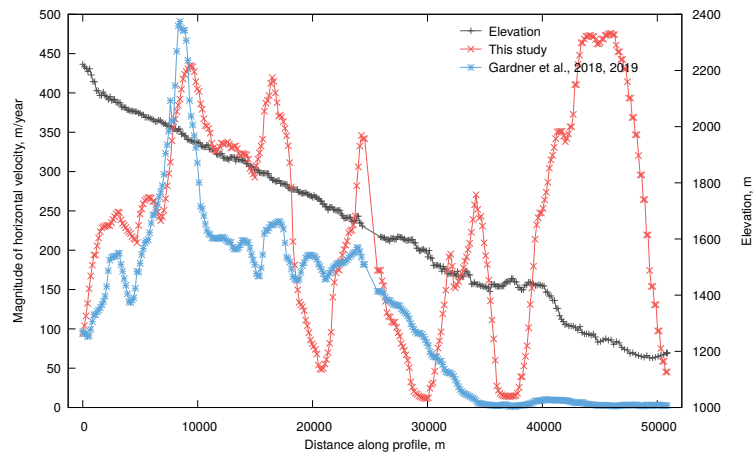
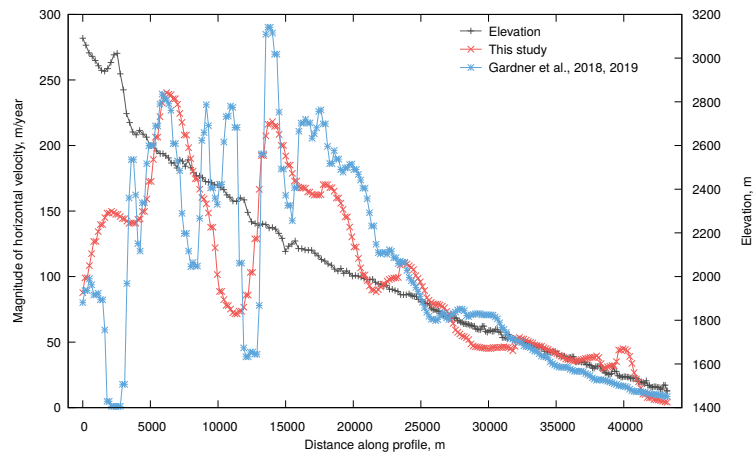


(a) Seward and Malaspina Glaciers



(b) Klutlan Glacier



(c) Walsh Glacier

Figure S1: Comparison between SAR-derived (this study) and Landsat-derived (Gardner et al., 2018, 2019) magnitude of mean horizontal flow velocities along three profiles: (a) Seward and Malaspina Glaciers; (b) Klutlan Glacier; and (c) Walsh Glacier.