

Sudden large-volume detachments of low-angle mountain glaciers – more frequent than thought?

Andreas Kääb¹, Mylène Jacquemart², Adrien Gilbert³, Silvan Leinss⁴, Luc Girod¹, Christian Huggel⁵, Daniel Falaschi^{6,7}, Felipe Ugalde^{8,9}, Dmitry Petrakov¹⁰, Sergey Chernomorets¹⁰, Mikhail Dokukin¹¹, Frank Paul⁵, Simon Gascoïn¹², Etienne Berthier¹³, Jeff S. Kargel¹⁴

¹ Department of Geosciences, University of Oslo, Norway

² Cooperative Institute for Research in Environmental Sciences, University of Colorado at Boulder, United States

³ Université Grenoble Alpes, CNRS, IGE, Grenoble, France

⁴ Institute of Environmental Engineering, ETH Zurich, Switzerland

⁵ Department of Geography, University of Zurich, Switzerland

⁶ Instituto Argentino de Nivología, Glaciología y Ciencias Ambientales, Mendoza, Argentina

⁷ Departamento de Geografía, Facultad de Filosofía y Letras, Universidad Nacional de Cuyo, Mendoza, Argentina

⁸ Geostudios, San José de Maipo, Chile

⁹ Departamento de Geología, Facultad de Ciencias Físicas y Matemáticas, Universidad de Chile, Santiago, Chile

¹⁰ Faculty of Geography, M.V.Lomonosov Moscow State University, Moscow, Russia

¹¹ High-Mountain Geophysical Institute, Nalchik, Russia

¹² CESBIO, Université de Toulouse, CNES/CNRS/INRA/IRD/UPS, Toulouse, France

¹³ LEGOS, CNES, CNRS, IRD, UPS, Université de Toulouse, Toulouse, France

¹⁴ Planetary Science Institute, University of Arizona, Tucson, AZ, USA

Correspondence to: Andreas Kääb (kaeab@geo.uio.no)

Abstract.

The detachment of large parts of low-angle mountain glaciers, resulting in massive ice-rock avalanches, have so far been believed to be a unique type of event, made known to the global scientific community first for the 2002 Kolka Glacier detachment, Caucasus Mountains, and then for the 2016 collapses of two glaciers in the Aru range, Tibet. Since 2016, several so-far unrecognized low-angle glacier detachments have been recognized and described, and new ones have occurred. In the current contribution, we compile, compare and discuss 20 actual or suspected large-volume detachments of low-angle mountain glaciers at ten different sites in the Caucasus, the Pamirs, Tibet, Altai, Alaska's St. Elias mountains, and the Southern Andes. Many of the detachments reached volumes in the order of 10–100 million m³. The similarities and differences between the presented cases suggest that glacier detachments often involve a coincidental combination of factors related to lowering of basal friction, high or increasing driving stresses, concentration of shear stress, or low resistance to exceed stability thresholds

. Particularly, soft glacier beds seem to be a common condition among the observed events, as they offer smooth contact areas between the glacier and the underlying substrate, and are prone to till-strength weakening and eventually basal failure under high pore-water pressure. Surface slopes of the detached glaciers range between around 10° and 20°. This may be low enough to enable the development of thick and thus large-volume glaciers, while also being steep enough to allow critical driving stresses to build up. We construct a simple slab model to estimate ranges of glacier slope and width above which a glacier may be able to detach when extensively losing basal resistance. From this model we estimate that all the detachments presented occurred due to a basal shear stress reduction of more than 50%. Most of the ice-rock avalanches resulting from the detachments in this study have a particularly low angle of reach, down to around 0.1 (apparent friction angle), likely due to their high ice content and connected liquefaction potential, the availability of soft basal slurries and large amounts of basal water, as well as the smooth topographic setting typical for glacial valleys. Low-angle glacier detachments combine elements, and likely also physical processes of glacier surges and ice break-offs from steep glaciers. The surge-like temporal evolution ahead of several detachments and their geographic proximity to other surge-type glaciers suggests the glacier detachments investigated can be interpreted as endmembers of the continuum of surge-like glacier instabilities. Though rare, glacier detachments appear to be more frequent than commonly thought and disclose, despite local differences in conditions and precursory evolutions, the fundamental and critical potential of low-angle soft glacier beds to fail catastrophically.

1 Introduction

Eighteen years after the detachment of Kolka Glacier in the Russian Caucasus, the 17 July and 21 September 2016 detachments of two neighbouring glaciers in the Tibet's Aru range directed attention to a new type of glacier instability that had been rarely observed and little described before (Gilbert et al., 2018; Käab et al., 2018; Tian et al. 2017). The detachment of Kolka Glacier on 20 September 2002 released $130 \cdot 10^6 \text{ m}^3$ of ice and rock that claimed ~135 lives. Situated near a dormant volcano, Mt. Kazbek, it was long assumed that the Kolka Glacier catastrophe was unique and specific to the glacier's location (Haeblerli et al., 2004; Huggel et al., 2005; Drobyshev, 2006; Evans et al., 2009b). The Aru twin glacier detachments – which released 68 and $83 \cdot 10^6 \text{ m}^3$ of glacier ice without known conditions of high geothermal flux – have recently raised the questions of whether and where such events may have happened before or need to be expected in the future, what conditions allow low-angle glaciers to detach catastrophically from their beds, and what this means for mountain hazard management. The urgency of these questions is highlighted by the fact that several detachments similar to the Aru events, though smaller, have been detected subsequently (Falaschi et. al., 2019; Paul 2019; Jacquemart et al., 2020).

In contrast to glacier detachments, glacier surges are an extensively studied, though still not fully understood type of glacier instability. Characterized by unusually high ice-flow speeds of up to tens of metres per day over large parts of a glacier, glacier surges last weeks to several years (Harrison and Post, 2003; Jiskoot, 2011; Harrison et al., 2015; Truffer et al., 2021). Clusters of surge-type glaciers are found in many mountain regions around the world (Sevestre and Benn, 2015). The lowering of basal

66 glacier friction that is associated with surging involves abnormally high water pressure, change in the thermal regime, and/or
responses of subglacial till to increasing shear stress and water input (Clarke et al., 1984; Kamb, 1987; Truffer et al., 2000;
68 Fowler et al., 2001; Murray et al., 2003; Frappe and Clarke, 2007; Sevestre et al., 2015; Benn et al., 2019).

A second, well-known type of glacier instability happens over a wide range of magnitudes, from icefalls at steep glacier fronts
70 to large ice avalanches, when partial or entire ice volumes suddenly break off from hanging glaciers that are typically steeper
than around 30° (Alean, 1985; Huggel, 2009; Faillettaz et al., 2015). The latter empirical value from literature offers a slope
72 threshold to separate the definitions of ice avalanches from glacier detachments. Impacts associated with ice avalanches, which
typically have volumes much smaller than $1 \cdot 10^6 \text{ m}^3$, are usually limited to a few kilometres, unless the failed ice transforms
74 into a highly mobile mass flow through liquefaction and incorporation of wet sediments or liquid water in the path (Petrakov
et al., 2008; Evans and Delaney, 2015). Failure conditions and triggering factors of such steep ice avalanches typically include
76 glacier geometry (steep ramp-type glaciers, bedrock edges), bedrock topography (e.g. convex bed), atmospheric events (e.g.
temperature increase), increasing accumulation rates, ice-thermal conditions (e.g. frozen base or changes therein), instabilities
78 of the underlying bedrock that take with them ice resting on it, or seismic events (Alean, 1985; van der Woerd et al., 2004;
Huggel, 2009; Fischer et al., 2013; Faillettaz et al., 2015).

80 Compared to the above two types of glacier instability, sudden large-scale detachments of mountain glaciers, primarily
occurring at low bed slopes, are much less frequent. However, due to a mobility at least as high as that of ice avalanches,
82 combined with large volumes, glacier detachments can constitute a severe threat to communities and settlements located in
remote areas.

84 In general, mass movements that result from sudden slope failures in ice- or snow-rich mountain environments are particularly
mobile, leading to strongly increased run-out distances compared to ice/snow-free conditions (Petrakov et al., 2008; Huggel,
86 2009; Schneider et al., 2011; Evans and Delaney, 2015). Frictional heating melts ice and snow components, which are either
part of the initial slope failure or incorporated along the avalanche path. Liquid water, embedded in the glacier and sediments
88 before failure, can amplify the avalanche mobility. Also ice and snow surfaces, in case the avalanche travels over those, are
able to reduce basal friction. Here, we define sudden large-volume glacier detachments through their initiation, while the
90 eventually resulting ice-rock avalanches might be similar to those resulting from other high-mountain slope instabilities. By
terming these events *low-angle glacier detachments*, we follow the suggestion by Evans and Delaney (2015) who describe the
92 Kolka case as large-scale detachment of a valley glacier. Other authors, for instance, called these failure events glacier slides,
in reference to landslides (Petrakov et al., 2008), or glacier collapses (Kääb et al., 2018).

94 The following selection focusses on detachments $\gg 1 \cdot 10^6 \text{ m}^3$ and from glaciers with surface slopes of less than around 20°, i.e.
focussing on glaciers from which large-volume detachments are not expected. We are well aware that it can be reasonable to
96 include events beyond the limits of these criteria in analyses, depending on the goal of the investigation, and that similar events
beyond the limits of these criteria could involve the same mechanisms that are discussed here. The main scientific purpose of

98 this paper is to provide an overview of all known glacier detachments, either by summarizing existing detailed studies, or by
providing such details for the first time (see Suppl. Tab. S1 for existing studies and new contributions by the present work).
100 We aim to show and discuss the relation of low-angle glacier detachments to glacier surges and the continuum of high-
mountain ice and rock instabilities, such as normal avalanches. The main applied purpose of our study is to make experts
102 involved in high-mountain hazard management aware of the so far little recognized possibility for glacier detachments, and to
discuss related potential key indicators and how climate change could factor into the mechanisms.

104 **2 Ice-rock avalanches and glacier surges**

In this section we draw some comparisons of low-angle glacier detachments to (1) more typical types of glacier ice and ice-
106 rock avalanches and (2) glacier surges. The detachment process sequence combines elements of both of these but in a
combination and under conditions that are distinct.

108 Glacier detachments lead to ice-rock avalanches, but ice-rock avalanches usually are be the result of different other initial
types of slope failures and event cascades. A wide range of magnitudes, avalanche compositions and impacts have been
110 observed (Schneider et al., 2011). In this section, we exemplify the diverse characteristics of ice-rock avalanches and the
resultant mass flows in order to contrast them to sudden large-volume detachments of mountain glaciers. We use the extensive
112 data collection from Schneider et al. (2011) as background data set for our study, extended by events from Petrakov et al.
(2008). In Fig. 1, each event of this combined data set is plotted as a gray circle according to its horizontal reach (L), elevation
114 difference (H) and detachment volume (V). The size of the circles in Fig. 1a indicates the event volumes. The ratio H/L is the
apparent friction coefficient or the angle of reach, also called “Fahrböschung”, calculated from the uppermost scarp of the
116 slope failure to the lowermost part of the mass movement deposits. Dark grey circles mark the following examples, standing
out mainly by type, volume and angle of reach:

- 118 - In the 1970 Huascarán (Peru) event (and a similar event in 1962), a rock-wall failure triggered by a M7.9 earthquake,
incorporated large amounts of ice from above and below it, leading to a highly mobile and far reaching rock-ice avalanche
120 of $80 \cdot 10^6 \text{ m}^3$ that claimed up to 20'000 lives (e.g., Evans et al., 2009a). In Fig. 1, we use the solid deposits of the avalanche
to define its reach and elevation difference, neglecting that a subsequent water/mud flood travelled much farther (indicated
122 by * symbols in Fig. 1). The 1970 Huascarán avalanche is one of the largest, farthest reaching, and the by far deadliest
known ice-rock avalanche.
- 124 - A rock failure in the Chilean Andes in 1987 incorporated ice, snow and water which transformed the avalanche into a
debris flow of $15 \cdot 10^6 \text{ m}^3$ that sped down the Estero Parraguirre valley and killed more than 37 people (Hauser, 2002). In
126 our collection, this is the farthest-reaching event (lowest angle of reach; $H/L \sim 0.12$) that did not originate as a glacier
detachment.

- 128 - The 1964/65 Allen Glacier event, Alaska, is an example for a very large rock avalanche, likely triggered by an earthquake, that was able to run out for an unusually long distance because it landed on a glacier (Post, 1968). Neighbouring glaciers show similar rock deposits from the same time, and also later earthquakes caused comparable rock avalanches that travelled far over low-angle glaciers (e.g., Shugar et al., 2012).
- 130
- 132 - In 1895, $5 \cdot 10^6 \text{ m}^3$ of at least partially cold-based ice sheared off 40° -steep bedrock from Altels Glacier in the Swiss Alps (glacier surface slopes indicated as numbers within the circles in Fig. 1a). The resulting ice avalanche rushed up the opposite side of the valley and thus did not reach its maximum runout distance (indicated by \rightarrow symbols in Fig. 1; Faillettaz et al., 2011). The Altels event is an example of a very large, pure ice avalanche, stemming from the detachment of a very steep glacier. Until it sheared off, the glacier was probably held in place by transverse bedrock riegels and cold patches/zones where it was frozen to its bed (Wagner, 1996).
- 134
- 136
- 138 - A number of ice-rock avalanches have occurred from different locations on Iliamna volcano, Alaska, the last of which is documented for June 2019 (Toney et al., 2020). Failure surfaces were typically on the order of 40° , and volumes reached up to around $20 \cdot 10^6 \text{ m}^3$ (Caplan-Auerbach and Huggel, 2007; Huggel et al., 2007). These events show that enhanced geothermal heat fluxes can be involved in causing ice-rock avalanches.
- 140

142 Above, we exemplify ice-rock avalanches other than glacier detachments in order to put the avalanches resulting from glacier
detachments into the context of high-mountain mass movements. In the following, we also put glacier detachments briefly in
144 the context of glacier surges. An obvious difference between surges and glacier detachments is that the bed of surging glaciers
does not fail catastrophically. A substantial body of research is available about glacier surging, covering among others surge
146 cycles and phases, and thermally and/or hydrologically driven surge mechanisms (see references in the Introduction). Some
observations of surging mountain glaciers or their surge-like movements fall outside the norm of the majority of surges, but
148 will become of interest for some glacier detachments contained in this contribution: While the regional pattern of known
glacier surges exhibits geographical clusters (Sevestre and Benn, 2015), surge-like events are sometimes found far outside the
150 known surge clusters, as was for example the case for the speed-up of Belvedere Glacier, Italian Alps, in the early 2000s
(Haerberli et al., 2002; Käab et al., 2004; Harrison et al., 2015; Truffer et al., 2021) (cf. Tsambagarav detachment, Section 3.4).
152 Ice flow speeds associated with surges are typically one to two orders of magnitude higher than pre-surge speeds, up to several
tens of metres per day, or about 5-6 orders of magnitudes slower than ice-rock avalanches. But there are known surges that
154 reached speeds of up to 1 km/h, i.e. only about 2 orders of magnitude slower than the avalanches (Section 3.6.3; Zhang, 1992).
Furthermore, disintegration of surging (and non-surging) glaciers, which did not lead to ice-rock avalanches, have also been
156 reported (e.g., Milana, 2007; Wang et al., 2020). Finally, another non-frequent behaviour of surge-type glaciers is extreme
surface bulging that has been observed as a consequence of polythermal ice structure (Clarke and Blake, 1991) (cf. e.g. Flat
158 Creek detachments, Section 3.7).

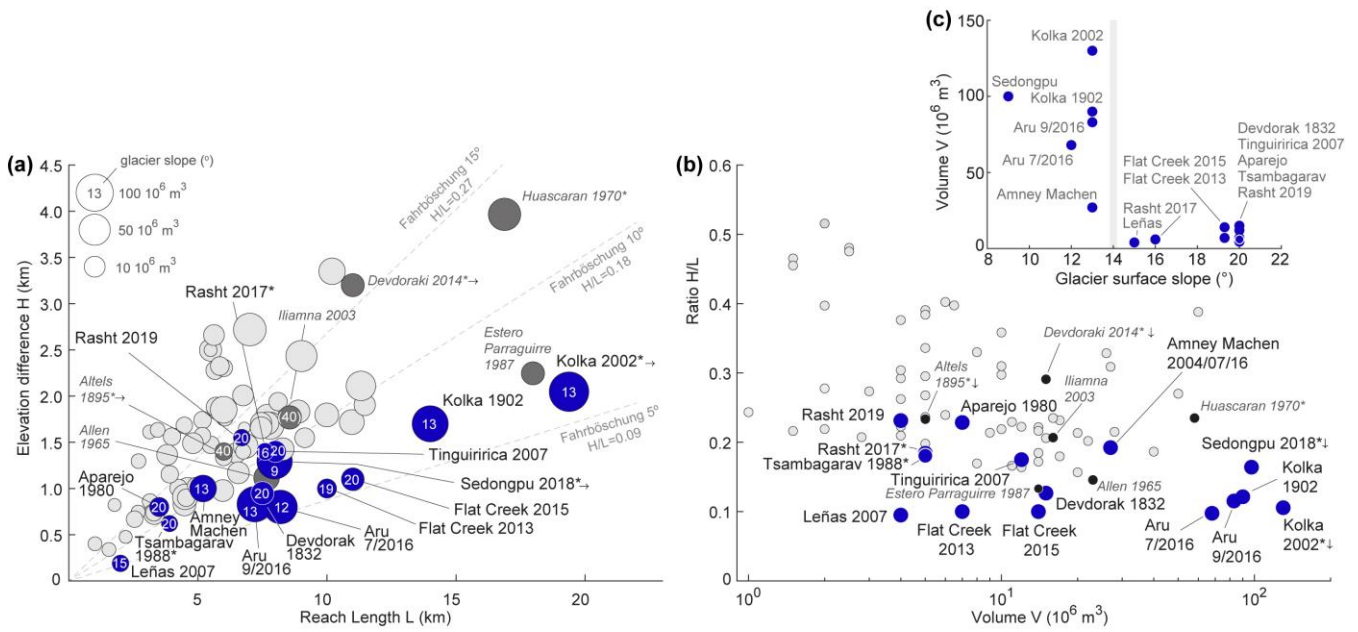


Figure 1: (a) Known avalanches of rock-ice mixtures plotted by elevation drop H versus reach L . The event volumes are indicated by circle size (see legend to the upper left of panel a). Blue circles are sudden large-volume detachments of low-angle mountain glaciers, with the surface slope of the detached glacier parts given inside the circles. The grey circles are other ice-rock avalanche events, with dark grey events mentioned specifically in the text to illustrate different event types collected in this figure. The diagonal dashed lines indicate the angle of reach, Fahrböschung, at 5°, 10° and 15°. (b) Events from (a) plotted by reach angle (H/L) versus avalanche volume V . Note the logarithmic scale of the x-axis (volume). Most events stem from Schneider et al. (2011), extended by data from Petrakov et al. (2008) and the present study. * after the event name indicates that a mud or debris flow continued from the rock-ice avalanche deposits, which is not considered in the calculation of the reach. Arrows behind the event name indicate that the avalanche was stopped by some obstacle and would otherwise have travelled farther. The direction of the arrow indicates the direction in which the event symbol would have shifted in the plot without the obstacle. (c) Glacier detachment volume against glacier surface slope. The grey vertical bar indicates a very rough boundary between the glacier slope of very large and smaller detachment volumes.

3 Glacier detachment events

In the following, we summarize events that we categorize as glacier detachments, i.e. large-volume ice-rock avalanches from the sudden failure of low-angle parts of mountain glaciers (blue circles in Fig.1). Based on previously published findings from several of the events, we focus our descriptions specifically on disposition factors that could contribute to or hint at the presence of particularly low basal friction and high driving stresses. These factors include soft sediments, polythermal ice conditions, abnormal geothermal heat flux, high water input and basal water pressure, glacier surging, additional ice or rock loading, or significant steepening in surface slope. As it has been shown that thermal conditions can also play a role in the detachments of glaciers (Gilbert et al., 2018; Jacquemart et al., 2020), we also try to evaluate permafrost conditions for each event.

182 We sort the following events by regions, and proceed within the regions from short summaries of well-documented events to
more detailed descriptions of not or little studied cases. Discussions of individual events, e.g. regarding pre-satellite era events
184 or a possible recurrence by glacier recovery, are included in the respective subsections, whereas the main discussion Section
4 focuses on the overall comparison between events.

186 **3.1 Mount Kazbek, Caucasus mountains**

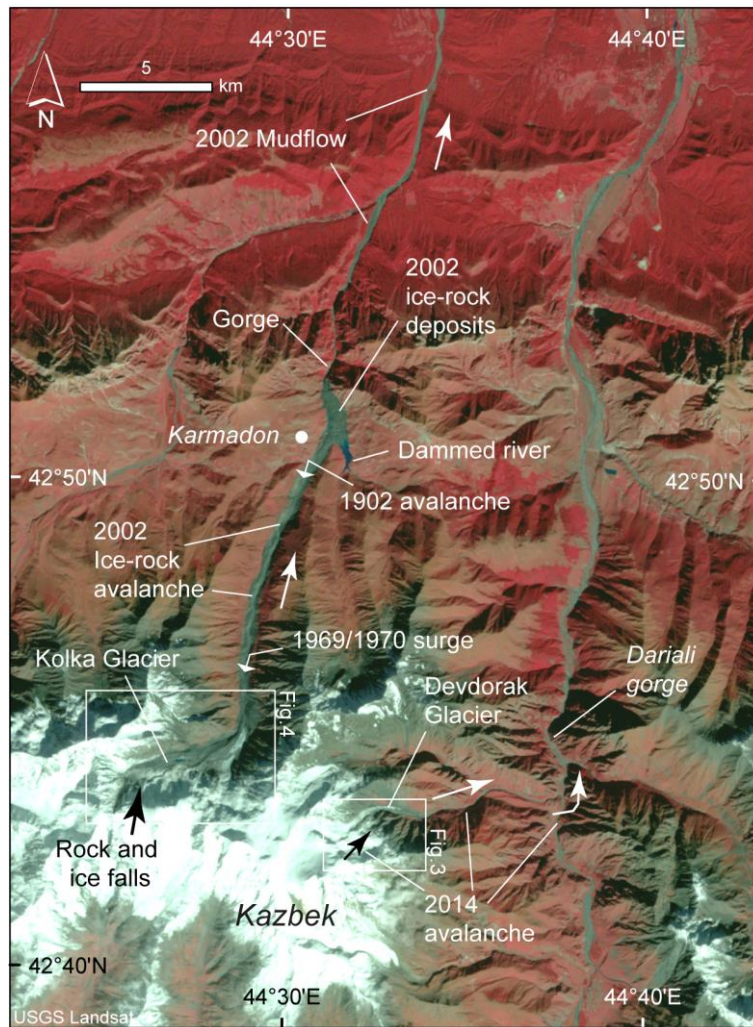
3.1.1 Devdorak, 18th century, 19th century, 2014

188 A number of suspected glacier detachments and rock-ice avalanches happened around Mt. Kazbek at the border between
Russia and Georgia. During the 18-19th centuries, surges of the Devdorak (Georgian name Devdoraki also used in literature)
190 Glacier on the north-eastern flank of Mount Kazbek (Fig. 2; Tab.1) were moving down the Amilishka River (Kabakhi River
in its lower part), which drains the glacier. Surge-like advances were recorded in 1776, 1778, 1785, 1808, 1817, and 1832
192 (Zaporozhchenko and Chernomorets, 2004). On August 13, 1832, parts of the surging Devdorak Glacier tongue detached and
the subsequent ice-rock avalanche blocked the main Terek valley, an important transportation route between Russia and
194 Georgia (Petraikov et al., 2008). Eyewitness of the 1832 event, engineer-captain Grauert estimated a volume of $15.5 \cdot 10^6$ m³ of
ice and rock mass blocked the Dariali Gorge of the Terek valley (Zaporozhchenko and Chernomorets, 2004). The causes and
196 mechanisms of this (and other) detachments are not well known, and vary throughout the literature. Ice-rock avalanching onto
the glacier, overloading and associated increase in subglacial water pressure could well have played a role.

198 Except for their source area, these at their time well known “Kazbek blockages” followed the same avalanche path as the 2014
Devdorak event described in the following. In 2014, parts of a rock wall and overlying hanging glaciers failed from Mount
200 Kazbek (Figs. 2-3). The resulting highly mobile rock-ice avalanche of $2\text{-}5 \cdot 10^6$ m³ rushed down the Amilishka / Kabakhi Valley
and blocked the main road between Russia and Georgia, killing 9 people (Chernomorets et al., 2016; Tielidize et al., 2019).
202 This event might also have had a longer runout (Fig. 1) but was stopped by a sharp 90°-turn at the confluence of the Devdoraki
gorge and the Dariali (or Terek) gorge. The 1832 Kazbek blockage is described as a glacier detachment in the sense of the
204 present contribution in older literature, but more recent interpretations, not least based on the 2014 event, suggest that the 1832
and other such events at the site might have started as rock failures rather than surges (Chernomorets, 2014, Chernomorets et
206 al., 2016). We list the Kazbek blockages as potential glacier detachments here, but stress that it remains uncertain what kind
of event they actually were.

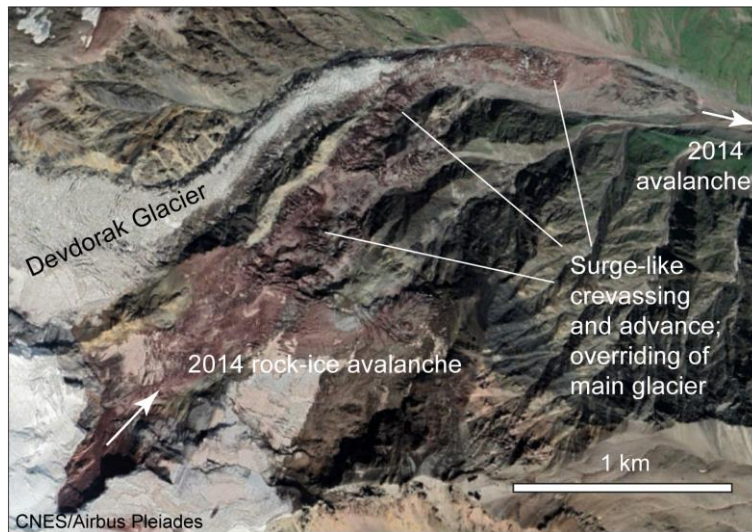
208 Currently, the entire narrow lower part of Devdorak Glacier has a surface slope of around 23°, its tongue closer to 17°. The
volcanic nature of Mount Kazbek, the documentation of a number of violent mass flows from the mountain in the past
210 (Chernomorets et al., 2007), field visits, and visual analysis of very high resolution satellite images and terrestrial photos all
suggest highly erodible rock and an abundance of fine sediments at many places on Mount Kazbek. On all high-resolution
212 satellite images available since around 2002 (GoogleEarth, Bing Maps, Maxar, Pleiades), Devdorak Glacier appears heavily

crevassed, and is partly covered by fine sediments, likely deposited by mass movements from the surrounding mountain flanks.
214 Since 2015, a glacier directly south of Devdorak Glacier has been overriding the main tongue of Devdorak glacier in a surge-
like destabilisation, perhaps triggered by the 2014 Kazbek/Devdorak rock-ice avalanche that overran it (Fig. 3). Possibly as a
216 consequence of the tributary surge, Devdorak Glacier itself is currently also advancing (Dokukin et al., 2020). A 1-km global
permafrost model (Obu et al., 2019), not particularly tuned for mountain permafrost, though, suggests the elevation of the
218 Devdorak Glacier tongue is roughly at or below today's lower boundary of the discontinuous permafrost zone in the region.



220

222 **Figure 2: Overview over Mount Kazbek, Russia/Georgia, Caucasus Mountains, with elements of the 2002 Kolka/Karmadon and 2014 Devdoraki rock-ice avalanches indicated. Satellite image: Landsat, 6 Oct 2002 (credit: USGS).**



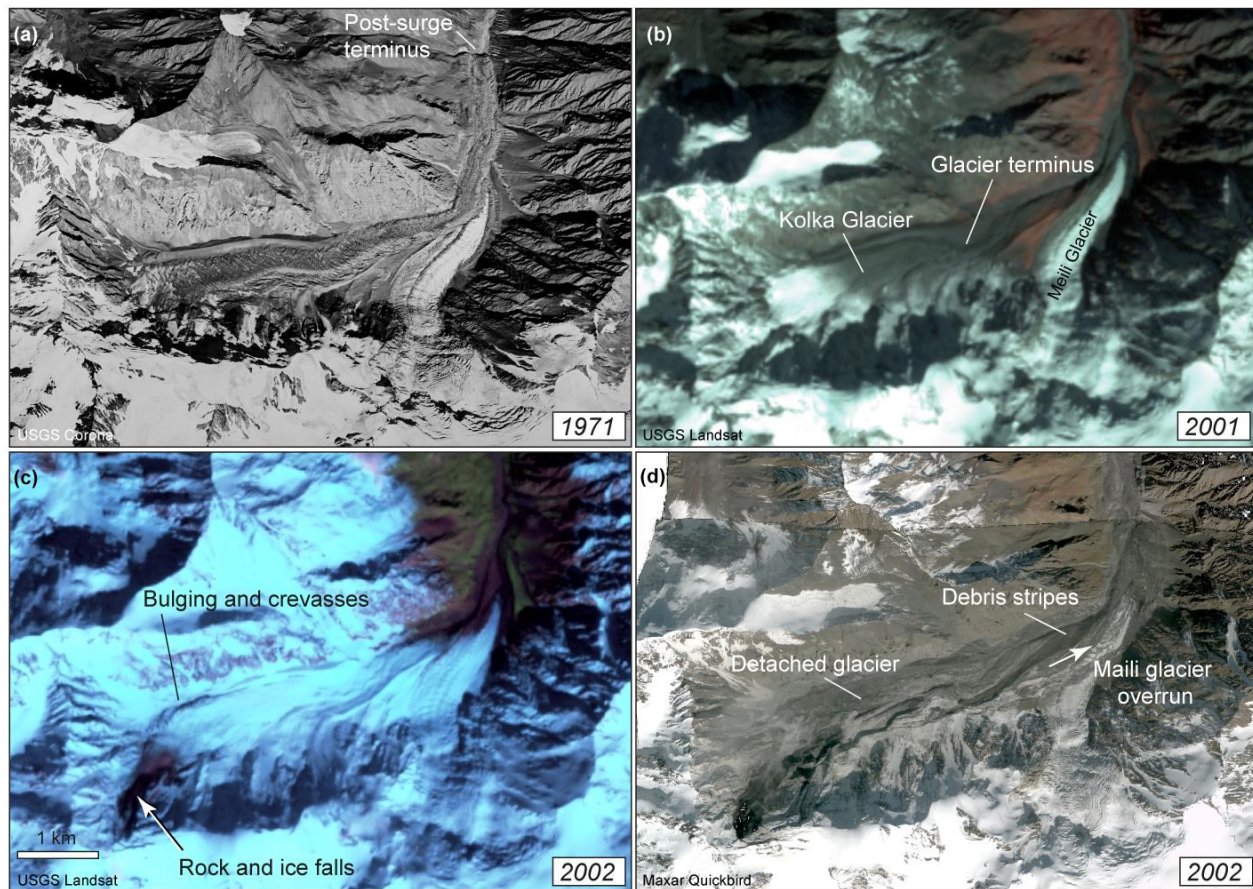
224
 226 **Figure 3: Lower part of Devdorak Glacier and northeastern flank of Mount Kazbek. The position of the image section is indicated in Fig. 2. Satellite image: Pleiades, © Airbus, 19 Aug 2019.**

228 3.1.2 Kolka, 1902 and 2002

230 The $130 \cdot 10^6 \text{ m}^3$ Kolka Glacier detachment (Figs. 2 and 4, Tab. 1) of 20 September 2002 has been described and discussed in several studies (Kääb et al., 2003; Haeberli et al., 2004; Kotlyakov et al., 2004; Huggel et al., 2005; Drobyshev, 2006; Evans et al., 2009b). During these investigations, it became clear that a similar event must have already happened at least once, at the beginning of July 1902 (and probably also around 1700), whereby the glacier tongue detached after a roughly two-week long surge-like advance. Heavy rain and snow melt may have played a role in triggering the 1902 advance. Damming or erosion by water could then have caused the actual detachment and subsequent rock/mud/ice flow (Drobyshev, 2006; Petrakov et al., 2008; Kotlyakov et al., 2010b). The descriptions given in these references and their sources clearly describe an event that
 236 qualifies as a detachment in the sense of the present contribution. The glacier started surging again in autumn 1968 and advanced by 4 km with speeds of up to 220 m/day (Fig. 4), but without catastrophic consequences (Hoinkes, 1972; Rototayev et al., 1983). We do not know which differences in conditions, compared to 1902 and 2002, caused the glacier to not detach in 1970. Several other glaciers in the Caucasus are known to have surged in the past (Kotlyakov et al., 2010b). We found that
 240 Kolka Glacier had a low surface slope of around 13° prior to the 2002 detachment. Evans et al (2009b) estimated a bed slope of 9° after the detachment. Over the course of several weeks before the 2002 detachment, perhaps triggered by earthquakes (Kotlyakov et al., 2004), heavy rock and ice falls from the northern flank of the Kazbek massif deposited several 10^6 m^3 of material on the glacier. During this period of mass-wasting activity, the glacier changed in unusual ways: it bulged and became
 244 heavily crevassed (Fig. 4), it developed a scarp at the location of the later detachment, and supraglacial ponds formed

(Kotlyakov et al., 2004; Evans et al., 2009b; Kotlyakov et al., 2010b). Unusually high geothermal heat fluxes underneath the glacier (fumaroles and sulphur smell were reported from the glacier bed shortly after detachment), the impact energy of a large rock/ice fall, and successive loss of shear stress due to excess water pressure have been proposed as possible factors and ultimate triggers of the 2002 detachment (Kotlyakov et al., 2004; Evans et al., 2009b; Kotlyakov et al., 2010b). Similarly, the additional loading of Kolka Glacier from the rock and ice falls has more recently been proposed to have increased the basal shear stress until it exceeded a frictional threshold given by the glacier bed material, topography, and hydraulic conditions (Kääb et al., 2018). After the detachment, lakes were visible on the Kolka Glacier bed, pointing to the involvement of large amounts of subglacial water in the detachment. The high mean avalanche velocities of 50-80 m/s (Huggel et al., 2005) suggest availability of large amounts of water and/or saturated fine-grained till.

The Kolka Glacier tongue is, like Devdorak Glacier, roughly at the lower elevation of the regional discontinuous permafrost zone, and the glacier must have been temperate throughout, except for the likely polythermal, or even cold steep hanging glaciers avalanching from the northern flank of the Kazbek massif onto its surface. The ice-rock avalanche resulting from the 2002 detachment is described in detail in the above literature about the event, but we want to draw attention to the streamlined debris stripes, in the following called debris stripes, that were visible in the detachment zone after the event (Fig. 4d; Petrakov et al., 2004; Huggel et al., 2005), because similar patterns have also been found in several of the other cases of this study. Currently, the detached glacier depression is refilling and the glacier is gaining mass again. The fast recovery of the glacier volume lost by the 1970 surge, and again after the 2002 detachment, is associated with Kolka Glacier's positive mass balance, which stands in stark contrast to the predominant strong glacier shrinkage in the Caucasus Mountains (Kutuzov et al., 2019; Zemp et al., 2019). Kolka Glacier had already reached almost 50% of its pre-detachment volume by 2017 and is projected to accumulate 60–70% of its pre-detachment volume by 2025 (Petrakov et al., 2018; Aristov et al., 2019).



266 **Figure 4: Kolka Glacier, Mount Kazbek. (a) Kolka Glacier surged in 1969/70. Satellite image: Corona, 20 Sep 1971**
 268 **(credit: USGS). (b) Landsat image, 3 Oct 2001 (credit: USGS). (c) Days and weeks before the 2002 detachment, rock**
 270 **and ice falls/avalanches were observed onto the glacier, and the left lateral margin of the glacier was bulged and heavily**
crevassed. Satellite image: Landsat, 20 Sep 2002, a few hours before detachment (credit: USGS). (d) Quickbird satellite
image (© Maxar), 25 Sep 2002, 5 days after detachment. The position of the image sections is indicated in Fig. 2. The
location of debris stripes in avalanche direction is indicated.

272

3.2 Rasht, Pamir/Tajikistan

274 In 2017 and 2019, two glacier detachment events happened on the north side of the Peter the First Range (or Petra Pervogo
 Range, or Peter the Great Range), in the Pamir Mountains of Tajikistan. The resulting masses of both events travelled north
 276 into the Rasht Valley through which the Surkhob River flows that later forms the Vakhsh River (Fig. 5).

3.2.1 Event of 2017

278 The 2017 event, first mentioned in Dokukin et al. (2019), happened between 10 and 11 July 2017 (Planet images). A glacier
of roughly 1000 m length and 240 m width detached (upper scarp ca. at 3600 m a.s.l) and the resulting ice-rock avalanche
280 flowed down a narrow valley towards the village Tojikobod in the Rasht Valley (Figs. 5 and 6, Tab. 1). In satellite imagery
taken shortly after the event (Planet, Maxar), ice remains can be recognized over a horizontal distance of about 8 km, down to
282 an elevation of about 2160 m a.s.l. Beyond this point, a considerable debris/mud flow must have continued for another 2 km
or so. The detached glacier had a surface slope of around 16° (High Mountain Asia DEM; Shean, 2017). We measured
284 increased surface speeds of up to 5.8 m/day in early July 2017 (compared to a few dm/day in 2016; velocities from repeat
Planet data) and detected unusual lateral crevasses delineating the later detachment area in images from as early as May 2017
286 (Fig. 6). The glacier is likely not surrounded by permafrost (Obu et al., 2019).

To roughly estimate the event volume we derive the ice thickness along the center flow line of the glacier based on an estimated
288 basal shear assuming a driving stress of $1.2 \cdot 10^5$ Pa as suggested for mountain glaciers, a slope of 16° , and a form factor of 0.8,
which then results in a thickness of around 60 m (Cuffey and Patterson, 2010). Multiplying half of this depth (i.e. assuming a
290 triangular cross-section) with the detached area (ca. 200,000 m²) gives a first volume estimate of roughly $6 \cdot 10^6$ m³. Whereas
satellite images after detachment suggest that much of the glacier bed might actually have a triangular cross-section, it may
292 have been more shallow in the lowermost and uppermost parts. As an order of magnitude, we suggest a detachment volume of
 $5 \cdot 10^6$ m³ and assign a conservative error of $\pm 1 \cdot 10^6$ m³ to this estimate.

294 The cirque from which the 2017 event originated was also the source of other slope instabilities over recent years. Another
(much smaller) ice-rock avalanche from a neighbouring glacier occurred between 15 and 24 July 2016 (dates from Planet
296 images), with a horizontal reach of roughly 5.5 km. A large debris flow descended the same valley in late August 2016, starting
from the same cirque, likely entraining deposits of the July 2016 avalanche, and reaching the Surkhob River 19.4 km
298 downstream where it destroyed several buildings, bridges and agricultural fields.

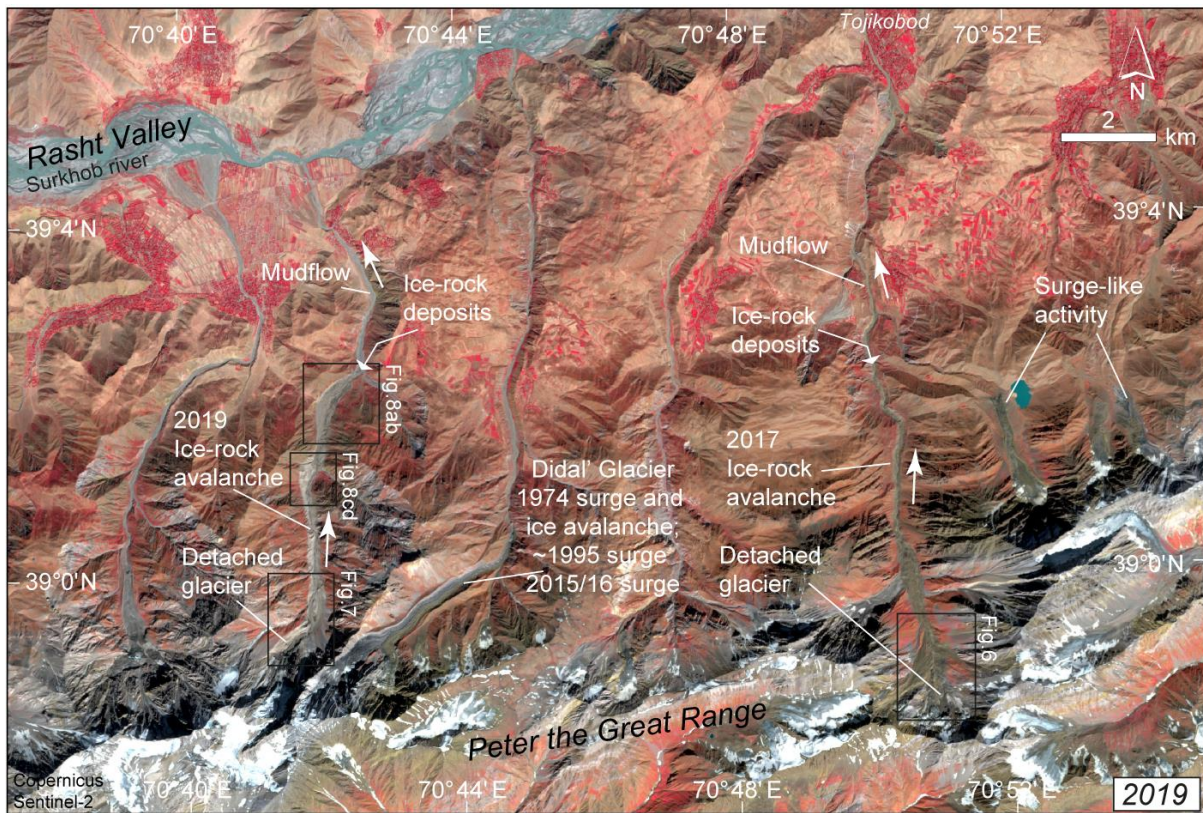
3.2.2 Event of 2019

300 Between 2 and 3 August 2019 a second glacier, ca. 14 km to the west of the one that collapsed in 2017, detached (Figs. 5, 7).
This glacier was slightly smaller than the 2017 one, and had a surface slope of around 20° . The resulting ice-rock avalanche
302 travelled north down a narrow valley towards the Rasht Valley, over a horizontal reach of 6.5 km and a vertical drop from
3350 (upper scarp) to 1850 m a.s.l. Superelevations of the ice-rock avalanche path of up to almost 200 m above valley bottom
304 suggest high avalanche speeds (McClung, 2001). We estimated the detached volume in the same way as described for the 2017
event (section 3.2.1) and computed a volume of $4.5 \pm 1 \cdot 10^6$ m³ (glacier area ca. 230,000 m²; centreline depth 50 m). Based on
306 pre- and post-event WorldView stereo DEMs Leinss et al. (2020) estimate a maximum erosion depth of 90 m and a detachment
volume of $8\text{-}9 \cdot 10^6$ m³, i.e. significantly more than our rough general model.

308 This glacier also showed increased sliding speeds and crevassing around the later detachment area for at least 2-3 weeks before
the failure. For the end of July 2019 we found surface speeds of roughly 2.5 m/day, a marked increase compared to roughly <
310 0.1 m/day during 2017–2018 (repeat Planet data). The glacier did not show any visual signs of destabilisation between 2015
and 2018 (Planet images). In 2007 (Maxar; see Supplement) the glacier looked heavily crevassed, possibly an indication of a
312 surge-like advance. This condition is still visible in Landsat data 5-6 years later, though less certain due to the lower resolution
of Landsat data (no other data is available to us between 2007 and 2015). Landsat data also suggest that the glacier experienced
314 a similar advance in the early 1990s. Under the limitation of the reduced spatial resolution of the Landsat data, however, we
do not find signs of a large detachment event or large ice-rock avalanche. Nevertheless, we draw attention to a surprisingly
316 vegetation-free landform visible downstream of the 2019 detachment in pre-event imagery (Fig. 8). The lack of vegetation,
the streamlined microtopography, and zones of rough and chaotic microtopography that resemble avalanche or debris flow
318 deposits (Fig. 8; Supplement), led us already before the 2019 event to interpret this landform as a possible geomorphological
imprint of an earlier ice-rock avalanche (Kääb, 2019). Meanwhile, this landform has been overrun by the August 2019 ice-
320 rock avalanche, leaving similar new forms, and suggesting that the landform now buried could have originated from a similar
detachment event, probably before 1961 (year of earliest Corona satellite image). Between the 1961 Corona images and very
322 high-resolution images from just before the 2019 avalanche no significant changes are visible on the landform.

Very-high resolution satellite images over the Peter the First Range suggest abundance of weak bedrock and fine sediments.
324 All over the range, signs of large debris flows, rock avalanches or ice-rock avalanches are visible in high resolution satellite
images (Maxar, CNES/Airbus, Planet; Leinss et al, 2020). The Pamirs are known to be very geomorphologically active, with
326 a number of associated hazards (Mergili et al., 2012; Gruber and Mergili, 2013; Strom and Abdrakhmatov, 2018) and a cluster
of surge-type glaciers (Kotlyakov et al., 2008; Kotlyakov et al., 2010a; Gardelle et al., 2013; Sevestre and Benn, 2015; Lv et
328 al., 2019; Goerlich et al., 2020). A number of glaciers in the Peter the Great Range were surging at the time of writing or have
done so in the recent past (Fig. 5). Didal Glacier (ca. 12° steep) surged around 1995, and again during the winter 2015/16
330 where it advanced by 2.5 km over a few months. In the valley below Didal Glacier we note lack of vegetation in the valley
and landforms that could well stem from a former ice-rock avalanche. Kotlyakov et al. (2010a) mention a 2.2 km long ice
332 avalanche from Didal Glacier in 1974. In comparison, the bottom of the valley through which the 2017 ice-rock avalanche
descended (section 3.2.1) was partly tree covered before, suggesting that no event like the 2017 one has happened there in the
334 recent past.

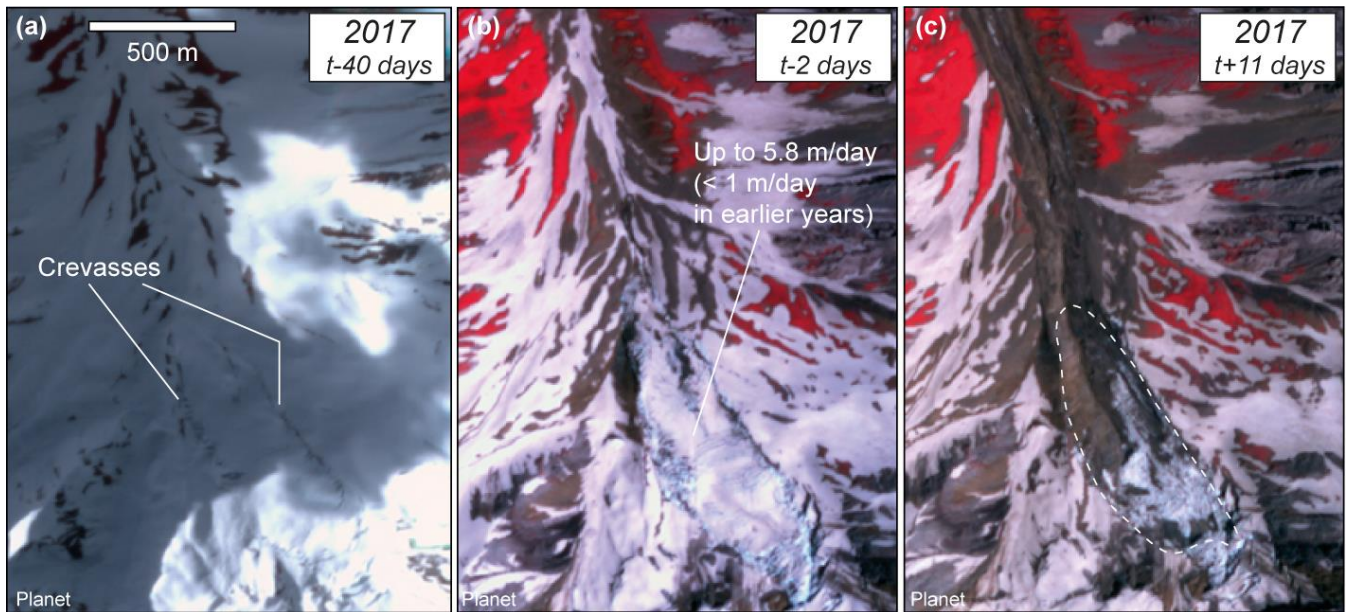
Even if not documented in detail in an internationally accessible format so far, to our best knowledge, both the 2017 and 2019
336 detachments and their downstream effects were very likely noted by the local communities as the lowermost ice/rock deposits
stopped not far from settlements, agricultural fields, and pastures, and very-high resolution images (Maxar) show that flooding
338 happened close to houses and two irrigation channel bridges were partially destroyed.



340

342

Figure 5: Rasht Valley and Peter the Great Range, Tajikistan. Locations of the 2017 and 2019 ice-rock avalanches are indicated. Satellite image: Sentinel-2, 19 Sep 2019 (credit: Copernicus Sentinel data).

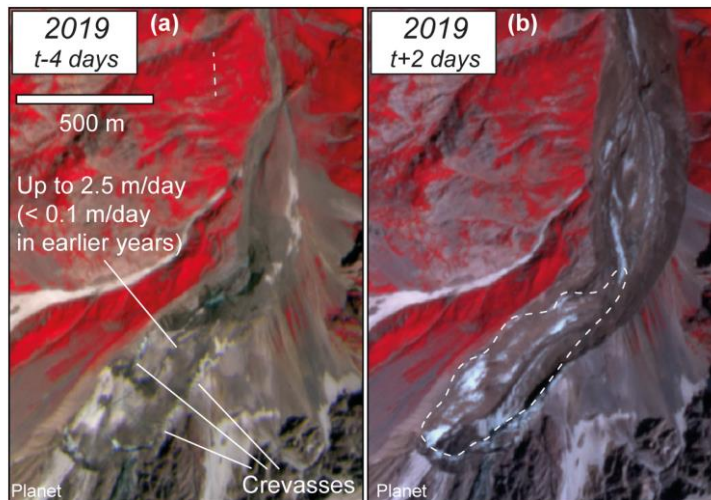


344

346

Figure 6: Planet images over the Rasht Valley glacier detachment of around 10 July 2017 ($\approx t$). (a) 31 May 2017, (b) 8 July 2017, (c) 21 July 2017. Abnormal marginal crevassing and enhanced speeds were visible several weeks before the detachment. See Fig. 5 for location. (Satellite images © Planet).

348



350

Figure 7: Planet images over the Rasht Valley glacier detachment of around 2 Aug 2019 ($\approx t$). (a) 29 Jul 2019, (b) 4 Aug 2019. See Fig. 5 for location. (Satellite images © Planet).

352



354

356

358

Figure 8: Location of the ~2 Aug 2019 Rasht Valley ice-rock avalanche. See Fig. 5 for image location. (a) and (c): 30 Jul 2007 (© Google Earth and Maxar). (b) and (d): 20 Aug 2019 (© Google Earth and CNES/Airbus). Before the 2019 event, traces of a potential former large mass flow were visible (lack of trees in the valley, sparse vegetation, debris stripes).

360

3.3 Aru, 2016, western Tibet

362

364

366

On 17 July 2016, a massive volume of glacier ice detached from the lower part of an unnamed glacier in the Aru Range (Rutok County, China) in the western Tibetan Plateau (termed Aru-1). The fragmented ice mass ran out 6 km beyond the glacier terminus, killing nine herders and hundreds of their animals, and reached the Aru Co lake (Tian et al., 2017; Kääh et al., 2018). The ice debris covered 8–9 km² and a volume of $68 \cdot 10^6$ m³ was calculated for the detached glacier part. On 21 September 2016, a second glacier (Aru-2) detached just a few km south of Aru-1 (Fig. 9). Similar to the July event, the glacier ice fragmented and transformed into a mass flow. The glacier debris in the second detachment covered 6–7 km² with a detached glacier volume of $83 \cdot 10^6$ m³. The maximum glacier thicknesses that detached were around 115 m (Aru-1) and 145 m (Aru-2).

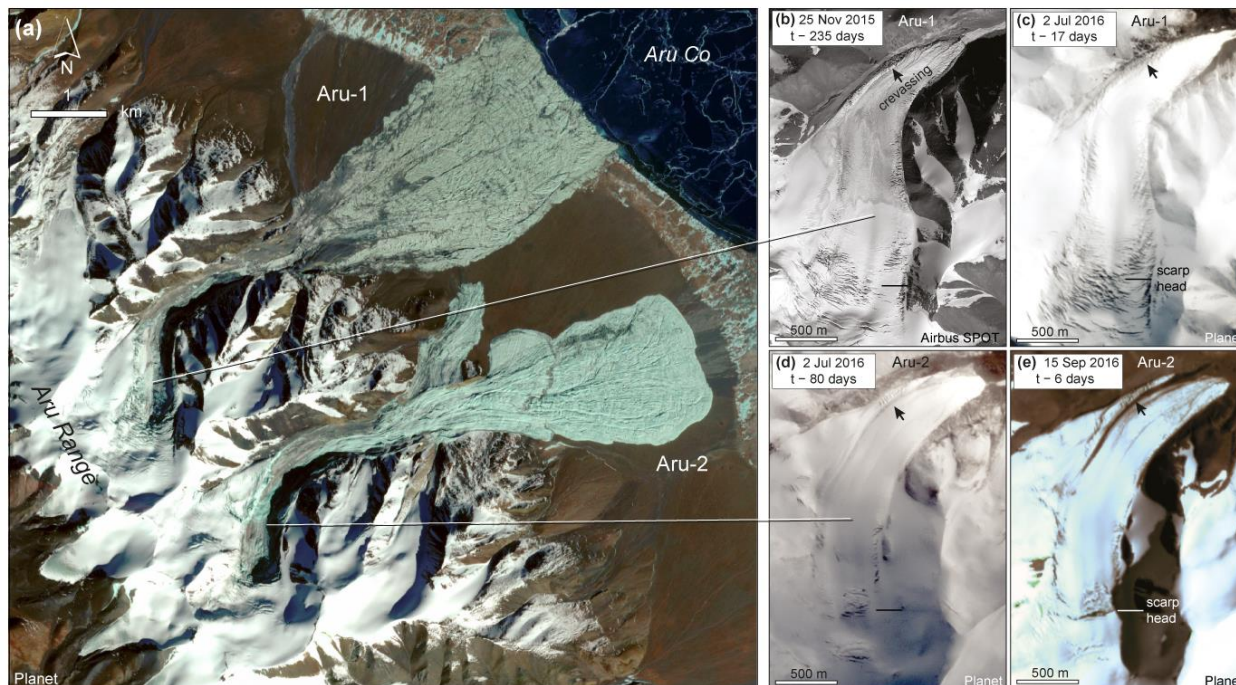
368 and maximum deposit thicknesses were around 25 m (Aru-1) and 80 m (Aru-2) (Kääb et al., 2018). The mean speeds of the
Aru ice-rock avalanches were estimated to 30–50 m s⁻¹, with maximum speeds of 70–90 m s⁻¹ (Kääb et al., 2018). (For a
370 satellite image of the current situation of the Aru glaciers and the deposits, see the Supplement).

Glaciers in the wider region around the Aru range are part of the Karakoram – West Kulun Shan – Eastern Pamir anomaly
372 (Treichler et al., 2019) and experienced a slight increase in thickness of around 0.20–0.30 m/a water equivalent since the early
2000s (Brun et al., 2017; Kääb et al., 2018). Positive mass-balances of the Aru glaciers (modeled based on ERA-interim
374 reanalysis data; Kääb et al., 2018) and the widespread growth of endorheic lakes confirmed a precipitation increase in the
region from the late 1990's on (Treichler et al., 2019). Driven by these positive mass balances, the two Aru glaciers underwent
376 surge-like accelerations and mass transfers over several years before the detachments (Gilbert et al., 2018; Kääb et al., 2018).
In apparent contrast to the positive mass balances and the surge-like mass transfers, the Aru-1 and Aru-2 glaciers both retreated
378 by around 500 m between 1970 and 2015.

Since at least 2011 and until 2014, the sections above the eventual detachment zones of both Aru glaciers subsided.
380 Simultaneously, glacier sections below bulged upwards. The rates of elevation change derived for 2011–2014 indicate that a
down-glacier mass transfer had already begun during the second half of the 2000s (Gilbert et al., 2018). A modelling study
382 based on the observed elevation changes reconstructed changes in basal friction and horizontal velocity prior to the
detachments (Gilbert et al., 2018). It showed that the two glaciers were close to their steady state geometry with no/little sliding
384 until 2010. Thereafter, decreasing friction under the whole detachment area of Aru-1 and in more localized zones of Aru-2
started to trigger the surge-like mass transfer. Modelling the glaciers' thermal regimes revealed that the frictional changes
386 likely occurred in temperate areas of the two glaciers and that stress concentration occurred at the cold-ice margins (Gilbert et
al., 2018). The surge-like changes of basal friction under the Aru glaciers were thus likely not associated with a change of the
388 glaciers' thermal regimes but rather with a change in friction due to increasing water pressure in the already temperate areas.
During the instability development, basal shear stresses in the detachment area dropped by an order of magnitude, leading to
390 significant stress concentrations at the detachment margins and in a few spots under the glaciers. These stress concentrations
led to strongly enhanced crevassing at the glacier margins and the zone of the later scarp head several months prior to the Aru-
392 1 detachments. Fast-developing crevasses appeared only three weeks before the Aru-2 detachment and were discovered in
satellite images in time to alert Chinese authorities.

394 The Aru glaciers are surrounded by continuous permafrost of -3 to -4 °C mean annual ground temperature (Obu et al., 2019).
Field observations in the detachment and runout zones showed no presence of a hard-bed lithology beneath the glaciers, and
396 very few large boulders were observed in the runout paths (own field visit and Lei et al. 2021). Rather, extensive deposits of
soft, unconsolidated and fine-grained lithologies were identified. The Aru glaciers, situated in a region of positive or zero mass
398 balances (Brun et al., 2017; Treichler et al., 2019) could well build up again to a size similar to the one before their 2016

collapses. Especially in the path of the Aru-1 avalanche, streamlined debris stripes, not present before the event, are well visible
400 at several locations in high-resolution satellite data (Supplementary Fig. S5). We find no other evidence for a similar event in
the recent past at the site, so finding two similar events at neighbouring glaciers is rather remarkable.



402

Figure 9: Satellite images of the Aru glaciers, western Tibet, and their detachments. (a) Planet infra-red false-colour satellite image of 29 November 2016, after both glaciers collapsed (© Planet). (b) Enhanced crevassing on Aru-1 glacier (SPOT7, © Airbus). Time t refers to detachment date (17 July 2016 for Aru-1, 21 September 2016 for Aru-2). Note the particular crevassing at the northern curve of the glacier. (c), Aru-1 (Planet). (d), Aru-2 (SPOT7, © Airbus). (e), Aru-2 (© Planet), six days before collapse. The horizontal line in panels (b-e) indicates the scarp head positions of the later detachments.

406

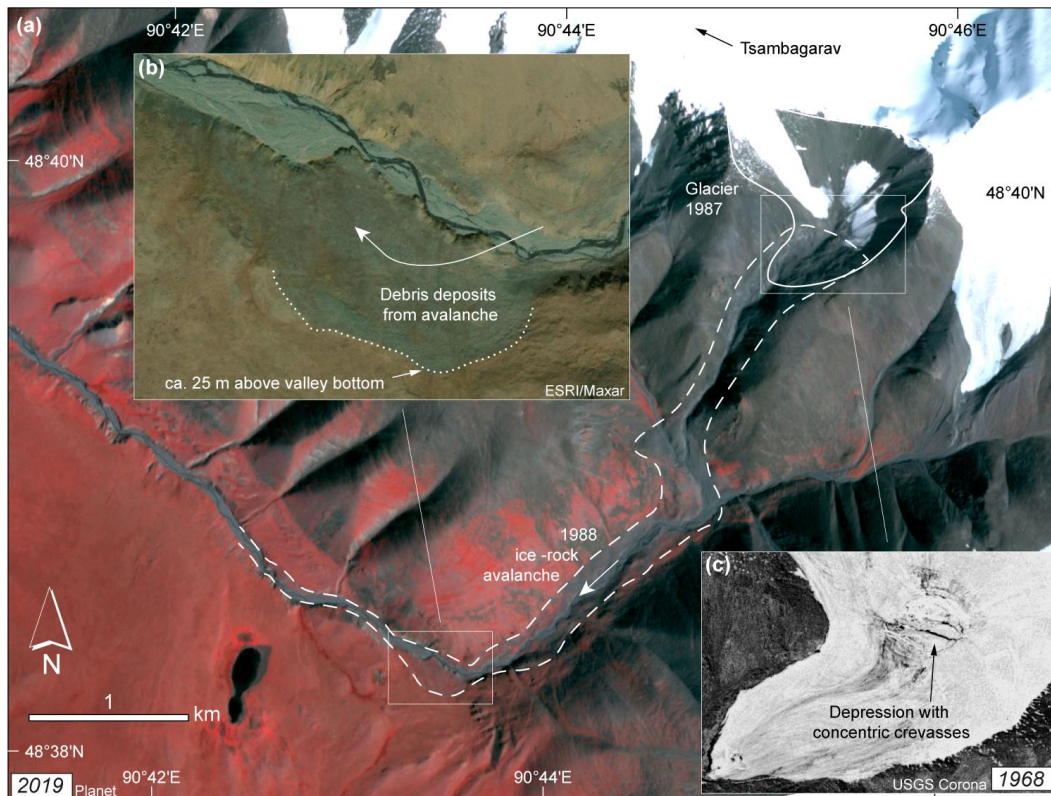
410 3.4 Tsambagarav, 1988, Altai, western Mongolia

Information about the 1988 Tsambagarav event is mainly relying on observations and interpretations by Avdeev et al. (1989).
412 On the evening of 9 Aug 1988 (local time) the lower part of an unnamed glacier on the southern flank of Tsambagarav mountain
(4193 m asl.), Altai mountains, western Mongolia, detached and formed an ice-rock avalanche. The avalanche travelled about
414 5.5 km (Avdeev et al., 1989), and from Landsat data we suggest the last 1-2 km might have been a mud flow (Fig. 10). As a
peculiarity of this event, it seems to have been preconditioned by the 23 July 1988 Tsambagarav M6.4 earthquake. As a
416 consequence of this earthquake, a large block (ca. $6 \cdot 10^6 \text{ m}^3$) of the lower part of the glacier was separated from its upper parts

418 and displaced a few meters to south eastern direction. Melt water could then reach the glacier bed beneath the ice block through
420 the developing crack. On 9 Aug 1988, the ice block detached from the glacier bed. Avdeev et al. (1989) describe the path of
422 the resulting ice-rock avalanche in detail, but here we want to highlight two aspects of it. First, after about 1.8 km, the avalanche
424 jumped (obviously at high speeds) over a 70-m tall ridge, leaving the ground on leeward side of the ridge intact. Second,
Avdeev et al. (1989) estimate the deposited avalanche volume to about $12 \cdot 10^6 \text{ m}^3$ (vs. $6 \cdot 10^6 \text{ m}^3$ detached ice volume) indicating
that the detachment must have eroded and ingested substantial amount of material along the way. The large debris content of
the deposits likely also played a role in that it took almost 30 yr for the ice content to melt out completely (Agatova et al.,
2020).

426 On a Corona satellite image from 11 Aug 1968, two obvious transverse crevasses, surrounded by a number of smaller
428 concentric crevasses can be seen at the location of the upper scarp of the 1988 earthquake-triggered rupture and later glacier
detachment (Fig. 10c). The entire feature has a diameter in the order of 150 m. Close visual inspection leads us to interpret the
430 feature as a depression in the glacier surface. From many contemporary Planet satellite images with snow cover, and from
Landsat 8 thermal data, we do not find indications of enhanced geothermal activity at the depression location. Today, the
432 location appears to be the place for a spring that concentrates the subsurface runoff of the entire cirque. This spring could
already have existed in 1988 and led to reduced basal friction and enhanced basal melt at its position, and thus to a depression
on the glacier surface. Also today's glacier remains show a few obvious crevasses in the same area. Overall, the 1988
detachment seems to have happened at a pre-existing weakness and strongly crevassed location of the glacier.

434 Avdeev et al. (1989) note a slope angle of the detachment area of 20° - 25° . From the SRTM1 DEM we find a slope of the
436 valley bottom of around 15° at the location of the detached glacier part and assign an arbitrary 20° slope to the pre-detachment
glacier. Since the detachment in 1988, the entire glacier has shrank substantially and as of 2020 only a small part of it is left.
438 The detachment site lies in continuous permafrost with mean annual ground temperatures in the order of -10°C (Obu et al.,
2019). Avdeev et al. mention the existence of shattered bedrock in and around the glacier bed, and this is in line with visible
440 interpretation of contemporary high-resolution satellite images. Ultimately, we cannot draw conclusions about the existence
of particularly fine-grained sediments at the detachment site. From the weak avalanche traces that are still visible in high-
442 resolution satellite images, it would be difficult to recognize the site as a place of a former glacier detachment and ice-rock
avalanche. However, with the information from Avdeev et al. available, one can still detect signs of the past avalanche such
444 as debris stripes oriented in avalanche direction and debris deposits inundating the mountain grassland (Fig. 10b). We do not
find similar signs in other glacier valleys surrounding Tsambagarav, and the Corona spy satellite image from 11 Aug 1968
446 suggests that nothing like this has happened here before. Lastly, we are not aware of recent surge-type activity of glaciers in
the Altai.



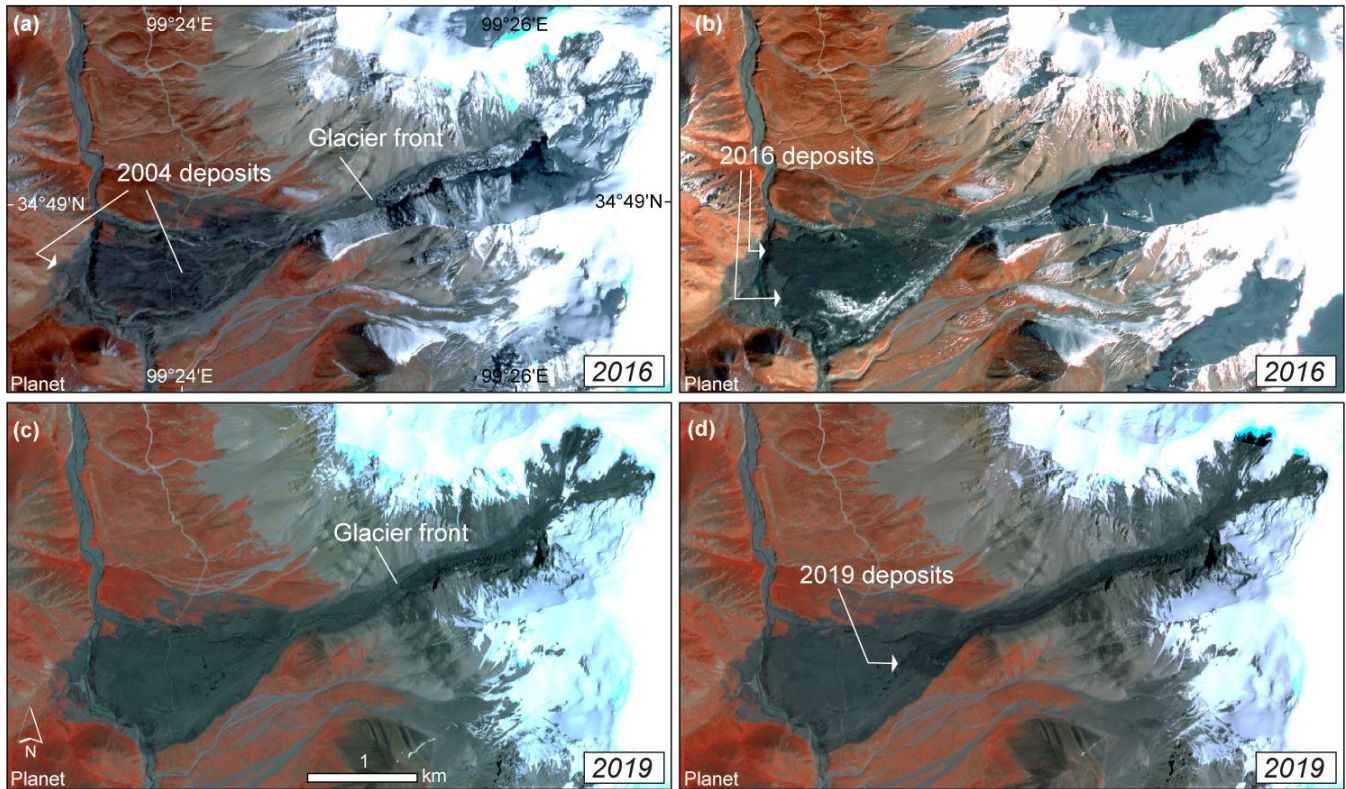
448 **Figure 10: (a) Location of the 9 Aug. 1988 Tsambagarav glacier detachment. Glacier outline of 1987 from Landsat TM**
 450 **indicated as bold line, rough outline of ice-rock avalanche path from 1989 Landsat data as dashed line. The small white**
 452 **rectangle indicates the position of panel (b) (Satellite image, 2019, © Planet). (b) Detail of 2015 Worldview data (©**
ESRI/Maxar). The upper elevation of debris deposits from the avalanche in this right turn is about 25 m above valley
bottom. (c) A 11 Aug 1968 photo from a Corona satellite shows crevasses around a depression on the glacier surface,
at the location of the upper scarp of the 1988 detachment (credit: USGS).

454

3.5 Amney Machen, 2004, 2007, 2016, and 2019, eastern Tibet

456 A sequence of surge-like advances, some of them ending in detachments of the glacier tongue, have been observed for a glacier
 in the Amney Machen mountain range, Eastern Tibet (Fig. 11, Tab. 1; Paul, 2019). The isolated mountain range is home to
 458 several surging glaciers (Wenying, 1983). The first ice-rock avalanche happened between 26 January and 3 February 2004,
 and the involved volume was estimated to be $20\text{-}25 \cdot 10^6 \text{ m}^3$, perhaps up to $36 \cdot 10^6 \text{ m}^3$ according to a local information sign-
 460 board (Paul, 2019). Three years later, between 23 September and 2 November 2007, a second detachment followed a surge-
 like recovery of the glacier tongue that had detached in 2004. The 2007 detachment was considerably smaller in volume than
 462 the one in 2004. A third detachment, also smaller than that in 2004, occurred between 4 and 7 October 2016 (date from Planet
 images). Following this event, the glacier tongue started to recover again, and another small avalanche occurred from it

464 between 9 and 20 July 2019. Paul (2019) notes the weak rocks and fine sediments visible in the rock ribs in the glacier's steep
source area. The glacier recovered rapidly after each detachment, suggesting that it is largely nourished by ice and rock fall
466 from the headwall, and that a rock/ice melange likely makes up the glacier tongue. The surface slope of the detaching lower
part of the glacier is around 15° . The glacier lies in an area of continuous permafrost with ground temperatures in the order of
468 -3 to -6°C (Obu et al., 2019). Debris stripes oriented in avalanche direction are visible in high-resolution satellite images (not
shown).



470

Figure 11: Unnamed glacier in the Amney Machen range, Tibet. Satellite images of (a) 2 Oct 2016, (b) 23 Oct 2016, (c) 9 Jul 2019, and (d) 25 Jul 2019. Detachments of the glacier tongue happened before (a), between (a) and (b), and between (c) and (d). (Satellite images © Planet).

474

3.6 Sedongpu/Gyala, 2018, south-eastern Tibet

476 During 2017 and 2018 the Sendongpu basin below the western flank of the Gyala Peri peak (7294 m.a.s.l.; Fig. 12) in south-
eastern Tibet was the source of a series of large mass flows. Some of them dammed the Yarlung Tsangpo river, which posed
478 a serious flood hazard to the upstream Gyalha village and large downstream areas, and triggered hazard management and

investigations of the causes (Tong et al., 2018; Liu et al., 2019; Chen et al., 2020). The largest of the mass flows stemmed
480 from the detachment of a large, low-angle glacier in 2018.

3.6.1 Events before 2018

482 In order to elucidate significant elements of the recent mass-flow history from the basin that might have conditioned the 2018
detachment and that are not documented in detail elsewhere, we start our description with the oldest satellite data available to
484 us. In Corona satellite reconnaissance data of 8 Dec 1969, a narrowing in the Yarlung Tsangpo river where the Sedongpu
valley joins the river, points to deposits from previous mass flows. However, trees on these deposits suggest no recent large
486 mass flow activity. The main glacier in the basin, here called Sedongpu Glacier (Fig. 12), shows some signs of enhanced flow
such as large crevasses. On Corona satellite data of 6 Nov 1974 the glacier has advanced some 800 m into steeper terrain.
488 Fresh traces of a large mass flow are visible between the glacier front and the main Yarlung Tsangpo river, and fresh deposits
seem to have covered or destroyed the forest on the older deposits in the river, but the main glacier is still in place. The glacier
490 showed one single tongue in 1969, but had split into two tongues during its advance by 1974, a feature that it still exhibited in
2016. Chen et al. (2020) describe an ice avalanche from the Sedongpu basin that dammed the Yarlung Tsangpo river in 1968,
492 but do not mention any other events before 2014. From our interpretation of the Corona satellite data there was either one more
event between 1969 and 1974, or the event dated ‘1968’ actually happened a few years later. The next large mass flow (listed
494 as ice avalanche in Chen et al. (2020) and debris flow in Tong et al. (2018); we interpret at least a large debris content)
happened in 2014. The source of the mass flow must have been in the upper part of the main Sedongpu Glacier or its headwall,
496 as both lateral moraines of the glacier were heavily eroded from the glacier side (RapidEye satellite data of 2013–2015). The
glacier surface was not visibly changed along the glacier centre line, suggesting that the mass flow must have flowed along
498 both glacier margins. Although difficult to determine in the satellite data available to us, the flow may have eroded the
lowermost part of the glacier tongue.

500 Between 20 and 27 Oct 2017 (Planet and Sentinel-2 images) a huge rock avalanche started high up from the north ridge of
Gyala Peri and ran over large parts of the Sedongpu basin and down to Yarlung Tsangpo, damming the river (Figs. 12 and 13).
502 The event seems to have had a severe impact on Sedongpu Glacier. We generated two elevation models from 13 Nov 2015
Spot6 and 30 Dec 2018 Pleiades tri-stereo data that produced robust results despite the extreme topographic conditions.
504 Differencing the two DEMs indicates that the October 2017 rock avalanche removed around 17 and 33·10⁶ m³ of material
from two close-by but separated areas, respectively (Fig. 12c). If both failures happened as part of the same event, the total
506 volume of 50·10⁶ m³ makes this one of the larger rock avalanches detected in recent decades. Based on visual inspection of
satellite data, we consider it very likely that the avalanche also involved small glaciers from the west wall of Gyala Peri and
508 incorporated ice from the surface of the glaciers lower down, as it ran over them. The Chinese seismic database registered two
large ‘landslide’ events on 22 Oct 2017: A M3.2 event at 6:20 about 16 km west of Sedongpu and a M4.0 event at 6:22 directly
510 at Sedongpu. Chen et al. (2020) and Tong et al. (2018) confirm that at least the latter signal stems from the Gyala Peri rock-

ice avalanche. Subsequent satellite images suggest that the avalanche must have changed the surface of Sedongpu Glacier
512 drastically. It covered the glacier and much of the basin with debris and dust. A small, surge-like lobe with ponds on it appeared
at the transition between the headwall and the tongue of Sedongpu Glacier (Fig. 13, and GoogleEarth, BingMaps). The eastern
514 tributary glacier to Sedongpu Glacier also showed a surge-like lobe (Sentinel-2, Planet, GoogleEarth). Driven by the
geomorphological changes in the basin, a series of debris flows, some involving ice and likely nourished from the large
516 amounts of unconsolidated debris left behind by the rock-ice avalanche, occurred after 22 Oct 2017 and into 2018 (Tong et al.,
2018; Chen et al., 2020). The two 18 Nov 2017 M5.2 and M6.9 Linzhi/Milin/Nyingchi earthquakes, with epicentres only a
518 few km from Sedongpu, may have contributed to triggering of the debris flows (Hu et al., 2019). Lastly, we report hundreds
of small earthquakes recorded under the Gyala Peri massif in 2017 and 2018, most up to M2, some up to M3, which we have
520 not analysed further in the present study (Chinese Earthquake Data Center, 2020).

3.6.2 Detachment in 2018

522 Following the 2017 rock-ice avalanche the main Sedongpu Glacier underwent drastic changes (Fig. 13). Ponds developed on
its surface and along the margins. Surface velocities increased from a background velocity of ~ 0.3 m/d (ca. 100 m/a) in 2017
524 to 1–3 m/d end of January 2018, 10 m/d in mid-September 2018, and 25 m/d in mid-October 2018 (velocities derived from
offset tracking in repeat Planet, Sentinel-1, and Sentinel-2 data). The glacier surface showed several crevassed bulges (Fig.
526 13b) in January 2018, and progressively more crevasses appeared as the glacier tongue expanded (Fig. 13c). The lower, flat
glacier part separated from the steep head wall. Between 19 Sep 2018 (last optical image due to later cloud cover) and 13 Oct
528 2018 (Sentinel-1) the glacier advanced by almost 1 km. On 17 or 18 October (Tong et al., 2018; Chen et al., 2020), the entire
tongue of Sedongpu Glacier detached over a length of about 3.5 km (glacier width between 250 and 550 m) (Figs. 12 and 13).
530 Planet images of 27 Oct 2018 and Chinese media images confirm that large amounts of ice blocked the Yarlung Tsangpo river
(Fig. 12d). Parts of the emptied glacier bed filled up with enough ice debris that another mass flow originated from there on
532 29 Oct 2018. The dam in the Yarlung Tsangpo river was estimated to be roughly $40\text{--}60 \cdot 10^6$ m³ in volume (Chen et al., 2020).
Differencing our 2015 SPOT6 and 30 Dec 2018 Pleiades tri-stereo DEMs (Fig. 13d) shows two areas of distinct volume loss:
534 around $80 \cdot 10^6$ m³ are missing from the main branch of the glacier, and around $50 \cdot 10^6$ m³ from its terminus and frontal moraine.
An ASTER satellite stereo DEM of 11 Nov 2017 suggests that the volume loss over the glacier tongue and frontal moraine
536 cannot have occurred before November 2017. From our data we cannot tell how much of the total $130 \cdot 10^6$ m³ stems from the
main first glacier detachment event of 17/18 Oct 2018, and how much from the 29 Oct 2018 event. However, satellite images
538 indicate that the first event involved by far the largest volume. The detached glacier part had an overall slope of only $8\text{--}9^\circ$.
According to Obu et al. (2019) it should have been several hundred meters below the regional permafrost limit, but cold or
540 polythermal ice is certainly found in the west wall of Gyala Peri, and could theoretically be advected into the basal parts of the
glacier near its tongue.

542 Between 19 Sep and 26 Oct 2018 (Planet) a $\sim 9 \cdot 10^6$ m³ rock(-ice) avalanche (volume from 2015 SPOT6 and 2018 Pleiades tri-
stereo DEM difference) originated from the south-western flank of Gyala Peri and likely reached Sedongpu Glacier (Fig. 12).
544 The avalanche covered a small glacier below its starting zone which started a surge-like advance early 2018. Due to insufficient
satellite data (cloud cover in optical data; low resolution and radar shadow in SAR data), though, we cannot tell if this avalanche
546 happened before, during or after the 17/18 Oct 2018 glacier detachment, and could thus have triggered the glacier detachment.
Seismic records are also inconclusive regarding the rock avalanche and the glacier detachment, with two dozens of M1–2
548 earthquakes recorded under the Gyala Peri massif between mid September and end of October 2018.

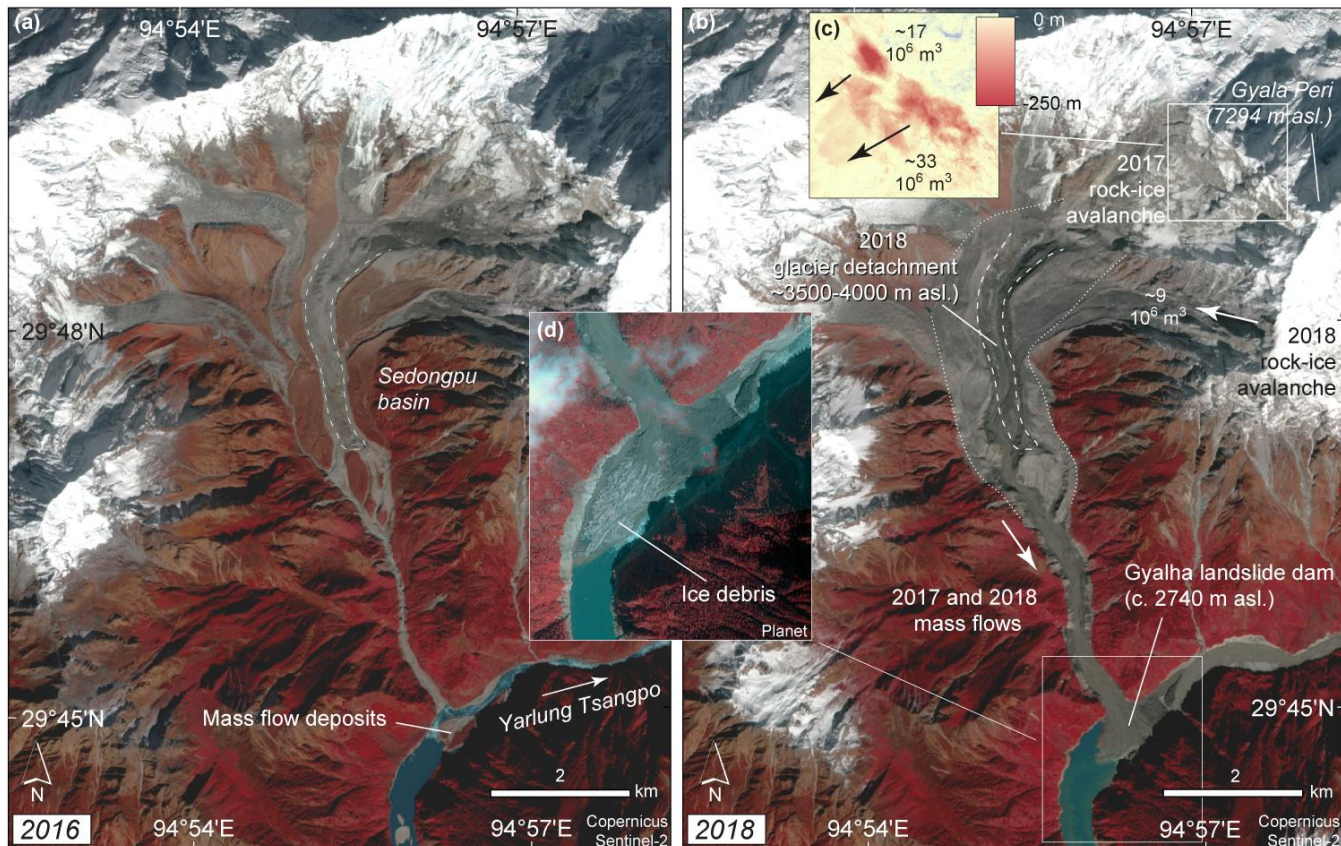
From all the evidence collected above, it seems very likely that the 22 Oct 2017 Gyala Peri rock avalanche, which travelled
550 over the Sedongpu Glacier, primed the glacier for its detachment a year later, perhaps with additional influence of the 18 Nov
2017 earthquakes, though the exact controlling mechanisms remain unclear. The effects that the ongoing mass-wasting
552 activities from Gyala Peri had on Sedongpu Glacier can have been manifold: additional loading on the glacier can have
increased normal and shear stresses, and the 2017 rock avalanche and earthquakes could have mechanically weakened the
554 glacier and its bed, potentially disrupting the subglacial drainage system. The large amounts of fine dust deposited on the
glacier will likely have changed (enhanced?) its surface melt rates. Lastly, independent factors such as high temperatures and
556 precipitation amounts (Tong et al., 2018; Liu et al., 2019), associated with large water input into the glacier, could have
complicated the changes caused by rock-avalanche impact. The supraglacial and glacier-marginal ponds, unusual on temperate
558 glaciers (see Haeberli et al. 2002, Kääh et al. 2004), suggest that the glacier was under high internal water pressure. The bulging
ice and the strong downstream gradient in surface velocities suggest that a surge-like instability first developed in the upper
560 section of the low-angle part of the glacier. Just how this instability propagated down-glacier, whether by exerting pressure on
the lower glacier from above, or by a propagation of exceptionally low basal friction values (Thogersen et al., 2019) remains
562 unclear. High-resolution imagery and media photos of the glacier bed and detachment deposits, as well as the various debris
flows that originated from the basin, suggest that the detached glacier rested on a soft bed with substantial amounts of fine
564 material. The geology of the area is described as marble (Liu et al., 2019), which at least opens up the possibility of fine-
grained sediments.

566 It remains to be seen to which extent the Sedongpu Glacier is able to rebuild, given the strongly negative mass balances in the
region (Kääh et al., 2015; Brun et al., 2017; Treichler et al., 2019, Shean et al., 2020).

568 **3.6.3 Zelunglung Glacier surge-like instabilities**

The region around Sedongpu does not seem to host any obvious surge-type glaciers. However, the events at Zelunglung Glacier
570 (29.62° N, 95.00° E; GLIMS G095018E29637N, RGI60-13.01428), 20 km south of Sedongpu, are worth mentioning. In 1950,
1968, and 1984 extraordinary instabilities propelled the glacier forward and blocked the Yarlung Tsangpo river (Zhang, 1992).
572 The 1984 event seems to have involved only a smaller section of the glacier. Corona reconnaissance satellite images of 1969
show a massive advance (by about 4.5 km compared to 2018), but no detached glacier. However, the glacier had obviously

574 overridden its frontal moraine, reaching almost down to Yarlung Tsangpo. Deposits, visually similar to those of ice-rock
 576 avalanches in general cover much of the main Yarlung Tsangpo river bed on a length of about 2.5 km downstream measured
 from the confluence with the Zelunglung valley. Glacier advance rates of up to 1 km/h are reported for the 1950 event (Zhang,
 1992). Such rates are far above what is typical for surges and the glacier might have, at least in 1950, undergone an event close
 578 to a sudden detachment in the sense of the present contribution.



580 **Figure 12: Location of the 17/18 Oct 2018 Sedongpu glacier detachment, south-eastern Tibet. (a) Sentinel-2 image of**
 582 **20 Nov 2016 (credit: Copernicus Sentinel data), before a series of mass flows happened that culminated in glacier**
 584 **detachment. Already earlier, mass flows from the basin have blocked the Yarlung Tsangpo river. (b) Sentinel-2 image**
 of 31 Oct 2018 showing the area impacted by the 22 Oct 2017 rock avalanche from the Gyala Peri peak, and the 17/18
 586 Oct 2018 glacier detachment. (c) Detail of elevation model differences between SPOT6 13 Nov 2015 and Pleiades 30
 Dec 2018 tri-stereo data. Elevation losses amount up to 330 m, but the colour scale is saturated at -250 m. (d) Detail of
 the glacier detachment deposits in the main river (© Planet; image of 27 Oct 2018, 10 days after detachment).

588

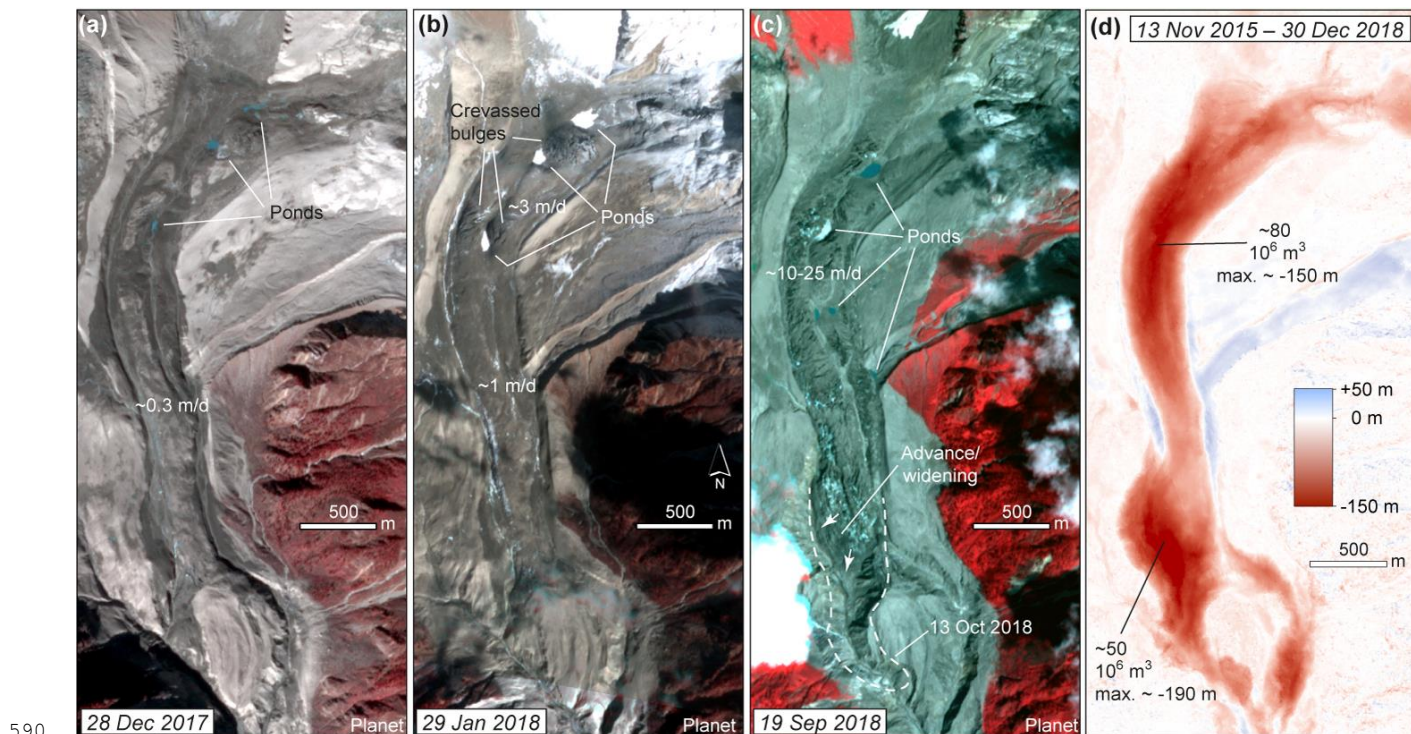


Figure 13: (a)-(c) Evolution of Sedongpu Glacier towards instability and detachment. Average surface velocities around the image dates are indicated. (Satellite images © Planet). Velocities and glacier position after 19 Sep 2018 (25 m/d) are derived from Sentinel-1 radar images. (d) Detail of elevation model differences between SPOT6 13 Nov 2015 and Pleiades 30 Dec 2018 tri-stereo data. Elevation losses amount up to 190 m, but the colour scale is saturated at -150 m.

3.7 Flat Creek, 2013, 2015 and 2016, Alaska

598 Flat Creek Glacier, a small glacier in the north-eastern corner of Alaska's St. Elias mountains (Fig. 14), produced two large glacier detachments in 2013 and 2015. This region in Alaska is home to many surging glaciers (e.g., Harrison et al., 2015; Sevestre and Benn, 2015; Kochtitzky et al., 2019), and a glacier in a valley adjacent to Flat Creek surged between 2012 and 2016. Located in the rain shadow of the St. Elias range, the area receives on average about 350 mm of precipitation annually (2008 – 2018). A mean annual air temperature of -14°C at the former terminus of Flat Creek Glacier, ground temperature measurements, and electrical resistivity tomography surveys strongly suggest that the headwall is underlain by continuous permafrost (Jacquemart et al., 2020).

604 On 5 August 2013, the lower 500 m of the glacier detached, releasing $6.8-11.2 \cdot 10^6 \text{ m}^3$ of ice and lithic material. On 31 July 2015, most of the remaining glacier ice (up to the drainage divide) detached, evacuating an additional $17.6-20.1 \cdot 10^6 \text{ m}^3$ (Jacquemart et al., 2020). Both events produced runouts of over 11 km (angle of reach 6-7°), deposited vast amounts of lithic

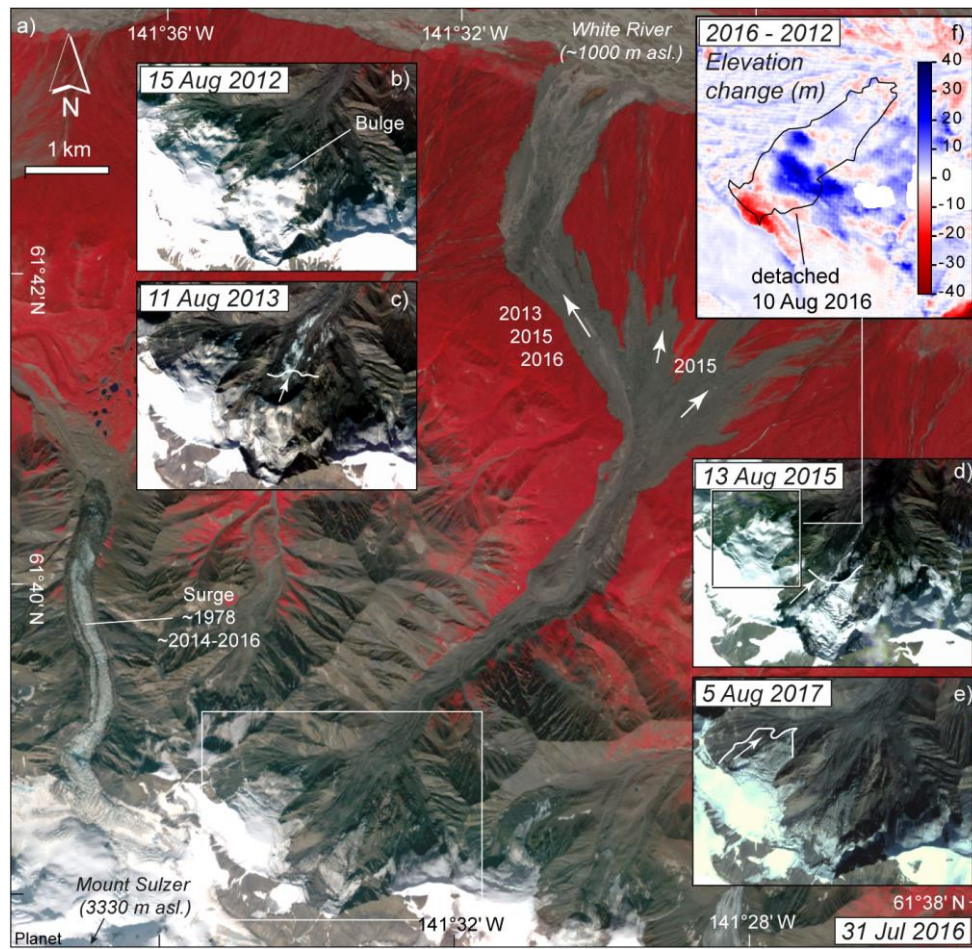
606

material, and buried several km² of old growth forest (400+ years old). The large amount of fine-grained sediment found in
608 the deposits suggests that the failures occurred within the glacier bed rather than at the ice-bed interface. The detachment slope
was determined to be ~20°.

610 A remarkable feature of Flat Creek glacier was a ~70 m tall bulge upstream of a stagnant, crevasse-free tongue. A similar
bulge on Trapridge glacier, a polythermal surge-type glacier 80 km south-east of Flat Creek, was shown to have formed because
612 a cold-ice tongue buttressed temperate ice upstream (Clarke and Blake, 1991). Based on the low annual air temperature and
the presence of continuous permafrost, Jacquemart et al. (2020) concluded that the bulge on Flat Creek glacier was also the
614 consequence of a polythermal regime. Measurements of the bulge position in satellite images suggest that the bulge advanced
between 2011 and 2013, likely increasing driving stresses locally.

616 The 2013 and 2015 detachments both occurred at the peak of their respective melt seasons. Using a degree-day model,
Jacquemart et al. (2020) found that the water availability during the exceptionally warm summer of 2013 was primarily melt
618 driven and up to 4.8 standard deviations (σ) above the long term mean (1979–2015). No detachments were detected in 2014,
when water availability was below average (-0.5σ). Water availability was again higher in 2015 ($+1 \sigma$), when the second
620 detachment occurred.

In 2016, a third glacier detachment released from a much steeper glacier (~30°) in the same cirque (not described in Jacquemart
622 et al. (2020) but mentioned in Jacquemart and Loso (2019)). We differenced a 13 March 2016 Arctic DEM and a structure-
from-motion DEM from a 2019 aerial survey and estimate the volume of this detachment to be $4.7 \pm 0.18 \cdot 10^6 \text{ m}^3$. DEM
624 differences over 2012–2016 show bulging of up to 30 m in the lower part of the later detachment and surface lowering in its
upper part (Fig. 14 f, and Supplement). The detachment causes have not yet been investigated, but the moving mass of ice was
626 caught on video by rangers on a coincidental overflight. The speed of the observed mass flow was about three times slower
than that of the 2013 and 2015 events. Nevertheless, the churning mass of ice blocks (termed a “slush-avalanche” by
628 Jacquemart and Loso (2019)) provides a sense of what the much larger flows may have looked like.



630

632

634

636

638

Figure 14: a) Overview of the three detachments and ice-rock avalanches from Flat Creek Glacier, Alaska, since 2012. b) On the 15 Aug 2012 inset, a bulge is visible on the lower part of the glacier. c) On the 11 Aug 2013 inset, the glacier part that detached on 5 Aug 2013 is indicated together with the front position before the event (white line). d) On the 13 Aug 2015 inset, the detachment of 31 Jul 2015 and the front position before it are indicated. e) On the 5 Aug 2017 inset, the area of the 10 Aug 2016 detachment is shown. All images © Planet (Dove and RapidEye satellites). (For more images and front positions see Jacquemart et al. (2020)). f) DEM difference between 13 Mar 2016 (Arctic DEM) and summer 2012 (Alaska IFSAR) showing surge-like mass redistribution (see also Supplement).

3.8 Aparejo, 1980, Chilean Andes

640

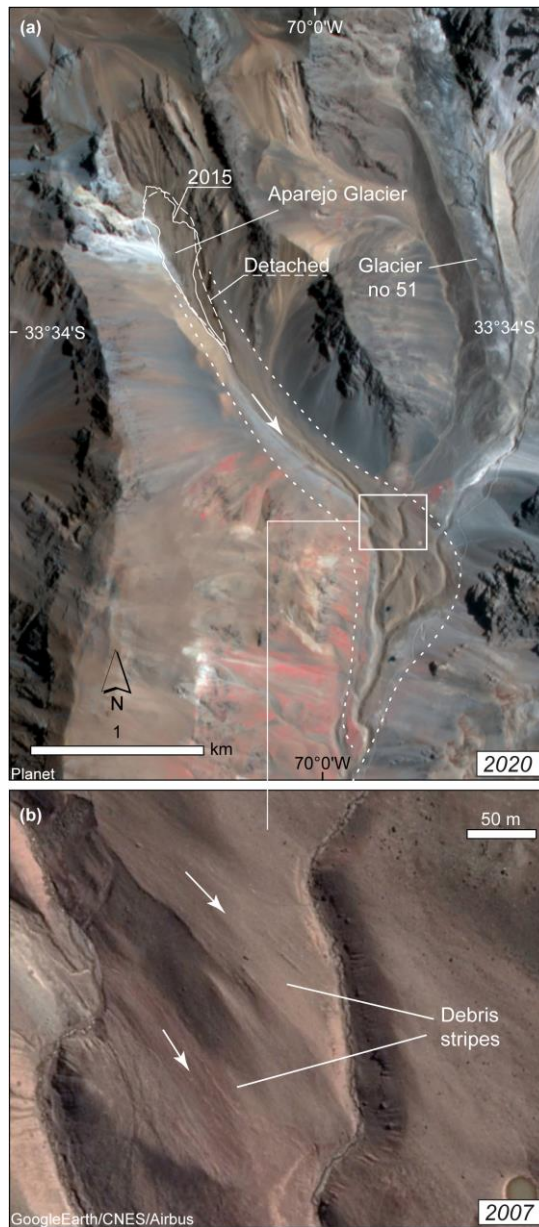
642

On 1 March 1980, $7 \cdot 10^6 \text{ m}^3$ (85% of its total volume) sheared off the debris-covered Aparejo Glacier in the Chilean Andes, mobilizing the detached mass 3.7 km down-valley with an estimated speed of 110 km/h (Ugalde et al., 2015; Ugalde, 2016; Ugalde et al., 2017) (Fig. 15). The slide deposit covered an area of 0.55 km^2 with ice and rock debris piled up to 17 m thick. The volume of the deposit was estimated at $8.1 \cdot 10^6 \text{ m}^3$ (Marangunic, 1980). Five mountaineers witnessed the event and noted

644 several supraglacial ponds and 2-3 cm of wet snow on the surface of the glacier (Marangunic, 1980). These observations
suggest that the triggering mechanism of the glacier detachment likely involved an extreme reduction of the basal drag due to
646 high water saturation of the glacier bed. Aparejo Glacier appears to sit on a glacier bed composed primarily of weak subglacial
till, and the slope on the lower two thirds of the glacier averages 7°. Snowmelt infiltration and warm precipitation due to a
648 sudden increase of the zero-degree isotherm elevation could have provided the main source of infiltrated water, leading to
enhanced water pressure at the glacier bed. During a field inspection on 12 March 1980, Marangunic (1980) found that the
650 nearby debris-covered glacier to the east, glacier no 51 according to the Chilean glacier inventory at the time (Fig. 15), also
showed significant signs of surge-like instability, such as a heavily crevassed front and patches of freshly exposed ice along
652 its entire length. The prominent terminal moraine of this glacier may have contained its detachment, though.

The Aparejo glacier is situated in a region of complex geology with a number of weak rock formations, including sandstones
654 and fine-grained conglomerate in the immediate vicinity of the glacier (Ugalde, 2016). Ugalde (2016) sampled the grain size
distribution of the remains of the lower ice-rock avalanche deposits and did not find them to contain more fines than a typical
656 moraine, but notes that spatial variability was high and that the 35 years since the detachment may have depleted the deposits
of fine particles. In the former avalanche path, modern satellite images show streamlined debris stripes similar to those reported
658 from several other detachments in this contribution. Remarkably, similar debris stripes are also visible in Hycon airphotos
from 1956. Interestingly, the geomorphology of the deposit area is similar between the 1956 airphotos and the post 1980-event
660 high-resolution satellite images. One possible interpretation of this is that large mass flows had already originated from the
Aparejo cirque at earlier times. A detailed field investigation would be required to determine whether the debris stripes consist
662 of glacial flutes formed under a previous glacier extent or stem from a catastrophic detachment.

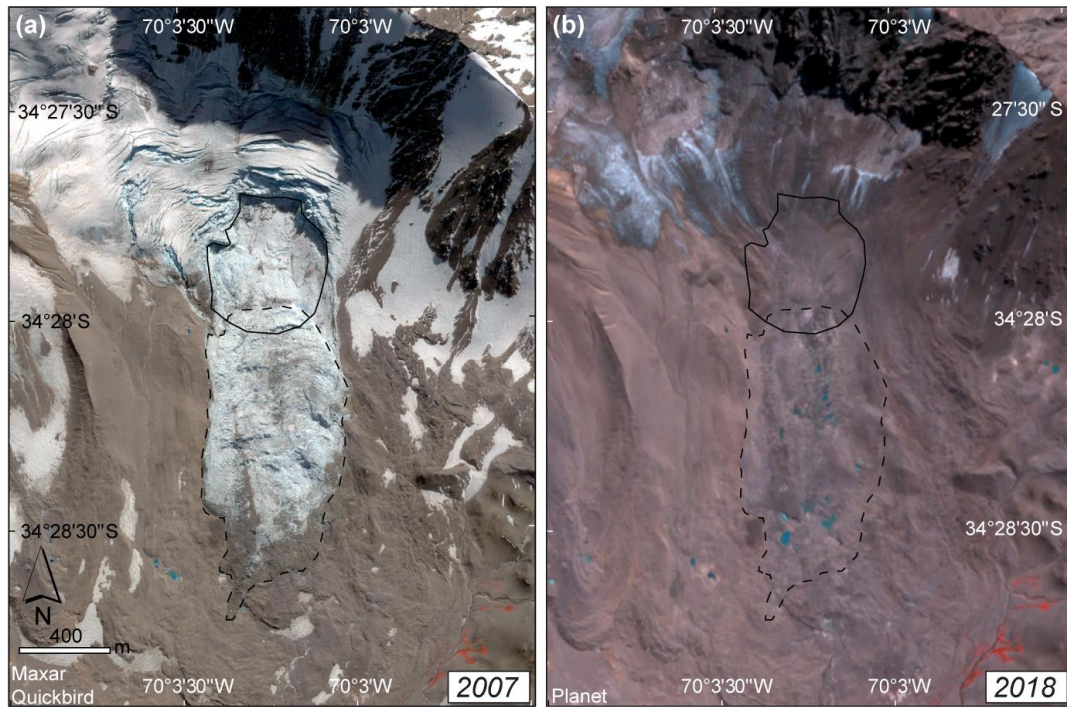
In 2015, the glacier had around 15% of its pre-detachment volume, covering much of the original area, and with a surface
664 slope of around 20° (Ugalde, 2016). The current glacier terminus lies at around 3400 m a.s.l., slightly below the lower regional
limit of discontinuous permafrost, estimated by Brenning (2005) to be at around 3500 m a.s.l. Consistent with regional glacier
666 mass balance trends (Falaschi et al., 2018b; Braun et al., 2019; Dussaillant et al., 2019), decreasing ice thicknesses have been
identified on the lower and middle section of the Aparejo glacier (Ugalde et al., 2017), pointing to the glacier shrinking under
668 current climate conditions.



670 **Figure 15: Aparejo Glacier, Chilean Andes. (a) Satellite image (© Planet) of 27 Jan 2020 with the outlines of the**
 672 **detached glacier as solid line, and the outlines of the 1980 detachment and runout roughly indicated as dashed lines**
(outlines after Marangunic, 1980; Ugalde, 2016; Ugalde et al., 2017). (b) Detail of avalanche path (rectangle in (a)) with
 674 **streamlined debris stripes. Satellite image: © Google Earth and CNES/Airbus, 29 Feb 2016.**

3.9 Leñas, 2007, Argentinean Andes

676 The $4 \cdot 10^6 \text{ m}^3$ detachment of Leñas Glacier between 5 and 14 March 2007 was discovered only recently, since it happened in
a very remote region and had no down-stream impacts (Fig. 16). Meanwhile, the case is described in detail by Falaschi et al.
678 (2019). The detached lower glacier section had a surface slope of around $15\text{-}16^\circ$. The glacier tongue at around 3450 m a.s.l. is
suggested to lie within the zone of discontinuous permafrost in the region. The bed characteristics of the glacier are not known,
680 but large amounts of fine sediments were found over the run-out area of the event. A number of glacier surges are documented
in the wider region but not for Leñas Glacier itself (Falaschi et al., 2018a, 2019). At the location of the later head scarp of the
682 detachment, pronounced transverse crevasses are visible in airphotos from 1970 and in a satellite image from a few weeks
before the event (SPOT5). It is hard to determine, however, if these crevasses could have been signs of abnormal glacier
684 behaviour, or rather a pre-existing feature that then naturally formed the upper failure scarp. Transverse undulations of the
glacier surface as indicated in the 2000 SRTM DEM, and a slight increase of surface gradients at the location of the crevasse
686 zone favour the latter scenario.



688 **Figure 16: (a) Quickbird satellite image of 19 Apr 2007 over Leñas Glacier, Argentinian Andes, a few days after**
detachment (© Maxar). (b) Planet image of 28 Mar 2018. Bold lines in both panels indicate the detached glacier part,
690 **dashed lines the outlines of the avalanche deposits. (© Planet).**

692 **3.10 Tinguiririca, 1994 and 2007, Chilean Andes**

3.10.1 The 1994, 2007 and a possible 1962 event

694 A detachment from a glacier on the southern flank of the Tinguiririca Volcano (Fig. 17) happened between 27 June (Landsat
5 TM) and 6 July 1994 (Landsat 5 TM). For the event, we estimate a detached glacier area of 0.2 km^2 . Using glacier thickness
696 estimates derived for the 2007 case (described below), we estimate a detachment volume of roughly $4\text{--}5 \cdot 10^6 \text{ m}^3$. The climatic
conditions between 1994 and 2007 were obviously favourable enough (i.e. little negative or even balanced regional glacier
698 mass balances; Masiokas et al, 2016; Dussailant et al. 2019) for the glacier to recover to its pre-detachment geometry.

At the same location, a glacier area of 0.46 km^2 detached between 7 January (Landsat ETM+ image without collapse) and 14
700 January 2007 (Landsat ETM+ with collapse), producing an ice/debris avalanche of $10\text{--}14 \cdot 10^6 \text{ m}^3$ volume (Schneider et al.,
2011; Iribarren Anacona et al., 2015; Figs. 17, 18). We estimate that the detached glacier had a surface slope of around 20° .
702 Before the 2007 detachment, the glacier's lowest elevation was at about 3500 m a.s.l., roughly at the lower regional limit of
discontinuous permafrost (Brenning, 2005). The volcanic nature of Tinguiririca should be associated with weak rocks and
704 sediments. There are fumarolic fields and hot springs within a few km of the detached glacier (Pavez et al., 2016), and an
inactive volcanic crater lies just a few hundred metres to the west of the detached glacier. In very high-resolution satellite
706 images of 2007 and later (GoogleEarth, BingMaps), clear signs of hydrologic activity are visible in the upper part of the
detachment area: freshly eroded channels, wet looking areas, and deposits from small debris flows – all perhaps signs of
708 geothermally-enhanced melt of snow and ice (Fig. 18). In the path of the ice-rock avalanche we find streamlined debris stripes
similar to those found in the Kolka, Rasht 2019, and Aparejo avalanche paths (Fig. 18). As of late 2019, the glacier has not
710 recovered from its 2007 detachment and there are only a few small snow (or ice?) fields visible at its location. Elevation
differences between 2000 (SRTM DEM, before detachment), 2007–2010 (ALOS PRISM, after detachment), and 2010–2015
712 (TanDEM-X; both the ALOS PRISM and TanDEM-X DEMs are multi-year composites and therefore their date range is given)
suggest that the detached glacier had average and maximum thickness of 21–28 m and 50 m, respectively. Combined with the
714 detached glacier area of about 0.5 km^2 we estimate a detachment volume of roughly $10.5\text{--}14 \cdot 10^6 \text{ m}^3$, which is in good
agreement with Iribarren Anacona et al. (2015). The Tinguiririca case illustrates how glacier removal by the 1994 detachment
716 was largely reversible as the glacier built up again to failure conditions under the climate at that time, whereas the 2007 glacier
removal seems irreversible under current climate and associated negative glacier mass balances in the region (Falaschi et al.,
718 2018b; Braun et al., 2019; Dussailant et al., 2019).

In airphotos from 1962 and Corona-series reconnaissance-satellite images from 1967 we notice debris stripes in the valley
720 similar to the ones visible after the 1994 and 2007 events, and other cases described in this contribution. Over the glacier, the
1962 airphotos clearly show that a glacier detachment similar to the 1994 event must have occurred not long (weeks, months
722 or a few years?) before the image was taken. Stripes of debris or ice remains after the avalanche are still well preserved in the
1962 images over the glacier (Fig. 18d). (The associated terrain sections are under snow cover in the 1967 Corona images).

724 **3.9.2 A potential large pre-1970s detachment of the neighbouring glacier**

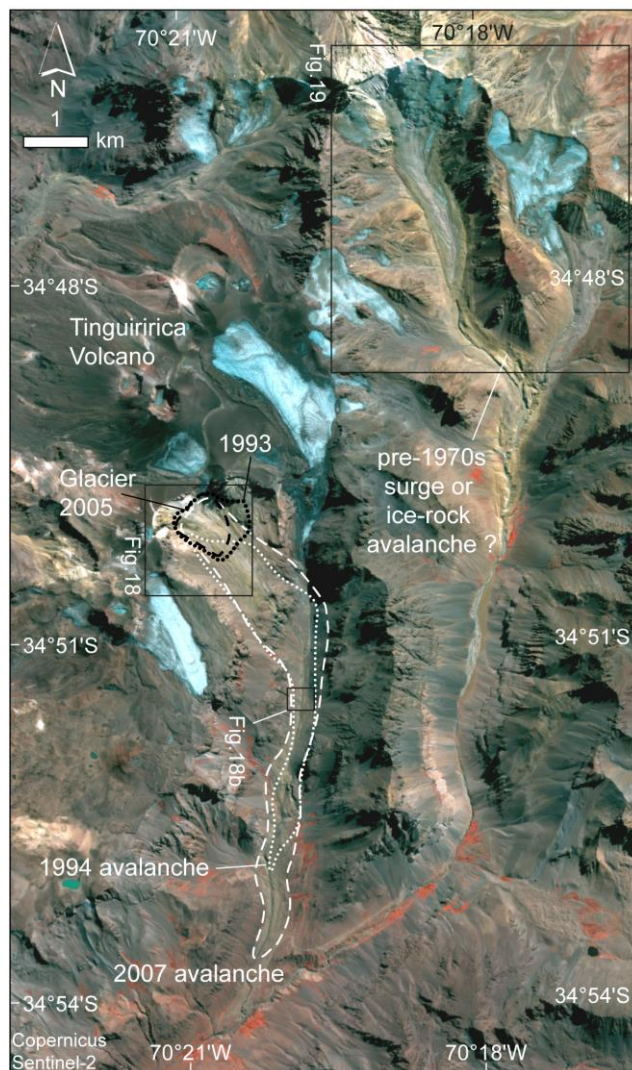
726 In the neighbouring valley to the east (Fig. 19) we note geomorphological traces that could be investigated further with regard
727 to their origin from volcanic mass movements, earlier glacier stages, glacier surging, or more glacier-detachment like events.
728 In the lower part of this potential event path we find debris stripes, similar to the ones from the Tinguiririca, Aparejo and other
729 avalanches of this study, largely unchanged since the first available Corona-series reconnaissance-satellite images in 1967
(Fig. 19c), and airphotos from 1962. Only detailed field work would be able to rule out the possibility that this debris stripes
730 consist of glacial flutes or small lateral moraines formed during a previous glacier extent, or were produced by a glacier surge.
731 It should also be investigated whether such debris stripes can remain largely intact after having been overrun by an ice-rock
732 avalanche or if it is an indicator of the most recent event (see also Aparejo, where similar questions turned up).

In the upper part of this valley, or in the potential event source area, we observe two noticeable changes over time. First, the
734 tongue of this unnamed glacier (RGI60-17.01112, GLIMS ID: G289692E34781S) was much smaller in 1962 airphotos than it
is in 2020. Its advance of roughly 1.5 km since 1962, most of which occurred between 1975 and 1986 (Landsat), is in stark
736 contrast to the pronounced shrinkage of the other glaciers in the area (Fig. 17 and 19). Indeed, differencing a DEM, which we
produced from 1962 stereo-airphotos, from the SRTM or TanDEM-X DEMs confirms elevation gains on the glacier tongue
738 of up to 120 m between 1962–2000 (SRTM), or up to 150 m between 1962 and 2010-2015 (TanDEM-X; Fig. 19c). This
development could point to the recovery of the glacier tongue after a removal some time before 1962. The volume gain of the
740 glacier tongue between 1962 and 2000 is around $70 \cdot 10^6 \text{ m}^3$, or $100 \cdot 10^6 \text{ m}^3$ between 1962 and 2015.

Second, we detected an elevation decrease of the glacier forefield of around 10–15 m between 1962 and 2000, which could
742 point to the deflation of debris-covered ground ice, deposited by a possible surge or glacier detachment (Fig. 19c). Third, a
comparison of the 1962 airphotos to contemporary images revealed a heavily bulged glacier surface between 3900 m a.s.l. and
744 4650 m a.s.l. (Fig. 19a,b). Visually, this bulging is similar to the bulge found on Flat Creek Glacier prior to its 2013 detachment
(section 3.7). The slope of the glacier tongue is around 8-10°, and around 35° for the steep upper part. The bulging upper part
746 of the glacier is far above the regional permafrost limit so that polythermal ice conditions might well be found in parts of it.

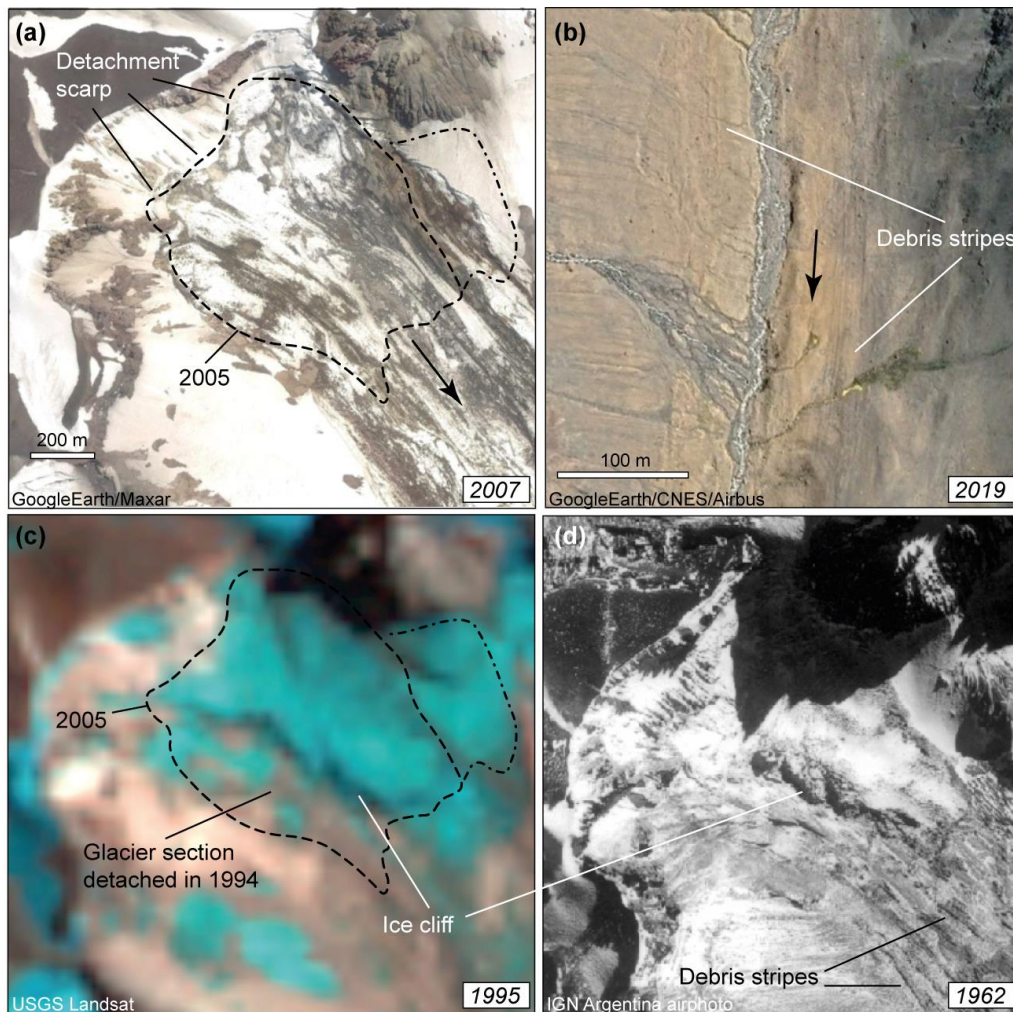
We also examined a 1955 Hycon aerial photo (no stereo data to produce a DEM available to us), but visual interpretations
748 from it remain inconclusive. Under illumination conditions that are very different from those of the 1962 images, the headwall
glacierisation and the tongue seem larger in 1955 than in 1962, resembling rather its shape and extent of the 1980s. Below the
750 position of the current (2020) glacier terminus, there seem to be dead-ice remains visible in the 1955 images. These are also
visible in the 1962 images, though shrunk. It remains thus to be clarified at this point to which extent the features observed
752 can be explained by a surge, or series of surges of the glacier before 1955, or between 1955 and 1962, or by a detachment-like
event.

754

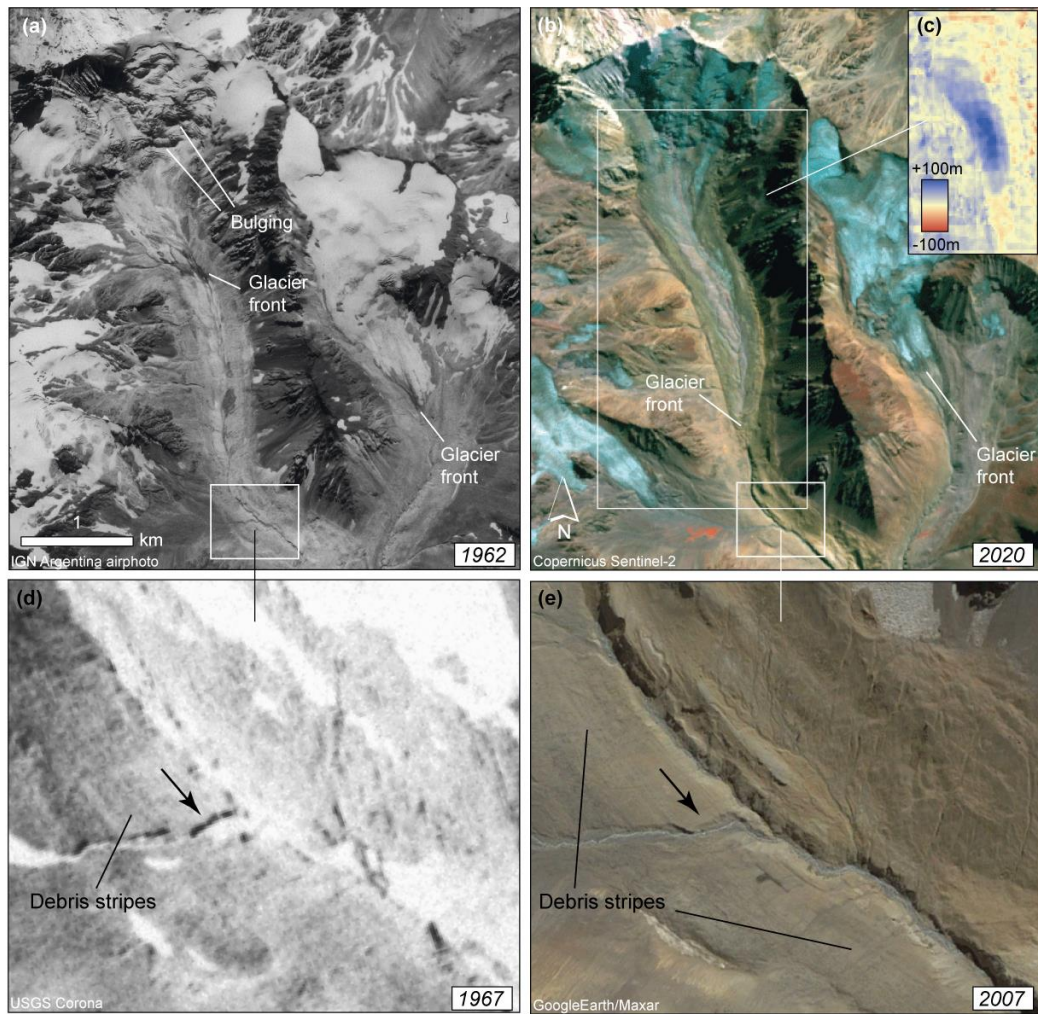


756 **Figure 17: Tinguiririca Volcano, Chilean Andes. Outlines of the 1994 and 2007 ice-rock avalanches, and the 1993 and**
 758 **2005 area of the detached glacier as dotted or dashed lines, respectively. These outlines have been digitised for this**
 study but were found to agree well with the ones in Iribarren Anacona et al. (2015). Satellite image: Sentinel-2, 14 Mar
 2020 (credit: Copernicus Sentinel data).

760



762 **Figure 18:** (a) Glacier detachment area at Tinguiririca Volcano on 24 Jan 2007 (satellite image: © Google Earth and
 764 Maxar). See Fig. 17 for location. Glacier outlines from 26 Feb 2005 Landsat data (latest snow-free image before 2007
 766 detachment) indicated by dashed line. From the 30-m resolution Landsat data it is unclear whether the dash-dotted ice
 768 section was connected to the main glacier. (b) Debris stripes left by the 2007 ice-rock avalanche (30 Jan 2019; © Google
 770 Earth and CNES/Airbus). (c) A Landsat image of 19 Mar 1995 (first snow-free image after 1994 detachment; credit:
 USGS) shows that the southern part of the glacier detached in the 1994 event. Glacier outlines of 2005 dashed as in (a).
 (d) The glacier on an aerial image of 8 Apr 1962 (© National Geographical Institute of Argentina). Clearly, a glacier
 section similar to the 1994 event has detached not long before the image date, leaving also a similar ice cliff. Streamlined
 debris stripes from the resulting avalanche are still well visible.



772

774

776

778

780

Figure 19: Glacier valley with potential former surge or glacier detachment, east of Tinguiririca Volcano. See Fig. 17 for location. (a) Orthorectified airphoto of 8 Apr 1962 (© National Geographical Institute of Argentina). (b) Sentinel-2 image of 14 Mar 2020, showing an advance of 1.5 km relative to 1962, in contrast the other retreating glaciers in the area (credit: Copernicus Sentinel data). (c) Elevation differences between DEMs from 1962 stereo airphotos and the 2000 SRTM show gains over the glacier tongue of up to 120 m, and losses of around 10-15 m in the forefield. (d) Corona satellite image of 23 Feb 1967 with debris stripes (credit: USGS). (e) Satellite image of 19 Mar 2007 (© Google Earth and Maxar). (a) and (b), and (d) and (e) show the same terrain section each. Locations of (c), (d) and (e) indicated as white rectangles in (a) and (b).

782 4 Discussion

4.1 Simplified force and energy balance

784 4.1.1 Idealized slab model

786 The condition under which a detachment might occur can be qualitatively understood from a simple force balance analysis. To simplify the problem, we represent the potential detachment as a rectangular slab (Fig. 20a). The force balance between gravitational (left part of Eq. 1) and resistance forces (right part of Eq. 1) gives the following relationship:

$$788 \quad W L h \rho g \sin(\alpha) = W L \tau_b + 2 h L \tau_d \quad (1)$$

and by solving for τ_d :

$$790 \quad \tau_d = \frac{W}{2h} (\rho g h \sin(\alpha) - \tau_b) \quad (2)$$

792 where τ_d is the lateral shear stress (Pa), W is the slab width (m), L is the slab length (m; cancelling out), h is the slab thickness (m), ρ the density of ice (kg m^{-3}), g is the gravitational acceleration (m s^{-2}), α is the slab slope, and τ_b is the basal shear stress (Pa). Assuming that the glacier driving stress is originally in balance with the basal shear stress under normal conditions ($\tau_b = \tau_0$) we have:

$$794 \quad \tau_0 = \rho g h \sin(\alpha) \quad (3)$$

796 which gives the following equation by combining (2) and (3) in a way that a ratio $\frac{\tau_b}{\tau_0}$ appears, which allows us to compare potential failure conditions to normal conditions:

$$798 \quad \tau_d = \frac{W \rho g \sin(\alpha)}{2} \left(1 - \frac{\tau_b}{\tau_0} \right) \quad (4)$$

800 A collapse can only happen if τ_d exceeds the mechanical resistance of the slab margins (critical shear strength τ_c). Using the work of Gilbert et al. (2018) where the evolution of the force balance toward the collapse of Aru glaciers has been quantified, we estimate $\tau_c \cong 0.28$ MPa for the Aru glaciers and apply this value to the simplified glacier slab. This allows, using Eq. (4),
802 to define a stability diagram as a function of detachment width and slope, and the ratio $\frac{\tau_b}{\tau_0}$ (Fig. 20b).

804 This stability criterion seems to be respected by most of the detachments of our study (Fig. 20b) showing that the rough slab approximation may be a way to initially and qualitatively analyse which glaciers might be susceptible to detaching. In particular, the analysis shows which combinations of slope and width are unlikely to produce detachment when τ_d remains
806 below τ_c even for $\tau_b = 0$ (i.e. complete loss of basal friction; green area in Fig 20b). Under the provisional assumption that τ_c is similar for all the glaciers investigated, this analysis also shows that the detachments presented here happened for an average
808 loss of friction between around 50 and 100% (i.e. $0 < \tau_b/\tau_0 < 0.5$). In reality, it is reasonable to assume that the basal friction

rarely goes all the way to zero. Additionally, the critical lateral shear stress will vary between glaciers, depending for instance on whether the critical lateral resistance is provided by ice or by morainic margins, their properties, and on topographic forms of resistance like glacier curves or bedrock bumps. For the Amney Machen detachment, which did not follow our provisional criteria (it failed at a critical shear stress of 0.2 MPa, which is smaller than the 0.28 MPa estimated for Aru), the detachment flanks consisted of sediments and might thus be weaker than the ice margins along which the Aru glaciers detached. For some glaciers the effective width of the detachment is difficult to estimate as it varies along the glacier length and we cannot be sure at which width the failure started to develop. For Tinguiririca, the effective detachment width is particularly uncertain as the glacier rested on a bed ramp rather than between valley or moraine flanks. It remains to be investigated how the deviation of the cross-sections of the detached glaciers from the idealized slab influences our stability analysis.

4.1.2 Energy from precursory acceleration

As will be discussed in the following sections in more detail, several of the detachments presented here showed precursory accelerations, some clearly surge-like. In the present section we discuss to what extent the melt-water production associated with this precursory motion could feedback on the reduction of basal shear stress. We take the case of the Aru-1 event (based on data in Gilbert et al. 2018) as an example. The first major dissipative losses of this event were during the pre-detachment accelerated sliding, which attained about 0.5 m/day. Whereas some energy drove crevasse development and brittle-ductile changes in ice crystals, we suppose that most of this phase of energy dissipation occurred at the bed by grinding of rocks and ice, and melting of ice. The typical glacier thickness was 100 m, so 1 m² of bed area by 100 m column of ice at a density of 900 kg/m³ would have a mass of about 90,000 kg. Each day it slid downslope by about 0.5 m, including an elevation drop of about 0.1m. The daily loss of potential energy of each such column of ice was thus about 88,300 J (about 1 W/m²). If the ice was at the melting point, which it was across much of the bed within the frozen perimeter (Gilbert et al., 2018), this energy could melt up to around 0.26 kg of ice per m² of thawed bed per day. If this continued for 200 days at such rapid sliding, about 53 kg of liquid water would be generated per m² of thawed bed area, amounting to a roughly 5 cm layer of water (some energy may also have been expended in crushing rocks and ice). This water could be expelled, or it could be contained within the frozen confines of the polythermal glacier. If confined, this water could be ingested into basal till, perhaps dilating the volume of till and spreading it over a larger fraction of the bed, thus reducing the total frictional resistance in the thawed parts of the glacier. Or the water itself could spread over a larger fraction of the bed, or it could pool against the frozen toe and margins of the glacier. Additional water – maybe a lot more – likely was provided to the subglacial bed environment from rainfall and snowmelt sources. -The role of the above 5-cm average thickness of frictional meltwater could become important if (i) it is a substantial proportion of the thickness of the basal till, (ii) if it is a significant proportion of the meteorological meltwater that reaches the bed, and/or (iii) if it can spread laterally over a large part of the thawed bed.

Not all detachments presented here were preceded by longer phases of surge-like acceleration, and surge-like acceleration typically does not lead to glacier detachment. Still, the above estimates exhibit a feedback process that could through precursory acceleration facilitate substantial reduction of basal shear stress and ultimately failure of soft beds.

4.2 Similarities and differences

The most apparent similarities among the detachments compiled in this contribution (Tab. 1) are their geographic proximity to surge-type glaciers – in some cases the detached glaciers themselves exhibited surging or surge-like behaviour – as well as the existence of weak bedrock and/or fine sediments around and likely at the base of the glaciers (Fig. 21). Both commonalities suggest that the sudden detachments of low-angle glaciers discussed here could be seen as rare and extreme endmembers of the range of surge-type and surge-like glacier instabilities (Quincey et al., 2015; Herreid and Truffer, 2016). The detachments could be a specific kind of glacier surge where the force balance cannot be achieved by a global control, typically by longitudinal and lateral stresses, when basal friction is suddenly reduced. In case of a low bed roughness and an absence of sufficient topographic support, the reduced amount of stress accommodated by basal resistance can only be transferred to the margins (Fig. 20a) and leads to an expanding instability (Thogersen et al., 2019). This ultimately leads to a runaway acceleration and detachment. The loss of friction involved in such behaviour, more than 50% according to our idealized slab analysis, may only be reached by sustained low effective pressure. Such conditions are more plausible on soft-bed glaciers in contrast to hard-bed glaciers where increasing sliding velocity would lead to cavity opening and increasing drainage efficiency, making preservation of high water pressure at the glacier bed unlikely.

In this context, we note that the surface slopes of the detached glaciers were between 9° and 21° (average 15.9° , standard deviation 3.6°), which is at the upper end for slopes of surge-type glaciers, yet surprisingly low for glaciers causing ice avalanches. The slope range of around $10\text{--}20^\circ$ may be a necessary condition for glacier detachments, as a slope lower than 9° is unlikely to drive a stress concentration that exceeds the critical shear stress even in the case of total loss of basal shear stress (Figure 20b) (Section 4.1). At the same time, glaciers within the $10\text{--}20^\circ$ slope range still have considerable thickness and thus volume, while higher slopes sustain thinner glaciers and much smaller volumes involved in a potential failure (Fig. 1c). Our limited data-base of detachment events suggests a transition between larger and smaller detachment volumes at roughly around 14° (Fig. 1c).

From a more mechanical point of view, low-angle glacier detachments can also be seen as part of the continuum between surges and ice break-offs from steep glaciers. Not least owing to their slope, glaciers have a range of possibilities to adapt to changes in their stress regimes (see Fig. 22). Flat glaciers can respond by adjusting their geometry, for instance through advance and surging. On very steep terrain, glaciers may not be able to adjust their geometry smoothly and ice breaks off. In contrast to the factors involved in typical ice break-offs from steep glaciers (see Section 1), glacier detachments appear to have in common basal failure on soft beds. Therefore, low-angle glacier detachments combine the elements of both instability processes: the inability to rapidly adjust geometry in response to stress changes, similar to steep glaciers, and a surge-like

process that propagates an initial instability through large parts of the glacier (Thogersen et al., 2019), allowing entire glacier
872 tongues to be mobilized. The latter framework for low-angle glacier detachments and the above one of surge endmembers are
not mutually exclusive but rather linked by the role of glacier slope, fine basal tills, and the surge-like propagation of
874 instabilities.

The role of basal water pressure in the detachments is difficult to examine in detail, but most detachments should have involved
876 severe reduction in friction (Section 4.1), likely due to high basal water pressure. Ways to rapidly increase basal water pressure
include: an increase in water input (e.g., large high-altitude rain events (Kääb et al., 2018) or increased surface snow/ice melt
878 (Jacquemart et al., 2020)) into a subglacial drainage system not capable of adjusting fast enough; inefficiencies or blockages
of this drainage system; or increased permeability of the glacier through enhanced crevassing (e.g., Tsambagarav) (Dunse et
880 al., 2015). Sudden weakening of the strength of subglacial till under high pore-water pressure and over large parts of the glacier
bed was shown to be a key process leading to the Aru detachments (Gilbert et al., 2018). Ongoing surge-like activity may
882 enhance sensitivity to water input (Flowers et al., 2016).

In Figure 22 we attempt to summarize the main drivers of the glacier detachments described here. We define a detachment's
884 *disposition* as the sum of long-term factors that might promote glacier detachments and refer to *triggers* to describe short-term
factors that might suddenly tip the scale toward a catastrophic failure. Fundamentally, it seems that different combinations of
886 dispositions and triggers are able to produce instability. Aside from the similarities mentioned above, the observed detachments
all present some unique conditions, many of which remain shrouded in uncertainty. The observed failure conditions (Fig. 20)
888 include ruptures during surge-like glacier instabilities (Kolka 1902, Aru, Amney Machen, Sedongpu; unclear for Devdorak)
or earthquake triggered rupture (Tsambagarav), or increase of driving stress due to thickening caused by snow accumulation
890 (Aru) or rock-ice avalanches (Kolka 2002, Amney Machen, uncertain: Sedongpu). Geothermal activity could have played a
role at Tinguiririca and Kolka, but is unlikely for the other events. The thermal setting of the detached glaciers can play a role
892 if permafrost around the glaciers potentially causes frozen margins or the glaciers exhibit a polythermal structure (Aru, Flat
Creek, Tsambagarav, uncertain: Tinguiririca, Leñas). However, other detachments happened under conditions very likely free
894 of cold ice. Some of the detached glaciers seem to have been composed of a mixture of debris and ice (Amney Machen, Flat
Creek; likely at least for Devdorak, Kolka, Sedongpu). Such mixtures can be profoundly weaker than clean glacier ice,
896 particularly at temperatures close to the melting point (Moore, 2014), but it is unclear at this point whether and how these
mixtures and their weakness may have contributed to the detachments. In contrast, the ice of the Aru glaciers and the glacier
898 at Tsambagarav clearly consisted of rather clean ice. Failure circumstances are particularly unclear to us for Aparejo and Leñas.

The angles of reach of the ice-rock avalanches associated with glacier detachments (Fahrböschung between about 5° and 10°),
900 both absolutely and relative to their volume, are lower or at the lower end of those observed for other types of ice-rock
avalanches (Fig. 1a, b). The particularly high ice content of glacier detachments might reduce friction of the mass movements
902 through liquefaction (Schneider et al., 2011), promoting the long runouts. Remarkably, many (perhaps all) detached glaciers

appear to have sat on particularly fine-grained glacier beds. The large amounts of soft sediments under the glaciers with potentially low friction angle, combined with low effective pressure due to the presence of large amounts of basal water at the time of detachments, may have been able to reach unusually low basal shear stress. In addition, smooth u-shaped glacial valleys might favour low angles of reach by channelizing the mass flows, reducing energy dissipation, and presenting few topographic obstacles along the path (Schneider et al., 2011). The glacier detachments' long runout flows remind also of rocky "sturzstroms", some of which reached friction angles (H/L) as low as those found for the ice-rock avalanches from glacier detachments (Hsü, 1975). "Sturzstroms" and these ice-rock avalanches may share some physics, including reduced basal fraction from acoustic fluidization, or movement on air or vapour cushions of flow materials. One mechanism for long runout of dry granular flows involves acoustic fluidization (Gareth and Melosh, 2003), where the physics analogue in the long runout ice-rock avalanches may be acoustic fluidization of ice, especially in cases where the role of liquid water was mainly restricted in producing the initial mobilization of the glacier detachment.

914 **4.3 Influence of climate change**

Inevitably, these events rise the question of whether climate change could be a driving factor of glacier detachments. Some cases investigated here suggest that detachments could be part of a cycle from reservoir refilling to occasional threshold exceedance, similar to what is found for glacier surges and some avalanching glaciers (Benn et al., 2019; Amney Machen, Tinguirica, Devdorak, Kolka, uncertain: Rasht). But several cases of this study also illustrate developments where climate change can cause transient conditions that lead to failure. A number of dispositions and triggers listed in Fig. 22 may be impacted by climatic changes and may bring a glacier closer to failure, or prevent future failures, respectively.

Repeated detachments of the same glacier, or detachments connected to surge-like behaviour, require that the climate conditions and associated glacier mass balances enable reservoir recovery or built-up of accumulation areas (Devdorak, Aru, Amney Machen, Kolka 1902). Climate change might shift glaciers out of the envelope of conditions that are favourable for surging, or shift them into it (Hock et al., 2019). Whereas glacier rebuilding seems to be underway at Kolka and Aru, it is open for Sedongpu, unlikely for Tinguirica, and did not happen at all for Tsambagarav. The glacier's potential to regain a substantial size is critically linked to the potential for repeated detachment events, and thus important for hazard management.

The enhanced rock-ice avalanching onto Kolka Glacier in 2002, possibly responsible for its detachment, or the 2017 Gyala Peri rock avalanche over the Sedongpu Glacier, are likely a reflection of a general trend of climate change impact on polythermal, glacierised rock walls, where the reduction of ice cover and permafrost thaw increases the rock and ice fall frequency and enhances the potential for long-reaching cascading events (Fischer et al., 2013; Hock et al., 2019). Indeed, summers were exceptionally warm and glacier mass balances negative in the Caucasus Mountains, around Kolka Glacier, over 1998–2001 (Zemp et al., 2019). Glacier shrinkage due to negative mass balance (Larsen et al., 2015; Treichler et al., 2019; Zemp et al., 2019) has exposed large parts of the – at earlier times mostly ice-covered – headwalls of Flat Creek, Amney Machen, Leñas, and likely Petra Pervogo/Rasht. This exposes bedrock to erosion making it available for mass flows and

incorporation in and underneath the glaciers, a process that is particularly important for soft rock lithologies. The partial loss
936 of glacier cover may also interrupt existing patterns of stress transfer and cause new temporary stress concentrations (see also
Fig. 20) that may exceed stability thresholds in certain locations. Some glacier detachments could thus be connected to the
938 transient development of headwall glacier loss.

Climate change increases the amount of meltwater and transitions from snowfall to rainfall, and may thus favour development
940 of instabilities, at least for the polythermal glaciers (Aru and Flat Creek, uncertain: Tsambagarav) where such amounts of
meltwater are unusual at the scale of the last century. The relative increase of meltwater can be particularly significant for
942 cold/dry climate glaciers. The synchronization of the twin Aru detachments within just two months of each other points to a
climatic driven instability, perhaps involving some meteorological synchronization such as exceptional amounts of high-
944 elevation rain or snow and ice melt, or extreme weather. Also, and without understanding the triggers of the Aru events in
detail, the frequency and magnitude of certain potential climatic causes and meteorological trigger events, such as heavy rain
946 falls or warm spells, can increase with climatic changes.

Also our simplified considerations on the force balance of a glacier slab (Section 4.1) provide hints to how climate change
948 could influence detachments. For this strongly idealized geometry, fast and extensive reduction of basal shear stress obviously
reduces stability. Increase of glacier slope (e.g., from bulging), or thickness and density of the slab (e.g., additional loading
950 from ice or rock avalanche deposition), faster than the glacier's ability to adjust, will increase driving stress. Finally, climate
change could also reduce the lateral shear stress, for instance by thawing of frozen glacier margins.

952 **4.4 Hazard management**

From a more applied hazard management perspective, sudden massive glacier detachments pose a high magnitude/low-
954 frequency problem, and their low probability/high consequence nature makes them hard to incorporate in hazard management
and planning. The particularly low friction coefficients (H/L) involved in the detachments enable them to travel over low
956 slopes (where other types of ice-rock avalanches would stall) and to cover large distances. The detachment events seem very
rare, but their large volumes, fast evolution, and the exceptionally long runout distances and high speeds hold the potential for
958 severe impacts even far away from the source. Our compilation of all (so far) known cases shows that low-angle glacier
detachments might have, though rare, occurred more frequently than commonly thought. The differences between the events
960 suggest that there is no straightforward way to predict where they might occur, but the following list of the most common
conditions might support a more systematic assessment. Events happened at places

- 962 (i) with abundant weak bedrocks/fine sediments,
- (ii) where glacier surface slope is between about 10° and 20° ,
- 964 (iii) where surge-like glacier instabilities are observed in the region, sometimes for the detached glacier itself
(exception: Tsambagarav), and

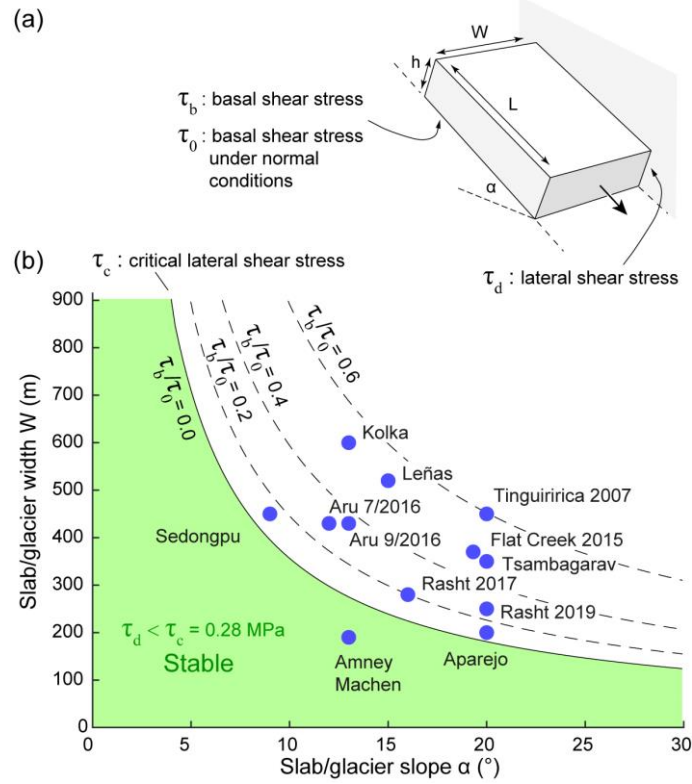
966 (iv) where similar events or other violent ice-rock mass flows have happened before (based on direct observation or
a geomorphological imprint).

968 This set of very rough qualitative criteria might allow a first-order assessment of whether glacier detachments are possible in
any given region. It is crucial to be aware of, however, that these criteria and their interplay are likely transient so that in
970 particular criterion (iv) can be misleading. Particularly important for hazard management is – yet again – the conclusion that
climate change is able to shift hazard zones beyond historical precedence, so that also so far unaffected areas might suddenly
972 be susceptible (Hock et al., 2019).

For several of the events we find in aerial and satellite images streamlined debris features in the avalanche paths. Field
974 investigations for Kolka Glacier (Petraikov et al., 2004) and Flat Creek (study in prep.) show ground traces related to the
avalanche movement at two very different scales. Debris features of meters in width and tens or hundreds of meters long
976 resemble glacial flutes, but might also consist of pavements. These features can be recognized in high-resolution aerial and
satellite images and are in this study in a general way called debris stripes, acknowledging that they are not investigated in
978 detail or understood. At a much smaller scale (mm-cm in width, dm-m in length) and thus not visible in aerial and satellite
images, boulders in the avalanche path can show scratches in avalanche direction, similar to glacier striations. Notably, both
980 scales of avalanche traces show that the ice-rock avalanches presented here were not entirely turbulent. More research is
necessary to correctly interpret these signatures and differentiate them from glacial flutes, small moraines, and other
982 longitudinal glacial and geomorphodynamic features.

Systematic monitoring turns out to be one of the most feasible responses to changes in hazard conditions, and the increasing
984 temporal and spatial resolution, and improving availability of satellite imagery, is particularly helpful for glacier detachment
assessment. For several of the cases in this contribution, abnormal glacier crevassing and accelerating precursory speeds were
986 visible days to weeks before failure (Kolka 2002, Rasht, Aru, Sedongpu, Tsambagarav, uncertain: Flat Creek), but the
significance of such a development was realized for the second Aru detachment only due to its spatial and temporal proximity
988 to the first Aru detachment. On the other hand, abnormal crevassing does not necessarily indicate an impending detachment,
see Rasht (situation in 2007, Supplementary Fig. S2) or Leinss et al. (2019), where the glacier geometry has likely stabilized
990 a detaching ice mass. Overall, predicting glacier detachments can likely only be achieved by strong efforts in detailed remote-
sensing based monitoring and, if feasible, by ground-based measurements, which contribute to an improved understanding of
992 conditions and relevant processes, past events, glacier velocities and slope deformations, glacier bed geology and lithology,
surge behaviour and dynamics, and short-term and long-term temperature and precipitation records (Kääb et al. 2018).

994



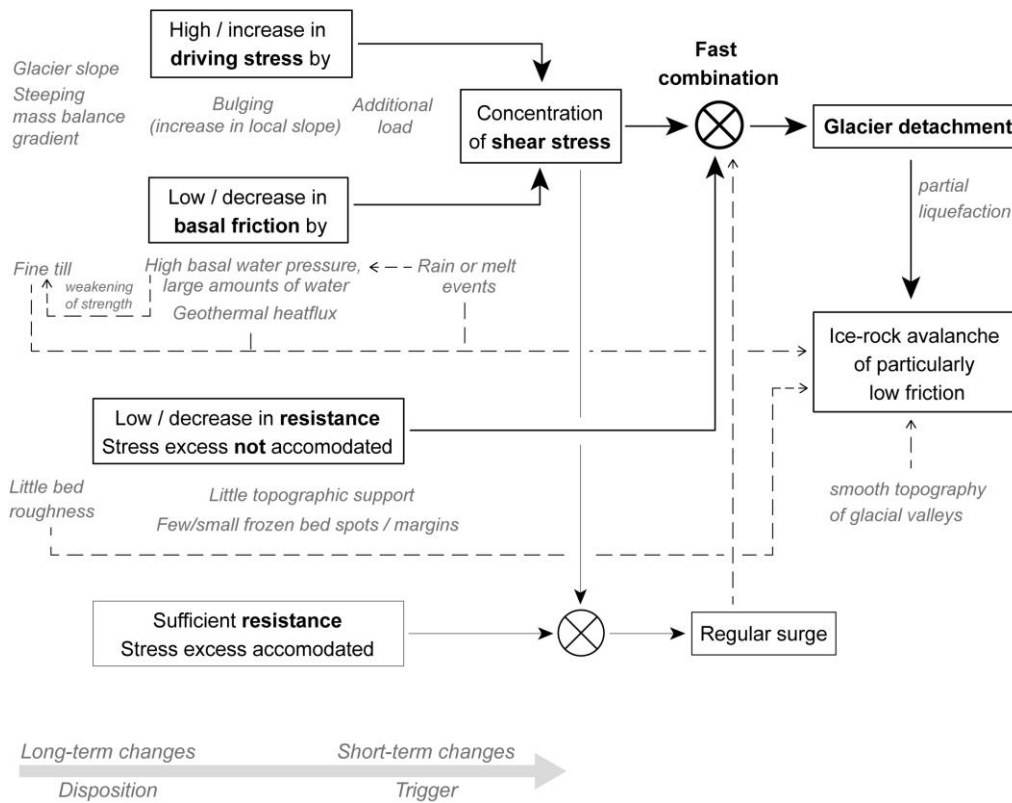
996 **Figure 20: (a) Slab geometry used for the force balance analysis. (b) Stability diagram showing under which condition**
 998 **the slab would remain stable in the case of a total loss of basal friction ($\tau_b = 0$; green area) and for different ratios**
 1000 **friction τ_b/τ_0 (i.e. partial loss of basal friction; dashed lines). Blue dots show averaged slope and width of all**
detachment reported in this study. The critical lateral shear stress τ_c has been estimated from the Aru glacier
detachments using the force balance constructed in Gilbert et al. (2018).

1002

Name of event	Earlier surges in the region?	Weak rocks, fine sediments ?	Glacier tongue within permafrost ?	Abnormal crevassing before failure?	Enhanced water input into glacier (melt, rain) ?	Repeat events known?	Signs of high water pressure ?	Signs of earlier mass flows?	Surge-like activity related to event?	Loading prior to event (snow, rock)?	Earlier surges same glacier ?	Bulging before event?
Kolka	yes	yes, but uncertain	yes, but uncertain	yes, but uncertain	yes, but uncertain	yes, but uncertain	yes, but uncertain	yes, but uncertain	yes, but uncertain	yes, but uncertain	yes, but uncertain	yes, but uncertain
Devdorak	yes	yes, but uncertain	yes, but uncertain	yes, but uncertain	yes, but uncertain	yes, but uncertain	yes, but uncertain	yes, but uncertain	yes, but uncertain	yes, but uncertain	yes, but uncertain	yes, but uncertain
Aru	yes	yes, but uncertain	yes, but uncertain	yes, but uncertain	yes, but uncertain	no, but uncertain	yes, but uncertain	yes, but uncertain	yes, but uncertain	yes, but uncertain	yes, but uncertain	yes, but uncertain
Sedongpu	yes	yes, but uncertain	no, but uncertain	yes, but uncertain	yes, but uncertain	no, but uncertain	yes, but uncertain	yes, but uncertain	yes, but uncertain	yes, but uncertain	yes, but uncertain	yes, but uncertain
Rasht	yes	yes, but uncertain	yes, but uncertain	yes, but uncertain	yes, but uncertain	yes, but uncertain	yes, but uncertain	yes, but uncertain	yes, but uncertain	yes, but uncertain	yes, but uncertain	yes, but uncertain
Amney Machen	yes	yes, but uncertain	yes, but uncertain	yes, but uncertain	yes, but uncertain	yes, but uncertain	yes, but uncertain	yes, but uncertain	yes, but uncertain	yes, but uncertain	yes, but uncertain	yes, but uncertain
Flat Creek	yes	yes, but uncertain	yes, but uncertain	yes, but uncertain	yes, but uncertain	yes, but uncertain	yes, but uncertain	yes, but uncertain	yes, but uncertain	yes, but uncertain	yes, but uncertain	yes, but uncertain
Tinguiririca	yes	yes, but uncertain	yes, but uncertain	yes, but uncertain	yes, but uncertain	yes, but uncertain	yes, but uncertain	yes, but uncertain	yes, but uncertain	yes, but uncertain	yes, but uncertain	yes, but uncertain
Aparejo	yes	yes, but uncertain	yes, but uncertain	yes, but uncertain	yes, but uncertain	yes, but uncertain	yes, but uncertain	yes, but uncertain	yes, but uncertain	yes, but uncertain	yes, but uncertain	yes, but uncertain
Leñas	yes	yes, but uncertain	yes, but uncertain	yes, but uncertain	yes, but uncertain	yes, but uncertain	yes, but uncertain	yes, but uncertain	yes, but uncertain	yes, but uncertain	yes, but uncertain	yes, but uncertain
Tsambagarav	yes	yes, but uncertain	yes, but uncertain	yes, but uncertain	yes, but uncertain	yes, but uncertain	yes, but uncertain	yes, but uncertain	no	yes, but uncertain	yes, but uncertain	yes, but uncertain

yes yes, but uncertain unknown no, but uncertain no x Earthquake-triggered rupture ca. 2 weeks before detachment

Figure 21: Possible indicators for and factors involved in low-angle glacier detachments.



1008 **Figure 22: Schematic on which conditions and changes to a low-angle mountain glacier can in combination lead to the**
1010 **spatio-temporal interference of particularly high and concentrated shear stresses and low resistance, eventually**
1012 **exceeding stability thresholds and causing detachment. The failure conditions can change at a range of time scales, so**
1014 **that detachment is the result of a highly transient and rare interplay of factors. It is key that the low basal friction and**
1016 **high driving stresses, the resulting concentration of high shear stresses, and the lack of sufficient resistance develop**
rapidly, or are combined rapidly, preventing the glacier to adjust to changing forces in a steady way. Several of the
factors potentially involved in the detachment are subsequently also able to strongly reduce basal friction of the
resulting ice-rock avalanche and lead thus to particularly low angles of reach. Boxes in the figure indicate main physical
conditions, grey italic text indicates different actual processes that can fulfil these conditions, sorted from long-term
(left) to short-term (right) variability.

1018 **5 Conclusions**

In this contribution we describe around 20 ice-rock avalanche events that we characterize as sudden large-volume detachments
1020 of low-angle glaciers. Overall, these events seem to be more frequent than previously thought. The detached volumes ranged
from a few up to more than $100 \cdot 10^6 \text{ m}^3$. We described one new event in the same size-class as the 2002 Kolka and the 2016
1022 Aru glacier detachments (Sedongpu 2018) and as a side-result quantified one of the larger high-mountain rock avalanches of
recent decades (Gyala Peri 2017).

1024 Despite the relatively low number of low-angle glacier detachments and their site-specific variations that leave considerable
uncertainties, we were able to identify a set of conditions and evolutions likely involved in these glacier failures. We consider
1026 this an important step, given that a few years ago the possibility for low-angle mountain glaciers to detach and produce massive
ice-rock avalanches was hardly known. Interestingly, the fact that the spatio-temporal factor combinations leading to
1028 exceptionally low basal friction and very high shear stress concentration, and eventually to detachment, are different among
the cases, suggests that there exists an exceptional but still fundamental possibility of low-angle glacier beds to fail
1030 catastrophically. Awareness of this fundamental potential for catastrophic basal instability expands our understanding of
glacier flow.

1032 Many of the glacier detachments show some relation to surge-type glacier movement, and could be seen as a rare and extreme
endmember of this much more common glacier instability. Glacier detachments combine elements of surging, where the glacier
1034 adjusts its geometry to satisfy the force balance, with those of ice break-offs from steeper glaciers, where the glacier is not
able to adjust in a steady way. The surface slopes of $9\text{--}21^\circ$ of the detached glacier parts, though quite low for glaciers that
1036 produce ice avalanches, might rank high in comparison with surge-type glacier tongues. Slopes in this range exert higher shear
stresses than is typical for surge-type glaciers and favour thus the possibility of exceeding a critical stress level that then leads
1038 to sudden failure. At the same time, in comparison to glaciers in very steep terrain that tend to be thin, glaciers of $10\text{--}20^\circ$
surface slope can build up thicker ice, which leads to the larger volumes typically involved in detachments. Using a strongly
1040 simplifying slab model we estimate ranges for glacier slope and width above which a glacier could detach when widespread
and strong loss of its basal resistance cannot be accommodated anymore by lateral resistance. We estimate a critical shear

1042 stress of 0.28 MPa that could be supported by the glacier margins of the Aru detachments. We also estimate that (surge-like)
1044 precursory acceleration of glacier sliding before detachment could produce substantial amounts of ice melt at the glacier base
that would facilitate reduction of the shear stress of soft beds.

Weak bedrock and/or the existence of soft and highly erodible sediments under the detached glaciers was identified for most
1046 of the observed glacier detachments, plausible for the ones we determined retroactively, and hints at till-strength weakening
under high pore-water pressure as a concrete failure process. There appear to be different trajectories into, or out of, the narrow
1048 envelope of potential failure conditions, not least driven by climatic changes. The fact that most collapses happened during
local spring/summer suggests that a meltwater or high-altitude rain driven increase of basal pore water pressure can play an
1050 important role in triggering the events, whether directly or in some delayed form. Atmospheric warming enhances such hazard
conditions. For some detachment sites, negative regional glacier mass balances can prevent detached glaciers from fully
1052 rebuilding and thus from detachments to repeat over time, at least at earlier volumes. The special case of Tsambagarav
demonstrates that an earthquake was not able to trigger a glacier detachment (reinforcing earlier findings that low-slope glaciers
1054 appear quite resistant to ground shaking; Kargel et al., 2016) but to precondition one glacier for failure along a weakness
existing already before the earthquake.

1056 Detailed investigations of the events described in this study showed that a wide variety of dispositions and triggers can lead to
a glacier detachment. This makes it challenging for practitioners working in high-mountain hazard management to anticipate
1058 and predict such events. From this practical standpoint, however, this study attempts to raise awareness about the – albeit low
– possibility of sudden, large-volume detachments of low-angle glaciers at locations with

- 1060 ● particularly soft and erodible lithologies, and, likely related, the
- existence of surge-type glaciers and surge-like glacier evolution.
- 1062 ● Repeated events or geomorphological imprints of potential earlier collapses or other violent ice-rock mass flows can
be further investigated, but events can also happen without historical precedence through shifts in the array of failure
1064 conditions.
- Several of the glaciers investigated here showed abnormal crevassing and enhanced precursory surface speeds in the
1066 days to weeks before detachment.
- The surface slopes found in this study for the detached glaciers ranged between roughly 10° and 20°, and we propose
1068 a rough combination of glacier slope and width above which glaciers could detach in case of extensive loss of basal
friction (section 4.1).

1070 Due to the large amounts of snow and ice involved in glacier detachments, the high chance of lubrication and of liquefaction
of glacier ice and subglacial sediments, and smooth geometries of glacial valleys, avalanche friction is typically greatly
1072 reduced. This results in the particularly high mobility of the ice-rock avalanches resulting from low-angle glacier detachments
and can lead to substantial damage far from the source. Between the large runout distances and the varying factors that can

1074 impact a glacier's detachment probability, high-mountain hazard management will, after the first general assessment provided
in this study, benefit from more detailed investigations of glacier detachments, the conditions that lead to them and the
1076 mechanics that drive them.

1078

Table 1: Parametres for the low-angle glacier detachments of this contribution. For repeat events the parameters given refer to the underlined year.

Name of event	Region	Years	Lat, Lon	GLIMS,RGI IDs	Reach L (km)	Drop H (km)	Volume (10 ⁶ m ³)	Glacier surface slope (°)	Section
Devdorak	Caucasus	(1776, 1778, 1785, 1808, 1817 ?)1832, 2014	42.72°N, 44.55°E	G044517E4271 5N, RGI60-12.00840	10.5	3.2	15	17(?)	3.1
Kolka	Caucasus	~1835?,1902, <u>2002</u>	42.73°N, 44.44°E	G044447E4273 3N, RGI60-12.00131	19	2.0	130	13	3.1
Rasht	Pamirs	2017	38.975N 70.850E	G070852E3897 4N, RGI60-13.18284; USSR 504	7.6	1.4	6	16	3.2
Rasht	Pamirs	2019	38.989° N 70.693° E	G070689E3898 1N, RGI60-13.20645; USSR 518	6.7	1.5	4.5	20	3.2
Aru 1	Western Tibet	Jul 2016	34.02° N, 82.250° E	G082249E3402 3N, RGI RGI60-13.51473, Chinese: CN5Z412C0011	8.2	0.8	68	12	3.3
Aru 2	Western Tibet	Sep 2016	34.00° N, 82.265° E	G082268E3400 5N, RGI60-13.51476, Chinese inv.: CN5Z412C0007	7.2	0.83	83	13	3.3
<u>Tsambagarav</u>	<u>Western Mongolia, Altai</u>	<u>Aug 1988</u>	<u>48.66° N, 90.75° E.</u>	<u>G090733E4867 6N, RGI60-10.02686</u>	<u>4-5.5</u>	<u>0.7</u>	<u>6</u>	<u>20</u>	<u>3.4</u>
Amney Machen	Eastern Tibet	<u>2004</u> ,2007, 2016,2017,2019	34.82°N 99.44°E	G099443E3482 4N, RGI60-13.23943, Chinese inv: CN5J352E0017,	5.2	1.0	27	13	3.5
Sedongpu	South-eastern Tibet	2018	29.80° N 94.92° E	G094940E2981 1N, RGI60-13.01391, Chinese inv.: SDP1	8	1.3	100	9	3.6
Flat Creek	Saint Elias Mts.	2013, <u>2015</u> , 2016	61.50° N, 141.54° W	G218441E6163 8N, RGI60-01.17460	11	1.1	14	20	3.7
Aparejo	Chilean Andes	1980	33.56° S, 70.01° W	only World Glacier Inv. CL1M005D004 9	3.7	0.8	7.2	20	3.8
Leñas	Argentinean Andes	2007	34.46° S 70.05° W	G289941E3445 9S, RGI60-17.01251	2	0.2	4.2	15	3.9

Tinguiririca	Chilean Andes	~1960,1994, <u>2007</u>	34.83° S 70.35° W	only World Glacier Inv. CL1M00420016	7.9	1.4	12	20	3.10
--------------	---------------	----------------------------	----------------------	--	-----	-----	----	----	------

1082

Code availability

1086 Not relevant

Data availability

1088 Sentinel-1 and Sentinel-2 data are freely available from the ESA/EC Copernicus Sentinels Scientific Data Hub at
https://scihub.copernicus.eu (Copernicus, 2020), Landsat satellite data, Corona satellite data, and SRTM-C DEMs from United
1090 States Geological Survey (USGS, 2020), SRTM-X and TanDEM-X DEMs from the German Aerospace Center (DLR, 2020),
the ALOS World DEM from the Japan Aerospace Exploration Agency (JAXA, 2020), Chinese earthquake data from the China
1092 Earthquake Data Center. Planet data (Dove and RapidEye) are not openly available as Planet is a commercial company.
However, scientific access schemes to these data exist (https://www.planet.com/markets/education-and-research/). Data from
1094 Maxar satellites (GeoEye, Ikonos, WorldView, Quickbird) and Airbus (Pléiades, Spot) are commercial, but in parts explorable
from GoogleEarth and BingMaps.

1096 Author contribution

A.K. wrote the text, did most new analyses and prepared the figures. M.J. and A.G. wrote parts of the text, edited all text, and
1098 contributed comments and discussions. L.G. prepared the Sedongpu DEMs. All authors edited text and contributed with data,
comments and discussions.

1100 Competing interests

All authors declare that they have no competing interests.

1102 Acknowledgements

This paper is an extended and updated version of the Louis Agassiz medal lecture by A.K. given at the European Geosciences
1104 Union General Assembly 2019. We would like to thank Martin Truffer and an anonymous referee for their very constructive
comments. The force balance model, section 4.1, is based on a concept proposed to us by Martin Truffer. We are grateful to
1106 the providers of free data for this study; European Space Agency (ESA) / European Commission (EC) Copernicus for Sentinel-

2 data, USGS for Landsat, Corona, and SRTM data, DLR for SRTM and TanDEM-X data, and Planet for their cubesat data
1108 via Planet's Ambassadors Program. E.B. and S.G. acknowledge support from the French Space Agency (CNES) through
TOSCA and DINAMIS programs. S.C. acknowledges support from Lomonosov Moscow State University on the theme
1110 "Mapping, modeling and risk assessment of dangerous natural processes". D.P. and S.C. acknowledge the Russian Foundation
for Basic Research. Paola Banegas from SEGEMAR Mendoza provided the 1962 aerial photos over Tinguririca.

1112 **Financial support**

This work was funded by the ESA projects Permafrost_CCI (4000123681/18/I-NB), Glaciers_CCI (4000109873/14/I-NB,
1114 4000127593/19/I-NS), and the ESA EarthExplorer10 Mission Advisory Group (4000127656/19/NL/FF/gp), by the European
Research Council under the European Union's Seventh Framework Programme (FP/2007-2013) / ERC grant agreement no.
1116 320816, and the Russian Foundation for Basic Research (grant 18-05-00520). JSK thanks NASA's Interdisciplinary Science
Program (grant 80NSSC18K0432).

1118

1120 References

- 1122 Alean, J.: Ice avalanche activity and mass balance of high-altitude hanging glaciers in the Swiss Alps, *Ann Glaciol*, 6, 248-249, 1985.
- 1124 Agatova, A. R., Nepop, R. K., Otgonbayar Demberel, and Ganyushkin, D. A.: The influence of the seismic process on the modern glaciation of the Tsambagarav massif (Western Mongolia), XVII Glaciological Symposium, St. Petersburg, 2020.
- 1126 Aristov, K. A., Petrakov, D. A., Kovalenko, N. V., Timonin, S. A., Kolchin, A. A., and Drobyshev, V. N.: Monitoring of Kolka Glacier in 2014–2017 by terrestrial stereophotogrammetry. *Led i Sneg. Ice and Snow [In Russian], Led i Sneg (Ice and Snow)*, 59, 49–58, <https://doi.org/10.15356/2076-6734-2019-1-49-58>, 2019.
- 1128 Asoyan, D. S., and Rototaeva, O. V. Devdoraki Glacier, Kazbek: history of studies of natural hazards in XIX and the beginning of XXI centuries. *Led i Sneg. Ice and Snow*, 56(2): 253-264, <https://doi.org/10.15356/2076-6734-2016-2-253-264>, 2016.
- 1130 Avdeev, V.A., Nartov, S.V., Baljinniam, I., Monhoo, D., and Erdenbileg, B.: Tsambagarav earthquake of July 23, 1988, *Geology and Geophysics*, 11, 118–124. (in Russian), 1989.
- 1134 Benn, D. I., Fowler, A. C., Hewitt, I., and Sevestre, H.: A general theory of glacier surges, *J Glaciol*, 65, 701-716, <https://doi.org/PII S0022143019000625>, 10.1017/jog.2019.62, 2019.
- 1136 Braun, M. H., Malz, P., Sommer, C., Farias-Barahona, D., Sauter, T., Casassa, G., Soruco, A., Skvarca, P., and Seehaus, T. C.: Constraining glacier elevation and mass changes in South America, *Nat Clim Change*, 9, 130, <https://doi.org/10.1038/s41558-018-0375-7>, 2019.
- 1138 Brenning, A.: Geomorphological, hydrological and climatic significance of rock glaciers in the Andes of Central Chile (33–35°S), 16, 231-240, <https://doi.org/10.1002/ppp.528>, 2005.
- 1140 Brun, F., Berthier, E., Wagnon, P., Kääh, A., and Treichler, D.: A spatially resolved estimate of High Mountain Asia glacier mass balances from 2000 to 2016, *Nature Geosci*, 10, 668-673, <https://doi.org/10.1038/ngeo2999>, 2017.
- 1142 Caplan-Auerbach, J., and Huggel, C.: Precursory seismicity associated with frequent, large ice avalanches on Iliamna volcano, Alaska, USA, *J Glaciol*, 53, 128-140, <https://doi.org/Doi 10.3189/172756507781833866>, 2007.
- 1144 Chen, C., Zhang, L. M., Xiao, T., and He, J.: Barrier lake bursting and flood routing in the Yarlung Tsangpo Grand Canyon in October 2018, *J Hydrol*, 583, Artn 124603, <https://doi.org/10.1016/j.jhydrol.2020.124603>, 2020.
- 1146 Chernomorets, S. S. New “Kazbek blockage” on 17 May 2014. *Priroda*, 7: 67-72 <https://istina.msu.ru/download/6618200/1k5k5t:82mOHGauqEFijKJOHSXRSTVDIT8/> (in Russian), 2014.
- 1148 Chernomorets, S., Savernyuk, E., Petrakov, D., Dokukin, M., Gotsiridze, G., Gavardashvili, G., Drobyshev, V., Tutubalina, O., Zaporozhchenko, E., Kamenev, N., Kamenev, V., Kääh, A., Kargel, J., and Huggel, C.: The Devdorak ice-rock avalanche and consequent debris flow from the slope of Mt. Kazbek (Caucasus, Georgia) in 2014, EGU General Assembly Conference Abstracts, April 01, 2016, 2016.
- 1150 Chernomorets, S. S., Tutubalina, O. V., Seinova, I. B., Petrakov, D. A., Nosov, K. N., and Zaporozhchenko, E. V.: Glacier and debris flow disasters around Mt. Kazbek, Russia/Georgia, in: *Debris-Flow Hazards Mitigation: Mechanics, Prediction, and Assessment*, edited by: Chen, C. L., and Major, J. J., Millpress, Netherlands, 2007.
- 1154 Clarke, G. K. C., Collins, S. G., and Thompson, D. E.: Flow, thermal structure, and subglacial conditions of a surge-type glacier, *Can J Earth Sci*, 21, 232-240, <https://doi.org/10.1139/e84-024>, 1984.
- 1158

- 1160 Clarke, G. K. C., and Blake, E. W.: Geometric and thermal evolution of a surge-type glacier in its quiescent state - Trapridge
Glacier, Yukon-Territory, Canada, 1969-89, *J Glaciol*, 37, 158-169, 1991.
- 1162 Copernicus Open Access Hub, Copernicus programme, European Commission and European Space Agency, available at:
<https://scihub.copernicus.eu>, last access: 17 October 2019, 2019.
- 1164 Crandell, D. R., and Fahnestock, R. K.: Rockfalls and avalanches from little Tahoma Peak on Mount Rainier, Washington,
U.S. Geol. Surv. Bull., 1221-A, A1-A30, 1965.
- 1166 Dokukin, M. D., Bekkiev, M. Y., Kalov, R. H., Savernyuk, E. A., and Chernomorets, S. S.: Signs of catastrophic glacier
detachments (Analysis of multitemporal space information) (In Russian), in: *Dangerous natural and technogenic
processes in mountain regions: models, systems and technologies*, Moscow, 522-528, 2019.
- 1168 Dokukin, M. D., Savernyuk, E. A., and Chernomorets, S. S. Rock Avalanches in the Alpine Zone of the Caucasus in the 21
Century. *Priroda*, 7: 52-62, (in Russian), 2015.
- 1170 Dokukin, M. D., Bekkiev, M. Yu., Kalov, R. Kh., Chernomorets, S. S., and Savernyuk, E. A. Activation of rock avalanches
in the Central Caucasus and their impact on the dynamics of glaciers and debris flows. – *Led i Sneg. Ice and Snow*,
1172 60(3), 361-378, 2020.
- 1174 Drobushhev V.N., Torchinov H-M.Z., Tutubalina O.V., and Hubaev H.M. Main topographical data and kinematics of the
Devdorakskiy collapse on May 17, 2014. *Vestnik of the Vladikavkaz Scientific Centre*, 4: 30-41, (in Russian), 2014.
- 1176 Drobyshev, V. N.: Glacial catastrophe of 20 September 2002 in North Osetia, *Russian Jo. Earth Sci*, ES4004,
<https://doi.org/doi:10.2205/2006ES000207>, 2006.
- 1178 Dunse, T., Schellenberger, T., Hagen, J. O., Kääb, A., Schuler, T. V., and Reijmer, C. H.: Glacier-surge mechanisms
promoted by a hydro-thermodynamic feedback to summer melt, *Cryosphere*, 9, 197-215, <https://doi.org/10.5194/tc-9-197-2015>, 2015.
- 1180 Dussaillant, I., Berthier, E., Brun, F., Masiokas, M., Hugonnet, R., Favier, V., Rabatel, A., Pitte, P., and Ruiz, L.: Two
decades of glacier mass loss along the Andes, *Nat Geosci*, 12, 803, <https://doi.org/10.1038/s41561-019-0432-5>, 2019.
- 1182 Evans, S. G., Bishop, N. F., Smoll, L. F., Murillo, P. V., Delaney, K. B., and Oliver-Smith, A.: A re-examination of the
mechanism and human impact of catastrophic mass flows originating on Nevado Huascarán, Cordillera Blanca, Peru
1184 in 1962 and 1970, *Eng Geol*, 108, 96-118, <https://doi.org/10.1016/j.enggeo.2009.06.020>, 2009a.
- 1186 Evans, S. G., Tutubalina, O. V., Drobyshev, V. N., Chernomorets, S. S., McDougall, S., Petrakov, D. A., and Hungr, O.:
Catastrophic detachment and high-velocity long-runout flow of Kolka Glacier, Caucasus Mountains, Russia in 2002,
Geomorphology, 105, 314-321, <https://doi.org/10.1016/j.geomorph.2008.10.008>, 2009b.
- 1188 Evans, S. G., and Delaney, K. B.: Catastrophic mass flows in the mountain glacial environment, in: *Snow and Ice-related
Hazards, Risks, and Disasters*, edited by: Haerberli, W., and Whitemann, C., *Hazards and Disasters Series*, Elsevier,
1190 Amsterdam, 563-606, 2015, <https://doi.org/10.1016/B978-0-12-394849-6.00016-0>.
- 1192 Faillettaz, J., Sornette, D., and Funk, M.: Numerical modeling of a gravity-driven instability of a cold hanging glacier:
reanalysis of the 1895 break-off of Altsgletscher, Switzerland, *J Glaciol*, 57, 817-831, 2011.
- 1194 Faillettaz, J., Funk, M., and Vincent, C.: Avalanching glacier instabilities: Review on processes and early warning
perspectives, *Rev. Geophys.*, 53, 203-224, <https://doi.org/10.1002/2014rg000466>, 2015.
- 1196 Falaschi, D., Bolch, T., Lenzano, M. G., Tadono, T., Lo Vecchio, A., and Lenzano, L.: New evidence of glacier surges in the
Central Andes of Argentina and Chile, *Prog Phys Geog*, 42, 792-825, <https://doi.org/10.1177/0309133318803014>,
2018a.
- 1198 Falaschi, D., Lenzano, M. G., Tadono, T., Vich, A., and Lenzano, L.: Balance de masa geodésico 2000-2011 de los glaciares
de la cuenca del río Atuel, Andes Centrales de Mendoza, *Geoacta*, 42, 7-22, 2018b.
- 1200 Falaschi, D., Kääb, A., Paul, F., Tadono, T., Rivera, J. A., and Lenzano, L. E.: Brief communication: Collapse of 4 Mm(3) of
1202 ice from a cirque glacier in the Central Andes of Argentina, *Cryosphere*, 13, 997-1004, <https://doi.org/10.5194/tc-13-997-2019>, 2019.

- 1204 Fischer, L., Huggel, C., Käab, A., and Haeberli, W.: Slope failures and erosion rates on a glacierized high-mountain face
under climatic changes, *Earth Surf. Proc. Land.*, 38, 836-846, <https://doi.org/10.1002/Esp.3355>, 2013.
- 1206 Flowers, G. E., Jarosch, A. H., Belliveau, P. T. A. P., and Fuhrman, L. A.: Short-term velocity variations and sliding
sensitivity of a slowly surging glacier, *Ann Glaciol*, 57, 71-83, <https://doi.org/10.1017/aog.2016.7>, 2016.
- 1208 Fowler, A. C., Murray, T., and Ng, F. S. L.: Thermally controlled glacier surging, *J Glaciol*, 47, 527-538,
<https://doi.org/10.3189/172756501781831792>, 2001.
- 1210 Frappe, T. P., and Clarke, G. K. C.: Slow surge of Trapridge Glacier, Yukon territory, Canada, *J Geophys Res-Earth*, 112,
Art. F03s32, <https://doi.org/10.1029/2006jf000607>, 2007.
- 1212 Gardelle, J., Berthier, E., Arnaud, Y., and Käab, A.: Region-wide glacier mass balances over the Pamir-Karakoram-
Himalaya during 1999-2011, *Cryosphere*, 7, 1263-1286, 2013.
- 1214 Gareth, G.S. and Melosh, H.J.: Acoustic fluidization and the extraordinary mobility of sturzstroms. *J Geophys Res-Earth*,
108 (B10), 2473, <https://doi.org/10.1029/2003JB002465>, 2003.
- 1216 Gilbert, A., Leinss, S., Kargel, J., Käab, A., Gascoïn, S., Leonard, G., Berthier, E., Karki, A., and Yao, T. D.: Mechanisms
leading to the 2016 giant twin glacier collapses, Aru Range, Tibet, *Cryosphere*, 12, 2883-2900,
<https://doi.org/10.5194/tc-12-2883-2018>, 2018.
- 1218 Goerlich, F., Bolch, T., and Paul, F.: More dynamic than expected: an updated survey of surging glaciers in the Pamir, *Earth
Syst. Sci. Data*, 12, 3161-3176, <https://doi.org/10.5194/essd-12-3161-2020>, 2020.
- 1220 Gruber, F. E., and Mergili, M.: Regional-scale analysis of high-mountain multi-hazard and risk indicators in the Pamir
(Tajikistan) with GRASS GIS, *Nat Hazard Earth Sys*, 13, 2779-2796, <https://doi.org/10.5194/nhess-13-2779-2013>,
1222 2013.
- 1224 Haeberli, W., Käab, A., Paul, F., Chiarle, M., Mortara, G., Mazza, A., and Richardson, S.: A surge-type movement at
Ghiacciaio del Belvedere and a developing slope instability in the east face of Monte Rosa, Macugnaga, Italian Alps,
56, 104-111, 2002.
- 1226 Haeberli, W., Huggel, C., Kaab, A., Zraggen-Oswald, S., Polkvoj, A., Galushkin, I., Zotikov, I., and Osokin, N.: The
Kolka-Karmadon rock/ice slide of 20 September 2002: an extraordinary event of historical dimensions in North
1228 Ossetia, Russian Caucasus, *J Glaciol*, 50, 533-546, <https://doi.org/10.3189/172756504781829710>, 2004.
- 1230 Harrison, W. D., and Post, A. S.: How much do we really know about glacier surging?, *Ann Glaciol*, 36, 1-6,
<https://doi.org/10.3189/172756403781816185>, 2003.
- 1232 Harrison, W. D., Osipova, G. B., Nosenko, G. A., Espizua, L., Käab, A., Fischer, L., Huggel, C., Craw Burns, P. A., Truffer,
M., and Lai, A. W.: Glacier Surges, in: *Snow and Ice-related Hazards, Risks, and Disasters*, edited by: Haeberli, W.,
and Whitemann, C., Elsevier, Amsterdam, 437-485, 2015.
- 1234 Hauser, A.: Rock avalanche and resulting debris flow in Estero Parraguire and Río Colorado, Región Metropolitana, Chile,
in: *Catastrophic Landslides: Effects, Occurrence, and Mechanisms*, edited by: Evans, S. G., and DeGraff, J. V.,
1236 Geological Society of America Reviews in Engineering Geology 15, Boulder, CO, 135-148, 2002.
- 1238 Herreid, S., and Truffer, M.: Automated detection of unstable glacier flow and a spectrum of speedup behavior in the Alaska
Range, *J Geophys Res-Earth*, 121, 64-81, <https://doi.org/10.1002/2015jf003502>, 2016.
- 1240 Heybrock, W. Earthquakes as a Cause of Glacier Avalanches in the Caucasus. *Geographical Review*, 25. (3): 423-429,
<https://doi.org/10.2307/209310>, 1935.
- 1242 Hock, R., Rasul, G., Adler, C., Cáceres, B., Gruber, S., Hirabayashi, Y., Jackson, M., Käab, A., Kang, S., Kutuzov, S.,
Milner, A., Molau, U., Morin, S., Orlove, B., and Steltzer, H.: High Mountain Areas, in: *IPCC Special Report on the
1244 Ocean and Cryosphere in a Changing Climate (SROCC)*, edited by: Pörtner, H.-O., Roberts, D. C., Masson-Delmotte,
V., Zhai, P., Tignor, M., Poloczanska, E., Mintenbeck, E., Alegria, A., Nicolai, M., Okem, A., Petzold, J., Rama, B.,
and Weyer, N. M., IPCC, Geneva, 2019.
- 1246 Hoinkes, H.: Die Ausbrüche (surges) des Kolka-Gletschers in Nord-Ossetien, Zentraler Kaukasus, *Z. Gletscherkd. Glazial-
geol.*, 253-270, 1972.

- 1248 Hsü, K. J.: Catastrophic debris streams (Sturzstroms) generated by rockfalls, *Geol. Soc. Am. Bull.*, 86, 129-140, 1975.
- 1250 Hu, K. H., Zhang, X. P., You, Y., Hu, X. D., Liu, W. M., and Li, Y.: Landslides and dammed lakes triggered by the 2017 Ms6.9 Milin earthquake in the Tsangpo gorge, *Landslides*, 16, 993-1001, <https://doi.org/10.1007/s10346-019-01168-w>, 2019.
- 1252 Huggel, C., Zraggen-Oswald, S., Haeberli, W., Kääb, A., Polkvoj, A., Galushkin, I., and Evans, S. G.: The 2002 rock/ice avalanche at Kolka/Karmadon, Russian Caucasus: assessment of extraordinary avalanche formation and mobility, and application of QuickBird satellite imagery, *Nat. Hazard. Earth Sys.*, 5, 173-187, <https://doi.org/10.5194/nhess-5-173-2005>, 2005.
- 1254 Huggel, C., Caplan-Auerbach, J., Waythomas, C. F., and Wessels, R. L.: Monitoring and modeling ice-rock avalanches from ice-capped volcanoes: A case study of frequent large avalanches on Iliamna Volcano, Alaska, *J Volcanol Geoth Res*, 168, 114-136, <https://doi.org/10.1016/j.jvolgeores.2007.08.009>, 2007.
- 1256 Huggel, C.: Recent extreme slope failures in glacial environments: effects of thermal perturbation, *Quaternary Sci Rev*, 28, 1119-1130, <https://doi.org/10.1016/j.quascirev.2008.06.007>, 2009.
- 1262 Iribarren Anaconda, P., Mackintosh, A., and Norton, K. P.: Hazardous processes and events from glacier and permafrost areas: lessons from the Chilean and Argentinean Andes, *Earth Surf Proc Land*, 40, 2-21, <https://doi.org/10.1002/esp.3524>, 2015.
- 1264 Jacquemart, M., and Loso, M.: Catastrophic glacier collapse and debris flow at Flat Creek, Wrangell-St. Elias National Park and Preserve. *Alaska Park Science*, 18(1), 16-25, 2019.
- 1266 Jacquemart, M., Loso, M., Leopold, M., Welty, E., Berthier, E., Hansen, J. S. S., Sykes, J., and Tiampo, K.: What drives large-scale glacier detachments? Insights from Flat Creek glacier, St. Elias Mountains, Alaska, *Geol*, <https://doi.org/10.1130/g47211.1>, 2020.
- 1268 Jiskoot, H.: Glacier surging, in: *Encyclopedia of Snow, Ice and Glaciers*, edited by: Singh, V. P., and Haritashya, U. K., Springer, 415-428, 2011.
- 1270 Kamb, B.: Glacier surge mechanism based on linked cavity configuration of the basal water conduit system, *J Geophys Res-Sol Ea*, 92, 9083-9100, <https://doi.org/10.1029/Jb092ib09p09083>, 1987.
- 1272 Kargel, J. S., Leonard, G. J., Shugar, D. H., Haritashya, U. K., Bevington, A., Fielding, E. J., Fujita, K., Geertsema, M., Miles, E. S., Steiner, J., Anderson, E., Bajracharya, S., Bawden, G. W., Breashears, D. F., Byers, A., Collins, B., Dhital, M. R., Donnellan, A., Evans, T. L., Geai, M. L., Glasscoe, M. T., Green, D., Gurung, D. R., Heijnen, R., Hilborn, A., Hudnut, K., Huyck, C., Immerzeel, W. W., Jiang, L. M., Jibson, R., Kaab, A., Khanal, N. R., Kirschbaum, D., Kraaijenbrink, P. D. A., Lamsal, D., Liu, S. Y., Lv, M. Y., McKinney, D., Nahirnick, N. K., Nan, Z. T., Ojha, S., Olsenholler, J., Painter, T. H., Pleasants, M., Pratima, K. C., Yuan, Q. I., Raup, B. H., Regmi, D., Rounce, D. R., Sakai, A., Donghui, S., Shea, J. M., Shrestha, A. B., Shukla, A., Stumm, D., van der Kooij, M., Voss, K., Xin, W., Weihs, B., Wolfe, D., Wu, L. Z., Yao, X. J., Yoder, M. R., and Young, N.: Geomorphic and geologic controls of geohazards induced by Nepal's 2015 Gorkha earthquake, *Science*, 351, 140, <https://doi.org/10.1126/science.aac8353>, 2016.
- 1282 Khatisyan, G. S. The Kazbek glaciers in the period from 1862 to 1887. *Izvestiya Imperatorskago Russkago Geograficheskago Obschestva* 24(5): 326-347 (in Russian), 1889.
- 1284 Kochtitzky, W., Jiskoot, H., Copland, L., Enderlin, E., McNabb, R., Kreutz, K., and Main, B.: Terminus advance, kinematics and mass redistribution during eight surges of Donjek Glacier, St. Elias Range, Canada, 1935 to 2016, *J Glaciol*, 65, 565-579, <https://doi.org/10.1017/jog.2019.34>, 2019.
- 1286 Kotlyakov, V. M., Rototaeva, O. V., and Nosenko, G. A.: The September 2002 Kolka glacier catastrophe in North Ossetia, Russian Federation. Evidence and analysis, *Mt Res Dev*, 24, 78-83, 2004.
- 1288 Kotlyakov, V. M., Osipova, G. B., and Tsvetkov, D. G.: Monitoring surging glaciers of the Pamirs, central Asia, from space, *Ann Glac*, 48, 125-134, <https://doi.org/10.3189/172756408784700608>, 2008.
- 1290

- 1292 Kotlyakov, V. M., Osipova, G. B., and Tsvetkov, D. G.: Investigations of the fluctuations of surge-type glaciers in the Pamir
 1294 based on observations from space, in: *Glaciers of Asia*, U.S. Geological Survey Professional Paper 1386, edited by:
 Williams, R. S. J., and Ferrigno, J. G., USGS, 77-93, 2010a.
- Kotlyakov, V. M., Rototaeva, O. V., and Nosenko, G. A.: Fluctuations of glaciers of the Central Caucasus and Gora El'brus,
 1296 with a section on the glaciological disaster in North Osetiya, in: *Glaciers of Asia*, U.S. Geological Survey
 Professional Paper 1386, edited by: Williams, R. S. J., and Ferrigno, J. G., USGS, 59-76, 2010b.
- 1298 Kutuzov, S., Lavrentiev, I., Smimov, A., Nosenko, G., and Petrakov, D.: Volume changes of Elbrus glaciers from 1997 to
 2017, *Front Earth Sc-Switz*, 7, 153, <https://doi.org/10.3389/feart.2019.00153>, 2019.
- 1300 Kääb, A., Wessels, R., Haeberli, W., Huggel, C., Kargel, J., and Khalsa, S. J. S.: Rapid ASTER imaging facilitates timely
 assessment of glacier hazards and disasters, *EOS Trans AGU*, 84, 117,121, 2003.
- 1302 Kääb, A., Huggel, C., Barbero, S., Chiarle, M., Cordola, M., Epifani, F., Haeberli, W., Mortara, G., Semino, P., Tamburini,
 1304 A., and Viazzo, G.: Glacier hazards at Belvedere Glacier and the Monte Rosa east face, *Italian Alps: processes and
 mitigation*, *Interpraevent*, 2004, 67-78,
- Kääb, A., Treichler, D., Nuth, C., and Berthier, E.: Brief Communication: Contending estimates of 2003–2008 glacier mass
 1306 balance over the Pamir–Karakoram–Himalaya, *Cryosphere*, 9, 557-564, <https://doi.org/10.5194/tc-9-557-2015>, 2015.
- Kääb, A., Leinss, S., Gilbert, A., Buhler, Y., Gascoïn, S., Evans, S. G., Bartelt, P., Berthier, E., Brun, F., Chao, W. A.,
 1308 Farinotti, D., Gimbert, F., Guo, W. Q., Huggel, C., Kargel, J. S., Leonard, G. J., Tian, L. D., Treichler, D., and Yao,
 1310 T. D.: Massive collapse of two glaciers in western Tibet in 2016 after surge-like instability, *Nat Geosci*, 11, 114-120,
<https://doi.org/10.1038/s41561-017-0039-7>, 2018.
- Kääb, A.: Collapsing Glaciers, *Geophysical Research Abstracts*, European Geosciences Union General Assembly 2019, Vol.
 1312 21, 8799, 2019.
- Larsen, C. F., Burgess, E., Arendt, A. A., O'Neel, S., Johnson, A. J., and Kienholz, C.: Surface melt dominates Alaska
 1314 glacier mass balance, *Geophys Res Lett*, 42, 5902-5908, <https://doi.org/10.1002/2015gl064349>, 2015.
- Lei, Y., Yao, T., Tian, L., Sheng, Y., Lazhu, Liao, J., Zhao, H., Yang, W., Yang, K., Berthier, E., Brun, F., Gao, Y., Zhu, M.,
 1316 and Wu, G.: Response of downstream lakes to Aru glacier collapses on the western Tibetan Plateau, 15, 199-214,
<https://doi.org/10.5194/tc-15-199-2021>, 2021.
- 1318 Leinss, S., Willmann, C., and Hajnsek, I.: Glacier Detachment Hazard Analysis in the West Kunlun Shan Mountains, *Int
 Geosci Remote Se*, 4565-4568, 2019.
- 1320 Leinss, S., Bernardini, E., Jacquemart, M., and Dokukin, M.: Glacier detachments and rock-ice avalanches in the Petra
 Pervogo range, Tajikistan (1973–2019), *Nat. Hazards Earth Syst. Sci. Discuss.*, <https://doi.org/10.5194/nhess-2020-285>, under review, 2020.
- 1322 Liu, C. Z., Lu, J. T., Tong, L. Q., Chen, H. Q., Liu, Q. Q., Xiao, R. H., and Tu, J. N.: Research on glacial/rock fall-landslide-
 1324 debris flows in Sedongpu basin along Yarlung Zangbo River in Tibet, *Geol. China*, 46, 219-234, 2019.
- Lv, M. Y., Guo, H. D., Lu, X. C., Liu, G., Yan, S. Y., Ruan, Z. X., Ding, Y. X., and Quincey, D. J.: Characterizing the
 1326 behaviour of surge-and non-surge-type glaciers in the Kingata Mountains, eastern Pamir, from 1999 to 2016,
Cryosphere, 13, 219-236, <https://doi.org/10.5194/tc-13-219-2019>, 2019.
- 1328 Marangunic, C.: Informe sobre deslizamientos de glaciares en el Estero del Aparejo, Valle del Río Maipo, Área
 Metropolitana, Oficina Nacional de Emergencias, Santiago, Chile, 8p, 1980.
- 1330 Masiokas, M. H., Christie, D. A., Le Quesne, C., Pitte, P., Ruiz, L., Villalba, R., Luckman, B. H., Berthier, E., Nussbaumer,
 S. U., Gonzalez-Reyes, A., McPhee, J., and Barcaza, G.: Reconstructing the annual mass balance of the Echaurren
 1332 Norte glacier (Central Andes, 33.5 degrees S) using local and regional hydroclimatic data, *Cryosphere*, 10, 927-940,
<https://doi.org/10.5194/tc-10-927-2016>, 2016.
- 1334 McClung, D. M.: Superelevation of flowing avalanches around curved channel bends, *J Geophys Res-Sol Ea*, 106, 16489-
 16498, <https://doi.org/10.1029/2001jb000266>, 2001.

- 1336 Mergili, M., Kopf, C., Mullebner, B., and Schneider, J. F.: Changes of the cryosphere and related geohazards in the high-
1338 mountain areas of Tajikistan and Austria: a comparison, *Geogr Ann A*, 94A, 79-96, <https://doi.org/10.1111/j.1468-0459.2011.00450.x>, 2012.
- Milana, J. P.: A model of the Glaciar Horcones Inferior surge, Aconcagua region, Argentina, *J Glaciol*, 53, 565-572,
1340 <https://doi.org/10.3189/002214307784409324>, 2007.
- Moore, P. L.: Deformation of debris-ice mixtures, *Rev Geophys*, 52, 435-467, <https://doi.org/10.1002/2014rg000453>, 2014.
- 1342 Murray, T., Strozzi, T., Luckman, A., Jiskoot, H., and Christakos, P.: Is there a single surge mechanism? Contrasts in
1344 dynamics between glacier surges in Svalbard and other regions, *J Geophys Res-Sol Ea*, 108, 2237,
<https://doi.org/10.1029/2002JB001906>, 2003.
- Obu, J., Westermann, S., Bartsch, A., Berdnikov, N., Christiansen, H. H., Dashtseren, A., Delaloye, R., Elberling, B.,
1346 Etzelmueller, B., Kholodov, A., Khomutov, A., Kaab, A., Leibman, M. O., Lewkowicz, A. G., Panda, S. K.,
1348 Romanovsky, V., Way, R. G., Westergaard-Nielsen, A., Wu, T. H., Yamkhin, J., and Zou, D. F.: Northern
Hemisphere permafrost map based on TTOP modelling for 2000-2016 at 1 km(2) scale, *Earth-Sci Rev*, 193, 299-316,
<https://doi.org/10.1016/j.earscirev.2019.04.023>, 2019.
- 1350 Paul, F.: Repeat Glacier Collapses and Surges in the Amney Machen Mountain Range, Tibet, Possibly Triggered by a
Developing Rock-Slope Instability, *Remote Sens-Basel*, 11, Artn 708, <https://doi.org/10.3390/rs11060708>, 2019.
- 1352 Pavez, C., Tapia, F., Comte, D., Gutierrez, F., Lira, E., Charrier, R., and Benavente, O.: Characterization of the hydrothermal
1354 system of the Tinguiririca Volcanic Complex, Central Chile, using structural geology and passive seismic
tomography, *J Volcanol Geoth Res*, 310, 107-117, <https://doi.org/10.1016/j.jvolgeores.2015.11.018>, 2016.
- Petrakov, D. A., Tutubalina, O. V., and Chernomorets, S. S.: The 2002 Genaldon glacial catastrophe: one year later,
1356 *Kryosfera Semlu*, VIII, 29-39, 2004.
- Petrakov, D. A., Chernomorets, S. S., Evans, S. G., and Tutubalina, O. V.: Catastrophic glacial multi-phase mass
1358 movements: a special type of glacial hazard, *Advances in Geosciences*, 14, 211-218, 2008.
- Petrakov, D. A., Aristov, K. A., A.A., A., Boyko, E. S., Drobyshev, V. N., Kovalenko, N. V., Tutubalina, O. V., and
1360 Chernomorets, S. S.: Rapid regeneration of the Kolka Glacier (Caucasus) after the 2002 glacial disaster Earth's
Cryosphere (*Kriosfera Zemli*), 22, 51-62, [https://doi.org/10.21782/EC2541-9994-2018-1\(51-62\)](https://doi.org/10.21782/EC2541-9994-2018-1(51-62)) 2018.
- 1362 Post, A.: Effects on Glaciers, in: The great Alaska earthquake of 1964. Part A: hydrology, National Academy of Sciences,
Washington DC, 266-308, 1968.
- 1364 Quincey, D. J., Glasser, N. F., Cook, S. J., and Luckman, A.: Heterogeneity in Karakoram glacier surges, *J Geophys Res-
Earth*, 120, 1288-1300, <https://doi.org/10.1002/2015jf003515>, 2015.
- 1366 Reineggs, J. Allgemeine historisch- topographische Beschreibung des Kaukasus. - Gotha; St. Petersburg, Bd. 1, 296 S.,
<http://elib.shpl.ru/ru/nodes/24706-bd-1-1796>, 1796.
- 1368 Rototayev, K. P., Khodakov, V. G., and Krenke, A. N.: Study of the Surging Kolka Glacier, Nauka, Moscow, 168 pp. (in
Russian), 1983.
- 1370 Schneider, D., Huggel, C., Haerberli, W., and Kaitna, R.: Unraveling driving factors for large rock-ice avalanche mobility,
Earth Surf. Proc. Land., 36, 1948-1966, <https://doi.org/10.1002/esp.2218>, 2011.
- 1372 Sevestre, H., and Benn, D. I.: Climatic and geometric controls on the global distribution of surge-type glaciers: Implications
for a unifying model of surging, *J. Glaciol.*, 61, 646-662, <https://doi.org/10.3189/2015JoG14J136>, 2015.
- 1374 Sevestre, H., Benn, D. I., Hulton, N. R. J., and Baelum, K.: Thermal structure of Svalbard glaciers and implications for
thermal switch models of glacier surging, *J Geophys Res-Earth*, 120, 2220-2236,
1376 <https://doi.org/10.1002/2015jf003517>, 2015.
- 1378 Shean, D. E., Bhushan, S., Montesano, P., Rounce, D. R., Arendt, A., and Osmanoglu, B.: A Systematic, Regional
Assessment of High Mountain Asia Glacier Mass Balance, *Front Earth Sc-Switz*, 7, Artn 363
<https://doi.org/10.3389/feart.2019.00363>, 2020.

- 1380 Sheridan, M. F., Stinton, A. J., Patra, A., Pitman, E. B., Bauer, A., and Nichita, C. C.: Evaluating Titan2D mass-flow model
1382 using the 1963 Little Tahoma Peak avalanches, Mount Rainier, Washington, *J Volcanol Geoth Res*, 139, 89-102,
<https://doi.org/10.1016/j.jvolgeores.2004.06.011>, 2005.
- 1384 Shugar, D. H., Rabus, B. T., Clague, J. J., and Capps, D. M.: The response of Black Rapids Glacier, Alaska, to the Denali
earthquake rock avalanches, *J Geophys Res-Earth*, 117, Artn F01006, <https://doi.org/10.1029/2011jf002011>, 2012.
- Statkowski, B. I. Origin of repeating Kazbek blockage and measures for its prevention. Tiflis (in Russian), 1877.
- 1386 Statkowski, B. Problèmes de la Climatologie du Caucase. Paris, Gauthier-Villars, Imprimeur-Librairie. Successeur de Mallet-
Bachelier. 279 p. <https://gallica.bnf.fr/ark:/12148/bpt6k9643218p.texteImage> , 1879.
- 1388 Stebnitsky, I. I. On the distribution of glaciers in the Caucasus. – *Izvestiya Kavkazskogo otdela Imperatorskago Russkago*
Geograficheskago Obschestva, V(1): 1-21 (in Russian), 1877.
- 1390 Strom, A., and Abdrakhmatov, K.: *Rockslides and Rock Avalanches of Central Asia: Distribution, Morphology, and Internal*
Structure, Elsevier, Amsterdam, 2018.
- 1392 Tavasiev, R. A., and Galushkin, I. V. Rock-ice collapse of Kazbek Mountain dated May 17, 2014. *Vestnik Vladikavkaz*
Scientific Center, 14(2): 43-45, 2014.
- 1394 Thogersen, K., Gilbert, A., Schuler, T. V., and Malthe-Sorensen, A.: Rate-and-state friction explains glacier surge
propagation, *Nat Commun*, 10, Artn 2823, <https://doi.org/10.1038/s41467-019-10506-4>, 2019.
- 1396 Tian, L. D., Yao, T. D., Gao, Y., Thompson, L., Mosley-Thompson, E., Muhammad, S., Zong, J. B., Wang, C., Jin, S. Q.,
and Li, Z. G.: Two glaciers collapse in western Tibet, *J Glaciol*, 63, 194-197, <https://doi.org/10.1017/jog.2016.122>,
1398 2017.
- Tielidze, L. G., Kumladze, R. M., Wheate, R. D., and Gamkrelidze, M. The Devdoraki Glacier Catastrophes, Georgian
1400 Caucasus. *Hungarian Geographical Bulletin*, 68(1), 21-35, <https://doi.org/10.15201/hungeobull.68.1.2>, 2019.
- Toney et al., 2020. Reconstructing the dynamics of the highly-similar May 2016 and June 2019 Iliamna Volcano, Alaska
1402 ice–rock avalanches from seismoacoustic data. <https://doi.org/10.5194/esurf-2020-47>
- 1404 Tong, L. Q., Tu, J. N., Pei, L. X., Guo, Z. C., Zheng, X. W., Fan, J. H., Zhong, X., Liu, C. L., Wang, S. S., He, P., and Chen,
H.: Preliminary discussion of the frequent debris flow events in Sedongpu Basin at Gyala Peri peak, Yarlung Zangbo
River, *J. Eng.Geol.*, 26, 1552-1561, <https://doi.org/10.13544/j.cnki.jeg.2018-401>, 2018.
- 1406 Treichler, D., Kääb, A., Salzmann, N., and Xu, C. Y.: Recent glacier and lake changes in High Mountain Asia and their
relation to precipitation changes, *Cryosphere*, 13, 2977-3005, <https://doi.org/10.5194/tc-13-2977-2019>, 2019.
- 1408 Truffer, M., Harrison, W. D., and Echelmeyer, K. A.: Glacier motion dominated by processes deep in underlying till, *J*
Glaciol, 46, 213-221, [https://doi.org/Doi 10.3189/172756500781832909](https://doi.org/Doi%2010.3189/172756500781832909), 2000.
- 1410 Truffer, M., Harrison, W. D., Osipova, G. B., Nosenko, G. A., Espizua, L., Kääb, A., Gilbert, A., Fischer, L., Huggel, C.,
Craw Burns, P. A., and Lai, A. W.: Glacier Surges, in: *Snow and Ice-related Hazards, Risks, and Disasters*, 2nd
1412 edition, edited by: Haerberli, W., and Whitemann, C., Elsevier, Amsterdam, in press, 2021.
- Ugalde, F., Casassa, G., Marangunic, C., Mujica, R., and Peralta, C.: El deslizamiento catastrófico del glaciar Aparejo: 35
1414 años después, *XIV Congreso Geológico Chileno*, 2015,
- Ugalde, F., Marangunic, C., and Casassa, G.: Ice thickness changes at Aparejo Glacier in central Chile from interferometric
1416 satellite data, 76-79, 2017.
- Ugalde, F. I. P.: Estimación de pelegro ante deslizamiento de glaciares en Chile Central: El caso del glaciar Aparejo.
1418 Departamento de Geología, Facultad de Ciencias Físicas y Matemáticas, Universidad de Chile, Santiago de Chile.
2016.
- 1420 van der Woerd, J., Owen, L. A., Tapponnier, P., Xu, X. W., Kervyn, F., Finkel, R. C., and Barnard, P. L.: Giant, similar to
M8 earthquake-triggered ice avalanches in the eastern Kunlun Shan, northern Tibet: Characteristics, nature and
1422 dynamics, *Geol Soc Am Bull*, 116, 394-406, <https://doi.org/10.1130/B25317.1>, 2004.
- 1424 Viskovatov, A. A. About periodic Kazbek blockage. *Zapiski Kavkazskago otdela Imperatorskago Russkago*
geograficheskago obshestva 6: 186-219. Tiflis (in Russian), 1864.

- 1426 Wagner, S.: Dreidimensionale Modellierung zweier Gletscher und Deformationsanalyse von eisreichem Permafrost.
Mitteilungen der Versuchsanstalt für Wasserbau, Hydrologie und Glaziologie der ETH Zürich, 146, 135pp, 1996.
- 1428 Wang, X., Liu, Q., Zhang, B., Zhang, R., and Liu, G.: Monitoring and analyzing collapse of KLSK-37 Glacier tongue in
recent 40 years with multi-source remote sensing, *Geomatics and Information Science of Wuhan University*, 45,
1687-1969, <https://doi.org/10.13203/j.whugis20200214>, (in Chinese with English abstract), 2020.
- 1430 Wenying, W.: Glaciers in the north-eastern part of the Ch'ing-hai-hsi-tsang (Qinghai-Xizang) Plateau (Tibet) and their
variations, *J Glaciol*, 29, 383-391, 1983.
- 1432 Zaporozhchenko, E. V., and Chernomorets, S. S. History and studies of Kazbek blockages. *Vestnik Kavkazskogo gornogo
obshestva* 5: 33-54 https://istina.msu.ru/download/8871273/1k5k36:x_gHoGej2TQCeFRBrQCnhJLg7eU/ (in
1434 Russian), 2004.
- 1436 Zemp, M., Huss, M., Thibert, E., Eckert, N., McNabb, R., Huber, J., Barandun, M., Machguth, H., Nussbaumer, S. U.,
Gartner-Roer, I., Thomson, L., Paul, F., Maussion, F., Kutuzov, S., and Cogley, J. G.: Global glacier mass changes
and their contributions to sea-level rise from 1961 to 2016, *Nature*, 568, 382, <https://doi.org/10.1038/s41586-019-1071-0>, 2019.
- 1438 Zhang, W. J.: Identification of Glaciers with Surge Characteristics on the Tibetan Plateau, *Ann Glaciol*, 16, 168-172, 1992.
- 1440