

1/26/2021 6:42:18 PM

Compare Results

Old File:

Barnes_et_al_Transferability_of_inversions.pdf

32 pages (3.25 MB)
9/18/2020 2:52:22 PM

versus

New File:

Barnes_et_al____Transferability_of_inversions.pdf

37 pages (3.41 MB)
1/26/2021 6:29:36 PM

Total Changes

806

Content

194 Replacements
286 Insertions
207 Deletions

Styling and Annotations

37 Styling
82 Annotations

[Go to First Change \(page 1\)](#)

The transferability of adjoint inversion products between different ice flow models

Jowan M. Barnes¹, Thiago Dias dos Santos^{2,3}, Daniel Goldberg⁴, G. Hilmar Gudmundsson¹, Mathieu Morlighem², and Jan De Rydt¹

¹Department of Geography and Environmental Sciences, Northumbria University, Newcastle upon Tyne, UK

²Department of Earth System Science, University of California, Irvine, CA, USA

³Centro Polar e Climático, Universidade Federal do Rio Grande do Sul, Porto Alegre, RS, Brazil

⁴School of GeoSciences, University of Edinburgh, Edinburgh, UK

Correspondence: Jowan M. Barnes (jowan.barnes@northumbria.ac.uk)

Abstract. Among the most important challenges faced by ice flow models is how to represent basal and rheological conditions, which are challenging to obtain from direct observations. A common practice is to use numerical inversions to calculate estimates for the unknown properties, but there are many possible methods and not one standardised approach. As such, every ice flow model has a unique initialisation procedure. Here we compare the outputs of inversions from three different ice flow models, each employing a variant of adjoint-based optimisation to calculate basal sliding coefficients and flow rate factors using the same observed surface velocities and ice thickness distribution. The region we focus on is the Amundsen Sea Embayment in West Antarctica, the subject of much investigation due to rapid changes in the area over recent decades. We find that our inversions produce similar distributions of basal sliding across all models, despite using different techniques, implying that the methods used are highly robust and represent the physical equations without much influence by individual model behaviours. Transferring the products of inversions between models results in time-dependent simulations displaying variability on the order of or lower than existing model intercomparisons. Focusing on contributions to sea level, the highest variability we find in simulations run in the same model with different inversion products is 32%, over a 40 year period. There is potential for this to be improved with further standardisation of modelling processes, and the lowest variability within a single model is 13%. While the successful transfer of inversion outputs from one model to another requires some extra effort and technical knowledge of the particular models involved, it is certainly possible and could indeed be useful for future intercomparison projects.

Copyright statement. ©2020, all rights reserved

1 Introduction

Many ice flow models use inverse methods to calculate initial conditions for properties of the ice for which directly observed data do not exist, or are of poor quality. Inversion is an iterative process which starts from an initial guess and obtains im-

proved values for the unknown property based on its relationship to a well-observed property, such as surface velocity. This process is generally undertaken for at least one of ice rheology (flow rate factor, A), basal sliding and bed topography. The use of such methods in glaciology dates back to MacAyeal (1992), who used control methods to derive a distribution of basal friction under Ice Stream E (now known as MacAyeal Ice Stream). Since then, the use of inverse methods in estimating basal and internal conditions of glaciers from measured surface velocities has become widespread, supported by an increase in observational data from satellites and improvements in computational efficiency (Pattyn et al., 2017). The ability to perform large-scale inversions has revolutionised the field of ice flow modelling, allowing better representation of basal and rheological conditions to which the flow is sensitive. Several methods have been proposed and tested for models of varying complexity, including the adjoint method (MacAyeal, 1993) and subsequent variations (e.g., Vieli and Payne, 2003; Joughin et al., 2004; Petra et al., 2012; Morlighem et al., 2013; Perego et al., 2014), a least-squares inversion (Thorsteinsson et al., 2003), a non-linear Bayesian method (Raymond and Gudmundsson, 2009), inverse Robin problems (Arthern and Gudmundsson, 2010) and a nudging method (Mosbeux et al., 2016).

However, these inverse problems are not well-posed and a unique solution is never guaranteed, regardless of the method used. In fact, a given inverse problem may have an infinite number of different solutions producing identical outputs of the forward model (e.g., Zhdanov, 2015). An approach often used to remedy the ill-posedness of inverse problems is the introduction of regularisation, but there are many possible techniques for doing so. As such, the methods used and results obtained from inversions could differ considerably between models.

Aspects of inversion processes within individual models have been the subject of several recent studies. Koziol and Arnold (2017) incorporated subglacial hydrology into inversions for basal sliding. Kyrke-Smith et al. (2018) analysed the effects of basal topography on inversions. The sensitivity of inversions to several ice properties was tested by Zhao et al. (2018), and sensitivities at the surface to perturbations in basal conditions from inversions have been investigated by Martin and Monnier (2014) and Cheng and Lötstedt (2020). However, there are not many direct comparisons between inversions from different models. Morlighem et al. (2010) compared inversions using ice flow equations of varying complexity, and the initMIP-Antarctica exercise (Seroussi et al., 2019), as part of the ISMIP6 model intercomparison project, compared models which were set up using different datasets, with a focus on the responses in forward model runs to a variety of initialisation procedures.

The differences between inversion outputs from different modelling platforms have not been given attention under controlled conditions, as it is generally thought that the products of inversions are highly model-dependent. In model intercomparison projects (e.g., Bindschadler et al., 2013; Asay-Davis et al., 2016; Cornford et al., 2020) boundary conditions such as topography and melt rates are specified in detail, but participants are not given set values for the basal sliding coefficient or ice rheology rate factor. Instead, participants are asked to tune the initialisation of their models individually to set these values. This implies that the results of inversions are believed not to be purely representative of the physical properties of an ice flow, but also to account for non-physical model behaviours resulting from different numerical implementations or approximations.

We seek to test this belief, by comparing the outputs of carefully controlled inversions in different models.

For this study, the focus is on inversions for basal sliding coefficients and ice rheology rate factors using an adjoint method, and using the same input datasets. We compare the results of inversions from three ice flow models, identify the factors which cause differences between them and investigate the effect these differences have when transferring the products of inversions between models. We are interested in the extent to which the inversion processes are reflective of the physical ice flow described by the model equations, and by how much numerical model behaviour might be influencing the outputs. If the inversion outputs from the models are similar, we can be sure that they represent a solution to the given physical equations, without the results being heavily influenced by model-specific differences in the processes used. As part of our investigation, we will assess whether the products of inversions can be used outside their model of origin, and whether the fields produced by inversions from different models result in similar behaviour in transient simulations.

Our chosen study area is the Amundsen Sea Embayment (ASE) in West Antarctica (Figure 1). Within this region, Thwaites Glacier is the subject of a targeted multidisciplinary investigation, the International Thwaites Glacier Collaboration (Scambos et al., 2017). Understanding change in the West Antarctic Ice Sheet has been identified as a top priority for future Antarctic research (National Academies of Sciences, Engineering, and Medicine, 2015). The Amundsen Sea, and Thwaites Glacier in particular, are of considerable interest due to rapid changes observed in the area over recent years (e.g., Mouginot et al., 2014; Milillo et al., 2019). Mass loss in the ASE is happening at a greater rate than anywhere else in Antarctica (Shepherd et al., 2018; Rignot et al., 2019), and has been accelerating (Sutterley et al., 2014). Many model simulations have been used to make predictions of the future evolution of Thwaites Glacier and the ASE region, and they can produce different results depending on model setup (e.g., Favier et al., 2014; Yu et al., 2018). However, these differences are predominantly in the rates of change rather than the direction of evolution. Forward simulations of ice flow models have been proved to be robust in intercomparison experiments, most recently MISIMP+ (Cornford et al., 2020), and they generally agree that the trend of rapid retreat in the ASE will continue into the future (e.g., Joughin et al., 2014; DeConto and Pollard, 2016). There is a constant effort to improve the understanding and functionality of all aspects of ice flow models, and to reduce uncertainty in their predictions. Among the most important factors which models must account for, and which are challenging to obtain from direct observation, are ice rheology and basal conditions.

In this work, we start by giving details of the models used and their respective inversion procedures in section 2. We outline the experiments, along with the datasets and boundary conditions used, in section 3. Following this, output fields of speed misfit, rate factor and the basal sliding coefficient from inversion runs in the three models are compared in section 4. In order to better understand how individual model behaviours affect inversion results, we then investigate specific factors which cause the differences. Finally, in section 5, we run transient simulations in each model using all three sets of inversion outputs, to assess the feasibility of transferring products of inversions between models and identify problems which may be encountered in doing

2 Model details

Three models are used in this study; \dot{U} a (Gudmundsson, 2020), the Ice-sheet and Sea-level System Model (Larour et al., 2012), known as ISSM, and the STREAMICE module of MITgcm (Goldberg and Heimbach, 2013). \dot{U} a and ISSM implement the Shallow Shelf Approximation (SSA) of MacAyeal (1989), and STREAMICE uses the L1L2 variant described in Goldberg (2011). \dot{U} a and ISSM employ unstructured meshes, which can be adapted to target specific areas of interest with finer resolution. STREAMICE, which inherits its grid and parallel domain decomposition from the MITgcm ocean model (Marshall et al., 1997), operates on a structured rectangular grid.

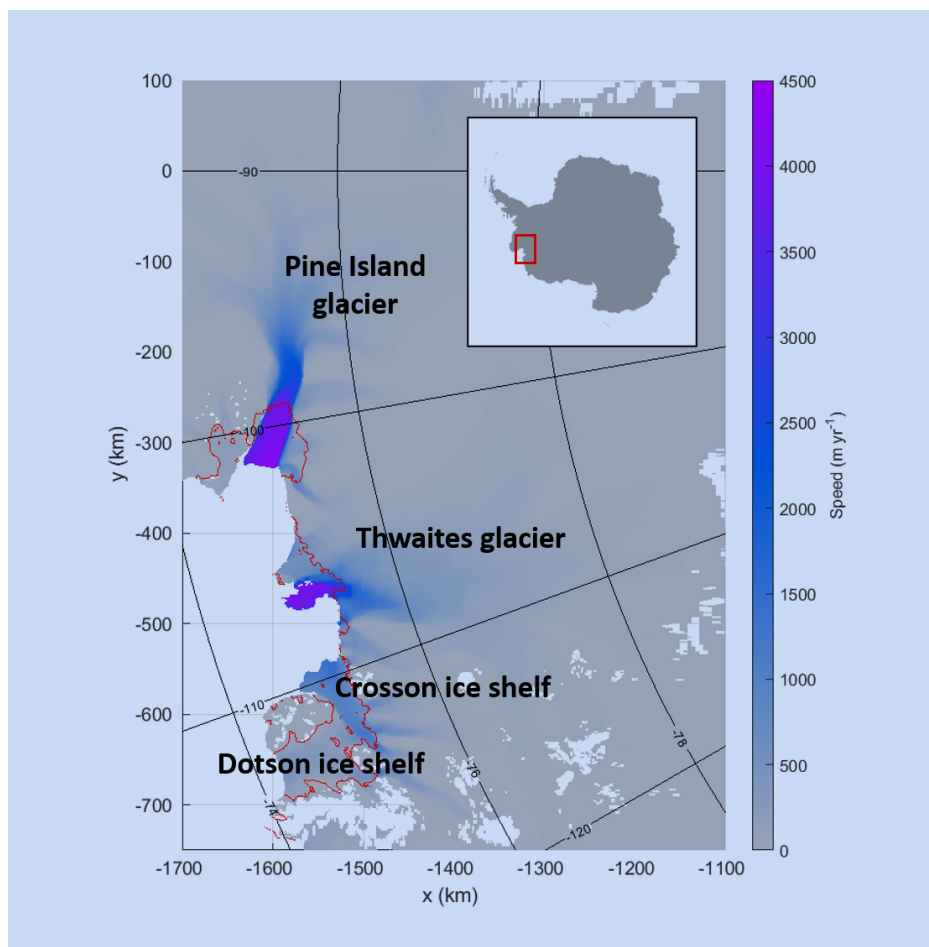


Figure 1. Amundsen Sea Embayment shaded with speed measurements from Mouginit et al. (2014). Grounding lines are shown in red.

2.1 Parameters for inversion

Each model performs inversions for two parameters, a rheological parameter and a basal sliding coefficient. To describe ice rheology all models use the constitutive equation

$$\boldsymbol{\tau} = \frac{1}{2} A^{-\frac{1}{n}} \dot{\epsilon}_e^{\frac{n-1}{n}} \dot{\epsilon} \quad (1)$$

generally referred to in glaciology as the Glen's flow law (Glen, 1958), where $\dot{\epsilon}$ is the strain rate, $\dot{\epsilon}_e$ is the effective strain rate, A is the ice flow rate factor, $\boldsymbol{\tau}$ is the deviatoric stress and n is a stress exponent. All the inversions in this study use the standard value of $n = 3$. Úa inverts for A or $\log_{10} A$, while ISSM inverts for a rheological parameter $B = A^{-\frac{1}{n}}$, sometimes known as the associated rate factor (eg., Greve and Blatter, 2009), and STREAMICE inverts for \sqrt{B} . The rate factors are an indicator of how soft or damaged ice is, with higher values of A corresponding to softer ice, and higher values of B corresponding to stiffer ice.

All three models employ the Weertman sliding law (Weertman, 1957), albeit in a slightly different form, as follows:

$$\text{Úa: } \boldsymbol{\tau}_b = (C + C_0)^{-\frac{1}{m}} (\|\mathbf{v}_b\|^2 + v_0^2)^{\frac{1-m}{2m}} \mathbf{v}_b \quad (2)$$

$$\text{ISSM: } \boldsymbol{\tau}_b = \beta^2 \|\mathbf{v}_b\|^{\frac{1}{m}-1} \mathbf{v}_b \quad (3)$$

$$\text{STREAMICE: } \boldsymbol{\tau}_b = \beta^2 (\|\mathbf{v}_b\|^2 + v_0^2)^{\frac{1-m}{2m}} \mathbf{v}_b, \quad (4)$$

where $\boldsymbol{\tau}_b$ is the basal stress, \mathbf{v}_b is the basal velocity, C_0 and v_0 are regularisation constants and m is the sliding law exponent, which in the case of these inversions is always $m = 3$. Úa inverts for either the basal sliding coefficient C , or $\log_{10} C$, while ISSM inverts for β^2 , sometimes referred to as a basal friction or roughness coefficient, and STREAMICE inverts for β . In Úa, $C_0 = 1 \times 10^{-20} \text{ kPa}^{-3} \text{ m a}^{-1}$ and $v_0 = 1 \times 10^{-4} \text{ m a}^{-1}$, and in STREAMICE, $v_0 = 1 \times 10^{-6} \text{ m a}^{-1}$. ISSM does not employ a regularisation term in the sliding law, but the code contains a numerical verification which prevents division by zero.

2.2 Inversion methods

All of the inversion methods involve minimising a cost function of general form

$$\mathcal{J} = I + R, \quad (5)$$

where I is a misfit function and R is a regularisation term. The exact forms that these take varies. In the following, $\mathbf{p} = (p_1, p_2)$ refers to the parameters being inverted for, which differs between models. The observed values of surface velocities are u_{obs} and v_{obs} , in the x - and y -directions on a polar stereographic grid, with observational errors u_{err} and v_{err} .

All of the inversion methods contain regularisation parameters which must be chosen. L-curve analyses were performed for each model, and further details of these can be found in Appendix A.

2.2.1 Úa

In Úa, the cost function is $\mathcal{J}_{\dot{U}a} = I_{\dot{U}a} + R_{\dot{U}a}$. The misfit function is given by

$$130 \quad I_{\dot{U}a} = \frac{1}{2\mathcal{A}} \int ((u - u_{\text{obs}})/u_{\text{err}})^2 d\mathcal{A} + \frac{1}{2\mathcal{A}} \int ((v - v_{\text{obs}})/v_{\text{err}})^2 d\mathcal{A}, \quad (6)$$

where $\mathcal{A} = \int d\mathcal{A}$ is the total area, and u and v are the modelled horizontal x and y velocity components, respectively.

Úa employs Tikhonov regularisation, for which the regularisation term has the form

$$R_{\dot{U}a} = \sum_{k=1,2} \frac{1}{2\mathcal{A}} \int \left(\gamma_s^2 (\nabla(p_k - p_{k,\text{prior}}))^2 + \gamma_a^2 (p_k - p_{k,\text{prior}})^2 \right) d\mathcal{A}, \quad (7)$$

135 where γ_s and γ_a are the slope and amplitude regularisation parameters, $p_1 = \log_{10} A$, $p_2 = \log_{10} C$ and $p_{k,\text{prior}}$ are prior values, or initial estimates, for the parameters p_k . For the inversions in this study, $\gamma_s = 1 \times 10^4$ m and $\gamma_a = 1$.

2.2.2 ISSM

In ISSM, the cost function is written as $\mathcal{J}_{\text{ISSM}} = I_{\text{ISSM}} + \alpha R_{\text{ISSM}}$, where α is the regularisation parameter. The misfit function is written as

$$140 \quad I_{\text{ISSM}} = aI_{\text{abs}} + I_{\text{log}}, \quad (8)$$

where a is a weighting parameter, adjusted such that the two components are equal in weight (within a given tolerance). I_{abs} and I_{log} are the absolute and logarithmic misfits given by

$$I_{\text{abs}} = \frac{1}{2} \int_s ((u - u_{\text{obs}})^2 + (v - v_{\text{obs}})^2) ds \quad (9)$$

$$I_{\text{log}} = \int_s \left(\log \left(\frac{\sqrt{u^2 + v^2} + \epsilon}{\sqrt{u_{\text{obs}}^2 + v_{\text{obs}}^2} + \epsilon} \right) \right)^2 ds, \quad (10)$$

145 where ϵ is a minimum velocity applied to avoid numerical issues and s is the ice surface.

The regularisation term is defined as

$$R_{\text{ISSM}} = \frac{1}{2} \int_{\Omega_p} \|\nabla p_k\|^2 d\Omega_p, \quad (11)$$

where Ω_p refers to the ice volume with $p_1 = B$, or to the ice base with $p_2 = \beta^2$.

150

In ISSM, the inversions for each parameter are carried out independently of each other. First, B is inverted for over a subdomain containing only the ice shelves, and then β^2 is inverted for on the grounded ice considering the whole domain, including the inverted value for B on the ice shelves. The regularisation term takes different values in each step. For the B inversion $\alpha = 1 \times 10^{-18}$, and for the β^2 inversion $\alpha = 1 \times 10^{-8}$.

2.3 STREAMICE

In STREAMICE, the parameters inverted for are $p_1 = \sqrt{B}$ and $p_2 = \beta$. The cost function is $\mathcal{J}_{SI} = I_{SI} + R_{SI}$. Since STREAMICE is not a purely finite element model, the functions are written discretely, taking the form

$$I_{SI} = \sum_{i,j \in D} \frac{1}{2N} \left(\frac{(u(i,j) - u(i,j)_{\text{obs}})^2 + (v(i,j) - v(i,j)_{\text{obs}})^2}{(1 + (u_{\text{err},i,j}^2 + v_{\text{err},i,j}^2)^{\frac{1}{2}})^2} \right) \quad (12)$$

$$R_{SI} = \sum_{i=1,2} \sum_{i,j \in D} \frac{1}{N} \gamma_k \left(\left(\frac{p_k(i+1,j) - p_k(i,j)}{\Delta x(i,j)} \right)^2 + \left(\frac{p_k(i,j+1) - p_k(i,j)}{\Delta y(i,j)} \right)^2 \right) + \sum_{i,j \in D_G} \frac{1}{N} \gamma_G (p_1 - B_0)^2, \quad (13)$$

where i and j are grid cell indices, N is the total number of cells, Δx and Δy are the distances between grid cells in the x - and y -directions, γ_1 , γ_2 and γ_G are regularisation parameters, B_0 is an initial estimate for \sqrt{B} , D is the full computational domain, and D_G consists of the grounded cells only. Note that the summations in I_{SI} and R_{SI} are not weighted by cell area, as they would be for a discretely calculated domain integral (cf. I_{ISSM} and $I_{\text{Úa}}$). This is in order to prevent the inversion from

weighting larger cells too strongly. For the inversions in this work, $\gamma_1 = \gamma_2 = 2 \times 10^4$ and $\gamma_G = 1 \times 10^3$

3 Experiment design and setup

3.1 Description of experiments

The first experiments involve a single inversion from each model. For the initial comparison, each model performs an inversion using the same geometry (bedrock and surface elevation) and velocity measurements, detailed in subsection 3.2. In these experiments, the models are free to choose their own priors. All models calculate priors for B using a relationship with temperature (e.g., Cuffey and Paterson, 2010), with Úa assuming a constant temperature of -15°C , ISSM using the initial ISMIP6 temperatures (Seroussi et al., 2019) and STREAMICE using temperatures from Van Liefferinge and Pattyn (2013). The prior for the sliding coefficient in Úa is calculated from the Weertman sliding law using uniform values $v_b = 700 \text{ m a}^{-1}$, $\tau_b = 80 \text{ kPa}$ and $m = 3$. ISSM also computes a prior using the sliding law, but assumes v_b is equal to the observed velocities and the basal drag is equal to the driving stress. STREAMICE uses a uniform value of $150 \text{ Pa}^{1/2} \text{ m a}^{-1/6}$ as its initial guess for β .

The resulting fields of rate factor and basal sliding coefficients are compared directly in order to see whether the models produce similar results. The velocity misfits, defined as the difference between the modelled and observed values, are also compared as an indicator of how well the inversion processes has performed. The results of this comparison are found in section 4.

Following this, further experiments seek to test the sensitivity of inversion outputs to particular details of the inversion procedure, such as the choices of optimisation scheme, algorithm sequence, mesh resolution and priors. An overview of the results

of these experiments is found in subsection 4.4, and more detail is available in Appendix B.

185

The final stage (section 5) involves comparing the effects on the ice flow of using inversion outputs from each of the three models within transient runs. The B and β^2 fields calculated by inversion are transferred between models and used as inputs. The models are run forward in time to investigate the effects of using outputs from different models' inversions on the evolution of the ice flow, with all else being equal.

190 3.2 Model domains and data

All three model domains used for our inversions, displayed in Figure 2, cover both Thwaites and Pine Island glaciers, and extend west to include the Dotson and Crosson ice shelves. They are set up using bedrock and ice surface fields linearly interpolated from BedMachine Antarctica (Morlighem et al., 2019). STREAMICE includes a preprocessing step which applies a 5-pixel Gaussian smoothing filter to the surface and hydrostatically inverts for the bed using the result. It was found that without this smoothing, the inversion optimisation would stagnate in some cases (in particular, the experiment discussed in Appendix B4 using the initial guess referred to as 'Priors1'). The inversions use the surface velocities and measurement errors from the 2014-15 year of the updated dataset originally described in Mouginot et al. (2014). The same velocities and geometries are used throughout this study in all models. The densities are set to be constant and uniform, with values of 917 kg m^{-3} for ice density and 1027 kg m^{-3} for ocean water density, which are the values used in the hydrostatic equilibrium calculation for BedMachine.

200

The STREAMICE domain is a 528×720 cell rectangular grid, with a minimum resolution of 1 km at the centre of the domain, and maximum resolution at the edges of 5.4 km in the x -direction and 5.96 km in the y -direction. The other two models use triangular meshes with spatially varying resolution. Both have a finer resolution closer to the grounding line. The ISSM mesh contains 261,375 elements with edge lengths between 725 m on the ice shelf and 16 km in the coarsest areas, with a resolution of about 1 km close to the grounding line. The mesh was refined based on the distance from the grounding line and interpolation error of the observed ice velocity. The Úa mesh contains 213,828 elements with edge lengths varying linearly with the distance from the grounding line and additional refinement of areas with high velocity or strain rates, with resolution varying from 500 m to 15 km. The Úa mesh boundary was chosen based on the drainage basins of the glaciers and the location of the ice front, while the other two meshes cover larger areas which contain this region of interest. The triangular meshes used were created using BAMG (Hecht, 2006) in ISSM and Mesh2D (Engwirda, 2014) in Úa.

210

A Dirichlet boundary condition is used to set velocities along the grounded parts of Úa's boundary to zero. ISSM also uses Dirichlet boundary conditions, setting the velocities along the grounded parts of the boundary according to the velocity measurements. STREAMICE applies a no-flow boundary condition, as its boundaries are sufficiently far from the area of interest for this not to affect the outcome. All models apply the ice-front stress boundary condition along the seaward boundaries. In Úa, this is at the edge of the computational domain, and in the other two models the ice/ocean boundary is set using a mask

215

derived from the BedMachine geometry data.

220 In the time dependent simulations, surface mass balance is from a climatological record of RACMO2.1 (Lenaerts et al., 2012). For basal melting of the ice shelf we use the simple depth-based parameterisation

$$m_b = \begin{cases} 0 & \text{if } z \geq 0 \\ -\frac{75}{500}z & \text{if } 0 > z > -500 \\ 75 & \text{if } z \leq -500, \end{cases} \quad (14)$$

where m_b is the basal melt rate in m a^{-1} and z is the vertical coordinate in metres, positive upwards with zero at sea level.

225 4 Results of inversions

We first look at the outputs from inversions run in the three ice flow models following the procedures previously described. The fields we compare are the speed misfit, and the values of B and β^2 . The outputs from all three models were converted to common units of $\text{Pa a}^{\frac{1}{3}}$ for B and $\text{Pa m}^{-\frac{1}{3}} \text{a}^{\frac{1}{3}}$ for β^2 . These are the units used for all comparisons in this work.

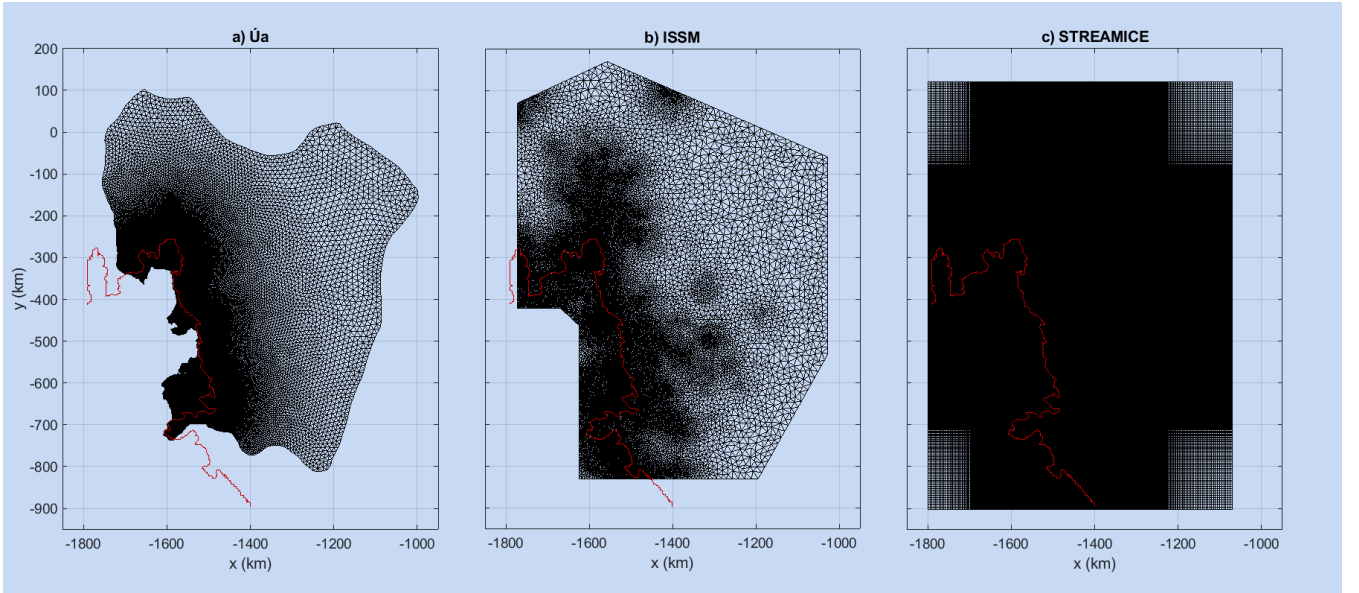


Figure 2. The meshes used by each model for the inversions. All domains cover our area of interest including Pine Island and Thwaites glaciers, and the Dotson and Crosson ice shelves. The main grounding line is shown in red.

230 For the purpose of the comparisons in this section, outputs from \hat{U}_a and ISSM were interpolated linearly onto the rectangular grid of the STREAMICE domain. As can be seen from the shapes of the domains in Figure 2, this results in some areas containing extrapolated values. Any area where this is the case has been masked out in figures, such that they display only the region for which directly calculated values are available. The ice mask for the STREAMICE domain has also been applied.

235 **4.1 Speed misfit**

Speeds $V = \sqrt{u^2 + v^2}$ and $V_{\text{obs}} = \sqrt{u_{\text{obs}}^2 + v_{\text{obs}}^2}$ were calculated. The difference between modelled and observed speed, which we refer to as the misfit, is $V_{\text{diff}} = V - V_{\text{obs}}$.

The speed misfits for each model are displayed in Figure 3. The speed misfit is a useful quantity to inspect in order to ensure that the inverted values of B and β^2 produce reasonable velocities, but the exact magnitudes are not necessarily indicative of the quality of the inversions themselves. As shown in subsection 2.2, the cost functions being minimised balance misfit and regularisation, thus different choices of regularisation in each inversion affect the misfit produced. The most important thing to note is that, following the inversions, calculated and measured velocities are similar for all three models.

245 A visual comparison reveals that \hat{U}_a has minimised the difference furthest, with misfit under 50 m a^{-1} , except in localised spots such as the edge of the Thwaites Ice Tongue. The lower misfit compared to the other inversions can be attributed to the fact that \hat{U}_a inverts for both B and β^2 over the entire domain, and an experiment discussed in Appendix B2 shows higher misfit when this is not the case. The misfit of STREAMICE does not exceed 200 m a^{-1} in general, again with a few small exceptions.

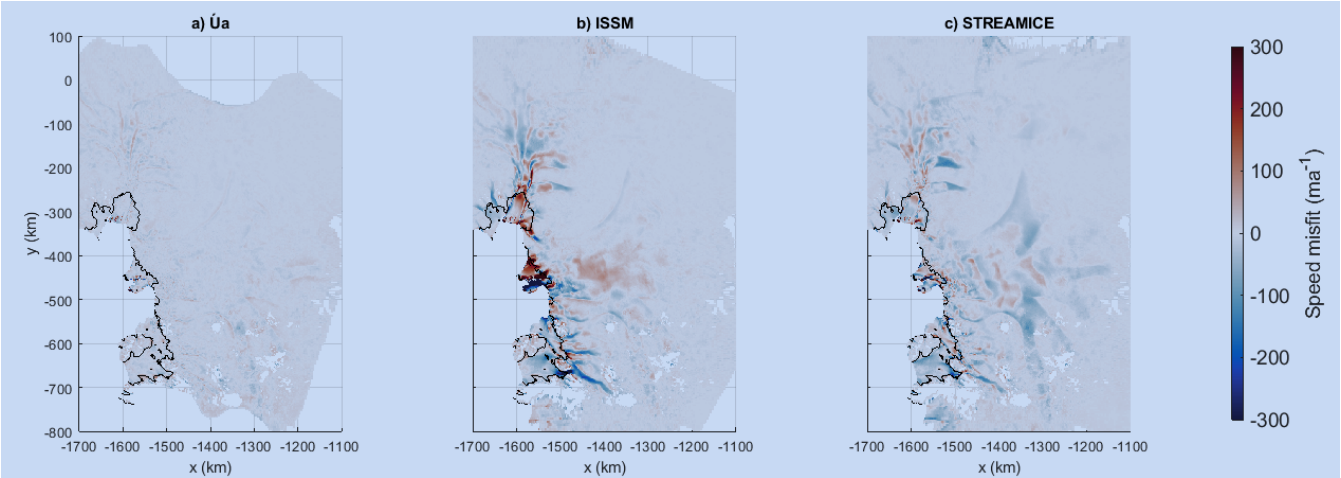


Figure 3. Difference in the calculated speeds after inversion, compared to the measurements, for each model. The grounding line is indicated in black.

	Whole domain	Speed > 50 m a ⁻¹	Speed > 100 m a ⁻¹	Speed > 500 m a ⁻¹
Úa	7.10 m a ⁻¹	9.09 m a ⁻¹	10.63 m a ⁻¹	17.18 m a ⁻¹
ISSM	19.43 m a ⁻¹	35.39 m a ⁻¹	49.77 m a ⁻¹	104.03 m a ⁻¹
STREAMICE	15.61 m a ⁻¹	27.43 m a ⁻¹	34.39 m a ⁻¹	50.09 m a ⁻¹

Table 1. Mean values for the magnitude of misfit in inversions from the three models, on regions with ice over chosen measured speed thresholds.

ISSM displays higher misfits of hundreds of metres per year in certain locations, particularly on the Thwaites Ice Tongue. The higher misfit in ISSM could be due to the weighting of the absolute and logarithmic misfits in Equation 8.

In general across all three models, the greatest differences are seen on the floating ice downstream of the grounding line, and on the fastest flowing grounded ice. For a clearer picture of the misfit on faster flowing ice, we can take the mean misfits on regions above a certain measured velocity threshold. The values for a few chosen thresholds are displayed in Table 1.

While we can see similarities in the locations of high misfit regions, the overall correlation between the distributions of misfit is not high. We calculated the Pearson correlation coefficient (Pearson, 1895) between each pair of misfit fields, and found the most similar to be Úa and STREAMICE, with a coefficient of 0.474. ISSM has a lower positive correlation with each of the other models, with coefficients of 0.276 and 0.270 for STREAMICE and Úa respectively. We note that these correlation coefficients serve only as rough quantitative estimates of the correlations between different inversion products. In general, we expect the correlation to depend on the spatial scales considered. For example, and as indicated by our inversion results, we generally observe better agreement over large spatial scales (≥ 50 km) than over smaller spatial scales.

4.2 Associated rate factor, B

The results from the rate factor inversion (Figure 4) show the most widespread differences between the models. All the models produce values of similar magnitude, but the values in Úa are spread over a larger range and the field is less smooth. The smoother fields produced by ISSM and STREAMICE can be explained by the fact that these models do not generally invert for B over grounded ice, as described in section 2. Instead, both models calculate their priors from temperature, with STREAMICE using temperatures from Van Liefferinge and Pattyn (2013) and ISSM following the process described in Seroussi et al. (2019). STREAMICE does allow for some perturbation from the initial values on grounded ice if significant changes are needed to minimise the velocity misfit, but this is heavily restricted by the last term in Eq. (13). Meanwhile Úa, which allows optimisation of the rate factor over the entire domain, produces a much more spatially variable field over the grounded ice. This is likely due in part to differences in regularisation applied in this particular example rather than a general feature. Locally, values of B from Úa's inversion are up to an order of magnitude different from the prescribed temperature-based estimates used by the

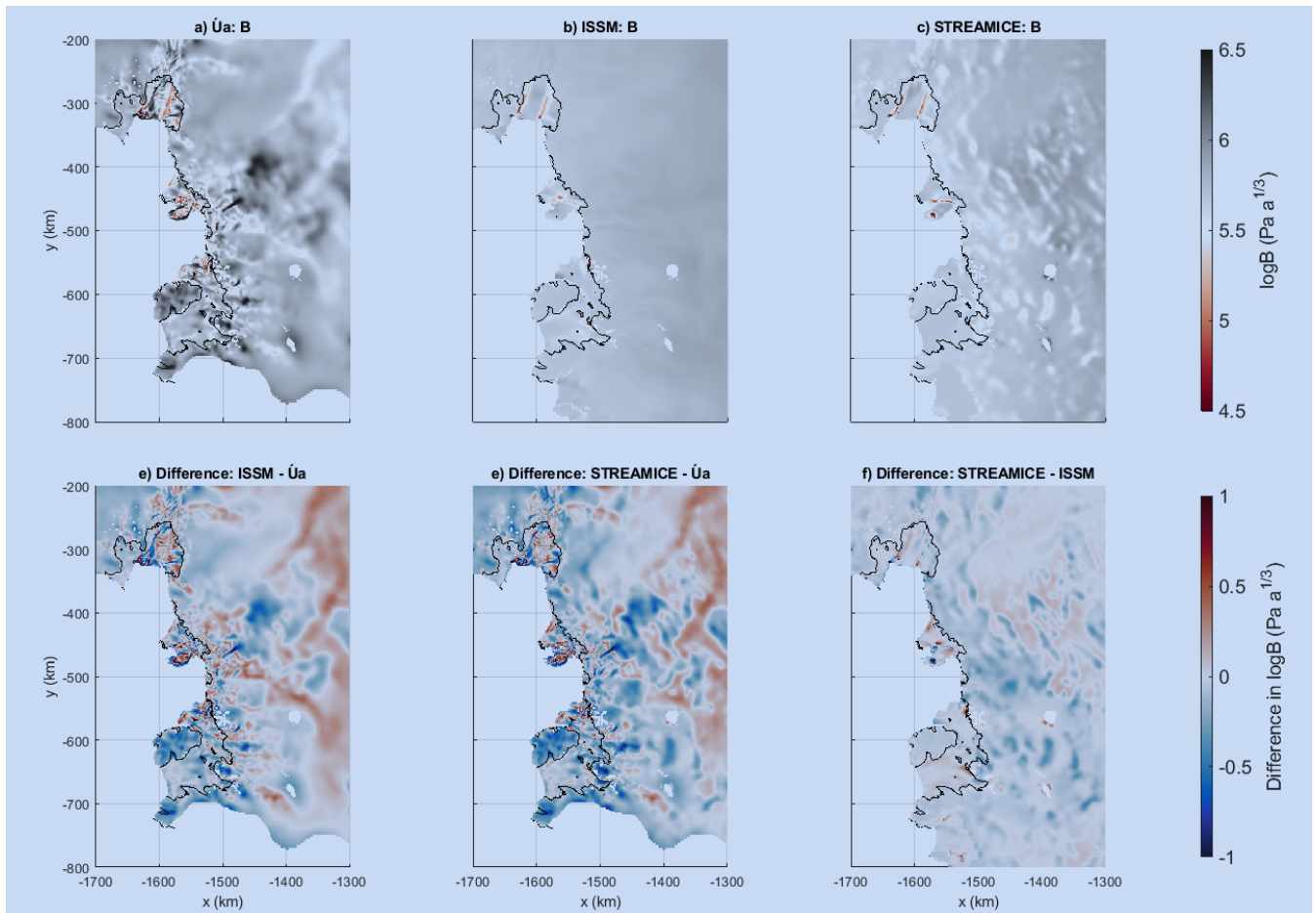


Figure 4. The B fields calculated by inversion and differences between them, displayed on a logarithmic colour scale in units of $\text{Pa a}^{\frac{1}{3}}$. The grounding line is indicated in black.

other two models.

275



On floating ice, ISSM and STREAMICE produce similar results, with differences between their outputs (Figure 4(d-f)) generally being small. The Úa output differs from the other two, producing a more variable distribution over the ice shelves, as it does over the grounded sections. Úa's inversion produces softer ice on the Western ice shelf of Thwaites and close to the calving front of Crosson ice shelf. However, it does also produce some similar features, with bands of softer ice being visible at the edges of the high-velocity ice streams which flow out onto Pine Island and Thwaites ice shelves. In general, the bigger differences are seen in faster-flowing areas, with the values for B being most similar over Dotson ice shelf and the northern section of the Pine Island ice shelf, both of which have low measured surface velocities.

280



To provide some quantification of the differences between the rate factor fields calculated by the models, we use Pearson correlation coefficients as before. The coefficient values can be found in Table 2. Over the entire domain, the distribution produced by \dot{U}_a is almost entirely uncorrelated with the output from the other two models. ISSM and STREAMICE, by contrast, are fairly well correlated, despite using different temperature fields to calculate the value on the grounded ice. When looking only at the floating ice, \dot{U}_a shows a moderate positive correlation with the other models. This demonstrates a fairly significant effect of \dot{U}_a performing the inversion for rate factor over the entire domain compared to the approaches of the other models.

4.3 Basal friction coefficient, β^2

Inverted β^2 fields (Figure 5) show a greater agreement between models than the B inversion products. This is likely because all three models are inverting for the parameter over the entire domain. An implication of this is that the inverted β^2 values appear not to be significantly dependent on the values of B , or on whether or not the two inversions are performed simultaneously.

However, there are still some notable differences between the β^2 fields. When compared to \dot{U}_a , ISSM and STREAMICE have patches of lower β^2 values over the trunk of Pine Island glacier which are less than $1 \text{ m}^{-\frac{1}{3}} \text{ a}^{\frac{1}{3}}$. Also, in all three difference plots (Figure 5(d-f)), there are localised larger differences in the immediate vicinity of the grounding line. These are likely due to differences in how the grounding line is treated in the models, which are discussed in Appendix C.

The STREAMICE output occasionally contains “loops” of lower values. These can appear due to the model inverting for β rather than β^2 , and in some locations producing values of β below zero, which is not physically viable. When β^2 is calculated from the final inversion output (a field of values for β), the shape of the function will be changed in any area where β is negative to include peaks inside the rings of low values, rather than local minima.

Once again, calculating Pearson correlation coefficients between the outputs gives us a quantitative idea of how alike the distributions are. We find strong positive correlation coefficients in the region of 0.8 for each comparison pair (see Table 2 for exact values). This shows a high level of agreement between the β^2 outputs of different inversion processes, suggesting that the underlying model equations are well represented in these results, as opposed to the results being influenced by model-specific aspects of inversion processes.

4.4 Discussion of inversion outputs

There are many factors which could cause differences in inversions. We have investigated several of these within \dot{U}_a in an attempt to identify in particular why the difference in the misfit produced by \dot{U}_a 's inversions is lower than the other two models, and what causes patches of lower β^2 values to be produced over Pine Island. We summarise the findings here, but further details of this investigation can be found in Appendix B.

	\hat{U}_a & ISSM	\hat{U}_a & STREAMICE	ISSM & STREAMICE
Speed misfit correlation	0.270	0.474	0.276
B correlation (whole domain)	0.077	0.058	0.666
B correlation (floating ice only)	0.368	0.340	0.511
β^2	0.843	0.871	0.798

Table 2. Pearson correlation coefficients calculated for different inversion outputs between all model pairs.

The difference in misfit appears to be due to a combination of factors. As noted in subsection 4.1, it may just be a symptom of different regularisation choices between the models. However, we have identified other factors which may contribute to the

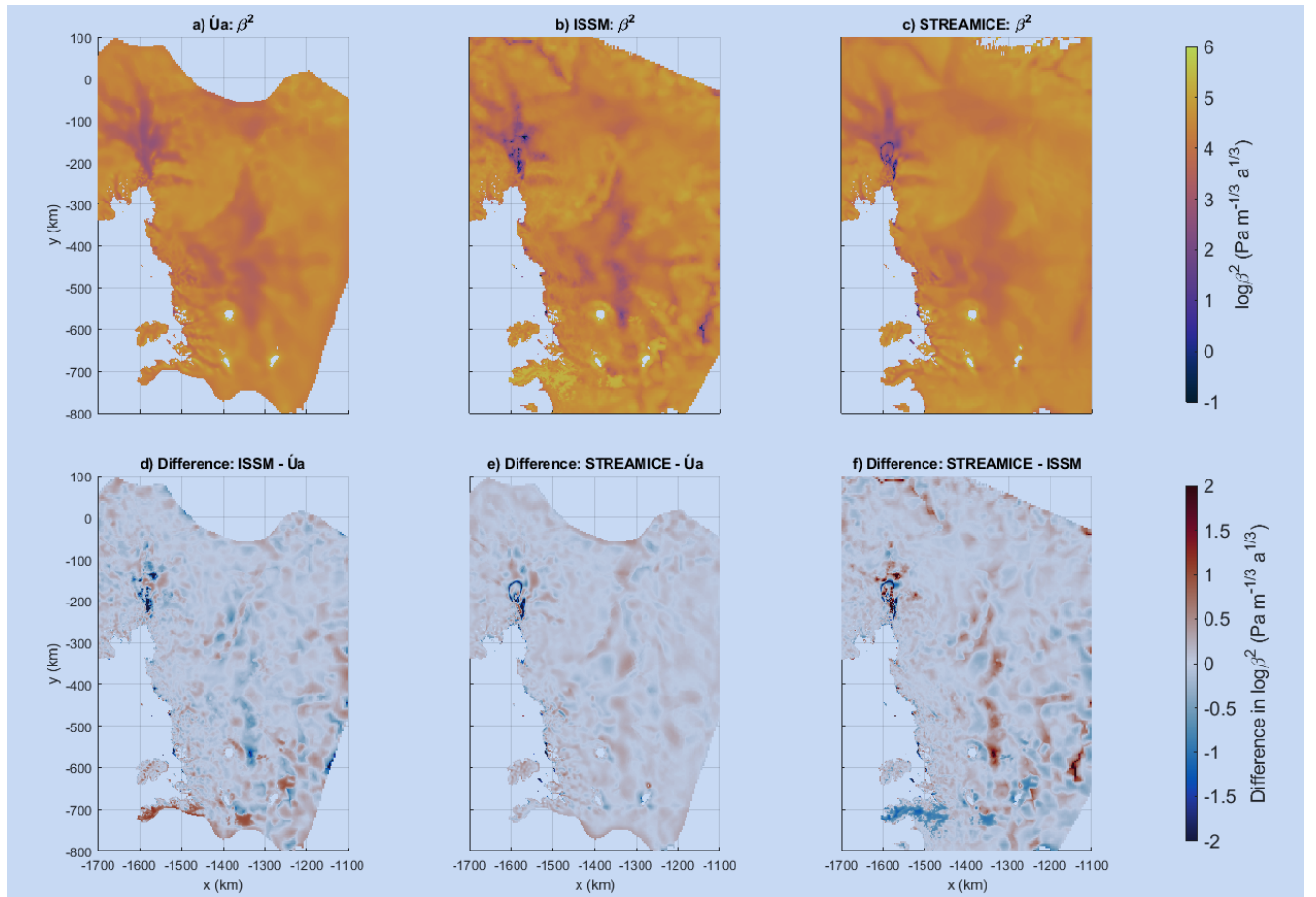


Figure 5. The β^2 fields calculated by inversion and differences between them, displayed on a logarithmic colour scale in units of $\text{Pa m}^{-\frac{1}{3}} \text{a}^{\frac{1}{3}}$.

The ungrounded area of the domain has been masked out.

difference. ISSM and STREAMICE use a different optimisation scheme, which results in a higher misfit when tested in $\dot{U}a$.

320 However, the B and β^2 fields from these experiments correlate well with $\dot{U}a$'s original result, so the optimisation scheme does not account for the differences found in these outputs. Differences in meshes and the choice of priors were also tested and not found to cause significant changes to the inversion results, except in cases where the parameters were beyond the range of variation in our original inversions.

325 Major factors affecting the inversion results appear to be the section of the domain over which B is inverted for, and the non-sequential nature of ISSM's inversion. $\dot{U}a$ produces higher misfit when inverting only for β^2 with a predetermined B field. In the β^2 field, patches of lower values are produced in a similar location over Pine Island to those noted in subsection 4.3. The outputs from the experiment in which this was tested had lower correlations with the original inversion than those of any other experiments.

330

In general, the inversions were found to agree on large-scale distributions of B on the ice shelves, and of β^2 everywhere. Due to our careful control of input datasets, we have removed much of the variability which can be introduced between models in general usage, and have shown the outputs to be robust with respect to technical aspects of the inversion process.

335 An implication we take from this is that our inversion outputs are representative of the physics of the underlying equations rather than individual numerical details in the model code. Given the similarities in the inversion outputs, it may be possible to transfer them between models and recover broadly similar results in forward simulation. This is what we attempt next.

5 Transferring inversion outputs between models

We performed three time-dependent simulations in each of the three models, using a pair of inversion products from each model as inputs for the rate factor and basal sliding coefficient. The inversion outputs from $\dot{U}a$ and ISSM are those used in 340 the comparisons of section 4, while the STREAMICE inversion outputs are from an inversion using slightly different priors (referred to as 'Priors2' and discussed in Appendix B4). The models were allowed to evolve for 40 years from the initial state described by our geometry datasets. The only differences between these simulations are the B and β^2 fields.

Before running the full time-dependent simulations, we also looked at diagnostic simulations. However, we found that these 345 were not a good indicator of the quality of inversions or forward model performance due to specific differences in the methods employed by our models at the grounding line. Details of this are given in Appendix C.

5.1 Results of time-dependent simulations

The evolution of the ice sheet follows a similar trajectory in each model and with each pair of fields for rate factor and basal sliding coefficients, showing that inversion outputs can be transferred between models and produce reasonable results. How- 350 ever, the changes to ice volume and thickness over time happen at different rates depending on which model was used for

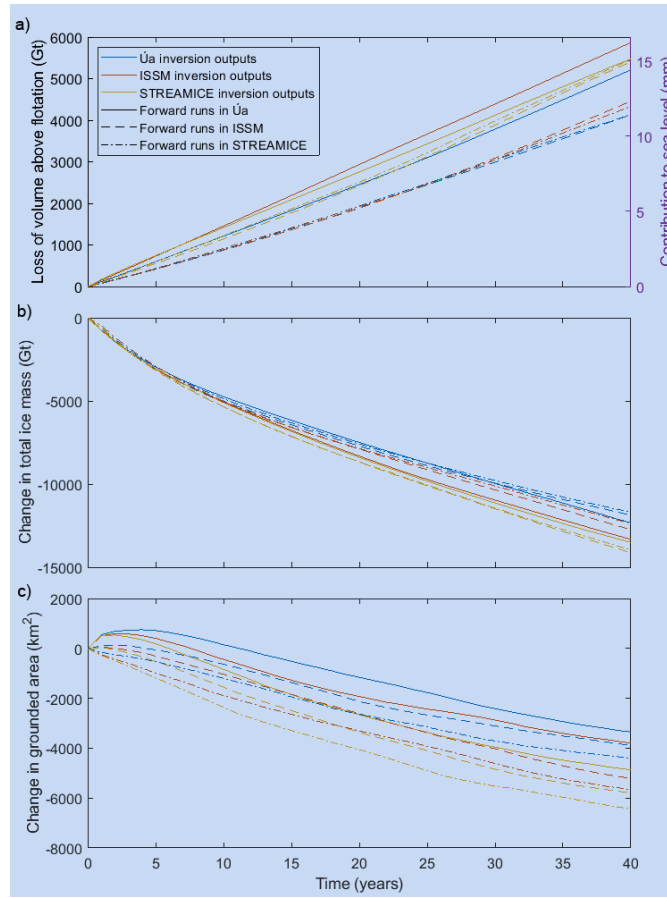


Figure 6. Changes in ice mass and grounded area over 40 years of simulation in Úa using the rate factor and basal sliding coefficient fields resulting from each of the three model inversions.

the inversion, and in which model the simulation is run. The changes in ice volume and grounded area over the domain are displayed in Figure 6. Looking at the variance in volume above flotation across all nine experiments, the highest sea level contribution over the 40 years (the simulation run in Úa using ISSM’s inversion outputs) is 42% greater than that of the lowest contributor (ISSM using Úa’s inversion outputs), a difference of 4.8 mm over 40 years. The changes in total ice mass are closer, with a difference of 2434 Gt between the highest and lowest values, the largest change being 21% greater than the lowest.

Figure 7 displays the thickness changes over the 40 years of simulation, and the final positions of the grounding line in each case. For the most part, similar patterns emerge in all the experiments, although there are some notable differences. In particular, the grounding line of Pine Island when Úa’s inversion outputs are transferred to the other models points to a discrepancy which could be rectified in future work to improve the consistency of results. The issue in this case is that the value of β^2 under the floating ice differs. In cases where the grounding line advances, higher friction values under the ice which was originally

floating can cause ice to reground, as it has done using Úa's inversion outputs in ISSM and STREAMICE. In initial tests this phenomenon was found to particularly affect the results in Úa, where the grounded area tends to increase slightly at the start of a transient run (as seen in Figure 6c). To rectify this, areas which are initially floating were forced to have very low friction before running the final forward simulations, which is why an advance of Pine Island is not seen in Úa's results after 40 years. If this alteration to the β^2 field were also applied in the other models, it is likely that the agreement between them would be closer.

Some differences between forward runs in different models, even when using the same inputs, are to be expected, as model intercomparisons demonstrate (e.g., Bindenschadler et al., 2013; Asay-Davis et al., 2016; Cornford et al., 2020). This could be due to many factors. In our experiments, we find differences in behaviour at the grounding line (as detailed in Appendix C) to be one cause of differing behaviour between the models. As an example of this, we can see that in Úa's simulations the grounded area (Figure 6c) increases a little before following the same downward trend as the other two models. Additionally, in Figure 7, we see that ISSM's forward runs consistently show the grounding line of Thwaites Glacier retreating more than in the other two models. Our models also solving different stress balances, with STREAMICE using an L1L2 approximation, while ISSM and Úa use SSA.

Our aim was to investigate the transferability of inversions between models, and for this we examine the results in sets of three, comparing the outcomes produced in the same forward model using the three different inversion outputs. In Úa, the range of sea level contribution after 40 years resulting from the three sets of inversion outputs is 1.82 mm, with the highest contribution being less than 13% higher than the lowest. In ISSM, the forward simulations produced a 3.52 mm range in sea level contributions, representing a 31% difference. In STREAMICE, these values were 3.67 mm and 32%. The result from Úa particularly highlights the potential for successful transfer of inversion products. As noted above, it is likely that the variation in ISSM and STREAMICE would be lower if the β^2 values under initially floating ice were controlled, as they were for Úa's simulations.

385

It should be noted that, again using sea level contributions as the metric for comparison, the largest difference between the results from each model under normal usage (i.e. all models using their own inversion outputs) is 2.78 mm, which is within the range of variability we see when using different inversion outputs within each of the three models. This means that the observed differences between the model outputs appear to be similarly affected by the inversion products used as they are by the model used.

390

5.2 Comparisons with previous studies

After 40 years, the contributions to sea level calculated in our three models using the three sets of model inversions differ by up to 4.8 mm, a factor of 1.42. The largest variation calculated within the same model is 3.67 mm, a factor of 1.32. Although seemingly a fairly large difference, this can be seen as a good result in the context of model initialisation processes. This range compares favourably to the control experiment of initMIP-Antarctica (Seroussi et al., 2019), which found a range of sea level

395

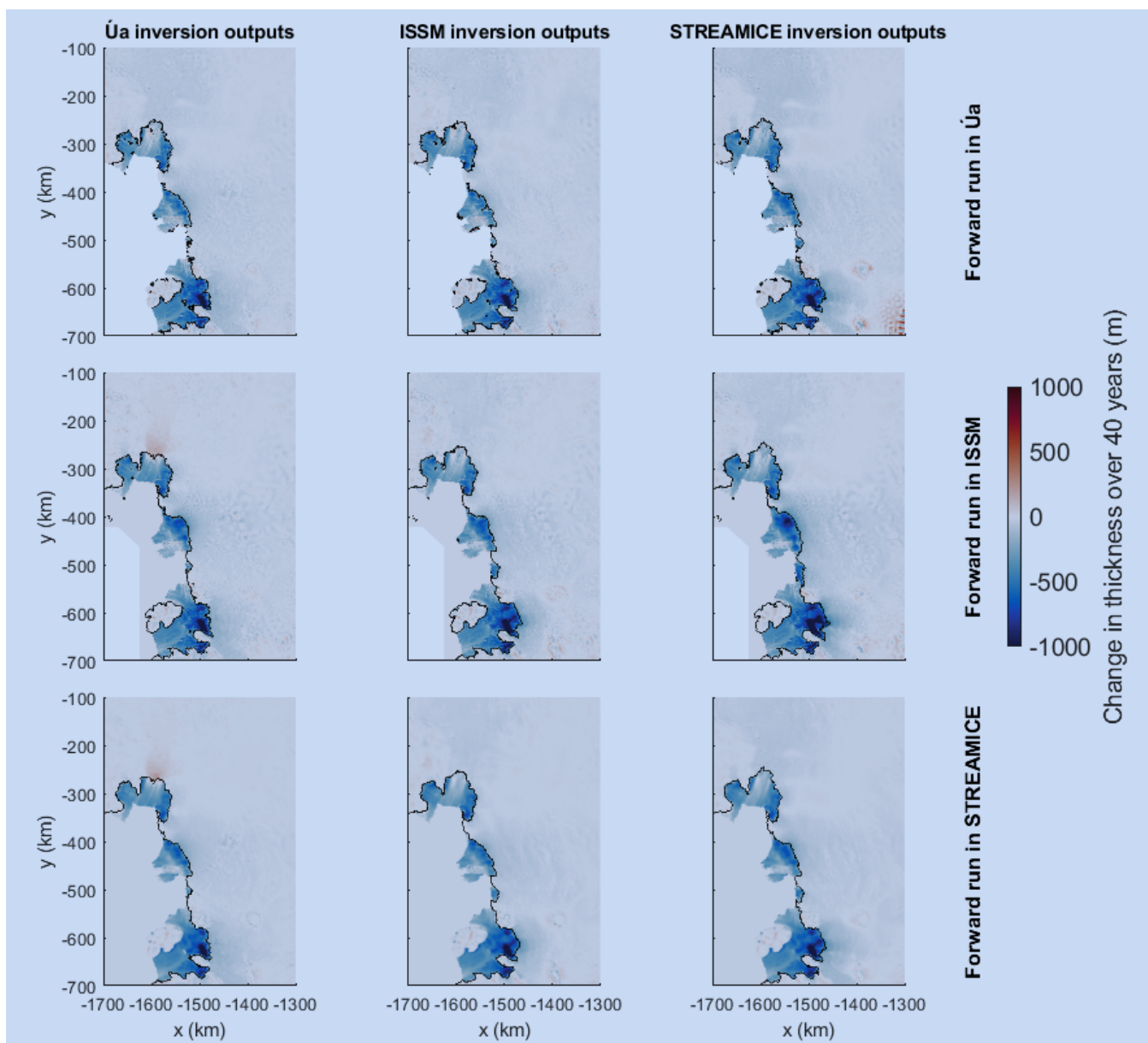


Figure 7. Thickness changes and the grounding line position after 40 years of simulation using the rate factor and basal sliding coefficient fields resulting from each of the three model inversions.

contributions between -243 mm and +167 mm for the whole of Antarctica over 100 years, although this included models which use entirely different initialisation methods. However, within this range are more representative examples of simulations run within the same models which differ greatly, including two simulations using ISSM which differ by a factor of 3.

400 ✖ The variability in ice mass loss found in our experiments is less than that of the control experiment of Alevropoulos-Borrill et al. (2020), in which sensitivity of simulations to basal sliding, rate factor and basal melt were tested by using perturbed parameter fields. The low- and high-end parameter sets produced sea level contributions of 0.03 mm and 28.85 mm for the Amundsen Sea Embayment. These parameter sets were based on the 5th and 95 percentiles of the probability density of an ensemble of experiments from Nias et al. (2016), in which they produced average sea level rise of 0.002 mm a^{-1} and
405 0.682 mm a^{-1} respectively over a 50 year simulation. The results of our experiments are comfortably in the middle of this range.

Our results display lower variability in terms of sea level contribution than that seen between models in the Antarctic intercomparison of the SeaRISE project (Bindschadler et al. 2013) or the results for the Amundsen Sea sector in LARMIP-2
410 (Levermann et al., 2020). The variability is also lower than the experiments of Favier et al. (2014), in which three models of varying complexity are compared. The differences between values for contribution to sea level also fall within the ranges reported in studies assessing other aspects of models. The comparisons here are less direct, since model process studies can entail changes to the physics of models whereas our forward experiments only deal with changes to inputs. However, we suggest that the uncertainties introduced by using inversion products outside of their native model are not more than those of, for example,
415 the different climate forcings used in LARMIP-2 (Levermann et al., 2020) or the choice of sliding law in Yu et al. (2018) or Brondex et al. (2019).

These favourable comparisons demonstrate the value of the standardisation of input datasets in our inversions, which helps to minimise uncertainty when transferring them. As long as the same geometry and densities are used as in the inversion process,
420 no more uncertainty is introduced into a forward problem by choosing to use an inversion product from another model than by other standard modelling choices such as which sliding law to use.

6 Conclusions

✖ In this work, we have investigated the differences between inversions for flow rate factor and basal sliding coefficients calculated in three different ice flow models. They each use different methods and employ different techniques during the inversion
425 process, but despite this they display a high degree of agreement in patterns of distribution, with strong positive correlations particularly evident between the fields of basal sliding coefficients. The implication of this is that outputs of inversions contain minimal representation of model-specific numerical behaviour, and strongly reflect the underlying equation system the models are designed to solve. The results of inversion processes used by our models are shown to be consistent with each other to a

higher extent than may have been expected from the ill-posedness of the problem being solved. The minimal model-dependence
430 demonstrates that ice flow models are as robust in their inversions as they are in their forward simulations.

Further to this, we have shown that the products of inversions performed in any one of these three models can be used in any
of the two other models as an input for transient simulations, and that the results obtained this way are similar to those obtained
when each model uses its own inversion products. Hence, the inversion products can be described as transferable between
435 models. In our 40 year transient simulations, the variation in sea level contributions produced by a single model did not exceed
32%, and further efforts to standardise modelling procedures would likely improve this figure. The smallest variation found
between simulations using the three different sets of inversion products was 13%. We found that using inversion products from
different models results in similar variability to that which already exists between each of the models operating normally with
their own inversion outputs.

440

Due to our careful control of input datasets, the results of our time-dependent simulations show variability lower than those
of other intercomparison experiments. When the process is managed well, the variability introduced by transferring inversion
outputs from one model into another is not significantly high, and thus is not prohibitive to wider applications. With provision
of sufficient details of the models involved, it would be possible to produce fields of basal sliding coefficients and rate factors
445 which could be used by multiple models for the purpose of increasing uniformity in the boundary conditions and ice properties
of intercomparison projects, or could be used as inputs for models which cannot perform their own inversion calculations.

Code availability. Source code for Úa can be downloaded at <http://doi.org/10.5281/zenodo.3706623>, and requires MATLAB to run. Source
code for ISSM can be downloaded at <https://issm.jpl.nasa.gov/download>. STREAMICE is part of MITgcm, for which the source code is
found at <http://mitgcm.org/source-code>.

450 Appendix A: Regularisation of inversions

The choice of regularisation parameters in our inversions is based on L-curve analysis. L-curves (e.g., Hansen, 1992) are cre-
ated by plotting the regularisation against the misfit (R against I , from the general form of inversions given in Equation 5). The
misfit is generally reduced by increasing the regularisation, but the relationship is not linear. The plots follow an L-shape, and
the aim is to pick parameters whose results lie near the corner of the L, where neither I nor R take high values. This ensures
455 that the the inversions produce velocities close to the measurements without being over-regularised.

In Úa, there are technically four different regularisation parameters. In Equation 7, we use the notation γ_s and γ_a , but it is
possible for these to be set differently for each p_k . In practice, we use the same values of these parameters for both A and C ,
hence the notation in the equation. From experience, we know that values of $\gamma_s = 1 \times 10^4$ and $\gamma_a = 1$ are a good starting point.

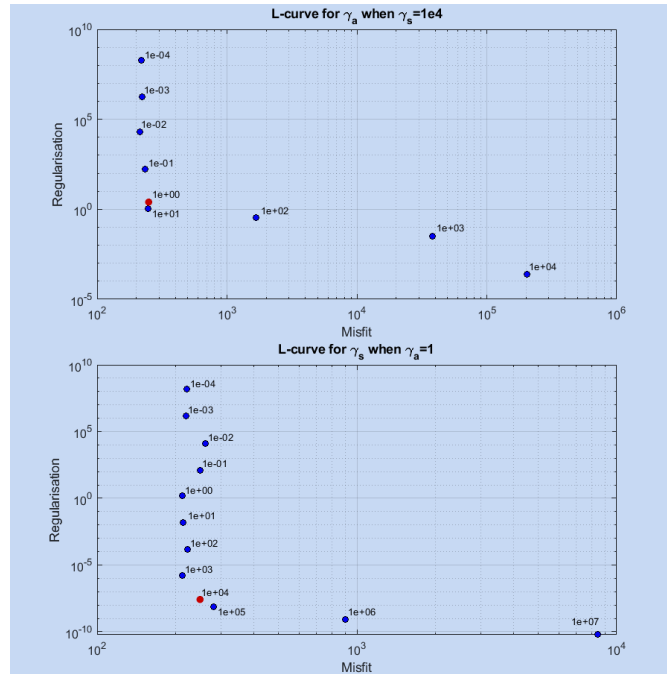


Figure A1. L-curves for \hat{U}_a . Points are labelled with values of γ_a and γ_s , and the chosen values are indicated in red.

460 These values were confirmed as good choices by the L-curves produced from a series of tests, shown in Figure A1.

In ISSM, since the inversions for B and β^2 are carried out separately, the parameters are also chosen separately in two L-curves. The values for the B inversion are chosen first, and once the optimal values are selected the corresponding B field is carried forward into the L-curve analysis for β^2 . The L-curves used to choose the regularisation values in this project are

465 displayed in Figure A2.

The regularisation parameters for STREAMICE were initially chosen to be the values resulting from previous work (Goldberg et al., 2019). An L-surface produced for that work is displayed in Figure A3. These values were then adapted slightly to improve optimisation performance for this project.

470 Appendix B: Investigating the effects of differing aspects of model inversion processes

After observing the differences between the inversion results of the three ice flow models, we investigated possible causes for them. Each of the models approaches the inversion process in a slightly different way, and further testing would reveal which factors are the most influential in affecting the outcome. We tested different factors by performing independent inversion calculations for each case in \hat{U}_a , and in one case across all three models. We looked at the velocity misfits, rate factors and

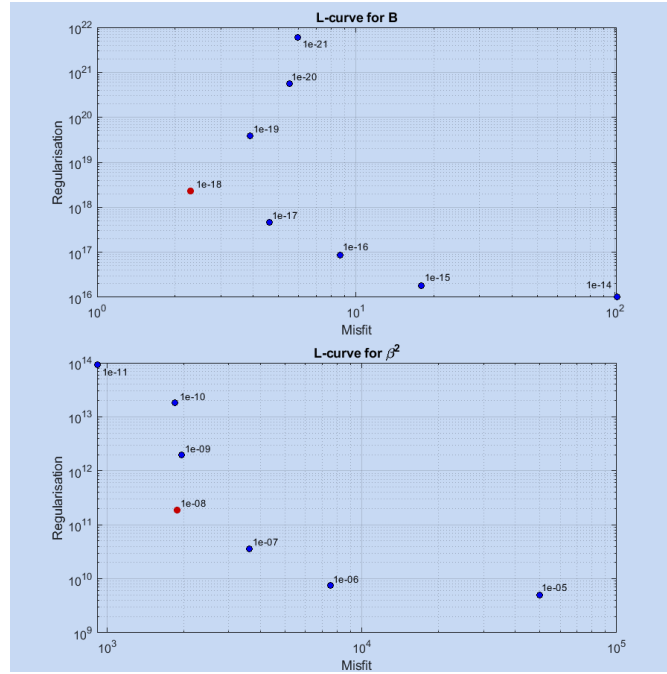


Figure A2. L-curves for ISSM. Points are labelled with values of α , and the chosen values are indicated in red.

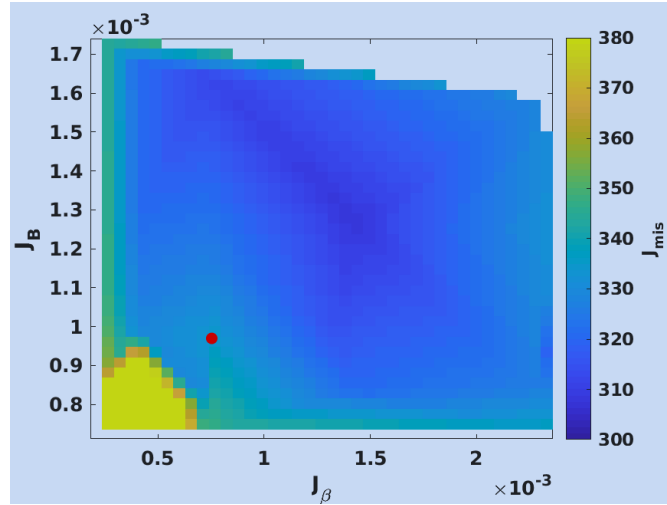


Figure A3. An L-surface for STREAMICE, produced for a previous project, which was used as the basis for regularisation choices in this work. The chosen values lie at the red point.

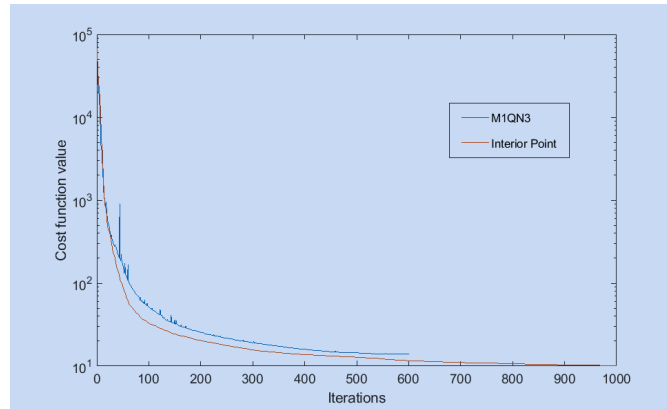


Figure B1. A comparison of the performance of the Interior Point algorithm in MATLAB used by default in *Úa*, and the M1QN3 optimisation scheme used by ISSM and STREAMICE, showing minimisation of the cost function during the inversion process.

basal sliding coefficients produced as indicators of inversion performance compared to the original results. We attempted to determine from this how robust our inversion results are with respect to these procedural differences.

B1 Optimisation schemes

One possible source of inconsistency between the models is the optimisation scheme used during the inversion process. ISSM and STREAMICE both make use of a scheme called M1QN3 (Gilbert and Lemaréchal, 1989), while *Úa* uses the Interior Point algorithm (Byrd et al., 1999) via MATLAB's inbuilt 'fmincon' function. Since *Úa* appeared to be performing better in minimising the differences between modelled and observed velocities, this was an important operational difference to check. We compared these algorithms in *Úa* by using a MATLAB implementation of M1QN3 from the OPTI Toolbox (Currie and Wilson, 2012). Used on the same inversion problem, M1QN3 under-performed compared to Interior Point algorithm. The inversion process aborted after 601 iterations, with the cost function having converged to a minimum value of 13.96, while the Interior Point algorithm reduced the cost function to 11.64 in the same number of iterations. The Interior Point algorithm continued to further minimise the cost function until the process was stopped at the 1000 iteration limit set in *Úa*, at which point the cost function value was 10.12. The minimisation processes for both algorithms are shown in Figure B1.

The misfit fields resulting from these inversions (Figure B2(b)) do not show a great enough difference in magnitude to entirely account for the discrepancies observed between the inversions from different models. While the M1QN3 inversion is visibly performing less well than MATLAB's Interior Point scheme, the misfit is smaller than those seen in results from the two models using M1QN3 by default. The mean magnitude of misfit using M1QN3 is 9.61 m a^{-1} , so by this measure it could account for roughly 30% of the difference observed between *Úa* and STREAMICE in subsection 4.1, and 20% of the difference seen in ISSM. In this case, as opposed to in the original inversion comparisons, the misfit is a more direct indicator of performance. Since the regularisation is exactly the same in both cases, the only differences in misfit are due to the choice

of optimisation scheme.

It is interesting to note that use of the M1QN3 algorithm results in slightly lower values of β^2 on part of Pine Island glacier, in a similar location to the low-value patches seen on the ISSM and STREAMICE inversions. The earlier termination of the minimisation process compared to Úa's Interior Point algorithm could be a cause of differences in that area. On the whole, however, there is a strong positive correlation in the spatial distribution of both the basal sliding coefficients and the speed misfit when comparing the two optimisation algorithms, with a weaker correlation in the rate factor. The correlation coefficients for several experiments described in this appendix can be found in Table B1.

B2 Inverting for basal sliding alone

The way in which ISSM performs its B and β^2 inversions sequentially rather than simultaneously and, in common with STREAMICE, does not generally invert for B over the grounded ice, could impact the result. To test this, we took the result of the B inversion from ISSM and used it as an input for an inversion in Úa. In this experiment, Úa was used to invert only for basal sliding coefficient, without changing the rate factor.

The results of this test (Figure B2(c)) show that using ISSM's calculated B field causes larger misfits in the velocity of the floating ice, especially on the Thwaites Ice Tongue. This is consistent with differences seen in the original misfit comparison (subsection 4.1). Some of those differences also propagate upstream of the grounding line. Fixing B to the values calculated from a temperature field causes a patch of low β^2 values to form over Pine Island glacier, in a similar way to the original results from the ISSM and STREAMICE inversions. The values dip below $10^2 \text{ Pa m}^{-\frac{1}{3}} \text{ a}^{\frac{1}{3}}$, but do not reach the lowest values

found in the original results. It appears that Úa's usual method of inverting for both parameters across the entire domain causes information which would otherwise be interpreted as extreme lows in the β^2 field to be absorbed into the B values instead. This can explain some of the differences seen in the original inversions.

The calculated correlation of β^2 with the outputs of the original Úa inversion is very low, despite a visual inspection of the results showing similarities and familiar features. This is caused by localised spikes of extreme values affecting the calculation. Once the β^2 field is edited to remove these extreme values, by capping values at $1 \times 10^6 \text{ Pa m}^{-\frac{1}{3}} \text{ a}^{\frac{1}{3}}$, the correlation coefficient is recalculated as 0.512. This is in the region which would be expected from visual inspection of Figure B2, although still a weaker correlation than those found for other factors under investigation. The issue of localised extreme values affecting the correlation is one which is also encountered for the B field, and in further results of this appendix. They are indicated in

Table B1.

B3 Mesh and resolution

The models are performing their calculations over different meshes, so experiments to test the mesh-dependence of inversions were performed. We first tested the mesh of ISSM within Úa, and found that the inversion outputs are not particularly sensitive

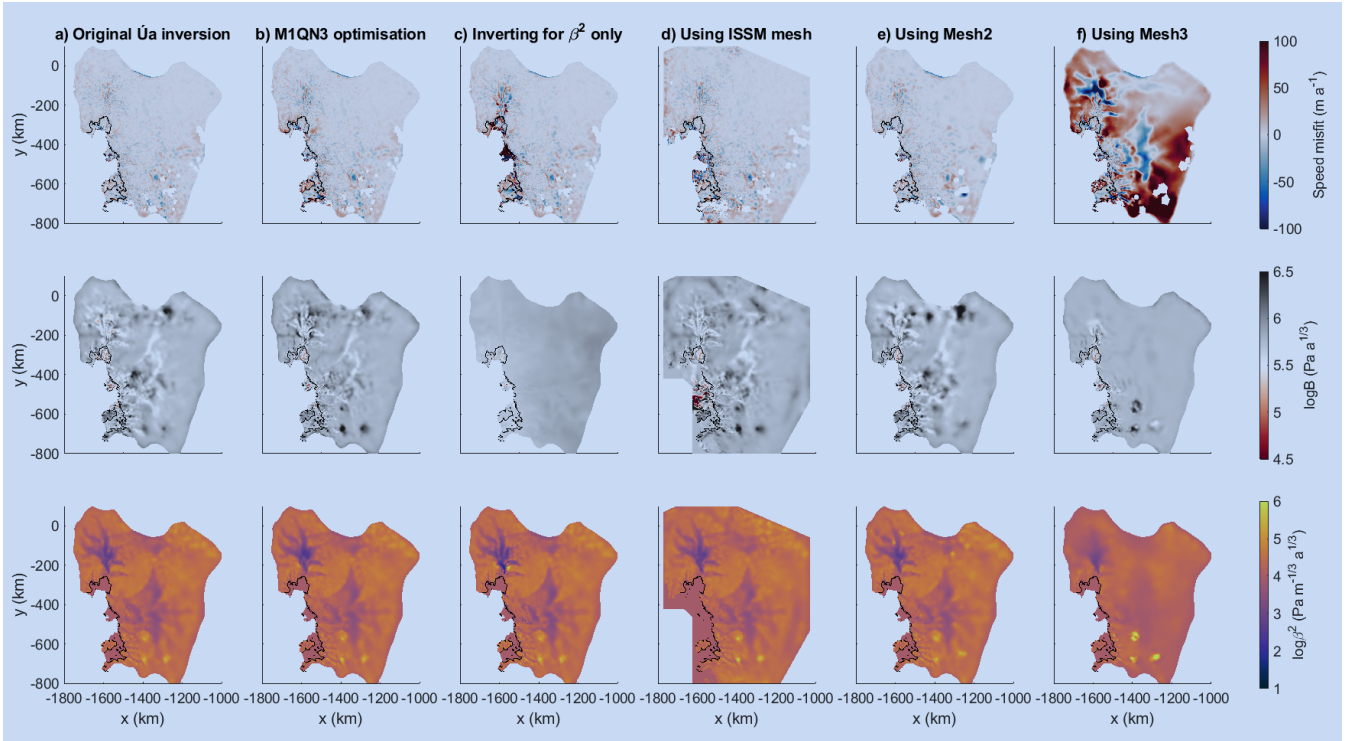


Figure B2. A comparison of the speed misfit, rate factor and basal sliding coefficients for several cases of inversions run in $\dot{U}a$ under different conditions. Column a) The original $\dot{U}a$ inversion for B and β^2 using an Interior Point optimisation scheme. Column b) The inversion using M1QN3 optimisation scheme. Column c) Inverting for β^2 only, using ISSM's B field. Column d) Using the mesh and domain of the original ISSM inversion. Column e) Using the second (coarser) version of $\dot{U}a$'s mesh. Column f) Using the third (even coarser) version of $\dot{U}a$'s mesh.

	ISSM	STREAMICE	M1QN3	β^2 only	ISSM mesh	Mesh2	Mesh3
Speed misfit correlation	0.270	0.474	0.980	0.021	0.743	0.963	0.863
B correlation (whole domain)	0.077	0.058	0.449	0.076*	0.389*	0.220*	0.238*
B correlation (floating ice only)	0.368	0.340	0.455	0.116*	0.350*	0.206*	0.236*
β^2 correlation	0.843	0.871	0.914	0.512 [†]	0.929	0.945	0.552 [†]

Table B1. The Pearson correlation coefficients of various models and tests with $\dot{U}a$'s original inversion. The first two columns show the correlation of the original ISSM and STREAMICE inversions, and the remaining columns show the correlation with the cases displayed in Figure B2(b-f). *Values limited to $5 \times 10^7 \text{ Pa a}^{\frac{1}{3}}$ before calculating correlation. [†]Values limited to $1 \times 10^6 \text{ Pa m}^{-\frac{1}{3}} \text{ a}^{\frac{1}{3}}$ before calculating correlation.

to the location of mesh points if the resolutions are similar as is the case here. A comparison produced a strong positive correlation in the β^2 and misfit distributions, with Figure B2(d) showing that there is not a large difference in the velocity misfit. The results for B show greater variation.

The minimum length of the elements in Úa's original mesh is 500 m, but STREAMICE uses a mesh with minimum resolution of 1 km. STREAMICE uses rectangular elements in its mesh which Úa cannot replicate, so instead we looked at the effects of changing the mesh resolution. Performing the same inversion in Úa over different resolutions shows some interesting results. For these experiments, we used coarser versions of the Úa mesh, which we refer to as 'Mesh2' and 'Mesh3'. These have the same boundary, but are designed to have element edge lengths two and three times those of the original Úa mesh. Thus, Mesh2 contains 58,292 elements with edge lengths between 1 km and 30 km, and Mesh3 contains 30,421 elements with edge lengths between 1.5 km and 45 km. An inversion over Mesh2 produces a slightly larger misfit (Figure B2(e)) than the original mesh, but the distribution of the misfit field correlates strongly with that calculated on the original mesh. There is also a high correlation between the β^2 fields produced in each case, with the differences between the two cases being primarily apparent in the B field.

Using Mesh3 (Figure B2(f)), we see a much greater difference. In this case the misfit is far higher, and there are noticeable differences in the fields of B and β^2 , which are lacking much of the detail present when using the other meshes. This shows that there is a limit to the mesh resolution from which useful inversion results can be obtained using the same parameters and model settings.

Within the range of resolutions of our models in their original states, the inversions for β^2 are robust and consistent. However, the results of the experiment using Mesh3 show that inversions performed on meshes with significantly lower resolutions do not retain this consistency. The inversions for B appear to be more mesh-dependent, with far lower correlation.

550 B4 Priors

In the original inversion comparison, each model was given the freedom to pick its own default priors for B and β^2 . This choice of a starting point for the inversion could have an effect on the outcome. To test this, two inversions were run in each model with identical priors. One set of priors (Priors1) consists of uniform values for B and β^2 , such that $\log(B) = 5.7$ and $\log(\beta^2) = 4.3$. The other (Priors2) consists of ISSM's original prior for B , and a β^2 field calculated using the Weertman sliding law with our velocity dataset and a constant value of $\tau_b = 80$ kPa.

The results in Figure B3 show that all models have some dependency on the priors chosen. In general, the rate factor is most heavily influenced by the prior field used, due to two of the models not changing these initial values over much of the domain. Even in Úa, which does invert for B everywhere, the influence of the prior values can clearly be seen on the slow-flowing ice inland. Pearson correlation coefficients for B are found in Table B2. Looking at the floating ice only, using the same priors across all three models does not have a significant effect on the correlation of B distribution between Úa and either of the other models. However, there is a noticeable strengthening of the correlation between the inverted values of ISSM and STREAMICE

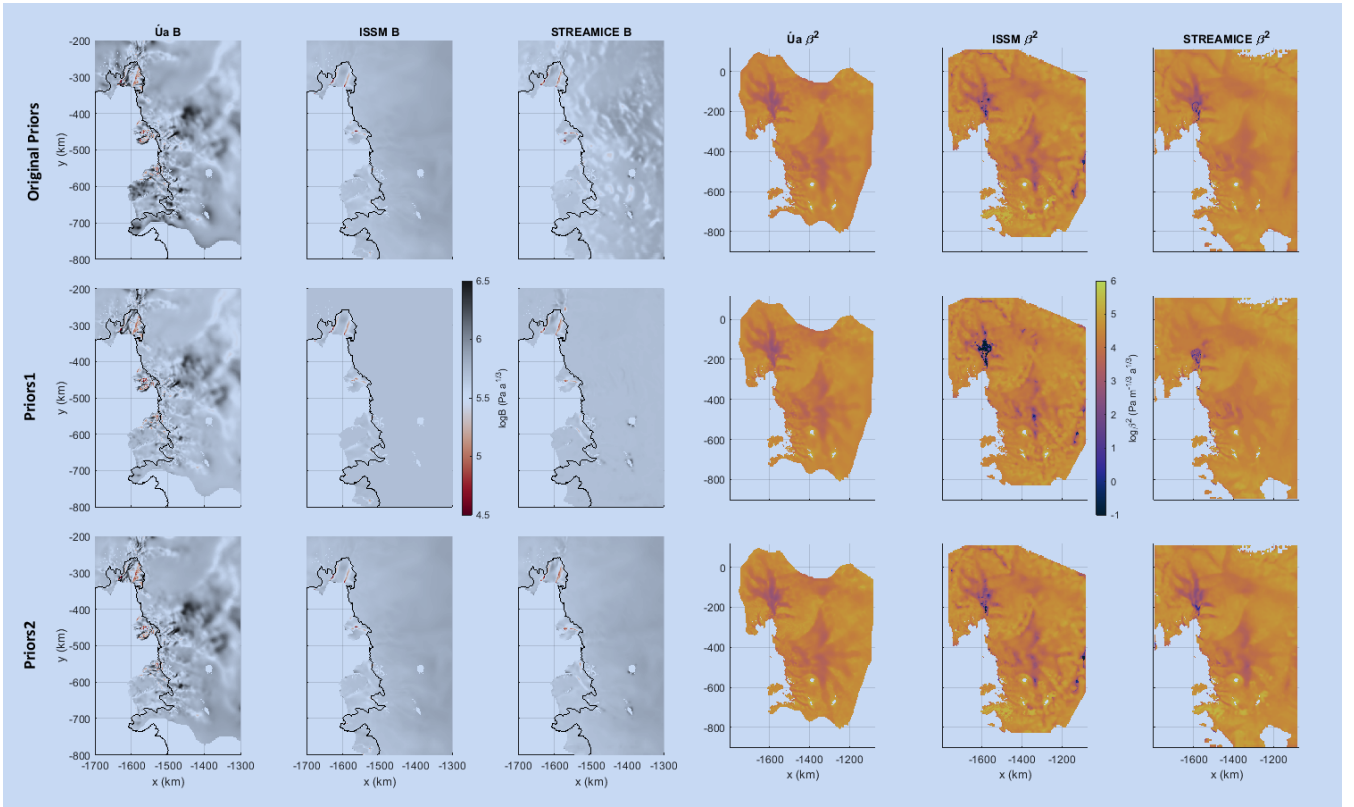


Figure B3. A comparison of the outputs of inversions using the original priors from each model in the first row, and the two specified sets, Priors1 and Priors2, in the second and third rows.

	Úa			ISSM			STREAMICE		
	Original	Priors1	Priors2	Original	Priors1	Priors2	Original	Priors1	Priors2
Úa Original		0.794	0.793	0.077	0.204	0.077	0.058	0.274	0.127
Úa Priors1	0.817		0.772	0.099	0.175	0.099	0.056	0.219	0.134
Úa Priors2	0.794	0.864		0.424	0.226	0.424	0.317	0.299	0.455
ISSM Original	0.368	0.365	0.353		0.526	1.000	0.666	0.424	0.932
ISSM Priors1	0.374	0.358	0.329	0.901		0.526	0.238	0.626	0.434
ISSM Priors2	0.368	0.365	0.353	1.000	0.901		0.666	0.424	0.932
STREAMICE Original	0.340	0.334	0.313	0.511	0.550	0.511		0.399	0.726
STREAMICE Priors1	0.433	0.423	0.387	0.657	0.729	0.657	0.794		0.583
STREAMICE Priors2	0.455	0.353	0.423	0.712	0.697	0.712	0.744	0.941	

Table B2. The Pearson correlation coefficients for B between pairs of tests using different sets of priors. Above the diagonal are coefficients calculated over the entire domain. Below the diagonal are the coefficients calculated over the floating ice only.

	Úa			ISSM			STREAMICE		
	Original	Priors1	Priors2	Original	Priors1	Priors2	Original	Priors1	Priors2
Úa Original		0.989	0.970	0.843	0.715	0.819	0.871	0.732	0.885
Úa Priors1	0.953		0.984	0.838	0.722	0.813	0.864	0.729	0.883
Úa Priors2	0.952	0.956		0.835	0.698	0.808	0.850	0.726	0.886
ISSM Original	0.270	0.264	0.265		0.749	0.971	0.798	0.669	0.867
ISSM Priors1	0.217	0.219	0.210	0.747		0.748	0.681	0.520	0.688
ISSM Priors2	0.280	0.272	0.273	0.958	0.755		0.779	0.664	0.847
STREAMICE Original	0.474	0.463	0.463	0.276	0.220	0.274		0.815	0.904
STREAMICE Priors1	0.324	0.321	0.305	0.186	0.118	0.148	0.407		0.781
STREAMICE Priors2	0.633	0.630	0.639	0.329	0.249	0.324	0.687	0.428	

Table B3. The Pearson correlation coefficients for β^2 and speed misfit between pairs of tests using different sets of priors. Above the diagonal are coefficients calculated for β^2 . Below the diagonal are the coefficients calculated for speed misfit.

over the ice shelves using both Priors1 and Priors2.

In the β^2 results, we find a slightly different outcome. Úa's results are affected very little by changing the priors, whereas the original outputs from ISSM and STREAMICE show a greater correlation with the outputs using Priors2. The difference can be seen in Figure B3 most prominently over Pine Island glacier. These results tell us that Úa is the least sensitive model to a change in priors, but also that the choice of priors is only a matter for concern in STREAMICE and ISSM if a reasonable field cannot be calculated from existing velocity or temperature data. Even the lowest correlation in Table B3, between ISSM and STREAMICE both using Priors1, is greater than 0.5.

The strong correlations between each model's original output and the Priors2 experiments leads us to conclude that the choice of priors is not a major factor in the differences between the original inversions, as neither STREAMICE nor ISSM was using uniform priors.

While the priors do not appear to affect the inversion outputs greatly, it was found that forward runs in STREAMICE using its original inversion outputs encountered some convergence issues, while this was not the case with the outputs from inversion using Priors2. For this reason, the Priors2 inversion from STREAMICE is used in the forward runs of section 5.

B5 Derivation of the adjoint

A technical difference between the inversion procedures in our models is the derivation of the adjoint. Úa and ISSM use an exact adjoint, following the terminology of Morlighem et al. (2013). STREAMICE uses the method described in Goldberg

et al. (2016), but with a relatively weak tolerance which places it somewhere between the exact and incomplete adjoints. A straightforward comparison is difficult here as STREAMICE is using a different stress balance, since its equations use an L1L2 approximation (Goldberg, 2011) as opposed to SSA.

585

This factor was not specifically investigated for the inversions in this project, but we note it here in the interests of completeness. We do not believe that it would be a major cause of differences. Morlighem et al. (2013) concludes that the incomplete adjoint is an excellent approximation to the exact adjoint and does not have a significant effect on the convergence of inversions.

Appendix C: The unsuitability of diagnostic calculations for assessing the transferability of inversion products

590 A diagnostic model step calculates an instantaneous velocity from the given boundary conditions and geometry, without any time evolution. We ran diagnostic calculations in Úa using the fields of B and β^2 produced by all three models as properties of the ice. We observe large discrepancies between the resulting velocity fields. The velocities produced when using the inversion outputs from ISSM and STREAMICE were significantly greater in magnitude than those calculated by their native models as part of the inversion process. Differences are seen in particular on the fastest flowing ice, and on the ice shelves, as seen
605 in Figure C1. The differences encountered indicate that transferring inversion products between models may not be a simple matter, since such large discrepancies appear in the velocities.

C1 Differences at the grounding line

Investigating the phenomenon of large diagnostic velocity discrepancies further, we found that the position and definition of the grounding line is the major cause of the velocity differences. There are two reasons for inconsistencies to appear at the
600 grounding line when transferring inversion products between models, which we shall discuss in this section.

Firstly, each model carries out inversions on a different mesh, and the outputs must be interpolated for use in other models. This is particularly important when transferring the β^2 fields, as the inversion output values of this parameter under the floating ice are not reliable. A remeshing and interpolation of data can result in some questionable values of β^2 at the grounding line,
605 which can in turn significantly affect the calculated diagnostic velocity. In Figure C1, the diagnostic velocities are calculated on Mesh2 (described in Appendix B3), which is coarser than the original mesh used for the inversions. Hence, the first panel demonstrates the effect of interpolating the B and β^2 fields to a new mesh. The fact that the STREAMICE result displays the largest velocity differences may be due to its original mesh being the most different from Mesh2.

610 Secondly, the models employ different treatments of the grounding line in their equations. Inversions in STREAMICE are calculated using a flotation relationship containing a Heaviside function which indicates whether ice in a mesh element is floating or grounded. Úa uses a modified version of this, as discontinuities in the equations can cause problems in the model's numerical solvers. The Heaviside function is smoothed by use of a parameter named k_H , which defines a length scale such

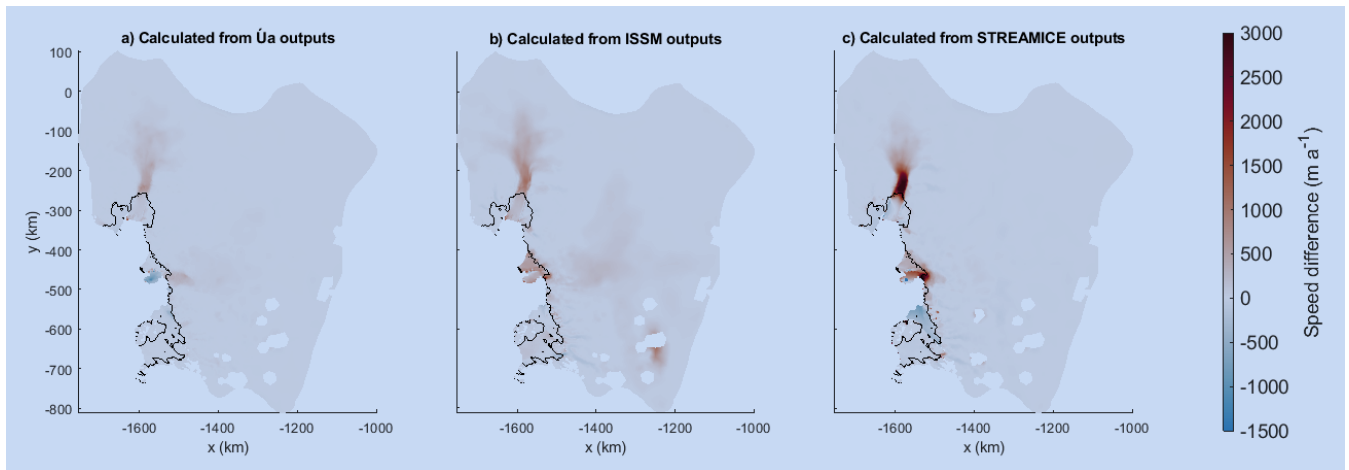


Figure C1. Differences between the speed calculated diagnostically in \dot{U}_a using the B and β^2 outputs from each model, and the original speed measurements used for the inversions. These calculations are performed on Mesh2, a coarser mesh than \dot{U}_a 's inversion.

that $\frac{1}{k_H}$ is the height above flotation affected by the smoothing being applied. Thus, higher values of k_H are closer to a true Heaviside function. ISSM employs the sub-element parameterisation scheme SEP2, as described in Seroussi et al. (2014). Some of the larger differences between the β^2 inversions in Figure 5 (subsection 4.3) can be seen at localised points along the grounding line, likely due to the differences in grounding line treatment.

For diagnostic calculations in \dot{U}_a , we can change the value of k_H to demonstrate the effects of varying grounding line regularisation. Figure C2 displays differences between diagnostic speeds calculated in \dot{U}_a with different values of k_H , and those calculated in the models from which the inversion outputs originate. An attempt can be made to replicate the diagnostic velocities of the original model as closely as possible within \dot{U}_a 's framework by 'tuning' the regularisation parameter, although this is not likely to result in a good representation of the physics of the system.

For the ISSM outputs, lowering the value of k_H causes the difference in calculated velocity to decrease on the ice shelf. However, there is a 'tipping point' beyond which decreasing the value further starts to increase the difference in the calculated velocity everywhere, especially on the grounded ice. For the results displayed in Figure C3, we chose to set k_H such that the difference on the ice shelf was minimised but this 'tipping point' was not passed, at $k_H = 0.02$.

The STREAMICE outputs follow a slightly different pattern. Beyond the 'tipping point', the difference on the ice shelves continues to follow the same trajectory, becoming negative as k_H is lowered further. The change in the differences around this 'tipping point' is more sudden, and the difference on the grounded ice is greater in magnitude than that of the ISSM outputs. Note that for these reasons, the bottom row of Figure C2 uses a different colour scale and different values of k_H than the top row. The value chosen for the results displayed in Figure C1 was $k_H = 0.0065$.

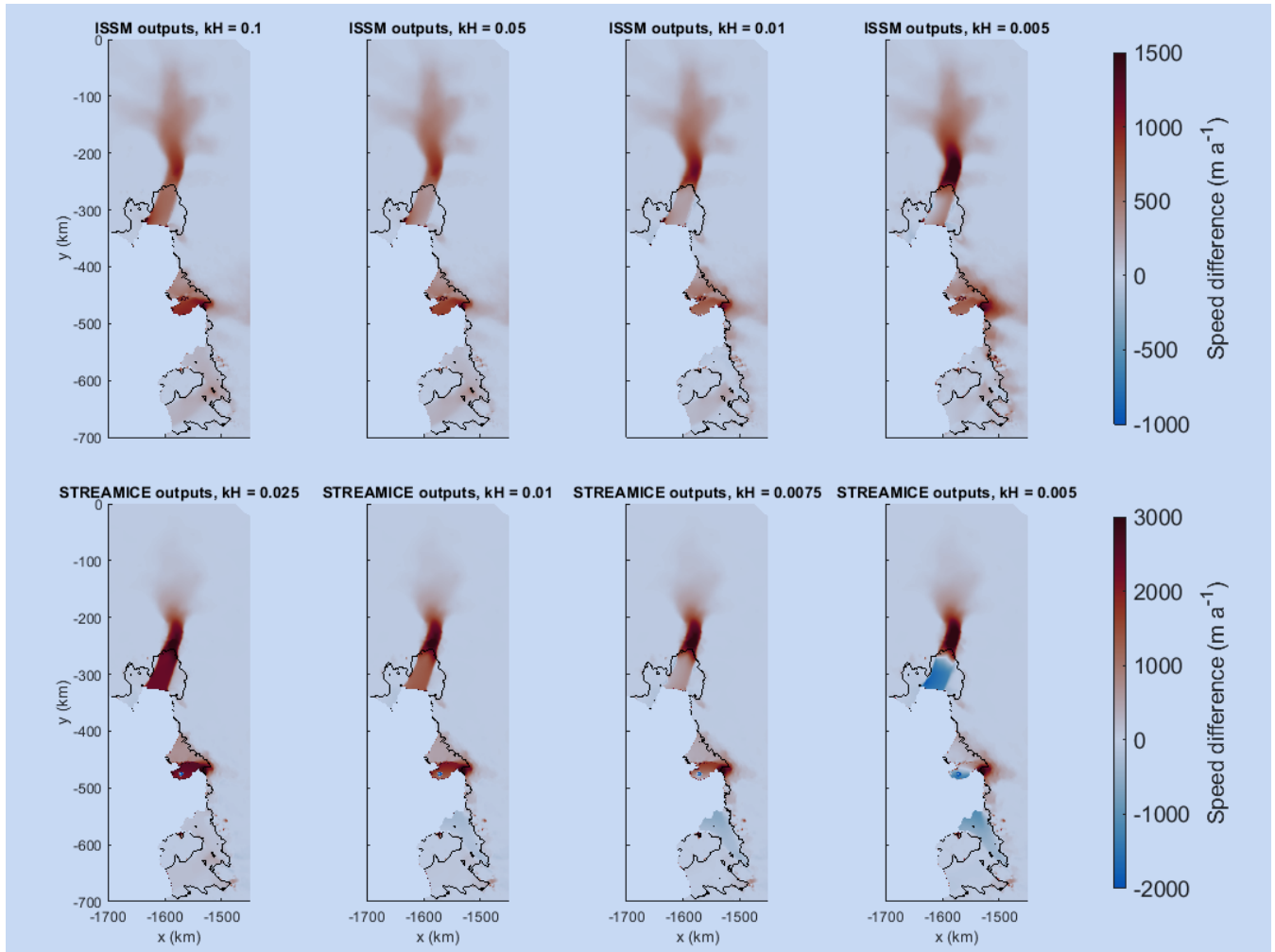


Figure C2. Differences between diagnostic speeds calculated in Úa using the ISSM and STREAMICE inversion outputs and a range of values for k_H , and the speeds calculated in the original models. Note that each row uses a different colour scale.

The effect of the grounding line regularisation is different in time-dependent simulations. This is illustrated by the comparisons of speed and grounding line position shown in Figure C3, which displays the results of three different simulations run in $\dot{U}a$, at one year and ten years. The first is using $\dot{U}a$'s own fields for B and β^2 , while the other two use the fields calculated by inversion in ISSM. The latter two are run using different values for kH : one with $kH = 0.02$, the value used for the diagnostic calculation in Figure C1, and one with $kH = 1$, the value used in the $\dot{U}a$ simulation.

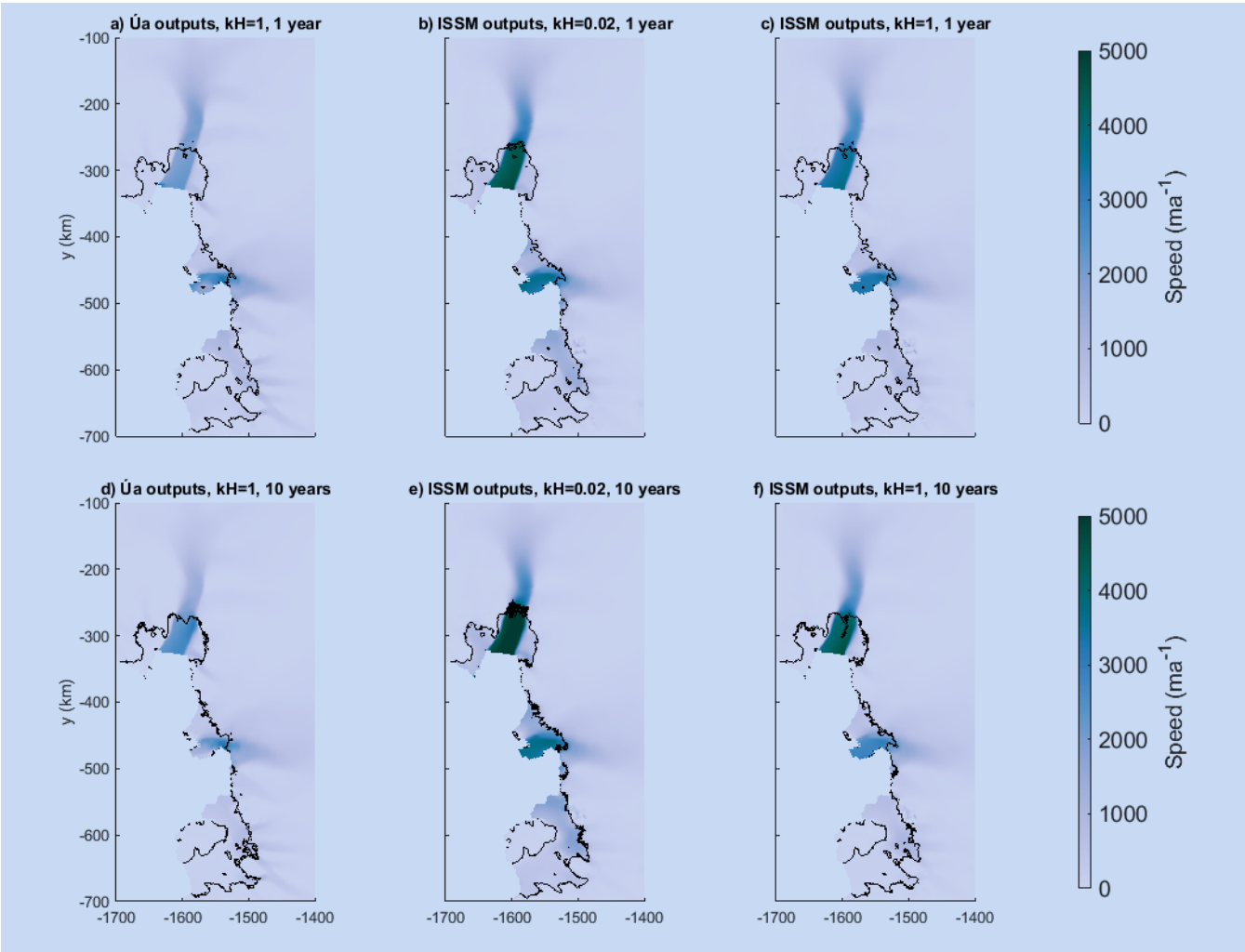


Figure C3. Speeds and grounding lines after 1 and 10 years of simulation in $\dot{U}a$ using its own inversion outputs, and those of ISSM with two different values of kH .

With both values for k_H , the ISSM fields produce a higher velocity than the fields from \dot{U}_a . However, the difference is larger when using the value which we chose for diagnostic calculations. We see that in the case where $k_H = 0.02$, the grounding line retreats further and the ice flows faster, despite this being the case which provided the closest velocities to the result using \dot{U}_a 's inversion products in the diagnostic calculation. This effect of using different values of k_H is not entirely unexpected, as it is a regularisation parameter rather than a physical property of the ice. The definition of the grounding line has a large effect on basal melting, which is a physical process not included in the diagnostic calculation. This means that even though a chosen value of k_H can seem to produce similar results in a diagnostic setting, the additional physics of time-dependent flow can produce very different results.

650

This suggests that diagnostic calculations are not indicative of performance in time-dependent simulations, and that large velocity differences in the diagnostic calculations do not necessarily mean that similarly large differences will be present in forward simulations. It also means that 'tuning' grounding line regularisation terms based on the diagnostics is not a method which should be used. Thus, for the time-dependent comparisons in section 5, none of the models alter their treatment of the grounding line between experiments.

655

Author contributions. All authors were involved in the conception of the project, and discussions throughout. JMB coordinated the project, and carried out the modelling work in \dot{U}_a . TDdS and DG carried out the modelling work in ISSM and STREAMICE respectively. JMB led the writing of the manuscript, and all authors provided comments and feedback during the editing process.

Competing interests. The authors declare that they have no competing interests.




660 *Acknowledgements.* This work is from the PROPHET project, a component of the International Thwaites Glacier Collaboration (ITGC). Support from National Science Foundation (NSF: Grant #1739031) and Natural Environment Research Council (NERC: Grants NE/S006745/1, NE/S006796/1 and NE/T001607/1). ITGC Contribution No. 019.

References

- Alevropoulos-Borrill, A. V., Nias, I. J., Payne, A. J., Golledge, N. R., and Bingham, R. J.: Ocean-forced evolution of the Amundsen Sea catchment, West Antarctica, by 2100., *The Cryosphere*, 14, 2020.
- Arthern, R. J. and Gudmundsson, G. H.: Initialization of ice-sheet forecasts viewed as an inverse Robin problem, *Journal of Glaciology*, 56, 527–533, 2010.
- Asay-Davis, X. S., Cornford, S. L., Durand, G., Galton-Fenzi, B. K., Gladstone, R. M., Gudmundsson, G. H., Hattermann, T., Holland, D. M., Holland, D., Holland, P. R., et al.: Experimental design for three interrelated marine ice sheet and ocean model intercomparison projects: MISMIP v. 3 (MISMIP+), ISOMIP v. 2 (ISOMIP+) and MISOMIP v. 1 (MISOMIP1), *Geoscientific Model Development*, 9, 2471–2497, 2016.
- Bindschadler, R. A., Nowicki, S., Abe-Ouchi, A., Aschwanden, A., Choi, H., Fastook, J., Granzow, G., Greve, R., Gutowski, G., Herzfeld, U., et al.: Ice-sheet model sensitivities to environmental forcing and their use in projecting future sea level (the SeaRISE project), *Journal of Glaciology*, 59, 195–224, 2013.
- Brondex, J., Gillet-Chaulet, F., and Gagliardini, O.: Sensitivity of centennial mass loss projections of the Amundsen basin to the friction law, *The Cryosphere*, 13, 177–195, 2019.
- Byrd, R. H., Hribar, M. E., and Nocedal, J.: An interior point algorithm for large-scale nonlinear programming, *SIAM Journal on Optimization*, 9, 877–900, 1999.
- Cheng, G. and Lötstedt, P.: Parameter sensitivity analysis of dynamic ice sheet models—numerical computations, *The Cryosphere*, 14, 673–691, 2020.
- Cornford, S. L., Seroussi, H., Asay-Davis, X. S., Gudmundsson, G. H., Arthern, R., Borstad, C., Christmann, J., Dias dos Santos, T., Feldmann, J., Goldberg, D., Hoffman, M. J., Humbert, A., Kleiner, T., Leguy, G., Lipscomb, W. H., Merino, N., Durand, G., Morlighem, M., Pollard, D., Rückamp, M., Williams, C. R., and Yu, H.: Results of the third Marine Ice Sheet Model Intercomparison Project (MISMIP+), *The Cryosphere*, 14, 2283–2301, <https://doi.org/10.5194/tc-14-2283-2020>, <https://tc.copernicus.org/articles/14/2283/2020/>, 2020.
- Cuffey, K. M. and Paterson, W. S. B.: *The physics of glaciers*, Academic Press, 2010.
- Currie, J. and Wilson, D. I.: OPTI: Lowering the Barrier Between Open Source Optimizers and the Industrial MATLAB User, in: *Foundations of Computer-Aided Process Operations*, edited by Sahinidis, N. and Pinto, J., Savannah, Georgia, USA, 2012.
- DeConto, R. M. and Pollard, D.: Contribution of Antarctica to past and future sea-level rise, *Nature*, 531, 591–597, 2016.
- Engwirda, D.: Locally optimal Delaunay-refinement and optimisation-based mesh generation, Ph.D. thesis, School of Mathematics and Statistics, The University of Sydney, 2014.
- Favier, L., Durand, G., Cornford, S. L., Gudmundsson, G. H., Gagliardini, O., Gillet-Chaulet, F., Zwinger, T., Payne, A., and Le Brocq, A. M.: Retreat of Pine Island Glacier controlled by marine ice-sheet instability, *Nature Climate Change*, 4, 117–121, 2014.
- Gilbert, J. C. and Lemaréchal, C.: Some numerical experiments with variable-storage quasi-Newton algorithms, *Mathematical programming*, 45, 407–435, 1989.
- Glen, J.: The flow law of ice: A discussion of the assumptions made in glacier theory, their experimental foundations and consequences, *IASH Publ*, 47, e183, 1958.
- Goldberg, D. and Heimbach, P.: Parameter and state estimation with a time-dependent adjoint marine ice sheet model, *The Cryosphere*, 7, 1659–1678, 2013.

- Goldberg, D., Narayanan, S. H. K., Hascoet, L., and Utke, J.: An optimized treatment for algorithmic differentiation of an important glaciological fixed-point problem, *Geoscientific Model Development*, 9, 27, 2016.
- Goldberg, D., Gourmelen, N., Kimura, S., Millan, R., and Snow, K.: How accurately should we model ice shelf melt rates?, *Geophysical Research Letters*, 46, 189–199, 2019.
- Goldberg, D. N.: A variationally derived, depth-integrated approximation to a higher-order glaciological flow model, *Journal of Glaciology*, 57, 157–170, 2011.
- Greve, R. and Blatter, H.: *Dynamics of ice sheets and glaciers*, Springer Science & Business Media, 2009.
- Gudmundsson, G. H.: GHilmarG/UaSource: Ua2019b (Version v2019b), <http://doi.org/10.5281/zenodo.3706623>, 2020.
- Hansen, P. C.: Analysis of discrete ill-posed problems by means of the L-curve, *SIAM review*, 34, 561–580, 1992.
- Hecht, F.: BAMG: Bidimensional Anisotropic Mesh Generator, Tech. rep., FreeFem++, 2006.
- Joughin, I., MacAyeal, D. R., and Tulaczyk, S.: Basal shear stress of the Ross ice streams from control method inversions, *Journal of Geophysical Research: Solid Earth*, 109, 2004.
- Joughin, I., Smith, B. E., and Medley, B.: Marine ice sheet collapse potentially under way for the Thwaites Glacier Basin, West Antarctica, *Science*, 344, 735–738, 2014.
- Kozioł, C. P. and Arnold, N.: Incorporating modelled subglacial hydrology into inversions for basal drag, *The Cryosphere*, 11, 2783–2783, 2017.
- Kyrke-Smith, T. M., Gudmundsson, G. H., and Farrell, P. E.: Relevance of detail in basal topography for basal slipperiness inversions: a case study on Pine Island Glacier, Antarctica, *Frontiers in Earth Science*, 6, 33, 2018.
- Larour, E., Seroussi, H., Morlighem, M., and Rignot, E.: Continental scale, high order, high spatial resolution, ice sheet modeling using the Ice Sheet System Model (ISSM), *Journal of Geophysical Research: Earth Surface*, 117, 2012.
- Lenaerts, J. T., Van den Broeke, M., Van de Berg, W., Van Meijgaard, E., and Kuipers Munneke, P.: A new, high-resolution surface mass balance map of Antarctica (1979–2010) based on regional atmospheric climate modeling, *Geophysical Research Letters*, 39, 2012.
- Levermann, A., Winkelmann, R., Albrecht, T., Goelzer, H., Golledge, N. R., Greve, R., Huybrechts, P., Jordan, J., Leguy, G., Martin, D., et al.: Projecting Antarctica’s contribution to future sea level rise from basal ice shelf melt using linear response functions of 16 ice sheet models (LARMIP-2), *Earth System Dynamics*, 11, 35–76, 2020.
- MacAyeal, D. R.: Large-scale ice flow over a viscous basal sediment: Theory and application to ice stream B, Antarctica, *Journal of Geophysical Research: Solid Earth*, 94, 4071–4087, 1989.
- MacAyeal, D. R.: The basal stress distribution of ice stream E, Antarctica, inferred by control methods, *Journal of Geophysical Research*, <https://doi.org/10.1029/91JB02454>, 1992.
- MacAyeal, D. R.: A tutorial on the use of control methods in ice-sheet modeling, *Journal of Glaciology*, 39, 91–98, 1993.
- Marshall, J., Hill, C., Perelman, L., and Adcroft, A.: Hydrostatic, quasi-hydrostatic, and nonhydrostatic ocean modeling, *Journal of Geophysical Research: Oceans*, 102, 5733–5752, <https://doi.org/10.1029/96JC02776>, <http://dx.doi.org/10.1029/96JC02776>, 1997.
- Martin, N. and Monnier, J.: Adjoint accuracy for the full Stokes ice flow model: limits to the transmission of basal friction variability to the surface, *The Cryosphere*, 8, 721–741, 2014.
- Milillo, P., Rignot, E., Rizzoli, P., Scheuchl, B., Mouginit, J., Bueso-Bello, J., and Prats-Iraola, P.: Heterogeneous retreat and ice melt of Thwaites Glacier, West Antarctica, *Science advances*, 5, eaau3433, 2019.
- Morlighem, M., Rignot, E., Seroussi, H., Larour, E., Ben Dhia, H., and Aubry, D.: Spatial patterns of basal drag inferred using control methods from a full-Stokes and simpler models for Pine Island Glacier, West Antarctica, *Geophysical Research Letters*, 37, 2010.

- Morlighem, M., Seroussi, H., Larour, E., and Rignot, E.: Inversion of basal friction in Antarctica using exact and incomplete adjoints of a higher-order model, *Journal of Geophysical Research: Earth Surface*, 118, 1746–1753, 2013.
- 740 Morlighem, M., Rignot, E., Binder, T., Blankenship, D., Drews, R., Eagles, G., Eisen, O., Ferraccioli, F., Forsberg, R., Fretwell, P., et al.: Deep glacial troughs and stabilizing ridges unveiled beneath the margins of the Antarctic ice sheet, *Nature Geoscience*, pp. 1–6, 2019.
- Mosbeux, C., Gillet-Chaulet, F., and Gagliardini, O.: Comparison of adjoint and nudging methods to initialise ice sheet model basal conditions., *Geoscientific Model Development*, 9, 2016.
- Mouginot, J., Rignot, E., and Scheuchl, B.: Sustained increase in ice discharge from the Amundsen Sea Embayment, West Antarctica, from 1973 to 2013, *Geophysical Research Letters*, 41, 1576–1584, 2014.
- 745 National Academies of Sciences, Engineering, and Medicine: A Strategic vision for NSF investments in Antarctic and southern ocean research, National Academies Press, Washington, DC, 2015.
- Nias, I. J., Cornford, S. L., and Payne, A. J.: Contrasting the modelled sensitivity of the Amundsen Sea Embayment ice streams, *Journal of Glaciology*, 62, 552–562, 2016.
- Pattyn, F., Favier, L., Sun, S., and Durand, G.: Progress in numerical modeling of Antarctic ice-sheet dynamics, *Current climate change reports*, 3, 174–184, 2017.
- 750 Pearson, K.: VII. Note on regression and inheritance in the case of two parents, *proceedings of the royal society of London*, 58, 240–242, 1895.
- Perego, M., Price, S., and Stadler, G.: Optimal initial conditions for coupling ice sheet models to Earth system models, *Journal of Geophysical Research: Earth Surface*, 119, 1894–1917, 2014.
- 755 Petra, N., Zhu, H., Stadler, G., Hughes, T. J., and Ghattas, O.: An inexact Gauss-Newton method for inversion of basal sliding and rheology parameters in a nonlinear Stokes ice sheet model, *Journal of Glaciology*, 58, 889–903, 2012.
- Raymond, M. J. and Gudmundsson, H.: Estimating basal properties of ice streams from surface measurements: a non-linear Bayesian inverse approach applied to synthetic data, *The Cryosphere*, 3, 265–278, 2009.
- Rignot, E., Mouginot, J., Scheuchl, B., van den Broeke, M., van Wessem, M. J., and Morlighem, M.: Four decades of Antarctic Ice Sheet mass balance from 1979–2017, *Proceedings of the National Academy of Sciences*, 116, 1095–1103, 2019.
- 760 Scambos, T. A., Bell, R. E., Alley, R. B., Anandakrishnan, S., Bromwich, D., Brunt, K., Christianson, K., Creyts, T., Das, S., DeConto, R., et al.: How much, how fast?: A science review and outlook for research on the instability of Antarctica’s Thwaites Glacier in the 21st century, *Global and Planetary Change*, 153, 16–34, 2017.
- Seroussi, H., Morlighem, M., Larour, E., Rignot, E., and Khazendar, A.: Hydrostatic grounding line parameterization in ice sheet models, *The Cryosphere*, 8, 2075–2087, 2014.
- 765 Seroussi, H., Nowicki, S., Simon, E., Abe-Ouchi, A., Albrecht, T., Brondex, J., Cornford, S., Dumas, C., Gillet-Chaulet, F., Goelzer, H., Golledge, N. R., Gregory, J. M., Greve, R., Hoffman, M. J., Humbert, A., Huybrechts, P., Kleiner, T., Larour, E., Leguy, G., Lipscomb, W. H., Lowry, D., Mengel, M., Morlighem, M., Pattyn, F., Payne, A. J., Pollard, D., Price, S. F., Quiquet, A., Reerink, T. J., Reese, R., Rodehacke, C. B., Schlegel, N.-J., Shepherd, A., Sun, S., Sutter, J., Van Breedam, J., van de Wal, R. S. W., Winkelmann, R., and Zhang, T.: initMIP-Antarctica: an ice sheet model initialization experiment of ISMIP6, *The Cryosphere*, 13, 1441–1471, <https://doi.org/10.5194/tc-13-1441-2019>, <https://www.the-cryosphere.net/13/1441/2019/>, 2019.
- 770 Shepherd, A., Ivins, E., Rignot, E., Smith, B., Van Den Broeke, M., Velicogna, I., Whitehouse, P., Briggs, K., Joughin, I., Krinner, G., et al.: Mass balance of the Antarctic Ice Sheet from 1992 to 2017, *Nature*, 558, 219–222, 2018.

- 775 Sutterley, T. C., Velicogna, I., Rignot, E., Mouginot, J., Flament, T., Van Den Broeke, M. R., Van Wessem, J. M., and Reijmer, C. H.:
 Mass loss of the Amundsen Sea Embayment of West Antarctica from four independent techniques, *Geophysical Research Letters*, 41,
8421–8428, 2014.
- Thorsteinsson, T., Raymond, C. F., Gudmundsson, G. H., Bindshadler, R. A., Vornberger, P., and Joughin, I.: Bed topography and lubrication
inferred from surface measurements on fast-flowing ice streams, *Journal of Glaciology*, 49, 481–490, 2003.
- Van Liefferinge, B. and Pattyn, F.: Using ice-flow models to evaluate potential sites of million year-old ice in Antarctica., *Climate of the Past*
780 *Discussions*, 9, 2013.
-  Vieli, A. and Payne, A. J.: Application of control methods for modelling the flow of Pine Island Glacier, West Antarctica, *Annals of Glaciol-*
ogy, 36, 197–204, 2003.
- Weertman, J.: On the sliding of glaciers, *Journal of glaciology*, 3, 33–38, 1957.
- Yu, H., Rignot, E., Seroussi, H., and Morlighem, M.: Retreat of Thwaites Glacier, West Antarctica, over the next 100 years using various ice
785 flow models, ice shelf melt scenarios and basal friction laws, *The Cryosphere*, 12, 3861–3876, 2018.
-  Zhao, C., Gladstone, R. M., Warner, R. C., King, M. A., Zwinger, T., and Morlighem, M.: Basal friction of Fleming Glacier, Antarctica–Part
I: Sensitivity of inversion to temperature and bedrock uncertainty, *The Cryosphere*, 12, 2637–2652, 2018.
- Zhdanov, M. S.: *Inverse theory and applications in geophysics*, vol. 36, Elsevier, 2015.