

Mapping potential signs of gas emissions in ice of Lake Neyto, Yamal, Russia using synthetic aperture radar and multispectral remote sensing data

Georg Pointner^{1,2,3}, Annett Bartsch^{1,2,3}, Yury A. Dvornikov⁴, and Alexei V. Kouraev^{5,6}

¹b.geos, Korneuburg, Austria

²Austrian Polar Research Institute, Vienna, Austria

³Paris Lodron University of Salzburg, Department of Geoinformatics – Z_GIS, DK GIScience, Salzburg, Austria

⁴Agrarian-Technological Institute, Peoples' Friendship University of Russia, Moscow, Russia

⁵LEGOS, Université de Toulouse, CNES, CNRS, IRD, UPS Toulouse, France

⁶Tomsk State University, Tomsk, Russia

Correspondence: Georg Pointner (georg.pointner@bgeos.com)

Abstract. Regions of anomalously low backscatter in C-band Synthetic Aperture Radar (SAR) imagery of lake ice of Lake Neyto in northwestern Siberia have been suggested to be caused by emissions of gas (methane from hydrocarbon reservoirs) through the lake's sediments. However, to assess this connection, only analyses of data from boreholes in the vicinity of Lake Neyto and visual comparisons to medium-resolution optical imagery have been provided due to a lack of in situ observations of the lake ice itself. These observations are impeded due to accessibility and safety issues. Geospatial analyses and innovative combinations of satellite data sources are therefore proposed to advance our understanding of this phenomenon. In this study, we assess the nature of the backscatter anomalies in Sentinel-1 C-band SAR images in combination with Very High Resolution (VHR) WorldView-2 optical imagery. We present methods to automatically map backscatter anomaly regions from the C-band SAR data (40 m pixel-spacing) and holes in lake ice from the VHR data (0.5 m pixel-spacing), and examine their spatial relationships. The reliability of the SAR method is evaluated through comparison between different acquisition modes. The results show that the majority of mapped holes (71%) in the VHR data are clearly related to anomalies in SAR imagery acquired a few days earlier and similarities to SAR imagery acquired more than a month before are evident, supporting the hypothesis that anomalies may be related to gas emissions. Further, a significant expansion of backscatter anomaly regions in spring is documented and quantified in all analysed years 2015 to 2019. Our study suggests that the backscatter anomalies might be caused by lake ice subsidence and consequent flooding through the holes over the ice top leading to wetting and/or slushing of the snow around the holes, which might also explain outcomes of polarimetric analyses of auxiliary L-band ALOS PALSAR-2 data. C-band SAR data are considered to be valuable for the identification of lakes showing similar phenomena across larger areas in the Arctic in future studies.

1 Introduction

20 Lakes and ponds are common features of the Arctic continuous permafrost zone and play an important role in the carbon cycle (e.g. Walter Anthony et al., 2012; Wik et al., 2016). Methane (CH_4) is a powerful greenhouse gas and the global trend of its atmospheric concentration has shown significant changes over the last decades. The concentration increased significantly until 1998 and since 2007 until today, while between 1999 and 2006, it remained nearly constant (Nisbet et al., 2014). To date, the factors and dominant sources of emissions driving these changes are not fully understood (e.g. Nisbet et al., 2019; Schwietzke et al., 2016). CH_4 produced by microorganisms in the sediments of Arctic lakes can escape to the atmosphere through upward bubbling (ebullition) in the water column and contributes significantly to the total global methane emissions (e.g. Bastviken et al., 2011, 2004). In addition to that, geologic methane accumulated in sub-surface hydrocarbon reservoirs, previously sealed by permafrost or glaciers that act as a cryosphere cap, can also seep to the atmosphere through lake sediments and the water column in case of open taliks under big lakes and rivers in the continuous permafrost zone, or in regions of glacial retreat (Walter Anthony et al., 2012).

Global climate models may currently underestimate carbon emissions from permafrost environments significantly and cannot account for methane ebullition from geological lake seeps (Turetsky et al., 2020). Gas emission related phenomena can pose serious threats to humans, e.g. people working in the gas industry or local indigenous people. The Yamal-Nenets are reindeer herders that travel across the Yamal Peninsula in Western Siberia and frequently cross frozen lakes in winter. Patches of thin ice, caused by emissions of natural gas, may be present on some of these lakes (e.g. Bogoyavlensky et al., 2016, 2019a). In June 2017, a powerful explosion from a gas-inflated mound that formed under a riverbed near Seyakha on the Yamal Peninsula has been documented by Bogoyavlensky et al. (2019c), scattering debris over a radius of a few hundred metres. Understanding where different forms of gas release happen may be favourable for identifying areas of increased risk for humans.

Walter Anthony et al. (2012) uses two main terms for types of methane seeps in lake sediments: Superficial seeps and subcap seeps. The former refers to seepage of ecosystem methane that is continuously formed and released without storage over geological timescales. Subcap seeps are in contrast characterised by the release of ^{14}C -depleted methane that has been previously sealed by the cryosphere cap. Possible origins of subcap methane are microbial, thermogenic or mixed microbial-thermogenic processes within sedimentary basins, including conventional natural gas reservoirs, coal beds, buried organics associated with glacial sequences, and potentially methane hydrates. Walter Anthony et al. (2012) identified locations of subcap and strong superficial seeps during aerial and ground surveys in Alaska and Greenland as open holes (so-called hotspots) in winter lake ice. Among other factors, flux rates and sizes of the holes in lake ice were used by them to distinguish superficial seeps from subcap seeps. Subcap methane flux rates are significantly higher than those of superficial seeps and the areas of open holes were reported to be significantly larger for subcap seeps (up to 300 m^2) when compared to superficial seeps ($0.01\text{--}0.3 \text{ m}^2$). They identified more than 150 000 holes in lake ice associated with subcap seeps along boundaries of permafrost thaw and glacial retreat in Alaska and Greenland.

Similar holes or zones of very thin ice in spring lake ice attributed to subcap gas emissions have been described for lakes on the Yamal Peninsula in Northwestern Siberia, Russia by Bogoyavlensky et al. (2019a, 2016). Numerous crater-like depressions

on the bottom of a large number of lakes have also been identified and attributed to gas emissions (Bogoyavlensky et al., 2019a, b, c, 2016). However, Dvornikov et al. (2019) provide alternative explanations for the origin of these crater-like depressions, such as the degradation of tabular ground ice or the existence of former river valleys in case of channel-like depressions and suggest that multiple origins are plausible.

The Yamal Peninsula is known for its abundant gas reserves stored in numerous gas fields scattered all over the Peninsula (e.g. Bogoyavlensky et al., 2019b) and other phenomena associated with the release of pressurised gas, such as a number of gas emission craters (GECs) that were discovered and described in recent years (e.g. Bogoyavlensky et al., 2016; Dvornikov et al., 2019; Kizyakov et al., 2020, 2017; Leibman et al., 2014). Many studies concerning mapping and characterising superficial seeps in lake ice are available for Alaskan and Swedish lakes (e.g. Lindgren et al., 2019, 2016; Walter et al., 2006; Wik et al., 2011). Apart from the study by Walter Anthony et al. (2012) mentioned above, recent studies concerning signs of subcap seepage in lake ice by Bogoyavlensky et al. (2019a, 2018, 2016) have focused on lakes on the Yamal Peninsula.

Promising in this context are space-borne synthetic aperture radar (SAR) data. SAR has proven to be very useful for the monitoring of lake ice phenology (e.g. Duguay and Pietroniro, 2005; Surdu et al., 2015). Several studies have successfully used SAR data to distinguish between ground-fast (ice that froze to the lakebed) and floating lake ice (e.g. Bartsch et al., 2017; Duguay and Lafleur, 2003; Engram et al., 2018; Grunblatt and Atwood, 2014; Surdu et al., 2014). In C-band SAR images, low backscatter is observed from ground-fast lake ice and high backscatter is usually observed from floating lake ice (Duguay and Pietroniro, 2005). The magnitude of the reported differences between backscatter from ground-fast and floating lake ice varies across studies and depends on radar frequency, polarisation, incidence angle and geographic region (Antonova et al., 2016). Lake ice is nearly transparent for the radar signal. Low radar return is observed from ground-fast lake ice due to low dielectric contrast between ice and the lake sediments (Duguay et al., 2002). On the other hand, strong reflection of the radar signal occurs at the ice-water interface of floating lake ice because of high dielectric contrast between ice and liquid water (Duguay et al., 2002; Engram et al., 2013). The dielectric contrast is determined by differences in the complex-valued relative permittivity ϵ , that in general depends on the radar frequency and temperature. The real part ϵ' of ice is approximately 3.17 and nearly independent of radar frequency and temperature (Mätzler and Wegmüller, 1987). The imaginary part ϵ'' is below 10^{-3} for pure and impure freshwater ice at C- and L-band frequencies (Mätzler and Wegmüller, 1987). Meissner and Wentz (2004) provide a detailed list of ϵ of water at various frequencies and temperatures. At 1.7 GHz and 25 °C, ϵ' is 78 and ϵ'' is 6. At 5.35 GHz and 25 °C, ϵ' is 73 and ϵ'' is 19. At 5 GHz and -4 °C, ϵ' is 65 and ϵ'' is 38. ϵ of frozen soil largely depends on the temperature, and water, clay, silt and sand content (Zhang et al., 2003). At 10 GHz, ϵ' ranges approximately from 3.2 to 8, ϵ'' from 0.1 to 2 (Hoekstra and Delaney, 1974). Little sensitivity of ϵ of frozen soil to the radar frequency between 1.4 and 10.6 GHz is suggested by estimates in Zhang et al. (2003). The reported values were chosen since they were most representative for the SAR data (C- and L-band) used in this study. The dominant mechanism for high backscatter from floating lake ice observed by SAR sensors has long been described to be double-bounce scattering from the ice-water interface and columnar bubbles trapped within the ice (e.g. Duguay et al., 2002; Jeffries et al., 1994; Wakabayashi et al., 1993). More recent studies, however, provide strong evidence that the dominant mechanism is direct backscattering from a rough ice-water interface (Atwood et al., 2015; Engram et al., 2020, 2013; Gunn et al., 2018). Engram et al. (2020) showed a significant correlation between whole lake

methane emissions and whole lake L-band backscatter from ice-covered Alaskan lakes in case of superficial seeps (see Sect. 6 for details).

90 For Lake Neyto on the Yamal Peninsula, regions characterised by low C-band backscatter that very likely belong to the floating ice regime have been identified (Bogoyavlensky et al., 2018; Pointner et al., 2019). Based on the analysis of data of boreholes in the vicinity of Lake Neyto, Bogoyavlensky et al. (2018) described a gas field that stretches out under Lake Neyto. They showed Sentinel-1 scenes acquired in different years, compared them visually to optical Sentinel-2 scenes and suggested that backscatter anomalies are related to zones of very thin or no ice which resulted from gas bubble inclusions within the ice. 95 Pointner et al. (2019) also suggested that the regions of low backscatter may be a result of up-welling gas released through the sediments, which might lead to local thinning of the ice or that eddies might cause a local thinning of the ice layer, similar to the cause of ice rings on Lakes Baikal, Hovsgol and Teletskoye reported by Kouraev et al. (2019, 2016).

In this study, we demonstrate a connection between potential signs of gas emissions in SAR and optical very high resolution (VHR) imagery of Lake Neyto for the first time. We provide a direct link between the locations of clusters of low backscatter from Sentinel-1 SAR data and potential seep sites that we could identify as open holes in lake ice in a single VHR WorldView- 2 image. Similar holes in VHR imagery were described and shown in detail for Lake Otkrytie, located approximately 60 km to the east of Lake Neyto by Bogoyavlensky et al. (2019a). We present methods to map the backscatter anomalies from Sentinel-1 SAR imagery and the holes from WorldView-2 data with state-of-the-art image processing techniques and compare their locations spatially. Further, we provide time series of classified area of anomalies, quantify the expansion over time and 105 discuss the use of other remote sensing data that could help to advance the understanding of the mechanisms involved. In this regard, investigations of ALOS PALSAR-2 fully polarised L-band SAR data were carried out, which could reveal the dominant scattering mechanisms of backscatter from anomaly regions and regular floating lake ice.

2 Study Site

Lake Neyto (other title: Neyto-Malto), 70.073 °N, 70.350 °E, is located in the central part of the Yamal Peninsula, ca. 80 km 110 away from the closest settlement Seyakha and about 80 km away from the Bovanenkovo gas field. The lake has the second largest area (214 km²) in Yamal after Yaroto-1 Lake. The length of the shoreline is about 60 km and the lake measures approximately 17.8 km in the south – north direction and 16.5 km from west to east. The lake is relatively shallow, reaching 17 m at the north-west corner, but the average depth does not exceed 3 m, which results in a significant mixing of water masses during summer (Edelstein et al., 2017). Wide shelf areas up to 800 m can be found within the lake, whereas at the deepest part, 115 several depressions with diameters up to 500-800 m are documented (Edelstein et al., 2017). Lake shores are mostly cliffs up to 25 m high, sometimes with tabular ground ice exposures. The ground temperature at 2 m depth in the surroundings of the lake is approximately -1.5 °C (Obu et al., 2020). Snow depth (liquid water equivalent) from ERA5 reanalysis data generally increases gradually in winter and spring until melt-onset and typically ranged between 15 cm and 20 cm at its maximum in recent years (Hersbach et al., 2018).

120 Figure 1 shows the location of Lake Neyto in the Arctic and a comparison between Sentinel-1 Extra Wide Swath (EW) horizontal-horizontal (HH) polarised imagery, a Sentinel-2 true-color composite and a subset of a WorldView-2 true-color composite for Lake Neyto in May 2016, where all images were acquired within six days. The mentioned anomalies of low backscatter surrounded by regions of much higher backscatter in regions of assumed floating lake ice (based on the bathymetric map of Lake Neyto by Edelstein et al. (2017) and expectable maximum ice thickness of 1.5 to 2 m for lakes on Yamal
125 (Bogoyavlensky et al., 2018)) can be seen in Fig. 1 (b). Figure 1 (c) shows a Sentinel-2 image acquired five days later. Strong similarities to the Sentinel-1 image can be identified easily. Locations of clusters of low backscatter in the SAR imagery apparently resemble regions where the snow has melted earlier than in other regions in the optical image. Figure 1 (d) shows a detail (marked by the red rectangle in Fig. 1 (b) and (c)) of a WorldView-2 acquisition taken one day after the Sentinel-2 acquisition. Dark spots on white regions are visible that we interpret as open holes surrounded by regions of bright ice,
130 slush or snow. A similarity to open holes in ice associated with gas emissions described by Bogoyavlensky et al. (2019a) and Walter Anthony et al. (2012) is apparent and such holes can be found over wider regions of Lake Neyto in the WorldView-2 image.

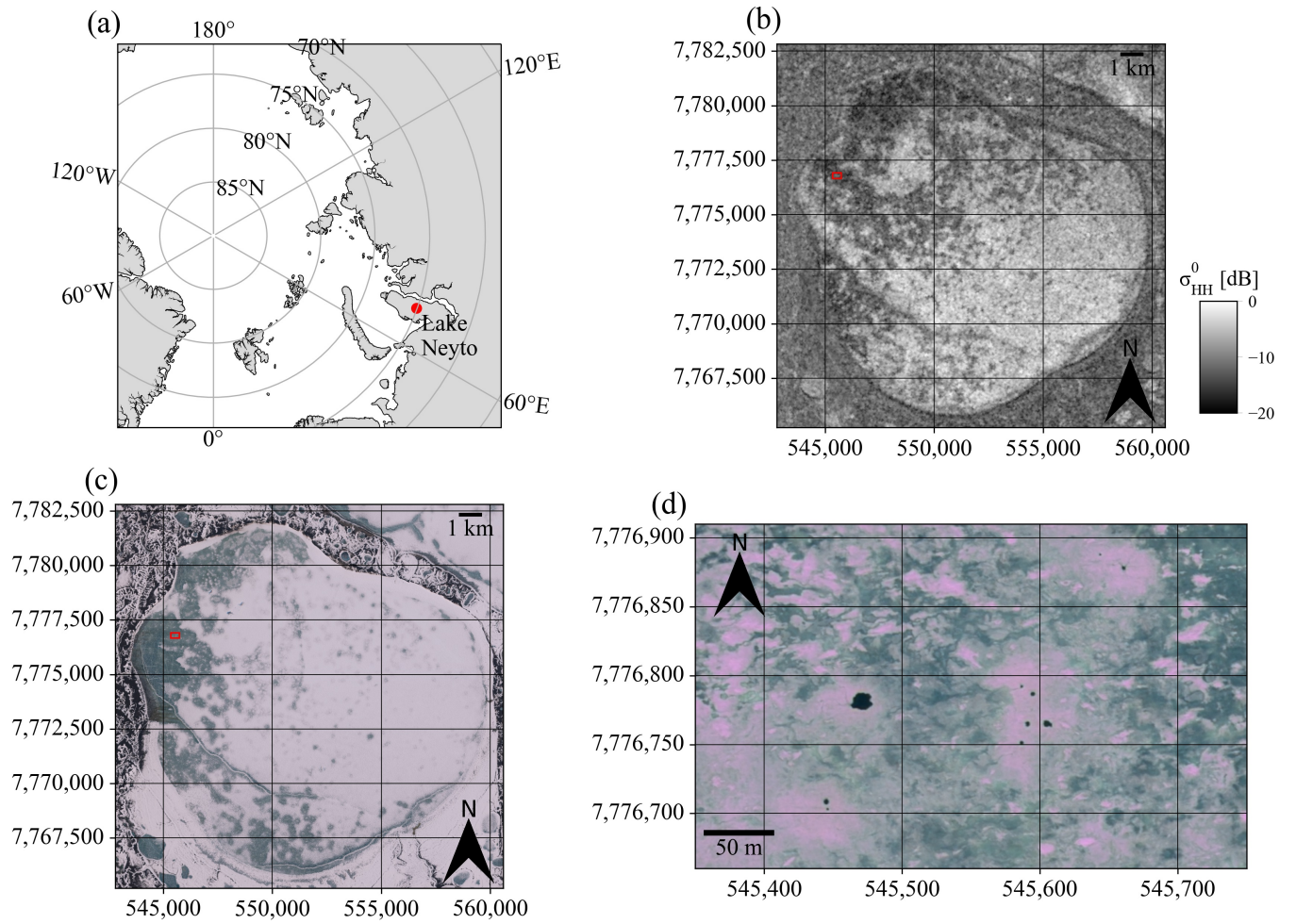


Figure 1. Location of Lake Neyto and visual comparison of potential signs of gas emissions in satellite data. (a) Location of Lake Neyto in the Arctic, (b) Backscatter anomalies are visible as clusters of low backscatter surrounded by regions of much higher backscatter in a Sentinel-1 EW HH-polarised acquisition from 16 May 2016, (c) Regions where snow seems to have melted earlier that appear similar to the regions of backscatter anomalies in the Sentinel-1 image can be seen in a Sentinel-2 true-color composite from 21 May 2016, (d) Zoomed view of a Worldview-2 true-color composite from 22 May 2016, where holes in the ice are visible as dark spots surrounded by very bright ice. The red rectangle in (b) and (c) indicates the region of the zoomed view in (d). Coordinate Reference System (CRS): (a) Polar Stereographic/WGS84, (b)-(d) UTM Zone 42N/WGS84.

3 Data

3.1 Sentinel-1 synthetic aperture radar data

135 The two polar-orbiting satellites Sentinel-1A and Sentinel-1B are part of the European Union's (EU) Copernicus program. They were launched into orbit in April 2014 and in April 2016. The identical SAR sensor on both satellites, called C-SAR,

can be operated in different acquisition and polarisation modes at a centre frequency of 5.405 GHz. The acquisition modes differ from each other in terms of spatial resolution and swath width. Data can be acquired either in single co-polarised or dual co-polarised plus cross-polarised channels (European Space Agency, 2012).

140 The default operating mode over land is the Interferometric Wide Swath mode (IW) with vertical-vertical (VV) and vertical-horizontal (VH) dual-polarised acquisitions (European Space Agency, 2012). However, acquisitions over Lake Neyto are most frequently taken in Extra Wide Swath mode (EW) with horizontal-horizontal (HH) and horizontal-vertical (HV) dual polarisation. EW data are acquired at larger swath widths compared to IW data, but IW data has finer spatial resolution than EW data. Commonly used pixel-spacing after the pre-processing steps is 40 m in EW mode and 10 m in IW mode. The number of EW
 145 acquisitions over Lake Neyto is significantly larger (Pointner and Bartsch, 2020) and no acquisitions in IW mode were taken in 2016. Hence, the primary SAR data for our analyses were Sentinel-1 EW data with both, HH and HV polarisation channels. Table 1 shows the years of data, and the number of Sentinel-1 EW images and the average temporal gap between the image acquisitions in the years concerned.

Table 1. Years of Sentinel-1 EW data and associated numbers of images and average temporal gaps.

Year	Number of images	Average temporal gap
2015	29	4d 7h
2016	88	1d 13h
2017	112	1d 7h
2018	52	2d 23h
2019	41	3d 14h

We used IW data for validation purposes and visual comparisons. A validation was carried out that compared classified
 150 anomalies from EW images and IW images that were acquired on consecutive dates (for details see Sect. 4.3). The local acquisition dates and times (LT) of these validation data are shown in Table 2.

Table 2. Local acquisition dates and times of pairs of Sentinel-1 EW and IW scenes used for validation.

S1 EW local acquisition date and time	S1 IW local acquisition date and time
22 May 2017, 07:02:36 LT	23 May 2017, 06:53:47 LT
29 January 2018, 07:02:39 LT	30 January 2018, 06:53:51 LT
10 February 2018, 07:02:39 LT	11 February 2018, 06:53:51 LT
24 February 2018, 06:46:13 LT	23 February 2018, 06:53:51 LT
6 March 2018, 07:02:39 LT	7 March 2018, 06:53:51 LT
30 March 2018, 07:02:40 LT	31 March 2018, 06:53:51 LT
23 April 2018, 07:02:40 LT	24 April 2018, 06:53:52 LT
19 May 2018, 06:46:16 LT	18 May 2018, 06:53:53 LT
31 May 2018, 06:46:16 LT	30 May 2018, 06:53:54 LT
24 May 2019, 07:02:48 LT	25 May 2019, 06:54:00 LT

Lists of the used scenes including the mean projected local incidence angle over the lake, acquisition times in local time and Universal Time Coordinated (UTC) and an indicator showing if the scenes were assembled due to slicing (see Sect. 4.1.1)) are provided in the Supplement (S1-S4) to this article in ".csv"-format. "S1__scene_metadata_list_Sentinel1_EW_main.csv" contains a list of the main Sentinel-1 EW data (342 scenes) used in this study. "S2__scene_metadata_list_Sentinel1_EW_lake_masks.csv" and "S3__scene_metadata_list_Sentinel1_EW_shelf_masks.csv" contain lists of the Sentinel-1 EW data used for calculating lake masks (5 scenes) and shelf masks (5 scenes), respectively (see Sect. 4.2.1 for details). "S4__scene_metadata_list_Sentinel1_IW.csv" contains a list of all Sentinel-1 IW data used for the validation (10 scenes). "S5__scene_metadata_list_other_sensors.csv" contains a similar list for the other satellite data (4 scenes in total) used in this study, which are described in the following paragraphs.

3.2 WorldView-2 very high resolution optical data

The WorldView-2 satellite was launched in October 2009 and is operated by Maxar Technologies (formerly DigitalGlobe). It was the first commercial satellite to collect data at very high spatial resolution in 8 spectral bands. WorldView-2 data include a panchromatic band covering the wavelength range from 450 to 800 nm. The spatial resolution is 1.84 m for the multispectral bands and 0.46 m for the panchromatic band (Padwick et al., 2010). 100 km² of orthorectified WorldView-2 imagery (8 multispectral bands plus one panchromatic band) from 22 May 2016 covering approximately half of the surface area of Lake Neyto were available for this study.

3.3 ALOS PALSAR-2 fully polarised SAR data

The Phased Array L-band Synthetic Aperture Radar-2 (PALSAR-2) sensor on-board the Advanced Land Observing Satellite-2 (ALOS-2) is the successor of the PALSAR instrument on ALOS and operates at slightly varying centre frequencies between

1.237 GHz and 1.279 GHz (Kankaku et al., 2013). ALOS-2 was launched in May 2014 and is operated by the Japan Aerospace Exploration Agency (JAXA). Similar to Sentinel-1, PALSAR-2 can be operated in different imaging modes with varying ground resolutions and swath widths, but is able to acquire data in single (HH, HV, VH, or VV), dual (HH+HV or VV+VH) and full polarisation (HH+HV+VH+VV) modes (Kankaku et al., 2013). In this study, we used an ALOS PALSAR-2 High-
175 Sensitive Stripmap mode fully (quad) polarised scene from 18 April 2015, which was acquired at a swath width of 50 km and a ground resolution of approximately 6 m (Kankaku et al., 2013) for polarimetric analyses to infer possible scattering mechanisms for anomaly regions and regular floating lake ice.

3.4 Sentinel-2 medium resolution optical data

Sentinel-2A and Sentinel-2B are also part of the EU's Copernicus program and were launched into orbit in June 2015 and
180 March 2017, respectively. The two satellites carry an identical multispectral instrument which acquires data in 12 spectral bands in the optical, near infrared and short wave infrared (Drusch et al., 2012). The spatial resolution varies between bands and is 10, 20 or 60 m. The red, green and blue bands have a spatial resolution of 10 m. In this study, Sentinel-2 true-color composites based on the 10 m resolution bands were used for visual interpretations.

3.5 Landsat 8 brightness temperature and surface reflectance

185 Landsat 8 is the latest satellite of the Landsat satellite series that have been continuously providing multispectral data of the earth's land surface since 1972. Landsat 8 was launched in February 2013 and carries the Operational Land Imager (OLI) and the Thermal Infrared Sensor (TIRS) instruments. OLI acquires data in 8 spectral bands in the optical, near infrared and short wave infrared at 30 m spatial resolution and in one panchromatic band at 15 m spatial resolution (Roy et al., 2014). TIRS collects data in two spectral bands in the thermal infrared at 100 m spatial resolution (Roy et al., 2014). We used a true-color
190 composite of surface reflectance and the band 10 brightness temperature of a Landsat 8 scene of Lake Neyto acquired on 6 April 2015 for visual comparisons to the SAR data.

3.6 ERA5 2 m air temperature

ERA5 is the fifth generation of European Centre for Medium-Range Weather Forecasts (ECMWF) global climate and weather reanalysis. Reanalysis uses combined model data and observations on a global scale to derive a complete and consistent dataset
195 (Hersbach et al., 2018). The ERA5 hourly data on single levels from 1979 to present product contains hourly estimates for a variety of atmospheric, ocean-wave and land-surface parameters on a regular latitude-longitude grid of 0.25° (Hersbach et al., 2018). In this study, we used the "2m temperature" variable, which represents near-surface air temperature, for a comparison to the temporal dynamics of the backscatter anomalies. The "2m temperature" data for the nearest grid point to Lake Neyto (70°N, 70.25°E) were therefore aggregated to daily minima and maxima using the `cdstoolbox.geo.extract_point`, and `cdstool-`
200 `box.climate.daily_min` and `cdstoolbox.climate.daily_max` methods of the Python Application Programming Interface (API)

of the Copernicus Climate Change Service (C3S) Climate Data Store (CDS). The data was subsequently downloaded and converted to °C.

4 Methods

4.1 Pre-processing of satellite data

205 4.1.1 Pre-processing of Sentinel-1 SAR data

The majority of pre-processing steps for Sentinel-1 EW and IW data was conducted with the graph processing tool (gpt) of the Sentinels Application Platform (SNAP) toolbox (Zuhlke et al., 2015). Some products have been sliced directly over the lake. In these cases, the slice-assembly operator was applied to those products in gpt as the first processing step. Products to which this operator was applied are indicated in the supplementary tables S1-S4. In the following, the applied operators within gpt
210 were sub-setting, radiometric calibration, thermal noise removal and terrain correction using the ArcticDEM digital elevation model version 3.0 (Porter et al., 2018). The well-known-text (WKT) representation of the subset extent in World Geodetic System 84 (WGS84) geographical coordinates is: POLYGON ((69.2277 69.7650, 70.9744 69.7650, 70.9744 70.3610, 69.2277 70.3610, 69.2277 69.7650, 69.2277 69.7650)). After these steps, the data was converted to decibels (dB) and incidence angle normalisation was performed. The incidence angle normalisation methodology used here is described in Pointner et al. (2019)
215 and uses empirically derived normalisation functions in the form of second degree polynomials to normalise backscatter in dB to a common reference incidence angle of 30°. The normalisation function can be written as

$$\sigma_{norm}^0(\theta) [dB] = a * \theta^2 + b * \theta + c \tag{1}$$

where $\sigma_{norm}^0(\theta)$ is the normalisation function, θ is the local projected incidence angle, and a, b and c are the polynomial coefficients. The polynomial coefficients in Eq. (1) used for the incidence angle normalisation with respect to the sensor mode
220 and polarisation are given in Table 3.

Table 3. Polynomial coefficients used for the incidence angle normalisation with respect to sensor mode and polarisation.

	a	b	c
EW HH	0.0067	-0.6784	1.7417
EW HV	0.0026	-0.3976	-16.2692
IW VV	0.0123	-1.1955	12.2970
IW VH	0.0148	-1.4496	10.1781

Based on these coefficients, the final normalisation to the reference incidence angle of 30° was applied using (Pointner et al., 2019):

$$\sigma^0(30) = \sigma^0(\theta) - (\sigma_{norm}^0(\theta) - \sigma_{norm}^0(30)) \tag{2}$$

where $\sigma^0(30)$ is the backscatter coefficient normalised to 30° , $\sigma^0(\theta)$ is the backscatter coefficient before normalisation, $\sigma_{norm}^0(\theta)$ is the value of the normalisation function at the incidence angle concerned and $\sigma_{norm}^0(30)$ is the value of the normalisation function at 30° .

All steps were applied to both polarisation channels (HH and HV for EW mode, VV and VH for IW mode). Outputs were images of normalised backscatter coefficient σ^0 .

4.1.2 Pre-processing of optical imagery

We calibrated the WorldView-2 data from 22 May 2016 to top-of-atmosphere (TOA) reflectance following the methodology given by Updike and Comp (2010) and applied pan-sharpening from the Geospatial Data Abstraction Library (GDAL) command line utilities (version 2.2.4) which is based on the Brovey method (GDAL/OGR contributors, 2020) using all available bands.

Sentinel-2 data were downloaded in level 1C (L1C) format and directly used for visual comparisons.

4.1.3 Polarimetric processing of ALOS PALSAR-2 fully polarised SAR data

From the fully polarised ALOS PALSAR-2 High-Sensitive Stripmap mode data acquired on 18 April 2015, we deduced two polarimetric products in order to infer scattering properties of regular floating lake ice and anomaly regions. Firstly, we calculated the coherency matrix T_3 (Lee and Pottier, 2009), of which the first element T_{11} has been shown to relate to surface scattering and correlate with area of gas bubbles trapped in lake ice and methane flux estimates of ice-covered lakes in Alaska (Engram et al., 2020, 2013). The calculations were performed in SNAP and the processing steps were radiometric calibration, calculation of T_3 (Lee and Pottier, 2009), polarimetric speckle filtering using the Refined Lee Filter (Lee et al., 2008), terrain-correction using the ArcticDEM and spatial subsetting. Secondly, we performed an unsupervised polarimetric classification using the method proposed by Cloude and Pottier (1997), which can allow for a detailed identification of scattering mechanisms. In comparison with the calculation of T_3 , the workflow was essentially the same, with the only difference that between the polarimetric speckle filtering and terrain correction steps, the polarimetric classification was computed. The classification itself consists of two main steps. The first step is the polarimetric decomposition and extraction of entropy (H) and alpha (α) parameters (Cloude and Pottier, 1997; Lee and Pottier, 2009) and the second step is the classification based on 9 discrete regions in the H/ α -plane (Cloude and Pottier, 1997). Each of these regions indicates the dominant scattering mechanism in the resolution cell concerned (Cloude and Pottier, 1997). The output pixel values from SNAP did not correspond to the zone designations in Cloude and Pottier (1997) and Lee and Pottier (2009). I.e. regions in the H/ α -plane were labeled by different numbers compared between the SNAP documentation, and Cloude and Pottier (1997) and Lee and Pottier (2009). Thus, we reclassified the output to match the designations of Cloude and Pottier (1997) and Lee and Pottier (2009).

4.2 Classification and detection methods

4.2.1 Classification of backscatter anomalies from Sentinel-1 data

255 The method to classify backscatter anomalies (clusters of unusually low backscatter) in Sentinel-1 SAR images was briefly outlined in Pointner and Bartsch (2020), but is given here in greater detail. The input for the classification algorithm are pre-processed Sentinel-1 images of σ^0 in dB after incidence angle normalisation. All steps described in the following were identically performed on both polarisation channels. The most important software packages used for the classification were the Python packages scikit-image (skimage) version 0.15.0 (van der Walt et al., 2014), GDAL version 2.2.4 (GDAL/OGR contributors, 2020), scipy version 1.1.0 (Virtanen et al., 2020) and numpy version 1.15.1 (Harris et al., 2020).

As a first step, areas outside the lake and the shelf area of the lake, where ground-fast ice is assumed were masked. We deduced lake masks from late autumn Sentinel-1 EW imagery and shelf masks from winter Sentinel-1 EW imagery through binary classification for each year separately. For the extraction of the lake masks, we used Otsu-thresholding (Otsu, 1979) on the HH-polarisation band (σ^0 in dB) implemented in scikit-image (skimage.filters.threshold_otsu, default parameters) of the late autumn acquisitions. Here, no incidence angle normalisation was applied, as the incidence angle range over the lake was small and the backscatter values were only used to create the masks and were not compared to those of other acquisitions. After thresholding, we used the method scipy.ndimage.morphology.binary_fill_holes (default parameters) to fill holes in the classification result, polygonised the result using gdal_polygonize.py (default parameters) and extracted the polygon of Lake Neyto. Images used for the classification were cropped to the extent of the lake masks. For the shelf masks, we selected the latest date where clusters of low backscatter pixels on assumed floating ice were not spatially connected to the shelf zone, where ground-fast lake ice was assumed. The shelf masks were computed through a binary classification on the HH-polarisation band using incidence-angle dependent thresholding as described by Pointner et al. (2019) and extraction of all areas that were classified as ground-fast lake ice and connected to the lake outline. Additionally, binary dilation (skimage.morphology.dilation with selem=skimage.morphology.disk(3), otherwise default parameters) was applied to this shelf mask to exclude areas that may be affected by late grounding of the lake ice in late winter or spring from the classification.

After masking, pixel values were re-scaled from dB to the interval from -1 to 1 using skimage.exposure.rescale_intensity (out_range=(-1,1), in_range=(-40,0) in case of co-polarisation, in_range=(-50,-10) in case of cross-polarisation), as required by the image processing algorithms applied in the following. The main image processing steps were bilateral filtering to reduce noise in the images, local auto-leveling to balance out the unevenly distributed backscatter level across the lake and Yen-thresholding (Yen et al., 1995) to automatically classify the images into the two categories for floating lake ice "low backscatter anomalies" (positive class) and "high backscatter from regular floating lake ice" (negative class).

For the bilateral filtering, we used skimage.filters.rank.mean_bilateral (selem=skimage.morphology.square(5), s0=20 in case of EW, s0=150 in case of IW, s1=150 in both cases). For the local auto-leveling, we defined specific kernels as numpy arrays. In case of EW data, numpy.ones([51,int(image.shape[1]/4)]) was used. In case of IW data, numpy.ones([204,int(image.shape[1]/4)]) was used. Here, the shape of the image (image.shape) had been defined by the cropping of the pre-processed images by the lake masks. These kernels were then rotated using scipy.ndimage.interpolation.rotate (angle=45, otherwise default parameters) by

45 degrees, as the largest backscatter gradient seemed often occur from Northwest to Southeast of the lake in many images. The local auto-leveling itself was then performed using `skimage.filters.rank.autolevel_percentile` (with the defined kernel and $p_0=0$, $p_1=1$). Although using 0 and 1 as percentiles, we encountered a different behavior of this method regarding the treatment of the
290 no-data mask when compared to the method `skimage.filters.rank.autolevel` and thus `skimage.filters.rank.autolevel_percentile` was preferred. Yen-thresholding was in the following applied to the imagery using `skimage.filters.threshold_yen` with default parameters.

The output of these steps were two classified binary images: One for the co-polarised channel (HH in EW mode, VV in IW mode) and one for the cross-polarised channel (HV in EW mode, VH in IW mode), respectively. The bilateral mean filter was
295 chosen to handle noise with the aim of binary classification in mind, as opposed to a conventional speckle filter.

We applied a logical AND (`numpy.logical_and`, default parameters) on these two images to keep only pixels that belong to the class of backscatter anomalies in the outcome of both polarisation channels. Since we had no in situ data available (see Sect. 4.3), we tried to use conservative settings wherever possible. In order to mitigate potential remaining noise even further, we removed connected components (4-neighborhood) smaller than the size of 9 Sentinel-1 EW pixels from the final classification
300 result (`skimage.morphology.remove_small_objects`).

Since Yen-thresholding determines the threshold for the binary classification automatically, it is not applicable if backscatter anomalies are not present in the image. Since the mapping of clusters should be automatic, we needed to include a test if anomalies were apparent in the images. Our approach again utilises the dual-polarisation capability of Sentinel-1 and tests the similarity between classification outcomes of the two polarisation channels using Cohen's Kappa score κ (Cohen, 1960).
305 Only if κ was above 0.2 (class "fair agreement" according to Landis and Koch (1977)), the final classification was produced as described above. If κ was below 0.2, all pixels in the image were assigned to the negative class.

The classification method was especially designed to map anomalies in late winter and spring images. A considerable ice thickness is required to resist wind forces without breaking on large lakes and SAR imagery of lake ice acquired during early periods of ice formation can exhibit features of fracturing, movement or refreezing (Duguay and Pietroniro, 2005). Our
310 algorithm may classify such features in fall or early winter images incorrectly as the targeted anomalies. To prevent this, we restricted time series analyses to imagery acquired after January 1 in all years concerned.

4.2.2 Detection and mapping of holes in lake ice from WorldView-2 data

For the automated detection of open holes in the ice from the WorldView-2 acquisition, we used a blob-detector from `scikit-image` which uses the Laplacian of Gaussian (LoG) filter (van der Walt et al., 2014). The term blob stands for "binary large
315 object" and the holes in the ice are considered as blobs here. The intention behind using this approach was to automatically map round dark spots in the imagery characterised by high contrast to the surrounding regions in a reproducible manner. The blob-detector is a method to be applied to grayscale imagery. We used the green band as the input as it allowed for the best separation between holes and surface features that we did not interpret as holes but could have been confused with holes by the blob detection algorithm. The detector works by successively convolving the image with LoG-kernels of increasing
320 standard deviation and stacking up the responses in a cuboid. Detected blobs are local maxima in the cuboid that are filtered

using an intensity threshold on the maxima. Again, we tried to be very cautious when selecting this threshold to only detect round dark spots characterised by significant contrast to the surrounding pixels that are most likely holes in the lake ice. The method `skimage.feature.blob_log` (`min_sigma=0.69`, `max_sigma=10`, `num_sigma=200`, `threshold=0.187`) was used on the negative of the green band pan-sharpened TOA reflectance image. Fig. 2 gives an example of what we interpreted as holes and what features we sought to prevent from detecting as holes. Fig. 2 (a) shows a true-color composite and Fig. 2 (b) shows an associated spectral profile. The red line in Fig. 2 (a) indicates the pixels used for plotting the profile in Fig. 2 (b) (lower left to upper right). Two main minima can be identified. The left minimum was interpreted as hole that should be detected by the algorithm (and also the other two dark spots in the lower left of the image), while the right minimum was not considered as hole and it should not be detected by the algorithm. In most bands, the contrast between both minima and the surrounding pixels is similar, while the smallest contrast for the right minimum is observed in the green band.

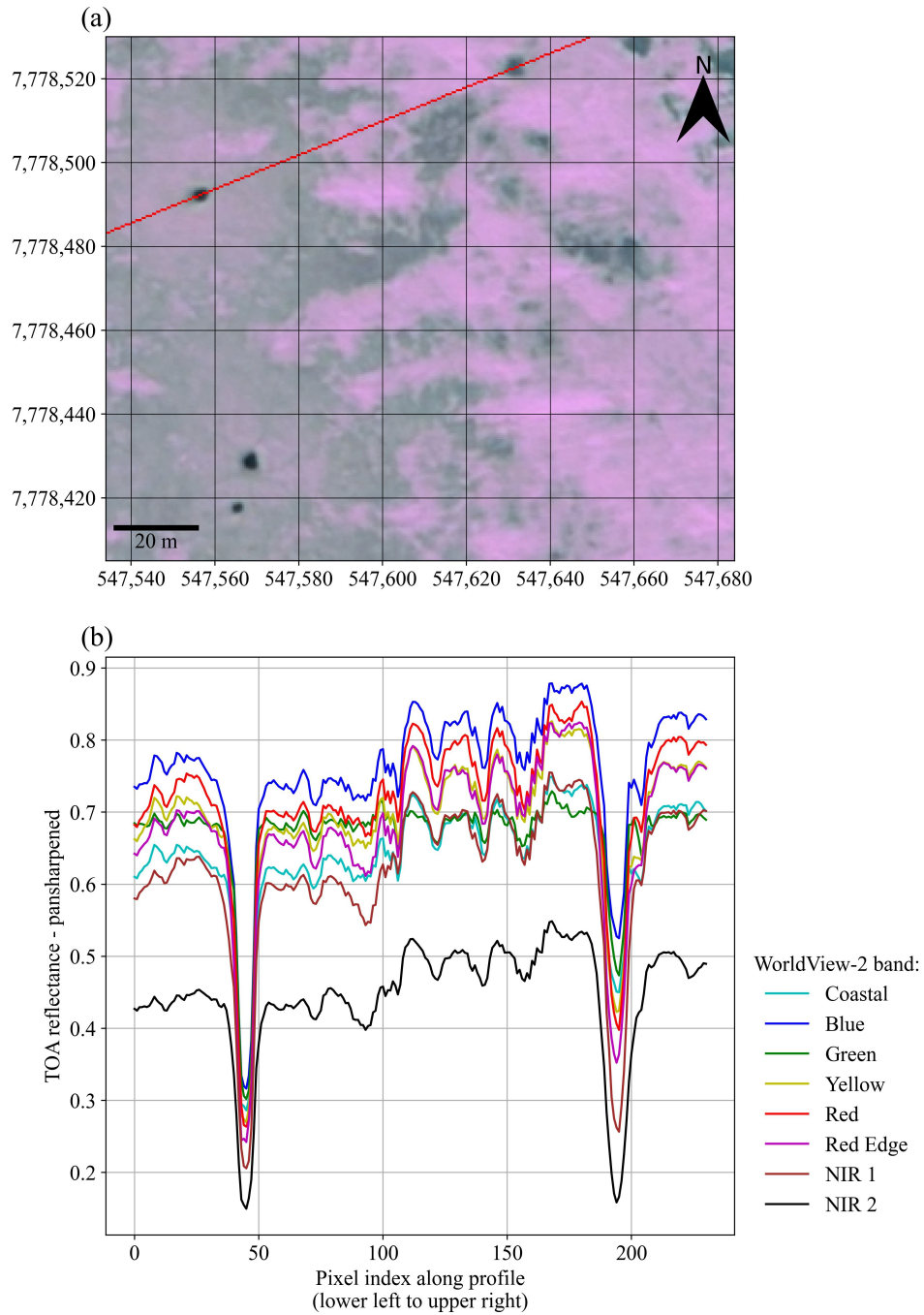


Figure 2. Examples of features in WorldView-2 imagery acquired on 22 May 2016 and associated spectral profile. (a) WorldView-2 true-color composite with red line indicating the pixels used for plotting the profile (CRS: UTM Zone 42N/WGS84). Spectral profile indicating variations between contrast for the two main minima. The left main minimum was considered as a hole that should be detected, while the right minimum was not considered as a hole and its detection should be avoided.

The outputs of the algorithm are the coordinates of the blob centres and the corresponding radii approximated from the standard deviation of the LoG-kernel that detected the blob concerned. In order to estimate hole areas, we performed a binary classification based on a marker-based watershed segmentation using the blob detection results to classify all pixels belonging to the holes. Markers for the hole class were set on single pixels on which the centres of detected blobs were located. Markers
335 for the background class were set on pixels with pan-sharpened TOA reflectance larger than 0.45. The marker image was defined with the same size as the original image, with value 1 for the hole markers, value 2 for the background class and value 0 elsewhere. After the definition of the markers, the watershed segmentation (`skimage.segmentation.watershed`, default parameters) was applied using the original image and the marker image, and individual hole objects were extracted and vectorised. In rare cases, the watershed segmentation produced unsatisfactory results by clearly overflowing the area of the expected hole.
340 To handle these false classifications, we excluded all hole polygons larger than 300 m^2 from further analysis (the largest open holes formed by subcap seepage in Walter Anthony et al. (2012) were reported to be approximately 300 m^2 in area).

4.3 Validation of Sentinel-1 classification methodology

No in situ data were available for Lake Neyto to validate the classification of anomaly regions from Sentinel-1 data directly. The remoteness of the area and the absence of transportation infrastructure largely impedes in situ data collection. More strikingly,
345 it is likely that parts of the regions of backscatter anomalies on the lake are characterised by very thin ice, which would pose a direct threat to human safety if in situ data collection on the lake ice was attempted. Only a few cm thick ice was also reported by the Yamal-Nenets on Lake Yambuto in mid-march 2017, where ice thickness at that time is usually more than one m (Pointner et al., 2019).

Due to the lack of reference data collected at site, we propose a comparison of classification results from EW data (HH
350 and HV polarisation) and IW (VV and VH polarisation) data acquired on consecutive dates. The anomalies are visible in all polarisation channels and their extent is expected to be similar on consecutive dates in the two modes. In all winters and springs with acquisitions, we could identify 10 points in time, where Lake Neyto was observed in the two modes on successive days (Table 2). For each of the dates, we re-sampled (nearest neighbour) and re-projected the binary classification image from the IW mode (10 m pixel-spacing) to the binary classification image from the EW mode (40 m pixel-spacing) in order to be able
355 to carry out pixel-based comparisons. Here, the classification on the EW data was assessed against the classification on the IW data that acted as reference set.

Several metrics have been proposed to assess binary classification outcomes in case of imbalanced classes (Chicco and Jurman, 2020). From the confusion matrix calculated from the EW and IW classification results, we estimate the total number of pixels in the negative class (regular floating lake ice) to be about one order of magnitude larger than the total number of
360 pixels in the positive class (anomalies) in the validation dataset (Table 2), so class imbalance is clearly the case here and simple accuracy measures should be avoided (Chicco and Jurman, 2020). We faced a similar situation of imbalance when looking at the number of pixels classified positively over time, i.e. there is a significant difference between the number of pixels classified positively in February and the number of pixels classified positively in May, for example. So, we argue that averaging metrics over the ten points in time (Table 2) cannot be representative of the classification method, either. We propose to calculate binary

365 metrics which are suitable in case of imbalanced classes on all classified pixels in the validation dataset, together. Specifically, we calculated F1-scores (Dice, 1945; Sørensen, 1948), the Matthews correlation coefficient (Matthews, 1975) and Cohen's kappa coefficient κ (Cohen, 1960). F1-scores are generally calculated per class. We give two versions of F1-scores here, one being the F1-score binary, that is calculated for the positive class (anomalies) only, and one being the F1-score macro, that is the average of the F1-scores of the positive and negative class.

370 In order to compare backscatter levels among modes and polarisation channels, we also used the data from this validation dataset because of the short time interval between acquisitions in the two modes. We calculated mean σ^0 per class and date, took the difference between the means per class for each acquisition date and calculated the mean of these differences over time. Further, we calculated the mean σ^0 for the positive class on single dates and averaged it over time. All calculations were performed separately for each polarisation channel.

375 4.4 Summary of the most important methodological steps

A flowchart diagram depicting the most important processing, selection and analysis steps associated with Sentinel-1 and WorldView-2 data is shown in Fig. 3. Sentinel-1 EW and IW data were both pre-processed and classified using a similar methodology. Classification results of IW and EW data acquired on consecutive dates (Table 2) were used to calculate validation metrics. Polygons of detected holes deduced from the blob-detection and subsequent watershed segmentation on the green band
380 of the pan-sharpened WorldView-2 image acquired on 22 May 2016 were used to calculate statistics of hole area. Detected locations of holes as produced by the blob detection algorithm were visually and quantitatively compared to single Sentinel-1 EW acquisitions and associated anomaly classification results from 16 May 2016 and 7 April 2016.

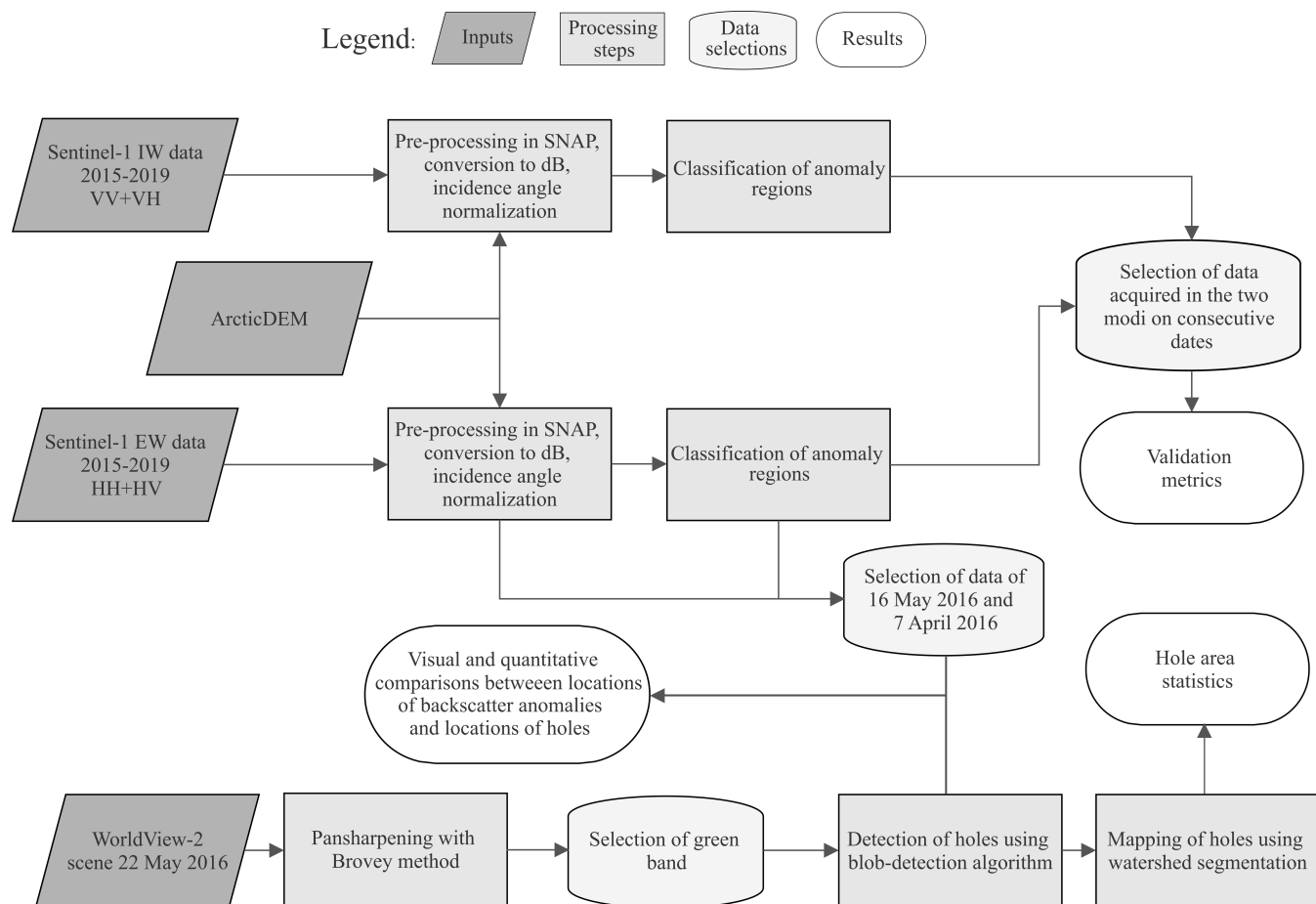


Figure 3. Workflow of main processing, selection and analysis steps associated with Sentinel-1 and WorldView-2 imagery in this study.

5 Results

385 An example of classification results from Sentinel-1 EW and IW imagery acquired on consecutive dates is given in Fig. 4 (HH-polarisation and VV-polarisation bands are shown, respectively). Anomalies are characterised by similar contrast and similar extents in the two acquisitions.

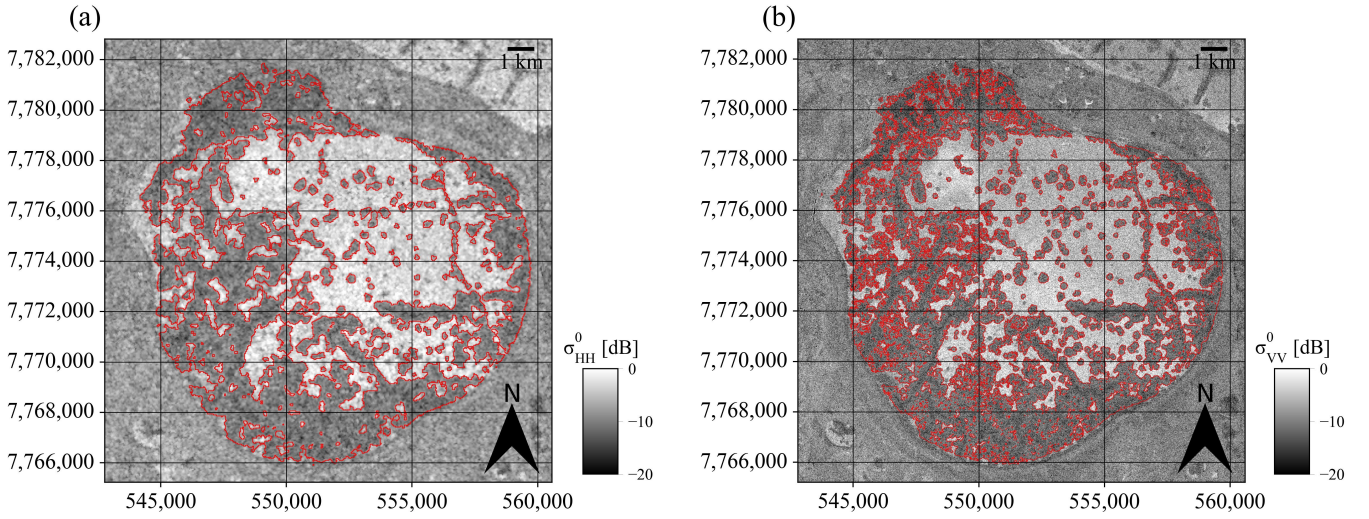


Figure 4. Example of Sentinel-1 EW and IW acquisitions taken one day apart and classification outcomes of backscatter anomalies. (a) Sentinel-1 EW HH-polarised acquisition from 24 May 2019, (b) Sentinel-1 IW VV-polarised acquisition from 25 May 2019. Red outlines represent polygon outlines from vectorised raster classification maps. CRS: UTM Zone 42N/WGS84.

Table 4 shows the metrics calculated from the comparison between classifications from EW and IW mode in the validation set. κ and the Matthews correlation coefficient are the same value (0.78), the F1-score binary is slightly higher (0.80) and the value of the F1-score macro is 0.89.

Table 4. Metrics for the comparison between binary classifications of Sentinel-1 EW and Sentinel-1 IW acquisitions on consecutive days. Ten pairs of EW and IW acquisitions were used.

F1-score binary	0.80
F1-score macro	0.89
Matthews correlation coefficient	0.78
Cohen's kappa coefficient κ	0.78

As described in Sect. 4.3, the validation dataset consists of 10 pairs of Sentinel-1 images acquired in EW and IW mode on consecutive dates. Several statistics were calculated from the validation set to describe backscatter levels. Boxplots of σ^0 for the positive class (anomalies) and negative class (regular floating lake ice) are shown in Fig. 5 for all polarisations and acquisition dates in the validation set. The temporal averages of the differences between mean σ^0 of the positive and negative class on the single acquisition dates are 4.9 dB for EW mode in HH-polarisation, 6.0 dB for EW mode in HV-polarisation, 5.4 dB for IW mode in VV-polarisation and 7.2 dB for IW-mode in VH-polarisation.

The temporal averages of mean σ^0 of the positive class (anomalies) on single acquisition dates are -12.2 dB for EW mode in HH-polarisation, -25.9 dB for EW mode in HV-polarisation, -14.1 dB For IW mode in VV-polarisation and -25.4 dB for IW mode in VH-polarisation.

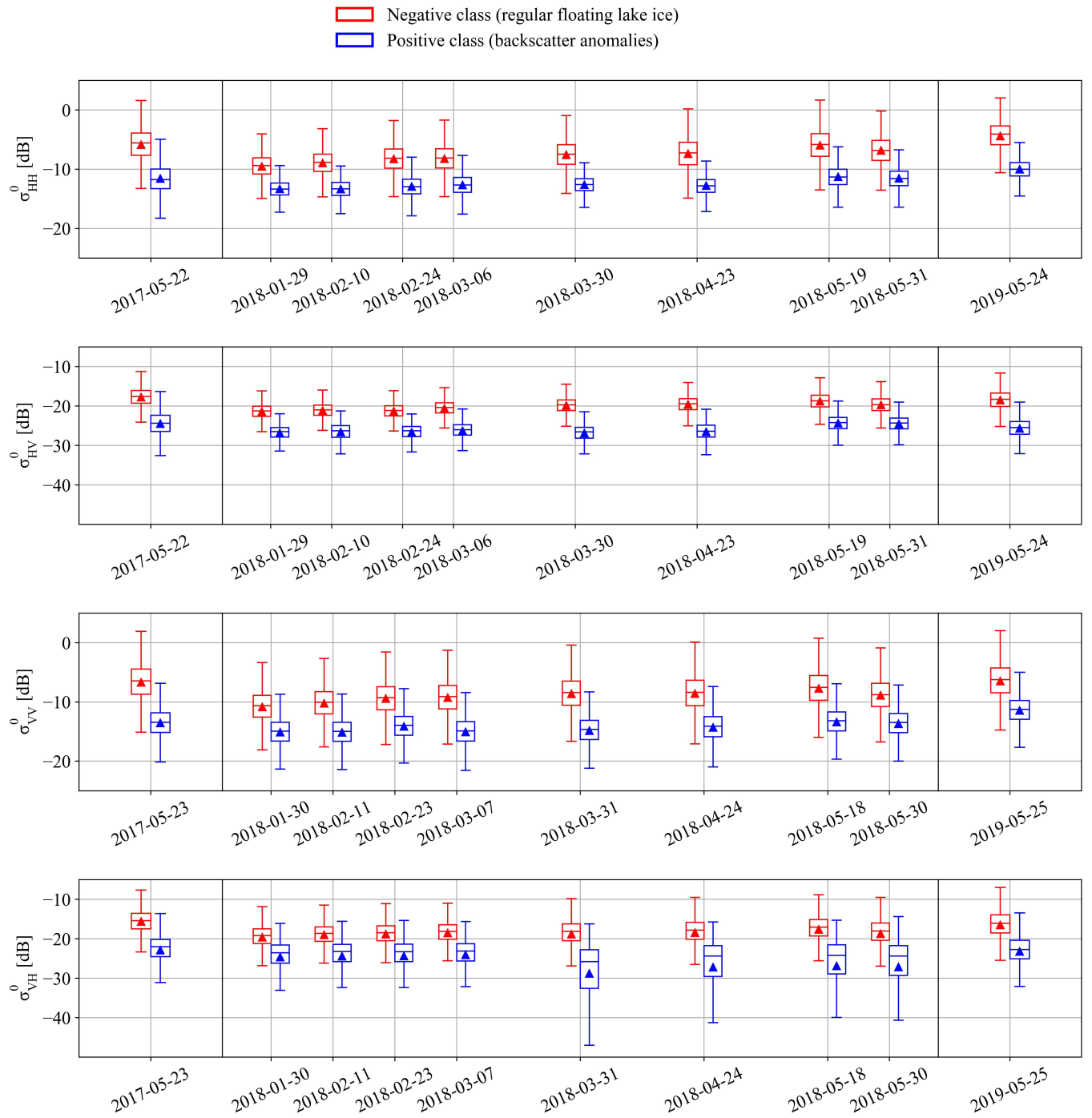


Figure 5. Boxplots of σ^0 for the positive class (backscatter anomalies) and negative class (regular floating lake ice) for all polarisations (HH, HV, VV, VH) and all 10 acquisition dates in the validation set. The means are represented by triangles.

Figure 6 (a) shows an example of detected holes in the lake ice of Lake Neyto on a true-color composite of the WorldView-2 acquisition from 22 May 2016 and Fig. 6 (b) shows examples of mapped holes from the watershed segmentation algorithm. Holes are clearly characterised by dark tones surrounded by regions of higher reflectance.

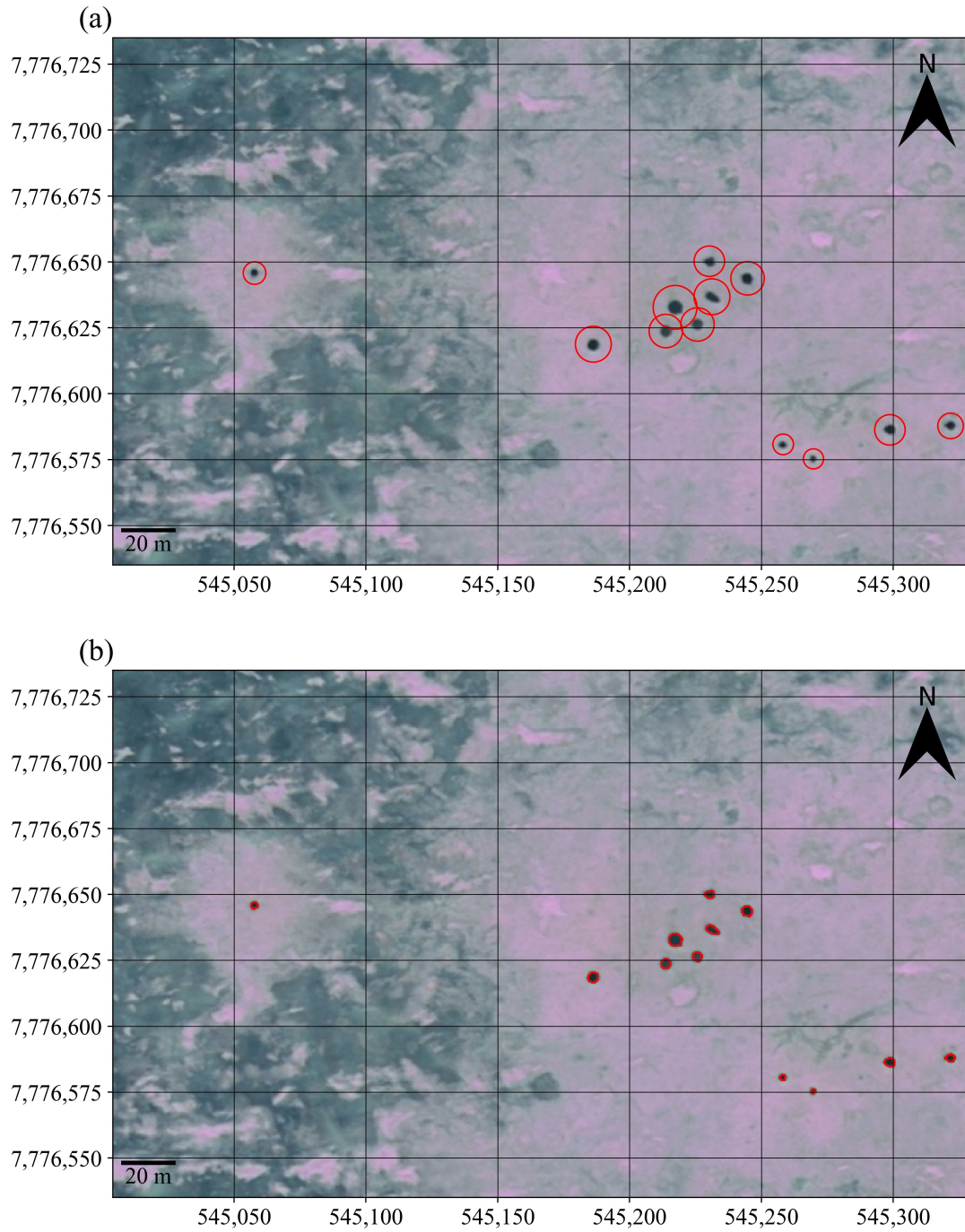


Figure 6. Examples of hole detection and classification results in lake ice of Lake Neyto on WorldView-2 true-color composites acquired on 22 May 2016. (a) Examples of detected holes (red circles) from the blob-detection method. Radii of circles are scaled proportional to the standard deviation of the LoG-kernel that detected the respective blob, enlarged for the visualisation. (b) Mapped holes (red outlines) from the watershed segmentation method. CRS: UTM Zone 42N/WGS84.

The blob detection algorithm yielded locations of 718 holes. Out of 718 hole polygons deduced thereof by using the watershed segmentation, 10 had to be excluded by the application of the area threshold (compare to Sect. 4.2.2). Figure 7 shows a histogram of hole areas from the remaining 708 hole polygons. The majority of holes is characterised by an area smaller than 5 m², the median is 4.00 m². Few holes with areas larger than 50 m² were identified.

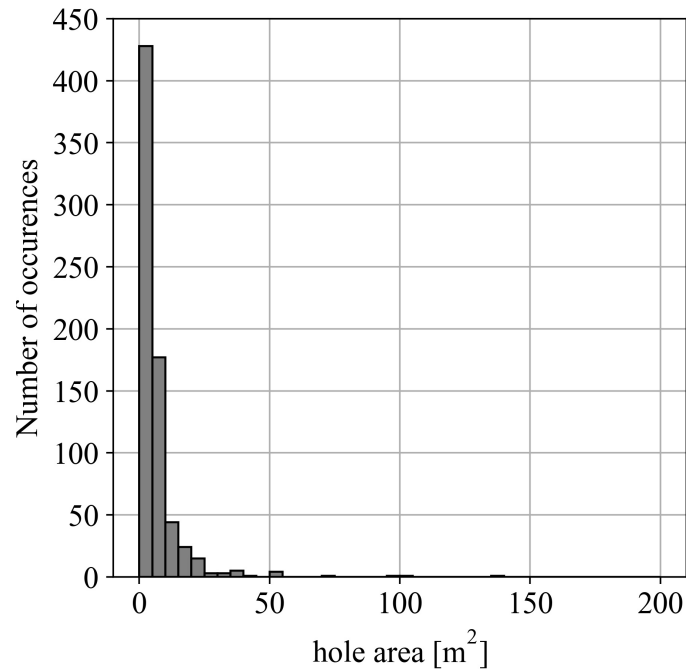


Figure 7. Histogram of hole areas from 708 hole polygons deduced from the watershed segmentation algorithm on the WorldView-2 image acquired on 22 May 2016.

The locations of the 718 detected holes (points, potential seep locations) from the WorldView-2 image acquired on 22 May 2016 and the Sentinel-1 HH-polarised image acquired on 16 May 2016 with the outlines of classified backscatter anomalies (polygons) are shown in Fig. 8. 71% of the 718 detected holes lie within the polygons deduced from the Sentinel-1 classification result. The mean minimum distance between the points and the polygons is 38 m (if a point lies within a polygon the distance is zero). The median distance of all points lying outside the polygons is 67 m.

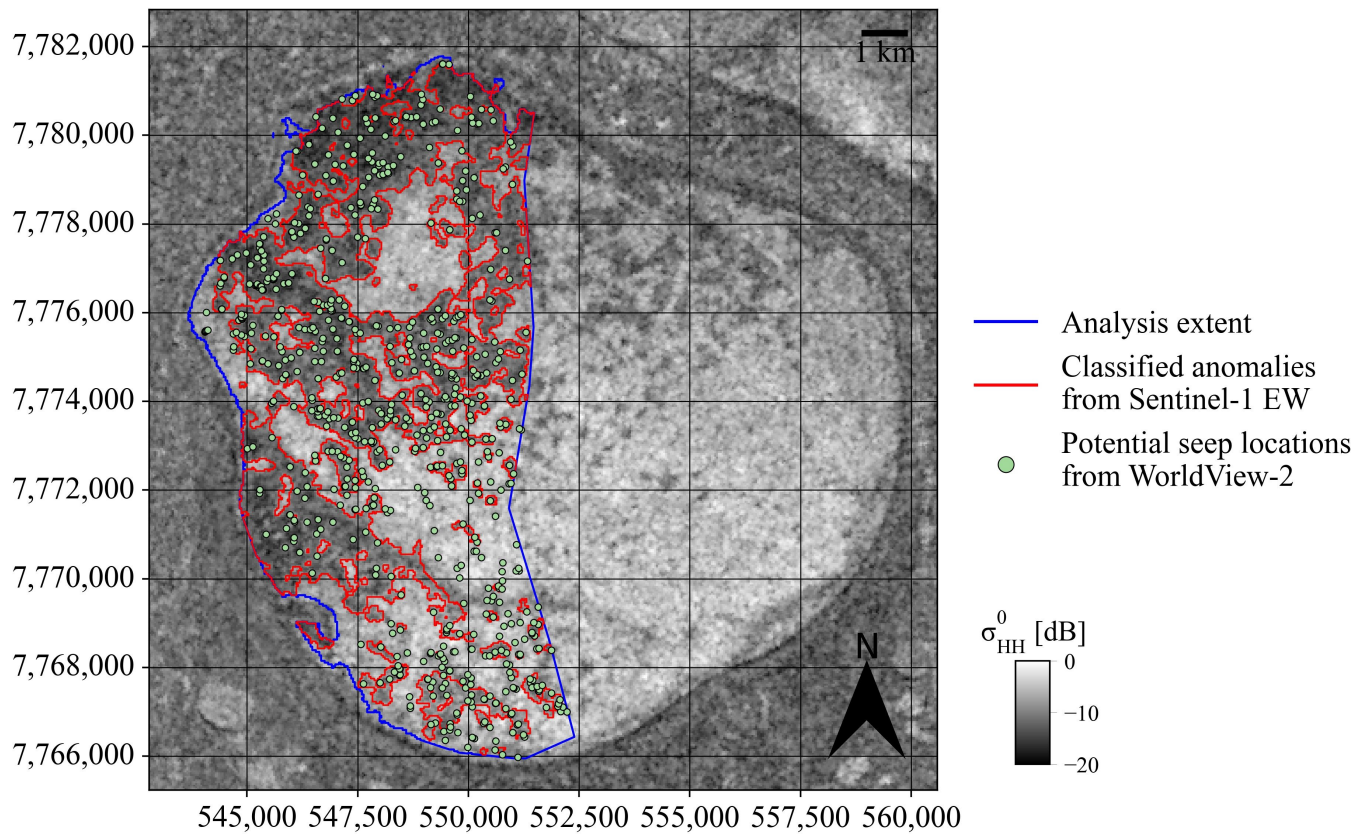


Figure 8. Comparison of detected holes (potential seep locations, green points) from WorldView-2 imagery acquired on 22 May 2016 and backscatter anomalies (red outlines) from a Sentinel-1 scene acquired on 16 May 2016 on top of the HH-polarisation band of the same scene. The blue outline shows the analysis extent that is determined by the extent of the WorldView-2 image and the lake and shelf masks. CRS: UTM Zone 42N/WGS84.

Interesting spatial relationships can also be identified when comparing the locations of detected holes to Sentinel-1 imagery acquired earlier in the same year. Figure 9 shows the same locations of detected holes deduced from the WorldView-2 image acquired on 22 May 2016 as in Fig. 8 on top of a Sentinel-1 EW HH-polarised acquisition from 7 April 2016, taken more than a month earlier than the image in Fig. 8. A detailed view of the northwestern part of Lake Neyto is shown. A relationship between many locations of holes and backscatter anomalies with smaller spatial extent can be identified. Maximum and minimum air temperature on 22 May 2016 were 1.2 °C and -2.0 °C, respectively, according to the ERA5 data (Hersbach et al., 2018). Apart from 1 April and three days from 22 April to 24 April, maximum air temperature remained below 0 °C until 16 May in 2016 (Hersbach et al., 2018).

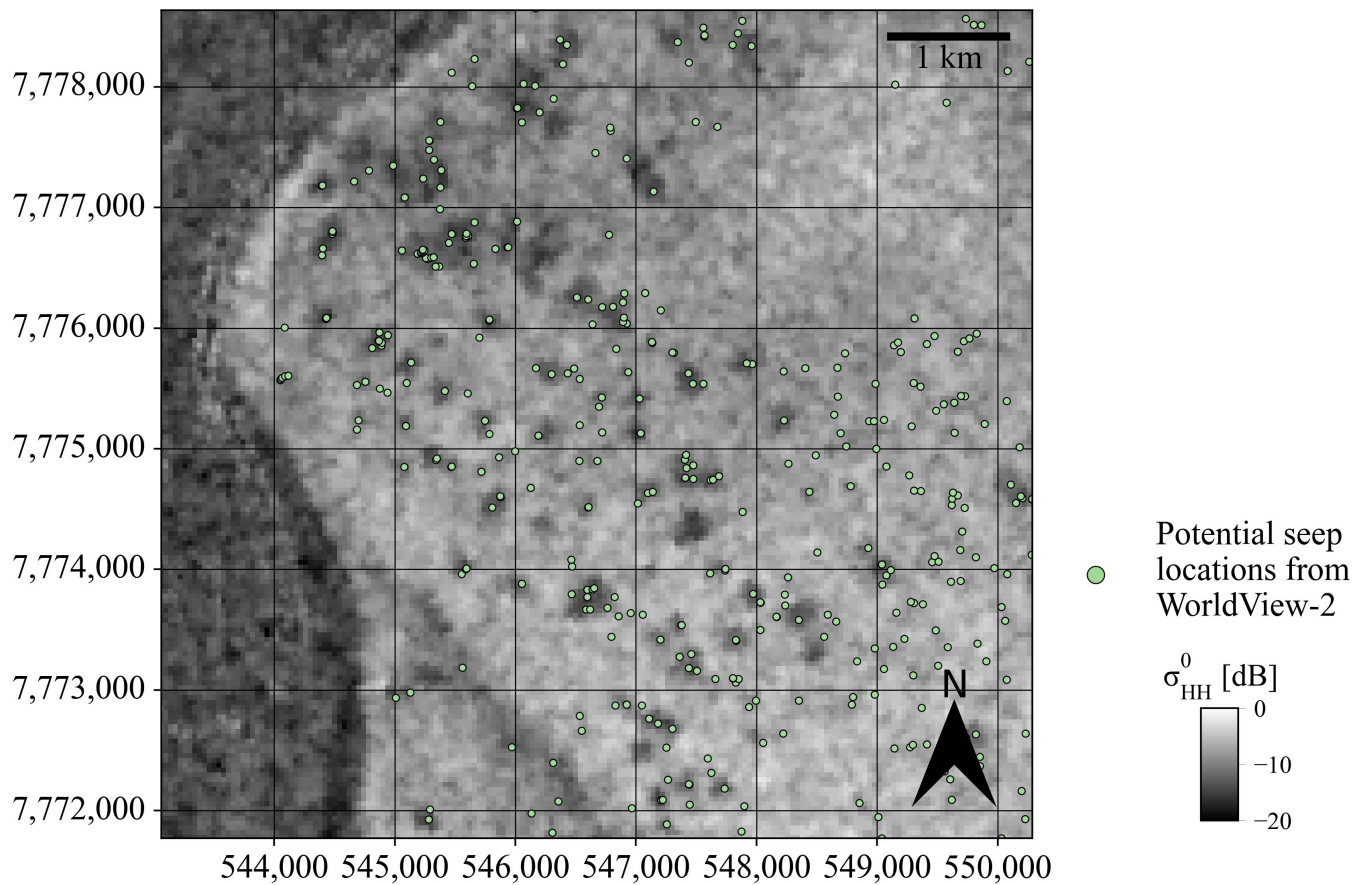


Figure 9. Comparison of detected holes (potential seep locations, green dots) from WorldView-2 imagery acquired on 22 May 2016 on top of the HH-polarisation band of a Sentinel-1 scene acquired on 7 April 2016 showing backscatter anomalies at an early stage of development. CRS: UTM Zone 42N/WGS84.

The automated classification approach on Sentinel-1 EW data makes it possible to compose time series of areas of backscatter anomalies and compare them to time series of minimum and maximum air temperatures over the years 2015 to 2019 (Fig. 10 (a)-(e)). A steady increase of area of backscatter anomalies in late winter and spring is evident. The maximum extent of backscatter anomalies was especially high in 2019, where on the last useful acquisition date, its area was approximately half of the whole lake area (Fig. 10, compare also to Fig. 4 (a)). Maximum air temperature often approaches or slightly exceeds 0 °C throughout the analysis periods. Days where maximum air temperatures exceeds 0 °C are shown by the dashed lines in Fig. 10. In order to assess the expansion of anomaly regions, the fraction of overlap between anomaly regions on consecutive dates is shown in brown (area of intersection between classified anomaly regions on the timestamp indicated and that of the previous timestamp, divided by area of the classified anomaly regions at the previous timestamp). The fraction is especially high during the last observation dates in the years concerned. In order to avoid division by zero, the graphs were only calculated for the

time period after zero anomalies were detected for the last time in the years concerned. The fraction of overlap often increases
430 when the air temperatures approach or exceed 0 °C.

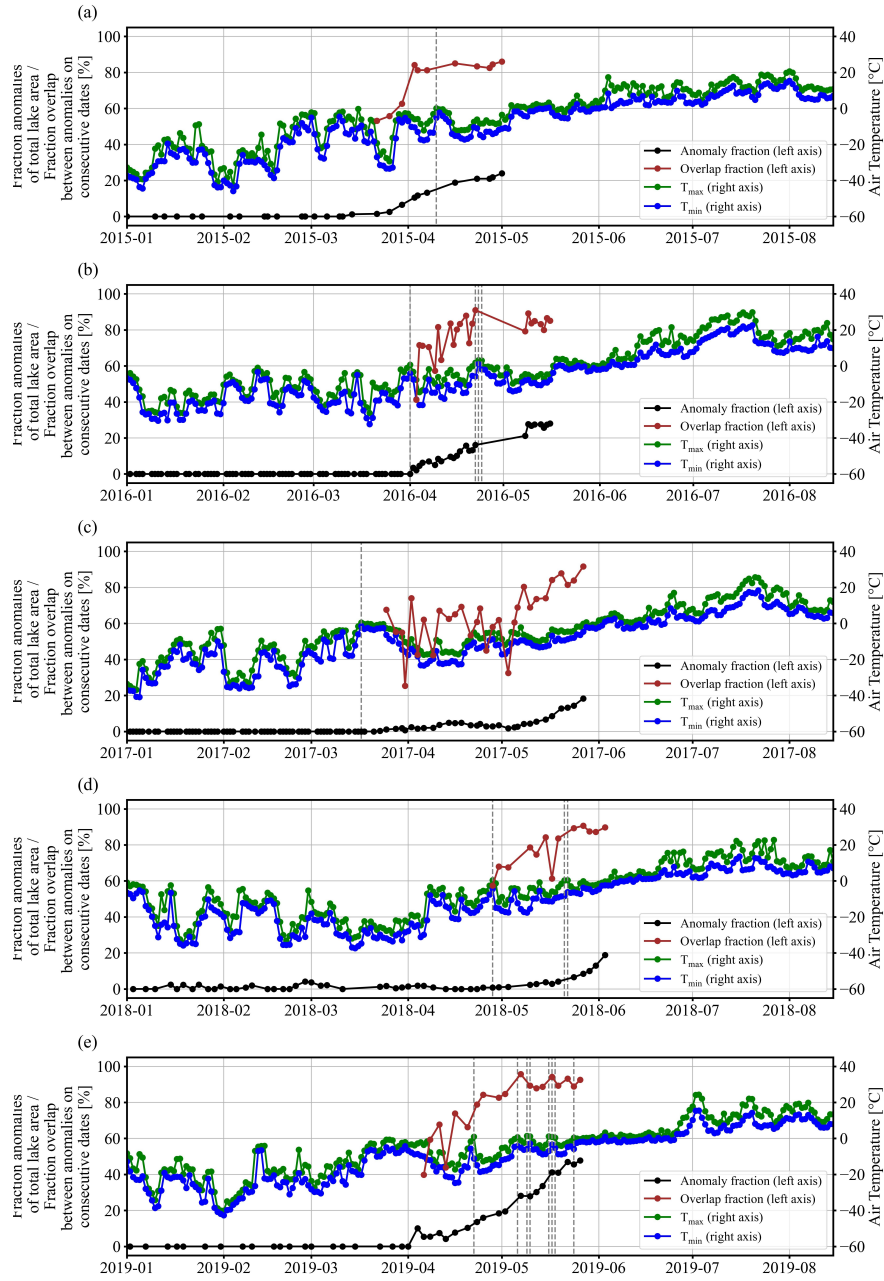


Figure 10. Time series of fraction of area of anomaly regions with respect to total lake area (black, (Pointner and Bartsch, 2020)), fraction of overlap between anomaly regions on consecutive dates (brown) for the time period after no anomalies were detected for the last time in the years concerned, maximum (green) and minimum (blue) 2 m air temperature from ERA5 (Hersbach et al., 2018). The left axis indicates fraction of area of anomaly regions with respect to total lake area and the fraction of overlap between anomaly regions on consecutive dates. The right axis indicates air temperature. Fractions of overlap were calculated as area of intersection between classified anomaly regions on the timestamp indicated and that of the previous timestamp, divided by area of the classified anomaly regions at the previous timestamp. Gray dashed lines indicate dates where maximum air temperature exceeded 0 °C during the analysis periods of the SAR data.

The results of the ALOS PALSAR-2 polarimetric analyses can be directly compared to Sentinel-1 acquisitions in EW and IW mode (Fig. 11), and to Landsat 8 brightness temperature and a surface reflectance data acquired in April 2015. As expected, backscatter is clearly lower in anomaly zones than for regular floating lake ice in both, Sentinel-1 IW VV-polarised (Fig. 11 (a)) and Sentinel-1 EW HH-polarised (Fig. 11 (b)) images. The T_{11} component of the coherency matrix, that is related to the
435 magnitude of surface scattering (Engram et al., 2013), interestingly indicates lower backscatter from regular floating lake ice compared to anomaly zones in L-band (Fig. 11 (c)). The polarimetric classification (Fig. 11 (d)) shows that regular floating lake ice largely falls in region 6 (random surface), while anomaly regions mainly fall in region 9 (bragg surface) of the H/α -plane (Lee and Pottier, 2009). The brightness temperature in anomaly regions is approximately one to two Kelvin higher than in the
440 rest of the lake (Fig. 11 (e)), while the snow surface appears rather homogeneous, but also shows very small differences in anomaly regions in the true-color composite of surface reflectance in Fig. 11 (f).

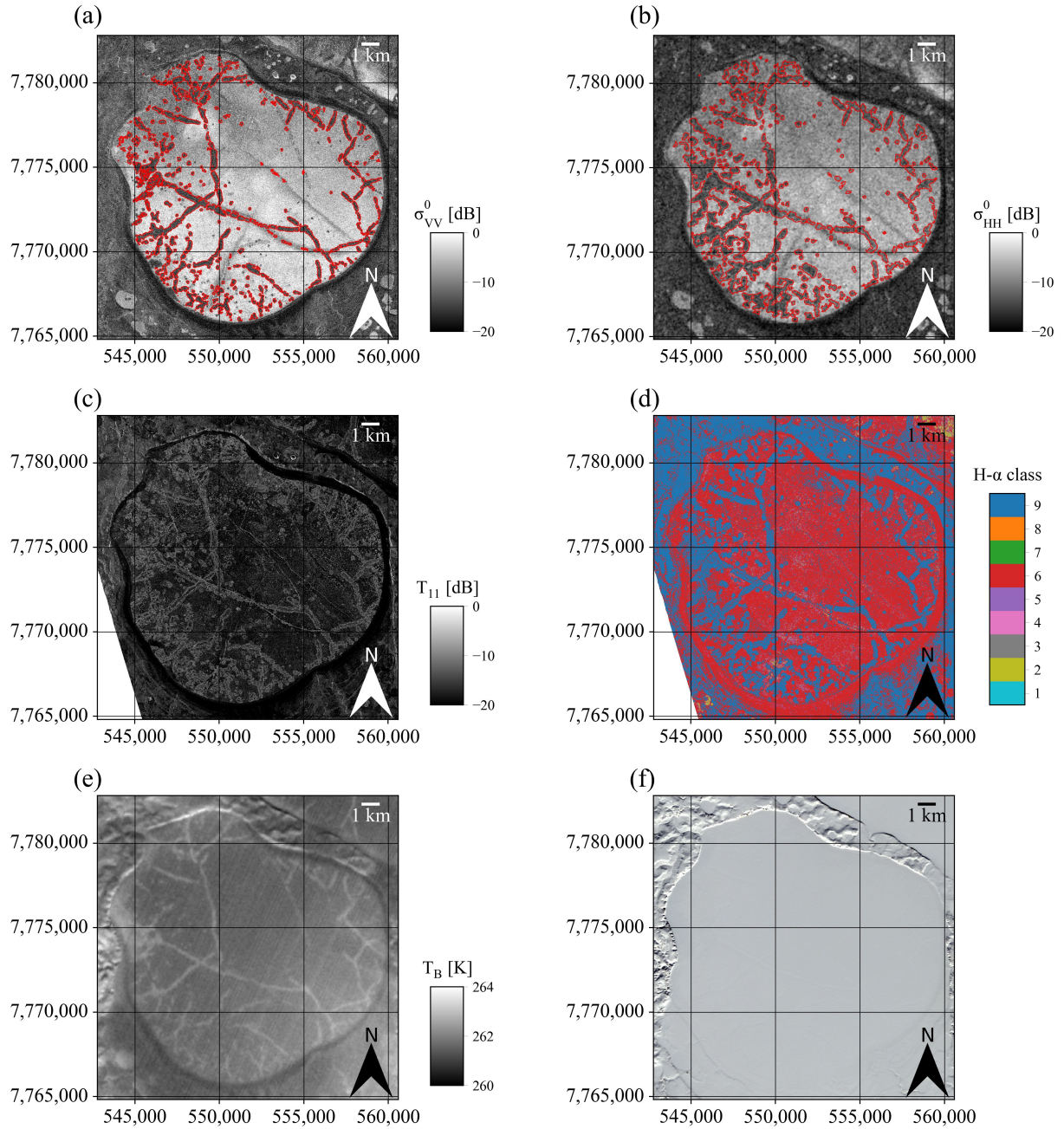


Figure 11. Comparison of Sentinel-1 C-band data, ALOS PALSAR-2 L-band polarimetric results, and Landsat 8 brightness temperature and surface reflectance for Lake Neyto in April 2015. (a) Sentinel-1 IW VV-polarised acquisition from 10 April 2015, (b) Sentinel-1 EW HH-polarised acquisition from 23 April 2015, (c) ALOS PALSAR-2 T_{11} from 18 April 2015, (d) Polarimetric classification result from ALOS PALSAR-2 scene acquired on 18 April 2015 (pixel values denote zones in the H/ α -plane, zone 6 is termed "random surface" and zone 9 is termed "bragg surface" in Lee and Pottier (2009)), (e) Landsat 8 band 10 brightness temperature from 6 April 2015, (f) Landsat 8 true-color composite of surface reflectance data from 6 April 2015. Outlines of classified backscatter anomalies are shown in red in (a) and (b). CRS: UTM Zone 42N/WGS84.

6 Discussion

Validation metrics from the comparison between classification results from EW and IW modes are relatively high, with similar values for the F1-score binary (0.80), the Matthews correlation coefficient (0.78) and Cohen's κ (0.78). The F1-score macro (average of F1-scores for the positive and negative class) is higher than the F1-score binary because of significantly higher F1-score for the negative class, for which pixel occurrences are also significantly higher (compare to Sect. 4.3). Cohen's κ is especially used to measure inter-rater reliability. In the interpretation scheme proposed by Landis and Koch (1977), κ from our validation belongs to the category "substantial agreement". A drawback is that we cannot present a proper validation against ground truth data, as it is often anticipated in remote sensing studies, but the remoteness of the study area and the potential endangering of human safety largely restricts in situ data collection on site (see also Sect. 4.3).

Our results show a strong contrast between backscatter from anomaly regions and regular floating lake ice, with a difference of 5.9 dB on average across polarisation channels (Fig. 5). A striking spatial relationship between detected holes and backscatter anomaly regions is shown in Fig. 8. More than two thirds of detected holes (potential seep locations) mapped from the WorldView-2 acquisition were found to lie within the backscatter anomaly polygons deduced from a Sentinel-1 EW acquisition taken six days earlier. Especially in the northern and western part of the lake, most holes can be clearly associated with the polygons deduced from the classification of the Sentinel-1 data.

A successive expansion of anomaly regions during spring is indicated by fractions of overlap between anomaly regions on consecutive dates (brown line in Fig. 10). During spring, the percentage of lake area covered by regions of anomalously low backscatter increases significantly, while the percentage of intersections remains rather high (mostly above 80%). When comparing Fig. 9 (Sentinel-1 EW acquisition from 7 April 2016) and Fig. 8 (Sentinel-1 EW acquisition from 22 May 2016), backscatter anomalies seem to emerge from locations of detected holes in the earlier acquisition, leading to a large patch of anomalously low backscatter in the later acquisition.

There might be a connection between the expansion of anomaly regions and air temperatures, as maximum air temperatures approaching or exceeding 0 °C sometimes coincide with increases in area of anomalies (Fig. 10) and with increases in fractions of overlap between anomaly regions on consecutive dates. The shape and locations of backscatter anomaly regions vary significantly between different years (Bogoyavlensky et al., 2018; Pointner and Bartsch, 2020) (compare also to Fig. 1, Fig. 4 and Fig. 11), but the characteristic expansion is similar in all years analysed, as discussed above.

The expanding areas of anomalies in spring might therefore be related to lake ice subsidence due to significant snow load on the lake ice (April is usually considered the month of maximum snow depth and ice thickness in Central Yamal) and consequent flooding through the holes over the ice top leading to wetting and/or slushing of the snow pack (see also Author(s) (2020)). The low backscatter might be consequently caused by increased absorption or specular reflection of the slush and/or wet snow. The expansion might then be caused by increasing snow loading during spring and possibly by accumulations of slush and/or wet snow around the holes. This might also be related to the increase in fractions of overlap between anomaly regions on consecutive dates when air temperature is close to or above 0 °C. Patterns identified in the WorldView-2 image from 22 May

2016 that might potentially depict accumulations of slush and wet snow around the holes are shown in Fig. 12 (a)-(d), but
 475 in-situ data are needed to test this hypothesis.

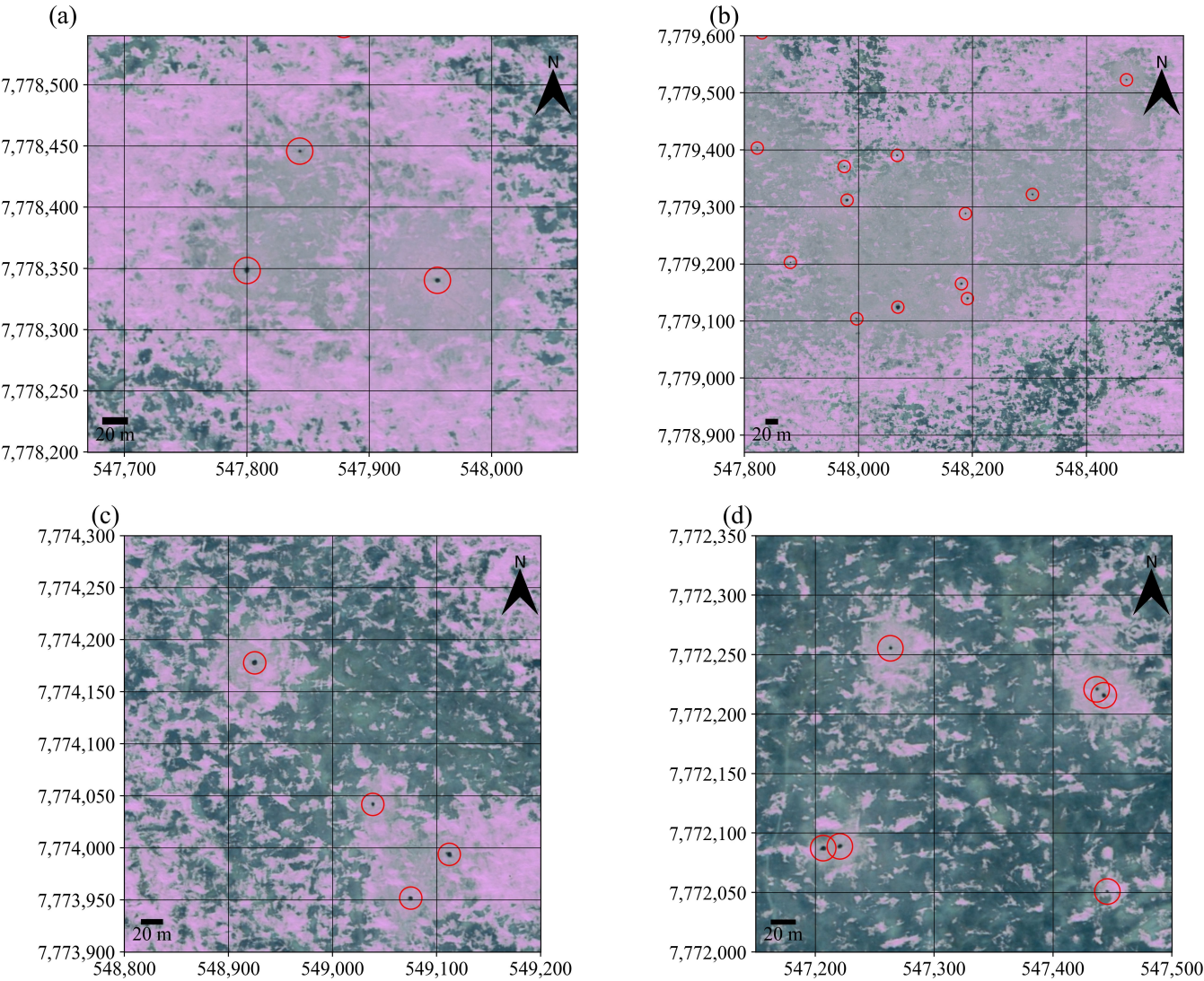


Figure 12. Examples of patterns around holes in a true-color composite of the WorldView-2 image acquired on 22 May 2016. Red circles indicate locations of detected holes as identified by the blob-detection algorithm. CRS: UTM Zone 42N/WGS84.

During lake ice drilling on Yamal in April 2019, the water level on several lakes rose up to 40 cm higher than the level of lake ice (Fig. 13). This could be a similar effect as the one that might be responsible for the observed anomalies on Lake Neyto, but in-situ data collected on the ice of Lake Neyto would be required to verify this.

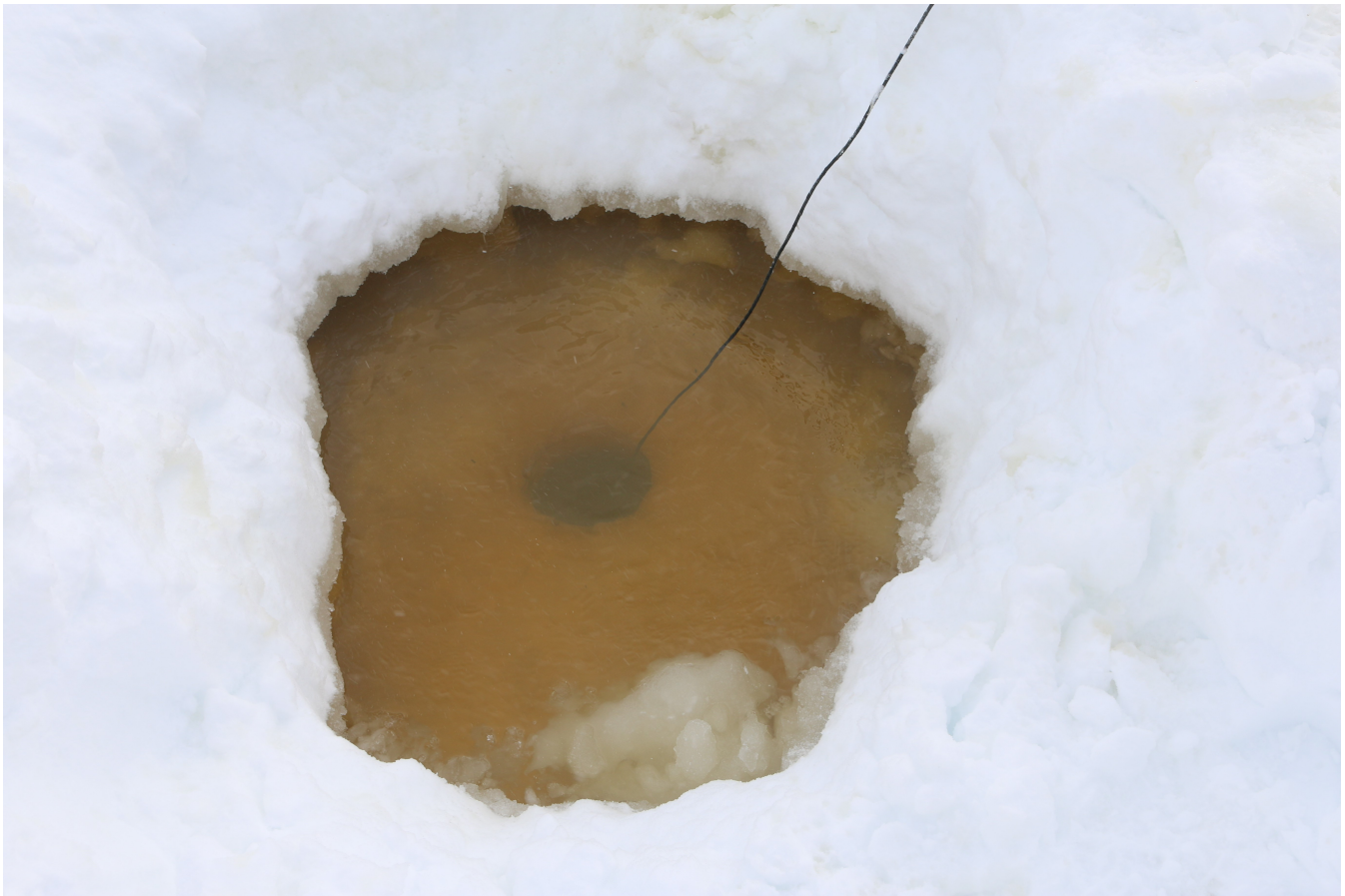


Figure 13. Liquid water on ice during lake ice drilling in Central Yamal, April 2019. The lake in the photo is termed LK-013, observed and drilled on 6 April 2019 (ca. 14:00 local time). The coordinates (WGS84 geographic) are 70.262123°N, 68.884803°E. Ice thickness at the time of drilling was approximately 1.5 m.

Some potentially interconnected factors might possibly explain why 29% of detected holes are located outside the classified anomaly regions. It is noticeable that the distances between many detected holes and the anomaly region polygons is relatively short (median 67 m). The snow around these holes might have flooded after the time of the Sentinel-1 acquisition and/or the limited spatial resolution might also play a role. Other potential reasons for holes outside classified anomaly regions may include remaining speckle, the imperfectness of the classification method in general or variations in snow depth leading to less flooding around some holes, but other unknown reasons might also contribute.

Features in the outcomes of polarimetric analyses on the L-band PALSAR-2 data from April 2015 clearly resemble backscatter anomaly regions in C-band Sentinel-1 imagery (Fig. 11 (a)-(d)) and also features in the Landsat 8 brightness temperature image (Fig. 11) (e). We could also identify very small differences in surface reflectance in the anomaly zones (Fig. 11 (f)), but since the whole lake appears to be covered with snow, the most obvious interpretation for the differences in brightness temperature seems to be that there is some warming from beneath the snow surface, leading to slightly increased snow surface

490 temperatures in anomaly regions, but not to a full melting of the snow. This might also explain why snow seems to have melted earlier in anomaly regions in the Sentinel-2 acquisition from 21 May 2016 in Fig. 1 (a), but as no data on emissivity of the surface were available, we cannot conclude on actual snow surface temperatures and the limited spatial resolution of Sentinel-2 and Landsat 8 could prevent the identification of smaller details on the ice or snow surfaces.

While T_{11} values are similar between many centres of anomaly regions and regular floating lake ice, high values of T_{11} 495 are observed mainly from the outlines of anomaly regions (Fig. 11 (c)), which might potentially relate to different scattering mechanisms for slush and wet snow, but further data are required to assess this and understand scattering mechanisms at both, C-band and L-band frequencies. An explanation for the classification of anomaly regions in L-band as bragg surface (zone 9 in Cloude and Pottier (1997)) in Fig. 11 (d) also calls for further investigations.

The observation that C-band backscatter is relatively high and L-band T_{11} is relatively low in the case of regular floating lake 500 ice may be explained by the longer radar wavelength in L-band. Recent studies suggest that backscatter from regular floating lake ice is predominantly caused by surface scattering controlled by roughness from the ice-water interface for both, C-band (Atwood et al., 2015; Gunn et al., 2018) and L-band (Atwood et al., 2015; Engram et al., 2020, 2013) SAR. Our polarimetric classification result (Fig. 11 (d)) clearly supports these findings, as it indicates that the main scattering mechanism from regular floating lake ice of Lake Neyto is scattering from a random surface (zone 6 in Cloude and Pottier (1997)) at L-band. If a surface 505 can be considered as rough, which is related to the magnitude of backscatter, largely depends on the magnitude of local height variations in relation to the radar wavelength (e.g. Woodhouse, 2005). The local height variations of the ice-water interface of regular floating lake ice of Lake Neyto may be too small that the surface can be considered rough at L-band (approximately 23 cm wavelength), but large enough to be considered rough at C-band (approximately 5.5 cm wavelength).

Engram et al. (2020) show that L-band T_{11} (ALOS PALSAR-1) is positively correlated with the area of methane bubbles 510 trapped in lake ice and also with total lake methane flux estimates for thermokarst lakes in Alaska. However, there are some significant differences between the studies of Engram et al. (2020) and this study that should be pointed out. Engram et al. (2020) primarily use fall acquisitions, although correlations with spring L-band backscatter were also shown in Engram et al. (2013). The increased radar return from ebullition zones is attributed to surface scattering from cavities that form due to slower ice growth above discrete point-like ebullition sources, which tend to remain in the same location every year (Engram et al., 515 2020). As a consequence of slowed ice growth, the cavities are filled by water, partly filled by gas or completely filled by gas (Engram et al., 2020). Resulting rough surfaces are the ice-water interface or the gas-water interface (Engram et al., 2020). Bogoyavlensky et al. (2018) and Pointner and Bartsch (2020) showed that locations of backscatter anomalies vary significantly between years for Lake Neyto. Cavities related to ebullition responsible for increased L-band T_{11} in PALSAR-1 SAR imagery in Engram et al. (2020) are of much smaller spatial scale than the holes in the VHR imagery of Lake Neyto. Diameters of 520 reported cavities in Engram et al. (2020) are in the order of decimetres, while the median area of 718 open holes identified in this study is 4 m². Engram et al. (2020) note that hotspot-type seeps are the rarest in Alaskan lakes and ebullition fluxes are dominated by much weaker A-type (characterised by isolated bubbles in multiple ice layers) and B-type (characterised by merged bubbles in multiple ice layers) seeps in the seep classification scheme of Walter Anthony et al. (2010).

Hotspots of gas emissions have been described to be visible as black holes (compare to Fig. 1 and Fig. 6) in lake ice before
525 (Walter, 2006; Walter et al., 2006) and the size (Fig. 7) and spatial clustering (Fig. 8 and Fig. 9) of holes identified in this study
seem consistent with observations of holes related to subcap seepage in Walter Anthony et al. (2012). However, other causes of
holes in lake ice were identified for Lake Baikal, for example, such as seal breathing holes, hot springs or oil seepage (Galaziy,
1987; Petrov, 2009). Ebullition of geologic methane as the cause of the holes in the ice of Lake Neyto would be consistent
with studies by Bogoyavlensky et al. (2019a, 2018, 2016) and Kazantsev et al. (2020), but in-situ measurements are needed to
530 confirm this hypothesis.

The gas that might be associated with the observed backscatter anomalies was previously suggested to be originated from the
gas field that stretches out under Lake Neyto and/or from the dissociation of gas hydrates within the permafrost (Bogoyavlensky
et al., 2018). In April 2019, the wheel of an all-terrain vehicle fell into the patch of very thin ice on one of the lakes in Central
Yamal, 60-70 km from Lake Neyto. Later in August, two gas seeps were found in this particular place. The emission of pure
535 methane of biogenic origin from these two seeps were estimated as more than 100 kg yr^{-1} (Kazantsev et al., 2020). The isotopic
composition of collected methane and the size of the lake suggest that the gas has been delivered rather from permafrost and
not from the deep productive horizons (Dvornikov et al., 2019). The potential annual amount of methane emitted from only
two small seeps described in Kazantsev et al. (2020) is comparable with the annual diffuse emission from the entire lake area
of West Siberian lakes ($5 - 249 \text{ kg yr}^{-1}$, Kazantsev et al. (2018)) given that it is completely covered with ice throughout six to
540 seven months of the year. Herewith, the emission of seepage methane may continue throughout the whole year.

It should be noted that similar patches of anomalously low backscatter in Sentinel-1 SAR imagery have also been shown
for a number of lakes in the vicinity of Lake Neyto by Bogoyavlensky et al. (2018) and for Lake Yambuto (approximately 70
km southwest of Lake Neyto) by Pointner et al. (2019). Further, more than 300 lakes near Seyakha on Yamal that may show
traces of gas emissions as either craters at the bottom or holes in lake ice were identified in optical VHR satellite imagery by
545 Bogoyavlensky et al. (2019a).

Here, we have shown the potential connection between open holes in lake ice potentially caused by gas emissions and
patches of anomalously low backscatter in C-band SAR imagery for the first time, but in situ data are needed to understand the
phenomenon in detail. Upon the verification of the presented hypothesis, the capability of SAR instruments to collect useful
data under almost all weather conditions, high revisit rates and high coverage may allow the identification of other lakes with
550 subcap gas emissions from C-band SAR data in future studies at larger spatial extents. This might then aid our understanding
of how much methane is released from West Siberian lake seeps and might possibly contribute to an incorporation of emissions
from these seeps in climate models.

Fig. 14 (a)-(d) shows examples of lakes on Yamal (including Lake Yambuto) with similar regions of low C-band backscatter
(Fig. 14 (a)-(d)). Because of higher spatial resolution, images acquired by Sentinel-1 in IW mode and VV-polarisation are
555 shown. While Sentinel-1 IW data can depict anomalies in greater spatial detail, they are unfortunately acquired at lower
temporal frequencies and more irregularly in comparison to the EW data over Yamal (see also Sect. 3.1). Anomalies on these
lakes appear similar to those on Lake Neyto, but if they (including those on Lake Neyto) are indeed related to methane ebullition
has yet to be verified. Based on the spatial and temporal dynamics of the C-band backscatter anomalies on Lake Neyto, a method

that incorporates both spatial and temporal information of C-band SAR data could be favourable for identifying anomalies over
560 larger spatial extents.

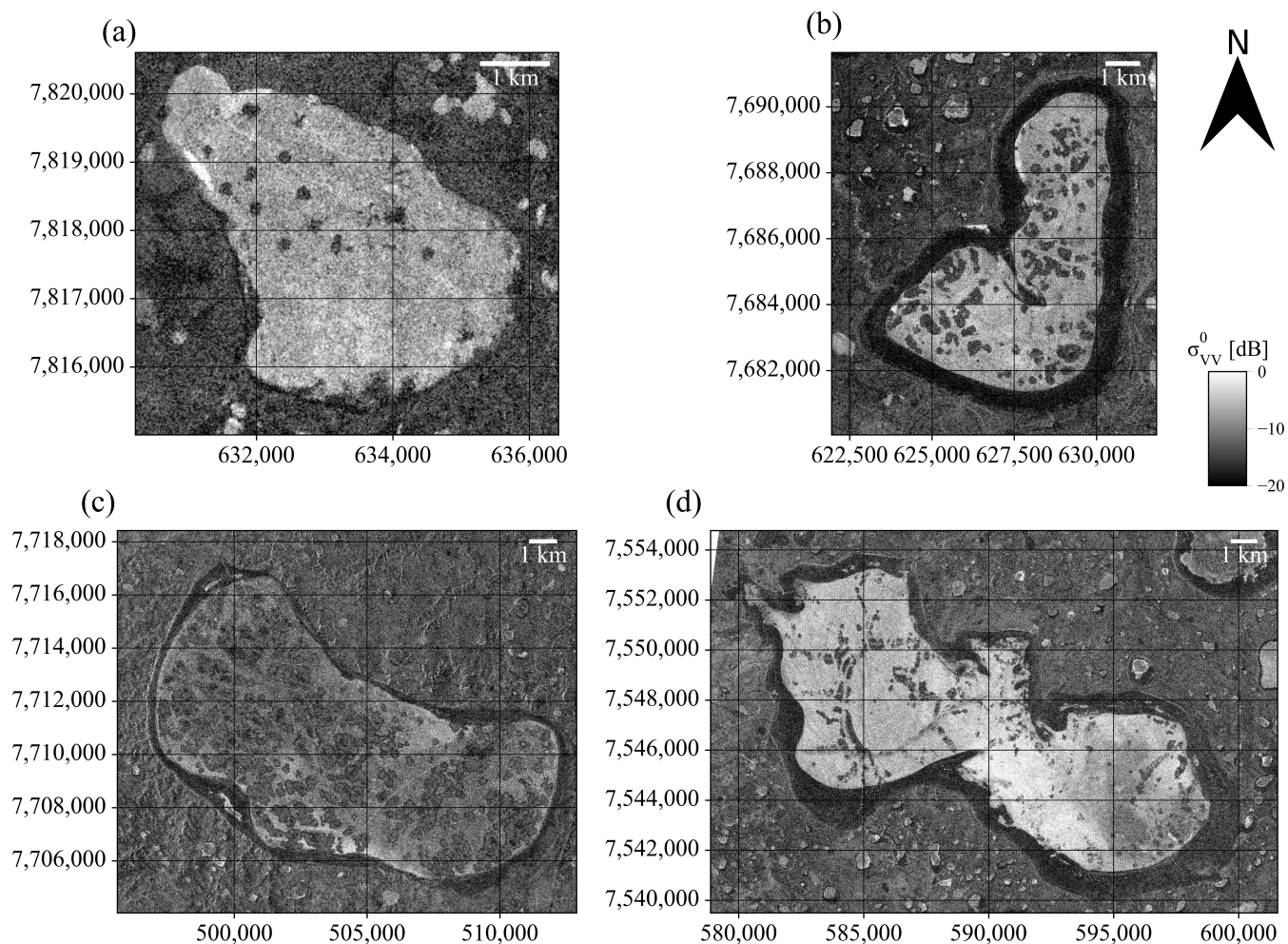


Figure 14. Examples of Sentinel-1 IW mode VV-polarised images of other lakes on Yamal with regions of anomalously low backscatter similar to those on Lake Neyto. (a) Lake Yanunto on 25 May 2019, (b) Lake Penadoto on 25 May 2017, (c) Lake Yambuto on 16 May 2018, (d) Lake Yarato 2-Ye on 3 May 2019. CRS: UTM Zone 42N/WGS84.

7 Conclusions

In this study, we investigated and quantified anomalies of C-band radar backscatter in SAR images of lake ice of Lake Neyto on Yamal, Russia and assessed their potential relation to gas emissions. This relation was suggested before using visual comparisons between Sentinel-1 data and medium-resolution optical data, but here we provided a quantification of relations between
565 features in SAR and VHR imagery, examined the spatio-temporal dynamics of backscatter anomaly regions and assessed

potential scattering and formation mechanisms in greater detail. The spatial relationship between 718 holes detected from Worldview-2 imagery and anomalies mapped from Sentinel-1 EW imagery acquired a few days apart and more than a month earlier suggests that anomalies expand from the locations of many holes. Expanding anomalies might be caused by flooding of the ice and subsequent slushing and/or wetting of the snow around the holes, as the ice surface around the holes might get depressed below hydrostatic water level due to increased snow loading in spring. This explanation is inferred from observed flooding of the ice layer during ice drilling on another lake in Central Yamal in spring, but in-situ observations of ice of Lake Neyto are needed to test this hypothesis. Statistics of areas and spatial clustering of mapped holes are consistent with observations related to subcap seepage of methane reported in previous studies, but it has yet to be verified that the holes in ice of Lake Neyto are indeed caused by up-welling gas. The proposed method to automatically map backscatter anomalies delivered good results in relation to the chosen validation strategy and could potentially allow to monitor gas emissions on Lake Neyto also in the future upon the verification of this hypothesis. The spatial and temporal properties of Sentinel-1 SAR data may also allow for the identification of lakes with similar anomalies as Lake Neyto over larger spatial extents in the near future and, if the given hypothesis is correct, this might potentially aid our understanding of how much methane is released by West Siberian lake seeps.

Code and data availability. Copernicus Sentinel-1 and Sentinel-2 data are available at <https://scihub.copernicus.eu/dhus> (last access: 19 January 2021). Landsat 8 data are available at <https://earthexplorer.usgs.gov> (last access: 19 January 2021). ERA5 data are available at <https://cds.climate.copernicus.eu> (last access: 19 January 2021). ArticDEM data are available at <https://www.pgc.umn.edu/data/arcticdem> (last access: 19 January 2021). Code for the image processing and SNAP processing graphs can be provided by the corresponding author upon request.

Author contributions. G.P.: Conceptualisation, Methodology, Software, Formal analysis, Investigation, Visualisation, Writing - Original Draft; A.B.: Conceptualisation, Supervision, Funding acquisition, Writing - Review & Editing; Y.A.D.: Investigation, Writing - Original Draft, Writing - Review & Editing, A.V.K.: Writing - Review & Editing

Competing interests. The authors declare that they have no conflict of interest.

Acknowledgements. This work was supported by the European Union's HORIZON2020 research projects "Nunataryuk" [grant number 773421] and "CHARTER" [grant number 869471], the doctoral college DK GIScience at the University of Salzburg [Austrian Science Fund (FWF) project number W 1237], and the projects CNES TOSCA "LakeIce/LakEddies" and CNRS-Russia IRN "TTS".

We thank three anonymous referees who provided detailed and constructive comments during the review of this manuscript. Comments by Anonymous Referee #1 especially helped to improve the description of the methodology. Comments by Anonymous Referee #2 especially

helped to improve the interpretation and discussion of the results. Comments by Anonymous Referee #3 especially helped to investigate
595 potential causes for holes not being located in classified anomaly regions.

We further thank the editor Dr. Sebastiano Piccolroaz for handling our manuscript and for providing additional comments that helped to
discuss the relevance of this work in a broader context.

Contains modified Copernicus Sentinel data (2015–2019). Contains modified Copernicus Climate Change Service information (2015–
2019). Neither the European Commission nor the European Centre for Medium-Range Weather Forecasts (ECMWF) is responsible for
600 any use that may be made of the Copernicus information or data it contains. Data provided by the European Space Agency. WorldView-2
data © DigitalGlobe, Inc. (2016), provided by European Space Imaging through the European Space Agency (ESA) third party mission
program (Project ID 54392). ALOS PALSAR-2 data were available for this study through JAXA PI agreement #3068002. Landsat-8 surface
reflectance and brightness temperature data courtesy of the U.S. Geological Survey. Geospatial support for this work provided by the Polar
Geospatial Center under NSF-OPP awards 1043681 and 1559691. DEMs provided by the Polar Geospatial Center under NSF-OPP awards
605 1043681, 1559691, and 1542736.

References

- Antonova, S., Duguay, C. R., Kääb, A., Heim, B., Langer, M., Westermann, S., and Boike, J.: Monitoring Bedfast Ice and Ice Phenology in Lakes of the Lena River Delta Using TerraSAR-X Backscatter and Coherence Time Series, Remote Sensing, 8, <https://doi.org/10.3390/rs8110903>, 2016.
- 610 Atwood, D. K., Gunn, G. E., Roussi, C., Wu, J., Duguay, C., and Sarabandi, K.: Microwave Backscatter From Arctic Lake Ice and Polarimetric Implications, IEEE Transactions on Geoscience and Remote Sensing, 53, 5972–5982, <https://doi.org/10.1109/TGRS.2015.2429917>, 2015.
- Author(s): Interactive comment on "Mapping potential signs of gas emissions in ice of lake Neyto, Yamal,Russia using synthetic aperture radar and multispectral remote sensing data" by Georg Pointner et al., The Cryosphere Discussions, <https://doi.org/10.5194/tc-2020-226-RC2>, 2020.
- 615 Bartsch, A., Pointner, G., Leibman, M. O., Dvornikov, Y. A., Khomutov, A. V., and Trofaier, A. M.: Circumpolar Mapping of Ground-Fast Lake Ice, Frontiers in Earth Science, 5, 12, <https://doi.org/10.3389/feart.2017.00012>, 2017.
- Bastviken, D., Cole, J., Pace, M., and Tranvik, L.: Methane emissions from lakes: Dependence of lake characteristics, two regional assessments, and a global estimate, Global Biogeochemical Cycles, 18, <https://doi.org/10.1029/2004GB002238>, 2004.
- Bastviken, D., Tranvik, L. J., Downing, J. A., Crill, P. M., and Enrich-Prast, A.: Freshwater Methane Emissions Offset the Continental Carbon
- 620 Sink, Science, 331, 50–50, <https://doi.org/10.1126/science.1196808>, 2011.
- Bogoyavlensky, V. I., Sizov, O. S., Bogoyavlensky, I. V., and Nikonov, R. A.: Remote identification of areas of surface gas and gas emissions in the Arctic: Yamal Peninsula., Arctic: Ecology and Economy, 3, 4–15, <http://eng.arctica-ac.ru/article/146/>, in Russian, 2016.
- Bogoyavlensky, V. I., Sizov, O. S., Bogoyavlensky, I. V., and Nikonov, R. A.: Technologies for Remote Detection and Monitoring of the Earth Degassing in the Arctic: Yamal Peninsula, Neito Lake, Arctic: Ecology and Economy, 2, 83–93, [https://doi.org/10.25283/2223-](https://doi.org/10.25283/2223-4594-2018-2-83-93)
- 625 4594-2018-2-83-93, in Russian, 2018.
- Bogoyavlensky, V. I., Bogoyavlensky, I. V., Kargina, T. N., Nikonov, R. A., and Sizov, O. S.: Earth degassing in the Arctic: remote and field studies of the thermokarst lakes gas eruption, Arctic: Ecology and Economy, 2, 31–47, <https://doi.org/10.25283/2223-4594-2019-2-31-47>, in Russian, 2019a.
- Bogoyavlensky, V. I., Sizov, O., Bogoyavlensky, I., Nikonov, R., and Kargina, T.: Earth Degassing in the Arctic: Comprehensive Studies
- 630 of the Distribution of Frost Mounds and Thermokarst Lakes with Gas Blowout Craters on the Yamal Peninsula, Arctic: Ecology and Economy, 4, 52–68, <https://doi.org/10.25283/2223-4594-2019-4-52-68>, in Russian, 2019b.
- Bogoyavlensky, V. I., Sizov, O., Mazharov, A., Bogoyavlensky, I., Nikonov, R., Kishankov, A., and Kargina, T.: Earth degassing in the Arctic: remote and field studies of the Seyakha catastrophic gas blowout on the Yamal Peninsula, Arctic: Ecology and Economy, 1, 88–105, <https://doi.org/10.25283/2223-4594-2019-1-88-105>, in Russian, 2019c.
- 635 Chicco, D. and Jurman, G.: The advantages of the Matthews correlation coefficient (MCC) over F1 score and accuracy in binary classification evaluation, BMC genomics, 21, 6, <https://doi.org/10.1186/s12864-019-6413-7>, 2020.
- Cloude, S. R. and Pottier, E.: An entropy based classification scheme for land applications of polarimetric SAR, IEEE transactions on geoscience and remote sensing, 35, 68–78, <https://doi.org/10.1109/36.551935>, 1997.
- Cohen, J.: A Coefficient of Agreement for Nominal Scales, Educational and Psychological Measurement, 20, 37–46,
- 640 <https://doi.org/10.1177/001316446002000104>, 1960.
- Dice, L. R.: Measures of the amount of ecologic association between species, Ecology, 26, 297–302, <https://doi.org/10.2307/1932409>, 1945.

- Drusch, M., Bello, U. D., Carlier, S., Colin, O., Fernandez, V., Gascon, F., Hoersch, B., Isola, C., Laberinti, P., Martimort, P., Meygret, A., Spoto, F., Sy, O., Marchese, F., and Bargellini, P.: Sentinel-2: ESA's Optical High-Resolution Mission for GMES Operational Services, *Remote Sensing of Environment*, 120, 25 – 36, <https://doi.org/10.1016/j.rse.2011.11.026>, 2012.
- 645 Duguay, C. R. and Lafleur, P. M.: Determining depth and ice thickness of shallow sub-Arctic lakes using space-borne optical and SAR data, *International Journal of Remote Sensing*, 24, 475–489, <https://doi.org/10.1080/01431160304992>, 2003.
- Duguay, C. R. and Pietroniro, A.: *Remote Sensing in Northern Hydrology: Measuring Environmental Change*, Washington DC American Geophysical Union Geophysical Monograph Series, 163, <https://doi.org/10.1029/GM163>, 2005.
- Duguay, C. R., Pultz, T. J., Lafleur, P. M., and Drai, D.: RADARSAT backscatter characteristics of ice growing on shallow sub-Arctic lakes, 650 Churchill, Manitoba, Canada, *Hydrological Processes*, 16, 1631–1644, <https://doi.org/10.1002/hyp.1026>, 2002.
- Dvornikov, Y. A., Leibman, M. O., Khomutov, A. V., Kizyakov, A. I., Semenov, P., Busmann, I., Babkin, E. M., Heim, B., Portnov, A., Babkina, E. A., Streletskaia, I. D., Chetverova, A. A., Kozachek, A., and Meyer, H.: Gas-emission craters of the Yamal and Gydan peninsulas: A proposed mechanism for lake genesis and development of permafrost landscapes, *Permafrost and Periglacial Processes*, 30, 146–162, <https://doi.org/10.1002/ppp.2014>, 2019.
- 655 Edelstein, K., Alabyan, A., Gorin, S., and Popryadukhin, A.: Hydrological And Hydrochemical Features Of The Largest Lakes Of The Yamal Peninsula, *Proceedings of the Karelian Research Centre of the Russian Academy of Sciences*, 10, 3–16, <https://doi.org/10.17076/lim571>, in Russian, 2017.
- Engram, M., Walter Anthony, K., Meyer, F. J., and Grosse, G.: Synthetic aperture radar (SAR) backscatter response from methane ebullition bubbles trapped by thermokarst lake ice, *Canadian Journal of Remote Sensing*, 38, 667–682, <https://doi.org/10.5589/m12-054>, 2013.
- 660 Engram, M., Arp, C. D., Jones, B. M., Ajadi, O. A., and Meyer, F. J.: Analyzing floating and bedfast lake ice regimes across Arctic Alaska using 25 years of space-borne SAR imagery, *Remote Sensing of Environment*, 209, 660 – 676, <https://doi.org/10.1016/j.rse.2018.02.022>, 2018.
- Engram, M., Walter Anthony, K., Sachs, T., Kohnert, K., Serafimovich, A., Grosse, G., and Meyer, F.: Remote sensing northern lake methane ebullition, *Nature Climate Change*, 10, 511–517, <https://doi.org/10.1038/s41558-020-0762-8>, 2020.
- 665 European Space Agency: Sentinel-1: ESA's Radar Observatory Mission for GMES Operational Services, https://sentinel.esa.int/documents/247904/349449/S1_SP-1322_1.pdf, 2012.
- Galaziy, G. I.: *Baikal in questions and answers*, Eastern-Siberian Publishing, p. 380, in Russian, 1987.
- GDAL/OGR contributors: GDAL/OGR Geospatial Data Abstraction software Library, Open Source Geospatial Foundation, <https://gdal.org>, 2020.
- 670 Grunblatt, J. and Atwood, D.: Mapping lakes for winter liquid water availability using SAR on the North Slope of Alaska, *International Journal of Applied Earth Observation and Geoinformation*, 27, 63–69, <https://doi.org/10.1016/j.jag.2013.05.006>, 2014.
- Gunn, G. E., Duguay, C. R., Atwood, D. K., King, J., and Toose, P.: Observing Scattering Mechanisms of Bubbled Freshwater Lake Ice Using Polarimetric RADARSAT-2 (C-Band) and UW-Scat (X- and Ku-Bands), *IEEE Transactions on Geoscience and Remote Sensing*, 56, 2887–2903, <https://doi.org/10.1109/TGRS.2017.2786158>, 2018.
- 675 Harris, C. R., Millman, K. J., van der Walt, S. J., Gommers, R., Virtanen, P., Cournapeau, D., Wieser, E., Taylor, J., Berg, S., Smith, N. J., Kern, R., Picus, M., Hoyer, S., van Kerkwijk, M. H., Brett, M., Haldane, A., Fernández del Río, J., Wiebe, M., Peterson, P., Gérard-Marchant, P., Sheppard, K., Reddy, T., Weckesser, W., Abbasi, H., Gohlke, C., and Oliphant, T. E.: Array programming with NumPy, *Nature*, 585, 357–362, <https://doi.org/10.1038/s41586-020-2649-2>, 2020.

- Hersbach, H., Bell, B., Berrisford, P., Biavati, G., Horányi, A., Muñoz Sabater, J. and Nicolas, J., Peubey, C., Radu, R., Rozum, I., Schepers, D., Simmons, A., Soci, C., and Dee, D. and Thépaut, J.-N.: ERA5 hourly data on single levels from 1979 to present, Copernicus Climate Change Service (C3S) Climate Data Store (CDS), <https://doi.org/10.24381/cds.adbb2d47>, accessed on 30-10-2020, 2018.
- Hoekstra, P. and Delaney, A.: Dielectric properties of soils at UHF and microwave frequencies, *Journal of Geophysical Research* (1896-1977), 79, 1699–1708, <https://doi.org/https://doi.org/10.1029/JB079i011p01699>, <https://agupubs.onlinelibrary.wiley.com/doi/abs/10.1029/JB079i011p01699>, 1974.
- Jeffries, M. O., Morris, K., Weeks, W. F., and Wakabayashi, H.: Structural and stratigraphic features and ERS 1 synthetic aperture radar backscatter characteristics of ice growing on shallow lakes in NW Alaska, winter 1991–1992, *Journal of Geophysical Research: Oceans*, 99, 22 459–22 471, <https://doi.org/10.1029/94JC01479>, 1994.
- Kankaku, Y., Suzuki, S., and Osawa, Y.: ALOS-2 mission and development status, in: 2013 IEEE International Geoscience and Remote Sensing Symposium-IGARSS, pp. 2396–2399, IEEE, <https://doi.org/10.1109/IGARSS.2013.6723302>, 2013.
- Kazantsev, V. S., Krivenok, L. A., and Cherbunina, M. Y.: Methane emissions from thermokarst lakes in the southern tundra of Western Siberia, *Geography, Environment, Sustainability*, 11, 58–73, <https://doi.org/10.24057/2071-9388-2018-11-1-58-73>, 2018.
- Kazantsev, V. S., Krivenok, L. A., and Dvornikov, Y. A.: Preliminary data on the methane emission from lake seeps of the Western Siberia permafrost zone, *IOP Conference Series: Earth and Environmental Science*, 606, 012 022, <https://doi.org/10.1088/1755-1315/606/1/012022>, 2020.
- Kizyakov, A., Zimin, M., Sonyushkin, A., Dvornikov, Y., Khomutov, A., and Leibman, M.: Comparison of Gas Emission Crater Geomorphodynamics on Yamal and Gydan Peninsulas (Russia), Based on Repeat Very-High-Resolution Stereopairs, *Remote Sensing*, 9, <https://doi.org/10.3390/rs9101023>, 2017.
- Kizyakov, A., Leibman, M., Zimin, M., Sonyushkin, A., Dvornikov, Y., Khomutov, A., Dhont, D., Cauquil, E., Pushkarev, V., and Stanilovskaya, Y.: Gas Emission Craters and Mound-Predecessors in the North of West Siberia, Similarities and Differences, *Remote Sensing*, 12, <https://doi.org/10.3390/rs12142182>, 2020.
- Kouraev, A. V., Zakharova, E. A., Rémy, F., Kostianoy, A. G., Shimaraev, M. N., Hall, N. M. J., and Ya. Suknev, A.: Giant ice rings on lakes Baikal and Hovsgol: Inventory, associated water structure and potential formation mechanism, *Limnology and Oceanography*, 61, 1001–1014, <https://doi.org/10.1002/lno.10268>, 2016.
- Kouraev, A. V., Zakharova, E. A., Rémy, F., Kostianoy, A. G., Shimaraev, M. N., Hall, N. M. J., Zdorovenov, R. E., and Suknev, A. Y.: Giant ice rings on lakes and field observations of lens-like eddies in the Middle Baikal (2016–2017), *Limnology and Oceanography*, 64, 2738–2754, <https://doi.org/10.1002/lno.11338>, 2019.
- Landis, J. R. and Koch, G. G.: The Measurement of Observer Agreement for Categorical Data, *Biometrics*, 33, 159–174, <https://doi.org/10.2307/2529310>, 1977.
- Lee, J.-S. and Pottier, E.: Polarimetric radar imaging: from basics to applications, CRC press, <https://doi.org/10.1201/9781420054989>, 2009.
- Lee, J.-S., Wen, J.-H., Ainsworth, T. L., Chen, K.-S., and Chen, A. J.: Improved Sigma Filter for Speckle Filtering of SAR Imagery, *IEEE Transactions on Geoscience and Remote Sensing*, 47, 202–213, <https://doi.org/10.1109/TGRS.2008.2002881>, 2008.
- Leibman, M., Kizyakov, A., Plekhanov, A., and Streletskaia, I.: New permafrost feature: deep crater in Central Yamal, West Siberia, Russia as a response to local climate fluctuations, *Geography, Environment, Sustainability*, 7, 68–80, <https://doi.org/10.24057/2071-9388-2014-7-4-68-79>, 2014.

- 715 Lindgren, P. R., Grosse, G., Walter Anthony, K. M., and Meyer, F. J.: Detection and spatiotemporal analysis of methane ebullition on thermokarst lake ice using high-resolution optical aerial imagery, *Biogeosciences*, 13, 27–44, <https://doi.org/10.5194/bg-13-27-2016>, 2016.
- Lindgren, P. R., Grosse, G., Meyer, F. J., and Walter Anthony, K. M.: An Object-Based Classification Method to Detect Methane Ebullition Bubbles in Early Winter Lake Ice, *Remote Sensing*, 11, <https://doi.org/10.3390/rs11070822>, 2019.
- 720 Matthews, B. W.: Comparison of the predicted and observed secondary structure of T4 phage lysozyme, *Biochimica et Biophysica Acta (BBA)-Protein Structure*, 405, 442–451, [https://doi.org/10.1016/0005-2795\(75\)90109-9](https://doi.org/10.1016/0005-2795(75)90109-9), 1975.
- Meissner, T. and Wentz, F. J.: The complex dielectric constant of pure and sea water from microwave satellite observations, *IEEE Transactions on Geoscience and Remote Sensing*, 42, 1836–1849, <https://doi.org/10.1109/TGRS.2004.831888>, 2004.
- Mätzler, C. and Wegmüller, U.: Dielectric properties of freshwater ice at microwave frequencies, *Journal of Physics D: Applied Physics*, 20, 1623–1630, <https://doi.org/10.1088/0022-3727/20/12/013>, <https://doi.org/10.1088%2F0022-3727%2F20%2F12%2F013>, 1987.
- 725 Nisbet, E. G., Dlugokencky, E. J., and Bousquet, P.: Methane on the Rise—Again, *Science*, 343, 493–495, <https://doi.org/10.1126/science.1247828>, 2014.
- Nisbet, E. G., Manning, M. R., Dlugokencky, E. J., Fisher, R. E., Lowry, D., Michel, S. E., Myhre, C. L., Platt, S. M., Allen, G., Bousquet, P., Brownlow, R., Cain, M., France, J. L., Hermansen, O., Hossaini, R., Jones, A. E., Levin, I., Manning, A. C., Myhre, G., Pyle, J. A., 730 Vaughn, B. H., Warwick, N. J., and White, J. W. C.: Very Strong Atmospheric Methane Growth in the 4 Years 2014–2017: Implications for the Paris Agreement, *Global Biogeochemical Cycles*, 33, 318–342, <https://doi.org/10.1029/2018GB006009>, 2019.
- Obu, J., Westermann, S., Barboux, C., Bartsch, A., Delaloye, R., Grosse, G., Heim, B., Hugelius, G., Irrgang, A., Kääb, A., Kroisleitner, C., Matthes, H., Nitze, I., Pellet, C., Seifert, F., Strozzi, T., Wegmüller, U., Wiczorek, M., , and Wiesmann, A.: ESA Permafrost Climate Change Initiative (Permafrost_cci): Permafrost Ground Temperature for the Northern Hemisphere, v2.0, Centre for Environmental Data 735 Analysis, <https://doi.org/10.5285/6ebcb73158b14cd5a321b7c0bc6ed393>, 2020.
- Otsu, N.: A Threshold Selection Method from Gray-Level Histograms, *IEEE Transactions on Systems, Man, and Cybernetics*, 9, 62–66, <https://doi.org/10.1109/TSMC.1979.4310076>, 1979.
- Padwick, C., Deskevich, M., Pacifici, F., and Smallwood, S.: WorldView-2 pan-sharpening, in: *Proceedings of the ASPRS 2010 Annual Conference, San Diego, CA, USA*, vol. 2630, <https://www.semanticscholar.org/paper/WORLDDVIEW-2-PAN-SHARPENING-Padwick-Scientist/cef54a1a117157ab3ec336ff83acc62eaafdd3c2>, 2010.
- 740 Petrov, E. A.: The Baikal seal, *ECOS*, Ulan-Ude, p. 176, in Russian, 2009.
- Pointner, G. and Bartsch, A.: Interannual Variability of Lake Ice Backscatter Anomalies on Lake Neyto, Yamal, Russia, *GI_Forum Journal*, 8, 47–62, https://doi.org/10.1553/giscience2020_01_s47, 2020.
- Pointner, G., Bartsch, A., Forbes, B. C., and Kumpula, T.: The role of lake size and local phenomena for monitoring ground-fast lake ice, 745 *International Journal of Remote Sensing*, 40, 832–858, <https://doi.org/10.1080/01431161.2018.1519281>, 2019.
- Porter, C., Morin, P., Howat, I., Noh, M.-J., Bates, B., Peterman, K., Keeseey, S., Schlenk, M., Gardiner, J., Tomko, K., Willis, M., Kelleher, C., Cloutier, M., Husby, E., Foga, S., Nakamura, H., Platson, M., Wethington, Michael, J., Williamson, C., Bauer, G., Enos, J., Arnold, G., Kramer, W., Becker, P., Doshi, A., D’Souza, C., Cummins, P., Laurier, F., and Bojesen, M.: ArcticDEM, <https://doi.org/10.7910/DVN/OHHUKH>, accessed: 2020-04-01, 2018.
- 750 Roy, D. P., Wulder, M. A., Loveland, T. R., Woodcock, C., Allen, R. G., Anderson, M. C., Helder, D., Irons, J. R., Johnson, D. M., Kennedy, R., et al.: Landsat-8: Science and product vision for terrestrial global change research, *Remote sensing of Environment*, 145, 154–172, <https://doi.org/10.1016/j.rse.2014.02.001>, 2014.

- Schwietzke, S., Sherwood, O. A., Bruhwiler, L. M., Miller, J. B., Etiope, G., Dlugokencky, E. J., Michel, S. E., Arling, V. A., Vaughn, B. H., White, J. W., et al.: Upward revision of global fossil fuel methane emissions based on isotope database, *Nature*, 538, 88–91, <https://doi.org/10.1038/nature19797>, 2016.
- Sørensen, T.: A method of establishing groups of equal amplitude in plant sociology based on similarity of species content and its application to analyses of the vegetation on Danish commons, http://www.royalacademy.dk/Publications/High/295_S%C3%B8rensen,%20Thorvald.pdf, 1948.
- Surdu, C. M., Duguay, C. R., Brown, L. C., and Fernández Prieto, D.: Response of ice cover on shallow lakes of the North Slope of Alaska to contemporary climate conditions (1950–2011): radar remote-sensing and numerical modeling data analysis, *The Cryosphere*, 8, 167–180, <https://doi.org/10.5194/tc-8-167-2014>, 2014.
- Surdu, C. M., Duguay, C. R., Pour, H. K., and Brown, L. C.: Ice Freeze-up and Break-up Detection of Shallow Lakes in Northern Alaska with Spaceborne SAR, *Remote Sensing*, 7, 6133–6159, <https://doi.org/10.3390/rs70506133>, 2015.
- Turetsky, M. R., Abbott, B. W., Jones, M. C., Anthony, K. W., Olefeldt, D., Schuur, E. A., Grosse, G., Kuhry, P., Hugelius, G., Koven, C., et al.: Carbon release through abrupt permafrost thaw, *Nature Geoscience*, 13, 138–143, <https://doi.org/10.1038/s41561-019-0526-0>, 2020.
- Updike, T. and Comp, C.: Radiometric use of WorldView-2 imagery, Technical Note, pp. 1–17, https://dg-cms-uploads-production.s3.amazonaws.com/uploads/document/file/104/Radiometric_Use_of_WorldView-2_Imagery.pdf, 2010.
- van der Walt, S., Schönberger, J. L., Nunez-Iglesias, J., Boulogne, F., Warner, J. D., Yager, N., Gouillart, E., Yu, T., and the scikit-image contributors: scikit-image: image processing in Python, *PeerJ*, 2, e453, <https://doi.org/10.7717/peerj.453>, 2014.
- Virtanen, P., Gommers, R., Oliphant, T. E., Haberland, M., Reddy, T., Cournapeau, D., Burovski, E., Peterson, P., Weckesser, W., Bright, J., van der Walt, S. J., Brett, M., Wilson, J., Millman, K. J., Mayorov, N., Nelson, A. R. J., Jones, E., Kern, R., Larson, E., Carey, C. J., Polat, İ., Feng, Y., Moore, E. W., VanderPlas, J., Laxalde, D., Perktold, J., Cimrman, R., Henriksen, I., Quintero, E. A., Harris, C. R., Archibald, A. M., Ribeiro, A. H., Pedregosa, F., van Mulbregt, P., and SciPy 1.0 Contributors: SciPy 1.0: Fundamental Algorithms for Scientific Computing in Python, *Nature Methods*, 17, 261–272, <https://doi.org/10.1038/s41592-019-0686-2>, 2020.
- Wakabayashi, H., Weeks, W. F., and Jeffries, M. O.: A C-band backscatter model for lake ice in Alaska, in: *Proceedings of IGARSS '93 - IEEE International Geoscience and Remote Sensing Symposium*, pp. 1264–1266 vol.3, <https://doi.org/10.1109/IGARSS.1993.322103>, 1993.
- Walter, K. M.: Methane emissions from lakes in northeast Siberia and Alaska, Ph.D. thesis, <http://hdl.handle.net/11122/8900>, 2006.
- Walter, K. M., Zimov, S. A., Chanton, J. P., Verbyla, D., and Chapin, F. S.: Methane bubbling from Siberian thaw lakes as a positive feedback to climate warming, *Nature*, 443, 71–75, <https://doi.org/10.1038/nature05040>, 2006.
- Walter Anthony, K. M., Vas, D. A., Brosius, L., Chapin, F. S., Zimov, S. A., and Zhuang, Q.: Estimating methane emissions from northern lakes using ice-bubble surveys, *Limnology and Oceanography: Methods*, 8, 592–609, <https://doi.org/10.4319/lom.2010.8.0592>, 2010.
- Walter Anthony, K. M., Anthony, P., Grosse, G., and Chanton, J.: Geologic methane seeps along boundaries of Arctic permafrost thaw and melting glaciers, *Nature Geoscience*, 5, 419–426, <https://doi.org/10.1038/ngeo1480>, 2012.
- Wik, M., Crill, P. M., Bastviken, D., Danielsson, Å., and Norbäck, E.: Bubbles trapped in arctic lake ice: Potential implications for methane emissions, *Journal of Geophysical Research: Biogeosciences*, 116, <https://doi.org/10.1029/2011JG001761>, 2011.
- Wik, M., Varner, R. K., Anthony, K. W., MacIntyre, S., and Bastviken, D.: Climate-sensitive northern lakes and ponds are critical components of methane release, *Nature Geoscience*, 9, 99–105, <https://doi.org/10.1038/ngeo2578>, 2016.
- Woodhouse, I. H.: Introduction to microwave remote sensing, CRC press, <https://doi.org/10.1201/9781315272573>, 2005.

- Yen, J.-C., Chang, F.-J., and Chang, S.: A new criterion for automatic multilevel thresholding, *IEEE Transactions on Image Processing*, 4, 370–378, <https://doi.org/10.1109/83.366472>, 1995.
- Zhang, L., Shi, J., Zhang, Z., and Zhao, K.: The estimation of dielectric constant of frozen soil-water mixture at microwave bands, in: *IGARSS 2003. 2003 IEEE International Geoscience and Remote Sensing Symposium. Proceedings (IEEE Cat. No.03CH37477)*, vol. 4, pp. 2903–2905 vol.4, <https://doi.org/10.1109/IGARSS.2003.1294626>, 2003.
- Zuhlke, M., Fomferra, N., Brockmann, C., Peters, M., Veci, L., Malik, J., and Regner, P.: SNAP (sentinel application platform) and the ESA sentinel 3 toolbox, in: *Sentinel-3 for Science Workshop*, vol. 734, <https://ui.adsabs.harvard.edu/abs/2015ESASP.734E..21Z/abstract>, 2015.