

AUTHOR RESPONSES TO EDITOR COMMENTARY ON TUTTON AND WAY MANUSCRIPT

[T&W response] We would like to thank Dr. Bagshaw for taking the time to provide helpful comments on our manuscript. We have responded to each comment below and have made the suggested changes to the final revised manuscript. A short summary of implemented changes is at the bottom of this response.

Please could you revise the first sentence in the abstract: it is now rather overlong and/or lacking commas

[T&W response] We agree with is comment and have changed the wording.

L14: no need for a hyphen in 'one-year'

[T&W response] We agree with this comment and changed hyphen.

A close up photo of the loggers mounted onto the stakes would be a great addition to Figure 3 – the general set up can be seen, but a close up of the sensors and the mounting would be beneficial to readers.

[T&W response] We agree with this comment and have added a photo with a close-up to Figure 3. Thanks again for this suggestion.

SUMMARY OF CHANGES TO MANUSCRIPT:

[1] Modification to abstract.

[2] Removal of hyphen.

[3] Addition of close-up photo in Figure 3.

AUTHOR RESPONSES TO REVIEWER 1 COMMENTARY ON TUTTON AND WAY MANUSCRIPT

[T&W response] We would like to thank Reviewer 1 (Dr. Prior-Jones) for taking the time to provide helpful comments on our manuscript. We have responded to each comment below and have made the suggested changes to the final revised manuscript. A short summary of implemented changes is at the bottom of this response.

The abstract promises “a new method termed snow characterization with light and temperature”, but while both parameters are measured, they are then analysed separately and the results from each approach compared. The temperature sensor is used in the light intensity method but only to determine snow-free days for the baseline calibration. The authors do acknowledge that they intend to develop a technique that incorporates both kinds of measurements in future work, but it would be good to clarify this up front.

[T&W response] We agree and acknowledge that the methods outlined in this manuscript prioritize light measurements and have revised the introduction of this method to clarify that this is an evolving method and the temperature consideration requires further attention. See tracked changes to the revised manuscript.

Introduction, line 30: “Unlike its liquid counterpart, snow is . . .” – I presume by this you mean by comparison with rain? If that’s the case, I think it would be better if you revised the sentence and explicitly compared snowfall with rainfall.

[T&W response] We agree with this comment and changed the wording to rainfall.

Introduction, line 35. I would suggest also making reference to the fact that snow does not lie evenly because of the effects of topography and wind (snowdrifts, sastrugi, etc), so extrapolating local or regional levels of snow cover from a single point measurement is very prone to errors. The development of a low-cost technique potentially allows multiple instruments to be deployed within a region of interest to get a more representative measurement of snow cover.

[T&W response] We agree with this comment and included the benefit of dispersed point measurements in the following paragraph with context.

Struggled to understand whether the interpolation discussed here between loggers on a single stake or was interpolation in time between logger readings. The explanation (it’s between loggers on a stake) doesn’t come until sometime later at the start of section 4.3, so it is worth a clarification here.

[T&W response] We agree with this comment and have clarified that the interpolation is along the x (time) and y (height along stake) throughout the text.

Results, line 183: “The first, which used changepoint analysis, showed small increases in snow accumulation from late-October to late-January...” – I presume that these “small increases” were relative to the non-interpolated method, but it would be good to have this clearly stated.

[T&W response] We agree that this phrasing is unclear and reworded it to simply describe the increasing snow cover at these stations using the changepoint method.

SUMMARY OF CHANGES TO MANUSCRIPT:

- [1] Specifying the lack of temperature metrics in the method early and**
- [2] Revisions to phrasing and additional considerations to the significance of this method.**
- [3] Revisions to language to clarify methods.**

AUTHOR RESPONSES TO REVIEWER 2 COMMENTARY ON TUTTON AND WAY MANUSCRIPT

[T&W response] We would like to thank Reviewer 2 for taking the time to provide helpful comments on our manuscript. We have responded to each comment below and have made the suggested changes to the final revised manuscript. A short summary of implemented changes is at the bottom of this response.

Snow depth is a poorly observed variable: measurement networks are sparse (especially across the subarctic and Arctic) the measurements are prone to uncertainty, and often fail to capture the prevailing landscape-scale variability. Limited tools are available to address these weaknesses, so advancements in low-cost, easy to deploy instrumentation is of high interest to the snow community. This manuscript provides an overview of a new low-cost approach to acquiring snow depth estimates using vertical profiles of light and temperature measurements. The paper is clearly written and provides a careful inter-comparison of different processing techniques to derive snow depth from the profile measurements. While I have only a small number of suggestions on the manuscript, my main concern, as outlined in my first comment below, is with the experiment design.

1. Because no independent time series of snow depth measurements were acquired coincident to the profile measurements, it is not possible to know what the ‘true’ snow depth was. This means the various approaches to estimating snow depth can be compared, but not assessed. Only in the case of Goose Bay can the SCLT-derived snow depth time series be shown alongside an independent measurement, and as rightly pointed out in the text, this comparison serves to highlight the differences between snow measurements made in open environments (airports) versus in the forest. Ideally, an SR-50 or another independent sensor would have operated alongside the SCLT profile, although I understand the cost of such a deployment could be prohibitive. To mitigate the lack of assessment and highlight the inter-comparison, it would be useful to see the multiple snow depth time series produced at each location from the various techniques on a single plot (individual panel for each site). This would illustrate the range/agreement in snow depth through time based on the analysis methodology, which can now only be inferred by flipping between figures and looking at the correlation results in Figure S3. I suggest adding this new figure, and a brief discussion of it, to Section 5.

[T&W response] We agree and acknowledge that the lack of validation poses some challenges in evaluating the method. We have added an additional figure which compares the snow depth results for each of our SCLT sites to the CMC snow dataset (Brown et al., 2003; Brown and Brasnett, 2010) (Section 5.1). Although these data are based on a combination of first-guess modelling and regional weather stations, this product is widely-used and does represent variability in snow characteristics for an overlapping period with our stations. The new comparison we have added (Fig. 12) shows reasonable agreement between snow estimates for our sites and the regional CMC product. The comparison also demonstrates a clear difference at BaseSnow but we believe our representation is as likely to be accurate as the CMC product which lacks any observed snow depth inputs in this region.

2. Line 262-268: consider moving Figure S3 out of the supplemental material to include it in this

paragraph. I think these are worthwhile results to include in the manuscript.

[T&W response] We agree with this comment and have moved Figure S3 to the manuscript.

3. This issue is acknowledged in the Discussion, but why not use consistent vertical spacing of 10 cm? In a relative sense, greater uncertainty with deeper snow is ok, but the current setup dictates that uncertainty will be greater when snow is deeper.

[T&W response] There are two reasons for this. The first is that we had deployed iButtons for many years at these sites using a similar vertical arrangement so for consistency sake we did not want to introduce an even greater inconsistency. The second reason is more practical in that we are often more concerned about the shallower components of the snowpack when considering thermal impacts of snow cover of permafrost in the region therefore this configuration saves costs and serves the original purpose of the stakes. We have amended the text to clarify this point.

4. Line 122: can you provide a simple description of the PELT method? Not clear what is meant by ‘asymptomatic penalty of 10%’.

[T&W response] This penalty coefficient is part of the PELT method cost minimization function (Killick et al, 2011) and optimizes the number of changepoints in a segmentation. An asymptotic penalty is testing for significance, therefore $b=0.1$ (10%) is indicative of 90% confidence. We agree with the recommendation to provide a simple description of the PELT method in the manuscript with reference to the original derivation of the cost function.

5. Line 170: “all SCLT sites except for BaseSnow had a snowpack taller than the 170 uppermost data logger”. Murphy’s Law at work that there was an unusually deep snowpack during the season that you were evaluating this approach! Do you have a sense of how tall the profile needs to be? Is there any technical limitation to say, a 2 m profile with sensors every 10 cm?

[T&W response] This year was a high snow year relative to the 66-year average (Fig. S5). Prior work (e.g. Way and Lewkowicz, 2018) typically did not have snow depths exceeding 160 cm at these sites but as you say, this is an unusual year. There is no reason to limit the stake height to a particular limit other than we had cost, logistical and continuity considerations in the field that led us to choose the heights we did. We have amended the text in one location to reflect this point.

6. Cost effectiveness is a major driver of this work, but (unless I missed it) nowhere in the paper is the cost of the SCLT profiles stated. This information would be helpful! What is the cost sensitivity to the vertical resolution of the profile?

[T&W response] Cost of SCLT profiles is presented in Table S1 in the supplemental materials and compared to common iButton stakes. The cost is linear relative to the number of loggers installed, where total cost = installation cost + cost per logger * number of loggers. We have amended the text to make more clear reference to this.

7. Sections 4.5 and 4.6 provide more detailed analysis of the light intensity methods. To improve the logical structure of the paper, I suggest shifting these up to follow Section 4.3, and shift down the temperature measurement approach reported in Section 4.4.

[T&W response] We agree with moving Section 4.5 up to follow Section 4.3; however, we have kept Section 4.6 in place as it follows the presentation of the temperature method.

8. The reference list needs to be cleaned up. Some citations are missing (e.g. Archer, 1998) and details are missing from some references (journal titles, etc.). Review the sequence of figure numbers: figures jump from 10 to 13 to 15.

[T&W response] We agree and have addressed the errors in the reference list. Figure order was revised after editor comments and with the reviewer's comments above. It should be noted that referencing issues were introduced through our use of the .csl file for The Cryosphere in the public repository.

9. While the code and data availability are provided, what about schematics to the design of the probe? Will these be shared in some form so that others can follow your design if interested?

[T&W response] We have provided a diagram of the stake setup in Figure 2 and Figure 3. If readers request further instruction on installation we can provide a detailed technical drawing upon request.

Editorial

Line 30: change to 'snowfall is hard to catch, melts differentially once on the ground...'

[T&W response] We agree and have made this change.

Line 55: not clear what is meant by 'relatively unambitious method' . . .uncomplicated?

[T&W response] We have changed relatively unambitious method to direct method for clarity.

Line 60: suggest changing to 'broader snow science community'

[T&W response] We agree and have made this change.

Line 118: change to "We determined SCLT-derived snow surface heights using. . ."

[T&W response] We agree and have made this change.

Figure 4: minor point, but the y-axis range for BaseSnow is slightly different from the other sites

[T&W response] We agree and have changed the axis to be consistent.

SUMMARY OF CHANGES:

[1] Included further validation to CMC snow depth analysis dataset and comparison between methods in manuscript.

[2] Added brief background for using stake height and logger distribution.

[3] Included additional description of the statistical methods used in the changepoint analysis.

[4] Included further reference to the cost differences described in Table S1.

[5] Made revisions to missing references and errors in citations.

[6] Made revisions to language to improve clarity of manuscript.

A low-cost method for monitoring snow characteristics at remote field sites

Rosamond J. Tutton¹, Robert G. Way¹

¹Department of Geography and Planning, Queen's University, Kingston, ON K7L 3N9, Canada

Correspondence to: Robert G. Way (robert.way@queensu.ca)

Abstract. The lack of spatially distributed snow depth measurements in natural environments is a challenge worldwide. [These data gaps are of-but](#) particular [relevancelty](#) in northern regions such as coastal Labrador where changes to snow conditions directly impact indigenous livelihoods, local vegetation, permafrost distribution and wildlife habitat. This problem is exacerbated by the lack of cost-efficient and reliable snow observation methods available to researchers studying cryosphere-vegetation interactions in remote regions. In this study, we propose a new method termed snow characterization with light and temperature (SCLT) for estimating snow depth using vertically arranged multivariate (light and temperature) data loggers. To test this new approach, six snow stakes outfitted with SCLT loggers were installed in forested and tundra ecotypes in Arctic and Subarctic Labrador. The results from one-year of field measurement indicate that daily maximum light intensity (lux) at snow covered sensors is diminished by more than an order of magnitude compared to uncovered sensors. This contrast enables differentiation between snow coverage at different sensor heights and allows for robust determination of daily snow heights throughout the year. Further validation of SCLT [and the inclusion of temperature determinants](#) is needed to resolve ambiguities with thresholds for snow detection and to elucidate the impacts of snow density on retrieved light and temperature profiles. [However, However, the-the](#) results presented in this study suggest that the proposed technique represents a significant improvement over prior methods for snow depth characterization at remote field sites in terms of practicality, simplicity, and versatility.

1 Introduction

Snow cover and snow depth are among [the-Globalthe Global](#) Climate Observing System's (GCOS) essential climate variables (Bojinski et al., 2014) and are critical components of global and regional energy balances (Olsen et al., 2011; Pulliainen et al., 2020). The global snow albedo effect influences all humans, but consequences of changing snow conditions for those living in cold climate and alpine regions are especially pronounced (Ford et al., 2019; Lemke et al., 2007). Accurate characterization of snow depth is important for hydroelectric operations, freshwater and land resource availability to communities and prediction of climate change impacts (Hovelsrud et al., 2011; Mortimer et al., 2020; Sturm et al., 2005; Thackeray et al., 2019; Wolf et al., 2013). Changes to snow depth and snow cover duration in Arctic and alpine tundra caused by enhanced shrub and tree growth can result in warmer ground temperatures, permafrost thaw and further vegetation

expansion (Callaghan et al., 2011; Wilcox et al., 2019). Unlike ~~its rainfall liquid counterpart~~, snowfall is hard to catch, melts differentially (Archer, 1998) and is structurally, mechanically and thermally anisotropic (Leinss et al., 2016). Our ability to monitor *in situ* snow conditions has historically been limited to open areas near larger communities and airfields where large meteorological apparatus are established (Goodison, 2006). As such, standardized measurement of snow remains a challenge in remote regions where existing stations cannot represent the diversity of snow conditions across topography, ~~and~~ vegetation ~~and snow wind-scouring~~ (Brown et al., 2012, 2003; Derksen et al., 2014).

Satellite remote sensing platforms are unable to directly measure snow depth and thermal properties in most environments (Boelman et al., 2019; Kinar & Pomeroy, 2015; Sturm, 2015) and depend on a very limited network of surface validation sites located in open areas (Trujillo and Lehning, 2015). Further, acquisition, establishment and maintenance of stationary weather instrumentation used by government and industry services is costly outside of regional centres, and this infrastructure is not designed to represent forest conditions (Goodison, 2006). This leads to data-sparse areas at high latitudes and in mountainous regions, and spatially biased representation of snow characteristics in research and modelling which reduce our ability to predict impacts of climate change on snow and ground conditions (Domine et al., 2019; Pulliainen et al., 2020). ~~Cost-efficient snow measurement also facilitates multiple measurements across a basin or region of interest, better representation of spatial variability of key snow characteristics such as snow water equivalent across a basin or region of interest, ing spatially variable snow characteristics.~~

To compensate for the lack of automated, spatio-temporal measurements, field researchers in ecological, hydrological and cryospheric domains have made use of low-cost methods such as vertically arranged temperature loggers (Gilbert et al., 2017; de Pablo et al., 2017; Gilbert et al., 2017; Reusser and Zehe, 2011; Throop et al., 2012) and trail cameras with marked stakes (Bongio et al., 2019; Dickerson-Lange et al., 2017; Farinotti et al., 2010; Fortin et al., 2015). These options are relatively low-cost (\$250 CAD [trail camera] to \$700 CAD [10 iButtons] per stake) (Table S1) ~~but~~ have clear disadvantages. For example, iButton temperature loggers can have a low precision ($\pm 0.5^\circ\text{C}$) and sampling frequency (4-h sampling rate for less than a year of data) (Lewkowicz, 2008), experience frequent clock slippage and require specific modifications due to imperfect waterproofing. Trail camera setups often require extensive manual processing, depend on weather conditions (interpretable images, camera battery life) and do not allow determination of other snow characteristics beyond snow heights (Farinotti et al., 2010; Garvelmann et al., 2013).

In this study, we present results from a novel low-cost technique for snow depth estimation that can be efficiently applied at remote field sites. ~~Within a similar similar per site cost-budget (Table S1),~~ ~~we propose~~ the method ~~we propose~~ alleviates some of the challenges associated with other low-cost methods while offering a ~~direct + relatively unambitious straight forward~~ method of estimating snow characteristics in natural conditions. Building on the practice of using temperature loggers (Danby and Hik, 2007; Lewkowicz, 2008), we propose the snow characterization with light and temperature (SCLT) technique which uses vertically arranged dual light & temperature data loggers together to produce reliable estimates of snow characteristics with minimal analysis across ecotones. ~~The current generation of SCLT-based snow thickness estimation relies most on light measurements but SCLT's dual sensor configuration will enable future use of multivariate statistical techniques to improve~~

65 ~~snow estimation methods prioritize characterization by light, however temperature is used to define thresholds and will be~~
~~further incorporated in future revisions.~~ We tested the SCLT method for one year at six field sites located in forested and
shrub-tundra locations in Subarctic and Arctic Labrador, north-eastern Canada. Our results show sufficient promise that we
believe there is significant benefit to sharing first results with the broader ~~northern~~ snow science community. Adoption of this
method will facilitate a more prolific network of snow measurements in real-world conditions and will inform modelling and
70 climate change adaptation measures while enhancing core understanding of cryospheric processes.

2 Study Area

The snow characterization with light and temperature (SCLT) method was tested at six field sites located in Subarctic
and Arctic Labrador (northeast Canada). Field sites were within regions governed or managed by the Nunatsiavut Government,
NunatuKavut Community Council and/or Innu Nation. The overall region has a strong coastal-continental gradient in air
75 temperature, with higher snowfall amounts and colder temperatures than similar western Canadian latitudes due to the
Labrador Current (Banfield and Jacobs, 1998; Brown et al., 2012; Maxwell, 1981; Way et al., 2017). Mean annual air
temperature ranges from around -8°C (Torngat Mountains Ecodistrict) to 2°C (L'Anse Amour Ecodistrict) and regional total
precipitation ranges from 546 mm (Cape Chidley Ecodistrict) to 1248 mm (Mealy Mountain Ecodistrict) (Riley et al., 2013).
On average, regional snow and ice cover is present from November to May (Brown et al., 2012); however, snow cover duration
80 has rapidly declined in northern Labrador and climate models predict further reductions in snow cover duration in the future
(Barrette et al., 2020; Brown et al., 2012). The six SCLT field testing sites (Table 1) cover a latitudinal range of 52.7°N
to 58.5°N and are mostly located in forested ecodistricts (high Boreal forest, low Subarctic forest and mid Subarctic forest) where
the dominant vegetation types are Black Spruce, White Spruce, Balsam Fir and Eastern Larch (Roberts et al. 2006; Riley et
al., 2013) (Fig. 1; Table 1). One site (BaseSnow) is located in low-Arctic shrub-tundra (Torngat Mountains Ecodistrict) where
85 dominant upright shrub species are Alder and Dwarf birch (Riley et al., 2013). The forested sites (Amet11, Amet12, Amet17,
Amet28 and Amet19) are at a lower latitude and receive at minimum 7.6 hours of daylight while the higher latitude shrub-
tundra site (BaseSnow) [receives](#) at minimum 6.3 hours of daylight (Bird and Hulstrom, 1981).

90 **Table 1: Site specifications for the six SCLT sites including site name, latitude, longitude, elevation, ecotype and SCLT data collection period.**

Site ID	Full site name	Latitude (°N)	Longitude (°E)	Elevation (m)	Vegetation ecotype	SCLT data collection period
Amet11	Mealy South Lower	52.83	-60.10	265	Taiga forest	2018-09-13 to 2019-07-24
Amet12	Mealy South Upper	52.79	-60.03	467	Taiga forest	2018-09-13 to 2019-07-24
Amet17	Goose Bay Upper	53.30	-60.54	271	Boreal forest	2018-10-14 to 2019-08-05
Amet28	Aliant Tower Lower	53.09	-61.80	390	Taiga forest	2018-09-03 to 2019-08-12
Amet29	Aliant Tower Upper	53.11	-61.80	526	Taiga forest	2018-09-03 to 2019-08-12
BaseSnow	Torngat Basecamp	58.45	-62.80	3	Shrub tundra	2018-08-07 to 2019-08-19

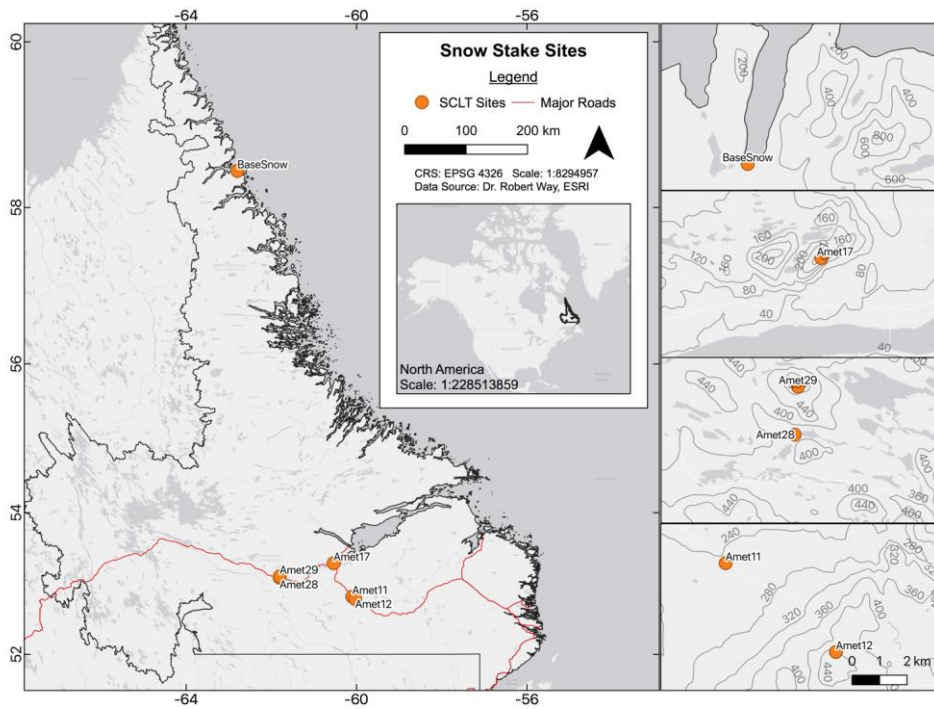
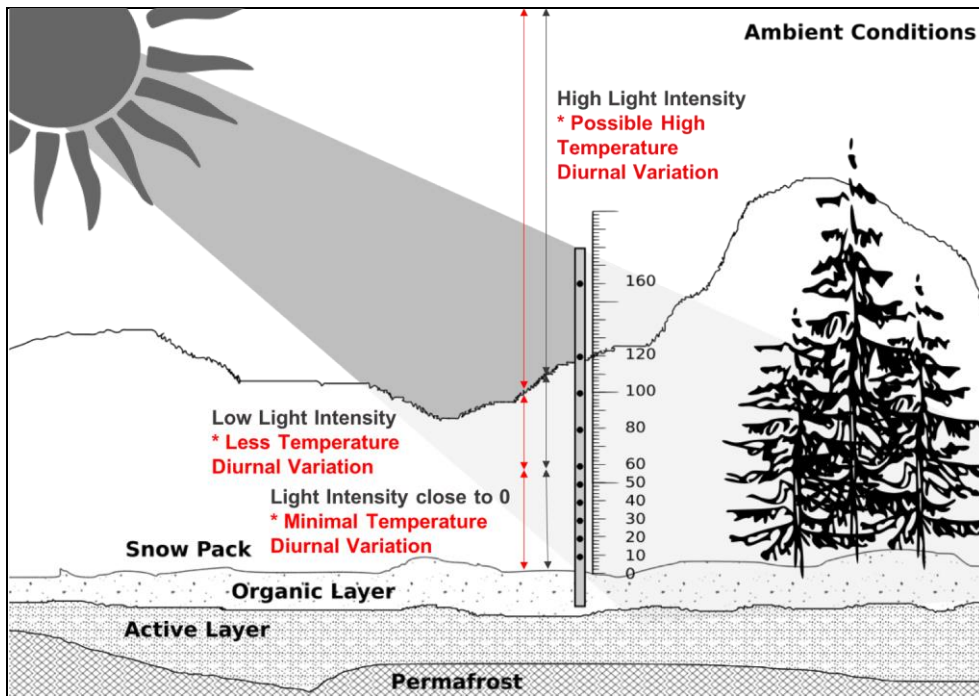


Figure 1: Geographic distribution of light and temperature snow stake sites (left) with detailed topographic depictions of each site (right).

95 3 Methods

3.1 Theoretical Approach

The snow characterization with light and temperature (SCLT) method is based on prior research demonstrating that light transmission is inhibited by snow cover, and that overlying snow layer characteristics impact the magnitude and rate of light transmission through the snowpack (Fig. 2) (Libois et al., 2013; Perovich, 2007). The SCLT method is an evolution of a low-cost method, first described by Danby and Hik (2007) and Lewkowicz (2008), that uses vertically arranged temperature measurements and diurnal temperature fluctuations to estimate the date of snow cover at a given height (Lewkowicz, 2008). SCLT uses simultaneous measurements of light intensity and temperature together to characterize snowpack characteristics.

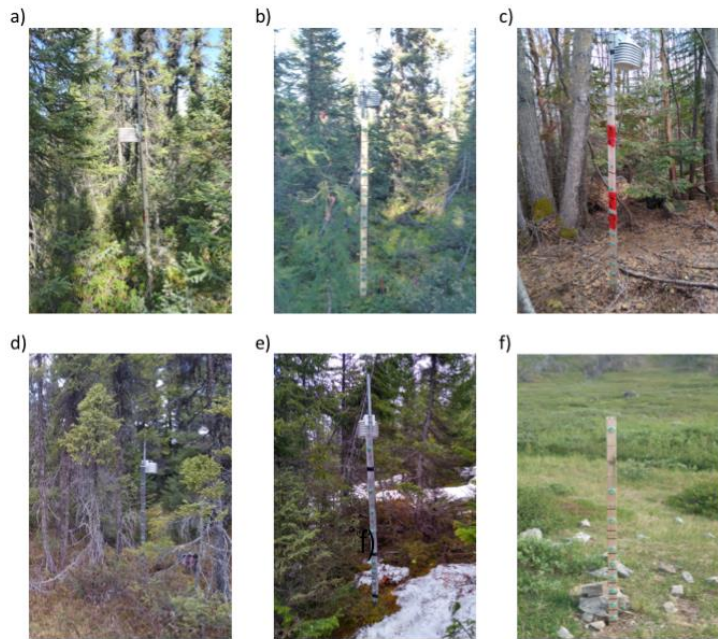


105 Figure 2: Conceptual diagram of the snow characterization with light and temperature (SCLT) method as implemented in this study. It is hypothesized that increases in snow depth will lead to sudden drops in light intensity measured by data loggers due to scattering and reflection in the snowpack (Perovich, 2007). A snow-covered logger is assumed to have mean values which are lower than ambient light intensity while temperature is assumed to remain at or just below freezing. Increased snow depth is assumed to result in less light penetration and decreasing diurnal temperature variation at lower logger heights. Impacts of snow aging and density variations are expected to impact these processes but are not explored in the present analysis.

3.2 Field Implementation of SCLT method

115 Wooden stakes (1.8 m) were outfitted with vertically arranged HOBO MX2202 Pendant Wireless Temperature/Light Data Loggers (Onset Computer Corporation, 2020) anchored to 1.0 m metal poles driven into the ground (Table S1). Loggers were positioned at heights of 10, 20, 30, 40, 50, 60, 80, 100, 120 and 160 cm above the ground surface and thus characterize near-surface snow layers at a higher resolution than upper layers (Fig. 2; Fig. 3). The specific heights used for height of the stakes and loggers' positions were set to maintain continuity with prior snow estimates made at these sites with iButton techniques (e.g. Way and Lewkowicz, 2018) but other configurations (e.g. 10 cm intervals) may be preferred for other non-permafrost applications - are based on cost, logistical and continuity considerations made in the field. Visible light intensity

120 and temperature was recorded at intervals of 2 hours (even intervals) and data was downloaded in the field via the HOBOMobile app (Onset, 2017). At each site, ground surface temperature, ground temperature (approximately 1 m depth) and air temperature were also collected following Way and Lewkowicz (2018). Initial testing of the SCLT method covered the period of September 2018 to August 2019.





125 **Figure 3: Field photos of all SCLT measurement sites for 2018-2019 and (g) a close up of logger installation onto stake. These include: (a) Amet11; (b) Amet12; (c) Amet17; (d) Amet28; (e) Amet29; and (f) BaseSnow.**

3.3 Data Processing and Analysis

130 We ~~determined-calculated~~ SCLT-derived snow surface heights using SCLT ~~withusing~~ three unique but conceptually similar approaches. All analyses assume that snow cover at a given height occurs when daily maximum light intensity or daily temperature standard deviation drops below an empirical threshold. The first approach applied changepoint analysis to raw light intensity measurements with the assumption that sudden changes in light intensity recorded at a logger are indicative of complete or partial snow coverage. The position of changepoint segments was determined using the Pruned Exact Linear Time (PELT) test method-, a cost minimisation function as described by Killick et al. (2011), using a asymptotic penalty of 0.1
 135 (resulting in 90% confidence) (Killick et al. 2011). By removing non-optimal solution paths, this method (asymptomatic penalty of 10%) which provides moderate sensitivity (Aminikhanghahi and Cook, 2017) and fast processing time (Beaulieu et al., 2012; Wambui et al., 2015). A logger is deemed snow covered if a drop in light intensity causes changepoint segments to fall below a threshold derived empirically.

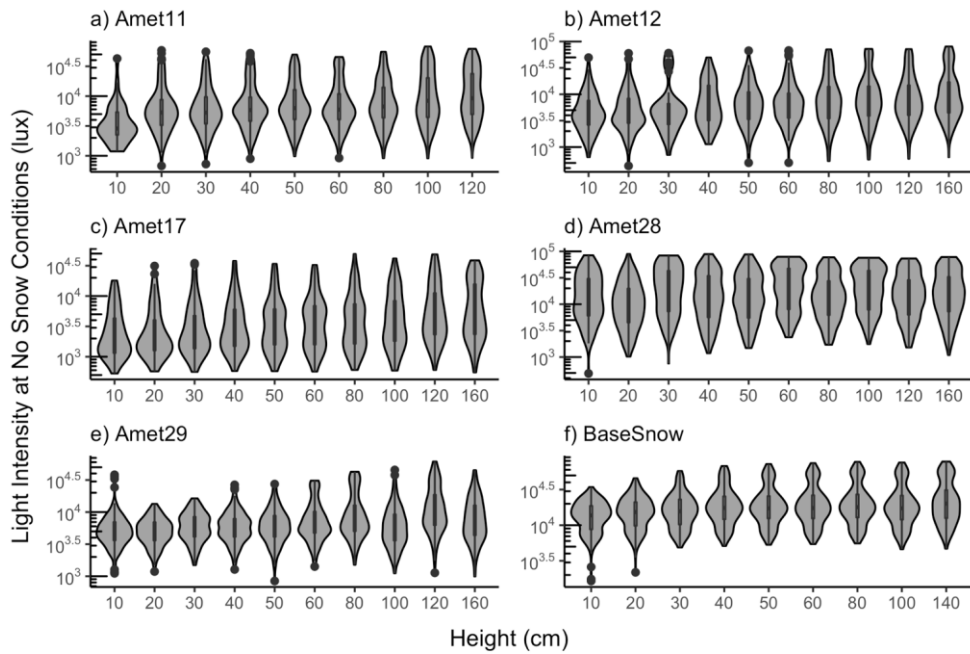
140 Snow cover thresholds were defined as the minimum of the daily maximum light intensities during no-snow conditions at a data logger. No-snow conditions were considered days where the daily maximum temperature recorded at a

given logger was above 0.5°C. This approach resulted in thresholds and ranges of daily maximum light intensities that varied from logger-to-logger (Fig. 4; Fig. S1). Application of changepoint analysis with the empirical thresholds enabled detection of stepwise increases (or decreases) in snow surface heights relative to a logger's position (Fig. 5). Estimated snow depth was floored to the closest logger height which, when using raw data, resulted in uncertainties of ± 10 cm at lower positions and up to ± 40 cm for the top position.

The second approach applied to SCLT data uses similar logic as the first method but takes advantage of the high correlation between loggers at different heights through interpolation (Table S2). Daily maximum light intensity data was interpolated [through time and vertical height](#) using a modified thin plate spline interpolation designed for spatial processes from the fields R package (Nychka et al., 2017). Mean Absolute Error (MAE) of daily maximum interpolations ranged from 0.089 - 0.398 lux (logarithmic) for light and 0.099 - 2.01°C for temperature (Table S2). Snow cover was estimated from interpolated SCLT data with two different techniques: (1) standard changepoint analysis (PELT method, [asymptotic asymptomatic](#) penalty of 10%) using the mean threshold using pooled data for all loggers at a given stake; and (2) using the minimum, mean and maximum of the empirical snow cover thresholds from all loggers across a stake (contour method) (Fig. S1).

A third approach based entirely on temperature (Fig. S2) was used for comparison with the light intensity-based methods presented above. Estimation of snow depth with only temperature data is widespread in the ecological and permafrost literature and relies on measuring attenuation of diurnal variability in the snowpack (Danby and Hik, 2007; Lewkowicz, 2008). We apply changepoint analysis (PELT method, [asymptomatic](#) penalty of 10%) to daily temperature standard deviations measured at each logger using the minimum standard deviation measured during no snow conditions ($T_{max} > 0.5^\circ\text{C}$) for each

160 height as an empirical threshold. A second condition was added where minimum temperature on a given day must be less than
| or equal to 0.5°C for snow cover to be present.



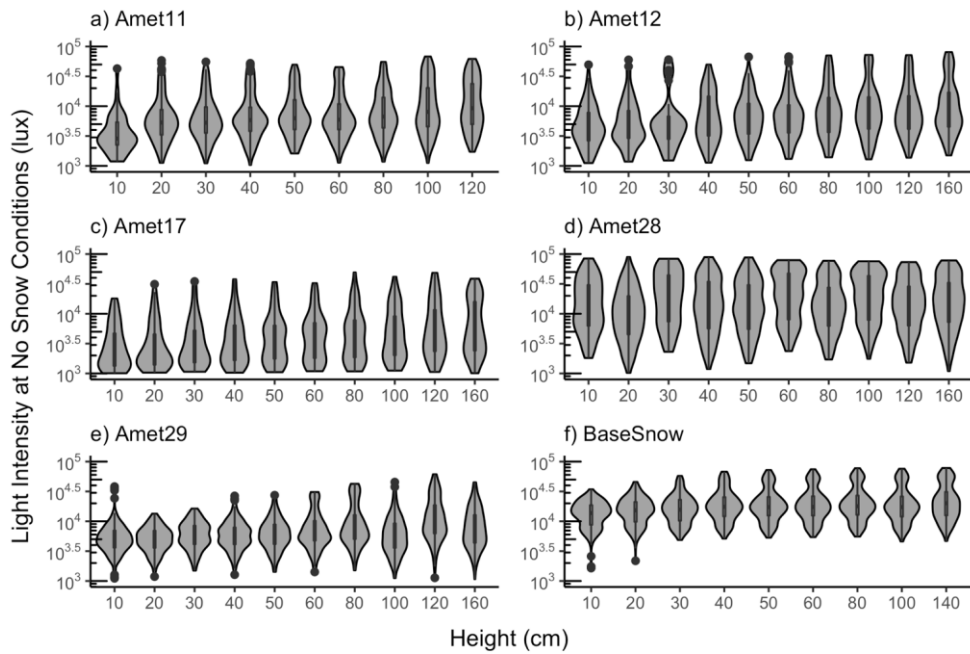


Figure 4: Violin plot (rotated kernel density) showing the probability density and distribution of daily maximum light intensities (logarithmic scale) when the daily maximum temperature is above 0.5°C at: (a) Amet11, (b) Amet12, (c) Amet17, (d) Amet-28, (e) Amet29 and (f) BaseSnow. Minimum values were used as the individual logger thresholds for the changepoint analysis and pooled thresholds were used for the range of thresholds used in the interpolated analysis.

165

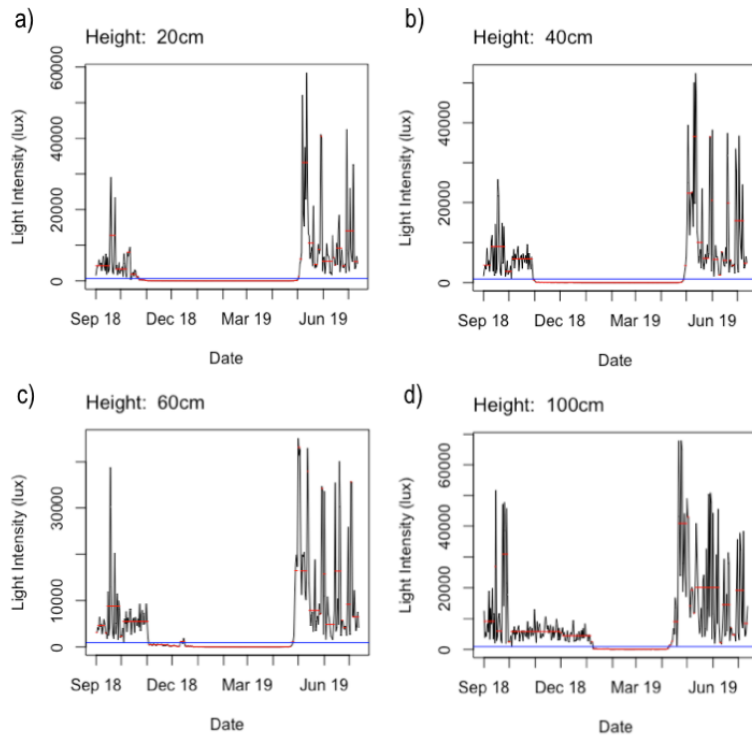


Figure 5: Changepoint analysis applied to (a) 20, (b) 40, (c) 60 and (d) 100 cm height loggers along Amef11. The red line shows changepoint segment means and the blue line shows the no-snow light intensity threshold for each logger. Snow cover occurs at a given logger when the changepoint segment drops below the no-snow threshold.

170

4 Results

4.1 Estimating snow depth using lux measurements

We used the SCLT method to estimate snow depth through the winter for 2018-2019 at six remote sites across Labrador. The first analysis method derives the snow depth using a changepoint analysis of the raw daily aggregates and the second uses interpolated light intensity data. A third method is entirely based on temperature and is presented for a comparison to data analysis methods used in prior studies.

175

4.2 Changepoint analysis with raw light intensity measurements

At forested sites (Amet11, Amet12, Amet17, Amet28, Amet29), snow accumulated stepwise beginning in mid-October with a maximum depth reached between March and April followed by rapid snow melt in early-to-mid May (Fig. 6). At the shrub-tundra site (BaseSnow), snow cover was generally thin over much of the winter with smaller periods of accumulation in the late-fall and early-winter. At BaseSnow, maximum snow thickness was reached in mid-March to mid-April and a complete melt occurred by early-May. Across all sites the snow cover duration ranged from 174 days (BaseSnow) to 229 days (Amet12) with an average duration of 215 days (Table 2). Mean January snow depth was also lowest at BaseSnow (~11 cm) and highest at Amet12 (~103 cm). In 2018-2019, all SCLT sites except for BaseSnow had a snowpack taller than the uppermost data logger (160 cm; 120 cm at Amet11 due to a logger failure) for anywhere between 8 days (Amet28) to 84 days (Amet11) (Table 2).

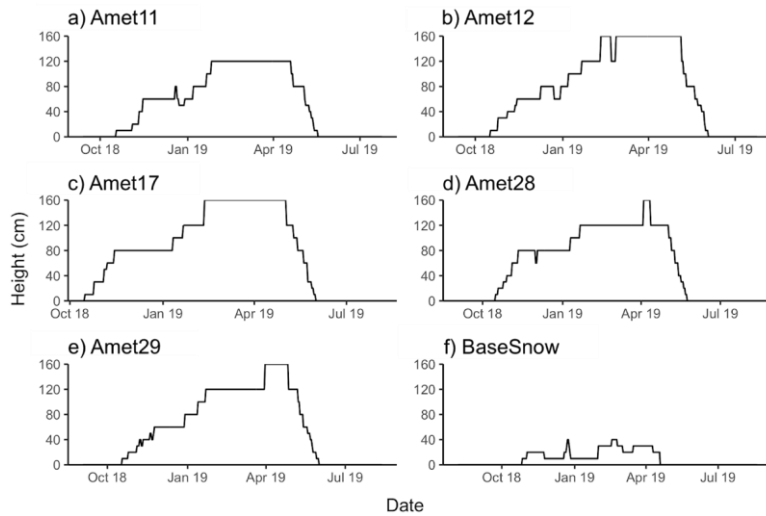


Figure 6: Snow depth over 2018-2019 derived using changepoint analysis of raw lux values from loggers at each SCLT measurement site including: (a) Amet11, (b) Amet12, (c) Amet17, (d) Amet28, (e) Amet29 and (f) BaseSnow. Top logger positions ranged from 120 cm (Amet11 and BaseSnow) to 160 cm (Amet12, Amet17, Amet28, Amet29) and cannot detect snow depths above this height.

Table 2: Snow cover duration, maximum snow depth, duration at maximum depth and mean January snow depth for each SCLT site for 2018-2019 using the changepoint method with raw lux values.

Site	Snow cover duration	Maximum snow depth	Duration at max depth	Mean January snow depth
------	---------------------	--------------------	-----------------------	-------------------------

Amet11	212 days	> 120 cm	84 days	87.1 cm
Amet12	229 days	> 160 cm	80 days	103.2 cm
Amet17	228 days	> 160 cm	81 days	100.6 cm
Amet28	220 days	> 160 cm	8 days	101.3 cm
Amet29	226 days	> 160 cm	27 days	98.7 cm
BaseSnow	174 days	40 cm	9 days	10.6 cm

195

4.3 Snow depth estimation with interpolated light intensity measurements

200

Light intensity was interpolated [through time and along each stake height](#) and two analysis techniques were applied to the interpolated data (Fig. 7). The first, which used changepoint analysis, ~~showed small increases in snow accumulation~~ [accumulated snow](#) from late-October to late-January for Amet11, Amet12 and Amet17 with snow cover above the top logger (greater than 120cm for Amet11 and 160cm for Amet12 and Amet17) until spring snowmelt in late-April to early-May. With the interpolated changepoint method, Amet28 accumulated snow until April when it reached a maximum snow depth of 133 cm on March 21, 2019 and melted from late April until mid-May. At Amet29 snow depth exceeded the top logger (160 cm) from mid-to-late April and melted throughout May (Fig. 7). BaseSnow showed a thinner snow cover with short periods of accumulation in the late-fall (November), late-December and February with a maximum snow depth of 31 cm in late-January. The interpolated changepoint analysis resulted in snow cover durations ranging from 177 days (BaseSnow) to 234 days (Amet12) and mean January snow depth ranging from 17 cm (BaseSnow) to 120 cm (Amet17).

205

210

The second approach applied to interpolated data used the minimum, mean and maximum stake-wide pooled thresholds to produce a range of contours showing potential snow depths for each day. The SCLT snow depth using mean thresholds showed a similar pattern to the changepoint analysis described above with accumulation from late-October to late-January, with the notable exception that snow cover at Amet28 exceeded the top logger with this method (Fig. 7). BaseSnow showed dispersed accumulations between the late-fall and early-spring with rapid melt occurring in mid-April and a maximum snow depth of 43 cm on December 23, 2018. Snow cover duration ranged from 178 days (BaseSnow) to 200 days (Amet17) and mean January snow depth ranged from 23.0 cm (BaseSnow) to 120 cm (Amet17) (Fig. 7). Applying the contour approach to 2018-2019 winter SCLT data leads to mean time-varying snow depth uncertainty ranges from 3 ± 3 cm (Amet17) to 15 ± 6 cm (Amet28).

215

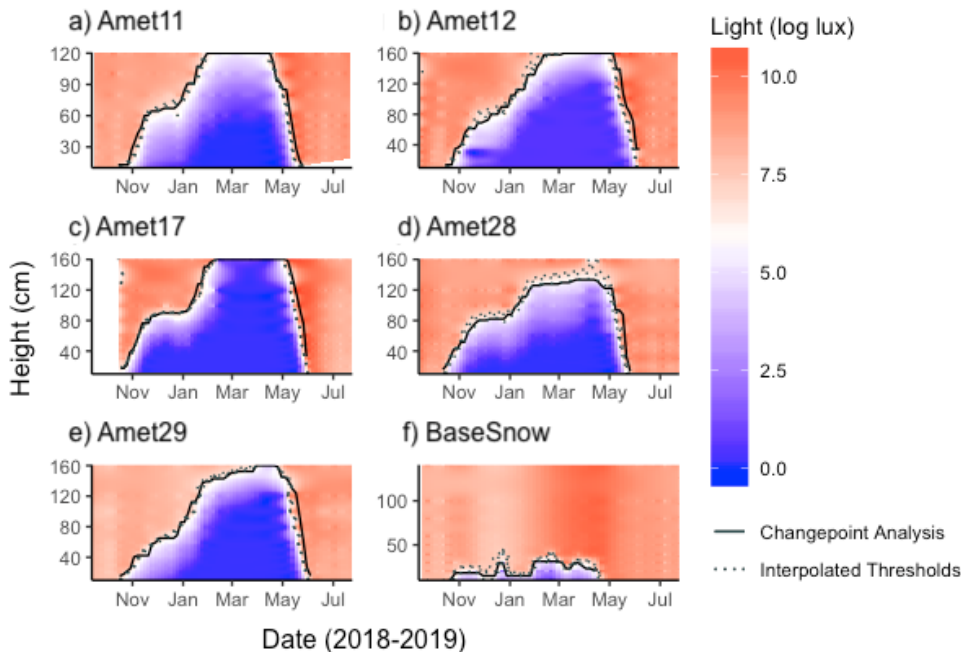


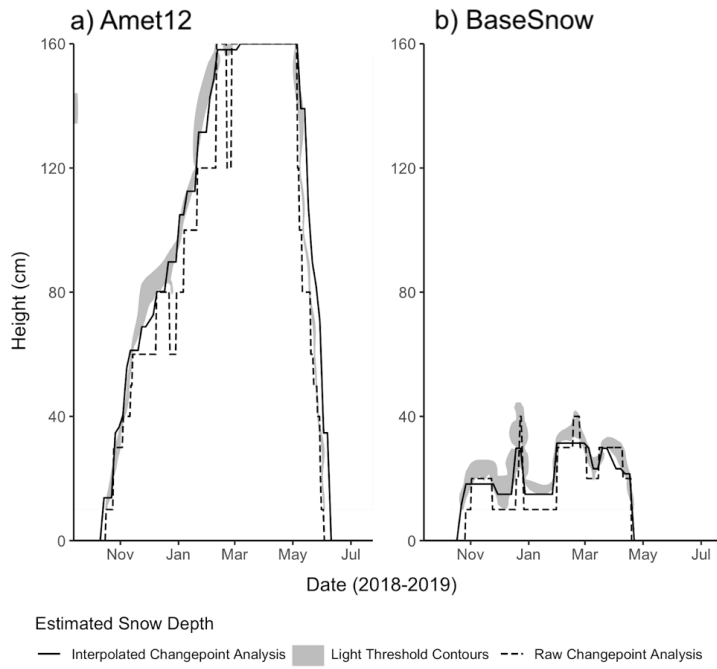
Figure 7: Interpolated lux measurements presented as an x-y-z plot on a log-scale for each SCLT measurement site including: (a) Amet11, (b) Amet12, (c) Amet17, (d) Amet28, (e) Amet29 and (f) BaseSnow. Estimated snow depths are presented for changepoint analysis (black) and the mean of the no-snow thresholds (contour-method; dotted).

4.4 Comparison of SCLT lux methods

Raw and interpolated light intensity-based methods showed similar periods of snow onset with gradual snow accumulation from October to May for the Amet sites but the raw changepoint analysis resulted in a shorter duration of snow cover compared to the interpolated data at all sites (Fig. 7). Generally, the raw changepoint method showed larger single day-increases in estimated snow depth, while the same method applied to interpolated data resulted in smaller, more frequent accumulations. Application of the contour method (using minimum, mean and maximum thresholds) resulted in smooth periods of accumulation and transport or melt but were mostly similar to the changepoint-based estimates (Fig. 7). Changepoint analysis and contours using interpolated data resulted in similar mean January snow depths for all stations with a mean difference of 3 ± 2 cm (Table 3). The mean January snow depth was significantly lower using the changepoint method on the raw data at all stations, with differences ranging from 10.2 cm (Amet28) to 18.4 cm (Amet17) (Table 3).

235

Comparison of a forested (Amet12) and shrub-tundra site (BaseSnow) showed earlier snowmelt with the raw changepoint analysis at the former site but no clear differences in melt at the latter site (Fig. 8). The raw changepoint method also showed a period of snow removal or melt in the early-to-mid winter at the forested site though this was not evident in the interpolated data (Fig. 8). All three light-based methods showed a consistently low snowpack at the shrub-tundra site (BaseSnow) with greater overall variability in the raw changepoint analysis (Fig. 8).



240

Figure 8: Comparison of snow depths derived with light-based methods for: (a) a forested site (Amet12) and (b) a shrub-tundra site (BaseSnow). Snow depth estimates are provided for raw changepoint analysis (dashed lines), interpolated changepoint analysis (black line) and interpolated contours using minimum and maximum snow cover thresholds (grey shading).

Formatted: Caption

4.5.4 Estimating snow depth using temperature measurements

245

Application of the temperature-based changepoint analysis resulted in forested stations (all Amets) showing snow accumulation starting in mid-to-late October but not until late-December at the shrub tundra site (BaseSnow). All temperature-

based snow depth estimates showed a drop in snow depth in late-December (Fig. 98). Amet11 reached a maximum snow depth of 100 cm in February but periodically dropped to 50 cm throughout the winter with a rapid decline in late-April to early-May (Fig. 98). Amet12 and Amet17 exceeded the top logger in February but had sudden drops in snow depth throughout the winter into early-spring. Amet28 and Amet29 both accumulated snow gradually until early-April with peak snow depths of greater than 120 cm and 160 cm, respectively. Melt is inferred to have occurred at all SCLT sites excluding BaseSnow between late-April and late-May. At BaseSnow, spikes in snow cover up to 30 cm occurred in late-December and late-March to early-April. Excluding these peaks, snow cover at BaseSnow remained at 0 cm throughout much of the snow season (Fig. 98). With the univariate temperature analysis, snow cover duration ranged from 104 days (BaseSnow) to 227 days (Amet12 and Amet17) and mean January snow depth ranged from 0 cm (BaseSnow) to 101 cm (Amet12).

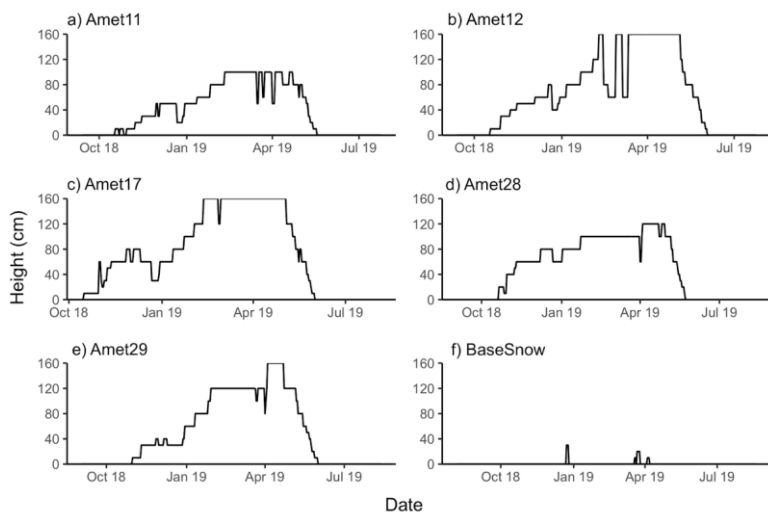


Figure 98: Snow depth over winter 2018-2019 derived from changepoint analysis applied to standard deviations of daily temperature for each SCLT measurement site including: (a) Amet11, (b) Amet12, (c) Amet17, (d) Amet28, (e) Amet29 and (f) BaseSnow. Top logger positions for SCLT sites ranged from 120 cm (Amet11 and BaseSnow) to 160 cm (Amet12, Amet17, Amet28, Amet29) and cannot detect snow depths above this height.

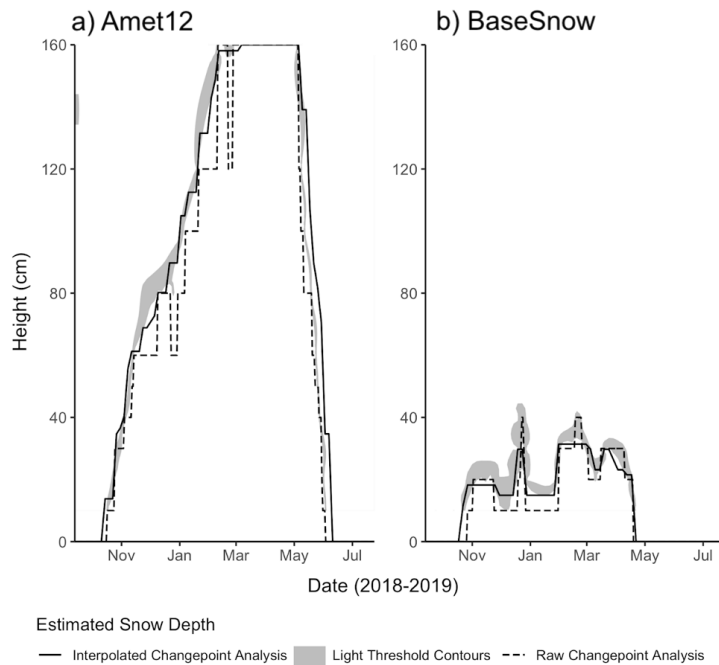
4.5 Comparison of SCLT lux methods

Raw and interpolated light intensity-based methods showed similar periods of snow onset with gradual snow accumulation from October to May for the Amet sites but the raw changepoint analysis resulted in a shorter duration of snow

Formatted: Caption

265 eover compared to the interpolated data at all sites (Fig. 7). Generally, the raw changepoint method showed larger single day-
increases in estimated snow depth, while the same method applied to interpolated data resulted in smaller, more frequent
accumulations. Application of the contour method (using minimum, mean and maximum thresholds) resulted in smooth
periods of accumulation and transport or melt but were mostly similar to the changepoint-based estimates (Fig. 7). Changepoint
analysis and contours using interpolated data resulted in similar mean January snow depths for all stations with a mean
270 difference of 3 ± 2 cm (Table 3). The mean January snow depth was significantly lower using the changepoint method on the
raw data at all stations, with differences ranging from 10.2 cm (Amet28) to 18.4 cm (Amet17) (Table 3).

Comparison of a forested (Amet12) and shrub tundra site (BaseSnow) showed earlier snowmelt with the raw
changepoint analysis at the former site but no clear differences in melt at the latter site (Fig. 9). The raw changepoint method
also showed a period of snow removal or melt in the early to mid winter at the forested site though this was not evident in the
interpolated data (Fig. 9). All three light-based methods showed a consistently low snowpack at the shrub tundra site
275 (BaseSnow) with greater overall variability in the raw changepoint analysis (Fig. 9).



280 **Figure 9:** Comparison of snow depths derived with light-based methods for: (a) a forested site (Amet12) and (b) a shrub-tundra site (BaseSnow). Snow depth estimates are provided for raw changepoint analysis (dashed lines), interpolated changepoint analysis (black line) and interpolated contours using minimum and maximum snow cover thresholds (grey shading).

4.6 Comparison of light and univariate temperature methods

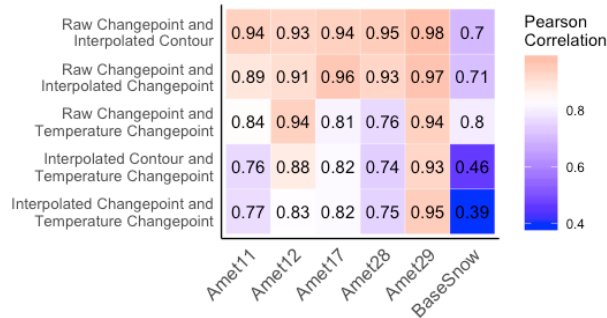
285 Estimated snow depth using temperature showed large drops in the late-Fall and mid-Winter at most sites that were not evident in the light intensity-based methods. Temperature-based snow depths consistently produced shorter snow durations and less snow accumulation at all sites (Fig. 98; Table 3). For the forested sites (Amets), the differences in mean January snow depth between the temperature changepoint and the raw SCLT changepoint ranged from 2 cm (Amet12) to 22 cm (Amet17) (Table 3) though an even greater difference was found when comparing interpolated data (mean difference of 27 ± 11 cm). At BaseSnow (shrub-tundra), the temperature method estimated a snow depth of 0 cm in January while the light-based methods estimated mean snow depths between 10 cm and 23 cm (Table 3).

290

Table 3: Mean January snow depth for all six stations using all methods.

Field site	Raw light changepoint	Interpolated light changepoint	Interpolated light threshold contours (mean)	Raw temperature changepoint
Amet11	87.1 cm	100.7 cm	98.2 cm	69.0 cm
Amet12	103.2 cm	117.8 cm	120.7 cm	101.2 cm
Amet17	100.6 cm	120.1 cm	119.0 cm	78.7 cm
Amet28	101.3 cm	107.6 cm	111.5 cm	96.8 cm
Amet29	98.7 cm	115.2 cm	114.0 cm	81.9 cm
BaseSnow	10.6 cm	17.3 cm	23.0 cm	0 cm

295 Temporal variability in snow depths was examined using Pearson correlation coefficients calculated across sites and methods between December and January (avoiding snow depths exceeding maximum logger heights). Amongst the four methods examined, snow depths derived using light-based methods were highly correlated with one another ($r = 0.7$ to $r = 0.98$) but were much less correlated with the temperature-based snow depths (Fig. S310). Raw changepoint analysis using light provided the highest mean correlation with the temperature-based snow depths across sites ($r = 0.85$). Overall, cross-method correlations were highest for Amet29 and lowest for BaseSnow reflecting the highly variable snow conditions at the latter site (Fig. S34).



300 **Figure 10: Pearson correlation coefficients (r) comparing estimated snow depths from December 2019 and January 2020, between methods for each site.**

Formatted: Indent: First line: 1.27 cm

Formatted: Caption, Indent: First line: 0 cm

5 Discussion

305 5.1 Evaluation of SCLT performance

Evaluation of the snow characterization with light and temperature (SCLT) method in Subarctic and Arctic Labrador over winter 2018-2019 showed that the technique can reliably and consistently determine snow depth in both forested and shrub-tundra environments. The raw changepoint requires minimal processing time and is easiest to implement, but by ignoring the inter-associations between measurements at different heights it will inherently floor snow depth to the closest logger leading to larger errors than with interpolated data. Interpolation of SCLT data was also able to compensate for logger failures, particularly post-snow coverage, by using the high correlation between loggers within the snowpack to estimate missing data (S4-Table S2). The univariate temperature analysis applied to our sites underperformed relative to the light-based methods with the divergence between approaches most evident at the shrub-tundra site (BaseSnow) (Fig. S410). The snowpack at this site was inferred to be dense due to wind packing and thus would experience greater diurnal temperature variability because of a higher thermal conductivity compared to a forest site (Domine et al., 2016; Sturm et al. 1999). The high light intensities outside of the snowpack induced by the albedo effect provided a fairly unambiguous contrast with the lower light intensities within the snowpack (Fig. 7), allowing for depth determination of a snowpack that is typically difficult to characterize (Domine et al., 2019).

As elucidated by Sturm et al. (2001), snow cover is sensitive to local micro-climate, vegetation cover and topography. These variables are not broadly represented in current weather monitoring infrastructure deployed near urban centres or airports (Goodison, 2006). The lack of weather stations recording snow depth adjacent to our field sites makes it difficult to validate results from most SCLT sites. However, Amet17 is located approximately 5 km from Goose Bay Airport which has a weather station measuring snow depth though this site is found in an open clearing and at a site that is 200 m lower than Amet17 (Environment and Climate Change Canada, 2020). Comparing the two 2018-2019 snow depths from both sites shows high general agreement ($r = 0.98$ for daily snow depths from December to January [$n=112$]) but Amet17 showed a longer overall snow season and a significantly later snow melt than at Goose Bay Airport (Fig. 119). This difference is not unexpected as Brown et al (2003) showed a thicker peak snow depth and longer snow duration at forested versus open snow course sites (currently inactive) near Goose Bay. Later snow melt at Amet17 can also be inferred from a site visit to Amet17 in 2020 (March 25) which showed a significantly thicker snowpack at Amet17 (95 ± 5 cm; Fig. S45) than contemporaneously measured at Goose Bay Airport (52 cm) (Environment and Climate Change Canada, 2020).

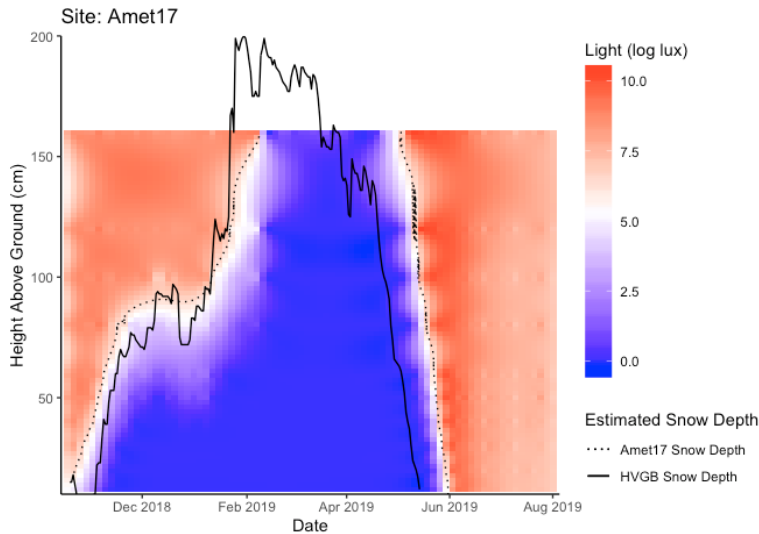


Figure 110: Estimated snow depth at Amet17 site (black dotted line) using interpolated SCLT data overlaid with snow depth measured for winter 2018-2019 at Goose Bay Airport (black solid line).

To further assess the SCLT approach, the accuracy without independent site measurement, we compared the SCLT derived estimated snow depths at our field sites to the co-located estimates from the snow depths to daily Canadian Meteorological Centre (CMC) snow depth product (Brown and Brasnett, 2010). CMC daily snow depths are derived using analyzed snow depths. This dataset uses real-time, *in-situ* daily snow depth observations, statistical and interpolation and a first-guess field using a from generated from a snow accumulation and melt model (Brown et al., 2003; Brown and Brasnett, 2010) (Fig. 12). This does not take the place of an in-situ validation as the data is The CMC product is interpolated to generated at a 24 km spatial resolution and has a 24 km x 24 km grid with and is as accurate reduced performance in areas with sparse *in-situ* snow monitoring networks like Labrador but our comparison that, melt daily patterns are. Our comparison shows that snow onset, melt and daily accumulations patterns are similar to the SCLT derived snow depth estimates (Fig. 12). MAE between December-January CMC snow depths and light-based SCLT snow depths estimates were 19 cm, 8.9, 24 cm, 66, 5 cm, 13, 35 cm, 4.7, 39 cm, 3 and 43.58 cm for Amet11, Amet12, Amet17, Amet28, Amet29 and BaseSnow, respectively. MAE between snow duration was 27 days, 14 days, 2 days, 10 days, 4 days and 129 days for Amet11, Amet12, Amet17, Amet28, Amet29 and BaseSnow, respectively. Both Amet11/and Amet12 and Amet28/and Amet29 shared respective grid cells thus and the differences illustrated between these SCLT sites within the same CMC grid cells (Amet11 Amet12; Amet28 Amet29) reflect influences of There is disagreement between SCLT sites within corresponding grid cells (Amet11 Amet12 and Amet28 Amet29) showing snow depth variability based on vegetation, elevation and potential snow drift. Unfortunately, due to the

Formatted: Font: Italic

Formatted: Font: Italic

lack of snow measurement locations throughout in northern Labrador (Mekis et al., 2018), the CMC modelled dataset does not provide an adequate representation of snow depth at their unlikely to be provide a useful validation against BaseSnow for utility comparison.

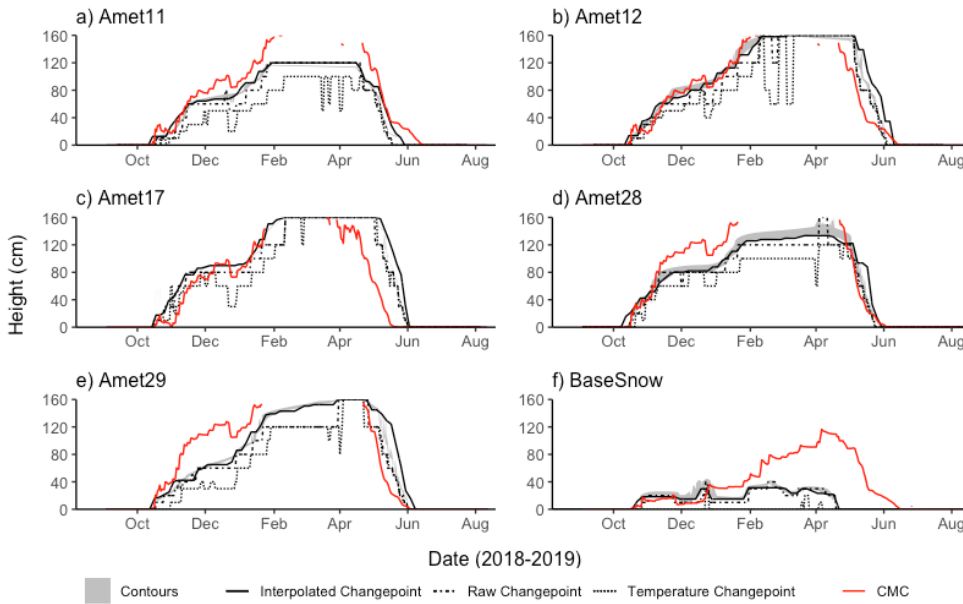


Figure 12: Comparison of snow depths derived with light and temperature-based methods and Canadian Meteorological Centre (CMC) snow depth analysis data (Brown and Brasnett, 2003) for: (a) Amet 11, (b) Amet 12, (c) Amet17, (d) Amet28, (e) Amet29 and (f) BaseSnow. Snow depth estimates are provided for interpolated contours using minimum and maximum snow cover thresholds (grey shading), interpolated changepoint analysis (black line), raw changepoint analysis (dot-dashed line), temperature changepoint analysis (dotted line) and modelled CMC snow depth at the associated grid cell (red line).

Formatted: Caption

5.2 Limitations and Opportunities

The results in this study have provided a direct workflow for estimating snow depth from SCLT data though the proposed method will require further optimization and refinement. For example, our analysis did not directly evaluate the impacts of latitude, canopy cover, logger configuration and ground condition on SCLT results. Each of these factors and their corresponding influence on light transmission under snow and no-snow conditions makes the universal application of particular light thresholds unlikely. The specific sensor arrangement of SCLT stakes may also require refinement and customization for

indices studied. Winter 2018-2019 far exceeded normal snow depths in coastal Labrador (Fig. S56), resulting in data gaps mid-winter. The configuration in this study was designed for investigations of ground thermal impacts of snow cover in discontinuous permafrost in Labrador which typically are largest when snow cover is shallower than 100 cm (Way and Lewkowicz, 2018). For hydrological applications, uniform sensor arrangement at a given interval (e.g. 5-10 cm) may be preferable.

~~At follow-up visits to several of our sites, we experienced water damage to HOBO MX2202 Pendant Wireless Temperature/Light loggers leading to battery failure and a cessation of data collection despite their reported waterproof casing. We have interpreted this to be a result of bowing of the logger casing because we overtightened the screws because we overtightened the screws when affixing loggers to the wooden stakes (Fig. 3). It is advised that in the future these loggers are loosely attached to stakes to maintain the integrity of the logger structure. There is significant risk for water damage and data loss if the HOBO MX2202 Pendant Wireless Temperature/Light loggers are over tightened. Screws should be secured loosely on the stake (Fig. 3) to prevent warping of the logger mounts, ensuring protection from snow, heavy rain and humidity.~~

Field visits to sites also suggest that maintaining a consistent measurement height may be challenging in areas with significant frost heave from year-to-year therefore alternative anchoring may be needed for examining changes at a site over multi-year periods. The widespread applicability of SCLT will depend on further testing at high latitudes where the lack of light availability during December and January may limit its utility during portions of the winter. However, this concern may be limited to the short periods of complete darkness as we observed substantial light reflection from high albedo tundra snow cover at our highest latitude site (BaseSnow) even in December. Exploring the potential utility of combining light intensity and temperature together with more advanced predictive modelling may further mitigate this concern. We would also recommend that a specific sensor arrangement pointing south or towards the most open portion of the canopy could be adopted to enhance light intensity contrasts at low sun angles.

Overall, the SCLT method was found to provide robust and cost-efficient snow depth estimation in regions that are not suitable for outfitting with full weather stations. We unambiguously show that light intensity is a clearer metric for estimating daily snow depth than temperature-only methods. Further analysis combining the light intensity measurements with temperature within the snowpack will allow for a more robust snowpack characterization than available through the use of time lapse photography-based methods. The dual measurements collected by the SCLT technique coupled with ground temperature measurements will also enable simplified characterizations of temperature gradients within the snowpack and at depth as a coupled system (Fig. 13). Further studies should explore how SCLT can be applied to better understand other snowpack characteristics including density, grain size and effective thermal conductivity.

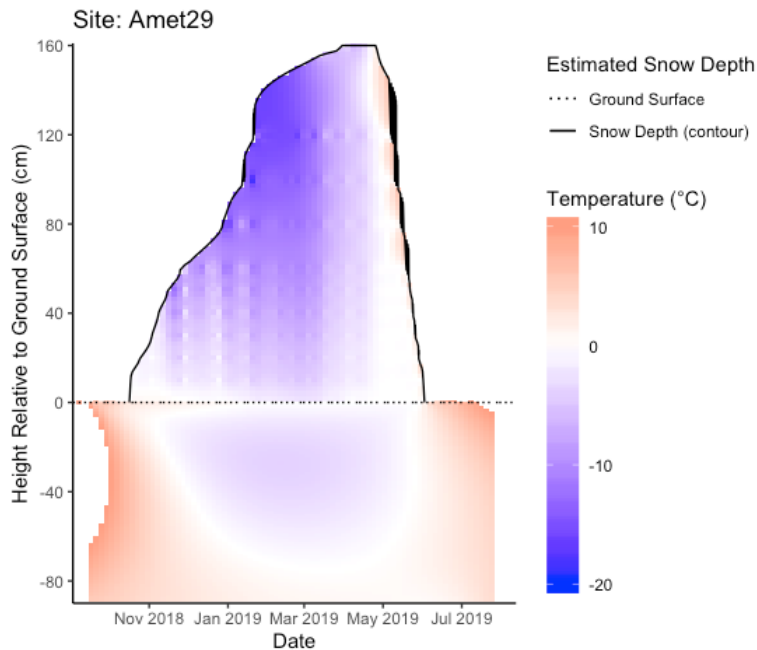


Figure 134: X-Y-Z plot showing interpolated temperatures for Amet29 within the snowpack and the underlying soil (maximum depth: 85 cm). Snowpack height is estimated using the interpolated light threshold contour (mean) (black line) and ground temperatures were recorded at 5 cm and 85 cm depth with a [Hobo-HOBO V2 Pro](#) data logger.

6 Conclusion

Improved monitoring and characterization of a changing snowscape is imperative to conservation, planning and climate adaptation in across the globe but particularly in Subarctic and Arctic regions. Snow characterization under natural environments is currently lacking in most northern environments with measurement stations mostly in open areas near airports or communities making snow studies outside of these regions dependent on snow courses and remote sensing (Brown et al., 2003; Goodison, 2006; Pulliainen et al., 2020). In this study, we introduce a novel method (SCLT) for characterizing snow conditions in remote northern environments that uses a combination of vertically arranged light and temperature loggers. We present three different methods for analyzing SCLT data, including a temperature-only approach for comparison with prior studies. Our results broadly show that raw and interpolated SCLT data can be used to efficiently characterize snow depth over full snow seasons at sites that varied considerably in ecotype and inferred snow characteristics. All SCLT-based snow

estimation techniques provided clear advantages over the temperature-only approach with the latter performing particularly poorly where snow density was inferred to be higher (shrub-tundra).

415 The development of the SCLT method as a cost-effective measurement technique aims to help fill knowledge gaps in snow-vegetation interactions and to facilitate a wider snow monitoring network in remote areas under natural conditions. The method requires further research and refinement; however, these preliminary results are sufficiently promising that deployment of SCLT across northern research basins for testing purposes may be desirable. Applying this new method will improve our understanding of the changing cryosphere, local hydrology and climate change impacts on ecosystems and biodiversity. Further elucidation of snow-vegetation-permafrost interactions will also aid community development, local travel
420 safety and cultural practices.

Code and Data Availability

The SCLT data contributes to a larger dataset presented by Way and Lewkowicz (2018) that will be made available through Nordicana D. The R v3.6.0 or RStudio v1.2.1335 code for: (a) inputting and preprocessing HOBO Pendant Light/Temperature csv data (b) determining light thresholds and (c) snow depth evaluation through changepoint analysis and interpolation, are
425 available through the authors' ResearchGate repository at the doi links below. Additional code is available upon request.

- (a) Tutton, R. and Way, R.: SCLT Data Pre-processing, [doi:10.13140/RG.2.2.17281.48483](https://doi.org/10.13140/RG.2.2.17281.48483), 2019.
- (b) Tutton, R. and Way, R.: SCLT Threshold Determination, [doi:10.13140/RG.2.2.14093.15841](https://doi.org/10.13140/RG.2.2.14093.15841), 2019.
- (c) Tutton, R. and Way, R.: SCLT Snow Cover Determination (Changepoint), [doi:10.13140/RG.2.2.35064.67843](https://doi.org/10.13140/RG.2.2.35064.67843), 2020.

Author Contribution

430 RGW established snow stake field sites as part of a wider permafrost monitoring network. RT and RGW collected and analysed field data and reviewed results relative to local weather monitoring stations. RT and RGW drafted the final manuscript.

Competing Interests

The authors declare that they have no conflict of interest.

Acknowledgements

435 The authors would like to acknowledge that research activities were undertaken on land originally and contemporarily occupied by the Innu and Inuit people of Labrador represented by the Innu Nation, Nunatsiavut Government and NunatuKavut Community Council. We would like to thank the Nunatsiavut Government and the Western Newfoundland and Labrador Field Unit of Parks Canada for direct logistical and research support for activities at the Torngat Mountains Basecamp and Research

Station. This research benefited from conversations and/or logistical support from Caitlin Lapalme, Dr. Darroch Whitaker, Rodd Laing, Dr. Antoni Lewkowicz, Ross Brown, Dr. Philip Bonnaventure, Dr. Luise Hermanutz, Dr. Andrew Trant, Dr. Sharon Smith, Charlene Kippenhuck, George Russell Jr., [Paul McCarney](#), Yifeng Wang and Taylor Larking. This research was financially and/or logistically supported by Queen's University, the W. Garfield Weston Foundation, the Labrador Institute of Memorial University of Newfoundland, the Nunatsiavut Government and ArcticNet Inc. Network of Centre of Excellence.

References

- 445 [Aminikhanghahi, S. and Cook, D. J.: A Survey of Methods for Time Series Change Point Detection, *Knowl. Inf. Syst.*, 51\(2\), 339–367, doi:10.1007/s10115-016-0987-z, 2017.](#)
- [Archer D.: Snow measurement. *Encyclopedia of Hydrology and Lakes*, Encyclopedia of Earth Science, Springer, Dordrecht doi:<https://doi.org/10.1007/1-4020-4497-6> 206, 1998.](#)
- 450 [Banfield, C. E. and Jacobs, J. D.: Regional Patterns of Temperature and Precipitation for Newfoundland and Labrador During the Past Century, *Can. Geogr.*, 42\(4\), 354–364, doi:10.1111/j.1541-0064.1998.tb01351.x, 1998.](#)
- [Barrette, C., Brown, R., Way, R., Mailhot, A., Diaconescu, É. P., Grenier, P., Chaumont, D., Dumon, D., Sévigny, C., Howell, S. and Senneville, S.: Nunavik and Nunatsiavut Regional Climate Information Update, in *Nunavik and Nunatsiavut: From science to policy. An Integrated Regional Impact Study \(IRIS\) of climate change and modernization, second iteration*, p. 62, ArcticNet Inc, Quebec City, Canada., 2020.](#)
- 455 [Bird, R. E. and Hulstrom, R. L.: Simplified clear sky model for direct and diffuse insolation horizontal surfaces. \[online\] Available from: <https://ui.adsabs.harvard.edu/abs/1981scsm.rept.....B>, 1981.](#)
- [Boelman, N. T., Liston, G. E., Gurarie, E., Meddens, A. J. H., Mahoney, P. J., Kirchner, P. B., Bohrer, G., Brinkman, T. J., Cosgrove, C. L., Eitel, J. U. H., Hebblewhite, M., Kimball, J. S., LaPoint, S., Nolin, A. W., Pedersen, S. H., Prugh, L. R., Reinking, A. K. and Vierling, L. A.: Integrating snow science and wildlife ecology in Arctic-boreal North America, *Environ. Res. Lett.*, 14\(1\), 010401, doi:10.1088/1748-9326/aaec1, 2019.](#)
- 460 [Bojinski, S., Verstraete, M., Peterson, T. C., Richter, C., Simmons, A. and Zemp, M.: The Concept of Essential Climate Variables in Support of Climate Research, Applications, and Policy, *B. Am. Meteorol. Soc.*, 95\(9\), 1431–1443, doi:10.1175/BAMS-D-13-00047.1, 2014.](#)
- [Bongio, M., Arslan, A. N., Tanis, C. M. and De Michele, C.: Snow depth estimation by time-lapse photography: Finnish and Italian case studies, *The Cryosphere Discuss.*, <https://doi.org/10.5194/tc-2019-193>, in review, 2019.](#)
- [Brasnett, B.: A Global Analysis of Snow Depth for Numerical Weather Prediction: *J. Appl. Meteorol.*, 38, 726–740, 1999.](#)
- [Brown, R. D., Brasnett, B. and Robinson, D.: Gridded North American monthly snow depth and snow water equivalent for GCM evaluation, *Atmo. Ocean*, 41\(1\), 1–14, doi:10.3137/ao.410101, 2003.](#)
- 470 [Brown, R. D. and Brasnett, B.: Canadian Meteorological Centre \(CMC\) Daily Snow Depth Analysis Data, Version 1. updated annually, NASA National Snow and Ice Data Center Distributed Active Archive Center \[snow depth\], doi: <https://doi.org/10.5067/W9FOYWH0EQZ3>, 2010.](#)
- [Brown, R., Lemay, M., Allard, M., Barrand, N. E., Barrette, C., Bégin, Y., Bell, T., Bernier, M., Bleau, S., Chaumont, D., Dibike, Y., Frigon, A., Leblanc, P., Paquin, D., Sharp, M. J. and Way, R.: Climate variability and change in the Canadian Eastern Subarctic IRIS region \(Nunavik and Nunatsiavut\), doi:10.13140/RG.2.1.3745.0323, 2012.](#)
- 475 [Callaghan, T. V., Johansson, M., Brown, R. D., Groisman, P. Ya., Labba, N., Radionov, V., Barry, R. G., Blangy, S., Bradley, R. S., Bulygina, O. N., Christensen, T. R., Colman, J., Essery, R. L. H., Forbes, B. C., Forchhammer, M. C., Frolov, D. M.,](#)

- 480 [Golubev, V. N., Grenfell, T. C., Honrath, R. E., Juday, G. P., Melloh, R., Meshcherskaya, A. V., Petrushina, M. N., Phoenix, G. K., Pomeroy, J., Rautio, A., Razuvaev, V. N., Robinson, D. A., Romanov, P., Schmidt, N. M., Serreze, M. C., Shevchenko, V., Shiklomanov, A. I., Shindell, D., Shmakin, A. B., Sköld, P., Sokratov, S. A., Sturm, M., Warren, S., Woo, M., Wood, E. F. and Yang, D.: Changing snow cover and its impacts., *AMBIO*, 2011.](#)
- [Danby, R. K. and Hik, D. S.: Variability, contingency and rapid change in recent subarctic alpine tree line dynamics, *J. Ecol.*, 95\(2\), 352–363, doi:10.1111/j.1365-2745.2006.01200.x, 2007.](#)
- 485 [Derksen, C., Lemmetyinen, J., Toose, P., Silis, A., Pulliainen, J. and Sturm, M.: Physical properties of Arctic versus subarctic snow: Implications for high latitude passive microwave snow water equivalent retrievals, *J. Geophys. Res.-Atmos.*, 119\(12\), 7254–7270, doi:10.1002/2013JD021264, 2014.](#)
- [Dickerson-Lange, S. E., Gersonde, R. F., Hubbart, J. A., Link, T. E., Nolin, A. W., Perry, G. H., Roth, T. R., Wayand, N. E. and Lundquist, J. D.: Snow disappearance timing is dominated by forest effects on snow accumulation in warm winter climates of the Pacific Northwest, United States, *Hydrol. Process.*, 31\(10\), 1846–1862, doi:10.1002/hyp.11144, 2017.](#)
- 490 [Domine, F., Barrere, M. and Sarrazin, D.: Seasonal evolution of the effective thermal conductivity of the snow and the soil in high Arctic herb tundra at Bylot Island, Canada, *The Cryosphere*, 10\(6\), 2573–2588, doi:10.5194/tc-10-2573-2016, 2016.](#)
- [Domine, F., Picard, G., Morin, S., Barrere, M., Madore, J.-B. and Langlois, A.: Major Issues in Simulating Some Arctic Snowpack Properties Using Current Detailed Snow Physics Models: Consequences for the Thermal Regime and Water Budget of Permafrost, *J. Adv. Model. Earth. Sy.*, 11\(1\), 34–44, doi:10.1029/2018MS001445, 2019.](#)
- 495 [Environment and Climate Change Canada: Historical Climate Data - Goose A, \[online\] Available from: \[https://climate.weather.gc.ca/climate_data/daily_data_e.html?StationID=6777\]\(https://climate.weather.gc.ca/climate_data/daily_data_e.html?StationID=6777\) \(Accessed 20 July 2020\), 2011.](#)
- [Farinotti, D., Magnusson, J., Huss, M. and Bauder, A.: Snow accumulation distribution inferred from time-lapse photography and simple modelling, *Hydrol. Process.*, 24\(15\), 2087–2097, doi:10.1002/hyp.7629, 2010.](#)
- [Ford, J. D., Smit, B. and Wandel, J.: Vulnerability to climate change in the Arctic: A case study from Arctic Bay, Canada, *Global Environ. Chang.*, 16\(2\), 145–160, doi:10.1016/j.gloenvcha.2005.11.007, 2006.](#)
- 500 [Ford, J. D., Clark, D., Pearce, T., Berrang-Ford, L., Copland, L., Dawson, J., New, M. and Harper, S. L.: Changing access to ice, land and water in Arctic communities, *Nat. Clim. Chang.*, 9\(4\), 335–339, doi:10.1038/s41558-019-0435-7, 2019.](#)
- [Fortin, V., Jean, M., Brown, R. and Payette, S.: Predicting Snow Depth in a Forest–Tundra Landscape using a Conceptual Model Allowing for Snow Redistribution and Constrained by Observations from a Digital Camera, *Atmo. Ocean*, 53\(2\), 200–211, doi:10.1080/07055900.2015.1022708, 2015.](#)
- 505 [Garvelmann, J., Pohl, S. and Weiler, M.: From observation to the quantification of snow processes with a time-lapse camera network, *Hydrol. Earth Syst. Sci.*, 17\(4\), 1415–1429, doi:10.5194/hess-17-1415-2013, 2013.](#)
- [Gilbert, S. L., Hundertmark, K. J., Person, D. K., Lindberg, M. S. and Boyce, M. S.: Behavioral plasticity in a variable environment: snow depth and habitat interactions drive deer movement in winter, *J. Mammal.*, 98\(1\), 246–259, doi:10.1093/jmammal/gvw167, 2017.](#)
- 510 [Goodison, B.: Challenges in Snow Measurement: Solid Precipitation and Snow Cover. *ECMWF Seminar on Polar Meteorology*, 6, 2006.](#)
- [Hovelsrud, G. K., Poppel, B., van Oort, B. and Reist, J. D.: Arctic Societies, Cultures, and Peoples in a Changing Cryosphere, *AMBIO*, 40\(S1\), 100–110, doi:10.1007/s13280-011-0219-4, 2011.](#)
- 515 [Killick, R., Fearnhead, P. and Eckley, I. A.: Optimal detection of changepoints with a linear computational cost, *J. Am. Stat. Assoc.*, 107\(500\), 1590–1598, doi:10.1080/01621459.2012.737745, 2012.](#)
- [Kinar, N. and Pomeroy, J.: Measurement of the physical properties of the snowpack, *Rev. Geophys.*, 53\(2\), 481–544, 2015.](#)

- 520 [Leinss, S., Löwe, H., Proksch, M., Lemmetyinen, J., Wiesmann, A. and Hajnsek, I.: Anisotropy of seasonal snow measured by polarimetric phase differences in radar time series, *The Cryosphere*, 10\(4\), 1771–1797, doi:10.5194/tc-10-1771-2016, 2016.](#)
- [Lemke, P., Ren, J. F., Alley, R. B., Allison, I., Carrasco, J., Flato, G., Fujii, Y., Kaser, G., Mote, P., Thomas, R. H. and Zhang, T.: Observations: Changes in Snow, Ice and Frozen Ground, *Climate Change 2007: The Physical Science Basis*, 2007.](#)
- 525 [Lewkowicz, A. G.: Evaluation of miniature temperature-loggers to monitor snowpack evolution at mountain permafrost sites, northwestern Canada, *Permafrost Periglac.*, 19\(3\), 323–331, doi:10.1002/ppp.625, 2008.](#)
- [Libois, Q., Picard, G., France, J. L., Arnaud, L., Dumont, M., Carmagnola, C. M. and King, M. D.: Influence of grain shape on light penetration in snow, *The Cryosphere*, 7\(6\), 1803–1818, doi:10.5194/tc-7-1803-2013, 2013.](#)
- [Maxwell, J. B.: Climatic Regions of the Canadian Arctic Islands, *Arctic*, 34\(3\), 225–240, 1981.](#)
- 530 [Mekis, E., Donaldson, N., Reid, J., Zucconi, A., Hoover, J., Li, Q., Nitu, R. and Melo, S.: An Overview of Surface-Based Precipitation Observations at Environment and Climate Change Canada, *Atmo. Ocean*, 56\(2\), 71, doi:10.1080/07055900.2018.1433627, 2018.](#)
- [Mortimer, C., Mudryk, L., Derksen, C., Luoju, K., Brown, R., Kelly, R. and Tedesco, M.: Evaluation of long-term Northern Hemisphere snow water equivalent products, *The Cryosphere*, 14\(5\), 1579–1594, doi:10.5194/tc-14-1579-2020, 2020.](#)
- 535 [Nychka, D., Furrer, R., Paige, J. and Sain, S.: “fields: Tools for spatial data.”, R package version 9.8-6, doi:10.5065/D6W957CT, 2017.](#)
- [Olsen, M. S., Callaghan, T. V., Reist, J. D., Reiersen, L. O., Dahl-Jensen, D., Granskog, M. A., Goodison, B., Hovelsrud, G. K., Johansson, M., Kallenborn, R., Key, J., Klepikov, A., Meier, W., Overland, J. E., Prowse, T. D., Sharp, M., Vincent, W. F. and Walsh, J.: The Changing Arctic Cryosphere and Likely Consequences: An Overview, *AMBIO*, 40\(1\), 111–118, doi:10.1007/s13280-011-0220-y, 2011.](#)
- 540 [Onset Computer Corporation: HOBO Pendant \(R\) MX Temperature/Light Data Logger, Data Loggers \[online\] Available from: <https://www.onsetcomp.com/products/data-loggers/mx2202/>, 2020.](#)
- [de Pablo, M. A., Ramos, M. and Molina, A.: Snow cover evolution, on 2009-2014, at the Limnopolar Lake CALM-S site on Byers Peninsula, Livingston Island, Antarctica., *CATENA*, 149, 538–547, doi:10.1016/j.catena.2016.06.002, 2017.](#)
- 545 [Perovich, D. K.: Light reflection and transmission by a temperate snow cover, *J. Glaciol.*, 53\(181\), 201–210, doi:10.3189/172756507782202919, 2007.](#)
- [Pulliainen, J., Luoju, K., Derksen, C., Mudryk, L., Lemmetyinen, J., Salminen, M., Ikonen, J., Takala, M., Cohen, J., Smolander, T. and Norberg, J.: Patterns and trends of Northern Hemisphere snow mass from 1980 to 2018, *Nature*, 581\(7808\), 294–298, doi:10.1038/s41586-020-2258-0, 2020.](#)
- 550 [Reusser, D. E. and Zehe, E.: Low-cost monitoring of snow height and thermal properties with inexpensive temperature sensors, *Hydrol. Process.*, 25\(12\), 1841–1852, doi:10.1002/hyp.7937, 2011.](#)
- [Riley, J. L., Notzl, L. and Greene, R.: Labrador Nature Atlas: Vol. II, Ecozones, Ecoregions and Ecodistricts., 130, Nature Conservancy of Canada, Toronto, Ontario., 2013.](#)
- 555 [Sturm, M.: White water: Fifty years of snow research in WRR and the outlook for the future, *Water Resour. Res.*, 51\(7\), 4948–4965, doi:10.1002/2015wr017242, 2015.](#)
- [Sturm, M., Holmgren, J., König, M. and Morris, K.: The thermal conductivity of seasonal snow, *J. Glaciol.*, 43\(143\), 26–41, doi:10.3189/S0022143000002781, 1997.](#)
- 560 [Sturm, M., Holmgren, J., McFadden, J. P., Liston, G. E., III, F. S. C. and Racine, C. H.: Snow–Shrub Interactions in Arctic Tundra: A Hypothesis with Climatic Implications, *J. Climate*, 14\(3\), 336–344, doi:10.1175/1520-0442\(2001\)014<0336:Ssiat>2.0.Co;2, 2001.](#)

[Sturm, M., Douglas, T., Racine, C. and Liston, G. E.: Changing snow and shrub conditions affect albedo with global implications, *J. Geophys. Res.-Biogeo.*, 110\(G1\), doi:10.1029/2005jg000013, 2005.](#)

[Thackeray, C. W., Derksen, C., Fletcher, C. G. and Hall, A.: Snow and Climate: Feedbacks, Drivers, and Indices of Change, *Curr. Clim. Change Rep.*, 5\(4\), 322–333, doi:10.1007/s40641-019-00143-w, 2019.](#)

565 [Throop, J., Lewkowicz, A. G. and Smith, S. L.: Climate and ground temperature relations at sites across the continuous and discontinuous permafrost zones, northern Canada, *Can. J. Earth Sci.*, 49\(8\), 865–876, doi:10.1139/e11-075, 2012.](#)

[Trujillo, E. and Lehning, M.: Theoretical analysis of errors when estimating snow distribution through point measurements, *The Cryosphere*, 9\(3\), 1249–1264, doi:10.5194/tc-9-1249-2015, 2015.](#)

570 [Way, R. G. and Lewkowicz, A. G.: Environmental controls on ground temperature and permafrost in Labrador, northeast Canada, *Permafrost and Periglac.*, 29\(2\), 73–85, doi:10.1002/ppp.1972, 2018.](#)

[Way, R. G., Lewkowicz, A. G. and Bonnaventure, P. P.: Development of moderate-resolution gridded monthly air temperature and degree-day maps for the Labrador-Ungava region of northern Canada, *Int. J. Climatol.*, 37\(1\), 493–508, doi:10.1002/joc.4721, 2017.](#)

575 [Wilcox, E. J., Keim, D., de Jong, T., Walker, B., Sonnentag, O., Sniderhan, A. E., Mann, P. and Marsh, P.: Tundra shrub expansion may amplify permafrost thaw by advancing snowmelt timing, *Arctic Science*, 5\(4\), 202–217, doi:10.1139/as-2018-0028, 2019.](#)

[Wolf, J., Alice, I. and Bell, T.: Values, climate change, and implications for adaptation: Evidence from two communities in Labrador, Canada, *Global Environ. Chang.*, 23\(2\), 548–562, doi:10.1016/j.gloenvcha.2012.11.007, 2013.](#)

References

580 [Aminikhanghahi, S. and Cook, D. J.: A Survey of Methods for Time Series Change Point Detection, *Knowl Inf Syst.*, 51\(2\), 339–367, doi:10.1007/s10115-016-0987-z, 2017.](#)

[Banfield, C. E. and Jacobs, J. D.: Regional Patterns of Temperature and Precipitation for Newfoundland and Labrador During the Past Century, *Canadian Geographer*, 42\(4\), 354–364, doi:10.1111/j.1541-0064.1998.tb01351.x, 1998.](#)

585 [Barrette, C., Brown, R., Way, R., Mailhot, A., Diaconescu, É. P., Grenier, P., Chaumont, D., Dumon, D., Sévigny, C., Howell, S. and Senneville, S.: Nunavik and Nunatsiavut Regional Climate Information Update, in *Nunavik and Nunatsiavut: From science to policy. An Integrated Regional Impact Study \(IRIS\) of climate change and modernization, second iteration*, p. 62, ArcticNet Inc, Quebec City, Canada., 2020.](#)

[Bird, R. E. and Hulstrom, R. L.: Simplified clear sky model for direct and diffuse insolation horizontal surfaces. \[online\] Available from: <https://ui.adsabs.harvard.edu/abs/1981scsm.rept....B>, 1981.](#)

590 [Boelman, N. T., Liston, G. E., Gurarie, E., Meddens, A. J. H., Mahoney, P. J., Kirchner, P. B., Bohrer, G., Brinkman, T. J., Cosgrove, C. L., Eitel, J. U. H., Hebblewhite, M., Kimball, J. S., LaPoint, S., Nolin, A. W., Pedersen, S. H., Prugh,](#)

L. R., Reinking, A. K. and Vierling, L. A.: Integrating snow science and wildlife ecology in Arctic-boreal North America, *Environ. Res. Lett.*, 14(1), 010401, doi:10.1088/1748-9326/aaee1, 2019.

595 Bojinski, S., Verstraete, M., Peterson, T. C., Richter, C., Simmons, A. and Zemp, M.: The Concept of Essential Climate Variables in Support of Climate Research, Applications, and Policy, *Bulletin of the American Meteorological Society*, 95(9), 1431–1443, doi:10.1175/BAMS-D-13-00047.1, 2014.

Bongio, M., Arslan, A. N., Tanis, C. M. and De Michele, C.: Snow depth estimation by time-lapse photography: Finnish and Italian case studies, *The Cryosphere Discuss.*, <https://doi.org/10.5194/te-2019-193>, in review, 2019.

600 Brown, R. D., Brasnett, B. and Robinson, D.: Gridded North American monthly snow depth and snow water equivalent for GCM evaluation, *Atmosphere-Ocean*, 41(1), 1–14, doi:10.3137/ao.410101, 2003.

Brown, R., Lemay, M., M Allard, N E Barrand, C Barrette, Y Bégin, T Bell, M Bernier, S Bleau, D Chaumont, Y Dibike, A Frigon, P Leblanc, D Paquin, M J Sharp and R Way: Climate variability and change in the Canadian Eastern Subarctic IRIS region (Nunavik and Nunatsiavut), , doi:10.13140/RG.2.1.3745.0323, 2012.

605 Callaghan, T. V., Johansson, M., Brown, R. D., Groisman, P. Ya., Labba, N., Radionov, V., Barry, R. G., Blangy, S., Bradley, R. S., Bulygina, O. N., Christensen, T. R., Colman, J., Essery, R. L. H., Forbes, B. C., Forehammer, M. C., Frolov, D. M., Golubev, V. N., Grenfell, T. C., Honrath, R. E., Juday, G. P., Melloh, R., Meshcherskaya, A. V., Petrushina, M. N., Phoenix, G. K., Pomeroy, J., Rautio, A., Razuvaev, V. N., Robinson, D. A., Romanov, P., Schmidt, N. M., Serreze, M. C., Shevchenko, V., Shiklomanov, A. I., Shindell, D., Shmakin, A. B., Sköld, P., Sokratov, S. A., Sturm, M., Warren, S., Woo, M., Wood, E. F. and Yang, D.: Changing snow cover and its impacts., 2011.

610 Danby, R. K. and Hik, D. S.: Variability, contingency and rapid change in recent subarctic alpine tree line dynamics, *Journal of Ecology*, 95(2), 352–363, doi:10.1111/j.1365-2745.2006.01200.x, 2007.

Derksen, C., Lemmetyinen, J., Toose, P., Silis, A., Pulliainen, J. and Sturm, M.: Physical properties of Arctic versus subarctic snow: Implications for high latitude passive microwave snow water equivalent retrievals, *Journal of Geophysical Research: Atmospheres*, 119(12), 7254–7270, doi:10.1002/2013JD021264, 2014.

615 Diekerson-Lange, S. E., Gersonde, R. F., Hubbart, J. A., Link, T. E., Nolin, A. W., Perry, G. H., Roth, T. R., Wayand, N. E. and Lundquist, J. D.: Snow disappearance timing is dominated by forest effects on snow accumulation in warm

winter climates of the Pacific Northwest, United States, *Hydrological Processes*, 31(10), 1846–1862, doi:10.1002/hyp.11144, 2017.

620 Domine, F., Barrere, M. and Sarrazin, D.: Seasonal evolution of the effective thermal conductivity of the snow and the soil in high Arctic herb tundra at Bylot Island, Canada, *The Cryosphere*, 10(6), 2573–2588, doi:10.5194/te-10-2573-2016, 2016.

Domine, F., Picard, G., Morin, S., Barrere, M., Madore, J.-B. and Langlois, A.: Major Issues in Simulating Some Arctic Snowpack Properties Using Current Detailed Snow-Physics Models: Consequences for the Thermal Regime and Water Budget of Permafrost, *Journal of Advances in Modeling Earth Systems*, 11(1), 34–44, doi:10.1029/2018MS001445, 2019.

625 Environment and Climate Change Canada: Historical Climate Data — Goose A, [online] Available from: https://climate.weather.gc.ca/climate_data/daily_data_e.html?StationID=6777 (Accessed 20 July 2020), 2011.

Farinotti, D., Magnusson, J., Huss, M. and Bauder, A.: Snow accumulation distribution inferred from time-lapse photography and simple modelling, *Hydrological Processes*, 24(15), 2087–2097, doi:10.1002/hyp.7629, 2010.

630 Ford, J. D., Smit, B. and Wandel, J.: Vulnerability to climate change in the Arctic: A case study from Arctic Bay, Canada, *Global Environmental Change*, 16(2), 145–160, doi:10.1016/j.gloenvcha.2005.11.007, 2006.

Ford, J. D., Clark, D., Pearce, T., Berrang-Ford, L., Copland, L., Dawson, J., New, M. and Harper, S. L.: Changing access to ice, land and water in Arctic communities, *Nat. Clim. Chang.*, 9(4), 335–339, doi:10.1038/s41558-019-0435-7, 2019.

635 Fortin, V., Jean, M., Brown, R. and Payette, S.: Predicting Snow Depth in a Forest-Tundra Landscape using a Conceptual Model Allowing for Snow Redistribution and Constrained by Observations from a Digital Camera, *Atmosphere-Ocean*, 53(2), 200–211, doi:10.1080/07055900.2015.1022708, 2015.

Garvelmann, J., Pohl, S. and Weiler, M.: From observation to the quantification of snow processes with a time-lapse camera network, *Hydrol. Earth Syst. Sci.*, 17(4), 1415–1429, doi:10.5194/hess-17-1415-2013, 2013.

640 Gilbert, S. L., Hundertmark, K. J., Person, D. K., Lindberg, M. S. and Boyce, M. S.: Behavioral plasticity in a variable environment: snow depth and habitat interactions drive deer movement in winter, *Journal of Mammalogy*, 98(1), 246–259, doi:10.1093/jmammal/gyw167, 2017.

Goodison, B.: Challenges in Snow Measurement: Solid Precipitation and Snow Cover, , 6, 2006.

Hovelsrud, G. K., Poppel, B., van Oort, B. and Reist, J. D.: Arctic Societies, Cultures, and Peoples in a Changing Cryosphere, *AMBIO*, 40(S1), 100–110, doi:[10.1007/s13280-011-0219-4](https://doi.org/10.1007/s13280-011-0219-4), 2011.

645 Lemke, P., Ren, J. F., Alley, R. B., Allison, I., Carrasco, J., Flato, G., Fujii, Y., Kaser, G., Mote, P., Thomas, R. H. and Zhang, T.: Observations: Changes in Snow, Ice and Frozen Ground. In: *Climate Change 2007: The Physical Science Basis. Contribution of Working Group I to the Fourth Assessment Report of the Intergovernmental Panel on Climate Change, Climate Change 2007: The Physical Science Basis*, 2007.

650 Lewkowicz, A. G.: Evaluation of miniature temperature loggers to monitor snowpack evolution at mountain permafrost sites, northwestern Canada, *Permafrost Periglac. Process.*, 19(3), 323–331, doi:[10.1002/ppp.625](https://doi.org/10.1002/ppp.625), 2008.

Libois, Q., Picard, G., France, J. L., Arnaud, L., Dumont, M., Carmagnola, C. M. and King, M. D.: Influence of grain shape on light penetration in snow, *The Cryosphere*, 7(6), 1803–1818, doi:[10.5194/tc-7-1803-2013](https://doi.org/10.5194/tc-7-1803-2013), 2013.

Maxwell, J. B.: Climatic Regions of the Canadian Arctic Islands, *Arctic*, 34(3), 225–240, 1981.

655 Mortimer, C., Mudryk, L., Derksen, C., Luoju, K., Brown, R., Kelly, R. and Tedesco, M.: Evaluation of long-term Northern Hemisphere snow water equivalent products, *The Cryosphere*, 14(5), 1579–1594, doi:[10.5194/tc-14-1579-2020](https://doi.org/10.5194/tc-14-1579-2020), 2020.

Olsen, M. S., Callaghan, T. V., Reist, J. D., Reiersen, L. O., Dahl-Jensen, D., Granskog, M. A., Goodison, B., Hovelsrud, G. K., Johansson, M., Kallenborn, R., Key, J., Klepikov, A., Meier, W., Overland, J. E., Prowse, T. D., Sharp, M.,

- 660 Vincent, W. F. and Walsh, J.: The Changing Arctic Cryosphere and Likely Consequences: An Overview, *AMBIO*, 40(1), 111–118, doi:10.1007/s13280-011-0220-y, 2011.
- Onset Computer Corporation: HOBO Pendant (R) MX Temperature/Light Data Logger, Data Loggers [online] Available from: <https://www.onsetcomp.com/products/data-loggers/mx2202/>, 2020.
- de Pablo, M. A., Ramos, M. and Molina, A.: Snow cover evolution, on 2009–2014, at the Limnopolar Lake CALM-S site on Byers Peninsula, Livingston Island, Antarctica., *CATENA*, 149, 538–547, doi:10.1016/j.catena.2016.06.002, 2017.
- 665 Perovich, D. K.: Light reflection and transmission by a temperate snow cover, *J. Glaciol.*, 53(181), 201–210, doi:10.3189/172756507782202919, 2007.
- Pulliainen, J., Luojus, K., Derksen, C., Mudryk, L., Lemmetyinen, J., Salminen, M., Ikonen, J., Takala, M., Cohen, J., Smolander, T. and Norberg, J.: Patterns and trends of Northern Hemisphere snow mass from 1980 to 2018, *Nature*, 581(7808), 294–298, doi:10.1038/s41586-020-2258-0, 2020.
- 670 Reusser, D. E. and Zehe, E.: Low-cost monitoring of snow height and thermal properties with inexpensive temperature sensors, *Hydrological Processes*, 25(12), 1841–1852, doi:10.1002/hyp.7937, 2011.
- Riley, J. L., Notzl, L. and Greene, R.: Labrador Nature Atlas: Vol. II, Ecozones, Ecoregions and Ecodistricts., p. 130, Nature Conservancy of Canada, Toronto, Ontario., 2013.
- 675 Sturm, M., Holmgren, J., König, M. and Morris, K.: The thermal conductivity of seasonal snow, *Journal of Glaciology*, 43(143), 26–41, doi:10.3189/S0022143000002781, 1997.
- Sturm, M.: White water: Fifty years of snow research in WRR and the outlook for the future, *Water Resources Research*, 51(7), 4948–4965, doi:10.1002/2015wr017242, 2015.
- 680 Sturm, M., Holmgren, J., McFadden, J. P., Liston, G. E., III, F. S. C. and Racine, C. H.: Snow–Shrub Interactions in Arctic Tundra: A Hypothesis with Climatic Implications, *Journal of Climate*, 14(3), 336–344, doi:10.1175/1520-0442(2001)014<0336:Ssiat>2.0.Co;2, 2001.
- Sturm, M., Douglas, T., Racine, C. and Liston, G. E.: Changing snow and shrub conditions affect albedo with global implications, *Journal of Geophysical Research: Biogeosciences*, 110(G1), doi:10.1029/2005jg000013, 2005.
- 685 Thackeray, C. W., Derksen, C., Fletcher, C. G. and Hall, A.: Snow and Climate: Feedbacks, Drivers, and Indices of Change, *Curr Clim Change Rep*, 5(4), 322–333, doi:10.1007/s40641-019-00143-w, 2019.

Throop, J., Lewkowiec, A. G. and Smith, S. L.: Climate and ground temperature relations at sites across the continuous and discontinuous permafrost zones, northern Canada, *Canadian Journal of Earth Sciences*, 49(8), 865–876, doi:10.1139/e11-075, 2012.

690 Trujillo, E. and Lehning, M.: Theoretical analysis of errors when estimating snow distribution through point measurements, *The Cryosphere*, 9(3), 1249–1264, doi:10.5194/te-9-1249-2015, 2015.

Way, R. G. and Lewkowiec, A. G.: Environmental controls on ground temperature and permafrost in Labrador, northeast Canada, *Permafrost and Periglacial Processes*, 29(2), 73–85, doi:10.1002/ppp.1972, 2018.

695 Way, R. G., Lewkowiec, A. G. and Bonnaventure, P. P.: Development of moderate-resolution gridded monthly air temperature and degree-day maps for the Labrador-Ungava region of northern Canada, *International Journal of Climatology*, 37(1), 493–508, doi:10.1002/joc.4721, 2017.

Wileox, E. J., Keim, D., de Jong, T., Walker, B., Sonnentag, O., Sniderhan, A. E., Mann, P. and Marsh, P.: Tundra shrub expansion may amplify permafrost thaw by advancing snowmelt timing, *Arctic Science*, 5(4), 202–217, doi:10.1139/as-2018-0028, 2019.

700 Wolf, J., Alice, I. and Bell, T.: Values, climate change, and implications for adaptation: Evidence from two communities in Labrador, Canada, *Global Environmental Change*, 23(2), 548–562, doi:10.1016/j.gloenvcha.2012.11.007, 2013.