

# Simulated Ka- and Ku-band radar altimeter height and freeboard estimation ~~scattering horizon~~ freeboard on snow-covered Arctic sea ice

5 Rasmus T. Tonboe<sup>1</sup>, Vishnu Nandan<sup>2,3</sup>, John Yackel<sup>3</sup>, Stefan Kern<sup>4</sup>, Leif Toudal Pedersen<sup>5</sup>, Julienne Stroeve<sup>2,6</sup>

<sup>1</sup>Danish Meteorological Institute, Copenhagen, Denmark

<sup>2</sup>Centre for Earth Observation Science (CEOS), University of Manitoba, Canada

<sup>3</sup>Cryosphere Climate Research Group, University of Calgary, Canada

10 <sup>4</sup>University of Hamburg, Germany

<sup>5</sup>Technical University of Denmark, Denmark

<sup>6</sup>[University College London, United Kingdom](#)

15 *Correspondence to:* Rasmus T. Tonboe (rtt@dmi.dk)

**Abstract.** Owing to differing and complex snow geophysical properties, radar waves of different wavelengths undergo variable penetration through snow-covered sea ice. However, the mechanisms influencing radar altimeter backscatter from snow-covered sea ice, especially at Ka- and Ku-band frequencies, and its impact on the Ka- and Ku-band radar scattering horizon or the ‘track point’ (i.e. the scattering layer depth detected by the radar re-tracker), are not well understood. In this study, we evaluate the Ka- and Ku-band radar scattering horizon with respect to radar penetration and ice floe buoyancy using a first-order scattering model and the Archimedes<sup>2</sup> principle. The scattering model is forced with snow depth data from the European Space Agency (ESA) climate change initiative (CCI) round robin data package, where NASA’s Operation Ice Bridge (OIB) data and climatology are included, and detailed snow geophysical property profiles from the Canadian Arctic. Our simulations demonstrate that the Ka- and Ku-band track point difference is a function of snow depth, however, the simulated track point difference is much smaller than what is reported in the literature from the CryoSat-2 Ku-band and SARAL/AltiKa Ka-band satellite radar altimeter observations. We argue that, this discrepancy in the Ka- and Ku-band track point differences are sensitive to ice type and snow depth and its associated geophysical properties. Snow salinity is first increasing the Ka- and Ku-band track-point difference, when the snow is thin and then decreasing the difference when the snow is thick (>0.10 em). A relationship between the Ku-band radar scattering horizon and snow depth is found. This relationship has implications for 1) the use of snow climatology in the conversion of radar freeboard into sea ice thickness and 2) the impact of variability in measured snow depth on the derived ice thickness. For both 1 and 2, the impact of using a snow climatology versus the actual snow depth is relatively small on the measured-radar freeboard, by only raising the measured-radar freeboard by 0.03 times the climatological snow depth plus 0.03 times the real snow depth. The radar freeboard is a function of both radar scattering and floe buoyancy. This study serves to enhance our understanding of

#### Kommentar [RTT1]:

P1 L19-20: Make it clear that OIB and climatology are used only as part of the RRDP data, and not as separate datasets

**Kommentar [RTT2]:** P1 L27: I do not agree with the following sentence: "... the impact of using a snow climatology versus the actual snow depth is relatively small on the measured freeboard" that must be more clearly demonstrated (see general comments and other comments below).

**Kommentar [RTT3]:** P1 L28-30: "radar freeboard", rather than "measured freeboard"? Either way, this sentence needs to be re-worded for clarity.

**Kommentar [RTT4]:** Measured -> radar

35 | microwave interactions towards improved accuracy of snow depth and sea ice thickness retrievals ~~from via the combination of combining~~ currently operational and ~~ESA's forthcoming~~ Ka- and Ku-band dual-frequency CRISTAL radar altimeter missions, ~~such as ESA's Copernicus High Priority Candidate Mission CRISTAL.~~

## 1 Introduction

40 | Since 2010, basin-scale Arctic sea-ice thickness ( $H_I$ ) has been estimated monthly during the winter season using European Space Agency's CryoSat-2 Ku-band frequency radar altimeter data. (e.g. AWI <https://www.meereisportal.de>, [UCL CPOM](http://www.cpom.ucl.ac.uk/) <http://www.cpom.ucl.ac.uk/>, and NSIDC <https://nsidc.org/data/RDEFT4>) and from joint French Aerospace Agency/Indian Space Research Organization's Ka-band SARAL/AltiKa radar altimeter data (e.g. Maheshwari et al., 2015). Neither CryoSat-2 nor AltiKa directly measure  $H_I$ . Instead, they provide a measure of the sea ice freeboard ( $F_I$ ) — the height of the sea ice floe from the local sea level, either measured in leads or cracks located adjacent to the floe. To convert  $F_I$  to  $H_I$ , hydrostatic equilibrium is assumed (Laxon et al., 2003). This assumption requires geophysical property information on the overlying snow pack as well as the underlying sea ice, which can affect the accuracy of the radar ~~scattering horizon~~ height estimate. These geophysical parameters include snow depth, snow density, temperature, salinity, snow grain size, snow surface/sea ice interface roughness, sea ice density and sea water density (Landy et al., 2020; Nandan et al., 2020; Landy et al., 2019; Tonboe et al., 2010; Nandan et al., 2017; Alexandrov et al., 2010; Ricker et al., 2014). The radar scattering horizon or track point is conceptualized as the scattering surface depth detected by the radar re-tracker algorithm and the floe buoyancy; and in turn impacts the accuracy of  $F_I$  and  $H_I$  estimates (Ricker et al., 2014). The ~~scattering horizon or~~ track point represents the return radar echo waveform measured by a radar altimeter, which is then statistically analyzed in the re-tracker algorithm to extract information on the scattering surface depth between the air/snow interface and a physical interface either within the snow pack volume, at the snow/sea ice interface or within the sea ice volume (e.g. ~~Ricker et al., 2014~~ [Kwok and Kacimi, 2018](#)). However, the detected horizon may not coincide with a physical interface. That is why, we prefer to call it the 'track point'. The re-tracker algorithm that we are using can be tuned so that the radar ~~scattering horizon~~ height estimate coincides with the snow/sea ice interface. However, satellite radar backscatter interactions are non-linear, and the total backscatter is dominated by a relatively small areal fraction of plane facets on the surface (Fetterer et al., 1992; Ulander and Carlström, 1991). Also, thinner ice types within the radar foot-print exhibit higher backscatter than thicker sea ice because of differences in surface roughness, leading to preferential over-sampling of the thinner ice types and under sampling of the thicker ice types (Tonboe et al., 2010; Aldenhoff et al., 2019). In other words, the radar scattering is dominated by an area which is only a fraction of the total surface and bulk snow and ice properties which are relevant for the buoyancy of the floe and may not be representative for the scattering parts of the floe. This has implications for snow/sea ice field sampling strategy ~~how one might acquire snow and ice samples in the field~~ and how snow depth and ice thickness and density are used in the processing of radar altimeter data for deriving  $H_I$ . When deriving  $H_I$  snow depth, snow, ice and water density and radar penetration are accounted for in the processing of the sea ice thickness products

**Kommentar [RTT5]:** P2 L36: "UCL" -> "CPOM"

**Kommentar [RTT6]:** P2 L40-42, L45-46: It's confusing to state that geophysical properties of the ice impact the radar scattering horizon. I know what the authors mean, but in remote sensing terminology, "scattering horizon" is commonly used to refer to a location within the snow pack. Therefore, a more accurate statement is that geophysical properties of ice affect radar height estimates, as height estimates depend on radar scattering horizon in the snow, and floe buoyancy. This is an important difference, which should be explained and then maintained throughout to avoid confusion.

**Kommentar [RTT7]:** P2 L45: "The radar scattering horizon or track point is conceptualized as the scattering surface depth detected by the radar re-tracker algorithm and the floe buoyancy": this study should not depend on the buoyancy but only on the penetration.

**Kommentar [RTT8]:** P2 L50: Ricker et al., 2014 is an excellent paper. However, it is cited extensively throughout this manuscript. The authors should note that multiple other publications are also relevant, and some more so as they were published earlier.

**Kommentar [RTT9]:** P2 L51: The following sentence is true only for the heuristic retracers, not for the retracers based on physical models: "The re-tracker algorithm can be tuned so that the radar scattering horizon coincides with the snow/sea ice interface."

**Kommentar [RTT10]:** P2 L54: What do you mean by: "leading to preferential sampling of the thinner ice types" ?

**Kommentar [RTT11]:** ...within the radar foot-print...

**Kommentar [RTT12]:** P2 L55: This makes it sound like the MYI isn't sampled at all. Re-phrase to e.g. "height estimates dominated by FYI" or similar.

from CryoSat-2 (e.g. Hendricks et al., 2016). During the  $F_I$ -to- $H_I$  conversion and if the snow depth is known there are two corrections involving snow: 1) there is a radar penetration correction that will compensate for this sensitivity and locate the scattering horizon at the snow/sea ice interface (Kwok et al., 2011; Ricker et al., 2014; Mallett et al., 2020), and 2) there is a correction to the ice floe buoyancy as a function of snow depth.

Several studies suggest that it may be possible to derive snow depth directly using a dual-frequency approach by combining Ka- and Ku-band radar altimetry (e.g. Lawrence et al. 2018; Guerreiro et al. 2016). The underlying principal behind this technique is that the assumption of predominant Ka-band scattering originates at the air/snow interface, while for Ku-band, the dominant scattering originates at the snow/sea ice interface (Beaven et al., 1995; Lawrence et al., 2018; Laxon et al., 2013; Kurtz et al., 2014). Armitage and Ridout (2015) compared the effective scattering surface of the Ka-band altimeter AltiKa and Ku-band CryoSat-2 to the snow depth and snow surface measurements from NASA's Operation Ice Bridge (OIB) campaigns. They found that the AltiKa dominant scattering horizon radar height is 0.54 times the snow depth above the ice surface using the OIB Quick Look snow depth product. They also found that the CryoSat-2 radar scattering horizon height was deeper into the snow volume, well below the Ka-band scattering horizon radar height, but still above the snow/sea ice interface and that the depth of this horizon was dependent on sea ice type. Observed AltiKa and CryoSat-2 mean freeboard differences were found to be  $\sim 0.04$  to  $0.07$  em from October to March (Fig. 2 in Armitage & Ridout, 2015). Lawrence et al. (2018) indicated that some of these differences between AltiKa and CryoSat-2 could be attributed to the different re-tracker algorithms used in the processing scheme of the two datasets.

While Guerreiro et al. (2016) found that Ka-band radar scattering primarily originates from the air/snow interface, based on simple modeling assumptions, Maheshwari et al. (2015) assumed the effective Ka-band scattering interface was coincident with the snow/sea-ice interface in their derivation of sea ice freeboard using AltiKa. Seasonally evolving snow covers with internal density layering (e.g. compacted wind slabs), ice lenses, melt-refreeze layers, brine-wetting (only on first-year sea ice) and large spatial diversity, adds to the geophysical complexity and manifests vertical shifting of the Ku-band radar scattering horizon height by several or more centimeters above the snow/sea ice interface (Nandan et al., 2020; Nandan et al., 2017; Tonboe et al., 2006b). This significantly impacts the accuracy of  $F_I$  and  $H_I$  retrievals from radar altimetry, both in the Arctic and in the Antarctic (Nandan et al., 2020; Kwok and Kacimi, 2018; Ricker et al., 2014; Ricker et al., 2015; Kwok et al., 2014; Hendricks et al., 2010). This ambiguity and inconsistency in assumptions and previous study results suggests detailed investigation into the location of the Ka- and Ku-band radar scattering horizon height for snow-covered sea ice is warranted.

In this study, we simulate the combined effect of snow depth and density on the Ka- and Ku-band radar scattering horizon height and on the sea ice floe buoyancy. To achieve our research objective, we use a first-order radar scattering model, together with a reference snow depth and density dataset from the European Space Agency (ESA) climate change

**Kommentar [RTT13]:** P2 L60: Hendricks et al., 2016 reference; you've listed all the products above already. Be care not to show too much of an AWI bias.

**Kommentar [RTT14]:** P2 L61: when speaking of "penetration correction" do you include the speed propagation reduction into the snow ?

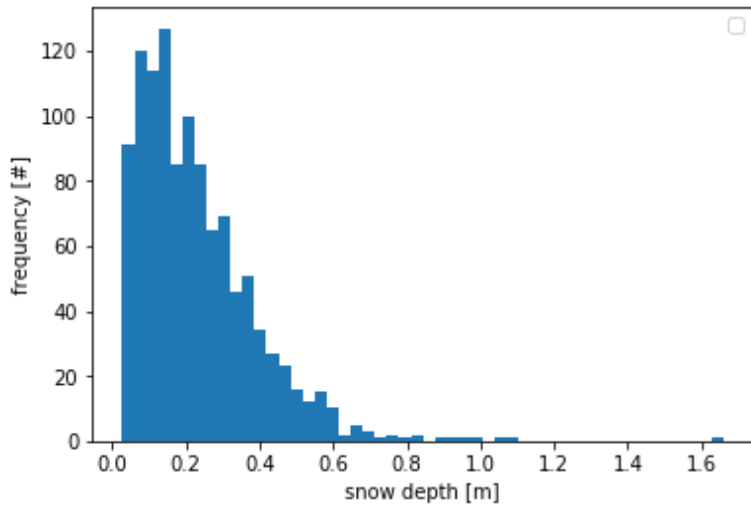
initiative (CCI) round robin data package programme, to describe any potential variability in Ka- and Ku-band radar scattering horizon height in snow-covered Arctic sea ice. For the scattering model, we use simple snow and sea ice geophysical property profiles to elucidate the Ka- and Ku-band radar scattering processes at the primary interfaces, i.e. the air/snow and snow/ice interfaces, so that we can assess the direct effect of snow depth from the Ka- and Ku-band track point difference without the influence of any other parameters which may be related to snow depth. In addition, we include five simulations from detailed snow geophysical property profiles sampled from select locations in the Canadian Arctic to assess the effect of snow density layering, snow grain size variability and salinity variability, observed in naturally occurring snow covers on first-year sea ice (FYI). Together with the radar scattering model, we apply Archimedes principle, to compute the effect of snow on the buoyancy for a snow-covered sea ice floe in hydrostatic equilibrium. For the simplest case, we assume a uniform snow layer on top of a uniform ice layer where  $H_I$  is given as a function of  $F_i$  (the sea ice freeboard is synonymous with the snow/ice interface) and snow depth ( $H_S$ ):

$$H_I = F_i \left( \frac{\rho_{water}}{\rho_{water} - \rho_{ice}} \right) + H_S \left( \frac{\rho_{snow}}{\rho_{water} - \rho_{ice}} \right) \quad (1)$$

where  $\rho_{water}$ ,  $\rho_{ice}$  and  $\rho_{snow}$  are the densities of seawater, ice and snow, respectively. Typical values from the literature for the densities of seawater, multi-year ice (MYI), first-year ice (FYI) and snow are 1024 kg m<sup>-3</sup>, 882 kg m<sup>-3</sup>, 917 kg m<sup>-3</sup> and 300 kg m<sup>-3</sup>, respectively and these values are also used in the processing of satellite altimeter data (Laxon et al., 2013; Ricker et al., 2014; Alexandrov et al., 2010). During the  $F_i$ -to- $H_I$  conversion using (1), the different assumptions regarding FYI and MYI densities translates into a 25 %  $H_I$  difference between the two ice types. However, in our simulations the ice density is fixed at the FYI density of 917 kg m<sup>-3</sup>. The snow density is varied together with the snow depth. While ice density affects ice floe buoyancy, it is not expected to influence the scattering surface depth.

## 2 The ESA CCI round robin data package and snow profiles on sea ice

The ESA Climate Change Initiative (CCI) round robin data package (RRDP) (Laxon et al., 2016) is a collection of spatially collocated and resampled Operation Ice Bridge (OIB) data (OIB version IDCSI4, 2009-2013, from NSIDC), coincident with CryoSat-2 and ENVISAT radar freeboard data, and Warren et al. (1999) snow climatology. This means that the OIB snow depth data from March and April spring campaigns are paired with the snow bulk densities from the March and April Warren et al. (1999) (W99) climatology. Since OIB flights preferentially sampled MYI in the Lincoln Sea and both FYI and MYI types in the Beaufort Sea during March and April from 2009 to 2013, the RRDP data are representative of both dominant ice types in the Arctic. OIB snow depth and W99 snow density distributions from the RRDP data collection for both MYI and FYI are shown in Figures 1 and 2. [The geographical distribution of the snow depth and density data pairs is shown in Figure 3.](#)



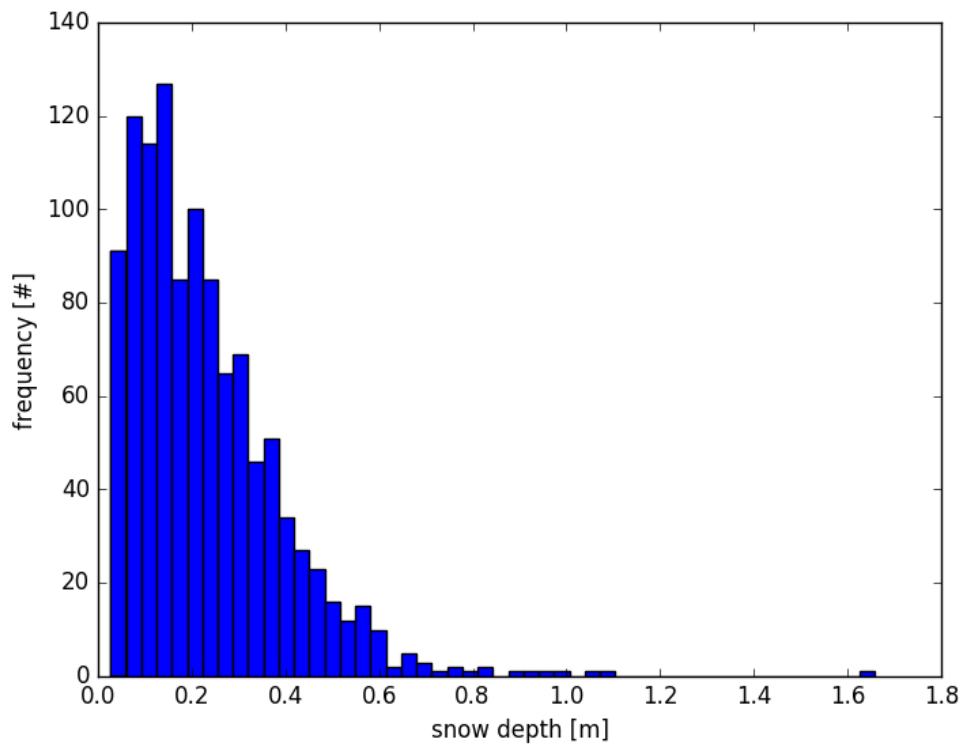
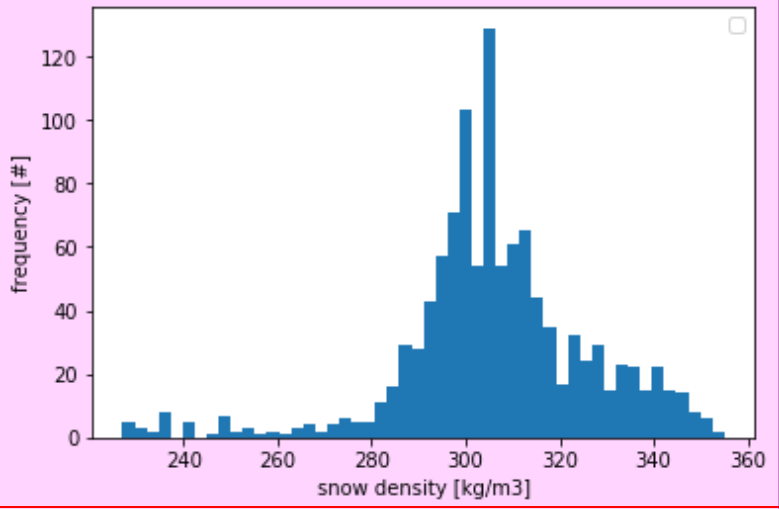


Figure 1. Snow depth data from March and April 2009 to 2013, derived from the snow depth data from OIB data in the RRD dataset (N=1114) used as input to the scattering model. Mean snow depth is 0.23 m and the standard deviation is 0.16 m. The minimum snow depth is 0.027 m.

135

**Kommentar [RTT15]:** P5 Fig. 1 and Fig. 2: It'd be great to see these mapped too, to get a better representation of values over regions associated with different ice types



**Kommentar [N16]:** Anyway we can put a super script for "3" in kg/m3.

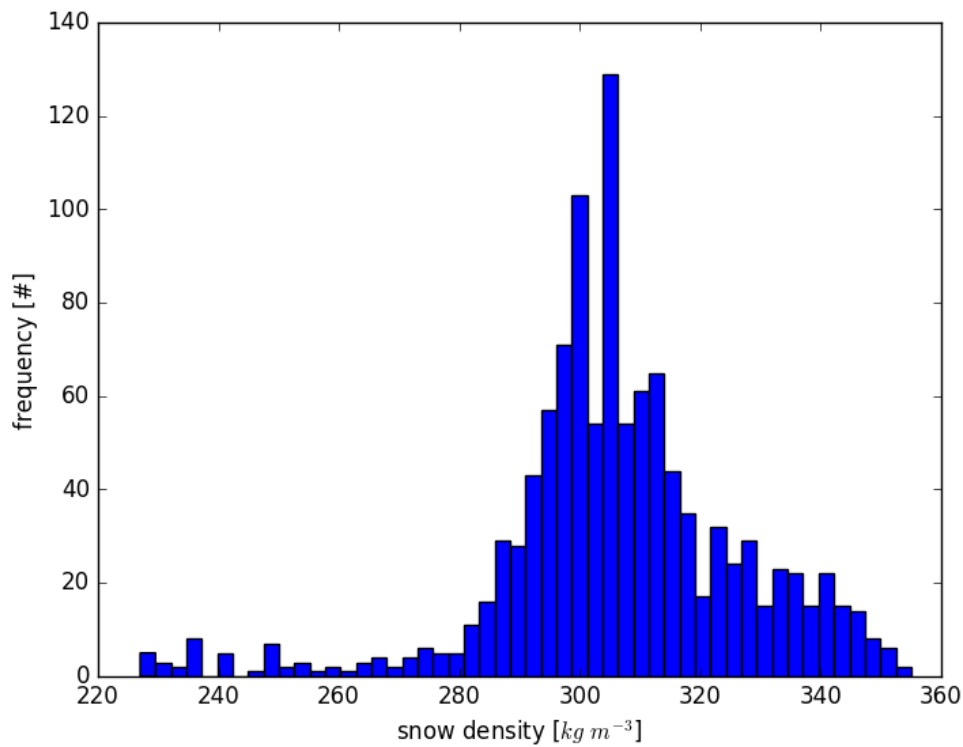


Figure 2. Snow density distribution (N=1114) in the RRDP dataset (from W99 climatology) used as input to the scattering model. Mean snow density corresponding to March and April is  $306 \text{ kg m}^{-3}$  and the standard deviation is  $20 \text{ kg m}^{-3}$ .

140

Formateret: Normal



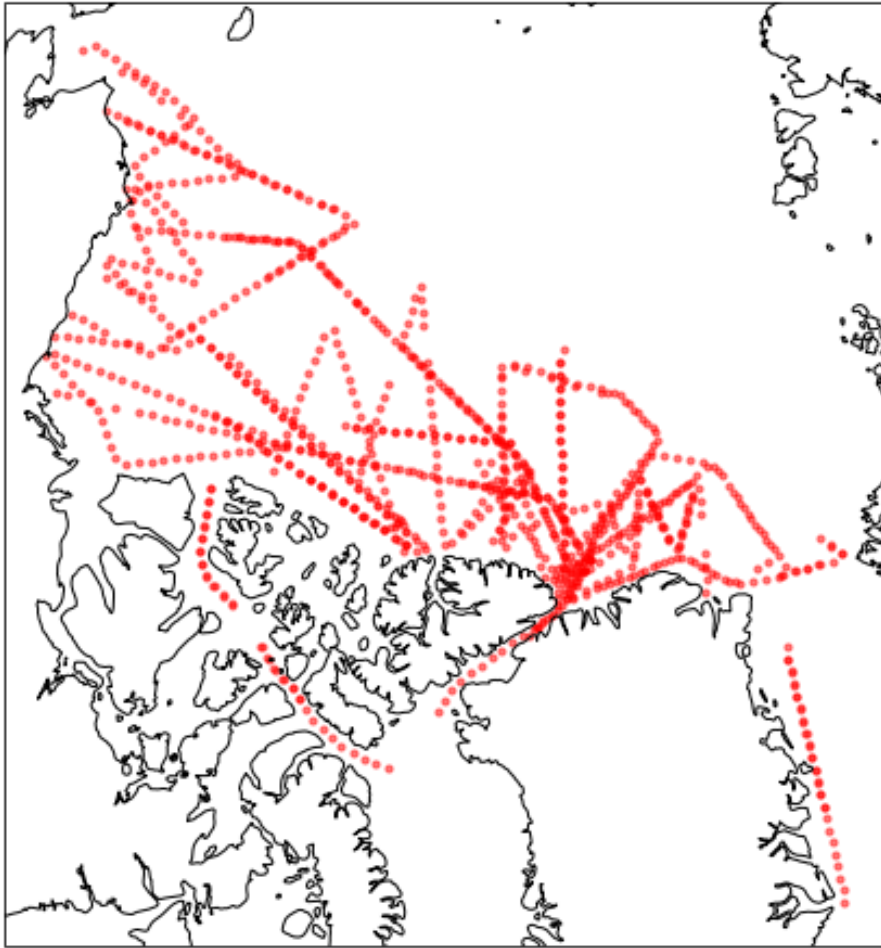


Figure 3. The locations for the RRDP snow depth (Fig. 1) and snow density (Fig. 2) pairs.

145

### 2.1 Snow pit-geophysical property data

Vertical heterogeneity of snow properties can play a significant role in accurately determining the location of Ka- and Ku-band scattering horizons radar height (Ricker et al., 2014). Since the RRDP lacks information on this vertical heterogeneity,

we performed additional simulations using in-situ measured snow geophysical property profiles (snow salinity, temperature and density measurements sampled at 0.02 m vertical intervals) acquired from five disparate snow covers acquired from the Canadian Arctic that ranged in mean thickness from 0.05 to 0.31 cm. These profiles were sampled from relatively smooth, land-fast FYI in May 2012 (late-winter season), located near Resolute Bay, Nunavut (74.70° N, 95.63° W). The in-situ drill hole measured ice thicknesses varied between 1.3 m and 1.7 m. We do not have coincident in-situ measured microscale surface roughness estimates from these locations, but ~~synthetic aperture radar imagery acquired from RADARSAT-2 imagery acquired from this location~~, suggests that each of the 5 samples were acquired from level and very smooth FYI. Here, we assume level sea ice and snow cover, with a flat-patch-area of 1 % and as a result surface roughness is assumed to not influence the scattering horizon variability in our model simulations. The concept of the flat-patch-area is described in the section describing the radar altimeter scattering model below.

Snow temperature was measured in situ using a Digi-Sense RTD thermometer probe (resolution of 0.1° C and accuracy ±0.2° C). Snow density was sampled using a 66.35 cm<sup>3</sup> density cutter and weighed on a Gram Precision GX-230 scale (accuracy of ±0.01 g). Snow salinity was measured in melted temperature stabilized samples using a WTW Cond 330i conductivity meter (accuracy of ±0.5 %). The samples were extracted from the snow pack with the density cutter to ensure a comparable sample volume in every sample. Snow grain radius was measured and categorized from disaggregated grain photographs on a 2 mm grid crystal plate following Langlois et al. (2010). The snow grain size and density is used to compute the snow correlation length in Eq. 3 below. The 5 profiles where the temperature, snow salinity and the correlation length are shown in Figure 43 are as follows:

Profile 1) 0.05 m cold (snow surface temperature = -12.7° C), highly saline (7.5-14.5 ppt) snow pack with a relatively uniform density distribution (320-360 kg m<sup>-3</sup>). ~~The correlation length profile indicates depth hoar layers towards the middle of the snow pack. at mid depth.~~

Profile 2) 0.11 m cold (snow surface temperature = -7.4° C) snow pack, saline at the bottom (14.1 ppt), and nearly non-saline at the top (0.1 ppt). Snow densities in the upper layers are 350 kg m<sup>-3</sup> and 250 kg m<sup>-3</sup> towards the basal layers. The basal layer snow densities and ~~grain sizes correlation lengths~~ indicate the presence of depth hoar.

Profile 3) 0.15 m cold (snow surface temperature -12.7° C) and saline (top to bottom 3 - 13.3 ppt) snow pack. The top 0.11 m layers have high densities from 400 - 430 kg m<sup>-3</sup> and the lowest 0.04 m have densities from 220 to 250 kg m<sup>-3</sup>. Similar to Profile 1, the bottom layer densities and the ~~grain sizes correlation lengths also~~ indicate the presence of depth hoar crystals.

Profile 4) 0.23 m cold (snow surface temperature -13.5° C) non-saline snow pack. The topmost 0.19 m have low densities (174 - 267 kg m<sup>-3</sup>) while the bottommost 0.04 m has higher densities (330 - 350 kg m<sup>-3</sup>). ~~The peaks in correlation length at about 8 cm and at 16 cm are indicating layers of depth hoar. There are layers with coarse grained snow.~~

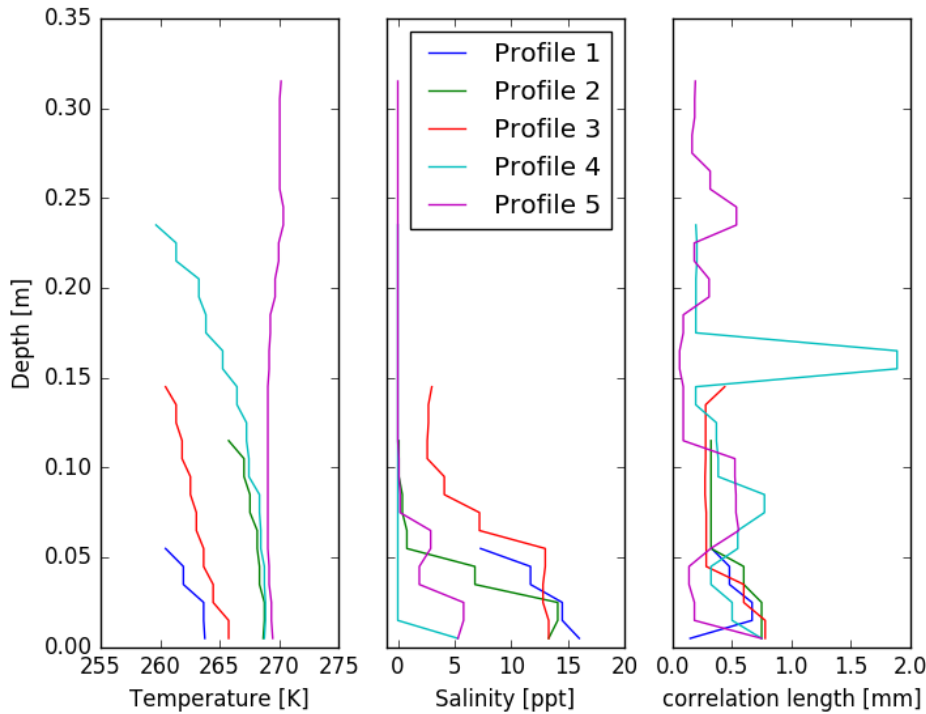
**Kommentar [RTT17]:** P6 L137: "These profiles were sampled from relatively smooth, land-fast FYI: :". This information is repeated below so no need to include it here.

**Kommentar [RTT18]:** P6 L142: You say that the "surface roughness is assumed to not influence the scattering horizon variability in our model simulations" while the surface as a strong impact on the altimetric waveforms. Does that mean that the model do not reflect the altimetric behavior? Please comment.

**Kommentar [RTT19]:** P6 150-151: State here why snow correlation length is important, otherwise its inclusion in Figure 3 is confusing until you read much further on

**Kommentar [RTT20]:** P6-7 Profiles 1-5: Include correlation length in profile descriptions

185 | Profile 5) 0.31 em, almost isothermal (-2.8° C to -4.1° C), highly layered snow pack. Density varies between 226 and 877 kg m<sup>-3</sup> (icy layers). The bottommost salinity contains up to 5.8 ppt but the top 0.20 em of the snow profile is non-saline.



190 | **Figure 43.** Snow temperature, salinity and snow grain correlation length of the 5 depth-snow pit profiles on FYI, acquired from FYI in the Canadian Arctic. Depth = 0.00 corresponds to the bottom of the snow pack.

195 | These five detailed profiles (the snow profiles with 2 m saline FYI beneath) are included in the simulations and compared to the simulations using a uniform snow profile. Simulations using these snow profiles (with 2 m saline FYI beneath) are compared with simulations using the uniform snow pack to assess the impact of snow density layering, snow grain size and salinity variability in naturally occurring snow packs on the Ka- and Ku-band scattering horizon. Our goal is to separate the direct effect of snow depth in the uniform vertical profile of geophysical properties on the Ka- and Ku-band scattering

**Kommentar [N21]:** Rasmus, maybe it's a good idea to put a,b, and c for these panel figures. Also (just a suggestion), since we describe the snow depth in cm, it may be a good idea if you can relabel the y-axis in cm. So 35, 30, ... to 0. Y-axis label would be snow depth (cm).

**Kommentar [RTT22]:** P7 Fig 3: Please specify that depth=0.0 corresponds to the bottom, not to the surface! (if I dont mistake)

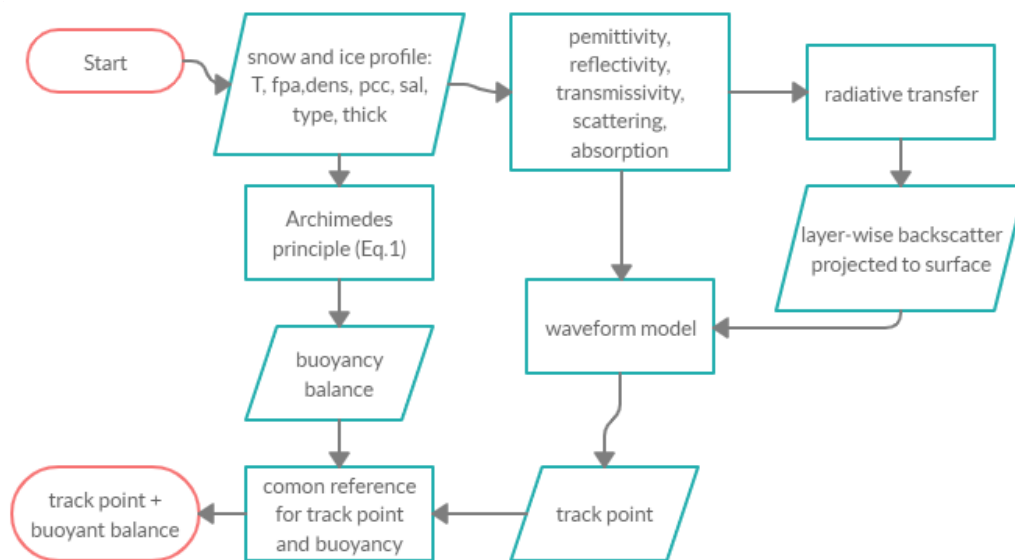
**Kommentar [RTT23]:** P7 L178-180: Final sentence is wordy and quite confusing.

horizontal radar height estimate, and compare them with the derived scattering horizon radar height estimations<sup>2</sup> influenced by the effects of layered snow packs.

### 3 Radar altimeter scattering model and re-tracker description

The radar scattering model utilized in this study is a multi-layer, one-dimensional radiative transfer model, where surface scattering is computed at horizontal interfaces (snow surface, interfaces within the snow pack and at the sea ice surface), as described in Tonboe et al. (2006a; 2010; 2017), and conceptually comparable to models developed by others (e.g. Landy et al., 2019). The multi-layer model concept is different from single layer scattering models developed for ice sheet backscatter (e.g., Ridley and Partington, 1988), since surface interface scattering dominates in sea ice (Ulander et al., 1991; Fetterer et al., 1992). The model — flowchart from input of the physical snow and ice profiles to computing the track point — is illustrated in Figure 54.

**Kommentar [RTT24]:** P8 L186: “: : surface\*\*/interface\*\*::”



**Kommentar [N25]:** Spell checks. “common” reference for track point. Moreover, in the box for track point, can you add Ka- and Ku-band track point.

Figure 54. Computational steps in the scattering model to reach the radar altimeter track point. The model is described in detail in Tonboe et al., 2006a and 2010. The snow and ice profile has temperature (T), flat-patch-area (fpa), correlation length (pcc), salinity (sal), snow or ice type (type), and thickness (thick) for each layer.

215 The scattering model uses layer-wise information on snow/sea ice stratigraphy (layer thickness in meters), temperature (K), snow salinity (ppt), snow density (kg m<sup>-3</sup>), correlation length (a measure of the snow grain size or the size of inclusions, e.g., brine or air, in the sea ice) (mm), surface/interface roughness (fraction of total area - in mm<sup>2</sup>), and derived brine volume from snow salinity, density and temperature. The model uses a radiative transfer approach to compute the total backscatter,  $\sigma_{total}$  (Tonboe et al., 2010).

$$\sigma_{total} = (\sigma_i^{surf} + T_i^2 \sigma_i^{vol}) \prod_{i=1}^n \frac{1}{T_{i-1}^2} \quad (2)$$

220 where  $\sigma_i^{surf}$  is the surface/interface surface-scattering for layer  $i$ ,  $T_i$  is the surface/interface transmissivity,  $\sigma_i^{vol}$  is the layer volume scattering,  $L$  is the layer loss (scattering and absorption). The volume scattering is a function of radar frequency to the 4<sup>th</sup> power. It is the parameter which is most sensitive to radar frequency but all the parameters in equation 2 are to some extent frequency dependent. Radar propagation speed, attenuation and scattering are computed for each layer. We use a geometric description of the foot\_print area in each layer as a function of time for a pulse limited altimeter and the time dependent area is multiplied with the time dependent backscatter resulting in the waveform (Tonboe et al., 2010). The track point is found at half of the maximum waveform power point in time (Tonboe et al., 2010). While different track point thresholds will shift the scattering horizon track point vertically (Ricker et al., 2014), the location of the scattering horizon track point does not change the modeled sensitivity to snow depth (Tonboe, 2017).

230 Since the total backscatter is dominated by surface/interface scattering, the surface scattering model used in this study assumes that the backscatter return signal is dominated by specular reflection processes from relatively small plane areas (flat-patches), normal to the near-nadir radar signal within the foot\_print, described in Fetterer et al. (1992; eq. 18) and Ulander and Carlström (1991). This assumption is believed to be "more realistic" than other-for example, the assumptions behind the geometric optics model sea ice surface scattering models, because the satellite nadir/near-nadir radar backscatter is dominated by reflections from smooth patches on the surface (Fetterer et al., 1992). The fundamental assumption for all surface scattering models is that the backscatter is a function of the reflection coefficient, interface roughness and slope i.e. at nadir, when the interface is smooth the backscatter is high, and when the surface is rough then the backscatter received by the radar is smaller.

240 The permittivity of the snow and ice is computed using the two-phase mixing formulas described in Mätzler (1998). The permittivity of dry snow is primarily a function of snow density and the permittivity of sea ice and saline snow depends on salinity and temperature, i.e. brine volume and snow or ice density, (Frankenstein and Garner, 1967; Drinkwater and Crocker, 1988). The permittivity of both materials is computed using the mixing formulae for rounded spheres as inclusions in a background matrix of air or ice (Mätzler, 1998) and the equations for brine volume and permittivity in Ulaby et al.

**Kommentar [RTT26]:** P9 Eqn (2): How does the model account for the different radar frequencies? This is a key principle of the paper and as far as I can tell, the information is missing. It needs to be really spelt out for those of us who are familiar with remote sensing, but not so much with radiative transfer modelling.

**Formateret:** Hævet skrift

**Kommentar [RTT27]:** P9 L206: You say that "The track point is found at half of the maximum waveform power point in time". It is a true mean for LRM altimetry but physical retrackers show that this value varies according to the roughness and the specularity of the surface. For SAR altimetry the mean value is much higher.

**Kommentar [RTT28]:** P9 L210: What do you mean by "the total backscatter is dominated by surface/interface scattering"? The interface is between the surfaces? Or it is another surface? Do you mean that the volum scattering is negligible? In such a case it must be said/shown explicitly.

**Kommentar [RTT29]:** P9 L213: In the sentence "This assumption is believed to be more realistic than other sea ice surface scattering" please specify which other sea ice surface scattering you are thinking off.

**Kommentar [RTT30]:** P9 L214: Length scale of "smooth patches"? I assume they mean "smooth" on the order of the radar wavelength.

(1986). When the snow is saline, we use a formulation for wet snow in Ulaby et al. (1986) and an estimation of the brine volume as a function of salinity, density and temperature (Ulaby et al., 1986). This is feasible, since the permittivity of fresh water and brine is the same for radar frequencies larger than about 10 GHz, including both Ka- and Ku-band (Ulaby et al., 1986). The predictions of different snow and ice permittivity models vary as a function of brine pocket, air bubble or snow particle inclusion shape and permittivity (Ulaby et al., 1986). We believe that the choice of model will have an impact on the absolute magnitude of the model estimates, however, only a smaller impact on the relative variability of the model predictions. Volume scattering from snow grains or inclusions in the ice is computed for each layer using the “Improved Born Approximation” for spherical inclusions (Mätzler, 1998) and is included in our radiative transfer calculation. Although the volume scattering contribution to the overall backscatter is considered insignificant, its contribution adds to the signal extinction and therefore affects the loss factor and the track point.

We convert the optical snow grain size (described in the detailed snow profiles), to snow correlation length,  $p_{cc}$ , which is used in the model describing the scatter size, i.e. (Mätzler, 2002),

$$p_{cc}=0.5D_0(1-\nu) \quad (3)$$

where  $D_0$  is the optical snow grain diameter in millimeters and  $\nu$  is the bulk snow density divided by the pure ice density ( $917 \text{ kg m}^{-3}$ ).

In this study, the track point is computed as a point in time located midway between the noise floor/zero backscatter and the maximum return signal power received by the radar. Different track point thresholds change the vertical height of the scattering horizon as described in Tonboe (2017). On ice sheets and sea ice where surface/interface scattering dominates, the half power time re-tracking threshold provides a good estimate of the mean surface elevation (Davis, 1997).

#### 4 Scattering model initialisation and set-up

The scattering model uses a multi-layer snow and sea ice profile as input. The simplest case consists of one uniform snow layer on top of an overlying uniform ice layer, with the parameters listed in Table 1 used as input to the model. While salinity, temperature and interface roughness are fixed, snow depth and density vary as given in the RRDP data set. We set

~~$p_{cc}$  the snow grain correlation length (a measure of scatter size)~~ to 0.1 mm following Tonboe et al. (2010) and Tonboe (2017). For snow/ice salinity and temperature, we assume ~~no salinity in the brine-free~~ snow pack and an isothermal temperature of 263.15 K. Sea ice salinity and temperature is set at 3.0 ppt and a temperature of 269.15 K, respectively. These values represent non-melting conditions. ~~The surface roughness is quantified as the flat patch area which is the areal fraction of flat patches contributing coherently to the total backscatter (Fetterer et al., 1992; Ulander and Carlström, 1991).~~ Here, the

**Kommentar [N31]:** Is it 'p' or 'pcc'?

**Kommentar [RTT32]:** P10 L240: How do they calculate the noise floor?

**Kommentar [RTT33]:** P10 L241: "the track point is computed as a point in time located midway between the noise floor and the maximum return signal power received by the radar." This is pertinent only for LRM altimetry.

**Kommentar [RTT34]:** P10 L243: Expand on what you mean by "surface scattering", i.e. from which surface (snow, ice, somewhere in-between)

**Kommentar [RTT35]:** P10 L243-244: I would like more justification as to why a 50% threshold was chosen. In the manuscript they mention their own 2010 paper and the Ricker et al., 2014 paper, but there are many other studies that suggest a different threshold is preferable.

**Kommentar [N36]:** Didn't we already say this before?

flat-patch area is set to 0.01 for both the snow and the sea ice surface (Tonboe et al., 2010). With this information, the model produces the backscatter coefficient, waveform, and track points at half of the maximum power. The model then simulates the Ka- and Ku-band radar waveform track point variability of homogeneous ~~un-layered~~ snow packs during winter as a function of snow depth and density only. Since, both the track point and the floe buoyancy are affected by snow depth and density, the scattering model is used together with the “Archimedes<sup>2</sup> principle<sup>2</sup>” to compute the sensitivity of both, simultaneously. The fixed value of surface roughness used in these simulations at the snow surface and at the snow/ice interface will affect the height of the scattering surface for both Ka- and Ku band, while the sea ice density will primarily affect the floe buoyancy’s impact on the track point (Tonboe et al., 2010).

**Kommentar [RTT37]:** P10 L255: “: : \*\*Ka and Ku\*\* waveform: : :”

The scattering model is first initiated with uniform snow and sea ice properties and then for each subsequent simulation, the snow density and snow depth in Table 1 are exchanged with OIB pairs of snow depth and the Warren et al. (1999) snow density from the RRD data set in order to investigate the sensitivity to observed snow depth and density variability. Then we additionally use the 5 ~~in-situ snow geophysical property~~ profiles to study the effect of snow density layering, and variability in snow salinity and grain size-snow grain size variability and snow salinity variability in natural snow packs on the track point.

**Kommentar [RTT38]:** P11 L264: “: : OIB snow depth and the Warren et al. (1999) snow density \*\*pairs\*\*: : :”

**Table 1. Initial run input to the scattering model. T is the layer temperature, Roughness is quantified as the flat-patch area which is the fraction of specular facets compared to the total area (F), Density is the layer density, Depth is the layer thickness, Correlation length is a measure of the scatter size (and distribution), Salinity is layer salinity. Variables marked in bold in the table are exchanged with values from the RRD data set. There are 1114 data points in the RRD data set.**

**Kommentar [RTT39]:** P11 Table1: Only one layer for the snow. Is it realistic? Please comment.

Layer number	T [K]	Roughness [1/100]	F	Density [kg m <sup>-3</sup> ]	Depth [m]	Corr. length [mm]	Salinity [ppt]	Type
1	263.15	0.01		<b>300</b>	<b>0.2</b>	0.1	0.0	snow
2	268.15	0.01		917	2.0	0.2	3.0	sea ice

**Kommentar [RTT40]:** P11 L276-277: Stating that the tracking point difference is “mostly insensitive” to snow depth could be misleading, when differences can reach up to 8 cm. This would have a significant impact on sea ice thickness estimates. In fact, I would just get rid of this sentence.

## 5 Ka- and Ku-band altimetry track point difference simulation results and discussion

The Ka- and Ku-band track point difference as a function of snow depth, density and correlation length is illustrated in Figure 65. We find that the Ka- and Ku-band track point difference ~~is mostly insensitive to snow depth; i.e. the track point difference~~ ranges between 0 cm and 0.08 cm, for coarse-grained (~~pcc = correlation length~~ 0.3 mm) snow depths between 0.05 and 0.65 m. The sensitivity increases with snow depth and is highest for snow ~~> deeper than 0.50 m in thickness~~. The sensitivity to snow depth decreases for smaller snow correlation lengths, such that the track point difference is about half (0 cm to 0.04 cm) for fine grained snow (correlation length of 0.1 mm ~~shown in~~ red), compared to coarse grained snow

**Kommentar [N41]:** Rasmus, you use ‘cm’ in the latter part of this sentence. Maybe we should use ‘cm’ throughout for snow depth to keep it consistent.

**Kommentar [RTT42]:** P11 L279: Change “smaller snow correlation lengths” to “fine-grained (0.1 mm) snow depths” or similar, for consistency with the rest of the paragraph.

305 (correlation length of 0.3 mm shown in (blue)), keeping all other parameters unchanged (see Table 1). We are not varying the surface roughness in our experiments. ~~and to~~ To investigate the impact of the air/snow and snow/ice interface roughness on the Ka- and Ku-band track point difference, we would require a different surface scattering model and data, accounting for the interface roughness. This remains outside the scope of this study.

310 Figure 66 illustrates the effect of the 5 snow profiles on FYI in the Canadian Arctic. Of interest is the presence of saline snow covers on FYI, which has been long recognized for its effect on microwave/radar signal propagation (Geldsetzer et al., 2007; Yackel and Barber, 2007; Nandan et al., 2020; Nandan et al., 2017; Kwok and Kacimi, 2018; Barber and Nghiem, 1999; Barber et al., 1998 and references therein). With changes in snow temperature, salinity and density in the snow layers, snow brine volume is modified towards the snow basal layers and at the snow/sea ice interface, masking the propagation of radar waves from reaching the snow/sea ice interface (Barber and Nghiem, 1999; Nandan et al., 2017). This results in an  
315 upward shift of the track point. In our study, the simulations were rerun at 1% snow brine volume (1-% brine volume is equivalent to a bulk snow salinity of about 2 ppt at -10° C bulk snow temperature), after which, the Ka- and Ku-band track point differences were acquired. For snow covers < 0.10 em, the saline snow at first increases the sensitivity of the Ka- and Ku-band track point difference to snow depth, but for snow depths > 0.10 em, the signal loss in the snow cover caused by the brine results in identical track points at Ka- and Ku-band. Snow extinction is the sum of scattering from snow grains and  
320 attenuation from brine when the snow is saline. While attenuation in the snow is comparable at Ka- and Ku-band, scattering is different, and it is the scattering contribution to the extinction which is creating the Ka- and Ku-band track point difference. Deeper snow (more scatters) and/or larger snow grains (scatters) gives more scattering and a larger ~~Ka- and Ku-~~ band difference by increasing extinction and the relative importance of the snow/ice interface scattering. When the depth of saline snow is increased then the Ka- and Ku-band track point difference initially increases compared to non-saline snow.  
325 This is because the attenuation is controlling the relative importance of the snow ice interface scattering compared to the snow surface scattering which is invariant in these experiments, and again it is the scattering from the snow grains which is producing the Ka- and Ku-band track point difference. When the snow depth is > 0.10 em then the relative importance of the snow/ice interface scattering is minimal. ~~and w~~ When the saline snow is ~ 0.40 em thick/deep, then snow surface scattering totally dominates and there is no Ka- and Ku-band track point difference because both radar wavelengths are scattered at the  
330 snow surface. The average sensitivity of the Ka- and Ku-band track point difference to snow depth in our simulations is small (30:1). For coarse grained snow, using the mean snow depth from the RRDP dataset of 0.23 em as the reference point, the track point difference is 0.008 mm (Figure 43). This indicates that the Ka- and Ku-band track point differences observed in Lawrence et al. (2018) and in Guerreiro et al. (2016) is not only caused by the snow depth itself, but in combination with, for example, the snow grain size and/or snow salinity or other factors that we have not investigated here. Armitage and  
335 Ridout (2015) found that the Ka- and Ku-band track point difference is a function of sea ice type as well. Snow depth is indirectly linked with sea ice type because the accumulation period is longer, generating thicker and denser snow for second-year ice (SYI) and #MYI and also because SYI/MYI is rougher and it disproportionately 'traps/captures/entrains' more

**Kommentar [RTT43]:** P12 L297:  
Typo: "Ku- and Ku-"

**Kommentar [N44]:** A good idea to keep the units same throughout the paper. Just a suggestion.

**Kommentar [RTT45]:** P12 L312:  
Define "\*\*\*second-year ice\*\* (SYI)"



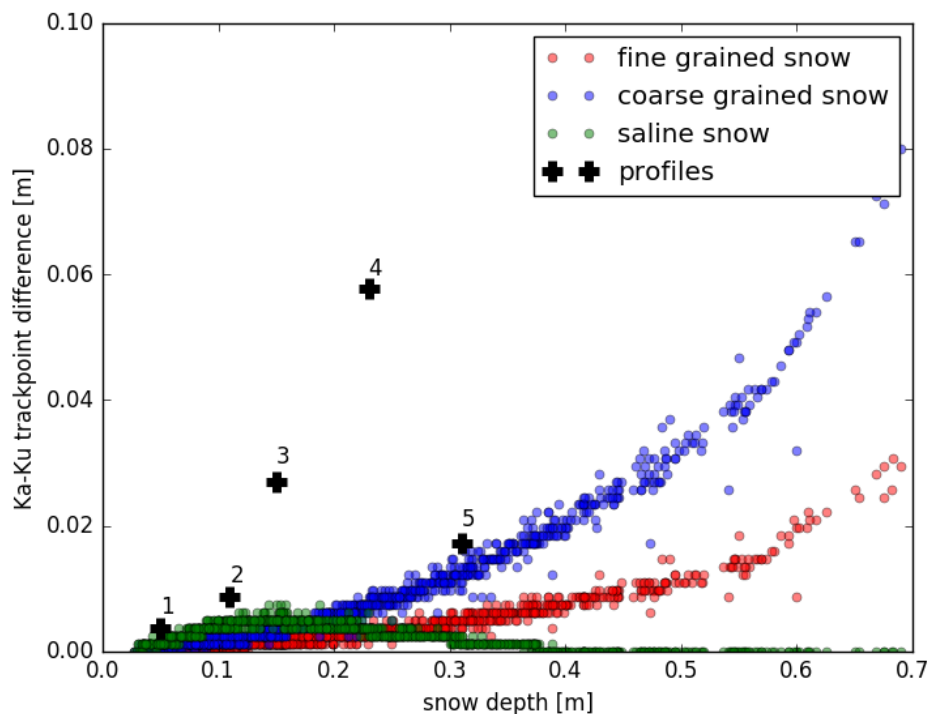
blowing/drifted snow than for FYI (Iacozza and Barber, 1999; Liston et al., 2019). In addition, snow cover on FYI is usually saline, especially in the bottommost 0.06 to 0.08 m basal snow layers (Drinkwater & Crocker, 1988; Barber et al., 1998; Nandan et al., 2017), and this will affect the Ka- and Ku-band track point difference.

Sensitivity of the Ka- and Ku-band track point difference to variations in snow pack properties from our 5 profiles is summarized in Table. 2. The track point difference is essentially zero when the snow is saline. However, profile 4 (non-saline snow pack with depth of 0.23 m) has a Ka- and Ku-band track point difference of 0.05-0.08 m which is comparable to differences reported by Armitage and Ridout (2015). This illustrates that the track point difference can be higher for naturally observed snow profiles than for the uniform profile results shown in Figure 65. In addition to being non-saline, profile 4 has layers with coarse grained snow. The snow correlation length in these layers is much larger than for any of the other profiles. The scattering magnitude contributing to the radar signal extinction in the snow at Ka- and Ku-band is very different and this is affecting radar penetration and consequently the track point difference in profile 4.

350

**Table 2. Summary of the Ka- and Ku-band track point difference for 5 snow profiles on FYI in the Canadian Arctic.**

	Profile 1	Profile 2	Profile 3	Profile 4	Profile 5
Depth and salinity characteristics	0.05 m saline snow pack	0.11 m where bottom snow pack is saline	0.15 m saline snow pack	0.23 m non-saline snow pack with coarse grained snow	0.31 m where bottom of the layered snow pack is saline
Ka-Ku track point difference [m]	0.004	0.009	0.027	0.058	0.017



355 | **Figure 65.** The Ka- and Ku-band track point difference as a function of snow depth (and density). The red points represent the profile in Table 1, while blue points represent coarse grained snow (correlation length: 0.3 mm) and green points represents saline snow (salinity 2 ppt). The five simulated profiles in Table 2 are marked with black crosses and the numbers refer to the profile number in Table 2.

## 6 Snow climatology for radar sea-ice freeboard to thickness conversion

360 It is common practice in sea ice altimetry to use the W99 snow climatology in the  $F_I$  to  $H_I$  conversion (Laxon et al., 2013; Kurtz and Farrell, 2011). The snow climatology is used to 1) compensate for the effect of the snow cover on the ice floe buoyancy, and 2) to compute radar pulse propagation speed reduction in the snow which is affecting the range estimation. In practice, on a location specific basis, the snow climatology only introduces an offset systematic uncertainty in the sea ice thickness estimation since the climatology does not reflect actual spatial and temporal snow depth and density variability.

365 Here, we simulate the radar track point as a function of snow depth to see the combined effect of 1 and 2.

**Kommentar [RTT46]:** Figure 5: Belongs at the end of P11. This is a clear and interesting plot. However, it may not be the most insightful for sea ice altimetry applications. More useful would be a figure showing the fraction of penetration as a function of snow depth (and density), for Ku and Ka separately. This could be included as a second panel.

**Kommentar [RTT47]:** > The presentation of results, and related discussion, is not always clear. This issue starts on P12. The paragraph was too long (a whole page), and still didn't sufficiently explain what is being shown in Figure 6. The contents of Figure 6 need to be clearly described (both in the text and caption) before the authors try to present an analysis. It may help to rearrange this paragraph and the following paragraph into three paragraphs providing 1.) a description of what is shown in Figure 6, 2.) analysis of the RRDP model runs, 3.) analysis of the profiles summarized in Table 2.

**Kommentar [RTT48]:** P14 L338: "The snow climatology is used to 1) compensate for the effect of the snow cover on the ice floe buoyancy, and 2) to compute radar propagation in the snow." For point 2) I suppose that you mean "compute radar slow down speed propagation in the snow" ?

Figure 76 summarizes the simulated Ka- and Ku-band radar track points computed with the scattering model and the snow/sea ice interface computed from the buoyancy of the profile as a function of the snow depth and density using (1) uniform profile (Table 1); (2) uniform profile (Table 1) with varying snow depth and density from the RRDP data; and (23) the snow profiles from the Canadian Arctic. We do not show the actual ice thickness which is 2 m in our simulations, but it is proportional to the freeboard only the Ka- and Ku-band track points and the snow ice interface. Both the snow depth and the snow density are varied in the simulations. However, the effect of snow density is negligible because its variability in the RRDP dataset is small (mean snow density is  $306 \text{ kg m}^{-3}$  and the standard deviation is  $20 \text{ kg m}^{-3}$ , see Figure 2). Moreover, the standard deviation of the snow density in the RRDP dataset is small, compared to other studies (e.g. King et al., 2020). Linear fits to each of the clusters are shown. The snow profiles from the Canadian Arctic, exhibiting larger vertical variability in snow density, are in close agreement with the fitted simulations for the reference snow profile. In figure 7 the snow ice interface height is decreasing as a function of increasing snow depth ( $f = -0.29\text{SnowDepth} + 0.24$ ), while the Ku-band track point height is increasing as a function of increasing snow depth ( $f_{Ku} = 0.35\text{SnowDepth} + 0.05$ ). The Ka-band track point is also increasing as a function of increasing snow depth ( $f_{Ka} = 0.39\text{SnowDepth} + 0.05$ ).

The green line in Figure 76 shows the combined effect of snow on the Ku-band track point and the floe buoyancy. The slope is small ( $f = 0.03\text{SnowDepth} + 0.15$  -  $0.03 \times \text{SnowDepth} + 0.15$ ) (SnowDepth is referred to by 'SD' in Figure 6 regression equations), suggesting that the combined effect of the radar track point and the floe buoyancy variability is almost independent of snow depth. The combined effect of the Ka-band track point and the floe buoyancy is  $f_{Ka} = 0.05SD + 0.15$ .

The effect of snow depth on the Ku- and Ka- track point is linear up to snow depths of  $\sim 0.5 \text{ m}$  (Figure 7). Therefore, even if the RRDP data is not fully representative of the Arctic, the results would still be valid for most of the Arctic because snow depth on Arctic sea ice is usually  $< 0.5 \text{ m}$ . The "radar pulse propagation speed reduction correction" for the Ku-band track point in our simulations is on average 0.35 times the snow depth (slope of red line in Figure 7) for a snow density of  $306 \text{ kg m}^{-3}$  (standard deviation  $20 \text{ kg m}^{-3}$ ). This is comparable to the correction used in CryoSat-2 operational processing (Tilling et al., 2018).

$$\delta h = 0.25\text{SnowDepth} \quad (4)$$

so that the freeboard correction  $\delta h$ , is 25 % of the snow depth. This equation is valid for a snow density of  $300 \text{ kg m}^{-3}$ . The buoyancy correction in our simulations is on average 0.29 times (slope of the blue line in Figure 7) the snow depth with an opposite sign (+/-) to the track point correction. This is equivalent to the buoyancy correction described in Eq. 1 for both FYI and SYI for a snow density of  $300 \text{ kg m}^{-3}$ . The snow geophysical property profiles from the Canadian Arctic, with a range of snow depths ( $0.05 - 0.31 \text{ m}$ ), show similar pattern as the uniform profiles for both the floe buoyancy and track point (Figure 7).

**Kommentar [RTT49]:** P15 L342-345: This description should be included when Figure 6 is first introduced.

**Kommentar [RTT50]:** P15 L345: "We do not show the actual ice thickness, but it is proportional to the freeboard." As shown by your equation (1) the SIT depends also on the snow load. So please could you precise the SIT used in the Fig 6.

**Kommentar [RTT51]:** P15 L352: "The green line in Figure 6 shows the combined effect of snow on the track point and the floe buoyancy." Which track point? Ka? Ku? Until this section 6 only the ka-ku difference has been considered.

**Kommentar [RTT52]:** P15 L352: "Ka and Ku\*\* track point : :"

**Kommentar [RTT53]:** P15 L357: "The effect of snow depth on the Ku- and Ka- track point is linear up to snow depths of  $\sim 50 \text{ cm}$  (Figure 6)." Fig 6 does not show the Ka measurement.

**Kommentar [RTT54]:** P15 L360: "The correction" for the track point is on average 0.35 times the snow depth". Which track point? Ka? Ku?

**Kommentar [RTT55]:** P15 L368: typo "SYI"

400

Therefore, the correction for snow on buoyancy and Ka- and Ku-band track point are almost equal and opposite in magnitude. This means that if actual snow depth information is available then the radar freeboard should be corrected for both the track point and buoyancy variation before computing sea ice thickness on a location specific basis. ~~The effect of snow depth on the Ku- and Ka- track point is linear up to snow depths of ~ 50 cm (Figure 6). Therefore, even if the RRD data is not fully representative of the Arctic, the results would still be valid for most of the Arctic because snow depth on Arctic sea ice is usually < 50 cm. The "correction" for the track point is on average 0.35 times the snow depth (slope of red line in Figure 6) for a snow density of 306 kg m<sup>-3</sup> (standard deviation 20 kg m<sup>-3</sup>). This is comparable to the correction used in CryoSat-2 operational processing (Tilling et al., 2018).~~

405

410

$$\delta h = 0.25SD \quad (4);$$

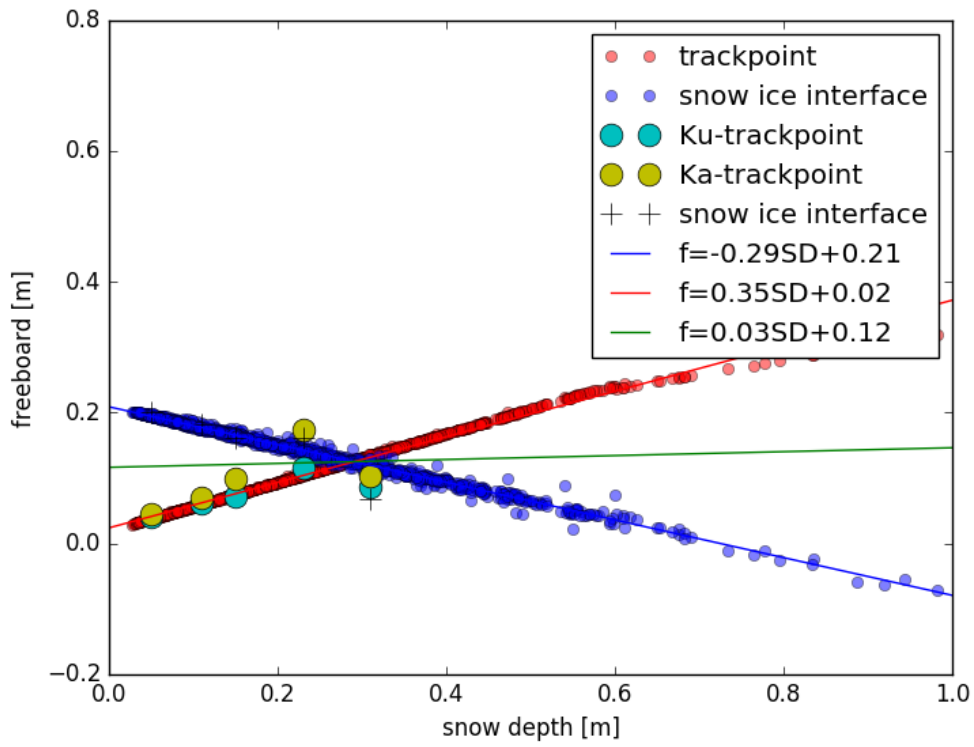
so that the freeboard correction  $\delta h$ , is 25 % of the snow depth  $SD$ . This equation is valid for a snow density of 300 kg m<sup>-3</sup>. The buoyancy correction in our simulations is on average 0.28 times (slope of the blue line in Figure 6) the snow depth with an opposite sign (+/-) to the track point correction. This is equivalent to the buoyancy correction described in Eq. 1 for both FYI and SYI for a snow density of 300 kg m<sup>-3</sup>. The snow profiles from the Canadian Arctic, with a range of snow depths (5–31 cm), show similar pattern as the uniform profiles for both the floe buoyancy and track point (Figure 6).

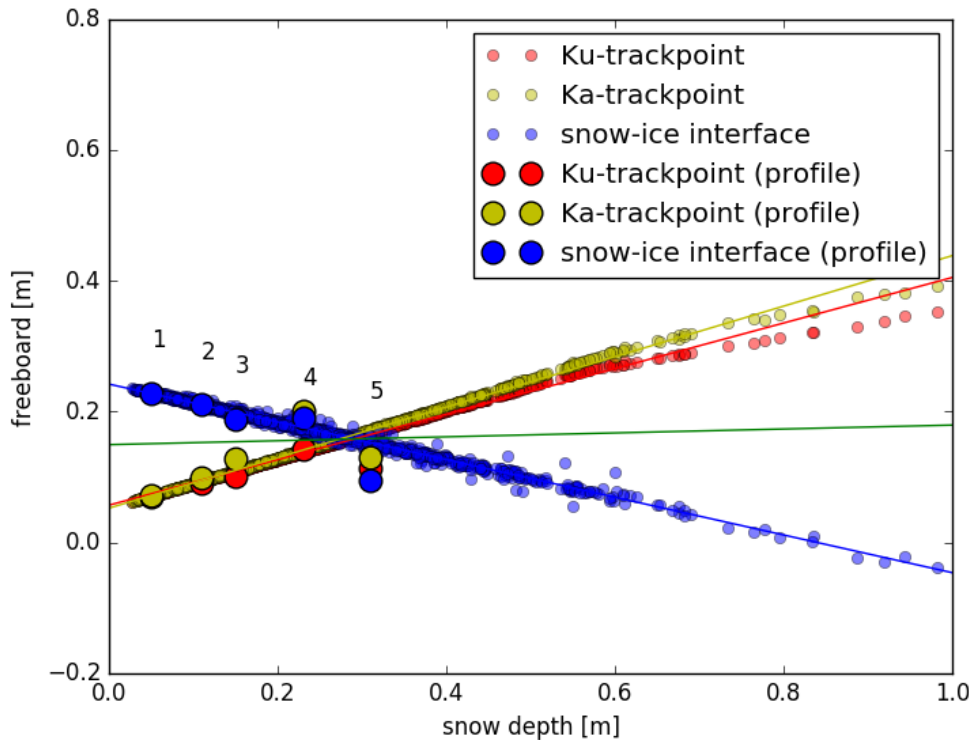
415

**Kommentar [RTT56]:** P15 L357: "The effect of snow depth on the Ku- and Ka-track point is linear up to snow depths of ~ 50 cm (Figure 6)." Fig 6 does not show the Ka measurement.

**Kommentar [RTT57]:** P15 L360: "The correction" for the track point is on average 0.35 times the snow depth". Which track point? Ka? Ku?

**Kommentar [RTT58]:** P15 L368: typo "SYI"





420 Figure 76. Red circles is the Ku-band radar track point as a function of snow depth and density, the linear fit (red line) is the  
 freeboard,  $f_{Ku} = 0.355 \text{ snowDepth} + 0.052$ , yellow circles (and line) is the Ka-track point,  $f_{Ka} = 0.39 \text{ snowDepth} + 0.05$ ,  
 425 blue circles is the snow/ice interface freeboard as a function of snow depth and density, the linear fit (blue line) is  
 $f = -0.29 \text{ snowDepth} + 0.244$ . The lines cross at a snow depth of 0.30 m (the physical meaning of the crossing point is related  
 to the sea ice and sea water densities and the surface roughness and the radar frequency), the combined effect of both Ka- and the  
 Ku-band track point and buoyancy is the green line freeboard,  $f = 0.03 \text{ snowDepth} + 0.152$  (The figure is a reproduction of  
 Fig. 3C in Tonboe et al. (2010) with new input data). The five snow profiles (numbers 1-5) from the Canadian Arctic are added,  
 depicted with black cross marks, large blue circles for the snow/sea ice interface, large cyan-red and yellow circles for the Ka- and  
 Ku-band track points, respectively (Table 2). (The figure is a reproduction of Fig. 3C in Tonboe et al. (2010) with new input data).

430 The W99 snow climatology used to convert  $F_I$  to  $H_I$  is seasonally and regionally varying. This means that the spatial and  
 temporal offsets systematic uncertainty that the W99 dataset introduces in the sea ice thickness derivation has regional and  
 seasonal variability. However, this variability may not coincide with actual snow depth and density. With increasingly earlier  
 Arctic sea ice melt onset and longer melt seasons (e.g. Stroeve and Notz, 2018), sea ice freeze-onset and snow accumulation

**Kommentar [N59]:** Rasmus, can you rename the prof. Ku-track point to "Ku-track point (profiles) or something similar. Prof. Ku-track point sounds like a Professor :p.

**Kommentar [RTT60]:** Figure 6: I can't make out the black crosses, and the legend covers some data. It'd also be useful to number the profiles again

**Kommentar [RTT61]:** P16 Fig 6: "Red circles is the Ku-band radar track point as a function of snow depth and density": The Ku FB has not been introduced beforehand how do you obtain it? "The combined effect of both Ka- and Ku-band track point and buoyancy is the green line freeboard": how it is computed? How do you get a nul Ku-FB for a ice-FB, without snow, of 20cm? Thus it is clearly not a problem of snow penetration!

time has also reduced (Webster et al., 2014; Webster et al., 2018). Deviations in snow depth and density from climatology are mapped directly as systematic errors into the derived sea ice thickness changes. Climatology is used when the real snow depth is unknown and the offset that the climatological snow depth is introducing to the Ku-band freeboard measurement is 0.03 times the climatological snow depth (the green-line slope in Fig. 76). Additionally, we need to add there is a 0.03 times the real snow depth bias when using snow climatology (if the real snow depth is unknown). If not using the climatology there would only be the 0.03 times the real snow depth bias and -only if the real snow depth is known the bias can be avoided. This has two important implications: 1) the snow climatology results in a small impact on the derived sea ice thickness because the radar penetration and the buoyancy correction have opposite signs (-/+), and 2) when using climatology the impact of the snow on the measured freeboard is small (0.03 times the snow depth, slope of the green line in Figure 4) and this small bias is introduced by the freeboard sensitivity to snow coming from the climatology and the actual snow cover variability. The small impact of the snow on the measured freeboard is the reason why the sea ice thickness can be derived using radar altimeters even without actual snow information (current operational situation). It is also the reason why corrections using snow climatology are relatively small compared to other errors. Other factors related to snow could influence the buoyancy and the radar scattering, e.g. snow salinity and density (e.g. Nandan et al., 2017; Nandan et al., 2020), snow grain size, roughness (e.g. Tonboe et al., 2010; Landy et al., 2020) and snow layering; and these topics warrant further research.

## 7 Conclusions

In this study, we have shown that it is necessary to correct the sea ice freeboard measured by a radar altimeter for both the snow loading from actual snow depth estimates and the radar signal penetration before computing the sea ice thickness. As a result, we advocate to avoid the use of snow climatology because we think it is not necessary to include a bias in sea ice thickness estimation, even if it is small. We used a radar altimeter scattering model forced with snow depth and density from the European Space Agency's RRDP data set and in situ measured snow geophysical property profiles obtained from land-fast FYI in the Canadian Arctic.

Our simulations demonstrate/indicate/show that the direct Ka- and Ku-band track point difference sensitivity is about 0.033 times the snow depth using the average snow depth of 0.23 m as a reference point. This is smaller than previously reported from SARAL/AltiKa Ka-band and CryoSat-2 Ku-band track point differences of ~0.04 to 0.07 m from October to March over the AltiKa region of coverage (e.g. Armitage and Ridout, 2015, Guerreiro et al., 2016, Lawrence et al., 2018). The simulated Ka- and Ku-band track point sensitivity is affected by snow grain size, snow salinity and vertical snow density heterogeneity, in addition to the snow depth itself. However, the simulated Ka- and Ku-band track point differences do not explain all of the observed differences, and other factors, such as ice type (with corresponding snow salinity and snow grain size), likely affect the differences as well (Armitage and Ridout, 2015). Saline snow on FYI dampens the Ka- and Ku-band

**Kommentar [RTT62]:** P17 L388-389: Isn't adding to an unknown an impossibility? This needs to be explained Better

**Kommentar [RTT63]:** P17 L389: "the snow climatology results in a small impact on the derived sea ice thickness": this sentence is clearly in contradiction with equation (1). See general comments.

**Kommentar [RTT64]:** P17 L393: "The small impact of the snow on the measured freeboard is the reason why the sea ice thickness can be derived using radar altimeters even without actual snow information." If the first part of this sentence could be true, the second one is clearly false. Even if we can not measure precisely the FB, the SD does have nevertheless a strong impact on the resulting SIT! It is easy to demonstrate using equation (1) and various SD datasets.

**Kommentar [RTT65]:** > The conclusions presented in Section 7 are not sufficiently justified. On P17 L400- 401, the authors state that they advocate avoiding the use of a snow climatology. However, in the above paragraph they state that "the snow climatology results in a small impact on the derived sea ice thickness" and "The small impact of the snow on the measured freeboard is the reason why the sea ice thickness can be derived using radar altimeters even without actual snow information". This collection of statements seems contradictory. I'd like a more clearly structured argument and justification of the conclusions.

**Kommentar [RTT66]:** P17 L405: "Our simulations demonstrate that the direct Ka- and Ku-band track point difference sensitivity is about 0.033 times the snow": it is not (yet) a demonstration but still an assumption based on a model. Please mitigate.

track point difference by masking the penetration of both Ka- and Ku-band radar waves from reaching the snow/sea ice interface. This result was found using both the uniform and detailed snow geophysical property profiles, as input to the model and supports the findings of Armitage and Ridout (2015) who noted that the Ka- and Ku-band track point difference is dependent on sea ice type. Snow Scattering in the snow creates a Ka- and Ku-band track point difference by controlling the relative importance of the snow/ice interface scattering compared to snow surface scattering. This was shown for both the uniform profiles and the detailed snow geophysical property profiles ~~from the Canadian Arctic~~.

The buoyancy and Ka- and Ku-band track point corrections are nearly equal and opposite in magnitude. This implies that the measured freeboard is nearly independent of snow depth. The measured Ku-band freeboard is elevated/ lowered by about 0.03 times the snow depth, with an increase/decrease in snow depth. For Ka-band, the factor is 0.05. This has two implications when deriving the sea ice thickness from the radar freeboard: 1) the snow depth climatology introduces a bias in the measured Ku-band freeboard of 0.03 times the climatological snow depth plus 0.03 times the real snow depth, and 2) the impact of actual snow depth is small in the sea ice thickness estimate and if the actual snow depth is unknown it is better not to correct than to use climatology for the correction.

A high inclination polar orbiting Ka- and Ku-band radar altimeter (CRISTAL) is being planned at ESA as one of six European Copernicus High Priority Candidate Missions for launch after 2026 (Kern et al., 2020). A primary objective of CRISTAL is to improve upon the accuracy of snow and sea ice thickness estimates. We anticipate that our simulations will be useful in consolidating these applications and improve the measurement and mapping of snow and ice thickness from space.

#### Author contribution

RTT developed the model code and performed the simulations. RTT prepared the manuscript with contributions from all co-authors (VN, JY, SK, LTP and JS). ~~—so that initials below in Acknowledgements can be used.~~

#### Acknowledgements

RTT was supported by the ESA sea ice CCI project. SK acknowledges support by the German Research Foundation (DFG) Excellence Initiative CliSAP under Grant EXC 177/2. VN was supported by Canada's Marine Environmental Observation, Prediction and Response Network (MEOPAR) Post-Doctoral funds. VN acknowledges support by the Natural Sciences and Engineering Research Council of Canada (NSERC) Discovery and Research Tools and Infrastructure Grants to ~~John~~ Yaekel, JY, Randall Scharien, University of Victoria and Brent Else, University of Calgary; Polar Continental Shelf Project (PCSP) and the Northern Scientific Training Program (NSTP) for financial and logistic support. The Centre for Earth

**Kommentar [RTT67]:** P18 L421: "This implies that the measured freeboard is nearly independent of snow depth." Using Ka? Ku? Both? Please be more precise or mitigate.

**Kommentar [RTT68]:** P18 L424: "the impact of actual snow depth is small in the sea ice thickness estimate": equ (1) shows that the SD may not be negligible at all.



Observation Science (CEOS), University of Manitoba is acknowledged for financial and logistical support towards collection of field data.

## References

- Aldenhoff, W., C. Heuzé, L. Eriksson: Sensitivity of radar altimeter waveform to changes in sea ice type at resolution of synthetic aperture radar. *Remote Sensing* 11, 2602, doi:10.3390/rs11222602, 2019.
- 500 Alexandrov, V., Sandven, S., Wahlin, J., and Johannessen, O. M.: The relation between sea ice thickness and freeboard in the Arctic, *The Cryosphere*, 4, 373–380, <https://doi.org/10.5194/tc-4-373-2010>, 2010.
- Armitage, T., A. Ridout: Arctic sea ice freeboard from AltiKa and comparison with CryoSat-2 and Operation IceBridge. *Geophysical Research Letters* 42, 6724-6731, 2015.
- 505 Arndt, S., K. M. Meiners, R. Ricker, T. Krumpen, C. Katlein, and M. Nicolaus: Influence of snow depth and surface flooding on light transmission through Antarctic pack ice, *Journal of Geophysical Research Oceans* 122, 2108–2119, doi:10.1002/2016JC012325, 2017.
- Barber, D. G., Nghiem, S. V.: The role of snow on the thermal dependence of microwave backscatter over sea ice. *Journal of Geophysical Research Oceans*, 104(C11), 25789-25803, 1999.
- 510 Barber, D. G., A. K. Fung, T. C. Grenfell, S. V. Nghiem, R. G. Onstott, V. I. Lytle, D. K. Perovich, A. J. Gow: The role of snow on microwave emission and scattering over first-year sea ice. *IEEE Transactions on Geoscience and Remote Sensing*, 36(5), 1750-1763, doi: 10.1109/36.718643, 1998.
- Beaven, S. G., G. L. Lockhart, S. P. Gogineni, A. R. Hosseinmostafa, K. Jezek, A. J. Gow, D. K. Perovich, A. K. Fung and S. Tjuatja: Laboratory measurements of radar backscatter from bare and snow-covered saline ice sheets, *International Journal of Remote Sensing* 16(5), 851-876, 1995.
- 515 Bintanja, R., C.A. Katsman, and F.M. Selten: Increased Arctic precipitation slows down sea ice melt and surface warming. *Oceanography* 31(2), 118–125, <https://doi.org/10.5670/oceanog.2018.204>, 2018.
- Davis, C. H.: A robust threshold retracking algorithm for measuring ice-sheet surface elevation change from satellite radar altimeters. *IEEE Transactions on Geoscience and Remote Sensing* 35(4), 974-979, 1997.
- 520 Drinkwater, M. R., & Crocker, G. B.: Modelling changes in scattering properties of the dielectric and young snow-covered sea ice at GHz frequencies. *Journal of Glaciology* 34(118), 274-282, 1988.
- Fetterer, F. M., M. R. Drinkwater, K. C. Jezek, S. W. C. Laxon, R. G. Onstott, & L. M. H. Ulander: Sea ice altimetry. In: F. D. Carsey, Ed., *Microwave Remote Sensing of Sea Ice*, *Geophysical Monograph* 68 (pp. 111-135). Washington DC: American Geophysical Union, 1992.
- 525 Frankenstein, G., & Garner, R.: Equations for determining the brine volume of sea ice from  $-0.5^{\circ}$  to  $-22.9^{\circ}$  C. *Journal of Glaciology* 6(48), 943-944, 1967.

- Geldsetzer, T., Mead, J. B., Yackel, J. J., Scharien, R. S., and Howell, S. E.: Surface-based polarimetric C-band scatterometer for field measurement of sea ice. *IEEE Transactions on Geoscience and Remote Sensing* 45, 3405– 3416, 2017.
- 530 Giles, K. A., Laxon, S. W., Wingham, D. J., Wallis, D. W., Krabill, W. B., Leuschen, C. J., McAdoe, D., Manizade, S. S., Raney, R. K.: Combined airborne laser and radar altimeter measurements over the Fram Strait in May 2002. *Remote Sensing of Environment* 111, 182 – 194, 2007.
- Guerreiro, K., S. Fleury, E. Zakharova, F. Rémy, A. Kouraev: Potential for estimation of snow depth on Arctic sea ice from CryoSat-2 and SARAL/AltiKa missions. *Remote Sensing of Environment* 186, 339-349, -2016.
- 545 Hendricks, S., L. Stenseng, V. Helm and C. Haas: Effects of surface roughness on sea ice freeboard retrieval with an Airborne Ku-Band SAR radar altimeter, 2010 IEEE International Geoscience and Remote Sensing Symposium 3126-3129, 2010.
- Hendricks, S., R. Ricker, V. Helm: AWI Cryosat-2 sea ice thickness data product (v1.2), user guide. ([https://epic.awi.de/id/eprint/41242/1/AWI\\_cryosat2\\_user\\_guide\\_v1\\_2\\_july2016.pdf](https://epic.awi.de/id/eprint/41242/1/AWI_cryosat2_user_guide_v1_2_july2016.pdf)), 2016.
- 540 Iacozza, J., D. G. Barber: An examination of the distribution of snow on sea-ice. *Atmosphere-Ocean* 37(1), 21–51, 1999.
- Kern, M., Cullen, R., Berruti, B., Bouffard, J., Casal, T., Drinkwater, M. R., Gabriele, A., Lecuyot, A., Ludwig, M., Midthassel, R., Navas Traver, I., Parrinello, T., Ressler, G., Andersson, E., Martin Puig, C., Andersen, O., Bartsch, A., Farrell, S. L., Fleury, S., Gascoin, S., Guillot, A., Humbert, A., Rinne, E., Shepherd, A., van den Broeke, M. R., and Yackel, J. The Copernicus Polar Ice and Snow Topography Altimeter (CRISTAL): Expected Mission Contributions, *The Cryosphere Discuss.*, <https://doi.org/10.5194/tc-2020-3>, in review, 2020.
- 545 King, J., Howell, S., Brady, M., Toose, P., Derksen, C., Haas, C., and Beckers, J.: Local-scale variability of snow density on Arctic sea ice, *The Cryosphere Discuss.*, <https://doi.org/10.5194/tc-2019-305>, in review, 2020.
- Kurtz, N. T. and S. L. Farrell: Large-scale surveys of snow depth on Arctic sea ice from Operation IceBridge. *Geophysical Research Letters* 38(20), L20505, 2011.
- 550 Kurtz, N. T., N. Galin and M. Studinger: An improved CryoSat-2 sea ice freeboard retrieval algorithm through the use of waveform fitting. *The Cryosphere* 8(4), 1217-1237, 2014.
- Kwok, R., & Kacimi, S.: Three years of sea ice freeboard, snow depth, and ice thickness of the Weddell Sea from Operation IceBridge and CryoSat-2. *The Cryosphere*, 12(8), 2789-2801, 2018.
- Kwok, R., Kurtz, N. T., Brucker, L., Ivanoff, A., Newman, T., Farrell, S. L., King, J., Howell, S., Webster, M. A., Paden, J., Leuschen, C., MacGregor, J. A., Richter-Menge, J., Harbeck, J., and Tschudi, M.: Intercomparison of snow depth retrievals over Arctic sea ice from radar data acquired by Operation IceBridge, *The Cryosphere*, 11, 2571–2593, <https://doi.org/10.5194/tc-11-2571-2017>, 2017.
- 555 Kwok, R.: Simulated effects of a snow layer on retrieval of CryoSat-2 sea ice freeboard. *Geophysical Research Letters* 41(14), 5014-5020, -2014.

- 560 | Landy, J. C., Tsamados, M., Scharien, R. K.: A Facet-Based Numerical Model for Simulating SAR Altimeter Echoes [f](#)From  
Heterogeneous Sea Ice Surfaces. *IEEE Transactions on Geoscience and Remote Sensing*, 57(7), 4164-4180, -2019.
- Landy, J. C., Petty, A. A., Tsamados, M., Stroeve, J. C.: Sea ice roughness overlooked as a key source of uncertainty in  
CryoSat-2 ice freeboard retrievals. *Journal of Geophysical Research Oceans*—125,  
e2019JC015820. <https://doi.org/10.1029/2019JC015820>, 2020.
- 565 | Langlois, A., A. Royer, B. Montpetit, G. Pichard, L. Brucker, L. Arnaud, P. Harvey-Collard, M. Fily, K. Goïta: On the  
relationship between snow grain morphology and in situ near infrared calibrated reflectance photographs. *Cold Regions  
Science and Technology* 61, 34-42,- 2010.
- Lawrence, I. R., Tsamados, M. C., Stroeve, J. C., Armitage, T. W. K., and Ridout, A. L.: Estimating snow depth over Arctic  
sea ice from calibrated dual-frequency radar freeboards, *The Cryosphere* 12, 3551–3564 ([https://doi.org/10.5194/tc-12-3551-](https://doi.org/10.5194/tc-12-3551-2018)  
570 | 2018), 2018.
- Laxon S. W., K. A. Giles, A. L. Ridout, D. J. Wingham, R. Willatt, R. Cullen, R. Kwok, A. Schweiger, J. Zhang, C. Haas, S.  
Hendricks, R. Krishfield, N. Kurtz, S. Farrell and M. Davidson: CryoSat-2 estimates of Arctic sea ice thickness and volume,  
*Geophysical Research Letters* 40, 732–737 (doi:10.1002/grl.50193), 2013.
- Laxon, S., L. Toudal Pedersen & T. Lavergne. Database for Task 2, Doc Ref: SICCI-DBT2-06-16, Version: 2.0. available  
575 | from <https://ftp.spacecenter.dk/pub/SICCI/>, 2016.
- Lecomte, O., T. Fishefet, M. Vancoppenolle, M. Nicolaus: A new snow thermodynamic scheme for large scale sea ice  
models. *Annals of Glaciology* 52(57), 337-346, -2011.
- Maheshwari, M., C. Mahesh, K. S. Rajkumar, J. Pallipad, D. R. Rajak, S. R. Oza, R. Kumar, R. Sharma: Estimation of sea  
ice freeboard from SARAL/AltiKa data. *Marine Geodesy* 38(S1), 487-496, 2015.
- 580 | Mallett, R. D. C., Lawrence, I. R., Stroeve, J. C., Landy, J. C., and Tsamados, M.: Brief communication: Conventional  
assumptions involving the speed of radar waves in snow introduce systematic underestimates to sea ice thickness and  
seasonal growth rate estimates, *The Cryosphere* 14, 251–260, (<https://doi.org/10.5194/tc-14-251-2020>), 2020.
- Mätzler, C.: Improved Born approximation for scattering of radiation in a granular  
medium. *Journal of Applied Physics* 83(11), 6111-6117, 1998.
- 585 | Nandan, V., R. K Scharien, T. Geldsetzer, R. Kwok, J. J. Yackel, M. Mahmud, A. Rösel, R. Tonboe, M. Granskog, R.  
Willatt, J. Stroeve, P. Nomura, M Frey: Snow Property Controls on Modeled Ku-Band Altimeter Estimates of First-Year Sea  
Ice Thickness: Case Studies From the Canadian and Norwegian Arctic. *IEEE Journal of Selected Topics in Applied Earth  
Observations and Remote Sensing* 13, 1082-1096, 2020.
- Nandan, V., Scharien, R., Geldsetzer, T., Mahmud, M., Yackel, J. J., Islam, T., and Duguay, C.: Geophysical and  
590 | atmospheric controls on Ku-, X-and C-band backscatter evolution from a saline snow cover on first-year sea ice from late-  
winter to pre-early melt. *Remote Sensing of Environment*, 198, 425-441,-2017.

- Nandan, V., T. Geldsetzer, J. Yackel, M. Mahmud, R. Scharien, S. Howell, J. King, R. Ricker, B. Else: Effect of Snow Salinity on CryoSat-2 Arctic First-Year Sea Ice Freeboard Measurements. *Geophysical Research Letters* (<https://doi.org/10.1002/2017GL074506>), 2017.
- 595 Ricker, R., S. Hendricks, V. Helm and R. Gerdes.: Impact of snow accumulation on CryoSat-2 range retrievals over Arctic sea ice: An observational approach with buoy data. *Geophysical Research Letters* 42(11), 4447-4455,- 2015.
- Ricker, R., S. Hendricks, V. Helm, H. Skourup and M. Davidson: Sensitivity of CryoSat-2 Arctic sea-ice freeboard and thickness on radar-waveform interpretation. *The Cryosphere* 8(4), 1607-1622, 2014.
- Ridley, J. K., and K. C. Partington: A model of satellite radar return from ice sheets. *International Journal of Remote Sensing* 9(4), 601-624, 1988.
- 600 Stroeve, J., D. Notz: Changing state of Arctic Sea Ice across all seasons. *Environmental Research Letters* 13, 103001, <https://doi.org/10.1088/1748-9326/aade56>, 2018.
- Tilling, R., A. Ridout, A. Shepherd: Estimating Arctic sea ice thickness and volume using Cryosat-2 radar altimeter data. *Advances in Space Research* 62, 1203-1225, 2018.
- 605 Tonboe, R. T., L. T. Pedersen, and C. Haas: Simulation of the Cryosat-2 satellite radar altimeter sea ice thickness retrieval uncertainty. *Canadian Journal of Remote Sensing* 36(1), 55-67, 2010.
- Tonboe, R. T., S. Andersen, and L. Toudal Pedersen: Simulation of the Ku-band radar altimeter sea ice signal. *IEEE Geoscience and Remote Sensing Letters* 3(2), 237-240, 2006a.
- Tonboe, R. T., S. Andersen, R. S. Gill, and L. Toudal Pedersen: The simulated seasonal variability of the Ku-band radar altimeter effective scattering surface depth in sea ice. *Arctic Sea Ice Thickness: Past, Present and Future*, edited by Wadhams and Amanatidis. *Climate Change and Natural Hazards Series 10*, EUR 22416, 2006b.
- 610 Tonboe, R. T.: Radar backscatter modelling for sea ice radar altimetry. DMI report 17-17, pp.19, ([https://www.dmi.dk/fileadmin/user\\_upload/Rapporter/TR/2017/DMIREp17-17\\_rtt.pdf](https://www.dmi.dk/fileadmin/user_upload/Rapporter/TR/2017/DMIREp17-17_rtt.pdf)), 2017.
- Ulaby, F. T., R. K. Moore & A. K. Fung: *Microwave Remote Sensing, From Theory to Applications*, vol. 3. Dedham MA: Artech House, 1986.
- 615 Ulander, L. M. H. and A. Carlström: Radar backscatter signatures of Baltic sea ice. *Proceedings of the IGARSS'91*, p. 1215-1218, IEEE, doi:10.1109/IGARSS.1991.579290, 1991.
- Warren, S. G., Rigor, I. G., Untersteiner, N., Radionov, V. F., Bryazgin, N. N., Aleksandrov, Y. I., & Colony, R.: Snow depth on Arctic sea ice. *Journal of Climate*, 12(-6), 1814–1829, 1999.
- 620 Webster, M. A., I. G. Rigor, S. V. Nghiem, N. T. Kurtz, S. L. Farrell, D. K. Perovich, and M. Sturm: Inter-decadal changes in snow depth on Arctic sea ice, *Journal of Geophysical Research Oceans*, 119, 5395–5406, doi:10.1002/2014JC009985, 2014.
- Webster, M., Gerland, S., Holland, M., Hunke, E., Kwok, R., Lecomte, O., & Sturm, M.: Snow in the changing sea-ice systems. *Nature Climate Change*, 8(11), 946-953, 2018.

- 625 Yackel, J. J., D. G. Barber: Observations of snow water equivalent change on landfast first-year sea ice in winter using synthetic aperture radar data. *IEEE Transactions on Geoscience and Remote Sensing* 45(4), 1005-1015, 2007.