

Responses to Reviewer 1's comments (in blue):

This article documents the improvements of sea-surface identification with ICESat-2 altimetric measurements for sea ice, and the ensuing changes in the new release (i.e., ver. 3) of sea ice freeboard. Specifically, photon rate on dark leads can be reduced by cloud, which may cause mis-categorization as sea level tie points and result in under-estimation of sea ice freeboard. A case study with collocating airborne measurements is carried out, and a correction is introduced to utilize only specular returns for lead detection and sea-level computation. Basin-scale effects on freeboard estimation is also studied for Arctic and Antarctic retrieval. Given the importance of the ICESat-2 measurements for the ongoing and future observation of sea ice thickness, this work is an important and timely update for the polar research community. The article is also well-written, and the representation of the results are very good. However, I find several aspects that can be improved especially in the results and analysis part. My major comments and questions are as follows.

We thank the reviewer for the valuable comments and suggested revisions.

Major comment 1: one key analysis that I suggest to add, is the study/validation with collocating tracks of ICESat-2 and OIB. For example, the 4 OIB tracks as used in Kwok et al (2019), which showed very good consistency between OIB and IS-2 elevation, can be utilized. In fact, in Kwok et al. (2019), the effect on freeboard retrieval is discussed. But key info (including the systematic differences of freeboard, as shown Tab. 1 of the reference) may be different from the current version of the IS-2 data, including protocols, etc. Besides the basin-scale comparisons as in Sec. 5 of the manuscript, the study on the fine spatial scale may be more informative of the performance of the new treatments, as well as the consistency with OIB which feature a sea level retrieval with more comprehensive measurements. This revision is also necessary to improve the overall content of Sec. 5, which in its current form is too short and contains limited result and analysis.

As suggested, we have repeated the analysis in Kwok et al. (2019). There were only two days where there were sea surfaces identified in the IS-2 data (April 12 and April 22). As mentioned in Kwok et al. (2019) the winds were light and the ice cover was extremely compact along these flight lines. While these conditions were ideal for acquiring coincident sea ice data sets, they were not conducive to ice deformation or open water production (i.e., leads) required for computing freeboard. Only 4 segments (10 km in length) were available for assessment of the retrieved freeboards. The results show that the IS-2 freeboards were lower than the ATM freeboards by between 3-4 cm. For the small number of samples, we did not conclude at the time that these biases were significant.

In repeating the analysis, the sea surfaces in Release 2 were not available in Release 3. This indicated that the sea surfaces used in the Kwok et al. analysis were dark leads (i.e., not classified as sea surfaces) and no longer designated as sea level references for use in freeboard calculations. This suggests that the lower IS-2 freeboards in the previous analysis may be (because of the small number of samples) due to the impact of dark leads – providing a higher (biased) sea surface and thus lower IS-2 freeboards consistent with our expectation of results from the algorithm revision.

Major comment 2: previous release (ver. 2) of sea ice freeboard (ATL07) contains swath-wide freeboard estimations, by using sea-level estimations across all 3 strong beams. This effectively mitigates the problem of missing parts of the beam ground segments when ssh is computed within a single beam. Besides, there also exists effect on the freeboard value for each beam segment. Since about 10% to 20% coverage is lost due to the new treatments (that excludes dark leads), this cross-beam processing could be potentially important in salvaging more data. The authors are suggested to clarify both ends of the comparison. First, whether the previous version of freeboard (R002) is based on per-beam freeboard OR swath-wide freeboard. Second, whether the new version of freeboard (R003) is based on per-beam freeboard OR swath-wide freeboard. Furthermore, whether there is a swath-wide freeboard estimation in the newly-released version of the ATL data.

Good point. Indeed, previous releases (vers. 1 & 2) of sea ice freeboards (in ATL10) included swath-wide freeboard estimations, by using sea-level estimations across all 3 strong beams. The swath-wide freeboard estimations should not have been and are no longer provided to users in Release 3 of ATL10 (discussed in the ‘Notes to users and known issues document’ – URL below). The release of the multi-beam estimates was due to an error in software implementation, which allowed the multi-beam estimates to be released. The reason for not distributing the swath-based estimates is that there are residual range biases between the heights of the three beams and until that calibration of these inter- and intra-beam range biases are available, the multi-beam freeboard analyses will not be released.

https://nsidc.org/sites/nsidc.org/files/technical-references/ICESat2_ATL07_ATL10_Known_Issues_v003_Sept2020.pdf

Major comment 3: the discussion of the potential effect of the new scheme on sea ice thickness is suggested to be added. During wintertime (first row in Fig. 5 and third row in Fig. 6), the average total freeboard increased by about 3cm with the new treatments. This directly translates into about 30cm systematic increase in sea ice thickness (if the snow conditions stay the same). Does this help to mitigate the observed differences between ICESat-2 thickness and CryoSat-2 estimations? [Fig. 14 of Petty et al (2020), and related text contents] The lack of detectable leads can be especially prominent within the packed ice region in the Arctic. What is the impact of losing 10% to 20% ICESat-2 measurements on the estimation of ice thickness in this region and the total volume?

We are currently exploring the impact on sea ice thickness and the comparisons with CryoSat-2 thickness estimates, following on from the initial results shown in Petty et al., (2020). The reviewer is correct that the increased freeboards correspond to a significant increase in ice thickness, with the exact magnitude depending on the region and season. Our preliminary analysis across the CS-2 products suggests this pretty consistently improves the correspondence between the ICESat-2 and CryoSat-2 thickness when calculated using hydrostatic equilibrium and the same input assumptions. We choose not to show these results in this paper to keep the focus on the publicly available ICESat-2 sea ice freeboard product distributed by the ICESat-2 mission. We plan to write up the thickness comparisons in a forthcoming paper. We have yet to calculate sea ice volume, but do expect that the decreased coverage will pose a challenge, and potentially the need to introduce spatial interpolation if one was to do so.

Minor comments:

The analysis has been focused on strong beams of IS-2. What is the effect on the retrieval of weak beams? Does the loss of 10% to 20% of coverage include statistics from weak beams? Given the lower power of these beams (#2, #4 and #6) and the lower photon rates, is the data loss rate higher in weak beams than strong beams with the new treatments in R003?

The analysis is only on the strong beams. Yes, the data loss is higher. However, at this time the ICESat-2 project does not recommend the use of the weak beams because of the long integration distance needed to construct height and sea surface estimates. This is discussed in the ‘known issues’ document at NSIDC.

Line 33, page 4: delete extra ‘.’ after ‘use’.

Done.

Line 11, page 5: “the second percentile in . . .”.

Corrected.

Line 12, page 5: “. . . for smooth surfaces in IS-2 the retrieved heights” should be “. . . for smooth surfaces in the retrieved heights of IS-2”.

Corrected.

Line 25, page 5: the definition of H_{lower} is missing.

Corrected.

Line 11, page 6: add the missing “.”.

Done.

Line 17, page 8: delete the extra space.

Done.

Fig. 1 (on pg. 13): the second mode of lead width for Arctic winter by beam #3 is offset from those of beam #1 and #5 by 10 meters [top-right and bottom right sub-figure of subfigure (a)] . Why?

The reason for this is that transmitted energy for Beam 3 is approximately 80% that of Beams 1 and 3. Thus, it takes a longer distance to aggregate the 150 photons used for height estimate in the surface finding procedure. This is now discussed in the text.

Responses to Reviewer 2's comments (in blue):

This manuscript describes a change in processing of the ICESat-2 sea ice freeboard product. It finds that returns from dark leads can be affected by clouds, giving erroneous higher surface heights, and reducing the accuracy of the freeboards. Revision 003 of the product removes dark leads as a source for the sea surface height calculation. This results in a decrease in the sea surface height and thus an increase in freeboard.

We thank the reviewer for the valuable comments and suggested revisions.

General Comment

This is nice paper that documents an important revision to the ICESat-2 sea ice freeboard product that corrects an error due to clouds in Revision 001/002 and describes the change for Revision 003 that corrects this error. The paper is well written and the analysis is complete. I have only a few minor suggestions below, the primary one being to consider moving the material in Section 4.3 to a more logical (in my view) place in the manuscript. Other comments are minor suggestions to provide more clarity in a few places.

Section 4.3 introduces a potential diagnostic for identifying dark leads that are contaminated by clouds. While moving Section 4.3 to Section 5 (or even to a new Section 6) seems more logical, we prefer to keep this subsection in Section 4 because this diagnostic has yet to be implemented and tested. In addition, the introduction of the diagnostic is closer to the discussion of the specular and dark leads. And, since Section 5 is focused on the actual algorithm revisions in Release 3, it seems more appropriate that the discussion remains in Section 4. We have added words to clarify our intent in Section 4.3 so that it does not seem out of place.

Specific Comments (by page and line number):

P2, L33: Perhaps a bit more explanation on the 10-km freeboard determination length scale. I know this is detailed in earlier papers and the ATBD, but for a reader who is less familiar, a brief description of the method that gives rise to the 10-km length scale would be helpful. I see this noted below in Section 2.1. But still this sentence seems to presume an understanding of the products (e.g., what are “ice segment height errors”?) that hasn't yet been explicitly introduced in the manuscript. Perhaps simplify to say “Misidentified sea surface segments can have observable impacts on freeboard determine, as described below.”?

In the revision, we have added brief description of the 10-km length scale. And, we have used the sentence as suggested by the reviewer: Misidentified sea surface segments can have observable impacts on freeboard determine, as described below.

P3, L2: CAMBOT is essentially a digital camera, right? I suggest adding this as a descriptor along spelling out the full name. “Optical translator” may not be clear to all readers. I see it noted in Section 2.2, but it still may be useful here. E.g., say “and digital imagery from the Continuous. . . (CAMBOT) obtained by. . .”

Correct. CAMBOT is a digital camera. The text has been revised as suggested to clarify the fact that this is a digital camera in addition to the words used in the text.

P3, L12: I would provide the title of the product initially and not just the product code, e.g., “The Sea Ice Height (ATL07) product. . .”

Done.

P3, L25-28: Should provide recommended citation for the CAMBOT product, as noted on NSIDC’s page: Studinger, M. and J. Harbeck. 2019. IceBridge CAMBOT L1B Geolocated Images, Version 2. [Indicate subset used]. Boulder, Colorado USA. NASA National Snow and Ice Data Center Distributed Active Archive Center. doi: <https://doi.org/10.5067/B0HL940D452L>. [Date Accessed]

Done.

P3, L34: “RGT” is introduced here and used in several other places in the manuscript, but not defined or explained. It should be spelled out the first time – Reference Ground Track – with a brief definition.

RGT is now defined in the text.

P8, L8-19: Section 4.3 seems a bit out of place here. You discuss a potential new filter and then note that you’re not using that for R003, which is described in Section 5. It seems like Section 4.3 should be moved to the end as a “potential improvement for a future Revision” – i.e., as a short Section 6 (with conclusions moving to Section 7), or as a Section 5.3.

See above.

P6, L23: Last sentence of Section 3: this is/was for R001/R002, right?

Yes, we have added this to clarify this.

Table 1: I would expect that since the dark leads are being removed in R003, the number of samples would decrease over R002. But N is larger in R003 for the Arctic Jun-19 and Antarctic Jan-19. What is the reason for this? Or am I misunderstanding what N means? (And this suggests that N should be described in the Table 1 caption.)

N is now defined in the text. There typos for Arctic Jun-19 and Jan-19 have been fixed.

Figure 5: It would be useful to have a difference map for R003 minus R002. Maybe that could be the third column with the distribution plots moved to the fourth column, or if that’s too crowded, maybe move the distributions to a separate figure.

We have added difference distributions to show the impact of the revision on different intervals of freeboards.

Minor Comments (by page and line number):

P2, L30: typo, should be “of our” instead of “of or”

Corrected.

P3, L15: repetitive “from”. Could say “. . .are derived from the ATL07 surface heights.”

Done.

P7, L26: no hyphen in “to date”

Corrected.

P8, L19: spelling - “misclassification”

Corrected.

Refining the sea surface identification approach for determining freeboards in the ICESat-2 sea ice products

Ron Kwok¹, Alek A. Petty^{2,3}, Marco Bagnardi^{2,4}, Nathan T. Kurtz², Glenn F. Cunningham⁵, Alvaro Ivanoff^{2,4}

¹Applied Physics Laboratory, Polar Science Center, University of Washington, Seattle, Washington, USA

²Goddard Space Flight Center, Greenbelt, Maryland, USA

³Earth System Science Interdisciplinary Center, University of Maryland, College Park, Maryland, USA

⁴ADNET Systems, Inc., Rockville, Maryland, USA

⁵Jet Propulsion Laboratory, California Institute of Technology, Pasadena, California, USA

Correspondence to: Alek Petty (alek.a.petty@nasa.gov)

Abstract. In Release 1 and 2 of the ICESat-2 sea ice products, candidate height segments used to estimate the reference sea surface height for freeboard calculations included two surface types: specular and smooth dark leads. We found that the uncorrected photon rates, used as proxies of surface reflectance, are attenuated due to clouds resulting in the potential misclassification of sea ice as dark leads, biasing the reference sea surface height relative to those derived from the more reliable specular returns. This results in higher reference sea surface heights and lowering estimated ice freeboards. Resolution of available cloud flags from the ICESat-2 atmosphere data product are too coarse to provide useful filtering at the lead segment scale. In Release 3, we have modified the surface reference finding algorithm so that only specular leads are used. The consequence of this change can be seen in the freeboard composites of the Arctic and Southern Ocean. Broadly, coverages have decreased by ~10-20% because there are fewer leads (by excluding the dark leads), and the composite means have increased by 0-4 cm because of the use of more consistent specular leads.

Deleted: ¹Polar Science Center, Applied

1 Introduction

The community distribution of higher-level data products from the ICESat-2 (IS-2) observatory (Markus et al., 2017) began with the first release in May 2019 (Release 001, R001). This was followed by a second release around October 2019 (R002), and, more recently, the third and most current release (R003). These data have all been made publicly available through the National Snow and Ice Data Center (NSIDC, <https://nsidc.org/data/icesat-2>). New releases are created periodically (nominally every six months), each new data product release incorporates improvements from on-going in-orbit calibration of the Advanced Topographic Laser Altimeter System (ATLAS), enhancements in the processing algorithms, and issues encountered in product generation.

One of the analyzed science products (Level 3A) from the IS-2 mission is sea ice freeboard of the polar oceans, i.e., the height of the surface above the local sea level (ATL10, Kwok et al., 2019a). The ATL10 freeboard product is generated primarily to enable calculations of sea ice thickness. To calculate sea ice freeboards, an important first step is the identification of the surface returns that could be used to estimate the height of the local sea surface. Useful freeboard estimates have been produced for the analog lidars on the ICESat mission (Kwok et al., 2007; Farrell et al., 2009) and Operation IceBridge (OIB) (Kwok et al., 2012; Kurtz et al., 2013). For the ICESat lidar (Zwally et al., 2002), investigators have used estimates of reflectance and surface relief statistics (Kwok et al., 2007), lowest level filtering (Yi et al., 2011), and waveform characteristics (Farrell et al., 2009) to separate the ice and sea surface returns. Identification of the local sea surface in the Airborne Topographic Mapper (ATM) lidar on OIB (Kurtz et al., 2013) is aided by coincident and contemporaneous digital camera images and an infra-red radiometer data. However, accurate selection of sea surface samples is very much dependent on the specific instrument (e.g. resolution, sampling, incidence angle, radiometry etc.) and whether ancillary data are available in the ice-water discrimination procedure.

The ATLAS data from IS-2 is unique in that the photon height distributions from the instrument have to be treated somewhat differently even though the physical basis for freeboard calculations remain unchanged. The classification algorithm for discriminating surface type of a height segment in the IS-2 sea ice data utilizes three attributes of the photon cloud/height distribution (photon rate, width of photon distribution, and background) to determine the surface type of a height sample. From the available IS-2 surface types, two surface types (specular and smooth dark leads) are selected as candidate height samples to estimate the sea surface reference heights and a weighted sum of the heights of these two surfaces is used for freeboard calculations. This was the approach used in R001 and R002 and is based on our pre-launch understanding of the IS-2 instrument, our experience with ICESat and an airborne implementation of a multibeam experimental lidar flown between 2012 and 2014 (Kwok et al., 2014).

With more than a year of IS-2 data now available, together with coincident data from Operation IceBridge, we are able to better understand the capabilities of the instrument and refine the sea ice algorithm. A key outcome of our initial assessments is improved understanding of the impact of clouds on the ice-water discrimination procedure. Misidentified sea surface segments can have observable impacts on freeboard determination, errors in sea surface reference heights affect freeboard estimates over the entire 10-km freeboard determination length scale, whereas ice segment height errors affect only the individual ice surface height/freeboard estimates. This is described in more detail below.

Based on the results of our analysis presented here, we find that the photon rates, used as proxies of surface reflectance are predictably attenuated due to clouds, leading to incorrect classification of ice as dark leads, and reference sea surface heights from dark leads being biased relative to the heights from the more reliable specular returns. In R003, we have modified the

Deleted:

Deleted:

Deleted: or

Deleted: as

surface reference algorithm so that only specular leads are used. The analysis, the rationale and the impact of this revision to the sea ice algorithms are the subjects of this paper.

The paper is organized as follows. Section 2 describes the two IS-2 sea ice products (heights and freeboards) and the Continuous Airborne Mapping by Optical Translator (CAMBOT) – a digital camera – imagery obtained by Operation IceBridge used here. A brief description of the key features of the height and surface type classification algorithm is provided in Section 3. Sections 4 discusses the effect of clouds on sea surface identification, a potential approach for removing of these erroneous surface type for consideration in reference height calculations, and the implemented change in Release 003 for addressing the impact of clouds in sea surface samples. Section 5 describes the expected differences between Releases 001/002 and 003. The last section concludes the paper.

2 Data description

Two data sets are used here: 1) sea ice products from IS-2, and 2) digital camera images acquired by the CAMBOT on Operation IceBridge. They are described below.

2.1 ICESat-2 (ATL07 and ATL10 products)

The JS-2 sea ice height product (ATL07) contains profiles of surface heights and surface type of individual height segments along each of the six ground tracks (Kwok et al., 2019b). Individual height estimates in ATL07 are derived from height distributions constructed using a fixed aggregate of 150 geolocated photons from the ATLAS Global Geolocated Photon Data product (ATL03) (Neumann et al., 2019). Individual ATL10 freeboard estimates are derived from ATL07 surface. A local sea surface reference (h_{ref}) (i.e., the estimated local sea level) is derived from the heights of available lead segments (one or more) within a 10-km along-track section (for each beam). Each lead may contain one or more consecutive sea surface height (SSH) segments. The derived sea surface references are interpolated to obtain estimates between gaps of < 50 km in length and extrapolated to adjacent 10 km sections where gaps are > 50 km. Within each 10-km section, individual freeboard heights (h_f) are calculated as the difference between the surface heights (h_s) and the local sea surface reference (i.e., $h_f = h_s - h_{ref}$). In ATL10, freeboards are provided only where the ice concentration is higher than 50% and the height samples are at least 25-km away from the coast (to avoid uncertainties in coastal tides corrections). The ATL07 and ATL10 products (currently R002 and R003) are available the National Snow and Ice Data Center (Kwok et al., 2019b).

2.2 CAMBOT: Operation IceBridge

We use CAMBOT imagery obtained during the spring 2019 Operation IceBridge (OIB) Arctic campaign. CAMBOT is a nadir-looking digital camera system operated by the ATM instrument team, that provides georeferenced and orthorectified imagery with a spatial resolution of ~9 cm at the nominal flight altitude of 500 m. The CAMBOT data are available through the NSIDC (Studinger and Harbeck, 2019). The spring 2019 OIB Arctic campaign surveyed the thicker multi-year ice north of Ellesmere Island and was designed to optimize spatial/temporal coincidence with IS-2 (see Figure 1 in Kwok et al., 2019). Winds (and thus sea ice drift) were reported to be low throughout these flights, increasing coincidence, however the presence of leads in this highly consolidated sea ice regime was limited. Manual inspection of the CAMBOT imagery and ATL07 data identified ~10 examples of misclassified dark leads. We include two example scenes here (Section 4) which had the best spatial/temporal coincidence with IS-2. Scene 1 was obtained by CAMBOT on April 12th at 13:23:48-13:24:45 UTC (86.6N, 127.5W) where IS-2

Deleted: By

Deleted: the

Formatted: Justified

Deleted: the

Deleted: from

Deleted: ATL07

Deleted: ATL07

Deleted: the

Deleted: heights from ATL07

Deleted: (h_f)

Deleted: (h_s)

Deleted: $h_f = h_s - h_{ref}$

Deleted: The CAMBOT data are available through the NSIDC (<https://nsidc.org/data/iocam1b>).

Deleted: which

(RGT 218, Beam 2) passed at 13:03-13:05 UTC (with a time difference of ~20 minutes). Scene 2 was from April 22nd at 14:07:15-14:08:12 UTC (81.6 N, 118.2W) which IS-2 (RGT 371, Beam 2) passed at: 13:29-13:33 UTC (time difference of ~40 minutes). RGTs (Reference Ground Tracks) are imaginary lines centered on the six beams used to identify distinct IS-2 orbits within a given IS-2 repeat cycle of 91 days.

3 Ice-water discrimination

In this section, we first provide a brief description of procedure used to separate surface types and the use of these surface types in identifying the sea surface samples used in the calculation of freeboards. Second, we show the distribution of attributes of the sea surface height samples in three months of ATL10 products (January, June, and October 2019). These three months were chosen to broadly represent the full seasonal cycle in ATL07/10 data across both poles.

3.1 Identification of sea surface samples in IS-2 (in R001/02)

Each height segment in ATL07 is assigned a surface type (specular, dark_lead (smooth), dark_lead (rough), gray ice, snow-covered ice, rough, shadow). These surface types were chosen as they are expected to broadly represent the typical surfaces encountered over the polar oceans – a detailed description of the classification approach can be found in Kwok et al. (2016). The primary use of surface types is for determining, together with local height statistics, whether a given height segment is suitable for use as a sea surface height sample in computing freeboards in ATL10. The surface type classifier uses three attributes derived from the photon distribution of a height segment, they are: photon rate (r_{surf}), width of photon distribution (w_i) and background rate (r_{bg}).

The surface photon rate (photons/shot) is the average number of detected surface photons (photoelectrons) divided by the number of laser shots required to construct a 150-photon aggregate. In the absence of clouds, it provides a measure of the brightness or apparent reflectance of the surface. Open leads of smooth open-water/thin ice surfaces at near-nadir incidence angles can be specular/quasi-specular (i.e., high photon rates) but can also have low photon rates characteristic of surfaces with low surface reflectance/albedo. Specular returns are relatively common in IS-2 sea ice returns, and these returns are especially useful as large numbers of photons over very short length scales (i.e., small number of shots with inter-pulse spacing of 70 cm) are ideal for resolving very narrow leads (10s of meters) within the ice cover. Unlike the higher signal-to-noise returns from specular surfaces, the classification of low albedo surface are more prone to errors due to cloud effects (Section 4). Clouds can attenuate the strength of the surface returns because the transmitted or reflected energy are scattered away (atmospheric scattering) from the narrow field-of-view of ATLAS instrument (more on this below). Between the two extremes, the surface types are of ice/snow surfaces but may be of geophysical interest for the general understanding of surface and cloud conditions.

The Gaussian width (w_i) of the photon-height distribution provides a measure of the surface roughness; the width is useful in further partitioning the height segments into different surface types (e.g. a specular surface with a relatively wide Gaussian width is classified as sea ice and not a lead).

Prior to surface finding, background photons are separated from surface photons based on their distance from the mode of the height distribution (Kwok et al., 2019a). Photon events that are not classified as surface returns are designated as background or noise photons. Background photon events could be associated with noise in the lidar instrument (e.g. stray light, detector dark counts, etc.) or scattered sunlight at the laser wavelength. Specifically, the solar background count rate (B_s) is the solar zenith

Deleted: r_{surf}

Deleted: w_i

Deleted: r_{bg}

Deleted: interpulse

Deleted: w_i

radiance due to solar energy scattered by the surface or atmosphere and provides a useful reflectance measure for surface identification. But, the latitudinal, seasonal, and daily variability of the solar zenith makes β , more challenging to use. Under clear skies, the surface returns from Lambertian surfaces are approximately linearly related to the solar background rate. Deviations from a linear relationship are indicative of shadows (cloud shadows or ridge shadows), specular returns, or atmospheric scattering. In the case of quasi-specular returns from a dark lead, for example, the behavior of background vs photon rate is not positively correlated: that is, while the surface photon rate is high for quasi-specular returns, the solar background rate is low due to a low reflectance smooth surface. When the sun is up in the polar regions, the availability of solar background provides another proxy of surface reflectance and adds to the confidence level in our surface type classification. The reader is referred to the procedure described in (Kwok et al., 2019a) for further details.

3.2 Post classification height filtering

When a sea surface sample is present locally, it is typically the lowest height along a height profile. Since sea surface samples designated by the classifier (specular and smooth dark leads) are not always unambiguous (i.e., subject to classification errors) and their heights are noisy estimates, the lowest point may not be the optimal estimate. In the IS-2 sea ice algorithm, we bracket the candidate samples in the surface height distribution selected to calculate our sea level reference. From the population of smooth surfaces – H_{smooth} (i.e., with $w_s < 0.13m$), we define the upper and lower limits of the height bracket (h_{UB} , h_{LB}) to select the candidate samples, as follows:

1. h_{LB} is the lowest height in H_{smooth} .
2. h_{UB} is the higher of h_{smooth}^2 (the 2nd-percentile in H_{smooth}) and $(h_{LB} + 2\sigma_e)$.

σ_e is the expected uncertainty in the retrieved surface height (~2-3 cm for smooth surfaces in the retrieved heights of IS-2). We include only the statistics of the smooth ice because we expect this represents the height range of level ice in the profile. The variable upper bound (h_{UB}) allows for small tilts in the sea surface along the profile such that a reasonable number of samples are included in the population used in the calculation of the sea surface; but, the height of all selected samples have to be below h_{smooth}^2 to remove the outliers from the classification process. For those candidate samples within these bounds, we gather up contiguous samples and label them as individual leads ($lead(i)$) such that a sea surface height can be estimated for each lead. Thus, there may be several leads within a 10-km segment and each lead may contains a variable number of sea surface samples. The rationale is that potential biases in contiguous height samples within a lead are likely correlated and would overweight sea level estimates (especially over a large lead) for a given 10-km segment; thus, separating the leads into independent samples over the 10-km span would provide a better estimate of the sea surface. For each lead, we calculate the sea surface estimate ($\hat{h}_{lead(i)}$) as the weighted sum of the selected height samples (h_i), viz:

Deleted:

Deleted: ..

Deleted: $w_s < 0.13m$

Deleted: h_{smooth}^2 (the 2nd

Deleted: IS-2

Deleted: h_{smooth}^2

Deleted: $\hat{h}_{lead(i)}$

$$\hat{h}_{lead} = \sum_{i=1}^{N_s} \alpha_i h_i \quad \text{and} \quad \hat{\sigma}_{lead}^2 = \sum_{i=1}^{N_s} \alpha_i^2 \sigma_i^2$$

$$\text{where} \quad \alpha_i = \frac{w_i}{\sum_{i=1}^{N_s} w_i}$$

$$\text{and} \quad w_i = \exp\left(-\frac{h_i - h_{min}}{\sigma_i}\right)^2$$

σ_i^2 is the error variance of each height estimate (provided by the surface-finding routine in ATL07), N_s is the number of contiguous height segments in a given lead, and w_i is a weighting factor that varies with distance from H_{lower} (the lowest height in the population of sea surface samples).

- 5 Estimates from individual leads are then combined to obtain a sea level reference (\hat{h}_{ref}) for a 10-km along-track section as below (weighting is based on the error variance of each lead $\sigma_{lead(i)}^2$):

$$\hat{h}_{ref} = \sum_{i=1}^{N_l} \alpha_i \hat{h}_{lead(i)} \quad \text{and} \quad \hat{\sigma}_{ref}^2 = \sum_{i=1}^{N_l} \alpha_i^2 \hat{\sigma}_{lead(i)}^2$$

$$\text{where} \quad \alpha_i = \frac{1}{\sum_{j=1}^{N_l} \frac{1}{\hat{\sigma}_{lead(j)}^2}}$$

For each valid ice segment along the given beam, the freeboard and associated error variance are then given as:

$$h_f = h_i - \hat{h}_{ref} \quad \text{and} \quad \sigma_f^2 = \sigma_i^2 + \hat{\sigma}_{ref}^2.$$

10 3.3 Photon rates and length of sea surface height segments

Figure 1 shows the distribution photon rates (photon/shot) and lead lengths of the sea surface height samples (strong beams). The mean photon rates of the entire height population (between ~6 – 8, Figure 1 – left panel) are dominated by the expected returns from a mixture of snow-covered sea ice of different roughness. The distributions are remarkably consistent for the three months (Jan-19, Jun-19, and Oct-19) shown here. As expected, Beam-3 has consistently weaker surface returns. This is due to the lower transmitted laser energy (transmitted energy of Beam 3 is ~0.81 of Beam-1 and ~0.5), and thus lower return for this beam, which is consistent with pre-launch expectations and is attributable to the custom construction of the optical component used to split the laser energy into the six IS-2 beams (Neumann et al., 2019). A consequence of this is that it takes a more pulses (longer along-track distance) to construct a 150-photon aggregate for surface finding; thus, the longer lead lengths seen in Figure 1.

- 20 Because a fixed number of photons is used in surface finding, photon rates are determined by the number of shots, or along-track distance, needed to construct these 150-photon aggregates. That is, the segment length adapts to changes in photon rates from surfaces of different reflectance: height segment lengths are longer when the returns are lower and vice versa. The distributions of lead lengths (aggregate of sea surface segments described above) – used in reference height calculations – are bi-

$$\hat{h}_{lead} = \sum_{i=1}^N \alpha_i h_i \quad \text{and} \quad \hat{\sigma}_{lead}^2 = \sum_{i=1}^N \alpha_i^2 \sigma_i^2$$

Deleted: σ_i^2

$$\text{where} \quad \alpha_i = \frac{w_i}{\sum_{i=1}^N w_i}$$

$$\text{and} \quad w_i = \exp\left(-\frac{h_i - h_{min}}{\sigma_i}\right)^2$$

Deleted: w_i

Deleted: .

Deleted: \hat{h}_{ref}

Deleted: $\sigma_{lead(i)}^2$

$$\hat{h}_{ref} = \sum_{i=1}^{N_l} \alpha_i \hat{h}_{lead(i)} \quad \text{and} \quad \hat{\sigma}_{ref}^2 = \sum_{i=1}^{N_l} \alpha_i^2 \hat{\sigma}_{lead(i)}^2$$

Deleted: σ

$$\text{where} \quad \alpha_i = \frac{1}{\sum_{j=1}^{N_l} \frac{1}{\hat{\sigma}_{lead(j)}^2}}$$

$$h_f = h_i - \hat{h}_{ref} \quad \text{and} \quad \sigma_f^2 = \sigma_i^2 + \hat{\sigma}_{ref}^2.$$

Deleted:). This is due to the lower transmitted laser energy.

modal (Figure 1 – right panel); the modes are determined by leads that are specular/quasi-specular and by leads with very low reflectance. The lead lengths vary between ~10 m and 150 m, with modes at ~27 m (specular leads) and ~60 m (dark leads). The upper bound in segment length (~150-200 m) is controlled by a setting in the surface finding procedure that restricts the distance over which photons are aggregated and serves to reduce the number of noise/background photons accumulated in long distance aggregates. The consequence of a longer integrating distance for estimating surface heights of dark leads are: 1) the likelihood that there is a mixture of surface types in the height segment; and, 2) the higher number of accumulated noise photons in the larger number of shots used.

For estimating the reference surface heights, the specular and dark lead heights (in R001/R002) are mixed in the weighting process above.

4 Effects of clouds on leads with low surface reflectance

As mentioned above, the presence of clouds reduces the surface returns (i.e., lower the photon rates) because the transmitted or reflected energy are scattered away from the field-of-view of the lidar. In this section, we illustrate the effect of clouds on the classification of low reflectance surfaces. First, we show the phenomenology in two examples from coincident IS-2 and CAMBOT observations acquired in April 2019. Second, we examine the distributions of sea surface heights in the population of specular and dark leads used in reference surface estimation. Third, we assess the fraction of the dark lead population that is likely contaminated by clouds.

4.1 Phenomenology

In the presence of clouds, the photon rates are unreliable proxies of brightness or apparent surface reflectance of the surface. In the first CAMBOT/IS-2 scene (Figure 2a), the attenuation effects of atmospheric moisture are evident in the coincident coverage of a ‘dark’ lead detected by the surface-type classifier (Figure 2a). A clear indication of the presence of clouds is the concurrent along-track decreases in IS-2 photon rate (from ~6 photons/shot to ~2 photons/shot) and increases in background rate (from ~3 MHz to 4 MHz), followed by a recovery of both parameters to close to their expected levels. Since a dip in the recorded levels of the CAMBOT data is not seen, the clouds are likely present in the atmospheric column above the altitude of the IceBridge platform, which was ~1000 m for this flight-line. Because of the attenuated photon rates, the IS-2 samples within the linear feature (refrozen lead) in the CAMBOT image was mislabeled as a dark lead by the surface classifier. In the absence of the attenuation effects (dip in photon rates), these samples would not have been classified as a dark lead. Even though the post-classification height filter ensured that the surface height of those samples were the lowest in the neighborhood, the sampled heights are unlikely indicative of the sea surface (i.e., they are higher than the actual sea surface).

The second example shows gaps in IS-2 surface retrievals near the center of the CAMBOT image. Gaps in IS-2 data are present when the software on board the IS-2 observatory determine, by an on-board analysis of the photon density in that atmospheric column, that surface returns are unlikely to be present, thus no data are telemetered or downlinked to the ground station. This suggests the presence of clouds in the neighborhood of the gaps. In fact, large variability in photon rates and CAMBOT data is seen away from the gaps. Since this type of surface variability is unlikely of the sea ice cover in an area north of Ellesmere Island on April 22, both the IS-2 and CAMBOT data are affected by the atmosphere. Again, there is a misclassified lead near the center of the image – with a distinct dip in the surface height – even though a correct surface classification would have removed those samples as candidate sea surface segments. These two examples highlight the potential effects of clouds in surface type classification.

Deleted: over

Deleted: Effect

Deleted:

Why are cloud flags not used? The crucial element in freeboard retrieval is the accurate identification of the height samples that are suitable for estimation of the local sea surface, largely because of the low density of these samples on the ice cover; and, errors in reference heights affect freeboard estimates over 10-km length scales, unlike that of the impact of errors of individual ice surface height estimates. The cloud flags in IS-2 are sampled every 400 m and not compatible with the size of the leads used here (27 – 80 m). Also, we find that the cloud flags are quite conservative: our understanding to-date is that a large number of leads would be removed if the cloud flags were used to filter the returns. The IS-2 cloud flags, as they are currently designed, are thus currently ineffective for addressing the cloud issue at the length scale of the leads in the sea ice data.

4.2 Sea surface height distribution of specular/dark leads

In first and second releases of the IS-2 sea ice products (R001 and R002), both specular and dark leads were used in the determination of the local (10-km) sea surface references. Here, we examine the height distributions of the population of specular and dark leads used in reference surface estimation to assess whether the distributions of dark leads introduce biases in the freeboard calculation. The height distributions of the two surface-type categories in the Arctic and Antarctic for three months in 2019 (Jan, Jun, and Oct) are shown in Figure 3. We summarize the results as follows:

- The height distributions overlap even though the mean of the height distribution of the dark-leads are higher by up to 10 cm: the modes of the distributions are skewed relative to each other and the differences in the negative tail of the distribution are more distinct. This provides further, albeit indirect, evidence that the height distribution of the dark-leads are contaminated by incorrect classification of the surface as discussed above.
- The population of height segments classified as specular is much higher than the population classified as dark leads, except for the January 2019 Arctic distributions, meaning the overall impact and significance of the dark leads are lower.

It should also be noted that these are distributions of the sea surface height segments prior to their aggregation into leads and the weighted averaging of these segments into 10-km reference height estimates for freeboard calculations. Thus, the impact of the dark leads are further moderated in cases where there are mixture of specular and dark lead segments in a given 10-km section. The impact on monthly composites of the Arctic and Antarctic are discussed in Section 5.

4.3 Towards a new contrast-ratio cloud/lead filter

We have ~~examined~~ a simple approach to ~~identify~~ the fraction of dark leads that may be affected by clouds ~~(for possible implementation in future data releases but not R003)~~. In the approach, the photon rate of a dark lead (PR_{lead}) is compared to the height segment with the highest photon rate (PR_{max}) in the neighborhood of the dark lead. As a simple diagnostic, we calculate the contrast ratio:

$$R = \frac{PR_{max}}{PR_{lead}}$$

Under cloud-free and ideal conditions, we expect the contrast to be between 8 and 9, i.e., the albedo of snow-covered sea ice is >0.8 compared to the lower albedo (reflectance) of smooth open leads of ~0.1. In less than ideal conditions (e.g. cloudy conditions), however, we expect this contrast to be lower.

Deleted: devised

Deleted: examine

Deleted: :

Deleted: PR_{lead}

Deleted: PR_{max}

Deleted: $R = \frac{PR_{max}}{PR_{lead}}$

Formatted: Indent: First line: 0 cm

Figure 4 shows the percentage of the dark-lead population with contrasts < 2 , < 3 , and < 4 within a ± 20 km neighborhood of the dark-lead. It is evident that 70-80% of the population (for the months shown here) have a contrast ratio < 4 and are potentially misclassified if clouds were not considered in the surface-type analysis. This preliminary analysis suggests that this local contrast ratio diagnostic could provide a useful filter to address the cloud **misclassification** issue. However, the efficacy of and the implementation of this approach needs to be examined in more detail if this were to be incorporated into the IS-2 sea ice product generation.

5 An algorithm revision: R001/R002 to R003

In this section, we describe a simple revision to our current product generation algorithm – implemented for Release 003 (R003) – to eliminate the potential effects of the misclassified dark leads. Next, we show the differences between R001/R002 and R003 in the monthly freeboard distributions and composites of the Arctic and Antarctic sea ice covers for January, June, and October of 2019.

5.1 Algorithm revision

In R001/R002, candidate height segments that were selected to estimate reference heights for freeboard calculations included, as discussed above, two primary surface types: specular and smooth dark leads. Given the likelihood for the mislabeling of dark lead segments as suggested by the results presented here, a simple revision to the algorithm for production of R003 has been implemented. Instead of using two surface types for reference height calculation, only the specular surface returns are used to derive the reference sea surface. This is a simple change in the software system, chosen to enable continued sea ice product generation while a more sophisticated filtering approach (as highlighted in the previous section) is tested. The overall impact of this change in the freeboard estimates is shown in the next section.

5.2 Differences between R002 and R003

Here, we compare the retrievals from R002 and R003 for the months of January, June, and October of 2019. The consequence of this change can be seen in the freeboard composites and distributions of the Arctic and Antarctic sea ice covers (Figures 5 and 6) and Table 1 summarizes the freeboard statistics of the distributions. The differences are summarized below:

- In the monthly composites of the Arctic and Antarctic, area coverage has decreased by ~10-20% because, by excluding the dark leads, there are fewer estimates of the local reference sea surface for freeboard calculations.
- The composite means have increased by 0-4 cm because of the use of surface heights from only specular returns in freeboard calculations. As shown in the previous section, the use of specular returns would lower the sea surface estimates and thus increase the retrieved freeboard. We also note that some of the changes are due to changes in coverage as well. The overall impact of dark leads on freeboard statistics is also dependent on the relative population of specular and dark leads. In January 2019, the two populations are comparable (Figure 3) whereas the dark-lead populations are smaller in the other months of the Arctic and Antarctic.

The increased freeboards correspond to an increase in ice thickness and snow depth estimates from ICESat-2 first examined in Petty et al. (2020) and Kwok et al. (2020). These are not addressed in this paper because the present focus is on the publicly available ICESat-2 sea ice freeboard product distributed by the ICESat-2 mission. The impact on sea ice thickness and snow depth will be addressed in forthcoming papers.

Deleted:

Deleted:

Deleted: miss-classification

Deleted: potential

Deleted:

6 Conclusions

In this paper, we examine the effect of clouds on the surface-type classifier used to identify sea surface samples for determining freeboard. Based on these results, the IS-2 sea ice classification has been revised for production of Release 003 of the IS-2 ATL07 (sea ice heights) and ATL10 (freeboard) products.

In R001/R002, candidate height segments that were selected to estimate reference heights for freeboard calculations included two surface types: specular and smooth dark leads. We found that the photon rates, used as proxies of surface reflectance, are attenuated due to clouds (leading to incorrect classification of dark leads), and surface heights from dark leads are sometimes biased relative to the heights from the more reliable specular returns. This results in reference surfaces that are higher (when weighted with heights of specular leads) thus lowering the estimated freeboards. Cloud flags from ATL09 are low resolution (~400 m) and thus do not provide an effective filter at the length-scales of leads (10s of meters) detected by ICESat-2.

In R003, we revised the surface reference calculations so that only leads with specular returns are used. The consequence of the changes can be seen in the freeboard distributions composites of the Arctic Ocean and of the Antarctic. Broadly, for the three months examined here, coverages have decreased by ~10-20% because there are fewer leads (by excluding the dark leads), and the composite freeboard means have increased by 0-4 cm because of the use of surface heights from more reliable specular surfaces (i.e., closer to the local sea surface) in freeboard calculations.

Acknowledgments

The CAMBOT digital imagery are available at <https://nsidc.org/data/iocam1b>. The ICESat-2 ATL10 data set used herein are available at <https://nsidc.org/data/icesat-2/data-sets>. AP, MB, NK and AI carried out this work at NASA's Goddard Space Flight Center, with funding provided by the ICESat-2 Project Science Office. GFC performed this work at the Jet Propulsion Laboratory, California Institute of Technology, under contract with the National Aeronautics and Space Administration.

Deleted:

Table 1 Comparison of summary statistics and grid coverage of freeboard retrievals for the three months over the Arctic and Antarctic sea ice cover shown in Figures 5 and 6. N is the number of grid cells (25 km) with freeboard retrievals.

meters	R002		R003	
Arctic	Mean(S.D)	N	Mean(S.D)	N
Jan-19	0.25 (0.12)	9908	0.28 (0.12)	9096
Jun-19	0.30 (0.14)	8480	0.31 (0.14)	8280
Oct-19	0.22 (0.11)	6371	0.24 (0.12)	6143
Antarctic				
Jan-19	0.32 (0.20)	2657	0.36 (0.22)	2485
Jun-19	0.25 (0.22)	10961	0.25 (0.19)	9985
Oct-19	0.26 (0.20)	6371	0.29 (0.21)	6143

- Moved down [1]: 8280
- Moved (insertion) [1]
- Deleted: 8404
- Moved (insertion) [2]
- Moved down [3]: 2485
- Moved (insertion) [3]
- Moved up [2]: 2657

References

- Farrell, S. L., Laxon, S. W., McAdoo, D. C., Yi, D., and Zwally, H. J.: Five years of Arctic sea ice freeboard measurements from the Ice, Cloud and land Elevation Satellite, *J. Geophys. Res.*, 114, 10.1029/2008jc005074, 2009.
- 5 Kurtz, N. T., Farrell, S. L., Studinger, M., Galin, N., Harbeck, J. P., Lindsay, R., Onana, V. D., Panzer, B., and Sonntag, J. G.: Sea ice thickness, freeboard, and snow depth products from Operation IceBridge airborne data, *Cryosphere*, 7, 1035-1056, 2013.
- Kwok, R., Cunningham, G. F., Zwally, H. J., and Yi, D.: Ice, Cloud, and land Elevation Satellite (ICESat) over Arctic sea ice: Retrieval of freeboard, *J. Geophys. Res.*, 112, 10.1029/2006jc003978, 2007.
- Kwok, R., Cunningham, G. F., Manizade, S. S., and Krabill, W. B.: Arctic sea ice freeboard from IceBridge acquisitions in 2009: Estimates and comparisons with ICESat, *J. Geophys. Res.*, 117, 10.1029/2011jc007654, 2012.
- 10 Kwok, R., Markus, T., Morison, J., Palm, S. P., Neumann, T. A., Brunt, K. M., Cook, W. B., Hancock, D. W., and Cunningham, G. F.: Profiling Sea Ice with a Multiple Altimeter Beam Experimental Lidar (MABEL), *Journal of Atmospheric and Oceanic Technology*, 31, 1151-1168, 10.1175/jtech-d-13-00120.1, 2014.
- Kwok, R., Cunningham, G. F., Hoffmann, J., and Markus, T.: Testing the ice-water discrimination and freeboard retrieval algorithms for the ICESat-2 mission, *Remote Sens. Environ.*, 183, 13-25, 10.1016/j.rse.2016.05.011, 2016.
- 15 Kwok, R., Cunningham, G. F., Hancock, D. W., Ivanoff, A., and Wimert, J. T.: Ice, Cloud, and Land Elevation Satellite-2 Project: Algorithm Theoretical Basis Document (ATBD) for Sea Ice Products, https://icesat-2.gsfc.nasa.gov/science/data_products, 2019a.
- Kwok, R., Cunningham, G. F., Markus, T., Hancock, D., Morison, J., Palm, S., Farrell, S., Ivanoff, A., and Wimert, J.: ATLAS/ICESat-2 L3A Sea Ice Height, Version 1, Boulder, Colorado USA. NSIDC: National Snow and Ice Data Center, 10.5067/ATLAS/ATL07.001, 2019b.
- 20 Kwok, R., Kacimi, S., Webster, M. A., Kurtz, N. T., and Petty, A. A.: Arctic Snow Depth and Sea Ice Thickness From ICESat-2 and CryoSat-2 Freeboards: A First Examination, *J. Geophys. Res.*, 125, 10.1029/2019jc016008, 2020.
- Markus, T., Neumann, T., Martino, A., Abdalati, W., Brunt, K., Csatho, B., Farrell, S., Fricker, H., Gardner, A., Harding, D., Jasinski, M., Kwok, R., Magruder, L., Lubin, D., Luthcke, S., Morison, J., Nelson, R., Neuenschwander, A., Palm, S., Popescu, S., Shum, C. K., Schutz, B. E., Smith, B., Yang, Y. K., and Zwally, J.: The Ice, Cloud, and land Elevation Satellite-2 (ICESat-2): Science requirements, concept, and implementation, *Remote Sens. Environ.*, 190, 260-273, 10.1016/j.rse.2016.12.029, 2017.
- 25 Neumann, T. A., Martino, A. J., Markus, T., Bae, S., Bock, M. R., Brenner, A. C., Brunt, K. M., Cavanaugh, J., Fernandes, S. T., Hancock, D. W., Harbeck, K., Lee, J., Kurtz, N. T., Luers, P. J., Luthcke, S. B., Magruder, L., Pennington, T. A., Ramos-Izquierdo, L., Rebold, T., Skoog, J., and Thomas, T. C.: The Ice, Cloud, and Land Elevation Satellite – 2 mission: A global geolocated photon product derived from the Advanced Topographic Laser Altimeter System, *Remote Sens. Environ.*, 233, 10.1016/j.rse.2019.111325, 2019.
- 30 Petty, A. A., Kurtz, N. T., Kwok, R., Markus, T., and Neumann, T. A.: Winter Arctic Sea Ice Thickness From ICESat-2 Freeboards, *J. Geophys. Res.*, 125, 10.1029/2019jc015764, 2020.
- Studinger, M., and Harbeck, J.: IceBridge CAMBOT L1B Geolocated Images, Version 2, Boulder, Colorado USA, NASA National Snow and Ice Data Center Distributed Active Archive Center, 10.5067/BOHL940D452L, 2019.
- 35 Yi, D. H., Zwally, H. J., and Robbins, J. W.: ICESat observations of seasonal and interannual variations of sea-ice freeboard and estimated thickness in the Weddell Sea, Antarctica (2003-2009), *Ann. Glaciol.*, 52, 43-51, 2011.
- Zwally, H. J., Schutz, B., Abdalati, W., Abshire, J., Bentley, C., Brenner, A., Bufton, J., Dezio, J., Hancock, D., Harding, D., Herring, T., Minster, B., Quinn, K., Palm, S., Spinhirne, J., and Thomas, R.: ICESat's laser measurements of polar ice, atmosphere, ocean, and land, *J. Geodyn.*, 34, 405-445, 10.1016/S0264-3707(02)00042-X, 2002.
- 40

- Formatted ... [1]
Deleted: S. W. Laxon, D. C. W., McAdoo, D. C., Yi, D. [2]
Deleted: (C4). doi:
Formatted ... [3]
Deleted: S. L. Farrell, M. L., Studinger, N., Galin, N. [4]
Formatted ... [5]
Deleted: (4), 1035-1056. Retrieved from <Go to ... [6]
Deleted: G. F. Cunningham, H. J. F., Zwally, & D. [7]
Formatted ... [8]
Deleted: (C12). doi:
Deleted: G. F. Cunningham, S. S. F., Manizade, & W. [9]
Formatted ... [10]
Deleted: (C2). doi:
Deleted: T. Markus, J., Morison, S. P., Palm, T. [11]
Formatted ... [12]
Deleted: (5), 1151-1168. doi: ... [13]
Deleted: G. F. Cunningham, J. F., Hoffmann, & T. [14]
Formatted ... [15]
Deleted: Sensing of Environment,
Formatted ... [16]
Deleted: . doi:
Deleted: G. F. ... unningham, D. W. F., Hancock, A. [17]
Formatted ... [18]
Deleted: .
Deleted: G. F. Cunningham, T. F., Markus, D., [19]
Formatted ... [20]
Deleted: . doi:
Formatted ... [21]
Deleted: T. Neumann, A., Martino, W., Abdalati [22]
Formatted ... [23]
Deleted: Sensing of Environment,
Formatted ... [24]
Deleted: . doi:
Deleted: A. J. Martino, T. J., Markus, S., Bae, M. [25]
Formatted ... [26]
Deleted: Sensing of Environment,
Formatted ... [27]
Deleted: . doi:
Formatted ... [28]
Deleted: H. J. Zwally, & J. W., and Robbins. ... [29]
Deleted: B. Schutz, W., Abdalati, J., Abshire, C. [30]
Formatted ... [31]
Deleted: (3-4), 405-445. doi: ... [32]

Figure Captions

Figure 1. Distributions of photon rates of all height segments and lead lengths (strong beams) in IS-2 sea ice products of the (a) Arctic and (b) Antarctic for the months of January, June, and October of 2019. Numerical values show the mode, mean and standard deviation of the distributions.

Figure 2. Effect of clouds on IS-2 photon rates, background rates and surface-type classification in IS-2 in R002 and R003 on (left) April 12, 2019 (RGT-218), and (right) April 22 (RGT-371). (top panel) ATL10 overlaid on CAMBOT RGB imagery, magenta markers indicate sea ice segments and blue indicates sea surface (smooth dark lead) in R002 ATL10; (second panel) magenta markers indicate sea ice segments in R003 (there are no lead segments); (third panel) red band intensity in the CAMBOT RGB image at the location of the ATL10 segments; (fourth panel) ATL10 surface height; (fifth panel) ATL10 photon rate; (sixth panel) ATL10 background rate. In panels 4-6, red = R002 and black = R003. The vertical blue shading shows the location of the ATL10 sea surface reference (smooth dark lead) segment in R002. Low contrast in the CAMBOT imagery is due to low solar elevations of 8 and 11 degrees during acquisition.

Figure 3. Distribution of surface heights classified with specular (red) and dark returns (black) in the (a) Arctic and (b) Antarctic IS-2 sea ice products for the months of January, June, and October of 2019. All height segments are subject to additional height filtering in the determination of reference surfaces used in freeboard calculations. Numerical values show the mean and standard deviation of the distributions.

Figure 4. Contrast of lead photon rate (PR-lead) with surface segment with the highest photon rate (PR-max) within ± 20 km of the 'dark' lead for the months of January, June, and October of 2019. Numerical values show the number of surface height segments classified as 'dark' lead, and the percentage of population with contrast (PR-leads/PR-max) < 2.0 , < 3.0 and < 4.0 .

Figure 5. Differences of monthly composite freeboard statistics and coverage between Releases 002 and 003 in the Arctic IS-2 sea ice products for the months of January, June, and October of 2019. Only specular leads are used in Release 003. N is the number of grid cells (25 by 25 km) that are covered and numerical values show the mean and standard deviation of the composite field.

Figure 6. As in Fig. 5 but for the Antarctic.

Deleted:

Deleted: <object>

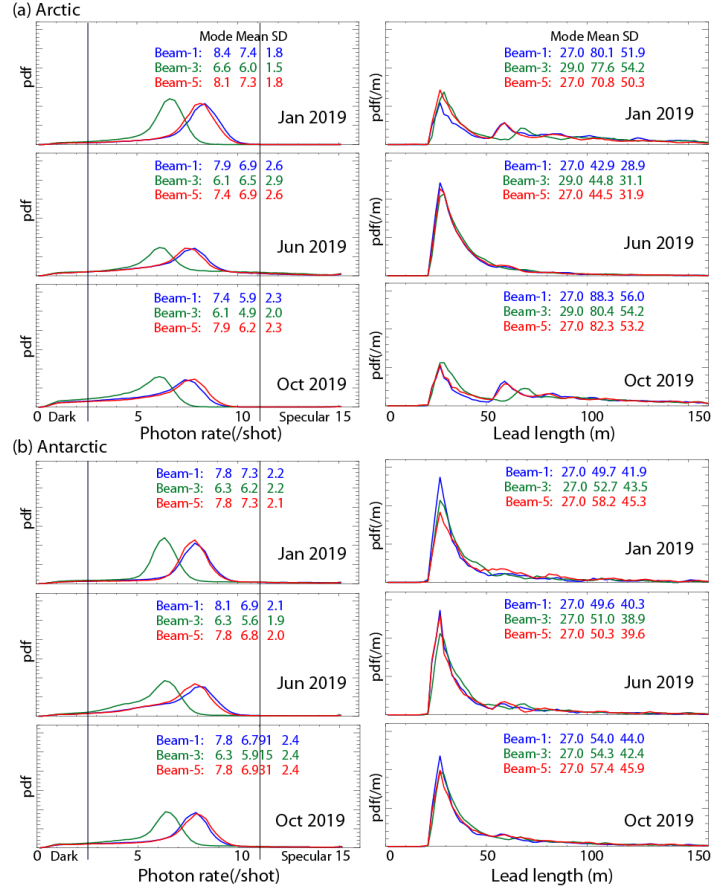


Figure 1. Distributions of photon rates of all height segments and lead lengths (strong beams) in IS-2 sea ice products of the (a) Arctic and (b) Antarctic for the months of January, June, and October of 2019. Numerical values show the mode, mean and standard deviation of the distributions.

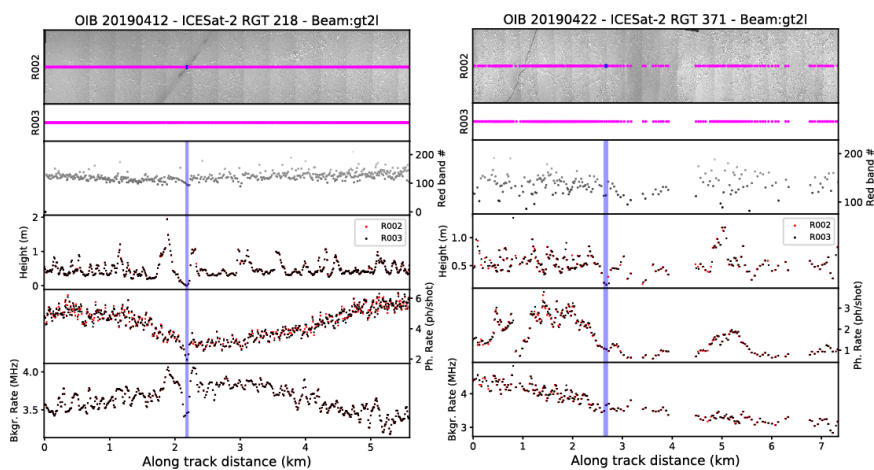


Figure 2. Effect of clouds on IS-2 photon rates, background rates and surface-type classification in IS-2 in R002 and R003 on (left) April 12, 2019 (RGT-218), and (right) April 22 (RGT-371). (top panel) ATL10 overlaid on CAMBOT RGB imagery, magenta markers indicate sea ice segments and blue indicates sea surface (smooth dark lead) in R002 ATL10; (second panel) magenta markers indicate sea ice segments in R003 (there are no lead segments); (third panel) red band intensity in the CAMBOT RGB image at the location of the ATL10 segments; (fourth panel) ATL10 surface height; (fifth panel) ATL10 photon rate; (sixth panel) ATL10 background rate. In panels 4-6, red = R002 and black = R003. The vertical blue shading shows the location of the ATL10 sea surface reference (smooth dark lead) segment in R002. Low contrast in the CAMBOT imagery is due to low solar elevations of 8 and 11 degrees during acquisition.

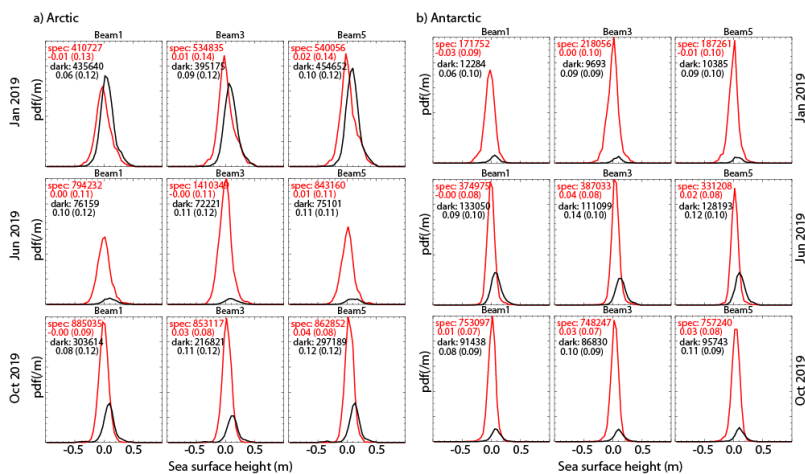


Figure 3. Distribution of surface heights classified with specular (red) and dark returns (black) in the (a) Arctic and (b) Antarctic IS-2 sea ice products for the months of January, June, and October of 2019. All height segments are subject to additional height filtering in the determination of reference surfaces used in freeboard calculations. Numerical values show the mean and standard deviation of the distributions.

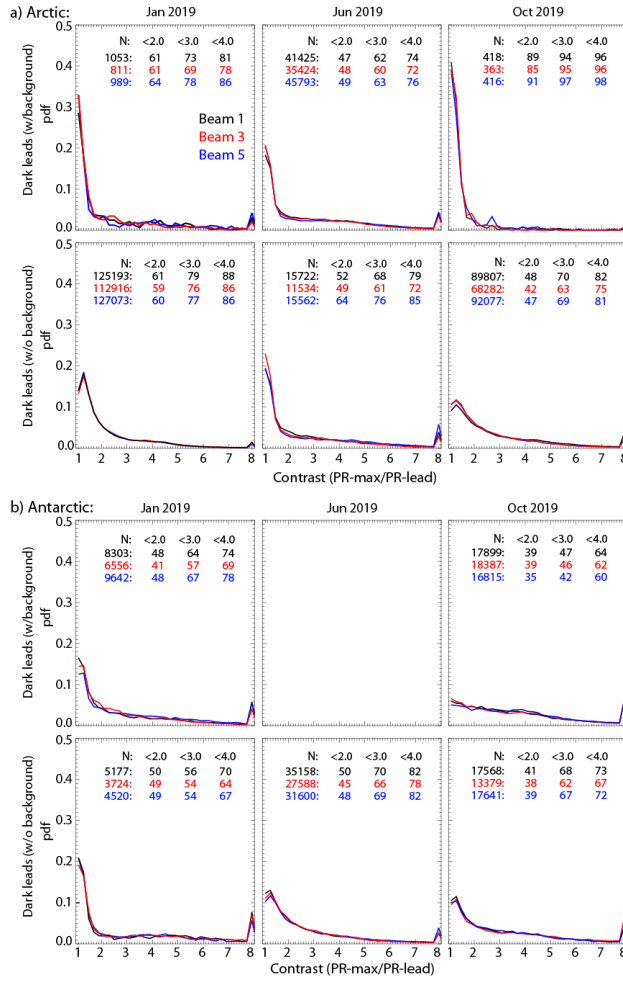


Figure 4. Contrast of lead photon rate (PR-lead) with surface segment with the highest photon rate (PR-max) within ± 20 km of the 'dark' lead for the months of January, June, and October of 2019. Numerical values show the number of surface height segments classified as 'dark' lead, and the percentage of population with contrast (PR-leads/PR-max) < 2.0 , < 3.0 and < 4.0 .

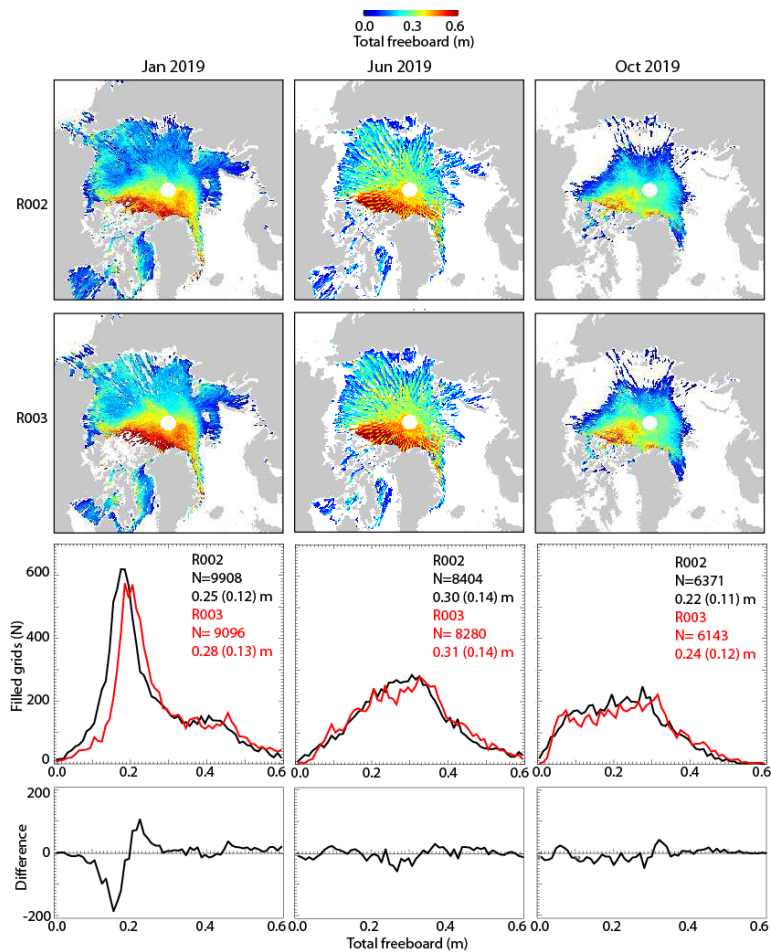


Figure 5. Differences of monthly composite freeboard statistics and coverage between Releases 002 and 003 in the Arctic IS-2 sea ice products for the months of January, June, and October of 2019. Only specular leads are used in Release 003. N is the number of grid cells (25 by 25 km) that are covered and numerical values show the mean and standard deviation of the composite field.

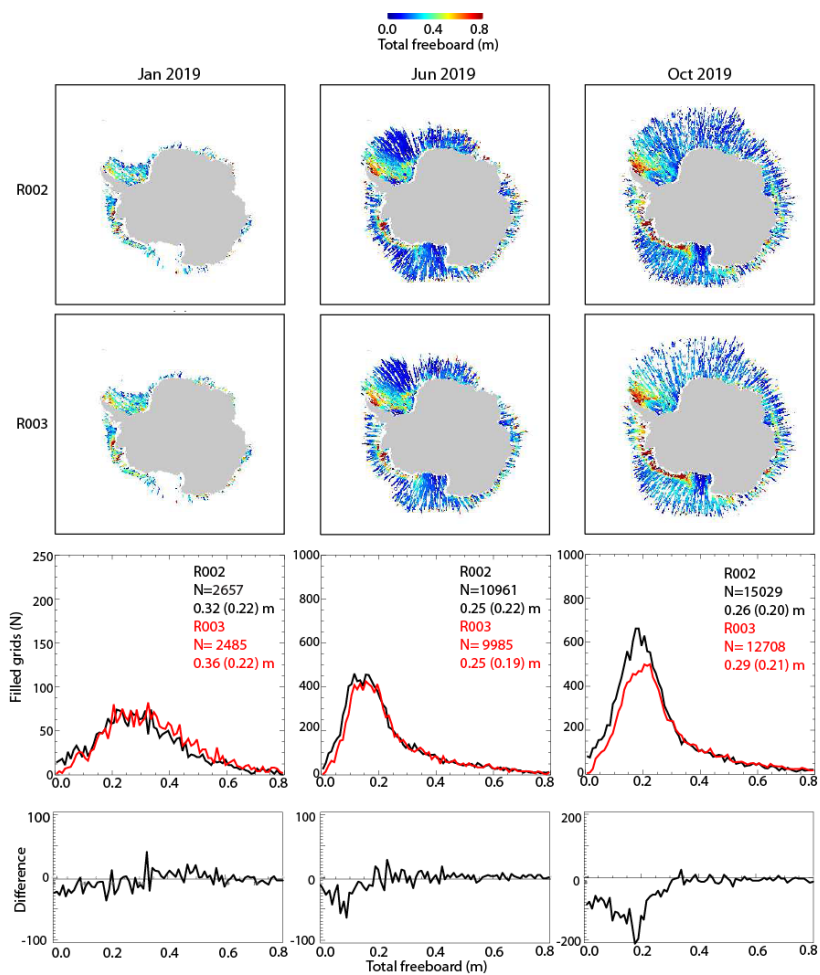


Figure 6. As in Fig. 5 but for the Antarctic

Page 12: [1] Formatted	Ronald Kwok	10/28/20 9:46:00 AM
------------------------	-------------	---------------------

Indent: Left: 0 cm, First line: 0 cm

Page 12: [2] Deleted	Ronald Kwok	10/28/20 9:46:00 AM
----------------------	-------------	---------------------

▼

Page 12: [2] Deleted	Ronald Kwok	10/28/20 9:46:00 AM
----------------------	-------------	---------------------

▼

Page 12: [2] Deleted	Ronald Kwok	10/28/20 9:46:00 AM
----------------------	-------------	---------------------

▼

Page 12: [2] Deleted	Ronald Kwok	10/28/20 9:46:00 AM
----------------------	-------------	---------------------

▼

Page 12: [2] Deleted	Ronald Kwok	10/28/20 9:46:00 AM
----------------------	-------------	---------------------

▼

Page 12: [3] Formatted	Ronald Kwok	10/28/20 9:46:00 AM
------------------------	-------------	---------------------

Font: Not Italic

Page 12: [4] Deleted	Ronald Kwok	10/28/20 9:46:00 AM
----------------------	-------------	---------------------

▼

Page 12: [4] Deleted	Ronald Kwok	10/28/20 9:46:00 AM
----------------------	-------------	---------------------

▼

Page 12: [4] Deleted	Ronald Kwok	10/28/20 9:46:00 AM
----------------------	-------------	---------------------

▼

Page 12: [4] Deleted	Ronald Kwok	10/28/20 9:46:00 AM
----------------------	-------------	---------------------

▼

Page 12: [4] Deleted	Ronald Kwok	10/28/20 9:46:00 AM
----------------------	-------------	---------------------

▼

Page 12: [4] Deleted	Ronald Kwok	10/28/20 9:46:00 AM
----------------------	-------------	---------------------

▼

Page 12: [4] Deleted	Ronald Kwok	10/28/20 9:46:00 AM
----------------------	-------------	---------------------

▼

Page 12: [5] Formatted	Ronald Kwok	10/28/20 9:46:00 AM
------------------------	-------------	---------------------

Font: Not Italic

Page 12: [6] Deleted	Ronald Kwok	10/28/20 9:46:00 AM
----------------------	-------------	---------------------

▼

Page 12: [6] Deleted	Ronald Kwok	10/28/20 9:46:00 AM
----------------------	-------------	---------------------

▼

Page 12: [7] Deleted	Ronald Kwok	10/28/20 9:46:00 AM
----------------------	-------------	---------------------

▼

Page 12: [7] Deleted	Ronald Kwok	10/28/20 9:46:00 AM
----------------------	-------------	---------------------

▼

Page 12: [7] Deleted	Ronald Kwok	10/28/20 9:46:00 AM
----------------------	-------------	---------------------

▼

Page 12: [7] Deleted	Ronald Kwok	10/28/20 9:46:00 AM
----------------------	-------------	---------------------

▼

Page 12: [7] Deleted	Ronald Kwok	10/28/20 9:46:00 AM
----------------------	-------------	---------------------

▼

Page 12: [8] Formatted	Ronald Kwok	10/28/20 9:46:00 AM
------------------------	-------------	---------------------

Font: Not Italic

Page 12: [9] Deleted	Ronald Kwok	10/28/20 9:46:00 AM
----------------------	-------------	---------------------

▼

Page 12: [9] Deleted	Ronald Kwok	10/28/20 9:46:00 AM
----------------------	-------------	---------------------

▼

Page 12: [9] Deleted	Ronald Kwok	10/28/20 9:46:00 AM
----------------------	-------------	---------------------

▼

Page 12: [9] Deleted	Ronald Kwok	10/28/20 9:46:00 AM
----------------------	-------------	---------------------

▼

Page 12: [9] Deleted	Ronald Kwok	10/28/20 9:46:00 AM
----------------------	-------------	---------------------

▼

Page 12: [10] Formatted	Ronald Kwok	10/28/20 9:46:00 AM
-------------------------	-------------	---------------------

Font: Not Italic

Page 12: [11] Deleted	Ronald Kwok	10/28/20 9:46:00 AM
-----------------------	-------------	---------------------

▼

Page 12: [11] Deleted	Ronald Kwok	10/28/20 9:46:00 AM
-----------------------	-------------	---------------------

▼

Page 12: [11] Deleted	Ronald Kwok	10/28/20 9:46:00 AM
-----------------------	-------------	---------------------

▼

Page 12: [11] Deleted	Ronald Kwok	10/28/20 9:46:00 AM
-----------------------	-------------	---------------------

▼

Page 12: [11] Deleted	Ronald Kwok	10/28/20 9:46:00 AM
-----------------------	-------------	---------------------

▼

Page 12: [11] Deleted	Ronald Kwok	10/28/20 9:46:00 AM
-----------------------	-------------	---------------------

▼

Page 12: [11] Deleted	Ronald Kwok	10/28/20 9:46:00 AM
-----------------------	-------------	---------------------

▼

Page 12: [12] Formatted	Ronald Kwok	10/28/20 9:46:00 AM
-------------------------	-------------	---------------------

Font: Not Italic

Page 12: [13] Deleted	Ronald Kwok	10/28/20 9:46:00 AM
-----------------------	-------------	---------------------

▼

Page 12: [13] Deleted	Ronald Kwok	10/28/20 9:46:00 AM
-----------------------	-------------	---------------------

▼

Page 12: [14] Deleted	Ronald Kwok	10/28/20 9:46:00 AM
-----------------------	-------------	---------------------

▼

Page 12: [14] Deleted	Ronald Kwok	10/28/20 9:46:00 AM
-----------------------	-------------	---------------------

▼

Page 12: [14] Deleted	Ronald Kwok	10/28/20 9:46:00 AM
-----------------------	-------------	---------------------

▼

Page 12: [14] Deleted	Ronald Kwok	10/28/20 9:46:00 AM
-----------------------	-------------	---------------------

▼

Page 12: [14] Deleted	Ronald Kwok	10/28/20 9:46:00 AM
-----------------------	-------------	---------------------

▼

Page 12: [15] Formatted	Ronald Kwok	10/28/20 9:46:00 AM
-------------------------	-------------	---------------------

Font: Not Italic

Page 12: [16] Formatted	Ronald Kwok	10/28/20 9:46:00 AM
-------------------------	-------------	---------------------

Font: Not Italic

Page 12: [17] Deleted	Ronald Kwok	10/28/20 9:46:00 AM
-----------------------	-------------	---------------------

▼

Page 12: [17] Deleted	Ronald Kwok	10/28/20 9:46:00 AM
-----------------------	-------------	---------------------

▼

Page 12: [17] Deleted	Ronald Kwok	10/28/20 9:46:00 AM
-----------------------	-------------	---------------------

▼

Page 12: [17] Deleted	Ronald Kwok	10/28/20 9:46:00 AM
-----------------------	-------------	---------------------

▼

Page 12: [17] Deleted	Ronald Kwok	10/28/20 9:46:00 AM
-----------------------	-------------	---------------------

▼

Page 12: [17] Deleted	Ronald Kwok	10/28/20 9:46:00 AM
-----------------------	-------------	---------------------

▼

Page 12: [18] Formatted	Ronald Kwok	10/28/20 9:46:00 AM
-------------------------	-------------	---------------------

Font: Not Italic

Page 12: [18] Formatted	Ronald Kwok	10/28/20 9:46:00 AM
-------------------------	-------------	---------------------

Font: Not Italic

Page 12: [18] Formatted	Ronald Kwok	10/28/20 9:46:00 AM
-------------------------	-------------	---------------------

Font: Not Italic

Page 12: [19] Deleted	Ronald Kwok	10/28/20 9:46:00 AM
-----------------------	-------------	---------------------

▼

Page 12: [19] Deleted	Ronald Kwok	10/28/20 9:46:00 AM
-----------------------	-------------	---------------------

▼

Page 12: [19] Deleted	Ronald Kwok	10/28/20 9:46:00 AM
-----------------------	-------------	---------------------

▼

Page 12: [19] Deleted	Ronald Kwok	10/28/20 9:46:00 AM
-----------------------	-------------	---------------------

▼

Page 12: [19] Deleted	Ronald Kwok	10/28/20 9:46:00 AM
-----------------------	-------------	---------------------

▼

Page 12: [19] Deleted	Ronald Kwok	10/28/20 9:46:00 AM
-----------------------	-------------	---------------------

▼

Page 12: [19] Deleted	Ronald Kwok	10/28/20 9:46:00 AM
-----------------------	-------------	---------------------

▼

Page 12: [20] Formatted	Ronald Kwok	10/28/20 9:46:00 AM
-------------------------	-------------	---------------------

Font: Not Italic

Page 12: [21] Formatted	Ronald Kwok	10/28/20 9:46:00 AM
-------------------------	-------------	---------------------

Indent: Left: 0 cm, First line: 0 cm

Page 12: [22] Deleted	Ronald Kwok	10/28/20 9:46:00 AM
-----------------------	-------------	---------------------

▼

Page 12: [22] Deleted	Ronald Kwok	10/28/20 9:46:00 AM
-----------------------	-------------	---------------------

▼

Page 12: [22] Deleted	Ronald Kwok	10/28/20 9:46:00 AM
-----------------------	-------------	---------------------

▼

Page 12: [22] Deleted	Ronald Kwok	10/28/20 9:46:00 AM
-----------------------	-------------	---------------------

▼

Page 12: [22] Deleted	Ronald Kwok	10/28/20 9:46:00 AM
-----------------------	-------------	---------------------

▼.....

Page 12: [22] Deleted	Ronald Kwok	10/28/20 9:46:00 AM
-----------------------	-------------	---------------------

▼.....

Page 12: [22] Deleted	Ronald Kwok	10/28/20 9:46:00 AM
-----------------------	-------------	---------------------

▼.....

Page 12: [23] Formatted	Ronald Kwok	10/28/20 9:46:00 AM
-------------------------	-------------	---------------------

Font: Not Italic

Page 12: [24] Formatted	Ronald Kwok	10/28/20 9:46:00 AM
-------------------------	-------------	---------------------

Font: Not Italic

Page 12: [25] Deleted	Ronald Kwok	10/28/20 9:46:00 AM
-----------------------	-------------	---------------------

▼.....

Page 12: [25] Deleted	Ronald Kwok	10/28/20 9:46:00 AM
-----------------------	-------------	---------------------

▼.....

Page 12: [25] Deleted	Ronald Kwok	10/28/20 9:46:00 AM
-----------------------	-------------	---------------------

▼.....

Page 12: [25] Deleted	Ronald Kwok	10/28/20 9:46:00 AM
-----------------------	-------------	---------------------

▼.....

Page 12: [25] Deleted	Ronald Kwok	10/28/20 9:46:00 AM
-----------------------	-------------	---------------------

▼.....

Page 12: [25] Deleted	Ronald Kwok	10/28/20 9:46:00 AM
-----------------------	-------------	---------------------

▼.....

Page 12: [25] Deleted	Ronald Kwok	10/28/20 9:46:00 AM
-----------------------	-------------	---------------------

▼.....

Page 12: [26] Formatted	Ronald Kwok	10/28/20 9:46:00 AM
-------------------------	-------------	---------------------

Font: Not Italic

Page 12: [27] Formatted	Ronald Kwok	10/28/20 9:46:00 AM
-------------------------	-------------	---------------------

Font: Not Italic

Page 12: [28] Formatted	Ronald Kwok	10/28/20 9:46:00 AM
-------------------------	-------------	---------------------

Indent: Left: 0 cm, First line: 0 cm

Page 12: [29] Deleted	Ronald Kwok	10/28/20 9:46:00 AM
-----------------------	-------------	---------------------

▼.....

Page 12: [29] Deleted	Ronald Kwok	10/28/20 9:46:00 AM
-----------------------	-------------	---------------------

▼.....

Page 12: [29] Deleted	Ronald Kwok	10/28/20 9:46:00 AM
-----------------------	-------------	---------------------

Page 12: [29] Deleted	Ronald Kwok	10/28/20 9:46:00 AM
-----------------------	-------------	---------------------

▼

Page 12: [29] Deleted	Ronald Kwok	10/28/20 9:46:00 AM
-----------------------	-------------	---------------------

▼

Page 12: [30] Deleted	Ronald Kwok	10/28/20 9:46:00 AM
-----------------------	-------------	---------------------

▼

Page 12: [30] Deleted	Ronald Kwok	10/28/20 9:46:00 AM
-----------------------	-------------	---------------------

▼

Page 12: [30] Deleted	Ronald Kwok	10/28/20 9:46:00 AM
-----------------------	-------------	---------------------

▼

Page 12: [30] Deleted	Ronald Kwok	10/28/20 9:46:00 AM
-----------------------	-------------	---------------------

▼

Page 12: [30] Deleted	Ronald Kwok	10/28/20 9:46:00 AM
-----------------------	-------------	---------------------

▼

Page 12: [30] Deleted	Ronald Kwok	10/28/20 9:46:00 AM
-----------------------	-------------	---------------------

▼

Page 12: [30] Deleted	Ronald Kwok	10/28/20 9:46:00 AM
-----------------------	-------------	---------------------

▼

Page 12: [31] Formatted	Ronald Kwok	10/28/20 9:46:00 AM
-------------------------	-------------	---------------------

Font: Not Italic

Page 12: [32] Deleted	Ronald Kwok	10/28/20 9:46:00 AM
-----------------------	-------------	---------------------

▼

Page 12: [32] Deleted	Ronald Kwok	10/28/20 9:46:00 AM
-----------------------	-------------	---------------------

▼