

Grounding zone subglacial properties from calibrated active source seismic methods

Huw J. Horgan¹, Laurine van Haastrecht¹, Richard B. Alley², Sridhar Anandakrishnan², Lucas Beem³, Knut Christianson⁴, Atsuhiko Muto⁵, and Matthew Siegfried⁶

¹Antarctic Research Centre, Victoria University of Wellington, Wellington, New Zealand

²Department of Geosciences and Earth and Environmental Systems Institute, Pennsylvania State University, University Park, Pennsylvania 16802, USA

³Department of Earth Sciences, Montana State University, Bozeman, Montana 59717, USA

⁴Earth and Space Sciences, University of Washington, Seattle, Washington 98195, US

⁵Department of Earth and Environmental Science, Temple University, Philadelphia, Pennsylvania 19122, USA

⁶Department of Geophysics, Colorado School of Mines, Golden, Colorado 80401, USA

Correspondence: Huw Horgan (huw.horgan@vuw.ac.nz)

Abstract. The grounding zone of Whillans Ice Stream, West Antarctica, exhibits an abrupt transition in basal properties from the grounded ice to the ocean cavity over distances of less than 0.5–1 km. Active source seismic methods reveal the [downglacier-most](#) grounded portion of the ice stream is underlain by a relatively stiff substrate (relatively high shear wave velocities [of \$1100 \pm 430 \text{ m s}^{-1}\$](#)) compared to the deformable till found elsewhere beneath the ice stream. [Changes in basal reflectivity in our study area cannot be explained by the stage of the tide.](#) Several kilometers upstream of the grounding zone, layers of subglacial water are detected, as are regions that appear to be water layers [but are](#) less than the thickness resolvable by our technique. The presence of stiff subglacial sediment and thin water layers upstream of the grounding zone supports previous studies that have proposed the dewatering of sediment within the grounding zone and the [possibility that ocean water is pumped into the subglacial system and upstream trapping of subglacial water upstream of the ocean cavity](#). The setting enables calibration of our methodology using returns from the floating ice shelf. This allows a comparison of different techniques used to estimate the sizes of the seismic sources, [a constraint essential for the accurate recovery of subglacial properties](#). We find a strong correlation (coefficient of determination=[0.450.46](#)) between our calibrated method and a commonly used [amplitude ratio-multiple bounce](#) method, but our results also highlight the incomplete knowledge of other factors affecting the amplitude of seismic sources and reflections in the cryosphere.

15 *Copyright statement.*

1 Introduction

Grounding zones mark the transition from grounded to floating ice, standing sentinel over much of the contribution of glaciers and ice sheets to sea level. [Grounding zones are actively built and modified, with sedimentation at grounding zones providing](#)

temporary stabilisation of their position against small increases in sea level (Anandakrishnan et al., 2007; Alley et al., 2007) and tidal working of the sediments strengthening the bed of the ice (Walker et al., 2013). Ice flux across Within the grounding zone the location where the ice sheet ceases contact with the bed (the grounding line) is primarily determined by ice thickness, bed elevation, and the stage of the tide. In the Antarctic, tidally induced migration of the grounding line within the grounding zone is highly sensitive to varies from near zero in the case of abrupt changes in bed elevation and/or ice thickness, leading to the potential for runaway grounding zone retreat of marine ice sheets with inward sloping beds (Schoof, 2007). The grounding zone transition from limited basal slip beneath an ice stream to zero traction beneath an ice shelf has proved a challenge to simulate numerically (Barcilon and MacAyeal, 1993; Nowicki and Wingham, 2008) and abrupt transitions occurring over length scales comparable to an ice thickness may require the full Stokes equations to be solved if grounding zone dynamics are to be accurately simulated (Pattyn et al., 2013) to up to 10 kilometers in the case of gently sloping ice plains (Brunt et al., 2011; Dawson and Barn

. Along with grounding line migration, tides correlate with ice velocity changes upstream and downstream of the grounding zone. Observations include daily velocity variability on Bindschadler Ice Stream (Anandakrishnan et al., 2003), twice daily stick-slip displacement on Whillans Ice Plain (Bindschadler et al., 2003; Winberry et al., 2009; Walter et al., 2011), daily and spring-neap velocity variability on the Ronne-Filchner Ice Shelf, Ross Ice Shelf and Byrd Glacier (Rosier and Gudmundsson, 2020; Brunt

and spring-neap tidal velocity variability on Rutford Ice Stream (Gudmundsson, 2007). Observed velocity variability has generally been attributed to tidal changes in the force balance interacting with the underlying till rheology (Bindschadler et al., 2003; Gudm

. Subsequent studies have attributed Rutford Ice Stream's spring-neap velocity variability to changes in subglacial pore water pressure (Rosier et al., 2015), while on Rutford and elsewhere others have pointed to contact with ice shelf pinning points and at the grounding zone as the causes of observed velocity changes (Robel et al., 2017; Minchew et al., 2017; Rosier and Gudmundsson, 2020)

.

Here we investigate Early efforts to model tidal deflection of ice shelves primarily addressed vertical displacement and the associated development of strand cracks and basal crevassing at the grounding zone of Whillans Ice Stream, Siple Coast, West Antarctica (Figure 1). Upstream of the grounding zone, deformable sediments underlie the Siple Coast ice streams, enabling their fast flow in the absence of high driving stress (Kamb, 2001; Alley et al., 1986, 1987; Blankenship et al., 1987; Alley et al., 1989; Anar

. Regions of high basal drag known as sticky spots balance a significant proportion of driving stress (Alley, 1993; MacAyeal et al., 1995) and likely correspond with regions of the bed that have relatively less subglacial water than surrounding regions (Anandakrishnan and Alley

. Ice stream beds tend to get smoother farther downglacier (Siegert et al., 2004) suggesting that subglacial sediment thickness is increasing as (Holdsworth, 1969, 1977). These models, termed stiff-bed fixed grounding line models by Sayag and Worster (2013)

, do not allow the grounding line to migrate, nor do they allow the underlying bed to deform. Despite inconsistencies in the retrieved elastic properties, subsequent applications of these models have successfully reproduced surface displacement (e.g. Vaughan, 1995; Schmeltz et al., 2002) with models accounting for basal crevassing (Rosier et al., 2017) and treating the ice as a viscoelastic material (Wild et al., 2017) shown to be more consistent with observations. The importance of grounding line migration for ice dynamics and the sensitivity of ice flow to tidal forcing has prompted renewed examination of the effect of tides on grounding line migration distances and subglacial conditions both within and upstream of the grounding

zone is approached, as sediment is transported downstream englacially and subglacially (Alley et al., 1989) before ultimately

being deposited in the ocean cavity. Observations and modelling of flexure and internal layer deformation within the ice column indicate that subglacial sediment may stiffen beneath. Sayag and Worster (2011) combined laboratory observations and an elastic sheet model in an analysis that allowed the grounding line to migrate over an elastic bed. Their approach was extended to the implications for subglacial water pressure (Sayag and Worster, 2013), showing pressure gradients alternating direction upstream of the grounding zone (Walker et al., 2013; Christianson et al., 2013). Ice flexure forming migrating barriers to subglacial water flow. Walker et al. (2013) used a fixed grounding line model with no vertical displacement at the grounding zone may also line and a viscoelastic ice sheet-shelf overlying an elastic bed. This approach resulted in alternating pressure gradients that may act to draw ocean water into the subglacial system water from the ocean cavity at low tide and force it upstream at high tide (Walker et al., 2013; Horgan et al., 2013a). Dewatering and stiffening of subglacial material. Tsai and Gudmundsson (2015) applied a novel elastic fracture approach to grounding line migration, which resulted in migration distances significantly different to elastic beam or hydrostatic approaches. Notably, Tsai and Gudmundsson (2015) demonstrated an asymmetry in grounding line migration whereby for a constant surface slope and a constant coastward bed slope, the grounding line migrates upstream as the tide rises from mean sea level much further than it propagates downstream when the tide falls from mean sea level. The subglacial system can also filter forcings leading to velocity changes that occur at unexpected frequencies (e.g. Rosier et al., 2015). Robel et al. (2017) attributed such behavior to the viscoelastic response of the ice shelf as it responds to changes in contact and buttressing at the grounding zone is also consistent with a sticky spot located near the grounding zone identified using geodetic observations of the diurnal stick-slip cycle of and pinning points. Alternatively, Warburton et al. (2020) coupled processes of upstream fluid flow beneath an elastic sheet and drainage through porous till and showed ice streams and ice shelves can respond at a range of frequencies and also suggested ocean water may be retained in the subglacial system depending on the porosity of the till.

Grounding zones have been directly observed in only a few locations around Antarctica. Beneath Langovde Glacier in East Antarctica Sugiyama et al. (2014) reported a substrate of fine sediment with decimeter scale dropstones, along with an incursion of sea water far beyond the previously mapped grounding line. In the ocean cavity proximal to the grounding line of McKay Glacier, Powell et al. (1996) imaged a diverse range of glaciomarine lithologies, ranging from soft till to bedrock and dropstone boulders. Approximately 3 km downstream from Whillans Ice Stream (Winberry et al., 2011; Pratt et al., 2014).

To's grounding zone, the WISSARD program (Fricker et al., 2010) observed an ice shelf melt-out deposit with a mixture of soft mud and rock clasts (Scherer et al., 2015). Begeman et al. (2018) reported oceanographic and geophysical observations from the WISSARD borehole where they found a highly stratified water column with basal melt rates of less than 0.1 m a^{-1} . To further investigate the basal properties beneath Whillans Ice Stream's grounding zone, and the distance over which the transition to the freely slipping ice shelf occurs, we use we here revisit the active source seismic techniques that are commonly applied data reported by Horgan et al. (2013b) and apply and extend amplitude analysis methods previously used in studies addressing the basal boundary of glaciers and ice sheets (e.g. Anandakrishnan, 2003b; Smith, 2007; Brisbourne et al., 2017; Zechmann et al., (e.g. Anandakrishnan, 2003b; Smith, 2007; Holland and Anandakrishnan, 2009; Brisbourne et al., 2017; Zechmann et al., 2018; Muto et al., 2018). These methods require the source amplitude and path effects to be estimated, which is often challenging due to variability in source and receiver coupling, and strong vertical gradients in density and seismic velocity in the firn. Acquiring data

over the ocean cavity allows calibration of these methods due to the presence of a known [ice–water](#) reflection interface. This [allows us to use and expand on the methods of Holland and Anandakrishnan \(2009\) \(hereafter referred to as H&A2009\). H&A2009 reviewed active source seismic methods for the recovery of subglacial properties, outlined best practices for reducing uncertainties, and presented new strategies for source size determination. Our application and extension of their methods](#) enables a robust estimate of ~~subglacial properties at a spatial resolution of less than an ice thickness.~~ [elastic properties beneath the ice at a relatively high spatial resolution. Our profile data cover approximately 50 line kilometers. The nominal horizontal resolution of our method is 240 m \(based on the spatial footprint of a 100 Hz wave in a 3860 m s⁻¹ medium at a depth of 760 m\) and we are able to image the top and bottom of a water layer \$\geq 3.6\$ m thick \(\$\lambda/4\$, where \$\lambda\$ denotes wavelength, of a 100 Hz wave in a 1440 m s⁻¹ medium\). In theory, water layers down to \$\lambda/32\$ \(0.45 m\) can be imaged, however amplitudes from these layers may not be representative of their elastic properties \(e.g. Booth et al., 2012\). To explore the relationship between the tidal stage and our results, we also present the timing and tidal stage of our experiment, and Global Navigation Satellite System \(GNSS\) repeat transects along two profiles crossing the grounding zone.](#)

2 Data and Methods

~~Here we present~~ [We performed](#) amplitude analysis of data from four transects ~~across that cross~~ the grounding zone of Whillans Ice Stream (Figure 1). [These data were](#) acquired in the austral summer of 2011/2012. Acquisition was composed of an explosive seismic source detonated at approximately 27 m depth, with charge sizes of 0.4 kg (Line 1) and 0.8 kg (Lines 2, and 4) and 0.85 kg (Line 3) at a nominal shot spacing of 240 m. Each of Line 3's 0.85 kg charge was composed of one 0.4 kg charge and three narrower 0.15 kg charges. All other charges were composed of equal diameter 0.4 kg charges. The time between burial and detonation varied but always exceeded 24 hours. Geophones were buried approximately 0.5 m beneath the snow surface at 20 m spacings, and consisted of alternating single-string 40 Hz geophones (even channels) and 5-element 40 Hz georods (odd channels, Voigt et al., 2013). Acquisition used an asymmetric split spread with near and far ~~shot-receiver~~ [shot–receiver](#) offsets of 10 m and 1430 m. Seismic imaging and grounding zone determination at Whillans Ice Stream is presented in Horgan et al. (2013b).

Following ~~Holland and Anandakrishnan (2009)~~ [H&A2009](#), the amplitudes reflected off of the base of the ice and recorded at our geophones (A_i , where i denotes the receiver index) are related to our source amplitude (A_0) by:

$$A_i = A_0 \gamma_i R(\theta) e^{-\alpha s_i} \quad \text{(Equation 1, H\&A2009),} \quad (1)$$

where $R(\theta)$ denotes the angle (θ) dependent reflection coefficient at the base of the ice described by the Zoeppritz equations (e.g. Aki and Richards, 1980). During travel along the path length (s_i) from the source to the receiver, amplitudes are modified by path effects (γ_i) and attenuation (α), all of which are discussed below. [Both \$A_0\$ and \$\gamma_i\$ are amplitudes relative to a reference range \(typically \$d_0 = 1\$ m, Holland and Anandakrishnan, 2009; Shearer, 2009\).](#)

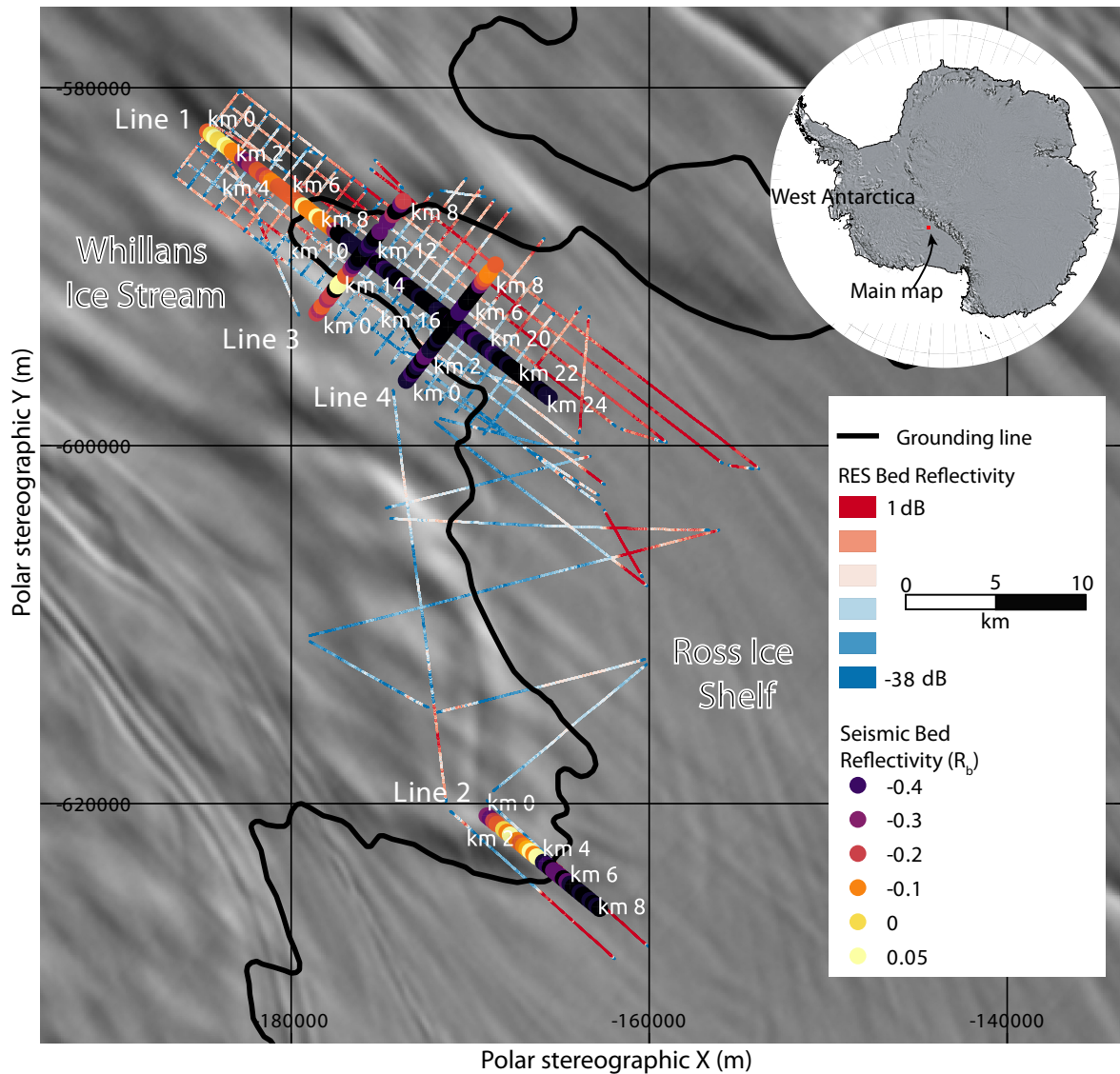


Figure 1. Location map showing the seismic profiles (~~white with kilometer annotations~~ Lines 1–4) crossing the grounding zone of Whillans Ice Stream. Radio echo sounding (RES) basal reflectivity from Christianson et al. (2016). Seismic bed reflectivity (R_b) from this study. Background imagery from MODIS MOA (Haran et al., 2005) ~~-Grounding zone and grounding line~~ from Bindschadler et al. (2011). Polar ~~stereographic~~ stereographic projection (meters) with a true scale at 71° south.

2.1 Seismic Velocity Model

Tracing seismic ray paths between the source and receivers requires knowledge of the firm and ice column's seismic velocity. ~~A~~ To achieve this we estimated a one-dimensional (1D) velocity model ~~was estimated~~ using shallow seismic-refraction tech-

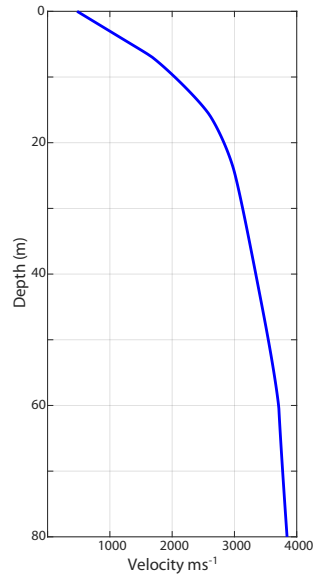


Figure 2. One dimensional compressional wave velocity profile estimated using the τ - p method.

niques. During shallow refraction surveying a hammer source was recorded at 0.5 m horizontal intervals with near and far offsets of 0.5 m and 579 m. A velocity model (Figure 2) was then calculated using first-break arrival times and the τ - p (intercept time–slowness) method (e.g. Shearer, 2009), which assumes that the velocity monotonically increases with depth. ~~The bottom velocity of the model was estimated using the temperature–velocity relationship of Kohnen (1974) and an assumed ice temperature of~~ This method estimated a velocity of 3840 m s^{-1} at 80 m depth. Below this depth our velocity model consists of an extrapolation to a V_p corresponding to -20°C . ~~Implicit~~ (3860 m s^{-1} ; Kohnen, 1974) which is kept constant to the ice base. Kohnen (1974) demonstrated a decrease in V_p of 2.3 m s^{-1} per degree C decrease in temperature, so our velocity is fairly insensitive to our choice of temperature. Also implicit in our use of a 1D velocity model is an assumption that seismic velocity does not vary laterally within the survey area.

10 2.2 Amplitude Picking

Amplitudes were picked on frequency-filtered and amplitude-scaled shot records guided by common depth point stacked profiles (Figure 3). On every shot record we attempted to digitize the direct arrival, primary bed return, and first long-path multiple of the bed return (Figure 3). The low impedance-contrast at the ice-bed interface meant the long-path multiple could not be reliably picked in the grounded part of the profiles. Amplitude picking selected the zero crossing preceding the side-lobe of the wavelet. Amplitude extraction was then performed on shot records with only bandpass filtering applied. Amplitudes were extracted within the wavelet encompassing the first side lobe, the central lobe, and the next side lobe. Within this wavelet, peak positive, peak negative, and root mean squared (RMS) amplitudes were extracted. We avoided picking bed returns where direct arrival energy ~~was interfering-interferes~~ with the bed wavelet. Our data are from ice thicknesses of approximately 730–

790 m and direct arrivals interfere with the reflection from the base of the ice beyond offsets of approximately 700 m. While the channels with 5-element georods showed better signal to noise ratios for imaging, we here present an analysis of the single-string geophones as their amplitudes exhibit less channel to channel variability the cause of which we attribute to more variability in coupling when burying the georods. Our analysis also uses the RMS amplitudes, with the positive and negative peaks used to define polarity. We tested the use of peak amplitudes and fixed wavelet length approaches and found both resulted in a greater distribution of source sizes, and less robust estimates of basal reflectivity.

2.3 Path effects

Path effects (γ_i) modify the source amplitude during its propagation to the receiver. We ~~calculate~~ calculated the total path effects as

$$10 \quad \gamma_i = \frac{\cos \theta_i}{s_i} \sqrt{\frac{z_0}{z_1}} \quad (2)$$

where θ_i denotes the angle between the incoming ray and normal incidence, z_0 , z_1 denote the acoustic impedance at the source and receiver respectively, and s_i denotes the path length traveled between the source and receiver. Equation 2 therefore accounts for the angle at which the incoming ray arrives at the vertical-component receivers ($\cos \theta_i$), amplitude scaling due to the different acoustic impedance at the source and receiver ($\sqrt{\frac{z_0}{z_1}}$, e.g. Shearer, 2009), and geometric spreading along the ray path ($1/s_i$). We ~~estimate~~ estimated all near-field effects using the 1D velocity model (Figure 2) and the density–compressional-wave velocity relationship of Kohnen and Bentley (1973). The high vertical gradients in density and velocity in polar firm lead to a $\cos \theta_i$ correction ≈ 1 , as $\theta_i \approx 0$, and a significant $\sqrt{\frac{z_0}{z_1}}$ correction ($\sim \sqrt{10}$) due to the different source and receiver burial depths.

2.4 Source size and attenuation

20 Source size (A_0) is often estimated using the ratio of the primary bed return amplitude (A_i) and the long path multiple amplitude ($A_{m,i}$) (e.g. Röthlisberger, 1972; Smith, 1997; Peters et al., 2008; Brisbourne et al., 2017; Zechmann et al., 2018); ~~as this approach can remove~~. This approach, termed the multiple bounce method by H&A2009, removes the need for an independent estimate of attenuation. However, low impedance contrast at the bed, low signal to noise ratios, or closely spaced subglacial reflectors, can all complicate the ~~amplitude ratio~~ multiple bounce method of determining source amplitude. Here we explore this and other methods for determining the source amplitude because more-accurate source-amplitude estimates will enable improved investigation of the ~~rapid spatial transitions in~~ basal properties resolved by ~~the~~ seismic surveys. These methods fall into three categories: (1) ~~primary–multiple amplitude ratios~~, multiple bounce methods (2) direct arrival ~~amplitudes~~ methods, and (3) known reflector ~~amplitudes~~ methods. We present the results for each of the four profiles individually as three different source sizes and configurations were used (Figure 4, Table 1).

30 ~~Here~~

2.4.1 Multiple bounce methods

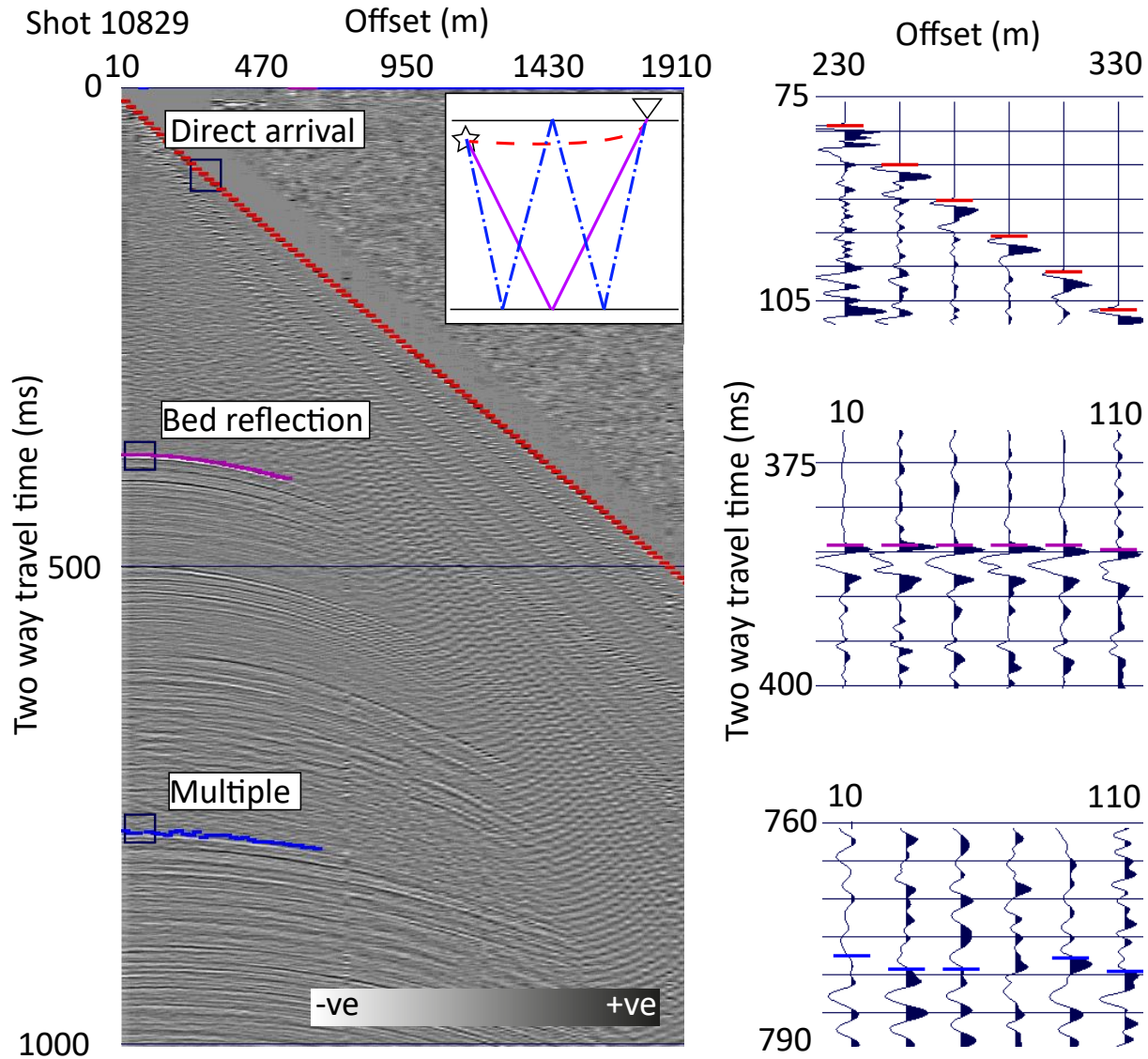


Figure 3. Left panel: example shot record from floating portion of Line 2 (kilometer-kilometer 4.8-6.7). Left panel inset shows schematic travel paths for direct (red), primary (purple), and multiple (red) rays. Right hand panels show wavelets and picks for the direct arrival (top), primary return (middle), and multiple return (bottom).

[Our multiple bounce methods used the primary–multiple amplitude ratio methods for estimating to estimate \$A_0\$ follow Holland and Ananda and followed H&A2009.](#) The first method requires near-normal incidence returns but does not require knowledge of attenuation (α):

$$A_{0,i} = \frac{A_i^2}{A_{m,i}} \frac{1}{2\gamma_i} \quad \text{(Equation 6, H\&A2009),} \quad (3)$$

and the second method requires close to normal incidence returns and an estimate of attenuation:

$$A_{0,i} = \frac{A_i^2}{A_{m,i}} \frac{\gamma_{m,i}}{\gamma_i^2} e^{\alpha(2d_i - d_{m,i})} \quad \text{(Equation 7, H\&A2009),} \quad (4)$$

where d_i and $d_{m,i}$, and γ_i and $\gamma_{m,i}$ denote the path length, and path amplitude factor (Equation 2) for the primary and multiple bed returns respectively. A_0 is then calculated as the average $A_{0,i}$ for each shot. Equations 3 and 4 give near identical A_0 estimates with root mean squared differences $\approx 0.1\%$. Henceforth for the amplitude ratio method we report only the results from Equation 4 with an angle cut off of $< 10^\circ$ and assuming an attenuation $\alpha = 0.27 \pm 0.13$ $\alpha = 0.27$ km^{-1} (following Horgan et al., 2011). [Holland and Anandakrishnan \(2009\) note](#) [This attenuation corresponds to a seismic quality factor \(Q\) of 30–300 for 10–100 Hz waves in a 3860 m \$\text{s}^{-1}\$ medium. H\&A2009 noted](#) that Equation 4 is weakly dependent on uncertainties in α . Long-path multiples from shots in which the primary reflections were from the interface between ice and seismically thick (\Rightarrow [5 m, see Section 4](#)) water resulted in 60, 19, 9, and 24 estimates of A_0 for Lines 1–4, respectively (left column Figure 4, [A_{0AR}](#) [A_{0MB}](#) columns Table 1).

~~Here two methods are also~~

2.4.2 [Direct path methods](#)

[Two methods were](#) used to estimate source amplitude from the direct arrival amplitudes (B_i). Direct arrivals have successfully been used to determine source size (Muto et al., 2019) and to normalise shot records (Brisbourne et al., 2017). Following [Holland and Anandakrishnan \(2009\): H\&A2009:](#)

$$B_i = A_0 \gamma_{d,i} e^{-\alpha s_{d,i}} \quad \text{(Equation 8, H\&A2009),} \quad (5)$$

where B_i denotes direct arrival amplitude at receiver index i , and $s_{d,i}$ and $\gamma_{d,i}$ are the direct arrival path lengths and path amplitude factors. We first ~~estimate~~ [estimated](#) A_0 using the direct-path pair method of [Holland and Anandakrishnan \(2009\)](#) [\(Figure 4B,D; Table 1\)](#) [H\&A2009](#). This method uses receiver pairs where the ratio of path lengths $s_2/s_1 = 2$, and where the [offset is sufficient that](#) depth averaged attenuation can be assumed the same. This negates the need for an independent attenuation estimate. Our acquisition geometry did not result in pairs where $s_2/s_1 = 2$ exactly so an acceptance distance (x_1) was set such that pairs were used if $s_2 \geq 2s_1 - x_1 \wedge s_2 \leq 2s_1 + x_1$. We set $x_1 = 14$ m through trial and error, looking for the minimum x_1 that ~~would result~~ [resulted](#) in multiple estimates of A_0 for all shots. This resulted in a mode of 8 pairs per shot (mean of 7.7, standard deviation of 3.7). A_0 direct pair estimates are shown in Figure 4 (centre left column) and Table 1 (A_{0DP} columns).

We also ~~investigate~~ [investigated](#) A_0 estimation using all direct arrival amplitudes by fitting the observed B_i values to Equation 5 and minimizing the misfit to determine optimal A_0 and α values [\(Figure 4C,D; Table 1\)](#). We refer to this method as the direct path linear intercept method, because

$$\ln \frac{B_i}{\gamma_{d,i}} = -\alpha s_{d,i} + \ln A_0$$

shows that in $\ln \frac{B_i}{\gamma_i}$ versus $-s_i$ versus $\ln \frac{B_i}{\gamma_i}$ space every shot record should exhibit a common gradient (α), and independent y-intercepts representing $\ln A_0$. Despite this linear form we ~~solve~~ solved for best fitting parameters directly from Equation 5 using non-linear regression. We ~~restrict~~ restricted our direct arrival analysis to returns from offsets greater than 450 m, and testing up to an offset limit of > 800 m did not result in significantly different A_0 and α estimates. For both direct
 5 path methods, path effects ($\gamma_{d,i}$) were estimated using both Equation 2 and by estimating wavefront energy using ray theory (Section 6.2 of Shearer, 2009, modified to account for different outgoing and incoming angles). The wavefront energy approach did not result in better A_0 estimates, with a larger distribution and poorer correlation with the known reflector method. We therefore present results using Equation 2, consistent with our other source size estimates. A_0 direct linear intercept estimates are shown in Figure 4 (centre right column) and Table 1 (A_{0LI} columns).

10 2.4.3 Known reflector methods

Reflections from a known impedance contrast, in this case the floating ice shelf overlying the ocean cavity, allow another method of determining A_0 . We ~~estimate~~ estimated a best fitting A_0 for each ice shelf shot by ~~minimizing non-linear regression of Equation 6 (Equation 10, H&A2009). We minimized~~ the root-mean-squared misfit between the ~~Zoeppritz equation reflection amplitudes~~ reflection amplitudes resulting from the Zoeppritz equations for the seismic properties in Table ~~???~~, and the observed bed reflection amplitudes ~~after correction for path effects and attenuation. This results~~ ($R(\theta)$, Equation 6). To account for the possibility that englacial debris may be present in the basal ice we also optimised the seismic properties of the ice used in the Zoeppritz equations while keeping the underlying water properties constant. We allowed the basal ice to vary within a range encompassing debris contents of 0–20% by volume. The range of seismic velocities for this basal ice was estimated using a Bruggeman mixing model following Röthlisberger (1972). We refer to this method as the known reflector method and
 15 the resulting A_0 estimates are shown in Figure 4 (right column) and Table 1 (A_{0KR} columns). The method resulted in the same number of A_0 estimates as the ~~amplitude ratio method. The method~~ multiple bounce method and each line’s average basal ice properties estimated during optimisation are shown in Table 3. The known reflector method requires an estimate of path effects but is insensitive to our assumption that ~~$\alpha = 0.27 \pm 0.13$~~ $\alpha = 0.27$ km⁻¹ as the same α used to determine A_0 is later used in Equation 6 to determine the basal reflection coefficient. ~~We refer to this method as the~~ The known reflector method
 20 and the resulting has similarities to the technique used by Smith et al. (2018) in their study of the lithology beneath Subglacial Lake Ellsworth, although here we explicitly estimated ~~A_0 estimates are shown in Figure 4 (right column) and Table 1 (A_{0KR} columns),~~ allowed the basal ice properties to vary, and used amplitude versus offset techniques.

~~A_0 source size estimates for Whillans Grounding Zone Lines 1–4 (rows) using four methods (columns). Left column: A_0 estimates using the primary~~ multiple amplitude ratio method. Centre left column: A_0 direct pair estimates. Centre right column: A_0 linear intercept estimates. Right column: A_0 estimates from known reflection coefficient method assuming ice overlying water. (See Figure 1 for line locations.)

$$R(\theta) = \frac{A_i}{A_0} \frac{1}{\gamma_i} e^{-\alpha s_{d,i}} \quad (\text{Equation 10, H\&A2009}), \quad (6)$$

Table 1. Source size (A_0) estimates. ~~Line 1 used a single 0.4 kg charge. Lines 2 and 4 used two 0.4 kg charges in a vertical configuration. Line 3 used one 0.4 kg charge and three 0.15 kg charges in a vertical configuration. See Section 4 for discussion.~~

Line	Source Size (kg)	A_{0AR}-A_{0MB} Median	A_{0AR}-A_{0MB} Mean	A_{0AR}-A_{0MB} Std	A_{0DP} Median	A_{0DP} Mean	A_{0DP} Std	A_{0LI} Median	A_{0LI} Mean	A_{0LI} Std	A_{0KR} Median	A_{0KR} Mean
1	0.40	1097	1076	299	229	260	131	232	288	195	420-376	430-380
2	0.80	1312	1424	413	171	176	93	150	188	128	606-547	629-570
3	0.85	691	744	288	202	220	123	197	249	169	353-318	367-328
4	0.80	1200	1259	242	258	290	101	239	295	167	552-489	544-475

Table 2. ~~Seismic velocity and density Range of seismic properties assumed at for the lower ice shelf base. ν denotes Poisson's ratio.~~

	V_p	V_s	ρ	ν
Ice-Debris laden ice	3860-3800-3870	1930-1930-2040	917-917-1274	0.297-0.330
Water	1440-1450	0	1020-1028	

2.5 Choosing the best A_0

The known reflector method ~~provides~~ provided our best estimate of A_0 as judged by its potential to recover accurate estimates of basal reflectivity (e.g. ice-water reflection coefficient where the ice is known to be floating), and its narrow normal distribution (Figure 4, Table 1). The narrow distribution indicates low source size variability, consistent with a uniform firn-ice profile, a consistent drilling depth and geophone placement, back filling all shots, and allowing at least 24 hours before detonation. ~~We use the average amplitude for each line, which is approximately equal to the median, and adopt the standard deviation as our uncertainty.~~

Both our direct path methods ~~show~~ resulted in large standard deviations (Table 1) and correlate poorly with our known reflector estimates (r^2 (coefficient of determination) of ~~0.1~~ 0.09 for the direct pair method and 0.04 for the linear intercept method, Figure 5). The linear intercept method resulted in an average $\alpha = 1.4 \pm 0.5 \text{ km}^{-1}$ (mean and 1 standard deviation of the combined results for all 4 lines). Individual line average values range from 1.0–1.6 km^{-1} . These α estimates are an order of magnitude greater than commonly used published estimates and are not used in our analysis. The amplitude-ratio multiple bounce method correlates well with the known reflector method ($r^2 = \del{0.45} 0.46, Figure 5). Linear regression of the known reflector estimates with the amplitude-ratio multiple bounce estimates results in a best fitting gradient of ~~2.0~~ 2.2 with an intercept of ~~200-180~~. However, this relationship is dependent on our estimate of α and our γ estimates, and will be discussed in Section 4.$

Table 3. Seismic properties estimated in the lower ice shelf

	V_p	V_s	ρ	ν	%Debris
Line 1	3830	1990	1030	0.31	6
Line 2	3840	1990	1030	0.32	7
Line 3	3830	1990	1030	0.31	6
Line 4	3850	1960	1030	0.33	6

2.6 Estimating subglacial properties

Using each line's ~~average~~ A_0 values from the known reflector method (Table 1, Figure 4 A) ~~we calculate right column)~~ we calculated the angle dependent bed reflection coefficients for each shot gather ($R(\theta)$, Equation 1). ~~We present these in Figures 6–7 as both~~ Our angle coverage typically extends up to 25°, with some shots extending to 30°. We present

5 $R(\theta)$ as average values within 10 degrees of normal incidence (R_{bTO}) ~~and as intercept values (R_{bINT}) calculated from linear regression through each shot's observed $R(\theta)$ values R_b)~~ (Figures 6A, 7A) to allow comparison with normal incidence methods reported elsewhere (e.g. Muto et al., 2019). We then ~~calculate~~ calculated the optimal combination of subglacial seismic velocities (~~V_p, V_s)~~ (V_p, V_s) and density (ρ) (Figures 6–7B–D) by fitting each shot's ~~complete entire~~ $R(\theta)$ to the Zoeppritz ~~equation~~ equations while imposing reasonable bounds for the subglacial material following Zechmann et al. (2018), expanded to allow

10 for an ice/water interface (Table 4). During optimisation we ~~impose~~ imposed the additional constraint that the optimal V_p and V_s must result in a realistic Poisson's ratio (ν) of 0.25–0.5 (Hamilton, 1979). Optimisation ~~minimises~~ minimised the root mean squared misfit between the observed amplitudes for each shot and those modelled by the Zoeppritz equations using the *fmincon* algorithm in MATLAB®. This optimisation uses a trust region approach resulting in rapid convergence. ~~Finally we group our results using K-means clustering (Hartigan, 1975) into three groups based on each shot's R_{bTO}, V_p , and ρ values (Figures 6–7B–D). We exclude V_s from this clustering analysis due to its high spatial variability, the cause of which we discuss~~

15 We set the basal ice's seismic properties to those obtained for each line during our A_0 known reflector method in Section 4. We estimate our uncertainties by repeating 2.4.3 (Table 3). We repeat our R_b estimates and the optimisation of V_p , V_s , and ρ values using $R(\theta)$ values estimated ~~from our~~ using all estimates of A_0 uncertainty bounds for each line, resulting in the same number of estimates of basal properties per shot as there are estimates of known reflector source size per line. In some cases

20 our inversion repeatedly converged on the same solution implying a misleadingly high precision. To account for this we also estimated our uncertainties by examining the retrieved basal properties from the floating portions of our survey. For all floating portions of the survey, misfit between the recovered properties and theoretical properties resulted in one standard deviation uncertainties for R_b of ± 0.09 , V_p of ± 140 m s⁻¹, V_s of ± 430 m s⁻¹, and ρ of ± 30 kg m⁻³. Uncertainty estimates for each line are shown in Table 5.

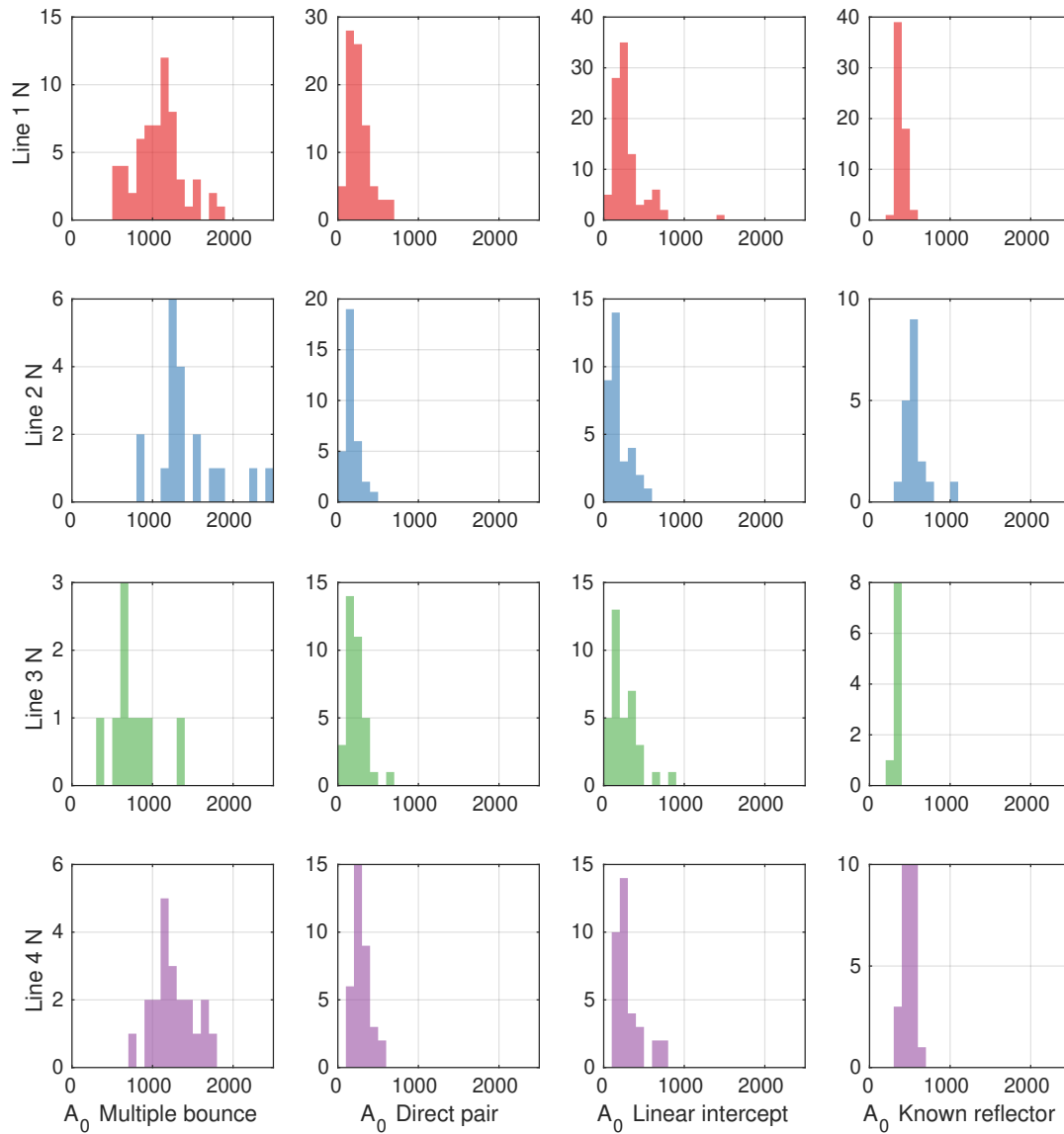


Figure 4. A_0 source size estimates for Whillans Grounding Zone Lines 1–4 (rows) using four methods (columns). Left column: A_0 estimates using the primary–multiple amplitude ratio method. Centre left column: A_0 direct pair estimates. Centre right column: A_0 linear intercept estimates. Right column: A_0 estimates from known reflection coefficient method assuming ice overlying water. (See Figure 1 for line locations.)

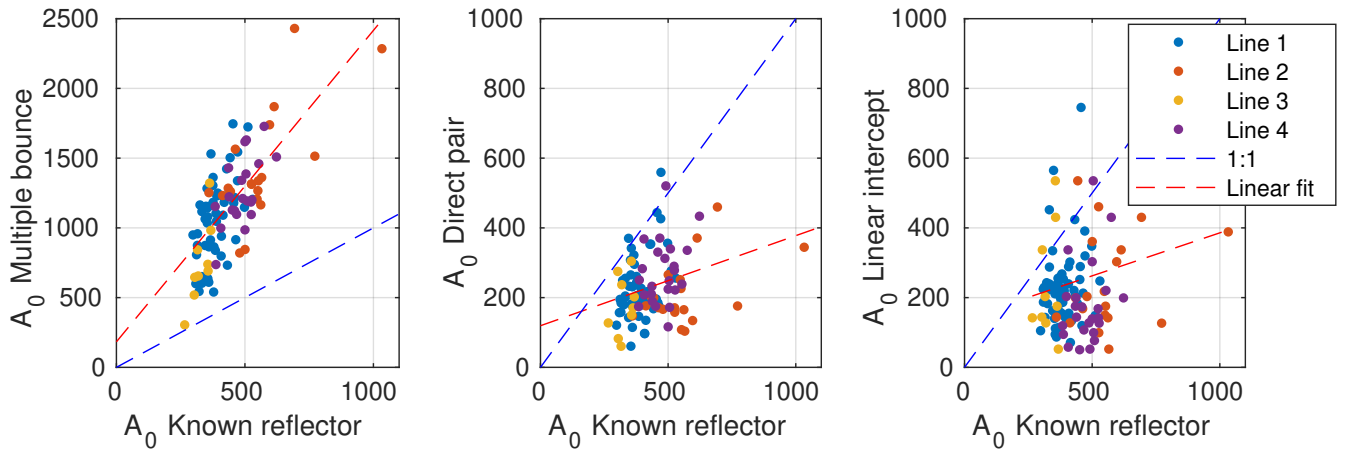


Figure 5. A_0 estimates comparisons. Left: A_0 estimates from known reflector method (abscissa) against A_0 estimates from amplitude ratio-multiple bounce method (ordinate) (coefficient of determination (r^2) of linear regression = 0.45). Middle: A_0 estimates from known relectivity method (abscissa) against A_0 estimates from the direct pair method (ordinate) ($r^2=0.1009$). Right: A_0 estimates from known reflector method against A_0 estimates from linear intercept method ($r^2=0.04$).

Table 4. Seismic velocity (V_p , V_s), density (ρ) and Poisson's Ratio (σ_v) bounds used for Zoepritz fitting.

Lower Limit	Upper Limit	V_p (m s^{-1})
1440	2300	1440-2300
0	11500	0-11500
1000	2500	1000-2500
0.250	0.5	0.250-0.5

3 Results

3.1 Reflection Coefficients and Basal Properties

Line 1 (Figure 6) exhibits generally slowly varying R_b values upstream of the grounding zone, before an abrupt change at the grounding zone (Figure 6). This change occurs over less than 500 m at approximately kilometer 9. V_p , V_s and ρ values retrieved from Zoepritz fitting exhibit a similarly abrupt change at the grounding zone. Our clustering analysis results in the grounded portion exhibiting three substrate groups, dominated by one group (Group 1, Figure 6, Table 5). The floating portion of Line 1 is composed of one group (Group 2), with estimated Upstream of the grounding zone binned mode V_p and ρ values consistent with water. Retrieved V_s values are variable upstream and downstream of the grounding zone, with most V_s values beneath the ice shelf equal to those expected for water. Both kilometer equal 2000 m s^{-1} and 1100 m s^{-1} respectively and mode ρ values equal 1800 kg m^{-3} . Kilometer 3-4, and the grounding zone of Line 1 (kilometer 9) exhibit retrieved V_s and ρ values similar to those expected for water, but R_{bTO} , R_b and V_p estimates suggest otherwise. In the floating portion of

Table 5. Seismic-Binned mode seismic properties from estimated using normal incidence methods (R_b) and Zoeppritz fitting (V_p , V_s , and ρ) for the grounded and floating portion of each line. Bin sizes are shown in square brackets. One standard deviation uncertainties were obtained from the misfit in the floating portion of each line.

Line, Group	R_b [0.05]	V_p (m s ⁻¹) [50]	V_s (m s ⁻¹) [100]
Line 1, Group 1 (N=28) 1850±90-680±340 Grounded Group 3 (N=7) Line 1 Floating	1710-0.10±120 Group 2 (N=62) 0.09 2210-0.45±150-0.09	1530-2000±100-140 3301450±560-140	1801100±300 11600 (0-300)
Line 2, Group 1 (N=12) Grounded Group Line 2 (N=20) Floating	1800-0.10±70-0.14 1540-0.40±90-0.14	6902000±430-150 3201450±380-150	16701100±90830 1080±120 Group 3 (N=1)
Line 3, Group 1 (N=11) 1890±110-670±470 Grounded Group Line 3 (N=6) Floating	1720-0.20±170 Group 2 (N=16) 0.08 1980-0.45±180-0.08	15202000±110-70 5601450±610-70	3401100±390-330 10700 (0-330)
Line 4, Group 1 (N=6) 1920±140-600±540 Grounded Group 3 (N=Line 4) Floating	1640-0.10±190 Group 2 (N=25) 0.09 1840-0.45±250-0.09	14802000±40-130 01450±130	2901100±330-630 0 (0-630)

the profile most retrieved properties are equal those expected for water (Table 5). Estimates of V_s are more spatially variable with larger distributions both upstream and downstream of the grounding zone.

Line 2 (Figure 7, left panel) exhibits similar patterns in R_b and retrieved seismic properties to Line 1. An abrupt transition is observed at the grounding zone (kilometer 4.3-6), and the grounded and floating portions are dominated by distinct groups (Groups 1 and 2 respectively, seismic properties (Figure 7, left panel), Table 5). Upstream of the grounding zone two retrieved estimates exhibit properties similar to those of water (kilometer 0–0.5); however, neither are unambiguous. V_s estimates are again more variable than other parameters, with most floating shots exhibiting V_s values typical of water. Line 3 (Figure 7, middle panel) shows both rapid and gradual changes in basal properties along the profile. Rapid changes are observed either side of kilometer 7–8 where a narrow bed feature exhibits V_p and ρ estimates typical of subglacial water. Kilometer 2–4 displays a gradual change in R_b while the associated transition in V_p and ρ occurs abruptly over <500 m. V_s estimates are variable along the profile, and exhibit scatter within regions thought to be both grounded (kilometer 0–3) and floating (kilometer 3.5–6). Line 4 (Figure 7, right panel) is dominated by R_b , V_p and ρ estimates typical of ice over water (kilometer 1–7). The transition from these values occurs over a distance of <1 km -beginning at kilometer 7. As with the other profiles the estimates of V_s are variable but most often the floating portion of the profile (kilometer 1–7) exhibits V_s estimates typical of water (Table 5).

3.2 Experiment Timing and Tidal Elevation

Seismic shooting occurred at different stages of the tide resulting in the potential for different tidal heights along profile. Shot and receiver elevations were not directly observed at the time of shooting so instead we present tidal heights estimated at the floating end of the profile using Erofeeva et al. (2020) (Figure 8). Figure 8A shows that kilometer 6–12.5 of Line 1 was

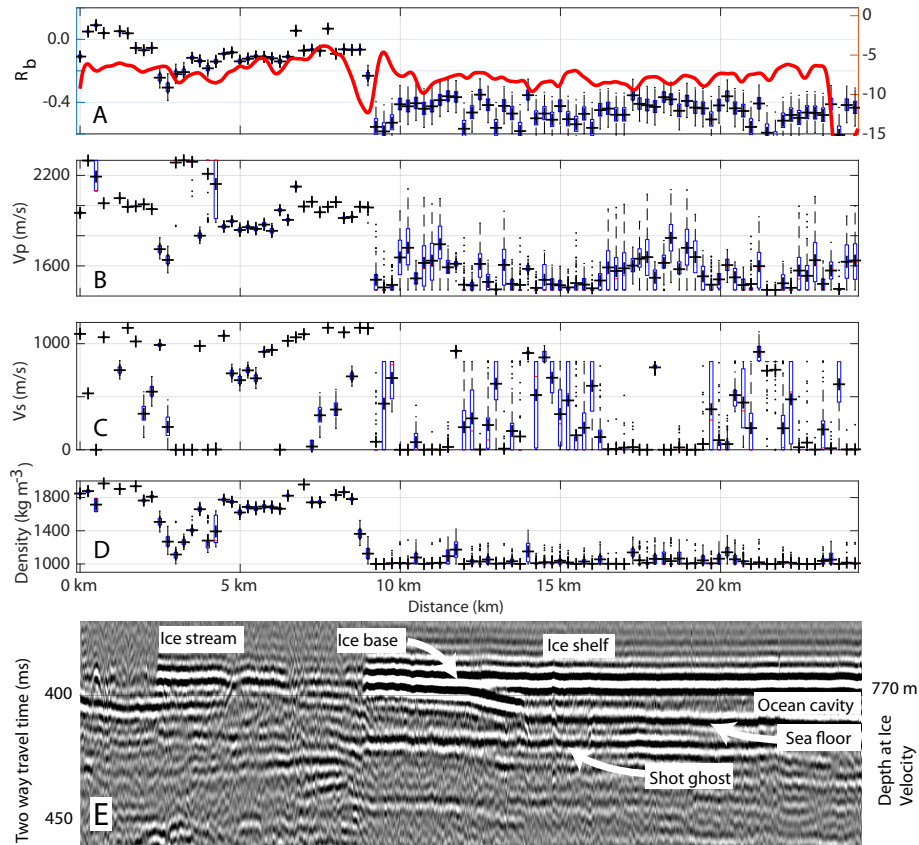


Figure 6. Line 1 (A) Seismic basal reflectivity at normal incidence estimated from the average value within 10° (R_{b10} , black) and using the linear intercept method (R_{b1ML} , red R_b). Blue Red line shows radar basal reflectivity from Christianson et al. (2016). (B–D) Box plots of V_p , V_s and ρ estimated using Zoeppritz fitting and all estimated source sizes. Blue boxes show the 25th and 75th percentiles, whiskers extend to cover data points, and outliers are plotted as black points. Solutions using the mean source size are overlain as black crosses. All estimates use source sizes obtained using the known reflector method. (E) Stacked active source seismic reflection profile with ice flow from left (grounded ice stream) to right (floating ice shelf). Shot ghost denotes the short-path multiple generated by the ray path from the source up to the ice-air interface then down. For profile location see Figure 1.

acquired on the falling tide when the tidal elevation varied from +0.1 m to -0.6 m. The pronounced change in basal reflectivity that occurs at approximately kilometer 9 on Line 1 (Figure 6) does not coincide with a step in the tidal elevation. Other step-changes in tidal elevation along Line 1 also do not coincide with changes in basal reflectivity (e.g. kilometer 1, 6). Lines 2–4 all took less than a day to acquire and for the most part have no major step-changes in tidal elevation along the profiles.

5 An exception to this occurs on Line 2 where the onset of high basal reflectivity (kilometer 3.6–4.1, Figure 7 left panel) occurs in proximity to an offshore 0.3 m change in tidal elevation.

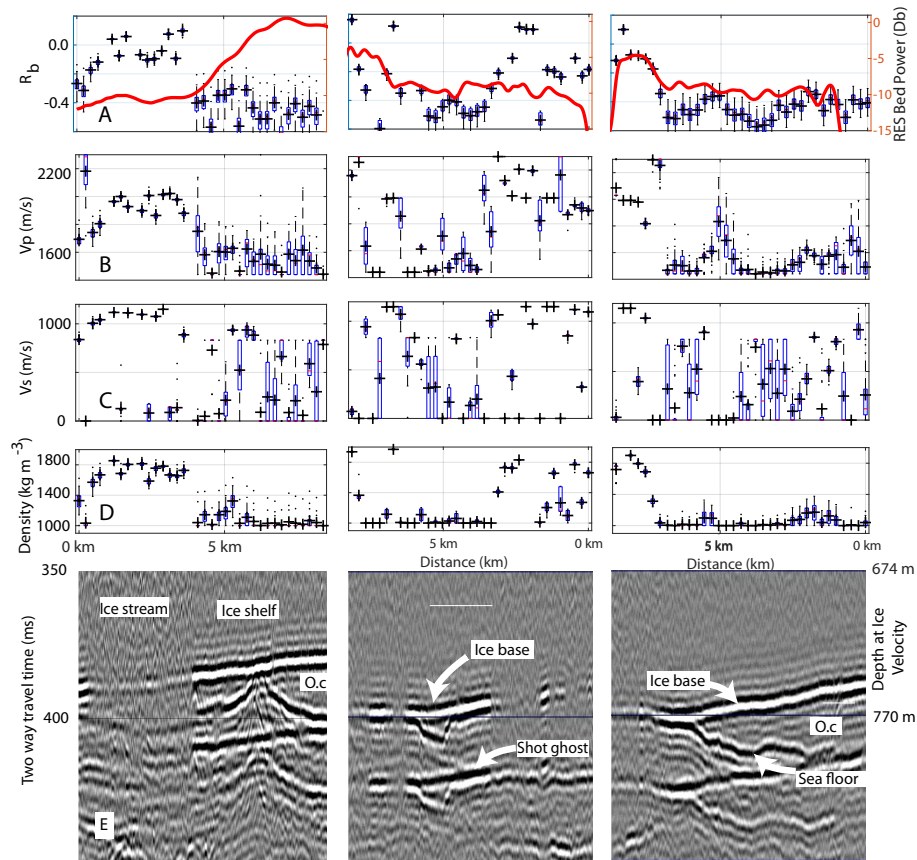


Figure 7. Lines 2 (left), 3 (middle), and 4 (right). (A) Seismic basal reflectivity at normal incidence estimated from the average value within 10° (black) and using the linear intercept method (red R_b). Blue-Red line shows radar basal reflectivity from Christianson et al. (2016). (B–D) Box plots of V_p , V_s and ρ estimated using Zoeppritz fitting and all estimated source sizes. Blue boxes show the 25th and 75th percentiles, whiskers extend to cover data points, and outliers are plotted as black points. Solutions using the mean source size are overlain as black crosses. All estimates use source sizes obtained using the known reflector method. (E) Stacked active source seismic reflection profile. Line 2 is plotted flowing from grounded (left) to floating (right). Lines 3 and 4 are plotted with flow into the page. Shot ghost denotes the short-path multiple generated by the ray path from the source to the ice-air interface then down. O.c. denotes the ocean cavity. For locations see Figure 1.

3.3 Repeat elevation profiles across the grounding zone.

Repeat kinematic GNSS elevation profiles were acquired along Lines 1 and 2 and have previously been used to validate the seismically imaged grounding line location (Horgan et al., 2013b). We locate the grounding zone using the standard deviation of elevation observations in 50 m spatial bins after the removal of a single best fitting spline from each profile. Upstream of the grounding zone we expect this value to represent the method uncertainty, which comes from both the GNSS observations and our ability to repeat a track precisely, combined with a measure of the roughness of the surface. Downstream these combine

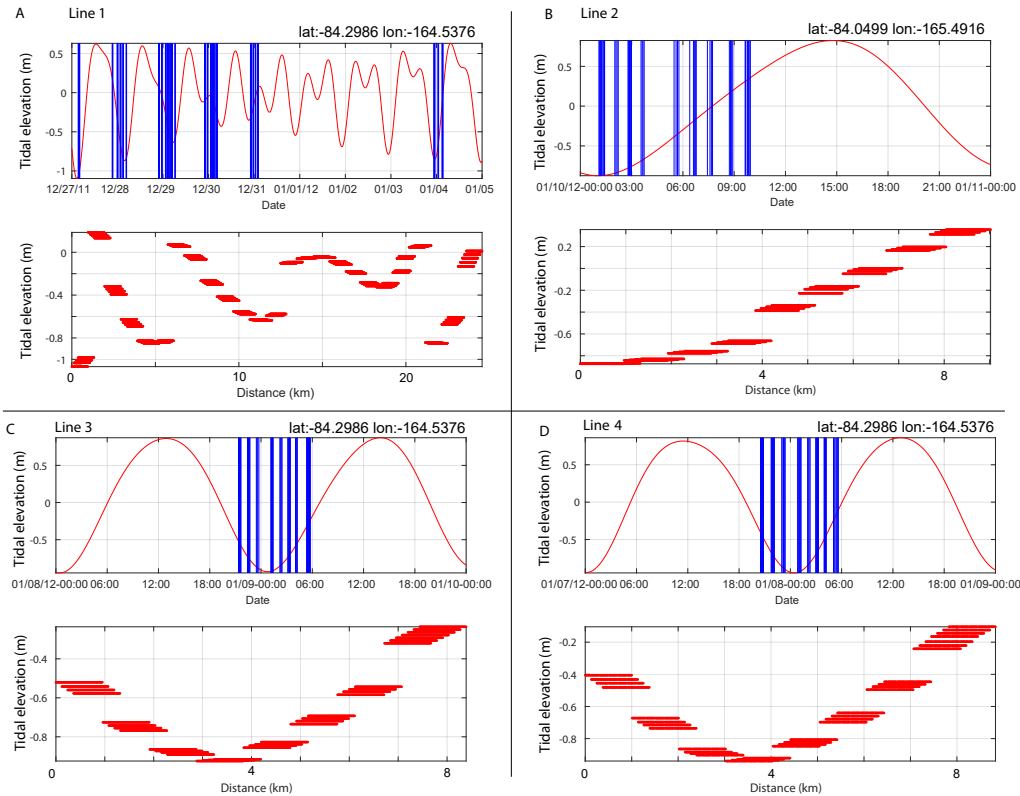


Figure 8. Shot timing and tidal elevation from Erofeeva et al. (2020). A) Line 1. Top subplot shows the timing of shots (blue bars) overlain on the tidal elevation anomaly. Bottom subplot shows vertical tidal anomalies (Erofeeva et al., 2020) at the time of shooting as a function of distance along the profile. B-C) same as A) but for lines 2, 3, and 4, respectively. Latitude (lat) and longitude (lon) for each tide model time series is shown in each top subplot.

with the displacement of the ice surface due to the tide. The grounding line is determined to be the point at which the standard deviation changes from values representative of grounded upstream values to those representative of floating values. The pick is subject to some interpretation as roughness and the ability to repeat a track can vary spatially and can correlate with surface slope (e.g. van der Veen et al., 2009).

- 5 Repeat elevation profiles for lines L1 and L2 were acquired on the rising tide. The tidal range for Line 1 at the time we observed was approximately 1.5 m, while Line 2 was observed during a range of approximately 0.35 m. Both profiles exhibit a region of relatively-high surface slope that begins upstream of the onset of vertical tidal displacement. We pick the Line 1 grounding line at kilometer 9.6, and at kilometer 3.6 for Line 2. Well upstream of the grounding zone our repeat tracks typically all fall within 0.1 m vertically of each other. At the resolution of our data we do not observe migration of the grounding line in
- 10 the GNSS data.

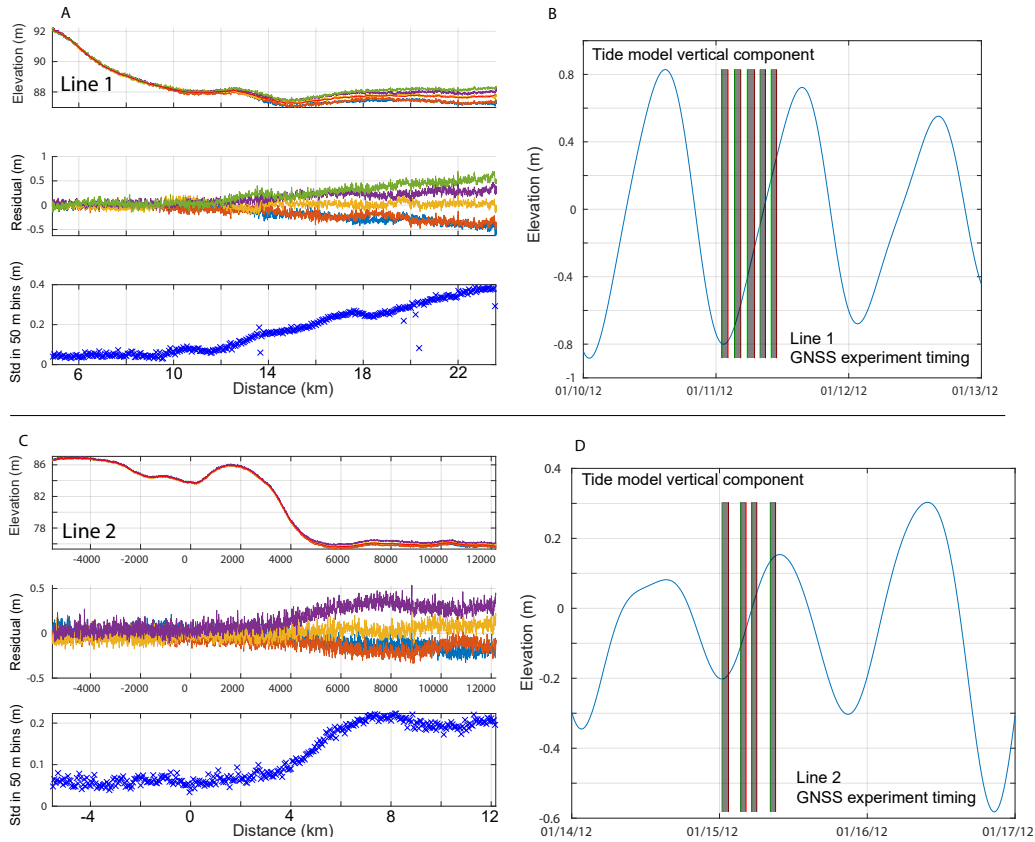


Figure 9. Repeat kinematic profiling along Lines 1 (A,B) and 2 (C,D). Left panels (A,C) show the elevation (top), residual elevation after removal of a best-fitting spline (middle), and standard deviation of residual elevation in 50 m spatial bins (bottom). Panels B,D show the timing of the GNSS profile data collection (vertical overlain on the vertical elevation anomaly of Erofeeva et al. (2020)).

4 Discussion

4.1 Subglacial properties beneath Whillans Ice Stream's grounding zone

Subglacial material beneath the grounded ice stream exhibits ρ and V_p values in the range of dilatant till, but with most V_s values typical of those observed in dewatered tills (Figure 6–7, Table 5) (Zechmann et al., 2018). Our estimates of V_p and ρ for all lines are close to those estimated by Luthra et al. (2016) in their active source seismic study of a major sticky spot beneath Whillans Ice Plain. V_s estimates from the grounding zone are greater than those estimated by Luthra et al. (2016), although they overlap within uncertainties. When compared with estimates from upstream on Whillans, where Blankenship et al. (1986) measured V_s of 150 ± 10 m s⁻¹, our results indicate significantly stiffer till beneath the grounding zone. **Compression and dewatering of subglacial till due to ice flexure within the grounding zone has been hypothesised by Walker et al. (2013), and**

was invoked by Christianson et al. (2013) as the cause of the enhanced internal deformation evident in radio echo sounding profiling across the grounding zone. Our finding of dewatered till is consistent with this hypothesis.

Upstream of Basal shear stress is already known to vary spatially beneath Whillans Ice Stream. Inversion of surface elevation, ice thickness, and remotely-sensed velocity observations has resolved spatially variable basal shear stress (Joughin et al., 2004b), and spatially variable rates of change of basal shear stress during the ice stream's deceleration (Beem et al., 2014). Joughin et al. (2004a) estimated low basal shear stress near the grounding zone several regions (e.g. Line 1 kilometer 3–4; Line 2, kilometer 0–0.5; Line 3 kilometer 7–8) exhibit properties that indicate the presence of subglacial water, although not without ambiguity. This ambiguity likely results from water column thicknesses that are less than one-quarter the dominant seismic wavelength for our data, $\lambda/4 \approx 5$ m. Visual inspection of shot records shows that in these regions the thin-layer effects detailed by Booth et al. (2012) result in constructive and destructive interference of our basal wavelet, leading to best-fitting parameter combinations that are not representative of the contrast in properties. A similar phenomenon likely results in the anomalous estimated values at the grounding zone of Line 1 (Figure 6, kilometer 9) and for kilometer 7–7.5 of Line 3 (Figure 7). However, no similar attribution is possible for the V_s outliers in the floating portions of all lines, which instead appear to correspond to low signal to noise ratios apparent in visual inspection of the shot records, similar to that observed elsewhere beneath the majority of the ice plain. Lipovsky and Dunham (2017) introduced spatial variable bed properties in their rate and state friction model to better reproduced the timing and distribution of stick-slip displacement on Whillans Ice Plain. Passive seismic and geodetic observations of Whillans Ice Stream's stick-slip motion have been used to locate asperities beneath the central portion of the ice stream (Walter et al., 2011) and at its grounding zone (Pratt et al., 2014).

The transition in basal properties at the grounding zone of Whillans Ice Stream is abrupt in both longitudinal lines (Lines 1–2), occurring over distances of less than 500 m. This is less than the ice thickness of 730–790 m. The transverse lines (Lines 3–4) exhibit less abrupt transitions but still show change over distances of less than 1 km. The rapid transition in basal properties indicates that suggest that even in the case of a fast flowing, low basal shear stress ice stream such as Whillans, it is necessary to solve the full Stokes equations are likely to be needed to be solved if the ice flow velocity field is to be accurately modelled across the grounding line (Pattyn et al., 2013). The radio echo sounding (RES) results of Christianson et al. (2016) provide additional insights (Figures 6A, 7A). Lines 1,3, and 4, which all sample the embayment in the grounding zone to the grid north (Figure 1), all exhibit a drop in RES basal reflectivity of approximately 3–5 dB as the grounding zone is crossed from the grounded ice stream to the floating ice shelf. This change occurs over similar length scales to the seismically detected transition. In contrast, Line 2, which crosses the peninsula to the grid south exhibits a gradual increase in RES basal reflectivity of approximately 10 dB after the ice goes afloat, over a distance of approximately 3 km. Christianson et al. (2016) attributes the differences in the RES-detected transitions to the presence of basal roughness (fluting, modelled with a 20 m wavelength and 4 m root-mean-squared heights) and entrained debris in the ice shelf in the embayment, and a basal interface that is becoming smoother and losing the basal debris zone due to basal melt at the peninsula. The insensitivity of seismic methods to the presence of low levels of entrained debris and fluting is evident in the abrupt transition in basal properties observed at the Line percentage of entrained debris we obtained during source size estimation is similar across all four lines (6–7%), indicating differing debris content is unlikely to be the cause of the differences in RES

basal reflectivity. MacGregor et al. (2011) reported low frequency (2 transition-MHz) RES bed reflectivity from elsewhere on Whillans Ice Stream and the adjacent Kamb Ice Stream and found negligible change in RES reflectivity when crossing the grounding zone. One possibility discussed by MacGregor et al. (2011) was the presence of brackish water upstream of the grounding line, smoothing the RES-imaged transition from grounded to floating ice.

5 4.2 Water upstream of the grounding zone

Upstream of the grounding zone several regions (e.g. Line 1 kilometer 3–4; Line 2, kilometer 0–0.5; Line 3 kilometer 7–8) exhibit properties that indicate the presence of subglacial water, although not without ambiguity. This ambiguity likely results from water column thicknesses that are less than one-quarter the dominant seismic wavelength for our data ($\lambda/4 \approx 3.6$ m). Visual inspection of shot records shows that in these regions the thin-layer effects detailed by Booth et al. (2012) result in constructive and destructive interference of our basal wavelet, leading to best-fitting parameter combinations that are not representative of the contrast in properties. A similar phenomenon likely results in the anomalous estimated values at the grounding zone of Line 1 (Figure 6). ~~Our seismic records lack evidence of englacial reflectivity near the bed that could be attributed to sufficiently abundant englacial debris (Bentley, 1971). The contrast between the RES and active source seismic views of~~, kilometer 9) and for kilometer 7–7.5 of Line 3 (Figure 7). However, no similar attribution is possible for the V_s outliers in the floating portions of all lines, which instead appear to correspond to low signal to noise ratios apparent in visual inspection of the shot records.

Our seismic methods are insensitive to whether the subglacial water is sourced from beneath the ice stream or from the ocean cavity. The WISSARD field site was initially selected as it lay on the subglacial drainage path from Subglacial Lake Whillans to the ocean cavity (Fricker et al., 2010; Carter and Fricker, 2012). Oversnow geophysical surveying, including the data presented here and in Christianson et al. (2013), has shown the potential for estuarine flow across the grounding zone (Horgan et al., 2013a). Shot times, tidal stage, and bed reflectivity lack correlation between changes in tidal height and imaged bed properties. One exception to this occurs on Line 2 where the change in bed properties at kilometer 3.6 (Figure 6 left column) occurs in proximity to a 0.3 m change in tidal height at kilometer 3.8–4.2 (Figure 8B). We consider this correlation coincidental as Line 2's grounding line position appears pinned at kilometer 3.6 by an approximately 6 m change in bed elevation. Also, repeat GNSS profiling (Figure 9C) indicates vertical change at Line 2's grounding line is likely to be much less than that estimated offshore, and even a 0.3 m change in water column thickness would be insufficient to cause the pronounced change in reflectivity observed. Line 1's repeat GNSS profiling (Figure 9A) locates the onset of vertical tidal deflection 0.6 km downstream of the seismically resolved change in subglacial properties. This indicates the presence of water upstream of the of the GNSS picked grounding line, but the subjective nature of the GNSS method make this conclusion tentative. Line 1's repeat GNSS profiling also suggests the region between kilometer 9.6–12 is a zone of ephemeral grounding, resulting in a smaller distribution of elevations over the observed portion of the tidal cycle (Figure 9A bottom subplot). Our experiment was not designed to study changing bed properties over a tidal cycle, which would be better examined using tilt meters or fixed GNSS stations and a fixed geophone deployment with a source repeating at the same location.

While our methods are not able to determine the process of stiffening at the grounding zone and ponding upstream, our observations are broadly consistent with the findings of several previous modelling studies. In the nomenclature of Sayag and Worster (2013) our study location appears to be a fixed grounding line, stiff-bedded system, although the zone of ephemeral grounding and the 0.6 km difference between our seismically determined grounding zone and that located by our repeat GNSS profiling shows some grounding line migration may be occurring on Line 1. Our seismic properties indicate a stiff bed over thicknesses of at least approximately 5 m ($\lambda/4 = 5\text{ m}$ for a 100 Hz wave in a 2000 m s^{-1} medium). Estimated seismic velocities and densities imply a Young's modulus (E) of 3.1–6.2 GPa in the subglacial material with lines 1, 2, and 4 all exhibiting $E = 5.2\text{--}6.2\text{ GPa}$. Our observations at this location are not able to identify the asymmetric grounding line migration outlined by Tsai and Gudmundsson (2015). Local variations in bed and surface slope, and ice thickness are likely to contribute to this, however the resolution of our GNSS method and our temporal sampling of basal properties also contribute to a lack of fidelity. Stiff till beneath the grounding zone ~~highlights the different and complementary sensitivities of the two methods~~ and localised bodies of water upstream of the grounding zone are in keeping with the compression and dewatering of subglacial till due to ice flexure modelled by Walker et al. (2013). Stiffening of the till was also invoked by Christianson et al. (2013) as the cause of the enhanced internal deformation evident in radio echo sounding profiling across the grounding zone. The presence of isolated water bodies also aligns with the alternating pressure gradients causing barriers to water flow upstream of the grounding proposed by Sayag and Worster (2013) and the movement of water upstream of the grounding line modelled by Warburton et al. (2020). Warburton et al. (2020) show that low subglacial permeability should lead to filtering of the response of ice flow to tidal forcing. If this is true for Whillans Ice Stream then the combination of the low till permeability suggested by our findings, and the tidally modulated twice daily stick-slip motion of the ice stream indicates its response to tides is not controlled by fluid connectivity through the grounding zone till.

4.3 Estimating source size (A_0)

Our preferred method of estimating source size is only possible when a portion of the survey area contains a known reflection interface. The interface need not be known exactly, as demonstrated by our retrieval of basal ice properties alongside estimating source size, provided the shape of the $R(\theta)$ response varies with changing properties along with the absolute level of reflectivity. Comparison with other methods used to estimate A_0 demonstrates the efficacy of the commonly employed ~~amplitude ratio multiple bounce~~ method (Figure 5). A_0 estimated using the ~~amplitude ratio multiple bounce~~ method was, however, approximately twice that estimated using our known reflector method (Figure 5). This difference can be reduced by a more thorough treatment of the path amplitude factor (γ_i). For instance, applying the geometric loss estimated by Margrave (2003) results in a best fitting gradient of 1.6. The remaining difference can be accounted for by varying α in our known reflectivity A_0 calculation, with an $\alpha = 6.0\text{ km}^{-1}$ resulting in a 1:1 relationship between the multiple bounce and known reflector methods, albeit with a linear intercept of approximately 100. Instead of using path amplitude factors from Margrave (2003) and adjusting our α estimate we have chosen the $1/\text{pathlength}$ approach of Equation 2 and a published α estimate for clarity and to better enable repeatability. The discrepancy between the methods indicates that attenuation (α) and path amplitude factors (γ) remain areas of uncertainty, overcome here by our use of a known reflector. In the absence of reliable A_0 estimates, other attributes

of the amplitude reflection curve such as the angle of phase change (e.g. ?) (e.g. Anandkrishnan, 2003a) can be effective predictors of subglacial geology. Direct path methods for A_0 estimation have been successfully employed elsewhere (Muto et al., 2019), and greatly simplify $R(\theta)$ recovery. Muto et al. (2019) presented data where the sources were buried at 40–50 m depth, compared to our 27 m, and their signal to noise ratios are high as evident in their imaging of englacial seismic reflectivity.

5 The poor correlation between our known-reflector and direct-path A_0 estimates (Figure 4) shows that further investigation of direct path methods is warranted. Both the direct path methods we present would benefit from a greater offset distribution, and the direct pair method would benefit from a greater number of path combinations where $s_2/s_1 = 2$ than was available to us. Trace interpolation could also be used here as the direct arrival energy is unlikely to change rapidly. Also, the path effects (γ_i) experienced by the direct ray are likely to be inadequately captured by our approach due to the possibility of unaccounted for

10 energy loss and more complex travel paths than those predicted within the firm.

Our Zoeppritz fitting methodology is skilled at recovering both V_p and ρ as demonstrated in the floating portions of all lines where the recovered values are those expected for water (see Table 5 Group 2 estimates). The methodology is less skillful at recovering V_s , likely due to the weaker dependence of the shape of the $R(\theta)$ curve on V_s for the angles we observe. We Using average source sizes and the known reflector method we recover the near zero V_s typical of water for 73 of the 112 floating shots

15 in our survey. Estimating V_s , along with ρ allows the shear modulus to be estimated, which can be used to calculate the effective pressure in the till (Luthra et al., 2016). This provides a more direct link between seismic observations and till properties than is otherwise possible from estimates of normal incidence reflectivity (R_b) alone. An acquisition geometry that covered greater angles would improve our ability to estimate V_s ; however, limitations due to interference from direct arrivals would still exist. These limitations could be overcome by observing much greater offsets, where direct arrivals no longer interfere with the bed

20 return, or surveying in regions of greater ice thickness.

Using multiple charge sizes and configurations also highlights the importance of source configuration. Line 3, which consisted of the largest charges by weight (0.85 kg) resulted in the lowest A_0 estimates calculated from both the known reflector method and the amplitude-ratio-multiple bounce method. The charges for Line 3 were made up of a stack of a single 0.4 kg charge, and three narrower 0.15 kg charges. These narrower charges were likely less well coupled with the shot hole wall, and

25 the longer linear configuration resulted in a less effective source. A shorter interval between shot loading and detonation may have also been a factor here as Line 3 was shot within 1–2 days of loading.

5 Conclusions

Subglacial material beneath Whillans Ice Stream’s grounding zone is relatively stiff and is seismically exhibiting $V_s \approx 1100 \text{ m s}^{-1}$ and Young’s moduli of 3.2–6.2 GPa, making it more similar to a subglacial sticky spot than to deforming till. ~~Thin-water bodies are detected upstream of the grounding zone. While our methods are not able to determine the process of stiffening at the grounding zone and ponding upstream, our observations are consistent with Walker et al. (2013), who model the tidal deflection of a viscoelastic beam (the ice stream–ice shelf) pivoting around a fulcrum at the grounding line. This model predicts both the strengthening of subglacial material at the grounding zone, and subglacial pressure gradients that would promote the~~

30

~~flow of water upstream of the grounding zone. The seismically determined transition in bed properties~~ The transition from this stiff subglacial sediment to the ocean cavity is abrupt, occurring over distances of 500-1000 m. This ~~differs from the transition seismically imaged transition differs from that~~ imaged using RES, which detects both an abrupt transition and a gradual one at the embayment and promontory respectively ~~Christianson et al. (2013).~~

5 (Christianson et al., 2013). Upstream of the grounding line we detect thin, apparently isolated, bodies of water. These findings are consistent with models that compact till within the grounding zone and those that isolate water upstream of the grounding zone, although we cannot detect whether the subglacial water is sourced from the ocean cavity or subglacially. Our comparison of methods used to determine source size (A_0) shows that the commonly employed ~~amplitude-ratio-multiple bounce~~ method correlates well with the known reflector method available to us. However, our comparison also highlights that
10 path effects (γ_i) are incompletely modelled by the methods employed here and elsewhere. Our findings also reinforce the need for consistency in source placement, configuration, and time between burial and detonation. Overall our methods are skilled at retrieving basal properties at relatively high spatial resolution where the thickness of the subglacial material is sufficient to prevent thin film effects ($> \lambda/4$). Both V_p and ρ are reliably retrieved, while V_s is recovered ~~but~~ less consistently. While we are currently unable to accurately recover all seismic properties for what appear to be thin water layers, our methods ~~also do~~ show
15 promise here. These thin layers are pertinent for ice flow, and techniques such as full waveform inversion are likely to prove useful here. These methods, which invert not just for a single amplitude of the basal return but the full time series, have been successful applied to other environments where thin layers with large contrasts in seismic properties have been investigated (e.g. Pecher et al., 1996).

Code and data availability. Data analysis and modelling used MATLAB[®] and the CREWES Matlab Toolbox (www.crewes.org). Seismic
20 data processing and picking was performed using GLOBE Claritas (www.globeclaritas.com). Amplitude data are available at PANGAEA (www.pangaea.de/ DOI pending.)

Competing interests. No competing interests are present.

Acknowledgements. We are grateful to ~~Lucas Beem,~~ Rory Hart, Matthew Hill, ~~Benjamin Petersen, and Matthew Seigfried~~ and Benjamin Petersen for assistance in the field. HJH thanks Roger Clark for helpful correspondence early in this study. This study was funded by US
25 National Science Foundation grants to the CReSIS (0852697), and WISSARD (0838764, 0838763) projects. HJH acknowledges funding from a Rutherford Discovery Fellowship and Project-1 of the New Zealand Antarctic Science Platform. An anonymous reviewer, Alex Brisbane, and editor Reinhard Drews are thanked for their comments.

References

- Aki, K. and Richards, P. G.: Quantitative Seismology. Theory and Methods, W.H. Freeman and Co., 1980.
- Alley, R. B.: In Search of Ice-Stream Sticky Spots, *J. Glaciol.*, 39, 447–454, 1993.
- Alley, R. B., Blankenship, D. D., Bentley, C. R., and Rooney, S. T.: Deformation of Till Beneath Ice Stream B, West Antarctica., *Nature*,
5 322, 57–59, 1986.
- Alley, R. B., Blankenship, D. D., Bentley, C. R., and Rooney, S. T.: Till beneath Ice Stream B, 3, Till Deformation: Evidence and Implications,
J. Geophys. Res., 92, 8921–8929, 1987.
- Alley, R. B., Blankenship, D. D., Rooney, S. T., and Bentley, C. R.: Sedimentation beneath ice shelves - the view from Ice Stream B, *Marine
Geology*, 85, 101–120, 1989.
- 10 Alley, R. B., Anandakrishnan, S., Dupont, T., Parizek, B. R., and Pollard, D.: Effect of Sedimentation on Ice-Sheet Grounding-Line Stability,
Science, 315, 1838–1841, 2007.
- Anandakrishnan, S.: Dilatant till layer near the onset of streaming flow of Ice Stream C, West Antarctica, determined by AVO (amplitude vs
offset) analysis, *Annals of Glaciology*, 36, 283–286, <https://doi.org/10.3189/172756403781816329>, 2003a.
- Anandakrishnan, S.: Dilatant till layer near the onset of streaming flow of Ice Stream C, determined by AVO (Amplitude vs. Offset) analysis,
15 *Ann. Glaciol.*, 36, 283–287, 2003b.
- Anandakrishnan, S. and Alley, R. B.: Ice Stream C, Antarctica, Sticky-Spots Detected by Microearthquake Monitoring, *Ann. Glaciol.*, 20,
183–186, 1994.
- Anandakrishnan, S., Blankenship, D. D., Alley, R. B., and Stoffa, P. L.: Influence of subglacial geology on the position of a West Antarctica
ice stream from seismic measurements, *Nature*, 394, 62–65, 1998.
- 20 Anandakrishnan, S., Voigt, D. E., Alley, R. B., and King, M. A.: Ice stream D flow speed is strongly modulated by the tide beneath the Ross
Ice Shelf, *GEOPHYSICAL RESEARCH LETTERS*, 30, 1361, 2003.
- Anandakrishnan, S., Catania, G. A., Alley, R. B., and Horgan, H. J.: Discovery of Till Deposition at the Grounding Line of Whillans Ice
Stream, *Science*, 315, 1835–1838, 2007.
- Barcilon, V. and MacAyeal, D.: Steady flow of a viscous ice stream across a no-slip/free-slip transition at the bed, *Journal of Glaciology*, 39,
25 167–185, 1993.
- Beem, L. H., Tulaczyk, S. M., King, M. A., Bougamont, M., Fricker, H. A., and Christoffersen, P.: Variable deceleration of Whillans Ice
Stream, West Antarctica, *Journal of Geophysical Research: Earth Surface*, 119, 212–224, <https://doi.org/10.1002/2013jf002958>, 2014.
- Begeman, C. B., Tulaczyk, S. M., Marsh, O. J., Mikucki, J. A., Stanton, T. P., Hodson, T. O., Siegfried, M. R., Powell, R. D., Christianson,
K., and King, M. A.: Ocean Stratification and Low Melt Rates at the Ross Ice Shelf Grounding Zone, *Journal of Geophysical Research:*
30 *Oceans*, 123, 7438–7452, <https://doi.org/10.1029/2018jc013987>, 2018.
- Bentley, C. R.: Seismic evidence for moraine within the basal Antarctic ice sheet, in: *Antarctic snow and ice studies, II*, Antarctic Research
Series, edited by Crary, A., vol. 16, American Geophysical Union, 1971.
- Bindschadler, R., Choi, H., Wichlacz, A., Bingham, R., Bohlander, J., Brunt, K., Corr, H., Drews, R., Fricker, H., Hall, M., Hindmarsh,
R., Kohler, J., Padman, L., Rack, W., Rotschky, G., Urbini, S., Vornberger, P., and Young, N.: Getting around Antarctica: new high-
35 resolution mappings of the grounded and freely-floating boundaries of the Antarctic ice sheet created for the International Polar Year, *The
Cryosphere*, 5, 569–588, 2011.

- Bindschadler, R. A., King, M. A., Alley, R. B., Anandakrishnan, S., and Padman, L.: Tidally Controlled Stick-Slip Discharge of a West Antarctic Ice Stream, *Science*, 301, 1087–1089, 2003.
- Blankenship, D. D., Bentley, C. R., Rooney, S. T., and Alley, R. B.: Seismic Measurements Reveal a Saturated, Porous Layer Beneath an Active Antarctic Ice Stream, *Nature*, 322, 54–57, 1986.
- 5 Blankenship, D. D., Bentley, C. R., Rooney, S. T., and Alley, R. B.: Till Beneath Ice Stream B, 1, Properties Derived from Seismic Travel Times, *J. Geophys. Res.*, 92, 8903–8911, 1987.
- Booth, A. D., Clark, R. A., Kulessa, B., Murray, T., Carter, J., Doyle, S. H., and Hubbard, A. L.: Thin-layer effects in glaciological seismic amplitude-versus-angle (AVA) analysis: implications for characterising a subglacial till unit, Russell Glacier, West Greenland, *Cryosphere*, 6, 909–922, 2012.
- 10 Brisbourne, A. M., Smith, A. M., Vaughan, D. G., King, E. C., Davies, D., Bingham, R. G., Smith, E. C., Nias, I. J., and Rosier, S. H. R.: Bed conditions of Pine Island Glacier, West Antarctica, *Journal of Geophysical Research: Earth Surface*, 122, 419–433, 2017.
- Brunt, K. M., Fricker, H. A., and Padman, L.: Analysis of ice plains of the Filchner–Ronne Ice Shelf, Antarctica, using ICESat laser altimetry, *Journal of Glaciology*, 57, 965–975, <https://doi.org/10.3189/002214311798043753>, 2011.
- Carter, S. and Fricker, H. A.: The supply of subglacial meltwater to the grounding line of the Siple Coast, West Antarctica, *Ann. Glaciol.*, 15 53, 267–280, 2012.
- Christianson, K., Parizek, B. R., Alley, R. B., Horgan, H. J., Jacobel, R. W., Anandakrishnan, S., Keisling, B. A., Craig, B. D., and Muto, A.: Ice sheet grounding zone stabilization due to till compaction, *Geophysical Research Letters*, 40, 5406–5411, 2013.
- Christianson, K., Jacobel, R. W., Horgan, H. J., Alley, R. B., Anandakrishnan, S., Holland, D. M., and DallaSanta, K. J.: Basal conditions at the grounding zone of Whillans Ice Stream, West Antarctica, from ice-penetrating radar, *Journal of Geophysical Research: Earth Surface*, 20 121, 1954–1983, 2016.
- Dawson, G. J. and Bamber, J. L.: Measuring the location and width of the Antarctic grounding zone using CryoSat-2, *The Cryosphere*, 14, 2071–2086, <https://doi.org/10.5194/tc-14-2071-2020>, 2020.
- Erofeeva, S., Padman, L., and Howard, S. L.: Tide Model Driver (TMD) version 2.5, Toolbox for Matlab, Tech. rep., https://doi.org/https://www.github.com/EarthAndSpaceResearch/TMD_Matlab_Toolbox_v2.5, retrieved 10/08/2020, 2020.
- 25 Fricker, H. A., Powell, R. D., Priscu, J. C., Tulaczyk, S., Anandakrishnan, S., Christner, B., Fisher, A. T., Holland, D. M., Horgan, H. J., Jacobel, R. W., Mikucki, J., Mitchell, A., Scherer, R., and Severinghaus, J. P.: Siple Coast subglacial aquatic environments: The Whillans Ice Stream Subglacial Access Research Drilling (WISSARD) project, chap. 12, AGU Monograph, American Geophysical Union, 2010.
- Gudmundsson, G. H.: Tides and the flow of Rutford Ice Stream, West Antarctica, *Journal of Geophysical Research*, 112, <https://doi.org/10.1029/2006jf000731>, 2007.
- 30 Hamilton, E. L.: V_p/V_s and Poisson's ratios in marine sediments and rocks, *The Journal of the Acoustical Society of America*, 66, 1093–1101, 1979.
- Haran, T., Bohlander, J., Scambos, T., and Fahnestock, M.: MODIS mosaic of Antarctica (MOA) image map, NSIDC Digital media, 2005.
- Hartigan, J. A.: Clustering algorithms, Wiley, 1975.
- Holdsworth, G.: Flexure of a floating ice tongue, *Journal of Glaciology*, 8, 385–397, 1969.
- 35 Holdsworth, G.: Tidal interaction with ice shelves, *Annals of Geophysics*, 33, 133–146, 1977.
- Holland, C. and Anandakrishnan, S.: Subglacial seismic reflection strategies when source amplitude and medium attenuation are poorly known, *Journal of Glaciology*, 55, 931–937, 2009.

- Horgan, H. J., Anandakrishnan, S., Alley, R. B., Burkett, P. G., and Peters, L. E.: Englacial seismic reflectivity – Imaging crystal orientation fabric in West Antarctica, *Journal of Glaciology*, 57, 639–650, 2011.
- Horgan, H. J., Alley, R. B., Christianson, K., Jacobel, R. W., Anandakrishnan, S., Muto, A., Beem, L. H., and Siegfried, M. R.: Estuaries beneath ice sheets, *Geology*, 2013a.
- 5 Horgan, H. J., Christianson, K., Jacobel, R. W., Anandakrishnan, S., and Alley, R. B.: Sediment deposition at the modern grounding zone of Whillans Ice Stream, West Antarctica, *Geophysical Research Letters*, 40, 3934–3939, 2013b.
- Joughin, I., Abdalati, W., and Fahnestock, M.: Large fluctuations in speed on Greenland’s Jakobshavn Isbræ glacier, *Nature*, 432, 608–610, 2004a.
- Joughin, I., MacAyeal, D. R., and Tulaczyk, S.: Basal shear stress of the Ross ice streams from control method inversions, *Journal of Geophysical Research: Solid Earth*, 109, 1–20, <https://doi.org/10.1029/2003jb002960>, 2004b.
- 10 Kamb, B.: Basal zone of the West Antarctic ice streams and its role in the lubrication of their rapid motion, in: *The West Antarctic Ice Sheet: Behavior and Environment*, edited by Alley, R. B. and Bindschadler, R. A., vol. 77 of *Antarctic Research Series*, pp. 157–200, AGU, 2001.
- Kohnen, H.: The temperature dependence of seismic waves in ice, *Journal of Glaciology*, 13, 144–147, 1974.
- Kohnen, H. and Bentley, C. R.: Seismic Refraction and Reflection measurements at “Byrd” Station, Antarctica, *Journal of Glaciology*, 12, 15 101–111, 1973.
- Lipovsky, B. P. and Dunham, E. M.: Slow-slip events on the Whillans Ice Plain, Antarctica, described using rate-and-state friction as an ice stream sliding law, *Journal of Geophysical Research: Earth Surface*, 122, 973–1003, <https://doi.org/10.1002/2016jf004183>, 2017.
- Luthra, T., Anandakrishnan, S., Winberry, J. P., Alley, R. B., and Holschuh, N.: Basal characteristics of the main sticky spot on the ice plain of Whillans Ice Stream, Antarctica, *Earth and Planetary Science Letters*, 440, 12 – 19, 20 <https://doi.org/https://doi.org/10.1016/j.epsl.2016.01.035>, <http://www.sciencedirect.com/science/article/pii/S0012821X16300103>, 2016.
- Luthra, T., Peters, L. E., Anandakrishnan, S., Alley, R. B., Holschuh, N., and Smith, A. M.: Characteristics of the sticky spot of Kamb Ice Stream, West Antarctica, *Journal of Geophysical Research: Earth Surface*, 122, 641–653, 2017.
- MacAyeal, D. R., Bindschadler, R. A., and Scambos, T. A.: Basal Friction of Ice Stream E, West Antarctica, *Journal of Glaciology*, 41, 247–262, 1995.
- 25 MacGregor, J. A., Anandakrishnan, S., Catania, G. A., and Winebrenner, D. P.: The grounding zone of the Ross Ice Shelf, West Antarctica, from ice-penetrating radar, *Journal of Glaciology*, 57, 2011.
- Margrave, G. F.: *Numerical Methods of Exploration Seismology*, The University of Calgary, <https://doi.org/10.1017/9781316756041>, 2003.
- Marsh, O. J., Rack, W., Floricioiu, D., Gолledge, N. R., and Lawson, W.: Tidally induced velocity variations of the Beardmore Glacier, Antarctica, and their representation in satellite measurements of ice velocity, *The Cryosphere*, 7, 1375–1384, [https://doi.org/10.5194/tc-7-](https://doi.org/10.5194/tc-7-1375-2013) 30 1375-2013, 2013.
- Minchew, B. M., Simons, M., Riel, B., and Milillo, P.: Tidally induced variations in vertical and horizontal motion on Rutford Ice Stream, West Antarctica, inferred from remotely sensed observations, *Journal of Geophysical Research: Earth Surface*, 122, 167–190, <https://doi.org/10.1002/2016jf003971>, 2017.
- Muto, A., Anandakrishnan, S., Alley, R. B., Horgan, H. J., Parizek, B. R., Koellner, S., Christianson, K., and Holschuh, N.: Relating bed character and subglacial morphology using seismic data from Thwaites Glacier, West Antarctica, *Earth and Planetary Science Letters*, 35 507, 199–206, 2019.
- Nowicki, S. M. J. and Wingham, D. J.: Conditions for a steady ice sheet–ice shelf junction, *Earth and Planetary Science Letters*, 265, 246–255, 2008.

- Pattyn, F., Perichon, L., Durand, G., Favier, L., Gagliardini, O., Hindmarsh, R. C. A., Zwinger, T., Albrecht, T., Cornford, S., Docquier, D., and et al.: Grounding-line migration in plan-view marine ice-sheet models: results of the ice2sea MISMIP3d intercomparison, *Journal of Glaciology*, 59, 410–422, 2013.
- 5 Pecher, I. A., Minshull, T. A., Singh, S. C., and von Huene, R.: Velocity structure of a bottom simulating reflector offshore Peru: Results from full waveform inversion, *Earth and Planetary Science Letters*, 139, 459 – 469, [https://doi.org/https://doi.org/10.1016/0012-821X\(95\)00242-5](https://doi.org/https://doi.org/10.1016/0012-821X(95)00242-5), <http://www.sciencedirect.com/science/article/pii/0012821X95002425>, 1996.
- Peters, L. E., Anandakrishnan, S., Holland, C. W., Horgan, H. J., Blankenship, D. D., and Voigt, D. E.: Seismic detection of a subglacial lake near the South Pole, Antarctica, *Geophysical Research Letters*, 35, 1–5, 2008.
- Powell, R. D., Dawber, M., McInnes, J. N., and Pyne, A.: Observations of the grounding-line area of a floating glacier terminus, *Annals of*
10 *Glaciology*, 22, 217–223, 1996.
- Pratt, M. J., Winberry, J. P., Wiens, D. A., Anandakrishnan, S., and Alley, R. B.: Seismic and geodetic evidence for grounding-line control of Whillans Ice Stream stick-slip events, *Journal of Geophysical Research: Earth Surface*, 119, 333–348, 2014.
- Robel, A. A., Tsai, V. C., Minchew, B., and Simons, M.: Tidal modulation of ice shelf buttressing stresses, *Annals of Glaciology*, 58, 12–20, <https://doi.org/10.1017/aog.2017.22>, 2017.
- 15 Rosier, S. H. R. and Gudmundsson, G. H.: Exploring mechanisms responsible for tidal modulation in flow of the Filchner–Ronne Ice Shelf, *The Cryosphere*, 14, 17–37, <https://doi.org/10.5194/tc-14-17-2020>, 2020.
- Rosier, S. H. R., Gudmundsson, G. H., and Green, J. A. M.: Temporal variations in the flow of a large Antarctic ice stream controlled by tidally induced changes in the subglacial water system, *The Cryosphere*, 9, 1649–1661, <https://doi.org/10.5194/tc-9-1649-2015>, 2015.
- Rosier, S. H. R., Marsh, O. J., Rack, W., Gudmundsson, G. H., Wild, C. T., and Ryan, M.: On the interpretation of ice-shelf flexure measure-
20 ments, *Journal of Glaciology*, 63, 783–791, <https://doi.org/10.1017/jog.2017.44>, 2017.
- Röthlisberger, H.: Seismic exploration in cold regions, Tech. rep., Cold regions research and engineering lab, Hanover NH, 1972.
- Sayag, R. and Worster, M. G.: Elastic response of a grounded ice sheet coupled to a floating ice shelf, *Physical Review E*, 84, <https://doi.org/10.1103/physreve.84.036111>, 2011.
- Sayag, R. and Worster, M. G.: Elastic dynamics and tidal migration of grounding lines modify subglacial lubrication and melting, *Geophysical*
25 *Research Letters*, 40, 5877–5881, <https://doi.org/10.1002/2013gl057942>, 2013.
- Scherer, R. P., Powell, R. D., Coenen, J. J., Hodson, T. O., Puttkammer, R., and Tulaczyk, S. M.: Geological and paleontological results from the WISSARD (Whillans Ice Stream Subglacial Access Research Drilling) Project, AGU Fall Meeting Abstracts, 2015.
- Schmeltz, M., Rignot, E., and MacAyeal, D.: Tidal flexure along ice sheet margins: comparison of InSAR with an elastic plate model, *Annals of Glaciology*, 34, 202–208, 2002.
- 30 Schoof, C.: Ice sheet grounding line dynamics: steady states, stability and hysteresis, *Journal of Geophysical Research*, 112, 2007.
- Shearer, P. M.: Introduction to seismology, Cambridge University Press, 2009.
- Siegert, M. J., Welch, B. C., Morse, D. L., Vieli, A., Blankenship, D. D., Joughin, I., King, E. C., Leysinger Vieli, G., Payne, A. J., and Jacobel, R. W.: Ice flow direction changes in interior West Antarctica, *Science*, 305, 1948–1951, 2004.
- Smith, A. M.: Basal conditions on Rutford Ice Stream, West Antarctica, from seismic observations, *Journal of Geophysical Research*, 102,
35 543–552, 1997.
- Smith, A. M.: Subglacial bed properties from normal-incidence seismic reflection data, *Journal of environmental and engineering geophysics*, 12, 3–13, 2007.

- Smith, A. M., Woodward, J., Ross, N., Bentley, M. J., Hodgson, D. A., Siegert, M. J., and King, E. C.: Evidence for the long-term sedimentary environment in an Antarctic subglacial lake, *Earth and Planetary Science Letters*, 504, 139–151, <https://doi.org/10.1016/j.epsl.2018.10.011>, 2018.
- Sugiyama, S., Sawagaki, T., Fukuda, T., and Aoki, S.: Active water exchange and life near the grounding line of an Antarctic outlet glacier, *Earth and Planetary Science Letters*, 399, 52 – 60, <https://doi.org/https://doi.org/10.1016/j.epsl.2014.05.001>, <http://www.sciencedirect.com/science/article/pii/S0012821X14002957>, 2014.
- Tsai, V. C. and Gudmundsson, G. H.: An improved model for tidally modulated grounding-line migration, *Journal of Glaciology*, 61, 216–222, <https://doi.org/10.3189/2015jog14j152>, 2015.
- van der Veen, C. J., Ahn, Y., Csatho, B. M., Mosley-Thompson, E., and Krabill, W. B.: Surface roughness over the northern half of the Greenland Ice Sheet from airborne laser altimetry, *Journal of Geophysical Research*, 114, <https://doi.org/10.1029/2008jf001067>, 2009.
- Vaughan, D. G.: Tidal flexure at ice shelf margins, *Journal of Geophysical Research*, 100, 6213–6224, 1995.
- Voigt, D. E., Peters, L. E., and Anandkrishnan, S.: ‘Georods’: the development of a four-element geophone for improved seismic imaging of glaciers and ice sheets, *Annals of Glaciology*, 54, 142–148, <https://doi.org/10.3189/2013AoG64A432>, 2013.
- Walker, R. T., Parizek, B. R., Alley, R. B., Anandkrishnan, S., Riverman, K. L., and Christinason, K.: Ice-shelf tidal flexure and subglacial pressure variations, *Earth and Planetary Science Letters*, 361, 422–428, 2013.
- Walter, J. I., Brodsky, E. E., Tulaczyk, S., Schwartz, S. Y., and Pettersson, R.: Transient slip events from near-field seismic and geodetic data on a glacier fault, Whillans Ice Plain, West Antarctica, *Journal of Geophysical Research*, 116, 2011.
- Warburton, K. L. P., Hewitt, D. R., and Neufeld, J. A.: Tidal Grounding-Line Migration Modulated by Subglacial Hydrology, *Geophysical Research Letters*, 47, <https://doi.org/10.1029/2020gl089088>, 2020.
- Wild, C. T., Marsh, O. J., and Rack, W.: Viscosity and elasticity: a model intercomparison of ice-shelf bending in an Antarctic grounding zone, *Journal of Glaciology*, 63, 573–580, <https://doi.org/10.1017/jog.2017.15>, 2017.
- Winberry, J. P., Anandkrishnan, S., Alley, R. B., Bindschadler, R. A., and King, M. A.: Basal mechanics of ice streams: Insights from the stick-slip motion of Whillans Ice Stream, West Antarctica, *Journal of Geophysical Research*, 114, 1–11, 2009.
- Winberry, J. P., Anandkrishnan, S., Wiens, D. A., Alley, R. B., and Christianson, K.: Dynamics of stick-slip motion, Whillans Ice Stream, Antarctica, *Earth and Planetary Science Letters*, 305, 283–289, 2011.
- Zechmann, J. M., Booth, A. D., Truffer, M., Gusmeroli, A., Amundson, J. M., and Larsen, C. F.: Active seismic studies in valley glacier settings: strategies and limitations, *Journal of Glaciology*, 64, 796–810, 2018.