

Central Himalayan tree-ring isotopes reveal increasing regional heterogeneity and enhancement in ice-mass loss since the 1960s

Nilendu Singh¹, Mayank Shekhar², Jayendra Singh³, Anil K Gupta⁴, Achim Bräuning^{5*}, Christoph Mayr⁵, and Mohit Singhal¹

5 ¹Centre for Glaciology, Wadia Institute of Himalayan Geology, Dehradun 248001, India

²Birbal Sahni Institute of Palaeosciences, Lucknow 226007, India

³Wadia Institute of Himalayan Geology, Dehradun 248001, India

⁴Center for Oceans, Rivers, Atmosphere and Land Sciences, IIT Kharagpur 721302, India

⁵Institute of Geography, University of Erlangen-Nuremberg, Erlangen 91058, Germany

10 *Correspondence to:* Achim Bräuning (achim.braeuning@fau.de)

Abstract. Tree-ring $\delta^{18}\text{O}$ values are a sensitive proxy of regional physical climate, while their $\delta^{13}\text{C}$ values are a strong predictor of local ecohydrology. Utilizing available ice-core and tree-ring $\delta^{18}\text{O}$ records from the central Himalaya (CH), we found an increase in east-west [climate](#) heterogeneity since the 1960s. Further, $\delta^{13}\text{C}$ records from transitional western [glaciated](#) valleys provide a robust basis [for reconstructing](#) about three centuries of glacier mass balance (GMB) dynamics. [We reconstructed](#) 15 [annually resolved](#) GMB since 1743 CE based on regionally-dominant [tree species](#) of diverse plant-functional types. Three major phases became apparent: positive GMB up to the mid-nineteenth century, the middle phase (1870-1960) of slightly negative but stable GMB, and an exponential ice-mass loss since the 1960s. Reasons [for](#) accelerated mass loss are largely attributed to anthropogenic climate change, including concurrent alterations in atmospheric circulations (weakening of the westerlies and the Arabian Branch of the Indian summer monsoon). [Multi](#)-decadal isotopic and climate coherency analyses 20 [specify](#) an eastward declining influence [of the westerlies in the monsoon-dominated CH region](#). Besides, our study provides a long-term context for recent GMB variability, which is essential [for its](#) reliable projection and attribution.

1 Introduction

Glaciers in the Himalayan-Tibetan orogen are an important component of the regional hydrological cycle, and a major fraction of regional potable water is stored and provided by them. However, [recent climate warming](#) has imposed a serious alteration 25 in the equilibrium of these glaciers (Bandyopadhyay et al., 2019; Bolch et al., 2012; Maurer et al., 2019; Mölg et al., 2014; Yao et al., 2012; Zemp et al., 2019). High uncertainty prevails in future projections [of glacier mass balance \(GMB\)](#), since sound understanding of glacier fluctuations and its response to climate change on [multi-decadal](#) timescale is [poorly understood](#) (e.g., [the](#) erroneous statement in the Fourth Assessment Report of the IPCC, Kargel et al., 2011). Reliable projections of future Himalayan ice mass loss require robust observations of glacier response to past and ongoing climate change. Long-term 30 estimation of GMB is also imperative for regional water security. Currently, coupled glacier-climate models even do not agree on the sign of change, and hence projections [of GMB are](#) ambiguous (Watanabe et al., 2019; Jury et al., 2019; DCCC, 2018).

Nevertheless, a consistent picture emerges of net ice mass loss in recent decades, which is highest in the western and central Himalaya (except the Karakoram and the Pamir) (Bolch et al., 2012; Brun et al., 2017; Dehecq et al., 2019; Maurer et al., 2019; Mölg et al., 2014; Shekhar et al., 2017; Yao et al., 2012).

35 The central Himalayan glaciers show a rather homogeneous behaviour (Azam et al., 2018; Bandyopadhyay et al., 2019; Brun et al., 2017; Dehecq et al., 2019; Kääb et al., 2012; Sakai and Fujita, 2017; Yao et al., 2012). In this study, we focus on the transitional climate zone between the western and central Himalaya, where knowledge about **multi-decadal** glacier dynamics in relation to climate change is **still missing**. Evidence from tree-ring isotopes and hydroclimatic studies **from the central Himalaya** suggest that the glacier mass balance behaviour is primarily determined by the conjoint effect of the winter westerlies

40 (WD) and Indian summer monsoon (ISM) (Fig. 1 and references therein). The influence of the ISM declines towards the northwest Himalaya, and the westerlies progressively become dominant. Towards the eastern Himalaya, the influence of the Arabian Sea branch of the ISM declines, and the Bay of Bengal branch dominantly regulates the climate, besides an influence of the East Asian monsoon (Benn and Owen, 1998; Bookhagen and Burbank, 2010; Hochreuther et al., 2016; Liu et al., 2014; Lyu et al., 2019; Mölg et al., 2014; Sano et al., 2017; Yang et al., 2008; Yao et al., 2012). Monsoon-influenced glaciers,

45 particularly those in the transitional climatic zone (such as the western region of the central Himalaya), are more sensitive to climate warming than winter-accumulation type glaciers (Kargel et al., 2011; Sakai and Fujita, 2017). Moreover, a weakening in the moisture delivering systems (i.e., WD and ISM) since the mid-twentieth century had a direct impact on the summer-accumulation type glaciers in the region (Dahe et al., 2000; Hunt et al., 2019; Joswiak et al., 2013; Khan et al., 2019; Roxy et al., 2015, 2017; Sano et al., 2012, 2013, 2017; Singh et al., 2019; Xu et al., 2018; Yadav, 2011).

50 **In the present study, we attempt to reconstruct glacier mass balance history since the end of the Little Ice Age (since 1743 AD) in the transition zone between the ISM and the westerly-dominated climate in the central-western Himalaya (Fig. 1). We use tree-ring stable isotope ($\delta^{13}\text{C}$ and $\delta^{18}\text{O}$) chronologies of three dominant tree species of two different plant functional types and synthesize available regional $\delta^{18}\text{O}$ chronologies from different archives, including tree-rings and ice-cores across the central Himalaya (Fig. 1; Table S1).**

55 Field-based mass balance measurements are logistically challenging in the Himalaya. Nevertheless, since the 1980s, workers have endured monitoring of four benchmark glaciers (Pratap et al., 2015; Garg et al., 2017, 2019) of the Uttarakhand Himalaya (Fig. 1). Based on a detailed analysis of hypsometric curves and several morphological and glaciological factors of these four valley glaciers (DOK, CHO, TIP, DUN; Fig. 1, Table S2) (Bandyopadhyay et al., 2019; Pratap et al., 2015; Garg et al., 2017, 2019), and building upon previous studies (Shekhar et al., 2017; Bandyopadhyay et al., 2019; Azam et al., 2018), we compiled

60 **a mean observed glacier mass balance time-series since the 1980s (1982 - 2013) (Fig. 1, Fig. S1, Table S2).**

The length of observed mass balance records principally limits our understanding of the response of **Himalayan** glaciers to climate change. Remote sensing techniques provide the best alternative in this regard (Garg et al., 2017, 2019; Maurer et al., 2019; Kääb et al., 2012; Dehecq et al., 2019; Brun et al., 2017; Bandyopadhyay et al., 2019; DCCC, 2018). Nevertheless, observation-based mass balance records cannot be extended beyond a few decades. To understand long-term changes, we must

65 rely on proxy data. **One valuable proxy** is ice-core isotopes, which are yet to be obtained from the Indian Himalaya. Tree-rings

are another reliable and sensitive proxy allowing the reconstruction of glacier history. They have been widely used in mountainous regions around the world (Bräuning, 2006; Duan et al., 2013; Gou et al., 2006; Hochreuther et al., 2015; Larocque and Smith, 2005; Linderholm et al., 2007; Nicolussi and Patzelt, 1996; Solomina et al., 2016; Tomkins et al., 2008; Watson and Luckman, 2004; Xu et al., 2012; Zhang et al., 2019). Tree-ring width (TRW) is known to bear the influence of non-climatic factors like biological tree age, which overlaps climatic signals (Bunn et al., 2019; Zhang et al., 2019). TRW records of Himalayan evergreen conifer trees (including *Cedrus deodara*, *Abies*, *Larix*, and *Picea* spp.) have been widely used to reconstruct hydroclimate and natural hazards (Borgaonkar et al., 2009, 2018; Cook et al., 2003; Singh et al., 2006; Singh and Yadav, 2013; Yadav and Bhutiyani, 2013; Yadav et al., 2011; Yadav, 2011). Despite of numerous TRW-based climate reconstructions, there is only one TRW-derived glacier mass balance reconstruction (Shekhar et al., 2017). Tree-ring stable isotopes are a reliable source of past hydroclimate variability because of their sensitivity to local/regional climate, the coherence in the climatic response, and the well understood control by the environmental conditions regulating tree physiology (Levesque et al., 2019, Sano et al., 2012, 2013, 2017; Singh et al., 2019, Zeng et al., 2017). Although many studies reconstructed hydroclimate in the Himalaya using tree-ring isotopes (e.g., Sano et al., 2012, 2013, 2017; Singh et al., 2019; Xu et al., 2018), glacier mass balance reconstructions from tree-ring isotope series are still not available. Higher growing season temperatures stimulate photosynthesis rates. This facilitates stable isotope fractionation process, resulting in decreased intercellular CO₂ concentration and fractionation against the heavier ¹³C isotope, which leads to increased higher δ¹³C. Thus, climate (temperature) is a bridge that indirectly connects the mass balance of a glacier with tree-ring C isotope ratios. Hence, the mass balance can be reconstructed using stable carbon isotope chronologies from trees growing in the proximity of the glacier (Zhang et al., 2019).

In this study, thus, we utilized tree-ring carbon isotope (δ¹³C) chronologies of three different species belonging to two plant functional types (PFT) that differ in their annual phenological cycle (Table S1). One PFT includes evergreen conifers (*Abies pindrow* and *Picea smithiana*) that have been widely used to reconstruct hydroclimatic regimes across the Himalaya and are abundantly found in the moist valley regions of the high central Himalaya. Moreover, we investigated the dendroclimatological potential of a major dominant species broadleaf deciduous trees species (*Aesculus indica*), as its growth period (April to September) coincides with the warm-wet phase during the Indian summer monsoon (ISM) season (and lacks westerlies' signal due to complete winter dormancy). Additionally, we utilized available Dasuopu ice-core and tree-ring isotope chronologies from six different locations in the central Himalaya to substantiate our results (Fig. 1). This study aims (i) to identify the tree-ring parameter (TRW and/or δ¹³C, δ¹⁸O) of deciduous and evergreen tree species containing the strongest mass balance signature, (ii) to reconstruct annual glacier mass balance using the identified best proxy chronology, and (iii) to analyse the reconstructed mass balance in relation to regional climate, local forcing factors, and large-scale atmospheric circulation.

2 Materials and Methods

2.1 Study region and climate

The present study focuses on the glaciers of the [Uttarakhand Himalaya \(Indian central Himalaya\) in the transitional climate zone between the western and the central Himalaya](#). The study region extends from latitude 30.15° to 31.03° N and longitude 78.78° to 80.73° E. The highly glaciated upper reaches of the [Uttarakhand Himalaya](#) encompass about 1000 glaciers of varying size, which cover total area about 2850 km² (Raina and Srivastava, 2008; Bandyopadhyay et al., 2019). Previous studies found that glaciers in the region are mainly fed by the ISM (Azam et al., 2018; Sakai and Fujita, 2017). Therefore, glaciers in the region are usually classified as summer-accumulation type glaciers (Azam et al., 2018; Sakai and Fujita, 2017). Snow accumulation during winter (December–March) is influenced by a precipitation regime driven by mid-latitude westerlies (WD). Decadal-scale meteorological records from the study region are available only for lower elevations (< 2000 m asl) (Fig. 1). Therefore, long-term gridded temperature and precipitation datasets were obtained through the Climatic Research Unit (CRU TS.3.22, 0.5 latitude x 0.5 longitudes, 1901-2015) (Harris et al., 2014). [However, given the limitations of the CRU precipitation dataset in high-altitude regions, we, complemented it with existing meteorological records \(Singh et al., 2019\)](#). Analyses of meteorological records indicate that mean annual precipitation is ~800 mm, of which the warm-wet summer months (April–September) receive about 80%. Mean annual temperature varies around 4°C, with a minimum (-7°C) in January and maximum (13.5°C) in June (Fig. S2). As previously mentioned, studies indicate an increasing trend in temperature, while precipitation during both ISM and WD seasons show a recent declining trend. As local climate is the common factor influencing both glacier mass balance and the physiology and growth of the trees growing in the valleys, we first analyzed tree growth-climate relations (Fig. S3). Averaged monthly temperature and total monthly precipitation over a period spanning from October of the preceding year to September of the current growth year were correlated with $\delta^{13}\text{C}$ chronologies of the species (as $\delta^{13}\text{C}$ is a strong predictor of local climatology) (Fig. S3). In addition, various climatological indices (SST, ENSO, ENSO-Modoki, PDO, and IOD) were obtained from the archive (<http://climexp.knmi.nl>) to analyse large-scale climatic relations.

2.2 Glacier mass balance data

Four benchmark valley glaciers that are distributed across the [Uttarakhand Himalaya](#) namely Dokriani (DOK), Chorabari (CHO), Tipra Bamak (TIP) and Dunagiri (DUN) have been individually monitored for their mass balance over the time-period from 1982 to 2013 (with a few gap years, Fig. 1; Table S2) (Pratap et al., 2015; Garg et al., 2017, 2019). Two glaciers (DOK and CHO) lie in the Garhwal Himalaya, while two (DUN and TIP) are located in the Kumaun Himalaya (India). We used the available glaciological mass balance records to produce best possible time-series (Table S2). We built a mean mass balance time-series based upon previous studies (Shekhar et al., 2017; Bandyopadhyay et al., 2019; Borgoankar et al., 2009) and the premises that the glaciers show a homogeneous behaviour to changes in the regional climate and that their mass balances show a high inter-correlation (Azam et al., 2018). Given the same climatic forcing owing to the location in the humid central Himalaya and the similar geomorphological characteristics (Garg et al., 2017, 2019) (Table S2), the four valley glaciers should

generally correlate well (Solomina et al., 2016). Ideally, land-terminated valley type glaciers of a simple configuration and hypsometry are most suitable to infer paleoclimatic information (Solomina et al., 2016). The four studied glaciers are of this kind and are therefore designated by workers as 'benchmark glaciers'. The glaciers are of similar small size (except DUN), have simple shapes and moderate elevation ranges, and thus their recent deglaciation responded to changes in the climate equivalently (Table S2). A surface ice velocity study (Table S2) confirmed a similar response-time of these glaciers (Garg et al., 2019). Geomorphological features determining glacier hypsometry primarily regulate the response of an individual glacier to changes in the climate. Thus, we prepared hypsometric curves of these four benchmark glaciers (Fig. S1), which were convex for the DOK and CHO glaciers, while they were concave for the TIP and DUN glaciers. These curves and other similar glacio-morphological indices (Garg et al., 2017, 2019) (Table S2) provide a reasonable basis to compile these individual mass balance time-series (Shekhar et al., 2017; Bandyopadhyay et al., 2019).

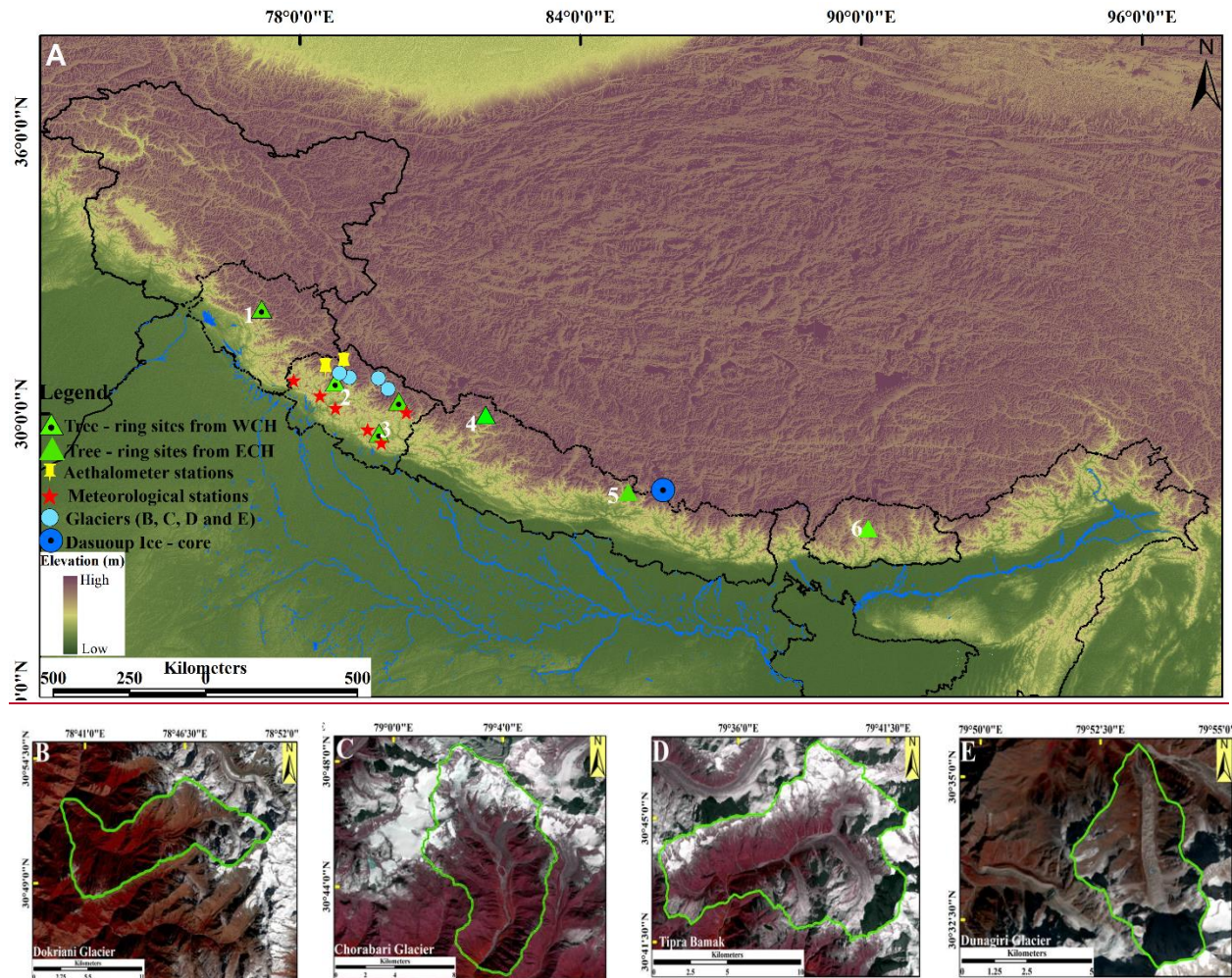


Figure 1. (A) The study region at the transitional climate zone of central-western Himalaya (WCH) showing tree-ring sampling sites, meteorological and aethalometer stations and four benchmark glaciers of the Uttarakhand Himalaya (B: Dokriani Glacier; C: Chorabari Glacier; D: Tipra Bamak; E: Dunagiri Glacier). Tree-ring sites from WCH include: (1) Manali (Sano et al., 2017),

(2) Uttarakashi (Singh et al., 2019), and (3) Jageswar (Xu et al., 2018). 'Dasuopu Ice-core' site in the eastern part of central Himalaya (ECH) has been indicated as blue dotted circle (Thompson et al., 2000), while tree-ring sites of ECH are: (5) Ganesh (Xu et al., 2018), and (6) Bhutan (Sano et al., 2013). The fourth tree-ring site ('Humla', Sano et al., 2011) has been indicated between WCH and ECH.

2.3 Tree-ring data

The three tree species utilized in this study are ubiquitously distributed species throughout the central western Himalaya have
140 been used earlier to reconstruct past climatic variations. The collected species occupy both aspects of a glacier valley, stretching
from near treeline to down-slope towards the valley. About 20 to 30 increment core samples of healthy tree individuals (to
minimize the influence of non-climatic factor on growth) were collected from higher elevation sites (2500 - 3800 m asl) from
two representative glacial valleys (Dokriani: DOK and Pindar: PIN) encompassing the basin in the Indian central Himalaya
(Fig. 1). Tree-ring isotopic signals (particularly $\delta^{18}\text{O}$) are coherent over a large area, as shown by high inter-species and inter-
145 site correlations in the Himalaya (Sano et al., 2012, 2013, 2017; Xu et al., 2018; Grießinger et al., 2019; Table S1). Recently,
Singh et al. (2019) reconstructed regional ISM precipitation derived from $\delta^{18}\text{O}$ chronologies of the same three tree species
from the DOK valley, and found high inter-species and inter-site correlations. Due to unavailability of long-term tree-ring
stable isotope records from PIN valley, we utilized $\delta^{13}\text{C}$ chronologies of the three tree species from the DOK valley.

In summary, we adopted a methodology to reconstruct glacier mass balance history from tree-rings that was successfully tested
150 before (Nicolussi and Patzelt, 1996; Duan et al., 2013; Zhang et al., 2019). We used standard dendrochronological methods
and techniques to develop tree-ring width (TRW) and stable isotope chronologies. Then, we calibrated the climate response
using linear regression models, and tested the reliability of our reconstruction. The leave-one-out cross-validation method
(LOOCV; Michaelsen, 1987; Yadav and Bhutiyani, 2013; Duan et al., 2013; Zhang et al., 2019) was used to verify our
reconstruction, given the relative shortness of glacier mass balance data (23 years: 1982-2013 after omitting gap years of 1990-
155 1992, 1996, 1997, 2001-2003 and 2011) (Table S3).

2.3.1 Tree-ring width chronology development

Two core samples per tree were collected at breast height using 5.15 mm diameter increment corers. Standard
dendrochronological procedures (Fritts, 1976; Holmes, 1983) such as mounting and surface smoothing were applied to render
the ring boundaries clearly visible. [TRW of the samples](#) was measured at a resolution of 0.001 mm using a LINTAB™ system
160 interfaced with a computer. Cross-dating was performed by matching variations in ring-widths in all cores to determine the
absolute age of each ring. Dating and ring-width measurement quality control was conducted using the COFECHA computer
program (Holmes, 1983). [Coherent](#) growth pattern between species revealed a common regional climate signal affecting
growth of the trees. However, TRW chronologies of all species [only showed a weak correlation](#) with glacier mass balance
data, [and hence were not used for any reconstruction](#) efforts.

165 2.3.2 Stable carbon isotope chronology development

Five trees per species were selected for stable isotope analyses based on best TRW inter-series matches. Each year's growth-rings were dissected with precaution with a sharp scalpel under the microscope. To remove any possible juvenile effect, the innermost approximately 30-40 rings of each tree core were omitted from the analyses. Wood samples were grounded using an ultracentrifuge mill (Retsch ZM1). Extraction of cellulose from whole wood and carbon isotope analysis was carried out at the Institute of Geography, University of Erlangen-Nuremberg, Germany. Cellulose was extracted from the wood samples using the method of Wieloch et al. (2011). Isolated cellulose was homogenized using an ultrasonic method (Laumer et al., 2009) and freeze-dried. Before the pooling procedure, we checked co-relatedness in all five individual time series at 20-year intervals in the entire chronology. About 270 µg of cellulose was weighed into tin capsules with a micro balance (ME36S, Sartorius, Germany). The carbon isotope analyses were performed with an elemental analyzer (NC 2500, Carlo Erba, Italy) linked to an isotope-ratio-mass spectrometer (IRMS; DeltaPlus, Thermo-Finnigan, Germany). Prior to isotope analyses, samples were thoroughly dried in a vacuum drying cabinet at 60°C. Isotope values were calibrated with international (IAEA-CH7, USGS-41) and laboratory standards (peptone). The analytical precision was equal to or better than 0.2 ‰. Carbon ($\delta^{13}\text{C}$) values of samples were calculated by comparison with isotope ratio-predetermined peptone and cellulose lab standards and certified international isotope standards (IAEA-601, IAEA-602, IAEA-CH7, USGS-41), which were inserted frequently in the course of sample measurements. Isotope ratios are presented in the common δ notation against PDB as:

$$\delta^{13}\text{C} = \left[\frac{\left(\frac{^{13}\text{C}}{^{12}\text{C}}\right)_{\text{sample}}}{\left(\frac{^{13}\text{C}}{^{12}\text{C}}\right)_{\text{PDB}}} - 1 \right] \times 1000 (\text{‰})$$

The final tree-ring carbon isotope chronology was corrected to incorporate isotopically light carbon released by the burning of fossil fuels and increasing CO₂ concentration, as proposed by McCarroll and Loader (2004) and McCarroll et al. (2009). The correction procedure applied here has the advantage of being objective, as it effectively removes any declining trend in the $\delta^{13}\text{C}$ series post 1850 CE, which is attributed to the physiological response to increased atmospheric CO₂ concentrations (McCarroll et al., 2009).

2.4 Statistical analyses

Tree growth–climate relationships were analysed applying simple Pearson correlation analysis. The relationship with glacier mass balance was analysed using the pair-plot correlation package 'Performance Analytics' (Carl et al., 2010) in *R* (Table S4, S5, Fig. S3). Correlations were computed between monthly temperature and rainfall data and the tree-ring $\delta^{13}\text{C}$ chronology for a window from the previous year's October to the current year's September.

To better visualize the comparison between our reconstructed glacier mass balance time-series and other hydroclimatic reconstruction series from the monsoon dominated central Himalayan region (Fig. 1), data time-series were standardized using Z-scores and smoothed with 11-year fast Fourier transform to highlight common climate signals.

195 Based on correlation analysis, a linear regression model (Briffa and Jones, 1990, Cook et al., 1994) was used to perform the reconstruction using LM module in *R* (ggplot2 package, Wickham, 2016). The leave-one-out cross-validation method (LOOCV; Michaelsen, 1987) was used for the entire calibration period (1982–2013) and to verify the reconstruction (Table S3). This method is most suitable when the length of observed records is short (Shah et al., 2013; Shekhar et al., 2017; Yadav and Bhutiyani, 2013; Vehtari et al., 2017; Zhang et al., 2019). In this method, each observation is successively withdrawn; a
200 model is estimated on the remaining observations, and a prediction is made for the omitted observation. The LOOCV analysis was performed using package 'caret' (Kuhn et al., 2015). Rigorous statistics, including sign test, the reduction of error (RE), and the correlation coefficients were calculated to evaluate the similarity between observed and estimated values. Sign test measures the degree of association between two series by counting the number of agreements and disagreements. The series are highly correlated if the number of similarities is significantly larger than the number of dissimilarities. The RE statistic
205 provides a rigorous test of the association between actual and estimated series. Any positive value indicates the predictive capability of the model. A positive RE is an evidence of a valid regression model (Fritts, 1976). In addition, other rigorous statistics, viz., root mean square error, coefficient of efficiency (CE), and Durbin–Watson (DW) test were carried out to evaluate the linear regression model (Table S3).

Spatial and temporal correlations (moving correlations) were used to identify the coherence between reconstructed mass
210 balance and gridded ($0.5^\circ \times 0.5^\circ$) temperature, precipitation, SST, ENSO, ENSO-Modoki, PDO, and IOD for the studied region in the central Himalaya. The variability of the climate and glacier mass balance reconstruction in the frequency domain was investigated using the multi-taper method (MTM) of spectral analysis (Mann and Lees, 1996) and wavelet transform (Grinsted et al., 2004) to identify periodicities and their temporal variability in the reconstructed data.

3 Results and discussion

215 3.1 Annual glacier mass balance reconstruction

The detailed results on analysed relationship between $\delta^{13}\text{C}$ and compiled glacier mass balance as well as with available climate datasets are presented in Table S4 and S5. Descriptive statistics of $\delta^{13}\text{C}$ chronologies and inter-species correlation (for common period) are shown in Table S1. Uncorrected and corrected $\delta^{13}\text{C}$ chronologies (McCarroll and Loader, 2004) of the PFTs are illustrated in figure S6. The mean difference in the isotopic composition of the two conifer species is $\sim 0.53\text{‰}$ (*Abies pindrow*,
220 1743-2015: $-22.19 \pm 0.7\text{‰}$; *Picea smithiana*, 1920-2015: $-22.72 \pm 0.65\text{‰}$). The mean $\delta^{13}\text{C}$ value of broadleaf deciduous species (*Aesculus indica*) is $-24.31 \pm 0.82\text{‰}$. The difference ($1.6 - 2.1\text{‰}$) between $\delta^{13}\text{C}$ time-series of two PFTs indicates a higher level of isotope discrimination in the broadleaf species relative to conifers. Further, break-point analysis indicated 1954 as a year of change in the isotopic composition. Irrespective of the PFTs, a mean $\sim 5\text{‰}$ decline in isotopic composition was noted after 1954 relative to the pre-1950s level (Fig. S6). For the broadleaf species, slopes of the trends for the periods prior
225 and after 1954 are -0.001‰ yr^{-1} and -0.032‰ yr^{-1} , respectively. For the conifers, they are -0.0007‰ yr^{-1} and -0.025‰ yr^{-1} , respectively ($P < 0.001$). $\Delta^{13}\text{C}$ time-series of broadleaf species showed an increasing trend since 1954, with an average rate of

0.15 ‰ yr⁻¹, while it remained stable for the conifers (0.003 ‰ yr⁻¹) (Fig. S6). Nevertheless, a significant and positive inter-species correlation exists between them. This indicates an influence of common and coherent climatic factors on the physiological processes. Climate-response functions indicate that for both PFTs, correlation strength between $\delta^{13}\text{C}$ and mean annual temperature (MAT) or mean annual precipitation (MAP) remained similar (MAT; *Abies pindrow*: $r = -0.215$, $P < 0.05$, $n = 66$; *Aesculus indica*: $r = -0.281$, $P < 0.05$, $n = 66$; *Picea smithiana*: $r = -0.405$, $P < 0.001$, $n = 66$), (MAP; *Abies pindrow*: $r = 0.243$, $P < 0.05$, $n = 66$; *Aesculus indica*: $r = 0.115$, $P < 0.05$, $n = 66$; *Picea smithiana*: $r = 0.185$, $P < 0.05$, $n = 66$). Results on monthly and seasonal climate-response function analyses are provided in supplementary material (Fig. S3, Table S5).

A weak correlation between TRW and glacier mass balance could arise due to sensitivity issues (Bunn et al., 2019). At high-elevations in a valley environment, temperature and precipitation signals mix and make TRW records difficult to interpret (Bunn et al., 2019). In view of this, we resorted to tree-ring isotopes ($\delta^{13}\text{C}$) of the species that are known to be sensitive to climate. Interestingly, we found a strong correlation only between $\delta^{13}\text{C}$ of our studied conifer species and compiled glacier mass balance (*Abies pindrow*: $r = 0.596$, $P < 0.001$, $n = 23$ and *Picea smithiana*: $r = 0.631$, $P < 0.001$, $n = 23$). The correlations are strong enough to establish a significant calibration model (Shah et al., 2013; Shekhar et al., 2017; Yadav and Bhutiyani, 2013; Vehtari et al., 2017; Zhang et al., 2019). In contrast, correlation with the deciduous species (*Aesculus indica*: $r = 0.343$, $P = 0.1101$, $n = 23$) is weak during summer (April-September) and non-significant during winter. This could be due to a lack of storage of winter-time climate signals, as the species remains physiologically active only during wet-warm period from April to September. Therefore, we utilized both evergreen conifer species for our reconstruction (Table S4). A linear regression model was employed for the reconstruction of annual glacier mass balance (GMB) over the past 273 years and the corresponding empirical equation is:

$$\text{GMB} = 8.4526 + 0.3839 * \delta^{13}\text{C}_{\text{conifers}}$$

Where, $\delta^{13}\text{C}_{\text{conifers}}$ is the mean chronology of *Abies pindrow* and *Picea smithiana* and GMB is annual glacier mass balance (meter water equivalent; m w.e.). The detailed model statistics are presented in Table S3. Model and calibration-verification statistics indicate the reliability and strength of our reconstruction model (Table S3; Fig. S4; Fritts, 1976; Vehtari et al., 2017). Validation tests including the number of sign agreements between the reconstructed series and observed mass balance records, and cross-correlation between reconstruction and measurements are significant ($P < 0.001$) (Fig. S4). However, the error estimates are based on measured mass balance data of only 23 years (1982–2013, with gap of few years), so a possibility of uncertainty still exists in the reconstruction, particularly during the pre-observation period. Nevertheless, the use of sensitive isotope chronology ($\delta^{13}\text{C}$) and the combination of two conifer species in this study may help to minimize several factors responsible for higher uncertainty, such as sensitivity issues, decreasing sample size and temporal variability, which is unavoidable with TRW.

3.2 Three major phases in the mass balance dynamics

Historical records of glacier change are rare from the Himalaya. However, available studies provide evidence that the monsoon-influenced southeast Tibetan Plateau (TP) glaciers and those of the central Himalaya have responded synchronously to the

260 change in climate. In contrast, glaciers in the western regions of the Himalaya-Tibet orogen behaved asynchronously (Solomina
et al., 2016; Owen et al., 2008; Kaspari et al., 2008; Liu et al., 2013; Hochreuther et al., 2015; Xu et al., 2012; Bräuning et al.,
2006). Studies highlight the relative importance of two moisture delivery systems (westerlies and Asian summer monsoon) in
driving regional glacier fluctuations; how variations in moisture delivery systems have changed at millennial to glacial-
interglacial timescale and their impact is even perceptible at interannual to decadal timescale (Hou et al., 2017, Mölg et al.,
265 2014).

In a gross regional sense, the current state-of-the-knowledge suggests that since the last glacier advance (LIA: 1500 – 1850
CE) glaciers are in a general state of retreat, whereby the role of regional climate in regulating regional glacier fluctuations
has increased gradually (Mayewski and Jeschke, 1979; Mayewski et al., 1980). Therefore, across the Himalaya this period
(1850s onwards) is characterized by dominance of retreat, advance, and/or standstill regimes (Mayewski and Jeschke, 1979;
270 Mayewski et al., 1980; Bolch et al., 2012; Rowan, 2016; Solomina et al., 2016). Available records from the central Himalaya
indicate a state of glacier retreat since the 1850s, regardless of the glacier type (Mayewski and Jeschke, 1979), with a recent
acceleration in ice mass loss as indicated by remote sensing studies (Maurer et al., 2019; Bandyopadhyay et al., 2019).

Our 273 yearlong GMB reconstruction agrees with the general retreat of glaciers since the mid-19th century (Fig. 2). Smoothing
of the reconstruction with an 11-year moving average and break-point analyses revealed three distinguishable main phases:
275 (1) a phase of positive mass balance up to ~1870 CE, coincident with the LIA in the central Himalaya; (2) reorganisation of
Northern Hemisphere atmospheric circulation following the LIA and progressively increasing influence of regional climate
could have resulted in a phase of near zero or stable mass balance that lasted up to 1960s and (3) a phase of accelerated ice
mass loss since the 1960s. The latter phase corresponds to a global glacial retreat and can be attributed to increasing
temperatures, combined with a decline in ISM and westerly circulations, and anthropogenic climate change (e.g., Bollasina et
280 al., 2011).

Hydroclimatic evidence such as regional and composite tree-ring $\delta^{18}\text{O}$ chronologies from the monsoon-influenced region (from
southeast TP to central Himalaya) (An et al., 2014; Singh et al., 2019; Griebinger et al., 2011; Wernicke et al., 2017; Liu et al.,
2014; Sano et al., 2012, 2013, 2017; Shi et al., 2012; Xu et al., 2018) and speleothems and Dasuopu ice-core record from the
central Himalaya (Thompson et al., 2000; Kaspari et al., 2008; Denniston et al., 2000; Kotlia et al., 2012; Kotlia et al., 2015;
285 Liang et al., 2015) show that regional climate changed since the 1860s, with a reorganisation of hemispheric atmospheric
circulation. Consequently, regional hydroclimate abruptly shifted towards a drier phase concurrent with the changes in
atmospheric circulation. These records show a spatially coherent signal and serve as a validation test of the accuracy of our
GMB reconstruction (Fig. 2). Particularly, tree-ring and speleothem $\delta^{18}\text{O}$ records (Singh et al., 2019, Sano et al., 2012, 2013,
2017; Xu et al., 2018; Kotlia et al., 2015; Liang et al., 2015) from our study region (Fig. 1) indicate increased westerly
290 precipitation prior to 1860-70 CE (Murari et al., 2014; Yang et al., 2008), which resulted in a phase of positive mass balance.
Increased winter snowfall could be anticipated from a southward shift of southwesterly winds due to reduced Northern
Hemisphere air temperatures during the LIA (Rowen, 2016). The stronger influence of mid-latitude westerlies in driving
glacier variability in monsoonal high Asia (Mölg et al., 2014) may have led to higher snowfall and positive mass balance prior

to 1870s as observed in our reconstruction (Fig. 2). Regional temperature reconstructions (Zhu et al., 2011, Borgaonkar et al.,
295 2018, Yadav et al., 2011) also suggest a cold and cloudy climate prior to 1850, which was followed by warmer and sunnier
climate thereafter (Liu et al., 2014; Xu et al., 2012). Indeed, a [brief phase of negative GMB trend during the 1770s to 1790s
could be the result of warmer winter temperatures](#) (Huang et al., 2018) and below-average snow accumulation during mega-
droughts as observed around this period (Cook et al., 2010; Thompson et al., 2000; Kaspari et al., 2008) (Fig. 2). The close
correspondence between reconstructed mass balance and regional hydroclimate reconstructions supports the notion of
300 hemispheric synchronicity to climate change prior to 1860-70 CE (Solomina et al., 2016). However, gradual changes in
regional oscillations in temperature and moisture delivery sources in the Himalaya-Tibet orogen, particularly a change in the
interplay of ISM and westerlies could have induced regionally distinguished climate zones with specific behaviour of glacier
dynamics (section 3.3).

Glacial history during the late-Holocene and LIA in our studied region (Murari et al., 2014; [Saha et al., 2019](#)), and the above
305 mentioned proxy records and climate dynamics studies (Mölg et al., 2014; Khan et al., 2019) indicate an out-of-phase
relationship between the westerlies and ISM influence. Therefore, regardless of the strength of the westerlies (Joswiak et al.,
2013), ISM weakening since the 1860s tended to shift the regional hydroclimate towards a drier and a warmer climate. This
could have favoured ice mass loss that led to a slightly negative mean mass balance (-0.046 ± 0.134 m w.e., \pm SD) during the
middle phase (1870-1959) in our reconstruction. Timing of our reconstructed glacier advancement or recession is consistent
310 with records of cold periods during the early 19th (1815–1825) and 20th century (1900–1910) (Zech et al., 2003). A brief period
of declining mass balance from 1865 to 1885 could be ascribed to warm winter temperatures observed during 1848 to 1894
(Huang et al., 2018), and the late Victorian Great Drought during 1875-1878 (Singh et al., 2018; Cook et al., 2010). The
slightly negative but stable mean GMB observed from 1920 to 1960 is consistent with reported mass balances from the
Himalaya (Bolch et al., 2012), and pluvial conditions from enhanced ISM activity during 1920 to 1960 (Sinha et al., 2015).

315 Severe glacial mass loss (-0.437 ± 0.191 m w.e.) since the 1960s corresponds to a further and prominent shift towards drier
conditions arising out of the weakening of both the ISM and westerlies (Dahe et al., 2000; Hunt et al., 2019; Basistha et al.,
2008, Singh et al., 2019, Sano et al., 2012, 2013, 2017). Increasing regional and global temperatures coupled with progressive
regional industrialization may have exacerbated the retreat rates. We observed a doubling of average ice mass loss rate (-0.577
 ± 0.022 m w.e. year⁻¹) (\pm SE) in the last thirty years compared to 1960-1985 (-0.275 ± 0.022 m w.e. year⁻¹). An extensive
320 remote sensing-based study encompassing the last forty years observed a consistent and similar trend of glacier loss across the
Himalayan transect (Maurer et al., 2019). For our study region, Bandyopadhyay et al. (2019) computed mean weighted mass
balance as -0.61 ± 0.04 m w.e. year⁻¹ (2000-2014), while we observed -0.65 ± 0.02 m w.e. year⁻¹ (excluding the very large-
sized Gangotri Glacier). Similarly, several geodetic mass balance estimates from the western-central Himalayan region are
comparable (-0.4 to -0.8 m w.e. year⁻¹) to our results and are within the error limits of earlier studies (DCCC, 2018;
325 Bandyopadhyay et al., 2019; [Maurer et al., 2019](#)).

In recent decades, along with the decreasing intensity of moisture influx (ISM and WD), the importance of regional temperature
in regulating mass balance behaviour has been gradually increasing (Fig. 3). Several studies from the eastern Himalaya-Tibet

330 orogen have emphasised on the increased influence of regional temperature in determining mass balance behaviour (Bräuning, 2006; Yang et al., 2008). Our results confirm historical observations made in the early 19th century (without the availability of geochronological data to constrain the timing) that the central Himalayan glaciers have been receding since 1850 CE (Mayewski and Jeschke, 1979; Rowen, 2016). The rate of ice mass loss accelerated since the 1960s and almost doubled in the last thirty years with respect to pre-1985. Here, our results contradict the notion of UNEP (2009) that 'despite the widespread shrinkage of the Himalayan glaciers in area and thickness, the nature of shrinkage has not changed significantly over the last 100 years' (UNEP, 2009).

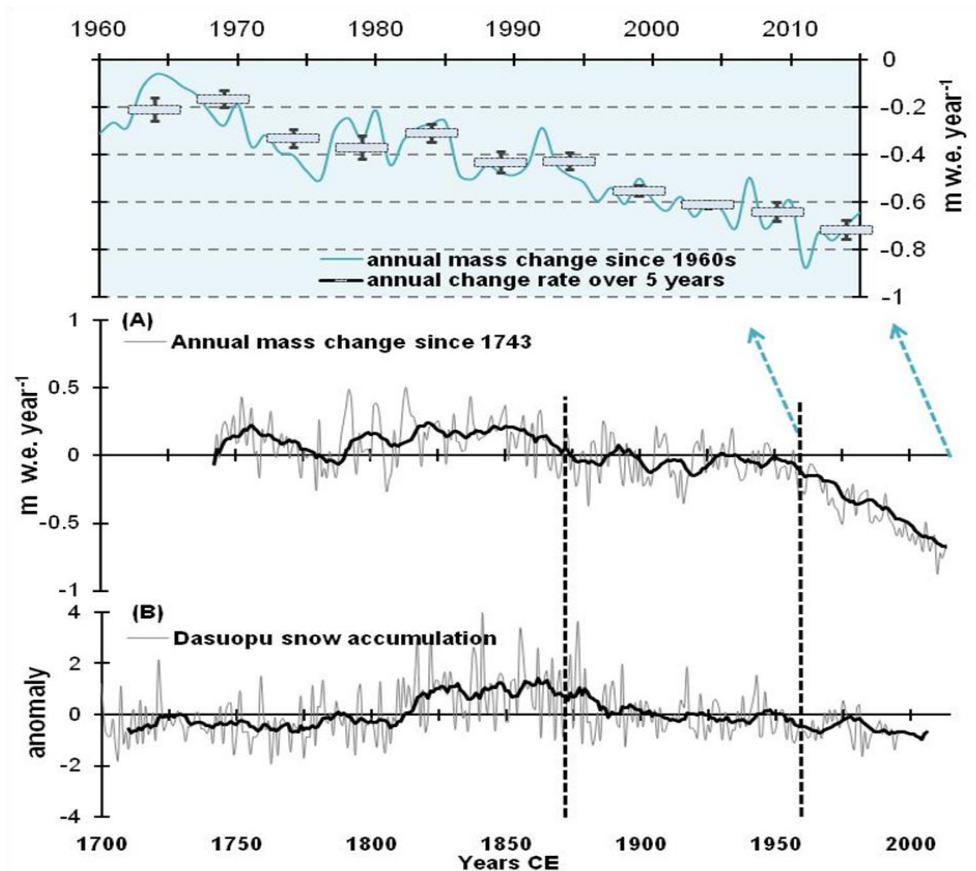


Figure 2. (A) Reconstructed glacier mass balance for the western-central Himalaya (WCH) since 1743 AD (coloured inset indicates annual and pentadal mass change rate since the 1960s with std. errors). (B) Annual snow accumulation record derived from Dasuopu Ice Core from the central eastern Himalaya (Thompson et al., 2000). Dark lines indicate 11-year moving averages. Vertical dashed lines are results of break-point analyses that reveal three major phases in the reconstruction.

335 3.3 Increasing regional heterogeneity

Substantial evidence exists from the monsoon-influenced Himalaya-Tibet orogen (Fig. 1) suggesting that **LIA glacial fluctuations** were more or less synchronous prior to 1850s (Hochreuther et al., 2015; Bräuning, 2006; Yang et al., 2008; Xu et

al., 2012; Mayewski and Jeschke, 1979; Rowen, 2016, Owen et al., 2008). Following the LIA, a global readjustment in atmospheric circulation resulted in a southward shift of the Inter Tropical Convergence Zone (ITCZ). It broadly affected the Asian summer monsoon and the region progressively moved towards a drier phase, subsequent to a breakdown in ITCZ and Northern Hemisphere temperature relation since the mid-nineteenth century (Reidely et al., 2015; Xu et al., 2012). Nevertheless, the strength of the westerlies in the region remained unaffected until the mid-twentieth century (Joswaik et al., 2013; Hunt et al., 2019; Khan et al., 2019). Thus, depending upon the geographical location and proximity to the oceans, a distinct regionality developed, with a decline in summer monsoon precipitation. The middle phase (mid-nineteenth to mid-twentieth century) in our reconstructed GMB and in the annual snow accumulation recorded in Dasuopu ice core support this point of view (Fig. 2). During this period, cryospheric mass balance turned slightly negative, with a gradual decline in summer precipitation, which was more prominent towards the western part (Fig. 2, 3).

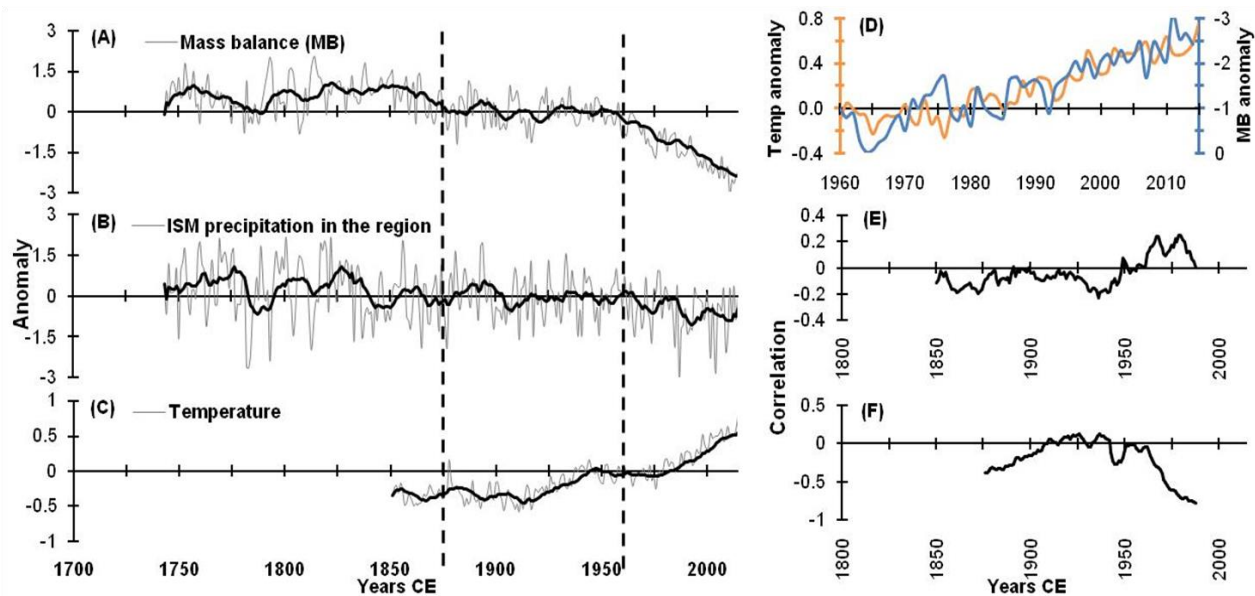


Figure 3a. (A-C) Coherence in the anomalies (Z-scores) of glacier mass balance, summer monsoon precipitation (Singh et al., 2019) (B), and CRU temperature (C). Dark lines indicate 11-year moving averages. (D) Enhanced correlation between glacier mass balance and temperature after the 1960s and the effect of the global warming hiatus of the late 1990s. (E-F) 51-year running correlations of glacier mass balance with precipitation (Singh et al., 2019) (E), and temperature (HadCRUT4) (F).

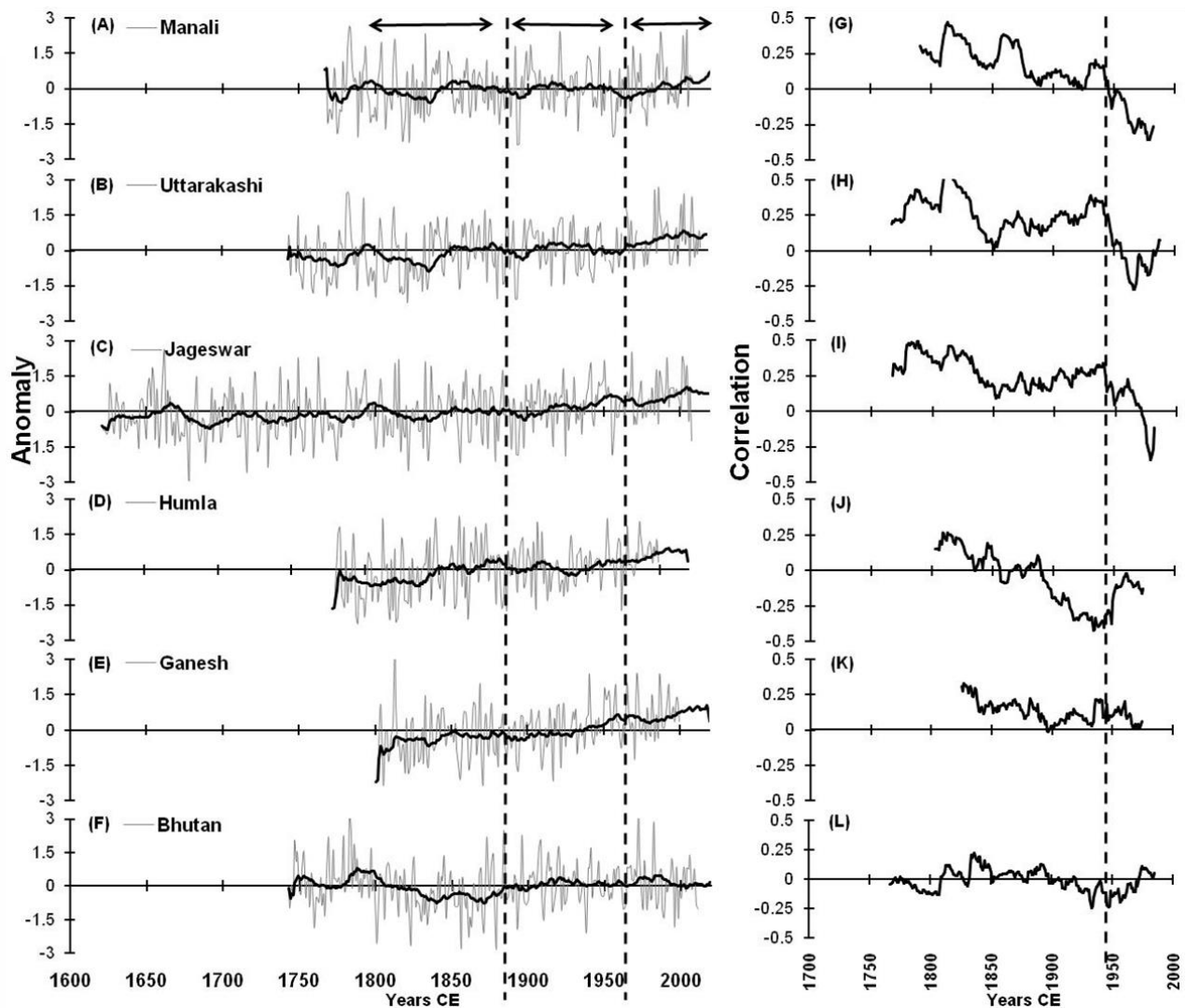


Figure 3b. (A-F) Anomalies (Z-scores) of six central Himalayan tree-ring $\delta^{18}\text{O}$ series (Manali: Sano et al., 2017; Uttarakashi: Singh et al., 2019; Jageswar: Xu et al., 2018; Humla: Sano et al., 2012; Ganesh: Xu et al., 2018; Bhutan: Sano et al., 2013). Dark lines denote 21-year moving averages. (G-L) Corresponding right panels indicate low frequency temporal correlations (51-year running correlations) with reconstructed glacier mass balance. Different behaviour of regional $\delta^{18}\text{O}$ chronologies, particularly a phase shift in WCH chronologies (Manali, Uttarakashi and Jageswar) is prominent after the mid-twentieth century (dashed vertical line).

Dendroglaciological and paleoclimate studies suggest that on a centennial timescale temperature changes remain the prime factor for glacier fluctuations rather than precipitation changes (Yang et al., 2008; Wang et al., 2019). After the mid-twentieth century (1960s), the role of temperature increased in determining mass balance behaviour, concurrent with a further decline in moisture influx both from ISM and WD (Roxy et al., 2015, 2017; Dahe et al., 2000; Hunt et al., 2019; Basistha et al., 2008, Singh et al., 2019, Sano et al., 2012, 2013, 2017). Correlation analysis indicate a high coherence of GMB dynamics with CRU temperature data after the 1960s ($r = -0.78$, $P < 0.001$). Interestingly, reconstructed GMB even sensitively responds to the

effect of slowdown in global temperature increase since the late 1990s (warming hiatus) (Fig. 3a). In contrast, correlations
355 with gridded precipitation including that of northern India and ISM rainfall indicate a low association. However, we observed
a high coherence (at both low and high frequencies) with local $\delta^{18}\text{O}$ reconstructed summer monsoon precipitation derived from
several regionally dominant tree species (Singh et al., 2019) (Fig. 3a). Moreover, we also found a tight correspondence with
regional (Fig. 1) tree-ring $\delta^{18}\text{O}$ chronologies; the strength of which declined towards the eastern central Himalaya (Fig. 3b,
Table S6). Results indicate an abrupt change in hydroclimate after the mid-twentieth century, which is particularly prominent
360 in the western part of the central Himalaya. Moving correlations (51-year) between GMB and tree-ring $\delta^{18}\text{O}$ chronologies
indicated a phase shift in the western part, which is more prominent relative to the eastern central Himalaya after the 1960s
(Fig. 3b).

Regional tree-ring $\delta^{18}\text{O}$ chronologies constitute sensitive records that exemplify regional hydroclimatic heterogeneity and
show that the drivers of glacier fluctuations in the western part of the central Himalaya (WCH) are somewhat different from
365 the eastern central Himalaya (ECH) (Fig. 3b). Here, we contend that caution should be applied when referring to the glaciers
in WCH as summer-accumulation type glacier. We showed that over the WCH (compared to ECH), the westerlies still have a
significant impact on annual mass balance behaviour. Earlier studies confirm that glaciers in the ECH and further east are
mainly fed by summer monsoon precipitation and thus are undisputedly classified as summer-accumulation type glaciers
(Sakai and Fujita, 2017). However, our results reveal a contrasting hydroclimate relation between WCH and ECH, with an
370 opposite behaviour of moving correlation patterns (51-year) between records of regional glacier/snow accumulation and tree-
ring $\delta^{18}\text{O}$ series (Fig. 4). When comparing the $\delta^{18}\text{O}$ chronology of the deciduous species (*Aesculus indica*) growing in WCH,
we find a correlation pattern strikingly similar to ECH, rather than to WCH. In contrast to conifer species that take up snowmelt
water containing winter precipitation isotopic signals in the early growing season (Huang et al., 2019), the broadleaf deciduous
species takes up soil water mostly after leaf flush and full canopy development in May (Negi, 2006). At this time of the year,
375 the snowmelt signal may already be gone, so the species does not reflect the winter precipitation signal. These results support
our interpretation that the winter westerlies have a strong impact on the annual mass balance of glaciers in WCH compared to
ECH. The correlation patterns indicate an abrupt phase change in WCH since the 1960s, while correlation in ECH remains
stable, suggesting a super-positioning role of temperature and differential precipitation seasonality derived from the westerlies
and the two branches of the ISM (AS and BoB) (Fig. 2, 4).

380 Analyses of tree-ring $\delta^{18}\text{O}$ records and water stable isotope ratios from the central Himalaya specify greater influence of the
Arabian Sea branch of the ISM in WCH, the strength of which declines towards the eastern Himalaya (Sano et al., 2017).
While, the climate in ECH is dominantly regulated by the Bay of Bengal branch, along with some influence of East Asian
summer monsoon (Sano et al., 2013; 2017; Sinha et al., 2015; Liu et al., 2014). At the north-western periphery of ISM
incursions in WCH, moisture flux from the Arabian Sea competes with the influence from the Bay of Bengal (Sano et al.,
385 2017). Thus, the role of the Arabian Sea branch increases in WCH, particularly when the Bay of Bengal branch is relatively
weak (Sano et al., 2017).

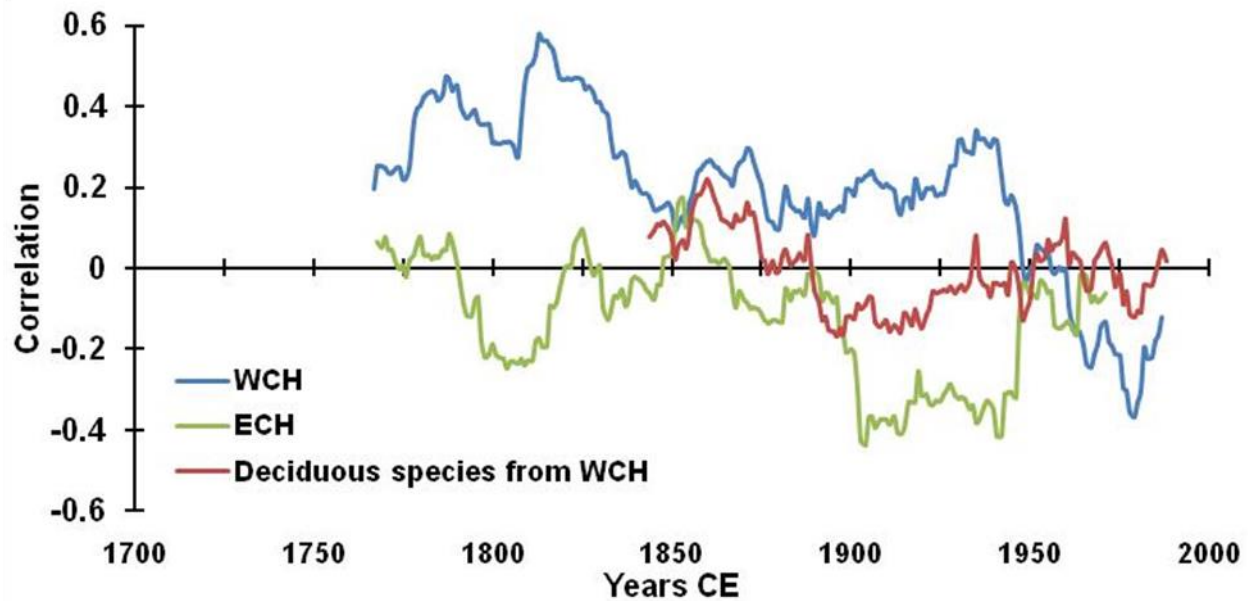


Figure 4. Low frequency correlations between regional cryospheric dynamics and hydroclimate. Blue line indicates 51-year moving correlations between reconstructed glacier mass balance (GMB) and regional tree-ring $\delta^{18}\text{O}$ (Manali, Uttarakashi and Jageswar) from western part of the central Himalaya (WCH). The abrupt phase shift since the 1960s is peculiar for WCH. Green line indicates 51-year moving correlations in the eastern central Himalaya (ECH) between annual snow accumulation from Dasuopu ice-core (Thompson et al., 2000) and regional $\delta^{18}\text{O}$ (Ganesh and Bhutan). While, the red line indicates 51-year moving correlations between GMB and tree-ring $\delta^{18}\text{O}$ of a dominant deciduous species (*Aesculus indica*) growing in WCH. Its similarity in the coherence with that of ECH is remarkable and illustrative of the summer monsoon influence during the annual growing period (April-September).

It is pertinent here to mention about differential influence and behaviour of the two branches of the ISM. Although the Arabian Sea (AS) and the Bay of Bengal (BoB) are part of the Indian Ocean, crucial ocean-atmosphere interaction experiments have shown that they possess distinctly different features (Saikranthi et al., 2019). They are strongly different in terms of sea surface temperature (SST) and background atmosphere and related precipitating systems. The monsoonal winds and low-level Findlater jet are stronger over the AS than BoB. Tropospheric thermal inversions are more frequent and stronger over the AS than BoB. The variability in SST is larger over the AS than over the BoB. The SST in the AS cools between 10° and 20° N during the monsoon season, whereas warming occurs in all oceans between the same latitudes (Misra et al., 2019; Saikranthi et al., 2019; Roxy et al., 2015). Thus, AS plays a predominant role in regulating the ISM rainfall variability, which appears to be particularly impactful for the prevailing climate in the WCH.

Compelling evidence suggests increased warming over the Indian Ocean since the mid-twentieth century. However, warming over the AS is monotonous for more than a century, at a rate faster than in any other region of the tropical oceans (Roxy et al., 2015, 2017; Misra et al., 2019). Currently, the AS is the largest contributor to the trend in global mean SST. The abnormal warming over the AS tends to weaken the land-ocean thermal contrast and hence has been implicated for a weakening of the ISM since the mid-twentieth century (Roxy et al., 2015, 2017). Besides, warming over the AS has also been shown to reduce

the magnitude of the westerlies, as their interaction enhances the moisture convergence over the AS, leading to decreased precipitation from the westerlies (Misra et al., 2019). This mechanism may explain the decline in precipitation frequency, snowfall, and total precipitation amount from the westerlies since the mid-twentieth century (Hunt et al., 2019; Das et al., 2002; Shekhar et al., 2010, Kumar et al., 2015, Khan et al., 2019). Tree-ring $\delta^{18}\text{O}$ records from Bhutan to the southeast TP (Sano et al., 2013; Hochreuther et al. 2016; Lyu et al. 2019) show more or less unaltered conditions during the 20th century. Thus, weakening of the BoB branch as indicated in some studies (Roxy et al., 2017) needs reappraisal. However, irrespective of the strength or variability of the Bay of Bengal monsoon branch, accelerated ice mass loss since 1960s could be possibly ascribed to the combined effect of a decline in moisture influx from the Arabian Sea and the westerlies.

Given the importance of the westerlies (Mölg et al., 2014) and their weakening, as reflected in the decline of the indices of the Arctic Oscillation and North Atlantic Oscillation (Hunt et al., 2019; Peings et al., 2019), we focus on El Niño-Southern Oscillation (ENSO), the Indian Ocean dipole (IOD), and the Pacific Decadal Oscillation (PDO), which are all known to strongly modulate the summer monsoon precipitation. Hydroclimatic studies from the monsoon-dominated Himalaya-Tibet orogen indicate a pervasive but temporally unstable coherence. Low frequency coherences between tree-ring $\delta^{18}\text{O}$ derived regional hydroclimatic reconstructions and the above indices of atmosphere-ocean interaction appear to strengthen in recent decades (Sano et al., 2012, 2013, 2017; Singh et al., 2019; Hochreuther et al. 2016; Lyu et al. 2019). In accordance, our results too show a strong correlation at multi-decadal timescale between tree-ring $\delta^{18}\text{O}$ chronologies available from WCH and the above indices (Fig. 5).

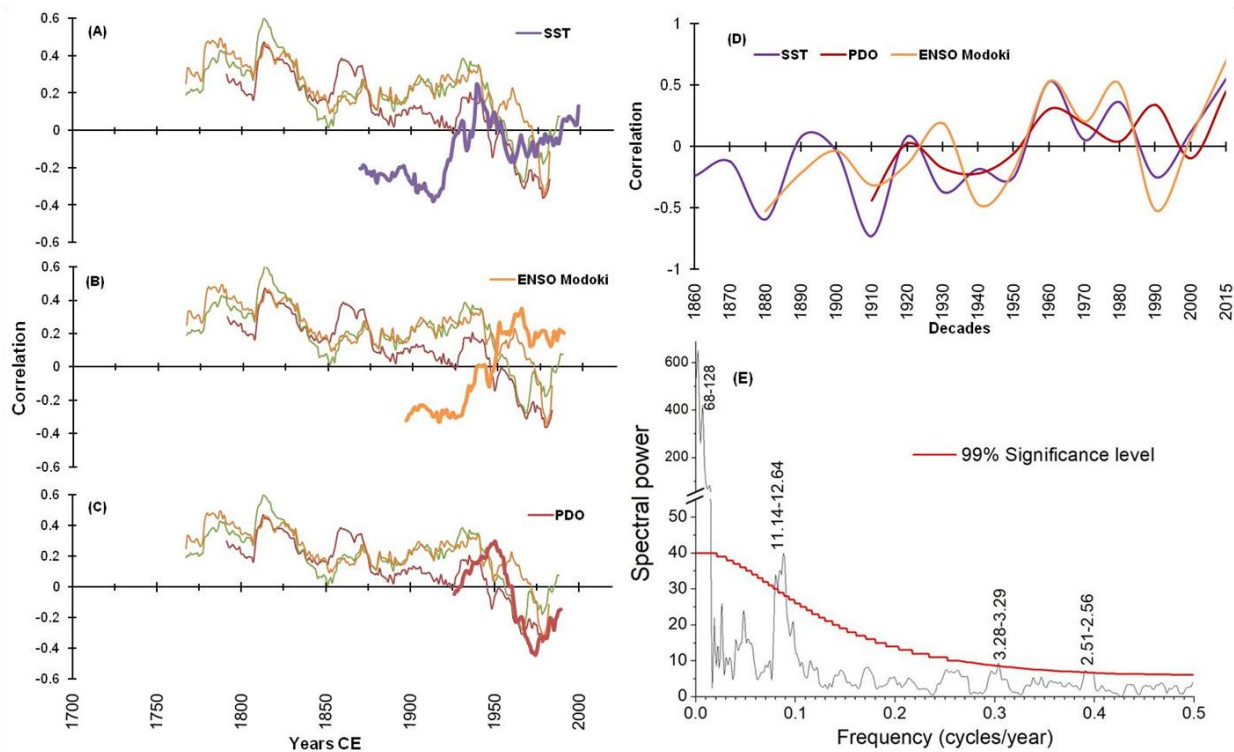


Figure 5. (A-C) Temporal correlation behaviour at multi-decadal timescale (51 years) between tree-ring $\delta^{18}\text{O}$ chronologies available from the western central Himalaya (Manali: Sano et al., 2017; Uttarakashi: Singh et al., 2019; Jageswar: Xu et al., 2018), Nino4 SST (violet line) (A), ENSO Modoki (orange line) (B), and Pacific Decadal Oscillation (PDO: red line) (C). (D) Strengthening decadal correlations between glacier mass balance and oceanic indices after the 1960s. (E) Spectral analysis plot of glacier mass balance (GMB) time-series reflecting low-frequency variations preserved in GMB reconstruction.

Tree-ring $\delta^{18}\text{O}$ chronologies from the monsoon-dominated Himalaya generally contain a 2-5 years cyclic signal, which is
420 coherent with the ENSO cycle (Xu et al., 2018, Singh et al., 2019; Sano et al., 2012, 2013, 2017). However, spectral analysis
of our GMB time-series showed significant periodicities ($P < 0.05$) at decadal and multi-decadal scales, which reflect low
frequency variations preserved in the reconstruction (Fig. 5E). Lack of high frequency periodicities indicates a minor role of
ENSO in modulating glacial hydroclimate on interannual or shorter timescale. Low periodicity was also found in a regional
reconstruction of mass balance (Shekhar et al., 2017). Cross-correlations between reconstructed GMB and Nino4 SSTs
425 revealed a weak negative correlation ($r = -0.25$, $P < 0.05$, 1901-2015). Interestingly, weak and non-significant negative
correlations between a $\delta^{18}\text{O}$ based summer monsoon rainfall reconstruction for our study region and SST (Singh et al., 2019)
during 1909-1926 and 1957-2015 coincides with a negative GMB trend (Fig. 2), while, significantly strong negative
correlations observed during 1870-1908 and 1927-1956 coincide with positive GMB trends (Fig. 2). This indicates a clear
influence of SSTs on mass balance behaviour particularly for the WCH at low frequency timescale. Wavelet coherence
430 analyses of reconstructed GMB with annual Nino4 SST revealed unstable common frequency composition in the different
series over time, indicating a wobbly linkage with the change in SSTs (Fig. S5), as observed in previous studies of regional
hydroclimate (Sano et al., 2012, 2013, 2017; Singh et al., 2019; Hochreuther et al. 2016; Lyu et al. 2019). Similarly, we noted
a weak correlation with other indices (Fig. S5). However, decadal correlations between GMB and these indices strengthen
after the 1960s (Fig. 5), indicating a negative influence of monotonous ocean warming on mass balance dynamics through
435 precipitation feedback.

A lack of strong coherence in the high frequency bands between GMB dynamics and SST indices is possible because once the
monsoon circulation sets in, the local weather begins to decouple from the circulation. There is complete absence of monsoon
footprint on regional glaciers both from atmospheric drivers and from mass-balance perspectives (Mölg et al., 2014). Point-
scale micrometeorological experimentation and surface energy balance analyses of a typical glacier from WCH (Pindari
440 Glacier, Fig 1) also indicate a tight land-atmosphere coupling during the summer- as well as in the winter-accumulation
seasons. The coupling turned negative and remained weak only during the transition phases (pre- and post-monsoon), making
it amenable to atmospheric perturbances (Singh et al., 2019). Thus, any repeated atmospheric alterations during the summer
monsoon season such as active or break periods may not be able to strongly influence the mass balance dynamics. However,
critical transition phases, particularly the pre-monsoon melt season has the potential to shape mass balance on decadal or even
445 longer timescale (Mölg et al., 2014; Singh et al., 2019).

The pre-monsoon season is also important for the onset of summer accumulation season (during ISM). Numerical experiments
and simulations in the Himalaya-Tibet orogen have identified seasonal changes during the pre-monsoon that lead to the onset
of ISM. The Tibetan plateau maintains a large-scale thermally driven vertical circulation, which initially remains unconnected

from the monsoon circulation. Rising motion exists only on the far western side of the Plateau during winter. Gradually, it
450 extends towards the eastern side as the pre-monsoon season progresses. The ISM onset over the region is thus an interaction
process between the plateau-induced circulation and northward migrating rain-bearing depressions from AS and BoB. It is
thus highly possible that warming-induced decline in winter-spring snow cover, particularly over the western TP could alter
this interaction process and monsoon onset. The weakening of the relationship between snow cover over the western TP and
ISM rainfall could be a possible manifestation (Zhang et al., 2019). Studies have affirmed that atmospheric conditions during
455 [the pre-monsoon season](#) are pivotal in determining mass balance even at the decadal or longer timescale (Mölg et al., 2014).
These studies also suggest anti-correlated precipitation variability between ISM and mid-latitude circulation during the pre-
monsoon season. The interaction between these large-scale circulations in this region is largely determined by the position of
thermally driven subtropical jet streams (Peings et al., 2019; Hunt et al., 2019). Thus, a possibility emerges that anthropogenic
factors influencing tropospheric warming could alter the position of jet streams and annual mass balance behaviour,
460 particularly in the transitional climate zone in the WCH.

3.4 Local forcing factors

Our study region has experienced an enhanced warming trend during pre-monsoon season since the 1960s that has amplified
in the last 2-3 decades (Lau et al., 2010; Gautam et al., 2009, 2010; Xu et al., 2009; Prasad et al., 2009). This is most likely
due to increased aerosol loading, enhanced atmospheric water vapour content (Mortin et al., 2016), and anthropogenic
465 greenhouse (CO₂) emissions. These factors increase radiative heating rates, aid to net atmospheric warming and create a
positive feedback loop to tropospheric warming. Enhanced tropospheric warming has the potential to alter the position of the
subtropical westerly jet and as described earlier, determines ISM strength by influencing the AS branch and ultimately the
glacier mass balance.

Of the local factors influencing tropospheric heating, greenhouse forcing of CO₂ emissions is pervasive. Studies suggest an
470 inverse geological relation between glaciation events and atmospheric CO₂ concentration (Willeit et al., 2019; Macdonald et
al., 2019). Causes of enhanced CO₂ concentration over the Himalaya include deforestation, increased frequency of forest fires,
regional industrialization, and emission and transport of greenhouse gases. Beside major contributions from anthropogenic
activities, sub-glacial carbonate weathering, especially sulphide oxidation process coupled to carbonate carbonation is a
potential source of CO₂ to the atmosphere. Fast kinetics associated with these processes in glacial environments is also
475 responsible for present day atmospheric CO₂ concentration (Shukla et al., 2019). [Our corrected chronologies \(\$\Delta^{13}\text{C}\$ \) \(McCarroll
and Loader, 2004\), showed an effect of rising atmospheric CO₂ concentrations on tree physiology, which was prominent for
\[the deciduous trees \\(Fig. S6\\)\]\(#\). The current regional annual radiative forcing due to CO₂ is about 1.7 Wm⁻², which is almost
fivefold to that of early 20th century. A peak in the transport of dust and greenhouse gases from the Indo-Gangetic plain occurs
during the pre-monsoon season, and we anticipate enhanced seasonal CO₂ radiative forcing during this critical transitional
480 phase.](#)

Climate sensitivity studies suggest that surface temperature change is higher for aerosols than for greenhouse gases due to its strong longwave effect (Chakraborty and Lee, 2019). The severe lack of aerosol data precludes drawing of any conclusions on black carbon induced ice/snow melting in the Himalaya. Some space-borne studies utilizing ground radiometric measurements indicate that absorbing aerosols have favoured a localized warming over the western-central Himalaya (0.26 ± 0.09 °C/decade) (Gautam et al., 2010). Related studies from Tibetan glaciers suggest that black carbon aerosol deposition is a significant factor contributing to the observed rapid glacier retreat (Xu et al., 2009; Zhao et al., 2017).

To get an estimate of radiative forcing due to ambient concentrations of black carbon aerosols over glacier environment, we utilized data of two existing aethalometer stations from our study region (Fig. 1; Gangotri glacier: $30^{\circ} 58' 48''$ N, $79^{\circ} 4' 48''$ E, 3600m asl, Negi et al., 2019; and Dokriani (DOK) glacier: $30^{\circ}51'6.86''$ N, $78^{\circ}45'8.55''$ E, 3900 m asl). Annual mean radiative forcing (at atmosphere) due to black carbon aerosols (computed as described by Dumka et al., 2016) was $+10.1 \pm 3.0$ Wm⁻² for the Dokriani glacier, and $+7.4 \pm 2.2$ Wm⁻² for the Gangotri glacier, respectively. The lower value for the Gangotri glacier could be due to its location on the leeward side. In support of these results, we found similar mean annual values and diurnal to seasonal dynamics in aerosol radiative forcing with that of sites on the southeastern TP (Zhao et al., 2017; Li et al., 2018; Zhang et al., 2017). Although we were not able to compute seasonal radiative forcing arising out of black carbon aerosols and/or dust, we anticipate many-fold enhanced pre-monsoonal radiative forcing. These observations indicate the significant contribution of the local forcing factors associated with anthropogenic climate change.

4 Conclusions

We present a 273 year-long ice mass loss record from the [Uttarakhand Himalaya](#), which is the only record of annual mass balance variability from the Himalaya so far. Utilizing coherent analyses of tree-ring stable isotope chronologies of regionally dominant tree species and [synthesizing oxygen isotope chronologies from different regional archives](#), we show that ice mass loss in the region has accelerated since the mid-20th century to its highest levels during the past 273 years. Stable isotope chronologies of three species of diverse plant functional types and well calibrated $\delta^{13}\text{C}$ -derived mass balance reconstruction indicate a mean rate of mass loss of -0.437 ± 0.025 m w.e. year⁻¹ since 1960. The reconstructed mass balance reveals three major phases. Mass balance remained positive prior to 1860-70s. Slightly negative but stable mass balance up to 1960s, and a highly negative mass balance since then. Further, our results suggest a doubling of average ice mass loss rate (-0.577 ± 0.021 m w.e. year⁻¹) in the last thirty years as compared to 1960-1985 (-0.275 ± 0.022 m w.e. year⁻¹). Isotopic and climate coherency analyses indicate that reconstruction is consistent with regional climatic variability and indicate a significant influence of the westerlies in this transitional climate zone of the central Himalaya. The current trend in ice mass loss goes along with increased anthropogenic aerosol and, CO₂ loading and with a concurrent change in climatological factors, including a decline of the westerlies and the strength of the Arabian Sea branch of the Indian summer monsoon. These results present observational support to calibrate and validate coupled regional climate-glacier models. Improvements in glacier mass-change assessments are still possible and necessary. We suggest that incorporating growth increments of shrubs growing in the alpine zone could

be complemented to provide robust estimates of glacier response to future climate scenarios and modelling studies of glacier contributions to regional runoff.

515 **Data and materials availability:** All data needed to evaluate the conclusions are present in the paper and/or the Supplementary Material. Any additional data/code related to this paper may be requested from the authors.

Author contributions: N.S. conceived and designed this study with inputs from the co-authors. N.S., J.S., A.B. & C.M. generated tree-ring isotope data. N.S. analyzed the final dataset and wrote the first draft of the manuscript. J.S. and M.S. performed reconstruction, provided climate datasets and respective analyses. All authors contributed equally to interpretation; discussion and editing of the manuscript.

Competing interests: All authors declare no competing interests.

Acknowledgements: This work was supported by the Department of Science and Technology (DST) through the ‘Centre for Glaciology (CFG) at Wadia Institute of Himalayan Geology (WIHG)’. We thank I. Burchardt, A. Beyer, and R. Höfner-Stich for isotope analyses at FAU Erlangen-Nuremberg. Staffs of the WIHG and CFG (D.P. Dobhal, Aparna Shukla, Indira Karakoti, Pankaj Chauhan and P.K. Garg) are duly acknowledged for discussion and their respective contributions. Dr. Vikram Sharma (Dept. of Geography, BHU) is kindly acknowledged for providing location figure. N.S. acknowledges DST for support under Fast-track young scientist fellowship (File No. SR/FTP/ES-166/2014). J.S. expresses sincere thanks to Director, WIHG for extending necessary facilities to carry out dendrochronological work. M.S. expresses gratitude to Dr. Vandana Prasad (Director, BSIP) and acknowledges Birbal Sahni Research Associate (BSRA) fellowship.

530 **References**

- An, W., Liu, X., Leavitt, S.W., Xu, G., Zeng, X., Wang, W., Qin, D., and Ren, J.: Relative humidity history on the Batang–Litang Plateau of western China since 1755 reconstructed from tree-ring $\delta^{18}\text{O}$ and δD . *Climate dynamics*, 42(9-10), 2639–2654, 2014.
- Azam, M.F., Wagnon, P., Berthier, E., Vincent, C., Fujita, K., and Kargel, J.S.: Review of the status and mass changes of Himalayan-Karakoram glaciers. *Journal of Glaciology*, 64(243), 61–74, 2018.
- 535 Bandyopadhyay, D., Singh, G., and Kulkarni, A.V.: Spatial distribution of decadal ice-thickness change and glacier stored water loss in the Upper Ganga basin, India during 2000–2014. *Scientific Reports*, 9(1), 1–9, 2019.
- Basistha, A., Arya, D.S., and Goel, N.K.: Analysis of historical changes in rainfall in the Indian Himalayas. *International Journal of Climatology*. 29, 555–572, 2009.
- 540 Benn, D.I., and Owen, L.A.: The role of the Indian summer monsoon and the mid-latitude westerlies in Himalayan glaciation: review and speculative discussion. *Journal of the Geological Society*, 155(2), 353–363, 1998.
- Bollasina, M. A., Ming, Y., Ramaswamy, V.: Anthropogenic aerosols and the weakening of the South Asian Summer Monsoon. *Science*, 334, 502–505, 2011.
- 545 Bolch, T., Kulkarni, A., Kääb, A., Huggel, C., Paul, F., Cogley, J.G., Frey, H., Kargel, J.S., Fujita, K., Scheel, M., and Bajracharya, S.: The state and fate of Himalayan glaciers. *Science*, 336(6079), 310–314, 2012.

- Bookhagen, B., and Burbank, D.W.: Toward a complete Himalayan hydrological budget: Spatiotemporal distribution of snowmelt and rainfall and their impact on river discharge. *Journal of Geophysical Research: Earth Surface*, 115(F3), 2010.
- 550 Bargaonkar, H.P., Gandhi, N., Ram, S., and Krishnan, R.: Tree-ring reconstruction of late summer temperatures in northern Sikkim (eastern Himalayas). *Palaeogeography, Palaeoclimatology, Palaeoecology*, 504, 125–135, 2018.
- Bargaonkar, H.P., Ram, S., and Sikder, A.B.: Assessment of tree-ring analysis of high-elevation *Cedrus deodara* D. Don from Western Himalaya (India) in relation to climate and glacier fluctuations. *Dendrochronologia*, 27(1), 59–69, 2009.
- Bräuning, A.: Tree-ring evidence of ‘Little Ice Age’ glacier advances in southern Tibet. *The Holocene*, 16(3), 369–380, 2006.
- 555 Briffa, K.R., and Jones, P.D.: Basic chronology statistics and assessment. In ‘Methods of dendrochronology: applications in the environmental sciences’. (Eds ER Cook, LA Kairiukstis), 1–8, 1990.
- Brun, F., Berthier, E., Wagnon, P., Käab, A., and Treichler, D.: A spatially resolved estimate of High Mountain Asia glacier mass balances from 2000 to 2016. *Nature Geoscience*, 10(9), 668, 2017.
- Bunn, A.G., Salzer, M.W., Anchukaitis, K.J., Bruening, J.M., and Hughes, M.K.: Spatiotemporal variability in the climate growth response of high elevation bristlecone pine in the White Mountains of California. *Geophysical Research Letters*, 560 45(24), 13–312, 2018.
- Carl, P., Peterson, B.G. and Peterson, M.B.G.: Package ‘PerformanceAnalytics’. Retrieved March, 29, 2011, 2010.
- Chakraborty, T., and Lee, X.: Land cover regulates the spatial variability of temperature response to the direct radiative effect of aerosols. *Geophysical Research Letters*, 46(15), 8995–9003, 2019.
- 565 Cook, E.R., Krusic, P.J., and Jones P.D.: Dendroclimatic signals in long tree-ring chronologies from the Himalayas of Nepal. *Int. J. Climatol.*, 23, 707–732, 2003.
- Cook, E.R., Anchukaitis, K.J., Buckley, B.M., D’Arrigo, R.D., Jacoby, G.C., and Wright, W.E.: Asian monsoon failure and megadrought during the last millennium. *Science*, 328(5977), 486–489, 2010.
- Cook, E.R., Briffa, K.R. and Jones, P.D.: Spatial regression methods in dendroclimatology: a review and comparison of two techniques. *International Journal of Climatology*, 14(4), 379–402, 1994.
- 570 Dahe, Q., Mayewski, P.A., Wake, C.P., Shichang, K., Jiawen, R., Shugui, H., Tandong, Y., Qinzhaoh, Y., Zhefan, J. and Desheng, M.: Evidence for recent climate change from ice cores in the central Himalaya. *Annals of Glaciology*, 31, 153–158, 2000.
- Divecha Centre for Climate Change (DCCC): State of Himalayan Glaciers and Future Projections. Science Brief: March & September 2018, Divecha Centre for Climate Change, Indian Institute of Science (IISc.), India, 2018.
- 575 Dehecq, A., Gourmelen, N., Gardner, A.S., Brun, F., Goldberg, D., Nienow, P.W., Berthier, E., Vincent, C., Wagnon, P., and Trouvé, E.: Twenty-first century glacier slowdown driven by mass loss in High Mountain Asia. *Nature Geoscience*, 12(1), .22, 2019.
- Denniston, R.F., González, L.A., Asmerom, Y., Sharma, R.H., and Reagan, M.K.: Speleothem evidence for changes in Indian summer monsoon precipitation over the last~ 2300 years. *Quaternary Research*, 53(2), 196–202, 2000.
- 580 Duan, J., Wang, L., Li, L., and Sun, Y.: Tree-ring-inferred glacier mass balance variation in southeastern Tibetan Plateau and its linkage with climate variability. *Climate of the Past*, 9(6), 2451–2458, 2013.
- Dumka, U.C., Saheb, S.D., Kaskaoutis, D.G., Kant, Y. and Mitra, D.: Column aerosol characteristics and radiative forcing over the Doon Valley in the Shivalik range of northwestern Himalayas. *Environmental Science and Pollution Research*, 23(24), 25467–25484, 2016.
- 585 Fritts, H. C.: *Tree-Rings and Climate*, Academic Press, London, 567, 1976.
- Garg, P.K., Shukla, A., and Jasrotia, A.S.: Influence of topography on glacier changes in the central Himalaya, India. *Global and Planetary Change*, 155, 196–212, 2017.
- Garg, P.K., Shukla, A. and Jasrotia, A.S.: Dynamics of the four major central Himalayan glaciers: spatio-temporal trends, influencing factors and glacier health. *Himalayan Geology*, 40(2), 141–148, 2019.

- 590 Gautam, R., Hsu, N.C., and Lau, K.M.: Premonsoon aerosol characterization and radiative effects over the Indo-Gangetic Plains: Implications for regional climate warming. *Journal of Geophysical Research: Atmospheres*, 115(D17), 2010.
- Gautam, R., Hsu, N.C., Lau, K.M., Tsay, S.C., and Kafatos, M.: Enhanced pre-monsoon warming over the Himalayan-Gangetic region from 1979 to 2007. *Geophysical Research Letters*, 36(7), 2009.
- Gou, X., Chen, F., Yang, M., Jacoby, G., Peng, J., and Zhang, Y.: A comparison of tree-ring records and glacier variations over the past 700 years, northeastern Tibetan Plateau. *Annals of Glaciology*, 43, 86–90, 2006.
- 595 Griebinger, J., Bräuning, A., Helle, G., Thomas, A., and Schleser, G.: Late Holocene Asian summer monsoon variability reflected by $\delta^{18}\text{O}$ in tree-rings from Tibetan junipers. *Geophysical Research Letters*, 38(3), 2011.
- Griebinger, J., Bräuning, A., Helle, G., Schleser, G.H., Hochreuther, P., Meier, W.J.H., Zhu, H.: A dual stable isotope approach unravels common climate signals and species-specific responses to environmental change stored in multi-century tree-ring series from the Tibetan plateau. *Geosciences* 9, 151, 2019.
- 600 Grinsted, A., Moore, J.C. and Jevrejeva, S.: Application of the cross wavelet transform and wavelet coherence to geophysical time series. *Nonlinear Processes in Geophysics*, 11(5/6), 561–566, 2004.
- Harris, I.P.D.J., Jones, P.D., Osborn, T.J., and Lister, D.H.: Updated high-resolution grids of monthly climatic observations—the CRU TS3. 10 Dataset. *International journal of climatology*, 34(3), 623–64, 2014.
- 605 Hochreuther, P., Loibl, D., Wernicke, J., Zhu, H., Griebinger, J., and Bräuning, A.: Ages of major Little Ice Age glacier fluctuations on the southeast Tibetan Plateau derived from tree-ring-based moraine dating. *Palaeogeography, Palaeoclimatology, Palaeoecology*, 422, 1–10, 2015.
- Hochreuther, P., Wernicke, J., Griebinger, J., Mölg, T., Zhu, H., Wang, L. and Bräuning, A.: Influence of the Indian Ocean Dipole on tree-ring $\delta^{18}\text{O}$ of monsoonal Southeast Tibet. *Climatic Change*, 137(1-2), 217–230, 2016.
- 610 Holmes, R. L.: Computer-assisted quality control in tree-ring dating and measurement, *Tree-Ring Bull.*, 43, 69–78, 1983.
- Hou, J., D'Andrea, W.J., Wang, M., He, Y. and Liang, J.: Influence of the Indian monsoon and the subtropical jet on climate change on the Tibetan Plateau since the late Pleistocene. *Quaternary Science Reviews*, 163, 84–94, 2017.
- Huang, R., Zhu, H., Liang, E., Liu, B., Shi, J., Zhang, R., Yuan, Y., and Griebinger, J.: A tree ring-based winter temperature reconstruction for the southeastern Tibetan Plateau since 1340 CE. *Climate Dynamics*, 1-13, 2019.
- 615 Huang, R., Zhu, H., Liang, E., Griebinger, J., Wernicke, J., Yu, W., Hochreuther, P., Risi, C., Zeng, Y., Fremme, A., Sodemann, H., and Bräuning, A.: Temperature signals in tree-ring oxygen isotope series from the northern slope of the Himalaya. *Earth and Planetary Science Letters*, 506, 455–465, 2019.
- Hunt, K.M., Turner, A.G. and Shaffrey, L.C.: Falling trend of western disturbances in future climate simulations. *Journal of Climate*, 32(16), 5037-5051, 2019.
- 620 Joswiak, D.R., Yao, T., Wu, G., Tian, L., and Xu, B.: Ice-core evidence of westerly and monsoon moisture contributions in the central Tibetan Plateau. *Journal of Glaciology*, 59(213), 56–66, 2013.
- Jury, M.W., Mendlik, T., Tani, S., Truhetz, H., Maraun, D., Immerzeel, W.W., and Lutz, A.F.: Climate projections for glacier change modelling over the Himalayas. *International Journal of Climatology*, 40(3), 1738–1754. 2019.
- Kääb, A., Berthier, E., Nuth, C., Gardelle, J. and Arnaud, Y.: Contrasting patterns of early twenty-first-century glacier mass change in the Himalayas. *Nature*, 488(7412), 495. 2012.
- 625 Kargel, J.S., Cogley, J.G., Leonard, G.J., Haritashya, U. and Byers, A.: Himalayan glaciers: The big picture is a montage. *Proceedings of the National Academy of Sciences*, 108(36), 14709–14710, 2011.
- Kaspari, S., Hooke, R.L., Mayewski, P.A., Kang, S., Hou, S., and Qin, D.: Snow accumulation rate on Qomolangma (Mount Everest), Himalaya: synchronicity with sites across the Tibetan Plateau on 50–100 year timescales. *Journal of Glaciology*, 54(185), 343–352, 2008.
- 630 Khan, A., Chen, F., Ahmed, M. and Zafar, M.: Rainfall reconstruction for the Karakoram region in Pakistan since 1540 CE reveals out-of-phase relationship in rainfall between the southern and northern slopes of the Hindukush-Karakorum-Western Himalaya Region. *International Journal of Climatology*. 40(1), 52–62, 2019.

- 635 Kotlia, B.S., Ahmad, S.M., Zhao, J.X., Raza, W., Collerson, K.D., Joshi, L.M. and Sanwal, J.: Climatic fluctuations during the LIA and post-LIA in the Kumaun Lesser Himalaya, India: evidence from a 400 y old stalagmite record. *Quaternary International*, 263, 129–138, 2012.
- Kotlia, B.S., Singh, A.K., Joshi, L.M. and Dhaila, B.S.: Precipitation variability in the Indian Central Himalaya during last ca. 4,000 years inferred from a speleothem record: Impact of Indian Summer Monsoon (ISM) and Westerlies. *Quaternary International*, 371, 244–253, 2015.
- 640 Kuhn, M., Wing, J., and Weston, S.: Package ‘caret’. Classification and regression training. 2015
- Larocque, S.J., and Smith, D.J.: ‘Little Ice Age’ proxy glacier mass balance records reconstructed from tree rings in the Mt Waddington area, British Columbia Coast Mountains, Canada. *The Holocene*, 15(5), 748–757, 2005.
- Lau, W.K., Kim, M.K., Kim, K.M. and Lee, W.S.: Enhanced surface warming and accelerated snow melt in the Himalayas and Tibetan Plateau induced by absorbing aerosols. *Environmental Research Letters*, 5(2), 025204, 2010.
- 645 Laumer, W., Andreu, L., Helle, G., Schleser, G.H., Wieloch, T. and Wissel, H.: A novel approach for the homogenization of cellulose to use micro-amounts for stable isotope analyses. *Rapid Communications in Mass Spectrometry: An International Journal Devoted to the Rapid Dissemination of Up-to-the-Minute Research in Mass Spectrometry*, 23(13), 1934–1940, 2009.
- Levesque, M., Andreu-Hayles, L., Smith, W.K., Williams, A.P., Hobi, M.L., Allred, B.W. and Pederson, N.: Tree-ring isotopes capture interannual vegetation productivity dynamics at the biome scale. *Nature Communications*, 10(1), 742, 2019.
- 650 Li, X., Kang, S., Zhang, G., Qu, B., Tripathee, L., Paudyal, R., Jing, Z., Zhang, Y., Yan, F., Li, G. and Cui, X.: Light-absorbing impurities in a southern Tibetan Plateau glacier: Variations and potential impact on snow albedo and radiative forcing. *Atmospheric Research*, 200, 77–87, 2018.
- Liang, F., Brook, G.A., Kotlia, B.S., Railsback, L.B., Hardt, B., Cheng, H., Edwards, R.L., and Kandasamy, S.: Panigarh cave stalagmite evidence of climate change in the Indian Central Himalaya since AD 1256: Monsoon breaks and winter southern jet depressions. *Quaternary Science Reviews*, 124, 145–161, 2015.
- 655 Linderholm, H.W., Jansson, P. and Chen, D.: A high-resolution reconstruction of Storglaciären mass balance back to 1780/81 using tree-ring data and circulation indices. *Quaternary Research*, 67(1), 12–20, 2007.
- Liu, X., Xu, G., Griebinger, J., An, W., Wang, W., Zeng, X., Wu, G., and Qin, D.: A shift in cloud cover over the southeastern Tibetan Plateau since 1600: evidence from regional tree-ring $\delta^{18}\text{O}$ and its linkages to tropical oceans. *Quaternary Science Reviews*, 88, 55–68, 2014.
- Liu, X., Zeng, X., Leavitt, S.W., Wang, W., An, W., Xu, G., Sun, W., Wang, Y., Qin, D. and Ren, J.: A 400-year tree-ring $\delta^{18}\text{O}$ chronology for the southeastern Tibetan Plateau: Implications for inferring variations of the regional hydroclimate. *Global and Planetary Change*, 104, 23–33, 2013.
- 665 Lyu, L., Büntgen, U., Treydte, K., Yu, K., Liang, H., Reinig, F., Nievergelt, D., Li, M.H., and Cherubini, P.: Tree rings reveal hydroclimatic fingerprints of the Pacific Decadal Oscillation on the Tibetan Plateau. *Climate Dynamics*, 1–15, 2019.
- [Negi, G. C. S.: Leaf and bud demography and shoot growth in evergreen and deciduous trees of central Himalaya, India. *Trees*, 20\(4\), 416–429, 2006.](#)
- 670 Macdonald, F.A., Swanson-Hysell, N.L., Park, Y., Lisiecki, L. and Jagoutz, O.: Arc-continent collisions in the tropics set Earth’s climate state. *Science*, 364(6436), 181–184, 2019.
- Mann, M.E., and Lees, J.M.: Robust estimation of background noise and signal detection in climatic time series. *Climatic Change*, 33(3), 409–445, 1996.
- Maurer, J.M., Schaefer, J.M., Rupper, S., and Corley, A.: Acceleration of ice loss across the Himalayas over the past 40 years. *Science advances*, 5(6), p.eaav7266, 2019.
- 675 Mayewski, P.A. and Jeschke, P.A.: Himalayan and Trans-Himalayan glacier fluctuations since AD 1812. *Arctic and Alpine Research*, 11(3), 267–287, 1979.

- Mayewski, P.A., Pregent, G.P., Jeschke, P.A. and Ahmad, N.: Himalayan and Trans-Himalayan glacier fluctuations and the south Asian monsoon record. *Arctic and Alpine Research*, 12(2), 171–182, 1980.
- McCarroll, D. and Loader, N.J.: Stable isotopes in tree rings. *Quaternary Science Reviews*, 23(7-8), 771–801, 2004.
- 680 McCarroll, D., Gagen, M.H., Loader, N.J., Robertson, I., Anchukaitis, K.J., Los, S., Young, G.H., Jalkanen, R., Kirchhefer, A., and Waterhouse, J.S.: Correction of tree ring stable carbon isotope chronologies for changes in the carbon dioxide content of the atmosphere. *Geochimica et Cosmochimica Acta*, 73(6), 1539–1547, 2009.
- Michaelsen, J.: Cross-validation in statistical climate forecast models. *Journal of climate and Applied Meteorology*, 26(11), pp.1589–1600, 1987.
- 685 Misra, A.K., Dwivedi, S., and Das, S.: Role of Arabian Sea Warming on the Indian Summer Monsoon Rainfall in a Regional Climate Model. *International Journal of Climatology*, 40(4), 2226–2238, 2019.
- Mölg, T., Maussion, F. and Scherer, D.: Mid-latitude westerlies as a driver of glacier variability in monsoonal High Asia. *Nature Climate Change*, 4(1), 68, 2014.
- Mortin, J., Svensson, G., Graversen, R.G., Kapsch, M.L., Stroeve, J.C., and Boisvert, L.N.: Melt onset over Arctic sea ice controlled by atmospheric moisture transport. *Geophysical Research Letters*, 43(12), 6636–6642, 2016.
- 690 Murari, M.K., Owen, L.A., Dortch, J.M., Caffee, M.W., Dietsch, C., Fuchs, M., Haneberg, W.C., Sharma, M.C., and Townsend-Small, A.: Timing and climatic drivers for glaciation across monsoon-influenced regions of the Himalayan–Tibetan orogen. *Quaternary Science Reviews*, 88, 159–182, 2014.
- Nicolussi, K., and Patzelt, G.: Reconstructing glacier history in Tyrol by means of tree-ring investigations. *Zeitschrift für Gletscherkunde und Glazialgeologie*, 32, 207–215, 1996.
- 695 Owen, L.A., Caffee, M.W., Finkel, R.C. and Seong, Y.B.: Quaternary glaciation of the Himalayan–Tibetan orogen. *Journal of Quaternary Science: Published for the Quaternary Research Association*, 23(6-7), 513–531, 2008.
- Peings, Y., Cattiaux, J. and Magnusdottir, G.: The Polar Stratosphere as an Arbiter of the Projected Tropical Versus Polar Tug of War. *Geophysical Research Letters*, 46(15), 9261–9270, 2019.
- 700 Prasad, A.K., Yang, K.H.S., el-Askary, H., and Kafatos, M.: Melting of major Glaciers in the western Himalayas: evidence of climatic changes from long term MSU derived tropospheric temperature trend (1979-2008), In *Annales Geophysicae*, 27, 12, 4505–4519 European Geophysical Society, Max-Planck-Str. 13 Katlenburg-Lindau Germany. 2009.
- Pratap, B., Dobhal, D.P., Bhambri, R., Mehta, M. and Tewari, V.C.: Four decades of glacier mass balance observations in the Indian Himalaya. *Regional Environmental Change*, 16(3), 643–658, 2016.
- 705 Raina, V.K., Srivastava, D.: *Glacier atlas of India*. Geological Society of India, Bangalore 316, 2008.
- Ridley, H.E., Asmerom, Y., Baldini, J.U., Breitenbach, S.F., Aquino, V.V., Pruffer, K.M., Culleton, B.J., Polyak, V., Lechleitner, F.A., Kennett, D.J., and Zhang, M.: Aerosol forcing of the position of the intertropical convergence zone since AD 1550. *Nature Geoscience*, 8(3), 195, 2015.
- Rowan, A.V.: The ‘Little Ice Age’ in the Himalaya: A review of glacier advance driven by Northern Hemisphere temperature change. *The Holocene*, 27(2), 292–308, 2017.
- 710 Roxy, M.K., Ghosh, S., Pathak, A., Athulya, R., Mujumdar, M., Murtugudde, R., Terray, P. and Rajeevan, M.: A threefold rise in widespread extreme rain events over central India. *Nature Communications*, 8(1), 708, 2017.
- Roxy, M.K., Ritika, K., Terray, P., Murtugudde, R., Ashok, K. and Goswami, B.N.: Drying of Indian subcontinent by rapid Indian Ocean warming and a weakening land-sea thermal gradient. *Nature Communications*, 6, 7423, 2015.
- 715 Saikranthi, K., Radhakrishna, B., Narayana Rao, T. and Satheesh, S.K.: Variability in vertical structure of precipitation with sea surface temperature over the Arabian Sea and the Bay of Bengal as inferred by Tropical Rainfall Measuring Mission precipitation radar measurements. *Atmospheric Chemistry and Physics*, 19(15), 10423–10432, 2019.
- Saha, S., Owen, L.A., Orr, E.N., and Caffee, M.W.: High-frequency Holocene glacier fluctuations in the Himalayan-Tibetan orogen. *Quaternary Science Reviews*, 220, 372-400.

- 720 Sakai, A. and Fujita, K.: Contrasting glacier responses to recent climate change in high-mountain Asia. *Scientific Reports*, 7(1), 13717, 2017.
- Sano, M., Dimri, A.P., Ramesh, R., Xu, C., Li, Z. and Nakatsuka, T.: Moisture source signals preserved in a 242-year tree-ring $\delta^{18}\text{O}$ chronology in the western Himalaya. *Global and Planetary Change*, 157, 73–82, 2017.
- 725 Sano, M., Ramesh, R., Sheshshayee, M.S. and Sukumar, R.: Increasing aridity over the past 223 years in the Nepal Himalaya inferred from a tree-ring $\delta^{18}\text{O}$ chronology. *The Holocene*, 22(7), 809–817, 2012.
- Sano, M., Tshering, P., Komori, J., Fujita, K., Xu, C. and Nakatsuka, T.: May–September precipitation in the Bhutan Himalaya since 1743 as reconstructed from tree ring cellulose $\delta^{18}\text{O}$. *Journal of Geophysical Research: Atmospheres*, 118(15), 8399–8410, 2013.
- 730 Shah, S.K., Bhattacharyya, A. and Shekhar, M.: Reconstructing discharge of Beas river basin, Kullu valley, western Himalaya, based on tree-ring data. *Quaternary International*, 286, 138–147, 2013.
- Shekhar, M., Bhardwaj, A., Singh, S., Ranhotra, P.S., Bhattacharyya, A., Pal, A.K., Roy, I., Martín-Torres, F.J., and Zorzano, M.P.: Himalayan glaciers experienced significant mass loss during later phases of little ice age. *Scientific Reports*, 7(1), 10305, 2017.
- 735 Shi, C., Daux, V., Zhang, Q.B., Risi, C., Hou, S.G., Stievenard, M., Pierre, M., Li, Z., and Masson-Delmotte, V.: Reconstruction of southeast Tibetan Plateau summer climate using tree ring $\delta^{18}\text{O}$: moisture variability over the past two centuries. *Climate of the Past*, 8(1), 205–213, 2012.
- Shukla, T., Sundriyal, S., Stachnik, L., and Mehta, M.: Carbonate and silicate weathering in glacial environments and its relation to atmospheric CO_2 cycling in the Himalaya. *Annals of Glaciology*, 59(77), 159–170, 2018.
- 740 Singh, N., Singhal M., Chhikara, S., Karakoti, I., Chauhan, P., Dobhal, D.P.: Radiation and energy balance dynamics over a rapidly receding glacier in the central Himalaya. *Int J Climatol*. 2019; 40(1), 400–420, 2020.
- Singh, D., Seager, R., Cook, B.I., Cane, M., Ting, M., Cook, E., and Davis, M.: Climate and the Global Famine of 1876–78. *Journal of Climate*, 31(23), 9445–9467, 2018.
- Singh, J., Singh, N., Chauhan, P., Yadav, R.R., Bräuning, A., Mayr, C., Rastogi, T.: Tree-ring $\delta^{18}\text{O}$ records of abating June–July monsoon rainfall over the Himalayan region in the last 273 years. *Quaternary International*, 532, 48–56, 2019.
- 745 Singh, J. and Yadav, R.R.: Tree-ring-based seven century long flow records of Satluj River, western Himalaya, India. *Quaternary International*, 304, 156–162, 2013.
- Singh, J., Park, W.K., and Yadav, R.R.: Tree-ring-based hydrological records for western Himalaya, India, since AD 1560. *Climate Dynamics*, 26(2–3), 295–303, 2006.
- 750 Sinha, A., Kathayat, G., Cheng, H., Breitenbach, S.F., Berkelhammer, M., Mudelsee, M., Biswas, J. and Edwards, R.L.: Trends and oscillations in the Indian summer monsoon rainfall over the last two millennia. *Nature Communications*, 6, 6309, 2015.
- Solomina, O.N., Bradley, R.S., Jomelli, V., Geirsdottir, A., Kaufman, D.S., Koch, J., McKay, N.P., Masiokas, M., Miller, G., Nesje, A., and Nicolussi, K.: Glacier fluctuations during the past 2000 years. *Quaternary Science Reviews*, 149, 61–90, 2016.
- 755 Thompson, L.G., Yao, T., Mosley-Thompson, E., Davis, M.E., Henderson, K.A. and Lin, P.N.: A high-resolution millennial record of the South Asian monsoon from Himalayan ice cores. *Science*, 289(5486), 1916–1919, 2000.
- Tomkins, J.D., Lamoureux, S.F. and Sauchyn, D.J.: Reconstruction of climate and glacial history based on a comparison of varve and tree-ring records from Mirror Lake, Northwest Territories, Canada. *Quaternary Science Reviews*, 27(13–14), 1426–1441, 2008.
- 760 UNEP [United Nations Environment Programme], *Recent Trends in Melting Glaciers, Tropospheric Temperatures over the Himalayas and Summer Monsoon Rainfall over India*, 2009.
- Vehtari, A., Gelman, A. and Gabry, J.: Practical Bayesian model evaluation using leave-one-out cross-validation and WAIC. *Statistics and computing*, 27(5), 1413–1432, 2017.

- 765 Wang, R., Liu, S., Shangguan, D., Radić, V., and Zhang, Y.: Spatial Heterogeneity in Glacier Mass-Balance Sensitivity across High Mountain Asia. *Water*, 11(4), 776, 2019.
- Watanabe, M., Yanagawa, A., Watanabe, S., Hirabayashi, Y., and Kanae, S.: Quantifying the range of future glacier mass change projections caused by differences among observed past-climate datasets. *Climate Dynamics*, 1–11, 2019.
- Watson, E. and Luckman, B.H.: Tree-ring-based mass-balance estimates for the past 300 years at Peyto Glacier, Alberta, Canada. *Quaternary Research*, 62(1), 9–18, 2004.
- 770 Wernicke, J., Hochreuther, P., Griebinger, J., Zhu, H., Wang, L., and Bräuning, A.: Multi-century humidity reconstructions from the southeastern Tibetan Plateau inferred from tree-ring $\delta^{18}\text{O}$. *Global and Planetary Change*, 149, 26–35, 2017.
- Wickham, H. *ggplot2: elegant graphics for data analysis*. Springer, 2016.
- Wieloch, T., Helle, G., Heinrich, I., Voigt, M. and Schyma, P.: A novel device for batch-wise isolation of α -cellulose from small-amount wholewood samples. *Dendrochronologia*, 29(2), 115–117, 2011.
- 775 Willeit, M., Ganopolski, A., Calov, R. and Brovkin, V.: Mid-Pleistocene transition in glacial cycles explained by declining CO_2 and regolith removal. *Science Advances*, 5(4), p.eaav7337, 2019.
- Xu, B., Cao, J., Hansen, J., Yao, T., Joswia, D.R., Wang, N., Wu, G., Wang, M., Zhao, H., Yang, W. and Liu, X.: Black soot and the survival of Tibetan glaciers. *Proceedings of the National Academy of Sciences*, 106(52), 22114–22118, 2009.
- 780 Xu, C., Sano, M., Dimri, A.P., Ramesh, R., Nakatsuka, T., Shi, F., and Guo, Z.: Decreasing Indian summer monsoon on the northern Indian sub-continent during the last 180 years: evidence from five tree-ring cellulose oxygen isotope chronologies. *Climate of the Past*, 14(5), 653–664, 2018.
- Xu, P., Zhu, H., Shao, X. and Yin, Z.: Tree ring-dated fluctuation history of Midui glacier since the little ice age in the southeastern Tibetan plateau. *Science China Earth Sciences*, 55(4), 521–529, 2012.
- 785 Yadav, R.R., and Bhutiyani, M.R.: Tree-ring-based snowfall record for cold arid western Himalaya, India since AD 1460. *Journal of Geophysical Research: Atmospheres*, 118(14), 7516–7522, 2013.
- Yadav, R.R.: Tree ring evidence of a 20th century precipitation surge in the monsoon shadow zone of the western Himalaya, India. *Journal of Geophysical Research: Atmospheres*, 116(D2), 2011.
- Yadav, R.R., Braeuning, A. and Singh, J.: Tree ring inferred summer temperature variations over the last millennium in western Himalaya, India. *Climate Dynamics*, 36(7-8), 1545–1554, 2011.
- 790 Yang, B., Bräuning, A., Dong, Z., Zhang, Z. and Jiao, K.: Late Holocene monsoonal temperate glacier fluctuations on the Tibetan Plateau. *Global and Planetary Change*, 60(1-2), 126–140, 2008.
- Yao, T., Thompson, L., Yang, W., Yu, W., Gao, Y., Guo, X., Yang, X., Duan, K., Zhao, H., Xu, B. and Pu, J.: Different glacier status with atmospheric circulations in Tibetan Plateau and surroundings. *Nature Climate Change*, 2(9), 663, 2012.
- 795 Zech, W., Glaser, B., Abramowski, U., Dittmar, C. and Kubik, P.W.: Reconstruction of the Late Quaternary Glaciation of the Macha Khola valley (Gorkha Himal, Nepal) using relative and absolute (^{14}C , ^{10}Be , dendrochronology) dating techniques. *Quaternary Science Reviews*, 22(21-22), 2253–2265, 2003.
- Zemp, M., Huss, M., Thibert, E., Eckert, N., McNabb, R., Huber, J., Barandun, M., Machguth, H., Nussbaumer, S.U., Gärtner-Roer, I. and Thomson, L.: Global glacier mass changes and their contributions to sea-level rise from 1961 to 2016. *Nature*, 568(7752), 382, 2019.
- 800 Zeng, X., Liu, X., Treydte, K., Evans, M.N., Wang, W., An, W., Sun, W., Xu, G., Wu, G., and Zhang, X.: Climate signals in tree-ring $\delta^{18}\text{O}$ and $\delta^{13}\text{C}$ from southeastern Tibet: insights from observations and forward modelling of intra-to interdecadal variability. *New Phytologist*, 216(4), 1104–1118, 2017.
- Zhang, R., Wei, W., Shang, H., Yu, S., Gou, X., Qin, L., Bolatov, K. and Mambetov, B.T.: A tree ring-based record of annual mass balance changes for the TS. Tuyuksuyskiy Glacier and its linkages to climate change in the Tianshan Mountains. *Quaternary Science Reviews*, 205, 10–21, 2019.
- 805 Zhang, T., Wang, T., Krinner, G., Wang, X., Gasser, T., Peng, S., Piao, S. and Yao, T.: The weakening relationship between Eurasian spring snow cover and Indian summer monsoon rainfall. *Science Advances*, 5(3), p.eaau8932, 2019.

- 810 Zhang, Y., Kang, S., Cong, Z., Schmale, J., Sprenger, M., Li, C., Yang, W., Gao, T., Sillanpää, M., Li, X., and Liu, Y.: Light-
absorbing impurities enhance glacier albedo reduction in the southeastern Tibetan plateau. *Journal of Geophysical
Research: Atmospheres*, 122(13), 6915-6933, 2017.
- Zhao, Z., Wang, Q., Xu, B., Shen, Z., Huang, R., Zhu, C., Su, X., Zhao, S., Long, X., Liu, S. and Cao, J.: Black carbon aerosol
and its radiative impact at a high-altitude remote site on the southeastern Tibet Plateau. *Journal of Geophysical
Research: Atmospheres*, 122(10), 5515–5530, 2017.
- 815 Zhu, H.F., Shao, X.M., Yin, Z.Y. and Huang, L.: Early summer temperature reconstruction in the eastern Tibetan Plateau since
AD 1440 using tree-ring width of *Sabina tibetica*. *Theoretical and Applied Climatology*, 106(1-2), 45–53, 2011.