

Open system pingos as conduits for highly concentrated methane seepage in Svalbard

Andrew J. Hodson^{1,2}, Aga Nowak¹, Mikkel T. Hornum^{1,3}, Kim Senger¹, Kelly Redeker⁴, Hanne H. Christiansen¹, Søren Jessen³, Peter Betlem¹, Steve F. Thornton⁵, Alexandra V. Turchyn⁶, Snorre Olaussen¹, Alina Marca⁷

5

¹Department of Arctic Geology, University Centre in Svalbard (UNIS), N-9171 Longyearbyen, Norway.

²Department of Environmental Science, Western Norway University of Applied Sciences, Røyrgata 6, N-6856 Sogndal, Norway

³Department of Geosciences and Natural Resource Management, University of Copenhagen, 1350 Copenhagen K, Denmark.

10 ⁴Department of Biology, University of York, YO10 5DD, UK.

⁵Department of Civil and Structural Engineering, University of Sheffield, S10 2TN, UK.

⁶Department of Earth Sciences, University of Cambridge, CB2 3EQ, UK.

⁷School of Environmental Sciences, University of East Anglia, Norwich, NR4 7TJ, UK.

15 *Correspondence to:* Andrew J. Hodson (AndrewH@unis.no)

Abstract. Methane release from beneath lowland permafrost represents an important uncertainty in the Arctic greenhouse gas budget. Our current knowledge is arguably best-developed in settings where permafrost is being inundated by rising sea level, which means much of the methane is oxidised in the water column before it reaches the atmosphere. Here we provide a different process perspective that is appropriate for Arctic fjord valleys, where local deglaciation causes isostatic uplift to out-pace rising sea level. We show how the uplift induces permafrost aggradation in former marine sediments, whose pressurisation results in methane escape directly to the atmosphere via ground water springs. In Adventdalen, Central Spitsbergen, we show how the springs are historic features, responsible for the formation of open system pingos, and capable of discharging brackish waters enriched with high concentrations of mostly biogenic methane (average 18 mg L⁻¹). Thermodynamic calculations show that the methane concentrations sometimes marginally exceed the solubility limit for methane in water at 0 °C (41 mg L⁻¹). With a combined discharge of just 1.6 L s⁻¹, four pingo springs transport a flux (1050 kg CH₄ a⁻¹) equivalent to between 10 and 17% of the methane emissions measured in local wetlands. This confirms that sub-permafrost methane migration deserves more attention for improved forecasting of Arctic greenhouse gas emissions.

20

25

1 Introduction

Methane evasion to the atmosphere from thawing Arctic permafrost represents a significant risk to future greenhouse gas management, and so great emphasis has been placed upon quantifying the global importance of methane release from the active layer (see Dean et al, 2018). However, the potential for methane evasion from deeper sub-permafrost sources also exists (Anthony et al, 2012; Betlem et al, 2019; Kohnert et al, 2017), but since the means by which the gas by-passes the permafrost are unclear, their possible timing, magnitude and impact are very uncertain. Recent research has provided significant insights

30

into the role of landscape change and methane release from low relief Arctic shelf environments typical of the Canadian, Siberian and North Alaskan coastlines (Kohnert et al, 2017; Frederick et al, 2016; Dmitrenko et al, 2016). Here, sea level inundation has enhanced methane escape by inducing permafrost thaw (Frederick et al, 2016). However, this mechanism is not relevant to many fjord coastlines in the Arctic because isostatic uplift has out-paced sea level rise (Dutton et al, 2015). Here, the uplift of sediments deposited in the fjord since the Last Glacial Maximum (LGM) has caused their exposure to the atmosphere, resulting in a period of freezing and permafrost aggradation (e.g. Cable et al, 2018; Gilbert et al, 2017, Gilbert et al, 2018). Fjord coastlines which have undergone significant isostatic uplift are typical of Svalbard, Novaya Zemlya, northern Greenland and the Canadian Arctic archipelago. It is therefore significant that these areas are poorly represented in our current understanding of pan-Arctic methane emissions from the land surface.

Fjords are notable for some of Earth's most rapid rates of sedimentation and organic carbon burial during glacial retreat, producing thick sediment sequences potentially conducive to biogenic methane production (Smith et al, 2015; Syvitski et al, 1986; Włodarska-Kowalczyk et al, In Press). In addition, the rocks underlying many Arctic fjords support either proven or highly probable natural gas resources (Gautier et al, 2009). Therefore methane from geogenic sources such as coal beds and shale is also likely to be present. At the LGM, widespread methane hydrate stability zones were present under the ice sheets, providing a transient reservoir for both the biogenic and geogenic methane. The warmer period that caused the onset of ice sheet retreat after the LGM caused the gas hydrates to become thermodynamically unstable, and the methane began to escape rapidly through the recently uncovered sea floor (Crémière et al, 2016; Smith et al, 2001; Weitemeyer and Buffet, 2006). Evidence for such rapid fluid escape include pockmarks (Crémière et al, 2016; Portnov et al, 2016) (Figure 1a), whose occurrence in Svalbard is particularly well-documented because some of them remain active today (Liira et al, 2019; Sahling et al, 2014). Sea floor methane emissions are subject to very significant removal processes due to dissolution and oxidation within the overlying water column (Mau et al, 2017). Further, Pohlman et al (2017) have shown that sea floor gas emissions in coastal waters off Svalbard may also be offset by far greater rates of atmospheric CO₂ sequestration into the overlying surface waters, because the rising bubbles help nutrient-rich bottom waters rise up to fuel the photosynthesising plankton community. However, Hodson et al (2019) showed that pockmarks exposed by isostatic uplift have the potential to form methane seepage pathways on land. Since any groundwater carrying the gas through the permafrost will be subject to freezing temperatures, these features are likely to become discernible as small, ice-cored hill forms known as open system pingos (Figure 1b). Therefore, pingos and other terrestrial seepages must be considered as migration pathways through what is otherwise regarded as an effective seal or "cryospheric cap" formed by the permafrost (Anthony et al, 2012). Such routes potentially represent the most harmful greenhouse gas emission pathway for methane trapped beneath permafrost, because gas can escape directly to the atmosphere without removal by oxidation within the overlying water column of the fjord.

This paper therefore investigates how methane-rich fluids readily escape from beneath permafrost by exploiting the open system pingos that have formed following isostatic uplift and permafrost aggradation in Svalbard's fjord landscape. We show that the pingos form natural "hotpots" for the ventilation of sub-permafrost methane directly to the atmosphere, with the

potential to account for a meaningful proportion of the total annual methane emissions in Adventdalen, a representative, well-researched fjord valley system in Central Spitsbergen, Svalbard.

70 2 Methods

2.1 The field site

Adventdalen's open system pingos are located in a lowland valley that has been rapidly in-filled by a pro-grading delta system throughout the Holocene. This was driven by ice sheet retreat commencing ca. 11 000 years ago (Gilbert et al, 2018) and is represented by the landscape model in Figure 1. As with many open system pingos in Central Spitsbergen, their formation was intricately linked to changes in groundwater dynamics that occur after such deltaic sediments emerge from below sea level and start to freeze. This permafrost aggradation increases hydraulic pressure and thus forces residual groundwaters toward the land surface. Since the hydraulic conductivity of the fine-grained, uplifted marine sediments is very low (Toft-Hornum et al, In Review), the fluids are likely to exploit any former pockmarks that are uplifted with them (e.g. Hodson et al, 2019). Further freezing near the surface then results in expansion and the formation of a small hill with an ice core, or "pingo" up to 40 m higher than the surrounding topography (Liestøl, 1996; Yoshikawa et al, 1995; Yoshikawa, 1993). Figure 2a shows that two pingos (Lagoon Pingo and Førstehytte Pingo) are situated in the lower part of the valley, whilst two others (Innerhytte Pingo and River Bed Pingo) are up-valley, and just beyond the former marine limit at ca. 70 m asl. Lagoon Pingo, nearest to the coast, is thought to be less than 200 years old, and has had springs documented from as early as 1926 (Liestøl, 1996; Yoshikawa and Nakamura, 1996). At Førstehytte Pingo, a spring has also been known to exist since the 1920's, but the pingo is thought to be much older. Radio-carbon dates for molluscs in the marine sediments uplifted by the Førstehytte Pingo give a maximum age limit of 7000 ± 70 years (Yoshikawa, 1993; Yoshikawa and Nakamura, 1996). Innerhytte Pingo and River Bed Pingo are of unknown age, and since they lack a cover of marine sediments containing mollusc shells, no radiocarbon dates are available.

Like many fjord valleys, the rate of sedimentation was extremely high during ice sheet retreat, and so a "wedge" of up to 60 m of valley in-filling has occurred within the former marine limit (Cable et al, 2018; Gilbert et al, 2018). However, the permafrost in the valley floor of Adventdalen is up to 120 m thick, so much of the fine sediments have frozen since their exposure by isostatic uplift during the Holocene, with the exception of the sediments closest to the contemporary shoreline and pockets of saline "cryopegs" further up-valley (Keating et al, 2019). There are no taliks beneath the river, because river discharge volumes drop rapidly in late August and allow freezing to commence early in the winter. Although the typically fine-grained, frozen marine sediment infill in the valley has a low hydraulic conductivity, the underlying glacial tills, and in particular the upper (unfrozen) geological strata beneath that, both seem to support important sub-permafrost fluid migration pathways (Huq et al, 2017; Hornum et al, In Review: Figure 2b). Unique insights into the sub-permafrost geology were provided by the legacy of geological exploration in the region, currently managed by the Store Norske Spitsbergen Kulkompani (SNSK). This provided unpublished borehole records and geochemical data that allowed us to better understand the presence

100 of methane and groundwater beneath the permafrost. Furthermore, geochemical and geophysical analysis of deep rock cores
have also been undertaken in the valley as part of the UNIS CO₂ Project (Braathen et al, 2012; Olausen et al, 2019). Key sites
for these earlier investigations are shown in Figure 2a. Of particular importance are the permeable, fractured sandstones of the
Lower Cretaceous Helvetiafjellet Formation immediately beneath the permafrost westwards of Innerhytte Pingo, and a ca. 400
105 m-thick Lower Cretaceous to Middle Jurassic mudstone-dominated succession beneath that (the Rurikfjellet and Agardfjellet
Formations). The mudstone succession also outcrops eastwards from Innerhytte Pingo, as well as to the north at the base of
the mountains (see cross section, Figure 2b). Fractured, uplifted mudstone clasts therefore form the mantle lying over the
Innerhytte and River Bed Pingos, whilst younger marine muds form the mantle over Førstehytte and Lagoon Pingos.

Earlier work has shown that the fractured sandstones host an important, biogenic methane-rich aquifer, whilst the mudstones
110 form an effective flow boundary that seems to suppress the upward migration of its own geogenic methane resource (Huq et
al, 2017). The gas-rich upper sandstone aquifer therefore contains few hydrocarbons other than methane, whilst in the lower
mudstone successions, ethane and propane have been detected at levels indicative of a geogenic gas source (Huq et al, 2017;
Ohm et al, 2019). Fluid migration through the outcropping mudstones to Innerhytte and River Bed Pingos is therefore likely
to exploit faults (shown conceptually in Figure 2b, but very poorly understood), whilst fluid migration towards Førstehytte and
115 Lagoon Pingos is likely to exploit the fractured sandstones of the Helvetiafjellet Formation and glacial tills immediately
beneath the permafrost (Figure 2b).

Four of six open system pingos in Adventdalen discharge groundwaters all year (Figure 2). In the summer, the springs are
discernible as a discrete conduit discharging either into the base of a small pond (e.g. Lagoon Pingo), directly out of the pingo
120 and down its flank (Førstehytte Pingo, Innerhytte Pingo) or straight out of the base of the pingo and into the Adventelva river
bed, which may or may not be flooded due to its braided nature (River Bed Pingo). During summer, surface meltwater flooding
in the valley hinders access to the pingos, since the river must be crossed to gain access. At other times of the year, after
freezing has commenced (usually late September until mid-May), spring water accumulates beneath a large ice blister. The
pressure caused by continuous flow expands the ice blister, forcing its summit upwards by as much as 4 m by the end of winter.
125 The expansion is periodically checked by turbulent outbursts of water that typically freeze within 100 m of the pingo. All four
springs were sampled before the melt season after drilling up to 2 m through their winter ice cover, releasing pressurised flow.

2.2 Fieldwork

Field work involved consecutive spring-time sampling campaigns (March - April) at the four pingos from 2015 until 2017. In
130 addition, opportunistic sampling at the pingos was conducted in summer 2017, where low river levels made access to the field
sites possible. We focussed our sampling on the larger, discrete springs that were closest to the pingo summit, but in 2017 the
spring that was sampled at River Bed Pingo was in a different location to previous years (away from the foot of the pingo).

This site is hereafter referred to as “River Bed Pingo Distal” and is discriminated for reasons that become apparent when our results are considered.

135

Pingo springs were sampled after drilling up to three metres through their winter ice cover using a 7 cm diameter Kovacs drill and Stihl two-stroke engine. Although the icing surfaces were sometimes visibly cracked, with an outflow of water, drilling was still employed to reduce the likelihood of oxygenation before sampling and contamination from local snow. At the sampling site, pH, temperature, dissolved oxygen and Oxidation-Reduction Potential (ORP) were recorded using Hach Lange
140 HQ 40D meters and dedicated electrodes/sensors. These were calibrated prior to use with the exception of the dissolved O₂ measurement, which was conducted using the luminescence method and thus used a factory calibrated sensor tip. To prevent freezing problems and electrode malfunction, water samples were pumped through a bespoke, air-tight flow cell with an internal heating element maintaining the sample flow at ca. 7 °C.

2.3 Analytical work

145 Samples for dissolved iron and manganese analysis were syringe-filtered immediately in the field through 0.45 µm filters into pre-cleaned 15 mL Eppendorf Tubes, before acidification to pH ~ 1.7 using reagent grade HNO₃ (AnalaR 65% Normapur, VWR, IL, USA). The analysis of dissolved Fe and Mn was then completed using Inductively Coupled Plasma Mass Spectrometry or ICP-MS (PerkinElmer Elan DRC II, MA, USA). Precision errors of the analyses were < 5% according to repeat analyses of mid-range standards, with a detection limit of 1.0 µg L⁻¹. No contaminants were detected above this limit in
150 the analyses of blank deionised water samples. Samples for major ion analysis (here Ca²⁺, Mg²⁺, Na⁺, K⁺, Cl⁻, NO₃⁻, SO₄²⁻) were also filtered in the same manner (but not acidified) and stored in 50 mL Corning centrifuge tubes after being triple rinsed with filtrate. The analysis was conducted on Dionex DX90 Ion Chromatographs with a detection limit of 0.02 mg L⁻¹ for the lowest, undiluted analysis. Precision errors for these ions were all <5% for mid-range standards.

155 Charge balance calculations were used to provide the indicative values of HCO₃⁻ and CO₃²⁻, given (as DIC or dissolved inorganic carbon) in Table 1. Excess CO₂ levels were estimated from calculations of the partial pressure of CO₂ using the online WEB-PHREEQ Geochemical Speciation Software (<https://www.ndsu.edu/webphreeq/>).

Samples for the determination of dissolved methane and carbon dioxide concentrations as well as δ¹³C-CH₄ and δ¹³C-DIC of
160 the waters were taken directly from the spring following immersion, complete filling and sealing of a 22 mL Wheaton bottle with a crimp-top lid with septum. The samples were stored inverted under water at 4°C until analysis. The analysis of the CH₄ was performed by gas-chromatography on a Shimadzu GC-2014 instrument equipped with a methaniser and flame ionisation detector, using a 30 m GS-Q, 0.53 mm internal diameter column with N₂ as a carrier gas at a flow rate of 8 mL/minute, and injection, oven and detector temperature of 60, 40 and 240 °C, respectively. The sample size was 100 µL and the sample run
165 time was 3 minutes at 40 °C. Concentrations of dissolved CH₄ were obtained according to a mass balance calculation for the

170 samples (McAuliffe, 1971), in which a known volume of N₂ was injected into sample vials to create a headspace whilst allowing sample displacement through an outlet needle to prevent pressurisation (Tyler et al, 1997). After shaking and equilibration (2 h) the CH₄ partitioned into the headspace was analysed by GC-FID and the corresponding mass in the gas and aqueous phase was determined by Henry's law, to obtain a final concentration in the water sample. Six calibration gas standards were prepared on the day of analysis by serial dilution of certificated 60% CH₄: 40% CO₂ mixed gas using O₂-free N₂ as the balance gas. The calibration was linear across the range 0 – 140000 ppm v and the detection limit equivalent to ~ 0.017 mg L⁻¹. Repeat analyses of mid-range standards indicated a precision error < 1.3%.

175 Analysis of dissolved methane isotopic composition and concentration was performed using the gas headspace equilibration technique (Magen et al, 2014) (5mls sampled water were injected into a Viton-stoppered, He-flushed 120 mL glass serum vial). 10mls of the headspace was then flushed through a 2 mL sample loop, and injected onto a 25 m MolSieve column within an Agilent 7890B GC attached to an Isoprime100 Isotope Ratio Mass Spectrometer (IRMS) (Tyler et al, 1997). Analytical precision errors for samples > 3 ng-C were better than 0.3‰ for isotopic values, and < 3.5% for concentration, based on methane standard injections. δ¹³C_{DIC} was measured by a Continuous Flow Isotopic Ratio Mass Spectrometer (Thermo-180 Finnegan Delta V with gasbench interface) and an error of 0.1‰. All δ¹³C_{DIC} and δ¹³C_{CH4} values are reported vs. the Vienna Pee Dee Belemnite standard.

Samples for water isotope analysis were collected as unfiltered 20 mL aliquots in a screw-top HDPE bottle. The bottles were subsampled into 1.5 mL vials with septa closures and loaded into the auto-sampler tray of a CDRS instrument (Picarro V 1102-185 i model). Each sample was injected and measured 6 times using 2.5 µL of water for each injection. Together with the samples, two secondary international standards (USGS 64444 and USGS 67400) and one internal laboratory standard (NTW – Norwich tap water) were measured, each injected 10 times in order to minimise memory effects. Final isotopic compositions were calculated using the calibration line based on the secondary international standards and reported in ‰ units with respect to V-SMOW on the V-SMOW – SLAP scale. The precision error of the measurements was 0.1‰ for δ¹⁸O and 0.3‰ for δD.

190

3 Results

3.1 Sub-permafrost groundwater chemistry inferred from pingo springs

Table 1 shows the geochemistry of all the water samples collected prior to the onset of snow melt from the open system pingos in Adventdalen. These waters were typically brackish (Cl⁻ concentrations 390 – 1600 mg L⁻¹), largely lacking in dissolved oxygen (0.00 – 2 mg L⁻¹) and NO₃⁻ (≤0.15 mg L⁻¹) and with a pH from circum-neutral to alkaline (pH 6.8 – 8.2). Figure 3A shows oxidation-reduction potential (ORP) measurements, indicating that strongly reducing conditions (negative ORP) existed

nearest the coast (typically < -180 mV at Førstehytte and Lagoon Pingos) whilst higher, more variable values were encountered up-valley (-189 to + 130 mV) at Innerhytte and River Bed Pingos.

200 With the exception of the River Bed Pingo Distal samples from 2017, the generally observed water type was Na-HCO₃ with a saturation index (SI) for calcite indicating near-equilibrium ($SI_{\text{calcite}} = 0.1 \pm 0.4$) according to WEB-PHREEQ. The dominance of Na⁺ over the other cations (Ca²⁺, Mg²⁺ and K⁺: Table 1) and the increasing Na⁺ to Cl⁻ ratios towards the coast (Figure 3A) show how cation exchange (freshening) and rock-weathering effects were increasingly influential down the valley. Concentrations of SO₄²⁻ in most samples were far lower than expected when compared to late summer baseflow concentrations
205 in local rivers (e.g. Hodson et al, 2016; Rutter et al, 2011; Yde et al, 2008). However, the River Bed Pingo Distal samples revealed a distinctly different spring water chemistry, with a Mg-Ca-SO₄ water type, far higher SO₄²⁻ concentrations and a saturation index for gypsum that reached equilibrium ($SI_{\text{gypsum}} = 0.0 \pm 0.1$) according to WEB-PHREEQ. Otherwise, the River Bed Pingo samples from 2015 and 2016 showed sub-saturation with respect to gypsum ($SI_{\text{gypsum}} = -2.9 \pm 0.5$). The markedly different Mg-Ca-SO₄ water type therefore suggested a different groundwater source whose composition was governed by
210 gypsum-driven de-dolomitization, a process wherein very reactive gypsum catalyses the replacement of dolomite by calcite (Bischoff et al, 1994). This is further supported by the different $\delta^{18}\text{O-H}_2\text{O}$ and $\delta\text{D-H}_2\text{O}$ stable isotope characteristics of the River Bed Pingo Distal waters, which Figure 3B suggests were more similar to those encountered at Lagoon Pingo.

With the exception of the River Bed Pingo Distal waters, Figure 3B indicates a general westward depletion (decrease) in both
215 water isotopes towards the coast, where water samples also lie closest to the Local Meteoric Water Line (LMWL) (Rozanski et al, 1993). Although Figure 4B shows that none of the waters depart significantly from the LMWL, a linear regression model produces a lower slope (6.09) than that which is associated with the LMWL (i.e. 6.97), suggesting minor isotopic fractionation associated with partial re-freezing (Lacelle, 2011).

220 3.2 Methane geochemistry in the pingo springs

Table 2 shows that concentrations of methane in pingo spring waters in both the pre-melt season and the summer periods lay in the range 0.6 – 42.6 mg L⁻¹, which is up to five orders of magnitude greater than calculated atmospheric thermodynamic equilibrium values, and places the most concentrated values marginally above the solubility limit for fresh water at 0 °C (i.e. 41 mg L⁻¹). The data include samples collected opportunistically from the springs during the summer melt season. The
225 dissolved carbon dioxide concentrations were also in excess of atmospheric equilibrium, by as much as 700 mg L⁻¹ at Innerhytte Pingo. Temporal variability in the dissolved gas concentrations was significant at all sites, but greatest at River Bed Pingo Distal, where there were generally much lower methane and excess CO₂ concentrations. The methane concentration (at all sites) was positively correlated ($p < 0.05$) with excess CO₂ ($r = 0.86$: Figure 3C), the stable isotopes of water ($\delta^{18}\text{O-H}_2\text{O}$, $r = 0.86$ and $\delta\text{D-H}_2\text{O}$, $r = 0.91$: Figure 4D) and Na⁺ ($r = 0.74$).

Table 2 shows that the $\delta^{13}\text{C}$ of methane and dissolved inorganic carbon ($\delta^{13}\text{C}\text{-CH}_4$ and $\delta^{13}\text{C}\text{-DIC}$ respectively) were variable, especially at Lagoon Pingo and Førstehytte Pingo. The $\delta^{13}\text{C}\text{-CH}_4$ lay between -70.7‰ and -48.2‰ VPDB, which is indicative of biogenic methane at the ^{13}C -depleted (more negative) end of the scale, and either partially oxidised biogenic or geogenic methane at the ^{13}C -enriched (more positive) upper end (Schoell, 1980). Table 2 also includes samples collected
235 opportunistically from the springs during the summer. These show that the methane concentration in summer is within the range reported during late winter. The $\delta^{13}\text{C}\text{-CH}_4$ and $\delta^{13}\text{C}\text{-DIC}$ values of the summer samples are also similar to the late winter, although the $\delta^{13}\text{C}\text{-CH}_4$ is marginally lower (^{13}C -depleted) at Lagoon Pingo and the summer $\delta^{13}\text{C}\text{-DIC}$ values at Førstehytte Pingo and Innerhytte Pingo are slightly higher (^{13}C -enriched) than typical values in late winter.

Figure 4 shows that all measured $\delta^{13}\text{C}\text{-CH}_4$ values in the pingo springs compare well with the results of the pore gas extractions (range -53‰ VPDB to -69‰ VPDB) from the upper core sections at the CO₂ Well Park (Well Site B in Figure 2: data from Huq et al, 2017). Here, the methane in the permafrost and underlying host rocks of the sub-permafrost aquifer has been attributed to a biogenic source because the $\delta^{13}\text{C}\text{-CH}_4$ values are moderately ^{13}C -depleted (i.e. more negative) and the concentrations of other hydrocarbons (propane and ethane) are low relative to methane (see Figure 4). Nearby, methane with
245 $\delta^{13}\text{C}\text{-CH}_4$ between -48.9 and -52.9‰ VPDB, and no other detectable hydrocarbons, was also found immediately beneath the permafrost at Well Sites C and D in association with a Cl-rich (1500 mg L⁻¹) groundwater (Store Norske Spitsbergen Kullkompani, Unpublished Report SN1983-004). In this case, both the $\delta^{13}\text{C}\text{-CH}_4$ and the Cl⁻ concentrations compare favourably to the values at Innerhytte and River Bed Pingos. By contrast, the $\delta^{13}\text{C}\text{-CH}_4$ values from the pingos did not compare well with the ^{13}C -enriched $\delta^{13}\text{C}\text{-CH}_4$ values (range -50 ‰ to -32 ‰ VPDB) recorded from the deeper shale unit (ie > 300 m:
250 see Figure 4) at Well Site B by Huq et al (2017). These values were assumed to indicate the deeper geogenic methane source because ethane and propane were also detected at significant concentrations relative to the methane (see also Ohm et al, 2019).

Figure 4 also shows that the $\delta^{13}\text{C}\text{-DIC}$ values (range -8.5‰ to +26‰ VPDB) observed in the pingo springs do not compare well with the values from the lower shale-rich units of the rock cores either (range -26‰ to +21‰ vPDB: Huq et al, 2017).
255 This difference cannot be attributed to differences in the DIC speciation among our water samples (containing CO_{2(aq)}, H₂CO₃, HCO₃⁻ and CO₃²⁻) and the published rock pore gas samples (CO_{2(g)} only). The low $\delta^{13}\text{C}\text{-DIC}$ that is missing from the pingo water samples derives from organic matter respiration and is known to be present in local riverine runoff ($\delta^{13}\text{C}\text{-DIC}$ range -15‰ to -4‰ VPDB: Hindshaw et al, 2016). Therefore, the higher $\delta^{13}\text{C}\text{-DIC}$ signatures of the pingo springs are most similar to those seen in the upper aquifer zone of the cores.

4.1 Groundwater geochemical environment and methane concentrations

The geochemistry of the pingo springs is significantly different to surface waters in the Adventdalen watershed (see Hodson et al, 2016; Rutter et al, 2011; Yde et al, 2008). Their high Cl^- concentrations and distinct Na-HCO_3 freshening signature indicate incorporation of brackish-marine water from either the uplifted, Holocene marine sediments, the fjord, or a mixture of the two. Importantly, the removal of nitrate and sulphate and the presence of biogenic methane indicate that microbially-mediated processes operate (denitrification, sulfate reduction and methanogenesis, respectively). These decrease the redox potential of the groundwaters towards the low ORP conditions found at the coast (Figure 3a). The strikingly different water chemistry dominated by Mg-Ca-SO_4 in the River Bed Pingo Distal samples during 2017 seems to indicate an additional ground water type that is strongly influenced by the gypsum- and dolomite-bearing rocks that outcrop east of Adventdalen, or lie at considerable depth (beneath the Agardfjellet Formation) within the study area in Figure 2. Due to the low hydraulic conductivity of the shale units of the Rurikfjellet and Agardfjellet Formations, their influence upon springs at the River Bed Pingo Distal site is presumably made possible by groundwater migration along the faults in the vicinity of pingo (Figure 2a). Otherwise, sub-permafrost groundwater migration in the study area seems dominated by the exploitation of the sub-permafrost aquifer hosted by the Helvetiafjellet Formation in the lower valley (see Hornum et al, In Review).

275

The strongest predictors of the methane content in the pingo springs are $\delta^{18}\text{O-H}_2\text{O}$ and $\delta\text{D-H}_2\text{O}$ (Figure 3d). Since the $\delta^{18}\text{O-H}_2\text{O}$ and $\delta\text{D-H}_2\text{O}$ show only a minor departure from the LMWL (Figure 3b), this indicates a strong water source control upon the gas concentration emerging from the pingos. Methane concentrations generally increase up-valley where $\delta^{18}\text{O-H}_2\text{O}$ and $\delta\text{D-H}_2\text{O}$ become more ^{18}O -enriched. Since sea water is $\delta^{18}\text{O}$ - and δD -enriched relative to freshwater, the simplest, although initially counter-intuitive explanation for this change, is an inland increase in the mixing ratio of marine water within the sub-permafrost groundwater. A statistically significant ($p < 0.05$) relationship between Cl^- and methane ($r = 0.74$) also becomes apparent when the River Bed Pingo Distal samples are excluded. The dependence of the methane concentration upon Cl^- , $\delta^{18}\text{O-H}_2\text{O}$ and $\delta\text{D-H}_2\text{O}$ is therefore consistent with deeper, denser sub-permafrost brines providing the water source to the pingo springs further inland. Hornum et al (In Review) show how this most likely reflects a general increase in the thickness of the permafrost with distance from the coast (shown crudely in Figure 1b). The presence of the Mg-Ca-SO_4 groundwater in the River Bed Pingo Distal samples is also consistent with this interpretation, because the gypsum-hosting Permian strata lie beneath the Agardfjellet Formation. Further down-valley, where permafrost is thinner, a greater mixing ratio of fresher, low density groundwater discharges from the pingo springs. Its more depleted (lower) $\delta^{18}\text{O-H}_2\text{O}$ and $\delta\text{D-H}_2\text{O}$ signature is consistent with dilution by snow and ice melt from the mountains that flank the main valley axis near the coast (Yde et al, 2008).

285

290 4.2 Methane sources and removal

Comparison of the pingo $\delta^{13}\text{C-CH}_4$ to the rock core gas samples in Figure 4 shows that mixtures of biogenic methane (lower $\delta^{13}\text{C-CH}_4$ signatures) and geogenic methane (higher $\delta^{13}\text{C-CH}_4$ signatures) might be present beneath the permafrost. However, evidence for a significant geogenic methane contribution to the pingo springs is equivocal and seems unlikely given the low rates of fluid migration that may be expected in the deeper shale-rich Rurikfjellet and Agardfjellet Formations. Therefore, the partial oxidation of biogenic methane most likely explains the occasionally higher $\delta^{13}\text{C-CH}_4$ signatures in the pingo springs, due to the preferential oxidation of the ^{12}C isotopes (leaving the residual pool ^{13}C enriched: Schoell, 1980). The most variable $\delta^{13}\text{C-CH}_4$ values were encountered at Førstehytte and Lagoon Pingos (mean \pm 1 standard deviation: $-58.8 \pm 7.11\%$ VPDB and $-62.2 \pm 8.81\%$ VPDB, respectively) and include the only low $\delta^{13}\text{C-CH}_4$ values which can be attributed to biogenic methane with reasonable certainty (Table 2). Significant variations in these $\delta^{13}\text{C-CH}_4$ values sometimes occurred relatively rapidly, for example from -55.3 to -67.4% VPDB in just nine days at Førstehytte Pingo (April 2016), or from -62.0 to -48.3 to -55.6% VPDB over 34 days at Lagoon Pingo (March to April 2017). Rather than invoking an unlikely, rapid switching between geogenic ($\delta^{13}\text{C-CH}_4$ -enriched) and a biogenic ($\delta^{13}\text{C-CH}_4$ -depleted) methane sources, it is far more plausible that this variability was caused by changing degrees of oxidation of biogenic methane during storage beneath the surface ice blisters at the pingos. We therefore contend that as storage beneath an ice lid proceeds, the $\delta^{13}\text{C-CH}_4$ at these sites will become increasingly $\delta^{13}\text{C-CH}_4$ -enriched until hydraulic or thermal fracturing allows the trapped fluids to escape. Methanotrophic microbial communities in the marine muds represent a plausible mechanism for the enrichment (Hodson et al, 2019). After an outburst event, refreezing then seals the system and the void fills once more with $\delta^{13}\text{C-CH}_4$ -depleted, biogenic methane. As a consequence, the time elapsed since the last fracture event, as well as the volume fraction of the fluids that managed to escape before refreezing, are both likely to cause the notable variations in the $\delta^{13}\text{C-CH}_4$ of our samples. For this reason, Table 2 shows that samples collected opportunistically at these sites during late summer (when no ice lid existed) consistently showed the depleted $\delta^{13}\text{C-CH}_4$ values (i.e. between -60 and -70% VPDB) expected of a biogenic source.

The high methane concentrations at Innerhytte Pingo, sometimes observed near the solubility limit (ca. 41 mg L^{-1}), were characterised by limited variability in $\delta^{13}\text{C-CH}_4$ (mean $-54.4 \pm 2.82\%$ VPDB). The $\delta^{13}\text{C-CH}_4$ values at nearby River Bed Pingo ($-54.5 \pm 1.76\%$ VPDB) were almost identical, and again showed far less variability than at Førstehytte and Lagoon Pingos. If the high concentrations and invariable $\delta^{13}\text{C-CH}_4$ are indicative of minimal removal or carbon isotope fractionation beneath an ice lid, then these results reveal a different (more ^{13}C -enriched) $\delta^{13}\text{C-CH}_4$ source signature than at Lagoon Pingo and Førstehytte Pingo. A mixture of geogenic and biogenic gas therefore seems more plausible here, not least because the $\delta^{13}\text{C-CH}_4$ signatures lie close to the geogenic methane $\delta^{13}\text{C-CH}_4$ signature inferred from the lower shale units by Huq et al (2017) (i.e. $\delta^{13}\text{C-CH}_4$ ca. -45% VPDB and above: Figure 4). However, the $\delta^{13}\text{C-CH}_4$ signatures are in fact closest to the gas discovered in the Helvetiafjellet aquifer just below the permafrost at Wells C and D (i.e. $\delta^{13}\text{C-CH}_4$ between -48.9 and -52.9% VPDB), which is known to be almost entirely biogenic because there are low or undetectable levels of other hydrocarbons (ethane and propane)

325 according to both SNSK reports and Huq et al (2017). Furthermore, the high $\delta^{13}\text{C-DIC}$ ($> 10\text{‰}$) at both Innerhytte and River Bed Pingos, also observed in the sub-permafrost aquifer by Huq et al (2017), are strongly indicative of CO_2 reduction by the hydrogenotrophic pathway of biogenic methanogenesis (Schoell, 1980). Therefore, the partial oxidation of biogenic methane also provides the simplest explanation for the presence of this gas at high concentrations in pingo outflows further up-valley.

4.3 Pingos and springs as methane emission hotspots

330 In spite of there being evidence for sub-surface oxidation and/or methanotrophy in our winter samples, our data clearly show that others reach, or even marginally exceed, the methane solubility limit (i.e. 41 mg L^{-1} in freshwater at 0°C) prior to their discharge from the pingo. The potential contribution of the pingos to the annual land-to-atmosphere methane flux therefore deserves appraisal. We address this by first showing that the flux of methane transported to the land surface is significant compared to known wetland methane emissions in our study area. Then we describe how removal processes immediately after the spring waters discharge from the pingos are far less effective than is known to be the case with submarine emissions in the Svalbard region (Mau et al, 2017).

The flux of methane transported to the land surface was estimated from the product of the pingo outflow rates (water discharge) and their average methane concentration. The water discharge was assumed constant at each site, on account of the likelihood of prolonged residence time beneath the permafrost, our own visual inspection of the flows throughout the study, and the fact that discharge is largely driven by the gradual process of permafrost aggradation in response to isostatic uplift (Hornum et al, 2019; Yoshikawa and Harada, 1995). Our flow observations include monitoring that was undertaken at Lagoon Pingo, which demonstrated little seasonal variation in groundwater flow (Hodson et al, 2019). Published values of the pingo spring discharges are scarce, but range from 0.01 to 3 L s^{-1} (Hodson et al, 2019; Hornum et al, In Review; Liestøl, 1996; Yoshikawa, 1993). The flows used for each site are described in Table 3 and amount to a combined discharge of ca. 1.6 L s^{-1} . In addition to the four pingo springs, a large spring discharge (measured at 0.52 L s^{-1} in October 2018) at a site 100 m west of Lagoon Pingo has been included after it was discovered to contain high methane concentrations. The average methane concentration of this site “Lagoon Pool” was $22.2 \pm 1.9 \text{ mg L}^{-1}$ ($n = 4$) according to samples taken through an ice cover in February, March and October, 2018. At these times, the electrical conductivity was very similar to the outflow at Lagoon Pingo and it was inferred to be the same water source.

350

Table 3 shows that the total methane flux from the pingo springs is ca. $1051 \text{ kg CH}_4 \text{ y}^{-1}$. For comparison, rates of methane emission from chambers installed over the course of three years in an ice wedge polygon site in Adventdalen lie in the range $0 - 5 \text{ gC m}^{-2} \text{ yr}^{-1}$ according to Pirk et al (2017), with a median of ca. $1 \text{ gC m}^{-2} \text{ yr}^{-1}$. Assuming that all other wetlands in the valley floor contributed equally (from an area of 4.7 km^2), the total active layer emissions were probably between 6040 and

355 10400 kg CH₄ yr⁻¹. Our estimates of pingo spring methane fluxes are therefore equivalent to up to 17% of the active layer emissions.

The magnitude of annual methane emission from the springs to the atmosphere very much depends upon the hydrological and meteorological conditions at each pingo site, as well as their variation during the year. During winter, all the sites were
360 characterised by a large ice blister, from which periodic outbursts of methane-rich water occurred. During these outbursts, methane emission is most efficient on account of the flow turbulence and likely rejection of methane from the icing formed by the runoff as it gradually freezes (usually within 100 m of the outburst source). Measurement of the methane evasion from the outburst was impossible under winter conditions, although it was possible to capture the rapid, downstream loss of dissolved methane using samples taken opportunistically during an outburst event on 22nd April 2015. Figure 5 shows how the
365 downstream methane concentration decreased with distance from the pingo icing summit in a manner described by a regression model of the form:

$$(CH_{4(aq)})_x = 16.9X^{-0.384} \quad \text{Eq. 1}$$

Where $(CH_{4(aq)})_x$ is the dissolved methane concentration at distance X (m) from the pingo icing summit. The coefficient of determination was 0.90 ($n = 6$) using only the 2015 data. Other samples from the base of the pingo in 2014 are used to show
370 how methane concentrations at greater distances away from the pingo are far lower and thus consistent with further methane loss (see Table 2). The rapid loss of methane was not well accounted for by an exponential model, which yielded a coefficient of determination of 0.70 (not shown). Although this outcome is highly sensitive to the single data point at 3 m from the icing summit, it most likely implies that turbulence was non-linear along the flow path and greatly enhanced the rate of methane evasion as the spring descended the steep, initial part of the pingo flank. Freezing effects were not discernible in the 2015
375 transect until after the spring flowed onto the flat valley floor (ie beyond 50 m in Figure 5), where the flow velocities decreased markedly. With this being the case, the data show that 94 % of the methane was most likely lost to the atmosphere within 44 m of the inferred spring source. During winter, turbulence-driven gas exchange therefore seems most effective near the pingo summit, whilst freezing effects dominate once springs have flowed onto the valley floor (but add little to the overall flux).

380 During summer, significant changes at the surface of the pingos means that two key emission scenarios require consideration: i) a low emission scenario, caused by springs discharging straight into a receiving water body, such as a pool (Lagoon Pingo and Lagoon Pool) or the river (River Bed Pingo), and ii) a higher emission scenario caused by turbulent discharge down the flank of the pingo (Førstehytte Pingo and Innerhytte Pingo) and therefore similar to the winter emission scenario but with less freezing effects. Hodson et al (2019) examined the first scenario at Lagoon Pingo and showed that the pond which forms above the groundwater spring during summer reduces the annual emission flux to 42 kg CH₄ y⁻¹, which is 0.65 times the spring discharge flux according to Table 3. This reduction was caused by inundation of the site by meltwater (including that derived
385 from ablation of the ice lid) and rainfall. We presume a similar reduction occurs every summer at River Bed Pingo Site, where a large river engulfs the entire spring. However, the pond that forms above Lagoon Pingo does not form every year due to the

susceptibility of the drainage pathway at this site to the disturbance caused by its ice lid collapse. Therefore, by 2020, the system had reverted to a single spring discharging from a point source, rather like the situation at Innerhytte Pingo. Interannual variations in atmospheric methane emissions from pingos are therefore very likely.

The discovery of methane-rich sub-permafrost groundwaters discharging from Svalbard's open system pingos means that other perennial springs also deserve attention, because they may be carrying the same fluids. Modelling studies also imply that an increase in the discharge of groundwater systems into surface hydrological networks can be expected as climate change proceeds (Bense et al, 2012). Since these perennial springs result in the formation of winter icings similar to those encountered on the summit or flanks of the pingos, their detection is greatly facilitated. As a consequence, it is well known in Svalbard that they constitute groundwater flows greatly in excess of those observed flowing from pingos (Bukowska-Jania and Szafraniec, 2005). The sensitivity of the total atmospheric methane flux caused by the ventilation of sub-permafrost groundwater discharge is therefore potentially very important. For example, a total discharge of sub-permafrost groundwaters of just 50 L s⁻¹ with a methane concentration of 17.9 mg L⁻¹ (i.e. average of all values in Table 2) would mean more than five times more methane is available for emission from the land surface to the atmosphere (if active layer emissions remain constant). Such a groundwater discharge would still only represent 0.001% of the total annual runoff in Adventdalen during the study (A. Nowak and A. Hodson, Unpublished Data). Evidence for similar coastal groundwater springs with high methane concentrations that contribute meaningfully to emission fluxes exist elsewhere in the Arctic, including the MacKenzie Delta, Alaska, where they are thought to contribute approximately 17% of the emission from the delta (Kohnert et al, 2017). All forms of sub-permafrost groundwater discharge in Arctic coastal lowlands therefore deserve closer attention in order to better understand changes in the release of sub-permafrost methane to the atmosphere.

410 **5 Conclusion**

The development of open system pingos in Svalbard's coastal lowlands is linked to permafrost aggradation following isostatic uplift. This mechanism results in the expulsion of methane-rich sub-permafrost fluids over the course of centuries at individual sites, and establishes pingos as potential hotspots for greenhouse gas emissions. In Central Spitsbergen, the concentrations of methane in the springs that discharge from open system pingos are high (flow weighted average 17.9 mg L⁻¹, and can even marginally exceed the solubility limit of ca. 41 mg L⁻¹). The methane appears to be largely biogenic in origin and subject to moderate levels of oxidation. However a geogenic methane origin cannot be ruled out because it is present at greater depths beneath the permafrost. The methane is brought to the surface of Adventdalen after groundwaters have exploited faults through mudstones of low hydraulic conductivity to the east, and sandstones of high hydraulic conductivity to the west. The study of open system pingos therefore offers rare insight into sub-permafrost methane and groundwater dynamics. Since this is one of the least understood potential emission sources, open system pingos deserve greater research attention, so that sub-permafrost emission sources can be integrated with those from the active layer for better emission forecasts. In our study, ca. 1051 kg CH₄

yr⁻¹ was transported to the land surface at four pingos with a trivial combined groundwater discharge of ca. 1.6 L s⁻¹. The high gas concentrations in the pingo springs that is responsible for this potentially significant emission shows that all types of sub-permafrost groundwater spring, however small, deserve appraisal as methane emission sources.

425

6 Data Availability

Detailed water quality parameters, including methane concentrations and isotopic composition, for groundwater springs discharging from open system pingos in Adventdalen, Svalbard (2015-2017) are available at <https://doi.org/10.5285/3D82FD3F-884B-47B6-B11C-6C96D66B950D>.

430

Author Contributions

AJH, AN, PB and MTH collected the samples and analysed the data, with significant input from SJ, KR and AVT. The laboratory samples were analysed by SFT, AJH, KR and AVT. AJH wrote the manuscript, with equal editorial input from the remaining authors.

435

Competing financial interests

The authors declare no competing financial interests.

Acknowledgements

440 The authors acknowledge Joint Programming Initiative (JPI-Climate Topic 2: Russian Arctic and Boreal Systems) Award No. 71126, UK Natural Environment Research Council grant NE/M019829/1, UK Natural Strategic Environment Science Capital Funding, Research Council of Norway grants (NRC nos. 244906 and 294764) and a Royal Geographical Society Ralph Brown Expedition Award 2017. Andrew Fairburn (University of Sheffield) and Stephen Reid (University of Leeds) are thanked for performing the dissolved gas and chemical analysis of the water samples.

445

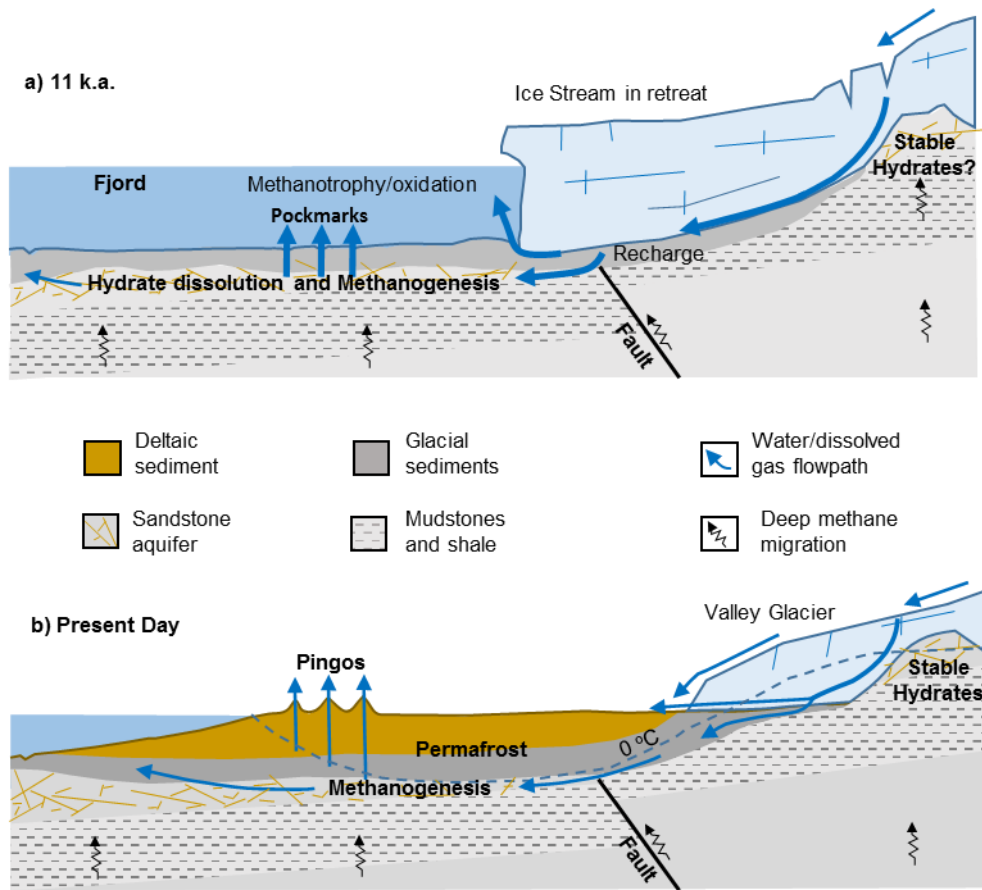
References

- Anthony, K. M. W., Anthony, P., Grosse, G. & Chanton, J. Geologic methane seeps along boundaries of Arctic permafrost thaw and melting glaciers, *Nat. Geosci.*, 5(6), 419-426, 2012.
- 450 Bense, V. F., Kooi, H., Ferguson, G. and Read, T.: Permafrost degradation as a control on hydrogeological regime shifts in a warming climate, *J. Geophys. Res. Earth Surf.*, 117(3), 1–18, doi:10.1029/2011JF002143, 2012.
- Bergman, T. L., Lavine, A. S., Incropera, F. P. and Dewitt, D. P.: *Fundamentals of Heat and Mass Transfer*. 7th Edition, , 1048, doi:10.1007/s13398-014-0173-7.2, 2011.
- Betlem, P., Senger, K., and Hodson, A.: 3D thermobaric modelling of the gas hydrate stability zone onshore central Spitsbergen, Arctic Norway, *Marine and Petroleum Geology*, 100, 246-262, 2019.
- 455 Bischoff, J. L., Juliá, R., Shanks III, W. C. and Rosenbauer, R. J.: Karstification without carbonic acid: Bedrock dissolution by gypsum-driven dedolomitization, *Geology*, 22(11), 95-998, 1994.
- Braathen, A., Bælum, K., Christiansen, H. H., Dahl, T., Eiken, O., Elvebakk, H., Hansen, F., Hanssen, T. H., Jochmann, M., Johansen, T. A., Johnsen, H., Larsen, L., Lie, T., Mertes, J., Mørk, A., Mørk, M. B., Nemeč, W. J., Olausen, S., Oye, V., Rød, K., Titlestad, G. O., Tveranger, J. & Vagle, K. Longyearbyen CO₂ lab of Svalbard, Norway – first assessment of the
460 sedimentary succession for CO₂ storage, *Norwegian Journal of Geology*, 92, 353–376, 2012.
- Bukowska-Jania, E., and Szafraniec, J.: Distribution and morphometric characteristics of icing fields in Svalbard, *Polar Res.*, 24(1-2), 41-53, 2005.
- Cable, S., Elberling, B. and Kroon, A.: Holocene permafrost history and cryostratigraphy in the High-Arctic Adventdalen Valley, central Svalbard, *Boreas*, 47(2), 423-442, 2018.
- 465 Crémère, A., Lepland, A., Chand, S., Sahy, D., Condon, D.J., Noble, S. R., Martma, T., Thorsnes, T., Sauer, S. and Brunstad, H.: Timescales of methane seepage on the Norwegian margin following collapse of the Scandinavian Ice Sheet, *Nat. Comms.*, 7, 11509, 2016.
- Dean, J. F., Middelburg, J. J., Röckmann, T., Aerts, R., Blauw, L. G., Egger, M., Jetten, M. S., de Jong, A. E., Meisel, O. H., Rasigraf, O. and Slomp, C.P.: Methane feedbacks to the global climate system in a warmer world, *Rev. Geophys.*, 56(1), 207-
470 250, 2018.
- Dmitrenko, I. A., Kirillov, S. A., Tremblay, L. B., Kassens, H., Anisimov, O. A., Lavrov, S. A., Razumov, S. O. and Grigoriev, M. N.: Recent changes in shelf hydrography in the Siberian Arctic: Potential for subsea permafrost instability, *J. Geophys. Res.: Oceans*, 116, C10, 2011.
- Dutton, A., Carlson, A. E., Long, A. J., Milne, G.A., Clark, P. U., DeConto, R., Horton, B. P., Rahmstorf, S. and Raymo, M.
475 E.: Sea-level rise due to polar ice-sheet mass loss during past warm periods, *Science*, 349, 6244, 2015.

- Frederick, J. M. and Buffett, B. A.: Submarine groundwater discharge as a possible formation mechanism for permafrost-associated gas hydrate on the circum-Arctic continental shelf, *J. Geophys. Res.: Earth*, 121(3), 1383-1404, 2016.
- Gautier, D. L., Bird, K. J., Charpentier, R. R., Grantz, A., Houseknecht, D. W., Klett, T. R., Moore, T. E., Pitman, J. K., Schenk, C. J., Schuenemeyer, J. H. and Sørensen, K.: Assessment of undiscovered oil and gas in the Arctic. *Science*, 324(5931), 480 1175-1179, 2009.
- Gilbert, G. L., Cable, S., Thiel, C., Christiansen, H. H. and Elberling, B.: Cryostratigraphy, sedimentology, and the late Quaternary evolution of the Zackenberg River delta, northeast Greenland, *The Cryosphere*, 11(3), 1265, 2017.
- Gilbert, G. L., O'Neill, H. B., Nemeč, W., Thiel, C., Christiansen, H. H., and Buylaert, J.P.: Late Quaternary sedimentation and permafrost development in a Svalbard fjord-valley, Norwegian high Arctic, *Sedimentology*, 65, 2531–2558, 2018.
- 485 Hindshaw, R.S., Lang, S.Q., Bernasconi, S.M., Heaton, T.H.E., Lindsay, M.R. and Boyd, E.S.: Origin and temporal variability of unusually low $\delta^{13}\text{C}$ -DOC values in two High Arctic catchments. *J. Geophys. Res.: Biogeo.*, 121(4), 1073-1085 (2016).
- Hodson, A., Nowak, A. and Christiansen, H.H.: Glacial and periglacial floodplain sediments regulate hydrologic transfer of reactive iron to a high arctic fjord, *Hydrol. Proc.*, 30(8), 1219-1229, 2016.
- Hodson, A. J., Nowak, A., Holmlund, E., Redeker, K. R., Turchyn, A. V., & Christiansen, H. H.: Seasonal dynamics of 490 Methane and Carbon Dioxide evasion from an open system pingo: Lagoon Pingo, Svalbard, *Frontiers in Earth Science*, 7, 30, 2019.
- Hornum, M. T., Hodson, A. J., Jessen, S., Bense, V., and Senger, K.: Numerical modelling of permafrost spring discharge and open-system pingo formation induced by basal permafrost aggradation, *The Cryosphere Discuss.*, <https://doi.org/10.5194/tc-2020-7>, in review, 2020. Huq, F., Smalley, P. C., Mørkved, P. T., Johansen, I., Yarushina, V. & Johansen, H.: The 495 Longyearbyen CO₂ Lab: Fluid communication in reservoir and caprock, *Int. J. Greenhouse Gas Control*, 63, 59-76, 2017.
- Keating, K., Binley, A., Bense, V., Van Dam, R. L., and Christiansen, H. H.: Combined geophysical measurements provide evidence for unfrozen water in permafrost in the Adventdalen valley in Svalbard, *Geophys. Res. Lett.*, 45(15), 7606-7614, 2018.
- Kohnert, K., Serafimovich, A., Metzger, S., Hartmann, J., and Sachs, T.: Strong geologic methane emissions from 500 discontinuous terrestrial permafrost in the Mackenzie Delta, Canada, *Scientific Reports*, 7(1), 5828, 2017.
- Lacelle, D.: On the $\delta^{18}\text{O}$, δD and D-excess relations in meteoric precipitation and during equilibrium freezing: theoretical approach and field examples, *Permafrost Periglac.*, 22(1), 13-25, 2011.
- Liestøl, O.: Open System pingos in Spitsbergen, *Norsk Geogr. Tidsskr.*, 50(1), 81 – 84, 1996.
- Liestøl, O.: Pingos, Springs, and Permafrost in Spitsbergen, *Årbok 1975. Norsk Polarinstitut, Tromsø, Norway*, 1977.

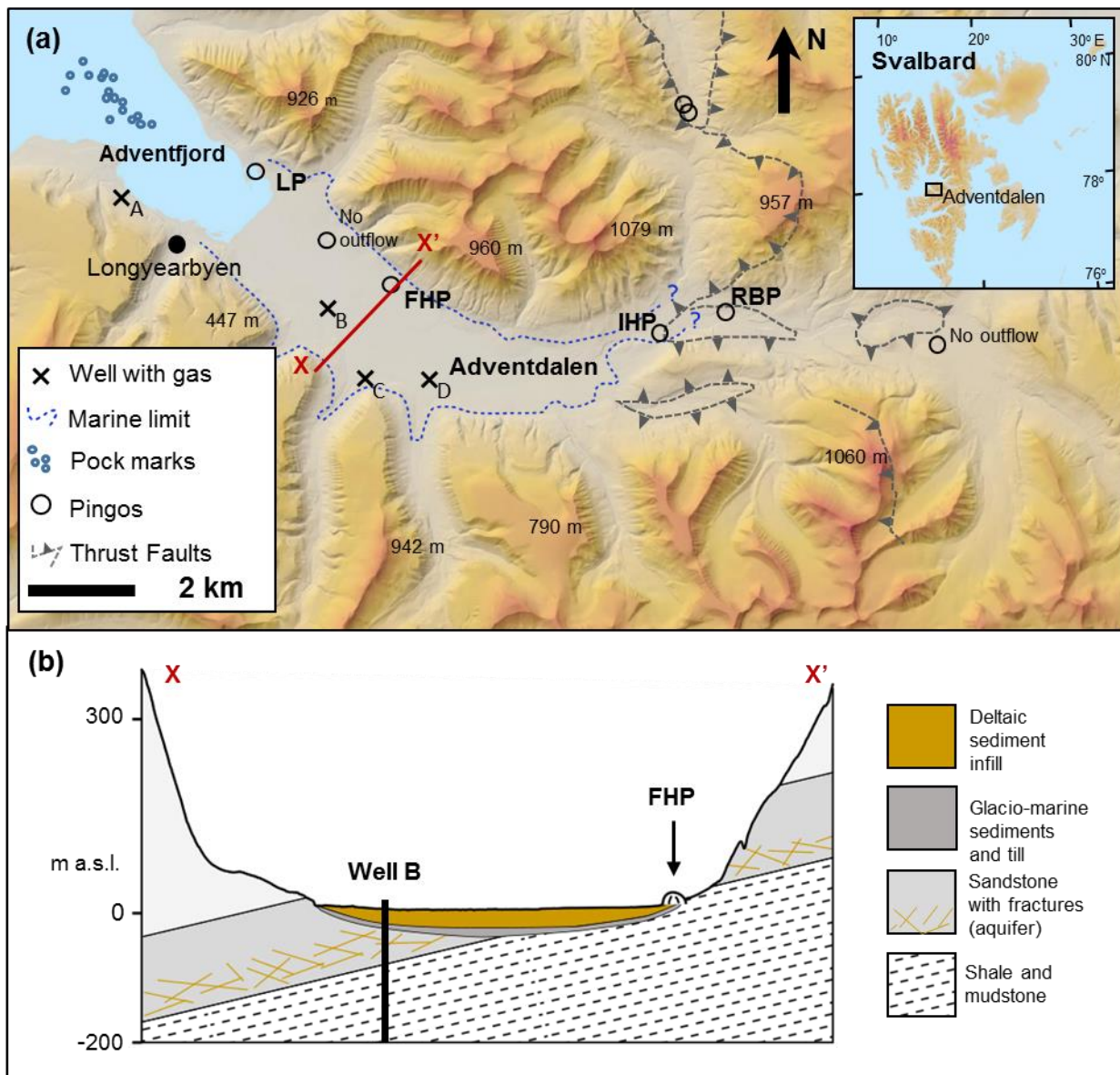
- 505 Liira, M., Noormets, R., Sepp, H., Kekišev, O., Maddison, M., and Olaussen, S.: Sediment geochemical study of hydrocarbon seeps in Isfjorden and Mohnbukta: a comparison between western and eastern Spitsbergen, Svalbard, *Arktos*, 5(1), 49 – 62, 2019.
- Magen, C., Lapham, L.L., Pohlman, J.W., Marshall, K., Bosman, S., Casso, M. and Chanton, J.P.: A simple headspace equilibration method for measuring dissolved methane, *Limnol. Oceanogr. Methods*, 12, 637-650, 2014.
- 510 Mau, S., Römer, M., Torres, M.E., Bussmann, I., Pape, T., Damm, E., Geprägs, P., Wintersteller, P., Hsu, C.W., Loher, M. and Bohrmann, G.: Widespread methane seepage along the continental margin off Svalbard-from Bjørnøya to Kongsfjorden, *Scientific reports*, 7, 42997, 2017.
- McAuliffe, C.: Gas Chromatographic determination of solutes by multiple phase equilibrium, *Chem. Technol.*, 1, 46-51, 1971
- Ohm, S. E., Larsen, L., Olaussen, S., Senger, K., Birchall, T., Demchuk, T., Hodson, A., Johansen, I., Titlestad, G. O., Karlsen, 515 D. A. and Braathen, A.: Discovery of shale gas in organic rich Jurassic successions, Adventdalen, Central Spitsbergen, Norway, *Norwegian Journal of Geology*, 99(2), 349 - 276, 2019.
- Olaussen, S., Senger, K., Braathen, A., Grundvåg, S. A. and Mørk, A.: You learn as long as you drill; research synthesis from the Longyearbyen CO₂ Laboratory, Svalbard, Norway, *Norwegian Journal of Geology*, 99(2), 157 - 181, 2019.
- Pirk, N., Mastepanov, M., López-Blanco, E., Christensen, L. H., Christiansen, H. H., Hansen, B. U., Lund, M., Parmentier, F- 520 J., Skov, K. and Christensen, T. R.: Toward a statistical description of methane emissions from arctic wetlands, *Ambio*, 46(1), 70-80, 2017.
- Pohlman, J. W., Greinert, J., Ruppel, C., Silyakova, A., Vielstädte, L., Casso, M., Mienert, J. and Bünz, S.: Enhanced CO₂ uptake at a shallow Arctic Ocean seep field overwhelms the positive warming potential of emitted methane, *Proc. Natl. Acad. Sci. U.S.A.*, 114(21), 5355-5360, 2017.
- 525 Portnov, A., Vadakkepuliambatta, S., Mienert, J. and Hubbard, A.: Ice-sheet-driven methane storage and release in the Arctic, *Nat. Comms.*, 7, 10314, 2016.
- Roy, S., Senger, K., Hovland, M., Römer, M. and Braathen, A.: Geological controls on shallow gas distribution and seafloor seepage in an Arctic fjord of Spitsbergen, Norway, *Marine and Petroleum Geology*, 107, 237-254, 2019.
- Rozanski, K., Araguás-Araguás, L., and Gonfiantini, R.: Isotopic patterns in modern global precipitation, in: *Climate change in Continental Isotopic Records* (eds. P. K. Swart, K. C. Lohmann, J. McKenzie, and S. Savin), 1–37, *Geophysical Monograph No. 78*, American Geophysical Union, Washington D.C.1-36, 1993.
- 530 Rutter, N., Hodson, A., Irvine-Fynn, T. & Solås, M. K. Hydrology and hydrochemistry of a deglaciating high-Arctic catchment, Svalbard. *J. Hydrol.*, 410(1), 39-50, 2011.

- Schoell, M.: The hydrogen and carbon isotopic composition of methane from natural gases of various origins, *Geochim. Cosmochim. Acta*, 44(5), 649–661, 1980.
- 535
- Schuur, E. A. G., McGuire, A. D., Schädel, C., Grosse, G., Harden, J. W., Hayes, D. J., Hugelius, G., Koven, C. D., Kuhry, P., Lawrence, D. M. and Natali, S. M.: Climate change and the permafrost carbon feedback, *Nature*, 520 (7546), 171-179, 2015.
- Smith, L. M., Sachs, J.P., Jennings, A. E., Anderson, D. M. & DeVernal, A.: Light $\delta^{13}\text{C}$ events during deglaciation of the East
540 Greenland continental shelf attributed to methane release from gas hydrates, *Geophys. Res. Lett.*, 28(11), 2217-2220, 2001.
- Smith, R. W., Bianchi, T. S., Allison, M., Savage, C. and Galy, V.: High rates of organic carbon burial in fjord sediments globally, *Nat. Geosci.*, 8(6), 450-453, 2015.
- Syvitski, J. P. M., Burrell, D. C. and Skei, J. M.: *Fjords: Processes and Products*, Springer, New York, 377 pp, 1986.
- Tyler, S. C., Bilek, R. S., Sass, R. L. and Fisher, F. M.: Methane oxidation and pathways of production in a Texas paddy field
545 deduced from measurements of flux, $\delta^{13}\text{C}$, and δD of CH_4 , *Global Biogeochem Cycles*, 11 (3) 323-348, 1997.
- Weitemeyer, K. A. and Buffett, B. A.: Accumulation and release of methane from clathrates below the Laurentide and Cordilleran ice sheets, *Glob. Planet. Change*, 53(3), 176-187, 2006.
- Włodarska-Kowalczyk, M., Mazurkiewicz, M., Górska, B., Michel, L.N., Jankowska, E. and Zaborska, A.: Organic carbon
550 origin, benthic faunal consumption and burial in sediments of northern Atlantic and Arctic fjords (60-81 0N), *J. Geophys. Res.: Biogeo., In Press*, doi:10.1029/2019JG005140
- Yde, J. C., Riger-Kusk, M., Christiansen, H. H., Knudsen, N. T., and Humlum, O.: Hydrochemical characteristics of bulk meltwater from an entire ablation season, Longyearbreen, Svalbard, *J. Glaciol.*, 54(185), 259-272 (2008).
- Yoshikawa, K.: Notes on open-system pingo ice, Adventdalen, Spitsbergen, *Permafrost Periglac.*, 4, 327-334, 1993.
- Yoshikawa, K. and Harada, K. Observations on nearshore pingo growth, Adventdalen, Spitsbergen, *Permafrost Periglac.*, 6(4),
555 361-372, 1995.
- Yoshikawa, K., and Nakamura, T.: Pingos growth age in the delta area, Adventdalen Spitsbergen, *Polar Rec.*, 32, 347-352, 1996.



560 **Figure 1.** Landscape change and likely methane migration pathways in Adventdalen (thickness of geological units and sediments not to scale): a) during deglaciation after the Last Glacial Maximum ca. 11 000 years ago, b) today, following delta progradation, isostatic uplift and permafrost aggradation. The conceptual model of landscape change was based upon Gilbert et al (2018).

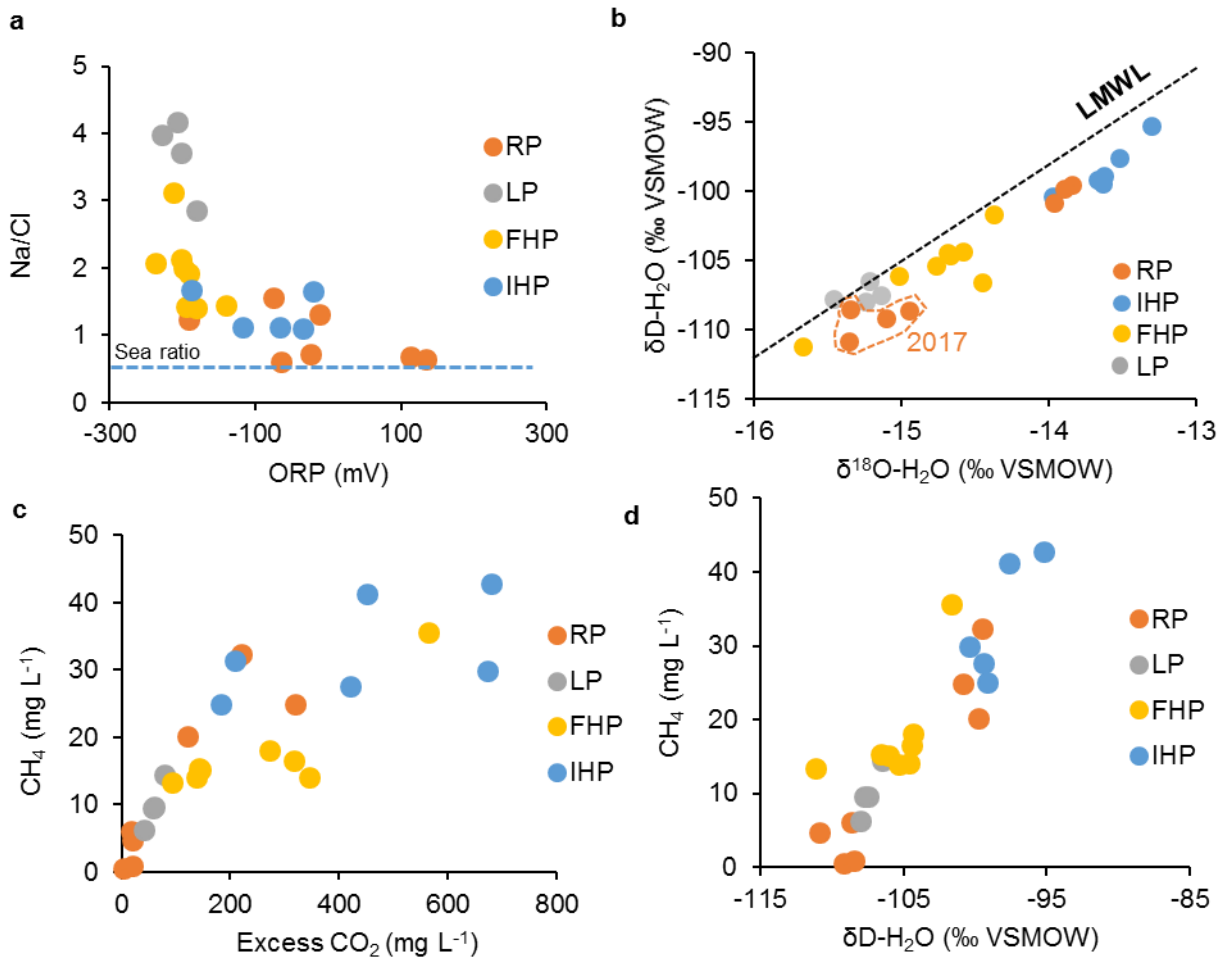
565



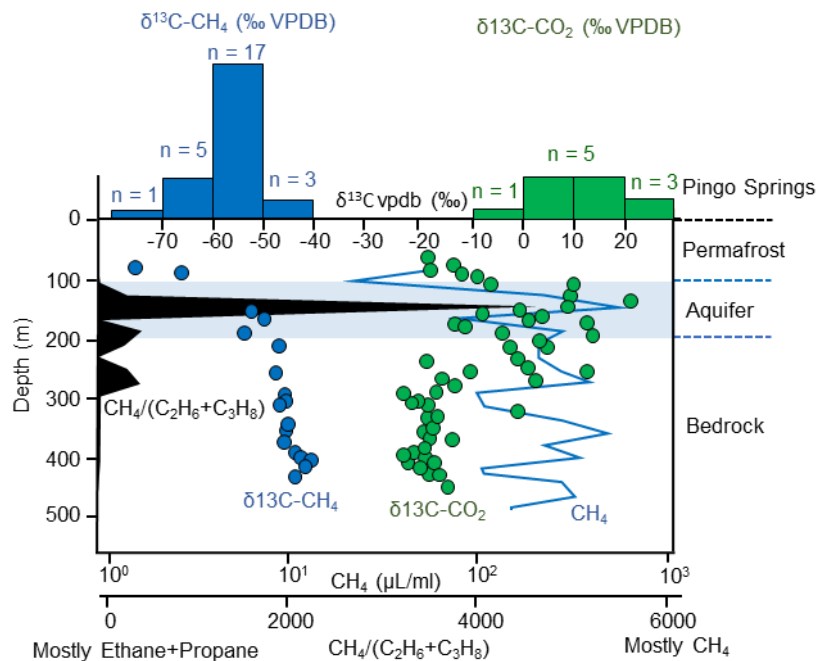
570

Figure 2. Adventdalen topography, pingos and geology. Active springs exist at Lagoon Pingo, Førstehytte Pingo, Innerhytte Pingo and River Bed Pingo (LP, FHP, IHP and RBP respectively). Well Sites A and B are part of the UNIS CO₂ Well Park (Braathen et al, 2012), whilst Well Sites C and D are part of the Store Norske Spitsbergen Kulkompani (SNSK) operations.

575 Map developed online at www.svalbardkartet.npolar.no.



580 **Figure 3.** Key geochemical and dissolved gas characteristics in spring waters draining River Bed Pingo (RP), Innerhytte Pingo (IHP), Førstehytte Pingo (FHP) and Lagoon Pingo (LP). “LMWL” denotes the Local Mean Water Line. The legend in Figure 3a applies also to Figures 3b – 3d.



585

Figure 4. Histograms showing stable isotope composition of methane and CO₂ in pingo spring waters (from Table 2) for comparison with published pore gases from different depths at the CO₂ Well Park (Well Site B in Figure 2). The ratio of methane to the sum of ethane and propane (all in μL mL⁻¹) is shown to indicate where biogenic methane is most likely (i.e. high values). Also shown are the approximate lower boundary of the permafrost and the aquifer beneath it.

590

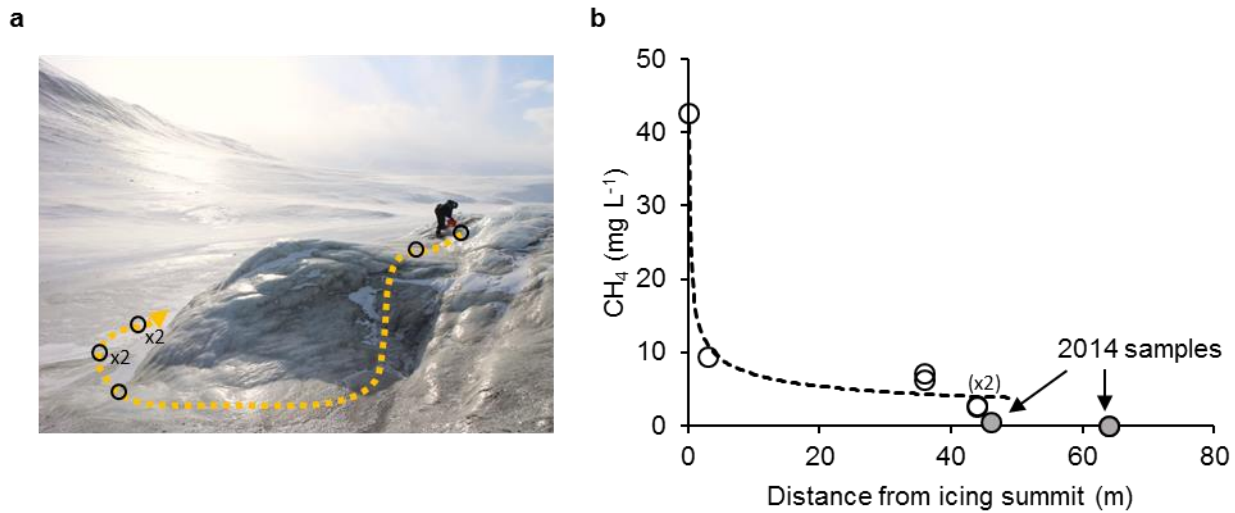


Figure 5. Rapid decrease in dissolved methane concentration with distance from the source of a sub-permafrost groundwater outburst at Innerhytte Pingo summit April 2015.

Date	pH	ORP (mV)	O ₂	$\delta^{18}\text{O}_{\text{H}_2\text{O}}$ ‰ vsmow	$\delta\text{D}_{\text{H}_2\text{O}}$ ‰ vsmow	Cl	NO ₃	SO ₄	DIC	Na	K	Mg	Ca
River Bed Pingo (distal)													
21/4/17	7.18	134	1.1	-15.4	-111	1560	b.d	2880	229	1020	7.89	518	459
5/4/17	7.32	-64.1	0.0	-14.9	-109	1520	b.d	1950	281	916	6.89	353	381
17/3/17	8.15	-25.1	0.0	-15.1	-109	775	b.d	3670	305	563	6.30	537	534
19/3/17	7.22	113	2.2	-15.3	-109	780	b.d	3510	236	539	5.96	495	480
River Bed Pingo													
16/4/16	7.21	-192	0.31	-14.3	-102	1540	0.04	40.1	2700	1910	4.99	13.8	31.6
12/4/16	7.06	-12.1	0.17	-14.0	-101	1510	0.08	43.2	2770	1980	4.95	13.0	30.7
12/4/15	7.61	-74.9	0.68	-13.9	-99.8	1450	b.d	24.3	3710	2270	6.92	20.1	32.6
Innerhytte Pingo													
19/4/17	7.16	-35.4	0.77	-13.7	-99.2	1530	b.d	b.d	2000	1690	4.14	12.7	19.3
15/4/17	7.11	-119	0.0	-13.6	-98.9	1490	b.d	b.d	2023	1680	4.13	11.7	18.4
17/3/17	6.81	-67.4	0.30	-13.6	-99.4	1520	b.d	1.40	2043	1700	4.48	12.3	18.9
21/4/16	6.89	-189	0.43	-14.5	-103	1380	0.03	38.6	3930	2310	3.70	20.6	40.0
12/4/16	7.07	-20.7	0.23	-13.5	-97.6	1410	0.02	14.5	3990	2330	3.54	20.2	39.6
22/4/15	6.88	-20.7	0.22	-13.3	-95.2	1490	b.d	17.4	3870	2360	5.30	17.7	28.1
Førstehytte Pingo													
19/4/17	7.35	-195	1.1	-14.4	-107	1100	b.d	11.3	2430	1580	5.89	13.4	20.4
15/4/17	7.34	-180	0.0	-15.0	-106	1130	b.d	12.1	2390	1580	7.41	15.2	20.1
16/3/17	7.35	-140	0.34	-14.8	-105	1070	b.d	15.6	2360	1540	5.43	13.7	21.1
21/4/16	7.31	-238	0.49	-15.7	-110	1058	0.03	48.5	4180	2190	5.54	21.6	40.7

12/4/16	7.20	-199	0.30	-14.7	-105	1100	0.15	63.7	4130	2210	5.76	21.5	42.0
9/4/16	7.21	-192	0.31	-14.7	-105	1100	0.10	59.3	3870	2110	5.69	21.6	40.9
10/5/15	7.81	-202	0.90	-15.7	-111	1100	b.d	35.0	4540	2340	10.6	23.8	30.8
23/4/14	7.25	-212	0.60	-14.4	-102	1100	b.d	53.9	7560	3430	12.0	25.8	39.6
Lagoon Pingo													
19/4/17	7.9	-229	2.44	-15.1	-108	392	b.d	121	3540	1560	25.4	28.1	12.9
15/4/17	8.05	-202	0.00	-15.2	-108	418	b.d	128	3480	1550	26.3	29.3	13.3
16/3/17	7.71	-181	1.71	-15.5	-108	396	b.d	115	2340	1130	19.7	21.0	9.20
10/4/16	7.94	-207	0.48	-15.2	-106	541	0.05	248	5250	2260	39.2	63.2	38.2

595 **Table 1.** Geochemical characteristics of Adventdalen pingo springs during pre-melt season sampling. All units are in mg L⁻¹ unless otherwise stated. NO₃ is reported as mg-N L⁻¹ and “b.d” means “below detection” (ca. 0.02 mg L⁻¹).

Date	CH ₄ (mg L ⁻¹)	eCO ₂ (mg L ⁻¹)	δ ¹³ C-CH ₄ (‰ VPDB)	δ ¹³ C-DIC (‰ VPDB)
River Bed Pingo (distal)				
21/4/17	4.78	19.6	-54.4	12.6
5/4/17	6.23	17.3	-55.0	12.5
17/3/17	0.61	2.36	b.d.	10.1
19/3/17	0.97	18.9	b.d.	10.1
River Bed Pingo				
16/4/16	32.4	221	-55.6	n.d.
12/4/16	24.9	320	-51.5	n.d.
12/4/15	20.2	121	-55.9	n.d.
Innerhytte Pingo				
<u>23/9/17</u>	<u>25.0</u>	<u>183</u>	<u>-53.8</u>	<u>27.1</u>
19/4/17	31.4	208	-55.9	26.7
15/4/17	27.6	420	-56.1	12.6
17/3/17	30.0	672	-55.7	26.3
21/4/16	41.3	451	-57.8	n.d.
12/4/16	42.6	678	-51.8	n.d.
22/4/15	25.0	183	-49.7	n.d.
Førstehytte Pingo				
<u>3/10/17</u>	<u>11.9</u>	<u>641</u>	<u>-64.2</u>	<u>2.5</u>
<u>13/9/17</u>	<u>16.5</u>	<u>770</u>	<u>-64.7</u>	<u>2.7</u>
19/4/17	15.3	143	-48.2	1.7
15/4/17	15.1	145	-52.3	2.4
16/3/17	14.0	139	-54.0	2.4
21/4/16	18.1	271	-67.4	n.d.
12/4/16	14.1	346	-55.3	n.d.
9/4/16	16.6	317	-56.1	n.d.
10/5/15	13.4	93.0	-67.1	n.d.
Lagoon Pingo				
<u>28/9/17</u>	<u>7.26</u>	<u>210</u>	<u>-70.7</u>	<u>-8.4</u>
<u>24/8/17</u>	<u>9.50</u>	<u>58.7</u>	<u>-69.8</u>	<u>n.d.</u>
19/4/17	6.30	40.7	-55.6	n.d.
15/4/17	9.63	60.1	-48.3	n.d.
16/3/17	13.7	79.6	-62.0	n.d.
10/4/16	9.50	58.7	-66.8	n.d.

Table 2. $\delta^{13}\text{C}$ composition and concentration of methane and dissolved inorganic carbon (DIC) in pingo springs. “eCO₂” is the excess of CO₂ relative to equilibrium with the atmosphere. Samples collected opportunistically during the summer are underlined, “n.d.” means “not determined, whilst “b.d.” means results were below the detection limit.

Source	Spring discharge (L s ⁻¹)	Average CH ₄ concentration (Mg L ⁻¹)	Annual CH ₄ Flux (kgCH ₄ y ⁻¹)
River Bed Pingo	0.11*	25.8	89.6
Innerhytte Pingo	0.29**	31.8	291
Forstehytte Pingo	0.46**	15.0	218
Lagoon Pingo	0.26**	9.3	76.4
Lagoon Lake	0.52**	22.9	376
Total	1.64	20.2	1051
Active layer emissions			6040 - 10400

605

Table 3. Sub-permafrost groundwater discharge and CH₄ flux estimates. Active layer emissions are median annual fluxes from individual chambers, reported by Pirk et al (2017). (Source: *Hornum et al (In Review); **authors’ own measurements).