

Interactive comment on “Laboratory Study of the Properties of Frazil Ice Particles and Flocs in Water of Different Salinities” by Christopher C. Schneck et al.

Authors Response to **Referee #1** (received and published: 1 July 2019)

The authors wish to thank Referee #1 for the constructive comments and corrections to the discussion paper. We have responded to each of the comments from the reviewer. The comments from the reviewer are in black font and our responses are in red font.

1. **Referee #1:**

The authors present laboratory experiments to measure frazil ice particles properties. Experiments are conducted in a water tank with bottom mounted propellers to create turbulence. The change in frazil ice properties as a function of salinity concentration is investigated, and different behavior between freshwater and saline water is highlighted. High-resolution camera and cross polarized lenses system is used to capture images and a suitable image processing algorithm is developed.

The growth rate of frazil crystals and flocs, their size distribution over time and the super cooling curves are measured and discussed. The presented findings suggest that overall process of nucleation and growth of frazil ice particles is similar for freshwater and saline water: in both cases a lognormal particle size distribution is observed, even if in saline water the mean value of particle size is slightly smaller. On the contrary, flocculation process significantly slowdown in saline water. Furthermore, flocs porosity is estimated by comparison with a thermodynamic model.

Given the lack in measurements of the size and shape of frazil ice particles and flocs (particularly in saline water), the results of this paper can be very useful for modeler community. Moreover, the authors deeply discuss the results with clear and precise comparison with literature data and models. Therefore, I recommend this paper for publication.

Authors Response:

Thank you for your concise summary of our paper and for highlighting the significance of the presented results.

2. **Referee #1:**

- Turbulence intensity is held constant in all experiments with a turbulent kinetic energy dissipation rate of about $336 \text{ cm}^2/\text{s}^3$. Can the authors contextualize this value with those measured in ocean mixed layer or in rivers?

Authors Response:

This is a very valid suggestion and it was also raised by the Referee #2. Although the dissipation rates in the tank were compared to the range of values estimated in rivers in Alberta (McFarlane et al., 2015), our initial submission did not compare this value to the reported ranges of dissipation rates in oceans. In general, the dissipation rates in oceans

range from $\sim 10^{-2} \text{ m}^2/\text{s}^3$ to $10^{-9} \text{ m}^2/\text{s}^3$ (Banner and Morrison, 2018; Wang and Liao, 2016) with a reported lower range in the Arctic regions ranging from $\sim 10^{-3} \text{ m}^2/\text{s}^3$ to $10^{-10} \text{ m}^2/\text{s}^3$ (Chanona et al., 2018; Scheifele et al., 2018). We will include a description of this limitation in the revised manuscript and will also point out the need for future experiments to investigate the behavior at very low dissipation rates.

3. Referee #1:

- In Introduction the rationale of this study is well presented and the state of art of the laboratory experiments is well detailed, but the novelty of the present study is quite hidden. I therefore suggest to improve this section (in particular to extend from line 6 to line 12 of page 4) by highlighting how the present study differs from previous ones.

Authors Response:

We will expand on the last paragraph of the introduction to highlight the novelty of the current study. Specifically, we will highlight the fact that concurrent time series of supercooling temperatures with sizes and concentrations of particles and flocs observed at different salinities are being presented for the first time.

4. Referee #1:

- (very small comment) Page 1 line 23 I suggest to remove the "(i.e. cooled below 0_C)", since it is false for saline water.

Authors Response:

Thank you for catching this mistake. The text will be updated as suggested.

Interactive comment on “Laboratory Study of the Properties of Frazil Ice Particles and Floccs in Water of Different Salinities” by Christopher C. Schneck et al.

Authors Response to **Referee #2** (received and published: 7 July 2019)

The authors wish to thank Referee #2 for the constructive comments and corrections to the discussion paper. We have responded to each of the comments from the reviewer. The comments from the reviewer are in black font while our responses are in red font.

1. Referee #2:

This paper presents a set of carefully executed laboratory experiments, measuring the number density and size distribution of individual frazil ice particles, and floccs of frazil crystals in waters of salinities varying from freshwater to sea water of 35 ppt. It provides new information in that it clearly demonstrates that a lognormal size distribution is observed in waters of all salinities. These are unique and carefully repeated measurements. The paper is very clearly written and is certainly worthy of publication.

Authors Response:

Thank you for your positive comments and recommendation.

2. Referee #2:

I have two comments that would improve the paper, in my opinion. First, the short review of frazil production in rivers seems concise and complete. However, in the ocean the authors only describe the production of frazil in polynyas. They cite Rees Jones & Wells (2018) and Langhorne et al (2015) both of which are concerned with formation of frazil in a supercooled ice shelf water plume, yet there is no description of this process. The paper ought to briefly outline the process of frazil formation in ice shelf water as it differs from frazil formation due to heat loss to the atmosphere.

Authors Response:

We agree that our initial submission should have discussed the process of frazil ice formation in supercooled ice shelf water plume. We will include a brief description of this process in the introduction similar to the description in Smedsrud and Jenkins (2003), Langhorne et al (2015), and Rees Jones & Wells (2018).

3. Referee #2:

Second, measurements of temperature and supercooling are quoted to more significant figures than the accuracy of the measurements. This is unnecessary and misleading. Please consider rounding to the level of uncertainty of these and all derived quantities throughout the paper.

Authors Response:

We agree with this comment and the results in the paper will be updated so that the significant figures are consistent with the accuracy of the measurements.

4. Referee #2:

Technical Corrections

p. 2, line 20 onwards: please include a description of frazil ice formation due to supercooling caused by pressure relief of upward-flowing ice shelf basal melt (e.g. see Langhorne et al (2015) and/or Rees Jones & Wells (2018) among many other references).

Authors Response:

Please see our response to comment number 2 above.

5. Referee #2:

p. 2, Line 30: there is quite a large body of work on dense water formation and polynyas so it seems odd to mention one Arctic polynya from a rather old reference. The statement re dense water outflow is generally true, e.g. Ohshima et al. Global view of sea-ice production in polynyas and its linkage to dense/bottom water formation, *Geosci. Lett.* (2016) 3:13 DOI 10.1186/s40562-016-0045-4

Authors Response:

Thank you for providing the Ohshima et al (2016) reference. We will update the text to explain the general physics of the dense water outflow and reference Ohshima et al (2016) among others (e.g. Tamura et al., 2012; Nihashi and Ohshima, 2015)

6. Referee #2:

p. 4, line 6-12: as mentioned above, some processes of frazil formation under sea ice have not been discussed.

Authors Response:

Please see our response to comment number 2 above.

7. Referee #2:

p. 4, line 21: how does turbulent kinetic energy dissipation in the laboratory tank compare with that in the ocean?

Authors Response:

This issue was also raised by the Referee #1. Although the dissipation rates in the tank were compared to the range of values estimated in rivers in Alberta (McFarlane et al., 2015), our initial submission did not compare this value to the reported ranges of dissipation rates in oceans. In general, the dissipation rates in oceans range from $\sim 10^{-2} \text{ m}^2/\text{s}^3$ to $10^{-9} \text{ m}^2/\text{s}^3$ (Banner and Morrison, 2018; Wang and Liao, 2016) with a reported lower range in the Arctic regions ranging from $\sim 10^{-3} \text{ m}^2/\text{s}^3$ to $10^{-10} \text{ m}^2/\text{s}^3$ (Chanona et al., 2018; Scheifele et al., 2018). We will include a description of this limitation in the revised manuscript and will also point out the need for future experiments to investigate the behavior at very low dissipation rates.

8. Referee #2:

p. 4, line 27: change to “were used in experiments, either a 10 by 10 cm or a 16 by 16 cm polarizer”. I tried to imagine how both were used at once.

Authors Response:

Updated.

9. **Referee #2:**
p. 5, line 24: please round to a smaller number of significant figures to correctly reflect the uncertainty i.e. -0.003 to +0.005
Authors Response:
Updated.
10. **Referee #2:**
p. 5, line 26: round to 0.0007
Authors Response:
Updated.
11. **Referee #2:**
p. 6, line 11: please round to -8.0 ± 0.2
Authors Response:
Updated.
12. **Referee #2:**
p. 7, line 6: please replace “exact freezing point” with “freezing point to better than 10 mK”
Authors Response:
Text updated to “this method yields values of the freezing point that are within 0.01 °C or better” (Mair et al, 1941; p. 610).
13. **Referee #2:**
p. 7, line 8-9: please round to -0.89 ± 0.02 , -1.48 ± 0.02 and -2.09 ± 0.02
Authors Response:
Updated.
14. **Referee #2:**
p. 7, line 22: please consider significant figures in cooling rates.
Authors Response:
Updated.
15. **Referee #2:**
p. 7, line 22: what is the COV?
Authors Response:
The COV stands for the coefficient of variation (standard deviation over the arithmetic mean). We updated the text to include this description. The COV was used as a measure of the repeatability of the experiments.
16. **Referee #2:**
p. 7, line 24-25: please consider rounding to 2 and 5%, and 3 and 7%
Authors Response:
Updated.

17. **Referee #2:**

p. 8, line 15: “non-zero salinities”

Authors Response:

Updated.

18. **Referee #2:**

p. 8, line 29-30: I didn't really understand the description of holes being filled as fig 6 clearly has holes.

Authors Response:

We agree that this sentence was misleading as it implied that dilation and erosion would fill all holes in the fitted ellipse. The process of dilation and erosion of the binary images is done to smooth and fill any insignificant holes (by 5 pixels) that were generated due to the thresholding of the images. This is not to fill the gaps in the flocs but to smooth the outside edges of the individual particles. We will update the text to clarify this process.

19. **Referee #2:**

p. 9, line 29-31: why should the diameter to thickness ratio of the floc be equal to that of the particle? Please can you discuss the expected error in c and hence in volume.

Authors Response:

The diameter to thickness ratio was only used for estimating the volume of the individual frazil ice particles (p. 9 lines 32-33). For flocs, we assumed that their shape was approximated by a fitted ellipsoid as defined by Eq. 2. The value of c (the floc dimension perpendicular to the plane of the image) was assumed to be equal to the average of a and b (the major and minor axis of the fitted in-plane ellipse) but not greater than the distance between the polarizers when using Eq. 2 to estimate floc volume. Based on our visual observations of flocs, this seemed to be a reasonable assumption.

Regarding the expected error in c and hence the volume of the floc: The computed eccentricity (section 7.3) for the flocs at all salinities ranged between 0.81 and 0.84 with an average value of 0.82, which translates to $b \approx 0.6 a$ and accordingly $c \approx 0.8 a$ and $c \approx 1.3 b$, when c is assumed to be the average of a and b . The average volume of a floc in this case is $V_{\text{mean}} = 4/3 \pi (0.48 a^3)$. Next, we considered the two extreme cases where c is equal to either a or b (the major or minor axes). When c equals b , the volume $V_{\text{min}} = 4/3 \pi (0.36 a^3)$, and when c is equal a , then the volume $V_{\text{max}} = 4/3 \pi (0.60 a^3)$.

Therefore, the expected error in estimating the flocs volume would be $\pm 25\%$. If c is less than b or greater than a then the error would increase and this likely does occur but we think the vast majority of flocs fall within the limits, that is, have c values that fall between a and b .

20. **Referee #2:**

p. 12, line 29: arithmetic mean or geometric mean (which I believe is equal to the median)? For those not familiar with the lognormal distribution it might be useful to discuss the measures of the distribution (i.e. relationship of mean, median etc)

Authors Response:

The reported averages μ are the arithmetic means and the corresponding standard deviation σ . The text has been updated to clarify that these are the values of the arithmetic means. We will also include a brief description of the lognormal distribution and the parameters that define it.

21. **Referee #2:**

p. 13, line 26: mm³

Authors Response:

The units of the volume are indeed mm³.

22. **Referee #2:**

p. 14, line 15 & p. 16, line 33: wow – fabulous. A porosity of 0.75 for 35 ppt agrees very well with estimates for frazil ice in layers under sea ice (called sub-ice platelet layer) (e.g. Langhorne et al, 2015).

Authors Response:

Thank you for highlighting this. We will include in the discussion section the agreement between our estimates of flocc porosities and the values reported by Langhorne et al (2015).

23. **Referee #2:**

p. 16, line 17-18: I'm not sure why the discrepancy between present measurements and those of Clark and Doering (2009) imply the latter are inadequate? Please explain.

Authors Response:

Clark and Doering (2009) used a simplified criterion to identify individual floccs in the images, which was "a flocc was considered to be any particle with an equivalent diameter greater than 17 mm" as quoted from their paper. Therefore, they disregarded any floccs smaller than this value and consequently they overestimated the mean sizes of floccs.

24. **Referee #2:**

Tables 2-5: Please reconsider rounding of all quantities. What is COV? Arithmetic mean or geometric mean (which I believe is equal to median)? For those not familiar with log normal distribution it might be useful to discuss the measures of the distribution (i.e. relationship of mean, median etc).

Authors Response:

Please see our response to comment number 3 and 20 above.

25. **Referee #2:**

Fig 1: clearly not a "Seabird". Would it be better labelled "temperature sensor"?

Authors Response:

Thank you for highlighting this, we updated the label to read “temperature sensor” as suggested.

26. **Referee #2:**

Fig 2 caption: “saline water in a confined vessel” to account for the decrease in freezing point.

Authors Response:

Good point. The text has been updated.

27. **Referee #2:**

Figs 13-15: What is the value of NT in each figure? Mark the means on the distributions by vertical lines.

Authors Response:

This is a good suggestion and we will add the values of NT and the arithmetic means to the captions for each figure.

Interactive comment on “Laboratory Study of the Properties of Frazil Ice Particles and Floccs in Water of Different Salinities” by Christopher C. Schneck et al.

Authors Response to **Referee #3** (received and published: 24 July 2019)

The authors wish to thank Referee #3 for the constructive comments and corrections to the discussion paper. We have responded to each of the comments from the reviewer. The comments from the reviewer are in black font while our responses are in red font.

1. Referee #3:

General Comments

The authors have conducted a very thorough analysis of the effect of various levels of salinity on frazil ice formation and flocculation. The manuscript is very well organized and written, and fits nicely within the scope of the journal. It fills a gap in the literature and will be well received by the river and sea ice researchers. I recommend that the paper be accepted.

The introduction provides the reader with a good appreciation of the current state of knowledge and clearly outlines the contribution of this paper. Throughout the paper the authors do a good job of comparing with previous experiments and field measurements, and highlighting similarities and differences.

The experimental setup is described well, and the authors have conducted an impressive 9 runs of each test condition to evaluate the reproducibility of the experiments. The data is presented well and the analysis is thorough. The conclusions are supported by the data. The entire study is tied up quite nicely by the end.

Authors Response:

Thank you for your positive comments and recommendation.

2. Referee #3:

Specific Comments

Page 2, line 29. Am I correct that the authors are implying that this polynya is always there? I understand that polynya's are persistent, but is this one permanent? Should also be 'produces' rather than 'produce'.

Authors Response:

Thank you for highlighting this. The sentence now is reworded to read “In the polynya that forms in the Chukchi Sea off Cape Lisburne and Point Hope, Alaska, rapid ice growth occurs and is accompanied by an ocean salt flux that produces a dense outflow... etc”. This will clarify that this polynya does form intermittently in this region.

3. Referee #3:

Page 3, line 12 – might be nice to report the salinities of the Ushio and Wakatsuchi study rather than just saying low and high salinities.

Authors Response:

We agree with this comment and the sentence has been reworded to read:” Ushio and Wakatsuchi (1993) performed laboratory experiments investigating the effect of wind conditions and salinity on the properties of frazil ice particles. In these experiments, the wind speed varied between 2 and 6 m/s, and water salinity between 0 and 35 ‰. They found that under strong wind and high salinity (above 25 ‰) conditions dendritic crystals having diameters of 2 to 3 mm were produced, and under calm air and lower salinity (below 25 ‰) conditions disc shaped crystals with diameters of approximately 5 mm were produced”.

4. Referee #3:

Page 3, line 19 – Frazil ‘deposits’. Line 22 – ‘44 ‰ water’ should be reworded. Interchangeable use of disc and disk. As well as inconsistent hyphenation disc-shaped vs disc shaped, disk-like, etc.

Authors Response:

Page 3, line 19 now read:” Frazil deposits”.

Line 22 now reads: “Hanley and Tsang (1984) performed laboratory experiments in a tank with water of 44 ‰ salinity and used a propeller to create turbulence”.

Thank you for highlighting the inconsistency in these terms. Page 4, line 1 reads:” disc-like”. Also, the manuscript has been reviewed to avoid this inconsistency.

5. Referee #3:

If space is limited, Figure 2 could be removed. The experimentally-measured supercooling plot in Fig. 3 would be sufficient, and the ‘theoretical’ declining temperature of the residual supercooling level could just be described. COV is only defined in a figure caption.

Authors Response:

Thank you for your suggestion. We will consider removing Figure 2 if we are out of space. The COV is now defined in the text in Page 7, line 22.

6. Referee #3:

Page 9, line 31 – should be Eq. (2) rather than 1.

Authors Response:

Updated.

7. Referee #3:

The volume of particles being negligible compared to flocs is interesting, and a reader might question this based on the number of particles in Fig. 6 for example. Perhaps consider summing up the number and volume of particles and flocs in Fig. 6 and reporting them to help support your statement.

Authors Response:

We agree that the fact that “the volume of particles is negligible compared to flocs” was not accurately addressed in the text. We’ve now updated the text on Page 10, line 2 to read:” In all salinities, it was found that the total volume of frazil ice particles during peak concentrations was between 0.3 and 1% of the total volume of frazil ice flocs.

Therefore, the volume of frazil ice particles was neglected when computing ice volumes”.

8. **Referee #3:**

Page 11, line 10 – the eccentricity statements could appear near Eq. (1).

Authors Response:

Updated, the sentence:” Ellipses have eccentricity between zero and one, where an eccentricity of zero corresponds to a circle and an eccentricity of one corresponds to a straight line.” has been moved to Page 9 line 6.

9. **Referee #3:**

At a glance, Figure 9 and 10 show numbers and sizes of frazil particles that don’t appear to be much different than those of the frazil flocs. Have the size distributions plotted separately for Figs. 13 and 14 also make it difficult to compare. Consider combining these two figures.

Authors Response:

A careful examination at Figure 9a shows an average peak concentration of about 2 particle/cm³, as opposed to ~ 1 floc/cm³ from Figure 10a. We agree that Figures 13 and 14 might be difficult to compare especially since the x-axis is a log scale and has different limits in the two figures. We adjusted Figure 13 to have x-axis limits of 0.01 and 100 (mm) to match the limits in Figure 14 and this should facilitate comparison. We think this is a better solution than superimposing these two figures together since this would obscure the individual bars in each distribution and would make it difficult for the reader to distinguish between them.

10. **Referee #3:**

Page 14, Line 9 – Latent heat of fusion of ice seems to be in J/g, rather than J/kg. The discussion sometimes switches from past to present tense in a way that doesn’t seem to always be correct.

Authors Response:

Thank you for highlighting this. The value of the latent heat of fusion of ice is now updated to 3.33×10^5 J/kg. Also, the past tense has been used throughout this discussion for consistency.

Laboratory Study of the Properties of Frazil Ice Particles and Flocs in Water of Different Salinities

Christopher C. Schneck¹, Tadros R. Ghobrial¹, Mark R Loewen¹

¹Department of Civil and Environmental Engineering, University of Alberta, Edmonton, T6G 1H9, Canada

5 Correspondence to: Tadros R. Ghobrial (triad@ualberta.ca)

Abstract. Measurements of the size and shape of frazil ice particles and flocs in saline water and of frazil ice flocs in freshwater are limited. This study consisted of a series of laboratory experiments producing frazil ice at salinities of 0 ‰, 15 ‰, 25 ‰, and 35 ‰ to address this lack of data. The experiments were conducted in a large tank in a cold room with bottom mounted propellers to create turbulence. A high-resolution camera system was used to capture images of frazil ice particles and flocs passing through cross polarizing lenses. The high-resolution images of the frazil ice were processed using a computer algorithm to differentiate particles from flocs and determine key properties including size, shape, and volume. The size and volume distributions of particles and flocs at all four salinities were found to fit lognormal distributions closely. The concentration, mean size, and standard deviation of flocs and particles were assessed at different times during the supercooling process to determine how these properties evolve with time. Comparisons were made to determine the effect of salinity on the properties of frazil ice particles and flocs. The overall mean size of frazil ice particles in saline water and freshwater was found to range between 0.52 and 0.45 mm with particles sizes in freshwater ~ 13% larger than in saline water. However, qualitative observations showed that frazil ice particles in saline water tend to be more irregularly shaped. The overall mean size of frazil ice flocs in freshwater was 2.57 mm compared to a mean size of 1.47 mm for flocs in saline water. The average growth rate of frazil particles was found to be 0.174, 0.070, 0.033, and 0.024 mm/min and the average floc growth rate was 0.408, 0.118, 0.089, and 0.072 mm/min for the 0 ‰ freshwater, 15 ‰, 25 ‰, and 35 ‰, respectively. Estimates for the porosity of frazil ice flocs were made by equating the estimated volume of ice produced based on thermodynamic conditions to the estimated volume of ice determined from the digital images. The estimated porosities of frazil ice flocs were determined to be 0.86, 0.82, 0.80, and 0.75 for 0 ‰, 15 ‰, 25 ‰, 35 ‰ saline water, respectively.

1 Introduction

25 Frazil ice particles are small crystals that form when water is supercooled (i.e. cooled below 0°C the freezing point) and turbulent. Given these conditions, frazil ice production and growth are naturally occurring processes that may be observed in rivers and oceans (Martin, 1981). In northern rivers (i.e. freshwater), the individual frazil ice particles are transported by the turbulent flow and begin to collide with one another. These collisions and the adhesive properties of the ice cause them to sinter together into groups of particles known as frazil flocs in a process known as flocculation. Sintering is the process by

which particle and flocs bind together and adjust their shape in order to minimize free surface energy (Hobbs, 1970). Once these frazil flocs reach a mass large enough for their buoyancy to overcome the entraining turbulence of the flow, the flocs will rise to the surface of the river. At the surface, the flocs continue to combine and form slush that then freezes together due to the cold air to form frazil pans or pancake ice (Hicks, 2009). The pans will move with the flow of the river and continue to collide and combine with other pans to form larger ice floes known as rafts. Once a high concentration of the rafts and pans has been reached on the river, a congestion or arrest of incoming ice rafts and pans will occur in a process known as bridging (Hicks, 2009). Bridging often occurs where there is a flow constriction (i.e. at a bridge or island) or at a bend in the river. Incoming ice from upstream will continue to be arrested at the bridging location as the solid ice cover propagates upstream (Beltaos, 2013). Once the solid ice cover has been formed, the layer of ice provides insulation from the cold air to the water flowing beneath, thereby preventing supercooling of the water column and preventing frazil ice production for the remainder of the winter (Beltaos, 2013).

In oceans (i.e. saline water), similar conditions of supercooling and turbulence are necessary for frazil ice production to begin. In polar regions, there are two common sets of conditions that produce different types of ice cover in the ocean (Weeks, 2010).

The first is calm winds, cold air temperatures, and little swell, and in this case, frazil ice starts to form and freeze together into a continuous skim ice on the sea surface. The second set of conditions that produce frazil ice are cold air temperatures with appreciable swell, waves, wind, and blowing snow (Weeks, 2010). As ice production begins, frazil ice forms a slurry layer on the surface and as more ice is added to the layer, the viscosity of the layer continually increases. This layer of soupy, viscous ice that forms is called grease ice. Grease ice is very flexible and weak and would not hold its shape if removed from the water.

Under conditions of heavy snow, a snow water mixture can form on the surface of the ocean, which is indistinguishable from grease ice. Pancake ice, similar to rivers, has also been observed in the ocean (Weeks, 2010). Frazil ice particles have been observed to deposit under sea ice, grow in situ and contribute to its thickness (Langhorne, et al., 2015). These crystals known as platelet ice are characterized as fragile and dendritic in shape (Weeks, 2010). Frazil ice was also observed to form in gaps in the ice pack (called leads) and in extensive areas of open water (called polynyas), as observed by (Skogseth et al., 2009).

At the mouths of rivers, the salinity difference between the ocean and the river can lead to frazil ice production (Ohshima et al., 2016; Martin, 1984). The temperature difference between the saline water and freshwater can lead to supercooling of the freshwater resulting in the production of frazil ice. Polynyas play an important role in ice production and brine production in the ocean (Ohshima et al., 2016; Tamura et al., 2012; Nihashi and Ohshima, 2015; Weeks, 2010). As frazil ice forms in a polynya, the salt is rejected by the ice resulting in higher salinity which salinity, which depresses the freezing point even further and results in colder water in the vicinity of the polynya. Cavalieri & Martin (1994) found that the rejection of salt during frazil ice production in polynyas in the Canadian Arctic contribute to the cold salty water in the Arctic halocline. Nihashi and Ohshima (2015) studied the Antarctic coastal polynyas systems and suggested that wind driven landfast sea ice (fast ice) plays an important role in the formation and variability of these polynyas. In the polynya located in the Chukchi Sea off Cape Lisburne and Point Hope, Alaska, rapid ice growth occurs and is accompanied by an ocean salt flux that produce a dense

~~outflow on the ocean floor (Martin, 1981). Frazil ice can also form under the ice shelf layer. This process begins when buoyant plumes of water move upward and the resulting decrease in pressure increases the freezing point of the water, and thus the water becomes supercooled in situ. Frazil ice crystals start to form in supercooled water and rise to form a sub-ice platelet layer (Smedsrud and Jenkins, 2004; Langhorne et al., 2015; Rees Jones and Wells, 2018). Frazil ice may also contribute to the transport of nutrients and metals which may alter the water quality (De Santi and Olla, 2017).~~

Several laboratory and field studies have reported measurements on the size and shape of individual frazil ice particles in freshwater. The reported frazil particles were predominantly disc-shaped with a range of diameters between 23 μm and 5 mm, and particle sizes fitting a lognormal particle size distribution in laboratory (Gosink and Osterkamp, 1983; Daly and Colbeck, 1986; Ye et al., 2004; Clark and Doering, 2006; Ghobrial et al., 2012; McFarlane et al., 2015) and field studies (Gosink and Osterkamp, 1983; Richard et al., 2011; Ghobrial et al., 2013; Marko et al., 2015; McFarlane et al., 2017). A limited number of measurements of the shape and size of individual frazil ice particles in saline water have been performed, and to the best of the authors' knowledge, no studies have reported particle size distributions. Laboratory experiments performed by Kempema et al. (1993) reported disc diameters of 1 to 5 mm in fresh water and 1 to 3 mm in water at salinities of 29.14 ‰ and 32.00 ‰. In lab experiments with salinities between 36 ‰ and 38 ‰, Smedsrud (2001) reported an average diameter of irregular shaped frazil ice particles of 2 mm. ~~Disc-Disc-shaped particles measuring approximately 1 mm in diameter were reported in laboratory experiments at a salinity of 35.5 ‰ by Martin and Kauffman (1981). Ushio and Wakatsuchi (1993) performed laboratory experiments investigating the effect of wind conditions and salinity on the properties of frazil ice particles. In these experiments, the wind speed varied between 2 and 6 m/s, and water salinity between 0 and 35 ‰. They found that under strong wind and high salinity (above 25 ‰) conditions, dendritic crystals having diameters of 2 to 3 mm were produced; and under calm air and lower salinity (below 25 ‰) conditions, disc-shaped crystals with diameters of approximately 5 mm were produced. and found that under windy, high salinity conditions dendritic crystals having diameters of 2 to 3 mm were produced, and under calm air, lower salinity conditions disc-shaped crystals with diameters of approximately 5 mm were produced.~~ In summary, in saline water, the individual frazil ice particle sizes reported are comparable to freshwater observations, and there is a consensus that individual frazil ice particles are more irregularly shaped in saline water.

A small number of studies have been performed to investigate the process of flocculation and the properties of frazil ice flocs. Floc properties such as porosity and size are needed to estimate the mass and the volume of frazil deposits (Park and Gerard, 1984). Experiments suggest that frazil ice in saline water is less adhesive than freshwater frazil ice, resulting in less tendency to flocculate (Hanley and Tsang, 1984; Kempema et al., 1993). Hanley and Tsang (1984) performed laboratory experiments in a tank with water of 44 ‰ salinity and used a propeller to create turbulence with turbulence created by a propeller with 44 ‰ water. They observed that saline water flocs would disperse and break apart when passing near the propeller and that at the surface the frazil had no detectable resistance to force applied by a finger. This was attributed to the salt rejection that occurs when the frazil ice is formed in saline water. As the salt is rejected by the frazil ice, it forms a thin layer of slightly higher

salinity water around the frazil ice particle (Hanley and Tsang, 1984). The freezing point of the saline water around the particle will then be slightly reduced and this inhibits the ability of the ice to grow and adhere to neighbouring particles and flocs. Kempema et al. (1993) created flocs in a racetrack flume powered by propellers in a walk-in freezer. The study described the flocs as a group of particles aligned with their flat surfaces in contact. The flocs in saline water were also observed to be smaller on average and more dendritic in appearance when compared to freshwater flocs (Kempema et al., 1993). Saline water flocs were observed to stay suspended in the flow and did not rise to the surface until the experiment was stopped and the turbulence subsided. Park and Gerard (1984) conducted laboratory experiments on artificial frazil flocs fabricated from plastic discs (diameter of ~10 mm and thickness between 0.16 and 0.41 mm) to assess the hydraulic characteristics of frazil flocs. They fabricated artificial flocs ranging in size between 10 and 100 mm, and ~~in-with~~ porosities between 0.01 and 0.89 and estimated drag coefficients from fall velocities measured in a tank. It was found that the drag coefficient of flocs of ~~diskdisc~~-like particles was significantly higher than that for a sphere of the same bulk density. In Clark and Doering's (2009) freshwater experiments in a counter rotating flume, measurements of the size of frazil ice flocs were made. In ~~this~~ study, a floc was defined as a group of particles that have sintered together, however, only objects with major axis larger than 17 mm were considered flocs. They found that higher levels of turbulence intensity tended to constrain the formation of large frazil flocs.

In summary, in freshwater there have been a number of laboratory studies investigating frazil ice particles but very few focused on frazil flocs. However, in saline water, there have been very few studies of frazil ice particles or frazil flocs. In this study, laboratory measurements of frazil ice particles and flocs in water at salinities 0 ‰, 15 ‰, 25 ‰, and 35 ‰ were conducted. ~~Concurrent time series of supercooling temperatures with the change in mean sizes and concentrations of frazil ice particles and flocs mean sizes and concentrations along with simultaneously measured supercooling temperatures observed at different salinities are being presented for the first time. The effects of different salinities on the characteristics of particles and flocs is highlighted, and estimates of flocs porosities are presented.~~ Measurements of the size and shape of individual frazil ice particles and frazil ice flocs in saline and freshwater can be ~~applied-used~~ to improve river ice models (e.g. Shen, 2010) and sea ice formation models (e.g. Rees Jones and Wells, 2018; De Santi and Olla, 2017).

2 Experimental Set-up and Methods

Experiments were performed in the frazil ice production tank in the University of Alberta's Cold Room Facility as described in Ghobrial et al. (2012). An image of the tank and the experimental set-up is presented in Fig. 1. The tank has a base dimension of 0.8 m by 1.2 m and was filled to a depth of 1.2 m. The four bottom-mounted propellers used to generate turbulence in the tank are driven by four NEMA 34 DC variable speed electric motors (278 W, 1.514 N-m of torque, max speed of 1750 rpm). The turbulence intensity was held constant by keeping the propeller speed constant at 325 rpm for all experiments. The speed of each motor was verified using a laser tachometer. In a similar series of experiments in the same tank, McFarlane et al. (2015) found that the tank-averaged turbulent kinetic energy dissipation rate was ~~$\sim 3.436 \times 10^{-2} \text{ m}^2/\text{s}^3$~~ at a propeller speed of 325

Formatted: Superscript

In addition to the Sea-Bird temperature sensor placed approximately in the middle of the tank, six RBR Solo temperature loggers were placed at different locations throughout the tank. During each experiment, the water in the tank was cooled until frazil ice particles were generated and then the experiment was stopped. The temperature difference between each RBR Solo and the Seabird was computed at each time step throughout the experiment and these differences were then averaged over the entire event duration. The mean differences ranged from -0.00337 °C to $0.00482-005$ °C indicating that the temperature was approximately uniform. It is noteworthy that the average temperature difference between the Sea-Bird at the centre of the tank and the RBR Solo at the location of the polarizers is $0.00067-0007$ °C, which is less than the accuracy of the RBR Solos and Sea-bird (± 0.002 °C). This indicated that the temperature measurements taken at the centre of the tank using the Sea-bird are reflective of the conditions at the location where the frazil ice images were taken. It is also important to note that the observed temperature differences are approximately an order of magnitude smaller than the maximum supercooling temperatures observed in this study.

The tank was filled with fresh, filtered tap water to a depth of 1.2 m for all freshwater and saline water experiments. Saline water experiments were performed at salinities of 15 ‰, 25 ‰ and 35 ‰. A salinity of 35 ‰ was chosen because it is near the upper limit of salinities found in the ocean. Intermediate salinities of 15 ‰ and 25 ‰ were chosen as they could be representative of salinities at salt-freshwater interfaces such as [in estuaries](#). Furthermore, by choosing intermediate salinities, the change in frazil ice properties as a function of salinity could be assessed. The required mass of salt to attain each salinity concentration was calculated and measured using a digital scale with accuracy of 0.2 g. Sifto Hy-Grade Food Grade Salt was used and is specified to be predominately sodium chloride (99.77 % to 99.91 % NaCl). Due to evaporation filtered tap water was periodically added to the tank to maintain the 1.2 m depth.

At the start of an experiment the propellers were turned on, the Sea-Bird temperature logger was started and the polarizers were placed in the tank at the specified spacing. Images of a ruler positioned at the front, back, and midpoint between the polarizers were captured prior to each experiment to measure the field of view. Ten background images of the water in the tank prior to any ice formation were also captured for each experiment. Next, the cold room was programmed to reduce the air temperature from approximately $+2.0$ °C to -8.02 ± 0.24 °C. The camera was then ~~programed~~programmed to capture images at a rate of 1 Hz starting at approximately the time when the water had cooled to the freezing point. Images were capture for a total duration of 999 s and 1998 s in freshwater and saline water, respectively.

3 Freezing Point Experiments

Supercooling curves are defined as time series plots of temperature during the time period when the temperature is below the freezing point. An idealized supercooling curve for freshwater assuming a constant heat loss is presented in the upper plot of Fig. 2. Initially the temperature decreases linearly with time due to the constant rate of heat loss but as time increases the slope

of the curve (i.e. the rate of temperature decrease) decreases due to the heat released when frazil ice begins to form. The latent heat of fusion and the mass of ice created per unit time determine how rapidly the slope of the curve decreases, and at some point, the temperature reaches its minimum value (i.e. zero slope) defined as the maximum supercooling temperature. After this point in time, the temperature continues to increase as more frazil ice is formed, and the curve eventually reaches a constant residual temperature which is typically slightly below the freezing temperature if frazil ice production continues to occur (Hanley and Tsang, 1984). The principal supercooling period is defined as the time from when the water is cooled below the freezing temperature until it reaches the residual temperature. In saline water, the supercooling curves follows a slightly different pattern when compared to freshwater, as illustrated in the lower plot in Fig. 2. The shape of the curve and the physics of the process are the same as in freshwater up until the time the residual temperature is reached. In saline water during the residual phase of the supercooling curve, ice continues to form causing the salinity of the water to continuously increase slowly. As a result, the residual temperature does not remain constant but decreases slowly (Brescia et al., 1975).

It was essential to determine the freezing point of water at the different salinities tested in these experiments. For this purpose, experiments were conducted to measure the freezing point at the three salinities and it was assumed to be 0 °C in freshwater. The experiment consisted of sampling approximately 1000 mL of water from the tank during each experiment at a given salinity. This water sample was then placed in the cold room during the experimental run and mixed using a magnetic mixer. The water temperature in the stirred beaker was recorded using an RBR Solo temperature sensor. Supercooling curves for each of the freezing point depression experiments were plotted and the linearly sloping portion of the residual was extrapolated back to where it intersects the curve as illustrated in Fig. 2. ~~This method yields values of the freezing point that are within 0.01 °C or better (Mair et al., 1941)Mair et al. (1941) developed this method and though it does not provide the exact freezing point, it has been shown to produce a value accurate to within a few percent (She et al., 2016).~~ The freezing point measurements made during each repeated experiment at a given salinity were averaged and the mean freezing points (\pm standard deviation) for salinities of 15 ‰, 25 ‰, and 35 ‰ were -0.89 ± 0.020 °C, -1.48 ± 0.019 °C and -2.09 ± 0.023 °C, respectively.

4 Repeatability of Experiments

Repeated runs of experiments were conducted during each of the five series of experiments in order to reduce the uncertainty in the results by ensemble averaging. In total, 62 experiments were conducted. Anomalous (i.e. outlier) runs (typically due to inconsistent air temperatures in the cold room, images out of focus, or frost build-up on the tank glass) were discarded from the analysis. This process eliminated 16 experiments and there were 9 to 10 repeated experiments that could be ensemble averaged for each series of experiments. In Fig. 3 temperature time series from the 9 repeated runs conducted at a salinity of 15 ‰ are plotted. The supercooling curves aligned quite well, indicating that the experimental conditions in the cold room were adequately controlled and produced repeatable experiments. Note that a negative slope was not observed during the residual of the freezing point depression experiments in saline water as was illustrated in Fig. 2. This was because the quantity

of ice produced in the tank relative to the total volume of water in the tank was not large enough to reduce the freezing point significantly. A summary of the statistics of the temperature time series during the five series of experiments is presented in Table 2. The maximum supercooling, defined as the minimum temperature minus the freezing point, and the cooling rates ranged between -0.0752 °C and -0.0924 °C, and 0.0092 and 0.0123 °C/min, respectively. The ~~COV-coefficient of variation~~ (standard deviation ~~over~~divided by the arithmetic mean) of the maximum supercooling and the cooling rates ranged between ~~2.06~~ and ~~4.575~~%, and ~~2.873~~ and ~~7.113~~%, respectively confirming the experiments were repeatable within acceptable limits.

5 Data Processing

5.1 Raw images

The raw images of the frazil ice particles and flocs from each experiment were visually examined to assess the qualitative characteristics of the freshwater and saline water frazil ice particles. This visual analysis helped guide the development of the image processing algorithm used to compute the properties of frazil ice particles and flocs. In Fig. 4, a pair of representative raw images a salinity of 35 ‰ and in freshwater are shown to illustrate the qualitative differences between frazil ice particles and flocs in saline and freshwater. An image at salinity of 35 ‰ is presented but the qualitative characteristics of the particles and flocs at this salinity are similar to those observed at salinities of 15 ‰ and 25 ‰. Figure 5 presents a zoomed view of the different particles' shapes observed in the experiments. In freshwater experiments, the typical shape of the particles was very consistent with previously reported studies in that the individual frazil ice particles were predominantly disc-shaped. In saline water experiments, the shapes of individual frazil ice particles were a combination of disc, dendritic, hexagonal and other irregular shapes as shown in Fig. 5.

The average size of frazil particles appeared to be larger in freshwater than in saline water experiments. Also, in freshwater frazil ice flocs were remarkably bigger than those in saline water and tended to rise to the surface even when the turbulence created from the propellers was still present, while in saline water, flocs remained in suspension until the propellers were turned off. In saline water, there are many smaller flocs comprised largely of irregularly shaped particles. In stark contrast, in the freshwater image (Fig. 4b), there are fewer smaller flocs present and one very large floc that dominated the image. The very large freshwater floc is an order of magnitude larger than the largest floc visible in saline water image, and it is evident that freshwater flocs are comprised largely of ~~disc-disc~~-shaped particles. There were no significant differences observed when visually comparing the particles and flocs sizes at ~~the different~~non-zero salinities.

5.2 Image processing

Images from each experiment were analysed to compute the properties of individual frazil ice particles and frazil ice flocs using a modified image processing algorithm originally developed by McFarlane et al. (2015). Modifications to the algorithm were made to more accurately determine particle properties for the experimental conditions in this study and to distinguish

between individual frazil ice particles and frazil ice flocs. First the average of ten background images (collected before frazil ice production starts) were subtracted from each image in the series. The raw images from the series were then converted to grayscale by eliminating the hue and saturation information while retaining the luminance. The grayscale images were then converted to a binary image using a simple threshold. The threshold value is specified as a scalar luminance value between 0 and 1. As such any pixel with a scalar luminance value less than the specified threshold would be assigned a value of 0 (black) and any pixel with a scalar luminance value greater than the specified threshold would be assigned a value of 1 (white). At this point in the algorithm, the white objects correspond to frazil ice particles and/or flocs, and the black pixels correspond to the dark ice-free background. Any objects that were touching the border of the image were eliminated from the binary image to prevent properties of portions of individual frazil ice particles and flocs from being computed. Finally, the white objects in the binary images were then dilated and eroded by five pixels to ensure any possible holes in the white object smooth and fill any insignificant holes smaller than (by five pixels) that were generated due to the thresholding of the images, s had been filled in. Next, the objects that represent individual frazil ice particles or flocs were analysed for key properties such as the area, perimeter, and the centroid. In addition, the major and minor axis lengths, and eccentricity of a fitted ellipse that has the same second moments as the detected object were also computed. The eccentricity e , of an ellipse is calculated as follows:

$$e = \sqrt{1 - \frac{b^2}{a^2}}, \quad (1)$$

where a and b are semi-major and semi-minor axis length of the fitted ellipse of a given particle or floc, respectively. Ellipses have eccentricity between zero and one, where an eccentricity of zero corresponds to a circle and an eccentricity of one corresponds to a straight line. Figure 6 presents a binary image with superimposed fitted ellipses over detected frazil particles or flocs. It can be seen in Fig. 6 that the major axes of the ellipses do provide an accurate estimate of ice particle and floc sizes. Therefore, the major axis length of the fitted ellipse is reported as the size of the frazil ice particles and flocs throughout the analysis following Clark and Doering (2009).

One of the objectives of the algorithm was to determine whether an object was an individual particle, or a floc. A frazil ice particle (both disc-shaped and irregular shaped particles) is more elliptical in shape than a frazil ice floc. Based on this hypothesis, the algorithm compares the perimeter and area of a detected object to the perimeter and area of the corresponding fitted ellipse. If the area of the object was greater than 90 % of the corresponding fitted ellipse area, or the difference between the object perimeter and the fitted ellipse perimeter was less than 15% the object was identified as an individual frazil particle. The thresholds for perimeter and area were optimized by varying them to determine the values that correctly identified the highest percentage of particles and flocs. By manually checking approximately 500 individual frazil ice particles and frazil ice flocs, it was found that the area and perimeter thresholds of 90 % and 15 % correctly identify objects 90 % and 94 % of the time in images taken in saline and freshwater, respectively. However, when this algorithm was applied to images of frazil ice captured using the Set-up 3 (to capture freshwater flocs using larger field of view) it was found to have an accuracy of only 86 %. This is likely because the pixel resolution was only 28.8 μm resulting in small particles looking more irregular in shape

(i.e. pixelated). As a result, an additional criterion was developed to improve the accuracy of the algorithm. This criterion utilizes the ratio of the area-over-perimeter of the objects (flocs or particles) to the area-over-perimeter of the corresponding fitted ellipses. If the object is a perfect ellipse, then this ratio equals one. As the shape of an object diverges from its fitted ellipse (i.e. more irregular shaped) this ratio becomes larger than one. A threshold for this ratio was used to distinguish between particles and flocs. Raw images of 500 objects were visually identified as particles or flocs and then compared to the algorithm predictions at various thresholds. It was found that a threshold ratio of 1.1 correctly categorized the objects 95 % of the time. That is, if the ratio of an object's area-over-perimeter to its fitted ellipse's area-over-perimeter is greater than 1.1, then the object was identified as a frazil ice floc. Another benefit of using the properties of a fitted ellipse is that it provides information about the volume of ice particles or flocs from the volume of a fitted ellipsoid V calculated as follows,

$$V = \frac{4}{3} \pi abc, \quad (2)$$

where c is the dimension of a floc perpendicular to the plane of the image which is unknown. To estimate floc volume, it was assumed that c was equal to the average of a and b but not greater than the distance between the polarizers when using Eq. (12) to estimate floc volume. Based on the results of the experiments, the computed average eccentricity was -0.82 , which translates to $b \approx 0.6 a$. Assuming c to be the average of a and b results in a mean volume equal to $4/3 \pi (0.48 a^3)$. In the two extreme cases when c is equal to either a or b (the major or minor axes), the volume would range between $4/3 \pi (0.60 a^3)$ and $4/3 \pi (0.36 a^3)$, respectively. Therefore, an approximate estimate of the expected error in estimating computing the flocs volume would be $\pm 25\%$. If c is less than b or greater than a then the error would increase and this likely does occur in extreme cases but we think the vast majority of flocs fall within these limits. When estimating the volume of an individual particle, it was assumed that the particles are approximately disc-shaped and that the diameter to thickness aspect ratio of the individual particles was equal to 37, which was the mean aspect ratio obtained by McFarlane et al. (2014). In all salinities, it was found that the total volume of frazil ice particles was between 0.3 and 1 % of the total volume of frazil ice flocs. In all experiments it was found that the total volume of frazil ice particles was insignificant compared to the total volume of frazil ice flocs. Therefore, the volume of frazil ice particles was neglected when computing ice volumes.

6 Data Analysis

Results from the image processing algorithm were used to assess how the properties of the flocs and particles changed throughout a supercooling event. The particle/floc concentration as well as the mean particle/floc size and standard deviation were computed for each image throughout an experiment. The noise in the resulting time series was reduced by smoothing using a 35 s moving average. These smoothed times series of particle and floc properties (concentration, mean size, and standard deviation) were plotted for each repeated experiment conducted at the four salinities. The time series were synchronized by aligning all the time series from each set of experiments at the time when the minimum temperature occurred. Next, the ensemble average time series of the particle or floc concentration, mean size, and standard deviation were calculated. In order to compare the ensemble average time series at the different salinities they were plotted as a function of a

Formatted: Font: Italic

Formatted: Font: Italic

Formatted: Font: Italic

Formatted: Font: Italic

Formatted: Font: Italic

Formatted: Superscript

Formatted: Font: Italic

Formatted: Font: Italic

Formatted: Font: Italic

Formatted: Font: Italic

Formatted: Superscript

Formatted: Superscript

Formatted: Font: Italic

Formatted: Font: Italic

Formatted: Font: Italic

dimensionless time. The dimensionless time is defined as the time divided by t_c defined as the time interval between when the freezing point and maximum supercooling occurred, as illustrated in Fig. 7. The time of freezing t_f is taken as the start of the experiment (i.e. $t/t_c = 0$), and t_m corresponds to a dimensionless time $t/t_c = 1.0$. In all cases, by the time when $t/t_c = 2.0$, the supercooling curve had reached the residual temperature, and therefore the experiment was considered finished at this point in time.

Three time-phases were defined to assist in comparing results at different times in the supercooling process [for both particles and flocs](#). ~~The three phases are as~~ illustrated in Fig. 8 ~~and they apply to the particles and flocs experiments~~. Phase 1 is defined as the time from when the water reached the freezing temperature ($t/t_c = 0$) to the time when the water reached the maximum supercooling temperature ($t/t_c = 1.0$). The other two phases were defined relative to when the peak number of particles or flocs were observed in the ensemble-averaged time series following Clark and Doering (2006). Phase 2 is defined as the time from $t/t_c = 1.0$ to the time when 90 % of the peak number of particles or flocs is reached (t_{90a}). Phase 3 is defined as the time from t_{90a} to the time when 90% of the peak number of particles or flocs is reached on the other side of the peak (t_{90b}). These three phases were well defined for individual particles experiments at all four salinities, and for the freshwater flocs experiments. For the saline water flocs experiments, the number of flocs reached a peak and then remained at a value above 90% of the peak for the remainder of the time interval and therefore t_{90b} does not exist in this case. To consistently compare the results from the freshwater and saline flocs experiment, the Phase 3 dimensionless time interval from the freshwater flocs experiments was used to estimate the results for Phase 3 for the saline water flocs experiments.

The volume of flocs estimated from the image processing algorithm was used to estimate the volume concentration of ice produced at the end of the principal supercooling. The volume of the fitted ellipsoid was multiplied by a factor that accounts for the porosity of the ice. Ghobrial (2012) conducted slush layer experiments in the same tank and estimated the slush porosity to be between 0.80 and 0.85. Also, Beltaos (2013) suggested a porosity of 0.80 may be a reasonable estimate. Therefore, the volume of ice contained in a floc was estimated by multiplying the volume of its fitted ellipsoid by 0.20. A set of 25 images starting at the end of the principal supercooling were analyzed to get an average ice volume at this point in time for each experiment. The volume of the field of view was then calculated based on the determined pixel sizes and space between the polarizers for each set-up (see Table 1). The frazil ice volume concentration was estimated by computing the ratio of the volume of ice to the volume of the field of view. Finally, the shape of a floc (i.e. more elongated or more circular) was quantified by computing the eccentricity of its fitted ellipse. ~~Ellipses have eccentricity between zero and one, where an eccentricity of zero corresponds to a circle and an eccentricity of one corresponds to a straight line.~~

7 Results

7.1 Time series

Figures 9 and 10 present an example of the synchronized time series generated for the frazil particles and flocs, respectively, for the 15 ‰ set of experiments. In these figures, the particles and flocs concentrations are calculated in terms of the number (N) of particles/flocs per unit volume (cm^3). Although only time series of the 15 ‰ experiments are shown, the trends in all experiments was/were similar in that the time series from all experiments line up together very well confirming the repeatability of the experiments. The time series from the different experiments at each salinity were then ensemble averaged for the particles and flocs as shown in Fig. 11 and 12.

In Fig. 11, the ensemble averaged time series of frazil ice particle concentration, mean particle size, and standard deviation at all salinities are plotted versus non-dimensional time (t/t_c). Figure 11a shows that at all four salinities, the particle concentration initially increased, reached a peak, decreased, and then asymptotically approached a constant value. In freshwater the peak particle concentration was 2.1 cm^{-3} at $t/t_c = 1.20$, and in saline water the peaks were 2.2 , 3.2 , and 3.6 cm^{-3} at $t/t_c = 1.28$, 1.24 and 1.23 at 15 ‰, 25 ‰ and 35 ‰, respectively. The 35 ‰ curve had the highest particle concentration throughout the entire time interval, and the freshwater curves had the lowest particle concentration throughout nearly the entire time interval, except near its peak where the freshwater concentration was briefly greater than the 15 ‰ concentration. In Fig. 11b the mean individual frazil ice particle size initially increased, reached a peak, decreased, and then reached an asymptotic value of approximately 0.5 mm in all four cases. The average growth rate of frazil particle was estimated for the initial growth period and was found to be 0.174, 0.070, 0.033, and 0.024 mm/min for the 0 ‰, 15 ‰, 25 ‰, and 35 ‰, respectively. The maximum mean particle size for the three higher salinities occurred prior to when the maximum size was reached in freshwater. The maximum mean particle size occurred at $t/t_c = 0.96$, 0.81, 0.79, and 0.88 for 0 ‰, 15 ‰, 25 ‰, and 35 ‰, respectively. The maximum mean size in freshwater was the largest at 0.68 mm, followed by 0.63, 0.57, and 0.53 mm for 15 ‰, 25 ‰ and 35 ‰, respectively. Figure 11c shows that the time series of the standard deviation are very similar in saline water where it increased from approximately 0.1 mm to 0.2 mm and reached a constant value of approximately 0.04 mm at approximately $t/t_c = 1$ until the end of the experiment. The standard deviation in freshwater was initially constant at a value of ~ 0.05 mm, then at $t/t_c = 0.6$ it started to increase and reached a peak value of ~ 0.45 mm at $t/t_c = 0.87$. After that it decreased quickly to a minimum at $t/t_c = 1.23$ and then slowly increased.

In Fig. 12a, the times series of frazil ice floc concentration, defined as the number of flocs per cm^3 , has a similar shape in the saline water experiments. The floc concentration increased from zero initially, reached a maximum value and then remained approximately constant until the end of the experiments. In freshwater, the trend was slightly different with the floc concentration reaching a maximum value of 0.25 cm^{-3} at $t/t_c = 1.27$ and then decreasing slowly. In saline water the maximum floc concentrations were reached at approximately $t/t_c = 1.4$ and had values of approximately 1.10, 1.37, and 1.86 cm^{-3} at

salinities of 15 ‰, 25 ‰, and 35 ‰, respectively. Figure 12b shows that as time progressed, the general trend for all cases is that the mean floc size continually increased with time. Initially (i.e. $t/t_c \leq 0.8$) the time series are noisy, particularly for the freshwater case, because only a very small number of frazil ice flocs were produced during this time. At $t/t_c \geq 0.8$ the floc concentration has increased sufficiently that the noise disappears in all cases. For the freshwater case, the mean floc size increased from 1.70 mm at $t/t_c \sim 1$ to 2.20 mm at $t/t_c \sim 1.13$ and continued increasing very slowly to 2.40 mm until $t/t_c = 2.0$. In saline water the mean floc size varied slightly with salinity and was always smaller than the freshwater floc sizes. In general, the mean floc size in saline water increased from ~0.5 mm at the start of the experiments up to ~1.90 mm at the end. The average floc growth rate was 0.408, 0.118, 0.089, and 0.072 mm/min for the freshwater, 0 ‰, 15 ‰, 25 ‰, and 35 ‰, respectively. Figure 12c shows that the time series of the standard deviation of floc size at $t/t_c \leq 1.0$ were quite noisy due to the small floc concentration. At $t/t_c \geq 1.0$ the standard deviation curves in all cases was approximately constant and varied between ~0.15 mm to ~0.25 mm with the lowest value being in freshwater.

7.2 Size and volume distributions

Figures 13 to 15 present the plots of the size distributions of frazil particles and flocs, and volume distributions of flocs, respectively, for the 35 ‰ experiments during the three phases and the overall average (i.e. averaged over the entire duration). Although only distributions from the 35 ‰ experiments are presented, plots at the other salinities were very similar. It can be seen in Fig. 13 that the particles' size distributions during the three phases and the overall average closely follow a lognormal distribution. The lognormal distribution is defined by the mean and standard deviation of the logarithmic of the variable (i.e. size or volume of particles or flocs). The arithmetic mean and the corresponding standard deviation of particles sizes at all salinities are presented in Table 3. The mean size of frazil ice particles averaged over the entire duration ($0 \leq t/t_c \leq 2$) defined as the overall mean size were 0.52, 0.46, 0.48 and 0.45 mm for salinities of 0 ‰, 15 ‰, 25 ‰ and 35 ‰, respectively. The overall mean particle size in freshwater was 8.3 % to 15.6 % larger than in saline water. The standard deviation decreased as salinity increased in all phases and overall. Also in addition, the standard deviation decreased with time for all salinities (from Phase 1 to Phase 3), with the largest decreases observed in the freshwater and the smallest decrease observed at 35 ‰. The data in Table 3 show that in saline water, the maximum mean particle size occurred during Phase 1 and decreased during the latter two phases 2 and 3. Conversely, for the freshwater experiments, the maximum mean particle size occurred during Phase 2.

All the floc size distributions plotted in Fig. 14 closely followed a lognormal distribution (Fig. 14). A summary of the mean floc sizes can be found in Table 4. The overall mean floc sizes were 2.57, 1.64, 1.61, and 1.47 mm for salinities of 0 ‰, 15 ‰, 25 ‰ and 35 ‰, respectively. The mean size of the freshwater flocs was significantly larger than the saline water flocs, approximately 60% larger, and this is consistent with qualitative observations of the raw images. The mean size of saline water flocs decreased slightly (i.e. 10 %) as salinity increased from 15 ‰ to 35 ‰. The standard deviation of floc sizes in

freshwater was significant larger than in saline water and it decreased as salinity increased. At all four salinities, as the experiment progressed the mean size and standard deviation of the flocs increased and reached its maximum during Phase 3 of the experiment.

5 As discussed previously it was observed that there were very large flocs present in the freshwater experiments that were not observed in the saline water experiments. In order to assess this observation quantitatively, the 95th percentile of floc sizes, the maximum floc size and the mean size of flocs larger than the 95th percentile were computed, and these results are listed in Table 5. The 95th percentile of floc size was 6.91 mm in freshwater and decreased with increasing salinity to 3.96 mm at 35 %.

10 The mean size of the largest 5 % of flocs varied from 11.9 mm in freshwater and decreased with increasing salinity to 5.38 mm at 35 %. The maximum floc size in freshwater was 95 mm compared to 23 to 36 mm in the saline water cases. The data in Table 5 supports the qualitative observation that the flocs were considerably larger in freshwater and that floc size decreased slightly as the salinity increased from 15 % to 35 %.

15 Similar to the ~~particle and frazil ice~~ floc size distributions, the ~~frazil ice~~ floc volume distributions during the three phases and the overall distribution all fit a lognormal distribution closely ~~as shown in~~ (Fig. 15). A summary of the estimated volume of ice in flocs can be found in Table 6. The mean estimated ~~frazil~~ floc volumes were 8.79, 1.14, 0.82, and 0.60 mm³ for 0 % freshwater, 15 %, 25 %, and 35 %, respectively. This equates to the average floc volume being 8 to 15 times greater in freshwater than in saline water.

7.3 Floc porosity and eccentricity

20 The volume concentration of ice at the end of the principal supercooling in 0 % freshwater, 15 %, 25 %, and 35 % was estimated to be 0.0028, 0.0031, 0.0028, and 0.0021 m³/m³, respectively. These volume concentrations can be compared to the theoretical values calculated by considering the thermodynamic conditions of the experiment assuming the tank is fully mixed (Osterkamp, 1978; Ye et al., 2004). The total heat exchanged with the surrounding environment, Q_{tw} in W/m³ is given by:

$$Q_{tw} = \rho C_p \frac{dT}{dt}, \quad (3)$$

25 where, ρ is the density of water in kg/m³, C_p is the specific heat of the water in J/kg.°C, and dT/dt is the cooling rate in °C/s. Density and specific heat depend on salinity and were calculated following Gill (1982). The cooling rate was obtained by calculating the slope of the supercooling curve over an interval beginning 15 min prior to freezing and ending at the freezing point. The volume concentration of frazil ice, M_{sp} in m³/m³ is then given by:

$$M_{sp} = \frac{Q_{tw} t_{sp}}{L_i \rho_i}, \quad (4)$$

30 where, t_{sp} is the principal supercooling time in s, L_i is the latent heat of fusion for ice in J/kg (3.34×10^5 J/kg), and ρ_i is the density of ice kg/m³ (917 kg/m³). The time of principal supercooling was obtained by averaging the supercooling curves for each salinity. Based on these calculations the computed volume concentrations of ice formed during the principal supercooling

Formatted: Superscript

Formatted: Superscript

were 0.0019, 0.0027, 0.0028, and 0.0027 m³/m³ for ~~freshwater~~ 0 ‰, 15 ‰, 25 ‰, and 35 ‰, respectively. This information was also used to estimate the porosity of frazil floes, by equating the theoretical volume concentration of ice computed thermodynamically using Eq. (4) to the estimated total floe volume computed from the images. This calculation ~~gives-gave~~ estimated porosities for frazil ice floes of 0.86, 0.82, 0.80, and 0.75 for ~~0 ‰ freshwater~~, 15 ‰, 25 ‰, and 35 ‰, respectively.

The mean eccentricity of frazil floes was 0.84, 0.82, 0.81, and 0.81 ~~which corresponds to ratios of major to minor axis length of 1.84, 1.75, 1.71, and 1.71 for 0 ‰ freshwater, 15 ‰, 25 ‰, and 35 ‰, respectively. This corresponds to a ratio of major to minor axis length of 1.84, 1.75, 1.71, and 1.71 in freshwater, 15 ‰, 25 ‰, and 35 ‰, respectively.~~ These eccentricity values indicate that the average shape of floes in saline water did not vary significantly and that the average shape of floes was slightly more elongated in freshwater compared to saline water.

8 Discussion

The ensemble average time series of frazil ice particle concentration showed that, in general, the higher the salinity, the higher the particle concentration (Fig. 11a). As the salt is rejected by the ice, this can create a small pocket around the ice particle with a higher salinity and slightly lower freezing point (Rees Jones and Wells, 2015), thus inhibiting the flocculation process. This would result in fewer particles adhering and sintering together to form floes, leaving more particles in suspension, and producing the observed result of more individual particles being present at higher salinities. All of the time series of the particle concentration follow a similar pattern of initially increasing, reaching a maximum, and then decreasing with time. This pattern can be explained by considering particle production and the flocculation process. The flocculation rate, defined as the rate at which particles are sintered to other particles or floes, is a function of the particle concentration. This is because when there are more particles there is higher likelihood of particle to particle and particle to floe collisions which present opportunities for sintering. Prior to the time when the peaks occur in the time series, particle production exceeds the flocculation rate but as time progresses a point is reached where particle production equals the rate of flocculation and the peak occurs at this time. This balance is reached because the flocculation rate is increasing as can be seen in the time series plots of floes concentration in Fig. 12a. As time progresses both the particle production and the rate of flocculation reach asymptotic values when the water is at the residual temperature.

The time series of the mean particle sizes in Fig. 11b show that there is a decreasing trend in growth rate with increasing salinity, and on average the average particles growth rate in freshwater was approximately ~~four~~4 times larger than in saline water. The growth rate depends on the rate at which the latent heat released by crystal growth is transported away from the crystal (Daly, 1994). During ice production in saline water, the supercooling is reduced and salt rejected by the growing crystal needs to diffuse away, which slows down the crystal growth (Rees Jones and Wells, 2018). Also, the peak size was reached sooner in saline water ($t/t_c \approx 0.8$) as opposed to $t/t_c \approx 1.0$ in freshwater (see Table 3 and Fig. 11b). This may be due to the fact

that the nucleation starts sooner in the saline water experiments (i.e. particles are being produced earlier than in freshwater), and it can be seen in Fig. 11a that particles do not start to appear until around $t/t_c = 0.8$ in freshwater compared to $t/t_c = 0.4$ in saline water (Fig. 11a). Therefore, the freshwater particles have less time to grow during Phase 1 and reach their maximum mean size later in the process during Phase 2.

5

The time series plots in Fig. 12a showed that throughout an entire experiment the higher the salinity, the higher the floc concentration. As salinity increases, the strength of particle to particle bonds decreases and therefore flocs remain smaller in size. This is because as flocs grow larger the shear forces that cause them to rupture also increase and therefore weaker internal bonds leads to smaller flocs and higher floc concentrations (Hanley and Tsang, 1984). Eventually, at $t/t_c \approx 1.4$, the floc concentration curves reach a plateau which suggests that particle to floc sintering becomes the dominant process as this process produces a net zero contribution to floc concentration. This is logical because at this point the particle production rate has decreased, resulting in low particle concentrations which reduces the probability of two particles colliding to near zero. However, the concentration of flocs is high, making particle floc collisions much more probable. Note that in freshwater, floc concentration increased, reached a peak and then slowly decreased starting from $t/t_c \approx 1.2$. This can be explained by the visual observation that flocs in freshwater tended to rise to the surface before the experiment was completed, whereas saline water flocs tended to remain suspended until the end of the experiment. The larger mean size of freshwater flocs increases their buoyancy, and thus increases their ability to overcome the turbulence of the flow and rise to the surface. This result is similar to observations made by Kempema et al. (1993).

10
15
20
25
The mean floc size increased as the experiments progressed (Fig. 12b) indicating that the mean volume of flocs also increased. As particle production continues, the probability of collisions of particles to flocs increases, resulting in a continuous increase of the mean floc size, especially in saline water. Later in the process, when the particle production slows down, most of the collisions would be particle to floc resulting in the slow steady growth of flocs until the end of the time of the experiments. In freshwater, the rapid increase in floc sizes started at $t/t_c \approx 1$ with a rate that was four times faster than in the saline water but over a much shorter time interval.

30
The overall mean size of frazil ice particles in freshwater of 0.52 mm was slightly larger than in saline water. This value falls within the reported ranges of previous studies of 23 μm to 5 mm (Gosink and Osterkamp, 1983; Daly and Colbeck, 1986; Ye et al., 2004; Clark and Doering, 2006; McFarlane et al., 2015 & 2017). The average overall mean particle sizes in saline water was 0.46 mm. This value is smaller than the previously reported estimates of particle size in saline water, which are on the order of 1 to 3 mm (Martin and Kauffman, 1981; Kempema et al., 1993; Ushio and Wakatsuchi, 1993; Smedsrud, 2001). However, these previously reported estimates of size ranges were based on very small sample sizes and using less sophisticated measuring techniques including visual observations which may have influenced the results. The overall mean size of particles in freshwater were was on average 1.13 times larger than particles in saline water. This suggests that the nucleation and growth

of frazil ice particles are fairly similar in fresh and saline water. The particle size distributions at all salinities were lognormal, which is further evidence that the processes involved are similar.

The overall mean size of frazil-ice flocs in freshwater was significantly larger than in saline water. Past studies have reported similar qualitative results that freshwater flocs are larger and more adhesive than saline water flocs (Hanley and Tsang, 1984; Kempema et al., 1993). The overall mean size of flocs in freshwater was 2.57 mm, which suggests that Clark and Doering (2009) ~~measurements-criteria for of defining a floc as any particle of flocs~~ larger than 17 mm ~~is-did not capturing-capture~~ the full spectrum of the floc size distribution. Flocs in freshwater were on average 1.64 times larger than in saline water. The maximum floc size observed in the freshwater experiments was approximately three times larger than in the saline experiments. The difference in the flocculation process can be explained by freezing point depression in saline water. As the salt is rejected by the ice, it will increase the salinity of the surrounding water and slightly reduce the freezing point. This will inhibit the process of adhering and sintering, thus resulting in the mean size of frazil-flocs decreasing with salinity.

The overall mean volume of flocs in freshwater was on average approximately 10 times larger than in saline water. It is interesting to note that there is large difference between the floc sizes when comparing freshwater to saline water, but the variation in saline water is less significant. This is further evidence that the flocculation process is largely dependent on whether the process occurs in saline water or freshwater, and less dependent on precise value of the salinity.

The volume concentrations estimated from the image processing are very close to the theoretical values computed thermodynamically. This indicates that assuming flocs are ellipsoid and have a porosity of 80% may provide a reasonable estimate of the ice volume concentration contained in flocs. Also, the deduced flocs porosities decreased with decreasing salinities from 0.86 for freshwater to 0.75 ~~for~~ at the highest salinity. These values are within the range of previously reported freshwater slush porosities (Beltaos, 2013; Ghobrial, 2012) and the porosity of the sub-ice platelet layer in the polar regions (Langhorne et al., 2015).

9 Conclusions

A total of 46 laboratory experiments were performed to determine the properties of individual frazil ice particles and flocs at salinities of 0 ‰, 15 ‰, 25 ‰, and 35 ‰. Visual examination of the images clearly showed that there were more irregular shaped particles in saline water than in freshwater. The average particle and floc growth rates decreased as salinity increased and the freshwater growth rates were ~~~4~~ approximately four times larger than the average growth rate in saline water. The mean frazil ice particle sizes ranged between 0.52 and 0.45 mm with particles sizes in freshwater ~ 13 % larger than in saline water. This indicates that mean particle sizes are only weakly dependent on salinity. The mean floc sizes ranged between 2.57 and 1.47 mm for freshwater and saline water with freshwater flocs being on average 60 % larger than in saline water. A

lognormal distribution was observed to fit all the particle and flocs size distributions closely. The estimated flocs porosities were equal to 0.86, 0.82, 0.80, and 0.75 for salinities of 0 ‰, 15 ‰, 25 ‰, 35 ‰, respectively, which suggest that as salinity increases porosity decreases.

5 These laboratory measurements of the properties of frazil ice particles and flocs in saline water can be applied to oceanic frazil ice production models (Galton-Fenzi et al., 2012; Rees Jones and Wells, 2015 and 2018). Due to the complexity of the processes involved in the frazil ice production, all these models rely on the parameterization of small-scale phenomena and on the introduction of empirical constants (De Santi and Olla, 2017). Rees Jones and Wells (2018) noted that it is difficult to discriminate between models that use different crystal growth rate parameterizations because they can predict the same
10 experimentally observed supercooling time series using different size distributions of initial seed crystals. They concluded that what was needed to discriminate between different models was for experiments to be conducted to measure crystal sizes as well as supercooling, which is precisely what we have done in this study. In a recent attempt to address the complexity of these processes, De Santi and Olla (2017) presented a simplified limit regime approach for ice formation based on the relative importance of salinity and the heat release due to the formation of frazil particles in controlling the supercooling. Therefore,
15 results presented in this paper such as: the growth rate of frazil crystals, the size distributions during the different phases, and the corresponding supercooling curves can be used to evaluate crystal growth models adopted by earlier researcher (Svensson and Omstedt, 1994; Smedsrud and Jenkins, 2004; Holland et al., 2007; Galton-Fenzi et al., 2012; ~~and~~ Rees Jones and Wells, 2015). Additionally, in river ice models, inaccurate simulation of frazil dynamics can have significant implications on the freeze-up processes and overall development of the solid ice cover (Holland et al., 2007; Shen, 2010). The uncertainty in the
20 prediction of the frazil nucleation, flocculation, and transport by the flow, as predicted by frazil ice dynamics models (e.g. Daly and Colbeck, 1986; Daly, 1994), results in inaccurate prediction of ice production rates. Ice volume concentration and deduced porosity results from the current study can be used to improve the accuracy of the estimates of ice discharges predicted by these models.

Acknowledgements

25 We would like to thank the Natural Sciences and Engineering Research Council of Canada (NSERC) for supporting this project (RGPIN-2015-04670 and RGPAS 477890-2015) and Perry Fedun for his valuable technical assistance. We are grateful for that support.

References

30 [Banner, M. L., and Morison, R. P.: On the upper ocean turbulent dissipation rate due to microscale breakers and small whitecaps, *Ocean Modelling* 126 \(2018\) 63–76, <https://doi.org/10.1016/j.ocemod.2018.04.004>, 2018.](#)

- Beltaos, S.: River Ice Formation, 1st edition, Committee on River Ice Processes and the Environment, Edmonton, AB, 2013.
- Brescia, F., Arents, J., Herbert, M., Turk, A., and Weiner, E.: Fundamentals of Chemistry: Laboratory Studies (3rd edition), Academic Press, Inc., 1975.
- Cavalieri, D. J. and Martin, S.: The contribution of Alaskan, Siberian, and Canadian coastal polynyas to the cold halocline layer of the Arctic Ocean, *Journal of Geophysical Research*, 99(C9): 18,343-18,362, 1994.
- 5 [Chanona, M., Waterman, S., Gratton, Y.: Variability of internal wave-driven mixing and stratification in Canadian Arctic shelf and shelf-slope waters. *Journal of Geophysical Research: Oceans*, 123, 9178–9195, <https://doi.org/10.1029/2018JC014342>, 2018.](https://doi.org/10.1029/2018JC014342)
- Clark, S. and Doering, J.: Laboratory Experiments on Frazil-Size Characteristics in a Counterrotating Flume, *Journal of Hydraulic Engineering*, 132(1): 94–101, doi:10.1061/(ASCE)0733-9429(2006)132:1(94), 2006.
- 10 Clark, S. P. and Doering, J. C.: Frazil flocculation and secondary nucleation in a counter-rotating flume, *Cold Regions Science and Technology*, 55(2): 221–229, Elsevier B.V. doi:10.1016/j.coldregions.2008.04.002, 2009.
- Daly, S. F. and Colbeck, S.: Frazil Ice Measurements in CRREL's Flume Facility, *Proc. Syrup. Ice, Int. Assoc. Hydraul. Res.*, Iowa City, Iowa, pp. 427–438, 1986.
- 15 Daly, S.: Report on frazil ice, US Army Corp of Engineers, Cold Regions Research & Engineering Laboratory, Hanover, New Hampshire, Report 94-23, 50 pages, 1994.
- De Santi, F. and Olla, P.: Limit regimes of ice formation in turbulent supercooled water, *Phys. Rev. E* 96, 043106, 2017.
- Galton-Fenzi, B. K., Hunter, J. R., Coleman, R., Marsland, S. J., and Warner, R.C: Modeling the basal melting and marine ice accretion of the Amery Ice Shelf. *Journal of Geophysical Research*, 117(May): 1–19. doi:10.1029/2012JC008214, 2012.
- 20 Ghobrial, T. R.: Characterization of suspended frazil and surface ice in rivers using sonars, PhD thesis, University of Alberta, 2012.
- Ghobrial, T. R., Loewen, M. R., and Hicks, F. E.: Laboratory calibration of upward looking sonars for measuring suspended frazil ice concentration, *Cold Regions Science and Technology*, 70: 19–31, Elsevier B.V. doi:10.1016/j.coldregions.2011.08.010, 2012.
- 25 Ghobrial, T. R., Loewen, M. R., and Hicks, F. E.: Characterizing suspended frazil ice in rivers using upward looking sonars, *Cold Regions Science and Technology*, 86: 113–126. Elsevier B.V. doi:10.1016/j.coldregions.2012.10.002, 2013.
- Gill, A. E.: *Atmosphere-Ocean Dynamics*, Academic Press, Inc., San Diego, California, 1982.
- Gosink, J. P., and Osterkamp, T. E.: Measurements and analysis of velocity profiles and frazil ice-crystal rise velocities, *Annals of Glaciology*, 4: 79–84, 1983.
- 30 Hanley, T. O. D., and Tsang, G.: Formation and properties of frazil in saline water, *Cold Regions Science and Technology*, 8(3): 209–221, doi:10.1016/0165-232X(84)90052-1, 1984.
- Hicks, F. E.: An Overview of River Ice Problems, invited paper, *Journal of Cold Regions Science and Technology*, Special Issue on River Ice, 55:175-185, 2009.
- Hobbs, P. V.: *Ice Physics*, Oxford University PRes, New York City, 1970.

- Holland, P. R., Feltham, D. L., and Daly, S. F.: On the Nusselt number for frazil ice growth – a correction to “Frazil evolution in channels” by Lars Hammar and Hung-Tao Shen, *J. Hydraul. Res.*, 45, 421–424, <https://doi.org/10.1080/00221686.2007.9521775>, 2007.
- Kempema, E. W., Reimnitz, E., Clayton, J. R. J., and Payne, J. R.: Interactions of frazil and anchor ice with sedimentary particles in a flume, *Cold Regions Science and Technology* 21(2):137-149 DOI: 10.1016/0165-232X(93)90003-Q, 1993.
- Langhorne, P. J., Hughes, K. G., Gough, A. J., Smith, I. J., Williams, M. J. M., Robinson, N. J., Stevens, C. L., Rack, W., Price, D., Leonard, G. H., Mahoney, A. R., Haas, C., and Haskell, T. G.: Observed platelet ice distributions in Antarctic sea ice: An index for ocean-ice shelf heat flux, *Geophysical Research Letters*, 42(13): 5442–5451, doi:10.1002/2015GL064508, 2015.
- 10 Mair, B. J., Glasgow, A. R., and Rossini, F. D.: Determination of freezing points and amounts of impurity in hydrocarbons from freezing and melting curves, *J. Res. Natl. Bur. Stand.*, 26 (1941), pp. 591-620, 1941.
- Marko, J. R., Jasek, M., and Topham, D. R.: Multifrequency analyses of 2011 – 2012 Peace River SWIPS frazil backscattering data, *Cold Regions Science and Technology*, 110: 102–119, Elsevier B.V. doi:10.1016/j.coldregions.2014.11.006, 2015.
- Martin, S.: Frazil ice in rivers and oceans, *Annual Review of Fluid Mechanics*, 13: 379–397. doi:10.1146/annurev.fl.13.010181.002115, 1981.
- 15 Martin, S., and Kauffman, P.: A field and laboratory study of wave damping by grease ice, *Journal of Glaciology*, 27(96): 283–313, 1981.
- McFarlane, V., Loewen, M., and Hicks, F. E.: Laboratory measurements of the rise velocity of frazil ice particles, *Cold Regions Science and Technology*, 106–107: 120–130, Elsevier B.V. doi:10.1016/j.coldregions.2014.06.009, 2014.
- 20 McFarlane, V., Loewen, M., and Hicks, F. E.: Measurements of the evolution of frazil ice particle size distributions, *Cold Regions Science and Technology*, 120: 45–55, Elsevier B.V. doi:10.1016/j.coldregions.2015.09.001, 2015.
- McFarlane, V., Loewen, M., and Hicks, F. E.: Measurements of the size distribution of frazil ice particles in three Alberta rivers, *Cold Regions Science and Technology*, 142(March): 100–117, Elsevier. doi:10.1016/j.coldregions.2017.08.001, 2017.
- [Nihashi, S., Ohshima, K. I.: Circumpolar Mapping of Antarctic Coastal Polynyas and Landfast Sea Ice: Relationship and Variability, *Journal of Climate*, Vol 28: 3650-3669, DOI: 10.1175/JCLI-D-14-00369.1, 2015.](#)
- 25 [Ohshima, K. I., Nihashi, S., Iwamoto, K.: Global view of sea-ice production in polynyas and its linkage to dense/bottom water formation, *Geosci. Lett.* \(2016\) 3:13, DOI 10.1186/s40562-016-0045-4, 2016.](#)
- Osterkamp, T. E.: Frazil Ice Formation: A Review, *Journal of the Hydraulics Division*, 1978, Vol. 104, Issue 9, Pg. 1239-1255, 1978.
- 30 Richard, M., Morse, B., Daly, F. and Emond, J.: Quantifying suspended frazil ice using multi-frequency underwater acoustic devices, *River Research and Applications*, 27(9):1106 – 1117, DOI: 10.1002/rra.1446, 2011.
- Rees Jones, D. W. and Wells, A. J.: Solidification of a disk-shaped crystal from a weakly supercooled binary melt, *Phys. Rev. E*, 92, 022406, <https://doi.org/10.1103/PhysRevE.92.022406>, 2015.

- Rees Jones, D. W. and Wells, A. J.: Frazil-ice growth rate and dynamics in mixed layers and sub-ice-shelf plumes, *The Cryosphere*, 12, 25-38, <https://doi.org/10.5194/tc-12-25-2018>, 2018.
- [Scheifele, B., Waterman, S., Merckelbach, L., and Carpenter, J. R.: Measuring the dissipation rate of turbulent kinetic energy in strongly stratified, low-energy environments: A case study from the Arctic Ocean. *Journal of Geophysical Research: Oceans*, 123, 5459–5480, <https://doi.org/10.1029/2017JC013731>, 2018.](#)
- 5
- She, Y., Kemp, J., Richards, L., and Loewen, M.: Investigation into freezing point depression in stormwater ponds caused by road salt, *Cold Regions Science and Technology*, 131: 53–64, Elsevier B.V. doi:10.1016/j.coldregions.2016.09.003, 2016.
- Shen, H. T.: Mathematical modeling of river ice processes, *Cold Regions Science and Technology*: 62, 3–13, 2010.
- Skogseth, R., Nilsen, F., and Smedsrud, L. H.: Supercooled water in an Arctic polynya: Observations and modeling, *J. Glaciol.*, 10
- 55, 43–52, [tps://doi.org/10.3189/002214309788608840](https://doi.org/10.3189/002214309788608840), 2009.
- Skyllingstad, E. D.: Turbulence Beneath Sea Ice and Leads: A coupled Sea Ice/Large- Eddy Simulation Study. *Journal of Geophysical Research*, 106(C2): 2477–2497, 2001.
- Smedsrud, L. H., and Jenkins, A.: Frazil ice formation in an ice shelf water plume, *Journal of Geophysical Research*, 109(December 2003): 1–15, doi:10.1029/2003JC001851, 2004.
- 15
- Smedsrud, L. H.: Frazil-ice entrainment of sediment: Large-tank laboratory experiments, *Journal of Glaciology*, 47(158): 461–471. doi:10.3189/172756501781832142, 2001.
- Svensson, U. and Omstedt, A.: Simulation of supercooling and size distribution in frazil ice dynamics, *Cold Reg. Sci. Technol.*, 22, 221–233, [https://doi.org/10.1016/0165-232X\(94\)90001-9](https://doi.org/10.1016/0165-232X(94)90001-9), 1994.
- [Tamura, T., Williams, G. D., Fraser, A.D., Ohshima, K.I.: Potential regime shift in decreased sea ice production after the Mertz Glacier calving. *Nature Communications*, 3:826, DOI: 10.1038/ncomms1820, 2012.](#)
- 20
- Ushio, S., and Wakatsuchi, M.: A laboratory study on supercooling and frazil ice production processes in winter coastal polynyas, *J. Geophys. Res.*, 98 (C11), 20321– 20328, doi:10.1029/93JC01905, 1993.
- [Wang, B., and Liao, Q.: Field observations of turbulent dissipation rate profiles immediately below the air-water interface. *J. Geophys. Res. Oceans*, 121, 4377–4391, doi:10.1002/2015JC011512, 2016.](#)
- 25
- Weeks, W. F.: *On Sea Ice*, In 1st edition, University of Alask Press, Fairbanks, Alaska, 2010.
- Ye, S. Q., Doering, J., and Shen, H. T.: A laboratory study of frazil evolution in a counter-rotating flume, *Canadian Journal of Civil Engineering*, 31(6): 899–914. doi:10.1139/104-056, 2004.

Tables

Table 1: Summary of camera and polarizer set-ups used in the experiments.

Set-up #	Set-up 1	Set-up 2	Set-up 3
Experimental Conditions	Particles in freshwater	Particles and flocs in saline water	Flocs in freshwater
Polarizers Size (cm)	10 by 10	10 by 10	16 by 16
Space between Polarizers (cm)	2.2	2.2	3.5
ISO	6400	8000	6400
Shutter Speed (s)	1/2000	1/2000	1/2000
Aperture	f/25	f/29	f/25
Image Frequency (Hz)	1	1	1
Camera Distance (cm)	5.7	8.7	30
Average Pixel size (μm)	6.4	8.3	28.8
Average field of view (width by height, mm)	47.5 by 31.7	61.3 by 40.9	162.9 by 141.3
Measuring Volume (cm^3)	33.1	55.1	805.7
Lighting System	Genaray SpectroLED	Genaray SpectroLED	Andoer FalconEyes

Table 2: Summary of statistics on the repeatability of experiments at each salinity showing the **average-arithmetic mean μ** , **the corresponding standard deviation σ** , and the coefficient of variation COV for the maximum supercooling and the cooling rate.

Salinity (%)	Experimental Set-up #	# of repeated experiments	Maximum Supercooling (minimum temperature – freezing point)		Cooling Rate	
			$\mu \pm \sigma$ ($^{\circ}\text{C}$)	COV (%)	$\mu \pm \sigma$ ($^{\circ}\text{C}/\text{min}$)	COV (%)
0	1	10	-0.0854 \pm 0.0017002	2.061	0.0123 \pm 0.0004001	2.899
15	2	9	-0.0773 \pm 0.0028003	3.697	0.0112 \pm 0.0003001	2.879
25	2	9	-0.0852 \pm 0.0034	3.954.0	0.0095-01 \pm 0.0003001	3.02
35	2	9	-0.0924 \pm 0.0026003	2.788	0.0094 \pm 0.0007001	7.14
0	3	9	-0.0752 \pm 0.0034	4.576	0.0092 \pm 0.0003001	3.73

Table 3: Mean-Arithmetic mean sizes and corresponding standard deviations of frazil ice particles during different phases and at all four salinities.

Salinity	Mean sizes \pm standard deviations (mm)			
	<u>Overall</u>			
	Phase 1	Phase 2	Phase 3	<u>Overall</u>
Freshwater	0.54 \pm 0.58	0.58 \pm 0.46	0.48 \pm 0.33	0.52 \pm 0.41
15 ‰	0.54 \pm 0.43	0.50 \pm 0.36	0.42 \pm 0.30	0.46 \pm 0.35
25 ‰	0.53 \pm 0.35	0.49 \pm 0.34	0.44 \pm 0.31	0.48 \pm 0.33
35 ‰	0.50 \pm 0.32	0.47 \pm 0.32	0.42 \pm 0.29	0.45 \pm 0.31

5 Table 4: Mean-Arithmetic mean sizes and corresponding standard deviations of frazil ice flocs during different phases and at all four salinities.

Salinity	Mean sizes \pm standard deviations (mm)			
	<u>Overall</u>			
	Phase 1	Phase 2	Phase 3	<u>Overall</u>
Freshwater	1.68 \pm 1.19	2.28 \pm 2.06	2.65 \pm 3.09	2.57 \pm 2.88
15 ‰	0.93 \pm 0.96	1.45 \pm 1.30	1.83 \pm 1.81	1.64 \pm 1.63
25 ‰	1.02 \pm 0.81	1.39 \pm 1.09	1.77 \pm 1.57	1.61 \pm 1.43
35 ‰	0.96 \pm 0.82	1.30 \pm 1.01	1.60 \pm 1.40	1.47 \pm 1.28

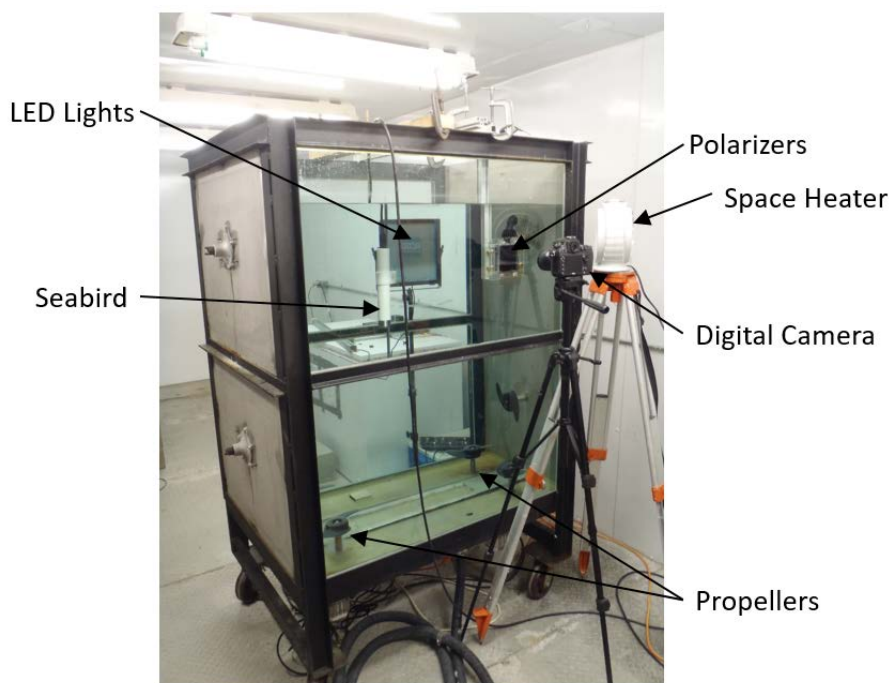
Table 5: Sizes of the largest frazil ice flocs at all four salinities.

Salinity	95 th Percentile (mm)	Mean Size of Flocs Larger than 95 th Percentile (mm)	Maximum Floc Size (mm)
Freshwater	6.91	11.89	95.10
15 ‰	4.82	6.77	36.22
25 ‰	4.38	5.98	23.18
35 ‰	3.96	5.38	25.19

Table 6: Estimated arithmetic mean volumes and corresponding standard deviations of frazil ice floes during different phases and at all four salinities.

Salinity	Mean volumes \pm standard deviations (mm ³)			
	Phase 1	Phase 2	Phase 3	<u>Overall</u>
Freshwater	0.40 \pm 1.07	3.01 \pm 37.68	10.67 \pm 141.45	8.79 \pm 117.98
15 ‰	0.21 \pm 4.70	0.60 \pm 4.36	1.54 \pm 7.78	1.14 \pm 6.68
25 ‰	0.15 \pm 0.71	0.39 \pm 1.49	1.08 \pm 4.55	0.82 \pm 3.78
35 ‰	0.16 \pm 2.62	0.31 \pm 1.05	0.78 \pm 3.22	0.60 \pm 2.72

Figures



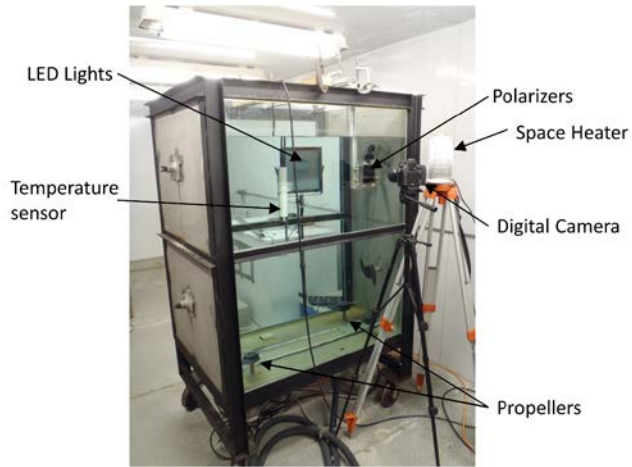


Figure 1: Frazil ice tank experimental set-up.

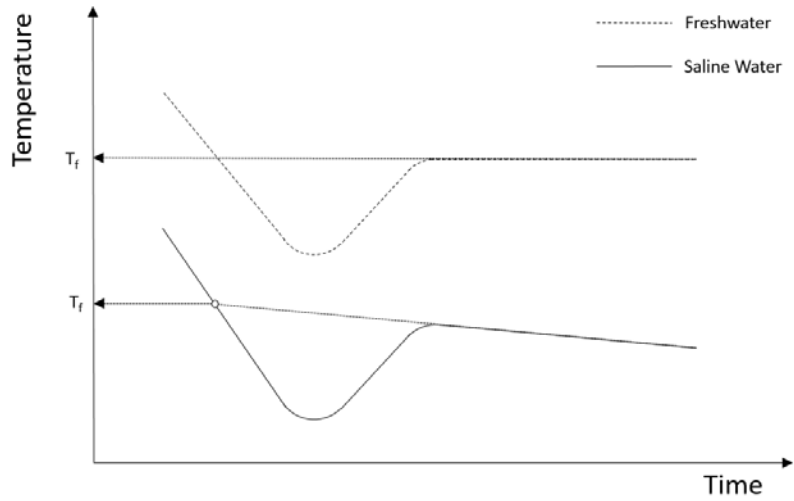


Figure 2: Typical supercooling curves showing the difference between the freezing point temperature T_f in freshwater and saline water in a confined vessel. Adapted from She et al. (2016).

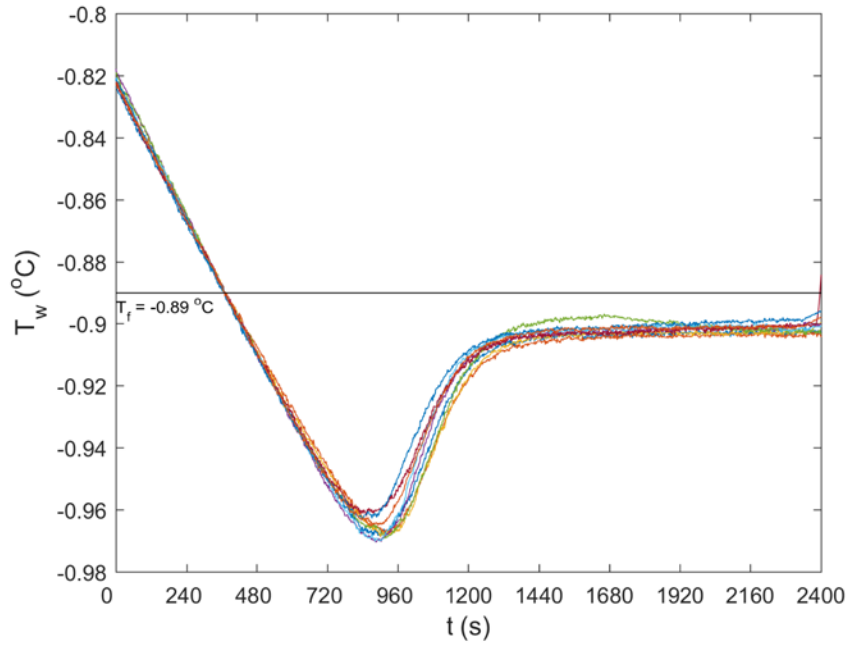
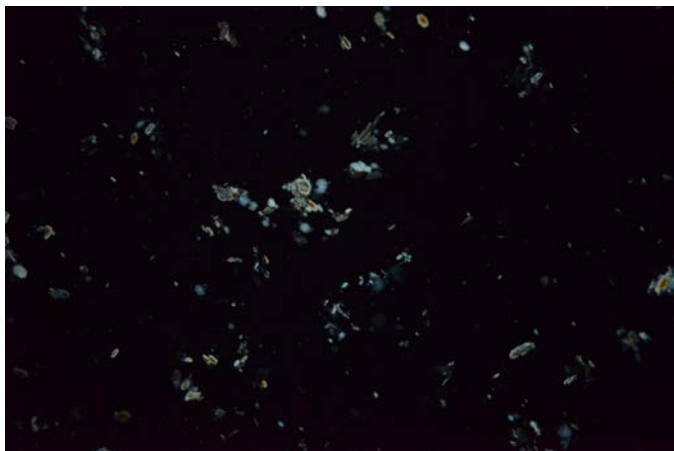


Figure 3: Superimposed supercooling curves from repeated experiments showing water temperature, T_w (°C), as a function of time, t (s), for a salinity of 15 %. The different curves represent the different repeated experiments, and the freezing temperature T_f (°C) is indicated by the horizontal line.

(a)



(b)



Figure 4: Raw digital images showing frazil particles and flocs for a) 35 %, [and](#) b) freshwater. Image dimensions are 3.07 cm by 4.61 cm.

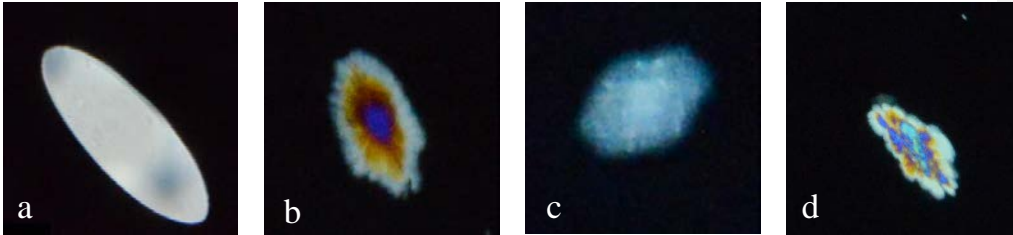
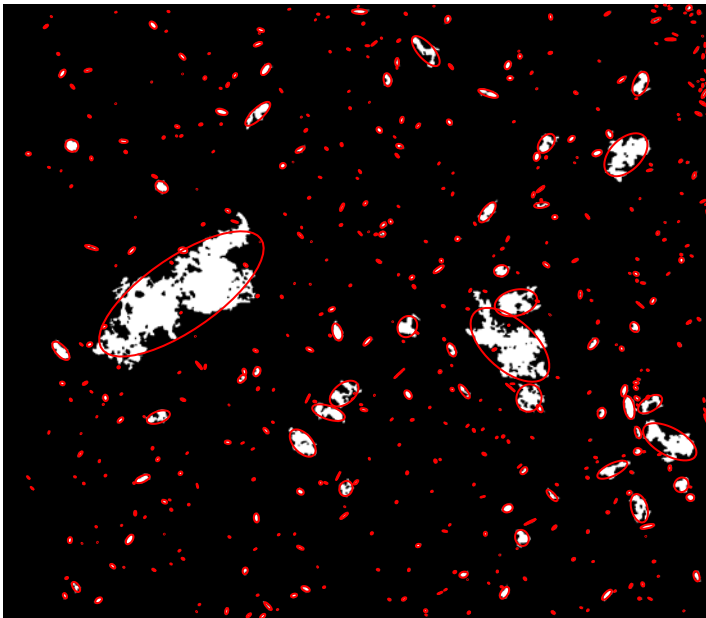


Figure 5: Different shaped particles observed in the experiments: (a) disc-shaped, (b) dendritic, (c) hexagonal, and (d) irregular.



5 Figure 6: Binary image with superimposed fitted ellipses plotted over each detected particle/floc.

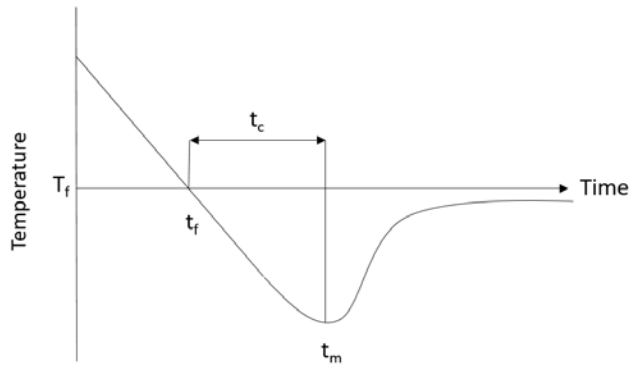


Figure 7: Typical water supercooling curve as a function of time, where t_f is the time of freezing, t_m is the time of minimum temperature, t_c is the time of cooling and T_f is the freezing temperature.

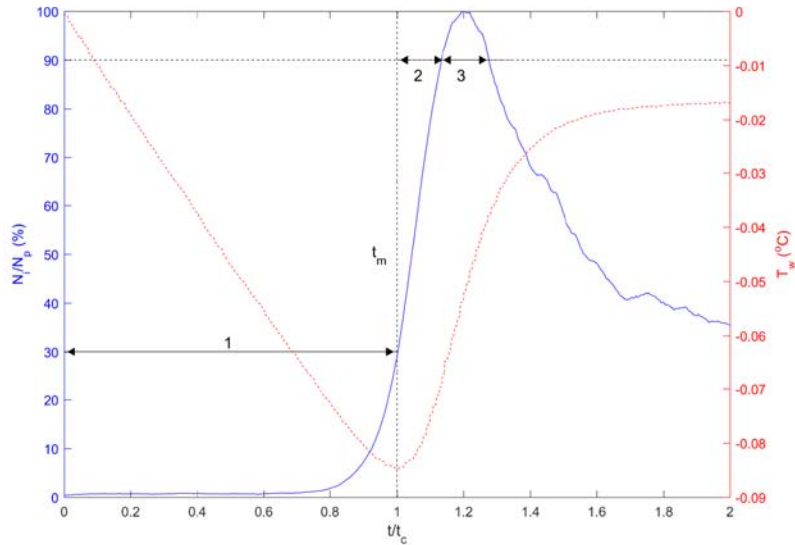


Figure 8: Typical plot illustrating the three time-phases (labelled as 1, 2 and 3) used to compare results from different salinities showing with the dimensionless number of particles or flocs per image (in blue) plotted as a function of dimensionless time with a superimposed supercooling curve (in red). N_i is the number of particles or flocs per image, N_p is the peak number of particles or flocs per image, T_w is the water temperature ($^{\circ}\text{C}$), t is the time (s), t_c is the time of cooling (s), and t_m is the time of minimum temperature (s). Note: this plot is was generated from a freshwater experiment where the freezing temperature T_f is 0°C .

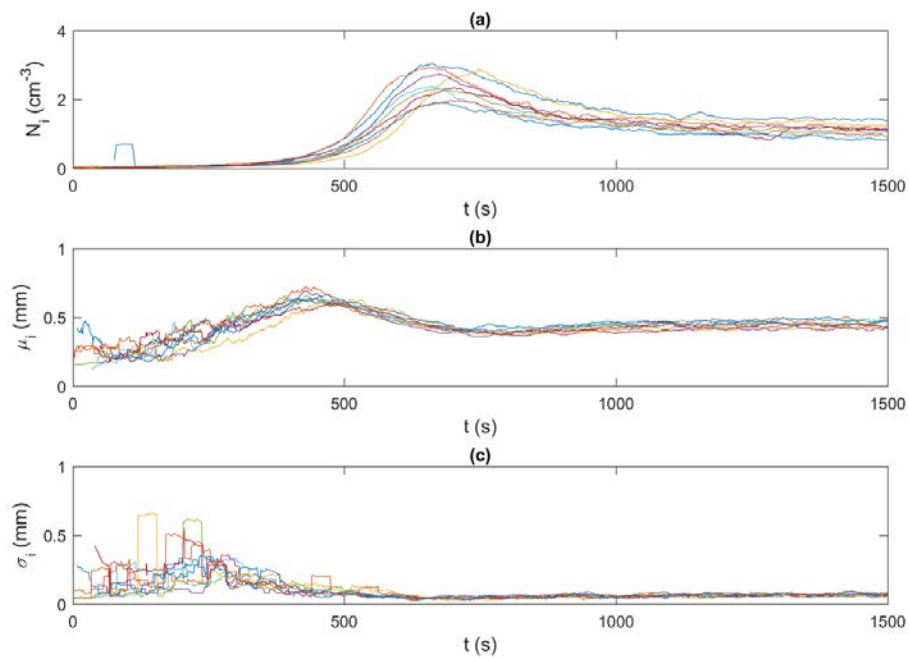


Figure 9: Time series of [the moving average](#) frazil ice particle properties for all 15 % experiments (shown in different colors). a) N_i , the frazil ice particle concentration (cm^{-3}), b) μ_i , the mean size of frazil ice particles (mm), and c) σ_i , the standard deviation of the size of frazil ice particles (mm). [Note the data was smoothed using a 35 s moving average.](#)

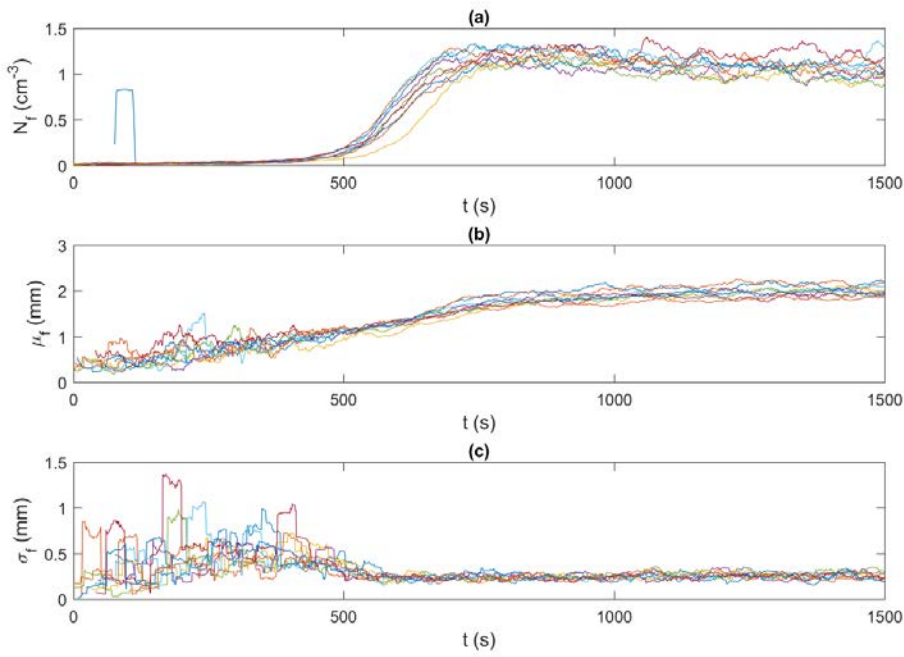


Figure 10: Time series of [the moving average](#) frazil ice floc properties for all 15 % experiments (shown in different colors). a) N_f , the frazil ice floc concentration (cm^{-3}), b) μ_f , the mean size of frazil ice flocs (mm), and c) σ_f , the standard deviation of the size of frazil ice flocs (mm). [Note the data was smoothed using a 35 s moving average.](#)

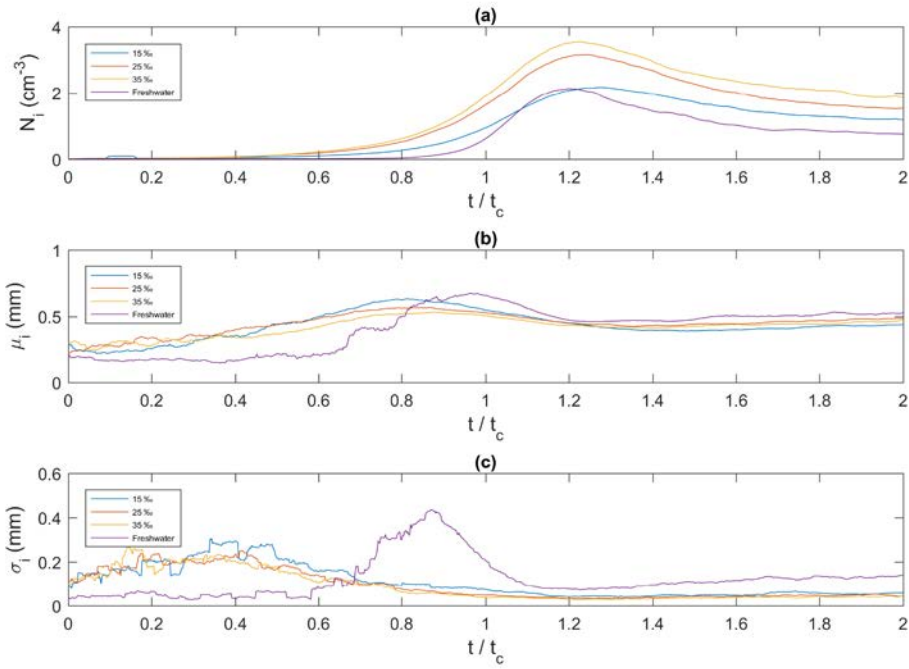


Figure 11: Non-dimensional Ensemble averaged time series of the moving average frazil ice particle properties for all four salinities plotted as a function of dimensionless time. a) N_i , the average frazil ice particle concentration (cm^{-3}), b) μ_i , the mean size of frazil ice particles (mm), and c) σ_i , the standard deviation of the size of frazil ice particles (mm). $t/t_c = 1$ corresponds to the time of the minimum temperature on the supercooling curves.

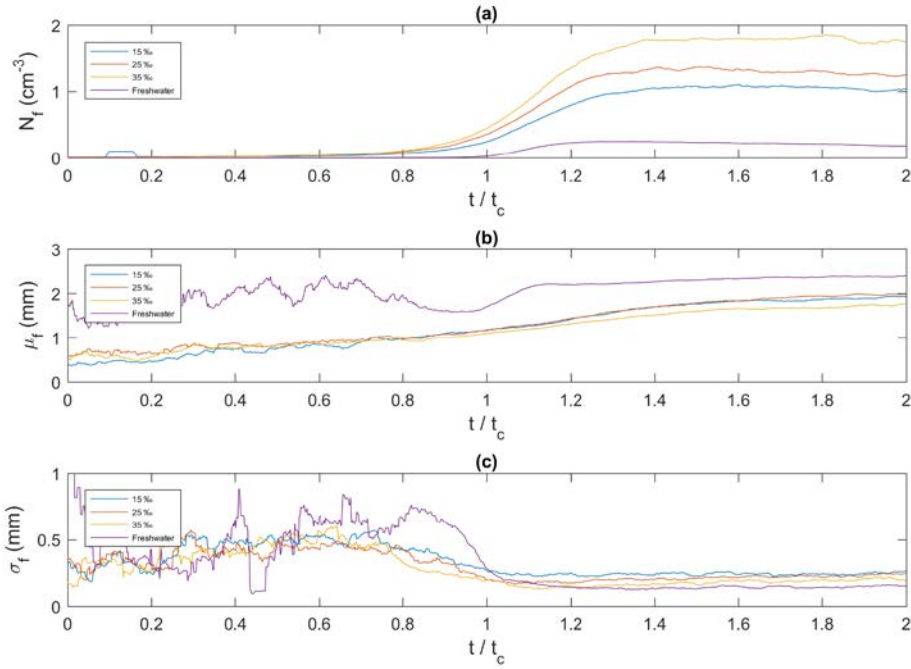
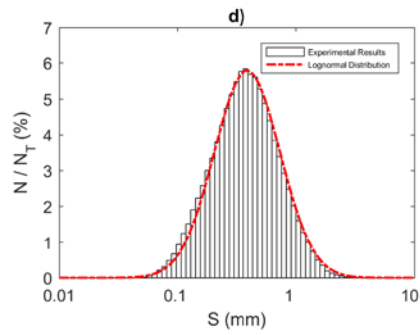
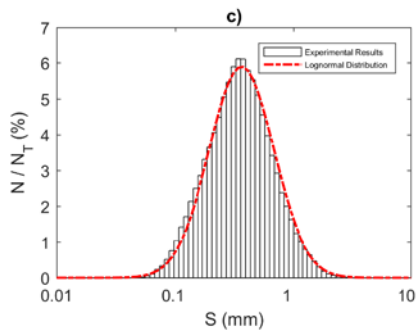
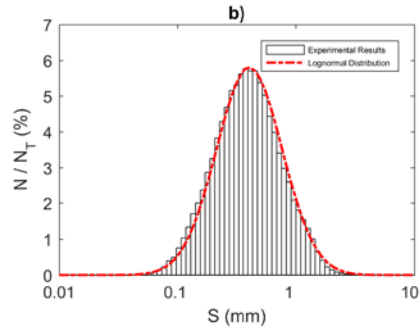
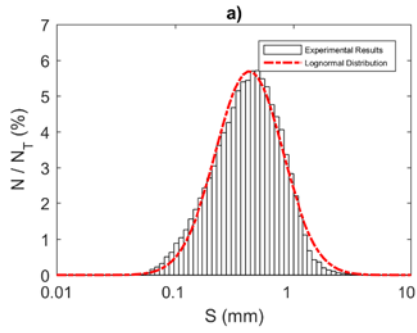


Figure 12: Non-dimensional-Ensemble averaged time series of the moving average frazil ice floc properties for all four salinities plotted as a function of dimensionless time. a) N_f , the average frazil ice floc concentration (cm^{-3}) b) μ_f , the mean size of frazil ice flocs (mm), and c) σ_f , the standard deviation of the size of frazil ice flocs (mm). $t/t_c = 1$ corresponds to the time of the minimum temperature on the supercooling curves.



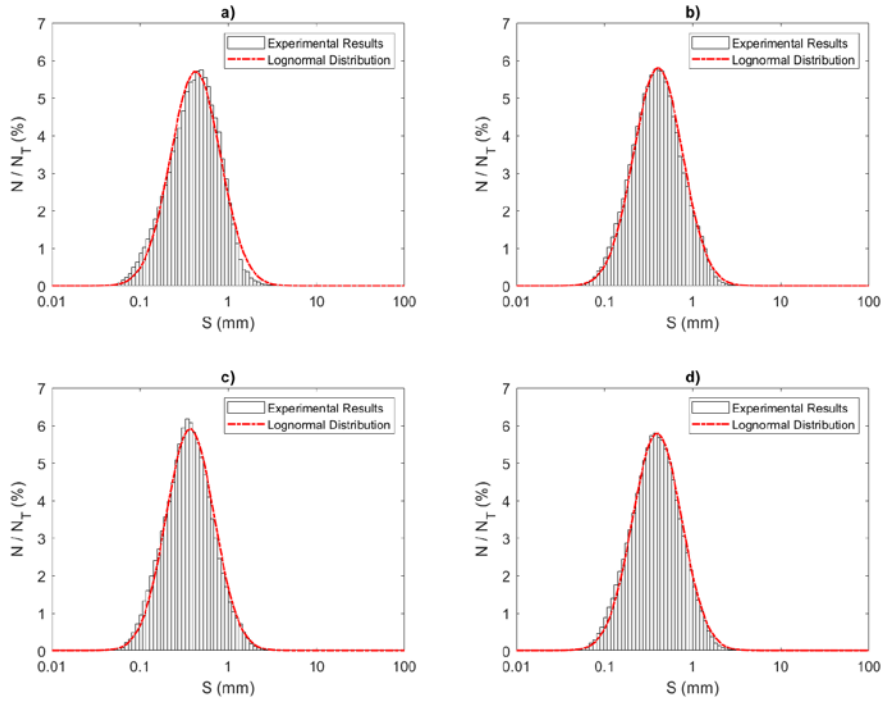


Figure 13: Size distributions of individual particles at a salinity of 35 % during a) Phase 1, b) Phase 2, c) Phase 3, and d) the entire time interval (i.e. averaged over all three phases). N is the number of particles in each bin, N_T is the total number of particles ($N_T \approx 13620, 22430, 105560, \text{ and } 141610$ in a, b, c, and d, respectively), and S is the particle size (mm). Note: the arithmetic mean of particles sizes were 0.50, 0.47, 0.42, and 0.45 mm for a, b, c, and d, respectively.

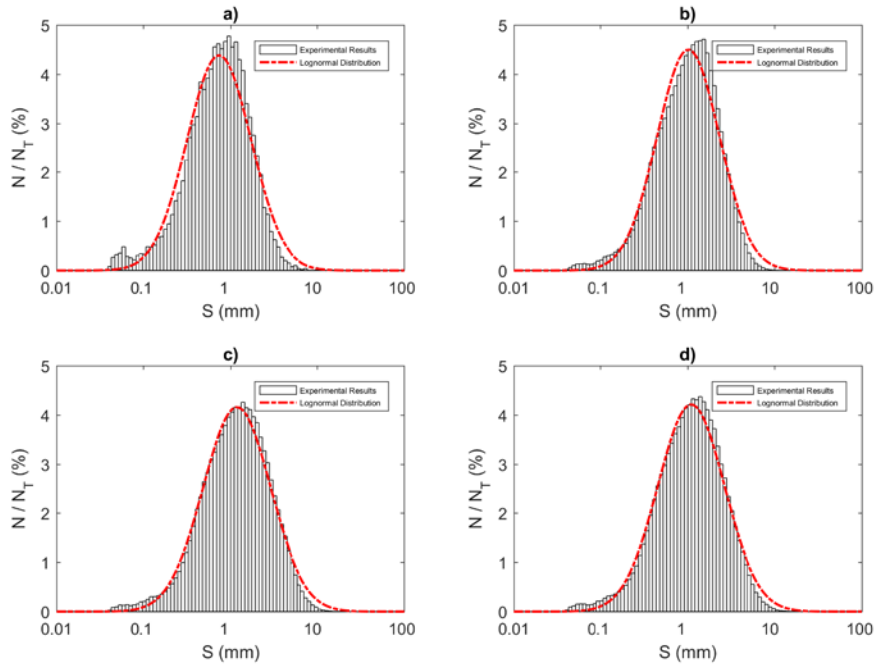


Figure 14: Size distributions of frazil floes at a salinity of 35 % during a) Phase 1, b) Phase 2, c) Phase 3, and d) the entire time interval (i.e. averaged over all three phases). N is the number of floes in each bin, N_T is the total number of floes ($N_T \approx 23880, 136950, 270790,$ and 431620 in a, b, c, and d, respectively), and S is the floe size (mm). Note: the arithmetic mean of floes sizes were 0.96, 1.30, 1.60, and 1.47 mm for a, b, c, and d, respectively.

Formatted: Font: Italic

Formatted: Font: Italic, Subscript

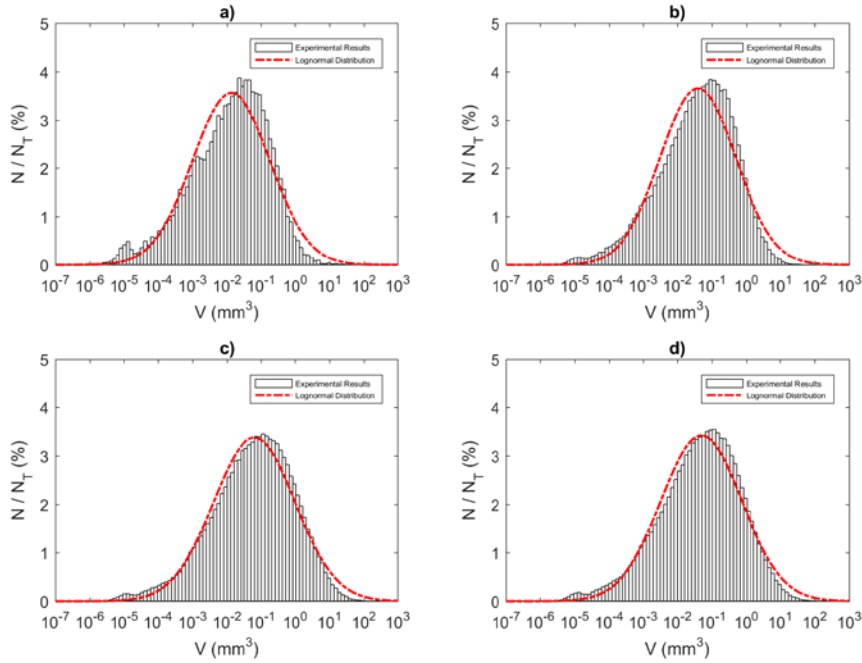


Figure 15: Size distributions of frazil ice floc volume at a salinity of 35 % during a) Phase 1, b) Phase 2, c) Phase 3, and d) the entire time interval (i.e. average over all three phases). N is the number of flocs in each bin, N_T is the total number of flocs ($N_T \approx 23880, 136950, 270790,$ and 431620 in a, b, c, and d, respectively), and V (mm^3) is the estimated floc volume (mm^3) of ice. Note: the arithmetic mean of flocs volumes were 0.16, 0.31, 0.78, and 0.60 mm^3 for a, b, c, and d, respectively.

Formatted: Superscript