

**General comments**

Dear Reviewer #1 and Reviewer #2,

thank you very much for spending the time to carefully read the paper again. We also thank you for your constructive comments and for suggestions to further improving the paper. Please find below all remaining referee comments (RC) by Referee #2 and the corresponding author comments (AC). We thank Referee #1 already for recommendation for final publication and the Editor for excellent handling of the manuscript.

Attached to this document is the track-change version of the manuscript.

**RC1:** Specification of  $A_{min} = -0.7$ . This comes from extrapolation of Figure 5, yet is inconsistent with literature values of  $-0.3$ . This discrepancy is not covered in the discussion. Is this to do with the difficulty of measuring depth hoar in the field or something more fundamental in the difference between the way natural snow evolves and TGM growth in the lab?

**AC1:** The literature is not very helpful here because systematically measured values of  $A$  from laboratory experiments are simply missing, especially for time series lasting many hundreds of days. Such long time series would be required according to our model (Fig. 2a) to reach extreme anisotropy values like  $A_{min} = -0.7$ . As our model agrees with lab experiments lasting for about 80 days, we consider the extrapolation from Fig. 5 as a valid way to estimate  $A_{min}$  by extrapolation. Snow aged multiple hundreds of days can be found e.g. on ice sheets, however, because in nature settling occurs always combined with TGM it is very difficult to find extremely low anisotropy values. Therefore, we consider the value of  $A_{min} = -0.7$  also not to be inconsistent with literature values from ice sheets, e.g. the measurements by (Fujita et al., 2014, 2016, 2009) which indicates common dielectric anisotropy of  $\Delta\epsilon = 0.05$  with extreme values up to  $0.08$ . With the corresponding density, these measurements correspond to anisotropy values as low as  $A = -0.4$ . In addition more recent data from Greenland measured by SLF (unpublished) actually confirms  $A_{min} = -0.7$  very well (see attached figure).

To consider your comment in the paper we suggest to add in Sect. 4.1 after "Therefore, we choose a practical minimum threshold of  $A_{min} = -0.7$ ". *"We note that such low values have neither been observed in lab experiments nor in nature, because experiment would need to last many hundreds of days and in nature snow would either evaporate or TGM would occur combined with settling.*

**RC1.1:** What is the sensitivity of the model to  $A_{min}$  and  $A_{max}$ ?

**AC1.1:** The impact is rather small and is on the same order of magnitude as the uncertainty from different ensemble runs and similar to the scatter of data points from the CT measurements. Within the range of  $A_{min} = -0.8...-0.5$  and

$A_{max} = 0.2...0.4$  the simulated depth-resolved, as well as depth-averaged anisotropy values change hardly more than by  $0.05$ . Still, the dynamics of the model remain the same. Therefore we have add to Section 5.4 (model deficits) that *Varying the values of  $A_{min}$  and  $A_{max}$  within the estimated uncertainty range of  $\pm 0.1$  does not affect the general dynamics of the model. Within this range the modeled results did hardly change more than  $\pm 0.05$ .*

**RC1.2:** If the column  $A_{max}$  from radar measurements is  $0.2$ , values for individual layers could be much higher. It's not clear how  $A_{max} = 0.3 \pm 0.1$  was estimated. What is the impact of this estimation?

**AC1.2:** The values of the individual layers are shown in Fig. 8(b) where values of  $A = 0.1...0.4$  have been observed for 2011-12-21 which coincides very well with the most positive column values of  $A = 0.2$  measured by radar. As the majority of CT data points in Fig. 8(b) is less than  $0.3$  and only a few points range to  $0.4$  (some even to  $+0.6$ ) we think that  $A_{max} = 0.3$  is a reasonable estimate. We have added to section 4.3 (validation with CT-profiles) that *The most positive anisotropy values of the CT data  $A = 0.3$  with some scatter up to  $0.4$  and higher agree with our estimation of  $A_{max} = 0.3$ .* The impact for  $A_{max} = 0.2...0.4$  is mentioned in AC1.1.

**RC2:** I'm not convinced that dividing by a density and a characteristic microstructural length scale in equation 5 on dimensional grounds is the correct thing to do. The orientational dependent part of the equation already indirectly accounts for a difference in size associated with horizontal structure vs size associated with horizontal structure so to then incorporate a size dependent term which is afterwards treated as a constant seems odd. From a physical perspective it seems intuitive that the rate of vapour-solid exchanges is dependent on the effective surface area perpendicular to the thermal gradient i.e. horizontal structures present more surface area for phase changes than vertical structures. I would then argue that you are dividing the flux by something with units of specific surface area but dependent on the anisotropy.

**AC2:** We agree that the factors introduced on dimensional grounds seem a bit odd. As we consider the density of ice  $\rho_{ice}$  and the "microstructural parameter  $f_{\mu}(\cdot)$ " anyway to be constant we have now absorbed them into the prefactor  $\alpha_1$  which has now the value and dimension  $\alpha_1 = 1.01 \text{ m}^2 \text{ kg}^{-1}$ . By this incorporation, all discussion about  $f_{\mu}(\cdot)$  becomes irrelevant and has been removed. Instead we changed the first paragraph of the discussion to:

*It may surprise that we neglected any parametrization of the microstructure in the model. For example, a more sophisticated description would characterize each grain type, shape and size by its potential velocity to transform into vertical structures. The microstructure is only rudimentary considered by the factor  $(A - A_{min})^2$  which causes a quadratic dependence of the change rate on the anisotropy such that*

*horizontal structures transform much faster than vertical structures.*

**RC3:** If empirical correction factor  $\alpha_2$  is somehow related to the resistance of the bonded ice matrix to compression, would vertical and horizontal structures have the same value?

**AC3:** Probably not. But as we like to keep the number of free parameters as low as possible we think that using the same value of  $\alpha_2$  for vertical and horizontal structures is a reasonable first guess. To mention this in the paper, we will add in section 5.4 (model deficits) *As the settling rate depends on the resistance of the bonded ice matrix to compression and as the resistance should depend on the anisotropy we think that  $\alpha_2$  could also depend on the anisotropy. However, to keep the numbers of free parameters low we used constant values of  $\alpha_2$ .*

**RC4:** Figure 2 - it would be better to have a consistent colour scheme. At the moment red is used for (8) in (a) but (7) in (b).

**AC4:** Fine. (8) in (a) is now in dark red and the numbers correspond to the same colour.

**RC5:** Section 3.2. What frequencies / incidence angles are you using? This relates to later section and calculation of standard deviation of A from CPD in section 4.2 - how was this done? Calculated over time / frequency / incidence angle?

**AC5:** We used the full spectrum of SnowScat (9.2–17.8 GHz), split into 13 bands, each with a bandwidth of 2 GHz. As the CPD at steep (i.e small) incidence angles is rather small, we used only the incidence angle 40, 50, and 60 degree. The standard deviation was calculated over all 13 x 3 measurements with different frequencies and incidence angles. We have added this information to section 3.2.

**RC6:** Clearly a lot of work went into derivation of the meteorological data to run SNOWPACK, with associated uncertainties. Why was this approach taken rather than using the Essery <https://doi.org/10.5194/gi-5-219-2016> dataset?

**AC6:** Simply because we were not aware of it because we started preprocessing the meteorological data already before 2016. The dataset contains some additional corrections which we haven't considered. We will definitely cite it (see next comment).

**RC6.1:** What could cause the incoming longwave to require a decrease (in processing in this paper) instead of providing an additional thermal contribution due to the trees?

**AC6.1:** We added at the end of section 3.3.4 (calibration and configuration of SNOWPACK) the explanation that *The reduction of short wave radiation agrees with the model by Essery et al. (2016), however, they modeled an increase of the longwave radiation by a few percent whereas we reduced it by a few percent such that SNOWPACK results agree better with snow depth and temperature measurements.*

**RC7:** P.19, 2nd paragraph - layers at the base do not always show vertical structures: at the start of the seasons there are only horizontal structures: could this period be used for calibration of Amax?

**AC7:** Yes, correct. The first snow of every season shows some settling and therefore a horizontal structures. We corrected this in the paper (always -> *mainly, except for early season snow*). For calibration of Amax from early season snow we often have the problem that the early season snow is quite wet (no radar penetration). Additionally, the depth of the first few cm of snow is pretty thin and introduces therefore a relatively high uncertainty for the anisotropy. Therefore we did not use this snow to calibrate Amax. Instead we used the radar measurements from Dec 2011 where the snow depth- and snow density related uncertainty in the anisotropy estimation is relatively low (see provided error bars / standard deviation in Fig. 6+7). See also comment AC1.2.

**RC7.1:** Similarly, could the purely vertical structure profile period in 2010-2011 be used to calibrate Amin?

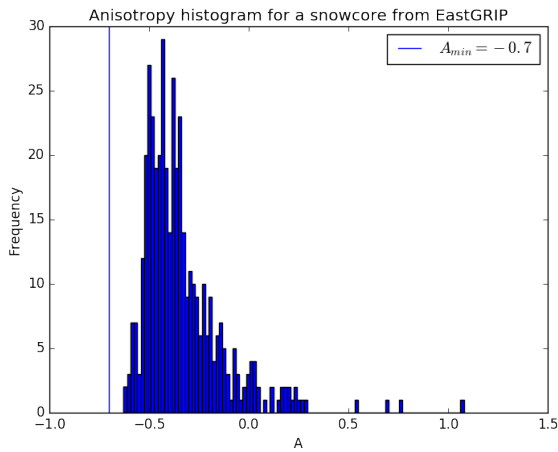
**AC7.1:** We don't think so. As discussed in AC1, time series lasting many hundreds of days would be required to observe anisotropy values close to Amin. The snow in the purely vertical structure profile end of November 2010 is only about 30 days old. The profile CT-1 taken in the season 2010/2011 could provide our most negative anisotropy values, unfortunately, the strong depth hoar could not be sampled (Fig. 8a). Data from other years, e.g. CT-4 shows values of A down to -0.4 but again, the snow is only 4 months old and additional settling might have occurred.

**RC8:** P.19, L9-10 (begins We think...) this sentence would benefit from some clarity

**AC8:** We rephrased this sentence to *Initially fallen crystals have an intrinsic particle orientation which is not perfectly aligned horizontally when first sticking to the surface. Upon initial metamorphism and settling, which takes some characteristic time, these crystals may further align horizontally under the influence of gravity with a measurable impact on the anisotropy.*

**RC9:** P.24, L9-10. Missing a discussion about the difference at the bottom (where observations available). The fact that the micro-CT data show vertical structures whereas the model indicates horizontal may be significant depending on application. It would be interesting to discuss possible reasons for this difference.

**AC9:** The bottom (where observations are available) would be the snow between 10 and 30 cm for which the data CT-1 indicate  $A = -0.1$  whereas the model indicates  $A = 0.05$ . These snow layers have settled during a thin snowpack with relatively cold air temperatures ( $-15^{\circ}\text{C}$ ), hence large temperature gradients, where the settling rate could have been overestimated by SNOWPACK or the anisotropy evolution could have been overestimated by our model. The settling of these



**Figure 1.** Histogram of anisotropy measurements in Greenland (unpublished data by SLF).

snow layers appears as a very fast anisotropy increase in the model results for Jan and Feb 2011 (Fig. 6d) supporting the assumption that the modeled results are too positive. Still, we think that this is a rather speculative discussion and therefore prefer to avoid it in the paper.

**RC9.1:** It is also interesting that the model agrees more with A derived from  $p_c$  rather than  $p_{ex}$  for this section. What could this mean?

**AC9.1:** For CT-1 (Fig. 8a), the model seems to agree better with A from  $p_c$  but we think that this is pure coincidence because the model estimates a too positive anisotropy which is closer to A from  $p_c$  which is generally smaller than A from  $p_{ex}$ . The difference between A from  $p_c$  and  $p_{ex}$  is discussed in section 4.3.1. (anisotropy determined from  $p_c$ ).

**Typos:** all listed typos have been corrected.

## References

Essery, R., Kontu, A., Lemmetyinen, J., Dumont, M., and Ménard, C. B.: A 7-year dataset for driving and evaluating snow models at an Arctic site (Sodankylä, Finland), *Geoscientific Instrumentation, Methods and Data Systems*, 5, 219–227, <https://doi.org/10.5194/gi-5-219-2016>, <https://www.geosci-instrum-method-data-syst.net/5/219/2016/>, 2016.

Fujita, S., Okuyama, J., Hori, A., and Hondoh, T.: Metamorphism of stratified firn at Dome Fuji, Antarctica: A mechanism for local insolation modulation of gas transport conditions during bubble close off, *Journal of Geophysical Research: Earth Surface*, 114, 1–21, <https://doi.org/10.1029/2008JF001143>, <http://dx.doi.org/10.1029/2008JF001143>, 2009.

Fujita, S., Hirabayashi, M., Goto-Azuma, K., Dallmayr, R., Satow, K., Zheng, J., and Dahl-Jensen, D.: Densification of layered firn of the ice sheet at NEEM, Greenland, *Journal of Glaciology*, 60, 905–921, <https://doi.org/http://dx.doi.org/10.3189/2014JoG14J006>, 2014.

Fujita, S., Goto-Azuma, K., Hirabayashi, M., Hori, A., Iizuka, Y., Motizuki, Y., Motoyama, H., and Takahashi, K.: Densification of layered firn in the ice sheet at Dome Fuji, Antarctica, *Journal of Glaciology*, 62, 103–123, <https://doi.org/10.1017/jog.2016.16>, [http://journals.cambridge.org/article\\_S0022143016000162](http://journals.cambridge.org/article_S0022143016000162), 2016.

# Modeling the Evolution of the Structural Anisotropy of Snow

Silvan Leinss<sup>1</sup>, Henning Löwe<sup>2</sup>, Martin Proksch<sup>2</sup>, and Anna Kontu<sup>3</sup>

<sup>1</sup>Institute of Environmental Engineering, Swiss Federal Institute of Technology in Zurich (ETH), Zürich, Switzerland

<sup>2</sup>Institute for Snow and Avalanche Research SLF, Davos, Switzerland.

<sup>3</sup>Finnish Meteorological Institute FMI, Arctic Research, Sodankylä, Finland.

**Correspondence:** S. Leinss (leinss@ifu.baug.ethz.ch)

**Abstract.** The structural anisotropy of snow characterizes the spatially anisotropic distribution of the ice and air microstructure and is a key parameter for improving parameterizations of physical properties. To enable the use of the anisotropy in snowpack models as internal variable, we propose a simple model based on a [rate-equation-rate equation](#) for the temporal evolution. The model is validated with a comprehensive set of anisotropy profiles and time-series from X-ray [tomography-microtomography](#) (CT) and radar measurements. The model includes two effects, namely temperature gradient metamorphism and settling, and can be forced by any snowpack model that predicts temperature and density. First, we use CT time-series from lab experiments to validate the proposed effect of temperature gradient metamorphism. Next, we use SNOWPACK simulations to calibrate the model against radar time-series from the [NOSREX NoSREx](#) campaigns in Sodankylä, Finland. Finally we compare the simulated anisotropy profiles against field-measured full-depth CT profiles. Our results confirm that the creation of vertical structures is mainly controlled by the vertical water vapor flux. Our results further indicate a yet undocumented effect of settling on the creation of horizontal structures. Overall the model is able to reproduce the characteristic anisotropy variations in time series of 4 different winter seasons with a very limited set of calibration parameters.

## 1 Introduction

Deposited snow is a porous material that continuously undergoes microstructural changes in response to the external, thermodynamic forcing imposed by the atmosphere and the underlying soil. In some cases, the microstructure can develop a significant structural anisotropy, i.e. the non-spherical ice particles develop a preferential orientation, of-

ten in the vertical or horizontal direction. Among other microstructural properties, a significant amount of work was recently dedicated to understand the impact of the structural anisotropy which is a key parameter to improve predictions of different snow properties like the thermal conductivity (Izumi and Huzioka, 1975; Calonne et al., 2011; Shertzer and Adams, 2011; Riche and Schneebeli, 2013; Calonne et al., 2014), mechanical (Srivastava et al., 2010, 2016; Wiese and Schneebeli, 2017), diffusive and permeable properties (Zematten et al., 2011; Calonne et al., 2012, 2014), as well as the electromagnetic permittivity (Leinss et al., 2016, and references therein). Especially the thermal conductivity shows a strong dependence on the structural anisotropy (Löwe et al., 2013; Calonne et al., 2014). Depending on snow type, the thermal conductivity can vary by an order of magnitude at a given density: this variability is discussed with respect to the theoretical limits defined by a microstructure of either vertical or horizontal series of ice plates (Sturm et al., 1997).

The structural anisotropy is commonly characterized by different variants of geometrical or structural fabric tensors. These can be computed e.g. from mean intercept lengths (Srivastava et al., 2016), contact orientations (Shertzer and Adams, 2011), surface normals (Riche et al., 2013) or other second-order orientation tensors that can be constructed from the two-point correlation function of a two phase medium (Torquato and Lado, 1991; Torquato, 2002). The correlation functions can be evaluated in terms of directional correlation lengths which define characteristic length scales of the microstructure (e.g. Vallese and Kong, 1981; Mätzler, 1997; Löwe et al., 2013) and from which the anisotropy can be derived. For snow, the microstructure can be obtained by stereology (e.g. Alley, 1987; Mätzler, 2002) or from computer tomography, CT (Schneebeli and Sokratov, 2004).

However the inclusion of the structural anisotropy in current snowpack models is still missing due to i) the lack of a

prognostic model for the anisotropy evolution and ii) the lack of in-situ data for validation. Motivated by recent progress of anisotropy measurements using radar (Leinss et al., 2016) as a solution for ii) it is the aim of the present paper to overcome i) and to suggest a minimal, dynamical model tailored to direct use in common, operational snowpack models.

The model is based on a simple rate equation which incorporates temperature gradient metamorphism and snow settling. Each contribution is formulated in terms of common, macroscopic state variables (temperature, temperature gradient and strain rate) which are provided by detailed snowpack models like SNOWPACK (Bartelt and Lehning, 2002; Lehning et al., 2002a, b), CROCUS (Brun et al., 1989, 1992) or SNTHERM (Jordan, 1991). The magnitude of each contribution is controlled by free parameters which we calibrated with laboratory CT data, literature data, and radar time series of from Finland from which the anisotropy evolution over four winter seasons between Oct 2009 and May 2013 with 4 hour was obtained with 4 h resolution. The model links temporally high-resolution but vertically averaged anisotropy time series from radar with vertically high-resolution but temporally sparse CT measurements and is validated against field-measured, full-depth CT anisotropy profiles.

The paper is structured as follows: Section 2 discusses relevant processes which influence the structural anisotropy and casts them into rate equations. Section 3 presents experimental data and their integration for model forcing, calibration and validation. Section 4 validates the influence of TGM on the modeled anisotropy, presents the seasonal evolution of the anisotropy according to the full model and validates these results with field-measured CT profiles. Section 5 discusses capabilities and deficits of the model and of anisotropy measurements. Section 6 concludes the paper and Sect. 7 lists the data availability. The Appendix details the preprocessing of meteorological data and the calibration of SNOWPACK.

Supplementary files provide additional figures about the processing work flow, meteorological data, radiation balance, snow density, SSA and correlation lengths derived from CT data, an analysis of SNOWPACK model variants ensemble members, visualizations of snow properties, and results of anisotropy model variants.

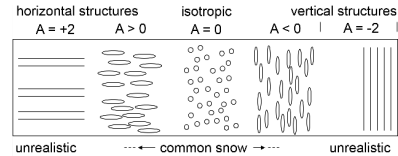
## 2 A dynamical model for the structural anisotropy

### 2.1 Definition of the anisotropy

For quantifying the structural anisotropy, we follow the definition in (Leinss et al., 2016) and use the normalized difference of a characteristic horizontal length scale  $a_x$  and a vertical length scale  $a_z$ :

$$A = \frac{a_x - a_z}{\frac{1}{2}(a_x + a_z)}. \quad (1)$$

Different characteristic length scales can be chosen. Commonly exponential correlation lengths  $a_i = p_{\text{ex},i}$  are used as



**Figure 1.** Different structures and their anisotropy according to Eq. (1). Snow has only a small anisotropy and never reaches the unrealistic cases of horizontal planes or vertical needles.

defined in (Mätzler, 2002). According to Eq. (1), the structural anisotropy ranges from -2 (vertical needles) to +2 (horizontal planes) with  $A = 0$  for randomly shaped or spherical particles (Fig. 1). As detailed in (Leinss et al., 2016), a normalized difference is convenient compared to the definition via an aspect ratio ( $A' = a_z/a_x$ ) because equally prolate and oblate particles with interchanged semi-axis have then the same magnitude for the anisotropy and averaging them results in isotropy ( $A = 0$ ). The normalized difference and the frequently used grain size aspect ratio  $A'$  are however equivalent and can be related by

$$A = 2 \frac{1 - A'}{1 + A'} \quad \text{or equivalently} \quad A' = \frac{2 - A}{2 + A} \approx 1 - A. \quad (2)$$

This relation is helpful for a comparison with literature values. For snow a common range is  $A' \approx 0.75 \dots 1.3$  but larger values up to 1.4 might occur (Alley, 1987; Davis and Dozier, 1989; Schneebeli and Sokratov, 2004; Fujita et al., 2009; Calonne et al., 2014). In this range, equally to  $A \approx +0.3 \dots -0.3$ , the approximation in Eq. (2) deviates less than 5% from  $A'$  with respect to  $A'$ .

For conciseness, we refer to "horizontal structures" when the horizontal length scales are larger than the vertical ones,  $a_x, a_y > a_z$ , hence  $A > 0$ . Accordingly, "vertical structures" describe snow with larger vertical length scales larger than horizontal ones,  $a_z > a_x, a_y$ , equivalent to  $A < 0$ .

### 2.2 Evolution of the anisotropy

Quite generally, the anisotropy evolves from horizontal structures in new snow, over isotropic structures in decomposing rounded grains, to vertical structures under the influence of temperature gradient metamorphism (Schneebeli and Sokratov, 2004; Calonne et al., 2014) and might return to isotropy during melt processes. To describe this evolution we assume the following rate equation

$$\frac{\partial}{\partial t} A(z, t) = \dot{A}_{\text{TGM}}(z, t) + \dot{A}_{\text{strain}}(z, t) \quad (3)$$

The first term accounts for the growth of vertical structures due to temperature gradient metamorphism (TGM), the most common type of snow metamorphism. The second term accounts for the formation of horizontal structures due to microscopic grain rearrangement causing the settling (strain)

of snow. Further terms could be added to account e.g. for a possible rounding of grains by melt metamorphism. For simplicity we start with the assumption of an additive decomposition of these processes, though naturally, all these processes are coupled (e.g., Wiese and Schneebeli, 2017) (e.g. Wiese and Schneebeli, 2017).

As common for snow models focusing on the evolution of microstructural properties of individual snow layers (Bartelt and Lehning, 2002), we describe the anisotropy evolution in each layer with a Lagrangian viewpoint where the reference frame is attached to a material element. Therefore, we drop the  $z$ -dependence in Eq. (3). Further, we restrict our model to flat terrain and do not consider any forces acting parallel to the snow layers (in the  $x$ - or  $y$ -direction). This implies that gravity and temperature gradient are strictly applied in the  $z$ -direction.

### 2.3 Temperature gradient metamorphism

For TGM ice crystals preferably grow into the opposite direction of the heat- and water vapor flux, for both, an applied horizontal or vertical heat flux (Yosida, 1955, p. 52–56). The underlying water transport mechanism, mediated by a vapor flux from ice grain to ice grain, is often termed "hand-to-hand" transport as suggested by Yosida (1955, p. 31–34). Pinzer et al. (2012) confirmed this mechanism and demonstrated a rapid reorganization of the ice matrix within a few days. The rapid reorganization renders the perception of a slowly growing ice grain misleading as "only the 'memory' of the grain, encoded in the temporal correlation of the structure, survives" (Pinzer et al., 2012). Thereby, large vertical structures have a higher chance to survive while small structures quickly disappear.

To mimic this structural reorganization, we model the growth of vertical structures proportional to the magnitude of the water vapor mass flux:  $\dot{A}_{\text{TGM}} \propto |J_V|$ . We use the absolute value  $|J_V|$ , because the anisotropy does not contain any information about the growth direction but only about the growth orientation.

In winter, the vapor flux direction is usually positive (upwards) but can be reverse in spring, when the eventually melting snow surface is warmer than the underlying snowpack. With strong diurnal cycles, the flux direction can also alternate on a daily basis, but apparently these oscillating temperature gradients seem not to cause growth of faceted crystals: according to Pinzer and Schneebeli (2009) the morphology of the snow structure evolves slower and "did not show any sign of conventional TGM". Therefore, we exclude the effect of daily alternating temperature gradients by averaging temperature gradients over 24 h:

$$\dot{A}_{\text{TGM}} \propto |\langle J_V \rangle_{24\text{h}}|. \quad (4)$$

As indicated in Fig. 1, perfect needle microstructures do not exist in reality. Therefore, we assume a minimal anisotropy  $A_{\text{min}}$  that can be practically attained by adding an

empirical, quadratic weighting function. This function also amplifies the decay of horizontal structures modeled for new snow which should transform faster because small grains evaporate relatively quickly. The function also slows down the evolution of vertical structures which are modeled for snow which has experienced already strong TGM and has therefore relatively large grains. With these considerations, we model the growth of vertical structures by

$$\dot{A}_{\text{TGM}}(t) = -\alpha_1 \frac{|\langle J_V \rangle_{24\text{h}}|}{\rho_{\text{ice}} f_{\mu}(\cdot)} |\langle J_V \rangle_{24\text{h}}| \cdot \begin{cases} \frac{(A - A_{\text{min}})^2}{A_{\text{min}}^2} & A \geq A_{\text{min}} \\ 0 & A < A_{\text{min}} \end{cases} \quad (5)$$

The positive prefactor  $\alpha_1$  defines the coupling-strength of the right hand side to the anisotropy change rate that and must be determined from experiments. On dimensional grounds, we divided the water vapor flux by the density of ice  $\rho_{\text{ice}}$  ( $\text{kg m}^{-3}$ ) to obtain a velocity. This velocity can be interpreted as the vertical, average velocity of water molecules. As the lifetime of evaporating ice particles should depend on their size, we divided by a characteristic microstructural length scale,  $f_{\mu}(\cdot)$  (m), which leads to the correct units ( $\text{m}^2 \text{kg}^{-1}$ ) of the change rate of the structural anisotropy.

The vapor flux is mediated by diffusion which is driven by a water vapor pressure gradient induced by a temperature gradient. Therefore, the vertical water vapor mass flux  $J_V$  ( $\text{kg m}^{-2} \text{s}^{-1}$ ) follows from Fick's law applied to the water vapor mass density  $\rho_v(T)$  ( $\text{kg m}^{-3}$ ):

$$J_V(T, \frac{\partial T}{\partial z}) = -D_{\text{vs}} \frac{\partial \rho_v}{\partial z} = -D_{\text{vs}} \frac{\partial \rho_v(T)}{\partial T} \frac{\partial T}{\partial z} \quad (6)$$

The vapor mass density  $\rho_v$  is given by the water vapor pressure,  $p_S(T)$ , which is supposed to be at the saturation point in the pores between the ice crystals. Density and saturation pressure are related by the equation for ideal gases,

$$\rho_v(T) = p_S(T)/(R_V T), \quad (7)$$

where  $R_V = R/M_w = 461 \text{ J kg}^{-1} \text{ K}^{-1}$ ,  $R_V = R/M_w = 461 \text{ J kg}^{-1} \text{ K}^{-1}$  the specific gas constant for water vapor,  $M_w = 0.018 \text{ kg mol}^{-1}$  the molar mass of water and  $R = 8.314 \text{ J mol}^{-1} \text{ K}^{-1}$ ,  $R = 8.314 \text{ J mol}^{-1} \text{ K}^{-1}$  the universal gas constant. The saturation pressure over ice can be well approximated using different formulas (Marti and Mauersberger, 1993) and is given in (Bartelt and Lehning, 2002) by

$$p_S(T) \approx p_{0S} \cdot \exp [L/R_V (T_0^{-1} - T^{-1})] \quad (8)$$

with the latent heat of ice sublimation  $L = 2.8 \text{ MJ kg}^{-1}$ ,  $L = 2.8 \text{ MJ kg}^{-1}$  and the Triple point pressure and temperature of water,  $p_{0S} = 611.73 \text{ Pa}$  and  $T_0 = 273.16 \text{ K}$ .

Because the saturation pressure, Eq. (8), depends only on temperature, Eq. (6) can be written in terms of temperature  $T$  and temperature gradient  $\frac{\partial T}{\partial z}$  (Lehning et al., 2002b):

$$J_v(T, \frac{\partial T}{\partial z}) = -D_{vs} \cdot \rho_v(T) \cdot \left[ \frac{L}{R_v T^2} - \frac{1}{T} \right] \frac{\partial T}{\partial z} \quad (9)$$

The effective diffusion constant for water vapor in snow,  $D_{vs}$ , is close to the diffusion constant in air,  $D_{v,air} = 2.1 \cdot 10^{-5} \text{ m}^2 \text{ s}^{-1}$  (Massman, 1998), and ranges between 1 and  $10 \cdot 10^{-5} \text{ m}^2 \text{ s}^{-1}$  (Sokratov and Maeno, 2000; Colbeck, 1993) and review in (Pinzer et al., 2012). As the vapor flux seems to be almost independent of grain size or microstructure (Pinzer et al., 2012, Sect. 4.3 and Fig. 11) we assume a constant diffusion constant,  $D_{vs} = 2 \cdot 10^{-5} \text{ m}^2 \text{ s}^{-1}$ .

## 2.4 Gravitational settling

Gravitational settling and densification of snow has been assumed to create horizontal structures as indicated by polarimetric radar observations (Leinss et al., 2016). ~~The-They~~ observed that the radar signal did not increase instantaneously with new snow but with a time delay of a few days after snow fall, thereby suggesting a settling effect (Leinss et al., 2016, Sect. 5.4). In the absence of detailed, quantitative work about the anisotropy evolution of new snow we start with the simplest assumption of an affine deformation where all structural length scales inherit the macroscopically imposed strain. Then, the strain rate and the vertical correlation lengths would be related by  $\dot{\epsilon}(t) = \dot{a}_z/a_z$ . However, because in the heterogeneous microstructure only the air pores can be squeezed while ice particles might build new vertical contact points, an affine deformation needs to be mitigated. To account for non-affine effects we introduce an empirical correction factor  $\alpha_2$  and hence proceed with

$$\dot{\epsilon}(t) = \frac{1}{\alpha_2} \frac{\dot{a}_z(t)}{a_z(t)}. \quad (10)$$

Then, the anisotropy change rate  ~~$\dot{A}(t)$~~  caused-modeled by a strain-induced shortening of the correlation length  $a_z$  can be expressed as

$$\dot{A}(t)_{\text{strain}} = \frac{d}{dt} A(a_z(t), a_x) = \left( \frac{\partial A}{\partial a_z} \right) \dot{a}_z(t). \quad (11)$$

With Eq. (1) and (10) this can be rewritten as

$$\dot{A}_{\text{strain}}(t) = \alpha_2 \dot{\epsilon}(t) \left( \frac{A^2}{4} - 1 \right). \quad (12)$$

For large  $|A| \rightarrow 2$  the term  $A^2/4 - 1$  approaches zero and ensures that the anisotropy cannot grow beyond the two extreme values of  $A = \pm 2$ , even for very large strain rates. ~~However, because compression should increase~~ Because

compression should increase the vertical contact between ice grains it seems unrealistic that large values of  $A$  can be actually reached. Therefore, we modify this term and introduce an empirical upper threshold,  $A_{\text{max}}$ . For negative values of  $A$ , no modification is applied. This leads to

$$\dot{A}_{\text{strain}}(t) = \alpha_2 \dot{\epsilon}(t) \begin{cases} \left( \frac{A^2}{4} - 1 \right) & A \leq 0. \\ \left( \frac{A^2}{A_{\text{max}}^2} - 1 \right) & A > 0. \end{cases} \quad (13)$$

## 2.5 Initial condition

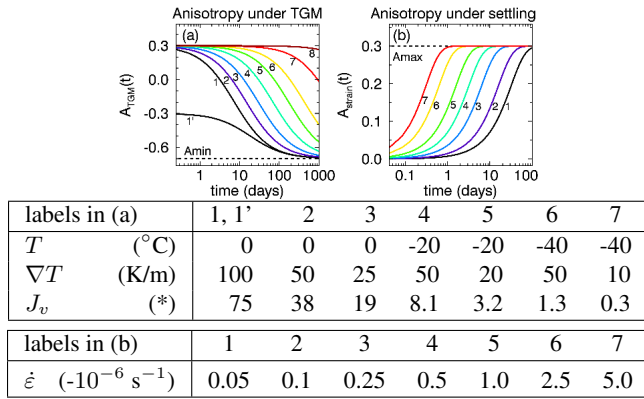
For the model an initial anisotropy  $A_{\text{ini}}$  of new snow needs to be specified. The lag between the accumulation of new snow and the anisotropy increase (Leinss et al., 2016, Sect. 5.4) indicates that  $A_{\text{ini}}$  should be very close to zero, but slightly positive as new snow settles already during accumulation. Furthermore, we think that most non-spherical snow crystals align preferably horizontally by gravity at the time of deposition. This assumption is supported by observations where dendrites were only found with horizontal orientation in artificial snow (Löwe et al., 2011) as well as in natural snow (Mätzler, 1987, Fig. 2.15). To account for initial settling and alignment, ~~chose we choose~~  $A_{\text{ini}} = 0.05$ .

## 2.6 Model behavior and numerical solution

The model is summarized in (Fig. 2) which shows the anisotropy evolution for different parameters as obtained ~~from the by~~ numerical integration of the rate equation using an the explicit Euler method (no ~~differences are difference is~~ observed when using the classic Runge-Kutta method). Depending on temperature, the time scales of the anisotropy evolution under TGM (Fig. 2a) range between 10 and 300 days because the water vapor flux can vary by 2–3 orders of magnitude (table below Fig. 2). Extreme values close to  $A_{\text{min}}$  are only reached after hundreds of days. The comparison of the two runs (1) and (1') show-shows that for the same temperature settings negative anisotropies evolve slower than positive anisotropies. The dark red line (8) shows that even when strong temperature gradients are applied for many years no significant anisotropy change can be observed under conditions used for sample archiving in the lab. Compared to TGM the settling induced anisotropy (Fig. 2b) evolves-is modeled to evolve much faster (hours to days). As both the strain rate  $\dot{\epsilon}$  and the  $A^2$ -terms in Eq. (13) are always negative, snow settling always increases the anisotropy.  $A_{\text{min}} = -0.7$  and  $A_{\text{max}} = 0.3$  indicate ~~the chosen our choice~~ for the upper and lower limit for the anisotropy.

## 3 Datasets and methods

A comprehensive set of laboratory and field data was used to calibrate, drive and evaluate the model. Here, we describe the different datasets and the forcing, calibration and evaluation of a large ensemble of SNOWPACK runs.



**Figure 2.** Modeled anisotropy evolution for TGM with  $\alpha_1 = 0.93$   $\alpha_1 = 1.01 \text{ m}^2 \text{ kg}^{-1}$  and settling with  $\alpha_2 = 1.68$  for the different tabled conditions (1-7). In (a), 1 and 1' differ only by the initial anisotropy. The dark red line (8) corresponds to  $\nabla T = 100 \text{ K/m}$  and  $T = -80^{\circ}\text{C}$ . (\*) The vapor flux  $J_v$  is given (\*) in units of  $10^{-8} \text{ kg m}^{-1} \text{ s}^{-1}$ .

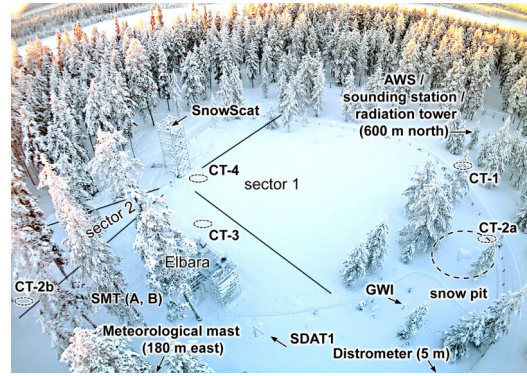
Except for an independent set of laboratory CT data, all field data were acquired in northern Finland 5 km south of the town of Sodankylä at or close to the test site "intensive observation area" (IOA). The IOA is shown in Fig. 3. Table 2 lists all measurements, sensors and their locations. The measurements were supported by the Nordic Snow Radar Experiment NoSREx-I to -III (Lemmetyinen et al., 2013, 2016).

At the IOA, snow pit measurements were performed on a weekly basis. The measurements include snow temperature and snow classification. In addition near-infrared (NIR) images of the snow structure were taken on selected dates. For each NIR image we calculated the ratio to a reference image of a Styrofoam panel. The ratio images were used to cross-check CT data, snow type classification and for interpretation of the modeled results.

### 3.1 Anisotropy determined by computer tomography

For validation of the model we used anisotropy data derived from 3D scans of snow samples analyzed by micro-computed tomography-X-ray microtomography (CT). Our analysis includes published data of time series acquired during temperature gradient metamorphism experiments in the lab and snow samples taken in the field during the NoSREx campaign.

The field samples were casted using Diethyl-Phthalate (DEP) for transportation as described in (Heggli et al., 2009) and scanned with a nominal resolution (voxel size) ranging between  $10 \mu\text{m}$  and  $20 \mu\text{m}$ . The resulting 3D-gray-scale images were filtered using a Gaussian filter (sigma = 1.2 voxel length, total filter kernel width = 4 voxel lengths). The smoothed images were then segmented into binary ice/air images. For segmentation, an intensity threshold was chosen at the minimum between the DEP peak and the ice peak in the histograms of the gray-scale images.



**Figure 3.** All field-, radar-, and most meteorological data were acquired at the intensive observation area (IOA). The remaining meteorological data were measured at the meteorological mast 180 m east of the IOA and at the automatic weather station (AWS) 600 m north of the IOA. Anisotropy validation profiles were extracted at the locations CT-1, CT-2a/b, CT-3, and CT-4. The depth-averaged anisotropy for "sector 1" was measured every 4 hours with a tower-based radar (SnowScat) which also measured the snow water equivalent in combination with the gamma water instrument, GWI, as detailed in (Leinss et al., 2015). Sensor abbreviations are explained in Table 2.

Two-point correlation functions were calculated from the binary images for each direction (Löwe et al., 2013). Then, the correlation lengths,  $p_{ex,x}$ ,  $p_{ex,y}$ , and  $p_{ex,z}$  were derived as described in (Mätzler, 2002). Because of the symmetry in the  $x$ - $y$ -plane, the lengths  $p_{ex,x}$  and  $p_{ex,y}$  were averaged and the corresponding CT anisotropy follows analogue to Eq. (1):

$$A^{\text{CT}} = \frac{0.5(p_{ex,x} + p_{ex,y}) - p_{ex,z}}{\frac{1}{2}[0.5(p_{ex,x} + p_{ex,y}) + p_{ex,z}]}. \quad (14)$$

To validate the anisotropy evolution under TGM and to determine the free parameter  $\alpha_1$  we used the laboratory data listed in Table 1. The samples TGM-17 (Kaempfer et al., 2005), TGM-2 (Löwe et al., 2013), DH-1 and DH-2 (Riche et al., 2013) were analyzed for their exponential correlation lengths in (Löwe et al., 2013). In addition we used digitized data of the sample C-1 analyzed by Calonne et al. (2014).

**Table 1.** List of snow samples from laboratory TGM experiments with temperature, temperature gradient, initial ice volume fraction, initial snow type and sub-type, SSA, and duration of the experiment. The corresponding anisotropy evolution is shown in Fig. 5.

sample	T $^{\circ}\text{C}$	$\nabla T$ K/m	$f_v(0)$ -	type	SSA $\text{m}^2 \text{ kg}^{-1}$	$\Delta t$ days
TGM-2	-10	100	0.22	DFdc	29.0	11.7
TGM-17	-8	50	0.33	RGsr	21.7	16.0
DH-1	-20	50	0.19	DFdc	22.1	87.5
DH-2	-20	50	0.29	DFbk	20.0	80.5
C-1	-4	43	0.35	RG	20.8	27.7



For validation of the full model ~~with~~ applied on field-measured conditions, almost complete vertical snow profiles were extracted in Finland and preserved for later analysis in Switzerland. Five profiles named CT-1, CT-2a/2b, CT-3, and CT-4, were sampled at the locations shown in Fig. 3 on the dates listed in Table 2. The structural anisotropy was determined with a vertical resolution of 1–2 mm. The profiles contain some gaps of a few cm where the samples were not overlapping or sample taking was not possible due to very soft new snow (CT-4), ice crusts or large fragile depth hoar crystals (CT-1). Data of the profiles CT-2a and 2b were combined. Examples of the analyzed 3D snow structure are shown in (Leinss et al., 2016, Fig. 14 and 15). Other derived parameters have already been published in (Proksch et al., 2015).

### 3.2 Anisotropy determined by polarimetric radar

Depth-averaged anisotropy time series were obtained from polarimetric radar measurements acquired by the ground based radar instrument SnowScat. SnowScat was developed and built to analyze the backscatter intensity of snow between 9.2 and 17.8 GHz (Lemmetyinen et al., 2016), ESA ESTEC contract 42000 20716/07/NL/EL (available on request from ESA). Technical details of the instrument are given in (Werner et al., 2010).

The method for measuring the depth-averaged anisotropy from radar data is detailed in (Leinss et al., 2016). Here we briefly outline the method: ~~microwaves~~. Microwaves with a sufficiently long wavelength penetrate the snowpack with negligible scattering losses and accumulate a signal delay by the refractive index of snow. For snow with a spatially anisotropic microstructure the signal delay depends on the polarization of the electric field. The signal delay difference between two perpendicular to each other polarized radar echoes can then precisely be measured interferometrically by determining the co-polar phase difference, CPD (Leinss et al., 2016). From the CPD, the depth-averaged radar anisotropy,  $A_{\text{avg}}^{\text{CPD}}$ , can be derived when snow depth and density are known.

When this method is applied at sufficiently high frequencies (10–20 GHz)  $A_{\text{avg}}^{\text{CPD}}$  can be determined with an accuracy of a few percent. The frequency limits are determined such that the radar penetration depth in snow is sufficiently high (upper limit), the system's phase accuracy is much smaller than the total measured CPD, and the penetration into soil (and polarimetric effects of soil) are negligible (lower limit).

About 3200 anisotropy measurements with a temporal resolution of 4 h were acquired at the IOA during the four winter seasons 2009–2013. ~~Because~~ The anisotropy measurements were done for 13 frequency bands (bandwidth of 2 GHz) covering the full frequency spectrum of SnowScat (9.2–17.8 GHz). Because the CPD is rather small for the incidence angle  $\theta = 30^\circ$ , we used only anisotropy measurements done at  $\theta = 40, 50$ , and  $60^\circ$ . To reduce phase

noise CPD measurements from 17 different azimuth angles were averaged before derivation of the anisotropy. Because microwaves frequencies above 10 GHz have almost no penetration into wet snow, the anisotropy during snow melt could not be measured.

### 3.3 Anisotropy determined by SNOWPACK

For comparison of modeled results with radar data and to simulate the depth-resolved anisotropy evolution, we forced the anisotropy model with snow properties simulated by the model SNOWPACK (v.3.4.5). The model was forced by meteorological and soil data and was calibrated with snow height and snow temperature measurements. The following subsections provide intermediate details of the retrieval, pre-processing, and filtering of these measurements. More details are provided in Appendix A1 and A2. Plots of input, output and control data of SNOWPACK are provided in the supplementary material.

#### 3.3.1 Meteorological data

For the snow-atmosphere boundary conditions, SNOWPACK requires the following meteorological input data: air temperature (TA), soil temperature (TSG), relative humidity (RH), wind speed (VW), wind direction (DW), incoming short wave radiation (ISWR) and/or reflected (outgoing) short wave radiation (OSWR), incoming long wave radiation (ILWR) and/or snow surface temperature (TSS), precipitation (PSUM) and/or snow height (HS) and optionally the precipitation phase (PSUM\_PH). For monitoring purposes, up to five internal snow temperature measurements (TS1, ..., TS5) at different heights can be provided for comparison with modeled snow temperatures. Most input data were measured redundantly by more than one sensor at the IOA (Table 2). Precipitation and wind velocity were measured at the automatic weather station (AWS), 600 m north of the IOA. The radiation balance was measured close to the AWS at the sounding station and at the radiation tower. A very similar, well calibrated dataset is available by Essery et al. (2016).

To provide physically correct and consistent conditions, the meteorological data were filtered, combined, and interpolated if gaps could not be filled with equivalent datasets (~~for details see details in~~ Appendix A1). Plots of both measured raw data and filtered SNOWPACK input data are provided in the supplementary figures S3–S10. SNOWPACK additionally filters and preprocesses the input data and provides them for control (supplementary figures S11–S14).

#### 3.3.2 Soil data

For the lower boundary condition, SNOWPACK requires a description of at least one soil layer. To define precisely the temperature of the soil-snow interface we defined a single, 5 cm thin soil layer which lower temperature (TSG) was provided by the average of four soil temperature sensors at -5 cm

**Table 2.** List of field data for model input, calibration and validation. For each site, sensor abbreviations and full sensor names are given, or data set abbreviation and type of measurements.

Intensive observation area (IOA):		67.36185°N, 26.633
SnowScat	SnowScat instrument, tower-based radar for depth-averaged <del>anisotropy measurements</del> <u>measurements of anisotropy</u> and <del>for of the</del> snow water equivalent (SWE).	
GW1	Gamma Water Instrument ( <del>for</del> SWE measurement by gamma ray absorption).	
Distr	Distrometer: precipitation classification and precipitation phase (liquid, solid).	
SDAT1	Sensor for snow height and air temperature.	
SMT A,B	Two sensors for soil moisture (at -2, -10 cm), and for soil temperature (at -2 cm).	
CT-no.	Snow profile no.1...4, analyzed by CT.	
CT-1	Profile 1, sampled on 03 Mar <del>2011</del> <u>2011</u> .	
CT-2a/b	Profile 2a/b, sampled on 21 Dec <del>2011</del> <u>2011</u> .	
CT-3	Profile 3, sampled on 01 Mar <del>2012</del> <u>2012</u> .	
CT-4	Profile 4, sampled on 28 Feb <del>2013</del> <u>2013</u> .	
Snow pit	snow classification, density, SWE, grain size, snow temperature (manual measurements).	
Meteorological mast (arcmast):		67.36205°N, 26.6323°E
arcsnow	Snow height, air temperature (1 m above ground), snow temperature at 10, 20, ..., 110 cm height.	
arcsoil	Soil moisture, soil temperature at -5, -10,...-50 cm.	
Automatic weather station (AWS):		67.36662°N, 26.62898°E
Snow height, air temperature (2 m above ground), wind speed and direction, precipitation, humidity.		
Sounding station (near AWS):		67.36660°N, 26.62975°E
CM11	Kipp & Zonen sensor CM11, 305–2800 nm, incoming and outgoing short wave radiation.	
Radiation tower (near AWS):		67.36664°N, 26.62825°E
CG4	Kipp & Zonen sensor CG4, 4500–42000 nm, incoming and outgoing long wave radiation.	



**Figure 4.** Snow temperature was measured with an array of horizontally oriented temperature sensors at the meteorological mast.

of 0.2 was determined from the ratio of incoming and reflected short wave radiation data.

### 3.3.3 Snow temperature data

Snow temperature, used for SNOWPACK calibration, was measured at the meteorological mast, 180 m east of the IOA, with an array of 11 horizontally oriented temperature sensors located at 10, 20, ..., 110 cm above the ground (Fig. 4).

Unfortunately, for this configuration with all sensors attached to the same support stick, we cannot exclude that some air-filled gaps occurred between the sensor elements. Furthermore, it was reported for another, similar sensor configuration that the sensor configuration interfered with snow accumulation and caused the formation of an up to 30 cm deep pit in the snow around the sensor. Such sensor biases can be detected by comparing the lowest snow temperature (at +10 cm above ground) with the measured soil temperature (see Fig. S17) because for a deep, well insulating snowpack, both temperatures should not vary more than a few K. Manual snow temperature measurements provide an additional validation source for the sensor array measurements.

### 3.3.4 Calibration and configuration

SNOWPACK provides a variety of settings to adjust for the local environment and to configure the simulation. Additionally, the radiation balances required some calibration because it was not directly measured at the IOA. To best replicate measured snow height and temperatures we run for all four seasons more than 5000 simulations with each time different settings (but keeping the same settings for all four seasons) and graded the accuracy of the simulation results by comparison of simulated snow height and snow temperature with measured snow height and temperature (details in Appendix A3). To avoid systematic deviations of SWE or snow density we first run SNOWPACK driven by calibrated precipitation (Appendix A1). Then, we run the best 230 simulations again but with enforced snow height, i.e. SNOWPACK tries to estimate the precipitation which is required to reproduce the measured snow height. For a sanity check we verified

and -10 cm (sensor: arcsoil at meteorological mast) and two measurements at -2 cm depth (sensor: SMT at IOA).

For soil moisture we averaged data from six sensors, two from the meteorological mast (arcsoil: -5 cm, -10 cm) and four from the IOA (SMT: two locations, each at -2 cm and -10 cm). ~~Temperature~~ Soil temperature and moisture were provided as the average over one week around the simulation start time (1st of Sept).

The soil composition is described in (Lemmetyinen et al., 2013) as very fine mineral soil composed of 70% sand, 1% clay and 29% silt. For this mineral soil, we assumed a solid volume fraction of 75% and zero ice fraction in autumn. We estimated a density  $1800 \text{ kg m}^{-3}$ , a heat conductivity of  $1.5 \text{ W m}^{-1} \text{ K}^{-1}$  (from ToolBox (2003a)), and a heat capacity of  $1000 \text{ J kg}^{-1} \text{ K}^{-1}$  (from ToolBox (2003b)). A soil albedo

**Table 3.** Most relevant settings for SNOWPACK which produced the best results.

SNOW_EROSION	= TRUE
WIND_SCALING_FACTOR	= 2.0...2.5
ATMOSPHERIC_STABILITY	= NEUTRAL
THRESH_RAIN	= 0.7...1.2°C, (or PSUM_PH)
ISWR	= ISWR × 0.75...0.93
ILWR	= ILWR × 0.93...0.97
SW_MODE	= INCOMING, (BOTH)

the simulated SWE. Table 3 summarizes the most important settings which improved the simulation results significantly. Little difference was found between a fixed threshold for the precipitation phase (THRESH\_RAIN) and estimation of the precipitation phase (PSUM\_PH) from distrometer data (Appendix A1). When enforcing snow height, snow height was better predicted but SWE was slightly overestimated when reducing the default value HEIGHT\_NEW\_ELEM = 0.02.

Tree canopy was not considered (CANOPY = FALSE) because the test site was not covered by trees. Still, surrounding trees could have affected the radiation balance which was calibrated by multiplication with constant factors and selection of the best simulation results. Incoming short wave radiation (ISWR) was reduced (Table 3) which agrees with the fact that the IOA was partially shadowed by trees but short wave radiation was measured on a tower above the trees. Outgoing short wave radiation (OSWR) was internally estimated by SNOWPACK based on the simulated albedo (SW\_MODE = INCOMING instead of BOTH). The incoming long wave radiation (ILWR) needed only a little reduction. Outgoing long wave radiation was not used by SNOWPACK. The reduction of short wave radiation agrees with the model by Essery et al. (2016), however, they modeled an increase of the longwave radiation by a few percent whereas we reduced it by a few percent such that SNOWPACK results agree better with snow depth and temperature measurements.

### 3.3.5 Coupling the anisotropy model to SNOWPACK

The proposed ~~anisotropy model~~ model for the anisotropy is designed for immediate implementation into snowpack models which provide the following variables for each layer of snow: snow temperature  $T$ , vertical snow temperature gradient  $\partial T/\partial z$ , and strain rate  $\dot{\epsilon}$ . SNOWPACK provides these parameters but does not consider the structural anisotropy of snow. To keep the implementation simple enough, we post-processed the output of SNOWPACK and did not intend to feed the anisotropy back into SNOWPACK.

SNOWPACK merges two adjacent snow layers when they have similar properties and when their thickness falls below a certain threshold. To keep track of the anisotropy evolution of merged layers, we wrote an algorithm to detect when snow layers get merged. ~~The~~ We defined the anisotropy of a

merged layer ~~is defined~~ by the average anisotropy of the two original layers weighted by their thickness.

Extremely large temperature gradients could naturally occur at the snow surface under extreme conditions but we do not expect that the anisotropy will grow proportionally to such extreme gradients. Extreme temperature gradients could also wrongly occur in simulated data. To exclude such temperature gradients, we set a maximum threshold for simulated temperature gradients of  $|\Delta T/\delta z| \leq 200 \text{ K m}^{-1}$ .

### 3.3.6 Ensemble runs

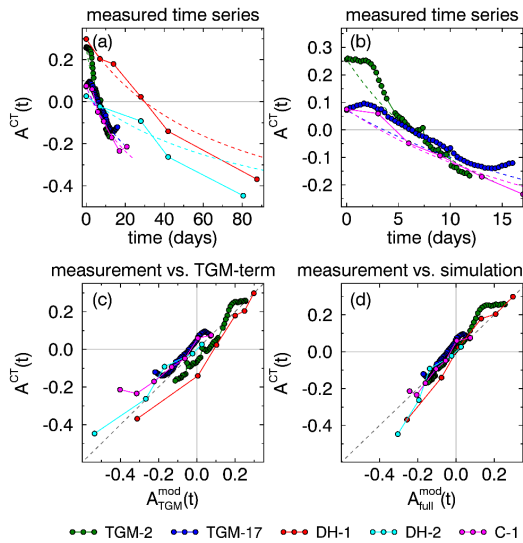
To consider the uncertainty of different SNOWPACK configurations, we run a sensitivity analysis of the model and determined  $\alpha_2$  for the ensemble of the best 230 SNOWPACK simulations. Each ensemble member consists of 4 seasons simulated with the same SNOWPACK configuration. For each ensemble member,  $\alpha_2$  was determined once for each season independently and once for all seasons together. The ensemble members differed slightly in the following configuration settings: scaling of radiation balance, rain threshold, wind scaling factor, short wave reflected radiation based on albedo simulation or measurements, precipitation phase estimation, and different thresholds for the height of new snow elements. All 230 simulations had the following settings in common: snow height was enforced, neutral atmosphere, snow erosion was allowed. ~~The quality analysis of An analysis of the accuracy of the~~ corresponding SNOWPACK ensemble members is shown in the supplementary Fig. S19.

## 4 Results

### 4.1 Validation by laboratory experiments

For validation of the TGM formulation we analyzed ~~the~~ anisotropy time series from the five laboratory CT experiments listed in Table 1. The time series are shown in Fig. 5(a) and ~~also in Fig. 5(b)~~. All experiments indicate that the anisotropy has not reached a stable value at the end of the experiment but would further decrease with time. Extrapolating the curves would probably reach a stable state around  $A_{\min} = -0.6... -0.8$  which indicates that  $A_{\min}$  must be smaller than the lowest observed value of -0.45. Therefore, we choose ~~an~~ a practical minimum threshold of  $A_{\min} = -0.7$ . We note that such low values have neither been observed in lab experiments nor in nature, because experiment would need to last many hundreds of days and in nature snow would either evaporate or TGM would occur combined with settling.

A simple check of anisotropy evolution with respect to the vapor flux dependence can be done when ignoring the limiting factor  $(A - A_{\min})^2/A_{\min}^2$  in Eq. (5) and setting  $\alpha_1 = 1$ ,  $\alpha_2 = 1.0 \text{ m}^2 \text{ kg}^{-1}$ . By time integration one obtains  $A_{\text{TGM}}^{\text{mod}}(t) = A(0) + |J_v|/(\rho_{\text{ice}} f_{\mu}) \cdot t$   ~~$A_{\text{TGM}}^{\text{mod}}(t) = A(0) - \alpha_1 |J_v| t$~~   $A_{\text{TGM}}^{\text{mod}}(t) = A(0) - \alpha_1 |J_v| t$  which agrees well with the experimental data as shown in Fig. 5(c). Because the laboratory CT data was obtained



**Figure 5.** (a): Anisotropy time series  $A^{CT}(t)$  of the laboratory experiments listed in from Table 1. Dashed lines indicate modeled results. (b): Zoom into the first 15 days after start of the experiment (c): When ignoring the lower threshold  $A_{\min}$  and with  $\alpha_T = 1 \text{ m}^2 \text{ kg}^{-1}$  the simulated data agrees already well with CT data. (d) With a lower threshold  $A_{\min} = -0.7$  and with  $\alpha_T = 0.93 \text{ m}^2 \text{ kg}^{-1}$ , the agreement of model and measurements agree even better which indicates that the growth of vertical structures is proportional to the water vapor flux.

with different temperatures and temperature gradients (listed in Table 1) this proportionality relation indicates that the growth of vertical structures is almost linearly dependent on the water-vapor flux  $J_v$ .

Then we applied the full TGM-term, Eq. (5), including the limiting factor and with  $A_{\min} = -0.7$  and determined  $\alpha_T = 0.93 \text{ m}^2 \text{ kg}^{-1}$  by minimizing the RMSE (= 0.048) between the laboratory CT data and the simulated data. Figure 5(d) shows the a slight improvements of the results compared to Fig. 5(c).

Above, we have simply set the free microstructural parameter  $f_{\mu}(\cdot)$ , which originated from dimensional considerations, to  $f_{\mu}(\cdot) = 1 \text{ mm}$ , constant, instead of considering any grain-size dependence in Eq. As the laboratory data agree very well with the simulated data, we think that this is a reasonable approximation.

An interesting detail appears in Fig. 5(b) at an early stage. The anisotropy seems to be quite stable for a few days and vertical structures start growing not before 2–3 days after start of the experiment.

## 4.2 Seasonal evolution of the anisotropy

No laboratory data about the anisotropy evolution of new snow is presently available. Therefore, we calibrated the parameter  $\alpha_2$  by running the full model on the output of SNOWPACK and compared the depth-averaged anisotropy

measured by radar with the depth-averaged anisotropy of the model results.

The depth-averaged, radar measured anisotropy time series,  $A_{\text{avg}}^{\text{CPD}}$ , are shown in the lower panels (b, d) of Figs. 6 and 7 as a line of solid black dots. The corresponding standard deviation of radar measurements acquired with different incidence and azimuth frequencies and incidence angles of the radar antenna is indicated by red error bars. Radar measurements were considered reliable enough for model calibration when the snowpack was dry and the standard deviation  $\sigma(A_{\text{avg}}^{\text{CPD}})$  was below 0.05. Gray dashed lines limit the radar measurements used for model calibration; radar measurements excluded from calibration are shown as gray dots. The begin and the end of the period considered as dry snow period are indicated by vertical blue lines. Short melt events are still visible from the SNOWPACK simulations between the blue lines. During the dry snow period, a few short melt events can be recognized in the depth resolved anisotropy profiles as gray areas.

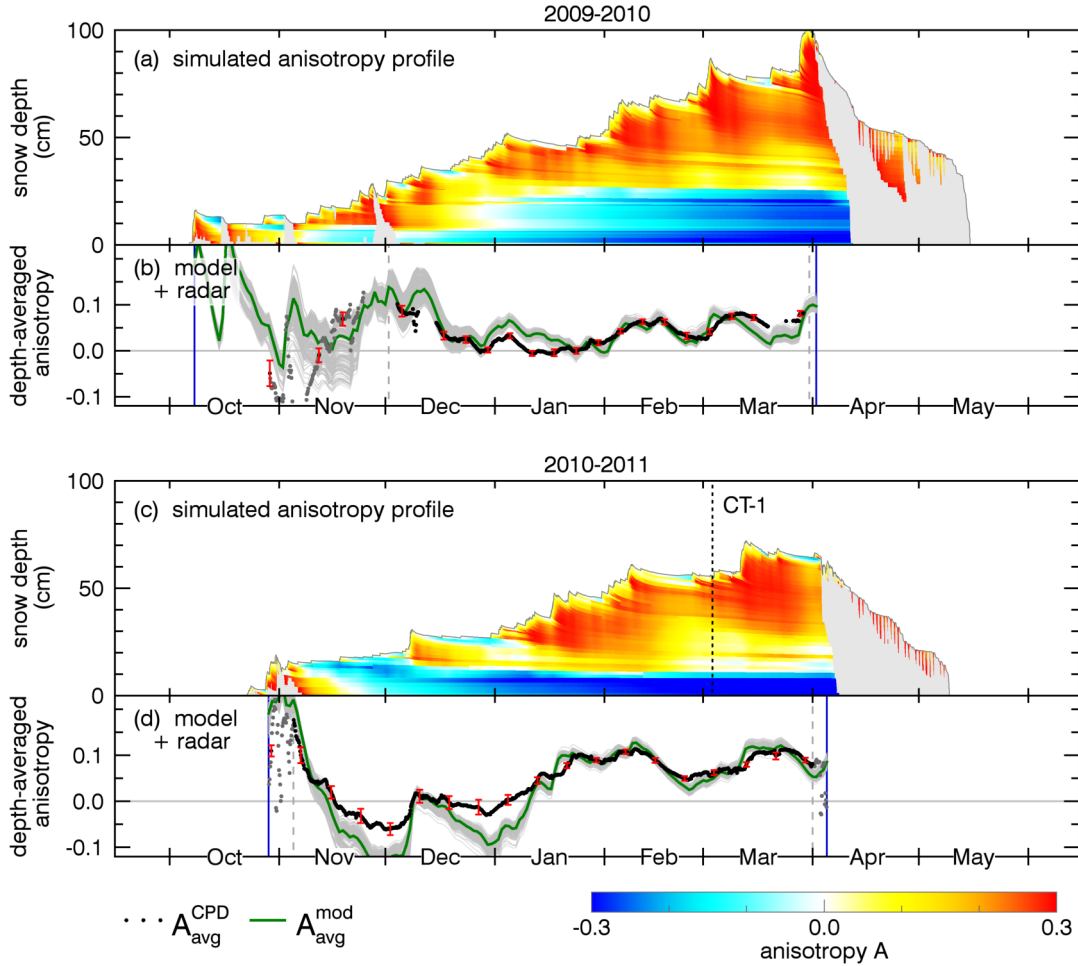
In the radar measurements the maximum anisotropy never grows much beyond +0.2, even in Dec 2011 where air and soil temperature were around the freezing point such zero degrees so that the growth of vertical structures by TGM was limited and mainly settling of the thick snowpack occurred. We estimate that from that we estimate the value for  $A_{\max} \approx 0.3 \pm 0.1$  and used this value in the model.

The depth-resolved, modeled anisotropy is shown in color in the upper panels, (a) and (c) of Figs. 6 and 7. Yellow and red colors indicate horizontal structures and blue colors indicate vertical structures. The model is based on the output of the best snowpack simulation. As we do not model the anisotropy evolution of wet snow, wet snow is grayed out. When the simulated anisotropy profiles are vertically averaged one obtains the simulated, depth-averaged anisotropy,  $A_{\text{avg}}^{\text{mod}}$ , which is shown as a green line in the lower panels.

To evaluate the uncertainty of the free parameter  $\alpha_2$  we determined it for each season independently and also for all seasons together by minimizing the RMSE between  $A_{\text{avg}}^{\text{mod}}$  and  $A_{\text{avg}}^{\text{CPD}}$ . Additionally to the RMSE, the model accuracy was measured with the Nash-Sutcliffe model efficiency coefficient and also with the Pearson-r correlation coefficient. Table 4 summarizes the results. The depth resolved profiles and depth-averaged time series in the Figures 6 and 7 show the results for  $\alpha_2 = 1.68$  determined for all seasons together which results in an RMSE of 0.033 and a Pearson-r correlation coefficient of 0.89.

The sensitivity of  $\alpha_2$  on slightly different SNOWPACK settings is represented by the ensemble of gray lines in the lower panels of of Figs. 6 and 7. The last column of Table 4 summarizes the ensemble results. The ensemble of gray lines corresponds to  $\alpha_2 = 1.87 \pm 0.25$  where the uncertainty is specified by the standard deviation.

Considering, that it is a hypothesis that settling increases the anisotropy, it is remarkable that the modeled anisotropy



**Figure 6.** Structural anisotropy simulated for the first two seasons 2009/2010 and 2010/2011. (a), (c): depth-resolved anisotropy (in color) based on post-processed SNOwPACK data. Wet snow is grayed out. Model parameters are  $\alpha_1 = 0.93$ ,  $\alpha_2 = 1.68$ ,  $A_{\min} = -0.7$ ,  $A_{\max} = 0.3$ ,  $f_{\mu}(\cdot) = 1 \text{ mm}$ . The dashed line, labeled with CT-1, indicates the sampling date of the CT validation profile. (b), (d): depth-averaged anisotropy of the model  $A_{\text{avg}}^{\text{mod}}$  (green) and radar-measured anisotropy  $A_{\text{avg}}^{\text{CPD}}$ . Radar measurements used to calibrate  $\alpha_2$  are shown as black dots. Gray dots indicate radar measurements excluded from calibration because of a too big standard deviation (red error bars).

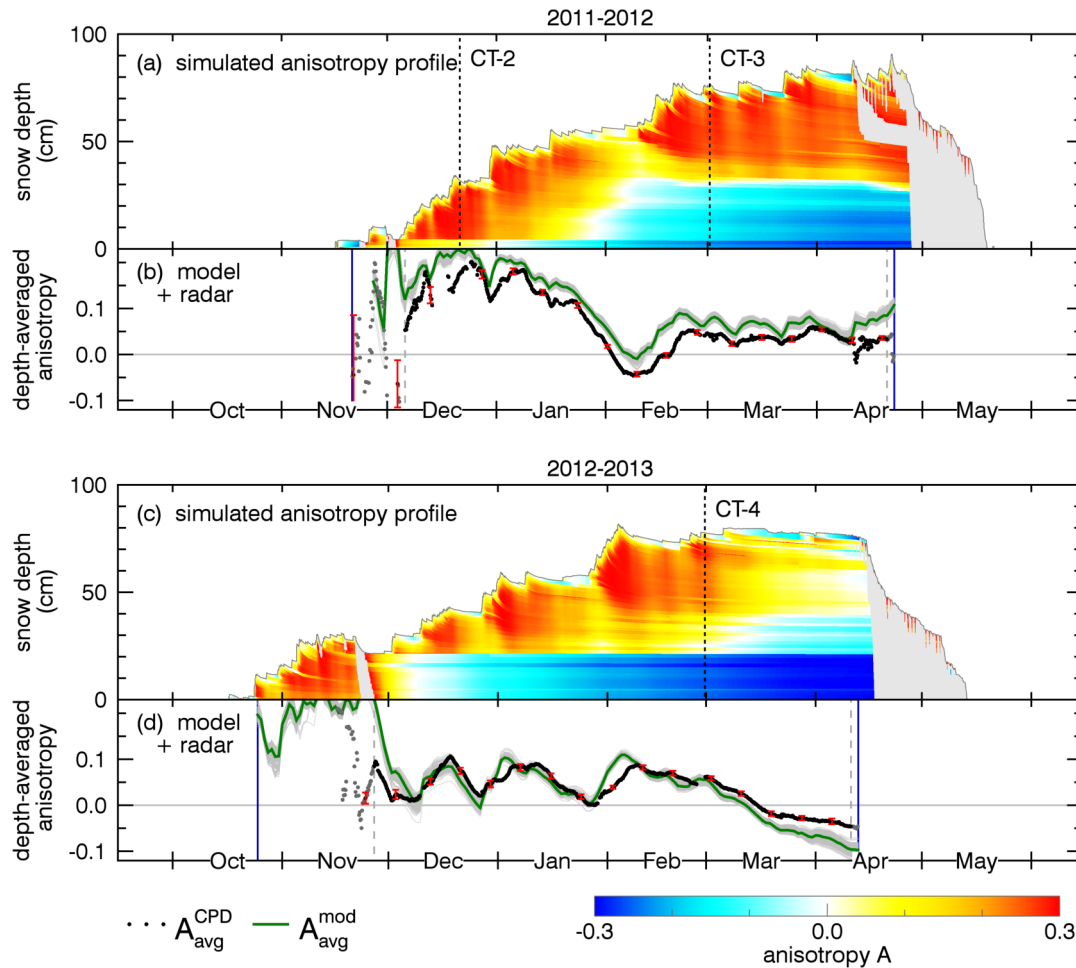
**Table 4.** Results for the parameter  $\alpha_2$  determined for each season independently and for all seasons together. The agreement between model and radar anisotropy is given by the Pearson’s correlation coefficient ( $r$ ), the Nash-Sutcliffe model efficiency coefficient (NS), and the root mean square error (RMSE). The last row contains the mean and standard deviation of  $\alpha_2$  from the ensemble runs.

season	$\alpha_2$	$r$	NS	RMSE	$\alpha_{2,\text{ens}} \pm \sigma$
2009/2010	1.41	0.61	0.25	0.024	$1.72 \pm 0.28$
2010/2011	2.23	0.97	0.70	0.029	$2.57 \pm 0.72$
2011/2012	1.02	0.96	0.92	0.018	$1.04 \pm 0.09$
2012/2013	2.08	0.88	0.39	0.031	$2.22 \pm 0.36$
2009–2013	1.68	0.89	0.55	0.033	$1.87 \pm 0.25$

and the radar-measured anisotropy show a highly consistent trend: the model is able to catch many details of the radar

measured anisotropy time series. Nevertheless, in some early winter periods, especially in the season 2010/2011, stronger deviations occur likely because of melt events and differently modeled snow height and layer thicknesses.

From the simulated anisotropy profiles it is evident that snow layers at the bottom of the snowpack **always-mainly** show vertical structures (blue,  $A < 0$ ) while the upper snow layers (**and the first snow every season**) which are stronger affected by snow settling show generally horizontal structures (yellow and red,  $A > 0$ ). An exception is the snow surface which shows a more isotropic (and sometimes an even vertical) structure compared to the underlying upper snow layers which experienced more overburden pressure. The occasionally appearing vertical structures at the snow surface are expected from the strong temperature gradients at the surface, especially during clear-sky winter nights. During such condi-



**Figure 7.** Structural anisotropy simulated for the seasons 2011/2012 and 2012/2013. Labels CT-2, CT-3, and CT-4, indicate the sampling dates of the CT validation data. [For Model parameters and further details see descriptions are given in the caption of Fig. 6.](#)

tions, TGM transforms the top layers faster than intermediate layers.

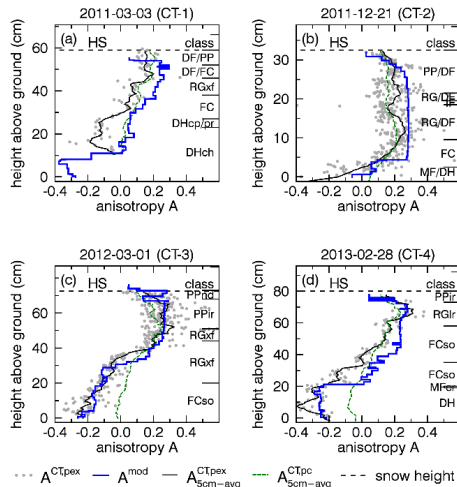
A small but very interesting detail, especially in the radar measurements, is that the anisotropy does not grow instantaneously with accumulating new snow but shows [an a](#) delayed increase within a few days (e.g. in Mar 2010, Mar 2011, Dec 2011, and Feb 2013). We think, [the delay results from the fact that it is this delay could result from a settling-related effect: Initially fallen crystals have an intrinsic particle orientation which is not perfectly aligned horizontally when first sticking to the surface. Upon initial metamorphism and settling, which takes some characteristic time, these crystals may further align horizontally under the influence of gravity with a measurable impact on the settling of new snow which dominantly and not the anisotropy of new snow itself which does not or only weakly increases the anisotropy.](#) The delay seems to be more pronounced in the radar measurements than in the model where the anisotropy often increases [to too](#) quickly after snowfall. The length of this delay was deter-

mined to [be](#) about 2–4 days in average in (Leinss et al., 2016, Sect. 5.4).

### 4.3 Validation with CT-profiles from the field

The seasonally modeled depth-resolved anisotropy was validated with vertically resolved field-measured anisotropy CT profiles. The dates when the CT profiles were obtained in the field are indicated by vertical black dashed lines labeled with CT-1, -2, -3, and -4 in Figs. 6 and 7.

In Fig. 8 the modeled anisotropy profiles (blue lines) are compared to the CT-based anisotropy (gray dots; black line indicating the 5 cm running mean). Table 5(a) lists correlation coefficients between the modeled anisotropy and the individual CT anisotropy data points derived from  $p_{ex}$  (left columns) as well as the correlation coefficients with the 5 cm running mean of the  $p_{ex}$ -based anisotropy (right columns). For both, the Pearson- $r$  correlation coefficients are around 0.8 and higher except for CT-2 ( $r = -0.51$ ,  $r = 0.50$ ) for which the snow structure does not show much vertical



**Figure 8.** Comparison of simulated anisotropy ( $A^{\text{mod}}$ , blue line), with field-measured CT anisotropy profiles ( $A^{\text{CT}, p_{\text{ex}}}$ , gray dots; black line: 5 cm running mean). Right axis: snow layer classification according to (Fierz et al., 2009) and measured snow height (HS, horizontal black dashed line). The anisotropy determined from the correlation length  $p_c$  is shown as a green line (5 cm running mean). The locations where the CT profiles were taken are shown in Fig. 3.

**Table 5.** (a) correlation coefficients between modeled anisotropy profiles and CT anisotropy profiles as shown in Fig. 8. The first three columns are the correlation with respect to the individual anisotropy data points; the rightmost three columns are correlations with respect to the 5 cm running mean of the CT anisotropy.

(a)	correlation coefficients relative to CT data, $p_{\text{ex}}$					
	CT single samples			CT: 5 cm running mean		
	profile	$r$	NS	RMSE	$r$	NS
CT-1	0.79	-0.18	0.15	0.84	-0.32	0.14
CT-2	0.50	0.10	0.15	0.85	0.49	0.12
CT-3	0.86	0.74	0.10	0.96	0.91	0.06
CT-4	0.91	0.69	0.12	0.92	0.75	0.11

variability except for a thin layer of depth hoar at the bottom of the snowpack. Unfortunately for CT-1, Fig. 8(a), no snow samples were taken for the lowest 10 cm for which the lowest anisotropy values were modeled. The most positive anisotropy values in the CT data of  $A = 0.3$  with some scatter up to 0.4 and higher agree with our estimation of  $A_{\text{max}} = 0.3 \pm 0.1$ .

#### 4.3.1 Anisotropy determined from $p_c$

In general, the anisotropy could also be calculated from other correlation lengths. For example, the anisotropy  $A^{\text{CT}, p_c}$ , shown as a green dashed line in Fig. 8, is derived from  $p_c$  which is defined by the slope at the origin of the correlation function. By definition,  $p_c$  describes characteristics on the smallest length scales, e.g. the specific surface area (Löwe et al., 2011) and is not sensitive to the extent of large

structures. Therefore,  $A^{\text{CT}, p_c}$  (green dashed line in Fig. 8) indicates a less distinct anisotropy than  $A^{\text{CT}, p_{\text{ex}}}$ . Especially for depth hoar, where both anisotropies differ most, the often used relation  $p_{\text{ex}} \approx 0.75p_c$  is not valid (Mätzler, 2002; Krol and Löwe, 2016) and we obtained rather a relation of  $p_{\text{ex}} \approx 0.8 \dots 1.2p_c$  (Fig. S1). The comparison of the anisotropy profiles based on  $p_{\text{ex}}$  and  $p_c$  shows that  $p_{\text{ex}}$  is more sensitive to characterize the anisotropy.

## 5 Discussion

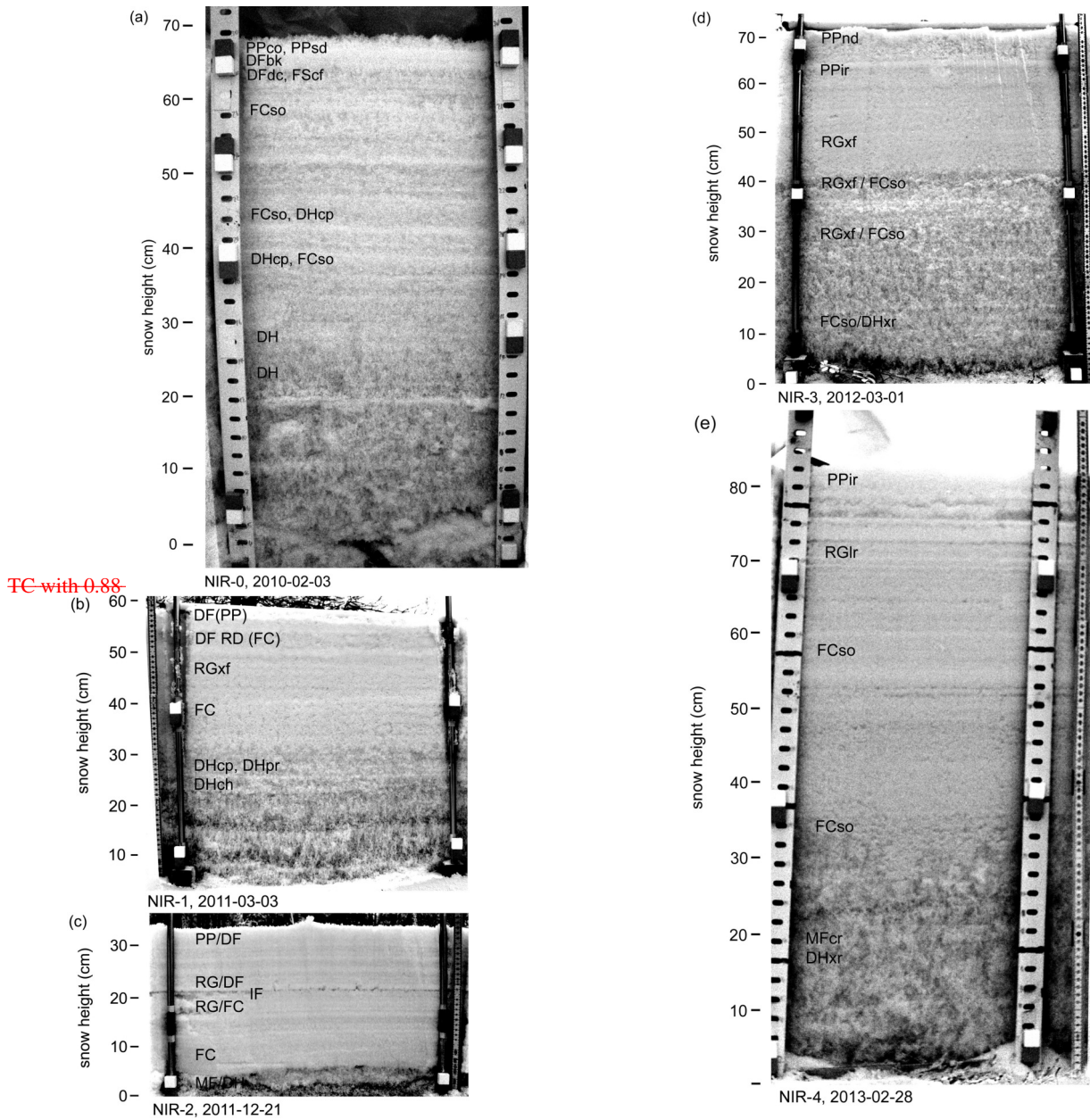
A main motivation of this paper was to show that it is possible to model the radar-measured anisotropy solely based on meteorological data. This was achieved in detail and demonstrates that polarimetric radar measurements at sufficiently high frequencies (10–20 GHz) can be used to monitor the depth-averaged evolution of the anisotropy nondestructively (Leinss et al., 2016) and even from space (Leinss et al., 2014). Beyond that our results confirm that the creation of vertical structures is mainly controlled by the recrystallization rate of water vapor. The results further indicate a yet undocumented effect of settling on the creation of horizontal structures. We think that it is remarkable that a model, which completely neglects any microstructural parameters like grain size, SSA or snow classification is able to simulate the temporal evolution of a microstructural parameter, the anisotropy, solely based on macroscopic fields and with a very limited set free parameters which we determined from literature values, CT and radar data, laboratory CT data and radar measurements.

### 5.1 Seasonal model results and snow conditions

Snow conditions observed in the field differed significantly between the different winter seasons, therefore, we provide a short summary for every season before discussing the evolution of the simulated and radar-measured anisotropy with respect to observed snow and weather conditions. For reference, snow height, air temperature and soil temperature are plotted in Fig. 10.

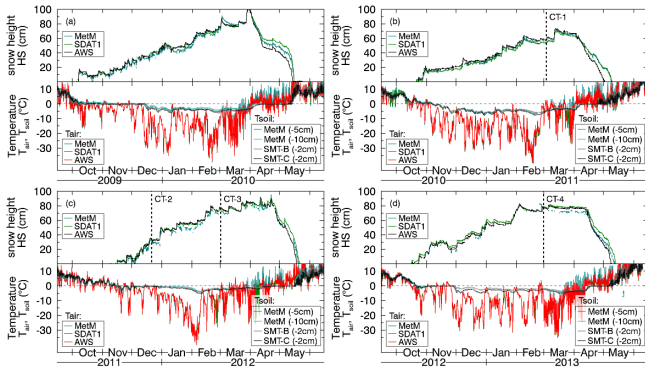
In the first season, 2009/2010, snow fall started early Oct and accumulated up to 30 cm during relatively moderate temperatures (and some short melt events) until mid of Dec when temperatures dropped well below zero and the soil froze.

The corresponding modeled mean anisotropy varies strongly in Oct/Nov, Fig. 6(b), where model and radar data disagree because microwave penetration was reduced by temporary melt events, gray in Fig. 6(a), and melt metamorphism was anyway not considered in the model. The precision of the radar measurements was also limited by the 10–15 cm thin snowpack. After mid of Nov new snow dominates the modeled anisotropy which agrees then better with the radar measurements. End of Dec cold temperatures transformed the early winter snowpack into vertical structures.



**Figure 9.** NIR Photography of the snowpack. The image NIR-0 was acquired in the first season on 2010-02-23 where no CT data is available. The other images NIR-1, -2, -3, -4 corresponds to the CT-profiles CT-1, CT-2, CT-3, CT-4. The intensity of the NIR photography is mainly determined by grain size but also shows the metamorphic state of the snowpack. The NIR photography provides an independent measure for the absolute depth of individual snow layers and helps to identify strong structural transition in the snowpack.





**Figure 10.** Snow height, air- and soil temperature at different locations (IOA, AWS, MetM = meteorological mast).

Each of the following snow fall events increased temporarily the average anisotropy, Fig. 6(b). The NIR image from 2010-02-23, Fig. 9(a), confirms the model results of metamorphic snow (depth hoar) in the lower 30 cm of the snowpack and shows multiple distinguishable layers above. No CT validation data is available for the first season.

In the second season, 2010/2011, conditions are characterized by a shallow snowpack with less than 30 cm snow until Jan, accompanied with cold temperatures. The soil froze already mid of Nov and a layer of 20 cm depth hoar was present during the entire season.

The modeled mean anisotropy, Fig. 6(d), clearly shows vertical structures until Jan but the radar data indicates a less strong anisotropy. During this period, the uncertainty of the radar data, indicated by the standard deviation ( $\approx 0.03$ , red error bars), is higher compared to other periods which could hint at some systematic measurement errors (Sect. 5.3). The modeled, depth-resolved results shows that these vertical structures persisted through the entire winter season. In the NIR image, Fig. 9(b), these structures appear as a 20 cm thick depth hoar layer at the bottom of the snowpack, which could not be sampled for CT analysis due to its brittle structure. For the upper 50 cm, the model overestimates the CT-measured anisotropy but still agrees with the general trend of the CT data from 2011-03-03, Fig. 8(a).

In the third season, 2011/2012, snow fall started late but with intense snow fall 50 cm of snow accumulated in Dec during very mild air temperatures, often above  $-5^{\circ}\text{C}$ . Except for a few days in early Dec, TGM was almost not present and field measurements report finer grain size compared to other winter seasons (Leppänen et al., 2015). Then, between Jan and early Feb, temperatures dropped gradually from  $-10^{\circ}\text{C}$  to  $-30^{\circ}\text{C}$  and strong TGM set in which transformed the fined grained snow visible in Fig. 9(c) into the faceted crystals shown in Fig. 9(d).

The modeled mean anisotropy, and also the radar measurements, show the highest observed values,  $A \approx +0.2$ , because in Dec vertical structures were almost completely ab-

sent. Only a thin layer of depth hoar is visible in the modeled results, Fig. 7(a), which is confirmed by NIR and CT data, Figs. 9(c) and 8(b). With the strong TGM in Jan/Feb the initial snowpack transforms quickly into a 30 cm thick layer with vertical structures which emerges as a strong anisotropy reversal in Fig. 7(b). Then, mid of Feb, additional 30 cm of new snow fell on top of the transformed layers, resulting in the step-like anisotropy transition in the profile CT-3 shown in Fig. 8(c). Until Apr, several minor snow fall events appear as little oscillations in the depth-averaged and radar-measured anisotropy, Fig. 7(b).

At the end of the third season, gray snow layers appear in Fig. 7(a) from 10–13th of Apr 2012 after accumulation which indicate that wet snow and rain fell on top of the snowpack which partially refroze afterwards. The event induced strong settling in the SNOWPACK model which in turn increased the modeled anisotropy (green line,  $A_{\text{avg}}^{\text{mod}} \approx 0.06$ ). In contrast, the radar measurements reach for a moment zero (no penetration into wet snow) but returned to the previous values  $A_{\text{dvt}}^{\text{CPD}} \approx 0.03$ . We think that the anisotropy increase induced by settling was compensated by an anisotropy reduction from melt metamorphism which is currently not included in the model.

In the last season, 2012/2013, conditions are characterized by four major snow fall events. During the first event in Nov occasionally surface melt occurred. After the last event in Feb, very little precipitation was measured and cold temperatures persisted until early April.

The modeled mean anisotropy in Nov is above  $+0.2$  but because of frequently surface melt no reliable radar measurements were possible (gray dots in Fig. 7(d)). Still, for a few days mid of Nov, anisotropy values up to  $+0.2$  are visible in the radar measurements but they quickly approached zero, likely because of decreasing microwave penetration into wet snow. With very cold temperatures around  $-20^{\circ}\text{C}$  end of Nov, the snowpack refreezes and the positive anisotropy recovers but then quickly decays due to strong TGM resulting in a 30 cm thick layer of depth hoar which continued to evolve during the remaining season, Fig. 7(c). This depth hoar layer reached the lowest anisotropy values observed in the field  $A^{\text{CT}, \text{Pex}} \approx -0.4$  as shown in CT-4 in Fig. 8(d).

Interesting in Mar and Apr 2013, and also in other seasons, are the modeled vertical structures at the snow surface. These result from strong temperature gradients modeled in at the snow surface which does not experience any overburdened pressure and can therefore quickly transform into vertical structures or possibly surface hoar as classified by SNOWPACK (Figs. S20).

## 5.2 Quality of meteorological input data

For best modeled anisotropy results it is critical that both, meteorological input data and snow properties simulated by SNOWPACK are as correct as possible. For most of the meteorological data this was ensured by using redundant sen-

sors, only precipitation was adjusted by SWE measurements (details in Appendix A1, for raw data see Figs. S3–S6). The results of SNOWPACK were assessed with snow depth and snow temperature.

5 For Feb 2011 we noticed that when air temperatures dropped below  $-30^{\circ}\text{C}$  measured snow temperatures were 10–20 K lower than modeled snow temperatures (black vs. red lines, 2nd column in Fig. S17). We think that this is a measurement error because temperatures 10 cm above ground  
10 should not deviate strongly from measured soil temperatures, especially below a 60 cm thick snowpack. Similar for Feb 2010, snow temperatures measured 50 cm above ground were 10 K lower than modeled temperatures. The reason could be a few cm deep snow pit at the sensor array as mentioned in Sect. 3.3.3. Fortunately, for both events, modeled temperature at the bottom of the snowpack agree closely with measured soil temperatures (red vs. gray line, second-last row in Fig. S17). Hence, we are confident that SNOWPACK simulated quite reasonable snow temperatures.

20 Snow temperature, especially in the upper layers, is strongly affected by the radiation balance which in turn affects settling, snow melt and TGM. Therefore, wrongly interpolated gaps in the radiation data cause deviations in the modeled anisotropy. For example, in the first season, several gaps of multiple days in the long wave radiation data between Dec 2009 and Jan 2010 were interpolated. Likely, too high incoming long wave radiation in the first week of Jan 2010, resulting in modeling of a too warm snow surface, could explain why the anisotropy in Jan 2010 did not decrease as indicated by the radar measurements, Fig. 6(b). In the second season, several gaps of multiple days in the long wave radiation data between Nov 2010 and Jan 2011 seem to be correctly interpolated as both, snow height and SWE agree very well; nevertheless, the simulated anisotropy deviates from the radar data. In the third ~~seasons~~season, radiation data was complete during winter. In the fourth season, the radiation balance for the rain on snow event in late Nov 2012 was manually corrected (Appendix A2).

Missing short-wave reflection data were no problem, because short wave reflection was estimated based on the simulated albedo. The incoming short wave radiation data did not contain any significant gaps.

### 5.3 Precision of radar measurements

Deviations between model and radar data could result from measurement errors and assumptions in the electromagnetic model to derive the anisotropy from the CPD. Uncertainties in the radar data could affect the strain-parameter  $\alpha_2$  and  $A_{\max}$ . Of these, only  $\alpha_2$  was solely determined by radar whereas the value for  $A_{\max}$  is also constrained by CT data.

50 The uncertainty of  $\alpha_2 = 1.0..2.5$  results very likely from model deficits rather than from radar measurements. The anisotropy measured with radar at different frequencies and incidence angles agrees within the standard deviation (shown

in Figs. 6 and 7) with the underlying model (Leinss et al., 2016, Sect. 5.2). Systematic errors could result from uncertainties of ~~snow—the snow depth, especially for a very thin snow cover but these measurements were excluded from model calibration. Systematic errors could also result from~~ snow density estimations  $\rho_{\text{snow}} \approx 0.2 \pm 0.05$  which, however, would result in an anisotropy error of less than 10% (Leinss et al., 2016, Fig. 3).

### 5.4 Anisotropy model deficits

It may surprise that we neglected any parametrization of the microstructure in the model. For example, ~~instead of fixing  $f_{\mu}(-) = 1 \text{ mm}$ , a more physical approach would be to a more sophisticated description would~~ characterize each grain type, ~~shape~~ and size by its potential velocity to transform into vertical structures ~~by implementing a more sophisticated definition of  $f_{\mu}(-)$ . However, with the first approximation by setting  $f_{\mu}$  equal to grain size,  $f_{\mu} = r_g$ , to weight the TGM-term by the inverse of the grain size to allow for faster transformation of smaller ice grains, we could not produce reasonable results. Instead the strong dependence on grain size caused a strong vertical variability of the anisotropy combined with a too slowly changing anisotropy for depth hoar with very large crystals (Fig. .).~~

~~Similar—~~ The microstructure is only rudimentary considered by the factor  $(A - A_{\min})^2$  which causes a quadratic dependence of the change rate on the anisotropy such that horizontal structures transform much faster than vertical structures. Further, and similar to SNOWPACK, we did not consider any coupling of TGM and the settling rate as observed by Wiese and Schneebeli (2017). Instead we fitted the free parameter  $\alpha_2$  to radar data and determined the uncertainty  $\alpha_2 \approx 1.0..2.5$  by independent fits for each season and for different SNOWPACK ensemble members (Table 4). ~~As the settling rate depends on the resistance of the bonded ice matrix to compression and as the resistance should depend on the anisotropy we think that  $\alpha_2$  could also depend on the anisotropy. However, to keep the numbers of free parameters low we have used constant values of  $\alpha_2$ .~~ Interestingly, and likely because of the bounds  $A_{\min}$  and  $A_{\max}$ , model results do not differ significantly within the uncertainty range of  $\alpha_2$  (compare Figs. 6 and 7 with Fig. A3). Therefore, we conclude that the mean value  $\alpha_2 \approx 1.7$  is a ~~good reasonably well~~ approximation which can be used for ~~any snowpack—most snowpacks. Varying the values of  $A_{\min}$  and  $A_{\max}$  within the estimated uncertainty range of  $\pm 0.1$  does not affect the general dynamics of the model. Within this range the modeled results did hardly change more than  $\pm 0.05$ .~~

~~Note however, that the Our~~ analysis is presently limited to the prediction of anisotropy from the output of a snowpack model (no feedback). If the (existing) feedback of the anisotropy onto mechanical properties of snow was allowed for, the parameters in the strain term will certainly change.

We also need to point out that currently no comprehensive laboratory data exists which confirms the modeled relation between settling of fresh snow and the creation of horizontal structures.

5 In the model we also neglected any melt metamorphism which could transform the microstructure very ~~fast~~quickly. We think that for our Finnish data, melt metamorphism can be neglected as no strong melt events occurred except during the spring snow melt where no radar data is available. Therefore, calibration of a melt-metamorphism equation would lack sufficient calibration data. Nevertheless, we like to ~~suggested~~suggest here a simple model. We think that the surface tension of water should cause a rounding of ice grains which would drive any anisotropic structure towards isotropy. Unfortunately, observational data and models to predict melt metamorphism are still rudimentary and except for the model and references in (Lehning et al., 2002a) and (Brun et al., 1992) we could not find any detailed studies. Similar to their given rate equations we tried to model the anisotropy decay due to melt metamorphism ~~as~~by

$$\dot{A}_{\text{melt}} = -\alpha_3 A \cdot \theta_w^v{}^3 \quad (15)$$

with the empirical constant  $\alpha_3 \approx 2 \cdot 10^{-3} \text{ day}^{-1}$  and the liquid water volume fraction  $\theta_w^v$  in vol.%. The parameter  $\alpha_3$  was determined from only one event in Apr 2012 where the snow refroze after strong surface melt occurred. Despite ~~of~~ strong settling during the spring snow melt, Eq. (15) lead to almost isotropic conditions after one week (Fig. S26).

The initial anisotropy  $A_{\text{ini}}$  was assumed to be constant and close to zero. Model results support this assumption and provide reasonable results for  $A_{\text{ini}}$  between 0.00 and 0.05. The profiles CT-2 and CT-3, Fig. 8(b) and (c), also show a slightly positive anisotropy,  $0.05 \pm 0.05$ , for the surface layer 2–3 days after snowfall and support the assumption that the initial anisotropy must be small. Within the given range for  $A_{\text{ini}}$ , a weak temperature dependence for  $A_{\text{ini}}$  might exist, but no representative data is available. We think that stronger cohesion between crystals near the melting point could lead to a more isotropic structure (but with faster settling) compared to cold temperatures where crystals align rather by gravity and their anisotropic shape. A temperature dependence for the shape of snow growing in the atmosphere (Libbrecht, 2005) could also influence the initial anisotropy and the subsequent evolution of the anisotropy. This, because different grain types (~~dendrits~~dendrites vs. graupel would be extremes) should show a different settling behavior and likely also a differently strong anisotropy evolution under TGM.

Beyond the spatial distribution of the microstructure which determines the structural anisotropy (the grain shape), we ignored the crystallographic fabric of snow, i.e. the angular distribution of the orientation of the  $c$ -axis of the hexagonal ice crystals (the crystal lattice orientation) which affects not only the dielectric anisotropy but also the crystal growth dynamics. For the radar data it was ignored because

the snow fabric anisotropy affects only very weakly the dielectric anisotropy:  $\Delta A \ll 0.02$ , (Leinss et al., 2016, Appendix A). For the model, we neither ~~consider~~considered the evolution of the snow fabric anisotropy nor the influence of snow fabric (crystal orientation) on the evolution on the structural anisotropy. This, because only very few studies exist which provide experimental insight about the orientation of the snow fabric (Calonne et al., 2016) or even the temporal evolution of the snow fabric anisotropy (Riche et al., 2013). Furthermore, the dominant growth direction of snow crystals depends on temperature (Lamb and Hobbs, 1971; Lamb and Scott, 1972) and is not necessarily parallel to the temperature gradient (Miller and Adams, 2009) as it can be clearly observed in (Pinzer et al., 2012, supplementary movie). The competing effect of growth direction by crystal orientation versus structural optimization to increase entropy production by increasing the vertical thermal conductivity as suggested by Staron et al. (2014) might be a reason why a lower limit  $A_{\text{min}}$  of the anisotropy during TGM exists and why no perfectly vertically oriented snow structure has been documented so far.

## 5.5 An undocumented effect of settling?

From the radar time series a clear increase of the anisotropy a few days after snow fall is revealed in (Leinss et al., 2016, Sect. 5.4) and also in (Chang et al., 1996, Fig. 7). Likewise, space borne data indicates an increase of the CPD (and hence the dielectric anisotropy) proportional to the amount of new snow which must have settled after deposition (Leinss et al., 2014, Fig. 12). In our model this settling-induced creation of horizontal structures is well predicted by describing the anisotropy changes proportional to the strain rate. The modeled effect is however not independently confirmed yet and existing studies about the anisotropy evolution under strain provide very limited insight to confirm our hypothesis.

For example, Wiese and Schneebeli (2017) did not observe any significant growth of horizontal structures during compaction of, however, relatively dense and coarse snow ( $\rho_{\text{snow}} \approx 250 \text{ kg m}^{-3}$ ,  $\text{SSA} = 13 \text{ m}^2 \text{ kg}^{-1}$ ) which has also sintered for several months after initial sample preparation by sieving. Still, most samples showed a slight horizontal structure at the ~~begin~~beginning of the experiment. Different to Wiese and Schneebeli (2017) and with the aim to study new snow of relatively low density ( $\rho_{\text{snow}} \approx 100 \text{ kg m}^{-3}$  and  $\text{SSA} = 70 \text{ mm}^{-1} = 76 \text{ m}^2 \text{ kg}^{-1}$ ) Schleef and Löwe (2013) avoided any sintering and observed indications for "the anisotropic nature of densification" by attributing observed density changes "solely to a squeeze of the structure in the vertical direction, i.e. to axial strains". The affine compression in our model reflects this squeeze.

From our modeled results and from the above described experiments and findings, we conclude that a so far undocumented effect during settling exists which creates horizontal structures, at least during an initial phase after new snow

deposition. Unfortunately, a reanalysis of the dataset from (Schleef and Löwe, 2013; Schleef et al., 2014) comprising 700 CT images is clearly beyond the scope of the present study, also because the present calculation of the anisotropy from CT images may break down in new snow (next section).

## 5.6 Anisotropy calculations from CT

Deviations between model and CT data could also result from uncertainties in the definition of the anisotropy from the microstructure. To understand this we recall that the anisotropy of the dielectric tensor is characterized by a second rank fabric tensor that is defined by an integral over the anisotropic correlation function of the material (Rechtsman and Torquato, 2008). Under the assumption that the correlation function possesses ellipsoidal symmetry, i.e. has the form  $C(r/\ell(\cos\theta))$  with a single size scaling function  $\ell(\cos\theta)$  that depends only on the polar angle  $\theta$ , this integral can be evaluated exactly. The resulting fabric tensor can then be expressed in terms of the ratios of correlation lengths. If ellipsoidal symmetry was strictly true, any derived length scale ( $p_{\text{ex}}, p_{\text{c}}, \dots$ ) could be used for the anisotropy calculation and should lead to the same result. This is ~~however~~, ~~however~~, not the case, ~~as shown in and~~ Fig. 8 ~~where we compared the anisotropy shows that the anisotropies~~ based on the two correlation lengths  $p_{\text{ex}}$  and  $p_{\text{c}}$  ~~differ~~. On physical grounds, it is reasonable that  $p_{\text{ex}}$  rather than  $p_{\text{c}}$  is better suited to characterize the structural anisotropy for microwave measurements:  $p_{\text{ex}}$  characterizes the snow structure on length scales which are (still small but) closer to the wavelength of the radar. In contrast, density fluctuations on the smallest scales (namely those characterized by  $p_{\text{c}}$ ) solely characterize local properties of the ice-air interface (Löwe et al., 2011) which are irrelevant features for radar wavelengths. The experiments from (Löwe et al., 2011) provide yet another hint for the violation of a (strict) ellipsoidal symmetry: It was shown the two-point correlation function contains at least two characteristic length scales which exhibit different ratios in different coordinate directions, again incompatible with the ellipsoidal form. In summary, there are indications that the current (approximative) calculation of the anisotropy from a CT image using exponential correlation lengths is not equally well justified for different snow types. This may also explain observed differences between modeled and CT-based anisotropy and definitely needs to be taken into account in a potential assessment of strain effects on the anisotropy evolution in snow.

## 6 Conclusions

In this paper, a model for the temporal evolution of the structural anisotropy of snow was designed. The model is based on simple rate equations and requires solely the following macroscopic fields as input variables: strain rate, temperature

and temperature gradient, ideally depth-resolved. These variables are provided by most of the more advanced snowpack models, here we used SNOWPACK.

To describe the evolution of the anisotropy, the model considers only two contributions: temperature gradient metamorphism (TGM) which was confirmed to create vertical structures and snow settling for which we think that the strain leads to preferentially horizontally oriented ice grains in the snow microstructure. The TGM formulation was validated with existing CT data from laboratory experiments. The strain formulation was calibrated with four years of anisotropy data obtained from polarimetric radar measurements acquired in Sodankylä, ~~in~~ Finland between 2009 and 2013. For calibration, we drove SNOWPACK with meteorological data and used the output to model the depth-resolved anisotropy. Then, we minimized the difference between the depth average of the modeled anisotropy and the depth-averaged radar anisotropy by adjusting a single fit parameter. For sensitivity analysis the fit ~~parameters~~ ~~parameter~~ was determined for each season separately but we determined it also globally for the entire set of all four seasons. Additionally, we run an ensemble of different SNOWPACK configurations to evaluate the model sensitivity to slightly different snowpack properties. We conclude that the same fit parameter can be used for any snowpack because model results improved only marginally when the parameter was adjusted for every season individually. Finally, the modeled, depth-resolved anisotropy profiles were validated with field-measured CT anisotropy profiles. The modeled anisotropy varies between values of ~~about~~  $\pm 0.3$  and agrees with the radar data with ~~an~~ ~~a~~ root means square error (RMSE) of 0.03 (Pearson- $r = 0.8 \pm 0.2$ ) and with CT data with an RMSE of less than 0.15 (Pearson- $r = 0.7 \pm 0.2$ ).

The model results are remarkable in several aspects: 1) the model performance allows for improved parametrization of different snow properties like thermal, mechanical and electromagnetic properties. 2) our results indicate a yet undocumented effect of settling on the creation of horizontal structures in new snow. 3) the detailed agreement between the radar-measured anisotropy and the anisotropy modeled from meteorological data demonstrates that polarimetric radar measurements at sufficiently high frequency (10–20 GHz) can be used to monitor the evolution of the structural anisotropy. This has several consequences:

The simplicity of the model allows for immediate implementation into common snow models to simulate the anisotropy, at least during dry snow conditions. We could show with laboratory CT data that for dry snow the growth of vertical structures is proportional to the vertical water vapor flux. Unfortunately, experiments with wet snow metamorphism at the melting point are difficult and only very few studies exist, therefore, we could only hypothesize about a formulation for the anisotropy evolution during snow melt which limits our model to dry snow applications.

The observation that the compression of new snow increase horizontal structures could stimulate new laboratory experiments to confirm this mechanism and to study what exactly causes creation of horizontal structures, how different crystal types influence or impede the creation of horizontal structures and how horizontal structures affect the mechanical properties of snow under strain.

The fact, that model, radar measurements and CT data are consistent puts confidence in the interpretation of the radar measured anisotropy. Depending on the system geometry, the anisotropy can be measured only depth-averaged (remote-sensing systems) or even depth-resolved with in-situ systems as done e.g. for a fast characterization of firn cores (Fujita et al., 2009). Similarly, radar systems mounted on rails could be used to scan the snowpack layer by layer and nondestructively which allows for monitoring of the evolution of the depth-resolved anisotropy. Radar satellites can directly measure the copolar phase difference (CPD) which is proportional to the depth-averaged anisotropy of a dry snowpack. For single radar acquisitions the CPD can be difficult to interpret and can even be zero for a snowpack with equal amounts of layers with positive and negative anisotropies. In contrast, with radar time series, quantitative information e.g. about new snow fall can be obtained because we showed that the transformation by TGM is often slower than the anisotropy increase during accumulation of new snow (Leinss et al., 2014).

Finally, the large observation time spanning four winter seasons with a sampling interval of ~~four hours builds an~~ 4 h ~~builds a~~ unique data source to study the evolution of the anisotropy of snow. We think, that the developed model and the determined parameters are relevant for future consideration of the anisotropy in snow models. Beyond that, the SNOWPACK model calibrated with extreme efforts provides a valuable data set to study microwave properties of snow especially within the framework of the Nordic Snow and Radar Experiment (NoSREx-I-III) in Finland, Sodankylä.

With the long time series and the developed model we gained a deeper insight into the anisotropic growth mechanisms of snow crystals and identified the two main driving terms, the vertical water vapor flux and snow settling. The model could help to ~~enhances enhance~~ the understanding of the anisotropy of macroscopic snow properties and demonstrates that the anisotropy can be measured by means of polarimetric radar systems to access microstructural properties of snow non-destructively and even from space.

## 7 Data availability

All data are originally from the NoSREx-campaigns (Lemmetyinen et al., 2016, 2013) and are partially available from FMI at [www.litdb.fi](http://www.litdb.fi). [Similar, well calibrated meteorological data is also available from \(Essery et al., 2016\)](#). Radar data are available from ESA or from the GAMMA Remote Sens-

ing and Consulting AG. ~~Preprocessed on request.~~ [Data of this paper \(preprocessed meteorological input data, configuration files and simulated snow profiles from SNOWPACK, modeled anisotropy time series, radar-measured anisotropy time series, SWE measurements and CT-data\)](#) are available under DOI: <http://dx.doi.org/10.3929/ethz-b-000334041>.

## Appendix A: Preprocessing of meteorological data and SNOWPACK calibration

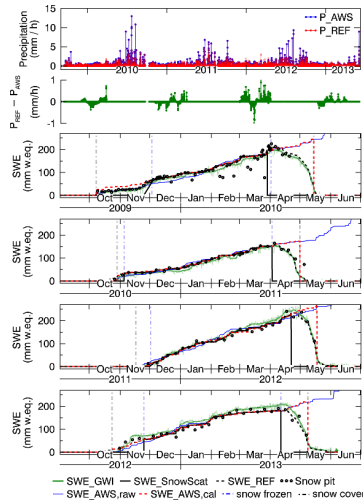
### A1 Preprocessing of meteorological data

In order to provide SNOWPACK physically consistent input data all meteorological data were preprocessed, filtered, combined and gaps were interpolated if they could not be filled by data sets of equivalent sensors. Figure S2 shows a processing flow chart of the meteorological data which was used to create the three input files required by SNOWPACK (soillayer\*.sno, config\*.ini, meteoin\*.smet). We combined data measured at the IOA (MAWS\*), meteorological mast (arcmast\*), and from the AWS. All raw data were downsampled to a 1 h sampling interval. Invalid data were removed and redundant datasets were averaged. Data gaps were interpolated with algorithms which considered diurnal and seasonal cycles and also the type and statistics of existing data series. For comparison, supplementary figures show raw data (Figs. S3–S6) and processed data (S7–S10).

Snow height (HS) and air temperature (TA) were measured by at least one sensor at each of the three site (IOA, AWS, meteorological mast), but some of the data series contained gaps for periods of a few days. The measurements of the three sensors were very similar (see supplementary figures S3–S6; standard deviation snow height  $\sigma_{HS} = 2.6$  cm, max. difference  $\Delta HS_{95\%} < 10$  cm for 95% of measurements. Standard deviation of air temperature  $\sigma_{TA} < 0.6$  K, max deviation of air temperature  $\Delta T_{95\%} < 2.0$  K for 95% of measurements.). Therefore, the data were averaged when data from more than one sensor were available. By this redundancy, we obtained almost complete time series of snow depth and air temperature. Remaining gaps of a few days were interpolated.

Four different soil temperature measurements (TSG) were averaged: they were measured at each two locations 2 cm below the surface few meters apart at the IOA (SMT: soil temp B, soil temp C) and at two sites near the meteorological mast at -5 cm and -10 cm depth. The soil temperature of all four sensors differed less than 1.5 K for 95% of measurements and had a standard deviation of 0.5 K.

Soil moisture showed significant variations between the six different sensors (each two sensors at -2 cm and -10 cm depth at the two locations SMT-A and SMT-B at IOA and also two sensors at -5 cm and -10 cm depth at the meteorological mast). However, all sensors showed the same trends with 5–15% vol liquid water content during summer, 1–3%



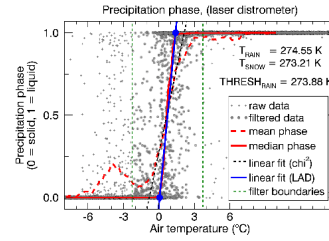
**Figure A1.** Top: precipitation from the AWS, adjusted precipitation ( $P_{REF}$ ) and difference between both. Below, SWE time series derived from different methods are shown: snowpit data (black bullets), GWI (green), SnowScat (black). Blue and red lines are the cumulated precipitation of the AWS and the adjusted precipitation  $P_{REF}$ . Vertical dash-dotted lines indicate snow freeze and melt (light blue) and the period of snow covered ground (gray).

$vol$  liquid water content during winter and 15–35%  $vol$  liquid water content during snow melt.

Relative humidity (RH), wind speed (VW), wind direction (DW), and maximum wind speed (VWM) was only measured at the AWS and gaps of a few days were filled by a combination of linear interpolation, average data from the four seasons and diurnal cycles.

Precipitation (PSUM) was measured 600 m north of the IOA. In order to calibrate the precipitation data to the IOA, we adjusted the precipitation data such that the cumulated precipitation of the AWS ( $SWE_{AWS,cal}$ ) follows closely the reference snow water equivalent ( $SWE_{REF}$ ), composed by SWE data measured by SnowScat during dry snow conditions and data from the GWI during snow melt (Leinss et al., 2015). Calibration was done by amplifying/decreasing existing precipitation when the cumulated precipitation of the AWS,  $SWE_{AWS,raw}$ , was lower/higher than  $SWE_{REF}$ . A comparison of raw precipitation ( $P_{AWS}$ , blue), calibrated precipitation ( $P_{REF}$ , red) and precipitation change (green) are shown at the top together with the SWE data (below) in Fig. A1. SNOWPACK runs with calibrated and uncalibrated precipitation showed that the calibration of precipitation improved the results for the simulated snow height. Some minor inaccuracies in precipitation data can be detected by comparing measured and modeled snow height, Fig. S16.

The precipitation phase (PSUM\_PH) was measured by the distrometer located at the IOA (data from www.litdb.fmi.fi). However, the data was not directly used because the distrometer frequently misclassified snow as rain. Therefore, the distrometer data was only used to check the rain/snow threshold



**Figure A2.** From the precipitation phase measured by the distrometer we determined a mean rain/snow threshold of  $0.73^{\circ}\text{C}$  using a robust least-absolute-deviation (LAD) fit (blue line). A linear fit provides the same threshold but a slightly lower slope. Before fitting, we set a filter boundary (green dotted line) of  $0.73 \pm 3^{\circ}\text{C}$ . Data outside the boundary are considered as misclassified precipitation.

( $THRESH_{RAIN}$ ). According to the distrometer data combined with air temperature data from the AWS we determined a rain/snow threshold of  $T = 0.73^{\circ}\text{C}$  or alternatively a linear range from  $T_{snow} = 0.06^{\circ}\text{C}$  to  $T_{rain} = 1.40^{\circ}\text{C}$  (Fig. A2).

### A2 calibration and interpolation of radiation data

35

To provide consistent solar radiation data, data acquired by different sensors between Jan 2009 and Sep 2015 were homogenized and gaps with missing data were interpolated. Plots of the original raw data and the homogenized and filled data are shown in the supplementary material: Fig. S15 (all radiation data), Figs. S3–S6 (seasonal raw data) and Figs. S7–S10 (seasonal filled data). The incoming short wave radiation data was almost complete was interpolated only for a few isolated single days. The reflected short wave radiation data was modeled by SNOWPACK based on the simulated albedo.

40

45

The long wave radiation balance was measured at the radiation tower. Long wave radiation data contained a few gaps up to 20 days long (one gap of 52 days in autumn 2011 is irrelevant because this gap is before the onset of snow fall). Data gaps shorter than 12 days were interpolated by the Gaussian average of neighboring data points (FWHM = 1 day, kernel size = 12 days). Remaining gaps of up to 8 days were linearly interpolated. Additionally, to reconstruct the diurnal radiation cycles, the average radiation of each hour of the year was high-pass filtered (Gaussian window of 6 days) and added to the smoothly interpolated data gaps. To provide SNOWPACK the possibility to correctly model snow melting and settling during the four days 21–23 Nov 2012, the long wave incoming radiation was increased by  $45 \text{ Wm}^{-2}$ . Webcam observation confirm foggy conditions during this period.

50

55

60

### A3 SNOWPACK calibration

For comparison of the natural snowpack with the modeled snowpack under different configuration settings, we compared measured and modeled snow height and snow tem-

65

**Table A1.** Thresholds for snow height (HS) and snow temperature (TS) which were used to score the different SNOWPACK runs.

statistical descriptor evaluated for all/each year(s)		threshold value for	
		HS (cm)	TS (°C)
smallest negative Difference	>	-10.0	-10.0
largest positive Difference	<	12.0	10.0
max. abs. difference (95%)	<	5.0	3.0
root mean square error	<	2.5	2.5
mean difference	<	1.0	0.20
Nash-Scliffé coefficient	>	0.98	0.77

perature. Snow temperature was measured at five internal snow temperatures sensors at 10, 20, 30, 40, and 50 cm above ground. For snow height and snow temperature we evaluated for each of the four season each six statistical descriptors: the smallest (negative) difference, the largest (positive) difference, the absolute deviation for which 95% of all absolute deviations are smaller, the root mean square error, the mean difference, and the Nash-Sutcliffe model coefficient. Additionally to individual seasons, we calculated these descriptors for the data of all four seasons together. This provided in total  $2 \times (4+1) \times 6 = 60$  quantities for comparisons. To determine the "best" simulation(s), we compared this 60 quantities of every SNOWPACK run with all of the other 5000+ SNOWPACK runs and calculated a score which describes how many times these 60 comparisons show a better result (smaller error, larger Nash-Sutcliffe coefficient) than all other runs. The total score was divided by the total number of runs which results in a score between 0 and 60. A score of 60 indicates that a single run outperforms every other run independent of which statistical variable is analyzed. The maximum achieved score was 51.3, the lowest score 9.3.

Additionally to the relative scoring by pair-wise comparison of all SNOWPACK runs, we used a second scoring scheme which defined fixed height and temperature thresholds for each of the six statistical descriptors. The thresholds are listed in Table A1. The sum of all fulfilled conditions for all years simultaneously and for all individual years made again a maximum score of 60. The score by comparison and score by threshold show an approximately linear relation. Histograms over all SNOWPACK runs with the score by threshold, and the distribution of statistical descriptors are shown in Fig. S18.

For SNOWPACK calibration, we varied the following parameters: scaling of short wave and long wave radiation by various constant factors, various thresholds for the snow/rain threshold (THRESH\_RAIN), various factors for the WIND\_SCALING\_FACTOR with SNOW\_EROSION = TRUE/FALSE, five different settings for the ATMOSPHERIC\_STABILITY, creation of short wave reflected radiation from albedo (RSWR::create = ISWR\_ALBEDO) on/off, Calibrated or uncalibrated precipitation PSUM (see section A1), with or without provided precipitation phase

(PSUM\_PH in \*.smet files), filling of long wave radiation gaps with the generator ILWR::allsky\_lw::type = Konzelmann or our method described in section A2, and SW\_MODE = BOTH/INCOMING.

We found, that radiation scaling was crucial to produce correct results. Additionally snow erosion with a wind scaling factor around two significantly improved the results. With atmospheric stability = normal we got much better results compared to other atmospheric models. Interestingly, only the model MO\_MICHLMAYR required not much modification of the radiation in contrast to the other atmospheric models. Setting SW\_MODE = INCOMING instead of BOTH did not change the results except near the end of snow melt where a slight change was observable. Obviously, for our test site, SNOWPACK works better when the reflected short wave radiation is estimated via the albedo than vice-versa.

*Author contributions.* SL and HL wrote the manuscript together, SL processed all meteorological and radar data and designed the model, HL processed all CT data, MP, HL and AK collected the field data.

*Competing interests.* The authors declare that they have no conflict of interest.

*Acknowledgements.* The *in situ* data collection was supported by the European Space Agency activity "Technical assistance for the deployment of an X- to Ku-band scatterometer during the NoSREx campaigns" (ESA ESTEC Contract no. 22671/09/NL/JA/ef) (Lemmetyinen et al., 2013). The staff at FMI-ARC is acknowledged for the collection of *in situ* data. Andreas Wiesmann from GAMMA Remote Sensing is acknowledged for technical assistance with the SnowScat data and Margret Matzl for the lab sampling procedures for casted DEP samples. Special thank goes to Jouni Pulliainen from FMI for the initiative of setting up a test site which provides a unique amount and diversity of meteorological data and snow measurements. We thank Matthias Bavey from SLF for helping to find the best SNOWPACK configuration. Juha Lemmetyinen deserve a major thank for his support concerting all details about the test site and the field data. The paper was funded by ETH Zürich. Irena Hajsek deserves a major thank for providing the space and time to write this paper.

## References

- Alley, R. B.: Texture of polar firn for remote sensing, *Annals of Glaciology*, 9, 1–4, 1987.
- Bartelt, P. and Lehning, M.: A physical SNOWPACK model for the Swiss avalanche warning: Part I: numerical model, *Cold Regions Science and Technology*, 35, 123 – 145, [https://doi.org/http://dx.doi.org/10.1016/S0165-232X\(02\)00074-5](https://doi.org/http://dx.doi.org/10.1016/S0165-232X(02)00074-5), <http://www.sciencedirect.com/science/article/pii/S0165232X02000745>, 2002.

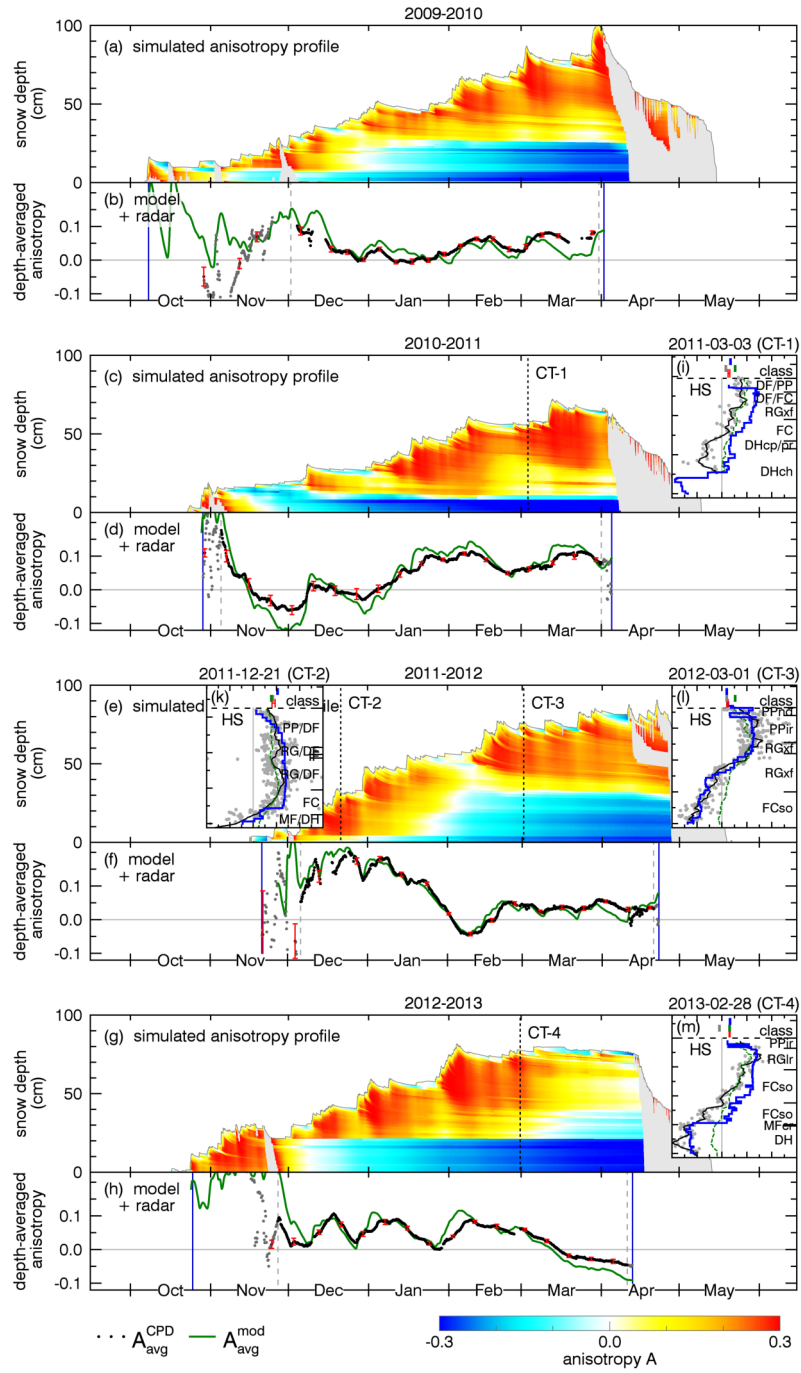


Figure A3. Modeled solution of all four seasons when the parameter  $\alpha_2$  is optimized for every season (row 1-4, Table 4).



- Brun, E., Martin, E., Simon, V., Gendre, C., and Coleou, C.: An Energy and Mass Model of Snow Cover Suitable for Operational Avalanche Forecasting, *Journal of Glaciology*, 35, 333–342, <https://doi.org/10.3189/S002214300009254>, 1989.
- 5 Brun, E., David, P., Sudul, M., and Brunot, G.: A numerical model to simulate snow-cover stratigraphy for operational avalanche forecasting, *Journal of Glaciology*, 38, 13–22, 1992.
- Calonne, N., Flin, F., Morin, S., Lesaffre, B., du Roscoat, Rolland du Roscoat, S., and Geindreau, C.: Numerical and experimen-  
10 tal investigations of the effective thermal conductivity of snow, *Geophysical Research Letters*, 38, 1–6, 2011.
- Calonne, N., Geindreau, C., Flin, F., Morin, S., Lesaffre, B., Rolland du Roscoat, S., and Charrier, P.: 3-D image-based numerical computations of snow permeability: links to specific surface  
15 area, density, and microstructural anisotropy, *The Cryosphere*, 6, 939–951, <https://doi.org/10.5194/tc-6-939-2012>, <http://www.the-cryosphere.net/6/939/2012/>, 2012.
- Calonne, N., Flin, F., Geindreau, C., Lesaffre, B., and Rolland du Roscoat, S.: Study of a temperature gradient metamorphism of snow from 3-D images: time evolution of microstructures, physical properties and their associated anisotropy, *The Cryosphere*, 8, 2255–2274, <https://doi.org/10.5194/tc-8-2255-2014>, <http://www.the-cryosphere.net/8/2255/2014/>, 2014.
- 20 Calonne, N., Montagnat, M., Matzl, M., and Schneebeli, M.: The layered evolution of fabric and microstructure of snow at Point Barcola, Central East Antarctica, *Earth and Planetary Science Letters*, 2016.
- Chang, P., Mead, J., Knapp, E., Sadowy, G., Davis, R., and McIntosh, R.: Polarimetric backscatter from fresh and metamorphic snowcover at millimeter wavelengths, *IEEE Transactions on Antennas and Propagation*, 44, 58–73, <https://doi.org/10.1109/8.477529>, 1996.
- 30 Colbeck, S. C.: The vapor diffusion coefficient for snow, *Water Resources Research*, 29, 109–115, <https://doi.org/10.1029/92WR02301>, <http://dx.doi.org/10.1029/92WR02301>, 1993.
- Davis, R. E. and Dozier, J.: Stereological characterization of dry Alpine snow for microwave remote sensing, *Advances in Space Research*, 9, 245–251, [https://doi.org/http://dx.doi.org/10.1016/0273-1177\(89\)90492-4](https://doi.org/http://dx.doi.org/10.1016/0273-1177(89)90492-4), <http://www.sciencedirect.com/science/article/pii/0273117789904924>, 1989.
- 40 Essery, R., Kontu, A., Lemmetyinen, J., Dumont, M., and Ménard, C. B.: A 7-year dataset for driving and evaluating snow models at an Arctic site (Sodankylä, Finland), *Geoscientific Instrumentation, Methods and Data Systems*, 5, 219–227, <https://doi.org/10.5194/gi-5-219-2016>, <https://www.geosci-instrum-method-data-syst.net/5/219/2016/>, 2016.
- Fierz, C., Armstrong, R., Durand, Y., Etchevers, P., Greene, E., McClung, D., Nishimura, K., Satyawali, P., and Sokratov, S.: The International Classification for Seasonal Snow on the Ground, 2009.
- 55 Fujita, S., Okuyama, J., Hori, A., and Hondoh, T.: Metamorphism of stratified firn at Dome Fuji, Antarctica: A mechanism for local insolation modulation of gas transport conditions during bubble close off, *Journal of Geophysical Research: Earth Surface*, 114, 1–21, <https://doi.org/10.1029/2008JF001143>, <http://dx.doi.org/10.1029/2008JF001143>, 2009.
- Heggli, M., Frei, E., and Schneebeli, M.: Instruments and Methods Snow replica method for three-dimensional X-ray microtomographic imaging, *Journal of Glaciology*, 55, 631–639, <https://doi.org/10.3189/002214309789470932>, 2009.
- Izumi, K. and Huzioka, T.: Studies of metamorphism and thermal conductivity of snow, 1, *Low Temperature Science Series A*, 33, 91–102, <http://eprints.lib.hokudai.ac.jp/dspace/handle/2115/18276>, 1975.
- 65 Jordan, R.: A one-dimensional temperature model for a snow cover: Technical documentation for SNTherm. 89., Tech. rep., COLD REGIONS RESEARCH AND ENGINEERING LAB HANOVER NH, 1991.
- Kaempfer, T. U., Schneebeli, M., and Sokratov, S. A.: A microstructural approach to model heat transfer in snow, *Geophysical Research Letters*, 32, n/a–n/a, <https://doi.org/10.1029/2005GL023873>, <http://dx.doi.org/10.1029/2005GL023873>, 121503, 2005.
- 75 Krol, Q. and Löwe, H.: Relating optical and microwave grain metrics of snow: the relevance of grain shape, *The Cryosphere*, 10, 2847–2863, <https://doi.org/10.5194/tc-10-2847-2016>, 2016.
- Lamb, D. and Hobbs, P. V.: Growth rates and habits of ice crystals grown from the vapor phase, *Journal of the Atmospheric Sciences*, 28, 1506–1509, 1971.
- 80 Lamb, D. and Scott, W. D.: Linear growth rates of ice crystals grown from the vapor phase, *Journal of Crystal Growth*, 12, 21–31, [https://doi.org/https://doi.org/10.1016/0022-0248\(72\)90333-8](https://doi.org/https://doi.org/10.1016/0022-0248(72)90333-8), <http://www.sciencedirect.com/science/article/pii/0022024872903338>, 1972.
- Lehning, M., Bartelt, P., Brown, B., and Fierz, C.: A physical SNOWPACK model for the Swiss avalanche warning: Part III: meteorological forcing, thin layer formation and evaluation, *Cold Regions Science and Technology*, 35, 169–184, [https://doi.org/http://dx.doi.org/10.1016/S0165-232X\(02\)00072-1](https://doi.org/http://dx.doi.org/10.1016/S0165-232X(02)00072-1), <http://www.sciencedirect.com/science/article/pii/S0165232X02000721>, 2002a.
- 90 Lehning, M., Bartelt, P., Brown, B., Fierz, C., and Satyawali, P.: A physical SNOWPACK model for the Swiss avalanche warning: Part II. Snow microstructure, *Cold Regions Science and Technology*, 35, 147–167, [https://doi.org/http://dx.doi.org/10.1016/S0165-232X\(02\)00073-3](https://doi.org/http://dx.doi.org/10.1016/S0165-232X(02)00073-3), <http://www.sciencedirect.com/science/article/pii/S0165232X02000733>, 2002b.
- 100 Leinss, S., Parrella, G., and Hajnsek, I.: Snow Height Determination by Polarimetric Phase Differences in X-Band SAR Data, *IEEE Journal of Selected Topics in Applied Earth Observations and Remote Sensing*, 7, 3794–3810, <https://doi.org/10.1109/JSTARS.2014.2323199>, 2014.
- 105 Leinss, S., Wiesmann, A., Lemmetyinen, J., and Hajnsek, I.: Snow Water Equivalent of Dry Snow measured by Differential Interferometry, *IEEE Journal of Selected Topics in Applied Earth Observations and Remote Sensing*, 8, 3773–3790, <https://doi.org/http://dx.doi.org/10.1109/JSTARS.2015.2432031>, 2015.
- 110 Leinss, S., Löwe, H., Proksch, M., Lemmetyinen, J., Wiesmann, A., and Hajnsek, I.: Anisotropy of Seasonal Snow measured by Polarimetric Phase Differences in Radar Time Series, *The Cryosphere*, 10, 1–28, <https://doi.org/https://doi.org/10.5194/tc-10-1771-2016>, 2016.

- Lemmetyinen, J., Kontu, A., Leppänen, L., Pulliainen, J., Wiesmann, A., Werner, C., Proksch, M., and Schneebeli, M.: Technical assistance for the deployment of an X- to Ku-band scatterometer during the NoSREx experiment. NoSREx-I, -II and -III (2009 - 2012) Final report. Contract No. 22671/09/NL/JA/ef, Tech. rep., ESA ESTEC, Noordwijk, <https://earth.esa.int/web/guest/campaigns>, 2013.
- Lemmetyinen, J., Kontu, A., Pulliainen, J., Vehviläinen, J., Rautiainen, K., Wiesmann, A., Mätzler, C., Werner, C., Rott, H., Nagler, T., Schneebeli, M., Proksch, M., Schüttemeyer, D., Kern, M., and Davidson, M. W. J.: Nordic Snow Radar Experiment, Geoscientific Instrumentation, Methods and Data Systems, 5, 403–415, <https://doi.org/10.5194/gi-5-403-2016>, <http://www.geosci-instrum-method-data-syst.net/5/403/2016/>, 2016.
- Leppänen, L., Kontu, A., Vehviläinen, J., Lemmetyinen, J., and Pulliainen, J.: Comparison of traditional and optical grain-size field measurements with SNOWPACK simulations in a taiga snowpack, *Journal of Glaciology*, 61, 151–162, <https://doi.org/10.3189/2015JoG14J026>, 2015.
- Libbrecht, K. G.: The physics of snow crystals, *Reports on progress in physics*, 68, 855, 2005.
- Löwe, H., Spiegel, J. K., and Schneebeli, M.: Interfacial and structural relaxations of snow under isothermal conditions, *Journal of Glaciology*, 57, 499–510, 2011.
- Löwe, H., Riche, F., and Schneebeli, M.: A general treatment of snow microstructure exemplified by an improved relation for thermal conductivity, *The Cryosphere*, 7, 1473–1480, <https://doi.org/10.5194/tc-7-1473-2013>, <http://www.the-cryosphere.net/7/1473/2013/>, 2013.
- Marti, J. and Mauersberger, K.: A survey and new measurements of ice vapor pressure at temperatures between 170 and 250K, *Geophysical Research Letters*, 20, 363–366, <https://doi.org/10.1029/93GL00105>, <http://dx.doi.org/10.1029/93GL00105>, 1993.
- Massman, W.: A review of the molecular diffusivities of H<sub>2</sub>O, CO<sub>2</sub>, CH<sub>4</sub>, CO, O<sub>3</sub>, SO<sub>2</sub>, NH<sub>3</sub>, N<sub>2</sub>O, NO, and {NO<sub>2</sub>} in air, {O<sub>2</sub>} and {N<sub>2</sub>} near {STP}, *Atmospheric Environment*, 32, 1111 – 1127, [https://doi.org/http://dx.doi.org/10.1016/S1352-2310\(97\)00391-9](https://doi.org/http://dx.doi.org/10.1016/S1352-2310(97)00391-9), <http://www.sciencedirect.com/science/article/pii/S1352231097003919>, 1998.
- Miller, D. and Adams, E.: A microstructural dry-snow metamorphism model for kinetic crystal growth, *Journal of Glaciology*, 55, 1003–1011, <https://doi.org/doi:10.3189/002214309790794832>, <http://www.ingentaconnect.com/content/igsoc/jog/2009/00000055/00000194/art00006>, 2009.
- Mätzler, C.: Applications of the interaction of microwaves with the natural snow cover, *Remote Sensing Reviews*, 2, 259–387, <https://doi.org/10.1080/02757258709532086>, 1987.
- Mätzler, C.: Autocorrelation functions of granular media with free arrangement of spheres, spherical shells or ellipsoids, *Journal of Applied Physics*, 81, 1509–1517, <https://doi.org/http://dx.doi.org/10.1063/1.363916>, <http://scitation.aip.org/content/aip/journal/jap/81/3/10.1063/1.363916>, 1997.
- Mätzler, C.: Relation between grain-size and correlation length of snow, *Journal of Glaciology*, 48, 461–466, <https://doi.org/doi:10.3189/172756502781831287>, <http://www.ingentaconnect.com/content/igsoc/jog/2002/00000048/00000162/art00011>, 2002.
- Pinzer, B. R. and Schneebeli, M.: Snow metamorphism under alternating temperature gradients: Morphology and recrystallization in surface snow, *Geophysical Research Letters*, 36, 1–4, <https://doi.org/10.1029/2009GL039618>, <http://dx.doi.org/10.1029/2009GL039618>, 2009.
- Pinzer, B. R., Schneebeli, M., and Kaempfer, T. U.: Vapor flux and recrystallization during dry snow metamorphism under a steady temperature gradient as observed by time-lapse micro-tomography, *The Cryosphere*, 6, 1141–1155, <https://doi.org/10.5194/tc-6-1141-2012>, <http://www.the-cryosphere.net/6/1141/2012/>, 2012.
- Proksch, M., Löwe, H., and Schneebeli, M.: Density, specific surface area and correlation length of snow measured by high-resolution penetrometry, *Journal of Geophysical Research: Earth Surface*, 120, 346–362, <https://doi.org/10.1002/2014JF003266>, 2015.
- Rechtsman, M. C. and Torquato, S.: Effective dielectric tensor for electromagnetic wave propagation in random media, *Journal of Applied Physics*, 103, 084901, <https://doi.org/http://dx.doi.org/10.1063/1.2906135>, <http://scitation.aip.org/content/aip/journal/jap/103/8/10.1063/1.2906135>, 2008.
- Riche, F. and Schneebeli, M.: Thermal conductivity of snow measured by three independent methods and anisotropy considerations, *The Cryosphere*, 7, 217–227, <https://doi.org/10.5194/tc-7-217-2013>, <http://www.the-cryosphere.net/7/217/2013/>, 2013.
- Riche, F., Montagnat, M., and Schneebeli, M.: Evolution of crystal orientation in snow during temperature gradient metamorphism, *Journal of Glaciology*, 59, 47–55, <https://doi.org/doi:10.3189/2013JoG12J116>, <http://www.ingentaconnect.com/content/igsoc/jog/2013/00000059/00000213/art00005>, 2013.
- Schleef, S. and Löwe, H.: X-ray microtomography analysis of isothermal densification of new snow under external mechanical stress, *Journal of Glaciology*, 59, 233–243, <https://doi.org/https://doi.org/10.3189/2013JoG12J076>, 2013.
- Schleef, S., Löwe, H., and Schneebeli, M.: Hot-pressure sintering of low-density snow analyzed by X-ray microtomography and in situ microcompression, *Acta Materialia*, 71, 185 – 194, <https://doi.org/https://doi.org/10.1016/j.actamat.2014.03.004>, <http://www.sciencedirect.com/science/article/pii/S1359645414001475>, 2014.
- Schneebeli, M. and Sokratov, S.: Tomography of temperature gradient metamorphism of snow and associated changes in heat conductivity, *Hydrological Processes*, 18, 3655–3665, <https://doi.org/10.1002/hyp.5800>, <http://dx.doi.org/10.1002/hyp.5800>, 2004.
- Shertzer, R. H. and Adams, E. E.: Anisotropic thermal conductivity model for dry snow, *Cold Regions Science and Technology*, 69, 122 – 128, <https://doi.org/http://dx.doi.org/10.1016/j.coldregions.2011.09.005>, <http://www.sciencedirect.com/science/article/pii/S0165232X1100187X>, 2011.
- Sokratov, S. A. and Maeno, N.: Effective water vapor diffusion coefficient of snow under a temperature gradient, *Water Resources Research*, 36, 1269–

- 1276, <https://doi.org/10.1029/2000WR900014>, <http://dx.doi.org/10.1029/2000WR900014>, 2000.
- Srivastava, P. K., Mahajan, P., Satyawali, P. K., and Kumar, V.: Observation of temperature gradient metamorphism in snow by X-ray computed microtomography: measurement of microstructure parameters and simulation of linear elastic properties, *Annals of Glaciology*, 51, 73–82, 2010.
- Srivastava, P. K., Chandel, C., Mahajan, P., and Pankaj, P.: Prediction of anisotropic elastic properties of snow from its microstructure, *Cold Regions Science and Technology*, 125, 85 – 100, <https://doi.org/http://dx.doi.org/10.1016/j.coldregions.2016.02.002>, <http://www.sciencedirect.com/science/article/pii/S0165232X16300052>, 2016.
- Staron, P. J., Adams, E. E., and Miller, D. A.: Nonequilibrium thermodynamics of kinetic metamorphism in snow, *Cold Regions Science and Technology*, 97, 60–71, 2014.
- Sturm, M., Holmgren, J., König, M., and Morris, K.: The thermal conductivity of seasonal snow, *Journal of Glaciology*, 43, 26–41, 1997.
- ToolBox, E.: Thermal Conductivity of common Materials and Gases, [https://www.engineeringtoolbox.com/thermal-conductivity-d\\_429.html](https://www.engineeringtoolbox.com/thermal-conductivity-d_429.html), 2003a.
- ToolBox, E.: Specific Heat of common Substances, [https://www.engineeringtoolbox.com/specific-heat-capacity-d\\_391.html](https://www.engineeringtoolbox.com/specific-heat-capacity-d_391.html), 2003b.
- Torquato, S.: *Random heterogeneous materials*, Springer, New York, 2002.
- Torquato, S. and Lado, F.: Trapping constant, thermal conductivity, and the microstructure of suspensions of oriented spheroids, *The Journal of Chemical Physics*, 94, 4453–4462, <https://doi.org/http://dx.doi.org/10.1063/1.460635>, <http://scitation.aip.org/content/aip/journal/jcp/94/6/10.1063/1.460635>, 1991.
- Vallese, F. and Kong, J. A.: Correlation function studies for snow and ice, *Journal of Applied Physics*, 52, 4921–4925, <https://doi.org/10.1063/1.329453>, 1981.
- Werner, C., Wiesmann, A., Strozzi, T., Schneebeli, M., and Mätzler, C.: The SnowScat ground-based polarimetric scatterometer: Calibration and initial measurements from Davos Switzerland, in: *Geoscience and Remote Sensing Symposium (IGARSS), 2010 IEEE International*, pp. 2363–2366, <https://doi.org/10.1109/IGARSS.2010.5649015>, 2010.
- Wiese, M. and Schneebeli, M.: Early-stage interaction between settlement and temperature-gradient metamorphism, *Journal of Glaciology*, 63, 652–662, <https://doi.org/10.1017/jog.2017.31>, 2017.
- Yosida, Z.: *Physical Studies on Deposited Snow. I.; Thermal Properties.*, Contributions from the Institute of Low Temperature Science, 7, 19, 1955.
- Zermatten, E., Haussener, S., Schneebeli, M., and Steinfeld, A.: Tomography-based determination of permeability and DupuitForchheimer coefficient of characteristic snow samples, *Journal of Glaciology*, 57, 811–816, <https://doi.org/doi:10.3189/002214311798043799>, <http://www.ingentaconnect.com/content/igsoc/jog/2011/00000057/00000205/art00004>, 2011.