

Response to referee comments

(Referee comments are shown in black, our response is in blue and changes to the manuscript are shown in red. The revised manuscript is also included in this document.)

Page references are given to the updated manuscript as PXY indicating that the manuscript has been updated on page X line Y.

A marked-up version of the manuscript is included at the end of this document. Note that page references apply to the updated manuscript and not the marked-up manuscript.

Anonymous Referee #1

Firstly, we would like to thank the reviewer for providing such thorough and thoughtful comments on our manuscript. They have been invaluable in improving the manuscript.

In their manuscript „Impact of floe size distribution on seasonal fragmentation and melt of Arctic sea ice”, Adam Bateson and colleagues present results of a numerical sensitivity study concentrating on the role of the floe size distribution (FSD) in shaping the seasonal cycle of the sea ice cover in the Arctic. The study is based on a numerical sea ice model coupled with a mixed layer ocean model. Several processes influencing/influenced by the FSD are investigated, including the lateral melting of sea ice and ice fragmentation induced by waves. The FSDs considered are truncated power laws described by three parameters: the minimum and maximum floe size, and the exponent. The manuscript is devoted to a subject which is very important for the performance of numerical sea ice models on both short (synoptic) and long (seasonal, climate) time scales. As the authors point out in the introduction, recent climate change and the associated negative trends in sea ice extent, thickness and strength have produced conditions in which interactions with waves are becoming more and more important over larger and larger areas. Fragmentation of sea ice by waves in turn influences ice-ocean-atmosphere heat flux and sea ice melting/freezing rates. At present, our limited understanding of many aspects of these coupled processes is a serious limitation for development of reliable parameterizations suitable for numerical sea ice models. In my opinion, the proposed manuscript is an important contribution to the subject, even though many solutions used in the model and assumptions underlying them are oversimplified (or maybe even wrong). As the authors correctly remark, these simplifying assumptions are to a large degree a result of the lack of observational data and/or theoretical understanding available. In this respect, the most important contribution of the manuscript is that it develops a framework in which future developments can be integrated, as new data and insights become available. In other words, in spite of some clear limitations of the solutions presented, I find this contribution very valuable, as it paves the way for further development.

Several aspects of the results are very interesting, for example the findings related to the (partial) compensation of the increased lateral-melting rates by decreased bottom-melting rates in simulations with power-law FSD compared to simulations with constant floe size; or the important role of the wave attenuation rates in shaping the seasonal cycle of sea ice. I think that those results are worth publishing in “The Cryosphere”. My comments to the manuscript are listed below. My recommendation to the Editors is “major revision”.

We would like to thank the reviewer for pointing out the value of our study for future improvement of numerical sea ice models.

General comments:

1. The text of the manuscript is written in an untidy manner, it contains a lot of (mostly small) mistakes and should be carefully checked before publication. Moreover, the text is full of technical slang, colloquialisms, informal expressions which (in most cases) are comprehensible for a reader familiar with numerical modelling of ocean/sea ice, but should be avoided in a paper. It makes reading of the text tiresome.

We have carefully checked and modified our manuscript to improve readability and comprehensibility.

2. I find the description in section 2.2 quite chaotic. The impression is that the choice of topics that are described there is pretty random, even though the first sentence announces that this section contains only “elements pertinent to our study”. For example, is the CFL criterion relevant for the results/discussion presented further? In turn, some more details from the papers of Williams and colleagues regarding computation of wave-induced breaking etc. would be very useful, even though they can be found in those papers.

We have modified the structure and removed some less important aspects including the additional sentence regarding the CFL criterion, which has been deemed unnecessary. The model description has been expanded to give a better explanation of how the waves-in-ice component of the model is currently operating (see section 2.2). This includes a more detailed outline of how the wave spectra is reconstructed and key properties calculated after advection (P7L27-P7L35) and an explanation of the breaking strain amplitude and a more detailed overview of the terms required to identify a wave break-up event (P7L35 – P8L3).

R1: But the most important comment to section 2.2 is related to the description of the wave forcing. It is very imprecise. Also, I think the Authors should better justify the methodology they use. As written in section 3, the only wave information from ERA reanalysis used as input to the sea ice model are H_s and T_p (I think this information should be provided in section 2.2, so that the text there can be better understood). Why don't the Authors use wave directions from ERA? Or even the whole energy spectra?

Information regarding Stokes drift within the ice field was not available as a standard output at the time of model development. Whilst this may no longer be the case, updating the schemes to use the Stokes drift wave directions was not judged to be an effective use of resources for this present study. H_s and T_p are used rather than the full wave energy spectra for consistency with Williams et al. (2013a, 2013b).

The following general statement regarding waves-in-ice model choices has now been added to the start of section 2.2 and included here for reference: ‘The waves-in-ice module described here reproduces wave conditions near the sea ice edge within the MIZ. Local wind direction determines the direction of wave propagation with adjustments made for attenuation imposed by the sea ice cover. This is a compromise dictated by availability of forcing data, lack of observational studies and the course resolution of the CICE model.’ Specific comments have now been made in the manuscript regarding the decision not to use Stokes drift (P7L1 – P7L3) and the choice of H_s and T_p are used rather than the full wave energy spectra (P6L26 – P6L27) as outlined here. The description of the dataset used to obtain H_s and T_p has been moved to section 2.2 as suggested.

The approach described seems very complicated and requires several arbitrary assumptions. First, the assumption about the correspondence between the wave direction and wind direction might be justified, e.g, in the Beaufort Sea, where waves are predominantly locally generated, but the wave

climate in the North Atlantic is dominated by swell, so that the direction of waves reaching the ice edge likely has little in common with the local wind.

Stopa et al. (2016) discuss wave climate in the Arctic between 1992 and 2014 and they find that in the Atlantic side of the Arctic basin ‘wave seasons follow the winds’, however they also state that regions exposed to the North Atlantic wave climate will be strongly influenced by swells generated within the North Atlantic Ocean. Semi-enclosed and isolated seas e.g. Laptev, Kara are more event driven and have an equal mix of wind driven and swell driven waves.

It has been clarified in the manuscript that the approach used here to derive wave directions is a simplification and neglects wave direction from swell effects, as outlined here (P7L3 – P7L9).

Moreover, swell typically has a much narrower directional distribution than 45° used by the Authors (by the way: what does “total spread” mean? how is the wave energy distributed among the 5 directional bins?). This might seem a minor detail, but narrower directional distribution of wave energy means that the waves can penetrate deeper into the ice cover (with the same attenuation rate α_{dim}) – and the results presented in this paper suggest this might have a significant influence on the results.

‘Total spread’ is the angular size of the surface wave spread. The energy is distributed amongst the bins according to $\frac{2}{\pi}(\cos \Delta\theta)^2$ where $\Delta\theta$ is the deviation from the principal wave direction.

Modelling the propagation of waves under the sea ice cover is an area of ongoing research. Wadhams et al. (1986) produced observations that show that waves propagating into the MIZ could experience significant wave spreading until it was ‘essentially isotropic’. However this paper also noted a distinction between wind seas where the isotropic state could be achieved within a few km and swell seas where spreading occurs much more slowly, if at all. A recent study from Montiel et al. (2016) was able to specifically link spreading behaviour to wave period, with two regimes identified. Shorter wavelengths experienced spreading and longer wavelengths did not with a transition between these two regimes defined by the maximum floe size. This is consistent with the observed behaviour of wave driven regimens and swell driven regimes. Using a fixed surface wave spread across a limited number of categories is a significant simplification of the rather complex spreading behaviour of waves, however it represents a balance between short wave periods that quickly achieve an isotropic state and longer wave periods that propagate much further into the MIZ before they experience significant spreading.

The information about how ‘total spread’ is defined and how energy is distributed is now included in the manuscript (P6L31 – P6L33). The discussion outlined here regarding the choice for the direction distribution has also now been included in the manuscript (P7L9 – P7L18).

Second, from the technical perspective, the approach requires advecting wave energy into the ice in a bin-by-bin manner, and waves from several locations can reach any given ice-covered grid cell. Using full ERA energy spectra would be much more elegant, but not much more complicated.

See above for motivation to use significant wave height and peak wave period rather than the full ERA wave spectra.

3. It is hard to prove without numerical simulations, but my impression is that some conclusions from this study might be affected by the – very artificial – assumption that the minimum floe size is constant. For example, during freezing conditions the FSD becomes wider due to increasing l_{max} , but the small floes remain as small as they were initially. Thus, it is not surprising that the model sensitivity to changes of the relaxation time T_{rel} is rather limited: the effective floe size is all the time

dominated by the small floes, as they contribute a lot to the total perimeter, but much less to the total surface area of the ice. No rapid increase of l_{eff} is possible, even if freezing is fast. To represent lateral freezing, it seems more natural to shift the whole distribution towards larger floe sizes. I'm not suggesting that the Authors should extend their study to simulations with variable minimum floe sizes, but some discussion of the expected consequences of constant d_{min} would be very useful.

It is not necessarily true to say no rapid increase in l_{eff} is possible; it depends on the choice of parameters e.g. in figure 5 the effective floe size rapidly transitions from 10 m to over 500 m within the MIZ. It should also be noted that when l_{max} increases in value, the number frequency of smaller floes must decrease to maintain consistency between the FSD and sea ice concentration. We explored the impact of a variable exponent on the basis of evidence from Stern et al. (2018 a & b) that the exponent isn't a fixed value and instead evolves spatially and temporally. There isn't a clear set of evidence to show that the minimum floe size also varies in a similar manner and other FSD modelling approaches e.g. the prognostic FSTD approach adopted by Roach et al. (2018) also shows a high frequency of small floes across the sea ice extent throughout the year.

We have included a section within the discussion section (P17L12 – P17L16) of the manuscript regarding why we do not investigate a fixed d_{min} , specifically pointing out the lack of observations motivating such a sensitivity study.

4. The important role of the wave attenuation is particularly interesting from the point of view of possible feedbacks with floe size. If the wave attenuation rates are dependent on floe size, with stronger attenuation in fields of small floes (due, e.g., to floe-floe collisions), then sea ice fragmentation close to the ice edge might modify wave propagation into the MIZ, in turn impacting the floe sizes in the inner MIZ. The sensitivity studies presented in this manuscript suggest that accounting for processes that influence wave attenuation might be important from the point of view of reproducing annual evolution of MIZ.

Agreed. The attenuation rate is inversely proportional to floe size (as according to Eq. (3), Williams et al., 2013 a). We present a sensitivity study here (Section 4.3.2) where the attenuation rate is reduced by a factor of 10 with a modest model response. However, there are definitely interesting feedbacks to be further investigated between floe size and attenuation rate and to properly understand the role in MIZ evolution we need to better understand and represent the attenuation of waves within models.

We include a section within the discussion commenting on the importance of wave-floe size feedbacks and the need to better capture the attenuation of waves in sea ice within models (P16L40 – P17L8).

Other comments:

Page 2, lines 24-26: A strange sentence, formulated in a complicated way, but stating something obvious: that if the floe size in a model is constant, it cannot be modified by processes that modify the floe size in the real world.

The purpose of this sentence was to express the idea that to accurately capture the impact of waves on sea ice, for example, some form of floe size change mechanism is required.

The sentence has been updated for clarity from 'Since the power law is the cumulative outcome of all the mechanical and thermodynamic processes that influence the FSD, some of the impact of an

individual process will be tied up within the imposed power law itself' to 'The assumption of a fixed floe size also prevents sea ice models from accurately representing the impact of processes on the sea ice evolution that act via the perturbation of floe size such as lateral melting and wave induced fragmentation of floes.'

2. Page 3, line 39: I think you should introduce notation for the minimum floe size, maximum floe size and the power-law exponent already here, and consequently use those symbols throughout the paper (e.g., in order to avoid formulations of the type: "all the different exponent-minimum permutations" (page 10, line30); I had to think for a while to realize what an "exponent-minimum permutation" is).

Agreed. The changes you have suggested have been implemented within the paper.

3. Page 4, line 20: "developed developed"

Noted and fixed.

4. The same notation, α , is used for the floe-shape parameter (e.g., equation 1) and for the exponent of the FSD. Please use different symbols for those two things – for example, use α_{shape} , which is used just once on page 14, line 19.

Agreed.

α will now be used solely to represent the exponent of the power law FSD, and α_{shape} will be used to refer to the floe-shape parameter.

5. Is A ice area or ice concentration? You introduce it in equation (1) as ice area, but then the same symbol appears in different equations where it has to be non-dimensional to make sense (e.g., eq. 20 and eq. 10, to which I return in one of the next comments).

A refers to the ice concentration.

This has been made clear in the manuscript. The statement 'A refers to the ice area' now reads 'A refers to the ice concentration'.

6. ΔT in equation (2) is not defined.

ΔT is the elevation of the surface water temperature above freezing.

ΔT is now defined in the manuscript as above.

R1: 7. Page 6, line 12: wave cover? And further: wave spectrum? Rather wave energy spectrum.

Noted and fixed. Line updated from 'Next, the attenuation of the wave cover over each wave timestep is calculated. This will be calculated for each individual wave spectrum' to 'Next, the attenuation of waves over each wave timestep is calculated. This will be calculated for each individual wave energy spectrum'.

R1: 8. First line in section 2.3: I think it would be good to state explicitly that N is the number-weighted FSD (there are other alternatives, e.g., area-weighted FSD).

Agreed.

I have now explicitly stated that N is the number-weighted FSD as suggested.

9. Equation (10): Replace '=' with '→' for consistency with eqs. (12) and (13). Also, something is wrong with this equation. First, if A denotes ice area, then 1/A cannot be subtracted from 1; if A is ice concentration, then 1-1/A is negative. Further, the whole expression should be multiplied by the time step or another quantity expressed in seconds.

Equation (10) is indeed wrong as written in the manuscript. Thank you for pointing out the error. The correct expression is:

$$l_{\max, \text{final}} = l_{\max, \text{initial}} \sqrt{1 - \frac{\Delta A_{\text{lm}}}{A}}$$

Where ΔA_{lm} is the reduction in ice concentration that can be attributed to lateral melting. Note that the change in l_{\max} is a function of another time dependent variable, ΔA_{lm} , hence the expression does not need to be multiplied by the time step. We have used the correct expression in the model and it was only incorrect in the manuscript.

'=' has been replaced with '→' as suggested and Equation (10) has also now been corrected in the manuscript.

10. Equation (12): What is d_{frag} ?

Should be d_{min} not d_{frag} .

This has been corrected in the manuscript.

11. Page 7, lines 11-14: What happens when new ice is formed in a grid cell that was ice free?

l_{\max} is set to d_{min} in a grid cell where new sea ice is formed.

This has been clarified in the text as follows: 'In grid cells that transition from being ice free to having a sea ice cover, the maximum floe size is initiated with its minimum value i.e. d_{min} '.

12. Page 7, line 17: I don't understand the second part of this sentence.

This is supposed to recognise the fact that we can't represent the full impact of individual processes through this modelling approach as it assumes a power law rather than being a fully prognostic model.

The sentence has been removed as its mention here is confusing and unnecessary.

13. Is x floe radius or floe diameter? From eq. (9) it follows that the floe surface area is πx^2 ; from eq. (14) – $\pi x^2/4$.

It is the floe diameter.

This is now clarified when the FSD is defined: 'We employ a number-weighted FSD, $N(x)$, where x is the floe diameter.'

14. Equation (16): Note that this is valid for $\alpha \geq 3$ and $\alpha \geq 2$ (for $\alpha=3$, the integral in eq.(14) is $\log(l_{\max}) - \log(d_{\min})$; the same is true for eq.(15) and $\alpha=2$). This is important as $\alpha=2$ and $\alpha=3$ are among parameters considered in simulations.

To simplify the model code, rather than defining a different equation to evaluate for $\alpha=2$ and $\alpha=3$, 0.001 is added to their values. This will have a negligible impact on the accuracy of the model.

A statement has been added to the manuscript to clarify this.

15. Page 7, line 32: it should be P_{fsd} instead of P .

Noted and updated.

16. Page 8, lines 4-7: Why introduce d_{con} if l_{eff} can be used already in eq. (17)?

d_{con} should be replaced with L , an already defined parameter for the floe size where the floe size is fixed. Equation (17) is the definition of perimeter density for simulations with a constant, fixed floe size, and L is the relevant floe size parameter in this case.

The manuscript has been updated to use L within Eq. (17) rather than d_{con} .

17. Page 8, line 22-23: The sentence "A reference run is..." is a repetition of the sentence in lines 20-21.

Noted and fixed.

18. Starting from section 4.1, the Authors use negative values of α (e.g., lines 35-36 on page 8). This is inconsistent with section 2.3, in which the FSD is formulated as $N \sim x^{-\alpha}$. Usually in the literature, when references are made to "an exponent of the power-law distribution", a positive number is meant, as in the expression $N \sim x^{-\alpha}$. I'd suggest therefore speaking of exponents as positive numbers, and modifying the text accordingly. For example, line 7 on page 10 should be: "The exponent is increased from 2.5 to 3.5" instead of "reduced from -2.5 to -3.5".

Noted and fixed. The exponent will now be treated as positive in the manuscript, as suggested.

19. Page 11, line 25: "lower ice cover"? Rather lower ice concentration.

Noted and fixed.

20. Page 12, lines 19-20: "...even prior to the melting season in March". This part of the sentence suggests that one should expect the wave-induced fragmentation to occur mainly during the melting season. Obviously, it is mainly related to storminess and the related wave "activity".

We are referring to the impact of the model on sea ice concentration in the MIZ and lateral melting, however, have decided that highlighting this point is unnecessary and misleading.

The phrase referred to here has now been removed from the manuscript.

21. The first paragraph in section 5 is a summary rather than discussion, so I'm not sure if it belongs here or at the beginning of section 6. Similarly, I'd suggest moving the last part of section 5 to section 6. Or simply merging sections 5 and 6 into "discussion and conclusions".

The final part of section 5 is included in the discussion rather than the conclusion as it introduces new material.

The introduction to section 5, the discussion, has been shortened to: 'We present here a series of simulations and additional sensitivity studies completed with the newly developed WIPoFSD model to explore the impacts of a variable power law derived floe size distribution model on the Arctic sea ice.'

Anonymous Referee #2

Firstly, we would like to thank the reviewer for providing such thorough and thoughtful comments on our manuscript. They have been invaluable in improving the manuscript.

This paper details a new parameterization for the sea ice floe size effects, which assumes a power law floe size distribution over a given size range of variable exponent and endpoints. The benefit of this approach is it may simulate the effective properties of the sea ice FSD without having to parameterize the underlying physics. This work outlines the WIPoFSD model and analyzes the variability of Arctic sea ice over the period 2007-2016 between standard mixed-layer-ocean-CICE simulations and those using the new parameterization, with a number of parameter perturbation experiments used to assess overall Arctic sensitivity to floe size parameters. They find a lateral melt feedback on September sea ice extent and volume, where the redistribution of heat from basal to lateral melt leads to future reductions in sea ice volume, and find effective floe size is a good predictor of September sea ice volume/extent. This research is clearly relevant to ongoing operational and predictive modeling efforts, with the potential to be a useful benchmark for understanding the sensitivity of Arctic sea ice to floe size variability and with the potential to be a useful model for simulation purposes.

The manuscript: (A) outlines a new computationally inexpensive model designed to capture aspects of FSD behavior, and (B) demonstrates a floe-size-melt-feedback at a scale only discussed by Asplin (2012, JGR), Kohout (2014, Nature), and others. I find that (B) is generally well-presented and would be an interesting addition to the scientific literature. Yet aspect (A), while again, a promising idea, lacks key details and, as presented, contains inconsistencies that may preclude publication or adoption of this technique.

I recommend the authors carefully re-examine the presentation and formulation of section 2 before reconsidering their results. I have outlined specific comments that relate to their new additions in Section 2.3, along with more general and copy-editing comments subsequently.

Section 2.3: This section must be carefully re-analyzed. When doing so, please be cognizant of variable definitions and units. For example in eq. 14, $\alpha > 0$, but in Sec.4 ($\alpha < 0$), and α is also the shape parameter.

Noted and fixed. The shape parameter will now be referred to as α_{shape} .

Is A a concentration (as it must be in eq (10)) or an area?

A is a concentration.

This has now been clarified in the manuscript.

What are the units of N?

m^{-1} noting that $\frac{\alpha_{shape}}{A_{grid}} \int_{d_{min}}^{l_{max}} N x^2 dx = 1$, where A_{grid} is the grid cell size.

This has now been clarified in the manuscript.

What is dfrag?

Should be d_{min} not d_{frag} .

Now fixed in manuscript.

What is d_{max} ? Their definitions in Table 1 are not sufficient to follow through the text.

d_{max} is the fixed global maximum floe size (as opposed to the variable grid cell specific maximum floe size, l_{max}).

The following line has been added to the introduction of the manuscript to ensure this parameter is carefully defined: ‘The distribution is defined by three parameters: d_{min} , minimum floe size; d_{max} , global maximum floe size and α , the power law exponent.’ To ensure the relationship between d_{max} and l_{max} is clear, where the FSD, $N(x)$, is defined the following description is now included: ‘ l_{max} is the local maximum floe size. The parameters can be defined independently for each grid cell, however in this study d_{min} and α will be fixed across the ice cover within an individual simulation, such that only l_{max} will vary in response to processes which would be expected to change the floe size. l_{max} is allowed to vary between d_{min} and d_{max} , the global minimum and maximum floe sizes respectively.’

- What is the definition of the FSD, N ? By eq.(9) you have adopted an numberweighted definition. Rothrock and Thorndike (1984) give a good way of presenting the FSD. Most modeling approaches have used area-weighted distributions for consistency with the ITD (Zhang et al, 2016) but there has been no consistency there, so defining it clearly is necessary.

N is a number-weighted FSD. The number-weighted FSD is selected over the area-weighted FSD to be consistent with how observations are reported e.g. Stern et al. (2018 a, b).

We have now defined N more clearly in the text: ‘We employ a number-weighted FSD, $N(x)$, where x is the floe diameter.’

- (and P15L29, e.g.,) The «truncated»FSD defined here is not the scale-truncated power law used in the literature, defined in Burroughs and Tebbens (2001), and investigated in Herman (2011) and Stern et al (2018).

The truncated FSD defined here is consistent with other literature in the field. Note the literature has considered both the complementary cumulative number distribution and the standard number distribution for plotting observations of the FSD. Here we specifically use a standard number distribution as a result of the complications outlined in Stern et al. (2018 b) associated with the use of the complementary cumulative number distribution (i.e. a system that adopts an upper-truncated power law in the probability density function does not necessarily produce a power law in its cumulative form).

It is also not zero at l_{max} .

This is a standard feature of observed FSDs that display a truncated power law form.

What about floes larger and smaller than the size ranges here? How much of the full range of area is being cut out?

This model aims to represent the full FSD, and hence it is a model assumption that there are no floes larger or smaller than the range modelled.

This point is now made explicitly in the manuscript (P8L16 – P8L17).

How low does l_{max} get?

Its minimum value is set to l_{min} . Grid cells that transition from ice-free to including sea ice initiate the FSD with $l_{max} = d_{min}$ i.e. the range of l_{max} is d_{min} to d_{max} .

This has made clear in the manuscript (P10L2 – P10L3).

- Eq (9) - Quantities like «max floe size» are not area tracers (you can see they are non-linearly related to the area in Eq (9)), thus the CICE scheme is not appropriate here. These variables must be advected differently (see Horvat and Tziperman (2017)).

l_{max} is treated as an area tracer. In this model it is a specific property assigned to areas of sea ice alongside α and d_{min} to define the FSD and should not be considered a property specific to any individual floe. Hence the use of the CICE scheme is appropriate in this case.

This explanation has now been included in the manuscript (P9L29 – P9L31).

- Eq (10) is not consistent: the square root requires that A be unitless. Then the units on the LHS are m, and the units on the RHS are m/s. But if A is unitless, it is a number less than 1, and the inconsistently defined l_{max} is imaginary.

Agreed. Equation (10) is indeed wrong as written in the manuscript and we apologise for this. Thank you for pointing out the error. The correct expression is:

$$l_{max,final} = l_{max,initial} \sqrt{1 - \frac{\Delta A_{lm}}{A}}$$

Where ΔA_{lm} is the reduction in ice concentration that can be attributed to lateral melting. We have used the correct expression in the model and it was only incorrect in the manuscript.

The manuscript has been updated to correct this error.

- More importantly, Eq (10) is a main new contribution of this model but it is dictated, not derived. The impact of Eq (10) is easily explored, however, by plugging it into Eq (11) via Eq (18), at which point you can solve for A! Once corrected, is this consistent?

Eq. (10) is derived from assuming the reduction in l_{max}^2 from lateral melting is proportional to the

reduction in A, the sea ice concentration, from lateral melting: $\left(\frac{l_{max,final}}{l_{max,initial}}\right)^2 = \frac{A_{final}}{A_{initial}}$.

It should be noted that the changes in both A and l_{max} will perturb the entire distribution via the normalisation constant, C. This parameterisation is not supposed to represent the impact of lateral melting specifically on a floe of size l_{max} , rather it aims to represent changes in l_{eff} resulting from reductions in N across all floe sizes.

The equation and explanation given here have now been included in the manuscript to provide context to Eq (10) (P9L16 – P9L23).

- Eq (13) needs to be re-examined as it is inconsistent with Eq (9). Since the growth rate of l_{max} is not derived based on the change in sea ice area, the constraint (9) can only be accomplished by changing the coefficient C introduced in (8). Essentially, this means reducing the area occupied by floes at all scales (except for the very largest), which is not what is happening!

This is effectively what is happening, however. The changes in the FSD currently only impact the model via the lateral melt volume, which is calculated as a function of effective floe size. In the context of the model, effective floe size is scale invariant and the calculation of the total lateral melt volume also requires knowledge of the ice concentration. Therefore Eq. (13) and Eq. (9) can still be consistent with each other.

This feature of the model has been clarified in the manuscript with the following statement: 'It is important to note that changes in l_{max} impact the entire FSD because C , the normalisation constant, is a function of l_{max} , as defined in Eq. (5). Processes that change the total sea ice concentration, such as lateral melting, also change C . This is because C is calculated to ensure the FSD is normalised to be consistent with the total sea ice surface area.'

Restoring is ok, but Trel should relate to dA/dt . This would eliminate the need for the sentences at L15 justifying this approach.

The motivation of this paper is to explore the role of the floe size distribution in driving the seasonal retreat of the Arctic sea ice. This means priority has been given to processes that reduce the size of floes in summer i.e. lateral melting, and wave breakup. Given floe growth is a winter process it was deemed less important to represent floe growth processes in a physically realistic manner, and instead a restoring approach has been used to avoid making any assumptions about how floes grow. It should be noted that the real mechanism of floe growth is more complex e.g. new floes forming as both pancake and nilas ice, welding, lateral growth.

If the authors wish to use an ad-hoc parameterization, then why invoke the FSD and its distributional features at all? Instead, just write a heuristic equation for l_{eff} .

The WIPoFSD model includes complicated feedbacks that could not be represented using a heuristic equation for l_{eff} e.g. the attenuation rate of the WIM is a function of the mean floe size (as opposed to the effective floe size).

- P7L6 - what does this mean? Is λ the peak wavelength? The spectrum as outlined previously is a frequency spectrum.

The origin of this term is outlined in Williams et al. (2013 a), where it is labelled λ_w and described as a representative wavelength.

We have updated the model description to more clearly explain how this term is calculated (P8L1 – P8L3).

- P2L19 - As you mention, many models (LIM, e.g.) do not have any floe size, so «simplifies model code» isn't quite right - there were no FSD schemes when these models were written.

Noted. The sentence 'this assumption both simplifies the model code and reduces computational costs of running the model' has been removed from the manuscript.

- P2L24 - I think you should be careful in this section - given the small FSD literature, what «dictates the best approach» may not be known yet.

The point that was supposed to be made here is that there is value in having multiple FSD models. The prognostic approach described in Roach et al. (2018) has some clear advantages to the WIPoFSD model, however that doesn't mean there aren't applications where the approach presented here is more appropriate.

The statement has been softened from ‘Context dictates the most suitable approach; higher complexity floe size representation will be required for high resolution regional sea ice modelling than for large scale climate models’ to ‘The most suitable modelling approach will be context dependent; for example, high resolution regional sea ice models would be expected to require a higher complexity of floe size treatment than large scale climate models’.

- P2L35 (and where discussed later, e.g. P8L32) - The cited paper does not give evidence for a unique power law across that range of scales. In the abstract: «We found that the FSDs from the high-resolution images follow power laws over floe sizes from 10 m to 3 km.» Though similar-sounding, this is different to «we found all FSDs follow a unique power law . . .» over that range, and there is a good reason! Picking a fixed exponent to run the model is a great simplifying idea, but should not overemphasize the applicability of a single power law.

Noted and agreed.

We have changed the statements made on this point:

P2 L35: ‘This same study was also able to use two satellite data sets with different resolutions but operating over the same region to show floes from as small as 10 m and as large as 30,000 m follow power laws.’

P8L32: ‘Stern et al. (2018 b) were recently able to show a region of floe sizes could be described by power laws over a size range from 10 to 30,000 m.’

- P3L34 - I would re-write this passage to avoid making qualitative judgements about other sea ice and climate modelers. Model developments all come at a cost and it is not within the scope of this study to diagnose and prescribe best practices, particularly when trying to justify one’s own parameterization.

Point taken on board, and in hindsight this may have come across too much as a direct attack. We were trying to convey the point that the best approach is not necessarily the one with the highest physical fidelity. However, this point has been made in an earlier section so it is unnecessary to reiterate it here.

The sentence ‘This may be acceptable for use within a standalone sea ice model but coupled-climate modellers will be reluctant to accept a significant cost without evidence that it has a significant impact on how the sea ice interacts with the climate system’ has now been removed from the manuscript.

- Model description: In general, there is too much extraneous information given in the model description. Is it important to discuss standard model physics of the CICE model? Or what NEMO is, especially since NEMO is not used in this study? There is much more detail given to previous work than the new work, I recommend cutting this substantially, and focusing on what directly affects the FSD model here. This could go in the Supporting Information if it is necessary.

We think it is useful to include details of the standard CICE model that pertain to the themes discussed in this manuscript.

The description of NEMO has now been removed. The balance between new and existing work has been addressed in the manuscript to increase the focus on the new model components presented here. The main changes are: The reduction of material relating to the CFL criterion; the addition of new material to justify the method of advecting the wave energy spectra and its limitations; a more

detailed overview of how the wave energy spectra is reconstructed and relevant parameters obtained from the spectra; and a more detailed overview of how the parameters used to identify a wave break-up event are calculated (section 2.2).

- P4L14 - I'm not sure why NEMO is included here or the references to the SWARP project. You later use a mixed layer model to produce all results!

The description of NEMO and reference to SWARP have now been removed. This section has been significantly edited to remove extraneous information. We now only include enough information to give clear model development traceability from Williams's model to the NOC's coupled model and subsequently the WIPoSFD model.

- P5L31 - because of the many types of wave spectra can become confusing, it may be helpful to write this as S(!)d! to make comparison easier with other studies using the spectra. See Michel (1968 and 1999).

Noted. We have now expressed S analogously to Williams et al. (2013 a) for consistency.

- P6L23 - it appears as if this is the place that waves reduce the FSD maximum size. But how is not explained, and should be included in the text.

This is given in section 2.4. We wanted to explicitly describe all the processes that influence floe size in the same section for ease of reference.

A explicit reference to section 2.4 is now made in the text.

- Sec. 2.4 - I think the use of perimeter per square meter is fantastic - the right approach.

Thank you; we agree.

- P7L36 - Equation 16 is a ratio of ice perimeter to ice area, i.e. the 1st moment of N divided by the 2nd moment of N (if N is an area). The shape parameter (which is not introduced as part of N prior to this comment) does not cancel from this expression.

You are indeed correct. This was an error made in writing the manuscript. The floe shape parameter does however cancel out from Eq. (18) i.e. Eq. (18) remains correct.

The equations in the manuscript have now been corrected.

- P10 - How does this parameter space exploration differ from what was performed by Roach et al (2017), who reduced the CICE floe size parameter in much the same way as did Steele (1992)?

Roach et al. (2017) investigated automated tuning for a series of parameters, however floe size was not one of these. Steel (1992) explored the impact of changing L, the fixed floe diameter, invariant in time and space. Floe diameters of 30 m, 300 m and 3000 m were investigated. Here we explore the sensitivity to the fixed floe size parameters used to construct our FSD. l_{eff} , the equivalent to L in our model, is a function of both these fixed parameters and l_{max} , which is a variable that is defined per grid cell. Hence, unlike Steele (1992), our equivalent floe size parameter is not fixed either on a spatial or temporal scale.

- P13L10 (and discussion on P14) - I don't believe these sensitivity experiments are sufficient to test variability in ocean response - as mentioned the minimum mixed layer depth is a numerical crutch because Kraus-Turner models become singular - is this parameter really what controls mixed layer feedbacks? There is such a wide range of Arctic mixed layers (see Peralta-Ferriz and Woodgate (2015)) that you may be exiting the range of interest here.

We agree that a mixed layer model can not capture the full range of ocean variability, however this was not the focus of this study. Tsamados et al. (2015) have previously discussed the performance the prognostic ML model used here with respect to Peralta-Ferriz and Woodgate (2015). The mixed layer model is generally realistic though does tend to underestimate summer MLD compared to the results presented by Peralta-Ferriz and Woodgate (2015), though their results also show the MLD can be as low as 5 m.

The discussion here has now been included in the manuscript (P5L36 – P5L40).

- Discussion: The sensitivity experiments are referenced to a time-varying baseline (2007-2016). What is the rationale for choosing this period? Why should deviations from such a strongly forced system be used as a sensitivity? I do not think concepts like the multi-year memory of Arctic sea ice can be understood based on two averages across 10-year periods. In general here I would support simply explaining how certain parameter changes affect results, but there is not enough information presented to support qualitative claims about the Arctic system response.

In this study we are not trying to address decadal scale changes in sea ice, instead we are trying to understand the impact of the FSD and associated processes on the seasonal sea ice loss. 2007 – 2016 has been selected as the baseline as it will capture the current climatology of the Arctic, including extrema of sea ice extent (e.g. 2012 compared to 2013). Whilst we can't make precise quantitative assessments of the impacts of different sensitivity studies on the Arctic system, we can still compare the magnitude of the different sensitivity results.

A comment has been added to the manuscript to explain the choice of time period and address the other issues raised here using the same arguments made above (P10L22 – P10L25).

- We do not know the relative importance of the three factors that affect the FSD: melting, waves, and freezing. A needed figure is one that breaks down the seasonal variation in l_{max} (better, l_{eff}) as a function of each forcing components. Furthermore we don't see how N evolves in time, neither l_{max} , but these are key variables of the WIPoFSD model!

Sensitivity studies (F), (G) and (K) have been performed to explore the importance of these different processes. However, it seems like a sensible idea to plot the evolution of l_{eff} for these different sensitivity studies compared to the standard case. Given l_{max} is the only time dependent variable that N is a function of, we do not think it is necessary to plot how both N and l_{eff} evolve with time, which are both functions of l_{max} .

Figure 12 has now been added to the paper to address this. Figure 12 shows the daily annual evolution of l_{eff} over 2015 averaged over regions with between 15 – 80 % sea ice concentration on 31st August 2015 and regions with between 15 – 30 % sea ice concentration on 31st August 2015 for three simulations exploring the effective floe size tendencies with respect to different processes. These sets are chosen to capture regions that become part of the MIZ for at least some of the year without becoming sea ice free such that on annual cycle is artificially introduced to the l_{eff} . The following lines have been added / modified within the manuscript to reflect the new figure: P14L24 – P14L52, P16L29 – P16L32, P16L35.

- Figures: This may be a question of style you can ignore, but the figure captions contain descriptions or context that aren't directly describing the figure (e.g., the final 3 sentences in Fig 4). These may be better off in the text. Same for using parentheses instead of division «/»(or a comma, in Fig 1) for units on axis labels. Feel free to ignore this comment.

The figure captions are certainly longer than standard, though this choice was made intentionally. We are happy to shorten this but will leave it as an editorial decision. Likewise, with the style for units on axis labels.

Copy-editing comments

- P1L1 - Authors' choice, but «sea ice floe size distribution»is probably good in the title, even if obvious.

Noted and added.

- P1L15 - «climate sea ice models»(pick one! or sea ice models in climate models)

Noted and changed to sea ice models within climate models.

- P1L21 - «this feature is important in correcting existing biases»- true (see Roach et al 2017), but not supported within the text or referenced again.

This theme is discussed in the final paragraph of the discussion (P17L35 – P17L43).

- P1L36 and elsewhere - be sure to say «sea ice»instead of «ice»throughout.

Noted and fixed.

- P2L2 «described as marginal»- seems mean, perhaps say «the region with X characteristic, referred to as the MIZ, etc». See again the use of marginal as an adjective on L16.

Noted and changed. Sentence now reads 'similarly the region of the Arctic identified as the marginal ice zone (MIZ), defined here as where the ice area fraction extends between 15 and 80%, is projected to increase in extent (Aksenov et al., 2017).'

- P2L4 - no need to capitalize Marginal Ice Zone.

Noted and changed.

- P2L7 - The S+J citation here is about past changes to Arctic cyclones, not about future changes to sea state/storminess.

Noted and replaced with more relevant and recent citations (Casas-Prat et al., 2018; Day and Hodges, 2018).

- P2L18 - «calliper»can be removed here.

Noted and fixed.

- P3L3 - Are these autonomous techniques recovering the FSD?

No, they are giving a high-resolution picture of sea ice and ocean state that can be used alongside timeseries of high-resolution FSD data to better understand the processes that drive FSD evolution.

Text updated to remove this ambiguity: ‘Novel techniques, particularly those using autonomous platforms and robotic instruments, are enabling increased high-resolution data capture of sea ice and ocean conditions that can be used alongside time series of up to 1m-resolution FSD data obtained through remote sensing to better understand the factors driving FSD evolution (Thomson and Lee, 2017).’

- P3L9 - Consider looking at Perovich and Jones (2014) here.

Reference now included in relevant location, following on from the sentence just quoted: ‘This data can be applied within an approach analogous to Perovich and Jones (2014), who used aerial photography alongside simple parameterisations for lateral melting and floe fragmentation by waves, assuming the floe size cumulative distribution adopts a power law, to explore whether these processes could result in the observed changes to the FSD.’

- P4L2 - P4L6 «allow time», probably best to say «permit more sensitivity studies». You may also remove the statements about «lends itself to sensitivity. . .»because this is true of any new parameterization with new parameters to tweak.

Text edited accordingly. ‘Lends itself to sensitivity studies’ has been changed to ‘a series of additional experiments are also possible within this framework’.

- P5L4 - Please re-consider using alpha here or later.

Noted and fixed.

- P8L16 - Replace this acronym with a description of the reanalysis product.

Noted and fixed. Line now reads: ‘The mixed layer properties are restored over a timescale of 5 days to a monthly climatology reanalysis at 10 m depth taken from the Ferry et al. (2011) reanalysis dataset.’

- P8L36 - this is the first time «cumulative distribution»is introduced - please outline what the distribution is prior to here.

It has now been made clear in the model description that we are using a number-weighted FSD. Cumulative distributions are also mentioned in the introduction. Nevertheless, ‘as opposed to a cumulative distribution’ has been removed here to avoid confusion.

- P9L6 - «peak melting season»- what time period you are referring to?

Sentence poorly constructed.

This has now been changed to ‘The difference in sea ice area reaches a maximum in August whereas the difference in sea ice volume peaks in September.’

- P9L21 - index these quantities to their definitions in the text.

These quantities have previously been defined in the model description.

A reference to this section has been added into the text.

- P9L25 - do you mean «between Stan-ref and ref?»

Sentence has been updated to remove ambiguities: 'the difference in ice area between stan-fsd and ref'.

- P9L34 - «fractional ice area»! «ice concentration»(throughout)

Noted and fixed.

- P9L36 - The strong restoring and imposed external forcing fields complicate statements like this, I'd consider removing this statement unless you plan to examine the ice flow field.

Agreed; thank you.

'The distribution observed suggests the Beaufort Gyre is redistributing pack ice of higher concentration and volume to more marginal locations. In particular this appears to reverse the reduction in sea ice thickness at the outer edge of the MIZ off the Alaskan coast that is otherwise observed along the rest of the outer MIZ region.' has been removed.

- P10L7 - explain in words what changing the distribution means - how much does the effective floe size drop? Same at L26.

Figures 7 and 8 provide information to show what the mean effective floe size is for each of the simulations presented in this section (noting that this parameter is not fixed either spatially or temporally). It is not possible to give a singular answer of how much the effective floe size will drop as this parameter can vary both spatially and temporally.

We have updated the manuscript to include commentary on how changing the model parameters changes the distribution at the start of section 4.2: 'It is valuable to consider how changes to each FSD parameter is likely to impact the distribution: increasing α increases the number of small floes in the distribution and reduces the number of larger floes; increasing d_{min} removes smaller floes from the distribution entirely, increasing the number of floes across the rest of the distribution; increasing d_{max} adds larger floes to the distribution, reducing the number of floes across the rest of the distribution.'

- P1039 - PL-FSD model?

Apologies; this was an earlier iteration of the name of the WIPoFSD model.

Noted and fixed.

- P11L26 - Why is this parameterization chosen? Perovich and Jones (2014) provide a useful relationship between power law exponent and area, as does Birnbaum and Lupkes (2001).

The parameterisation selected here was chosen to capture the range of exponents seen in observations (c.f. Stern et al., 2018 b), as stated in the manuscript. The relationship between ice

concentration and area described by Perovich and Jones seems to specifically apply to obtaining an estimate of the exponent from observations as it also required an estimate of perimeter density, something that is an emergent property of the FSD in our case and not a variable that evolves independently. We have been unable to find the Birnbaum and Lupkes reference you suggested. There is a paper from the same authors published in 2002, however this does not provide any relationship between power law exponent and area.

- P11L30 - Which effective floe size? Averaged over the Arctic?

This is referring to the effective floe size value averaged over the MIZ and reported in table 3.

Text updated to: 'the mean September effective floe size in the MIZ, as reported in table 3,'.

How is this done? What does «predictor» mean here?

To average effective floe size over the Arctic the average is taken across each grid cell where ice concentration exceeds 15%, with equal weighting given to each grid cell.

The method to take the average is now mentioned in the figure caption to table 3. Sentence edited to remove the word predictor.

- P11L41 «earlier observations»! «the previous result»?

Noted and fixed.

- P12L21 - In general, I do not see how changing the restoring is reflective of memory in the system. You have not presented any evidence as to the magnitude of the restoring response. You could look at seasonal tendencies in l_{eff} which would be far more helpful when analyzing these sensitivity experiments.

The way the model is currently setup, any fragmentation events that happen in the freeze-up season will not impact the model in any meaningful way as l_{max} will be restored to its maximum value before the melting season begins. By reducing the rate of restoring, any fragmentation events that occur during the freeze-up season will still have a residual impact on l_{max} during the subsequent melting season i.e. the system has a stronger 'memory' of fragmentation events. We agree that it is useful to compare how l_{eff} evolves during the season and have included an additional plot to explore this.

Figure 12, as described above, includes the evolution of l_{eff} for the simulation with reduced floe restoring rates. This is discussed in the manuscript (P14L40 – P15L2, P16L30 – P16L32).

- P12L29 - «are uncorrelated parameters»! «may be uncorrelated parameters».

Noted and fixed.

- P12L30 - As before, consider re-defining this term, alpha is already in use.

Noted and fixed.

- P14L1 - «melt potential» is not previously defined.

The melting potential has now been defined in section 2.1 (P5L24 – P5L29).

- P14L1 - which simulation?

The results of this simulation have not been presented here. Note Roach et al. (2018) report a similar result.

(not presented) has been added in brackets after this reference to make it clear this simulation has not been presented.

- P15L32 - «The WIPoFSD»! In the «WIPoFSD model, the FSD»- I know, this is ugly, but you have to!

Noted and fixed.

- Figure 1 - please include some schematic depiction of the axis and its scale (logarithmic or linear).

Noted and fixed.

- Table 3 - Runs are in lowercase, but uppercase in the text.

Noted and fixed.

- Table 3 - why not put in parentheses the percentage change instead of absolute change?

It is useful to be able to compare the changes in adjacent cells i.e. how does the change in lateral melt compare to the change in basal melt for a given simulation. Similarly, to what extent can losses in total ice volume be explained by losses in the MIZ. This is a lot easier to do for absolute values than percentages.

Impact of sea ice floe size distribution on seasonal fragmentation and melt of Arctic sea ice

Adam W. Bateson¹, Daniel L. Feltham¹, David Schröder¹, Lucia Hosekova¹, Jeff K. Ridley², Yevgeny Aksenov³

5 ¹Department of Meteorology, University of Reading, Reading, RG2 7PS, United Kingdom

²Hadley Centre for Climate Prediction and Research, Met Office, Exeter, EX1 3PB, United Kingdom

³National Oceanography Centre Southampton, Southampton, SO14 3ZH, United Kingdom

Correspondence to: Adam W. Bateson (a.w.bateson@pgr.reading.ac.uk)

Abstract. Recent years have seen a rapid reduction in the summer Arctic sea ice extent. To both understand this trend and project the future evolution of the summer Arctic sea ice, a better understanding of the physical processes that drive the seasonal loss of sea ice is required. The marginal ice zone, here defined as regions with between 15 and 80% sea ice cover, is the region separating pack ice from the open ocean. Accurate modelling of this region is important to understand the dominant mechanisms involved in seasonal sea ice loss. Evolution of the marginal ice zone is determined by complex interactions between the atmosphere, sea ice, ocean, and ocean surface waves. Therefore, this region presents a significant modelling challenge. Sea ice floes span a range of sizes but sea ice models within climate-sea-ice models assume they adopt a constant size. Floe size influences the lateral melt rate of sea ice and momentum transfer between atmosphere, sea ice, and ocean, all important processes within the marginal ice zone. In this study, the floe size distribution is represented as a truncated power law defined by ~~three key parameters:~~ a global minimum floe size, global maximum floe size, and power law exponent. We also introduce a new tracer, the local maximum floe size, that varies in response to lateral melting, wave induced break-up, freezing conditions and advection. This distribution is implemented within a sea ice model coupled to a prognostic ocean mixed layer model. We present results to show that the use of a power law ~~derived~~ floe size distribution has a spatially and temporally dependent impact on the sea ice, in particular increasing the role of the marginal ice zone in seasonal sea ice loss. This feature is important in correcting existing biases within sea ice models. In addition, we show a much stronger model sensitivity to floe size distribution parameters than other parameters used to calculate lateral melt, justifying the focus on floe size distribution in model development. We also find that the attenuation rate of waves propagating under the sea ice cover modulates the impact of wave breakup on the floe size distribution. It is finally concluded that the model approach presented here is a flexible tool for assessing the importance of a floe size distribution in the evolution of sea ice and is suitable for applications where a simple but realistic floe size distribution model is required.

1 Introduction

30 Arctic sea ice is an important component of the climate system. The sea ice cover moderates high latitude energy transfers between the ocean and atmosphere (Screen et al., 2013) and generates a positive feedback response to global warming via the albedo feedback mechanism (Dickinson et al., 1987; Winton, 2006, 2013). Accurate representation of the sea ice within climate models can contribute to improved projections of the climate response to present and future forcings (Vihma, 2014). On a more local scale sea ice modelling is necessary to understand how environments within and around the Arctic are likely to develop. This is important for Arctic communities to plan for the future (Laidler et al., 2009), to enable ecologists to identify practical responses to protect vulnerable species that live in the Arctic or seasonally migrate into the region (Hauser et al.,

2017; Post et al., 2009; Regehr et al., 2010), and shipping companies to understand the potential viability of new routes in the next few decades (Aksenov et al., 2017; Ho, 2010; Smith and Stephenson, 2013).

The Arctic is currently in a state of transition (Notz and Stroeve, 2018; Stroeve and Notz, 2018). Multiyear sea ice fraction has decreased by more than 50% with an increasing proportion of the ice cover now seasonal first year ice (Kwok, 2018; Maslanik et al., 2007). First year ice does not have the same surface roughness or the same mechanical or thermophysical (salinity, conductivity, permeability) properties as ice that has developed over multiple years. In particular, first year ice is thinner and weaker (Stroeve et al., 2018) and hence more vulnerable to fracture in response to external stress (Zhang et al., 2012). Similarly the region of the Arctic ~~described~~identified as the marginal ice zone (MIZ), defined here as where the sea ice area fraction~~concentration~~ extends between 15 and 80%, is projected to increase in extent (Aksenov et al., 2017).

10 Modelling the Marginal Ice Zone (MIZ) is a significant challenge due to its complexity; it is a region in which there is strong coupling between the sea ice, ocean and atmosphere (Lee et al., 2012; McPhee et al., 1987). The proximity of the MIZ to the open ocean and incomplete ice coverage means these are regions into which ocean waves can propagate and fracture the ice cover (Liu et al., 1992). ~~Wave intensity and storm frequency are projected to increase, which will strengthen wave-ice interactions (Sepp and Jaagus, 2014).~~Wave intensity and storm frequency are projected to increase, which will strengthen
15 wave-sea ice interactions (Casas-Prat et al., 2018; Day and Hodges, 2018). This continues a trend already observed over the past few decades (Stopa et al., 2016). Such interactions are even more prominent around Antarctica due to the dominance of seasonal sea ice in the region (Parkinson and Cavalieri, 2012) and large and increasing wave fetch (Young et al., 2011).

Floe size is a key parameter in describing the evolution of the MIZ (Rothrock and Thorndike, 1984). As sea ice floes become smaller the available perimeter per unit area of sea ice cover increases, enhancing the lateral melt rate (Steele, 1992). Increased
20 lateral ice melt increases the area of exposed ocean, allowing the input of more heat into the ocean mixed layer from solar insolation. Warming of the upper mixed layer also re-stratifies the ocean. These two processes increase heat available for ice melt through basal and lateral ice melting mechanisms. The former is a well-known mechanism, the albedo feedback (Curry et al., 1995). As ~~more of the ice becomes marginal~~MIZ expands, the lateral ice melting is expected to become an increasingly significant driver of seasonal ice loss.

25 Currently climate models either assume a fixed and constant characteristic floe size (~~calliper~~) across the Arctic cover, for all types of sea ice (Hunke et al., 2015), or they ignore floe size entirely. ~~This assumption both simplifies the model code and reduces computational costs of running the model. However, this~~This approach does not allow for regional or temporal variations in floe size. Multiple sea ice processes depend on floe size. Lateral melt rate is a function of floe size; the melt rate is proportional to the perimeter per unit area of sea ice. A recent study has found that the basal melt rate may also be influenced
30 by floe size (Horvat and Tziperman, 2018). Floe size can also impact the propagation of waves under the sea ice (Boutin et al., 2018; Meylan and Squire, 1994; Squire, 2007). The assumption of a fixed floe size also ~~precludes~~prevents sea ice models from accurately representing the ~~role~~impact of processes ~~within~~on the sea ice evolution that ~~can change~~act via the perturbation of floe size such as lateral melting and wave induced fragmentation of floes. Whilst these assumptions are significant, the use of a variable floe size within models will need to be justified against the increased computational cost. ~~Context dictates the~~The
35 most suitable modelling approach; ~~higher complexity floe size representation~~ will be ~~required~~context dependent; for example, high resolution regional sea ice ~~modelling models would be expected to require a higher complexity of floe size treatment~~ than ~~for~~ large scale climate models.

There have been several observational studies aiming to characterise the floe size distribution (FSD) using techniques including satellite imagery and in-situ studies (Stern et al., 2018a). FSD data is generally fitted to a truncated power law (Rothrock and
40 Thorndike, 1984). Values have been reported for the magnitude of the exponent of this power law ranging from -1.5 to ~~below~~-over 3.5 between different datasets (Stern et al., 2018a). Comparing these observations is complicated by the fact that some studies report a value for the probability distribution of floe size, and some for the cumulative floe size distribution. It has been recently pointed out that if a distribution adopts a truncated power law for a probability distribution, it will have a tailing off

for larger floes when plotted as a cumulative distribution (Stern et al., 2018a). Furthermore, a recent study (Stern et al., 2018b) found evidence to suggest that the exponent of the power law FSD evolves throughout the year and is not fixed. This same study was also able to use two satellite data sets with different resolutions but operating over the same region to show ~~a consistent power law over~~ floes from as small as 10 m and as large as 30,000 m follow power laws. Other studies find different values for these limits, for example Toyota et al. (2016) showed a power law extending to 1 m (using data collected *in situ* from a ship), whereas Hwang et al. (2017) found a tailing off from the power law around 300 – 400 m. As each study operates over a different spatial extent, with a different resolution and different algorithms used to extract the FSD, it is not trivial to identify whether the cut-offs in each scenario are physical or a product of limited resolution or spatial extent. Alternative approaches to a single power law have been proposed including the use of two power laws over different size ranges, with smaller floes found to have a smaller exponent (Steer et al., 2008). The Pareto distribution has also been discussed (Herman, 2010); it is analogous to a power law but with a non-constant exponent. To fully understand and characterise the FSD across the Arctic sea ice good spatial and temporal coverage is required. Novel techniques, particularly those using autonomous platforms and robotic instruments, are enabling increased high-resolution data capture of sea ice and ocean conditions that can be used alongside time series of up to 1m-resolution FSD data obtained through remote sensing to better understand the factors driving FSD evolution (Thomson and Lee, 2017); ~~the collection and output of this data remains in progress. This data could be applied within an approach analogous to Perovich and Jones (2014), who used aerial photography alongside simple parameterisations for lateral melting and floe fragmentation by waves, assuming the floe size cumulative distribution adopts a power law, to explore whether these processes could result in the observed changes to the FSD.~~ There are also efforts to characterise the floe size distribution resulting from individual processes, such as laboratory analogues to the wave ~~breakup~~break-up of ice (Herman et al., 2018). Future Arctic expeditions including “Multidisciplinary drifting Observatory for the Study of Arctic Climate” (MOSAiC, Dethloff et al., 2016), planned to last one year within the central Arctic, should contribute to the existing FSD datasets.

Modelling studies have used contrasting approaches to represent floes as a distribution. A very simple approach is the use of a semi-empirical relationship between floe size and sea ice concentration (Lüpkes et al., 2012; Tsamados et al., 2015). Although this approach involves a simple amendment to the code and has a negligible computational cost, it is unable to respond to fragmentation processes. It will not capture the desired feedbacks during events such as storms that are expected to produce significant fragmentation of the sea ice cover. Furthermore, the parameters used within the relationship were constrained by a set of observations from a specific region and season and might not be applicable across the whole sea ice ~~fraction~~extent and full seasonal cycle.

Extending beyond using this simple dependency of floe size on sea ice concentration, Zhang et al. (2015) introduced a thickness, floe size and enthalpy distribution. This model aims to represent the impacts on floe size of advection, thermodynamic growth, lateral melting, ice ridging and ice fragmentation. However, the impacts of wind, current and wave forcing are represented by an empirically parameterised floe size distribution factor. Bennetts et al. (2017) focus on the incorporation of a physically realistic wave-induced ~~break~~break-up model (Williams et al., 2013a, 2013b). Bennetts et al. (2017) assume that the FSD follows a split power law, with a change in exponent at some critical diameter. The wave component of this model assumes steady-state conditions over a timestep and uses a Bretschneider spectrum defined by a significant wave height and a peak period for computational efficiency and propagates it in the mean wave direction. The propagation directions are calculated from averages of the wave directions entering the neighbouring cells and weighted according to the respective wave energy. The model implementation also assumes floe sizes to be assigned to a minimum representative diameter if ice is too thin and compliant to be broken by waves. A recent study by Boutin et al. (2019) also considers the interactions between

floe size and waves within the MIZ. This study includes a fully coupled ocean surface wave model and is unique in considering the impact of momentum transfer to the sea ice from the waves via the wave radiative stress.

There has also been a significant drive to develop a physically derived prognostic floe size-thickness distribution (Horvat and Tziperman, 2015, 2017; Roach et al., 2018a). A recent approach by Roach et al. (2018a) includes the representation of five processes: new ice formation; welding of floes; lateral growth; lateral melt; and fracture by ocean surface waves. This model has the advantage that it does not involve any assumptions about the form of the distribution. Provided the model incorporates good physical representations of the processes which impact floe size, the model should respond accurately to localised extremes in behaviour (such as the large waves associated with storms), or future changes (e.g. changing wind speeds). It is also possible to model floe evolution at the floe by floe scale, for example Herman (2018) uses a discrete-element model to investigate the wave-induced behaviour of floes. ~~However, these are computationally expensive approaches. This may be acceptable for use within a standalone sea ice model but coupled climate modellers will be reluctant to accept a significant cost without evidence that it has a significant impact on how the sea ice interacts with the climate system.~~

For this study, a single truncated power law will be applied to describe the FSD within a standalone sea ice model coupled to a prognostic mixed layer model, hereafter referred to as the WIPoFSD model (Waves-in-Ice module and Power law Floe Size Distribution model). The distribution is defined by three parameters: d_{min} , global minimum floe size; d_{max} , global maximum floe size and α , the power law exponent. ~~The exponent α , d_{min} and minimum floe size d_{max}~~ are set to fixed values. However, the local maximum floe size, l_{max} , evolves between fixed limits in response to four key processes: wave induced break-up; lateral melting; advection; and a restoring mechanism in freezing conditions. The WIPoFSD model has been selected as it is able to respond to processes that influence floe size without the computational expense of a full prognostic FSD model. The model allows an assessment of how a power law distribution of floes will impact the sea ice cover and by what mechanisms these changes occur. Furthermore, it provides a simple framework to explore the model sensitivity to the three parameters used to define the WIPoFSD. ~~This framework also lends itself to a~~ series of additional experiments are also possible within this framework including imposing a variable exponent, changing the parameters that define the impact of waves on sea ice, and comparing the model sensitivity of the floe size parameters to other parameters that influence the lateral melt rate. A standalone sea ice model has been selected over a coupled approach to limit model complexity so that the physical impacts and feedbacks of imposing the WIPoFSD model can be more easily identified and to ~~allow time for~~ permit more sensitivity studies. ~~This~~ The WIPoFSD model is coupled to a prognostic mixed layer so that mixed layer feedbacks can also be considered.

In this study we present results to understand the thermodynamic response of the sea ice to a power-law derived FSD and the individual impacts of wave-floe size and lateral melting-floe size interactions. Our focus will be on the impact of this FSD on the seasonal sea-ice retreat and variability rather than on longer term changes and trends.

This paper will proceed as follows: Section 2 ~~will describe~~ describes the sea ice model used, ~~with~~ section 2.1 ~~describing~~ describes standard model physics, and ~~sections~~ 2.2 ~~describing~~ outline the new WIPoFSD model ~~used~~. Section 3 describes the modelling methodology used including the forcing data and model domain. Section 4 describes the results of the simulations in three sections: section 4.1 looks at the general impacts of the FSD on the sea ice; section 4.2 explores the model sensitivity to the different FSD parameters; and section 4.3 looks at the model response to a series of perturbations to the model including the wave-in-ice setup, floe shape parameter, lateral melt constants and a variable ~~exponent α~~ . Sections 5 and 6 are the discussion and conclusion sections respectively.

2 Model description

For this study a CPOM (Centre for Polar Observation and Modelling) version of the Los Alamos Sea Ice model v 5.1.2, hereafter referred to as CICE, will be used (Hunke et al., 2015). This is a dynamic and thermodynamic sea ice model designed for inclusion within a climate model. CICE includes a large choice of different physical parameterisations. ~~See, see~~ Hunke et al. (2015) for details. Section 2.1 outlines the features pertinent to this study. Our local version also includes some state-of-

the-art parameterisations not included within the general CICE distribution, ~~which will be also~~ described ~~here in~~ section 2.1. The WIPoFSD model ~~with a waves-in-ice module that we have~~ implemented into standalone CICE is adapted from an implementation developed ~~developed~~ at the National Oceanography Centre of the UK (NOC) as a part of the EU FP7 project ‘~~Ships and waves reaching Polar Regions (SWARP)~~’ within a coupled sea ice-ocean framework, called the NEMO-CICE-
5 Waves-in-Ice (WIM) model (Hosekova et al., 2015; NERSC, 2016) ~~within a coupled CICE-NEMO setup. NEMO, or the Nucleus for European Modelling of the Ocean, is a state-of-the-art ocean model with applications in oceanographic research, operational oceanography, seasonal forecasts, and climate studies (Madee and the NEMO Team, 2016). This approach was originally developed to understand the impact of waves on the MIZ and the upper ocean via the thermodynamic and dynamic response. The model included the wave attenuation and floe breakup model based on the waves ice model from the Nansen~~
10 Environmental and Remote Sensing Center (NERSC) Norway, details are given by. This approach was originally developed to understand the impact of waves on the MIZ and the upper ocean via the thermodynamic and dynamic response with applications for the operational forecasting of the MIZ and large-scale coupled sea ice-ocean global modelling, where assuming a power law is particularly practical. The model includes the wave attenuation and floe break-up model based on the Waves-in-Ice Model from the Nansen Environmental and Remote Sensing Center (NERSC) Norway (Williams et al., 2013a, 2013b).
15 An overview of this scheme is given in section 2.2. Floe size is assumed to follow a single truncated power law within the WIPoFSD model. Three new global parameters and one tracer are required to define this power law. The global parameters are d_{min} , minimum floe size; d_{max} , global maximum floe size and α , the power law exponent. The introduced tracer, l_{max} , or the local maximum floe size, is a function of several processes that change floe size the floe size: lateral melting, wave break-up of sea ice, advection, and freeze-up. We also introduce a new floe size metric l_{eff} to characterise the FSD, the effective
20 floe size. Section 2.3 outlines how the imposed FSD is defined and describes amendments made to model thermodynamics to account for the change in floe size treatment. This section also provides a definition of l_{eff} . Further details about the treatment of floe size and how l_{max} evolves are given in section 2.4. ~~Williams et al. (2013a, 2013b). In addition, the NOC model included the following additional features: (i) a new more efficient upstream advection scheme for wave spectra (instead of the original Lax-Wendroff scheme); (ii) floe size changes due to lateral melting; (iii) floe size advection using a remapping advection scheme following Lipscomb and Hunke (2004); (iv) parameterisations for the sizes of the newly formed ice floes and (v) restoring a multiple slope power law FSD from maximum floe sizes using a Runge-Kutta method. The features relevant to this study are described in more detail in Section 2.2. The above modelling approach was developed with a focus on the operational forecasting of the MIZ and large-scale coupled sea ice-ocean global modelling, where assuming a power law is particularly practical. The focus in this study will be on understanding the thermodynamic response of the sea ice to a power-~~
25 law derived FSD and understand the individual impacts of wave floe size and lateral melting floe size interactions.
30

2.1 Description of Standard Model Physics

Within the CICE v 5.1.2 model we use the incremental remapping advection scheme (Lipscomb and Hunke, 2004), an ice thickness redistribution scheme (Lipscomb et al., 2007), along with 5 ice thickness categories (Hunke et al., 2015). The default elastic-viscous-plastic (EVP) rheology is used (Hunke and Dukowicz, 2002) along with an ice strength formulation (Rothrock,
35 1975). The frictional energy dissipation parameter is set to 12. A topological based melt pond scheme is used (Flocco et al., 2012) in conjunction with a Delta-Eddington radiation scheme (Briegleb and Light, 2007). The atmospheric and oceanic neutral drag coefficients are assumed constant in time and space. An ocean heat flux formulation is used at the ice-ocean interface (Maykut and McPhee, 1995).

The rate of thermodynamic ice loss is calculated as follows (Maykut and Perovich, 1987; Steele, 1992),

$$\frac{d}{dt}(AH) = A \left[w_{top} + w_{bas} + \frac{\pi H}{\alpha_L} w_{lat} \right] \left[w_{top} + w_{bas} + \frac{\pi H}{\alpha_{shape} L} w_{lat} \right], \quad (1)$$

where A refers to the sea ice area concentration, H to the ice thickness, L refers to the floe diameter (300 m in the default set up) and α_{shape} is a geometrical parameter to represent the deviation of floes from having a circular profile (0.66 in the default set up). The terms w_{top} , w_{bas} and w_{lat} refer to the melt rate at the floe upper surface (top melt), base (basal melt) and sides (lateral melt). The lateral melt rate is calculated as follows:

$$w_{lat} = m_1 \Delta T^{m_2}. \quad (2)$$

Here $m_1 = 1.6 \times 10^{-6} \text{ m s}^{-1} \text{ K}^{-m_2}$ and $m_2 = 1.36$ (Perovich, 1983). ΔT is the elevation of the surface water temperature above freezing. The basal and top melt rates are not explicitly calculated, but instead expressed as changes in height derived from a consideration of fluxes over the top and bottom floe surfaces (Hunke et al., 2015). If the sum of the basal and Both lateral melts exceed and basal melting are reliant on there being sufficient heat flux from the ocean to the sea ice to produce the predicted melting. The model calculates a melting potential term, F_{frzmlt} , for the upper ocean layer. If $F_{frzmlt} < 0$ in a grid cell where sea ice is present, lateral and basal melting will occur. F_{frzmlt} is proportional to the difference between the sea surface temperature and sea ice freezing temperature (up to a maximum limit of 1000 Wm^{-2}). If the total heat flux required to produce the calculated basal and lateral melt exceeds the value permitted by the meltmelting potential of the upper ocean layer within a time step, then both values will be reduced proportionally such that the total heat flux required equals F_{frzmlt} . Note that H stays constant with respect to lateral melt, so considered in isolation discarding the w_{top} and w_{bas} terms in Eq. (1) we have an expression for the rate of fractional sea ice area concentration loss via lateral melt,

$$\frac{1}{A} \frac{dA}{dt} = \frac{\pi}{\alpha_L} \frac{\pi}{\alpha_{shape} L} w_{lat}. \quad (3)$$

In these simulations, the default CICE fixed slab ocean mixed layer (ML) is not used, and instead a prognostic mixed layer model is used wherein the temperature, salinity and depth of the layer are all able to evolve with time (Petty et al., 2014). These variables evolve based on surface fluxes and entrainment/detrainment at the base of the ML. The ML entrainment rate is calculated based on the mechanical energy input by wind forcing and surface buoyancy fluxes and profiles of water properties beneath the mixed layer (Kraus and Turner, 1967). This implementation also includes a minimum ML depth, set to 10 m. The prognostic mixed layer model used here cannot capture the full extent of ocean variability, however it is sufficient to represent sea ice-mixed layer feedbacks via the mixed layer properties. Tsamados et al. (2015) have previously compared the performance of the prognostic ML model used here to observations (Peralta-Ferriz and Woodgate, 2015). The mixed layer was found to be generally realistic, though shows a bias towards too shallow mixed layer depths through the melting season.

A number of amendments are made to CICE version 5.1.2 based on recent work by Schröder et al. (2019). The maximum melt water added to melt ponds is reduced from 100 % to 50 %. This produces a more realistic distribution of melt ponds (Rösel et al., 2012). Snow erosion, to account for a redistribution of snow based on wind fields, snow density and surface topography, is parameterised based on Lecomte et al. (2015) with the additional assumptions described by Schröder et al. (2019). The ‘bubbly’ conductivity formulation of Pringle et al. (2007) is also included, which results in larger thermal conductivities for cooler ice.

2.2 Waves-in-ice module

The full details of this module are described in Williams et al. (2013a, 2013b), to which the reader is referred for details; here we provide an overview of the elements pertinent to our study—alongside developments unique to the WIPoFSD model. The waves-in-ice module described here reproduces wave conditions near the sea ice edge within the MIZ. Local wind direction

determines the direction of wave propagation with adjustments made for attenuation imposed by the sea ice cover. This is a compromise dictated by availability of forcing data, lack of observational studies and the course resolution of the CICE model. The ocean surface wave spectra is taken to be given by the 2-parameter Bretschneider formula;

$$S(\omega_m, H_s) = \frac{5}{6} \frac{\omega_m^4}{\omega^5} H_s^2 e^{-\frac{5\omega_m^4}{4\omega^4}} \quad (4)$$

- 5 Here ω is the frequency, ω_m refers to the modal frequency of the wave (both in radians per second), and H_s refers to the significant wave height (in metres). The spectra is broken down into 25 individual frequencies from a minimum wave period of 2.5 s and a maximum of 23 s.

The module operates using its own internal time-step defined by:

$$10 \quad t_{wav} = \frac{c \Delta x_{min}}{c_{g,max}}, \quad (54)$$

where c is the Courant-Friedrichs-Lewy (CFL) condition, here set to 0.7, Δx_{min} is the size of the smallest grid cell, and $c_{g,max}$ is the highest available group velocity. This is necessary due to the high wave-speeds observed in the Arctic. ~~The original paper by (Williams et al., 2013b) provides further discussion of values of the CFL criterion.~~ Over each module time step, the wave field is advected, attenuation of waves is calculated and any ice breaking events are identified. Note also the forcing fields within each module time-step are interpolated between the prior reading and the subsequent reading to ensure smooth variations in the field (note this only applies if the grid cell ~~remain~~remains ice-free over this period).

- 15 We construct the wave energy spectra using H_s , the significant wave height (m), and T_p the peak wave period (s). These parameters are obtained from the ERA-interim reanalysis dataset (Dee et al., 2011). The forcings are updated at 6 hour intervals, but only for locations where the sea ice is at less than 1 % coverage, i.e. grid cells where there will be negligible wave-ice interactions. The ocean surface wave spectra, S ($m^2 s^{-1}$), is then constructed using the 2-parameter Bretschneider formula,

$$20 \quad S_B(\omega, T_p, H_s) = \frac{1.25}{8\pi} \frac{T^5}{T_p^4} H_s^2 e^{-1.25 \left(\frac{T}{T_p}\right)^4} \quad (5)$$

Here ω is the frequency ($rad s^{-1}$). H_s and T_p are used rather than the full wave energy spectra for consistency with Williams et al. (2013a, 2013b).

- 25 Once the wave field S is defined, it needs to be advected into the ice-covered regions. In the first instance this involves defining the directional space of advection. A principal direction is defined as that of the boundary surface stress component of the ocean. This is generally close to the atmospheric wind direction, which should generally be a realistic (potentially less so during storm events; however), sea ice also contributes to the boundary surface stress. The waves are advected in 5 directions spaced equally around the principal direction, with ~~at~~the total angular size of the surface wave spread ~~of $\pm 45^\circ$ equal to 90° .~~ The wave field energy is distributed amongst the bins according to $\frac{2}{\pi} (\cos \Delta\theta)^2$ where $\Delta\theta$ is the deviation from the principal wave direction. The wave energy spectra is then discretised into 25 individual frequencies from a minimum wave period of 2.5 s and a maximum of 23 s. The wave energy spectra is then advected in each defined direction using an upwind advection scheme with each individual spectrum advected separately using its group velocity $c_g(\omega)$. This advection process is necessary because the wave forcing, derived from the ERA reanalysis data, does not cover areas with a sea ice cover. Furthermore, due to ~~diserepancies~~differences between the modelled sea ice ~~extent between the modeled~~ge and observations, there can exist ice-free regions within the model for which no wave forcing data is available ~~either~~.

- 35 Next, ~~the attenuation of the wave cover over each wave timestep is calculated. This will be calculated for each individual wave~~The decision to use the ocean surface stress to define the primary direction of wave propagation rather than the Stokes drift direction was made because the Stokes drift direction data was not available within the sea ice field at the time of model development. The use of ocean surface stress will be sensible for wind-driven seas, but not for swell-driven seas where the

Stokes drift is a more appropriate choice. Stopa et al. (2016) discuss wave climate in the Arctic between 1992 and 2014 and they find that regions exposed to the North Atlantic wave climate will be strongly influenced by swells generated within the North Atlantic Ocean. Semi-enclosed and isolated seas e.g. Laptev, Kara are more event driven and have an equal mix of wind driven and swell driven waves. The results presented in this study should therefore be considered in the context that the direction of wave propagation is a significant approximation. Furthermore, we are only able to represent the impacts of waves generated externally to the sea ice cover within this setup. The choice of surface wave spread is also non-trivial. Wadhams et al. (2002) showed that a wave propagating into the MIZ could experience significant wave spreading until it was essentially isotropic. However, a distinction was found between wind seas where the isotropic state could be achieved within a few km and swell seas where spreading occurs much more slowly, if at all. Wave spreading has been shown to be dependent on the wavelength. Montiel et al. (2016) found that shorter wavelengths experienced spreading and longer wavelengths did not with a transition between these two regimes defined by the maximum floe size. This is consistent with the observed behaviour of wave driven regimens and swell driven regimes. Using a fixed surface wave spread across a limited number of categories is a significant simplification of the rather complex spreading behaviour of waves, however it represents a balance between short wave periods that quickly achieve an isotropic state and longer wave periods that propagate much further into the MIZ before they experience significant spreading.

After advection, the attenuation of waves over each wave timestep is calculated. This will be calculated for each individual wave energy spectrum:

$$S_{at}(\omega) = S(\omega)e^{-\alpha_{dim}c_g(\omega)t_{wav}}, \quad (6)$$

where S_{at} is the wave spectrum after attenuation, α_{dim} is the dimensional attenuation coefficient, t_{wav} is the module timestep, and other variables are as previously defined. α_{dim} is a function of mean floe size, sea ice concentration, ice thickness and wave period (as described in Williams et al., 2013a, 2013b). The value of α_{dim} is obtained from interpolation coefficients which include both scattering and damping components, as described by Robinson and Palmer (1990). At the end of each time-step, the significant wave height and peak wave period are calculated for each grid cell where these values cannot be defined or interpolated from the forcing fields. This is achieved through integration of the wave spectra advected into each grid cell is the wave spectrum after attenuation ($\text{m}^2 \text{s}^{-1}$). α_{dim} is the dimensional attenuation coefficient (m^{-1}), t_{wav} is the module timestep (s), and other variables are as previously defined. α_{dim} can also be described as the rate of exponential attenuation per metre. It is here modelled as a sum of the linear wave scattering at floe edges in addition to a viscosity term. It is also updated discontinuously when the wave energy is large enough to cause ice breakage. α_{dim} effectively becomes a function of mean floe size, sea ice concentration, ice thickness and wave period (see Williams et al., 2013a, for further details).

The model assumes that ice breaking events occur when the breaking strain amplitude E_s exceeds the breaking strain ϵ_c . More specifically breaking events happen when the following condition is fulfilled:

After attenuation, the wave energy spectra within each grid cell is reconstructed as a discretised function of ω by summing the advected spectra from each of the 5 incident directions. The final spectra, $S(\omega)$, can then be advected using the process described above for subsequent time steps. If we assume that the sea surface elevation follows a Gaussian distribution i.e. non-linear affects that can cause asymmetry are neglected, we can calculate the following properties of interest from the wave energy spectra: the mean square surface elevation of the ocean, $\langle \eta^2 \rangle$; the mean square surface elevation of the sea ice, $\langle \eta_{ice}^2 \rangle$; the mean square strain for the sea ice (modelled as a thin elastic plate), $\langle \epsilon^2 \rangle$; and the representative wave period, T_w . Each of these metrics requires the computation of integrals over frequency, here approximated using Simpson's rule (see Williams et al., 2013a, for further details). H_s , a model output, can be calculated as $4\sqrt{\langle \eta^2 \rangle}$ (World Meteorological Organization, 1998).

The floe fragmentation scheme used is identical to Williams et al. (2013a), which should be referred to for a detailed description of the scheme. An overview of this scheme is presented here. Ice breaking events occur when the probability that the breaking strain amplitude, E_s , exceeds the breaking strain, ϵ_c , becomes larger than a critical probability, P_{crit} :

$$P(E_s > \varepsilon_c) = e^{-\frac{2\varepsilon_c^2}{E_s^2}} > P_{crit}. \quad (7)$$

We assume that the spectrum is narrow enough to be considered monochromatic. In this case $P_{crit} = e^{-1}$ and the criterion reduces to $E_s > \varepsilon_c \sqrt{2}$. E_s is defined as $2\sqrt{\langle \varepsilon^2 \rangle}$, i.e. twice the standard deviation in strain. ε_c is calculated as $\frac{\sigma_c}{Y^*}$, where σ_c is the flexural strength and Y^* the effective Young's modulus for the sea ice. σ_c and Y^* are calculated using empirically derived expressions, where both are dependent on the brine volume fraction.

T_W is used to calculate the representative wavelength, λ_W , required to update the FSD after a wave fragmentation event (see section 2.4 for details on how the FSD is changed). λ_W is calculated as $\frac{2\pi}{k_W}$, where $k_W = k_{ice} \left(\frac{2\pi}{T_W} \right)$. Here $k_{ice}(\omega)$ is the positive real root of the dispersion equation for a section of ice-covered ocean.

breaking events occur when the probability that the breaking strain amplitude, E_s , exceeds the breaking strain, ε_c , becomes larger than a critical probability, P_{crit} . Note that ε_c is a function of ice properties including floe size and mean ice thickness. See Williams et al. (2013a, 2013b) for further details on these parameters and how they are calculated.

2.3 Floe size distribution model

We employ a number-weighted FSD, $N(x)$, where x is the floe diameter. $N(x)$ is fitted to a truncated power law FSD, as shown in fig. 1. It is described by the following equation:

$$N(x | d_{min} \leq x \leq l_{max}) = Cx^{-\alpha}. \quad (8)$$

Where N has units m^{-1} , d_{min} and l_{max} have units m , and α is unitless. l_{max} is the local maximum floe size, also in m . The parameters can be defined independently for each grid cell, however in this study d_{min} and α will be fixed across the ice cover within an individual simulation, such that only l_{max} will vary in response to processes which would be expected to change the floe size. The maximum value of l_{max} is an additional constant labelled d_{max} . The constant C is defined based on the constraint imposed by total sea ice area: l_{max} is allowed to vary between d_{min} and d_{max} , the global minimum and maximum floe sizes respectively. The model is initiated with $l_{max} = d_{max}$ in all grid cells where sea ice is present. The constant C is a normalisation constant to ensure that the total area of individual floes, $N \alpha_{shape} x^2$, sum to equal the total sea ice area, Al^2 (where l^2 is the total grid cell area):

$$\frac{\pi}{A} \int_{d_{min}}^{l_{max}} N x^2 dx = 1 \implies \frac{\alpha_{shape}}{Al^2} \int_{d_{min}}^{l_{max}} N x^2 dx = 1. \quad (9)$$

In our model there are four ways in which this distribution can be perturbed: lateral melt; break up of floes by ocean waves; advection of floes; and restoring due to freezing. As lateral melt involves the loss of ice volume from the sides of floes, it can be expected to reduce floe size. This can be represented in the model as follows:

$$l_{max} = l_{max} \sqrt{1 - \frac{1}{A} \frac{dA}{dt}}. \quad (10)$$

The expression for fractional melt rate It should be noted this treatment of N means that all the sea ice in each grid cell must consist of floes between d_{min} and l_{max} in diameter, with no floes with sizes outside these limits.

It is now amended useful here to

define an additional $\frac{1}{A} \frac{dA}{dt}$

$$\frac{\pi}{\alpha l_{eff}} W_{lat}, \quad (11)$$

where l_{eff} , representing a constant floe size, has been replaced by parameter, l_{eff} , the effective floe size of the distribution. This parameter is defined in section 2.4. A floe breaking event is initiated when the conditions described in section 2.2 are fulfilled. The following amendment is applied to l_{max} :

$$l_{max} \rightarrow \max\left(d_{frag}, \frac{\lambda}{2}\right), \quad (12)$$

Where λ is the wavelength corresponding to the wave spectrum which caused the breakup.

The maximum floe size is transported using the horizontal remapping scheme with a conservative transport equation, the standard within CICE for ice area tracers (Hunke et al., 2015). An amendment to the usual scheme involves calculating a weighted average of the l_{max} over ice thickness categories post advection and subsequent mechanical redistribution. This is necessary as the parameter is not defined independently for each thickness category unlike other tracer fields.

During conditions when the model identifies frazil ice growth, it is assumed floes begin to grow. This is represented in the FSD model by the following amendment to l_{max} :

$$l_{max} \rightarrow \min\left(d_{max}, l_{max} + \frac{d_{max}\Delta t}{T_{rel}}\right), \quad (13)$$

where T_{rel} is a relaxation time which relates to how quickly the ice floes would be expected to grow to cover the entire grid cell area. It is set to 10 days as standard. Note this is a restoring approach as opposed to a physically derived parameterisation. Since the power law is the cumulative outcome of all the mechanical and thermodynamic processes that influence the FSD, some of the impact of an individual process will be tied up within the imposed power law itself.

2.4 Effective floe size

The updated lateral melt parameterisation introduced l_{eff} , the effective floe size. The effective floe size, l_{eff} is defined as the floe size of a distribution of identical floes that would produce the same lateral melt rate in a given instant to a distribution of non-uniform floes, when under the same conditions with the same total ice cover. Equation (3), used to calculate the lateral melt rate, can be adapted for use within the WIPoFSD model. The lateral melt rate of a given area of sea ice is proportional to the total perimeter of that sea ice. It is hence useful to introduce a second parameter called perimeter density, ρ_p , which is the length of the ice edge per unit area of sea ice cover. The effective floe size is hence the constant floe size which produces the same ρ_p as an FSD.

$$\frac{1}{A} \frac{dA}{dt} = \frac{\pi}{\alpha_{shape} l_{eff}} w_{lat}. \quad (10)$$

The lateral melt rate of a given area of sea ice is proportional to the total perimeter of that sea ice. It is therefore also useful to introduce a second parameter called perimeter density, ρ_p , which is the length of the ice edge per unit area of sea ice cover.

l_{eff} is hence the constant floe size which produces the same ρ_p as an FSD.

First, Eq. (8) and Eq. (9) can be used to give an expression for the total sea ice area, AI^2 :

$$AI^2 = \int_{d_{min}}^{l_{max}} \alpha_{shape} x^2 * C x^{-\alpha} dx. \quad (11)$$

First consider a probability distribution of form $Cx^{-\alpha}$. The total area of the FSD must equal to the total sea ice area i.e.

$$\varphi I^2 = \int_{d_{min}}^{l_{max}} \frac{1}{4} \pi x^2 * C x^{-\alpha} dx, \quad (14)$$

where φI^2 refers to the total sea ice area within a grid cell (φ is the fractional ice coverage and I^2 is the total grid cell size), and the right hand side expresses the integral of each individual floe size category in the FSD multiplied by the total ice area.

We can then produce a similar expression to the integral above, but this time to find the total ice edge length, P , within a grid cell. The total ice edge length, P_{fsd} , within a grid cell, can also be expressed in terms of the WIPoFSD parameters:

$$P_{fsd} = \int_{d_{min}}^{l_{max}} \pi x * C x^{-\alpha} dx. \quad (15)$$

We can then divide the second expression by the first to ~~get~~ $\rho_p^{f_{sd}}$, which is $P_{f_{sd}}$ divided by the total ice area in the grid cell, $\varphi A l^2$:

$$\begin{aligned}\rho_p^{f_{sd}} &= \frac{P_{f_{sd}}}{\varphi l^2 A l^2} \\ &= \frac{4(3-\alpha)[l_{max}^{2-\alpha} - d_{min}^{2-\alpha}]}{(2-\alpha)[l_{max}^{3-\alpha} - d_{min}^{3-\alpha}]} \frac{\pi(3-\alpha)[l_{max}^{2-\alpha} - d_{min}^{2-\alpha}]}{\alpha_{shape}(2-\alpha)[l_{max}^{3-\alpha} - d_{min}^{3-\alpha}]}\end{aligned}$$

- 5 ~~The floe shape parameter to account for deviations of floes from circular behaviour has been omitted from these expressions for clarity. This term appears as a factor in both the perimeter and area expressions and will therefore cancel out.~~ Whilst perimeter density has not been a standard parameter to report from observations, it can be easily calculated from available FSD data. A similar value has been reported by Perovich (2002), though this was reported per unit area of domain size (i.e. ocean plus sea ice area). We can then also define ρ_p^{con} , the perimeter density for a distribution of floes of constant size, using an
- 10 analogous approach:

$$\begin{aligned}\rho_p^{con} &= \frac{P_{con}}{\varphi l^2} \\ &= \frac{4}{\alpha_{con} l} \quad (17) \frac{P_{con}}{A l^2} \\ &= \frac{\pi}{\alpha_{shape} L}; \quad (14)\end{aligned}$$

~~$\alpha_{con} l$~~ corresponds to the constant floe size, hence for the 300 m case we would get a perimeter density of ~~0.0130159~~ m^{-1} .

- 15 ~~Hence, setting~~ Setting the perimeter density expressions for both a constant floe size and power law FSD to be equal, and noting that this defines $L = l_{eff}$, we obtain:

$$l_{eff} = \frac{(2-\alpha)[l_{max}^{3-\alpha} - d_{min}^{3-\alpha}]}{(3-\alpha)[l_{max}^{2-\alpha} - d_{min}^{2-\alpha}]} \quad (15)$$

Note that equations (13) and (15) are not valid where $\alpha = 2$ or 3 . For these cases, α is taken to be 2.001 and 3.001 to maintain code simplicity with only a negligible cost to accuracy.

20 2.4 Processes that impact l_{max}

In our model there are four ways in which the floe size distribution can be perturbed: lateral melt; break-up of floes by ocean waves; advection of floes; and restoring due to freezing. These all act by perturbing l_{max} . It is important to note that changes in l_{max} impact the entire FSD because C , the normalisation constant, is a function of l_{max} , as defined in Eq. (9). Processes that change the total sea ice concentration, such as lateral melting, also change C . This is because C is calculated to ensure

25 the FSD is normalised to be consistent with the total sea ice surface area.

As lateral melt involves the loss of ice volume from the sides of floes, it can be expected to reduce floe size. To represent this in the model, we assume the reduction in l_{max}^2 from lateral melting is proportional to the reduction in A , the sea ice concentration, from lateral melting:

$$\left(\frac{l_{max,final}}{l_{max,initial}}\right)^2 = \frac{A_{final}}{A_{initial}} \quad (16)$$

- 30 This parameterisation is not supposed to represent the impact of lateral melting specifically on a floe of size l_{max} , rather it aims to represent changes in l_{eff} resulting from reductions in N across all floe sizes. If we then express A_{final} in terms of $A_{initial}$ and ΔA_{lm} , the reduction in sea ice concentration from lateral melting, we obtain:

$$l_{max,final} = l_{max,initial} \sqrt{1 - \frac{\Delta A_{lm}}{A}} \quad (17)$$

Section 2.4 outlines the conditions necessary to trigger the break-up of floes by waves. If these conditions are fulfilled, l_{max} is updated according to the following expression:

$$l_{max} = \max\left(d_{min}, \frac{\lambda_w}{2}\right), \quad (18)$$

where λ_w is the representative wavelength, as defined in section 2.2.

- 5 l_{max} is transported using the horizontal remapping scheme with a conservative transport equation, the standard within CICE for ice area tracers (Hunke et al., 2015). l_{max} can be treated as an area tracer here as it is a property assigned to areas of sea ice and should not be considered a property specific to any individual floe. Hence the use of the CICE ice area advection scheme is appropriate in this case. An amendment to the usual scheme involves calculating a weighted average of the l_{max} over ice thickness categories after advection and the subsequent mechanical redistribution. This is necessary as the parameter
- 10 is not defined independently for each thickness category unlike other tracer fields. During conditions when the model identifies frazil ice growth, l_{max} is restored to its maximum value according to the following expression:

$$l_{max,final} = \min\left(d_{max}, l_{max,initial} + \frac{d_{max}\Delta t}{T_{rel}}\right), \quad (19)$$

where T_{rel} is a relaxation time which relates to how quickly the ice floes would be expected to grow to cover the entire grid

- 15 cell area. It is set to 10 days as standard. ~~$d_{con} = l_{off}$, we obtain:~~

~~$$l_{off} = \frac{(2 - \alpha)[l_{max}^2 - d_{min}^2]}{(3 - \alpha)[l_{max}^2 - d_{min}^2]}, \quad (18)$$~~

In grid cells that transition from being ice free to having a sea ice cover, the maximum floe size is initiated with its minimum value i.e. d_{min} .

3 Methodology

- 20 Our modified version of CICE is run over a pan-Arctic domain with a 1° tripolar (129 x 104) grid. The surface forcing is derived from the 6 hourly NCEP-2 reanalysis fields (Kanamitsu et al., 2002). ~~The parameters that define the ocean spectra, i.e. H_s and T_p (the peak wave period used to calculate ω_m), are obtained from the ERA interim reanalysis dataset (Dee et al., 2011). The forcings are updated at 6 hour intervals, but only for locations where the sea ice is at less than 1% coverage i.e. grid cells where there will be negligible wave ice interactions.~~
- 25 The mixed layer properties are restored over a timescale of 5 days to a monthly climatology reanalysis at 10 m depth taken from ~~MYO WP4 PUMGLOBAL REANALYSIS PHYS 001-004~~ a global ocean physical reanalysis product (Ferry et al., 2011). This restoring is needed to effectively represent advection within the mixed layer. The deep ocean post detrainment retains the mixed layer properties, however it is restored over a timescale of 90 days to the winter climatology (herein meaning the mean of January 1st conditions from 1993-2010) from the MYO reanalysis.
- 30 All simulations are spun-up between 1st January 1990 and 31st December ~~2006~~2004 using the standard setup described in section 2.1 with a constant floe size of 300 m: ~~(without the WIPoFSD model included)~~. Simulations are initiated ~~for on~~ the 1st January 2005 using the output of the spin-up and evaluated for 12 years until 31st December 2016. ~~Results are all taken from the period 2007 – 2016 to allow 2 years for the model to adjust to the addition of the WIPoFSD model.~~ A reference run is also evaluated over this period using the standard setup ~~described in section 2.1 with~~and a 300 m constant floe size. Figure 2 shows
- 35 this model simulates the climatological monthly sea ice extent realistically for this period. All further simulations are evaluated over the same time period using the same initial model state, however with the WIPoFSD model imposed. Some simulations have additional modifications made to the model as described.

4. Results

Results are presented for the pan-Arctic domain with a focus on the melting season. All plots compare the mean behaviour over 10 years from 2007 to 2016 against the reference simulation, referred to as *ref*, which uses a constant floe size of 300 m. The results for 2005 and 2006 are discarded to allow two years for the model to adjust to the imposed FSD. In this study we are trying to understand the impact of the FSD and associated processes on the seasonal sea ice loss. 2007 – 2016 has been selected as the baseline for these simulations as it will capture the current climatology of the Arctic, including the record September minimum sea ice extent observed in 2012.

4.1 General impact of an imposed distribution

The WIPoFSD model ~~requires the introduction of~~introduces new parameters: ~~the minimum and maximum floe size allowed and the exponent of the power law distribution that can be constrained through observations.~~ Stern et al. (2018b) were recently able to show a region of floe sizes ~~adopting a power law with a singular exponent could be described by power laws over a size range~~ from 10 to 30,000 m. This is the largest range of floe sizes that a truncated power law has produced a good fit to, hence these are set as the standard values for ~~the floe size limits~~ d_{min} and d_{max} in this study. ~~For the exponent α~~ collated analysis of observations (Stern et al., 2018a) shows ~~a range of power laws adopted between~~ ~~that α can adopt values generally ranging from 1.6 to 3.5~~ ~~to 1.6 for~~ ~~(when the FSD is reported as a probability distribution~~ ~~(as opposed to a cumulative distribution).~~). A standard exponent value of $\alpha = -2.5$ is adopted as an intermediate value over this range, noting in addition that this value is consistent with the ranges reported by Stern et al. (2018b). The simulation using these standard FSD parameters, $\alpha = -2.5$, $d_{min} = 10\text{ m}$, $d_{max} = 30,000\text{ m}$, will be referred *stan-fsd* (see table 2).

Figure 3 displays the percentage difference in sea ice extent and volume for *stan-fsd* compared to *ref*. In addition, it shows the spread of twice the standard deviation of these simulations as a measure of the interannual variability. The impact on the pan-Arctic scale is small with sea ice extent and volume reductions of up to 1.2 %. The difference in sea ice area ~~is more sensitive to melting reaches a maximum in the early season, however~~ August whereas the difference in sea ice volume ~~shows a much stronger response peaks in the peak melting season~~ September. The differences in both extent and volume evolve over an annual cycle, with minimum differences of -0.1 % and -0.2 % observed respectively between December to January for ice area and April to May for volume. The annual cycles correspond with periods of melting and freeze-up and is a product of the nature of the imposed FSD. The interannual variability shows that the impact of the WIPoFSD model with standard parameters varies significantly depending on the year. In some years the difference between the *stan-fsd* and *ref* set-ups can be negligible, in other years it can be up to 2 %. Lateral melt rates are a function of floe size but freeze-up rates are not and hence model differences only increase during periods of melting and not during periods of freeze-up. The difference in sea ice extent reduces rapidly during the freeze-up conditions; this is a consequence of the fact this lateral freeze-up behaviour is predominantly driven by ocean surface properties, which are strongly coupled to atmospheric conditions in areas of low sea ice extent. In comparison, whilst atmospheric conditions initiate the vertical sea ice growth, this atmosphere-ocean coupling is rapidly lost due to insulation of the warmer ocean from the cooler atmosphere once sea ice extends across the horizontal plane. Hence a residual difference in sea ice thickness and therefore volume propagates throughout the winter season. The difference in sea ice extent shows an additional trough in June. This feature is something also seen consistently within the data for individual years and can most likely be attributed to particular weather patterns that occur during the spring season.

Figure 4 shows the absolute difference in the mean cumulative annual melt components between the two simulations. The plot shows lateral, basal, top and total melt: (as defined in section 2.1). A large increase can be seen in the lateral melt, however the change in total melt is negligible. This is because the lateral melt increase is largely compensated by a reduction in basal melt. The top melt also shows a negligible change. The plot also shows the change in basal melt in *stan-fsd* only accounting for the loss of basal surface area available for melting. This was calculated by multiplying the ~~reduction~~ difference in ice area ~~in stand~~ between *stan-fsd* from and *ref* by the basal melt rate in *ref*. The agreement (to within one standard deviation) between

this synthetic reduction in basal melt and the actual reduction in basal melt suggests that the loss of ice area by lateral melt is sufficient to explain most of the basal melt compensation effect.

Figure 5 explores the spatial distribution in the changes in ice extent and volume for three months over the melting season, March, June and September. Data is shown only for regions where the sea ice cover exceeds 5 % of the total grid cell. These

5 results show the differences increase in magnitude through the melting season. Although the pan-Arctic differences in extent and volume are marginal, Fig. 5 shows distinct regional variations in sea ice area and thickness metrics. Reductions in the ~~fractional~~ sea ice ~~area~~ concentration and thickness are seen both within and beyond the MIZ with reductions of up to 0.1 and 50 cm observed respectively in September. Within the pack ice, increases in the ~~fractional~~ sea ice ~~area~~ concentration of up to 0.05 and ice thickness of up to 10 cm can be seen. In September the biggest increases in thickness are directed along the North
10 American coast, particularly within the Beaufort Sea. ~~The distribution observed suggests the Beaufort Gyre is redistributing pack ice of higher concentration and volume to more marginal locations. In particular this appears to reverse the reduction in sea ice thickness at the outer edge of the MIZ off the Alaskan coast that is otherwise observed along the rest of the outer MIZ region.~~ To understand the non-uniform spatial impacts of the FSD, it is useful to look at the behaviour of ~~the effective floe size~~ l_{eff} . Regions with an ~~effective floe size~~ l_{eff} greater than 300 m will experience less lateral melt than the equivalent
15 location in *ref* (all other things being equal) whereas locations with an ~~effective floe size~~ l_{eff} below 300 m will experience more lateral melt. The distribution of ~~this parameter~~ l_{eff} is shown in Fig. 5 where in general ~~it transitions we see a transition~~ from larger floes to smaller floes moving from the pack ice into the MIZ, with the transition to ~~floes~~ l_{eff} of a size less than 300 m observed within the MIZ. Most of the sea ice area must therefore experience less lateral melting compared to *ref*. This result shows that the increase in lateral melt observed in Fig. 4 is ~~very~~ localised to regions where the ~~sea ice area~~
20 ~~fraction~~ concentration is around 50% or below.

4.2 Exploration of the parameter space

It has been previously discussed that the floe size parameters used within the WIPoFSD model are poorly constrained by observations. In this section experiments are performed using different permutations of these parameters to assess model sensitivity to the form of the FSD. ~~It is valuable to consider how changes to each FSD parameter is likely to impact the~~
25 ~~distribution: increasing the magnitude of α increases the number of small floes in the distribution and reduces the number of larger floes; increasing d_{min} removes smaller floes from the distribution entirely, increasing the number of floes across the rest of the distribution; increasing d_{max} adds larger floes to the distribution, reducing the number of floes across the rest of the distribution.~~

For the first study the ~~exponent~~ α is ~~reduced~~ changed from -2.5 to -3.5, previously identified as the most ~~negative~~ extreme value
30 within a reasonable observed range for the power law exponent. This simulation will be referred to as (A). Figure 6 is analogous to Fig. 4, comparing the component and total melt evolution for an FSD with an ~~exponent of $\alpha \equiv 3.5$~~ compared to one with an ~~exponent of $\alpha \equiv 2.5$~~ (with ~~a range of $10d_{min}$ and d_{max} set to 30,000 m for both standard values~~). The plot shows an increase in the cumulative lateral melt, as seen before for *stan-fsd* compared to *ref*. Now, however, the basal melt is less effective at compensating ~~this~~ the lateral melt resulting in a significant increase in the total melt. There is also now a non-negligible
35 reduction in the top melt, with the interannual variability showing the increase in total melt and reduction in top melt is consistently produced for each year of the simulations. ~~There is a small reduction mid annual cycle in the~~ The difference in cumulative total melt, ~~however, implying the model with a higher exponent has~~ reaches a maximum in August and ~~subsequently decreases slightly. This suggests that increasing the magnitude of α results in~~ an earlier melting season and a correspondingly reduced melt in the late season. The predicted change in basal melt based on the reduced sea ice area is ~~one~~
40 again plotted and it is able to account for 90% of the actual reduction in basal melt. This is in contrast to Fig. 4, where the predicted reduction in basal melt was ~~slightly~~ too high compared to the simulated reduction. The interannual variability shows that this underprediction of the reduction in basal melt is consistent throughout individual years. This implies the presence of

additional mechanisms such as albedo and other mixed layer feedbacks causing non-negligible changes in the basal melt rate, however reduction in the ~~sea ice area fraction is concentration remains~~ the leading order impact. Figure 7 shows difference map plots between the two simulations. The ice area and thickness are reduced across the sea ice cover with reductions of over 5 % and 0.5 m respectively, seen in particular locations during September. However, even in March, after the freeze-up period, reductions of 0.1 m or more in sea ice thickness can be seen within the ice pack. The response of sea ice can once again be understood through the behaviour of the ~~effective floe size. Now this value~~ l_{eff} is below 30 m across the entire ice cover throughout all three months studied, leading to increased lateral melt rates across the sea ice.

A further 17 sensitivity studies using different permutations of the parameters have been completed. These are formed by varying the three key defining parameters of the FSD shown in Fig. 1. We selected values of -2, -2.5, -3 and -3.5 for the ~~exponent~~ α , 1 m, 20 m and 50 m for the ~~minimum floe size~~ d_{min} and 1000 m, 10,000 m, 30,000 m and 50,000 m for the ~~maximum floe size~~ d_{max} . These values were chosen to span the general range of values reported in studies. 14 of the 17 additional permutations are generated by selecting all the different ~~exponent minimum~~ α - d_{min} permutations (except the two already investigated). Each of these simulations has ~~a maximum floe size of~~ $d_{max} \equiv 30000$ m. The further three simulations vary the ~~maximum floe size~~ d_{max} with the ~~exponent~~ α and ~~minimum~~ d_{min} fixed to -2.5 and 10 m respectively. Figure 8 shows the change in mean September sea ice extent and volume relative to *ref* plotted against mean annual ~~effective floe size~~ l_{eff} , ~~averaged over the sea ice extent~~. The impacts range from a small increase in extent and volume to large reductions of -22 % and -55 % respectively, even within the parameter space defined by observations. Furthermore, there is almost a one-to-one mapping between mean ~~effective floe size~~ l_{eff} and extent and volume reduction. This suggests ~~effective floe size~~ l_{eff} is a useful diagnostic tool to predict the impact of a given set of floe size parameters. The system varies most in response to the changes in the ~~exponent~~ α , but it is also particularly sensitive to the ~~minimum floe size~~ d_{min} .

4.3 Sensitivity runs to explore specific model components and additional relevant parameters

A series of sensitivity studies have been performed to explore the behaviour of the ~~PL-FSD~~ WIPoFSD model and understand how it interacts with other model components. Table 1 defines the important parameters considered in this section and Table 2 provides a summary of the sensitivity experiments performed. The first two entries in table 2 (*stan-fsd*) and (*ref*) refer to a standard setup using the standard FSD parameters described above and a constant floe size of 300 m respectively. Studies (A) – (C) are a selection of the simulations described in section 3.4.2 to allow a comparison between model sensitivity to the parameters that define the FSD and model sensitivity to other relevant parameters and components within the WIPoFSD model. In the following section a bracketed letter will follow descriptions of sensitivity studies, which corresponds to the letter assigned in table 2.

Table 3 reports key metrics for the sensitivity studies described in table 2, plus a selection of the different sensitivity studies described in section 4.2. For each experiment the September sea ice extent and volume size are reported for both the full sea ice extent and MIZ only (taken as a mean between 2007 – 2016), with the MIZ defined here as regions with between 15 and 80% sea ice cover. In addition, the mean cumulative ~~component~~ lateral, basal, top and total ~~melt up~~ melts until September is reported in each case, and the September mean ~~effective floe size~~ l_{eff} and mean sea ice perimeter per m² of ocean area are both reported ~~for~~ averaged over the MIZ. For each value reported (except for the ~~effective floe size~~ l_{eff}) the difference from *stan-fsd* is also stated. Cells highlighted in yellow and orange deviate by one and two standard deviation(s) respectively from the *stan-fsd* mean value (the standard deviation is calculated from the set of 10 annual values for each metric).

4.3.1 Imposing a variable exponent on the floe size distribution

The ~~formshape~~ of the FSD ~~between its limiting values~~ is defined by ~~the exponent~~, α . Recent evidence suggests this may not be constant in time or space (Stern et al., 2018b). We have investigated the impact of this behaviour through the use of two alternative modelling approaches. The first approach imposes a sinusoidal annual cycle on ~~the exponent~~ α (D):

$$\alpha = -2.35 + 5 \quad -0.45 \cos \frac{2\pi(d-100)}{d_{ann}}. \quad (1920)$$

Here d refers to the current day of the year (for example 45 would refer to 14th February) and d_{ann} is the total number of days in the year (here taken to be 365). This curve was selected as a reasonable fit to the observations of Stern et al. (2018b), though it should be noted that these observations were taken from the Beaufort and Chukchi seas so should not be assumed to be representative of the entire Arctic Ocean.

10 The second sensitivity experiment assumes that ~~the exponent~~ α is a function of ~~fractional sea ice area concentration~~, A (E). This is derived from the observation that ~~the exponent becomes more negative~~ α ~~increases in magnitude~~ as the melting season advances and ~~moving towards~~ locations of lower ~~sea ice cover concentration~~:

$$\alpha = -4 + 15 \quad + -2.1A. \quad (2021)$$

The limits were selected to try and capture the variability of the exponent seen within observations.

The results in table 3 shows imposing the time-varying ~~exponent~~ α (D) has a very small impact on the sea ice cover, whereas the spatial-varying ~~exponent~~ α (E) causes a moderate reduction in September ice extent and volume of about 3 % and 5 % respectively. It is worth noting that the ~~effective floe size is a very poor predictor in these cases of mean l_{eff} over the MIZ~~

20 ~~does not correlate well with~~ the size of the response of the system ~~in these cases~~ compared to ~~cases~~ simulations with a fixed ~~exponent~~ α , with ~~the effective floe size within the MIZ l_{eff} being~~ much higher than expected given the size of the sea ice extent and volume reduction. The value of the ~~mean MIZ sea ice perimeter averaged over the MIZ~~ is more consistent with the observed changes in sea ice extent and volume, particularly for experiment (E). This shows that it is useful to have multiple approaches to collapsing the FSD into a representative value. Whilst map plots of ~~effective floe size l_{eff}~~ can be very useful for

25 understanding the regional impacts of an FSD, as in Fig. 5, the mean value can be misleading. Figures 9 and 10 shows how ~~the exponent~~ α and ~~the resultant effective floe size l_{eff}~~ respectively evolve in these two simulations ~~for averaged over~~ both the overall ~~sea ice cover and the MIZ~~. The region spanned by twice the standard deviation of individual years within the simulation is also shown. Whilst ~~the effective floe size l_{eff}~~ in both regions behaves in corresponding ways for the simulation with a time-varying ~~exponent~~ α (D), experiment (E) shows the mean ~~exponent~~ α and hence ~~effective floe size l_{eff} within the MIZ~~ is small

30 and approximately constant throughout the year ~~within the MIZ~~, despite the overall ~~sea ice pack showing strong seasonal variability for these quantities~~. ~~This corresponds with earlier observations During the peak melting period between May and August the mean l_{eff} is lower for experiment (D) within the pack ice and experiment (E) within the MIZ. Given the much stronger changes seen for experiment (E) compared to experiment (D) relative to stan-fsd, this supports previous findings~~ that the ~~response impact~~ of the ~~WIPoFSD~~ model is ~~particularly primarily~~ dependent on the behaviour of the FSD ~~model~~ within the

35 MIZ. (D) shows the strongest interannual variation in ~~effective floe size l_{eff}~~ between March and May, whereas for (E) it is strongest in the peak melting season between July and August. Figure 10 also includes the annual evolution of ~~effective floe size l_{eff}~~ for the ~~fsd-stan~~ simulation. Unlike (D) and (E), ~~fsd-stan~~ shows no strong annual oscillation in the ~~effective floe size l_{eff}~~ across the overall pack ice.

4.3.2 Other parameters affecting the floe size distribution

40 The two processes currently represented in the model ~~which that~~ actively reduce floe size are lateral melting and wave induced fragmentation of floes. Two simulations are undertaken where either waves are no longer able to influence floe size (F) or

lateral melting is no longer allowed to influence floe size (G). An additional three simulations are performed to focus on how waves may be influencing sea ice via reductions in floe size: the incident significant wave height at the point of entering the sea ice cover is increased by a factor of 10 (H); the floe breaking strain is reduced by a factor of 10 (I); and the wave attenuation coefficients under the sea ice are reduced by a factor of 10 (J).

5 The results in table 3 show that the wave- l_{max} interaction is more important than the lateral melt- l_{max} interaction in driving the increase in lateral melt observed by imposing the standard FSD. Study (F), where waves no longer break-up floes, shows a 3 % increase in MIZ volume compared to *stan-fsd*, whereas study (G), where floes do not change size as a result of lateral melt, shows an increase in MIZ volume of less than 1 %. For the three simulations performed to explore the behaviour of the wave advection model, i.e. (H), (I) and (J), the strongest response is produced by reducing the wave attenuation rate of the model (J). The weakest response is produced by increasing the ice vulnerability to wave fracture (I). Figure 11 shows difference plots of fractional sea ice area concentration and effective floe size between *stan-fsd* and (J), where the attenuation rate of waves under sea ice is reduced. The plots show a reduction in the fractional sea ice area concentration of around 1 % across the MIZ throughout the year for (J). This can be attributed to the reduction of the effective floe size l_{eff} in the same region by magnitudes of greater than 100 m. ~~The impact can be seen within the MIZ throughout the year, even prior to the melting season in March.~~

15 The floe restoring rate is the parameter, T_{rel} , used in Eq. (4219). As a standard it is set to 10 days, however this value is not well constrained. This effectively means the maximum floe size restores rapidly during freezing conditions, and hence the FSD is effectively initiated in each melting season with no memory of the previous year. There is not enough evidence available to either validate or invalidate the assumption that the FSD retains no memory of the previous melting or freeze-up season. An experiment (K) has been performed where T_{rel} is increased from 10 days to 365 days to explore the impact of inter-seasonal memory retention within the FSD model. The results in table 3 show that, whilst this change to the model did reduce the effective floe size l_{eff} and increase the mean MIZ perimeter density metrics by significant amounts, it did not produce a significant change in either the melt components or sea ice extent and volume.

25 In Figure 12 we show the evolution of simulations *stan-fsd*, (F) and (K) over 2015 averaged over selected grid cells. 2015 has been chosen as a representative year over the 2007 – 2016 period. There are two subplots: the first gives l_{eff} averaged over grid cells with a sea ice concentration within the MIZ on the 31st August 2015, selected as the approximate date of the 2015 minimum sea ice extent in simulations. This set of grid cells is chosen to capture grid cells that are marginal for at least some of the year without also becoming ice free, which would create an artificial seasonal cycle in l_{eff} . For the second subplot, the same set is further constrained to grid cells with between 15% and 30% sea ice concentration on the 31st August 2015. Figure 5 shows that significant reductions in l_{eff} are generally seen at the outer edge of the sea ice extent, so further restricting the maximum sea ice concentration in this way will capture this region. The significant reduction of l_{eff} by up to 120 m between (K) and *stan-fsd* in August and September shows that the wave break-up of floes is a significant component of both the floe size reduction and the subsequent reduction in sea ice concentration seen in Fig. 5 for these locations. The difference between (K) and the maximum possible l_{eff} , of just over 540 m, during the melting season primarily captures the impact of lateral melting on floe size as floe restoring will not be active during this period. We see a reduction of up to 50 m for the more marginal set of grid cells, so whilst not insignificant, the impact is a factor of around 3 – 4 times lower than the wave fragmentation in these regions. This suggests that mechanical break-up of floes is a necessary precondition for the lateral melting feedback on floe size to become significant. This effect will not be as strong for other selections of FSD parameters, particular those where l_{eff} is below 50 m even when $l_{max} = d_{max}$. For these simulations we expect the much larger increase in lateral melt, as seen in Fig. 6, to produce a stronger lateral melt impact on the FSD. For (K), where l_{max} restoring rates during freezing conditions are reduced, l_{eff} is significantly lower throughout the year including during the melting season.

~~*l_{eff}* varies between 360 m – 480 m for the full MIZ grid cell selection, significantly reduced from the 450 m – 540 m seen for the *stan-fsd* simulation. We also see a well-defined seasonal cycle, unlike with *stan-fsd*.~~

4.3.3 Lateral melt parameters

The first order impact of introducing a variable floe size is on the lateral melt volume. Equation 1 shows the lateral melt volume is calculated from several parameters beyond just floe diameter, L , including lateral melt rate, w_{lat} , and floe shape, ~~α~~ ~~α_{shape}~~ . α_{shape} is currently fixed to a constant value, 0.66. There has been significantly less interest in characterising how the shape of floes ~~might vary~~ and to characterise a floe shape distribution, particularly given available evidence suggesting floe size and shape ~~are~~ ~~may be~~ uncorrelated parameters (Gherardi and Lagomarsino, 2015). Two sensitivity studies are performed: one with ~~α_{shape}~~ reduced to 0.44 (L), corresponding to 3:1 rectangular floes or similar distortions from a perfect circle; ~~and~~ one with ~~α_{shape}~~ increased to 0.79, corresponding to approximately circular floes (M). w_{lat} is a function of two parameters, m_1 and m_2 (see Eq. 2). These parameters have been estimated from observations and hence are subject to uncertainty. Experiments are undertaken with either both m_1 and m_2 reduced by 10% (N) or both increased by 10% (O). A reduction in these parameters reduces the lateral melt rate and an increase, the converse.

Table 3 shows that all four of these sensitivity studies did not produce a large model response in terms of the overall sea ice extent and volume. Reducing the floe shape parameter (L) produced the strongest response in the lateral melt volume, and more generally the model metrics were more sensitive to ~~the shape factor, α~~ ~~α_{shape}~~ than the melt coefficients, m_1 and m_2 . The much stronger model sensitivity to the floe size parameters justifies the focus on floe size as the main uncertainty in lateral melt volume calculation.

4.3.4 Minimum mixed layer depth

The minimum ocean mixed layer depth is a constant within the prognostic mixed layer model required to prevent the mixed layer depths reaching unrealistically small values. As a standard it is set to 10 m. The depth of the mixed layer is important for the strength of mixed layer feedbacks, with a deeper mixed layer acting to damp any feedbacks via mixed layer properties. These feedbacks include the albedo feedback mechanism and the negative feedback of increased lateral and basal melts (meltwater perturbs the mixed layer properties towards less favourable melting conditions). Sensitivity studies are performed with both the minimum mixed layer depth reduced to 7 m (P) and increased to 20 m (Q).

The challenge with this ~~particular~~ set of experiments is that, unlike the other sensitivity studies presented here, it ~~doesn't only~~ ~~affects to influence the evolution of the sea ice both~~ via changes in the lateral melt ~~but will~~ ~~and~~ also ~~impact~~ ~~via~~ the basal melt ~~rate~~ and sea ice freeze-up rates, determined by ocean properties. Experiment (P) shows a small increase in the total sea ice extent and volume, and (Q) a small decrease, however both result in larger increases in the MIZ extent and volume. In comparison to other sensitivity studies, the changes in the lateral and basal melt are small, suggesting that mixed layer feedbacks do not have a significant role in the impacts of the FSD found in *stan-fsd* compared to *ref*. It should be noted, however, that the evidence presented here is not enough to rule out the existence of multiple compensating feedback processes.

5. Discussion

~~The WIPoFSD model, based on a truncated power law, has been implemented into the CPOM version of CICE 5.1.2 coupled to a prognostic mixed layer (CICE ML model). This model assumes a fixed minimum floe size and power law exponent, but the maximum floe size evolves with respect to wave breakup (using a waves in ice module derived from Williams et al., 2013a, 2013b) and lateral melting. During freezing periods, the floe size is restored to its maximum value. All simulations in this study use a 15 year spin up from 1990 to 2004 using the CICE ML model with a constant floe size of 300 m. All experiments with the imposed WIPoFSD model are then performed from 2005 to 2016 using the output of the spin up (*stan*~~

fsd), with the results from 2005 and 2006 discarded to allow the model to adjust to the new components. A reference case is also evaluated over the same time period using a constant floe size of 300 m (*ref*). A series of studies have been performed; one set exploring the parameter space constrained by observations, and one set consisting of a series of sensitivity studies to different model components and parameterisations related to the WIPoFSD model. Results showed that the imposition of the WIPoFSD with standard parameters, selected using the observations from Stern et al. (2018a, 2018b), leads to a large increase in lateral melt, however this is compensated by a reduction in the basal melt, resulting in a negligible change in the total melt. Much stronger model response was found by varying the WIPoFSD parameters to the extremes of observed ranges, in particular the minimum floe size and exponent, with extent reductions over 20 % and volume reductions of over 50 % in September compared to *ref* for the most extreme case.

We present here a series of simulations and additional sensitivity studies completed with the newly developed WIPoFSD model to explore the impacts of a variable power law derived floe size distribution model on the Arctic sea ice. It is useful to consider the physical mechanisms that drive the simulation results. It was previously noted that the increase in lateral melt observed when imposing the WIPoFSD model was compensated by a loss in basal melt, resulting in a more moderate increase in the total melt. Within the model there are three possible mechanisms causing the limited basal melt. Firstly, the increase in lateral melt will correspond to a reduction in available ice area for basal melting. It is shown in Fig. 4 and Fig. 6 that this mechanism is able to explain most of the reduction in basal melt, but the difference remains large enough that further mechanisms need to be considered. The second mechanism concerns available ocean heat. Within each timestep, the total basal melt and lateral melt is compared to the melting potential heat content within of the upper ocean layer to see if. If there is sufficient heat energy available to produce the required amount of melt. If this test is failed, the basal and lateral melt are reduced by a factor according to the available melt large enough increase in the lateral melt to result in insufficient melting potential-, both the lateral and basal melt will be reduced proportionally, as described in section 2.1. A simulation (not presented) to explore this impact shows it has only a limited impact on the basal melt, and not enough to explain the observed compensation effect. The third mechanism concerns lateral melt feedback on the basal melt rate via the perturbation of mixed layer properties. Higher freshwater release from the increase in lateral melt will lower the temperature and salinity of the ocean mixed layer, which will reduce the basal melt rate. However, the lateral melt increase also reduces the fractional-ice area concentration, lowering the albedo of the ice-ocean system. This increases the absorption of shortwave solar radiation into the mixed layer, raising the temperature of the mixed layer i.e. it has the opposite effect of the increased freshwater input. These two competing feedbacks explain the overprediction of basal melt in Fig. 4 but underprediction of basal melt in Fig. 6. The increase in total melt observed in Fig. 6 will likely correspond to a more efficient use of the available melt potential and the aforementioned albedo-feedback mechanism. The interaction between the mixed layer and FSD is further explored through the (P) and (Q) sensitivity studies where the minimum mixed layer depth was reduced and increased respectively. These studies provide further evidence that mixed layer feedbacks are not a leading order effect on the impacts of the FSD, given the very small perturbations of the melt component from the *stan-fsd* simulation. Larger changes are seen for the sea ice extent and volume metrics. However, the same mixed layer feedbacks that influence change the melt rates can also independently influence the freeze-up rate of sea ice, hence it is not possible to directly attribute these changes produced by varying the minimum mixed layer depths specifically to WIPoFSD impacts related feedbacks. It should also be noted that the prognostic mixed layer model used here provides a limited representation of sea ice-ocean interactions and feedbacks. The strength of these interactions may increase within a fully coupled sea ice-ocean model (Rynders, 2017)(Rynders, 2017).

The series of sensitivity studies to both the floe size parameters and other aspects of the WIPoFSD model are useful to understand the limitations of the model. An important result is the limited sensitivity of the model to the m_1 , m_2 , and α_{shape} parameters, i.e. experiments (L) – (O), with significant perturbations of these parameters reducing the sea ice extent by around 1 % or less. These are additional constants needed to calculate the lateral melt rate beyond floe size, if. If a strong sensitivity was found to these parameters, it would imply suggest that imposing a floe size distribution was introducing

~~unnecessary complexity into these should be considered as alternative targets rather than the parameterisation where some other component was dominating the uncertainty within this parameterisation. This justifies FSD for future model development. Instead, these experiments support the focus on floe size as opposed to the other components of the primary uncertainty in lateral melt calculation. Experiment (K) showed very little model response to increasing the floe freeze-up timescale, T_{rel} , from 10 to 365 days. This result suggests that the use of more physically derived parameterisations of the floe growth during freezing conditions (e.g. Roach et al., 2018b) would not have a significant impact within the model framework presented here. However, Fig. 12 shows that the seasonal l_{eff} evolution is dependent on the floe restoring rate and there may be specific events, such as strong winter break-up events, where accurate modelling of floe growth is important to then understand the sea ice evolution during the subsequent melting season.~~

The sensitivity studies also give insight into the impact of waves on the sea ice cover. In particular, the two sensitivity studies that switch off the lateral melt-floe size l_{max} (G) and wave-floe size l_{max} (F) feedback mechanisms respectively showed that the latter ~~was more important for~~ had a stronger influence on both the observed evolution of l_{eff} and the changes in sea ice area and extent when imposing the WIPoFSD with standard parameters. This impact was enhanced through various perturbations to the wave model. The increase in significant wave height (H) and reduction in ice strength (I) are representative of future Arctic conditions when the sea ice is expected to be thinner (Aksenov et al., 2017) with storms of increasing strength and duration (Basu et al., 2018). The results presented here suggest that these changes will have only a limited impact on sea ice extent and volume via the floe size feedback mechanism. The strongest response in sea ice extent and volume was observed with a reduction in the attenuation rate (J). ~~Modelling It is important to note that the attenuation rate is a function of floe size, with smaller floes driving stronger attenuation. This creates a feedback where the fragmentation caused by one wave changes the way subsequent waves propagate through the MIZ. It should be noted that the wave component of the WIPoFSD model is a simplified representation of waves propagating into sea ice and involves a number of approximations. In particular, the directional behaviour of the waves will be more suitable for wind waves than swell waves. As discussed in section 2.2, swell waves have been observed to have longer wavelengths and reduced attenuation rates suggesting they would interact differently with the FSD than wind waves. More generally, modelling the propagation and energy loss of waves as they travel under sea ice is a complex problem and an area of active research (Meylan et al., 2017), and there are recent efforts to produce coupled wave-sea ice models (Herman, 2017); (Boutin et al., 2019; Herman, 2017). However, any increase in complexity in modelling the waves will result in increased computational cost. Further observations about wave attenuation in sea ice are needed to judge the complexity of the model approach required to produce sufficient accuracy.~~

As stated above, the model shows a strong sensitivity to the floe size parameters with some selections of the WIPoFSD parameters showing moderate increases in the sea ice extent and volume, and other selections driving reductions of these values by over 50 % in September. The limited observational data available to constrain the selected parameters is ~~therefore~~ a significant challenge of this modelling approach. Furthermore, a not insignificant model response of order 5% relative to ref has been observed to sensitivity experiment (E) performed here to explore the impacts of the non-uniform ~~exponent observed by Stern et al. (2018a). The WIPoFSD model used here assumes a truncated power law distribution with a fixed exponent, minimum floe size and global maximum floe size. Each grid cell has a locally defined grid cell α .~~ Sensitivity experiments (D) and (E) were performed on the basis of evidence from Stern et al. (2018 a & b) that α is not a fixed value and instead evolves spatially and temporally. Whilst it would be interesting to explore the impact of a variable d_{min} , especially considering the strong sensitivity of the model response to this parameter, we do not have an analogous set of observations focusing on how d_{min} may vary in space and time.

The WIPoFSD model used here assumes a truncated power law distribution with α , d_{min} and d_{max} all fixed at constant values. Each grid cell has a locally defined maximum floe size, l_{max} , which is perturbed in response to wave break-up events, lateral melt, and freezing conditions. The prognostic model approach used by Roach et al. (2018a) would avoid making such strong assumptions about the form of the FSD ~~and~~. It provides a more flexible framework to understand the factors that determine

these different floe size parameters and why ~~floe size~~the FSD tends to ~~adopt~~follow a power law. For example, it can be used to understand what factors may drive intra-annual changes in the ~~exponent~~ α , something not possible in the framework described here as ~~the exponent~~ α is prescribed. However, new physical parametrisations will introduce new constants that will have to be constrained from observations. Furthermore, given the large knowledge gaps regarding processes that impact floe size, a ~~model that can easily be constrained by observations i.e. more prescribed modelling approach i.e.~~ the WIPoFSD model, may be the preferred approach for more general applications. This will be particularly true if upcoming studies, including MOSAiC, provide further observational evidence to support the use of a power law and provide data to better constrain the WIPoFSD parameters. In addition, the identification of ~~the effective floe size~~ l_{eff} as a useful floe size parameter may provide a method to report useful FSD information over a larger spatial and temporal scale, as this value can be calculated from the ice perimeter length within a unit area and avoids the need to report a full distribution. This would allow an assessment of the regional, intra-annual and inter-annual variability of the FSD and identify the FSD parameters and components that best reproduce these desired features. ~~There have been recent efforts to develop techniques to obtain a representative floe size metric from satellite imagery over large spatial and temporal scales, though so far these techniques have only been demonstrated at low resolution (Horvat et al., 2019).~~

~~One of the key impacts of the use of an WIPoFSD was the non-uniform impact on the ice cover, with an enhancement in lateral melt and reduction in ice volume within the MIZ, as shown in Fig. 5.~~ The reference simulation (*ref*) used ~~here currently in this study~~ underpredicts summer sea ice concentration in the pack ice but overpredicts the concentration at the sea ice edge, consistent with other studies that use the CICE sea ice model (such as Schröder et al., 2019). An analysis of the historically forced simulations used within phase 5 of the Coupled Model Intercomparison Project (CMIP5) found that coupled models consistently performed poorly in capturing the regional variation in sea ice concentration, showing this problem ~~isn't~~is not specific to CPOM CICE simulations (Ivanova et al., 2016). This suggests that models currently underestimate the role of the MIZ in driving the seasonal sea ice loss, ~~and one of the observed features of the imposed.~~ The WIPoFSD model is ~~the~~shown ~~here to have a non-uniform impact on the sea ice cover, with an~~ enhancement ~~of~~in lateral melt ~~in this region and a corresponding reduction in sea ice concentration within the MIZ, as shown in Fig. 5.~~ Whilst the changes are generally small, it shows that the use of an FSD model, either in the described form or otherwise, may be an important step towards improving the accuracy of sea ice models.

6. Conclusion

Climate model representations of sea ice currently assume that the size of floes that make up the sea ice is constant; however, observations show that floes adopt a distribution of sizes. A truncated power law generally produces a good fit to observations of the floe size distribution (FSD), though the size range and exponent reported for this distribution can vary significantly between different studies. A power law derived FSD model including a waves-in-ice module (WIPoFSD) has been ~~imposed~~incorporated into the Los Alamos sea ice model coupled to a prognostic mixed layer model, CICE-ML. ~~The~~In the WIPoFSD model, the FSD is defined by ~~the~~a minimum floe size, maximum floe size and exponent. In this model the maximum floe size varies in response to lateral melting, wave ~~breakup~~break-up events and freezing conditions. The minimum floe size and exponent are fixed alongside a global maximum floe size parameter. A standard set of parameters for the WIPoFSD model is identified from observations and the results of a sea ice simulation using these parameters is compared to one with a constant floe size of 300 m. Inclusion of the WIPoFSD model within CICE-ML results in increased lateral melt compensated by reductions in basal melt, resulting in only moderate impacts on the total melt. The primary mechanism by which the increased lateral melt reduces the basal melt is shown to be the reduction in available ice area for basal melt. The impact is not spatially homogeneous, with losses in sea ice area and volume dominating in the marginal ice zone (MIZ). These impacts partially correct existing model biases in the standalone CICE-ML model, suggesting the inclusion of an FSD is an important step forward in ensuring that models can produce realistic simulations of the Arctic sea ice.

A series of sensitivity experiments explore the limitations of the model. The model does show a strong response to a reduction in wave attenuation rate, suggesting this is an important component in understanding wave-sea ice interactions. Different selections of parameters for the ~~WIPoFSD~~FSD show a large ~~variability in their response~~impact on the modelled sea ice state, with some showing a moderate increase in mean September sea ice extent and volume, with others reducing these metrics by over 20 and 50 % respectively. A newly defined parameter, effective floe size, is found to be a good predictor of model response for simulations where the minimum floe size and power law exponent are fixed. The impact of a non-uniform exponent was also explored based on observations that these parameters evolve for a given region of sea ice. Results suggest that this parameter could further enhance the differential behaviour seen between pack ice and the MIZ in response to the imposition of an FSD. These sensitivity studies also showed that the choice of WIPoFSD parameters are a source of much larger model uncertainty ~~to the model~~ than other constants used within the lateral melt parameterisation, justifying the focus on developing an FSD model as a priority for improved accuracy of sea ice modelling.

Whilst the model presented here does make a major assumption that the floe size distribution adopts a power law, this is consistent with the majority of observations. Furthermore, it has been shown that the model can be easily modified to adapt to additional findings such as the inclusion of a non-uniform exponent. This means the WIPoFSD model is a useful tool for assessing the importance of the FSD in the evolution of sea ice, particularly the seasonal retreat. Its simplicity also means it is a useful candidate as a modelling approach to represent the FSD in climate models, where there is an important balance to be maintained between physical fidelity and computational expense. Whilst the model is currently limited by too little observational data to constrain the FSD parameters, planned studies such a MOSAiC should enable much stronger constraints to be placed on these parameters.

Data Availability

~~TBC~~

Model output used in this manuscript is publicly available via the University of Reading research data archive (<http://dx.doi.org/10.17864/1947.223>). Please contact the corresponding author to discuss access to the code.

Author Contributions

LH, with support from YA, developed the original version of the WIPoFSD model with a coupled CICE-NEMO framework. DS adapted the model into the CPOM CICE standalone setup. AB further developed the WIPoFSD model and completed the simulations and analysis under the supervision of DF, DS, LH, JR and YA. DS provided additional technical support. AB composed the paper with feedback and contributions from all authors.

Competing interests

The authors declare that they have no conflict of interest.

Acknowledgements

AB is funded through a NERC industrial CASE studentship with the UK Met Office, reference NE/M009637/1. The contributions of DF and DS were supported by NERC grant, number NE/R016690/. JR is supported by the Joint UK BEIS/Defra Met Office Hadley Centre Climate Programme (GA01 101). LH and YA acknowledge support from European Union Seventh Framework Programme SWARP (Grant agreement 607476). YA was also supported by “Towards a marginal Arctic sea ice cover” NE/R000654/1. LH and YA would also like to express gratitude towards Dr Timothy D. Williams (Nansen Environmental and Remote Sensing Center, NERSC, Norway), Prof. Dany Dumont (Institut des sciences de la mer de Rimouski, Québec, Canada), and Prof. Vernon A. Squire (University of Otago, New Zealand) for their kind advice on ice-waves interaction. Dr Stefanie Rynders (National Oceanography Centre, Southampton) should also receive credit for also

contributing to the development of the WIPoFSD model within the coupled CICE-NEMO framework alongside LH and YA. Coupled CICE-NEMO simulations were performed on the ARCHER UK National Supercomputing Service (<http://www.archer.ac.uk>). [We would also like to thank the Isaac Newton Institute for Mathematical Sciences for support and hospitality during the 'Mathematics of Sea Ice Phenomena' programme when work on this paper was undertaken.](#)

5 References

- Aksenov, Y., Popova, E. E., Yool, A., Nurser, A. J. G., Williams, T. D., Bertino, L. and Bergh, J.: On the future navigability of Arctic sea routes: High-resolution projections of the Arctic Ocean and sea ice, *Mar. Policy*, doi:10.1016/j.marpol.2015.12.027, 2017.
- Basu, S., Zhang, X. and Wang, Z.: Eurasian Winter Storm Activity at the End of the Century: A CMIP5 Multi-model Ensemble Projection, *Earth's Futur.*, 6(1), 61–70, doi:10.1002/2017EF000670, 2018.
- Bennetts, L. G., O'Farrell, S. and Uotila, P.: Brief communication: Impacts of ocean-wave-induced breakup of Antarctic sea ice via thermodynamics in a stand-alone version of the CICE sea-ice model, *Cryosphere*, doi:10.5194/tc-11-1035-2017, 2017.
- Boutin, G., Arduin, F., Dumont, D., Sévigny, C., Girard-Arduin, F. and Accensi, M.: Floe Size Effect on Wave-Ice Interactions: Possible Effects, Implementation in Wave Model, and Evaluation, *J. Geophys. Res. Ocean.*, 123(7), 4779–4805, doi:10.1029/2017JC013622, 2018.
- [Boutin, G., Lique, C., Arduin, F., Rousset, C., Talandier, C., Accensi, M. and Girard-Arduin, F.: Toward a coupled model to investigate wave-sea ice interactions in the Arctic marginal ice zone, *Cryosph. Discuss.*, \(May\), 1–39, doi:10.5194/tc-2019-92, 2019.](#)
- Briegleb, B. P. and Light, B.: A Delta-Eddington Multiple Scattering Parameterization For Solar Radiation In The Sea Ice Component Of The Community Climate System Model, NCAR Tech. Note, doi:10.5065/D6B27S71, 2007.
- [Casas-Prat, M., Wang, X. L. and Swart, N.: CMIP5-based global wave climate projections including the entire Arctic Ocean. *Ocean Model.*, doi:10.1016/j.ocemod.2017.12.003, 2018.](#)
- Curry, J. A., Schramm, J. L. and Ebert, E. E.: Sea ice-albedo climate feedback mechanism, *J. Clim.*, doi:10.1175/1520-0442(1995)008<0240:SIACFM>2.0.CO;2, 1995.
- [Day, J. J. and Hodges, K. I.: Growing Land-Sea Temperature Contrast and the Intensification of Arctic Cyclones, *Geophys. Res. Lett.*, doi:10.1029/2018GL077587, 2018.](#)
- Dee, D. P., Uppala, S. M., Simmons, A. J., Berrisford, P., Poli, P., Kobayashi, S., Andrae, U., Balmaseda, M. A., Balsamo, G., Bauer, P., Bechtold, P., Beljaars, A. C. M., van de Berg, L., Bidlot, J., Bormann, N., Delsol, C., Dragani, R., Fuentes, M., Geer, A. J., Haimberger, L., Healy, S. B., Hersbach, H., Hólm, E. V., Isaksen, L., Kållberg, P., Köhler, M., Matricardi, M., McNally, A. P., Monge-Sanz, B. M., Morcrette, J. J., Park, B. K., Peubey, C., de Rosnay, P., Tavalato, C., Thépaut, J. N. and Vitart, F.: The ERA-Interim reanalysis: Configuration and performance of the data assimilation system, *Q. J. R. Meteorol. Soc.*, 137(656), 553–597, doi:10.1002/qj.828, 2011.
- Dethloff, K., Rex, M. and Shupe, M.: Multidisciplinary Drifting Observatory for the Study of Arctic Climate (MOSAIC), in *EGU General Assembly Conference Abstracts*, vol. 18., 2016.
- Dickinson, R. E., Meehl, G. A. and Washington, W. M.: Ice-albedo feedback in a CO₂-doubling simulation, *Clim. Change*, 10(3), 241–248, doi:10.1007/BF00143904, 1987.
- Ferry, N., Masina, S., Storto, A., Haines, K., Valdivieso, M., Barnier, B. and Molines, J.-M.: Product user manual global-reanalysis-phys-001-004-a and b, *myocean.*, Tech. rep., 2011.
- Flocco, D., Schroeder, D., Feltham, D. L. and Hunke, E. C.: Impact of melt ponds on Arctic sea ice simulations from 1990 to 2007, *J. Geophys. Res. Ocean.*, doi:10.1029/2012JC008195, 2012.
- Gherardi, M. and Lagomarsino, M. C.: Characterizing the size and shape of sea ice floes, *Sci. Rep.*, 5, 1–11,

- doi:10.1038/srep10226, 2015.
- Hauser, D. D. W., Laidre, K. L., Stafford, K. M., Stern, H. L., Suydam, R. S. and Richard, P. R.: Decadal shifts in autumn migration timing by Pacific Arctic beluga whales are related to delayed annual sea ice formation, *Glob. Chang. Biol.*, doi:10.1111/gcb.13564, 2017.
- 5 Herman, A.: Sea-ice floe-size distribution in the context of spontaneous scaling emergence in stochastic systems, *Phys. Rev. E - Stat. Nonlinear, Soft Matter Phys.*, 81(6), 1–5, doi:10.1103/PhysRevE.81.066123, 2010.
- Herman, A.: Wave-induced stress and breaking of sea ice in a coupled hydrodynamic discrete-element wave-ice model, *Cryosphere*, doi:10.5194/tc-11-2711-2017, 2017.
- Herman, A.: Wave-Induced Surge Motion and Collisions of Sea Ice Floes: Finite-Floe-Size Effects, *J. Geophys. Res. Ocean.*,
10 doi:10.1029/2018JC014500, 2018.
- Herman, A., Evers, K. U. and Reimer, N.: Floe-size distributions in laboratory ice broken by waves, *Cryosphere*, doi:10.5194/tc-12-685-2018, 2018.
- Ho, J.: The implications of Arctic sea ice decline on shipping, *Mar. Policy*, 34(3), 713–715, doi:10.1016/j.marpol.2009.10.009, 2010.
- 15 Horvat, C. and Tziperman, E.: A prognostic model of the sea-ice floe size and thickness distribution, *Cryosphere*, 9(6), 2119–2134, doi:10.5194/tc-9-2119-2015, 2015.
- Horvat, C. and Tziperman, E.: The evolution of scaling laws in the sea ice floe size distribution, *J. Geophys. Res. Ocean.*, doi:10.1002/2016JC012573, 2017.
- Horvat, C. and Tziperman, E.: Understanding Melting due to Ocean Eddy Heat Fluxes at the Edge of Sea-Ice Floes, *Geophys. Res. Lett.*, doi:10.1029/2018GL079363, 2018.
- 20 [Horvat, C., Roach, L., Tilling, R., Bitz, C., Fox-Kemper, B., Guider, C., Hill, K., Ridout, A. and Sheperd, A.: Estimating The Sea Ice Floe Size Distribution Using Satellite Altimetry: Theory, Climatology, and Model Comparison, *Cryosph. Discuss.*, \(June\), 1–25, doi:10.5194/tc-2019-134, 2019.](#)
- Hosekova, L., Aksenov, Y., Coward, A., Williams, T., Bertino, L. and Nurser, A. J. G.: Modelling Sea Ice and Surface Wave
25 Interactions in Polar Regions, in *AGU Fall Meeting Abstracts*, ppp. GC34A--06, San Francisco., 2015.
- Hunke, E. and Dukowicz, J.: The elastic-viscous-plastic sea ice dynamics model in general orthogonal curvilinear coordinates on a sphere-incorporation of metric terms, *D R A F T Oct.*, doi:10.1175/1520-0493(2002)130<1848:TEVPSI>2.0.CO;2, 2002.
- Hunke, E. C., Lipscomb, W. H., Turner, A. K., Jeffery, N. and Elliott, S.: CICE : the Los Alamos Sea Ice Model Documentation and Software User ' s Manual LA-CC-06-012, , 115, 2015.
- 30 Hwang, B., Wilkinson, J., Maksym, E., Graber, H. C., Schweiger, A., Horvat, C., Perovich, D. K., Arntsen, A. E., Stanton, T. P., Ren, J. and Wadhams, P.: Winter-to-summer transition of Arctic sea ice breakup and floe size distribution in the Beaufort Sea, *Elem Sci Anth*, 5(0), 40, doi:10.1525/elementa.232, 2017.
- Ivanova, D. P., Gleckler, P. J., Taylor, K. E., Durack, P. J. and Marvel, K. D.: Moving beyond the total sea ice extent in gauging model biases, *J. Clim.*, doi:10.1175/JCLI-D-16-0026.1, 2016.
- 35 Kanamitsu, M., Ebisuzaki, W., Woollen, J., Yang, S. K., Hnilo, J. J., Fiorino, M. and Potter, G. L.: NCEP-DOE AMIP-II reanalysis (R-2), *Bull. Am. Meteorol. Soc.*, doi:10.1175/BAMS-83-11-1631(2002)083<1631:NAR>2.3.CO;2, 2002.
- Kraus, E. B. and Turner, J. S.: A one-dimensional model of the seasonal thermocline II. The general theory and its consequences, *Tellus*, doi:10.3402/tellusa.v19i1.9753, 1967.
- Kwok, R.: Arctic sea ice thickness, volume, and multiyear ice coverage: Losses and coupled variability (1958-2018), *Environ. Res. Lett.*, doi:10.1088/1748-9326/aae3ec, 2018.
- 40 Laidler, G. J., Ford, J. D., Gough, W. A., Ikummaq, T., Gagnon, A. S., Kowal, S., Qrunnut, K. and Irgaut, C.: Travelling and hunting in a changing Arctic: Assessing Inuit vulnerability to sea ice change in Igloodik, Nunavut, *Clim. Change*, doi:10.1007/s10584-008-9512-z, 2009.

- Lecomte, O., Fichefet, T., Flocco, D., Schroeder, D. and Vancoppenolle, M.: Interactions between wind-blown snow redistribution and melt ponds in a coupled ocean-sea ice model, *Ocean Model.*, doi:10.1016/j.ocemod.2014.12.003, 2015.
- Lee, C. M., Cole, S., Doble, M., Freitag, L., Hwang, P., Jayne, S., Jeffries, M., Krishfield, R., Maksym, T., Maslowski, W., Owens, B., Posey, P., Rainville, L., Roberts, A., Shaw, B., Stanton, T., Thomson, J., Timmermans, M., Toole, J., Wadhams, P., Wilkinson, J. and Zhang, J.: Marginal Ice Zone (MIZ) Program : Science and Experiment Plan APL-UW 1201 October 2012 Applied Physics Laboratory University of Washington, , (October 2012), 2012.
- Lipscomb, W. H. and Hunke, E. C.: Modeling Sea Ice Transport Using Incremental Remapping, *Mon. Weather Rev.*, 132(6), 1341–1354, doi:10.1175/1520-0493(2004)132<1341:MSITUI>2.0.CO;2, 2004.
- Lipscomb, W. H., Hunke, E. C., Maslowski, W. and Jakacki, J.: Ridging, strength, and stability in high-resolution sea ice models, *J. Geophys. Res. Ocean.*, doi:10.1029/2005JC003355, 2007.
- Liu, A. K., Vachon, P. W., Peng, C. Y. and Bhogal, A. S.: Wave attenuation in the marginal ice zone during limex, *Atmos. - Ocean*, doi:10.1080/07055900.1992.9649437, 1992.
- Lüpkes, C., Gryanik, V. M., Hartmann, J. and Andreas, E. L.: A parametrization, based on sea ice morphology, of the neutral atmospheric drag coefficients for weather prediction and climate models, *J. Geophys. Res. Atmos.*, 117(13), 1–18, doi:10.1029/2012JD017630, 2012.
- ~~Madec, G. and the NEMO Team: NEMO ocean engine, in Note du Pôle de modélisation., 2016.~~
- Maslanik, J. A., Fowler, C., Stroeve, J., Drobot, S., Zwally, J., Yi, D. and Emery, W.: A younger, thinner Arctic ice cover: Increased potential for rapid, extensive sea-ice loss, *Geophys. Res. Lett.*, doi:10.1029/2007GL032043, 2007.
- Maykut, G. A. and McPhee, M. G.: Solar heating of the Arctic mixed layer, *J. Geophys. Res.*, doi:10.1029/95JC02554, 1995.
- Maykut, G. A. and Perovich, D. K.: The role of shortwave radiation in the summer decay of a sea ice cover, *J. Geophys. Res. Ocean.*, 92(C7), 7032–7044, doi:10.1029/JC092iC07p07032, 1987.
- McPhee, M. G., Maykut, G. A. and Morison, J. H.: Dynamics and thermodynamics of the ice/upper ocean system in the marginal ice zone of the Greenland Sea, *J. Geophys. Res. Ocean.*, doi:10.1029/JC092iC07p07017, 1987.
- Meylan, M. and Squire, V. A.: The response of ice floes to ocean waves, *J. Geophys. Res.*, doi:10.1029/93JC02695, 1994.
- Meylan, M. H., Bennetts, L. G. and Peter, M. A.: Water-wave scattering and energy dissipation by a floating porous elastic plate in three dimensions, *Wave Motion*, doi:10.1016/j.wavemoti.2016.06.014, 2017.
- Montiel, F., Squire, V. A. and Bennetts, L. G.: Attenuation and directional spreading of ocean wave spectra in the marginal ice zone, *J. Fluid Mech.*, doi:10.1017/jfm.2016.21, 2016.
- NERSC: Ships and Waves Reaching Polar Regions D5 . 1 Validation Reports, Bergen. [online] Available from: Ships and Waves Reaching Polar regions, 2016.
- Notz, D. and Stroeve, J.: The Trajectory Towards a Seasonally Ice-Free Arctic Ocean, *Curr. Clim. Chang. Reports*, doi:10.1007/s40641-018-0113-2, 2018.
- Organization, W. M.: Guide to wave analysis and forecasting., 1998.
- Parkinson, C. L. and Cavalieri, D. J.: Antarctic sea ice variability and trends, 1979-2010, *Cryosphere*, doi:10.5194/tc-6-871-2012, 2012.
- Perovich, D. K.: On the summer decay of a sea ice cover., 1983.
- Perovich, D. K.: Aerial observations of the evolution of ice surface conditions during summer, *J. Geophys. Res.*, doi:10.1029/2000JC000449, 2002.
- Petty, A. A., Holland, P. R. and Feltham, D. L.: Sea ice and the ocean mixed layer over the Antarctic shelf seas, *Cryosphere*, 8(2), 761–783, doi:10.5194/tc-8-761-2014, 2014.
- Post, E., Forchhammer, M. C., Bret-Harte, M. S., Callaghan, T. V., Christensen, T. R., Elberling, B., Fox, A. D., Gilg, O., Hik, D. S., Høye, T. T., Ims, R. A., Jeppesen, E., Klein, D. R., Madsen, J., McGuire, A. D., Rysgaard, S., Schindler, D. E., Stirling, I., Tamstorf, M. P., Tyler, N. J. C., Van Der Wal, R., Welker, J., Wookey, P. A., Schmidt, N. M. and Aastrup, P.: Ecological

- dynamics across the arctic associated with recent climate change, *Science* (80-), doi:10.1126/science.1173113, 2009.
- Pringle, D. J., Eicken, H., Trodahl, H. J. and Backstrom, L. G. E.: Thermal conductivity of landfast Antarctic and Arctic sea ice, *J. Geophys. Res. Ocean.*, doi:10.1029/2006JC003641, 2007.
- Regehr, E. V., Hunter, C. M., Caswell, H., Amstrup, S. C. and Stirling, I.: Survival and breeding of polar bears in the southern Beaufort Sea in relation to sea ice, *J. Anim. Ecol.*, doi:10.1111/j.1365-2656.2009.01603.x, 2010.
- Roach, L. A., Horvat, C., Dean, S. M. and Bitz, C. M.: An Emergent Sea Ice Floe Size Distribution in a Global Coupled Ocean-Sea Ice Model, *J. Geophys. Res. Ocean.*, doi:10.1029/2017JC013692, 2018a.
- Roach, L. A., Smith, M. M. and Dean, S. M.: Quantifying Growth of Pancake Sea Ice Floes Using Images From Drifting Buoys, *J. Geophys. Res. Ocean.*, 123(4), 2851–2866, doi:10.1002/2017JC013693, 2018b.
- 10 ~~Robinson, N. J. and Palmer, S. C.: A modal analysis of a rectangular plate floating on an incompressible liquid, *J. Sound Vib.*, doi:10.1016/0022-460X(90)90661-I, 1990.~~
- Rösel, A., Kaleschke, L. and Birnbaum, G.: Melt ponds on Arctic sea ice determined from MODIS satellite data using an artificial neural network, *Cryosphere*, doi:10.5194/tc-6-431-2012, 2012.
- Rothrock, D. A.: The energetics of the plastic deformation of pack ice by ridging, *J. Geophys. Res.*, 15 doi:10.1029/JC080i033p04514, 1975.
- Rothrock, D. a and Thorndike, A. S.: Measuring the sea ice floe size distribution, *J. Geophys. Res.*, 89, 6477–6486, doi:10.1029/JC089iC04p06477, 1984.
- Rynders, S.: Impact of surface waves on sea ice and ocean in the polar regions, University of Southampton, United Kingdom., 2017.
- 20 Schröder, D., Feltham, D. L., Tsamados, M., Ridout, A. and Tilling, R.: New insight from CryoSat-2 sea ice thickness for sea ice modelling, *Cryosph. Discuss.*, 1–25, doi:10.5194/tc-2018-159, 2019.
- Screen, J. A., Simmonds, I., Deser, C. and Tomas, R.: The atmospheric response to three decades of observed arctic sea ice loss, *J. Clim.*, doi:10.1175/JCLI-D-12-00063.1, 2013.
- ~~Sepp, M. and Jaagus, J.: Changes in the activity and tracks of Arctic cyclones, *Clim. Change*, doi:10.1007/s10584-010-9893-7, 2011.~~
- 25 ~~Smith, L. C. and Stephenson, S. R.: New Trans-Arctic shipping routes navigable by midcentury, *Proc. Natl. Acad. Sci.*, doi:10.1073/pnas.1214212110, 2013.~~
- Squire, V. A.: Of ocean waves and sea-ice revisited, *Cold Reg. Sci. Technol.*, doi:10.1016/j.coldregions.2007.04.007, 2007.
- Steele, M.: Sea ice melting and floe geometry in a simple ice-ocean model, *J. Geophys. Res. Ocean.*, doi:10.1029/92JC01755, 30 1992.
- Steer, A., Worby, A. and Heil, P.: Observed changes in sea-ice floe size distribution during early summer in the western Weddell Sea, *Deep. Res. Part II Top. Stud. Oceanogr.*, 55(8–9), 933–942, doi:10.1016/j.dsr2.2007.12.016, 2008.
- Stern, H. L., Schweiger, A. J., Zhang, J. and Steele, M.: On reconciling disparate studies of the sea-ice floe size distribution, *Elem Sci Anth*, doi:10.1525/elementa.304, 2018a.
- 35 Stern, H. L., Schweiger, A. J., Stark, M., Zhang, J., Steele, M. and Hwang, B.: Seasonal evolution of the sea-ice floe size distribution in the Beaufort and Chukchi seas, *Elem Sci Anth*, 6(1), 48, doi:10.1525/elementa.305, 2018b.
- Stopa, J. E., Ardhuin, F. and Girard-Ardhuin, F.: Wave climate in the Arctic 1992-2014: Seasonality and trends, *Cryosphere*, 10(4), 1605–1629, doi:10.5194/tc-10-1605-2016, 2016.
- Stroeve, J. and Notz, D.: Changing state of Arctic sea ice across all seasons, *Environ. Res. Lett.*, doi:10.1088/1748-40 9326/aade56, 2018.
- Stroeve, J. C., Schroder, D., Tsamados, M. and Feltham, D.: Warm winter, thin ice?, *Cryosphere*, doi:10.5194/tc-12-1791-2018, 2018.
- Thomson, J. and Lee, C.: An autonomous approach to observing the seasonal ice zone in the western Arctic, *Oceanography*,

doi:10.5670/oceanog.2017.222, 2017.

Toyota, T., Kohout, A. and Fraser, A. D.: Formation processes of sea ice floe size distribution in the interior pack and its relationship to the marginal ice zone off East Antarctica, *Deep. Res. Part II Top. Stud. Oceanogr.*, 131, 28–40, doi:10.1016/j.dsr2.2015.10.003, 2016.

- 5 Tsamados, M., Feltham, D., Petty, A., Schroder, D. and Flocco, D.: Processes controlling surface, bottom and lateral melt of Arctic sea ice in a state of the art sea ice model, , 17, 10302, doi:10.1098/rsta.2014.0167, 2015.

Vihma, T.: *Effects of Arctic Sea Ice Decline on Weather and Climate: A Review.*, 2014.

[Wadhams, P., Squire, V. A., Ewing, J. A. and Pascal, R. W.: The Effect of the Marginal Ice Zone on the Directional Wave Spectrum of the Ocean, *J. Phys. Oceanogr.*, doi:10.1175/1520-0485\(1986\)016<0358:teotmi>2.0.co;2, 2002.](#)

- 10 Williams, T. D., Bennetts, L. G., Squire, V. A., Dumont, D. and Bertino, L.: Wave-ice interactions in the marginal ice zone. Part 1: Theoretical foundations, *Ocean Model.*, 71, 81–91, doi:10.1016/j.ocemod.2013.05.010, 2013a.

Williams, T. D., Bennetts, L. G., Squire, V. A., Dumont, D. and Bertino, L.: Wave-ice interactions in the marginal ice zone. Part 2: Numerical implementation and sensitivity studies along 1D transects of the ocean surface, *Ocean Model.*, 71, 92–101, doi:10.1016/j.ocemod.2013.05.011, 2013b.

- 15 Winton, M.: Amplified Arctic climate change: What does surface albedo feedback have to do with it?, *Geophys. Res. Lett.*, 33(3), 1–4, doi:10.1029/2005GL025244, 2006.

Winton, M.: Sea Ice-Albedo Feedback and Nonlinear Arctic Climate Change, in *Arctic Sea Ice Decline: Observations, Projections, Mechanisms, and Implications.*, 2013.

- Young, I. R., Zieger, S. and Babanin, A. V.: Global trends in wind speed and wave height, *Science* (80-.),
20 doi:10.1126/science.1197219, 2011.

Zhang, J., Lindsay, R., Schweiger, A. and Rigor, I.: Recent changes in the dynamic properties of declining Arctic sea ice: A model study, *Geophys. Res. Lett.*, doi:10.1029/2012GL053545, 2012.

Zhang, J., Schwinger, A., Steele, M. and Stern, H.: Sea ice floe size distribution in the marginal ice zone: Theory and numerical experiments, *J Geophys Res*, 120, 3484–3498, doi:10.1002/2015JC010770.Received, 2015.

25

30

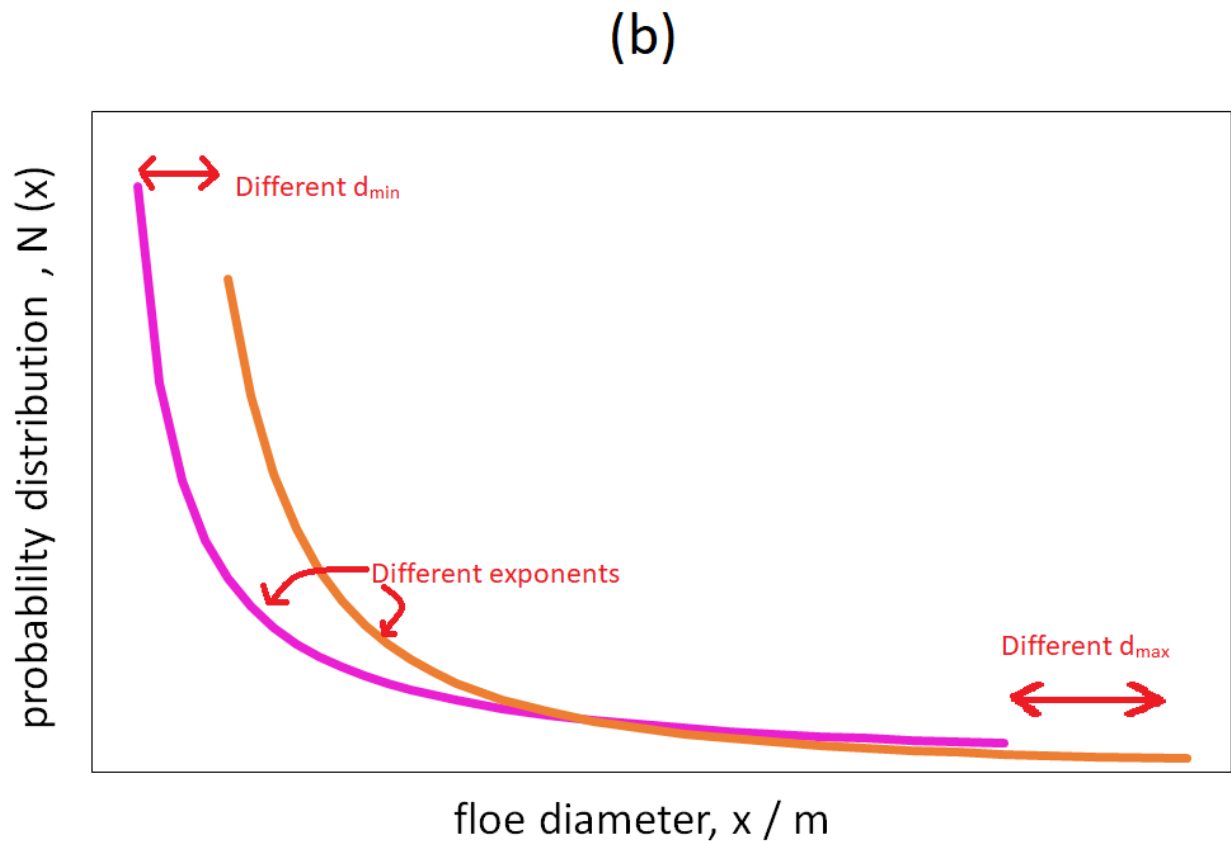
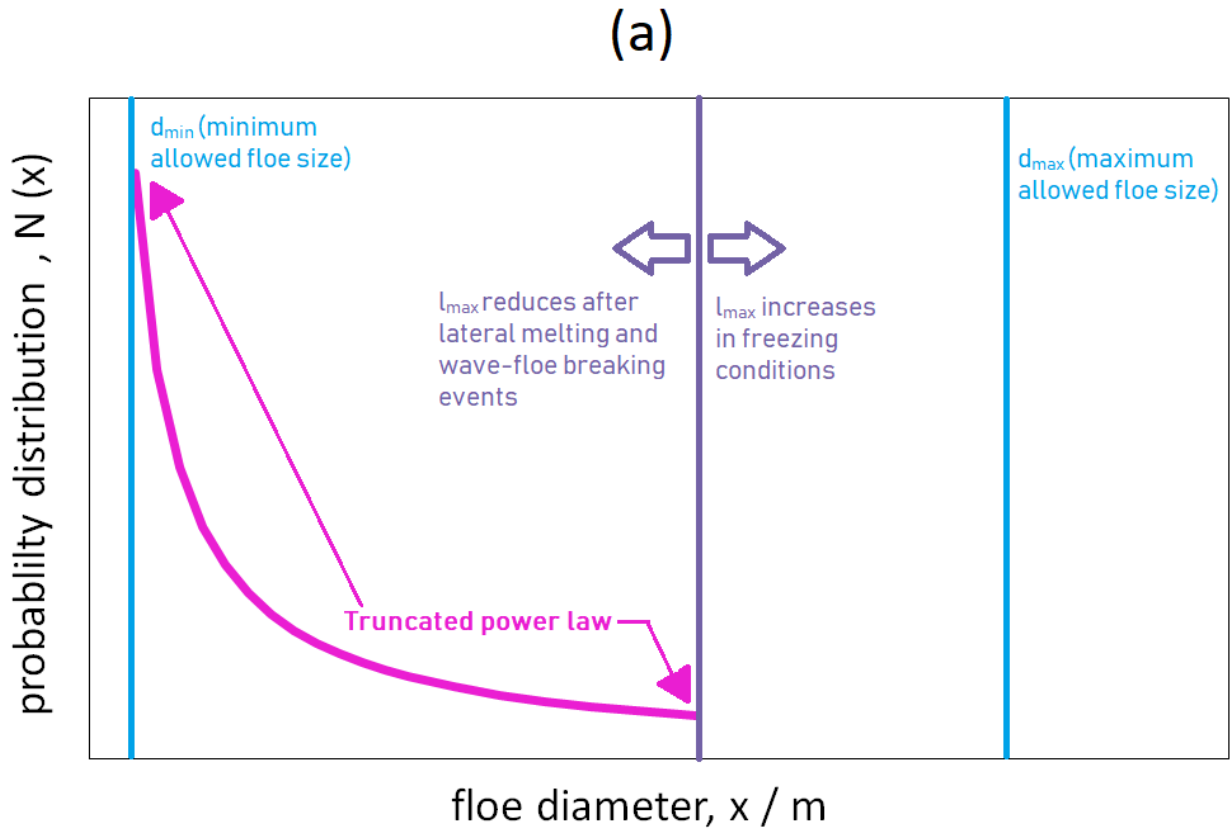


Figure 1: Panel (a) is a schematic of the imposed FSD model. This model is initiated by prescribing a truncated power law with an exponent, α , and between the limits d_{min} and d_{max} , where d_{max} sets the global maximum limit of the power law. Within individual grid cells the local maximum floe size, l_{max} , is not fixed and varies between these two limits. l_{max} evolves through lateral melting, wave break-up events, freezing and advection. Panel (b) shows the how d_{min} , d_{max} and α can all be varied to produce different distributions. All axes within both panels are logarithmic to base 10.

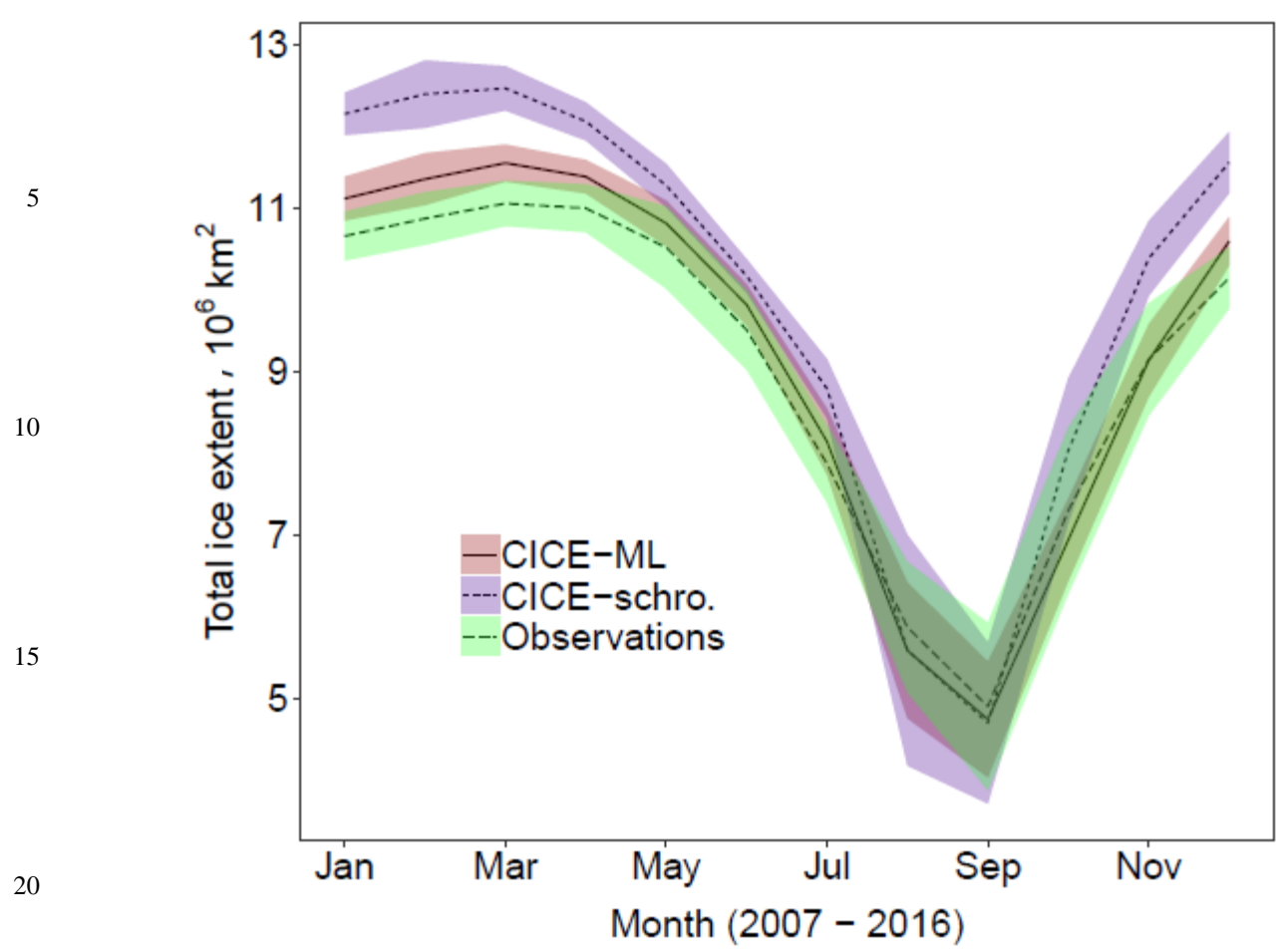


Figure 2: Comparison of the 2007 – 2016 mean cycle for the total Arctic sea ice extent simulated in the coupled CICE-prognostic mixed layer reference setup (marked CICE-ML, red ribbon, solid) with the results from the standard optimised CPOM CICE model (Schröder et al., marked CICE-schro., 2018, blue ribbon, small dashes) and observed sea ice extent derived from Nimbus-7 SMMR and DMSP SSM/I-SSMIS satellites using Bootstrap algorithm version 3 (Comiso, 2017, marked Observations, green ribbon, large dashes). The ribbon shows, in each case, the region spanned by the mean value plus or minus two times the standard deviation for each simulation. This gives a measure of the interannual variability over the 10-year period. Results show the new model performs either comparably to or better than the previous optimum setup throughout the year. In addition, the mean CICE-ML sea ice extent falls within the interannual variability of the observations between June and December i.e. most of the melting season, suggesting this reference state is suitable for studies focusing on this period.

25
30

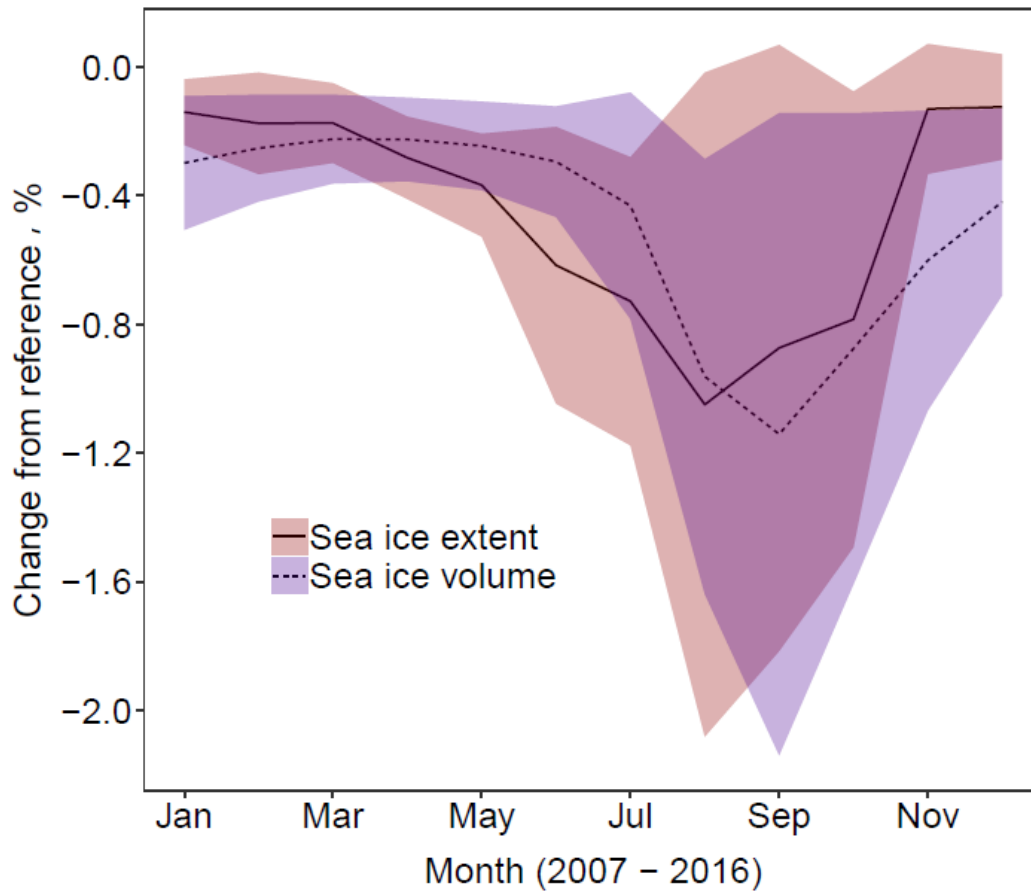


Figure 3: Difference in sea ice extent (solid, red ribbon) and volume (dashed, blue ribbon) between *stan-fsd* relative to *ref* (using a constant floe size) averaged over 2007 - 2016. The ribbon shows, in each case, the region spanned by the mean value plus or minus two times the standard deviation for each simulation. This gives a measure of the interannual variability over the 10-year period. The mean behaviour is a reduction in the sea ice extent and volume, with losses of up to 1 % and 1.2 % respectively seen in September during the period of minimum sea ice. The interannual variability shows that the impact of the WIPoFSD model with standard parameters varies significantly between years, with some years potentially showing negligible change in extent and volume and others showing a maximum reduction of over 2 %.

5
10
15
20
25
30
35

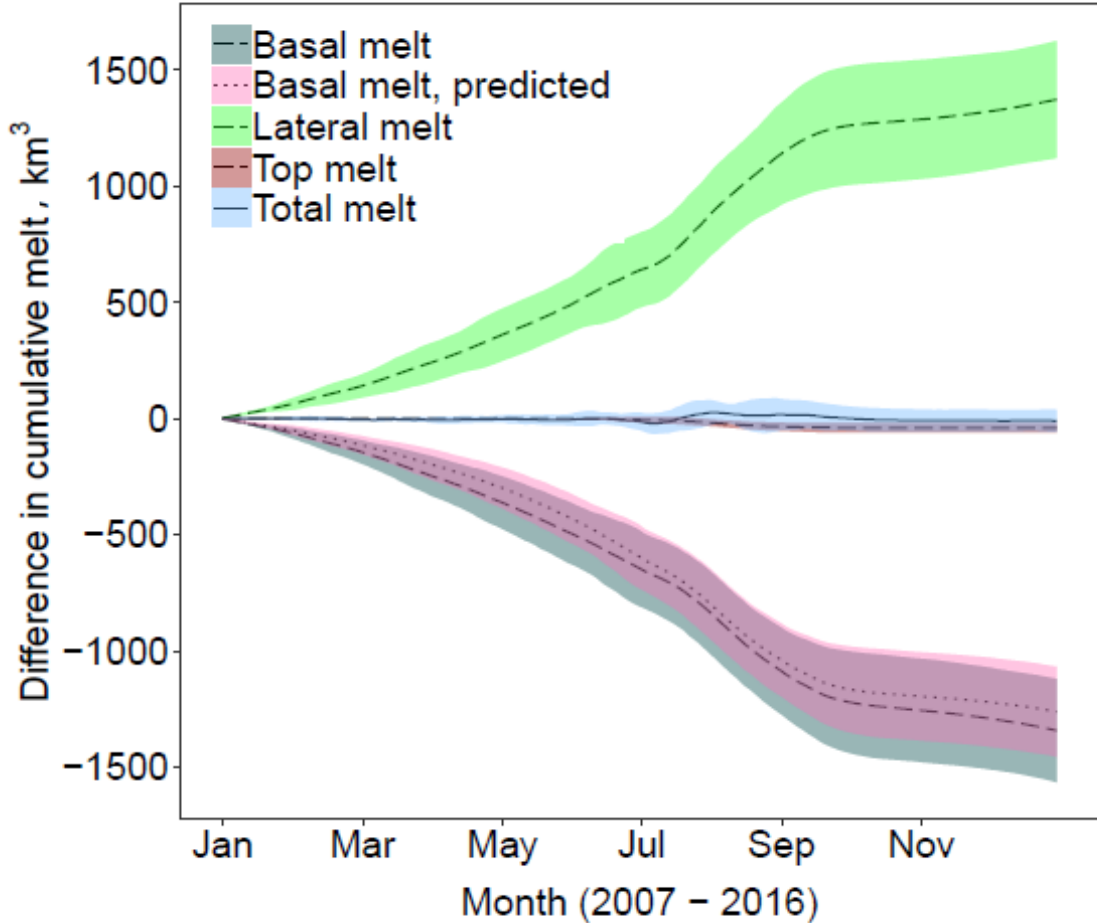


Figure 4: Difference in the cumulative lateral (green ribbon, dashed), basal (grey ribbon, dashed), top (red ribbon, dashed) and total (blue ribbon, solid) melts averaged over 2007 - 2016 between *stan-fsd* relative to *ref*. The ribbon shows, in each case, the region spanned by the mean value plus or minus two times the standard deviation for each simulation. A large increase is observed in the total lateral melt, however this is mostly compensated by a reduction in the basal melt, leading to a negligible change in total melt. A small reduction in top melt can be seen. The predicted difference in basal melt is also shown on the plot (pink ribbon, dotted); this shows the expected change in basal melt accounting only for the reduction in sea ice concentration from *ref* to *stan-fsd*.

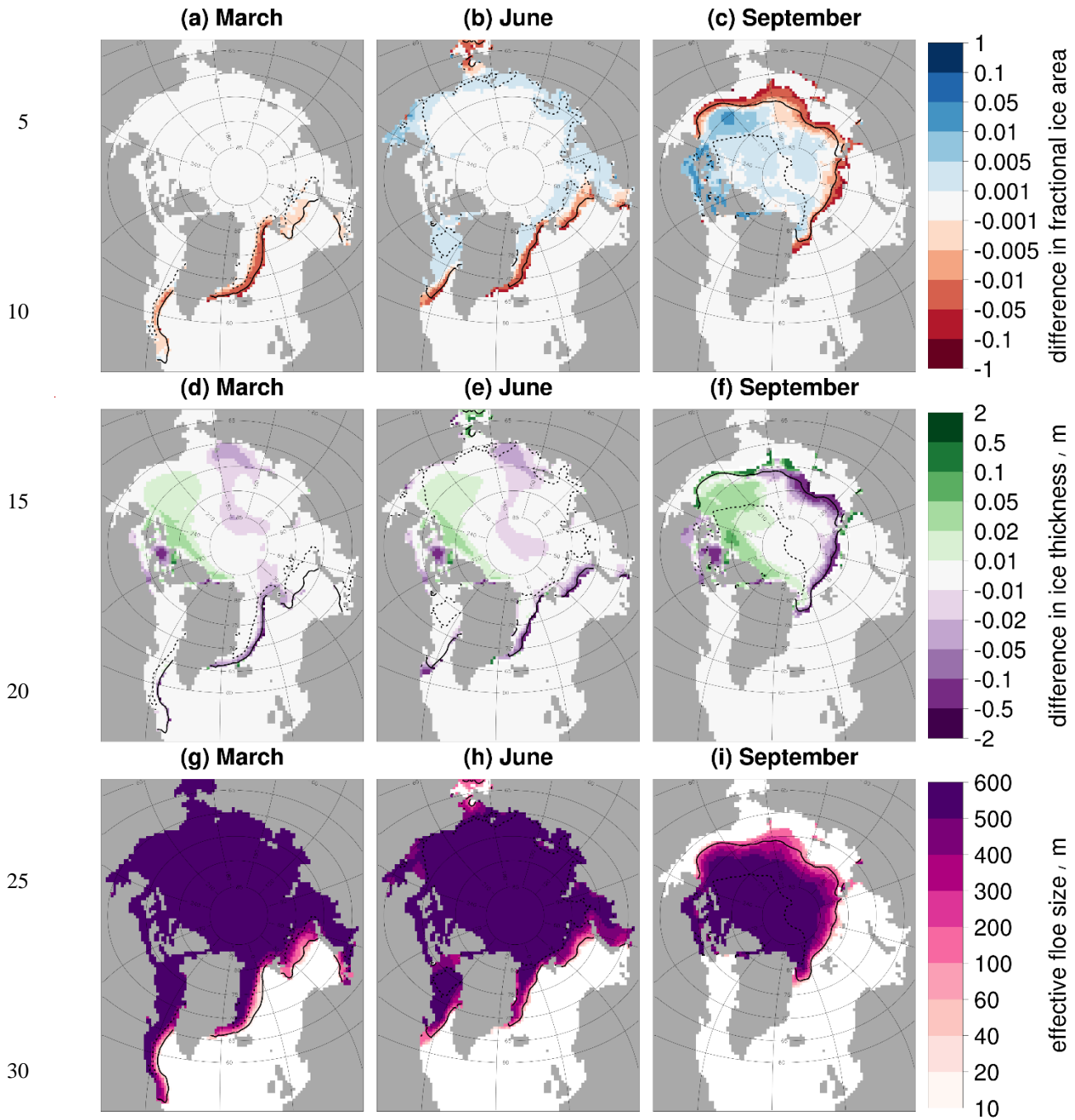


Figure 5: Difference in the sea ice concentration (top row, a-c) and ice thickness (middle row, d-f) between *stan-fsd* and *ref* and l_{eff} (bottom row, g-i) for *stan-fsd* averaged over 2007 – 2016. Results are presented for March (left column, a, d, g), June (middle column, b, e, h) and September (right column, c, f, i). Values are shown only in locations where the sea ice concentration exceeds 5 %. The inner (dashed black) and outer (solid black) extent of the MIZ averaged over the same period is also shown. In general, the plots show an increase in the sea ice concentration and thickness in the pack ice, but a reduction in the MIZ. This corresponds to the behaviour of the l_{eff} , with increases in regions where the l_{eff} is above 300 m and reductions where it is below 300 m.

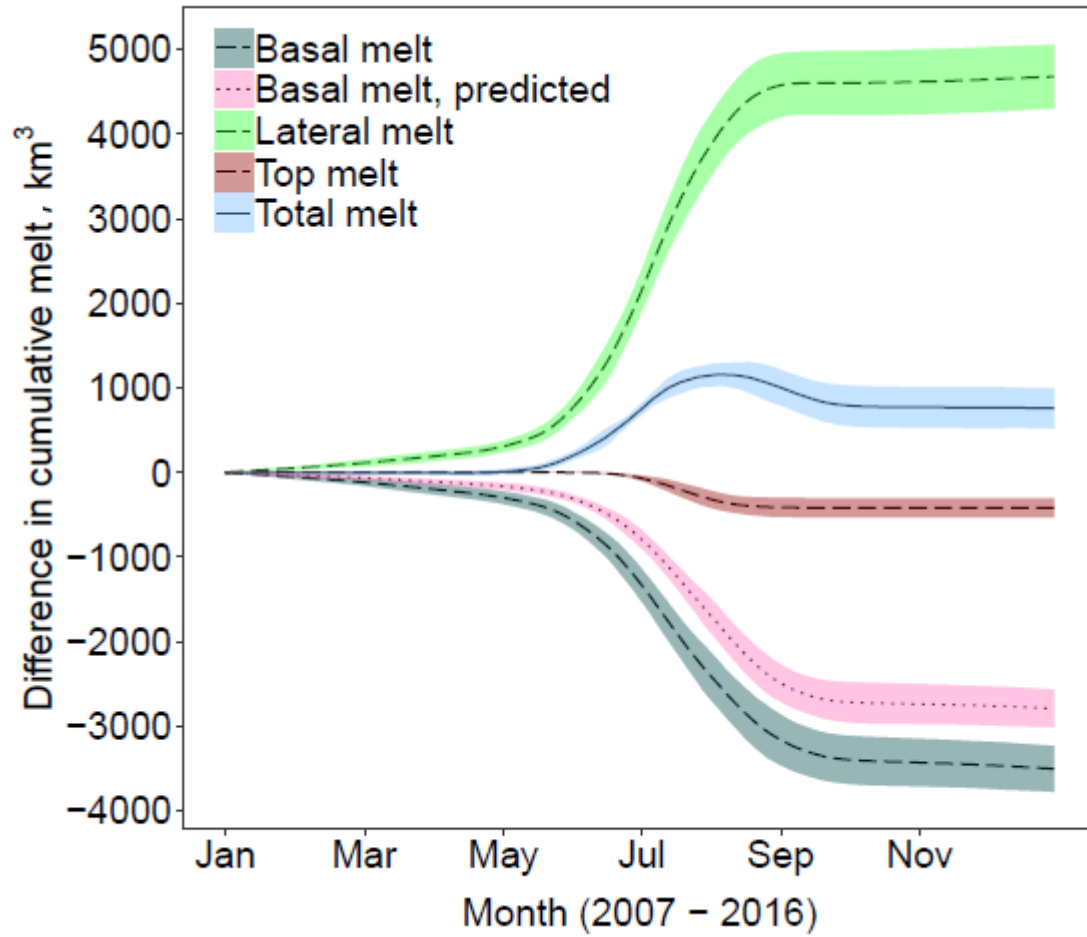


Figure 6: As fig. 4 but the difference between (A) compared to *stan-fsd* i.e. the impact of changing α from 2.5 to 3.5 with the other FSD parameters held at standard values. A large increase in lateral melt is partly compensated by a reduction in basal melt, however this time a large increase is seen in the total melt.

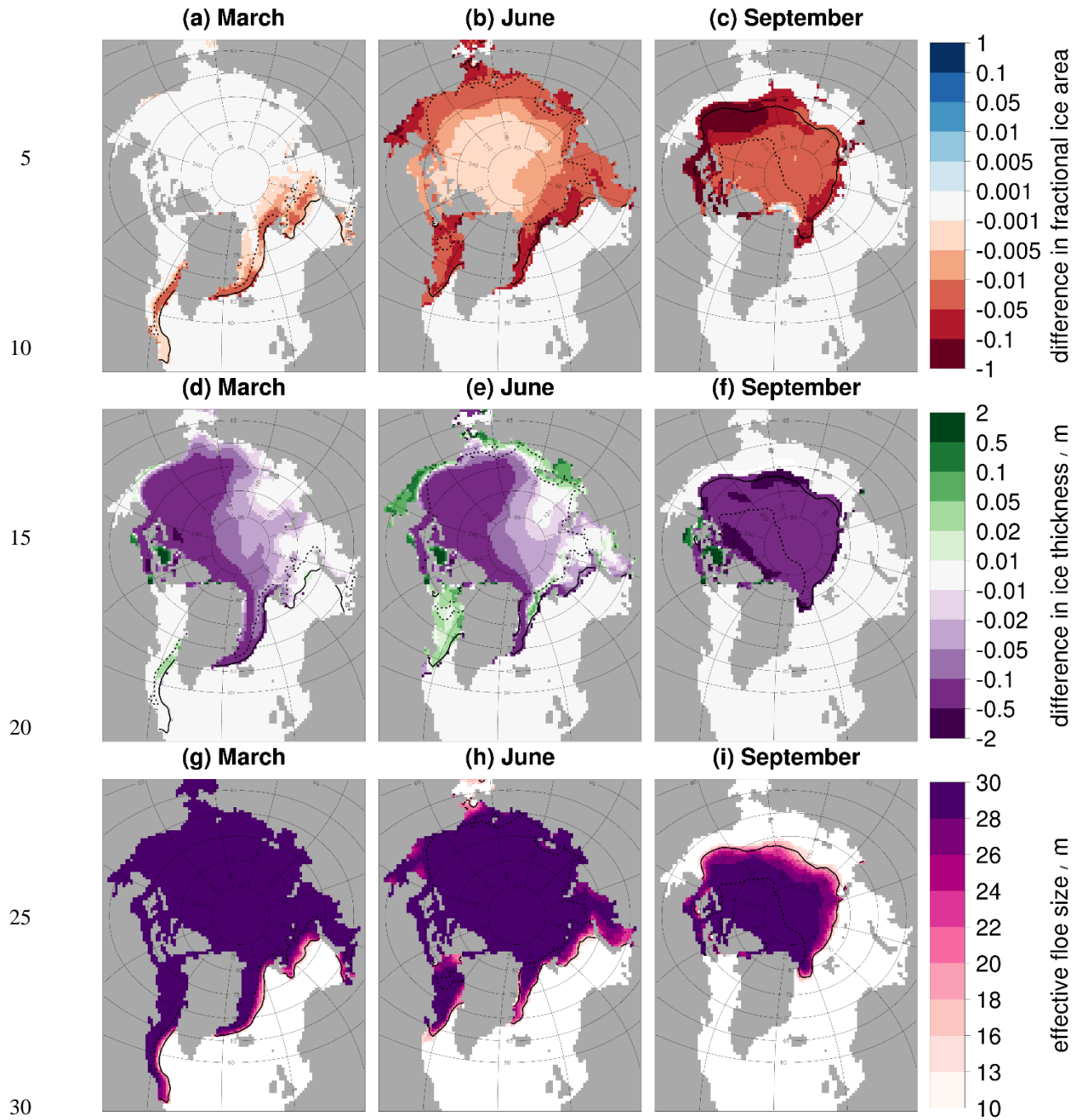


Figure 7: As fig. 5 except now the difference between (A) compared to *stan-fsd* is given i.e. the impact of changing α from 2.5 to 3.5 with the other FSD parameters held at standard values. l_{eff} is reported for the simulation with the higher magnitude α . In general, the plots show a reduction in the sea ice concentration and ice thickness across the sea ice cover. This corresponds to the behaviour of the l_{eff} , with the l_{eff} 30 m or below across the sea ice cover.

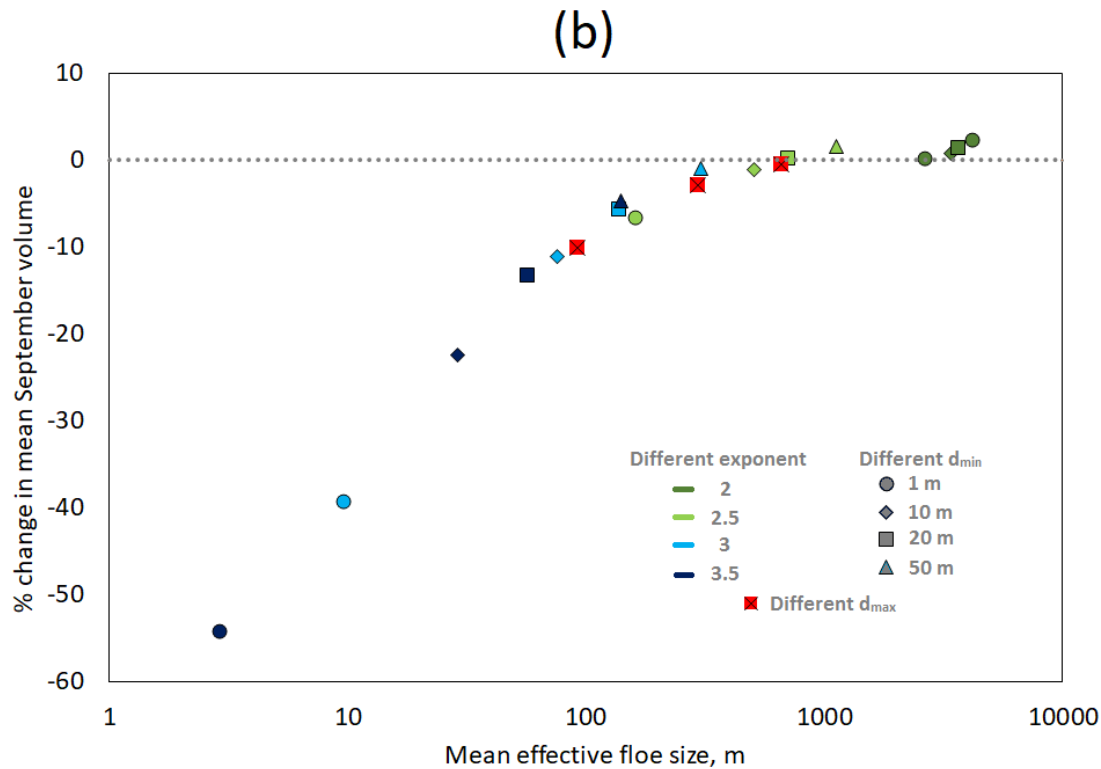
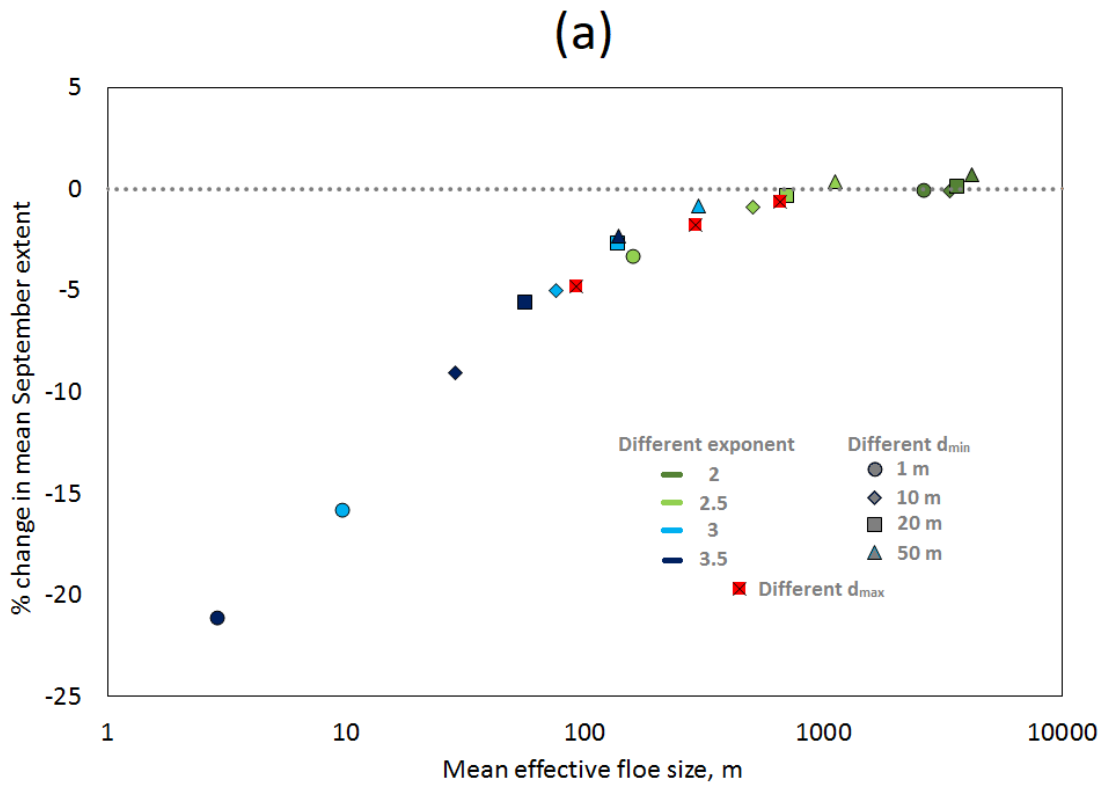


Figure 8: Relative change (%) in mean September sea ice extent (a) and volume (b) from 2007 - 2016 respectively, plotted against mean l_{eff} for simulations with different selections of parameters relative to *ref.* The mean l_{eff} is taken as the equally weighted average across all grid cells where the sea ice concentration exceeds 15%. The colour of the marker indicates the value of the α , the shape indicates the value of d_{min} , and the three experiments using standard parameters but different d_{max} (1000 m, 10000 m and 50000 m) are indicated by a crossed red square. The parameters are selected to be representative of a parameter space for the WIPoFSD that has been constrained by observations. Model response ranges from small increases in the sea ice extent and volume to reductions of over 20 and 50 % respectively. The mean l_{eff} is shown to be a good predictor of the response of the sea ice extent and volume.

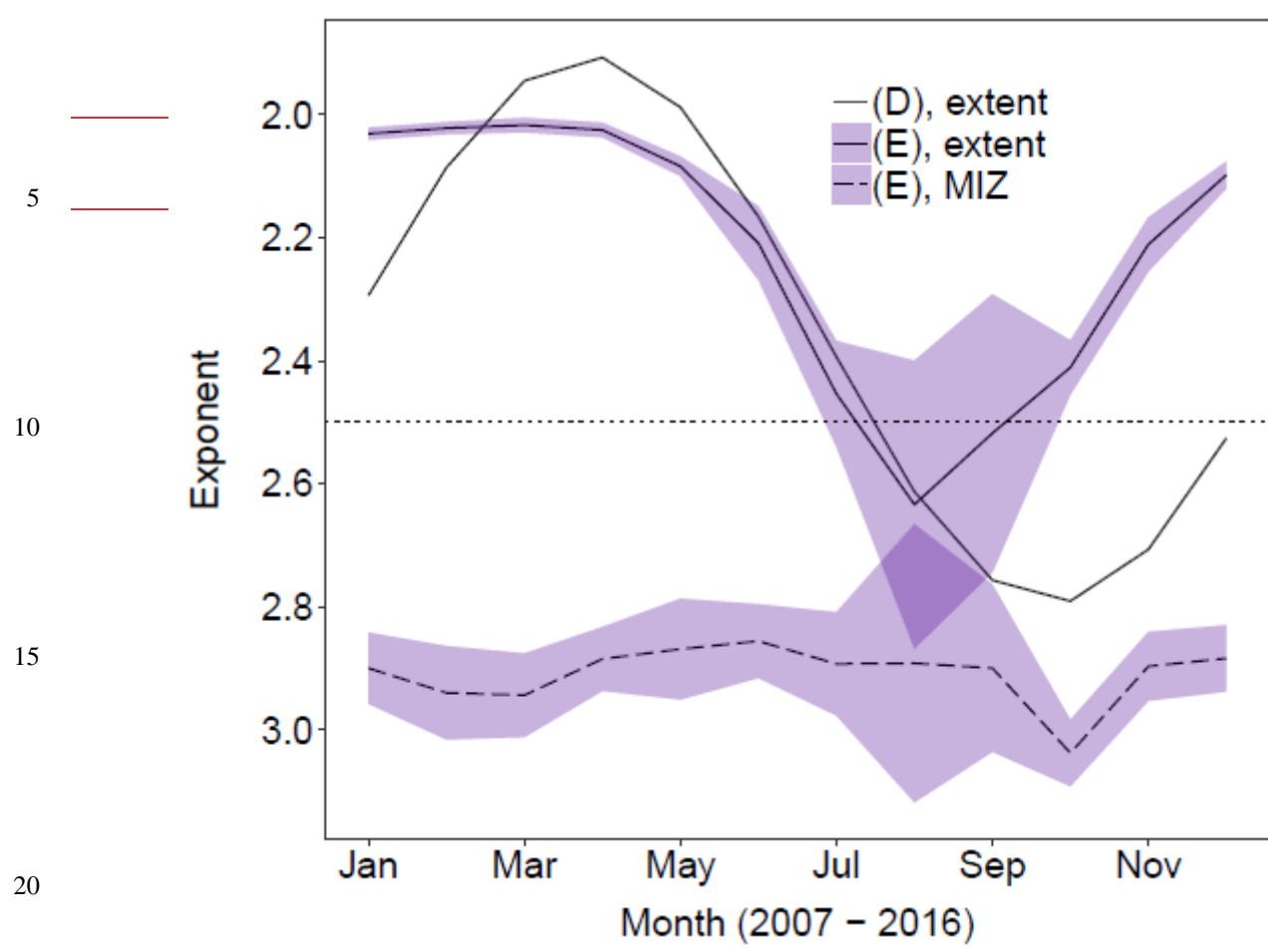


Figure 9: Annual variation in α (top) averaged over 2007 – 2016 for two simulations with variable α . The plots show results for an α which varies depending on time through the year (D, no ribbon) or on the sea ice concentration (E, blue ribbon). Results are given as the mean α for the total sea ice extent (solid) and MIZ only (dashed). The mean α is taken as the equally weighted average across all grid cells where the sea ice concentration exceeds 5% (total extent) or is between 15% - 80% (MIZ only). The imposed annual oscillation in α is identical for all grid cells for (D), hence the MIZ behaviour has not been plotted as it will be identical to the annual oscillation in α across the total sea ice extent. The ribbon shows, in each case, the region spanned by the mean value plus or minus two times the standard deviation for each simulation. Both setups show an annual oscillation in the value of α averaged over the total sea ice extent. For experiment (E), no obvious annual trend in the mean value of α can be seen when averaged over the MIZ, though the interannual variation is at a maximum during the peak melting season between July and September.

25
30

5
10
15
20
25

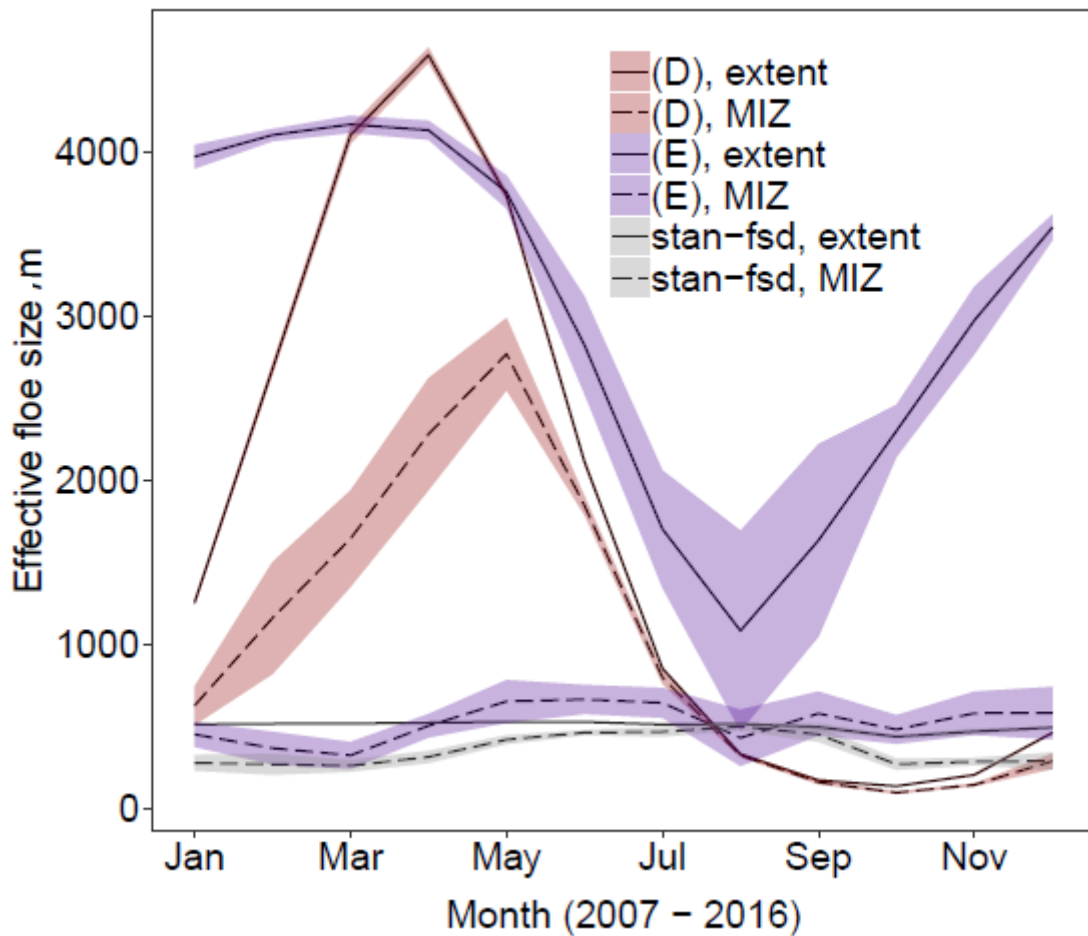


Figure 10: Annual variation in mean l_{eff} averaged over 2007 – 2016 for two simulations with variable α . The plots show the evolution of l_{eff} throughout the year for a simulation with a time-dependent α (D, red ribbon) or a sea ice concentration-dependent α (E, blue ribbon). Also shown is the behaviour of l_{eff} for a simulation with a fixed α of 2.5 (*fsd-stan*, grey ribbon). Results are shown for the total sea ice area (solid) and MIZ only (dashed). The mean l_{eff} is taken as the equally weighted average across all grid cells where the sea ice concentration exceeds 5% (total extent) or is between 15% - 80% (MIZ only). The ribbon shows, in each case, the region spanned by the mean value plus or minus two times the standard deviation for each simulation. The results show that introducing a variable α produces much larger intra-annual variations in l_{eff} across the overall sea ice extent than with a fixed α . (D) and (E) show an annual oscillation in the value of l_{eff} averaged over the total sea ice extent. Within the MIZ, only experiment (D) continues to show this strong variation in l_{eff} ; (E) and *fsd-stan* show variations of around an order less. (D) shows the strongest interannual variation between March and May, whereas for (E) it is strongest in the peak melting season between July and August.

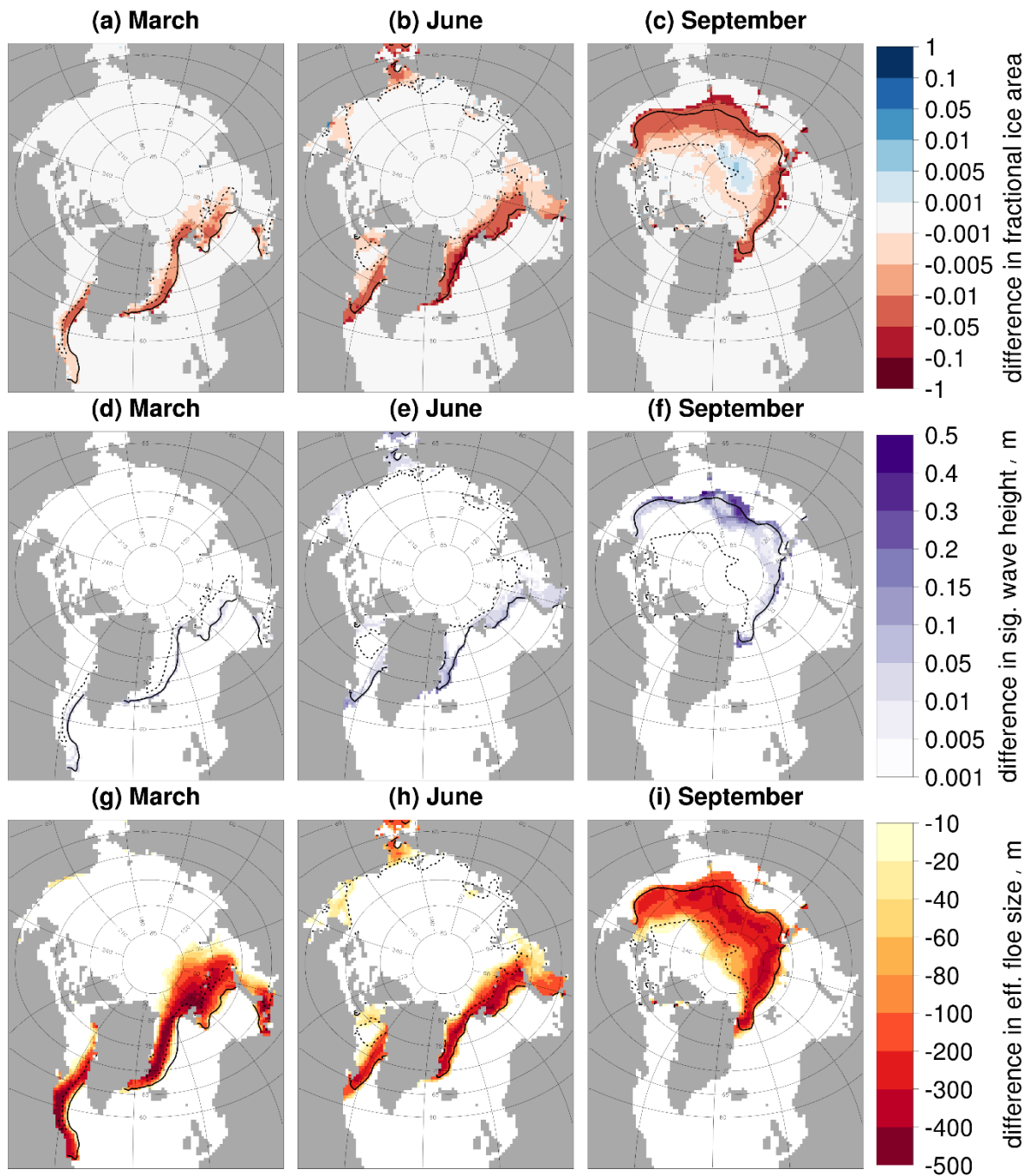


Figure 11: Difference in the sea ice concentration (top row, a - c), significant wave height (middle row, d - f) and l_{eff} (bottom row, g - i) for (J), with the wave attenuation rate reduced by 90 %, compared to *stan-fsd*, both using standard FSD parameters. Plots show results for March (left column, a, d, g), June (middle column, b, e, h) and September (right column, c, f, i) averaged over 2007 - 2016. Each plot shows the inner (dashed black) and outer (solid black) extent of the MIZ averaged over the same period. Values are shown only in locations where the sea ice concentration exceeds 5 %. The plots show that despite very small differences in the significant wave height, the reduced attenuation rate still drives reductions in l_{eff} and in consequence the sea ice concentration across the MIZ.

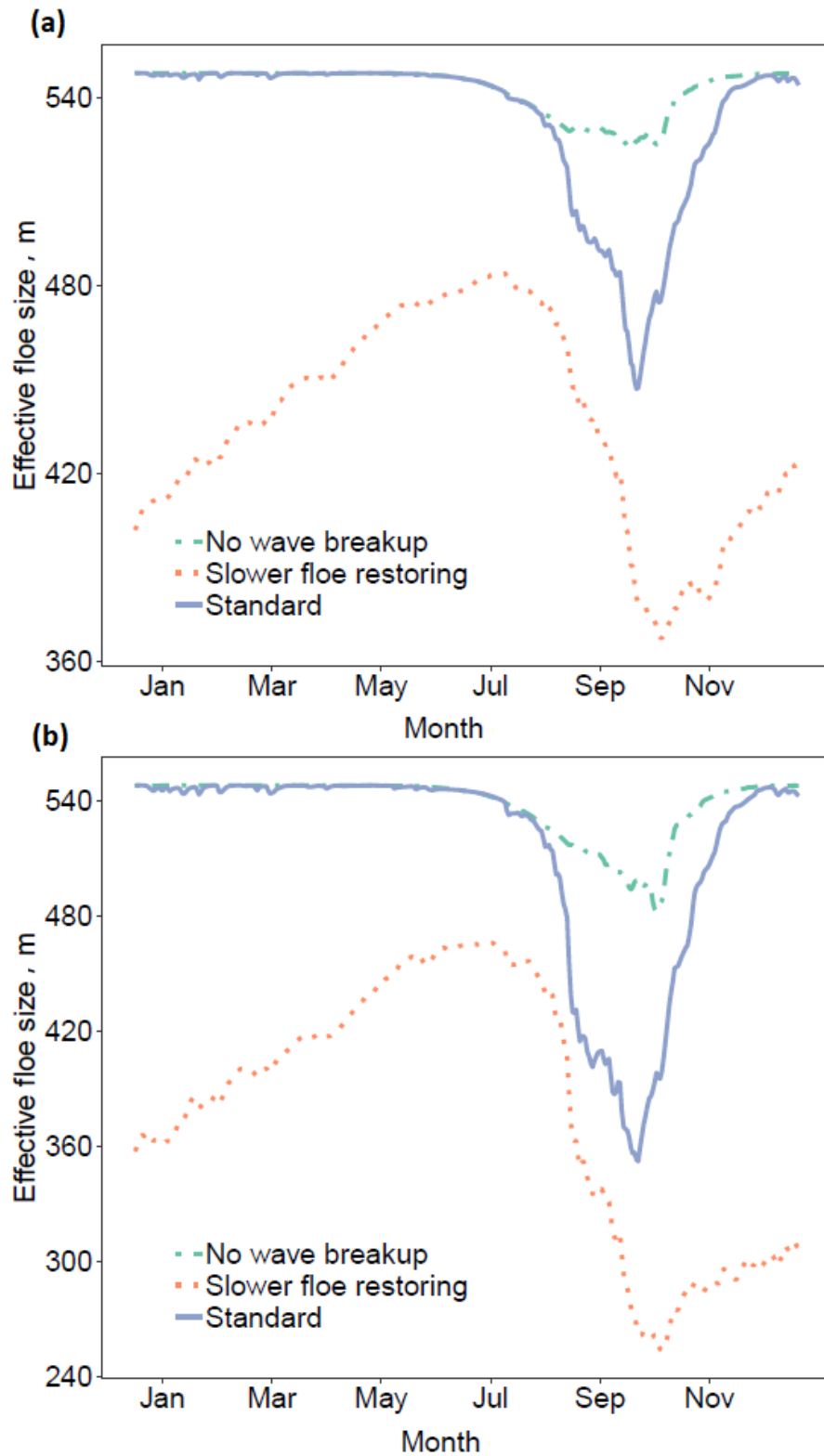


Figure 12: Daily variation in l_{eff} over 2015 averaged over (panel a) regions with between 15 – 80 % sea ice concentration on 31st August 2015 and (panel b) regions with between 15 – 30 % sea ice concentration of 31st August 2015. The three simulations demonstrate l_{eff} tendencies with respect to different processes. The plots show the evolution of l_{eff} throughout the year for the standard simulation (*fsd-stan*, blue solid), without wave break-up of floes (F, green dot-dashed), and with a reduced floe size restoring rate in freezing conditions (K, orange dotted). Means for l_{eff} and ice perimeter are taken as averages over the selected grid cells with each grid cell equally weighted. The plots show that a strong seasonal cycle in l_{eff} can be observed, particularly in grid cells on the edge of the sea ice cover where waves are expected to have a particularly strong impact.

Variable	Description
d_{min}	Fixed minimum floe size within the WIPoFSD model. Standard value of 10 m.
d_{max}	Global maximum floe size within the WIPoFSD model. Standard value of 30000 m.
l_{max}	Local (i.e. grid cell) maximum floe size. Allowed to vary between d_{min} and d_{max} .
α	Power law exponent within the WIPoFSD model. Standard value fixed at 2.5.
l_{eff}	The effective floe size is defined as the floe size of a distribution of identical floes that would produce the same lateral melt rate in a given instant to a distribution of non-uniform floes, when under the same conditions with the same total ice cover. See Eq. (15).
α_{dim}	The dimensional attenuation coefficient, as used in Eq. (6).
P_{crit}	The critical probability that must be exceeded for wave breaking events to occur, as used in Eq. (7).
T_{rel}	The floe restoring rate, as used in Eq. (19). Set to 10 as default.
α_{shape}	Floe shape parameter to account for the deviation of floes from a perfect circle. Standard value of 0.66 (Rothrock and Thorndike, 1984)
w_{lat}	Lateral melt rate, as calculated within Eq. (2).
m_1	Melt rate parameter, as used in Eq. (2) to calculate the lateral melt rate w_{lat} . Default value of $1.6 \times 10^{-6} m s^{-1} K^{-m_2}$ (Perovich, 1983)
m_2	Melt rate parameter, as used in Eq. (2) to calculate the lateral melt rate w_{lat} . Default value of 1.36 (Perovich, 1983)

Table 1: Definitions of the parameters relating to the sensitivity studies described in table 2.

Sensitivity study	Description	Technical details
stan-fsd	CICE-ML with standard FSD	$d_{min} = 10 \text{ m}$, $d_{max} = 30,000 \text{ m}$, $\alpha = 2.5$
Ref	CICE-ML with constant floe size	Floe size of 300 m for all floes
(A)	Low exponent	$d_{min} = 10 \text{ m}$, $d_{max} = 30,000 \text{ m}$, $\alpha = 3.5$
(B)	Minimum l_{eff}	$d_{min} = 1 \text{ m}$, $d_{max} = 30,000 \text{ m}$, $\alpha = 3.5$ This is the selection of FSD parameters that produces the lowest average l_{eff}
(C)	Maximum l_{eff}	$d_{min} = 50 \text{ m}$, $d_{max} = 30,000 \text{ m}$, $\alpha = 2$ This is the selection of FSD parameters that produces the highest average l_{eff}
(D)	Exponent evolves over a fixed annual cycle	An annual cycle, as described by Eq. (20), is imposed on the exponent based on the observations of Stern et al. (2018 a). The exponent does not vary spatially.
(E)	Exponent as a function of local ice concentration	The exponent becomes a function of the local sea ice concentration (i.e. fractional sea ice area) according to Eq. (21).
(F)	Waves no longer break-up floes	The waves-in-ice module operates normally, however Eq. (18) is no longer applied after a floe break-up event is identified.
(G)	No lateral melt feedback on floe size	The model operates normally, however l_{max} is no longer reduced based on the amount of lateral melt i.e. Eq. (17) is removed from the model.
(H)	Big waves	The significant wave heights read into the model from ERA-interim data at ice free locations is increased by a factor of 10.
(I)	Weak ice	P_{crit} is reduced by a factor of 10.
(J)	Weaker attenuation of waves	α_{dim} is reduced by a factor of 10.
(K)	Reduced floe growth rates	T_{rel} is increased from 10 to 365.
(L)	Less circular floes	α_{shape} is reduced from 0.66 to 0.44.
(M)	Perfectly circular floes	α_{shape} is increased from 0.66 to 0.79. This is the approximate value of this parameter for a perfect circle.
(N)	Reduced lateral melt rate	The parameters m_1 and m_2 are reduced by 10 % each to $1.44 \times 10^{-6} \text{ m s}^{-1} \text{ K}^{-m_2}$ and 1.22 respectively.
(O)	Increased lateral melt rate	The parameters m_1 and m_2 are increased by 10 % each to $1.76 \times 10^{-6} \text{ m s}^{-1} \text{ K}^{-m_2}$ and 1.48 respectively.
(P)	Shallow mixed layer	The minimum mixed layer depth is reduced from 10 m to 7 m.
(Q)	Deep mixed layer	The minimum mixed layer depth is increased from 10 m to 20 m.

Table 2: The details of the sensitivity studies to explore the behaviour of the CICE-ML-WIPoFSD model. Parameters discussed here defined in table 1.

Sensitivity study	Description	Metrics (reported as mean September value between 2007 – 2016, parentheses give change from reference)										
		Area metrics / 10 ⁶ km ²		Volume / 10 ³ km ³		Mean MIZ l _{eff} / m	Mean MIZ ice perimeter m ⁻¹	Annual cumulative melt by end of September / 10 ³ km ³			Total	
		Extent	MIZ	Total	MIZ			Top	Basal	Lateral		
stan-fsd	CICE-ML with standard FSD	4.70 (0)	2.54 (0)	7.72 (0)	2.07 (0)	453.9	0.0070	5.21 (0)	14.58 (0)	2.43 (0)	22.22 (0)	
ref	CICE-ML with constant floe size	4.74 (0.04)	2.61 (0.06)	7.81 (0.09)	2.12 (0.05)	300	0.0081	5.25 (0.04)	15.79 (1.22)	1.17 (-1.26)	22.21 (-0.01)	
(A)	Low exponent	4.31 (-0.39)	2.55 (0.01)	6.06 (-1.67)	1.75 (-0.32)	27.7	0.0862	4.79 (-0.42)	11.19 (3.39)	7.03 (-4.60)	23.01 (0.79)	
(B)	Minimum l _{eff}	3.76 (-0.96)	2.75 (0.21)	3.56 (-4.16)	1.18 (-0.90)	2.7	0.8151	3.60 (-1.60)	4.34 (-10.23)	16.56 (14.13)	24.50 (2.28)	
(C)	Maximum l _{eff}	4.77 (0.07)	2.58 (0.04)	7.98 (0.26)	2.14 (0.07)	3656.3	0.0023	5.27 (0.06)	15.54 (0.96)	1.30 (-1.13)	22.11 (-0.11)	
(D)	Exponent evolves over fixed annual cycle	4.69 (-0.01)	2.53 (-0.01)	7.70 (-0.02)	2.06 (-0.01)	162.9	0.0161	5.23 (0.02)	14.68 (0.11)	2.31 (-0.12)	22.22 (0.00)	
(E)	Exponent a function of ice concentration	4.55 (-0.15)	2.39 (-0.15)	7.34 (-0.38)	1.85 (-0.22)	580.6	0.0184	5.13 (-0.07)	13.46 (-1.11)	3.75 (1.32)	22.34 (0.12)	
(F)	Waves no longer break-up floes	4.78 (0.08)	2.62 (0.08)	7.93 (0.21)	2.15 (0.08)	531.8	0.0045	5.27 (0.06)	15.95 (1.37)	0.93 (-1.50)	22.15 (-0.07)	
(G)	No lateral melt feedback on floe size	4.70 (0.01)	2.55 (0.01)	7.75 (0.03)	2.08 (0.01)	465.3	0.0068	5.21 (0.01)	14.69 (0.12)	2.30 (-0.13)	22.20 (-0.02)	
(H)	Big waves	4.60 (-0.10)	2.44 (-0.10)	7.47 (-0.26)	1.94 (-0.14)	299.8	0.0212	5.16 (-0.05)	13.62 (-0.96)	3.53 (1.10)	22.31 (0.09)	
(I)	Weak ice	4.66 (-0.04)	2.51 (-0.04)	7.65 (-0.08)	2.03 (-0.04)	412.4	0.0095	5.19 (-0.02)	14.26 (-0.32)	2.79 (0.36)	22.24 (0.02)	
(J)	Weaker attenuation of waves	4.57 (-0.17)	2.42 (-0.12)	7.40 (-0.33)	1.90 (-0.18)	236.6	0.0328	5.15 (-0.05)	13.42 (-1.16)	3.76 (1.34)	22.33 (0.11)	
(K)	Reduced floe growth rates	4.68 (-0.02)	2.54 (0.00)	7.67 (-0.05)	2.06 (-0.01)	372.9	0.0100	5.18 (-0.03)	14.40 (-0.18)	2.67 (0.24)	22.25 (0.03)	
(L)	Less circular floes	4.64 (-0.05)	2.50 (-0.04)	7.56 (-0.16)	2.01 (-0.06)	442.2	0.0109	5.17 (-0.03)	14.04 (-0.53)	3.05 (0.63)	22.26 (0.04)	
(M)	Perfectly circular floes	4.72 (0.02)	2.56 (0.02)	7.79 (0.07)	2.11 (0.03)	459.1	0.0058	5.22 (0.02)	14.92 (0.34)	2.05 (-0.38)	22.19 (-0.03)	
(N)	Reduced lateral melt rate	4.71 (0.01)	2.56 (0.01)	7.74 (0.02)	2.08 (0.01)	456.3	0.0069	5.22 (0.01)	14.77 (0.19)	2.23 (-0.20)	22.21 (-0.01)	
(O)	Increased lateral melt rate	4.69 (-0.01)	2.53 (-0.01)	7.70 (-0.02)	2.06 (-0.01)	451.5	0.0071	5.20 (-0.01)	14.41 (-0.17)	2.61 (0.18)	22.22 (0.00)	
(P)	Shallow mixed layer	4.70 (0.01)	2.57 (0.03)	7.84 (0.12)	2.14 (0.07)	447.4	0.0067	5.19 (-0.02)	14.56 (-0.01)	2.46 (0.03)	22.21 (-0.01)	
(Q)	Deep mixed layer	4.64 (-0.06)	2.65 (0.10)	7.62 (-0.11)	2.34 (0.27)	473.6	0.0071	5.26 (0.05)	14.57 (-0.01)	2.34 (-0.08)	22.17 (-0.05)	

Table 3: A summary of the metrics for each of the sensitivity studies described in table 2. Metrics are reported for sea ice extent, MIZ extent, total sea ice volume, MIZ volume, mean l_{eff} within the MIZ, mean sea ice perimeter per m² of ocean area within the MIZ, and cumulative melt top, basal, lateral and total melt. All metrics are reported for September, except the cumulative melt which is reported for all months up to and including September and given as an average between 2007 – 2016. Means for l_{eff} and ice perimeter are taken as averages over the MIZ with each grid cell equally weighted. The values in red within the parentheses give the change from *stan-fsd*. Cells highlighted in yellow and orange deviate by one and two standard deviation(s) respectively from the *stan-fsd* mean value (the standard deviation is calculated from the set of 10 annual values for each metric).