

Dear editor and reviewers,

We would like to thank you sincerely for your constructive comments of our manuscript. We have revised the manuscript according to your suggestions and comments. Please find below a point-by-point response. We hope that the revised version of the manuscript properly addresses your concerns. Please note that we provide our answers in blue below each of the reviewer's comment.

Sincerely,

Mohammad Farzamian on behalf of all authors

Author response to reviewer comment

Referee #1:

In this study, presented by M. Farzamian et al. a quasi-autonomous electrical resistivity tomography was applied in Crater Lake research site, Antarctica. The study shows the potential to describe fast changes in the active layer of a remote permafrost dominated region with a relatively easy measurement set up. The overall quality of the paper is good, I have only minor points to add or change:

We would like to thank Anonymous Referee #1 for evaluating our manuscript. We highly appreciate the overall positive comments.

1) p. 3., l. 30: Please reconsider citing order, this seems a bit odd!

We corrected it accordingly.

Old Version (Page 3. Line 30)

(e.g. Ramos et al., 2008; Vieira et al., 2010; Bockheim et al., 2013; Melo et al., 2012; Goyanes et al., 2014; Ramos et al., 2017)

New version (Page 3. Line 29)

(e.g. Ramos et al., 2008; Vieira et al., 2010; Melo et al., 2012; Bockheim et al., 2013; Goyanes et al., 2014; Ramos et al., 2017)

2) p.5: Are the snow fields interpolated from the mini loggers? If so, how? Could Machine Learning be a method in addition to the camera?

The temperature miniloggers allow for estimating the snow thickness at two points only, however, the images from the time-lapse camera allow for detecting the snow cover position. In this study, we used a manual analysis for determining the timing and location of the snow cover (an automated algorithm for detecting snow occurrence from time-lapse camera pictures is available as well, but was not used in this case due to the comparatively short time-series). No machine learning is necessary in this case, since the contrast between the snow and the ash surface is really sharp. No changes of the text were made in relation to this comment.

3) p.7, l.11: How does RES2DINV robust inversion better resolve the contrasts? Please elaborate!

The conventional smoothness-constrained least squares method, which is widely used in inversion algorithms, attempts to minimize the square of the changes in the model resistivity values. Therefore, this method produces a model with a smooth variation in the resistivity, values which is suitable where subsurface resistivity also changes in a smooth manner. However, if the subsurface has sharp boundaries, such as the unfrozen/frozen soil interface (large contrast in resistivity), this conventional method tends to smear the boundaries. In this regard, the so-called robust model works better as the objective function attempts to minimize the absolute changes in the resistivity values, which produces models with sharp interfaces between different regions with different resistivity values, but within each region the resistivity value is almost constant. For better explanation we have revised the manuscript as follows:

Old Version (Page 7. Line 9)

In the next step, the apparent resistivity datasets were inverted using e.g. the commercially available software RES2DINV. The robust inversion option in RES2DINV, as well as a mesh refinement to half of the electrode spacing, was applied to better resolve the expected strong resistivity contrasts between unfrozen and frozen subsurface materials.

New version (Page 7. Line 13)

In the next step, the apparent resistivity datasets were inverted using the commercially available software RES2DINV. The robust inversion option in RES2DINV, as well as a mesh refinement to half of the electrode spacing, was applied to better resolve the expected strong resistivity contrasts between unfrozen and frozen subsurface materials. The objective function used in the robust inversion algorithm attempts to minimize the absolute changes in the resistivity values which produces models with sharp interfaces between different regions with different resistivity values (Loke, 2002).

4) p.16., l.11: Can these processes be linked to a mass balance of the active layer? This would help to understand the hydrological processes taking place in this system.

This is a very interesting suggestion, but goes quite beyond the scope of the present paper. In a more complex integrated approach (hydrogeophysical modelling approach, as mentioned in the preceding paragraph) the A-ERT models could in principle be used to assess the mass balance of the system. First attempts to couple resistivity data with hydro-thermal modelling were e.g. made in a recent paper by Jafarov et al. (2019), but using only synthetic data, Tomaskovicova (2018) and on smaller time scales by Scherler et al. (2010). However, in all cases this would require supplementary information regarding the hydrological setting of the study site, in-situ data (e.g. soil moisture) for model calibration as well as a proper uncertainty assessment of the geophysical models (e.g. data quality, inversion artifacts) with respect to the available in-situ data. At the moment, the monitoring station at Deception Island does not provide this kind of additional data.

References:

Jafarov, E. E., Harp, D. R., Coon, E. T., Dafflon, B., Tran, A. P., Atchley, A. L., Wilson, C. J., and Lin, Y. (2019): Estimation of soil properties by coupled inversion of electrical resistance, temperature, and moisture content data, *The Cryosphere Discuss.*, <https://doi.org/10.5194/tc-2019-91>, in review.

Scherler, M., Hauck, C., Hoelzle, M., Stähli, M. and Völksch, I. (2010): Meltwater infiltration into the frozen active layer at an alpine permafrost site. *Permafrost and Periglacial Processes* 21: 325–334, DOI: 10.1002/ppp.694.

Tomaskovicova, S. (2018). *Coupled thermo-geophysical inversion for permafrost monitoring*. PhD thesis Technical University of Denmark, Department of Civil Engineering. BYGDTU. Rapport, No. R-387

5) Discussion and outlook: How can this knowledge be transferred into new research? Would a new modelling technique enhance us to get more information from this data? Think about physical Agent-based models (Mewes & Schumann 2018: IPA (v1): a framework for agent-based modelling of soil water movement): The continuous ERT data could be the basis for dynamic models like the one presented by Mewes and Schumann.

We have revised the last two paragraphs of the manuscript by including several potential areas of future extension and application of the A-ERT approach in general and in our study area:

Old Version (Page 16. Line 4)

The consistency of our full year results with previous studies in more easily accessible alpine and polar regions (e.g. Hilbich et al., 2011; Supper et al., 2014; Keuschnig et al., 2017; Tomaskovicova, 2017, Oldenborger and LeBlanc, 2018) suggests that the detailed studies of the Alps can be transferred to set-ups in very remote

environments, which would allow for integrative process studies as well as coupled modeling of A-ERT data with existing water content and temperature monitoring system in Antarctica. Examples of such joint geophysical and thermal modelling approaches were given in Scherler et al. (2010) using uncoupled models and Tomaskovicova (2017) using a fully coupled electro-thermal modelling approach.

A long-term deployment of an A-ERT system in Antarctica would allow a much more detailed analysis of the permafrost and active layer evolution, which could be used as input data for hydro-thermal models simulating the future permafrost evolution (e.g. Marmy et al., 2016, Rasmussen et al., 2018). On a more local scale, the specific characteristics of Deception Island, where permafrost conditions are influenced also by geothermal and even volcanic activity, would allow for detailed investigations of the resulting hydro-thermal interactions in a cryospheric context. The fact that the monitoring occurs along a transect allows for improving the spatial understanding of the active layer dynamics with a minimal environmental disturbance in comparison to boreholes. It allowed detecting high-temporal resolution changes on freezing and thawing along the transect, providing new insight also into the potential geomorphic dynamics and its regime, for example, for processes such as cryoturbation or solifluction.

New version (Page 16. Line 25)

The consistency of our full year results with previous studies in more easily accessible alpine and polar regions (e.g. Hilbich et al., 2011; Supper et al., 2014; Keuschnig et al., 2017; Tomaskovicova, 2018, Oldenborger and LeBlanc, 2018) suggests that the detailed studies of the Alps can be transferred to set-ups in very remote environments, which would allow for integrative process studies as well as coupled modeling of A-ERT data with existing water content and temperature monitoring system in Antarctica. Examples of such studies include the combination of data processing techniques, petrophysical models and supporting information to estimate unfrozen water content from electrical resistivity data (e.g. Hauck, 2002; Fortier *et al.*, 2008; Grimm and Stillman, 2015; Dafflon *et al.*, 2016) or combining electrical resistivity data with seismic refraction data in a joint petrophysical model to estimate ice and water content (e.g. Hauck *et al.*, 2011). Such analyses also provide a tool to monitor the transient layer and study the impact of fast-changing meteorological conditions and frequent freeze-thaw process on soil behavior at the permafrost table. However, in the context of the volcanic material at Deception Island, the link between pore water resistivity and measured bulk resistivity should be assessed by laboratory measurements prior to performing a quantitative investigation on soil ice/water content. In addition, the type of the electric conduction needs to be investigated as in dry soils with low salinity, surface conduction is the dominant process (Duvillard et al., 2019) as opposed to electrolytic conduction which is usually assumed to calculate water contents from resistivity values.

A long-term deployment of an A-ERT system in Antarctica would allow a much more detailed analysis of the permafrost and active layer evolution, which could be used as input data for hydro-thermal models simulating the future permafrost evolution (e.g. Marmy et al., 2016, Rasmussen et al., 2018). In this context, joint A-ERT

and thermal modelling approaches such as uncoupled modeling approach (Scherler et al., 2010) and fully coupled electro-thermal modelling approach (Tomaskovicova, 2018) can be used for calibration of the thermal model that allows simulating heat transfer in active layer and permafrost. On a more local scale, the specific characteristics of Deception Island, where permafrost conditions are influenced also by geothermal and even volcanic activity, would allow for detailed investigations of the resulting hydro-thermal interactions in a cryospheric context. The fact that the monitoring occurs along a transect allows for improving the spatial understanding of the active layer dynamics with a minimal environmental disturbance in comparison to boreholes. It allowed detecting high-temporal resolution changes on freezing and thawing along the transect, providing new insight also into the potential geomorphic dynamics and its regime, for example, for processes such as cryoturbation or solifluction.

Referee #2:

The manuscript “Detailed detection of fast changes in the active layer using quasi continuous electrical resistivity tomography (Deception Island, Antarctica)” by Farzamian et al. presents automatic ERT measurements covering an entire yearly cycle at very high time resolution at a remote location in Antarctica. Such measurements are extremely rare, and the results are of high interest for the audience of TC. The manuscript, however, could be significantly improved by better focusing on the obvious question “can such a system provide added value compared to traditional techniques”. I recommend reviewing the content in this light, which should make it possible to identify superfluous parts and shorten the manuscript to some extent.

We would first like to thank Anonymous Referee #2 for evaluating our manuscript. We appreciate the overall positive comment that highlight the potential impact of our research. We have now revised the manuscript in this light to further highlight the potential of the A-ERT system compared to traditional methods. Please see our detailed answers to the various individual comments below.

Major comments:

1. The authors show that the ERT setup facilitates estimating/measuring ground temperatures, and the results are indeed impressive. However, ground temperature is exactly the physical variable characterizing the thermal state of permafrost that we can measure very well already. Playing devil’s advocate, one could bring forward that a bunch of reliable and inexpensive temperature loggers could easily cover the spatial and temporal scales that the ERT was set up for (at better accuracy and probably lower cost). This is especially true since point-by-point calibration seems necessary (Fig. 10) to convert resistivity to temperature. Ice and water contents, on the other hand, are really hard to measure. The authors mention the transient layer as an example for changing ice contents the Introduction (P. 3, l. 14, see comment below), but no results are presented. If anything (semi-) quantitative regarding water and ice contents can be extracted from the measurements, that would make the manuscript much stronger. I do not question the selected setup or the results presented, but the authors should provide the reader with a better sense of direction where they are going with their research, and how far they have come with the presented results in this process.

It is correct that we showed how ERT data could estimate ground temperature due to the strong resistivity-temperature correlation, however, this is not the main aim of this study as described in the manuscript. With this study we aim to I) evaluate the feasibility of installing and running autonomous ERT monitoring stations in remote and extreme environments such as Antarctica, II) to monitor subsurface freezing and thawing processes on a daily and seasonal basis and mapping the spatial and temporal variability of thaw depth and III) to study the impact of short-lived extreme meteorological events on active layer dynamics. Validating and illustrating the performance of the A-ERT system by using near-surface temperature dynamics does therefore not mean that we propose to use the system only for this target – as the reviewer remarked correctly, for this objective, shallow boreholes with temperature measurements are equally well suited, if they can be deployed.

However, being able to predict ground temperatures (also at much larger depths) using a non-invasive method and hence, low environmental impact method, will be indeed very valuable especially in Antarctica, where the ecosystem is very sensitive to invasive techniques. In addition, drilling (not the temperature loggers) is very expensive in Antarctica, while A-ERT set-up is a comparatively inexpensive method with flexible set-up to investigate different depths. Moreover, using an A-ERT system, we could detect freeze-thaw process of active layer in very high temporal and spatial resolution which cannot be easily assessed by temperature loggers as phase changes are not explicitly seen. Having e.g. a series of 20 m deep boreholes in frozen soil/rocky terrain over a transect of several 100 metres (to cover its heterogeneity) is quite impossible to achieve in Antarctica, whereas an A-ERT installation of this size would only require longer cables than the one shown in our study.

We have revised the text in this light. please see also our detailed answer to the comment #3 in this regard.

The feasibility of quantitative water/ice content estimation from A-ERT data was shown in several studies; however, this requires a combination of data processing techniques, petrophysical models and supporting information (e.g. Fortier et al., 2008; Hauck et al., 2011; Grimm and Stillman, 2015; Dafflon et al., 2016) to provide a proper water content estimation. In addition, to access a reliable estimate water/ice contents from resistivity alone, the type of electric conduction must be analysed. Duvillard et al. (2018) showed that for comparatively dry soils with low salinity, surface conduction is the dominant process as opposed to electrolytic conduction, which is usually assumed to calculate water contents from resistivity values (e.g. by using Archie's Law). In the context of the volcanic material at Deception Island, the link between pore water resistivity and measured bulk resistivity would have to be made by laboratory measurements, which has not been done in the present study. Consequently, an explicit link between monitored resistivity values and ice/water content would be possible and is desirable, but to do this in a reliable manner would go beyond the scope of the present study. In this regard, we revised the "Conclusion and Outlook" section to better address the potential of A-ERT in water/ice content estimation.

Old Version (Page 16. Line 4)

The consistency of our full year results with previous studies in more easily accessible alpine and polar regions (e.g. Hilbich et al., 2011; Supper et al., 2014; Keuschnig et al., 2017; Tomaskovicova, 2017, Oldenborger and LeBlanc, 2018) suggests that the detailed studies of the Alps can be transferred to set-ups in very remote environments, which would allow for integrative process studies as well as coupled modeling of A-ERT data with existing water content and temperature monitoring system in Antarctica....

New version (Page 16. Line 25)

The consistency of our full year results with previous studies in more easily accessible alpine and polar regions (e.g. Hilbich et al., 2011; Supper et al., 2014; Keuschnig et al., 2017; Tomaskovicova, 2018, Oldenborger and

LeBlanc, 2018) suggests that the detailed studies of the Alps can be transferred to set-ups in very remote environments, which would allow for integrative process studies as well as coupled modeling of A-ERT data with existing water content and temperature monitoring system in Antarctica. Examples of such studies include the combination of data processing techniques, petrophysical models and supporting information to estimate unfrozen water content from electrical resistivity data (e.g. Hauck, 2002; Fortier *et al.*, 2008; Grimm and Stillman, 2015; Dafflon *et al.*, 2016) or combining electrical resistivity data with seismic refraction data in a joint petrophysical model to estimate ice and water content (e.g. Hauck *et al.*, 2011). Such analyses also provide a tool to monitor the transient layer and study the impact of fast-changing meteorological conditions and frequent freeze-thaw process on soil behavior at the permafrost table. However, in the context of the volcanic material at Deception Island, the link between pore water resistivity and measured bulk resistivity should be assessed by laboratory measurements prior to performing a quantitative investigation on soil ice/water content. In addition, the type of the electric conduction needs to be investigated as in dry soils with low salinity, surface conduction is the dominant process (Duvillard *et al.*, 2019) as opposed to electrolytic conduction which is usually assumed to calculate water contents from resistivity values.

References:

- Dafflon B., Hubbard S., Ulrich C., Peterson J., Wu Y., Wainwright H., Kneafsey T.J. (2016). Geophysical estimation of shallow permafrost distribution and properties in an ice-wedge polygon-dominated Arctic tundra region, *Geophysics*, 81, WA247–WA263, <https://doi.org/10.1190/geo2015-0175.1>
- Duvillard, P. A., Revil, A., Soueid Ahmed, A., Qi, Y., Coperey, A., & Ravel, L. (2018). Three-dimensional electrical conductivity and induced polarization tomography of a rock glacier. *Journal of Geophysical Research: Solid Earth*, 123, 9528–9554. <https://doi.org/10.1029/2018JB015965>
- Fortier R., LeBlanc A.-M., Allard M., Buteau S., Calmels F. (2008). Internal structure and conditions of permafrost mounds at Umiujaq in Nunavik, Canada, inferred from field investigation and electrical resistivity tomography, *Can. J. Earth Sci.*, 45, 367–387 <https://doi.org/10.1139/E08-004>
- Grimm R.E., Stillman D.E. (2015). Field test of detection and characterization of subsurface ice using broadband spectral-induced polarisation, *Permafrost Periglacial Process*, 26, 28–38. doi: 10.1002/ppp.1833.
- Hauck, C., Böttcher, M., and Maurer, H. (2011). A new model for estimating subsurface ice content based on combined electrical and seismic data sets, *The Cryosphere*, 5, 453–468, <https://doi.org/10.5194/tc-5-453-2011>.

2. The fast temperature changes (“events”) are interesting (and once again, it is impressive that the ERT can pick them up). But most of the manuscript describes the general evolution over a year which is even more important than fast changes for the above-mentioned question “does such a system provide added value compared to traditional techniques”. I therefore recommend changing the title, not mentioning “fast changes”, to better describe the (adequate) content of the manuscript.

We agree, thank you very much for the comment. We changed the title to “[Detailed detection of active layer freeze-thaw dynamics using quasi continuous electrical resistivity tomography \(Deception Island, Antarctica\)](#)” which can better reflect the content of the manuscript.

3. In the Discussion, I am missing a reflection on the points that the ERT system could indeed beat traditional (temperature) measurement techniques. In addition to water and ice contents (see above), this could in particular be temperature monitoring in deeper layers, for which expensive boreholes are needed. Furthermore, spatially resolved (in lateral direction) measurements could be achieved by ERT, and some pattern is indeed visible in Figs. 7 and 9, but this is not discussed in much detail, except for the short paragraph on page 12. This could be discussed in more detail in the Discussion. Another application could be monitoring of changing salinities. The authors should discuss under which circumstances these different variables could be estimated/evaluated in permafrost settings.

Please see our answer to comment 1. We revised the manuscript in this light and reflected the advantage of the non-invasive A-ERT system compared to the boreholes. This includes the revision of the abstract, introduction, and discussion with the following details:

Abstract: we revised the last paragraph of the abstract as follows:

Old Version (Page 2. Line 22)

Based on this first complete year-round A-ERT monitoring data set in Deception Island, we believe that this system shows high potential for autonomous applications in remote and harsh polar environments such as Antarctica.

New version (Page 2. Line 22)

Based on this first complete year-round A-ERT monitoring data set in Deception Island, we believe that this system shows high potential for autonomous applications in remote and harsh polar environments such as Antarctica. In addition, the monitoring system can be used with larger electrode spacing to investigate greater depths, providing adequate monitoring at sites and depths where boreholes are very costly and the ecosystem is very sensitive to invasive techniques. Further applications may be the estimation of ice/water contents through petrophysical models or the calibration/validation of heat transfer models between active layer and permafrost.

Introduction: we revised two paragraphs of the introduction as follows:

Old Version (Page 4. Line 2)

... In addition, being an invasive technique, the drilling of boreholes disturbs the subsurface and is not feasible to conduct over large areas, especially in environmentally sensitive ecosystems such as the Antarctic.

New version (Page 3. Line 34)

... In addition, being an invasive technique, the drilling of boreholes disturbs the subsurface and is not feasible to conduct over large areas, especially in environmentally sensitive ecosystems such as the Antarctic. Also, the drilling of boreholes to monitor temperature in deeper layers is very expensive in Antarctica, which further limits the application of boreholes for deep investigations and in areas with very heterogeneous ground conditions.

Old Version (Page 4. Line 10)

.... Due to the large contrast between the resistivity of ice and water, the method has become popular in permafrost investigation to distinguish between frozen and unfrozen soil.

New version (Page 4. Line 9)

.... Due to the large contrast between the resistivity of ice and water, the method has become popular in permafrost investigation to distinguish between frozen and unfrozen soil and thus to monitor the active layer dynamics including freezing, thawing, water infiltration and refreezing processes in a spatial context, which is sometimes very difficult to assess with only temperature boreholes. This technique is also being widely used to provide non-invasive estimates of spatiotemporal unfrozen water content distribution due to the strong dependence of electrolytic conduction on the phase change of water to ice in earth materials (e.g. Hauck, 2002).

Discussion: we revised a paragraph of the discussion as follows:

Old Version (Page 14. Line 31)

.... Hence, the ground temperature tomogram (Fig. 4b) shows a constant thaw depth of 40 cm in the first three months...

New version (Page 15. Line 14)

... Hence, the ground temperature tomogram (Fig. 4b) shows a constant thaw depth of 40 cm in the first three months. These results reveal that our A-ERT set-up allows for accurate characterization of the active layer freeze-thaw process, with a spatial resolution that can usually not be achieved with temperature sensors, except for a very dense sensor setup...

The lateral resistivity variations seen in Figures 7 and 9 were already discussed in the results section. To make the text clearer and more consistent in this regard, we have reformulated the manuscript and included a new paragraph about the lateral resistivity changes along the A-ERT transect in the “discussion” section as follows:

New version (Page 14. Line 18)

The resistivities of both, active layer and permafrost zones, indicate only a slight lateral change along the transect, which is indicative for a spatially homogeneous ground conditions in the study area. However, the size of the A-ERT transect is comparatively small compared to other A-ERT studies where stronger lateral variations along the ERT transects are usually more evident (i.e. Hilbich et al., 2011; Supper et al., 2014; Keuschnig et al., 2017). In contrast, large lateral resistivity changes are visible during the extreme short-lived meteorological events. An example of such lateral changes is very evident during event (II) shown in Figure 9b. The obtained resistivity models during this event suggest the propagation of the thawing process from the left (A) to the right (B) on May 9 and 10 (i.e. the active layer resistivity decreased from the left to the right) and then refreezing from the same direction on May 11. Because the left side of the A-ERT transect is closer to the interfluvium and is more wind and sun exposed, subsurface thaw and snowmelt are expected to take place from left to right along the transect orientation after the initial air temperature rise on May 9. Similarly, active layer refreezing starts from the same direction (left to right) when the air cools down again on May 11. On seasonal time-scales, a similar lateral resistivity variation is visible in Figure 7. During the freezing season, the resistivity of the active layer is higher on the left side due to the enhanced cooling of the active layer in this part of the profile. Similarly, the resistivity of the active layer decreases from the left to the right during active layer warming (i.e. September 2010) and thawing (i.e. October 2010).

The ashes at Deception Island are recent (a few hundred years) and previous unpublished studies in this site indicate a non-saline soil. Our geophysical investigations across the site also show very resistive soil (active layer) which also suggest that the soil is not saline.

Minor Comments:

P2 -l. 2-8: Please break this sentence up in several.

We revised it accordingly as follows:

Old Version (Page 2. Line 2)

Climate induced warming of permafrost soils is a global phenomenon, with regional and site-specific variations, which are not fully understood. In this context, a 2D automated electrical resistivity tomography (A-ERT) system was installed for the first time in Antarctica at Deception Island, associated to the existing Crater Lake site of the Circumpolar Active Layer Monitoring Network (CALM-S) I) to evaluate the feasibility of installing and running autonomous ERT monitoring stations in remote and extreme environments such as Antarctica, II) to monitor subsurface freezing and thawing processes on a daily and seasonal basis and to map the spatial and temporal variability of thaw depth, and III) to study the impact of short-lived extreme meteorological events on active layer dynamics.

New version (Page 2. Line 2)

Climate induced warming of permafrost soils is a global phenomenon, with regional and site-specific variations, which are not fully understood. In this context, a 2D automated electrical resistivity tomography (A-ERT) system was installed for the first time in Antarctica at Deception Island, associated to the existing Crater Lake site of the Circumpolar Active Layer Monitoring Network (CALM-S). This set-up aims to I) monitor subsurface freezing and thawing processes on a daily and seasonal basis and to map the spatial and temporal variability of thaw depth, and to II) study the impact of short-lived extreme meteorological events on active layer dynamics. In addition, the feasibility of installing and running autonomous ERT monitoring stations in remote and extreme environments such as Antarctica was evaluated for the first time.

-l. 13: “indicates that our system set-up can successfully map spatiotemporal thaw depth variability” How quantitative does it become with respect to AL? Is “map” which means that spatial differences can be resolved the correct word to use here?

We have revised this paragraph and we use now the term “resolve”. In addition, according to the electrode spacing and array configuration, we expect a resolution of 20-30 cm.

-l. 20: please describe the advantages/added value compared to having a borehole?

We revised this section as follow:

Old Version (Page 2. Line 22)

Based on this first complete year-round A-ERT monitoring data set in Deception Island, we believe that this system shows high potential for autonomous applications in remote and harsh polar environments such as Antarctica.

New version (Page 2. Line 22)

Based on this first complete year-round A-ERT monitoring data set in Deception Island, we believe that this system shows high potential for autonomous applications in remote and harsh polar environments such as Antarctica. In addition, the monitoring system can be used with larger electrode spacing to investigate greater depths, providing adequate monitoring at sites and depths where boreholes are very costly and the ecosystem is very sensitive to invasive techniques. Further applications may be the estimation of ice/water contents through petrophysical models or the calibration/validation of heat transfer models between active layer and permafrost.

P3 -l. 14ff: does the presented method shed any new light on this issue?

In fact, this layer was resolved in our resistivity section in Figure 11. The higher amount of ice in this layer increases the resistivity which could be detected in the inverted resistivity models. We have revised the “discussion” section and added the following explanation in this regard:

Old Version (Page 14. Line 31)

... Hence, the ground temperature tomogram (Fig. 4b) shows a constant thaw depth of 40 cm in the first three months....

New version (Page 15. Line 14)

... Hence, the ground temperature tomogram (Fig. 4b) shows a constant thaw depth of 40 cm in the first three months. These results reveal that our A-ERT set-up allows for accurate characterization of the active layer freeze-thaw process, with a spatial resolution that can usually not be achieved with temperature sensors, except for a very dense sensor setup. In addition, the spatiotemporal resistivity variations show that the resistivity values are greatest in winter and around the permafrost table at depths around 40 cm (see Fig. 11), indicating maximum ice contents at this depth. This is due to the repeated thawing and refreezing processes of water infiltrating from snow/rain that accumulated on top of the permafrost table (cf. the transition zone, Shur et al.,

2005) which forms an ice-rich layer and increases the resistivity of this layer. Resistivity at the borehole location compared to borehole temperatures within S_{3,3} (Fig. 10) also shows remarkably greater values during active layer freezing at a depth of 40 cm indicating that A-ERT data can be used to study the transition zone in the study area.

P4 -l. 21: Isn't the site rather untypical for "conditions found in Antarctica", when considering all of Antarctica?

The site is not typical for soil conditions in Antarctica, since it is a volcanic setting. However, the sentence relates to logistics and for these, Deception Island is similar to most other areas in the Antarctic Peninsula and also other Antarctic stations without year-round maintenance. All available bases on Deception Island are only summer operated.

P5 -l. 22: please make clear that the "nodes" refer to active layer measurements, this could be confused with the actual ERT setup.

We have revised this section accordingly as follow:

Old Version (Page 5. Line 22)

The Crater Lake CALM-S site consists of a 100 × 100 m grid with 121 nodes spaced at 10 m intervals and was installed in January 2006 (Fig. 2) with several upgrades since then. The site includes monitoring of air temperature, permafrost and the active layer in boreholes, snow thickness and once per year, thaw depth is measured manually by mechanical probing during the summer (Ramos et al., 2017).

New version (Page 5. Line 28)

The Crater Lake CALM-S site consists of a 100 × 100 m grid with little topography (maximum of 6 m variation in elevation) and was installed in January 2006 (Fig. 2) with several upgrades since then. The site includes monitoring of air temperature, permafrost and the active layer in boreholes, and snow thickness. Thaw depth is measured manually once per year during summer at 121 nodes spaced at 10 m intervals by mechanical probing (Ramos et al., 2017).

P. 7 -l. 9: delete "e.g."

We corrected it accordingly.

P16 L. 17: Is this realistic, considering the spatial resolution which would be required for a process like cryoturbation (for example at a mudboil)? What is the spatial resolution in the horizontal direction, that can be resolved by the system? Is it conceivable to use such a system with even finer spacing (e.g. 10cm) and still obtain good results?

The spatial resolution of the A-ERT system is a function of the selected electrode spacing, array configuration and subsurface properties. Regarding the small spacing of 50 cm in our set-up we expect lateral resolution of 20-30 cm (Figure 3 d), which allows for accurate characterization of the freeze-thaw process with a resolution that, with temperature sensors, would only be possible with a very dense setup. This allows for detecting changes, potentially, even at the large mudboil scale, and hence detect changes between center and border frost penetration. However in mudboils, close to the surface, micro-topography would need careful modelling. In the study area, no mudboils occur and in fact, ice segregation is limited by the coarse and porous nature of the lappilli. In sloping terrain, the A-ERT system could be used to detect water movement over the frozen soil layer and the linkage of the process to shallow-debris flow initiation or even shallow active layer detachment slide dynamics.

A smaller electrode spacing of 10 cm could be used to obtain even higher resolution (e.g. 5 cm). Such an electrode spacing is used in “micro” A-ERT monitoring system to study e.g. the soil-plant interactions in laboratory or in field in micro scale (e.g. Boaga et al., 2013). However, this would require smaller electrodes and performing several tests to study feasibility of such a set-up at the site. In addition, performing the same set-up but using the small electrode spacing of 10 cm will yield smaller ($\sim 1/5$) spatial coverage compared to the original configuration, and smaller maximum investigation depth.

References:

Boaga, J., Rossi, M., and Cassiani, G.: Monitoring Soil-plant Interactions in an Apple Orchard Using 3-D Electrical Resistivity Tomography, *Procedia Environ. Sci.*, 19, 394–402, <https://doi.org/10.1016/j.proenv.2013.06.045>, 2013.

**Detailed detection of ~~fast changes in the~~ active layer freeze-thaw
dynamics using quasi-continuous electrical resistivity tomography
(Deception Island, Antarctica)**

Mohammad Farzamian¹, Gonalo Vieira², Fernando A. Monteiro Santos¹, Borhan Yaghoobi Tabar³,
Christian Hauck⁴, Maria Catarina Paz¹, Ivo Bernando¹, Miguel Ramos⁵, and Miguel Angel de Pablo⁵

¹ IDL-Universidade de Lisboa, Faculdade de Ciencias, Portugal,

² Centre for Geographical Studies, IGOT, Universidade de Lisboa, Portugal,

³ School of Mining, Petroleum and Geophysics, Shahrood University of Technology, Iran,

⁴ Department of Geosciences, University of Fribourg, Switzerland,

⁵ Universidad de Alcal de Henares, Spain

Correspondence to: Mohammad Farzamian (mohammadfarzamian@fc.ul.pt)

Abstract

Climate induced warming of permafrost soils is a global phenomenon, with regional and site-specific variations, which are not fully understood. In this context, a 2D automated electrical resistivity tomography (A-ERT) system was installed for the first time in Antarctica at Deception Island, associated to the existing Crater Lake site of the Circumpolar Active Layer Monitoring Network (CALM-S). ~~This set-up aims to I) to evaluate the feasibility of installing and running autonomous ERT monitoring stations in remote and extreme environments such as Antarctica, II) I) to~~ monitor subsurface freezing and thawing processes on a daily and seasonal basis and to map the spatial and temporal variability of thaw depth, and ~~to II) III) to~~ study the impact of short-lived extreme meteorological events on active layer dynamics. In addition, the feasibility of installing and running autonomous ERT monitoring stations in remote and extreme environments such as Antarctica was evaluated for the first time. Measurements were repeated at 4-hour intervals during a full year, enabling the detection of seasonal trends, as well as short-lived resistivity changes reflecting individual meteorological events. The latter is important to distinguish between (1) long-term climatic trends and (2) the impact of anomalous seasons on the ground thermal regime.

Our full-year dataset shows large and fast temporal resistivity changes during the seasonal active layer freezing and thawing and indicates that our system set-up can ~~successfully map~~ resolve spatiotemporal thaw depth variability along the experimental transect at very high temporal resolution. Largest resistivity changes took place during the freezing season in April when low temperatures induce an abrupt phase change in the active layer in the absence of a snow cover. The seasonal thawing of the active layer is associated with a slower resistivity decrease during October due to the presence of a snow cover and the corresponding zero-curtain effect. Detailed investigation of the daily resistivity variations reveals several periods with rapid and sharp resistivity changes of the near-surface layers due to the brief surficial refreezing of the active layer in summer or brief thawing of the active layer during winter as a consequence of short-lived meteorological extreme events. These results emphasize the significance of the continuous A-ERT monitoring set-up which enables to detect fast changes in the active layer during short-lived extreme meteorological events.

Based on this first complete year-round A-ERT monitoring data set in Deception Island, we believe that this system shows high potential for autonomous applications in remote and harsh polar environments such as Antarctica. The monitoring system can be used with larger electrode spacing to investigate greater depths, providing adequate monitoring at sites and depths where boreholes are very costly and the ecosystem is very sensitive to invasive techniques. Further applications may be the estimation of ice/water contents through petrophysical models or the calibration/validation of heat transfer models between active layer and permafrost.

1 Introduction

Although permafrost soils show currently a clear global warming trend due to climate change (Biskaborn et al. 2019), regional differences can be pronounced, which are not only due to regional climate differences but also due to heterogeneous soil characteristics. One example is the Antarctic Peninsula where one of the strongest air temperature increases is recorded since the 1950's. In spite of this general air temperature increase, the northwest of the Antarctic Peninsula has shown a cooling trend between 1999 and 2015 (Turner et al., 2016; Oliva et al., 2016). Consequently, and contrary to the general trend, the seasonal surficial thaw layer of the ground above the permafrost (the active layer) decreased, indicating that the climate signal is more complex than previously accounted (Ramos et al. 2017).

The active layer of permafrost environments is not only a climate change indicator, but its dynamic is of extreme importance to terrestrial ecosystems since it influences the hydrology, soil nutrient and contaminant fluxes, as well as geomorphological processes, such as soil erosion and mass wasting. Furthermore, changes in active layer thickness may also affect infrastructure due to the effects it shows on the rheological properties of the perennially frozen soil (Williams and Smith, 1989).

In moist Polar environments, the transition zone between the active layer and the permafrost table is frequently characterized by the presence of a high content of interstitial ice, forming an ice-rich layer, some centimeters to decimeter thick. This relates to the interannual variability of the active layer thickness. In warmer summers, the active layer thickens and water percolates downwards concentrating at the permafrost table, refreezing at the beginning of the cold season. In cooler summers, the active layer is shallower and the previously formed ice does not melt. This ice-rich layer, still poorly characterized, but with significance due to its impacts on soil behavior is called the transient layer (Shur et al., 2005). A continuous monitoring of the physical properties of the active and transient layers is therefore essential to understand the permafrost dynamics and its potential impacts on climate feedbacks and local ecology.

Deception Island in the South Shetlands archipelago, off northern Antarctic Peninsula, is an extraordinary natural laboratory to study active layer and permafrost dynamics. The island is an active stratovolcano with widespread permafrost down to sea-level except at spatially restricted localities with geothermal anomalies, generally along faults (Goyanes et al., 2014). The soil surface is bare with vegetation almost completely absent, and permafrost is close to its climatic limit since mean annual air temperatures are just below 0 °C (Bockheim et al., 2013; Ramos et al., 2017). The soil is composed by a mix of lavas, lapilli, and pumice, which in some areas induce high thermal insulation, with resulting active layer thickness of only 40 cm.

The shallow active layer and soil characteristics of Deception Island, the easy access to the permafrost table, as well as the geographical setting in the Maritime Antarctic and its geothermal characteristics, have made the island one of the best-studied areas for permafrost research in the Antarctic Peninsula (e.g. Ramos et al., 2008; Vieira et al., 2010; [Melo et al., 2012](#); Bockheim et al., 2013; ~~Melo et al., 2012~~; Goyanes et al., 2014; Ramos et al., 2017). Two permafrost and active layer monitoring sites within the Circumpolar Active Layer Monitoring – South Program (CALM-S) and the Global Terrestrial Network for Permafrost (GTN-O/GCOS/IPA) including ground temperature boreholes and meteorological stations have been installed, at Irizar col and Crater Lake.

So far, monitoring of the active layer dynamics in Antarctica was conducted using only 1-dimensional borehole and meteorological data, which restricted the analysis to point information that often lack representativeness at the field scale. In addition, being an invasive technique, the drilling of boreholes disturbs the subsurface and is not feasible to conduct over large areas, especially in environmentally sensitive ecosystems such as the Antarctic. Also, the drilling of boreholes to monitor temperature in deeper layers is very expensive in Antarctica, which further limits the application of boreholes for deep investigations and in areas with very heterogeneous ground conditions.

As a cost-effective and ecologically non-hazardous alternative, 2-dimensional geophysical monitoring, such as Electrical Resistivity Tomography (ERT), allows for monitoring the spatiotemporal variability of the freezing and thawing characteristics of the active layer and the permafrost, as has been demonstrated in several applications in the European Alps (e.g. Hauck, 2002; Hilbich et al., 2008; 2011; Krautblatter et al., 2010; Ottowitz et al., 2011; Supper et al., 2014; Mewes et al., 2017; Mollaret et al. 2019). ERT is a non-invasive technique that is sensitive to the electrical conductivity (the reciprocal of electrical resistivity) of materials. Due to the large contrast between the resistivity of ice and water, the method has become popular in permafrost investigation to distinguish between frozen and unfrozen soil and thus to monitor the active layer dynamics including freezing, thawing, water infiltration and refreezing processes in a spatial context, which is sometimes very difficult to assess with only temperature boreholes. This technique is also being widely used to provide non-invasive estimates of spatiotemporal unfrozen water content distribution due to the strong dependence of electrolytic conduction on the phase change of water to ice in earth materials (e.g. Hauck, 2002).

Although individual ERT measurements in Antarctica have been reported (e.g. McGinnis et al., 1973; Guglielmin et al., 1997; Guglielmin and Dramis, 1999; Hauck et al., 2007; Goyanes et al., 2014), no continuous and autonomous ERT monitoring has been attempted yet at these remote and extreme environments, where winter access is usually impossible. In these cases, maintenance and repair, which has often become necessary in the autonomous ERT studies reported from the European Alps (cf. Supper et al. 2014), is not possible for most of the year. In this paper, we show that continuous ERT monitoring of the active layer and shallow permafrost is possible in Antarctica, and that its results may yield high-resolution 2-dimensional data on freeze and thaw characteristics on different time-scales.

We installed and tested an autonomous and continuously measuring ERT monitoring system in the vicinity of shallow boreholes at the Crater Lake CALM-S site, Deception Island with the objective to evaluate its potential in a remote area without maintenance for a full year. The Crater Lake CALM-S site is typical for conditions found in Antarctica, where year-round stations are scarce, and most research stations are only summer operated. Data were collected to monitor subsurface freezing and thawing processes on a daily and seasonal basis, and to detect seasonal trends as well as the impact of short-lived extreme meteorological events. Short-lived meteorological events are rarely addressed in permafrost studies, but they reflect the impact of fast-changing meteorological conditions on the upper soil horizons. In the context of climate change, with increasing frequency of atmospheric extreme events, these events may also become more frequent. Being able to identify them in the ERT series allows for a better characterization of the links between soil thermal regimes and geomorphic dynamics.

2 Study area

Deception Island (62° 55' S, 60° 37' W) is located about 100 km north of the Antarctic Peninsula (AP), in the Bransfield Strait and is part of the South Shetlands archipelago (Fig. 1). The island is a stratovolcano with a horseshoe shape and a diameter of 15 km, a 7 km wide caldera open to the sea and maximum elevation at Mount Pond (539 m). About 57% of the island is currently glaciated and about 47 km² are glacier-free (Smellie and López- Martínez, 2002). The climate is cold-oceanic with frequent summer rainfalls, a moderate annual temperature range and mean annual air temperatures close to -3 °C at sea level. The weather conditions are dominated by the influence of the polar frontal systems and atmospheric circulation is very variable including the possibility for winter rainfall (Styszynska, 2004). Deception Island is an active volcano and is formed by intercalation of lava flows, pyroclastic and ash deposits, with many of the present-day glaciers ash-covered. During the recent eruptions of 1967, 1969 and 1970, pyroclastic and ash deposits covered the snow mantle, and buried snow is still present at some sites. Deposits are very porous and insulating with high ice content at the permafrost table. The active layer is thin, varying from 30 to 96 cm depth across Deception Islands in different soils (Bockheim et al., 2013) and boreholes show the presence of warm permafrost.

The Crater Lake CALM-S site is located in a small and relatively flat plateau-like surface covered by volcanic and pyroclastic deposits at 85 m a.s.l, north of Crater Lake (62°59'06.7" S, 60°40'44.8" W). The site was selected due to its flat characteristics, absent summer snow cover, large distance to known geothermal anomalies, good exposure to the regional climate conditions (mitigating site-specific effects and being representative in a regional context) and because of the vicinity to the Spanish station Gabriel de Castilla. The ground surface is completely devoid of vegetation and the ~~MAAT-mean annual~~ air temperatures at the Crater Lake CALM-S site between 28/01/2009 to 22/01/2014 was -3.0 °C. Permafrost temperatures are -0.3 °C to -0.9 °C, with permafrost thickness varying spatially from 2.5 to 5.0 m (Vieira et al., 2008; Ramos et al., 2017) and active layer thickness in the range of 25 to 40 cm. This spatial variability has not been addressed in the literature, but it is possibly related to differences in surface deposits and snow cover.

Figure 1 (near here)

3 Material and Methods

3.1 Crater Lake CALM-S environmental monitoring setup

The Crater Lake CALM-S site consists of a 100 × 100 m grid ~~with little topography (maximum of 6 m variation in elevation) with 121 nodes spaced at 10 m intervals~~ and was installed in January 2006 (Fig. 2) with several upgrades since then. The site includes monitoring of air temperature, permafrost and the active layer in boreholes, ~~and~~ snow thickness ~~and once per year,~~ Thaw depth is measured manually once per year during summer at 121 nodes spaced at 10 m intervals by mechanical probing ~~during the summer~~ (Ramos et al., 2017). ~~The topography map of the CALM-S site shows relatively a flat area with a maximum of 6 m variation in elevation within the site.~~

Air temperatures are measured at 160 cm above the surface, monitored with hourly measurements since 2009. Ground temperatures are measured in the shallow borehole S_{3,3} down to 160 cm (node 3,3) (Fig. 2). This borehole has a diameter of 32 mm and is cased with air-filled PVC pipes and ground temperatures are measured with ibutton-sensors at depths 2.5, 5, 10, 20, 40, 80 and 160 cm. In addition, ground temperatures are measured in 16 very shallow boreholes, regularly distributed within the grid, with a single ibutton sensor close to the base of the active layer. Finally, snow thickness is estimated using a so-called snow pole, with ~~series of near surface air temperature~~ ibutton miniloggers installed ~~in~~ on a vertical stake at 5, 10, 20, 40, 80 cm height above the ground (de Pablo et al., 2016). Snow distribution is mapped using a Campbell CC640 time-lapse camera with daily pictures at 11:00, 12:00 and 13:00 (local solar time). The combined approach of snow pole and the time-lapse camera allows evaluating the snow distribution in the study area.

Figure 2 (near here)

3.2 Electrical Resistivity Tomography monitoring

Electrical Resistivity Tomography (ERT) is the method for the calculation of the subsurface electrical resistivity distribution from multiple electrical resistance measurements made using a quadrupole arrangement of electrodes. The electrodes are placed on the ground surface and a 2-D or 3-D image of the resistivity distribution can be achieved by varying the location and spacing of the electrodes. The relationship between the measured spatial apparent resistivity distribution and the true resistivity distribution of the subsurface is complex and needs to be estimated using inversion theory (Loke, 2002). Under the assumption that general conditions (e.g. lithology, pore space) remain unchanged during the observation period, repeated resistivity measurement can provide a mean for evaluation of freezing or thawing processes and subsurface temperature variations (Hauck, 2002).

An automatic ERT (A-ERT) monitoring system using a 4POINTLIGHT_10W (Lippmann) instrument, was installed in the vicinity of the ground temperature borehole S_{3,3} (see Fig. 2) in 2010 in order to monitor active layer freezing and thawing by ground surface time-lapse surveys (Fig. 3). The system was installed close to the interfluvial zone, in the most elevated zone within the site, where stronger spatiotemporal subsurface variations are expected. ~~The Lippmann resistivity meter was programmed in combination with multi electrodes for ERT surveys.~~ The individual readings of each quadruple measurement were converted to apparent resistivity values and stored in the internal memory.

All ERT surveys were performed using the Wenner electrode configuration to minimize energy consumption and measurement time as well as to obtain the best signal-to-noise ratio in highly resistive terrain (Kneisel, 2006; Hauck and Vonder Mühll, 2003). The Wenner array is also more sensitive to vertical changes in the subsurface resistivity below the center of the array (Loke, 2002) which makes the configuration ideal for active layer imaging. 20 copper plates, which are connected by buried cables to the active boxes, with an electrode spacing of 0.5 m were used in this study (Fig. 3b). A robust, water-proof box was used and buried, casing the 4POINTLIGHT_10W instrument, solar panel-driven battery and multi-

electrodes connectors during data acquisition (Fig. 3c). This setup yields 56 individual data points for each monitoring data set at six data levels (Fig. 3d). A-ERT measurements were started at the beginning of 2010 and repeated every four hours during one full year.

Figure 3 (near here)

3.3 A-ERT data processing and inversion

A-ERT data processing and inversion include several steps: data filtering (outlier detection), spatial mean apparent resistivity analysis and resistivity data inversion. As a first step, the apparent resistivity data measured during one year were filtered by removing data spikes and negative values. Furthermore, data points with standard deviations of more than 2% after 9 stackings were excluded. The quality of the apparent resistivity data was good in most datasets and ~~only~~ less than 0.5% of all measurements had to be eliminated. The measured apparent resistivity data were then averaged for each depth level, providing six horizontal mean values for each dataset as shown in Fig. 3d, and analyzed regarding daily and monthly resistivity changes.

In the next step, the apparent resistivity datasets were inverted using ~~e.g.~~ the commercially available software RES2DINV. The robust inversion option in RES2DINV, as well as a mesh refinement to half of the electrode spacing, was applied to better resolve the expected strong resistivity contrasts between unfrozen and frozen subsurface materials. The objective function used in the robust inversion algorithm attempts to minimize the absolute changes in the resistivity values which produce models with sharp interfaces between different regions with different resistivity values (Loke, 2002). In addition, a full 4D inversion algorithm developed by Kim et al. (2009) was used ~~in this study~~ to better image the temporal resistivity changes. The full 4D inversion algorithm defines a subsurface structure and the entire monitoring data in the space-time domain to obtain a four-dimensional space-time model using just one inversion process. In this approach, regularizations are introduced not only in the space domain but also in time, resulting in reduced inversion artifacts and improved stability of the inverse problem (Kim et al., 2009).

3.4 Virtual borehole analysis

A so-called virtual borehole analysis (e.g. Hilbich et al., 2011) was used to ~~further investigate the dynamics of~~ the active layer dynamics during 2010 in more detail ~~in order to evaluate the temporal variation of the thaw depth~~ as well as to study the resistivity-temperature relationship. Here, inverted resistivity values were extracted from the tomogram along a 1-dimensional depth transect, close to the existing borehole S_{3,3}. At this borehole, temperature sensors are installed at different depths down to 160 cm, and temperature data are available every 3 hours during the experiment. The maximum depth of the

ERT investigation is hereby almost equal to the deepest temperature sensor. The inverted temporal vertical resistivity variations from the tomogram are then compared to the corresponding temporal thermal variations obtained from $S_{3,3}$.

4 Results and Discussions

4.1 Analysis of observational data

Figure 4 shows air, surface, shallow and ground temperature variations during the A-ERT monitoring period observed very close to the A-ERT transect. Snow cover during winter is thin with only 10 to 20 cm thickness and frequent snow-free periods. Correspondingly, air and ground temperature are generally well-coupled with a slight phase lag in the presence of snow (cf. the cooling events in August and September 2010).

The ground temperature at $S_{3,3}$ at shallow depths (Fig. 4b) fluctuates significantly during the year, with temperature ranging from -8 to 5 °C, reflecting the snow cover variability and air temperatures. Temperatures above zero are delineated by the yellow to red colors, indicating ~~the~~-active layer thawing events. The temperature of ~~the~~-within active layer falls below 0 °C at the end of April and stays below 0 °C until the beginning of November. The zero-curtain phase in spring ~~is~~-lasts around 1 month, whereas no significant zero-curtain can be seen in autumn due to the low air and soil surface temperatures and the absence of a thick snow cover during freezing. Short-lived meteorological events with quick and superficial changes of the ground temperature around 0 °C are quite frequent during the study period, and therefore, brief surficial refreezing (e.g. in March, April, and December) and thawing of the active layer (May) can be identified in the summer and winter respectively.

The temperature variations of the shallow temperature boreholes at nodes 2,2 and 4,2 (see Fig. 2 for the locations of the temperature sensors) are shown in Fig. 4c to investigate the lateral temperature changes along the A-ERT transect. Node 2,2 is closer to the interfluvial and is more wind and sun exposed. Consequently, a thinner snow cover, as well as smaller number of days with snow, were recorded at node 2,2 when compared to node 4,2 with corresponding lower winter temperatures at node 2,2 due to the stronger insulation effect of snow at node 4,2 (supported by time-lapse camera observations). The stability of temperatures at 0 °C in the summer months reflects the ice-content and latent heat effects that limit thaw propagation.

Figure 5 shows the spatial distribution of thaw depth across the Crater Lake CALM-S site, measured in January 2010. The thaw depth varies between 25 to 40 cm with shallower thaw depth in the south of the study area where the area is less wind-exposed and shows a longer and more stable snow cover. The thaw depth is approximately 30 cm along the A-ERT transect in January 2010.

Figure 4 (near here)

Figure 5 (near here)

4.2 Apparent resistivity data

The apparent resistivity raw data of all surveys were processed as discussed in Sect. 3.3 and the resulting mean daily apparent resistivity change of each data level are shown in Fig. 6a. The usefulness of investigating spatiotemporal apparent resistivity data over different timescales was demonstrated in several studies (e.g. Hilbich et al., 2008; 2011). They allow insights into the resistivity variability trend during the year as well as the identification of the impact of specific meteorological events on the subsurface thermal regime. For most of the year, resistivity increase and decrease can be associated with freezing and thawing processes.

The apparent resistivity data collected at $a=1$ and 2 levels (corresponding to 0.5 and 1 m electrode spacing respectively) reveal a sharp resistivity rise on April, 19th from approximately 10-20 k Ω .m and reaching to values more than 500 k Ω .m on May 5, suggesting the beginning of the seasonal freezing of the active layer. Because of the absence of a snow cover during this period, the very low air temperature provokes an abrupt phase change which causes a sharp resistivity rise in this period. The delayed response of deeper levels (i.e. $a=3, 4, 5$ and 6; corresponding to 1.5, 2, 2.5 and 3 m electrode spacing respectively) indicates the advancing freezing front and is coincident with the gradual decrease of the active layer temperature with depth (see Fig. 4b). The freezing of the active layer intensifies in June, July, and August. The beginning of the seasonal thawing phase is associated with the steady decrease of apparent resistivity, starting on October 4th from a value of approximately 200 k Ω .m, to less than 40 k Ω .m at the end of October. During the seasonal thawing of the active layer, the snow cover dampens the thawing effect and provides water input to the active layer, which refreezes again at the still frozen active layer. Interestingly, this zero-curtain phase, visible in the temperature record, was reflected in the steady decrease of apparent resistivity, recorded by the A-ERT system in this period. Deeper levels experience the resistivity decrease with some delay.

In general, the daily apparent resistivity fluctuations are relatively small. However, Fig. 6a reveals several significant resistivity fluctuations during the observation period. These fluctuations are associated with either brief surficial refreezing of near-surface layers in summer, or short thawing periods during winter as a consequence of short-lived meteorological extreme events with quick and superficial changes of the ground temperature around 0 °C. Two examples of these daily apparent resistivity changes during the short-lived events, events (I) and (II), were selected for detailed investigation. Event (I), shown in Fig. 6b is an example of the surficial refreezing of the active layer in the summer. A continuous increase of apparent resistivity at shallower levels is evident with a total difference of approximately 30 k Ω .m in 10 days. On the other hand, Event (II), shown in Fig. 6c, presents a very rapid apparent resistivity decrease at shallowest levels, $a=1$ and $a=2$, with a total difference of approximately 400-600 k Ω .m in 3 days. The observation of such rapid changes of the apparent resistivity proves the significance of the automatic ERT monitoring system to record continuous resistivity changes.

Figure 6 (near here)

4.3 Monthly resistivity variations

A monthly selection of the modeled resistivity data in 2010 and the resistivity changes relative to the first ERT dataset are shown in Fig. 7. Data collected on the 28th day of each month at 12:00 was used in this analysis and all data was inverted using the full 4D inversion algorithm, described in Sect. 3.3. The corresponding temperature profiles were marked with the dashed lines in Fig. 4b.

The resistivity pattern along the A-ERT monitoring transect at CALM-S site is characterized by two vertical distinct resistivity zones. The first zone, down to 20-40 cm depth in summer images the active layer. The resistivity of this layer changes dramatically during freezing and thawing. The deeper zone images the permafrost to a depth of 160 cm during the A-ERT measurements. ~~The resistivity of both active layer and permafrost zones indicate only a slight lateral change along the transect. This can be well explained by the spatial homogeneity of the study area, as well as by the small size of the A-ERT transect, which is smaller than for other A-ERT studies in which stronger lateral variations along the ERT transects are usually more evident (i.e. Hilbich et al., 2011; Supper et al., 2014; Keuschnig et al., 2017).~~

The resistivity model plotted for January shows a more conductive zone (less than 10 k Ω .m) for the first 30-40 cm, followed by a deeper zone with resistivities of more than 30 k Ω .m. The shallow zone images the active layer in summer when this layer has not been frozen yet and shows a slight thickness increase from the left to the right. The thickness and small lateral variability of this layer are in good agreement with the thaw depth measurement using a mechanical probe in January 2010 (cf. Fig. 5). The resistivity and thickness of the active layer show a slight change during February and March. However, a more significant resistivity decrease is evident at depths of more than 50 cm due to the slight temperature increase at depth during February and March (Fig. 4b) which increases the unfrozen water content and consequently decreases the subsurface resistivity.

The largest resistivity changes at the surface during the year take place between March and April due to the freezing of the active layer. Interestingly, the resistivity of the permafrost at more than 1 m depth decreases slightly ~~in~~ during this ~~day~~ period.

The resistivity model behavior in April can be well explained with an abrupt phase change during the active layer freezing in shallow surface and delayed response of the deeper zone. This is in very good agreement with the thermal transect shown in Fig. 4b, which shows a slight temperature increase at more than 1 m depth when compared to March. On the other hand, the resistivity model plotted for May is characterized by a resistivity decrease at the shallower zone (active layer) and a resistivity increase at depth (permafrost) when compared to the resistivity model ~~plotted~~ for April. The resistivity increase of the permafrost is coincident with a temperature decrease of the permafrost during May which results in lower unfrozen water content. On the other hand, the active layer warming during this month provides more unfrozen water to the active layer which decreases the active layer resistivity during the same period.

The freezing of the active layer and cooling of permafrost intensifies during June, July, and August which is reflected by the high resistivity values. ~~and then the~~ The beginning of seasonal thawing is then associated with the resistivity decrease in October. The average resistivity of the active layer on 28th October is higher than the corresponding zone during the thawing seasons (i.e. January, February, March, November, and December). This is due to the zero-curtain phase in October when the snow cover damps the thawing effect and the temperature stays around zero. The steady resistivity decrease of the active layer and permafrost ~~until~~ down to a depth of 160 cm is evident along the A-ERT transect during November and December due to the subsurface temperature increase. The monthly subsurface resistivity behavior is consistent with the mean apparent resistivity data shown in Fig. 6a.

Figure 7 (near here)

4.4 Daily resistivity variations on the scales of individual events: Events (I) and (II)

Two short-lived meteorological events with fast and superficial changes of the ground temperature around 0 °C are selected for detailed A-ERT analysis to investigate how well the A-ERT model can resolve the expected sharp subsurface changes associated with the fast active layer freezing and thawing processes.

Figure 8a and 8b show in detail the air and ground temperature fluctuation during the selected events. Event (I) indicates a surficial refreezing of the active layer in the summer. A decrease in air temperature started on March 16 and intensified on March 20 with a subsequent increase starting from March 22. The arrival of the cold air induced an impact in the uppermost 5 cm starting from March 17, when the ground temperature at depths 2.5 and 5 cm falls below zero. The active layer refreezing intensified between 22nd and 24th March when temperatures decreased and the advancing freezing front reached 10 cm. A very shallow subsurface phase change is expected during this short-lived meteorological event as no impact has been recorded at ground temperature sensors deeper than 10 cm.

Event (II) presents a surficial thawing of the active layer in summer. A drastic rise in the air temperature from -8.4 to 1.4 °C is evident on May 9. The warm air influenced the ground temperature immediately and generated an abrupt phase change in the top 20 cm on May 10, as evidenced by the above-zero temperatures on May 10 and 11 at depths 2.5, 5, 10 and 20 cm. The time-lapse camera photos taken on May 9 (Fig. 8c) show clearly the fast snow melt between 11h00 and 13h00 on this day, which might explain the quick subsurface temperature rise due to the infiltration of the melted snow to the soil subsurface and consequent advective heat transfer. The thermal sensors at depths 40 and 80 cm also recorded the temperature increase during this event although ~~the~~ temperatures ~~stays~~ stay below zero at these depths. Event (II) lasts for a shorter period compared to the event (I). However, it caused stronger and deeper subsurface temperature changes.

Figure 9 shows the time-lapse inversion results during the events (I) and (II). Data collected on March 14 and May 7 were used as the reference for the events (I) and (II) respectively, and the resistivity changes relative to the first ERT dataset are presented in this figure. Data collected at 12h00 was used in this analysis and all data was inverted using the full 4D

inversion algorithm, discussed in Sect. 3.3. A continuous resistivity increase at shallow depth (less than 30 cm) is evident from March 18 till March 24 in Fig. 9a. The resistivity of this zone started to decrease again on March 26, and there is no significant change between resistivity models on March 28 and the reference model on March 14. In addition, no significant change occurs at depths of more than 30 cm during this event, suggesting that this event provoked phase changes only within the shallow subsurface. The results of the time-lapse resistivity models are in good agreement with the air and ground temperature fluctuation shown in Fig. 8a. The resistivity increase of the active layer is coincident with the temperature decrease of the active layer at shallow depth. The resistivity of the active layer reached its maximum between March 22 and 24 when the temperature reached its minimum and a larger amount of the pore water is frozen.

Figure 9b shows a sharp resistivity decrease on May 9 suggesting an abrupt phase change during this day. In the following, the resistivity of the active layer reached its minimum on May 10 and 11. We anticipate that this is due to the infiltration of the snow-melt water into the soil subsurface which provides liquid water to the active layer and decreases resistivity. A slight increase of resistivity at depths of more than 1 m is evident on May 9 and 10. This can be explained by the slight permafrost temperature decrease at a depth of 160 cm on these days (cf. Fig. 8b). ~~Interestingly, the resistivity models suggest the propagation of the thawing process from the left (A) to the right (B) on May 9 and 10 (i.e. the active layer resistivity decreased from the left to the right) and then refreezing from the same direction on May 11. Because the left side of the A-ERT transect is closer to the interfluvium and is more wind and sun exposed, subsurface thaw and snowmelt are expected to take place from left to right along the transect orientation after the initial air temperature rise on May 9. Similarly, active layer refreezing starts from the same direction (left to right) when the air cools down again on May 11.~~ The continuous active layer refreezing during the following three days is coincident with a slight resistivity decrease at depth. This can be explained with the delayed response of the permafrost to the temperature signal at the surface. An increase of the permafrost temperature at depths 40 and 80 cm was recorded in the ground thermal sensors on these days.

Figure 8 (near here)

Figure 9 (near here)

4.5 Temperature-Resistivity relationship

The temperature-resistivity relationship ~~in-for~~ temperatures below zero was studied during two periods: I) the beginning of the seasonal active layer freezing in April/May (P1) and II) the beginning of the seasonal thawing in October (P2). The selected A-ERT data was inverted using the full 4D inversion algorithm, described in Sect. 3.3. The virtual borehole analysis, described in Sect. 3.4 was used to establish the temperature-resistivity relationship.

Figure 10 shows the linear regression between ~~the~~ resistivity and temperature in the virtual borehole at ~~the~~ $S_{3,3}$ ~~at~~ for three depths (i.e. 20, 40 and 80 cm). These depths were selected to study the resistivity – temperature behavior of the active layer (20 cm), permafrost table (40 cm) and permafrost (80 cm). The figure shows an excellent linear regression between the resistivity and temperature at all depths during the seasonal thawing (P2) in October with R^2 greater than 0.96. Small deviations from this linear relationship can be found during the seasonal freezing phase (P1) due to the faster subsurface temperature and therefore phase change (no zero-curtain present), where the mismatch between the volume measured by resistivity and temperature can be larger. In addition, the effect of downward ion migration upon freezing may further influence the relationship; however, a strong linear regression between the resistivity and temperature at all depths can be also seen (R^2 greater than 0.86) ~~in~~ for all depths ~~in~~ during this period. Highest resistivities (and probably ice contents) are found at 40 cm depth upon freezing, which may partly be due to more frequent refreezing effects at the boundary between active layer and permafrost.

Figure 10 (near here)

4.6 Evaluation of the temporal resistivity variability in the virtual borehole $S_{3,3}$

Figure 11 shows the resistivity evolution with time in virtual boreholes at the $S_{3,3}$ location during 2010 using the evaluation described in Sect. 3.4. As the RES2DINV software cannot invert more than 21 ERT datasets simultaneously, no time-lapse inversion algorithm was used for this analysis and apparent resistivity data were inverted independently using a batch routine. The zero degree isotherm from the borehole temperatures at $S_{3,3}$ (Fig. 4b), is superimposed on the resistivity tomogram. A resistivity cut-off value of 13 $k\Omega.m$ was selected to delineate the temporal variability of the thaw depth at the $S_{3,3}$ location. This value was selected based on our analysis of the individual resistivity tomograms as well as the average thaw depth measured by a mechanical probe in January. This value roughly corresponds to the resistivity transition value between the unfrozen media at the surface and the more resistive frozen zone at depth.

The average of thaw depth at the end of January is about 30 cm with a slight increase in February. The brief active layer thinning between 20 and 24 of February might have happened due to the brief active layer cooling in this period, recorded by the ground temperature sensors. Afterwards, the thaw depth increases to an average of 40 cm at the beginning of March. The maximum thaw depth is recorded during March probably due to the stronger active layer warming in this month. The sudden resistivity rise in the middle of March is coincident with the brief active layer freezing (event I), discussed in Sect. 4.4. Thinning of the active layer starts in April due to the active layer cooling and possible refreezing of the infiltrating water above the permafrost table.

The largest resistivity changes in the active layer took place at the end of April due to the active layer freezing. The active layer stays frozen from May until October except during the brief surficial thawing event between 7 and 14 of May (cf. Fig. 9b). The resistivity changes near the surface during the winter are coincident with consecutive active layer cooling and

warming events. The resistivity values are greatest in winter and around the permafrost table at depths around 40 cm. We anticipate that this is where maximal ice contents are present due to the repeated thawing and refreezing processes of water infiltrating from snow/rain that accumulated on top of the permafrost table (cf. the critical zone, Shur et al., 2005)

During the zero-curtain phase in October-November, ~~the~~ ground temperatures are still below zero and the active layer is still frozen. However, unfrozen moisture is already present due to snowmelt and the warm but subzero temperatures, which results in lower resistivity values near the surface. The active layer thaws at the beginning of November when the temperature rises above zero and is coincident with the strong resistivity decrease in this period. The average thaw depth in November-December is 20 cm with a slight increase at the end of December. The sudden resistivity rise in December is coincident with the brief active layer freezing in this month.

Figure 11 (near here)

5 Discussion

The monitoring setup with a very small electrode spacing (i.e. 50 cm) and dense measurements of six times per day was designed to generate subsurface resistivity maps with very high spatial and temporal resolution. This enables to detect the expected fast and sharp resistivity changes within the very narrow active layer during the short-lived extreme meteorological events at the study site. Since short-lived meteorological events may induce phase change, they are potential generators of geomorphic activity, such as cryoturbation, or even small debris-flows in sloping terrains. These events are particularly important in regions without a thick or continuous snow cover such as the Deception Island due to the quick response of the active layer to the air temperature signal.

With this high-resolution set-up, we were able to identify these events in our A-ERT models. Looking more closely at the resistivity and temperature changes during the brief active-layer thawing events, we suggest that infiltration processes from the melting snow cover are the dominating factor provoking the observed resistivity decrease and temperature increase. This is in agreement with Scherler et al. (2010) who simulated the active layer thaw period using a 1-dimensional fully coupled heat and mass transfer model. They found that the water pool, formed at the ground surface from the melting snow cover, may percolate and reach greater depths which results in fast water and advective heat transfer to depth. The infiltration ends when the water pool is emptied and/or the water refreezes. Such shallow active layer dynamics show that there are freeze-thaw cycles during the freezing season, which may result in cryoturbation and in sloping terrain, be responsible for increased superficial solifluction.

The resistivities of both, active layer and permafrost zones, indicate only a slight lateral change along the transect, which is indicative for a spatially homogeneous ground conditions in the study area. However, the size of the A-ERT transect is

comparatively small compared to other A-ERT studies where stronger lateral variations along the ERT transects are usually more evident (i.e. Hilbich et al., 2011; Supper et al., 2014; Keuschnig et al., 2017). In contrast, large lateral resistivity changes are visible during the extreme short-lived meteorological events. An example of such lateral changes is very evident during event (II) shown in Figure 9b. The obtained resistivity models during this event suggest the propagation of the thawing process from the left (A) to the right (B) on May 9 and 10 (i.e. the active layer resistivity decreased from the left to the right) and then refreezing from the same direction on May 11. Because the left side of the A-ERT transect is closer to the interfluvial and is more wind and sun exposed, subsurface thaw and snowmelt are expected to take place from left to right along the transect orientation after the initial air temperature rise on May 9. Similarly, active layer refreezing starts from the same direction (left to right) when the air cools down again on May 11. On seasonal time-scales, a similar lateral resistivity variation is visible in Figure 7. During the freezing season, the resistivity of the active layer is higher on the left side due to the enhanced cooling of the active layer in this part of the profile. Similarly, the resistivity of the active layer decreases from the left to the right during active layer warming (i.e. September 2010) and thawing (i.e. October 2010).

We used a resistivity cut-off value of 13 k Ω .m to distinguish the unfrozen media at the surface (i.e. active layer) from the more resistive frozen zone (i.e. permafrost) at depth. This value was selected empirically based on our analysis of the individual resistivity tomograms and the average thaw depth measured by a mechanical probe in January. The resistivity of the unfrozen media in the study area is ~~very~~ comparatively high compared to other studies conducted in alpine and polar regions (e.g. Supper et al. 2014, Keating et al. 2018), and could be due to the soil being composed by very porous lapilli with high air content and large intergranular pore spaces that induce fast percolation of snow melt and rainwater. The dark surface of the soil and the wind-exposed conditions promote fast evaporation and favors a quick drying of the near-surface horizons. In accordance with other studies (e.g. Oldenborger and LeBlanc, 2018) the obtained linear relationship between resistivity and temperature also implies the absence of large latent heat effects during phase change, i.e. comparatively dry conditions. In addition, in pyroclastic sediments, pores containing water can be disconnected from each other, which further reduce the effect of phase change between liquid and frozen water on the bulk resistivity. It is worth mentioning that the resistivity of any subsurface material is a complex function of soil properties (e.g. grain and pore size, void ratio, degree of saturation, water content and salinity, temperature and water phase) and thus the cut-off value cannot be used for other sites and a site-specific investigation is required to estimate this value.

The detailed investigation of the resistivity tomograms indicates that our A-ERT set-up could better map the thaw depth, compared to the ground temperature sensor S_{3,3}. In fact, the thaw depth variability in the 10, 20 and 40 cm depth range, seen in the resistivity tomogram (Fig. 11), is not reflected in the borehole temperature data due to the lack of sensors between these depths. Hence, the ground temperature tomogram (Fig. 4b) shows a constant thaw depth of 40 cm in the first three months. These results reveal that our A-ERT set-up allows for accurate characterization of the active layer freeze-thaw process, with a spatial resolution that can usually not be achieved with temperature sensors, except for a very dense sensor setup. In addition, the spatiotemporal resistivity variations show that the resistivity values are greatest in winter and around the permafrost table at depths around 40 cm (see Fig. 11), indicating maximum ice contents at this depth. This is due to the repeated thawing and refreezing processes of water infiltrating from snow/rain that accumulated on top of the permafrost table (cf. the transition zone, Shur et al., 2005) which forms an ice-rich layer and increases the resistivity of this layer.

Resistivity at the borehole location compared to borehole temperatures within $S_{3,3}$ (Fig. 10) also shows remarkably greater values during active layer freezing at a depth of 40 cm indicating that A-ERT data can be used to study the transition zone in the study area.

On the other hand, our resistivity models slightly overestimated the thaw depth ~~in~~during several periods, when compared to the borehole temperature data. Examples of such overestimations are seen in March when inverted resistivity suggests the thaw depth to be slightly over 40 cm. This error becomes worse at the beginning of the seasonal thawing in November; when the A-ERT derived thaw depth is too ~~thin~~small (5 cm). We used a small electrode spacing of 50 cm to deal with the expected abrupt changes near-close to the surface. However, the resolution of the A-ERT within the first 10 cm (e.g. the active layer condition at the beginning of the seasonal thawing) is still very limited. In addition, the over-parameterized inverse problem and the effects of smoothing from regularization applied in the inversion algorithm overestimate the thaw depth in the resistivity tomograms. In the virtual borehole analysis, each dataset was inverted independently and temporal resistivity changes of individual quadrupoles were not accounted for in the inversion. Using a time-lapse inversion algorithm as used in Sect. 4.3 and Sect. 4.4 might enhance the temporal resolution of the resistivity tomogram and reduce the uncertainty in the estimation of the thaw depth.

~~In accordance with other studies (e.g. Oldenborger and LeBlanc, 2018) the obtained linear relationship between resistivity and temperature implies the absence of large latent heat effects during phase change, i.e. comparatively dry conditions. In addition, in pyroclastic sediments, pores containing water can be disconnected from each other, which further reduce the effect of phase change between liquid and frozen water on the bulk resistivity.~~

6 Conclusion and outlook

An automated ERT (A-ERT) system with a solar panel-driven battery and multi-electrodes configuration was installed at Deception Island at the Crater Lake CALM-S monitoring site, as the first automatic resistivity monitoring system in Antarctica. Our analysis of this combined geophysical and thermal monitoring approach focused on (I) the ability of the A-ERT system to monitor the spatiotemporal variability of the active layer along the small-scale transect (II) the active layer freezing and thawing processes on seasonal time scales and (III) the impact of extreme short-lived meteorological events on the ground thermal regime.

Based on the comprehensive analysis of the A-ERT data, the following main conclusions can be drawn:

- 1) The A-ERT system allows detailed monitoring ~~in-detail~~of the spatio-temporal variability of the active layer in summer. The maximum thaw depth in 2010 was recorded in March with values slightly more than 40 cm.
- 2) The process of active layer freezing in autumn and thawing in spring was well resolved by the A-ERT system. The absence of the snow cover and direct influence of atmospheric processes during the seasonal freezing provoked a drastic resistivity rise in April. On the contrary, the zero-curtain phase during the seasonal thawing causes a continuous resistivity decrease during several weeks in November.

3) Short-lived meteorological events during a few days provoked a fast and dramatic resistivity change in the active layer due to the brief active layer freezing and thawing, detected by the A-ERT system. Our study clearly shows that without automatic and quasi-continuous measurements, short-time active layer freezing and thawing, as well as the infiltrating water from the melting snow cover to the ground during such extreme meteorological events, could not be investigated.

5 The automated system developed in this study allows a free choice of measurement interval as well as electrode configuration, and our A-ERT set-up with a small electrode spacing of 0.5 m and dense measurements of six times per day enabled us to detect the impact of the extreme short-lived meteorological events on the active layer with a thickness as small as ~~of~~ 20-40 cm. Interestingly, our A-ERT system could detect the spatial directions of the thawing and freezing processes along such a small transect. The A-ERT set-up can also be applied with larger-spaced configurations to investigate greater
10 depths, enabling permafrost monitoring in Antarctica where boreholes are very costly and the ecosystem is very sensitive to
invasive techniques.

The consistency of our full year results with previous studies in more easily accessible alpine and polar regions (e.g. Hilbich et al., 2011; Supper et al., 2014; Keuschnig et al., 2017; Tomaskovicova, ~~2017~~2018, Oldenborger and LeBlanc, 2018) suggests that the detailed studies of the Alps can be transferred to set-ups in very remote environments, which would allow
15 for integrative process studies as well as coupled modeling of A-ERT data with existing water content and temperature monitoring system in Antarctica. ~~Examples of such joint geophysical and thermal modelling approaches were given in~~
~~Scherler et al. (2010) using uncoupled models and Tomaskovicova (2017) using a fully coupled electro-thermal modelling~~
~~approach.~~ Examples of such studies include the combination of data processing techniques, petrophysical models and
20 supporting information to estimate unfrozen water content from electrical resistivity data (e.g. Hauck, 2002;
Fortier et al., 2008; Grimm and Stillman, 2015; Dafflon et al., 2016) or combining electrical resistivity data with seismic
refraction data in a joint petrophysical model to estimate ice and water content (e.g. Hauck et al., 2011). Such analyses also
provide a tool to monitor the transient layer and study the impact of fast-changing meteorological conditions and frequent
freeze-thaw process on soil behavior at the permafrost table. However, in the context of the volcanic material at Deception
25 Island, the link between pore water resistivity and measured bulk resistivity should be assessed by laboratory measurements
prior to performing a quantitative investigation on soil ice/water content. In addition, the type of the electric conduction needs
to be investigated as in dry soils with low salinity, surface conduction is the dominant process (Duvillard et al., 2019) as
opposed to electrolytic conduction which is usually assumed to calculate water contents from resistivity values.

A long-term deployment of an A-ERT system in Antarctica would allow a much more detailed analysis of the permafrost and active layer evolution, which could be used as input data for hydro-thermal models simulating the future permafrost evolution
30 (e.g. Marmy et al., 2016, Rasmussen et al., 2018). In this context, joint A-ERT and thermal modelling approaches such as
uncoupled modeling approach (Scherler et al., 2010) and fully coupled electro-thermal modelling approach (Tomaskovicova,
2018) can be used for calibration of the thermal model that allows simulating heat transfer in active layer and permafrost. On
a more local scale, the specific characteristics of Deception Island, where permafrost conditions are influenced also by
geothermal and even volcanic activity, would allow for detailed investigations of the resulting hydro-thermal interactions in a
35 cryospheric context. The fact that the monitoring occurs along a transect allows for improving the spatial understanding of
the active layer dynamics with a minimal environmental disturbance in comparison to boreholes. It allowed detecting high-

temporal resolution changes on freezing and thawing along the transect, providing new insight also into the potential geomorphic dynamics and its regime, for example, for processes such as cryoturbation or solifluction.

Acknowledgments

The research was funded by the Fundação para a Ciência e a Tecnologia under project PERMANTAR-2 (Permafrost and Climate Change in the Maritime Antarctic – FCT – PTDC/AAC-CLI/098885/2008) and the Portuguese Polar Program (PROPOLAR-FCT). We thank the Spanish Antarctic Station Gabriel de Castilla, the BIO Hespérides personnel for logistical support, and the continued support of the Spanish Polar Committee for the research in Deception Island. Gabriel Goyanes, Vanessa Baptista, José Miguel Cardoso, Ana David, Alice Ferreira and Mário Neves are thanked for the support in the maintenance of the A-ERT system. ~~This publication is supported by the FCT project UID/GEO/50019/2019 – Instituto Dom Luiz.~~ This work and publication have been supported by the FCT- project UIDB/50019/2020 - IDL and the Swiss National Science Foundation (project no. 178823). We are very grateful for the helpful and constructive comments of the editor C. Beer and two anonymous reviewers, which helped to significantly improve the paper.

References

- Biskaborn, B.K., Smith, S.L., Noetzli, J., Matthes, H., Vieira, G., Streletskiy, D.A., Schoeneich, P., Romanovsky, V.E., Lewkowicz, A.G., Abramov, A. et al.: Permafrost is warming at a global scale. *Nature communications*, 10(1), 264.
- Bockheim, J., Vieira, G., Ramos, M., Lopez-Martinez, J., Serrano, E., Guglielmin, M., Wilhelm, K., and Nieuwendam, A.:
5 Climate warming and permafrost dynamics in the Antarctic Peninsula region. *Glob. Planet. Chang.* 100, 215–223, doi: 10.1016/j.gloplacha.2012.10.018, 2013.
- Dafflon B., Hubbard S., Ulrich C., Peterson J., Wu Y., Wainwright H., Kneafsey T.J.: Geophysical estimation of shallow permafrost distribution and properties in an ice-wedge polygon-dominated Arctic tundra region, *Geophysics*, 81, WA247–WA263, doi: 10.1190/geo2015-0175.1. 2016.
- 10 De Pablo, M. A., Ramos, M., Molina, A., Vieira, G., Hidalgo, M. A., Prieto, M., Jiménez, J. J., Fernández, S., Recondo, C., Calleja, J. F., Peón, J. J., and Mora, C.: Frozen ground and snow cover monitoring in the South Shetland Islands, Antarctica: Instrumentation, effects on ground thermal behaviour and future research, *Cuad. Investig. Geográfica*, 42(2), doi:10.18172/cig.2917, 2016.
- Fortier R., LeBlanc A.-M., Allard M., Buteau S., Calmels F.: Internal structure and conditions of permafrost mounds at Umiujaq in Nunavik, Canada, inferred from field investigation and electrical resistivity tomography, *Can. J. Earth Sci.* , 45, 367–387 <https://doi.org/10.1139/E08-004>, 2008.
- 15 Goyanes, G., Vieira, G., Caselli, A., Cardoso, M., Marmy, A., Santos, F., Bernardo, I., and Hauck, C.: Local influences of geothermal anomalies on permafrost distribution in an active volcanic island (Deception Island, Antarctica). *Geomorphology*, <http://dx.doi.org/10.1016/j.geomorph>, 2014.
- 20 Grimm R.E., Stillman D.E.: Field test of detection and characterization of subsurface ice using broadband spectral-induced polarisation, *Permafrost Periglacial Process*, 26, 28–38. doi: 10.1002/ppp.1833, 2015.
- Guglielmin, M., Biasini, A., and Smiraglia, C.: The contribution of geoelectrical investigations in the analysis of periglacial and glacial landforms in ice free areas of the Northern Foothills (Northern Victoria Land, Antarctica). *Geografiska Annaler: Series A, Physical Geography*, 79(1-2), pp.17-24, <https://doi.org/10.1111/j.0435-3676.1997.00003.x>, 1997.
- 25 Guglielmin, M. and Dramis, F.: Permafrost as a climatic indicator in northern Victoria Land, Antarctica. *Annals of Glaciology*, 29, 131-135, <https://doi.org/10.3189/172756499781821111>, 1999.
- Hauck, C.: Frozen ground monitoring using DC resistivity tomography, *Geophysical Research Letters* 29, 21, 2016, doi:10.1029/2002GL014995, 2002.
- Hauck, C., and Vonder Mühll, D.: Inversion and interpretation of two-dimensional geoelectrical measurements for detecting permafrost in mountainous regions, *Permafrost Periglac.*, 14, 305–318. <https://doi.org/10.1002/ppp.462>, 2003.
- 30

Hauck, C., Vieira, G., Gruber, S., Blanco, J.J., and Ramos, M.: Geophysical identification of permafrost in Livingston Island, maritime Antarctica. *J. Geophys. Res.*, 112, F02S19, doi: 10.1029/2006JF000544, 2007.

Hauck, C., Böttcher, M., and Maurer, H.: A new model for estimating subsurface ice content based on combined electrical and seismic data sets, *The Cryosphere*, 5, 453–468, <https://doi.org/10.5194/tc-5-453-2011>, 2011.

- 5 Hilbich, C., Hauck, C., Hoelzle, M., Scherler, M., Schudel, L., Völksch, I., Vonder Mühll, D., and Mäusbacher, R.: Monitoring mountain permafrost evolution using electrical resistivity tomography: A 7-year study of seasonal, annual, and long-term variations at Schilthorn, Swiss Alps, *Journal of Geophysical Research* 113, F01S90, doi:10.1029/2007JF000799, 2008.

- 10 Hilbich, C., Fuss, C., and Hauck, C.: Automated Time-lapse ERT for Improved Process Analysis and Monitoring of Frozen Ground. *Permafrost Periglac.*, 22, 306–319, <https://doi.org/10.1002/ppp.732>, 2011.

Keuschnig, M., Krautblatter, M., Hartmeyer, I., Fuss, C., and Schrott, L.: Automated Electrical Resistivity Tomography Testing for Early Warning in Unstable Permafrost Rock Walls Around Alpine Infrastructure. *Permafrost and Periglacial Processes*, 28(1), 158-171, <https://doi.org/10.1002/ppp.1916> 2017.

- 15 Keating, K., Binley, A., Bense, V., Van Dam, R.L. and Christiansen, H.H.: Combined geophysical measurements provide evidence for unfrozen water in permafrost in the Adventdalen valley in Svalbard. *Geophysical Research Letters*, 45(15), 7606-7611, <https://doi.org/10.1029/2017GL076508>, 2018.

Kim, J. H., Yi M. J., Park, S. G., and Kim, J. G.: 4-D inversion of DC resistivity monitoring data acquired over a dynamically changing earth model. *Journal of Applied Geophysics*, 68, 522-532, doi: 10.1016/j.jappgeo.2009.03.002, 2009.

- 20 Kneisel, C.: Assessment of subsurface lithology in mountain environments using 2D resistivity imaging, *Geomorphology*, 80, 32–44, doi: 10.1016/j.geomorph.2005.09.012, 2006.

Krautblatter, M., Verleysdonk, S., Flores-Orozco, A., and Kemna A.: Temperature-calibrated imaging of seasonal changes in permafrost rock walls by quantitative electrical resistivity tomography (Zugspitze, German/Austrian Alps). *Geophysical Research*, Vol.115, doi:10.1029/2008JF001209, 2010.

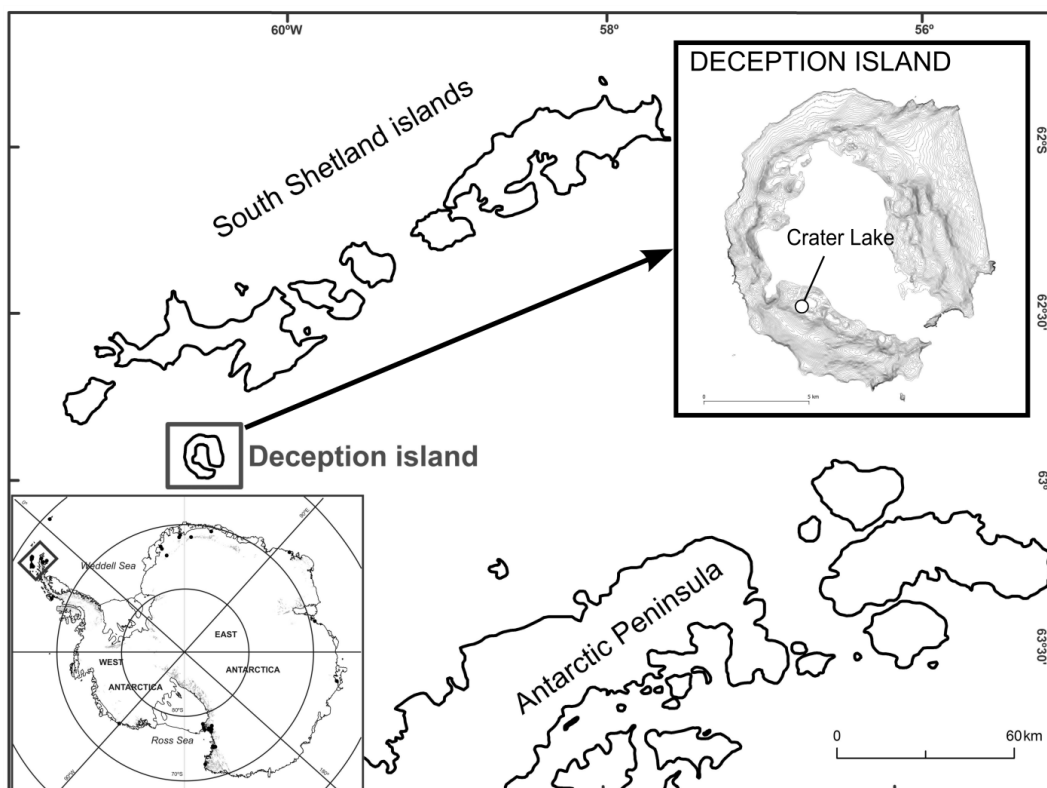
Loke, M.H.: Tutorial: 2D and 3D Electrical Imaging Surveys, Technical Note. 2nd ed. Geotomo Software, Malaysia, 2002.

- 25 Marmy, A., Rajczak, J., Delaloye, R., Hilbich, C., Hoelzle, M., Kotlarski, S., Lambiel, C., Noetzli, J., Phillips, M., Salzmann, N., Staub, B., and Hauck, C.: Semi-automated calibration method for modelling of mountain permafrost evolution in Switzerland. *The Cryosphere*, 10, 2693-2719, <https://doi.org/10.5194/tc-10-2693-2016>, 2016.

McGinnis, L.D., Nakao, K., and Clark, C.C.: Geophysical identification of frozen and unfrozen ground, Antarctica.- *Proceed. 2nd Internat. Conf. Permafrost*, Yakutsk, Russia: 136-146, 1973.

- Melo, R., Vieira, G., Caselli, A., and Ramos, M.: Susceptibility modelling of hummocky terrain distribution using the information value method (Deception Island, Antarctic Peninsula), *Geomorphology*, 155-156: 88-95 doi: 10.1016/j.geomorph.2011.12.027, 2012.
- Mewes, B., Hilbich, C., Delaloye, R., and Hauck, C.: Resolution capacity of geophysical monitoring regarding permafrost degradation induced by hydrological processes. *The Cryosphere* 11, 2957–2974, <https://doi.org/10.5194/tc-11-2957-2017>, 2017.
- Mollaret, C., Hilbich, C., Pellet, C., Flores-Orozco, A., Delaloye, R. and Hauck, C. (2019): Mountain permafrost degradation documented through a network of permanent electrical resistivity tomography sites. *The Cryosphere*, 13 (10), 2557-2578.
- Oldenborger, G. A., and LeBlanc, A-M.: Monitoring changes in unfrozen water content with electrical resistivity surveys in cold continuous permafrost. *Geophysical Journal International*, Volume 215, Issue 2, 965–977, <https://doi.org/10.1093/gji/ggy321>, 2018.
- Oliva, M., Nývlt, D., and Pereira, P.: Recent regional climate cooling on the Antarctic Peninsula and associated impacts on the cryosphere, (December). <https://doi.org/10.1016/j.scitotenv.2016.12.030>, 2016.
- Ottowitz, D., Jochum, B., Supper, R., Römer, A., Pfeiler, S., and Keuschnig, M.: Permafrost monitoring at Mölltaler Glacier and Magnetköpfl. *Berichte der Geologischen Bundesanstalt*, 93, 57–64, 2011.
- Ramos, M., Vieira, G., Gruber, S., Blanco, J.J., Hauck, C., Hidalgo, M.A., Tome, D., Neves, M., and Trindade, A.: Permafrost and active layer monitoring in the Maritime Antarctic: Preliminary results from CALM sites on Livingston and Deception Islands. U.S. Geological Survey and the National Academies; USGS OF-2007–1047. Short Research Paper 070 <https://dx.doi.org/10.3133/of2007-1047srp070>, 2008.
- Ramos, M., Vieira, G., De Pablo, M. A., Molina, A., Abramov, A., and Goyanes, G.: Recent shallowing of the thaw depth at Crater Lake, Deception Island, Antarctica (2006–2014), doi:10.1016/j.catena.2016.07.019, 2017.
- Rasmussen, L., Zhang, W., Hollesen, J., Cable, S., Christiansen, H., Jansson, P.E., and Elberling, B.: Modelling present and future permafrost thermal regimes in Northeast Greenland. *Cold Regions Science and Technology*, 146, 199-213, <https://doi.org/10.1016/j.coldregions.2017.10.011>, 2018.
- Scherler, M., Hauck, C., Hoelzle, M., Stähli, M., and Völksch, I.: Meltwater infiltration into the frozen active layer at an alpine permafrost site, *Permafrost Periglac.*, 21, 325–334, <https://doi.org/10.1002/ppp.694>, 2010.
- Shur, Y., Hinkel, K.M., and Nelson, F.E.: The transient layer: implications for geocryology and climate change science. *Permafrost and Periglacial Processes*, 16(1), 5-17, <https://doi.org/10.1002/ppp.518>, 2005.
- Smellie, J.L., and López-Martínez, J.: Geological map of Deception Island. In: Smellie, J.L., López-Martínez, J., Serrano, E., Rey, J. (Eds.), *Geology and Geomorphology of Deception Island*, Sheet 6-A, 1:25.000. BAS GEOMAP Series. British Antarctic Survey, Cambridge, 2000.

- Styszynska, A.: The origin of coreless winters in the South Shetlands area (Antarctica). *Pol. Polar Res.* 25, 45–66, 2004.
- Supper, R., Ottowitz, D., Jochum, B., Romer, A., Pfeiler, S., Gruber, S., Keuschnig, M., and Ita, A.: Geoelectrical monitoring of frozen ground and permafrost in alpine areas: field studies and considerations towards an improved measuring technology. *Near Surface Geophysics*, 12, 93–115, doi: 10.3997/1873-0604.2013057, 2014.
- 5 Tomaskovicova, S.: Coupled thermo-geophysical inversion for permafrost monitoring. PhD thesis. Department of Civil Engineering, Technical University of Denmark, 2017.
- Turner, J., Lu, H., White, I., King, J.C., Phillips, T., Hosking, J.S., Bracegirdle, T.J., Marshall, G.J., Mulvaney, R., and Deb, P.: Absence of 21st century warming on Antarctic Peninsula consistent with natural variability. *Nature* 535, 411–415, doi: 10.1038/nature18645, 2016.
- 10 Vieira, G., López-Martínez, J., Serrano, E., Ramos, M., Gruber, S., Hauck, C., and Blanco, J.J., Geomorphological observations of permafrost and ground-ice degradation on Deception and Livingston Islands, Maritime Antarctica. In: Kane, D., and Hinkel, K. (Eds.), *Proceedings of the 9th International Conference on Permafrost*, 29 June–3 July 2008, Fairbanks, Alaska, Extended Abstracts, Vol. 1. University of Alaska Press, Fairbanks, pp. 1839–1844, <https://doi.org/10.5167/uzh-3320>, 2008.
- 15 Vieira, G., Bockheim, J., Guglielmin, M., Balks, M., Abramov, A.A., Boelhouwers, J., Cannone, N., Ganzert, L., Gilichinsky, D.A., Goryachkin, G., López-Martínez, J., Meiklejohn, J., Raffi, R., Ramos, M., Schaefer, C., Serrano, E., Simas, F., Sletten, R., and Wagner, D.: Thermal state of permafrost and active-layer monitoring in the Antarctic: advances during the International Polar Year 2007–2009. *Permafr. Periglac. Process.* 21, 182–197, <https://doi.org/10.1002/ppp.685>, 2010.
- Williams, P.J., Smith, M.W.: *The Frozen Earth. Fundamentals of Geocryology*. Cambridge University Press, Cambridge, <https://doi.org/10.1017/CBO9780511564437>, 1989.
- 20



5

Figure 1. Location of Deception Island and Crater Lake CALM-S site in Antarctica.

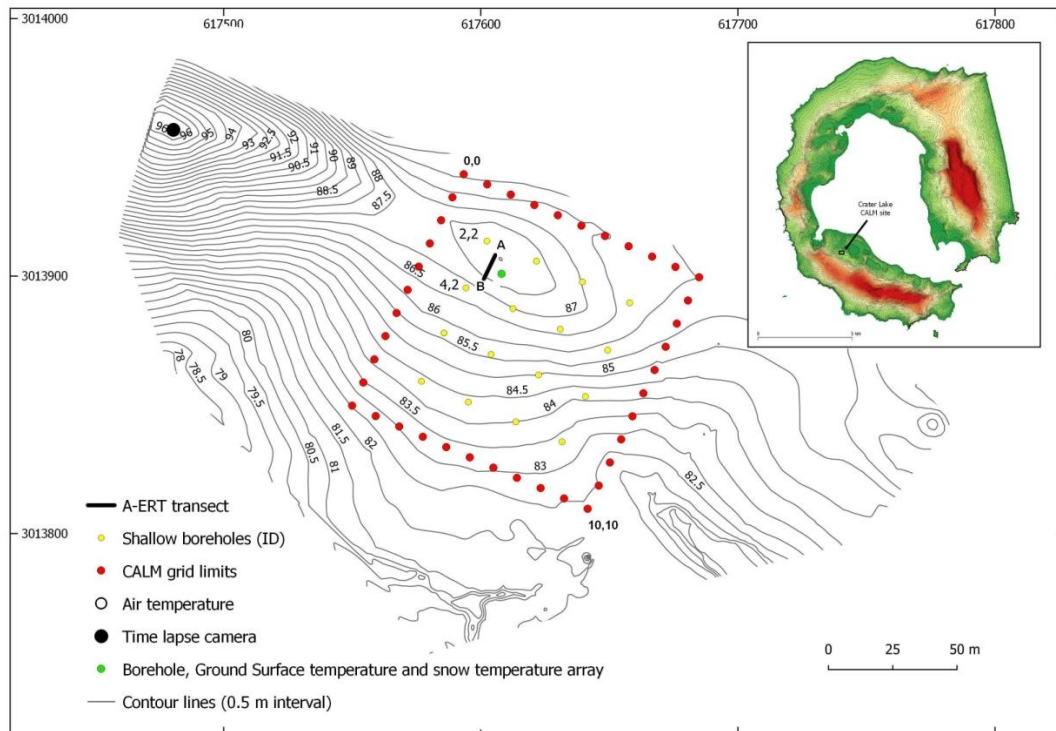


Figure 2. Environmental monitoring setup at the Crater Lake CALM-S site.

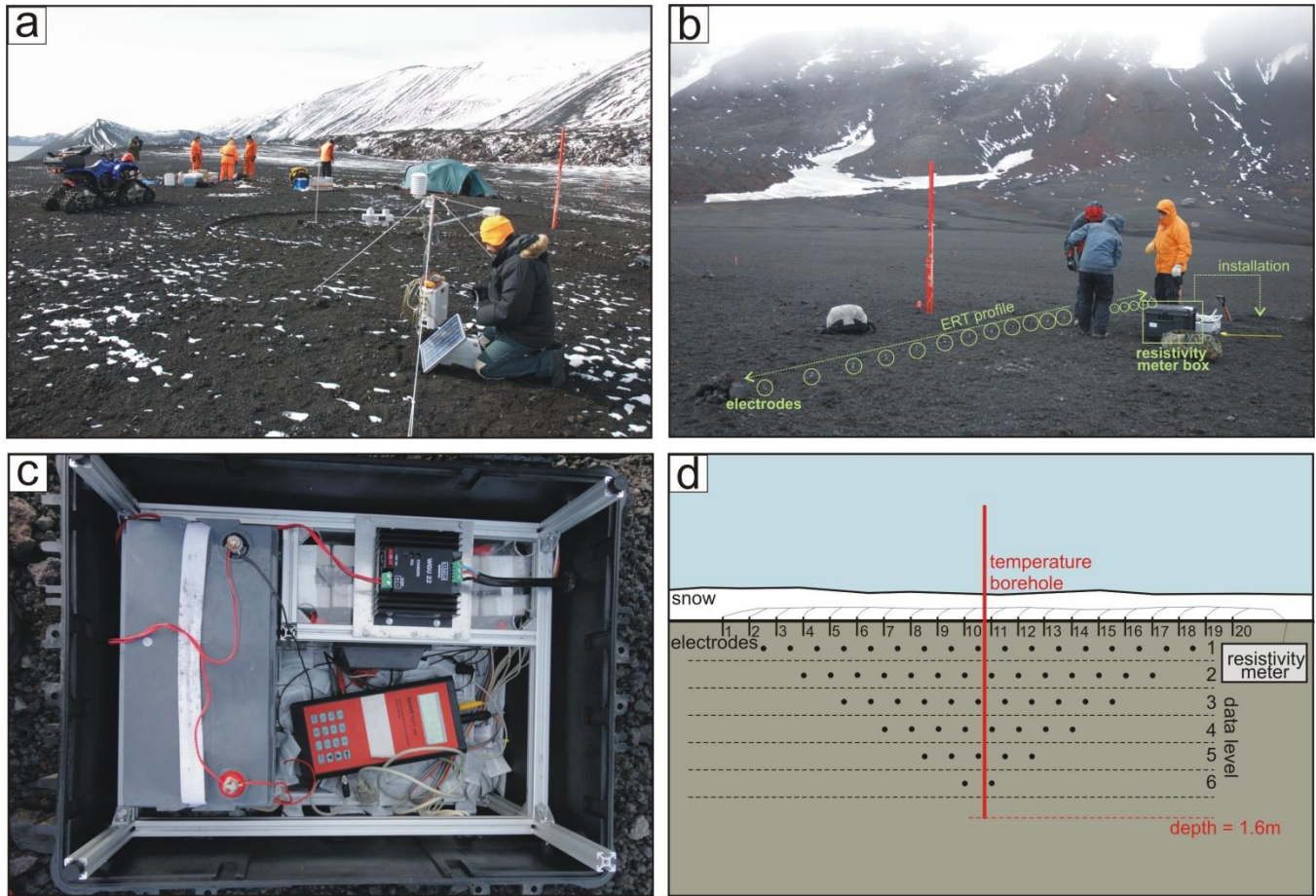


Figure 3. a) Overview of the CALM-S site, b) A-ERT monitoring system installation at CALM-S site; electrodes are buried in the ground and are connected to the resistivity meter box by buried cables, c) Resistivity meter box; the 4POINTLIGHT_10W instrument is connected to a solar panel-driven battery and multi-electrodes connectors . d) A schematic display of the measured resistivities (Pseudo Section) in the CALM-S site using a Wenner electrode configuration.

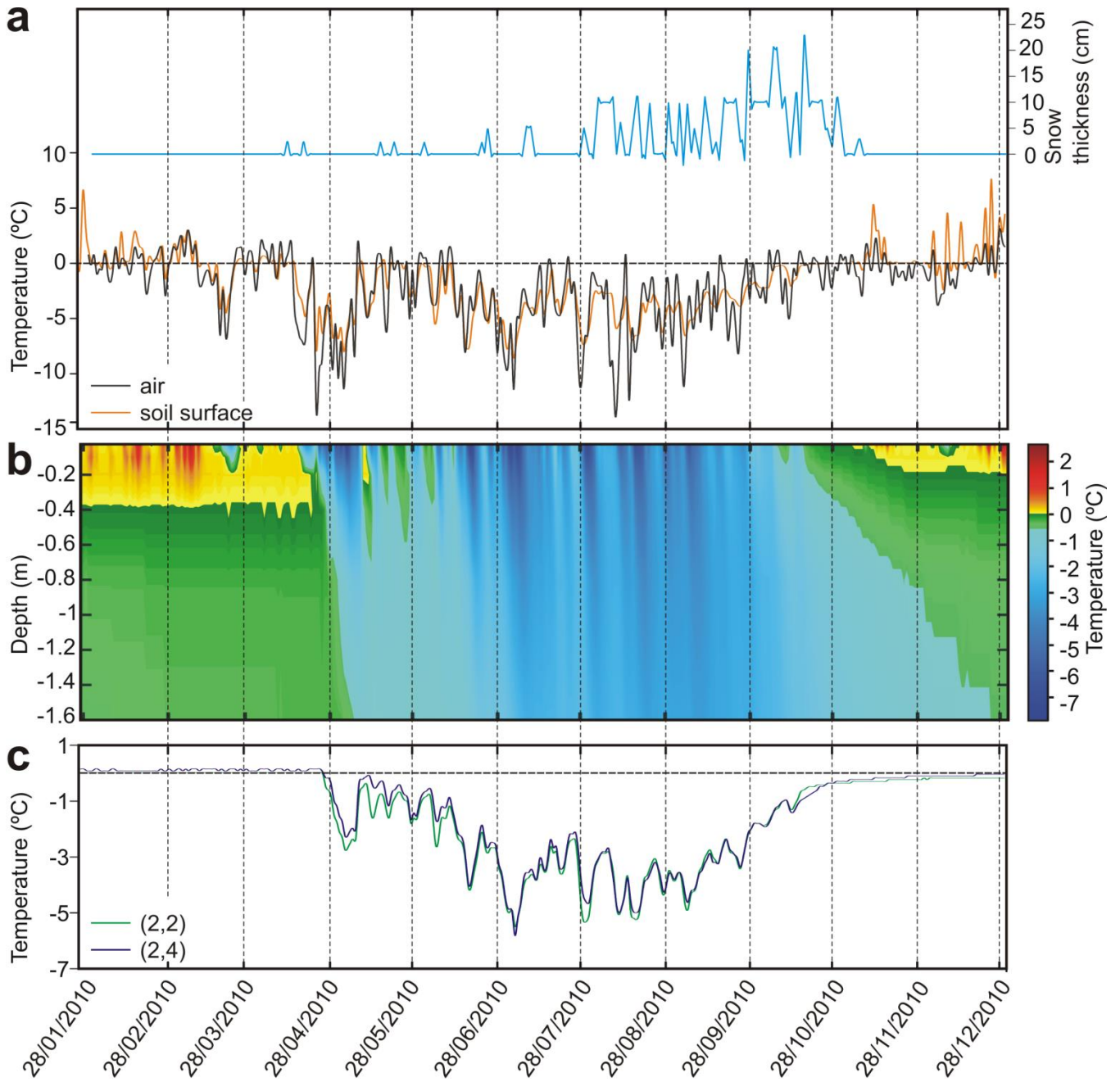


Figure 4. (a) Snow thickness, air and soil surface temperatures variability during the A-ERT data acquisition in 2010. (b) Borehole temperature plotted for the sensors installed at the node 3,3 ($S_{3,3}$) covering the investigation depth of the ERT transect. (c) Shallow borehole temperatures plotted for the sensors installed at nodes 2,2 and 4,2 at the base of the active layer. The dashed lines mark the selected dates for the ERT inversion analysis shown in Figure 7.

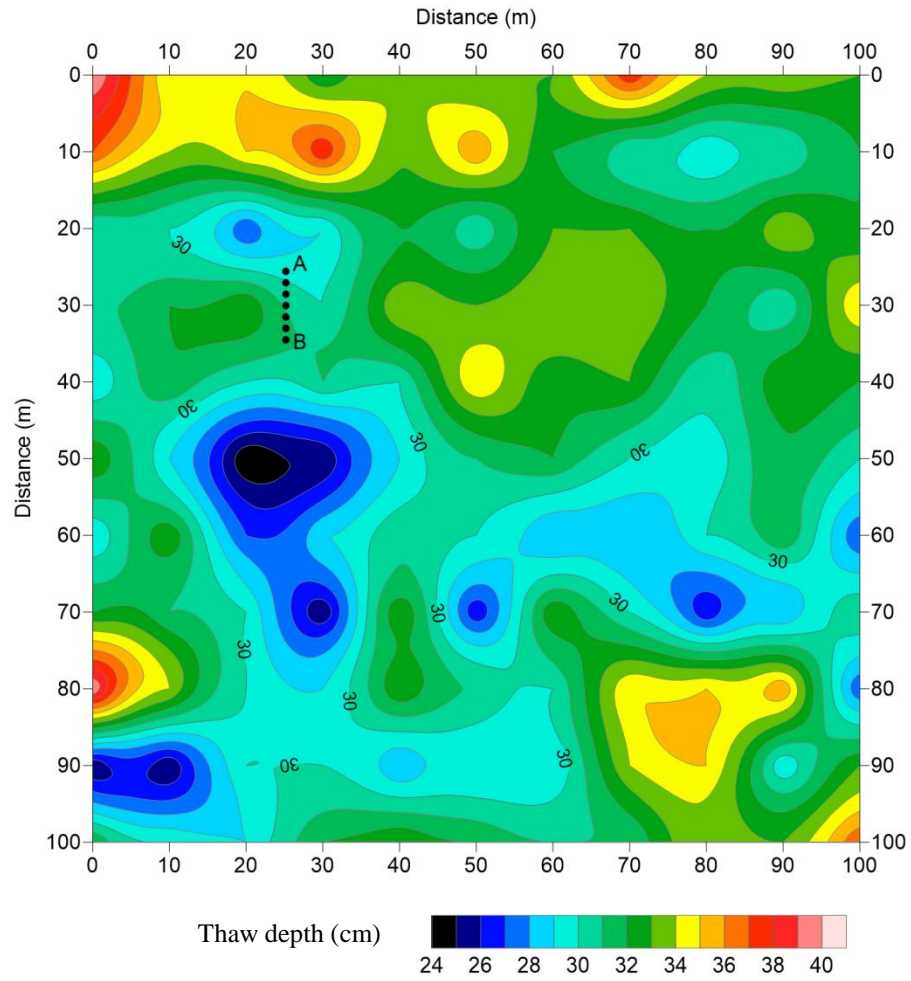


Figure 5. Spatial distribution of thaw depth measured at the grid nodes across the study area in January 2010. The location of the A-ERT transect is delineated with the black dashed line (A-B).

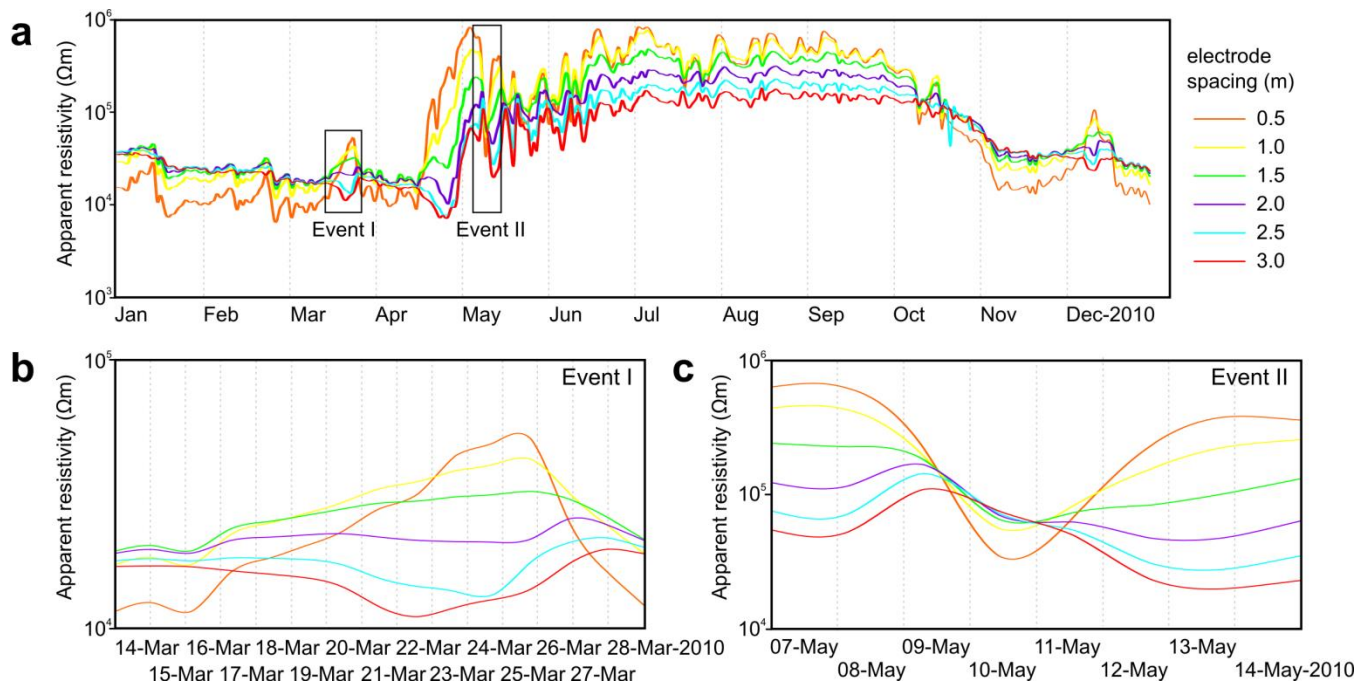


Figure 6. (a) Mean apparent resistivity data of the A-ERT profile during 2010 for different electrode spacing on a daily scale. (b,c) Mean apparent resistivity data on the scale of individual events: (b) brief surficial refreezing event from 14–28 March 2010, (c) brief surficial thawing event from 7–14 May 2010.

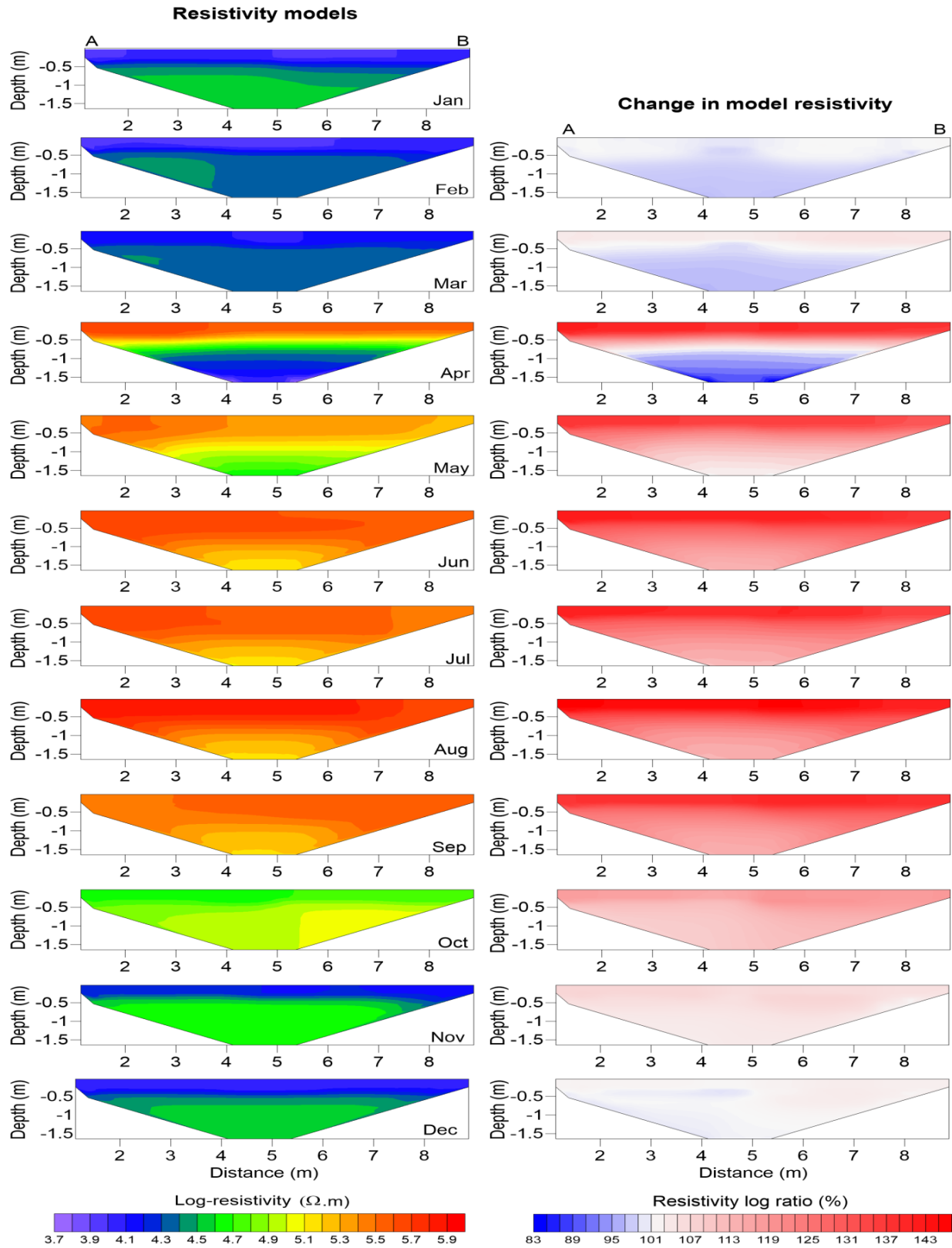


Figure 7. (Left) inverted resistivity tomograms of 12 monthly spaced A-ERT datasets between January and December 2010, based on data measured on the 28th of each month; (Right) relative resistivity changes based on the first ERT dataset referred to January.

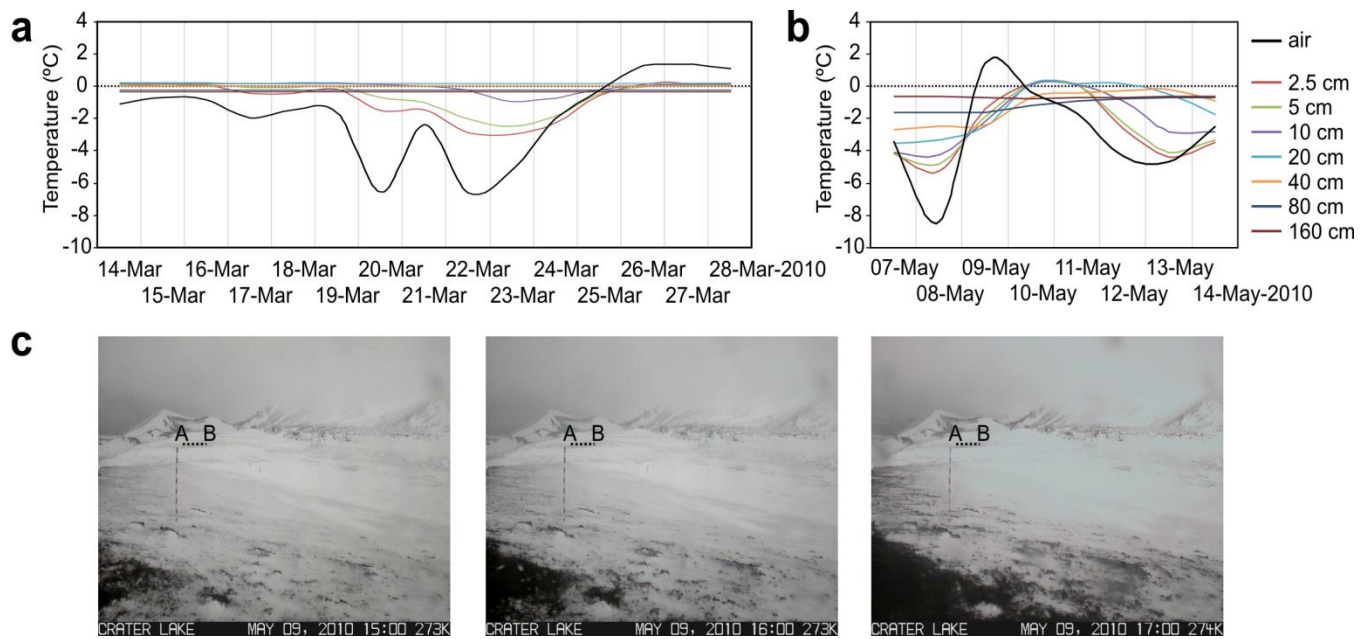


Figure 8. Air and ground temperature fluctuations in the event scale (a) Event (I): brief surficial refreezing event from 14–28 March 2010, (b) Event (II): brief surficial thawing event from 7–14 May 2010. (c) Time-lapse camera photos at 11:00, 12:00 and 13:00 on May 9.

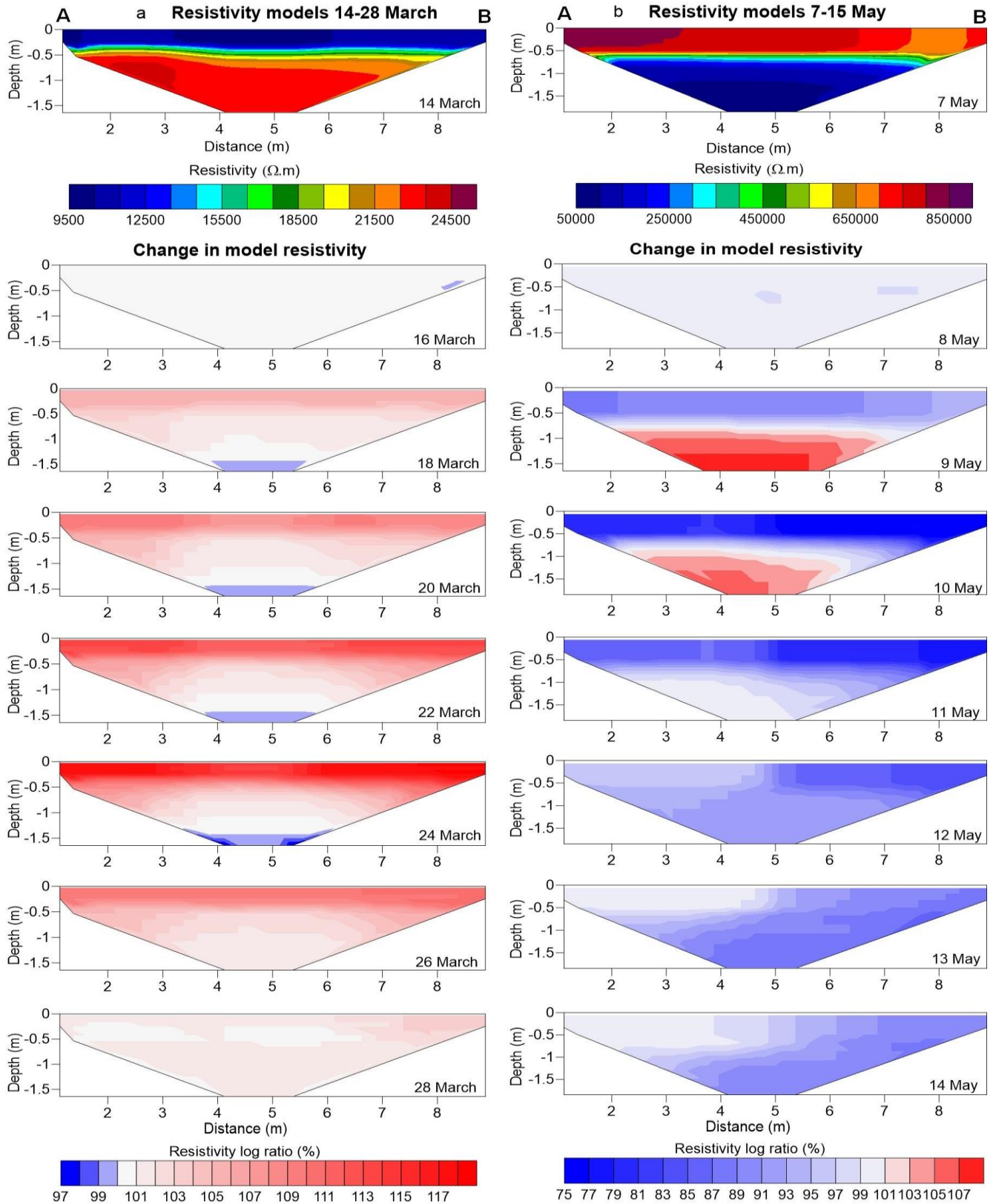


Figure 9. Relative resistivity changes of daily spaced A-ERT datasets in the event scale (a) Event (I): brief surficial refreezing event from 14–28 March 2010, (b) Event (II): brief surficial thawing event from 7–14 May 2010.

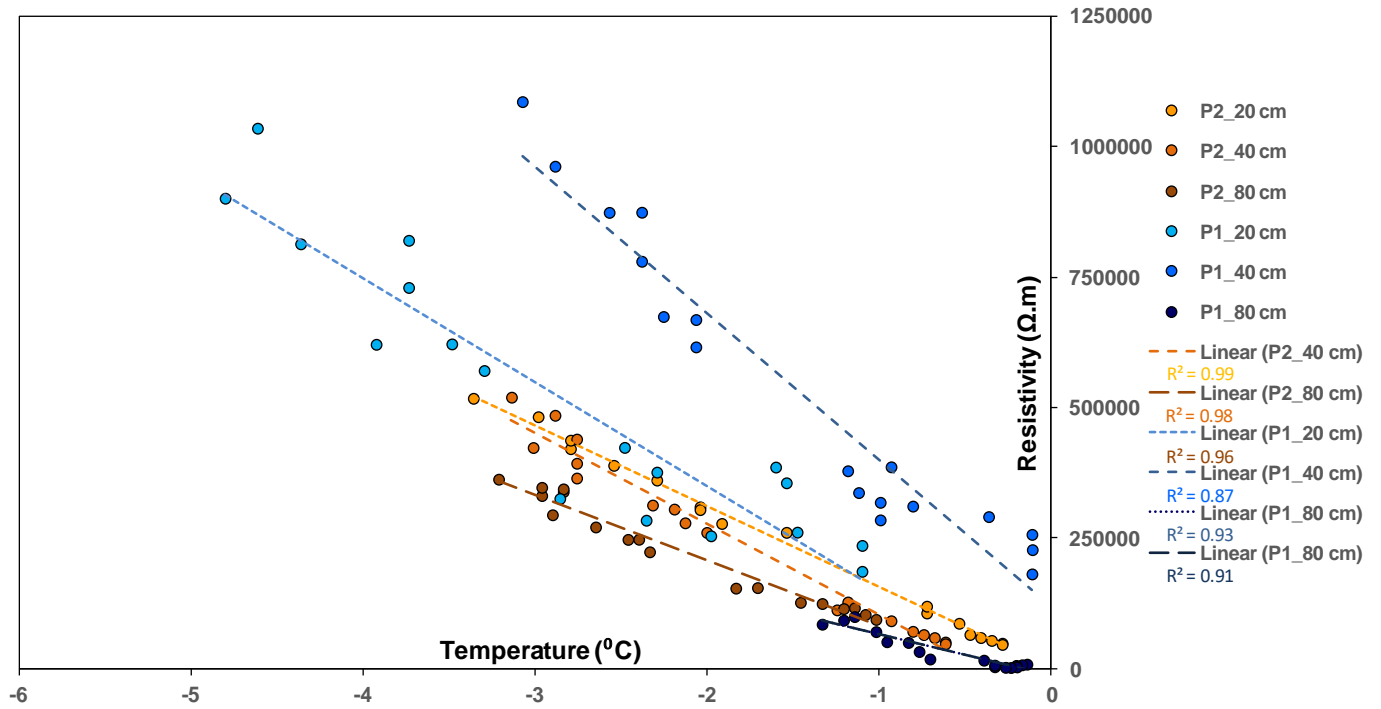


Figure 10. Resistivity values at the borehole location against borehole temperatures in S_{3,3} during the seasonal active layer freezing in April/May (P1) and thawing in October (P2).

5

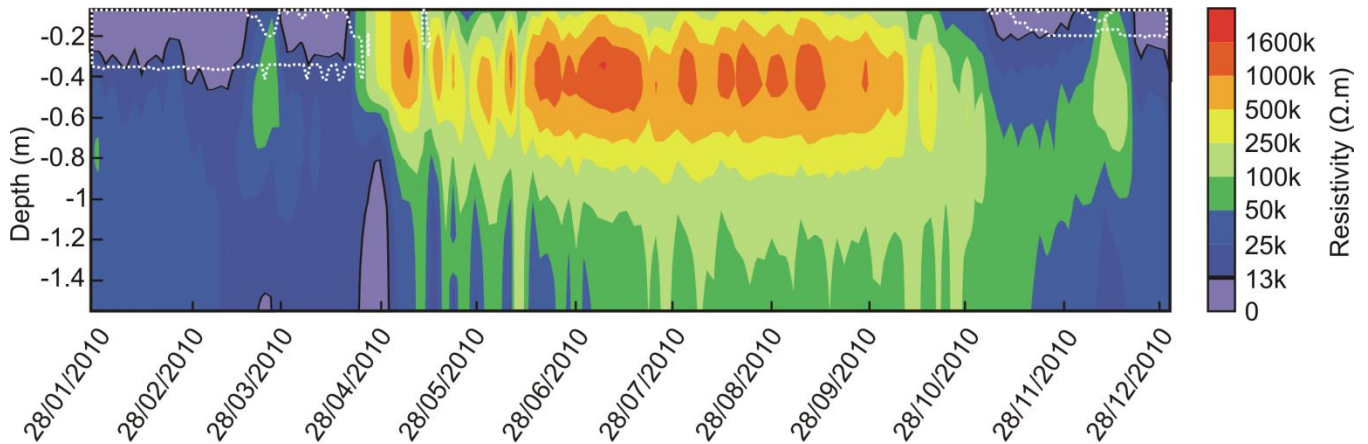


Figure 11. Evaluation of the temporal resistivity variability in virtual borehole S_{3,3} inferred from inverted A-ERT data for the period January 2010 to December 2010. The black line delineates the cut-off value of 13 k Ohm.m and the white dashed line shows the zero degree isotherm from the borehole temperatures at S_{3,3}.

10