

Interactive comment on “The contributions of the leading modes of the North Pacific sea surface temperature variability to the Arctic sea ice depletion in recent decades” by Lejiang Yu et al.

Lejiang Yu et al.

yulejiang@pric.org.cn

Received and published: 15 July 2019

We hope that our answers and new analyses have addressed the reviewer’s concerns

Please also note the supplement to this comment:

<https://www.the-cryosphere-discuss.net/tc-2019-38/tc-2019-38-AC2-supplement.pdf>

Interactive comment on The Cryosphere Discuss., <https://doi.org/10.5194/tc-2019-38>, 2019.

C1

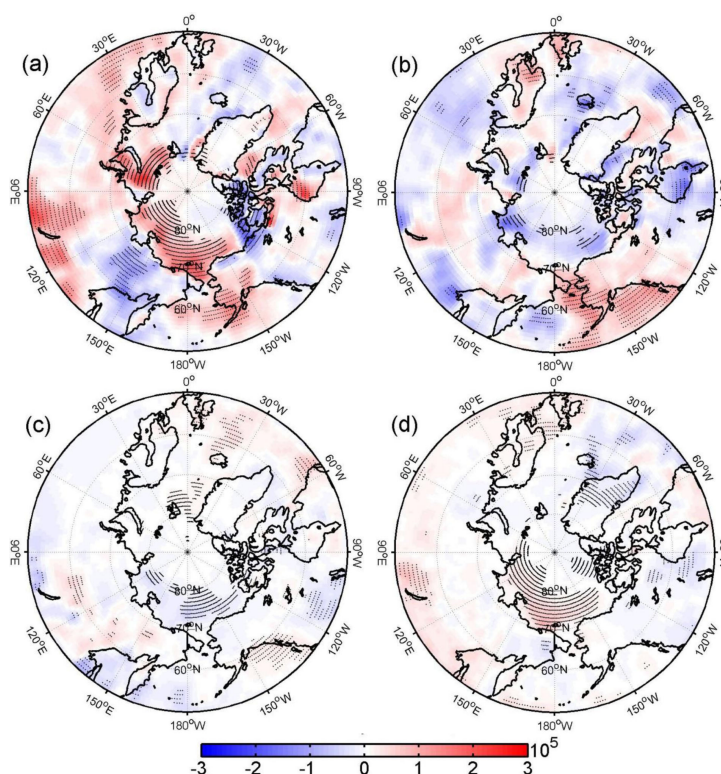


Fig. 1.

C2

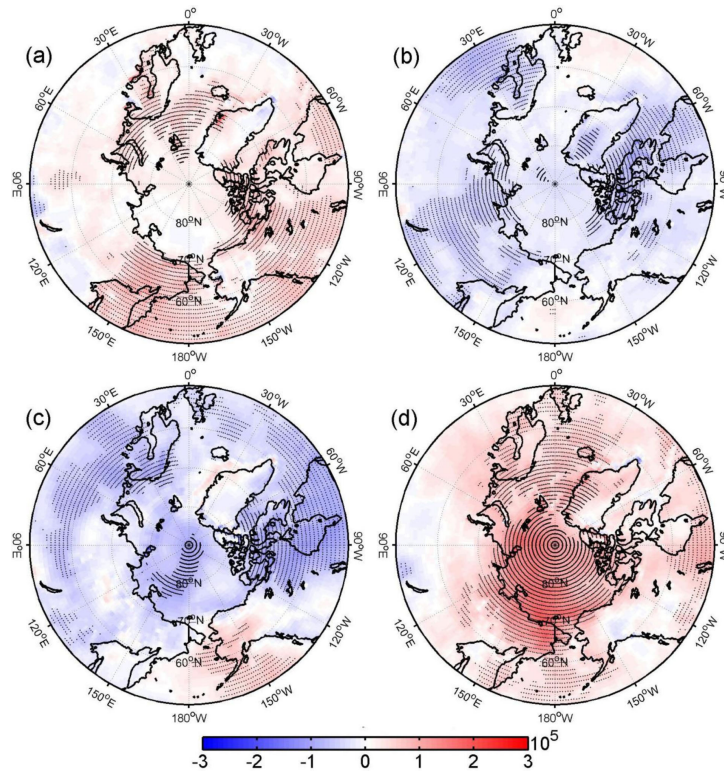


Fig. 2.

C3

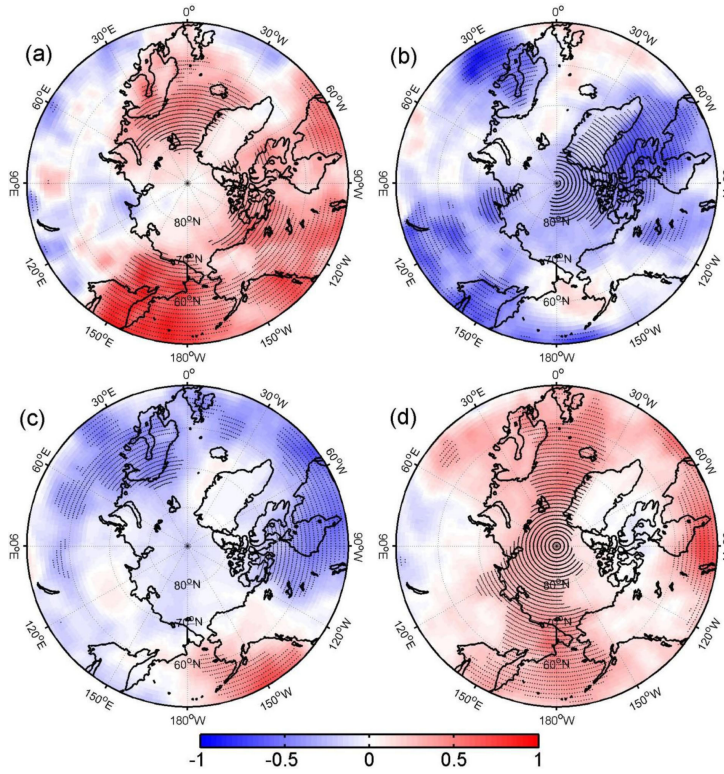


Fig. 3.

C4

The difference between domain-averaged outgoing longwave radiation north of 70°N at the top of the atmosphere and the surface for summer (a) and autumn (b)

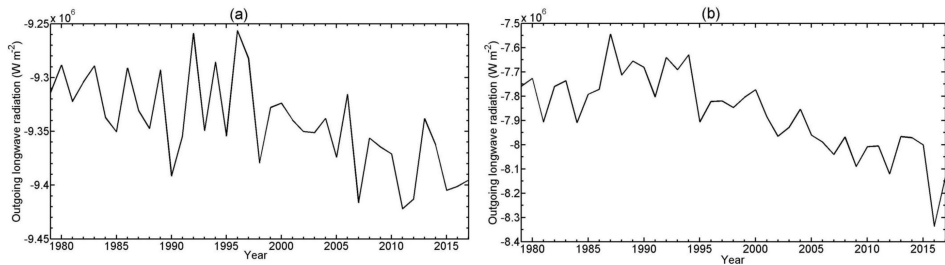


Fig. 4.

C5

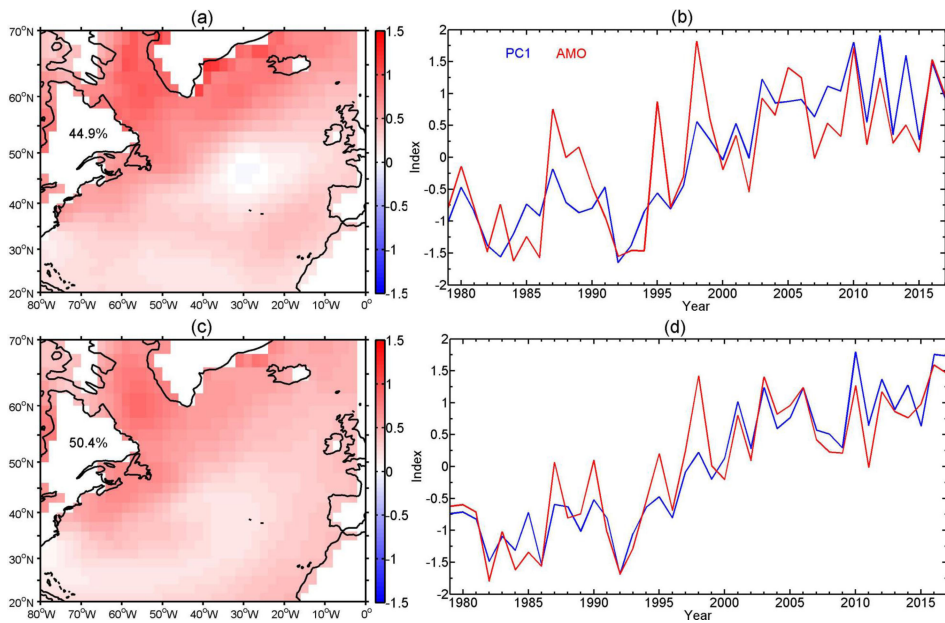


Fig. 5.

C6

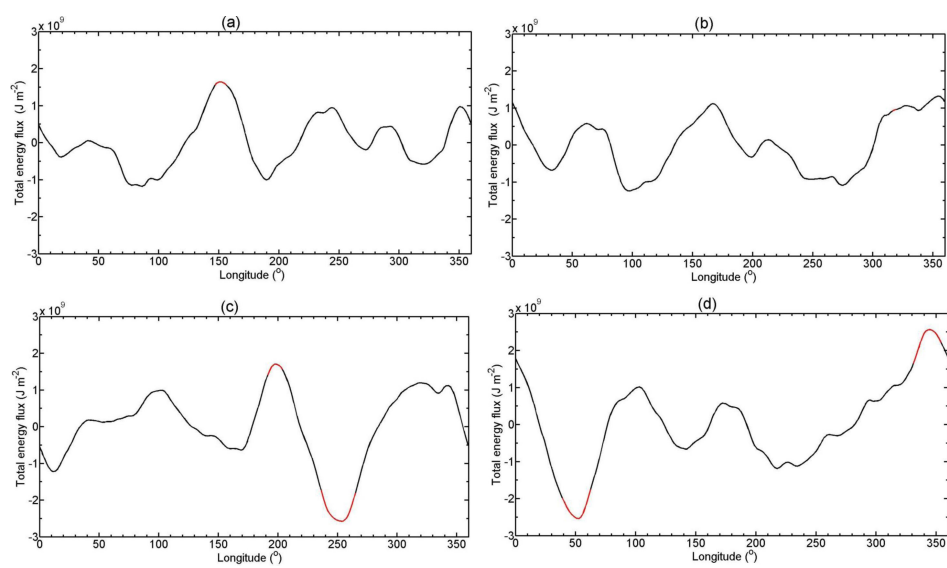


Fig. 6.