

# Brief communication: Glacier thickness reconstruction on Mt. Kilimanjaro

Catrin Stadelmann<sup>1</sup>, Johannes Jakob Fürst<sup>1</sup>, Thomas Mölg<sup>1</sup> and Matthias Braun<sup>1</sup>

<sup>1</sup>Institute of Geography, Friedrich-Alexander University Erlangen-Nürnberg, Erlangen, 91058, Germany

5 *Correspondence to:* Catrin Stadelmann (catrin.stadelmann@fau.de)

## Abstract.

Glaciers on Kilimanjaro are unique indicators for climatic change in the tropical mid-troposphere of Africa, but their disappearance seems imminent. A key unknown is their present ice thickness. Here, we present thickness maps for the Northern Icefield (NIF) and Kersten Glacier (KG) with mean values of 26.6 m and 9.3 m respectively in 2011. In absence of direct  
10 measurements on KG, multi-temporal satellite information was exploited to infer past thickness values in areas that have become ice-free and that allow glacier-specific calibration. In these areas, KG is unrealistically thick in the existing consensus estimate of global glacier ice thickness.

## 1 Introduction

Tropical glaciers at high elevations are unique climate indicators for the tropical mid-troposphere (e.g. Kaser 2001, Mölg et al. 2009). As one of few tropical locations with still existing glaciers, Mt. Kilimanjaro, a stratovolcano with an elevation of  
15 5895 m.a.s.l., is located in East Africa close to the Tanzania-Kenya border (3°04' S / 37°21' E) (Fig. 1, overview). In addition to the very high elevation, the free-standing nature of the mountain causes the glacier on top of the summit to be directly exposed to tropospheric flows at higher altitudes, minimizing the forcing of local climate on the glacier and creating a unique opportunity to study the mid-troposphere climate.

20 The modern glacier recession on Kilimanjaro has been well documented and mapping approaches have shown that from an estimated ice extent of 11.4 km<sup>2</sup> in 1912, only 1.76 km<sup>2</sup> remained in 2011, constituting a severe 85% reduction in glacier area (Cullen et al. 2013). While glaciological research on Kilimanjaro has focused on mapping glacier area and retreat (e.g. Cullen et al. 2013), as well as quantifying the mass and energy balance (Mölg et al. 2003, 2008, 2009), the research on the ice thickness of different glaciers on Kilimanjaro has been comparably sparse (Bohleber et al. 2017). However, in light of severe glacier  
25 recession, an assessment of current glacier thickness is important to better determine future recession. A recent effort was made to reconstruct the distributed ice thickness for all glaciers outside Antarctica and Greenland using a consensus of up to 5 models (Farinotti et al. 2019). This estimate generated ice thicknesses for Northern Icefield (NIF) and Kersten Glacier (KG) using ensembles of 2 and 3 models, respectively. The consensus estimate produces a similar mean ice thickness of 21.5 m for NIF, which is in fair agreement with the observations by Bohleber et al. (2017), considering that the consensus was not

30 informed by local thickness observations (Farinotti et al. 2019). Moreover, the recently observed separation of KG into two fragments (e.g. Landsat 5 scene 2011-08-22; Image courtesy of the U.S. Geological Survey) is not in agreement with the high thickness values illustrated in the consensus estimate.

Here, we present the first well constrained thickness maps for KG and NIF using a mass conserving reconstruction approach introduced in Fürst et al. (2017) that readily assimilated thickness measurements (Section 3.4). In two different experiments  
35 we test the influence of varying input of ice thickness observations for the glacier state of 2000, where we rely on surface mass balance (SMB) data from a physically-based model developed by Mölg et al. (2008, 2009; Section 3.1) and digital elevation data with global coverage (Shuttle Radar Topography Mission; SRTM; USGS), pursuing a new calibration strategy that uses multi-temporal satellite information on geometric changes in absence of observational ice thickness data on KG. These resulting thickness estimates are then compared to the consensus estimate (Farinotti et al. 2019). In a third experiment, we  
40 combine the very high resolution digital elevation model KILISoSDEM (0.5 m ground resolution; Sirguey et al. 2014) with the calibration strategy from the previous 2000 experiments to produce a best estimate for the 2011 glacier state.

## 2 Data

To apply the distributed surface mass balance (SMB) model (Sect. 3.1; Mölg et al., 2008, 2009) and the thickness reconstruction (Sect. 3.4), the following input data was used: climate data measured by the automatic weather station (AWS)  
45 located on KG (Section 3 c in Mölg et al. 2009), digital elevation information from the SRTM digital elevation model (DEM) from 2000 and the KILISoSDEM from 2012 (Sirguey et al. 2014), the RGI6.0 glacier outlines from 21 February 2000 (RGI Consortium 2017), as well as digitized outlines based on a Landsat 5 image from 22 August 2011. Surface height change was generated by differencing a merge of two TanDEM-X radar images from 2011 (28 January 2011, 4 April 2011) and the SRTM DEM.

50 The central plateau area of NIF drains westward into two glaciers, Drygalski Glacier in the south and Credner Glacier in the North. In anticipation of a future separation of NIF, we redefine Credner Glacier (CG) to comprise the northern part of NIF (Fig. 1). Ice thickness measurements on Kilimanjaro are limited to NIF, where three ice cores were drilled to bedrock in 2000, with lengths from 49.0 m (C1) to 50.9 m (C2) and 50.8 m (C3) (Thompson et al. 2002; Fig. 1 for borehole locations). In addition, ground penetrating radar (GPR) profiles from September 2015 (Fig. 1) were collected by Bohleber et al. (2017).  
55 Using a kriging interpolation and the KILISoSDEM, the authors estimated the mean thickness to be between  $21.2 \pm 1$  m and  $27 \pm 2$  m. For the anticipated reconstruction in 2000 and 2011, the GPR thickness measurements for NIF are adjusted by linearly interpolating the above-mentioned elevation change information to the elapsed time between the DEM date and acquisition date of the thickness measurements. To account for different availability of thickness measurements, Fürst et al. (2017) conducted experiments withholding 1% - 99% of the available point measurements on several test geometries on  
60 Svalbard. Aggregate errors typically exceed 10-20% of the mean glacier ice thickness when most measurements are withheld but error values quickly reduce as measurements become available. Between the two end-member experiments (1% and 99%),

volumes of the test geometries differ by at most 10%. Considering input uncertainties from the DEM and the SMB fields, sensitivity tests revealed that ice-volume differences remain below 5% (only shown for the ice-cap geometry). For more details on associated uncertainties and input sensitivities, we refer the interested reader to Fürst et al. (2017). Here, the focus is rather on assessing the utility of multi-temporal satellite information in a glacier specific calibration.

### 3 Methods

#### 3.1 Mass balance modelling

The mean annual climatic surface mass balance fields were generated using version 2.4 of the distributed, physically-based mass balance (MB) model by Mölg et al. (2008, 2009), being driven by meteorological input from the aforementioned AWS (Suppl. Fig. 1). The full MB model has already been calibrated and validated for KG. For the application on NIF, surface meltwater is not expected to run off but rather refreeze over the very flat plateau areas (Mölg & Hardy, 2004). To properly reproduce these conditions on NIF, we revised the model code so that refreezing of meltwater can occur on a bare ice surface with a slope angle below 5 degrees (not captured before). With these changes, the model is capable of reproducing the observed surface height changes observed by a Sonic Ranger mounted to the AWS.

#### 3.2 TanDEM-X processing

First a DEM with 30 m resolution was generated from the 2011 TanDEM-X imagery (for details refer to Braun et al., 2019). Surface elevation changes between 2000 and 2011 were inferred from DEM differencing with respect to the SRTM DEM (Suppl. Fig. 2).

#### 3.3 Margin thickness generation

For KG, no in-situ thickness measurements are available. Therefore, multi-temporal DEM and glacier outline information is used to infer past ice thickness. First, glacier retreat is delineated from outline information in 2000 and 2011 (Fig. 1 hatched area). In the currently ice-free area, contemporaneous elevation changes (2000-2011) then give information on past ice thickness. Positive values, which indicate a height gain in the TanDEM-X layer, were removed as a height gain outside the 2011 glacier extent implies an increase in glacier thickness from 2000 to 2011, which is unlikely. In total we removed 92 of 602 grid cells with a mean height gain of 0.19 m/a for NIF and 14 of 254 grid cells with a mean height gain of 0.25 m/a for KG.

#### 3.4 Ice thickness reconstruction

A detailed description of the two-step ice-thickness reconstruction, of which we only used the first model step as surface velocities were not available, can be found in Fürst et al. (2017). The reconstruction approach is based on the principle of mass

90 conservation and computes a glacier-wide flux field from the difference between the surface mass balance (Section 3.2) and  
contemporaneous elevation changes. The flux solution is converted into thickness values using the Shallow Ice Approximation  
(SIA; Hutter, 1983). This conversion involves the ice-viscosity parameter  $B$ , which is a-priori unknown. This parameter stems  
from assuming a Glen-type flow law, linking deviatoric stresses to strain rate components  $\dot{\epsilon}_{ij}$  via the effective viscosity  
 $\eta = 0.5 B^{-1/n} \dot{\epsilon}^{(1-n)/n}$ . Here,  $\dot{\epsilon}$  is the second invariant of the strain rate tensor (for further information on the equation see Pattyn  
95 2003) and  $n=3$ . After the flux solution is obtained,  $B$  is calibrated at locations where thickness measurements are available.  
This point-information is then expanded to the entire glacier domain using a Natural Neighbor Sibsonian Interpolation,  
resulting in a spatially variable field. Before interpolating the  $B$  values from each measurement location to the entire glacier  
basin, an average value is prescribed along the glacier outline to avoid spurious extrapolation effects. For the reconstruction  
in 2000, a nominal mesh resolution of 25 m was chosen. With the higher DEM quality in 2011, the resolution was iteratively  
100 increased from 25, via 10 and 5, to 2 m. The processing was conducted separately for NIF and KG. To smooth the surface  
slope during reconstruction, we use a coupling length parameter (introduced in Fürst et al. 2017), which is defined as a multiple  
of the local ice thickness. In this way, flux streamlines become less erratic and their alignment increases. For KG, the parameter  
is set to 1, a typical value for valley glaciers (Kamb & Echelmeyer, 1986). For NIF, it had to be reduced so that the steep  
elevation increase at the vertical ice cliffs is depicted in the thickness field. A compromise value of 0.3 was chosen to still  
105 guarantee sufficient smoothing of the flux streamlines.

### 3.5 Experimental Setup

The general strategy is to reconstruct a thickness field for KG and NIF by combining SMB, elevation changes and glacier  
geometry with in-situ measurements of ice thickness for two points in time, namely 2000 (Experiment 1 and 2) and 2011  
(Experiment 3). In Experiment 1, we reconstructed the glacier state for 2000 with the generated margin thickness data (Section  
110 3.3) for both NIF and KG. As KG is rather small, we expect a homogeneous ice viscosity. In Experiment 2, we therefore  
decided to simply average the point information on ice viscosity and use a constant viscosity value over the entire glacier basin.  
In this way, lateral thickness values are no longer reproduced but spurious spatial viscosity variations stemming from the  
generic margin data are suppressed. For NIF in Experiment 2, we chose to use the thickness measurements from Bohleber et  
al. (2017) as input, to check how observational data influences the glacier-wide ice thickness in comparison to only using  
115 margin thickness information. In Experiment 3, the aim is to benefit from the 2011 KILISoSDEM showing very high  
resolution. For NIF, the reconstruction can still be calibrated by GPR measurements from Bohleber et al. (2017) acquired in  
central areas. For KG, the retreat information falls outside the ice-covered domain in 2011. Therefore, we use the mean  
viscosity information as inferred for the reconstruction in year 2000 (Experiment 2). The KILISoSDEM is further exploited to  
investigate the resolution influence. Table 1 summarizes the three different experimental setups (Tab. 1).

## 120 **4 Results**

Results show generally larger ice thickness for NIF than for KG in all three experiments. For Experiment 1 (Fig. 2 A), KG shows thickest ice of up to 15 m at the flat plateau parts of KG. For the central areas on the mountain flank thickness values show a mean of 6.2 m and locally reach up to 7.5 m, with patches of thinner ice towards the glacier margins. NIF is up to 40 m thick in its center, decreasing towards the glacier margins and towards CG and has a mean ice thickness of 13.7 m. At the 125 borehole locations C1, C2 and C3 ice thicknesses of Experiment 1 are 19.9 m, 23.9 m and 36.6 m thinner, respectively (see Suppl. Table 1).

Results from Experiment 2 show a similar thickness pattern on KG (Fig. 2B). For NIF, the magnitude differs significantly. Now one large part of NIF's flat area and two smaller parts of CG exceed 40 m. Moreover, the ice thickness in the steeper western areas of NIF and CG has increased by a factor of 2. The mean ice thickness also increases to 23.4 m. At the borehole 130 locations C1, C2 and C3 ice thicknesses of Experiment 2 are 4.4 m, 8.3 m and 26.1 m thinner, respectively (see Suppl. Table 1). Concerning the GPR surveys from Bohleber et al. (2017), the thickness map of NIF (Fig. 2D) largely reproduces these measurements. Turning to the consensus estimate map (Farinotti et al., 2019), larger discrepancies prevail (Fig. 2E), especially towards the eastern part. KG shows a similar thickness, but the ice body on the mountain flank becomes thicker in the central parts. As before, the thickest ice patch remains on the plateau. The mean ice thickness with 6.9 m is very similar to 135 Experiment 1. For Experiment 3 (Fig. 1), KG is now split into two parts and shows an ice thickness of up to 10 m at the flat top part and most of the slope being between 5 and 7.5 m thick. KG's mean ice thickness is 9.3 m. NIF's thickness distribution is similar to Experiment 2, with the thickest areas of over 40 m at its flat part on the plateau. For NIF, the decrease in thickness is less noticeable than the lateral retreat and decrease of glacier area. The mean ice thickness of NIF in Experiment 3 is 26.6 m. At the three ice-core locations, the thickness mismatch remains comparable to Experiment 2 (see Suppl. Table 1), with a mean 140 relative absolute difference of 26%. This value is rather large and exceeds inferred error estimates for the majority of glacier on Svalbard (Fürst et al., 2017). Here, we want to use it as a rough orientation for the overall uncertainty of the 2011 reconstruction.

## **5 Discussion**

We will first discuss the reconstructions for the year 2000 (Fig. 2): Generally, our experiments produce results with a higher 145 difference in thickness magnitude between KG and NIF as compared to the consensus thickness map (Fig. 2C; results from Farinotti et al. 2019). For KG, no ice thickness measurements are available, and it is uncertain to what extent the generated thicknesses along the glacier margin (Section 3.3) are useful to inform the reconstruction. We find that the margin values result in a spatially varying viscosity field, which is transmitted into the ice thickness field (Experiment 1; Fig. 2 A). As no strong viscosity variations are expected for the small KG, a second run was conducted with constant viscosity (Experiment 2; Fig. 2 150 B). Results indicate a thick central flow unit, as one might expect for a steep glacier, as well as a smoother ice thickness distribution, with higher thickness in the center of the glacier and thinning towards the margins. In the absence of ground truth

data, it is unclear, which thickness field is more plausible. However, as the thickness of most glaciers on Earth is unsurveyed, the use of margin thickness information, generated from outline differences enabled a local glacier-specific viscosity tuning which might be preferential to an empirical temperature relation (Huss and Farinotti, 2012). The consensus map shows a similar thickness pattern as Experiment 2. The most notable difference is found for the thickness magnitude of KG. For the consensus estimates, thickness values exceed 35 m both for the flat top part and the central steep slope part. The consensus mean thickness of 27.1 m, is more than twice as large as in our reconstruction. Since there are no actual thickness observations for KG, it is not certain that the ice was only up to 15 m thick in the year 2000. However, KG split in two parts by 2011. The separation line follows a contour line just below the plateau. Mean elevation changes between 2000 and 2011 of -0.64 m/yr suggest that not more than 7 m of ice was present in 2000. With 35m ice in this area, the consensus estimate seems too large. NIF's peculiar geometry poses a challenge and it is difficult to reconstruct the ice thickness distribution using generic thickness observations around the margin (Fig. 2A). The ice is much too thin in the interior (Fig. 2 A), which underestimates the ice core lengths from Thompson et al. 2002 by 48, 52 and 71% for the core locations C1, C2 and C3 respectively. When the interior GPR measurements are used as model input (Experiment 2; Fig. 2 B), differences decrease to 10, 17 and 53%. Increased mismatch values, especially for borehole C3, might as well be explained by the very flat plateau. Therefore, ice motion is expected to be rather slow. Stagnant and flat areas are challenging for a reconstruction based on ice-flow and Füst et al. (2017) show that uncertainties in the reconstructed thickness values significantly increase towards the ice divide of an ice cap. They further show that measurements along divides and ridge areas are most valuable to constrain the reconstruction approach used here. Although GPR measurements are available on the NIF plateau, we expect that uncertainties increase quickly away from these measurements. This can partly explain the mismatch with C3. Turning to the consensus estimate the mismatch is significantly larger with relative underestimations of 34%, 38% and 72% for boreholes C1, C2 and C3. Despite that no GPR measurements were considered on Mt. Kilimanjaro, the complex topography posed a similar challenge for the models participating in the consensus. This is also reflected in the similar mean ice thicknesses, which are 27.1 m for the consensus estimate (Farinotti et al. 2019) and 23.4 m for Experiment 2.

Experiment 3 repeats the reconstruction for the year 2011 at a very high resolution. The general distribution of ice thickness is barely affected by the increase in resolution. This stability under resolution increase is assuring and illustrates the effects of inherent smoothing via the coupling length parameter that scales with the thickness. For NIF however, resolution is key, and the cliff geometries are much better imprinted in the final thickness map. Further experiments with 10 and 5 m model resolution (not shown) showed barely any difference in thickness distribution, verifying this effect. The mean ice thickness for KG and NIF have increased in comparison to Experiment 2 to 9.3 m and 26.6 m, respectively.. As observed elevation changes do not support an increase, remaining explanations comprise model resolution, outline differences and DEM quality. Resolution can be excluded from a 25 m reconstruction in 2011 (not shown). Concerning the 2011 outlines, some internal ice-free areas (on both NIF and KG), present in the RGI, could not be confirmed from the coarse Landsat imagery, resulting in thicker ice. The quality difference between SRTM and KILISoSDEM is certainly also a contributing factor explaining part of the larger thickness values.

Finally, we want to briefly discuss the reconstruction approach, used here, with respect to other strategies for inferring distributed thickness information. The Ice Thickness Models Intercomparison eXperiments (IMTIX; Farinotti et al. 2017) concluded that as long as no thickness measurements are available, no single strategy generally outperforms the others. In this case, an ensemble result from multiple models is preferable. Yet here, observations are either available or are inferred from multi-temporal satellite imagery. Measurement availability was used in the global consensus estimate to infer performance scores for the participating models (Farinotti et al., 2019) and the approach by Fürst et al. (2017) was attributed the highest value. Yet, with regard to applications on individual geometries as for Kilimanjaro, comparable results, as presented here, might well be attainable with various approaches. Regarding input requirements, approaches based on the perfect plasticity assumption are least exigent, only requiring information on the ice geometry (e.g. Frey et al., 2014).

## 195 **6 Conclusion & Outlook**

This study has a multi-disciplinary character as we apply modelling approaches for glacier surface mass balance, infer remotely sensed elevation changes and utilize available information in a data assimilation. The aim of the assimilation is to accurately determine the thickness and distribution of ice for NIF and KG on Mt. Kilimanjaro. As ice thickness observations were not available for KG, the reconstruction approach was calibrated with past thickness values inferred from multi-temporal satellite information in areas that became ice-free in the last decade. Our reconstructions for 2011 show mean ice thicknesses of 9.3 m for KG and 26.6 m for NIF. A comparison of modelled thickness to the ice core lengths (Thompson et al. 2002) results in a mean relative absolute error of 26%.

In the reconstructions for 2000 we assessed the utility of this margin thickness information in constraining glacier thickness by comparing our reconstructions to the recent global consensus estimate (Farinotti et al. 2019). For Kersten Glacier, we report significantly smaller thickness values as compared to the consensus estimate. The latter reconstruction is shown to be inconsistent with the observed glacier separation between 2000 and 2011. For NIF, our reconstruction (Experiment 2) and the consensus estimate both show a very similar mean ice thickness, which is surprising as the consensus estimate was not informed by any thickness measurements. The lateral glacier retreat information seems less utile as central ice thickness is strongly underestimated. Reasons for this worse performance might be the complex topography and the dynamic inactivity of NIF. We therefore speculate that thickness information from retreat is most useful in areas that have been dynamically more active in the past.

The unique glacier settings on Mt. Kilimanjaro are certainly not ideal for this first assessment of utilizing glacier retreat information to allow a glacier-specific calibration of thickness reconstruction approaches. In absence of ground truth data on KG, it remains unclear if the retreat information is best used spatially distributed or as a bulk average. Yet we can state that increased quality and resolution of more recent DEMs are key for capturing sharp transition zones (e.g. cliffs).

To conclude, glacier retreat is palpable all around the planet and it will continue in the future (e.g., Hock et al., 2019). As time progresses, the suggested strategy to infer past ice thickness values from multi-temporal satellite information will produce an

increasing wealth of calibration data. Moreover, the approach is readily transferable and provides a means for glacier-specific calibration of reconstruction approaches on regional or even global scales.

## 220 **Acknowledgement**

CS received primary funding from the project BR2105 /14-1 within the DFG Priority Program "Regional Sea Level Change & Society". JJF was funded by the German Research Foundation (DFG) under grant number FU1032/1-1. Results presented in this publication are based on numerical simulations conducted at the high-performance computing center of the Regionales Rechenzentrum Erlangen (RRZE) of the University of Erlangen-Nürnberg. We would also like to thank Nicolas Cullen and  
225 Pascal Sirguey (both at University of Otago, NZ) for constructive discussions and for providing the KILISoSDEM.

## **Author contribution**

CS led writing of the manuscript, in which she received support from all authors. The research aims and setup were developed in regular discussion with JJF, TM and MB.

## **Competing interests**

230 The authors declare no competing interests.

## **References**

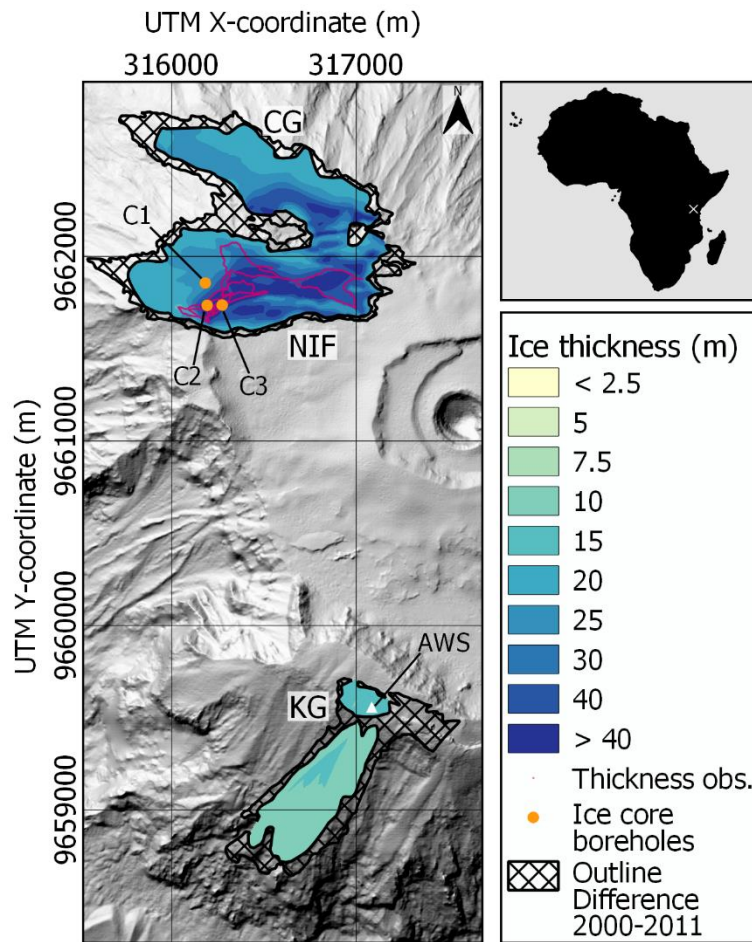
- Bohleber, P., Sold, L., Hardy, D. R., Schwikowski, M., Klenk, P., Fischer, A., Sirguey, P., Cullen, N. J., Potocki, M., Hoffmann, H. and Mayewski, P.: Ground-penetrating radar reveals ice thickness and undisturbed englacial layers at Kilimanjaro's Northern Ice Field, *The Cryosphere*, 11, 469–482, doi: 10.5194/tc-11-469-2017, 2017.
- 235 Braun, M.H., Malz, P., Sommer, C., Farías-Barahona, D., Sauter, T., Casassa, G., Soruco, A., Skvarca, P. and Seehaus, T.: Constraining glacier elevation and mass changes in South America, *Nat. Clim. Change*, 9, 130–136, doi: 10.1038/s41558-018-0375-7, 2019.
- Cullen, N. J., Sirguey, P., Mölg, T., Kaser, G., Winkler, M. and Fitzsimons, S. J.: A century of ice retreat on Kilimanjaro: the mapping reloaded, *The Cryosphere*, 7, 419–431, doi: 10.5194/tc-7-419-2013, 2013.
- 240 Farinotti, D., Brinkerhoff, D. J., Clarke, G. K. C., Fürst, J. J., Frey, H., Gantayat, P., Gillet-Chaulet, F., Girard, C., Huss, M., Leclercq, P. W., Linsbauer, A., Machguth, H., Martin, C., Maussion, F., Morlighem, M., Mosbeux, C., Pandit, A., Portmann, A., Rabatel, A., Ramsankaran, R., Reerink, T. J., Sanchez, O., Stentoft, P. A., Singh Kumari, S., van Pelt, W. J. J., Anderson, B., Benham, T., Binder, D., Dowdeswell, J. A., Fischer, A., Helfricht, K., Kutuzov, S., Lavrentiev, I., McNabb, R., Gudmundsson, G. H., Li, H., and Andreassen, L. M.: How accurate are estimates of glacier ice thickness?



- 245 Results from ITMIX, the Ice Thickness Models Intercomparison eXperiment, *The Cryosphere*, 11, 949–970, <https://doi.org/10.5194/tc-11-949-2017>, 2017.
- Farinotti, D., Huss, M., Fürst, J. J., Landmann, J., Machguth, H., Maussion, F. and Pandit, A.: A consensus estimate for the ice thickness distribution of all glaciers on Earth, *Nat. Geosci.*, 12, 168–173, doi: 10.1038/s41561-019-0300-3, 2019.
- Frey, H., Machguth, H., Huss, M., Huggel, C., Bajracharya, S., Bolch, T., Kulkarni, A., Linsbauer, A., Salzmann, N. and  
250 Stoffel, M.: Estimating the volume of glaciers in the Himalayan–Karakoram region using different methods, *The Cryosphere*, 8, 2313–2333, doi:10.5194/tc-8-2313-2014, 2014.
- Fürst, J. J., Gillet-Chaulet, F., Benham, T. J., Dowdeswell, J. A., Grabiec, M., Navarro, F., Pettersson, R., Moholdt, G., Nuth, C., Sass, B., Aas, K., Fettweis, X., Lang, C., Seehaus, T. and Braun, M.: Application of a two-step approach for mapping ice thickness to various glacier types on Svalbard, *The Cryosphere*, 11, 2003–2032, doi: 10.5194/tc-11-2003-2017, 2017.
- 255 Hock, R., Bliss, A., Marzeion, B., Giesen R., Hirabayashi Y., Huss M., Radić V. and Slangen A.: GlacierMIP – A model intercomparison of global-scale glacier mass-balance models and projections., *J. Glaciol.*, 65, 453-467, doi:10.1017/jog.2019.22, 2019.
- Hutter, K.: *Theoretical glaciology; material science of ice and themechanics of glaciers and ice sheets*, D. Reidel Publishing Company, Tokyo, Terra Scientific Publishing Company, 1983
- 260 Huss, M., Farinotti, D.: Distributed ice thickness and volume of all glaciers around the globe, *J. of Geophys. Research*, 117, doi: 10.1029/2012JF002523, 2012.
- Kamb, B. and Echelmeyer, K. A.: Stress-Gradient Coupling in Glacier Flow: 1. Longitudinal Averaging of the Influence of Ice Thickness and Surface Slope, *J. Glaciol.*, 32, 267–284, 1986.
- Kaser, G.: Glacier-climate interactions at low latitudes, *Journal of Glaciology*, 47, 195–204, 2001.
- 265 Mölg, T., Cullen, N. J., Hardy, D. R., Kaser, G. and Klok, L.: Mass balance of a slope glacier on Kilimanjaro and its sensitivity to climate, *Int. J. Climatol.*, 28, 881–892, doi: 10.1002/joc.1589, 2008.
- Mölg, T., Cullen, N. J., Hardy, D. R., Winkler, M. and Kaser, G.: Quantifying Climate Change in the Tropical Midtroposphere over East Africa from Glacier Shrinkage on Kilimanjaro, *J. Clim.*, 22, 4162–4181, doi: 10.1175/2009JCLI2954.1, 2009.
- Mölg, T. and Hardy, D.R.: Ablation and associated energy balance of a horizontal glacier surface on Kilimanjaro, *J. Geophys. Res.*, 109, D16104, doi: 10.1029/2003JD004338, 2004.
- 270 Pattyn, F.: A new three-dimensional higher-order thermomechanical ice sheet model: Basic sensitivity, ice stream development, and ice flow across subglacial lakes, *J. Geophys. Res.*, 108, 2382, doi: 10.1029/2002JB002329, 2003.
- RGI Consortium: *Randolph Glacier Inventory – A Dataset of Global Glacier Outlines: Version 6.0*, Global Land Ice Measurements from Space, doi: <https://doi.org/10.7265/N5-RGI-60>, 2017.
- 275 Sirguey, P. and Cullen, N. J.: Surveying from Outer Space. KILISoSDEM2012: a very high resolution DEM of Kilimanjaro, *Survey Quarterly*, 76, 5–7, 2013.

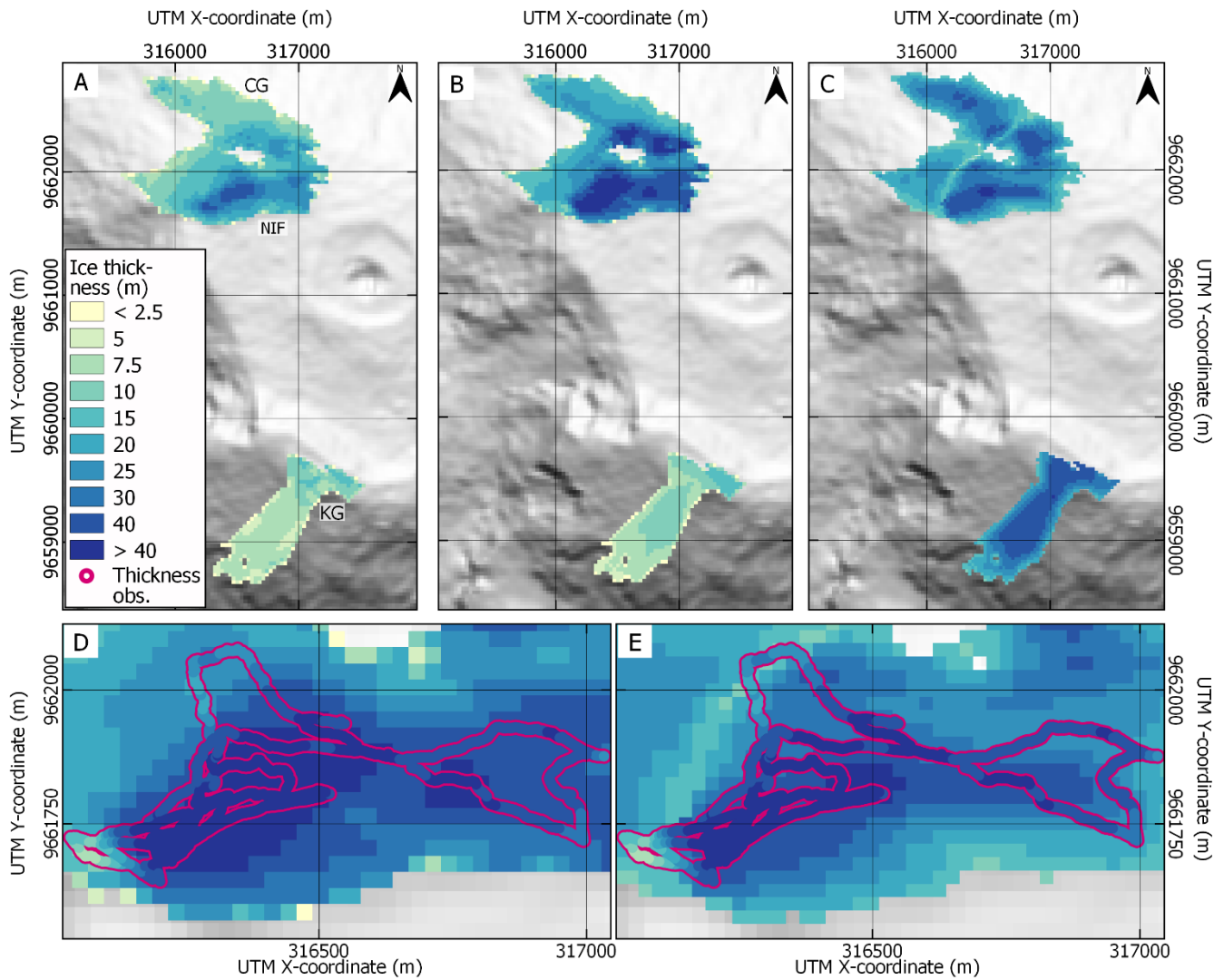
Thompson, L. G., Mosley-Thompson, E., Davis, M. E., Henderson, K. A., Brecher, H. H., Zagorodnov, V. S., Mashiotta, T. A., Lin, P.-N., Mikhalenko, V. N., Hardy, D. R. and Beer, J.: Kilimanjaro ice core records: evidence of holocene climate change in tropical Africa, *Science*, 298, 589–593, doi: 10.1126/science.1073198, 2002.

280 USGS: Shuttle Radar Topography Mission Void Filled, doi: /10.5066/F7F76B1X, 2014.



**Figure 1: Reconstructed ice thickness (m) for Northern Icefield (NIF) and Kersten Glacier (KG) for the year 2011, based on thickness observations (NIF) and mean viscosity (KG) with a model resolution of 2 m (Experiment 3). The magenta path on NIF represent the GPR ice thickness measurements by Bohleber et al. (2017). Orange dots (C1-C3) indicate the drill locations of the ice cores from Thompson et al. (2002). The AWS location from Mölg et al. (2009) is marked by the white triangle. Background: KiliSoSDEM hillshade. The overview map depicts the location of Mt. Kilimanjaro (white cross) on the African continent.**

285



290 **Figure 2: Reconstructed ice thickness (m) for Northern Icefield (NIF) and Kersten Glacier (KG) for the year 2000. Panel (A) shows**  
**results for Experiment 1 making exclusive use of past thickness information in nowadays ice-free areas. Panel (B) presents results**  
**from Experiment 2, which uses a bulk viscosity inferred from the retreat information on KG, whereas for NIF, the reconstruction**  
**is only calibrated by in-situ GPR measurements (see Table 1).As comparison panel (C) depicts the composite ice thickness from**  
**Farinotti et al 2019. Panel (D) shows a closeup of NIF, overlying the thickness map of Experiment 2 with the GPR thickness**  
**measurements (colored dots with magenta outline, showing measured values in the same colourbar) by Bohleber et al. (2017). Panel**  
295 **(E): same as Panel (D) but showing the consensus thickness map (Farinotti et al., 2019; cf. Panel C). Background: SRTM DEM**  
**hillshade.**

**Table 1: Experimental setup of the ice thickness reconstruction (Section 3.5).**

	<b>Representing the glacier state for the year</b>	<b>Thickness input KG</b>	<b>Thickness Input NIF</b>	<b>Surface Elevation Information (year of acquisition)</b>	<b>Glacier Outlines (acquisition date)</b>	<b>Mean ice thickness KG (m)</b>	<b>Mean ice thickness NIF (m)</b>
<b>Experiment 1</b>	2000	Generated margin thicknesses	Generated margin thicknesses	SRTM DEM (2000)	Randolph Glacier Inventory 6.0 (2000/02/21)	6.2	13.7
<b>Experiment 2</b>	2000	Mean viscosity	Observations from Bohleber et al. (2017)	SRTM DEM (2000)	Randolph Glacier Inventory 6.0 (2000/02/21)	6.9	23.4
<b>Experiment 3</b>	2011	Mean viscosity	Observations from Bohleber et al. (2017)	KILISoSDM (2012)	Digitized from Landsat 5 Image (2011/08/22)	9.3	26.6