

Local-scale variability of snow density on Arctic sea ice

Joshua King¹, Stephen Howell¹, Mike Brady¹, Peter Toose¹, Chris Derksen¹, Christian Haas², Justin Beckers^{3,4}

¹Climate Research Division, Environment and Climate Change Canada, Toronto, M3H5T4, Canada

²Alfred Wegner Institute of Polar and Marine Research, Bremerhaven, Germany

³~~Department of Earth and Space Science and Engineering, York University, Toronto, Ontario, Canada~~

³Canadian Forest Service, Natural Resources Canada, Edmonton, T6H 3S5, Canada

⁴Formerly: Department of Earth and Atmospheric Sciences, University of Alberta, Edmonton, T6G2E3, Canada

Formatted: Superscript

Formatted: Not Superscript/ Subscript

10 *Correspondence to:* Joshua King (Joshua.King@Canada.ca)

Abstract

Local-scale variations in snow density and layering on Arctic sea ice were characterized using a combination of traditional snow pit and SnowMicroPen (SMP) measurements. In total, 14 sites were evaluated within the Canadian Arctic Archipelago and Arctic Ocean on both first (FYI) and multi-year (MYI) sea ice. Sites contained multiple snow pits with coincident SMP profiles as well as unidirectional SMP transects. An existing SMP density model was recalibrated using manual density cutter measurements (n=186) to identify best-fit parameters for the observed conditions. Cross-validation of the revised SMP model showed errors comparable to the expected baseline for manual density measurements (RMSE=34 kg m⁻³ or 10.9%) and strong retrieval skill (R²=0.78). The density model was then applied to SMP transect measurements to characterize variations at spatial scales of up to 100 m. A supervised classification trained on snow pit stratigraphy allowed separation of the SMP density estimates by layer-type. The resulting dataset contains 58,882 layer-classified estimates of snow density on sea ice representing 147 m of vertical variation and equivalent to more than 600 individual snow pits. An average bulk density of 310 kg m⁻³ was estimated with clear separation between FYI and MYI environments. Lower densities on MYI (277 kg m⁻³) corresponded with increased depth hoar composition (49.2%), in strong contrast to composition of the thin FYI snowpack (19.8%). Spatial auto-correlation analysis showed layered composition on FYI snowpack to persist over long distances while composition on MYI rapidly decorrelated at distances less than 16 m. Application of the SMP profiles to determine propagation bias in radar altimetry showed the potential errors of 0.5 cm when climatology is used over known snow density.

1 Introduction

The stratified nature of snow on sea ice provides a detailed history of interacting geophysical processes and synoptic-scale input. From its deposition on new ice, to melt in summer, these interactions are dynamic, leading to spatiotemporal heterogeneity at multiple scales. For large portions of the Arctic, early season cyclones drive rapid accumulation followed by

sustained periods of cold air temperatures and high winds (Webster et al., 2018). The resulting snowpack is characteristically shallow and subject to sustained temperature gradient metamorphism. Contrasting layers associated with these conditions, namely wind slab and depth hoar, form distinctive features of the winter snowpack (Sturm and Holmgren, 2002). Sequential precipitation and wind events contribute to layered complexity where mass is lost to open water (leads, polynyas), mixed-phase precipitation occurs (melt, ice features), or ice topography acts as an obstruction (drifts and dunes). Although structural similarities exist at synoptic scales (e.g. Warren et al., 1999), few studies have quantified local-scale variability on Arctic sea ice (10 m²; Iacozza and Barber, 1999; Sturm et al., 2002, Sturm et al., 2006) where layered snow strongly modulates optical and thermal properties at the surface (Ledley et al. 1991; Wu et al., 1999).

Accurate remote sensing observations of sea ice are dependent on spatially distributed knowledge of snow mass (a function of thickness and density). For example, snow thickness represents a significant source of uncertainty in altimetry where isostasy is assumed for retrievals of sea ice thickness (Tilling et al., 2016; Kwok et al., 2019). Radar altimetry estimates of sea ice freeboard must also account for variations in snow density to determine an effective speed of propagation within the medium (Giles et al., 2007; Kwok et al., 2011). It is therefore of interest to develop objective representations of snow on sea ice to quantify potential errors and constrain models. *In situ* studies form the basis of these representations (Barber et al., 1995; Warren et al., 1999; Sturm et al., 2002, Kwok and Haas, 2015) and are often extended spatially in model or satellite-based products (Kurtz et al., 2011; Lawrence et al., 2018; Liston, et al., 2018; Petty et al., 2018). Given short length scales of variability, application of these approximations must be handled carefully where errors vary with vertical or horizontal resolution (Kern et al., 2015; King et al., 2015). Additionally, where basin scale inputs are required, recent changes to the Arctic climate system call into question how representative legacy snow climatologies are for current conditions (Kwok and Cunningham, 2008; Laxon et al., 2013; Webster et al., 2014).

Although there is a need for enhanced representation of snow on sea ice, detailed *in situ* characterization can be challenging and costly to execute. Traditional snow pits are restricted to a single vertical dimension and require trained operators (i.e. Fierz et al., 2009). Adjacent snow pits or multiple profiles can be arranged to enhance horizontal dimensionality, but are cumbersome to execute at scale (Benson and Sturm, 1993; Sturm and Benson, 2004). In many cases, a trade-off between horizontal and vertical resolution is necessary to balance available time with spatial coverage. Recently, penetrometer measurements with the SnowMicroPen (SMP; Schneebeli and Johnson, 1998) were used to address this problem, providing a novel method to rapidly characterize snow structural properties including density (Proksch et al., 2015). The SMP provides millimeter-scale mechanical measurements which can be linked to vertical snow structure through modeling of the penetration process (Marshall and Johnson, 2009; Löwe and van Herijnen, 2012). Taking less than a minute to complete a single vertical profile, there is potential to apply the SMP to snow on sea ice to provide detailed information for radiative transfer or mass balance applications at multiple scales.

65 In this study, we quantify local-scale variation of snow properties on Arctic sea ice using a combination of snow pit and SMP
measurements. SMP profiles are used to extend traditional snow pit analysis to characterize variations in density and
stratigraphy at spatial scales of up to 100 m. We validate the SMP density model of Proksch et al. (2015) at sites within the
Canadian Arctic Archipelago (CAA) and Arctic Ocean (AO) where adjacent density cutter profiles were collected on first-
and multi-year sea ice (FYI and MYI). The SMP density model is recalibrated using snow pits to identify best fit parameters
70 for the observed conditions. Traditional snow pit stratigraphy is then used to train a supervised SMP classifier, facilitating
evaluation of density by layer-type. The calibrated density model and layer-type classifier are applied to an independent set of
613 SMP profiles to discuss snowpack length scales of variability on Arctic sea ice. Finally, we apply the SMP derived
properties to an altimetry application, discussing propagation of errors as related to the observed snow structure.

2 Data and methods

75 2.1 Study areas and protocols

The measurements utilized in this study were acquired during two April field campaigns conducted near the time of maximum
snow thickness (Figure 1). The snow measurements coincided with NASA Operation IceBridge (OIB; 17 April 2016) and
ESA CryoVEx (26 April 2017) flights, aimed at improving understanding of inter-annual variability of Arctic snow and sea
ice properties. The snow measurements discussed here support local-scale analysis, fundamental to quantifying remote sensing
80 errors and linking physical processes at larger spatial scales.

The first measurement campaign took place near Eureka, Nunavut, Canada on landfast ice in the CAA (80.0°N 85.9°W; Figure
1a). Snow property measurements were collected over a 9-day period between 8 April 2016 and 17 April 2016 within Eureka
Sound and Slide Fjord. Sea ice near Eureka was principally landfast FYI with embedded floes of MYI imported from the
85 Arctic Ocean via Nansen Sound. Similar to conditions reported in King et al. (2015), FYI near Eureka formed as large level
pans with limited deformation. Imported MYI was rough in comparison and heavily hummocked from exposure to previous
melt (Figure 1b). Mean ice thickness was 2.18 ± 0.10 for FYI and 3.10 ± 0.66 for MYI evaluated near Eureka (\pm indicates
standard deviation). Measurements at Eureka were grouped by sites (250 x 100 m) with similar surface condition as determined
from visual inspection of RADARSAT-2 imagery (Figure 1b). At Eureka, a total of 8 sites were completed with 6 on FYI and
90 2 on MYI (Table 1). The average distance between sites was approximately 15 km which were accessed via snowmobile from
the Environment and Climate Change Canada Eureka Weather Station.

A second campaign in April 2017 focused on the characterization of MYI in the Arctic Ocean (AO; Figure 1a). A Twin Otter
aircraft was used to access sites west of the Geographic North Pole from Alert, Nunavut, Canada along a CryoSat-2 track (see
95 Haas et. al, 2017). Measurements were carried out at 6 sites spanning 83.4°N and 86.3°N between 11 April 2017 and 13 April
2017 (Figure 1a). In contrast to the Eureka campaign, the AO sites traversed an extensive region of MYI with thickness

consistently greater than 3 m (Haas et. al, 2017). However, with limited time at each landing site, areas characterized were much smaller than at Eureka. The average distance between sites for Alert was 175 km, spanning a large gradient of ice conditions.

100 2.2 Snow pit measurements

The Eureka and AO campaigns had common goals to (1) collect adjacent snow pit and SMP profiles and (2) extend characterization from single, local snow pits to larger horizontal scales using SMP transects. As such, the common core of the measurement protocol were standard snow pits used as reference. For Eureka, an average of three snow pits were excavated per site (total n=20) and a single snow pit was completed per landing for the AO campaign (total n=6). Once excavated, stratigraphy was interpreted via visual inspection and finger hardness tests. Heights of the interpreted layers were marked on the pit face and recorded. A 2-mm comparator card and 40x field microscope were used to classify each layer by standardized grain type as described in Fierz et al. (2009). Samples were then broadly categorized as rounded (integrating RGwp, RGxf grain types), faceted (FCso, FCsf), or depth hoar (DHcp, DHch), descriptive of predominate metamorphic processes. Trace amounts of recent snow were integrated into the rounded classification of some layers because of surface decomposition and wind rounded grain-type mixtures (i.e. DFbk).

Snow pit density was measured as continuous vertical profiles between the air-snow and snow-ice interfaces with a 100-cm³ Taylor-LaChapelle cutter (75 g; Figure 2a). Extracted samples were weighed *in situ* with a shielded A&D EJ-4100 digital scale (± 0.01 g accuracy). Measurements were rejected where the cutter could not be properly filled, such as in the presence of horizontal ice features or fragile microstructure. Previous studies have shown box-style cutter measurements to agree within 9% of high-certainty laboratory experiments (Proksch et al., 2016), however due to potential errors of omission from sample rejection, layer specific bias may be present.

2.3. SnowMicroPen (SMP) measurements

A single 4th generation SnowMicroPen (SMP) developed by Schneebeli and Johnson (1998) was used to measure profiles of penetration force (F). Operating at a constant speed of 20 mm s⁻¹, the high-resolution force transducer of the SMP was driven vertically through the snowpack. The resulting profiles contained ~250 measurements of F per millimeter, with a maximum F of 45 N and resolution of 0.01 N. Given high surface hardness, a rigid metal mount was required to stabilize the sensor and prevent rebounding on initial penetration (Figure 2a). To preserve the penetrometer from impact with the ice surface, maximum penetration was set 1 cm shorter than the adjacent snow thickness. Coincident SMP profiles at were made at 26 snow pit locations to evaluate derived estimates of snow density (Table 1). Maintaining a horizontal separation of 10 cm, profiles were located behind the snow pit wall in proximity to the manual cutter profile. After each profile, a snow depth probe was inserted into the SMP path to measure any unresolved thickness. The location of each profile was recorded with the GPS onboard the SMP (± 5 m accuracy).

130 In addition to profiles at snow pit locations, SMP transects ~~was~~were established to characterize spatial variability (~~n=614~~;
Table 1). For Eureka, multi-scale sampling was applied where unidirectional sets of 10 profiles were separated at distances of
0.1, 1, and 10 m, in sequence (Figure 1c). Where time permitted, additional profiles were completed with 1 m spacing adjacent
to the primary transect. An average of 69 SMP profiles were collected per site near Eureka (total n=550). It was not possible
to execute an identical sampling strategy for AO sites due to time constraints. Instead, a single set of 10 profiles were spaced
135 1 m apart, parallel to the snow pit wall. An average of 11 profiles were made per site for the AO campaign (total n=63).

3. Snow density and layering on sea ice from SMP profiles

3.1 Basis for estimation of snow density from penetrometry

The SMP force signal, F , can be linked to physical properties of the snowpack through modeling of the penetration process,
and related to density with an empirical model (Proksch et al, 2015). To do so, the fluctuating force signal measured by the
140 SMP can be interpreted as the superposition of spatially uncorrelated ruptures and deflections (Marshall and Johnson, 2009).
Conceptualised as a one-dimensional shot-noise process, Löwe and van Herwijnen (2012) reinterpret this relationship to
compute estimates of microstructural length scale (L) without the need for *a priori* knowledge of snow structure. The derived
quantity L represents an idealized distance between two rupturing elements of the snow structure. Proksch et al. (2015;
hereafter P15), building on the work of Pielmeier (2003), relate the microstructural property L and median penetration force
145 (\bar{F}) to snow density through a bilinear regression ~~using the following equation:~~

$$\rho_{\text{smp}} = a + b \ln(\bar{F}) + c \ln(\bar{F})L + dL \quad (1)$$

where the coefficients (a, b, c, and d) were calibrated against micro-computed tomography (uCT) in alpine, Arctic, and
150 Antarctic environments (Table 2). Detailed methodology regarding the two-point correlation function used to compute L
and other relevant parameters can be found in Löwe and van Herwijnen (2012).

3.2 Processing of SMP profiles for snow on sea ice

Prior to generating estimates of snow density, a series of pre-processing steps were applied to minimize SMP measurement
uncertainty. First, profiles penetrating less than 90% of the measured snow thickness were removed from analysis to minimize
vertical errors of omission. Force profiles were then evaluated to isolate signal artifacts by applying a minimum noise threshold
155 of 0.01 N following Marshall and Johnson (2009). Signals below the threshold were removed and linear interpolation was
applied to infill. Once filtered, \bar{F} and L were computed following Löwe and van Herwijnen (2012), ~~using applying~~ a moving
window of 5 mm with 50% overlap to meet an assumption of spatial homogeneity. Estimates of density (ρ_{smp}) were then

calculated by applying \tilde{F} and L in Eq. (1) with an appropriate set of coefficients. The resulting data are geo-located vertical profiles of ρ_{smp} at 2.5 mm vertical resolution.

Small-scale lateral variations in stratigraphy made validation of ρ_{smp} challenging where the reference snow pits were physically displaced. For example, pinching or expansion of layers from variations in ice topography at sub-meter scales could lead to large differences in compared density. Adapting an approach similar to Hagenmuller and Pilloix (2016), a matching process was applied to compensate for layered differences between the target and reference snowpack. To initiate the process, first-guess estimates of ρ_{smp} were made with the P15 coefficients for profiles at snow pit locations. Derived profiles were then divided into arbitrary 5 cm layers and scaled randomly in thickness. Individual layers were allowed to erode or dilate by up to 75% of the original thickness, contributing towards a total permitted change of 10% per profile. A large number of scaling permutations were generated for each SMP profile using a brute force approach ($n = 1 \times 10^4$). Estimates of ρ_{smp} were then extracted from the scaled profiles within the 3-cm height of the ~~the each~~ density cutter measurements and averaged. Best-fit alignment was selected where root mean square error (RMSE) was minimized between the thickness scaled ρ_{smp} profiles and snow pit observed density.

Figure 3 shows an example of the matching process where a basal snow feature on MYI was poorly aligned between the first guess estimates of ρ_{smp} and snow pit measurements. The profile was divided into 12 layers (Figure 3a) and scaled to identify best fit parameters for each layer (Figure 3b). An overall stretch of 6.5% was applied through the matching process, minimizing RMSE (54 kg m^{-3}) and improving correlation ($R=0.83$) in the example profile. Matching applied to all SMP profiles at snow pit locations resulted in a mean vertical absolute scaling of 7.4% or 1.7 cm.

3.3. Calibration of the SMP snow density model on sea ice

Once aligned, estimates of ρ_{smp} were compared against *in situ* snow pit densities to quantify retrieval skill. An evaluation of the P15 parametrized density model is shown in Figure 4, including measurements from all 26 snow pit locations ($n=196$). Estimates of ρ_{smp} were biased high relative to the snow pit reference with a large RMSE of 124 kg m^{-3} (Table 2). The observed bias increased with density, leading to unrealistic overestimates for wind slab-classified samples (165 kg m^{-3} RMSE). Conversely, errors were lowest for low-density depth hoar (96 kg m^{-3} RMSE). Comparing estimates from the two campaigns, Eureka had a higher RMSE (135 kg m^{-3}) ~~then than~~ measurements at AO sites (98 kg m^{-3}), but the discrepancy was related to lower overall density reported on MYI rather than campaign specific bias.

Despite a 41% RMSE, the P15 parametrized estimates of ρ_{smp} were well correlated with snow pit measurements ($R^2=0.72$; $p<0.01$; Table 2). An ordinary least squares (OLS) regression was used to recalibrate P15 where snow pit measurements were available as reference. Values of \tilde{F} and L identified in best-fit scaling of the SMP profiles were used in the regression, along

with the corresponding density cutter measurements. A 10-fold cross-validation was applied where inputs were divided into roughly equal groups and used to train the regression with all but a single fold which was reserved for testing. Test-train permutations were iterated until each fold had been used independently in testing to minimize sampling bias. Coefficients were averaged across fold combinations and reported with RMSE and R^2 in Table 2.

195

Calibrated with the snow pit densities, retrieved coefficients of the regression differed substantially from P15 but remained identical in R^2 (Table 2). Applying the revised coefficients (referred to as K2019a), RMSE was reduced to 41 kg m^{-3} or 13% of the observed mean. Previously observed P15 bias was also minimized with no significant trend in residuals (0.1 kg m^{-3}). Given that the profiles used to evaluate model skill were physically displaced, it was unlikely that all matched comparisons were strong candidates for the recalibration. As such, a revised set of coefficients were prepared where outliers defined as the 95th percentile of absolute error in the initial comparison were removed from the regression ($>85 \text{ kg m}^{-3}$; $n = 10$). Data associated with these outliers were few in number and primarily associated with layer boundaries on FYI. Regression of the constrained input (K2019b; Figure 4b) showed small differences in the retrieved coefficients (Table 2) along with improved skill ($R^2=0.78$; 34 kg m^{-3}).

200

To evaluate dependency of the regression parameters, their respective relationships with observed snow density are shown in Figure 5. Median force (\bar{F}), once log-transformed, was well correlated with density in the combined ice surface and campaign dataset ($R=0.76$; Figure 1a). However, the observed relationship with \bar{F} weakened for samples collected on MYI (0.69 R), in particular those as part of the Eureka campaign ($R=0.46$). In contrast, the microstructural parameter L remained well correlated with density regardless of ice type or campaign ($R<-0.76$; Figure 1b). In all coefficient parametrizations (P15 and K2019) the dependent variables and interaction term were found to be significant in the OLS regression. Although some dependency on snow conditions with respect to ice type were apparent, the K2019b parametrization was applied globally as the relationship was unlikely to be driven by ice type but rather as some function of ice surface roughness which was unaccounted for in this study.

210

215 3.4 Classification of SMP density profiles by layer-type

To quantify the stratigraphic variability of snow density, a support vector machine (SVM) was implemented to partition the SMP density profiles by layer-type (Cortes and Vapnik, 1995). SVMs apply hyperplanes in high-dimensional space to separate classes by maximizing distance from support vectors (i.e. a hyperplane which best delineates the nearest data pairs between classes). Automated learning methods have previously been applied to support classification of SMP profiles (e.g. Havens et al., 2012) and are well suited to rapidly process the available transect data. Learning methods for SVM classification were adapted from Scikit-learn (Pedregosa et al., 2011) and trained on snow pit (layer-type) and SMP (\bar{F} , L , Penetration depth) information extracted according the Sect. 3.2 procedures. Applying a linear kernel, the classifier was 10-fold cross-validated similar to the OLS regression, however, sampling was stratified to ensure a minimum of 10 samples per layer-type class in

220

each fold. Classified estimates from each profile were smoothed with a median window to remove thin layers with thickness less than 1 cm (window size=5). Cross-validated results of the SVM classifier are presented in Table 3 as a confusion matrix. Accuracy, defined as the percentage of true positive or true negative predictions, was 76% overall when compared against the snow pit reference samples. Layer-type specific accuracy was comparable for rounded and faceted types (76%) and improved for depth hoar (82%). Misclassification errors were highest for rounded types, where samples were most often confused for faceted types (24%).

Figure 6 shows an example of a classified SMP profile compared against snow pit observed stratigraphy on MYI near Eureka. Trained against a generalized layer-type classification scheme, the methodology is incapable of identifying inter-layer variations apparent in the manual snow pit observations. However, by identifying major transitions, the classified profile can be used to quantify differences in layered composition observed across both ice type and campaign. Moreover, by counting the number of transitions between layer-type classifications an approximate count of snowpack layers can be made.

4 Variability of snow density and layering on sea ice

4.1 Snow pits

Central to the density model evaluation was the acquisition of a limited number of high-certainty snow pits (n=26). Each served as a density reference for the SMP calibration but also provided baseline information on stratigraphy to frame the transect analysis. By the April timing of the campaigns, evidence of wind redistribution and temperature gradient metamorphism were widespread, characteristic of late winter Arctic snowpack. Mean thicknesses of the snow pits were 20.8 ± 6.1 and 38.0 ± 12.7 cm for FYI and MYI, respectively. Stratigraphic complexity was apparent on MYI where 7 layers were present on average as opposed to 4 on FYI. Bulk density of snow pits on FYI ($320 \pm 33 \text{ kg m}^{-3}$) was higher in comparison to MYI ($300 \pm 36 \text{ kg m}^{-3}$), a function of limited variation in ice surface topography on the level FYI near Eureka.

Consistently across snow pits, density was highest in proximity to the air-snow interface where rounded grain-types were prevalent. Commonly known as wind slab, these layers were a product of mechanical wind rounding and subsequent sintering. Corresponding grain classifications were mainly wind packed (RGwp) or faceted rounded (RGxf) types. Density of the wind slabs were comparable between ice environments and campaigns with an average of $375 \pm 49 \text{ kg m}^{-3}$ (Table 43). Lower density slab features occurred where wind-broken precipitation (DFbk) was inter-mixed with the smaller mechanically rounded grains. For example, at Alert sites 6 and 8, ~3 cm of decomposing precipitation was present at the air-snow interface leading to lower surface densities ($\sim 222 \text{ kg m}^{-3}$). In general, these so-called soft slab features were more common on MYI where rough ice features buffered wind blown snow efficiently.

255 Layers below the surface slab were similar in appearance but inspection of the grains revealed tightly packed facets. Distinct
in microstructure, these former wind slabs showed clear signs of kinetic growth while maintaining a well bonded structure.
Density of the mid-pack faceted layers were comparable to the surface features for the AO campaign (380 kg m^{-3}) but were
slightly lower for Eureka (287 kg m^{-3}). At the base of the snowpack were multiple layers of large diameter depth hoar, texturally
distinct from the overlying slab and faceted layers. Microstructure of the depth hoar was characterized by weakly bonded cups
260 (DHcp) at times clustered as large chained units (DHch). The unconsolidated structure of the depth hoar was fragile, often
collapsing when inspected by touch or tool. Density of the depth hoar layer was consistently lowest, with a small range of
observed variability (Table 43).

4.2 SMP profiles

265 Despite layered similarity, it was difficult from snow pits alone to directly compare proportional composition or determine
process scales over which structural correlations might persist. The SMP transects presented a unique opportunity to extend
analysis beyond the point-scale and link layers between snow pits by drastically increasing the number and spatial diversity of
profiles. Once processed, the SMP profiles collected on sea ice provided 58,882 estimates of snow density, representing
approximately 147 m of vertical variation. Each profile also contained estimates of proportional composition by layer-type
though automated classification, facilitating layer density comparisons and spatial analysis.

270 Figure 7 shows the aggregated results of the SMP transect profiles where snow density measurements were separated by ice
surface and layer type. Separated by ice type (FYI and MYI), bulk densities (vertically integrated) are represented in two
overlapping but distinct distributions (Figure 7a). Profiles collected on FYI, and therefore exclusively near Eureka, formed a
~~negatively-slightly left~~-skewed distribution with mean density of $327 \pm 42 \text{ kg m}^{-3}$ ($n=402$). In contrast, densities on MYI were
275 ~~positively-right~~-skewed with a mean of $277 \pm 30 \text{ kg m}^{-3}$ ($n=211$). Separating the MYI profiles by campaign shows small
differences between Eureka ($272 \pm 27 \text{ kg m}^{-3}$, $n = 148$) and the AO ($290 \pm 31 \text{ kg m}^{-3}$, $n=63$). However, these differences were
small in comparison to the larger shift between MYI and FYI. Overall, the opposing skew shows a clear shift in snow density
by ice surface type for the observed domains independent of campaign.

280 Given that all profiles were classified by layer-type (see Sect. 3.3), it was also possible to evaluate distributions of density
separately for rounded, faceted, and depth hoar features (Figure 8; Table 54). Composition of the thin Eureka FYI snowpack
($18.1 \pm 8.8 \text{ cm}$) was primarily faceted, represented by $50.0 \pm 18.1\%$ of total thickness on average. Measurements classified as
faceted had on average a density of $336 \pm 43 \text{ kg m}^{-3}$, forming a ~~negatively-left~~-skewed distribution (Figure 8e8). Rounded layers
in proximity to the air-snow interface were thinner, accounting for $30.2 \pm 15.0\%$ of total thickness (Figure 8), with a mean
285 density of $352 \pm 51 \text{ kg m}^{-3}$, also represented in a ~~negatively-left~~-skewed distribution (Figure 7b8). At the base of the snowpack
on FYI, depth hoar was both the smallest fractional component ($19.8 \pm 18.4\%$; Figure 8) and had the lowest mean density
($248 \pm 27 \text{ kg m}^{-3}$; Figure 7d).

290 Composition on MYI shifted towards a larger proportion of depth hoar (49.2±16.3%) within the overall thicker snowpack
 (34.7±16.8 cm). Density of the depth hoar on MYI was comparable to FYI with means of 247±15 and 257±18 kg m⁻³ for the
 Eureka and AO sites, respectively. Mid-pack faceted layers were well represented at 35.5±13.7%, albeit with lower density
 overall at 301±43 kg m⁻³ and notable decreases at Eureka (294±41 kg m⁻³). Layers classified as rounded composed the
 remainder of the volume at 15.3±8.5%. The fractional density distribution of rounded layers on MYI was bimodal (Figure 87),
 corresponding with the presence of decomposing precipitation in mixed-type layers. Mean density of rounded layers on MYI
 295 were on average 291±65 kg m⁻³ with slightly higher densities observed at AO sites (306±67 kg m⁻³) over Eureka (285±63 kg
 m⁻³).

As a proxy for the number of observed layers, transitions between layer-type classifications were summed for each profile.
 Figure 9 shows probability densities associated with layer-type transitions separated by ice type. As in the snow pits,
 300 stratigraphic complexity was greater on MYI with an average of 6.9 layer-type transitions as opposed to 4.5 on for FYI. Of
 the transitions, those associated with faceted layers on MYI were most prevalent with an average of 2.9 per profile. Faceted
 transitions on FYI were fewer in number at 1.9 on average. Depth hoar layers were 2.8 on average for MYI and 1.5 for FYI.
 Finally, in both environments the average number of rounded transitions was 1.1 with no more than 3 transitions identified in
 any profile.

305

4.3 Length scales of variability

Large standard deviation relative to most layer-type fractions indicated strong stratigraphic variability within the SMP transect
 dataset. Given that these variations are driven at local-scales by ice topography and weather (wind and precipitation), it can be
 expected that structural similarities persist at some process scale. To evaluate differences in length scale, estimates of spatial
 310 auto-correlation for layer-type composition were computed using Moran's I (Moran, 1950):

$$I(d) = \frac{\frac{1}{w} \sum_{i=1}^n \sum_{j=1}^n w_{ij} (x_i - \bar{x})(x_j - \bar{x})}{\frac{1}{n} \sum_{i=1}^n (x_i - \bar{x})^2} \quad (2)$$

where x are rounded, faceted or depth hoar volume fractions at locations i and j displaced at a lag distance of d . Equation (2)
 was evaluated for pairs of profiles separated by d from 1 to 100 m in 1 m increments for each layer-type. To compensate for
 315 geo-location errors, a tolerance of ±5 m was applied to d , corresponding with GPS accuracy of the SMP. Weighting (w) of

Eq. (2) takes on a value of 1 when pairs were displaced at $d \pm 5$ m and 0 otherwise. On average, 412 pairs were evaluated per lag of d on FYI and 333 on MYI. The resulting spatial auto-correlation analysis of snowpack fractional composition is presented in Figure 10. At scales beyond 100 m the number of profile pairs were limited given the ~250 m length of each site and are therefore not presented.

320

On FYI, all layer-types showed similar trending in auto-correlation with distinct minimums spaced at approximately 40 m (Figure 10). After an initial decline, depth hoar fraction on FYI remained moderately correlated at scales of 100 m and also was the strongest of the layer-type correlations ($R=0.70$ at 52 m). While the magnitude of the remaining rounded and faceted fraction layer-type correlations were lower, spatial trends on FYI were highly correlated with each other. In contrast, correlations dropped quickly on MYI for all layer-types and remain low at scales of 100 m (Figure 10). Faceted-type layer fraction maintained spatial correlation for the longest period on MYI, but reached 0 at only 16 m. The result suggests spatial persistence of layered features on FYI beyond the available data. In contrast, strong variations in snow structure on MYI at short scales indicate the presence of distinct drivers and variability absent on the level FYI near Eureka.

325

5. Implications for radar propagation in snow on sea ice

In the context of radar altimetry and sea ice freeboard retrievals, errors related to snow density can be described as a propagation bias where speed of the interacting wave is reduced in snow (Kwok et al., 2011). Without accounting for this reduction, radar measured distance to [the a ice surface scattering horizon](#) may be overestimated, or in a retrieval, underestimate the height of the sea ice freeboard [if the primary scattering horizon is assumed to be the ice surface](#). Established empirical relationships with permittivity (i.e. Ulaby et al., 1986) can be leveraged to quantify reductions in wave speed (c_s):

335

$$c_s = c(1 + 0.51 \rho_s)^{-3/2} \quad (3)$$

where ρ_s is observed or modeled snow density. Estimates of path length difference (δ_p) relative to propagation in free space can then be computed with respect to variations in snow thickness (h_s) [as in Tilling et al. \(2018\)](#):

340

$$\delta_p = h_s \left(\frac{c}{c_s} - 1 \right) \quad (4)$$

Utilizing these equations, differences in propagation bias were evaluated for two scenarios where snow density was (1) determined from climatology and (2) parametrized from SMP measurements. The first configuration mirrors common practice in radar altimetry where the two-dimensional quadratic of Warren et al. (1999) was used to compute bulk density based on location and month. The second configuration leverages the high vertical resolution of the SMP profiles to approximate

345 variations in wave propagation at the millimeter-scale. One-way path length difference from the SMP (δ_p^{SMP}) was
calculated as the summation of δ_p for each 2.5 mm vertical estimate. In both scenarios, height of the snowpack (h_s) was
defined as SMP total penetration and δ_p was evaluated at each profile location.

Given the small geographic extent of the Eureka campaign, climatological estimates of snow density predicted no spatial
350 variability with a mean of 298 kg m⁻³. This was unsurprising given that the Warren et al. (1999) estimates are generally
considered invalid within the CAA due to a lack of observations in the region. As such, a static value of 300 kg m⁻³ was applied,
representative of a typical static-parametrization used in altimetry studies (e.g. Tilling et al., 2016). For AO sites, climatological
estimates fell within a narrow range between 317 to 321 kg m⁻³, across a nearly 3° difference in latitude. From climatology,
the average reduction in wave speed relative to free space (\bar{c}_s/c) was estimated to be 0.809 for Eureka and 0.799 for AO sites.
355 With little variability in density, δ_p was driven strongly by snow thickness, where longer physical paths lead to larger delays
(Figure 11a). As a result, predicted bias was greatest on MYI North of Alert (9.2 cm), despite slower expected propagation
within the higher-density Eureka snowpack.

For the second scenario, average wave speeds relative to free space remained similar for Eureka (0.803) but were increased
360 for AO profiles (0.815). Estimates of propagation bias computed with an explicit representation of density (δ_p^{SMP}) showed
limited sensitivity to the observed variations (Figure 11a). At h_s corresponding with the Eureka FYI mean (18.2±1 cm) the
spread in δ_p^{SMP} was approximately 2.3 cm with an average propagation bias of 4.7 cm. Conversely, for AO sites (39.7±1 cm)
the spread in δ_p^{SMP} increased to 3.8 cm with a mean propagation bias of 9.3 cm. To quantify errors related to the use of
climatology over *in situ* observations, the two scenarios were differenced ($\delta_p^{\text{w99}} - \delta_p^{\text{SMP}}$; Figure 11b). Assuming δ_p^{SMP} as truth,
365 potential errors on FYI ranged from -4.0 to 2.6 cm with a mean of 0.5±0.6 cm. On MYI, where densities were generally lower,
the mean difference was -0.5±0.8 cm, spanning a small range of -2.5 to 2.3 cm. Errors on MYI between the AO and Eureka
campaigns were in close agreement with means of -0.5±0.7 and -0.2±0.9 cm, respectively.

6. Discussion

Considerable skill was demonstrated in SMP retrievals of snow density by Proksch et al. (2015) but there had been no previous
370 application on sea ice or in environments with a comparable snowpack dominated by wind slab and depth hoar. Evaluation of
the P15 coefficients at 26 snow pits on sea ice showed a strong positive bias in SMP derived density compared to manual
density cutter measurements. As a technical limitation, Proksch et al. (2015) noted that future hardware revision of the SMP
would necessitate recalibration due to differences in signal digitization. The P15 results appear to confirm this limitation which
was addressed with an OLS regression of the coincident density cutter measurements and SMP profiles. The recalibrated
375 coefficients showed errors 10.9% of the observed mean when evaluated across a selected set of reference measurements (34

kg m⁻³, n=185). This was comparable to the P15 reported error (10.6%), and within the range of the reported skill ($R^2=0.64-0.80$). Differences in error between ice environments and campaigns were nominal (<4 kg m⁻³), demonstrating confidence in the application of a globally optimized set of coefficients.

380 Observed errors in the snow density may be accounted for by limitations in the snow pit and SMP procedures. First, density
cutter measurements used as reference, as opposed to high-certainty micro-CT, include baseline errors of up to 8% (Proksch
et al., 2016). Sampling in depth hoar was a particular challenge where insertion of the cutter lead to collapse of the fragile
microstructure. Evaluation of depth hoar was further complicated by low signal-to-noise where weakly bonded grains produced
little variation in the SMP measured force. As a result, errors associated with depth hoar (14.0%) were greater than rounded
385 (10.7%) or faceted (8.6%) layers. Errors associated with the higher density slab features may also be present due to
unaccounted interactions between failing elements in the penetration model (Löwe and van Herwijnen, 2012). Representing
two extremes, wind slab and depth hoar presented challenging retrieval scenarios, however the errors appears consistent with
those expected from manual density cutter measurement and previous study.

390 Differences between the two ice type environments (MYI and FYI) showed median force (F) to be an unreliable predictor of
snow density, particularly on MYI (Figure 5). This was consistent with Marshall and Johnson (2009) who first identified
environment specific sensitivity of the SMP force leading Proksch et. al. (2015) to include the microstructural term L in the
empirical model. The relationship between L and snow density was found to be independent of ice environment or campaign,
acting to balance the retrieved density where signal-to-noise was poor. Limiting the regression inputs in Sect. 3.3 to profiles
395 collected only on MYI shows the strong influence of L where retrieved coefficients place increased weight on microstructure
(+42%). The observed dependencies were unlikely to be driven by ice type but rather by associated differences in ice
topography and therefore retained snow structure. Differences in snow structure were clear between the two ice environments,
however quantitative evaluation of how ice topography might be used to further refine coefficients in Eq. (1) was beyond the
scope of this work and will require measurements in deformed FYI environments.

400 An average bulk density of 310 ± 37 kg m⁻³ was measured across all profiles included in this study (n=615). Separated by ice
type, contrasting distributions were presented where density on the wind swept FYI was typically greater (Figure 7a). Despite
separation by a full year, and hundreds of kilometers, the MYI measurements from the AO and Eureka sites were similar in
bulk density at 289 and 272 kg m⁻³, respectively. Evaluation of the snowpack structure showed depth hoar composition to be
405 a driver of reduced density on MYI relative to FYI. At the local scales, melt ponds and hummocks on MYI serve to trap larger
amounts of snow earlier in the season (Radionov et al., 1996, Sturm et al., 2002). Coupled with strong temperature gradients,
favourable conditions for the development of a substantial depth hoar layer were common to most MYI sites. Ice topography
control on the internal structure of the snowpack, and ultimately bulk density, was also apparent in the length scale analysis
(Figure 10). Rapid decorrelation of layered structure on MYI suggested that the hypothesised ice topography interactions

410 occurred on relatively short length scales, driving high spatial variability particularly in depth hoar. In contrast, where large
smooth floe were typical for Eureka, covariance of the layer composition on FYI persisted over large distances (>100 m). The
observed variations showed a periodicity common to length scales associated with snow dunes or interactions between drifted
elements (Sturm et. al, 2002; Moon et al., 2019). In the future it would be instructive to evaluate how information on surface
roughness can be used to constrain understanding of internal snowpack structure between ice type environments where clear
415 contrast exists.

A limited number of studies were available to place the observed stratigraphy in the context of other Arctic regions.
Measurements collected during N-ICE2015 (Merkouriadi et al., 2016) in the Atlantic sector of the Arctic Ocean described a
predominantly faceted composition on FYI (48%) and second-year ice (54%). Although the data presented in this study
420 contains no second year ice, the FYI faceted composition is in agreement, as are bulk densities in the relatively flat and wind
swept environments. Faceted layers observed in both campaigns originated as surface slabs, buried by successive winter
storms. With density and hardness comparable to the overlying wind slab, the differentiating factor in evolution was length of
exposure to strong temperature gradients (Derksen et. al, 2009; Domine et. al., 2012). Snow pits consistently had measured
temperature gradients sufficient for kinetic grain growth on FYI (25.7 C m^{-1} on average; Colbeck 1983). While these layers
425 had not fully converted to depth hoar due to high initial density (Akitaya, 1974), the larger faceted crystals were texturally
distinct, separating the wind slab from depth hoar. Improved understanding of how these faceted layers evolve at larger scales
may be important in remote sensing or thermodynamic applications as they contribute enhanced scattering and reduced thermal
conductivity relative to their wind slab origin types.

430 Snow stratigraphy reported during SHEBA in the Beaufort Sea (Sturm et al., 2002) showed greater wind slab composition
overall (42%), although this varied considerably with ice surface roughness. Analysis during SHEBA suggested that increased
wind slab fraction was associated with smoother ice classes and therefore thinner snowpack. Similar observations inferred
from the SMP profiles showed fractional composition by wind slab to increase by 46% on FYI over MYI because surface
roughness conditions were much smoother. At small-scales, portions of slab and hoar approached parity during SHEBA where
435 precipitation was intercepted earlier and retained within hummocks. Consolidating the wind slab and faceted layer
classifications on MYI, the SMP derived composition was also roughly equal when compared to depth hoar (52% for AO and
51% for Eureka). In the case of both N-ICE2015 and SHEBA, direct comparison of the snowpack composition is difficult due
to different measurement protocols, but common themes regarding the influence of ice topography on snowpack stratigraphy
were clear.

440 Applying the SMP measurements to compute differences in radar propagation showed small differences compared the use of
climatological density. In comparison to the Warren et al. (1999) climatology, density on MYI in the AO was approximately
10% lower, insufficient to drive strong uncertainty in radar derived freeboard. Amongst the SMP derived parameters,

penetration bias most greatly influenced by fractional composition by rounded-type layers ($R=-0.73$) on both FYI and MYI.

445 High surface densities resulted in wave speeds 3% slower than the remaining snowpack, having the most significant impact
with respect to increased proportion. However, the overwhelming influence on the propagation bias [in this study](#) remains
snowpack thickness ($R=0.97$).

Although the result regarding density uncertainty in radar altimetry suggests that use of constants to represent density may be
450 sufficient, several issues persist that should be addressed prior to making a conclusion. First, the work of Nandan et al. (2017)
demonstrated that penetration is negatively impacted by the presence of brine within the snow volume on FYI. In section 5,
the role of salinity was not addressed for profiles on FYI and is likely to be a much larger and inverse uncertainty. Second,
[snow conditions evaluated in this study were dry and thus do not consider variations in scattering horizon that can be attributed
to temperature or wetness \(Willatt et al., 2011\)](#). Finally, in addition to density, Proksch et al. (2015) demonstrated the ability
455 to retrieve snow microstructural properties from SMP signals. Lacking a reference for calibration, microstructural quantities
were not evaluated as part of this study but in the future could be used to address waveform uncertainty corrected in some
products (Ricker et al., 2014).

7. Conclusions

The recent shift towards younger Arctic sea ice (Maslanik et al., 2011) along with increased winter precipitation (Zhang et al.,
460 2019) are likely to drive variations in snow structure whose full characterization will require a combined *in situ*, model, and
remote sensing framework. Combinations of lidar and radar altimetry have been used to estimate snow depth on sea ice from
space but no remote sensing methods are yet available to directly characterize density (Kwok and Markus, 2018; Lawrence et
al., 2018). As such, *in situ* and model support are critical to fully address spatiotemporal variations in snowpack properties
including mass and permittivity. The ability to rapidly collect SMP profiles across a broad set of features is attractive in this
465 regard. Where a single snow pit represents only a snapshot of potential configuration, multiple SMP profiles can be leveraged
to generate snow property distributions. Such data are highly desirable as they minimize or remove entirely, subjective bias
introduced by operator decision or skill. This may allow meaningful parametrization of models with the intention of
transferring local-scale campaign based analysis to larger domains. Although application of the SMP on sea ice shows great
potential to meet this need, it does not replace standard snow pit methods required to frame more specific or larger-scale
470 analysis.

The SMP transect analysis demonstrated contrasting controls on snow density and layering specific to ice type and depositional
environment. While snowpack structure of level FYI appears to persist at scales beyond 100 m, [snow on](#) MYI was highly
variable at distances beyond 20 m. The role of ice topography and snow thickness variations as hypothesized drivers of these
475 differences should be studied in further detail to assess if variations in snowpack structure can be inferred from knowledge of

the ice surface itself. Such information would be valuable for remote sensing of sea ice studies where snowpack variations stand as a critical uncertainty.

480 The spatially distributed mm-scale estimates of snow density and layering introduced in this study provide novel information on multi-scale variability in Arctic sea ice covered domains. We hope these measurements will be relevant for applications beyond the altimetry case study discussed here such as in model development (Petty et al., 2018; Liston et al., 2018; Landy et al., 2019) and to assist in the definition of future satellite candidate missions including the Copernicus polaR Ice and Snow Topography Altimeter (CRISTAL; [Kern et al., 2020](#)).

Code and data availability

485 Code and data to reproduce all figures and analysis are available at <https://github.com/kingjml/SMP-Sea-Ice>. ~~(DOI pending)~~.

Author contributions

J.K. wrote the manuscript with input from all authors. J.K. and S.H. designed the experiment. J.K. and M.B. performed the analysis. J.K., S.H., C.H., C.D., and J.B., collected the field measurements.

Competing interests

490 The authors declare that they have no conflict of interest.

Acknowledgements

We thank Polar Continental Shelf Program, Eureka Weather Station, Canadian Forces Station Alert, and Defence Research and Development Canada for their assistance and logistical support of this work. Financial support for fieldwork was provided by Environment and Climate Change Canada (ECCC), European Space Agency (ESA), Natural Sciences and Engineering
495 Research Council (NSERC) and Canada Research Chair (CRC) programs, and Alfred Wegener Institute for Polar and Marine Research (AWI). We thank the legendary Arvids Silis, as well as Tom Newman, Jack Landy, Julienne Stroeve, Jeremy Wilkinson, Jim Milne, Chris Brown, Andrew Platt, and Troy McKerral for their dedicated efforts to make the Arctic Ocean and Eureka campaigns a success. Analysis in this study uses Python open source scientific computing packages including Pandas, NumPy, scikit-learn from the SciPy ecosystem. [Thank you to the two anonymous reviewers who contributed to
500 improving the quality of this paper.](#)

References

- Akitaya, E.: Studies on depth hoar, Contributions from the Institute of Low Temperature Science, 26, 1-67, 1974.
- 505 Colbeck, S.C.: Theory of metamorphism of dry snow, J Geophys Res-Oceans, 88, doi: 10.1029/JC088iC09p05475, 5475-5482.
- Cortes, C. and Vapnik, V.: Support-vector networks. V Mach Learn, 20, 273-297, doi: 10.1007/BF00994018, 1995.
- Benson, C.S. and Sturm, M.: Structure and wind transport of seasonal snow on the Arctic slope of Alaska, Ann Glaciol, 18, 261-267, doi:10.3189/S0260305500011629, 1993.
- 510 Barber, D.G., Reddan, S.P. and LeDrew, E.F.: Statistical characterization of the geophysical and electrical properties of snow on landfast first-year sea ice, J Geophys Res-Oceans, 100, 2673-2686, doi: 10.1029/94JC02200, 1995.
- 515 Derksen, C., Silis, A., Sturm, M., Holmgren, J., Liston, G.E., Huntington, H. and Solie, D.: Northwest Territories and Nunavut snow characteristics from a subarctic traverse: Implications for passive microwave remote sensing. J Hydrometeorology, 10, 448-463, doi:10.1175/2008JHM1074.1, 2009.
- Domine, F., Gallet, J.C., Bock, J. and Morin, S.: Structure, specific surface area and thermal conductivity of the snowpack around Barrow, Alaska, J Geophys Res-Atmos, 117, doi:10.1029/2011JD016647, 2012.
- 520 Giles, K.A., Laxon, S.W., Wingham, D.J., Wallis, D.W., Krabill, W.B., Leuschen, C.J., McAdoo, D., Manizade, S.S. and Raney, R.K.: Combined airborne laser and radar altimeter measurements over the Fram Strait in May 2002, Remote Sensing of Environment, 111, 182-194, doi: 10.1016/j.rse.2007.02.037, 2007.
- 525 Fierz, C., Armstrong, R.L., Durand, Y., Etchevers, P., Greene, E., McClung, D.M., Nishimura, K., Satyawali, P.K., Sokratov, S.A.: The International Classification for Seasonal Snow on the Ground, IHP-VII Technical Documents in Hydrology No.83, IACS Contribution No.1, UNESCO-IHP, Paris, 2009.
- 530 Haas, C., Beckers, J., King, J., Silis, A., Stroeve, J., Wilkinson, J., Notenboom, B., Schweiger, A. and Hendricks, S.: Ice and snow thickness variability and change in the high Arctic Ocean observed by in situ measurements, Geophysical Research Letters, 44, 10-462, 2017.
- Hagenmuller, P. and Pilloix, T.: A new method for comparing and matching snow profiles, application for profiles measured by penetrometers, Frontiers in Earth Science, 4, 52, 2016.
- 535 Iacozza, J. and Barber, D.G.: An examination of the distribution of snow on sea-ice. Atmos Ocean, 37(1), 21-51, doi:10.1080/07055900.1999.9649620, 1999.
- 540 Laxon, S.W., Giles, K.A., Ridout, A.L., Wingham, D.J., Willatt, R., Cullen, R., Kwok, R., Schweiger, A., Zhang, J., Haas, C. and Hendricks, S.: CryoSat-2 estimates of Arctic sea ice thickness and volume. Geophysical Research Letters, 40, 732-737, doi: 10.1002/grl.50193, 2013.
- 545 [Kern, M., Cullen, R., Berruti, B., Bouffard, J., Casal, T., Drinkwater, M. R., Gabriele, A., Lecuyot, A., Ludwig, M., Midthassel, R., Navas Traver, I., Parrinello, T., Ressler, G., Andersson, E., Martin-Puig, C., Andersen, O., Bartsch, A., Farrell, S., Fleury, S., Gascoïn, S., Guillot, A., Humbert, A., Rinne, E., Shepherd, A., van den Broeke, M. R., and Yackel, J.: The Copernicus Polar Ice and Snow Topography Altimeter \(CRISTAL\) high-priority candidate mission, The Cryosphere, 14, 2235–2251, <https://doi.org/10.5194/tc-14-2235-2020>, 2020.](#)

Formatted: Font: (Default) Times New Roman, 10 pt

Field Code Changed

Formatted: Font: (Default) Times New Roman, 10 pt

Formatted: Font: (Default) Times New Roman, 10 pt

- 550 Kern, S., Khvorostovsky, K., Skourup, H., Rinne, E., Parsakhoo, Z.S., Djepa, V., Wadhams, P. and Sandven, S.: The impact of snow depth, snow density and ice density on sea ice thickness retrieval from satellite radar altimetry: results from the ESA-CCI Sea Ice ECV Project Round Robin Exercise, *The Cryosphere*, 9, 37-52, doi: 10.5194/tc-9-37-2015, 2015.
- 555 King, J., Howell, S., Derksen, C., Rutter, N., Toose, P., Beckers, J.F., Haas, C., Kurtz, N. and Richter-Menge, J.: Evaluation of Operation IceBridge quick-look snow depth estimates on sea ice, *Geophysical Research Letters*, 42, 9302-9310, doi:10.1002/2015GL066389, 2015.
- Kurtz, N.T. and Farrell, S.L.: Large-scale surveys of snow depth on Arctic sea ice from Operation IceBridge, *Geophysical Research Letters*, 38, L20505, doi: 10.1029/2011GL049216, 2011.
- 560 Kwok, R. and Cunningham, G.F.: ICESat over Arctic sea ice: Estimation of snow depth and ice thickness, *J Geophys Res-Oceans*, 113, doi: 10.1029/2008JC004753, 2008.
- Kwok, R., Panzer, B., Leuschen, C., Pang, S., Markus, T., Holt, B., and Gogineni, S.: Airborne surveys of snow depth over Arctic sea ice, *J Geophys Res-Oceans*, 116, C11018, doi: 10.1029/2011JC007371, 2011.
- 565 Kwok, R., and Haas C.: Effects of radar sidelobes on snow depth retrievals from Operation IceBridge, *J. Glac.*, 61, doi:10.3189/2015JoG14J2292015, 2015.
- 570 Kwok, R. and Markus, T.: Potential basin-scale estimates of Arctic snow depth with sea ice freeboards from CryoSat-2 and ICESat-2: An exploratory analysis, *Adv Space Res*, 62, 1243-1250 doi:10.1016/j.asr.2017.09.007, 2018.
- Kwok, R., Markus, T., Kurtz, N.T., Petty, A.A., Neumann, T.A., Farrell, S.L., Cunningham, G.F., Hancock, D.W., Ivanoff, A. and Wimert, J.T.: Surface height and sea ice freeboard of the Arctic Ocean from ICESat-2: Characteristics and early results, *J Geophys Res-Oceans*, doi:10.1029/2019JC015486, 2019.
- 575 Landy, J.C., Tsamados, M. and Scharien, R.K.: A facet-based numerical model for simulating SAR altimeter echoes from heterogeneous sea ice surfaces, *IEEE T Geosci Remote*, doi:10.1109/TGRS.2018.2889763, 2019.
- 580 Lawrence, I.R., Tsamados, M.C., Stroeve, J.C., Armitage, T.W. and Ridout, A.L.: Estimating snow depth over Arctic sea ice from calibrated dual-frequency radar freeboards, *The Cryosphere*, 12, 3551-3564, doi:10.5194/tc-12-3551-2018, 2018.
- Laxon, S.W., Giles, K.A., Ridout, A.L., Wingham, D.J., Willatt, R., Cullen, R., Kwok, R., Schweiger, A., Zhang, J., Haas, C. and Hendricks, S.: CryoSat-2 estimates of Arctic sea ice thickness and volume, *Geophysical Research Letters*, 40, 732-737, doi:10.1002/grl.50193, 2013.
- 585 Ledley, T.S.: Snow on sea ice: Competing effects in shaping climate. *Journal of Geophysical Research: Atmospheres*, 96(D9), 17195-17208, doi:10.1029/91JD01439, 1991.
- 590 Liston, G.E., Polashenski, C., Rösel, A., Itkin, P., King, J., Merkouriadi, I. and Haapala, J.: A Distributed Snow-Evolution Model for Sea-Ice Applications (SnowModel), *J Geophys Res-Oceans*, 123, 3786-3810, 2018.
- Löwe, H., and van Herwijnen, A.: A Poisson shot noise model for micro-penetration of snow, *Cold Reg. Sci. Technol.*, 70, 62-70, doi:10.1016/j.coldregions.2011.09.001, 2012.
- 595 Marshall, H. P., and Johnson, J., B.: Accurate inversion of high-resolution snow penetrometer signals for microstructural and micromechanical properties, *J Geophys Res-Earth*, 114, F04016, doi:10.1029/2009JF001269, 2009.

- Merkouriadi, I., Gallet, J.C., Graham, R.M., Liston, G.E., Polashenski, C., Rösel, A. and Gerland, S.: Winter snow conditions on Arctic sea ice north of Svalbard during the Norwegian young sea ICE (N-ICE2015) expedition, *J Geophys Res-Atmos*, 122, 10-837, doi:10.1002/2017JD026753, 2017.
- 600
- Moran, P.A.: Notes on continuous stochastic phenomena. *Biometrika*, 37, 17-23, doi: 10.2307/2332142, 1950.
- Moon, W., Nandan, V., Scharien, R.K., Wilkinson, J., Yackel, J.J., Barrett, A., Lawrence, I., Segal, R.A., Stroeve, J., Mahmud, M. and Duke, P.J.: Physical length scales of wind-blown snow redistribution and accumulation on relatively smooth Arctic first-year sea ice. *Environmental Research Letters*, 14, 104003, doi: 10.1088/1748-9326/ab3b8d, 2019.
- 605
- Nandan, V., Geldsetzer, T., Yackel, J., Mahmud, M., Scharien, R., Howell, S., King, J., Ricker, R. and Else, B.: Effect of snow salinity on CryoSat-2 Arctic first-year sea ice freeboard measurements. *Geophysical Research Letters*, 44, 10-419, doi: 10.1002/2017GL074506, 2017.
- 610
- Pedregosa, F., Varoquaux, G., Gramfort, A., Michel, V., Thirion, B., Grisel, O., Blondel, M., Prettenhofer, P., Weiss, R., Dubourg, V. and Vanderplas, J.: Scikit-learn: Machine learning in Python, *J Mach Learn Res*, 12, 825-2830, 2011.
- 615
- Petty, A.A., Webster, M., Boisvert, L. and Markus, T.: The NASA Eulerian Snow on Sea Ice Model (NESOSIM) v1. 0: initial model development and analysis, *Geosci Model Dev*, 11, doi:10.5194/gmd-11-4577-2018, 2018.
- Pielmeier, C.: Textural and mechanical variability of mountain snowpacks, PhD thesis, Univ. of Bern, Bern, Switzerland, 2013
- 620
- Proksch, M., Löwe, H. and Schneebeli, M.: Density, specific surface area, and correlation length of snow measured by high-resolution penetrometry, *J Geophys Res-Earth*, 120, 346-362, doi:10.1002/2014JF003266, 2015.
- 625
- Proksch, M., Rutter, N., Fierz, C., and Schneebeli, M.: Intercomparison of snow density measurements: bias, precision, and vertical resolution, *The Cryosphere*, 10, 371-384, doi:10.5194/tc-10-371-2016, 2016.
- Ricker, R., Hendricks, S., Helm, V., Skourup, H., and Davidson, M.: Sensitivity of CryoSat-2 Arctic sea-ice freeboard and thickness on radar-waveform interpretation, *The Cryosphere*, 8, 607-1622, doi: 10.5194/tc-8-1607-2014, 2014
- 630
- Radionov, V. F., N. N. Bryazgin, and Y. I. Aleksandrov (1996), *The Snow Cover of the Arctic Basin* (in Russian), 102, Gidrometeoizdat, St. Petersburg, Russia. (English translation, Tech. Rep. APLUW TR 9701, 98, Polar Sci. Cent., Univ. of Wash., Seattle, 1997.).
- Schneebeli, M., and J. Johnson, J.: A constant-speed penetrometer for high-resolution snow stratigraphy, *Ann. Glaciol.*, 26, 107-111, doi: 10.3189/1998AoG26-1-107-111, 1998.
- 635
- Sturm, M., and Holmgren, J.: Winter snow cover on the sea ice of the Arctic Ocean at the Surface Heat Budget of the Arctic Ocean (SHEBA): Temporal evolution and spatial variability, *J. Geophys. Res.*, 107, 8047, doi:10.1029/2000JC000400, 2002.
- 640
- Sturm, M., Maslanik, J.A., Perovich, D., Stroeve, J.C., Richter-Menge, J., Markus, T., Holmgren, J., Heinrichs, J.F., and Tape, K.: Snow depth and ice thickness measurements from the beaufort and chukchi seas collected during the AMSR-Ice03 campaign, *IEEE T. Geosci. Remote*, 44, 3009-3020, doi:10.1109/TGRS.2006.878236, 2006.

- 645 Sturm, M., and Benson, C.: Scales of spatial heterogeneity for perennial and seasonal snow layers, *Ann. Glaciol.*, 38, 253-260, doi: 10.3189/172756404781815112, 2004.
- Tilling, R.L., Ridout, A. and Shepherd, A.: Near-real-time Arctic sea ice thickness and volume from CryoSat-2, *The Cryosphere*, 10, 2003-2012, doi: 10.5194/tc-10-2003-2016, 2016.
- 650 Ulaby, F. T., Moore, R. K., and Fung, A. K.: *Microwave remote sensing: Active and passive. Volume 3-From theory to applications*, 1986.
- Warren, S. G., Rigor, I. G., Untersteiner, N., Radionov, V. F., Bryazgin, N. N., Aleksandrov, Y. I., and Colony, R.: Snow depth on Arctic sea ice, *J. Climate*, 12, 1814–1829, doi:10.1175/1520-0442(1999)012<1814:SDOASI>2.0.CO;2, 1999.
- 655 Webster, M.A., Rigor, I.G., Nghiem, S.V., Kurtz, N.T., Farrell, S.L., Perovich, D.K. and Sturm, M.: Interdecadal changes in snow depth on Arctic sea ice, *J Geophys Res-Oceans*, 119, 5395-5406, doi:10.1002/2014JC009985, 2014.
- 660 Webster, M., Gerland, S., Holland, M., Hunke, E., Kwok, R., Lecomte, O., Massom, R., Perovich, D. and Sturm, M.: Snow in the changing sea-ice systems, *Nat. Clim. Change*, 8, 946-953, doi: 10.1038/s41558-018-0286-7, 2018.
- 665 [Willatt, R., Laxon, S., Giles, K., Cullen, R., Haas, C., and Helm, V.: Ku-band radar penetration into snow cover on Arctic sea ice using airborne data. *Ann. Glaciol.*, 52, 197-205, doi:10.3189/172756411795931589, 2011.](#)
- Wu, X., Budd, W.F., Lytle, V.I. and Massom, R.A.: The effect of snow on Antarctic sea ice simulations in a coupled atmosphere-sea ice model. *Climate Dynamics*, 15, 127-143, doi: 10.1007/s003820050272, 1999.
- 670 Zhang, X., Flato, G., Kirchmeier-Young, M., Vincent, L., Wan, H., Wang, X., Rong, R., Fyfe, J., Li, G., & Kharin, V.V., Changes in Temperature and Precipitation Across Canada; Chapter 4 in Bush, E. and Lemmen, D.S. (Eds.) *Canada's Changing Climate Report*. Government of Canada, Ottawa, Ontario, 112-193, 2019.

Tables

Table 1: Summary of measurements completed as part of the Eureka (E) and Arctic Ocean (A) campaigns.

Site Details			Location [DD]		Measurements [#]	
<i>ID</i>	<i>Type</i>	<i>Date</i>	<i>Latitude</i>	<i>Longitude</i>	<i>Pits</i>	<i>SMP Profiles</i>
A2	MYI	11/04/2017	83.9834	-66.3509	1	12
A3	MYI	11/04/2017	83.4421	-64.4156	1	12
A5	MYI	13/04/2017	84.8578	-69.7044	1	12
A6	MYI	13/04/2017	85.4446	-73.4211	1	12
A7	MYI	12/04/2017	83.4421	-64.4154	1	4
A8	MYI	12/04/2017	86.1987	-79.3859	1	12
E1	FYI	08/04/2016	79.9629	-86.0019	3	31
E2	FYI	09/04/2016	79.9944	-86.4462	3	41
E3	FYI	10/04/2016	80.0785	-86.7794	3	70
E4	FYI	11/04/2016	79.8440	-86.8051	3	70
E5	MYI	13/04/2016	79.9829	-86.2933	3	85
E6	FYI	14/04/2016	80.0211	-86.7856	3	92
E7	FYI	15/04/2016	79.9716	-86.7909	3	100
E8	MYI	17/05/2016	79.8135	-86.8083	2	63

675

Table 2: Model coefficients for Eqn. (1) as originally defined in Proksch et al. (2015; P15) and recalibrated as part of this study to estimate snow density sea ice (K2019).

Set	Samples [#]	Regression Coefficients				Metrics	
		a (kg m ⁻³)	b (N ⁻¹)	c (N ⁻¹ mm ⁻¹)	d (mm ⁻¹)	$RMSE$ [kg m ⁻³]	R^2
P15	196	420.47	102.47	-121.15	-169.96	130	0.72
K2019a	196	315.61	46.94	-43.94	-88.15	41	0.72
K2019b	186	312.54	50.27	-50.26	-85.35	34	0.78

680

Table 3: Normalized confusion matrix for the support vector machine (SVM) layer type classification of SMP profiles compared against known snow pit samples. Results were 10-fold cross validated and samples were stratified to ensure a minimum of 10 samples per layer-type class in each fold.

	Observed		
	Rounded	Faceted	Hoar
Rounded	0.76	0.24	0.00

Faceted	0.09	0.76	0.15
Hoar	0.00	0.18	0.82

Table 43: Mean density cutter measurements from snow pits separated by layer type and campaign.

Campaign	Pits [#]		Density FYI [kg m ⁻³ (#)]			Density MYI [kg m ⁻³ (#)]		
	FYI	MYI	Rounded	Faceted	Depth hoar	Rounded	Faceted	Depth hoar
Eureka	17	3	375 (19)	357 (46)	232 (36)	381 (6)	287 (24)	218 (10)
Arctic Ocean	0	6	- (0)	- (0)	- (0)	373 (4)	380 (18)	275 (38)
Combined	17	9	375 (19)	357 (46)	232 (36)	375 (10)	343 (42)	249 (48)

Table 54: Snow density and layering derived from SMP profiles at each field campaign site using Eqn. (1) and the automated classification procedures described in Sect. 3.4.

Site ID	Type	SMP derived properties		SMP derived composition		
		Penetration [cm]	Density [kg m ⁻³]	Rounded [%]	Faceted [%]	Hoar [%]
A2	MYI	44.2	289	11.3	36.8	51.9
A3	MYI	33.6	302	20.3	42.5	37.2
A5	MYI	39.2	326	11.8	60.8	27.4
A6	MYI	34.5	267	14.0	29.1	56.9
A7	MYI	34.7	279	12.7	14.8	72.5
A8	MYI	45.4	272	8.2	20.6	71.2
E1	FYI	13.8	364	38.2	53.7	8.1
E2	FYI	17.3	346	31.6	59.0	9.4
E3	FYI	15.9	342	39.1	52.1	8.8
E4	FYI	20.2	285	23.3	33.1	43.6
E5	MYI	32.5	279	15.4	36.2	48.4
E6	FYI	15.4	336	34.1	57.6	8.3
E7	FYI	22.4	309	22.3	48.5	29.3
E8	MYI	32.4	268	17.4	33.1	49.5

Figures

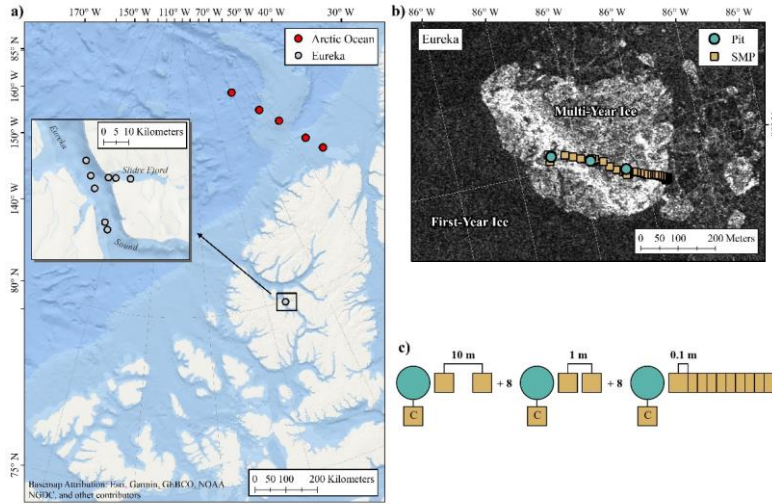


Figure 1: Overview of the Eureka and Arctic Ocean (AO) snow on sea ice campaigns (a). Unidirectional SnowMicoPen (SMP) transects were collected at multiple sites to evaluate spatial variability of snowpack properties (b; Eureka MYI site shown) with sets of 10 profiles separated at distances of 0.1, 1, and 10 m, in sequence (c). Co-located SMP profiles were collected at all snow pit locations to calibrate the SMP density model of Proksch et al. (2015). Background of (b) shows RADARSAT-2 imagery near Eureka where bright returns indicate rough multi-year ice. RADARSAT-2 Data and Products © MacDonald, Dettwiler and Associates Ltd. (2019). All Rights Reserved. RADARSAT is an official trademark of the Canadian Space Agency.

695

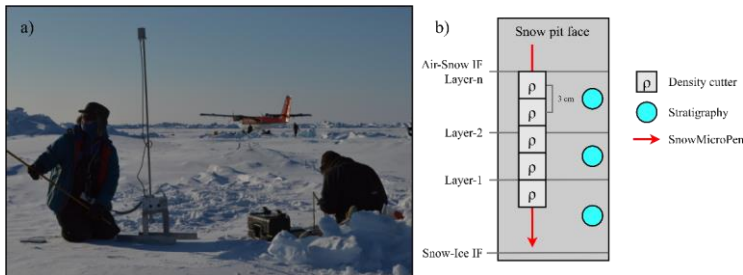


Figure 2: Photo of typical SMP and snow pit measurements on MYI (a) and sketch of the sampling procedure (b). Manual density measurements (3-cm height) were collected as continuous profiles between the air-snow and snow-ice interfaces (IF). SMP profiles were compiled 10 cm behind the pit face at each site. A rigid mount was used to stabilize the SMP while penetrating hard surface slabs (a).

700

705

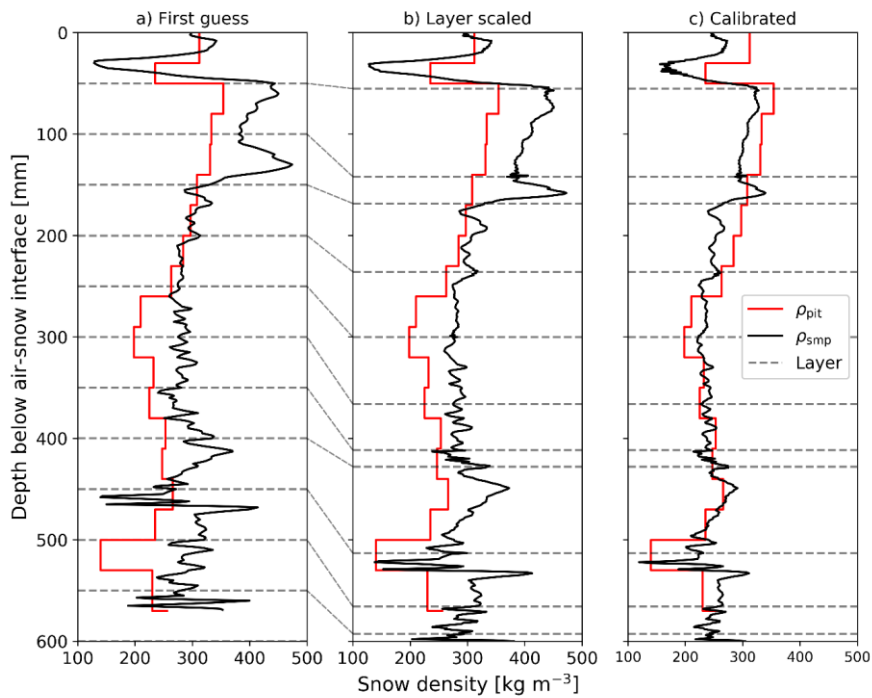


Figure 3: SMP processing steps where first guess estimates of ρ_{smp} (a; black lines) are used to improve alignment with snow pit measurements of density (b; red lines) prior to recalibration and computation of final estimates (c). To begin alignment SMP profiles are divided into arbitrary 5 cm layers (dotted lines) and scaled randomly in thickness. Best fit alignment is selected where RMSE between the SMP estimates and snow pit measurements are minimized. The matching process accounts for differences in the target snowpack due to the 10 cm separation between profiles. The example shown is for Eureka site 5 on MYI.

710

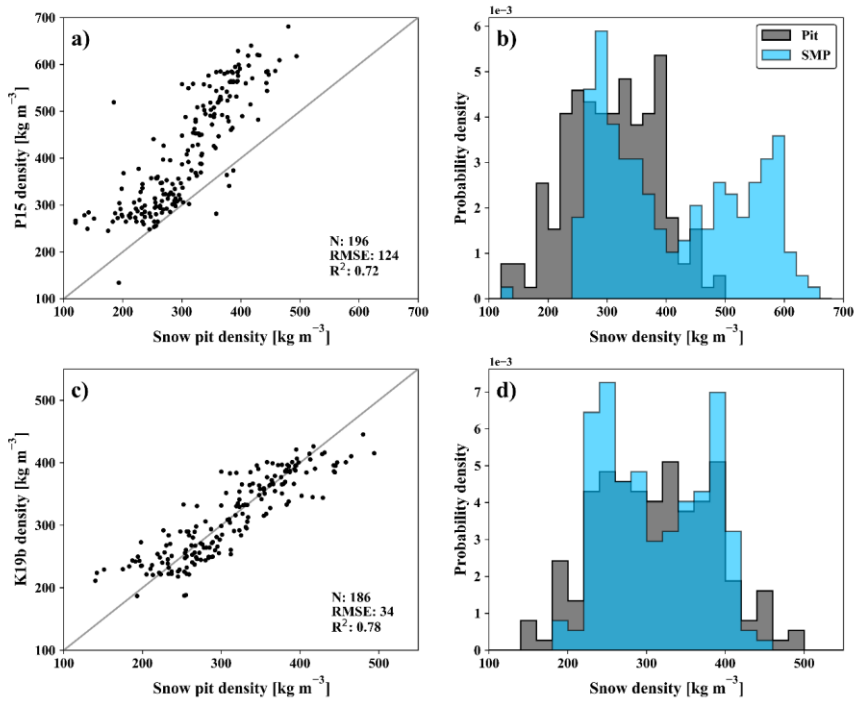
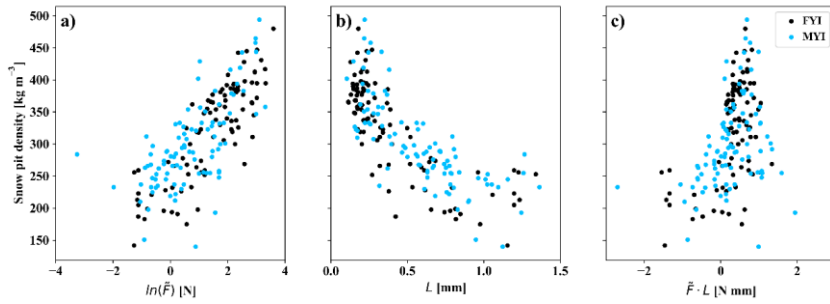
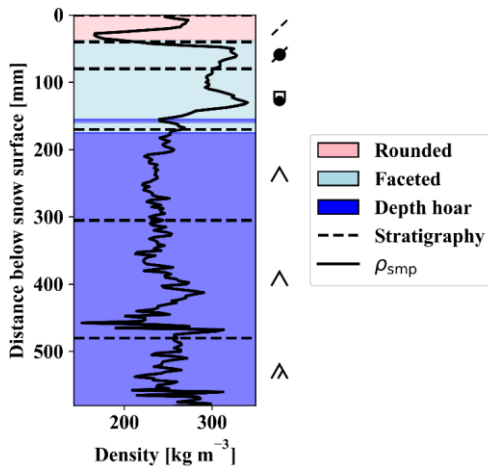


Figure 4: Evaluation of the original SMP density model of Proksch et al. (2015) (P15; a) and recalibrated coefficients for snow on sea ice (K2019b; b). Retrieved distributions are shown for the P15 (b) and K2019b (d) parameterizations of Eqn. 1 with a common bin size of 20 kg m⁻³. In all cases, the reference measurements are manual density cutter measurements of snow density.

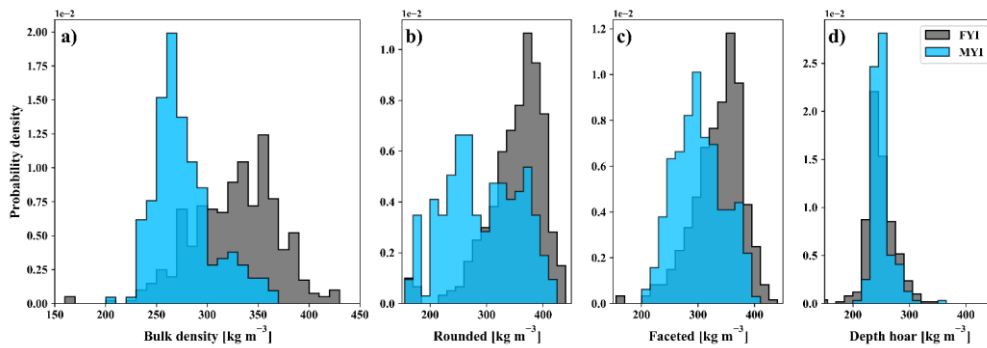
715



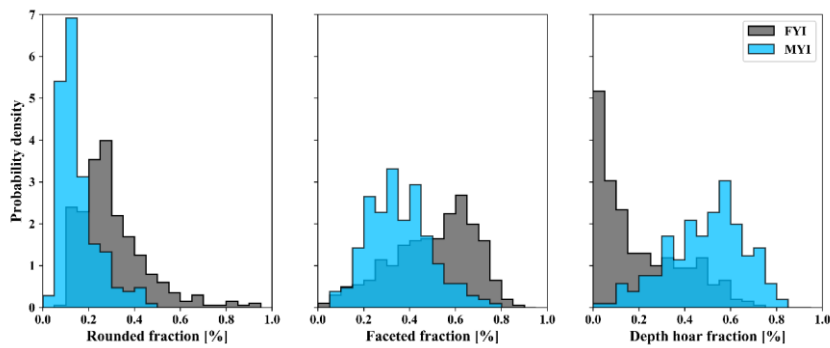
720 **Figure 5:** Comparison of the SMP regression parameters and corresponding snow pit observed density. Parameters include log-transformed median force ($\ln(\bar{F})$, a), microstructure length scale (L , b) and an interaction term ($\bar{F} \cdot L$, c). Relationships are separated by ice type (FYI and MYI).



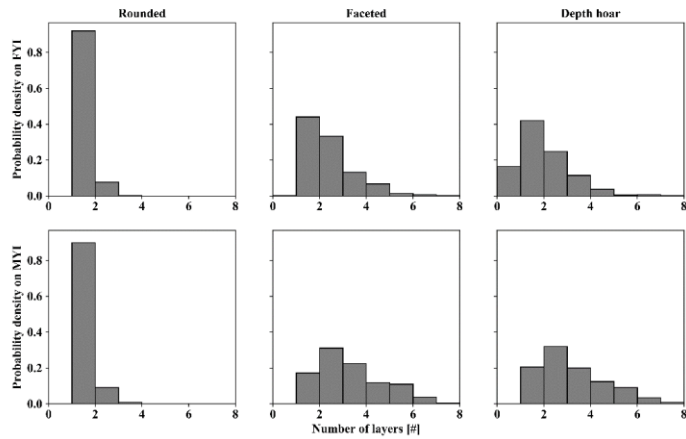
725 **Figure 6:** Automated layer-type classification of a SMP profile collected on sea ice where colours indicate classification result. Horizontal dashed lines indicate heights of snow pit observed stratigraphic layers at the same location. Snow layer classification follows standardized colours and symbols described in Fierz et al., (2009).



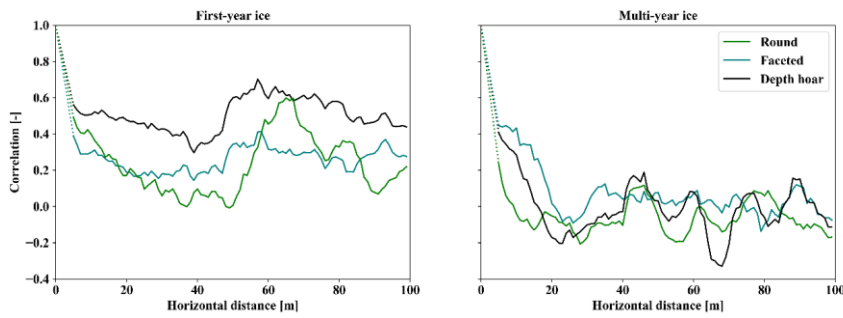
730 **Figure 7:** Bulk density (vertically integrated) derived from SMP profiles on first year (FYI, $n = 402$) and multiyear (MYI, $n = 211$) sea ice (a). Automated profile classification was used to separate the high vertical resolution (2.5 mm) estimates of snow density and produce layer-type distributions for rounded (b), faceted (c) and depth hoar (d) classes.



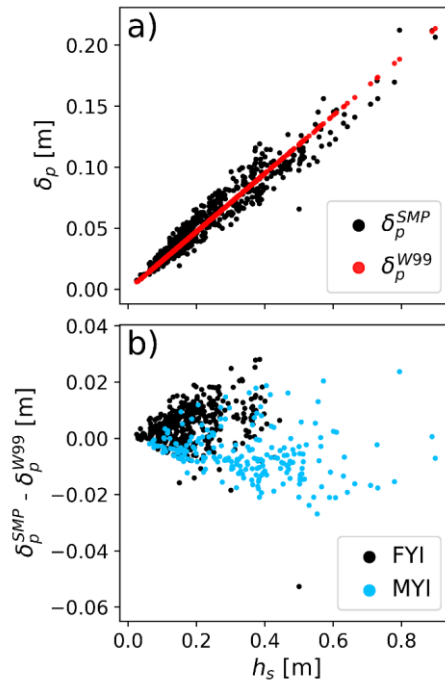
735 **Figure 8:** Fractional snowpack composition by rounded, faceted, and depth hoar layers from the SMP profiles on first year (FYI) and multiyear (MYI) sea ice. Classification methods for the SMP are described in Sect. 3.4.



740 **Figure 9:** Distribution of the number of snowpack layers as derived from the SMP transect profiles. Transitions between layer-types from the automated SMP profile classifications are used as a proxy for traditional snow pit layer counts.



745 **Figure 10:** Spatial auto-correlation of snowpack fractional composition by layer-type on FYI and MYI as estimated from classified SMP profiles. Dotted lines show assumed correlation at length scales less than 1 m where geolocation uncertainty of the profiles precludes analysis.



750 **Figure 11:** Changes in estimated radar propagation bias (δ_p ; a) relative to snow thickness (h_s) based on density estimated from climatology (δ_p^{W99}) and measured from SMP profiles (δ_p^{SMP}). The two sets of estimates were subtracted to show potential errors associated with the use of climatology over known snow densities (b).

755 **Response to reviewer #1**

General comments: This paper presents the snow pit and SnowMicroPen measurements over sea ice to recalibrate the SMP density model. The calibrated snow density and machine learning-based layer classification are combined to estimate density and length scale of variability differences in the composition of snow layers. Such density model and data are highly valuable in sea ice altimetry application as mentioned by authors. This in situ and model work are important in snowpack properties analysis and will draw wide interests from the community. This article is well-written and easy to follow.

Thank you for your review and helpful suggestions to improve the paper. We have made changes throughout section 3.2 to improve our description of how the SMP and density cutter measurements were compared. We have also revised some of the statistical descriptions as suggested. Inline responses to suggestions and questions are provided in bold below.

765

My major comments are as follows: Section 3.2 about how to estimate density from SMP profile is not quite clear to me in P6, L168 'Estimates of _smp were then extracted...'. From my understanding, what you are doing here is more like getting the original 5cm-thickness _smp profile scaled according to perturbed thickness in individual layer. What do you mean by "average the scaled profiles within 3-cm height of cutter measurements"?

770

Once the SMP profiles are scaled we simply take the corresponding SMP values at the same height of each density cutter measurement. Because the density cutter is 3-cm in height we average the much higher resolution SMP estimates to make a 1:1 comparison. There is scope in the future to optimize how this comparison is made but we have not completed an extensive evaluation here. We modified the sentence on line L169 to make clear what is being averaged.

775

What does it mean by: "Another 6cm window moving averaging"?

We hope that the above response clarifies how the matching process was applied. However, we have not discussed a 6 cm moving average and are unsure which lines this comment is referring to.

780

P6, L180 and Figure 4, when you compare the density, do you compare each layer mean snow pit density and all SMP profiles estimation at that layer in one site?

Comparisons described here were between each density cutter measurement and the mean of the SMP estimates within their corresponding 3-cm height. Effectively each point in Figure 4 represents a single density cutter measurement. We've made small improvements to the text in an attempt to make this clear.

785

I noticed that in Eureka, one site has 2 or 3 pits (the distances between these pits are under 100m), how to divide the SMP measurements for these pits if SMP have the same distance between two sites?

This is correct, not all sites have the same number of pits, and at times, they are unequally spaced. Placement of the snow pits was structured to characterize inter-site variability but the distance between each was not considered as part

of our analysis. All analysis of spatial variability used the distance between SMP profiles (GPS located). We relied on
790 large SMP data volumes rather than strict spacing of profiles to understand scales between 0 and 100 m.

*In section 3.4, when you use SVM to classify the snow layer's type, with 75% accuracy, have you tried other machine learning
methods and have you tried other non-linear kernels except for the linear one? What is the accuracy in other methods, and
what are the potential limitation of such methods in classifying snow properties?*

795 **Thank you for highlighting this important area of future work. We chose to apply a linear kernel with the SVM to limit
complexity and focus on broader aspects of the density analysis. There are certainly non-linear divisions within the
parameter space which the hyperplanes fail to delineate, limiting accuracy. To apply a non-linear kernel would require
an extensive evaluation of the hyper-parameters which we feel is beyond the scope of this work. The work of Havens et
al., (2012) stands as a strong example that enhanced SMP classification methods can be applied to improve accuracy.**
800 **We hope to conduct an extensive assessment of other classification methods in future work.**

*P7, L219, what is the vertical resolution when snowpit and SMP measurements are both trained considering their vertical
resolutions are different. Also, I am very curious about the results when further adding ice type information in the training.
Adding ice type information resulted in a small improvement of ~2% accuracy. The example we created will remain in
805 our revised public code for reference. We chose not to use this configuration as ice type as ancillary information is not
directly available from the SMP.*

*P9, L268, 'Profiles collected on FYI, and therefore exclusively near Eureka...'. Do you mean in Figure 7(a), over FYI, the
distribution is negatively skewed? But from the figures, the density seems positively skewed over FYI. Also, the following
810 sentence 'In contrast, densities on MYI were positively skewed...'. Please check it.*

**We have revised wording throughout the paper to use left- or right-skewed instead of negative or positive. The
distribution in question is now described as left-skewed (Statistical skew of -0.41).**

*P9, L277, 'Measurements classified as faceted had on average a density...'. Figure 8c is over depth hoar not faceted and the
815 distribution is not negatively skewed.*

Thank you for noting the incorrect label, we have corrected this. See our previous comment regarding skew.

How to quantify the density uncertainty/error from the SMP density model in consideration of application on altimetry studies?

820 **Errors quantified in the study showed the SMP to be comparable to those expected from manual density cutter
measurements. We hope to use this information to build a more comprehensive analysis of errors involved in altimetry
of sea ice. However, we do not have any specific conclusions at this point on how best to address uncertainty when
applying the SMP to altimetry studies.**

Specific comments: P2, L50, 'Laxon et al. 2013' should be 'Laxon et al., 2013' P9,L271, 'However, these difference...' should be 'However, these differences' P13, L381, 'however the errors appears' should be 'however the errors appear'

Thank you for noting these errors. Each has been revised as suggested.

Response to Reviewer #2

830 *This manuscript addresses the spatial variation in the density of snow on sea ice through use of an extensive in-situ dataset from SMP and density-cutters. The paper is well written and highly rigorous; I believe it makes a significant contribution to the study of snow on sea ice and I recommend it for publication in The Cryosphere after some minor changes and clarifications. On a side note, it was particularly pleasing to see the authors publishing their data and analysis code in an interactive, browser-based environment. As well as making the research output easier to review, it is likely to add to the impact of the work.*

835 **Thank you for your review and comments to improve the quality of the manuscript. We sincerely hope that the methods and code presented here can be made better through community application and adaptation. Thank you for your note regarding our efforts to ensure reproducible and open science.**

840 *L57: "were used to address this problem"*

Corrected as suggested.

L58/339/471: Perhaps 'mm-scale' should be replaced with 'milimeter-scale' for readability.

We have made the units explicit as suggested.

845 *L129: "SMP transects were established"*

Corrected as suggested.

L184: "Eureka had a higher RMSE ...than measurements at AO sites"

850 **Corrected as suggested.**

You'll presumably update your coefficient names to reflect the year of publication (K19a→K20a) in the final copy.

Updated throughout to reflect the current year.

855 *L223: I think the reporting of the classifier's accuracy evaluation could be reworded for clarity. Presumably the 'prediction accuracy of 76%' means that 76% of the samples were assigned the correct layer type? Or does it mean that of the bulk layers that it identified (e.g. depth hoar, slab etc), they were right 76% of the time?*

860 **Added text to clarify what accuracy means (True positive or true negative predictions on line 224). We have also added an evaluation of errors by layer type and reported classification errors as a confusion matrix (Table 3).**

865 *Since the SMP makes measurements of F & L a couple of hundred times per mm, then does your classifier make a classification of the snow type with similar frequency, or is it as the frequency of your 2.5 mm density estimates? Or does it just identify boundaries between layers of different snow type?*

The classifier is trained on the 3-cm averaged SMP data extracted at the height of each density cutter measurement. We added text to make it clear that the classifier was applied at vertical resolution of the SMP despite training on density cutter averages.

870

I think it would also be particularly valuable to break down the performance by layer-type. The average was 76%, but did the classifier do a better job of identifying different types? Were there some types that were particularly hard to identify?

Agreed, see previous response regarding the introduction of the confusion matrix.

875

L326: As you subsequently mention, the primary scattering surface for radar altimetry may not be the ice surface. As such, I think this should be rephrased as 'radar measured distance to the primary scattering horizon may be overestimated'. On that note, I think you should mention explicitly in this section that calculations of σ_0 assume (in line with convention for radar altimetry) that the ice surface is the dominant scattering horizon.

880

Agreed, more careful wording was needed to acknowledge penetration uncertainty. We've modified the text to establish that our assumption is that the primary scattering interface is the ice surface. See further points below where additional details have been added on why that assumption may be invalid.

885

L327: This reference is now quite challenging for many readers to track down, I suggest updating to the more recent edition: Ulaby and Long (2014).

Thanks for your suggestion but we have kept the original given differences in authorship.

890

L332: I think it would be good to cite this equation (as it's reported differently in some literature), consider Tilling et al. (2018) or Mallett et al. (2020).

A reference to Tilling et al. (2018) has been added as suggested to establish lineage.

895

L444: Consider pointing out in this section that as well as brine over FYI, morphological features in the snow or higher snow temperatures (Willatt et al., 2011) may also raise the primary scattering horizon, limiting the applicability of your path difference calculation.

Yes, important to mention this even if assumed. We added a point to clarify that snow conditions were dry and temperature was not considered. We will leave the final sentence as is using microstructure to address the influence of layering.

900