

Answer to Anonymous Referee #1

We would like to thank Anonymous Referee #1 for their extensive analysis of our manuscript which helped us improve our paper. All the comments have been addressed and a point by point response is provided below each comment.

The reviewer's initial comments are reported in black, our answer in blue and the corrections in the paper are highlighted in red. The line numbers which are used in the answers correspond to the new version of the manuscript.

Summary comment:

This was a worthwhile project which deserves publication, but I found the paper difficult to read.

Major comments:

(1) Figure 4 compares two established methods for measuring black carbon. It shows, for example, that when $rBC=5$ ng/g, EC can be anywhere from 4 to 75 ng/g. This is disturbing and demands explanation. The very low rBC values from the SP2 make me skeptical. The authors cite Wendl et al 2014 (on page 8 line 11). However, the Wendl paper discusses the effect of using different nebulizers, so I'm not sure which one was used here. More detail should be given about how the measurements were done, including the expected sampling efficiency of the SP2 set-up.

We agree that only mentioning Wendl et al 2014 can be confusing, so we now explicitly mention the nebulizer used in our case (APEX Q), and reference Lim et al 2014, which describes further evaluation of this particular setup.

Discrepancies between rBC and EC measurements are well documented. We acknowledge that our observed discrepancies are larger than usually observed, and we added a short discussion on that in Section 4.1 p.19 l.23 : "This extra coagulation step is usually not implemented, which may explain why the EC/rBC ratios are higher in our case compared to previous studies. This calls for more systematic comparison of rBC vs EC measurements."

(2) In places the discussion of a figure disagrees with what the figure actually shows. For example, page 1 line 20 says "LAP concentration and SSA are correctly reproduced". But Figure 5 shows disagreements commonly a factor of 10 for LAP, and a factor of 2 for SSA.

This sentence of the abstract was indeed over-optimistic, it has been replaced as follows : p.1 l.15 : "The temporal variations of near-surface LAP concentration and SSA are most of the time correctly simulated."

Page 15 line 22-23, describing Figure 5a, says "temporal variations of near-surface AEC are correctly reproduced. But Figure 5a for 2018 shows poor agreement: e.g. for 2018-03 the red line is at _3

ng/g, but the black crosses (autosolex) show two clusters of values, one an order-of-magnitude higher at ~ 50 ng/g, and one an order-of-magnitude lower at ~ 0.5 ng/g.

Indeed, even if the temporal variations of AEC concentrations are in general captured by the model, there are some periods for which the agreement is poor. This has been underlined.¹⁶ I.29 “meaning that temporal variations of near-surface AEC are generally well reproduced despite periods with lower agreement (e.g. March 2018).”

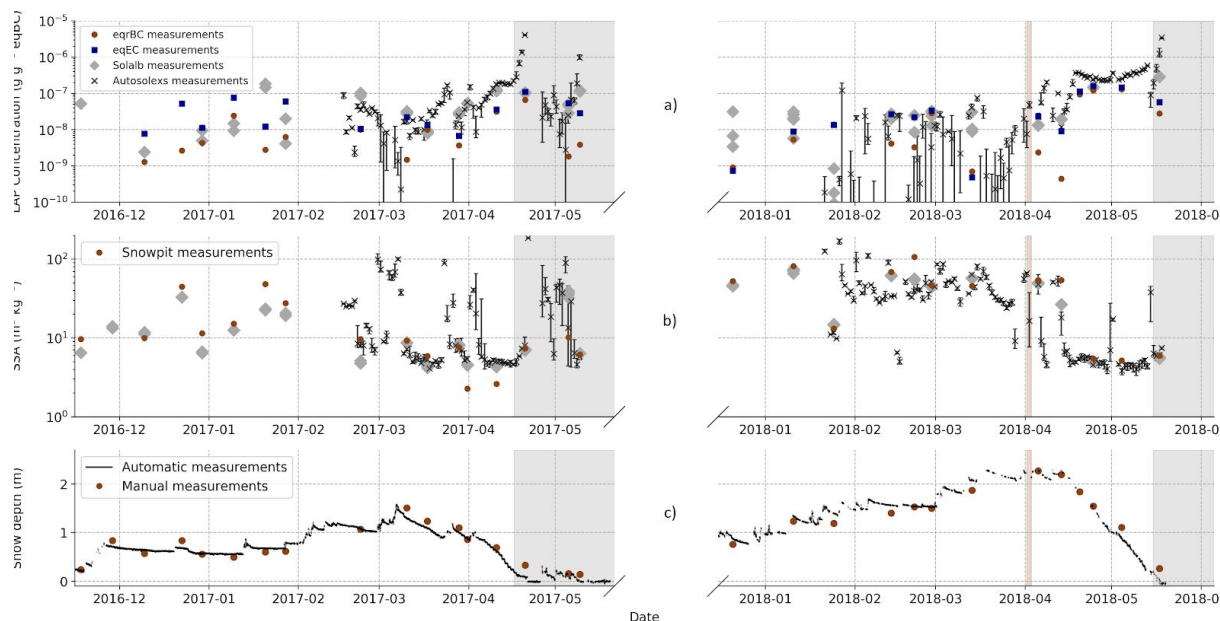
Page 15 line 22 gives the correlation $r^2=0.78$. Was this correlation done linearly or logarithmically? If it was done linearly, the apparently good correlation will be the result of many points near zero (i.e. 10^{-9} not distinguished from 10^{-8}) and a few points at the high end (10^{-6}).

The correlations are done linearly, which have been indicated in the manuscript in Section 3.2. The logarithmic correlations are indeed lower because of the effect described by the reviewer. The following sentence has been added after the paragraph on AEC measurement description p.16 I.7 :

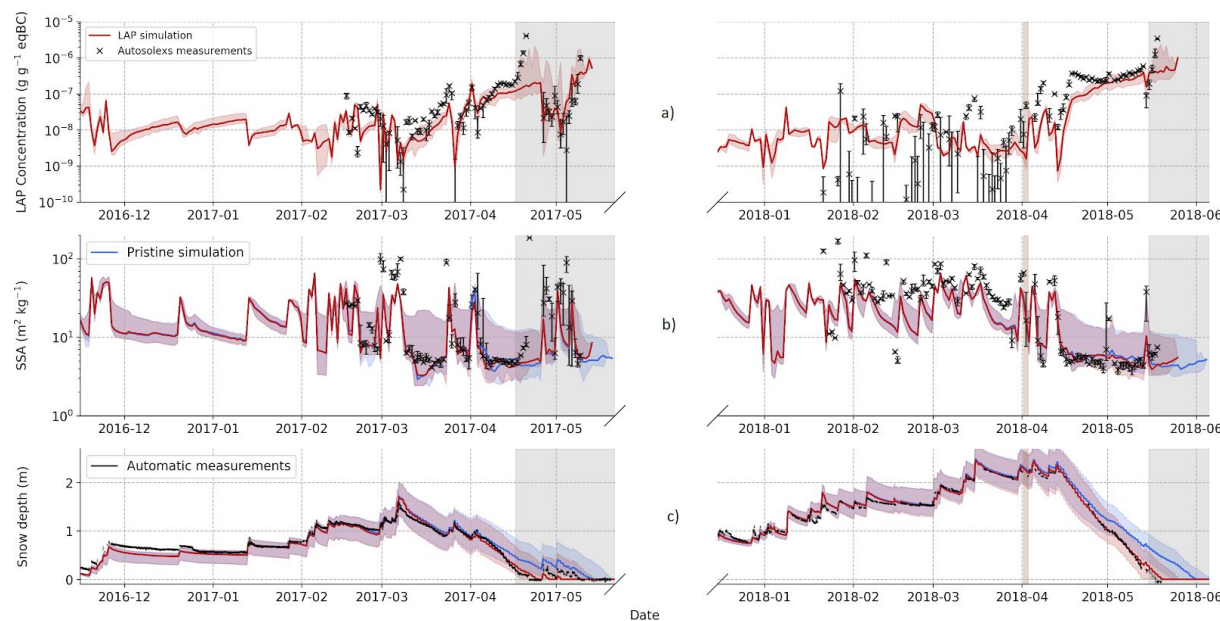
“It is noteworthy that all the Pearson correlation coefficients for AEC presented in Table \ref{tab:LAP} strongly decrease when the regressions are done logarithmically (not shown). The good linear correlation between the different AEC estimates mainly results from two clusters of points: a lower one, with points around 1 ng g^{-1} that are not distinguished from points around 10 ng g^{-1} and a higher one with points featuring concentrations higher than 50 ng g^{-1} . This result is not surprising, as AEC estimations from spectral albedo are expected to have a poor accuracy for low concentrations ($< 10 \text{ ng g}^{-1}$) approximately, e.g. Warren 2013), explaining the low values of logarithmic correlations.”

In the discussion of Figure 5b, page 15 line 29 says “there is no significant bias between Crocus SSA and the measurements”. This figure should be redrawn, plotting SSA on a log scale instead of linear. In the middle of March 2017, the difference is barely distinguishable, but with magnification I can see that the black crosses average $\sim 5.3 \text{ m}^2/\text{kg}$ and the red line $\sim 3.3 \text{ m}^2/\text{kg}$, indicating a factor-of-1.6 disagreement (and corresponding to effective radii r_e of 600 and 1000 microns respectively). The same problem would result from changing the vertical axis to be linear in r_e , because that would shrink the high-SSA region. But there is no reason to prefer either SSA or r_e as the choice for showing area-to-mass ratio, so to be fair the axis should be in $\log \text{SSA}$ (or $\log r_e$); both choices then give the same intervals.

The representation chosen in the original version of the manuscript was indeed clearer for high SSA than for lower ones. Figures 3 and 5 have been redrawn following reviewer’s recommendation (they are presented below this comment) and we believe they now provide a clearer overview of the data for both low and high SSA. Moreover, the relative difference between simulated SSA and the black crosses is significant in the middle of March 2017. This is not a systematic bias as the one observed for high SSAs, but it is worth to be underlined in the description p.17 I.2 : For SSA lower than $15 \text{ m}^2/\text{kg}$ there is no significant bias between Crocus SSA and the measurements, except for a short period in mid-March 2017



New Figure 3



New Figure 5

Page 16 line 12 states “the highest AECs estimated from Autosolex are within the simulated concentrations by our ensemble”. I assume AEC means LAP concentration? If so than the statement is not true. If I am reading Figure 5a correctly, the highest AECs from Autosolex (black crosses) are above the red shading, e.g. 2017-03, 2018-03, 2018-04.

By this sentence, the authors meant that the seasonal maxima of Absorption Equivalent Concentration (AEC; at the end of the ablation phase) was close to the simulated AEC ensemble. However this was not clear and simulated AEC are in fact slightly underestimating autosolex seasonal maximum. This sentence has been reformulated as follows and moved p.17 l.27

During the period with significant RF (April 2017, April and 2018 and May 2018), the AECs estimated from Autosolexs measurements are within or slightly above the concentrations simulated by our ensemble (Figure 5). This means that the simulated RF, presented here, are expected to be representative of Autosolexs measurements or slightly underestimated.

Minor comments:

p 7 line 11. “350 to 1050 nm” What is done to account for the rest of the solar spectrum, 300-350 and 1050-2800 nm?

The instrument only acquires signals in this range of wavelengths. For SSA and LAP content retrieval, this part of the solar spectrum is sufficient.

p 11 Eq.3. Instead of requiring the reader to consult Dumont 2017 (which in turn requires going back to Libois 2013 and Picaro 2016), it would help the reader if the authors would describe this equation briefly. For example, why the factor $32/3$? And I think B has not been defined.

This Section has been modified in order to better explain the core of the spectral albedo model used in the retrieval method. However, the reader may have to read Dumont et al. 2017 in order to understand all technical information related to the retrieval method. Redefining the whole method here would be extremely long and is out of the scope of this study. Finally, the enhancement parameter B has been defined in Section 2.1 defined pg 7 line 5.

p 11 line 20. The definitions have been reversed. The density should be rho-ice, not n-ice.

This mistake has been corrected in the revised version of the manuscript.

p 12 Eq.4. It would be helpful to describe the psi-function. For example, approximately how much dust would be needed to have the albedo-lowering effect of 1 ng/g BC? Dang et al (JGR 2015) estimated a factor of ~ 200 for Saharan dust.

In order to clarify the way the eqBC concentration is computed, the psi function (exactly reproduced from Tuzet et al.2019) has been added in the Appendix A1. As it can be interpreted from this figure, 1 ng/g BC has an albedo-lowering effect 250-290 times stronger than Saharan dust in the range of dust concentrations studied here. Of course, this strongly depends on the hypotheses on dust and BC MAE but gives an order of magnitude

The following sentence has been added in the manuscript p.14 l.9 : Appendix A1 illustrates the hypotheses of BC and dust MAE taken here as well as the psi function. More details about the computation of C_{eqBC} are given in Tuzet et al. 2019 .

p13 Eq.7. The numerator looks wrong. I think it should instead be $E(\text{indirect}) - E(\text{pristine})$.

The numerator is indeed $E(\text{indirect}) - E(\text{pristine})$, the mistake has been corrected in the manuscript. This does not affect the results, all the results of the manuscript were obtained with the correct formula.

p 14 line 2. Change “2c” to “2b”.

Done. p.x l.x, the opposite mistake was also corrected and “2b” became “2c” when mentioning air temperatures.

p 15 line 1. Change “50 g-1” to “50 ng g-1”.

Done.

p 15 line 26. “The dispersion . . . is quite low regarding the median value”. I don’t understand this phrase; perhaps “regarding” is the wrong word.

Indeed, what was meant here was “relative dispersion” and not “dispersion regarding the median value” which was an erroneous formulation. The sentence has been replaced by : “The relative dispersion of near-surface LAP concentrations in the ensemble is moderate, ...” p.16 l.32

p 16 line 17. How can snow cover lower the amount of incoming radiation?

In this sentence, snow cover has to be replaced by cloud cover. The mistake has been corrected p.17 l.22: “cloud cover that lowers the amount of incoming radiation”

p 25 line 32. This paper has now been published in JGR, so the citation can be updated.

The reference has been updated.

Figures 2a and 3c (showing snow depth, with gaps), disagree with Figure 5c (which has no gaps). 2a and 3c will be easier to read if the gaps are filled in.

The snow depths plotted on Figure 5c are exactly the same data as Figure 2a and 3c, the gaps seem to have been filled because of the superposition of the model data but it is only a visual artefact. The authors voluntarily decided to let missing data as they are in order not to plot hypothetical information at dates for which we have no measurements.

Figure 2a has two kinds of vertical blue dashed lines. What is the distinction between the bold lines and the faint lines?

As the ROS vertical lines are plotted with transparency, and as the width of the plotted lines are larger than 1 hour, the ROS events appear with bold lines when their duration is higher than 1 hour.

Figure 2 caption line 1. Reverse (b) and (c). Wind speed is (b).

Done.

Figure 3 caption line 3. “grey diamonds”. I don’t see any grey diamonds.

Indeed, the grey diamonds corresponding to solalb data were not plotted in the original version of the manuscript. This mistake has been corrected as follows :

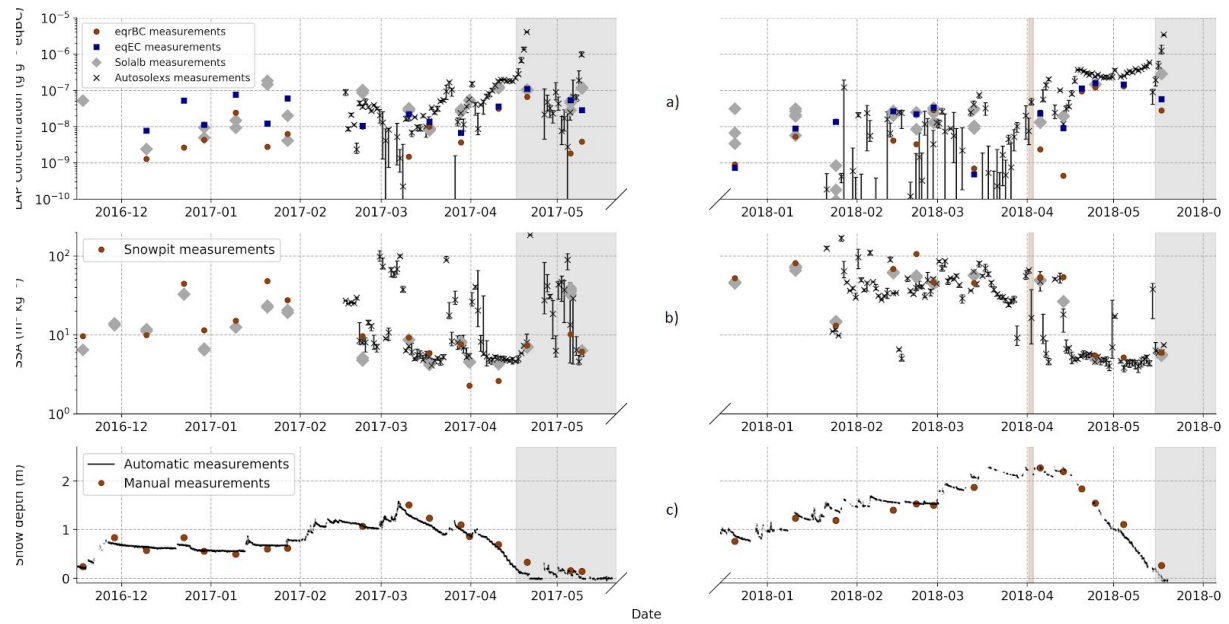


Figure 4. Give units for both horizontal and vertical axes.

Done

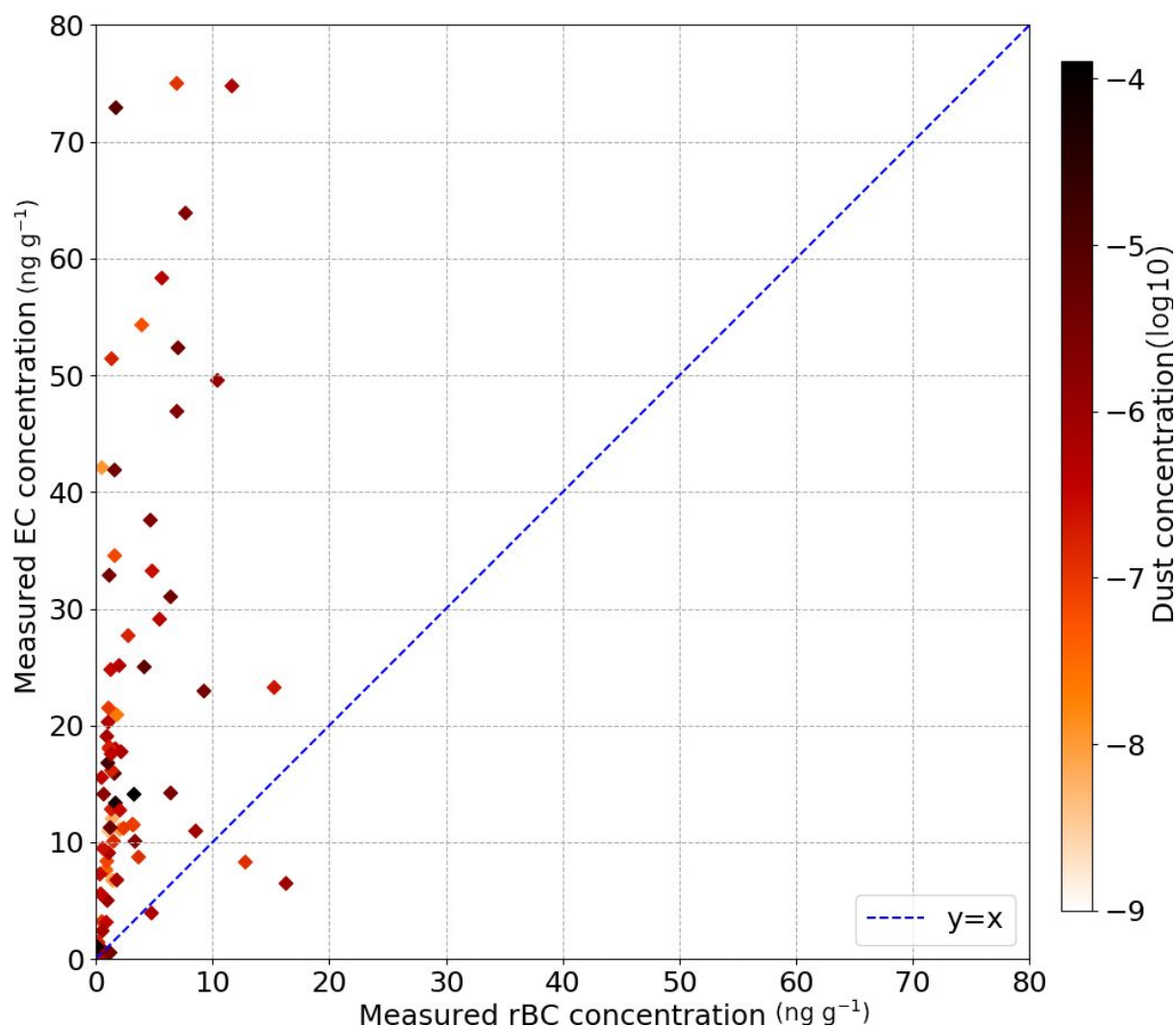


Figure 5. Do the ticks on the horizontal axis mean the beginning of the month or the middle of the month?

For all figures, the horizontal ticks represent the beginning of each month. The following sentence has been added at the end of the legend of Figure 2, which is the first figure to use these temporal ticks : The ticks on the abscissa axis correspond to the first day of each month.

Figure 5 caption line 1. Change “(b)” to “(a)”. Change “(c)” to “(b)”.

Done

Figure 5 caption is confusing. Line 1 says “measured and simulated near-surface LAP”. But no measurements of LAP are actually plotted here. What is plotted is not measured LAP, but rather LAP inferred from albedo.

Based on the terminology defined in the manuscript, LAP concentration has been replaced by AEC in the caption.

Figure 6. The horizontal grid lines for the right-hand plots (2018) differ from those in the left-hand plots (2017), indicating a different scale. But the vertical axis has a scale only on the left-hand plot. Add vertical-axis labels to the 2018 plots.

The yticks were indeed disturbingly positioned in Figure 8 of the original version of the manuscript. After verifying the code, the y-limits were the same on left-hand and right-hand plot so that the data presented already corresponded to the min and max values. The mistake has been corrected in the revised version of the manuscript as follows :

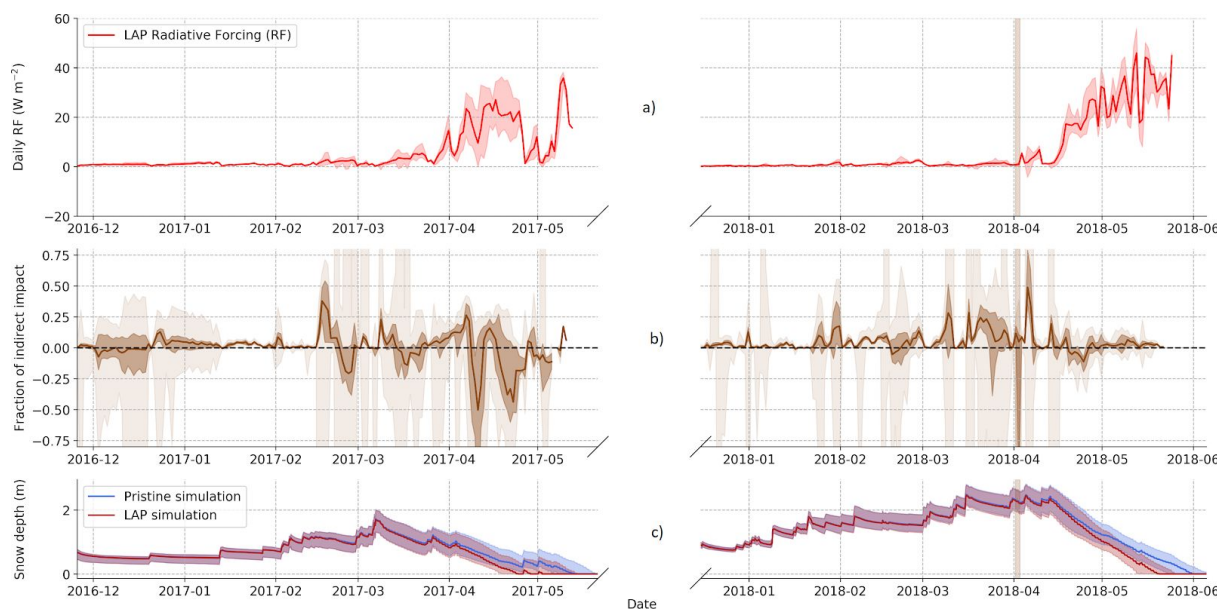


Figure 8 caption last line refers to “brown shading” for the major dust deposition event. I do not see the brown shading.

The extreme dust deposition occurred before the beginning of the selected period. The sentence referring to the brown shading has been removed.

References :

Dumont, M., Laurent, A., Picard, G., Libois, Q., Lejeune, Y., Nabat, P., ... & Morin, S. (2017). *In situ continuous visible and near-infrared spectroscopy of an alpine snowpack. The Cryosphere*, 11(3), 1091.

Tuzet, F., Dumont, M., Arnaud, L., Voisin, D., Lamare, M., Larue, F., ... & Picard, G. (2019). *Influence of light-absorbing particles on snow spectral irradiance profiles. Cryosphere*, 13(8).

Answer to Anonymous Referee #2

We would like to thank Anonymous Referee #2 for his relevant comments pointing out some issues in our manuscript. The comments have been addressed point by point and a detailed response to each comment is provided hereafter.

The reviewer's initial comments are reported in black, our answer in blue and the corrections in the paper are highlighted in red. The line numbers which are used in the answers correspond to the new version of the manuscript.

The manuscript by Tuzet et al. illustrates an interesting dataset of two years of measurements and modeling at the Col du Lautaret experimental site. The site is quite unique and the analysis of those data represents for sure a step forward in the snow science. The manuscript fits well the aim and scope of TC, but I found it a little hasty in some sections. The BC measurements are unprecedented in the Alps, but the presentation should be modified by comparing the concentrations measured in this manuscript with other publications on this topic. It's also important to present the data with the same units (e.g. ppb or ppm) of other studies, so data can be compared. I suggest to present dust concentration in ppm and BC concentration in ppb, and directly compare these concentration with other measurements in other mountain chains or ice sheets.

I think that some further work is needed before publication in TC.

In order to address the first concern of the reviewer on comparisons with other publications, the following table was added to the discussion p.18 l.27 : "Table 2 presents a brief comparison of the surface BC concentration measured in our dataset with results of previous studies in other regions of the world."

Regions	Typical BC content (ng g ⁻¹)	References
Greenland	0.8-4.5	Mori et al., 2019; Doherty et al., 2010, Polashenshki et al., 2015
Arctic	8-60	Doherty et al., 2010 ; Mori et al., 2019
China	20-2000	Wang et al., 2013 ; Ye et al., 2012
North America (including melt)	5-70	Doherty et al., 2014 ; Painter et al., 2012

Antarctic Plateau	0.2-0.6	Grenfell et al., 1999; Warren et al., 2006 .
French Alps (including melt)	0-80	This study
Swiss Alps (including melt)	0-50	Gabbi et al., 2015

Then, concerning the units used to present dust and black carbon concentration, we agree that many studies use ppm and ppb as units for particle concentrations. However, it is ambiguous for non-experts, as ppb may be understood as nmol mol⁻¹ (as is common in atmospheric chemistry), or µg L⁻¹ (as is common in hydrology).

The units used throughout the paper use the international unit system, which is the recommended way. Furthermore by choosing the adequate multipliers ng g⁻¹ and µg g⁻¹, the numbers are the same as with ppb and ppm.

Some specific comments below

pg1 ln1. the abstract is way too long. I suggest to shorten it.

The abstract has been shortened to focus on essential information needed by a reader to comprehend the ins and outs of the paper.

pg3 ln32. add "is" between "concentration" and "determined"

Done

pg4 ln18. those mentioned are not "chemical techniques"

Indeed, the word "chemical" has been removed as some of the mentioned techniques are physical (gravimetry, coulter) and others are chemical (mineralogical properties)

pg4 ln21. add more details regarding the radiative impact of dust on snow

This paragraph of the introduction mainly focuses on the measurement techniques of LAP (dust and BC) while more details on the radiative impact of these LAPs in the region of interest can be found in the second paragraph (e.g p.3 l.16)

pg5 ln10. I suggest to add some discussion also on the paper by Niwano et al. 2012 that made use of SMAP model

The radiative model included in SMAP (PBSAM) was already cited but the coupling with the detailed snow model described in Niwano et al. 2012 was not. The logic of the authors was to focus on a model able to compute LAP indirect impacts, and to our knowledge, SMAP has never been used for such an application. However, the innovative coupling between a detailed snow model and a radiative transfer model makes SMAP totally relevant in this section. The citation has been added in the following sentence p5 l.4: "In contrast, estimating the indirect RF of LAPs -- which accounts for the albedo feedbacks, i.e the interaction between LAP impacts and snow metamorphism -- necessitates a coupling between a radiative transfer model and a snowpack model simulating snow metamorphism (e.g. SMAP; Niwano et al. 2012)."

Section 2 "Materials". this section includes also several methods. I don't understand why the authors separated material and methods in two sections. I suggest to merge them and to harmonize the content.

As underlined by the reviewer, some methods to process field measurements and to process numerical simulations were in Section "Materials. As suggested by the reviewer, the two Sections "Materials" and "Methods" have been merged in a "Materials and Method" section which has been re-organised.

pg7 ln25. How did you measure the slope/aspect? What are the uncertainties in these measurements? How these uncertainties impact on the albedo correction?

The slope under the albedometer light collector was measured with a digital inclinometer Level Development [SOLAR-2-15-2-RS232](#) , which has an accuracy of 0.04 degrees. This inclinometer was fixed to a 3m metal ruler of rectangular section and the ruler was checked to be perfectly straight. A first rough estimation of the direction of maximal slope was done visually . Then, a succession of several measurements were done each 10 degrees around and refined to 5 degrees when approaching the maximal recorded slope. This protocol ensures an aspect measurement with an accuracy better than 5 degrees and a slope angle measurement with an accuracy better than 0.2 degrees. This accuracy is sufficient for an accurate albedo correction (Picard et al., 2020). This paragraph has been modified to explicit the protocol as follows p.9 l.13: Slope inclination and azimuth of the snow surface under the sensor -- that have to be accounted for in the data processing (Dumont et al. 2017) -- are measured after the acquisition with a digital inclinometer Level Development SOLAR-2-15-2-RS232, which has an accuracy of 0.04 degrees. To do so, the azimuth of the greatest slope was first visually determined. Then a series of measurements every 5 degrees around this direction was performed to find the maximum inclination. This protocol ensures an accuracy better than 5 degrees for the aspect measurement and than 0.2 degrees for slope measurement. This accuracy is sufficient for an accurate albedo correction (Picard et al. 2020).

Section 3. I suggest to add more details on the retrieval methods. The reader is continuously addressed to other papers from the same group.

This Section has been modified in order to better explain the core of spectral albedo modelling used in the retrieval method. However, redefining the full method presented by Dumont et al. 2017 would be extremely long and is not the purpose of the present study.

Equation 6. I think it should be $E_{\text{pristine}} - E_{\text{lap}}$

Done

Section 4. from this section I'm missing a comparison between Autosolex, Solalb and simulated spectral albedo

In this study, we choose to compare SSA and AEC for Autosolexs, Solalb and the model instead of the albedo spectra. We rely on the fact that SSA and AEC fully determine (once set the direct-to-diffuse irradiance ratio and the type of impurities) the shape of the spectra for a flat surface, and a comparison wavelength by wavelength would be quite hard to read. We thus believe that it would make the manuscript harder to read to add the comparison of the spectra in addition to comparison of the two parameters retrieved from the spectra, i.e. SSA and AEC.

pg14 ln10. "extreme dust deposition". We still don't know the (climatic) average of dust deposition on snow in the Alps. I suggest to replace "extreme" with "strong".

Done

pg14 ln24. I don't see this regression in the manuscript. it should be added.

The regressions of AEC and SSA have been added in appendix D as follows :

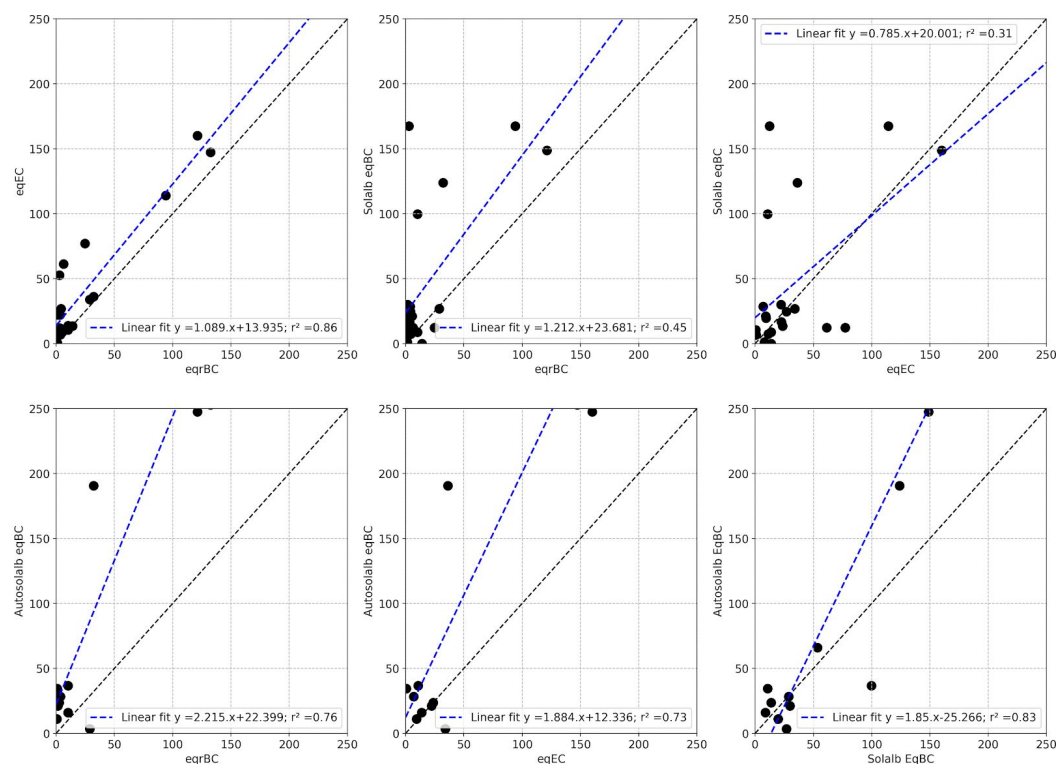


Figure D1 : Comparison between the different estimates of near-surface AEC presented in Section 3.2

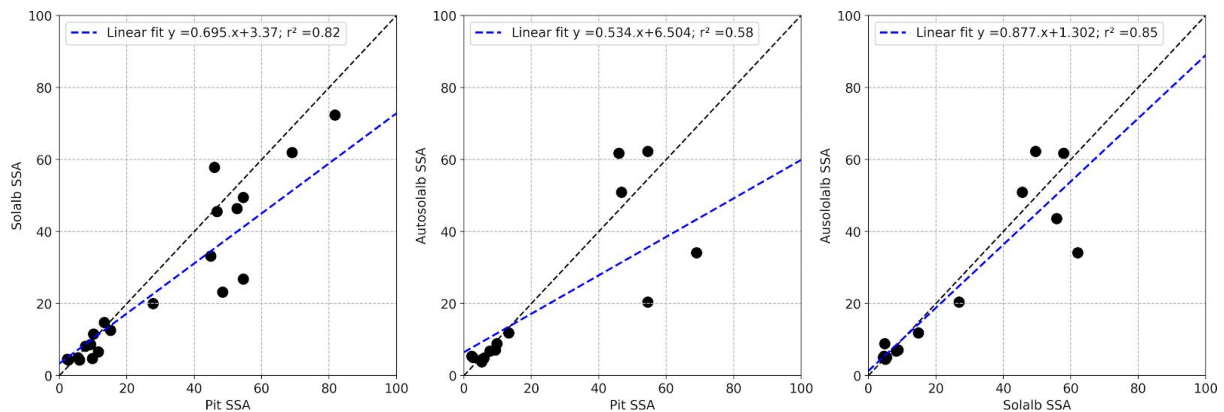


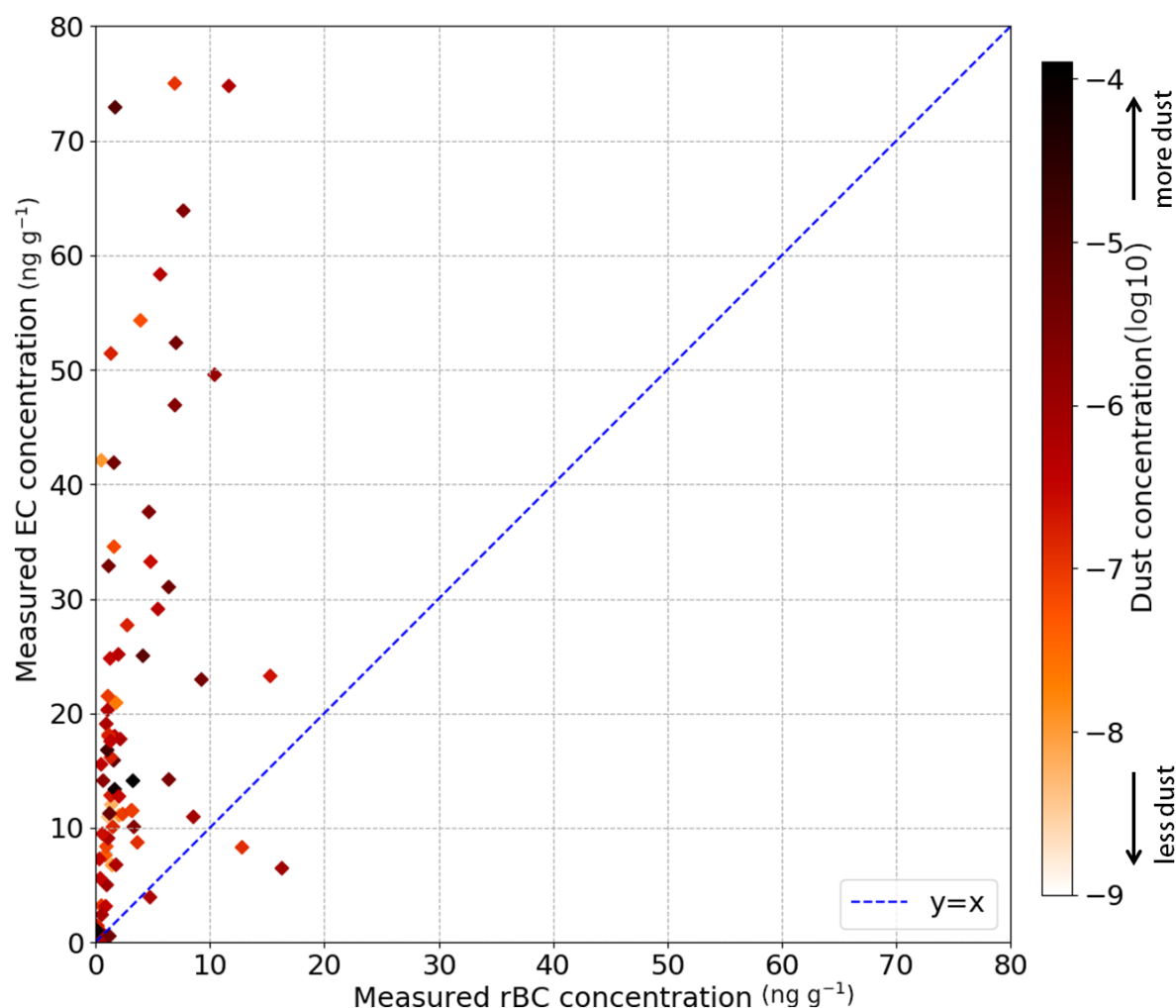
Figure D2 : Comparison between the different estimates of near-surface SSA presented in Section 3.2

The following sentence has also been added p.15 l.12

The present Section compares the different estimates of near-surface properties presented in Figures 3 a) and b) and all the correlations can be found in Appendix B.

Figure 4. Figure 4 is a bit puzzling to me. Units are missing from the axes. From this plot I learn that for $rbC < 10$ (ppb?) all possible values of EC are found in experimental data. Dust color coding is totally useless since it does not add any information to this presentation. More explanation is needed in the text. Authors may also evaluate to delete this plot and find a better way to present these data.

The units have been added on the Figure as follows :



Moreover, the paragraph describing this Figure has been modified in the revised version to bring more explanations about its content: p.15 l.22 ... eqEC is almost systematically higher than eqrBC. This bias is explained by the strong discrepancies between both BC measurement techniques illustrated in Figure 4. This figure presents a comparison of EC and rBC concentrations for all available samples, including samples that are not close to the surface. Each point on this scatter-plot corresponds to a snow sample and it appears that EC concentration is almost systematically higher than rBC concentration. Indeed, the ratio EC/rBC has a mean value around 10 and ranges from 0.5 to 30. This means that BC concentrations obtained by thermal-optical method are on average an order of magnitude higher than those obtained by laser-induced incandescence. Moreover, the ratio EC/rBC does not feature a clear relationship with the dust concentration measured in the sample (represented by the color of the points).

pg15 ln1. "are lower than 50 g⁻¹ eqBC". I thing that ng is missing from the unit.

Thank you, the mistake has been corrected

Figure 3. SSA variability is not particularly clear. Data are very scattered during the accumulation period. This is due to bad retrieval caused by atmospheric variability? the accumulation period of 2018 shows overall higher SSA values with respect to 2017, why? Please describe here or in the discussion section. Always on Figure 3: revise the label in order to present all data in the plot. In

fig3a, the label is missing the autosolex measurements. Fig. 3a also shows an increase of LAP concentration during late April 2017.

The stronger variability during the accumulation period is mostly due to :

1. the succession of different precipitation events and
2. the fastest decrease rate of SSA for high SSA than for low SSA.

As suggested by reviewer #1, the SSA is now represented in log-scale which improves the readability during the accumulation period.

SSA values are generally higher during the accumulation period for 2018 season than for 2017 because 2017 was warm and underwent several rain on snow events during the accumulation period as explained p.16 l.14 : “Higher values are generally observed during the second snow season compared to the first one. High SSA values are usually observed for fresh and cold snow (Legagneux et al. 2002), that was rarely present at the surface during the 2016–2017 season owing to the warm and wet meteorological conditions of the season.”

The labels of Figure 3 and 5 have been modified to present the data in the first panel in which they are used.

I suggest to present in the manuscript also the prescribed BC and dust depositions simulated by the model for the two years investigated.

The deposition fluxes simulated by ALADIN-Climate have been added in Appendix .B as follows:

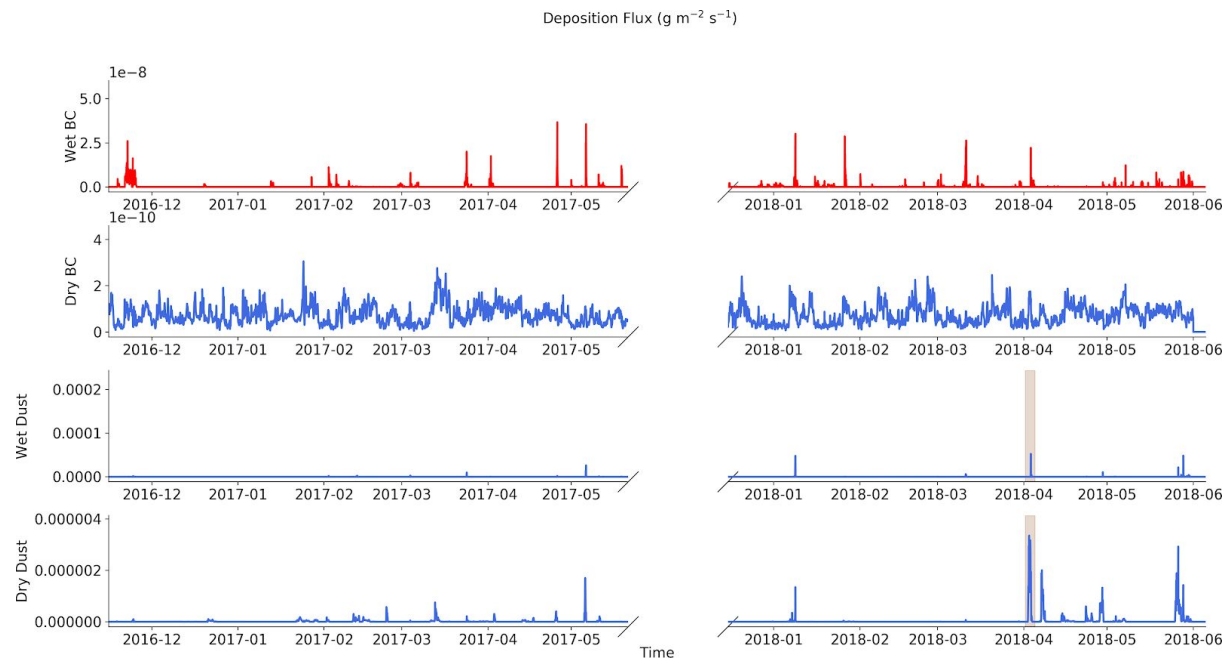


Figure B1 : Different component of ALADIN-Climate deposition fluxes used as inputs for Crocus snowpack model. The strong dust deposition event that occurred in April 2018 is represented by a brown shading. The different panels correspond to wet and dry deposition fluxes for BC and dust, all expressed in g m⁻² s⁻¹.

pg15 In 32. Why $65 \text{ m}^2/\text{kg}$ has been selected as a upper bound for SSA? 0.05mm

For now, the only available metamorphism law based on SSA in Crocus was implemented by Carmagnola et al. 2014 which itself has been adapted from a former metamorphism law based on the optical diameter. In this former metamorphism law, the effective diameter had a low limitation of 0.1mm explaining the upper SSA threshold value of $65 \text{ m}^2/\text{kg}$. As SSA measurements of fresh snow can be higher than this threshold, it should be adapted in the future, but this is out of the scope of this study.

Section 4.4. A comparison between TARTES and Autosolex could be interesting here.

Figure 6. in this figure we only see modeled data. It would be interesting to add also retrieval from autosolex data.

pg13 In1. the RF calculation is here strongly dependent on the simulations. A more useful (and replicable) RF estimation would make use only of Autosolex data. Please add this discussion here or later in the manuscript.

As these three comments refer to the same idea, we provide here a common response. The reviewer suggests to also compute RF directly from Autosolex's measurement to remove the dependence on simulations and to present these results in comparison to model data in Section 4.4 and Figure 6. Our choice of only presenting the results using the simulations was guided by the following reasons :

1. Autosolex's does not provide an absolute measurement of incoming and reflected irradiance (in $\text{W m}^{-2} \text{ nm}^{-1}$), it is not calibrated for this. The irradiance is expressed in arbitrary units and only an irradiance ratio (as the albedo or diffuse to total ratio) is meaningful and well calibrated. As a consequence, Autosolex's does not provide an estimation of the irradiance, and to convert the measurement into an energy in W m^{-2} , a simulated solar irradiance is required.
2. In addition, in order to be useful for the RF calculation, Autosolex's measurements must be (i) corrected from slope effects and (ii) extrapolated outside the measured spectral range (350-1050 nm) to cover the full solar spectrum. Finally, some modeling would be required to estimate a clean snow albedo needed for the calculation of the additional energy absorbed by the snowpack due to LAPs.

As a consequence of (1) and (2), several extrapolations/simulations are required to convert Autosolex's measured signals into RF. We believe that these steps would add a lot of uncertainty in the estimated RF and that the ones simulated by the snow model are of an equal, if not better accuracy. Indeed, for periods when the RF of LAP is the most significant (April 2017, the end of April 2018 and May 2018) the AEC concentrations as well as SSA simulated by our ensemble snowpack simulations are close from the one retrieved from Autosolex's, except at the end of April 2018 where the simulated RF is likely to be slightly underestimated by our model. Note that a RF estimated using only Autosolex's values would also not include indirect radiative forcing.

For the comparison between TARTES and Autosolex's, the reasons are similar. We argue that comparing SSA and AEC is equivalent to comparing spectra, and are much simpler to present and to understand because of the lower dimensionality (i.e. no wavelength)

pg16 ln22. RF values found in this study should be compared with other studies already published.

The recent review of Skiles et al. 2018 makes a full inventory of all RF values found in previous studies. As explained p.20 l.5 “The maximum values of daily and instantaneous RF, around 50 and 200 W m⁻² respectively, are in range with maximum values for Europe that have recently been put together in the complete review of Skiles et al. 2018”.

pg16 ln33. This is strange. The first year featured higher surface concentration of LAPs and a stronger shortening of the snow season. Here the authors should try a process based interpretation of their data. It was BC from the atmosphere? possible input from biomass burning or other emissions? Are there undetected dust events? Giving a look to the albedo spectra may help in the interpretation of LAPs concentration since dust and BC have a different impact on the spectra.

Indeed, the first year features lower LAP surface concentration and some members of the ensemble simulation exhibit a stronger shortening of the season (though the median shortening is smaller). We believe that this counter-intuitive result is particularly interesting as it underlines that the LAP impact does not only depend on the deposited amount but also on the interaction between snow/ground physics and LAP radiative impacts. This is why this result is further discussed in Section 4.2. The following sentence has been added in the manuscript p.18 l.6: So, the upper estimate of $\Delta t_{\text{melt-out}}$ is higher for the first year (20 days) than for the second one (12 days), whereas LAP RF is higher for the second year. This counter intuitive result is further discussed in Section 4.2.1.

As autosolexs estimates of LAP AEC and SSA are consistent with ensemble simulations, we believe that the simulated radiative impact of LAP is of the right order of magnitude. Hence this counter-intuitive result can not be attributed to a LAP deposition issue. Finally, as explained in Section 3.5, the impact of BC and dust are separated in our analysed based on the different impact on the spectra (method p11 l.3)

pg17 ln26. please add some references to the last sentence.

References to Skiles et al. 2019 and Tuzet et al. 2017 have been added after the last sentence.

pg19 ln15. What is a "numerical outcropping"?

We agree that this paragraph was confusing. It has been reformulated to better explain what we call a numerical outcropping, i.e the outcropping of sub-surface layer after the melt of the uppermost layer in the simulation. The new paragraph reads as follows p.20 l.29:

The negative impact, that may be surprising at first, can be explained by the outcropping of a sub-surface layer with a higher SSA than the surface layer when Crocus uppermost layer completely disappears due to melt. In the LAP simulation, LAPs can enhance the melt of the uppermost layer and, in some cases when the underlying layer has a higher SSA, the outcropping of this high SSA layer is occurring earlier than in the pure snow simulations. In this case, the energy absorption can be higher for the pristine simulation (larger surface SSA) than for the indirect simulation (lower surface SSA).

Figure 7. Not particularly informative. I suggest to remove it, and to present average numbers in the text.

According to the authors, this figure is an important result of the manuscript as it underlines the necessity to account for modelling uncertainties when estimating the impact of LAP on snow cover evolution. Presenting median or mean in the text is insufficient to illustrate the difference of dispersion in term of Δ_{SAG} between the two years within the ensemble simulation, which is a valuable and innovative result discussed in Section 5.1 of the manuscript. However, the authors forgot to cite the Figure 7 in this Section which has been corrected in the revised version p.20 l.6 : Nevertheless, the median advance of melt-out date due to LAP is close for both seasons (Figure 7)

Figure 8. not easily understandable. I suggest to think a better way to present these interesting data

Figure 8 has been modified as follows in the new version of the manuscript. The first sentence of the caption has also been modified to clarify what is represented in the Figure.

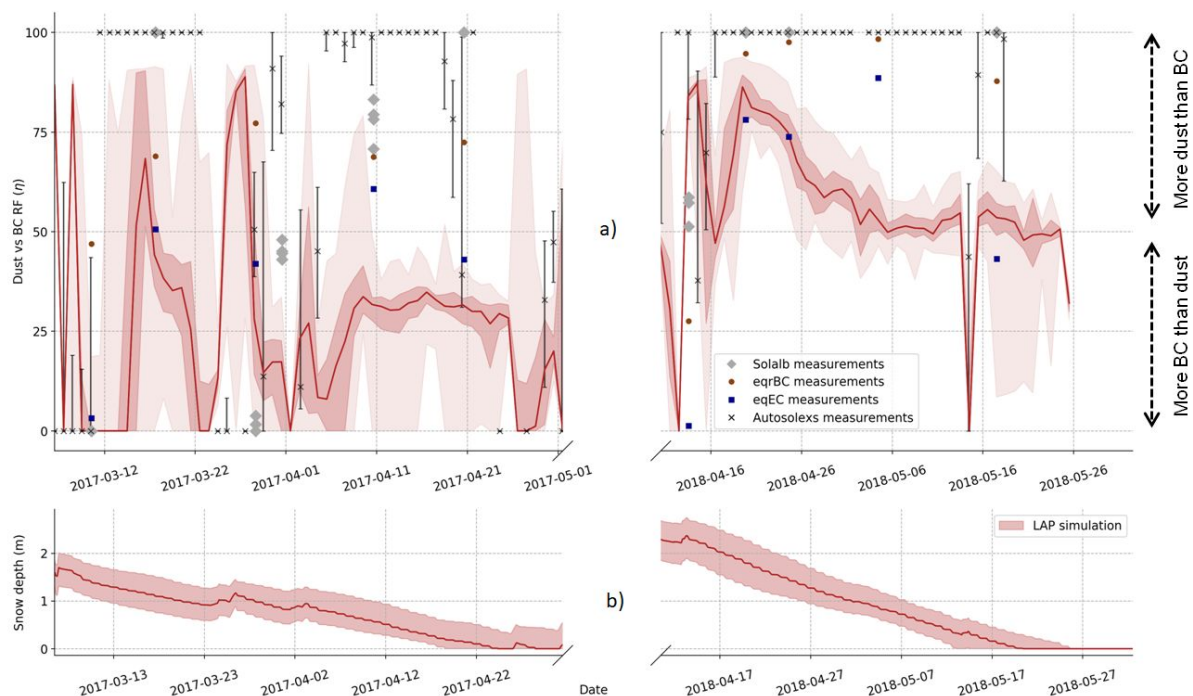


Figure 8 : Percentage of the LAP total RF which is caused by dust (η) during the final ablation period.

Figure A2. Here I don't understand why slope is changing sign during the season. It is very odd and makes me question the slope and aspect retrieval developed by the authors. Are those data somehow validated? It would be also informative to plot the slope-aspect of the underlying terrain.

During the winter seasons, the slope and the aspect of the surface under our automatic albedo sensor were not measured in order to avoid any disturbance of the snow surface, hence the exact slope and aspect when the ground is snow covered are unknown. It has been estimated to 7.5 degrees with an aspect of 165 degrees in Picard et al., 2020 (Section 4.2). The slope estimation is expected to have a lower accuracy for high LAP concentrations explaining why the estimate is

affected by large uncertainties, up to lead to negative values. The following sentence has been added p.11 l.9 : : 'It is noteworthy that the slope and aspect estimation presented on Figure B2 have a better accuracy for low surface LAP concentrations, explaining why they are more stable during the accumulation period'. This has a negligible impact on SSA and impurity retrieval, a retrieval with constant slope (7.5, 165 degrees) have been tested with no significant change of the results presented here.

References :

Carmagnola, C. M., Morin, S., Lafaysse, M., Domine, F., Lesaffre, B., Lejeune, Y., ... & Arnaud, L. (2014). Implementation and evaluation of prognostic representations of the optical diameter of snow in the SURFEX/ISBA-Crocus detailed snowpack model. *The Cryosphere*, 8(2), 417.

Niwano, M., Aoki, T., Kuchiki, K., Hosaka, M., and Kodama, Y. (2012), Snow Metamorphism and Albedo Process (SMAP) model for climate studies: Model validation using meteorological and snow impurity data measured at Sapporo, Japan, *J. Geophys. Res.*, 117, F03008, doi:10.1029/2011JF002239.

Picard, G., Dumont, M., Lamare, M., Tuzet, F., Larue, F., Pirazzini, R., and Arnaud, L.: Spectral albedo measurements over snow-covered slopes: theory and slope effect corrections, *The Cryosphere*, 14, 1497–1517, <https://doi.org/10.5194/tc-14-1497-2020>, 2020.

Skiles, S. M., & Painter, T. H. (2019). Toward understanding direct absorption and grain size feedbacks by dust radiative forcing in snow with coupled snow physical and radiative transfer modeling. *Water Resources Research*, 55(8), 7362-7378.

Skiles, S. M., Flanner, M., Cook, J. M., Dumont, M., & Painter, T. H. (2018). Radiative forcing by light-absorbing particles in snow. *Nature Climate Change*, 8(11), 964-971.

Tuzet, F., Dumont, M., Lafaysse, M., Picard, G., Arnaud, L., Voisin, D., ... & Morin, S. (2017). A multilayer physically based snowpack model simulating direct and indirect radiative impacts of light-absorbing impurities in snow. *Cryosphere*, 11(6).

Modifications of the original manuscript that were not suggested by the referees :

Following the comment of another member of the community, the authors realized that the term Radiative Forcing (RF) should not be used to describe the radiative impact of impurities in snow. The term Surface Radiative Effect would be preferable, however given the common use of the term RF in the community and the numerous acronyms already defined in the manuscript we decided not to change RF for SRE. This has been clarified just after Table 1 p.6 I.3 “Strictly speaking, what is called Radiative Forcing (RF) of LAPs in snow should better be called Surface Radiative Effect. However, given the common use of the term RF in the literature (e.g. Skiles et al. 2018) and the numerous acronyms already defined in this manuscript, we decided to keep the term RF for sake of simplicity. ”

Skiles, S. M., Flanner, M., Cook, J. M., Dumont, M., & Painter, T. H. (2018). Radiative forcing by light-absorbing particles in snow. Nature Climate Change, 8(11), 964-971.

Quantification of the radiative impact of light-absorbing particles during two contrasted snow seasons at Col du Lautaret (2058 m a.s.l., French Alps)

Francois Tuzet^{1,2}, Marie Dumont¹, Ghislain Picard², Maxim Lamare¹, Didier Voisin², Pierre Nabat¹, Mathieu Lafaysse¹, Fanny Larue¹, Jesus Revuelto^{1,3}, and Laurent Arnaud²

¹Univ. Grenoble Alpes, Université de Toulouse, Météo-France, CNRS, CNRM, Centre d'Etudes de la Neige, 38000 Grenoble, France

²UGA, CNRS, Institut des Geosciences de l'Environnement (IGE) UMR 5001, Grenoble, France

³Instituto Pirenaico de Ecología, Consejo Superior de Investigaciones Científicas (IPE-CSIC), Zaragoza, Spain

Correspondence: Marie Dumont (marie.dumont@meteo.fr)

Abstract. The presence of light-absorbing particles (LAPs) in snow leads to a decrease in shortwave albedo, affecting the surface energy budget. ~~Precisely quantifying the impacts of LAPs on snowpack evolution is crucial to characterise the spatio-temporal variability of snowmelt and assess snow albedo feedbacks in detail.~~ However, the understanding of the impacts of LAPs is hampered by the lack of dedicated datasets, as well as the scarcity of models able to represent the interactions between LAPs and snow metamorphism. The present study aims to address both these limitations by introducing a survey of LAP concentrations over two snow seasons in the French Alps, as well as an estimation of their impacts based on the Crocus snowpack model that represents the complex interplays between LAP dynamics and snow metamorphism.

First, ~~we present~~ a unique dataset collected at the Col du Lautaret (2058 m a.s.l.; French Alps) for the two snow seasons 2016–2017 and 2017–2018 is presented. This dataset consists of spectral albedo measurements ~~(manual and automated)~~, vertical profiles of snow specific surface area (SSA), density, and concentrations of ~~refractive Black Carbon (rBC), Elemental Carbon (EC) and mineral dust~~ different LAP species. Spectral albedo ~~data~~ are processed to estimate ~~near-surface~~ SSA and LAP absorption-equivalent concentrations near the surface of the snowpack. These estimates are then compared to chemical measurements of ~~dust and BC concentrations, as well as to SSA measurements acquired by near-infrared reflectometry~~ LAP concentrations and SSA measurements. Our dataset highlights, among others, large discrepancies between ~~the~~ two measurement techniques of ~~BC concentrations, with EC concentrations being one order of magnitude higher than rBC measurements. In view of LAP absorption inferred from albedo measurements, the mass absorption efficiency (MAE) of BC used in our study (11.25 g m⁻² at 550 nm) is more appropriate for EC measurements than for rBC ones~~ Black Carbon (BC) concentrations in snow (namely thermal-optical and laser-induced incandescence).

Second, we present ensemble snowpack simulations of ~~ESCROC~~ — the multi-physics version of the detailed snowpack model Crocus —, forced with in-situ meteorological data as well as dust and BC deposition fluxes from ~~the ALADIN-Climate~~

an atmospheric model. The ~~results of these simulations are compared to the near-surface properties estimated from automatic albedo measurements, showing that the~~ temporal variations of near-surface LAP concentration and SSA are ~~correctly reproduced. The impact of dust and BC on our simulations is estimated by comparing this ensemble to a similar ensemble that does not account for LAPs. The~~ most of the time correctly simulated. The simulated seasonal radiative forcing of LAPs is ~~1.33 times~~ 33 % higher for the 2017–2018 snow season than for the 2016–2017 one, highlighting a strong variability between these two seasons. However, the shortening of the snow season caused by LAPs are similar with 10 ± 5 and 11 ± 1 days for the first and the second snow seasons respectively. This counter-intuitive result is attributed to two small snowfalls at the end of the first season and highlights the importance to account for meteorological conditions to correctly predict the impact of LAPs. The strong variability of season shortening caused by LAPs in the multi-physics ensemble for the first season (10 ± 5 days) also points out

the sensitivity of model-based estimations of LAP impact to modelling uncertainties of other processes. Finally, the indirect impact of LAPs (i.e. the enhancement of energy absorption due to acceleration of the metamorphism by LAPs) is negligible for the two years considered here, contrary to what was found in previous studies for other sites. ~~This finding is mainly attributed to the meteorological conditions of the two studied snow seasons.~~

1 Introduction

Light-absorbing particles (LAPs) such as black carbon (BC) or mineral dust (hereinafter referred to as dust) are important drivers of snow albedo (Warren and Wiscombe, 1980). Indeed, LAPs enhance solar energy absorption in the visible (direct impact), triggering changes in snow properties that further decrease albedo (indirect impacts; e.g. Hansen and Nazarenko, 2004; Painter et al., 2007; Skiles and Painter, 2019). As a consequence, LAPs have a strong effect on snowpack evolution and melt at global and local scales. Since LAPs are present in snow-covered regions worldwide, they have been reported as a powerful climate forcing parameter (Flanner et al., 2007). In some regions, intensive field campaigns have already been conducted, providing a thorough knowledge of local or regional impacts of LAPs (e.g. Doherty et al. (2010) in the Arctic or Skiles et al. (2012) and Painter et al. (2012) in the Rocky Mountains; USA). For instance, dust deposition in the Rocky Mountains was shown to shorten the presence of snow cover by up to 51 days (Skiles et al., 2012). However, the impact of LAPs varies widely at the regional scale, and the recent review from Skiles et al. (2018) recommends to expand local-scale LAP observations.

In the European Alps, the only multi-year records of LAP concentrations are provided by ice cores for high altitude glaciers located mostly above 4000 m. In the 1980s, the analysis of ice cores from several alpine glaciers showed the importance of Saharan dust and BC in this region (De Angelis and Gaudichet, 1991; Thevenon et al., 2009). Gabbi et al. (2015) recently estimated that the mean LAP radiative forcing (RF; i.e the enhancement of shortwave radiation absorption caused by LAPs) at Claridenfirn (Swiss Alps) increased by 3.2 W m^{-2} due to BC and 0.6 W m^{-2} due to dust between 1914 and 2014. De Angelis and Gaudichet (1991) have shown an increasing trend in Saharan dust deposition on glaciers in the French Alps between 1955 and 1985. The increase of extreme Saharan dust deposition events has also recently been confirmed and partly attributed to the Arctic amplification of global warming (Varga et al., 2019). Other ice core analyses in the Alps point out the increase of BC concentration from 1850-1870 to the middle of the 20th century owing to industrialisation (Thevenon et al., 2009; Jenk et al., 2006; Painter et al., 2013).

For seasonal snow, measurements of LAP concentrations in the European Alps are scarcer than long term measurements from ice cores. Such measurements are however essential to gather information about the seasonal evolution of LAPs at lower altitudes. Di Mauro et al. (2015) report detailed measurements of dust concentrations using both a particle counter and gravimetry techniques, but only for samples taken on a single day. A similar dataset is presented in Di Mauro et al. (2019) with one day of dust measurements after a strong deposition event. The longest monitoring program of LAP concentrations in the European Alps is presented by Dumont et al. (2017), covering two months at the end of a snow season at a mid-altitude site (1300 m). To our knowledge, no other intensive LAP monitoring survey has been conducted so far on seasonal snow in the Alps, which strongly limits the understandings of their impacts.

There are mainly two experimental approaches to determine the radiative impact of LAPs in seasonal snow. First, several types of chemical measurement techniques were developed to estimate the concentration of different LAP species in snow. Once the concentration is determined, it can be related to LAP absorption under an assumption of the LAP mass absorption efficiency (MAE), i.e. the absorption efficiency of the LAP by unit of mass (g m^{-1}). Nevertheless, the MAE values for LAPs in snow are poorly constrained due to several problems such as the coating of LAP particles (e.g. Dong et al., 2018) or their mixing-state in

relation to the ice-matrix (e.g. Flanner et al., 2012). Second, an alternative approach consists of using spectral measurements of snow reflectance to infer the radiative impact of LAPs in snow. The method was developed to circumvent the difficulties associated with chemical measurements as well as the aforementioned MAE uncertainties.

Major efforts have been devoted to chemically determining BC concentrations in the atmosphere over the past decades (e.g. Bond and Bergstrom, 2006), all leading to problematic results. Indeed, different experimental methods have been developed, taking advantage of different physical properties of BC aerosols, yet no consensus has ever been reached on a preferential technique to measure BC (e.g. Petzold et al., 2013). For this reason, Petzold et al. (2013) defined a specific terminology for reporting BC measurements, where refractory Black Carbon (rBC) refers to BC measured by laser-induced incandescence (e.g.; Schwarz et al., 2008), Elemental Carbon (EC) to methods based on ~~evolved-carbon~~ thermal-optical methods (e.g. Zanatta et al., 2016) and equivalent Black Carbon (eBC) to methods based on light absorption (e.g. Bond et al., 1999). Strong discrepancies between these different methods are observed. Watson (2005) presents a review of numerous inter-comparisons of BC measurements techniques, highlighting up to 7-fold differences, which lead to a 1 order of magnitude uncertainty in experimental MAE estimations. Moreover, measurement techniques of BC concentrations used for the atmosphere may not be directly transferable to snow. For instance, the size distribution of BC is suspected to be shifted towards bigger particles in snow compared to that in the atmosphere (e.g. Lim et al., 2014; Schwarz et al., 2013), affecting amongst others the influence of the size detection range on the measurement. Additional measurement uncertainties due to the liquid state of the samples are also expected (e.g. nebulisation biases, Schwarz et al., 2012). Strong uncertainties are therefore associated with BC measurements in snow. The concentration of dust in snow can also be measured with various ~~chemical~~ techniques, for instance using particle counters (e.g. Coulter counter in Delmonte et al., 2004), by gravimetry (e.g. Di Mauro et al., 2015), or based on dust mineralogical properties (e.g. De Angelis and Gaudichet, 1991). As the attention paid to dust has been hitherto lower than BC, knowledge of uncertainties of dust concentration measurements in snow is incomplete.

The second approach consists in analysing measurements of snow optical properties to infer the absorption caused by LAPs, exploiting the differences between LAP and ice absorption spectra. To isolate the absorption of LAPs, these methods often rely on spectral band ratios (e.g. Kokhanovsky et al., 2018) and/or on a radiative transfer model (e.g. Dumont et al., 2017; Lamare et al., 2016; Tuzet et al., 2019). The inferred absorption can then be used in two ways. First, assumptions on the incoming radiation make it possible to deduce the RF of LAPs from spectral reflectance measurements (e.g. Painter et al., 2007; Skiles et al., 2012). Second, an assumption on the MAE value of LAPs allows to estimate an Absorption equivalent concentration (AEC) from spectral albedo measurements, i.e. the LAP concentration that would cause the same absorption as observed in albedo measurements. For instance, Dumont et al. (2017) derive temporal series of near-surface AEC from automated spectral albedo measurements. Similar methods have also been applied to data acquired by unmanned aerial vehicles (e.g. Di Mauro et al., 2015) or satellites (e.g. Kokhanovsky et al., 2019). Recently, a method was proposed to estimate AECs of homogeneous snow layers in depth from vertical profiles of spectral irradiance (Tuzet et al., 2019).

A variety of snow radiative transfer models accounting for the impact of LAPs were developed in the last decades (e.g. Warren and Wiscombe, 1980; Stamnes et al., 1988; Flanner and Zender, 2005; Flanner et al., 2007; Aoki et al., 2011; Libois et al., 2013). The direct RF of LAPs can be computed by simulating snow albedo with and without LAPs, using measured or

simulated LAP concentrations (e.g. Hadley and Kirchstetter, 2012), and thus only requires snow radiative transfer modelling. In contrast, estimating the indirect RF of LAPs – which accounts for the albedo feedbacks, i.e the interaction between LAP impacts and snow metamorphism – necessitates a coupling between a radiative transfer model and a snowpack model simulating snow metamorphism – (e.g. [SMAP; Niwano et al., 2012](#)). Tuzet et al. (2017) introduced an explicit representation of LAP deposition and evolution in the Crocus detailed snowpack model (Brun et al., 1989; Vionnet et al., 2012), in which the recent implementation of the Two-stream Analytical Radiative TransfER in Snow model (TARTES, Libois et al., 2013) allows to simulate spectral albedo. These developments make it possible to simulate the indirect impact of LAPs. Skiles and Painter (2019) similarly coupled the snowpack evolution model SNOWPACK (Lehning et al., 2002) and the radiative transfer model SNICAR (SNOW, Ice and Aerosol Radiation model; (Flanner and Zender, 2005)). Tuzet et al. (2017) and Skiles and Painter (2019) estimated that the indirect RF is an efficient mechanism of the RF of LAPs, accounting for 15 to 20 % of the total RF of LAPs. However, detailed snowpack models are affected by many uncertainties coming either from the uncertainties in the atmospheric forcing or from intrinsic uncertainties in the representation of snow physics (modelling uncertainties; e.g. Krinner et al., 2018, Raleigh et al., 2015, Essery et al., 2013). Accounting for these uncertainties is of particular interest since the errors accumulate over time, leading to strong uncertainties at the end of the snow season. Modelling uncertainties have recently been shown to affect the conclusions drawn on the impacts of LAPs using a model-based approach. Indeed, Skiles and Painter (2019) demonstrated that the estimated shortening of the snow season caused by LAPs varies from 30 to 49 days depending on the complexity of the snowpack model used. In this light, a multi-physics ensemble modelling framework called ESCROC (Ensemble System CROCus; Lafaysse et al., 2017) has been developed for Crocus to represent its own modelling uncertainties. The combined use of this ensemble modelling framework and developments of Tuzet et al. (2017) make it possible to represent all the impacts (direct and indirect) of LAPs as well as the modelling uncertainties associated with the other process in the snowpack model.

The present study aims to answer two scientific questions:

- 1) What are the concentrations of BC and dust near the surface of an Alpine snowpack and how do they evolve over two snow seasons?
- 2) What is the impact of these LAPs on the snowpack evolution and more specifically on snow cover duration?

To answer the first question, two years of near-weekly measurements were performed at the Col du Lautaret study site during which the impact of LAPs was determined by both aforementioned approaches. This unique dataset, presented in Section 2.2, consists of 30 measurement days during the 2016–2017 and 2017–2018 seasons. The spectral albedo measurements are first processed to estimate snowpack near-surface specific surface area (SSA) and AECas-described-in-Section-???. These data are then compared to physico-chemical measurements performed in snowpits.

To address the second question, the impact of LAPs on snowpack evolution is then calculated using ensemble simulations with the multiphysics version of Crocus model (ESCROC; Lafaysse et al., 2017) including TARTES ([Section 2.3](#)). Two ensemble simulations accounting or not for the impact of LAP are run and compared to each other, providing an estimate of the impact of LAPs on snowpack evolution and the associated uncertainty. The results of our analysis are presented (Section 3) and discussed (Section 4) before conclusions are drawn (Section 5).

Summary of the acronyms used in the present study

Acronym	Full name
AEC	Absorption equivalent concentration
BC	Black carbon
eqBC	Equivalent black carbon
rBC	Refractory black carbon
eqEC	Equivalent elemental carbon
eqrBC	Equivalent refractory black carbon
DOY	Day of year
EC	Elemental carbon
ESCROC	Ensemble system Crocus
LAP	Light-absorbing particle
MAE	Mass absorption efficiency
RF	Radiative forcing
ROS	Rain on snow
RMSE	Root mean squared error
SSA	Specific surface area
TARTES	Two-stream Analytical Radiative TransfEr in Snow

Strictly speaking, the term "Radiative Forcing (RF) of LAPs in snow" should be called "Surface Radiative Effect". However, given the common use of the term RF in the literature (e.g. Skiles et al., 2018) and the numerous acronyms already defined in this manuscript, we decided to keep the term RF for the sake of simplicity.

2 Materials and methods

2.1 Radiative transfer modelling

In the present study, the radiative transfer modelling is based on the asymptotic analytical radiative transfer theory (AART) theory (Kokhanovsky and Zege, 2004) as formulated in TARTES. The following assumptions are used throughout the manuscript:

- The refractive index of ice is taken from Warren and Brandt (2008).
- We assume that LAP absorption is only due to BC and dust.
- The MAE (mass absorption efficiency) of the LAPs is considered as known. For BC, MAE is derived from the constant BC refractive index advised by Bond and Bergstrom (2006) i.e $m = 1.91 - 0.79i$; the relation is scaled to obtain a MAE value at 550 nm of $11.25 \text{ m}^2 \text{ g}^{-1}$ (Hadley and Kirchstetter, 2012). The scaling makes it possible to implicitly account for

the potential absorption enhancement due to internal particle mixing or particle coating. For dust, as the Saharan desert is the major source of particles observed in European Alps (e.g. Thevenon et al., 2009; Di Mauro et al., 2019), MAE is set to the value for dust from Libya with a diameter inferior to $2.5 \mu\text{m}$ (PM 2.5) suggested by Caponi et al. (2017). This MAE value was chosen amongst several values reported for Saharan dust, because of its good agreement with our spectral albedo measurements. The impacts of this choice are discussed in Tuzet et al. (2019).

- The shape parameters B and g , used to describe the impact of the ice matrix shape in AART theory, are constant over time and the same for all types of snow. These parameters have a small dependency to the wavelength which is a function of the real part of ice refractive index r_i (taken here from Warren and Brandt, 2008) and are expressed as:

$$B(\lambda) = B_0 + 0.4(r_i(\lambda) - 1.3) \quad (1)$$

$$g(\lambda) = g_0 - 0.38(r_i(\lambda) - 1.3). \quad (2)$$

This implementation is adapted from Appendix F of Libois (2014) and comes from Kokhanovsky and Zege (2004)'s theory. The enhancement parameter B_0 is set to 1.6 and the asymmetry factor g_0 is set to 0.845 consistently with previous studies (Libois et al., 2014; Dumont et al., 2017).

2.2 Field measurements

Measurements were collected during the two snow seasons 2016–2017 and 2017–2018 at the Col du Lautaret site ($45^\circ 02' 28.7''\text{N}$, $6^\circ 24' 38.0''\text{E}$) around 2100 m a.s.l. in the French Alps (Figure 1). This site was chosen due to its high elevation and easy accessibility, even during the snow season. The dataset includes automated measurements and manual measurements, the latter acquired over 30 days during the two seasons. The following variables were collected: 1) ~~Automated and manual spectral albedo measurements~~, 2) Snow physical properties from a snowpit including: snow depth, snow water equivalent as well as vertical profiles of SSA, density, temperature and snow type, 3) Vertical profiles of EC, rBC and dust chemical concentrations and 4) ~~Automated and manual spectral albedo measurements~~, 4) Meteorological measurements and snow depth from an Automated Weather Station.

Manual measurements were performed approximately once a week. The actual measurement days were picked to favour stable illumination conditions (fully overcast or clear-sky) thus minimising the uncertainties associated with radiative measurements in changing conditions. All the field sampling and measurements were performed by a single operator for the two seasons, ensuring a stable protocol detailed in the following section.

2.3 Snow spectral albedo measurements

2.2.1 Snowpit measurements

Snowpit measurements were performed on each field day for the uppermost 20 centimetres of the snowpack at least. For each new measurement, the snowpits were dug at least one meter away from the former snowpit's location, at a distance of 5 to 20 meters from the Automated Weather Station. Tuzet et al. (2019) provide a detailed description of these measurements and the most important features of the dataset are recalled below.

Vertical profiles of snow density and snow specific surface area (SSA) were collected. Density was measured with a 6 cm vertical resolution using a cylindrical cutter with a volume of 0.5 L. During the snow season 2016-2017, SSA vertical profiles were collected with the DUFISSS instrument (Dual Frequency Integrating Sphere for Snow SSA measurement; Gallet et al., 2009) at a 3 cm vertical resolution, excluding ice layers. During the snow season 2017–2018, SSA profiles were acquired with the Alpine Snowpack Specific Surface Area Profiler (ASSSAP; Libois et al., 2014). The uncertainty associated with these SSA measurements was estimated to be 10% (Arnaud et al., 2011; Gallet et al., 2009). For both seasons, one to five samples of the surface were measured. For days when several surface samples were collected, the variability was lower than 15% for 95% of the samples, accounting for both the field variability and the measurement uncertainties.

Vertical profiles of dust and refractory Black Carbon (rBC) concentrations were obtained with a 3 cm vertical resolution. For this, snow was sampled in triplicates in sterile 50 mL polypropylene centrifugation tubes. The samples remained frozen until analysis in the laboratory, where they were melted and immediately analysed after nebulisation, using a Single Particle Soot Photometer (SP², Droplet Measurement Technologies), according to the procedure described in Wendl et al. (2014) and further evaluated by Lim et al. (2014), which uses a jet nebulizer (APEX-Q, Elemental Scientific Inc., USA). Dust size distributions and concentrations were measured with a Coulter Counter following Delmonte et al. (2004). The measured sizes span a range of 0.6 to 21 μm and we assume here that insoluble particles above 0.6 μm are mainly dust particles.

The dataset also includes Organic Carbon (OC) and Elemental Carbon (EC) measurements in addition to the dataset described in Tuzet et al. (2019). Snow was sampled with a vertical resolution of 10 to 20 cm, following Voisin et al. (2012), with stainless steel instruments and stored frozen (-30°C) in pre-cleaned borosilicate glass bottles until further processing. Snow was then melted, and a coagulant ($\text{NH}_4\text{H}_2\text{PO}_4$, 1.5g / 100mL; Torres et al., 2014) was added before filtering on precombusted QMA filters. The addition of the coagulant lets BC particles agglomerate and helps increase the filtration efficiency for BC to $\approx 90\%$. This is a key step, as QMA quartz filters in water have typical cutoff diameters around 500nm (Lim et al., 2014; Torres et al., 2014). EC/OC was then quantified on the entire filter (21 mm) by a Thermal Optical Transmission method (Sunset Lab instrument) following the EUSAAR-2 protocol (Cavalli et al., 2010).

In this study, we focus on near-surface SSA and LAP concentrations. To obtain these near-surface properties, all the samples of SSA, dust, rBC and EC collected in the top layer are averaged. Note that the EC dataset has a lower vertical resolution (10 or 20 cm) inducing higher uncertainties in the near-surface concentrations.

2.2.2 Snow spectral albedo measurements

Spectral albedo measurements were acquired using two techniques. First, spectral albedo was acquired automatically every 12 minutes from the 18 February 2017 to 21 May 2018 with the Autosolexs instrument (Picard et al., 2016), installed on the weather station. Autosolexs is a spectral albedometer consisting of two measurement heads at the end of a 3-meter metallic arm extending out from the weather station structure. The first head is equipped with two cosine light collectors, looking downward and upward. This head measures upwelling and downwelling spectral radiation to compute spectral albedo. The second head is equipped with a single upward-looking collector and measures the spectral ratio between diffuse and total incoming illumination – a mandatory quantity for albedo processing. The diffuse radiation is acquired by hiding the direct solar illumination with a thin strip piloted by a sun tracker. The 3 collectors are connected by fibre optics to an optical switch, itself connected to a spectrometer. This device acquires one spectral albedo spectrum and one diffuse-to-total illumination spectral ratio every 12 minutes with an effective resolution of 3 nm from 350 to 1050 nm. A full description of this instrument detailing the hardware specifications and data processing can be found in Picard et al. (2016).

Second, on each observation day, at least three different spectral albedo measurements were acquired manually using a single-channel manual version of the Autosolexs instrument (Picard et al., 2016). This albedometer (Solalb; Larue et al., 2019) is a hand-held instrument made of a single cosine light collector fixed at the extremity of a 3-meter metal bar, with the same characteristics as Autosolexs. The collector is directly connected to the spectrometer by a fibre optic. To obtain an albedo measurement, an upward-looking measurement is first acquired followed by a downward-looking measurement. This operation usually takes up to 30 seconds to execute, the time during which the variations of total incoming irradiance are continuously measured by a photodiode. When the incoming irradiance varied by more than 1% between the upward and downward acquisitions, the acquisition was discarded. A digital inclinometer located on the measurement head gives an instantaneous control on the levelling of the sensor, with a 0.1 degree accuracy. The manual measurements were performed at the same position as the snowpit physical measurements, before any surface disturbance. After the albedo acquisition, the diffuse-to-total ratio is measured by hiding the sun with a thin strip, as with Autosolexs except that the operation is manual. Slope inclination and azimuth of the snow surface under the sensor – that have to be accounted for in the data processing (Dumont et al., 2017) – are measured after the acquisition with a digital inclinometer Level Development SOLAR-2-15-2-RS232, which has an accuracy of 0.04 degrees. To do so, the azimuth of the greatest slope was first visually determined. ~~Succcessive measurements of the maximum inclination around this azimuth were then~~ Then a series of measurements every 5 degrees around this direction was performed to find the maximum inclination. This protocol ensures an accuracy better than 5 degrees for the aspect measurement and than 0.2 degrees for slope measurement. This accuracy is sufficient for an accurate albedo correction (Picard et al., 2020).

2.3 **Snowpit measurements**

2.2.1 LAP and SSA estimation from spectral albedo

~~Snowpit measurements were performed on each field day for the uppermost 20 centimetres of the snowpack at least. For each new measurement~~ Snow spectral albedo varies with snow SSA and LAP concentrations (e.g. Warren and Wiscombe, 1980) as

well as with the solar zenith angle and the relative proportion of direct and diffuse radiation. In order to present a comprehensive interpretation of spectral albedo measurements, the measured spectra are processed to retrieve near-surface SSA and LAP Absorption Equivalent Concentrations (AECs). The AEC is defined as the concentration of LAPs that would cause the same decrease of the visible albedo under the assumption of MAE detailed in Section 2.1.

5 To this end, a 3-step retrieval method adapted from Dumont et al. (2017) is applied. This method consists in optimising the simulated spectral albedo – accounting for direct and diffuse incoming radiation as well as the slope of the surface under the sensor– to estimate SSA and AEC as follows:

1. A scaling value (A), accounting for the small errors of cross-calibration between the upward and downward-looking sensors is estimated over a full season using acquisitions during fully cloudy days when the snowpits were dug at least one meter away from the former snowpit's location, at a distance of 5 to 20 meters from the Automated Weather Station. Tuzet et al. (2019) provide a detailed description of these measurements and the most important features of the dataset are recalled below: irradiance is 100% diffuse.

10 Vertical profiles of snow density and snow specific surface area (SSA) were collected at the same position as the manual albedo acquisitions. Density was measured with a 6 cm vertical resolution using a cylindrical cutter with a volume of 0.5 L. During the snow season 2016–2017, SSA vertical profiles were collected with the DUFISSS instrument (Dual Frequency Integrating Sphere for Snow SSA measurement; Gallet et al., 2009) at a

2. Optimal values of AEC and SSA are estimated from the shape of the spectrum between 400 and 1050 nm accounting for slope, aspect and solar zenith angle. This step is fully described in Section 3. em-vertical-resolution, excluding ice layers. During the snow season 2017–2018, SSA profiles were acquired with the Alpine Snowpack Specific Surface Area Profiler (ASSAP; Libois et al., 2014). The uncertainty associated with these SSA measurements was estimated to be 10% (Arnaud et al., 2011; Gallet et al., 2009). For both seasons, one to five samples of the surface were measured. For days when several surface samples were collected, the variability was lower than 15% for 95% of the samples, accounting for both the field variability and the measurement uncertainties.

25 Vertical profiles of dust and refractory Black Carbon (rBC) concentrations were obtained with a 3 cm vertical resolution. For this, snow was sampled in triplicates in sterile 50 mL polypropylene centrifugation tubes. The samples remained frozen until analysis in the laboratory, where they were melted and immediately analysed after nebulisation, using a Single Particle Soot Photometer (SP², Droplet Measurement Technologies), according to the procedure described in Wendt et al. (2014). Dust size distributions and concentrations were measured with a Coulter Counter following Delmonte et al. (2004). The measured sizes span a range of 0.6 of the article from Dumont et al. (2017), which introduced this complex retrieval method, and is hence not fully detailed here. The main underlying idea is that, according to 21 μm and we assume here that insoluble particles above 0.6 μm are mainly dust particles. AART theory, the spectral variations of snow bi-hemispherical albedo (α ; i.e: the albedo of a semi-infinite scattering medium illuminated by a diffuse source) can

be expressed as a function of snow SSA and LAP concentrations as follows (e.g. Libois et al., 2013):

$$\alpha(\lambda, \text{SSA}, c_i) = \exp(-\sigma(\lambda, \text{SSA}, c_i)), \quad (3)$$

where

$$\sigma(\lambda, \text{SSA}, c_i) = 4 \sqrt{\frac{1 - \omega(\lambda, \text{SSA}, c_i)}{3(1 - g(\lambda))}}, \quad (4)$$

1- ω being the co-single scattering albedo that can be expressed as :

$$1 - \omega(\lambda, \text{SSA}, c_i) = \frac{2}{\text{SSA}} \times \left(\frac{n_{ice}(\lambda)B(\lambda)}{\rho_{ice}} + \sum_i \text{MAE}_i(\lambda)c_i \right), \quad (5)$$

which gives

$$\sigma(\lambda, \text{SSA}, c_i) = \sqrt{\frac{32}{3\text{SSA}(1 - g(\lambda))} \times \left(\frac{4\pi n_{ice}(\lambda)B(\lambda)}{\lambda \rho_{ice}} + \sum_i \text{MAE}_i(\lambda)c_i \right)}. \quad (6)$$

Here, λ is the wavelength, n_{ice} and ρ_{ice} are the imaginary part of ice refractive index and the density respectively. c_i and MAE_i are respectively the AEC and the mass absorption efficiency (MAE) of the LAP type i . This formulation is the core of Dumont et al. (2017) retrieval method and in their study they only account for BC and they express BC MAE as a function of its complex refractive index which gives their Equation 5.

The dataset also includes Organic Carbon (OC) and Elemental Carbon (EC) measurements in addition to the dataset described in Tuzet et al. (2019). Snow was sampled with a vertical resolution of 10 to 20 cm, following Voisin et al. (2012), with stainless steel instruments and stored frozen (-30°C) in pre-cleaned borosilicate glass bottles until further processing. Snow was then melted, and a coagulant ($1.5\text{g}/100\text{mL}$; Torres et al., 2014) was added before filtering on precombusted QMA filters. The addition of the coagulant lets BC particles agglomerate and helps increase the filtration efficiency for BC to $\approx 90\%$. This is a key step, as QMA quartz filters in water have typical cutoff diameters around 500nm (Lim et al., 2014; Torres et al., 2014). EC/OC was then quantified on the entire filter (21 mm) by a Thermal Optical Transmission method (Sunset Lab instrument) following the EUSAAR-2 protocol (Cavalli et al., 2010). In their study, they explicitly mentions the discrepancies caused by the assumption of considering only BC on the shape of the albedo spectrum when dust is present near the surface. To overcome this issue, the formulation of the absorption coefficient σ is modified to explicitly account for dust absorption as follows:

In this study, we focus on

$$\sigma(\lambda, \text{SSA}, c_{BC}, c_{dust}) = \sqrt{\frac{32}{3\text{SSA}(1 - g(\lambda))} \times \left(\frac{4\pi n_{ice}(\lambda)B(\lambda)}{\lambda\rho_{ice}} + \text{MAE}_{BC}(\lambda)c_{BC} + \text{MAE}_{dust}(\lambda)c_{dust} \right)}. \quad (7)$$

This modification make it possible to distinguish BC and dust spectral signature from the shape of the albedo spectra. All other part of the retrieval process are kept conform to Dumont et al. (2017).

- 5 3. Each day, the slope and aspect of the snow surface under the sensor are estimated from the diurnal cycle of spectral albedo.

This method is applied to the albedo acquisitions during which the solar zenith angle was lower than 65° to avoid uncertainties arising with low illumination angles. The estimations of near-surface ~~SSA and LAP concentrations. To obtain these AEC and~~ SSA for which the root mean squared error (RMSE) between the optimal spectrum and the albedo measurement is higher than 0.022 are discarded. More details about the method can be found in Dumont et al. (2017) and additional details about the Autosolexs retrievals are presented in Appendix C. It is noteworthy that the slope and aspect estimation presented on Figure C2 have a better accuracy for low surface LAP concentrations, explaining why they are more stable during the accumulation period.

A similar method is also applied to manual spectral albedo to retrieve near-surface ~~properties, all the samples of SSA, dust, rBC and EC collected in the top layer are averaged. Note that the EC dataset has a lower vertical resolution (10 or 20 cm) inducing higher uncertainties in the SSA and AEC.~~ In this case, we use the slope measured manually as an input of the retrieval algorithm, since the slope estimation can only be computed when a diurnal cycle of albedo is measured. At last, the same method is applied to the spectral albedo computed by Crocus/TARTES (Tuzet et al., 2017) except that the terrain is considered to be flat. The retrieval is executed for each member of the LAP and pristine simulations at noon every day when there is snow on the ground. This provides an ensemble of near-surface ~~concentrations~~ snow SSA and near-surface AEC.

2.3 Ensemble snowpack simulations

Two ensemble simulations of the Crocus snowpack model (Lafaysse et al., 2017) were performed at an hourly time step to simulate the evolution of the snowpack at our study site with and without LAPs. The meteorological forcing and deposition fluxes, as well as the model configuration, are detailed in the following sections.

25 2.3.1 Meteorological forcing

During the two snow seasons, the weather station installed on the study site recorded most of the variables needed to run Crocus, namely air temperature, shortwave and longwave incident radiation, wind speed, atmospheric pressure and relative humidity. For each variable, the forcing for a time step t is computed as the mean of available measurements between $t-1h$ and t . Concerning precipitations, the timing of the precipitation events is taken from SAFRAN reanalysis (Durand et al., 1993) for 2016–2017

and from an unshielded rain gauge installed at the study site for 2017–2018. For both years, the intensity of the precipitations is manually adjusted to reproduce snow depth variations and the phase of the precipitation is determined with a threshold at $+1^{\circ}\text{C}$ (e.g. Aðalgeirsdóttir et al., 2006). Indeed, SAFRAN provides information covering a 1000 km^2 area which can not reflect exactly the local precipitation amount. Furthermore, the intensity of the precipitation measured with the rain gauge – installed
5 just before the beginning of 2017–2018 snow season– was underestimated even after state-of-the art corrections (Klok et al., 2001, Kochendorfer et al., 2017, Morin et al., 2012; data not shown here).

2.3.2 Forcing of LAP deposition fluxes

Aerosol deposition fields come from the regional climate model ALADIN-Climate version 6, described by Daniel et al. (2019). This model includes an interactive tropospheric aerosol scheme, named TACTIC (Tropospheric Aerosols for ClimaTe In CNRM)
10 and presented in Nabat et al. (2015) and Drugé et al. (2019). TACTIC is able to represent the main anthropogenic (sulfate, BC, organic matter, nitrate and ammonium) and natural (dust and sea-salt) aerosol species in the troposphere. These 7 aerosol types are represented through 16 sectional bins also including two gaseous precursors (sulfur dioxide and ammonia), which are prognostic variables in the model: i.e. subject to transport (semi-lagrangian advection, and convective transport), dry deposition, in-cloud and below-cloud scavenging. A simulation was carried out over a regional domain covering Europe, the Mediterranean
15 Sea and Northern Africa, at a 12 km horizontal resolution with 91 vertical levels. From this simulation, the hourly outputs of BC and dust deposition were extracted at the closest grid point to the Col du Lautaret. The deposition fields include both dry and wet deposition mechanisms and are then given as input to the Crocus model to compute the evolution of LAPs and the radiative impact on the snowpack (Tuzet et al., 2017). [All the components of aerosol deposition fluxes used here are presented in Appendix B.](#)

2.3.3 Simulation framework

Ensemble simulations are performed with the multiphysics version of Crocus model (ESCROC; Lafaysse et al., 2017). ESCROC is an ensemble framework running several Crocus simulations with different configurations of snow physical processes to represent modelling uncertainties; each simulation of an ESCROC experiment is called a member. Each member is run using the forcing data presented in the previous sections assuming flat terrain. The height of wind and temperature forcing in the
25 simulations is adjusted to the weather station configuration, i.e. 5.18 m and 3.53 m from the ground respectively. The sensors' distance from the snow surface is then computed by Crocus using the simulated snow depth along the season similarly to the Crocus experiment in Krinner et al. (2018). Moreover, LAP scavenging by meltwater was disabled here because Crocus percolation schemes are highly uncertain. This means that LAPs can not be transported downward in the snowpack by meltwater.

The ensemble used here is composed of 35 members and is similar to the Ensemble E2 described in Lafaysse et al. (2017),
30 whose dispersion has been optimised for a mid-altitude alpine site located less than 100 km from our study site. The only difference with E2 is that TARTES radiative transfer scheme is used for all the members of our study, a requirement of the LAP implementation (Tuzet et al., 2017). The configuration of TARTES is the same for all members of the ensemble and is described in Section 2.1. As a consequence, the modelling uncertainties on radiative transfer scheme are not accounted for.

To investigate the impact of LAP on snowpack evolution, two ensemble simulations are performed. The first one is forced by ALADIN-Climate LAP deposition fluxes and is referred to as the LAP simulation. The second one has the same 35 members but does not account for the impact of LAPs and is referred to as the pristine simulation. The comparison of the LAP simulation with the pristine simulation provides a numerical estimation of LAP impact on snow evolution as well as the associated modelling uncertainties.

3 Methods

2.0.1 Handling of the ensemble simulation

2.1 Radiative transfer modelling

In the present study, the radiative transfer modelling is based on AART theory (Kokhanovsky and Zege, 2004) as formulated in TARTES. The following assumptions are used throughout the manuscript: The different items have not been shown in the diff document because of a problem in the diff package.

2.1 LAP and SSA estimation from spectral albedo

Snow spectral albedo varies with snow SSA and LAP concentrations (e.g., Warren and Wiscombe, 1980) as well as with the solar zenith angle and the relative proportion of direct and diffuse radiation. To present a comprehensive interpretation of spectral albedo measurements, the spectra are processed to retrieve near-surface SSA and LAP Absorption Equivalent Concentrations (AECs). The AEC is defined as the concentration of LAPs that would cause the same decrease of the visible albedo under the assumption of MAE detailed in Section 2.1. To this end, a 3-step method based on Dumont et al. (2017) is applied. This method consists in optimising the simulated spectral albedo—accounting for direct and diffuse incoming radiation as well as the slope of the surface under the sensor—to estimate SSA and AEC as follows:

1. A scaling value (A), accounting for the small errors of cross-calibration between the upward and downward-looking sensors is estimated over a full season using acquisitions during fully cloudy days when the irradiance is 100% diffuse.
2. Optimal values of AEC and SSA are estimated from the spectrum between 400 and 1050 nm accounting for slope, aspect and solar zenith angle. Dumont et al. (2017) consider BC as the only LAP in their AEC estimation, explicitly mentioning the discrepancies caused by this assumption when dust is present near the surface. To overcome this issue, the formulation of the absorption coefficient σ (Equation (5) of Dumont et al. 2017) is modified to explicitly account for dust absorption as follows:

$$\sigma(\lambda, SSA, c_{BC}, c_{dust}) = \sqrt{\frac{32}{3SSA(1 - g(\lambda))} \times \left(\frac{4\pi n_{ice}(\lambda)B(\lambda)}{\lambda\rho_{ice}} + c_{BC}MAE_{BC}(\lambda) + c_{dust}MAE_{dust}(\lambda) \right)}.$$

where SSA is the snow specific surface area, λ is the wavelength, n_{ice} and ρ_{ice} are the density and the imaginary part of ice refractive index respectively, c_i and MAE_i are the AEC and the mass absorption efficiency (MAE) of the impurity type i . The optimal concentration of BC and dust are then determined under the assumptions of MAE described in Section 2.1.

3. Each day, the slope and aspect of the snow surface under the sensor are estimated from the diurnal cycle of spectral albedo.

This method is applied to the albedo acquisitions during which the solar zenith angle was lower than 65° to avoid uncertainties arising with low illumination angles. The estimations of near-surface LAP concentrations and SSA for which the root-mean squared error (RMSE) between the optimal spectrum and the albedo measurement is higher than 0.022 are discarded. More details about the method can be found in Dumont et al. (2017) and additional details about the Autosolexs retrievals are presented in Appendix C. A similar method is also applied to manual spectral albedo to retrieve near-surface SSA and AEC. In this case, we use the slope measured manually as an input of the retrieval algorithm, since the slope estimation can only be computed when a diurnal cycle of albedo is measured. At last, the same method is applied to the spectral albedo computed by Crocus/TARTES (Tuzet et al., 2017) except that the terrain is considered to be flat. The retrieval is executed for each member of the LAP and pristine simulations at noon every day when there is snow on the ground. This provides an ensemble of near-surface snow SSA and near-surface AEC.

2.1 LAP concentration terminology

This study aims at comparing chemically measured LAP concentrations with absorption equivalent concentrations (AEC) estimated from spectral albedo measurements. Here, we chose to present all concentrations as equivalent BC concentrations (eqBC; e.g. Dumont et al., 2017; Tuzet et al., 2019). This eqBC concentration represents the amount of BC that would induce the same absorption as both dust and BC actually present in the snowpack.

For both measured LAP concentrations and optically estimated AECs, the eqBC concentration is calculated as:

$$c_{eqBC} = c_{BC} + \psi(c_{dust}),$$

where c_{BC} , c_{dust} and c_{eqBC} are the BC, dust and eqBC concentrations respectively, ψ is a function computing the BC concentration that would have the same integrated radiative impact from 350 to 900 nm as the input dust concentration. More details about the computation of c_{eqBC} with the same values of BC and dust MAE are given in Tuzet et al. (2019).

In the following, eqBC concentrations from chemical measurements are referred to as eqEC and eqrBC concentrations and are computed applying Equation 10 with c_{BC} equal to the measured rBC or EC respectively.

The fraction of total LAP absorption which is caused by dust (η) is computed as follows:

$$\eta = \frac{\psi(c_{dust})}{c_{eqBC}},$$

with $\eta = 1$ indicating that the radiative impact is solely caused by dust and $\eta = 0$, by BC.

2.1 Handling of the ensemble simulation

Most of the simulation results are represented by the median and the spread (minimum and maximum values) of the ensemble. Due to the ensemble size of 35 members, this spread can be interpreted as the 95% confidence interval of a given diagnostic.

- 5 Unless otherwise specified the spread and the median of the ensemble are calculated considering only the members with snow on the ground. For each member with snow on the ground, several quantities are computed to represent the impact of LAPs and are listed hereafter. Note that all statistics presented in the manuscript exclude periods when the measured automatic snow depth was lower than 20 cm to ensure that albedo measurements are not affected by the signal of the ground.

Radiative forcing (RF)

- 10 At each time step, the instantaneous radiative forcing (RF) of LAP is computed as the difference between the energy absorbed by the whole snowpack in the LAP and the pristine simulations (E_{LAP} and E_{pristine} respectively):

$$RF = E_{\text{LAP}} - E_{\text{pristine}} [W m^{-2}]. \quad (8)$$

The daily RF is computed as a 24 h average of the instantaneous RF.

Indirect impact

- 15 The indirect impact of LAPs is also estimated at each time step as detailed in Tuzet et al. (2017). A simulation accounting only for the indirect impacts of LAP is performed with TARTES offline. For each time step, a TARTES calculation is made using the snowpack physical properties – i.e. the SSA, thickness and density of each layer – of the LAP simulation, but no LAPs. This way, the direct impact of LAP is ignored and only the radiative impact due to change of snow metamorphism is accounted for. This simulation is hereafter referred to as the indirect simulation. For each member and at each time step, the indirect impact
- 20 R_{ind} is computed as

$$R_{\text{ind}} = \frac{E_{\text{LAP}} - E_{\text{indirect}}}{E_{\text{LAP}} - E_{\text{pristine}}} \frac{E_{\text{indirect}} - E_{\text{pristine}}}{E_{\text{LAP}} - E_{\text{pristine}}} = \frac{RF_{\text{indirect}}}{RF}, \quad (9)$$

where RF_{indirect} is the indirect radiative forcing. The daily R_{ind} is computed as the ratio between the daily RF of the indirect simulation and the daily RF of the LAP simulation.

Shortening of the snow season

- 25 For each season, the date of definitive disappearance of the snowpack ($t_{\text{melt-out}}$) is also computed as the last date where there is at least 2 kg m⁻² water equivalent of snow on the ground. The difference between the melt-out dates in the LAP and pristine simulations is written $\Delta t_{\text{melt-out}}$ and corresponds to the shortening of the snow cover duration induced by LAPs.

2.1 LAP concentration terminology

This study aims at comparing chemically measured LAP concentrations with absorption equivalent concentrations (AEC) estimated from spectral albedo measurements. Here, we chose to present all concentrations as equivalent BC concentrations (eqBC; e.g. Dumont et al., 2017; Tuzet et al., 2019). This eqBC concentration represents the amount of BC that would induce the same absorption as both dust and BC actually present in the snowpack.

For both measured LAP concentrations and optically estimated AECs, the eqBC concentration is calculated as:

$$c_{eqBC} = c_{BC} + \psi(c_{dust}), \quad (10)$$

where c_{BC} , c_{dust} and c_{eqBC} are the BC, dust and eqBC concentrations respectively. ψ is a function computing the BC concentration that would have the same integrated radiative impact from 350 to 900 nm as the input dust concentration. Appendix A1 illustrates the hypotheses of BC and dust MAE taken here as well, as the ψ function. More details about the computation of c_{eqBC} are given in Tuzet et al. (2019).

In the following, eqBC concentrations from chemical measurements are referred to as eqEC and eqrBC concentrations and are computed applying Equation 10 with c_{BC} equal to the measured rBC or EC respectively.

The percentage of total LAP absorption which is caused by dust (η) is computed as follows:

$$\eta = \frac{\psi(c_{dust})}{c_{eqBC}}, \quad (11)$$

with $\eta = 100\%$ indicating that the radiative impact is solely caused by dust and $\eta = 0\%$, by BC.

3 Results

3.1 Two contrasted snow seasons

Figure 2 shows the observed evolution of the snow depth and of the meteorological conditions over the snow seasons 2016–2017 and 2017–2018. Figure 2 a) shows the evolution of the snow depth measured by the weather station and the operator on each field day. Rain-on-snow (ROS) events are represented as blue vertical lines and are determined based on the precipitation forcing (see Section 2.3.1). The brown shading corresponds to a major dust deposition that occurred at the beginning of April 2018. Manual and automated measurements are in good agreement, with snow depth differences below 30 cm, despite the horizontal distance between the automatic sensor and the manual measurements (up to 20 m). This highlights the moderate spatial snow depth variability within the study area, despite the occurrence of frequent wind events with wind speeds higher than 6 m s^{-1} for both years (Figure 2 eb).

The evolution of the snowpack is different between the two years. 2016–2017 features low accumulation, with few snowfall events in December and January and most of the snowfalls mixed with rain in February and March. The ablation phase started early, around mid-March and the snowpack first disappeared around 20 April 2017. Two small snowfalls in May rebuilt an

ephemeral snowpack lasting around two weeks. In 2017–2018, the accumulation was higher with many snowfall occurrences from December to mid-April. The ablation phase started approximately one month later, around mid-April and the snowpack completely disappeared one month later around 20 May 2018. Part of these differences can be explained by the temperatures (Figure 2 bc) which were higher for the first year especially in March and at the beginning of April. This meteorological overview underlines the contrast between both seasons in term of snow accumulation, temperatures as well as extreme-strong dust deposition events.

3.2 Measured near-surface properties

Figures 3 a) and b) show the evolution of near-surface properties measured with the different methods presented in Section 2.2 and ???. The near-surface AEC and SSA retrieved from Autosolexs correspond to the daily median value and the error bars correspond to the first and third quartiles of all valid daily measurements. The evolution of these near-surface properties is related to snowfall events and melt phases as illustrated with the evolution of the snow depth in Figure 3 c). The present section compares the different estimates of near-surface properties presented in Figures 3 a) and b) and all the correlations can be found in Appendix D.

Figure 3 a) presents the evolution of near-surface LAP concentrations. In general, a decrease of near-surface concentrations is observed after snowfalls whereas an increase is observed during the melt periods. This surface enrichment is particularly marked at the end of the two snow seasons as the snowpack undergoes strong melt, and LAPs of the melting layers accumulate at the surface (e.g. Sterle et al., 2013). In the second year, a major dust deposition occurred at the beginning of April (brown shading) and was immediately buried by new snowfalls until it reappeared at the surface mid-April, contributing to the observed high LAP concentrations. Table 1 presents the RMSE, bias and Pearson linear correlation coefficients (r^2) between different estimates of near-surface LAPs, AECs, highlighting several conclusions:

1) Both eqrBC (rBC+dust) and eqEC (EC+dust) concentrations from chemical measurements show a good linear correlation ($r^2 \simeq 0.86$) but eqEC is almost systematically higher than eqrBC. To better understand this bias, a direct comparison of EC and rBC measurements concentrations for all available samples, including samples that are not near the surface, is presented in Figure 4. High discrepancies between both BC measurement techniques can be noted with a close to the surface. Each point on this scatter-plot corresponds to a snow sample and it appears that EC concentration is almost systematically higher than rBC concentration. Indeed, the ratio EC/rBC ranging has a mean value around 10 and ranges from 0.5 to 30, and a mean value around 10-30. This means that BC concentrations obtained by thermal-optical method are on average an order of magnitude higher than those obtained by laser-induced incandescence. Moreover, the ratio EC/rBC does not feature a clear relationship with the dust concentration measured in the sample (represented by the color of the points).

2) The AECs retrieved from Autosolexs shows an equally good linear correlation with the LAP concentrations from both types of chemical measurements ($r^2 \approx 0.75$). Autosolexs AECs are systematically higher than chemical measurements, meaning that the measured concentrations are too low to explain the impact on albedo with our assumed MAE values. The difference is more pronounced for rBC measurements than for EC measurements in line with the results of Figure 4. The causes of these

discrepancies are further discussed in Section 4.1. The [linear](#) correlation between Solalb AECs and chemical measurements is low ($r^2 \approx 0.3$ and 0.44 for eqEC and eqrBC respectively). This is mainly due to three measurement days during the first season when Solalb AEC values are higher than 100 ng g^{-1} eqBC while chemical measurements are lower than 50 ng g^{-1} eqBC. The cause of these three outliers is unknown. The values in blue in Table 1 correspond to the statistics computed without these outliers. Once these points are removed, the [linear](#) correlation is good ($r^2 \approx 0.88$ and 0.72 with eqrBC and eqEC respectively). EqrBC concentrations are too low to explain Solalb AEC similarly to Autosolexs AECs. However, there is no significant bias between Solalb AECs and eqEC measurements. Two of the outlier days are before the beginning of Autosolexs measurements, which may explain why the correlation between Autosolexs and chemical measurements is not deteriorated.

It is noteworthy that all the Pearson correlation coefficients for AEC presented in Table 1 strongly decrease when the regressions are done logarithmically (not shown). The good linear correlation between the different AEC estimates mainly results from two clusters of points: a lower one, with points around 1 ng g^{-1} that are not distinguished from points around 10 ng g^{-1} and a higher one with points featuring concentrations higher than 50 ng g^{-1} . This result is not surprising, as AEC estimations from spectral albedo are expected to have a poor accuracy for low concentrations ($< 10 \text{ ng g}^{-1}$ approximately, e.g. Warren, 2013), explaining the low values of logarithmic correlations.

Figure 3 b) shows the evolution of measured and retrieved near-surface SSA. ~~In the case of measurements, higher~~ [Higher SSA](#) values are generally observed during the second snow season compared to the first one. High SSA values are usually observed for fresh and cold snow (Legagneux et al., 2002), that was rarely present at the surface during the 2016–2017 season owing to the warm and wet meteorological conditions of the season. The measured SSA correlates better with SSA retrieved from manual albedo ($r^2 = 0.82$) than with the one retrieved from automated albedo measurements ($r^2 = 0.58$). This may be explained by manual albedo measurements and SSA measurements being performed at the same place and most of the time in a 1 hour time interval, whereas automated albedos are collected up to 20 m from the SSA measurements and are represented by the daily median.

3.3 Ensemble simulations

Figures 5 a) and b) show respectively the near-surface AEC and SSA simulated at noon compared to field measurements. For sake of clarity, simulations were only compared to a single source of measurement: the automated spectral albedos from Autosolexs. We chose Autosolexs because 1) it measures the quantity of interest for this study: the radiative impact of LAP and 2) it has a higher temporal resolution than the manual measurements. All the statistics presented in this section do not account for values in the grey-shaded area, for which the measured automatic snow depth is lower than 20 cm to ensure that Autosolexs measurements are not influenced by the ground.

Figure 5 a) shows the evolution of near-surface AECs estimated from Autosolexs and simulated by the LAP ensemble. The simulated AEC median is correlated with the AEC retrieved from Autosolexs ($r^2 \approx 0.78$), meaning that temporal variations of near-surface AEC are ~~correctly reproduced~~ [generally well reproduced despite periods with lower agreement \(e.g. March 2018\)](#). The simulated LAP absorption is lower than that estimated from Autosolexs, with an AEC bias of around 31 ng g^{-1} . This means that the median LAP absorption in our simulation is slightly underestimated by our modelling framework. The agreement

between the ensemble simulations is lower in April 2018, just after the strong Saharan dust deposition. ~~The, which is discussed in Section 4.2.3. The relative~~ dispersion of near-surface LAP concentrations in the ensemble is ~~quite low regarding the median value moderate~~, which is not surprising because the LAP deposition fluxes and their evolution laws within the snowpack are not perturbed.

5 Figure 5 b) shows the evolution of measured and simulated near-surface SSA. The temporal patterns of SSA evolution are generally well captured by the model. For SSA lower than $15 \text{ m}^2 \text{ kg}^{-1}$ there is no significant bias between Crocus SSA and the measurements ~~-, except for a short period in mid-March 2017.~~ However, for higher SSA values there is a ~~clear-systematic~~ bias between Crocus and measurements, with Crocus systematically predicting lower SSA values. This bias may be explained by Crocus' parameterisation of fresh snow SSA, which is set to never exceed $65 \text{ m}^2 \text{ kg}^{-1}$ whereas values up to $105 \text{ m}^2 \text{ kg}^{-1}$ were
10 measured in the field. It is noteworthy that there are no significant SSA differences between the simulations with and without LAPs. Finally, the dispersion of near-surface SSA within the ensemble is significant for low SSA values, which sometimes vary from 5 to $20 \text{ m}^2 \text{ kg}^{-1}$ depending on the member. This dispersion is explained by the 3 different metamorphism laws used in ESCROC together with the indirect effects of the other perturbed processes.

Figure 5 c) shows the evolution of simulated and measured snow depth over the two snow seasons. There is no significant
15 impact of LAPs on snow depth evolution before the beginning of the ablation phase –i.e, 6 March for the first year and 13 April for the second one. Over this period, both the pristine and the LAP simulations reproduce well the measured snow depth with an RMSE of $\approx 6.5 \text{ cm}$. This is expected as the precipitation forcing was adjusted to fit the snow depth data as used here for the evaluation. Nevertheless, the snow depth observed in the measurements during the ablation phase is better reproduced by the LAP simulation than by the pristine simulation (RMSE $\approx 5.8 \text{ cm}$ and 17.2 cm for the median of LAP and pristine simulation
20 respectively on this period), because the melt-rate is underestimated by the pristine simulation. The dispersion of the ensemble is high in both simulations, with snow depth varying by up to 0.8 m depending on the member.

3.4 LAP radiative impacts and consequence on melt

~~For both snow seasons, the highest AECs estimated from Autosolexs are within the simulated concentrations by our ensemble, meaning that the extreme values of the simulated RF of LAPs are expected to be representative of Autosolexs measurements.~~

25 Figure 6 a) shows the daily RF in W m^{-2} of LAP estimated from ensemble simulations, which increases with time during each snow season as more shortwave energy becomes available from winter to spring. It becomes particularly important during the final ablation phase (Figure 6 c), with the enrichment of LAPs at the surface of the snowpack. This trend is modulated by snowfalls that lead to lower surface eqBC concentrations and ~~snow-cloud~~ cover that lowers the amount of incoming radiation. The seasonal RF of LAPs, computed as the sum of all daily RF, is 1.33 times higher for the second season than for the first
30 one. This is due both to the later triggering of the melt-out phase (and hence occurring with higher solar radiation) and to the higher eqBC concentration (Figure 5 a). The maximum daily RF values of LAPs are estimated around 38.2 and 55.8 W m^{-2} for the first and the second year respectively. Hourly values of the RF (not shown) peak at 125 and 215 W m^{-2} for the first and the second year respectively. During the period with significant RF (April 2017, April and 2018 and May 2018), the AECs estimated from Autosolexs measurements are within or slightly above the concentrations simulated by our ensemble (Figure

5) This means that the simulated RF, presented here, are expected to be representative of Autosolexs measurements or slightly underestimated.

Figure 6 b) shows the evolution of the fraction of the RF of LAPs coming from the indirect impact. The lightest envelope corresponds to all the members while the darkest one corresponds to the first and third quartiles to disregard the impact of outliers. The indirect impact of LAPs strongly varies with time and can be either positive or negative. For both snow seasons, the indirect impact cumulated over the whole season is close to zero (-1 and +1 % of the total RF for 2016–2017 and 2017–2018 seasons respectively). This result is further discussed in Section 4.2.2.

Figure 7 shows the evolution $\Delta t_{\text{melt-out}}$ – i.e. the number of days by which the snow season is shortened – as a function of the melt-out date of the pristine simulation expressed in Day Of Year (DOY). Each point corresponds to a member of the ensemble simulations. The median $\Delta t_{\text{melt-out}}$ is represented by the horizontal lines for each season. $\Delta t_{\text{melt-out}}$ is respectively 10 and 11 days for the first and the second snow season. For the first snow season, $\Delta t_{\text{melt-out}}$ varies widely with the model configuration with most values ranging from 7 to 20 days. For the second snow season, $\Delta t_{\text{melt-out}}$ exhibit a small dependency to the model configuration, with most values between 8 and 12 days. So, the upper estimate of $\Delta t_{\text{melt-out}}$ is higher for the first year (20 days) than for the second one (12 days), whereas LAP RF is higher for the second year. This counter intuitive result is further discussed in Section 4.2.1.

3.5 Apportionment between BC and dust impacts

Understanding the distribution of the direct RF between dust and BC is of importance to model LAP impacts (Skiles et al., 2018), especially at the end of the snow season when this RF is maximal. For both seasons, the RF of LAPs remains low ($< 5 \text{ W m}^{-2}$ daily RF) until the final ablation phase – occurring after the peak of snow accumulation for both seasons (Figure 6 a). Figure 8 a) shows the evolution of η , i.e. the proportion of the RF of LAPs attributed to dust during the final ablation phase.

In the simulations, less impact is attributed to dust for the first year (around 35% in median) than for the second one (around 55% in median). This is mainly due to the major dust deposition of the beginning of April 2018 that outcrops on 19 April, resulting in a high η value of around ~~0.85~~85%. A clear conclusion is hard to draw for the measurements because of the strong discrepancies between the different estimates of η . First, Autosolexs retrieval attributes the whole impact either to BC or to dust, with few intermediate η values. The only information detected is whether dust or BC dominates LAP absorption with no precise quantification of η . Second, the values of η estimated from chemical measurements are higher for eqrBC than for eqEC, due to the strong discrepancy between both BC measurements (Figure 4). The η values corresponding to eqEC are generally closer to simulated values rather than when obtained from rBC values. Considering all measurements together, it seems that dust contributes more to the impact of LAPs during the second season than during the first one, which is in agreement with Crocus simulations. However, simulated η are almost systematically lower than any measurement over both seasons, meaning that too much impact is attributed to BC in the simulation.

4 Discussion

The previous section presents a comparison between different measurements of near-surface SSA and near-surface LAP concentrations. ~~highlighting~~. Table 2 presents a brief comparison of the surface BC concentration measured in our dataset with results of previous studies in other regions of the world. As highlighted in previous studies (e.g. Mori et al., 2019), our BC data

5 highlight large discrepancies between EC and rBC ~~concentration measurements and measurements methods~~, pointing out an issue in our understanding of the related processes. This issue is of particular importance to link chemical concentrations of LAPs to their absorption as discussed in Section 4.1. As MAE uncertainties are already extensively discussed in Tuzet et al. (2019), the focus is placed here on the chemical measurements. The measurements are then compared to ensemble snowpack simulations performed with Crocus. The modelled near-surface AECs are in good agreement with automated albedo observations, meaning

10 that LAP absorption is correctly simulated. Despite the strong difference of RF between the two seasons, the median $\Delta t_{\text{melt-out}}$ are similar for both seasons (10 and 11 days respectively; Section 4.2.1). Finally, there is no significant indirect impact of LAP these to snow seasons, contrary to what was observed in previous studies (Tuzet et al., 2017; Skiles and Painter, 2019; Section 4.2.2).

4.1 On chemical measurements in snow

15 Figure 3 points out a marked bias between eqrBC concentrations and AEC retrieved from spectral albedo measurements, the chemical concentrations being lower. This suggests that the eqrBC concentrations measured chemically in the snowpack are too low to explain the observed LAP absorption under state-of-the-art assumptions about BC MAE. These findings confirm those of Doherty et al. (2016) and Tuzet et al. (2019).

From atmospheric science, we know that MAE values determined from experiments strongly depend on both concentration and absorbance measurement techniques (e.g. Salako et al., 2012; Chan et al., 2011, 2010; Zanatta et al., 2016; Ram and Sarin, 2009; Venkatachari et al., 2006). For instance Chan et al. (2010) suggest that the MAE of BC ranges from 2 to 6 m² g⁻¹ when determined from EC concentration against 8 to 55 m² g⁻¹ when determined from rBC concentrations (Chan et al., 2011). Watson (2005) indicates similar differences of about 1 order of magnitude.

In our case, the observed bias between AEC from spectral albedo and chemistry is significantly reduced when using eqEC measurements instead of eqrBC (Figure 3 a). This is not surprising given the significant bias between eqrBC and eqEC concentrations (Table 1). When focusing on the two types of BC measurements, it appears that for all valid snow samples of our dataset, EC measurements are 10 times higher than rBC measurements on average but EC/rBC ratios range from 0.5 to 30 depending on the sample (Figure 4). Similar findings have recently been ~~observed-highlighted~~ for Arctic snow in ~~the dataset of Mori et al. (2019) and are not unexpected~~. Mori et al. (2019), although to a lesser extent. rBC measurements with an unmodified

30 SP2 instrument (such as used here) are potentially biased low because of the limited size range observed (<600nm). On the opposite, filtration based thermo-optical EC measurements are known to favor particle sizes >600nm Lim et al. (2014). In our case, the latter problem is largely minimized by the introduction of a coagulation step prior to filtration Torres et al. (2014), which increases filtration efficiency to above 90%. This extra coagulation step is usually not implemented, which may explain

why the EC/rBC ratios are higher in our case compared to previous studies. This calls for more systematic comparison of rBC vs EC measurements.

This suggests that the value of BC MAE can not be chosen independently of the measurement technique used for BC. The value used in the present study ($11.25 \text{ m}^2 \text{ g}^{-1}$ at 550 nm) is well adapted for EC but too low for rBC. Similar issues are likely to affect dust measurements, which could explain the divergence between optically estimated AEC and both chemical concentrations at the end of 2017-2018 snow season (when all the estimates of η vary from ~~0.9 to 1.90%~~ to 100%). This issue comes on top of the strong variability reported for LAP absorption efficiency and makes it very challenging to link LAP chemical concentrations to their radiative impact.

4.2 On the impact of LAP on snow cover evolution

4.2.1 Variability of $\Delta t_{\text{melt-out}}$

Figure 6 shows the evolution of the RF of LAPs over the two snow seasons. The maximum values of daily and instantaneous RF, around 50 and 200 W m^{-2} respectively, are in range with maximum values for Europe ~~as suggested by that have recently been put together in the complete review of~~ Skiles et al. (2018). The seasonal radiative forcing of LAPs during the second snow season is higher than during the first one by a factor 1.33. Nevertheless, the median advance of melt-out date due to LAP is close for both seasons (Figure 7). Surprisingly, the maximum $\Delta t_{\text{melt-out}}$ estimated for the first season (20 days) is much higher than for the second one (12 days). These contradictory facts can be reconciled by considering the differences of meteorological conditions between the two snow seasons. Indeed, during the first snow season, two small snowfalls occurred at the beginning of May (Figure 2 a), which deposited $\approx 40 \text{ kg m}^{-2}$ of snow water equivalent according to all the members of the pristine simulation. In contrast, for the LAP simulation, the evolution of these snowfall events strongly varies from a member to another, depending on whether the simulated snowpack has already totally melted out at the beginning of May or not. If the two snowfalls are deposited on bare ground, all or part of the snowfall does not hold on the ground depending on the member. All $\Delta t_{\text{melt-out}}$ higher than 15 days correspond to members in which both snowfalls immediately melt, leaving the ground bare. On the opposite, for members in which the snowfalls are deposited on top of an existing snowpack in LAP simulations – for which the pristine simulation melts after the DOY 135 (15 May) – the median impact is around 8 days, in better agreement with the difference of RF between both years. The intermediate cases correspond to a partial melt of the snowfalls deposited on the ground. These different scenarios explain the high variability of $\Delta t_{\text{melt-out}}$ observed for the first snow season. The lower variability of $\Delta t_{\text{melt-out}}$ between the configurations for the second snow season is explained by the continuity of the snow-cover until the end of the season for all members. These findings highlight the necessity to account for the complex interplay between LAP dynamics in the snowpack, meteorological conditions and the snowpack/ground interactions to accurately estimate LAP impact on melt.

4.2.2 Indirect impact

Previous studies have shown that the indirect impact of LAPs – caused by the enhancement of SSA decrease due to LAP direct RF – represents around 20% of LAP total RF (e.g. Tuzet et al., 2017; Skiles and Painter, 2019). Over the two years considered

here, there is no clear influence of the indirect impact of LAPs. Integrated over the season, the median portion of the RF of LAPs coming from the indirect impact are around -1% and +1% for the first and second year respectively. Furthermore, the strong dispersion of the ensemble indicates that the diagnostic is highly sensitive to the parameterisation of other physical processes in the snowpack model. It is hence of particular importance to account for modelling uncertainties to investigate this process.

- 5 The negative impact, that may be surprising at first, can be explained by the ~~counter-intuitive outcropping of outcropping of~~ a sub-surface ~~layers-layer~~ with a higher SSA than the surface layer ~~in Crocus~~. ~~Indeed, in some cases, the presence of LAPs accelerates the numerical outcropping of a snow layer with a high SSA, while this layer remains buried by snow with low SSA in when Crocus uppermost layer completely disappears due to melt. In the LAP simulation, LAPs can enhance the melt of the uppermost layer and, in some case when the underlying layer has a higher SSA, the outcropping of this high SSA layer is~~
- 10 ~~occurring earlier than in the pure snow simulations. In this case, the energy absorption can be higher for the pristine simulation. This can lead to larger energy absorption by the~~ pristine simulation ~~than by (larger surface SSA) than for~~ the indirect simulation ~~. Given that this process may be physically plausible, we did not discard negative indirect impact values in this study. (lower surface SSA).~~

- The decrease in SSA induced by LAPs is particularly important when snow has a high SSA and, at the same time, contains a
- 15 large concentration of LAPs (Tuzet et al., 2017). These conditions were rarely observed over the two seasons considered here (Figure 5). ROS events and the warm temperatures of the first year maintained low surface SSA values during a major part of the season. During the second season, the only period with high LAP concentrations ($> 50 \text{ ng g}^{-1} \text{ eqBC}$) and high SSA values ($\approx 40 \text{ m}^2 \text{ kg}^{-1}$) is around 15 March 2018. During the two following weeks, the indirect impact of LAP was around 15–20%. These findings suggest a strong dependence of the indirect impact of LAPs to both meteorological conditions and LAP deposition.
- 20 Under the conditions observed during the two seasons studied here, the indirect impact of LAP is particularly inefficient.

4.2.3 BC vs. dust

- Figure 5 a) highlights a strong underestimation of near-surface concentrations of LAPs around 20 April 2018. This period corresponds to the outcropping of a layer containing dust from the major deposition that occurred two weeks before. During the following weeks, the measured concentration remained stable while the simulated concentration continued to rise significantly,
- 25 finally reaching the measured values. During the same time (20 April to 30 April), the value of η –i.e. the proportion of LAP absorption caused by dust – decreases noticeably (Figure 8 a). This feature suggests that the strong dust deposition at the beginning of April is underestimated by ALADIN-Climate and that the match between measured and simulated concentrations at the end of the season is due to compensation by BC. This confirms the findings of Tuzet et al. (2017) who show that major Saharan dust deposition events are underestimated by ALADIN-Climate. More generally, at the end of both seasons, all η values
- 30 measured are higher than the simulated ones. This means that the good agreement between measured and simulated AEC is due to compensation between the overestimation of BC deposition and the underestimation of dust deposition, reinforcing the hypothesis of Tuzet et al. (2017). As a consequence, care should be taken to expand the conclusion of this study to other regions.

5 Conclusion

This study provides an analysis of a unique dataset collected at Col du Lautaret (2058 m a.s.l., French Alps) site during two snow seasons featuring contrasted meteorological conditions. This dataset comprises automated measurements of spectral albedo and meteorological variables as well as 30 days of manual measurements of spectral albedo, and vertical profiles of snow physical and chemical properties. Spectral albedo measurements are first processed to estimate near-surface SSA and AEC of the snowpack. Then the estimates are compared to the snowpit measurements. Near-surface SSA retrieved from spectral albedo measurements and measured in the snowpit are overall in good agreement. However, our dataset highlights strong discrepancies between different chemical measurements techniques for BC, with a mean EC/rBC ratio around 10 on average and ranging from 0.5 to 30. These results underline the need to better understand what is precisely measured by each chemical measurement technique in snow and how to relate each type of measurements to their radiative impact. Indeed discrepancies between chemical measurements and radiative retrievals from spectral albedo are reduced by using EC measurement rather than rBC measurements under our assumption of BC MAE ($11.25 \text{ m}^2 \text{ g}^{-1}$ at 550 nm). This issue is particularly critical for studies focusing on the impact of BC on Arctic and Antarctic snow because in these regions the BC concentrations are often too low to be detected from reflectance measurements. Further studies should aim at comparing the different methods of LAP concentration measurements in snow with concomitant measurements of the induced absorption, as it has been done for BC in atmospheric sciences. Moreover, Bergmann et al. (2019) have recently shown the presence of microplastics in snow in remote snow-covered areas. We thus recommend further work to determine if this new type of particle in snow 1) has a significant radiative impact; and 2) affects uncertainties of other LAP concentration measurements.

This dataset is also compared to ensemble snowpack simulations performed with the Crocus detailed snowpack model. Two ensemble simulations are performed, one assuming that no LAPs are deposited on the snowpack and another one using BC and dust deposition fluxes from the ALADIN-Climate atmospheric model. This simulation framework makes it possible to isolate the impact of LAPs on snowpack evolution while accounting for modelling uncertainties. Near-surface properties of Crocus simulations are in good agreement with measured values, except for a marked SSA bias for high SSA values. This bias is probably due to the parameterisation of the SSA of fresh snow in Crocus. Near-surface LAP concentrations computed by ensemble simulations using ALADIN-Climate as a deposition forcing are in good agreement with automated spectral albedo measurements. The temporal evolution, as well as the extreme values at the end of the season, are correctly simulated. The radiative impact is hence expected to be captured by our simulations even if ~~extreme~~strong dust deposition events seems to be underestimated as hypothesised in Tuzet et al. (2017).

By comparing the pristine simulation to the LAP simulation, the RF of LAPs is estimated, with maximal values of 58 W m^{-2} and 215 W m^{-2} for daily averaged and instantaneous RF respectively, over the two seasons. The RF of LAP is higher for the second snow season which was affected by a major dust deposition event but the median impact on snow cover duration is similar for both seasons: 10 and 11 days respectively. This is due to complex interactions between meteorological conditions and snow-LAP synergy, especially for the first year when the LAP on the duration of snow cover varies from 5 to 20 days depending on the model configuration. Even though the LAP concentrations are similar in each member of our ensemble, there are strong

differences in terms of snow cover duration due to modelling uncertainties. This highlights the need to better constrain snowpack modelling, by assimilating observations for example. As our ensemble framework accurately represents the evolution of visible (AEC concentrations) and near-infrared (SSA) reflectances, it would provide a reasonable first guess for further assimilation of optical satellite reflectance; at least at the studied location for these two particular seasons. An analysis over a longer period and
5 at a larger scale would be needed to extend our findings.

Lastly, our results show that the indirect impact of LAPs – i.e. the enhancement of snow metamorphism induced by LAPs – is negligible. These findings, for the two particular snow seasons studied here at the Col du Lautaret study site, differ from the results of previous studies estimating this impact to be around 15–20 % of LAP total RF. Here strong LAP concentrations near the surface of the snowpack only occur when SSA is already low, explaining the inefficiency of the indirect impact. This suggests
10 that the seasonal indirect impact depends on meteorological conditions and on the timing of LAP deposition on the snowpack. It is hence necessary to explicitly account for the coupling between LAP deposition and snowpack evolution to reproduce the spatio-temporal variability of LAP indirect impact. This could not be captured with simple snow modelling approaches.

Author contributions

F. Tuzet led the study and was in charge of the field measurement campaign over the two seasons. F. Tuzet along with M.
15 Dumont and G. Picard performed the major part of the data analysis. L. Arnaud and G. Picard developed the Autosolexs and Solalb instruments and the associated processing library. M. Lamare had a significant contribution to improve the writing of the manuscript. D. Voisin supervised the chemical measurement analysis. M. Lafaysse made it possible to realise ensemble snowpack simulations with ESCROC. P. Nabat provided the ALADIN-Climate simulations. M. Lamare, F. Larue and J. Revuelto had a major contribution in the field data acquisition. All authors contributed to the manuscript.

20 Acknowledgements

CNRM/CEN and IGE are part of Labex OSUG@2020 (investissement d’avenir - ANR10 LABX56). This study was supported by the ANR programs 1-JS56-005-01 MONISNOW and ANR-16-CE01-0006 EBONI; the INSU/LEFE projects BON and ASSURANCE; the Ecole Doctorale SDU2E of Toulouse and the CNES APR grant MYOSOTIS. This research was at least partially supported by Lautaret Garden-UMS 3370(Univ.Grenoble Alpes, CNRS, SAJF, 38000 Grenoble, France), member
25 of AnaEE-France (ANR-11-INBS-0001AnaEE-Services, Investissements d’Avenir frame) and of the eLTER-Europe network (Univ. Grenoble Alpes, CNRS, LTSER Zone Atelier Alpes, 38000 Grenoble, France). The authors are grateful to LISA and PSI for chemical analysis of snow samples presented in this study.

Code availability

The code used to produce the figures and process the data are available from the corresponding authors upon request.

Data availability

The dataset will be published on an open-access platform (with a DOI) after the review process.

Competing interests

The authors declare that they have no conflict of interest.

References

- Aðalgeirsdóttir, G., Jóhannesson, T., Björnsson, H., Pálsson, F., and Sigurðsson, O.: Response of Hofsjökull and southern Vatnajökull, Iceland, to climate change, *Journal of Geophysical Research: Earth Surface*, 111, 2006.
- Aoki, T., Kuchiki, K., Niwano, M., Kodama, Y., Hosaka, M., and Tanaka, T.: Physically based snow albedo model for calculating broadband albedos and the solar heating profile in snowpack for general circulation models, *J. Geophys. Res.*, 116, <https://doi.org/10.1029/2010JD015507>, 2011.
- Arnaud, L., Picard, G., Champollion, N., Domine, F., Gallet, J.-C., Lefebvre, E., Fily, M., and Barnola, J.-M.: Measurement of vertical profiles of snow specific surface area with a 1 cm resolution using infrared reflectance: instrument description and validation, *J. Glaciol.*, 57, 17–29, <https://doi.org/10.3189/002214311795306664>, 2011.
- Bergmann, M., Mützel, S., Primpke, S., Tekman, M. B., Trachsel, J., and Gerdt, G.: White and wonderful? Microplastics prevail in snow from the Alps to the Arctic, *Science Advances*, 5, eaax1157, 2019.
- Bond, T. C. and Bergstrom, R. W.: Light absorption by carbonaceous particles: An investigative review, *Aerosol science and technology*, 40, 27–67, 2006.
- Bond, T. C., Anderson, T. L., and Campbell, D.: Calibration and intercomparison of filter-based measurements of visible light absorption by aerosols, *Aerosol Science & Technology*, 30, 582–600, 1999.
- Brun, E., Martin, E., Simon, V., Gendre, C., and Coléou, C.: An energy and mass model of snow cover suitable for operational avalanche forecasting, *J. Glaciol.*, 35, 333 – 342, 1989.
- Caponi, L., Formenti, P., Massabo, D., Biagio, C. D., Cazaunau, M., Pangui, E., Chevaillier, S., Landrot, G., Andreae, M. O., Kandler, K., et al.: Spectral-and size-resolved mass absorption efficiency of mineral dust aerosols in the shortwave spectrum: a simulation chamber study, *Atmospheric Chemistry and Physics*, 17, 7175–7191, 2017.
- Cavalli, F., Viana, M., Yttri, K. E., Genberg, J., and Putaud, J.-P.: Toward a standardised thermal-optical protocol for measuring atmospheric organic and elemental carbon: the EUSAAR protocol, *Atmospheric Measurement Techniques*, 3, 79–89, 2010.
- Chan, T., Huang, L., Leaitch, W., Sharma, S., Brook, J., Slowik, J., Abbatt, J., Brickell, P., Liggio, J., Li, S.-M., et al.: Observations of OM/OC and specific attenuation coefficients (SAC) in ambient fine PM at a rural site in central Ontario, Canada, *Atmospheric Chemistry and Physics*, 10, 2393–2411, 2010.
- Chan, T., Brook, J., Smallwood, G., and Lu, G.: Time-resolved measurements of black carbon light absorption enhancement in urban and near-urban locations of southern Ontario, Canada, *Atmospheric Chemistry and Physics*, 11, 10407–10432, 2011.
- Daniel, M., Lemonsu, A., Déqué, M., Somot, S., Alias, A., and Masson, V.: Benefits of explicit urban parameterization in regional climate modeling to study climate and city interactions, *Climate Dynamics*, 52, 2745–2764, 2019.
- De Angelis, M. and Gaudichet, A.: Saharan dust deposition over Mont Blanc (French Alps) during the last 30 years, *Tellus B*, 43, 61–75, 1991.
- Delmonte, B., Petit, J., Andersen, K. K., Basile-Doelsch, I., Maggi, V., and Lipenkov, V. Y.: Dust size evidence for opposite regional atmospheric circulation changes over east Antarctica during the last climatic transition, *Climate Dynamics*, 23, 427–438, 2004.
- Di Mauro, B., Fava, F., Ferrero, L., Garzonio, R., Baccolo, G., Delmonte, B., and Colombo, R.: Mineral dust impact on snow radiative properties in the European Alps combining ground, UAV, and satellite observations, *Journal of Geophysical Research: Atmospheres*, 120, 6080–6097, 2015.

- Di Mauro, B., Garzonio, R., Rossini, M., Filippa, G., Pogliotti, P., Galvagno, M., Morra di Cella, U., Migliavacca, M., Baccolo, G., Clemenza, M., et al.: Saharan dust events in the European Alps: role in snowmelt and geochemical characterization, *The Cryosphere*, 13, 1147–1165, 2019.
- Doherty, S. J., Warren, S. G., Grenfell, T. C., Clarke, A. D., and Brandt, R. E.: Light-absorbing impurities in Arctic snow, *Atmos. Chem. Phys.*, 10, 11 647–11 680, <https://doi.org/doi:10.5194/acp-10-11647-2010>, 2010.
- Doherty, S. J., Dang, C., Hegg, D. A., Zhang, R., and Warren, S. G.: Black carbon and other light-absorbing particles in snow of central North America, *Journal of Geophysical Research: Atmospheres*, 119, 12–807, 2014.
- Doherty, S. J., Hegg, D. A., Johnson, J. E., Quinn, P. K., Schwarz, J. P., Dang, C., and Warren, S. G.: Causes of variability in light absorption by particles in snow at sites in Idaho and Utah, *Journal of Geophysical Research: Atmospheres*, 121, 4751–4768, 2016.
- 10 Dong, Z., Kang, S., Qin, D., Shao, Y., Ulbrich, S., and Qin, X.: Variability in individual particle structure and mixing states between the glacier–snowpack and atmosphere in the northeastern Tibetan Plateau, *The Cryosphere*, 12, 3877–3890, <https://doi.org/10.5194/tc-12-3877-2018>, <https://www.the-cryosphere.net/12/3877/2018/>, 2018.
- Drugé, T., Nabat, P., Mallet, M., and Somot, S.: Model simulation of ammonium and nitrate aerosols distribution in the Euro-Mediterranean region and their radiative and climatic effects over 1979–2016, *Atmospheric Chemistry and Physics*, 19, 3707–3731, <https://doi.org/10.5194/acp-19-3707-2019>, 2019.
- 15 Dumont, M., Arnaud, L., Picard, G., Libois, Q., Lejeune, Y., Nabat, P., Voisin, D., and Morin, S.: In situ continuous visible and near-infrared spectroscopy of an alpine snowpack, *The Cryosphere*, 11, 1091–1110, <https://doi.org/10.5194/tc-11-1091-2017>, <http://www.the-cryosphere.net/11/1091/2017/>, 2017.
- 20 Durand, Y., Brun, E., Mérindol, L., Guyomarc’h, G., Lesaffre, B., and Martin, E.: A meteorological estimation of relevant parameters for snow models, *Ann. Glaciol.*, 18, 65–71, http://www.igsoc.org/annals/18/igs_annals_vol18_year1993_pg65-71.html, 1993.
- Essery, R., Morin, S., Lejeune, Y., and Menard, C. B.: A comparison of 1701 snow models using observations from an alpine site, *Advances in water resources*, 55, 131–148, <https://doi.org/10.1016/j.advwatres.2012.07.013>, 2013.
- Flanner, M., Liu, X., Zhou, C., and Penner, J.: Enhanced solar energy absorption by internally-mixed black carbon in snow grains, *Atmos. Chem. Phys.*, 12, 4699–4721, <https://doi.org/doi:10.5194/acp-12-4699-2012>, 2012.
- 25 Flanner, M. G. and Zender, C. S.: Snowpack radiative heating: Influence on Tibetan Plateau climate, *Geophysical Research Letters*, 32, n/a–n/a, <https://doi.org/10.1029/2004GL022076>, <http://dx.doi.org/10.1029/2004GL022076>, 106501, 2005.
- Flanner, M. G., Zender, C. S., Randerson, J. T., and Rasch, P. J.: Present-day climate forcing and response from black carbon in snow, *J. Geophys. Res.*, 112, D11 202, <https://doi.org/10.1029/2006JD008003>, 2007.
- 30 Gabbi, J., Huss, M., Bauder, A., Cao, F., and Schwikowski, M.: The impact of Saharan dust and black carbon on albedo and long-term mass balance of an Alpine glacier, *The Cryosphere*, 9, 1385–1400, 2015.
- Gallet, J.-C., Domine, F., Zender, C. S., and Picard, G.: Measurement of the specific surface area of snow using infrared reflectance in an integrating sphere at 1310 and 1550 nm, *The Cryosphere*, 3, 167 – 182, <https://doi.org/10.5194/tc-3-167-2009>, 2009.
- Grenfell, T. and Warren, S.: Representation of a nonspherical ice particle by a collection of independent spheres for scattering and absorption of radiation, *Journal of Geophysical Research*, 104, 31 697–31 709, <https://doi.org/10.1029/2000JC000414>, 1999.
- 35 Hadley, O. L. and Kirchstetter, T. W.: Black-carbon reduction of snow albedo, *Nature Climate Change*, 2, 437, 2012.
- Hansen, J. and Nazarenko, L.: Soot climate forcing via snow and ice albedos, *Proc. Natl. Acad. Sci.*, 101, 423–428, 2004.

- Jenk, T. M., Szidat, S., Schwikowski, M., Gäggeler, H. W., Brütsch, S., Wacker, L., Synal, H.-A., and Saurer, M.: Radiocarbon analysis in an Alpine ice core: record of anthropogenic and biogenic contributions to carbonaceous aerosols in the past (1650–1940), *Atmospheric Chemistry and Physics*, 6, 5381–5390, 2006.
- Klok, E., Jasper, K., Roelofsma, K., Gurtz, J., and Badoux, A.: Distributed hydrological modelling of a heavily glaciated Alpine river basin, *Hydrological Sciences Journal*, 46, 553–570, 2001.
- Kochendorfer, J., Nitu, R., Wolff, M., Mekis, E., Rasmussen, R., Baker, B., Earle, M. E., Reverdin, A., Wong, K., Smith, C. D., et al.: Analysis of single-Alter-shielded and unshielded measurements of mixed and solid precipitation from WMO-SPICE, 2017.
- Kokhanovsky, A. and Zege, E.: Scattering optics of snow, *Applied Optics*, 43(7), 1589–1602, <https://doi.org/doi:10.1364/AO.43.0001589>, 2004.
- Kokhanovsky, A., Lamare, M., Mauro, B. D., Picard, G., Arnaud, L., Dumont, M., Tuzet, F., Brockmann, C., and Box, J. E.: On the reflectance spectroscopy of snow, *The Cryosphere*, 12, 2371–2382, 2018.
- Kokhanovsky, A., Lamare, M., Danne, O., Dumont, M., Brockmann, C., Picard, G., Arnaud, L., Favier, V., Jourdain, B., Lemeur, E., et al.: Retrieval of snow properties from the Sentinel-3 Ocean and Land Colour Instrument, 2019.
- Krinner, G., Derksen, C., Essery, R., Flanner, M., Hagemann, S., Clark, M., Hall, A., Rott, H., Brutel-Vuilmet, C., Kim, H., et al.: ESM-SnowMIP: assessing snow models and quantifying snow-related climate feedbacks, *Geoscientific Model Development*, 11, 5027–5049, 2018.
- Lafayse, M., Cluzet, B., Dumont, M., Lejeune, Y., Vionnet, V., and Morin, S.: A multiphysical ensemble system of numerical snow modelling, *The Cryosphere*, 11, 1173–1198, <https://doi.org/10.5194/tc-11-1173-2017>, <http://www.the-cryosphere.net/11/1173/2017/>, 2017.
- Lamare, M. L., Lee-Taylor, J., and King, M. D.: The impact of atmospheric mineral aerosol deposition on the albedo of snow & sea ice: are snow and sea ice optical properties more important than mineral aerosol optical properties?, *Atmospheric Chemistry and Physics*, 16, 843–860, <https://doi.org/10.5194/acp-16-843-2016>, 2016.
- Larue, F., Picard, G., Arnaud, L., Ollivier, I., Delcourt, C., Lamare, M., Tuzet, F., Revuelto, J., and Dumont, M.: Snow albedo sensitivity to macroscopic surface roughness using a new ray tracing model, *The Cryosphere Discussions*, 2019, 1–26, <https://doi.org/10.5194/tc-2019-179>, <https://www.the-cryosphere-discuss.net/tc-2019-179/>, 2019.
- Legagneux, L., Cabanes, A., and Domine, F.: Measurement of the specific surface area of 176 snow samples using methane adsorption at 77 K, *J. Geophys. Res.*, 107, 4335, <https://doi.org/10.1029/2001JD001016>, 2002.
- Lehning, M., Bartelt, P., Brown, B., Fierz, C., and Satyawali, P.: A physical SNOWPACK model for the Swiss avalanche warning. Part II: snow microstructure., *Cold Reg. Sci. Technol.*, 35, 147 – 167, [https://doi.org/10.1016/S0165-232X\(02\)00073-3](https://doi.org/10.1016/S0165-232X(02)00073-3), 2002.
- Libois, Q.: Evolution des propriétés physiques de neige de surface sur le plateau Antarctique. Observations et modélisation du transfert radiatif et du métamorphisme, Ph.D. thesis, Grenoble, 2014.
- Libois, Q., Picard, G., France, J. L., Arnaud, L., Dumont, D., Carmagnola, C. M., and King, M. D.: Influence of grain shape on light penetration in snow, *The Cryosphere*, 7, 1803–1818, <https://doi.org/10.5194/tc-7-1803-2013>, 2013.
- Libois, Q., Picard, G., Arnaud, L., Morin, S., and Brun, E.: Modeling the impact of snow drift on the decameter-scale variability of snow properties on the Antarctic Plateau, *J. Geophys. Res.*, 119, 11,662–11,681, <https://doi.org/10.1002/2014JD022361>, 2014.
- Lim, S., Fäin, X., Zanatta, M., Cozic, J., Jaffrezo, J.-L., Ginot, P., and Laj, P.: Refractory black carbon mass concentrations in snow and ice: method evaluation and inter-comparison with elemental carbon measurement, *Atmospheric Measurement Techniques*, 7, 3307–3324, 2014.

- Mori, T., Goto-Azuma, K., Kondo, Y., Ogawa-Tsukagawa, Y., Miura, K., Hirabayashi, M., Oshima, N., Koike, M., Kupiainen, K., Moteki, N., et al.: Black Carbon and Inorganic Aerosols in Snowpack over the Arctic, *Journal of Geophysical Research: Atmospheres*, <https://doi.org/10.1029/2019JD030623>, 2019.
- Morin, S., Lejeune, Y., Lesaffre, B., Panel, J.-M., Poncet, D., David, P., and Sudul, M.: A 18-years long (1993 - 2011) snow and meteorological dataset from a mid-altitude mountain site (Col de Porte, France, 1325 m alt.) for driving and evaluating snowpack models, *Earth Syst. Sci. Data*, 4, 13–21, <https://doi.org/10.5194/essd-4-13-2012>, 2012.
- Nabat, P., Somot, S., Mallet, M., Michou, M., Sevault, F., Driouech, F., Meloni, D., di Sarra, A., Di Biagio, C., Formenti, P., Sicard, M., Léon, J.-F., and Bouin, M.-N.: Dust aerosol radiative effects during summer 2012 simulated with a coupled regional aerosol–atmosphere–ocean model over the Mediterranean, *Atmospheric Chemistry and Physics*, 15, 3303–3326, <https://doi.org/10.5194/acp-15-3303-2015>, <http://www.atmos-chem-phys.net/15/3303/2015/>, 2015.
- Niwano, M., Aoki, T., Kuchiki, K., Hosaka, M., and Kodama, Y.: Snow Metamorphism and Albedo Process (SMAP) model for climate studies: Model validation using meteorological and snow impurity data measured at Sapporo, *J. Geophys. Res.*, 117, F03 008, <https://doi.org/10.1029/2011JF002239>, 2012.
- Painter, T. H., Barrett, A. P., Landry, C. C., Neff, J. C., Cassidy, M. P., Lawrence, C. R., McBride, K. E., and Farmer, G. L.: Impact of disturbed desert soils on duration of mountain snow cover, *Geophysical Research Letters*, 34, 2007.
- Painter, T. H., Bryant, A. C., and McKenzie Skiles, S.: Radiative forcing by light absorbing impurities in snow from MODIS surface reflectance data, *Geophysical Research Letters*, 39, L17 502, <https://doi.org/10.1029/2012GL052457>, 2012.
- Painter, T. H., Flanner, M. G., Kaser, G., Marzeion, B., VanCuren, R. A., and Abdalati, W.: End of the Little Ice Age in the Alps forced by industrial black carbon, *Proceedings of the national academy of sciences*, 110, 15 216–15 221, 2013.
- Petzold, A., Ogren, J. A., Fiebig, M., Laj, P., Li, S.-M., Baltensperger, U., Holzer-Popp, T., Kinne, S., Pappalardo, G., Sugimoto, N., et al.: Recommendations for reporting" black carbon" measurements, *Atmospheric Chemistry and Physics*, 13, 8365–8379, 2013.
- Picard, G., Libois, Q., Arnaud, L., Verin, G., and Dumont, M.: Development and calibration of an automatic spectral albedometer to estimate near-surface snow SSA time series, *The Cryosphere*, 10, 1297–1316, <https://doi.org/10.5194/tc-10-1297-2016>, 2016.
- Picard, G., Dumont, M., Lamare, M., Tuzet, F., Larue, F., Pirazzini, R., and Arnaud, L.: Spectral albedo measurements over snow-covered slopes: theory and slope effect corrections, *The Cryosphere*, 14, 1497–1517, <https://doi.org/10.5194/tc-14-1497-2020>, <https://www.the-cryosphere.net/14/1497/2020/>, 2020.
- Polashenski, C. M., Dibb, J. E., Flanner, M. G., Chen, J. Y., Courville, Z. R., Lai, A. M., Schafer, J. J., Shafer, M. M., and Bergin, M.: Neither dust nor black carbon causing apparent albedo decline in Greenland's dry snow zone: Implications for MODIS C5 surface reflectance, *Geophysical Research Letters*, 42, 9319–9327, 2015.
- Raleigh, M., Lundquist, J., and Clark, M.: Exploring the impact of forcing error characteristics on physically based snow simulations within a global sensitivity analysis framework, *Hydrology and Earth System Sciences*, 19, 3153–3179, 2015.
- Ram, K. and Sarin, M.: Absorption coefficient and site-specific mass absorption efficiency of elemental carbon in aerosols over urban, rural, and high-altitude sites in India, *Environmental science & technology*, 43, 8233–8239, 2009.
- Salako, G. O., Hopke, P. K., Cohen, D. D., Begum, B. A., Biswas, S. K., Pandit, G. G., Chung, Y.-S., Rahman, S. A., Hamzah, M. S., Davy, P., et al.: Exploring the variation between EC and BC in a variety of locations, *Aerosol and Air Quality Research*, 12, 1–7, 2012.
- Schwarz, J., Gao, R., Spackman, J., Watts, L., Thomson, D., Fahey, D., Ryerson, T., Peischl, J., Holloway, J., Trainer, M., et al.: Measurement of the mixing state, mass, and optical size of individual black carbon particles in urban and biomass burning emissions, *Geophysical Research Letters*, 35, 2008.

- Schwarz, J., Doherty, S., Li, F., Ruggiero, S., Tanner, C., Perring, A., Gao, R., and Fahey, D.: Assessing single particle soot photometer and integrating sphere/integrating sandwich spectrophotometer measurement techniques for quantifying black carbon concentration in snow, *Atmospheric Measurement Techniques*, 5, 2581–2592, 2012.
- Schwarz, J., Gao, R., Perring, A., Spackman, J., and Fahey, D.: Black carbon aerosol size in snow, *Scientific reports*, 3, 1356, 2013.
- 5 Skiles, S. M. and Painter, T. H.: Toward understanding direct absorption and grain size feedbacks by dust radiative forcing in snow with coupled snow physical and radiative transfer modeling, *Water Resources Research*, 2019.
- Skiles, S. M., Painter, T. H., Deems, J. S., Bryant, A. C., and Landry, C. C.: Dust radiative forcing in snow of the Upper Colorado River Basin: 2. Interannual variability in radiative forcing and snowmelt rates, *Water Resources Research*, 48, 2012.
- Skiles, S. M., Flanner, M., Cook, J. M., Dumont, M., and Painter, T. H.: Radiative forcing by light-absorbing particles in snow, *Nature Climate Change*, p. 1, 2018.
- 10 Stamnes, K., Tsay, S.-C., Wiscombe, W., and Jayaweera, K.: Numerically stable algorithm for discrete-ordinate-method radiative transfer in multiple scattering and emitting layered media, *Applied Optics*, 27, 2502–2509, 1988.
- Sterle, K. M., McConnell, J. R., Dozier, J., Edwards, R., and Flanner, M. G.: Retention and radiative forcing of black carbon in eastern Sierra Nevada snow, *The Cryosphere*, 7, 365–374, <https://doi.org/10.5194/tc-7-365-2013>, <http://www.the-cryosphere.net/7/365/2013/>, 2013.
- 15 Thevenon, F., Anselmetti, F. S., Bernasconi, S. M., and Schwikowski, M.: Mineral dust and elemental black carbon records from an Alpine ice core (Colle Gnifetti glacier) over the last millennium, *Journal of Geophysical Research: Atmospheres*, 114, 2009.
- Torres, A., Bond, T. C., Lehmann, C. M., Subramanian, R., and Hadley, O. L.: Measuring organic carbon and black carbon in rainwater: evaluation of methods, *Aerosol Science and Technology*, 48, 239–250, 2014.
- Tuzet, F., Dumont, M., Lafaysse, M., Picard, G., Arnaud, L., Voisin, D., Lejeune, Y., Charrois, L., Nabat, P., and Morin, S.: A multilayer
20 physically based snowpack model simulating direct and indirect radiative impacts of light-absorbing impurities in snow, *The Cryosphere*, 11, 2633–2653, 2017.
- Tuzet, F., Dumont, M., Arnaud, L., Voisin, D., Lamare, M., Larue, F., Revuelto, J., and Picard, G.: Influence of light-absorbing particles on snow spectral irradiance profiles, *The Cryosphere*, 13, 2169–2187, <https://doi.org/10.5194/tc-13-2169-2019>, <https://www.the-cryosphere.net/13/2169/2019/>, 2019.
- 25 Varga, G., Király, C., Szalai, Z., and Gammoudi, N.: Changing temporal patterns of Saharan dust events in Central Europe, in: *Goldschmidt 2019*, 2019.
- Venkatadari, P., Zhou, L., Hopke, P. K., Schwab, J. J., Demerjian, K. L., Weimer, S., Hogrefe, O., Felton, D., and Rattigan, O.: An intercomparison of measurement methods for carbonaceous aerosol in the ambient air in New York City, *Aerosol Science and Technology*, 40, 788–795, 2006.
- 30 Vionnet, V., Brun, E., Morin, S., Boone, A., Martin, E., Faroux, S., Moigne, P. L., and Willemet, J.-M.: The detailed snowpack scheme Crocus and its implementation in SURFEX v7.2, *Geosci. Model. Dev.*, 5, 773–791, <https://doi.org/10.5194/gmd-5-773-2012>, 2012.
- Voisin, D., Jaffrezo, J.-L., Houdier, S., Barret, M., Cozic, J., King, M., France, J., Reay, H., Grannas, A., Kos, G., and Ariya, P.: Carbonaceous species and HUMic Like Substances (HULIS) in Arctic snowpack during OASIS field campaign in Barrow, *J. Geophys. Res.*, 116, <https://doi.org/doi:10.1029/2011JD016612>, 2012.
- 35 Wang, X., Doherty, S. J., and Huang, J.: Black carbon and other light-absorbing impurities in snow across Northern China, *Journal of Geophysical Research: Atmospheres*, 118, 1471–1492, <https://doi.org/10.1029/2012JD018291>, 2013.
- Warren, S. and Brandt, R.: Optical constants of ice from the ultraviolet to the microwave: A revised compilation, *J. Geophys. Res.*, 113, D14 220, <https://doi.org/doi:10.1029/2007JD009744>, 2008.

- Warren, S. G.: Can black carbon in snow be detected by remote sensing?, *Journal of Geophysical Research: Atmospheres*, 118, 779–786, <https://doi.org/10.1029/2012JD018476>, 2013.
- Warren, S. G. and Wiscombe, W.: A Model for the Spectral Albedo of Snow. II: Snow Containing Atmospheric Aerosols, *J. Atmos. Sci.*, 37, 2734–2745, 1980.
- 5 Warren, S. G., Brandt, R. E., and Grenfell, T. C.: Visible and near-ultraviolet absorption spectrum of ice from transmission of solar radiation into snow, *Applied optics*, 45, 5320–5334, 2006.
- Watson, J. G.: Summary of Organic and Elemental Carbon/Black Carbon Analysis Methods and Intercomparisons, *Aerosol and Air Quality*, 5, 65–102, 2005.
- Wendl, I., Menking, J., Färber, R., Gysel, M., Kaspari, S., Laborde, M., and Schwikowski, M.: Optimized method for black carbon analysis in
10 ice and snow using the Single Particle Soot Photometer, *Atmospheric Measurement Techniques*, 7, 2667–2681, 2014.
- Ye, H., Zhang, R., Shi, J., Huang, J., Warren, S. G., and Fu, Q.: Black carbon in seasonal snow across northern Xinjiang in northwestern China, *Environmental Research Letters*, 7, 044 002, 2012.
- Zanatta, M., Gysel, M., Bukowiecki, N., Müller, T., Weingartner, E., Areskoug, H., Fiebig, M., Yttri, K. E., Mihalopoulos, N., Kouvarakis, G.,
et al.: A European aerosol phenomenology-5: Climatology of black carbon optical properties at 9 regional background sites across Europe,
15 *Atmospheric environment*, 145, 346–364, 2016.

Tables

Parameter	eqEC	Solalb eqBC	Autosolexs eqBC
eqrBC	N : 23 RMSE : 23.3 ng g ⁻¹ eqBC Bias : 15.9 ng g ⁻¹ eqBC r ² : 0.86	N : 21 (18; no outliers) RMSE : 50.4 (23) ng g ⁻¹ eqBC Bias : 27.5 (12.8) ng g ⁻¹ eqBC r ² : 0.44 (0.88)	N : 12 RMSE : 106.7 ng g ⁻¹ eqBC Bias : 66.7 ng g ⁻¹ eqBC r ² : 0.76
eqEC		N : 21 (18; no outliers) RMSE : 49.2 (24.7) ng g ⁻¹ eqBC Bias : 13.2 (-3.15) ng g ⁻¹ eqBC r ² : 0.3 (0.72)	N : 12 RMSE : 96.61 ng g ⁻¹ eqBC Bias : 54.9 ng g ⁻¹ eqBC r ² : 0.73
Solalb			N : 12 RMSE : 71.53 ng g ⁻¹ eqBC Bias : 26.48 ng g ⁻¹ eqBC r ² : 0.83

Table 1. Comparison between the different measurements of eqBC concentrations. Each cell of the table contains the number of samples (N) used for the statistics, the RMSE, the bias and [the Pearson linear correlation coefficient \(r²\)](#) between the quantities named in the first column and row. The bias is computed as a difference between the quantity named in the column header and the quantity named in the row header. The values in blue correspond to the statistics after removing the 3 outliers of the solalb analysis.

Regions	Typical BC content (ng g⁻¹)	References
Antarctic Plateau	0.2-0.6	Grenfell and Warren, 1999; Warren et al., 2006
Arctic	8-60	Doherty et al., 2010; Mori et al., 2019
Greenland	0.8-4.5	Mori et al., 2019; Doherty et al., 2010; Polashenski et al.
China	20-2000	Wang et al., 2013; Ye et al., 2012
North America (including melt)	5-70	Painter et al., 2012; Doherty et al., 2014
French Alps (including melt)	0-80	This study
Swiss Alps (including melt)	0-50	Gabbi et al., 2015

Table 2. [Typical surface concentration of Black Carbon measured in different regions of the world. The result of this study are presented in blue.](#)

Figures

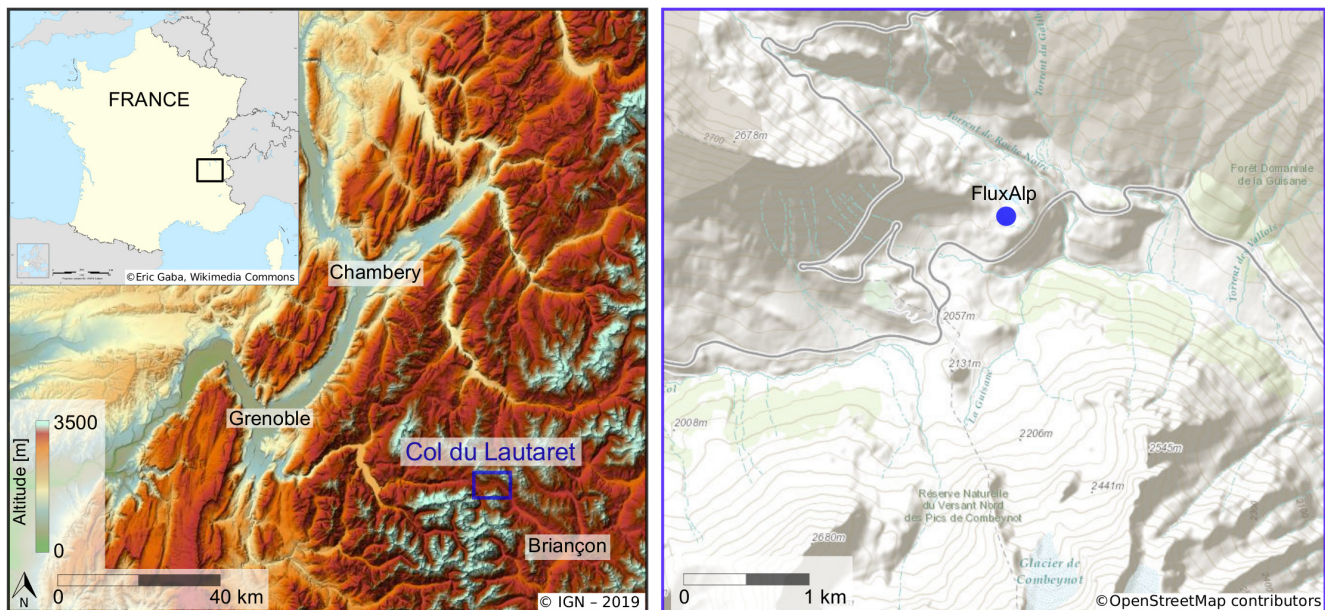


Figure 1. Localisation of the study area (left: Col du Lautaret site shown on a hillshade product draped over the 25m DEM (BD ALTI) produced by the French National Institute of Geographic and Forest Information (IGN); right: automated weather station shown on the OpenStreetMap product, ©OpenStreetMap contributors).

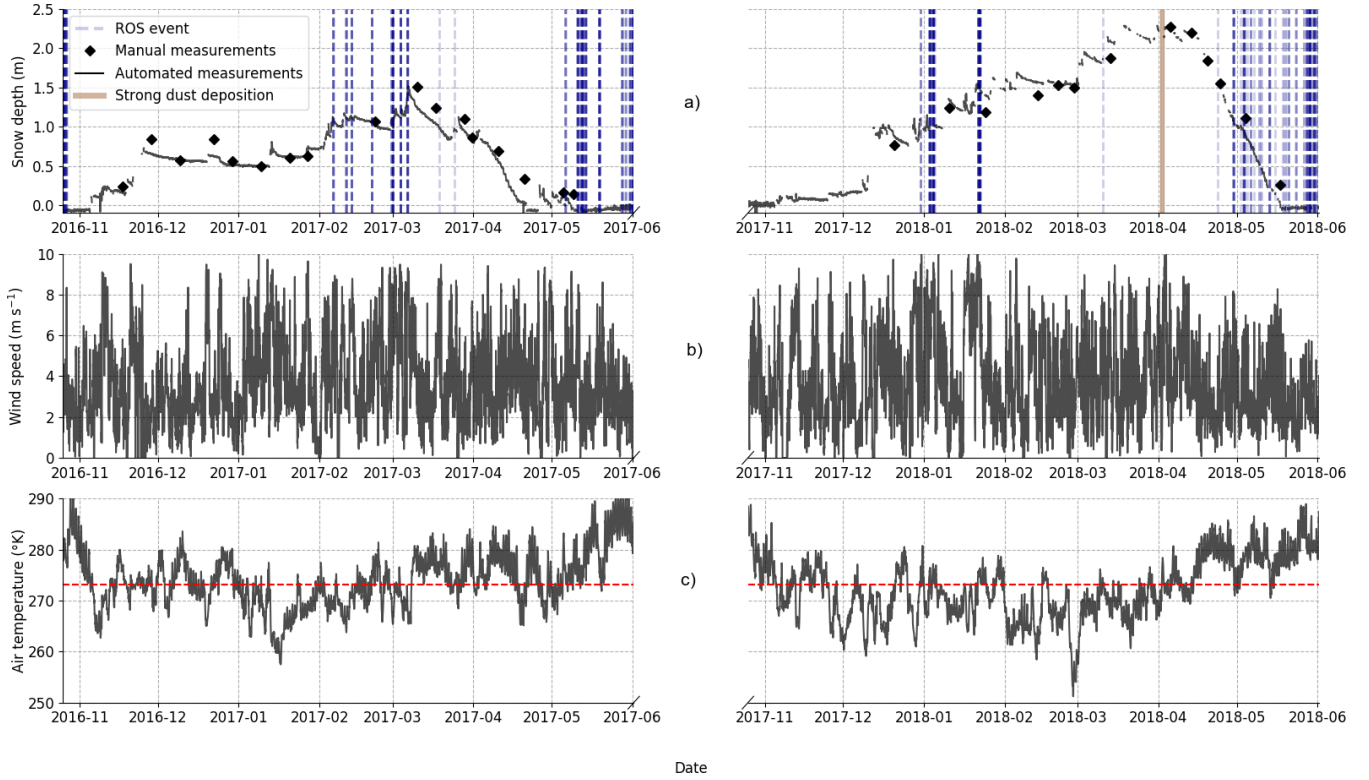


Figure 2. Snow depth (a), air temperature-wind speed (b) and wind-speed-air temperature (c) measured at the weather station for the two snow seasons (black curve). All data are averaged at an hourly time-step. On the upper panel, ROS and strong dust deposition events are represented by dashed blue and brown shadowing respectively. Manual snow depth measurements acquired on each field day are also represented by black diamonds. The tick on the abscissa axis corresponds to the first day of each month.

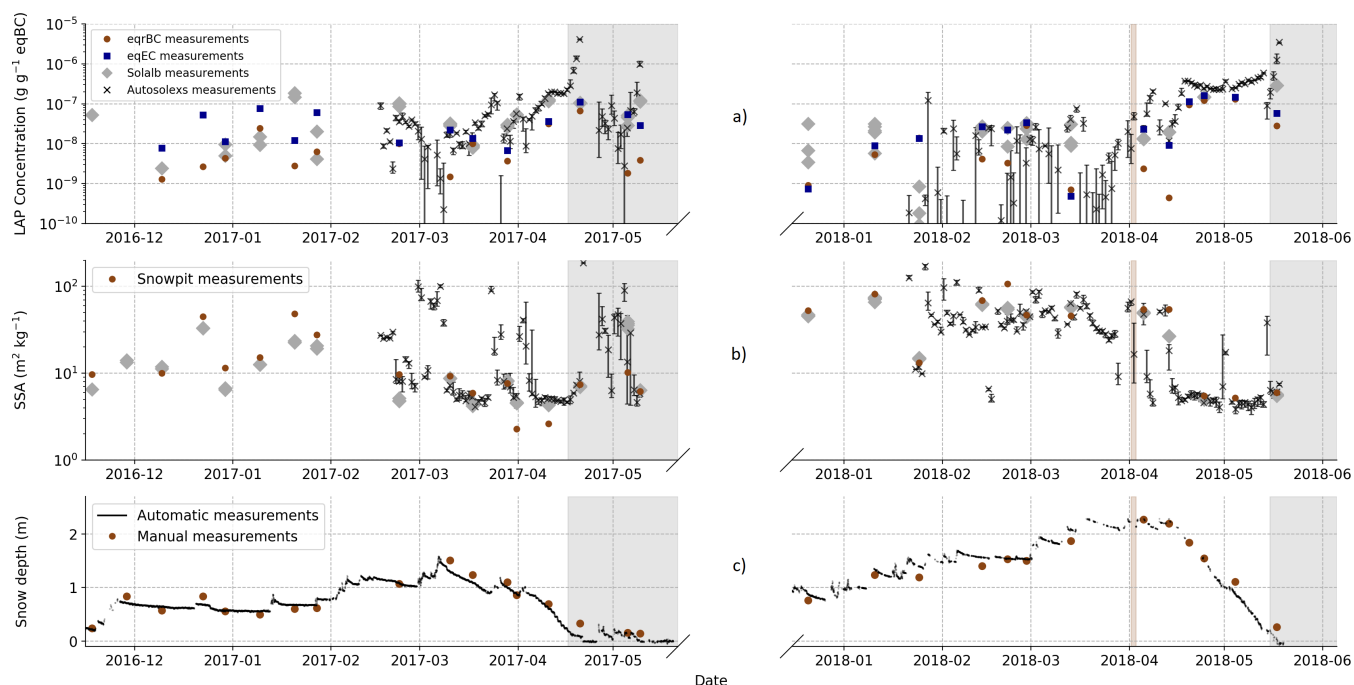


Figure 3. Evolution of measured near-surface LAP concentration (a), near-surface SSA (b) and snow depth (c). Information retrieved from automatic spectral albedo (Autosolexs) are represented by black crosses with error bars corresponding to the 25 and 75% quantile of all the measurements of the day. Information retrieved from manual spectral albedo (Solalb) are represented by grey diamonds. Snowpits SSA and eqrBC concentrations are represented by brown dot and eqEC concentrations are represented by blue squares. The major dust deposition event of the second year is represented by the vertical brown shading.

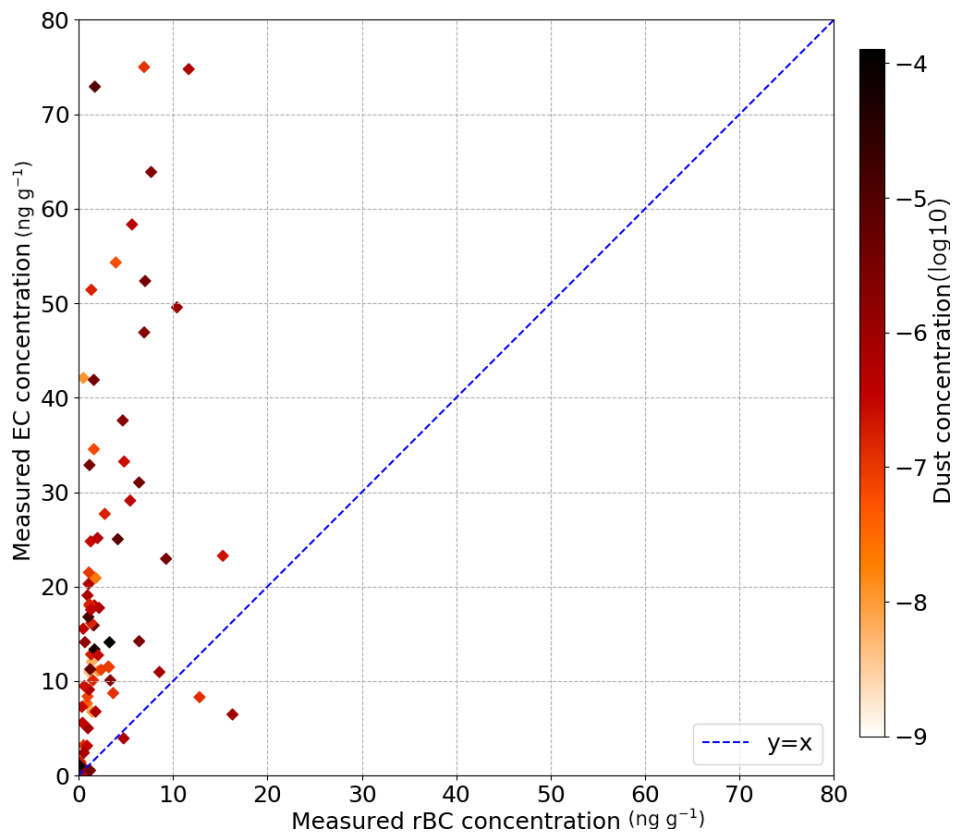


Figure 4. Comparison between EC measurements and rBC measurements for all available measurements over the two snow seasons. As the vertical resolution of rBC measurements is higher than for EC measurements, the rBC concentration is computed as the average of all rBC measurements weighted by snow density in the corresponding EC layer.

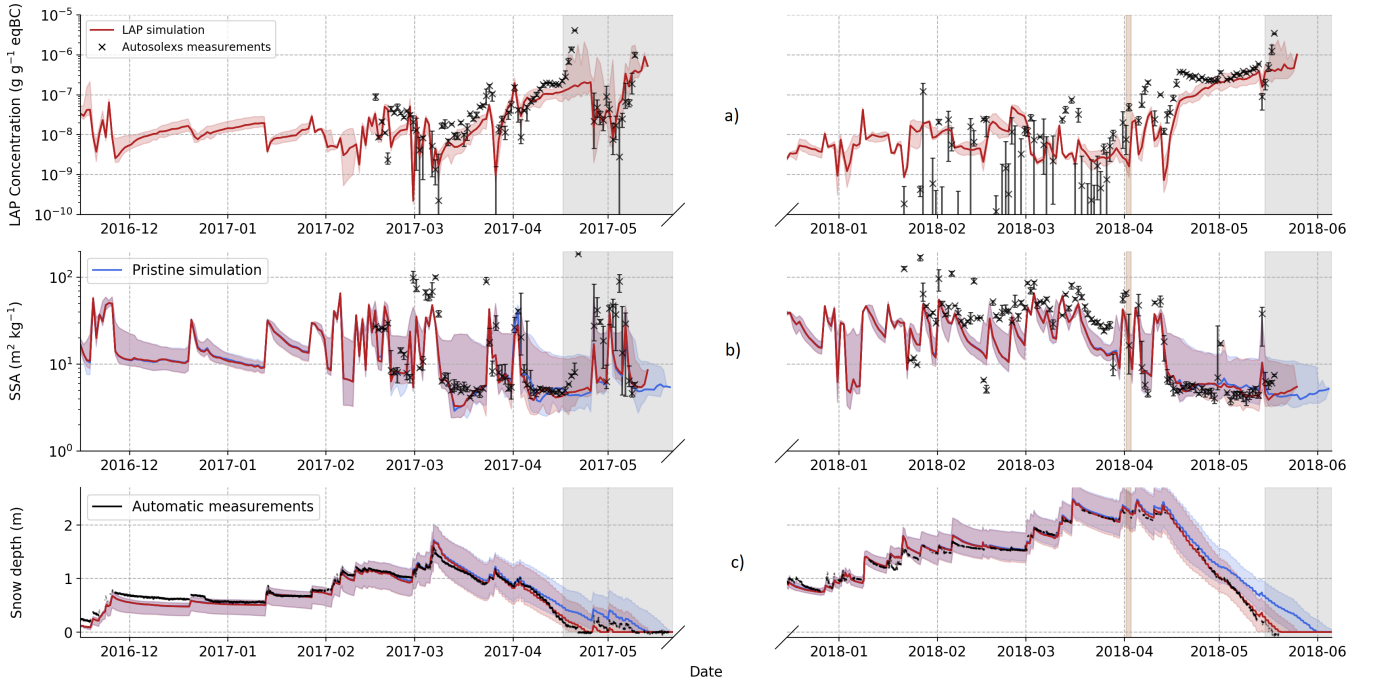


Figure 5. Evolution of measured and simulated near-surface **LAP concentration** **AEC** (ba), near-surface SSA (eb) and snow depth (c). Ensemble simulation results are represented by a shadowing and the median value of the different simulations is represented with a full line. The information retrieved from automatic spectral albedo (Autosolex) are represented by black crosses with error bars corresponding to the 25 and 75% quantile of all the measurements of the day. The major dust deposition of the second year is represented by brown shading and grey shading corresponds to areas with less than 20 cm of measured snow depth.

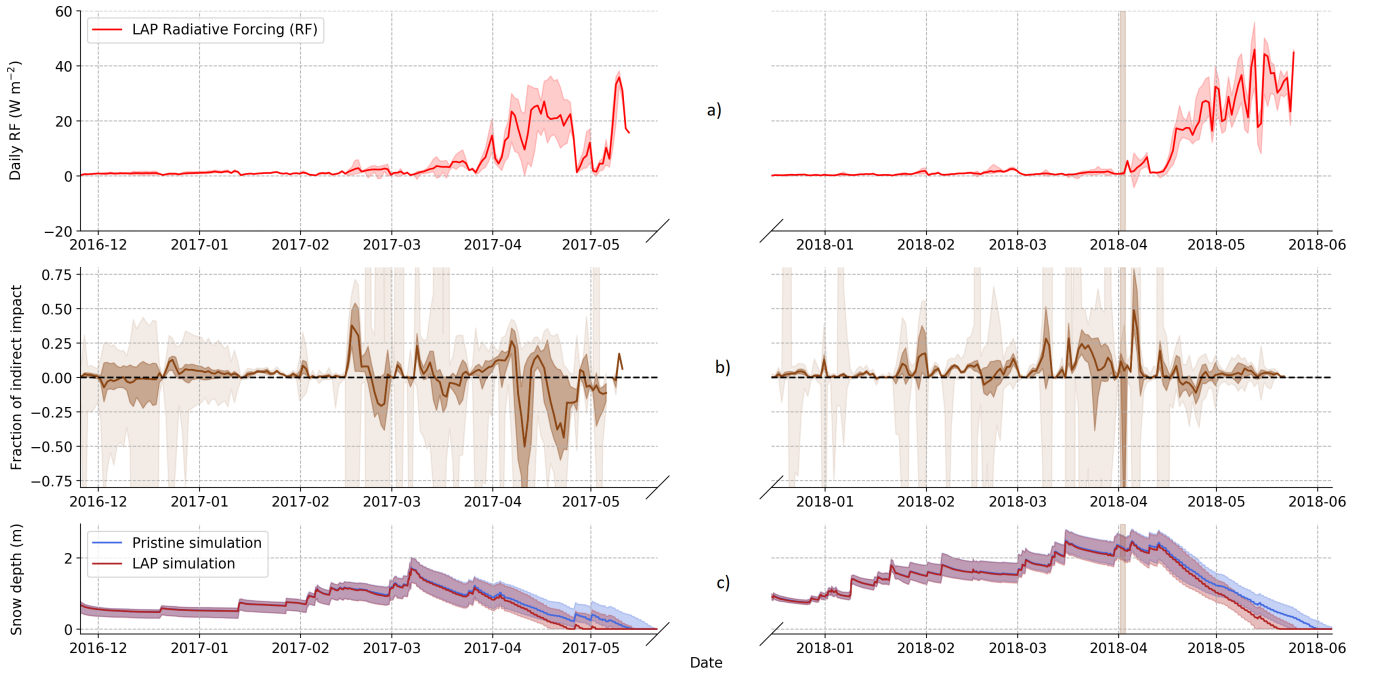


Figure 6. a) Evolution of daily radiative forcing (RF) due to LAPs. This RF is computed as the difference of energy absorbed by the snowpack between the LAP and pristine simulations. b) Evolution of the daily fraction of the indirect impact (r_{ind}), the opaque shadowing corresponds to the ensemble members between the first and third quantile whilst the light shadowing is the full ensemble spread. c) Simulated snow depth for the pristine and the LAP simulations. The major dust deposition event of the second year is represented by brown shading.

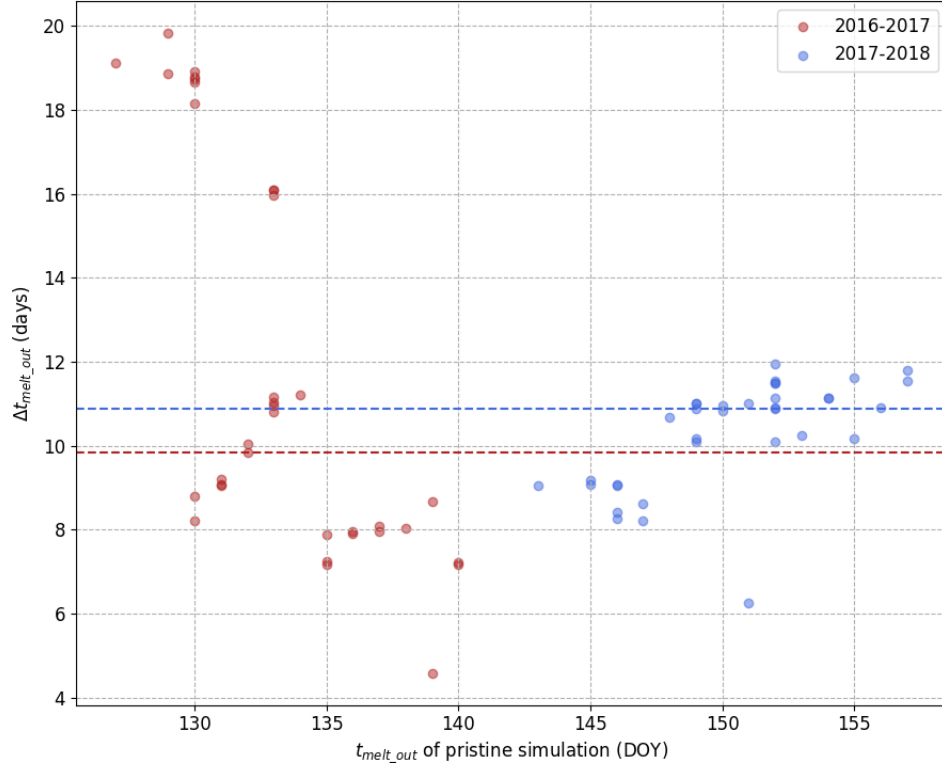


Figure 7. $\Delta t_{\text{melt-out}}$ as a function of the date of melt of the pristine simulation for each of the 35 members and each year.

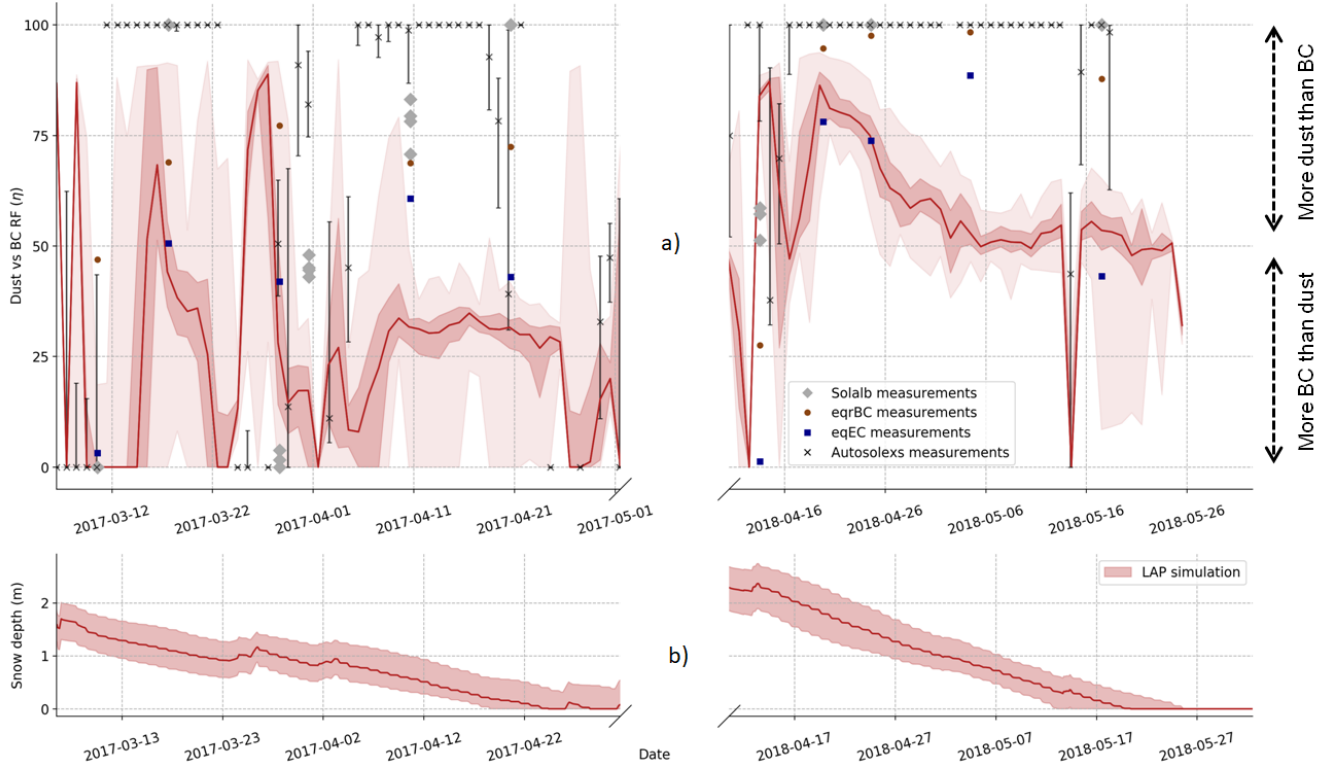


Figure 8. a) Evolution-Percentage of measured and simulated η —i.e. the portion of LAP radiative impact-total RF which is caused by dust (η) during the final ablation period. η values estimated from the LAP simulation is represented in red, with light shading corresponding to the full ensemble and darker shading corresponding to the first and third quartiles of the ensemble. Information retrieved from automatic spectral albedo are represented by black crosses with error bars corresponding to the 25 and 75 % quartiles of all the measurements of the day. Information retrieved from manual spectral albedo are represented by grey diamonds. Chemical measurements of eqEC (EC+dust) and eqrBC (rBC+dust) are represented in dark blue and brown respectively. The results are put in comparison to the snow depth (b). -The major dust deposition event of the second year is represented by brown shading-

Appendix A: Computation of eqBC concentration

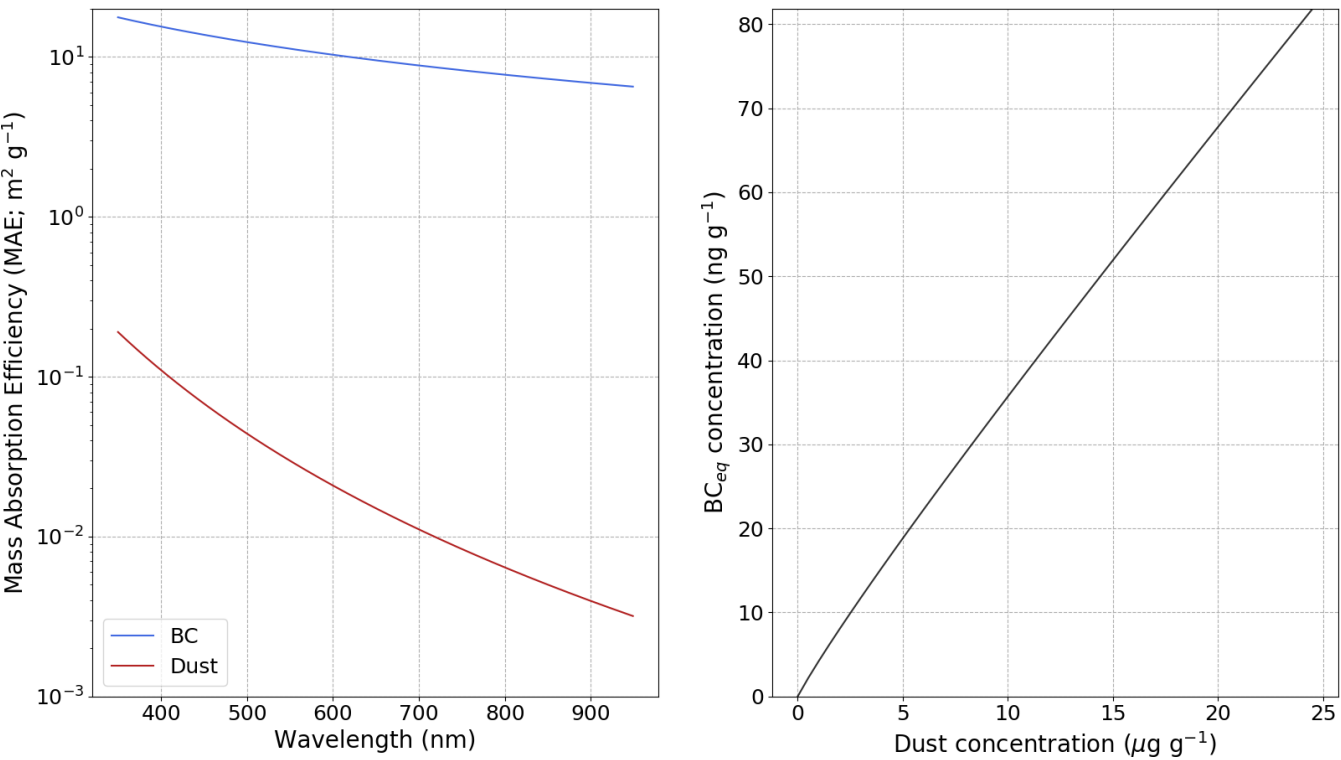


Figure A1. a) Mass Absorption Efficiency (MAE) values of BC and dust used in the present study as a function of wavelength. b) EqBC concentration corresponding to a given dust concentration using these MAE values and the methods described in Section 2.1. Figure adapted from Tuzet et al. (2019)

~

Appendix B: Prescribed deposition fluxes from ALADIN-Climate

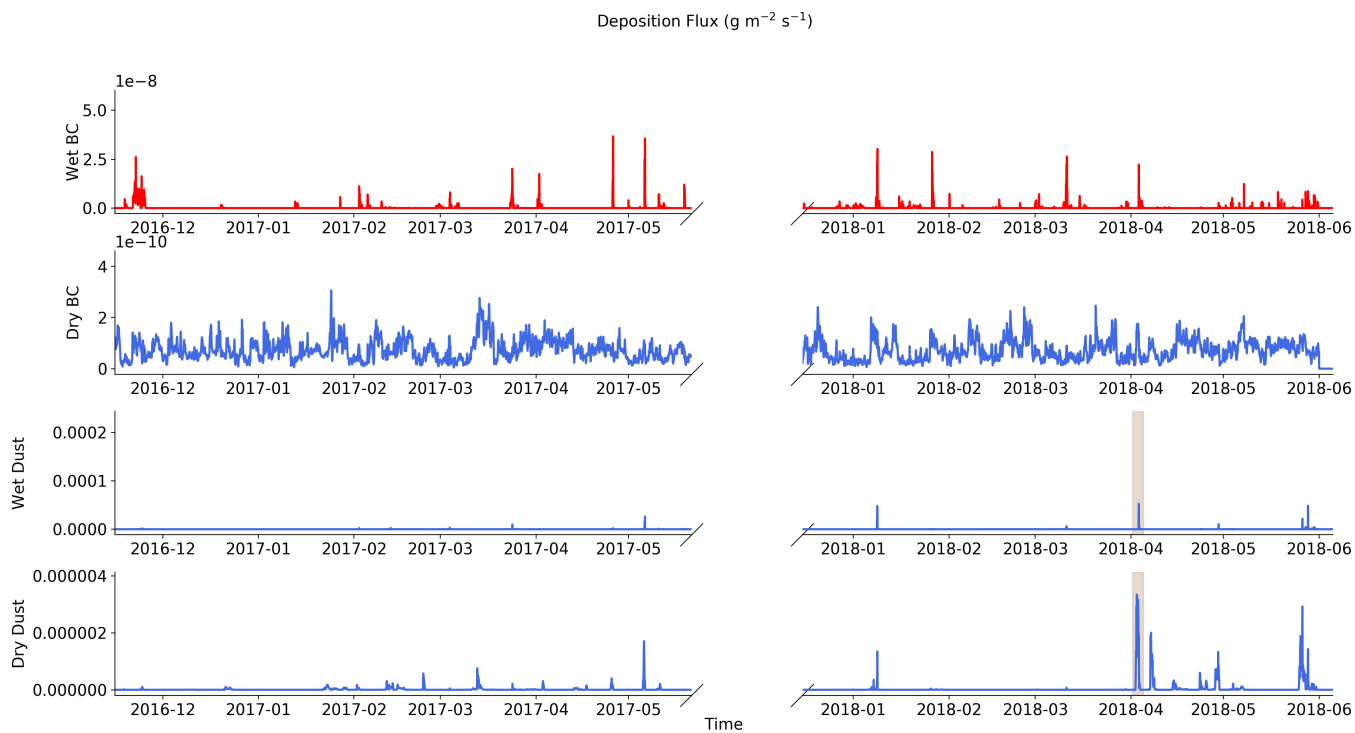


Figure B1. Different component of the ALADIN-Climate deposition fluxes used as inputs for the Crocus snowpack model. The strong dust deposition event that occurred in April 2018 is represented by a brown shading. The different panels correspond to wet and dry deposition fluxes for BC (two upper panels) and dust (two lower panels), all expressed in $\text{g m}^{-2} \text{s}^{-1}$

Appendix C: Autosolexs inversion details

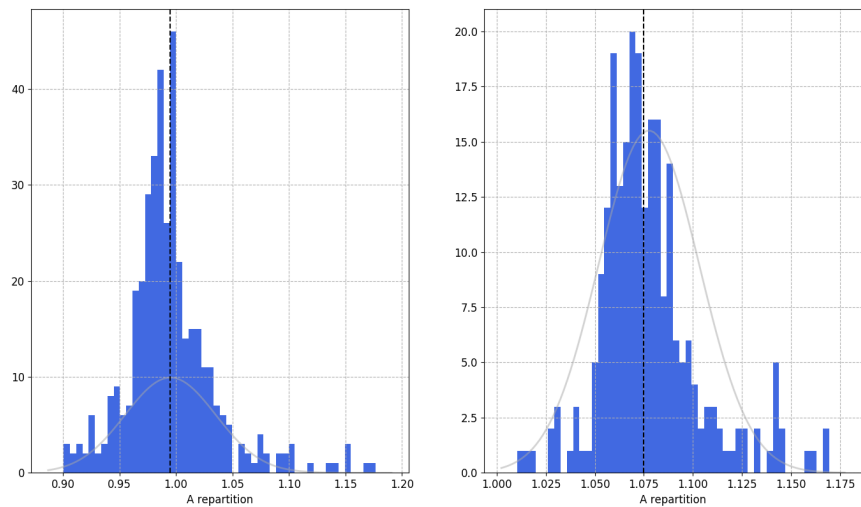


Figure C1. Repartition of the scaling factor of Autosolexs measurements for cloudy days. The difference between both years comes from a change in the instrument setup of Autosolexs for the second year; the lower glass protective shield of the light collector was removed.

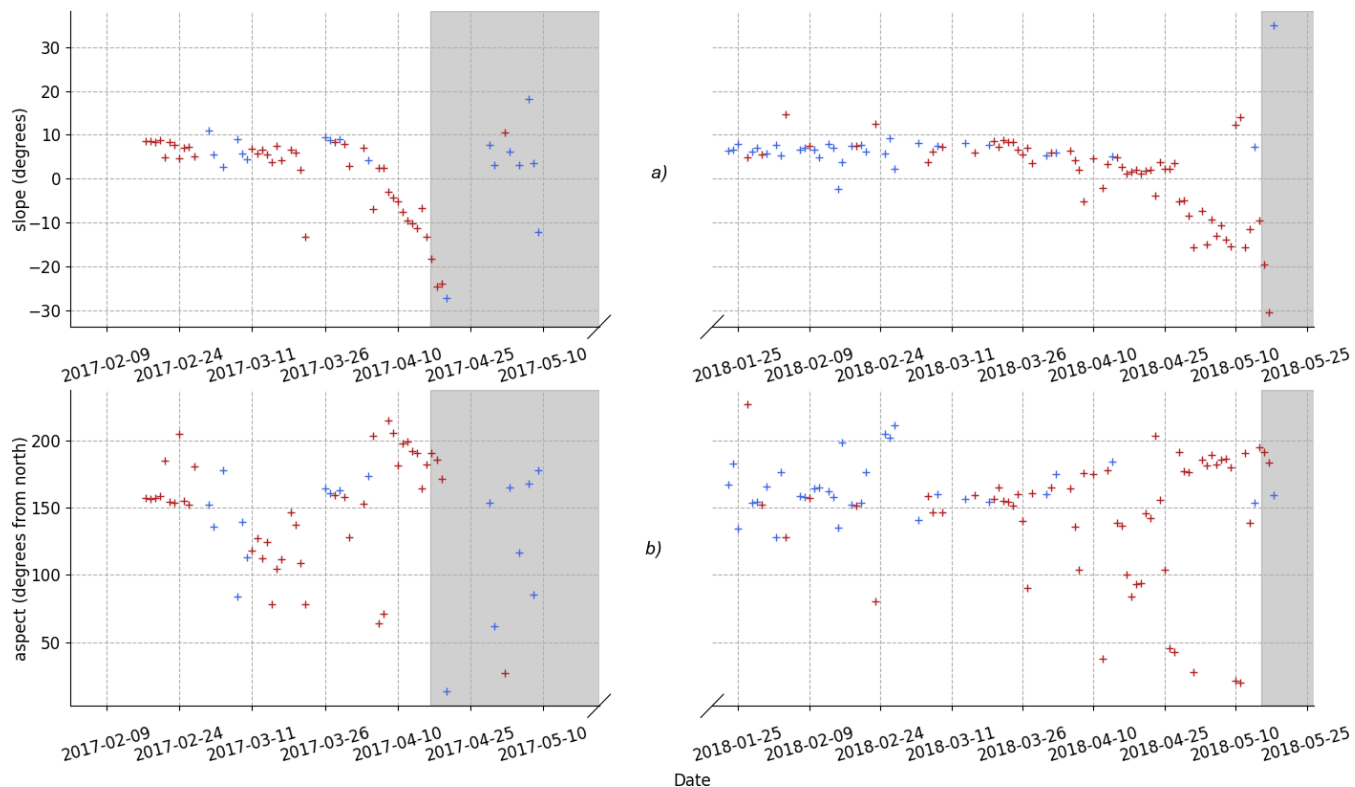


Figure C2. Estimation of the slope (a) and aspect (b) of the snow surface under Autosolexs sensor. The estimation is more robust for low solar elevations and low near-surface AEC. Grey shading corresponds to areas with less than 20 cms of measured snow depth.

Appendix D: Linear regressions of measured near-surface properties

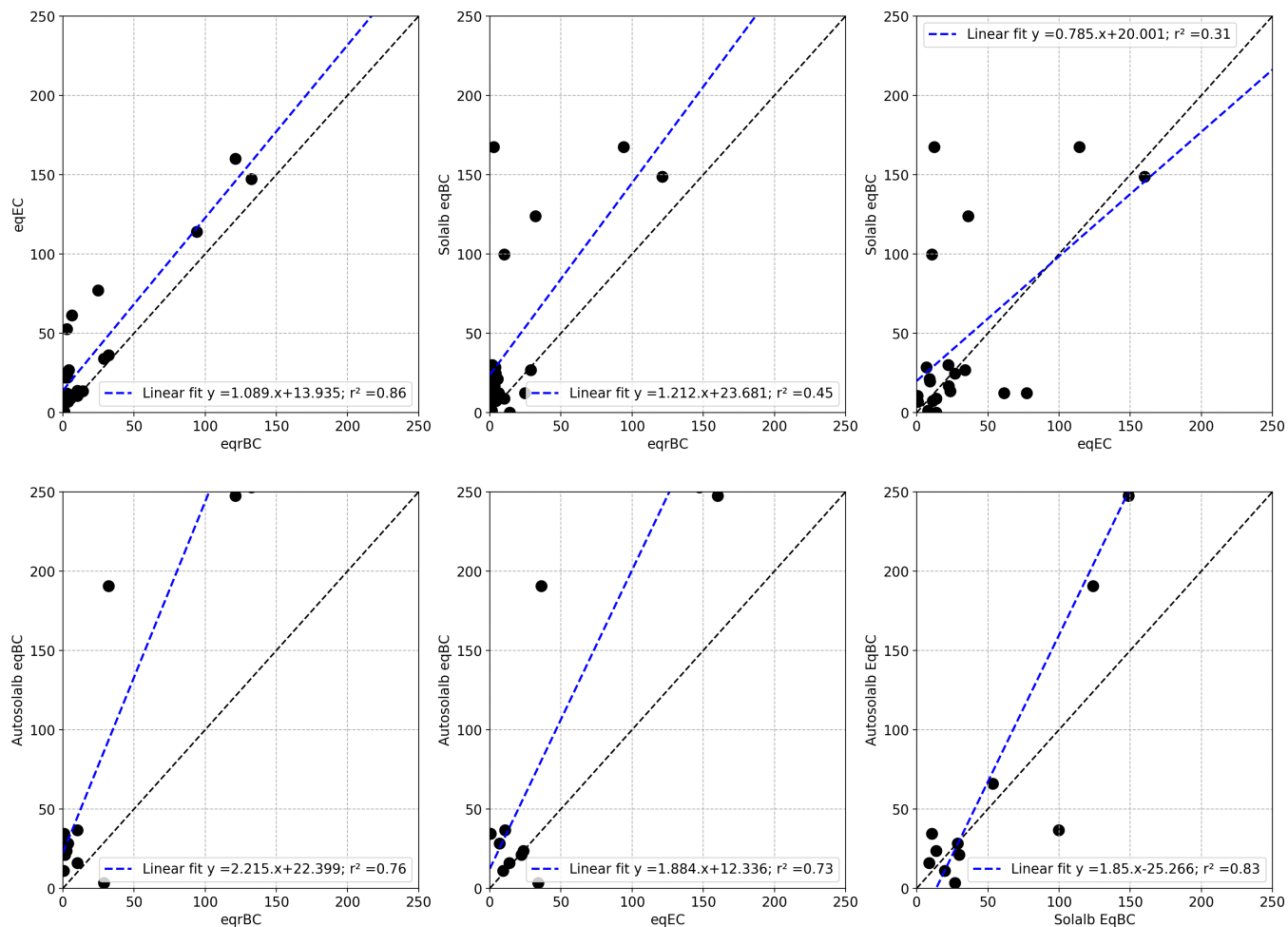


Figure D1. Comparison between the different estimates of near-surface AEC presented in Section 3.2

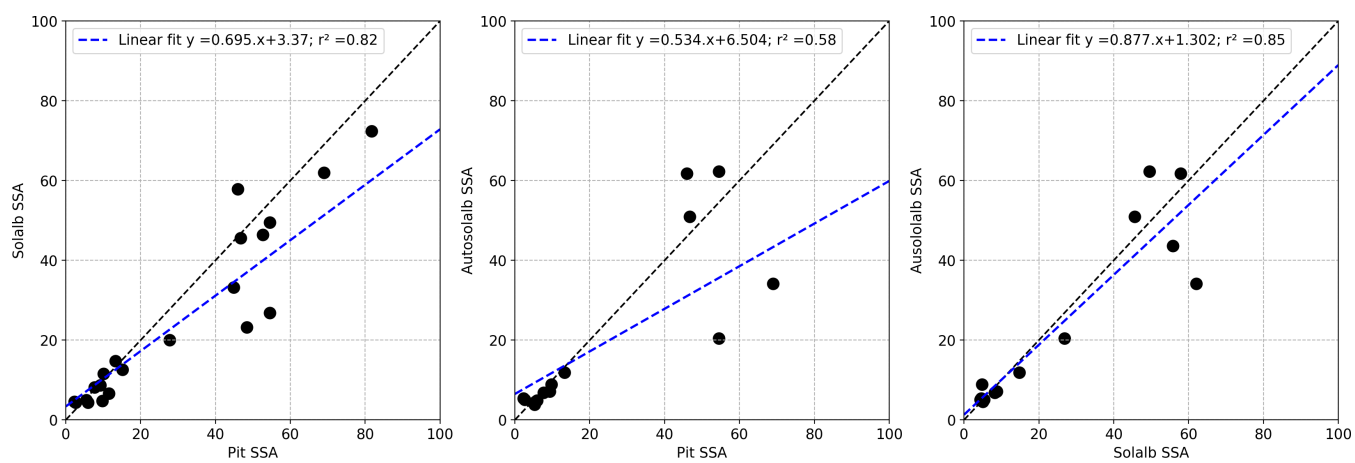


Figure D2. Comparison between the different estimates of near-surface SSA presented in Section 3.2