

# Satellite retrieved sea ice concentration uncertainty and its effect on modelling wave evolution in marginal ice zones

Takehiko Nose<sup>1</sup>, Takuji Waseda<sup>1</sup>, Tsubasa Kodaira<sup>1</sup>, and Jun Inoue<sup>2</sup>

<sup>1</sup>Graduate School of Frontier Sciences, The University of Tokyo, Kashiwa, Japan

<sup>2</sup>National Institute of Polar Research, Tachikawa, Japan

**Correspondence:** Takehiko Nose (tak.nose@k.u-tokyo.ac.jp)

**Abstract.** Ocean waves are known to decay exponentially when they interact with sea ice. Wave-ice models implemented in a spectral wave model, e.g., WAVEWATCH III<sup>®</sup> (WW3), derive the attenuation coefficient based on several different model ice types, i.e., how the model treats sea ice. In the marginal ice zone (MIZ) with sea ice concentration (SIC) < 1, the wave attenuation is moderated by SIC: this implies that the subgrid scale physics is missing, and the accuracy of SIC plays an important role in the predictability. Satellite retrieved SIC data (or a sea ice model that assimilates them) are often used to force wave-ice models, but these data are known to have uncertainty. Six satellite retrieved SIC products, based on four algorithms applied to SSMIS and AMSR2 data, were used in the WW3 hindcast experiment to study the effect of SIC uncertainty  $\Delta$ SIC on modelling MIZ waves during the 2018 R/V Mirai observational campaign in the refreezing Chukchi Sea. The results show that  $\Delta$ SIC can cause wave prediction discrepancies in ice cover. There is evidence that bivariate uncertainty data (model significant wave heights and SIC forcing) are correlated, although off-ice wave growth is more complicated due to the cumulative effect of  $\Delta$ SIC along an MIZ fetch. Further, we found that the effect of  $\Delta$ SIC can be large enough, such that it overwhelms the choice of model ice types, i.e., wave-ice interaction parameterisations. Despite these parameterisations being derived from different concepts and missing the subgrid scale physics relating to sea ice field heterogeneity, the accuracy of satellite retrieved SIC used as model forcing is the primary error source of modelling MIZ waves in the refreezing ocean.

15 *Copyright statement.* TEXT

## 1 Introduction

Satellite remote sensing and in situ observations reveal the Arctic Ocean sea ice has been declining in extent and volume (Maslanik et al., 2007; Kwok and Rothrock, 2009; Stroeve et al., 2012). Stroeve and Notz (2018) highlighted the emergence of consecutive monthly negative sea ice extent anomalies in recent years. From a practical view point, this downward trend of sea ice decline opens trans-Arctic shipping routes connecting Europe and Asia for longer times of the year; potential global economic benefits of non-ice breakers accessing Northern Sea Route and North West Passage are substantial (Stephenson et al., 2013; Bekkers et al., 2018). The increasing vessel traffic implies that adequate prediction capabilities will become crucial to

assist ships in polar waters to circumnavigate hazards such as high winds and waves, collision with perennial sea ice, and sea-spray icing; however, Jung et al. (2016) describe that the existing polar prediction systems need to be urgently enhanced to effectively manage the risks and opportunities associated with growing human activities. In this regard, the Polar Prediction Project (PPP) has contributed to advancing the predictive capabilities. While wave forecasting in polar oceans is still in its early years, the need for advancing wave forecast capacity will only grow in the emerging Arctic Ocean. This paper focuses on the effect of sea ice concentration (SIC) uncertainty on third-generation spectral wave model simulations in and near a marginal ice zone (MIZ). WMO (2014) defines the MIZ as "the region of an ice cover which is affected by waves and swell penetrating into the ice from the open ocean". This study is primarily focused on the MIZ region at the interface between the open ocean and sea ice field.

Documented academic work on wave-ice interactions has a long history dating back as far as Greenhill (1886) (V.A. Squire, 2007; Mosig et al., 2015). When wind waves propagate through/under sea ice cover, the dispersion relation is modified and wave energy is attenuated due to non-conservative dissipation and a conservative scattering phenomenon. Standalone contemporary spectral wave models simulate wave-ice interactions using sea ice as forcing; in this space, the intensive field measurements of the Arctic Sea State and Boundary Layer Physics Program (Thomson et al., 2018) have made a solid contribution to the recent advance of The WAVEWATCH III<sup>®</sup> Development Group (WW3DG) (2019) wave-ice interaction parameterisations. Rogers et al. (2016); Cheng et al. (2017); Ardhuin et al. (2018); Boutin et al. (2018) describe the development and optimisation of the latest WW3 parameterisations for wave evolution in sea ice cover. Despite the progress, Squire (2018); Thomson et al. (2018) qualify accurately quantifying the wave decay and connecting the associated mechanisms over a large domain still remain a challenge because sea ice fields are notoriously heterogeneous; therefore, the wave-ice interaction parameterisation is a source of uncertainty when simulating wave evolution in MIZs. Recent developments of coupled wave-ice-ocean models on a pan-Arctic scale (Boutin et al., 2019; Roach et al., 2019; Zhang et al., 2020) reflect the growing interest in the surface waves' role in the atmosphere, ocean, and sea ice dynamics: perhaps this indicates that advancing the wave-ice interaction physics is becoming a more pertinent issue to broader scientific communities.

Besides the model interior, e.g., wave-ice interaction parameterisations, the 0<sup>th</sup> order uncertainty pertains to sea ice forcing accuracy such as SIC and sea ice thickness (SIT). In particular, SIC retrieved from satellite radiometers (or sea ice models that assimilate satellite observations) forms the most fundamental input into wave-ice models and should have a profound effect on sea state predictions. Spatial distributions of SIC in the Arctic Ocean can be mapped daily based on satellite microwave radiometry, and they have been the primary source of sea ice trend and climatological studies; however, discrepancies among retrieval algorithms have been a long-known issue, and numerous intercomparison studies have investigated the effects of retrieval algorithms, and to a lesser extent instruments, on SIC estimates (Comiso et al., 1997; Meier, 2005; Andersen et al., 2007; Notz, 2014; Ivanova et al., 2015; Comiso et al., 2017; Chevallier et al., 2017; Roach et al., 2018; Lavergne et al., 2019). To date, there is no robust validation of any algorithm, so users are urged to understand strengths and weaknesses of the algorithms when using and interpreting the data (Ivanova et al., 2015; Comiso et al., 2017). The long-known SIC discrepancies imply there is uncertainty in the knowledge of true sea ice coverage (Notz, 2014). The uncertainty is potentially greater for MIZs in the refreezing ocean as satellite derived SIC estimates are known to underestimate thin ice less than 35 cm (Heygster

et al., 2014; Ivanova et al., 2015). Because the satellite retrieved SIC has uncertainty, the choice of a SIC product a modeller and model developers select is an error source. Since the latest WW3 wave-ice parameterisation developments have all used different sea ice forcing products, understanding the effect of SIC uncertainty on wave predictions is a relevant contribution and is the primary objective of this paper.

The expedition that inspired this study is introduced to close the preliminary section: the R/V Mirai Arctic Ocean observational campaign in the refreezing Chukchi Sea during November 2018 (JAMSTEC, 2018). A 12 day MIZ transect observation was conducted to capture daily changes in the sea ice field and the associated environmental conditions at the same geographical location. The observation showed firsthand how surface waves propagate through a heterogeneous MIZ sea ice field. We began to inquire how the sea ice field heterogeneity may affect a wave-ice model and how the satellite retrieved SIC represents the observed sea ice field, which led to the subject of satellite retrieved SIC. The ensuing Section 2 introduces the methods employed to analyse the wave model uncertainties associated with SIC forcing including the R/V Mirai observation details. Section 3 discusses the SIC from a wave modelling perspective using the snapshot images of a sea ice field obtained during the MIZ transect observation. A wave hindcast experiment is conducted using various SIC products as forcing for which the model results are compared with limited available in situ wave observations and two independent predictions as described in Section 4. The analysis is extended to the refreezing Chukchi Sea to examine the bivariate uncertainty data (model significant wave heights and SIC forcing) from a physical view point of modelling wave decay and growth, which is discussed in Section 5. In this section, we also investigate the relative significance of the SIC uncertainty compared with the wave-ice interaction parameterisation uncertainty. Section 6 concludes and discusses the study findings.

## 2 Methods

### 2.1 R/V Mirai and drifting buoy observations

#### R/V Mirai MIZ transect observation

Regions in the Arctic Ocean, like the Chukchi Sea, that were inaccessible in November are now open for navigation, even for non-icebreakers, and R/V Mirai, a Japanese ice class vessel (JAMSTEC, 2019), carried out a late autumn voyage in 2018. R/V Mirai arrived in the Chukchi Sea on 4 November; after other ship time commitments, it began a 12 day transect observation that included an MIZ during daylight hours on 9 November. Daylight hours are limited at high latitudes during this time of the year, so sea ice observation was conducted generally between 19:00–00:00 UTC each day. The transect spanned roughly from 73.00° N, 198.00° E in the MIZ to 72.00° N, 194.00° E towards the central Chukchi Sea. Although the MIZ coverage was less expansive, daily observation of the sea ice conditions at the same geographical locations for an extended period is rare if not unique because of exhaustive ship time required. The R/V Mirai transect on 15 November is overlaid on the mosaic of Sentinel-1 A and B Synthetic Aperture Radar (SAR) normalised radar cross section (NRCS) images (NOAA, 2019) captured on the same day in Figure 1. Shipboard measurements used in this study include surface wind, sea surface temperature (SST),

air temperature, and surface wind waves (WM-2 and Piper-C#15). The details of the R/V Mirai measurement systems are  
90 provided in Appendix A.

### Drifting buoy wave measurement

Two drifting type wave buoys were also deployed during the R/V Mirai observational campaign. One failed within hours, but  
the other buoy, Piper#13, survived for 19 days after being deployed on 6 November 2018 22:18; it was remotely switched  
to a sleep mode to preserve battery on 26 November, and the remote connection ceased on 5 December for some unknown  
95 reason. Hardware and on-board data processing were mostly the same as Nose et al. (2018) except Piper#13 produced bulk  
parameters at 15 minute intervals, which were transmitted near real time via Iridium satellite communication. Piper#13 was  
deployed at 73.32° N, 201.09° E, and its track between 6 and 27 November is presented in Figure 1 overlaid on the NRCS  
mosaic. The wave height is calculated as  $H_{m0} = 4\sqrt{m_0}$  within the analysed range of a spectrum between the low and high  
cut-off frequencies,  $f_{low}$  and  $f_{high}$ , respectively.  $m_0 = \int_{f_{low}}^{f_{high}} S(f)df$  where  $S$  is the variance density spectrum.

## 100 2.2 Satellite retrieved sea ice concentration

SIC estimates from Earth-orbiting satellites are an indirect measurement calculated from microwave brightness temperatures.  
Although passive microwave radiation has low energy, brightness temperatures between sea ice and open ocean are distinguish-  
able due to the difference in surface emissivity and physical temperatures. Microwave brightness temperatures measured from  
different frequency channels can account for the spatial and temporal variations of the ocean surface, so retrieval algorithms  
105 can be applied to produce SIC field estimates (Comiso et al., 2017).

Since the 1970's, a number of multichannel passive microwave radiometers have been in operation, and the sensors currently  
in operation (that are most used) for sea ice analysis are SSMIS and AMSR2. The key difference between the two sensors to  
derive the SIC spatial distribution is footprint resolution as the latter instrument has around 3–4 times higher resolutions for  
frequencies near 19, 37, and 89 GHz. For these two sensors, a large number of SIC retrieval algorithms have been developed  
110 primarily because different algorithms produce considerably different SIC estimates. This is evidenced by a long list of inter-  
comparison studies (Comiso et al., 1997; Meier, 2005; Andersen et al., 2007; Notz, 2014; Ivanova et al., 2015; Comiso et al.,  
2017; Chevallier et al., 2017; Roach et al., 2018; Lavergne et al., 2019).

A total of eight SIC products were selected for this uncertainty study based on four algorithms applied to SSMIS and AMSR2  
data. Hereinafter, uncertainty of satellite derived SIC  $c_i$  for a set of data products is defined as follows:

$$115 \Delta c_i = \text{uncertainty}(c_i) = \max(c_{i1}, \dots, c_{i8}) - \min(c_{i1}, \dots, c_{i8}) \quad (1)$$

where  $c_{ix}$  is the respective data products.

Four algorithms that appear most frequently in literature were considered, and the following algorithms were selected:  
NASA-Team (Cavalieri et al., 1984), Bootstrap (Comiso, 1986), OSISAF, and ARTIST-sea-ice (Spren et al., 2008). The  
selected products are summarised in Table 1 where the product abbreviations and data references are also provided.

120 A concise explanation for the selection of each product is given below:

- NASA-Team—the algorithm has been used for sea ice trend and climatological studies since the beginning of the satellite radiometry era. The SIC data used in this study are the original NASA-Team algorithm applied to SSMIS data and the enhanced NASA-Team2 algorithm applied to AMSR2 data.
- Bootstrap—like NASA-Team, the Bootstrap algorithm has been used for sea ice trend and climatological studies for many years. The SIC data used in this study are the Bootstrap algorithm applied to SSMIS and AMSR2 data.
- OSISAF—this algorithm was selected because the highly reputable European Centre for Medium-Range Weather Forecasts (ECMWF) wave model (ECWAM) uses sea ice forcing based on the Operational Sea Surface Temperature and Sea Ice Analysis (OSTIA) system (Donlon et al., 2012) for which SIC is retrieved using the OSISAF algorithm applied to SSMIS data. We also analyse the AMSR2 data in this study.
- ARTIST-Sea-Ice—this algorithm uses the 89 GHz frequency signal to produce high resolution SIC estimates. This algorithm was selected as accurate higher resolution forcing is generally desirable for numerical models. For this product, we only use the AMSR2 data but analyse two different grids: the pan-Arctic data with 6.250 km resolution and the regional Chukchi-Beaufort data with 3.125 km grid resolution.

The principle of all sea ice algorithms as described in Comiso (2007) is that measured radiative flux can be expressed as  $T = T_i c_i + T_o c_o$  where  $T_i$  and  $T_o$  are the brightness temperatures normally observed from 100 % ice cover and 100 % open water, respectively. Then, SIC can be expressed simply as  $c_i = \frac{T_b - T_o}{T_i - T_o}$  where the subscript  $b$  corresponds to observed ocean surface, and the ice-free surface is  $c_o = 1 - c_i$  (Comiso, 2007). The accuracy of SIC is then dependent on the closeness of tuning brightness temperature tie points to the ice-free and fully ice-covered ocean surface. The selection of frequency channels to derive polarisation ratios or differences (V and H) and gradient ratios (V polarisation) to retrieve SIC also dictates strengths and uncertainties of each algorithm. Technical details of the respective algorithms are described in the Table 1 data references.

### 2.3 WAVEWATCH III<sup>®</sup> spectral wave model

The effect of SIC uncertainty on MIZ wave predictions was investigated by a hindcast experiment using The Arctic Ocean wave model developed at the University of Tokyo (TodayWW3-ArCS) based on WW3, which was introduced in Nose et al. (2018). Third-generation spectral wave models simulate the numerical evolution of waves as energy budgets based on the action density balance equation,

$$\frac{\partial N}{\partial t} + \nabla \cdot \mathbf{c}N = \frac{s}{\sigma}. \quad (2)$$

The left hand side concerns wave kinematics where  $N$  is the wave action density spectrum, which is a function of frequency  $\sigma$ , direction  $\theta$ ,  $x$  and  $y$  space, and time  $t$ , and  $\mathbf{c}$  describes the propagation velocities in spatial and spectral coordinates. In deep water when neglecting currents,  $\mathbf{c}$  is the group velocity  $c_g$ . Source terms are on the right hand side and the ones relevant to this study include the following: the wind input term  $s_{\text{wind}}$ , the wave dissipation term  $s_{\text{dissipation}}$ , the non-linear interaction term  $s_{\text{non-linear interactions}}$ , and the wave-ice interaction term  $s_{\text{ice}}$ . The sum of these source terms  $s$  is expressed based on the following

default scaling in ice-covered waters:

$$s = (1 - c_i)(s_{\text{wind}} + s_{\text{dissipation}}) + c_i s_{\text{ice}} + s_{\text{non-linear interactions}}. \quad (3)$$

Specifically to this study,  $c_i$  relates to the satellite retrieved SIC and  $s_{\text{ice}}$  to the ice type, i.e., how the model treats sea ice. The effect of sea ice on waves are represented via the modified dispersion relation  $\sigma = \sigma(\bar{k})$  where  $|\bar{k}| = k = k_r + ik_i$ . The real part  $k_r$  is the physical wavenumber and alters the propagation speed of waves in a sea ice field (analogous to effects of shoaling and refraction by bathymetry), and the imaginary part  $k_i$  is the exponential decay coefficient.  $k_i$  is introduced in the model as  $s_{\text{ice}} = -2c_g k_i N$  for fully ice-covered sea, i.e.,  $c_i=1$ , and the solution to  $\frac{dN}{dt} = s_{\text{ice}}$  is  $N_0 e^{-2c_g k_i t}$ . There are five options for treating sea ice in WW3 denoted as IC1–5;  $c_i$  provides the scaling in the linkage between  $s_{\text{ice}}$  and ICX as

$$\frac{dN}{dt} = c_i s_{\text{ice}} = -2c_i c_g k_i(f, p_1, \dots, p_n) N \quad (4)$$

where  $p_n$  is the sea ice properties, e.g., effective shear modulus and effective viscosity. Therefore, the rate of attenuation depends on the wave period and sea ice properties and is moderated by  $c_i$ , i.e.,  $N_0 e^{-2c_i c_g k_i t}$ .

The wave-ice models implemented in WW3 that calculate  $k_r$  to model  $k_i$  are IC2, IC3, and IC5. IC2 calculates dissipation due to basal friction in the boundary layer below an ice sheet, which is modelled as a continuous thin elastic plate based on the work of Liu and Mollo-Christensen (1988). IC3 treats sea ice as a visco-elastic layer based on Wang and Shen (2010), which calculates the internal stress of the ice cover based on storage and dissipation. IC5 is a visco-elastic beam model based on Mosig et al. (2015). The dispersion relation of these models are provided in Appendix B. Arduin et al. (2018); Boutin et al. (2018) (IC2) and Rogers et al. (2016); Cheng et al. (2017) (IC3) describe the progress of these  $s_{\text{ice}}$  parameterisations using the refreezing Beaufort Sea data of Thomson et al. (2018). These wave-ice models can be combined with an energy-conservative scattering attenuation model denoted as IS1 and IS2 (Meylan and Masson, 2006; Dumont et al., 2011; Williams et al., 2013; Arduin et al., 2018; Boutin et al., 2018).

During the R/V Mirai cruise, sea ice in the MIZ was mainly grease, nilas, and pancake ice, so the hindcast experiment was conducted using the IC3 package (with the default parameters) as it has been designed for these ice types (Rogers et al., 2016; Cheng et al., 2017). Scattering is not expected to be the dominant process in this type of ice fields (Montiel et al., 2018), so it was not considered in the experiment. Regarding SIT forcing, a homogeneous input option with a value of 10 cm was applied; the constant forcing was applied so we can evaluate solely the  $\Delta c_i$  effect on wave-ice interaction models. 10 cm was chosen because the MIZ transect observation was mostly characterised by new and young ice whose upper bound of SIT is of a similar order (Canadian Ice Service-Environment Canada, 2005).

$s_{\text{wind}}$  and  $s_{\text{dissipation}}$  parameterisations and wind forcing for TodayWW3-ArCS were tested. We compared the most commonly used physics packages, ST4 (Arduin et al., 2010; Rasche and Arduin, 2013) and ST6 (Rogers et al., 2012; Zieger et al., 2015; Liu et al., 2019), using ECMWF global reanalysis (ERA5) 10 m wind ( $U_{10}$ ) against the 2016 September storm (Nose et al., 2018) when TodayWW3-ArCS and observations agreed well. The ST6 parameterisation showed marginally improved agreement using the default parameters; so all simulations used the ST6 parameterisation and were forced with ERA5 wind fields. The default  $s_{\text{non-linear interactions}}$ , which is not affected numerically by sea ice, was used for all simulations.

185 TodayWW3-ArCS used in this study has a horizontal resolution of 4 km, and its domain covers most of the Pacific side of the Arctic Ocean including the East Siberian, Chukchi, and Beaufort Seas. The model boundaries connected to the seas of the Arctic Ocean was enclosed by ice cover during the November 2018 modelling period (corresponding to the R/V Mirai observation), so nesting was unnecessary. Similar to Rogers et al. (2016), we neglected swell penetration through the Bering Strait. The technical details of TodayWW3-ArCS's geographical and spectral grids are provided in Appendix B.

190 ASI-3km and OSISAF-AMSR2 data were excluded for the wave hindcast experiment. The former has a regional coverage that is too small for the TodayWW3-ArCS domain, and the OSISAF-AMSR2 data have noise in the open ocean, which yield erroneous wave simulation results when they are used as model forcing (as described in Appendix C). The remaining six satellite retrieved SIC products in Table 1 were used as model forcing to examine wave modelling uncertainty, so the  $\Delta c_i$  wave hindcast experiment dataset has  $\{H_{m0\ c_{i1}}, \dots, H_{m0\ c_{i6}}\}$  where  $c_{ix}$  denotes the satellite retrieved SIC forcing. Step-like changes  
195 of SIC from daily intervals are not ideal as forcing, so the SIC data were interpolated to match the model output frequency of hourly intervals. Unless specified otherwise, all other settings were default. The modelling period covers both R/V Mirai and Piper#13 observations and is from 5 to 25 November 2018 with a 5 day spin up.

It should be noted that when satellite derived SIC data are used as forcing, the heat and momentum fluxes are distorted in the marine atmospheric boundary layer because the lower atmosphere and the ocean surface are no longer coupled. Inoue et al.  
200 (2011) evaluated surface heat transfer from three reanalysis products by focusing on how the models treat sea ice; they found the treatment of SIC is a key factor for the estimation of surface turbulent heat fluxes. Guest et al. (2018) have elucidated the ice-edge jet generation mechanism based on the in situ data obtained in the refreezing Beaufort Sea. Undoubtedly, altering the sea ice field would feedback to the wind, but this is not captured in this wave hindcast experiment.

### 3 Sea ice concentration: definition, characteristics, and the use in wave-ice models

205 WMO (2014) defines SIC as "the ratio expressed in tenths describing the amount of the sea surface covered by ice as a fraction of the whole area being considered". The so-called "area considered" presumably varies for different objectives. The length scale of  $O(10)$  km may be adequate for sea ice extent climatology, but for wave-ice interactions, the wave provides a scale in a phase-resolved sense. Satellite retrieved SIC represents the fraction of ice-covered water over a large area, sufficiently large enough that the SIC represents a property of a continuum. In reality, the sea ice in the MIZ is granular, and ice floes jam due to  
210 horizontal convergence by Langmuir circulation, internal waves, and wind variability, resulting in a formation of features such as ice bands and wind streaks—with which waves likely interact distinctively.

On 14 November 2018 during the MIZ transect observation, R/V Mirai encountered moderate on-ice waves with an  $H_{m0}$  up to around 2.00 m propagating towards the ice edge (this  $H_{m0}$  estimate is consistent from both the shipboard wave data described in Appendix A and hindcast models as shown later). Figure 2 presents a series of snapshot images of the sea ice  
215 field during the encounter. R/V Mirai traversed over 10 km in the MIZ from the ice edge, and each image area extends at least over 1 km conservatively (using the crude distance to horizon calculation). These images depict the heterogeneous sea ice field, both in SIC and ice types, that waves propagate when they enter an MIZ. Because WW3 wave-ice interaction models are

scaled according to  $\frac{dN}{dt} = c_i s_{ice}$  (Equation 4), the subgrid scale physics is completely missing. It is plausible the subgrid scale distribution of SIC and ice types can be treated in a stochastic manner to provide meaningful mean values to the grid-scale model. On the other hand, SIC  $c_i$  also affects the WW3 wave-ice model by means of scaling (Equation 4). Figure 2 shows SIC data from eight satellite retrieved products described in Section 2.2 during this event. The SIC estimates interpolated at the R/V Mirai positions largely deviate among the products, characterising the uncertainty of the satellite retrieved SIC. Moreover, the entire time series of the 12 day MIZ transect observation depicts  $\Delta c_i$  is persistent (Figures A4 to A6 of Appendix D). Hereafter, we show how large the effect of  $\Delta c_i$  on modelling MIZ waves can be, so much so that it overwhelms the choice of  $s_{ice}$ , e.g., ICX.

#### 4 $\Delta c_i$ effects on wave modelling at the observation sites

Our goal is to understand  $\Delta c_i$  effects on wave-ice models, but adequate model accuracy, at least qualitatively, is needed for a meaningful uncertainty analysis. Because we lack a sufficient duration of robust in situ wave measurements, two independent numerical wave models that produce predictions in the Arctic Ocean, namely ERA5 ECWAM and the Arctic Monitoring and Forecasting Centre (ARCMFC) wave model, both based on WAM, were also included in the analysis. Comparisons with these high quality models provide a guide on the TodayWW3-ArCS performance. The ERA5 ECWAM data are made available on a  $0.5^\circ$  resolution grid on the Climate Data Store (Copernicus, 2019), and the model treats grid points with  $c_i > 0.30$  as land using an ice mask. The ARCMFC wave model has a horizontal resolution of around 8 km and also used an ice mask; from December 2019, the month after our observation, the model was upgraded to simulate waves under sea ice cover based on Sutherland et al. (2019)'s two-layer sea ice model. The ARCMFC TOPAZ model provides the SIC and SIT forcing fields, which are kept constant from the initial state. Daily ARCMFC wave analysis data remapped to a 6.25 km polar stereographic grid are made available on ARCMFC (2019).

#### R/V Mirai MIZ transect observation

Figure 3 presents time series of  $H_{m0}$  interpolated at the R/V Mirai positions for all models during the MIZ transect observation (refer to Appendix D for the details on the environmental conditions during the MIZ transect observation). The figure also includes shipboard wave measurements from the WM-2 integrated analog system (TSK Tsurumi Seiki Co., 2019) when the ship speed was  $< 2 \text{ ms}^{-1}$  (refer to Appendix A for further explanation). Using Equation 1, the model wave height uncertainty is denoted  $\Delta H_{m0} = \text{uncertainty}(H_{m0})$  for six SIC forcing simulations. The time series figure depicts the effect of sea ice on waves each time R/V Mirai sailed in the ice cover as the uncertainty generally increased. In the case of waves propagating towards the ice edge, waves decay at different timing depending on the sea ice edge location of the respective SIC data used, and the representation of the ice edge affects the fetch distance of off-ice wave growth as waves propagate towards open water. The model  $\Delta H_{m0} > 1.50 \text{ m}$  occurred on 20 November 2018 during the off-ice wind condition, which is  $> 50 \%$  of the open water  $H_{m0}$  (of the TodayWW3-ArCS and ARCMFC models). Because R/V Mirai slowed down in the MIZs, at least one WM-2 measurement was obtained in ice cover each day, and they generally lie within  $[\min(H_{m0 \ c_i 1}, \dots, H_{m0 \ c_i 6}), \max(H_{m0 \ c_i 1}, \dots, H_{m0 \ c_i})]$ .



250 Furthermore, when the open ocean sea state is energetic, daily peak  $\Delta H_{m0}$  occurs as R/V Mirai sailed into and out of the ice-covered water, indicating the representation of an ice edge in the model forcing plays an important role.

Regarding the comparison of three different base models, ERA5 ECWAM consistently has a positive bias compared with other models except for the on-ice wave event on 14 November when they all agree reasonably well. For this event, both WM-2 and Piper-C#15 have comparable estimates of the measured peak  $H_{m0}$  as R/V Mirai was sailing out of the ice  
255 cover, which was around 2.00 m. The ERA5 ECWAM positive bias compared with other models is exacerbated when the strongest off-ice winds were recorded by R/V Mirai between 19–22 November. ARCMFC  $H_{m0}$  agrees slightly better with  $max(TodaiWW3-ArCSH_{m0})$ . These are evidenced in bias and root mean square deviation (RMSD) values calculated with respect to the ARCMFC  $H_{m0}$ : the ERA5 ECWAM  $H_{m0}$  has bias = 0.19 m and RMSD = 0.25 m, and the  $max(TodaiWW3-ArCSH_{m0})$  has bias = -0.11 m and RMSD = 0.21 m.

260 It is interesting to point out that using different sea ice forcing alone causes wave estimates to deviate in open water. This is also the case between the ERA5 ECWAM and ARCMFC models, which both use ECMWF wind forcing. The deviation of wave estimates in open ocean is more apparent during the off-ice wind conditions at the end of the transect observation period. A conjecture is that a different treatment of sea ice in each model modifies available fetch for which waves can be generated; for example, having open water to 0.30 SIC in ERA5 ECWAM may simply increase the fetch distance at the R/V Mirai locations,  
265 which could result in a consistent positive bias compared with other models.

### Piper#13 drifting buoy observation

Figure 4 is a Piper#13 equivalent of Figure 3 with its observational data. Satellite retrieved SIC for all products at the Piper#13 positions is provided in Figure A7 of Appendix D. The buoy data are discussed first. It measured  $H_{m0} > 1.00$  m for two days after being deployed at the final hours on 6 November 2018.  $H_{m0}$  tapered off to around 0.20 m, but briefly rose to 0.60 m  
270 when the wind speed increased at around 12 November 2018 00:00. Then, it drifted in ice cover with less wave penetration; no measurable wave signals propagated to Piper#13 as the measured spectra indicate instrument noise except during the on-ice wave event between the late hours on 14 November and the early hours of 15 November. Peak wave periods,  $T_p$ , which is a frequency inverse corresponding to the maximum variance density, were consistently around 9 s; this is likely a true wave signal even though  $H_{m0}$  was only 0.05 m.

275 Regarding the wave hindcast, TodaiWW3-ArCS  $\Delta H_{m0}$  was the largest in open water and decreased with  $mean(H_{m0})$ . In general, Piper#13  $H_{m0}$  during 7 and 8 November are underestimated by all numerical models. When the wave energy tapered off between 8–11 November, both ERA5 ECWAM and ARCMFC model  $H_{m0}$  are overestimated. However, the episodic increase of wave energy on 11 and 12 November is reproduced in these models, albeit with a positive bias, whereas the TodaiWW3-ArCS simulations did not show any increase in the  $H_{m0}$  at the Piper#13 location. There are no data shown for  
280 the ERA5 ECWAM and ARCMFC models after 12 November at Piper#13 presumably due to the ice masks. There are three occasions when all TodaiWW3-ArCS simulations slightly overestimates  $H_{m0}$  compared with the buoy data, which indicate the model attenuation rates may be too weak or SIC forcing is inaccurate.

## 5 $\Delta c_i$ and wave modelling in the refreezing Chukchi Sea

Figure 5 depicts 0.15 and 0.85 SIC contours on 15 November 2018 from three products: OSISAF-SSMIS, BST-AMSR2, and  
285 ASI-3km. They are overlaid on the NRCS mosaic of Sentinel-1 images acquired on the same day as NRCSs provide indication  
of true sea ice fields. The difference among these contours in the MIZs is striking regardless of their footprint resolutions.  
The mosaic depicts sea ice edges have a wavy, but highly nonlinear, jagged form. For most of the ice edges, Figure 5 shows  
OSISAF-SSMIS derived 0.15 contours are smoother whereas the BST-AMSR2 and ASI-3km contours appear to follow the  
sea ice edge concavity and convexity with a varying degree of closeness; ASI-3km appears to be qualitatively more consistent  
290 with the ice edges detected in the NRCS data. Figure 5 also shows the 0.85 SIC contours are somewhat qualitatively similar  
between OSISAF-SSMIS and ASI-3km; however, BST-AMSR2 and OSISAF-SSMIS 0.85 contours can be some 200 km apart,  
for example between  $73.00^\circ$  N,  $190.00^\circ$  E and  $74.00^\circ$  N,  $185.00^\circ$  E. Regions of low radar intensity that appears dark in the  
NRCSs are apparent in the disparate 0.85 SIC contours, which indicate the waters in this area were not high SIC. As such,  
it does imply BST-AMSR2 overestimated the SIC for this date. Although not shown here, 0.50 SIC contours are inconsistent  
295 among all three products. The analysis here suggests ASI-3km generally captures qualitatively the SIC spatial variability shown  
in the NRCS data.

The above suggests the satellite retrieved SIC uncertainty can be considerable on a regional scale. The preceding Section 4  
demonstrated that simply changing SIC forcing alone produces considerable  $\Delta H_{m0}$  in the wave hindcast experiment at the  
observation sites. In this section, we extend the wave hindcast analysis to the refreezing Chukchi Sea.

### 300 5.1 On- and off-ice wave evolution in the refreezing Chukchi Sea MIZs

A more in-depth analysis is conducted here to understand how  $\Delta c_i$  affects the wave-ice interactions as implemented in WW3  
from a physical view point. At the most fundamental level, sea ice fields modify the fetch of the ocean: two cases are selected  
to analyse the effect of varying fetches on the attenuation and growth during on- and off-ice wave conditions on 15 November  
2018 00:00 and 21 November 2018 18:00, respectively. The wind magnitudes and vectors for these cases are shown in Figure 6.  
305 For the on-ice wave case, relatively strong small-scale south westerly winds as depicted in Figure 6a generated waves with an  
 $H_{m0}$  of about 2.00 m propagating towards the ice edge. When on-ice waves encounter ice cover, rapid attenuation is expected  
within  $O(10)$  km (Ardhuin et al., 2018; Squire, 2018), so the ice edge locations and the SIC variability near it affect the model  
simulation of wave decay. For the selected off-ice wave case, a low pressure system over Alaska and a high pressure system  
north west of the Chukchi Sea generated sustained north easterly winds over much of the Chukchi Sea as depicted in Figure 6b,  
310 which generated open water  $H_{m0} > 3.00$  m. In this case, the ice edge and SIC field determine the fetch on which waves are  
generated, and as such,  $\Delta c_i$  introduces  $\Delta H_{m0}$ .

Owing to the combination of the non-homogeneous nature of wind that generates waves and the SIC field heterogeneity,  
there was no statistical association for the bivariate uncertainty data ( $\Delta H_{m0}$  and  $\Delta c_i$ ) even when the  $H_{m0}$  was normalised to  
wind forcing. In an attempt to elucidate the model uncertainties in the context of physical processes, a scatter plot is produced  
315 for both cases with the following visualisation technique: marker sizes are scaled to  $mean(H_{m0})$  as a bubble plot and each

marker is colour coded according to  $mean(c_i)$  like a colour-coded scatter plot. The former aims to emphasise the model data near the ice edge where the effects of wave attenuation and growth associated with  $\Delta c_i$  are most prominent, and the colour coded markers indicate  $mean(c_i)$  among all forcing. For simplicity, we refer to these figures herein as an enhanced scatter plot.

Figure 7a depicts the spatial distribution of the model  $\Delta H_{m0}$  for the on-ice wave case with 0.01, 0.50, and 0.85  $mean(c_i)$  contours. Not all ice edges are aligned to the on-ice wind orientation because of the ice edge geometry. On-ice wave analysis was, therefore, conducted for a strip of the model grid points roughly 100 km in width along the south westerly on-ice wind orientation as depicted in a grey dashed quadrilateral. An enhanced scatter plot shown in Figure 7b depicts bivariate uncertainty data corresponding to the model grid points along the on-ice wind orientation. There is a strong indication of a correlation between the  $\Delta c_i$  and model  $\Delta H_{m0}$  for this on-ice wave case. The correlated uncertainties imply that as on-ice waves approach and decay due to wave-ice interactions, larger discrepancies in the representation of SIC as forcing causes greater model  $\Delta H_{m0}$ .

Figure 7b also shows inverse proportion of marker sizes and uncertainties. Smaller size markers have low  $mean(H_{m0})$ , so larger  $\Delta H_{m0}$  occur when only one or two of  $\{H_{m0c_{i1}}, \dots, H_{m0c_{i6}}\}$  have  $H_{m0} > 0$  while remaining  $H_{m0} = 0$  due to waves being fully attenuated. The figure shows only blue and light-blue markers, which indicate the waves generated by the strong localised winds decayed with limited wave penetration no farther than  $mean(c_i) = 0.40$ . Furthermore, in theory, the cluster of data must approach the origin of the figure coordinate in the upwind open waters in the central Chukchi Sea. In other words, on-ice waves that are being generated numerically in the open water must satisfy  $\Delta H_{m0} = 0$  &  $\Delta c_i = 0$ . The reason they do not converge to the figure coordinate origin is that the  $\Delta c_i$  along the Siberian coast (not shown here) affects the waves in the upwind waters as indicated by very faint yellow shades in Figure 7a.

Analysis of the off-ice case is carried out in a similar manner. The data bound by Quadrilateral 2 as shown in Figure 8a reflect the model grid points with the north easterly off-ice wind conditions. Although the correlation is not as high as the on-ice wave case (with higher scatter for  $\Delta c_i > 0.10$ ), the enhanced scatter plot in Figure 8c shows that the bivariate uncertainty data are correlated for the off-ice wave case as well. Analogous to the on-ice wave case, high  $\Delta H_{m0}$  can occur near the ice edge when only one or two simulations have the SIC forcing representing open water conditions, while the wave growth is suppressed for the remaining simulations due to higher SIC. This effect is depicted in Figure 9c, which shows  $\Delta H_{m0}$  and  $\Delta c_i$  along a transect of the Quadrilateral 2 long axis. Along this transect, ASI-6km and BST-AMSR2 have the most north east ice edge, and the waves rapidly grow under the strong north easterly wind forcing whereas the higher SIC of the other simulations suppress the wave growth. A distinct difference between the off- and on-ice wave cases regarding the  $\Delta c_i$  effect on wave-ice models is that  $\Delta H_{m0}$  remains in the downwind open ocean whereas  $\Delta c_i \rightarrow 0$ . This is clearly shown in Figure 8c where  $\Delta H_{m0} = [0.10, 0.60]$  when  $\Delta c_i = 0$  indicating the effect of  $\Delta c_i$  forcing on model  $\Delta H_{m0}$  can extend to the adjacent open water.

Off-ice wave evolution is a complex process because the fetch is not only controlled by the location of the ice edge, but also wave-ice interactions as implemented in WW3. The current numerical approach to simulate wind pumping energy into waves in ice cover is dictated by  $c_i$  because waves grow when  $(1 - c_i)(s_{wind} + s_{dissipation}) > c_i s_{ice}$ . Whether wave evolution in ice cover follows the Equation 3 scaling has been discussed in Rogers et al. (2016); Thomson et al. (2018); the latter cites Li et al. (2017) who confirmed wind input to high frequency wave energy in the Antarctic Ocean. The off-ice  $\Delta H_{m0}$  is apparently also

influenced by the cumulative effect of the  $\Delta c_i$  along the fetch distance affected by the wave-ice interaction parameterisations as implemented in WW3.

Lastly, for both on- and off-ice wave cases, significant  $\Delta H_{m0}$  extends to the waters where the wind forcing is orientated along the ice edge; so the model data are briefly examined in the region of MIZs north east of Wrangel Island, which is shown as Quadrilateral 1 in Figure 8a along the sea ice edge and north easterly wind forcing orientation. This region has considerable  $\Delta c_i$  (not shown here) in a similar manner to Figure 5, and the model  $\Delta H_{m0}$  is just as sizeable under the influence of high wind forcing. There is evidence of correlated bivariate uncertainty data in Figure 8b, and a combination of on- and off-ice wave features for the respective enhanced plots discussed in the previous paragraphs are apparent. Deciphering the physical processes is complicated; however, the bivariate uncertainty data along a transect illustrates how  $\Delta c_i$  and  $\Delta H_{m0}$  are related; Figure 9b shows these results for a cross section oriented along the ice edge (the long axis of Quadrilateral 2) on 21 November 2018 18:00.

## 5.2 Relative significance of $\Delta c_i$ compared with wave-ice interaction parameterisation uncertainty

The  $\Delta c_i$  hindcast experiment conducted in this study intentionally adopted the default IC3 source term parameters. As mentioned in Section 1, considerable progress in the WW3 wave-ice interaction parameterisations has been made owing to the Thomson et al. (2018) measurements. However, Arduin et al. (2018) also explain that observation of wave attenuation could also be reproduced with many model forcing and parameter combinations, which as stated in the article is not unexpected because different wave-ice interaction processes are taking place along the wave propagation path. As discussed in Section 2.3, WW3 offers three physics-based  $s_{ice}$  parameterisations: IC2, IC3, and IC5. They are based on different attenuation mechanisms and dispersion relations (see Appendix B), but their default ice rheological parameters (as given in the manual or the WW3 regression test cases) also vary as apparently the sea ice parameters are context-based according to the manual. The three main parameters used to tune the IC2, IC3, and IC5 attenuation rate are as follows: eddy viscosity ( $\text{m}^2\text{s}^{-1}$ )  $\nu$ , ice density ( $\text{kg}^3\text{m}^{-3}$ )  $\rho$ , and effective elastic shear modulus (Pa)  $G$ , although  $G$  is not used in IC2. The default  $\rho$  values are consistent for these  $s_{ice}$  parameterisations. The default  $\nu$  values are  $153.6\text{e}-3$ ,  $1.0\text{e}+0$ , and  $5.0\text{e}+7$  for IC2, IC3, and IC5, respectively, and the default  $G$  values are  $1.0\text{e}+3$  and  $4.9\text{e}+12$  for IC3 and IC5, respectively. Rogers et al. (2016) adopted  $G = 0$  assuming it is negligible in nilas and pancake ice fields. Based on the enormous range of tunable parameters and other factors described in this paragraph, the  $s_{ice}$  parameterisation is a notable uncertainty source. To evaluate the relative significance of  $\Delta c_i$ , we compared the results with the wave-ice interaction source term uncertainty ( $s_{ice}$  uncertainty) for the modelling period between 5 and 25 November 2018. The  $s_{ice}$  uncertainty wave hindcast experiment was conducted using IC2, IC3, and IC5 based on the same model setup described in Section 2.3 except all three simulations used BST-AMSR2 as SIC forcing.

A pair of  $\Delta H_{m0}$  datasets were derived for the  $\Delta c_i$  and  $s_{ice}$  uncertainty wave hindcast experiments. They were collated for the entire simulation period within the model domain shown in Figure 7a. Uncertainty distributions are visualised in a Q-Q plot by simply sorting each dataset, and this is shown in Figure 10. The figure depicts that both uncertainties are considerable with  $\max(\Delta H_{m0})$  values of 1.95 m and 1.44 m for the  $\Delta c_i$  and  $s_{ice}$  uncertainty experiments, respectively. The robustness of this result was examined via SIT forcing sensitivity analysis. From a physical view point, the choice of 10 cm was made to match

385 the observed sea ice types during the R/V Mirai MIZ transect observation. For observational evidence of SIT in the refreezing Arctic Ocean, we defer to Arduin et al. (2018) to determine the test case and selected 50 cm. From a wave-ice modelling perspective, SIT effectively serves as a tuning parameter when forced as a homogeneous field. For example, the attenuation rate  $k_i$  of IC2 as shown in Appendix B has SIT in the form of  $(1 + k_r M)$  in the denominator:  $M = \frac{\rho h_i}{\rho_w}$  (Liu and Mollo-Christensen, 1988) where  $h_i$  is the SIT, and  $\rho$  and  $\rho_w$  are the ice and sea water density. If we take a deep water wavelength  
390 corresponding to 7 s wave period, changing the SIT from 10 cm to 50 cm increase the  $k_i$  by at most 3 %.  $k_i$  sensitivity on SIT examined in Wang and Shen (2010); Mosig et al. (2015) (IC3 and IC5) appears more sensitive; as such, sensitivity analysis was conducted for our model. Repeating the  $\Delta c_i$  and  $s_{ice}$  uncertainty experiments with 50 cm SIT,  $max(\Delta H_{m0})$  values increased respectively to 2.34 m and 1.95 m, but the  $\Delta c_i$  remains as the dominant error source. Further, IC3 was most affected by the SIT change for the equivalent transects of Figure 9 (not shown here). Even though there was no event during the study period  
395 when scattering were expected to be the dominant process (the implication of this is given in Section 6), sensitivity of the finding to scattering was also examined by combining IS2 scattering with IC2 and IC3 with the default parameters. The results remained robust for the study period. Lastly, sensitivity to the choice of SIC forcing used in the  $s_{ice}$  uncertainty experiment was examined by using ASI-6km instead of BST-AMSR2: the experiment also resulted in the same outcome.

Table 2 is a list of SIC forcing used in the recent WW3  $s_{ice}$  developments as well as the forcing of the wave models  
400 analysed in Section 4. Some studies employed numerical sea ice models or considered various sources and assessed their accuracy/suitability. It is interesting to learn that each wave-ice modelling study used different satellite retrieved SIC data.

## 6 Conclusions and discussions

The WW3 wave-ice models represent the exponential decay of waves in the presence of sea ice as  $\frac{dN}{dt} = -2c_i c_g k_i N$  (Equation 4). We investigated the effect of the satellite retrieved SIC uncertainty  $\Delta c_i$  on modelling waves in the refreezing Chukchi  
405 Sea MIZ using six SIC data sets based on the four commonly used retrieval algorithms: NASA-Team, Bootstrap, OSISAF, and ARTIST-sea-ice. The wave hindcast experiment reveals  $\Delta c_i$  causes model wave height uncertainty  $\Delta H_{m0}$ , and there is evidence that bivariate uncertainty data ( $\Delta H_{m0}$  and  $\Delta c_i$ ) are correlated, although off-ice wave growth is more complicated due to the cumulative effect of  $\Delta c_i$  along an MIZ fetch

We compared the  $\Delta H_{m0}$  distribution of the  $\Delta c_i$  experiment with that of the  $s_{ice}$  uncertainty experiment. Both uncertainties  
410 are found to be considerable during the simulation period with maximum  $\Delta H_{m0}$  values of 1.95 m and 1.44 m, respectively. This result is found to be robust based on the sensitivity analyses that tested the SIT forcing and the inclusion of scattering. Despite the  $s_{ice}$  parameterisations being derived from different concepts and the WW3 wave-ice models completely missing the subgrid scale physics relating to sea ice field heterogeneity, the accuracy of satellite retrieved SIC used as model forcing is the primary error source of modelling MIZ waves in the refreezing ocean. The study outcome suggests wave-ice model tuning  
415 may not be as effective at this time when the knowledge of the true SIC field is too uncertain. It is worthy to note that swell waves that propagate  $O(100)$  km into the ice-covered water where the scattering would likely be the dominant process were not observed during the study period. As such, the effect of  $\Delta c_i$  for such waves remains to be resolved.

Future improvements on the wave-ice models should come from two ends; continual developments of parameterised physics on the regional and pan-Arctic scale and working on a subgrid scale physical model on the other end. Solid and robust observational evidence through remote sensing and shipboard measurements is likely the key to connecting these two ends.

## Appendix A: R/V Mirai measurement system

R/V Mirai is equipped with two anemometers that were located on the foremast at 25 m elevation, and indicative wind conditions at the ship positions were derived from 10 minute vector moving averages of 6 s interval instantaneous true wind speed and direction. SST was measured –1 m below the sea surface with further 5 m inlet to the gauge while air temperatures were measured on the foremast at 23 m elevation.

Shipboard waves were obtained based on two methods: a microwave radar system (WM-2) (TSK Tsurumi Seiki Co., 2019) at the bow and stern of the ship, and nine-axis Inertial Moment Unit (IMU) (Piper-C#15), which is a device similar to the one used by Kohout et al. (2015). WM-2 has a sampling frequency of 2 Hz and collects raw sea surface elevation for 1,152 seconds at 35 minutes past each hour, and its integrated analogue system removes hull agitation and carries out Doppler correction. Bulk parameters like the significant wave height and period are produced based on the zero-crossing method. Wave observations during the campaign from the WM-2 integrated analog system (TSK Tsurumi Seiki Co., 2019) were significantly affected by Doppler correction errors. Collins III et al. (2015) have shown shipboard measurements are less affected by this effect when ship speed is  $< 3 \text{ ms}^{-1}$ . Applying a  $2 \text{ ms}^{-1}$  ship speed threshold greatly reduced conspicuously spurious data, and these data were used as indicative wave heights in this study (e.g., Figure 3). Piper-C#15 on board the vessel relies on an IMU. The processing method is consistent with Kohout et al. (2015) except 15 minute intervals were used instead of 1 hour. Waves in the Chukchi Sea during the study period was dominated by wind seas, which have shorter wavelength relative to the ship dimensions. These waves are impeded by R/V Mirai's hull, so the shipboard Piper-C#15 has limitations on measuring wind seas. Response Amplitude Operator of R/V Mirai and the WM-2 data can be combined in theory to transfer IMU's high frequency signals to true surface elevations, but post-processing remains ongoing work. Although most of the Piper-C#15 data did not reflect the true wave field, the peak Piper-C#15  $H_{m0}$  of 2.00 m during the on-ice wave event on 14 November 2018 agreed with the peak WM-2  $H_{m0}$ ; this value is also comparable with the ERA5  $H_{m0}$  as well. This provides confidence that the waves observed during this event was at least around 2.00 m.

## Appendix B: Supplementary information of TodaiWW3-ArCS and the dispersion relation of WAVEWATCH III<sup>®</sup> wave-ice interaction models

The TodaiWW3-ArCS geographical grid at high latitudes was based on the curvilinear grid implemented by Rogers and Campbell (2009) with a polar stereographic projection of  $75^\circ \text{ N}$  latitude (produced by Mathworks Matlab's polarstereo\_inv function). The model domain coverage on the polar stereographic grids is as follows: the easting extent between –1,800 km and 1,512 km, and the northing extent between 520 km and 2,904 km. The geographical grid was defined using the International

Bathymetry Chart of the Arctic Ocean bathymetry (Jakobsson et al., 2012) and the Global Self-consistent, Hierarchical, High-  
 450 resolution Geography shoreline data (Wessel and Smith, 1996), and there are approximately 301,535 sea point cells. The  
 spectral grid was configured with 36 directional and 35 frequency bins with the latter ranging from 0.041 Hz to 1.052 Hz.

The WW3 wave-ice model dispersion relations for IC2, IC3, and IC5 are provided here. IC2 is based on the work of Liu and  
 Mollo-Christensen (1988), and the dispersion relation is defined as follows according to the WW3 manual:

$$\sigma^2 = \frac{gk_r + Bk_r^5}{\coth(k_r d) + (k_r M)}, c_g = \frac{g + (5 + 4k_r M)Bk_r^5}{2\sigma(1 + k_r M)^2}, \text{ and } k_i = \frac{\sqrt{\nu\sigma}k_r}{c_g\sqrt{2}(1 + k_r M)},$$

455 where

$$B = \frac{Eh_i^3}{12(1 - \phi^2)\rho_w}, Q = \frac{Ph_i}{\rho_w}, \text{ and } M = \frac{\rho h_i}{\rho_w}.$$

$h_i$  is the SIT,  $\rho$  and  $\rho_w$  are the ice and sea water density,  $\nu$  is the viscosity,  $E$  is the Young's modulus of elasticity,  $\phi$  is the  
 Poisson's ratio, and  $P$  is the compressive stress in the ice pack.

IC3 is based on Wang and Shen (2010), and the dispersion relation is concisely shown in Equation 4 of Cheng et al. (2017)  
 460 as follows:

$$\sigma^2 - Q_c g k \tanh(kd) = 0 \text{ where}$$

$$Q_c = 1 + \frac{\rho}{\rho_w} \frac{g^2 k^2 S_k C_a - (K^4 + 16k^6 a^2 \nu_e^4) S_k S_a - 8k^3 a \nu_e^2 (C_k C_a - 1)}{gk(4k^3 a \nu_e^2 S_k C_a + K^2 S_a C_k - gk S_k S_a)},$$

$$S_k = \sinh(kh), S_a = \sinh(ah), C_k = \cosh(kh), C_a = \cosh(ah), K = \sigma + 2ik^2 \nu_e, a^2 = k^2 - \frac{i\sigma}{\nu_e}, \text{ and } \nu_e = \nu + \frac{iG}{\rho\sigma}.$$

465  $G$  is the shear modulus.

IC5 is based on Mosig et al. (2015), and the dispersion relation is defined as follows according to the WW3 manual:

$$Q g k \tanh(kd) - \sigma^2 = 0, \text{ where } Q = \frac{G_\nu h_i^3}{6\rho_w g} (1 + \phi) k^4 - \frac{\rho h_i \sigma^2}{\rho_w g} + 1 \text{ and } G_\nu = G - i\sigma\rho\nu.$$

### Appendix C: OSISAF-AMSR2 noise in open ocean

The OSISAF-AMSR2 SIC estimates during the November 2018 study period consist of prevalent erroneous estimates in the  
 470 open ocean. At the R/V Mirai positions, inaccurate SIC is estimated on 14 and 20 November 2018 when R/V Mirai was not  
 in ice cover. These estimates are noise because SSTs were too warm for new and young ice to form, so only perennial ice  
 could survive. R/V Mirai has strenuous restrictions on sailing near first-year and perennial sea ice, and the sightings of them  
 are logged by the experienced ice navigator. This is supported by the wave model as the TodaiWW3-ArCS simulation using  
 OSISAF-AMSR2 as forcing calculates  $H_{m0}$  interpolated at R/V Mirai as 0 m for the 14 November on-ice event as shown in  
 475 Figure A1. There is also apparent  $H_{m0}$  errors on 20 November. The open ocean OSISAF-AMSR2 SIC estimates for 14 and 20  
 November are shown in Figure A2.

## Appendix D: R/V Mirai MIZ transect sea ice observation and satellite retrieved SIC at the observation locations

This appendix describes the environmental conditions during the MIZ transect sea ice observation conducted by R/V Mirai in the refreezing Chukchi Sea, which is described in Section 2.1. It also provides the comparison of eight satellite retrieved SIC at the observation locations including those at the Piper#13 drifting wave buoy.

R/V Mirai began the 12-day sea ice observation on 9 November 2018. Coinciding with this schedule, the transect waters began to refreeze and became consolidated ice cover at the start and (several days after) end of the observation period. The sea ice observation is grouped in four phases as distinct ocean surface features were captured from four meteorological conditions the ship encountered. Figure A3 presents the shipboard measured wind and SST data as well as bilinearly interpolated (in space) ERA5 10 m wind speeds. During the first few days between 9 and 13 November 2018 (Phase 1), gradual sea ice growth was observed both in extent and ice cake/floe sizes under generally calm surface conditions. On 14 November, the most significant on-ice wind event during the transect period occurred. The peak wind speed measured by R/V Mirai was  $18 \text{ ms}^{-1}$ , and  $> 10 \text{ ms}^{-1}$  winds persisted for roughly 18 hours at the ship location. WM-2 and Piper-C#15  $H_{m0}$  both peaked  $> 2.00 \text{ m}$  in ice cover indicating energetic sea state of this event. The MIZ was mostly broken up ice fields on the following day, which was followed by the most apparent sea ice advance on 16 November as a seemingly dense ice field was encountered. We've grouped this period, Phase 2, as the on-ice event and aftermath. During 17 and 18 November, sea ice observation was mostly open water; our conjecture is the sea ice disappeared by horizontal advection, but there is insufficient evidence to simply discard rapid melting or other processes. This period of minimal ice sighting is referred as Phase 3. In the final Phase 4, SSTs along the transect waters began to warm despite the persistent and strengthening cold off-ice winds. Air temperatures along the MIZ transect on 18–20 November were  $< -10 \text{ }^\circ\text{C}$ , but the shipboard SSTs exceeded  $0 \text{ }^\circ\text{C}$  for the entire MIZ transect waters the ship traversed on 20 November.

Figures A4 to A6 present the full time series of satellite retrieved SIC interpolated in time to hourly intervals and bilinearly interpolated in space at the R/V Mirai positions for the MIZ transect sea ice observation period between 9–20 November 2018. The figure schematics follow Figure 2. Lastly, satellite retrieved SIC data at the Piper#13 drifting wave buoy locations also interpolated in time and space are shown in Figure A7.

*Author contributions.* TN formulated the study idea, conducted the analysis, and prepared the manuscript. TW contributed significantly to the analysis and the manuscript. TK and JI continually contributed to the formulation of the manuscript from the start. JI designed the R/V Mirai MIZ transect sea ice observational plan.

*Competing interests.* Authors declare we have no competing interests.



505 *Acknowledgements.* We thank the editor and two anonymous reviewers for their valuable and insightful comments to improve the manuscript. This work was sponsored by the Japanese Ministry of Education, Culture, Sports, Science, and Technology through the ArCS project. A part of this study was also conducted under JSPS KAKENHI Grant Number JP 16H02429. JI acknowledges support from the KAKENHI grant numbers 18H03745 and 18KK0292. The authors greatly appreciate the comprehensive data available freely on the web. Satellite retrieved SIC were obtained from these sources: Cavalieri et al. (1996); Meier et al. (2018); Comiso (2017); Hori et al. (2012); Spreen et al. (2008).  
510 Furthermore, the OSI-401-b and OSI-408 were used and are the product of the EUMETSAT Ocean and Sea Ice Satellite Application Facility. Sentinel-1 SAR data were downloaded from NOAA (2019). ERA5 data were downloaded from Copernicus (2019), and ARCMFC wave model data were obtained from ARCMFC (2019). We are grateful to the R/V Mirai crew on board MR18-05C who made the MIZ transect sea ice observation possible. Note that our research cruise was supported by the PPP contribution with ECMWF weather and sea ice forecasts and Environment and Climate Change Canada sea ice forecast.

## 515 **References**

- Andersen, S., Tonboe, R., Kaleschke, L., Heygster, G., and Pedersen, L. T.: Intercomparison of passive microwave sea ice concentration retrievals over the high-concentration Arctic sea ice, *Journal of Geophysical Research: Oceans*, 112, <https://doi.org/10.1029/2006JC003543>, 2007.
- ARCMFC: Index of [ftp://nrt.cmems-du.eu/Core/ARCTIC\\_ANALYSIS\\_FORECAST\\_WAV\\_002\\_010/dataset-wam-arctic-1hr6km-be/](ftp://nrt.cmems-du.eu/Core/ARCTIC_ANALYSIS_FORECAST_WAV_002_010/dataset-wam-arctic-1hr6km-be/), [Online; accessed 11. Aug. 2019], 2019.
- 520 Arduin, F., Rogers, E., Babanin, A. V., Filipot, J.-F., Magne, R., Roland, A., van der Westhuysen, A., Queffelec, P., Lefevre, J.-M., Aouf, L., and Collard, F.: Semiempirical Dissipation Source Functions for Ocean Waves. Part I: Definition, Calibration, and Validation, *Journal of Physical Oceanography*, 40, 1917–1941, <https://doi.org/10.1175/2010JPO4324.1>, 2010.
- Arduin, F., Boutin, G., Stopa, J., Girard-Arduin, F., Melsheimer, C., Thomson, J., Kohout, A., Doble, M., and Wadhams, P.: Wave attenuation through an Arctic marginal ice zone on October 12, 2015: Part 2. Numerical modeling of waves and associated ice break-up, *Journal of Geophysical Research: Oceans*, <https://doi.org/10.1002/2018JC013784>, 2018.
- 525 Bekkers, E., Francois, J. F., and Rojas-Romagosa, H.: Melting Ice Caps and the Economic Impact of Opening the Northern Sea Route, *The Economic Journal*, 128, 1095–1127, <https://doi.org/10.1111/eoj.12460>, 2018.
- Boutin, G., Arduin, F., Dumont, D., Sevigny, C., Girard-Arduin, F., and Accensi, M.: Floe Size Effect on Wave-Ice Interactions: Possible Effects, Implementation in Wave Model, and Evaluation, *Journal of Geophysical Research: Oceans*, 123, 4779–4805, <https://doi.org/10.1029/2017JC013622>, 2018.
- 530 Boutin, G., Lique, C., Arduin, F., Rousset, C., Talandier, C., Accensi, M., and Girard-Arduin, F.: Toward a coupled model to investigate wave-sea ice interactions in the Arctic marginal ice zone, *The Cryosphere Discussions*, 2019, 1–39, <https://doi.org/10.5194/tc-2019-92>, 2019.
- 535 Canadian Ice Service–Environment Canada: Manual of Ice (MANICE). Manual of Standard Procedures for Observing and Reporting Ice Conditions, Tech. rep., Canadian Ice Service—Environment Canada, cATALOGUE NO. En56-175/2005, 2005.
- Cavalieri, D. J., Gloersen, P., and Campbell, W. J.: Determination of sea ice parameters with the NIMBUS 7 SMMR, *Journal of Geophysical Research: Atmospheres*, 89, 5355–5369, <https://doi.org/10.1029/JD089iD04p05355>, 1984.
- Cavalieri, D. J., Parkinson, C. L., Gloersen, P., and Zwally, H. J.: updated yearly. Sea Ice Concentrations from Nimbus-7 SMMR and 540 DMSP SSM/I-SSMIS Passive Microwave Data, Version 1. November 2018. Arctic grid, <https://doi.org/10.5067/8GQ8LZQVL0VL>, [Date accessed 23. Jul. 2019], 1996.
- Cheng, S., Rogers, W. E., Thomson, J., Smith, M., Doble, M. J., Wadhams, P., Kohout, A. L., Lund, B., Persson, O. P., Collins III, C. O., Ackley, S. F., Montiel, F., and Shen, H. H.: Calibrating a Viscoelastic Sea Ice Model for Wave Propagation in the Arctic Fall Marginal Ice Zone, *Journal of Geophysical Research: Oceans*, 122, 8770–8793, <https://doi.org/doi/abs/10.1002/2017JC013275>, 2017.
- 545 Chevallier, M., Smith, G. C., Dupont, F., Lemieux, J.-F., Forget, G., Fujii, Y., Hernandez, F., Msadek, R., Peterson, K. A., Storto, A., Toyoda, T., Valdivieso, M., Vernieres, G., Zuo, H., Balmaseda, M., Chang, Y.-S., Ferry, N., Garric, G., Haines, K., Keeley, S., Kovach, R. M., Kuragano, T., Masina, S., Tang, Y., Tsujino, H., and Wang, X.: Intercomparison of the Arctic sea ice cover in global ocean–sea ice reanalyses from the ORA-IP project, *Climate Dynamics*, 49, 1107–1136, <https://doi.org/10.1007/s00382-016-2985-y>, 2017.
- Collins III, C. O., Rogers, W. E., Marchenko, A., and Babanin, A. V.: In situ measurements of an energetic wave event in the Arctic marginal 550 ice zone, *Geophysical Research Letters*, 42, 1863–1870, <https://doi.org/10.1002/2015gl063063>, 2015.

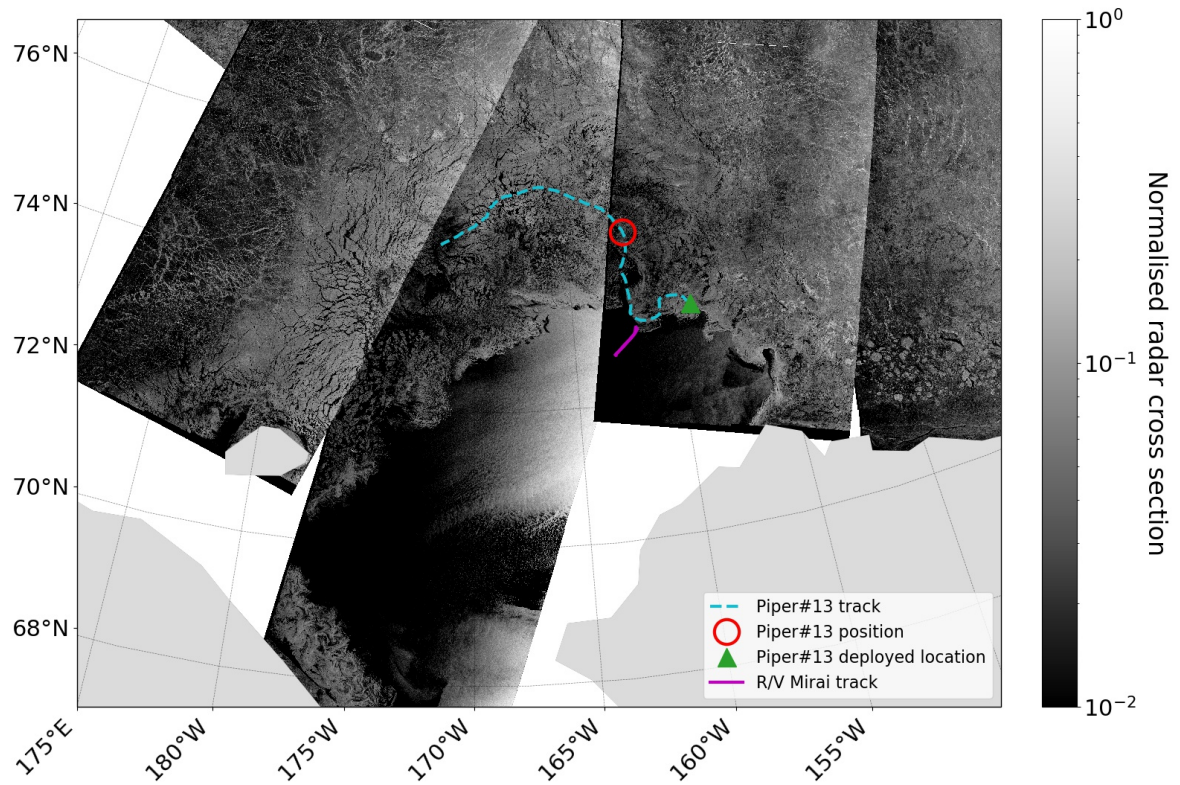
- Comiso, J. C.: Characteristics of Arctic winter sea ice from satellite multispectral microwave observations, *Journal of Geophysical Research: Oceans*, 91, 975–994, <https://doi.org/10.1029/JC091iC01p00975>, 1986.
- Comiso, J. C.: Enhanced Sea Ice Concentrations from Passive Microwave Data, Tech. rep., NASA Goddard Space Flight Center, [https://nsidc.org/sites/nsidc.org/files/files/data/pm/Bootstrap\\_Algorithm\\_Revised07.pdf](https://nsidc.org/sites/nsidc.org/files/files/data/pm/Bootstrap_Algorithm_Revised07.pdf), 2007.
- 555 Comiso, J. C.: Bootstrap Sea Ice Concentrations from Nimbus-7 SMMR and DMSP SSM/I-SSMIS, Version 3. November 2018. Arctic grid, <https://doi.org/10.5067/7Q8HCCWS4I0R>, [Date accessed 23. Jul. 2019], 2017.
- Comiso, J. C., Cavalieri, D. J., Parkinson, C. L., and Gloersen, P.: Passive microwave algorithms for sea ice concentration: A comparison of two techniques, *Remote Sensing of Environment*, 60, 357 – 384, [https://doi.org/10.1016/S0034-4257\(96\)00220-9](https://doi.org/10.1016/S0034-4257(96)00220-9), 1997.
- Comiso, J. C., Meier, W. N., and Gersten, R.: Variability and trends in the Arctic Sea ice cover: Results from different techniques, *Journal of Geophysical Research: Oceans*, 122, 6883–6900, <https://doi.org/10.1002/2017JC012768>, 2017.
- 560 Copernicus: ERA5 hourly data on single levels from 1979 to present, <https://cds.climate.copernicus.eu/cdsapp#!/dataset/reanalysis-era5-single-levels?tab=overview>, [Online; accessed 11. Aug. 2019], 2019.
- Donlon, C. J., Martin, M., Stark, J., Roberts-Jones, J., Fiedler, E., and Wimmer, W.: The Operational Sea Surface Temperature and Sea Ice Analysis (OSTIA) system, *Remote Sensing of Environment*, 116, 140 – 158, <https://doi.org/10.1016/j.rse.2010.10.017>, 2012.
- 565 Dumont, D., Kohout, A., and Bertino, L.: A wave-based model for the marginal ice zone including a floe breaking parameterization, *Journal of Geophysical Research: Oceans*, 116, <https://doi.org/10.1029/2010JC006682>, 2011.
- Guest, P., Persson, P. O. G., Wang, S., Jordan, M., Jin, Y., Blomquist, B., and Fairall, C.: Low-Level Baroclinic Jets Over the New Arctic Ocean, *Journal of Geophysical Research: Oceans*, 123, 4074–4091, <https://doi.org/10.1002/2018JC013778>, 2018.
- Heygster, G., Huntemann, M., Ivanova, N., Saldo, R., and Pedersen, L. T.: Response of passive microwave sea ice concentration algorithms to thin ice, in: 2014 IEEE Geoscience and Remote Sensing Symposium, pp. 3618–3621, <https://doi.org/10.1109/IGARSS.2014.6947266>, 2014.
- 570 Hori, M., Yabuki, H., Sugimura, T., and Terui, T.: AMSR2 Level 3 product of Daily Polar Brightness Temperatures and Product, 1.00, <https://ads.nipr.ac.jp/dataset/A20170123-003>, [Date accessed 23. Jul. 2019], 2012.
- Inoue, J., Hori, M. E., Enomoto, T., and Kikuchi, T.: Intercomparison of Surface Heat Transfer Near the Arctic Marginal Ice Zone for Multiple Reanalyses: A Case Study of September 2009, *SOLA*, 7, 57–60, <https://doi.org/10.2151/sola.2011-015>, 2011.
- 575 Ivanova, N., Pedersen, L. T., Tonboe, R. T., Kern, S., Heygster, G., Lavergne, T., Sørensen, A., Saldo, R., Dybkjær, G., Brucker, L., and Shokr, M.: Inter-comparison and evaluation of sea ice algorithms: towards further identification of challenges and optimal approach using passive microwave observations, *The Cryosphere*, 9, 1797–1817, <https://doi.org/10.5194/tc-9-1797-2015>, 2015.
- Jakobsson, M., Mayer, L., Coakley, B., Dowdeswell, J. A., Forbes, S., Fridman, B., Hodnesdal, H., Noormets, R., Pedersen, R., Rebesco, M., Schenke, H. W., Zarayskaya, Y., Accettella, D., Armstrong, A., Anderson, R. M., Bienhoff, P., Camerlenghi, A., Church, I., Edwards, M., Gardner, J. V., Hall, J. K., Hell, B., Hestvik, O., Kristoffersen, Y., Marcussen, C., Mohammad, R., Mosher, D., Nghiem, S. V., Pedrosa, M. T., Travaglini, P. G., and Weatherall, P.: The International Bathymetric Chart of the Arctic Ocean (IBCAO) Version 3.0, *Geophysical Research Letters*, 39, L12609, <https://doi.org/10.1029/2012GL052219>, 2012.
- 580 JAMSTEC: R/V Mirai Cruise Report MR18-05C Arctic Challenge and for Sustainability (ArCS). Arctic Ocean, Bering Sea, and North Pacific. 24 October–7 December 2018, Tech. rep., Japan Agency for Marine-Earth Science and Technology (JAMSTEC), [http://www.godac.jamstec.go.jp/catalog/data/doc\\_catalog/media/MR18-05C\\_all.pdf](http://www.godac.jamstec.go.jp/catalog/data/doc_catalog/media/MR18-05C_all.pdf), 2018.
- JAMSTEC: Oceanographic Research Vessel MIRAI, <https://www.jamstec.go.jp/e/about/equipment/ships/mirai.html>, [Online; accessed 22. Jul. 2019], 2019.

- Jones, E., Oliphant, T., Peterson, P., et al.: SciPy: Open source scientific tools for Python, <http://www.scipy.org/>, [Online; accessed 23. July. 590 2019], 2001–.
- Jung, T., Gordon, N. D., Bauer, P., Bromwich, D. H., Chevallier, M., Day, J. J., Dawson, J., Doblas-Reyes, F., Fairall, C., Goessling, H. F., Holland, M., Inoue, J., Iversen, T., Klebe, S., Lemke, P., Losch, M., Makshtas, A., Mills, B., Nurmi, P., Perovich, D., Reid, P., Renfrew, I. A., Smith, G., Svensson, G., Tolstykh, M., and Yang, Q.: Advancing Polar Prediction Capabilities on Daily to Seasonal Time Scales, *Bulletin of the American Meteorological Society*, 97, 1631–1647, <https://doi.org/10.1175/BAMS-D-14-00246.1>, 2016.
- 595 Kohout, A. L., Penrose, B., Penrose, S., and Williams, M. J.: A device for measuring wave-induced motion of ice floes in the Antarctic Marginal Ice Zone, *Annals of Glaciology*, 56, 415–424, <https://doi.org/10.3189/2015aog69a600>, 2015.
- Kwok, R. and Rothrock, D. A.: Decline in Arctic sea ice thickness from submarine and ICESat records: 1958–2008, *Geophysical Research Letters*, 36, <https://doi.org/10.1029/2009GL039035>, 2009.
- Lavergne, T., Sørensen, A. M., Kern, S., Tonboe, R., Notz, D., Aaboe, S., Bell, L., Dybkjær, G., Eastwood, S., Gabarro, C., Heygster, G., 600 Killie, M. A., Brandt Kreiner, M., Lavelle, J., Saldo, R., Sandven, S., and Pedersen, L. T.: Version 2 of the EUMETSAT OSI SAF and ESA CCI sea-ice concentration climate data records, *The Cryosphere*, 13, 49–78, <https://doi.org/10.5194/tc-13-49-2019>, 2019.
- Li, J., Kohout, A. L., Doble, M. J., Wadhams, P., Guan, C., and Shen, H. H.: Rollover of Apparent Wave Attenuation in Ice Covered Seas, *Journal of Geophysical Research: Oceans*, 122, 8557–8566, <https://doi.org/10.1002/2017JC012978>, 2017.
- Liu, A. K. and Mollo-Christensen, E.: Wave Propagation in a Solid Ice Pack, *Journal of Physical Oceanography*, 18, 1702–1712, [https://doi.org/10.1175/1520-0485\(1988\)018<1702:WPIASI>2.0.CO;2](https://doi.org/10.1175/1520-0485(1988)018<1702:WPIASI>2.0.CO;2), 1988. 605
- Liu, Q., Rogers, W. E., Babanin, A. V., Young, I. R., Romero, L., Zieger, S., Qiao, F., and Guan, C.: Observation-Based Source Terms in the Third-Generation Wave Model WAVEWATCH III: Updates and Verification, *Journal of Physical Oceanography*, 49, 489–517, <https://doi.org/10.1175/JPO-D-18-0137.1>, 2019.
- Maslanik, J. A., Fowler, C., Stroeve, J., Drobot, S., Zwally, J., Yi, D., and Emery, W.: A younger, thinner Arctic ice cover: Increased potential 610 for rapid extensive sea-ice loss, *Geophysical Research Letters*, 34, <https://doi.org/10.1029/2007GL032043>, 2007.
- Meier, W. N.: Comparison of passive microwave ice concentration algorithm retrievals with AVHRR imagery in Arctic peripheral seas, *IEEE Transactions on Geoscience and Remote Sensing*, 43, 1324–1337, <https://doi.org/10.1109/TGRS.2005.846151>, 2005.
- Meier, W. N., Markus, T., and Comiso, J. C.: AMSR-E/AMSR2 Unified L3 Daily 12.5 km Brightness Temperatures, Sea Ice Concentration, Motion & Snow Depth Polar Grids, Version 1. November 2018. Arctic grid, <https://doi.org/10.5067/RA1MIJOYPK3P>, [Date accessed 23. 615 Jul. 2019], 2018.
- Meylan, M. H. and Masson, D.: A linear Boltzmann equation to model wave scattering in the marginal ice zone, *Ocean Modelling*, 11, 417–427, <https://doi.org/10.1016/j.ocemod.2004.12.008>, 2006.
- Montiel, F., Squire, V. A., Doble, M., Thomson, J., and Wadhams, P.: Attenuation and Directional Spreading of Ocean Waves During a Storm Event in the Autumn Beaufort Sea Marginal Ice Zone, *Journal of Geophysical Research: Oceans*, 123, 5912–5932, <https://agupubs.onlinelibrary.wiley.com/doi/abs/10.1029/2018JC013763>, <https://doi.org/10.1029/2018JC013763>, 2018. 620
- Mosig, J. E. M., Montiel, F., and Squire, V. A.: Comparison of viscoelastic-type models for ocean wave attenuation in ice-covered seas, *Journal of Geophysical Research: Oceans*, 120, 6072–6090, <https://doi.org/10.1002/2015JC010881>, 2015.
- NOAA: Index of <ftp://ftpcoastwatch.noaa.gov/pub/socd6/coastwatch/s1/sar/nrcs/2018/>, [Online; accessed 10. Aug. 2019], 2019.
- Nose, T., Webb, A., Waseda, T., Inoue, J., and Sato, K.: Predictability of storm wave heights in the ice-free Beaufort Sea, *Ocean Dynamics*, 625 68, 1383–1402, <https://doi.org/10.1007/s10236-018-1194-0>, 2018.

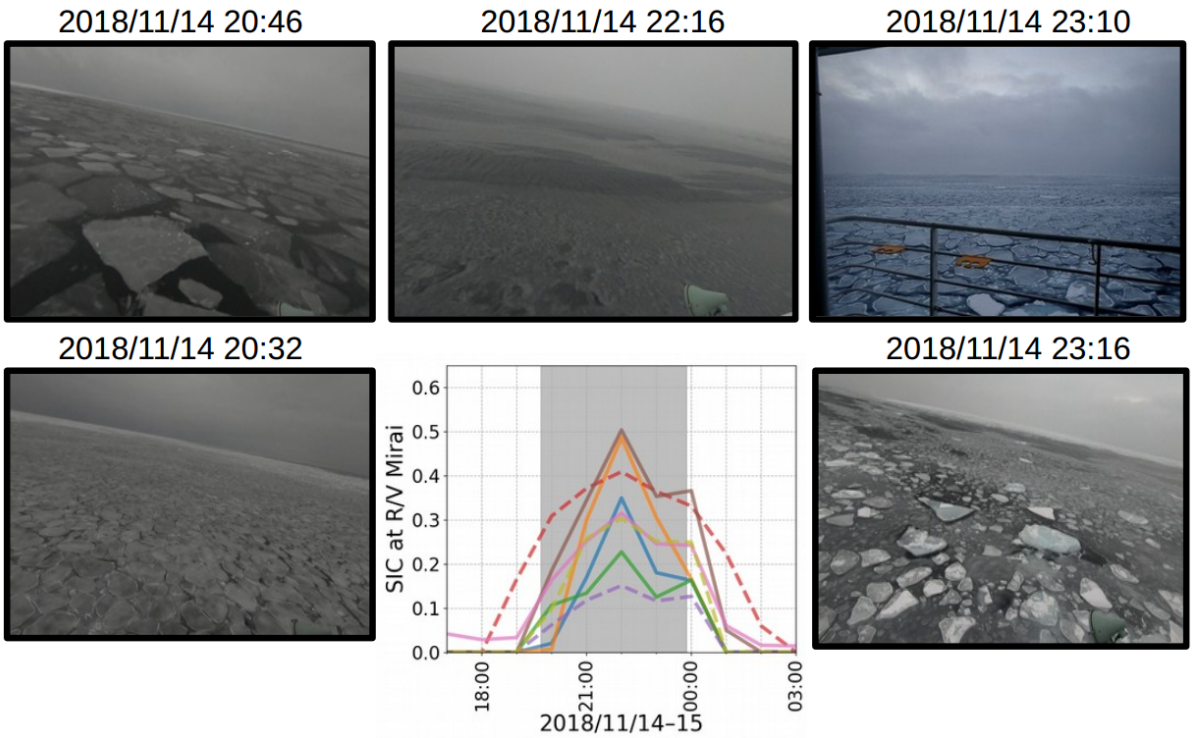
- Notz, D.: Sea-ice extent and its trend provide limited metrics of model performance, *The Cryosphere*, 8, 229–243, <https://doi.org/10.5194/tc-8-229-2014>, 2014.
- Raschle, N. and Ardhuin, F.: A global wave parameter database for geophysical applications. Part 2: Model validation with improved source term parameterization, *Ocean Modelling*, 70, 174 – 188, <https://doi.org/10.1016/j.ocemod.2012.12.001>, 2013.
- 630 Roach, L. A., Dean, S. M., and Renwick, J. A.: Consistent biases in Antarctic sea ice concentration simulated by climate models, *The Cryosphere*, 12, 365–383, 2018.
- Roach, L. A., Bitz, C. M., Horvat, C., and Dean, S. M.: Advances in Modeling Interactions Between Sea Ice and Ocean Surface Waves, *Journal of Advances in Modeling Earth Systems*, 11, 4167–4181, <https://doi.org/10.1029/2019MS001836>, 2019.
- Rogers, W. E. and Campbell, T. J.: Implementation of curvilinear coordinate system in the WAVEWATCH III model, Tech. Rep. 635 NRL/MR/7320–09-9193, Naval Research Laboratory, Stennis Space Center, 2009.
- Rogers, W. E., Babanin, A. V., and Wang, D. W.: Observation-Consistent Input and Whitecapping Dissipation in a Model for Wind-Generated Surface Waves: Description and Simple Calculations, *Journal of Atmospheric and Oceanic Technology*, 29, 1329–1346, <https://doi.org/10.1175/JTECH-D-11-00092.1>, 2012.
- Rogers, W. E., Thomson, J., Shen, H. H., Doble, M. J., Wadhams, P., and Cheng, S.: Dissipation of wind waves by pancake and frazil ice in 640 the autumn Beaufort Sea, *Journal of Geophysical Research: Oceans*, 121, 7991–8007, <https://doi.org/10.1002/2016jc012251>, 2016.
- Spreen, G., Kaleschke, L., and Heygster, G.: Sea ice remote sensing using AMSR-E 89-GHz channels, *Journal of Geophysical Research: Oceans*, 113, <https://doi.org/10.1029/2005JC003384>, 2008.
- Squire, V. A.: A fresh look at how ocean waves and sea ice interact, *Philosophical Transactions of the Royal Society A: Mathematical, Physical and Engineering Sciences*, 376, 20170342, <https://doi.org/10.1098/rsta.2017.0342>, 2018.
- 645 Stephenson, S. R., Smith, L. C., Brigham, L. W., and Agnew, J. A.: Projected 21st-century changes to Arctic marine access, *Climatic Change*, 118, 885–899, <https://doi.org/10.1007/s10584-012-0685-0>, 2013.
- Stroeve, J. and Notz, D.: Changing state of Arctic sea ice across all seasons, *Environmental Research Letters*, 13, 103001, <https://doi.org/10.1088/1748-9326/aade56>, 2018.
- Stroeve, J. C., Serreze, M. C., Holland, M. M., Kay, J. E., Malanik, J., and Barrett, A. P.: The Arctic’s rapidly shrinking sea ice cover: a 650 research synthesis, *Climatic Change*, 110, 1005–1027, <https://doi.org/10.1007/s10584-011-0101-1>, 2012.
- Sutherland, G., Rabault, J., Christensen, K. H., and Jensen, A.: A two layer model for wave dissipation in sea ice, *Applied Ocean Research*, 88, 111 – 118, <https://doi.org/10.1016/j.apor.2019.03.023>, 2019.
- The WAVEWATCH III<sup>®</sup> Development Group (WW3DG): User manual and system documentation of WAVEWATCH III<sup>®</sup> version 6.07, Tech. Note 333, NOAA/NWS/NCEP/MMAB, College Park, MD, USA, 465 pp. + Appendices, 2019.
- 655 Thomson, J., Ackley, S., Girard-Ardhuin, F., Ardhuin, F., Babanin, A., Boutin, G., Brozena, J., Cheng, S., Collins, C., Doble, M., Fairall, C., Guest, P., Gebhardt, C., Gemmrich, J., Graber, H. C., Holt, B., Lehner, S., Lund, B., Meylan, M. H., Maksym, T., Montiel, F., Perrie, W., Persson, O., Rainville, L., Erick Rogers, W., Shen, H., Shen, H., Squire, V., Stammerjohn, S., Stopa, J., Smith, M. M., Sutherland, P., and Wadhams, P.: Overview of the Arctic Sea State and Boundary Layer Physics Program, *Journal of Geophysical Research: Oceans*, 123, 8674–8687, <https://doi.org/10.1002/2018JC013766>, 2018.
- 660 TSK Tsurumi Seiki Co., Ltd.: Oceanographic Equipment Water Quality Monitoring Equipment | TSK Tsurumi Seiki Co., Ltd. - Microwave Type Wave Height Meter WM-2, <http://www.tsk-jp.com/index.php?page=/product/detail/21/2>, [Online; accessed 23. Jul. 2019], 2019.
- V.A. Squire: Of ocean waves and sea-ice revisited, *Cold Regions Science and Technology*, 49, 110 – 133, <https://doi.org/10.1016/j.coldregions.2007.04.007>, 2007.

- 665 Wang, R. and Shen, H. H.: Gravity waves propagating into an ice-covered ocean: A viscoelastic model, *Journal of Geophysical Research: Oceans*, 115, 10.1029/2009JC005591, 2010.
- Wessel, P. and Smith, W. H. F.: A global, self-consistent, hierarchical, high-resolution shoreline database, *Journal of Geophysical Research: Solid Earth*, 101, 8741–8743, <https://doi.org/10.1029/96JB00104>, 1996.
- Williams, T. D., Bennetts, L. G., Squire, V. A., Dumont, D., and Bertino, L.: Wave–ice interactions in the marginal ice zone. Part 1: Theoretical foundations, *Ocean Modelling*, 71, 81 – 91, <https://doi.org/10.1016/j.ocemod.2013.05.010>, 2013.
- 670 WMO: WMO Sea-Ice Nomenclature, Tech. Rep. 259, The Joint Technical Commission for Oceanography and Marine Meteorology (JCOMM), [https://www.jcomm.info/index.php?option=com\\_oe&task=viewDocumentRecord&docID=14598](https://www.jcomm.info/index.php?option=com_oe&task=viewDocumentRecord&docID=14598), [Online; accessed 22. Jan. 2020], 2014.
- Zhang, Y., Chen, C., Beardsley, R. C., Perrie, W., Gao, G., Zhang, Y., Qi, J., and Lin, H.: Applications of an unstructured grid surface wave model (FVCOM-SWAVE) to the Arctic Ocean: The interaction between ocean waves and sea ice, *Ocean Modelling*, 145, 101–153, <https://doi.org/10.1016/j.ocemod.2019.101532>, 2020.
- 675 Zieger, S., Babanin, A. V., Rogers, W. E., and Young, I. R.: Observation-based source terms in the third-generation wave model WAVEWATCH, *Ocean Modelling*, 96, 2 – 25, <https://doi.org/10.1016/j.ocemod.2015.07.014>, 2015.

FIGURES.

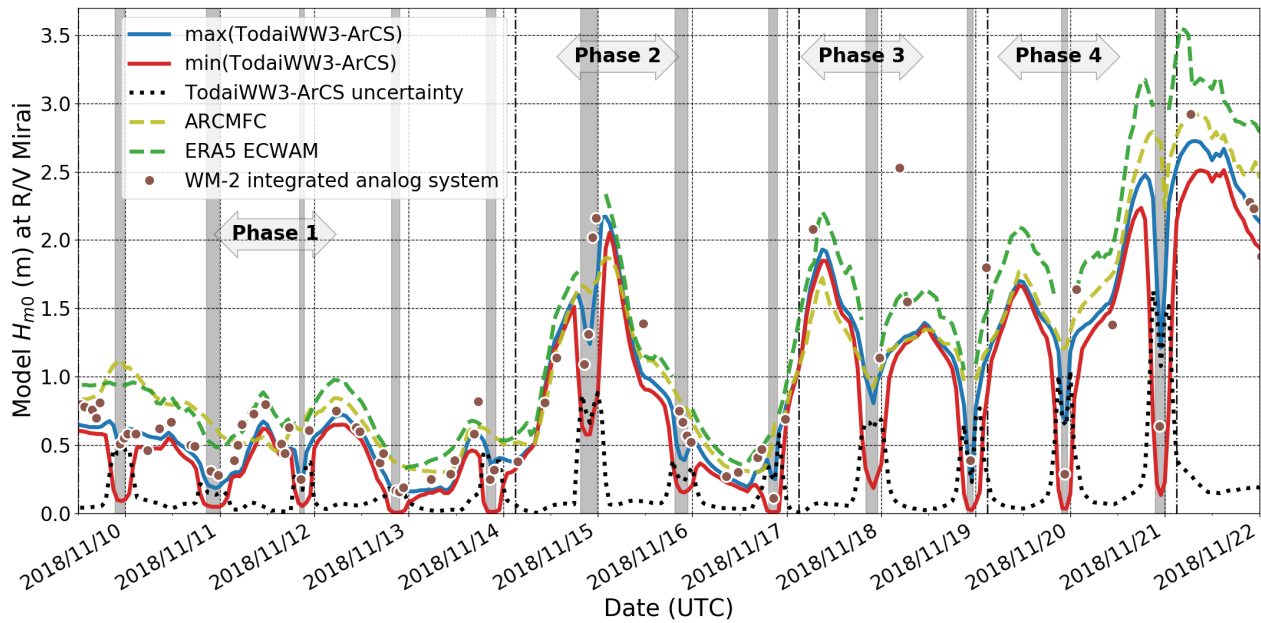


**Figure 1.** Observation locations are overlaid on the mosaic of Sentinel-1 NRCS images (NOAA, 2019) acquired on 15 November 2018. R/V Mirai track on this date is shown as the solid magenta line, and the Piper#13 drifting wave buoy track between 6–28 November is shown in the dashed cyan line. The green triangle shows the deployment location, and the red circle represents the buoy position on 15 November 12:00.

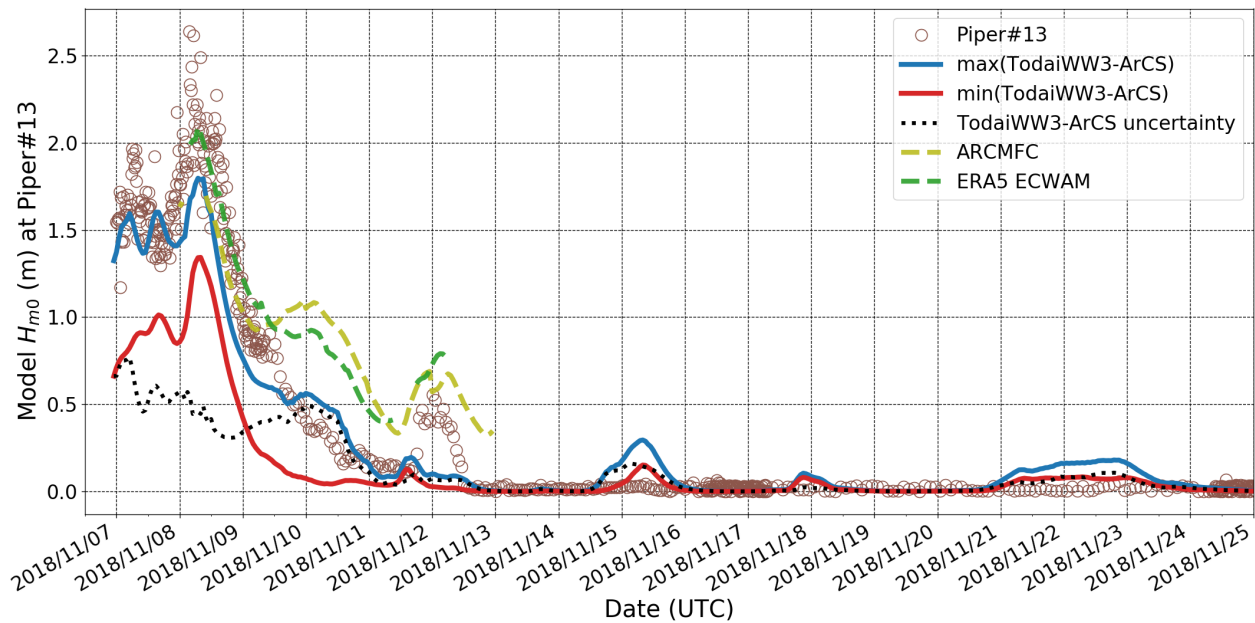


**Figure 2.** Snapshot images taken from R/V Mirai of the sea ice field and the satellite retrieved SIC estimates from eight products on 14 November 2018 during the on-ice wave event. The satellite derived SIC were linearly interpolated in time to hourly intervals and bilinearly interpolated in space from respective native grids to the R/V Mirai positions using the Python Scipy interpolation package (Jones et al., 2001–). The figure schematics of SIC estimates are as follows: ASI-3km (blue), ASI-6km (orange), BST-AMSR2 (green), BST-SSMIS (red), NT2-AMSR2 (purple), NT-SSMIS (brown), OSISAF-AMSR2 (pink), and OSISAF-SSMIS (olive), and SSMIS and AMSR2 are distinguished by dashed and solid lines, respectively. Grey highlighted times indicate when the vessel was in ice cover based on the ice navigator’s logs: from the first (known) encounter of sea ice to the ship proceeding to the ice-free water.

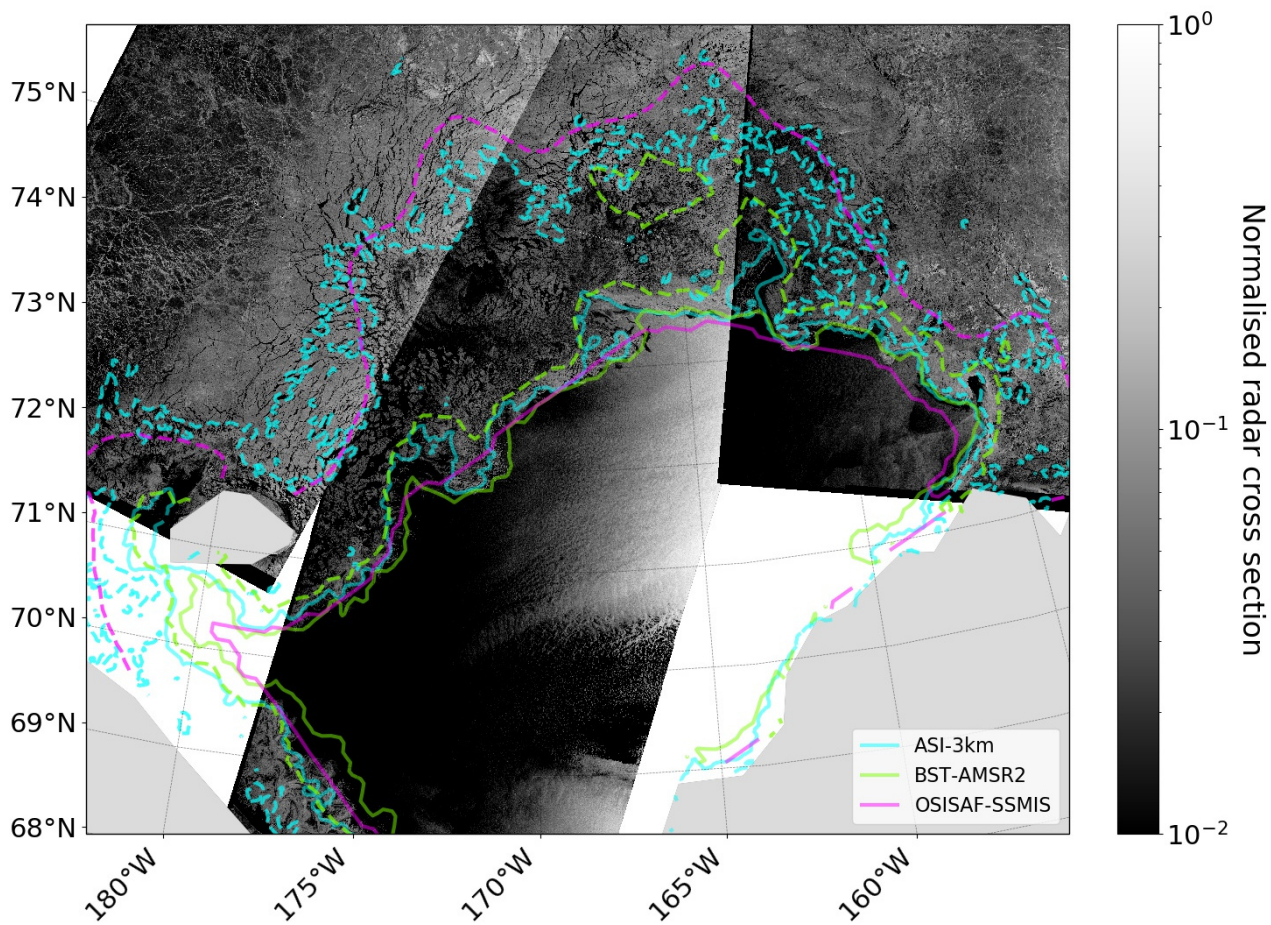




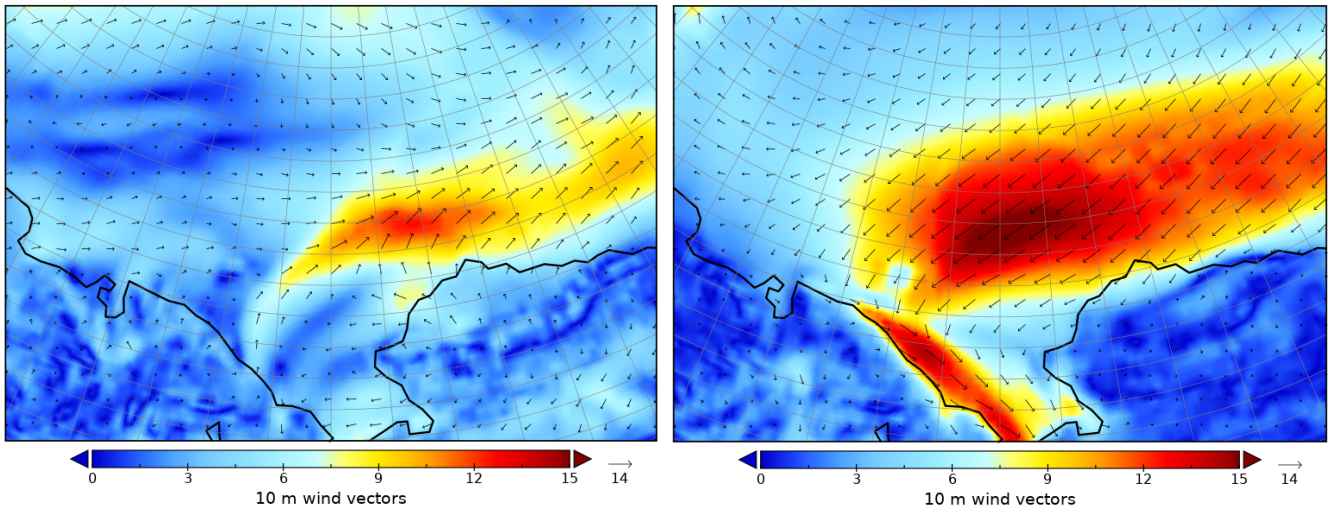
**Figure 3.**  $\Delta H_{m0}$  of TodaiWW3-ArCS estimates using various SIC products as sea ice forcing interpolated at R/V Mirai positions are shown during the MIZ transect observation. The figure also shows the WM-2 data when R/V Mirai ship speed was  $< 2 \text{ ms}^{-1}$  (refer to Appendix A for more details). Two independent predictions from ERA5 ECWAM and the ARCMFC wave model are also presented. Grey highlighted times indicate when the vessel was in ice-covered sea based on the ice navigator’s logs. Refer to Appendix D for details on Phases.



**Figure 4.** Piper#13 wave data are presented with TodaiWW3-ArCS  $\Delta H_{m0}$  using various SIC products as sea ice forcing interpolated at the Piper#13 positions. Two independent predictions from ERA5 ECWAM and the ARCMFC wave model are also presented.



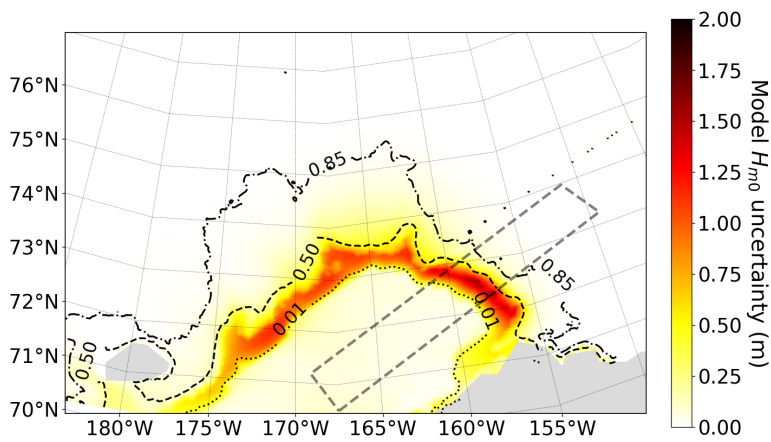
**Figure 5.** 0.15 (solid) and 0.85 (dashed) SIC contours of OSISAF-SSMIS, BST-AMSR2, and ASI-3km for 15 November 2018, shown respectively as magenta, lime green, and cyan lines, are overlaid on the mosaic of Sentinel-1 NRCS images (NOAA, 2019) acquired on the same day.



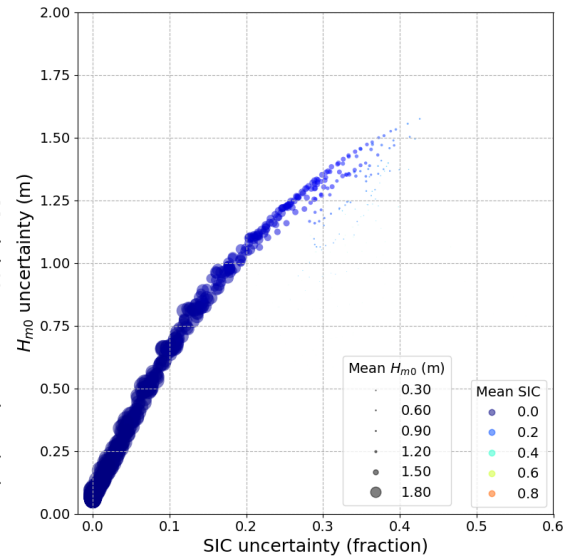
(a) South westerly on-ice winds on 15 November 2018 00:00.

(b) North easterly off-ice winds on 21 November 2018 21:00.

**Figure 6.** ERA5 10 m wind speed ( $\text{ms}^{-1}$ ) and vectors to depict the forcing for the selected on- and off-ice wave cases.

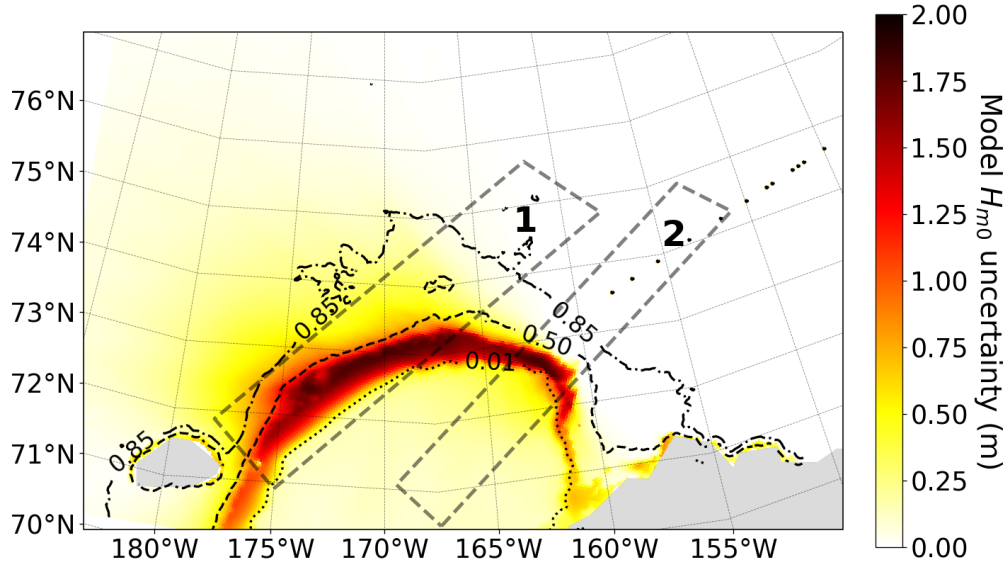


(a) TodayWW3-ArCS  $\Delta H_{m0}$  map with 0.01 (dotted), 0.50 (dashed), and 0.85 (dash-dotted)  $mean(c_i)$  contours shown in black. Data enclosed in the grey dotted quadrilateral, which is orientated along the wind forcing direction, are plotted in Figure 7b.

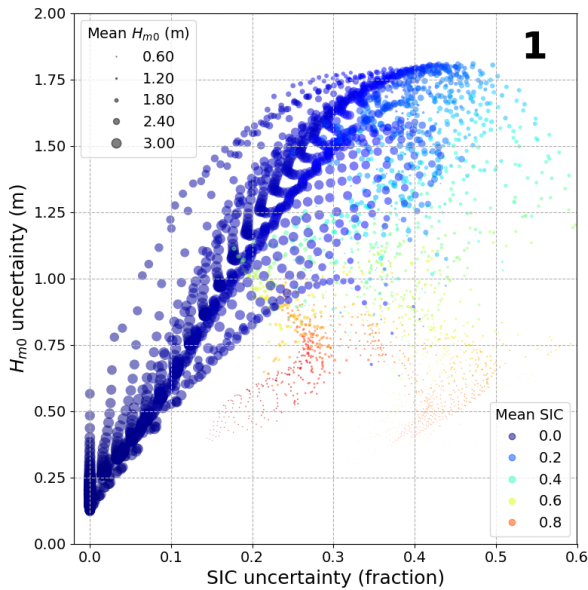


(b) Bivariate model  $\Delta H_{m0}$  and  $\Delta c_i$  uncertainty data for the on-ice wave case are shown in an enhanced scatter plot for the quadrilateral area in Figure 7a. The marker sizes are scaled by  $mean(H_{m0})$ , and the marker colours indicate  $mean(c_i)$ .

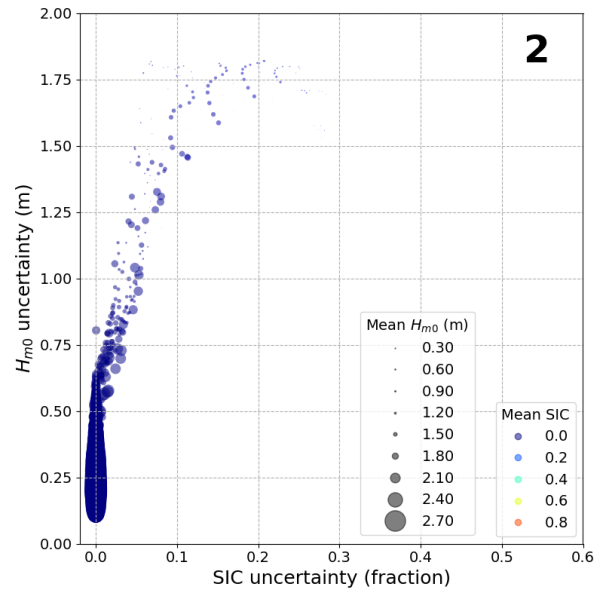
**Figure 7.** TodayWW3-ArCS simulation on 15 November 2018 00:00 during on-ice south westerly wind conditions as shown in Figure 6a.



(a) TodaiWW3-ArCS  $\Delta H_{m0}$  map with 0.01 (dotted), 0.50 (dashed), and 0.85 (dash-dotted)  $mean(c_i)$  contours shown in black. Data enclosed in two grey dotted quadrilaterals are plotted in Figures 8b and 8c. Quadrilateral 1 depicts the region where the wind forcing is orientated along the ice edge, and Quadrilateral 2 reflects the off-ice wave case.

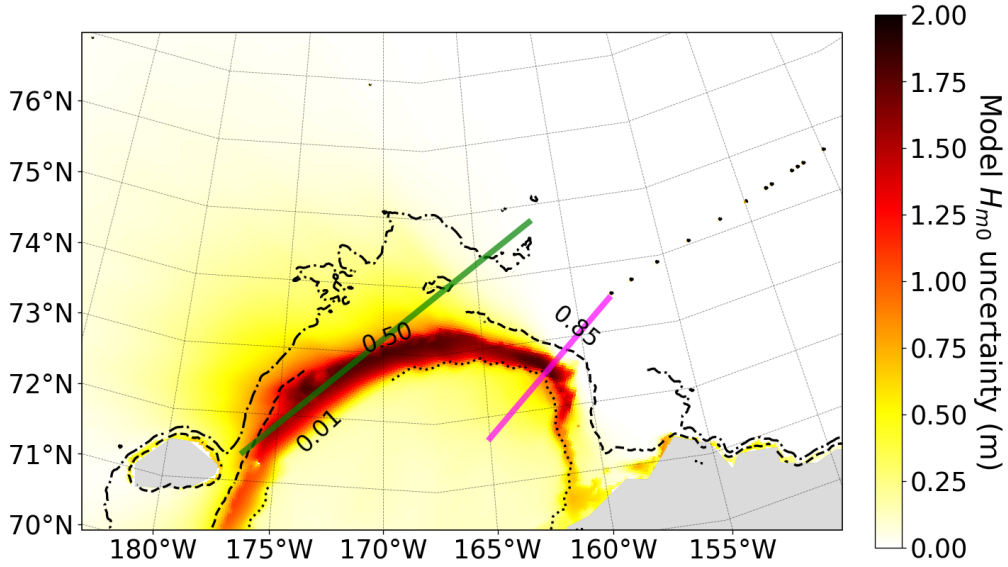


(b) Bivariate model  $\Delta H_{m0}$  and  $\Delta c_i$  uncertainty data shown in an enhanced scatter plot for the Quadrilateral 1 area in Figure 8a where the wind forcing is orientated along the ice edge. The figure schematics follows Figure 7b.

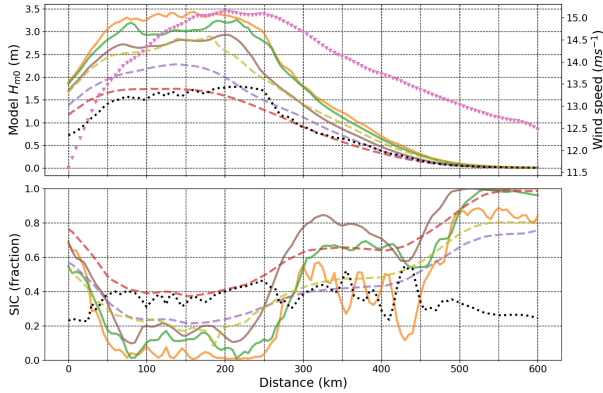


(c) Bivariate model  $\Delta H_{m0}$  and  $\Delta c_i$  uncertainty data for the off-ice wave case are shown in an enhanced scatter plot for the Quadrilateral 2 area in Figure 8a. The figure schematics follows Figure 7b.

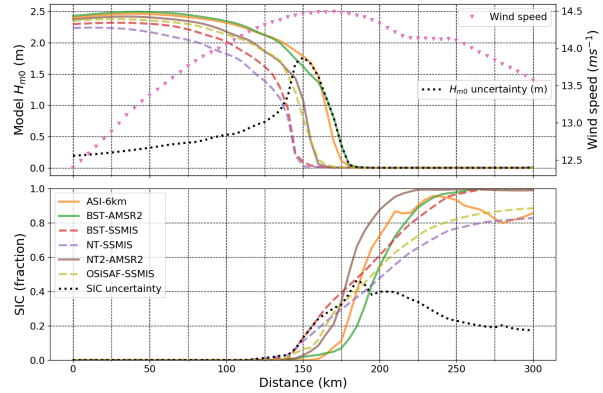
**Figure 8.** TodaiWW3-ArCS simulation on 21 November 2018 21:00 during north easterly off-ice wind conditions as shown in Figure 6b.



(a) TodayWW3-ArCS  $H_{m0}$  uncertainty map with 0.01 (dotted), 0.50 (dashed), and 0.85 (dash-dotted)  $mean(c_i)$  contours shown in black. Cross sections of  $H_{m0}$  and SIC  $c_i$  along the green and magenta transects are shown in Figures 9b and 9c, respectively.

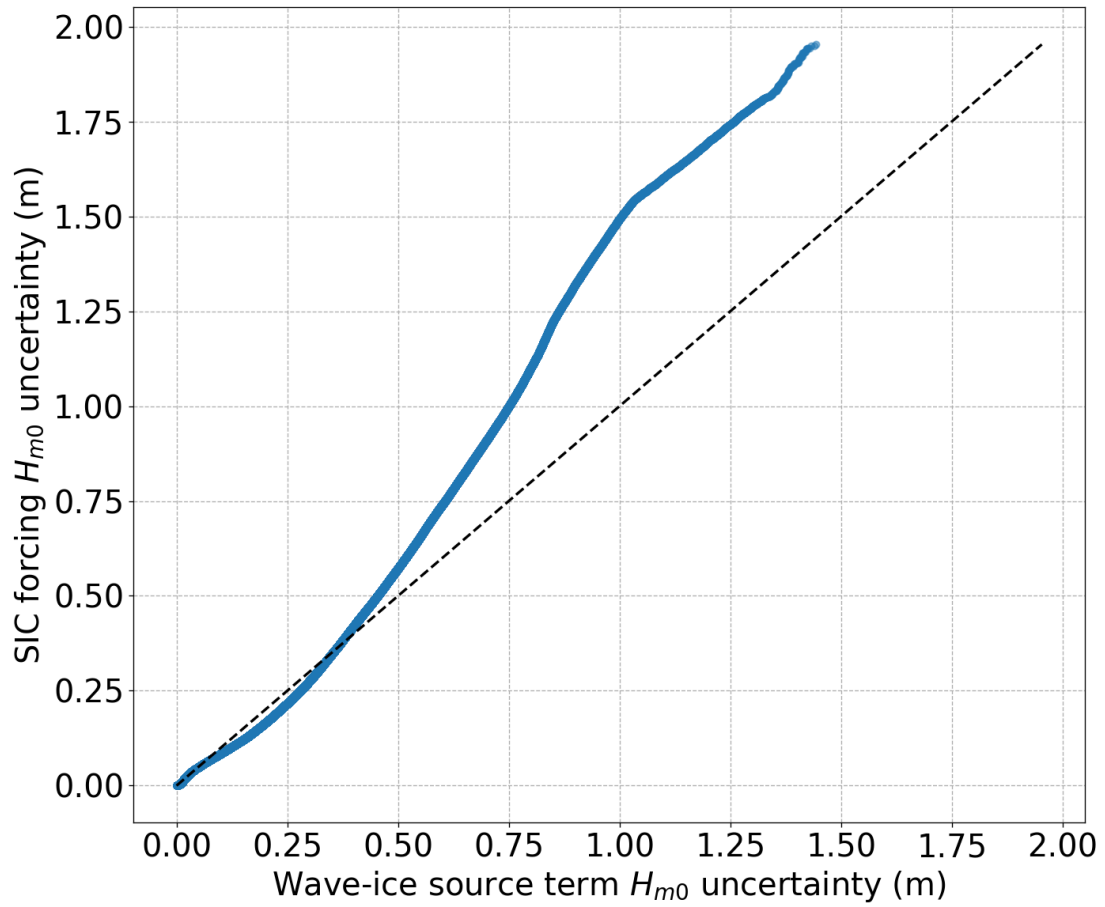


(b) Model  $H_{m0}$  (top) and SIC  $c_i$  (bottom) forcing along the green line in Figure 9a are shown for the  $\Delta c_i$  hindcast experiment. The figure schematics of SIC  $c_i$  forcing follow Figure 2. Magenta markers indicate the wind forcing magnitude, and dotted black lines represent  $\Delta H_{m0}$  and  $\Delta c_i$ .



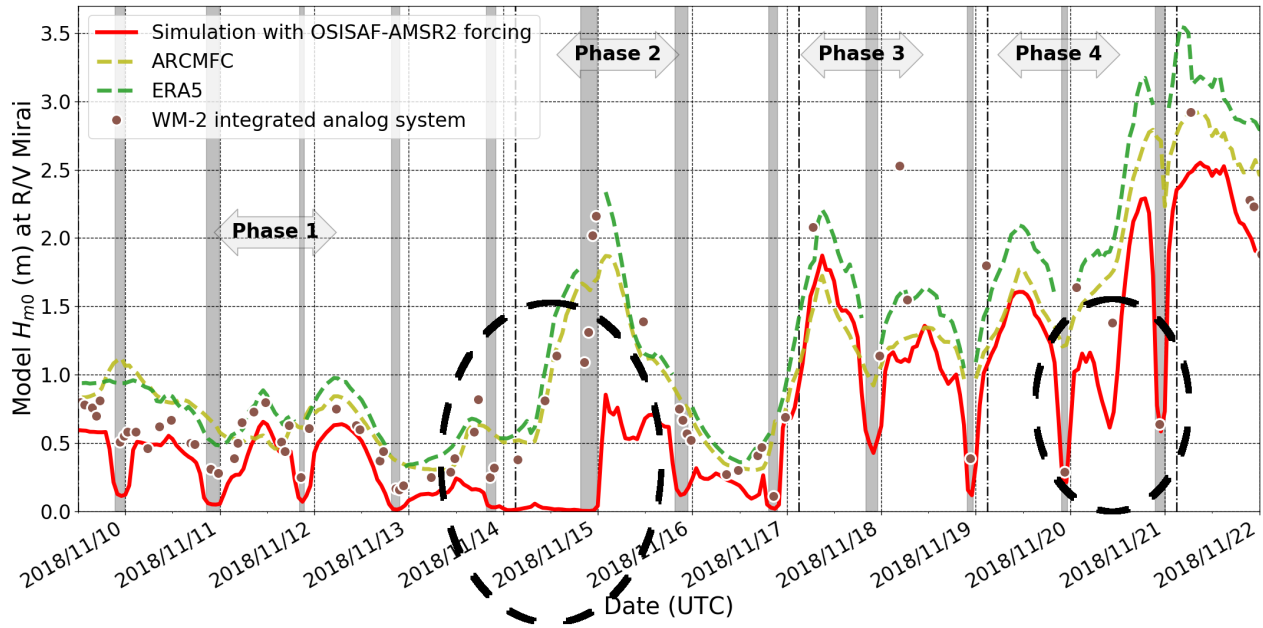
(c) Model  $H_{m0}$  (top) and SIC  $c_i$  (bottom) for an off-ice wave transect along the magenta line in Figure 9a are shown for the  $\Delta c_i$  hindcast experiment. The figure schematics follow Figure 9b.

**Figure 9.** TodayWW3-ArCS simulation showing  $H_{m0}$  and SIC  $c_i$  transects on 21 November 2018 21:00 for the north easterly off-ice wave case.

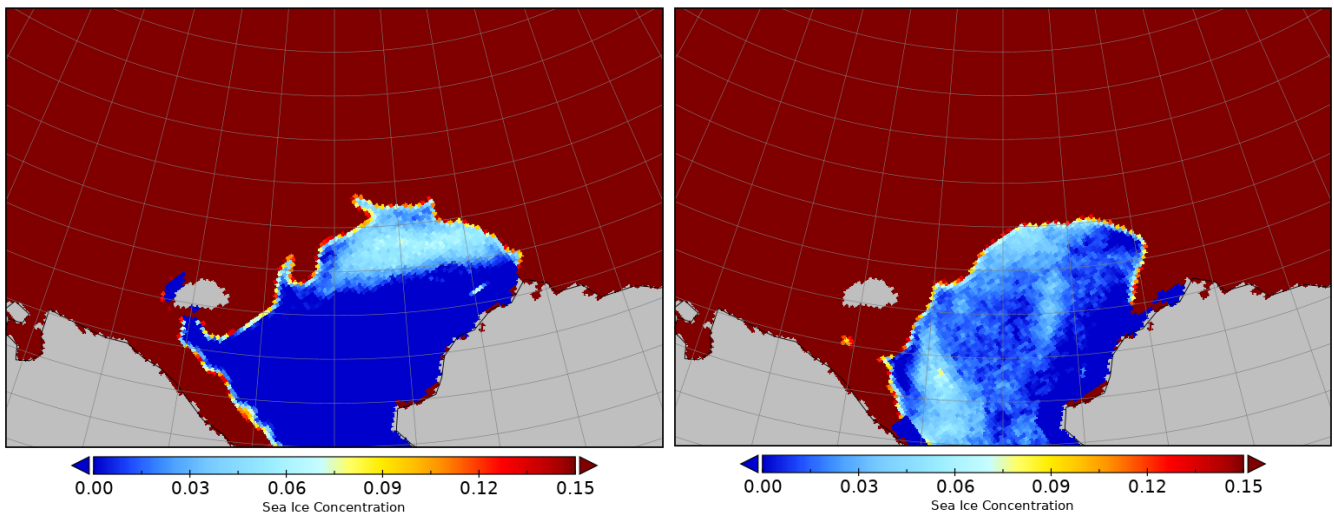


**Figure 10.** A Q-Q plot depicting the  $\Delta H_{m0}$  distributions for  $\Delta c_i$  and  $s_{ice}$  uncertainty hindcast experiments.





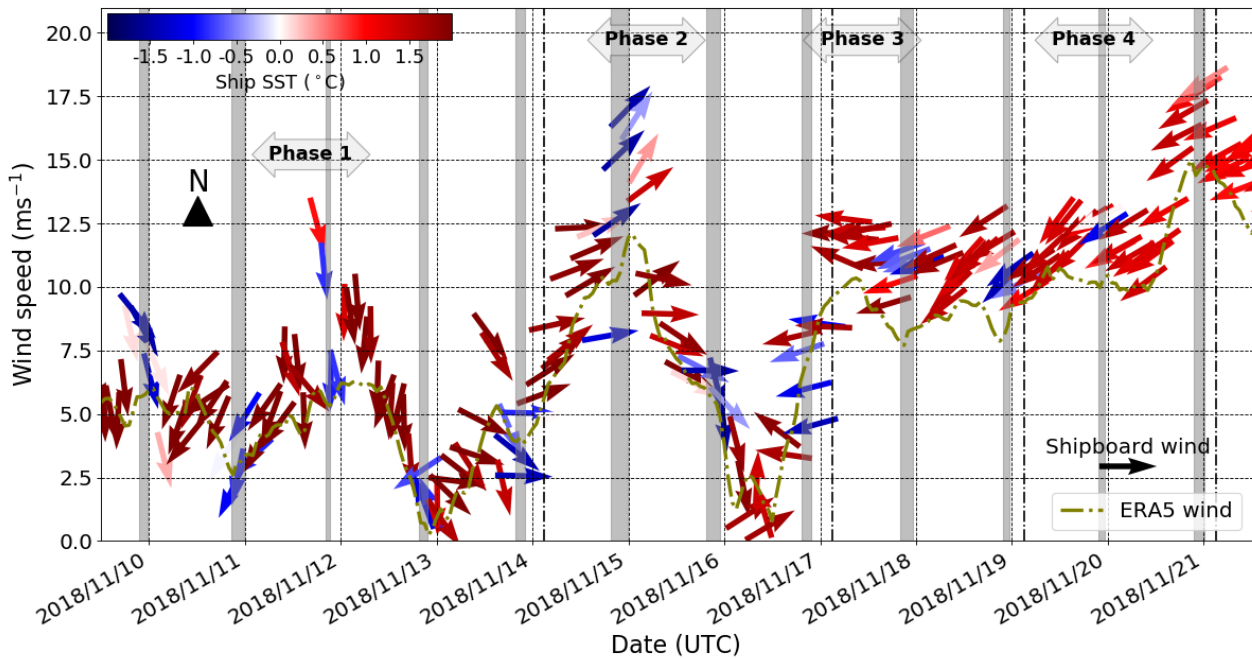
**Figure A1.** The TodayWW3-ArCS  $H_{m0}$  estimates using the OSISAF-AMSR2 SIC as forcing interpolated at R/V Mirai positions are shown during the MIZ transect observation. The figure also shows the WM-2 data when R/V Mirai ship speed was  $< 2 \text{ ms}^{-1}$ . Two independent predictions from ERA5 ECWAM and the ARCMFC wave model are also shown. Blacked dotted circles indicate times when the erroneous SIC forcing caused inaccurate estimates of  $H_{m0}$  at the R/V Mirai position. Grey highlighted times indicate when the vessel was in ice covered based on the ice navigator's logs: from the first (known) encounter of sea ice to the ship proceeding to the ice-free water.



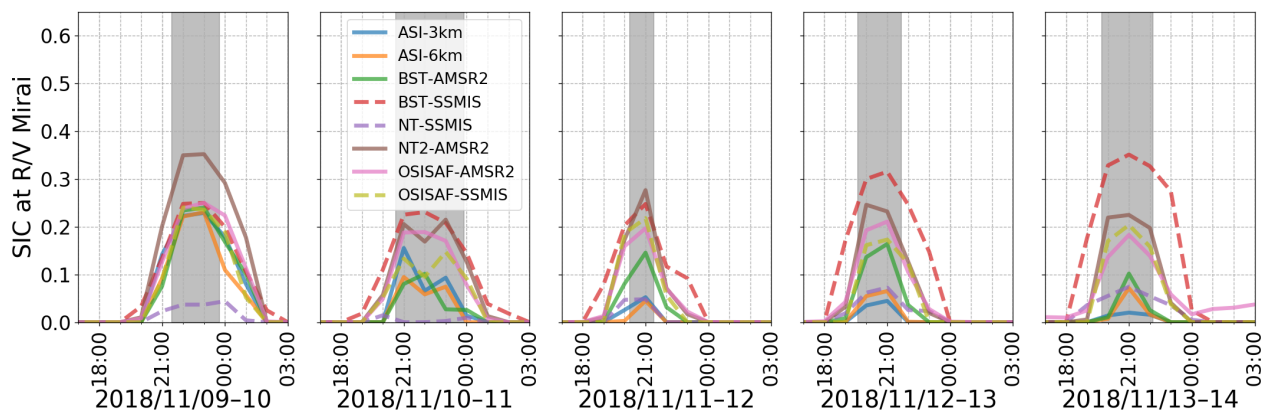
(a) SIC estimates on 15 November 2018.

(b) SIC estimates on 20 November 2018.

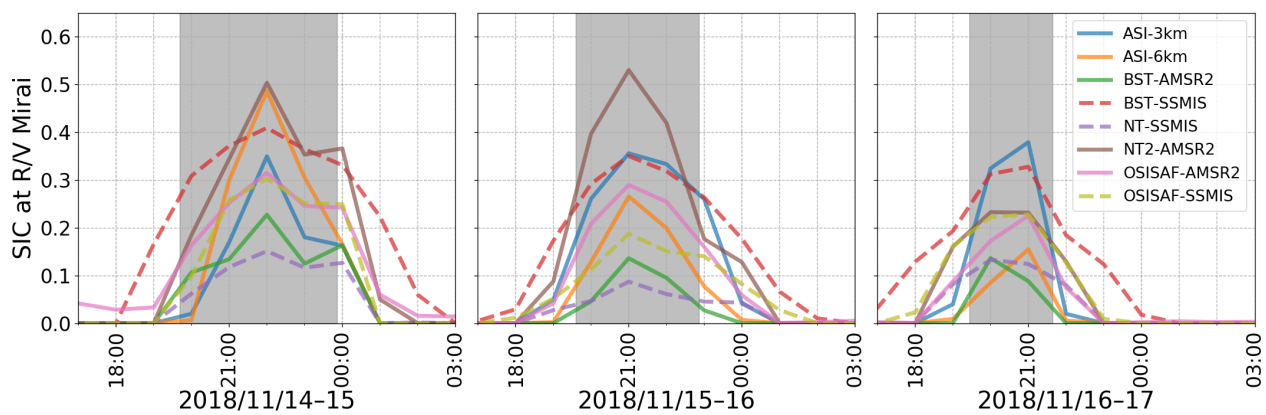
**Figure A2.** Apparent OSISAF-AMSR2 SIC noise in the open water during the R/V Mirai MIZ transect observation.



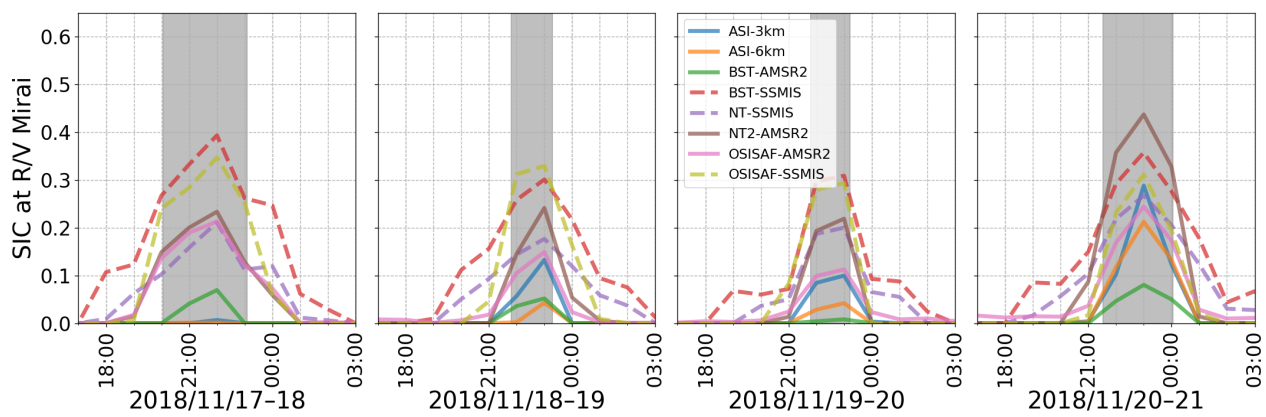
**Figure A3.** Shipboard wind and SST and bilinearly interpolated ERA5 10 m winds at the R/V Mirai position. Grey highlighted times indicate when the vessel was in ice cover based on the ice navigator's logs.



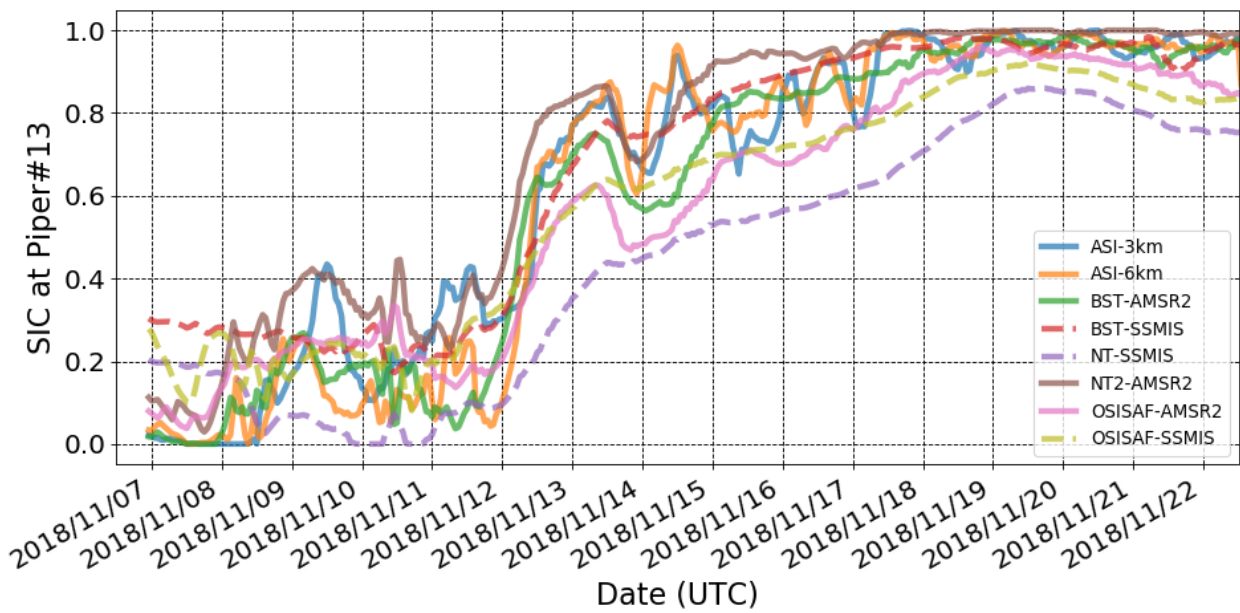
**Figure A4.** Satellite retrieved SIC for all products along the R/V Mirai track during Phase 1 between 9–13 November 2018. The figure schematics of SIC estimates are as follows: ASI-3km (blue), ASI-6km (orange), BST-AMSR2 (green), BST-SSMIS (red), NT2-AMSR2 (purple), NT-SSMIS (brown), OSISAF-AMSR2 (pink), and OSISAF-SSMIS (olive), and SSMIS and AMSR2 are distinguished by dashed and solid lines, respectively. Grey highlighted times indicate when the vessel was in ice cover based on the ice navigator’s logs.



**Figure A5.** Satellite retrieved SIC for all products along the R/V Mirai track during Phase 2 between 14–16 November 2018. The figure schematics follow Figure A4.



**Figure A6.** Satellite retrieved SIC for all products along the R/V Mirai track during Phases 3 and 4, between 17–20 November 2018. The figure schematics follow Figure A4.



**Figure A7.** Satellite retrieved SIC for all products along the Piper#13 track between 7–25 November 2018. The figure schematics of SIC estimates follow Figure A4.

## TABLES

**Table 1.** Details of satellite retrieved SIC products used in this study.

Product name	Instrument	Abbreviation	Data reference (specified grid resolution)
NASA-Team (NT)	SSMIS	NT-SSMIS	Cavalieri et al. (1996) (25 km)
NASA-Team 2 (NT2)	AMSR2	NT2-AMSR2	Meier et al. (2018) (12.5 km)
Comiso-Bootstrap (BST)	SSMIS	BST-SSMIS	Comiso (2017) (25 km)
	AMSR2	BST-AMSR2	Hori et al. (2012) (10 km)
OSISAF	SSMIS	OSISAF-SSMIS	OSI-401-b: SIC product of the EUMETSAT Ocean and Sea Ice Satellite Application Facility (10 km)
	AMSR2	OSISAF-AMSR2	OSI-408: AMSR-2 SIC product of the EUMETSAT Ocean and Sea Ice Satellite Application Facility (10 km)
ARTIST-Sea-Ice (ASI)	AMSR2	ASI-6km	Spreen et al. (2008) (6.25 km Arctic grid)
	AMSR2	ASI-3km	Spreen et al. (2008) (3.125 km Chukchi-Beaufort grid)



**Table 2.** A list of SIC data products used for various wave-ice interaction modelling studies.

Reference	Model (wave-ice interaction parameterisation)	SIC data product
Rogers et al. (2016)	WW3 (IC3)	NASA-Team2 applied to SSMIS data and Bootstrap applied to AMSR2 data (assimilated in the sea ice model)
Cheng et al. (2017)	WW3 (IC3)	NASA-Team2 applied to AMSR2 data
Ardhuin et al. (2018)	WW3 (IC2 including IS2 scattering)	ARTIST-Sea-Ice applied AMSR2 data
Copernicus (2019)	ERA5 ECWAM (ice mask)	OSISAF applied to SSMIS data (indirectly from OSTIA (Donlon et al., 2012))
ARCMFC (2019)	ARCMFC wave model (Sutherland et al., 2019) (implemented from December 2018)	OSISAF applied to SSMIS data (assimilated in the sea ice model)