

# Modelling the Antarctic Ice Sheet across the Mid Pleistocene Transition - Implications for Oldest Ice

Johannes Sutter<sup>1,2</sup>, Hubertus Fischer<sup>2</sup>, Klaus Grosfeld<sup>1</sup>, Nanna B. Karlsson<sup>1</sup>, Thomas Kleiner<sup>1</sup>, Brice Van Liefferinge<sup>3,5</sup>, and Olaf Eisen<sup>1,4</sup>

<sup>1</sup>Alfred Wegener Institute Helmholtz-Centre for Polar and Marine Research, 27568 Bremerhaven, Germany

<sup>2</sup>Climate and Environmental Physics, Physics Institute, and Oeschger Centre for Climate Change Research, University of Bern, Bern, Switzerland

<sup>3</sup>Laboratoire de Glaciologie, Université libre de Bruxelles, CP 160/03, Avenue F.D. Roosevelt 50, B-1050 Brussels, Belgium

<sup>4</sup>Department of Geosciences, University of Bremen, Bremen, Germany

<sup>5</sup>Norwegian Polar Institute Fram Centre, NO-9296, Tromsø, Norway

**Correspondence:** Johannes Sutter (johannes.sutter@awi.de)

**Abstract.** The international endeavour to retrieve a continuous ice core, which spans the middle Pleistocene climate transition ca. 1.2-0.9 Myr ago, encompasses a multitude of field and model-based pre-site surveys. We expand on the current efforts to locate a suitable drilling site for the oldest Antarctic ice core by means of 3D continental ice-sheet modelling. To this end, we present an ensemble of ice-sheet simulations spanning the last 2 Myr, employing transient boundary conditions derived from climate modelling and climate proxy records. We discuss the imprint of changing climate conditions, sea level and geothermal heat flux on the ice thickness and basal conditions around previously identified sites with continuous records of old ice. Our modelling results show a range of configurational ice-sheet changes across the middle Pleistocene transition, suggesting a potential shift of the West Antarctic Ice Sheet to a marine-based configuration. Despite the middle Pleistocene climate re-organisation and associated ice-dynamic changes, we identify several regions conducive to conditions maintaining 1.5 Myr (Million years) old ice, particularly around Dome Fuji, Dome C and Ridge B, which is in agreement with previous studies. This finding strengthens the notion that continuous records with such old ice do exist in previously identified regions, while we are also providing a dynamic continental ice-sheet context.

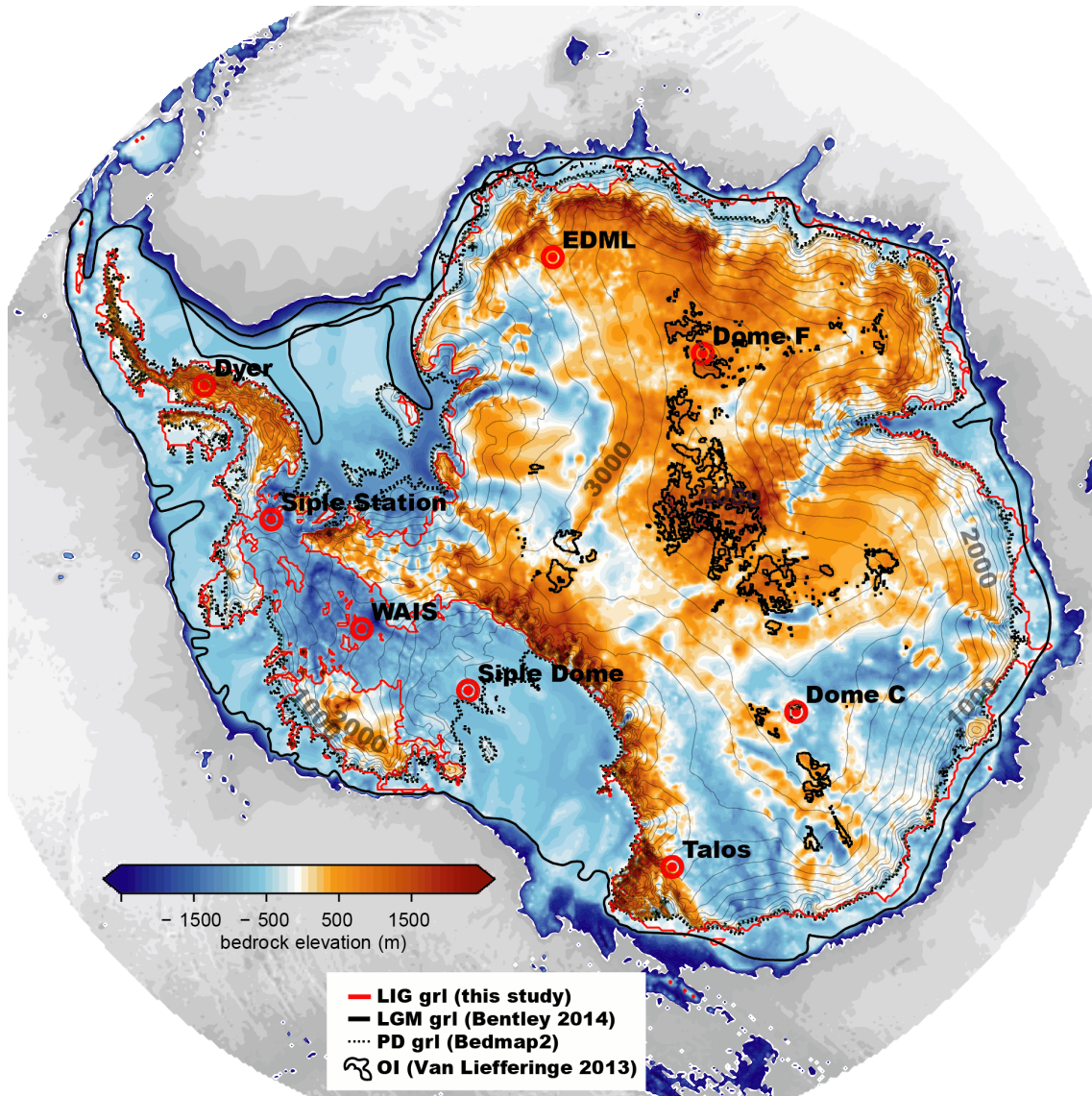
*Copyright statement.* TEXT

## 1 Introduction

The middle Pleistocene transition (MPT) is characterised by a shift from obliquity driven climate cycles ( $\sim 41.000$  years, 41 kyr) to the signature sawtooth  $\sim 100$  kyr cycles typical for the late Pleistocene. The drivers behind the MPT are still under debate and touch on the basic understanding of the climate system. The absence of any clear disruptive change during the MPT in orbital forcing makes the transition especially puzzling. Several theories have been put forth, striving to explain the enigmatic MPT (Raymo and Huybers, 2008). They include a shift in subglacial conditions underneath the Laurentide Ice Sheet

(regolith hypothesis by Clark and Pollard (1998)), the inception of a large North American Ice Sheet (Bintanja and van de Wal, 2008) or marine East Antarctic Ice Sheet by Raymo et al. (2006), ice bedrock climate feedbacks (Abe-Ouchi et al., 2013), the buildup of large ice sheets between MIS24 and 22 identified by Elderfield et al. (2012), or the combination of changes of ice-sheet dynamics and the carbon cycle (Chalk et al., 2017). Ultimately, it seems likely that an interplay of the various proposed processes culminated in the MPT. To illuminate the potential role of these different processes and thus to solve one of the grand challenges of climate research, the recovery of a continuous ice core spanning at least beyond the MPT (in the following termed as "Oldest Ice") is crucial.

An expansion of the currently longest ice core record from the EPICA Dome C project (Jouzel et al., 2007) to and beyond the MPT, would provide the necessary atmospheric boundary conditions (i.e. atmospheric greenhouse gases and surface temperature) to revisit the current theories (Fischer et al., 2013). It would provide a direct record of global atmospheric CO<sub>2</sub> and CH<sub>4</sub> concentrations and local climate during the MPT and beyond. A transient record of CO<sub>2</sub> concentrations would provide a key piece of the puzzle in answering the question whether greenhouse gases were the main culprit behind the MPT, while proxies of climate conditions in Antarctica would illuminate the evolution of the Antarctic Ice Sheet leading to the MPT. However, retrieval of such an ice core is a challenging task, as a multitude of prerequisites must be met to recover an undisturbed ice core reaching more than a million years into the past (Fischer et al., 2013; Van Liefferinge and Pattyn, 2013; Parrenin et al., 2017). The European ice core community has identified a most promising target for an Oldest Ice drill site to be close to a secondary dome in the vicinity of Dome C, usually referred to as "Little Dome C" (LDC) (Parrenin et al., 2017). Also, other potential locations are targeted around Dome Fuji. The selection of sites is motivated by a series of recent studies based on radar observations of the internal ice-sheet stratigraphy and underlying bedrock topography (Young et al., 2017; Karlsson et al., 2018), local paleoclimate conditions (Cavitt et al., 2018), as well as 1D and 3D ice-flow modelling (Van Liefferinge et al., 2018; Parrenin et al., 2017; Passalacqua et al., 2017). These studies provide a detailed view on the regional properties such as ice flow, thermal conditions and bedrock topography, enabling a localized assessment of promising drill sites. The only component missing so far in the analysis is the transient, continental paleo ice-sheet dynamics perspective, which allows for the assessment of large-scale re-organizations of ice-sheet flow and geometry during glacial and interglacial cycles, their impact on divide migration, ice thickness changes along the East Antarctic ice divide and basal melt. There are many studies focussing on the transient evolution of the Antarctic Ice Sheet (AIS) during specific climate episodes in the past such as the Last Interglacial (LIG) (Sutter et al., 2016; DeConto and Pollard, 2016) or the Last Glacial Maximum (LGM) (e.g. Golledge et al., 2014). However, so far only a few studies cover the waxing and waning of the AIS during the MPT (Pollard and DeConto, 2009; de Boer et al., 2014) or late Quaternary (Tigchelaar et al., 2018) in transient model simulations with an evolving climate forcing. We build on these efforts by carrying out ensemble simulations of the Antarctic Ice Sheet across the last 2 Myr to investigate the MPT and the effect of glacial-interglacial variations in ice thickness and basal melting on potential Oldest Ice drill sites.



**Figure 1.** Antarctic bedrock topography overlain by surface contours (gray lines). The present day (PD) grounding line from BEDMAP2 (Fretwell et al., 2013) depicted by the dashed black line. Last Glacial Maximum (LGM) grounding line reconstruction from Bentley et al. (2014) (thick black lines) is compared to simulated grounding line retreat in one of the ensemble members for the Last Interglacial (LIG, red line). Regions previously identified as potentially viable sites for Oldest Ice (Van Liefferinge and Pattyn, 2013) are outlined by thick black lines. Eight ice core locations are highlighted, which are used as tuning targets with respect to ice core thickness and analysed in Figure 9 (West Antarctica) and 10 (East Antarctica), respectively.

## 2 Methods

### 2.1 Ice Sheet Model

We employ the 3D thermomechanical Parallel Ice Sheet Model (PISM) (Bueler and Brown, 2009; Winkelmann et al., 2011) in the hybrid shallow-ice/shallow-shelf mode (SIA+SSA) with a subgrid grounding line parameterisation (Gladstone et al., 2010; Feldmann et al., 2014) to allow for reversible grounding line migration despite using a relatively coarse resolution. Basal sliding is calculated with a pseudo-plastic sliding law (Schoof, 2010) in which the yield stress ( $\tau_c$ ) is determined by the pore water content and the strength of the sediment which is set by a linear piecewise function dependent on the ice-bedrock interface depth relative to sea level. The relevant parameter for this approach is introduced in PISM via the till-friction angle (see Winkelmann et al. (2011) eq. 12) which is scaled linearly between  $till_{min}$  and  $till_{max}$ , depending on the bedrock elevation (see Table 2). Through this heuristic parameterisation marine-based ice has a more slippery base as compared to ice above sea level, allowing for faster flowing marine outlet glaciers. The parameter space used here yields a basal friction coefficient (e.g. underneath Thwaites glacier) on the lower end compared to Yu et al. (2018). Since the simulations presented here span a long time period (of 2 Myr), we abstain from the derivation of basal friction by inversion (optimization problem) as we want to prevent over-tuning of present-day flow patterns. All simulations are carried out on a  $16 \times 16 \text{ km}^2$  grid and 81 vertical levels with refined resolution near the base ( $\approx 18 \text{ m}$  at the ice-bedrock interface). The grid resolution resolves the major ice streams while allowing for reasonable computation times (ca. 100 model years per processor hour on 144 cores, i.e. ca 5-7 days for 2 Myr depending on the supercomputer load), yet small outlet glaciers such as in the Antarctic Peninsula cannot be simulated adequately on this resolution.

The initial topography used for the simulations consists of a 200 kyr thermal spinup of the BEDMAP2 (Fretwell et al., 2013, see Figure 1) data set (present day steady state simulation with fixed ice-sheet geometry), refined around LDC and Dome Fuji by the new radar derived topographies published in Young et al. (2017) and Karlsson et al. (2018). As basal heat flux is crucial for the existence of 1.5 Myr old ice (Fischer et al., 2013; Van Liefferinge and Pattyn, 2013) as well as for ice dynamics, especially in the interior of the ice sheet (Larour et al., 2012), we consider four different geothermal heat flux (GHF) data sets (Shapiro and Ritzwoller, 2004; Purucker, 2013; An et al., 2015; Martos et al., 2017) in our simulations to account for uncertainties in GHF and to illustrate their impact on ice dynamics and potential Oldest Ice candidate sites.

Sea level plays an important role in the stability of marine ice sheets as it affects the position of the grounding line via the floatation criterion. We employ three different sea level reconstructions (see section 2.3) to account for different glaciation patterns in the northern hemisphere and different sea level highstands in interglacials. PISM does not account for self-gravitational effects yet, which can have a stabilising effect on the ice sheet locally in interglacials (e.g. Konrad et al., 2014). Ice-shelf melt rates are calculated based on the parameterisation in Beckmann and Goosse (2003) (eq. 1), with a square dependency on the temperature difference between the pressure dependent freezing point and the ambient ocean temperature as used in e.g. Pollard



and DeConto (2012),

$$M = m_b 0.005 \frac{\rho_w c_{pw}}{L_i \rho_i \gamma_T} |(T_{ocean}^{3D} - T_f)|(T_{ocean}^{3D} - T_f) \quad (1)$$

where  $M$  is the melt rate in m/s,  $m_b$  is a scaling factor,  $\rho_w$  and  $\rho_i$  are ocean water and ice-shelf density, respectively,  $c_{pw}$  is ocean water heat capacity,  $\gamma_T$  heat transfer coefficient,  $L_i$  latent heat,  $T_f$  freezing point at depth of ice and  $T_{ocean}^{3D}$  ambient ocean temperature. The ambient ocean temperature  $T_{ocean}^{3D}$  is derived from simple extrapolation of the 3D ocean temperature into the ice-shelf cavity. Recently, there have been developments towards more realistic representations of basal shelf melt in standalone continental ice-sheet models, incorporating sub-shelf ocean circulation (e.g. Reese et al., 2018; Lazeroms et al., 2018) which improve the representation of basal ice-shelf melt rates, but they have not been included in this study. To better match present day observed sub ice-shelf melt rates (Rignot et al., 2013; Depoorter et al., 2013), we had to multiply the computed present day melt rates in the Amundsen and Bellinghousen Sea by a factor of  $m_b = 10$ , around the Antarctic Peninsula by 5, and underneath the Filchner Ice-Shelf by a factor of 1.5. Shelf melt rates adjacent to Wilkes, Terre Adelie and George V Land in East Antarctica are also multiplied by factor of 10 in a subset of the simulations. These scaling factors are kept constant throughout the paleo simulations. Ice-shelf calving and therefore the dynamic calving front is derived via two heuristic calving parameterisations: 1. thickness calving (cH) sets a minimum spatially uniform ice thickness (75 m or 150 m) at the calving front. If the ice thickness drops below this threshold, ice in the respective grid node is purged; 2. independently of 1. we additionally employ Eigencalving (cE), which calculates a calving rate from the ice-shelf strain rates (Albrecht and Levermann, 2014). Both calving parameterisations are active simultaneously throughout the simulations.

## 2.2 Climate Forcing

To adequately capture continental ice-sheet dynamics on multi-millennial timescales, in principle, a coupled modelling approach which resolves climate-ice-sheet interactions is required. First efforts to tackle multi-millennial timescales via a fully coupled modelling approach are promising and currently being developed (e.g. Ganopolski and Brovkin, 2017). However, coupled climate-ice-sheet models which resolve ice-shelf–ocean interactions are mostly limited to applications on the centennial time scale due to computational limitations. To bridge this shortcoming, we construct a transient climate forcing over the last 2 Myr by expanding time-slice snapshots from the Earth system model (ESM) COSMOS (Lunt et al., 2013) with a climate index method as applied in Sutter et al. (2016). The climate snapshots are based on Pliocene (Stepanek and Lohmann, 2012), LIG (Pfeiffer and Lohmann, 2016), LGM and Pre-Industrial orbital, atmospheric and topographic conditions. For each climate snapshot, anomaly fields with respect to the pre-industrial control run are calculated and added to a mean Antarctic climatology (1979-2011), derived from the regional climate model RACMO (van Wessem et al., 2014), or the extrapolated World Ocean Atlas 2009 (Locarnini et al., 2010) to provide the climate forcing for the individual climate epoch. The intermediate climate states between the snapshots are calculated by interpolating the anomaly fields with a climate index approach, utilizing either of two climate indices derived from the Dome C deuterium record from Jouzel et al. (2007) which is expanded to the last 2 Myr by a transfer function (Michel et al., 2016) using the benthic oxygen isotope stack from Lisiecki and Raymo (2005) (LR04) or the global surface temperature data set from Snyder (2016). To obtain an "Antarctic" surface temperature record from the far

field benthic oxygen isotope stack, the LR04 isotope values are scaled via:

$$LR04_T = -(LR04 - \overline{LR04_{810}}) \frac{\sigma(EDC2007)}{\sigma(LR04_{810})} + \overline{EDC2007} - 55K \quad (2)$$

$LR04_T$  is the new surface temperature record,  $LR04$  is the benthic isotope stack data (time corrected to match the AICC2012 time scale (Bazin et al., 2013; Veres et al., 2013)) and  $\overline{LR04_{810}}$  is the mean LR04 isotope data for the last 810 kyr, standard deviations of the  $EDC$  and  $LR04_{810}$  record are denoted by  $\sigma(EDC2007)$  and  $\sigma(LR04_{810})$ , respectively, mean Dome C surface temperature record is denoted by  $\overline{EDC2007}$ . The forcing variables (surface temperature  $T_s$ , ocean temperature  $T_o$ ) can then be calculated at every grid point in time by:

$$T_s^{i,j}(t) = T_{spd}^{i,j} + \sum_{x=ig,g,p} \omega_x(t) \Delta T_{s,x}^{i,j} \quad (3)$$

$$T_o^{i,j,z}(t) = T_{opd}^{i,j,z} + \sum_{x=ig,g,p} \omega_x(t) \Delta T_{o,x}^{i,j,z} \quad (4)$$

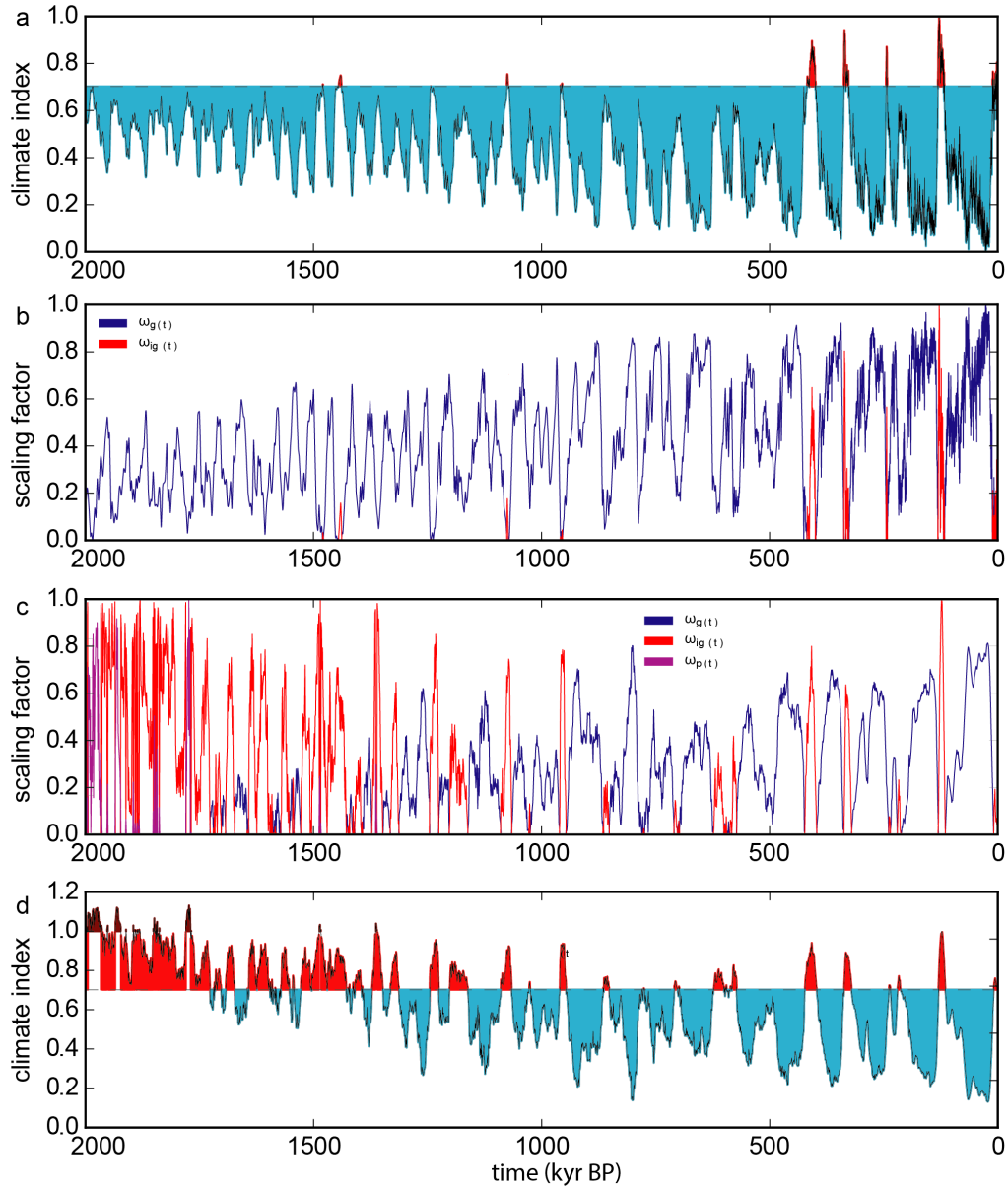
where indices  $i,j$  denotes the grid point,  $z$  denotes the depth of the ice ocean interface at grid point  $(i,j)$ ,  $T_s^{i,j}(t)$  is the surface temperature at grid point  $i,j$  at time  $t$ ,  $T_{spd}^{i,j}$  is the surface temperature at present day (mean climatology from 1979-2016),  $\Delta T_{sig}^{i,j}$ ,  $\Delta T_{s_g}^{i,j}$  and  $\Delta T_{sp}^{i,j}$ , are the climate anomalies for the LIG, the LGM and the Pliocene, respectively. Ocean temperatures are derived in the same way (eq. 4). The linear scaling  $\omega_x(t)$  derived from the climate index (CI) interpolates the climate forcing at any given time between the respective climate states. The scaling  $\omega_x(t)$  is computed by :

$$\omega_g(t) = 1.0 - \frac{\min(CI, CI_{pd})}{CI_{pd}} \begin{cases} 1.0 \text{ for } CI = 0.0 \\ 0.0 - 1.0 \text{ for } 0.0 < CI < CI_{pd} \\ 0.0 \text{ for } CI \geq CI_{pd} \end{cases} \quad (5)$$

$$\omega_{ig}(t) = \frac{(\max(CI, CI_{pd}) - CI_{pd})}{(1.0 - CI_{pd})} \begin{cases} 1.0 \text{ for } CI = 1 \\ 0.0 - 1.0 \text{ for } CI_{pd} \leq CI \leq 1.0 \\ 0.0 \text{ for } CI \leq CI_{pd} \end{cases} \quad (6)$$

$$\omega_p(t) = \frac{(\max(CI, 1.0) - 1.0)}{(CI_p - 1.0)} \begin{cases} 1.0 \text{ for } CI = CI_{max} \\ 0.0 - 1.0 \text{ for } 1.0 \leq CI \leq CI_{pd} \\ 0.0 \text{ for } CI \leq 1.0 \end{cases} \quad (7)$$

where the subscripts  $g$ ,  $ig$  and  $p$  stand for Glacial, Interglacial and Pliocene respectively and  $CI_{pd}$  refers to the present day climate index. The respective values of the climate indices are  $CI_{lgm} = 0.0$ ,  $CI_{pd} = 0.70$ ,  $CI_{lig} = 1.0$ ,  $CI_p = 1.13$ . The climate index is normalized with respect to the warmest climate period in the Dome C temperature record, therefore the LIG has index 1.0 in ensemble B1 and B2. The climate is linearly scaled between present day and LIG if the climate index surpasses the



**Figure 2.** Climate index ~~glacial index~~ derived from Dome C deuterium record a) and corresponding scaling factors  $\omega_x$  in b). Times colder than present are shaded in cyan and times warmer than present in red. d) same as as a) but for the climate index derived from the Snyder global surface temperature record and scaling factors  $\omega_x$  in c). Times warmer than the Last Interglacial are shaded in dark red. The lines in b) and c) vanish when scaling factors are zero.

mean present day climate index  $CI_{pd}$ , and between LIG and the Pliocene if the index is larger than 1.0. The major difference between the two glacial indices is the warmer overall climate state recorded in Snyder (2016) before the MPT (see Figure 2 b). The present day forcing derived from van Wessem et al. (2014) matches the present day climatology in Antarctica (compared to in-situ measurements) very well, with biases in the high Antarctic plateaus of less than 5%.

- 5 We apply a temperature dependent scaling of precipitation ( $P$ ), using a scaling factor (percent precipitation change per degree Celsius) of  $\alpha_P$  of 3 and 5 %, respectively, motivated by central East Antarctic paleo precipitation changes (Frieler et al., 2015; Werner et al., 2018):

$$P(t) = P_{pd} + (T_{spd}^{i,j} - T_s^{i,j}(t))\alpha_P. \quad (8)$$

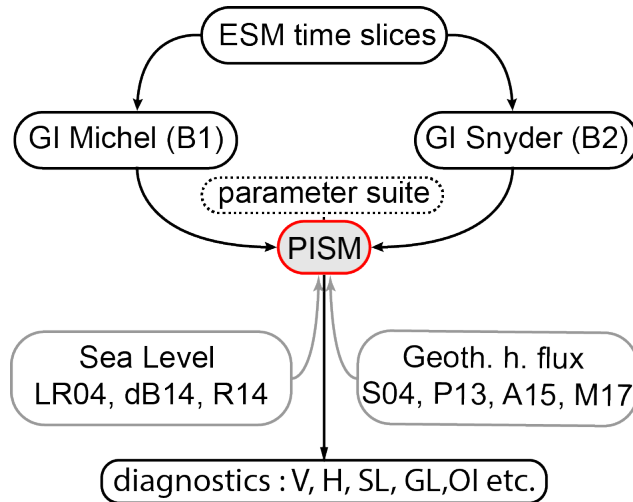
- The precipitation is linearly dependent on the temperature anomaly with respect to present day temperature. Note that this  
10 scaling underestimates the sensitivity of coastal mass balance to temperature changes.

In this standalone approach, the AIS is responding to the external forcing, thus no feedbacks are acting between the ice sheet and the climate system. However, the climate index approach implicitly incorporates the integrated climate response to changes in orbital configuration and atmospheric  $CO_2$  archived in the Dome C (Jouzel et al., 2007), the marine sediment  
15 core (Lisiecki and Raymo, 2005) or the global surface air temperature (Snyder, 2016) record. This allows to investigate the dynamical response of the AIS to a shifting climate regime across the MPT, with the caveat, that ice-sheet–climate interactions which are not included in the GCM time slice approach might have also played a significant role in the evolution of the AIS during the MPT.

### 2.3 Model ensemble approach

- 20 We choose a model ensemble approach, to address the multitude of uncertainties regarding the paleoclimate state during the last 2 million years, the applied boundary conditions and the physics of ice flow. The aim of the ensemble design (Figure 3) is to investigate the impact of different climate forcings, the response of the AIS to different geothermal heat flux signatures (Figure 4) and the impact of sea level on the transient configuration of marine ice sheets. Ultimately, different manifestations of ice-sheet flow and climate response are investigated via a set of ice-sheet model parameterisations. The model parameters are  
25 pre-selected in equilibrium simulations under present day forcing (1979–2011 climatology from van Wessem et al. (2014) and World Ocean Atlas (Locarnini et al., 2010) ocean temperatures) trying to fit the current sea level equivalent ice-sheet volume, geometry, ice flow, ice thickness at selected ice core locations (Figure 1), as well as the Antarctic sea level contribution during the last two glacial cycles. The ensemble is built around two main branches of ensemble runs consisting of a set of boundary conditions (Table 1) and ice-sheet model parameterisations (Table 2).

- 30 In the first ensemble branch (B1) the climate index is derived from an extrapolation of the EPICA Dome C temperature record (Jouzel et al., 2007) via correlation to the Lisiecki and Raymo (2005) time series to span the last two million years (Michel et al., 2016). In the second branch (B2) the climate index is derived from the global temperature record in Snyder (2016). Major differences between 2–0.9 Myr BP can be identified in the two resulting glacial indices. B2 exhibits much

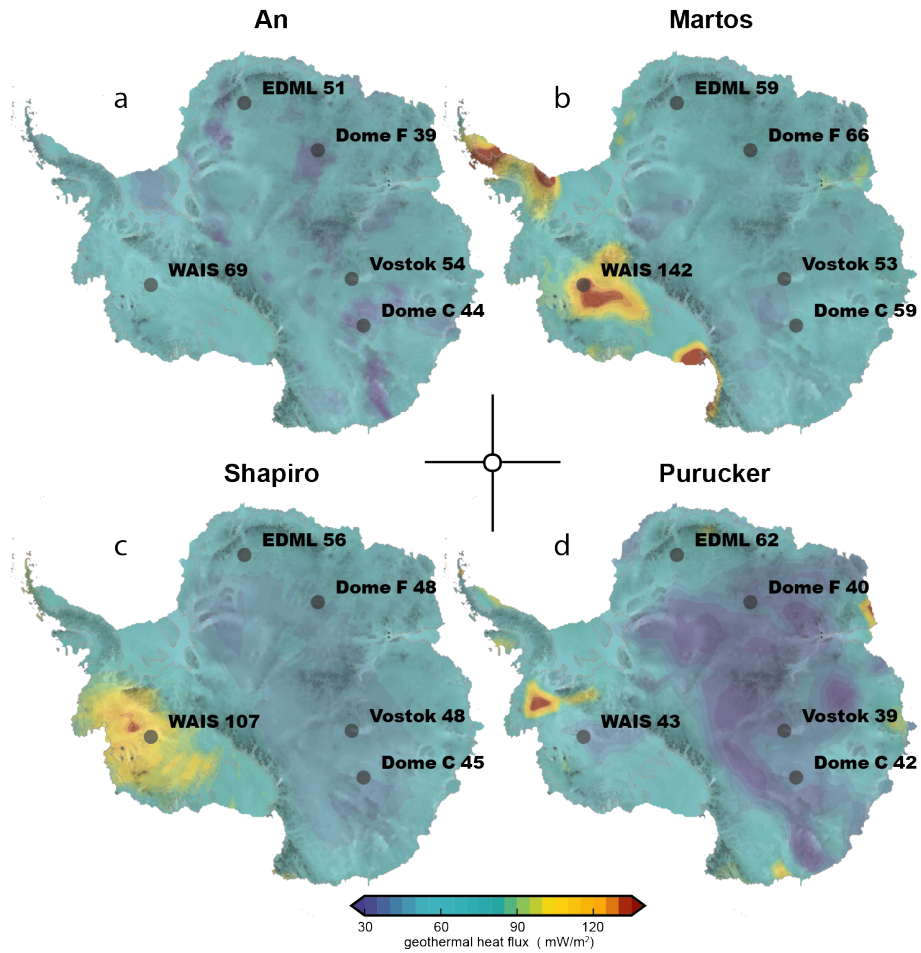


**Figure 3.** Schematic flow chart of the model ensemble. The ice-sheet model (PISM) is forced via the transient forcing derived by linear interpolation with glacial indices from Michel et al. (2016) and Snyder (2016) forming ensemble branch B1 and B2. Prescribed input data consist of sea level (SL) data and geothermal heat flux (GHF) data sets. Both ensemble B1 and B2 are constructed with twelve different forcing combinations (three SL data sets and four geothermal heat flux fields). The parameter suite is derived from sensitivity studies in which the present day Antarctic Ice Sheet and its sea level contribution during the last two glacial cycles were the main tuning targets.

**Table 1.** Available choices of selected forcing fields for the model ensemble. B1 and B2 stand for the two glacial indices derived from Michel et al. (2016) and Snyder (2016); SL data from Lisiecki and Raymo (2005) (LR05), de Boer et al. (2014) (dB14), and Rohling et al. (2014) (R14); GHF data from Shapiro and Ritzwoller (2004) (S04), Purucker (2013) (P13), An et al. (2015) (A15), and Martos et al. (2017) (M17).

Forcing	GI	SL	GHF
Data	B1, B2	LR05, dB14, R14	S04, P13, A15, M17

warmer climate conditions between 2–1.2 Myr ago. The warmest climate state in B1 is the ESM time slice centred in the LIG (MIS5) (Pfeiffer and Lohmann, 2016) while in B2 the interglacials between 2 and 1.7 Myr BP are the warmest, represented by a middle Pliocene climate time slice (Stepanek and Lohmann, 2012) (see Figure 2). We explore two main parameter sets (P1 and P2) highlighted in Table 2. While we do take into account all sea level variations for ensemble B1, we only look at the sea level forcing derived from Lisiecki and Raymo (2005) (LR05) in ensemble B2. We also experimented with other parameter choices based on Table 2 (VP) but do not cover all individual forcing sets for these, thus they are not discussed in this study. In total we carried out 186 individual simulations. The ensemble members discussed in this manuscript consist of 8 experiments for each ensemble B1 and B2 with sea level forcing from LR05.



**Figure 4.** The four panels illustrate the four GHF input data sets (Shapiro and Ritzwoller, 2004; Purucker, 2013; An et al., 2015; Martos et al., 2017) used in this study. As a reference the rounded GHF (in  $\text{mW}/\text{m}^2$ ) at selected ice core locations is provided.

### 3 Results & Discussion

The main objective of this work is to assess the existence of 1.5 Myr old ice along the East Antarctic ice divide. We simulate the evolution of the AIS throughout the last 2 Myr, focussing on ice volume changes specifically across the MPT (see Figure 5 and 6), as well as on ice-sheet configurations in glacials (focussing on marine isotope stage 2) and interglacials (with a focus on marine isotope stage 11 and 5, see Figure 7 and 8). We further investigate ice thickness changes at ice core locations in West and East Antarctica (see Figure 9 and 10). We conclude with a map of promising sites providing suitable conditions for an Oldest Ice ice core around Dome Fuji, Dome C and Ridge B, following the approach of Fischer et al. (2013) and Van Liefferinge and Pattyn (2013) (Figure 11).

**Table 2.** Selected ISM parameters for the model ensemble. First and second line show the main parameter sets used in the ensemble (P1 and P2). The third line lists additional parameters tested but not further used and discussed in this study (VP). cH stands for thickness calving limit (in meter), cE is a parameter in the Eigencalving equation;  $sia_e$  and  $ssa_e$  stand for the so called SIA and SSA "enhancement factors",  $till_{min}$  and  $till_{max}$  modify basal friction in the sliding law.  $\gamma_{E AIS}$  is a dimensionless scaling factor for basal shelf melt for selected East Antarctic ice-shelf regions (George V Land, Wilkes Land).

Parameter	$sia_e$	$ssa_e$	cH (m)	cE	$till_{min}$	$till_{max}$	$\gamma_{E AIS}$
P1	1.0	0.55	<b>75</b>	$1 \cdot 10^{17}$	5	30	<b>10</b>
P2	1.0	0.55	<b>150</b>	$1 \cdot 10^{17}$	5	30	<b>1</b>
VP	1.6 ; 1.7 ; 2.0	1.0	100	$1 \cdot 10^{18}$	10	40	5-20

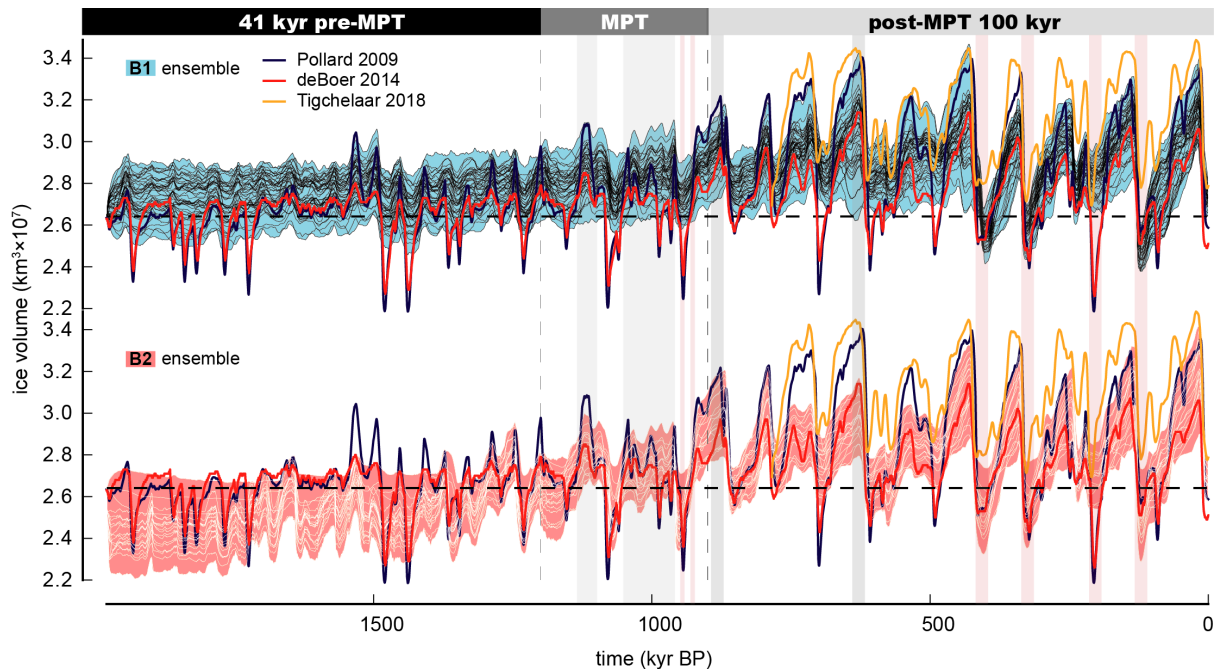
### 3.1 Antarctic ice volume changes

We divide our discussion of the evolution of the AIS volume into three time frames: 1. pre-MPT (2 – 1.2 Myr BP), MPT (1.2 – 0.9 Myr BP), and post-MPT (0.8 – 0 Myr BP). To put our results into perspective, we compare them to two published transient ice-sheet model studies which cover the time interval considered here (Pollard and DeConto (2009) and de Boer et al. (2014)) as well as Tigchelaar et al. (2018), which spans the last 0.8 Myr. Figures 5 and 6 depict the transient evolution of AIS volume as simulated by the whole ensemble and a representative subset of our model ensemble in comparison to Pollard and DeConto (2009), de Boer et al. (2014) and Tigchelaar et al. (2018) and with respect to different choices of GHF and climate index. In Figure 6, we present two clusters of the model ensemble from branch B1 (ice/marine sediment core climate index) and the branch B2 (surface air temperature climate index). Depicted are three simulations from both B1 and B2 with two model parameterisations (P1 and P2, respectively, see Table 2) using three different GHF data sets (Shapiro and Ritzwoller, 2004; Purucker, 2013; Martos et al., 2017).

#### 3.1.1 Pre-MPT Antarctic ice-sheet evolution

Simulated ice volume changes before the MPT are characterised by a strong obliquity ( $\approx 41$  kyr) cycle resembling the climate index forcing which is formed by the integrated planetary response to orbital variations. The two clusters in the upper panel of Figure 6 show an ice-sheet configuration similar to present day (B1-branch) and a strong Interglacial configuration (B2-branch) in which the West Antarctic Ice Sheet (WAIS) has collapsed. Note that most of the ensemble members do not allow a significantly increased glaciation as encountered during the last 800 kyr. The increase in glacial AIS volume during the pre-MPT phase is limited to less than 2-4 m sea level equivalent ice volume throughout the model ensemble. Variability in the B2-branch (red) is higher than in B1 (blue), due to the waxing and waning of the marine WAIS and stronger Glacial-Interglacial surface mass balance variability. Ice volume in the B1-branch is predominantly driven by surface mass balance and sea level. The comparison to Pollard and DeConto (2009) and de Boer et al. (2014) illustrates the imprint of the different forcing approaches. While Pollard and DeConto (2009) and de Boer et al. (2014) both follow a combined approach using far





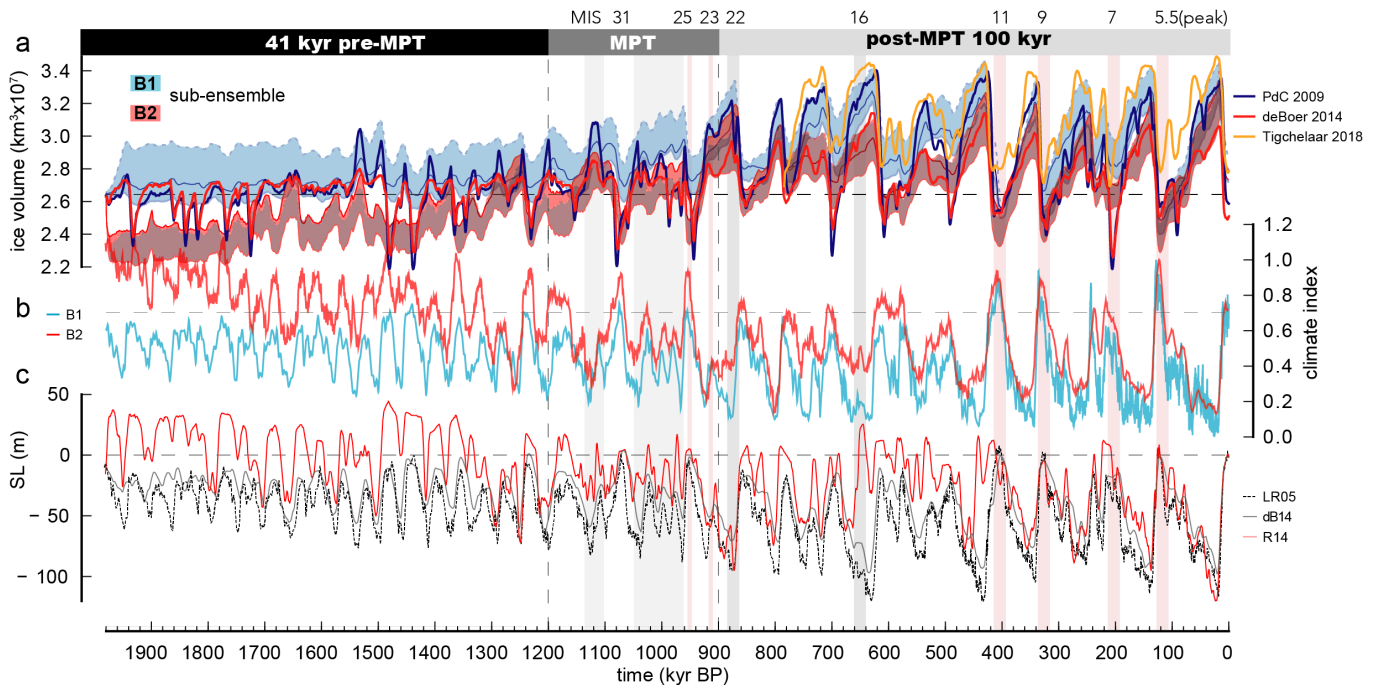
**Figure 5.** Antarctic ice volume as simulated in the full model ensemble (excluding simulations with either present day ice volume larger than  $2.8 \cdot 10^7 \text{ km}^3$  or Last Glacial Maximum ice-sheet volume smaller than  $3.0 \cdot 10^7 \text{ km}^3$ ). The horizontal black dashed line denotes present day ice volume derived from BEDMAP2 (Fretwell et al., 2013).

field proxies as well as austral summer insolation ( $80^\circ\text{S}$ ), we construct a transient climate forcing by combining Antarctic Earth System Model (ESM) snapshots from the Pliocene, LIG and LGM with two glacial indices derived from far field proxies. One of the main differences in our approach and the forcing applied in Pollard and DeConto (2009) and de Boer et al. (2014) is the handling of basal melting underneath the ice shelves. This forcing component arguably exerts the strongest influence on

5 grounding line migration of the AIS in interglacials. Our calculation of basal melt rates is very similar to de Boer et al. (2014), with smaller differences between assumed peak interglacial and present day uniform ocean temperature. Peak interglacial ocean temperatures for ensemble B1 are approximately  $2^\circ\text{C}$  (Last Interglacial) warmer than present day and  $3^\circ\text{C}$  warmer (Pliocene) in B2 ( $3.7^\circ\text{C}$  in de Boer et al. (2014), with  $-1.7^\circ$  circum-antarctic ocean temperatures at present day and  $+2^\circ$

10 ocean basins (see method section). Pollard and DeConto (2009) prescribe basal melt rates directly, scaling them via the far field benthic isotope record (Lisiecki and Raymo, 2005) and austral summer insolation. Ultimately, this scaling leads to larger bulk ice-shelf melt rates and smaller melt rates close to the grounding line compared to the ones calculated in our approach. Overall, this leads to a more muted ice-loss response to warmer interglacial conditions during the pre-MPT in our ensemble and a generally lower variability in ice volume (sea level equivalent of ca. 4 – 8 m), while the growth and retreat phases are more

15 or less synchronous to the variations in Pollard and DeConto (2009) and de Boer et al. (2014). Interestingly, the differences in



**Figure 6.** Panel a) depicts the ice volume evolution of a subset of the model ensemble. Blue and light blue curves depict ensemble branch B1 with parameter set P2 (see Table 2) and sea level forcing LR04. Geothermal heat flux depicted with blue line (Shapiro and Ritzwoller, 2004) upper light blue dashed line (Purucker, 2013) and lower light blue line (Martos et al., 2017). The red curves show B2 with parameter set P1 and using the climate index from Snyder (2016). Red line (Shapiro and Ritzwoller, 2004), dashed maroon line (Martos et al., 2017), maroon line (Purucker, 2013)). The simulated ice volume from Pollard and DeConto (2009); de Boer et al. (2014); Tigchelaar et al. (2018) are shown for comparison (black, gray and black dashed line). The middle panel shows the climate index used in B1 (dark grey) and B2 (light grey) with the horizontal gray dashed line depicting the average Holocene index. The lower panel shows the sea level reconstructions used in the model ensembles ((Lisiecki and Raymo, 2005, LR04), (de Boer et al., 2014, dB14), (Rohling et al., 2014, R14)).

interglacial AIS volume between the three studies are largest in pre-MPT times, while they are rather similar for the last four interglacials (see Figure 6). Evidently, the strongest interglacial AIS retreat is found in MIS7 for both Pollard and DeConto (2009) and de Boer et al. (2014), while in our ensemble it is MIS11 and MIS5, with MIS5 producing a slightly stronger response. A coherent result of our study and the results from Pollard and DeConto (2009) and de Boer et al. (2014) is that the East Antarctic Ice Sheet (EAIS) margins are relatively stable throughout the pre-MPT.

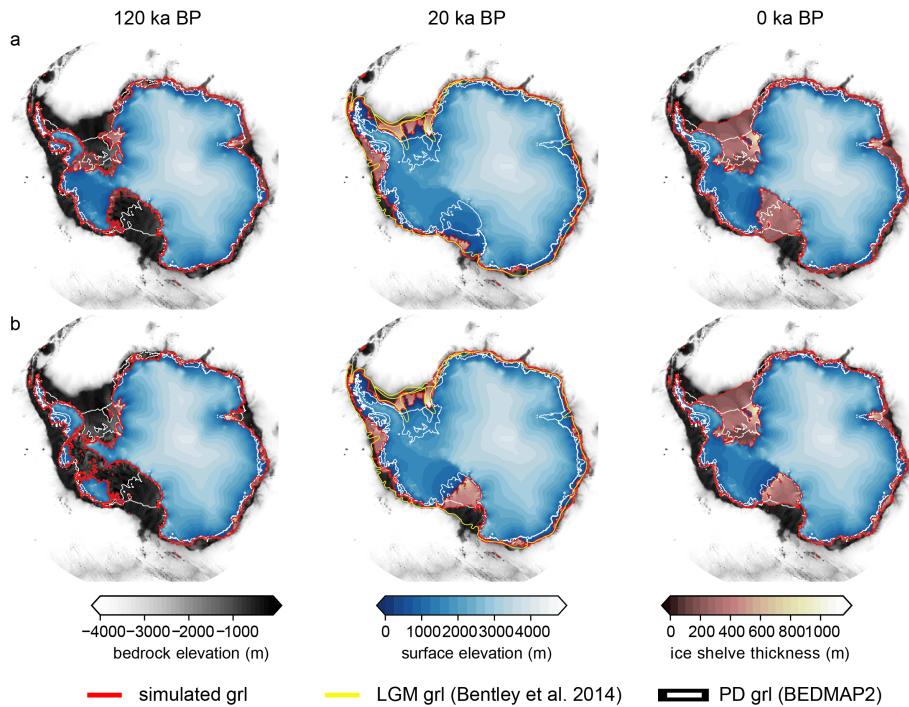
### 3.1.2 MPT Antarctic Ice-Sheet evolution

Commonly, the onset of the MPT is put at 1.2 Myr BP and the MPT ends about 0.9 Myr BP culminating in extended cold conditions between marine isotope stages 24 and 22 (ca. 940-880 kyr BP). Two pronounced interglacials (MIS31 and MIS25) and several "colder-than-present" interglacials (between 1050 kyr and 950 kyr BP) separated by moderate glacial conditions

throughout the MPT can be identified in the climate index forcing (Figure 6 panel b). The AIS response during the MPT is dominated by two proto-glacial states between 1.1 – 1.0 Myr BP separated by interglacial MIS31, which can be interpreted as a first expression of a 100 kyr cycle. However, obliquity pacing still dominates ice volume changes at this stage. The second proto-glacial state after MIS31 is interrupted by MIS25 followed by an extended cold period, allowing for the formation of marine ice sheets in the Weddell and Ross Seas similar to what is observed during late Quaternary glacials, marking the end of the MPT and the onset of unperturbed 80-120 kyr cycles in AIS volume. Our ice-sheet model results are in line with the notion of a 900-kyr event by Elderfield et al. (2012), which is centred around MIS25-22, manifesting itself in a qualitative difference in the formation of glacials: a long build up phase ended by a sharp decline of the ice volume into interglacials (late Quaternary sawtooth pattern) during the last 800 kyr and a more symmetric glaciation/deglaciation before the MPT. This finding is robust across all tested sea level forcing data sets. We find no evidence of large changes in the EAIS margin during the MPT as hypothesized by Raymo et al. (2006), where a transition from a mostly land based EAIS to a marine EAIS similar to today's configuration is proposed. However, most simulations from B2, which include warm Pliocene climate conditions, show a major re-organisation of West Antarctica into a "present day" ice-sheet configuration at the end of the MPT (see Figure 9). This might represent a West Antarctic analogue to the theory that the EAIS transitioned to a marine configuration during the MPT (Raymo et al., 2006), which does not require significant changes in the EAIS margin during the MPT. Such a configurational WAIS-shift would potentially implicate strong climate feedback mechanisms due to the formation of an ocean gateway between the Weddell, Ross and Amundsen Sea (Sutter et al., 2016) affecting climate dynamics across the MPT. This transition is not simulated in B1 and calls for a more crucial analysis outside the scope of this publication, e.g. incorporating a fully coupled ESM with a dynamical ice-sheet component. Accordingly, the climate state in B1 does not allow a waxing and waning of the WAIS for pre-MPT interglacial conditions. We note, that other modelling studies either focussing on warmer Pliocene stages (DeConto and Pollard, 2016) or regional sensitivity studies (Mengel and Levermann, 2014) show large scale retreat of the grounding line into the Wilkes and Aurora subglacial basins, therefore a potential re-organization of the EAIS across the MPT cannot be excluded using all model experiments. The end of the MPT is marked by a pronounced glacial state at MIS 22 akin to the Last Glacial Maximum reflecting a strong growth of the AIS at the end of the MPT. This result is robust across all ensemble members for both branch B1 and B2. It is interesting to note that the glaciations in the MPT interval become progressively stronger and reach a full late Quaternary glaciation state in MIS 22.

### 3.1.3 Post-MPT Antarctic Ice-Sheet evolution

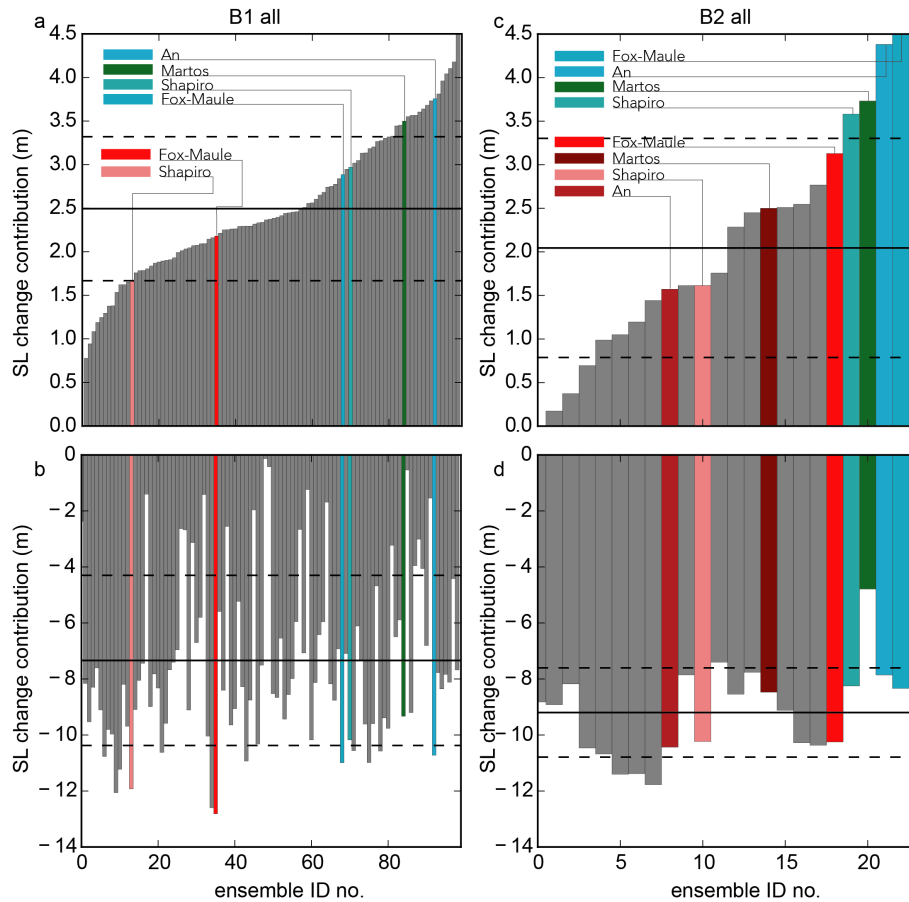
The simulated Quaternary AIS volume evolution can be roughly divided into two parts, the first spanning the window from 900 kyr BP to 420 kyr BP (MIS11) and the second from MIS11 to today. After MIS11, ice volume variability increases with smaller interglacial and bigger glacial ice sheets compared to the preceding 500 kyr. This pattern mostly reflects the stronger interglacial atmospheric and ocean temperature forcing from MIS11 onwards. MIS11 is the first late Quaternary interglacial in which the WAIS recedes to a land based ice-sheet configuration in B1 with the second major interglacial being MIS5e. The ensemble mean sea level contribution in MIS5e amounts to  $\approx 2.5 - 3$  m with a full ensemble range between 1 and 4.5 m (see Figure 8). Glacial ice volume in the late Quaternary grows by ca.  $-8$  to  $-10$  m sea level equivalent ice volume (see Figure



**Figure 7.** Panel a/b illustrate simulated ice-sheet configurations for the LIG, LGM and PD, respectively. Both simulations are carried out with forcing B1, using a different ice thickness calving limit (a:  $ch=75$  m, b:  $ch=150$  m). Reconstructed grounding line positions for the LGM (Bentley et al., 2014) are depicted in yellow. Both grounding line and ice-shelf front from BEDMAP2 (Fretwell et al., 2013) are depicted in white.

8) with strongest glacials represented by MIS16 and 2. In general, the glacial extent of the AIS matches reconstructed LGM grounding margins rather well, with the notable exception of the Amundsen and Bellinghausen sea sectors. In this region, the ocean forcing seems to be too warm to allow for an advance of the ice margin to the continental shelf edge in the model. LGM ice growth in the whole ensemble is strongly dependent on the SIA enhancement factor  $sia_e$ , with values larger than 1.5 leading to an underestimation of ice thickness, albeit not necessarily ice extent. In the Ross Sea, ice thickness calving exerts a strong influence on grounding line advance. A calving thickness of 75 m generally leads to a good representation of LGM ice margin reconstructions (Bentley et al., 2014) (Figure 7 b), while simulations with a thickness limit of 150 m underestimate Ross Sea LGM grounding line advance. Furthermore, the parameterisation of ice shelf calving can play a preminent role in interglacials, which underlines the dire need for a physical rather than heuristic representation of calving in ice-sheet models.

10 The different forcing approaches of our study and Pollard and DeConto (2009); de Boer et al. (2014) and Tigchelaar et al. (2018) are apparent e.g. in the largest ice-sheet retreat occurring in our ensemble at MIS5e while occurring during MIS 7 (ca. 210 kyr BP) for both Pollard and DeConto (2009) and de Boer et al. (2014) while in Tigchelaar et al. (2018) Quaternary ice-sheet volume never drops below the present AIS volume.



**Figure 8.** Sea level contribution in the LIG (a/c) and LGM (b/d) for the full ensemble forced with climate index B1 and B2. The ensemble members focused on in this paper are highlighted by colours (P1 red colors, P2 blue/green colors). Horizontal black lines depict the full ensemble means and the dashed lines the standard deviations. The x-axis shows the individual ensemble IDs in ascending order of LIG SL contribution.

### 3.2 The role of geothermal heat flux

It is a well established fact, that the heat flux at the ice-bedrock interface can be a major driver of ice-sheet evolution. Albeit, the GHF for the AIS is poorly constrained (Martos et al., 2017) and the few published continental data sets available differ substantially (see Figure 4 and Martos et al. (2017)). We can analyse the impact of GHF in our model ensemble by gauging the fit of diagnostic variables (ice thickness, basal melt, basal temperature, ice volume) in comparison to observed data. Both data sets from Purucker (2013) and An et al. (2015) show relatively low heat flux along the East Antarctic ice divide and overall for the WAIS. In consequence, potential "Oldest Ice" candidate sites indicated by the model ensemble and using those two data sets are unrealistically large, due to the absence of basal melting (see Figure 11), specifically for the Dome Fuji region. This is the case regardless of the model parameterisation and climate forcing or sea level input data. The choice of geothermal heat

flux imprints on both East and West Antarctic ice **thicknessdynamies**. Modulating ice thickness (leading to thickness changes of up to 20%) in East Antarctica it also impacts the simulated ice divide along the transect of Dome A-Ridge B-Vostok-Dome C (see Figure 11). The impact of heat flux in West Antarctica can be drastic, as it acts as a major control on the marine ice-sheet instability. All simulations with the GHF field from Purucker (2013) exhibit a collapse of the WAIS in the LIG with a much smaller percentage for both Martos et al. (2017) and Shapiro and Ritzwoller (2004). A thorough analysis of this result is beyond the scope of this manuscript, but it could be caused by larger glacial ice cover caused by the colder basal conditions in Purucker (2013). This would lead to an overdeepened bedrock and larger surface gradients along the coast at the onset of interglacials and therefore to favourable conditions for the marine ice sheet instability. Overall ice-sheet variability between ensemble members (for identical parameter settings) due to different choices of GHF is consistently larger than due to the choice of different sea level forcing. This emphasises the strong role of GHF in modulating Antarctic Ice Sheet dynamics and overall evolution of ice volume.

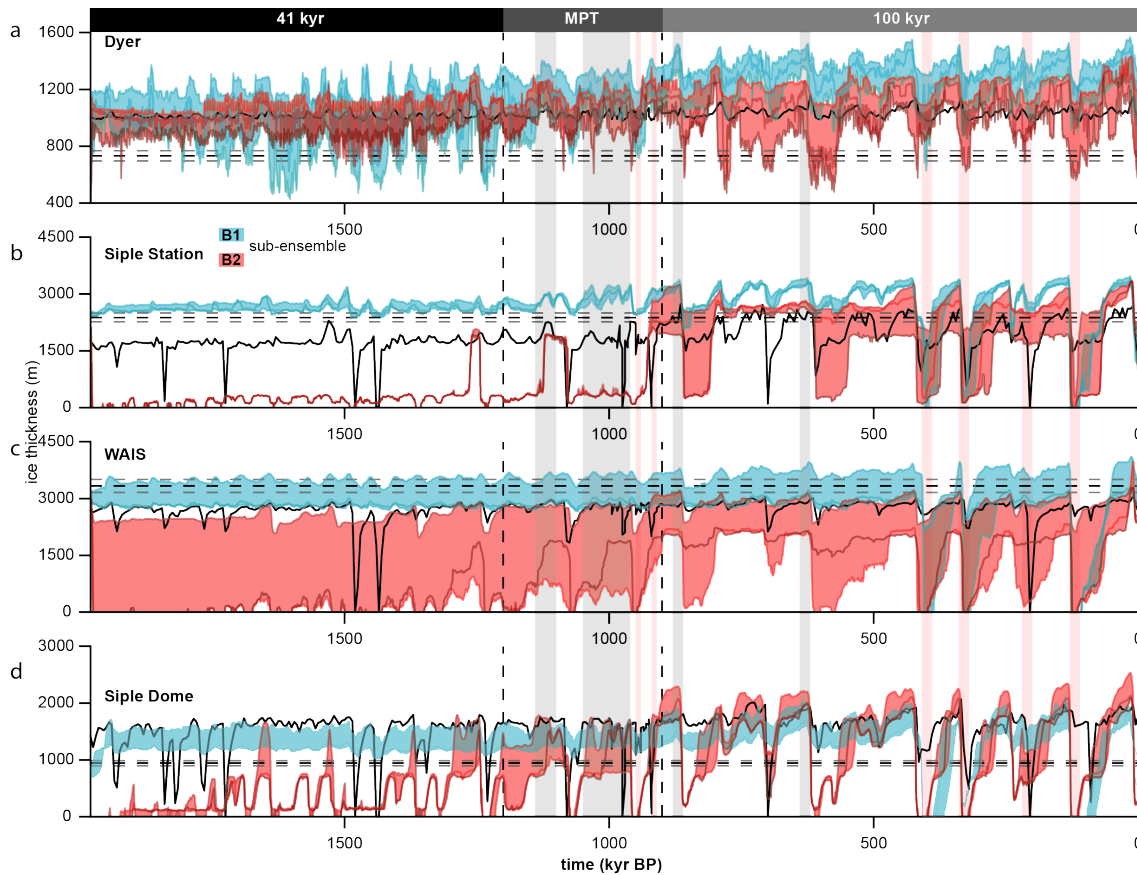
### 3.3 Ice thickness variability in WAIS and EAIS

Ice thickness is an important parameter controlling the availability of a continuous 1.5 million year old ice core record at a given location. If the ice is too thick, its insulating properties lead to melting at the ice bedrock interface, if it is too thin, the layering might be too thin to decipher a meaningful transient climate signal. Figures 9 and 10 show the ice thickness change at the four East and West Antarctic ice core locations which are depicted in Figure 1.

In the simulations with a collapsed late Pliocene WAIS (ensemble B2), the MPT leads to the advance of the WAIS into a present day configuration going along with a closure of the open ocean connection between the Weddell-, Amundsen/Bellinghausen- and Ross-Seas. However, in those simulations with no early Pleistocene WAIS, the WAIS remains relatively small throughout the Quaternary which is likely to be an indication that the climate forcing is too warm. The ensemble members with a stable interglacial pre-MPT WAIS transition to a higher variability during the MPT with no major re-organisation of ice flow and grounding line dynamics.

Changes in the EAIS manifest in an increase in ice thickness across the MPT by ca. 30% (mean ice thickness at ice core locations calculated for pre-MPT (1.8-1.2 Myr BP) and Quaternary (0.8-0.0 Myr BP)) time intervals alongside an increase in variability in glacial-interglacial ice volume (standard deviation of ice thickness of individual ensemble members) of ca 50%. The shift to larger Glacial–Interglacial ice thickness changes in individual ensemble members is evident at all ice core locations and mostly due to the more pronounced climate cycles following the MPT. The temporal evolution of ice thickness changes for the different East Antarctic ice core locations follows a similar pattern with muted variability during the pre-MPT and a gradual increase completed by ca. 900 kyr BP. Note, that we find different points in time regarding ice thickness maxima for the central dome positions Dome C and Dome Fuji compared to positions away from the central Domes such as around the EDML and Talos Dome ice core sites. While the former generally show ice-sheet maxima during mid interglacials, the latter show maxima generally at the onset of interglacials and declining ice thicknesses during the interglacial. This and the

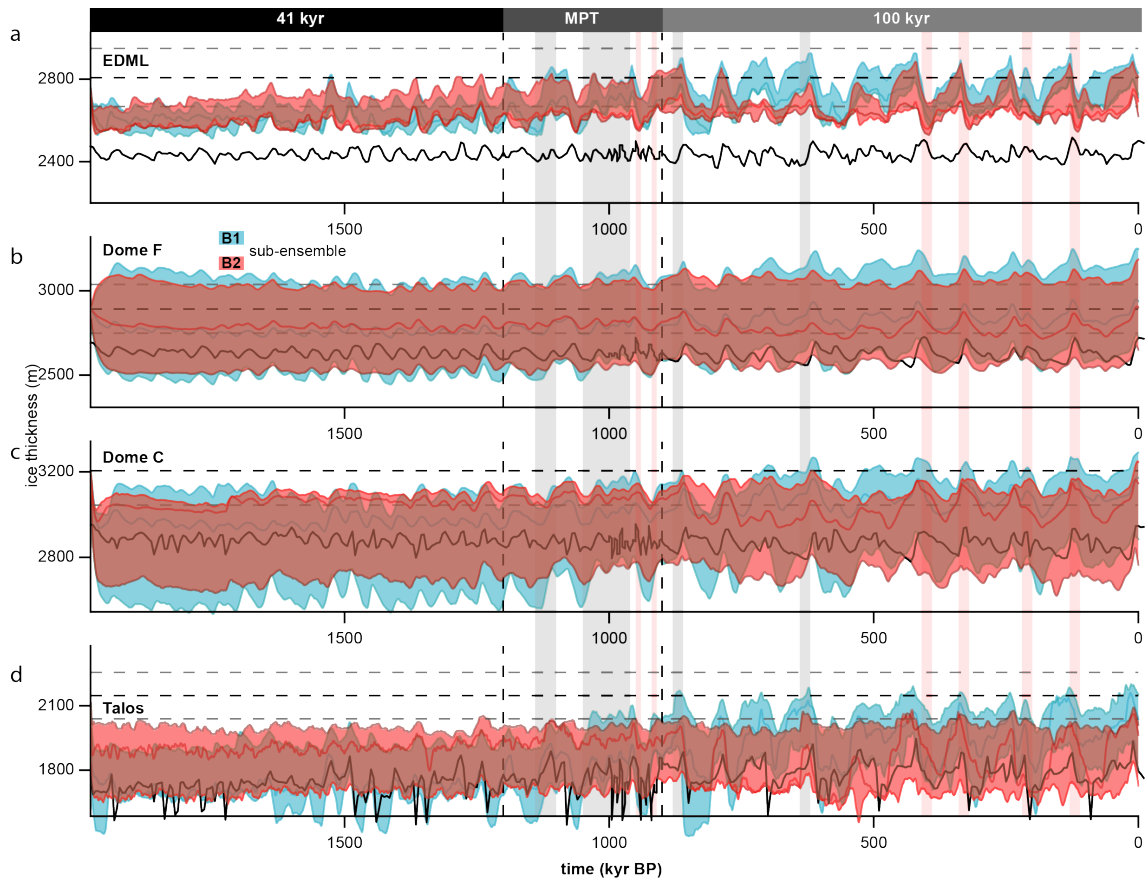




**Figure 9.** Ice thickness evolution during the last two Myr as simulated in our model ensemble for the four West Antarctic ice core locations (see Figure 1). Blue lines are from ensemble B1 (as in Figure 6) red lines from B2. Sampling rate is 1 kyr. For comparison, the ice thickness evolution simulated in Pollard and DeConto (2009) is plotted in black (sampling rate 10 kyr). The observed present day ice thickness, derived from BEDMAP2 (Fretwell et al., 2013), is shown by the horizontal black dashed line, with 5% variation illustrated by grey dashed lines. The ice thickness simulated in Pollard and DeConto (2009) is based on a 5 Myr transient simulation using BEDMAP1 (Lythe et al., 2001) as the initial ice-sheet configuration.

higher glacial-interglacial variability for the two locations (EDML and Talos) can be explained by the impact of grounding line migration and larger glacial-interglacial surface mass balance differences. Mean ice thickness variability for Dome Fuji and Dome C during the late Quaternary is 165 and 195 m, respectively (105 and 140 during pre-MPT). Overall, the simulated present day ice thickness after 2 Myr at the highlighted ice core locations in East Antarctica is in good agreement with the ice thickness derived from the BEDMAP2 (Fretwell et al., 2013) data set (within  $\approx 5\%$  discrepancy in ice thickness for the selected ensemble members in B1 and B2). A notable exception is the Talos Dome ice thickness, which is too thin in all discussed B1 and B2 ensemble members except for the runs simulated with the relatively cold (Purucker, 2013) or intermediate (Shapiro



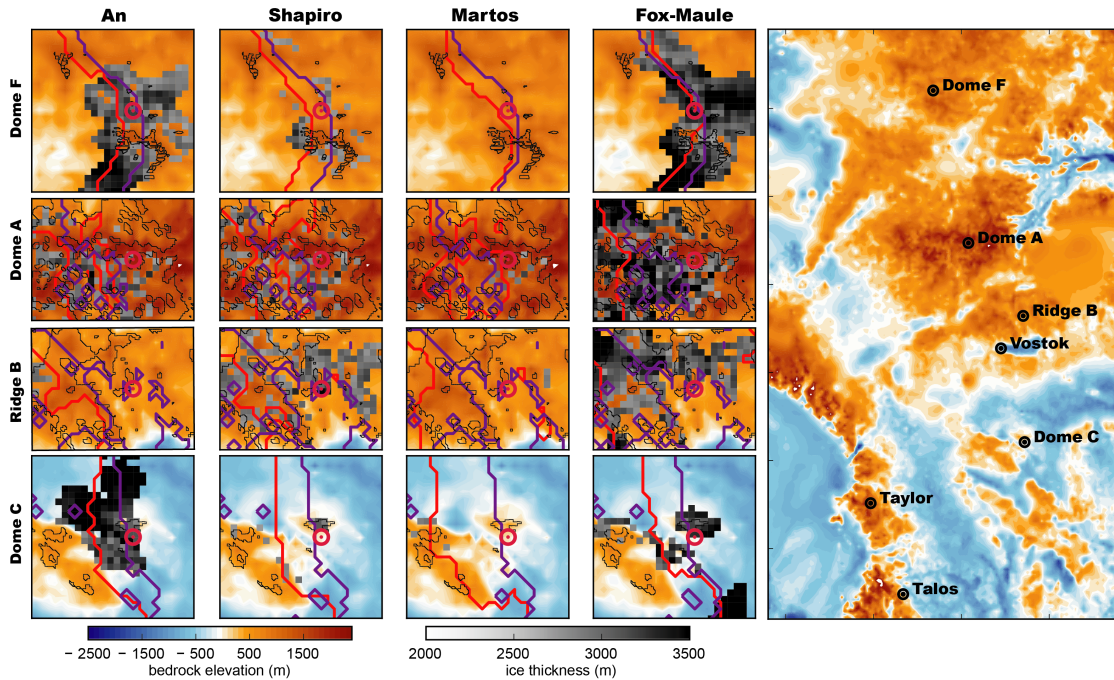


**Figure 10.** Same as Figure 9 but for the four East Antarctic ice cores.

and Ritzwoller, 2004) GHF data set. The applied model resolution of 16 km is generally too coarse to accurately reconstruct smaller outlet glaciers and therefore might overestimate advection away from coastal ice domes.

### 3.4 Mapping potential Oldest Ice sites

We apply the conditions for the existence of 1.5 Myr old ice derived in Fischer et al. (2013) (ice thickness larger than 2000 m, basal melting zero and surface ice velocity slower than 1 m/a) to our simulations in order to investigate the impact of the transient paleo-climate forcing, GHF and different model parameterisations on the sites Dome Fuji, Dome C, Dome A and Ridge B (Figure 11). Overall, we identify similar Oldest Ice regions as in Van Liefferinge and Pattyn (2013); Van Liefferinge et al. (2018); Parrenin et al. (2017); Passalacqua et al. (2017). This gives us confidence in the robustness of our model results and shows that the transient forcing and continental setup used here does not change the general conclusions in Van Liefferinge et al. (2018). The regions with major overlaps to Van Liefferinge et al. (2018) are thus promising sites from a paleo ice-climate evolution viewpoint as well as from the detailed dissection of the present day conditions. Overall, applying the GHF from the



**Figure 11.** Comparison between regions of Oldest Ice identified in this study and in Van Liefferinge and Pattyn (2013) (Ridge B, Dome A) and Van Liefferinge et al. (2018) (Dome C, Dome Fuji) outlined by thick black lines. Regions of Oldest Ice are defined as grid nodes where ice thickness is larger than 2000 m, basal melting is zero and surface ice velocity slower than 1 m/a (respective boxes coloured in grayscale). The left four columns show magnified sections centred at Dome Fuji, Dome A, Ridge B and Dome C for identical parameter sets and forcing but different geothermal heat flux (from left An et al. (2015), Shapiro and Ritzwoller (2004), Martos et al. (2017) and Purucker (2013) GHF forcing). The red line in enlarged regions depicts the simulated present day ice divide (defined as position where surface elevation gradient switches direction), while the purple line depicts the present day ice divide as computed from BEDMAP2.

data set by Shapiro and Ritzwoller (2004) yields the best agreement with the findings of Van Liefferinge and Pattyn (2013); Van Liefferinge et al. (2018); Parrenin et al. (2017) and Passalacqua et al. (2017). However, the geothermal heat flux data set from Martos et al. (2017) matches the observed/derived heat flux at Dome C to a better degree. In the simulations with the  
5 Ross Sea/Belgica Subglacial Highlands compared to the other three data sets due to the low geothermal heat flux south-west of the Dome C region contrasting with the high heat flux around Dome C (see Figure 11). Simulations using the Martos et al. (2017) data set show almost no viable conditions for the existence of Oldest Ice in East Antarctica (with the exception of oldest ice patches around Dome A, Ridge B and in the Belgica Subglacial Highlands west of Dome C), as basal temperatures are relatively high due to the large heat flux at the base of the ice leading to sustained basal melting. This is the case despite  
10 the relatively low ice thickness (and therefore insulation) simulated with the Martos et al. (2017) data set. Simulations with the Purucker (2013) and An et al. (2015) GHF reconstruction overestimate the Oldest Ice area substantially (showing viable

conditions also for the Dome Fuji and Dome C ice core location where subglacial melting is observed). Interestingly however, the Purucker (2013) data sets yields the best agreement between the simulated and observed present day ice divide for Dome Fuji as well as Dome C. The effect of the geothermal heat flux forcing is not limited to the basal temperature of the ice, but also has a substantial impact on overall ice thickness (up to 20% change between forcing sets, see Figure 10, comparing the  
5 difference between simulations with different GHF in the same ensemble).

Our findings indicate, that the existence of Oldest Ice is not only dependent on the choice of GHF but can also be influenced by the applied climate forcing or ice flow parameterisation modulating the regions illustrated in Figure 11. Despite regional differences, all three sites (Dome Fuji, Dome C, Vostok/Ridge B) show suitable conditions for an Oldest Ice core throughout the  
10 last 1.5 Myr. This accounts for ensemble members using either the GHF from Shapiro and Ritzwoller (2004) or Purucker (2013) and An et al. (2015) (see Figure 11). However the later two show unreasonably large Oldest Ice patches. While previously identified regions of Oldest Ice (e.g. in the Dome C area (Parrenin et al., 2017)) are also identified in our model results, the regions of Oldest Ice at Dome Fuji are somewhat shifted in comparison to the findings in (Van Liefferinge and Pattyn, 2013) and (Van Liefferinge et al., 2018). This might be due to the different employed input data or ice dynamics simulated, or affected  
15 by differences in model resolution or the thermal state at the base of the ice. However, the generally robust agreement between high resolution studies (Van Liefferinge et al., 2018; Parrenin et al., 2017; Passalacqua et al., 2017) and our coarse resolution paleo dynamics approach strengthens the notion of viable conditions for Oldest Ice both at Dome Fuji and Dome C as well as Ridge B.

#### 4 Conclusions

20 The search for the major drivers of the mid Pleistocene transition is ongoing, with ice sheets acting as a crucial component of climate system re-arrangement. Our model ensemble simulations indicate both rapid transitions and gradual growth of the Antarctic Ice Sheet during the MPT, featuring the buildup of a large glacial ice mass in West Antarctica driven by extended glacial conditions and muted interglacials between 1.2 and 0.9 Myr BP. These findings fit well to the notion of a significant expansion of the Antarctic Ice Sheet around 0.9 Myr BP by Elderfield et al. (2012). However, we do not find a major re-  
25 organisation of the EAIS grounding line across the MPT which is in contrast to the theory that the EAIS transitioned from a mostly land based ice sheet to a marine configuration in this interval (Raymo et al., 2006). However, such a re-organisation cannot be excluded at this point, as several other modelling studies show potential phases of major EAIS grounding line retreat in the Pliocene or under strong interglacial conditions (DeConto and Pollard, 2016; Mengel and Levermann, 2014), and proxy reconstructions indicate large scale EAIS grounding line retreat in the late Pleistocene (Wilson et al., 2018). While we do not  
30 simulate a transition to a marine based EAIS in the Wilkes and Aurora Basins, such a process would certainly imprint on ice flow around LDC due to proximity alone. We do find a clear transition of the WAIS configuration around 0.9 Myr in model runs where warm boundary conditions led to a collapse of the WAIS in the late Pliocene but allowed for glaciation during the colder interglacials in the MPT. We argue that such a transition between an ice free and a present day WAIS-configuration around 900

kyr BP would have a potentially stronger influence on the global climate system (compared to an advance of the EAIS grounded ice margin) via the closing of the gateway between the Ross, Amundsen and Weddell Sea. Additionally, climate conditions favourable for a retreated configuration of the EAIS ice margin (Raymo et al., 2006) would imply a collapsed WAIS according to ice-sheet modelling studies (Golledge et al., 2015; DeConto and Pollard, 2016; Sutter et al., 2016). Our study confirms a strong contribution of the Antarctic Ice Sheet to the LIG sea level highstand, with a mean contribution of 2.5-3 m (depending on the climate index record used and the applied boundary conditions) and a maximum contribution of ca. 4.5 m, which is in line with previous studies by Golledge et al. (2015), Sutter et al. (2016) and DeConto and Pollard (2016). This corroborates the major impact of the Antarctic Ice Sheet on LIG global sea level (Dutton et al., 2015). The spatial pattern of GHF can be decisive in modelling dynamics of the WAIS. Despite this uncertainty, we identify promising candidate sites at Dome Fuji, Dome C and Ridge B which provide favourable conditions for the existence of old ice throughout the last 2 Myr. This study illustrates that uncertainties in climate forcing and boundary conditions have a large impact on paleoclimate ice-sheet simulations and therefore the assessment of Oldest Ice sites. Accordingly, the successful retrieval of an ice core spanning the last 1.5 Myr would provide a transient data benchmark and proxy horizons against which ice-sheet models can be calibrated.

*Code and data availability.* PISM is freely available via github, we use PISM v0.73 with modifications. Further details on the code modifications can be provided upon request. Diagnostic ice sheet model output data is available upon request.

*Competing interests.* O. Eisen is CEIC of The Cryosphere

*Acknowledgements.* We would like to thank Bas de Boer, Jorge Alvarez-Solas and the editor Alexander Robinson for their very constructive comments in the review process. We thank the regional climate initiative REKLIM and the AWI Strategy Fund for funding of the project. We express our gratitude to Christian Stepanek, Madlene Pfeiffer and Martin Werner for providing climate snapshot data from the ESM COSMOS. We are very grateful to Adrien Michel for providing the temperature reconstruction for ensemble branch B1. Hubertus Fischer gratefully acknowledges the long-term support by the Swiss National Science Foundation (SNSF). This publication was generated in the frame of Beyond EPICA-Oldest Ice (BE-OI). The project has received funding from the European Union's Horizon 2020 research and innovation programme under grant agreement no. 730258 (BE-OI CSA). It has received funding from the Swiss State Secretariate for Education, Research and Innovation (SERI) under contract number 16.0144. It is furthermore supported by national partners and funding agencies in Belgium, Denmark, France, Germany, Italy, Norway, Sweden, Switzerland, the Netherlands, and the United Kingdom. Logistic support is mainly provided by AWI, BAS, ENEA, and IPEV. The opinions expressed and arguments employed herein do not necessarily reflect the official views of the European Union funding agency, the Swiss Government, or other national funding bodies. The work of T.K. has been conducted in the framework of the PalMod project (FKZ: 01LP1511B), supported by the German Federal Ministry of Education and Research (BMBF) as Research for Sustainability initiative (FONA).

30

Development of PISM is supported by NASA grant NNX17AG65G and NSF grants PLR-1603799 and PLR-1644277.

This is BE-OI publication number 7.

- 5 The article processing charges for this open-access publication were covered by a Research Centre of the Helmholtz Association.

## References

- Abe-Ouchi, A., Saito, F., Kawamura, K., Raymo, M. E., Okuno, J., Takahashi, K., and Blatter, H.: Insolation-driven 100,000-year glacial cycles and hysteresis of ice-sheet volume, *Nature*, 500, 190–194, <https://doi.org/https://doi.org/10.1038/nature12374>, 2013.
- Albrecht, T. and Levermann, A.: Fracture-induced softening for large-scale ice dynamics, *Cryosphere*, 8, 587–605, <https://doi.org/Doi>  
5 10.5194/Tc-8-587-2014, 2014.
- An, M. J., Wiens, D. A., Zhao, Y., Feng, M., Nyblade, A., Kanao, M., Li, Y. S., Maggi, A., and Leveque, J. J.: Temperature, lithosphere-asthenosphere boundary, and heat flux beneath the Antarctic Plate inferred from seismic velocities, *Journal of Geophysical Research-Solid Earth*, 120, 8720–8742, <https://doi.org/10.1002/2015jb011917>, 2015.
- Bazin, L., Landais, A., Lemieux-Dudon, B., Toyé Mahamadou Kele, H., Veres, D., Parrenin, F., Martinerie, P., Ritz, C., Capron, E., Lipenkov,  
10 V., Loutre, M.-F., Raynaud, D., Vinther, B., Svensson, A., Rasmussen, S. O., Severi, M., Blunier, T., Leuenberger, M., Fischer, H., Masson-Delmotte, V., Chappellaz, J., and Wolff, E.: An optimized multi-proxy, multi-site Antarctic ice and gas orbital chronology (AICC2012): 120-800 ka, *Climate of the Past*, 9, 1715–1731, <https://doi.org/10.5194/cp-9-1715-2013>, <https://www.clim-past.net/9/1715/2013/>, 2013.
- Beckmann, A. and Goosse, H.: A parameterization of ice shelf-ocean interaction for climate models, *Ocean Modelling*, 5, 157–170, [https://doi.org/https://doi.org/10.1016/S1463-5003\(02\)00019-7](https://doi.org/https://doi.org/10.1016/S1463-5003(02)00019-7), 2003.
- 15 Bentley, M. J., Cofaigh, C. O., Anderson, J. B., Conway, H., Davies, B., Graham, A. G. C., Hillenbrand, C. D., Hodgson, D. A., Jamieson, S. S. R., Larter, R. D., Mackintosh, A., Smith, J. A., Verleyen, E., Ackert, R. P., Bart, P. J., Berg, S., Brunstein, D., Canals, M., Colhoun, E. A., Crosta, X., Dickens, W. A., Domack, E., Dowdeswell, J. A., Dunbar, R., Ehrmann, W., Evans, J., Favier, V., Fink, D., Fogwill, C. J., Glasser, N. F., Gohl, K., Golledge, N. R., Goodwin, I., Gore, D. B., Greenwood, S. L., Hall, B. L., Hall, K., Hedding, D. W., Hein, A. S., Hocking, E. P., Jakobsson, M., Johnson, J. S., Jomelli, V., Jones, R. S., Klages, J. P., Kristoffersen, Y., Kuhn, G., Leventer, A., Licht, K.,  
20 Lilly, K., Lindow, J., Livingstone, S. J., Masse, G., McGlone, M. S., McKay, R. M., Melles, M., Miura, H., Mulvaney, R., Nel, W., Nitsche, F. O., O'Brien, P. E., Post, A. L., Roberts, S. J., Saunders, K. M., Selkirk, P. M., Simms, A. R., Spiegel, C., Stollendorf, T. D., Sugden, D. E., van der Putten, N., van Ommen, T., Verfaillie, D., Vyverman, W., Wagner, B., White, D. A., Witus, A. E., Zwart, D., and Consortium, R.: A community-based geological reconstruction of Antarctic Ice Sheet deglaciation since the Last Glacial Maximum, *Quaternary Science Reviews*, 100, 1–9, <https://doi.org/10.1016/j.quascirev.2014.06.025>, 2014.
- 25 Bintanja, R. and van de Wal, R. S. W.: North American ice-sheet dynamics and the onset of 100,000-year glacial cycles, *Nature*, 454, 869–872, <https://doi.org/https://doi.org/10.1038/nature07158>, 2008.
- Bueler, E. and Brown, J.: Shallow shelf approximation as a "sliding law" in a thermomechanically coupled ice sheet model, *Journal of Geophysical Research-Earth Surface*, 114, <https://doi.org/https://doi.org/10.1029/2008JF001179>, 2009.
- Cavitte, M. G. P., Parrenin, F., Ritz, C., Young, D. A., Van Liefferinge, B., Blankenship, D. D., Frezzotti, M., and Roberts, J. L.: Accumulation  
30 patterns around Dome C, East Antarctica, in the last 73 kyr, *Cryosphere*, 12, 1401–1414, <https://doi.org/10.5194/tc-12-1401-2018>, 2018.
- Chalk, T. B., Hain, M. P., Foster, G. L., Rohling, E. J., Sexton, P. F., Badger, M. P. S., Cherry, S. G., Hasenfratz, A. P., Haug, G. H., Jaccard, S. L., Martinez-Garcia, A., Palike, H., Pancost, R. D., and Wilson, P. A.: Causes of ice age intensification across the Mid-Pleistocene Transition, *Proceedings of the National Academy of Sciences of the United States of America*, 114, 13 114–13 119, <https://doi.org/10.1073/pnas.1702143114>, 2017.
- 35 Clark, P. U. and Pollard, D.: Origin of the middle Pleistocene transition by ice sheet erosion of regolith, *Paleoceanography*, 13, 1–9, <https://doi.org/Doi> 10.1029/97pa02660, 1998.

- de Boer, B., Lourens, L. J., and van de Wal, R. S. W.: Persistent 400,000-year variability of Antarctic ice volume and the carbon cycle is revealed throughout the Plio-Pleistocene, *Nature Communications*, 5, <https://doi.org/https://doi.org/10.1038/ncomms3999>, 2014.
- DeConto, R. M. and Pollard, D.: Contribution of Antarctica to past and future sea-level rise, *Nature*, 531, 591–597, <https://doi.org/10.1038/nature17145>, 2016.
- 5 Depoorter, M. A., Bamber, J. L., Griggs, J. A., Lenaerts, J. T. M., Ligtenberg, S. R. M., van den Broeke, M. R., and Moholdt, G.: Calving fluxes and basal melt rates of Antarctic ice shelves, *Nature*, 502, 89–93, <https://doi.org/https://doi.org/10.1038/nature12567>, 2013.
- Dutton, A., Carlson, A. E., Long, A. J., Milne, G. A., Clark, P. U., DeConto, R., Horton, B. P., Rahmstorf, S., and Raymo, M. E.: Sea-level rise due to polar ice-sheet mass loss during past warm periods, *Science*, 349, [https://doi.org/ARTN aaa4019](https://doi.org/ARTN%20aaa4019) 10.1126/science.aaa4019, 2015.
- 10 Elderfield, H., Ferretti, P., Greaves, M., Crowhurst, S., McCave, I. N., Hodell, D., and Piotrowski, A. M.: Evolution of Ocean Temperature and Ice Volume Through the Mid-Pleistocene Climate Transition, *Science*, 337, 704–709, <https://doi.org/10.1126/science.1221294>, 2012.
- Feldmann, J., Albrecht, T., Khroulev, C., Pattyn, F., and Levermann, A.: Resolution-dependent performance of grounding line motion in a shallow model compared with a full-Stokes model according to the MISMIP3d intercomparison, *Journal of Glaciology*, 60, 353–360, <https://doi.org/10.3189/2014JoG13J093>, 2014.
- 15 Fischer, H., Severinghaus, J., Brook, E., Wolff, E., Albert, M., Alemany, O., Arthern, R., Bentley, C., Blankenship, D., Chappellaz, J., Creyts, T., Dahl-Jensen, D., Dinn, M., Frezzotti, M., Fujita, S., Gallee, H., Hindmarsh, R., Hudspeth, D., Jugie, G., Kawamura, K., Lipenkov, V., Miller, H., Mulvaney, R., Parrenin, F., Pattyn, F., Ritz, C., Schwander, J., Steinhage, D., van Ommen, T., and Wilhelms, F.: Where to find 1.5 million yr old ice for the IPICS "Oldest-Ice" ice core, *Climate of the Past*, 9, 2489–2505, [https://doi.org/Doi 10.5194/Cp-9-2489-2013](https://doi.org/Doi%2010.5194/Cp-9-2489-2013), 2013.
- 20 Fretwell, P., Pritchard, H. D., Vaughan, D. G., Bamber, J. L., Barrand, N. E., Bell, R., Bianchi, C., Bingham, R. G., Blankenship, D. D., Casassa, G., Catania, G., Callens, D., Conway, H., Cook, A. J., Corr, H. F. J., Damaske, D., Damm, V., Ferraccioli, F., Forsberg, R., Fujita, S., Gim, Y., Gogineni, P., Griggs, J. A., Hindmarsh, R. C. A., Holmlund, P., Holt, J. W., Jacobel, R. W., Jenkins, A., Jokat, W., Jordan, T., King, E. C., Kohler, J., Krabill, W., Riger-Kusk, M., Langley, K. A., Leitchenkov, G., Leuschen, C., Luyendyk, B. P., Matsuoka, K., Mouginot, J., Nitsche, F. O., Nogi, Y., Nost, O. A., Popov, S. V., Rignot, E., Rippin, D. M., Rivera, A., Roberts, J., Ross, N., Siegert, M. J., Smith, A. M., Steinhage, D., Studinger, M., Sun, B., Tinto, B. K., Welch, B. C., Wilson, D., Young, D. A., Xiangbin, C., and Zirizzotti, A.: Bedmap2: improved ice bed, surface and thickness datasets for Antarctica, *Cryosphere*, 7, 375–393, [https://doi.org/Doi 10.5194/Tc-7-375-2013](https://doi.org/Doi%2010.5194/Tc-7-375-2013), 2013.
- Frieler, K., Clark, P. U., He, F., Buizert, C., Reese, R., Ligtenberg, S. R. M., van den Broeke, M. R., Winkelmann, R., and Levermann, A.: Consistent evidence of increasing Antarctic accumulation with warming, *Nature Climate Change*, 5, 348–352, 2015.
- 30 Ganopolski, A. and Brovkin, V.: Simulation of climate, ice sheets and CO<sub>2</sub> evolution during the last four glacial cycles with an Earth system model of intermediate complexity, *Climate of the Past*, 13, 1695–1716, <https://doi.org/10.5194/cp-13-1695-2017>, 2017.
- Gladstone, R. M., Payne, A. J., and Cornford, S. L.: Parameterising the grounding line in flow-line ice sheet models, *Cryosphere*, 4, 605–619, [https://doi.org/Doi 10.5194/Tc-4-605-2010](https://doi.org/Doi%2010.5194/Tc-4-605-2010), 2010.
- Golledge, N. R., Menviel, L., Carter, L., Fogwill, C. J., England, M. H., Cortese, G., and Levy, R. H.: Antarctic contribution to meltwater pulse 1A from reduced Southern Ocean overturning, *Nature Communications*, 5, [https://doi.org/ARTN 5107](https://doi.org/ARTN%205107) 10.1038/ncomms6107, 2014.
- 35 Golledge, N. R., Kowalewski, D. E., Naish, T. R., Levy, R. H., Fogwill, C. J., and Gasson, E. G. W.: The multi-millennial Antarctic commitment to future sea-level rise, *Nature*, 526, 421–+, <https://doi.org/10.1038/nature15706>, 2015.



- Jouzel, J., Masson-Delmotte, V., Cattani, O., Dreyfus, G., Falourd, S., Hoffmann, G., Minster, B., Nouet, J., Barnola, J. M., Chappellaz, J., Fischer, H., Gallet, J. C., Johnsen, S., Leuenberger, M., Loulergue, L., Luethi, D., Oerter, H., Parrenin, F., Raisbeck, G., Raynaud, D., Schilt, A., Schwander, J., Selmo, E., Souchez, R., Spahni, R., Stauffer, B., Steffensen, J. P., Stenni, B., Stocker, T. F., Tison, J. L., Werner, M., and Wolff, E. W.: Orbital and millennial Antarctic climate variability over the past 800,000 years, *Science*, 317, 793–796, <https://doi.org/Doi.1141038>, 2007.
- 5 Karlsson, N. B., Binder, T., Eagles, G., Helm, V., Pattyn, F., Van Liefferinge, B., and Eisen, O.: Glaciological characteristics in the Dome Fuji region and new assessment for "Oldest Ice", *Cryosphere*, 12, 2413–2424, <https://doi.org/10.5194/tc-12-2413-2018>, 2018.
- Konrad, H., Thoma, M., Sasgen, I., Klemann, V., Grosfeld, K., Barbi, D., and Martinec, Z.: The Deformational Response of a Viscoelastic Solid Earth Model Coupled to a Thermomechanical Ice Sheet Model, *Surveys in Geophysics*, 35, 1441–1458, <https://doi.org/Doi.10.1007/S10712-013-9257-8>, 2014.
- 10 Larour, E., Morlighem, M., Seroussi, H., Schiermeier, J., and Rignot, E.: Ice flow sensitivity to geothermal heat flux of Pine Island Glacier, Antarctica, *Journal of Geophysical Research-Earth Surface*, 117, <https://doi.org/https://doi.org/10.1029/2012JF002371>, 2012.
- Lazeroms, W. M. J., Jenkins, A., Gudmundsson, G. H., and van de Wal, R. S. W.: Modelling present-day basal melt rates for Antarctic ice shelves using a parametrization of buoyant meltwater plumes, *Cryosphere*, 12, 49–70, <https://doi.org/10.5194/tc-12-49-2018>, 2018.
- 15 Lisiecki, L. E. and Raymo, M. E.: A Pliocene-Pleistocene stack of 57 globally distributed benthic delta O-18 records, *Paleoceanography*, 20, <https://doi.org/https://doi.org/10.1029/2004PA001071>, 2005.
- Locarnini, R. A., Mishonov, A. V., Antonov, J. I., Boyer, T. P., Garcia, H. E., Baranova, O. K., Zweng, M. M., and Johnson, D. R.: World Ocean Atlas 2009, Volume 1: Temperature., NOAA Atlas NESDIS 68, U.S. Government Printing Office, 2010.
- Lunt, D. J., Abe-Ouchi, A., Bakker, P., Berger, A., Braconnot, P., Charbit, S., Fischer, N., Herold, N., Jungclaus, J. H., Khon, V. C., Krebs-Kanzow, U., Langebroek, P. M., Lohmann, G., Nisancioglu, K. H., Otto-Bliesner, B. L., Park, W., Pfeiffer, M., Phipps, S. J., Prange, M., Rachmayani, R., Renssen, H., Rosenbloom, N., Schneider, B., Stone, E. J., Takahashi, K., Wei, W., Yin, Q., and Zhang, Z. S.: A multi-model assessment of last interglacial temperatures, *Climate of the Past*, 9, 699–717, 2013.
- 20 Lythe, M. B., Vaughan, D. G., and Consortium, B.: BEDMAP: A new ice thickness and subglacial topographic model of Antarctica, *Journal of Geophysical Research-Solid Earth*, 106, 11 335–11 351, <https://doi.org/Doi.10.1029/2000jb900449>, 2001.
- 25 Martos, Y. M., Catalan, M., Jordan, T. A., Golynsky, A., Golynsky, D., Eagles, G., and Vaughan, D. G.: Heat Flux Distribution of Antarctica Unveiled, *Geophysical Research Letters*, 44, 11 417–11 426, <https://doi.org/10.1002/2017gl075609>, 2017.
- Mengel, M. and Levermann, A.: Ice plug prevents irreversible discharge from East Antarctica, *Nature Climate Change*, 4, 451–455, <https://doi.org/Doi.10.1038/Nclimate2226>, 2014.
- Michel, A., Schwander, J., and Fischer, H.: Transient Modeling of Borehole Temperature and Basal Melting in an Ice Sheet, Master Thesis, 30 Climate and Environmental Physics Institute, University of Bern, 2016.
- Parrenin, F., Cavitte, M. G. P., Blankenship, D. D., Chappellaz, J., Fischer, H., Gagliardini, O., Masson-Delmotte, V., Passalacqua, O., Ritz, C., Roberts, J., Siegert, M. J., and Young, D. A.: Is there 1.5-million-year-old ice near Dome C, Antarctica?, *Cryosphere*, 11, 2427–2437, <https://doi.org/10.5194/tc-11-2427-2017>, 2017.
- Passalacqua, O., Ritz, C., Parrenin, F., Urbini, S., and Frezzotti, M.: Geothermal flux and basal melt rate in the Dome C region inferred from radar reflectivity and heat modelling, *Cryosphere*, 11, 2231–2246, <https://doi.org/10.5194/tc-11-2231-2017>, 2017.
- 35 Pfeiffer, M. and Lohmann, G.: Greenland Ice Sheet influence on Last Interglacial climate: global sensitivity studies performed with an atmosphere-ocean general circulation model, *Climate of the Past*, 12, 1313–1338, <https://doi.org/10.5194/cp-12-1313-2016>, 2016.

- Pollard, D. and DeConto, R. M.: Modelling West Antarctic ice sheet growth and collapse through the past five million years, *Nature*, 458, 329–333, 2009.
- Pollard, D. and DeConto, R. M.: Description of a hybrid ice sheet-shelf model, and application to Antarctica, *Geoscientific Model Development*, 5, 1273–1295, <https://doi.org/10.5194/gmd-5-1273-2012>, 2012.
- 5 Purucker, M. E.: Geothermal heat flux data set based on low resolution observations collected by the CHAMP satellite between 2000 and 2010, and produced from the MF-6 model following the technique described in Fox Maule et al. (2005), retrieved from: [https://core2.gsfc.nasa.gov/research/purucker/heatflux\\_updates.html](https://core2.gsfc.nasa.gov/research/purucker/heatflux_updates.html), 2013.
- Raymo, M. E. and Huybers, P.: Unlocking the mysteries of the ice ages, *Nature*, 451, 284–285, <https://doi.org/10.1038/nature06589>, 2008.
- Raymo, M. E., Lisiecki, L. E., and Nisancioglu, K. H.: Plio-pleistocene ice volume, Antarctic climate, and the global delta O-18 record, *Science*, 313, 492–495, <https://doi.org/10.1126/science.1123296>, 2006.
- 10 Reese, R., Gudmundsson, G. H., Levermann, A., and Winkelmann, R.: The far reach of ice-shelf thinning in Antarctica, *Nature Climate Change*, 8, 53–+, <https://doi.org/10.1038/s41558-017-0020-x>, 2018.
- Rignot, E., Jacobs, S., Mouginot, J., and Scheuchl, B.: Ice-Shelf Melting Around Antarctica, *Science*, 341, 266–270, <https://doi.org/10.1126/science.1235798>, 2013.
- 15 Rohling, E. J., Foster, G. L., Grant, K. M., Marino, G., Roberts, A. P., Tamisiea, M. E., and Williams, F.: Sea-level and deep-sea-temperature variability over the past 5.3 million years (vol 508, pg 477, 2014), *Nature*, 510, 432–432, <https://doi.org/10.1038/nature13488>, 2014.
- Schoof, C.: Coulomb Friction and Other Sliding Laws in a Higher-Order Glacier Flow Model, *Mathematical Models & Methods in Applied Sciences*, 20, 157–189, <https://doi.org/10.1142/S0218202510004180>, 2010.
- Shapiro, N. M. and Ritzwoller, M. H.: Inferring surface heat flux distributions guided by a global seismic model: particular application to Antarctica, *Earth and Planetary Science Letters*, 223, 213–224, <https://doi.org/10.1016/J.Epsl.2004.04.011>, 2004.
- 20 Snyder, C. W.: Evolution of global temperature over the past two million years, *Nature*, 538, 226–228, <https://doi.org/10.1038/nature19798>, 2016.
- Stepanek, C. and Lohmann, G.: Modelling mid-Pliocene climate with COSMOS, *Geoscientific Model Development*, 5, 1221–1243, <https://doi.org/10.5194/gmd-5-1221-2012>, 2012.
- 25 Sutter, J., Gierz, P., Grosfeld, K., Thoma, M., and Lohmann, G.: Ocean temperature thresholds for Last Interglacial West Antarctic Ice Sheet collapse, *Geophysical Research Letters*, 43, 2675–2682, <https://doi.org/10.1002/2016gl067818>, 2016.
- Tigchelaar, M., Timmermann, A., Pollard, D., Friedrich, T., and Heinemann, M.: Local insolation changes enhance Antarctic interglacials: Insights from an 800,000-year ice sheet simulation with transient climate forcing, *Earth and Planetary Science Letters*, 495, 69–78, <https://doi.org/10.1016/j.epsl.2018.05.004>, 2018.
- 30 Van Liefferinge, B. and Pattyn, F.: Using ice-flow models to evaluate potential sites of million year-old ice in Antarctica, *Climate of the Past*, 9, 2335–2345, <https://doi.org/10.5194/Cp-9-2335-2013>, 2013.
- Van Liefferinge, B., Pattyn, F., Cavitte, M. G. P., Karlsson, N. B., Young, D. A., Sutter, J., and Eisen, O.: Promising Oldest Ice sites in East Antarctica based on thermodynamical modelling, *Cryosphere*, 12, 2773–2787, <https://doi.org/10.5194/tc-12-2773-2018>, 2018.
- van Wessem, J. M., Reijmer, C. H., Morlighem, M., Mouginot, J., Rignot, E., Medley, B., Joughin, I., Wouters, B., Depoorter, M. A., Bamber, J. L., Lenaerts, J. T. M., van de Berg, W. J., van den Broeke, M. R., and van Meijgaard, E.: Improved representation of East Antarctic surface mass balance in a regional atmospheric climate model, *Journal of Glaciology*, 60, 761–770, <https://doi.org/10.3189/2014JoG14J051>, 2014.

- Veres, D., Bazin, L., Landais, A., Toyé Mahamadou Kele, H., Lemieux-Dudon, B., Parrenin, F., Martinerie, P., Blayo, E., Blunier, T., Capron, E., Chappellaz, J., Rasmussen, S. O., Severi, M., Svensson, A., Vinther, B., and Wolff, E. W.: The Antarctic ice core chronology (AICC2012): an optimized multi-parameter and multi-site dating approach for the last 120 thousand years, *Climate of the Past*, 9, 1733–1748, <https://doi.org/10.5194/cp-9-1733-2013>, <https://www.clim-past.net/9/1733/2013/>, 2013.
- 5 Werner, M., Jouzel, J., Masson-Delmotte, V., and Lohmann, G.: Reconciling glacial Antarctic water stable isotopes with ice sheet topography and the isotopic paleothermometer, *Nature Communications*, 9, <https://doi.org/ARTN 3537> 10.1038/s41467-018-05430-y, 2018.
- Wilson, D. J., Bertram, R. A., Needham, E. F., van de Flierdt, T., Welsh, K. J., McKay, R. M., Mazumder, A., Riesselman, C. R., Jimenez-Espejo, F. J., and Escutia, C.: Ice loss from the East Antarctic Ice Sheet during late Pleistocene interglacials, *Nature*, 561, 383–386, <https://doi.org/10.1038/s41586-018-0501-8>, 2018.
- 10 Winkelmann, R., Martin, M. A., Haseloff, M., Albrecht, T., Bueller, E., Khroulev, C., and Levermann, A.: The Potsdam Parallel Ice Sheet Model (PISM-PIK) - Part 1: Model description, *Cryosphere*, 5, 715–726, <https://doi.org/Doi 10.5194/Tc-5-715-2011>, 2011.
- Young, D. A., Roberts, J. L., Ritz, C., Frezzotti, M., Quartini, E., Cavitte, M. G. P., Tozer, C. R., Steinhage, D., Urbini, S., Corr, H. F. J., van Ommen, T., and Blankenship, D. D.: High-resolution boundary conditions of an old ice target near Dome C, Antarctica, *Cryosphere*, 11, 1897–1911, <https://doi.org/10.5194/tc-11-1897-2017>, 2017.
- 15 Yu, H., Rignot, E., Seroussi, H., and Morlighem, M.: Retreat of Thwaites Glacier, West Antarctica, over the next 100 years using various ice flow models, ice shelf melt scenarios and basal friction laws, *The Cryosphere*, 12, 3861–3876, <https://doi.org/10.5194/tc-12-3861-2018>, 2018.