

## ***Interactive comment on “Changes of the Arctic marginal ice zone” by Rebecca J. Rolph et al.***

**Rebecca J. Rolph et al.**

[rebecca.rolph@awi.de](mailto:rebecca.rolph@awi.de)

Received and published: 26 March 2020

Please see the attached figure that is present in the revised manuscript as Figure 4. It is referred to in our response to the reviewer.

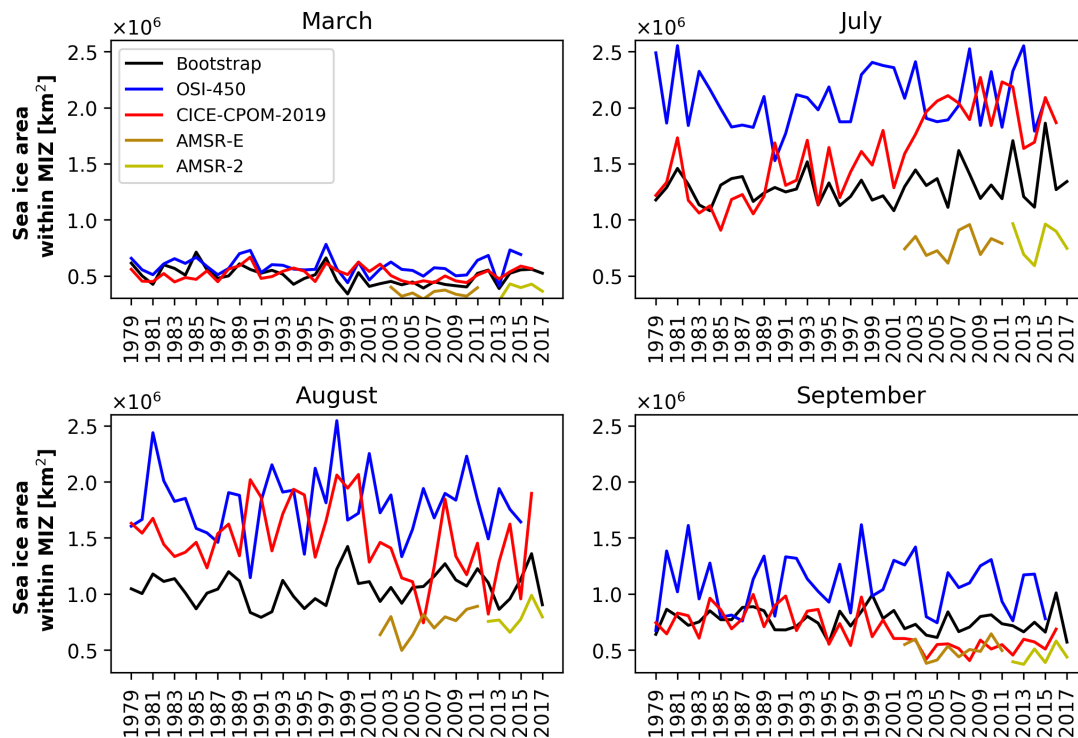
---

Interactive comment on The Cryosphere Discuss., <https://doi.org/10.5194/tc-2019-224>, 2019.

Printer-friendly version

Discussion paper





**Fig. 1.** (Figure 4 in revised manuscript) Sea ice area within the MIZ