

Interactive comment on “Substantial meltwater contribution to the Brahmaputra revealed by satellite gravimetry” by Shuang Yi et al.

Shuang Yi et al.

shuangyi.geo@gmail.com

Received and published: 3 February 2020

The comment was uploaded in the form of a supplement:
<https://www.the-cryosphere-discuss.net/tc-2019-211/tc-2019-211-AC1-supplement.pdf>

Interactive comment on The Cryosphere Discuss., <https://doi.org/10.5194/tc-2019-211>, 2019.

Printer-friendly version

Discussion paper



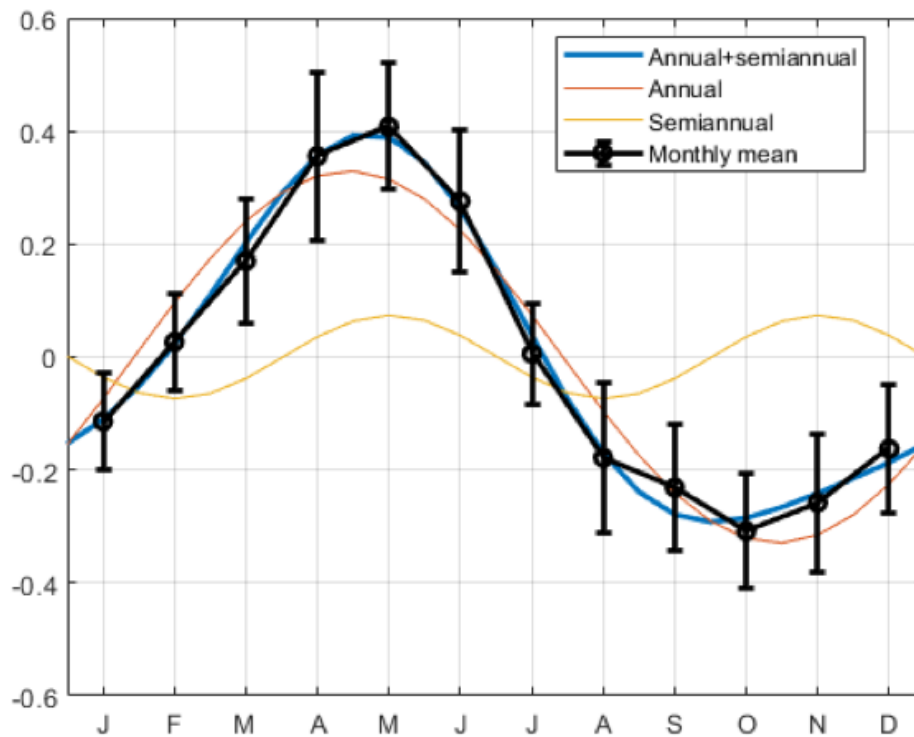


Fig. 1. Seasonal variation of the PC2

Printer-friendly version

Discussion paper



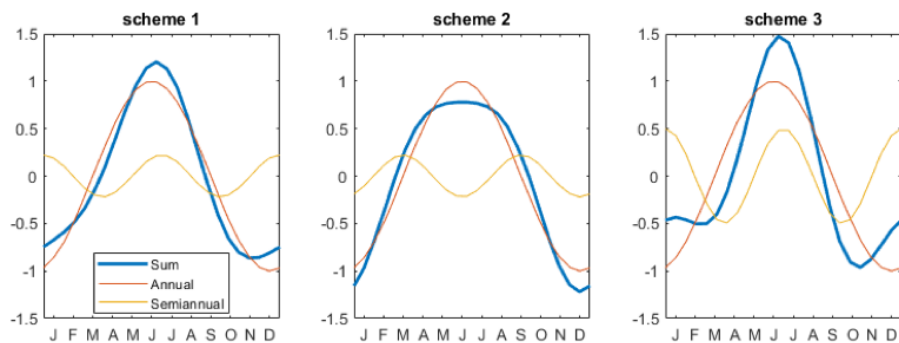


Fig. 2. Three schemes for simulation of seasonal variations

Printer-friendly version

Discussion paper



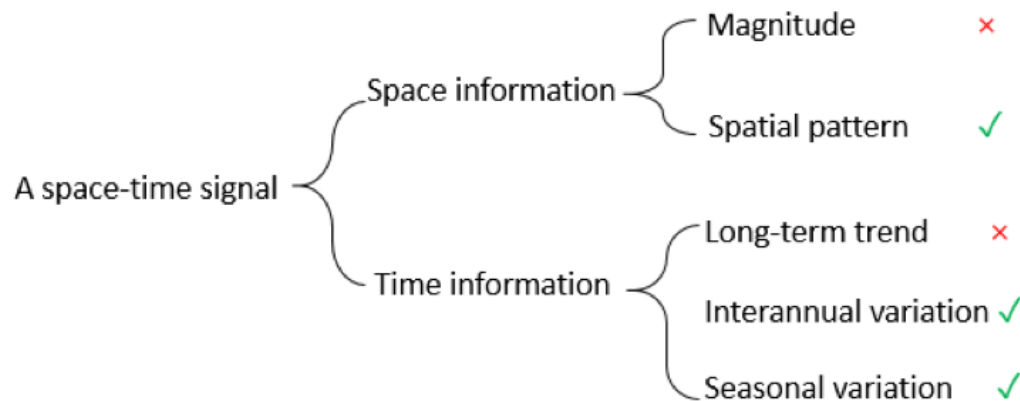


Fig. 3. Five aspects of a space-time signal

[Printer-friendly version](#)[Discussion paper](#)

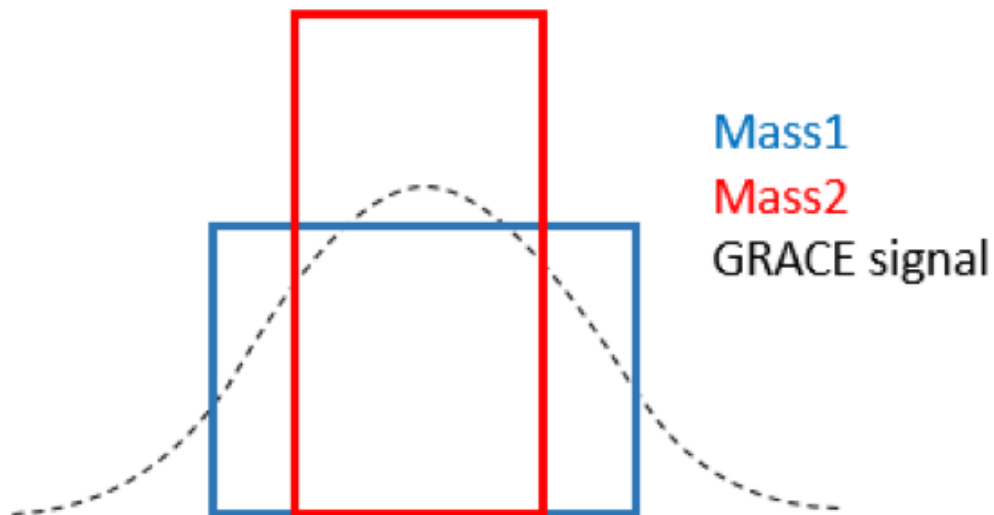


Fig. 4. A GRACE signals fitted by two different mass distributions

[Printer-friendly version](#)

[Discussion paper](#)



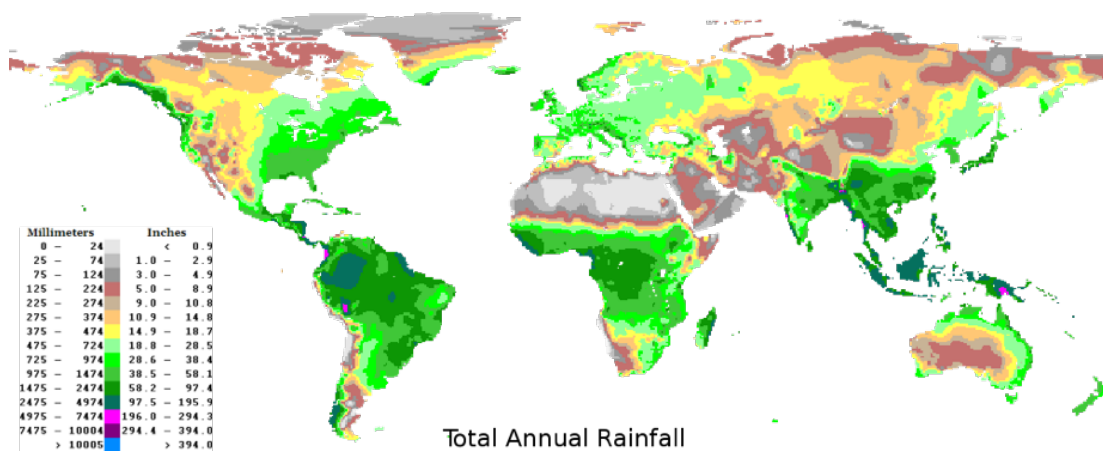


Fig. 5. Map of global precipitation

Printer-friendly version

Discussion paper



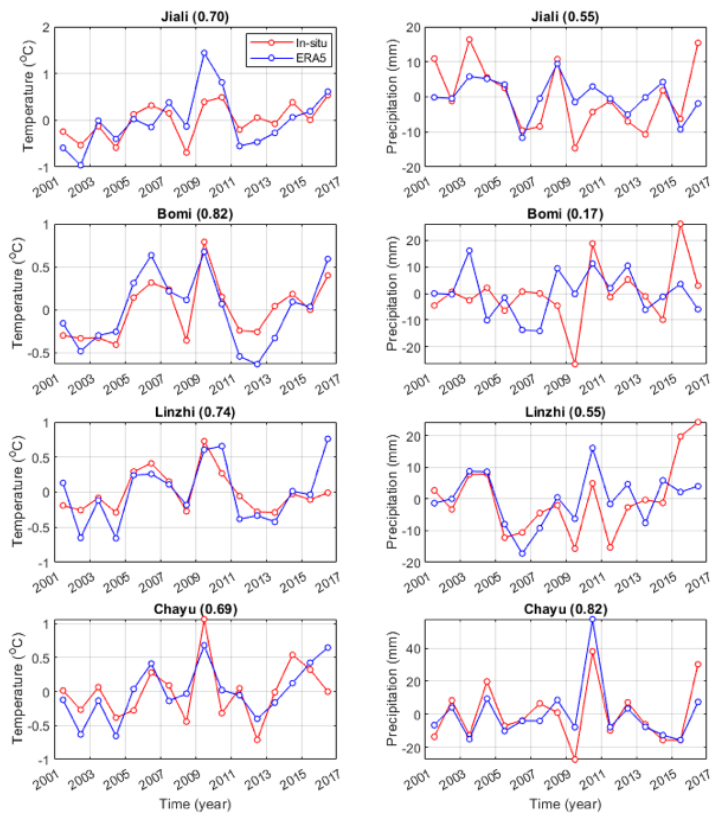


Fig. 6. Comparison of annual temperature (left) and precipitation (right) records from ERA5 and in-situ observations. The correlation coefficient is given in the title

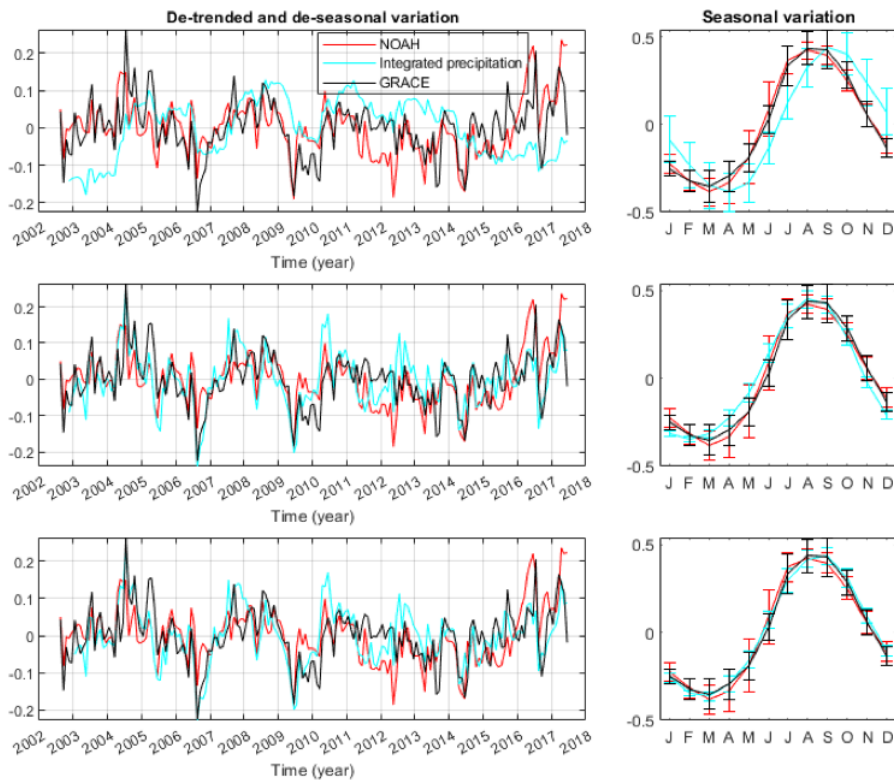


Fig. 7. Different methods for precipitation integration