

Interactive comment on “Substantial meltwater contribution to the Brahmaputra revealed by satellite gravimetry” by Shuang Yi et al.

Shuang Yi et al.

shuangyi.geo@gmail.com

Received and published: 3 February 2020

The comment was uploaded in the form of a supplement:
<https://www.the-cryosphere-discuss.net/tc-2019-211/tc-2019-211-AC1-supplement.pdf>

Interactive comment on The Cryosphere Discuss., <https://doi.org/10.5194/tc-2019-211>, 2019.

C1

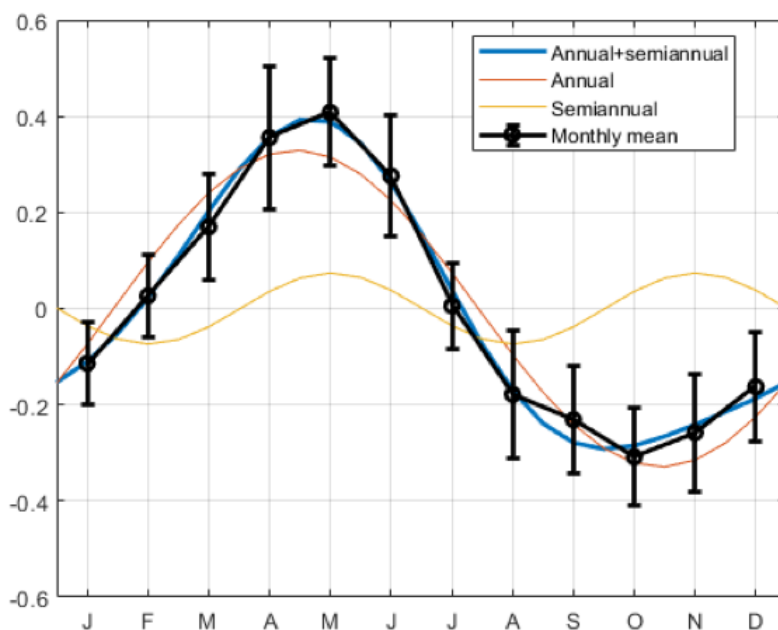


Fig. 1. Seasonal variation of the PC2

C2

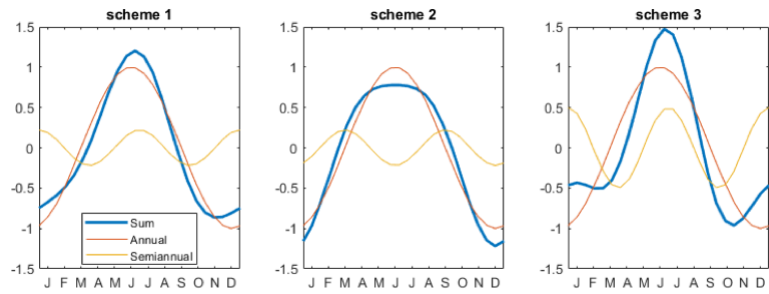


Fig. 2. Three schemes for simulation of seasonal variations

C3

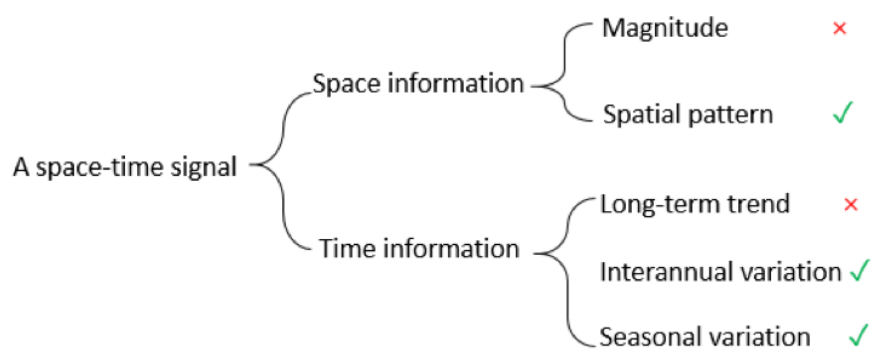


Fig. 3. Five aspects of a space-time signal

C4

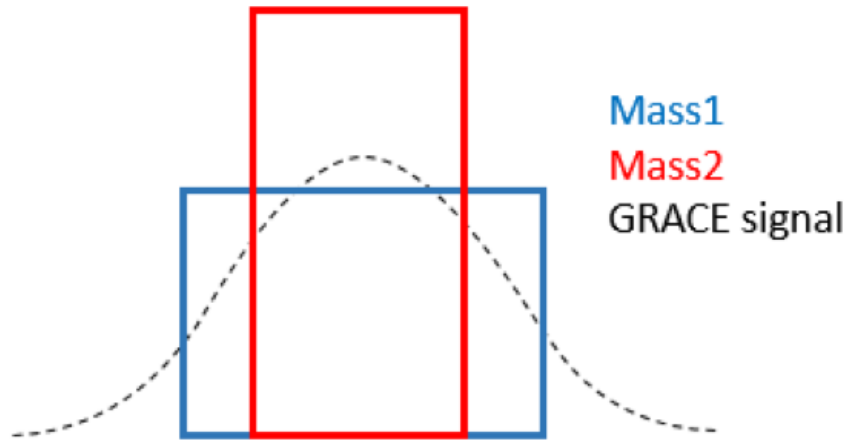


Fig. 4. A GRACE signals fitted by two different mass distributions

C5

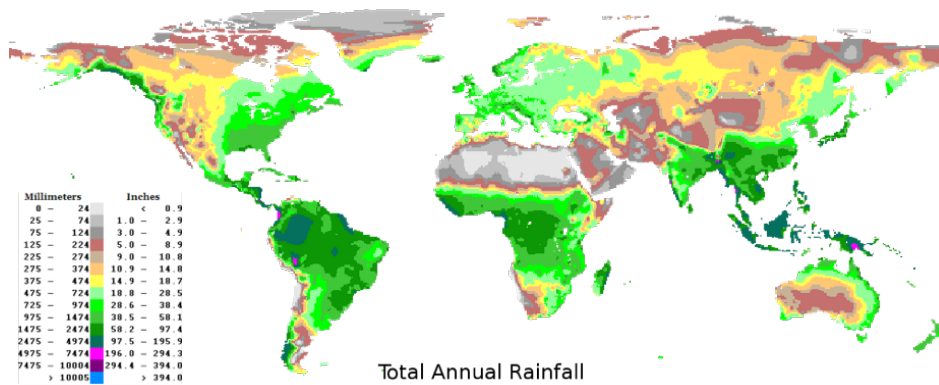


Fig. 5. Map of global precipitation

C6

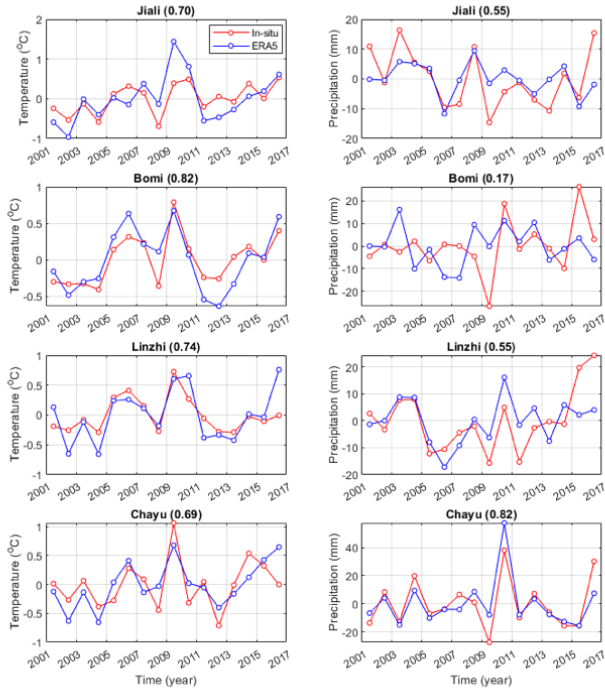


Fig. 6. Comparison of annual temperature (left) and precipitation (right) records from ERA5 and in-situ observations. The correlation coefficient is given in the title

C7

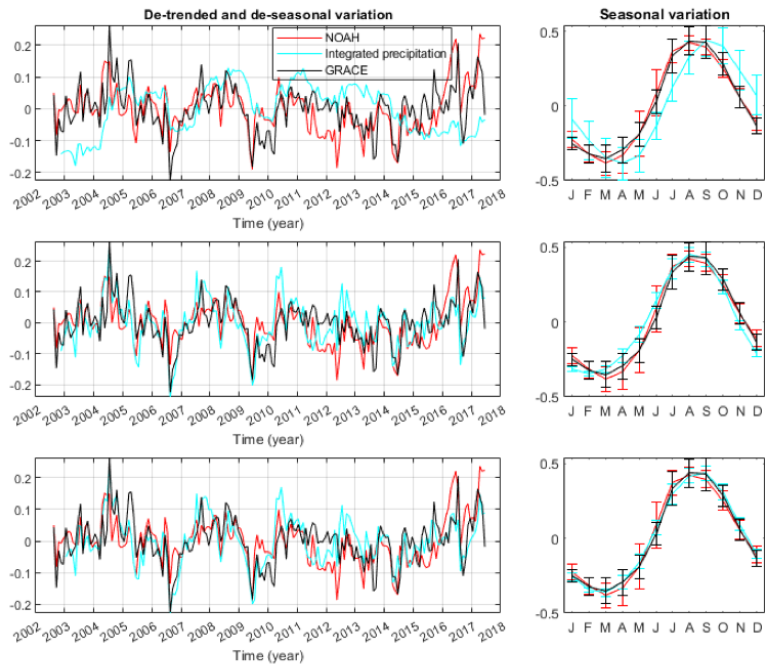


Fig. 7. Different methods for precipitation integration

C8