

# ***Interactive comment on “Spatial and temporal variations in glacier surface roughness during melting season, as observed at August-one glacier, Qilian mountains, China” by Junfeng Liu et al.***

**Junfeng Liu et al.**

jfliu121@163.com

Received and published: 3 January 2020

The comment was uploaded in the form of a supplement:  
<https://www.the-cryosphere-discuss.net/tc-2019-186/tc-2019-186-AC4-supplement.pdf>

Interactive comment on The Cryosphere Discuss., <https://doi.org/10.5194/tc-2019-186>, 2019.

Printer-friendly version

Discussion paper



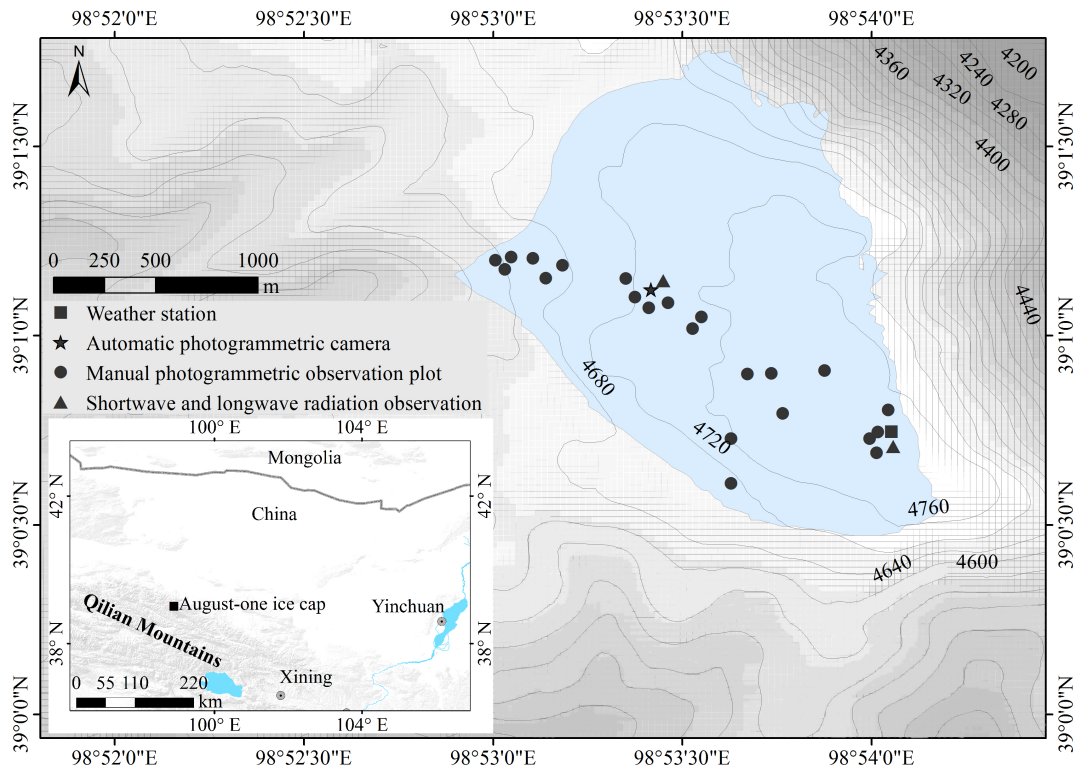


Fig. 1.

[Printer-friendly version](#)[Discussion paper](#)

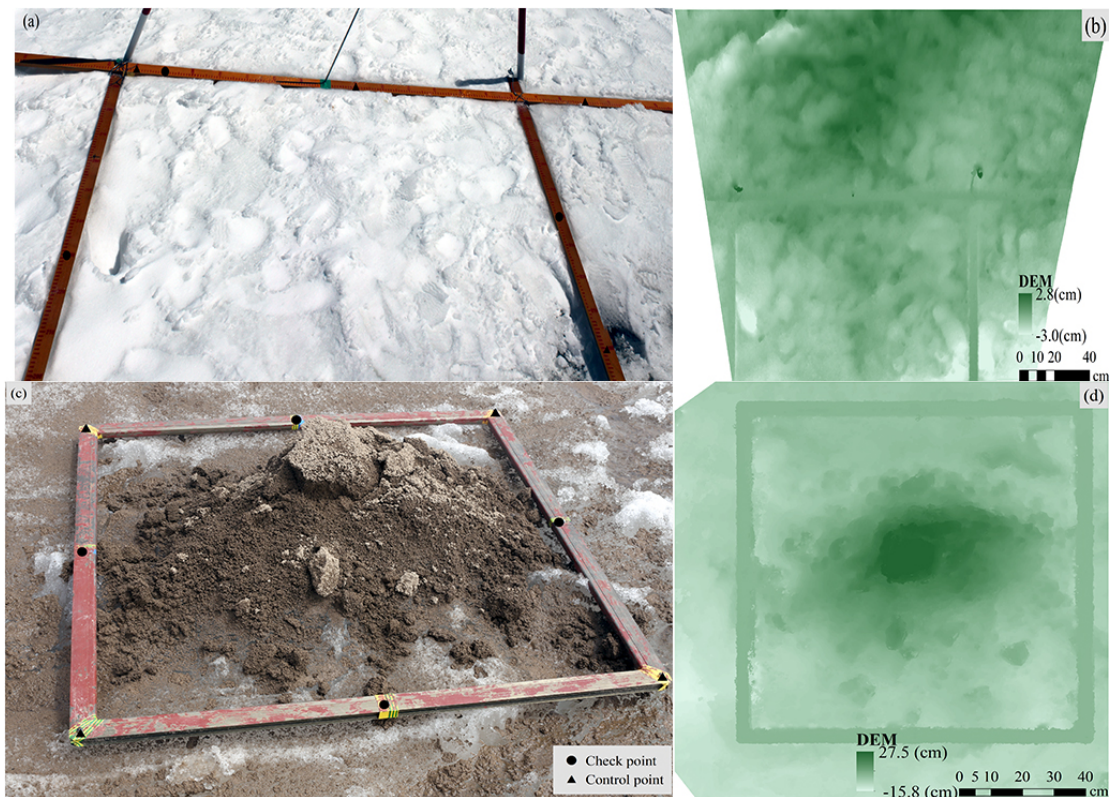
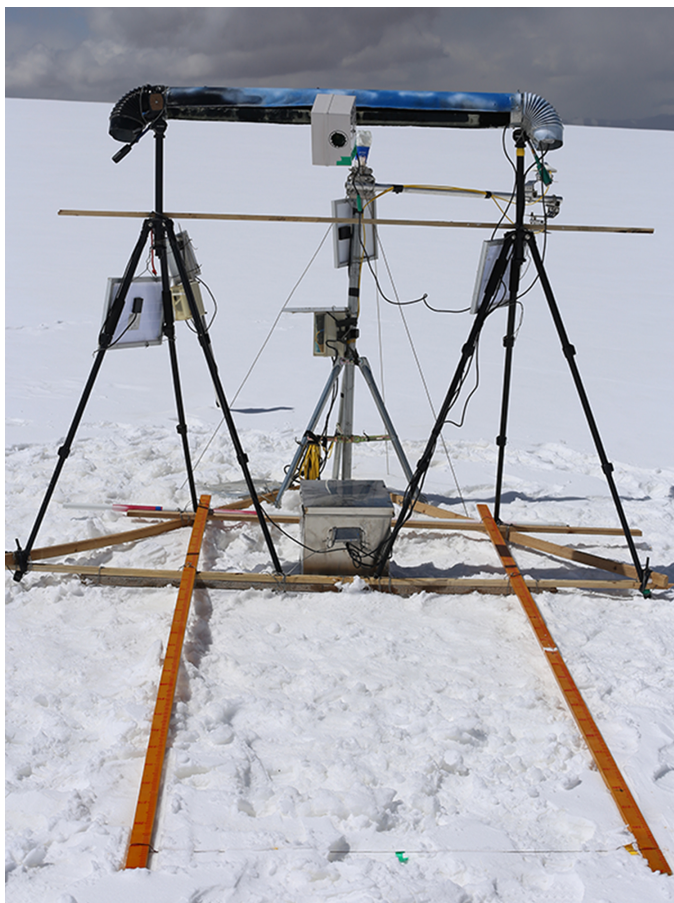


Fig. 2.

[Printer-friendly version](#)[Discussion paper](#)

[Interactive comment](#)



**Fig. 3.**

C4

[Printer-friendly version](#)

[Discussion paper](#)





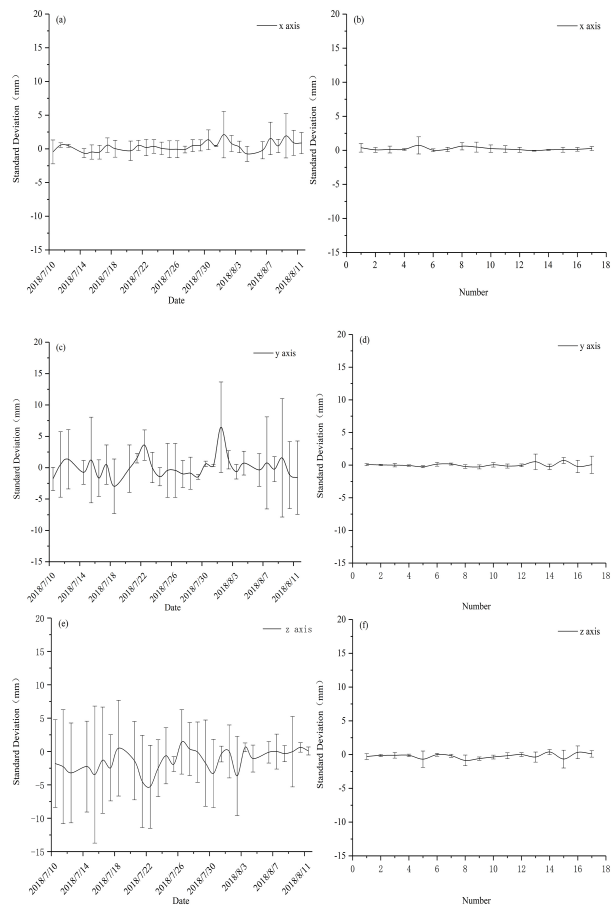


Fig. 4.

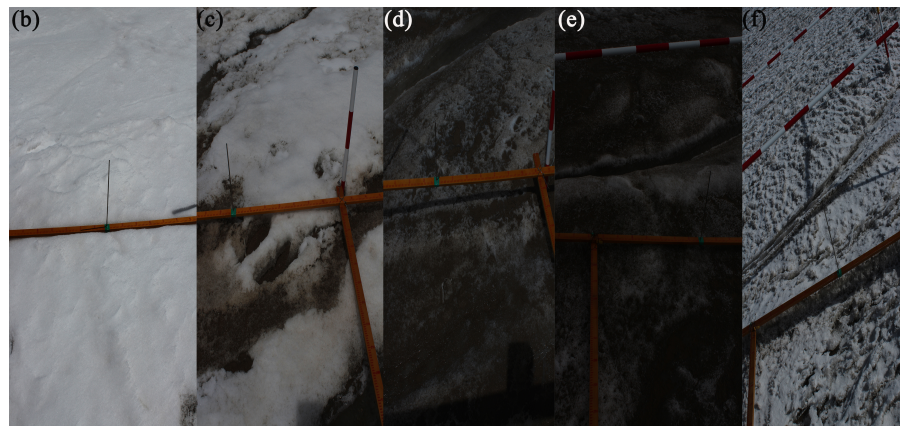
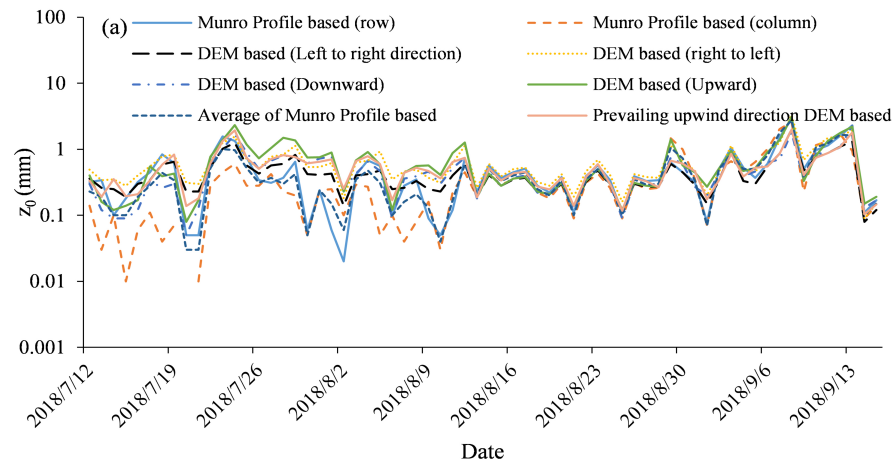


Fig. 5.

Printer-friendly version

Discussion paper



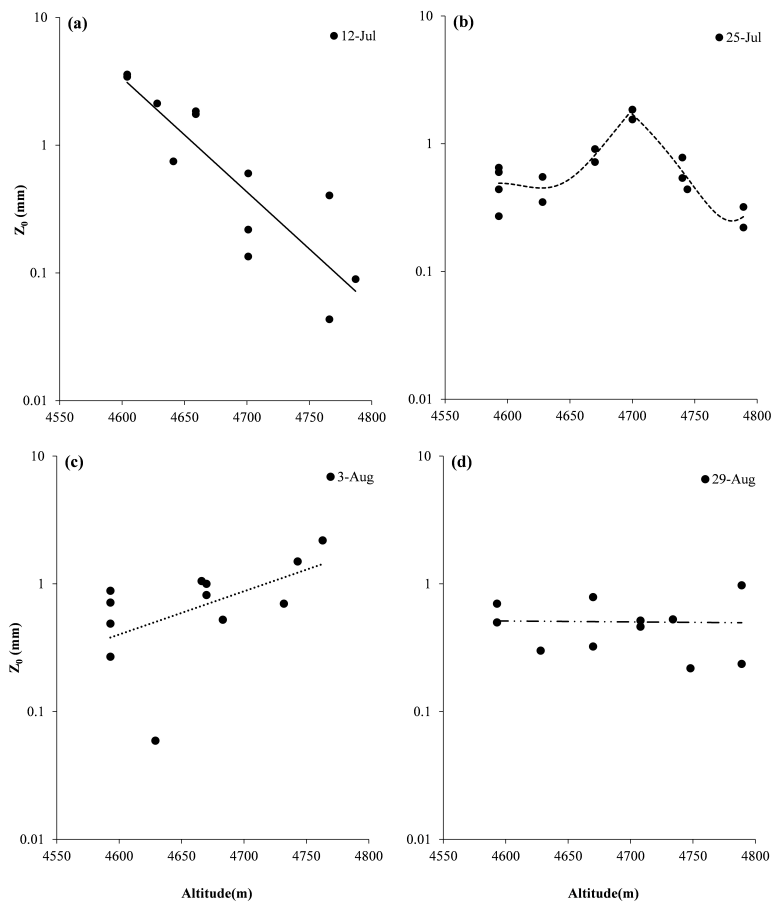


Fig. 6.

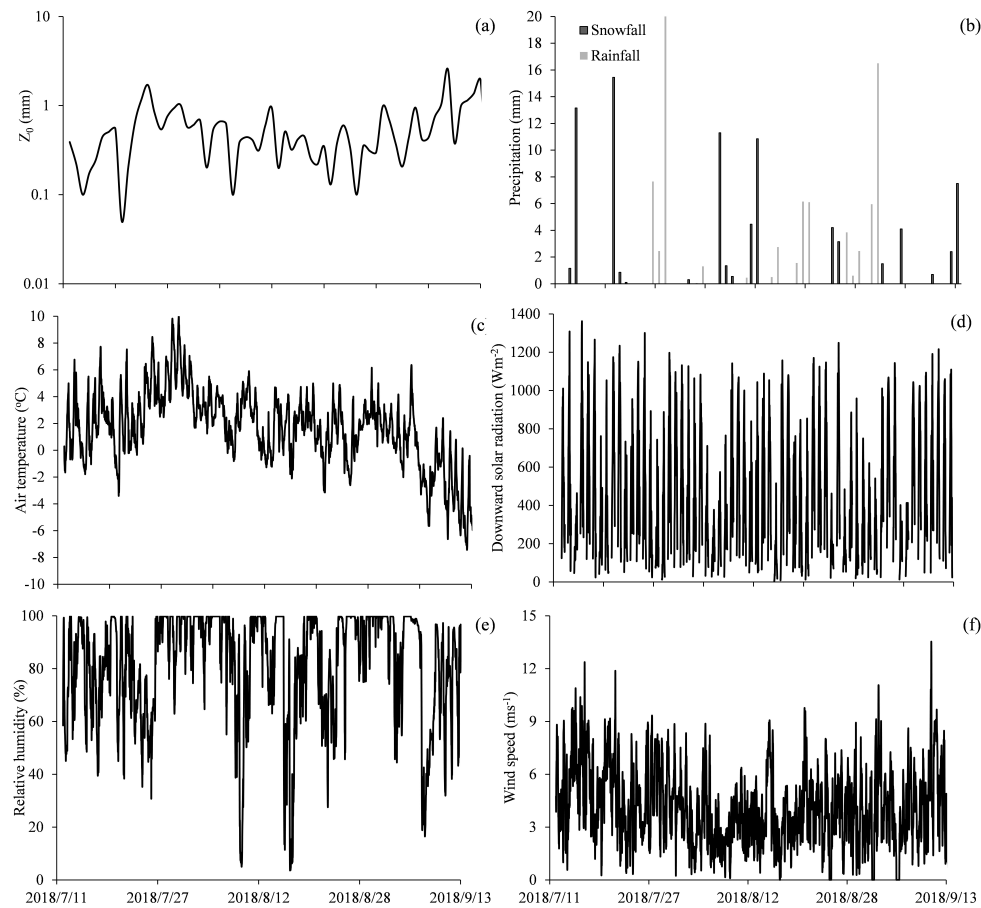


Fig. 7.

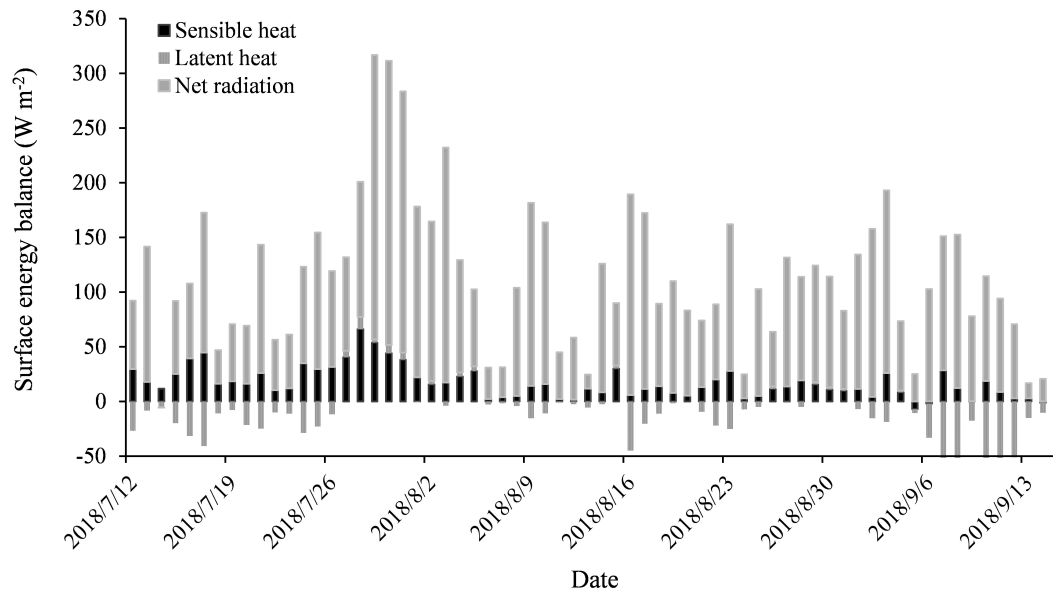
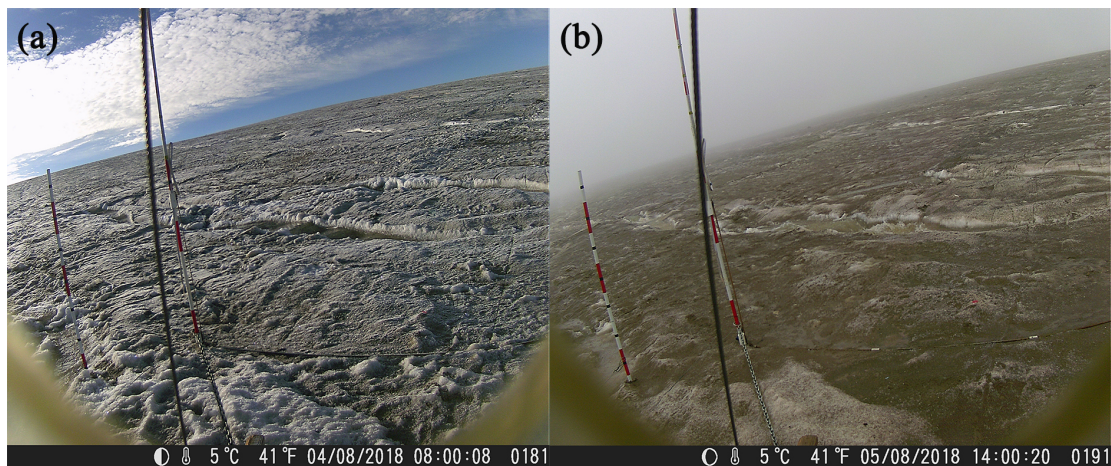


Fig. 8.

[Printer-friendly version](#)[Discussion paper](#)





**Fig. 9.**

Printer-friendly version

Discussion paper



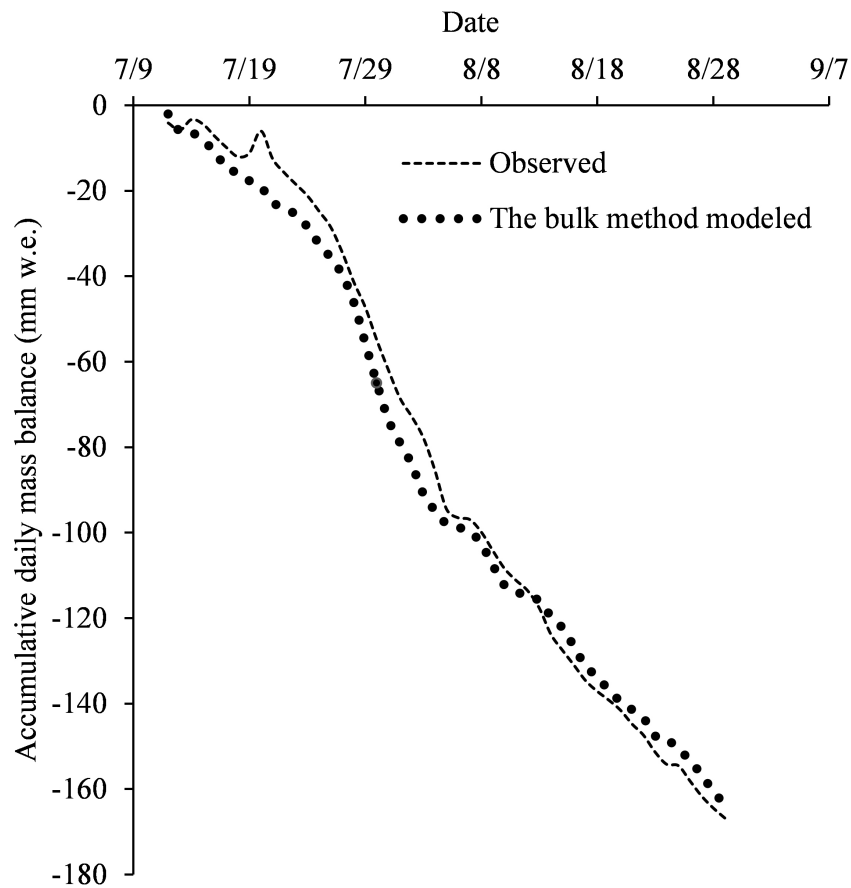


Fig. 10.

[Interactive comment](#)[Printer-friendly version](#)[Discussion paper](#)

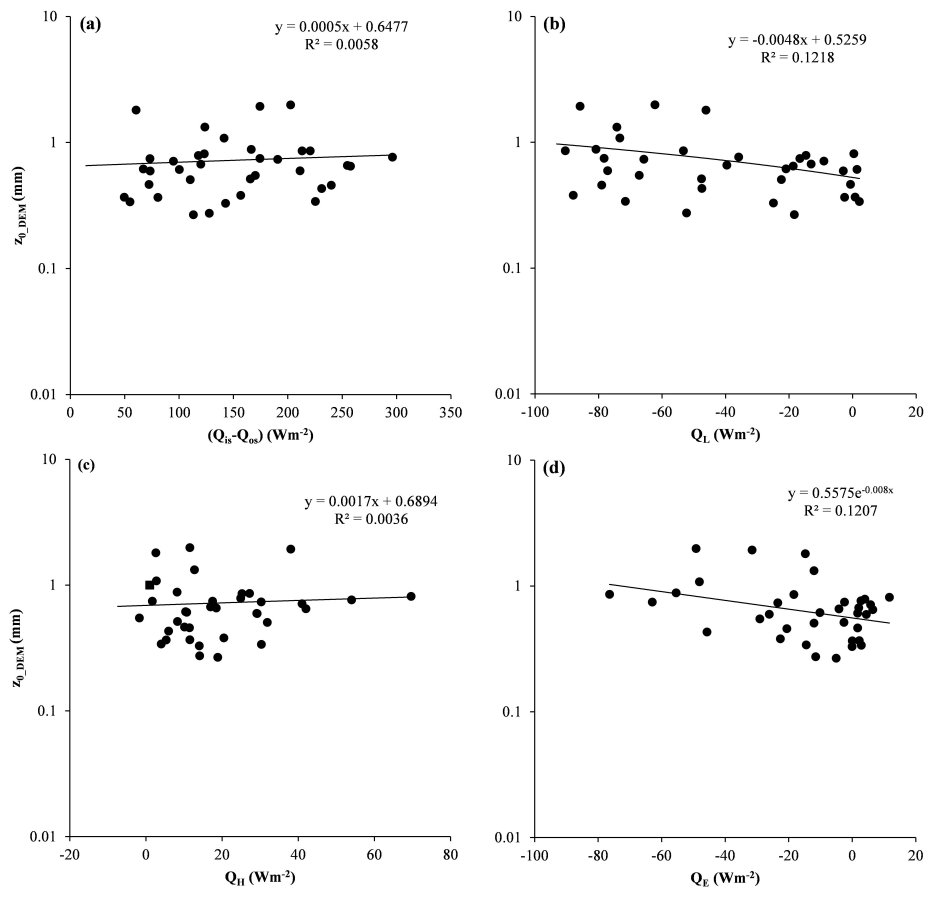


Fig. 11.

Printer-friendly version

Discussion paper



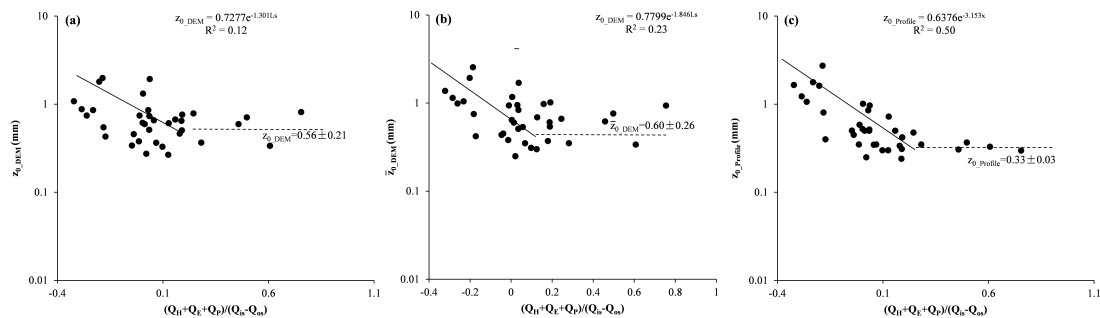


Fig. 12.

Printer-friendly version

Discussion paper

