

Interactive comment on “Spatial and temporal variations in glacier surface roughness during melting season, as observed at August-one glacier, Qilian mountains, China” by Junfeng Liu et al.

Junfeng Liu et al.

jfliu121@163.com

Received and published: 3 January 2020

The comment was uploaded in the form of a supplement:
<https://www.the-cryosphere-discuss.net/tc-2019-186/tc-2019-186-AC4-supplement.pdf>

Interactive comment on The Cryosphere Discuss., <https://doi.org/10.5194/tc-2019-186>, 2019.

C1

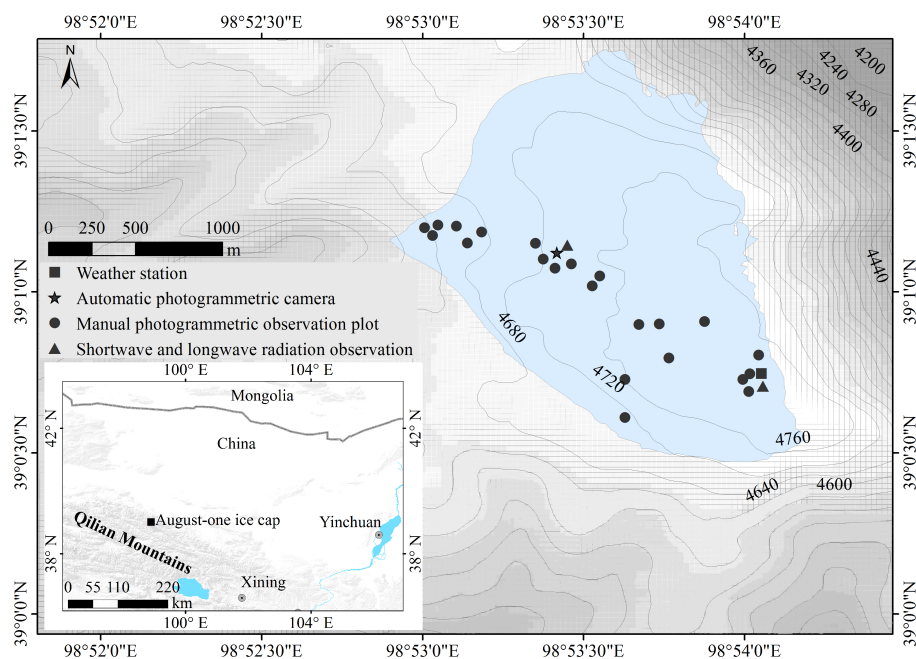


Fig. 1.

C2

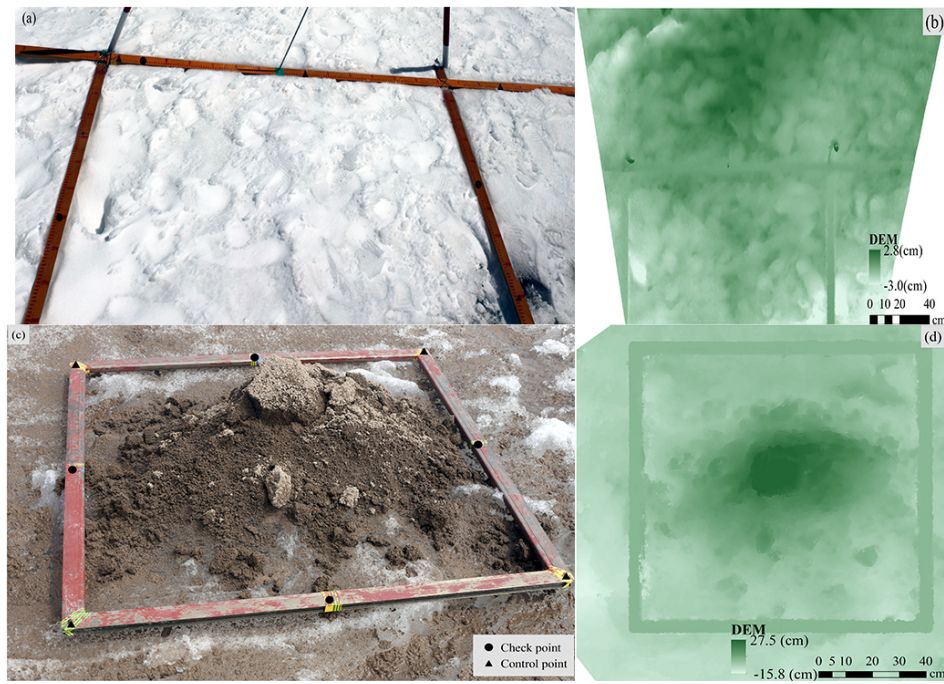


Fig. 2.

C3

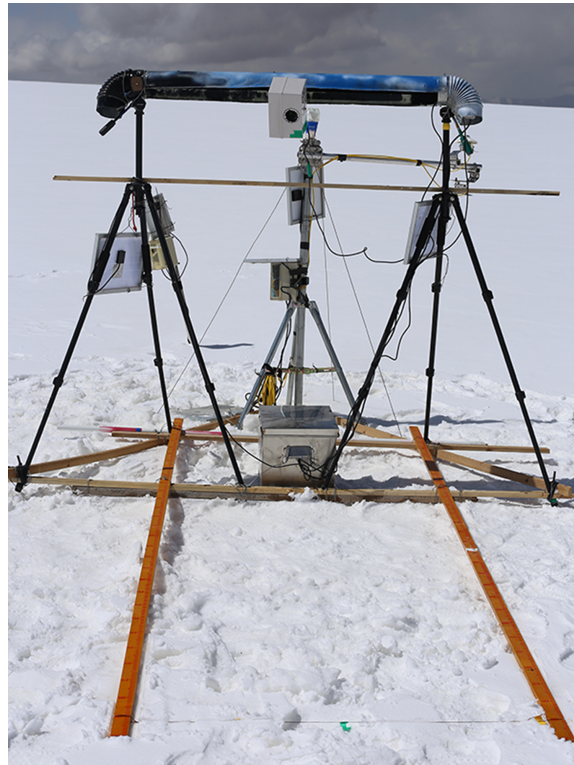


Fig. 3.

C4

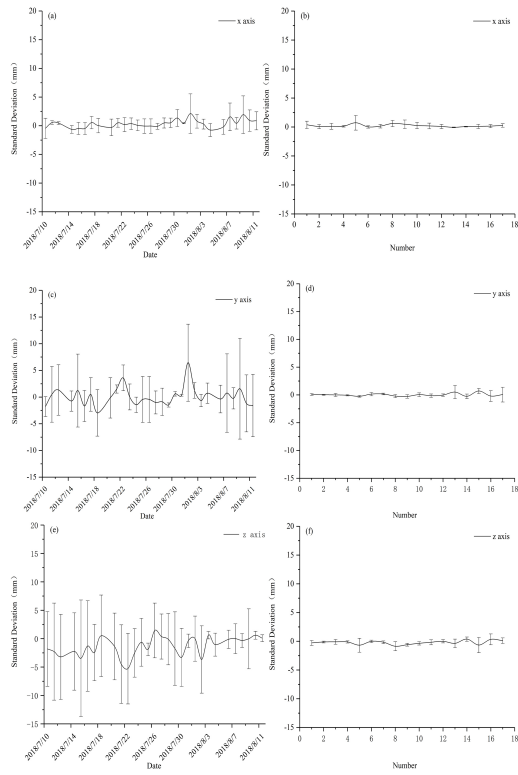


Fig. 4.

C5

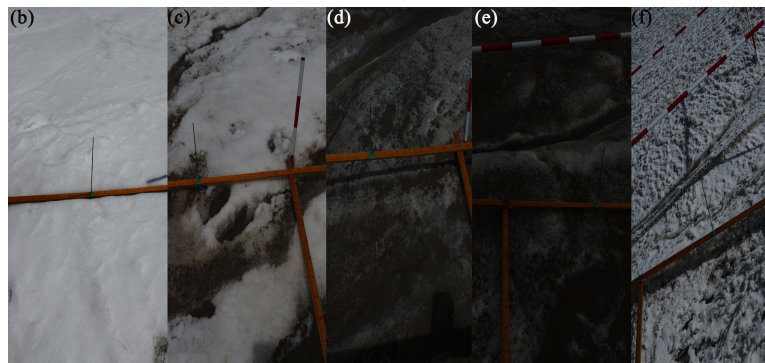
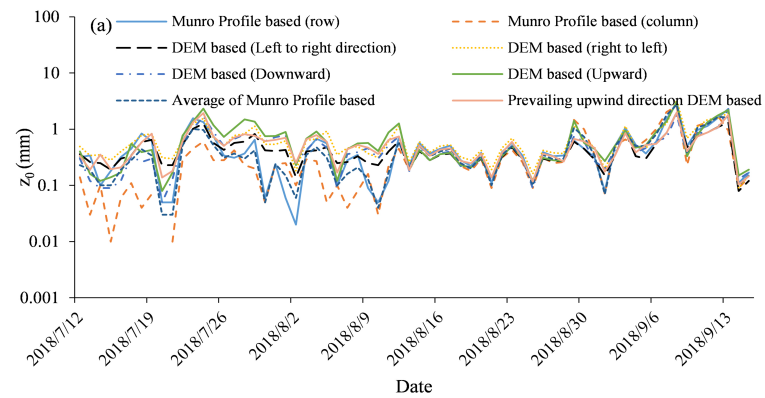


Fig. 5.

C6

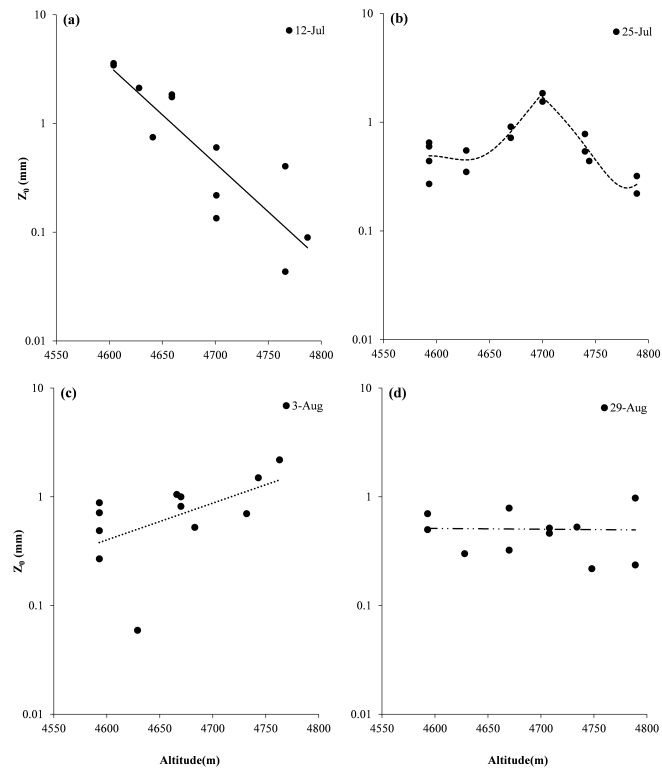


Fig. 6.

C7

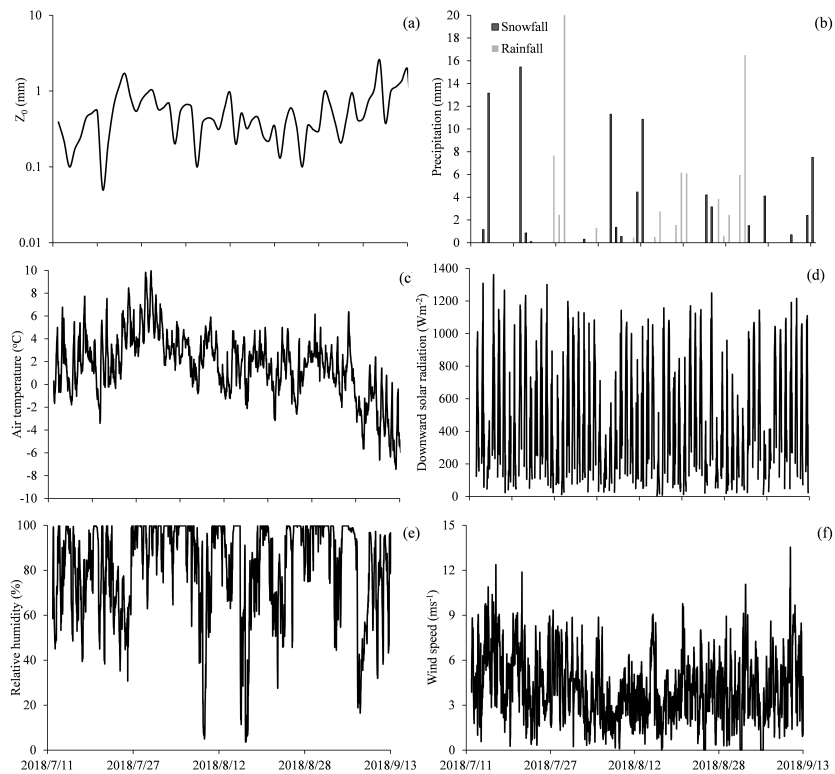


Fig. 7.

C8

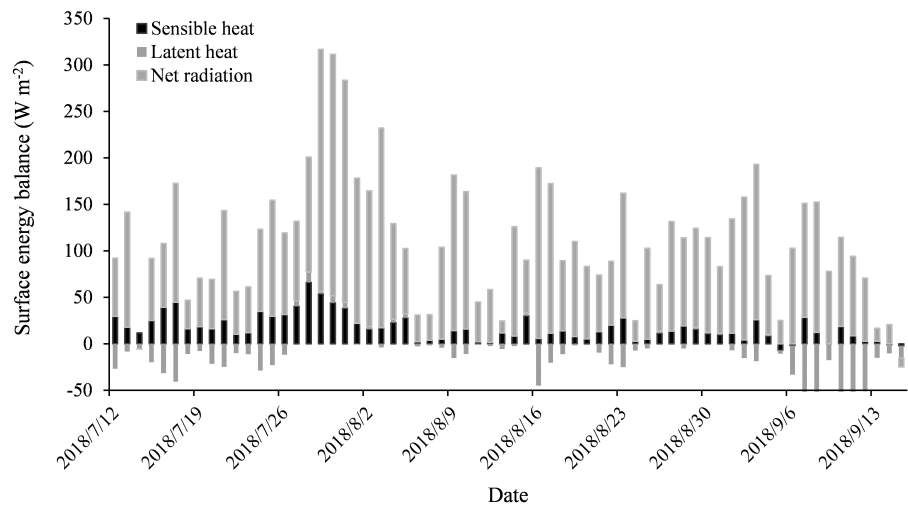


Fig. 8.

C9

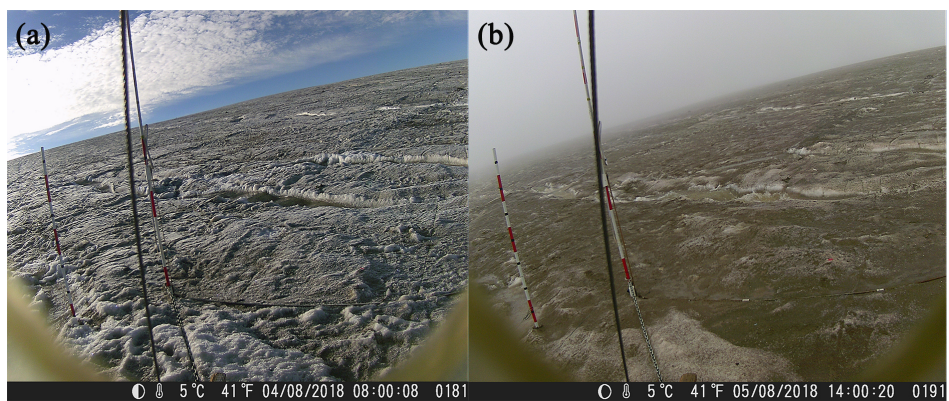


Fig. 9.

C10

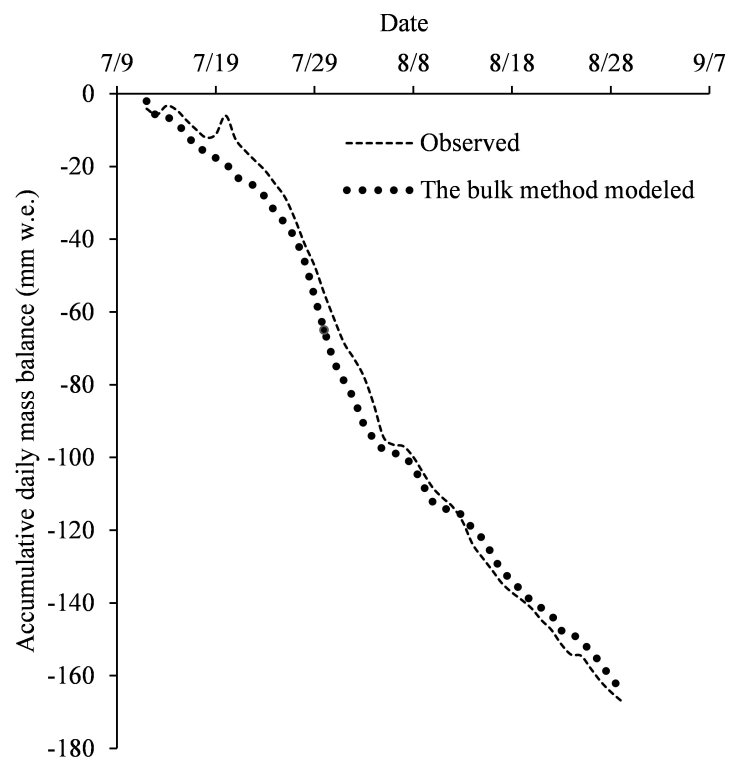


Fig. 10.

C11

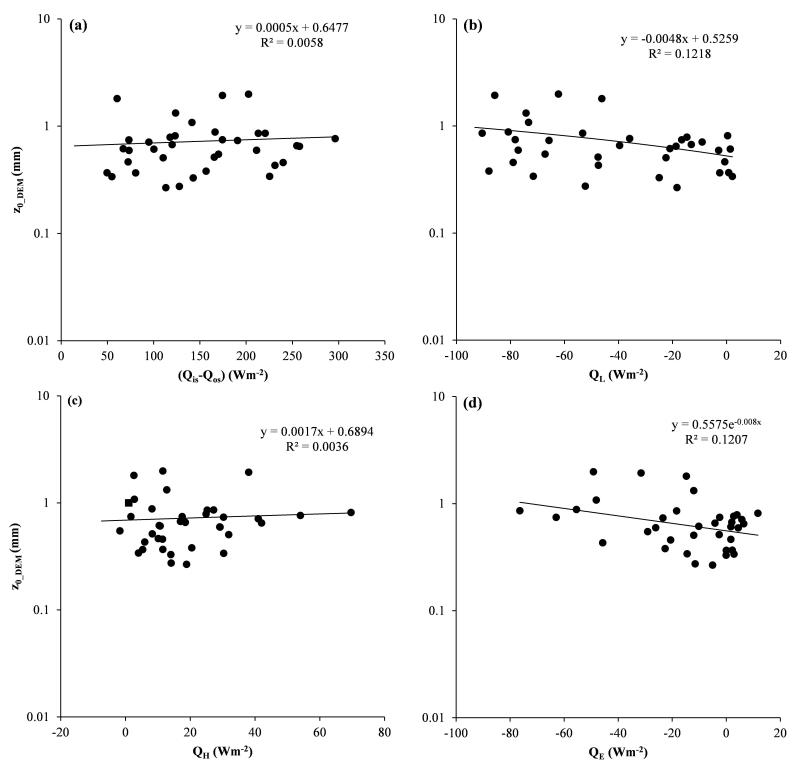


Fig. 11.

C12

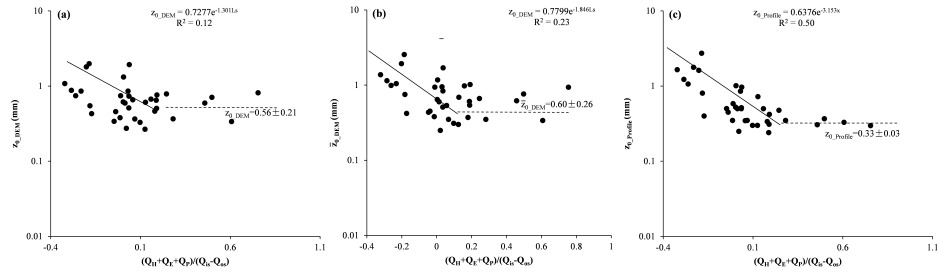


Fig. 12.