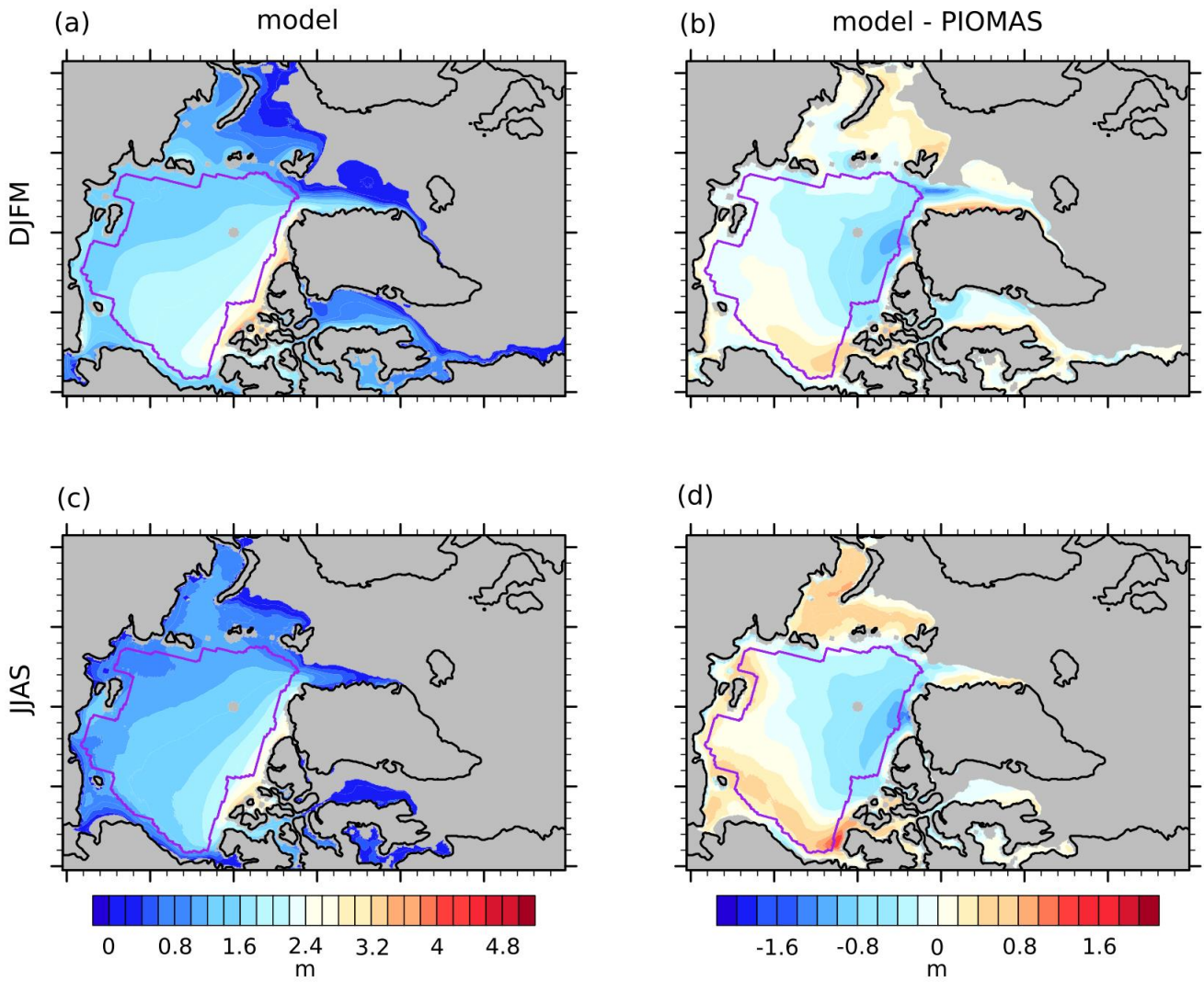
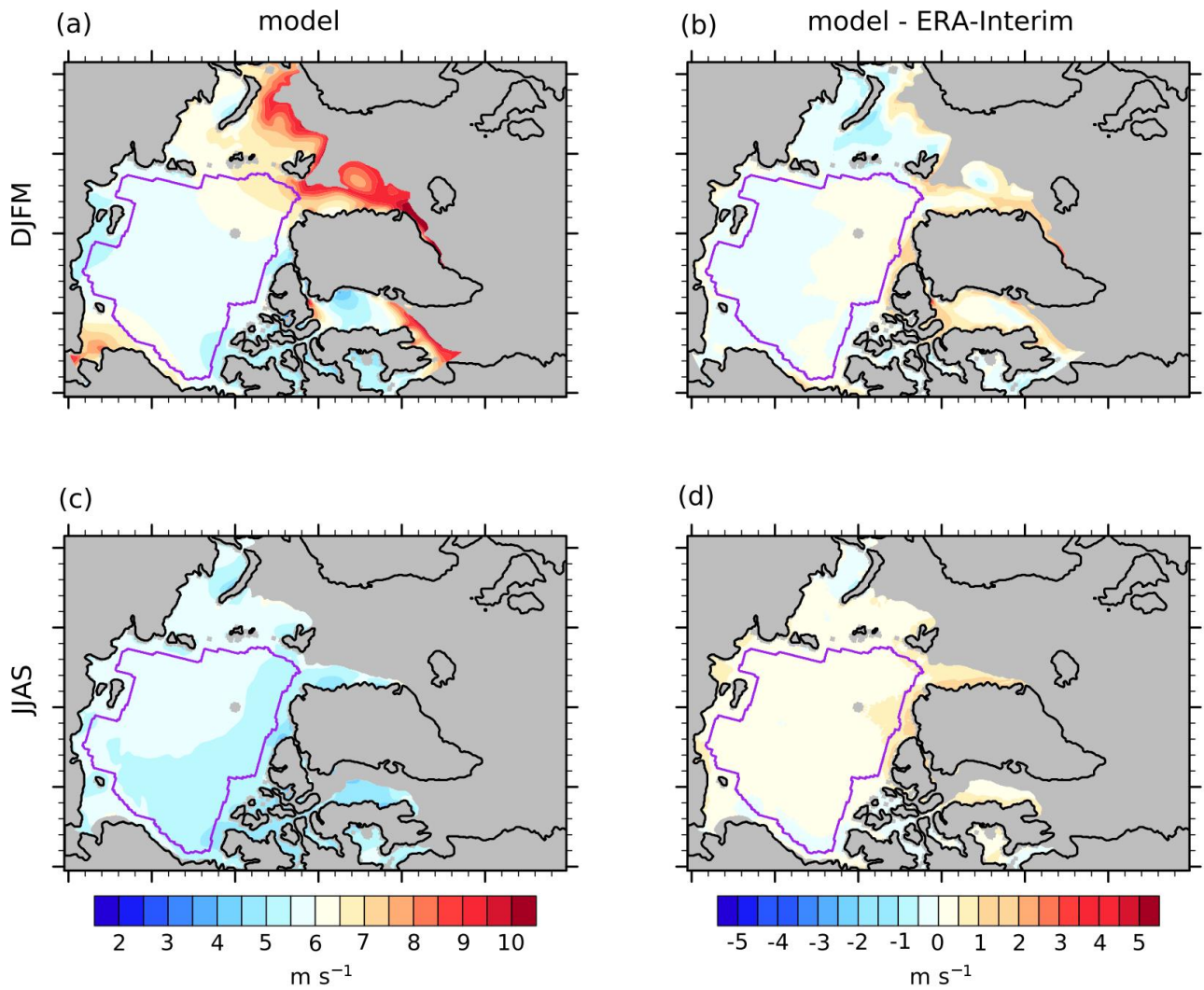


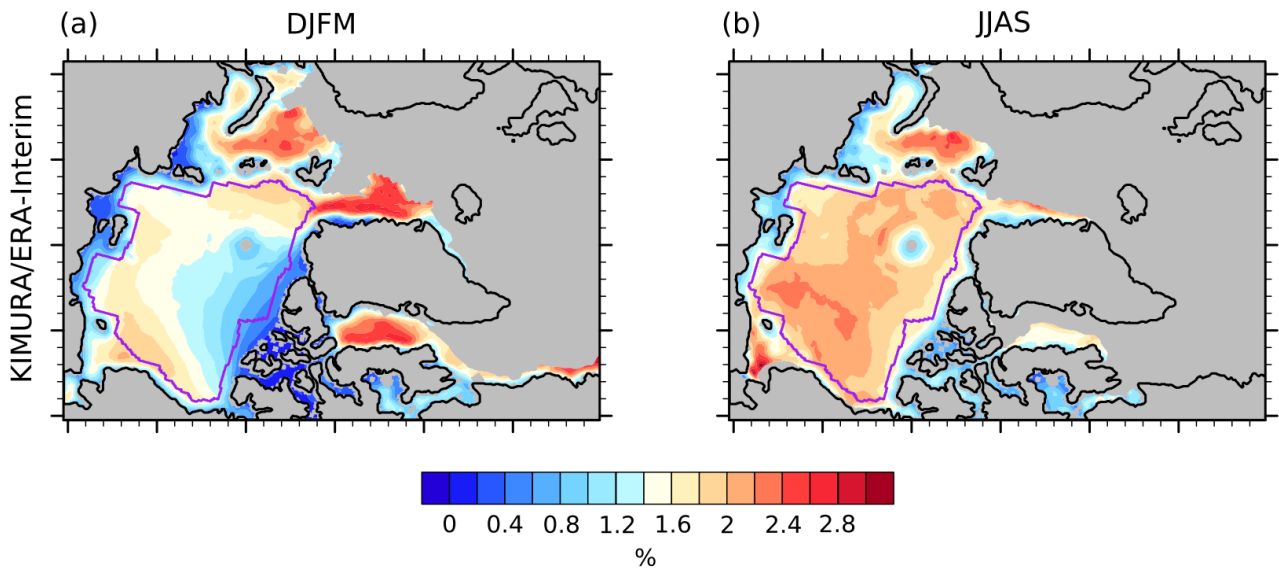
5 **Figure S1:** Mean spatial pattern of sea-ice concentration in the model (ensemble mean) during 2003-2014 (a) winter (DJFM) and (c) summer (JJAS). (b) and (d) are the model differences to the observation (“Model - NSIDC bootstrap”) during winter and summer respectively. The purple line in each panel indicates the study domain used for the basin-wide analysis.



10 **Figure S2:** Mean spatial pattern of sea-ice thickness [m] in the model (ensemble mean) during 2003-2014 (a) winter (DJFM) and (c) summer (JJAS). (b) and (d) are the model differences to the PIOMAS ("Model - PIOMAS") during winter and summer respectively. The purple line in each panel indicates the study domain used for the basin-wide analysis.



15 **Figure S3:** Mean spatial pattern of 10-m wind speed [m s⁻¹] in the model (ensemble mean) during 2003-2014 (a) winter (DJFM) and (c) summer (JJAS). (b) and (d) are the model differences to the reanalysis ("Model - ERA-Interim") during winter and summer respectively. The purple line indicates the study domain used for the basin-wide analysis.



20 **Figure S4:** Mean spatial pattern of wind factor [%] based on observation/reanalysis ("KIMURA/ERA-I") during 2003-2014 (a) winter (DJFM) and (b) summer (JJAS). The purple line indicates the study domain used for the basin-wide analysis.

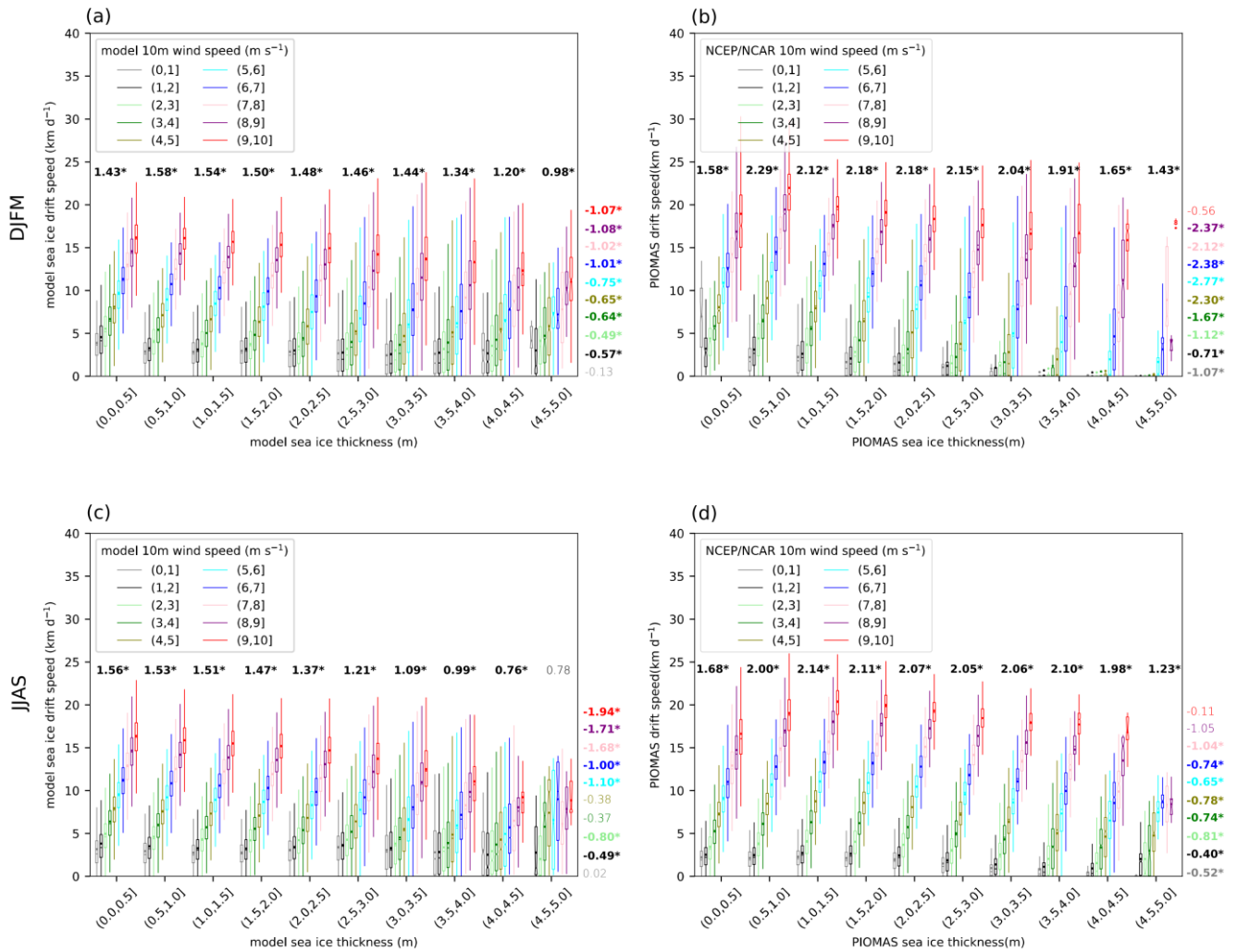


Figure S5: Box-whisker plots of the relationship between sea-ice drift speed and sea-ice thickness for different near-surface wind speed classes (different colors) in the model during 2003-2014 (a) winter (DJFM) and (c) summer. (b) and (d) are the relationship based on PIOMAS data during 2003-2014 winter and summer respectively. For the model, all 10 ensemble members are included. The plot is based on daily data and on all grid points within the study domain indicated in Figure 1. The horizontal bar represents the median, the notch represents the 95% confidence interval of the median, the dot represents the mean, the top and bottom of the box represent the 75th and 25th percentiles, the upper/lower whiskers represent the maximum/minimum value within 1.5 times interquartile range (IQR) to 75/25 percentiles. The numbers above the boxplots represent the slopes of sea-ice drift speed and near-surface wind fit lines (unit: km d⁻¹ per 1 m s⁻¹ wind speed change; font colors as for the wind speed classes). The numbers right of the boxplots represent the slopes of sea-ice thickness and sea-ice drift speed fit lines (unit: km d⁻¹ per 1 m sea-ice thickness change). A bold and asterisked number indicates that the slope of the fit line is significant at the 95 % level.

25

30