

# The influence of water percolation through crevasses on the thermal regime of a Himalayan mountain glacier

Adrien Gilbert et al.

## Response to editor's comments

Editor comments in normal font.

Response in *italic blue* font

[Title]

I agree that your approach can be applied to other Himalayan glaciers, however, this is not what you did in this paper. Therefore, to avoid unnecessary overstatements extending beyond the realm of the contents presented, I suggest to leave a singular form of a glacier (not "glaciers") as: "The influence of water percolation through crevasses on the thermal regime of a Himalayan mountain glacier".

*You are right, we originally choose this title because we wanted the paper to be process-oriented. There is no reason that this process is not occurring anywhere else so we choose a title that cover glaciers in general. It is however true that even if the process occurs, the extent of its influence will depend on the considered glacier. We changed the title according to your suggestion.*

[p.3, line 75]

"Continuous profiles were filtered and some of them migrated ..."

- there are so many ways to filter and introduce a phase shift (which I imagine behind your "migrated"), that I find it necessary to explain how exactly the filtering was done. Now the reader has no clue about this step. Please clarify.

*This has been clarified (lines 75-76)*

[p.7, line 174]

"We compare it with a threshold value  $\sigma_{th}$  (MPa) to identify where damage production occurs."

- I could not find where in text the chosen threshold value was shown. Was it 0.1 MPa? Why? Please, indicate it and support with a reference (there is a great variation in literature as you know).

*Yes, we forget to mention this value. We use a value of 0.05 MPa in order to better reproduce the observed crevassed areas. This value is within the recommended range found by Krug et al. (2014) ([0.01 0.2] MPa) who used similar approach to model calving events. We modify the revised manuscript (lines 304-305).*

[p.9, lines 238-243]

Please, put periods at the end of each sentence describing your iterative procedure steps.

*Done*

[p.10, line 250]

"we shifted the temperature forcing (1980-2016 corrected reanalysis) of 0.7C to obtain balanced mean conditions during the simulation period."

- I am not sure what is meant by "of" preposition here. Did you shifted "by -0.7C"? Why 0.7? Please, re-write in a more straightforward way.

*We corrected this sentence which now reads: "we shifted the temperature forcing (1980-2016 corrected reanalysis) by -0.7°C which allows to obtain balanced mean conditions during the simulation period."*

[p.12, line 333]

"we performed a transient simulation starting in 1975 from the modeled steady state (with crevasses location imposed from observations)"

- do you mean modern observations? Associated not with the past 1975 conditions, but from GPR and Google Earth in 2010-s? Please clarify.

*Yes, we meant modern observation. We clarified.*

[p.13, line 358]

should be able to adequately captured it.

->... capture

*Done*

[p. 23, Fig. 2 caption]

along the black dashed line in Fig. 3a.

-> I could not find such in Fig. 3a; should be red?

*Yes, we corrected the legend*

[p. 31, Fig. 10 caption]

"radar section next to the thermistor (black line in (e)) with the dashed line showing the modeled CTS."

- I could not follow which black line in (e) represents the radar section. Now (e) shows a longitudinal temperature profile 4 km long, where the upper black solid curve shows the surface and lower shows the base. Please re-check.

*We corrected this and now refer to the location shown in figure (b).*

- I do not think that your CTS abbreviation (cold-temperate transition surface) was defined anywhere. Please do so.

*Done*

# The influence of water percolation through crevasses on the thermal regime of [a](#) Himalayan mountain glaciers

Adrien Gilbert<sup>1</sup>, Anna Sinisalo<sup>2a</sup>, Tika R. Gurung<sup>2</sup>, Koji Fujita<sup>3</sup>, Sudan B. Maharjan<sup>2</sup>, Tenzing C. Sherpa<sup>2</sup>, and Takehiro Fukuda<sup>4,5b</sup>

<sup>1</sup>Department of Geosciences, University of Oslo, Oslo, Norway

<sup>2</sup>International Centre for Integrated Mountain Development, GPO Box 3226, Kathmandu, Nepal

<sup>3</sup>Graduate School of Environmental Studies, Nagoya University, Nagoya 464-8601, Japan

<sup>4</sup>Graduate School of Environmental Science, Hokkaido University, Sapporo 060-0810, Japan

<sup>5</sup>Institute of Low Temperature Science, Hokkaido University, Sapporo 060-0819, Japan

<sup>a</sup>Currently at: GRID-Arendal, Norway

<sup>b</sup>Currently at: Hokkaido Government, Sapporo 060-8588, Japan

Correspondence: Adrien Gilbert (adri.gilbert3@gmail.com) and Anna Sinisalo (Anna.Sinisalo@grida.no)

**Abstract.** In cold and arid climates, small glaciers with cold accumulation zones are often thought to be entirely cold based. However, scattering in Ground Penetrating Radar (GPR) measurements on the Rikha Samba Glacier in the Nepal Himalayas suggests a large amount of temperate ice that seems to be influenced by the presence of crevassed areas. We used a coupled thermo-mechanical model forced by a firm model accounting for firm heating to interpret the observed thermal regime. Using a simple energy conservative approach, we show that the addition of water percolation and refreezing in crevassed areas explains these observations. Model experiments show that both steady and transient thermal regimes are significantly affected by latent heat release in crevassed areas. It makes half of the glacier base temperate, resulting in ice dynamic mainly controlled by basal friction instead of ice deformation. The timescale of thermal regime change, in response to atmospheric warming, is also greatly diminished, with a potential switch from cold to temperate basal ice in 50-60 years in the upper part of the glacier instead of the 100-150 years that it would take without the effect of the crevasses. This study highlights the crucial role of water percolation through the crevasses on the thermal regime of glaciers and validates a simple method to account for it in glacier thermo-mechanical models.

## 1. Introduction

The thermal regime of a mountain glacier controls its hydrology, flow rheology, and basal conditions affecting glacier dynamics, which in turn affects its behavior in response to climate change. It influences erosion rates (Bennett and Glasser, 2009), potential glacier hazards (Faillettaz et al., 2011; Gilbert et al., 2015), and water resources in the glaciated catchments (Miller et al., 2012). It is thus essential to understand the processes causing and maintaining temperate basal conditions as well as the mechanisms leading to changes in the thermal regime of glaciers.

Very little is known about the thermal regime of the Himalayan glaciers due to the harsh conditions and logistical difficulties which make direct observations challenging in the remote, high altitudes areas. Borehole temperature measurements, such as carried out on Khumbu, Yala and Gyabrag Glaciers in the Himalayas (Miles et al., 2018; Mae, 1976; Watanabe et al., 1984; Liu et al., 2009), provide direct observations of the glaciers' thermal condition. However, the small number of boreholes gives only very limited information about the spatial distribution of the ice temperatures within the glacier. An estimation of the thermal structure of the glacier in such case requires the use of numerical modeling in order to extrapolate the boreholes measurements (Wang et al., 2018, Zhang et al., 2013).

Scattering of electromagnetic waves signal in glacier ice is commonly regarded as diagnosing temperate ice in ground penetrating radar (GPR) data. Continuous GPR profiles can thus provide information about the spatial distribution of thermal ice zones within a glacier (e.g. Ryser et al., 2013; Wilson et al., 2013; Gusmeroli et al., 2012; Irvine-Fynn et al., 2006; Pettersson et al., 2007). Wilson et al. (2013) showed that the interface between cold and temperate ice matching with the location of temperatures reaching pressure melting point in the boreholes could be identified with a 10 MHz GPR on two sub-Arctic polythermal glaciers. In the Himalayas, such GPR data are rare although Sugiyama et al. (2013) showed with GPR data that the Yala Glacier in Nepal is polythermal, which was in agreement with two previous borehole measurements in the ablation and accumulation areas of the glacier (Watanabe et al., 1984).

In this study, we determine the polythermal structure and ice thickness of a high altitude glacier in the Nepal Himalaya using GPR. We combine GPR data from 2010 and 2015 with other field data to determine ice thickness and to estimate the amount of temperate versus cold ice in the glacier. Measurements are interpreted using a 3D thermo-mechanical model for which we have developed new methods in order to: (i) determine the thermal surface boundary condition, and (ii) take into account water percolation and refreezing in the crevassed areas. The model is forced by a surface mass balance model calibrated with field measurements, which is then run to determine the steady state and transient thermal regimes of the glacier. We compare our modeling results with the GPR data to draw conclusions about the processes defining the thermal regime of the glacier and to provide recommendations on how to take them into account in further modeling studies.

## 2. Observations and data

### 2.1. Study area

The Rikha Samba Glacier is a south-east orientated, medium sized glacier (5.5 km<sup>2</sup>) located in the Hidden Valley in western Nepal (Fig. 1a). The glacier was about 5.5 km long with an elevation ranging from 5420 to 6440 m a.s.l. in 2014. The glacier melt water contributes to the Kali Gandaki Basin of the Ganges River. The Hidden Valley falls under a rain shadow climate, receiving the least precipitation in Nepal with an annual precipitation of 370 mm (Fujita and Nuimura, 2011). The annual mean temperature measured with an automatic weather station (AWS) in the vicinity of the glacier (Fig. 1a) was −5 °C in 2014. The glacier was first visited in 1974 and it had been losing mass at a mean rate of -0.5 m w.e. yr<sup>-1</sup> between 1974 and 2010 (Fujita et al., 1997; Fujita and Nuimura, 2011).

### 2.2. Ground penetrating radar (GPR)

We used a Malå GeoScience ProEx impulse-type ground penetrating radar (GPR) with a 30 MHz Rough Terrain Antenna (RTA) with a frequency band from 15 to 45 MHz to measure the ice thickness and thermal regime of the Rikha Samba Glacier in 2015 (Fig. 1b). The RTA is an unshielded radar antenna in which the transmitter and receiver elements are mounted in a row in a flexible tube making it suitable for rough terrain such as glacier surface.

~~DC offset was subtracted from the data, and a gain function as well as a bandpass butterworth filter removing frequencies below 15 MHz and above 45 MHz, were applied to the continuous radar profiles. The GPR reflectors from the assumed bedrock surface were manually picked from the data. Continuous profiles were filtered and some of them migrated while the GPR reflectors from the assumed bedrock surface were manually picked from the data.~~ Picked two-way travel times of the radar signal were converted to ice thickness using a wave velocity of 168 m µs<sup>-1</sup> (Robin, 1975). Strong scattering of the radar signal within the ice was interpreted as temperate ice whereas ice without internal reflectors was classified as cold ice, and the interface between these zones was also manually picked in the data. In addition, we have used point data collected in 2010 with an impulse GPR transmitter (Ohio State University) with a set of half-wavelength 5 MHz dipole antennas (Fig. 1b). These data were used only for ice thickness. The time increment of five years between the GPR measurements was corrected by projecting the 2010 data to 2015. This was done by assuming that the glacier was thinning at the same rate between 2010 and 2015 as the long-term thinning rate for 100-m elevation bands obtained for a 12-year period between 1998 and 2010 (Fujita and Nuimura, 2011).

### 2.3. Glacier geometry and crevasse location

A digital elevation model (DEM) of 30m resolution was generated for the Rikha Samba Glacier from Pleiades tri-stereo satellite imagery (0.5m resolution) for November 7, 2014. Crevassed areas on the glacier were visually identified from the imagery and refined using Google Earth imagery (WorldView, September 21, 2012) in which the crevasses were more visible.

The ice volume and bedrock topography were initially estimated by defining ice thicknesses as zero at the margins of the glacier and interpolating the ice thickness data measured with the GPR. For interpolation, we assumed a spherical semi-variogram (fitted to data with a sill of 3743 m<sup>2</sup> and a range of 784 m) and applied the Kriging algorithm (Matheron, 1963). This method is widely used to interpolate ice thicknesses measured with a GPR to estimate the volumes of mountain glaciers (e.g. Fischer, 2009). Since the GPR data do not cover the entire glacier, it results in high uncertainties in the interpolated bedrock topography in some part of the glacier. The initial bedrock topography is thus corrected using the ice flow model (Sect. 3.4.2).

#### 2.4. Glacier mass balance, surface velocities, and ice temperature

We constrained the surface mass balance model from stake network measurements in 2012 and 2013 (Gurung et al., 2016) and from the total volume change estimated by a geodetic survey (Fujita and Nuimura, 2011) over the period 1974-1994 (−0.57 m w.e. a<sup>−1</sup>) and 1998-2010 (−0.48 m w.e. a<sup>−1</sup>). Stakes displacement monitored during the 1998-1999 period shows horizontal surface velocities between 9 and 24 m a<sup>−1</sup> (Fujita et al., 2001). By comparing those velocities with the deformation velocities computed from shallow ice approximation and realistic flow rate factors, Fujita et al. (2001) concluded that observed velocities are greater than what could be explained by ice deformation alone, which thus implies basal sliding. The ice temperature at 10 m depth was measured with a thermistor chain manufactured by Stum Bohr AG Switzerland in the lower ablation area (5600 m a.s.l., Fig. 1b) for 2014–2015. The temperature was logged over one-year period in six-hour intervals. The air temperature and precipitation were observed with an AWS in the vicinity of the glacier at 5320 m a.s.l. (Fig. 1a).

#### 2.5. Meteorological parameters

We used the ERA-Interim reanalysis data (Dee et al., 2011) at a daily timescale over the period 1980–2016 as input data for the mass balance model. We only used air temperature data and assumed a constant precipitation rate in time (no precipitation seasonality) to avoid complexity in the simulation. Temperature and precipitation were then distributed on the glacier according to altitudinal gradients to reproduce the observed mass balances. Bias in the ERA-Interim air temperature was corrected using a linear function determined from the comparison with the local AWS data (Fig. 1b) over the period 2011-2015.

### 3. Modeling methods

The modeling study aims at identifying which physical processes lead to the thermal structure deduced from the GPR measurements. First, we focus on steady state simulation for which ice flow and thermal regime are in equilibrium with constant surface boundary conditions (surface temperature and mass balance). We then use the steady state simulation as initial condition for the transient model experiments.

### 3.1. Surface mass balance model

Mass balance is modelled using a degree-day method following Gilbert et al. (2016) in which we include the influence of the spatial variability of the shortwave radiation. The net annual surface mass balance is determined by

$$B = C + R - M \quad (1)$$

where  $B$  is the net annual surface mass balance (m w.e. a<sup>-1</sup>),  $C$  is the annual snow accumulation,  $R$  is the rate of refreezing and  $M$  is the annual melting. Meltwater is computed from the sum of two components following Pellicciotti et al. (2005):

$$m = \max[(T_a - T_{th})f_m + S_{pot}f_{rad}; 0] \quad (2)$$

where  $m$  is the daily melt (m w.e. d<sup>-1</sup>),  $T_a$  is the air temperature (K),  $T_{th}$  is a temperature threshold for melting (K),  $f_m$  is the melting factor (m w.e. K<sup>-1</sup> d<sup>-1</sup>),  $S_{pot}$  is the potential solar radiation (W m<sup>-2</sup>) and  $f_{rad}$  is the radiative melting factor (m w.e. W<sup>-1</sup> m<sup>2</sup> d<sup>-1</sup>). Following a similar approach as used in Gilbert et al. (2016),  $f_{rad}$  is computed from the radiative melting factors for snow and ice ( $f_{rad}^{snow}$  and  $f_{rad}^{ice}$ ) and the ratio of annual accumulation to melt ( $r_{s/m}$ ) with

$$f_{rad} = \begin{cases} f_{rad}^{snow} & \text{if } (r_{s/m} \geq 1) \\ f_{rad}^{ice} - (f_{rad}^{ice} - f_{rad}^{snow})r_{s/m} & \text{if } (r_{s/m} < 1) \end{cases} \quad (3)$$

The annual ratio  $r_{s/m}$  is computed assuming that

$$r_{s/m} = \frac{C}{M} \quad (4)$$

The annual snow accumulation ( $C$ ) and the annual amount of melting ( $M$ ) are computed with  $f_{rad}$  equal to  $f_{rad}^{snow}$ . Snow accumulation is calculated as a function of elevation ( $z$ , m a.s.l.) with

$$C = \sum_{d=1}^{365} \begin{cases} \frac{P_{ref}}{365} \left( 1 + (z - z_{pref}) A_P \right) & \text{if } T_a(d, z) < T_{snow} \\ 0 & \text{if } T_a(d, z) \geq T_{snow} \end{cases} \quad (5)$$

where,  $P_{ref}$  is the annual precipitation rate (m w. e. a<sup>-1</sup>) at the elevation  $z_{pref}$  (m a.s.l.),  $A_P$  is the altitudinal precipitation factor (m<sup>-1</sup>),  $z$  is the elevation (m a.s.l.) and  $T_{snow}$  is a temperature threshold that distinguishes between snow and rain (K). Assuming

that refreezing in the previous year creates impermeable layers and thus occurs only to a depth equal to the annual accumulation  
 145 rate, we write

$$R = \min[M; f_r C] \quad (6)$$

where  $f_r$  is a refreezing factor. The determination of the parameter values is described in section 4.2.

### 3.2. Thermo-mechanical model

150 The ice flow model solves the Stokes equations for incompressible flow adopting Glen's flow law for viscous isotropic ice (Cuffey and Paterson, 2010) and is coupled to an energy conservation equation using the enthalpy formulation (Aschwanden et al., 2012; Gilbert et al., 2014a)

$$\rho \left( \frac{\partial H}{\partial t} + \vec{v} \cdot \vec{\nabla} H \right) = \nabla(\kappa \vec{\nabla} H) + tr(\boldsymbol{\sigma} \dot{\boldsymbol{\epsilon}}) + Q_{lat} \quad (7)$$

155

where  $\rho$  is the firn/ice density ( $\text{kg m}^{-3}$ ),  $t$  is the time (s),  $H$  is the enthalpy ( $\text{J kg}^{-1}$ ),  $v$  is the ice velocity vector,  $\kappa$  is the enthalpy diffusivity ( $\text{kg m}^{-1} \text{s}^{-1}$ ),  $Q_{lat}$  is the heating rate coming from meltwater refreezing ( $\text{W m}^{-3}$ ), and  $tr(\boldsymbol{\sigma} \dot{\boldsymbol{\epsilon}})$  is the strain heating ( $\text{W m}^{-3}$ ) with  $\boldsymbol{\sigma}$  and  $\dot{\boldsymbol{\epsilon}}$  respectively the stress and strain rate tensors. A basal heat flux of  $4.0 \cdot 10^{-2} \text{ W m}^{-2}$  is assumed for the basal boundary condition. This value is not well-constrained ranging from  $2.0 \cdot 10^{-2} \text{ W m}^{-2}$  (observed at Rongbuk Glacier in  
 160 the Everest region (Zhang et al., 2013)) to  $8.0 \cdot 10^{-2} \text{ W m}^{-2}$  as predicted by a large scale model (Tao and Shen, 2008). The enthalpy is written in terms of ice temperature  $T_i$  (K) and water content  $\omega$  with

$$H(T_i, \omega) = \begin{cases} \int_{T_0}^{T_i} C_p dT & \text{if } T_i < T_m(p) \\ \int_{T_0}^{T_m(p)} C_p dT + \omega L & \text{if } T_i = T_m(p) \end{cases} \quad (8)$$

where  $C_p$  is the heat capacity of ice ( $2.05 \cdot 10^3 \text{ J K}^{-1} \text{ kg}^{-1}$ ),  $T_0$  is the reference temperature for enthalpy (set to 200 K),  $T_m$  is the  
 165 melting point temperature (K),  $L$  is the latent heat of fusion ( $3.34 \cdot 10^5 \text{ J kg}^{-1}$ ) and  $p$  is the ice pressure (Pa). Changes in the glacier surface elevation are computed by solving a free surface equation (Gilbert et al., 2014a). We adopt a linear friction law as a basal boundary condition for the Stokes equation with

$$\tau_b = \beta u_s \quad (9)$$



170 where  $\tau_b$  is the basal shear stress (MPa),  $u_s$  is the sliding velocity ( $\text{m a}^{-1}$ ) and  $\beta$  is the friction coefficient ( $\text{MPa a m}^{-1}$ ).  
 The model is solved using the finite-element software Elmer/Ice (Gagliardini et al., 2013) on a 3D mesh with a 50-m horizontal resolution and 15 vertical layers giving about 10 m of vertical resolution. The mesh is constructed from a 2D triangular linear element extruded in the vertical direction. It gives a mesh made of triangular prism unstructured in the horizontal direction and structured in the vertical direction.

### 175 3.3. Modeling crevasse influence via water percolation

In order to determine the areas where crevasses are likely to form on the glacier, we compute the maximal principal Cauchy stress  $\sigma_I$  (MPa) at the glacier surface from the stress tensor. We compare it with a threshold value  $\sigma_{th}$  (MPa) to identify where damage production occurs (Pralong and Funk, 2005; Krug et al., 2014) and define the crevassed areas where  $\sigma_I > \sigma_{th}$ . Crevasses are commonly considered to be the place where surface meltwater can enter the body of the glacier (Fountain and  
 180 Walder, 1998). The development of a hydrologically driven crack network initiated by water-filled crevasses seems to be able to transport liquid water down to the bedrock even through cold ice (Boon and Sharp, 2003; Van Der Veen, 2007). In our model, we therefore make an assumption of free vertical percolation of the meltwater down to the bedrock in which local surface meltwater in the crevassed area is the only source of liquid water percolating into the crevasses. This means that we leave out any water coming from the surface runoff outside of the crevassed area and draining into the crevassed area.  
 185 Assuming that water refreezes in the first cold layer, we compute a latent heat heating rate  $Q_{lat}$  (see eq. 7) from the available annual meltwater and the ice temperature of the current iteration. At each vertical layer  $i$  of the model,  $Q_{lat}$  is computed from the amount of refreezing water  $r_i$  each year ( $\text{kg m}^{-2}$ ) with

$$Q_{lat} = \frac{r_i}{dt \, dz_i \, L} \quad (10)$$

190 where  $dz_i$  is the thickness of the layer  $i$  (m) and  $dt$  is the timestep (s). The amount of refreezing water  $r_i$  is distributed from top to bottom of the glacier with the condition that the enthalpy for a certain layer has first reached the enthalpy of fusion  $H_f$  before the water can access the next layer downwards. Starting from the surface melt  $r_1 = m$ , the amount of liquid water available for refreezing in the next layer  $r_{i+1}$  is computed following

$$r_{i+1} = \max \left[ r_i - \frac{(H_f - H) \rho dz_i}{L}; 0 \right] \quad (11)$$

195 In adopting this approach, we assume that all the energy used to melt ice at the surface in crevassed area is released into the deeper ice body. It can be seen as an energy conservation approach rather than the modeling of water routing through crevasses.

### 3.4. Strategy for steady state glacier

#### 3.4.1. Enthalpy surface boundary condition including firn/snow influence

For this study, we develop a new method in order to determine surface boundary conditions for enthalpy. We use the 1D semi-parameterized approach developed in Gilbert et al. (2014b) and distribute it over the entire glacier. The method takes into account water percolation and refreezing in both firn and seasonal snow to determine the adequate surface boundary condition for the 3D model (Gilbert et al., 2012). The 1D model is solved on a one-dimensional 10-m-depth vertical profile at each surface node of the 3D model independently of all other surface nodes. It allows a higher temporal and vertical spatial resolution in order to explicitly solve percolation and refreezing processes in the snow and firn. Starting from an initial uniform temperature profile, firn/ice temperature is solved at daily time steps along the vertical profile with a 0.06 m resolution. The vertical grid is updated as the surface elevation evolves and all the variables are interpolated from the old grid to the new one at each time step. The 1D model is forced by air temperature and by the surface mass balance model that provides snow accumulation and surface melting for the corresponding surface node. To compute the steady state condition, the model is driven by a mean annual cycle of air temperature which is determined at the daily time scale from the meteorological data. A Gaussian random noise is added to the computed mean annual temperature cycle to plausibly represent the daily temperature variability. The standard deviation of the Gaussian function is adjusted to match the number of positive degree-days in our mean annual cycle to the mean one in the data in order to conserve the amount of modeled melting. It provides a strong constraint on this parameter making our results independent of this choice. The 1D model runs for several years with the same cycle until the 10m-depth temperature (approximate limit of the thermally active layer) reaches a mean annual equilibrium value that will be used as the surface boundary condition of the thermo-mechanical model. At each surface node, the density profile is calculated from the firn thickness  $F$  (m w.e.) which is computed as a function of time as follow:

$$F(t + dt) = \max[F(t) + (c(t) - d_f F)\Delta t; 0] \quad (12)$$

where  $c(t)$  is the daily net surface accumulation (m w.e.  $\text{yr}^{-1}$ ),  $d_f$  is a firn densification rate parameter ( $\text{yr}^{-1}$ ) and  $\Delta t$  the timestep (yr). The initial value of  $F$  is set to  $F_{ref}$  which is computed from the steady state mass balance assuming

$$F_{ref} = \begin{cases} \frac{B}{d_f} & \text{if } B \geq 0 \\ 0 & \text{if } B < 0 \end{cases} \quad (13)$$

The density is then calculated assuming a linear evolution of density with depth between the surface density  $\rho_0$  ( $\text{kg m}^{-3}$ ) and the ice density  $\rho_{ice}$  ( $\text{kg m}^{-3}$ ) at the firn/ice interface. It gives

$$\rho(z) = \rho_0 + \frac{(\rho_{ice} - \rho_0)}{(z_s - z_{ice})} (z_s - z) \quad (14)$$

where  $z$  is the vertical coordinate (m a.s.l.),  $z_s$  is the elevation of the surface (m a.s.l.), and  $z_{ice}$  is the elevation of the firm/ice transition (m a.s.l.). From mass conservation,  $z_{ice}$  has to satisfy

$$\int_{z_{ice}}^{z_s} \left( \rho_0 + \frac{(\rho_{ice} - \rho_0)}{(z_s - z_{ice})} (z_s - z) \right) dz = \rho_w F_{ref} \quad (15)$$

where  $\rho_w$  is the water density ( $1000 \text{ kg m}^{-3}$ ). Combining Equations (14) and (15) gives

$$\rho(z) = \min \left[ \rho_0 + \frac{(\rho_{ice}^2 - \rho_0^2)}{2\rho_w F} (z_s - z); \rho_{ice} \right] \quad (16)$$

235

The density profile and the surface elevation are updated only if  $F > F_{ref}$  by adding the corresponding amount of snow at density  $\rho_0$ .

The surface enthalpy field obtained using the distributed 1D model is used as a surface Dirichlet condition to solve the enthalpy equation in the 3D model. The 3D thermo-mechanical steady state of the glacier is then computed by following an iterative procedure:

240

1. Compute the steady state enthalpy field from Eq. 7 with  $Q_{lat} = \vec{v} = tr(\sigma \epsilon) = 0$  forced by the surface enthalpy field given by the distributed 1D model.
2. Compute  $Q_{lat}$  from Eq. 10 and Eq. 11.
3. Solve the ice velocity and deformational heat from the Stokes equation.
- 245 4. Compute the steady state enthalpy field from Eq. 7 with  $Q_{lat}$  determined in step 2.

Steps 2, 3 and 4 are repeated until a steady state is reached.

### 3.4.2. Bedrock topography and basal sliding condition

The main challenge in determining the glacier thermo-mechanical equilibrium is that: (i) the bedrock topography is not known everywhere underneath the glacier, and (ii) the glacier is sliding, which means that a friction coefficient has to be quantified. In order to resolve these issues, we adopted the following steps:

250

Step 1: Starting from the measured surface topography in 2014, we run the coupled thermo-mechanical model with the interpolated bedrock topography and a uniform basal friction coefficient during a 10-year period forced by the steady state

surface mass balance and enthalpy. In order to obtain the steady state mass balance, we shifted the temperature forcing (1980-2016 corrected reanalysis) ~~of by~~ -0.7°C which allows to obtain balanced mean conditions during the simulation period. The  
255 resulting mean surface mass balance is used as a steady mass balance associated with the 2014 glacier geometry. Here, we assume a uniform friction coefficient  $\beta$  ( $10^{-2}$  MPa a  $m^{-1}$ ) that allows the best match with the measured surface horizontal velocities;

Step 2: The computed changes in the free surface in Step 1 are reported to the bedrock topography by altering the bedrock by an amount equal to the free surface change (Gilbert et al., 2018);

260 Step 3: After a few iterations between Steps 1 and 2, we obtain a corrected bedrock topography where major flux divergences are avoided. Using this bedrock topography and the measured surface topography we inverted for the friction coefficient  $\beta$  by constraining the surface velocity with emergence velocities, which are taken as opposite to surface mass balance. This is done by using a controlled inverse method to minimize a cost function defined from the misfit with measured surface velocities and a regularization term (Gillet-Chaulet et al., 2012; Gagliardini et al., 2013). Following Gilbert et al. (2016, 2018) we define the  
265 cost function from the misfit between modelled and estimated emergence velocities;

Step 4: We finally run the model using the corrected bedrock topography and the inverted friction coefficient until the surface topography reaches a steady state.

### 3.5. Transient evolution

Transient simulations were performed at yearly timestep using the steady state glacier as initial condition. Surface mass balance  
270 and enthalpy are updated each year from the surface model described previously and forced by daily temperature reanalysis. We assumed constant basal friction parameter through time.

## 4. Results

### 4.1. Thermal regime and ice thickness measured with the GPR

GPR data show that the Rikha Samba Glacier is a polythermal glacier consisting mainly of cold ice but with significant  
275 temperate areas (Figs. 2 and 3). The measured maximum thickness was  $178 \pm 2$  m in the middle part of the glacier where the surface slope is relatively gentle. Ice temperature measurements by the thermistor chain support the GPR interpretation of an upper cold ice layer with sub-zero temperatures at the depth of 10 m (annual mean  $-2$  °C) in the ablation area of the glacier (Fig. 1). A notable characteristic of the GPR-based thermal regime is that the occurrence of temperate ice seems to be associated with the presence of surface crevasses (Figs. 2 and 3). The way that scattering is advected by the ice flow shows that the  
280 crevassed areas behave as a source term of scattering. It seems unlikely that the observed scattering would be produced by the crevasses field itself since the scatter occurs in the deeper part of the glacier where crevasses are not expected to persist. It would be rather more compatible with the formation of temperate ice which is then advected by ice flow.

## 4.2. Surface mass balance

We run the mass balance model using the 2014 surface topography over the period 1980-2016 using calibrated temperature reanalysis data (ERA-Interim) (Dee et al., 2011) while assuming a constant precipitation rate. The parameters were constrained by the stake measurements in 2012/2013 (Gurung et al., 2016), meteorological observations (Gurung et al., 2016), and geodetic mass balance over the periods 1974-1994 and 1998-2010 (Fujita and Nuimura, 2011) (Fig. 4). The parameters are summarized in Table 2.

Balanced conditions for the 2014 geometry are reached for a climate that is 0.7°C colder than the 1980-2016 climate with an equilibrium line altitude (ELA) of 5770 m a.s.l. (the 1980-2016 ELA is 5880 m a.s.l.; Fujita and Nuimura, 2011). This provides a mean surface mass balance and a melting rate to force the steady state glacier simulation (Fig. 4a).

The model is in good agreement with the observations but is not able to reproduce the same mass balance distribution as observed in 2013 (Figs. 4b-d). Probably, the inter-annual variability of the mass balance produced with our mass balance model is probably not very well represented since we assume a constant precipitation rate. Furthermore, the Rikha Samba Glacier is a summer-accumulation-type glacier in which precipitation events in summer can significantly affect the mass balance through albedo feedback (Fujita and Ageta, 2000; Fujita, 2008). However, the long-term trend and the mass balance gradient agree with the observations, which is satisfactory for the purposes of this study focusing on the thermal regime.

## 4.3. Enthalpy surface boundary condition

The modeled upper boundary condition field (Fig. 5) reveals a mainly cold surface condition with a temperate band between 5800 and 5900 m a.s.l. where both melting and firn thickness are sufficient to maintain temperate conditions. In the higher part of the accumulation area, the water percolation occurs only in the first two meters due to the limited amount of meltwater resulting in cold temperature at 10 m-depth (see Site 1 in Fig. 5) whereas, lower down at Site 2, meltwater percolates deep enough to keep temperate conditions all year round at 10 m-depth. In the ablation zone (Site 3), water percolation is limited to the seasonal snow thickness resulting in a cold boundary condition.

## 4.4. Modeled steady state glacier

The modeled steady state glacier is in good accordance with measured ice thickness (Fig. 6) and measured horizontal velocities (Fig. 7a). We selected a value for the damage threshold of  $\sigma_{th}=0.05$  MPa that allows the best match between modeled and observed crevassed areas (Fig. 7c). This value is within the recommended range found by Krug et al. (2014). The correction made on the bedrock topography following the method described in section 3.4.2 greatly improves the quality of the modeling in areas without radar measurements (Fig. 6). A simple interpolation (Fig. 6a) would have led to non-physical ice thickness with unrealistic flux divergence, which is avoided by our method. The bedrock correction in place where there is radar measurement rarely exceeds 20 m (Fig. 6c) apart from a few exceptions (i.e., 5 points in the 2010 measurements). We preferred to allow the corrected bedrock to differ from radar measurement in order to favour the mass conservation associated

with the prescribed surface mass balance. Moreover, radar measurements are uncertain especially in temperate areas where the bedrock interface is weakly determined. The inversion of the basal friction coefficient (Fig. 7b) provides a final steady state where ice flow is in accordance with steady state emergence velocities. The good agreement with horizontal velocities measured at stakes (Fig 7a) shows that our estimated emergence velocities (from surface mass balance) are consistent with the observed ice flow.

#### 4.5. Thermal regime: influence of melt water percolation

Modeling results show that water percolation in crevasses strongly affects the steady state thermal structure of the Rikha Samba Glacier leading to large temperate zones even at the glacier bed (Figs. 8b and 9b). It significantly extends the temperate-based parts, which cover almost the entire ablation area. Although we adopted a simple approach for water percolation through crevasses, modeled temperate ice thickness is in fairly good agreement with the GPR data (Fig. 8b). If water percolation through crevasses is neglected, the thermal regime of the glacier forced by mainly cold upper boundary conditions (Fig. 5) would result in a mainly cold based glacier (Fig. 9a). In such case, cold ice advection from the higher part of the glacier is able to compensate for the temperate surface conditions of the lower accumulation zone (Fig. 5), and only two bands of temperate ice are able to reach the bed on both sides of the flow line of the glacier (Fig. 9a). Such a thermal regime is in disagreement with the observed amount of temperate ice from the GPR data (Fig. 8a). This indicates the significant role of deep water percolation through cracks in cold ice as suggested by the GPR observations. The observed (Fig. 8b and 9b) and modeled (Fig. 8c and 9c) crevassed area leads to a similar result which validate our approach in modelling the location of the crevasses.

#### 4.6. Transient evolution

Despite the good agreement between the GPR data and the steady state model, a significant difference exists at the highest crevassed field. A temperate area is clearly visible in the GPR data (Fig. 3a) whereas the steady state thermal regime model predicts cold ice (Fig. 8). Mass balance measurements show that the Rikha Samba Glacier has not been in an equilibrium state for at least 40 years with an almost constantly negative rate of  $-0.5 \text{ m w.e. a}^{-1}$  (Fig. 4d). This temperate area could therefore be the signature of a transient response to air temperature warming. In order to investigate the potential impact of 40 years of unbalanced state on the glacier thermal regime, we performed a transient simulation starting in 1975 from the modeled steady state (with crevasses location imposed from [the modern observations showed in Fig. 3a](#)) and forced by the ERA-interim reanalysis time-series (Fig. 4c). It shows that the upper boundary conditions changed significantly with a cooling of the former accumulation zone in response to firn disappearance and a warming of the highest elevation due to melting increase (Fig. 10b). After a 40-years run, a temperate zone, that do not exist at the steady state, had developed in the highest crevassed area (Figs. 10c-d) as observed in the 2015 GPR measurements (Fig. 10d). This result strongly suggests that the presence of temperate ice in this zone is a result of a transient response to the air temperature warming and increasing surface melting at the higher elevations. The results also agree better with the observations, including the thermistor data (Figs. 10a).

To assess the sensitivity of the thermal regime to future temperature change, we performed a future simulation of the glacier retreat and thermal change until 2100 with (Fig. 11) and without (Fig. 12) water percolation through crevasses for a linearly increasing temperature of +1 °C between 2014 and 2100 (+1.7 °C in comparison with the steady state climatic condition). This shows a much faster development of a new temperate area when water percolation in the crevasses is taken into account. In such a scenario, the glacier becomes almost entirely temperate based by 2050 (Fig. 11) whereas it would have remained almost entirely cold if water percolation through the crevasses would have been neglected (Fig. 12). This highlights the crucial role of deep water percolation through cracks when modeling the past and future changes of glaciers thermal regimes.

## 5. Discussion

### 5.1. Uncertainty

The sensitivity experiment performed for the steady state simulation shows that the amount of modeled basal temperate ice can vary significantly depending on the choice of parameters associated with firn thickness and basal heat flux which are poorly constrained. However, the thickness of the modeled temperate ice always remains much less than indicated by the GPR observations if the crevasse influence is not taken into account. This means that uncertainty on those parameters alone do not explain the disagreement between data and model when the role of crevasses is neglected.

The mass balance model we used is simplified since we did not take into account the seasonality and time variation in precipitation which can be sources of uncertainties in our study. However, the main focus of this study is the thermal regime of the glacier and, hence, we do not claim that our simulation is accurate regarding the Rikha Samba Glacier past and future evolution. Our study relies on a long-term average of the surface mass balance and our simple calibrated model should be able to adequately capture it.

Since the density of ice is well constrained and there was no snow or firn over the surveyed part of the glacier at the time of the field measurement in 2015, the main uncertainties of the GPR measurements arise from the GPS positioning of the GPR measurements, the radar wavelength, and scattering of the radar signal. For the point measurements and those parts of the GPR profiles along which the bedrock reflection was clearly identified, the accuracy of the horizontal coordinates is about  $\pm 20$  m, especially on the steepest surface slopes. In addition, the vertical resolution of the GPR signal is usually considered to be approximately one quarter of the radar signal wavelength, which is about 5.6 m and 33.6 m for the 30 MHz and 5 MHz antennas, respectively. In other words, the vertical resolution of the englacial scattering, interpreted as temperate ice and ice thickness along the continuous GPR profiles, is about 1.4 m whereas the same for the ice thickness obtained from the point measurements is about 8.4 m. The manual picking of bed reflectors in the radargrams introduces extra uncertainties up to 20 m, especially in temperate areas where the bed reflectors are weaker (see Fig. 2). Finally, the limited coverage of the radar profiles on the glacier introduces uncertainty in the bedrock topography inferred from the GPR data even after correction using the model. Uncertainties in the surface DEM are expected to be lower than 1 m and do not introduce extra uncertainties in the bedrock topography reconstructed from the measured thicknesses. Our interpretation of the thermal regime based on the

englacial radar scattering of the GPR 30 MHz profiles is supported by previously found close agreement between the observed scattering and borehole temperatures without significant difference in observed englacial scattering relative to the expected measurement error at 10, 35 and 50 MHz antenna frequencies (Wilson et al., 2013).

In the modeled bedrock topography, the difficulty arises from the fact that the friction coefficient is unknown and we had to assume a uniform value of basal friction coefficient to correct the bedrock topography from flux divergence anomalies. The friction coefficient we inferred in a second step to force the steady emergence velocity to match the balanced surface mass balance is therefore affected by ice thickness errors. The resulting velocity field is consistent with the surface mass balance but uncertainties in the respective contribution of the basal sliding and ice deformation to surface velocities remain. It makes the interpretation of the modeled basal friction difficult (Fig. 7b), which thus has to be seen more as a tuning parameter rather than a parameter revealing physical processes.

## **5.2. Role of surface runoff through supra-glacial streams**

Our study shows that the thermal regime of the Rikha Samba Glacier can be modeled by taking into account the liquid water derived from local surface melt percolating into crevassed fields. Neglect of water inputs coming from surface runoff through supra-glacial streams seems thus, to be a valid hypothesis. For a polythermal glacier with a cold surface layer, which is a common feature in the ablation areas where firn heating is nonexistent, surface runoff occurs in well-marked and persistent streams at the surface (Ryser et al., 2013). These streams bring water into the crevasse fields through a few localized entry points only. Hence, as there is only a relatively small contact surface between the streams and cold ice, a limited amount of water will refreeze. This is why the influence of surface runoff on the thermal regime of the glacier is likely to remain limited. Similarly, Lüthi et al. (2015) have concluded that moulins have little influence on the thermal regime of the Greenland Ice Sheet since they can be represented as line sources which provide limited warming to the surrounding ice. On the contrary, surface melting occurring in crevassed fields is well distributed and can release latent heat on a much larger area, thus having a stronger impact on the thermal regime.

## **5.3. Enhanced influence of climate change on glaciers thermal regime and dynamics**

The influence of deep latent heat release through melt water percolation in crevasses have been already inferred for Greenland. Lüthi et al. (2015) and Seguinot et al. (2020) observed temperature anomalies in borehole measurements that can only be explained by latent heat released down to a 400 m-depth in crevassed fields. Similar conclusions have been made by Hills et al. (2017) although they show that these effects remain localized and may not really influence the thermal regime of the Greenland Ice Sheet on a large scale. In the case of mountain valley glaciers, crevassed fields can cover a significant fraction of the total glacier area, which is combined with a generally much faster ice flow leading to efficient advective processes that transport the heat produced in the crevassed areas. The results of these combined effects are significant, greatly influencing the thermal regime at the glacier scale as shown in this study. As already pointed out for ice sheets (Phillips et al. 2010, 2013), the timescale of the glacier thermal regime response to climate change is also greatly diminished in comparison with the case



410 where only heat diffusion/advection of surface changes are involved in the warming process. However, we show here that deep water percolation is likely restricted to the crevassed areas and absent elsewhere in order to model the observed thermal structure. This restricts the spatial extent of the process on the glacier as it is dependent on the bedrock topography and its related crevasse positions. For instance, the Yala Glacier, another polythermal glacier in the Nepal Himalaya (Sugiyama et al., 2013), is entirely cold in its ablation area likely due to thinner ice and a lack of crevassed areas. Nevertheless, it is likely that 415 the meltwater percolation via crevasses has a significant impact on the thermal regime of numerous polythermal high altitude glaciers. Future warming could also lead to a faster thermal regime response than previously thought (Gilbert et al. 2015), especially in the cold accumulation areas where the pre-industrial melting rates were not sufficient to form temperate ice.

## 6. Conclusions

In this study, we use GPR measurements to show that the high elevation Himalayan Rikha Samba Glacier is polythermal. We 420 interpret the field observations of the temperate ice thickness using a 3D thermo-mechanical model constrained by a surface model taking into account water percolation in firn and seasonal snow. We show that the firn/snow heating, heat deformation, and geothermal heat flux alone cannot explain the observed amount of temperate ice. The combined evidence of the model and observations reveals that valley-type mountain glaciers in cold climates are greatly affected by water percolation into crevassed fields which release latent heat into the ice body. It affects the thermal regime at the scale of the whole glacier 425 making temperate ice zones much larger than they would be without this effect. This enables sliding in large areas of the bed largely affecting the glacier dynamic and thickness.

We also show that the thermal regime of the Rikha Samba Glacier is affected by a transient response to the last 40 years' air temperature warming extending the temperate area to the highest part of the glacier. The thermal changes are occurring at a much smaller timescale (~50 years) due to the crevasse effect compared to what it would be by advection/diffusion processes 430 alone (>100 years). Our study reveals the crucial role of deep water percolation through cracks in determining both the steady state and transient thermal structure of the polythermal glacier. We provide a simple approach easily applicable to any glaciers for a more accurate reconstruction of complex thermal structures as the one observed in the case of the Rikha Samba Glacier.

435

*Data availability.* As required by ICIMOD publication policy, GPR data used in this study will be made publicly available through ICIMOD's Regional Database System at: <http://rds.icimod.org>. ICIMOD has an open data policy. The modelling code is based on the open-source code Elmer/Ice available at <http://www.elmerfem.org>. It includes an example based on the case presented in this paper.

440

*Author contributions.* AS and AG designed the study. AG performed the modeling analysis. AS, TRG and TCS conducted the field work in 2015. KF and TF conducted the fieldwork in 2010. AS and TF analyzed the GPR data. TRG and KF analyzed the ERA-Interim data and mass balance. SBM analyzed the DEM data. AG and AS wrote the paper with contributions from all other authors.

445  
*Competing interests.* The authors declare that they have no conflict of interest.

*Acknowledgements.* We would like to thank Martin Lüthi and one anonymous reviewer for their valuable comments that significantly improved the quality and readability of the manuscript. This work was supported by ICIMOD's Cryosphere Initiative, funded by Norway and by ICIMOD core funds contributed by the Governments of Afghanistan, Australia, Austria, Bangladesh, Bhutan, China, India, Myanmar, Nepal, Norway, Pakistan, Sweden, and Switzerland. The authors would like to thank L. Rai for his support in the field measurements campaign in 2015 and J. Gustafsson and T. Zwinger for their inputs when designing the study as well as the entire field teams in 2010, 2014 and 2015. Adrien Gilbert acknowledges the University of Oslo "EarthFlows" initiative and funding from the European Research Council under the European Union's Seventh Framework Programme (FP/2007-2013)/ERC grant agreement no. 320816. The views and interpretations in this publication are those of the authors' and are not necessarily attributable to their respective organizations.

## References

- Aschwanden, A., Bueler, E., Khroulev, C., and Blatter, H.: An enthalpy formulation for glaciers and ice sheets, *J. Glaciol.*, 58, 441–457, <https://doi.org/10.3189/2012JoG11J088>, 2012.
- Bennett, M. M. and Glasser, N. F.: *Glacial Geology: Ice Sheets and Landforms*, John Wiley & Sons, Oxford., ISBN: 978-0-470-51690-4, 2011.
- Boon, S. and Sharp, M.: The role of hydrologically-driven ice fracture in drainage system evolution on an Arctic glacier, *Geophysical Research Letters*, 30(18), doi:10.1029/2003GL018034, 2003.
- Calonne N., Flin F., Morin S., Lesaffre B., Rolland du Roscoat S., and Geindreau C.: Numerical and experimental investigations of the effective thermal conductivity of snow, *Geophys. Res. Lett.*, 38, L23501, <https://doi.org/10.1029/2011GL049234>, 2011.
- Cuffey, K. and Paterson, W. S. B.: *The Physics of Glaciers*, Elsevier, Butterworth-Heinemann, Burlington, MA, USA, ISBN: 9781493300761, 2010.

- 470 Fischer, A.: Calculation of glacier volume from sparse ice-thickness data, applied to Schaufelferner, Austria, *J. Glaciol.* 55, 453–460, <https://doi.org/10.3189/002214309788816740>, 2009.
- Dee, D. P., Uppala, S. M., Simmons, A. J., Berrisford, P., Poli, P., Kobayashi, S., Andrae, U., Balmaseda, M. A., Balsamo, G., Bauer, P., Bechtold, P., Beljaars, A. C. M., van de Berg, L., Bidlot, J., Bormann, N., Delsol, C., Dragani, R., Fuentes, M., Geer, A. J., Haimberger, L., Healy, S. B., Hersbach, H., Hólm, E. V., Isaksen, L., Kållberg, P., Köhler, M.,  
475 Matricardi, M., McNally, A. P., Monge-Sanz, B. M., Morcrette, J.-J., Park, B.-K., Peubey, C., de Rosnay, P., Tavolato, C., Thépaut, J.-N., and Vitart, F.: The ERA-Interim reanalysis: configuration and performance of the data assimilation system, *Q. J. Roy. Meteorol. Soc.*, 137, 553–597, <https://doi.org/10.1002/qj.828>, 2011.
- Faillettaz, J., Sornette, D., and Funk, M.: Numerical modeling of a gravity-driven instability of a cold hanging glacier: reanalysis of the 1895 break-off of Altelsgletscher, Switzerland, *J. Glaciol.*, 57, 817–831,  
480 <https://doi.org/10.3189/002214311798043852>, 2011.
- Fountain, A. G. and Walder, J. S.: Water flow through temperate glaciers, *Rev. Geophys.*, 36(3), 299–328, <https://doi:10.1029/97RG03579>, 1998.
- Fujita, K.: Effect of precipitation seasonality on climatic sensitivity of glacier mass balance, *Earth Planet. Sci. Lett.*, 276, 14–19, <https://doi.org/10.1016/j.epsl.2008.08.028>, 2008.
- 485 Fujita, K. and Ageta, Y.: Effect of summer accumulation on glacier mass balance on the Tibetan Plateau revealed by mass-balance model, *J. Glaciol.*, 46, 244–252, <https://doi.org/10.3189/172756500781832945>, 2000.
- Fujita, K. and Nuimura, T.: Spatially heterogeneous wastage of Himalayan glaciers, *Proc. Nat. Acad. Sci. USA*, 108, 14011–14014, <http://doi.org/10.1073/pnas.1106242108>, 2011.
- Fujita, K., Nakawo, M., Fujii, Y., and Paudyal, P.: Changes in glaciers in Hidden Valley, Mukut Himal, Nepal Himalayas, from 1974 to 1994, *J. Glaciol.*, 43, 583–588, <https://doi.org/10.3189/S002214300003519X>, 1997.  
490
- Fujita, K., Nakazawa, F., and Rana, B.: Glaciological observations on Rikha Samba Glacier in Hidden Valley, Nepal Himalayas, 1998 and 1999, *Bull. Glaciol. Res.*, 18, 31–35, 2001.
- Gagliardini, O., Zwinger, T., Gillet-Chaulet, F., Durand, G., Favier, L., de Fleurian, B., Greve, R., Malinen, M., Martín, C., Råback, P., Ruokolainen, J., Sacchetti, M., Schäfer, M., Seddik, H., and Thies, J.: Capabilities and performance of Elmer/Ice, a new-generation ice sheet model, *Geosci. Model Dev.*, 6, 1299–1318, <https://doi.org/10.5194/gmd-6-1299-2013>, 2013.  
495
- Gilbert, A., Vincent, C., Wagnon, P., Thibert, E., and Rabatel, A.: The influence of snow cover thickness on the thermal regime of Tête Rousse Glacier (Mont Blanc range, 3200 m asl): consequences for outburst flood hazards and glacier response to climate change, *J. Geophys. Res.*, 117, F04018, <https://doi.org/10.1029/2011JF002258>, 2012.

- 500 Gilbert, A., Gagliardini, O., Vincent, C., and Wagnon, P.: A 3-D thermal regime model suitable for cold accumulation zones of polythermal mountain glaciers, *J. Geophys. Res.*, 119, 1876–1893, <https://doi.org/10.1002/2014JF003199>, 2014a.
- Gilbert, A., Vincent, C., Six, D., Wagnon, P., Piard, L., and Ginot, P.: Modeling near-surface firn temperature in a cold accumulation zone (Col du Dôme, French Alps): from a physical to a semi-parameterized approach, *The Cryosphere*, 8, 689–703, <https://doi.org/10.5194/tc-8-689-2014>, 2014b.
- 505 Gilbert, A., Vincent, C., Gagliardini, O., Krug, J., and Berthier, E.: Assessment of thermal change in cold avalanching glaciers in relation to climate warming, *Geophys. Res. Lett.*, 42, 6382–6390, <https://doi.org/10.1002/2015GL064838>, 2015.
- Gilbert, A., Flowers, G. E., Miller, G. H., Rabus, B. T., Van Wychen, W., Gardner, A. S., and Copland, L.: Sensitivity of Barnes Ice Cap, Baffin Island, Canada, to climate state and internal dynamics, *J. Geophys. Res.*, 121, 1516–1539, <https://doi.org/10.1002/2016JF003839>, 2016.
- 510 Gilbert, A., Leinss, S., Kargel, J., Käab, A., Gascoin, S., Leonard, G., Berthier, E., Karki, A., and Yao, T.: Mechanisms leading to the 2016 giant twin glacier collapses, Aru Range, Tibet, *The Cryosphere*, 12, 2883–2900, <https://doi.org/10.5194/tc-12-2883-2018>, 2018.
- Gillet-Chaulet, F., Gagliardini, O., Seddik, H., Nodet, M., Durand, G., Ritz, C., Zwinger, T., Greve, R., and Vaughan, D. G.: Greenland ice sheet contribution to sea-level rise from a new-generation ice-sheet model, *The Cryosphere*, 6, 1561–1576, <https://doi.org/10.5194/tc-6-1561-2012>, 2012.
- 515 Gurung, S., Bhattarai, B. C., Kayastha, R. B., Stumm, D., Joshi, S. P., and Mool, P. K.: Study of annual mass balance (2011–2013) of Rikha Samba Glacier, Hidden Valley, Mustang, Nepal, *Sci Cold Arid Region.*, 8, 311–318, <https://doi.org/10.3724/SP.J.1226.2016.00311>, 2016.
- Gusmeroli, A., Jansson, P., Pettersson, R., and Murray, T.: Twenty years of cold layer thinning at Storglaciaren, sub-Arctic Sweden, 1989–2009, *J. Glaciol.*, 58, 3–10, <https://doi.org/10.3189/2012JoG11J018>, 2012.
- 520 Hills, B. H., Harper, J. T., Humphrey, N. F., and Meierbachtol, T. W.: Measured horizontal temperature gradients constrain heat transfer mechanisms in Greenland ice, *Geophys. Res. Lett.*, 44, 9778–9785, <https://doi.org/10.1002/2017GL074917>, 2017.
- Irvine-Fynn, T. D. L., Moorman, B. J., Williams, J. L. M., and Walter, F. S. A.: Seasonal changes in ground penetrating radar signature observed at a polythermal glacier, Bylot Island, Canada, *Earth Surf. Process. Landform.*, 31, 892–909, <http://dx.doi.org/10.1002/esp.1299>, 2006.
- 525 Krug, J., Weiss, J., Gagliardini, O., and Durand, G.: Combining damage and fracture mechanics to model calving, *The Cryosphere*, 8, 2101–2117, <http://dx.doi.org/10.5194/tc-8-2101-2014>, 2014.

- 530 Liu, Y., Hou, S., Wang, Y., and Song, L.: Distribution of borehole temperature at four high altitude alpine glaciers in central Asia, *J. Mt. Sci.*, 6, 221–227, <https://doi.org/10.1007/s11629-009-0254-9>, 2009.
- Lüthi, M. P., Ryser, C., Andrews, L. C., Catania, G. A., Funk, M., Hawley, R. L., Hoffman, M. J., and Neumann, T. A.: Heat sources within the Greenland Ice Sheet: dissipation, temperate paleo-firn and cryo-hydrologic warming, *The Cryosphere*, 9, 245–253, <https://doi.org/10.5194/tc-9-245-2015>, 2015.
- Mae, S.: Ice temperature of Khumbu Glacier, Seppyo, *J. Jpn. Soc. Snow Ice*, 38, Special Issue, 37–38, 1976.
- 535 Matheron, G.: Principles of geostatistics, *Economic Geology*, 58(8), 1246–1266, <https://doi.org/10.2113/gsecongeo.58.8.1246>, 1963.
- Miles, K. E., Hubbard, B., Quincey, D. J., Miles, E. S., Sherpa, T. C., Rowan, A. V., and Doyle, S. H.: Polythermal structure of a Himalayan debris-covered glacier revealed by borehole thermometry, *Sci. Rep.*, 8, 16825, <https://doi.org/10.1038/s41598-018-34327-5>, 2018.
- 540 Miller, J. D., Immerzeel, W. W., and Rees, G.: Climate change impacts on glacier hydrology and river discharge in the Hindu Kush–Himalayas, *Mt. Res. Dev.*, 32, 461–467, <https://doi.org/10.1659/MRD-JOURNAL-D-12-00027.1>, 2012.
- Pellicciotti, F., Brock, B., Strasser, U., Burlando, P., Funk, M., and Corripio, J.: An enhanced temperature-index glacier melt model including the shortwave radiation balance: development and testing for Haut Glacier d’Arolla, Switzerland, *J. Glaciol.*, 51, 573–587, <https://doi.org/10.3189/172756505781829124>, 2005.
- 545 Pettersson, R., Jansson, P., Huwald, H., and Blatter, H.: Spatial pattern and stability of the cold surface layer of Storglaciaren, Sweden, *J. Glaciol.*, 53, 99–109, <https://doi.org/10.3189/172756507781833974>, 2007.
- Phillips, T., Rajaram, H., and Steffen, K.: Cryo-hydrologic warming: a potential mechanism for rapid thermal response of ice sheets, *Geophys. Res. Lett.*, 37, L20503, <https://doi.org/10.1029/2010GL044397>, 2010.
- 550 Phillips, T., Rajaram, H., Colgan, W., Steffen, K., and Abdalati, W.: Evaluation of cryo-hydrologic warming as an explanation for increased ice velocities in the wet snow zone, Sermeq Avannarleq, West Greenland, *J. Geophys. Res.*, 118, 1241–1256, <https://doi.org/10.1002/jgrf.20079>, 2013.
- Pralong, A. and Funk, M.: Dynamic damage model of crevasse opening and application to glacier calving, *J. Geophys. Res.*, 110, B01309, <https://doi.org/10.1029/2004JB003104>, 2005.
- 555 Robin, G. D. Q.: Velocity of radio waves in ice by means of a bore-hole interferometric technique, *Journal of Glaciology*, 15(73), 151–159, <https://doi.org/10.3189/S0022143000034341>, 1975.
- Ryser, C., Lüthi, M., Blindow, N., Suckro, S., Funk, M., and Bauder, A.: Cold ice in the ablation zone: its relation to glacier hydrology and ice water content, *J. Geophys. Res.*, 118, 693–705, <https://doi.org/10.1029/2012JF002526>, 2013.

- Seguinot, J., Funk, M., Bauder, A., Wyder, T., Senn, C. and Sugiyama, S.: Englacial warming indicates deep crevassing in Bowdoin Glacier, Greenland, *Front. Earth Sci.*, 8, doi:10.3389/feart.2020.00065, 2020.
- 560 Sugiyama, S., Fukui, K., Fujita, K., Tone, K., and Yamaguchi, S.: Changes in ice thickness and flow velocity of Yala Glacier, Langtang Himal, Nepal, from 1982 to 2009, *Ann. Glaciol.*, 54(64), 157–162, <https://doi.org/10.3189/2013AoG64A111>, 2013.
- Tao, W. and Shen, Z.: Heat flow distribution in Chinese continent and its adjacent areas, *Progress in Natural Science*, 18(7), 843–849, <https://doi.org/10.1016/j.pnsc.2008.01.018>, 2008.
- 565 Van der Veen, C. J.: Fracture propagation as means of rapidly transferring surface meltwater to the base of glaciers, *Geophys. Res. Lett.*, 34(1), L01501, <https://doi.org/10.1029/2006GL028385>, 2007.
- Wang, Y., Zhang, T., Ren, J., Qin, X., Liu, Y., Sun, W., Chen, J., Ding, M., Du, W., and Qin, D.: An investigation of the thermomechanical features of Laohugou Glacier No. 12 on Qilian Shan, western China, using a two-dimensional first-order flow-band ice flow model, *The Cryosphere*, 12, 851–866, <https://doi.org/10.5194/tc-12-851-2018>, 2018.
- 570 Watanabe, O., Takenaka, S., Iida, H., Kamiyama, K., Thapa, K. B., and Mulmi, D. D.: First results from Himalayan glacier boring project in 1981–1982, Part I. Stratigraphic analyses of full-depth cores from Yala Glacier, Langtang Himal, Nepal. *Bull. Glacier Res.*, 2, 7–23, 1984.
- Wilson, N. J., Flowers, G. E., and Mingo, L.: Comparison of thermal structure and evolution between neighboring subarctic glaciers, *J. Geophys. Res.*, 118, 1443–1459, <https://doi.org/10.1002/jgrf.20096>, 2013.
- 575 Zhang, T., Xiao, C., Colgan, W., Qin, X., Du, W., Sun, W., Liu, Y., and Ding, M.: Observed and modelled ice temperature and velocity along the main flowline of East Rongbuk Glacier, Qomolangma (Mount Everest), Himalaya, *J. Glaciol.*, 59, 438–448, <https://doi.org/10.3189/2013JoG12J202>, 2013.

580

585

590

595

600

**Table 1. Parameters of the surface model for enthalpy boundary condition.**

Name	Symbol	Values	Units
Residual water saturation <sup>a</sup>	$S_r$	$5.00 \cdot 10^{-3}$	
Thermal conductivity of snow <sup>a</sup>	$k$	$f(\rho)$ <sup>b</sup>	$\text{W K}^{-1} \text{ m}^{-1}$
Firn densification rate	$d_f$	30.0	$\text{yr}^{-1}$
Surface density	$\rho_0$	350	$\text{kg m}^{-1}$
Ice density	$\rho_{ice}$	917	$\text{kg m}^{-1}$
Latent heat of fusion	$L$	$3.34 \cdot 10^5$	$\text{J kg}^{-1}$
Heat capacity of ice	$C_p$	2050	$\text{J kg}^{-1} \text{ K}^{-1}$

<sup>a</sup> Described in Gilbert et al. (2014b); <sup>b</sup> Formulation proposed by Calonne et al. (2011)

**Table 2. Parameters of the surface mass balance model.**

Name	Symbol	Values	Units
Melting factor	$f_m$	$1.2 \cdot 10^{-2}$ <sup>b</sup>	m w.e. d <sup>-1</sup> K <sup>-1</sup>
Radiative melting factor for ice	$f_{rad}^{ice}$	$9.3 \cdot 10^{-5}$ <sup>b</sup>	m w.e. d <sup>-1</sup> W <sup>-1</sup> m <sup>2</sup>
Radiative melting factor for snow	$f_{rad}^{snow}$	$4.6 \cdot 10^{-5}$ <sup>b</sup>	m w.e. d <sup>-1</sup> W <sup>-1</sup> m <sup>2</sup>
Altitudinal precipitation factor	$A_p$	0.43 <sup>a</sup>	km <sup>-1</sup>
Annual precipitation	$P_{ref}$	374 <sup>c</sup>	mm a <sup>-1</sup>
Reference elevation for $P_{ref}$	$z_{ref}$	5310	m a.s.l.
Temperature lapse rate	$dT/dz$	$-6.2 \cdot 10^{-3}$ <sup>a</sup>	K m <sup>-1</sup>
Snow/rain threshold	$T_{snow}$	276.75 <sup>a</sup>	K
Melting threshold	$T_{th}$	272.65 <sup>b</sup>	K
Refreezing factor <sup>d</sup>	$f_r$	0.15 <sup>b</sup>	—

<sup>a</sup>Gurung et al. (2016); <sup>b</sup>Calibrated in this study; <sup>c</sup>Fujita and Nuimura (2011); <sup>d</sup>Gilbert et al. (2016)



620

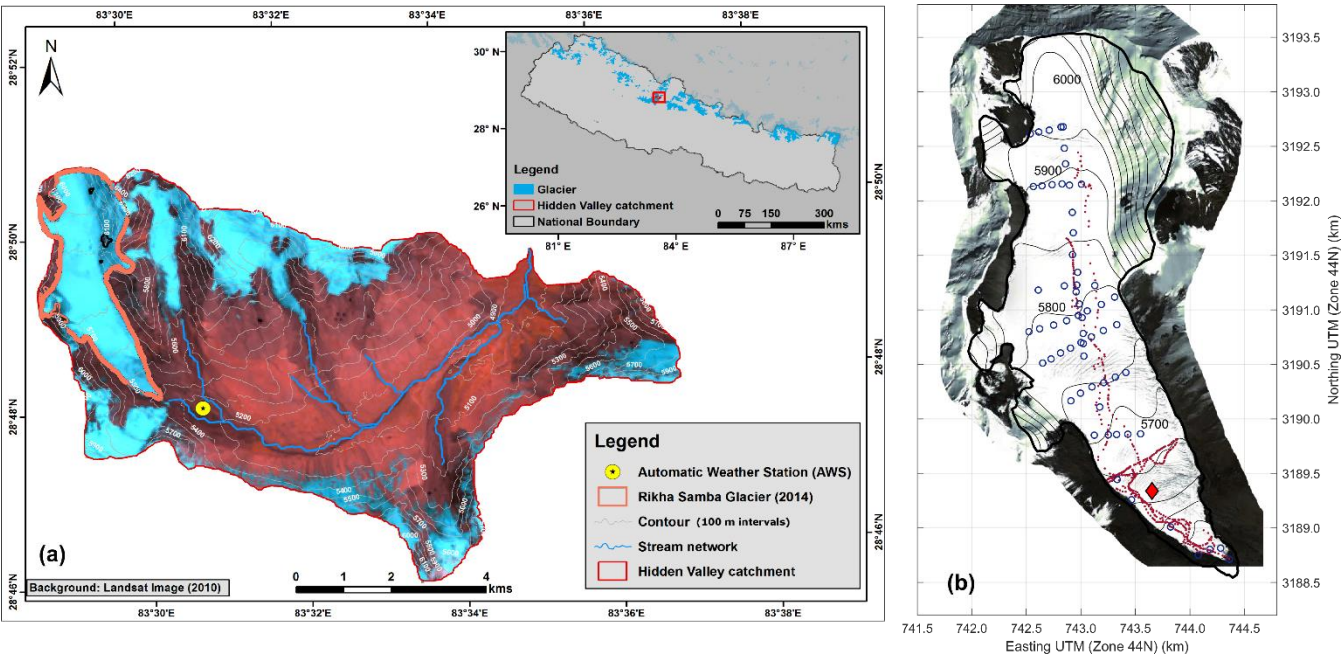


Figure 1. (a) Location and (b) map of Rikha Samba Glacier in the Hidden Valley catchment in Nepal. Radar tracks in 2015 (red dots), radar point measurements in 2010 (blue circles), and location of the thermistor chain (red diamond) are shown in (b). Background image of (a) is of Landsat 5 on 25 May 2010.

625

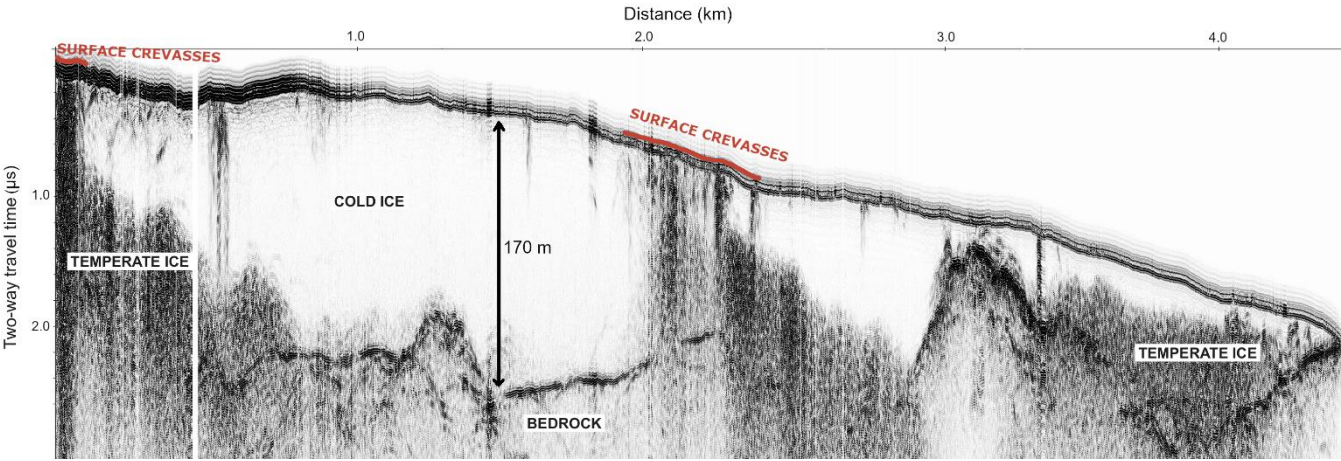
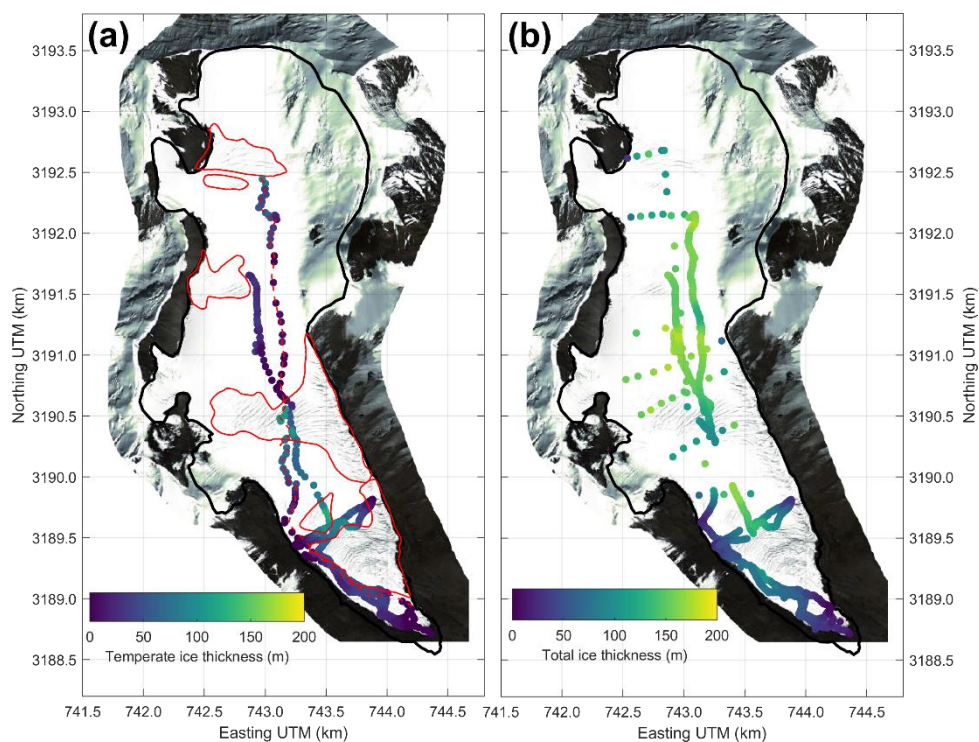
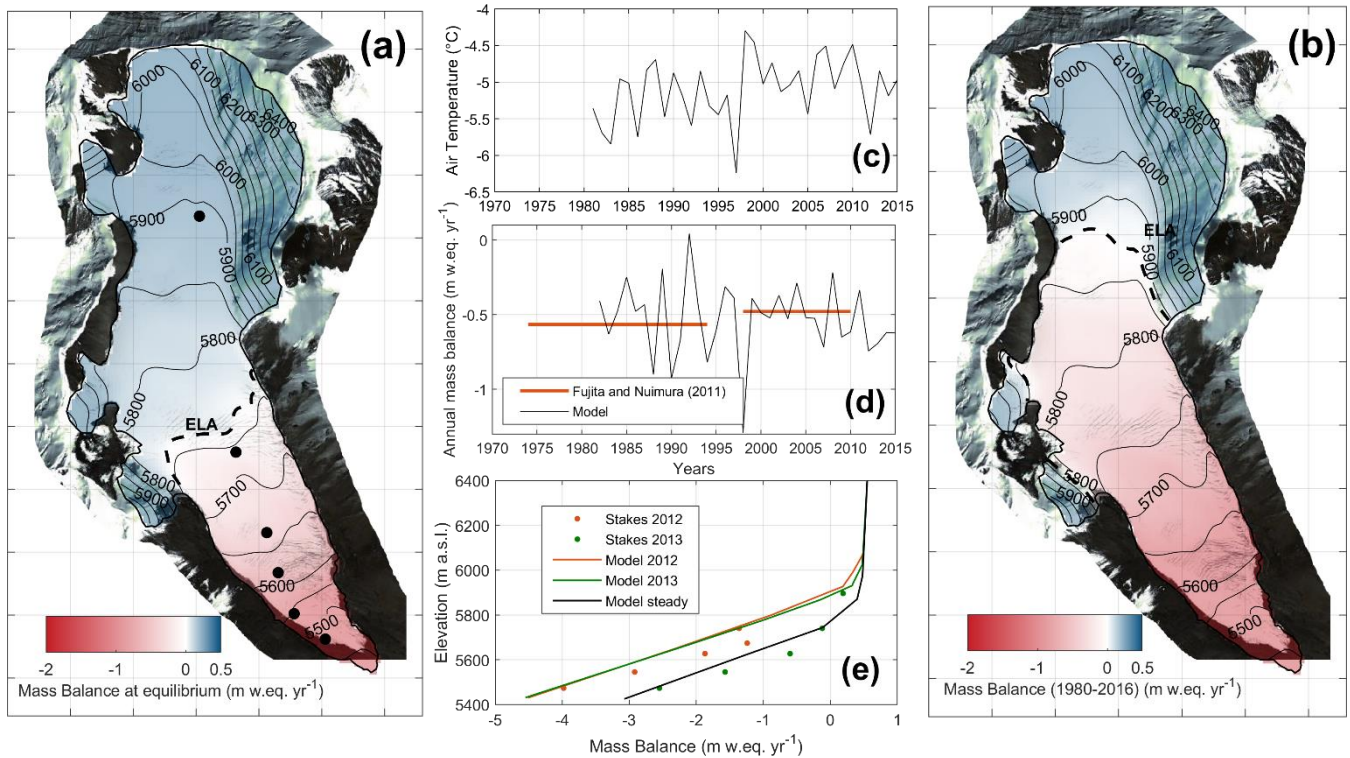


Figure 2. 30 MHz radar profile measured in 2015 along the ~~black-red~~ dashed line in Fig. 3a. This profile shows the presence of both cold ice (no reflection) and temperate ice (strong scattering).

630

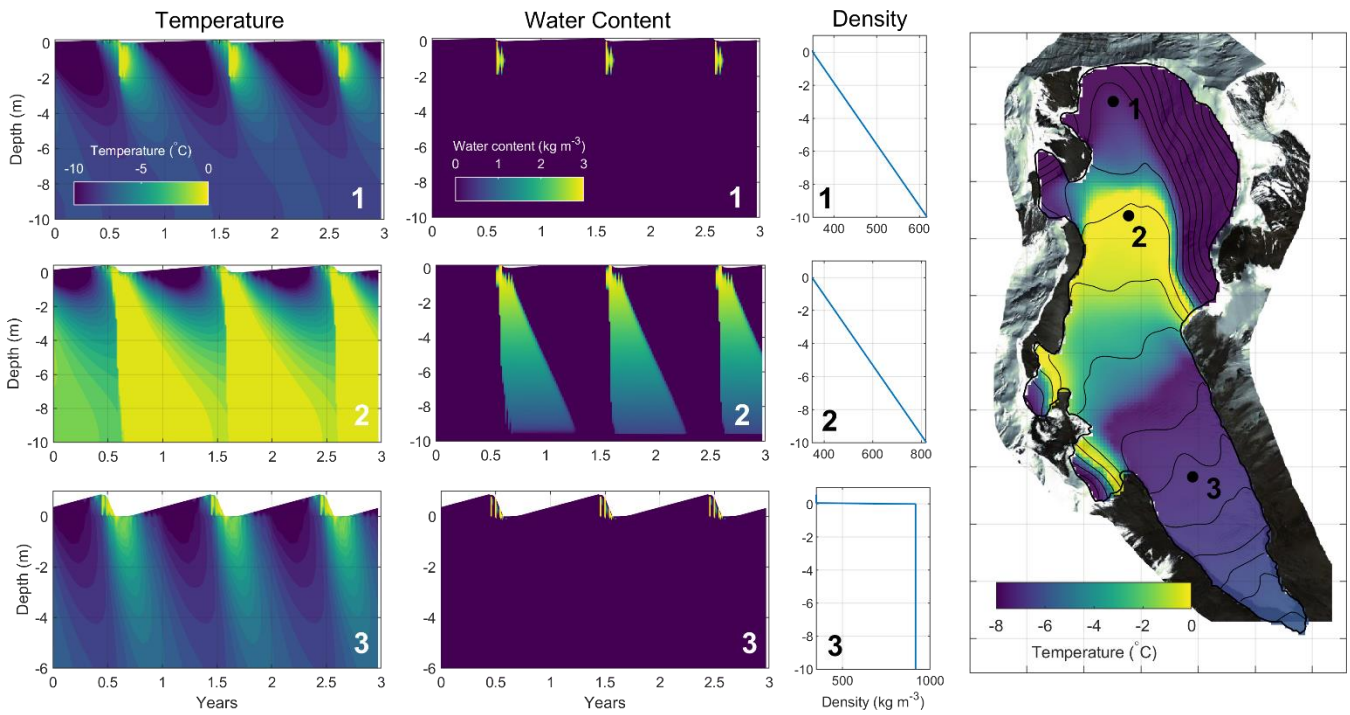


**Figure 3. (a) Measured temperate ice thickness (dots) and observed crevassed areas (red continuous lines). The red dashed line shows the location of the radar profile presented in Figure 2. (b) Measured total ice thickness.**

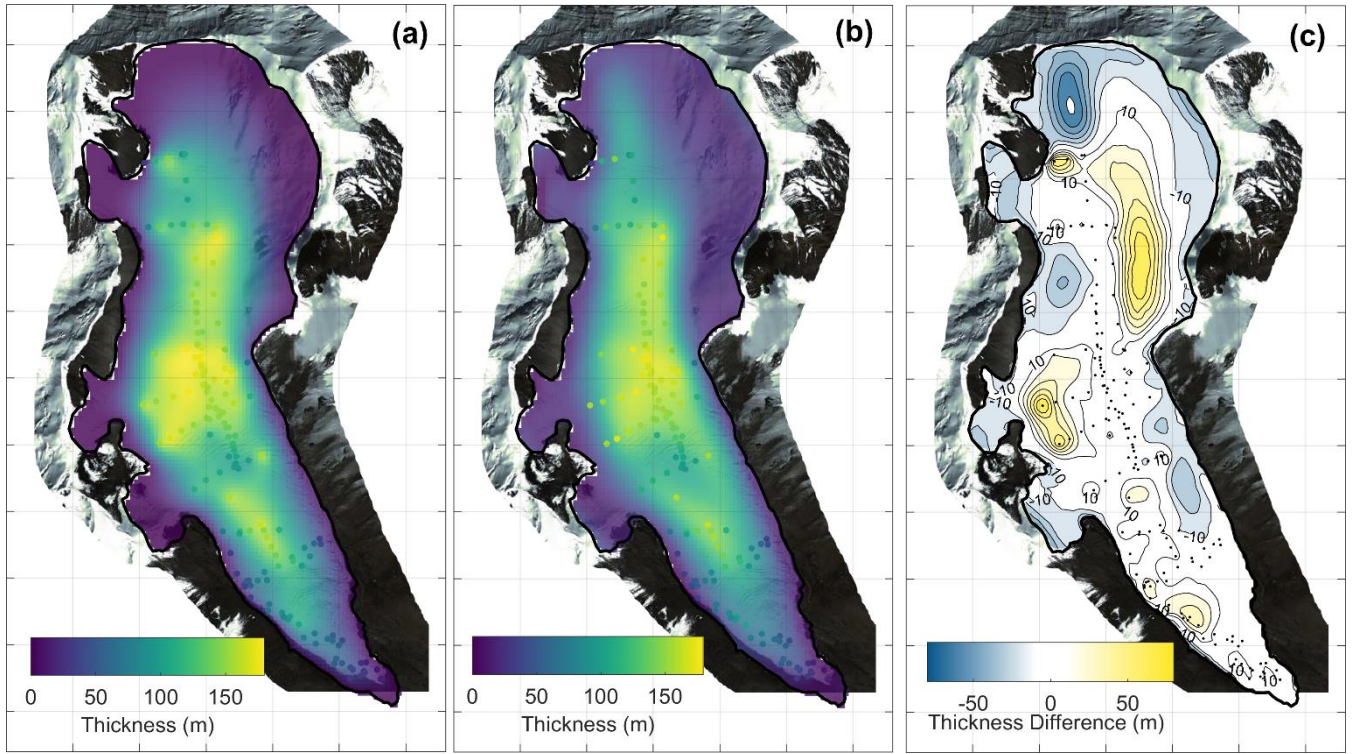


**Figure 4. Modeled mass balance using ERA-interim reanalysis data. (a) Surface mass balance at equilibrium. Black dots are stake locations from Gurung et al. (2016). (b) Mean surface mass balance during the period 1980-2016. (c) Corrected ERA-interim annual temperature (d) Modeled annual surface mass balance compared to geodetic data (Fujita and Nuimura, 2011). (e) Modeled surface mass balance as a function of elevation at equilibrium (black line), in 2012 (red line) and 2013 (green line). Dots are stake measurements for the years 2012 and 2013 (Gurung et al., 2016).**

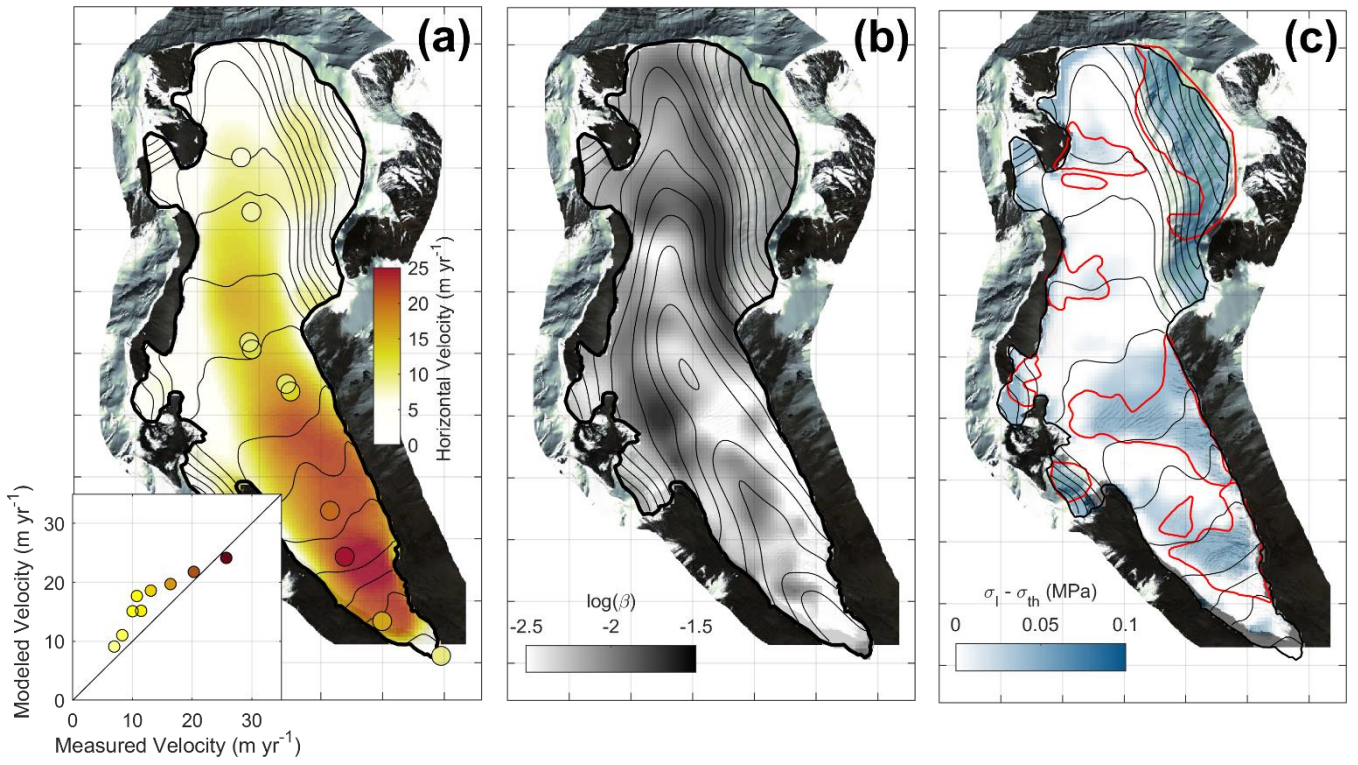




**Figure 5.** One-dimensional temperature, water content and density modeled in the first 10m-depth during 3 years and at three locations on the glacier. The one-dimensional model is forced by a reference temperature/precipitation annual cycle until reaching a stationary periodic response at 10 m-depth. Mean annual temperature at 10 m-depth is then used as an upper boundary condition for the thermo-mechanical model (mapped on the right panel).



**Figure 6.** (a) Interpolated ice thickness from GPR measurements (dots in the three panels). (b) Ice thickness after bedrock topography smoothing and correction using free surface relaxation. (c) Difference between interpolated and corrected ice thickness and positions of the GPR measurements (black dots).



**Figure 7. (a) Steady state surface velocities compared with the measurements (coloured dots and inset). Contour lines are surface topography with 50 m intervals (b) Friction coefficient inferred from emergence velocities (assumed to be opposite of surface mass balance). Contour lines are bedrock topography with 50 m intervals (c) Modeled crevassed areas from maximal Cauchy stress anomaly (colour scale) compared with observations (red lines).**



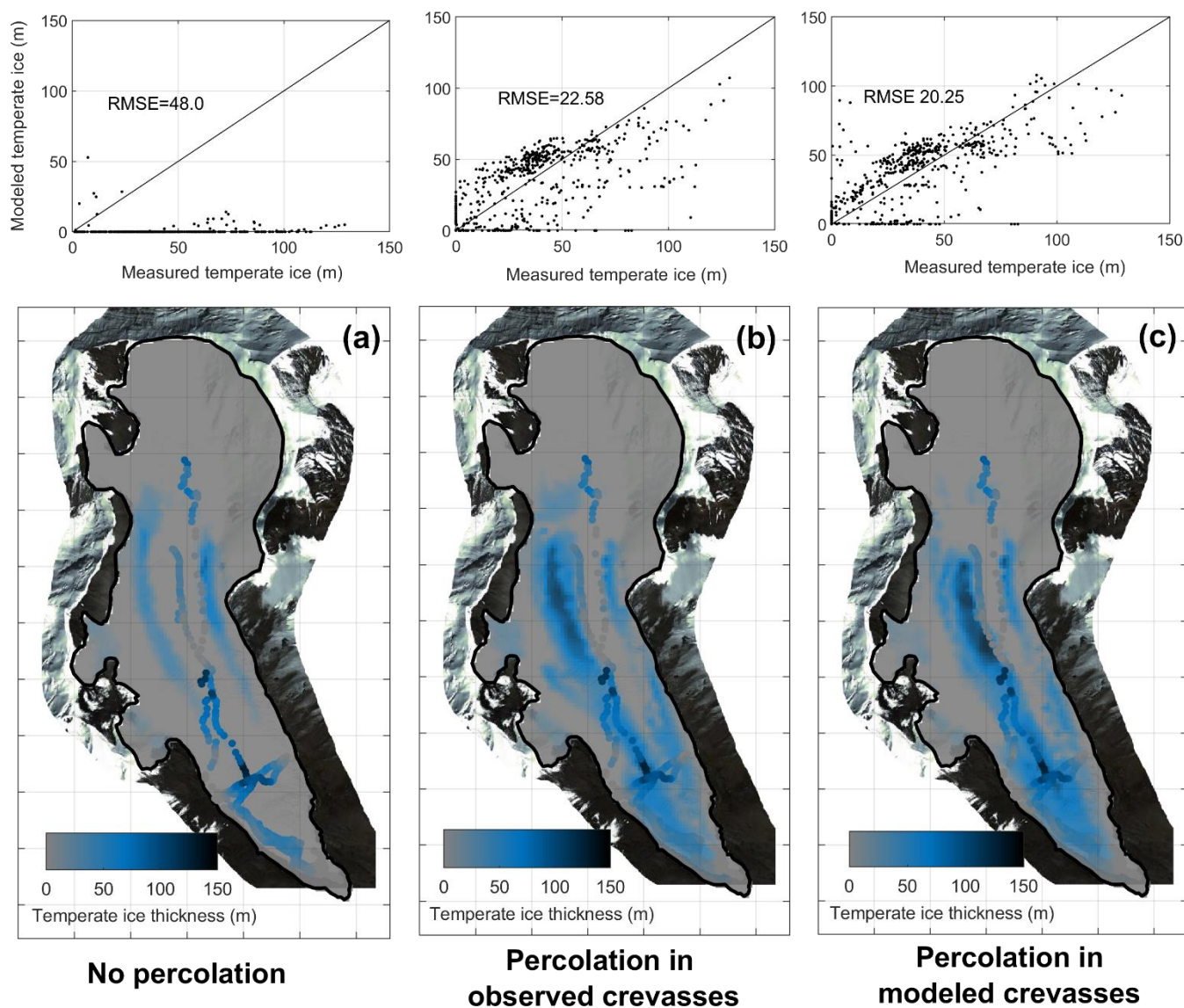
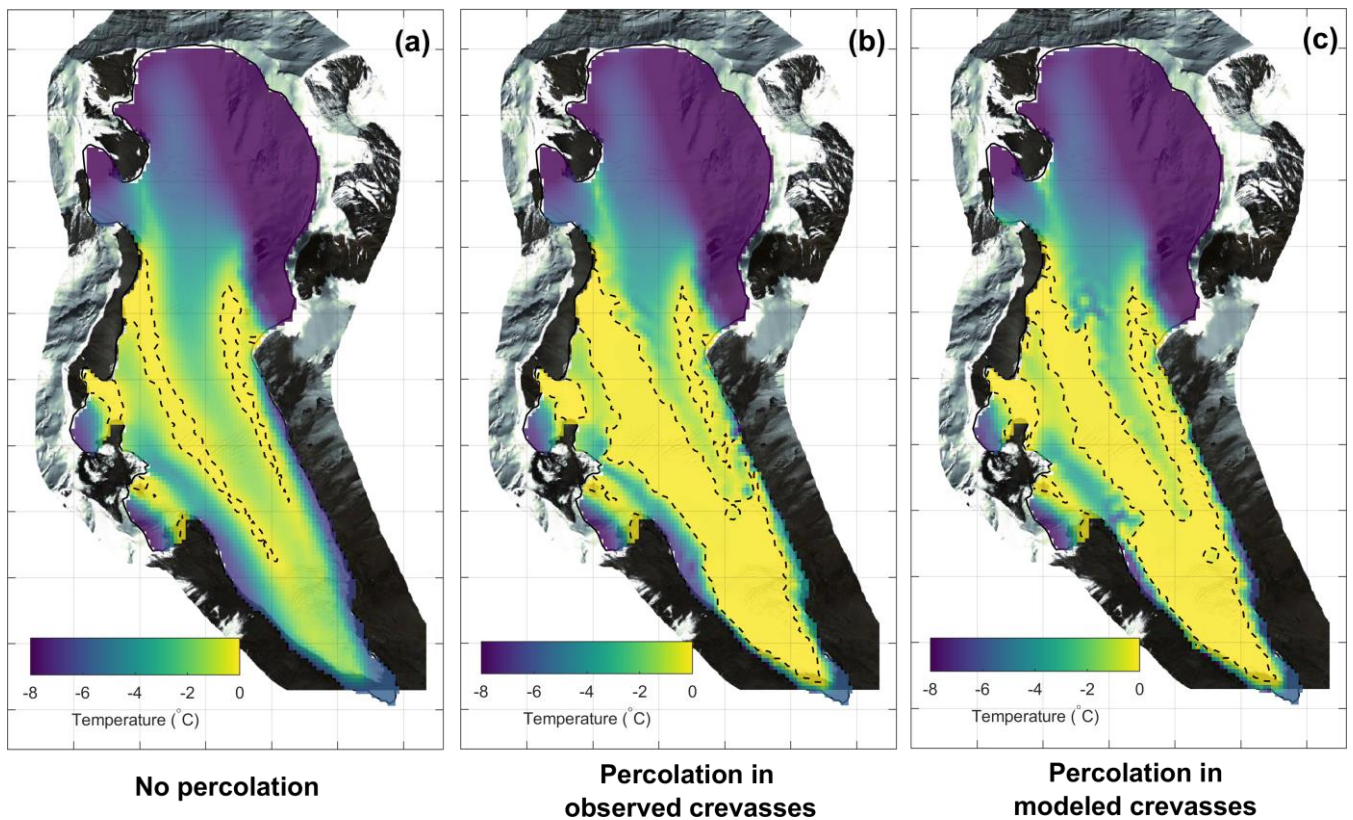
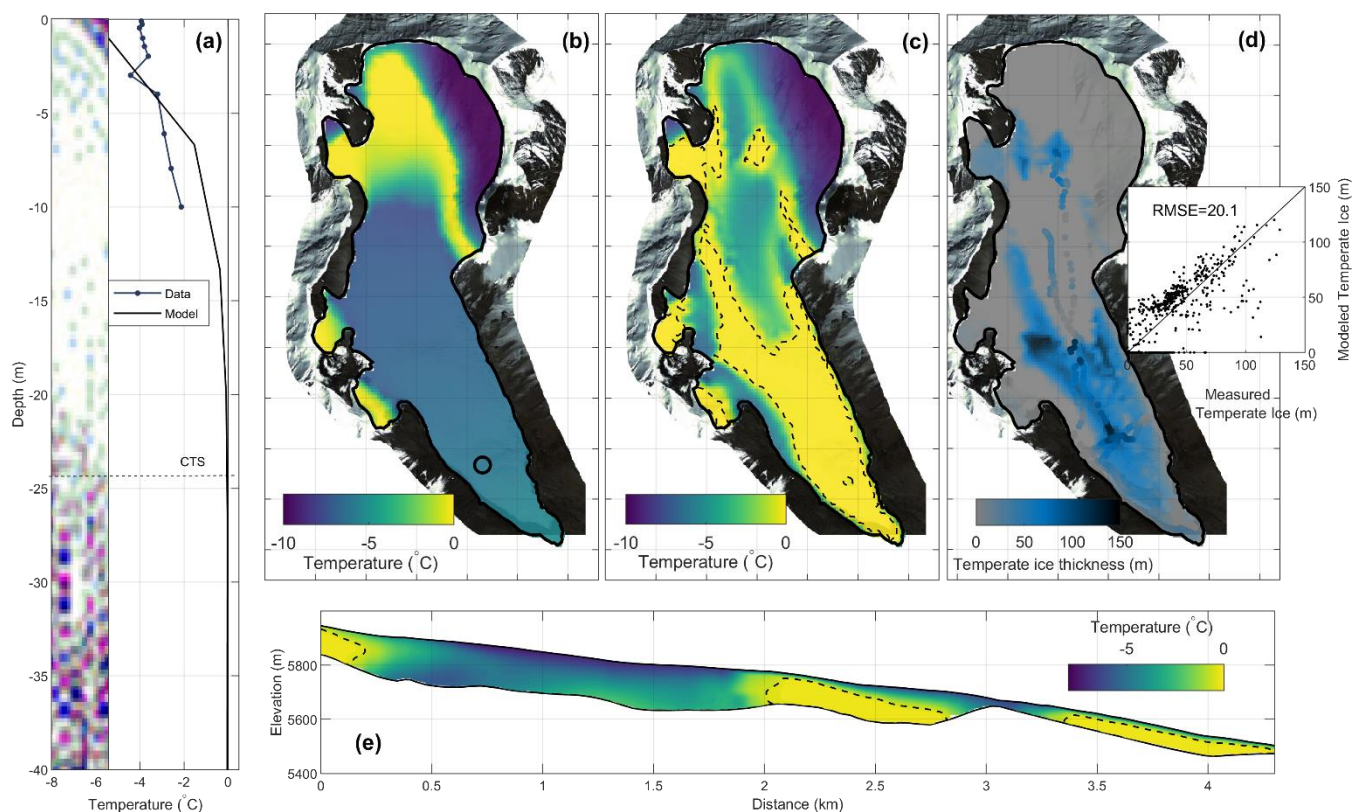


Figure 8. Modeled vs. measured temperate ice thicknesses (upper panel) and comparison between model (color background) and measurements (dots) (lower panel): (a) without crevasse influence, (b) with water percolation in observed crevassed areas, and (c) with water percolation in modeled crevassed areas.

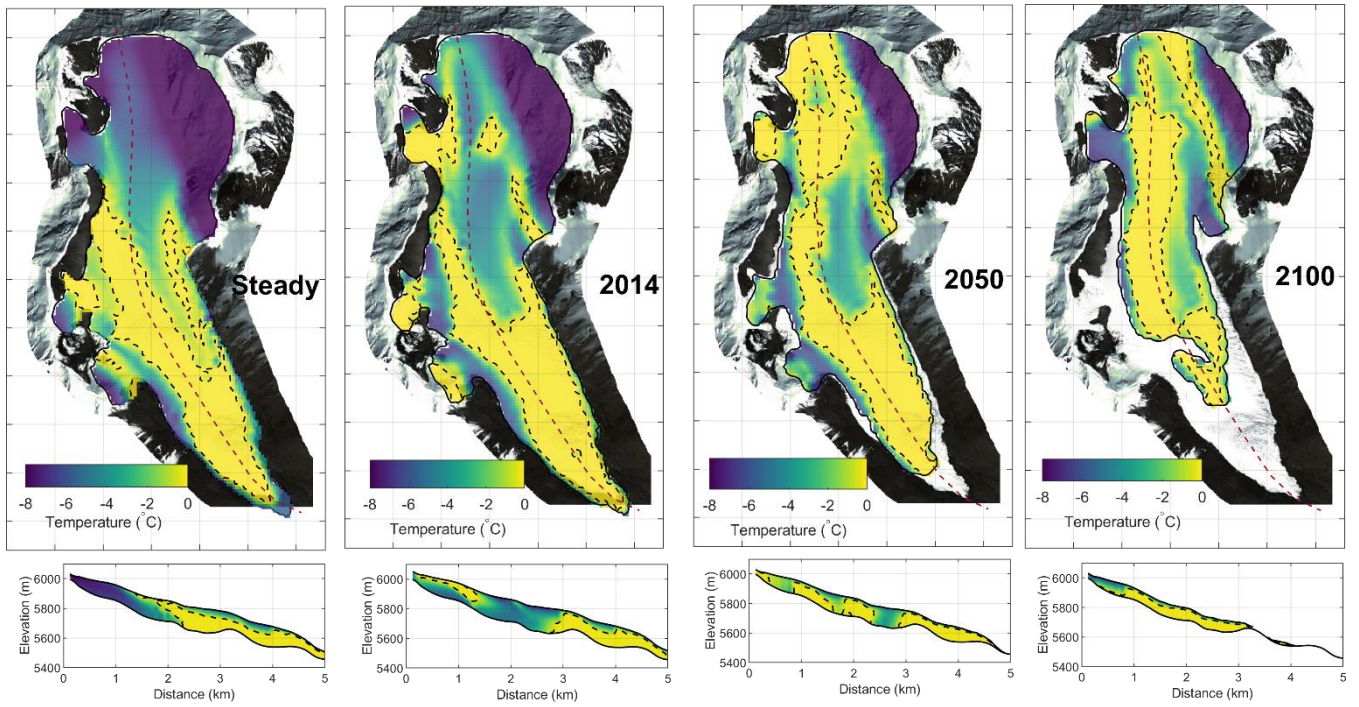


660 **Figure 9. Modeled steady state basal temperature. (a) Without crevasse influence. (b) With water percolation in observed crevassed areas. (c) With water percolation in modeled crevassed areas. Dashed lines delimit the temperate areas.**

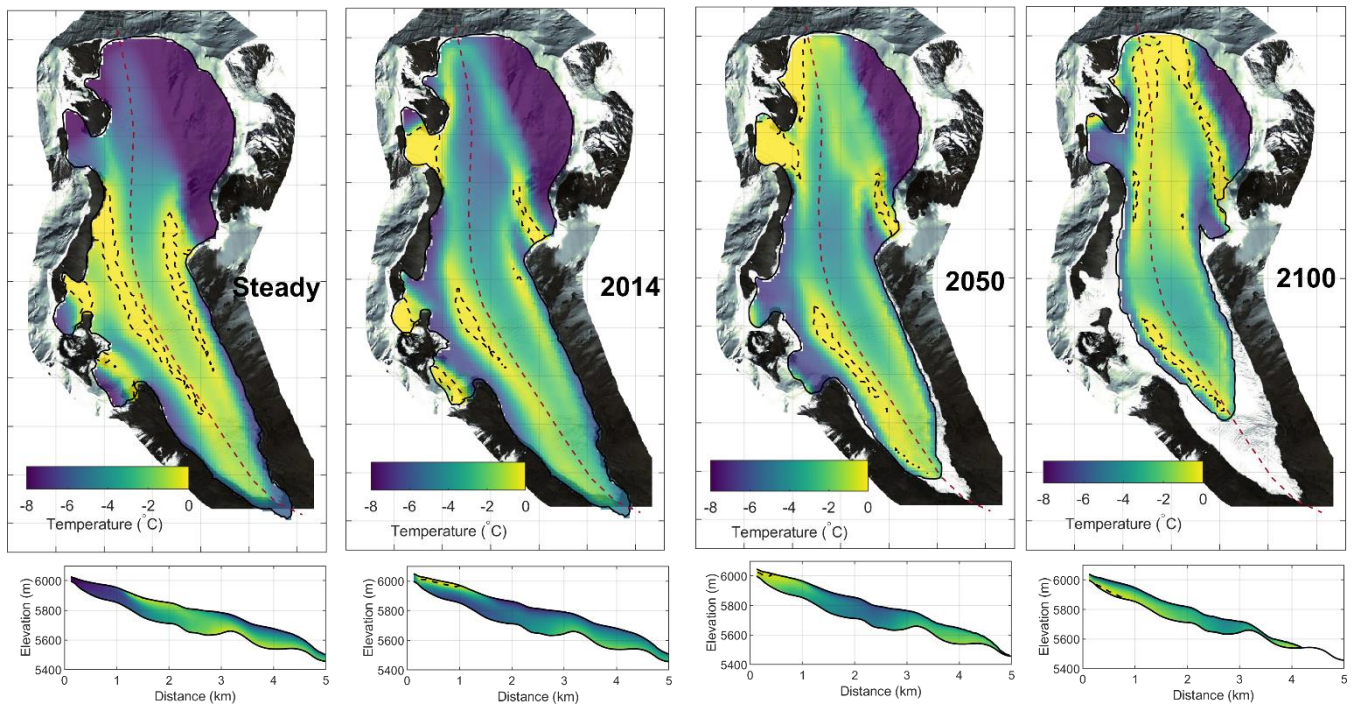




**Figure 10. Modeled thermal regime after a 40-years' transient run forced by mean climatic condition over the period 1981-2016 (see Fig. 3b). (a) Modeled and measured mean temperature profile (2014/2015) in the ablation zone (black circle in (b)). The inset shows the radar section measurement next to the thermistor (black circle in (b)) (black line in (e)) with the dashed line showing the modeled Cold-temperate Transition Surface (CTS). (b) Mean surface boundary condition over the period 1981-2016. (c) Modeled basal temperature. (d) Distribution of modeled and measured temperate ice thickness. (e) Modeled temperature along the radar longitudinal section presented in Fig. 2.**



670 **Figure 11.** Future evolution of Rikha Samba Glacier assuming a linear temperature increase of  $+1^{\circ}\text{C}$  between 2014 and 2100 ( $+1.7^{\circ}\text{C}$  in comparison with the steady state climatic condition). Upper panels represent basal temperature evolution. Lower panels are temperature evolution along the middle longitudinal section. Black dashed lines delimit the cold-temperate transition surface.



675 **Figure 12. Same as Fig. 11 but without water percolation in crevasses.**