



Automatically delineating the calving front of Jakobshavn Isbræ from multi-temporal TerraSAR-X images: a deep learning approach

Enze Zhang¹, Lin Liu¹, Lingcao Huang¹

¹Earth System Science Programme, Faculty of Science, The Chinese University of Hong Kong, Hong Kong, China.

5 Corresponding to: Enze Zhang (zhangenze@link.cuhk.edu.hk)

Abstract. The calving fronts of many tidewater glaciers in Greenland have been undergoing strong seasonal and inter-annual fluctuations. Conventionally, calving front positions have been manually delineated from remote sensing images. But manual practices can be labor-intensive and time-consuming, particularly when processing a large number of images taken over decades and covering large areas with many glaciers, such as Greenland. Applying U-Net, a deep learning architecture, to multi-temporal Synthetic Aperture Radar images taken by the TerraSAR-X satellite, we here automatically delineate the calving front positions of Jakobshavn Isbræ from 2009 to 2015. Our results are consistent with the manually delineated products generated by the Greenland Ice Sheet Climate Change Initiative project. We show that the calving fronts of Jakobshavn's two main branches retreated at mean rates of $-117 \pm 1 \text{ m yr}^{-1}$ and $-157 \pm 1 \text{ m yr}^{-1}$, respectively, during the years 2009 to 2015. The inter-annual calving front variations can be roughly divided into three phases for both branches. The retreat rates of the two branches tripled and doubled, respectively, from phase 1 (April 2009–January 2011) to phase 2 (January 2011–January 2013), then stabilized nearly zero in phase 3 (January 2013–December 2015). We suggest that the retreat of the calving front into an overdeepened basin whose bed is retrograde may have accelerated the retreat after 2011, while the inland-uphill bed slope behind the bottom of the overdeepened basin has prevented the glacier from retreating further after 2012. Demonstrating through this successful case study on Jakobshavn Isbræ and due to the transferable nature of deep learning, our methodology can be applied to many other tidewater glaciers both in Greenland and elsewhere in the world, using multi-temporal and multi-sensor remote sensing imagery.

1 Introduction

Glacier retreating is one of the processes that control the recent speedups of Greenland's tidewater glaciers (King et al., 2018). As glacier retreats, it accelerates to compensate for the loss of downstream buttress. Glacier dynamic instabilities, as suggested decades ago by Meier and Post (1987), play an essential role as the glaciers retreat over depressions in the bedrock topography. For example, Joughin et al. (2008a) indicated that dynamic instabilities caused Helheim and Kangerdlugssuaq Glaciers to speed up as they retreated into an overdeepened basin whose bed is retrograde between 2001 and 2006. Examining 276 marine-terminating outlet glaciers, Bunce et al. (2018) concluded that bed geometry is an important control on the timing and magnitude of glacier retreat.



An accurate and detailed quantification of calving front variations would improve our understanding of the controlling mechanisms of glacier retreat. Moreover, observations of retreat may serve as initial indicators for other dynamic variations such as the glacier acceleration (Moon and Joughin, 2008). Calving front positions are influenced by a range of forces including ice mélange buttressing, increased runoff, and ocean-driven melt (Moon et al., 2015; Fried et al., 2018).

5 Nevertheless, the mechanisms behind the numerous and complex controls on front positions are not yet fully understood. Compared with manually digitizing calving fronts, automatic mapping is superior because of greater productivity and reliability and lower cost. While most of the previous studies have manually delineated the calving fronts (e.g., Howat et al., 2005; Joughin et al., 2008b), studies by Sohn et al. (1996) and Seale et al. (2011) have automatically delineated calving fronts using feature extractors. Sohn et al. (1996) designed a method to extract ice sheet margin by applying Roberts edge

10 extractor to ERS-1 Synthetic Aperture Radar (SAR) images. Seale et al. (2011) automatically identified glacier calving fronts from daily MODIS images by combining Sobel and brightness profiling methods. With low computational complexity requiring no training and little memory resources, these feature-extracting methods are promising but require extensive prior knowledge and experience.

Deep learning can solve more complex problems with little prior knowledge required and take advantage of increased data

15 volume (LeCun et al., 2015). With the continuous accumulation in the past decades and in recent space missions, the data volume of remote sensing imagery in the polar regions has increased dramatically. Moreover, glacier systems are complex, as conditions such as weather and glacier dynamic behaviors vary from place to place and from season to season. There are therefore obvious advantages to applying deep learning techniques to automatically extract glaciological features from the available big data.

20 Here we aim to design a novel method to automatically delineate a glacier calving front from multi-temporal TerraSAR-X (TSX) images based on deep convolution neural networks (DCNNs). More specifically, we delineate the glacier calving front of Jakobshavn Isbræ (Fig. 1a) and quantify its seasonal and inter-annual variations. With this new set of observations, we investigate the possible link between calving front variations and bed elevation.

DCNNs are a class of the deep learning methods, and have made important breakthroughs in image processing. DCNNs can

25 discover both low-level (e.g., edges, corners, and lines) and mid-level features (e.g., shapes, sizes, and locations) (Sun et al., 2014; Zhang et al., 2015). Recently, some studies have used DCNNs on high-resolution SAR images to perform classification tasks (Geng et al., 2015; Huang et al., 2017). These studies unanimously agree that DCNNs outperform traditional classification methods on SAR images.

We use TSX images due to their high temporal resolution (11 days), high spatial resolution (3.3 to 3.5 meters), and ability to

30 penetrate cloud cover. These high-temporal-resolution images have been acquired in all seasons and allow us to investigate calving front variations with a high degree of continuity and consistency. With these high-spatial-resolution images, we can easily digitize the calving fronts (known as “ground truth” in the context of deep learning), and verify the accuracy of the DCNN. Using SAR images can avoid the cloud cover problem associated with optical images such as the Landsat-8 image shown in Fig. 1b.



2 Jakobshavn Isbræ

Jakobshavn Isbræ, located in central-west Greenland, is one of the largest and fastest tidewater glaciers in the world. In Jakobshavn, the ice flows westward to the ocean and divides into two branches near the coast (Fig. 1a). Before summer 2004, these two branches merged and flowed into the Kangia fjord. Afterwards, as the glacier retreated, the two branches became disconnected (Bondzio, 2017). During the past few years, Jakobshavn Isbræ has undergone dramatic acceleration as the glacier has retreated and thinned (Joughin et al., 2008c; Joughin et al., 2012). Jakobshavn's calving front retreated 16 km between 2002 and 2008 (Rosenau et al., 2013). This glacier alone has contributed nearly 1 mm to the global sea level rise from 2000 to 2011 (Howat et al., 2011).

Observations have shown that the calving front variations were correlated with the glacier velocity changes in Jakobshavn Isbræ. In 1998, the glacier sped up by 18% in its frontal regions, coinciding with the initial retreat of the ice tongue (Thomas, 2004; Luckman and Murray, 2005). The glacier doubled its speed by spring 2003, when nearly the entire floating ice tongue had disintegrated (Joughin et al., 2004). After the loss of this ice tongue, the glacier's velocity fluctuated seasonally from 2004 to 2007 (Joughin et al., 2008b). The glacier slowed down when it was advancing, and speeded up when it was retreating (Joughin et al., 2012).

The variations of Jakobshavn's calving front are also strongly influenced by the presence of ice mélange, namely a mixture of calved icebergs and sea ice (Fig. 1a). The seasonal variation of the calving front in Jakobshavn Isbræ is well correlated with the growth and recession of sea ice in the Kangia fjord (Sohn et al., 1998; Joughin et al., 2008c). Temporal variations of the ice mélange strength can also control the timing of calving events and influence the evolution of the calving front position (Amundson et al., 2010).

Our study area covers a 14×18 km section of the frontal area of Jakobshavn, and includes bedrock, ice mélange, and glacier regions. We restrict the extent of the study area to reduce the computational costs, while also ensuring the coverage of all the calving fronts within our investigation period (2009–2015, determined by the TSX images we have access to). We classify our study area into two classes: ice mélange and non-ice mélange regions (including both glacier and bedrock regions). We delineate the boundaries between these two regions and retrieve glacier calving fronts. The repetitive texture of crevasses in the glacier region clearly distinguishes it from ice mélange, where icebergs are distributed discretely. It is easy to identify the bedrock region because of the distinct bedrock texture, including cracks and land-based lakes.

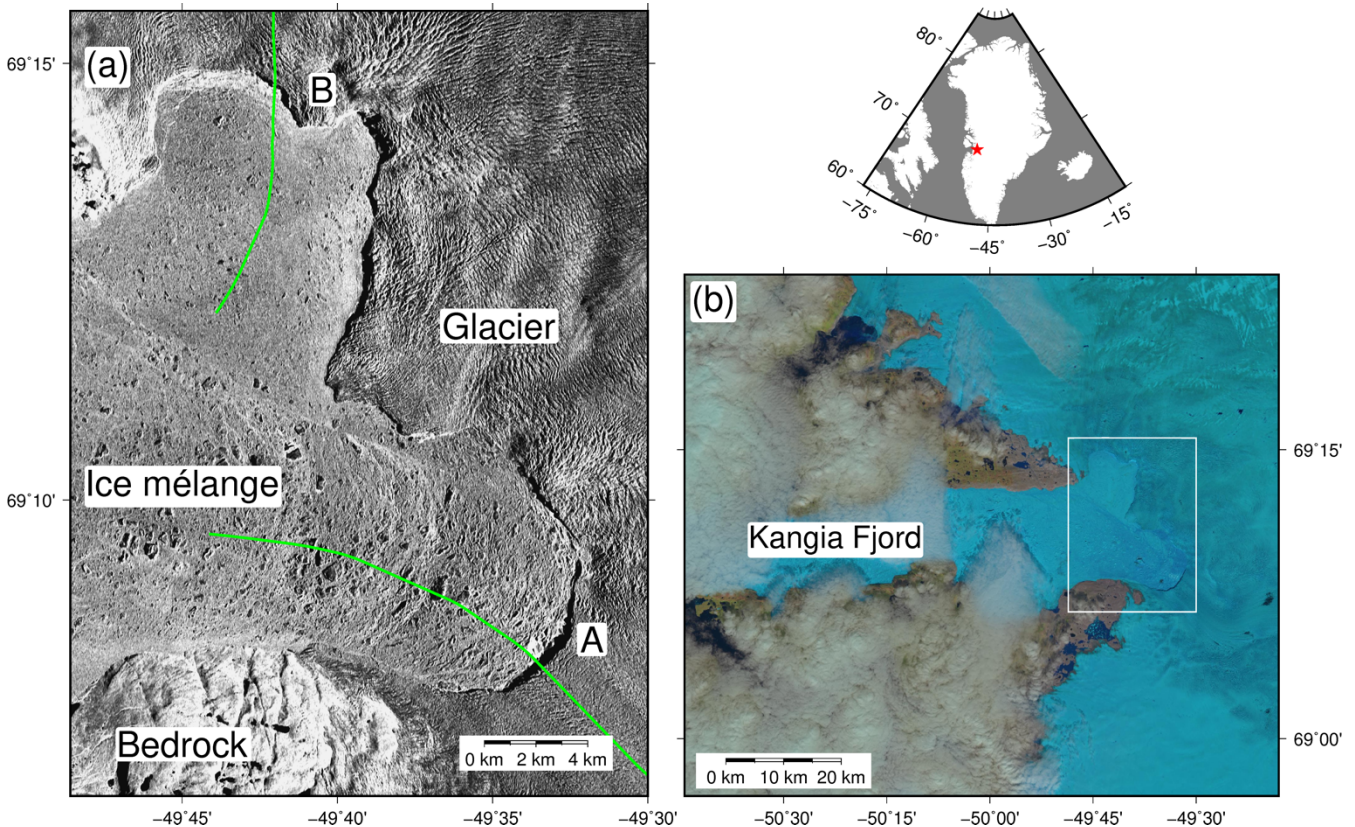


Figure 1. (a) TerraSAR-X image taken on 11th July 2015 showing the frontal area of Jakobshavn Isbræ. Its two branches are labeled as ‘A’ and ‘B’. The green lines indicate the location of the bed elevation profiles shown in Fig. 8. (b) Landsat-8 image taken on 13th July 2015. The white box shows the area illustrated in Fig. 1a.

5 3 TerraSAR-X images and pre-processing

The German SAR satellite TerraSAR-X was launched in June 2007 and carries an X-band SAR sensor. In this study, we use TSX images taken in both ascending and descending orbits and in stripmap imaging mode. We use the enhanced ellipsoid corrected (EEC) products, which are multi-looked, projected and resampled to the WGS84 reference ellipsoid. We use 159 images in total, taken between April 16th, 2009 and December 23rd, 2015 (listed in Table S1). We apply three pre-processing procedures including despeckling, multi-look, and re-georeferencing. Figure 2 shows an illustrative example of our pre-processing workflow, which we will describe below in detail.

Because the quality of SAR images is adversely affected by the speckle noise (Fig. 2a), we apply the median blur filter to mitigate the speckle noise (Fig. 2b) and then multi-look the filtered images to reduce their size by 25 times (Fig. 2c). The median blur filter is widely used in image processing and is particularly effective for speckle noise. With the despeckled images, we average five neighboring pixels (vertically and horizontally) by using Geospatial Data Abstraction Library (GDAL) package (www.gdal.org).



We choose the EEC products because they include topographic correction and are the standard geocoded products of TSX (Roth et al., 2004). However, even for the EEC products, we observe that the geocoding information for our study area is inaccurate. First, overlaying the EEC images on Google Earth, we note obvious offsets between these two. Second, the geocoding information is inconsistent in different orbit directions of EEC products. Therefore, we need to re-georeference the EEC products. For the images we have, we observe that the images in the same orbit direction have identical geometry. Based on this observation, we assume that the differences between the EEC products and the Google Earth images are systematic, namely that they are consistent for the EEC products in the same orbit direction. We correct the geocoding information of the EEC products using 16 ground control points on Google Earth images, including the center of lakes and cross sections of the bedrock, due to their stability and ease of identification. For all the EEC products in the same orbit direction, we apply the same thin plate spline transformation using the GDAL package.

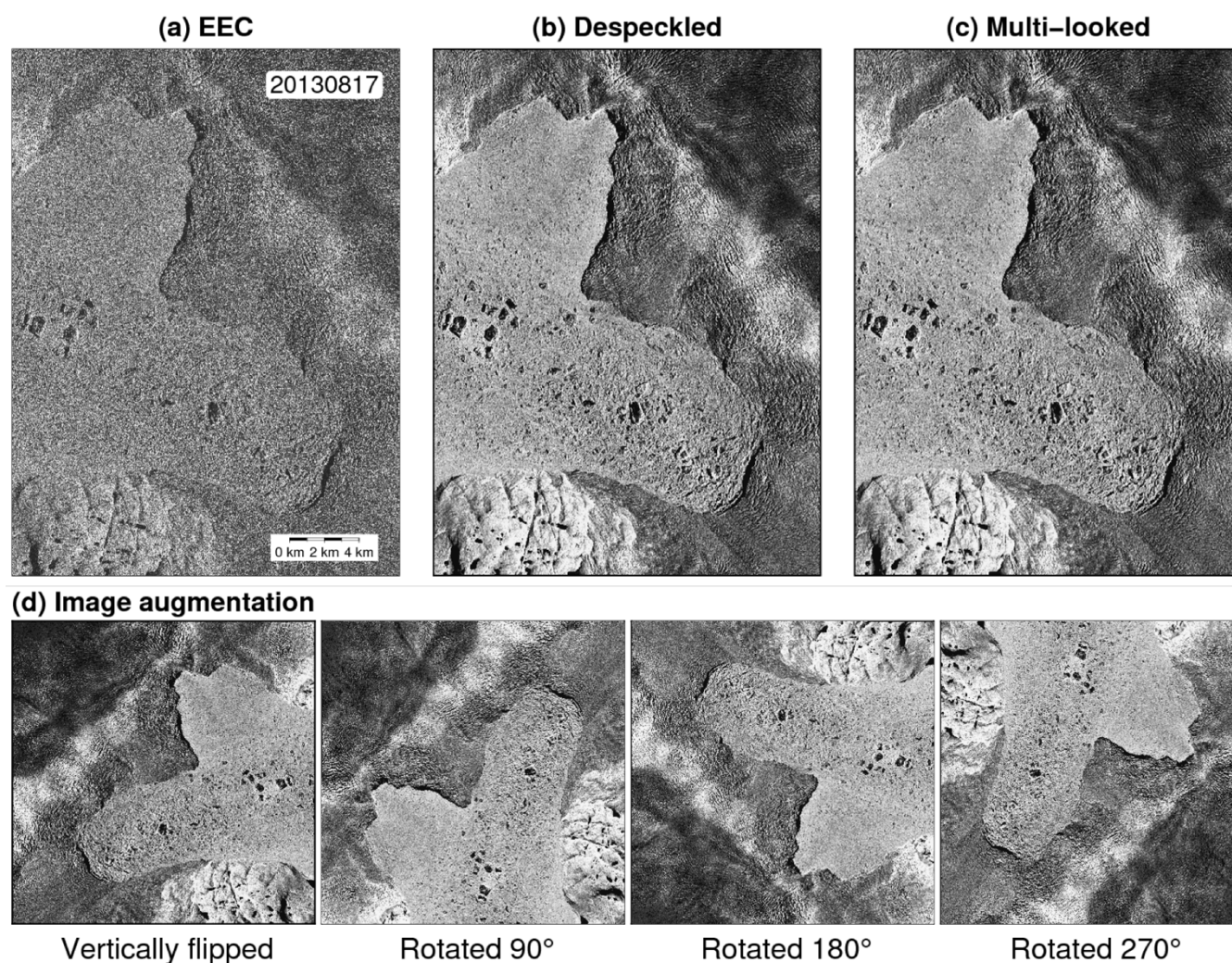




Figure 2. A set of examples of TerraSAR-X data pre-processing and preparation, including (a) the enhanced ellipsoid corrected (EEC) product, (b) despeckled image after reducing the speckle noise, (c) multi-looked image after decreasing the image size, and (d) images after vertically flipping and rotating Fig. 2c by 90°, 180°, and 270°, respectively. For ease of presentation, the images in Fig. 2d are not to scale with (a)–(c).

5 4 Deep learning and post-processing

DCNNs are a class of neural networks that consist of numerous convolutional layers, each of which contains learnable weights and biases. A network's architecture refers to its overall structure, including the number of units and layers the network has and how they are connected. Here, we use the U-net architecture, which has achieved outstanding performance in biomedical segmentation applications and is among the best methods in image segmentation (Ronneberger et al., 2015).

- 10 This network is fast, taking less than a second on a mainstream graphics processing unit (GPU) to segment a 512×512 image. The proposed framework for using deep learning to delineate the calving fronts is summarized in Fig. 3. We separate all the SAR images into a training dataset (75 images) and a test dataset (84 images) (Table S1). This practice is different from the deep learning convention that separates the entire dataset into three groups: training, validation, and test. As the validation dataset is used to evaluate the performance of different architectures, and since we only use one architecture (i.e., U-net), we
- 15 choose not to include a validation dataset.

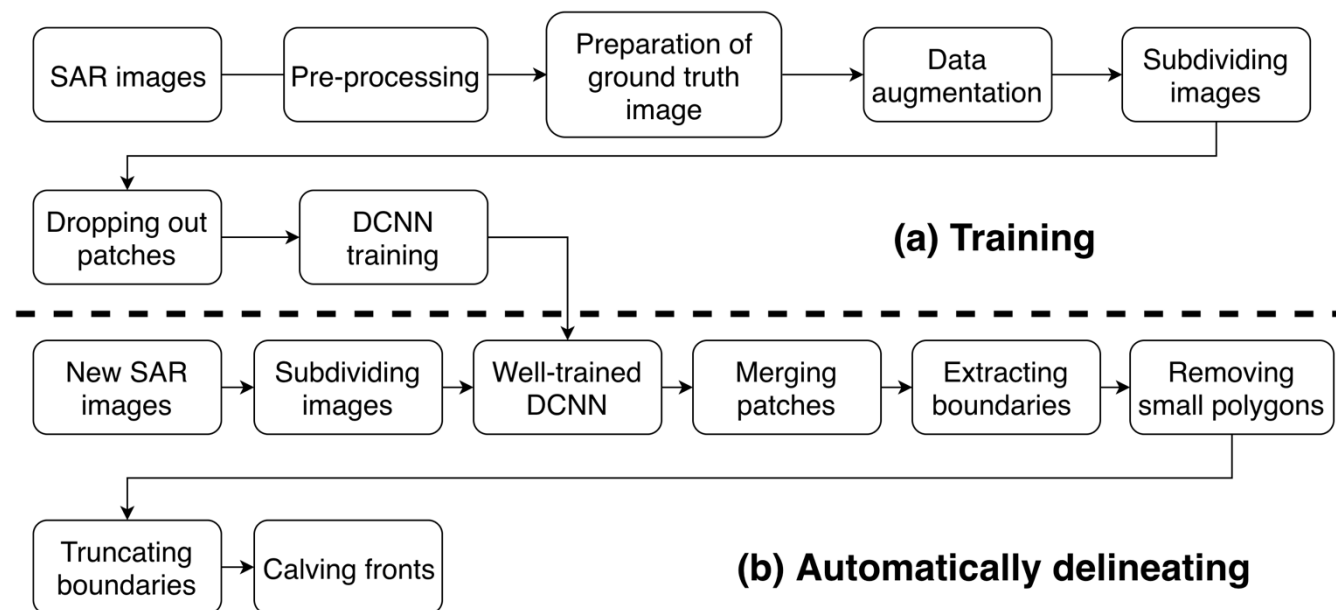


Figure 3. Diagram of the proposed framework. Details are described in Sections 3 and 4.

- Before training the network, we prepare the training dataset, including training images (SAR images) and their corresponding ground truth images. The ground truth images have two classes: the ice mélange region is set as zero, and the non-ice-mélange region (including both glacier and bedrock regions) is set as one (Fig. S1). The ground truth images are derived by converting the vector of manually delineated calving fronts to rasters using GDAL. Manual delineation is simple
- 20



on most TSX images. However, it is challenging to delineate the calving fronts on few TSX images acquired in winter and spring because the boundaries are obscured due to snow covering and sea ice bonding. For each of these obscure images, we use its temporally closest image with a clear calving front as a reference, and require that our manually-delineated fronts are smooth (Fig. S4).

5 We increase the smoothness of our network results in two ways. First, despeckling and multi-looking can smooth images without the loss of essential information for delineating the calving fronts. Second, we increase the convolution kernel size from the default 3×3 pixels to 5×5 pixels. This practice gives us more precise and smoother results. However, a larger convolution kernel increases the training time.

To ensure the effectiveness and accuracy of deep learning for a set of SAR images taken in all seasons spanning seven years,
 10 it is important to prepare a sufficiently diverse training dataset. We include at least one image in each month into the training dataset to represent various conditions related to radar backscatter and image texture. First, radar backscatter can vary with the dielectric properties of the surface scatterers in the study area due to changes in snow covering, wetness, and variations in geometric properties such as roughness, grain size, and internal structure (Fahnestock et al., 1993). Since our study area is in the ablation region, backscatter increases in winter because of dry snow covering and decreases in summer due to snow
 15 melting. Second, the seasonal and inter-annual variations of ice mélange condition can change the image texture. Sea ice formation in winter solidifies ice mélange, while ice mélange weakens in summer, resulting in freely floating icebergs (Amundson et al., 2010; Xie et al., 2016).

We also perform data augmentation to enrich our training dataset. We adopt the following two strategies. First, we vertically flip and rotate our training images by 90°, 180°, and 270°, respectively, to constitute many possible locations of the calving
 20 front in the study area (Fig. 2d). Second, we apply 2% linear stretch to the training images to enhance the edges.

We subdivide each image (3565×1634 pixels) in the training dataset into small patches (960×720 pixels). Otherwise, the resolution would be limited by the GPU memory. We split images with overlaps, and obtain 36414 patches in total. Such a strategy allows a seamless segmentation after merging, which reduces the edge effect. A larger patch size can also better mitigate the edge effect. Another common issue of DCNN training is overfitting, which refers to the cases when the test
 25 errors are large even though the training error is small. We adopt the common overfitting-mitigation strategy by stacking several items of training data together as a batch. With a given GPU memory, a smaller patch size allows more items in a batch, which consequently better mitigates overfitting. To strike a balance between overfitting and edge effect, we choose 960×720 pixels as our patch size.

Due to different computational time used in training and automatic delineation, the overlap areas between adjacent patches
 30 are set differently in the training and the test datasets. Taking the GPU we use as an example, training the network takes longer time (dozens of hours) than automatic delineation (several minutes) after the network is well trained. Therefore, we split the training images with smaller overlap (two-thirds of the patch size) to save computational power and split the test images with larger overlap (four-fifths of the patch size) to make denser samplings so that the results become more robust.



Balancing the number of training samples between classes is crucial in deep learning (Batista et al., 2005; Anantrasirichai et al., 2018). Compared with patches with two classes, patches with only one class are not equally helpful for delineating boundaries. However, one-fifth of the 36414 patches only have one class. Therefore, we randomly drop out 80% of these patches to make the network perform better on the boundary between two classes and also to save computational power.

5 Training the network starts with initializing all weights as zero, and then we use backpropagation to reduce the loss. Two properties are needed for the loss function: (1) the loss should be positive; and (2) it should tend towards zero as the network output is closer to the ground truth. We use binary cross-entropy (BCE) between the ground truth images and the network outputs to measure the training error, because it avoids the problem of slow learning (the training loss decreases slowly) (Goodfellow et al., 2016). When the error is no longer decreasing and stable, we consider the network as being well trained.

10 After the training, we first subdivide each test TSX image into small patches and use the well-trained network to segment all the patches into ice mélange and non-ice-mélange classes. Then, we merge the segmented patches (binary images with a pixel value of one or zero) into a single segmentation image by averaging the overlaps. After merging, if the pixel value is larger than 0.5, we consider the pixel to be in a non-ice mélange region. We use GDAL to convert the segmentation image into a vector, which contains a large polygon constituted by both the calving front and the image border, and small isolated

15 polygons caused by erroneous segmentation. After removing the small polygons and truncating the large polygon to separate the calving front from the image border, we finally obtain the calving front for each image.

Using the post-processed delineation results, we can quantify the temporal calving front variations of both branches. Taking the earliest calving front (April 16th, 2009) as the reference, we calculate the enclosed area bounded by the reference and the calving front in a given TSX image. We adopt these metrics of area changes because they take both calving front position

20 and shape into account.

5 Data validation and error estimation

Our results are validated by calving front products from the Greenland Ice Sheet Climate Change Initiative (CCI) project (<http://products.esa-icesheets-cci.org>). The CCI calving fronts are derived by manual delineation using ERS & Sentinel-1 SAR, and Landsat-5,7,8 optical imagery. We validate our results in the following two aspects.

25 First, the validation of the re-georeferencing (Section 3) is derived by directly comparing the manually delineated calving fronts obtained from this study and the CCI products. We manually delineate the calving fronts from the TSX image after re-georeferencing and then calculate the averaged width of the enclosed area bounded by both the calving fronts from these two datasets on the same date. The mean difference is 104 meters (Table S2, Fig. S2). Several reasons could cause such a seemingly large difference. The geocoding information of the CCI products also has uncertainties. Moreover, manual

30 delineation from both the CCI and ours are subjected to image quality and the different criteria we adopt for front delineation.



Second, the difference of calving front variations between ours and the CCI presents an overall validation that sums up both re-georeferencing and network-delineation uncertainties. We quantify the calving front variations of the CCI products with the same method and reference used in our results. Finally, we calculate the difference between these two variations in terms of both area and equivalent length.

- 5 The errors in the test dataset represent the error of the network. Unlike the BCE-measured segmentation error in training, the test error is for calving front delineation. We measure the test error by calculating the averaged width of the enclosed area bounded by the manually delineated and the network-delineated calving fronts (Fig. S3).

6 Results

- 10 We present our results in the following order: (1) the network-delineated calving fronts from April 16th, 2009 to December 23rd, 2015, which are shown in a movie (Movie S1); (2) two examples of our automatically delineated calving fronts (i.e., results in test dataset) (Fig. 4); (3) retreat rates (Table 1) and time series of calving front variations (Fig. 5); (4) inter-annual calving front variation (Fig. 6 and 7).

- 15 The individual network-delineated results are influenced by the image quality. Usually, the boundary is more distinct in summer than in other seasons, yielding superior results (Fig. 4a). In winter and spring, the boundary is obscure due to the low contrast and similar texture of the images, for example, the Branch B and the northern part of Branch A (Fig. 4b, 4c, and 4d). The backscatters of the snow-covered ice mélange and the glacier are similar. Moreover, sea ice formation in winter solidifies the ice mélange and even bonds it with the glacier. As a result, our detected edge deviates from the ground truth. Table S3 lists all of the test error with a mean of 38 meters. It also shows that our network performs better in summer than other seasons.

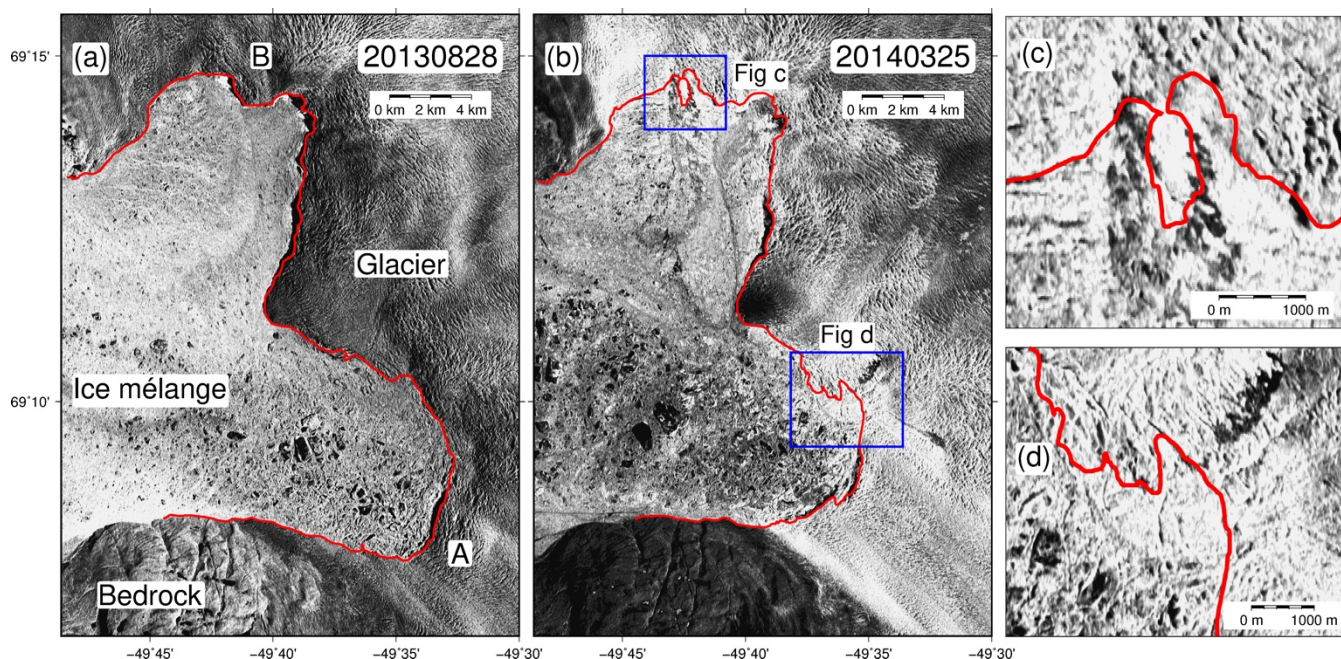


Figure 4. Examples of (a) superior and (b) inferior delineation from our deep-learning-based method. In both (a) and (b), the red line shows the calving front delineated by the network. (c) and (d) show the zoom-in figure of the obscure calving front positions within the blue boxes in (b).

- 5 Overall, our results agree well with the CCI products (Fig. 5). The area difference is $2.14 \times 10^6 \text{ m}^2$, and the equivalent length difference is 73 meters. Moreover, our results have a higher temporal resolution (about two measurements every month) than the CCI products (about four measurements every year). Therefore, we can observe the seasonal and inter-annual variations more clearly. Based on our results, Branches A and B retreated from 2009 to 2015 with linear trends of $-117 \pm 1 \text{ m yr}^{-1}$ and $-157 \pm 1 \text{ m yr}^{-1}$, respectively. The inter-annual variation can be roughly divided into three phases (Fig. 5 and summarized in
- 10 Table 1). (1) From April 2009 to January 2011, the retreat rates were -141 m yr^{-1} and -228 m yr^{-1} along Branches A and B, respectively. (2) From January 2011 to January 2013, the glacier retreated 170% and 61% faster than in the previous phase in Branches A and B, respectively. (3) From January 2013 to December 2015, these two branches behaved differently. In Branch A, the glacier retreated and advanced seasonally, but at much slower average rates (-23 m yr^{-1}). In Branch B, the seasonal variations were minor, and the glacier retreated slowly (-46 m yr^{-1}).



Table 1. Retreat rates in area and equivalent length during different phases.

	Period	Mean retreat rate	
		Branch A	Branch B
Area change ($10^6 \text{ m}^2 \text{ yr}^{-1}$)	Apr 2009–Jan 2011	-3.07 ± 0.05	-4.97 ± 0.09
	Jan 2011–Jan 2013	-8.30 ± 0.04	-8.03 ± 0.07
	Jan 2013–Dec 2015	-0.50 ± 0.03	-1.01 ± 0.03
	Apr 2009–Dec 2015	-2.56 ± 0.01	-3.41 ± 0.01
Equivalent length change (m yr^{-1})	Apr 2009–Jan 2011	-141 ± 4	-228 ± 9
	Jan 2011–Jan 2013	-381 ± 3	-368 ± 5
	Jan 2013–Dec 2015	-23 ± 2	-46 ± 2
	Apr 2009–Dec 2015	-117 ± 1	-157 ± 1

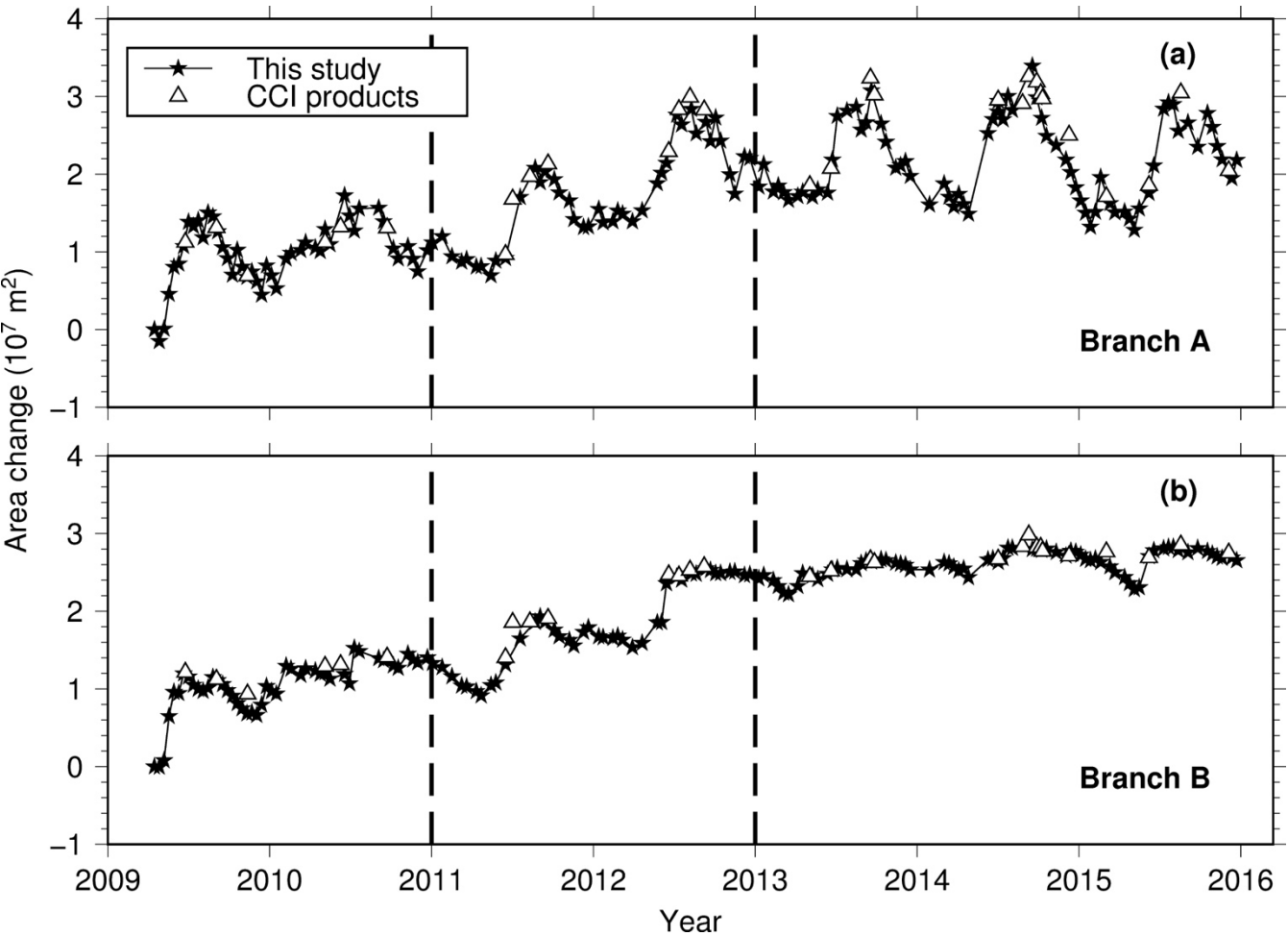
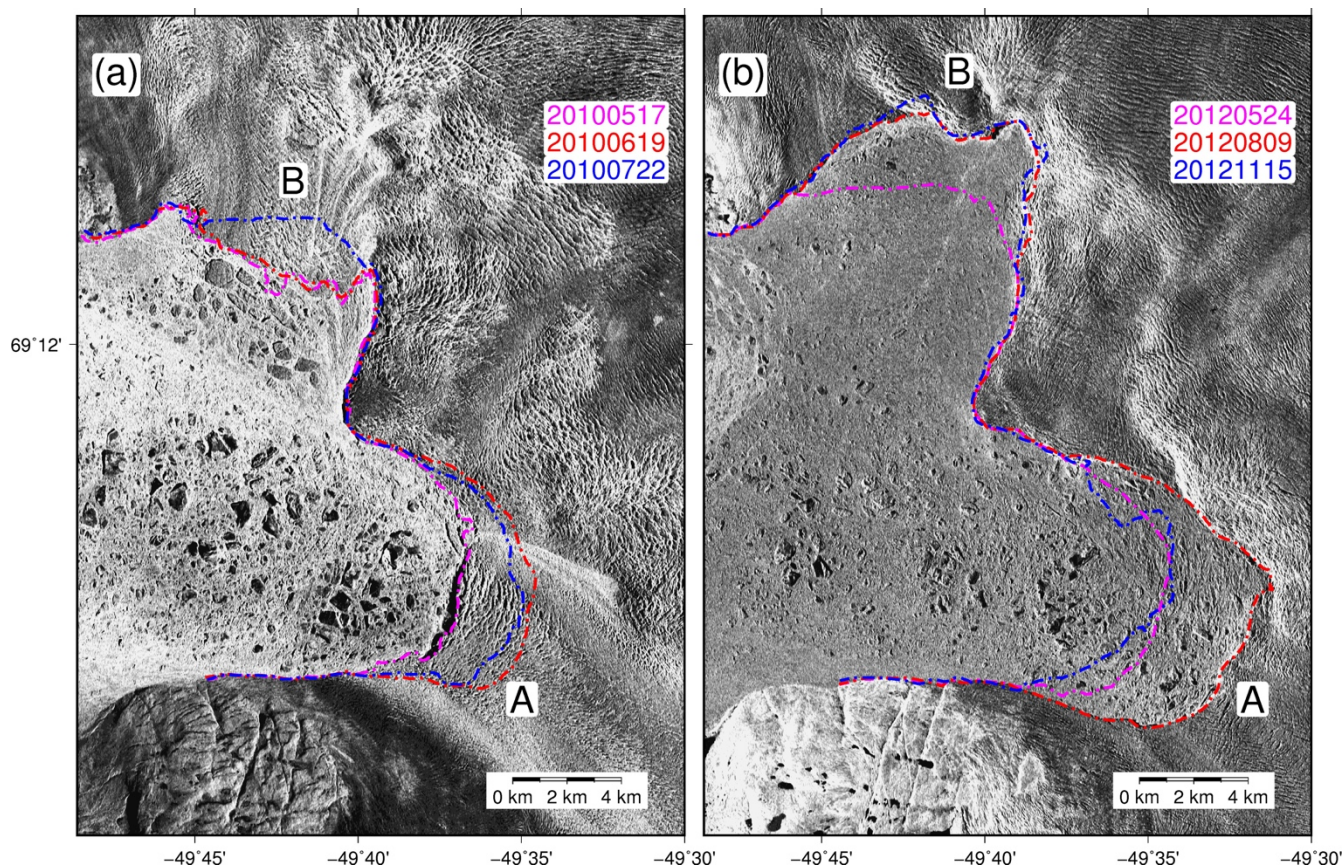


Figure 5. Time series of calving front variations (in area changes) of Branches A and B from our deep learning method (stars) and the Greenland Ice Sheet CCI project (triangles). Dashed vertical lines divide the time series into three separate phases (see text).

Further examination of the inter-annual variation indicates that the calving front exhibited different seasonal variations from year to year. First, even within a close distance of ten kilometers around the coastal area, Branches A and B behaved



asynchronously. For example, in 2010, Branch A began to retreat in May, while Branch B started to retreat one month later (Fig. 6a and 7). Moreover, after 2012, Branch A's front underwent strong seasonal variation while Branch B's front remained relatively stable (Fig. 6b). Second, the retreat timing of the glacier varied in different years. In Branch A, the front began to retreat around May in most years, while in 2011 and 2013 the retreat started in June. In 2010, both branches experienced a sudden retreat from mid-January to early February, and then became stable. Third, the calving front variation became regular after 2012. In Branch A, the front stopped retreating in July of each year, and its position remained unchanged up to September to October. In Branch B, the front advanced in spring and retreated in early summer, while its position remained almost unchanged in other seasons (Fig. 5 and 7).



10 **Figure 6. Two examples showing the asynchronous behaviors of Branches A and B. (a) Branch A began to retreat in May 2010, while Branch B started to retreat one month later. (b) Branch A's calving front underwent strong variation between August to November 2012, whereas Branch B's calving front was relatively stable. The magenta line in both (a) and (b) shows the calving front position just before the annual retreat.**

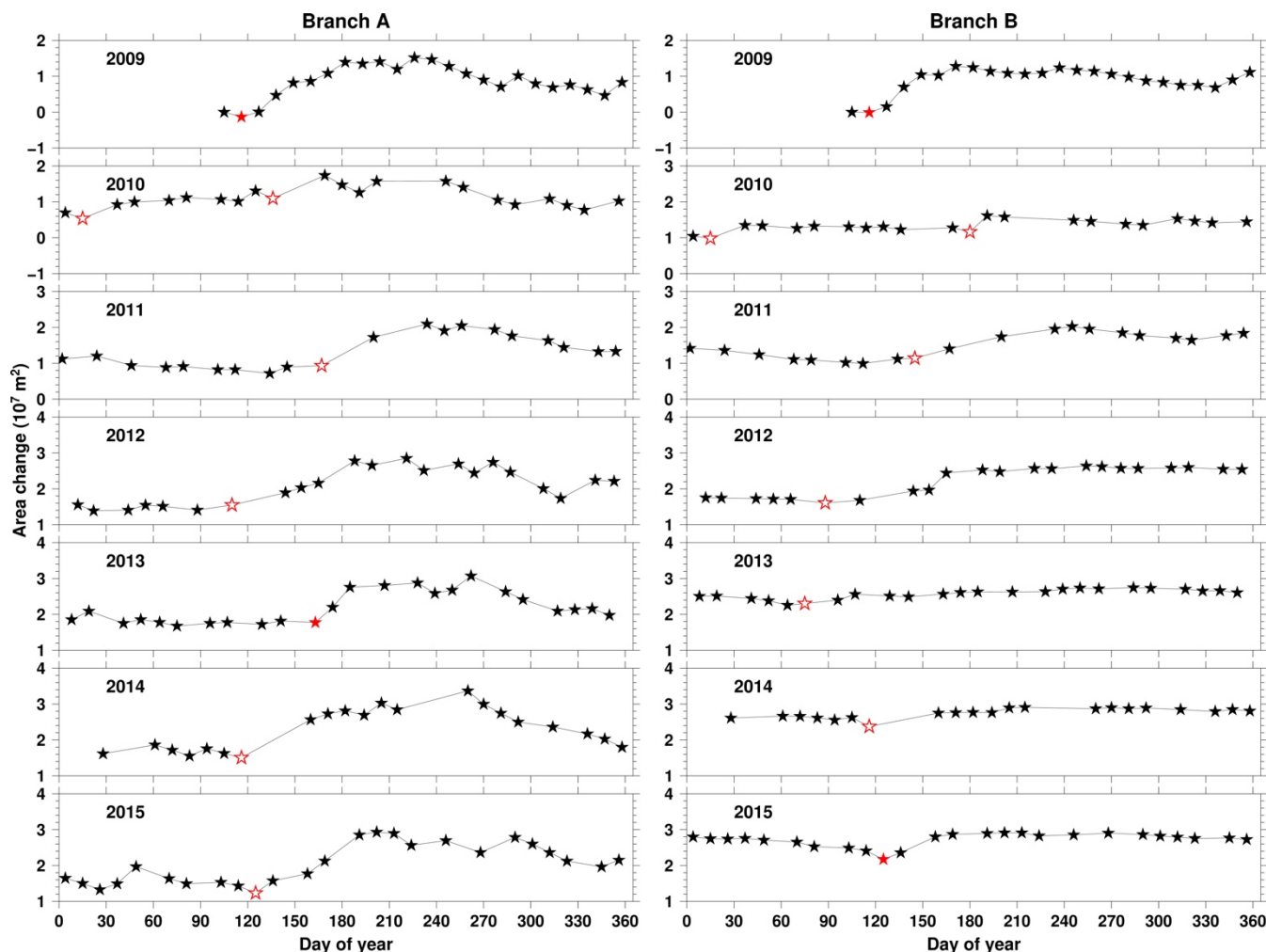


Figure 7. Similar to Fig. 5 but showing the time series of calving front changes (in area changes) of our deep-learning-based results in different years. The red filled stars mark the dates when the glacier started to retreat. Red open stars mark starting dates that cannot be reliably determined due to data gaps (e.g., Branch A in 2011) and small variations (e.g., Branch B in 2013).

5 7 Discussion

7.1 Calving front variation and bed elevation

In general, calving front variations are influenced by multiple factors, including floating or grounding conditions (McFadden et al., 2011; Murray et al., 2015; Bondzio et al., 2017; Fried et al., 2018), interaction with the ocean (Holland et al., 2008; Howat et al., 2008; Motyka et al., 2011; Vieli and Nick, 2011; Straneo et al., 2013), ice mélange and sea ice conditions (Amundson et al., 2010; Moon et al., 2015; Cassotto et al., 2015), basal lubrication (Joughin et al., 2008b; Moon et al., 2014) and bed elevation (Joughin et al., 2008a; Joughin et al., 2014; Kehrl et al., 2017; Bunce et al., 2018). Here we examine the possible link between the observed variations of the calving fronts with bed elevation.



- Bed elevation has a substantial influence on the glacier retreat. In the first situation where the bed is flat, glacier retreat decreases resisting force, which accelerates the glacier. The acceleration of the glacier can also thin the ice. Thinning reduces the effective pressure at the bed, $N = P_i - P_w$, where P_i is the overburden pressure and P_w is water pressure. A decreased N reduces basal drag, causing stretching and faster flow and constituting positive feedback. In the second situation, as the glacier retreats into an overdeepened basin where the bed slopes down inland or is retrograde, the positive feedback is reinforced, and the glacier becomes more unstable, for two reasons. First, ice thickness at the calving front increases as the retreat progresses, increasing driving stress. Second, because the calving front moves into deeper water, this retreat decreases N further. In the third situation where the bed slopes inland-uphill, the glacier may stabilize, since retreating into shallower water increases N and decreases driving stress.
- Previous studies also suggest that bed elevation has a substantial influence on glacier calving front variations. Examining the height above flotation of Branch A in Jakobshavn, Joughin et al. (2014) suggested that retreating into an overdeepened basin where the bed slope is retrograde may lead to an unstable calving front retreat, and a bed sloping inland-uphill may stabilize the glacier. Other studies have also suggested that retreating into deeper water may accelerate the glacier, resulting in an unstable retreating (Howat et al., 2005; Howat et al., 2007; Nick et al., 2009; Catania et al., 2018).
- In our study area, the bed elevation derived from BedMachine v3 (Morlighem et al., 2017) shows two overdeepened basins along the main channel of Branch A (Fig. 8a). During the period from 2009 to 2015, the calving front of Branch A retreated into the second overdeepened basin in August 2011 for the first time, which may have produce a faster rate of retreat. In July 2012, the glacier retreated to the bottom of the overdeepened basin and stopped retreating further (Movie S2). The inland-uphill bed slope behind the bottom of the overdeepened basin may have prevented the glacier from further retreating. In Branch B, after June 2012, the glacier retreated into a zone where the bed slopes uphill inland (Fig. 8b, Movie S3). We suggest that retreating into this zone may have led to the more regular and stable behavior of Branch B after June 2012 (Fig. 5b).

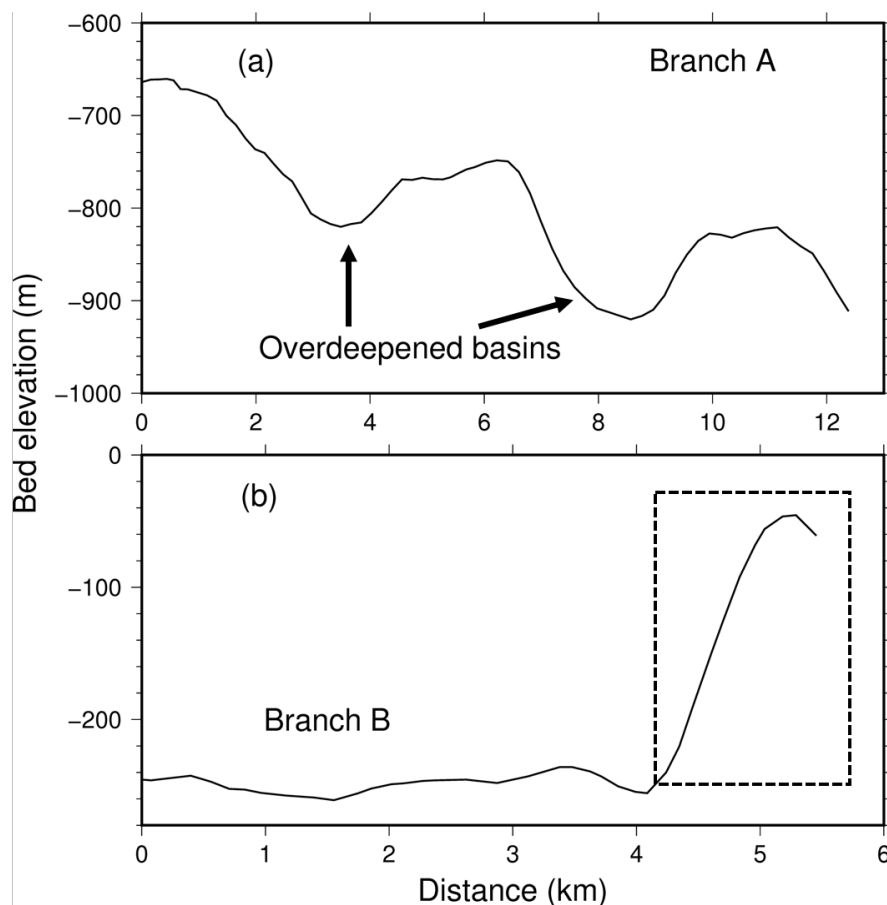


Figure 8. Bed elevation profiles of two branches derived from BedMachine v3 (Morlighem et al., 2017). The profile locations are shown in Fig. 1a. The dashed box shows the zone where the bed slopes uphill inland.

7.2 Prospects for future work

- 5 The accuracy of a DCNN largely depends on the information richness of the training dataset (Goodfellow et al., 2016). Therefore, by including more images into the training dataset, we can minimize network error. In this study, the well-trained network is limited to a specific dataset, namely TSX images. However, it is feasible to apply the DCNN to multi-sensor remote sensing imagery, which has been proved by previous studies (Nogueira et al. 2017; Lang et al., 2018).
- The effectiveness and transferable nature of deep learning (Anantrasirichai et al., 2018) promises that our methodology can
- 10 be applied to many other glaciers, both in Greenland and elsewhere in the world. Besides Jakobshavn Isbræ, other Greenland tidewater glaciers such as Helheim and Kangerdlugssuaq also show strong calving front variations (Howat et al., 2005; Howat et al., 2007; Joughin et al., 2008a). In theory, the DCNN can be retrained whenever new data is added to the training dataset. Moreover, including more data over other places can increase the generalization of the network, making it applicable to more situations (Goodfellow et al., 2016).



8 Conclusions

This study designs a method based on DCNNs to automatically delineate calving fronts of Jakobshavn Isbræ from TerraSAR-X SAR images acquired from April 2009 to December 2015. Small test error suggests that the accuracy of a well-trained network can be close to the human level. Our results reveal that the two branches of Jakobshavn Isbræ behaved asynchronously. We suggest that bed elevation may have a major influence on the observed calving front variations. Our methodology can be applied to many other tidewater glaciers both in Greenland and elsewhere in the world using multi-temporal and multi-sensor remote sensing imagery.

Code and data availability

The Greenland Ice Sheet CCI products are available from <http://products.esa-icesheets-cci.org>. The Bed elevation (BedMachine v3) is available from <http://sites.uci.edu/morlighem/dataproducts/bedmachine-greenland>. The code of the whole framework (Fig. 3) will be provided by Enze Zhang upon request. The network-delineated calving fronts obtained in this study are available from <https://doi.pangaea.de/10.1594/PANGAEA.897064> (Zhang et al., 2019).

Author contribution

EZ developed the code, performed the TSX images analysis and calving front quantification, and wrote the manuscript. LL advised EZ and edited the manuscript. LH actively helped to develop the code.

Competing interest.

The authors declare that they have no conflict of interest.

Acknowledgments

We acknowledge the support of NVIDIA Corporation, which donated the donation of the Quadro P5000 GPU used for this study. The TerraSAR-X SAR images were provided by the Deutsches Zentrum für Luft-und Raumfahrt (DLR) (LAN1650, LAN1797, and COA3605). Our deep learning code is based on Jakeoung Koo's work (https://github.com/jakeoung/Unet_pytorch). This study was supported by the Hong Kong Research Grants Council (CUHK24300414) and CUHK Direct Grant for Research (405328).

References

Amundson, J. M., Fahnestock, M., Truffer, M., Brown, J., Lüthi, M. P., and Motyka, R. J.: Ice mélange dynamics and



- implications for terminus stability, Jakobshavn Isbræ, Greenland, *J. Geophys. Res.-Earth*, 115, F01 005, <https://doi.org/doi:10.1029/2009JF001405>, 2010.
- Anantrasirichai, N., Biggs, J., Albino, F., Hill, P., and Bull, D.: Application of Machine Learning to Classification of Volcanic Deformation in Routinely Generated InSAR Data, *J. Geophys. Res.-Sol. Ea.*, 123, 6592–6606, <https://doi.org/10.1029/2018JB015911>, 2018.
- Batista, G. E. A. P. A., Prati, R. C., and Monard, M. C.: Balancing Strategies and Class Overlapping, in: *Lect. Notes Comput. Sc.*, pp. 24–35, Springer Berlin Heidelberg, Berlin, Heidelberg, 2005.
- Bondzio, J. H.: Analysis of Recent Dynamic Changes of Jakobshavn Isbrae, West Greenland, Using a Thermomechanical Model, Ph.D. thesis.
- 10 Bondzio, J. H., Morlighem, M., Seroussi, H., Kleiner, T., Rückamp, M., Mouginit, J., Moon, T., Larour, E. Y., and Humbert, A.: The mechanisms behind Jakobshavn Isbræ’s acceleration and mass loss: A 3-D thermomechanical model study, *Geophys. Res. Lett.*, 44, 6252–6260, <https://doi.org/10.1002/2017GL073309>, 2017.
- Bunce, C., Carr, J. R., Nienow, P. W., Ross, N., and Killick, R.: Ice front change of marine-terminating outlet glaciers in northwest and southeast Greenland during the 21st century, *J. Glaciol.*, 64, 523–535, <https://doi.org/10.1017/jog.2018.44>, 2018.
- 15 Cassotto, R., Fahnestock, M., Amundson, J. M., Truffer, M., and Joughin, I.: Seasonal and interannual variations in ice melange and its impact on terminus stability, Jakobshavn Isbræ, Greenland, *J. Glaciol.*, 61, 76–88, <https://doi.org/10.3189/2015JoG13J235>, 2015.
- Catania, G. A., Stearns, L. A., Sutherland, D. A., Fried, M. J., Bartholomaeus, T. C., Morlighem, M., Shroyer, E., and Nash, J.: Geometric Controls on Tidewater Glacier Retreat in Central Western Greenland, *J. Geophys. Res.-Earth*, 123, 2024–2038, <https://doi.org/10.1029/2017JF004499>, 2018.
- 20 Fahnestock, M., Bindschadler, R., Kwok, R., and Jezek, K.: Greenland Ice Sheet Surface Properties and Ice Dynamics from ERS-1 SAR Imagery, *Science*, 262, 1530–1534, <https://doi.org/10.1126/science.262.5139.1530>, 1993.
- Fried, M. J., Catania, G. A., Stearns, L. A., Sutherland, D. A., Bartholomaeus, T. C., Shroyer, E., and Nash, J.: Reconciling Drivers of Seasonal Terminus Advance and Retreat at 13 Central West Greenland Tidewater Glaciers, *J. Geophys. Res.-Earth*, 123, 1590–1607, <https://doi.org/10.1029/2018JF004628>, 2018.
- 25 Geng, J., Fan, J., Wang, H., Ma, X., Li, B., and Chen, F.: High-Resolution SAR Image Classification via Deep Convolutional Autoencoders, *IEEE Geosci. Remote S.*, 12, 2351–2355, <https://doi.org/10.1109/LGRS.2015.2478256>, 2015.
- Goodfellow, I., Bengio, Y., and Courville, A.: *Deep Learning*, MIT Press, 2016.
- 30 Holland, D. M., Thomas, R. H., De Young, B., Ribergaard, M. H., and Lyberth, B.: Acceleration of Jakobshavn Isbrae triggered by warm subsurface ocean waters, *Nat. Geosci.*, 1, 659, <https://doi.org/10.1038/ngeo316>, 2008.
- Howat, I. M., Joughin, I., Tulaczyk, S., and Gogineni, S.: Rapid retreat and acceleration of Helheim Glacier, east Greenland, *Geophys. Res. Lett.*, 32, L22 502, <https://doi.org/10.1029/2005GL024737>, 2005.



- Howat, I. M., Joughin, I., and Scambos, T. A.: Rapid Changes in Ice Discharge from Greenland Outlet Glaciers, *Science*, 315, 1559–1561, <https://doi.org/10.1126/science.1138478>, 2007.
- Howat, I. M., Joughin, I., Fahnestock, M., Smith, B. E., and Scambos, T. A.: Synchronous retreat and acceleration of southeast Greenland outlet glaciers 2000–06: ice dynamics and coupling to climate, *J. Glaciol.*, 54, 646–660, <https://doi.org/10.3189/002214308786570908>, 2008.
- Howat, I. M., Ahn, Y., Joughin, I., van den Broeke, M. R., Lenaerts, J. T. M., and Smith, B.: Mass balance of Greenland’s three largest outlet glaciers, 2000–2010, *Geophys. Res. Lett.*, 38, L12 501, <https://doi.org/10.1029/2011GL047565>, 2011.
- Huang, Z., Pan, Z., and Lei, B.: Transfer Learning with Deep Convolutional Neural Network for SAR Target Classification with Limited Labeled Data, *Remote Sens.-Basel*, 9, 907, <https://doi.org/10.3390/rs9090907>, 2017.
- Joughin, I., Abdalati, W., and Fahnestock, M.: Large fluctuations in speed on Greenland’s Jakobshavn Isbrae glacier, *Nature*, 432, 608, <https://doi.org/10.1038/nature03130>, 2004.
- Joughin, I., Howat, I., Alley, R. B., Ekstrom, G., Fahnestock, M., Moon, T., Nettles, M., Truffer, M., and Tsai, V. C.: Ice-front variation and tidewater behavior on Helheim and Kangerdlugssuaq Glaciers, Greenland, *J. Geophys. Res.-Earth*, 113, F01004, <https://doi.org/10.1029/2007JF000837>, 2008a.
- Joughin, I., Das, S. B., King, M. A., Smith, B. E., Howat, I. M., and Moon, T.: Seasonal Speedup Along the Western Flank of the Greenland Ice Sheet, *Science*, 320, 781–783, <https://doi.org/10.1126/science.1153288>, 2008b.
- Joughin, I., Howat, I. M., Fahnestock, M., Smith, B., Krabill, W., Alley, R. B., Stern, H., and Truffer, M.: Continued evolution of Jakobshavn Isbrae following its rapid speedup, *J. Geophys. Res.-Earth*, 113, F04 006, <https://doi.org/10.1029/2008JF001023>, 2008c.
- Joughin, I., Smith, B. E., Howat, I. M., Floricioiu, D., Alley, R. B., Truffer, M., and Fahnestock, M.: Seasonal to decadal scale variations in the surface velocity of Jakobshavn Isbrae, Greenland: Observation and model-based analysis, *J. Geophys. Res.-Earth*, 117, F02 030, <https://doi.org/10.1029/2011JF002110>, 2012.
- Joughin, I., Smith, B. E., Shean, D. E., and Floricioiu, D.: Brief Communication: Further summer speedup of Jakobshavn Isbrae, *The Cryosphere*, 8, 209–214, <https://doi.org/10.5194/tc-8-209-2014>, 2014.
- Kehrl, L. M., Joughin, I., Shean, D. E., Floricioiu, D., and Krieger, L.: Seasonal and interannual variabilities in terminus position, glacier velocity, and surface elevation at Helheim and Kangerlussuaq Glaciers from 2008 to 2016, *J. Geophys. Res.-Earth*, 122, 1635–1652, <https://doi.org/10.1002/2016JF004133>, 2017.
- King, M. D., Howat, I. M., Jeong, S., Noh, M. J., Wouters, B., Noël, B., and van den Broeke, M. R.: Seasonal to decadal variability in ice discharge from the Greenland Ice Sheet, *The Cryosphere*, 12, 3813–3825, <https://doi.org/10.5194/tc-12-3813-2018>, 2018.
- Lang, G., Tian, T., Xiao, S., and Hang, L.: Fusion of shallow and deep features for classification of high-resolution remote sensing images, in: *MIPPR 2017: Multispectral Image Acquisition, Processing, and Analysis*, vol. 10607, p. 1060700, <https://doi.org/10.1117/12.2284777>, 2018.
- LeCun, Y., Bengio, Y., and Hinton, G.: Deep learning, *Nature*, 521, 436, <https://doi.org/10.1038/nature14539>, 2015.



- Luckman, A. and Murray, T.: Seasonal variation in velocity before retreat of Jakobshavn Isbræ, Greenland, *Geophys. Res. Lett.*, 32, L08 501, <https://doi.org/10.1029/2005GL022519>, 2005.
- Meier, M. F. and Post, A.: Fast tidewater glaciers, *J. Geophys. Res.-Sol. Ea.*, 92, 9051–9058, <https://doi.org/10.1029/JB092iB09p09051>, 1987.
- 5 McFadden, E. M., Howat, I. M., Joughin, I., Smith, B. E., and Ahn, Y.: Changes in the dynamics of marine terminating outlet glaciers in west Greenland (2000–2009), *J. Geophys. Res.-Earth*, 116, F02022, <https://doi.org/10.1029/2010JF001757>, 2011.
- Moon, T. and Joughin, I.: Changes in ice front position on Greenland’s outlet glaciers from 1992 to 2007, *J. Geophys. Res.-Earth*, 113, F02 022, <https://doi.org/10.1029/2007JF000927>, 2008.
- 10 Moon, T., Joughin, I., Smith, B., van den Broeke, M. R., van de Berg, W. J., Noël, B., and Usher, M.: Distinct patterns of seasonal Greenland glacier velocity, *Geophys. Res. Lett.*, 41, 7209–7216, <https://doi.org/10.1002/2014GL061836>, 2014.
- Moon, T., Joughin, I., and Smith, B.: Seasonal to multiyear variability of glacier surface velocity, terminus position, and sea ice/ice mélange in northwest Greenland, *J. Geophys. Res.-Earth*, 120, 818–833, <https://doi.org/10.1002/2015JF003494>, 2015.
- Morlighem, M., Williams, C. N., Rignot, E., An, L., Arndt, J. E., Bamber, J. L., Catania, G., Chauché, N., Dowdeswell, J.
- 15 A., Dorschel, B., Fenty, I., Hogan, K., Howat, I., Hubbard, A., Jakobsson, M., Jordan, T. M., Kjeldsen, K. K., Millan, R., Mayer, L., Mouginot, J., Noël, B. P. Y., O’Cofaigh, C., Palmer, S., Rysgaard, S., Seroussi, H., Siegert, M. J., Slabon, P., Straneo, F., van den Broeke, M. R., Weinrebe, W., Wood, M., and Zinglensen, K. B.: BedMachine v3: Complete Bed Topography and Ocean Bathymetry Map- ping of Greenland From Multibeam Echo Sounding Combined With Mass Conservation, *Geophys. Res. Lett.*, 44, 11,051–11,061, <https://doi.org/10.1002/2017GL074954>, 2017.
- 20 Murray, T., Selmes, N., James, T. D., Edwards, S., Martin, I., O’Farrell, T., Aspey, R., Rutt, I., Nettles, M., and Baugé, T.: Dynamics of glacier calving at the ungrounded margin of Helheim Glacier, southeast Greenland, *J. Geophys. Res.-Earth*, 120, 964–982, <https://doi.org/10.1002/2015JF003531>, 2015.
- Motyka, R. J., Truffer, M., Fahnestock, M., Mortensen, J., Rysgaard, S., and Howat, I.: Submarine melting of the 1985 Jakobshavn Isbræ floating tongue and the triggering of the current retreat, *J. Geophys. Res.-Earth*, 116, F01 007, <https://doi.org/10.1029/2009JF001632>, 2011.
- 25 Nick, F. M., Vieli, A., Howat, I. M., and Joughin, I.: Large-scale changes in Greenland outlet glacier dynamics triggered at the terminus, *Nat. Geosci.*, 2, 110, <https://doi.org/10.1038/ngeo394>, 2009.
- Nogueira, K., Penatti, O. A., and dos Santos, J. A.: Towards better exploiting convolutional neural networks for remote sensing scene classification, *Pattern Recogn.*, 61, 539–556, <https://doi.org/10.1016/j.patcog.2016.07.001>, 2017.
- 30 Rignot, E., Koppes, M., and Velicogna, I.: Rapid submarine melting of the calving faces of West Greenland glaciers, *Nat. Geosci.*, 3, 187, <https://doi.org/10.1038/ngeo765>, 2010.
- Ronneberger, O., Fischer, P., and Brox, T.: U-Net: Convolutional Networks for Biomedical Image Segmentation, in: *Lect. Notes Comput. Sc.*, edited by Navab, N., Hornegger, J., Wells, W. M., and Frangi, A. F., pp. 234–241, Springer International



- Publishing, Cham, 2015.
- Rosenau, R., Schwalbe, E., Maas, H.-G., Baessler, M., and Dietrich, R.: Grounding line migration and high-resolution calving dynamics of Jakobshavn Isbræ, West Greenland, *J. Geophys. Res.-Earth*, 118, 382–395, <https://doi.org/10.1029/2012JF002515>, 2013.
- 5 Roth, A., Huber, M., and Kosmann, D.: Geocoding of TerraSAR-X data, *Proc. Int. 20th ISPRS Congr*, pp. 840–844, 2004.
- Seale, A., Christoffersen, P., Mugford, R. I., and O’Leary, M.: Ocean forcing of the Greenland Ice Sheet: Calving fronts and patterns of retreat identified by automatic satellite monitoring of eastern outlet glaciers, *J. Geophys. Res.-Earth*, 116, F03013, 2011.
- Sohn, H.-G. and Jezek, K. C.: Ice sheet margin detection using ERS-1 synthetic aperture radar, in: *Int. Geosci. Remote Se.*,
 10 vol. 1, pp. 148–150, <https://doi.org/10.1109/IGARSS.1996.516273>, 1996.
- Sohn, H.-G., Jezek, K. C., and van der Veen, C. J.: Jakobshavn Glacier, west Greenland: 30 years of spaceborne observations, *Geophys. Res. Lett.*, 25, 1998.
- Straneo, F. and Heimbach, P.: North Atlantic warming and the retreat of Greenland’s outlet glaciers, *Nature*, 504, 36, <https://doi.org/10.1038/nature12854>, 2013.
- 15 Sun, Y., Wang, X., and Tang, X.: Deep learning face representation from predicting 10,000 classes, in: *Proceedings of the IEEE conference on computer vision and pattern recognition*, pp. 1891–1898, 2014.
- Thomas, R. H.: Force-perturbation analysis of recent thinning and acceleration of Jakobshavn Isbræ, Greenland, *J. Glaciol.*, 50, 57–66, <https://doi.org/10.3189/172756504781830321>, 2004.
- Vieli, A. and Nick, F. M.: Understanding and Modelling Rapid Dynamic Changes of Tidewater Outlet Glaciers: Issues and
 20 Implications, *Surv. Geophys.*, 32, 437–458, <https://doi.org/10.1007/s10712-011-9132-4>, 2011.
- Xie, S., Dixon, T. H., Voytenko, D., Holland, D. M., Holland, D., and Zheng, T.: Precursor motion to iceberg calving at Jakobshavn Isbræ, Greenland, observed with terrestrial radar interferometry, *J. Glaciol.*, 62, 1134–1142, <https://doi.org/10.1017/jog.2016.104>, 2016.
- Zhang, E., Liu, L., Huang, L.: Calving front and the comparison between its variations and bed elevation in Jakobshavn
 25 Isbræ, <https://doi.pangaea.de/10.1594/PANGAEA.897066>, 2019.
- Zhang, F., Du, B., and Zhang, L.: Saliency-Guided Unsupervised Feature Learning for Scene Classification, *IEEE T. Geosci Remote*, 53, 2175–2184, <https://doi.org/10.1109/TGRS.2014.2357078>, 2015.