

# ***Interactive comment on “Estimating The Sea Ice Floe Size Distribution Using Satellite Altimetry: Theory, Climatology, and Model Comparison” by Christopher Horvat et al.***

**Christopher Horvat**

christopher\_horvat@brown.edu

Received and published: 19 July 2019

As pointed out by Dr. Armitage, Supplementary Figure S1 was not included in the zipped archive. I have attached that figure here, and apologize for the mistake.

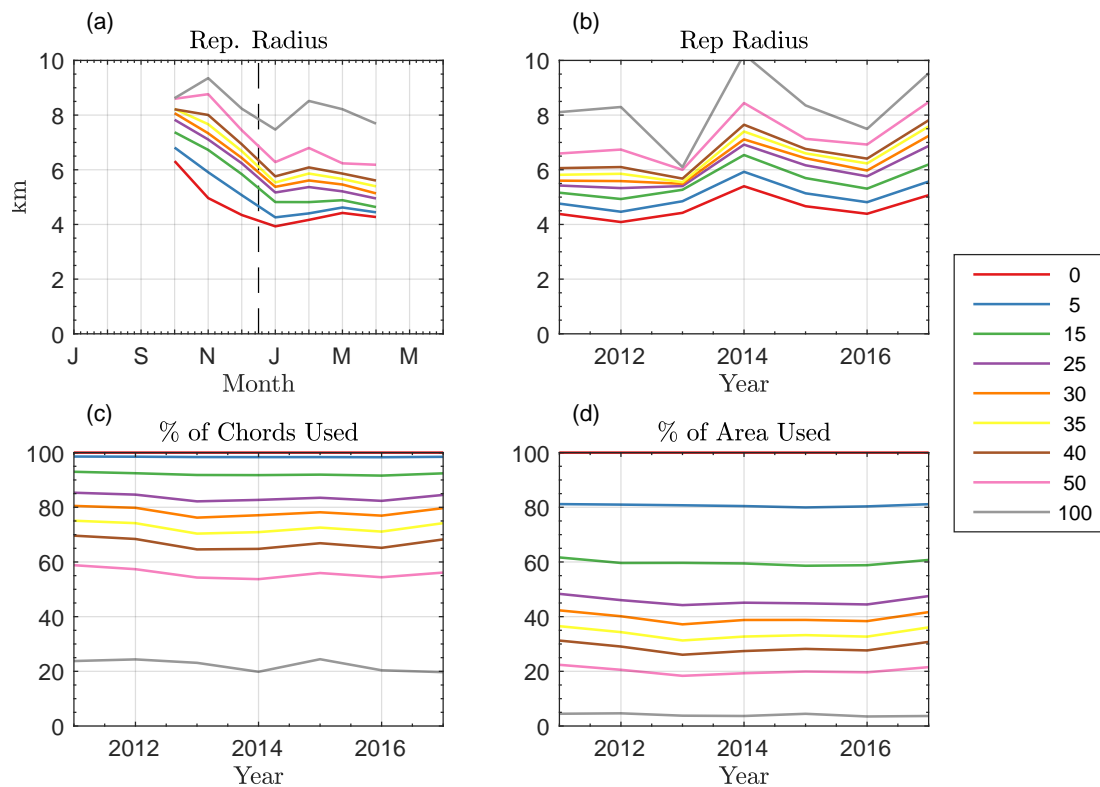
---

Interactive comment on The Cryosphere Discuss., https://doi.org/10.5194/tc-2019-134, 2019.

Printer-friendly version

Discussion paper





**Fig. 1.** Impact of chord number threshold on derived floe size statistics (see Text S2)

Printer-friendly version

Discussion paper

