

We thank the referee for their helpful, constructive comments, which enabled us to reconsider our interpretations, discuss some details more clearly, and eliminate relevant problems.

The red sections comprise the comments proposed by Reviewer 1; our responses are outlined in black; and the modified portions of the manuscript are shown in italics.

– Specific comments –

Line 113: The molar concentration of typical seawater is at the upper end of the experimental range of concentrations used here, and the authors do an excellent job discussing relevant concentration ranges in Line 583 ff. I believe it would aid the reader to have this concentration information presented earlier in the work, but this may be a matter of personal preference.

We have added to this section the information about the natural occurrence of salt in the snow and ice, as shown below:

*The concentrations are proxies for natural salt occurrence in coastal snow (5 mM) (Beine et al., 2012; Douglas et al., 2012), up to the concentration in sea water (0.5 M) (Massom et al., 2001; Thomas, 2017).*

Lines 120-137: Did the authors have any suspicions or intentions on how each freezing method would cause the solutes to be organized in the sample? If so, it would be helpful to include that information here, even if (actually, especially if) those expectations were later found to be untrue.

Thank you for the comment; our preference is to leave the descriptive part without personal opinions. The relevant expectations are outlined in the Discussion section to a certain extent.

*As mentioned above, the ice crystal size difference between the samples frozen under high and low supercooling was expected. However, we were rather surprised that the ice crystals in the non-seeded supercooled droplet appeared smaller than those in the ice spheres prepared by spraying a solution into the LN.*

Lines 138-141: While it makes sense to protect the surface from sublimating, how can the experimental procedure ensure the sublimation reveals only the original ice surface? Is it possible the ice surface is also sublimated to a certain degree, as subsequent experiments suggest? If so, what impact would this have?

The responses are provided in a related part of the paper, as shown below:

*The layer exhibited a structure very different from that the frozen samples (Figure S18); thus, the desublimed ice was always readily distinguishable from the original ice sample. The sublimation of the condensed layer was monitored at the start of the ESEM imaging; as soon as the layer had sublimed, the imaged surface of the frozen sample was affected by the sublimation process to only a very small extent. We can infer this fact because we had also followed further sublimation of the ice samples, as will be reported in the near future. By further extension, the effect of ice sublimation could be more pronounced in temperature cycling and ice dynamics experiments.*

Line 218: It is interesting that the surface became flooded with brine over the course of the procedure. How long did this take? Do you have a hypothesis what physical process would explain this?

The event most likely resulted from the slow, gradual sublimation of the ice. The flooding typically took about 5 minutes in the given samples.

during the procedure, the surface became completely brine-flooded due to the slow, gradual ice sublimation.

Line 322-323: It may be useful to discuss the uncertainties this introduces into the analysis.

As this comment was proposed also by Reviewer 2 we are giving same answer.

The uncertainty of the surface coverage calculation associated with the manual threshold selection can be indirectly deduced from the variance of the surface coverage in the sequence of the images recorded at the same temperature in Figure 4. Five images were recorded at the temperature -23.4 °C at the beginning of the experiment; their estimated surface coverages equaled 22.5, 21.1, 22.9, 20.4, and 25.8 %. Similarly, the values of 36.0, 35.7, and 34.4 were estimated for the surface coverage of the sample at -25.1 °C. Thus, we assume the surface coverage uncertainty due to the manual threshold selection is in units of percent. The systematic error due to a difference in the signal intensity would be larger, and therefore only the surface coverages based on the samples with similar signal intensities can be directly compared.

We modified and extended the Ch. “2.3 Estimating the brine surface coverage” accordingly:

*The uncertainty of the manual threshold selection procedure is indirectly deducible from the variance of the surface coverage in the sequence of the images recorded at the same temperature soon after one another; the relevant value was in units of percent.*

Line 315 ff: The idea of surface coverage is an interesting one. I think I understand the limitations of the technique, and I agree it is unfortunate the depth of the brine layer cannot be determined. However, is it worth including even some rough calculations of the total CsCl mass present in the sample, and determining if the freezing method assumptions are supportable? For example, you could calculate the surface area of the brine layer and assume it is present to a depth of 1,500 nm (the ESEM interrogation depth); does that volume account for all the CsCl, or just a tiny fraction of it?

The details of the performed calculations have been added to the Supplementary information section and their results into the text:

*we can nevertheless estimate the relative amount of the salt on the surface of the sample, presuming that the thickness of the surface brine is similar to channels' width. Therefore, we estimated the relative amount of the salt on the surface of the frozen samples prepared from 0.05 M CsCl via the freezing methods I-III, exploiting the assumption that the thickness of the surface layer equals 1.5 μm. As a result, the relative amounts of the salt on the surface were 9, 4.5, and 26% for the non-seeded droplets, seeded droplets, and ice spheres, respectively. The calculations are provided in the SI.*

As the authors (and some of the cited literature) suggest, assumptions about where freezing methods place solutes can be very speculative; any opportunity to constrain this information would be welcome.

We consider the current observation a suitable contribution to the general discussion on these issues; further experimental methods are being designed to facilitate better understanding of the problem.

Line 329: I'm not convinced the seeded sample would grow from the exposed surface downwards. Why wouldn't crystallization be favored at the basal surface, where presumably maximum heat transfer was happening and the droplet temperature was slightly lower?

The temperature of the sample was only 2 °C below the freezing point of pure water (and slightly less in an aqueous solution), and it remained constant within the sample. Spontaneous crystallization did not occur; this process started after the sample had been seeded with an ice crystal positioned onto the sample's surface. Horizontal movement of the ice-solution interface could be observed, proceeding from the point of touch between the sample and the ice crystal towards the other side of the sample. Although the vertical movement of the interface could not be monitored, we assume that the crystallization had started at the surface, where the crystallization nucleus was in contact with the droplet. The temperature gradient was supposed to be minimal, as the solution had been thermostated before seeding at -2°C. The thermal camera measurement suggested thermal stabilization within 3 minutes at -18 °C, and it will probably be less for -2°C. Furthermore, a dedicated study proposes that crystallization on the surface is 1e10 more likely than in the bulk (Shaw et al., 2005).

We modified the text accordingly:

*Conversely, the seeded sample probably started to crystallize from the surface, close to the edge of the sample as the first place in touch with the seeding crystals. Even though small vertical temperature gradients were to be expected through the solution, we considered crystallization from the surface more likely, in accordance with a related study which had suggested that crystallization on the surface was  $1 \times 10^{10}$  more probable than the corresponding process in the bulk (Shaw et al., 2005).*

Line 341-343: Was the droplet used here the same droplet presented in Figure 2b? If it is or if it isn't, I would clarify this point in the text. If it is a different droplet, what was the surface brine coverage for the droplet in 2b? This comparison might give the reader some idea of the variability in the system. Section 3.3.2 discusses surface coverage for the 0.05 M sample; while I understand it represents additional work, it may be worth at least tabulating surface coverage for all 9 samples presented in Figure 2 as a Supplemental figure.

The applied droplet was the same as that presented in Figure 2b; the observed spot, however, was different. The surface coverage variabilities are summarized in Table S3, where the coverage for 5 independent, identically prepared samples is presented in relation to each freezing method. We prefer avoiding a direct comparison of the surface coverage values for various concentrations, as this may become misleading due to the arguments presented in Section 2.3.

Line 356-359: This, to me, is an interesting and important finding. As a suggestion, would it make sense to include the relative brine volume versus temperature (based on the phase diagram) as a second line on Figure 4, or add an additional scale on the right-hand side indicating relative brine volume? This would allow a more direct comparison between brine surface area and brine volume.

We are grateful for good idea. Figure 4 and the text has been completed with the relevant information.

*The strong relationship between the brine volume and surface coverage is indirectly demonstrated in Figure 4; the coverage follows the same trend as the relative amount of brine in the frozen sample ( $w_{brine}$ ) calculated from the phase diagram using the formula*

$$w_{brine} = \frac{m_{aq}}{m_{fr} - m_{aq}},$$

where,  $m_{aq}$  is the molality of the aqueous solution of salt (that can be approximated by the concentration of the salt in case of low concentrations) and  $m_{fr}$  is the molality of the brine in the frozen sample (it is dependent on temperature and can be inferred from the liquidus curve of the phase diagram). Thus, we are of the opinion that the change of the brine volume is the main cause of the surface coverage variation.

Line 381-383: I'm a bit confused by the assertion that the brine volume has increased dramatically. You have previously stated the experimental method cannot evaluate brine volume, only surface area coverage. What data supports the idea that the brine volume has increased dramatically? Is it possible the brine volume is unchanged, and the brine has simply spread laterally? I would suggest addressing this uncertainty in the paper.

We cannot evaluate the brine volume directly; such a procedure is possible only in the surface coverage, and therefore the corresponding formulation in the text may have been rather vague. Nevertheless, we suppose the brine volume and the surface coverage are related parameters, as spreading of the brine on the surface of the ice is governed mainly by the surface tension.

The following text has been incorporated in the manuscript:

*Even though it is not possible to evaluate the volume from the microscopic images, we documented well that the brine surface coverage had risen four times during the warming, becoming much larger than the increase implied by the phase diagram. Presumably, the brine volume can be inferred indirectly from the surface coverage if spreading of the brine on the ice surface is governed mainly by the surface tension. We interpret the change in the brine volume as the central cause of the observed surface coverage variations, and we also suppose that the observed 4-fold rise in the coverage indicates an even larger volume alteration because the brine thickness will increase too. The strong relationship between the brine volume and surface coverage is indirectly demonstrated in Figure 4;*

Line 432ff: While reading the first paragraph of this section, the question that came to mind was, "Would ice sublimation also explain the apparent motion of grain boundaries, as the surface ice erodes?" a possibility I'm glad to see discussed in lines 486-490. I would suggest considering rewording some of the introductory statements of this section to acknowledge the motion is apparent, and may be an experimental artifact, not "true" motion.

Thank you! We appreciate the suggestions. The appearance of the ice boundaries' movement is discussed from the beginning of the paragraph now.

*With the time progressing, the grain boundary on the right-hand side performed an apparent gradual movement through the hump, while the hump did not change.*

Do you have a sense how quickly sublimation occurs off the ice surface? The fact that the surface coverage of CsCl stays the same suggests sublimation is not happening on a timescale relevant for the apparent boundary movement, but an explicit reference to the amount of time required for sublimation (perhaps in section 3.4) would be welcome. It may be possible to combine the apparent lateral motion of the grain boundaries with a known sublimation rate to estimate the angle of the grain boundaries relative to the ice surface. If all the calculated angles are shallow, which would be geometrically unlikely, the finding would support the idea that the grain boundaries are actually moving and not just appearing to move.

We materialized the answer in the text of the manuscript:

*We do not know the complete time required for our samples to sublime, because the process was not aimed at in our experiments; contrariwise, we intended to prevent sublimation of the samples. We usually imaged the samples for about 30 minutes, and they never sublimated during this period. The sample height at the start of the imaging corresponded to approximately 1 mm (based on the working distance of the ESEM). The upper limit of the (vertical) sublimation rate can thus be calculated if full sublimation of the sample is assumed to materialize within 30 minutes; the (vertical) sublimation rate would then be  $33\text{ }\mu\text{m}/\text{min}$ . The brine channel (Figure 6) moved by  $\approx 19\text{ }\mu\text{m}/\text{min}$ . If the apparent movement of the brine channel is caused solely by the sublimation, the angle between the channel and the horizontal line will be  $60^\circ$ .*

However, the uncertainty of the sublimation rate discourages us from discussing the further details in the manuscript.

Line 441: If it's easy to do, I would suggest adding text to the movie (Figure S1) including a timescale, or a caption stating the overall elapsed time in the movie. Otherwise the timescale is indirectly available in the caption for Figure 6.

The video has been completed with the elapsed time.

Line 512: This line seems to suggest the method of freezing a droplet using a seed crystal should exclude impurities to the surface of the droplet during freezing. However, Line 329 suggests the opposite, that the droplet would crystallize from the surface downward. I suggest reconciling these two statements (or clarifying them if I have misunderstood either), or discussing it as an uncertainty.

Thank you for identifying the conflicting statements. We attempted recording the process on camera; however, this did not deepen our knowledge in this respect thus far. We are of the opinion that, as discussed above, the freezing proceeds from the surface laterally and also vertically downwards. The fact that we did not observe that many air bubbles may have been caused by freezing slow enough to allow the bubbles to escape, either to the ambient air or towards the bottom of the sample.

*Conversely, the seeding method allows slow ice crystalization, leading to major expulsion of the air either out of the solution or downward, towards the bottom; we are nevertheless unsure of the details of such scenarios.*

Figures 744-749: This is a useful finding. It is worth noting that in at least one other related work, the same investigator suggested crushing an ice sample would preferentially expose impurities because the ice would cleave “along defect sites such as veins and pockets” (Kahan et al., 2010). If the research presented here can be used to address this issue as well, and it appears to me it could, I would suggest the text be modified accordingly.

Thank you for identifying the connection. We have changed the text accordingly.

*In the present paper, we propose evidence for structural differences between the surface (Figures 2-7) and the interior of the investigated ice samples (Figure 9). In the ice broken via mechanical impact, we cannot bring any evidence for the supposed cleavage “along defected sites such as veins and pockets”(Kahan et al., 2010). From Fig. 9 we can infer that the sample disintegrated perpendicularly to the lamellae. Certainly, after cutting the ice, some amount of impurities will surface; however, our*

*current observations indicate that most of the compounds still remain inside the ice interior. No flowing out of the brine was observed at -25 °C, even though the sample had slowly sublimated.*

– Technical corrections –

Line 266: Figure 21a should read Figure 2a. Line 373: Suggest that “expected” is a better word choice here than “expectable”. Line 672: I think “special” should be replaced by “spatial”. Line 729: I think that “expected” is a better word choice here than “expectable”. Line 744: “Figure 2-7” should be “Figures 2-7”.

Thank you for careful reading – good suggestions.

Line 769: I believe the correct temperature here should be -16 °C, not 16 °C.

We think that 16-degrees supercooling refers to -16 °C.

– References –

Kahan, T. F., Zhao, R., Jumaa, K. B., and Donaldson, D. J.: Anthracene photolysis in aqueous solution and ice: Photon flux dependence and comparison of kinetics in bulk ice and at the air-ice interface, *Environ Sci Technol*, 44, 1302-1306, 10.1021/es9031612, 2010.

Interactive comment on The Cryosphere Discuss., <https://doi.org/10.5194/tc-2019-13>, 2019. C5

Beine, H., Anastasio, C., Domine, F., Douglas, T., Barret, M., France, J., King, M., Hall, S., and Ullmann, K.: Soluble chromophores in marine snow, seawater, sea ice and frost flowers near Barrow, Alaska, *Journal of Geophysical Research*, 117, 10.1029/2011jd016650, 2012.

Douglas, T. A., Domine, F., Barret, M., Anastasio, C., Beine, H. J., Bottenheim, J., Grannas, A., Houdier, S., Netcheva, S., Rowland, G., Staebler, R., and Steffen, A.: Frost flowers growing in the Arctic ocean-atmosphere-sea ice-snow interface: 1. Chemical composition, *Journal of Geophysical Research*, 117, 10.1029/2011jd016460, 2012.

Massom, R. A., Eicken, H., Hass, C., Jeffries, M. O., Drinkwater, M. R., Sturm, M., Worby, A. P., Wu, X., Lytle, V. I., Ushio, S., Morris, K., Reid, P. A., Warren, S. G., and Allison, I.: Snow on Antarctic sea ice, *Rev. Geophys.*, 39, 413-445, 10.1029/2000rg000085, 2001.

Shaw, R. A., Durant, A. J., and Mi, Y.: Heterogeneous Surface Crystallization Observed in Undercooled Water, *The Journal of Physical Chemistry B*, 109, 9865-9868, 10.1021/jp0506336, 2005.

Thomas, D. N.: *Sea Ice*, Wiley-Blackwell, Chichester, UK, 2017.

We thank the referee for their helpful, constructive comments, which enabled us to reconsider our interpretations, discuss some details more clearly, and eliminate relevant problems.

The red sections comprise the comments proposed by Reviewer 2; our responses are outlined in black; and the modified portions of the manuscript are shown in italics.

## Anonymous Referee #2

### Main points

1. I'm a little confused about the detector sensitivity and variation in acquisition settings. It peaks for the authors that they mention this point so explicitly. I agree with them, that this -while being nasty- does not impact their conclusions. Looking at Figure 3, this might imply that the samples with a high signal intensity, might even have a higher surface coverage of brine, because weaker spots from smaller puddles might be overseen. I might suspect that sample g and f show the same fine structure as i their dark areas – but I would not think that this adds significantly to the brine covered area. However, in line 319 to 323 it is not clear to me how the “normalised brine surface coverage” is defined and why this is free from this artefact. I would suggest to move the discussion from the experimental section here, use Figure 3 more explicitly to discuss the potential impact on your conclusions, and maybe even include estimates of this systematic error in the uncertainties mentioned in lines 315-320.

The formulation “the samples with a high signal intensity might even have a higher surface coverage of brine because weaker spots from smaller puddles might be overseen “ is true.

The uncertainty of the surface coverage calculation associated with the manual threshold selection can be indirectly deduced from the variance of the surface coverage in the sequence of the images recorded at the same temperature in Figure 4. Five images were recorded at the temperature -23.4 °C at the beginning of the experiment; their estimated surface coverages equaled 22.5, 21.1, 22.9, 20.4, and 25.8 %. Similarly, the values of 36.0, 35.7, and 34.4 were estimated for the surface coverage of the sample at -25.1 °C. Thus, we assume the surface coverage uncertainty due to the manual threshold selection is in units of percent. The systematic error due to a difference in the signal intensity would be larger, and therefore only the surface coverages based on the samples with similar signal intensities can be directly compared.

We modified and extended the Ch. “2.3 Estimating the brine surface coverage” accordingly:

*The uncertainty of the manual threshold selection procedure is indirectly deducible from the variance of the surface coverage in the sequence of the images recorded at the same temperature soon after one another; the relevant value was in units of percent.*

2. I suggest to add concentration and temperature information of the samples during measurement and ice production to the phase diagram (Figure 1).

As the displayed phase diagram ranges from 0 to 18 mol kg<sup>-1</sup>, the two lower salt concentrations (0.005 M and 0.05 M) would be on the very left of the phase diagram, thus becoming hardly recognizable.



Throughout the text, I would encourage to be more precise in using the words brine volume, concentration, and salt amount. I'm not so convinced that you can discuss brine volume, as you are not sensitive to the thickness. Your observable is "only" the amount of salt, is it not?

Thank you for the comment.

What we observed was the surface coverage with the salt. However, we suppose that the brine volume and surface coverage are related parameters, as spreading of the brine on the surface of the ice is governed mainly by the surface tension. The relationship between the brine coverage and volume can be inferred from Figure 4. We attempted to use the indicated words with greater care throughout the text.

Would you expect the shock frozen samples (in N<sub>2</sub>) to crystallize once temperatures drop below the eutectic and could you comment on the question whether or not the salt deposits would liquify again upon warming to the temperature of investigation taken that this process might be slow.

We know from the differential scanning calorimetry (related to the NaCl solution, paper accepted for publication in J. Chemical Physics: "Vitrification and Increase of Basicity in between Ice Ih Crystals in Rapidly Frozen Dilute NaCl Aqueous Solutions") that the brine in the shock-frozen samples crystallizes at some temperature below  $T_{eu}$ , depending on the cooling rate. In our ESEM micrograms, crystallized CsCl was not observed in the frozen spheres due to poor thermal conductivity between the cooling stage and the spheres; however, we examined CsCl crystallization in the freezing method IV, where the thermal conductivity was sufficient. The deposited salt liquefies upon warming; Figure S19 was added to demonstrate the process.

3. Protecting the sample with a condensed ice layer is a excellent idea. However, could you give more details how you ensured that you "revealed the original surface" for the measurements and not removed too much ice (including some layers of the original surface). (lines 138)

The formation of an ice layer on the surface of the frozen sample cannot be excluded unless the sample has been frozen in an inert atmosphere. At the start of the imaging, we identified a condensed ice layer on the surface of the sample. The surface's structure is very different from that of the actual samples, as demonstrated in Figure S18. We imaged the samples from the very beginning until the ice sublimated completely. The data were evaluated by using the images recorded soon after the experiment had begun; thus, the samples' surfaces are not at all or only very slightly affected by the sublimation.

*The layer exhibited a structure very different from that the frozen samples (Figure S18); thus, the desublimed ice was always readily distinguishable from the original ice sample. The sublimation of the condensed layer was monitored at the start of the ESEM imaging; as soon as the layer had sublimed, the imaged surface of the frozen sample was affected by the sublimation process to only a very small extent. We can infer this fact because we had also followed further sublimation of the ice samples, as will be reported in the near future. By further extension, the effect of ice sublimation could be more pronounced in temperature cycling and ice dynamics experiments.*

#### Minor points

lines 12: I'm not a native speaker: What means "threading"? I find the first sentence of the abstract a slightly to abrupt and suggest to start more general.

The word "threading" was adopted from (Cheng et al., 2010) in the hope of its being an acceptable option. In the context of the article, *threading* means *winding around*: (<https://www.dictionary.com/browse/threading?s=t>)



lines 34: reword: ice and snow are also part of the environment.

Certainly: The problem has been eliminated.

Lines 41: Add reference to Grannas 2007 and/or Bartels-Rausch 2014

The reference has been added.

Lines 43: Rather “into the ice lattice at high concentration”. Domine’s work clearly shows that ice can hold impurities as solid solution and for some species at sufficient high concentration to impact partitioning to the atmosphere.

The relevant text section has been expanded accordingly.

*Excepting low concentrations of HF, NH<sub>4</sub><sup>+</sup>, HCl, HNO<sub>3</sub> and formaldehyde (Perrier et al., 2002; Thibert and Domine, 1998, 1997), impurities are usually not incorporated into the ice lattice (Krausková et al., 2016; Hobbs, 2010; Wilson and Haymet, 2008).*

Lines 87: I found the discussion in this paragraph too detailed and slightly off topic and suggest to remove it. This paper does not add to the question of interior vs. surface distribution of impurities. It is only sensitive to the surface of the samples.

The interior of the frozen samples was, in fact, approached by using the method 4, where the samples frozen in the test tubes had been broken and examined. Another applicable technique of reaching inside the sample was sublimation.

Lines 168: Is it correct that you never observed a supercooled solution? The brine always started crystalizing at the eutectic temperature? That would be an interesting observation.

Thank you for the comment. Regrettably, we cannot discuss your point properly, as we did not measure the temperature of the sample in a direct manner; the temperature of the cooling stage was adjusted. The temperature difference between the sample and the cooling stage is characterized in the Methods section. Moreover, the cooling is markedly slower in the sample than in the Peltier stage. We nevertheless know that supercooling is common in the DSC of NaCl solutions.

Lines 171: What is an BSE detector?

The abbreviation refers to a detector of back-scattered electrons.

Figure 2: Could you give an estimate on the smallest features that you would detect with the specific detector settings? (lines 213: no brine puddles larger than.... Were detected...).

We imaged the samples with the resolution of 0.5 µm. However, the size of the structures is not the decisive factor determining the visibility of the structures. The detector settings are influenced by the salt concentration and surface roughness. Further, if the crystalline salt is present, the visibility of other structures becomes greatly reduced because the salt signal is intensive too, and the detector sensitivity is thus reduced.

In figure 4 the surface coverage seems to increase continioiusly, while T shows steps between -24 to -18°C. Could you comment on this?

The temperature in Figure 4 is that set on the Peltier stage. When the temperature of the stage has been changed, it takes some time for the temperature of the sample to settle; thus, the changes on the surface coverage are continuous, not stepwise.

Hobbs, P. V.: Ice Physics, OUP Oxford, 2010.

Cheng, J., Soetjpto, C., Hoffmann, M. R., and Colussi, A. J.: Confocal Fluorescence Microscopy of the Morphology and Composition of Interstitial Fluids in Freezing Electrolyte Solutions, *Journal of Physical Chemistry Letters*, 1, 374-378, 10.1021/jz9000888, 2010.

Krausková, Ľ., Procházková, J., Klašková, M., Filipová, L., Chaloupková, R., Malý, S., Damborský, J., and Heger, D.: Suppression of protein inactivation during freezing by minimizing pH changes using ionic cryoprotectants, *International Journal of Pharmaceutics*, 509, 41-49, 10.1016/j.ijpharm.2016.05.031, 2016.

Perrier, S., Houdier, S., Domine, F., Cabanes, A., Legagneux, L., Sumner, A. L., and Shepson, P. B.: Formaldehyde in Arctic snow. Incorporation into ice particles and evolution in the snowpack, *Atmos. Environ.*, 36, 2695-2705, 2002.

Thibert, E., and Domine, F.: Thermodynamics and kinetics of the solid solution of HCl in ice, *J. Phys. Chem. B*, 101, 3554-3565, 1997.

Thibert, E., and Domine, F.: Thermodynamics and kinetics of the solid solution of HNO<sub>3</sub> in ice, *J. Phys. Chem. B*, 102, 4432-4439, 1998.

Wilson, P. W., and Haymet, A. D. J.: Workman-Reynolds freezing potential measurements between ice and dilute salt solutions for single ice crystal faces, *J. Phys. Chem. B*, 112, 11750-11755, 2008.

We thank Dr. Soenke Maus for an extensive and detailed review, which, in our opinion, has enabled us to substantially improve the manuscript.

The red sections comprise the comments proposed by Reviewer 1; our responses are outlined in black; and the modified portions of the manuscript are shown in italics.

I find the manuscript interesting, well written and to some degree worth publishing, as there is limited information available about the distribution of solute in ice formed in the environment, especially with the noted spatial resolution of 5  $\mu$ m. However regarding the relevance for ice in the environment (section 4.) and the straightforward implications for naturally occurring salty ices proposed by the authors, I strongly disagree.

We agree that the “straightforwardness” of the presented results is directed more towards laboratory-prepared samples than natural ices. As we work exclusively with the former, we may not have sufficiently appreciated the specific requirements of the latter in the original manuscript. After realizing this, we modified the text accordingly.

While the paper puts many observations in the light of possible processes and phenomena described in the literature, the discussion is very vague. Some quantitative results are given but not compared to theories.

We definitely agree in that the article misses the approach of a theoretician and would like to incorporate such an aspect in the future; currently, however, we focus on experimental microscopy, which, previously, was not covered in the literature on a comprehensive basis.

It is neither clearly presented which of the observed ice-brine pattern are created by the method, and which relate to the freezing process.

The text has been revised to better separate and highlight these facts.

I. While the authors apply different freezing methods, it is not clear to which degree these resemble natural freezing conditions. For (I), freezing of a filtered (0.45  $\mu$ m) solution, in a silicon sample holder rather high supercoolings were likely to exist followed by unidirectional freezing. This may resemble nucleation in the atmosphere, yet filtering, silicon holder and unidirectionality introduce considerable differences. Method (III) and (IV), freezing within liquid nitrogen, is easy to perform but may lead to rather artificial freezing conditions. Hence only (II) seeding a slightly supercooled droplet with ice crystals resembles natural conditions.

We appreciate the expert analysis of the relevance towards natural freezing conditions. As a matter of fact, our experiments are indeed centered especially on laboratory-frozen samples, and the step towards conditions closer to environmental freezing is yet to be taken.

In general, the freezing of solutions is a morphological stability problem for which the pattern depends on temperature and solute gradients (that may be derived based on the degree of supercooling) and the solidification velocity. None of these boundary conditions is documented or monitored.

We have made an attempt to determine the freezing velocity, when technically possible.

II. The technique only yields information about the distribution and pattern of ice and solute at the sample surface. For these brine films the thickness remains undetermined. The brine film coverage on the surface may not only depend on its (unknown) thickness, but also on processes in the interior of the samples. E.g. noting that brine will be expelled from the interior, the surface to volume ratio or specific surface area of samples can be expected to be a highly relevant parameter. However, sample size has not been varied during the experiments. Another important property that affects expulsion of brine is the bulk density of an ice-brine aggregate. Some results obtained here (e.g., line 339-346) should be discussed in terms of the non-linear behaviour of the expansion coefficient of an ice brine-mixture that may take positive or negative values depending on solute concentration and temperature (e.g. Timco and Frederking, 1996). Overall, the discussion of brine coverage is incomplete and speculative - see specific notes below.

III. For all samples the author create (line 138) a thin layer of ice from condensed moisture on the samples surface, to protect the surface from sublimation. It should be tested how this thin layer of ice might affect the surface brine pattern:

A deeper description of the desublimed layer has been added, together with the relevant images (Figure S18).

could the layer be porous and imply suction of brine into it?

The condensed layer of ice is porous; we do not assume the layer could alter the underlying ice surface in a notable manner. The sample is exposed to the condensed layer only briefly, for the period of a few minutes.

Does the creation of the layer change the surface temperature?

The formation of the condensed layer was inevitable in the open-chamber freezing. The layer was formed gradually during cooling the frozen sample; thus, no abrupt temperature change was observed. During lowering the sample temperature, the surface of the sample was likely warmer than the bottom due to imperfect heating; the condensed layer could also participate in slower cooling of the surface. The experiments, however, were conducted after the sample temperature had been thermally equilibrated and the condensed layer had sublimated.

May it lead to dissolution of ice in surface brine? How is the time determined at which the thin layer has sublimated? The behaviour of this layer needs to be described better, possibly through time-series of images showing its sublimation.

The images showing the sublimation of the condensed layer were incorporated in the SI (Figure S18). In our experiments, the time of the presence of the desublimated ice layer was kept short, and we thus do not expect the brine to wick in substantially. Other details on the layer sublimation are given below.

In general, on the one hand there appear surface features that change during the imaging due to sublimation (grain boundaries), while others do not change (humps). On the other hand, the humps form during sublimation, while the grain boundaries have formed earlier, during freezing. It should be distinguished better which morphological parameters are forming during the freezing process and which during sample preparation and observation.

We have modified the text to distinguish the effects of the freezing from those caused by the sample sublimation.

IV. Also the described dynamics of ice surfaces (3.5) appears to be related to sublimation during imaging and it is not clear for which process in natural ice the experiment with the present scales (time, sample size) is relevant. The description of these results and its discussion remain qualitative. Grain boundary migration in a temperature gradient is discussed, but no estimates of actual temperature gradients and migration velocities are given. It is also mentioned that tilting of grain boundaries with respect to the plane of sublimation might create an apparent rate of grain boundary migration, but no tests were made to verify this. The author's conclusions are vague: We are, however, uncertain if the reason for these unusual dynamics of the frozen surface consists in one of the previously described conditions, both of them, or a completely different process.

We admit that the low pressure sample sublimation is only an approximation to the natural conditions, progressing much faster than would have been relevant to sea ice surface or frozen aerosols. The approximation may be relevant to a certain extent if the surface reconstruction occurs at a low rate; such an assumption nevertheless remains to be validated.

## 1. Introduction

L29 straightforward implications → I would hardly call the results/conclusions as straightforward

The portion of the text has been modified to read as follows:

*The results have straightforward and indirect implications for artificially prepared and naturally occurring salty ices, respectively.*

L103–104 and the location of sea water brine on sea ice can be inferred → sea ice is a rather different system, involving natural convection, unidirectional growth, a freeboard, the presence of snow, etc....

The sentence has been modified to read as follows:

*thus, the presence of brine on the surface of the frozen samples can be clearly monitored, with indirect implications towards the location of sea water brine on sea ice.*

L138–141 → This process of thin layer application and sublimation needs to be better

shown/validated (VI. above)

The formation of an ice layer on the surface of the frozen sample cannot be excluded unless the sample has been frozen in an inert atmosphere. At the start of the imaging, we identified a condensed ice layer on the surface of the sample. The surface's structure is very different from that of the actual samples, as demonstrated in Figure S18. We imaged the samples from the very beginning until the ice sublimated completely. The data were evaluated by using the images recorded soon after the experiment had begun; thus, the samples' surfaces are not at all or only very slightly affected by the sublimation.

A discussion of these details has been incorporated in the manuscript, as follows:

*The layer exhibited a structure very different from that the frozen samples (Figure S18); thus, the desublimed ice was always readily distinguishable from the original ice sample. The sublimation of the condensed layer was monitored at the start of the ESEM imaging; as soon as the layer had sublimed, the imaged surface of the frozen sample was affected by the sublimation process to only a very small extent. We can infer this fact because we had also followed further sublimation of the ice samples, as will be reported in the near future. By further extension, the effect of ice sublimation could be more pronounced in temperature cycling and ice dynamics experiments.*

## 2. Methods

L146– (2.2.) → Here I would expect information about image resolution (mentioned later as 0.5  $\mu\text{m}$  in the results section.

A sentence concerning the resolution has been added to complete the methods:

*The images were typically recorded with the magnification of 500 (image resolution of  $\sim 0.5 \mu\text{m}$ ), although a resolution up to ten times higher is feasible.*

L163–168 We estimate that the surface of a frozen sample is up to 2 °C warmer compared to that of the sample holder...→ The crystallization temperature you observe is -25 °C which, allowing for some uncertainty, is within the eutectic temperature range you mention from other sources for aqueous CsCl solutions. There is thus no need to assume a warmer surface. Why is it assumed/likely then?

Our suspicion of a warmer surface was based on the observed CsCl crystallization. Based on the referee's comment, however, we employed a thermal camera to study the temperature behavior more closely. The details are now specified within the manuscript:

*The thermal camera measurements in atmospheric conditions (without the reduced pressure environment of the ESEM sample chamber) showed that the sample was about 2 °C warmer than the cooling stage. Further warming of the sample during the ESEM experiments was to be expected, especially due to the effects of the electron beam and the relatively warm gas purged through the specimen chamber; conversely, the surface cooling embodied an expectable process too, considering the ice sublimation and water evaporation from the brine. These factors could contribute to the salt crystallization on the sample surface, even when the temperature of the holder does not change; still,*

*the overall temperature difference between the surface of the frozen samples and the cooling stage will likely not exceed 2 °C.*

**L170– (2.3.) → The manual threshold segmentation process needs to be described better. What is the uncertainty in brine coverage related to segmentation uncertainty?**

In this context, we propose the following explanation, that is also detailed in Chapter 2.3:

The pixels of the grayscale image recorded with the ESEM exhibit brightness in the range from 0 (black) to 255 (white). The Mountain<sup>®</sup> Software enables us to select pixels with the brightness value above the chosen threshold; these pixels are highlighted in the software. By overlaying the highlighted mask and the white areas in the original image, the best-fitting threshold is chosen to represent the brine and to exclude the ice (Figure S1).

The uncertainty of the manual threshold selection procedure is indirectly deducible from the variance of the surface coverage in the sequence of the images recorded at the same temperature, Figure 4. Five images were recorded at the temperature -23.4 °C at the beginning of the experiment; their estimated surface coverages equalled 22.5, 21.1, 22.9, 20.4, and 25.8 %. Similarly, the values of 36.0, 35.7, and 34.4 were estimated for the surface coverage of the sample at -25.1 °C. Thus, we assume that the surface coverage uncertainty due to the manual threshold selection ranged within units of percent.

### **3. Results and discussion**

**L236– (table 1) → These results are interesting. To understand their relevance for natural freezing processes they need however to be related to an estimate of freezing rates. Please consider model and other observation approaches to obtain such an estimate. Also, I suggest that for the freezing method IV, capsules in liquid nitrogen, the pattern shown in Figure 9 should be given here - see next note on L274–277. It would be further helpful to provide a f comparing the basic information for all methods (directionality, temperature difference, sample size, surface of observations).**

We performed additional open-chamber freezing experiments, utilizing a high-speed camera to determine the freezing rate in the methods I and II. The movement of the freezing front was recorded for the 0.05 M CsCl solution. In the freezing method I, the freezing rate of 150 mm/s was established; in the technique II, the freezing rate of 0.2 mm/s was roughly estimated, as the freezing interface was very poorly visible on the camera in this freezing process. Regrettably, the camera could not be used to monitor the freezing front in the methods III and IV (freezing in liquid nitrogen).

As regards the structure of the text, we would like to separate the observation of the surfaces from that of the samples' interiors, thus facilitating separation of the samples frozen with the method IV.

A table comparing all the freezing methods has been incorporated in the text. (Table 1)

**L258–265 → Crystal orientation is not retrieved by the imaging and its discussion is confusing. Supercooling and freezing rate alone explain different crystal sizes.**



We agree: The text concerned has been deleted.

L274–277 Therefore, based on analysing the crystal sizes, we can infer that the spontaneous freezing of the non-seeded droplet supercooled to about -16 °C occurred at the highest freezing rates experimentally attempted in this.→ Based on the facets in Figure 9, I would rather suggest that freezing in LN2 with method IV was faster than in method I. Next, the freezing rate of droplets sprayed onto LN2 may have been the largest overall, with the difference that this interface has not become morphologically unstable. Such a planar growth can be expected based on morphological stability theory for high growth rates (e.g., Sekerka, 1973; Coriell et al., 1994).

We thank the reviewer for referring to the literature and appreciate his valuable comment. The text has been modified accordingly.

*An alternative reason for comparatively large ice crystals forming during the nebulization of a solution into LN may consist in a different freezing mechanism: at freezing rates from 210 to  $2 \times 10^6$  mm/s, morphological instability of the ice surface is predicted, whereas outside this range linear progression of the ice front is expected (Wettlaufer, 1992; Maus, 2019).*

The method IV allows the estimation of freezing rate to be less than 0.1 mm/s.

*Using the theoretically predicted instability for the 0.035 % NaCl solution, (Wettlaufer, 1992) we can conclude, for the observed 10- $\mu$ m spacing, that the freezing rate can range from 0.1 to  $10^{-5}$  mm/s. Thus, the freezing of the 16 °C supercooled sample can proceed 1,000 times (or more) faster than that of the LN-immersed capsules.*

L309– (table 2) → I would skip one decimal, if the image resolution is roughly 0.5  $\mu$ m. It would be interesting to see statistics for higher temperature - this is discussed in detail for the brine surface coverage. Also, an estimate of salt content based on the surface grooves should be presented, to illustrate if pattern in the interior need to be different to reflect the nominal salt content.

One decimal place was omitted in the Table. The grain boundary groove widths are difficult to measure at higher temperatures, as a large portion of the ice surface is covered with brine pools. The surface salt content has been estimated, and the calculations are provided in the SI.

L356-359 → Even though it is not possible to evaluate the volume from the microscopic images, we documented well that the brine surface coverage had risen four times during the warming, becoming much larger than the coverage implied by the phase diagram.→ During cooling the coverage changed from 80 to 40%, consistent with the phase diagram. This indicates that thickness changes are sometimes involved and sometimes not. And should be discussed.

We do not have any reliable method to determine the thickness of the brine layer; however, we suppose the area of the layer is, to some extent, related to the brine volume (see below).

L379-381 →The results of this temperature cycling experiment indicate that, as the ice from the surface was required to melt during the heating in order to double the volume of the brine, a formerly inaccessible portion of the brine (restrained due to being trapped below the surface layer of the ice) surfaced.→ The results can also be interpreted in terms of a thinning of the brine layer.

It cannot be excluded that the brine layer became thinner and more widespread. However, we suppose that the ratios of the volume and thickness of the layer are related, as spreading of the brine on the surface is governed mainly by the surface tension. In Figure 4, the surface coverage is compared to the amount of brine in the sample, calculated from the phase diagram; it clearly shows that the two parameters are related.

The following text has been added:

*Presumably, the brine volume can be inferred indirectly from the surface coverage if spreading of the brine on the ice surface is governed mainly by the surface tension. We interpret the change in the brine volume as the central cause of the observed surface coverage variations, and we also suppose that the observed 4-fold rise in the coverage indicates an even larger volume alteration because the brine thickness will increase too.*

L395-397 →It cannot be excluded that the sample surface was several degrees warmer than the holder due to the effects of the electron beam; purging relatively warm gas through the specimen chamber.→ Could you please present some numerical estimates?

As already cited above the text has been rephrased as follows:

*The thermal camera measurements in atmospheric conditions (without the reduced pressure environment of the ESEM sample chamber) showed that the sample was about 2 °C warmer than the cooling stage. Further warming of the sample during the ESEM experiments was to be expected, especially due to the effects of the electron beam and the relatively warm gas purged through the specimen chamber; conversely, the surface cooling embodied an expectable process too, considering the ice sublimation and water evaporation from the brine. These factors could contribute to the salt crystallization on the sample surface, even when the temperature of the holder does not change; still, the overall temperature difference between the surface of the frozen samples and the cooling stage will likely not exceed 2 °C.*

L405-409 →Thus, the temperature increase with the subsequent spread of the brine on the surface may lead to the surface darkening, resulting in higher solar radiation absorption and further increase of the temperature.→ The effect of a brine film on sea ice albedo has to my knowledge not been discussed yet - rather the number and size of inclusions in the bulk ice are relevant.

The number and sizes of inclusions are certainly factors of considerable importance.(Light et al., 2003) However, the optical properties are undoubtedly influenced also by the phase state of the salt/brine, as measured and discussed in (Light et al., 2016;Carns et al., 2016) The specific references have been added together with an explanatory sentence:

*Conversely, the brine crystallizing on the ice surface would result in larger reflection of the radiation, as the crystals would scatter the light substantially more effectively compared to the liquid brine (Carns et al., 2016; Light et al., 2016). These effects, together with the number and sizes of inclusions, ice grains, and location and characteristics of the absorbing particles, influence the overall absorption properties of icy bodies (Warren, 2019).*

L432–434 (and whole 3.5.) → The dynamics of the frozen samples' surfaces could be observed even at -23 °C. The CsCl brine-filled grain boundaries were not static: their positions changed swiftly in time. Interestingly, the positions of the humps on the ice surface did not change accordingly. → The two explanations (i) migration of grain boundaries in a temperature gradient and (ii) exposure of inclined grain boundaries during surface sublimation are not so expected and their discussion is lengthy. Could they be validated by some data and estimates (possible temperature gradients, sublimation rates, internal sample observations, etc...)?.

We incorporated the answer for both explanation into the text:

(i)

*The sample was prepared from a hemispherical droplet by cooling from the bottom. Thus, the height was most likely not constant across the sample and would be the most prominent in the center, allowing the temperature gradient to rise across the surface. A thermal camera was used to estimate the temperature gradients throughout the sample during cooling outside the ESEM chamber; it was not experimentally feasible to insert the camera into the chamber. As the temperature of the sample was dropping from 0 to -18 °C, the temperature at the center of the surface was approximately 2.7 °C higher than at the periphery. This difference had been caused presumably by the greater thickness of the sample at the central section. However, after the sample was cooled down and its temperature became approximately constant (which typically took about 3 minutes), the gradient was reduced, albeit in an opposite manner: The center was about 0.2-0.3 °C colder than the periphery, producing a small temperature gradient throughout the sample even after the cooling.*

*The sample presented in Figure 6 was sufficiently cooled down, as enough time had elapsed since the last temperature adjustment; therefore, we assume there might be a temperature gradient of only several tenths of °C across the sample.*

(ii)

*The sublimation rate largely depends on both the amount of water vapor purged into the chamber and the temperature. We do not know the complete time required for our samples to sublimate, because the process was not aimed at in our experiments; contrariwise, we intended to prevent sublimation of the samples. We usually imaged the samples for about 30 minutes, and they never sublimated during this period. The sample height at the start of the imaging corresponded to approximately 1 mm (based on the working distance of the ESEM). The upper limit of the (vertical) sublimation rate can thus be calculated if full sublimation of the sample is assumed to materialize within 30 minutes; the (vertical) sublimation rate would then be 33 µm/min. The brine channel (Figure 6) moved by 19 µm/min. If the apparent movement of the brine channel is caused solely by the sublimation, the angle between the channel and the horizontal line will be 60°.*

L526-528 → 10 µm indicates rather fast freezing - see note on freezing rates above.

We very much appreciate the help that Dr. Soenke Maus provided through interpreting our observations. We have added the following text:

*Using the theoretically predicted instability for the 0.035 % NaCl solution, (Wettlaufer, 1992) we can conclude, for the observed 10- $\mu$ m spacing, that the freezing rate can range from 0.1 to 10<sup>-5</sup> mm/s. Thus, the freezing of the 16 °C supercooled sample can proceed 1,000 times (or more) faster than that of the LN-immersed capsules.*

#### **4. Relevance to previous observations**

L578–591 → It is correct that the range 0.005 to 0.5M solute concentration is found in nature. However, the classification into relevant salinity regimes and processes in nature sounds a bit artificial: sea ice can have 0.05 M solute content (brackish ice, Baltic Sea ice), and for salt concentration near roads I would expect a large range depending on environmental conditions. Surface snow on sea ice may be much more saline than 0.005 M, and a range of 0.01 to 0.1 M is more representative.

We appreciate the expert comment and advice by Dr. Soenke Maus; we have changed the text accordingly:

*The tested concentrations ranged over two orders of magnitude. The values within 500 - 50 mM define the concentration of NaCl in seawater, and therefore they are also descriptive of fresh sea ice in the given context (Massom et al., 2001;Thomas, 2017). NaCl concentrations reaching up to 160 mM were detected immediately next to a highway treated against road icing; 50 mM of a salt solution can thus be considered a concentration potentially found farther from roads or also in their close vicinity when the salt was already partly flushed away (Notz and Worster, 2009;Labadia and Buttle, 1996). The values discovered in surface snows in Arctic coastal regions or on the surface of frost flowers span between 10-100 mM but may also be as low as 5 mM.(Beine et al., 2012;Douglas et al., 2012;Maus, 2019).*

L592-595 →The principal finding presented within our study is embodied in the very strong sensitivity of the ice-brine morphology and brine distribution to the freezing method (Figure 2, 3). Even for identical solution concentrations, the method and direction of freezing strongly modify the appearance of the ice surface morphology.→ These principal findings are not new.

Yes, we agree on that point, as relevant items of literature and also theoretical models have been composed and released. With our experiments, we primarily intended to understand the locations of impurities in laboratory-made ices.

L601-610 → It is not clear that natural convection played a role for solute redistribution within the different freezing experiments, as freezing was either fast or upwards. The comparison to sea ice formation and desalination is thus not useful here. While directionality is important, it is not due to natural convection.

The comparison to natural convection indeed is rather remote from the central subject; our original intention was only to summon the convection from that field. The following text has been complemented in relation to this information:

*Our freezing methods differ from that related to natural sea water in the rates and directionality. By extension, we would like to imply that the role of material convection in relation to the drop size should be considered for the modeling of the freezing process.*

L662–664 → Apparently, the amount of the brine on the ice surface was not sufficient to fill the groove around all the ice grains due to low brine concentration and/or the freezing method concentrating the brine towards the interior of the ice matrix → As mentioned, directionality, local brine expulsion and bulk ice-brine density changes are relevant here and this statement needs to be validated.

We agree with the comment and have attempted to discuss the topic accordingly. However, we are unsure of further validation besides the presented micrograms.

L678 → frozen aqueous solution (without added salt) → Do you mean frozen (almost pure) water?.

Yes, we meant pure water. Thank you!

L710–712 → The present study suggests that the remaining solute is likely to be found in not only the puddles of the highly concentrated solution but also, the veins or grain boundary grooves threading the crystals. → This is not a new observation. To produce something new you should at least give some estimates of the solute contained in the veins/grain boundaries, based on your observations.

Estimates of the relative amount of the solute present on the surface layer have been added to the text. The calculations are outlined in the SI.

*As a result, the relative amounts of the salt on the surface were 9, 4.5, and 26% for the non-seeded droplets, seeded droplets, and ice spheres, respectively.*

## **5. Conclusion**

L759 → amount of brine → You have not determined the amount, just the surface coverage.

We agree: “surface coverage” is a more accurate expression.

L766–767 → The presented micrographs clarified the possible porosity and pore microstructure of sea ice. → The relevance of the freezing conditions/sample sizes for sea ice has not been demonstrated. Regarding microstructure of sea ice there are textbooks that ‘clarify’ this much better (e.g., Weeks, 2010; Shokr and Sinha, 2015).

We agree: Our sample preparation methods are not directly related to sea ice formation. The sentence has been modified as follows:

*The presented micrographs clarified the possible porosity and pore microstructure of salty ices.*

L768–770 → From the ice crystal sizes we infer the actual freezing rates → In fact no freezing rates are inferred. Also, freezing rates are very likely largest for the LN2 freezing (III and IV) - see discussion above.

If our interpretation of the lamellar spacing in the samples prepared via the method IV is correct, the freezing rate could be comparable to or slower than those in the method II. Nevertheless, in the Conclusion we abandoned the inference of the freezing rate from the grain sizes, as it does not seem very reliable after we have studied Dr. Soenke Maus' comments and explanations.

Instead we state:

*The rheology of ice is strongly related to the freezing rates; in our experiments, these were directly measured or inferred from the spacing of the lamellae in the ice samples' interior, with the latter of these approaches being applied in cases of morphological instability.*

# The Morphology of Ice and Liquid Brine in the Environmental SEM: A Study of the Freezing Methods

Ľubica Vetráková,<sup>1</sup> Vilém Neděla,<sup>1</sup> Jiří Runštuk,<sup>1</sup> Dominik Heger<sup>2</sup>

<sup>1</sup>Environmental Electron Microscopy Group, Institute of Scientific Instruments of the Czech Academy of Sciences, Brno, Czech Republic

<sup>2</sup>Department of Chemistry, Faculty of Science, Masaryk University, Brno, Czech Republic

Correspondence to: Ľubica Vetráková ([vetrakova@isibrno.cz](mailto:vetrakova@isibrno.cz)), Dominik Heger ([hegerd@chemi.muni.cz](mailto:hegerd@chemi.muni.cz))

## Abstract

The microstructure of polycrystalline ice with a threading solution of brine controls its numerous characteristics, including the ice mechanical properties, ice-atmosphere interactions, sea-ice albedo, and (photo)chemical behavior in/on the ice. Ice samples were previously prepared in laboratories to study various facets of ice-impurities interactions and (photo)reactions to model natural ice-impurities behavior. We examine the impact of the freezing conditions and solute (CsCl used as a proxy for naturally occurring salts) concentrations on the microscopic structure of ice samples via an environmental scanning electron microscope. The method allows us to observe in detail the ice surfaces, namely, the free ice, brine puddles, brine-containing grain boundary grooves, individual ice crystals, and imprints left by entrapped air bubbles at temperatures higher than  $-25^{\circ}\text{C}$ . The amount of brine on the external surface is found proportional to the solute concentration and is strongly dependent on the sample preparation method. Time-lapse images in the condition of slight sublimation reveal sub-surface association of air bubbles with brine. With rising temperature (up to  $-14^{\circ}\text{C}$ ), the brine surface coverage increases to remain enhanced during the subsequent cooling and until the final crystallization below the eutectic temperature. The ice recrystallization dynamics identify the role of surface spikes in retarding the ice boundaries' propagation (Zeener pinning). The findings thus quantify the amounts of brine exposed to incoming radiation, available for the gas exchange, and influencing other mechanical and optical properties of ice. **The results have straightforward and indirect implications for artificially prepared and naturally occurring salty ices, respectively.**

## 1 Introduction

Ice and snow are important reaction media in which chemical compounds (impurities) can be accumulated, transformed, and released back to other compartments in the environment (Bartels-Rausch et al., 2014). The location and time evolution of impurities within a frozen sample are crucial in multiple respects: they determine the mechanical and optical properties of the material and thus must be considered in relation to snowpack stability, avalanches, sea ice mechanics, and climate change research (Blackford et al., 2007; Hobbs, 2010; Dash et al., 2006; Wählin et al., 2014). The location of impurities most probably influences the compounds' reactivity because their availability to incoming light radiation and/or gaseous reactants substantially differs depending on whether the impurities are located on the ice surface or buried in the frozen bulk (Hullar and Anastasio, 2016; Bartels-Rausch et al., 2014). However, the information combining the reactivity of compounds with their locations is essentially missing. **Excepting low concentrations of HF,  $\text{NH}_4^+$ , HCl,  $\text{HNO}_3$  and formaldehyde (Perrier et al., 2002; Thibert and Domine, 1998, 1997), impurities are usually not incorporated into the ice lattice (Krausková et al., 2016; Hobbs, 2010; Wilson and Haymet, 2008).** As ice is highly intolerant to impurities, these are segregated to an unfrozen freeze-concentrated solution (FCS) during the growth of ice crystals. The FCS can be located in the lamellae and veins between the ice crystals; (micro)pockets



47 within the ice structure; or puddles and grain boundary grooves on the ice surface. When the mixture  
48 is cooled below the eutectic temperature ( $T_{eu}$ ), the FCS may crystallize or vitrify (Salnikova et al.,  
49 2015;Bogdan et al., 2014).

50 To determine the actual positions of chemical compounds in ice samples, various microscopic  
51 techniques are used, including optical (Bogdan et al., 2014;Bogdan and Molina, 2017), fluorescence  
52 (Cheng et al., 2010;Roessl et al., 2015), electron (Blackford et al., 2007;Chen and Baker, 2010;Rosenthal  
53 et al., 2007;Barnes et al., 2002), and confocal Raman (Dong et al., 2009) microscopies. While optical  
54 microscopy can be applied at environmentally relevant temperatures and pressures, very low pressure  
55 conditions ( $10^{-4}$  to  $10^{-2}$  Pa) are needed in the specimen chamber of a conventional scanning electron  
56 microscope (SEM). At such low pressures, ice sublimates very rapidly due to its high vapor pressure  
57 (Blackford, 2007); for that reason, ice samples are observable only at very low temperatures (below  
58  $-120$  °C) in a SEM. (Blackford et al., 2007) These conditions are far from naturally relevant ones.  
59 Conversely, however, electron microscopy resolves fine structures two orders of magnitude smaller  
60 compared to those examined with optical microscopy, and its depth of field is much larger. Moreover,  
61 the ice surface appears opaque in a SEM, and its surface topography is thus defined significantly better  
62 than possible via optical microscopy (Blackford, 2007). In order for electron microscopy to be usable  
63 at higher pressures, the environmental scanning electron microscope (ESEM) was designed (Danilatos,  
64 1993). The ESEM can operate at specimen chamber pressures of up to thousands of Pascals, and such  
65 capability allows frozen samples to be inspected at higher temperatures, even up to the samples'  
66 melting point. To prevent ice sublimation, water vapor can be purged into the specimen chamber;  
67 thus, the imaging is performed under closer-to-natural conditions. Further, ionization of the gas in the  
68 specimen chamber of the ESEM prevents the sample from being charged, rendering the technique very  
69 convenient for imaging electrically non-conductive samples without the need of conductive coating.  
70 The ESEM is therefore becoming increasingly popular within research into pure ice (Nair et al.,  
71 2018;Magee et al., 2014;Chen et al., 2017) and ice-impurities interactions under static and dynamically  
72 changing conditions (Krausko et al., 2014;Yang et al., 2017). While electron microscopy visualizes the  
73 sample surface in detail, micro-computed tomography was recently applied to investigate solute  
74 locations in the frozen bulk (Hullar and Anastasio, 2016). Using this technique, the authors were able  
75 to visualize the locations of solutes (CsCl or rose bengal), gas, and ice in 3D.

76 Salt solutions are abundant in the natural environment; seawater alone represents 96.5% of water  
77 on the Earth (Gleick, 1993). In wintertime, sea ice covers an area of up to 7% of the Earth's surface  
78 and, as such, embodies one of the largest biomes (Thomas, 2017). Salts and ice also coexist in sea  
79 aerosols (Knipping et al., 2000;Zobrist et al., 2008) and in coastal regions, on frost flowers (Douglas et  
80 al., 2012), and also in ice cores (Ohno et al., 2006, 2005;Vega et al., 2018).

81 Well-conceived laboratory investigation of the ice-impurity interaction has the potential to  
82 simplify complex natural systems. Laboratory-based studies of the (photo)chemical reactions of frozen  
83 aqueous solutions have improved the understanding of the (photo)chemistry occurring in cold  
84 environments (Bartels-Rausch et al., 2014;Klanova et al., 2003). However, the dissonance between  
85 results from individual laboratories as regards the photodegradation rates (Kahan et al., 2010;Ram and  
86 Anastasio, 2009) points to the fact that there still remain key factors influencing the reactivity in a  
87 frozen solution which were not comprehended previously.

88 The impurities' locations were most often deduced from the sample preparation methods; for  
89 example, freezing an aqueous solution involved the precondition of placing the impurities inside the  
90 ice matrix. Subsequent breaking of the ice into small pieces was proposed to bring the impurities on  
91 the ice surface (Kahan et al., 2010); this assumption was recently questioned (Hullar et al., 2018). Other  
92 studies suggested that freezing an aqueous solution places the impurities prevalently inside the ice  
93 interior, whereas deposition of the organics from the vapour phase accommodates them on the ice  
94 surface (Ondrušková et al., 2018;Vetráková et al., 2017;Krausko et al., 2015b;Krausko et al.,

2015a;Kania et al., 2014;Heger et al., 2011;Hullar et al., 2018;Bartels-Rausch et al., 2013). Conversely, nebulizing the solution into liquid nitrogen was assumed to produce ice spheres with the organic impurities on their surfaces (Kurkova et al., 2011).

To establish a direct proof of salt location in frozen samples, we herein applied various methods to freeze caesium chloride (CsCl) solutions. We had intended to determine how the ice impurities' location and surface availability are affected by the freezing technique, temperature, and salt concentrations. The ESEM technology was utilized for the visualization due to its ability to represent the samples' surface topography together with the impurities' locations. CsCl was chosen as the model salt, being similar to NaCl and providing very good microscopic contrast; thus, the presence of brine on the surface of the frozen samples can be clearly monitored, with indirect implications towards the location of sea water brine on sea ice.

## 2 Methods

The microscopic images were recorded using an AQUASEM II, a Tescan VEGA SEM modified at the Institute of Scientific Instruments of the Czech Academy of Sciences (Tihlarikova et al., 2013;Nedela, 2007). This ESEM is capable of imaging wet, electrically non-conducting samples at chamber pressures as high as 2,000 Pa and temperatures of down to  $-27^{\circ}\text{C}$ . The advantages of the AQUASEM II in the imaging of frozen samples had been described previously (Krausko et al., 2014;Yang et al., 2017).

### 2.1 Preparation of the samples

CsCl solutions with the concentrations of 0.005, 0.05, and 0.5 M were prepared by dissolving an appropriate amount of CsCl in MilliQ  $\text{H}_2\text{O}$ . The molar concentrations correspond to molalities of 0.005, 0.050, and 0.512 mol/kg, respectively, using the solution densities at  $20^{\circ}\text{C}$  published by Reiser et al. (2014); the positions of these concentrations can be realized on the phase diagram for the CsCl-water (Figure 1) (Gao et al., 2017). The concentrations are proxies for natural salt occurrence in coastal snow (5 mM) (Beine et al., 2012;Douglas et al., 2012), up to the concentration in sea water (0.5 M) (Massom et al., 2001;Thomas, 2017). Prior to the measurement, the solutions had been filtered through a  $0.45\text{ }\mu\text{m}$  filter to exclude impurities that might interfere with the microscopic observations. The solutions were frozen at atmospheric pressure via four distinct methods:

- (I) Spontaneous freezing of a droplet without seeding. A droplet was put onto the silicon sample holder of the ESEM at room temperature (about  $23^{\circ}\text{C}$ ). The temperature of the sample holder, controlled by a Peltier stage, was lowered gradually (the cooling rate corresponded to approximately  $0.5^{\circ}\text{C/s}$ ) until the sample froze spontaneously, with the estimated freezing rate being  $(154 \pm 13)\text{ mm/s}$ . The nucleation temperature ranged from  $-16$  to  $-18^{\circ}\text{C}$  in the replicate experiments. After becoming frozen, the sample was cooled down to the initial observation temperature of  $-22$  to  $-25^{\circ}\text{C}$ .
- (II) Freezing of a droplet with seeding. A droplet was placed onto the sample holder of the ESEM, and its temperature was set to  $-2^{\circ}\text{C}$ ; then, after thermal equilibration, several small ice crystals were added to the edge of the sample to initiate the nucleation process. The estimated freezing rate reached about  $0.2\text{ mm/s}$ . Subsequently, the temperature of the sample holder was lowered down to the initial observation value.
- (III) Spraying into a vessel containing liquid nitrogen (LN). Small ice spheres (similar to artificial snow) were formed and then transferred onto the microscope sample holder precooled to  $-25^{\circ}\text{C}$ .
- (IV) Fragmentation of an LN-frozen sample. The applied CsCl solution enclosed in a hard gelatine capsule (diameter of 8 mm; approx. height of 25 mm, the sample level was at  $\sim 10\text{ mm}$ ) was immersed in LN. After freezing, the sample was fragmentized with a scalpel; thus, irregularly

shaped pieces were formed, and the former interior of the sample was revealed. The fragments from the interior of the sample were transferred onto the ESEM sample holder precooled to  $-25^{\circ}\text{C}$ .

In the methods I and II, the freezing rates were estimated by observing the process of freezing the 0.05 M CsCl solution with a high-speed camcorder (Phantom V611, Vision Research, Inc., 3000 fps) and via analyzing the movement of the freezing interface. As regards the method I, the interface was nicely visible, and the calculated freezing rates were well reproducible; the method II, however, exhibited a very poorly visible interface, allowing only rough estimation of the freezing rate.

During the open-chamber freezing process, a thin layer of ice from the condensed moisture was formed on the surfaces of the frozen samples in all of the preparation methods. This layer protected the samples from sublimating while the specimen chamber was being pumped down. The layer exhibited a structure very different from that the frozen samples (Figure S18); thus, the desublimed ice was always readily distinguishable from the original ice sample. The sublimation of the condensed layer was monitored at the start of the ESEM imaging; as soon as the layer had sublimed, the imaged surface of the frozen sample was affected by the sublimation process to only a very small extent. We can infer this fact because we had also followed further sublimation of the ice samples, as will be reported in the near future. By further extension, the effect of ice sublimation could be more pronounced in temperature cycling and ice dynamics experiments.

	The temperature of the cooling medium *	Sample size	Observed part
I	$-16^{\circ}\text{C}$	$d \approx 4 \text{ mm}$	surface
II	$-2^{\circ}\text{C}$	$h \approx 1 \text{ mm}$	
III	$-196^{\circ}\text{C}$	$d \approx 100\text{-}300 \mu\text{m}$	interior
IV		$d = 8 \text{ mm}$ $h \approx 10 \text{ mm}$	

**Table 1:** The major parameters of the freezing methods I-IV. \*The temperature of the cooling medium just before the nucleation started.

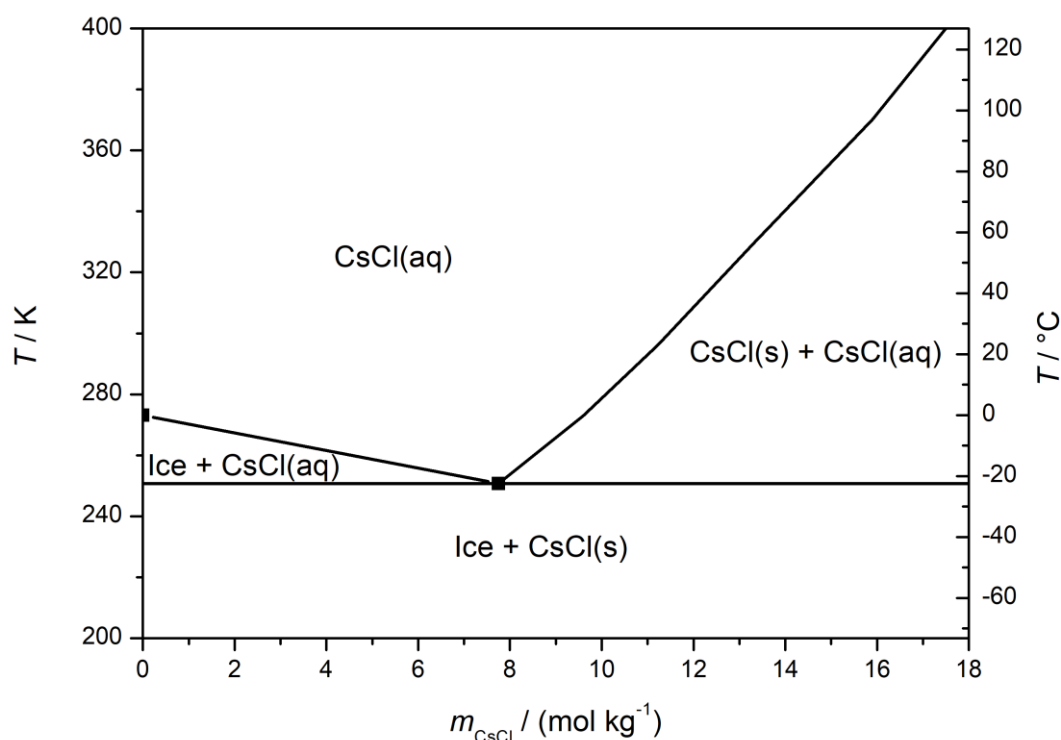


Figure 1. The CsCl-water phase diagram; adopted from Gao et al. (2017).

## 2.2 Imaging in the ESEM

The electron beam energy of 20 keV and a YAG:Ce<sup>3+</sup> scintillation backscattered electrons (BSE) detector, sensitive to the region encompassing the top 1,500 nm, were employed for the imaging. In a number of instances, the samples were represented with an ionization detector of secondary electrons, recording mainly signals from the thin subsurface layer (up to 5 nm); the device enabled us to obtain information about the topology of the surface (Neděla et al., 2015). In all of the measurements, a low beam current (40 pA) and a short dwell time (14 μs) were employed to minimize radiation damage to the frozen samples. During the experiments, we maintained the nitrogen gas partial pressure of 500 Pa inside the specimen chamber. Besides the nitrogen gas, water vapor was also purged into the chamber; the relative humidity was kept slightly below the sublimation curve values to prevent moisture condensation on the ice surface. Somewhat slow ice sublimation was observed, as conditions exactly matching the sublimation curve are difficult to establish inside the specimen chamber of the ESEM. For a fresh sample, the initial temperature of the sample holder was usually set to −25 °C (occasionally being −22 or −23.5 °C). Then, the temperature was gradually changed, and its impact on the brine abundance on the surface of the sample was monitored.

The indicated temperatures relate to the Peltier stage placed inside the sample holder. However, the temperature of the sample differs from that of the Peltier stage; we detected differences of up to 2 °C between the data provided by the sensor of the stage and the temperature of the sample measured with both a sensor frozen inside the ice and a thermal camera (Flir A310) in atmospheric conditions. The temperature settled significantly more slowly in the sample than in the Peltier stage: We observed a lag of about 3 minutes when the value of −18 °C was to be reached. Additionally, heating the sample surface with an electron beam (considering also the relatively warm gas purged through the specimen chamber) and the subsequent cooling due to the ice sublimation and/or water evaporation from the brine might affect the surface temperature during the imaging. The images were

typically recorded with the magnification of 500 (image resolution of  $\sim 0.5 \mu\text{m}$ ), although a resolution up to ten times higher is feasible.

### 2.3 Estimating the brine surface coverage

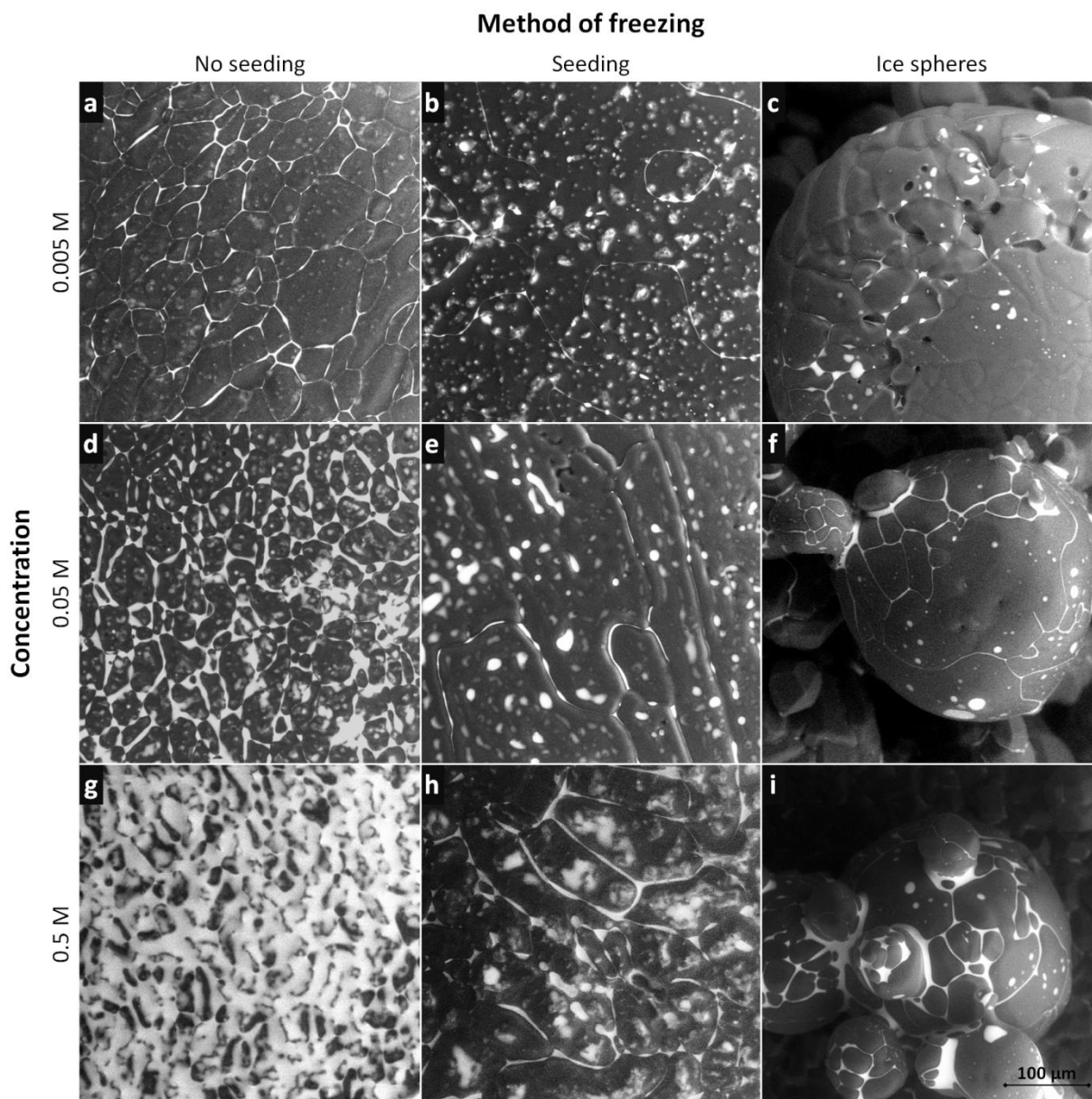
We used a BSE detector having high sensitivity to atoms with large atomic numbers; thus, in the grayscale ESEM images, the sample surface covered with the CsCl is white, whereas the gray areas represent the ice. To estimate the extent of the sample surface covered with the brine, Mountains® software (Digital Surf) was applied. This software facilitates selecting pixels with brightness above the chosen threshold; the pixels are then highlighted. By overlaying the highlighted mask and the white areas in the original image, the best-fitting threshold is chosen to represent the brine and to exclude the ice (Figure S1).

A constant threshold could not be employed for all of the images due to the fact that, during the actual image acquisition, the parameters of the detector (and thus the brightness and contrast of the image) were often changed based on the intensity of the detected signal to avoid under- or overexposure. If the signal is locally too intensive (e.g., there are spots with a large amount of the brine), the detector sensitivity must be reduced during the image acquisition to prevent oversaturation; thus, spots with a low amount of the brine might not be visible in the image, and the surface coverage could become underestimated. Conversely, with the CsCl signal too low, the brightness of the brine might be comparable to that of the surface irregularities (as the detector is also sensitive to the morphology of the sample, albeit to a limited extent only), leading to them being misinterpreted as small brine-containing spots. Such a situation would then cause overestimated brine surface coverage. The estimated coverage can therefore be directly compared exclusively in samples with similar amounts of the salt (similar concentrations), where the detector response differences are negligible. The uncertainty of the manual threshold selection procedure is indirectly deducible from the variance of the surface coverage in the sequence of the images recorded at the same temperature soon after one another; the relevant value was in units of percent.

## 3 Results and discussion

Representative examples of the surfaces of the non-seeded samples, seeded samples, and ice spheres of three CsCl concentrations (0.5 M, 0.05 M, and 0.005 M) are displayed in Figure 2. These images were recorded at the very beginning of the microscopic observations, and their surfaces are thus very little affected by the sublimation and specific conditions inside the specimen chamber of the ESEM (e.g., low pressure and possible interactions with the electron beam); we therefore assume that the observed features had resulted from the various freezing conditions. When BSEs are detected, merely the material contrast is revealed in most cases. The white areas in the images represent the CsCl-containing brine or CsCl crystals, while the dark or gray regions indicate the ice. Certain limited topographical information is also obtained; it is visualized via various shades of gray. We measured >50 samples and analyzed the acquired micrographs; from these, we then evaluated the impact of the freezing method and the salt concentration on the appearance of the surfaces of the frozen samples, location of the brine, and sizes of the ice crystals and grain boundary grooves.





**Figure 2.** The ESEM images of the frozen samples prepared from the 0.005, 0.05, and 0.5 M CsCl solutions via spontaneously freezing a supercooled (non-seeded) droplet (a, d, g); freezing a droplet seeded with ice crystals (b, e, h); and spraying the solution into LN (c, f, i). The images were acquired at the very beginning of the observations, at the following temperatures:  $-22\text{ }^{\circ}\text{C}$  (f, h, i);  $-23.5\text{ }^{\circ}\text{C}$  (a-c); and  $-25\text{ }^{\circ}\text{C}$  (d, e, g). The gray areas represent the ice, and the white regions denote the CsCl brine. Images of two additional samples for each freezing method and concentration are provided in the SI (Figures S7-S15).

### 3.1 Appearance of the surface of the frozen samples

**3.1.1 Non-seeded samples** (Figure 2, left column). The brine was located mainly at the grain boundary grooves. For the CsCl concentration of 0.005 M, the grooves were well visible; no brine puddles were located on the sample surface. As the concentration was increased to 0.05 M, the grain boundary grooves became thicker, and small brine puddles appeared on the surface. The surfaces of the samples (0.005 M and 0.05 M) were not smooth, with visible small humps. The surface of the most concentrated sample (0.5 M) was almost completely covered with a brine layer already at the beginning of the observations; during the procedure, the surface became completely brine-flooded due to the slow, gradual ice sublimation. Thus, the ice grains and grain boundary grooves could not be sufficiently recognized in this case.

**3.1.2 Seeded samples** (Figure 2, middle column). The amount of CsCl at the grain boundaries was apparently much smaller compared to that in the non-seeded samples: the grain boundaries were barely visible in the microscopic images of the 0.005 and 0.05 M seeded samples, and the surface of the 0.5 M seeded sample was not brine-flooded. However, brine puddles were abundant on the surfaces of the seeded samples. The surfaces were not smooth, with numerous humps formed (vide infra).

**3.1.3 Ice spheres** (Figure 2, right column). Spraying the solution into the LN led to the formation of ice spheres, with typical diameters ranging between 100 and 300  $\mu\text{m}$ . Their prevalently regular and spherical shapes indicate that the droplets froze during levitation above the LN surface due to the inverse Leidenfrost effect: If they had frozen inside the LN volume, the shapes would have been pear-like (Adda-Bedia et al., 2016). The surfaces of the spheres were smooth, lacking visible humps and almost without brine puddles. For the concentration of 0.005 M, the grain boundaries were nearly invisible, exhibiting very little brine on the sphere surfaces. As regards the CsCl concentrations of 0.05 M and 0.5 M, the brine was freeze-concentrated in the grain boundary grooves and at joints between neighboring spheres.

### 3.2 Sizes of the ice crystals

The average size of the ice crystals on the surfaces of the frozen samples depended on both the freezing method and the solution concentration (Table 2). The largest ice crystals were detected in the seeded droplet (the average sizes of 105, 91, and 48  $\mu\text{m}$  for 0.005, 0.05, and 0.5 M CsCl, respectively). These crystals exhibited oblong shapes, and therefore their longer and shorter dimensions were evaluated separately; the average dimensions determined are listed in Table 2. As the larger crystals often exceeded the field of view of the ESEM (Figure S2, distance F), the calculated sizes are biased towards lower values; thus, the average sizes should be somewhat larger. The smallest ice crystals were formed in the supercooled non-seeded droplet; the average sizes equaled 44, 33, and 26  $\mu\text{m}$  for 0.005, 0.5, and 0.5 M CsCl, respectively. Medium ice crystals (the average sizes of 50, 55, and 39  $\mu\text{m}$  for 0.005, 0.5, and 0.5 M CsCl, respectively) were observed on the surfaces of the ice spheres.

Concentration of CsCl / M	Average diameters of the ice crystals / $\mu\text{m}$				
	Non-seeded droplets	Seeded droplets			Ice spheres
		overall	longer	shorter	
0.005	44 $\pm$ 3	105 $\pm$ 11	135 $\pm$ 19	75 $\pm$ 8	50 $\pm$ 7
0.05	33 $\pm$ 2	91 $\pm$ 19	125 $\pm$ 25	53 $\pm$ 8	55 $\pm$ 2
0.5	26 $\pm$ 2	48 $\pm$ 4	65 $\pm$ 6	31 $\pm$ 2	39 $\pm$ 4

**Table 2.** The average diameters (and their standard errors of the mean) of the ice crystals on the surface of the frozen samples prepared from the 0.005 M, 0.05 M and 0.5 M CsCl solutions via the three freezing methods. The ice crystals in the seeded samples had oblong shapes; therefore, the average sizes of the longer and shorter sides of the crystals were evaluated separately. The number of crystals used for the analysis is presented in the SI (Table S1).

In our experiments, the freezing of the seeded samples promoted the slowest freezing rates, as the ice crystals developed from a solution with a low degree of supercooling (the temperature of the droplet was  $-2\text{ }^{\circ}\text{C}$ ) and the progress of the crystallization front proved to be about 0.2 mm/s. This freezing technique produced the largest ice crystals. The freezing rates for the non-seeded samples (150 mm/s) and ice spheres were much higher compared to those in the previous case, and thus substantially smaller ice crystals had been produced. The ice crystals in the non-seeded samples and in the ice spheres were about half the size of those in the seeded samples.



Our examination of the large crystals at low supercooling is parallel to the findings by Macklin and Ryan, who investigated large crystal discs at low supercooling of pure water (Macklin and Ryan, 1966). The patterns in our micrographs show sizable disc-like crystals formed at low supercooling (Figure 2b), whereas 16-degrees Centigrade supercooling (Figure 2a) delivers numerous small crystals. The fact that faster freezing rates promote a high number of small ice crystals and slower ones form a few large ice crystals is well recognized and efficiently utilized by productive freezing and lyophilization techniques (Kasper and Friess, 2011; Jameel, 2010; Cao et al., 2003).

As mentioned above, the ice crystal size difference between the samples frozen under high and low supercooling was expected. However, we were rather surprised that the ice crystals in the non-seeded supercooled droplet appeared smaller than those in the ice spheres prepared by spraying a solution into the LN. Although LN boils at the very low temperature of  $-196^{\circ}\text{C}$ , its ability to quickly cool the sample down is reduced due to the inverse Leidenfrost effect (Adda-Bedia et al., 2016). An alternative reason for comparatively large ice crystals forming during the nebulization of a solution into LN may consist in a different freezing mechanism: at freezing rates from 210 to  $2 \times 10^{-6}$  mm/s, morphological instability of the ice surface is predicted, whereas outside this range linear progression of the ice front is expected (Wettlaufer, 1992; Maus, 2019). The prediction was made for a 3.5% solution of NaCl, and varied in other compositions. The linear relationship between the freezing rate and the dimension of the formed lamellae holds only with temperatures of morphologically unstable growth; thus, if a high freezing rate induces linear growth of ice in ice spheres' preparation, the resulting ice crystal sizes cannot be used for comparison with the slower methods.

Another aspect affecting the crystal size consists in the concentration of the solutes. Generally, the ice crystals were smaller when the solute concentration had increased. The observation is in accordance with the conclusion proposed by multiple natural ice-core studies, namely, that high-impurity ice exhibits, as a rule, smaller grains than low-impurity ice at the same depth (Eichler et al., 2017). The explanation of this phenomenon may relate to the solution viscosity because ice crystal growth depends on the diffusion of the water molecules to the crystal surface, and an increase in the viscosity hinders the crystal growth (Braslavsky, 2015). The CsCl solution viscosity increases at concentration values higher than approximately  $2 \text{ mol kg}^{-1}$  (Goldsack and Franchetto, 1977; Nakai et al., 1995). The concentration in the veins of the freezing CsCl solution is expected to be within such a range, as the eutectic composition corresponds to about  $7.7 \text{ mol kg}^{-1}$  (Gao et al., 2017). A further factor influencing the ice crystal sizes possibly relates to a decreased heat capacity of the solution due to the presence of a solute (Bonner and Cerutti, 1976; Gao et al., 2017); thus, the solution may be cooled more effectively and the ice may propagate at a quicker pace, leading to smaller ice crystals. Changes in the above-described aspects could also cause altered microscopic convection patterns within the sample being frozen; these were previously shown to play a major role in the freezing of macroscopic quantities of sea water (Wettlaufer et al., 1997).

### 3.3 Brine on the surface of the frozen samples

**3.3.1 Effects of the salt concentration.** Typically, the brine on the surface of the frozen samples increased in amount with rising concentration of the salt. Such behavior is not surprising, as the maximum concentration of a salt in the brine and the proportion of the brine to the ice at each temperature are given by the liquidus curve in the phase diagram; the amount of the liquid brine increases with the salt concentration and temperature.

The grain boundary grooves became substantially thicker when the concentration had increased. The average widths of the brine-filled grain boundary grooves related to the concentration are given in Table 3. The measurements are displayed in S17. The average groove widths for the 0.005 M samples might be overestimated, as many grooves were so thin that they were almost invisible or their widths approached the image resolution (approx.  $0.5 \mu\text{m}$ ). The grain boundary grooves could not be

determined for the non-seeded sample with the CsCl concentration of 0.5 M, as the ice crystals were barely visible below the brine layer; the layer covered nearly the whole surface of the sample.

Concentration of CsCl / M	Average widths of the grain boundary grooves / $\mu\text{m}$		
	Non-seeded samples	Seeded samples	Ice spheres
0.005	$1.3 \pm 0.5$	$1.1 \pm 0.3$	$1.2 \pm 0.3$
0.05	$2.1 \pm 0.9$	$1.1 \pm 0.3$	$1.9 \pm 0.5$
0.5	ND	$5.7 \pm 2.0$	$3.3 \pm 1.1$

**Table 3:** The average widths of the CsCl brine-filled grain boundary grooves for the frozen samples prepared from the 0.005 M, 0.05 M, and 0.5 M CsCl solutions via the three freezing methods. The uncertainties represent the pooled standard deviations. The numbers of independent samples used for the calculation are listed in the SI (Table S2). The average width of the grain boundary grooves for the 0.5 M non-seeded sample was not determined, because the brine layer had covered almost the whole surface of this sample.

**3.3.2 Impact of the freezing method on the surface coverage.** The brine surface coverage in relation to the freezing method was estimated for the frozen 0.05 M solutions. While the brine covered ( $18.2 \pm 4.0$ ) % and ( $9.0 \pm 2.8$ ) % of the surface in the non-seeded and the seeded samples, respectively, it occupied only ( $4.1 \pm 1.5$ ) % in the ice spheres (Table S3). These estimates are based on the detected relative brine surface coverage in 5 independent samples for each freezing method. However, the estimated surface coverage might be strongly dependent on the intensity of the detected signal, as discussed in the Methods section. Regrettably, neither the thickness of the brine layer nor the absolute amount of the salt on the surface can be directly evaluated using the ESEM; we can nevertheless estimate the relative amount of the salt on the surface of the sample, presuming that the thickness of the surface brine is similar to channels' width. Therefore, we estimated the relative amount of the salt on the surface of the frozen samples prepared from 0.05 M CsCl via the freezing methods I-III, exploiting the assumption that the thickness of the surface layer equals  $1.5 \mu\text{m}$ . As a result, the relative amounts of the salt on the surface were 9, 4.5, and 26% for the non-seeded droplets, seeded droplets, and ice spheres, respectively. The calculations are provided in the SI.

The location of the CsCl brine within the sample and the related surface coverage were presumably dependent on the freezing rate and its directionality. In the globally supercooled non-seeded sample (cooled with a Peltier stage from the bottom), we suppose the crystallization was directed from the bottom upwards, as shown previously by Suzuki et al. (2007) for a supercooled water droplet on a silicon surface; thus, the salt was prevalently expelled from the bulk to the surface of the sample as the abrupt crystallization proceeded. Conversely, the seeded sample probably started to crystallize from the surface, close to the edge of the sample as the first place in touch with the seeding crystals. Even though small vertical temperature gradients were to be expected through the solution, we considered crystallization from the surface more likely, in accordance with a related study which had suggested that crystallization on the surface was  $1 \times 10^{10}$  more probable than the corresponding process in the bulk (Shaw et al., 2005). Because the given freezing method promoted slower freezing rates, we speculate that most of the salt was expelled from the growing ice towards the bottom of the frozen sample. Thus, only a small portion of the salt could be seen on the surface. The lowest brine surface coverage was detected in the ice spheres created by the freezing of micrometric droplets from the surface inwards; however, due to the large surfaces of the ice spheres, the estimated relative amount of the salt on the surface was the highest among the techniques discussed. Nevertheless, a large portion of CsCl solution was expelled by the growing ice from the surface of the sphere towards the center, and the CsCl brine inclusions were trapped below the surface. Other arguments supporting this assumption are presented in the chapter discussing the interior of the frozen samples.

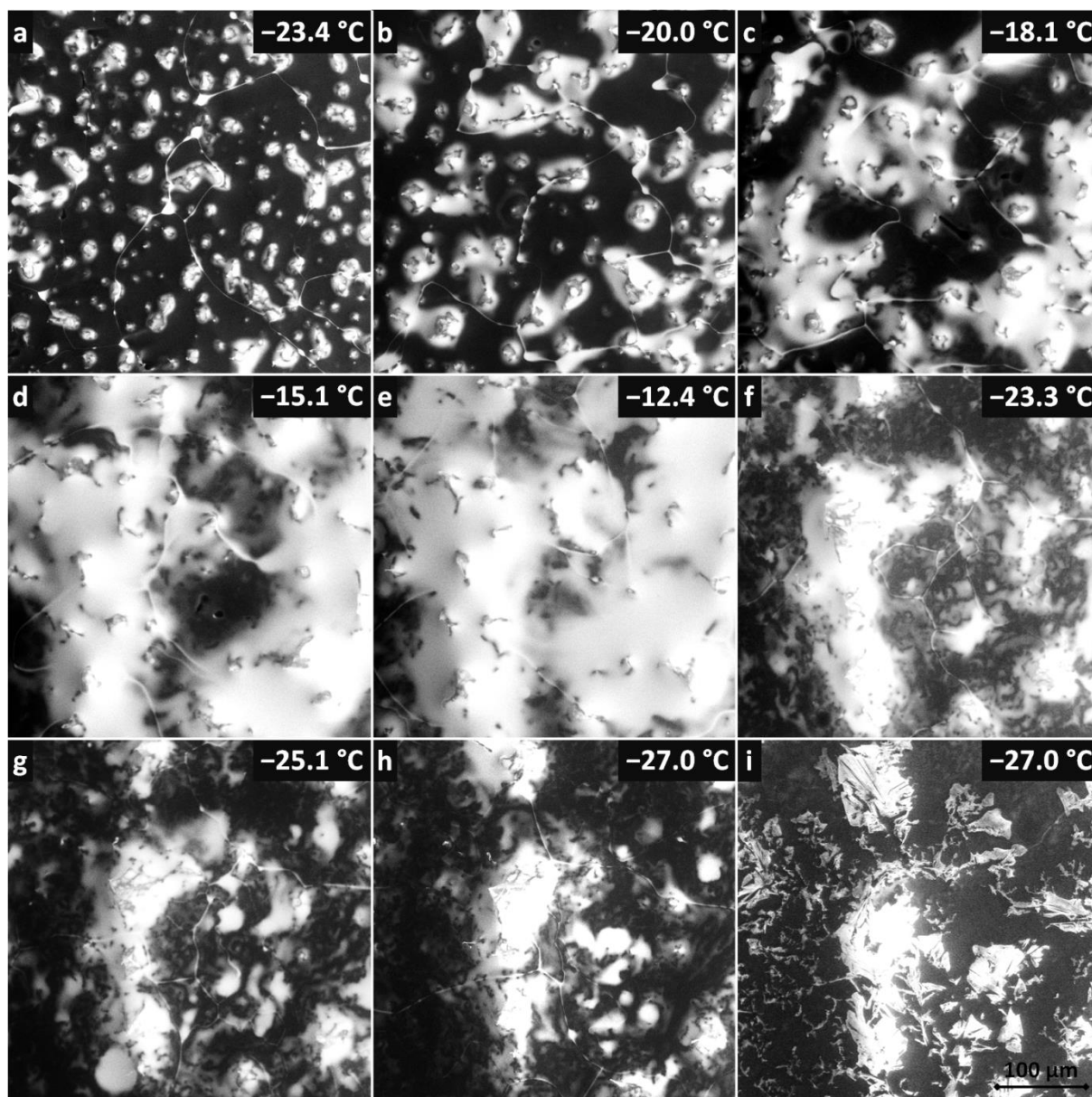
**3.3.3 Effects of the temperature.** As regards the seeded droplet of the 0.005 M CsCl solution, the brine surface coverage was studied as a function of temperature (Figures 3 and 4, Movie S1). The temperature of the sample reacts relatively slowly when the cooling stage temperature has been changed; therefore, the surface coverage variations are continuous, not stepwise. For this sample, about 20% of the surface was covered with the CsCl brine, initially at  $-23.4\text{ }^{\circ}\text{C}$ . Note that such surface coverage is, unexpectedly, larger than that found on average even in the more concentrated seeded sample ( $c = 0.05\text{ M}$ ) within the previous section. The explanation may lie in the stochastic behavior of the freezing process; however, we identify the most important factor in the difference of the instrumental settings, which, for reasons already outlined above, does not allow quantitative comparison of the micrographs. The brine was located mainly on the ice surface humps (Figure 3); apparently, these had functioned as points around which the brine gathered and crystallized. To a major extent, the humps seem to be artifacts of the low pressure conditions in the microscope, as will be discussed in the following section.

When the temperature was gradually increased, the area of the brine-covered surface grew larger (Figure 4). Such behavior was expected, as the liquid fraction in the partially frozen sample increases with the temperature in the region between the  $T_{eu}$  and the melting point. At the highest temperature examined,  $-12\text{ }^{\circ}\text{C}$ , about 80% of the surface was covered with the brine. Subsequently, the temperature was abruptly lowered from  $-12\text{ }^{\circ}\text{C}$  to  $-23.3\text{ }^{\circ}\text{C}$ , and the brine surface coverage fraction decreased from about 80 % to approximately 40 %.

According to the CsCl-water phase diagram (Figure 1), the equilibrium concentration of the CsCl brine equals  $7.7\text{ mol kg}^{-1}$  at  $-23\text{ }^{\circ}\text{C}$  and  $3.9\text{ mol kg}^{-1}$  at  $-12\text{ }^{\circ}\text{C}$  (Gao et al., 2017), meaning that if a constant amount of the CsCl salt on the surface is assumed, the brine volume on the frozen surface should approximately double after the temperature had increased from  $-23$  to  $-12\text{ }^{\circ}\text{C}$ . Even though it is not possible to evaluate the volume from the microscopic images, we documented well that the brine surface coverage had risen four times during the warming, becoming much larger than the increase implied by the phase diagram. Presumably, the brine volume can be inferred indirectly from the surface coverage if spreading of the brine on the ice surface is governed mainly by the surface tension. We interpret the change in the brine volume as the central cause of the observed surface coverage variations, and we also suppose that the observed 4-fold rise in the coverage indicates an even larger volume alteration because the brine thickness will increase too. The strong relationship between the brine volume and surface coverage is indirectly demonstrated in Figure 4; the coverage follows the same trend as the relative amount of brine in the frozen sample ( $w_{brine}$ ) calculated from the phase diagram using the formula

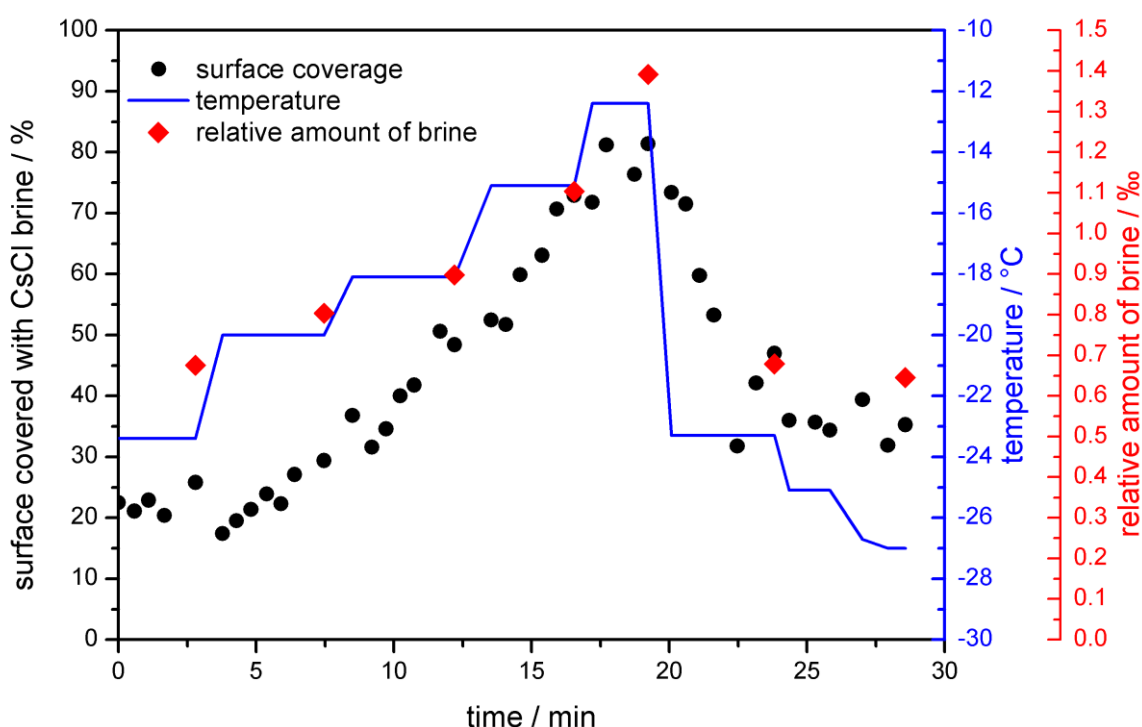
$$w_{brine} = \frac{m_{aq}}{m_{fr} - m_{aq}},$$

where,  $m_{aq}$  is the molality of the aqueous solution of salt (that can be approximated by the concentration of the salt in case of low concentrations) and  $m_{fr}$  is the molality of the brine in the frozen sample (it is dependent on temperature and can be inferred from the liquidus curve of the phase diagram). Thus, we are of the opinion that the change of the brine volume is the main cause of the surface coverage variation.



**Figure 3.** The brine surface coverage as a function of temperature for the seeded 0.005 M sample. The temperature was first increased stepwise from  $-23.4\text{ }^{\circ}\text{C}$  to  $-12.4\text{ }^{\circ}\text{C}$  and then decreased to  $-27\text{ }^{\circ}\text{C}$ . The procedure took 30 minutes (Figure 4). A movie from this experiment is included in the Supplementary material section (Movie S1). The panels h and i display the salt crystals forming from the brine. The crystals formed along the grain boundaries and on the humps where the brine had accumulated previously. The crystallization started a minute after the sample holder temperature had been set to  $-27\text{ }^{\circ}\text{C}$ . The air pressure in the microscope chamber was 500 Pa during the sequence. The scale in panel i is valid for all the images.





**Figure 4.** The relative brine surface coverage in the frozen seeded droplet ( $c(\text{CsCl}) = 0.005 \text{ M}$ ) at varying temperatures. The representative images used for the calculation are displayed in Figure 3. The temperature of the cooling stage during the measurement is indicated with the blue pattern. The red diamonds denote the relative amount of brine in the frozen sample, based on the phase diagram (Figure 1); temperatures  $2^\circ\text{C}$  higher than those of the cooling stage were used for the calculation to better represent the sample temperature.

During the cooling phase, the decrease of the brine volume (and correspondingly also the surface coverage) by half was expectable, considering the phase diagram; however, the surface coverage by the end of the experiment was significantly larger compared to the initial stage, despite the essentially equal temperatures ( $-23.4^\circ\text{C}$  vs.  $-23.3^\circ\text{C}$ ). Moreover, the temperature decrease down to  $-27^\circ\text{C}$  at the end of the experiment led to a surface coverage of about 30%, which, despite the temperature being  $3.6^\circ\text{C}$  lower, exceeded the amount of coverage found at the initial stage by 10 %.

The results of this temperature cycling experiment indicate that, as the ice from the surface was required to melt during the heating in order to double the volume of the brine, a formerly inaccessible portion of the brine (restrained due to being trapped in the ice interior) surfaced. This increased the amount of the CsCl salt on the surface, and the brine volume rose dramatically above the expectations stemming from the phase diagram. The subsequent cooling of the sample lowered the volume by half, as expected, indicating that the overall amount of the CsCl salt on the surface had not changed at the cooling stage. This observation implies that the temperature cycling may result in enhanced accumulation of the brine on the frozen surface during the heating phase.

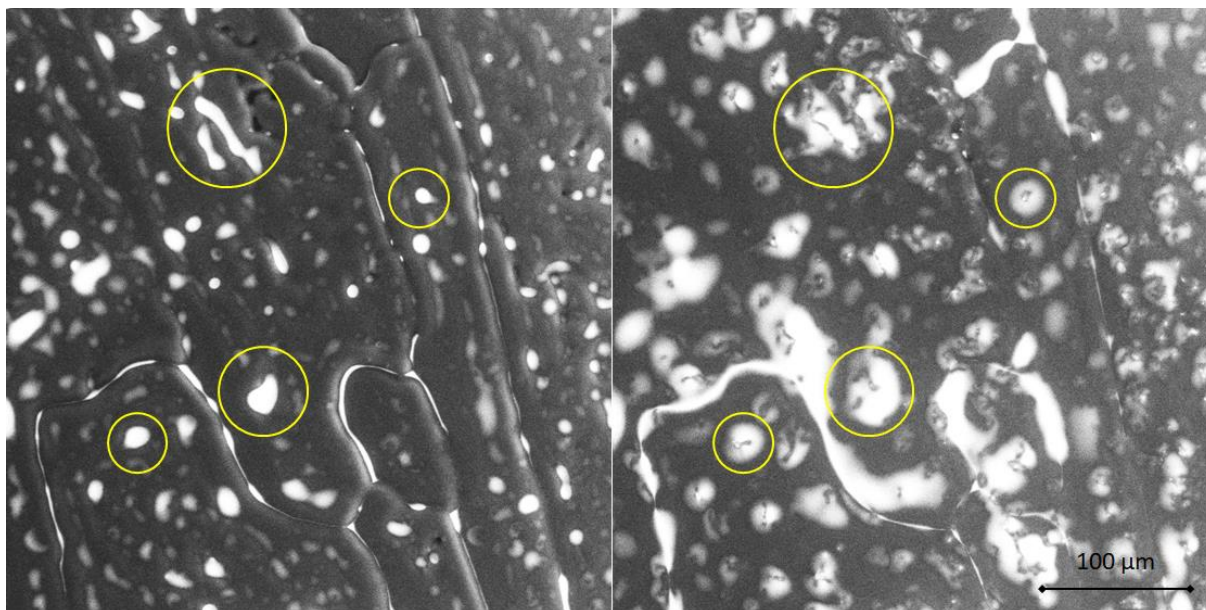
In the experiment, the CsCl started to crystallize from the brine at  $-27^\circ\text{C}$  only after a time delay (Figure 3i). The salt crystallization front propagated along the brine-filled grain boundaries and puddles (Figures 3, S3, Movie S1). The salt crystals exhibited fine dendritic structures and remained at the humps for a longer period. The brine left on the surface produced voids in the ice bulk; similarly, vertical, gravity-driven brine drainage is known to cause sea ice density to decrease (Timco and Frederking, 1996). We are currently investigating the details of salt crystallization and ice sublimation in salt-containing samples under various conditions.

In other experiments, the cooling stage temperature of  $-25\text{ }^{\circ}\text{C}$  was sufficient for the brine to crystallize after a prolonged period. The hitherto published  $T_{\text{eu}}$  values of the CsCl-H<sub>2</sub>O mixture range from  $-24.83$  to  $-22.3\text{ }^{\circ}\text{C}$  (Cohen-Adad, 1991; Dubois et al., 1993; Fujiwara and Nishimoto, 1998; Monnin and Dubois, 1999; Chen et al., 2005; Gao et al., 2017). The thermal camera measurements in atmospheric conditions (without the reduced pressure environment of the ESEM sample chamber) showed that the sample was about  $2\text{ }^{\circ}\text{C}$  warmer than the cooling stage. Further warming of the sample during the ESEM experiments was to be expected, especially due to the effects of the electron beam and the relatively warm gas purged through the specimen chamber; conversely, the surface cooling embodied an expectable process too, considering the ice sublimation and water evaporation from the brine. These factors could contribute to the salt crystallization on the sample surface, even when the temperature of the holder does not change; still, the overall temperature difference between the surface of the frozen samples and the cooling stage will likely not exceed  $2\text{ }^{\circ}\text{C}$ .

The observed ice surface coverage changes have consequences for the interaction with radiation under natural conditions: the higher the brine volume on the ice surface, the more absorbing the surface compared to the condition of dry ice surface, which is highly scattering (Light et al., 2009; Light et al., 2003). Thus, the temperature increase with the subsequent spread of the brine on the surface may lead to the surface darkening, resulting in higher solar radiation absorption and further increase of the temperature. Conversely, the brine crystallizing on the ice surface would result in larger reflection of the radiation, as the crystals would scatter the light substantially more effectively compared to the liquid brine (Carns et al., 2016; Light et al., 2016). These effects, together with the number and sizes of inclusions, ice grains, and location and characteristics of the absorbing particles, influence the overall absorption properties of icy bodies (Warren, 2019).

### 3.4 Formation of the humps

The surface humps were observed in the numerous non-seeded and seeded samples, often in co-location with the brine puddles. The time-lapse images revealed the humps forming at places where the puddles had been located previously (Figure 5). The humps usually exhibited broader bases and thin tips; the brine was located mainly at the bases, not on the tips (Figures S4, S5). As the sublimation continued, the tips became even thinner. In some cases, the thin tip separated from the body of a hump and fell off (Figure S4). From these observations we infer that the humps are predominantly formed during microscopic examinations due to ice sublimating from the frozen samples; we do not expect the humps to be originally present on the surface of the samples. The formation of the humps appears to be facilitated by the brine puddles on the ice surface: When the surface is covered with the brine, the sublimation from the given spot is retarded, and a hump is formed. Such formation might be an artifact caused by experimentation in a low-pressure environment. Previously, similar observations had been explained in terms of charged peaks formed by etching in the SEM (Barnes et al., 2002).

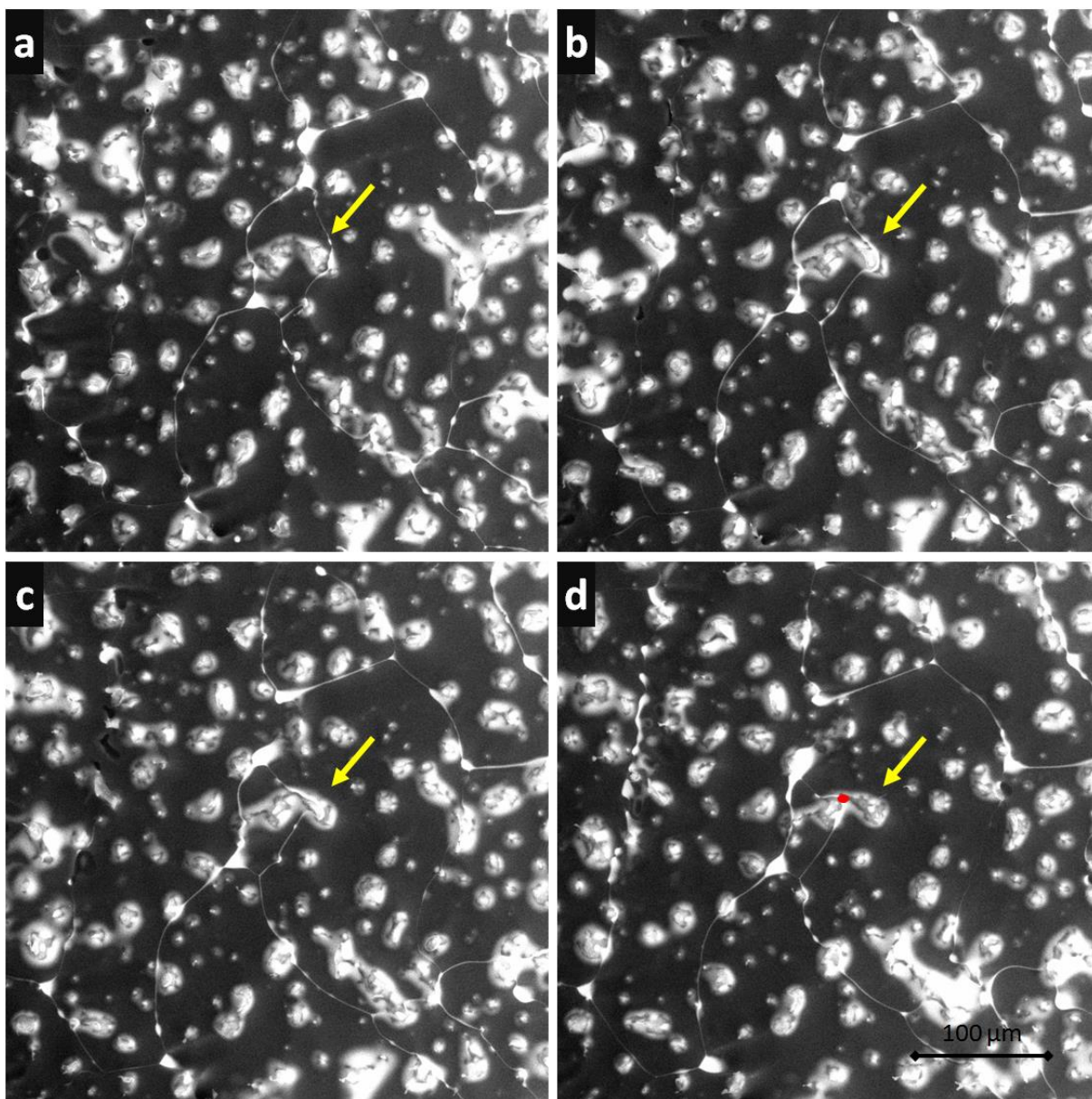


**Figure 5.** The ESEM images of the seeded sample prepared from the 0.05 M CsCl solution at the very beginning of the observation (left panel) and after 90 s (right panel). The images were recorded at the temperature of  $-25^{\circ}\text{C}$ . As conditions below the sublimation curve had been set inside the specimen chamber, sublimation of the top layer of the ice was presumed during the time interval between two images. It is clearly visible that the humps formed at spots previously covered with the brine; four examples of such spots are encircled.

### 3.5 Dynamics of the ice surface

The dynamics of the frozen samples' surfaces could be observed even at  $-23^{\circ}\text{C}$ . The CsCl brine-filled grain boundaries were not static: their positions changed swiftly in time. Interestingly, the positions of the humps on the ice surface did not change accordingly. A representative example is shown in Figure 6 and Movie S1. The surface of the seeded droplet from the 0.005 M CsCl solution was observed at  $-23.4^{\circ}\text{C}$ . As is demonstrated by the yellow arrow, whose position remains constant in all the panels in Figure 6, the indicated hump was originally encircled by brine-filled channels (panel a). We suppose the channels denote the ice grain boundary positions. With the time progressing, the grain boundary on the right-hand side performed an apparent gradual movement through the hump, while the hump did not change. The brine channel moved from the spot marked with the arrow tip to that marked with the red dot in Figure 6d (distance  $31\text{ }\mu\text{m}$ , time 1:40 min), thus advancing by approximately  $19\text{ }\mu\text{m}/\text{min}$ . It was also observed that the humps had caused the directional propagation of the ice boundaries to decelerate; several such examples are presented in Movie S1. A larger brine volume surfaced at the triple junctions of the ice grains. The dynamics of the process, together with the sampling relatively slow compared to the ice boundary movement, lend the brine reservoirs the appearance of propagating comet-like objects; this effect is demonstrated via the related encircled points in Movie S1. These brine pools occasionally appear at the locations of caverns formed by bubbles, thus delineating the grain boundary, which would otherwise be difficult to observe.

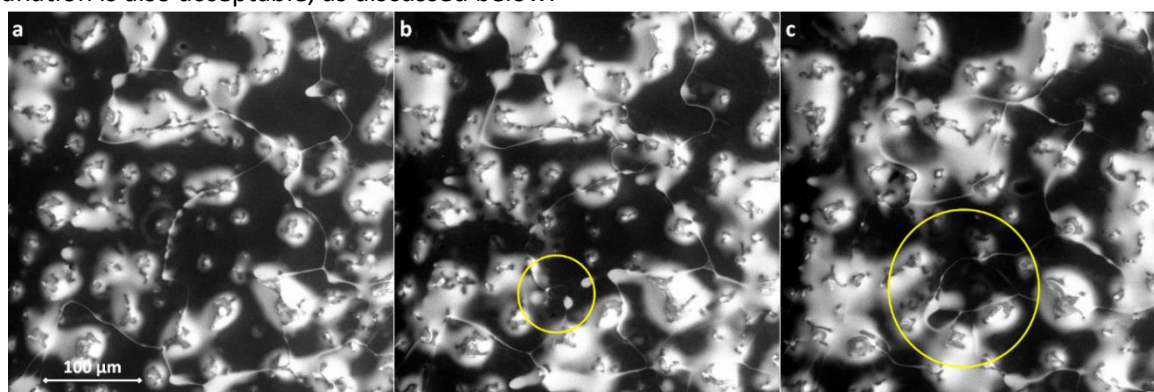




**Figure 6.** The ice surface dynamics observed at  $-23.5^{\circ}\text{C}$  and 500 Pa. The brine-filled grain boundaries (white channels) shifted their positions in time, while the positions of the humps did not change. An example is indicated by the yellow arrow pointing to a CsCl-filled channel moving through a hump. The arrow indicates the initial position of the brine channel in all of the figures. The sample was prepared from the 0.005 M CsCl solution by freezing a droplet seeded with ice at  $-2^{\circ}\text{C}$ . The distance between the brine channel (red point) and the arrow tip (where the movement started) is  $31\text{ }\mu\text{m}$ ; the channel moved by  $\sim 19\text{ }\mu\text{m}/\text{min}$ . The time interval between the images is approximately 30 s. The scale in panel d is valid for all of the images.

The fact that ice is a very dynamic medium allowing reconstitution at sub-zero temperatures was previously evidenced using, for example, time-lapse X-ray tomography; up to 60 % of the total ice mass recrystallized during 12 hours at  $-15^{\circ}\text{C}$  (Pinzer and Schneebeli, 2009; Hullar and Anastasio, 2016). Our research team is not the first one to have observed disjoint behavior of the ice surface in relation to the underlying ice crystals; fresh ice growing in steps of 100 – 4,000 nm to traverse the ice grains regardless of the boundaries was already noticed for planar ice growth (Ketcham and Hobbs, 1968). Moreover, the observed mutual interactions between the surface humps and the ice grain boundaries causing temporal retardation of the boundaries and partial draft of the hump (in the direction of the boundary motion) can be classified as Zener slow-mode pinning (Eichler et al., 2017). New ice grain formation (probably ascribable to the grain-boundary bulges mechanism) and the subsequent ice

crystal growth are visualized in Figure 7 (Steinbach et al., 2017). In this context, however, another explanation is also acceptable, as discussed below.



**Figure 7.** The ice surface dynamics observed at  $-23.5^{\circ}\text{C}$  and 500 Pa; newly formed ice grains are encircled.

The actual reason why the brine channels were dynamic while the humps remained static is not entirely clear to us. The causes of the recrystallization process are nevertheless appropriately summarized by Steinbach; the relevant factors include the thermal gradients and strains in the samples (Steinbach et al., 2017). Two possibilities are considered in this respect:

Firstly, the movement of the brine channels could be induced by a temperature gradient across the surface of the frozen ice. The sample was prepared from a hemispherical droplet by cooling from the bottom. Thus, the height was most likely not constant across the sample and would be the most prominent in the center, allowing the temperature gradient to rise across the surface. A thermal camera was used to estimate the temperature gradients throughout the sample during cooling outside the ESEM chamber; it was not experimentally feasible to insert the camera into the chamber. As the temperature of the sample was dropping from 0 to  $-18^{\circ}\text{C}$ , the temperature at the center of the surface was approximately  $2.7^{\circ}\text{C}$  higher than at the periphery. This difference had been caused presumably by the greater thickness of the sample at the central section. However, after the sample was cooled down and its temperature became approximately constant (which typically took about 3 minutes), the gradient was reduced, albeit in an opposite manner: The center was about  $0.2\text{--}0.3^{\circ}\text{C}$  colder than the periphery, producing a small temperature gradient throughout the sample even after the cooling. Regrettably, as the experiment was not conducted in the ESEM chamber, the effects of the gas flow on one hand and sublimation on the other are not included. Under a temperature gradient, the solute would exhibit higher concentration at the colder end of the brine inclusion and lower concentration at the warmer end, resulting in migration of the brine inclusions toward the warmer region of the ice (Light et al., 2009). The behavior observed in the present study indicates that the water molecules at the brine-filled grain boundaries are redistributed much faster than those on the ice surface. The dissolved salt may diffuse through the veins to increase the salt concentration on one side and decrease it on the other. Where the concentration increases, the ice grain boundaries will melt, and where it decreases, the ice will grow to maintain equilibrium conditions.

The sample presented in Figure 6 was sufficiently cooled down, as enough time had elapsed since the last temperature adjustment; therefore, we assume there might be a temperature gradient of only several tenths of  $^{\circ}\text{C}$  across the sample.

A second hypothesis to explain the apparent movement of the brine channels focuses on the ice sublimation from the sample surface. The brine channels were not necessarily perpendicular to the surface; the angle between the surface and the channels might have been low, and therefore the sublimation of a thin layer of ice from the surface could theoretically result in apparent movement of the brine channels while the appearance of the humps would not change markedly. Similar reasoning had been employed for the sublimation of not perpendicularly oriented ice crystals to explain the observed excessive width of the ice-grain grooves (Cullen and Baker, 2001). The sublimation rate largely depends on both the amount of water vapor purged into the chamber and the temperature.

We do not know the complete time required for our samples to sublime, because the process was not aimed at in our experiments; contrariwise, we intended to prevent sublimation of the samples. We usually imaged the samples for about 30 minutes, and they never sublimated during this period. The sample height at the start of the imaging corresponded to approximately 1 mm (based on the working distance of the ESEM). The upper limit of the (vertical) sublimation rate can thus be calculated if full sublimation of the sample is assumed to materialize within 30 minutes; the (vertical) sublimation rate would then be 33  $\mu\text{m}/\text{min}$ . The brine channel (Figure 6) moved by  $\sim 19 \mu\text{m}/\text{min}$ . If the apparent movement of the brine channel is caused solely by the sublimation, the angle between the channel and the horizontal line will be  $60^\circ$ .

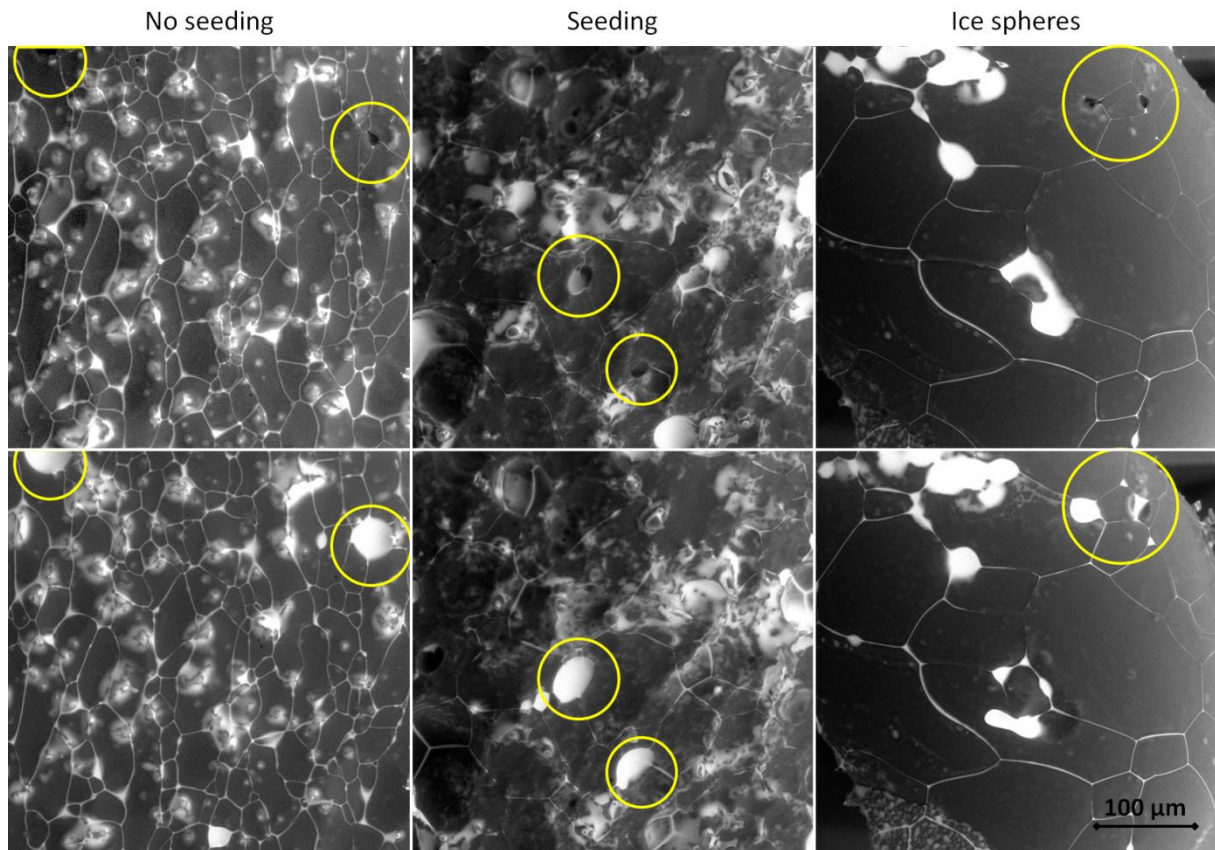
We are, however, uncertain if the reason for these unusual dynamics of the frozen surface consists in one of the previously described conditions, both of them, or a completely different process.

### 3.6 Interior of the frozen samples

**3.6.1 Sublimation.** The subsurface structure of the samples was revealed after partial sublimation of the ice from the surface made from the 0.005 M CsCl solution (Figure 8). Subsurface hollows were observed in all types of samples, namely, the non-seeded and seeded ones as well as the ice spheres. The numbers and sizes of the hollows nevertheless differed: the hollows in the non-seeded samples were small (units of micrometers) but numerous; those in the seeded samples were scarce; and those in the LN-prepared ice spheres were numerous, with the size varying from units to one hundred micrometres. The formation of these hollows is presumably associated with air bubbles trapped below the ice surface. For all the freezing methods, opening the hollows by further sublimation often revealed them to be partially filled with the brine (Figure 8); the co-location of the brine with gases suggests that the brine in the veins is air-saturated. The presence of gases in the brine had been shown previously to ease the ice recrystallization and boundary migration (Harrison, 1965). Recently, brine inclusions trapped below the ice surface co-located with air bubbles were found (Hullar and Anastasio, 2016). The co-location of the brine and the bubbles was most pronounced for the ice spheres, formed by freezing microdroplets of the solution by the LN at temperatures close to 77 K. The ice spheres were most likely frozen from the surface inwards; therefore, the entrapment of the brine and air inside the structure was anticipated, as was also observed in fractured samples in a similar manner (McCarthy et al., 2013). Conversely, the seeding method allows slow ice crystallization, leading to major expulsion of the air either out of the solution or downward, towards the bottom; we are nevertheless unsure of the details of such scenarios.

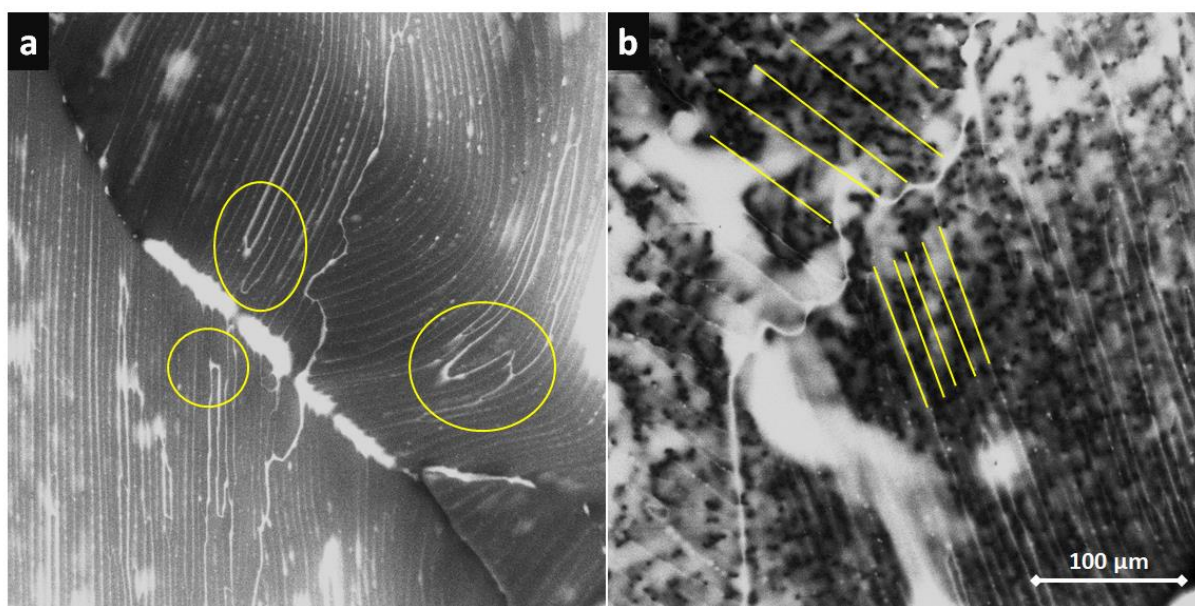


## Method of freezing



**Figure 8.** The ESEM images of the partially sublimed frozen samples prepared from the 0.005 M CsCl solution: the non-seeded droplet (left,  $-25^{\circ}\text{C}$ ); the seeded droplet (middle,  $-25^{\circ}\text{C}$ ); and the ice sphere (right,  $-23^{\circ}\text{C}$ ). The hollows in the internal structure were revealed after the initial sublimation of the ice from the surface (upper panels). Further sublimation showed the hollows filled with the brine (lower panels); the time interval between the upper and the lower images was about one minute. The gray areas represent the ice, while the white regions indicate the CsCl brine.

**3.6.2 Fragmentation.** An additional technique to observe the interior of a frozen sample consisted in fragmenting the LN-frozen macroscopic ice samples and inspecting the pieces originated from the given interior in the ESEM. Representative images of the fragments are displayed in Figure 9; it is clearly visible that the ice and the brine are arranged in parallel lamellae in the original interior of the fragmentized sample. The brine lamellae appear as lines on the micrograms. These lamellae were approximately equidistant within one facet of the fragment; however, when various facets are compared within one sample, the distances between the lamellae might differ significantly. The closer brine lamellae spacing for the lower-right facet in Figure 9b was approximately  $10\text{ }\mu\text{m}$ ; the wide-spaced arrangement (at  $40\text{ }\mu\text{m}$ ) is displayed on the upper-left facet. The lamellae were long and narrow. Sparsely, the parallel structure of the lamellae was interrupted by the bridge connecting two adjacent brine layers across the ice plate; several examples of these are encircled in Figure 9a. Only few bridges were typically recognized on the individual facets. We cannot determine if these features were present in the samples naturally or through the sample fragmentation (Maeda et al., 2003).



**Figure 9.** The interior of the fragmentized LN-frozen sample of 0.05 M CsCl imaged with the ESEM at  $-25^{\circ}\text{C}$ . The gray areas represent the ice, and the white regions indicate the CsCl brine. The brine was arranged in densely spaced parallel lamellae. Bridging of the ice was rare within a facet; examples of the effect are highlighted in panel a. The brine lamellae were equidistantly spaced within a facet. However, the distances between the lamellae might differ significantly among the facets (b). Images of two additional samples for this freezing method are provided in the SI (Figure S16).

The structures observed in the interior of the LN-frozen samples resembled the lamellar eutectic structure of alloys (Losert et al., 1998; Yan et al., 2017) or the pattern often recognized when sea ice is formed (Anderson and Weeks, 1958; Petrenko and Whitworth, 1999; Weeks, 2010; Thomas, 2017; Nagashima and Furukawa, 1997; Shokr and Sinha, 2015). This pattern is generated due to the constitutional supercooling of the liquid ahead of the freezing interface. It has long been known that the fastest freezing produces dendritic structures, whereas gradual slow freezing is characterized by cellular and planar structures, respectively (Rohatgi and Adams, 1967; Trivedi and Kurz, 1994). The linear solidification region is reached also upon very fast freezing (Wettlaufer, 1992). As a matter of fact, the microscopic structure of ice and brine is a complicated function of the thermal gradient and rate of freezing (Losert et al., 1998; Yan et al., 2017; Maus, 2007). The spacing of the parallel lamellae of pure ice separated by brine layers, created in a direction perpendicular to that of freezing, is characteristic of particular freezing rates and salt identities and concentrations. In terms of freezing salts solutions (NaCl, KCl and LiCl), the spacing between the perpendicular lamellae was experimentally found to be proportional to the inverse square root of the freezing rate (Rohatgi and Adams, 1967). The same paper reported that the maximum freezing rate, as well as its average, was inversely proportional to the square of the distance from the chill. At the same time, an increase of the solute concentration is responsible for the larger spacing between the lamellae. It is therefore conceivable that the uneven spacing observed in Figure 9b is due to unequal temperatures and/or concentrations for the growth of the individual ice facets. Another contributing factor could be the altered relative angle of the facets towards the detector, which would result in biased observed spacing. **Using the theoretically predicted instability for the 0.035 % NaCl solution, (Wettlaufer, 1992) we can conclude, for the observed 10- $\mu\text{m}$  spacing, that the freezing rate can range from 0.1 to  $10^{-5}$  mm/s. Thus, the freezing of the  $16^{\circ}\text{C}$  supercooled sample can proceed 1,000 times (or more) faster than that of the LN-immersed capsules.**

It is interesting to note that lamellar brine arrangement was not observed in any other sample, namely, neither on the surface of the LN-frozen macroscopic sample (Figure S6) nor on or below the surface of the ice spheres (Figures 2 and 8, right-hand columns). Instead, structures resembling a

cellular arrangement rather than a lamellar interface are formed in the small samples (Weeks, 2010; Losert et al., 1998). We can only speculate if the absence of lamellar growth in the micrometric ice spheres is due to the higher freezing rate or the exposure to a lower temperature gradient compared to the macroscopic sample with the diameter of 8 mm immersed in LN. Two significantly different ice sample structures were observed, even though LN was used as the coolant in both cases. A recent study of the inverse Leidenfrost effect of levitating drops on the surface of LN revealed strong dependence of the freezing time on the size of the droplet (Adda-Bedia et al., 2016); therefore, the size and surface properties of micrometric ice spheres in contrast to those of gelatine capsules can be among important contributing factors as regards the described difference.

#### 4 Relevance to previous observations

The ESEM observation presented herein employed a proprietarily developed detection system allowing the use of very low currents (40 pA) and short dwell times (14  $\mu$ s) to minimize the samples' degradation during the imaging (Nedela et al., 2018). The electric field was not found to influence the ice growth (Rohatgi et al., 1974). There was a subtle magnetic field present in our microscopic chamber. Thus, our observations differed from the natural conditions mostly due to the low pressure of 500 Pa inside the chamber.

In the experiments, CsCl was used as the solute thanks to its high contrast between the caesium atom and the oxygen and hydrogen of ice when BSEs are detected. It served as the model compound for monovalent chlorides, abundantly present in the environment. CsCl solutions exhibit properties relatively similar to those of NaCl ones; in particular, the eutectic temperatures important for this study are very close to each other ( $T_{eu}$  (CsCl) = -23 °C,  $T_{eu}$  (NaCl) = -21.21 °C) (Brady, 2009). The tested concentrations ranged over two orders of magnitude. The values within 500 - 50 mM define the concentration of NaCl in seawater, and therefore they are also descriptive of fresh sea ice in the given context (Massom et al., 2001; Thomas, 2017). NaCl concentrations reaching up to 160 mM were detected immediately next to a highway treated against road icing; 50 mM of a salt solution can thus be considered a concentration potentially found farther from roads or also in their close vicinity when the salt was already partly flushed away (Notz and Worster, 2009; Labadia and Buttle, 1996). The values discovered in surface snows in Arctic coastal regions or on the surface of frost flowers span between 10-100 mM but may also be as low as 5 mM. (Beine et al., 2012; Douglas et al., 2012; Maus, 2019). A similar concentration was used in the report on solute locations in ice by Hullar and Anastasio (2016).

The principal finding presented within our study is embodied in the very strong sensitivity of the ice-brine morphology and brine distribution to the freezing method (Figure 2, 3, 9). Even for identical solution concentrations, the method and direction of freezing strongly modify the appearance of the ice surface morphology. In all of the experiments, we observed a clear difference between the interconnected system of the brine in the grain boundary grooves and the predominantly separated brine puddles. At the lowest salt concentrations, free ice surfaces dominated. As the concentration rose, the grain boundary grooves broadened, and both the amount and the size of the brine puddles increased; however, some parts of the surface would remain bare even at the highest concentrations. Partial surface wetting had been invoked previously (Domine et al., 2013).

The directionality of freezing influences to a large extent the amount of brine exposed on the surface. Freezing from the outside inwards segregates the brine inside the ice matrix, whereas the same process starting from the bottom expels the brine to the ice surface. The directionality of freezing was previously shown to play a key role in determining the final distribution of impurities at the macroscopic scale for the formation of ice on seawater (Wettlaufer et al., 1997). With the samples cooled from the top by air at -20°C, it was observed that the salt is retained in the mushy layer of ice until it reaches a critical height. After this stage, plumes (capsules) of a saturated salt solution (having a higher density and low temperature) migrate downwards, leaving space for a less concentrated



solution and thus faster growth of the ice. Such a procedure then reduces the sea ice density (Timco and Frederking, 1996). Our freezing methods differ from that related to natural sea water in the rates and directionality. By extension, we would like to imply that the role of material convection in relation to the drop size should be considered for the modeling of the freezing process.

The distinct ice grain sizes and textures shown for the various freezing methods (Figures 2, 8, 9, and Table 2) indicate possible differences in the mechanical, thermal, and optical properties of the ice, influencing, for example, the samples' permeability for percolating solutions or their optical properties. Related changes could affect numerous properties of ices, having geological consequences such as the impact on sea ice desalination and melting; further, the variations might influence also the energy balance of ices and aerosols and rates of the (photo)chemical reaction (Thomas, 2017). In our experiments, the samples were invariably placed on the silicon pad in the microscope. This procedure renders the observation different from that of natural sea ice, where the brine from the ice may leak into the seawater (Notz and Worster, 2009). Nevertheless, our observations can be considered a good model for salty ices on solid grounds.

The ice sublimation effects displayed in Figure 8 suggest the character of the behavior of salty ice samples exposed to dry winds in the nature, namely, samples in which gradual brine accumulation is expected.

#### 4.1 Connection to previous microscopic observations

In previous studies of frozen aqueous solutions, two regions were described: one of the uncontaminated, pure ice matrix, and the other with impurities concentrated in liquid-like compartments above their eutectic temperatures (Krausko et al., 2014; Thomas, 2017; Lake and Lewis, 1970; Rohatgi and Adams, 1967). The impurities' inclusion was observed via several microscopic methods for both laboratory-prepared samples and natural ice and snow. However, the imaging methods reaching -20°C or more did not have a resolution large enough to visualize the impurities in the grain boundary grooves and were blind to the ice topography. For this reason, the impurities in the grain boundary grooves of polycrystalline ices were then observed in high vacuum via low temperature (< -80 °C) SEM (Barnes et al., 2003; Cullen and Baker, 2001; Blackford et al., 2007; Rosenthal et al., 2007). Our technique facilitates the observation of all the aspects: the liquid brine puddles, brine in the grain boundary grooves, and, to some extent, ice topology. The aim in this context is to summarize the previous observations, with a focus on the dimensions of the observed impurities' elements; first, attention is paid to the veins of subtle impurities and grain boundary grooves and, second, the larger puddles are discussed.

##### 4.1.1 Observing the grain boundary grooves and veins

Typically, in the procedures adopted to observe the impurities, the ice samples were repeatedly exposed to "etching", e.g., ice sublimation at a higher temperature (-20 °C) (Rosenthal et al., 2007; Cullen and Baker, 2001). The analysis allowed examination of pure ice crystals surrounded by veins containing the impurities. Using the energy dispersive X-ray technique, the veins were found to contain elements (e.g., Cl, S, Na, Mg) corresponding to the common minerals (NaCl, sulfates) for natural glacier samples (Cullen and Baker, 2001). At certain instances, the grain boundary impurities would coagulate to form filaments that can eventually peel off the ice due to differing thermal expansion coefficients. The diameters of the filaments varied between 0.2 and 2.5 µm, and the dimension of the nodes (the meeting points of four grains) was approximately 5 µm (Blackford et al., 2007; Rosenthal et al., 2007). However, the diameter of the groove formed by the sample sublimation at 253 K for 8 weeks reached as high as 250 µm. The apparent size of the sublimation groove can be biased by the fact that the ice crystals do not need to be oriented perpendicularly to the plane of observation. The observation most relevant to the ice spheres presented herein is that of the NaCl



solution (0.043 M) nebulized into LN and observed at -120 °C (Blackford et al., 2007). The newly prepared ice spheres exhibited sub-micrometer fine filaments of salt on the surface, whereas sintering at -25 °C allowed separated patches (up to 100 µm in diameter) and filaments threading the ice crystals due to metamorphism (Blackford, 2007; Domine et al., 2013). Further sublimation of the ice striped the filaments and showed that they form 3D interconnected structures, indicating also that each filament has a star-like geometry, which is appropriately explained via considering the surface energies of the ice and the brine.

All the dimensions of the veins observed previously correspond very well to those of the grain boundary grooves reported in the present paper (Table 3). The grain boundary grooves are formed at positions where two neighboring ice grains meet on the ice surface; thus, they thread each individual ice grain. Apparently, the amount of the brine on the ice surface was not sufficient to fill the groove around all the ice grains due to low brine concentration and/or the freezing method concentrating the brine towards the interior of the ice matrix (Figure 2c, e, f). Even for the most concentrated samples, the grain boundary grooves were found to range below 6 µm on average. The ice grain boundary grooves were predicted to increase their width with rising temperature and upon aging; (Nye, 1991) for example, under certain conditions, the values of 0.3 mm and 0.7 mm are assumed after 10 and 100 days, respectively, at 0 °C.

#### **4.1.2 Observation of the brine puddles**

The advantage of optical microscopic methods and X-ray tomography consists in the possibility of working at atmospheric pressure and an arbitrary temperature; the central drawback of these approaches rests in the compromised spatial resolution (Blackford, 2007). Importantly, optical microscopy maintains the transparency of ice to visible light, causing the image to include the subsurface information (Eichler et al., 2017); this aspect can be considered a benefit or a drawback, depending on the situation. Thus, the applied method relied on imaging the larger brine patches, but the brine in the subtle ice boundary grooves could not be represented.

The fluorescence microscopy technique exploiting a pH indicator showed a major difference between frozen water and a 0.1 mM solution of NaCl at -7 °C (Cheng et al., 2010): the former left pools of the solution around the ice crystals (approx. 12 µm wide), whereas the latter was specific in that the solute was mostly rejected towards the edge of the microscopic field of view, leaving only a few thin brine channels in the bulk of the ice. Another study based on fluorescence microscopy was intended to assess the amount of aggregation of bovine serum albumin labelled by a fluorescence probe (Roessl et al., 2015). Fast freezing rates produced more puddles of proteins, while slow ones led to fewer larger patches (millimeter sized), with the protein contained in a more concentrated solution. Such results agree with those assessing the extent of aggregation via the spectroscopy of methylene blue (Heger et al., 2005). The patches containing various salts were shown, via X-ray fluorescence imaging, to increase their surface concentrations with decreasing temperatures (Tokumasu et al., 2016). In the referenced study by Tokumasu et al., the patches were determined to be about 30 µm wide at temperatures from -5 to -15 °C. The optical microscopy and Raman spectroscopy of ice core samples detected microscopic impurities assigned to salt crystals and dust scattered through the ice matrix (Eichler et al., 2017). Eichler et al.'s report did not find any signal for liquid inclusions in the form of pools or veins around the ice grains at -15 °C. The resolution of the microscopy corresponded to 3 µm/pixel, a value higher than the dimension of most of the grain boundary grooves measured in our experiments. Therefore, it appears probable that the method did not facilitate discerning the ice grain boundaries (Eichler et al., 2017). Recently, the Raman microscopy of ice revealed the dependence of the brine puddles' width on the temperature; the width increased from 10 µm at -20 °C to 20 µm at -10 °C for 0.6 M NaCl solutions (Malley et al., 2018). Interior images of laboratory-frozen CsCl aqueous solutions (1 mM) were acquired with X-ray microtomography (Hullar and Anastasio, 2016). Slow

freezing in a refrigerator led to the formation of large pools of impurities (tens to hundreds of micrometers), whereas dumping the sample into liquid nitrogen produced small segregations, namely, ones sized below the voxel size of 16  $\mu\text{m}$ . The impurities were often associated with the air bubbles. The ice grain boundaries were not visualized as their dimensions are below the resolution of the applied method. Quantification of the overall amount of the CsCl present in the samples reveals that a substantial part of the CsCl is not detected in the analysis; thus, it must be present in the sub-detection compartments in the bulk of the ice matrix. Based on the current study, we suggest that the amount of missing brine can be located in the veins. A similar conclusion was drawn in one of the first attempts to quantify the amount of air in ice, with the success not exceeding 50 – 66 %; there remained 33 – 50 % of air deemed to form bubbles too small to be discernible with the magnification of 160 times (Carte, 1961).

The present study suggests that the remaining solute is likely to be found in not only the puddles of the highly concentrated solution but also the veins or grain boundary grooves threading the crystals. The problem of the varying behavior of the surface brine puddles as opposed to the brine in the ice grain grooves should be examined in more detail. The difference in the dynamics of these two environments (Figure 6) suggests the possibility of physically and/or chemically distinct behaviors; however, comprehensive research in the given respect is yet to be conducted.

#### 4.2 Relevance to impurity locations anticipated in previous laboratory experiments

The observed strong dependence of the ice microstructure on the freezing method suggests that inferring the locations of impurities exclusively from the way the sample was prepared is not straightforward; subtle details, such as the particular sample geometry and material properties of its cover, may play a significant role. Although we found satisfactory reproducibility of the freezing methods, variability was noticed within our research and other investigations in cases when the freezing rates had not been precisely controlled (Malley et al., 2018). Certain variance of values should always be supposed, even when the cooling protocol is kept unaltered as the freezing remains stochastic (Vetráková et al., 2017; Krausková et al., 2016; Heger et al., 2006; Heger and Klan, 2007). Importantly, a generalizable conclusion can be drawn from our current observations: for instances where the freezing occurs from the surface inwards, the impurities are to be expected inside the ice matrix, whereas when the process starts from the cooled pad, brine expulsion to the ice surface is likely to materialize. This justified and expectable result should be applied to review the experiments in which the impurities' locations were inferred merely based on the freezing procedure.

Thus, we can also assume, exploiting current and previous observations (Krausko et al., 2014; Blackford et al., 2007), that the impurities will be contained primarily inside ice spheres prepared by solution nebulization into LN. Experimental procedures essentially identical with our method for the preparation of the spheres were described by Kurkova et al. (2011); however, these authors proposed that the impurities prevail on the outer surfaces of the ice spheres in the ice-air interface. The difference between the present study and the approach adopted by Kurkova et al. lies in that salt solutions are used in our case, whereas Kurkova et al. applied dilute organic compound solutions (with  $\text{CuCl}_2$  in some instances). We acknowledge that utilizing inorganic salts as a proxy for organic compounds is only partly descriptive, but we assume that the compounds, inorganic or organic, experience similar positions. It is interesting to notice that ice spheres prepared from a solution of 1,1-diphenylethylene allowed complete conversion when exposed to ozone at 188 K but did not facilitate the same at 268 K; (Ray et al., 2013) the lower temperatures possibly enabled the ozone to enter the inside of the ice spheres, this being an ability restricted by higher temperatures. All our numerous attempts to visualize low concentrations of organic compounds ended unsuccessfully, as we had not observed significant differences from frozen pure water (data not shown).

In the present paper, we propose evidence for structural differences between the surface (Figures 2-7) and the interior of the investigated ice samples (Figure 9). In the ice broken via mechanical impact, we cannot bring any evidence for the supposed cleavage “along defect sites such as veins and pockets”(Kahan et al., 2010). From Fig. 9 we can infer that the sample disintegrated perpendicularly to the lamellae. Certainly, after cutting the ice, some amount of impurities will surface; however, our current observations indicate that most of the compounds still remain inside the ice interior. No flowing out of the brine was observed at  $-25^{\circ}\text{C}$ , even though the sample had slowly sublimated. Therefore, it seems unlikely that, by crushing the original ice cubes, the organic impurities from the interior of the ice matrix could ascend to the ice-air interface in an appreciable quantity, as was suggested by Kahan et al. (Kahan et al., 2010); such a process would probably not occur unless the sample were exposed to increased temperatures for a prolonged time or strong sublimation. Structurally, it can be proposed that even though the impurities frozen out of the solution may slightly rearrange after the ice was crushed, they will not be present in the quasi-liquid layer but in the grooves around the ice crystals. In our opinion, the faster disappearance in the experiments by Kahan and Donaldson of the anthracene fluorescence signal in crushed ice as compared to ice cubes might rather be explained by specific optical properties of crushed ice (McFall and Anastasio, 2016).

## 5 Conclusion

We documented high sensitivity of the brine-ice topology towards freezing procedures. The experimental setup of our ESEM allowed us to image the brine puddles together with ice grain grooves and free ice surfaces for a wide range of CsCl concentrations and various freezing methods previously applied in the laboratory examination of ice. The ice grain sizes and the brine surface coverage were found to be determined by not only the initial solution concentration but, crucially, also the freezing method and the thermal history of the sample. The freezing method also influenced the sizes and distribution of the air bubbles, which tend to co-locate with the brine. Therefore, the thermodynamic state of the sample (the temperature and impurities' concentrations) is not the sole factor to determine the shape of the frozen water: The freezing rate and directionality play a critical role in the brine distribution and will thus influence the transport properties within sea ice, including the thermal conductivity and permeability. The presented micrographs clarified the possible porosity and pore microstructure of salty ices. Strong hysteresis resulting in the brine accumulating on the ice surface was found during the warming-cooling cycle. *The rheology of ice is strongly related to the freezing rates; in our experiments, these were directly measured or inferred from the spacing of the lamellae in the ice samples' interior, with the latter of these approaches being applied in cases of morphological instability.* The interior of the in-capsule, LN-frozen ice samples exhibited regularly spaced layers of ice and brine and did not reconstruct during the observation. Besides the static snapshots, we were able to document the ice sublimation and recrystallization dynamics. During the latter, the surface humps retarded the ice grain boundary migration. The recognition of the impurities' locations within frozen samples should help to reinterpret previous assumptions and to rationalize the observed behavior for laboratory experiments, all with the goal to describe the complex interactions in natural ice. The obtained knowledge can also serve as an input for physical and chemical models.

**Author contribution:** L'V conducted the experiments and worked on the manuscript; JR and VN conducted the experiments and constructed the microscope; DH proposed and supervised the experiments and contributed to the writing of the manuscript. All of the authors contributed to the discussions.

**Acknowledgements:** The research was supported by Czech Science Foundation (19-08239S). We thank Jiří Hudec for helping us with the thermal camera measurements and Vojtěch Svak for providing his know-how as regards the high-speed camera operation.

**Competing interests:** The authors declare no conflict of interest.

## References:

- Adda-Bedia, M., Kumar, S., Lechenault, F., Moulinet, S., Schillaci, M., and Vella, D.: Inverse Leidenfrost Effect: Levitating Drops on Liquid Nitrogen, *Langmuir*, 32, 4179-4188, 10.1021/acs.langmuir.6b00574, 2016.
- Anderson, D. L., and Weeks, W. F.: A theoretical analysis of sea-ice strength, *Eos, Transactions American Geophysical Union*, 39, 632-640, 10.1029/TR039i004p00632, 1958.
- Barnes, P. R. F., Mulvaney, R., Wolff, E. W., and Robinson, K.: A technique for the examination of polar ice using the scanning electron microscope, *Journal of Microscopy-Oxford*, 205, 118-124, 10.1046/j.0022-2720.2001.00981.x, 2002.
- Barnes, P. R. F., Wolff, E. W., Mallard, D. C., and Mader, H. M.: SEM studies of the morphology and chemistry of polar ice, *Microscopy Research and Technique*, 62, 62-69, 10.1002/jemt.10385, 2003.
- Bartels-Rausch, T., Wren, S. N., Schreiber, S., Riche, F., Schneebeli, M., and Ammann, M.: Diffusion of volatile organics through porous snow: impact of surface adsorption and grain boundaries, *Atmospheric Chemistry and Physics*, 13, 6727-6739, 10.5194/acp-13-6727-2013, 2013.
- Bartels-Rausch, T., Jacobi, H. W., Kahan, T. F., Thomas, J. L., Thomson, E. S., Abbatt, J. P. D., Ammann, M., Blackford, J. R., Bluhm, H., Boxe, C., Domine, F., Frey, M. M., Gladich, I., Guzmán, M. I., Heger, D., Huthwelker, T., Klán, P., Kuhs, W. F., Kuo, M. H., Maus, S., Moussa, S. G., McNeill, V. F., Newberg, J. T., Pettersson, J. B. C., Roeselová, M., and Sodeau, J. R.: A review of air-ice chemical and physical interactions (AICI): liquids, quasi-liquids, and solids in snow, *Atmos. Chem. Phys.*, 14, 1587-1633, 10.5194/acp-14-1587-2014, 2014.
- Beine, H., Anastasio, C., Domine, F., Douglas, T., Barret, M., France, J., King, M., Hall, S., and Ullmann, K.: Soluble chromophores in marine snow, seawater, sea ice and frost flowers near Barrow, Alaska, *Journal of Geophysical Research*, 117, 10.1029/2011jd016650, 2012.
- Blackford, J. R.: Sintering and microstructure of ice: a review, *J. Phys. D Appl. Phys.*, 40, R355-R385, 10.1088/0022-3727/40/21/r02, 2007.
- Blackford, J. R., Jeffree, C. E., Noake, D. F. J., and Marmo, B. A.: Microstructural evolution in sintered ice particles containing NaCl observed by low-temperature scanning electron microscope, *Proceedings of the Institution of Mechanical Engineers, Part L: Journal of Materials: Design and Applications*, 221, 151-156, 10.1243/14644207jmda134, 2007.
- Bogdan, A., Molina, M. J., Tenhu, H., Bertel, E., Bogdan, N., and Loerting, T.: Visualization of Freezing Process in situ upon Cooling and Warming of Aqueous Solutions, *Scientific Reports*, 4, 7414, 10.1038/srep07414, 2014.
- Bogdan, A., and Molina, M. J.: Physical Chemistry of the Freezing Process of Atmospheric Aqueous Drops, *The Journal of Physical Chemistry A*, 121, 3109-3116, 10.1021/acs.jpca.7b02571, 2017.
- Bonner, O. D., and Cerutti, P. J.: The partial molar heat capacities of some solutes in water and deuterium oxide, *The Journal of Chemical Thermodynamics*, 8, 105-112, [https://doi.org/10.1016/0021-9614\(76\)90082-3](https://doi.org/10.1016/0021-9614(76)90082-3), 1976.
- Brady, J. B.: MAGMA IN A BEAKER: ANALOG EXPERIMENTS WITH WATER AND VARIOUS SALTS OR SUGAR FOR TEACHING IGNEOUS PETROLOGY, *Canadian Mineralogist*, 47, 457-471, 10.3749/canmin.47.2.457, 2009.
- Braslavsky, I.: 15. Control of ice formation in biological samples, *Cryobiology*, 71, 168, <https://doi.org/10.1016/j.cryobiol.2015.05.021>, 2015.
- Cao, E., Chen, Y., Cui, Z., and Foster, P. R.: Effect of freezing and thawing rates on denaturation of proteins in aqueous solutions, *Biotechnology and Bioengineering*, 82, 684-690, 10.1002/bit.10612, 2003.

953 Carns, R. C., Light, B., and Warren, S. G.: The spectral albedo of sea ice and salt crusts on the tropical  
 954 ocean of Snowball Earth: II. Optical modeling, *Journal of Geophysical Research: Oceans*, 121, 5217-  
 955 5230, 10.1002/2016jc011804, 2016.

956 Carte, A. E.: AIR BUBBLES IN ICE, *Proceedings of the Physical Society of London*, 77, 757-&  
 957 10.1088/0370-1328/77/3/327, 1961.

958 Cohen-Adad, R.: Caesium Chloride, in: *Alkali Metal and Ammonium Chlorides in Water and Heavy*  
 959 *Water (Binary Systems)*, Pergamon, Amsterdam, 375-412, 1991.

960 Cullen, D., and Baker, I.: Observation of impurities in ice, *Microsc. Res. Techniq.*, 55, 198-207,  
 961 10.1002/jemt.10000, 2001.

962 Danilatos, G. D.: Introduction to the ESEM Instrument Microscopy Research and Technique, 25, 354-  
 963 361, 10.1002/jemt.1070250503, 1993.

964 Dash, J. G., Rempel, A. W., and Wettlaufer, J. S.: The physics of premelted ice and its geophysical  
 965 consequences, *Reviews of Modern Physics*, 78, 695-741, 10.1103/RevModPhys.78.695, 2006.

966 Domine, F., Bock, J., Voisin, D., and Donaldson, D. J.: Can We Model Snow Photochemistry? Problems  
 967 with the Current Approaches, *J. Phys. Chem. A*, 117, 4733-4749, 10.1021/jp3123314, 2013.

968 Dong, J. P., Hubel, A., Bischof, J. C., and Aksan, A.: Freezing-Induced Phase Separation and Spatial  
 969 Microheterogeneity in Protein Solutions, *J. Phys. Chem. B*, 113, 10081-10087, 10.1021/jp809710d,  
 970 2009.

971 Douglas, T. A., Domine, F., Barret, M., Anastasio, C., Beine, H. J., Bottenheim, J., Grannas, A., Houdier,  
 972 S., Netcheva, S., Rowland, G., Staebler, R., and Steffen, A.: Frost flowers growing in the Arctic ocean-  
 973 atmosphere-sea ice-snow interface: 1. Chemical composition, *Journal of Geophysical Research*, 117,  
 974 10.1029/2011jd016460, 2012.

975 Dubois, M., Royer, J. J., Weisbrod, A., and Shtuka, A.: Reconstruction of Low-temperature Binary Phase  
 976 Diagrams Using a Constrained Least Squares Method - Application to the H<sub>2</sub>O CsCl System, *European*  
 977 *Journal of Mineralogy*, 5, 1145-1152, 1993.

978 Eichler, J., Kleitz, I., Bayer-Giraldi, M., Jansen, D., Kipfstuhl, S., Shigeyama, W., Weikusat, C., and  
 979 Weikusat, I.: Location and distribution of micro-inclusions in the EDML and NEEM ice cores using  
 980 optical microscopy and in situ Raman spectroscopy, *The Cryosphere*, 11, 1075-1090, 10.5194/tc-11-  
 981 1075-2017, 2017.

982 Fujiwara, S., and Nishimoto, Y.: Nonbiological Complete Differentiation of the Enantiomeric Isomers of  
 983 Amino Acids and Sugars by the Complexes of Gases with the Eutectic Compounds of Alkali Chlorides  
 984 and Water, *Analytical Sciences*, 14, 507-514, 10.2116/analsci.14.507, 1998.

985 Gao, D., Li, D., and Li, W.: Solubility of RbCl and CsCl in pure water at subzero temperatures, heat  
 986 capacity of RbCl(aq) and CsCl(aq) at T = 298.15 K, and thermodynamic modeling of RbCl + H<sub>2</sub>O and  
 987 CsCl + H<sub>2</sub>O systems, *The Journal of Chemical Thermodynamics*, 104, 201-211,  
 988 10.1016/j.jct.2016.09.031, 2017.

989 Gleick, P. H.: *Water in Crisis. A Guide to the World's Fresh Water Resources*, Oxford University Press,  
 990 1993.

991 Goldsack, D. E., and Franchetto, R.: Viscosity of Concentrated Electrolyte Solutions. 1. Concentration  
 992 Dependence at Fixed Temperature *Can. J. Chem.-Rev. Can. Chim.*, 55, 1062-1072, 10.1139/v77-148,  
 993 1977.

994 Harrison, J. D.: Measurement of Brine Droplet Migration in Ice *J. Appl. Phys.*, 36, 3811-&  
 995 10.1063/1.1713953, 1965.

996 Heger, D., Jirkovsky, J., and Klan, P.: Aggregation of methylene blue in frozen aqueous solutions studied  
 997 by absorption spectroscopy, *J. Phys. Chem. A*, 109, 6702-6709, 10.1021/jp050439j, 2005.

998 Heger, D., Klanova, J., and Klan, P.: Enhanced protonation of cresol red in acidic aqueous solutions  
 999 caused by freezing, *J. Phys. Chem. B*, 110, 1277-1287, 10.1021/jp0553683, 2006.

1000 Heger, D., and Klan, P.: Interactions of organic molecules at grain boundaries in ice: A solvatochromic  
 1001 analysis, *J. Photochem. Photobiol. A-Chem.*, 187, 275-284, 10.1016/j.jphotochem.2006.10.012, 2007.

1002 Heger, D., Nachtigallova, D., Surman, F., Krausko, J., Magyarova, B., Brumovsky, M., Rubes, M., Gladich,  
 1003 I., and Klan, P.: Self-Organization of 1-Methylnaphthalene on the Surface of Artificial Snow Grains: A

1004 Combined Experimental-Computational Approach, *J. Phys. Chem. A*, 115, 11412-11422,  
1005 10.1021/jp205627a, 2011.

1006 Hobbs, P. V.: *Ice Physics*, OUP Oxford, 2010.

1007 Hullar, T., and Anastasio, C.: Direct visualization of solute locations in laboratory ice samples, *The*  
1008 *Cryosphere*, 10, 2057-2068, 10.5194/tc-10-2057-2016, 2016.

1009 Hullar, T., Magadia, D., and Anastasio, C.: Photodegradation Rate Constants for Anthracene and Pyrene  
1010 Are Similar in/on Ice and in Aqueous Solution, *Environ. Sci. Technol.*, 10.1021/acs.est.8b02350, 2018.

1011 Chen, N. J., Morikawa, J., Kishi, A., and Hashimoto, T.: Thermal diffusivity of eutectic of alkali chloride  
1012 and ice in the freezing–thawing process by temperature wave analysis, *Thermochim. Acta*, 429, 73-79,  
1013 10.1016/j.tca.2004.11.010, 2005.

1014 Chen, S., and Baker, I.: Observations of the morphology and sublimation-induced changes in uncoated  
1015 snow using scanning electron microscopy, *Hydrol. Process.*, 24, 2041-2044, 10.1002/hyp.7689, 2010.

1016 Chen, X., Shu, J., and Chen, Q.: Abnormal gas-liquid-solid phase transition behaviour of water observed  
1017 with in situ environmental SEM, *Scientific Reports*, 7, 46680, 10.1038/srep46680, 2017.

1018 Cheng, J., Soetjpto, C., Hoffmann, M. R., and Colussi, A. J.: Confocal Fluorescence Microscopy of the  
1019 Morphology and Composition of Interstitial Fluids in Freezing Electrolyte Solutions, *Journal of Physical*  
1020 *Chemistry Letters*, 1, 374-378, 10.1021/jz9000888, 2010.

1021 Jameel, F.: Formulation and process development strategies for manufacturing biopharmaceuticals.  
1022 Hershenson, S. (Ed.), John Wiley & Sons, 2010.

1023 Kahan, T. F., Zhao, R., Jumaa, K. B., and Donaldson, D. J.: Anthracene Photolysis in Aqueous Solution  
1024 and Ice: Photon Flux Dependence and Comparison of Kinetics in Bulk Ice and at the Air-Ice Interface,  
1025 *Environ. Sci. Technol.*, 44, 1302-1306, 10.1021/es9031612, 2010.

1026 Kania, R., Malongwe, J. K. E., Nachtigallová, D., Krausko, J., Gladich, I., Roeselová, M., Heger, D., and  
1027 Klán, P.: Spectroscopic Properties of Benzene at the Air–Ice Interface: A Combined Experimental–  
1028 Computational Approach, *The Journal of Physical Chemistry A*, 118, 7535-7547, 10.1021/jp501094n,  
1029 2014.

1030 Kasper, J. C., and Friess, W.: The freezing step in lyophilization: Physico-chemical fundamentals,  
1031 freezing methods and consequences on process performance and quality attributes of  
1032 biopharmaceuticals, *European Journal of Pharmaceutics and Biopharmaceutics*, 78, 248-263,  
1033 10.1016/j.ejpb.2011.03.010, 2011.

1034 Ketcham, W. M., and Hobbs, P. V.: Step Growth on Ice During Freezing of Pure Water, *Philosophical*  
1035 *Magazine*, 18, 659-8, 10.1080/14786436808227468, 1968.

1036 Klanova, J., Klan, P., Heger, D., and Holoubek, I.: Comparison of the effects of UV, H<sub>2</sub>O<sub>2</sub>/UV and  
1037 gamma- irradiation processes on frozen and liquid water solutions of monochlorophenols,  
1038 *Photochemical & Photobiological Sciences*, 2, 1023-1031, 10.1039/b303483f, 2003.

1039 Knipping, E. M., Lakin, M. J., Foster, K. L., Jungwirth, P., Tobias, D. J., Gerber, R. B., Dabdub, D., and  
1040 Finlayson-Pitts, B. J.: Experiments and Simulations of Ion-Enhanced Interfacial Chemistry on Aqueous  
1041 NaCl Aerosols, *Science*, 288, 301-306, 10.1126/science.288.5464.301, 2000.

1042 Krausko, J., Runštuk, J., Neděla, V., Klán, P., and Heger, D.: Observation of a Brine Layer on an Ice  
1043 Surface with an Environmental Scanning Electron Microscope at Higher Pressures and Temperatures,  
1044 *Langmuir*, 30, 5441-5447, 10.1021/la500334e, 2014.

1045 Krausko, J., Malongwe, J. K. E., Bičanová, G., Klán, P., Nachtigallová, D., and Heger, D.: Spectroscopic  
1046 Properties of Naphthalene on the Surface of Ice Grains Revisited: A Combined Experimental–  
1047 Computational Approach, *The Journal of Physical Chemistry A*, 119, 8565-8578,  
1048 10.1021/acs.jpca.5b00941, 2015a.

1049 Krausko, J., Ondrušková, G., and Heger, D.: Comment on “Photolysis of Polycyclic Aromatic  
1050 Hydrocarbons on Water and Ice Surfaces” and on “Nonchromophoric Organic Matter Suppresses  
1051 Polycyclic Aromatic Hydrocarbon Photolysis in Ice and at Ice Surfaces”, *The Journal of Physical*  
1052 *Chemistry A*, 119, 10761-10763, 10.1021/acs.jpca.5b08276, 2015b.

1053 Krausková, L., Procházková, J., Klačková, M., Filipová, L., Chaloupková, R., Malý, S., Damborský, J., and  
1054 Heger, D.: Suppression of protein inactivation during freezing by minimizing pH changes using ionic

1055 cryoprotectants, *International Journal of Pharmaceutics*, 509, 41-49, 10.1016/j.ijpharm.2016.05.031,  
 1056 2016.  
 1057 Kurkova, R., Ray, D., Nachtigallova, D., and Klan, P.: Chemistry of Small Organic Molecules on Snow  
 1058 Grains: The Applicability of Artificial Snow for Environmental Studies, *Environ. Sci. Technol.*, 45, 3430-  
 1059 3436, 10.1021/es104095g, 2011.  
 1060 Labadia, C. F., and Buttle, J. M.: Road salt accumulation in highway snow banks and transport through  
 1061 the unsaturated zone of the Oak Ridges Moraine, southern Ontario, *Hydrol. Process.*, 10, 1575-1589,  
 1062 10.1002/(sici)1099-1085(199612)10:12<1575::aid-hyp502>3.0.co;2-1, 1996.  
 1063 Lake, R. A., and Lewis, E. L.: Salt rejection by sea ice during growth, *Journal of Geophysical Research*,  
 1064 75, 583-597, 10.1029/JC075i003p00583, 1970.  
 1065 Light, B., Maykut, G. A., and Grenfell, T. C.: Effects of temperature on the microstructure of first-year  
 1066 Arctic sea ice, *Journal of Geophysical Research: Oceans*, 108, 33/31 - 33/16, 10.1029/2001jc000887,  
 1067 2003.  
 1068 Light, B., Brandt, R. E., and Warren, S. G.: Hydrohalite in cold sea ice: Laboratory observations of single  
 1069 crystals, surface accumulations, and migration rates under a temperature gradient, with application to  
 1070 "Snowball Earth", *Journal of Geophysical Research*, 114, 10.1029/2008jc005211, 2009.  
 1071 Light, B., Carns, R. C., and Warren, S. G.: The spectral albedo of sea ice and salt crusts on the tropical  
 1072 ocean of Snowball Earth: 1. Laboratory measurements, *Journal of Geophysical Research: Oceans*, 121,  
 1073 4966-4979, 10.1002/2016jc011803, 2016.  
 1074 Losert, W., Shi, B. Q., and Cummins, H. Z.: Evolution of dendritic patterns during alloy solidification:  
 1075 Onset of the initial instability, *Proceedings of the National Academy of Sciences*, 95, 431-438,  
 1076 10.1073/pnas.95.2.431, 1998.  
 1077 Macklin, W. C., and Ryan, B. F.: Habits of Ice Grown in Supercooled Water and Aqueous Solutions  
 1078 *Philosophical Magazine*, 14, 847-&, 10.1080/14786436608211977, 1966.  
 1079 Maeda, N., Israelachvili, J. N., and Kohonen, M. M.: Evaporation and instabilities of microscopic  
 1080 capillary bridges, *Proceedings of the National Academy of Sciences*, 100, 803-808,  
 1081 10.1073/pnas.0234283100, 2003.  
 1082 Magee, N. B., Miller, A., Amaral, M., and Cumiskey, A.: Mesoscopic surface roughness of ice crystals  
 1083 pervasive across a wide range of ice crystal conditions, *Atmospheric Chemistry and Physics*, 14, 12357-  
 1084 12371, 10.5194/acp-14-12357-2014, 2014.  
 1085 Malley, P. P. A., Chakraborty, S., and Kahan, T. F.: Physical Characterization of Frozen Saltwater  
 1086 Solutions Using Raman Microscopy, *ACS Earth and Space Chemistry*,  
 1087 10.1021/acsearthspacechem.8b00045, 2018.  
 1088 Massom, R. A., Eicken, H., Hass, C., Jeffries, M. O., Drinkwater, M. R., Sturm, M., Worby, A. P., Wu, X.,  
 1089 Lytle, V. I., Ushio, S., Morris, K., Reid, P. A., Warren, S. G., and Allison, I.: Snow on Antarctic sea ice, *Rev.*  
 1090 *Geophys.*, 39, 413-445, 10.1029/2000rg000085, 2001.  
 1091 Maus, S.: Prediction of the cellular microstructure of sea ice by morphological stability theory, *Physics*  
 1092 *and Chemistry of Ice*, edited by: Kuhs, W. F., 371-382 pp., 2007.  
 1093 Maus, S.: Interactive comment on The Cryosphere Discuss., *The Cryosphere Discussions*, 10.5194/tc-  
 1094 2019-13, 2019.  
 1095 McCarthy, C., Blackford, J. R., and Jeffree, C. E.: Low-temperature-SEM study of dihedral angles in the  
 1096 ice-I/sulfuric acid partially molten system, *Journal of Microscopy*, 249, 150-157, 10.1111/jmi.12003,  
 1097 2013.  
 1098 McFall, A. S., and Anastasio, C.: Photon flux dependence on solute environment in water ices,  
 1099 *Environmental Chemistry*, 13, 682, 10.1071/en15199, 2016.  
 1100 Monnin, C., and Dubois, M.: Thermodynamics of the CsCl-H<sub>2</sub>O system at low temperatures, *European*  
 1101 *Journal of Mineralogy*, 11, 477-482, 1999.  
 1102 Nagashima, K., and Furukawa, Y.: Solute Distribution in front of an Ice/Water Interface during  
 1103 Directional Growth of Ice Crystals and Its Relationship to Interfacial Patterns, *The Journal of Physical*  
 1104 *Chemistry B*, 101, 6174-6176, 10.1021/jp963172k, 1997.  
 1105 Nair, M., Husmann, A., Cameron, R. E., and Best, S. M.: In situ



1106 ESEM imaging of the vapor-pressure-dependent sublimation-induced morphology of ice, *Physical*  
 1107 *Review Materials*, 2, 10.1103/PhysRevMaterials.2.040401, 2018.  
 1108 Nakai, T., Sawamura, S., and Taniguchi, Y.: EFFECT OF PRESSURE ON THE VISCOSITY OF AQUEOUS  
 1109 CESIUM-CHLORIDE SOLUTION AT 25-DEGREES-C, *Journal of Molecular Liquids*, 65-6, 365-368,  
 1110 10.1016/0167-7322(95)00832-4, 1995.  
 1111 Nedela, V.: Methods for additive hydration allowing observation of fully hydrated state of wet samples  
 1112 in environmental SEM, *Microscopy Research and Technique*, 70, 95-100, 10.1002/jemt.20390, 2007.  
 1113 Nedela, V., Tihlarikova, E., Runstuk, J., and Hudec, J.: High-efficiency detector of secondary and  
 1114 backscattered electrons for low-dose imaging in the ESEM, *Ultramicroscopy*, 184, 1-11,  
 1115 10.1016/j.ultramic.2017.08.003, 2018.  
 1116 Neděla, V., Konvalina, I., Oral, M., and Hudec, J.: The Simulation of Energy Distribution of Electrons  
 1117 Detected by Segmental Ionization Detector in High Pressure Conditions of ESEM, *Microscopy and*  
 1118 *Microanalysis*, 21, 264-269, 10.1017/S1431927615013483, 2015.  
 1119 Notz, D., and Worster, M. G.: Desalination processes of sea ice revisited, *Journal of Geophysical*  
 1120 *Research*, 114, 10.1029/2008jc004885, 2009.  
 1121 Nye, J. F.: The rotting of temperate ice, *J. Cryst. Growth*, 113, 465-476, [https://doi.org/10.1016/0022-](https://doi.org/10.1016/0022-0248(91)90081-F)  
 1122 [0248\(91\)90081-F](https://doi.org/10.1016/0022-0248(91)90081-F), 1991.  
 1123 Ohno, H., Igarashi, M., and Hondoh, T.: Salt inclusions in polar ice core: Location and chemical form of  
 1124 water-soluble impurities, *Earth and Planetary Science Letters*, 232, 171-178,  
 1125 10.1016/j.epsl.2005.01.001, 2005.  
 1126 Ohno, H., Igarashi, M., and Hondoh, T.: Characteristics of salt inclusions in polar ice from Dome Fuji,  
 1127 East Antarctica, *Geophys. Res. Lett.*, 33, 10.1029/2006gl025774, 2006.  
 1128 Ondrušková, G., Krausko, J., Stern, J. N., Hauptmann, A., Loerting, T., and Heger, D.: Distinct Speciation  
 1129 of Naphthalene Vapor Deposited on Ice Surfaces at 253 or 77 K: Formation of Submicrometer-Sized  
 1130 Crystals or an Amorphous Layer, *The Journal of Physical Chemistry C*, 122, 11945-11953,  
 1131 10.1021/acs.jpcc.8b03972, 2018.  
 1132 Perrier, S., Houdier, S., Domine, F., Cabanes, A., Legagneux, L., Sumner, A. L., and Shepson, P. B.:  
 1133 Formaldehyde in Arctic snow. Incorporation into ice particles and evolution in the snowpack, *Atmos.*  
 1134 *Environ.*, 36, 2695-2705, 2002.  
 1135 Petrenko, V. F., and Whitworth, R. W.: *Physics of ice*, Oxford University Press, Oxford, 1999.  
 1136 Pinzer, B. R., and Schneebeli, M.: Snow metamorphism under alternating temperature gradients:  
 1137 Morphology and recrystallization in surface snow, *Geophys. Res. Lett.*, 36, 4, 10.1029/2009gl039618,  
 1138 2009.  
 1139 Ram, K., and Anastasio, C.: Photochemistry of phenanthrene, pyrene, and fluoranthene in ice and  
 1140 snow, *Atmos. Environ.*, 43, 2252-2259, 10.1016/j.atmosenv.2009.01.044, 2009.  
 1141 Ray, D., Malongwe, J. K. E., and Klán, P.: Rate Acceleration of the Heterogeneous Reaction of Ozone  
 1142 with a Model Alkene at the Air–Ice Interface at Low Temperatures, *Environ. Sci. Technol.*, 47, 6773-  
 1143 6780, 10.1021/es304812t, 2013.  
 1144 Reiser, S., Horsch, M., and Hasse, H.: Temperature Dependence of the Density of Aqueous Alkali Halide  
 1145 Salt Solutions by Experiment and Molecular Simulation, *Journal of Chemical & Engineering Data*, 59,  
 1146 3434-3448, 10.1021/je500420g, 2014.  
 1147 Roessl, U., Leitgeb, S., and Nidetzky, B.: Protein freeze concentration and micro-segregation analysed  
 1148 in a temperature-controlled freeze container, *Biotechnology Reports*, 6, 108-111,  
 1149 10.1016/j.btre.2015.03.004, 2015.  
 1150 Rohatgi, P. K., and Adams, C. M.: Ice–Brine Dendritic Aggregate formed on Freezing of Aqueous  
 1151 Solutions, *J. Glaciol.*, 6, 663-679, Doi: 10.1017/s0022143000019936, 1967.  
 1152 Rohatgi, P. K., Jain, S. M., and Adams, C. M.: Effect of Magnetic and Electrical Fields on Dendritic  
 1153 Freezing of Aqueous Solutions of Sodium Chloride *Materials Science and Engineering*, 15, 283-290,  
 1154 10.1016/0025-5416(74)90062-7, 1974.  
 1155 Rosenthal, W., Saleta, J., and Dozier, J.: Scanning electron microscopy of impurity structures in snow,  
 1156 *Cold Regions Science and Technology*, 47, 80-89, 10.1016/j.coldregions.2006.08.006, 2007.

Salnikova, M., Varshney, D., and Shalae, E.: Heterogeneity of Protein Environments in Frozen Solutions and in the Dried State, 11-24, 10.1007/978-1-4939-2383-0\_2, 2015.

Shaw, R. A., Durant, A. J., and Mi, Y.: Heterogeneous Surface Crystallization Observed in Undercooled Water, *The Journal of Physical Chemistry B*, 109, 9865-9868, 10.1021/jp0506336, 2005.

Shokr, M., and Sinha, N.: *Sea Ice: Physics and Remote Sensing*, edited by: Mongraph, G., John Wiley and Sons, 600 pp., 2015.

Steinbach, F., Kuiper, E.-J. N., Eichler, J., Bons, P. D., Drury, M. R., Giera, A., Pennock, G. M., and Weikusat, I.: The Relevance of Grain Dissection for Grain Size Reduction in Polar Ice: Insights from Numerical Models and Ice Core Microstructure Analysis, *Frontiers in Earth Science*, 5, 10.3389/feart.2017.00066, 2017.

Suzuki, S., Nakajima, A., Yoshida, N., Sakai, M., Hashimoto, A., Kameshima, Y., and Okada, K.: Freezing of water droplets on silicon surfaces coated with various silanes, *Chem. Phys. Lett.*, 445, 37-41, 10.1016/j.cplett.2007.07.066, 2007.

Thibert, E., and Domine, F.: Thermodynamics and kinetics of the solid solution of HCl in ice, *J. Phys. Chem. B*, 101, 3554-3565, 1997.

Thibert, E., and Domine, F.: Thermodynamics and kinetics of the solid solution of HNO<sub>3</sub> in ice, *J. Phys. Chem. B*, 102, 4432-4439, 1998.

Thomas, D. N.: *Sea Ice*, Wiley-Blackwell, Chichester, UK, 2017.

Tihlarikova, E., Nedela, V., and Shiojiri, M.: In situ study of live specimens in an environmental scanning electron microscope, *Microsc Microanal*, 19, 914-918, 10.1017/S1431927613000603, 2013.

Timco, G. W., and Frederking, R. M. W.: A review of sea ice density, *Cold Regions Science and Technology*, 24, 1-6, [https://doi.org/10.1016/0165-232X\(95\)00007-X](https://doi.org/10.1016/0165-232X(95)00007-X), 1996.

Tokumasu, K., Harada, M., and Okada, T.: X-ray Fluorescence Imaging of Frozen Aqueous NaCl Solutions, *Langmuir*, 32, 527-533, 10.1021/acs.langmuir.5b04411, 2016.

Trivedi, R., and Kurz, W.: Solidification microstructures: A conceptual approach, *Acta Metallurgica et Materialia*, 42, 15-23, [https://doi.org/10.1016/0956-7151\(94\)90044-2](https://doi.org/10.1016/0956-7151(94)90044-2), 1994.

Vega, C. P., Isaksson, E., Schlosser, E., Divine, D., Martma, T., Mulvaney, R., Eichler, A., and Schwikowski-Gigar, M.: Variability of sea salts in ice and firn cores from Fimbul Ice Shelf, Dronning Maud Land, Antarctica, *The Cryosphere*, 12, 1681-1697, 10.5194/tc-12-1681-2018, 2018.

Vetráková, L., Vykoukal, V., and Heger, D.: Comparing the acidities of aqueous, frozen, and freeze-dried phosphate buffers: Is there a "pH memory" effect?, *International Journal of Pharmaceutics*, 530, 316-325, 10.1016/j.ijpharm.2017.08.005, 2017.

Wåhlin, J., Leisinger, S., and Klein-Paste, A.: The effect of sodium chloride solution on the hardness of compacted snow, *Cold Regions Science and Technology*, 102, 1-7, 10.1016/j.coldregions.2014.02.002, 2014.

Warren, S. G.: Optical properties of ice and snow, *Philos Trans A Math Phys Eng Sci*, 377, 20180161, 10.1098/rsta.2018.0161, 2019.

Weeks, W. F.: *On Sea Ice*, On Sea Ice, 1-665 pp., 2010.

Wettlaufer, J. S.: Directional solidification of salt water: deep and shallow cells, *Europhys. Lett.*, 19, 337-342, 10.1209/0295-5075/19/4/015, 1992.

Wettlaufer, J. S., Worster, M. G., and Huppert, H. E.: Natural convection during solidification of an alloy from above with application to the evolution of sea ice, *Journal of Fluid Mechanics*, 344, 291-316, 10.1017/s0022112097006022, 1997.

Wilson, P. W., and Haymet, A. D. J.: Workman-Reynolds freezing potential measurements between ice and dilute salt solutions for single ice crystal faces, *J. Phys. Chem. B*, 112, 11750-11755, 2008.

Yan, F., Xiong, W., and Faierson, E.: Grain Structure Control of Additively Manufactured Metallic Materials, *Materials*, 10, 1260, 10.3390/ma10111260, 2017.

Yang, X., Neděla, V., Runštuk, J., Ondrušková, G., Krausko, J., Vetráková, L., and Heger, D.: Evaporating brine from frost flowers with electron microscopy and implications for atmospheric chemistry and sea-salt aerosol formation, *Atmos. Chem. Phys.*, 17, 6291-6303, 10.5194/acp-17-6291-2017, 2017.

Zobrist, B., Marcolli, C., Pedernera, D. A., and Koop, T.: Do atmospheric aerosols form glasses?, *Atmospheric Chemistry and Physics*, 8, 5221-5244, 10.5194/acp-8-5221-2008, 2008.

