

Review of paper by Haibo Bi et al., “Contributions of advection and melting processes to the decline in sea ice in the Pacific sector of the Arctic Ocean,” submitted for publication to The Cryosphere. This is a solid but not a groundbreaking study. I recommend for publication with minor revisions.

Page 1, line 13 and elsewhere: Say “Pacific-Arctic sector of the Arctic Ocean” as in your title, not “Pacific-Arctic Ocean:” the latter does not exist. Same for “Atlantic-Arctic Ocean.” A major comment is the suggestion that you strive for consistency in your text and graphics. IE: a) consistent units: i) Abstract uses  $10^3 \text{ km}^2$  for PA  $\rightarrow$  AA outflow, and  $10^6 \text{ km}^2$  for melting. Just use  $10^6 \text{ km}^2$  for all, so that a reader can clearly compare eg 0.173 vs 1.66. ii) /yr vs /a: Sometimes you use “per year” and sometimes you use “per annum” and sometimes you do this in the same sentence! Just pick one and always use this. iii) /de vs /yr: I don’t know if /de is a standard way to write “per decade” but in any case you mostly use /yr (or /a) so I suggest you translate the /de to /yr or /a. b) consistent terminology: Is the distance along your flux gate (2840 km) the WIDTH or the LENGTH? Sometimes you use one, sometimes the other. I think it should be the length; the width is 25 km ie the grid size, yes? c) consistent graphics scales: Figures 2 and 8: Use same vertical scale for left and right panels

Response: a) consistent units are used in the revised manuscript. i) we use  $10^6 \text{ km}^2$  for outflow and melting sea ice area. ii) we use /yr throughout the paper. iii) for the trends where ‘/de’ is used, we change them to ‘/yr’. b) Following the suggestion, we keep using LENGTH for the distance spanned by the fluxgate. The grid size is 25 km. c) the vertical scale for the left and right panels in Figures 2 and 8 are changed to a consistent scale. The figures are redraw accordingly.

Page 2, line 27: You could also include this reference for faster ice and changing drag, internal stress: Zhang et al. (GRL, 39, doi:10.1029/2012GL053545, 2012)

Response: this is an excellent reference and we add it (P3, L1 in the revised version of the manuscript with a edit-tracking format). Hereafter, without specific statement, the page and line numbers denote those appear in the revision with a edit-tracking format.

Page 2, line 31: There are a number of model studies that have considered dynamic vs thermodynamic forcings separately. One example is Figure 9 in Lindsay et al. (J. Clim., 22, doi: 10.1175/2008JCLI2521, 2009).

Response: We carefully read this paper and found Lindsay’s work is very interesting and of great relevance to our study. The paper is noted in the revised manuscript (P3, L5-6).

Page 3, lines 15-16: Just say “NSIDC.” It is “University of Colorado” not Colorado University, but NSIDC is enough.

Response: Corrected as suggested.

Page 3, lines 23-24: Please provide a reference for these unrealistic buoy velocities. Are you referring here to Szanyi et al. (Geophys. Res. Lett., 43, doi:10.1002/2016GL069799, 2016)?

Response: The reference is presented in the revision (P4, L3-4).

Figure 1: a) Please give the lat/lon coordinates of each endpoint of the flux gate line. b)

There is no need for the compass rose, and in fact it is inappropriate on a map with the North Pole included. c) Is there a southern boundary of the PA? maybe at Bering Strait? This should be noted with a blue line, just like for the southern AA boundaries.

Response: a) the lat/lon coordinates of the endpoints of the fluxgate line are presented (see P5, L3-4). b) the compass rose is removed since it is not useful on a map with the North Pole. c) the southern boundary of PA is provided in the revised Figure, as marked with blue lines near the Bering Strait and Banks Island.

Equation 1: The units of F are length<sup>2</sup>/time, yes? Please note this here.

Response: the unit of F is km<sup>2</sup>/day and we note it in the text.

Table 1: Please provide the units for ice area flux. Also, it's "length" not width, I think (see comment above on consistency.)

Response: The units for sea ice area flux is provided and the "length" is used.

Page 5, line 17: Your English is generally quite good, but there are numerous minor errors in spelling and grammar. EG here it is "annual" not "annul."

Response: The manuscript is thoroughly read and examined by each author trying to avoid errors in spelling and grammar.

Bottom of page 5: Is it possible to provide a better estimate of the error in your calculations from the neglect of ice deformation (eg from numerical model studies)? Further, this error should be noted in the rest of your paper. EG if you find that there is a trend in total melt in the PA of X%, but this is smaller than the error from neglect of deformation, then do you have a significant result? Please discuss.

Response: At this point, we do not have a better estimate for the deformation contribution to sea ice loss. However, Lindsay et al(2009) provided an estimate due to deformation, which causes approximately 1% of sea ice area variation within the Atlantic side of the Arctic Ocean. Since the Pacific sector is dominated by ice divergence process, the sea ice coverage loss due to convergence may be less than that of the Atlantic sector. Thereby, we use 1% as a upper limit in sea ice changes due to deformation in the Pacific side, which is fairly less than the trend in total melt sea ice in PA (3.2%/yr for the period 1979-2016).

Page 6, lines 10-11: Is this DA index publicly available? Could you provide a link? AGU journals require a discussion of data availability; The Cryosphere may not, but it is all of our responsibility to discuss data availability so that our results can be independently reproduced.

Response: The DA index is not publicly available but a reference is provided (Wu et al., 2005). For the DA index data from 1979-present, it is kindly provided by Wu Bingyi through E-mail (bywu@fudan.edu.cn.).

Page 6, line 14: "precipitable"

Response: Corrected as suggested.

Figure 3: It is not immediately obvious to me that there is more blue on the left and more red on the right. Some nice further analysis is provided in subsequent plots, but for this one, I might suggest the addition of the annual mean anomaly on a new bottom row, which could more clearly summarize the trend.

Response: the addition of the annual mean anomaly is shown in the bottom row.

Page 9, line 2: This is very interesting. Any thoughts on why the extremes are not

changing?

Response: Despite the extremes are not changing overall, we further identify that the extreme low anomalies ( $A \leq -1$ ) reduce from 20.8% in P1 to 10.4%, while the extreme high anomalies ( $A > 1$ ) increases from 7.5% to 16.6%. This shift in sea ice exchanges between the PA and the AA sectors may indicate a shift of atmospheric circulation toward a pattern facilitating sea ice export out of the PA side (Wu et al., 2005; Zhang et al., 2008; Jia et al., 2009). (Please see P10, L13-15).

Figure 8: Use same vertical scale for both panels. Note that the line goes from N. America (left) to Eurasia (right).

Response: the same vertical scale is used for both panels in the revised manuscript. Also, following the suggestion, the endpoint location of the lines is given in the caption of Figure 8. (see P14, L2-4)

Figure 9: It is nearly impossible for me to see these panels clearly and thus to interpret this figure. Could you try to make a better one, maybe with fewer panels?

Response: For a clear demonstration, we selected fewer panels with five-year estimates in each decade since 1980s being presented. Additionally, legend is given for easy identification of sea ice area changes due to advection or melting processes.

Page 13, lines 6-9: Are you saying that melting in the AA is of similar magnitude to that in the PA, but that the AA ice is getting replenished by PA ice? This would be a major new result if true. But I kind of doubt that it is true, given that the AA is (in the mean) farther north than the PA, and so probably there is more melt in the PA.

Response: We do not expect to express the idea that melting in AA has a similar magnitude as that in the PA, which is not real. The regarding sentences are rewritten or removed to avoid this misunderstanding. A notice is added to show that AA in higher latitudes is likely less subject to melting than that in PA. (see P14, L11-14)

Section 4 Discussion re climate indices: The Arctic community went through a phase in which everything was correlated with climate indices. This fad has faded as ice continues to decline independently of climate indices. Further, climate indices don't provide predictive skill. It is unclear to me what they do provide, specifically in the present context of this paper. I might suggest that you write some introductory words to this section that explain why you are correlating your results with these indices, and then at the end, what your significant correlations provide in terms of new insight.

Response: The explanatory words are presented in the first paragraph of Section 4 and a summary of the new quantitative findings is given in the last paragraph. In brief, wind forcing has been significant in modulating the sea ice variability in summer. The Arctic-wide wind forcing is linked to large-scale atmospheric circulation patterns. Hence, the connection between the sea ice area loss in the PA sector and three typical atmospheric indices (AO, NAO, and DA) are assessed here. The temporal changes of the correlation among different decades (Table 4) provides us the new evidence of a shifting atmospheric regime in the Arctic.

## Anonymous Referee #1

### General Comment

This is a nice paper that updates previous analyses of sea ice changes in the Pacific sector and the contributions of melt/growth and advection processes. The paper is well-written and thorough. The methodology appears sound and is explained well and the results are clearly presented. There are a few small questions/concerns, noted below. After addressing these, I find the paper acceptable after minor revisions.

**Response:** We appreciate for the comments and suggestions and revise the manuscript accordingly.

Specific Comments (by page and line number):

P2, L4: “de” is non-standard and somewhat confusing for “decade”. I would use either “dec”, “d”, or “decade”.

**Response:** Based on this comment and suggestions from Reviewer 2# , we use unit “/yr” to take place of “dec” throughout the manuscript to ensure a unit consistency. Still many thanks for the reminding that “de” is not an appropriate word to be used in scientific paper.

P2, L11: what is the NSIDC report? Need to reference (if it’s a webpage, I think it’s fine to just include the link)

**Response:** The associated webpage link is added. (P2, L14 in the revised manuscript with a edit-tracking format. Hereafter, if not stated, the P and L correspond to the page and line numbers in the revised manuscript with a edit-tracking format)

P2, L15: Could provide a more updated reference than Maslanik et al., (2011): Tschudi et al., Remote Sensing, 2016

**Response:** The updated reference Tschudi et al., 2016 is added in the revised manuscript. (see P2, L16)

P3, L17: Should provide the full citation (and include in the reference list) for the data, not just the website. NSIDC provides guidance on proper citation on their product website.

**Response:** the relevant reference is added, see (Tschudi et al., 2017) in the revision.

P3, L17: Note that a new version of the product will soon be released. At this point, I wouldn’t expect your analysis to be redone and I don’t think the new version would substantively change your results, but noting so that it is addressed in the final paper. Also, there is a new reference, submitted to The Cryosphere, documenting the changes: Tschudi, M. A., Meier, W. N., and Stewart, J. S.: An enhancement to sea ice motion and age products, The Cryosphere Discuss., <https://doi.org/10.5194/tc-2019-40>, in review, 2019.

**Response:** I have to admitted that this is a timely and fantastic work since the NSIDC SIM and age products have been widely acknowledged in various studies. We found that the updated version 4 product is now (Access date: 2019-04-08) is in a process to be further improved based on some error reports. We keep in mind that if the newest version (v4.0) data is available, the final paper will use it for a further analysis. The associated reference by Tschudi (2019) introducing the new improvement regarding the product is added in the revised text (See P4, L6)

P3, L18-19: The first letters in the SSM/I, SSMIS, and AMSR-E written out sensor names should be capitalized.

Response: The first letters of the sensor name as referred is capitalized in the revision. (see P3, L26-29).

P3, L22-23: There are a couple erroneous statements here. The SIM product is on the EASE-Grid, which is an equal-area projection – it is not polar stereographic. Also, some AVHRR images were removed due to errors, but AVHRR sources are still used for the 1979-2000 period. Likewise, a few buoys were removed, but buoys are used throughout the product. Maybe there just needs to be a rewording of the sentence to be clear.

Response: Yes, the SIM product is available on the EASE-grid and we corrected accordingly. The sentences are reconstructed and reworded to make it clear that AVHRR and buoy measurements are used in the composition of SIM and some error sources have been excluded. Please see P4, L2-6.

P3, L27: As for the SIM, the full citation should be provided for the SIC product. NSIDC provides guidance on proper citation on their product website.

Response: the associated reference (Comiso, 2017) is added. (See P4, L11)

P4, L4-5: Again, an error here in the grid/projection info. The SIC is on a polar stereographic grid, but it is not equal area. I assume that this is just a miswording. However, if an equal area is assumed for the polar stereographic grid, that will give incorrect sea ice extent and area estimates. Each cell in the polar stereographic grid has a different area, so when summing for extent, you have to account for the specific area of each cell. If this was not done, then I would say that the analysis needs to be redone. NSIDC provides grid cell area files for the polar stereographic grids.

Response: The misleading information is corrected and the SIC projection is presented as a polar stereographic grid. See the concerning texts in the revision (P4, L18).

P5, L3: I can understand the focus on the summer, but it's important to note that the quality of both the SIC and SIM fields lower during summer due to surface melt water. I think reasonable estimates can still be obtained, but the lesser performance should be noted.

Response: This is true. Surface melting causes ambiguous observational signals which are really a big problem to retrieve a real sea ice motion or sea ice concentration. Following the suggestion, we remind the author that summer performance may be less good as that in winter. (Please refer to P5, L15-16)

P5, L11: While the reference is provided, the uncertainty value is important and should be given explicitly here in the paper. A reader shouldn't have to dig up a reference for what is salient information. And as noted above, summer uncertainties are higher.

Response: The specific uncertainty values are summarized and explained in the revised manuscript. For example, the uncertainty of the daily sea ice motion data during winter is obtained as 2 cm/s (i.e., 1.70 km/day) (Ivanova et al., 2014; Sumata et al., 2015) (Sumata et al., 2015). Also, the uncertainty in summer SIM data is presumed to larger than that that used in winter. For more detail, please refer to P6,

L4-11.

P6, L10-11: What is the source for the DA index in terms of the data? I assume it's based on a reanalysis? That needs to be documented. Even if the values were provided directly by a colleague, the source that the colleague used needs to be cited.

Response: DA is retrieved from NCEP reanalyzed SLP product. The concerning information about DA is provided in the revision and a reference by Wu et al. (2005) is given for more detail about how the DA index is obtained. (See P7, L11-19)

P8, L2: I find the color scale for Figure 4 somewhat ambiguous – it's hard to tell where the 0 anomaly is exactly and which small values are positive or negative. I would suggest perhaps a gradient two-color anomaly scale with white denoting 0.

Response: We redraw the Figure 4 with a white color pointing to zero. (See Figure 4, for example, Feb 1979). Also, following suggestions by Reviewer 2, we added the annual average of the anomaly in the bottom row of the Figure.

P9, L11: Earlier in the paper (e.g., in the abstract), “yr” is used, but here “a” (I assume for “annum”). You should be consistent in usage, so choose one or the other (I prefer “yr”, but “a” is perfectly acceptable).

Response: For consistency in the use of time, “yr” is used through the paper.

P10, 3: For Figure 5, it might make things too busy looking, but I think it could be helpful to overlay the flux gates. Especially for January, it's hard to tell if the vectors are advecting ice across the Pacific gate or not.

Response: For a clear look about the sea ice movement around the fluxgate, the gate line is overlaid on Figure 5.

P11, L2: What are the “\*”s next to the trends? I presume an indication of significance? That should be included in the caption.

Response: Yes, the label “\*” denotes for significance. ‘\*’, ‘\*,\*’, ‘\*,\*,\*’ correspond to the significance level at 90%, 95%, 99%. This notion is given in the caption of Figure 6 (P12, L11-12).

P13, L4: The “summer season” should be defined here. It's noted further down on the page (June – September), but it should be specified when the term is first used.

Response: The definition of summer is presented in P14, L7.

P16, L10-14: I'm curious why AO shows such low correlation, but NAO shows higher. My understanding (which may not be complete or totally up-to-date) is that the two are very similar and that the NAO can be thought of as a regional expression of AO. Given that, I would've thought that AO would have higher correlation because it's hemisphere whereas the NAO is focused on the Atlantic sector. In other words, why would the Atlantic sector variability have much more effect on the Pacific sector than hemispheric variability?

Response: The relevant explanations have been given in P21, L11-19. In addition, for a clear analysis, climatic variables (SLP, SAT, and PW) related to AO trending changes are presented in Figure 14 (see Figure 14d, h, and i).

Since AO shows a negligible trend (Figure 13a), the 38-yr climatic changes related to AO are insignificant (Figure 14d, h and i) and smaller in magnitudes compared to the DA and NAO-associated changes. The NAO pattern is conventionally deemed as a regional index, representing parts of the broader AO pattern. However,

NAO-associated SLP changes (Figure 14g) show a stronger gradient across the fluxgate than that of AO-associated SLP (Figure 14h), which would favor more sea ice outflow from PA to AA sectors. In comparison with NAO (Figure 14g), the AO-associated SLP distribution shows a much weaker gradient across the Arctic Ocean (Figure 14h), although it may contribute to the sea ice advection from the Pacific side to the Atlantic side. As a result, lower correlations between AO and sea ice melting and advection processes are expected, with  $R = -0.28$  and  $0.14$  (Table 3). However, these small overall correlations do not necessarily imply that AO plays no role in causing sea ice variations. For instance, throughout the examined periods, AO exerted more influences on sea ice changes for the earlier two decades (1979-1998), with  $R = 0.57$  and  $0.46$  (Table 4).

P16, L23-25: This sentence is really difficult to follow. I'm not a big fan of the "positive (negative)" way of saying two things, but here it is especially tough because you use "positive (negative) NAO" for summer and then switch to "negative (positive) NAO" for winter. Trying to keep these straight is difficult! I would use "positive (negative) NAO" (or the reverse) for both cases and word the rest accordingly.

Response: The sentence is reconstructed for a clear expression. (P19, L4-6)

P17, L3: There is a lot of variability in yearly values, even when the correlation is fairly high. Did you test for significance of the trends? I would guess that none of them may be significant. I think that would be good to include here and in the discussion.

Response: The linear trends of NAO and DA indices are significant at the 95% significance levels according to the t-test method, while the AO index reveals an insignificant trend. This is noted in the caption of Figure 13. (P19, L9-10).

P19, L23: Here again in Table 4, I'm curious about how different the NAO and AO correlations are. The differences are quite stark. In particular, during the P4 period, the NAO and AO are even opposite signs. And while the AO has a higher correlation than the NAO through 2008, the NAO has had a much higher correlation since then. While earlier, you note that overall the AO correlation is weak and thus you focus on the NAO and DA, I think further discussion of the AO is warranted, particularly in terms of comparison with the NAO.

Response: The relevant explanations have been given in P21, L11-19. In addition, for a clear analysis, climatic variables (SLP, SAT, and PW) related to AO trending changes are presented in Figure 14 (see Figure 14d, h, and i).

#### Technical Corrections

P4, L17: Use "length" instead of "distance".

Response: Corrected as suggested (P5, L9).

P5, L28: typo, "does"

Response: Corrected as suggested (P6, L26).

# Contributions of advection and melting processes to the decline in sea ice in the Pacific sector of the Arctic Ocean

Haibo Bi<sup>1,2,3,4</sup>, Qinghua Yang<sup>5</sup>, Xi Liang<sup>6</sup>, Liang Zhang<sup>1,2,3,4</sup>, Yunhe Wang<sup>1,2,3,4</sup>, Yu Liang<sup>1,2,3,4</sup>, Haijun Huang<sup>1,2,3,4</sup>

<sup>1</sup>Key laboratory of Marine Geology and Environment, Institute of Oceanology, Chinese Academy of Sciences, Qingdao, China

<sup>2</sup>Laboratory for Marine Geology, Qingdao National Laboratory for Marine Science and Technology, Qingdao, China

<sup>3</sup>Center for Ocean Mega-Science, Chinese Academy of Sciences, Qingdao, China

<sup>4</sup>University of Chinese Academy of Sciences, Beijing, China

<sup>5</sup>School of Atmosphere Sciences, Sun Yat-sen University, Zhuhai, China

<sup>6</sup>Key Laboratory of Research on Marine Hazards Forecasting, National Marine Environmental Forecasting Center, Beijing, China

*Correspondence to:* Haibo Bi (bhb@qdio.ac.cn)

## Abstract

The Pacific ~~Arctic~~ sector of the Arctic (PA)-Ocean (PA, hereafter) is a region sensitive to climate change. Given the alarming changes in sea ice cover during recent years, knowledge of sea ice loss with respect to ice advection and melting processes has become critical. With satellite-derived products from the National Snow and Ice Center (NSIDC), a 38-yr record (1979-2016) of the loss in sea ice area in summer within the Pacific-Arctic (PA) sector due to the two processes is obtained. The average sea ice outflow from the PA to the Atlantic-Arctic (AA) Ocean during the summer season (June-September) reaches  $0.1733 \times 10^6 \text{ km}^2$ , which corresponds to approximately 34% of the mean annual export (October to September). Over the investigated period, a positive trend of  $4.20004 \times 10^3 \text{ km}^2/\text{yr}$  is also observed for the outflow field in summer. The mean estimate of sea ice retreat within the PA associated with summer melting is  $1.66 \times 10^6 \text{ km}^2$ , with a positive trend of  $0.05334 \times 10^6 \text{ km}^2/\text{yr}$ . As a result, the increasing trends of ice retreat caused by outflow and melting together contribute to a stronger decrease in sea ice coverage within the PA ( $0.0573 \times 10^6 \text{ km}^2/\text{yr}$ ) in summer. In percentage terms, the melting process accounts for 90.4% of the sea ice retreat in the PA in summer, whereas the remaining 9.6% is explained by the outflow process, on average. Moreover, our analysis suggests that the connections are relatively strong ( $R = 0.63$ ), moderate ( $R = -0.46$ ), and weak ( $R = -0.24$ ) between retreat of sea ice and the winds associated with the Dipole Anomaly (DA), North Atlantic Oscillation (NAO), and Arctic Oscillation (AO), respectively. The DA participates by impacting both the advection ( $R = 0.74$ ) and melting ( $R = 0.55$ ) processes, whereas the NAO affects the melting process ( $R = -0.46$ ).

带格式的: 字体: 小四

带格式的: 字体: 小四

带格式的: 字体: 小四

带格式的: 字体: (中文) Times New Roman

带格式的: 字体: (中文) Times New Roman

带格式的: 字体: (中文) Times New Roman

带格式的: 字体: (中文) Times New Roman

带格式的

带格式的

带格式的



## 1 Introduction

As the Arctic climate warms (Comiso, 2010; Overland et al., 2010; Graham et al., 2017), a wide range of researchers and the public show compelling interests on topics associated with the drop in sea ice coverage (Kay and Gettelman, 2009; Spreen et al., 2009; Polyakov et al., 2010; Zhang et al., 2010; Spreen et al., 2011; Woods et al., 2013; Tjernström et al., 2015; Notz and Stroeve, 2016; Screen and Francis, 2016; Koyama et al., 2017; Smedsrud et al., 2017; Stroeve et al., 2017; Niederrenk and Notz, 2018). For the period since late 1970s, sea ice extent has been decreasing as revealed from a series of satellite microwave observations, ranging from  $-0.4\text{-}0.9\%/de/yr$  to  $-0.3\text{-}0.8\%/de/yr$  depending on different data products (Comiso et al., 2017). Specifically, the Arctic sea ice extent in September has been found to be the month with the most rapid decrease, at approximately  $-1.3\text{-}0\%/de/yr$  for the period 1979-2017.

Comiso (2011) reported a more negative trend in the multiyear ice (MYI) coverage, approximately  $-1.7\text{-}2\%/de/yr$  in winter over the period 1979-2011. As a result, the MYI extent decreased from ~~approximately~~ approximately  $6.2 \times 10^6 \text{ km}^2$  in the 1980s to only  $2.8 \times 10^6 \text{ km}^2$  in the late 2000s. Recently, record lows in sea ice extent have been frequently set in summer over the past years (Serreze et al., 2003; Parkinson and Comiso, 2013; Stroeve et al., 2013). According to the National Snow and Ice Data Center (NSIDC) report (<http://nsidc.org/yrrcticseaicenews/2012/09/>), the Arctic sea ice extent plummeted to its minimum of  $3.41 \times 10^6 \text{ km}^2$  on 16 September 2012, approximately 18% below the previous record minimum in 2007. The significant decline in sea ice coverage in summer implies that less Arctic sea ice can survive the melting season to replenish the MYI cover in September (Kwok, 2007). Therefore, the Arctic Ocean is now dominated by younger and thinner first-year ice (FYI) (Maslanik et al., 2011; Tschudi et al., 2016), which is usually thinner and saltier and melts at a lower temperature (Maslanik et al., 2011; Tschudi et al., 2016).

Much attention is also paid to the decline in sea ice thickness in the Arctic Ocean. The sea ice extent covered by MYI in March decreased from approximately 75% (mid-1980s) to 45% (2011), and coverage fraction of the oldest ice (no less than fifth year) dropped from 50% of the multiyear ice cover to 10% (Comiso, 2011). Such a large decline in coverage of the thicker and older component of the MYI ice cover means a decrease in the mean ice thickness in the Arctic Ocean. For example, placing sea ice thickness derived from ICESat (2003-2008) in the context of a 43-yr submarine records (1958-2000), the overall mean winter thickness in a sizable portion of the central Arctic Ocean shows a decline of 1.75 m in thickness from 3.64 m in 1980 to 1.75 m from the ICESat record (Kwok and Rothrock, 2009). Moored sonars in the Fram Strait also observed a decrease in the annual mean sea ice thickness, from earlier 3.0 m (1990s) to recent 2.2 m (2008-2011) (Hansen et al., 2013). Due to Arctic sea ice age changes, satellite measurements from 2003-2008 (ICESat) and CyroSat-2 (2011-2015) reveal that there are net reductions in Arctic ice volume, of approximately  $4.68 \times 10^3 \text{ km}^3$  in autumn and  $1.46 \times 10^3 \text{ km}^3$  in winter (Bi et al., 2018). The thinner ice pack is more dynamically responsive to the drag forcing of winds

带格式的: 字体: 小四, 加粗, 字距调整二号

域代码已更改

域代码已更改

域代码已更改

域代码已更改

带格式的: 上标

带格式的: 上标

域代码已更改

域代码已更改

域代码已更改

域代码已更改

域代码已更改

域代码已更改

域代码已更改

域代码已更改

and currents, allowing the Arctic sea ice to drift at a higher speed (Rampal et al., 2009; Spreen et al., 2011; Zhang et al., 2012; Kwok et al., 2013). Consequently, advective sea ice mass balance within the Arctic Ocean may have been changing.

域代码已更改

Although we are familiar with the fact that the sea ice mass balance is closely related to the dynamic (advection) and thermodynamic (melting) processes, quantitative knowledge about their contributions to the sea ice area changes within the

Arctic Ocean is scarce. Besides the utilization of satellite observations, modeling studies have been commonly used to diagnose the dynamic and thermodynamic forcing (e.g., Lindsay et al. (2009)). In this study, we examine the contributions

域代码已更改

of these two processes to the sea ice depletion within the PA side where sea ice loss is the most pronounced during summer (Cavalieri, 2012; Kawaguchi et al., 2014; Lynch et al., 2016; Comiso et al., 2017). In a preceding investigation, Kwok (2008a) examined the sea ice retreat within the PA sector due to melting and advection in summers of 2003-2007. However,

域代码已更改

域代码已更改

the record of five years is too short to draw any robust conclusion about the variability and trend in the sea ice area changes due to the two processes. Kwok (2008b) investigated the sea ice transport between the PA and Atlantic-Arctic (AA) sectors

域代码已更改

for the period 1979-2007. However, the contribution of ice melting to sea ice decline in PA is beyond the scope of their study. Taking advantage of a longer and updated version of sea ice motion data provided by the NSIDC, this study attempts to

quantify the contributions of the two processes (advection and melting) to the retreat of sea ice in summer within the PA sector over the period 1979-2016. Moreover, the possible causes for their variability and trends are examined by highlighting

the role of large-scale atmospheric circulation.

We organize this paper as follows. The data and method are summarized in section 2. The estimates of sea ice outflow and melting are presented in section 3. The connection between sea ice retreat within the PA sector and typical large-scale atmospheric circulation is analyzed in section 4 by exploring the connection between the PA sea ice loss and the Arctic Oscillation (AO), North Atlantic Oscillation (NAO), and the Dipole Anomaly (DA). Section 5 reiterates the key findings and concludes this study.

## 2 Data and method

带格式的: 字体: 小四, 加粗, 字距调整二号

### 2.1 Sea ice motion and concentration

带格式的: 字体: (中文)+中文标题(宋体), 加粗, 字体颜色: 文字1

A gridded sea ice motion (SIM) product is provided by the National Snow and Ice Data Center (NSIDC), ~~Colorado~~ University (<http://nsidc.org/data/NSIDC-0116>) (Tschudi et al., 2017a). SIM vectors are retrieved from a wide selection of

域代码已更改

platforms, from satellite radiometers, including the Advanced Very High Resolution Radiometer (AVHRR), Scanning Multichannel Microwave Radiometer (SMMR), ~~special-Special sensor-Sensor microwave-Microwave imager-Imager~~

(SSM/I), ~~special-Special sensor-Sensor microwave-Microwave imager-Imager sounder-Sounder~~ (SSMIS), and ~~advanced~~ Advanced Microwave scanning-Scanning radiometer-Radiometer-earth-Earth observing system (AMSR-E), to the

International Arctic Buoy Program (IABP) buoy data and surface winds from the National Centers for Environmental

Prediction and the National Center for Atmospheric Research (NCEP/NCAR). The ~~newest~~ version of the SIM product (v3.0) is available with a grid of 25 km×25 km, and is mapped on a ~~polar stereographic~~EASE-Grid projection, which is a ~~equal-area projection~~ (Tschudi et al., 2017a; Tschudi et al., 2017b). ~~The IABP buoy observation were employed throughout the product with a few unrealistic buoys being removed due to errors~~ (Szanyi et al., 2016). ~~Compared to the preceding versions, this product has eliminated the unrealistic advanced very high resolution radiometer (AVHRR) and IABP buoy velocities. Likewise, AVHRR imagery is used for the period 1979-2000 with some error sources are excluded.~~ Overall, the SIM data is estimated to has an uncertainty of between 1 and 2 cm/s depending on the amplitudes of both the sea ice concentration (SIC) and SIM (Sumata et al., 2015). At the time conducting this study, daily SIM data from 1979 through 2016 were available. Note that the newest version of SIM product (Tschudi et al., 2019) is soon released, based on which further analysis is expected.

Satellite-derived daily SIC records (1978-2017) (<http://nsidc.org/data/NSIDC-0079>) (Comiso, 2017) were also obtained from NSIDC. Common with SIM product, SIC is also extracted from multiple passive microwave observations from the SMMR, SSM/I, and SSMIS by the application of the bootstrap (BT) algorithm. Over the period November 1978 to July 1987 the ice concentration is available every other day. The data gap is filled using a temporal interpolation from the data of the two adjacent days (i.e., the previous and subsequent days). The concentration field utilized here is an up-to-date version (v3.1), offering improved consistency among the estimates from the different satellite observations through the application of varying tie points on daily basis. Furthermore, the product is optimized to further remove the effects of weather and land contamination (Cho et al., 1996). The data are available ~~with an equal area grid cell structure (25 km×25 km)~~ on a polar stereographic projection.

## 2.2 Procedure to estimate regional sea ice exchanges and melt

Following Kwok (2008a), the Arctic Ocean is divided into the PA and AA sectors (Figure 1). The division is defined by a line linking the easternmost tip of Severnaya Zemlya and the southwestern tip of Banks Island. With a length of 2840 km, the line serves as the gateway through which the sea ice area flux between the two sides of the Arctic Ocean is calculated.

域代码已更改  
带格式的: 非突出显示  
域代码已更改

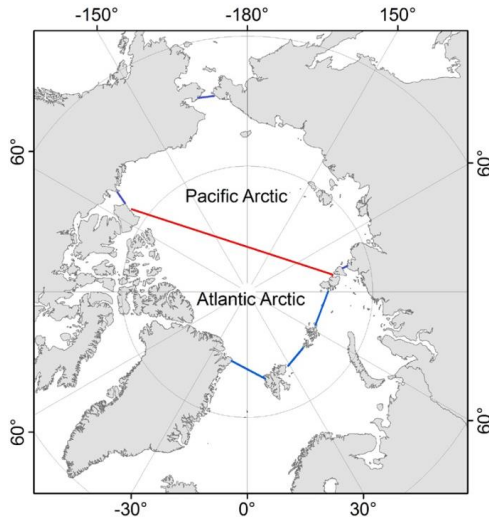
域代码已更改  
域代码已更改

域代码已更改

域代码已更改

带格式的: 字体: (中文)+中文标题 (宋体), 加粗, 字体颜色: 文字 1

域代码已更改



**Figure 1.** The fluxgate (red line) that is used to estimate sea ice area flux. The blue lines represents the boundaries of the **PA** and **AA** regimes. The endpoints in the North America and the Eurasia sides are (125.1 °W, 73.0 °N) and (101.0 °E, 79.6 °N), respectively.

Sea ice area flux is taken as the integral product of gate-perpendicular SIM and SIC for all grids across the fluxgate. The daily field of sea ice area flux ( $F$ , unit:  $\text{km}^2/\text{day}$ ) is written as

$$F = \sum_{i=1}^{N-1} u_i c_i \Delta x \quad (i = 1, 2, \dots, N) \quad (1)$$

where  $u$ ,  $c$ , and  $\Delta x$  correspond to the gate-perpendicular SIM (unit:  $\text{km}/\text{day}$ ), SIC, and the width of a grid (25 km) and  $i=1, 2, \dots, N$  refers to the index of grid cells along the gate. The distance-length (unit: km) of the chosen gate corresponds to the length-total width of 113 grids in total. The monthly area flux ( $F_m$ ) is the sum of daily fluxes for the corresponding calendar month, and the seasonal flux denotes the accumulative fluxes over the summer (June-September) and winter (October-May) months. Likewise, the annual flux is taken as the integrated flux over annual cycles between October and September (i.e. the sum of the winter and summer estimates). Although the focus season of this study is summer, the winter and annual fluxes across the gate are also presented for comparison to help readers understand the relative contribution of summer advection to the regional sea ice balance. We should note that the data quality for the daily SIC and SIM fields is likely lower during summer due to the surface melting process (Ivanova et al., 2014).

In our sign convention, sea ice transport from the PA to the AA sector is referred to as a positive flux (i.e., outflow) and the reverse direction is taken as a negative flux (i.e., inflow). Supposing that the errors in the SIM grid samples are unbiased, additive, uncorrelated, and normally distributed (Kwok, 2008b), the uncertainty of the daily fields can be expressed as follows.

带格式的: 字体: 倾斜

域代码已更改

域代码已更改

域代码已更改

$$\sigma_F = \frac{\sigma_d L}{\sqrt{N}} \quad (2)$$

where  $L$  represents the fluxgate width (2840 km), and  $\sigma_d$  is the uncertainty in the daily SIM. Regarding the daily drift uncertainty for one ice sample ( $\sigma_d$ ), we use the uncertainty reported in Sumata et al. (2015), which is estimated by comparing NSIDC SIM data with buoy drifts and varies on the basis of the magnitudes of SIC and SIM. The uncertainty of the daily sea ice motion data during winter is obtained as 2 cm/s (i.e., 1.70 km/day) (Ivanova et al., 2014; Sumata et al., 2015) (Sumata et al., 2015). For the summer period, however, the ice motion is often blurred by surface melting. Therefore, summer ice motion mainly relies on interpolation that introduces additional uncertainty and thus has a poorer quality. As a result, we presumed summer-period uncertainty to be twice of winter error, up to 4 cm/s (i.e., 3.40 km/day) in the fluxgate. Assessment for ice concentration fields show there is a uncertainty of 3% in wintertime consolidated ice areas, whereas it is estimated to be about 5–10% in summer when melt-ponding effects play a role (Meier, 2005). In this study, we use 3% and 10% as the representative value of ice concentration uncertainties during winter and summer periods, respectively (Meier, 2005).

The uncertainty of the seasonal ( $\sigma_{summer}$  and  $\sigma_{winter}$ ) or annual area flux estimates ( $\sigma_{annual}$ ) can be described as

$$\sigma = \sigma_F \sqrt{N_D} \quad (3)$$

where  $N_D$  denote the days for the period examined. Based on these equations, the expected uncertainties for the sea ice area flux estimates are obtained. The uncertainties listed in Table 1 correspond to 2.2%, 1.4%, and 1.2% of the mean flux (as shown in section 3.1.3) during summer, winter, and annual periods, respectively.

**Table 1.** Expected mean uncertainties in seasonal and annual sea ice area flux (unit:  $10^6 \text{ km}^2$ )

Width-Length of fluxgate	N	$\sigma_{summer}$ ( $10^6 \text{ km}^2$ )	$\sigma_{winter}$ ( $10^6 \text{ km}^2$ )	$\sigma_{annual}$ ( $10^6 \text{ km}^2$ )
2840 km	113	3.790.004	5.360.005	6.560.007

According to Kwok (2008a), the melting sea ice area in PA is the difference between the total sea ice area loss in PA and the sea ice area flux from PA to AA. A possible discrepancy is caused by deformation (divergence/convergence) processes, which can lead to reduction in sea ice area that may be misclassified as sea ice loss due to melt or export. The coarse resolution of satellite observations does not allow us to accurately quantify the sea ice loss in relation to sea ice deformation. However, in winter, sea ice area change due to deformation is expected to be negligible due to solid pack ice (approximately 1~2%) (Kwok et al., 1999). In summer, the deformation may be larger. A larger (smaller) convergence (divergence) is hypothesized north (south) of 80 °N. For example, the accumulated divergence south (north) of 80 °N is approximately 14% (25%) in 2007 (Kwok and Cunningham, 2012). The PA sector is an area located mostly south of 80 °N where ice divergence is more likely to occur in summer, and new ice likely does not form within the divergence area due to warm temperature. In

域代码已更改

域代码已更改

域代码已更改

域代码已更改

域代码已更改

域代码已更改

域代码已更改

带格式的: 上标

带格式的: 上标

带格式表格

域代码已更改

域代码已更改

域代码已更改

this study, it is difficult to quantitatively separate the ice loss due to deformation from the melting process. However, a sophisticated model study (Lindsay et al., 2009) suggests the convergence accounts for 1% of the Arctic basin ice loss in the Atlantic Sector. Since the Pacific sector is dominated by divergence over the major parts (Lindsay et al., 2009), convergence may contributes to a percentage no more than 1%. This is much less than the estimated melting trend, approximately 3.2%/yr for the 1979-2016 period as shown in Figure 11. Based on these findings, we ignore the limited contributions of convergence and divergence to sea ice area balance within the PA side.

域代码已更改

域代码已更改

### 2.3 Large-scale atmospheric circulation index

带格式的: 字体: (中文)+中文标题 (宋体), 加粗, 字体颜色: 文字 1

The atmosphere circulation modes screened in this study for possible linkages with sea ice area changes in PA include the AO (leading mode of sea level pressure (SLP) north of 20°N) (Thompson and Wallace, 1998), NAO (leading mode of SLP over the North Atlantic) (Hurrell, 1995), and DA (the second-leading mode of SLP within the Arctic Circle north of 70°N) (Wu et al., 2005). Both the AO and NAO indexes (1979-2016) are available at the following sites affiliated with the Climate Prediction Center (CPC) at the National Oceanic and Atmospheric Administration (NOAA):

域代码已更改

域代码已更改

域代码已更改

[http://www.cpc.ncep.noaa.gov/products/precip/CWlink/daily\\_ao\\_index/ao.shtml](http://www.cpc.ncep.noaa.gov/products/precip/CWlink/daily_ao_index/ao.shtml), and

带格式的: 默认段落字体, 字体颜色: 自动设置

[http://www.cpc.ncep.noaa.gov/products/precip/CWlink/pna/nao\\_index.html](http://www.cpc.ncep.noaa.gov/products/precip/CWlink/pna/nao_index.html). ~~The record of the DA index (1979-2016) was~~

带格式的: 默认段落字体, 字体颜色: 自动设置

~~provided by Bingyi Wu at Fudan University (personal communication).~~ The DA corresponds to the second-leading mode of

带格式的: 字体: Times New Roman, 10 磅

EOF of monthly mean sea level pressure (SLP) north of 70°N during the winter season (October mode 0) (Wu et al., 2005).

The SLP fields are obtained from the National Centers for Environmental Prediction (NCEP) and the National Center for

带格式的: 字体: Times New Roman

Atmospheric Research (NCAR). ~~The record of the DA index (1979-2016) was provided by Bingyi Wu at Fudan University~~

带格式的: 字体: Times New Roman, 10 磅

(personal communication).

### 2.4 Arctic climate variables

带格式的: 字体: (中文)+中文标题 (宋体), 加粗, 字体颜色: 文字 1

The changes in ~~sea level pressure (SLP)~~ SLP can have significant impacts on ~~winds ant hence sea ice~~ SIM through their perturbations of other climate variables, such as surface air temperature (SAT), and ~~precipitable~~ ~~predictable~~ water (PW). All these data are obtained from NCEP\NCAR in NOAA (Kalnay et al., 1996), with a grid size of 2.5°×2.5°.

域代码已更改

### 3 Results

#### 3.1 Sea ice transport between the Pacific-Arctic and Atlantic-Arctic Ocean

##### 3.1.1 Comparison with a previous estimate

To give credence to our estimates, we compared the estimates with the results reported by Kwok (2008b). He made use of the SIM data retrieved from the 37-GHz channels of the combined 29-yr SMMR and SSM/I time series between 1979 and 2007. Overall, the two estimates agree well with respect to summer and winter sea ice area fluxes (Figure 2). As shown in Figure 2, data pairs are distributed close to the  $Y=X$  line. There is a small mean positive bias between the two estimates, with Kwok's estimates slightly larger than ours, approximately  $0.01485 \times 10^6 \text{ km}^2$  in summer (Figure 2a) and  $0.028 \times 10^6 \text{ km}^2$  in winter (Figure 2b). These biases correspond to 8.6% and 8.2% of the mean estimates of sea ice area flux (as shown below in section 3.1.3) during summer ( $1730.173 \times 10^6 \text{ km}^2$ ) and winter ( $0.337 \times 10^6 \text{ km}^2$ ) seasons, respectively. Moreover, a good consistency in terms of interannual variability is identified as indicated by high correlation coefficients ( $R = 0.91$  in summer and  $R = 0.96$  in winter).

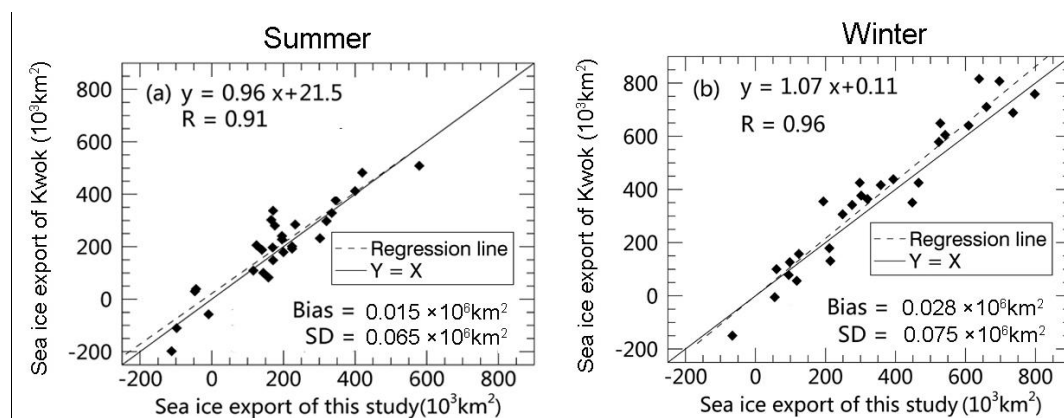
带格式的: 字体: 小四, 加粗, 字距调整二号

带格式的: 字体: (中文) + 中文标题 (宋体), 加粗, 字体颜色: 文字 1

带格式的: 字体: (中文) 宋体, 加粗, 字体颜色: 文字 1

域代码已更改

带格式的: 字体: (中文) Times New Roman, 0 磅, 字体颜色: 黑色, 字符缩放: 0%, 边框: (无框线), 图案: 清除 (黑色)



**Figure 2.** Comparison of regional sea ice exchanges between the PA and AA sectors in (a) summer and (b) winter. Our estimates are compared with a previous 29-yr record (1979-2007) provided by Kwok (2008b). The dashed line is the linear fit line between the two estimates. The solid line denotes for the ' $Y=X$ ' line. The linear relationship equation and correlation coefficient ( $R$ ) between the two records, as well as the mean bias and standard deviation (SD) of the difference are also displayed.

域代码已更改

##### 3.1.2 Monthly sea ice area flux

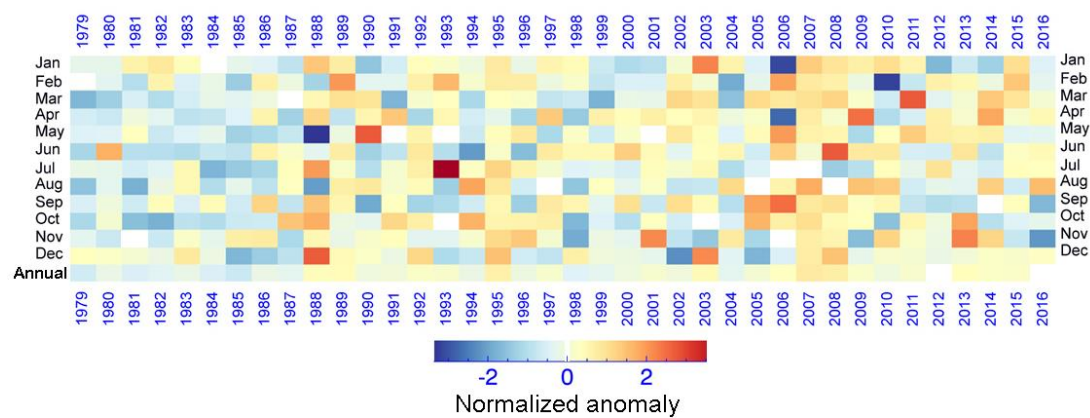
The normalized monthly anomaly data have been adopted for studying the monthly variability. As a result, the seasonal variability is removed and, therefore, the distinct variations in monthly estimates are clearer and a direct comparison of

带格式的: 字体: (中文) 宋体, 加粗, 字体颜色: 文字 1

variability among different months is feasible. The normalized or standardized procedure applied for the monthly anomaly fields ( $F_a$ ) can be written as

$$F_a = \frac{F_m - F_m'}{\sigma_{F_m}} \quad (4)$$

where  $F_m$  represents monthly area flux and  $F_m'$  and  $\sigma_{F_m}$  indicate the means and standard deviations (SDs) of the corresponding month over the investigated period (1979-2016), respectively, and the results are shown in Figure 3.



**Figure 3.** Normalized monthly anomaly fields of sea ice area flux. The anomaly field is calculated as the difference between the monthly estimate and the mean value of the same month computed over the period of interest. Then, the normalized anomaly field is obtained by dividing the monthly anomaly field by the standard deviation (SD) of the corresponding month over the 38-yr period. The bottom row denotes the annual mean value of the normalized anomaly.

Figure 3 displays the variations in anomaly fields for monthly sea ice flux between the two subsectors in the Arctic Ocean. Overall, the temporal variability is high (Figure 3). The first decade (1979-1988) is characterized by the occurrence of frequent negative anomaly fields, while for the remaining periods the emergence of positive anomalies seems to be more common (Figure 3). In particular, negative anomalies are observed in nearly all months (except for February) in 1985, yet almost all months experience positive ice flow anomalies in 1995, 2007 and 2008. The frequently-observed positive anomaly in recent periods compared to the early period (1979-1987) is further reflected in the annual mean normalized anomaly (bottom row in Figure 3).

The temporal variability in the monthly sea ice area flux fields is further emphasized in Figure 4, where the frequency distribution histogram for months with different normalized anomaly amplitudes are displayed for different decades (P1: 1979-1988; P2: 1989-1998; P3: 1999-2008, P4: 2009-2016). The dominance of anomalous low sea ice area fluxes during the first decade is reflected as an asymmetric distribution pattern in frequency (Figure 4a), with a larger number of months

带格式的: 字体: Times New Roman

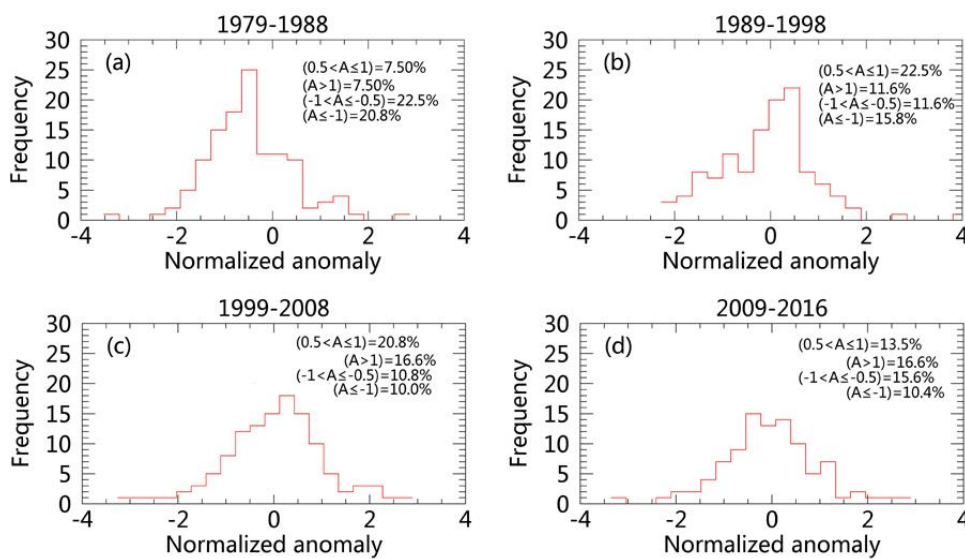
域代码已更改

带格式的: 右 -0.15 字符



decreasing to the negative anomaly side. Comparatively, for the following three periods (Figure 4b-d), the distribution pattern begins to become more symmetric, mainly because of the growing number of months with positive anomaly fields.

To depict the decadal evolution in frequency distribution, the individual months for each period are binned into four groups with different anomaly amplitude ranges ( $A \leq -1$ ,  $-1 < A \leq -0.5$ ,  $0.5 < A \leq 1$ ,  $A > 1$ ) are obtained and shown as inset text in Figure 4. The fraction is the ratio between the number of months affiliated with a specific range and the number of all months of the corresponding decadal period. In this case, there are 120 months for the each of the first three decades and 96 months for the last. Specifically, during the first decade (P1) approximately 43% of the months have normalized anomaly values less than -0.5, in contrast to only 15% of the months showing positive normalized values of greater than 0.5 (Figure 4a). In comparison, during the following three periods (Figure 4b-d), the fractions of months with significant negative normalized anomaly values less than -0.5 ( $-1 < A \leq -0.5$  and  $A \leq -1$ ) plummets to less than 28%, but 24-30% of the months are observed to have a distinct positive anomaly value at least of 0.5 (i.e.  $0.5 < A \leq 1$  and  $A > 1$ ). In addition, ~~it is interesting to note that t~~he fraction changes for the extreme cases ( $|A| \geq 1$ ) remain relatively steady with time, varying between 26% and 29%. However, the extreme low anomalies ( $A \leq -1$ ) reduce from 20.8% in P1 to 10.4%, while the extreme high anomalies ( $A > 1$ ) increases from 7.5% to 16.6%. This shift in sea ice exchanges between the PA and the AA sectors may indicate a shift of atmospheric circulation toward a pattern facilitating sea ice export out of the PA side (Wu et al., 2005; Zhang et al., 2008; Jia et al., 2009)



**Figure 4.** Frequency distribution histograms for months with different normalized anomalies in sea ice area flux in different decades. The fraction depicted as the percentage for each period, for example,  $(0.5 < A \leq 1) = 7.5\%$  as presented in panel (a), refers to the ratio between the frequency of the months sorted into the outlined range and the total number of months during the examined decades.

域代码已更改

带格式的: 段落间距段后: 0 磅

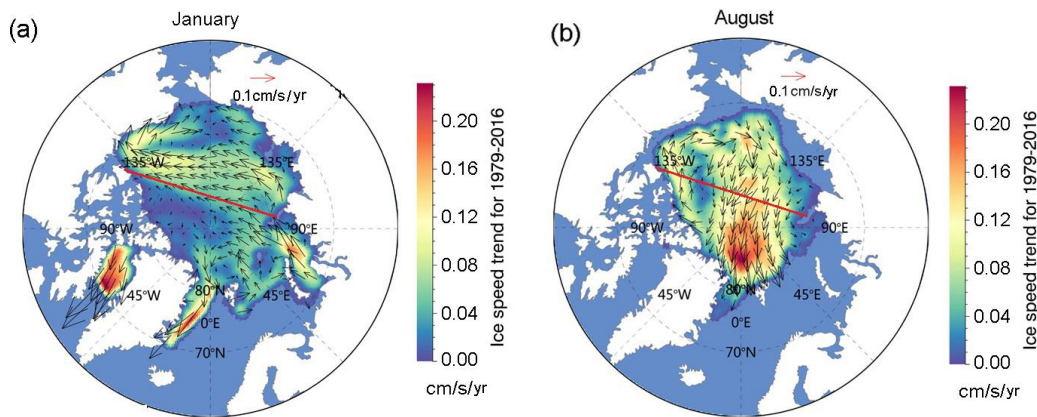
The monthly trends in the sea ice area flux are listed in Table 2. The trend in percentage for each month denotes the fraction of the monthly trend estimate relative to the mean sea ice area flux for the corresponding month. Basically, all months (except for January) show positive trends, with a mean value of 2.52%/a/yr. The largest trend appears in August (11.6%/a/yr, significant at the 90% level), whereas the lowest occurs in January (-3.67%/a/yr, not statistically significant).

The positive trend in August is mainly associated with an increasing trend in SIM in the transpolar drift stream (Figure 5a). The negative trend in January is linked to the trend pattern from the Laptev Sea through the central Arctic to the east of the Beaufort Sea (Figure 5b). The changes in SIM explain a major part ( $R^2=0.98$ ) of the trends and variability in sea ice area flux ( $F_m$ ), and the remaining minor part is determined by the SIC changes which induce negative contributions to the monthly flux trends during summer but small positive contributions during winter months (December to April) (Table 2).

**Table 2.** Monthly trends for the sea ice area flux between PA and AA. The trends for the SIM and SIC fields over the fluxgate are also provided. (Unit: %/a/yr)

	Jan	Feb	Mar	Apr	May	Jun	Jul	Aug	Sep	Oct	Nov	Dec
$F_m$	-3.67	0.07	5.28**	3.27*	2.68*	1.53*	1.17	11.6*	1.77	4.32*	1.77	0.43
SIM	-3.66	0.35	5.49**	3.67*	2.94*	2.04*	0.53	10.44*	2.23	3.95*	2.47	1.20
SIC	0.007	0.016	0.010	0.009	-0.033	-0.072	-0.165	-0.531	-0.650	-0.183	-0.002	0.012

Note: \* and \*\* denote the significance level at 95% and 99%, respectively.



**Figure 5.** Sea ice motion trend in (a) January and (b) August. The magnitude of ice motion is indicated by background color and the length of arrows.

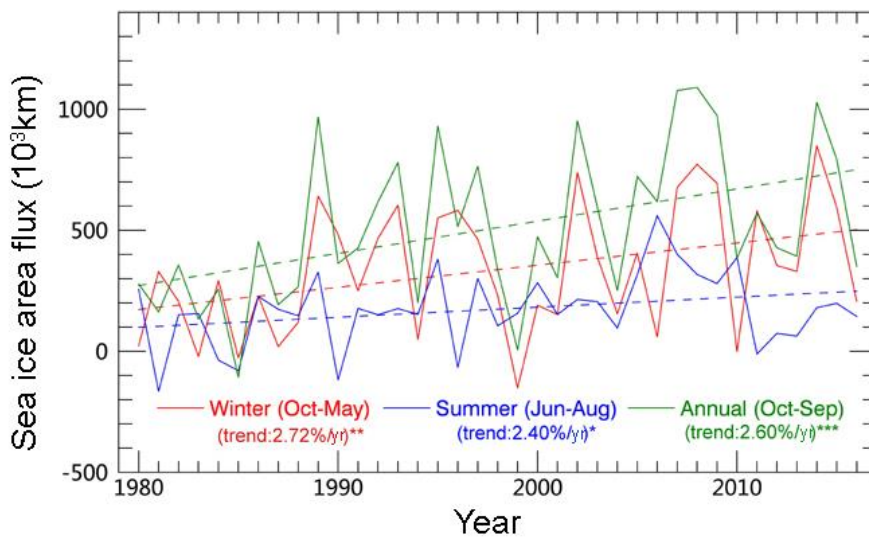
### 3.1.3 Annual and seasonal sea ice area flux

Figure 6 shows the estimates of the sea ice area transport for different seasons and years between the two sectors. The average annual sea ice export of  $0.519 (\pm 0.314) \times 10^3 \cdot 10^6 \text{ km}^2$  comprises the mean winter and summer contributions of 0.337

带格式的: 字符缩放: 0%, 边框: (无框线), 图案: 清除 (黑色)

带格式的: 字体: (中文) 宋体, 加粗, 字体颜色: 文字 1

( $\pm 0.263$ )  $\times 10^3 \times 10^6 \text{ km}^2$  (or 66%) and  $0.173 (\pm 0.153) \times 10^3 \times 10^6 \text{ km}^2$  (or 34%), respectively. The number after the sign “ $\pm$ ” denotes the standard deviation of 38-yr sea ice area flux. Annually, sea ice area flux peaked at  $1.089 \times 10^3 \times 10^6 \text{ km}^2$  in 2007/2008 and set a record low  $-0.107 \times 10^3 \times 10^6 \text{ km}^2$  in 1984/1985. Seasonally, the winter sea ice exports vary between  $-0.152 \times 10^3 \times 10^6 \text{ km}^2$  (1998/1999) and  $0.848 \times 10^3 \times 10^6 \text{ km}^2$  (2013/2014), whereas the summer ice flux fluctuates within a range from  $-0.166 \times 10^3 \times 10^6 \text{ km}^2$  (1981) to  $0.559 \times 10^3 \times 10^6 \text{ km}^2$  (2006). The negative (positive) sea ice area flux as mentioned above points to a net sea ice inflow (outflow) from the AA to PA side (from the PA to AA side).

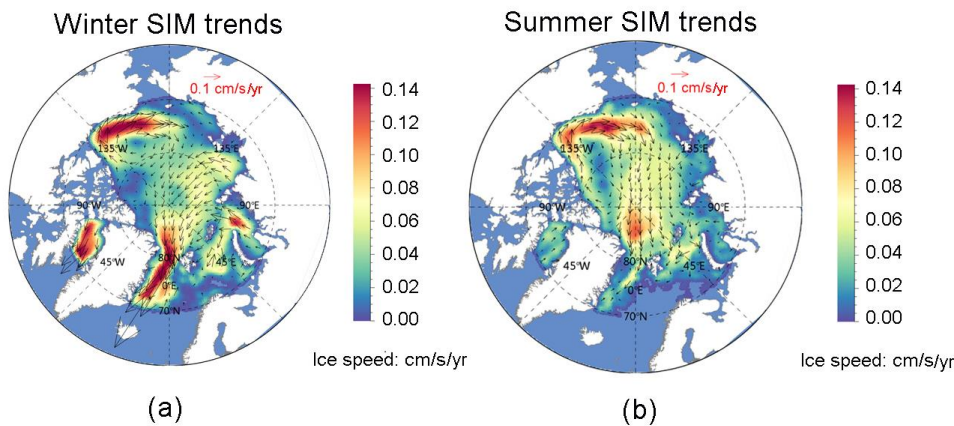


**Figure 6.** Annual and seasonal sea ice area fluxes between the PA and AA sectors over the period 1979-2016. The annual ice flow (annual cycle) is shown by the green line. Summer (from June through September) and winter (from October through May) fluxes are denoted with blue and red lines, respectively. The dashed lines representing the linearly fitted trends are obtained through the application of the least squares method. The labels \*, \*\*, and \*\*\* correspond to the significance at the level of 90%, 95% and 99%, respectively.

Over the 38-yr period, significant positive trends are observed for the sea ice area fluxes during the summer and winter seasons (Figure 6). Over the 38-yr period, the winter sea ice export exhibits a positive trend of  $0.00945 \times 10^3 \times 10^6 \text{ km}^2/\text{yr}$  (i.e., 2.72%/yr, significant at a 95% level), and the summer export increases at a rate of  $0.00415 \times 10^3 \text{ km}^2/\text{yr}$  (i.e., 2.40%/yr, significant at a 90% level). Together, they contribute to an upward trend in annual sea ice area flux of  $0.01320 \times 10^3 \times 10^6 \text{ km}^2/\text{yr}$  (i.e., 2.61%/yr, significant at a 99% level). The trend within the parentheses, expressed as percentage per year, is taken by dividing the trend estimate by the corresponding 38-yr mean estimate of sea ice area flux. The sharp increase since 1989 and onward for the winter export (Figure 6), in contrast to the preceding period 1979-1988, preconditions for a significant positive trend in the winter as well as annual fields of outflow. Nonetheless, the summer ice

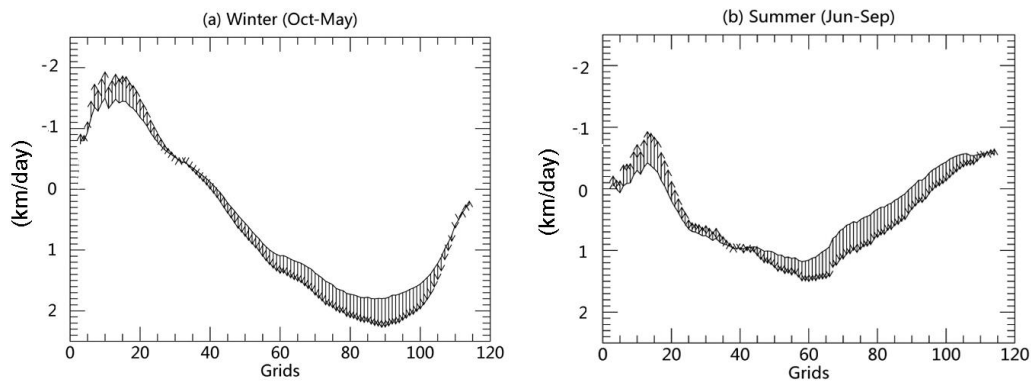
area flux features a gradual increase over the whole period, with anomalously large ice export occurring between 2006 and 2010 (approximately  $0.310 \times 10^6 \text{ km}^2$ , on average), which is favorable for the maintenance of the overall positive trend in summer.

Due to the extensive coverage in longitudes and latitudes across the investigated fluxgate (2840 km), regional variations in the trend of the across-gate sea ice area flux fields are expected. Broadly, the Arctic sea ice circulation is characterized by the Beaufort Gyre (BG) and transpolar drift stream (TDS). How does the SIM trend vary in these two regimes? To answer this question, we not only present the overall pattern of spatial distribution of SIM trends over the entire Arctic Ocean (Figure 7), but also depict the details of the cross-gate SIM trends in fields (Figure 8). Figure 7 shows that SIM increases in the BG and TDS regimes during both winter (Figure 7a) and summer (Figure 7b) seasons. In particular, the increasing SIM trends in the narrow southern arm of the BG regime appear in winter (Figure 7a) and summer (Figure 7b). The SIM trends during winter (summer) of approximately 0.12 cm/s/yr (0.11 cm/s/yr) (i.e., approximately 0.10 km/yr) over the southern arm of the BG lead to a reduced net sea ice export (i.e., more ice inflow) through the west end of the fluxgate (Figure 8a and b). The increasing SIM in the TDS is 0.07 cm/s/yr (0.04 cm/s/yr) (i.e., approximately 0.06 km/yr (0.03 km/yr)) during the winter (summer) season. Therefore, increasing sea ice outflow through the TDS is compensated by sea ice inflow associated with the BG. Compared with that in winter (Figure 7a or 8a), the sea ice trend in the TDS (Figures 7b and 8b) shifts its central axis to parallel the prime meridian. Overall, the SIM trend pattern appears to form an Arctic-wide anticyclonic mode. As discussed below, this mode has crucial meanings for the retreat of sea ice in the Pacific sector during summer.



**Figure 7.** SIM trends during (a) winter (October- May) and (b) summer (June - September) over the period

1978/1979-2015/2016 and 1979-2016, respectively.



**Figure 8.** Cross-gate SIM climatology (black solid line) and trends (arrows) for (a) winter and (b) summer over the 38-yr period. The left end represents for the North America side and the right for the Eurasia side.

### 3.2 Melting sea ice within the Pacific sector in summer

5 Sea ice melting is a sensitive indicator reflecting the warmer Arctic climate. An estimate of melting area of sea ice (dot-dashed line in Figure 9) is obtained as the difference between the observed sea ice area loss in the PA (red line in Figure 9) and the sea ice area flux through the fluxgate (blue line in Figure 9) during the summer season (June-September). Over the 38-yr period, the mean melting area is  $1.66 \times 10^6 \text{ km}^2$ , with a distinct variation from  $0.68 \times 10^6 \text{ km}^2$  (1980) to  $3.49 \times 10^6 \text{ km}^2$  (2012). Noticeably, the PA sector seems to have been shifted into a new era from 2007 onward, with large ice melting of

10  $2.70 \times 10^6 \text{ km}^2/\text{a/yr}$  during the post-2007 period compared with  $1.70 \times 10^6 \text{ km}^2/\text{a/yr}$  for the period before 2007. In contrast, the sea ice area in AA sector during summer has scarcely changed before 2008 (the first three rows in Figure 9). Sea ice area loss in the AA has been largely compensated by the sea ice transport from the PA. AA is located in a higher latitudes where less melting is expected compared to that in PA. However, recent-recent sea ice area changes reveal a n-observable shrinkage of sea ice area approximately  $0.28 \times 10^6 \text{ km}^2$  within the AA sector in September 2012 to 2013 (Figure 9). The sea ice loss within

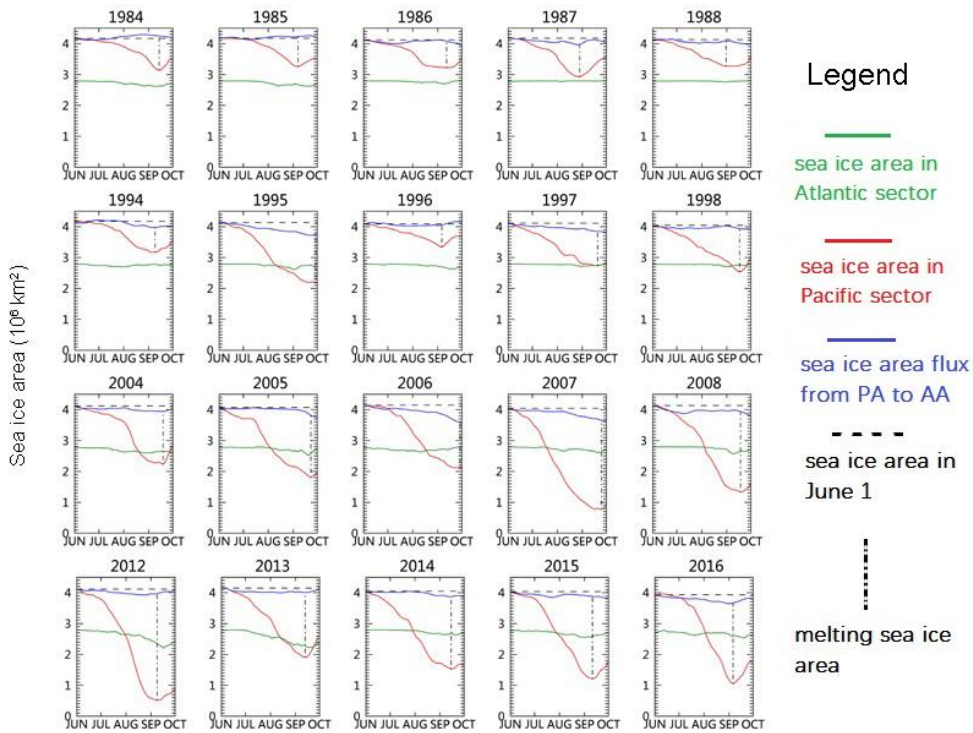
15 the AA may be more evident if the starting date of melting becomes earlier (Stroeve et al., 2014) and melting intensity is reinforced by the positive feedback mechanism of ice albedo (Perovich et al., 2007; Perovich et al., 2008; Screen and Simmonds, 2010) and/or if sea ice outflow through the Fram Strait is enhanced (Kwok et al., 2013; Bi et al., 2016; Smedsrud et al., 2017).

带格式的：字体：(中文)+中文标题 (宋体)，加粗，字体颜色：文字1

域代码已更改

域代码已更改

域代码已更改



带格式的：居中，缩进：左 0 字符

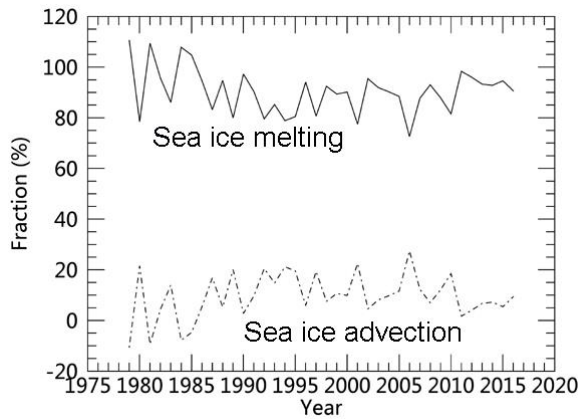
### Legend

- sea ice area in Atlantic sector
- sea ice area in Pacific sector
- sea ice area flux from PA to AA
- - - - sea ice area in June 1
- · · · · melting sea ice area

**Figure 9.** Selected Daily changes in sea ice areas within the PA (red) and AA (green) during summer (June-September) for the period 1979-2016. The horizontal dashed line represents the sea ice area in the PA on 1 June, which is used as a benchmark to measure the sea ice area changes due to melting. The cumulative daily sea ice area flux, with reference to the top dashed line, is shown as a blue line. The melting sea ice area, denoted by the vertical dot-dash line, is taken as the difference between the total decline in sea ice area within the PA and the accumulated flux through the gate.

带格式的：字体：非加粗

With the sea ice area budget shown in Figure 9, we quantify the relative contribution to sea ice area changes in summer due to the advection and melting processes over the period of 1979-2016 (i.e., Melting ( $M$ ) = Observed area change ( $O$ ) - Advection ( $A$ )). As a fractional contribution, the advection and melting processes, on average, account for 9.6% (i.e.,  $A/O \times 100\%$ ) and 90.4% (i.e.,  $M/O \times 100\%$  or  $(A-O)/O \times 100\%$ ), respectively, of the observed ice area loss within the PA sector during summer months. Interannual variability in fractions is distinct, as suggested by the standard deviation of approximately 9%. However, no significant trend is identified in the fractions of sea ice area in connection with the two processes (Figure 10). The smallest (largest) fraction of 72.6% (110.2%) in the sea ice area change due to melting was observed in 2006 (1979), along with the largest (smallest) fraction of 27.4% (-10.2%) due to sea ice area advection (Figure 10). The negative fraction with respect to advection suggests a net inflow from the AA to PA side. In this case, the actual melting area ( $O-A$ ) is thus larger than the directly observed area changes ( $O$ ), causing a melting fraction greater than 100%. Over the examined period, the cases with a net increase in advective ice area took place before 1985.



**Figure 10.** Fractions of sea ice area loss in the PA sector that are related to the sea ice melting and advection processes.

The trend of melting sea ice area within the PA is apparent over the 38-yr period (Figure 11), with an overall positive trend of 3.20%/a/yr (significant at the 99% level) (Figure 11). Since the mid 1990s, sea ice melting within the PA has been continually enhanced (Figure 11), which is associated with Arctic amplification (Screen and Simmonds, 2010). Decadal variability is also significant. The greatest increase of 7.48%/a/yr (significant at the 99% level) occurred in the third decade (1999-2008), whereas the remaining three decades show moderate or even negative trends.

Additionally, note that the day-of-year (DOY) of the minimum sea ice area in the PA sector displays an overall positive trend of 0.2-9 day/de/yr (Figure 12). The trend implies a gradually delayed occurrence of the DOY of the minimum sea ice area in the PA. There are also decadal variations in this DOY. In particular, over the second (1989-1998) and third decades (1999-2008), the trends in DOY approach to approximately 1.4-6 and 1.6-3 days/de/yr, respectively (Figure 12). The overdue DOY is associated with the earlier beginning of melting date (Stroeve et al., 2014) and the positive sea ice albedo feedback loop (Perovich et al., 2008), which allows more heat to be absorbed in the area of ice loss, facilitates more melting of sea ice in the PA sector, and results in later occurrence of the minimum sea ice area. However, since 2009, the DOYs appear to have recovered to the former state in the 1980s (Figure 12). This reversion can be explained by the withdrawal of the sea ice extent toward a farther northern position at high latitudes (Figures 9 and 11), where freezing usually starts earlier in comparison with areas at southern latitudes (Stroeve et al., 2014).

域代码已更改

域代码已更改

域代码已更改

域代码已更改

带格式的：缩进：首行缩进： 1.5 字符

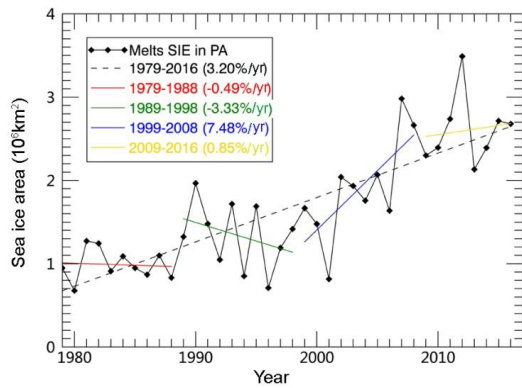


Figure 11. Time series for melting sea ice areas within PA

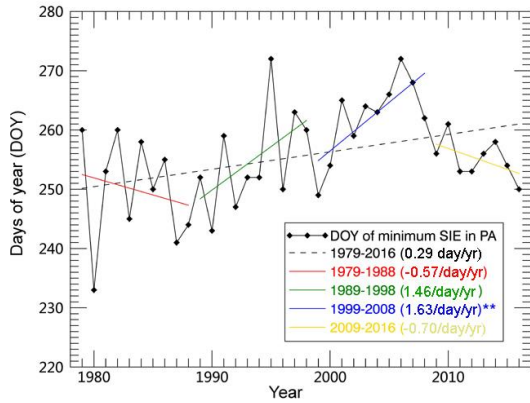


Figure 12. Day-of-year (DOY) of the annual minimum sea ice area in PA

#### 4 Discussion

Wind forcing has been significant in modulating the sea ice variability in summer (Ogi et al., 2016). As an example, sea ice depletion induced by the summer melting process is also connected to the wind forcing related to the large scale atmospheric circulation which can help to cause a warmer Arctic climate through the advection of warmer and moister air from the south (Wang et al., 2005; Zhang et al., 2013; Lee et al., 2017). The Arctic-wide sea ice variability can be linked to wind forcing is linked to associated with the large-scale atmospheric circulation patterns (Zhang et al., 2008; Overland and Wang, 2010; Stroeve et al., 2011). Hence, the connection between the sea ice area loss in the PA sector and three typical atmospheric indices (AO, NAO, and DA) are assessed here. NAO and AO represent the dominant atmospheric circulation modes in

带格式的：字体：小四，加粗，字距调整二号

域代码已更改

域代码已更改

域代码已更改



guiding sea ice movement and Fram Strait export before 1994 (Rigor et al., 2002; Nakamura et al., 2015), while the DA seems to play a leading role over the latter period after 1995 (Wang et al., 2005). Here our objective is to examine how the sea ice variability due to advection and melting processes are quantitatively related to the interannual and decadal changes in these atmospheric modes. Furthermore, the potential impacts on sea ice loss in related to climatic variables (SAT, SLP, and PW) coupled with different atmospheric circulation pattern are highlighted.~~The sea ice variability can be linked to wind forcing associated with the large scale atmospheric circulation (Zhang et al., 2008; Overland and Wang, 2010; Stroeve et al., 2011). Wind forcing has been used an effective predictor for the sea ice extent in September (Ogi et al., 2016). Sea ice depletion induced by the summer melting process is also connected to the wind forcing related to the large scale atmospheric circulation which can help to cause a warmer Arctic climate through the advection of warmer and moister air from the south (Wang et al., 2005; Zhang et al., 2013; Lee et al., 2017). Here, the connection between the sea ice area loss in the PA sector and three typical atmospheric indices (AO, NAO, and DA) are assessed. Overall, the interannual variability for the three indices is large, and two indices, NAO and DA, reveal significant trends during summer (Figure 13).~~

Overall, the interannual variability for the three indices is large, and two indices, NAO and DA, reveal significant trends during summer (Figure 13). Over the investigated 38-yr period, the sea ice area reduction in summer within the PA seems to have been slightly influenced by AO fluctuations, with a low correlation coefficient ( $R$ ) of -0.24 (Table 3). Separately, the sea ice area variations caused by advection and melting are barely attributable to the AO effects (Table 3). Therefore, in the following, we focus our analysis on the effects of the atmospheric circulations associated with NAO and DA, which show relatively strong correlations with the changes in sea ice area in the PA (Table 3).

**Table 3.** Correlations between summer mean atmospheric index and total sea ice area loss, and sea ice area decline due to melting and advection processes over the period 1979-2016.

Atmospheric index (summer mean)	Melting sea ice	Net sea ice advection	Total ice retreat (Melting + advection)
AO	-0.28	0.14	-0.24
NAO	-0.47	-0.18	-0.46
DA	0.55	0.74	0.63

The influence of NAO-associated atmospheric circulation in winter on sea ice changes in summer has been broadly documented (Kwok, 2000; Jung and Hilmer, 2001; Parkinson, 2008), which is especially clear for the period from the late 1980s to early 1990s (Jung and Hilmer, 2001) when NAO was in its peak positive phase. In this study, the summer NAO is negatively correlated with the summer retreat of sea ice area within the PA sector ( $R = -0.46$ ) over the 38-yr period. Table 2 shows a stronger connection with the sea ice area change due to melting ( $R = -0.47$ ) than with the sea ice area loss in relation

域代码已更改

域代码已更改

域代码已更改

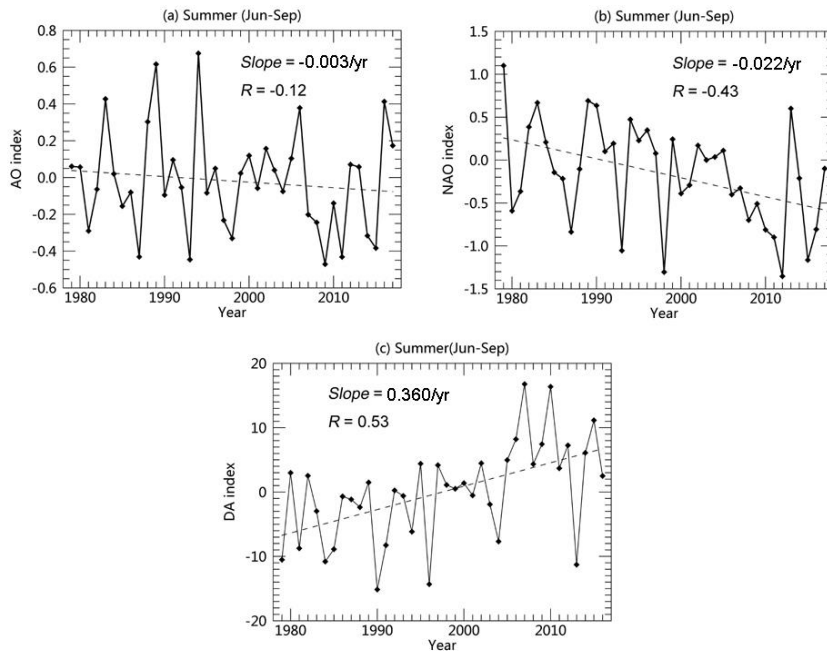
域代码已更改

域代码已更改

域代码已更改

域代码已更改

to advection ( $R = -0.18$ ). That is, a negative (positive) NAO in summer would favor for more (less) sea ice melting and hence less ice coverage in summer. This connection is in contrast to the relationship noted in winter (i.e., a positive (negative) winter NAO index likely causes a negative (positive) sea ice area in summer).



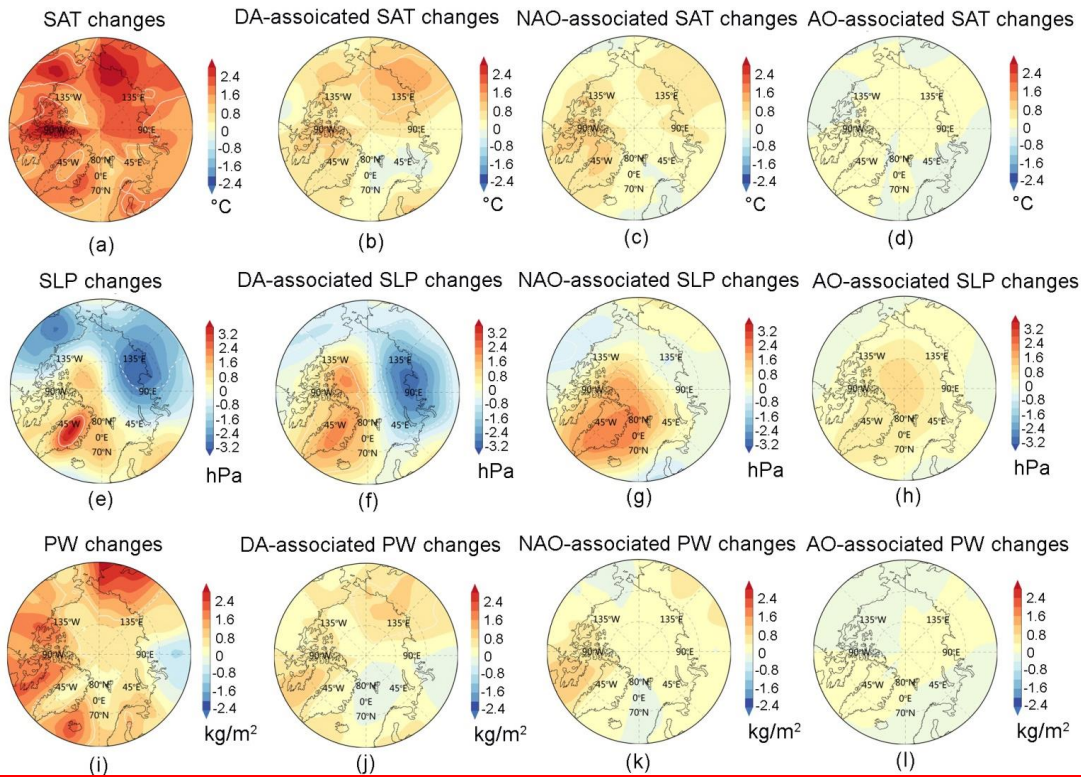
带格式的: 缩进: 首行缩进: 0 字符

5 **Figure 13.** Variations in and trends of the mean atmospheric indices in summer (June-September), including (a) the AO, (b) the NAO, and (c) the DA index. The linear trends of NAO and DA indices are both significant the 95% significance levels according to the *t*-test method, while the AO index reveal an insignificant trend.

带格式的: 字体: 倾斜

10 As there is a clear negative trend in the summer mean NAO index (Figure 13b), one may wonder how the summer NAO index trend is related to the increasing loss of sea ice within the PA sector. As shown in Figure 14f, 14g, the NAO-associated SLP distribution pattern, with a greater SLP in the western Arctic near the Canadian Archipelago, is favorable for a pattern of anticyclonic atmospheric circulation within the PA. Such a clockwise pattern of atmospheric circulation is hypothesized to push more ice from the eastern and northern Beaufort Sea to the western and southern Chukchi Sea (Figures 7b and 8b), where extensive sea ice melting has been commonly observed (Kwok, 2008a). The moderate negative correlation between NAO and melting sea ice area ( $R = -0.47$ ) corroborates this hypothesis. \_

域代码已更改



**Figure 14.** The changes in typical climate variables (SAT, SLP, SAI, and PW) over the 1979-2016 period (the first column, Figures a, d, and g). The change is obtained by multiplying the trend estimate (regression map) and the time span of the period (i.e., 38-yr). The regressions of these climatic variables on the DA (the second column, Figures b, e, and h) and NAO (the third column, Figures c, f, and i) are also presented.

The overall association between sea ice area variability and the DA index is comparatively robust ( $R = 0.63$ ). Considering the clear positive trend in DA (1979-2016) (Figure 13c), the SLP changes explained by the DA trend are characterized by a dipole pattern with one action center over the Barents and Laptev Seas and the other center of action appearing on the opposite side over the Canadian Archipelago and Greenland (Figure 14e-14f). In fact, the spatial distribution for the DA-associated SLP changes over the Arctic basin is broadly consistent with those for the actual SLP changes (Figure 14e), except for a prominent negative SLP center over the North Pacific and an enhanced positive SLP center over Greenland. With this type of SLP distribution, the DA-associated winds induce strengthened meridional ice advection through the TDS within the central Arctic (Figure 5, Figure 6b in section 3.1.3). A more rapid transpolar advection of sea ice is thus responsible for the observed increasing trend in the sea ice outflow from the PA to the AA sectors (Figure 7b). In addition, with such DA-associated SLP changes, more warmer air from the southern areas can be advected into and warm the SAT in the northern Arctic, finally augmenting the ice melting process (Zhang et al., 2013; Lee et al., 2017). Indeed, an SAT

域代码已更改

ridge centered on the East Siberian Sea is observed (Figure 14b). As a response, the cold air of the high-latitude Arctic origin is pushed out toward the southern areas, reducing the local SAT over the eastern Greenland Sea, Barents Sea, and Kara Sea regions (Figure 14b).

Associated with the DA-associated SLP distribution pattern, the emergence of enhanced BG circulation is identified in the Beaufort Sea (Figure 14e, 14f). In particular, the sea ice drifts in the southern arm of the BG regime are largely strengthened (Figure 7b), which contributes to the large inflow of sea ice to the southern Beaufort Sea (Figure 8b), where sea ice undergoes dramatic melting processes in summer as indicated by the remarkable SAT increase there (Figure 14a). This coupled mechanism between dynamic (advection) and thermodynamic (melting) processes resembles that caused by the NAO. As a consequence, the depletions in sea ice in summer due to both melting and advection are relatively strongly correlated to the DA index of summer, with  $R$  values of 0.55 and 0.74, respectively, over the entire period (Table 3).

Since AO shows a negligible trend (Figure 13a), the 38-yr climatic changes related to AO are insignificant (Figure 14d, h and i) and smaller in magnitudes compared to the DA- and NAO-associated changes. The NAO pattern is conventionally deemed as a regional index, representing parts of the broader AO pattern. However, NAO-associated SLP changes (Figure 14g) show a stronger gradient across the fluxgate than that of AO-associated SLP (Figure 14h), which would favor more sea ice outflow from PA to AA sectors. In comparison with NAO (Figure 14g), the AO-associated SLP distribution shows a much weaker gradient across the Arctic Ocean (Figure 14h), although it may contribute to the sea ice advection from the Pacific side to the Atlantic side. As a result, lower correlations between AO and sea ice melting and advection processes are expected, with  $R = -0.28$  and  $0.14$  (Table 3). However, these small overall correlations do not necessarily imply that AO plays no role in causing sea ice variations. For instance, throughout the examined periods, AO exerted more influences on sea ice changes for the earlier two decades (1979-1998), with  $R = 0.57$  and  $0.46$  (Table 4).

带格式的: 字体颜色: 文字 1

The temporally varying association between atmospheric circulation and sea ice drift reflects Arctic climate changes. How does the linkage vary with time? Does it remain stable? To answer these questions, correlations between different summer mean atmospheric indices and minimum sea ice areas in the PA sector over different decades are obtained (Table 4). The AO effects are relatively unstable, imposing clear and decreasing positive effects over the first three decades but reversing to a negative moderate impact in the last period (P4) (Table 4). A clear association with DA arises during the latter two periods: P3 (1999-2008) and P4 (2009-2016). In contrast, the NAO index appears to have a significant impact only during the last period (2009-2016) (Table 4).

**Table 4.** Correlations between summer mean atmospheric index and sea ice minimum area in the PA sector for the different decades and the whole 38-yr period.

Summer	P1	P2	P3	P4	Overall
--------	----	----	----	----	---------

(Jun-Sep)	1979-1988	1989-1998	1999-2008	2009-2016	1979-2016
AO	0.57	0.46	0.39	-0.34	0.24
DA	-0.03	-0.16	-0.68	-0.45	-0.63
NAO	0.16	0.24	0.23	0.87	0.46

PW serves as an important indicator of Arctic climatic conditions. In view of the distribution of PW changes (Figure 14g14i), we find it broadly agrees with that of SAT in the PA sector (Figure 14a). For example, over the Siberian marginal seas, warmer SATs accompany more PWs. If the PW constituents drop to the surface as rain during a warming summer, they may benefit the melting process of the local ice/snow surface by lowering the surface albedo of ice/snow. Compared with the NAO-associated changes (Figure 14h14k), the spatial distributions of DA-associated SAT (Figure 14b) and PW changes (Figure 14j14l) are, to a greater degree, consistent with those of the summer SIC trends (Figure 15), particularly over the area throughout the marginal seas in the PA sector, such as the Beaufort Sea, Chukchi Sea, East Siberian Sea, and Laptev Sea where the rates of sea ice area decline approach 2.0%/yr. On the other hand, we note that the magnitudes of SAT (or PW) changes in connection with the DA and NAO are far less comparable to the total SAT (or PW) changes, and similarity in spatial distribution between Figure 15a-14b and 15c (or Figure 15g-14j and 15k) is not readily identifiable. This result occurs because aside from the effects of atmospheric circulation, other mechanisms also play important roles on the large and broad increases in SAT and thus PW over the Arctic, such as the sea ice albedo feedback loop, the intrusion of warmer Pacific/Atlantic Ocean water (Shimada et al., 2006; Tverberg et al., 2014; Alexeev et al., 2017), cloud feedback (Liu et al., 2008; Schweiger et al., 2008), and the changes in the strength in Atlantic meridional overturning current (AMOC) (Chen and Tung, 2018).

域代码已更改  
域代码已更改  
域代码已更改

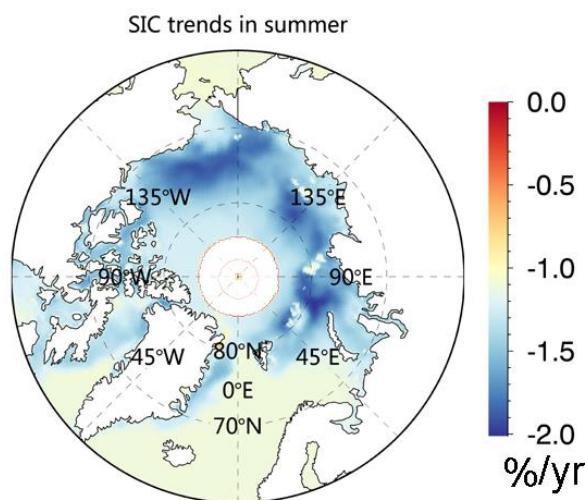


Figure 15. Summer SIC trends over the period 1979-2016

To summarize this section, we found different atmospheric forcing patterns exert varying influences on summer sea ice variability. Overall, the connections are relatively strong between sea ice loss and DA ( $R = 0.63$ ), and NAO ( $-0.46$ ), but fragile with AO ( $R = -0.24$ ). In particular, the DA affects sea ice loss through both advection ( $R = 0.74$ ) and melting ( $R = 0.55$ ) processes, whereas the NAO acts prominently on the melting process ( $R = -0.46$ ). This is consistent with previous arguments that DA plays a more vital role in promoting summer sea ice depletion (Jia et al., 2009). Furthermore, our analysis shows that the connections are not invariant on decadal scale (Jia et al., 2009) but is characteristic with a regime shift (Table 4). Accordingly, the linkage between atmospheric forcing and sea ice loss is stronger during earlier two decades (1979-1998) with AO and NAO, but more robust with DA for the latter two decades (1999-2016). Since DA is becoming a more favorable pattern for summer sea ice loss through both dynamic and thermodynamic forcing, the causes for its surface emergence and amplification remains unclear and need further investigation.

## 5 Concluding remarks

Using the new version (v3.0) of NSIDC products (SIM and SIC), we quantify the contributions of the advection and melting processes to the sea ice retreat within the PA sector over the period 1979-2016. A synoptic view of their 38-yr variability and trends on different timescales is presented. Over this period, the annual (October to following September) mean sea ice export is  $0.510 (\pm 0.314) \times 10^6 \text{ km}^2$ , with summer (June-September) and winter (October-May) outflows of  $0.173 \times 10^6 \text{ km}^2$  (or 34%) and  $0.337 \times 10^6 \text{ km}^2$  (or 66%), respectively. A positive trend for the annual sea ice outflow is also identified, at approximately  $0.0133 \times 10^6 \text{ km}^2/\text{a}/\text{yr}$  (or  $2.08\%/\text{de}/\text{yr}$ ), which is attributable to the increasing export of  $0.00915 \times 10^6 \text{ km}^2/\text{a}/\text{yr}$  (or  $2.72\%/\text{de}/\text{yr}$ ) in winter and increasing outflow of  $0.00415 \times 10^6 \text{ km}^2/\text{yr}$  (or  $2.43\%/\text{de}/\text{yr}$ ) in summer. At the same period, sea ice area loss linked to the melting in summer, on average, amounts to  $1.66 \times 10^6 \text{ km}^2$ , with a significant positive trend of  $0.0531 \times 10^6 \text{ km}^2/\text{yr}$  ( $3.20\%/\text{de}/\text{yr}$ ). Further, we examine the relative roles of ice advection and melting in the decline of sea ice within the PA where dramatic sea ice retreat has occurred in summer during recent years. In percentage, the sea ice depletions in the PA due to the advection and melting processes account for 9.6% and 90.4%, respectively.

The linkage between sea ice loss and wind forcing associated with different large-scale atmospheric circulation during the summer season is explored. Overall, the AO is weakly connected to the sea ice loss on the PA sides, while the NAO is moderately correlated with the sea ice decline caused by melting. In contrast, the DA shows a more robust connection with the sea ice decrease in the PA through influence on both sea ice melting and advection. Dynamically, the DA-associated SLP conveys heat and moist air from the south to the north, resulting in the increasing SAT and PW over the marginal seas of the PA sector and contributing to the significant sea ice retreat. In addition, the positive trend in the DA induces stronger meridional wind forcing over the transpolar stream, leading to increased sea ice outflow and more ice decline in the PA.

带格式的: 两端对齐, 缩进: 首行缩进: 1 字符

域代码已更改

域代码已更改

带格式的: 字体: 小四, 加粗, 字距调整二号

Thermodynamically, both the DA and NAO indices are associated with a strengthened anticyclonic SLP pattern over the southern Beaufort Sea. This feature will promote the westward transport of sea ice from the Canadian Basin to the south of the Beaufort Sea and Chukchi Sea where extensive melting sea ice has been detected in summers during the recent decade.

By contrast, AO-associated sea ice changes due to melting and advection processes is not distinct, although temporally robust correlation is expected (Table 4).

The significant sea ice retreat also plays a crucial role in triggering regional responsive feedback in the atmosphere (Overland and Wang, 2010), as indicated by the warmer SAT (Figure 13a) and decreased SLP (Figure 13d) observed on the broad Siberian Arctic Ocean side. Therefore, if the current distinct sea ice loss on the Pacific-Arctic Ocean persists, the diminishing SLP in areas over the Laptev Sea, one of the centers of action of the DA, will further enhance the positive DA trend. Consequently, stronger dynamic (advection) and thermodynamic (melting) effects associated with the DA on sea ice retreat within the PA sector are probably foreseen in the predictable future.

## **Acknowledgements**

We thank for the following organizations for providing the data used in this study. NSIDC provided the satellite-derived ice motion and concentration data, and the National Centers for Environmental Prediction/National Center for Atmospheric Research (NCEP/NCAR) provided the reanalysis product. Funds are provided by National Natural Science Foundation of China under Grants 41406215 and 41706194, a fund provided by the Qingdao National Laboratory for Marine Science and Technology, and the NSFC-Shandong Joint Fund for Marine Science Research Centers (U1606401).

## **References**

- Alexeev, V. A., Walsh, J. E., Ivanov, V., Semenov, V. A., and Smirnov, A.: Warming in the Nordic Seas, North Atlantic Frankenstorms and thinning Arctic sea ice, *Environmental Research Letters*, 12, 084011, 2017.
- Bi, H., Sun, K., Zhou, X., Huang, H., and Xu, X.: Arctic Sea Ice Area Export Through the Fram Strait Estimated From Satellite-Based Data:1988–2012, *IEEE Journal of Selected Topics in Applied Earth Observations & Remote Sensing*, 9, 3144-3157, 2016.
- Bi, H., Zhang, J., and Wang, Y.: Arctic Sea Ice Volume Changes in Terms of Age as Revealed From Satellite Observations, *IEEE Journal of Selected Topics in Applied Earth Observations and Remote Sensing*, 1-15, 2018.
- Cavalieri, D. J., Parkinson, C L Arctic sea ice variability and trends, 1979-2010, *Journal of Geophysical Research Oceans*, 113, 2012.
- Chen, X., and Tung, K. K.: Global surface warming enhanced by weak Atlantic overturning circulation, *Nature*, 2018.
- Cho, K., Sasaki, N., Shimoda, H., Sakata, T., and Nishio, F.: Evaluation and improvement of SSM/I sea ice concentration algorithms for the Sea of Okhotsk, *Journal of the Remote Sensing Society of Japan*, 16, 47-58, 1996.
- Comiso, J. C.: Arctic warming signals from satellite observations, *Weather*, 61, 70-76, 2010.
- Comiso, J. C.: Large Decadal Decline of the Arctic Multiyear Ice Cover, *Journal of Climate*, 25, 1176-1193, 2011.

域代码已更改

带格式的：字体：小四，加粗，字距调整二号

带格式的：字体：小四，加粗，字距调整二号

带格式的：不检查拼写或语法

- Comiso, J. C.: Bootstrap Sea Ice Concentrations from Nimbus-7 SMMR and DMSP SSM/I-SSMIS, Version 3 . Boulder, Colorado USA. NASA National Snow and Ice Data Center Distributed Active Archive Center. doi: <https://doi.org/10.5067/7Q8HCCWS4I0R>, 2017.
- 5 Comiso, J. C., Meier, W. N., and Gersten, R.: Variability and trends in the Arctic Sea ice cover: Results from different techniques, *Journal of Geophysical Research*, 122, 2017.
- Graham, R. M., Cohen, L., Petty, A. A., Boisvert, L. N., Rinke, A., Hudson, S. R., Nicolaus, M., and Granskog, M. A.: Increasing frequency and duration of Arctic winter warming events, *Geophysical Research Letters*, 44, 6974-6983, 2017.
- 10 Hansen, E., Gerland, S., Granskog, M. A., Pavlova, O., Renner, A. H. H., Haapala, J., Løyning, T. B., and Tschudi, M.: Thinning of Arctic sea ice observed in Fram Strait: 1990-2011, *Journal of Geophysical Research Oceans*, 118, 5202-5221, 2013.
- Hurrell, J. W.: Decadal trends in the north atlantic oscillation: regional temperatures and precipitation, *Science*, 269, 676-679, 1995.
- 15 Jia, W., Watanabe, E., Ikeda, M., Mizobata, K., Walsh, J. E., Bai, X., Wu, B., and Zhang, J.: Is the Dipole Anomaly a major driver to record lows in Arctic summer sea ice extent?, *Geophysical Research Letters*, 36, 277-291, 2009.
- Jung, T., and Hilmer, M.: The Link between the North Atlantic Oscillation and Arctic Sea Ice Export through Fram Strait, *Journal of Climate*, 14, 3932-3943, 2001.
- Kalnay, E., Kanamitsu, M., Kistler, R., Collins, W., Deaven, D., Gandin, L., Iredell, M., Saha, S., White, G., and Woollen, J.: The NCEP/NCAR 40-Year Reanalysis Project, *Bulletin of the American Meteorological Society*, 77, 437-472, 1996.
- 20 Kawaguchi, Y., Kikuchi, T., and Inoue, R.: Vertical heat transfer based on direct microstructure measurements in the ice-free Pacific-side Arctic Ocean: the role and impact of the Pacific water intrusion, *Journal of Oceanography*, 70, 343-353, 2014.
- Kay, J. E., and Gettelman, A.: Cloud influence on and response to seasonal Arctic sea ice loss, *Journal of Geophysical Research Atmospheres*, 114, -, 2009.
- 25 Koyama, T., Stroeve, J., Cassano, J., and Crawford, A.: Sea Ice Loss and Arctic Cyclone Activity from 1979 to 2014, *Journal of Climate*, 30, 2017.
- Kwok, R., Cunningham, G. F., and Yueh, S.: Area balance of the Arctic Ocean perennial ice zone: October 1996 to April 1997, *J.geophys.res.*, 104, 25747-25759, 1999.
- Kwok, R.: Recent changes in Arctic Ocean sea ice motion associated with the North Atlantic Oscillation, *Geophysical Research Letters*, 27, 775-778, 2000.
- 30 Kwok, R.: Near zero replenishment of the Arctic multiyear sea ice cover at the end of 2005 summer, *Geophysical Research Letters*, 34, 306-316, 2007.
- Kwok, R.: Summer sea ice motion from the 18 GHz channel of AMSR-E and the exchange of sea ice between the Pacific and Atlantic Sectors, *Geophysical Research Letters*, 35, 144-151, 2008a.
- 35 Kwok, R.: Outflow of Arctic ocean sea ice into the Greenland and Barents Seas: 1979-2007, *Journal of Climate*, 22, 2438-2457, 2008b.
- Kwok, R., and Rothrock, D. A.: Decline in Arctic sea ice thickness from submarine and ICESat records: 1958-2008, *Geophysical Research Letters*, 36, 1958-2008, 2009.
- Kwok, R., and Cunningham, G. F.: Deformation of the Arctic Ocean ice cover after the 2007 record minimum in summer ice extent, *Cold Regions Science & Technology*, 76-77, 17-23, 2012.
- 40 Kwok, R., Spreen, G., and Pang, S.: Arctic sea ice circulation and drift speed: Decadal trends and ocean currents, *Journal of Geophysical Research Oceans*, 118, 2408-2425, 2013.
- Lee, H. J., Kwon, M. O., and Yeh, S. W.: Impact of poleward moisture transport from the North Pacific on the acceleration of sea ice loss in the Arctic since 2002, *Journal of Climate*, 30, doi: 10.1175/JCLI-D-1116-0461.1171, 2017.
- 45 Lindsay, R. W., Zhang, J., Schweiger, A., Steele, M., and Stern, H.: Arctic Sea Ice Retreat in 2007 Follows Thinning Trend, *Journal of Climate*, 22, 165-176, 2009.



- 5 Liu, Y., Key, J. R., and Wang, X.: The Influence of Changes in Cloud Cover on Recent Surface Temperature Trends in the Arctic, *Journal of Climate*, 21, 705-715, 2008.
- Lynch, A. H., Serreze, M. C., Cassano, E. N., Crawford, A. D., and Stroeve, J.: Linkages between Arctic summer circulation regimes and regional sea ice anomalies: Arctic Summer Circulation and Sea Ice, *Journal of Geophysical Research*, 121, 2016.
- Maslanik, J., Stroeve, J., Fowler, C., and Emery, W.: Distribution and trends in Arctic sea ice age through spring 2011, *Geophysical Research Letters*, 38, 392-392, 2011.
- Meier, W. N.: Comparison of passive microwave ice concentration algorithm retrievals with AVHRR imagery in arctic peripheral seas, *IEEE Transactions on Geoscience & Remote Sensing*, 43, 1324-1337, 2005.
- 10 Nakamura, T., Yamazaki, K., Iwamoto, K., Honda, M., Miyoshi, Y., Ogawa, Y., and Ukita, J.: A negative phase shift of the winter AO/NAO due to the recent Arctic sea - ice reduction in late autumn, *Journal of Geophysical Research Atmospheres*, 120, 3209-3227, 2015.
- Niederrenk, A. L., and Notz, D.: Arctic sea ice in a 1.5 °C warmer world, *Geophysical Research Letters*, 2018.
- Notz, and Stroeve: Observed Arctic sea-ice loss directly follows anthropogenic CO2 emission, *Science*, 354, 747, 2016.
- 15 Ogi, M., Rysgaard, S., and Barber, D. G.: Importance of combined winter and summer Arctic Oscillation (AO) on September sea ice extent, *Environmental Research Letters*, 11, 2016.
- Overland, J. E., and Wang, M.: Large-scale atmospheric circulation changes are associated with the recent loss of Arctic sea ice, *Tellus Series A-dynamic Meteorology & Oceanography*, 62, 1-9, 2010.
- Overland, J. E., Wang, M., and Salo, S.: The recent Arctic warm period, *Tellus Series A-dynamic Meteorology & Oceanography*, 60, 589-597, 2010.
- 20 Parkinson, C.: Recent trend reversals in arctic sea ice extents: possible connections to the north Atlantic oscillation, *Polar Geography*, 31, 3-14, 2008.
- Parkinson, C. L., and Comiso, J. C.: On the 2012 record low Arctic sea ice cover: Combined impact of preconditioning and an August storm, *Geophysical Research Letters*, 40, 1356-1361, 2013.
- 25 Perovich, D. K., Light, B., Eicken, H., Jones, K. F., Runciman, K., and Nghiem, S. V.: Increasing solar heating of the Arctic Ocean and adjacent seas, 1979–2005: Attribution and role in the ice-albedo feedback, *Geophysical Research Letters*, 34, L19505, 2007.
- Perovich, D. K., Richter - Menge, J. A., Jones, K. F., and Light, B.: Sunlight, water, and ice: Extreme Arctic sea ice melt during the summer of 2007, *Geophysical Research Letters*, 35, 194-198, 2008.
- 30 Polyakov, I. V., Timokhov, L. A., Alexeev, V. A., Bacon, S., Dmitrenko, I. A., Fortier, L., Frolov, I. E., Gascard, J. C., Hansen, E., and Ivanov, V. V.: Arctic Ocean Warming Contributes to Reduced Polar Ice Cap, *Journal of Physical Oceanography*, 40, 2743-2756, 2010.
- Rampal, P., Weiss, J., and Marsan, D.: Positive trend in the mean speed and deformation rate of Arctic sea ice, 1979–2007, *Journal of Geophysical Research: Oceans*, 114, -, 2009.
- 35 Rigor, I. G., Wallace, J. M., and Colony, R. L.: Response of Sea Ice to the Arctic Oscillation, *Journal of Climate*, 15, 2648-2663, 2002.
- Schweiger, A. J., Lindsay, R. W., Vavrus, S., and Francis, J. A.: Relationships between Arctic Sea Ice and Clouds during Autumn, *Journal of Climate*, 21, 4799-4810, 2008.
- Screen, J. A., and Simmonds, I.: The central role of diminishing sea ice in recent Arctic temperature amplification, *Nature*, 464, 1334-1337, 2010.
- 40 Screen, J. A., and Francis, J. A.: Contribution of sea-ice loss to Arctic amplification is regulated by Pacific Ocean decadal variability, *Nature Climate Change*, 6, 2016.
- Serreze, M. C., Maslanik, J. A., Scambos, T. A., Fetterer, F., Stroeve, J., Knowles, K., Fowler, C., Drobot, S., Barry, R. G., and Haran, T. M.: A record minimum arctic sea ice extent and area in 2002, *Geophysical Research Letters*, 30, 365-389, 2003.
- 45

- Shimada, K., Kamoshida, T., Itoh, M., Nishino, S., Carmack, E., Mclaughlin, F., Zimmermann, S., and Proshutinsky, A.: Pacific Ocean inflow: Influence on catastrophic reduction of sea ice cover in the Arctic Ocean, *Geophysical Research Letters*, 33, 153-172, 2006.
- 5 Smedsrud, L. H., Halvorsen, M. H., Stroeve, J. C., Zhang, R., and Kloster, K.: Fram Strait sea ice export variability and September Arctic sea ice extent over the last 80 years, *Cryosphere*, 11, 65-79, 2017.
- Spreen, G., Kern, S., Stammer, D., and Hansen, E.: Fram Strait sea ice volume export estimated between 2003 and 2008 from satellite data, *Geophysical Research Letters*, 36, L19502, 2009.
- Spreen, G., Kwok, R., and Menemenlis, D.: Trends in Arctic sea ice drift and role of wind forcing: 1992&ndash;2009, *Geophysical Research Letters*, 38, L19501, 2011.
- 10 Stroeve, J., Serreze, M., Drobot, S., Gearheard, S., Holland, M., Maslanik, J., Meier, W., and Scambos, T.: Arctic Sea Ice Extent Plummet in 2007, *Eos Transactions American Geophysical Union*, 89, 13-14, 2013.
- Stroeve, J., Frei, A., Mccreight, J., and Ghatak, D.: Arctic sea-ice variability revisited, *Annals of Glaciology*, 48, 71-81, 2017.
- Stroeve, J. C., Maslanik, J., Serreze, M. C., Rigor, I., Meier, W., and Fowler, C.: Sea ice response to an extreme negative phase of the Arctic Oscillation during winter 2009/2010, *Geophysical Research Letters*, 38, 79-89, 2011.
- 15 Stroeve, J. C., Markus, T., Boisvert, L., Miller, J., and Barrett, A.: Changes in Arctic melt season and implications for sea ice loss, *Geophysical Research Letters*, 41, 1216-1225, 2014.
- Sumata, H., Lavergne, T., Girard - Arduin, F., Kimura, N., Tschudi, M. A., Kauker, F., Karcher, M., and Gerdes, R.: An intercomparison of Arctic ice drift products to deduce uncertainty estimates, *Journal of Geophysical Research Oceans*, 119, 4887-4921, 2015.
- 20 Szanyi, S., Lukovich, J. V., Barber, D. G., and Haller, G.: Persistent artifacts in the NSIDC ice motion dataset and their implications for analysis: PERSISTENT ARTIFACTS IN NSIDC ICE DRIFT, *Geophysical Research Letters*, 43, 10,800-810,807, 2016.
- Thompson, D. W. J., and Wallace, J. M.: The Arctic Oscillation Signature in the Wintertime Geopotential Height and Temperature Fields, *Geophysical Research Letters*, 25, 1297-1300, 1998.
- 25 Tjernström, M., Shupe, M. D., Brooks, I. M., Persson, P. O. G., Prytherch, J., Salisbury, D. J., Sedlar, J., Achtert, P., Bro oks, B. J., and Johnston, P. E.: Warm - air advection, air mass transformation and fog causes rapid ice melt, *Geophysical Research Letters*, 42, 5594-5602, 2015.
- Tschudi, M., Stroeve, J., and Stewart, J.: Relating the Age of Arctic Sea Ice to its Thickness, as Measured during NASA's ICESat and IceBridge Campaigns, *Remote Sensing*, 8, 457, 2016.
- 30 Tschudi, M., Meier, W. N., Stewart, J. S., C. Fowler, and Maslanik, J.: Polar Pathfinder Daily 25 km EASE-Grid Sea Ice Motion Vectors, Version 3, Boulder, Colorado USA. NASA National Snow and Ice Data Center Distributed Active Archive Center. doi: <https://doi.org/10.5067/INAWUWO7QH7B>. [2018-07-31], 2017a.
- Tschudi, M. A., Meier, W. N., and Stewart, J. S.: An enhancement to sea ice motion and age products, *The Cryosphere Discussion*, <https://doi.org/10.5194/tc-2019-40>, 2017b.
- 35 Tschudi, M. A., Meier, W. N., and Stewart, J. S.: An enhancement to sea ice motion and age products,, *The Cryosphere Discuss*. <https://doi.org/10.5194/tc-2019-40>, 2019.
- Tverberg, V., Nøst, O. A., Lydersen, C., and Kovacs, K. M.: Winter sea ice melting in the Atlantic Water subduction area, Svalbard Norway, *Journal of Geophysical Research Oceans*, 119, 5945–5967, 2014.
- 40 Wang, J., Ikeda, M., Zhang, S., and Gerdes, R.: Linking the northern hemisphere sea-ice reduction trend and the quasi-decadal arctic sea-ice oscillation, *Climate Dynamics*, 24, 115-130, 2005.
- Woods, C., Caballero, R., and Svensson, G.: Large - scale circulation associated with moisture intrusions into the Arctic during winter, *Geophysical Research Letters*, 40, 4717-4721, 2013.
- Wu, B., Wang, J., and Walsh, J. E.: Dipole Anomaly in the Winter Arctic Atmosphere and Its Association with Sea Ice Motion, *Journal of Climate*, 19, 210-225, 2005.
- 45 Zhang, J., Steele, M., and Schweiger, A.: Arctic sea ice response to atmospheric forcings with varying levels of anthropogenic warming and climate variability, *Geophysical Research Letters*, 37, 1400-1416, 2010.

- 5 | Zhang, J., Lindsay, R., Schweiger, A., and Rigor, I.: Recent changes in the dynamic properties of declining Arctic sea ice: A model study, *Geophysical Research Letters*, 39, 20503, 2012.
- Zhang, X., Sorteberg, A., Zhang, J., Gerdes, R., and Comiso, J. C.: Recent radical shifts of atmospheric circulations and rapid changes in Arctic climate system, *Geophysical Research Letters*, 35, -, 2008.
- Zhang, X., He, J., Zhang, J., Polyakov, I., Gerdes, R., Inoue, J., and Wu, P.: Enhanced poleward moisture transport and amplified northern high-latitude wetting trend, *Nature Climate Change*, 3, 47-51, 2013.