

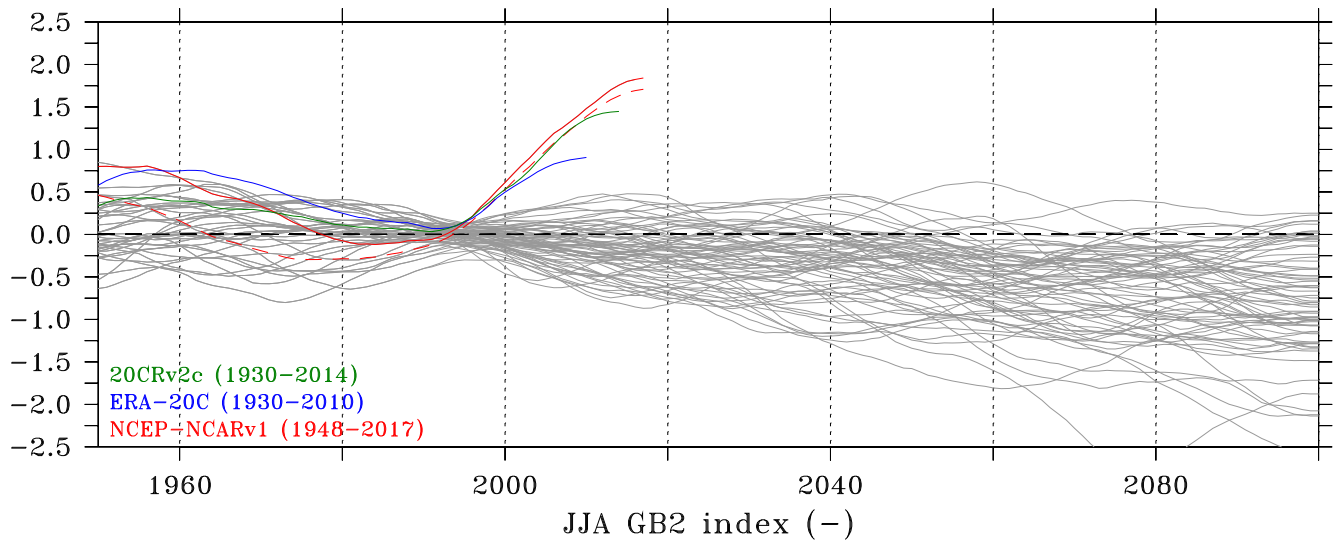
# **Supplementary Material of Recent changes in summer Greenland blocking captured by none of the CMIP5 models**

Edward Hanna <sup>1</sup>, Xavier Fettweis <sup>2</sup>, and Richard J. Hall <sup>1</sup>

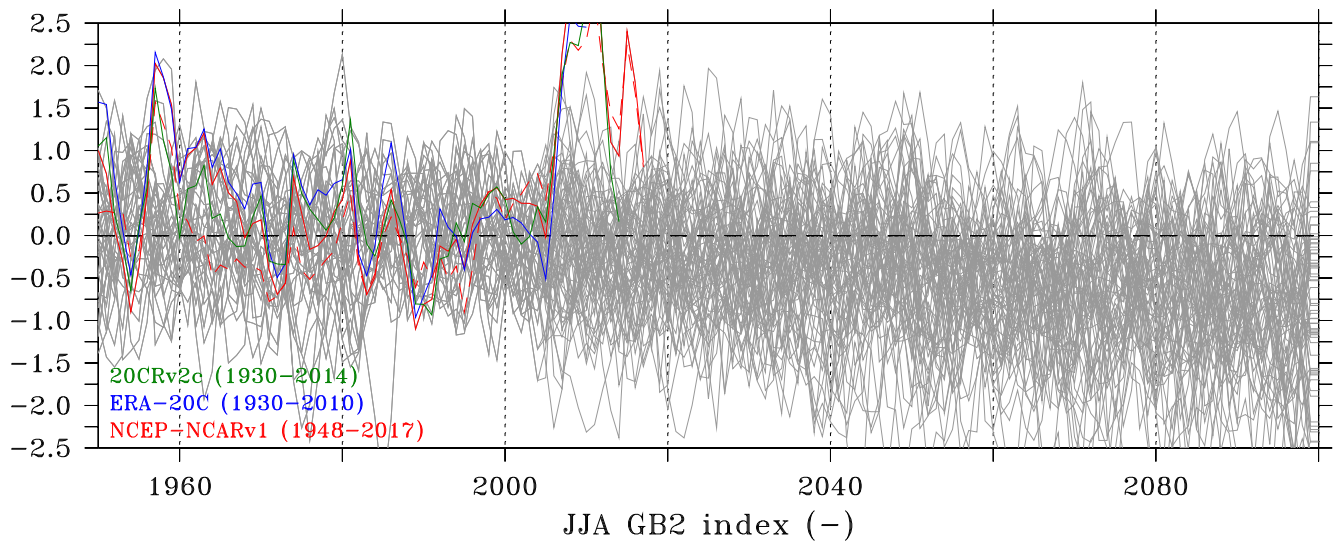
<sup>1</sup>School of Geography and Lincoln Centre for Water and Planetary Health, University of Lincoln, UK

<sup>2</sup>Laboratory of Climatology, Department of Geography, University of Liège, Liège, Belgium

**Correspondence:** Edward Hanna (EHanna@lincoln.ac.uk)



**Figure S1.** Same as Figure 1 but using a 30-year running mean.



**Figure S2.** Same as Figure 1 but using a 3-year running mean.

**Table S1.** List of the 36 CMIP5 global models (run r1i1p1) used in this study.

Model name	Model name
ACCESS1-0	GISS-E2-H
ACCESS1-3	GISS-E2-R-CC
bcc-csm1-1-m	GISS-E2-R
bcc-csm1-1	HadGEM2-AO
CanESM2	HadGEM2-CC
CCSM4	HadGEM2-ES
CESM1-BGC	inmcm4
CESM1-CAM5	IPSL-CM5A-LR
CMCC-CM	IPSL-CM5A-MR
CMCC-CMS	IPSL-CM5B-LR
CNRM-CM5	MIROC5
EC-EARTH	MIROC-ESM-CHEM
FGOALS-g2	MIROC-ESM
FIO-ESM	MPI-ESM-LR
GFDL-CM3	MPI-ESM-MR
GFDL-ESM2G	MRI-CGCM3
GFDL-ESM2M	NorESM1-ME
GISS-E2-H-CC	NorESM1-M