

## ***Interactive comment on “Satellite ice extent, sea surface temperature, and atmospheric methane trends in the Barents and Kara seas” by Ira Leifer et al.***

**Ira Leifer et al.**

ira.leifer@bubbleology.com

Received and published: 27 May 2018

We would like to correct the naming of a current in Supplemental Figure S1, which was mistakenly identified as BICC - the Bear Island Channel Current, but which should instead be the Bear Island Current (BIC).

---

Interactive comment on The Cryosphere Discuss., https://doi.org/10.5194/tc-2018-75, 2018.

Printer-friendly version

Discussion paper



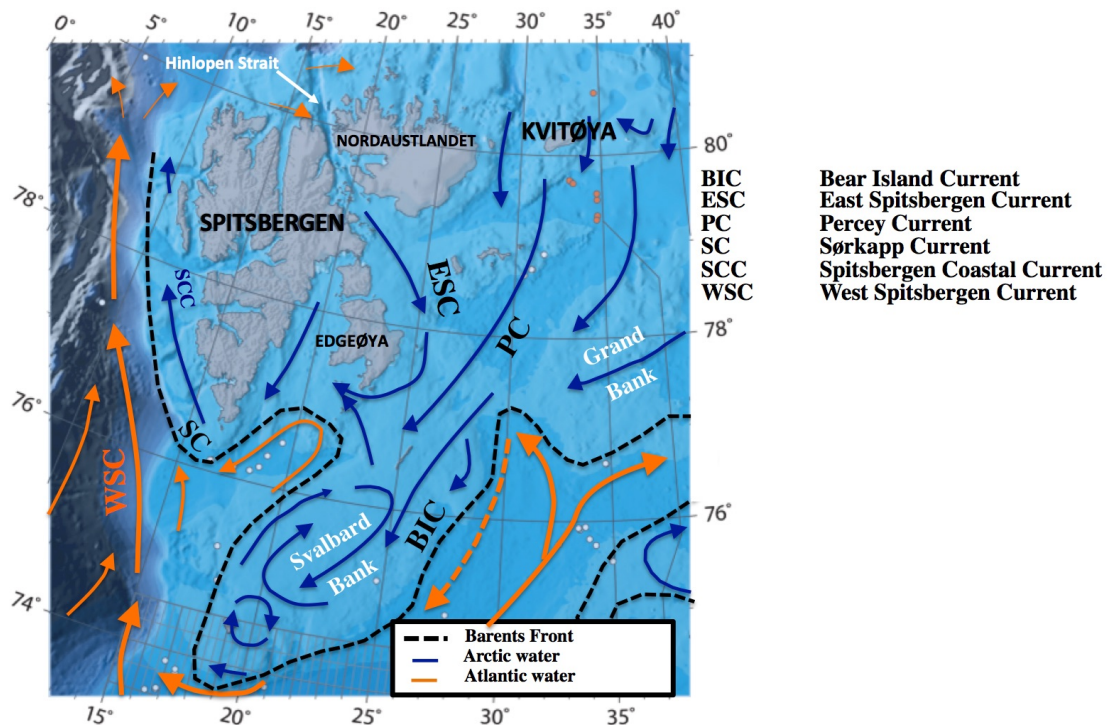


Fig. 1. Rev Supp Fig. S1

Printer-friendly version

Discussion paper

