

Response to review

Sapporo, Hokkaido
bas.altena@geo.uio.no

October 14, 2018

Dear editor and reviewers,

Thank you very much for your thorough assessment of the manuscript. I have been going through your comments, and in doing so found some lines of code which were misplaced. The orientation in the Hough transform for combined velocities was incorrect¹. Hence, the results in the manuscript highlight only the displacements which had whole numbers. Thus the theory is correct, but the implementation was not optimal. Basically, the manuscript was a slimmed version of the correct implementation; “an arrow can lose its feathers but not its point”! Even with limited amount of data, information can be extracted.

Nevertheless, this typo resulted in redoing the study, which took some time, in addition to the holiday season. Hence, I hope you understand this delay and enjoy the new results which have higher detail and more information within. In the pages hereafter inset are given, which are of interest to all referees, followed by the corrections made.

Sincerely,



Bas Altena
also on behalf of Ted Scambos,
Andreas Kääb & Mark Fahnestock

¹The diagonal lines were not placed correctly in the Hough space. Consequently, only horizontal and vertical lines were able to identify an intersection.

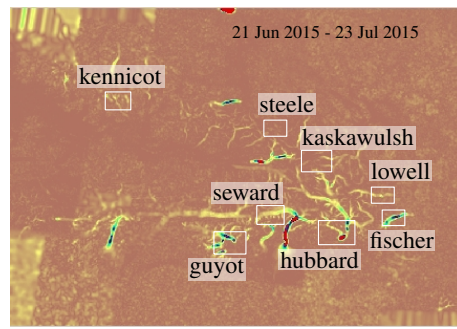


figure 1: Insets of different sections, that a shown hereafter.

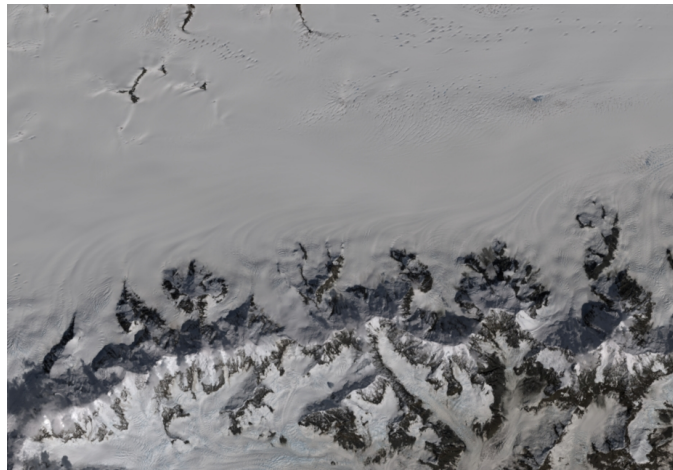
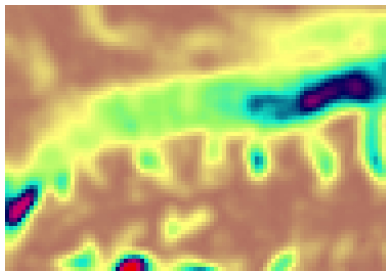
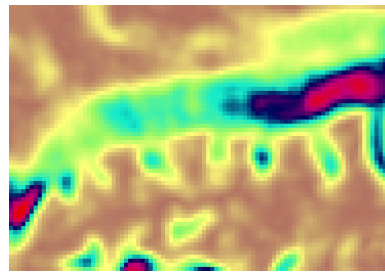


figure 2: Seward Glacier.



(a) Smoothing without a mask



(b) Smoothing with a glacier mask

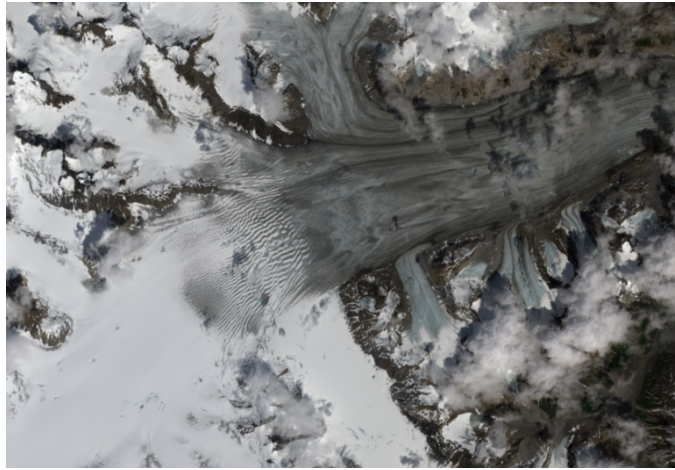
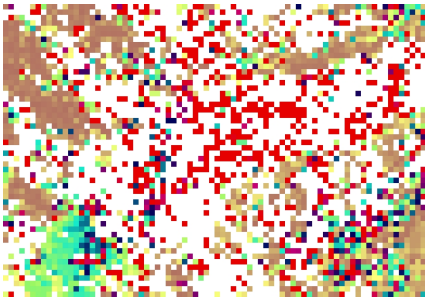
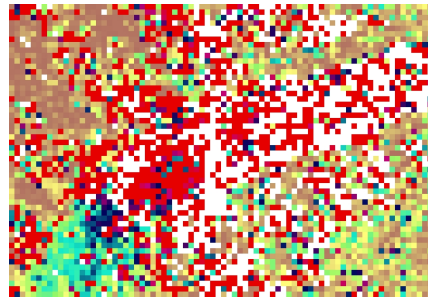


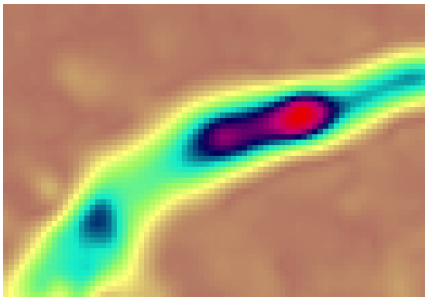
figure 4: Fischer Glacier.



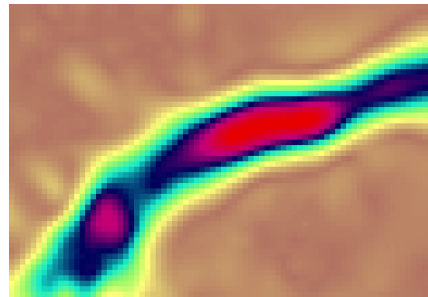
(a) Closed configuration



(b) Open configuration



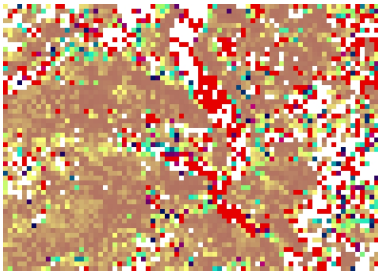
(a) Smoothing without a mask



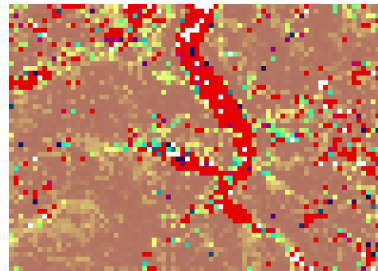
(b) Smoothing with a glacier mask



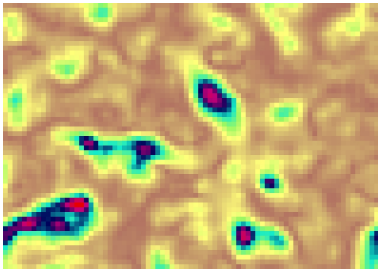
figure 7: Steele Glacier.



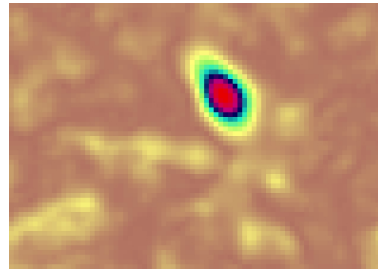
(a) Closed configuration



(b) Open configuration



(a) Smoothing without a mask



(b) Smoothing with a glacier mask

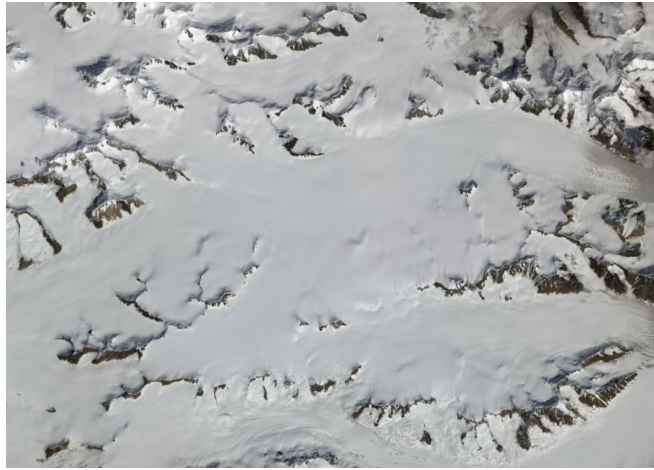
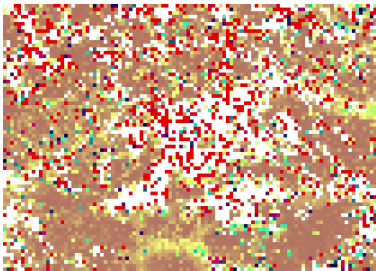
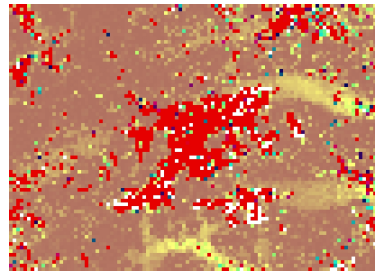


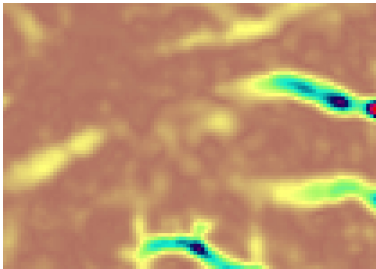
figure 10: Kaskawulsh Glacier.



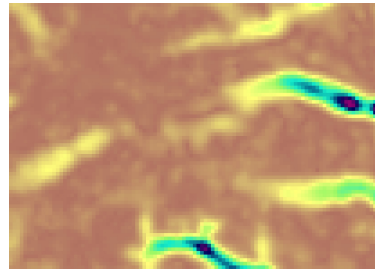
(a) Closed configuration



(b) Open configuration



(a) Smoothing without a mask



(b) Smoothing with a glacier mask

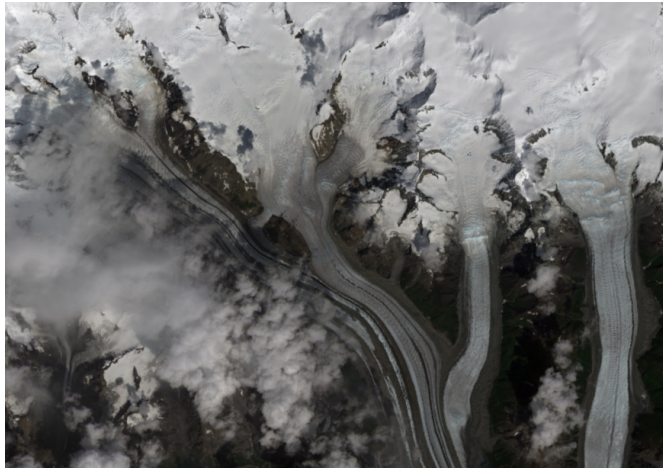
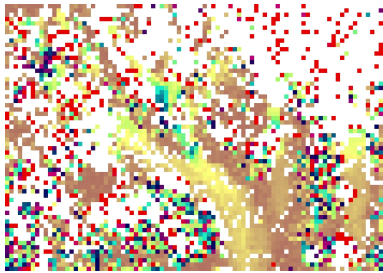
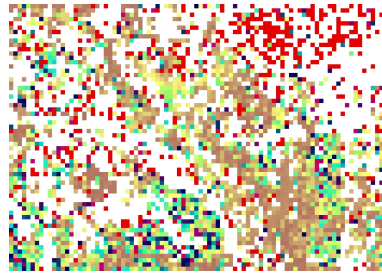


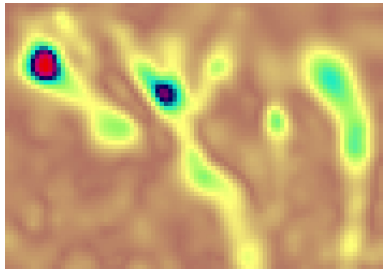
figure 13: Kennicott Glacier.



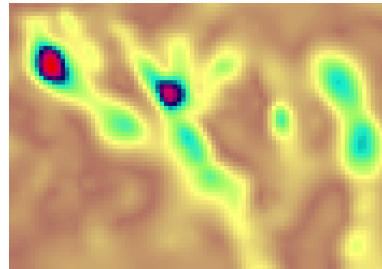
(a) Closed configuration



(b) Open configuration



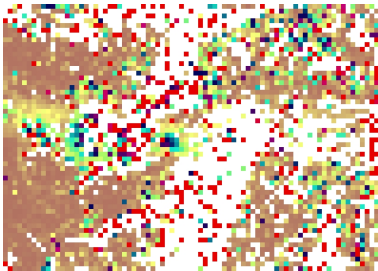
(a) Smoothing without a mask



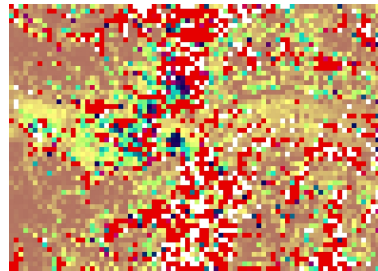
(b) Smoothing with a glacier mask



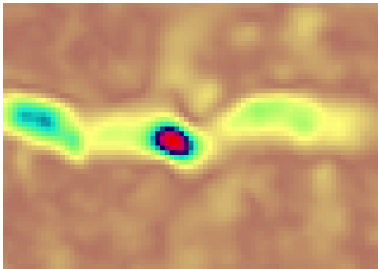
figure 16: Lowell Glacier.



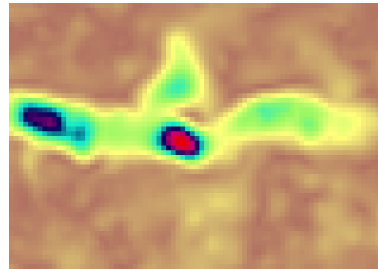
(a) Closed configuration



(b) Open configuration



(a) Smoothing without a mask



(b) Smoothing with a glacier mask

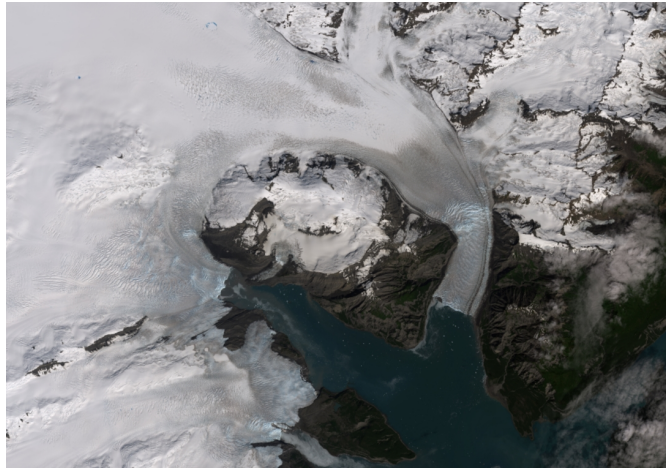
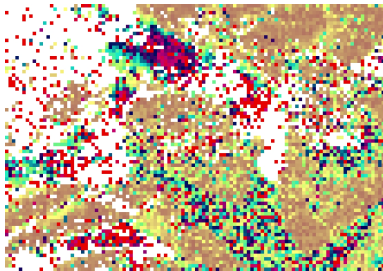
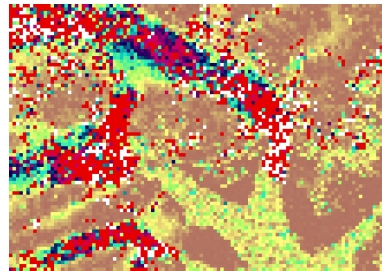


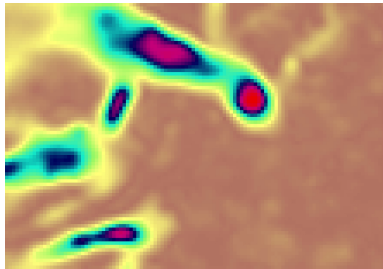
figure 19: Guyot Glacier.



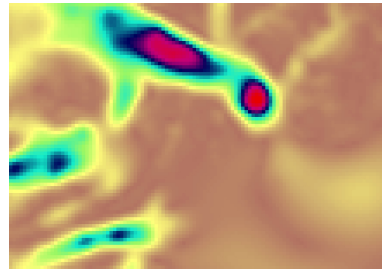
(a) Closed configuration



(b) Open configuration



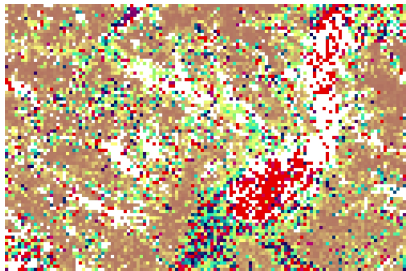
(a) Smoothing without a mask



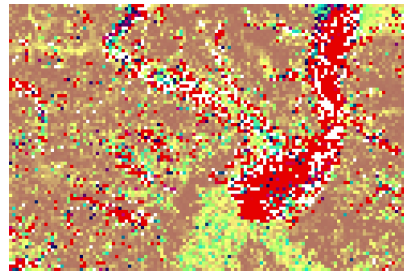
(b) Smoothing with a glacier mask



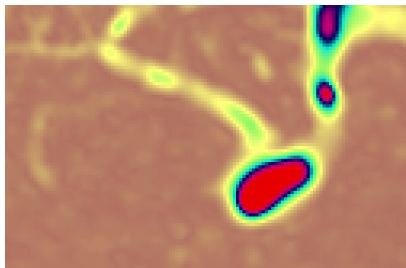
figure 22: Hubbard Glacier.



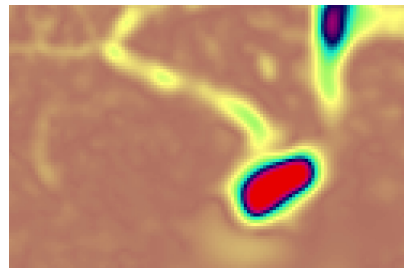
(a) Closed configuration



(b) Open configuration



(a) Smoothing without a mask



(b) Smoothing with a glacier mask

Extracting recent short-term glacier velocity evolution over Southern Alaska from a large collection of Landsat data

Bas Altena¹, Ted Scambos², Mark Fahnestock³, and Andreas Kääb¹

¹Department of Geosciences, University of Oslo, Blindern, 0316 Oslo, Norway

²National Snow and Ice Data Center (NSIDC), University of Colorado, Boulder, CO 80303, USA

³Geophysical Institute, University of Alaska Fairbanks, Fairbanks, AK 99775, USA

Correspondence to: Bas Altena (bas.altena@geo.uio.no)

Abstract. The measurement of glacier velocity fields using repeat satellite imagery has become a standard method of cryospheric research. However, the reliable discovery of important glacier velocity variations on a large scale ~~from noisy time-series of such data~~ is still problematic, ~~because time-series span different time intervals and are partly populated with erroneous velocity estimates~~. In this study we ~~propose a new post-processing procedure for assembling a set of velocity fields in time-series that generates a better visualization of glacier speed changes when the velocity fields are sparse or noisy. We demonstrate this automatic method on a large glacier area in Alaska/Canada. The visualization tool provides an overview of where and when interesting glacier dynamics are occurring. The goal is not to improve accuracy or precision, but the timing and location of ice flow events such as glacier surges.~~ Building ~~build~~ upon existing glacier velocity products from the GoLIVE data set (<https://nsidc.org/data/golive>), we compile a multi-temporal stack of velocity data over the Saint Elias Mountain range and vicinity. Each layer has a time separation of 32 days, making it possible to observe details such as within-season velocity change over an area of roughly ~~600~~150 000 km². Our methodology is robust as it is based upon a fuzzy voting scheme ~~applied in a discrete parameter space, in this way it is able~~ to filter multiple outliers. The multi-temporal data stack is then smoothed to facilitate interpretation. This results in a spatio-temporal dataset where one can identify short-term glacier dynamics on a regional scale. ~~The goal is not to improve accuracy or precision, but being able to extract the timing and location of ice flow events such as glacier surges.~~ Our implementation is fully automatic and the approach is independent of geographical area or satellite system used. ~~We demonstrate this automatic method on a large glacier area in Alaska/Canada.~~ Within the Saint Elias and Kluane mountain ranges, several surges and their propagation characteristics are identified and tracked through time, as well as more complicated dynamics in the Wrangell's mountains.

Copyright statement. TEXT

20 1 Introduction

Alaskan glaciers have a high mass turn-over rate (Arendt, 2011) and they ~~can~~ contribute considerably to sea level rise (Gardner et al., 2013; Arendt et al., 2013). ~~Monitoring changes of ice flow is thus of importance, especially since the velocity of these~~

glaciers seem to fluctuate considerably. Many of the glaciers have been identified as surge-type, from direct observations or from their looped moraines (Post, 1969; Herreid and Truffer, 2016). Furthermore, topographic glacier change in this region is heterogeneous (Muskett et al., 2003; Berthier et al., 2010; Melkonian et al., 2014), which is another indication of complicated responses. Gaining better understanding of the drivers that cause glacier mass re-distribution is therefore of great importance.

5

Glacier velocity monitoring through satellite remote sensing has proven to be a useful tool to observe velocity change on a basin scale. Several studies have focused on dynamics of individual glaciers in Alaska, at an annual or seasonal resolution (Fatland and Lingle, 2002; Burgess et al., 2012; Turrin et al., 2013; Abe and Furuya, 2015; Abe et al., 2016). Such studies can give a better understanding of the specific characteristics of a glacier, and which circumstances are of importance for this behaviour and response. Region-wide annual or ~~"snapshot"~~ "snapshot" velocities also have been estimated over the Saint Elias Mountain range in previous studies (Burgess et al., 2013; Waechter et al., 2015). Their results give a first-order estimate of the ~~dynamics~~ kinematics at hand. With frequent satellite data coverage, it is possible to detect the time of glacier speed-ups to within a week (Altena and Kääb, 2017b), although the study did not include an automated approach. In the most recent work, regional analyses have been conducted with over sub-seasonal (Moon et al., 2014; Armstrong et al., 2017) and multi-decadal (Heid and Kääb, 2012a; Dehecq et al., 2015) periods. With such data one is able to observe the behaviour of groups of glaciers that experience similar climatic settings. Consequently, surges and other glacier-dynamical events can be put into a wider spatio-temporal perspective. In this contribution we want to develop the methodological possibilities further and try to extract glacier velocities at a monthly resolution over a large region. The presented method retains spatial detail present in the data and does not simplify the flow structure to flowlines. Consequently, we want to improve knowledge about the influence and timing of tributary and neighbouring ice flow variations.

Since the launch of Landsat 8 in 2013 a wealth of high-quality medium-resolution imagery is being acquired over the cryosphere on a global scale. Onboard data storage and rapid ground-system processing have made it possible to almost continuously acquire imagery. The archived data has enormous potential to advance our knowledge in glacier flow. Extraction of glacier velocity is one of the stated mission objectives (Roy et al., 2014). However, the data rate far exceeds the possibilities for manual interpretation. Fortunately, automatically generated velocity products are now available (Scambos et al., 2016; Rosenau et al., 2016), though at this point sophisticated quality control and post processing methods are still being developed.

Up to now, most studies of glacial velocity have had an emphasis on either spatial or temporal detail. When temporal detail is present, studies focus on a single or a handful of glaciers (Scherler et al., 2008; Quincey et al., 2011; Paul et al., 2017). On the other hand, when regional assessments are the focus, the temporal resolution ranges from a single time stamp up to annual resolution (Copland et al., 2009; Dehecq et al., 2015; Rosenau et al., 2015). Furthermore, most studies rely on filtering in the post-processing of vector data by using the correlation (Scambos et al., 1992; Kääb and Vollmer, 2000) or through median filtering within a zonal neighborhood (Skvarca, 1994; Paul et al., 2015). Some sophisticated post-processing procedures are available (Maksymiuk et al., 2016), but rely on the coupling with models based upon the Navier-Stokes equations. Also geo-

metric properties can be taken into account during the matching to improve robustness and reduce post-processing efforts, such as reverse-correlation (Scambos et al., 1992; Jeong et al., 2017) or triangle closure (Altena and Kääb, 2017a).

Thus glacier velocity data is increasingly available, but in general post-processing is not at a sufficient level to directly exploit the full information content within these products. In this study we aim at the construction of a post-processing chain that is capable of extracting temporal information from stacks of noisy velocity data. Our emphasis is on discovering patterns over a mountain-range scale. Analysis of the individual details of the glacier-dynamical patterns identified by the processing will be considered in later work. For a single glacier, a manual selection of low-noise, good-coverage velocity data sets is possible. However, such a strategy will not be efficient when multiple glaciers or mountain ranges are of interest. ~~Therefore~~Therefore, our implementation focuses on automatic post-processing, without the help of expert knowledge or human interaction.

In this study, we discuss the data used and provide background on the area under study. We then introduce the spatio-temporal structure of the data, followed by an explanation of our process for vector ~~"voting"~~ "voting" and vector field smoothing. The next section highlights our results and our validation and assessment of the performance of our method.

2 Data and study region

2.1 GoLIVE velocity fields

The velocity fields used in this study are based upon repeat optical remote sensing imagery and are distributed through the National Snow and Ice Data Center (NSIDC) (Scambos et al., 2016). These velocity fields are derived from finding displacements between pairs of Landsat 8 imagery, using the panchromatic band with 15 meter resolution. A high-pass filter of one kilometer spatial scale is applied before processing. Normalized cross-correlation is applied between the image pairs on a sampling grid with 300 meters spacing (Fahnestock et al., 2016; Scambos et al., 1992) and a template size of 20 pixels (or 300 m). The resulting products are grids with lateral displacements, the absolute correlation value, signal-to-noise ratio and ratio between the two best matches. At the time of writing, displacement products can cover a time interval from 16 days up to 96 days. For a detailed description of the processing chain see Fahnestock et al. (2016).

The Landsat 8 satellite has a same-orbit revisit time of 16 days and a swath width of 185 km. Only scenes which are at least 50% cloud-free are used (as determined by the provided estimate in the metadata for the scenes). Consequently, not every theoretical pair combination is matched, and also pairs across tracks are neglected (cf. (Altena and Kääb, 2017a)) to avoid more complicated viewing geometry adjustments. Georeference errors are compensated by the estimation of a polynomial bias surface through areas outside glaciers (i.e., assumed stable). The glacier mask used for that purpose is from the ~~Randolp~~Randolph Glacier Inventory (RGI) (Pfeffer et al., 2014). The resulting grids come in Universal Transverse Mercator (UTM) projection and if orthorectification errors are minimal, displacements for precise georeferencing require only horizontal movement of a

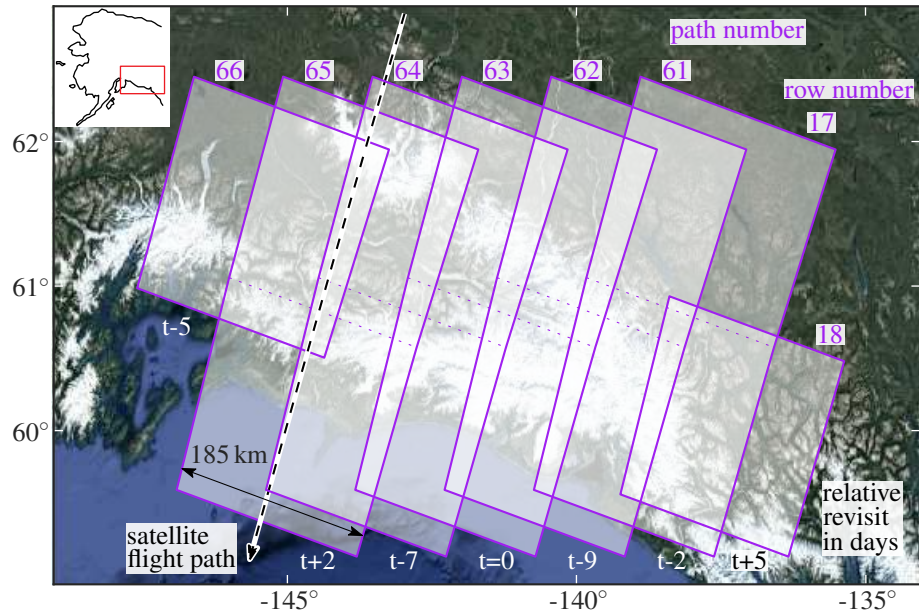


Figure 1. Nominal Landsat 8 footprints used over the studied region. The purple text colors are used to distinguish between annotates the different satellite paths. Blue polygons are glacier outlines over the area of interest LANDSAT, stemming from while the Randolph glacier inventory (Pfeffer et al., 2014). black text indicates the relative overpass time in days in respect to path 63.

few meters (generally <10 m). In total we use twelve Landsat path/row tiles to cover our study area (Figure 1).

2.2 Study region

The region of interest covers the Saint Elias, Wrangell and Kluane Mountain ranges, as well as some parts of the Chugach range.

- 5 These ranges host roughly 42 000 ~~000~~ km² glacier area, whereby roughly 22% of the glacier area is connected to marine terminating fronts draining into the Gulf of Alaska. The glaciological distribution of glacier types is diverse (Clarke and Holdsworth, 2002) and there is a (Molnia, 2008). The glaciers in this area are diverse, as a wide range of thermal conditions (cold and warm ice) and morphological glacier types (valley, icefields, marine terminating) occur in these mountain ranges (Clarke and Holdsworth, 2002). This might partly be due to the large precipitation gradient over the mountain range. The highest amount of precipitation falls
- 10 in summer or autumn. The study area covers mountain ranges that have two different clusters of climate. Along the coast one finds a maritime climate with a small annual temperature range. These mountains function as a barrier, and the mountain ranges behind, in the interior, have therefore a more continental climate (Bieniek et al., 2012).

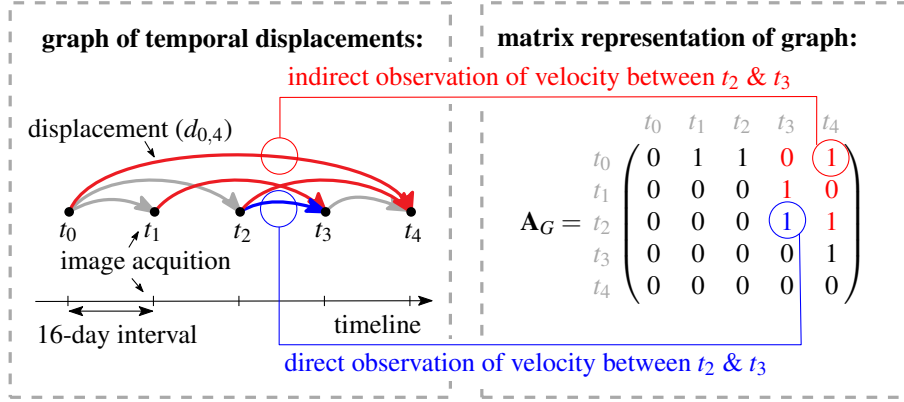


Figure 2. On the left is a graphical Graphical and matrix representation of Landsat-8 acquisitions (I) at different times (t) a network. Here acquisition pairs within a network are illustrated as nodes and matching solutions with displacements written down in an adjacency matrix ($d \mathbf{A}_G$) are shown as edges. The dark gray squares indicate acquisitions within a network period to be estimated. The subscript for the displacement denotes the time interval. The velocities connecting colors symbolize an open (x red) are estimated through the collection of all these displacements. At the right the mathematical representation or its parameter closed (Hough blue) space for voting selection of displacements over two time instances is shown, in this case the parameter space of only x_1 & x_2 are shown. The displacements (d) translate in a solid line and the fading illustrates the different weighting to take measurement precision (σ) into account. Note the wider spread of the displacement noise be used for the image pair with a small interval velocity estimation over this period ($d_{0,16} v$).

3 Methodology

GoLIVE and other velocity products are composed products from at least two acquisitions. Such velocity fields with different time spans need to be combined, in satellite acquisitions. When imagery from multiple time instances are used, combinations of displacements, with different (overlapping) time intervals can be constructed. In order to be of use for time-serie analysis, such velocity fields with different time spans need to be combined into a dataset with regular timesteps. To reduce the noise, the temporal configuration of these products can be used to synthesize a multi-temporal velocity field.

3.1 Temporal network configuration

At the high latitude of the Southern Alaska scenes from adjacent tracks have an overlap of 60%. Looking at only one track (or satellite path), multiple combinations of images over time periods of the 16-day revisit makes several matching combinations of integer multitudes of 16 days can be matched against each other possible. For example, over a 96-days 64-days period (Δt), seven-five images are acquired in one satellite track and their potential pairing combinations can be illustrated as a network (Figure 32). In this network, every acquisition (I at time t) is a node, and these nodes are connected through an edge that represents a matched pair leading to a collection of displacements (d) with an associated similarity measures (ρ).

When ~~individual time steps need to be~~ velocities over different timespans are estimated, this network has in theory a great amount of redundancy. However in practice this is complicated, as combinations of images are not processed when there is too much obstruction by clouds. Furthermore, individual ~~matches~~ displacements can be gross ~~outliers~~ errors, as an image match was not established due to surface change or lack of contrast and thus loss of similarity (~~displacement $d_{0,32}$ in Figure 3).~~

5 Consequently, when data from such a network is combined to synthesize one consistent velocity time series the estimation procedure needs to be able to resist multiple outliers or be able to identify whether displacement estimates could be extracted at a reliable level at all.

The network shown in figure ~~3-2~~ can be seen as a graph; nodes correspond to timestamps and edges to matched image
10 pairs. Such a graph can be transformed into an adjacency matrix (~~A_G~~ A_G , see Figure 2). In this matrix the columns and rows represent different timestamps. The edges can be directed, meaning it can assign which acquisition is the master (reference) or the slave (search) image during the matching procedure. For the GoLIVE data, the oldest acquisition is always the reference image, hence within the matrix only the upper triangular part has filled entities. The spacing of the timesteps is 16 days and the amount of days is set into the corresponding entries when a time step is covered by an edge. Individual days are specified
15 instead of a binary entity, to be able to merge adjacency matrices from different tracks which have different acquiring dates. If partial overlap of an edge occurs, then the time steps are proportionally distributed. For example, for a small network of three nodes, velocity (~~v~~ v) can be estimated through least-square adjustment of the displacements (d) through the following systems of equations (Altena and Käab, 2017a),

$$y = A \underline{xv}, \text{ where } y = \begin{bmatrix} d_{12} \\ d_{23} \\ d_{13} \end{bmatrix}, \quad A = \begin{bmatrix} \Delta t_{12} & 0 \\ 0 & \Delta t_{23} \\ \Delta t_{12} & \Delta t_{23} \end{bmatrix}, \quad \underline{xv} = \begin{bmatrix} v_{12} \\ v_{23} \end{bmatrix}, \quad (1)$$

20 Here the subscript denotes the timespan given by the starting and ending timestamps of the interval. This relational structure of displacements is similar to a leveling network. When the adjacency matrix is converted to an incidence matrix, then this matrix is the design matrix (A) (Strang and Borre, 1997). This makes the generation of such network adjustments easily implemented.

25 ~~The construction~~ This formulation of the temporal network makes it possible to estimate the unknown parameters, i.e. the temporal components of the velocity time series, through different formulations. This is illustrated in Figure 2, where a selection of ~~two velocities~~ a velocity (between t_2 & t_3) is estimated. Displacements ~~between the three images within this time frame can be estimated that fall between the two images can be used for the estimation~~ (here blue), which we here call a "closed"
"closed" network. But as can be seen in the figure as red connections, other displacements from outside the time ~~frame span~~
30 are over-arching and stretching further than the initial time interval. Such measurements can be of interest as they can fill in gaps or add redundancy, but the glacier dynamics obtained will be smeared compared to the real ones. Consequently, we call

such a network configuration an "open" "open" network (here red).

$$A_G = \begin{matrix} & t_1 & t_2 & t_3 & t_4 & t_5 & t_6 & t_7 \\ \begin{matrix} t_1 \\ t_2 \\ t_3 \\ t_4 \\ t_5 \\ t_6 \\ t_7 \end{matrix} & \begin{pmatrix} 0 & 0 & 1 & 1 & 0 & 1 & 1 \\ 0 & 0 & 0 & 0 & 0 & 0 & 0 \\ 0 & 0 & 0 & 1 & 1 & 1 & 1 \\ 0 & 0 & 0 & 0 & 1 & 1 & 1 \\ 0 & 0 & 0 & 0 & 0 & 1 & 1 \\ 0 & 0 & 0 & 0 & 0 & 0 & 1 \\ 0 & 0 & 0 & 0 & 0 & 0 & 0 \end{pmatrix} \end{matrix}$$

(yshift=3.2exharrowleft)—(yshift=3.2exharrowright)nodemidway,aboveimage timestamps; (yshift=1.5ex,xshift=-1.7exvarrowtop)
 5 —(xshift=-1.7exvarrowbottom)nodenearend,lefthtimestamps; Graphical and matrix representation of a network. Here acquisition
 pairs within a network are illustrated and written down in an adjacency matrix (A_G). The dark gray squares indicate acquisitions
 within a period to be estimated. The connecting colors symbolize an open (red) or closed (blue) selection of displacements to
 be used for the velocity estimation over this period (x):

3.2 Voting

- 10 The velocity dataset we use (like any) contains a large amount of incorrect or noisy displacements. Typically, the distribution
 of displacements has a normal distribution but with long tails. Moreover, a least-square adjustment is very sensitive to outliers
 contained in the data to be fitted. Therefore, direct estimation-least-square computation of velocity through the above network
 is not easily possible and some selection procedure is needed to exclude gross errors. Outlier detection within a network such as
 in equation 1 can be done through statistical testing (Baarda, 1968; Teunissen, 2000), assuming measurements (d) are normally
 15 distributed. However, such procedures are less effective when several gross errors are present within the set of observations.
 Extracting information from highly contaminated data is therefore an active field of research. For example, robust estimators
 change the normal distribution to a heavy tailed distribution. Nevertheless, such estimations typically still start with normal
 least-squares adjustment based on the full initial set of observations, and only in the next step the weights are iteratively ad-
 justed according to the amount of misfit. Hence, such methods are still restricted to robust a-priori knowledge or a data-set with
 20 relatively small amounts of contamination by gross errors.

Another common approach to cope with the adjustment of error-rich observations is through sampling strategies such as
 least-median of squares (Rousseeuw and Leroy, 2005), or random sampling and consensus (RANSAC) (Fischler and Bolles,
 1981). A minimum amount of observations are picked randomly to solve the model. The estimated parameters are then used to
 25 assess how the initial model fits in respect to all observations. Then the procedure is repeated with a new set of observations.

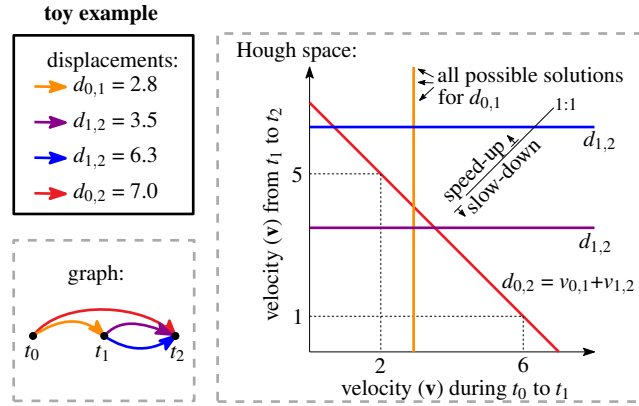


Figure 3. On the left is a graphical representation of Landsat 8 acquisitions at different times (t) illustrated as nodes and matching solutions with displacements (d) are shown as edges, within a network. The subscript for the displacement denotes the time interval. The velocities (v) are estimated through the collection of all these displacements. On the right the mathematical representation or its parameter (Hough) space for voting of displacements over two time instances is shown, in this case the parameter space of only $v_{0,1}$ & $v_{1,2}$ are shown.

The sampling procedure is stopped when a solution is within predefined bounds, or executed a defined amount of times after which the best set is taken. Such methods are very popular as they can handle high contamination of data (up to 50%) and still ~~resolve~~ result in a correct estimate. Put differently, the break-down point is .5 (Rousseeuw and Leroy, 2005). However, we use a different approach as these methods implement polynomial models. Our data set benefits from including conditional

5 equations as well.

~~Exploration into possibility theory, through the use of fuzzy-logic, is another approach towards a solution (Sun, 1994).~~

The equations that form the model can be seen as individual samples that populate the parameter space. In such a way the individual relations within the equation propagate into points, lines, or surfaces depending on their dimensions and relation

10 given by the equation. Hence, measurements can be transformed into a shape that is situated within the parameter space (which has a finite extent and resolution). The collection of shapes will be scattered through out this parameter space, but such shape converge at a common point which is most likely the correct parameter values. This transformation is the Hough transform and is commonly used in image processing for the detection of lines and circles.

15 However, the Hough transform is discrete while the measurements are noisy, thus the shapes should also be fuzzy. In this study we follow this latter direction and discretize the displacement-matching search-space after which we exploit a voting strategy. ~~In that way,~~ But the shapes in parameter space are blurred, so a fuzzy Hough transform (Han et al., 1994) is implemented. Our matching search space is simply the linear system of equations of the network described above. To illustrate the system, an example of a network with ~~three image pairs (similar to equation 1)~~ four displacements (d) is shown in Figure 3.

20 ~~Every~~ These displacements can be placed within a discrete grid that spans a large part of the parameter space (in this example

two dimensional). For the short time span displacements, this results in vertical or horizontal lines (blue, purple and yellow). The lines originate from the ambiguity, which is also in the entries of the design matrix (A) as these are 0 entries. For the overarching displacement (in red) the displacement is a combination of both velocities. Only the total displacement is known, thus the line results in a diagonal orientation ($5 + 2$ can be a solution as well as $1 + 6$, or a non-integer combination).

5

In this toy example, the lines concentrate around 3 for both velocities, with a slight preference to the upperleft, which indicates a slight speed-up between these two timespans. However, the lines are not perfectly intersecting, as measurement noise is present. To simulate this noise, the lines are perturbed with a Gaussian function, as for the toy example shown in figure 4a. In this case, every observation will fill the parameter space with a discretized weighting function. ~~In one dimension~~ This fuzziness in the Hough space makes it possible to find the intersection, while noise is present. Furthermore, the dimension of the Hough space depends on the formulation of the network. In principle it can have any dimension; in one dimensional case this is a simple histogram, but in higher dimensions this will translate into a line which radially decreases in weight. For this study we implement a three-dimensional Hough space, which for our toy example will look like as in figure 4b, though due to visualization limitations, the fuzzy borders are not visualized.

10

15

The advantage of a Hough search space is the resistance to multiple outliers. It builds support and is not reliant on the whole group of observations. Especially, when a second or third dimensional space is used, the chances of random (line)crossing decrease significantly in parameter space. Hence, such events will stand out when multiple measurements do align. Furthermore, random measurement errors can be incorporated through introducing a distribution function. In our implementation this is a Gaussian, but other functions are possible as well. The disadvantage of the fuzzy Hough transform is its limitation to implement a large and detailed search space, as the dimension and resolution depend on the available computing resources.

20

The fuzzy Hough transform functions as a selection process to find observations which are to a certain extent in agreement. With this selection of inliers the velocity can finally be estimated through ordinary least-squares estimation. The model is the same as used to construct the network. However, the observations without consensus (i.e. outliers) are not used. The remaining observations can, nevertheless, still be misfits, such as from shadow casting, as no ice flow behavior is prescribed in the design matrix of equation 1.

25

3.3 Smoothing

Because the voting and least-squares adjustment in our implementation has no neighborhood constraints but is rather strictly per matching grid point, the velocity estimates contain systematic, gross and random errors, though reduced with respect to the initial data set. ~~Resulting~~ This least squares adjustment with voted displacements results in a spatio-temporal stack of velocity ~~displacements, constructed with estimates that have~~ a regular temporal spacing ~~that can thus be better analyzed~~. However, due to undersampling as a result of cloud cover, the stack might have holes or ill-constrained estimates. We apply a spatial-temporal

30

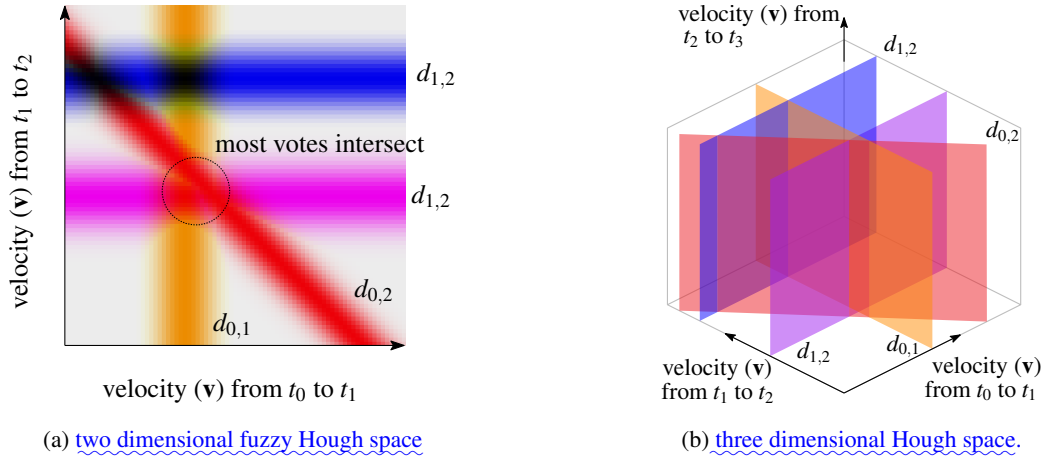


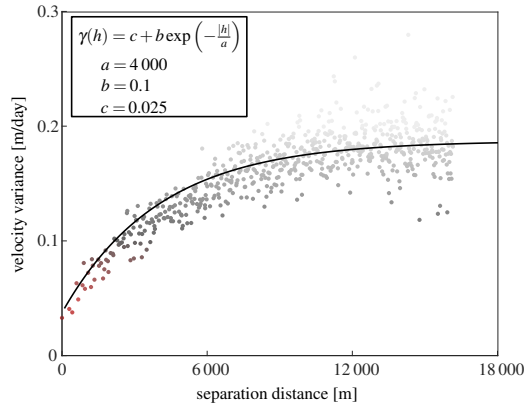
Figure 4. Two modifications used in this study, which deviate from the standard Hough-transform as given by the toy example in figure 3. (a) the change from a clear ideal line, towards fuzzy weights. (b) the extension towards a higher dimension, in this case the lines transform to planes, that intersect with each other.

smoothing taking both spatial and temporal information into account using the Whitacker approach that tries to minimize the following function (S),

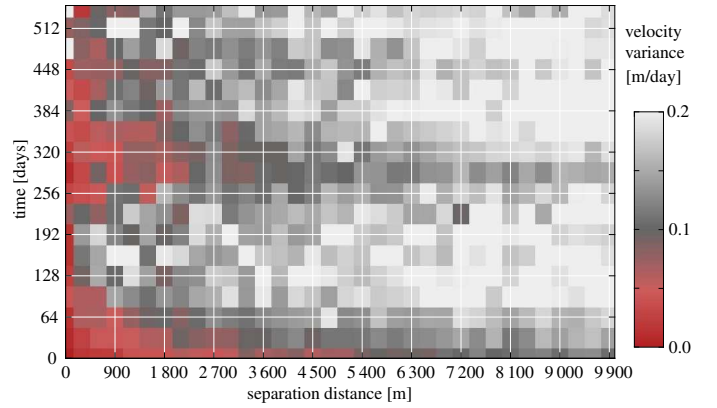
$$S = \sum_i w_i (\hat{x}_i - x_i)^2 + \lambda \sum_i (\Delta^2 x_i)^2. \quad (2)$$

This formulation is the one dimensional case, where for every location (x , where i denotes the index of the grid) an estimate
 5 (denoted by \hat{x}) is searched for that minimizes S . Here Δ denotes the difference operator, thus $\Delta x_i = x_{i+1} - x_i$. Similarly, Δ^2 is the double difference, describing the curvature of a signal ($\Delta^2 x_i = x_{i+1} - 2x_i - x_{i-1}$). For the implementation of this method we use the procedure presented by Garcia (2010). This routine has an automatic procedure to estimate the smoothing parameter (λ) and has robust adaptive weighting (w). Its implementation is conducted through a ~~discrete cosine transform~~ Discrete Cosine Transform (DCT), which eases the computational load. Furthermore, a discrete cosine transform operates both globally
 10 and locally, and in multiple dimensions. Lastly, in order to include all data at once, the vector field is configured as a complex number field.

The smoothing parameter (λ) is operating over both ~~the space and time dimensions, but it~~ space (2 dimensions) and time (1 dimension), but the smoothing parameter is a single scalar. Hence in this form it would be dependent on the choice of
 15 grid resolutions in time and space. Therefore, in order to get rid of this dependency and ~~fulfil~~ fulfill the isotropy property, the spatial and temporal dimensions are scaled. For this scaling estimation we construct an experimental variogram and look at its distribution (Wackernagel, 2013). Along the spatial axis, the variogram in Figure 5a shows spatial correlation up to about 10 kilometers. This sampling interval is then used to look at the spatio-temporal dependencies, as illustrated in Figure 5b. Around



(a) Experimental variogram in the spatial domain



(b) Spatio-temporal experimental variogram

Figure 5. Experimental variograms over a slice of the stack and over a subset of the spatio-temporal stack. The colorbar along the axis of figure 5a, is used for the coloring of figure 5b. The aspect ratio of figure 5b is at the resolution of the produced data-cube (32 days by 300 meters). In order to make this isotropic, the vertical axis needs to extent, so the spread is similar in both directions.

a year temporal distance, one can see a clear correlation, which corresponds to the seasonal cycle of glacier velocity. From this variogram a rough scaling was estimated, and the anisotropy was set towards a factor of four. In our case the pixel spacing is 300 meters and the time separation is 32 days.

5 4 Results

4.1 Method performance

Two different temporal networks (combinations of time intervals) can be formulated in order to calculate a velocity estimate, as is described in section 3.1. The "open" configuration includes a greater number of velocity estimates from image pairs, but this has consequences. It results in a more complete dataset, with coherent velocity fields, but when short-term glacier dynamics occur, temporal resolution of the event may be smeared. ~~As an example, velocity estimates from two different network configurations are-~~

Our methodology thrives when several displacement estimates are present, otherwise testing is not possible. This prerequisite is especially apparent when a "closed" configuration is used, then the collection of displacements are reduced. In order to show this dependency a slice is shown in Figure 6 with circles highlighting selected effects. For example, a longer stretch of the speeding-up section, in this time interval the Western side has several overlapping displacement estimates in space and time, while this is limited at the Eastern side. The exact distribution of the available data for this time interval is also highlighted in

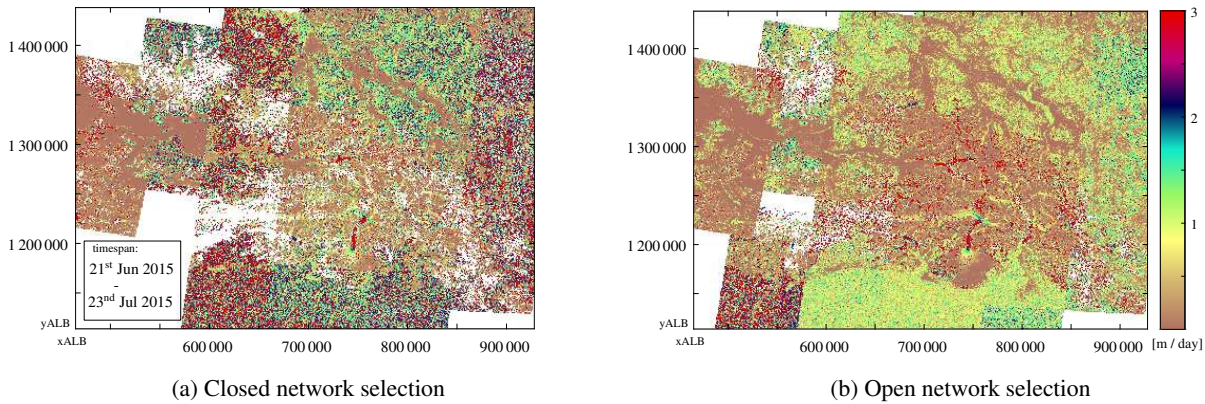


Figure 6. Least square estimates of velocities with different network configurations, see Figure 3 for a toy example of the terminology. The study region spread over several UTM zones, hence the dataset is in Albers equal-area projection (ALB) with North American Datum 83. White regions correspond to data without an estimate.

Figure A1, within the appendix. The lack of data can be seen (A) on Fisher Glacier. In the "closed" configuration, this section is slimmer and has more details at the western border of both both estimates. On the eastern side the glacier velocity structure is more clearly visible. Especially in the "open" configuration.

- 5 In Figure 7 more details of the two different configurations are shown. However, by including more imagery as with an open configuration, the velocity estimates are more complete ~~(B) and are better,~~ as can be seen along the outlets of Guyot Glacier. In the same subsection, not only the completeness increase but also the consistency, which is mostly apparent by coherent low velocities over stable ground ~~(C).~~ With more displacement vectors in the configuration, smaller-scale details, such as tributaries ~~(D) flowing into the large Kaskawulsh glacier,~~ become more apparent. Hence, depending on the application, the configuration can estimate a more complete velocity field or alternatively a temporally more precise product. evident.
- 10

~~Least squares estimation —Spatio-temporal smoothing Raw velocity estimates and smoothed estimates (taking space and time into account, see equation 2 and Figure 5):~~

- The spatio-temporal least-square estimates ~~are still noisy or have outliers with~~ still have to some extent variation in direction and amplitude as well as outliers. Therefore spatial-temporal smoothing is applied, in order to extract a better overview from the data, as is described in section 3.3. The results ~~for one time interval are of this smoothing for the same time interval as in Figure 6 is~~ shown in Figure ?? ~~and again some specific details are highlighted and discussed below~~ 7.
- 15

- ~~Because the~~ In the smoothing procedure the surroundings of glaciers ~~are stable,~~ which are stable- or slow moving terrain ~~is included in the smoothing, are included.~~ Consequently, high speed-ups such as on the surge bulge on the Steele glacier ~~(E) are dampened~~ are dampened, as in this case it has a confined snout within a valley. They do not disappear, as the signal is strong and
- 20

5 persistent over time, but damping does occur. Furthermore, because the smoothing makes use of the temporal domain as well, small features emerge out of the noise such as flow tranches in the snow-covered upper parts of Kaskawulsh glacier (F). Also small areas of stable consistent fast flow like the icefall of Gates glacier, and the neighbouring staircase icefall of Root glacier (G), or the icefall between Dusty and Lowell glacier (H) get better pronounced in the smoothed data. Steps in along-track direction (I) are reduced because stable ground is motionless over time. In the along-track direction, these steps are filtered as for most of the data the overlap is from the same path and thus acquired at the same time. Also random measurements over Vitus lake (J) are smoothed, as most of the estimates have a random velocity magnitude and orientation. An aspect of concern is the velocity bulge retreat of Guyot glacier (K); its front many outlet glaciers; their fronts with large velocities ~~seems seem~~ to retreat in the smoothed version, while this is not the case for the original least-squares estimate. This is an effect caused by sur-
 10 rounding zero-valued water bodies. ~~However, this effect is not at play at every glacier, as can be seen for example~~ Damping also occurs at turns such as at Hubbard glacier (L). ~~In general, this small damping effect of water bodies seem to be outweighed by the advantages from~~, the mask does reduce the effect of stable terrain, but has no specific glacial properties. The isotropy function included into the smoother might work for the direct neighborhood, but breaks down for fast moving outlets. For this smoother, weights are given in relation to neighborhood. However for glacier flow, the magnitude might be more similar in
 15 the direction of the flow lines, while in cross-flow direction the orientation might be more similar. This relation is not included in the smoother and therefor damping occurs. Nonetheless, the damping effect of the smoothing outweighs the advantage of having a clear image and overview over the mountain ranges.

20 Because the ~~stable surrounding~~ terrain, which has no movement, impacts the smoothed glacier velocity estimates in particular for surge and calving fronts (i.e. for strong spatial velocity gradients), the smoothing can be supported by a glacier mask. In our case, this mask is a rasterization of the Randolph Glacier Inventory (Pfeffer et al., 2014), with an additional dilation operation, to take potential advance or errors in the inventory into account. The difference in result for this masking procedure is shown in Figure ??7, with some highlights. ~~Unfortunately, speckles emerge in the estimates (M), though these only occur in the slower glacier areas. On the other hand, the masking makes it possible that individual flow branches become apparent, as~~
 25 ~~can be seen for the tributaries of Barnard glacier (N). Also the surge bulges of Steele glacier (O), for example, become more pronounced. Still, the front of fast velocities of Malaspina Glacier that is reaching into the piedmont lobe (P) are taken a bit back into the Seward Threat presumably because higher frequencies are given a higher weight when a mask is used. All these steps were taken to arrive at the resulting velocity sequence which reveals glaciological dynamic changes.~~ In general, the mask does compensate a little bit for the damping, but because the regions are mostly covered with ice its effect is small.

30

4.2 Glaciological observations

When looking at the spatio-temporal dataset some patterns that are observed by others also appear in our dataset. For example, the full extent of Bering glacier slows down, as highlighted by Burgess et al. (2012), however our time series cover a period where the full deceleration towards a quiescent state can be seen. This observation of a slow down can also be made for Donjek

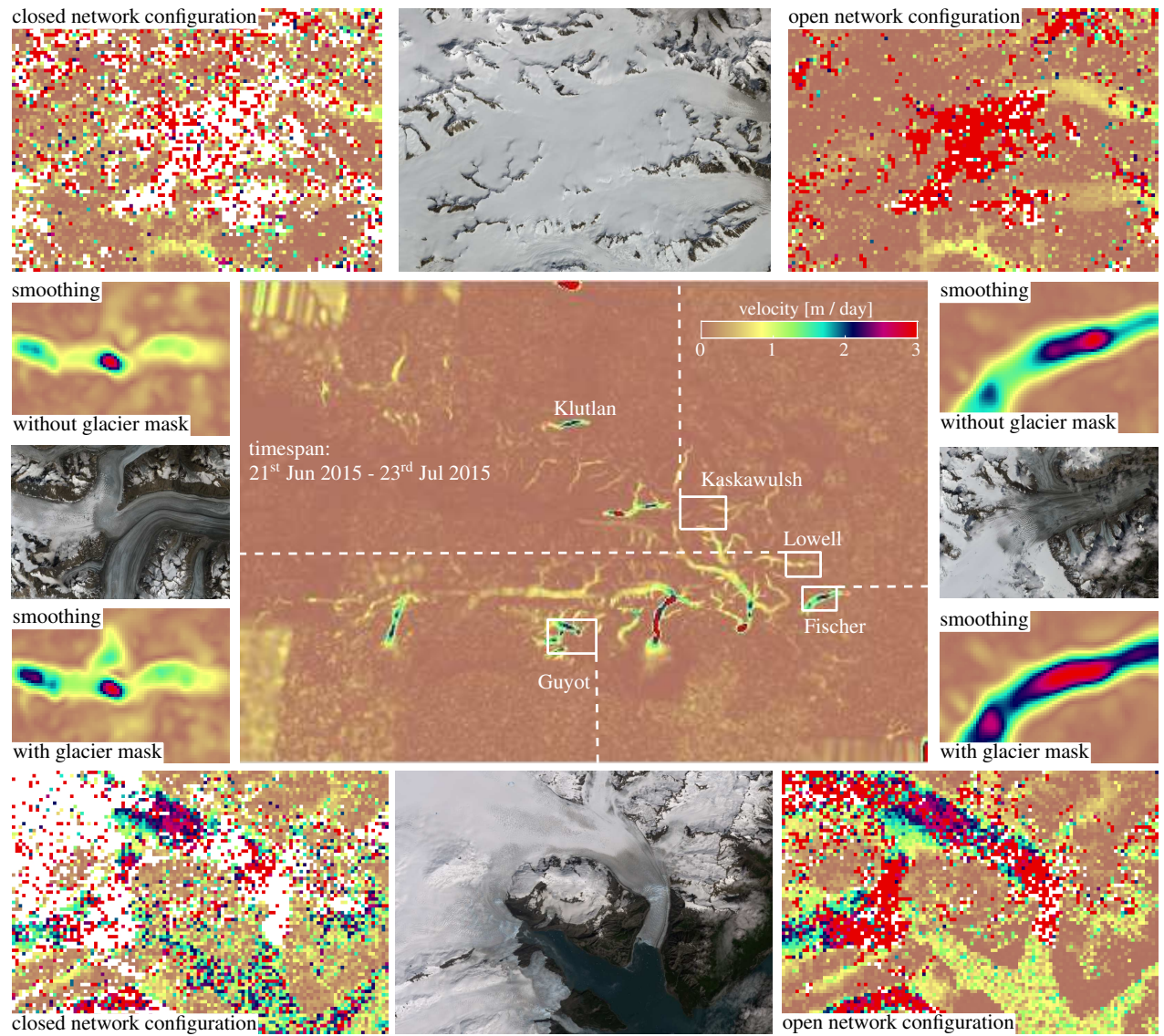


Figure 7. Spatio-temporal Overview map of different sections for the time interval which is similar to Figure 6 (i.e: 21st of June till 23th of July 2015). The surrounding zoom-ins are from the same time period, but with different configurations (open vs closed) or smoothing without settings (glacier mask vs. no-mask).

–Spatio-temporal smoothing-with mask Smoothed grid-of-velocities, with masking of non-glaciated terrain (a) and with no masking (b):

Glacier (Abe et al., 2016) and Loogan Glacier (Abe and Furuya, 2015), see also Figure ?? for the velocity evolution at a point. In the time period covered by our study some surges appear to initiate. For example, our dataset comprises a surge traveling along the main trunk of Klutlan Glacier, see Figure ??,??&??.

20 Jul 2014 – 21 Aug 2014 – 1 Mar 2015 – 2 Apr 2015 – 23 Jun 2016 – 25 Jul 2016 Snapshots of ice speeds at different time instances from a data compilation for the summer 2016 surge occurring on Klutlan Glacier.

When looking at the surge occurring at Klutlan Glacier, the dataset does capture the evolution of its dynamics, as can be seen in Figure 12. The surge ignition seems to happen in the central trunk of the glacier, as the surge front progresses (with steady bulk velocities around four meters per day). The surge also propagates upwards mainly into the most westwards basin. The eastward basin does also increase in speed, but to a lesser extent, while the middle basin of this glacier system does not seem to be affected significantly. Though, its extent is mostly pronounced in the lower part of the glacier, as the upward creep of velocity increase is limited and does not reach the headwalls of any basin. In Landsat imagery of late 2017, there is no indication of any heavily crevassed terrain in the upper parts of these basins, which supports the hypothesis of a partially developed surge.

Speed along flowline of Klutlan Glacier, line given in Figure 11a. – Moraine positions The speed over the central flowline of Klutlan Glacier. The markings of this flowline are shown in figure 11a. In Figure 12b the convergence of different basins of the Klutlan glacier is shown, data is from a RapidEye acquisition on the 5th of September 2013 and at the 23rd of September 2017. For comparison the 2013 image is overlain with the two moraine positions.

When looking at the velocities over the flowline of the glacier, as in Figure 12a, both the extension downstream as well as the upstream progression of the surge can be seen. Most clearly, the surge front seems to propagate downwards with a steady velocity, but seems to slow down around the 50 km mark. Here, the glacier widens but the surge does continue. This suggests glacier depth is homogeneous here or glacier depth does not seem to play an important role in surge propagation.

At the end of the summer of 2016 the tributary just north of the 20 kilometer mark seems to increase in speed. This can be confirmed by tracing the extent of the looped moraines, as in Figure 12b. In the same imagery the medial moraines of the meeting point of all basins are mapped as well. Here, the moraine bands before and after the event align well in the junction, indicating a steady or similar contribution over the full period. Or an insignificant effect, as the surge has not been developing into very fast flow. In contrast, the lower part of this glacial trunk has moraine bands that do not align.

The surge behavior we observe for Klutlan Glacier is not unique and can be observed at other glaciers within the mountain ranges. For Fisher Glacier, a similar increase in speed is observed within the main trunk that later propagates downstream as well as upstream. Similarly, this seems to be the case for Walsh Glacier, where a speed increase at the eastern trunk triggers a surge on the northern trunk leading to glacier-wide acceleration. On its way the fast flowing ice initiates surges in tributaries downflow, but the surge extent also creeps upslope and tributaries that were more up glacier from the initial surge start to speed up. This is also true for Steele Glacier, that develops into a surge and Hodgson Glacier is entrained into this fast flow as well.

Spread of variation in flow speed over the observed period (using the difference between the 20th and 80th percentile). Different dynamic glaciers are encircled, and the square indicates the tributary glacier shown in Figure C1.

These analysis were best observed with the help of an animation (see supplement) but the identification was done through a simple visualization of the spread of flow speed, see Figure 13. Here the surging glaciers stand out, but also most of the tidewater glaciers, which have a highly dynamic nature at their fronts. Not only large glaciers can be identified also the dynamics in smaller tributaries. For example, a tributary of the Chitina Glacier seems to have pushed itself into the main trunk within a two-year time-period, see figure C1.

Apart from these already known dynamics at these glaciers, additional patterns are observed. At the Nizina-Regal-Rohn glacier system in the eastern Wrangell Mountains (Figure 13), formerly negative mass balance glaciers (Das et al., 2014) appear to have generally increased in speed, but are decelerating as our data record begins. A brief period of speed-up in 2014 is followed by an extended period of low variability. These two glaciers then seem to alternate in their summer speed magnitude, see animation and Figure ??.

5 Validation

4.1 Validation of post-processing procedures

The voting used in our procedure is assessed through validation with an independent velocity estimate. Terrestrial measurements are limited in the study area, hence we use satellite imagery from RapidEye satellites over a similar timespan. Data from this constellation has a resolution of 5 meters and through processing in a pyramid fashion, a detailed flow field can be extracted. This velocity field functions as a baseline dataset to compare the GoLIVE and the synthesized data. Here we will look at a section of Klutlan Glacier, which flows from west to east, thus aligned with one of the map axis. The velocity of this glacier is, due to its surge, of significant magnitude, and therefor will have a wide spread in the voting space.

The two RapidEye images used over Klutlan Glacier were taken on 7th of September, and on 7th of October 2016. To retrieve the most complete displacement field of the glacier, we used a coarse-to-fine image matching scheme. The search window decreased stepwise (Kolaas, 2016) and the matching itself was done through Orientation Correlation (Heid and Kääb, 2012a). At every step a local post-processing step (Westerweel and Scarano, 2005) was implemented, to filter outliers. The resulting displacement field over one axis (that is x, the general direction of flow) for this period is illustrated in the top upperleft inset of Figure 8.

For the voting of the Landsat 8-based GoLIVE data, an overlapping time period was chosen, from the 11th of September up to the 13th of October 2016, nearly but not exactly overlapping with the RapidEye pair. An open “open” configuration was used for the voting, meaning all GoLIVE displacement fields covering this time period were used, resulting in a total of 36 velocity fields involved in the voting. The voted estimates and scores are illustrated in the third and fourth panel at the lower panels of Figure 8. ~~The voted estimates have gray patches within, as these are estimates which had not enough displacement data to get a reliable estimate of equation 1, or are on stable terrain.~~ Voting scores are high over the stable terrain, but low over the glacier trunk. To some extent this can be attributed to the surge event. The median over the stack and the median of

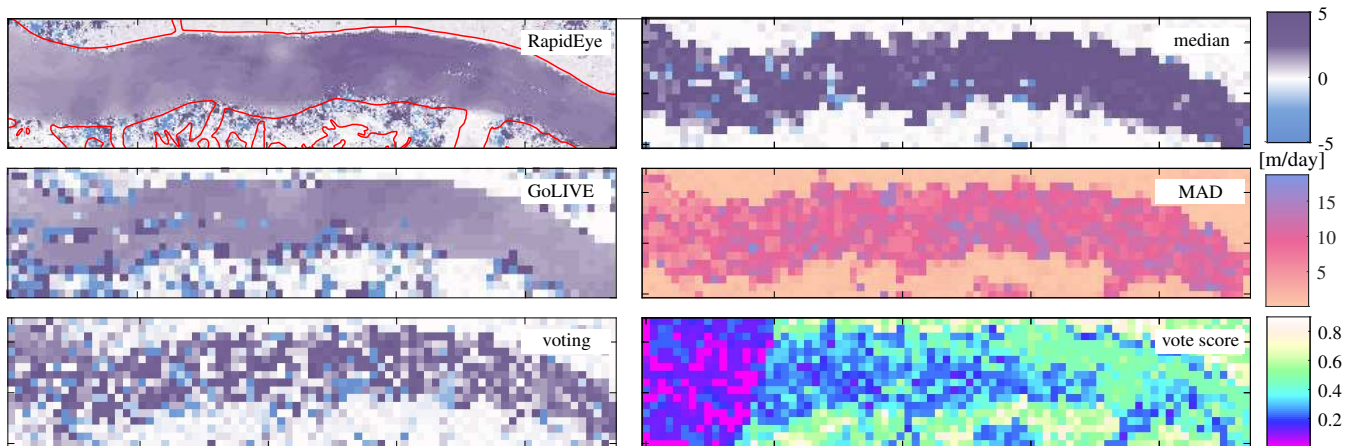


Figure 8. Monthly displacement in x-direction over the Klutlan Glacier (for location see Figure 7) using several data sources and velocity assessment schemes. The top panel shows velocities derived from two RapidEye images. Glacier borders are outlined in red. The second figure shows displacement estimates from a GoLIVE dataset (input), and the resulting voted estimate of a combination of 36 GoLIVE datasets (output). Its corresponding voting score of these estimates is shown in the fourth figure. The last two figures show the median ~~over the full dataset, and the median~~ of absolute deviation (MAD) ~~and the median over the full dataset~~. These last two results would typically be used for data exploration.

absolute differences (MAD) are shown ~~in the lower two panels on two panels at the right side~~ of figure 8. These two measures are frequently used to ~~produce and~~ analyze multi-temporal datasets (Dehecq et al., 2015).

When looking at this time period for the GoLIVE data, a clear displacement field is shown, as both images (11th Sept., 13th Oct.) from Landsat 8 were cloud free. The pattern is in close agreement with the RapidEye version. When looking at the voted estimate a similar pattern is observable but more corrupted ~~and some data is not available~~. In some respect the median estimate ~~appears to produce a better mapping. However the spread grasps the direction of flow, but over estimates the velocity, probably due to the surge that occurs. The spread might confirm this,~~ as shown by the MAD, ~~as this~~ is considerable and will not help to justify which displacement is correct. Furthermore, the voted estimate is an estimate over a short interval, while the median estimate is calculated over the full stack.

To better assess these results, the distribution of both ~~two-dimnstonal~~ displacement fields are illustrated in Figure 9a and 9b. Two groups of displacement ~~states-regimes~~ are clearly visible, a ~~cluster~~ showing little movement, or a ~~flock of displacements with a~~ dominant movement eastwards. The voted distribution has more spread, and ~~more~~ outliers are present, but in general the mapping has the correct direction and magnitude. When the x-component of these displacements are compared against the RapidEye displacements ~~a-~~ ~~The median of this difference is 0.45 mtr/day for the voting and 0.27 mtr/day for the good GoLIVE pair. A~~ similar trend can be seen ~~-These comparisons are shown in Figure ?? and ??, where again a similar pattern is visible.~~

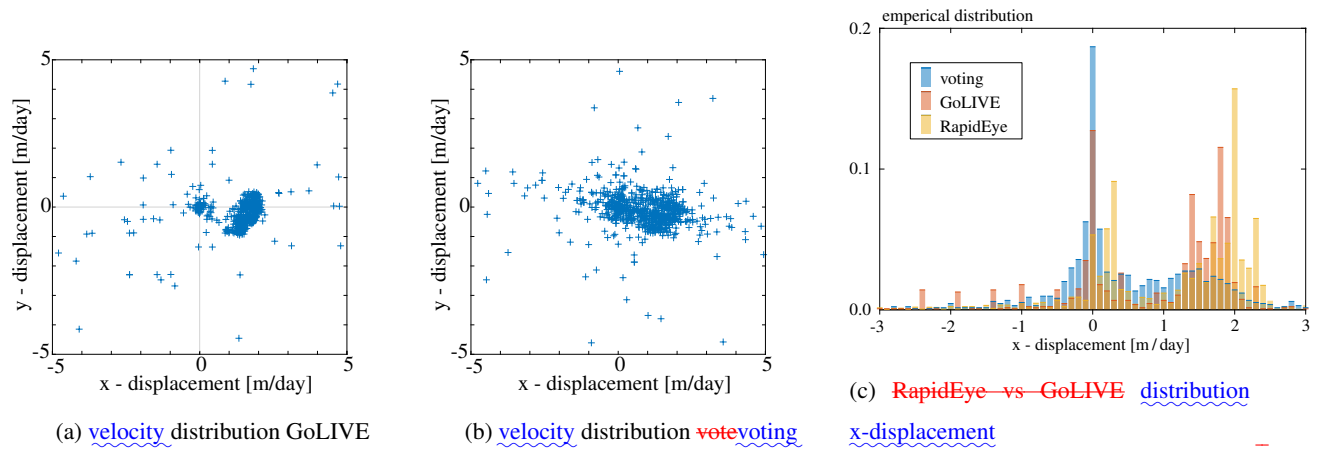


Figure 9. RapidEye ~~vs~~ voting Figure 9a & 9b show the distribution of velocities for a section of Klutlan glacier, their map view are shown in Figure 8. In figure 9c the same x-component data as in Figure 8 is shown, but now the distributions are shown.

Figure 9a & 9b show the distribution of velocities for a section of Klutlan glacier, their map view are shown in figure 8. In figure ?? & ?? the same data, but now only for the x-component is set against the validation displacement.

The 9c, which again shows the distributions are similar. Hence, the illustrated validation do show the voting scheme is able to grasp the general trend of the short term glacier flow through a large stack of corrupted velocity fields. The pair shown by for the GoLIVE. While the voted estimate is worse than the clean GoLIVE estimate, we stress that the chosen GoLIVE dataset is one clean example, while a large extent of these velocity fields are corrupted with clouds within a large collection of partly corrupted displacement fields. Hence it is a step towards efficient information extraction, though the implemented voting has many potential aspects of improvements.

4.2 Validation over stable terrain

A second component for validation is an analysis of the stable ground, and the effect of the smoothing of the voted estimates.

10 The non-glaciated terrain are the locations stemming from a mask. A similar mask, also based on the Randolpg Randolph glacier inventory, is used within the GoLIVE pipeline. Here, displacements over land and non-glaciated terrain are used to co-align the imagery Fahnestock et al. (2016), as geo-location errors might be present in the individual Landsat imagery. The fitting is done through a polynomial fit, still, in general these should be random, and its mean should be zero.

15 The distribution of these stable terrain measurements, more than 40-65 million in total, are illustrated in figure 10. Similar to the visual inspection already illustrated in Figure 6b, the distributions also show a clear improvement. This is a welcome property as the voted estimates still seem to be noisy with significant outliers.

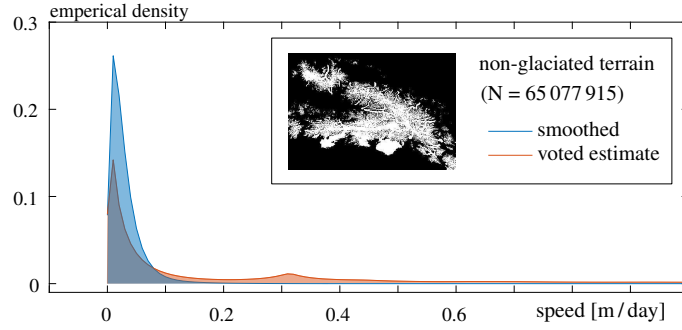


Figure 10. Distribution of the speed over stable terrain, for displacements extracted from the voting process, or after spatial temporal smoothing. The mask used is within the inset.

4.3 Glaciological observations

When looking at the spatio-temporal dataset some patterns that are observed by others also appear in our dataset. For example, the full extent of Bering glacier slows down, as highlighted by Burgess et al. (2012), however our time series cover a period where the full deceleration towards a quiescent state can be seen. This observation of a slow down can also be made for Donjek Glacier (Abe et al., 2016) and Logan Glacier (Abe and Furuya, 2015), see supplementary video. In the time period covered by our study some surges appear to initiate. For example, our dataset comprises a surge traveling along the main trunk of Klutlan Glacier, see also Figure B1&B2 in the appendix.

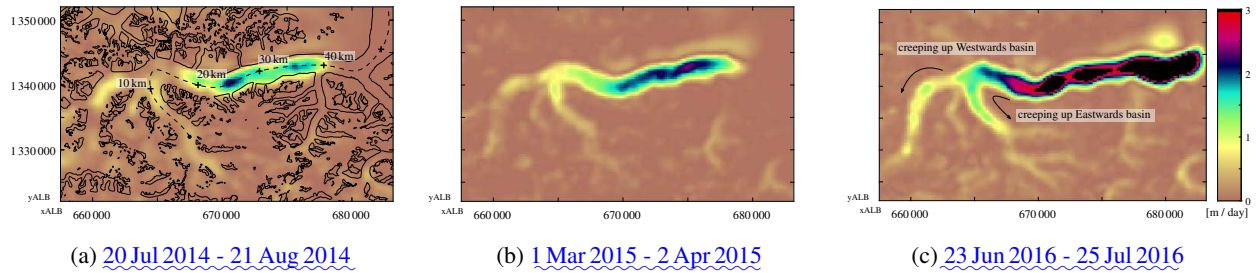


Figure 11. Snapshots of ice speeds at different time instances from a data compilation for the summer 2016 surge occurring on Klutlan Glacier (for location see Figure 7). The used GoLIVE data configuration is shown in Figure A1, and the data is from the smoothed dataset.

When looking at the surge occurring at Klutlan Glacier, the dataset does capture the evolution of its dynamics, as can be seen in Figure 12. The surge initiation seems to happen in the central trunk of the glacier, as the surge front progresses downwards (with steady bulk velocities around four meters per day). The surge also propagates upwards mainly into the most westwards basin. The eastward basin does also increase in speed, but to a lesser extent, while the middle basin of this glacier system does not seem to be affected significantly. Though, its extent is mostly pronounced in the lower part of the glacier, as the upward

creep of velocity increase is limited and does not reach the headwalls of any basin. In Landsat imagery of late 2017, there is no indication of any heavily crevassed terrain in the upper parts of these basins, which supports the hypothesis of a partially developed surge.

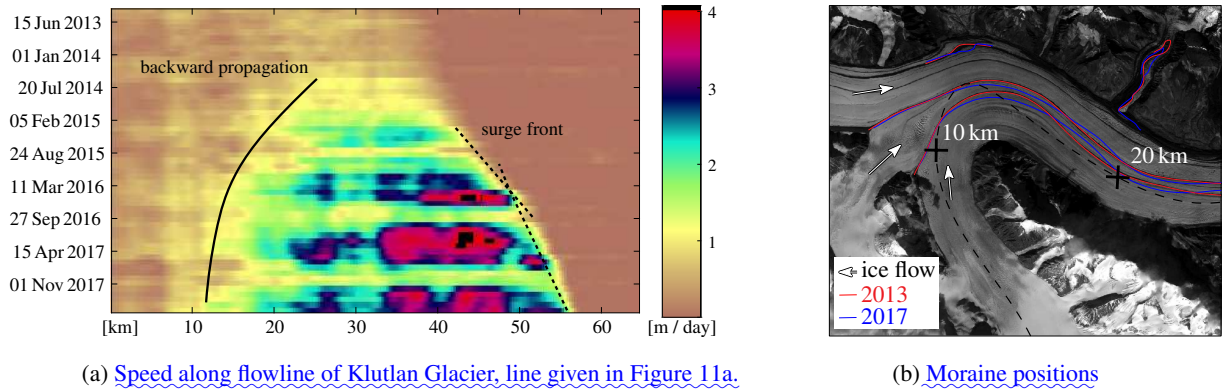


Figure 12. The speed over the central flowline of Klutlan Glacier. The markings of this flowline are shown in figure 11a. In Figure 12b the convergence of different basins of the Klutlan glacier is shown, data is from a RapidEye acquisition on the 5th of September 2013 and at the 23rd of September 2017. For comparison the 2013 image is overlain with the two moraine positions.

When looking at the velocities over the flowline of the glacier, as in Figure 12a, both the extension downstream as well as the upstream progression of the surge can be seen. Most clearly, the surge front seems to propagate downwards with a steady velocity, but seems to slow down around the 50 km mark (see dashed line in Figure 12a), as shown by the break in slope. Here, the glacier widens but the surge does continue. This can suggest ice thickness is homogeneous here or ice thickness does not seem to play an important role in surge propagation.

At the end of the summer of 2016 the tributary just north of the 20 kilometer mark of klutlan Glacier seems to increase in speed. This can be confirmed by tracing the extent of the looped moraines, as in Figure 12b. In the same imagery the medial moraines of the meeting point of all basins are mapped as well. Here, the moraine bands before and after the event align well in the junction, indicating a steady or similar contribution over the full period. Or an insignificant effect, as the surge has not been developing into very fast flow. In contrast, the lower part of this glacial trunk has moraine bands that do not align.

The surge behavior we observe for Klutlan Glacier is not a special mechanism and similar propagation behaviour can be observed at other glaciers within the mountain ranges. For Fisher Glacier, a similar increase in speed is observed within the main trunk that later propagates downstream as well as upstream. Similarly, this seems to be the case for Walsh Glacier, where a speed increase at the eastern trunk triggers a surge on the northern trunk leading to glacier-wide acceleration. On its way the fast flowing ice initiates surges in tributaries downflow, but the surge extent also creeps upslope and tributaries that were more

up-glacier from the initial surge start to speed up. This is also true for Steele Glacier, that develops into a surge and Hodgson Glacier is entrained into this fast flow as well.

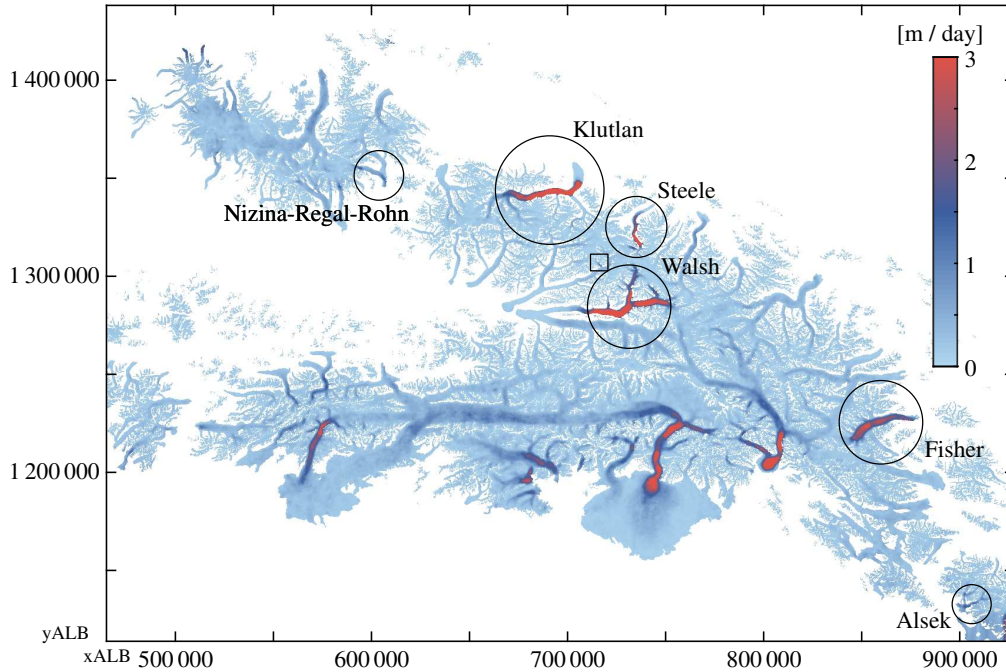


Figure 13. Spread of variation in flow speed (using the difference between the 20th and 80th percentile) over the observed period (2013-2018). Different dynamic glaciers are encircled, and the square indicates the tributary glacier shown in Figure C1.

These analysis were best observed with the help of an animation (see supplement) but the identification was done through a simple visualization of the spread of flow speed, see Figure 13. Here the surging glaciers stand out, but also most of the tidewater glaciers, which have a highly dynamic nature at their fronts. Not only large glaciers can be identified but also the dynamics in smaller tributaries. For example, a tributary of the Chitina Glacier seems to have pushed itself into the main trunk within a two-year time-period, see figure C1.

5 Discussions

Synthesized velocity estimates from our post-processing chain of GoLIVE image-pair velocity determinations are dependent on the number and distribution of measured displacements (see Appendix A). Surface features in the same season have similar appearances, thus good displacement fields can be estimates from imagery which are a year apart, as is typical working practice (Heid and Kääh, 2012b; Dehecq et al., 2015). Such annual displacements fields could be helpful when areas are cloud

covered for long periods, such estimates can then function as gap fillers in the least squares estimation. Furthermore, the adjustment model assigns equal weighting to individual displacements if no other information is available. Hence some velocity changes might be missed or blurred in time. Such a drawback might be overcome with spatial constraints, such as an advection pattern imposed on the data, although this would increase the amount of post-processing.

5

Another limitation of our method concerns the glacier ~~dynamics~~kinematics that are constrained by our model. In the current implementation the deviation (σ) is dependent on the time interval. From a measurement perspective this makes sense, but the model does thus not inherently account for speed change. Hence, for long time intervals the fuzzy function forces the deviation to become slim. This reduces the ability to get a correct match, especially when glacier-dynamical changes are occurring. It might therefore be worthwhile to explore the improvements occurring when a fixed deviation is set instead. In addition, the low score over glaciated terrain, might indicate the deviation of the displacement is set ~~to~~too tight. When this deviation is given higher bounds, the score increases and such parameter can then be used as a meaningful measure.

10

The smoothing parameter used is a single global parameter that assumes isotropy. In order to fulfill this property the spatio-temporal data has been scaled accordingly. However, when severe data gaps are present, the velocity dataset still seems to jump. This will improve when more data is available, for example by including Sentinel-2 data or incorporate across-track matching (Altena and Käab, 2017a). An increase in votes will result in a better population of the vote space, as can be seen in Figure 6. In addition, the voting score, that is the consensus score in the Hough space, can be used for the initial weighting for the smoothing procedure (w in equation 2). This might reduce the amount of iterations used by the robust smoother. Nonetheless, much improvement can be made by the smoother, as it has a simple neighborhood function and has no knowledge of glacier specific properties.

20

~~In the Wrangell mountain range, Armstrong et al. (2017) found a significant speed-up in summer for the lower part for most large glaciers. We use the same data, and also see these speed-ups, but not every year. This might indicate that for these glaciers an efficient subglacial system is not developed each year, hence storage should occur. Such storage would be in line with the other glaciers in this region that are of surge-type. Also with our post-processing it seems that signals from smaller or slimmer glaciers such as Copper Glacier can be picked up. And this glacier can be clearly identified as a speedup glacier type.~~

25

6 Conclusions

In the ~~last~~past couple of years the increase in the number of high quality optical satellite systems have made it possible to extract detailed and frequent velocity fields over glaciers, ice caps and ice sheets. The GoLIVE dataset is a repository of such velocity fields ~~available derived from Landsat 8, and available at low latency~~ for analysis by the community. Discovery and exploration of this resource can be complicated due to its vast ~~,unstructured~~ and growing volume, and the complexity of spatio-temporal changes of glacier flow fields. Hence, in this study we introduce an efficient post-processing scheme to

30

combine ~~such displacement fields ice~~ velocity data from different, but overlapping time-spans. The presented methodology is resistant to multiple outliers, as voting is used instead of testing. ~~Though as~~ However, since cloud cover can still hamper velocity estimation and spatial flow relations are not incorporated, the resulting synthesized ~~timeseries still have outliers. Therefore, we~~ time-series still have gaps or outliers. We use a data-driven spatio-temporal smoother to ~~enhance the~~ address this issue and
5 enhance the visualization of real glacier flow changes.

Our synthesized time-series has a ~~semi-monthly~~ monthly (32 days) temporal interval and a 300 meter spatial resolution. The ~~timeseries spans from time-series spans~~ 2013 ~~til 2017 to 2018~~ and covers the Saint Elias ~~Mountain range and its neighbours. Within these ranges, we could~~ Mountains and vicinity. Within this study area, we identify several surges ~~, among in~~ different
10 glaciers at different times and their development over time can be observed. Such details can even be extracted for small tributary glaciers. ~~Velocities~~ Even velocities for the snow-covered upper glacier areas are in general estimated ~~correctly, accurately.~~ Thus our synthesized time-series can provide an overview of where and when interesting glacier dynamics are occurring.

This study is a demonstration of the capabilities of ~~newly available~~ the new GoLIVE-type remote sensing products ~~. In this~~
15 ~~case we developed an effective tool to explore and discover glacier dynamics spanning a large region. Several glacier surges are identified and their development over time can be observed. The synthesized dataset has a semi-monthly resolution and is thus able to capture the seasonal evolution of glacier speed-ups and slow-downs, combined with an advanced data filtering and interpolation scheme.~~ We demonstrate that ~~it~~ our method can be implemented with ease for a large region, covering several mountain ranges. ~~Some velocity time series are highlighted as examples, but the dataset has much more information within.~~
20 ~~Furthermore, this dataset can be~~ The derived smoothed time-series data contains many subtle additional changes that could be investigated. If this time-series is combined with digital elevation model (DEM) time-series (Wang and Kääb, 2015), ~~and in this way ice fluxes can be estimated, it becomes possible to look at changes in ice flux in great detail.~~

The ~~demonstration of this study~~ presented velocity time-series has a high temporal dimension, especially in respect to the
25 sensor ~~specific 16-days same orbit~~ 16-day orbit repeat cycle. ~~Our procedure uses produced velocity fields exploiting geometric properties, and is thus not dependent on matching scores or other auxiliary data. Consequently~~ Though temporal or spatial data-gaps are still present (due to the short temporal interval, cloud cover or visual coherence loss) this might partly be addressed by enlarging the temporal resolution or through additional data, such as from Sentinel-2 (Altena and Kääb, 2017a). Fortunately, harmonization with other velocity datasets ~~from optical or SAR sensors~~ can be easily implemented. ~~This makes it~~
30 ~~possible to compose the patchwork of,~~ because our procedure uses only geometric information and are not dependent on sensor type. With our framework it is thus possible to make a consistent time-series composed of a patchwork of optical or SAR remote sensing products into a consistent time-series. Opening the opportunity to exploit the strengths of both SAR and optical satellite systems for glacier velocity monitoring. Especially when Sentinel-2 imagery and matching across orbits (Altena and Kääb, 2017a) is implemented. Then the temporal resolution might be reduced even further and a weekly resolution might be achievable for

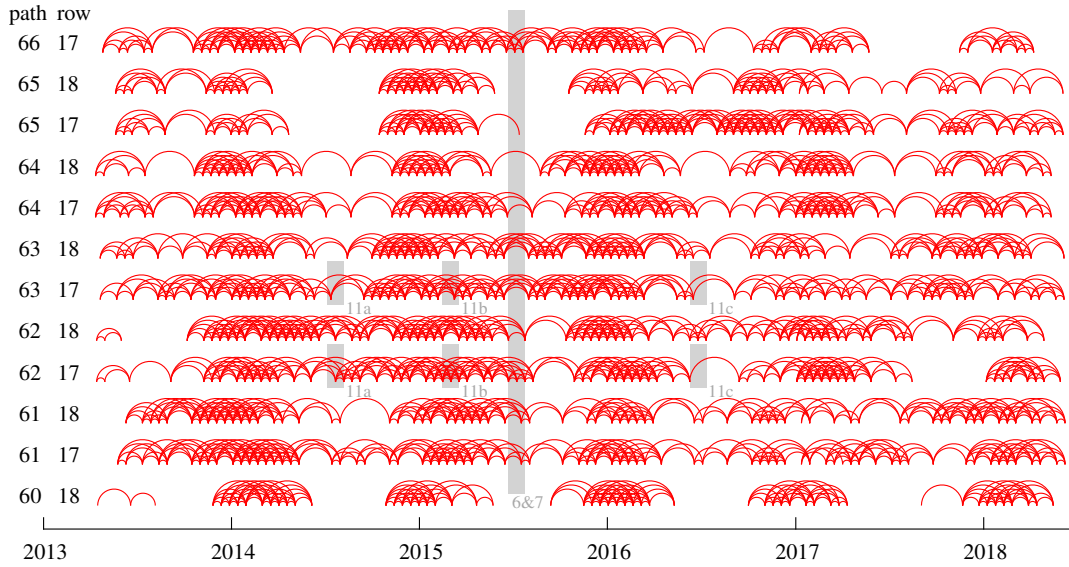


Figure A1. Node network of the velocity fields used in this study, for a specific path and row, 060 and 018, respectively, total of 2736 velocity fields.

fast-flowing glaciers.

Data availability. The Global Land Ice Velocity Extraction from Landsat 8 (GoLIVE) data is available at nsidc.org/data/golive (dx.doi.org/10.7265/N5ZP442B)

5 Appendix A: Used velocity pairs

The GoLIVE velocity fields used in this study are of a considerable amount. In order to get an overview of the data used, the velocity pairs are plotted in data graphs. In the example of Figure ?? the graph is annotated with dates, in order to better understand the other graphs corresponding to other path and rows which are given afterwards. Within the graph each gray arch represent a displacement field used in this study. The nodes of these arches come down to certain dates, where time is oriented counter clockwise. The colored lines represent year marks and are in correspondence with the colored footprints used in Figure 1. For sake of simplicity, dates are removed from all other graphs.

path-061-row-017 –path-061-row-018 –path-062-row-017 –path-062-row-018 –path-063-row-017 –path-063-row-018 –path-064-row-017 –path-064-row-018 –path-065-row-017 –path-065-row-018 –path-066-row-017 –

<u>↓ time- interval</u>	<u>60</u>	61		62		63		64		65		<u>66</u>	<u>path</u>
	<u>18</u>	<u>17</u>	<u>18</u>	<u>17</u>	<u>18</u>	<u>17</u>	<u>18</u>	<u>17</u>	<u>18</u>	<u>17</u>	<u>18</u>	<u>17</u>	<u>row</u>
<u>16</u>	<u>34</u>	<u>45</u>	<u>43</u>	<u>43</u>	<u>47</u>	<u>41</u>	<u>43</u>	<u>41</u>	<u>38</u>	<u>42</u>	<u>29</u>	<u>41</u>	
<u>32</u>	<u>34</u>	<u>40</u>	<u>37</u>	<u>46</u>	<u>49</u>	<u>46</u>	<u>39</u>	<u>38</u>	<u>34</u>	<u>40</u>	<u>27</u>	<u>39</u>	
<u>48</u>	<u>33</u>	<u>46</u>	<u>43</u>	<u>41</u>	<u>47</u>	<u>43</u>	<u>40</u>	<u>43</u>	<u>31</u>	<u>38</u>	<u>28</u>	<u>38</u>	
<u>64</u>	<u>27</u>	<u>47</u>	<u>42</u>	<u>41</u>	<u>42</u>	<u>44</u>	<u>40</u>	<u>36</u>	<u>26</u>	<u>38</u>	<u>25</u>	<u>38</u>	
<u>80</u>	<u>26</u>	<u>41</u>	<u>37</u>	<u>42</u>	<u>45</u>	<u>47</u>	<u>38</u>	<u>41</u>	<u>31</u>	<u>37</u>	<u>22</u>	<u>35</u>	
<u>96</u>	<u>21</u>	<u>38</u>	<u>38</u>	<u>38</u>	<u>43</u>	<u>42</u>	<u>40</u>	<u>40</u>	<u>35</u>	<u>30</u>	<u>21</u>	<u>35</u>	

Appendix B: Corrections done by smoothing

In the following section plots are given of speed variations over selected areas of interest, the locations are denoted in Figure ?? by red crosses. Every plot has a bloxplot with the least squares estimate of a selection of observations. This selection was done through consensus, by voting as described in the paper. The gray lines indicate the smoothed spatio-temporal velocity. These are multiple lines, as not one estimate is taken, but a surrounding area of 5x5 pixels wide neighborhood is taken. This is done in order to have sufficient data points and see the spread of the observations and the influence of the smoother. A comparison between both estimated and smoothed version is shown in the right graph of each figure, where the white line indicates the 1:1.

~~middle-part of Klutlan Glacier –lower part of Klutlan Glacier From our dataset the middle part of Klutlan seems to get in a surge, with heavy fluctuations, as several pulses come through. Two of these pulses seem to be visible as well in the lower part of Klutlan glacier, which had been moving slow prior to the surge.~~

~~middle part of Rohn Glacier –middle part of Regal Glacier Velocity evolution of the Rohn and Regal glacier that together make the Nizina glacier system. Both glaciers have every summer a small increase, however 2014 seems to stick out significantly for both. While, seems to have had another speed-up prior to 2013.~~

Appendix C: Tributary dynamics

From the constructed multi-temporal time-series the variance of a low and high quantile can be estimated. This gives an overview of ice masses with a highly dynamic nature. Through this simple analysis, an unknown tributary surge was identified. The push of this tributary into the medial moraine and its velocity record over time can be seen in Figure C1.

Author contributions. Bas Altena led the development of this study. All authors discussed the results and commented on the manuscript at all stages.

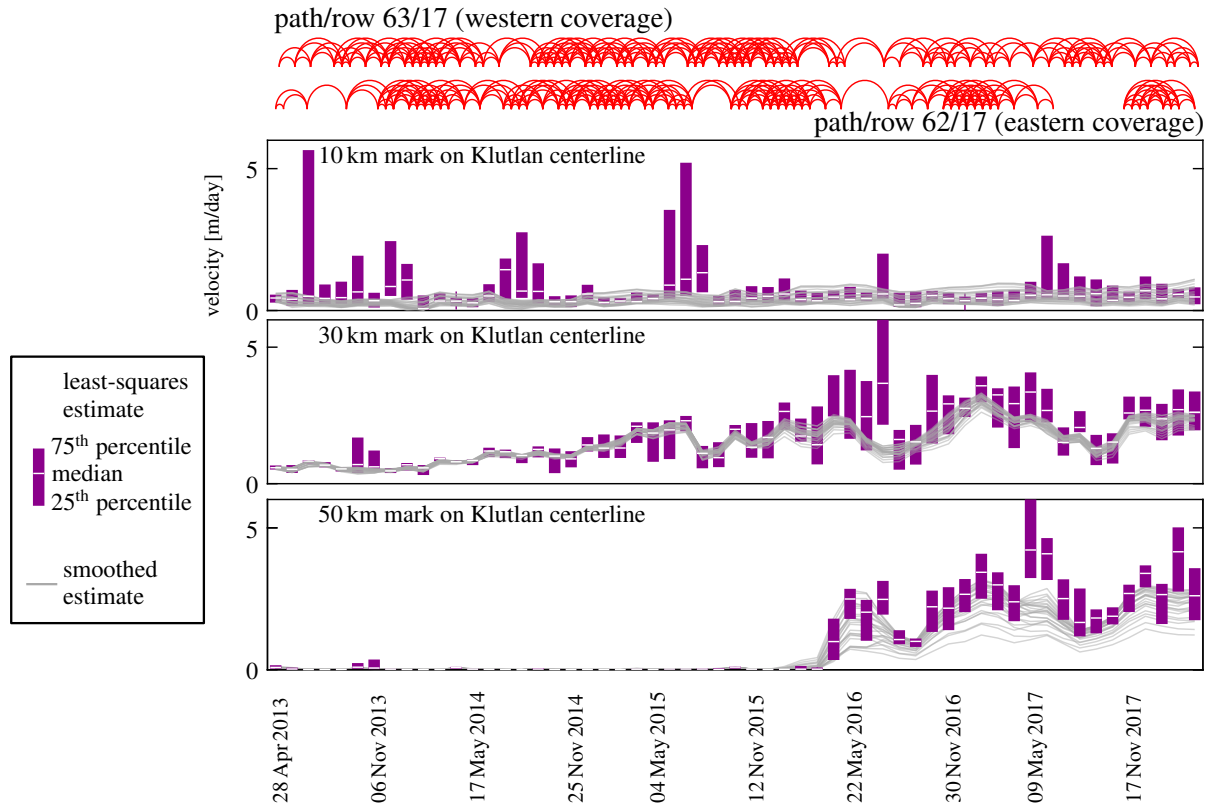


Figure B1. Location- Temporal evolution of three locations along the sampled-points-given-in-flowline of Klutlan Glacier. The data from the specific marker and its direct neighborhood is shown. In purple is the boxplot of this section data, while in gray, the smoothed estimates are plotted. For the location of the appendixreference marks, please see Figure 12. The background-image Above the figures, the network configuration of the GoLIVE data for the two covering Landsat scenes is a Google Maps-composite given.

Competing interests. All authors declare no competing interests.

Acknowledgements. The research of B.A. and A.K. has been conducted through support from the European Union FP7 ERC project ICE-MASS (320816) and the ESA [project-projects](#) Glaciers_cci (4000109873 14 I-NB) [and ICEFLOW](#). This work was supported by USGS award G12PC00066. The GoLIVE data processing and distribution system is supported by NASA Cryosphere award NNX16AJ88G. The authors

5 are grateful to Planet Labs Inc for providing RapidEye satellite data for this study via Planet's Ambassadors Program.

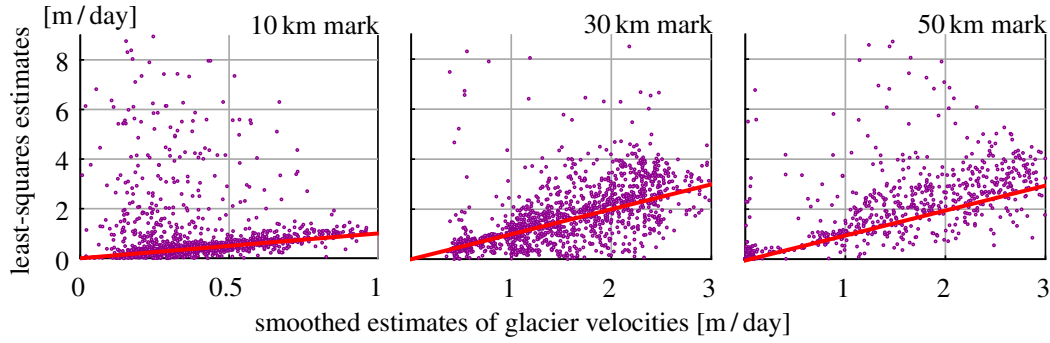


Figure B2. middle part of Logan Glacier The temporal data shown in Figure upper part of Klutlan Glacier. The velocity of Logan glacier slows down and goes into quiescence, but it still seems to have some velocity increase in summertime. For the upper part of Klutlan the summer velocities seem to increase as the surge develops over the years. B1 is combined and the least squares consensus is plotted against the smoothed estimate. The slanted line in all figures corresponds to the 1:1.

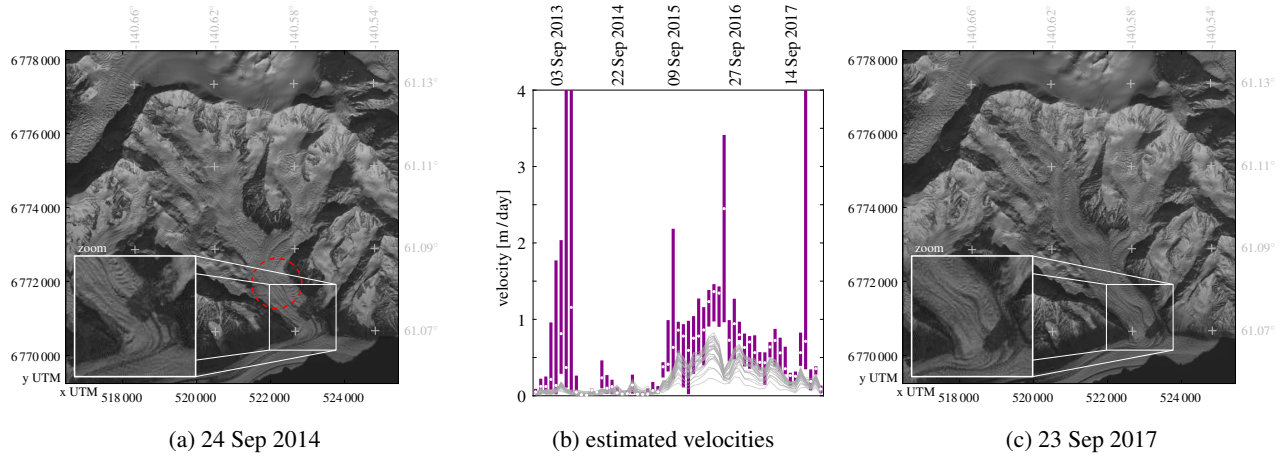


Figure C1. A tributary of Chitina Glacier surged in the period 2015-2016. Images are both acquired by Landsat 8, its location is indicated by a square in figure 13. The location of the time-series in figure C1b, is indicated by a red dashed circle in figure C1a.

References

- Abe, T. and Furuya, M.: Winter speed-up of quiescent surge-type glaciers in Yukon, Canada, *The Cryosphere*, 9, 1183–1190, <https://doi.org/10.5194/tc-9-1183-2015>, 2015.
- Abe, T., Furuya, M., and Sakakibara, D.: Brief Communication: Twelve-year cyclic surging episodes at Donjek Glacier in Yukon, Canada, *The Cryosphere*, 10, 1427–1432, <https://doi.org/10.5194/tc-10-1427-2016>, 2016.
- Altena, B. and Kääb, A.: Elevation change and improved velocity retrieval using orthorectified optical satellite data from different orbits, *Remote Sensing*, 9, 300, <https://doi.org/10.3390/rs9030300>, 2017a.

- Altena, B. and Kääb, A.: Weekly glacier flow estimation from dense satellite time series using adapted optical flow technology, *Frontiers in Earth Science*, 5, 53, <https://doi.org/10.3389/feart.2017.00053>, 2017b.
- Arendt, A., Luthcke, S., Gardner, A., O'neel, S., Hill, D., Moholdt, G., and Abdalati, W.: Analysis of a GRACE global mascon solution for Gulf of Alaska glaciers, *Journal of Glaciology*, 59, 913–924, <https://doi.org/10.3189/2013JoG12J197>, 2013.
- 5 Arendt, A. A.: Assessing the status of Alaska's glaciers, *Science*, 332, 1044–1045, 2011.
- Armstrong, W. H., Anderson, R. S., and Fahnestock, M. A.: Spatial patterns of summer speedup on South central Alaska glaciers, *Geophysical Research Letters*, 44, 1–10, <https://doi.org/10.1002/2017GL074370>, 2017.
- Baarda, W.: A testing procedure for use in geodetic networks, *Rijkscommissie voor Geodesie*, 1968.
- Berthier, E., Schiefer, E., Clarke, G. K., Menounos, B., and Rémy, F.: Contribution of Alaskan glaciers to sea-level rise derived from satellite
10 imagery, *Nature Geoscience*, 3, 92, <https://doi.org/10.1038/ngeo737>, 2010.
- Bieniek, P. A., Bhatt, U. S., Thoman, R. L., Angeloff, H., Partain, J., Papineau, J., Fritsch, F., Holloway, E., Walsh, J. E., Daly, C., et al.: Climate divisions for Alaska based on objective methods, *Journal of Applied Meteorology and Climatology*, 51, 1276–1289, 2012.
- Burgess, E., Forster, R., Larsen, C., and Braun, M.: Surge dynamics on Bering Glacier, Alaska, in 2008–2011, *The Cryosphere*, 6, 1251, <https://doi.org/10.5194/tc-6-1251-2012>, 2012.
- 15 Burgess, E. W., Forster, R. R., and Larsen, C. F.: Flow velocities of Alaskan glaciers, *Nature communications*, 4, 2146, <https://doi.org/10.1038/ncomms3146>, 2013.
- Clarke, G. K. and Holdsworth, G.: *Glaciers of the St. Elias mountains*, US Geological Survey professional paper, 2002.
- Copland, L., Pope, S., Bishop, M. P., Shroder, J. F., Clendon, P., Bush, A., Kamp, U., Seong, Y. B., and Owen, L. A.: Glacier velocities across the central Karakoram, *Annals of Glaciology*, 50, 41–49, 2009.
- 20 Das, I., Hock, R., Berthier, E., and Lingle, C. S.: 21st-century increase in glacier mass loss in the Wrangell Mountains, Alaska, USA, from airborne laser altimetry and satellite stereo imagery, *Journal of Glaciology*, 60, 283–293, <https://doi.org/10.3189/2014JoG13J119>, 2014.
- Dehecq, A., Gourmelen, N., and Trouvé, E.: Deriving large-scale glacier velocities from a complete satellite archive: Application to the Pamir–Karakoram–Himalaya, *Remote Sensing of Environment*, 162, 55–66, <https://doi.org/10.1016/j.rse.2015.01.031>, 2015.
- Fahnestock, M., Scambos, T., Moon, T., Gardner, A., Haran, T., and Klinger, M.: Rapid large-area mapping of ice flow using Landsat 8,
25 *Remote Sensing of Environment*, 185, 84–94, <https://doi.org/10.1016/j.rse.2015.11.023>, 2016.
- Fatland, D. R. and Lingle, C. S.: InSAR observations of the 1993–95 Bering Glacier (Alaska, USA) surge and a surge hypothesis, *Journal of Glaciology*, 48, 439–451, <https://doi.org/10.3189/172756502781831296>, 2002.
- Fischler, M. A. and Bolles, R. C.: Random sample consensus: a paradigm for model fitting with applications to image analysis and automated cartography, *Communications of the ACM*, 24, 381–395, <https://doi.org/10.1145/358669.358692>, 1981.
- 30 Garcia, D.: Robust smoothing of gridded data in one and higher dimensions with missing values, *Computational statistics & data analysis*, 54, 1167–1178, <https://doi.org/10.1016/j.csda.2009.09.020>, 2010.
- Gardner, A. S., Moholdt, G., Cogley, J. G., Wouters, B., Arendt, A. A., Wahr, J., Berthier, E., Hock, R., Pfeffer, W. T., Kaser, G., et al.: A reconciled estimate of glacier contributions to sea level rise: 2003 to 2009, *science*, 340, 852–857, <https://doi.org/10.1126/science.1234532>, 2013.
- 35 Han, J., Kóczy, L., and Poston, T.: Fuzzy Hough transform, *Pattern recognition letters*, 15, 649–658, [https://doi.org/10.1016/0167-8655\(94\)90068-X](https://doi.org/10.1016/0167-8655(94)90068-X), 1994.
- Heid, T. and Kääb, A.: Evaluation of existing image matching methods for deriving glacier surface displacements globally from optical satellite imagery, *Remote Sensing of Environment*, 118, 339–355, <https://doi.org/10.1016/j.rse.2011.11.024>, 2012a.

- Heid, T. and Kääb, A.: Repeat optical satellite images reveal widespread and long term decrease in land-terminating glacier speeds, *The Cryosphere*, 6, 467–478, 2012b.
- Herreid, S. and Truffer, M.: Automated detection of unstable glacier flow and a spectrum of speedup behavior in the Alaska Range, *Journal of Geophysical Research: Earth Surface*, 121, 64–81, <https://doi.org/10.1002/2015JF003502>, 2016.
- 5 Jeong, S., Howat, I. M., and Ahn, Y.: Improved multiple matching method for observing glacier motion with repeat image feature tracking, *IEEE Transactions on Geoscience and Remote Sensing*, 55, 2431–2441, <https://doi.org/10.1109/TGRS.2016.2643699>, 2017.
- Kääb, A. and Vollmer, M.: Surface geometry, thickness changes and flow fields on creeping mountain permafrost: automatic extraction by digital image analysis, *Permafrost and Periglacial Processes*, 11, 315–326, [https://doi.org/10.1002/1099-1530\(200012\)11:4<315::AID-PPP365>3.0.CO;2-J](https://doi.org/10.1002/1099-1530(200012)11:4<315::AID-PPP365>3.0.CO;2-J), 2000.
- 10 Kolaas, J.: Getting started with HydrolabPIV v1.0, Research report in mechanics 2016:01, University of Oslo, urn.nb.no/URN:NBN:no-53997, 2016.
- Maksymiuk, O., Mayer, C., and Stilla, U.: Velocity estimation of glaciers with physically-based spatial regularization. Experiments using satellite SAR intensity images, *Remote Sensing of Environment*, 172, 190–204, <https://doi.org/10.1016/j.rse.2015.11.007>, 2016.
- Melkonian, A. K., Willis, M. J., and Pritchard, M. E.: Satellite-derived volume loss rates and glacier speeds for the Juneau Icefield, Alaska, *Journal of Glaciology*, 60, 743–760, <https://doi.org/10.3189/2014JoG13J181>, 2014.
- 15 Molnia, B. F.: *Glaciers of Alaska*, Alaska Geographic Society, 2008.
- Moon, T., Joughin, I., Smith, B., Broeke, M. R., Berg, W. J., Noël, B., and Usher, M.: Distinct patterns of seasonal Greenland glacier velocity, *Geophysical research letters*, 41, 7209–7216, <https://doi.org/10.1002/2014GL061836>, 2014.
- Muskett, R. R., Lingle, C. S., Tangborn, W. V., and Rabus, B. T.: Multi-decadal elevation changes on Bagley ice valley and Malaspina glacier, *Alaska, Geophysical Research Letters*, 30, <https://doi.org/10.1029/2003GL017707>, 2003.
- 20 Paul, F., Bolch, T., Kääb, A., Nagler, T., Nuth, C., Scharrer, K., Shepherd, A., Strozzi, T., Ticconi, F., Bhambri, R., et al.: The glaciers climate change initiative: Methods for creating glacier area, elevation change and velocity products, *Remote Sensing of Environment*, 162, 408–426, 2015.
- Paul, F., Strozzi, T., Schellenberger, T., and Kääb, A.: The 2015 Surge of Hispar glacier in the Karakoram, *Remote Sensing*, 9, 888, <https://doi.org/10.3390/rs9090888>, 2017.
- 25 Pfeffer, W. T., Arendt, A. A., Bliss, A., Bolch, T., Cogley, J. G., Gardner, A. S., Hagen, J.-O., Hock, R., Kaser, G., Kienholz, C., et al.: The Randolph Glacier Inventory: a globally complete inventory of glaciers, *Journal of Glaciology*, 60, 537–552, 2014.
- Post, A.: Distribution of surging glaciers in western North America, *Journal of Glaciology*, 8, 229–240, 1969.
- Quincey, D., Braun, M., Glasser, N., Bishop, M., Hewitt, K., and Luckman, A.: Karakoram glacier surge dynamics, *Geophysical Research Letters*, 38, <https://doi.org/10.1029/2011GL049004>, 2011.
- 30 Rosenau, R., Scheinert, M., and Dietrich, R.: A processing system to monitor Greenland outlet glacier velocity variations at decadal and seasonal time scales utilizing the Landsat imagery, *Remote sensing of environment*, 169, 1–19, <https://doi.org/10.1016/j.rse.2015.07.012>, 2015.
- Rosenau, R., Scheinert, M., and Ebermann, B.: Velocity fields of Greenland outlet glaciers, Technische Universität Dresden, Germany, data1.geo.tu-dresden.de/flow_velocity/, 2016.
- 35 Rousseeuw, P. and Leroy, A.: Robust regression and outlier detection, vol. 589, John Wiley & sons, <https://doi.org/10.1002/0471725382>, 2005.

- Roy, D., Wulder, M., Loveland, T., Woodcock, C., Allen, R., Anderson, M., Helder, D., Irons, J., Johnson, D., Kennedy, R., Scambos, T., Schaaf, C., Schott, J., Sheng, Y., Vermote, E., Belward, A., Bindschadler, R., Cohen, W., Gao, F., Hipple, J., Hostert, P., Huntington, J., Justice, C., Kilic, A., Kovalsky, V., Lee, Z., Lymburner, L., Masek, J., McCorkel, J., Shuai, Y., Trezza, R., Vogelmann, J., Wynne, R., and Zhu, Z.: Landsat-8: Science and product vision for terrestrial global change research, *Remote Sensing of Environment*, 145, 154–172, <https://doi.org/10.1016/j.rse.2014.02.001>, 2014.
- 5 Scambos, T., Dutkiewicz, M., Wilson, J., and Bindschadler, R.: Application of image cross-correlation to the measurement of glacier velocity using satellite image data, *Remote Sensing of Environment*, 42, 177–186, [https://doi.org/10.1016/0034-4257\(92\)90101-O](https://doi.org/10.1016/0034-4257(92)90101-O), 1992.
- Scambos, T., Fahnestock, M., Moon, T., Gardner, A., and Klinger, M.: Global Land Ice Velocity Extraction from Landsat 8 (GoLIVE), Version 1, NSIDC: National Snow and Ice Data Center, Boulder, Colorado USA, <https://doi.org/10.7265/N5ZP442B>, nsidc.org/data/golive, 2016.
- 10 Scherler, D., Leprince, S., and Strecker, M. R.: Glacier-surface velocities in alpine terrain from optical satellite imagery - Accuracy improvement and quality assessment, *Remote Sensing of Environment*, 112, 3806–3819, <https://doi.org/10.1016/j.rse.2008.05.018>, 2008.
- Skvarca, P.: Changes and surface features of the Larsen Ice Shelf, Antarctica, derived from Landsat and Kosmos mosaics, *Annals of Glaciology*, 20, 6–12, <https://doi.org/10.3189/172756494794587140>, 1994.
- 15 Strang, G. and Borre, K.: Linear algebra, geodesy and GPS, Wellesley-Cambridge Press, 1997.
- Sun, W.: A new method for localisation of gross errors, *Survey review*, 252, 344–358, <https://doi.org/10.1179/sre.1994.32.252.344>, 1994.
- Teunissen, P.: Testing theory, Delft Academic Press, 2000.
- Turrin, J., Forster, R. R., Larsen, C., and Sauber, J.: The propagation of a surge front on Bering glacier, Alaska, 2001–2011, *Annals of Glaciology*, 54, 221–228, <https://doi.org/10.3189/2013AoG63A341>, 2013.
- 20 Wackernagel, H.: Multivariate geostatistics: An introduction with applications, Springer Science & Business Media, <https://doi.org/10.1007/978-3-662-05294-5>, 2013.
- Waechter, A., Copland, L., and Herdes, E.: Modern glacier velocities across the Icefield Ranges, St Elias Mountains, and variability at selected glaciers from 1959 to 2012, *Journal of Glaciology*, 61, 624–634, <https://doi.org/10.3189/2015JoG14J14>, 2015.
- Wang, D. and Kääb, A.: Modeling glacier elevation change from DEM time series, *Remote Sensing*, 7, 10117–10142, <https://doi.org/10.3390/rs70810117>, 2015.
- 25 Westerweel, J. and Scarano, F.: Universal outlier detection for PIV data, *Experiments in fluids*, 39, 1096–1100, 2005.