

**Apparent discrepancy of Tibetan ice core  $\delta^{18}\text{O}$  records may be attributed to misinterpretation of chronology**

Shugui Hou<sup>1</sup>, Wangbin Zhang<sup>1</sup>, Hongxi Pang<sup>1</sup>, Shuang-Ye Wu<sup>2</sup>, Theo M. Jenk<sup>3,4</sup>,

5 Margit Schwikowski<sup>3,4</sup>, Yetang Wang<sup>5</sup>

<sup>1</sup> School of Geographic and Oceanographic Sciences, Nanjing University, Nanjing, 210023, China.

<sup>2</sup> Department of Geology, University of Dayton, Dayton, OH 45469, USA.

<sup>3</sup> Laboratory of Environmental Chemistry, Paul Scherrer Institute, CH-5232 Villigen  
10 PSI, Switzerland.

<sup>4</sup> Oeschger Centre for Climate Change Research, University of Bern, Sidlerstrasse 5, CH-3012 Bern, Switzerland.

<sup>5</sup> College of Geography and Environment, Shandong Normal University, Jinan, China.

Correspondence to: Shugui Hou (shugui@nju.edu.cn)

**Abstract.** Ice cores from the Tibetan Plateau (TP) are widely used for reconstructing past climatic and environmental conditions that extend beyond the instrumental period.

However, challenges in dating and interpreting ice core records often lead to inconsistent results. The Guliya ice core drilled from the northwestern TP suggested a

20 cooling trend during the mid-Holocene based on its decreasing  $\delta^{18}\text{O}$  values, which is

not observed in other Tibetan ice cores. Here we present a new high-resolution  $\delta^{18}\text{O}$

record of the Chongce ice cores drilled to bedrock ~30 km away from the Guliya ice

cap. Our record shows a warming trend during the mid-Holocene. Based on our results

as well as previously published ice core data, we suggest that the apparent discrepancy

25 between the Holocene  $\delta^{18}\text{O}$  records of the Guliya and the Chongce ice cores may be

attributed to a possible misinterpretation of the Guliya ice core chronology.

## 1 Introduction

Global climate models simulate a warming trend during the Holocene epoch, typically  
30 attributed to retreating ice sheets and rising atmospheric greenhouse gases, while global  
cooling was inferred from proxy reconstructions obtained mainly from the analysis of  
marine sediment cores (Marcott et al., 2013). The apparent discrepancy is often referred  
to as the Holocene temperature conundrum, possibly due to the potentially significant  
biases resulted from both the seasonality of the proxy data and the high sensitivities of  
35 current climate models (Liu et al., 2014). Marsicek et al. (2018) recently presented  
temperature reconstructions derived from sub-fossil pollen across North America and  
Europe. These records show a general long-term warming trend for the Holocene until  
~2 kaBP (thousand years before present, present = 1950AD), and records with cooling  
trends are largely limited to North Atlantic, implying varied regional climate responses  
40 to global drivers.

Given the significantly positive correlation between air temperature and  $\delta^{18}\text{O}$  in  
precipitation over the central and the northern TP (Yao et al., 1996, 2013), the stable  
isotopic records of ice cores recovered from this area were widely used as a temperature

indicator (Tian et al., 2006; An et al., 2016). Among all the published Tibetan ice cores,  
45 the Guliya ice core drilled to bedrock (308.6 m) from the northwestern TP (Fig. S1) is  
unique due to the exceptional length of its temporal coverage, estimated to be >500 ka  
below the depth of 290 m (i.e., 18.6 m above the ice–bedrock interface), or up to ~760  
ka at the ice–bedrock interface based on  $^{36}\text{Cl}$  dead ice in the bottom section (Thompson  
et al., 1997). This makes it the oldest non-polar ice core up to now (Thompson et al.,  
50 2017). The Guliya record has been widely used to provide a climate context for  
numerous studies (e.g., Fang et al., 1999; Rahaman et al., 2009; Sun et al., 2012; Hou  
et al., 2016; Li et al., 2017; Saini et al., 2017; Sanwal et al., 2019). Its stable isotopic  
record suggests a cooling mid-Holocene based on its decreasing  $\delta^{18}\text{O}$  values during that  
period. However, this cooling mid-Holocene is not found in other Tibetan ice core  
55 records available so far. For instance, the Puruogangri ice core drilled from the central  
TP (Fig. S1) shows high  $\delta^{18}\text{O}$  values during the period of ~4.8-4.0 kaBP (Thompson et  
al., 2006), and the Dunde ice core drilled from the Qilian mountains (Thompson et al.,  
1989; Fig. S1) shows a high stand of  $\delta^{18}\text{O}$  values during the period of ~5-2 kaBP based  
on its updated chronology (Thompson et al., 2005). In order to investigate this apparent

60 discrepancy between the Tibetan  $\delta^{18}\text{O}$  records, we present a new  $\delta^{18}\text{O}$  record of the  
Chongce ice cores that were recently drilled to bedrock at the Chongce ice cap on the  
northwestern TP, ~30 km away from the Guliya ice cap (Hou et al., 2018; Fig. S1).

## 2 The Chongce ice cores and $\delta^{18}\text{O}$ measurements

65 In 2012, we drilled two ice cores to bedrock with the length of 133.8 m (Core 1) and  
135.8 m (Core 2, 35°14' N, 81°7' E) and a shallow ice core (Core 3) of 58.8 m at an  
altitude of 6010 m above sea level (a.s.l.) from the Chongce ice cap (Fig. 1). The  
distance between the drilling sites of Core 2 and Core 3 is ~2 m. In 2013, two more ice  
cores to bedrock were recovered from the same ice cap with the length of 216.6 m (Core  
70 4, 35°15' N, 81°5' E) and 208.6 m (Core 5) at an altitude of 6100 m a.s.l. (Fig. 1). More  
details about these ice cores can be found in Hou et al. (2018). For this study,  
measurements of stable isotopes were performed on the 135.8 m Core 2 and 58.8 m  
Core 3. In a cold room (-20 °C), Core 2 was cut into 1301 samples from the depth of  
13.2 m to the bottom with a resolution of ~10 cm/sample. The bottom ~0.2 m above the  
75 ice-bedrock contact consists of a mixture of ice and sediment (Zhang et al., 2018), and

is not analyzed for stable isotopes. The results were combined with the isotopic measurements of the top 13.2 m of Core 3 from An et al. (2016) to form a single profile as the two drilling sites are only ~2 m apart. Core 3 has a sampling resolution of 2-3 cm/sample. The samples were measured by a Picarro Wavelength Scanned Cavity Ring-  
80 Down Spectrometer (WS-CRDS, model: L2120-i) at Nanjing University. The stable isotopic ratio was calculated as:

$$\delta = \left[ \frac{R_{\text{sample}}}{R_{\text{reference}}} - 1 \right] \times 1000\text{‰}$$

where R is the ratio of the composition of the heavier to lighter isotopes in water ( $^{18}\text{O}/^{16}\text{O}$  for  $\delta^{18}\text{O}$ ), and the reference is the Vienna Standard Mean Ocean Water (V-  
85 SMOW). Each sample was measured eight times, with the first five measurements discarded in order to eliminate the effect of memory. The mean value of the last three measurements was taken as the measurement result. The analytical uncertainty is less than 0.1‰ for  $\delta^{18}\text{O}$  (Tang et al. 2015).

### 90 **3 Results**

The  $\delta^{18}\text{O}$  profile by depth of the Chongce ice core is shown in Fig. 2. For comparison,

we also include the depth  $\delta^{18}\text{O}$  profiles of the Guliya (Thompson et al., 1997),  
Puruogangri (Thompson et al., 2006) and Dunde (Thompson et al., 1989) ice cores. It  
is worth noting that the resolution of the  $\delta^{18}\text{O}$  profiles varies from one ice core to  
95 another. The sampling resolution is  $\sim 10$  cm/sample for the Chongce Core 2, and 2-3  
cm/sample for the Chongce Core 3 (An et al., 2016). The 308.6 m Guliya ice core was  
cut into 12628 samples ( $\sim 2.4$  cm/sample) for  $\delta^{18}\text{O}$  measurements (Thompson et al.,  
1997). However, the original Guliya data was not available. Instead, the Guliya data  
from the NOAA online repository have average resolutions of 10 m, 5 m, 3 m, 1 m and  
100 0.6 m for the depth of 0-100 m, 100-150 m, 150-252 m, 252-308 m and 308-308.6 m  
respectively. The 214.7 m Puruogangri ice core was cut into 6303 samples ( $\sim 3.4$   
cm/sample) for  $\delta^{18}\text{O}$  measurements (Thompson et al., 2006), but its data from the  
NOAA online repository have an average resolution of 1 m for most of the core except  
the very top (0-1.05 m) and bottom (214.02-214.7 m) sections. The 139.8 m Dunde ice  
105 core was cut into 3585 samples ( $\sim 3.9$  cm/sample) for  $\delta^{18}\text{O}$  measurements (Thompson  
et al., 1989), but its data from the NOAA online repository have an average resolution  
of  $\sim 1$  m for the depth of 0-120 m, and  $\sim 0.5$  m below 120 m.

#### 4 Discussion

110 The Chongce ice cap has been stable throughout the Holocene, hence provides an ideal location for retrieving ice cores used to reconstruct past climate. The ice flows from the Chongce ice cap into the Chongce glacier (Fig. 1). Although the Chongce glacier was suggested to surge between 1992 and 2014 (Yasuda and Furuya, 2015), it is clear that the surged area is confined within the Chongce glacier and did not affect the Chongce

115 ice cap (Fig. 3 of Yasuda and Furuya, 2015). Several other studies have also confirmed the recent stability of the Chongce ice cap (Lin et al., 2017; Wang et al., 2018; Zhou et al., 2018). In addition, Wang et al. (2018) found similar mass changes for surge-type and non-surge-type glaciers over the western Kunlun Mountains, suggesting that the flow instabilities seem to have little effect on the glacier-wide mass balance. Therefore,

120 the impact of glacial surge on the stratigraphy of the Chongce ice cap is minimal, especially in its accumulation zone where our Chongce ice cores were drilled. Over the longer time scale, Jiao et al. (2000) studied the evolution of glaciers in the west Kunlun Mountains during the past 32 kaBP. They found that the present terminus of the



Chongce ice cap was very close to its maximum position during the last glacial  
125 maximum (LGM), similar to the Guliya ice cap. This confirms the stability of the  
Chongce ice cap since the LGM.

Many studies have shown a significant positive correlation between local temperature  
and isotopic composition in precipitation in the northern Tibetan Plateau (e.g., Yao et  
al., 1996; Tian et al., 2003). This positive correlation is also observed between local  
130 temperature from instrumental records and isotopic composition in ice cores from  
Tibetan Plateau (e.g., Tian et al., 2006; Kang et al., 2007; An et al., 2016). Specifically,  
An et al (2016) established a statistically significant correlation between annual  $\delta^{18}\text{O}$   
of Chongce ice core and annual temperature record at Shiquanhe (the nearest climate  
station). In addition, simulations by the LMDZ4 general circulation model indicate that  
135 this positive correlation between local temperature and precipitation isotope has  
persisted during the Holocene (Risi et al., 2010). Although changes in moisture source  
(e.g., Liu et al., 2015) or large-scale atmospheric circulation (e.g., Shao et al., 2017)  
could influence precipitation isotopic composition in the Tibetan Plateau, such changes  
often lead to concurrent temperature change with the same effect on the precipitation

140 isotopes. Therefore, we believe that the isotopic variations of Chongce ice core  
primarily reflect local temperature signals.

Large amplitudes of  $\delta^{18}\text{O}$  variations are often observed in the Tibetan core cores during  
the Holocene, such as  $\sim 8\text{‰}$  for the Guliya ice core (Fig. 5) (or  $\sim 6\text{‰}$  based on its  
original chronology, Fig. 3),  $\sim 6.5\text{‰}$  for the Chongce ice core (Fig. 5), and  $\sim 6\text{‰}$  for  
145 the Puruogangri ice core (Fig. 3). This is largely attributed to the elevation dependency  
of temperature change observed in many studies, i.e. high altitude regions experience  
larger temperature changes than low elevation regions (Beniston et al. 1997; Liu and  
Chen, 2000; Mountain Research Initiative EDW Working Group, 2015). In addition,  
prominent changes in water vapor sources associated with northward and southward  
150 shifts of the westerly circulation from multi-millennial to orbital timescales (Cheng et  
al., 2016) may also contribute to the large amplitude of  $\delta^{18}\text{O}$  variation in core cores on  
TP.

A direct comparison of the Tibetan ice core  $\delta^{18}\text{O}$  records could only be made based on  
a common time scale. The chronology of the Chongce, Guliya and Puruogangri ice  
155 cores was established by Hou et al. (2018), Thompson et al. (1997) and Thompson et

al. (2006) respectively. The Dunde ice core was originally dated to be 40 kaBP at the depth of 5 m above the ice–bedrock interface, and was suggested to be potentially >100 kaBP at the ice–bedrock interface (Thompson et al., 1989). This chronology was subsequently revised to be within the Holocene (see details in Thompson et al., 2005).

160 The temporal  $\delta^{18}\text{O}$  profiles of the Tibetan ice cores are shown in Fig. 3. The  $\delta^{18}\text{O}$  profiles of the Chongce and Dunde ice cores show an increasing trend from 6-7 kaBP to ~2.5 kaBP, while the Guliya  $\delta^{18}\text{O}$  profile shows a decreasing trend from 7 kaBP to ~3 kaBP. The  $\delta^{18}\text{O}$  profile of the Puruogangri core shows an increasing trend from ~6.5 kaBP to ~4 kaBP,, and remains relatively stable since ~4 kaBP. In addition, the

165 Grigoriev ice core drilled from the western Tianshan Mountains (see Fig. S1 for location) also shows a rapid increasing trend of  $\delta^{18}\text{O}$  since ~8 kaBP (Takeuchi et al., 2014). Most recently, Rao et al. (2019) compiled climatic reconstructions from lake sediments, loess, sand-dunes and peats in the Xinjiang and surrounding region of Norwest China, including northern parts of TP, and brought to the attention the

170 disagreement between the Guliya ice core and other records. Their reconstructed records suggest a long-term warming trend during the Holocene. By comparison, it

seems that the  $\delta^{18}\text{O}$  profile of the Guliya ice core, especially for the period of 6-7 kaBP to ~3 kaBP, is at odds with this warming trend during the mid-Holocene. It is possible that this anomaly is not caused by the dramatic difference in local climate conditions, but linked to the equally anomalous length of Guliya's temporal coverage, which is over one order of magnitude greater than that of the surrounding ice cores (Hou et al., 2018).

Cheng et al. (2012) are one of the first to question the chronology of the Guliya ice core, and argued that it should be shortened by a factor of two (Fig. 4) in order to reconcile the difference in the  $\delta^{18}\text{O}$  variations between the Guliya ice core and the Kesang stalagmite records (see Fig. S1 for location). However, if compressed linearly by a factor of two, the revised chronology (Guliya-Cheng in Fig. 4) would place the high Guliya  $\delta^{18}\text{O}$  values below the depth of 266 m (i.e., 110 kaBP in Fig. 2) in the cold glacial period (North Greenland Ice Core Project members, 2004). This is very unlikely, given the significantly positive relationship between temperature and  $\delta^{18}\text{O}$  in precipitation over the northwestern TP (Yao et al., 2013; An et al., 2016). We believe the Guliya chronology needs to be further compressed until the high  $\delta^{18}\text{O}$  values below the depth

of 266 m (i.e., 110 kaBP in Fig. 2) fall within a warm period (Guliya-New in Fig. 4), which is likely to be the mid-Holocene based on the age range of surrounding ice cores (Hou et al., 2018). Since the complete dataset of the Guliya core, as well as its detailed depth-age relationship, is not made available, a detailed comparison between the Guliya and Chongce ice cores is difficult. Therefore, we attempt to make a direct comparison between the depth- $\delta^{18}\text{O}$  profiles of the Guliya and Chongce ice cores. We first divided the depths of each  $\delta^{18}\text{O}$  data points by the total core length to get the relative depths, and compared the  $\delta^{18}\text{O}$  profiles of the Guliya and the Chongce ice cores based on their same relative depth (Fig. 5). The Chongce  $\delta^{18}\text{O}$  profile has much higher sampling resolution than the publically available Guliya record. In order to account for this difference, we averaged Chongce  $\delta^{18}\text{O}$  values based on the same relative depth intervals of the Guliya record as shown in Fig. 2a. After averaging, the Guliya and Chongce  $\delta^{18}\text{O}$  profiles share much similarity (Fig. 5), and have a highly significant positive correlation ( $r=0.57$ ,  $n=110$ ,  $p=0.00$ ), whereas their correlation is significantly negative ( $r=-0.79$ ,  $n=16$ ,  $p=0.00$ ) based on Guliya's original chronology (Fig. 3b). Correlations between the  $\delta^{18}\text{O}$  profiles of Chongce/Guliya-original and other Tibetan ice cores during their

common period (i.e. 0-6 kaBP) are largely non-significant (Table 1). Although a more  
205 definitive conclusion would require detailed comparison with the original Guliya  
dataset (unavailable at the moment) and addition evidence from other Tibetan ice cores,  
the highly significant correlation between the Guliya and Chongce  $\delta^{18}\text{O}$  profiles based  
on their relative depth suggests the possibility that the Guliya core covers a similar time  
span as the Chongce core, which is reasonable given their close proximity (~30 km in  
210 direct distance). Consequently, the apparent discrepancy between the  $\delta^{18}\text{O}$  records of  
the Guliya and other Tibetan ice cores (Fig. 3) may be attributed to a possible  
misinterpretation of the Guliya ice core chronology. This would also cast doubt on  
using the Guliya record based on its original chronology as supporting evidence for  
asynchronous glaciation on the TP on Milankovitch timescales (Thompson et al., 2005).  
215 Recently, Ritterbusch et al. (2018) applied  $^{81}\text{Kr}$  dating, with the updated laser-based  
detection method of Atom Trap Trace Analysis (ATTA), to the bottom ice samples  
collected at the terminal of the Guliya ice cap. The resulting  $^{81}\text{Kr}$  ages are <50 kaBP. In  
fact, the exact age is likely to be even younger than 50 kaBP because this age lies at the  
low limit of the ATTA method and serves as an upper constraint for the actual age. The

220  $^{81}\text{Kr}$  samples collected at three different sites yielded remarkably consistent results  
(Tian Lide and Lu Zhengtian, personal communications), and all the  $^{81}\text{Kr}$  dating results  
are more than 1 order of magnitude younger than the original Chronology of the 1992  
Guliya ice core (Thompson et al., 1997), and roughly in line with the age ranges of the  
other Tibetan ice cores (Zhang et al., 2018; Hou et al., 2018).

225 From September to October of 2015, several new ice cores were recovered from the  
Guliya ice cap, including a core to bedrock (309.73 m) and a shallow core (72.40 m)  
adjacent to the 1992 Guliya core drilling site, as well as three cores to bedrock (50.72  
m, 51.38 m, 50.86 m) from the summit (35°17' N, 81°29' E, ~6700 m a.s.l.) of the Guliya  
ice cap (Thompson et al., 2018). The Guliya summit 50.80 m ice core (note that the  
230 depth 50.80 m is given in Zhong et al., 2018, which is slightly different from 50.86 m  
given in Thompson et al., 2018) was dated to be ~20 kaBP at the depth of 41.10–41.84  
m and ~30 kaBP at the depth of 49.51 to 49.90 m by matching the  $\delta^{18}\text{O}$  values with  
those from the 1992 Guliya ice core (Zhong et al., 2018). We made use of the two age  
points above, as well as the density profile of the 2015 Guliya summit core (Kutuzov  
235 et al., 2018), to estimate the basal age of the Guliya summit core by applying a two-

parameter flow model (2p model) (Bolzan, 1985), and obtained 76.6 kaBP, 48.6 kaBP and 42.1 kaBP at the depth of 1 cm w.e. 20 cm w.e., 40 cm w.e. above the ice–bedrock contact (Fig. S2). Although these estimates have great uncertainty due to limited data, the results are still one order of magnitude younger than the original Chronology of the 1992 Guliya ice core (Thompson et al., 1997) despite the fact that the two age points (i.e. ~20 kaBP and ~30 kaBP) used by the 2p model are deduced from the original chronology of the 1992 Guliya ice core (Zhong et al., 2018). This casts further doubt on the original Guliya chronology.

## 245 **5 Conclusions**

In this study, we provided a new high-resolution  $\delta^{18}\text{O}$  record of the Chongce ice cores drilled from the northwestern TP. Our results show a warming trend for the mid-Holocene on the TP, which is largely consistent with the Dundee and, to a lesser degree, Puruogangri ice cores, but much different from the Guliya ice core. It is possible that the cooling mid-Holocene derived from the Guliya  $\delta^{18}\text{O}$  record resulted from its erroneous chronology, rather than the unique boundary conditions on the TP as



previously suggested, such as decreasing summer insolation and weakened Indian monsoon (Hou et al., 2016; Li et al., 2017). Our study highlighted the urgent need for more ice core records with reliable chronologies, especially results from the 309.73 m

255 Guliya ice core drilled in 2015 close to the 1992 Guliya core drilling site (Thompson et al., 2018) to verify past temperature variation on the TP, which serves as important baseline information for many other studies, and based on which various scientific hypotheses such as asynchronous glaciation on the Milankovitch timescales (Thompson et al., 2005) could be further tested.

260

Data availability. The  $\delta^{18}\text{O}$  data of the Chongce ice core will be provided in the Supplement. At this stage, please refer to the corresponding author for the data.

Author contributions. SH conceived this study, drilled the Chongce ice cores and

265 wrote the paper. YW and WZ drilled the Chongce ice cores. WZ performed the  $\delta^{18}\text{O}$  measurements. All authors contributed to a discussion of the results.

Competing interests. The authors declare that they have no conflict of interest.

270 **Acknowledgments.** Thanks are due to many scientists, technicians, graduate students  
and porters, especially to Yongliang Zhang, Hao Xu and Yaping Liu, for their great  
efforts in the high elevations, to Guocai Zhu for providing the ground penetrating radar  
results of the Chongce ice cap, and to Lonnie Thompson and Ellen Mosley-Thompson  
for sharing the Dunde ice core data. This work was supported by the National Natural  
275 Science Foundation of China (91837102, 41830644, 41711530148, 41330526).

## References

An, W., Hou, S., Zhang, W., Wu, S., Xu, H., Pang, H., Wang, Y., and Liu, Y.: Possible  
recent warming hiatus on the northwestern Tibetan Plateau derived from ice  
280 core records, *Sci. Rep.*, 6, 32813, <https://doi.org/10.1038/srep32813>, 2016.

Beniston, M., Diaz, H. F., and Bradley, R. S.: Climatic change at high elevation sites:  
an overview, *Clim. Change*, 36, 233-251,  
<https://doi.org/10.1023/A:1005380714349>, 1997.

- Bolzan, J.: Ice flow at the Dome C ice divide based on a deep temperature profile, *J. Geophys. Res.*, 90, 8111–8124, 1985.
- 285
- Cheng, H., Zhang, P., Spötl, C., Edwards, R., Cai, Y., Zhang, D., Sang, W., Tan, M., and An, Z.: The climatic cyclicity in semiarid-arid central Asia over the past 500,000 years, *Geophys. Res. Lett.* 39, L01705, <https://doi.org/10.1029/2011gl050202>, 2012.
- 290
- Cheng, H., Spötl, C., Breitenbach, S. F. M., Sinha, A., Wassenburg, J. A., Jochum, K. P., Scholz, D., Li, X., Yi, L., Peng, Y., Lv, Y., Zhang, P., Votintseva, A., Loginov, V., Ning, Y., Kathayat, G., and Edwards, R. L.: Climate variations of central Asia on orbital to millennial timescales, *Sci. Rep.*, 6, 36975, <https://doi.org/10.1038/srep36975>, 2016.
- 295
- Fang, X., Li, J., and van der Voo, R.: Rock magnetic and grain size evidence for intensified Asian atmospheric circulation since 800,000 years BP related to Tibetan uplift, *Earth Planet. Sci. Lett.*, 165, 129-144, [https://doi.org/10.1016/S0012-821X\(98\)00259-3](https://doi.org/10.1016/S0012-821X(98)00259-3), 1999.
- Hou, J., Huang, Y., Zhao, J., Liu, Z., Colman, S., and An, Z.: Large Holocene summer

300 temperature oscillations and impact on the peopling of the northeastern Tibetan  
Plateau, *Geophys. Res. Lett.*, 43, 1323-1330,  
<https://doi.org/10.1002/2015GL067317>, 2016.

Hou, S., Jenk, T., Zhang, W., Wang, C., Wu, S., Wang, Y., Pang, H., Schwikowski, M.:

Age ranges of the Tibetan ice cores with emphasis on the Chongce ice cores,  
305 western Kunlun Mountains, *The Cryosphere* 12, 2341–2348,  
<https://doi.org/10.5194/tc-12-2341-2018>, 2018.

Jiao, K., Yao, T., and Li, S.: Evolution of glaciers and environment in the West Kunlun

Mountains during the past 32 ka, *J. Glacio. Geocryo.*, 22, 250-256, 2000 (in  
Chinese with English abstract).

310 Kang, S., Zhang, Y., Qin, D., Ren, J., Zhang, Q., Grigholm, B., and Mayewski, P.:

Recent temperature increase recorded in an ice core in the source region of Yangtze  
River. *Chin. Sci. Bull.*, 52, 825–831, <https://doi.org/10.1007/s11434-007-0140-1>,  
2007.

Kutuzov, S., Thompson, L. G., Lavrentiev, I., and Tian, L. D.: Ice thickness

315 measurements of Guliya ice cap, western Kunlun Mountains (Tibetan Plateau),

China, *J. Glaciol.*, 64(248), 977-989, <https://doi.org/10.1017/jog.2018.91>, 2018.

Li, X., Wang, M., Zhang, Y., Li, L., and Hou, J.: Holocene climatic and environmental change on the western Tibetan Plateau revealed by glycerol dialkyl glycerol tetraethers and leaf wax deuterium-to-hydrogen ratios at Aweng Co, *Quat. Res.*,

320 87, 455-467, <https://doi.org/10.1017/qua.2017.9>, 2017.

Lin, H., Li, G., Cuo, L., Hooper, A., and Ye, Q.: A decreasing glacier mass balance gradient from the edge of the Upper Tarim Basin to the Karakoram during 2000–2014, *Sci. Rep.*, 7, 612, <https://doi.org/10.1038/s41598-017-07133-8>, 2017.

325 Liu, X. and Chen, B.: Climatic warming in the Tibetan Plateau during recent decades, *Int. J. Climol.* 20, 1729–1742, 2000.

Liu, X., Rao, Z., Zhang, X., Huang, W., Chen, J., and Chen, F.: Variations in the oxygen isotopic composition of precipitation in the Tianshan Mountains region and their significance for the Westerly circulation, *J. Geography Sci.* 25, 801–816,

330 <https://doi.org/10.1007/s11442-015-1203-x>, 2015.

Liu, Z., Zhu, J., Rosenthal, Y., Zhang, X., Otto-Bliesner, B., Timmermann, A., Smith,

R., Lohmann, G., Zheng, W., and Timm, O.: The Holocene temperature conundrum, *Proc. Natl Acad. Sci. USA*, 111, E3501-E3505, <https://doi.org/10.1073/pnas.1407229111>, 2014.

335 Mountain Research Initiative EDW Working Group.: Elevation-dependent warming in mountain regions of the world, *Nat. Clim. Change*, 5, 424-430, <https://doi.org/10.1038/nclimate2563>, 2015.

Marcott, S., Shakun, J., Clark, P., and Mix, A.: A reconstruction of regional and global temperature for the past 11,300 years, *Science*, 339, 1198–1201, <https://doi.org/10.1126/science.1228026>, 2013.

340

Marsicek, J., Shuman, B., Bartlein, P., Shafer, S., and Brewer, S.: Reconciling divergent trends and millennial variations in Holocene temperatures, *Nature*, 554, 92-96, <https://doi.org/10.1038/nature25464>, 2018.

North Greenland Ice Core Project members: High-resolution record of northern Hemisphere climate extending into the last interglacial period, *Nature*, 431, 147-151, <https://doi.org/10.1038/nature02805>, 2004.

345

Rahaman, W., Singh, S., Sinha, R., and Tandon, S.: Climate control on erosion distribution over the Himalaya during the past ~100 ka, *Geology*, 37, 559-562, <https://doi.org/10.1130/G25425A.1>, 2009.

350 Rao, Z., Wu, D., Shi, F., Guo, H., Cao, J., and Chen, F.: Reconciling the ‘westerlies’ and ‘monsoon’ models: A new hypothesis for the Holocene moisture evolution of the Xinjiang region, NW China, *Earth-Sci. Rev.*, 191, 263-272, <https://doi.org/10.1016/j.earscirev.2019.03.002>, 2019.

Risi, C., Bony, S., Vimeux, F., and Jouzel, J.: Water stable isotopes in the LMDZ4  
355 General Circulation Model: Model evaluation for present day and past climates and applications to climatic interpretation of tropical isotopic records, *J. Geophys. Res.*, 115, D12118, <https://doi.org/10.1029/2009jd013255>, 2010.

Ritterbusch, F., Chu, Y., Dong, X., Gu, J., Hu, S., Jiang, W., Landais, A., Lipenkov, V.,  
Lu, Z., Shi, G., Stenni, B., Taldice team, Tian, L., Tong, A., Yang, G., and Zha,  
360 L.: Revealing old ice with  $^{81}\text{Kr}$ , *Geophysical Research Abstracts*. 20, EGU2018-2350-5, 2018.

Saini, J., Günther, F., Aichner, B., Mischke, S., Herzsuh, U., Zhang, C., Mäusbacher,

R., and Gleixner, G.: Climate variability in the past ~19,000 yr in NE Tibetan

Plateau inferred from biomarker and stable isotope records of Lake Donggi

365 Cona, Quat. Sci. Rev., 157, 129-140,

<https://doi.org/10.1016/j.quascirev.2016.12.023>, 2017.

Sanwal, J., Rajendran, C. P., and Sheshshayee, M. S.: Reconstruction of late quaternary

climate from a paleo-lacustrine profile in the central (Kumaun) Himalaya:

viewing the results in a regional context, *Front. Earth Sci.*, 7.

370 <https://doi.org/10.3389/feart.2019.00002>, 2019.

Shao, L., Tian, L., Cai, Z., Cui, J., Zhu, D., Chen, Y., and Palcsu, L.: Driver of the

interannual variations of isotope in ice core from the middle of Tibetan Plateau,

*Atmos. Res.*, 188, 48–54, <https://doi.org/10.1016/j.atmosres.2017.01.006>, 2017.

Sun, Y., Clemens, S., Morrill, C., Lin, X., Wang, X., and An, Z.: Influence of Atlantic

375 meridional overturning circulation on the East Asian winter monsoon, *Nat.*

*Geosci.* 5, 46-49, <https://doi.org/10.1038/ngeo1326>, 2012.



Takeuchi, N., Fujita, K., Aizen, V., Narama, C., Yokoyama, Y., Okamoto, S., Naoki,

K., and Kubota, J.: The disappearance of glaciers in the Tien Shan Mountains

in Central Asia at the end of Pleistocene, *Quat. Sci. Rev.*, 103, 26-33,

380 <https://doi.org/10.1016/j.quascirev.2014.09.006>, 2014.

Tang, Y., Pang, H., Zhang, W., Li, Y., Wu, S., and Hou, S.: Effects of changes in

moisture source and the upstream rainout on stable isotopes in precipitation – a

case study in Nanjing, eastern China, *Hydrol Earth Syst. Sc.* 19, 4293-4306,

<https://doi.org/10.5194/hess-19-1-2015>, 2015.

385 Thompson, L. G., Mosley-Thompson, E., Davis, M., Bolzan, J., Dai, J., Klein, L., Yao,

T., Wu, X., Xie, Z., and Gundestrup, N.: Holocene-late pleistocene climatic ice

core records from Qinghai-Tibetan Plateau, *Science*, 246, 474-477,

<https://doi.org/10.1126/science.246.4929.474>, 1989.

Thompson, L. G., Yao, T., Davis, M. E., Henderson, K. A., Mosley-Thompson, E., Lin,

390 P.-N., Beer, J., Synal, H.-A., Cole-Dai, J., and Bolzan, J. F.: Tropical climate

instability: the last glacial cycle from a Qinghai-Tibetan ice core, *Science*, 276,

1821-1825, <https://doi.org/10.1126/science.276.5320.1821>, 1997.

Thompson, L. G., Davis, M., Mosley-Thompson, E., Lin, P., Henderson, K., and

Mashiotta, T.: Tropical ice core records: evidence for asynchronous glaciation

395 on Milankovitch timescales, *J. Quat. Sci.*, 20, 723-733,

<https://doi.org/10.1002/jqs.972>, 2005.

Thompson, L. G., Yao, T., Davis, M., Mosley-Thompson, E., Mashiotta, T., Lin, P.,

Mikhalenko, V., and Zagorodnov, V.: Holocene climate variability archived in

the Puruogangri ice cap on the central Tibetan Plateau, *Ann. Glaciol.*, 43, 61-

400 69, <https://doi.org/10.3189/172756406781812357>, 2006.

Thompson, L.: Past, present, and future of glacier archives from the world's highest

mountains, *Proc. Am. Philos. Soc.*, 161, 226-243, 2017.

Thompson, L., Yao, T., Davis, M., Mosley-Thompson, E., Wu, G., Porter, S., Xu, B.,

Lin, P., Wang, N., Beaudon, E., Duan, K., Sierra-Hernández, M., and Kenny,

405 D.: Ice core records of climate variability on the Third Pole with emphasis on

the Guliya ice cap, western Kunlun Mountains, *Quat. Sci. Rev.*, 188, 1–14,

<https://doi.org/10.1016/j.quascirev.2018.03.003>, 2018.

Tian, L., Yao, T., Schuster, P. F., White, J. W. C., Ichiyanagi, K., Pendall, E., Pu, J., and

Yu, W.: Oxygen-18 concentrations in recent precipitation and ice cores on the  
410 Tibetan Plateau, *J. Geophys. Res.*, 108(D9), 4293,  
<https://doi.org/10.1029/2002JD002173>, 2003.

Tian, L., Yao, T., Li, Z., MacClune, K., Wu, G., Xu, B., Li, Y., Lu, A., and Shen, Y.:  
Recent rapid warming trend revealed from the isotopic record in Muztagata ice  
core, eastern Pamirs, *J. Geophys. Res.*, 111, D13103,  
415 <https://doi.org/10.1029/2005JD006249>, 2006.

Wang, Y., Hou, S., Huai, B., An, W., Pang, H., and Liu, Y.: Glacier anomaly over the  
Western Kunlun Mountains, northwestern Tibetan Plateau, since the 1970s, *J.*  
*Glaciol.* 64, 624-636, <https://doi.org/10.1017/jog.2018.53>, 2018.

Yao, T., Thompson, L. G., Mosley-Thompson, E., Yang, Z., Zhang, X., and Lin, P.:  
420 Climatological significance of  $\delta^{18}\text{O}$  in north Tibetan ice cores, *J. Geophys. Res.*,  
101(D23), 29531-29537, <https://doi.org/10.1029/96JD02683>, 1996.

Yao, T., Masson-Delmotte, V., Gao, J., Yu, W., Yang, X., Risi, C., Sturm, C., Werner,  
M., Zhao, H., He, Y., Ren, W., Tian, L., Shi, C., and Hou, S.: A review of climatic  
controls on  $\delta^{18}\text{O}$  in precipitation over the Tibetan Plateau: Observations and

425 simulations, *Rev. Geophys.*, 51, 525-51548, <https://doi.org/10.1002/rog.20023>,  
2013.

Yasuda, T. and Furuya, M.: Dynamics of surge-type glaciers in West Kunlun Shan,  
Northwestern Tibet, *J. Geophys. Res.*, 120, 2393–2405, <https://doi.org/10.1002/2015JF003511>, 2015.

430 Zhang, Z., Hou, S., and Yi, S.: The first luminescence dating of Tibetan glacier basal  
sediment, *The Cryosphere*, 12, 1-6, <https://doi.org/10.5194/tc-12-1-2018>, 2018.

Zhong, Z. P., Solonenko, N.E., Gazitúa, M. C., Kenny, D. V., Mosley-Thompson, E.,  
Rich, V. I., Van Etten, J. L., Thompson, L. G., and Sullivan, M. B.: Clean low-  
biomass procedures and their application to ancient ice core microorganisms,  
435 *Front. Microbiol.*, 9, 1-15, <https://doi.org/10.3389/fmicb.2018.01094>, 2018.

Zhou, Y., Li, Z., Li, J., Zhao, R., and Ding, X.: Glacier mass balance in the Qinghai–  
Tibet Plateau and its surroundings from the mid-1970s to 2000 based on  
Hexagon KH-9 and SRTM DEMs, *Remote Sens. Environ.*, 210, 96-112,  
<https://doi.org/10.1016/j.rse.2018.03>, 2018.

440

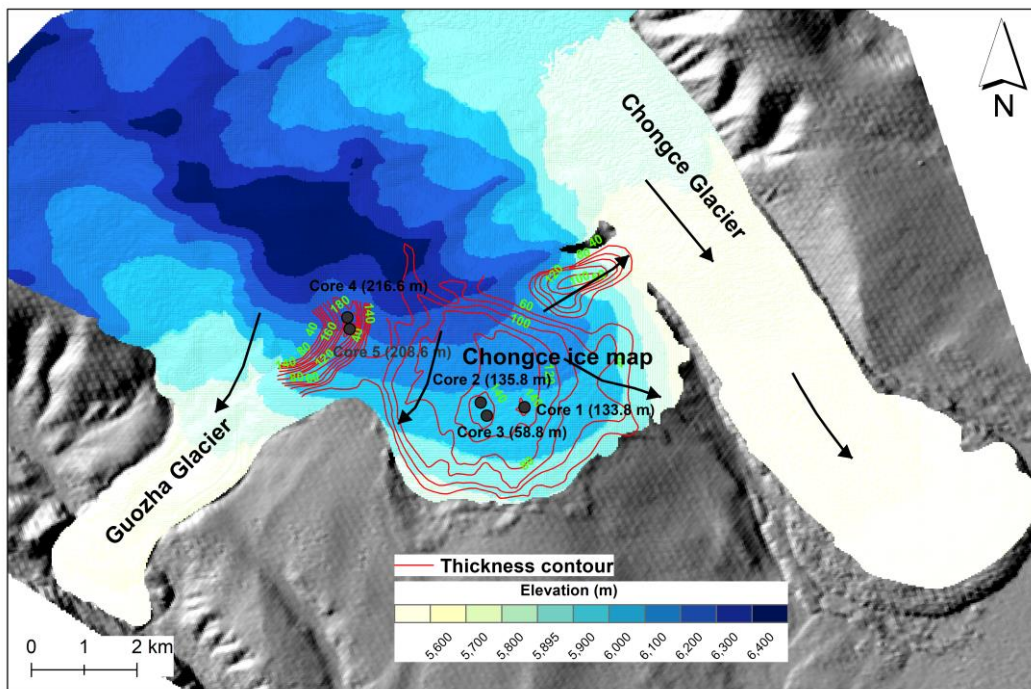
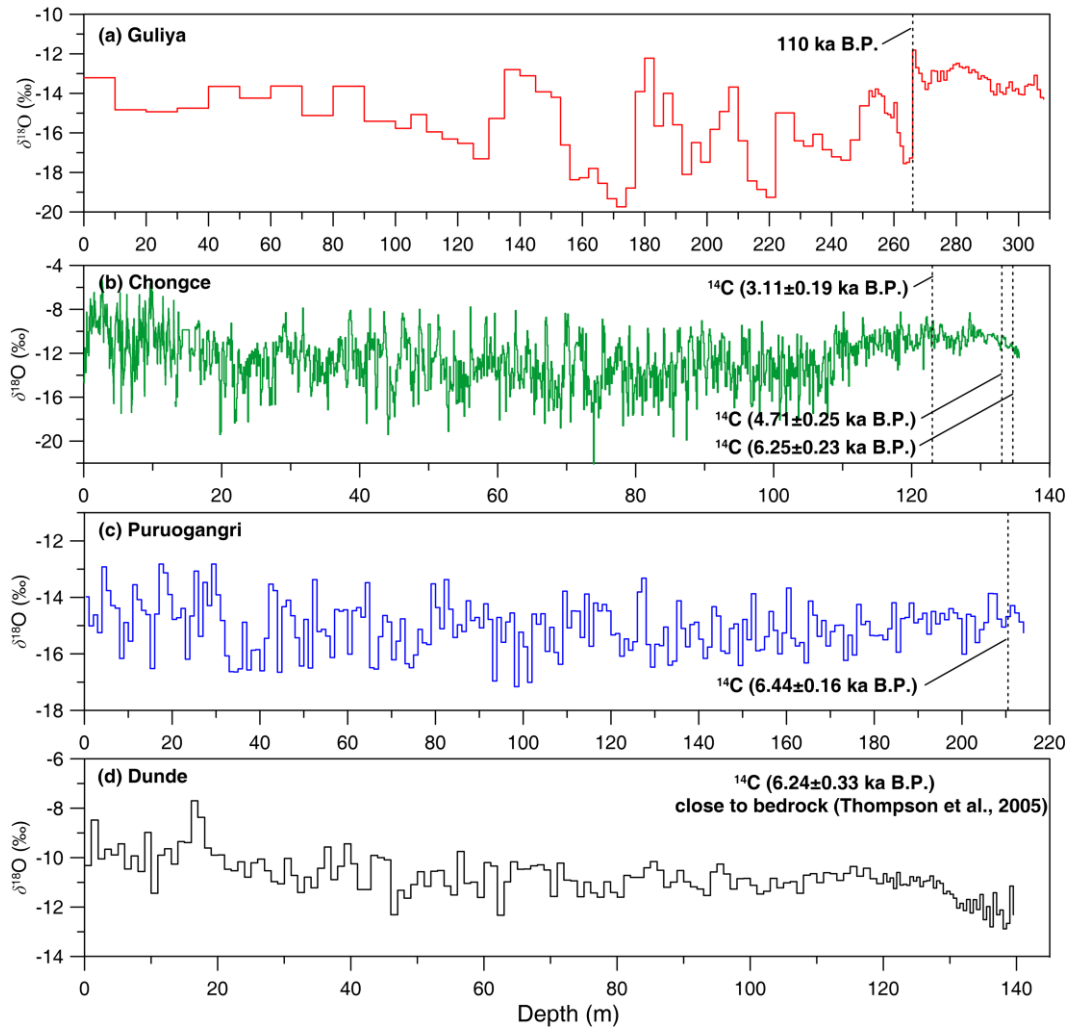


Figure 1. Map showing the topography (red contour lines) and ice thickness (blue color ramp) of the Chongce ice cap with the drilling sites (black dots). The black arrows show the ice flow direction. The effects of the Chongce Glacier surging on the mass balance of the Chongce ice cap is limited, if any (Wang et al., 2018), because the ice flows from the Chongce ice cap into the Chongce glacier, and the surged area is confined within the Chongce Glacier (Yasuda and Furuya, 2015).



450 Figure 2. The  $\delta^{18}\text{O}$  profiles of the ice cores against each respective depth. The age of  
 110 kaBP at the depth 266 m of the Guliya ice core is from Thompson et al. (1997). The  
 top 13.2 m of Chongce Core 3 profile (An et al., 2016) is combined with Core 2 to form  
 a single profile because the distance between their drilling sites is only  $\sim 2$  m (Fig. 1).  
 Data of Guliya and Puruogangri were obtained from the NOAA online repository, and  
 455 the data of Dundee were extracted from the Fig. 3 in Thompson et al. (1989) using  
 GetData graph digitizer software.

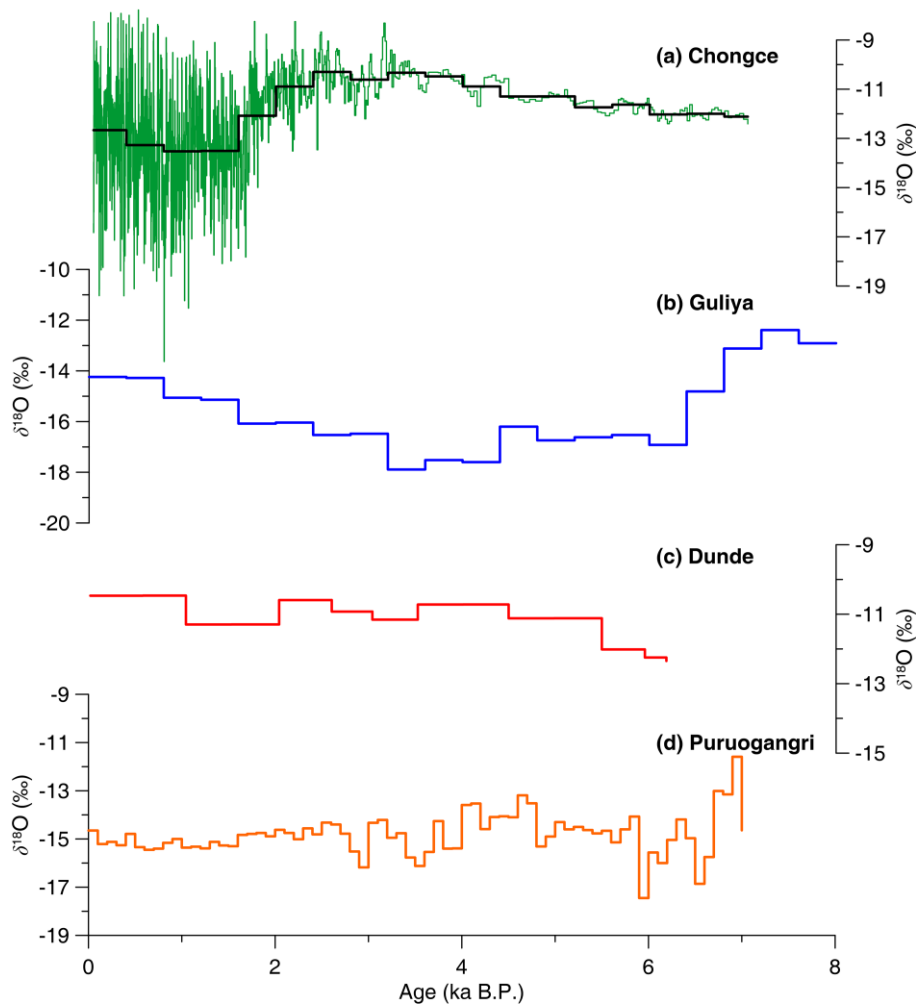


Figure 3. The  $\delta^{18}\text{O}$  profiles of the Chongce (a), Guliya (b), Dunde (c) and Puruogangri  
 460 (d) ice cores by age. We combined the  $\delta^{18}\text{O}$  profiles of Core 2 and Core 3 into a single  
 time series. The black line of the Chongce  $\delta^{18}\text{O}$  profile represents 400-year averages to  
 match the temporal resolution of the Guliya ice core data that are available from the  
 NOAA online repository. The 100-year averages of the Puruogangri ice core are also  
 available from the NOAA online repository, but the multi-centurial averages of the  
 465 Dunde ice core were extracted from Figure 3 of Thompson et al. (2005) plotted based  
 on its updated chronology instead of its original chronology (Thompson et al., 1989).

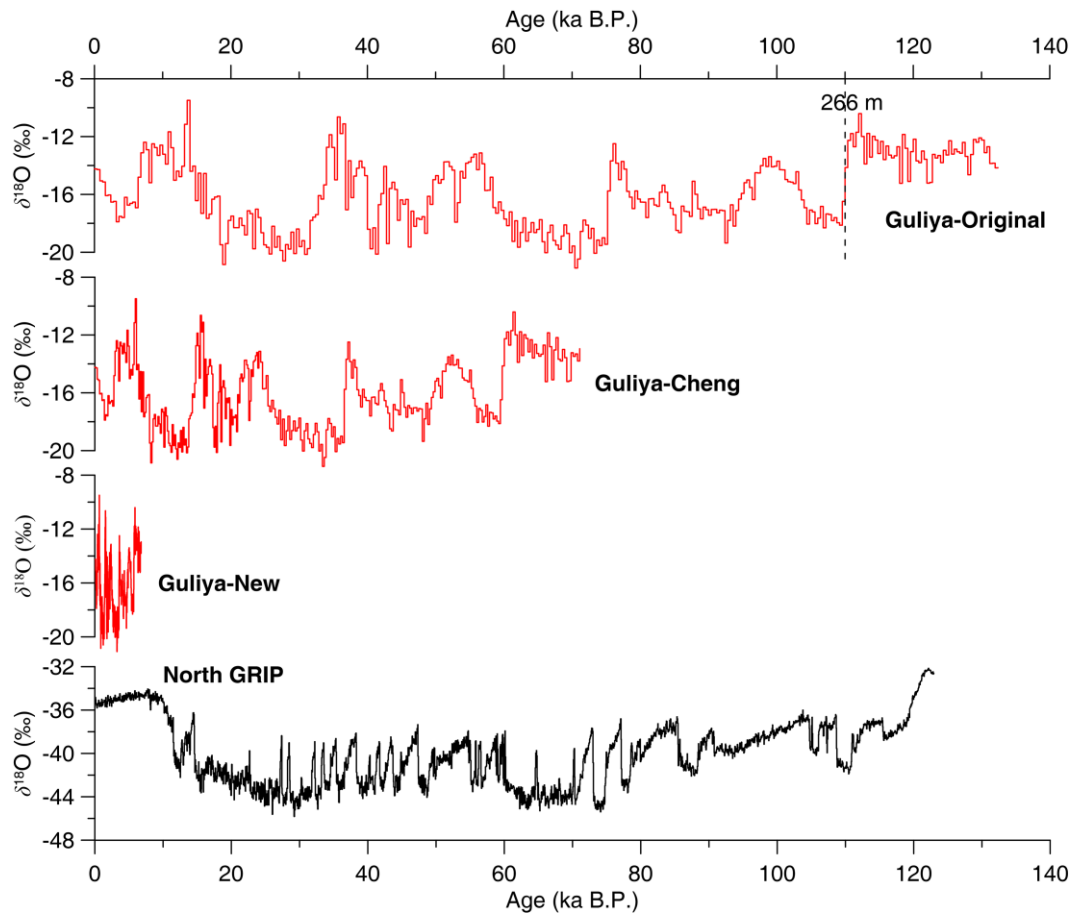


Figure 4. The  $\delta^{18}\text{O}$  profiles of the Guliya and North GRIP ice cores. The Guliya-Original is plotted on its original chronology (Thompson et al., 1997). The Guliya-470 Cheng profile is the original Guliya record linearly compressed by a factor of two, as suggested in Cheng et al. (2012). The Guliya-New profile is the original Guliya record further compressed linearly so that the high  $\delta^{18}\text{O}$  values fall within the warm Holocene.



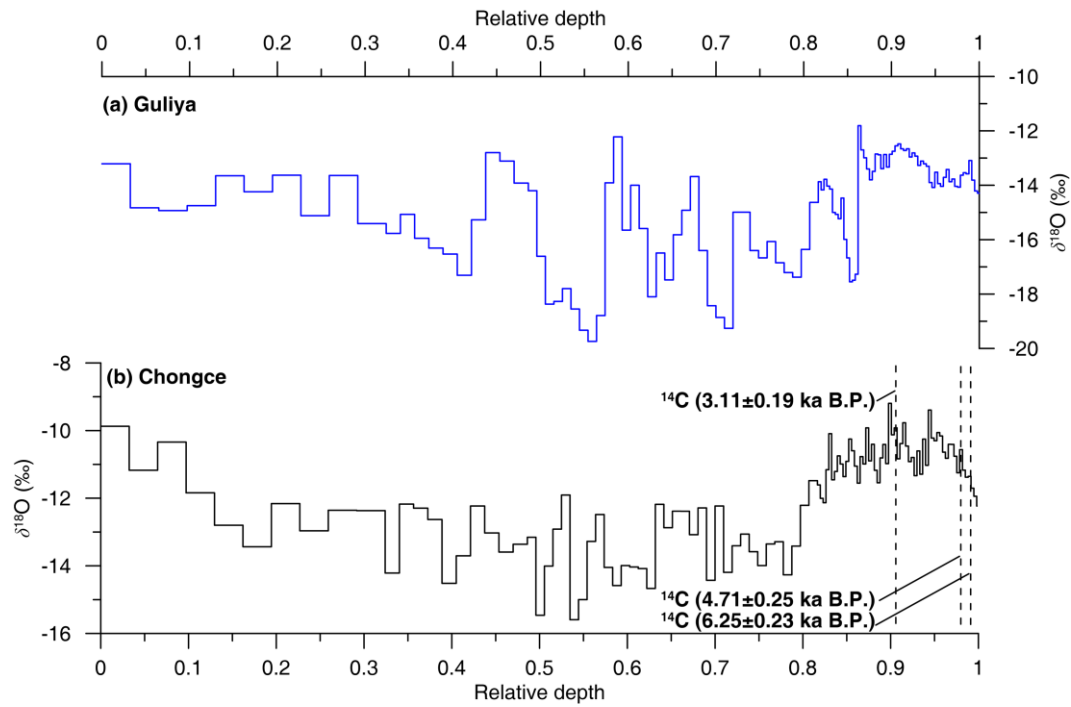


Figure 5. The  $\delta^{18}\text{O}$  profiles of the Guliya (a) and Chongce (b) ice cores, plotted against  
 475 their relative depth. The Chongce profile was averaged to match the temporal resolution  
 of the published Guliya record as shown in Fig. 2a (Thompson et al., 1997).

Table 1. Correlation coefficients (n=16) between the  $\delta^{18}\text{O}$  profiles of the Tibetan ice cores.

|             | Chongce            | Guliya | Puruogangri |
|-------------|--------------------|--------|-------------|
| Guliya      | -0.79 <sup>a</sup> |        |             |
| Puruogangri | 0.22               | -0.10  |             |
| Dunde       | 0.11               | 0.24   | -0.11       |

480 <sup>a</sup> p < 0.001