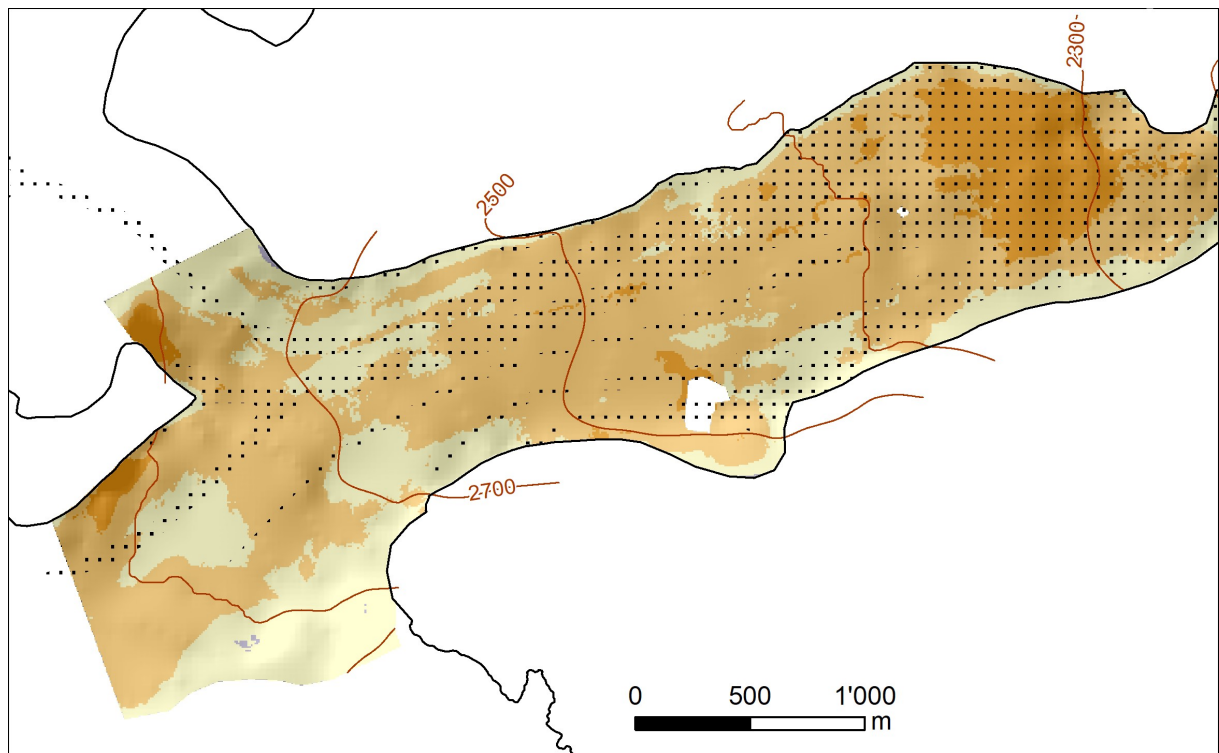
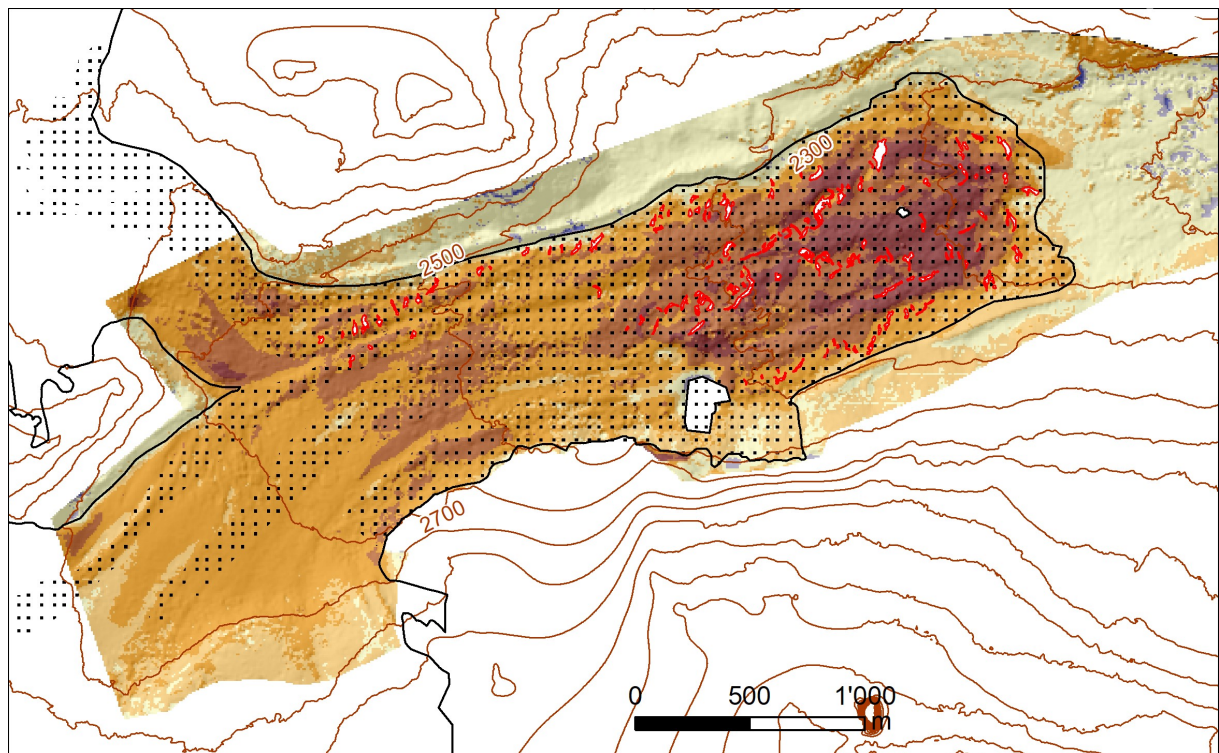


# Supplements

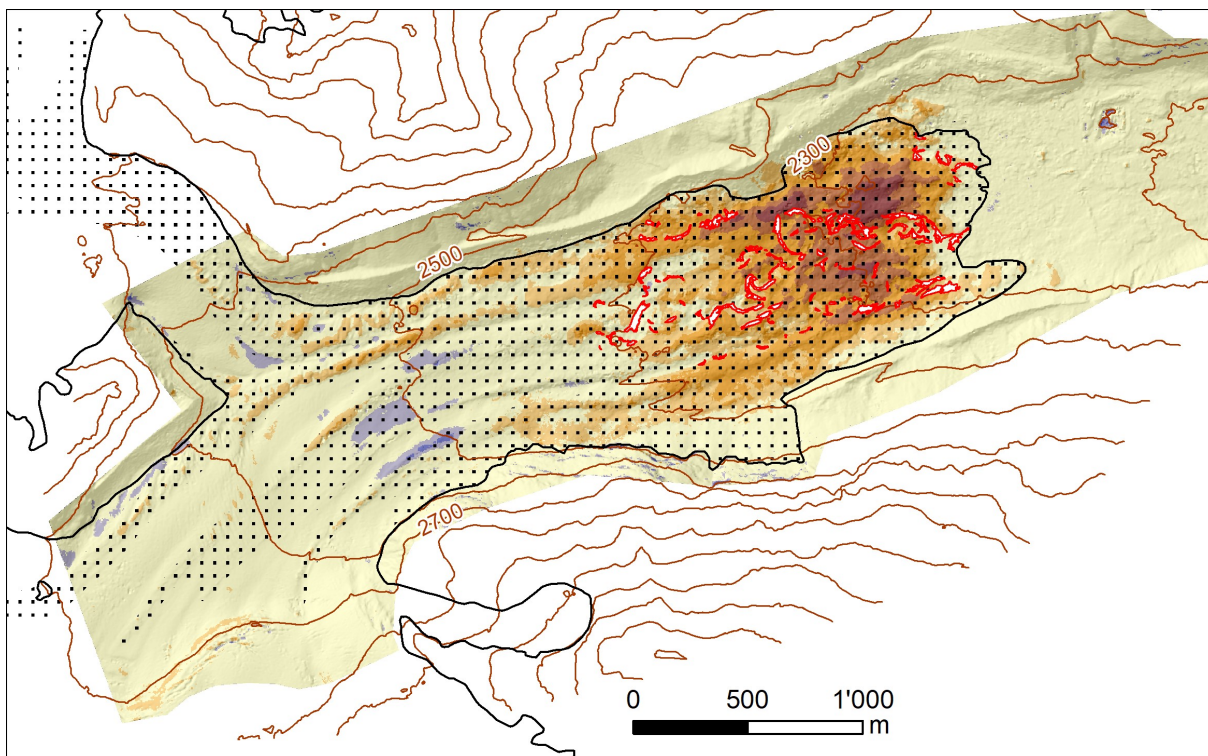
## Elevation change for different time periods



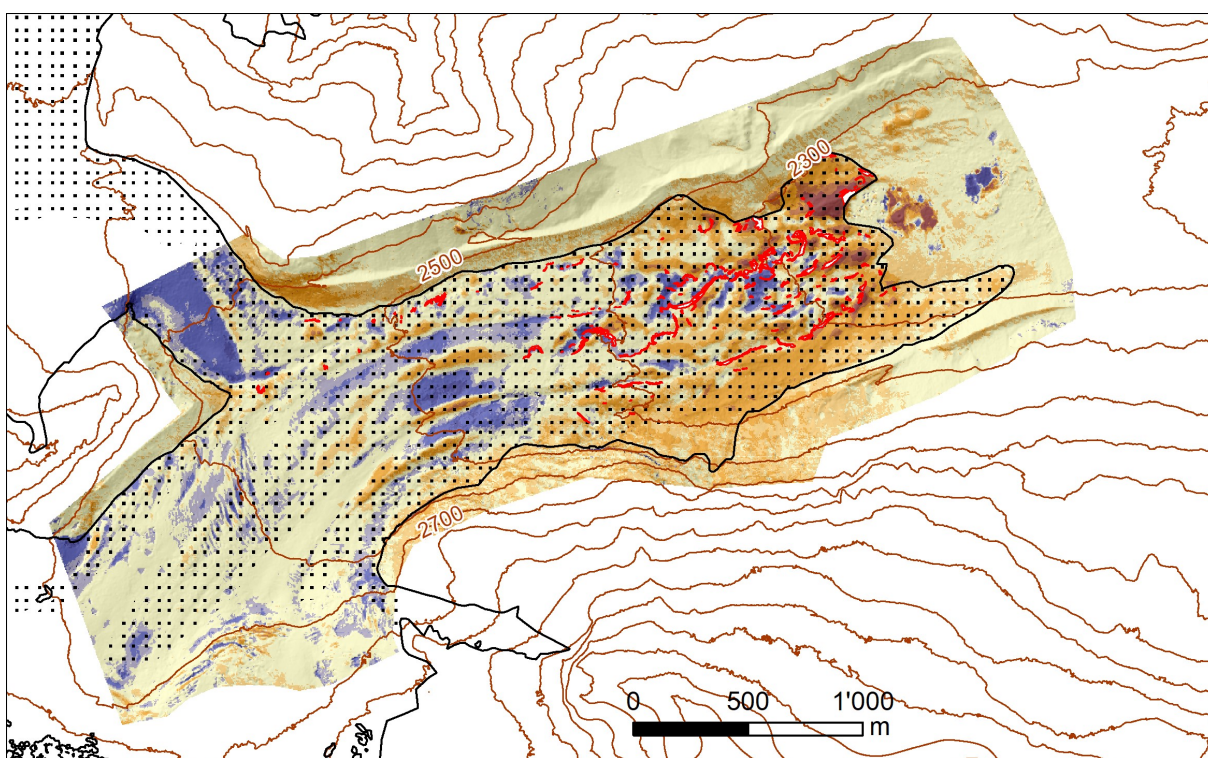
*Supplement 1: 1879-1946.*



*Supplement 2: 1946-1961.*

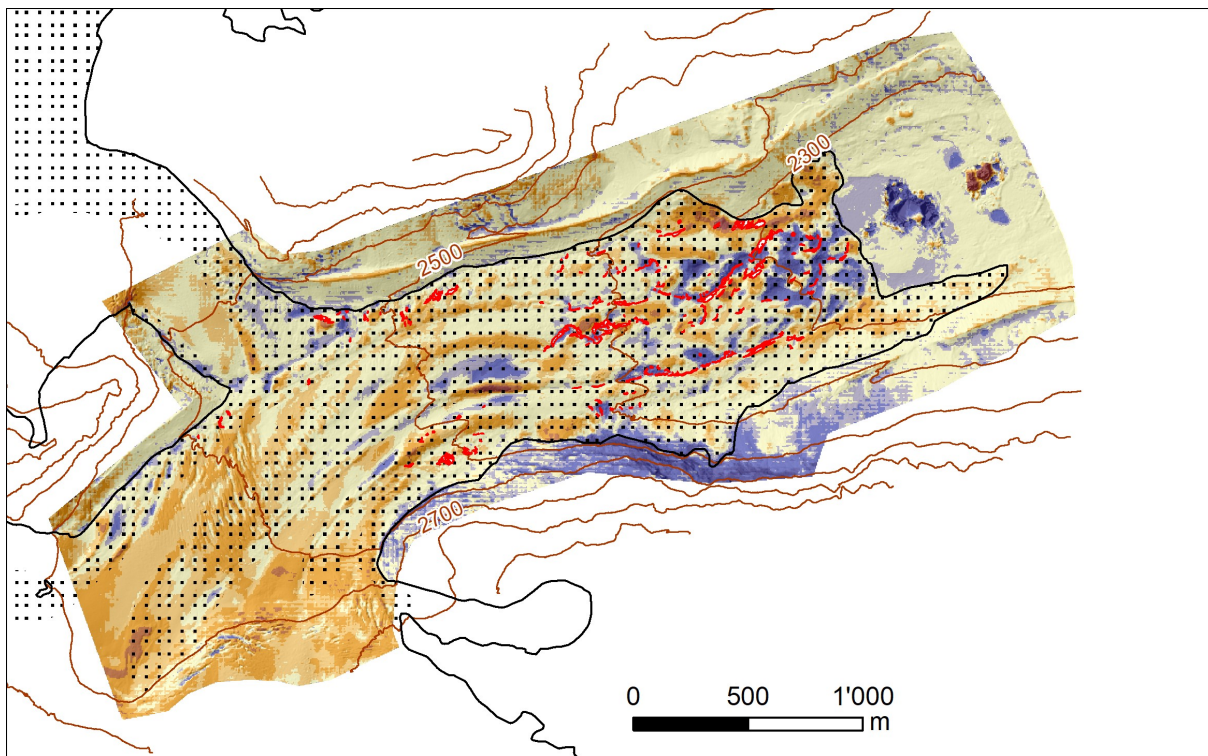


*Supplement 3: 1961-1977.*

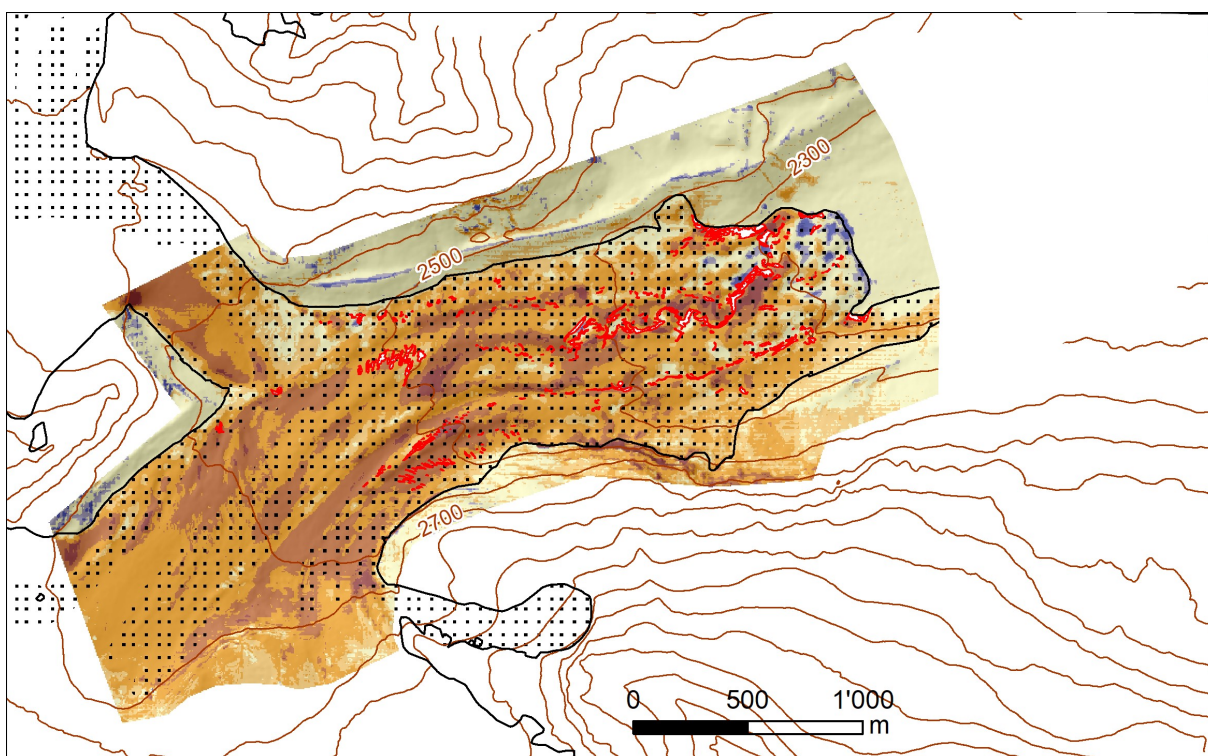


*Supplement 4: 1977-1983.*

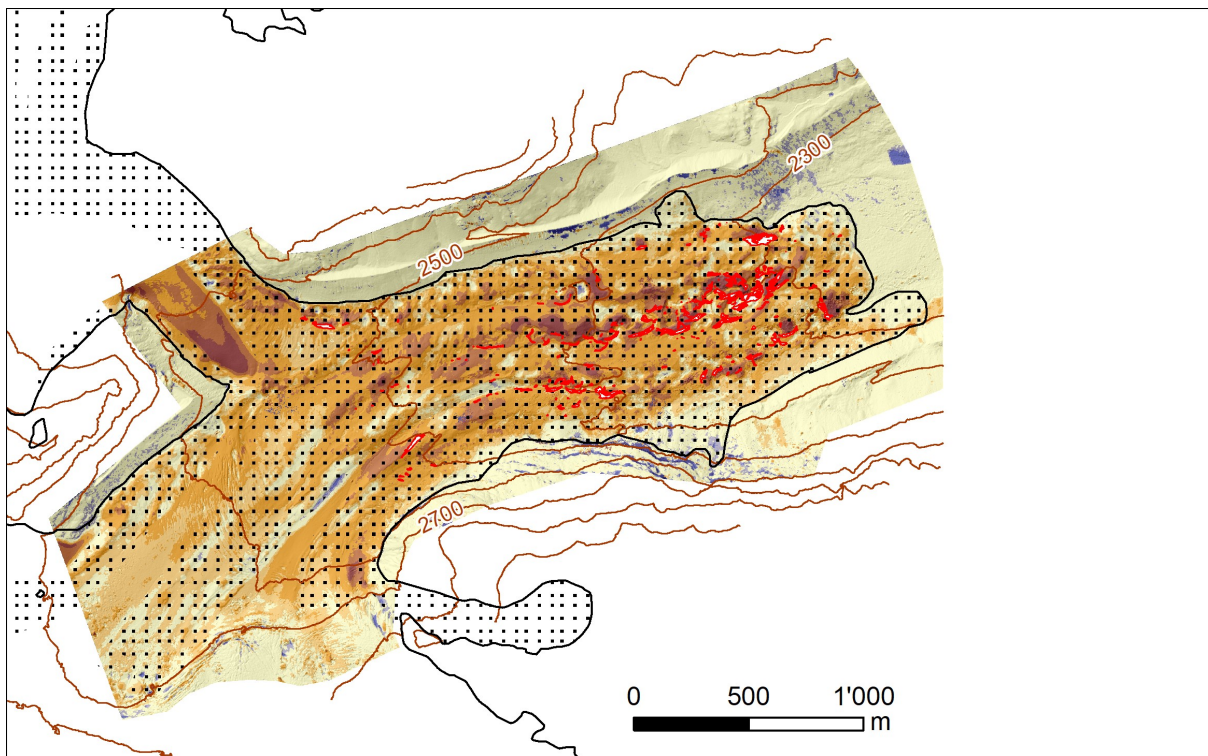




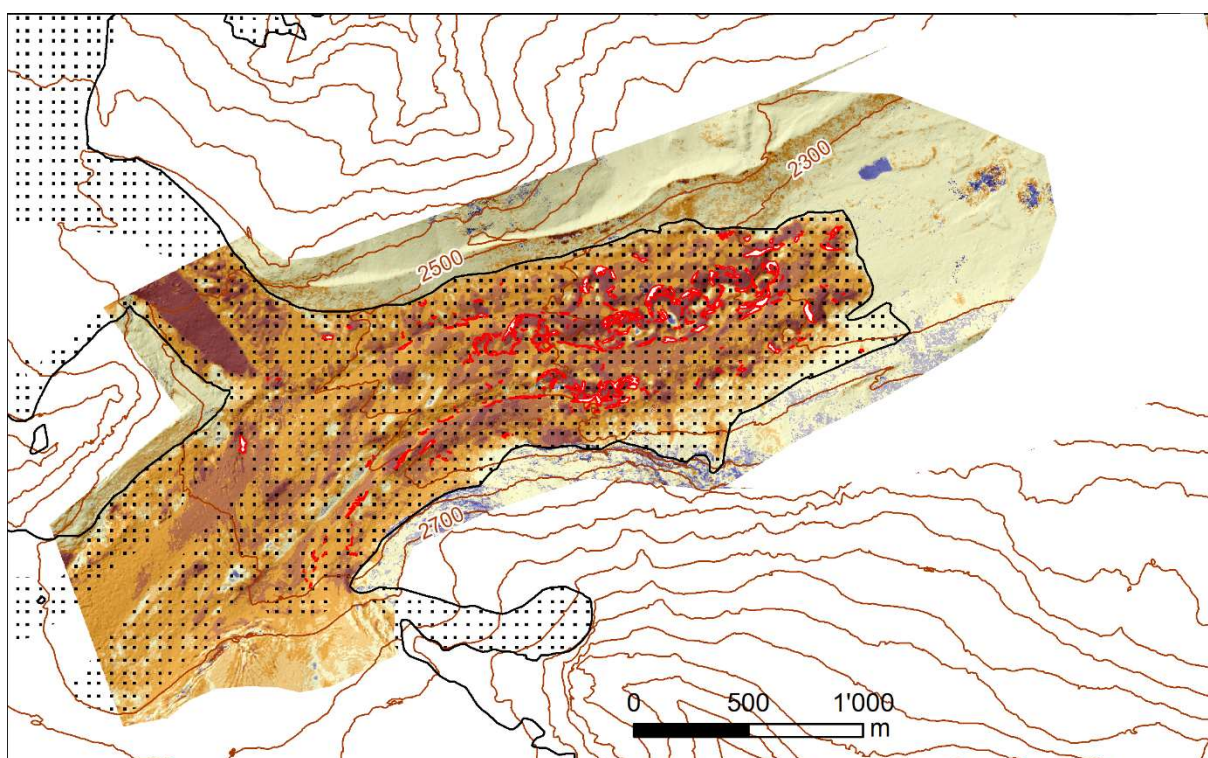
*Supplement 5: 1983-1988.*



*Supplement 6: 1988-1995.*

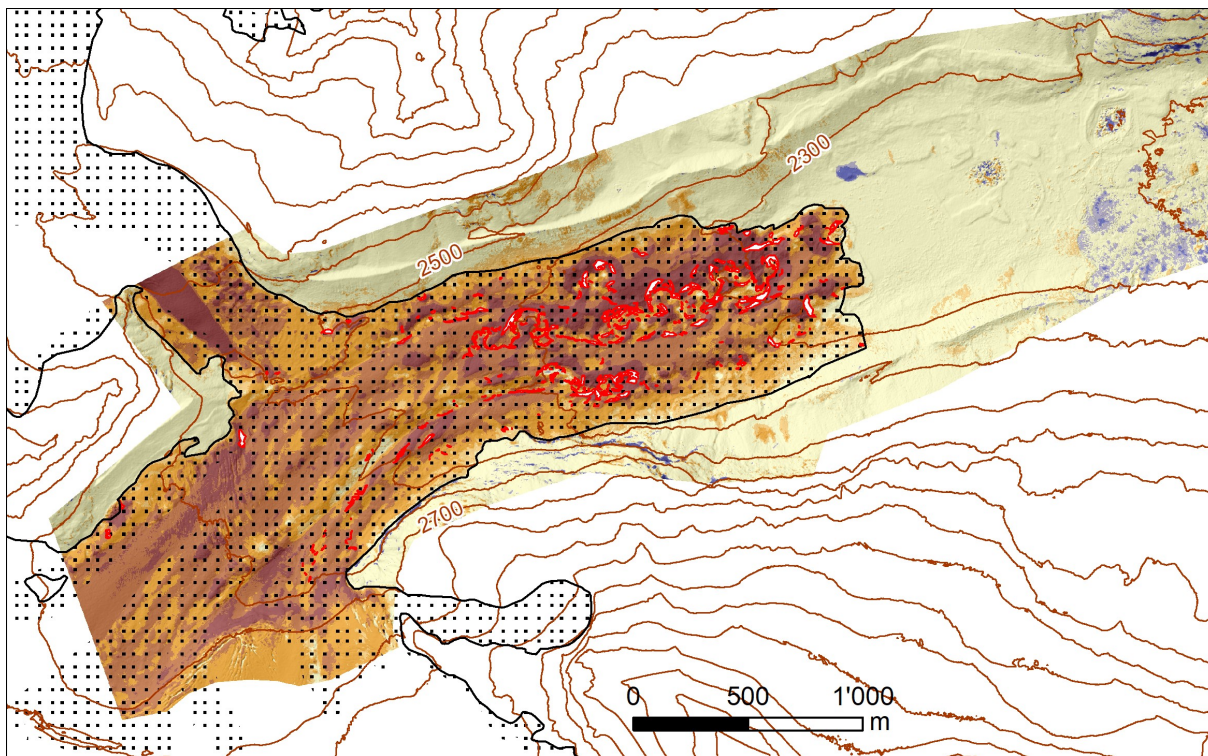


*Supplement 7: 1995-2001.*

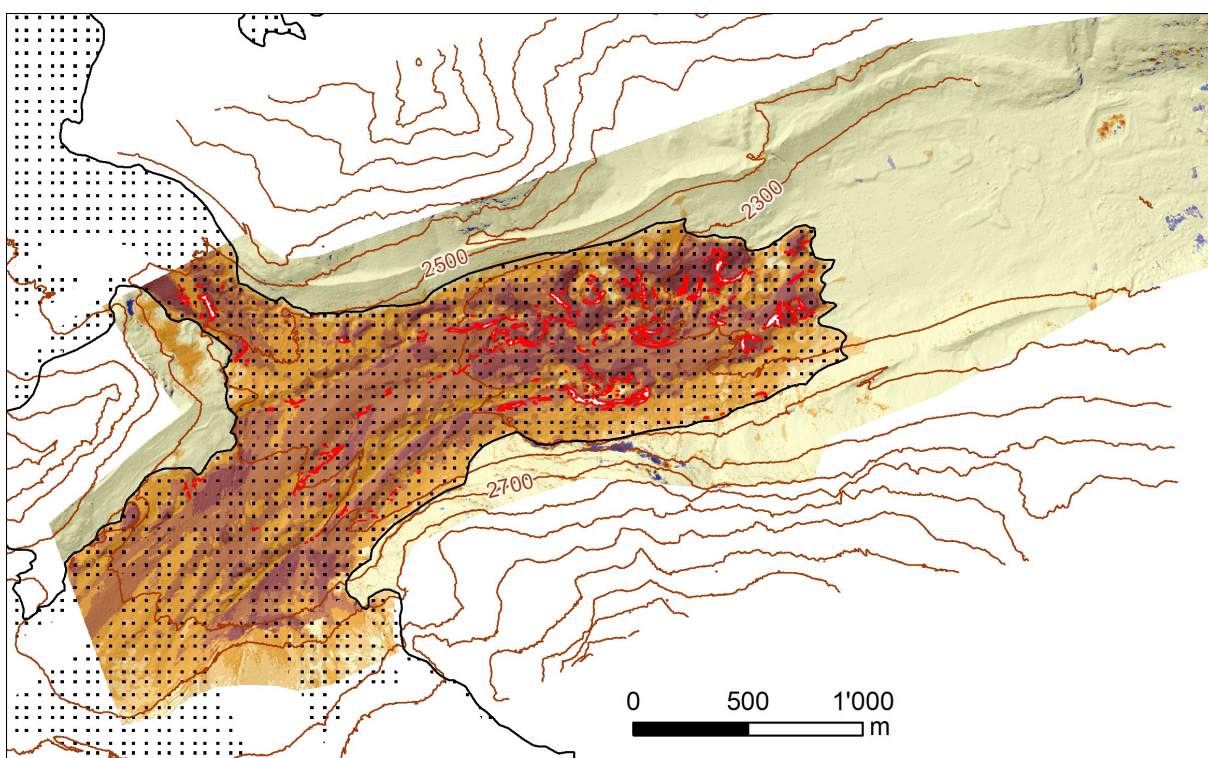


*Supplement 8: 2001-2005.*





*Supplement 9: 2005-2010.*



*Supplement 10: 2010-2017.*

## Length change

| From | To   | dL (m) | dL per year (m) | Cumulative dL (m) |
|------|------|--------|-----------------|-------------------|
| 1859 | 1880 | 75.2   | -3.6 ±0.8       | 75.2              |
| 1880 | 1946 | 888.3  | -13.5 ±0.2      | 963.5             |
| 1946 | 1961 | 245    | -16.3 ±0.05     | 1208.5            |
| 1961 | 1977 | 347.3  | -21.7 ±0.04     | 1555.8            |
| 1977 | 1983 | 65     | -10.8 ±0.07     | 1620.8            |
| 1983 | 1988 | 49.6   | -9.9 ±0.08      | 1670.4            |
| 1988 | 1995 | 6.8    | -1.0 ±0.05      | 1677.2            |
| 1995 | 2001 | 20.8   | -3.5 ±0.06      | 1698              |
| 2001 | 2005 | 75.8   | -19.0 ±0.2      | 1773.8            |
| 2005 | 2010 | 80     | -16 ±0.1        | 1853.8            |
| 2010 | 2016 | 53.3   | -8.9 ±0.06      | 1907.1            |
| 1859 | 2016 | 1907.1 | -12.1 ±0.09     |                   |
| 1892 | 1946 | 726.8  | -13.5 ±0.2      |                   |
| 1946 | 2010 | 890.3  | -13.9 ±0.01     |                   |

Supplement 11: Length change for Zmuttgletscher including annual uncertainties for the respective periods.

## Glacier and debris-covered area change

| Year   | Dc. area (km <sup>2</sup> ) | Total glacier area (km <sup>2</sup> ) | Annual glacier change (km <sup>2</sup> ) | Dc. area share (%) |
|--------|-----------------------------|---------------------------------------|--|--------------------|
| 1859.0 | 2.75 ±0.2                   | 21.28 ±0.34                           |  | 12.9               |
| 1880.0 | 2.84 ±0.26                  | 19.22 ±0.40                           | -0.10                                    | 14.8               |
| 1946.0 | 3.91 ±0.01                  | 18.04 ±0.26                           | -0.02                                    | 21.7               |
| 1961.0 | 3.67 ±0.01                  | 17.43 ±0.06                           | -0.04                                    | 21.1               |
| 1977.0 | 3.69 ±0.005                 | 16.96 ±0.14                           | -0.03                                    | 21.8               |
| 1983.0 | 3.74 ±0                     | 16.87 ±0.06                           | -0.02                                    | 22.2               |
| 1988.0 | 3.82 ±0.005                 | 16.77 ±0.16                           | -0.02                                    | 22.8               |
| 1995.0 | 3.98 ±0                     | 16.72 ±0.06                           | -0.01                                    | 23.8               |
| 2001.0 | 4.51 ±0.005                 | 16.66 ±0.06                           | -0.01                                    | 27.1               |
| 2005.0 | 4.79 ±0.005                 | 16.27 ±0.06                           | -0.10                                    | 29.4               |
| 2010.0 | 4.93 ±0.005                 | 16.36 ±0.07                           | 0.02                                     | 30.1               |
| 2013.0 | 5.03 ±0.01                  | 15.82 ±0.02                           | -0.18                                    | 31.8               |
| 2016.0 |                             | 15.72 ±0.02                           | -0.03                                    |                    |

Supplement 12: Area evolution of glacier and supraglacial debris cover.

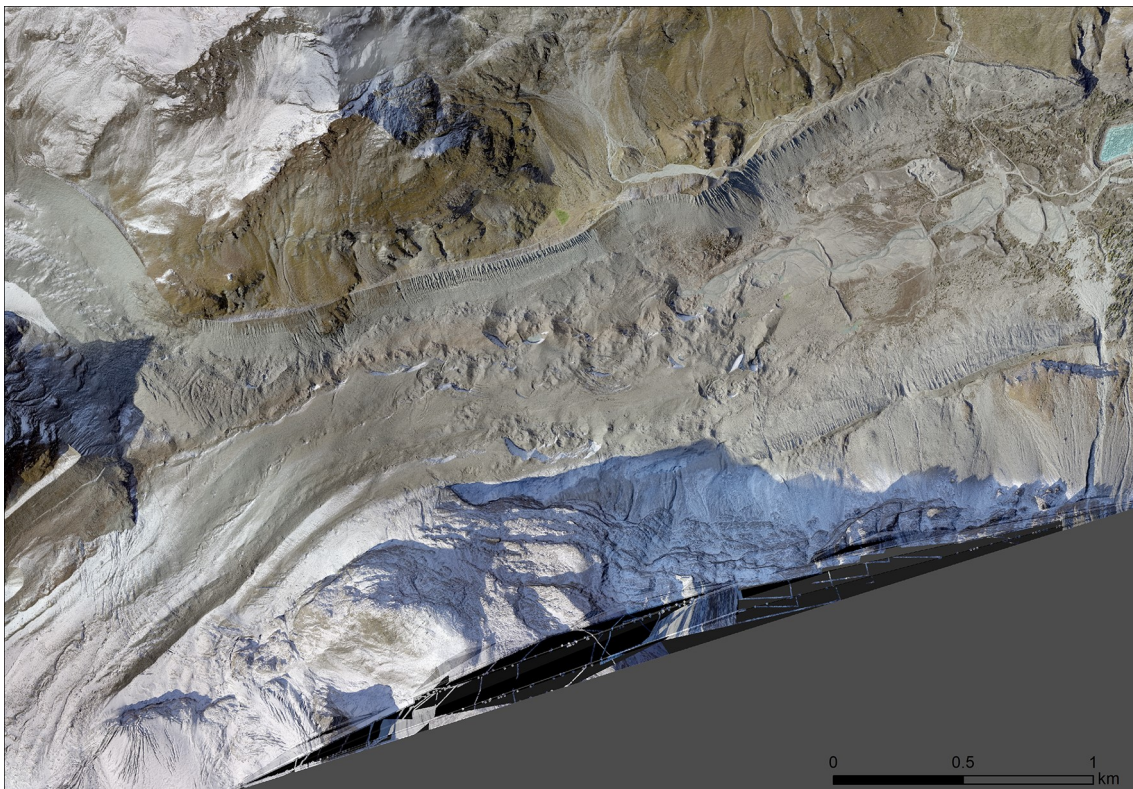


### Aerial photo of 1930



*Supplement 13: Aerial image from 1930. Although large parts of the tongue are still snow-covered, the lowest part yields the typical supraglacial meltwater channels and ice cliffs.*

### Orthophoto 2017



*Supplement 14: Orthophoto from UAV imagery from September 2017. There was light snowfall some days before the campaign, and the snow is conserved on the north-facing ice cliffs in the lowest part of the glacier tongue.*



## Moraine from ~2001



*Supplement 15: Glacier terminus and forefield in 2016. The terminal moraine from the small advance between 1988 and 1995 is well visible some metres in front of today's terminus, separating vegetated from non-vegetated areas on the right side of the river.*