

# **Reply to minor revisions of 'Differential InSAR for tide modelling in Antarctic ice-shelf grounding zones'**

Christian Wild, Oliver Marsh, Wolfgang Rack

## Comment L1:

The 7mm are the mean absolute error between 45 DInSAR images and their corresponding 45 reconstructions from mosaicking the maps of vertical ice displacement at the times of satellite data acquisition together (Table 2). We reworded this sentence.

## Comment L2:

Removed the (i),(ii),(iii) from the list as suggested by the reviewer

## Comment L3:

The amplitude of the backscattered wave depends on the physical (aspect, surface roughness) and electrical (permittivity) properties of the target surface. Their contributions vary depending on the wavelength of the sensor and which type of reflector it is (surface or volume scatterer). As this paper dives into phase analysis, we only mention controls on the received amplitude without further details.

## Comment L4:

Correct, InSAR shows horizontal AND vertical movement. We have removed 'lateral'.

## Comment L5:

We have replaced the Tong 2018 cite with the recent Mougnot paper on Antarctic wide mapping of ice velocity from InSAR

## Comment L6:

We have reworded and define DInSAR now a second time after the abstract before it is used in a sentence.

## Comment L7:

We have included both suggested references

## Comment L8:

We have removed the paragraph as suggested.

## Comment L9:

We explain one sentence earlier why Minchew's data set is so special. However, we have included an additional term that data is 'sparse' for the remainder of Antarctica.

## Comment L10:

The 71 day limit is the duration of the ERS tandem mission and not only the data set that Baek and Shum had available. We have reworded and added another sentence.

## Comment L11:

We have removed this sentence

Comment L12:

Removed 'in turn' from the sentence.

Comment L13:

We have removed this poorly written part.

Comment L14:

The 30km refers to the swath width (i.e. look direction) while the 50km is equivalent to 8 seconds of stripmap data in azimuth direction. We've added this information.

Comment L15:

Changed as suggested by the reviewer

Comment L16:

Changed as suggested by the reviewer

Comment L17:

Changed to T\_TIDE as suggested by the reviewer. Here and throughout the manuscript

Comment L18:

This is in regard to the sensor and not to the time series itself. We have reworded.

Comment L19:

We have replaced the statement about non-tidal effects.

Comment L20:

We have assigned 'a' and 'b' suffixes

Comment L21:

Changed here and in the next sentence to 'traditional tide modelling'

Comment L22:

See Scheffler's Master thesis who finds an accuracy between 3-5mm.. We have included the reference.

Comment L23:

Changed as suggested

Comment L24:

We have changed to 'constrain' as finite-element models are generally 'constrained' by field data like ice thickness etc

Comment L25:

We removed 'new'

Comment L26:

We agree that phase errors of individual constituents will only be smallish. This affects the rate of change of the harmonic more than the harmonic's amplitude at a certain point in time. By adjusting the total tide, this rate of change is corrected and therefore a good first step in the right direction. We haven't considered fitting in complex space yet. We included the statement about phase errors being

'smallish'.

Comment L27:

Maybe the confusion comes from 'A' here being a matrix and not the tidal amplitude ? We have changed 'A' to 'C' . The  $\Delta A$  further down, however, is the difference between the tidal amplitude and the empirical model.

Comment L28:

I hope it is more clear now. This is the definition of  $\Delta A$

Comment L29:

To perform interferometry, SAR images must originate from the same satellite track. At the Darwin, we had 12 SAR images from the same track which allowed the calculation of 45 DInSAR images. At the SMIS, we also have 12 SAR images but from 3 different tracks. Therefore we could only calculate 9 DInSAR images. So if the number of tracks goes up and the number of SAR images stays the same, the number of resulting DInSAR images will go down.

We agree that the primary control on 'low number' is SAR mission duration and repeat interval, but a secondary control is the viewing geometry of the sensor. If it is always the same track, tides can be studied well (this study). If the ice is illuminated from at least 2 different tracks, the 3D motion vector can be fully resolved. So it depends on what you want to measure with DInSAR. We have added a statement about this limiting the calculation of DInSAR combinations.

Comment L30:

This is true - flexure in the grounding zone can overshoot. Our modelling shows that it is always overshooting in an elastic case for all tidal amplitudes (Fig. 1 left). Viscoelastic models show that overshooting happens only at the min/max tide and the ice in the flexure zone is lagging behind the freely-floating part. As ice is viscoelastic on tidal frequencies, I think it will depend on the exact timing of the measurement (IceSAT) if an overshoot can be observed or not.

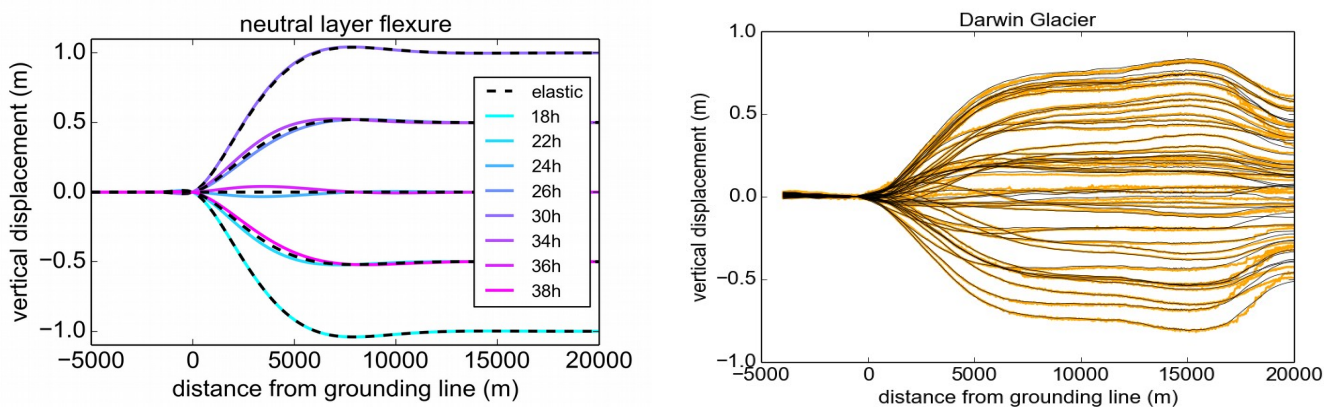


Fig.1: (left) idealised elastic versus viscoelastic model experiments, (right) transects along 45 DinSAR images of the Darwin glacier, orange is measured, black is modelled

At the Darwin glacier, we don't observe any overshooting in the grounding zone and even spot individual flexure curves which show a very well pronounced viscoelastic pattern (Fig. 1 right). These however are averaged out in the calculation of an alpha map. We added a short sentence.

Comment L31:

We think that callouts are much more practical than panel IDs and keep them if it is allowed by the journal style.

Comment L32:

The gap was there because of a quota in data acquisitions and the desire to acquire data both in the summer and winter. We've added a sentence.

Comment L33:

We have added North arrows to both maps

Comment L34:

We agree, it is much more logic to have the figures ordered this way. Changed as suggested.

Comment L35:

No this sentence refers to the Figure showing 3 examples of DInSAR versus their individual reconstructions.

Comment L36:

We removed 'inner' from the paper and replaced with 'near Diamond Hill'

Comment L37:

Layover is a consequence of slant-range distortion similar to shadowing and foreshortening. No changes to the paper.

Comment L38:

We have changed 'increases' to 'spatial gradients' as suggested

Comment L39:

It is this Python function (`scipy.interpolate.RectBivariateSpline`). We have added additional information to our interpolation routine.

Comment L40:

We have removed 'course of the'

Comment L41:

We note that the reviewer is an expert in tide modelling and hope we could spark his interest in ice rheology with this paper.

Comment L42:

There was a hick up with the ordering of the figures. We rearranged.

Comment L43:

Changed as suggested

Comment L44:

We have rounded the floats to their fifth decimal.

Comment L45:

We have added a few sentences and elaborate on the low tide bias.

Comment L46:

Changed as suggested earlier

Comment L47:

Changed as suggested

Comment L48:

We have removed 'inner' and replaced 'near Diamond Hill'

Comment L49:

Changed as suggested

Comment L50:

Oli: why didn't we use COSMO-SkyMed ? But we could

Comment L51:

Changed as suggested

Comment L52:

The reviewer is right, problems are minimized. We reworded and changed 'avoids' to 'eases'.

Comment L53:

We have removed the '-' from all percentage improvements in the manuscript.

# Differential InSAR for tide modelling in Antarctic ice-shelf grounding zones

Christian T. Wild<sup>1</sup>, Oliver J. Marsh<sup>1,2</sup>, and Wolfgang Rack<sup>1</sup>

<sup>1</sup>Gateway Antarctica, University of Canterbury, Private Bag 4800, Christchurch 8140, New Zealand

<sup>2</sup>British Antarctic Survey, High Cross, Madingley Road, Cambridge, CB3 0ET, United Kingdom

**Correspondence:** Christian T. Wild (christian.wild@canterbury.ac.nz)

**Abstract.** Differential interferometric synthetic aperture radar (DInSAR) is an essential tool for detecting ice-sheet motion near Antarctica's oceanic margin. These space-borne measurements have been used extensively in the past to map the location and retreat of ice-shelf grounding lines as an indicator for the onset of marine ice-sheet instability and to calculate the mass balance of ice sheets and individual catchments. The main difficulty in interpreting DInSAR is that images originate from a combination of several SAR images and do not indicate instantaneous ice deflection at the time of satellite data acquisition. Here, we combine the sub-centimetre accuracy and spatial benefits of DInSAR with the temporal benefits of tide models to infer the spatiotemporal dynamics of ice-ocean interaction during the times of satellite overpasses. We demonstrate the potential of this synergy with TerraSAR-X data from the almost stagnant Southern McMurdo Ice Shelf. We then validate our algorithm with GPS data from the fast-flowing Darwin Glacier, draining the Antarctic Plateau through the Transantarctic Mountains into the Ross Sea. We are able to <sup>c1</sup>reconstruct DInSAR derived vertical displacements to 7 mm <sup>c2</sup>MAE; generally improve traditional tide model output by up to <sup>c3</sup>39% from 10.8 cm to 6.7 cm RMSE against GPS data from areas where ice is in local hydrostatic equilibrium with the ocean; and up to <sup>c4</sup>74% from 21.4 cm to 5.6 cm RMSE against GPS data in feature-rich coastal areas where tide models have not been applicable before. Numerical modelling then reveals a Young's modulus of  $E = 1.0 \pm 0.56$  GPa and an ice viscosity of  $\nu = 10 \pm 3.65$  TPa s when finite-element simulations of tidal flexure are matched to 16 days of tiltmeter data; supporting the hypothesis that strain dependent anisotropy may significantly decrease effective viscosity compared to isotropic polycrystalline ice on large spatial scales. Applications of our method <sup>c5</sup>include: <sup>c6</sup> refining coarsely-gridded tide models to resolve small-scale features at the spatial resolution and vertical accuracy of SAR imagery<sup>c7</sup>; <sup>c8</sup> separating elastic and viscoelastic contributions in the satellite derived flexure measurement<sup>c9</sup>; and <sup>c10</sup> gaining information about large-scale ice heterogeneity in Antarctic ice-shelf grounding zones, the missing key to improve current ice-sheet flow

---

<sup>c1</sup> ~~match~~

<sup>c2</sup> ~~Text added.~~

<sup>c3</sup> ~~-~~

<sup>c4</sup> ~~-~~

<sup>c5</sup> ~~range from~~

<sup>c6</sup> ~~(i)~~

<sup>c7</sup> ~~,~~

<sup>c8</sup> ~~to (ii)~~

<sup>c9</sup> ~~Text added.~~

<sup>c10</sup> ~~(iii)~~

models. The reconstruction of the individual components forming DInSAR images has the potential to become a standard remote-sensing method in polar tide modelling. Unlocking the algorithm's full potential to answer multi-disciplinary research questions is desired and demands collaboration within the scientific community.

*Copyright statement.* TEXT

## 5 1 Introduction

The periodic rise and fall of the ocean's surface is caused by the gravitational interplay of the Earth-Moon-Sun system and our planet's rotation. Knowledge of ocean tides is fundamental to fully understand oceanic processes, sedimentation rates and behaviour of marine ecosystems. In Antarctica, the tidal oscillation also controls the motion of ice sheets near the coastline and ocean mixing in the sub ice-shelf cavity which modifies heat transport to the ice-ocean interface (Padman et al., 2018).

10 SAR satellites repeatedly illuminate Earth's surface and record the backscattered radar wave. While the SAR signal's amplitude depends on reflection intensity and is mainly characterized by <sup>c1</sup>physical and electrical properties of the surface, the recorded phase holds information about the distance travelled by the signal (Massom and Lubin, 2006). Two-pass interferometry (InSAR) can be used to determine <sup>c2</sup> surface motion with sub-centimetre accuracy over vast remote areas. <sup>c3</sup>Therefore, InSAR has been applied to measure <sup>c4</sup>Antarctic-wide ice velocity (Mouginot et al., 2019) and to observe tidal strain of landfast  
15 sea ice (Han and Lee, 2018). In grounding zone areas, where an ice sheet comes in contact with the ocean for the first time and forms floating glaciers and ice shelves, InSAR has become the state-of-the-art practice to measure the flux divergence of ice-flow velocity (Mouginot et al., 2014; Han and Lee, 2015) and thus the mass balance of many ice shelves around Antarctica (Rignot et al., 2013). InSAR can also be used to identify vertical deflection due to ocean tides. Horizontal and vertical motion cannot be distinguished in single interferograms but the unsteady tidal contribution can be extracted by <sup>c5</sup>using triple  
20 or quadruple combinations of SAR images. This is based on the assumption that horizontal flow is time invariant, and that its phase contribution therefore cancels out. The double-differential measurement of vertical displacement only is known as Differential InSAR (DInSAR). While DInSAR has often been applied to detect the grounding line movement around Antarctica (Konrad et al., 2018) the signal can also be used to measure spatial variability of ocean tides at very high ground resolution (Minchew et al., 2017; Baek and Shum, 2011). This second application is complicated by the fact that DInSAR interferograms  
25 show a combination of multiple stages of the tidal oscillation. Tidal migration of the grounding line as well as viscoelastic time delays in ice displacement, tidally-induced velocity variations and geometric effects on the surface flexure also complicate the correct interpretation of DInSAR interferograms to date (Rack et al., 2017; Wild et al., 2018).

---

<sup>c1</sup> *Text added.*

<sup>c2</sup> ~~lateral~~

<sup>c3</sup> ~~and~~

<sup>c4</sup> ~~surface velocity of floating ice~~

<sup>c5</sup> ~~DInSAR using-~~

Present-day displacement measurements by interferometry are exacerbated by the requirement of phase unwrapping, which is the most crucial processing step in any InSAR method. Discontinuities in the fringe pattern can cause jumps in the unwrapped phase and may therefore bias the continuous motion field. Due to these complications, only very few studies have attempted to derive a tide model from DInSAR<sup>c6</sup>. Minchew et al. (2017) developed an unprecedented spatially and temporally dense SAR data acquisition campaign for the Rutford Ice Stream, Weddell Sea. Their novel Bayesian method to unequivocally separate a complete set of <sup>c7</sup> tidal harmonics from nontidal ice-surface variability is unique, but beyond the <sup>c8</sup>sparse data availability for the remainder of Antarctica. Baek and Shum (2011) succeeded in using data from the ERS-1/2 tandem mission to map the dominant tidal <sup>c9</sup>constituent (O1) in Sulzberger Bay, Ross Sea, but data limitations prevented them from developing a full tidal model. In this case, too short a time span (71 days) <sup>c10</sup>of the ERS tandem mission eliminated a <sup>c11</sup>sufficient change of the observed tidal amplitudes as <sup>c12</sup>aliasing problems between the repeat-pass cycle of the SAR satellites <sup>c13</sup>and the tidal oscillation masked the sensor's sensitivity to tidal variability. <sup>c14</sup>As a result, many tidal constituents had their variability too poorly sampled to derive a full set of tidal harmonics. <sup>c15</sup>However, even identifying only dominant single tidal constituents is valuable as it indicates ways in which tide models need to be changed, and these changes will ultimately improve modelling of other constituents. In the Ross Sea, the tidal oscillation is dominated by diurnal harmonics (Padman et al., 2018).<sup>c16</sup>

Tide models can be consulted to predict both the timing and magnitude of the dominant harmonics. Numerous tide models of various spatial scales (global vs regional) and complexity have been developed (see Stammer et al., 2014, for an overview). While forward models integrate the equations of fluid motion subjected to a gravitational forcing over time, inverse models assimilate measurements of vertical displacement from laser altimetry, tide gauges and GPS (Egbert and Erofeeva, 2002; Padman et al., 2003a, 2008). Since the modelled physics is generally simple and gravitational forces are well known, tide model predictions are of high quality in areas where ice is freely floating on the ocean<sup>c1</sup>. In coastal areas, <sup>c2</sup>tide models are prone to inaccuracies due to errors in model bathymetry, grounding-line location and insufficient knowledge of the ice water drag coefficient (Padman et al., 2018). Another source of error arises from the conversion of ice-shelf draft to ice-shelf thickness and subsequent estimation of water-column thickness. This freeboard conversion assumes that ice near the coastline is in local hydrostatic equilibrium, whereas stresses from the grounded ice clearly prevent a freely-floating state. A bias of the hydrostatic

---

<sup>c6</sup> :

<sup>c7</sup> ~~energetic~~

<sup>c8</sup> ~~Text added.~~

<sup>c9</sup> ~~constituent~~

<sup>c10</sup> ~~Text added.~~

<sup>c11</sup> ~~Text added.~~

<sup>c12</sup> ~~Text added.~~

<sup>c13</sup> ~~Text added.~~

<sup>c14</sup> ~~Text added.~~

<sup>c15</sup> ~~However, even identifying only the dominant tidal constituent is valuable; as it indicates ways in which tide models need to be changed, and these changes will ultimately filter into other constituents.~~

<sup>c16</sup> ~~An accurate inversion of TerraSAR-X data with an exact integer number of repeat passes to a complete set of tidal constituents is therefore not possible from DInSAR measurements alone.~~

<sup>c1</sup> ~~Text added.~~

<sup>c2</sup> ~~in turn,~~



solution towards thicker ice (Marsh et al., 2014), and therefore a thinning water-column thickness, may negatively affect the tidal prediction. In summary, the relatively coarse spatial resolution and underlying assumptions of contemporary tide models introduce inaccuracies especially in feature-rich coastal areas such as fjord-type outlet glaciers. Although average tide model accuracy has improved markedly in coastal areas over one decade, from about  $\pm 10$  cm (Padman et al., 2002) to  $\pm 6.5$  cm (Stammer et al., 2014), they are still a<sup>c3</sup>n order of magnitude larger than the sub-centimetre accuracy of DInSAR (Rignot et al., 2011). For this reason, we consider DInSAR as the absolute truth and use these space-borne measurements to correct tide-model output.

In this manuscript, we show how the spatial benefits and high accuracy of DInSAR can be used to refine coarse resolution tide models to adequately resolve ocean tides along the feature-rich Antarctic coastline. First we introduce the necessary data set<sup>c1</sup>and describe the preprocessing.<sup>c2</sup> Second we test the algorithm for the Southern McMurdo Ice Shelf (SMIS), a small and almost stagnant ice shelf with a simple grounding-zone geometry, and expand the study to the Darwin Glacier, a relatively fast-flowing outlet glacier within a complex fjord-like embayment. We validate our results with dedicated field measurements taken within the Transantarctic Ice Deflection Experiment (TIDEx) in 2016. We then demonstrate how this exercise can also be applied to reveal errors in interferometric phase unwrapping and answer fundamental questions about the physical properties of ice in Antarctic glaciology.

## 2 Methodology

### 2.1 Summary of SAR image processing

To develop the method, we use 11-day repeat-pass TerraSAR-X data in StripMap imaging mode. The satellite acquires X-band radar data (wavelength 3.1 cm, frequency 9.6 GHz) with a ground resolution of slightly below  $3 \times 3$  m and images covering an area of  $30 \times 50$  km<sup>c3</sup>in look and azimuth direction. We calculate vertical surface displacement due to ocean tides using the Gamma software package (Werner et al., 2000). InSAR and DInSAR image combinations are generally chosen so that a later image is always subtracted from an earlier image. For image triplets, the central SAR image serves as a common reference during the co-registration. We then correct the resulting DInSAR interferograms for apparent vertical displacement due to horizontal surface motion (Rack et al., 2017) using the method presented<sup>c4</sup>by Wild et al. (2018).

### 2.2 Tide models

The predictions of five tide models are validated: the regional barotropic models (1) Circum-Antarctic Tidal Solution (<sup>c5</sup>CATS2008) developed by Padman et al. (2008), (2) Ross Sea Height-Based Tidal Inverse Model (Ross\_Inv\_2002) developed by Padman

---

<sup>c3</sup> *Text added.*

<sup>c1</sup> ;

<sup>c2</sup> and guide through the work flow.

<sup>c3</sup> *Text added.*

<sup>c4</sup> in

<sup>c5</sup> CATS2008a\_opt

et al. (2003a), (3) Ross Sea assimilation model (Ross\_VMADCP\_9cm), (4) the fully global barotropic assimilation model (TPXO7.2) from Oregon State University developed by Egbert and Erofeeva (2002), and (5) the (<sup>c6</sup>T\_TIDE) prediction of GPS data from freely-floating areas following the harmonic analysis of Pawlowicz et al. (2002) which is based on <sup>c7</sup>FORTRAN codes developed by Foreman (1977). The <sup>c8</sup>T\_TIDE software is a widely-used toolbox for performing classical harmonic analysis of ocean tides. It can <sup>c9</sup>be used to analyse <sup>c10</sup> time series records <sup>c11</sup>from GPS, tiltmeter and other sensors which are evenly spaced and adequately resolved. <sup>c12</sup>T\_TIDE outputs the amplitude and phase of its dominant harmonics with error estimates, along with a tidal prediction that <sup>c13</sup>can extend beyond the duration of the input record. The isostatic deformation of the Earth's lithosphere underneath the moving water masses is modelled using TPXO7.2 load tide model (Egbert and Erofeeva, 2002), which itself is based on 13 tidal constituents and added to all tide model predictions except <sup>c14</sup>T\_TIDE. In addition to the tidal motion underneath the floating ice, much of the ice-surface variability can be attributed to the Inverse Barometric Effect (IBE, Padman et al., 2003b). A +1 hPa anomaly of atmospheric pressure translates to an instantaneous -1 cm change on the ice-shelf surface. <sup>c15</sup>Note that we did not apply a running mean to the pressure records, as the application of any window length worsened the fit to available GPS data. To correct for the IBE outside the GPS period, we make use of atmospheric pressure records obtained by nearby automatic weather stations on Ross Island (Scott Base AWS) and the Ross Ice Shelf (Marilyn AWS). We validate these records with separate barometric measurements taken within the TIDEx campaign and find very good agreement.

In this paper, we use the terms 'traditional tide <sup>c1</sup>modelling' or 'tide model' to refer to the sum of ocean-tide, load-tide model outputs and the IBE. Freely-floating areas of ice shelves and glaciers are expected to experience the full oscillation of this tide model. Traditional tide <sup>c2</sup>modelling, however, neglects ice mechanics in grounding zones where tidal flexure <sup>c3</sup>significantly affects the surface elevation signal in reality. Other signals that change sea-level height such as mean dynamic topography and storm surges are also excluded from this type of tide model.

### 2.3 In-situ data

We set <sup>c4</sup>up a number of GPS receivers to measure ice-surface motion at millimetre accuracy and high temporal resolution (Scheffler, 2017). Although we used GPS data from the freely-floating parts to develop local tide models using <sup>c5</sup>T\_TIDE, all GPS data was only used for validation purposes and did not feed into the algorithm. GPS measurements were differentially

---

<sup>c6</sup> t\_tide

<sup>c7</sup> *Text added.*

<sup>c8</sup> t\_tide

<sup>c9</sup> *Text added.*

<sup>c10</sup> any

<sup>c11</sup> *Text added.*

<sup>c12</sup> and

<sup>c13</sup> is free from non-tidal effects

<sup>c14</sup> t\_tide

<sup>c15</sup> It is noteworthy to mention

<sup>c1</sup> \_

<sup>c2</sup> \_

<sup>c3</sup> significantly

<sup>c4</sup> \_

<sup>c5</sup> t\_tide

corrected using static base stations to increase their spatial accuracy. We also installed an array of seven tiltmeters to record surface flexure over 16 days across the grounding zone to <sup>c6</sup>constrain the physical properties of Antarctic ice. The tiltmeters were complemented by a dense network of point measurements of ice thickness using <sup>c7</sup>an autonomous phase-sensitive radar echo sounder (ApRES, Nicholls et al., 2015).

## 5 2.4 Combining DInSAR and tide models

To allow a correct interpretation of DInSAR images covering grounding zones, it is desirable that tide models replicate DInSAR observations in freely-floating areas. We first adjust the tide-model output to match the highly-accurate DInSAR measurements using a least sum of squares routine (Wild et al., 2018). By doing so, we consider just the tide model amplitude to contain errors. Possible tide-model phase errors are <sup>c1</sup>only smallish and accounted for by adjusting the absolute amplitude and thus the rate of tidal change during the times of SAR data acquisition. Second we build on earlier work by Han and Lee (2014) <sup>c2</sup>to develop an empirical displacement map showing tide-deflection ratio throughout the satellite image ( $\alpha$ -map). By feeding the  $\alpha$ -map with the adjusted tide model output, the 'point forecast' is then spatially extended to predict the mean vertical displacement for every pixel at the times of SAR data acquisition. We then perform the double differences of the empirical model corresponding to the SAR image combinations used to generate the DInSAR images. The original DInSAR satellite measurements are subsequently removed from the mean DInSAR images to calculate their misfits,  $\mu$ . We now compute the least-squares solution to the equation  $Cx = b$  such that the 2-norm  $|b - Cx|$  is minimized. Here,  $C$  is the  $m \times n$  DInSAR matrix of SAR image combinations with  $m$  rows of SAR images and  $n$  columns of coherent DInSAR interferograms;  $b$  is a vector of  $\alpha$ -prediction misfits and  $x$  the least-squares solution of this system of linear equations. The values of  $x$  correspond to how much an  $\alpha$ -prediction deviates from the 'real' vertical displacement at the times of SAR data acquisition. We therefore subtract these offsets,  $\Delta A$ , from the  $\alpha$ -prediction maps.

We now demonstrate the workflow in one spatial dimension with an example of the Southern McMurdo Ice Shelf (78°15' S, 167°7' E, SMIS). In this study area, we derived 9 DInSAR images from 12 TerraSAR-X scenes in 2014 (Rack et al., 2017). The low number of DInSAR images is a consequence of the SAR scenes being acquired on 3 different satellite tracks<sup>c3</sup>, which limits the number of coherent SAR scenes for DInSAR. The resulting system of linear equations is therefore underdetermined as there are more offsets,  $\Delta A$ , than misfits,  $\mu$ , to constrain the least-squares solutions. We choose a pixel on the freely-floating end of a profile through the ice-shelf grounding zone to represent the unrestricted ice shelf movement and calculate the percentage vertical displacement of every other pixel from this location. Averaged over the 9 DInSAR interferograms this pixel retains 100% vertical displacement (red areas in Fig. 1), while grounded areas experience zero net uplift (purple areas). Individual pixels on the freely-floating part of the SMIS may show  $\alpha$ -values slightly above 100%. <sup>c4</sup>Flexure in the grounding zone can

---

<sup>c6</sup> confine

<sup>c7</sup> the new

<sup>c1</sup> then

<sup>c2</sup> and

<sup>c3</sup> Text added.

<sup>c4</sup> Text added.

include 'overshoot' for snapshots in time (Fricker and Padman, 2006)<sup>c5</sup>, but these are averaged out during the calculation of the  $\alpha$ -map.

We now extract the  $\alpha$ -values along the profile from the  $\alpha$ -map. This  $\alpha$ -profile can be multiplied with the individual DInSAR measurements on its freely-floating end which results in empirically derived  $\alpha$ -predictions (Fig. 2 center). These mean predic-  
5 tions do not perfectly replicate the DInSAR measurements (Fig. 2 top). Their misfits, however, show a very systematic pattern (Fig. 2 bottom). It is desirable to find a combination of offsets that have the least deviation from the  $\alpha$ -predictions. We therefore hypothesize that this rather systematic signal can be reconstructed using a least-squares strategy. We solve the underdetermined system simultaneously by finding the combination of offsets that result in a minimal sum of squares. The reconstructed offsets must then be removed from the  $\alpha$ -prediction for the times of SAR data acquisition (Fig. 3 top). The computed least-square  
10 offsets generally replicate the pattern of the misfits (Fig. 3 center) and result in smooth displacement profiles in the ice-shelf grounding zone (Fig. 3 <sup>c1</sup>bottom).

### 3 Results

In this section we apply the workflow in two spatial dimensions to the Darwin Glacier (79°53' S, 159°00' E). In this study area, we derived a total of 45 DInSAR images from 12 SAR scenes being acquired on the same satellite track (Tab. 1). <sup>c2</sup>To  
15 ensure a balance of both SAR coherence between consecutive images and coverage of different tidal periods in different sea-  
seasons, we acquired the SAR imagery in two blocks, separated by an 11 week gap. SAR image combinations were generally chosen consecutively so that a later image is always subtracted from an earlier image. For image triples, the central image was taken as a common reference/master image. Additionally the data gap between SAR 8 and 9 was taken into account (no 8-9 combination as loss of coherence over this relatively long interval). The advantage of using every other remaining combination  
20 (Tab. 2) is that more double-differential measurements of tidal amplitude are available for the least-squares fitting algorithm than only using consecutive pairs alone. The system of linear equations is then overdetermined. A dedicated field campaign was conducted in the Darwin Glacier grounding zone in 2016 and *in-situ* data is available for numerical modelling and field validation purposes. In contrast to the simple geometry at the SMIS, the Darwin Glacier consists of a feature-rich embayment that is constrained by steep topography at its margins. Additionally a buttressing ice rise to the Ross Ice Shelf restricts outflow  
25 in the North.

#### 3.1 Reconstruction of displacement maps during satellite overpasses

From the interferogram dataset we identify a corridor of only about 2 km width along the centerline where the glacier can be assumed to be freely floating (Fig. 1). This area is expected to experience the full oscillation predicted from tide models. We run five tide models to predict the tidal oscillation at the GPS station 'Shirase' over the time span of SAR data acquisitions.  
30 Here we use atmospheric pressure data from the automatic weather station 'Marilyn' which is located about 120 km away on

---

<sup>c5</sup> Text added.

<sup>c1</sup> Text added.

<sup>c2</sup> Text added.

the Ross Ice Shelf to correct for the inverse barometric effect. This record correlates well (Pearson's correlator 0.989) with a mean of seven barometers installed over 14 days across the Darwin Glacier during the TIDEx campaign. All tide-model predictions show a clear fortnightly occurring spring-neap tidal cycle which is superimposed by a dominant diurnal signal (Fig. 4). <sup>c3</sup>The approximately fortnightly spring/neap tidal cycle is primarily determined by the difference in frequency between the

5 dominant K1 and O1 diurnal constituents.

We apply <sup>c1</sup>T\_TIDE to our 16 day record of the 'Shirase' GPS to test the potential of short-term GPS surveys to improve current Antarctic tide models. The problem with using such a short window to determine a full set of tidal constituents results from the interplay of the lunar diurnal tide (K1, 23.93 h) with the solar diurnal tide (P1, 24.07 h) as they are close in frequency and P1 has an amplitude of 15 – 20 % of K1. Without accounting for their inference, <sup>c2</sup>T\_TIDE just extracts an apparent K1  
10 from a 16 day record that is really K1+P1. As a consequence, the K1 tide from our harmonic analysis can vary by 30 – 40 % over a 6-month period and its amplitude is only controlled by the exact time that the GPS data was acquired within the K1+P1 modulation cycle. Additionally, harmonic decomposition of GPS data is subject to inaccuracies itself with errors in both the extracted amplitudes and phases. These errors were found to be of the same magnitude as the K1+P1 inference. For this reason, we did not use inference to separate K1 and P1 (or similarly to separate the semi-diurnal S2 and K2 constituents), but perform a  
15 thorough analysis on the identified uncertainty range. While the analysis captures the dominant K1 constituent in the Ross Sea within a reasonable signal-to-noise ratio, fortnightly harmonics could not be retrieved adequately from this time series alone. The <sup>c3</sup>T\_TIDE prediction is therefore the least accurate tide model and requires the largest adjustment to match DInSAR (Tab. 1). Although all the corrected tide model outputs now replicate our DInSAR measurements, their rate of tidal change is affected by the adjustment. Offsets computed for the Ross\_Inv\_2002 tide model are generally below 10 cm, whereas other  
20 tide models require adjustments of up to 13.3 cm (Tab. 1). This agrees well with the findings of Han et al. (2013), who find that the Ross\_Inv\_2002 model is the optimum tide model for the Terra Nova Bay with a 4.1 cm RMSE against 11 days of tide gauge data. We therefore choose Ross\_Inv\_2002 for numerical modelling purposes to minimize any effects on a viscoelastic model, but use TPXO7.2 to reconstruct vertical displacement at the times of satellite overpasses as it fits best to our GPS measurements. We refer to the Appendix for a validation of individual tide model output with GPS data from 'Shirase' (Fig.  
25 A1).

After the adjustment, modelled tidal amplitudes range from -0.966 m to 0.781 m over the whole SAR period (Fig. 4). Mean absolute residual error to the 45 DInSAR measurements at the tide-model location 'Shirase' is just 7 mm (Tab. 2), which can be explained by interferogram noise. We attribute this accuracy to the exceptionally high phase coherence of the TerraSAR-X data set. The reconstruction algorithm results in 12 smooth vertical displacement maps for the times of SAR data acquisition  
30 (Fig. 5).

---

<sup>c3</sup> The approximately fortnightly occurring spring/neap tides are largely owed to the difference in wavelength between the K1 and O1 constituents.

<sup>c1</sup> t\_tide

<sup>c2</sup> t\_tide

<sup>c3</sup> t\_tide

## 3.2 Validation with GPS measurements

We now validate these reconstructions with available field data. As both GPS records overlap with the acquisition of SAR image 11, we extract the vertical displacement along the glacier's centerline and plot the profiles against the two GPS point measurements. The GPS measurement at 'Hillary' is 0.169 m, which is close to the reconstruction of 0.156 m. The 'Shirase' GPS measurement is 0.566 m, which is slightly above the reconstruction of 0.522 m. We attribute the deviations of +1.3 and +4.4 cm, respectively, to a combination of interpolation artefacts, temporal smoothing of the GPS data and residual errors of the least-squares algorithm. The overall shape of the vertical displacement is well reproduced as observed with both GPS measurements (Fig. 6).

## 3.3 Applications

### 10 3.3.1 Tide-model refinement

A map of tide-deflection ratio ( $\alpha$ -map) can be combined with the tide model to predict an average time series of vertical displacement between the times of SAR image acquisition. With this approach, the coarse grid of traditional tide models is refined to resolve small-scale features of vertical tidal displacement throughout the embayment. The  $\alpha$ -value for the pixel containing the 'Hillary' GPS station is 46.06%. We use this value and linearly scale the adjusted tide-model output for the location of the 'Shirase' GPS to predict vertical tidal motion within the flexure zone. This scaling maintains the tide model's high correlation (Pearson's correlator 0.95) with the 'Shirase' record, but improves the RMSE between the TPXO7.2 output and the 'Hillary' record from 21.4 cm to 5.6 cm, which corresponds to an improvement of <sup>cl</sup>74% to GPS data (Fig. 7). The primary reason for this large improvement, however, is that the tide model now takes the damping of the tidal signal by ice mechanics in the grounding zone into account.

### 20 3.3.2 Ice heterogeneity

With the 12 reconstructed displacement maps at hand, it is now possible to perform any image combination. We mosaic the 45 double differences corresponding to DInSAR combinations (Tab. 2) to allow a more direct comparison between measured and modelled interferograms. SAR image combinations were chosen so that the loss of coherence between SAR 8 and 9 was taken into account and that a maximum number of consecutive, double-differential interferograms was available for the least-squares fitting routine. The synthetic interferograms replicate not only simple tidal fringes as measured with DInSAR, but also show complicated viscoelastic signals within the grounding zone (Fig. 8). For an overall assessment of model performance we calculate again the misfit between each modelled and observed interferogram for every pixel, but this time after using the adjusted tide-model output. The standard deviation of these misfits is shown in Fig. 9, with the majority of the glacier surface below noise level of interferograms ( $\sigma < 1.0$  cm). We identify a narrow band with higher standard deviations ( $\sigma \approx 2.0$  cm)

---

<sup>cl</sup> \_

from the <sup>c2</sup> shear margin of the Darwin Glacier <sup>c3</sup>near Diamond Hill extending along flow direction onto its ice shelf. Standard deviations are largest <sup>c4</sup> in the shear zone of the fast-flowing Ross Ice Shelf and above steep rocky cliffs ( $\sigma > 4.0$  cm) which is a result of poor phase coherence or layovers in SAR images in these areas.

### 3.3.3 Detection of errors in phase unwrapping

- 5 We now extend the earlier one dimensional analysis of the SMIS to a two dimensional re-analysis of the SMIS data set and calculate misfits of 9 DInSAR interferograms. Resulting standard deviations are generally smaller in this area ( $\sigma < 0.3$  cm) and smoothly distributed throughout the map. We identify two regions of phase discontinuities between adjacent cells at the SMIS. Both extend from the center of an ice rise towards Black Island (cyan and green areas in Fig. 9) with  $\sigma \approx 0.4$  cm and  $\sigma \approx 0.5$  cm, respectively. We interpret these rapid <sup>c1</sup>spatial gradients as a proxy for errors in the DInSAR measurements, as the
- 10 modelled least-square interferograms originate from <sup>c2</sup>a bivariate spline approximation over a rectangular mesh which acts curvature minimizing. We re-evaluate the remote-sensing part of the analysis and find discontinuities in DInSAR interferograms ID:1 and ID:8 that match the <sup>c3</sup> two phase jumps in the standard deviation map. These discontinuities, in turn, occurred during phase unwrapping and can now be corrected.

### 3.4 Finite-element modelling of viscoelasticity

- 15 We hypothesize that any non-linear signal due to viscoelastic ice properties is significantly reduced or even completely lost during the averaging step to compute the  $\alpha$ -map. This signal can then be reconstructed by finding the offsets to match observations made with DInSAR. We therefore subtract the  $\alpha$ -prediction again from the 12 reconstructions to extract the theorised viscoelastic signal (Fig. 10). This signal is negligible at times during neap tide (SAR 4 and 9) but well pronounced for SAR images acquired during spring-tide periods (SAR 1,6,7,10 and 11).
- 20 In order to further explore this pattern, we now make use of the tiltmeter array and ApRES network of ice-thickness measurements at the Darwin Glacier (Fig. 11). We match the numerical solutions from two finite-element models to seven tiltmeter records, with the goal to derive information on the physical properties of Antarctic ice. Thereby, the Young's modulus,  $E$ , is a measure of ice stiffness and controls the width of the flexure region. The value for ice viscosity,  $\nu$ , influences the timing of the flexural response within the grounding zone (Wild et al., 2017). Two numerical models of ice-shelf flexure are employed. The
- 25 elastic approximation (Holdsworth, 1969; Vaughan, 1995; Schmeltz et al., 2002) as formulated by Walker et al. (2013):

$$kw + \nabla^2(D\nabla^2w) = q, \tag{1}$$

where  $w(t)$  is the time-dependent vertical deflection of the neutral layer in a plate,  $\nabla^2$  is the Laplace operator in 2-D space and  $k = 5 \text{ MPa m}^{-1}$  a spring constant of the foundation which is zero for the floating part. The applied tidal force  $q(t)$  is defined

---

<sup>c2</sup> inner

<sup>c3</sup> Text added.

<sup>c4</sup> out

<sup>c1</sup> increases

<sup>c2</sup> a curvature-minimizing polynomial interpolation

<sup>c3</sup> course of the

by:

$$q = \rho_{sw}g[A(t) - w], \quad (2)$$

with  $g = 9.81 \text{ m s}^{-2}$  the gravitational acceleration and  $A(t)$  the time-dependent tidal amplitude given by the adjusted Ross\_Inv\_2002 tide model. We choose this model, in contrast to the TPX07.2 model, for finite-element simulations to minimize any potential effects of tide-model adjustment on viscoelasticity (Tab. 1). The stiffness of the ice shelf is given by (Love, 1906, p. 443):

$$D = \frac{EH^3}{12(1 - \lambda^2)}, \quad (3)$$

where  $E$  is the Young's modulus for ice,  $H(x, y)$  our ice thickness map derived from ApRES point measurements and  $\lambda = 0.4$  the Poisson's ratio. We compare the elastic model with the viscoelastic approach developed by Walker et al. (2013):

$$\frac{\partial}{\partial t} [kw + \nabla^2 (D\nabla^2 w)] + \frac{Ek}{2\nu(1 - \lambda^2)} w = \frac{\partial}{\partial t} q + \frac{E}{2\nu(1 - \lambda^2)} q, \quad (4)$$

where  $\nu$  is ice viscosity. The following boundary conditions are applied for both models: the upstream boundary of the model domains on the grounded portion are anchored rigidly ( $w = 0, \nabla^2 w = 0$ ), the downstream boundaries on the freely-floating ice shelf are set free. The location of the tide model computation is constrained to be equal to the tidal oscillation ( $w = A(t), \nabla w = 0$ ) and the grounding line is represented by a fulcrum ( $w = 0$ ). Both models are implemented in two spatial dimensions to capture effects of complex grounding-line configuration on ice-shelf flexure (Wild et al., 2018). We then solve the models using the commercial finite-element software COMSOL Multiphysics. As tiltmeters measure slope,  $w'$ , along their longitudinal axis, we derive the models' solutions for vertical displacement,  $w$ , with respect to the  $x$  and  $y$  directions. This allows us to retrieve surface slopes components in easting and northing direction and to rotate them into the individual orientations of the tiltmeter sensors. With our 16 day tiltmeter records it is only possible to capture their diurnal components with confidence. Semi-diurnal, fortnightly and monthly harmonics have been removed from the tiltmeter time series and we focus further analysis only on the K1 component within the 16 day window. Therefore, we now make extensive use of the <sup>c1</sup>[T\\_TIDE](#) program to automatically extract the modelled K1 harmonics from the modelled surface slopes and compare them against the K1 constituents from the tiltmeters. We thereby take amplitude and phase errors that originate from the harmonic analysis of noisy tiltmeter records into account and find the best rheological parameters to match the elastic and viscoelastic models to these seven K1 components. Incorporating viscoelastic effects into the model simulations always improves the elastic fit to the tiltmeter data within the uncertainty range of K1 amplitude and phase (Tab. 3). We find that an average Young's modulus of  $E = 1.0 \pm 0.56 \text{ GPa}$  and an ice viscosity value of  $\nu = 10 \pm 3.65 \text{ TPa s}$  fits best to our measurements within uncertainty (Fig. 12). The viscoelastic model gives an average RMSE of <sup>c2</sup>0.00119 ° to the seven tiltmeters and improves on the elastic approximation with an average RMSE of <sup>c3</sup>0.00147 ° by <sup>c4</sup>≈ 20%.

---

<sup>c1</sup> [t\\_tide](#)

<sup>c2</sup> 0.00118845 °

<sup>c3</sup> 0.00147136 °

<sup>c4</sup> ≈ -20%



## 4 Discussion

### 4.1 Seasonal bias in $\alpha$ -map

Due to the alignment of the satellite overpasses with the dominant diurnal tidal constituents in the Ross Sea, the observed stage of the tidal oscillation varies only slowly throughout the year. In the austral winter months, TerraSAR-X images have been acquired during stages of low tide, whereas satellite overpasses concur with stages of high tide during the austral summer months. The first 8 snapshots of our SAR data acquisitions for the Darwin Glacier show conditions at low tide and only the last 4 are acquired during high tide. <sup>c1</sup>For this reason, 21 of our 45 DInSAR images result from low-tide SAR combinations and only 3 from purely high-tide SAR combinations. The remaining 21 DInSAR images result from a combination of low and high-tide SAR snapshots (Tab. 2). Our  $\alpha$ -map, as an average of all 45 DInSAR images, ignores this seasonality and may therefore have a low-tide bias. As a result, the contribution of a <sup>c2</sup>possible tide induced landward migration of the grounding line may be affected by the averaging process. The seasonal bias would then modify the scaling of the tide model within the flexure zone. This is supported by the finding that low-tide stages in the 'Hillary' GPS record are matched closely by the scaled tide model, but peaks during high-tide stages are still over<sup>c3</sup>-estimated (Fig. 4)

### 4.2 Viscoelasticity between snapshots

Similarly, the linear scaling using an  $\alpha$ -map only modifies the predicted tidal amplitude, but neglects a viscoelastic time delay in the flexural response towards the grounding line. Wild et al. (2017) found that viscosity is most pronounced in the diurnal tidal components. Harmonic analysis of our GPS records reveals that the diurnal K1 and O1 constituents at 'Hillary' are lagging approximately 20 mins behind 'Shirase'. This signal is currently disregarded in the scaling work flow as ice is treated as a perfect elastic material that transfers tidal forcing instantaneously in the flexure zone. This assumption, however, allowed us to improve the accuracy of the predicted displacement by <sup>c4</sup>74%. Currently, the viscoelastic signal can only be reconstructed for the times of SAR data acquisition. Including viscoelasticity between times of satellite overpasses offers a small, but systematic, opportunity for further refinement. In our study area, the rate of tidal change is up to 10 cm hr<sup>-1</sup> (Tab. 1) and the viscoelastic misfit corresponding to 20 minutes time delay is therefore up to about 3 cm.

When separating the viscoelastic contribution from the reconstructed maps of vertical displacement at times of satellite overpasses, we assume that an  $\alpha$ -prediction corresponds to an instantaneous elastic response. This is justified by viscoelasticity being most pronounced when rates of tidal change are maximal. By expressing the viscoelastic misfits in percent of prevailing tidal amplitude during the times of satellite overpasses, the areas of pronounced viscoelastic effects can be visualised. They are most pronounced within the Darwin Glacier's shear zone (Fig. 13).

When predicting rates of tidal change using the adjusted Ross\_Inv\_2002 tide model, we identify a threshold of  $\dot{A} \approx \pm 0.05 \text{ m h}^{-1}$  (SAR times 1, 2, 7, 8, 10, 11 in Tab. 1) above which viscoelasticity is well represented in the reconstructed

---

<sup>c1</sup> Text added.

<sup>c2</sup> Text added.

<sup>c3</sup> Text added.

<sup>c4</sup> \_

vertical displacement maps (panels 1, 6, 7, 8, 10 and 11 in Fig. 10). Image 6 is thereby an exception, as the <sup>c5</sup> <sup>c6</sup>[adjustment of the Ross\\_Inv\\_2002 tide model was large](#) (-0.082 m), which affects the viscoelastic model. We find that the error due to viscoelasticity on the floating part of the ice shelf increases with the absolute rate of tidal change (Fig. 13). SAR images acquired during periods of spring tides at the Darwin Glacier show also a significant viscoelastic contribution that diminishes during

5 neap tide periods. These independent observations from satellite data alone support our suggested threshold of  $\pm 0.05 \text{ m h}^{-1}$  for the separation of elastic and viscoelastic signals, as derived from tiltmeter data on the Southern McMurdo Ice Shelf presented in an earlier study (Fig. 8 in Wild et al., 2017). The advantage of separating the elastic from the viscoelastic contribution to the tidal flexure pattern is the large potential for improving current inverse modelling techniques to determine grounding-zone ice thickness from DInSAR measurements alone. Hereby, an elastic model is currently employed to optimize grounding-zone

10 ice thickness to match the surface flexure from DInSAR. The applicability of an elastic model varies from location to location as effective viscosity is dependent on ice temperature and shear stress (Marsh et al., 2014). Our method to separate the two contributions to the flexure pattern may therefore help to remove the viscoelastic contamination and allow purely elastic inverse modelling. Such an analysis, however, goes beyond the scope of this manuscript and will be published elsewhere.

### 4.3 Large-scale ice anisotropy

15 Fast-moving glacial environments like the Darwin Glacier are subject to large deformation by flow convergence and divergence, ice compression and extension, lateral shearing at the margins accompanied by fracture under tension and rapid thinning by basal melt. With cumulative deformation, a crystallographic fabric evolves that reflects the glacier's flow history (Alley, 1988), and with it strain-dependent mechanical anisotropy of ice. <sup>c1</sup>[The map of average error due to viscoelasticity](#), Fig. 13, shows a narrow band of larger <sup>c2</sup>[errors](#) extending from the Darwin Glacier's <sup>c3</sup> shear margin <sup>c4</sup>[near Diamond Hill](#) out towards the freely-

20 floating ice shelf. As preferred crystallographic orientation develops with strain, effective viscosity decreases of about a factor of ten compared to initially isotropic polycrystalline ice (Hudleston, 2015). Our analysis of tiltmeter data reveals a five-fold reduced viscosity at the very dynamic Darwin Glacier compared to an earlier study at the almost stagnant Southern McMurdo Ice Shelf (Wild et al., 2017). We hypothesize that this microscopic process explains the macroscopic response observed here, and accounts for the measured glacial heterogeneity within the embayment. Large scale observations of ice anisotropy, in

25 turn, are currently the missing key to improve parametrisations to account for polar ice anisotropy in ice-sheet flow modelling (Gagliardini et al., 2009).

Other processes have been proposed which lead to ice softening in areas with high strain rates. Thermomechanical modelling suggests that shear heating and consequent thermal softening reduces lateral drag in ice-stream margins (Perol and Rice, 2015). Fracture modelling implies that damage reduces ice viscosity along confined crevassed zones with consequences on ice-shelf

---

<sup>c5</sup> used

<sup>c6</sup> [Ross\\_Inv\\_2002 tide model was largely adjusted](#)

<sup>c1</sup> [The standard deviation map, Fig. 9,](#)

<sup>c2</sup> [misfits](#)

<sup>c3</sup> [inner](#)

<sup>c4</sup> [Text added.](#)

scale (Albrecht and Levermann, 2014). Full-Stokes viscoelastic modelling shows that Glen’s non-linear flow law and tidal stresses in the ice-shelf flexure zone are sufficient to explain large-scale temporal variations in ice dynamics (Rosier and Gudmundsson, 2018). These processes, or a combination of them, might certainly be at play but they do not explain why a band of higher standard deviations can be observed in the shear zone of the Darwin Glacier which is absent in the flexure zone of the SMIS (Fig. 9). We therefore attribute this difference to ice-fabric reorientation in the shear margin.

#### 4.4 Refining tidal constituents using DInSAR

The idea of using SAR interferometry to derive a full set of tidal harmonics was first laid out in a study of tides in the Weddell Sea (Rignot et al., 2000). The authors discussed that DInSAR images cannot be transformed into individual displacement fields because of the nonuniqueness of the inversion. A large number of independent DInSAR images is required to overcome this problem and to resolve the phase of tidal constituents that are close to the repeat-pass of the SAR satellite. For example, multiples of the lunar diurnal constituent K1 (23.93 h) are relatively close to the exact integer repeat-pass of TerraSAR-X (11 days)<sup>c1</sup>, meaning that the observed amplitude of the K1 constituent is only varying once throughout the year. Consequently<sup>c2</sup>, SAR images need to be acquired at least over the duration of one year to provide some redundancy for the inversion step of DInSAR images to tidal constituents. However, with an exact 12 h period, the stage of the semidiurnal solar tide, S2, will always be the same at each satellite pass making<sup>c3</sup>, TerraSAR-X and similar satellites with repeat<sup>c4</sup> passes of integer days blind to the S2 constituent. For example Minchew et al. (2017) needed a unique spatially and temporally dense SAR acquisition campaign as well as *a-priori* knowledge of the temporal basis functions from GPS data to empirically determine tidal constituents on Rutford Ice Stream. The four COSMO-SkyMed satellites in orbit, however, produce repeat-passes of 1, 3, 4 and 8 days and are blind to the S2 constituent as well even when using > 1000 available DInSAR images. Although other dominant tidal constituents like M2 (12.4 h) and O1 (25.82 h) were inferred successfully, the method presented here can achieve a higher accuracy<sup>c5</sup> of the total tide with<sup>c6</sup> fewer DInSAR images.<sup>c7</sup>

## 5 Conclusions and Outlook

Accurate prediction of ocean tides in coastal areas<sup>c8</sup> around Antarctica is crucial as the majority of Antarctica’s ice is discharged through large outlet glaciers. We presented a data fusion method between DInSAR and traditional Antarctic tide models to predict spatial variability of tidal motion near the grounding line. The primary value of using DInSAR in conjunction with tide models lies in the spatio-temporal benefits of resolving complex grounding zone deformation. Their symbiosis not only

---

<sup>c1</sup> Text added.

<sup>c2</sup> Text added.

<sup>c3</sup> Text added.

<sup>c4</sup> \_

<sup>c5</sup> fo

<sup>c6</sup> less

<sup>c7</sup> From another perspective, the inclusion of an auxiliary tide model eases the requirement of a very large number of DInSAR images.

<sup>c8</sup> Text added.

improves current accuracies of the predicted tidal amplitudes in coastal regions generally, but also <sup>c9</sup> eases issues related to the timing of the tidal wave and the sun-synchronous satellite orbit when attempting to derive tide-models from SAR data alone. In our study area, the method presented in this paper improves traditional tide modelling in average by <sup>c10</sup> 22% from 11.8 cm to 9.3 cm RMSE against 16 days of GPS data. The GPS station 'Shirase' on the freely-floating part of the Darwin  
5 Glacier has proven invaluable to determine which tide model has to be used to best reconstruct the vertical displacement during satellite overpasses. For the Darwin Glacier, the TPXO7.2 tide model predicts best the tidal oscillation. With using DInSAR measurements to adjust the TPXO7.2 tidal prediction, its RMSE could be improved by <sup>c11</sup> 39% from 10.8 cm to 6.7 cm.

Our GPS record from 'Shirase' is too short to improve already available Antarctic tide models. A longer record is required to adequately resolve a full set of tidal constituents. We produced an empirical displacement map from DInSAR for tidal deflection  
10 ( $\alpha$ -map). Comparison of a GPS record within the tidal flexure zone <sup>c1</sup> ('Hillary' <sup>c2</sup>) with predicted vertical displacement from feeding the  $\alpha$ -map with the adjusted TPXO7.2 tide model shows a <sup>c3</sup> 74% improvement over using the tide-model output alone. This independent validation supports the finding that our method for making use of DInSAR is very useful for refining tide models in Antarctic grounding zones.

Numerical modelling of ice dynamics in Antarctic grounding zones commonly assumes that ice is isotropic and homoge-  
15 neous i.e. of the same density and rheological properties throughout. Our analysis reveals that this assumption is valid for the Southern McMurdo Ice Shelf, an almost stagnant area with a simple grounding line configuration, but invalid for the Darwin Glacier, a fast-flowing outlet glacier with complex shear margins causing non-negligible ice heterogeneity within the embayment.

Further work is required in order to improve tide models in a larger variety of grounding zones by including effects of  
20 grounding-line migration and variability of horizontal ice flow.

*Code availability.* The code is freely available to the scientific community. Collaboration is anticipated and desired.

*Data availability.* TerraSAR-X data presented in this paper are subject to license agreements. GPS/tiltmeter and ApRES data are available upon request.

*Code and data availability.* No data sets, nor software, are part of this study.

---

<sup>c9</sup> avoids

<sup>c10</sup> \_

<sup>c11</sup> \_

<sup>c1</sup> *Text added.*

<sup>c2</sup> *Text added.*

<sup>c3</sup> \_

*Sample availability.* No samples were collected for this study.

## Appendix A: GPS evaluation of tide models

The quality of the used <sup>c1</sup>[tide model](#) to correctly reconstruct tidal displacement at the times of SAR data acquisitions, is also crucial to accurately predict spatial variability in tidal motion for all times. Here, we assume that a freely-floating area on the <sup>c2</sup>[ice shelf](#) experiences the full oscillation as predicted from a tide model. In this area, however, tide-model output deviates from our DInSAR measurements. This indicates either that the area under investigation is prevented from a freely-floating state by lateral stresses within the embayment, or that the tide-model prediction is inaccurate for this area. We circumvent this ambiguity by making use of the high vertical accuracy of DInSAR and correct the tide-model prediction to match our satellite measurements. This raises the question of whether the adjustment improves or worsens the match to a 'real' tidal motion ? We therefore independently evaluate the pre- and post adjustment tide-model predictions and calculate their RMSE to 16 days of GPS data from the freely-floating area (Tab. A1). The adjustment improves all traditional tide model predictions by up to -39% for TPXO7.2, and only worsens the RMSE for the <sup>c3</sup>[T\\_TIDE](#) output by +11%, indicating that a harmonic analysis of GPS data can not be improved by using DInSAR for correction purposes. We choose TPXO7.2 for further processing as it displays the overall smallest RMSE (6.7 cm) and replicates the small-scale variability observed during the neap-tide period in the second half of our GPS record.

*Author contributions.* All authors conceived the study and conducted fieldwork. CW developed the algorithm, performed the data analysis and wrote a first version of the paper. OM and WR processed the SAR images for the Darwin Glacier and Southern McMurdo Ice Shelf, respectively. All authors finalized and approved the manuscript.

*Competing interests.* The authors declare that the research was conducted in the absence of any commercial or financial relationships that could be construed as a potential conflict of interest.

*Disclaimer.*

*Acknowledgements.* We thank Antarctica New Zealand for logistical support and the Scott Base staff for their dedication to the Transantarctic Ice Deflection Experiment. The project was supported by the Royal Geographic Society (Marsden Fast Start, PI O. Marsh) and by the Past Antarctic Science and Future Implications Program (PACaFI). D. Price, M. Ryan, D. Floricioiu and E. Scheffler contributed to fieldwork.

---

<sup>c1</sup> [tide-model](#)

<sup>c2</sup> [ice-shelf](#)

<sup>c3</sup> [t\\_tide](#)

TerraSAR-X data were provided through DLR project HYD1421. Landsat-8 images courtesy of the US Geological Survey. AWS data from Scott Base were provided by NIWA, and for Marilyn station by AMRC, SSEC, UW-Madison. The authors enjoyed fruitful discussions with H. Purdie and M. Sellier. CW also thanks R. Mueller for sharing oceanographic expertise. The thorough comments of one anonymous reviewer and L. Padman's valuable insight into tidal dynamics largely improved the paper. We also thank A. Robinson for editing.

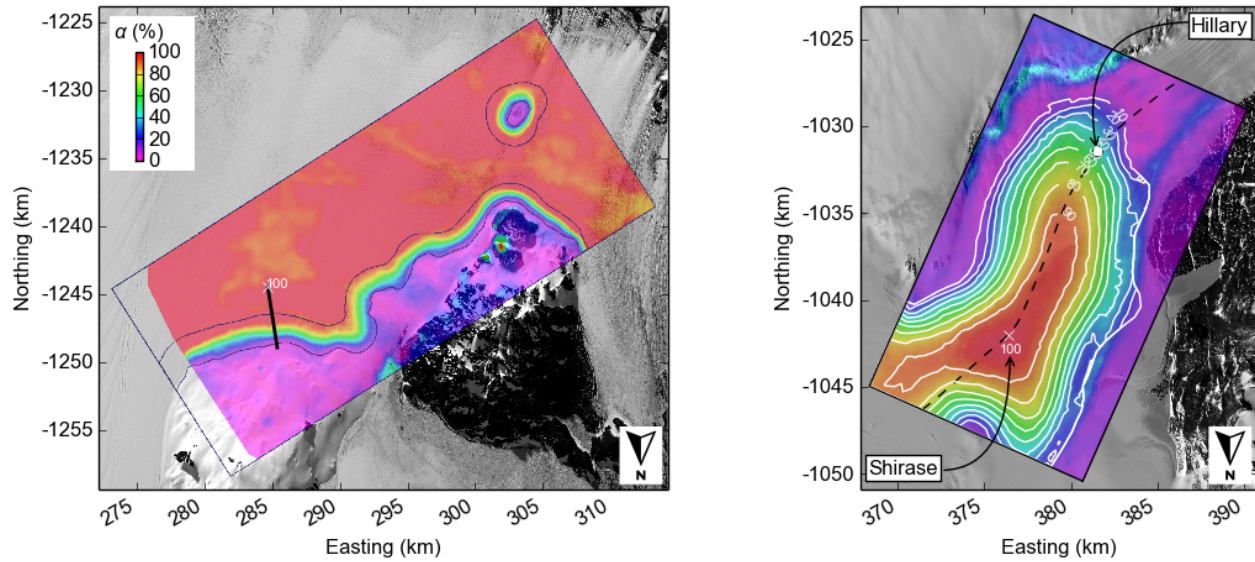
## References

- Albrecht, T. and Levermann, A.: Fracture-induced softening for large-scale ice dynamics, *The Cryosphere*, 8, 587, 2014.
- Alley, R.: Fabrics in Polar Ice Sheets: Development and Prediction, *Science*, 240, 493–495, <https://doi.org/10.1126/science.240.4851.493>, <http://science.sciencemag.org/content/240/4851/493>, 1988.
- 5 Baek, S. and Shum, C. K.: Antarctic ocean tide signal restoration using differential InSAR technique, in: 2011 3rd International Asia-Pacific Conference on Synthetic Aperture Radar (AP SAR), pp. 1–4, 2011.
- Egbert, G. and Erofeeva, S.: Efficient Inverse Modeling of Barotropic Ocean Tides, *J. Atmos. Oceanic Technol.*, 19, 183–204, [https://doi.org/10.1175/1520-0426\(2002\)019<0183:EIMOBO>2.0.CO;2](https://doi.org/10.1175/1520-0426(2002)019<0183:EIMOBO>2.0.CO;2), [http://dx.doi.org/10.1175/1520-0426\(2002\)019<0183:EIMOBO>2.0.CO;2](http://dx.doi.org/10.1175/1520-0426(2002)019<0183:EIMOBO>2.0.CO;2), (doi: 10.1175/1520-0426(2002)019<0183:EIMOBO>2.0.CO;2), 2002.
- 10 Foreman, M.: Manual for Tidal Heights Analysis and Prediction. Pacific Marine Science Report. 77–10. Institute of Ocean Sciences, Patricia Bay, 58 pp, British Columbia, Canada, 1977.
- Fricker, H. and Padman, L.: Ice shelf grounding zone structure from ICESat laser altimetry, *Geophysical Research Letters*, 33, 2006.
- Gagliardini, O., Gillet-Chaulet, F., and Montagnat, M.: A Review of Anisotropic Polar Ice Models: from Crystal to Ice-Sheet Flow Models, 68, 2009.
- 15 Han, H. and Lee, H.: Tide deflection of Campbell Glacier Tongue, Antarctica, analyzed by double-differential SAR interferometry and finite element method, *Remote Sens. of Environ.*, 141, 201–213, <https://doi.org/https://doi.org/10.1016/j.rse.2013.11.002>, <http://www.sciencedirect.com/science/article/pii/S0034425713004082>, (doi: <https://doi.org/10.1016/j.rse.2013.11.002>), 2014.
- Han, H. and Lee, H.: Tide-corrected flow velocity and mass balance of Campbell Glacier Tongue, East Antarctica, derived from interferometric SAR, *Remote Sens. of Environ.*, 160, 180 – 192, <https://doi.org/https://doi.org/10.1016/j.rse.2015.01.014>, <http://www.sciencedirect.com/science/article/pii/S0034425715000322>, 2015.
- 20 Han, H. and Lee, H.: Glacial and tidal strain of landfast sea ice in Terra Nova Bay, East Antarctica, observed by interferometric SAR techniques, *Remote Sens. of Environ.*, 209, 41 – 51, <https://doi.org/https://doi.org/10.1016/j.rse.2018.02.033>, <http://www.sciencedirect.com/science/article/pii/S0034425718300452>, 2018.
- Han, H., Lee, J., and Lee, H.: Accuracy assessment of tide models in Terra Nova Bay, East Antarctica, for glaciological studies of DDInSAR technique, *Korean Journal of Remote Sensing*, 29, 375–387, 2013.
- 25 Holdsworth, G.: Flexure of a floating ice tongue, *J. Glaciol.*, 8, 385–397, <https://doi.org/10.3198/1969JoG8-53-385-397>, <http://www.ingentaconnect.com/content/igsoc/jog/1969/00000008/00000054/art00005>, (doi: 10.3198/1969JoG8-53-385-397), 1969.
- Hudleston, P.: Structures and fabrics in glacial ice: A review, *Journal of Structural Geology*, 81, 1 – 27, <https://doi.org/https://doi.org/10.1016/j.jsg.2015.09.003>, <http://www.sciencedirect.com/science/article/pii/S0191814115300365>, 2015.
- 30 Konrad, H., Shepherd, A., Gilbert, L., Hogg, A., McMillan, M., Muir, A., and Slater, T.: Net retreat of Antarctic glacier grounding lines, *Nature Geoscience*, 11, 258, 2018.
- Love, A.: A treatise on the mathematical theory of elasticity, Cambridge University Press, London, 1906.
- Marsh, O., Rack, W., Gолledge, N., Lawson, W., and Floricioiu, D.: Grounding-zone ice thickness from InSAR: inverse modelling of tidal elastic bending, *J. Glaciol.*, 60, 526–536, <https://doi.org/10.3189/2014JoG13J033>, <http://www.ingentaconnect.com/content/igsoc/jog/2014/00000060/00000221/art00011>, (doi: 10.3189/2014JoG13J033), 2014.
- 35 Massom, R. and Lubin, D.: Polar remote sensing, vol. 2, Springer, 2006.

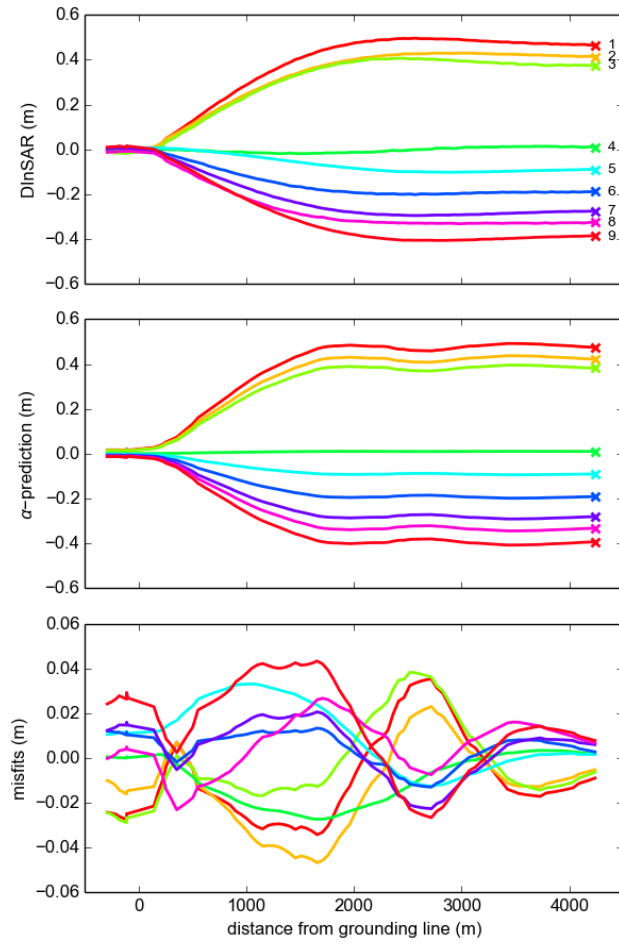
- Minchew, B., Simons, M., Riel, B., and Milillo, P.: Tidally induced variations in vertical and horizontal motion on Rutford Ice Stream, West Antarctica, inferred from remotely sensed observations, *Journal of Geophysical Research: Earth Surface*, 122, 167–190, <https://doi.org/10.1002/2016JF003971>, <https://agupubs.onlinelibrary.wiley.com/doi/abs/10.1002/2016JF003971>, 2017.
- Mouginot, J., Rignot, E., and Scheuchl, B.: Sustained increase in ice discharge from the Amundsen Sea Embayment, West Antarctica, from 1973 to 2013, *Geophys. Res. Lett.*, 41, 1576–1584, <https://doi.org/10.1002/2013GL059069>, <http://dx.doi.org/10.1002/2013GL059069>, (doi: 10.1002/2013GL059069), 2014.
- Mouginot, J., Rignot, E., and Scheuchl, B.: Continent-Wide, Interferometric SAR Phase, Mapping of Antarctic Ice Velocity, *Geophysical Research Letters*, 46, 9710–9718, <https://doi.org/10.1029/2019GL083826>, <https://agupubs.onlinelibrary.wiley.com/doi/abs/10.1029/2019GL083826>, 2019.
- 10 Nicholls, K., Corr, H., Stewart, C., Lok, L., Brennan, P., and Vaughan, D.: A ground-based radar for measuring vertical strain rates and time-varying basal melt rates in ice sheets and shelves, *J. Glaciol.*, 61, 1079–1087, <https://doi.org/https://doi.org/10.3189/2015JoG15J073>, <http://www.ingentaconnect.com/content/igsoc/jog/2015/00000061/00000230/art00005>, (doi: <https://doi.org/10.3189/2015JoG15J073>), 2015.
- Padman, L., Fricker, H., Coleman, R., Howard, S., and Erofeeva, L.: A new tide model for the Antarctic ice shelves and seas, *Ann. Glaciol.*, 34, 247–254, <https://doi.org/10.3189/172756402781817752>, (doi: 10.3189/172756402781817752), 2002.
- 15 Padman, L., Erofeeva, S., and Joughin, I.: Tides of the Ross Sea and Ross Ice Shelf cavity, *Antarct. Sci.*, 15, 31–40, <https://doi.org/10.1017/S0954102003001032>, <https://www.cambridge.org/core/article/div-class-title-tides-of-the-ross-sea-and-ross-ice-shelf-cavity-div/61113D5BABF09C073849CE24CB158030>, (doi: 10.1017/S0954102003001032), 2003a.
- Padman, L., King, M., Goring, D., Corr, H., and Coleman, R.: Ice-shelf elevation changes due to atmospheric pressure variations, *J. Glaciol.*, 49, 521–526, <https://doi.org/10.3189/172756503781830386>, <http://www.ingentaconnect.com/content/igsoc/jog/2003/00000049/00000167/art00006>, (doi: 10.3189/172756503781830386), 2003b.
- 20 Padman, L., Erofeeva, S., and Fricker, H.: Improving Antarctic tide models by assimilation of ICESat laser altimetry over ice shelves, *Geophys. Res. Lett.*, 35, <https://doi.org/10.1029/2008GL035592>, <http://dx.doi.org/10.1029/2008GL035592>, 122504, (doi: 10.1029/2008GL035592), 2008.
- 25 Padman, L., Siegfried, M., and Fricker, H.: Ocean Tide Influences on the Antarctic and Greenland Ice Sheets, *Reviews of Geophysics*, 56, 142–184, <https://doi.org/10.1002/2016RG000546>, <https://agupubs.onlinelibrary.wiley.com/doi/abs/10.1002/2016RG000546>, 2018.
- Pawlowicz, R., Beardsley, B., and Lentz, S.: Classical tidal-harmonic analysis including error estimates in MATLAB using T\_TIDE, *Comput. Geosci.*, 28, 929–937, [https://doi.org/10.1016/S0098-3004\(02\)00013-4](https://doi.org/10.1016/S0098-3004(02)00013-4), <http://www.sciencedirect.com/science/article/pii/S0098300402000134>, (doi: 10.1016/S0098-3004(02)00013-4), 2002.
- 30 Perol, T. and Rice, J. R.: Shear heating and weakening of the margins of West Antarctic ice streams, *Geophysical Research Letters*, 42, 3406–3413, 2015.
- Rack, W., King, M., Marsh, O., Wild, C., and Floricioiu, D.: Analysis of ice shelf flexure and its InSAR representation in the grounding zone of the Southern McMurdo Ice Shelf, *The Cryosphere*, 11, 2481–2490, <https://doi.org/10.5194/tc-11-2481-2017>, <https://www.the-cryosphere.net/11/2481/2017/>, 2017.
- 35 Rignot, E., Padman, L., MacAyeal, D., and Schmeltz, M.: Observation of ocean tides below the Filchner and Ronne Ice Shelves, Antarctica, using synthetic aperture radar interferometry: Comparison with tide model predictions, *J. Geophys. Res.-Oceans*, 105, 19 615–19 630, <https://doi.org/10.1029/1999JC000011>, <http://dx.doi.org/10.1029/1999JC000011>, (doi: 10.1029/1999JC000011), 2000.



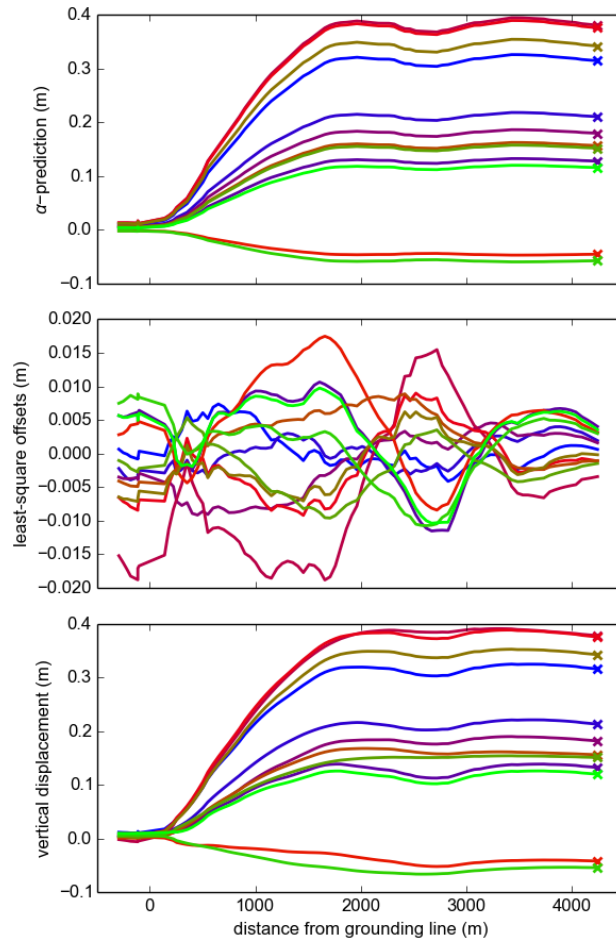
- Rignot, E., Mouginot, J., and Scheuchl, B.: Antarctic grounding line mapping from differential satellite radar interferometry, *Geophys. Res. Lett.*, 38, <https://doi.org/10.1029/2011GL047109>, <http://dx.doi.org/10.1029/2011GL047109>, 110504, (doi: 10.1029/2011GL047109), 2011.
- Rignot, E., Jacobs, S., Mouginot, J., and Scheuchl, B.: Ice-Shelf Melting Around Antarctica, *Science*, 341, 266–270, <https://doi.org/10.1126/science.1235798>, <http://science.sciencemag.org/content/341/6143/266>, 2013.
- Rosier, S. H. and Gudmundsson, G. H.: Tidal bending of ice shelves as a mechanism for large-scale temporal variations in ice flow, *The Cryosphere*, 12, 1699–1713, 2018.
- Scheffler, E.: Tide induced velocity fluctuations in the grounding zone of Darwin Glacier, Antarctica, Revealed by GNSS and SAR satellite data., Master's thesis, University of Canterbury, New Zealand, 2017.
- 10 Schmeltz, M., Rignot, E., and MacAyeal, D.: Tidal flexure along ice-sheet margins: comparison of InSAR with an elastic-plate model, *Ann. Glaciol.*, 34, 202–208, <https://doi.org/10.3189/172756402781818049>, <http://www.ingentaconnect.com/content/igsoc/agl/2002/00000034/00000001/art00031>, (doi: 10.3189/172756402781818049), 2002.
- Stammer, D., Ray, R., Andersen, O., Arbic, B., Bosch, W., Carrère, L., Cheng, Y., Chinn, D., Dushaw, B., Egbert, G., Erofeeva, S., Fok, H., Green, J., Griffiths, S., King, M., Lapin, V., Lemoine, F., Luthcke, S., Lyard, F., Morison, J., Müller, M., Padman, L., Richman, J., Shriver, J., Shum, C., Taguchi, E., and Yi, Y.: Accuracy assessment of global barotropic ocean tide models, *Reviews of Geophysics*, 52, 243–282, <https://doi.org/10.1002/2014RG000450>, <https://agupubs.onlinelibrary.wiley.com/doi/abs/10.1002/2014RG000450>, 2014.
- 15 Vaughan, D.: Tidal flexure at ice-shelf margins, *J. Geophys. Res.-Sol. Ea.*, 100, 6213–6224, <https://doi.org/10.1029/94JB02467>, <http://dx.doi.org/10.1029/94JB02467>, (doi: 10.1029/94JB02467), 1995.
- Walker, R., Parizek, B., Alley, R., Anandakrishnan, S., Riverman, K., and Christianson, K.: Ice-shelf tidal flexure and subglacial pressure variations, *Earth Planet. Sc. Lett.*, 361, 422–428, <https://doi.org/10.1016/j.epsl.2012.11.008>, <http://www.sciencedirect.com/science/article/pii/S0012821X12006164>, (doi: 10.1016/j.epsl.2012.11.008), 2013.
- 20 Werner, C., Wegmüller, U., Strozzi, T., and Wiesmann, A.: Gamma SAR and interferometric processing software, in: *Proceedings of the ers-envisat symposium*, Gothenburg, Sweden, vol. 1620, p. 1620, <https://pdfs.semanticscholar.org/d427/15a606091b1ae537f70a33cfdffd6e99af4d.pdf>, 2000.
- 25 Wild, C., Marsh, O., and Rack, W.: Viscosity and elasticity: a model intercomparison of ice-shelf bending in an Antarctic grounding zone, *J. Glaciol.*, pp. 1–8, <https://doi.org/10.1017/jog.2017.15>, <https://www.cambridge.org/core/journals/journal-of-glaciology/article/viscosity-and-elasticity-a-model-intercomparison-of-iceshelf-bending-in-an-antarctic-grounding-zone/EC11694D45B8DA9C03574BF797BA74CF>, (doi: 10.1017/jog.2017.15), 2017.
- 30 Wild, C., Marsh, O., and Rack, W.: Unraveling InSAR Observed Antarctic Ice-Shelf Flexure Using 2-D Elastic and Viscoelastic Modeling, *Frontiers in Earth Science*, 6, 28, <https://doi.org/10.3389/feart.2018.00028>, <https://www.frontiersin.org/article/10.3389/feart.2018.00028>, 2018.



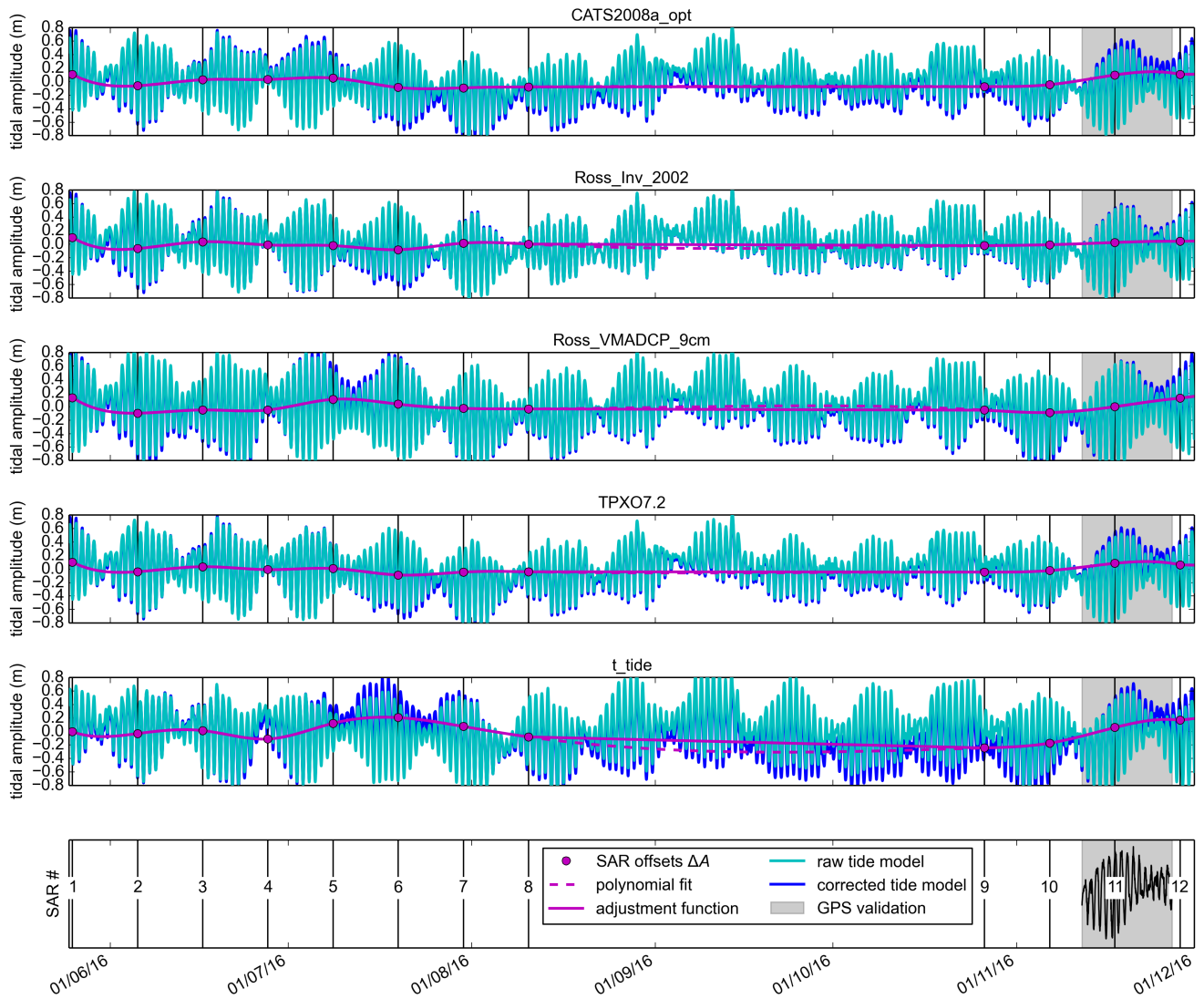
**Figure 1.**  $\alpha$ -maps of percentage vertical displacement due to ocean tides. Red colors highlight areas that can be assumed to be <sup>c1</sup>freely floating. The white crosses show the tide-model locations that also serve as a common reference point across the images. The solid black line is the location of the profiles shown in Figures 2 and 3 on the Southern McMurdo IceShelf (left). The dashed black line shows the location of the profiles along the Darwin Glacier’s centerline shown in Fig. 6 (right). The GPS station ‘Shirase’ and ‘Hillary’ in the tidal-flexure zone. White contours delineate areas of constant vertical displacement. The map background is contrast-stretched Landsat 8 panchromatic imagery. The geographic projection is Antarctic Polar Stereographic with easting and northing coordinates shown in kilometers.



**Figure 2.** Vertical displacements along a profile through the grounding zone of the Southern McMurdo Ice Shelf, as (top) measured with 9 DInSAR interferograms, (center) predicted from an empirical displacement model ( $\alpha$ -map) and (bottom) their difference.



**Figure 3.** Reconstruction of vertical displacement along the profile during the 12 times of satellite overpasses on the Southern McMurdo Ice Shelf. (Top) a combination of an empirical displacement model with adjusted CATS tide-model output, (center) their least-square adjustment and (bottom) the final vertical displacement profiles during the times of SAR data acquisition.



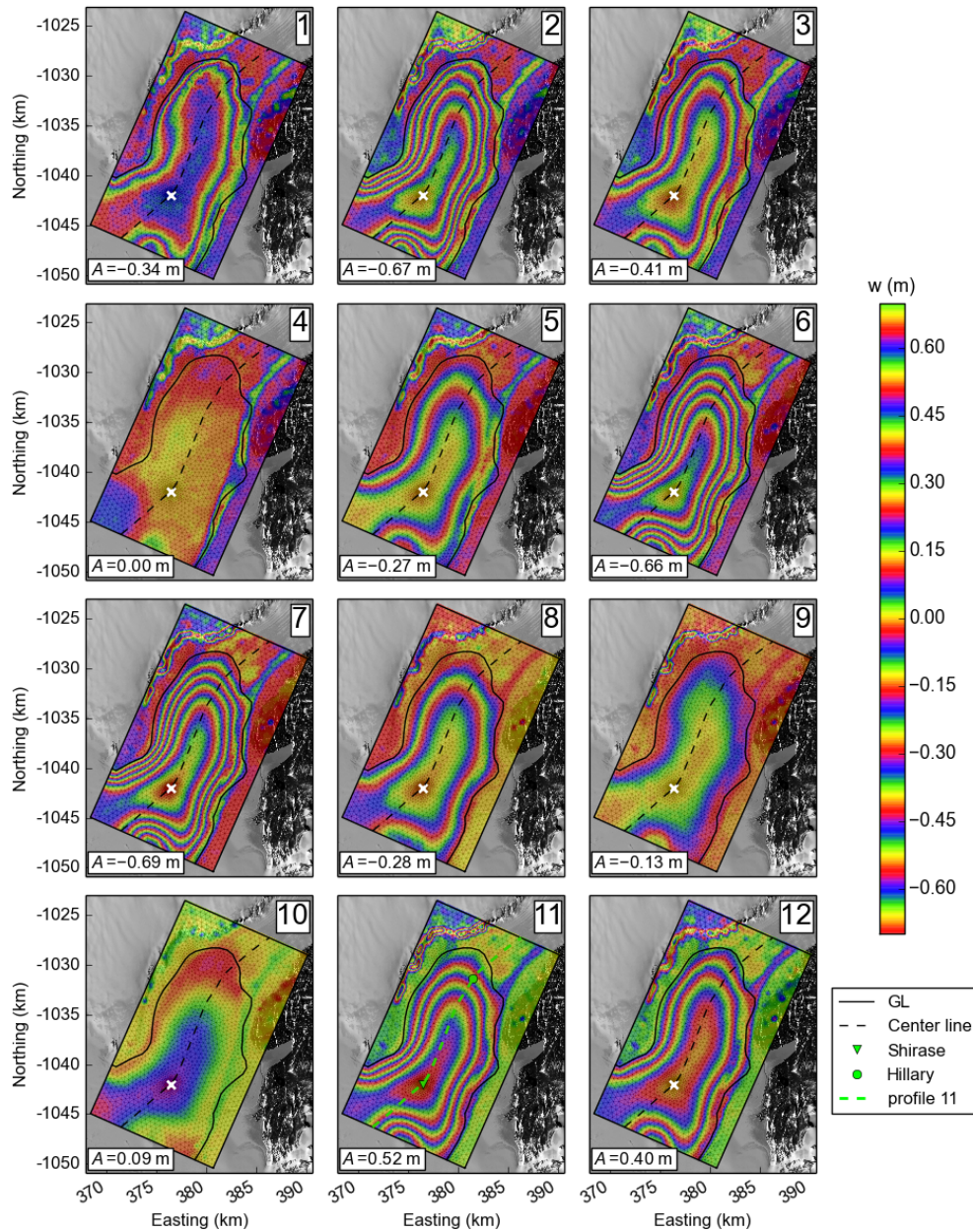
**Figure 4.** The tidal oscillation at the Darwin Glacier as predicted by four tide models and a harmonic analysis of GPS data from the freely-floating area. The tide-model outputs are adjusted to match DInSAR observations using a least-squares fitting technique published <sup>e1</sup>by Wild et al. (2018). Black vertical lines coincide with times of SAR data acquisitions. Values for the prevailing tidal amplitudes and their adjustment at these times are given in Table 1. Gray shaded areas delineate the duration of the TIDEx campaign, when GPS data was acquired for validation (Figs. 7 and A1).

**Table 1.** SAR imagery used for the Darwin Glacier, least-squares adjustment ( $^{\text{cl}}\Delta A$  in m) for 5 tide models, tidal amplitude ( $A$  in m) as predicted with the TPXO7.2 tide model and rate of tidal change ( $\dot{A}$  in  $\text{m h}^{-1}$ ) as predicted with the Ross\_Inv\_2002 tide model.

SAR:	Date 13:57 (UTC)	$\Delta A_{\text{CATS}}$	$\Delta A_{\text{RossInv}}$	$\Delta A_{\text{Ross9cm}}$	$\Delta A_{\text{TPXO7.2}}$	$\Delta A_{\text{T\_TIDE}}$	$A_{\text{TPXO7.2}}$	$\dot{A}_{\text{RossInv}}$
1	25/05/16	0.109	0.098	0.133	0.101	-0.004	-0.341	-0.059
2	05/06/16	-0.061	-0.066	-0.097	-0.039	-0.030	-0.666	-0.057
3	16/06/16	0.029	0.035	-0.050	0.034	0.013	-0.409	-0.007
4	27/06/16	0.032	-0.012	-0.049	-0.009	-0.111	0.002	-0.022
5	08/07/16	0.054	-0.022	0.107	0.008	0.122	-0.271	-0.037
6	19/07/16	-0.086	-0.082	0.035	-0.088	0.206	-0.661	-0.005
7	30/07/16	-0.091	0.015	-0.026	-0.045	0.074	-0.687	0.080
8	10/08/16	-0.078	0.001	-0.035	-0.040	-0.080	-0.276	0.072
9	26/10/16	-0.073	-0.023	-0.053	-0.046	-0.244	-0.132	0.011
10	06/11/16	-0.044	-0.009	-0.088	-0.023	-0.172	0.087	0.096
11	17/11/16	0.099	0.025	-0.002	0.084	0.059	0.522	0.052
12	28/11/16	0.109	0.041	0.124	0.062	0.168	0.398	-0.029
mean absolute $\Delta A$		0.072	0.036	0.067	0.048	0.107	-	-

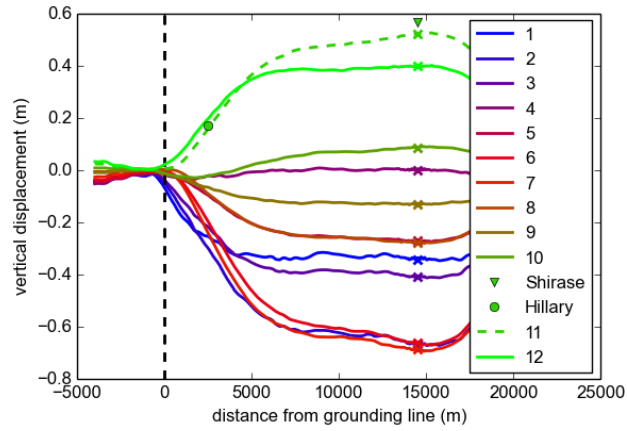
**Table 2.** DInSAR images of the Darwin Glacier. The SAR combination from 12 available SAR images, the tidal amplitude ( $A$  in m) as measured at the Shirase location as well as predicted with the TPXO7.2 tide model.

ID	SAR combination	$A_{\text{TerraSAR-X}}$	$A_{\text{TPXO7.2}}$	$\Delta$	ID	SAR combination	$A_{\text{TerraSAR-X}}$	$A_{\text{TPXO7.2}}$	$\Delta$
1	(1-2)-(2-3)	0.581	0.582	-0.001	⋮	⋮	⋮	⋮	⋮
2	(1-2)-(3-4)	0.740	0.735	0.004	24	(3-4)-(11-12)	-0.536	-0.534	-0.002
3	(1-2)-(4-5)	0.057	0.052	0.005	25	(4-5)-(5-6)	-0.112	-0.117	0.005
4	(1-2)-(5-6)	-0.061	-0.065	0.004	26	(4-5)-(6-7)	0.246	0.247	-0.001
5	(1-2)-(6-7)	0.298	0.299	-0.001	27	(4-5)-(7-8)	0.679	0.684	-0.005
6	(1-2)-(7-8)	0.734	0.736	-0.002	28	(4-5)-(9-10)	0.496	0.492	0.004
7	(1-2)-(9-10)	0.552	0.544	0.008	29	(4-5)-(10-11)	0.690	0.708	-0.018
8	(1-2)-(10-11)	0.736	0.760	-0.024	30	(4-5)-(11-12)	0.155	0.149	0.006
9	(1-2)-(11-12)	0.207	0.201	0.006	31	(5-6)-(6-7)	0.363	0.364	-0.001
10	(2-3)-(3-4)	0.154	0.154	0.001	32	(5-6)-(7-8)	0.811	0.801	0.010
11	(2-3)-(4-5)	-0.529	-0.530	0.001	33	(5-6)-(9-10)	0.620	0.609	0.011
12	(2-3)-(5-6)	-0.646	-0.647	0.001	34	(5-6)-(10-11)	0.803	0.825	-0.023
13	(2-3)-(6-7)	-0.288	-0.283	-0.005	35	(5-6)-(11-12)	0.274	0.266	0.008
14	(2-3)-(7-8)	0.137	0.154	-0.017	36	(6-7)-(7-8)	0.430	0.437	-0.007
15	(2-3)-(9-10)	-0.034	-0.038	0.004	37	(6-7)-(9-10)	0.237	0.244	-0.007
16	(2-3)-(10-11)	0.190	0.178	0.012	38	(6-7)-(10-11)	0.466	0.461	0.005
17	(2-3)-(10-11)	-0.376	-0.381	0.004	39	(6-7)-(11-12)	-0.107	-0.098	-0.009
18	(3-4)-(4-5)	-0.688	-0.683	-0.004	40	(7-8)-(9-10)	-0.202	-0.192	-0.009
19	(3-4)-(5-6)	-0.805	-0.801	-0.005	41	(7-8)-(10-11)	0.025	0.024	0.000
20	(3-4)-(6-7)	-0.446	-0.436	-0.009	42	(7-8)-(11-12)	-0.541	-0.535	-0.006
21	(3-4)-(7-8)	-0.014	0.001	-0.015	43	(9-10)-(10-11)	0.228	0.217	0.011
22	(3-4)-(9-10)	-0.192	-0.192	-0.000	44	(9-10)-(11-12)	-0.343	-0.342	-0.001
23	(3-4)-(10-11)	0.055	0.025	0.030	45	(10-11)-(11-12)	-0.565	-0.559	-0.006
⋮	⋮	⋮	⋮	⋮	mean absolute error				0.007

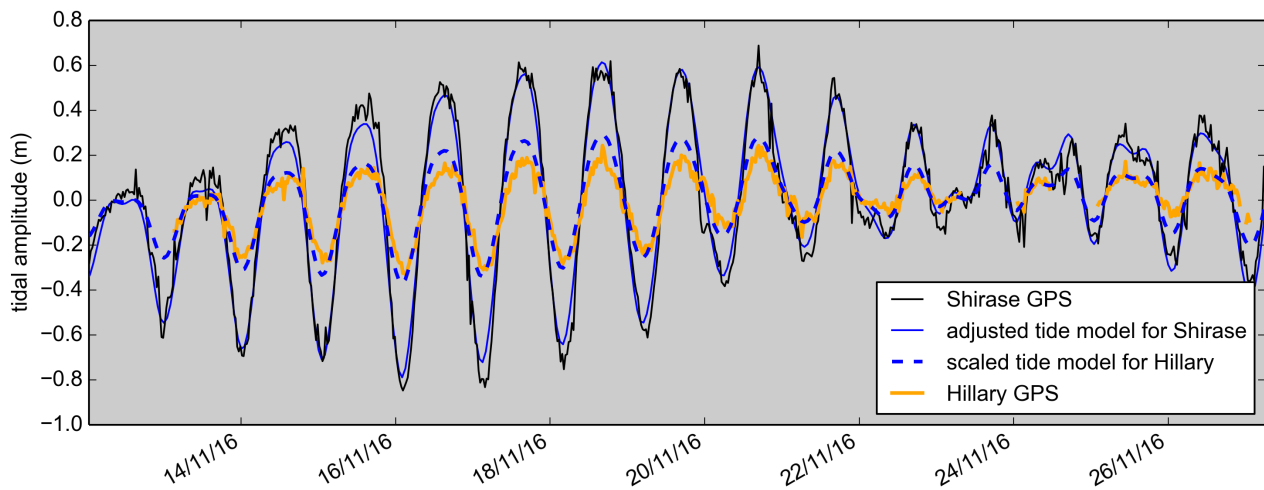


**Figure 5.** Reconstructed vertical displacement maps in the <sup>c1</sup>grounding zone of the Darwin Glacier. The images show surface displacement due to ocean tides at the 12 times of SAR data acquisition. Dashed black lines along the glacier's centerline correspond to the profiles shown in Fig. 6. The white cross marks the tide-model location. The green triangle and dot in the lower center panel mark the locations of the two GPS stations 'Shirase' (<sup>c2</sup>freely floating) and 'Hillary' (within the tidal flexure zone). Finite-element mesh in gray, mean course of the grounding line as determined from 45 DInSAR images in black. Note the ice rise in the bottom left corner. The map background is contrast-stretched Landsat 8 panchromatic imagery.

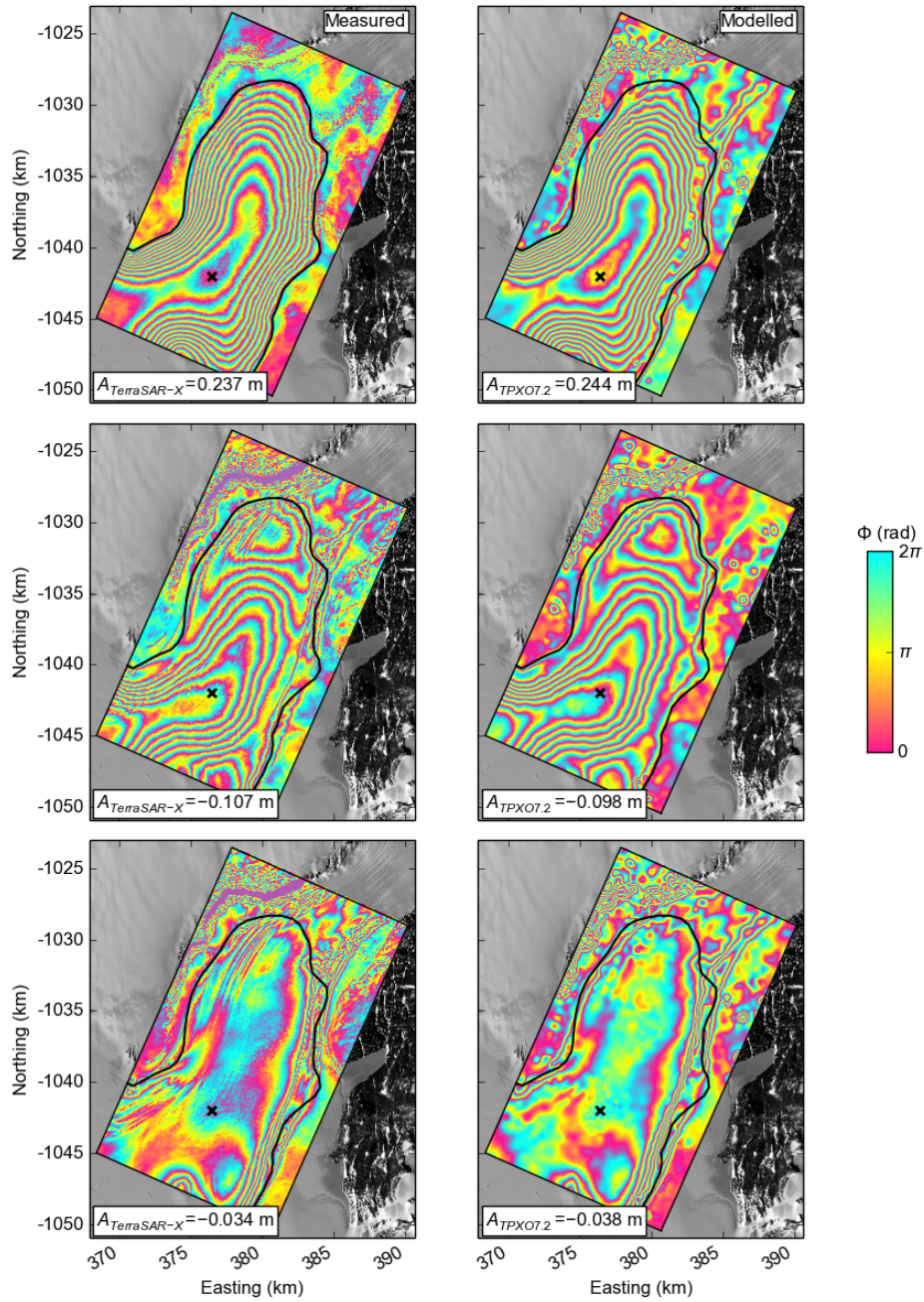




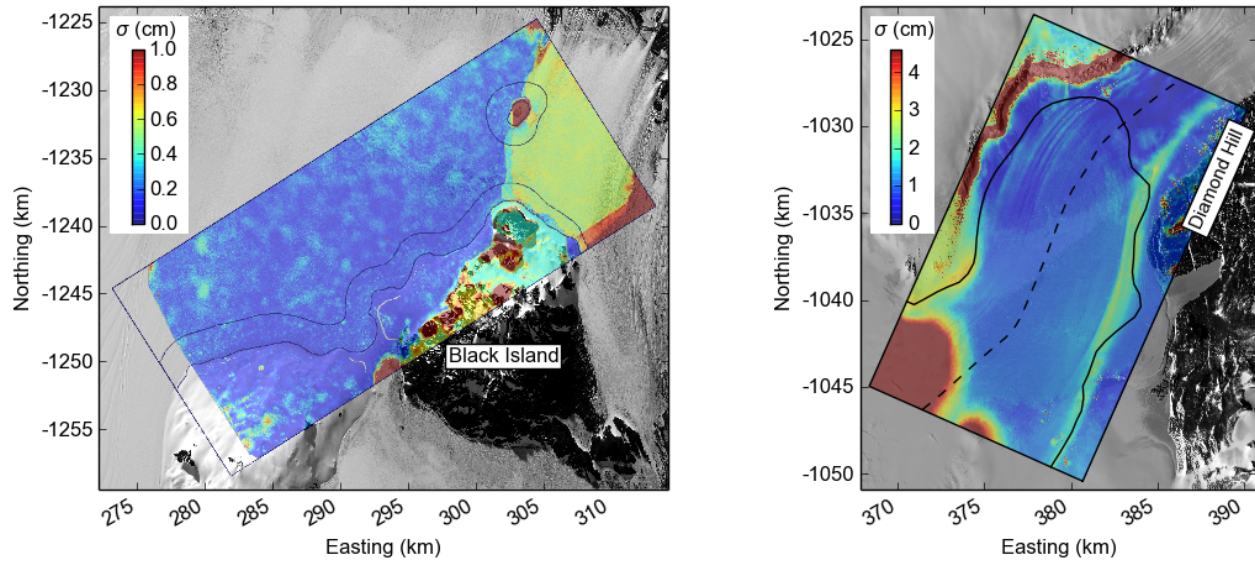
**Figure 6.** Profiles through the reconstructed maps of vertical displacement along the Darwin Glacier’s centerline. The crosses mark the location where the adjusted tide-model output is applied to the  $\alpha$ -map. The green triangle and dot mark the locations of the two GPS stations ‘Shirase’ and ‘Hillary’ and are only used to validate the dashed green profile 11.



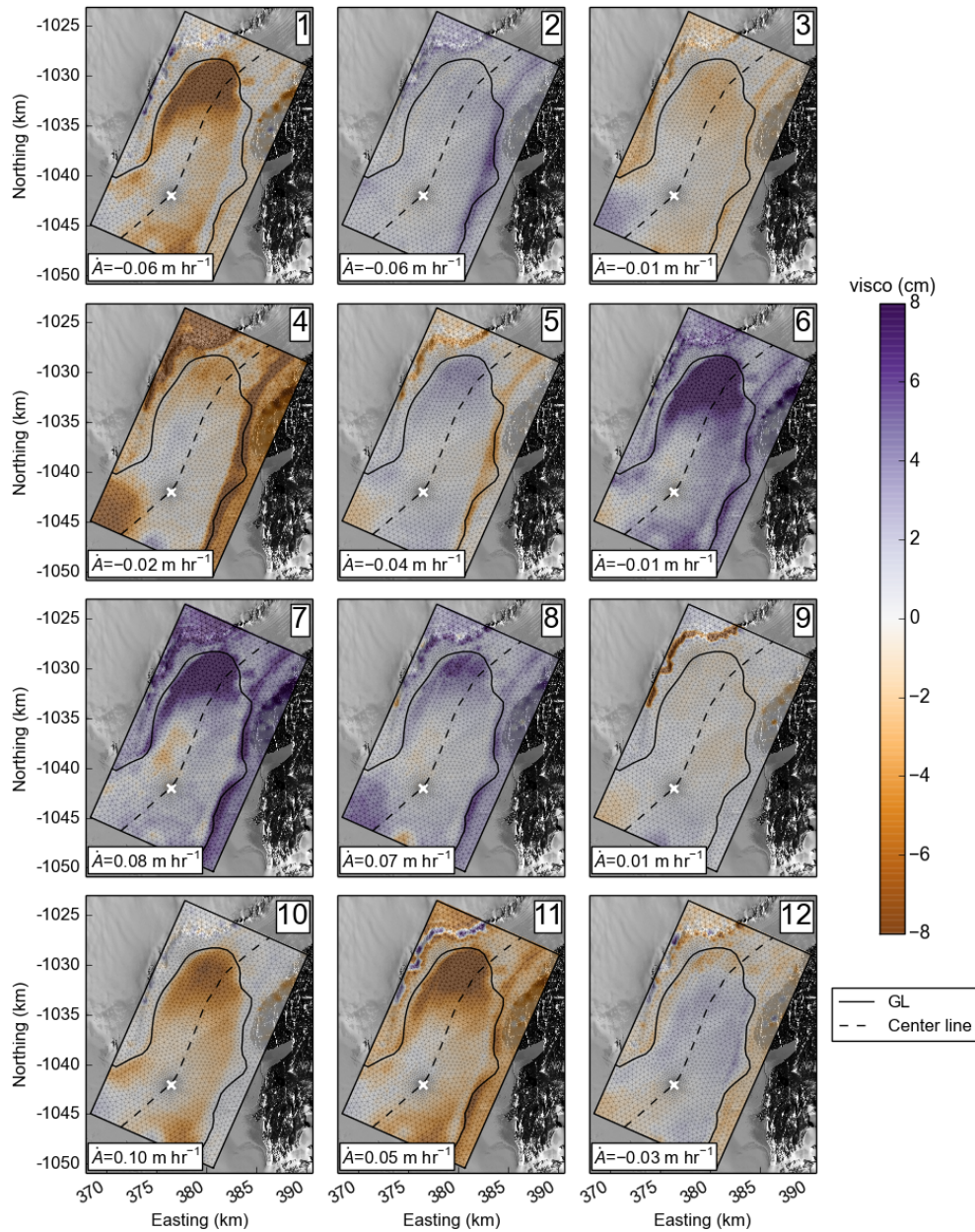
**Figure 7.** <sup>c1</sup>[Time series](#) of vertical tidal displacement on the freely-floating part of the Darwin Glacier ('Shirase') and within the flexure zone close to the grounding line ('Hillary'). The (solid blue) corrected tide-model output for the 'Shirase' location is at first compared to (black) its corresponding GPS record. The (dashed blue) extended tide model is scaled and shows an empirical prediction for (orange) the GPS record at the flexure-zone station 'Hillary'. The length of the record corresponds to the gray-shaded area in Fig. 4.



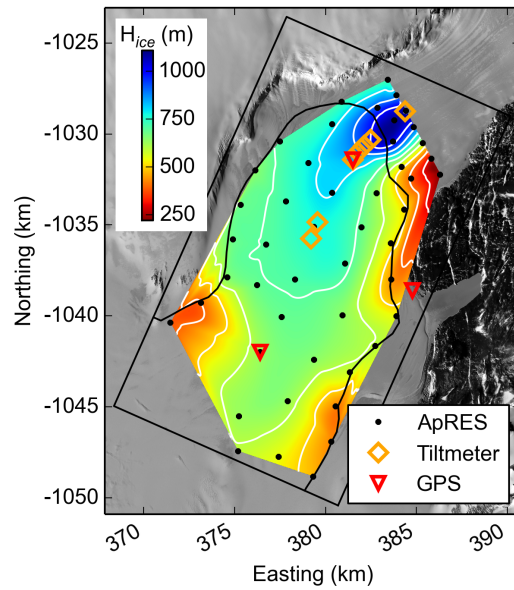
**Figure 8.** Selection of three measured and modelled images from 45 available DInSAR combinations. The top panels show conditions at a relatively large double-differential tidal amplitude (ID 37), the center panels display a pronounced visoelastic signal in the Darwin <sup>c1</sup>Glaciers grounding zone (ID 39) and the bottom panels show a complex flexural pattern (ID 15).



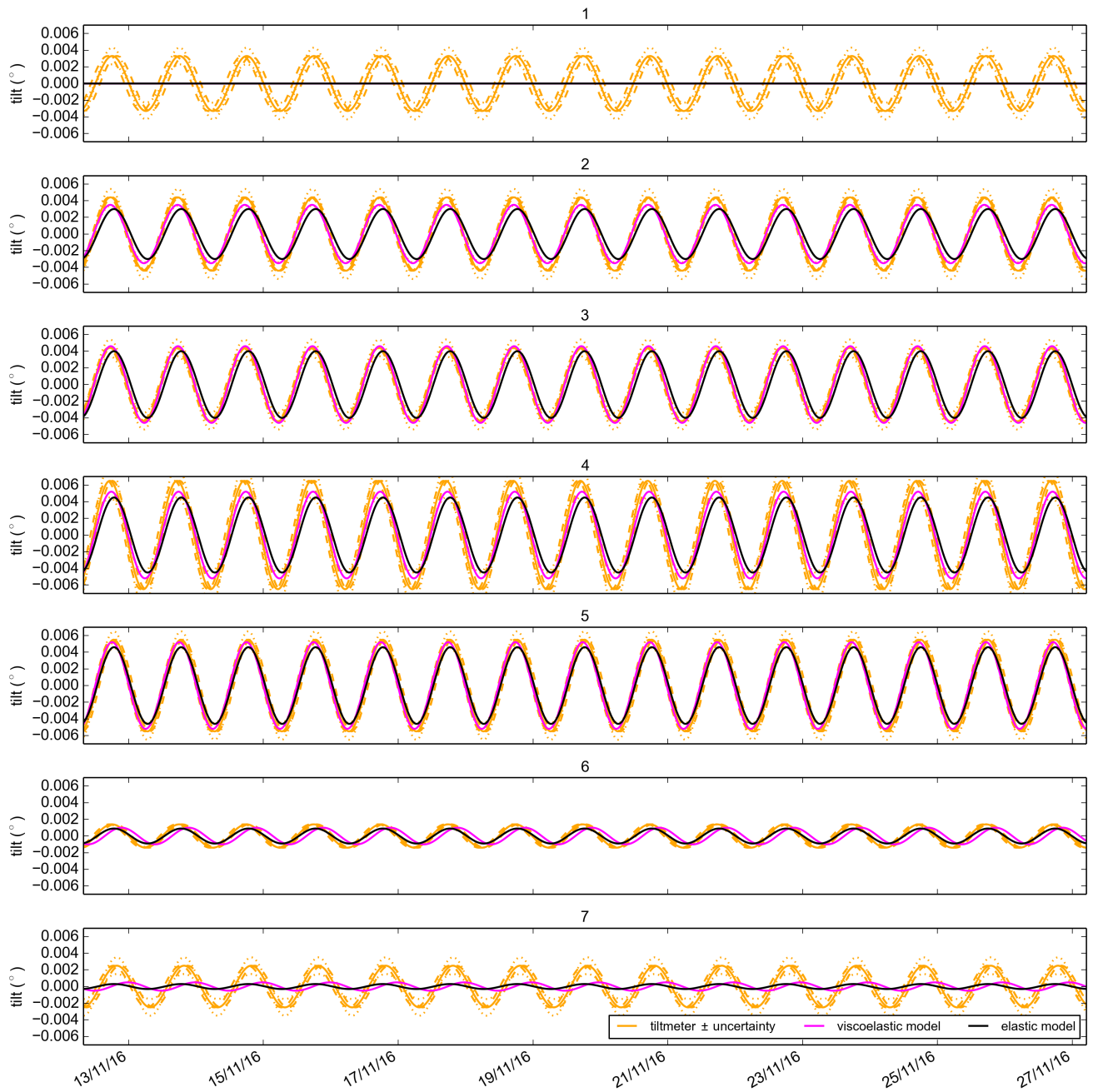
**Figure 9.** Standard deviations of misfits between modelled and observed DInSAR interferograms. Mean course of the grounding line as determined from DInSAR images in black. (Left) Note the ice rise in the upper right corner and two jumps in standard deviations between this ice rise and the dry land for the Southern McMurdo Ice Shelf. (Right) Note the band of higher standard deviations from the Darwin Glacier’s shear margin from Diamond Hill towards the ice rise in the bottom left corner and the high standard deviations. The map background is contrast-stretched Landsat 8 panchromatic imagery.



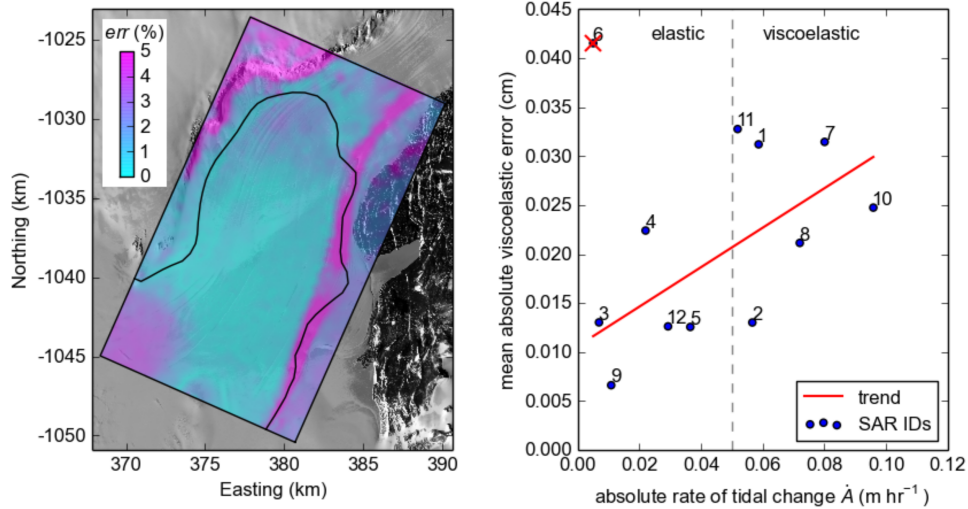
**Figure 10.** Spatial distribution of 12 least-square offsets that minimize the sum of misfits between 45 maps of  $\alpha$ -predictions and their corresponding DInSAR measurements. These offsets can be interpreted as the viscoelastic contribution to the reconstructed vertical tidal displacement at the times of SAR data acquisition. Dashed black line corresponds to the glacier's centerline, the solid black line shows the Darwin Glacier's mean grounding line as determined with DInSAR.



**Figure 11.** Measured ice-thickness map in the <sup>c1</sup>[grounding zone](#) of the Darwin Glacier. Black dots show locations of high-precision ApRES measurements. Orange rectangles mark seven tiltmeter sensors that are orientated along the glacier's centerline. Red triangles show locations of GPS stations on the moving ice (Shirase and Hillary) and the location of the GPS base station on stagnant ice which is used for differential correction of the measurements. White contours correspond to a 100 m change in interpolated ice thickness. The map background is contrast-stretched Landsat 8 panchromatic imagery.



**Figure 12.** Surface flexure of the K1 tidal constituent along the Darwin Glacier’s centerline as (orange) measured with an array of seven tiltmeters, (magenta) modelled using a viscoelastic rheology and (black) modelled with the elastic approximation. The orange dashed lines correspond to the uncertainty range of the K1 phases as determined from harmonic analysis of the individual tiltmeter records.



**Figure 13.** Map of average error due to viscoelasticity in percent of tidal amplitude (left panel) and average error on the floating part of the Darwin Glacier versus rate of tidal change as predicted with the adjusted Ross\_Inv\_2002 tide model (right panel). Image 6 is considered an outlier and was excluded from the calculation of the linear trend.

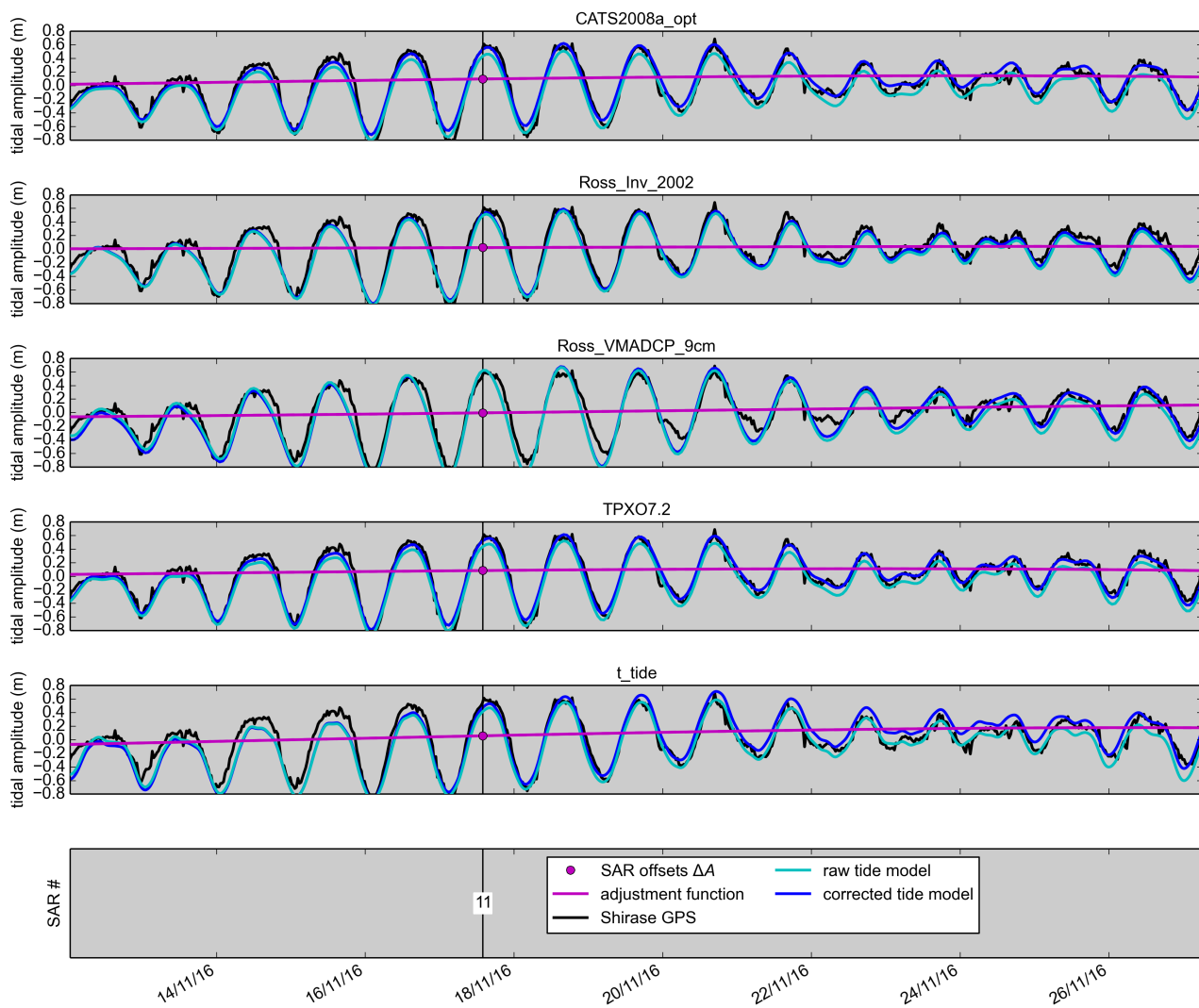


**Table 3.** Amplitude and phase of the K1 tidal constituents from harmonic analysis of tiltmeter measurements and values of the rheological parameters to minimize the average RMSE. Amplitudes are given in degrees, phases are the phase lag of the K1 constituent with respect to the equilibrium tide on Greenwich longitude.

		K1 amplitude $\pm$ error ( $^{\circ}$ )			K1 phase $\pm$ error ( $^{\circ}$ )		
	tiltmeter 1	-0.001	0.0033	+0.001	-24.34	206.22	+24.34
	tiltmeter 2	-0.001	0.0044	+0.001	-8.02	215.35	+8.02
	tiltmeter 3	-0.001	0.0044	+0.001	-7.46	218.64	+7.46
	tiltmeter 4	-0.002	0.0065	+0.002	-13.63	219.34	+13.63
	tiltmeter 5	-0.001	0.0055	+0.001	-12.36	198.09	+12.36
	tiltmeter 6	-0.001	0.0014	+0.001	-14.95	207.34	+14.95
	tiltmeter 7	-0.001	0.0025	+0.001	-18.06	181.97	+18.06
elastic	best $E$ (GPa)	1.5	1.0	0.5	0.5	1.0	2.0
	average RMSE ( $^{\circ}$ )	0.00098	0.00147	0.00198	0.00127	0.00147	0.00182
viscoelastic	best $E$ (GPa)	1.5	1.0	1.0	0.5	1.0	2.0
	best $\nu$ (TPa s)	19.9	10.0	10.0	12.6	10.0	7.9
	average RMSE ( $^{\circ}$ )	0.00077	0.00119	0.00170	0.00122	0.00119	0.00128

**Table A1.** Root-mean-square-errors in m between tide-model output and GPS data from 'Shirase' before and after the adjustment to match DInSAR.

Tide-model:	RMSE before:	RMSE after:
CATS2008a_opt	0.117	0.087
Ross_Inv_2002	0.112	0.091
Ross_VMADCP_9cm	0.135	0.127
TPXO7.2	0.108	0.067
mean	0.118	0.093
T_TIDE	0.127	0.141



**Figure A1.** Validation of the tidal predictions of 5 tide models with a GPS record from the freely-floating 'Shirase' station. The tide-model outputs are adjusted to match DInSAR observations using a least-squares fitting technique published <sup>c1</sup>by Wild et al. (2018). Root-mean-square-errors before and after this adjustment are presented in Tab. A1. The length of the records corresponds to the gray-shaded area in Fig. 4.

```

%% Copernicus Publications Manuscript Preparation Template for LaTeX
Submissions
%% -----
%% This template should be used for copernicus.cls
%% The class file and some style files are bundled in the Copernicus
Latex Package, which can be downloaded from the different journal
webpages.
%% For further assistance please contact Copernicus Publications at:
production@copernicus.org
%%
https://publications.copernicus.org/for\_authors/manuscript\_preparation.ht
ml

%% Please use the following documentclass and journal abbreviations for
discussion papers and final revised papers.

%% 2-column papers and discussion papers
\documentclass[tc, manuscript]{copernicus}

\graphicspath{{./Figures/}}
\usepackage[finalnew]{trackchanges}
%finalold - Reject all edits.
%finalnew - Accept all edits.
%footnotes - Display edits as footnotes.
%margins - Display edits as margin notes.
%inline - Display edits inline.

\usepackage{booktabs}

\begin{document}

\title{Differential InSAR for tide modelling in Antarctic ice-shelf
grounding zones}

% \Author[affil]{given_name}{surname}

\Author[1]{Christian T.}{Wild}
\Author[1,2]{Oliver J.}{Marsh}
\Author[1]{Wolfgang}{Rack}

\affil[1]{Gateway Antarctica, University of Canterbury, Private Bag 4800,
Christchurch 8140, New Zealand}
\affil[2]{British Antarctic Survey, High Cross, Madingley Road,
Cambridge, CB3 0ET, United Kingdom}

%% The [] brackets identify the author with the corresponding
affiliation. 1, 2, 3, etc. should be inserted.

\runningtitle{Differential InSAR and tide modelling}

\runningauthor{Wild et al.}

```

```

\correspondence{Christian T. Wild (christian.wild@canterbury.ac.nz)}

\received{}
\pubdiscuss{} %% only important for two-stage journals
\revised{}
\accepted{}
\published{}

%% These dates will be inserted by Copernicus Publications during the
typesetting process.

\firstpage{1}

\maketitle

\begin{abstract}
Differential interferometric synthetic aperture radar (DInSAR) is an
essential tool for detecting ice-sheet motion near Antarctica's oceanic
margin. These space-borne measurements have been used extensively in the
past to map the location and retreat of ice-shelf grounding lines as an
indicator for the onset of marine ice-sheet instability and to calculate
the mass balance of \change{ice-sheets}{ice sheets} and individual
catchments. The main difficulty in interpreting DInSAR is that images
originate from a combination of several SAR images and do not indicate
instantaneous ice deflection at the time of satellite data acquisition.
Here, we combine the sub-centimetre accuracy and spatial benefits of
DInSAR with the temporal benefits of tide models to infer the
spatiotemporal dynamics of ice-ocean interaction during the times of
satellite overpasses. We demonstrate the potential of this synergy with
TerraSAR-X data from the almost stagnant Southern McMurdo Ice Shelf. We
then validate our algorithm with GPS data from the fast-flowing Darwin
Glacier, draining the Antarctic Plateau through the Transantarctic
Mountains into the Ross Sea. We are able to match DInSAR \add{derived
vertical displacements} to \change{0.84~mm}{7~mm}; generally improve
traditional \change{tide models}{tide model output} by up to -39\% from
10.8-cm to 6.7-cm RMSE against GPS data from areas where ice is in local
hydrostatic equilibrium with the ocean; and up to -74\% from 21.4-cm to
5.6-cm RMSE against GPS data in feature-rich coastal areas where
\change{contemporary tide-models are most inaccurate}{tide models have
not been applicable before}. Numerical modelling then reveals a Young's
modulus of \add{\$E=1.0\pm0.56\$-GPa} and an ice viscosity of
\add{\$nu=10\pm3.65\$-TPa~s} when finite-element simulations of tidal
flexure are matched to 16 days of tiltmeter data; supporting the
\change{theory}{hypothesis} that strain dependent anisotropy may
significantly decrease effective viscosity compared to isotropic
polycrystalline ice on large spatial scales. Applications of our method
range from include: (i) refining coarsely-gridded tide models to resolve
small-scale features at the spatial resolution and vertical accuracy of
SAR imagery; to (ii) separating elastic and viscoelastic contributions
in the satellite derived flexure measurement; and (iii) gaining
information about large-scale ice \change{heterogenity}{heterogeneity} in
Antarctic ice-shelf grounding zones, the missing key to improve current

```

**Commented [L1]:** Relative to what? I really don't understand this "accuracy" metric

**Commented [L2]:** don't need these: you don't refer to list items by this code

ice-sheet flow models. The reconstruction of the individual components forming DInSAR images has the potential to become a standard remote-sensing method in polar tide modelling. Unlocking the algorithm's full potential to answer multi-disciplinary research questions is desired and demands collaboration within the scientific community.

`\copyrightstatement{TEXT}`

`\introduction %% \introduction[modified heading if necessary]`  
`\label{Intro}`

The periodic rise and fall of the ocean's surface is caused by the gravitational interplay of the Earth-Moon-Sun system and our planet's rotation. Knowledge of ocean tides is fundamental to fully understand oceanic processes, sedimentation rates and behaviour of marine ecosystems. In Antarctica, the tidal oscillation also controls the motion of ice sheets near the coastline and ocean mixing in the sub ice-shelf cavity which modifies heat transport to the ice-ocean interface `\citep{padman2018ocean}`.

SAR satellites repeatedly illuminate Earth's surface and record the backscattered radar wave. While the SAR signal's amplitude depends on reflection intensity and is mainly characterized by the surface, the recorded phase holds information about the distance travelled by the signal `\citep{massom2006polar}`. Two-pass interferometry (InSAR) can be used to determine lateral surface motion with sub-centimetre accuracy over vast remote areas, `\change{Recently,}` and InSAR has been applied to measure surface velocity of floating ice `\citep[e.g.][tong2018multi]` and to observe tidal strain of landfast sea ice `\citep{han2018glacial}`. In grounding zone areas, where an `\change{ice-sheet}{ice sheet}` comes in contact with the ocean for the first time and forms floating glaciers and `\change{ice-shelves}{ice shelves}`, InSAR has become the state-of-the-art practice to measure the flux divergence of ice-flow velocity `\citep{mouginot2014sustained, han2015tide}` and thus the mass balance of many `\change{ice-shelves}{ice shelves}` around Antarctica `\citep{rignot2013ice}`. InSAR can also be used to identify vertical deflection due to ocean tides. Horizontal `\remove{motion}` and vertical motion cannot be distinguished `\change{at this stage}{in single interferograms}` but the unsteady tidal contribution can be extracted by `\change{differencing two separate InSAR pairs that originate from a}{DInSAR using } triple or quadruple combination\add{s} of \remove{three or four} SAR images`. This `\change{assumes that gravitational flow due to steady ice creep}{is based on the assumption that horizontal flow is \change{time-invariant}{time invariant}, and that its phase contribution \change{can therefore be removed}{therefore cancels out}}`. The double-differential measurement of vertical displacement only is known as Differential InSAR (DInSAR). While DInSAR has often been applied to detect the grounding line movement around Antarctica `\citep{konrad2018net}` the signal can also be used to measure spatial variability of ocean tides at very high ground resolution. This second application is complicated by the fact that DInSAR interferograms show a combination of multiple stages of the tidal oscillation. Tidal migration of the grounding line as well as viscoelastic time delays in ice

**Commented [L3]:** what aspect of the surface are you referring to here?

**Commented [L4]:** ??? Can't get height changes from two-pass InSAR, right?

**Commented [L5]:** This doesn't seem like a fundamental cite for this statement

**Commented [L6]:** You use "DInSAR" before you define it. It \*is\* defined in the Abstract, but should be defined (again) in Main Text at first use.

**Commented [L7]:** Feels like you need a cite here. Maybe Minchew et al., Baek and Shum, or both

displacement, tidally-induced velocity variations and geometric effects on the surface flexure also complicate the correct interpretation of DInSAR interferograms to date  
`\citep{rack2017analysis,wild2018unraveling}`.

Present-day displacement measurements `\change{associated with interferometric phase suffer from two limitations:}``{by interferometry are exacerbated by the requirement of phase unwrapping, which is the most crucial processing step in any InSAR method.}` `\remove{As the absolute number of waves in the received SAR signal cannot be measured, the phase can only serve as a measure of relative distance change between two images. Phase is, by definition, expressed as the fraction of a full wave cycle that has elapsed relative to the origin with values between  $0-2\pi$  in radians. Measurements of relative ground displacements between satellite overpasses therefore require smooth phase unwrapping, the most crucial processing step in DInSAR. Leaps between adjacent cells above  $1\pi$ , e.g. introduced by layover or \change{discontinuities}{Discontinuities} in the \change{initial SAR images}{fringe pattern} can cause jumps in the unwrapped phase and may therefore bias the continuous motion field.`

Due to these complications, only very few studies have attempted to derive a tide model from DInSAR. `\cite{minchew2017tidally}` developed an unprecedented spatially and temporally dense SAR data acquisition campaign for the Rutford Ice Stream, Weddell Sea. Their novel Bayesian method to unequivocally separate a complete set of `\remove{energetic}` tidal harmonics from nontidal ice-surface variability is unique, but beyond the data availability for the remainder of Antarctica. `\cite{baek2011antarctic}` `\change{failed to develop a full tide model from the ERS-1/2 tandem mission, but succeeded in detecting the dominant tidal constituent in Sulzberger Bay, Ross Sea.}``{succeeded in using data from the ERS-1/2 tandem mission to map the dominant tidal constituent (O1) in Sulzberger Bay, Ross Sea, but data limitations prevented them from developing a full tidal model.}` In this case, too short a time span (71-days) eliminated a change of the observed tidal amplitudes as the repeat-pass cycle of the SAR satellites `\change{masks}``{masked}` the sensor's sensitivity to tidal variability. `\add{However, even identifying only the dominant dominant single tidal constituent is valuable}` as it indicates ways in which tide models need to be changed, and these changes will ultimately `filter into improve modeling of other constituents.` In the Ross Sea, the tidal oscillation is dominated by diurnal harmonics `\citep{padman2018ocean}`. An accurate inversion of TerraSAR-X data with an exact integer number of `\change{repeat-passes}``{repeat passes}` to a complete set of tidal constituents is therefore not possible from DInSAR measurements alone.

Tide models can be consulted to predict both the timing and magnitude of the dominant harmonics. Numerous tide models of various spatial scales (global vs regional) and complexity have been developed `\citep[see][for an overview]{stammer2014accuracy}`. While forward models integrate the equations of fluid motion subjected to a gravitational forcing over time, inverse models assimilate measurements of vertical displacement from laser altimetry, tide gauges and GPS `\citep{egbert2002efficient,padman2003tides,padman2008improving}`. Since the modelled physics is

**Commented [L8]:** Remove paragraph break here?

**Commented [L9]:** This won't make sense to most readers. You will need to explain why this dataset is so special.

**Commented [L10]:** I really don't understand. (1) You haven't told us what the 71-day limit applies to (the record that Baek and Shum used? But now we don't need to be limited by that.) (2) Even in 71 days, tidal "amplitudes" (as in "instantaneous tide height") will vary; it is just that many constituents will have their variability poorly sampled.

**Commented [L11]:** This doesn't follow from the previous sentence.

And why mention TerraSAR-X here? You haven't yet explained that/whether this is the SAR dataset you intend to use.

generally simple and gravitational forces are well known, tide model predictions are of high quality in areas where ice is ~~\change{freely-floating}{freely floating}~~ on the ocean. ~~\remove{(error =  $\pm 0.9$  cm, Stammer et al., 2014)}~~. In coastal areas, ~~in turn,~~ tide models are prone to inaccuracies due to errors in model bathymetry, grounding-line location and insufficient knowledge of the ice water drag coefficient ~~\citep{padman2018ocean}~~. Another source of error arises from the conversion of ice-shelf draft to ice-shelf thickness and subsequent estimation of water-column thickness. This freeboard conversion assumes that ice near the coastline is in local hydrostatic equilibrium, whereas stresses from the grounded ice clearly prevent a freely-floating state. A bias of the hydrostatic solution towards thicker ice ~~\citep{marsh2014grounding}~~, and therefore a thinning water-column thickness, may negatively affect the tidal prediction. In summary, the relatively coarse spatial resolution and underlying assumptions of contemporary tide models introduce inaccuracies especially in feature-rich coastal areas such as fjord-type outlet glaciers. Although average tide model accuracy has improved markedly in coastal areas over one decade, from about  $\pm 10$  cm ~~\citep{padman2002new}~~ to  $\pm 6.5$  cm ~~\citep{stammer2014accuracy}~~, they are still an order of magnitude larger than the sub-centimetre accuracy of DInSAR ~~\citep{rignot2011antarctic}~~. ~~\add{For this reason, we consider DInSAR as the absolute truth and use these space-borne measurements to correct tide-model output.}~~

Commented [L12]: "in turn" isn't correct here.

In this manuscript, we show how the spatial benefits and high accuracy of DInSAR can be used to refine coarse resolution tide models to adequately resolve ocean tides along the feature-rich Antarctic coastline. First we introduce the necessary data set, describe the preprocessing and guide through the work flow. Second we test the algorithm for the Southern McMurdo Ice Shelf (SMIS), a small and almost stagnant ice shelf with a simple grounding-zone geometry, and expand the study to the Darwin Glacier, a relatively fast-flowing outlet glacier within a complex fjord-like embayment. We validate our results with dedicated field measurements taken within the Transantarctic Ice Deflection Experiment (TIDEx) in 2016. We then demonstrate how this exercise can also be applied to reveal errors in interferometric phase unwrapping and answer fundamental questions about the physical properties of ice in Antarctic glaciology.

Commented [L13]: poorly written

```
\section{Methodology}
\label{Meths}
```

```
\subsection{Summary of SAR image processing}
```

To develop the method, we use 11-day repeat-pass TerraSAR-X data in StripMap imaging mode. The satellite acquires X-band radar data (wavelength 3.1 cm, frequency 9.6 GHz) with a ground resolution of slightly below 3x3-m and images covering an area of 30x50 km. We calculate vertical surface displacement due to ocean tides using the Gamma software package ~~\citep{werner2000gamma}~~. ~~\add{InSAR and DInSAR image combinations are generally chosen so that a later image is always subtracted from an earlier image. For image triplets, the central SAR image serves as a common reference during the co-registration.}~~ We then correct the resulting DInSAR interferograms for apparent vertical

Commented [L14]: 1) what are the different dimensions? one along-track and the other cross-track?

2) are these image sizes just the way the along-track swath data are packaged, or what you can get for a target or opportunity, or ???

displacement due to horizontal surface motion \cite{rack2017analysis} using the method presented ~~in-by~~ \cite{wild2018unraveling}.

**Commented [L15]:** My preference: use “by” to give credit to the authors for ideas, “in” when it’s just where you find a fact. “Table 1 in Wild et al., ...”

\subsection{Tide models}

The predictions of five tide models are validated: the regional barotropic models (1) Circum-Antarctic Tidal Solution (CATS2008a\opt) developed by \cite{padman2008improving}, (2) Ross Sea Height-Based Tidal Inverse Model (Ross\\_Inv\\_2002) developed by \cite{padman2003tides}, (3) Ross Sea assimilation model (Ross\\_VMADCP\\_9cm), (4) the fully global barotropic assimilation model (TPX07.2) from Oregon State University developed by \cite{egbert2002efficient}, and (5) the (t\\_tide) prediction of GPS data from freely-floating areas following the harmonic analysis of \cite{pawlowicz2002classical} \add{which is based on} FROTRAN codes developed by \cite{foreman1977manual}. The t\\_tide software is a widely-used toolbox for performing classical harmonic analysis of ocean tides. It can be sued to analyse any time series record and outputs the amplitude and phase of its dominant harmonics \add{with error estimates}, along with a tidal prediction that is free from non-tidal effects. The isostatic deformation of the Earth's lithosphere underneath the moving water masses is modelled using TPX07.2 load tide model \cite{egbert2002efficient}, which itself is based on 13 tidal constituents and added to all tide model predictions except t\\_tide. In addition to the tidal motion underneath the floating ice, much of the ice-surface variability can be attributed to the Inverse Barometric Effect \cite{IBE,}[\cite{padman2003tides}]. A +1-hPa anomaly of atmospheric pressure translates to \change{a}{an instantaneous} -1~cm \change{drop}{change} on the ice-shelf surface. \add{It is noteworthy to mention}Note that we did not apply a running mean to the pressure records, as the application of any window length worsened the fit to available GPS data.} To correct for the IBE \add{outside the GPS period}, we make use of atmospheric pressure records obtained by nearby automatic weather stations on Ross Island (Scott Base AWS) and the Ross Ice Shelf (Marilyn AWS). We validate these records with separate barometric measurements taken within the TIDEx campaign and find very good agreement.

**Commented [L16]:** This is what we call it now

**Commented [L17]:** The Pawlowicz paper uses “T\\_TIDE” for style formatting.

**Commented [L18]:** Not exactly; has to be evenly spaced and adequately resolved.

**Commented [L19]:** absolutely not true! Non-tidal signals can get misrepresented as tides, especially on shorter records or where the non-tidal signal has frequencies near tides.

**Commented [L20]:** The Padman et al. 2003 papers need to be assigned ‘a’ and ‘b’ suffixes.

\add{In this paper, we use the terms ‘traditional tide-modelling’ or ‘tide model’ to refer to the sum of ocean-tide, load-tide model outputs and the IBE. Freely-floating areas of ice shelves and glaciers are expected to experience the full oscillation of this tide model. Traditional tide-modelling, however, neglects ice mechanics in grounding zones where tidal flexure significantly affects the surface elevation signal in reality. Other signals that change sea-level height such as mean dynamic topography and storm surges are also excluded from this type of tide model.}

**Commented [L21]:** not hyphenated in this form. Might be hyphenated in, e.g., “tide-modelling output”

\subsection{In-situ data}

We set up a number of GPS receivers to measure ice-surface motion at millimetre accuracy and high temporal resolution. \change{Here we use}{Although we used} GPS data from the freely-floating parts \change{of the ice surface and}{to} develop local tide models using t\\_tide, \add{all GPS data was only used for validation purposes and did not feed into the algorithm}. \remove{GPS measurements from within the tidal flexure regions are only used as validation data sets.} \remove{All} GPS measurements were differentially corrected using static base stations

**Commented [L22]:** Really? Cite for this accuracy?

**Commented [L23]:** “T\\_TIDE”? see earlier comment. Pawlowicz gets to decide.



\add{to increase their spatial accuracy}. We also  
\change{install}{installed} an array of seven tiltmeters  
\change{recording}{to record} surface flexure over 16 days across the  
grounding zone to ~~confine~~ the physical properties of Antarctic ice.  
\change{This is}{The tiltmeters were} complemented by a dense network of  
point measurements of ice thickness using ~~a the new~~ autonomous phase-  
sensitive radar echo sounder \cite{ApRES,}{}{nicholls2015ground}.

**Commented [L24]:** Wrong word. Maybe “constrain”, but really “estimate”

**Commented [L25]:** Not “new” any more.

\subsection{Combining DInSAR and tide models}  
\change{A tide model must perfectly predict the}{To allow a correct  
interpretation of DInSAR images covering grounding zones, it is desirable  
that tide models replicate} DInSAR observations \change{in an area that  
can be expected to experience the full tidal forcing.}{in freely-floating  
areas.} We first adjust the tide-model output to match the highly-  
accurate DInSAR measurements using a least sum of squares routine  
\citep{wild2018unraveling}. \add{By doing so, we consider just the tide  
model amplitude to contain errors. Possible tide-model phase errors are  
then accounted for by adjusting the absolute amplitude and thus the rate  
of tidal change during the times of SAR data acquisition.} Second we  
build on earlier work by \cite{han2014tide} ~~and to~~ develop an empirical  
displacement map showing tide-deflection ratio throughout the satellite  
image ( $\alpha$ -map). By feeding the  $\alpha$ -map with the adjusted tide  
model output, the \change{'point-forecast'}{'point forecast'} is then  
spatially extended to predict the mean vertical displacement for every  
pixel at the times of SAR data acquisition. We then perform the  
\change{double-differences}{double differences} of the empirical model  
corresponding to the SAR image combinations used to generate the DInSAR  
images. The original DInSAR satellite measurements are subsequently  
removed from the mean DInSAR images to calculate their misfits,  $\mu$ . We  
now compute the least-squares solution to the equation  $Ax=b$  such that  
the 2-norm  $\|b-Ax\|$  is minimized. Here,  $A$  is the  $m \times n$  DInSAR  
matrix of SAR image combinations with  $m$  rows of SAR images and  $n$   
columns of coherent DInSAR interferograms;  $b$  is a vector of  $\alpha$ -  
prediction misfits and  $x$  the least-squares solution of this  
\change{over-determined system}{system of linear equations}. The values  
of  $x$  correspond to how much an  $\alpha$ -prediction deviates from the  
'real' vertical displacement at the times of SAR data acquisition. We  
therefore subtract these offsets, \change{\theta}{ $\Delta A$ }, from the  
 $\alpha$ -prediction maps.

**Commented [L26]:** We’ve discussed this before. This method doesn’t really “account for” phase errors. Take an extreme case: K1 in a model is 180 degrees out of phase, even though the amplitude is right. How will amplitude scaling help?

Note that, because phase errors are smallish, the amplitude scaling is probably an okay first step. But I still don’t see why this fitting can’t be done in complex space to get amp and phase sorted at the same time.

**Commented [L27]:** you haven’t defined ‘ $\Delta A$ ’

**Commented [L28]:** I have to trust you on this; I really don’t follow.

We \add{now} demonstrate the workflow in one spatial dimension with an  
example of the Southern McMurdo Ice Shelf ( $78^{\circ}15' S$ ,  
 $167^{\circ}7' E$ ), SMIS). In this study area, we derived 9  
DInSAR images from 12 TerraSAR-X scenes in 2014 \citep{rack2017analysis}.  
\add{The low number of DInSAR images is a consequence of the SAR scenes  
being acquired on 3 different satellite tracks. The resulting system of  
linear equations is therefore underdetermined as there are more offsets,  
 $\Delta A$ , than misfits,  $\mu$ , to constrain the least-squares  
solutions.} We choose a pixel on the freely-floating end of a profile  
through the ice-shelf grounding zone to represent the unrestricted ice  
shelf movement and calculate the percentage vertical displacement of  
every other pixel from this location. Averaged over the 9 DInSAR  
interferograms this pixel retains 100% vertical displacement (red areas  
in Fig. \ref{fig:alpha\_maps}), while grounded areas experience zero net

**Commented [L29]:** I don’t understand this either. Surely the primary control on “low number” is SAR mission duration and repeat interval. Here, I don’t even understand if the number of images would go up or down if you had more or fewer tracks.

**Commented [L30]:** Flexure in the GZ can include overshoot ( $\alpha > 100\%$ ); see, e.g., Fricker and Padman 2006

uplift (purple areas). Individual pixels on the freely-floating part of the SMIS may show  $\alpha$ -values slightly above 100%.

We now extract the  $\alpha$ -values along the profile from the  $\alpha$ -map. This  $\alpha$ -profile can be multiplied with the individual DInSAR measurements on its freely-floating end which results in empirically derived  $\alpha$ -predictions (Fig. \ref{fig:ls\_process\_DInSAR\_SMIS} center). These mean predictions do not perfectly replicate the DInSAR measurements (Fig. \ref{fig:ls\_process\_DInSAR\_SMIS} top). Their misfits, however, show a very systematic pattern (Fig. \ref{fig:ls\_process\_DInSAR\_SMIS} bottom). It is desirable to find a combination of offsets that have the least deviation from the  $\alpha$ -predictions. We therefore hypothesize that this rather systematic signal can be reconstructed using a least-squares strategy. \remove{Here, the linear system is under-determined with 9 DInSAR equations and 12 unknown SAR offsets.} We solve the \add{underdetermined} system simultaneously by finding the combination of offsets that result in a minimal sum of squares. The reconstructed offsets must then be removed from the  $\alpha$ -prediction for the times of SAR data acquisition (Fig. \ref{fig:ls\_process\_SAR\_SMIS} top). The computed least-square offsets generally replicate the pattern of the misfits (Fig. \ref{fig:ls\_process\_SAR\_SMIS} center) and result in smooth displacement profiles in the ice-shelf grounding zone (Fig. \ref{fig:ls\_process\_SAR\_SMIS}).

```
\section{Results}
\label{Res}
```

In this section we apply the workflow in two spatial dimensions to the Darwin Glacier ( $53^{\circ}\text{S}$ ,  $159^{\circ}\text{E}$ ). \add{In this study area, we derived a total of 45 DInSAR images from 12 SAR scenes being acquired on the same satellite track. SAR image combinations were generally chosen consecutively so that a later image is always subtracted from an earlier image. For image triples, the central image was taken as a common reference/master image. Additionally the data gap between SAR 8 and 9 was taken into account (no 8-9 combination as loss of coherence over this relatively long interval). The advantage of using every other remaining combination} (Tab. \ref{tab:DInSAR\_table}) \add{is that more double-differential measurements of tidal amplitude are available for the least-squares fitting algorithm than only using consecutive pairs alone. The system of linear equations is then overdetermined.} A dedicated field campaign was conducted in \change{its}{the Darwin Glacier} grounding zone in 2016 and \textit{in-situ} data is available \add{for numerical modelling and field validation purposes}. In contrast to the simple geometry at the SMIS, the Darwin Glacier consists of a feature-rich embayment that is constrained by steep topography at its margins. Additionally a buttressing ice rise to the Ross Ice Shelf restricts outflow in the North.

```
\subsection{Reconstruction of displacement maps during satellite overpasses}
```

From the interferogram dataset we identify a corridor of only about 2~km width along the centerline where the glacier can be assumed to be freely floating (Fig. \ref{fig:alpha\_maps}). This area is expected to experience the full oscillation predicted from tide models. We run five tide models

**Commented [L31]:** callouts to specific panels are good policy; however, it's much easier with 'a','b' etc panel IDs.

**Commented [L32]:** This is the first time you've really discussed this gap. The thing a reader wants to know is not so much about coherence loss, but why the gap is there in the first place.

**Commented [L33]:** Figure 1 should have "North" arrows. It isn't obvious whether North is up or down.

to predict the tidal oscillation at the GPS station 'Shirase' over the \change{time-span}{time span} of SAR data acquisitions. Here we use atmospheric pressure data from the automatic weather station 'Marilyn' which is located about 120~km away on the Ross Ice Shelf to correct for the inverse barometric effect. This record correlates well (Pearson's correlator 0.989) with a mean of seven barometers installed over 14 days across the Darwin Glacier during the TIDEx campaign. All tide-model predictions show a clear fortnightly occurring spring-neap tidal cycle which is superimposed by a dominant diurnal signal (Fig. \ref{fig:forcing\_Darwin}). The approximately fortnightly ~~occurring~~ spring/neap tidal cycle is primarily determined byes are largely owed to the difference in ~~wavelength-frequency~~ between the dominant K1 and O1 diurnal constituents. \remove{The K1 tide has a period of 23.93~hours and is the dominant tidal constituent in the Ross Sea (Padman et al., 2018).}

We apply  $t_{\text{tide}}$  to our 16~day record of the 'Shirase' GPS to test the potential of short-term GPS surveys to improve current Antarctic \change{tide-models}{tide models}. \add{The problem with using such a short window to determine a full set of tidal constituents results from the interplay of the lunar diurnal tide (K1, 23.93~h) with the solar diurnal tide (P1, 24.07~h) as they are close in frequency and P1 has an amplitude of \$15-20\%\$ of K1. Without accounting for their inference,  $t_{\text{tide}}$  just extracts an apparent K1 from a 16~day record that is really K1+P1. As a consequence, the K1 tide from our harmonic analysis can vary by \$30-40\%\$ over a 6-month period and its amplitude is only controlled by the exact time that the GPS data was acquired within the K1+P1 modulation cycle. Additionally, harmonic decomposition of GPS data is subject to inaccuracies itself with errors in both the extracted amplitudes and phases. These errors were found to be of the same magnitude as the K1+P1 inference. For this reason, we did not use inference to separate K1 and P1 (or similarly to separate the semi-diurnal S2 and K2 constituents), but perform a thorough analysis on the identified uncertainty range.} While the analysis captures the dominant \change{diurnal}{K1} constituent \add{in the Ross Sea within a reasonable signal-to-noise ratio}, fortnightly harmonics could not be retrieved adequately from this time series alone. The  $t_{\text{tide}}$  prediction is therefore the least accurate tide model and requires the largest adjustment to match DInSAR (Tab. \ref{tab:SAR\_table}). Although all the corrected tide model outputs now replicate our DInSAR measurements, their rate of tidal change is affected by the adjustment. Offsets computed for the Ross\\_Inv\\_2002 tide model are generally below 10~cm, whereas other tide models require adjustments of up to 13.3~cm (Tab. \ref{tab:SAR\_table}). This agrees well with the findings of \cite{han2013accuracy}, who find that the Ross\\_Inv\\_2002 model is the optimum tide model for the Terra Nova Bay with a 4.1~cm RMSE against 11 days of tide gauge data. We therefore choose Ross\\_Inv\\_2002 for numerical modelling purposes to minimize any effects on a viscoelastic model, but use TPX07.2 to reconstruct vertical displacement at the times of satellite overpasses as it fits best \add{to} our GPS measurements. We refer to the Appendix for a validation of individual tide model output with GPS data from 'Shirase' (Fig. \ref{fig:GPS\_validation}).

After the adjustment, modelled tidal amplitudes range from -0.966~m to 0.781~m over the whole SAR period (Fig. \ref{fig:forcing\_Darwin}). Mean

\add{absolute} residual error to the 45 DInSAR measurements at the tide-model location 'Shirase' is just \change{0.84~mm}{7~mm} (Tab. \ref{tab:DInSAR\_table}), \change{which is within}{which can be explained by} interferogram noise. We attribute this accuracy to the exceptionally high phase coherence of the TerraSAR-X data set. The reconstruction algorithm results in 12 smooth vertical displacement maps for the times of SAR data acquisition (Fig. \ref{fig:coeff\_maps\_Darwin}).

Commented [L34]: seems like Figs. 5 and 6 are out of order. Check.

\subsection{Validation with GPS measurements}

We now validate these reconstructions with available field data. As both GPS records overlap with the acquisition of SAR image 11, we extract the vertical displacement along the glacier's centerline and plot the profiles against the two GPS point measurements. The GPS measurement at 'Hillary' is 0.169-m, which is close to the reconstruction of 0.156-m. The 'Shirase' GPS measurement is 0.566-m, which is slightly above the reconstruction of 0.522-m. We attribute the deviations of +1.3 and +4.4-cm, respectively, to a combination of interpolation artefacts, temporal smoothing of the GPS data and residual errors of the least-squares algorithm. The overall shape of the vertical displacement is well reproduced as observed with both GPS measurements (Fig. \ref{fig:LS\_flexure\_curves\_Darwin}).

\subsection{Applications}

\subsubsection{Tide-model refinement}

A map of tide-deflection ratio ( $\alpha$ -map) can be combined with the tide model to predict an average \change{time-series}{time series} of vertical displacement between the times of SAR image acquisition. With this approach, the coarse grid of \add{traditional} tide models is refined to resolve small-scale features of vertical tidal displacement throughout the embayment. The  $\alpha$ -value for the pixel containing the 'Hillary' GPS station is 46.06%. We use this value and linearly scale the \add{adjusted} tide-model output for the location of the 'Shirase' GPS to predict vertical tidal motion within the flexure zone. This scaling maintains the tide model's high correlation (Pearson's correlator 0.95) with the 'Shirase' record, but improves the RMSE between the TPX07.2 output and the 'Hillary' record from 21.4~cm to 5.6~cm, which corresponds to an improvement of -74% \add{to GPS data} (Fig. \ref{fig:Hillary\_validation}). \add{The primary reason for this large improvement, however, is that the tide model now takes the damping of the tidal signal by ice mechanics in the grounding zone into account.}

\subsubsection{Ice \change{heterogenity}{heterogeneity}}

With the \change{twelve}{12} reconstructed displacement maps at hand, it is now possible to perform any image combination. We mosaic the 45 double differences corresponding to DInSAR combinations (Tab. \ref{tab:DInSAR\_table}) \add{to allow a more direct comparison between measured and modelled interferograms}. \add{SAR image combinations were chosen so that the loss of coherence between SAR 8 and 9 was taken into account and that a maximum number of consecutive, double-differential interferograms was available for the least-squares fitting routine.} \add{The synthetic interferograms replicate not only simple tidal fringes as measured with DInSAR, but also show complicated viscoelastic signals within the grounding zone} (Fig. \ref{fig:Darwin\_DInSARs}). \add{For an overall assessment of model performance we} \remove{and then} calculate

Commented [L35]: shows as "Fig. 5"; should it be "Fig. 6" ?

again the misfit between each modelled and observed interferogram for every pixel, but this time after using the adjusted tide-model output. The standard deviation of these misfits is shown in Fig.

[\ref{fig:LS\\_STD\\_maps}](#), with the majority of the glacier surface below noise level of interferograms ( $\sigma < 1.0$  cm). We identify a narrow band with higher standard deviations ( $\sigma \approx 2.0$  cm) from the inner shear margin of the Darwin Glacier extending along [\change{flow-direction}{flow direction}](#) onto its ice shelf. Standard deviations are largest out [\change{on the}{in the shear zone of the fast-flowing}](#) Ross Ice Shelf [\add{and above steep rocky cliffs}](#) ( $\sigma > 4.0$  cm) [\change{and a}{which is a}](#) result of poor [\change{coherence between}{phase coherence or layovers in}](#) SAR images in [\change{this area}{these areas}](#) .

**Commented [L36]:** not clear what counts as the “inner” shear margin.

**Commented [L37]:** I don’t know the term “layovers” in this context.

#### [\subsection{Detection of errors in phase unwrapping}](#)

We now [\change{apply the algorithm to the}{extend the earlier one}](#) dimensional analysis of the SMIS to a two dimensional re-analysis of the SMIS data set and calculate misfits of 9 DInSAR interferograms. Resulting standard deviations are generally smaller in this area ( $\sigma < 0.3$  cm) and smoothly distributed throughout the map. We identify two regions of [\change{jumps}{phase discontinuities}](#) between adjacent cells at the SMIS. Both extend from the center of an ice rise towards [\change{the dry land}{Black Island}](#) (cyan and green areas in Fig. [\ref{fig:LS\\_STD\\_maps}](#)) with  $\sigma \approx 0.4$  cm and  $\sigma \approx 0.5$  cm, respectively. We interpret these rapid [\add{increases}](#) as a proxy for errors in the DInSAR measurements, [\add{as the modelled least-square interferograms originate from a curvature-minimizing polynomial interpolation}](#). We re-evaluate the remote-sensing part of the analysis and find discontinuities in DInSAR interferograms ID:1 and ID:8 that match [\the course of the two \add{phase} jumps in the standard deviation map](#). These discontinuities, in turn, [\change{are a result of using a minimum cost-flow algorithm on a triangular network for unwrapping}{occurred during phase unwrapping}](#) [\remove{interferometric phase differences to relative surface displacement}](#) [\add{and can now be corrected}](#).

**Commented [L38]:** I don’t know what “increases” refers to. Sounds like time-domain, but I guess you mean “spatial gradients to the locations of maxima” or something like that.

**Commented [L39]:** So, we don’t really have much information about this “curvature-minimizing polynomial interpolation”. Can I repeat your study by following your “explanation” ?

**Commented [L40]:** what’s the “course of the two phase jumps” ?

**Commented [L41]:** Note that my understanding of the ice rheology stuff is limited.

#### [\subsection{Finite-element modelling of viscoelasticity}](#)

We hypothesize that any non-linear signal due to viscoelastic ice properties is significantly reduced or even completely lost during the averaging step to compute the  $\alpha$ -map. This signal can then be reconstructed by finding the offsets to match observations made with DInSAR. We therefore subtract the  $\alpha$ -prediction again from the 12 reconstructions to extract the theorised viscoelastic signal (Fig. [\ref{fig:visco\\_maps\\_Darwin}](#)). This signal is negligible at times during neap tide (SAR 4 and 9) but well pronounced for SAR images acquired during spring-tide periods (SAR 1,6,7,10 and 11).

**Commented [L42]:** Have we seen Fig. 11 yet? Looks like you went straight from Fig. 10 to Fig. 12

In order to further explore this pattern, we now make use of the tiltmeter array and ApRES network of ice-thickness measurements at the Darwin Glacier ([\ref{fig:Darwin\\_field\\_overview}](#)). We match the numerical solutions from two finite-element models to seven tiltmeter records, with the goal to derive information on the physical properties of Antarctic ice. Thereby, the Young's modulus,  $E$ , is a measure of ice stiffness and controls the width of the flexure region. The value for ice viscosity,  $\nu$ , influences the timing of the flexural response within

the grounding zone \citep{wild2017viscosity}. Two numerical models of ice-shelf flexure are employed. The elastic approximation \citep{holdsworth1969flexure, vaughan1995tidal, schmeltz2002tidal} as formulated by \citep{walker2013ice}:

$$\begin{equation}\label{elastic_model} kw + \nabla^2 (D \nabla^2 w) = q, \end{equation}$$

where  $w(t)$  is the \change{time-dependant}{time-dependent} vertical deflection of the neutral layer in a plate,  $\nabla^2$  is the Laplace operator in 2-D space and  $k=5\text{MPa}\cdot\text{m}^{-1}$  a spring constant of the foundation which is zero for the floating part. The applied tidal force  $q(t)$  is defined by:

$$\begin{equation} q = \rho_{sw} g [A(t) - w], \end{equation}$$

with  $g=9.81\text{m}\cdot\text{s}^{-2}$  the gravitational acceleration and  $A(t)$  the \change{time-dependant}{time-dependent} tidal amplitude given by the adjusted Ross\Inv\2002 tide model. We choose this model, in contrast to the TPX07.2 model, for finite-element simulations to minimize any potential effects of tide-model adjustment on viscoelasticity (Tab. \ref{tab:SAR\_table}). The stiffness of the ice shelf is given by \citep[p. 443]{love1906treatise}:

$$\begin{equation}\label{03} D = \frac{E H^3}{12(1-\lambda^2)}, \end{equation}$$

where  $E$  is the Young's modulus for ice,  $H(x,y)$  our ice thickness map derived from ApRES point measurements and  $\lambda=0.4$  the Poisson's ratio. We compare the elastic model with the viscoelastic approach developed by \citep{walker2013ice}:

$$\begin{equation}\label{visco_model} \frac{\partial}{\partial t} \left[ kw + \nabla^2 \left( D \nabla^2 w \right) \right] + \frac{Ek}{2 \nu (1-\lambda^2)} w = \frac{\partial}{\partial t} q + \frac{E}{2 \nu (1-\lambda^2)} q, \end{equation}$$

where  $\nu$  is ice viscosity. The following boundary conditions are applied for both models: the upstream boundary of the model domains on the grounded portion are anchored rigidly ( $w=0, \nabla^2 w=0$ ), the downstream boundaries on the freely-floating ice shelf are set free. The location of the tide model computation is constrained to be equal to the tidal oscillation ( $w=A(t), \nabla w = 0$ ) and the grounding line is represented by a fulcrum ( $w=0$ ). Both models are implemented in two spatial dimensions to capture effects of complex grounding-line configuration on ice-shelf flexure \citep{wild2018unraveling}. We then solve the models using the commercial finite-element software COMSOL Multiphysics. As tiltmeters measure slope,  $w'$ , along their longitudinal axis, we derive the models' solutions for vertical displacement,  $w$ , with respect to the  $x$  and  $y$  directions. This allows us to retrieve surface slopes components in easting and northing direction and to rotate them into the individual orientations of the tiltmeter sensors. With our 16-day tiltmeter records it is only possible to capture their diurnal \remove{and semi-diurnal} components with confidence. \change{Fortnightly}{Semi-diurnal, fortnightly} and monthly harmonics have been removed from the tiltmeter time series and we focus further analysis only on the K1 component \add{within the 16-day window}.

Therefore, we now make extensive use of the `t\_tide` program to automatically extract the modelled K1 harmonics from the modelled surface slopes and compare them against the K1 constituents from the tiltmeters. \add{We thereby take amplitude and phase errors that originate from the harmonic analysis of noisy tiltmeter records into account and find the best rheological parameters to match the elastic and viscoelastic models to these seven K1 components. Incorporating viscoelastic effects into the model simulations always improves the elastic fit to the tiltmeter data within the uncertainty range of K1 amplitude and phase} (Tab. \ref{tab:K1\_table}). \change{A Young's modulus of  $E=1.0$  GPa and an ice viscosity value of  $\nu=10$  TPa fits best our measurements}{We find that an average Young's modulus of  $E=1.0 \pm 0.56$  GPa and an ice viscosity value of  $\nu=10 \pm 3.65$  TPa fits best to our measurements within uncertainty} (Fig. \ref{fig:K1\_components}). The viscoelastic model gives an average RMSE of  $0.00118845$  to the seven tiltmeters and improves on the elastic approximation with an average RMSE of  $0.00147136$  by  $\approx -20\%$ .

Commented [L43]: style?

Commented [L44]: These seem \*much\* too precise!

\section{Discussion}  
\label{Dis}

\subsection{Seasonal bias in  $\alpha$ -map}

Due to the alignment of the satellite overpasses with the dominant diurnal tidal constituents in the Ross Sea, the observed stage of the tidal oscillation varies only slowly throughout the year. In the austral winter months, \change{SAR}{TerraSAR-X} images \change{are}{have been} acquired during stages of low tide, whereas satellite overpasses concur with stages of high tide during the austral summer months. The first 8 snapshots of our \change{SAR data set}{SAR data acquisitions} for the Darwin Glacier show conditions at low tide and only the last 4 are acquired during high tide. Our  $\alpha$ -map, in turn, ignores this seasonality and may therefore have a low-tide bias. As a result, the contribution of a tide induced landward migration of the grounding line may be affected by the averaging process. The seasonal bias would then modify the scaling of the \change{tide-model}{tide model} within the flexure zone. This \remove{theory} is supported by the finding that low-tide stages in the 'Hillary' GPS record are matched closely by the scaled tide model, but peaks during high-tide stages are still over-estimated (Fig. \ref{fig:forcing\_Darwin})

Commented [L45]: This para is interesting, but doesn't really get to the point of explaining why the fit doesn't "know" about the seasonal biases in tidal stage.

\subsection{Viscoelasticity between snapshots}

Similarly, the linear scaling using an  $\alpha$ -map only modifies the predicted tidal amplitude, but neglects a viscoelastic time delay in the flexural response towards the grounding line. \cite{wild2017viscosity} found that viscosity is most pronounced in the diurnal tidal components. Harmonic analysis of our GPS records reveals that the diurnal K1 and O1 constituents at 'Hillary' are lagging approximately 20 mins behind 'Shirase'. This signal is currently disregarded in the scaling work flow as ice is treated as a perfect elastic material that transfers tidal \change{motion}{forcing} instantaneously in the flexure zone. This assumption, however, allowed us to improve the accuracy of the \change{tide-model prediction}{predicted displacement} by  $-74\%$ . Currently, the viscoelastic signal can only be reconstructed for the times of SAR data acquisition. Including viscoelasticity between times of satellite overpasses \change{may therefore be only}{offers} a small, but

systematic, opportunity for further refinement. \add{In our study area, the rate of tidal change is up to  $10\text{-cm-hr}^{-1}$ } (Tab. \ref{tab:SAR\_table}) \add{and the viscoelastic misfit corresponding to 20-minutes time delay is therefore up to about 3-cm.}

When separating the viscoelastic contribution from the reconstructed maps of vertical displacement at times of satellite overpasses, we assume that an  $\alpha$ -prediction corresponds to an instantaneous elastic response. This is justified by viscoelasticity being most pronounced when rates of tidal change are maximal. \add{By expressing the viscoelastic misfits in percent of prevailing tidal amplitude during the times of satellite overpasses, the areas of pronounced viscoelastic effects can be visualised. They are most pronounced within the Darwin Glacier's shear zone} (Fig. \ref{fig:visco\_errors\_Darwin}). \remove{SAR images acquired during periods of spring tides at the Darwin Glacier show also a significant viscoelastic contribution that diminishes during neap tide periods.}

**Commented [L46]:** I think Figs. 11 and 12 are assigned and cited incorrectly.

When predicting rates of tidal change using the adjusted Ross\Inv\2002 tide model, we identify a threshold of  $\dot{A} \approx \pm 0.05\text{-m-h}^{-1}$  (SAR times 1, 2, 7, 8, 10, 11 in Tab. \ref{tab:SAR\_table}) above which viscoelasticity is well represented in the reconstructed vertical displacement maps (panels 1, 6, 7, 8, 10 and 11 in Fig. \ref{fig:visco\_maps\_Darwin}). Image 6 is thereby an exception, as the ~~used~~ Ross\Inv\2002 tide model was \change{adjusted largely}{largely adjusted} ( $-0.082\text{ m}$ ), which affects the viscoelastic model. \add{We find that the error due to viscoelasticity on the floating part of the ice shelf increases with the absolute rate of tidal change} (Fig. \ref{fig:visco\_errors\_Darwin}). \add{SAR images acquired during periods of spring tides at the Darwin Glacier show \add{also} a significant viscoelastic contribution that diminishes during neap tide periods.} These independent observations \add{from satellite data alone} support our suggested threshold of  $\pm 0.05\text{-m-h}^{-1}$  for the separation of elastic and viscoelastic signals, as derived from tiltmeter data on the Southern McMurdo Ice Shelf presented in an earlier study \citep[Fig. 8 in][wild2017viscosity]. The advantage of separating the elastic from the viscoelastic contribution to the tidal flexure pattern is the large potential for improving current inverse modelling techniques to determine grounding-zone ice thickness from DInSAR measurements alone. Hereby, an elastic model is currently employed to optimize grounding-zone ice thickness to match the surface flexure from DInSAR. \remove{This is because an elastic model for tidal flexure is only forced by the 'apparent' tidal amplitude (Eq.), which can be measured directly from the interferogram on the freely-floating area. A viscoelastic model additionally incorporates the time derivative of the tidal forcing (Eq.) and hence captures the rate of tidal change. This information, in turn, can not be deduced directly from the interferogram which makes the usage of auxiliary tide models inevitable. Tide models, however, have shown to be prone to large inaccuracies around Antarctica making a successful inversion of viscoelastic flexure models highly elusive.} The applicability of an elastic model varies from location to location as effective viscosity is dependent on ice temperature and shear stress \citep{marsh2014grounding}. Our method to separate the two contributions to the flexure pattern may therefore help to remove the viscoelastic

**Commented [L47]:** I don't understand what you mean here. Maybe that the adjustment was large, rather than the model being "largely adjusted" ?



contamination and allow purely elastic inverse modelling.  
\remove{Furthermore, the threshold of  $\pm 0.05$  m<sup>-1</sup> is invaluable to determine which satellite data acquisitions should be used for this calculation.} \change{This}{Such an} analysis, however, goes beyond the scope of this manuscript and will be published elsewhere.

#### \subsection{Large-scale ice anisotropy}

Fast-moving glacial environments like the Darwin Glacier are subject to large deformation by flow convergence and divergence, ice compression and extension, lateral shearing at the margins accompanied by fracture under tension and rapid thinning \change{at the ice-ocean interface}{by basal melt}. With cumulative deformation, a crystallographic fabric evolves that reflects the glacier's flow history \citep{alley1988fabrics}, and with it strain-dependent mechanical anisotropy of ice. The standard deviation map, Fig. \ref{fig:LS\_STD\_maps}, shows a narrow band of larger misfits extending from the Darwin Glacier's inner shear margin out towards the freely-floating ice shelf. As preferred crystallographic orientation develops with strain, effective viscosity decreases of about a factor of ten compared to initially isotropic polycrystalline ice \citep{hudleston2015structures}. Our analysis of tiltmeter data reveals a five-fold reduced viscosity at the very dynamic Darwin Glacier compared to an earlier study at the almost stagnant Southern McMurdo Ice Shelf \citep{wild2017viscosity}. We \change{theorise}{hypothesize} that this microscopic process explains the macroscopic response observed here, and accounts for the measured glacial \change{heterogenity}{heterogeneity} within the embayment. Large scale observations of ice anisotropy, in turn, are currently the missing key to improve parametrisations to account for polar ice anisotropy in ice-sheet flow modelling \citep{gagliardini2009review}. \add{Other processes have been proposed which lead to ice softening in areas with high strain rates. Thermomechanical modelling suggests that shear heating and consequent thermal softening reduces lateral drag in ice-stream margins} \citep{perol2015shear}. \add{Fracture modelling implies that damage reduces ice viscosity along confined crevassed zones with consequences on ice-shelf scale} \citep{albrecht2014fracture}. \add{Full-Stokes viscoelastic modelling shows that Glen's non-linear flow law and tidal stresses in the ice-shelf flexure zone are sufficient to explain large-scale temporal variations in ice dynamics} \citep{rosier2018tidal}. \add{These processes, or a combination of them, might certainly be at play but they do not explain why a band of higher standard deviations can be observed in the shear zone of the Darwin Glacier which is absent in the flexure zone of the SMIS} (Fig. \ref{fig:LS\_STD\_maps}). \add{We therefore attribute this difference to ice-fabric reorientation in the shear margin.}

Commented [L48]: Again, not really clear what "inner" means Darwin Glacier.

Commented [L49]: Maybe a paragraph break here

#### \subsection{Refining tidal constituents using DInSAR}

\add{The idea of using SAR interferometry to derive a full set of tidal harmonics was first laid out in a study of tides in the Weddell Sea} \citep{rignot2000observation}. \add{The authors discussed that DInSAR images cannot be transformed into individual displacement fields because of the nonuniqueness of the inversion. A large number of independent DInSAR images is required to overcome this problem and to resolve the phase of tidal constituents that are close to the repeat-pass of the SAR satellite. For example, multiples of the lunar diurnal constituent K1

(23.93~h) are relatively close to the exact integer repeat-pass of TerraSAR-X (11~days), meaning that the observed amplitude of the K1 constituent is only varying once throughout the year. Consequently, SAR images need to be acquired at least over the duration of one year to provide some redundancy for the inversion step of DInSAR images to tidal constituents. However, with an exact 12~h period, the stage of the semidiurnal solar tide, S2, will always be the same at each satellite pass, making TerraSAR-X and similar satellites with repeat-passes of integer days blind to the S2 constituent.} \add{For example,} \cite{minchew2017tidally} \add{needed a unique spatially and temporally dense SAR acquisition campaign as well as \textit{a-priori} knowledge of the temporal basis functions from GPS data to empirically determine tidal constituents on Rutford Ice Stream. The four COSMO-SkyMed satellites in orbit, however, produce repeat-passes of 1, 3, 4 and 8 days and are blind to the S2 constituent as well even when using  $>1000$  available DInSAR images. Although other dominant tidal constituents like M2 (12.4~h) and O1 (25.82~h) were inferred successfully, the method presented here can achieve a higher accuracy ~~offe~~ the total tide with ~~fewer-less~~ DInSAR images. From another perspective, the inclusion of an auxiliary tide model eases the requirement of a very large number of DInSAR images.}

**Commented [L50]:** A casual reader might get confused here: how is COSMO-SkyMed related to TerraSAR-X (Not at all, right?) SO, first time Minchew comes up, explain this, and why you can't use the same satellite for your SMIS and Darwin Glacier studies but have to use TerraSAR-X instead.

**Commented [L51]:** This is wrong, and probably easiest to delete it.

\conclusions[Conclusions and Outlook] %% \conclusions[modified heading if necessary]  
\label{Conc}

\add{Accurate prediction of ocean tides in coastal areas around Antarctica is crucial as the majority of Antarctica's ice is discharged through large outlet glaciers.} \change{Here we present the first data fusion of DInSAR with traditional Antarctic tide-modelling to predict spatial variability of tidal motion. The principal value of using DInSAR and tide models in tandem lies in the spatio-temporal benefits of resolving small features over large regions.}{We presented a data fusion method between DInSAR and traditional Antarctic tide models to predict spatial variability of tidal motion near the grounding line. The primary value of using DInSAR in conjunction with tide models lies in the spatio-temporal benefits of resolving complex grounding zone deformation.} Their symbiosis not only improves current accuracies of the predicted tidal amplitudes in coastal regions generally, but also avoids issues related to the timing of the tidal wave and the sun-synchronous satellite orbit when attempting to derive tide-models from SAR data alone. \add{In our study area,} the method presented in this paper improves traditional tide modelling in average by -22\% from 11.8~cm to 9.3~cm RMSE against 16 days of GPS data. The GPS station 'Shirase' on the freely-floating part of the Darwin Glacier has proven invaluable to determine which \change{tide-model}{tide model} has to be used to best reconstruct the vertical displacement during satellite overpasses. For the Darwin Glacier, the TPX07.2 tide model predicts best the tidal oscillation. With using DInSAR measurements to adjust the TPX07.2 tidal prediction, its RMSE could be improved by -39\% from 10.8~cm to 6.7~cm. \remove{which exceeds the average tide model improvement of -35\% within the last decade (Stammer et al., 2014).}

**Commented [L52]:** I don't think this is right. It does \*not\* avoid issues with timing (phase); it simply works to minimize problems that arise from phase errors. The earlier comment about the "thought experiment" about a major harmonic with an extreme phase error seems relevant here.

Our GPS record from 'Shirase' is too short to \change{develop a local tide model that improves}{improve} already available Antarctic tide models. A longer record is required to adequately resolve a full set of

tidal constituents. ~~The GPS record from 'Hillary' could not be used for this purpose as it was recorded within the tidal flexure zone.~~  
~~We produced an empirical displacement map from DInSAR for tidal deflection ( $\alpha$ -map).~~ Comparison of ~~its measurements~~ a GPS record within the tidal flexure zone ('Hillary') with predicted vertical displacement from feeding the  $\alpha$ -map with the adjusted TPX07.2 tide model shows a ~~-74%~~ improvement over using the tide-model output alone. This independent validation supports the finding that ~~our method for making use of~~ DInSAR is very useful for refining tide models in Antarctic ~~grounding-zones~~ grounding zones. ~~Accurate prediction of ocean tides in coastal areas is crucial as the majority of Antarctica's ice is discharged through large outlet glaciers.~~

Numerical modelling of ice dynamics in Antarctic grounding zones commonly assumes that ice is isotropic and homogeneous i.e. of ~~the~~ same density and rheological properties throughout. Our analysis reveals that this assumption is valid for the Southern McMurdo Ice Shelf, an almost stagnant area with a simple grounding line ~~configuration~~, but invalid for the Darwin Glacier, a fast-flowing outlet glacier with complex shear margins causing non-negligible ice ~~heterogeneity~~ heterogeneity within the embayment.

Further work is required ~~(1) to incorporate viscoelasticity to continue refining predictions of tidal motion between times of satellite overpasses, (2) to develop an automated method to monitor grounding-line migration due to ocean tides and (3) to perform inverse modelling of tidal elastic flexure to indirectly measure ice thickness from SAR data.~~ ~~in order to improve tide models in a larger variety of grounding zones by including effects of grounding-line migration and variability of horizontal ice flow.~~

%% The following commands are for the statements about the availability of data sets and/or software code corresponding to the manuscript.  
%% It is strongly recommended to make use of these sections in case data sets and/or software code have been part of your research the article is based on.

```
\codeavailability{The code is freely available to the scientific community. Collaboration is anticipated and desired.  
} %% use this section when having only software code available
```

```
\dataavailability{TerraSAR-X data presented in this paper are subject to license agreements. GPS/tiltmeter and ApRES data are available upon request.} %% use this section when having only data sets available
```

```
\codedataavailability{No data sets, nor software, are part of this study.} %% use this section when having data sets and software code available
```

```
\sampleavailability{No samples were collected for this study.} %% use this section when having geoscientific samples available
```

Commented [L53]: a negative improvement is not an improvement!

```
\appendix
\section{GPS evaluation of tide models}      %% Appendix A
The quality of the used \change{tide-model}{tide model} to correctly
reconstruct tidal displacement at the times of SAR data acquisitions, is
also crucial to accurately predict spatial variability in tidal motion
for all times. Here, we assume that a freely-floating area on the
\change{ice-shelf}{ice shelf} experiences the full oscillation as
predicted from a tide model. In this area, however, tide-model output
deviates from our DInSAR measurements. This indicates either that the
area under investigation is prevented from a freely-floating state by
lateral stresses within the embayment, or that the tide-model prediction
is inaccurate for this area. We circumvent this ambiguity by making use
of the high vertical accuracy of DInSAR and correct the tide-model
prediction to match our satellite measurements. This raises the question
of whether the adjustment improves or worsens the match to a 'real' tidal
motion ? We therefore independently evaluate the pre- and post adjustment
tide-model predictions and calculate their RMSE to 16 days of GPS data
from the freely-floating area (Tab. \ref{tab:GPS_table}). The adjustment
improves all traditional tide model predictions by up to -39\% for
TPX07.2, and only worsens the RMSE for the t\_tide output by +11\%,
indicating that a harmonic analysis of GPS data can not be improved by
using DInSAR for correction purposes. We choose TPX07.2 for further
processing as it displays the overall smallest RMSE (6.7-cm) and
replicates the small-scale variability observed during the neap-tide
period in the second half of our GPS record.
%\subsection{}      %% Appendix A1, A2, etc.
```

```
\noappendix      %% use this to mark the end of the appendix section

%% Regarding figures and tables in appendices, the following two options
are possible depending on your general handling of figures and tables in
the manuscript environment:

%% Option 1: If you sorted all figures and tables into the sections of
the text, please also sort the appendix figures and appendix tables into
the respective appendix sections.
%% They will be correctly named automatically.

%% Option 2: If you put all figures after the reference list, please
insert appendix tables and figures after the normal tables and figures.
%% To rename them correctly to A1, A2, etc., please add the following
commands in front of them:

%% Please add \clearpage between each table and/or figure. Further
guidelines on figures and tables can be found below.
```

```
\authorcontribution{All authors conceived the study and conducted
fieldwork. CW developed the algorithm, performed the data analysis and
```

wrote a first version of the paper. OM and WR processed the SAR images for the Darwin Glacier and Southern McMurdo Ice Shelf, respectively. All authors finalized and approved the manuscript.

} %% it is strongly recommended to make use of this section

\competinginterests{The authors declare that the research was conducted in the absence of any commercial or financial relationships that could be construed as a potential conflict of interest.

} %% this section is mandatory even if you declare that no competing interests are present

\disclaimer{} %% optional section

\begin{acknowledgements}

We thank Antarctica New Zealand for logistical support and the Scott Base staff for their dedication to the Transantarctic Ice Deflection Experiment. The project was supported by the Royal Geographic Society (Marsden Fast Start, PI O. Marsh) and by the Past Antarctic Science and Future Implications Program (PACaFI). D. Price, M. Ryan, D. Floricioiu and E. Scheffler contributed to fieldwork. TerraSAR-X data were provided through DLR project HYD1421. Landsat-8 images courtesy of the US Geological Survey. AWS data from Scott Base were provided by NIWA, and for Marilyn station by AMRC, SSEC, UW-Madison. The authors enjoyed fruitful discussions with H. Purdie and M. Sellier. CW also thanks R. Mueller for sharing oceanographic expertise. The thorough comments of one anonymous reviewer and L. Padman's valuable insight into tidal dynamics largely improved the paper. We also thank A. Robinson for editing.

\end{acknowledgements}

%% REFERENCES

%% The reference list is compiled as follows:

%\begin{thebibliography}{}

%\bibitem[AUTHOR(YEAR)]{LABEL1}  
%REFERENCE 1

%\bibitem[AUTHOR(YEAR)]{LABEL2}  
%REFERENCE 2

%\end{thebibliography}

%% Since the Copernicus LaTeX package includes the BibTeX style file copernicus.bst,  
%% authors experienced with BibTeX only have to include the following two lines:

%%

\bibliographystyle{copernicus}  
\bibliography{./JabRef/WC\_database}

```

%%
%% URLs and DOIs can be entered in your BibTeX file as:
%%
%% URL = {http://www.xyz.org/~jones/idx_g.htm}
%% DOI = {10.5194/xyz}

%% LITERATURE CITATIONS
%%
%% command                & example result
%% \citet{jones90}|        & Jones et al. (1990)
%% \citep{jones90}|        & (Jones et al., 1990)
%% \citep{jones90,jones93}| & (Jones et al., 1990, 1993)
%% \citep[p.~32]{jones90}| & (Jones et al., 1990, p.~32)
%% \citep[e.g.,]{jones90}| & (e.g., Jones et al., 1990)
%% \citep[e.g.,][p.~32]{jones90}| & (e.g., Jones et al., 1990, p.~32)
%% \citeauthor{jones90}|   & Jones et al.
%% \citeyear{jones90}|     & 1990

\clearpage

\begin{figure}[ht!]
\centering{\includegraphics[width=\textwidth]{alpha_maps_v2.png}}
\caption{\$alpha\$-maps of percentage vertical displacement due to ocean
tides. Red colors highlight areas that can be assumed to be
\change{freely-floating}{freely floating}. The white crosses show the
tide-model locations that also serve as a common reference point across
the images. The solid black line is the location of the profiles shown in
Figures \ref{fig:ls_process_DInSAR_SMIS} and
\ref{fig:ls_process_SAR_SMIS} on the Southern McMurdo IceShelf (left).
The dashed black line shows the location of the profiles along the Darwin
Glacier's centerline shown in Fig. \ref{fig:LS_flexure_curves_Darwin}
(right). The GPS station 'Shirase' and 'Hillary' in the tidal-flexure
zone. White contours delineate areas of constant vertical displacement.
The map background is contrast-stretched Landsat 8 panchromatic imagery.
The geographic projection is Antarctic Polar Stereographic with easting
and northing coordinates shown in kilometers.}
\label{fig:alpha_maps}
\end{figure}
\clearpage

\begin{figure}[ht!]
\centering{\includegraphics[width=86mm]{ls_process_DInSAR_v2.png}}
\caption{Vertical displacements along a profile through the grounding
zone of the Southern McMurdo Ice Shelf, as (top) measured with 9 DInSAR
interferograms, (center) predicted from an empirical displacement model
(\$alpha\$-map) and (bottom) their difference.}
\label{fig:ls_process_DInSAR_SMIS}
\end{figure}
\clearpage

\begin{figure}[ht!]
\centering{\includegraphics[width=86mm]{ls_process_SAR_v2.png}}

```

```

\caption{Reconstruction of vertical displacement along the profile during
the 12 times of satellite overpasses on the Southern McMurdo Ice Shelf.
(Top) a combination of an empirical displacement model with adjusted CATS
tide-model output, (center) their least-square adjustment and (bottom)
the final vertical displacement profiles during the times of SAR data
acquisition.}
\label{fig:ls_process_SAR_SMIS}
\end{figure}
\clearpage

```

```

\begin{figure}[ht!]
\centering{\includegraphics[width=\textwidth]{forcing_v2.png}}
\caption{The tidal oscillation at the Darwin Glacier as predicted by four
tide models and a harmonic analysis of GPS data from the freely-floating
area. The tide-model outputs are adjusted to match DInSAR observations
using a least-squares fitting technique published in
\cite{wild2018unraveling}. Black vertical lines coincide with times of
SAR data acquisitions. Values for the prevailing tidal amplitudes and
their adjustment at these times are given in Table \ref{tab:SAR_table}.
Gray shaded areas delineate the duration of the TIDEx campaign, when GPS
data was acquired for validation (Figs. \ref{fig:Hillary_validation} and
\ref{fig:GPS_validation}).}
\label{fig:forcing_Darwin}
\end{figure}
\clearpage

```

```

\begin{table*}[ht!]
\centering
\caption{SAR imagery used for the Darwin Glacier, least-squares
adjustment ( $\Delta A$  in m) for 5 tide models, tidal
amplitude ( $A$  in m) as predicted with the TPXO7.2 tide model and rate of
tidal change ( $\dot{A}$  in  $m \cdot h^{-1}$ ) as predicted with the
RossInv2002 tide model.}
\label{tab:SAR_table}
\begin{tabular}{lccccrr}
\toprule
SAR: & Date 13:57 (UTC) &  $\Delta A_{\text{CATS}}$  &  $\Delta A_{\text{RossInv}}$  &  $\Delta A_{\text{Ross9cm}}$  &  $\Delta A_{\text{TPXO7.2}}$  &  $\dot{A}_{\text{RossInv}}$  \\
\midrule
1 & 25/05/16 & 0.109 & 0.098 & & & \\
0.133 & & 0.101 & -0.004 & -0.341 & -0.059 & \\
2 & 05/06/16 & -0.061 & -0.066 & & & \\
0.097 & & -0.039 & -0.030 & -0.666 & -0.057 & \\
3 & 16/06/16 & 0.029 & 0.035 & & & \\
0.050 & & 0.034 & 0.013 & -0.409 & -0.007 & \\
4 & 27/06/16 & 0.032 & -0.012 & & & \\
0.049 & & -0.009 & -0.111 & 0.002 & -0.022 & \\
5 & 08/07/16 & 0.054 & -0.022 & & & \\
0.107 & & 0.008 & 0.122 & -0.271 & -0.037 & \\
6 & 19/07/16 & -0.086 & -0.082 & & & \\
0.035 & & -0.088 & 0.206 & -0.661 & -0.005 & \\
7 & 30/07/16 & -0.091 & 0.015 & & & \\
0.026 & & -0.045 & 0.074 & -0.687 & 0.080 & \\
\end{tabular}

```

```

8          & 10/08/16          & -0.078          & 0.001          & -
0.035      & -0.040          & -0.080 & -0.276 & 0.072          \\
9          & 26/10/16          & -0.073          & -0.023          & -
0.053      & -0.046          & -0.244 & -0.132 & 0.011          \\
10         & 06/11/16          & -0.044          & -0.009          & -
0.088      & -0.023          & -0.172 & 0.087 & 0.096          \\
11         & 17/11/16          & 0.099          & 0.025          & -
0.002      & 0.084          & 0.059 & 0.522 & 0.052          \\
12         & 28/11/16          & 0.109          & 0.041          & &
0.124      & 0.062          & 0.168 & 0.398 & -0.029
\\midrule
\multicolumn{2}{r|}{mean absolute $\Delta A$} & 0.072 & 0.036 & 0.067 &
0.048 & 0.107 & - & - & \\bottomrule
\end{tabular}
\end{table*}

```

```
\clearpage
```

```

\begin{table*}[ht!]
\centering
\caption{DINSAR images of the Darwin Glacier. The SAR combination from 12
available SAR images, the tidal amplitude ($A$ in m) as measured at the
Shirase location as well as predicted with the TPX07.2 tide model.}
\label{tab:DINSAR_table}
%\begin{adjustbox}{totalheight=\textheight-2\baselineskip}
\begin{minipage}[b]{0.45\linewidth}\centering
\begin{tabular}{lrrrr}\toprule
ID & SAR combination & $A_{\text{TerraSAR-X}}$ & & $A_{\text{TPX07.2}}$ &
$\Delta$ \\ \midrule
1 & (1-2)-(2-3) & 0.581 & 0.582 & -0.001 & \\
2 & (1-2)-(3-4) & 0.740 & 0.735 & 0.004 & \\
3 & (1-2)-(4-5) & 0.057 & 0.052 & 0.005 & \\
4 & (1-2)-(5-6) & -0.061 & -0.065 & 0.004 & \\
5 & (1-2)-(6-7) & 0.298 & 0.299 & -0.001 & \\
6 & (1-2)-(7-8) & 0.734 & 0.736 & -0.002 & \\
7 & (1-2)-(9-10) & 0.552 & 0.544 & 0.008 & \\
8 & (1-2)-(10-11) & 0.736 & 0.760 & -0.024 & \\
9 & (1-2)-(11-12) & 0.207 & 0.201 & 0.006 & \\
10 & (2-3)-(3-4) & 0.154 & 0.154 & 0.001 & \\
11 & (2-3)-(4-5) & -0.529 & -0.530 & 0.001 & \\
12 & (2-3)-(5-6) & -0.646 & -0.647 & 0.001 & \\
13 & (2-3)-(6-7) & -0.288 & -0.283 & -0.005 & \\
14 & (2-3)-(7-8) & 0.137 & 0.154 & -0.017 & \\
15 & (2-3)-(9-10) & -0.034 & -0.038 & 0.004 & \\
16 & (2-3)-(10-11) & 0.190 & 0.178 & 0.012 & \\
17 & (2-3)-(10-11) & -0.376 & -0.381 & 0.004 & \\
18 & (3-4)-(4-5) & -0.688 & -0.683 & -0.004 & \\
19 & (3-4)-(5-6) & -0.805 & -0.801 & -0.005 & \\
20 & (3-4)-(6-7) & -0.446 & -0.436 & -0.009 & \\
21 & (3-4)-(7-8) & -0.014 & 0.001 & -0.015 & \\
22 & (3-4)-(9-10) & -0.192 & -0.192 & -0.000 & \\
23 & (3-4)-(10-11) & 0.055 & 0.025 & 0.030 & \\
\vdots & & \vdots & \vdots & \vdots & \\
\end{tabular}
\end{minipage}
\end{table*}

```



```

\end{minipage}
\hspace{0.5cm}
\begin{minipage}[b]{0.45\linewidth}
%\end{minipage} \hfill
%\begin{minipage}{0.5\textwidth}
\begin{tabular}{lr|rr|r}\toprule
ID & SAR combination &  $\Delta_{\text{TerraSAR-X}}$  &  $\Delta_{\text{TPX07.2}}$  &  $\Delta$  \\
\vdots & \vdots & \vdots & \vdots & \vdots \\
24 & (3-4)-(11-12) & -0.536 & -0.534 & -0.002 \\
25 & (4-5)-(5-6) & -0.112 & -0.117 & 0.005 \\
26 & (4-5)-(6-7) & 0.246 & 0.247 & -0.001 \\
27 & (4-5)-(7-8) & 0.679 & 0.684 & -0.005 \\
28 & (4-5)-(9-10) & 0.496 & 0.492 & 0.004 \\
29 & (4-5)-(10-11) & 0.690 & 0.708 & -0.018 \\
30 & (4-5)-(11-12) & 0.155 & 0.149 & 0.006 \\
31 & (5-6)-(6-7) & 0.363 & 0.364 & -0.001 \\
32 & (5-6)-(7-8) & 0.811 & 0.801 & 0.010 \\
33 & (5-6)-(9-10) & 0.620 & 0.609 & 0.011 \\
34 & (5-6)-(10-11) & 0.803 & 0.825 & -0.023 \\
35 & (5-6)-(11-12) & 0.274 & 0.266 & 0.008 \\
36 & (6-7)-(7-8) & 0.430 & 0.437 & -0.007 \\
37 & (6-7)-(9-10) & 0.237 & 0.244 & -0.007 \\
38 & (6-7)-(10-11) & 0.466 & 0.461 & 0.005 \\
39 & (6-7)-(11-12) & -0.107 & -0.098 & -0.009 \\
40 & (7-8)-(9-10) & -0.202 & -0.192 & -0.009 \\
41 & (7-8)-(10-11) & 0.025 & 0.024 & 0.000 \\
42 & (7-8)-(11-12) & -0.541 & -0.535 & -0.006 \\
43 & (9-10)-(10-11) & 0.228 & 0.217 & 0.011 \\
44 & (9-10)-(11-12) & -0.343 & -0.342 & -0.001 \\
45 & (10-11)-(11-12) & -0.565 & -0.559 & -0.006 \\
\multicolumn{4}{r}{mean absolute error} & 0.007 \\
\end{tabular}
\end{minipage}
%\end{minipage}
%\end{adjustbox}
\end{table*}

```

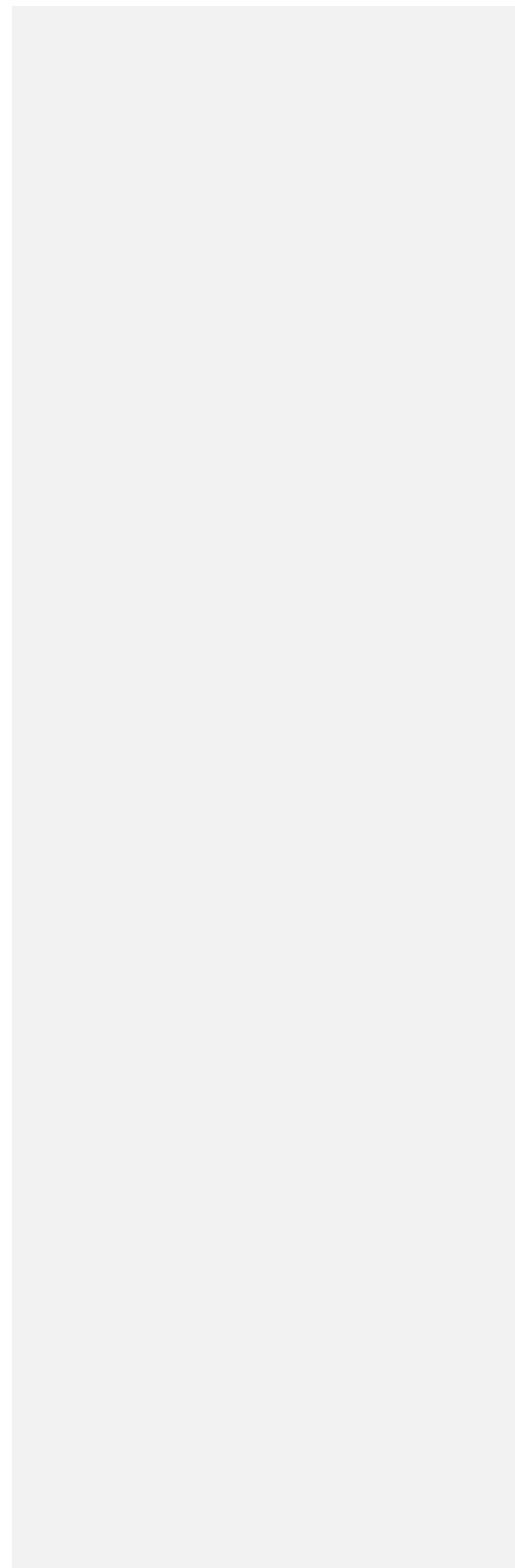
```
\clearpage
```

```

\begin{figure}[ht!]
\centering{\includegraphics[width=0.75\textwidth]{Darwin_DInSARs.png}}
\caption{Selection of three measured and modelled images from 45
available DInSAR combinations. The top panels show conditions at a
relatively large double-differential tidal amplitude (ID 37), the center
panels display a pronounced viscoelastic signal in the Darwin
\change{Glacier's}{Glaciers} grounding zone (ID 39) and the bottom panels
show a complex flexural pattern (ID 15).}
\label{fig:Darwin_DInSARs}
\end{figure}
\clearpage

```

```
\begin{figure}[ht!]
```



```

\centering{\includegraphics[width=0.75\textwidth]{Darwin_coeff_maps_v2.png}}
\caption{Reconstructed vertical displacement maps in the
\change{grounding-zone}{grounding zone} of the Darwin Glacier. The images
show surface displacement due to ocean tides at the 12 times of SAR data
acquisition. Dashed black lines along the glacier's centerline correspond
to the profiles shown in Fig. \ref{fig:LS_flexure_curves_Darwin}. The
white cross marks the tide-model location. The green triangle and dot in
the lower center panel mark the locations of the two GPS stations
'Shirase' (\change{freely-floating}{freely floating}) and 'Hillary'
(within the tidal flexure zone). Finite-element mesh in gray, mean course
of the grounding line as determined from 45 DInSAR images in black. Note
the ice rise in the bottom left corner. The map background is contrast-
stretched Landsat 8 panchromatic imagery.}
\label{fig:coeff_maps_Darwin}
\end{figure}
\clearpage

\begin{figure}[ht!]
\centering{\includegraphics[width=86mm]{LS_flexure_curves.png}}
\caption{Profiles through the reconstructed maps of vertical displacement
along the Darwin Glacier's centerline. The crosses mark the location
where the adjusted tide-model output is applied to the  $\alpha$ -map. The
green triangle and dot mark the locations of the two GPS stations
'Shirase' and 'Hillary' and are only used to validate the dashed green
profile 11.}
\label{fig:LS_flexure_curves_Darwin}
\end{figure}
\clearpage

\begin{figure}[ht!]
\centering{\includegraphics[width=172mm]{Hillary_validation_v2.png}}
\caption{\change{Time-series}{Time series} of vertical tidal displacement
on the freely-floating part of the Darwin Glacier ('Shirase') and within
the flexure zone close to the grounding line ('Hillary') . The (solid
blue) corrected tide-model output for the 'Shirase' location is at first
compared to (black) its corresponding GPS record. The (dashed blue)
extended tide model is scaled and shows an empirical prediction for
(orange) the GPS record at the flexure-zone station 'Hillary'. The length
of the record corresponds to the gray-shaded area in Fig.
\ref{fig:forcing_Darwin}.}
\label{fig:Hillary_validation}
\end{figure}
\clearpage

\begin{figure}[ht!]
\centering{\includegraphics[width=\linewidth]{STD_maps_v2.png}}
\caption{Standard deviations of misfits between modelled and observed
DInSAR interferograms. Mean course of the grounding line as determined
from DInSAR images in black. (Left) Note the ice rise in the upper right
corner and two jumps in standard deviations between this ice rise and the
dry land for the Southern McMurdo Ice Shelf. (Right) Note the band of
higher standard deviations from the Darwin Glacier's shear margin from

```

Diamond Hill towards the ice rise in the bottom left corner and the high standard deviations. The map background is contrast-stretched Landsat 8 panchromatic imagery.

```
\label{fig:LS_STD_maps}
\end{figure}
\clearpage
```

```
\begin{figure}[ht!]
\centering{\includegraphics[width=0.75\textwidth]{Darwin_visco_maps_v2.png}}
\caption{Spatial distribution of 12 least-square offsets that minimize the sum of misfits between 45 maps of  $\alpha$ -predictions and their corresponding DInSAR measurements. These offsets can be interpreted as the viscoelastic contribution to the reconstructed vertical tidal displacement at the times of SAR data acquisition. Dashed black line corresponds to the glacier's centerline, the solid black line shows the Darwin Glacier's mean grounding line as determined with DInSAR.}
\label{fig:visco_maps_Darwin}
\end{figure}
\clearpage
```

```
\begin{figure}[ht!]
\centering{\includegraphics[width=0.75\textwidth]{visco_errors_v4.png}}
\caption{Map of average error due to viscoelasticity in percent of tidal amplitude (left panel) and average error on the floating part of the Darwin Glacier versus rate of tidal change as predicted with the adjusted Ross\_Inv\_2002 tide model (right panel). Image 6 is considered an outlier and was excluded from the calculation of the linear trend.}
\label{fig:visco_errors_Darwin}
\end{figure}
\clearpage
```

```
\begin{figure}[ht!]
\centering{\includegraphics[width=76mm]{Darwin_field_overview_v2.png}}
\caption{Measured ice-thickness map in the \change{grounding-zone}{grounding zone} of the Darwin Glacier. Black dots show locations of high-precision ApRES measurements. Orange rectangles mark seven tiltmeter sensors that are orientated along the glacier's centerline. Red triangles show locations of GPS stations on the moving ice (Shirase and Hillary) and the location of the GPS base station on stagnant ice which is used for differential correction of the measurements. White contours correspond to a 100-m change in interpolated ice thickness. The map background is contrast-stretched Landsat 8 panchromatic imagery.}
\label{fig:Darwin_field_overview}
\end{figure}
\clearpage
```

```
\begin{figure}[ht!]
\centering{\includegraphics[width=\textwidth]{K1_components.png}}
\caption{Surface flexure of the K1 tidal constituent along the Darwin Glacier's centerline as (orange) measured with an array of seven tiltmeters, (magenta) modelled using a viscoelastic rheology and (black)
```

modelled with the elastic approximation. The orange dashed lines correspond to the uncertainty range of the K1 phases as determined from harmonic analysis of the individual tiltmeter records.}

\label{fig:K1\_components}  
\end{figure}

\begin{table\*}[ht!]  
\centering

\caption{Amplitude and phase of the K1 tidal constituents from harmonic analysis of tiltmeter measurements and values of the rheological parameters to minimize the average RMSE. Amplitudes are given in degrees, phases are the phase lag of the K1 constituent with respect to the equilibrium tide on Greenwich longitude.}

\label{tab:K1\_table}

\begin{tabular}{lr|lcl|lcr}\toprule

		& K1 amplitude	\pm error	( $^{\circ}$ )	& K1 phase	\pm error	( $^{\circ}$ )
& tiltmeter 1	24.34	& 206.22	& -0.001	& 0.0033	& +0.001	& -	
& tiltmeter 2	8.02	& 215.35	& -0.001	& 0.0044	& +0.001	& -	
& tiltmeter 3	7.46	& 218.64	& -0.001	& 0.0044	& +0.001	& -	
& tiltmeter 4	13.63	& 219.34	& -0.002	& 0.0065	& +0.002	& -	
& tiltmeter 5	12.36	& 198.09	& -0.001	& 0.0055	& +0.001	& -	
& tiltmeter 6	14.95	& 207.34	& -0.001	& 0.0014	& +0.001	& -	
& tiltmeter 7	18.06	& 181.97	& -0.001	& 0.0025	& +0.001	& -	

\\midrule

elastic & \begin{tabular}{@{}r@{}} best \$E\$ (GPa) \\ average RMSE  
( $^{\circ}$ ) \end{tabular} & \begin{tabular}{@{}l@{}} 1.5 \\ 0.00098 \end{tabular} & \begin{tabular}{@{}c@{}} 1.0 \\ 0.00147 \end{tabular} & \begin{tabular}{@{}r@{}} 0.5 \\ 0.00198 \end{tabular} & \begin{tabular}{@{}l@{}} 0.5 \\ 0.00127 \end{tabular} & \begin{tabular}{@{}c@{}} 1.0 \\ 0.00147 \end{tabular} & \begin{tabular}{@{}r@{}} 2.0 \\ 0.00182 \end{tabular} \\
& best \$E\$ (GPa) & 1.5 & 1.0 & 1.0 & 2.0 & 1.0 & 1.0

& 0.5 & 1.0 & 2.0 & 19.9 & 10.0 & 10.0 & 12.6 & 10.0 & 7.9

& average RMSE ( $^{\circ}$ ) & 0.00077 & 0.00119 & 0.00170 & 0.00122 & 0.00119 & 0.00128

\end{tabular}

\end{table\*}

```

\appendixfigures %% needs to be added in front of appendix figures
\begin{figure}[ht!]
\centering{\includegraphics[width=172mm]{GPS_validation_v2.png}}
\caption{Validation of the tidal predictions of 5 tide models with a GPS
record from the freely-floating 'Shirase' station. The tide-model outputs
are adjusted to match DInSAR observations using a least-squares fitting
technique published in \cite{wild2018unraveling}. Root-mean-square-errors
before and after this adjustment are presented in Tab.
\ref{tab:GPS_table}. The length of the records corresponds to the gray-
shaded area in Fig. \ref{fig:forcing_Darwin}.}
\label{fig:GPS_validation}
\end{figure}

```

```

\appendixtables %% needs to be added in front of appendix tables
\begin{table}[ht!]
\centering
\caption{Root-mean-square-errors in m between tide-model output and GPS
data from 'Shirase' before and after the adjustment to match DInSAR.}
\label{tab:GPS_table}
\begin{tabular}{lrr}
\toprule
Tide-model: & & & RMSE before: & & RMSE after: & \\
CATS2008a\_opt & & & 0.117 & & 0.087 & \\
Ross\_Inv\_2002 & & & 0.112 & & 0.091 & \\
Ross\_VMADCP\_9cm & & & 0.135 & & 0.127 & \\
TPXO7.2 & & & 0.108 & & 0.067 & \\
mean & 0.118 & & 0.093 & & & \\
t\_tide & & & 0.127 & & 0.141 & \\
\bottomrule
\end{tabular}
\end{table}

```

```
%% FIGURES
```

```

%% When figures & tables are placed at the end of the MS (article in
one-column style), please add \clearpage
%% between bibliography and first table and/or figure as well as between
each table and/or figure.

```

```
%% ONE-COLUMN FIGURES
```

```
%%f
```

```
%
```

```
%%% TWO-COLUMN FIGURES
```

```
%
```

```
%%f
```

```
%
```

```
%
```

```
%%% TABLES
```

```
%%%
```

%%% The different columns must be seperated with a & command and should  
%%% end with \\ to identify the column brake.

%%  
%%% ONE-COLUMN TABLE

%%  
%%t  
%\begin{table}[t]  
\caption{TEXT}  
\begin{tabular}{column = lcr}  
\tophline  
%\middlehline  
%\bottomhline  
\end{tabular}  
\belowtable{} % Table Footnotes  
\end{table}

%%  
%%% TWO-COLUMN TABLE

%%  
%%t  
%\begin{table\*}[t]  
\caption{TEXT}  
\begin{tabular}{column = lcr}  
\tophline  
%\middlehline  
%\bottomhline  
\end{tabular}  
\belowtable{} % Table Footnotes  
\end{table\*}

%%  
%%% LANDSCAPE TABLE

%%  
%%t  
%\begin{sidewaystable\*}[t]  
\caption{TEXT}  
\begin{tabular}{column = lcr}  
\tophline  
%\middlehline  
%\bottomhline  
\end{tabular}  
\belowtable{} % Table Footnotes  
\end{sidewaystable\*}

%%  
%%% MATHEMATICAL EXPRESSIONS

%%  
%%% All papers typeset by Copernicus Publications follow the math  
typesetting regulations

```

%%% given by the IUPAC Green Book (IUPAC: Quantities, Units and Symbols
in Physical Chemistry,
%%% 2nd Edn., Blackwell Science, available at:
http://old.iupac.org/publications/books/gbook/green_book_2ed.pdf, 1993).
%%%
%%% Physical quantities/variables are typeset in italic font (t for time,
T for Temperature)
%%% Indices which are not defined are typeset in italic font (x, y, z, a,
b, c)
%%% Items/objects which are defined are typeset in roman font (Car A, Car
B)
%%% Descriptions/specifications which are defined by itself are typeset
in roman font (abs, rel, ref, tot, net, ice)
%%% Abbreviations from 2 letters are typeset in roman font (RH, LAI)
%%% Vectors are identified in bold italic font using \vec{x}
%%% Matrices are identified in bold roman font
%%% Multiplication signs are typeset using the LaTeX commands \times (for
vector products, grids, and exponential notations) or \cdot
%%% The character * should not be applied as mutliplication sign
%
%
%%% EQUATIONS
%
%%% Single-row equation
%
%\begin{equation}
%
%\end{equation}
%
%%% Multiline equation
%
%\begin{align}
%& 3 + 5 = 8\\
%& 3 + 5 = 8\\
%& 3 + 5 = 8
%\end{align}
%
%
%%% MATRICES
%
%\begin{matrix}
%x & y & z \\
%x & y & z \\
%x & y & z \\
%\end{matrix}
%
%
%%% ALGORITHM
%
%\begin{algorithm}
%\caption{...}
%\label{al}
%\begin{algorithmic}
%...

```

```
%\end{algorithmic}
%\end{algorithm}
%
%
%%% CHEMICAL FORMULAS AND REACTIONS
%
%%% For formulas embedded in the text, please use \chem{}
%
%%% The reaction environment creates labels including the letter R, i.e.
(R1), (R2), etc.
%
%\begin{reaction}
%%% \rightarrow should be used for normal (one-way) chemical reactions
%%% \rightleftharpoons should be used for equilibria
%%% \leftrightharpoons should be used for resonance structures
%\end{reaction}
%
%
%%% PHYSICAL UNITS
%%%
%%% Please use \unit{} and apply the exponential notation

\end{document}
```