

Reply to Anonymous Referee #1 on “Differential InSAR for tide modelling in Antarctic ice-shelf grounding zones”

Summary:

The reviewer has largely understood the manuscript, picks up its main information and has generally good comments to improve the quality of the paper. The only misunderstanding seems to be that DInSAR is adjusted to match the tide model output (as indicated in the beginning of the reviewer's second sentence). With the relatively high vertical accuracy of DInSAR (<1cm) compared to tide models (approx 10cm) we consider DInSAR the absolute truth, and only adjust the tide-model output on the freely-floating part of the ice shelf to match DInSAR (we added this sentence to the introduction). The adjusted tide-model output is later scaled in the flexure zone using an alpha-map. We thank reviewer #1 for providing a very constructive feedback and the suggestion to include a Figure with a direct comparison between DInSAR images and reconstructed differential displacements in the paper, as well as the inspiration to include a Table dealing with a more detailed uncertainty analysis on the ice rheology values.

Minor comments:

1) DInSAR combinations

For the SMIS, 12 SAR images from three different satellite tracks were used to produce 9 DInSAR images. For the Darwin Glacier, 12 SAR images from one satellite track were available to produce a total of 45 DInSAR images (see Table). The combinations were generally chosen so that a later image is always subtracted from an earlier image. For image triples, the central image was taken as a common reference/master image. Additionally the data gap between SAR 8 and 9 at the Darwin Glacier was taken into account (no 8-9 combination as loss of coherence). The advantage of using every other remaining combination is that more double-differential measurements of tidal amplitude are available for the least-squares fitting algorithm than only using consecutive pairs alone. The system of linear equations is then overdetermined (instead of underdetermined). We have added these statements were appropriate in the main text and include a table of DInSAR combinations for the Darwin Glacier.

2) Figure 5

The reviewer is right that these images don't show wrapped interferometric phase and rather unwrapped vertical tidal displacement. The reason for displaying these maps with fringes is mainly to show the reader that the algorithm can reproduce complex flexural patterns within the grounding zone. We included a selection of 3 measured versus modelled DInSAR images as proposed by the reviewer.

The reviewer is also right that one would expect no tidal change on the grounded parts (ie same color in all panels). As the signal to noise ratio is increasing drastically from the grounding line in upstream direction, the algorithm will systematically be biased by noise in the interferograms. Areas where no tidal signal can be expected (as in the top corner or on rocks) will therefore show variability where there is none in reality. We have included sentences where appropriate.

3) Ice heterogeneity

The red band of relatively high standard deviations in the top left corner of the Figure follows the course of rocky cliffs. In these areas, most DInSAR measurements lost coherence and voids were dominated by noise. Similarly, the red area in the bottom left corner coincides with the shear zone with the fast-flowing Ross Ice shelf (the Byrd Glacier is adjacent). In this area a loss of coherence is also problematic. We comment on it in the revised paper.

4) Phase unwrapping

The purpose of Figure 9 is to show the reader the application of detecting unwrapping issues at the SMIS (jumps in the standard deviation) which we were able to avoid at the Darwin Glacier (smooth standard deviations on the floating part). As the main purpose of the paper is not on phase unwrapping strategies but rather on improving tide model output, we have decided against including a corrected standard deviation map of the SMIS as the paper is quite heavy on figures and tables already.

5) Finite-element modelling

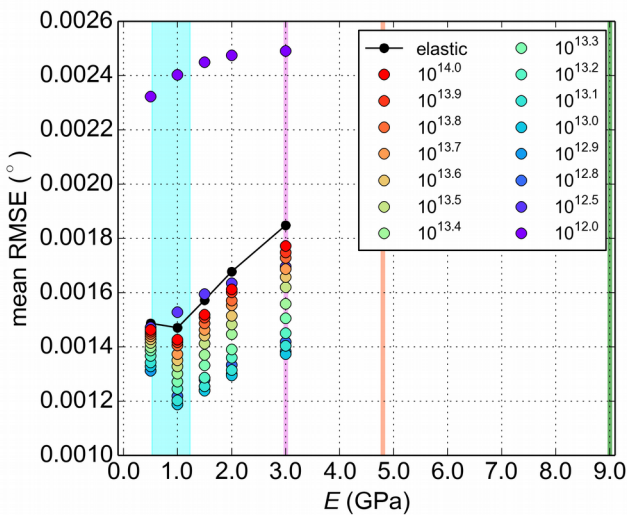


Illustration 1: Mean Root-mean-square-error to seven K1 harmonics as determined from harmonic analysis of tiltmeter data in the grounding zone of the Darwin Glacier. Only the Young's modulus (E) can be varied in an elastic model (black curve), the dots represent viscoelastic model performance with viscosity values corresponding to values in the legend. The smaller the mean RMSE the better the match of the model.

The reviewer is right that uncertainties for the ice rheology should be provided. (I assume $E=10$ GPa is a typo and should have been $E = 1$ GPa). We have therefore performed a thorough uncertainty analysis, but point the reviewer/reader to Wild et al., 2017 (Journal of Glaciology) for a more detailed sensitivity analysis on varying the ice rheology. Uncertainties arise from the quality of the harmonic analysis of the individual tiltmeter records using `t_tide`. Both amplitude and phase of the K1 signals are determined within error bounds, which have been accounted for in the revised paper. We note that the main hypothesis coming out of the present paper is the reduction of ice viscosity in the shear zone and state that a finer resolution of the viscosity value (12.9, 13.0, 13.1, etc) has been chosen to tune the model than for the Young's modulus (0.5, 1.0, 1.5, etc). This is supported by the fact that including viscoelasticity in our model simulations generally reduces the mean RMSE to tiltmeter data more than changing the Young's modulus between 0.5 and 2.0 GPa. The uncertainty range for the Young's modulus and the viscosity value are calculated as the mean absolute deviation from the best E and best ν in Table 3.

6) Large-scale ice anisotropy

We have included a paragraph about other mechanisms that soften ice (damage, shear heating, tidal stresses) and note that none of them explains the spatial heterogeneity and differences between Darwin Glacier and SMIS that we observe here.

7) Other related changes to the manuscript

I have found an error in the calculation of the mean error of the adjusted tide models to all 45 DInSAR measurements. The originally stated error of 0.84 mm was calculated without taking the sign of the residual errors into account (a mean of values around zero will always be close to zero). For this reason, the mean absolute error was calculated and the error corrected to 7 mm (which is still within interferogram noise)

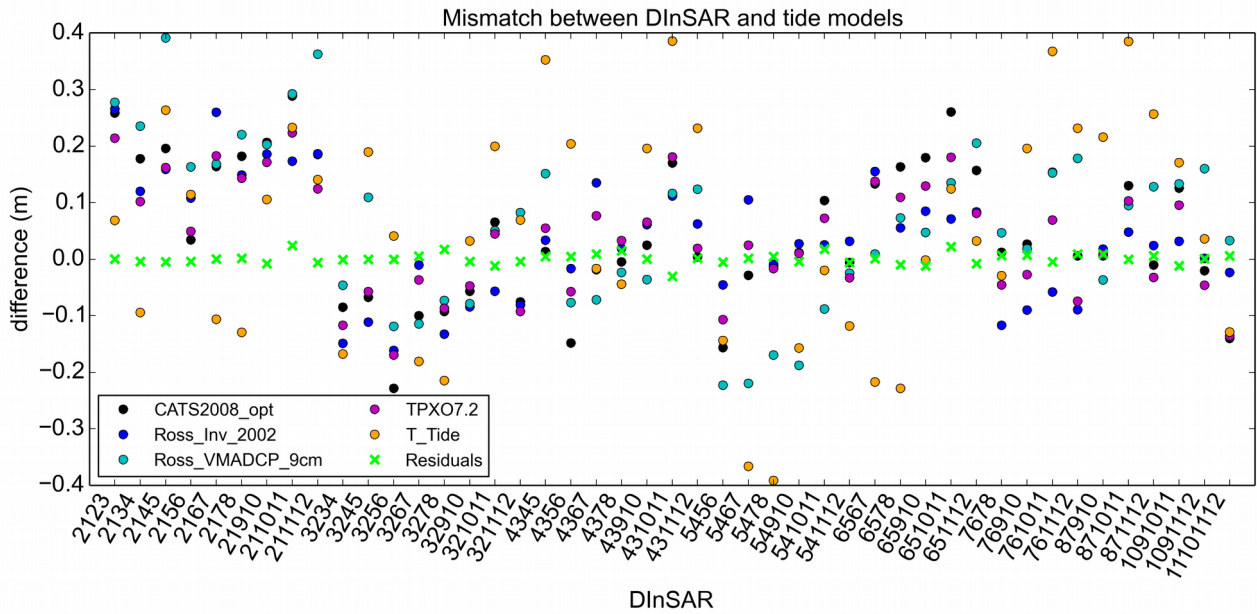


Illustration 2: Mismatch between 45 DInSAR measurements of tidal surface displacement in the freely-floating part of the Darwin Glacier. Dots correspond to model predictions before the adjustment to DInSAR, the green crosses correspond to the residual errors after the adjustment. The green crosses average out to a mean absolute error of 7mm, which is now changed in the paper

Reply to Referee #2 (Laurence Padman) on “Differential InSAR for tide modelling in Antarctic ice-shelf grounding zones”

Summary:

The reviewer is clearly an expert in tide modelling and provides invaluable insights in tidal dynamics, strengths and weaknesses of harmonic analysis as well as into the literature. The reviewer is right to point out that not the actual tide model physics are improved, but only (i) the tide model outputs are adjusted on the freely-floating part of the ice shelf by using DInSAR measurements (they are considered the absolute truth) and (ii) the adjusted tide model outputs are then scaled in the flexure zone by using 'the fraction of the tide-model signal that appears in the flexurally-constrained ice surface elevation signal' (aka alpha-map). The reviewer, however, seems to have misunderstood (1) the role of the two GPS records Shirase and Hillary in the analysis. Both of these records have only been used for validation purposes and don't feed into the tide adjustment/scaling algorithm. Similarly (2), it is true that t_{tide} only captures K1 and S2 as K1+P1 and S2+K2 without using inference, however, these harmonics have only been used within a short 16 day window and not in model simulations over an entire year (the reviewer agrees that 'an analysis without inference predicts tides within the window really well, but cannot be used to extrapolate'). Including inference in the analysis would be necessary if an entire year would have been modelled, but as only a relatively short window has been used to determine the rheology values, the errors in detecting the K1 amplitudes and phases from our 16 day tiltmeter records dominate the bias over the error due to inference (see reply to major comments below). We therefore focused our revisions on a more detailed uncertainty investigation of our harmonic analysis than including inference. We thank reviewer #2 for sharing his expertise in tidal dynamics and making us aware of using inference for analysing longer time series and leave the question on how to improve the actual tide model physics with an adjusted tide model output for future investigation.

Major comments:

1) Nomenclature : We extended the section on the sources of errors in tide models

2a) Inverse Barometric Effect (IBE) : The IBE is first calculated from barometric pressure records of nearby AWS and then added onto the raw tide model output. The result (IBE + tides + load tides) is then adjusted to match DInSAR measurements on the freely-floating part of the ice shelf. These adjusted tides are then validated with the independent GPS record Shirase. Afterwards, the adjusted tides are scaled using the alpha-map which is then validated with the GPS record Hillary. Note that both GPS records are solely for validation purposes. The alpha-map is a result of DInSAR alone.

2b) Dependency on time scales : We have identified that the most relevant control of the IBE is the window size over which to calculate a running mean of the barometric pressure. Our relatively long GPS record from the freely-floating part of the Southern McMurdo Ice Shelf was used to study the effects of changing the size of this window. First tides and load tides were removed from this GPS record to extract the IBE signal (called residual error). Second, the window length was varied linearly from 0 (instantaneous response) to 10 days (very delayed response) to calculate the IBE value in comparison to the residual error. Third, the RMSE is plotted as a function of the length of this window. Note that (i) the longer the length of the running mean, the closer the IBE value is to zero; (ii) the shorter the length of the running mean, the smaller the RMSE with a best match if an instantaneous response is assumed:

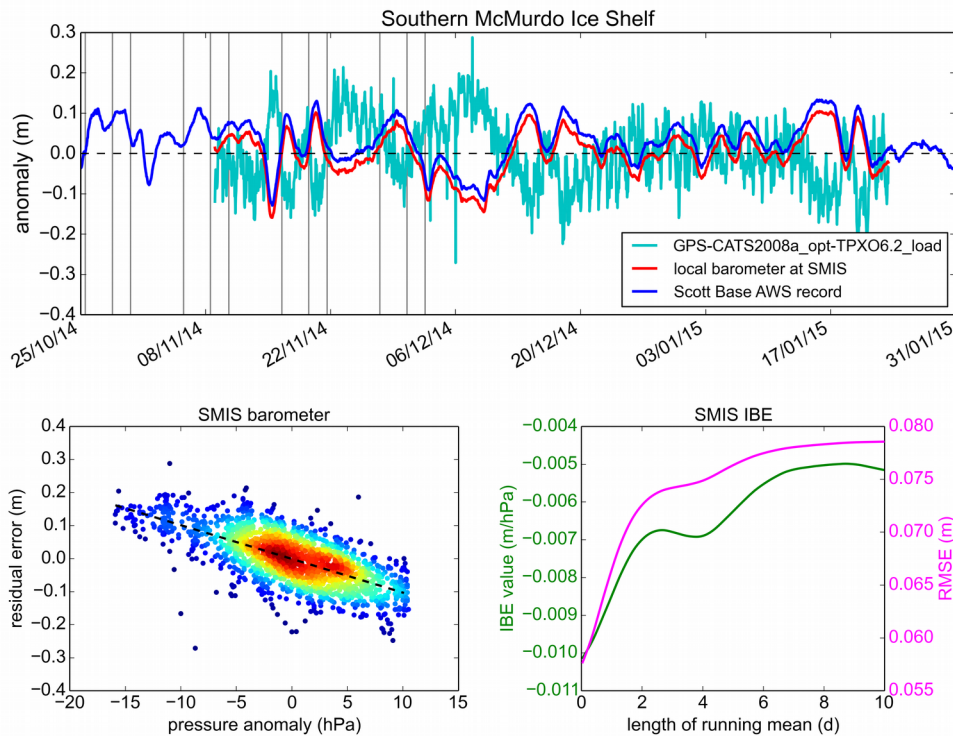
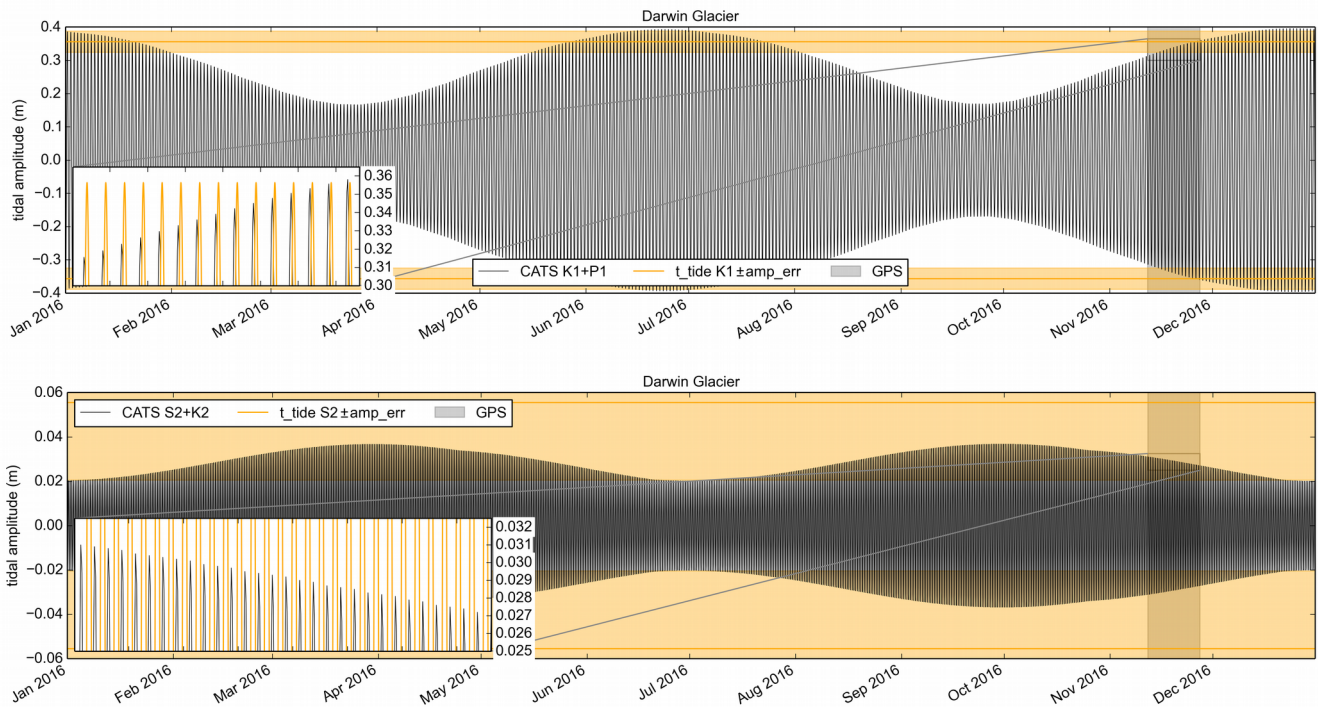


Illustration 1: Calculation of the best window size for the IBE: (Top panel) Comparison of the residual GPS signal to two scaled barometric records (1 hPa = -1 cm). (Bottom left panel) Scatter plot of the pressure anomaly from a local barometer and the anomaly of the residual to calculate the IBE as a linear fit through the point cloud (points are color coded to point density). (Bottom right panel) The length of the averaging window to calculate the scatter plot on the left and the resulting RMSE to our measurements. Note that any deviation from an instantaneous response will increase the RMSE.

3) Here might be the misunderstanding. The method used to optimize the tide model (tide + load + IBE) relies on adjusting it to best match multiple DInSAR measurements on the freely-floating part. It is independent from the GPS records and relies on SAR data alone (plus tide model, load model and barometer data as input). The method is therefore unable to detect individual tidal components and only adjusts the sum of the ones that are used in the underlying tide model. See related point 5.

4) Inference : The reason why we focused on the K1 component within the 16 day window in the first place was that t_{tide} didn't find other components with a sufficiently high signal-to-noise ratio for further analysis. Within this window, t_{tide} 's estimate of K1 plus/minus its amplitude error covers the variability that is introduced by K1+P1 within these 16 days (see figure below, top panel). These uncertainties as well as the phase errors of t_{tide} 's K1 components now feed into the paper when we determine the Young's modulus and viscosity values. We note that using inference would be necessary if t_{tide} 's K1 components would have been extrapolated to times when the K1+P1 inference is larger than K1's amplitude error (f.e. April and October 2016). Similarly, t_{tide} 's S2 component shows large uncertainties. The range of its S2 amplitude error is much greater than the annual variability in S2+K2. For these reasons, the tuning of the model rheology focuses solely on t_{tide} 's K1 components (now within respective amplitude and phase errors).



5) Correlation :

We weren't aware of the fact that tide models differ systematically between diurnal and semi-diurnal constituents. It would be very much appreciated if reviewer #2 could elaborate on which ones have generally good diurnals and poor semi-diurnals (and vice versa) and if this error is more likely to be in the amplitude or in the phase of the components. We agree with reviewer #2's hypothesis that this might explain why different tide models fit better to our diurnal-dominated GPS records, and note that Ross_VMADCP_9cm and Ross_Inv_2002 seem to lead the phase of the Shirase GPS record (Figure A1), while CATS2008a_opt and TPXO7.2 are in phase. From our experience in the Ross Sea region (Southern McMurdo Ice Shelf, Darwin and Beardmore Glaciers) we have learned that CATS2008a_opt is generally good in terms of phases, but underestimates amplitudes particularly during spring tides.

6) Phase errors :

It is true that phase errors in the tide model also affect the error to DInSAR fields. Is there a way to retrieve phase (and amplitude) errors from f.e. the CATS2008a_opt tide model, similar to the error bounds that t_tide provides ? We think that phase errors, and thus the timing of the tidal forcing, mostly affect the rate of tidal change rather than the absolute amplitude. An inaccurate phase would therefore influence the determined viscosity value. To minimize this uncertainty, we have selected the tide model with the best phase (Ross_Inv_2002) for the flexure modelling part of the paper and use the model with the best amplitudes (TPXO7.2) to reconstruct vertical surface displacements at the times of satellite overpasses (Section 3.1, 2nd paragraph). We hypothesize that our adjusted tide-model output can be used in the future to improve the actual tide-model physics (in terms of amplitudes and phases of individual components) by assimilation (similar to the reviewer's explanation of deep ocean tides under the TOPEX/Poseidon mission)

7) Minchew et al. (2017) :

Initially we have chosen to only mention this study as a direct comparison between Minchew's approach and ours is currently not possible yet with our limited availability of SAR data. We agree that including some of the lessons they have learned is beneficial for the paper.

Minor comments:

p.2, l34 to p.3, l2 : Baek and Shum (2011)

We changed the structure as requested and thank reviewer #2 for his explanation that even an accurate O1 will positively affect other components.

p.3, l.10-13 : Stammer et al., (2014)

We removed the very small error and the reference to Stammer et al. 2014

p.4, l.9 : Pawlowicz et al., (2002)

We included the reference to Foreman (1977) as requested

p.4, l.27 : perfect tide models

We have changed the sentence to weaken the statement about us demanding a 'perfect' tide prediction

p.4, l.28-29 : Wild et al., (2018)

We expand on the method to adjust tide model output as requested

p.6, l.7-8 : inference

We expand on the t_{tide} part of the analysis and thank reviewer #2 for his explanation of the problem and confirming that a prediction within a 16 days window is sufficient but should not be used to extrapolate (which is also our experience elsewhere, but using inference might be a solution to this problem).

p.6, l.25-28 : Hillary comparison

We agree that both are 'slightly above' but leave the wording as 'close to.., and slightly above' because +1.3cm and +4.4cm are still a bit different.

p.7, l.7-9 : Sources of errors in tide models

We elaborate on error sources of tide models near the grounding line (inaccurate bathymetry, wrong water column thickness, small-scale currents in the sub-ice shelf cavity, etc) and note that these uncertainties can be addressed by taking ice mechanics in the grounding zone into account.

p.7, l.24-26 : Discontinuities

We removed jargon.

p.8, l.29 to p.9, l.1 : K1 from a long record

We first use the adjusted Ross_Inv_2002 tide model (all components) to force the flexure models, we then extract the model solutions at the locations of the 7 tiltmeters. We then run t_{tide} on these solutions and compare their K1 components to the K1 components of the corresponding tiltmeters (now with amplitude and phase errors). As stated above, the K1+P1 inference is within these error bars. We therefore didn't use inference at this stage as we only look at a relatively short time window, when our 'K1 plus minus errors' is within the modulation of K1+P1 during these 16 days.

p.9, l.7-9: orbit alignment:

For the Darwin Glacier we acquired SAR data from only one track, for the SMIS we acquired SAR data from three different tracks. If the times of all satellite overpasses in a year are plotted against the prevailing tidal amplitude we can see that the observed tidal amplitude is only varying once throughout the year as stated in the text.

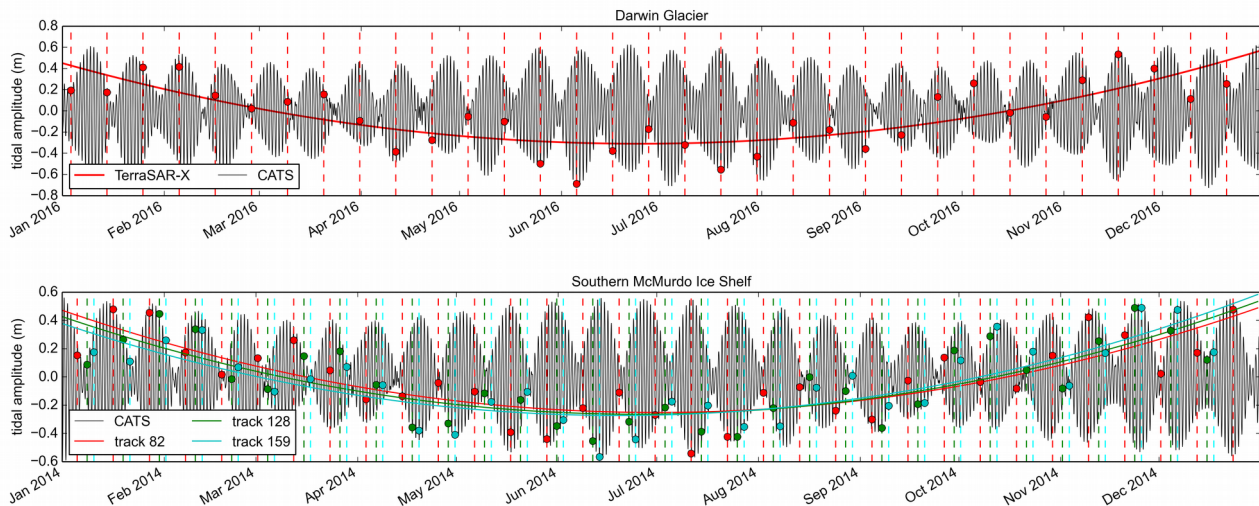


Illustration 2: Prevailing tidal amplitudes at the times of satellite overpasses of the TerraSAR-X satellite with an exact repeat pass of 11 days. Solid lines are a result of a 2nd order polynomial fit and show that the observed tidal amplitude varies only once throughout the year

p.9, l.20-21 : Phase

This is true, we state it now in the Methods section

p.9, l.26-28 : Viscoelasticity

We now defend this statement with a corresponding figure.

p.10, l.9-16 : Future work

Our long-term goal is to build on the work published in Marsh et al., 2014 who use inverse modeling of **elastic** tidal flexure to determine grounding-zone ice thickness from DInSAR. One idea is to invert a **viscoelastic** tidal flexure model for thickness, but this requires the use of tide models which aren't accurate enough yet to take advantage of the superiority of viscoelastic models. Another idea is to define criteria when an elastic model is sufficient to describe tidal flexure which would allow a purely elastic inversion of DInSAR. For this reason we would like to keep this paragraph in the paper but it was significantly shortened.

Technical Corrections:

- 1) Thank you for the explanation, we have corrected hyphens accordingly
 - 2) We have tried to follow this suggestion as much as possible
 - 3) We have changed 'heterogenity' to 'heterogeneity'
 - 4) We have changed 'theta' to 'Delta A' in the text, tables and figures
- Fig.1 caption : (a) changed as suggested (b) reworded the sentence
 Fig.2 : changed as suggested
 Fig.3 : changed as suggested
 Fig.5 (now Fig.6) : changed as suggested
 Fig.7 (now Fig.8) : changed as suggested
 Fig.8 (now Fig.9) : changed as suggested and included label of Black Island
 Fig.9 (now Fig.10) : changed as suggested
 (new figure request) : the new figure has been included in the main text

Other related changes to the manuscript

All colorbars in the figures were modified to have a white background if they are displayed within individual panels.

Differential InSAR for tide modelling in Antarctic ice-shelf grounding zones

Christian T. Wild¹, Oliver J. Marsh^{1,2}, and Wolfgang Rack¹

¹Gateway Antarctica, University of Canterbury, Private Bag 4800, Christchurch 8140, New Zealand

²British Antarctic Survey, High Cross, Madingley Road, Cambridge, CB3 0ET, United Kingdom

Correspondence: Christian T. Wild (christian.wild@canterbury.ac.nz)

Abstract. Differential interferometric synthetic aperture radar (DInSAR) is an essential tool for detecting ice-sheet motion near Antarctica's oceanic margin. These space-borne measurements have been used extensively in the past to map the location and retreat of ice-shelf grounding lines as an indicator for the onset of marine ice-sheet instability and to calculate the mass balance of ^{c1}[ice sheets](#) and individual catchments. The main difficulty in interpreting DInSAR is that images originate from a combination of several SAR images and do not indicate instantaneous ice deflection at the time of satellite data acquisition. Here, we combine the sub-centimetre accuracy and spatial benefits of DInSAR with the temporal benefits of tide models to infer the spatiotemporal dynamics of ice-ocean interaction during the times of satellite overpasses. We demonstrate the potential of this synergy with TerraSAR-X data from the almost stagnant Southern McMurdo Ice Shelf. We then validate our algorithm with GPS data from the fast-flowing Darwin Glacier, draining the Antarctic Plateau through the Transantarctic Mountains into the Ross Sea. We are able to match DInSAR ^{c2}[derived vertical displacements](#) to ^{c3}[7 mm](#); generally improve traditional ^{c4}[tide model output](#) by up to -39% from 10.8 cm to 6.7 cm RMSE against GPS data from areas where ice is in local hydrostatic equilibrium with the ocean; and up to -74% from 21.4 cm to 5.6 cm RMSE against GPS data in feature-rich coastal areas where ^{c5}[tide models have not been applicable before](#). Numerical modelling then reveals a Young's modulus of ^{c6}[E = 1.0 ± 0.56 GPa](#) and an ice viscosity of ^{c7}[ν = 10 ± 3.65 TPa s](#) when finite-element simulations of tidal flexure are matched to 16 days of tiltmeter data; supporting the ^{c8}[hypothesis](#) that strain dependent anisotropy may significantly decrease effective viscosity compared to isotropic polycrystalline ice on large spatial scales. Applications of our method range from (i) refining coarsely-gridded tide models to resolve small-scale features at the spatial resolution and vertical accuracy of SAR imagery, to (ii) separating elastic and viscoelastic contributions in the satellite derived flexure measurement and (iii) gaining information about large-scale ice ^{c9}[heterogeneity](#) in Antarctic ice-shelf grounding zones, the missing key to improve current ice-sheet flow models. The reconstruction of the individual components forming DInSAR images has the potential to become a

^{c1} [ice-sheets](#)

^{c2} [Text added.](#)

^{c3} [0.84 mm](#)

^{c4} [tide models](#)

^{c5} [contemporary tide models are most inaccurate](#)

^{c6} [Text added.](#)

^{c7} [Text added.](#)

^{c8} [theory](#)

^{c9} [heterogeneity](#)

standard remote-sensing method in polar tide modelling. Unlocking the algorithm's full potential to answer multi-disciplinary research questions is desired and demands collaboration within the scientific community.

Copyright statement. TEXT

1 Introduction

5 The periodic rise and fall of the ocean's surface is caused by the gravitational interplay of the Earth-Moon-Sun system and our planet's rotation. Knowledge of ocean tides is fundamental to fully understand oceanic processes, sedimentation rates and behaviour of marine ecosystems. In Antarctica, the tidal oscillation also controls the motion of ice sheets near the coastline and ocean mixing in the sub ice-shelf cavity which modifies heat transport to the ice-ocean interface (Padman et al., 2018).

SAR satellites repeatedly illuminate Earth's surface and record the backscattered radar wave. While the SAR signal's amplitude depends on reflection intensity and is mainly characterized by the surface, the recorded phase holds information about the distance travelled by the signal (Massom and Lubin, 2006). Two-pass interferometry (InSAR) can be used to determine surface motion with sub-centimetre accuracy over vast remote areas, ^{c1}and InSAR has been applied to measure surface velocity of floating ice (e.g. Tong et al., 2018) and to observe tidal strain of landfast sea ice (Han and Lee, 2018). In grounding zone areas, where an ^{c2}ice sheet comes in contact with the ocean for the first time and forms floating glaciers and ^{c3}ice shelves, InSAR has become the state-of-the-art practice to measure the flux divergence of ice-flow velocity (Mouginot et al., 2014; Han and Lee, 2015) and thus the mass balance of many ^{c4}ice shelves around Antarctica (Rignot et al., 2013). InSAR can also be used to identify vertical deflection due to ocean tides. Horizontal ^{c5} and vertical motion cannot be distinguished ^{c6}in single interferograms but the unsteady tidal contribution can be extracted by ^{c7}DInSAR using triple or quadruple combination ^{c8}s of ^{c9} SAR images. This ^{c10}is based on the assumption that horizontal flow is ^{c11}time invariant, and that its phase contribution ^{c12}therefore cancels out. The double-differential measurement of vertical displacement only is known as Differential InSAR (DInSAR). While DInSAR has often been applied to detect the grounding line movement around Antarctica (Konrad et al., 2018) the signal can also be used to measure spatial variability of ocean tides at very high ground resolution. This second application is complicated by the fact that DInSAR interferograms show a combination of multiple stages of the tidal oscillation.

^{c1} Recently,

^{c2} ice-sheet

^{c3} ice-shelves

^{c4} ice-shelves

^{c5} motion

^{c6} at this stage

^{c7} differencing two separate InSAR pairs that originate from a

^{c8} Text added.

^{c9} three or four

^{c10} assumes that gravitational flow due to steady ice creep

^{c11} time-invariant

^{c12} can therefore be removed

Tidal migration of the grounding line as well as viscoelastic time delays in ice displacement, tidally-induced velocity variations and geometric effects on the surface flexure also complicate the correct interpretation of DInSAR interferograms to date (Rack et al., 2017; Wild et al., 2018).

Present-day displacement measurements ^{c1}by interferometry are exacerbated by the requirement of phase unwrapping, which is the most crucial processing step in any InSAR method. ^{c2} ^{c3}Discontinuities in the ^{c4}fringe pattern can cause jumps in the unwrapped phase and may therefore bias the continuous motion field.

Due to these complications, only very few studies have attempted to derive a tide model from DInSAR: Minchew et al. (2017) developed an unprecedented spatially and temporally dense SAR data acquisition campaign for the Rutford Ice Stream, Weddell Sea. Their novel Bayesian method to unequivocally separate a complete set of ^{c5} tidal harmonics from nontidal ice-surface variability is unique, but beyond the data availability for the remainder of Antarctica. Baek and Shum (2011) ^{c6}succeeded in using data from the ERS-1/2 tandem mission to map the dominant tidal constituent (O1) in Sulzberger Bay, Ross Sea, but data limitations prevented them from developing a full tidal model. In this case, too short a time span (71 days) eliminated a change of the observed tidal amplitudes as the repeat-pass cycle of the SAR satellites ^{c7}masked the sensor's sensitivity to tidal variability. ^{c8}However, even identifying only the dominant tidal constituent is valuable; as it indicates ways in which tide models need to be changed, and these changes will ultimately filter into other constituents. In the Ross Sea, the tidal oscillation is dominated by diurnal harmonics (Padman et al., 2018). An accurate inversion of TerraSAR-X data with an exact integer number of ^{c9}repeat passes to a complete set of tidal constituents is therefore not possible from DInSAR measurements alone.

Tide models can be consulted to predict both the timing and magnitude of the dominant harmonics. Numerous tide models of various spatial scales (global vs regional) and complexity have been developed (see Stammer et al., 2014, for an overview). While forward models integrate the equations of fluid motion subjected to a gravitational forcing over time, inverse models assimilate measurements of vertical displacement from laser altimetry, tide gauges and GPS (Egbert and Erofeeva, 2002; Padman et al., 2003, 2008). Since the modelled physics is generally simple and gravitational forces are well known, tide model predictions are of high quality in areas where ice is ^{c10}freely floating on the ocean ^{c11}. In coastal areas, in turn, tide models are prone to inaccuracies due to errors in model bathymetry, grounding-line location and insufficient knowledge of the ice

^{c1} associated with interferometric phase suffer from two limitations:

^{c2} ~~As the absolute number of waves in the received SAR signal cannot be measured, the phase can only serve as a measure of relative distance change between two images. Phase is, by definition, expressed as the fraction of a full wave cycle that has elapsed relative to the origin with values between $0-2\pi$ in radians. Measurements of relative ground displacements between satellite overpasses therefore require smooth phase unwrapping, the most crucial processing step in DInSAR. Leaps between adjacent cells above 1π , e.g. introduced by layover or~~

^{c3} discontinuities

^{c4} initial SAR images

^{c5} energetic

^{c6} failed to develop a full tide model from the ERS-1/2 tandem mission, but succeeded in detecting the dominant tidal constituent in Sulzberger Bay, Ross Sea.

^{c7} masks

^{c8} Text added.

^{c9} repeat-passes

^{c10} freely-floating

^{c11} (error = ± 0.9 cm, Stammer et al., 2014)

water drag coefficient (Padman et al., 2018). Another source of error arises from the conversion of ice-shelf draft to ice-shelf thickness and subsequent estimation of water-column thickness. This freeboard conversion assumes that ice near the coastline is in local hydrostatic equilibrium, whereas stresses from the grounded ice clearly prevent a freely-floating state. A bias of the hydrostatic solution towards thicker ice (Marsh et al., 2014), and therefore a thinning water-column thickness, may negatively affect the tidal prediction. In summary, the relatively coarse spatial resolution and underlying assumptions of contemporary tide models introduce inaccuracies especially in feature-rich coastal areas such as fjord-type outlet glaciers. Although average tide model accuracy has improved markedly in coastal areas over one decade, from about ± 10 cm (Padman et al., 2002) to ± 6.5 cm (Stammer et al., 2014), they are still a magnitude larger than the sub-centimetre accuracy of DInSAR (Rignot et al., 2011).^{c12}For this reason, we consider DInSAR as the absolute truth and use these space-borne measurements to correct tide-model output.

In this manuscript, we show how the spatial benefits and high accuracy of DInSAR can be used to refine coarse resolution tide models to adequately resolve ocean tides along the feature-rich Antarctic coastline. First we introduce the necessary data set, describe the preprocessing and guide through the work flow. Second we test the algorithm for the Southern McMurdo Ice Shelf (SMIS), a small and almost stagnant ice shelf with a simple grounding-zone geometry, and expand the study to the Darwin Glacier, a relatively fast-flowing outlet glacier within a complex fjord-like embayment. We validate our results with dedicated field measurements taken within the Transantarctic Ice Deflection Experiment (TIDEx) in 2016. We then demonstrate how this exercise can also be applied to reveal errors in interferometric phase unwrapping and answer fundamental questions about the physical properties of ice in Antarctic glaciology.

2 Methodology

2.1 Summary of SAR image processing

To develop the method, we use 11-day repeat-pass TerraSAR-X data in StripMap imaging mode. The satellite acquires X-band radar data (wavelength 3.1 cm, frequency 9.6 GHz) with a ground resolution of slightly below 3x3 m and images covering an area of 30x50 km. We calculate vertical surface displacement due to ocean tides using the Gamma software package (Werner et al., 2000).^{c1}InSAR and DInSAR image combinations are generally chosen so that a later image is always subtracted from an earlier image. For image triplets, the central SAR image serves as a common reference during the co-registration. We then correct the resulting DInSAR interferograms for apparent vertical displacement due to horizontal surface motion (Rack et al., 2017) using the method presented in Wild et al. (2018).

2.2 Tide models

The predictions of five tide models are validated: the regional barotropic models (1) Circum-Antarctic Tidal Solution (CATS2008a_opt) developed by Padman et al. (2008), (2) Ross Sea Height-Based Tidal Inverse Model (Ross_Inv_2002) developed by Padman

^{c12} Text added.

^{c1} Text added.

et al. (2003), (3) Ross Sea assimilation model (Ross_VMADCP_9cm), (4) the fully global barotropic assimilation model (TPXO7.2) from Oregon State University developed by Egbert and Erofeeva (2002), and (5) the (t_tide) prediction of GPS data from freely-floating areas following the harmonic analysis of Pawlowicz et al. (2002) ^{c2}which is based on Foreman (1977). The t_tide software is a widely-used toolbox for performing classical harmonic analysis of ocean tides. It can analyse any time series record and outputs the amplitude and phase of its dominant harmonics ^{c3}with error estimates, along with a tidal prediction that is free from non-tidal effects. The isostatic deformation of the Earth's lithosphere underneath the moving water masses is modelled using TPXO7.2 load tide model (Egbert and Erofeeva, 2002), which itself is based on 13 tidal constituents and added to all tide model predictions except t_tide. In addition to the tidal motion underneath the floating ice, much of the ice-surface variability can be attributed to the Inverse Barometric Effect (IBE, Padman et al., 2003). A +1 hPa anomaly of atmospheric pressure translates to ^{c4}an instantaneous -1 cm ^{c5}change on the ice-shelf surface. ^{c6}It is noteworthy to mention that we did not apply a running mean to the pressure records, as the application of any window length worsened the fit to available GPS data. To correct for the IBE ^{c7}outside the GPS period, we make use of atmospheric pressure records obtained by nearby automatic weather stations on Ross Island (Scott Base AWS) and the Ross Ice Shelf (Marilyn AWS). We validate these records with separate barometric measurements taken within the TIDEx campaign and find very good agreement.

^{c1}In this paper, we use the terms 'traditional tide-modelling' or 'tide model' to refer to the sum of ocean-tide, load-tide model outputs and the IBE. Freely-floating areas of ice shelves and glaciers are expected to experience the full oscillation of this tide model. Traditional tide-modelling, however, neglects ice mechanics in grounding zones where tidal flexure significantly affects the surface elevation signal in reality. Other signals that change sea-level height such as mean dynamic topography and storm surges are also excluded from this type of tide model.

20 2.3 In-situ data

We set-up a number of GPS receivers to measure ice-surface motion at millimetre accuracy and high temporal resolution. ^{c2}Although we used GPS data from the freely-floating parts ^{c3}to develop local tide models using t_tide, ^{c4}all GPS data was only used for validation purposes and did not feed into the algorithm. ^{c5} ^{c6} GPS measurements were differentially corrected using static base stations ^{c7}to increase their spatial accuracy. We also ^{c8}installed an array of seven tiltmeters ^{c9}to record surface

^{c2} Text added.

^{c3} Text added.

^{c4} a

^{c5} drop

^{c6} Text added.

^{c7} Text added.

^{c1} Text added.

^{c2} Here we use

^{c3} of the ice surface and

^{c4} Text added.

^{c5} ~~GPS measurements from within the tidal flexure regions are only used as validation data sets.~~

^{c6} All

^{c7} Text added.

^{c8} install

^{c9} recording

flexure over 16 days across the grounding zone to confine the physical properties of Antarctic ice. ^{c10}The tiltmeters were complemented by a dense network of point measurements of ice thickness using the new autonomous phase-sensitive radar echo sounder (ApRES, Nicholls et al., 2015).

2.4 Combining DInSAR and tide models

5 ^{c1}To allow a correct interpretation of DInSAR images covering grounding zones, it is desirable that tide models replicate DInSAR observations ^{c2}in freely-floating areas. We first adjust the tide-model output to match the highly-accurate DInSAR measurements using a least sum of squares routine (Wild et al., 2018). ^{c3}By doing so, we consider just the tide model ampli-
10 tude to contain errors. Possible tide-model phase errors are then accounted for by adjusting the absolute amplitude and thus the rate of tidal change during the times of SAR data acquisition. Second we build on earlier work by Han and Lee (2014) and develop an empirical displacement map showing tide-deflection ratio throughout the satellite image (α -map). By feeding the α -map with the adjusted tide model output, the ^{c4}'point forecast' is then spatially extended to predict the mean vertical displacement for every pixel at the times of SAR data acquisition. We then perform the ^{c5}double differences of the empirical model corresponding to the SAR image combinations used to generate the DInSAR images. The original DInSAR satellite measurements are subsequently removed from the mean DInSAR images to calculate their misfits, μ . We now compute the
15 least-squares solution to the equation $Ax = b$ such that the 2-norm $|b - Ax|$ is minimized. Here, A is the $m \times n$ DInSAR matrix of SAR image combinations with m rows of SAR images and n columns of coherent DInSAR interferograms; b is a vector of α -prediction misfits and x the least-squares solution of this ^{c6}system of linear equations. The values of x correspond to how much an α -prediction deviates from the 'real' vertical displacement at the times of SAR data acquisition. We therefore subtract these offsets, ^{c7} ΔA , from the α -prediction maps.

20 We ^{c8}now demonstrate the workflow in one spatial dimension with an example of the Southern McMurdo Ice Shelf (78°15' S, 167°7' E, SMIS). In this study area, we derived 9 DInSAR images from 12 TerraSAR-X scenes in 2014 (Rack et al., 2017). ^{c9}The low number of DInSAR images is a consequence of the SAR scenes being acquired on 3 different satellite tracks. The resulting system of linear equations is therefore underdetermined as there are more offsets, ΔA , than misfits, μ , to constrain the least-squares solutions. We choose a pixel on the freely-floating end of a profile through the ice-shelf grounding zone to
25 represent the unrestricted ice shelf movement and calculate the percentage vertical displacement of every other pixel from this location. Averaged over the 9 DInSAR interferograms this pixel retains 100% vertical displacement (red areas in Fig. 1), while

^{c10} This is

^{c1} A tide model must perfectly predict the

^{c2} in an area that can be expected to experience the full tidal forcing.

^{c3} Text added.

^{c4} 'point-forecast'

^{c5} double-differences

^{c6} over-determined system

^{c7} θ

^{c8} Text added.

^{c9} Text added.

grounded areas experience zero net uplift (purple areas). Individual pixels on the freely-floating part of the SMIS may show α -values slightly above 100%.

We now extract the α -values along the profile from the α -map. This α -profile can be multiplied with the individual DInSAR measurements on its freely-floating end which results in empirically derived α -predictions (Fig. 2 center). These mean predictions do not perfectly replicate the DInSAR measurements (Fig. 2 top). Their misfits, however, show a very systematic pattern (Fig. 2 bottom). It is desirable to find a combination of offsets that have the least deviation from the α -predictions. We therefore hypothesize that this rather systematic signal can be reconstructed using a least-squares strategy.^{c1} We solve the ^{c2}underdetermined system simultaneously by finding the combination of offsets that result in a minimal sum of squares. The reconstructed offsets must then be removed from the α -prediction for the times of SAR data acquisition (Fig. 3 top). The computed least-square offsets generally replicate the pattern of the misfits (Fig. 3 center) and result in smooth displacement profiles in the ice-shelf grounding zone (Fig. 3).

3 Results

In this section we apply the workflow in two spatial dimensions to the Darwin Glacier (79°53' S, 159°00' E).^{c3}In this study area, we derived a total of 45 DInSAR images from 12 SAR scenes being acquired on the same satellite track. SAR image combinations were generally chosen consecutively so that a later image is always subtracted from an earlier image. For image triples, the central image was taken as a common reference/master image. Additionally the data gap between SAR 8 and 9 was taken into account (no 8-9 combination as loss of coherence over this relatively long interval). The advantage of using every other remaining combination (Tab. 2)^{c4}is that more double-differential measurements of tidal amplitude are available for the least-squares fitting algorithm than only using consecutive pairs alone. The system of linear equations is then overdetermined.
A dedicated field campaign was conducted in ^{c5}the Darwin Glacier grounding zone in 2016 and *in-situ* data is available ^{c6}for numerical modelling and field validation purposes. In contrast to the simple geometry at the SMIS, the Darwin Glacier consists of a feature-rich embayment that is constrained by steep topography at its margins. Additionally a buttressing ice rise to the Ross Ice Shelf restricts outflow in the North.

3.1 Reconstruction of displacement maps during satellite overpasses

From the interferogram dataset we identify a corridor of only about 2 km width along the centerline where the glacier can be assumed to be freely floating (Fig. 1). This area is expected to experience the full oscillation predicted from tide models. We run five tide models to predict the tidal oscillation at the GPS station 'Shirase' over the ^{c7}time span of SAR data acquisitions.

^{c1} Here, the linear system is under-determined with 9 DInSAR equations and 12 unknown SAR offsets.

^{c2} Text added.

^{c3} Text added.

^{c4} Text added.

^{c5} its

^{c6} Text added.

^{c7} time-span

Here we use atmospheric pressure data from the automatic weather station 'Marilyn' which is located about 120 km away on the Ross Ice Shelf to correct for the inverse barometric effect. This record correlates well (Pearson's correlator 0.989) with a mean of seven barometers installed over 14 days across the Darwin Glacier during the TIDEx campaign. All tide-model predictions show a clear fortnightly occurring spring-neap tidal cycle which is superimposed by a dominant diurnal signal (Fig. 4). The approximately fortnightly occurring spring/neap tides are largely owed to the difference in wavelength between the K1 and O1 constituents. ^{c8}

We apply `t_tide` to our 16 day record of the 'Shirase' GPS to test the potential of short-term GPS surveys to improve current Antarctic ^{c1}tide models. ^{c2}The problem with using such a short window to determine a full set of tidal constituents results from the interplay of the lunar diurnal tide (K1, 23.93 h) with the solar diurnal tide (P1, 24.07 h) as they are close in frequency and P1 has an amplitude of 15 – 20 % of K1. Without accounting for their inference, `t_tide` just extracts an apparent K1 from a 16 day record that is really K1+P1. As a consequence, the K1 tide from our harmonic analysis can vary by 30 – 40 % over a 6-month period and its amplitude is only controlled by the exact time that the GPS data was acquired within the K1+P1 modulation cycle. Additionally, harmonic decomposition of GPS data is subject to inaccuracies itself with errors in both the extracted amplitudes and phases. These errors were found to be of the same magnitude as the K1+P1 inference. For this reason, we did not use inference to separate K1 and P1 (or similarly to separate the semi-diurnal S2 and K2 constituents), but perform a thorough analysis on the identified uncertainty range. While the analysis captures the dominant ^{c3}K1 constituent ^{c4}in the Ross Sea within a reasonable signal-to-noise ratio, fortnightly harmonics could not be retrieved adequately from this time series alone. The `t_tide` prediction is therefore the least accurate tide model and requires the largest adjustment to match DInSAR (Tab. 1). Although all the corrected tide model outputs now replicate our DInSAR measurements, their rate of tidal change is affected by the adjustment. Offsets computed for the Ross_Inv_2002 tide model are generally below 10 cm, whereas other tide models require adjustments of up to 13.3 cm (Tab. 1). This agrees well with the findings of Han et al. (2013), who find that the Ross_Inv_2002 model is the optimum tide model for the Terra Nova Bay with a 4.1 cm RMSE against 11 days of tide gauge data. We therefore choose Ross_Inv_2002 for numerical modelling purposes to minimize any effects on a viscoelastic model, but use TPX07.2 to reconstruct vertical displacement at the times of satellite overpasses as it fits best ^{c5}to our GPS measurements. We refer to the Appendix for a validation of individual tide model output with GPS data from 'Shirase' (Fig. A1).

After the adjustment, modelled tidal amplitudes range from -0.966 m to 0.781 m over the whole SAR period (Fig. 4). Mean ^{c6}absolute residual error to the 45 DInSAR measurements at the tide-model location 'Shirase' is just ^{c7}7 mm (Tab. 2), ^{c8}which can be explained by interferogram noise. We attribute this accuracy to the exceptionally high phase coherence of the TerraSAR-

^{c8} The K1 tide has a period of 23.93 hours and is the dominant tidal constituent in the Ross Sea (Padman et al., 2018).

^{c1} tide-models

^{c2} Text added.

^{c3} diurnal

^{c4} Text added.

^{c5} Text added.

^{c6} Text added.

^{c7} 0.84 mm

^{c8} which is within

X data set. The reconstruction algorithm results in 12 smooth vertical displacement maps for the times of SAR data acquisition (Fig. 6).

3.2 Validation with GPS measurements

We now validate these reconstructions with available field data. As both GPS records overlap with the acquisition of SAR image 11, we extract the vertical displacement along the glacier's centerline and plot the profiles against the two GPS point measurements. The GPS measurement at 'Hillary' is 0.169 m, which is close to the reconstruction of 0.156 m. The 'Shirase' GPS measurement is 0.566 m, which is slightly above the reconstruction of 0.522 m. We attribute the deviations of +1.3 and +4.4 cm, respectively, to a combination of interpolation artefacts, temporal smoothing of the GPS data and residual errors of the least-squares algorithm. The overall shape of the vertical displacement is well reproduced as observed with both GPS measurements (Fig. 7).

3.3 Applications

3.3.1 Tide-model refinement

A map of tide-deflection ratio (α -map) can be combined with the tide model to predict an average ^{c1}[time series](#) of vertical displacement between the times of SAR image acquisition. With this approach, the coarse grid of ^{c2}[traditional](#) tide models is refined to resolve small-scale features of vertical tidal displacement throughout the embayment. The α -value for the pixel containing the 'Hillary' GPS station is 46.06%. We use this value and linearly scale the ^{c3}[adjusted](#) tide-model output for the location of the 'Shirase' GPS to predict vertical tidal motion within the flexure zone. This scaling maintains the tide model's high correlation (Pearson's correlator 0.95) with the 'Shirase' record, but improves the RMSE between the TPXO7.2 output and the 'Hillary' record from 21.4 cm to 5.6 cm, which corresponds to an improvement of -74% ^{c4}[to GPS data](#) (Fig. 8). ^{c5}[The primary reason for this large improvement, however, is that the tide model now takes the damping of the tidal signal by ice mechanics in the grounding zone into account.](#)

3.3.2 Ice ^{c6}[heterogeneity](#)

With the ^{c7}[12](#) reconstructed displacement maps at hand, it is now possible to perform any image combination. We mosaic the 45 double differences corresponding to DInSAR combinations (Tab. 2) ^{c8}[to allow a more direct comparison between measured and modelled interferograms.](#) ^{c9}[SAR image combinations were chosen so that the loss of coherence between SAR 8 and 9](#)

^{c1} [time-series](#)

^{c2} [Text added.](#)

^{c3} [Text added.](#)

^{c4} [Text added.](#)

^{c5} [Text added.](#)

^{c6} [heterogeneity](#)

^{c7} [twelve](#)

^{c8} [Text added.](#)

^{c9} [Text added.](#)

was taken into account and that a maximum number of consecutive, double-differential interferograms was available for the least-squares fitting routine. ^{c10}The synthetic interferograms replicate not only simple tidal fringes as measured with DInSAR, but also show complicated viscoelastic signals within the grounding zone (Fig. 5). ^{c11}For an overall assessment of model performance we ^{c12} calculate again the misfit between each modelled and observed interferogram for every pixel, but this time after using the adjusted tide-model output. The standard deviation of these misfits is shown in Fig. 9, with the majority of the glacier surface below noise level of interferograms ($\sigma < 1.0$ cm). We identify a narrow band with higher standard deviations ($\sigma \approx 2.0$ cm) from the inner shear margin of the Darwin Glacier extending along ^{c13}flow direction onto its ice shelf. Standard deviations are largest out ^{c14}in the shear zone of the fast-flowing Ross Ice Shelf ^{c15}and above steep rocky cliffs ($\sigma > 4.0$ cm) ^{c16}which is a result of poor ^{c17}phase coherence or layovers in SAR images in ^{c18}these areas .

10 3.3.3 Detection of errors in phase unwrapping

We now ^{c1}extend the earlier one dimensional analysis of the SMIS to a two dimensional re-analysis of the SMIS data set and calculate misfits of 9 DInSAR interferograms. Resulting standard deviations are generally smaller in this area ($\sigma < 0.3$ cm) and smoothly distributed throughout the map. We identify two regions of ^{c2}phase discontinuities between adjacent cells at the SMIS. Both extend from the center of an ice rise towards ^{c3}Black Island (cyan and green areas in Fig. 9) with $\sigma \approx 0.4$ cm and $\sigma \approx 0.5$ cm, respectively. We interpret these rapid increases as a proxy for errors in the DInSAR measurements, as the modelled least-square interferograms originate from a curvature-minimizing polynomial interpolation. We re-evaluate the remote-sensing part of the analysis and find discontinuities in DInSAR interferograms ID:1 and ID:8 that match the course of the two ^{c4}phase jumps in the standard deviation map. These discontinuities, in turn, ^{c5}occurred during phase unwrapping ^{c6} ^{c7}and can now be corrected.

20 3.4 Finite-element modelling of viscoelasticity

We hypothesize that any non-linear signal due to viscoelastic ice properties is significantly reduced or even completely lost during the averaging step to compute the α -map. This signal can then be reconstructed by finding the offsets to match obser-

^{c10} Text added.

^{c11} Text added.

^{c12} and then

^{c13} flow-direction

^{c14} on the

^{c15} Text added.

^{c16} and a

^{c17} coherence between

^{c18} this area

^{c1} apply the algorithm to the

^{c2} jumps

^{c3} the dry land

^{c4} Text added.

^{c5} are a result of using a minimum cost flow algorithm on a triangular network for unwrapping

^{c6} interferometric phase differences to relative surface displacement

^{c7} Text added.

vations made with DInSAR. We therefore subtract the α -prediction again from the 12 reconstructions to extract the theorised viscoelastic signal (Fig. 10). This signal is negligible at times during neap tide (SAR 4 and 9) but well pronounced for SAR images acquired during spring-tide periods (SAR 1,6,7,10 and 11).

In order to further explore this pattern, we now make use of the tiltmeter array and ApRES network of ice-thickness measurements at the Darwin Glacier (Fig. 12). We match the numerical solutions from two finite-element models to seven tiltmeter records, with the goal to derive information on the physical properties of Antarctic ice. Thereby, the Young's modulus, E , is a measure of ice stiffness and controls the width of the flexure region. The value for ice viscosity, ν , influences the timing of the flexural response within the grounding zone (Wild et al., 2017). Two numerical models of ice-shelf flexure are employed. The elastic approximation (Holdsworth, 1969; Vaughan, 1995; Schmeltz et al., 2002) as formulated by Walker et al. (2013):

$$kw + \nabla^2(D\nabla^2w) = q, \quad (1)$$

where $w(t)$ is the ^{c1}[time-dependent](#) vertical deflection of the neutral layer in a plate, ∇^2 is the Laplace operator in 2-D space and $k = 5 \text{ MPa m}^{-1}$ a spring constant of the foundation which is zero for the floating part. The applied tidal force $q(t)$ is defined by:

$$q = \rho_{sw}g[A(t) - w], \quad (2)$$

with $g = 9.81 \text{ m s}^{-2}$ the gravitational acceleration and $A(t)$ the ^{c2}[time-dependent](#) tidal amplitude given by the adjusted Ross_Inv_2002 tide model. We choose this model, in contrast to the TPX07.2 model, for finite-element simulations to minimize any potential effects of tide-model adjustment on viscoelasticity (Tab. 1). The stiffness of the ice shelf is given by (Love, 1906, p. 443):

$$D = \frac{EH^3}{12(1 - \lambda^2)}, \quad (3)$$

where E is the Young's modulus for ice, $H(x, y)$ our ice thickness map derived from ApRES point measurements and $\lambda = 0.4$ the Poisson's ratio. We compare the elastic model with the viscoelastic approach developed by Walker et al. (2013):

$$\frac{\partial}{\partial t} [kw + \nabla^2(D\nabla^2w)] + \frac{Ek}{2\nu(1 - \lambda^2)}w = \frac{\partial}{\partial t}q + \frac{E}{2\nu(1 - \lambda^2)}q, \quad (4)$$

where ν is ice viscosity. The following boundary conditions are applied for both models: the upstream boundary of the model domains on the grounded portion are anchored rigidly ($w = 0, \nabla^2w = 0$), the downstream boundaries on the freely-floating ice shelf are set free. The location of the tide model computation is constrained to be equal to the tidal oscillation ($w = A(t), \nabla w = 0$) and the grounding line is represented by a fulcrum ($w = 0$). Both models are implemented in two spatial dimensions to capture effects of complex grounding-line configuration on ice-shelf flexure (Wild et al., 2018). We then solve the models using the commercial finite-element software COMSOL Multiphysics. As tiltmeters measure slope, w' , along their longitudinal axis, we derive the models' solutions for vertical displacement, w , with respect to the x and y directions.

^{c1} [time-dependant](#)

^{c2} [time-dependant](#)

This allows us to retrieve surface slopes components in easting and northing direction and to rotate them into the individual orientations of the tiltmeter sensors. With our 16 day tiltmeter records it is only possible to capture their diurnal ^{c3} components with confidence. ^{c4}Semi-diurnal, fortnightly and monthly harmonics have been removed from the tiltmeter time series and we focus further analysis only on the K1 component ^{c5}within the 16 day window. Therefore, we now make extensive use of the `t_tide` program to automatically extract the modelled K1 harmonics from the modelled surface slopes and compare them against the K1 constituents from the tiltmeters. ^{c6}We thereby take amplitude and phase errors that originate from the harmonic analysis of noisy tiltmeter records into account and find the best rheological parameters to match the elastic and viscoelastic models to these seven K1 components. Incorporating viscoelastic effects into the model simulations always improves the elastic fit to the tiltmeter data within the uncertainty range of K1 amplitude and phase (Tab. 3). ^{c7}We find that an average Young's modulus of $E = 1.0 \pm 0.56$ GPa and an ice viscosity value of $\nu = 10 \pm 3.65$ TPa s fits best to our measurements within uncertainty (Fig. 13). The viscoelastic model gives an average RMSE of 0.00118845° to the seven tiltmeters and improves on the elastic approximation with an average RMSE of 0.00147136° by $\approx -20\%$.

4 Discussion

4.1 Seasonal bias in α -map

Due to the alignment of the satellite overpasses with the dominant diurnal tidal constituents in the Ross Sea, the observed stage of the tidal oscillation varies only slowly throughout the year. In the austral winter months, ^{c1}TerraSAR-X images ^{c2}have been acquired during stages of low tide, whereas satellite overpasses concur with stages of high tide during the austral summer months. The first 8 snapshots of our ^{c3}SAR data acquisitions for the Darwin Glacier show conditions at low tide and only the last 4 are acquired during high tide. Our α -map, in turn, ignores this seasonality and may therefore have a low-tide bias. As a result, the contribution of a tide induced landward migration of the grounding line may be affected by the averaging process. The seasonal bias would then modify the scaling of the ^{c4}tide model within the flexure zone. This ^{c5} is supported by the finding that low-tide stages in the 'Hillary' GPS record are matched closely by the scaled tide model, but peaks during high-tide stages are still over estimated (Fig. 4)

^{c3} and semi-diurnal

^{c4} Fortnightly

^{c5} Text added.

^{c6} Text added.

^{c7} A Young's modulus of $E = 1.0$ GPa and an ice viscosity value of $\nu = 10$ TPa s fits best our measurements

^{c1} SAR

^{c2} are

^{c3} TerraSAR-X data set

^{c4} tide model

^{c5} theory

4.2 Viscoelasticity between snapshots

Similarly, the linear scaling using an α -map only modifies the predicted tidal amplitude, but neglects a viscoelastic time delay in the flexural response towards the grounding line. Wild et al. (2017) found that viscosity is most pronounced in the diurnal tidal components. Harmonic analysis of our GPS records reveals that the diurnal K1 and O1 constituents at 'Hillary' are lagging approximately 20 mins behind 'Shirase'. This signal is currently disregarded in the scaling work flow as ice is treated as a perfect elastic material that transfers tidal ^{c6}forcing instantaneously in the flexure zone. This assumption, however, allowed us to improve the accuracy of the ^{c7}predicted displacement by -74%. Currently, the viscoelastic signal can only be reconstructed for the times of SAR data acquisition. Including viscoelasticity between times of satellite overpasses ^{c8}offers a small, but systematic, opportunity for further refinement. ^{c9}In our study area, the rate of tidal change is up to 10 cm hr^{-1} (Tab. 1) ^{c10}and the viscoelastic misfit corresponding to 20 minutes time delay is therefore up to about 3 cm.

When separating the viscoelastic contribution from the reconstructed maps of vertical displacement at times of satellite overpasses, we assume that an α -prediction corresponds to an instantaneous elastic response. This is justified by viscoelasticity being most pronounced when rates of tidal change are maximal. ^{c1}By expressing the viscoelastic misfits in percent of prevailing tidal amplitude during the times of satellite overpasses, the areas of pronounced viscoelastic effects can be visualised. They are most pronounced within the Darwin Glacier's shear zone (Fig. 11). ^{c2}

When predicting rates of tidal change using the adjusted Ross_Inv_2002 tide model, we identify a threshold of $\dot{A} \approx \pm 0.05 \text{ m h}^{-1}$ (SAR times 1, 2, 7, 8, 10, 11 in Tab. 1) above which viscoelasticity is well represented in the reconstructed vertical displacement maps (panels 1, 6, 7, 8, 10 and 11 in Fig. 10). Image 6 is thereby an exception, as the used Ross_Inv_2002 tide model was ^{c3}largely adjusted (-0.082 m), which affects the viscoelastic model. ^{c4}We find that the error due to viscoelasticity on the floating part of the ice shelf increases with the absolute rate of tidal change (Fig. 11). ^{c5}SAR images acquired during periods of spring tides at the Darwin Glacier show a significant viscoelastic contribution that diminishes during neap tide periods. These independent observations ^{c7}from satellite data alone support our suggested threshold of $\pm 0.05 \text{ m h}^{-1}$ for the separation of elastic and viscoelastic signals, as derived from tiltmeter data on the Southern McMurdo Ice Shelf presented in an earlier study (Fig. 8 in Wild et al., 2017). The advantage of separating the elastic from the viscoelastic contribution to the tidal flexure pattern is the large potential for improving current inverse modelling techniques to determine grounding-zone ice thickness from DInSAR measurements alone. Hereby, an elastic model is currently employed to optimize grounding-zone ice thickness

^{c6} motion

^{c7} tide-model prediction

^{c8} may therefore be only

^{c9} Text added.

^{c10} Text added.

^{c1} Text added.

^{c2} SAR images acquired during periods of spring tides at the Darwin Glacier show also a significant viscoelastic contribution that diminishes during neap tide periods.

^{c3} adjusted largely

^{c4} Text added.

^{c5} Text added.

^{c7} Text added.

to match the surface flexure from DInSAR. ^{c8} The applicability of an elastic model varies from location to location as effective viscosity is dependent on ice temperature and shear stress (Marsh et al., 2014). Our method to separate the two contributions to the flexure pattern may therefore help to remove the viscoelastic contamination and allow purely elastic inverse modelling. ^{c9} ^{c10} Such an analysis, however, goes beyond the scope of this manuscript and will be published elsewhere.

5 4.3 Large-scale ice anisotropy

Fast-moving glacial environments like the Darwin Glacier are subject to large deformation by flow convergence and divergence, ice compression and extension, lateral shearing at the margins accompanied by fracture under tension and rapid thinning ^{c1} by basal melt. With cumulative deformation, a crystallographic fabric evolves that reflects the glacier's flow history (Alley, 1988), and with it strain-dependent mechanical anisotropy of ice. The standard deviation map, Fig. 9, shows a narrow band of larger misfits extending from the Darwin Glacier's inner shear margin out towards the freely-floating ice shelf. As preferred crystallographic orientation develops with strain, effective viscosity decreases of about a factor of ten compared to initially isotropic polycrystalline ice (Hudleston, 2015). Our analysis of tiltmeter data reveals a five-fold reduced viscosity at the very dynamic Darwin Glacier compared to an earlier study at the almost stagnant Southern McMurdo Ice Shelf (Wild et al., 2017). We ^{c2} hypothesize that this microscopic process explains the macroscopic response observed here, and accounts for the measured glacial ^{c3} heterogeneity within the embayment. Large scale observations of ice anisotropy, in turn, are currently the missing key to improve parametrisations to account for polar ice anisotropy in ice-sheet flow modelling (Gagliardini et al., 2009). ^{c4} Other processes have been proposed which lead to ice softening in areas with high strain rates. Thermomechanical modelling suggests that shear heating and consequent thermal softening reduces lateral drag in ice-stream margins (Perol and Rice, 2015). ^{c5} Fracture modelling implies that damage reduces ice viscosity along confined crevassed zones with consequences on ice-shelf scale (Albrecht and Levermann, 2014). ^{c6} Full-Stokes viscoelastic modelling shows that Glen's non-linear flow law and tidal stresses in the ice-shelf flexure zone are sufficient to explain large-scale temporal variations in ice dynamics (Rosier and Gudmundsson, 2018). ^{c7} These processes, or a combination of them, might certainly be at play but they do not explain why a band of higher standard deviations can be observed in the shear zone of the Darwin Glacier which is absent in the flexure zone of the SMIS (Fig. 9). ^{c8} We therefore attribute this difference to ice-fabric reorientation in the shear margin.

^{c8} ~~This is because an elastic model for tidal flexure is only forced by the 'apparent' tidal amplitude (Eq.), which can be measured directly from the interferogram on the freely-floating area. A viscoelastic model additionally incorporates the time derivative of the tidal forcing (Eq.) and hence captures the rate of tidal change. This information, in turn, can not be deduced directly from the interferogram which makes the usage of auxiliary tide models inevitable. Tide models, however, have shown to be prone to large inaccuracies around Antarctica making a successful inversion of viscoelastic flexure models highly elusive.~~

^{c9} Furthermore, the threshold of $\pm 0.05 \text{ m h}^{-1}$ is invaluable to determine which satellite data acquisitions should be used for this calculation.

^{c10} This

^{c1} at the ice-ocean interface

^{c2} theorise

^{c3} heterogeneity

^{c4} Text added.

^{c5} Text added.

^{c6} Text added.

^{c7} Text added.

^{c8} Text added.

4.4 Refining tidal constituents using DInSAR

^{c1}The idea of using SAR interferometry to derive a full set of tidal harmonics was first laid out in a study of tides in the Weddell Sea (Rignot et al., 2000). ^{c2}The authors discussed that DInSAR images cannot be transformed into individual displacement fields because of the nonuniqueness of the inversion. A large number of independent DInSAR images is required to overcome this problem and to resolve the phase of tidal constituents that are close to the repeat-pass of the SAR satellite. For example, multiples of the lunar diurnal constituent K1 (23.93 h) are relatively close to the exact integer repeat-pass of TerraSAR-X (11 days) meaning that the observed amplitude of the K1 constituent is only varying once throughout the year. Consequently SAR images need to be acquired at least over the duration of one year to provide some redundancy for the inversion step of DInSAR images to tidal constituents. However, with an exact 12 h period, the stage of the semidiurnal solar tide, S2, will always be the same at each satellite pass making TerraSAR-X and similar satellites with repeat-passes of integer days blind to the S2 constituent. ^{c3}For example Minchew et al. (2017) ^{c4}needed a unique spatially and temporally dense SAR acquisition campaign as well as *a-priori* knowledge of the temporal basis functions from GPS data to empirically determine tidal constituents on Rutford Ice Stream. The four COSMO-SkyMed satellites in orbit, however, produce repeat-passes of 1, 3, 4 and 8 days and are blind to the S2 constituent as well even when using > 1000 available DInSAR images. Although other dominant tidal constituents like M2 (12.4 h) and O1 (25.82 h) were inferred successfully, the method presented here can achieve a higher accuracy for the total tide with less DInSAR images. From another perspective, the inclusion of an auxiliary tide model eases the requirement of a very large number of DInSAR images.

5 Conclusions and Outlook

^{c5}Accurate prediction of ocean tides in coastal areas is crucial as the majority of Antarctica's ice is discharged through large outlet glaciers. ^{c6}We presented a data fusion method between DInSAR and traditional Antarctic tide models to predict spatial variability of tidal motion near the grounding line. The primary value of using DInSAR in conjunction with tide models lies in the spatio-temporal benefits of resolving complex grounding zone deformation. Their symbiosis not only improves current accuracies of the predicted tidal amplitudes in coastal regions generally, but also avoids issues related to the timing of the tidal wave and the sun-synchronous satellite orbit when attempting to derive tide-models from SAR data alone. ^{c7}In our study area, the method presented in this paper improves traditional tide modelling in average by -22% from 11.8 cm to 9.3 cm RMSE against 16 days of GPS data. The GPS station 'Shirase' on the freely-floating part of the Darwin Glacier has proven invaluable

^{c1} Text added.

^{c2} Text added.

^{c3} Text added.

^{c4} Text added.

^{c5} Text added.

^{c6} Here we present the first data fusion of DInSAR with traditional Antarctic tide-modelling to predict spatial variability of tidal motion. The principal value of using DInSAR and tide models in tandem lies in the spatio-temporal benefits of resolving small features over large regions.

^{c7} Text added.

to determine which ^{c8}[tide model](#) has to be used to best reconstruct the vertical displacement during satellite overpasses. For the Darwin Glacier, the TPXO7.2 tide model predicts best the tidal oscillation. With using DInSAR measurements to adjust the TPXO7.2 tidal prediction, its RMSE could be improved by -39% from 10.8 cm to 6.7 cm. ^{c9}

Our GPS record from 'Shirase' is too short to ^{c1}[improve](#) already available Antarctic tide models. A longer record is required to adequately resolve a full set of tidal constituents. ^{c2} ^{c3}[We produced an empirical displacement map from DInSAR for tidal deflection \(\$\alpha\$ -map\)](#). Comparison of ^{c4}[a GPS record within the tidal flexure zone 'Hillary'](#) with predicted vertical displacement from feeding the α -map with the adjusted TPXO7.2 tide model shows a -74% improvement over using the tide-model output alone. This independent validation supports the finding that ^{c5}[our method for making use of DInSAR](#) is very useful for refining tide models in Antarctic ^{c6}[grounding zones](#). ^{c7}

10 Numerical modelling of ice dynamics in Antarctic grounding zones commonly assumes that ice is isotropic and homogeneous i.e. of ^{c8}[the](#) same density and rheological properties throughout. Our analysis reveals that this assumption is valid for the Southern McMurdo Ice Shelf, an almost stagnant area with a simple grounding line ^{c9}[configuration](#), but invalid for the Darwin Glacier, a fast-flowing outlet glacier with complex shear margins causing non-negligible ice ^{c10}[heterogeneity](#) within the embayment.

15 Further work is required ^{c11}[in order to improve tide models in a larger variety of grounding zones by including effects of grounding-line migration and variability of horizontal ice flow](#).

Code availability. The code is freely available to the scientific community. Collaboration is anticipated and desired.

Data availability. TerraSAR-X data presented in this paper are subject to license agreements. GPS/tiltmeter and ApRES data are available upon request.

^{c8} [tide-model](#)

^{c9} [which exceeds the average tide model improvement of -35% within the last decade \(Stammer et al., 2014\)](#).

^{c1} [develop a local tide model that improves](#)

^{c2} [The GPS record from 'Hillary' could not be used for this purpose as it was recorded within the tidal flexure zone.](#)

^{c3} [Text added.](#)

^{c4} [its measurements](#)

^{c5} [Text added.](#)

^{c6} [grounding-zones](#)

^{c7} [Accurate prediction of ocean tides in coastal areas is crucial as the majority of Antarctica's ice is discharged through large outlet glaciers.](#)

^{c8} [Text added.](#)

^{c9} [Text added.](#)

^{c10} [heterogeneity](#)

^{c11} [\(1\) to incorporate viscoelasticity to continue refining predictions of tidal motion between times of satellite overpasses, \(2\) to develop an automated method to monitor grounding-line migration due to ocean tides and \(3\) to perform inverse modelling of tidal elastic flexure to indirectly measure ice thickness from SAR data.](#)

Code and data availability. No data sets, nor software, are part of this study.

Sample availability. No samples were collected for this study.

Appendix A: GPS evaluation of tide models

The quality of the used ^{c1}[tide model](#) to correctly reconstruct tidal displacement at the times of SAR data acquisitions, is also crucial to accurately predict spatial variability in tidal motion for all times. Here, we assume that a freely-floating area on the ^{c2}[ice shelf](#) experiences the full oscillation as predicted from a tide model. In this area, however, tide-model output deviates from our DInSAR measurements. This indicates either that the area under investigation is prevented from a freely-floating state by lateral stresses within the embayment, or that the tide-model prediction is inaccurate for this area. We circumvent this ambiguity by making use of the high vertical accuracy of DInSAR and correct the tide-model prediction to match our satellite measurements. This raises the question of whether the adjustment improves or worsens the match to a 'real' tidal motion ? We therefore independently evaluate the pre- and post adjustment tide-model predictions and calculate their RMSE to 16 days of GPS data from the freely-floating area (Tab. A1). The adjustment improves all traditional tide model predictions by up to -39% for TPXO7.2, and only worsens the RMSE for the t_tide output by +11%, indicating that a harmonic analysis of GPS data can not be improved by using DInSAR for correction purposes. We choose TPXO7.2 for further processing as it displays the overall smallest RMSE (6.7 cm) and replicates the small-scale variability observed during the neap-tide period in the second half of our GPS record.

Author contributions. All authors conceived the study and conducted fieldwork. CW developed the algorithm, performed the data analysis and wrote a first version of the paper. OM and WR processed the SAR images for the Darwin Glacier and Southern McMurdo Ice Shelf, respectively. All authors finalized and approved the manuscript.

20 *Competing interests.* The authors declare that the research was conducted in the absence of any commercial or financial relationships that could be construed as a potential conflict of interest.

Disclaimer.

^{c1} [tide-model](#)

^{c2} [ice-shelf](#)

Acknowledgements. We thank Antarctica New Zealand for logistical support and the Scott Base staff for their dedication to the Transantarctic Ice Deflection Experiment. The project was supported by the Royal Geographic Society (Marsden Fast Start, PI O. Marsh) and by the Past Antarctic Science and Future Implications Program (PACaFI). D. Price, M. Ryan, D. Floricioiu and E. Scheffler contributed to fieldwork. TerraSAR-X data were provided through DLR project HYD1421. Landsat-8 images courtesy of the US Geological Survey. AWS data from
5 Scott Base were provided by NIWA, and for Marilyn station by AMRC, SSEC, UW-Madison. The authors enjoyed fruitful discussions with H. Purdie and M. Sellier. CW also thanks R. Mueller for sharing oceanographic expertise. The thorough comments of one anonymous reviewer and L. Padman's valuable insight into tidal dynamics largely improved the paper. We also thank A. Robinson for editing.

References

- Albrecht, T. and Levermann, A.: Fracture-induced softening for large-scale ice dynamics, *The Cryosphere*, 8, 587, 2014.
- Alley, R.: Fabrics in Polar Ice Sheets: Development and Prediction, *Science*, 240, 493–495, <https://doi.org/10.1126/science.240.4851.493>, <http://science.sciencemag.org/content/240/4851/493>, 1988.
- 5 Baek, S. and Shum, C. K.: Antarctic ocean tide signal restoration using differential InSAR technique, in: 2011 3rd International Asia-Pacific Conference on Synthetic Aperture Radar (AP SAR), pp. 1–4, 2011.
- Egbert, G. and Erofeeva, S.: Efficient Inverse Modeling of Barotropic Ocean Tides, *J. Atmos. Oceanic Technol.*, 19, 183–204, [https://doi.org/10.1175/1520-0426\(2002\)019<0183:EIMOBO>2.0.CO;2](https://doi.org/10.1175/1520-0426(2002)019<0183:EIMOBO>2.0.CO;2), [http://dx.doi.org/10.1175/1520-0426\(2002\)019<0183:EIMOBO>2.0.CO;2](http://dx.doi.org/10.1175/1520-0426(2002)019<0183:EIMOBO>2.0.CO;2), (doi: 10.1175/1520-0426(2002)019<0183:EIMOBO>2.0.CO;2), 2002.
- 10 Foreman, M.: Manual for Tidal Heights Analysis and Prediction. Pacific Marine Science Report. 77–10. Institute of Ocean Sciences, Patricia Bay, 58 pp, British Columbia, Canada, 1977.
- Gagliardini, O., Gillet-Chaulet, F., and Montagnat, M.: A Review of Anisotropic Polar Ice Models: from Crystal to Ice-Sheet Flow Models, 68, 2009.
- Han, H. and Lee, H.: Tide deflection of Campbell Glacier Tongue, Antarctica, analyzed by double-differential SAR interferometry and finite element method, *Remote Sens. of Environ.*, 141, 201–213, <https://doi.org/https://doi.org/10.1016/j.rse.2013.11.002>, <http://www.sciencedirect.com/science/article/pii/S0034425713004082>, (doi: <https://doi.org/10.1016/j.rse.2013.11.002>), 2014.
- Han, H. and Lee, H.: Tide-corrected flow velocity and mass balance of Campbell Glacier Tongue, East Antarctica, derived from interferometric SAR, *Remote Sens. of Environ.*, 160, 180 – 192, <https://doi.org/https://doi.org/10.1016/j.rse.2015.01.014>, <http://www.sciencedirect.com/science/article/pii/S0034425715000322>, 2015.
- 20 Han, H. and Lee, H.: Glacial and tidal strain of landfast sea ice in Terra Nova Bay, East Antarctica, observed by interferometric SAR techniques, *Remote Sens. of Environ.*, 209, 41 – 51, <https://doi.org/https://doi.org/10.1016/j.rse.2018.02.033>, <http://www.sciencedirect.com/science/article/pii/S0034425718300452>, 2018.
- Han, H., Lee, J., and Lee, H.: Accuracy assessment of tide models in Terra Nova Bay, East Antarctica, for glaciological studies of DDInSAR technique, *Korean Journal of Remote Sensing*, 29, 375–387, 2013.
- 25 Holdsworth, G.: Flexure of a floating ice tongue, *J. Glaciol.*, 8, 385–397, <https://doi.org/10.3198/1969JoG8-53-385-397>, <http://www.ingentaconnect.com/content/igsoc/jog/1969/00000008/00000054/art00005>, (doi: 10.3198/1969JoG8-53-385-397), 1969.
- Hudleston, P.: Structures and fabrics in glacial ice: A review, *Journal of Structural Geology*, 81, 1 – 27, <https://doi.org/https://doi.org/10.1016/j.jsg.2015.09.003>, <http://www.sciencedirect.com/science/article/pii/S0191814115300365>, 2015.
- Konrad, H., Shepherd, A., Gilbert, L., Hogg, A., McMillan, M., Muir, A., and Slater, T.: Net retreat of Antarctic glacier grounding lines, 30 *Nature Geoscience*, 11, 258, 2018.
- Love, A.: A treatise on the mathematical theory of elasticity, Cambridge University Press, London, 1906.
- Marsh, O., Rack, W., Golleger, N., Lawson, W., and Floricioiu, D.: Grounding-zone ice thickness from InSAR: inverse modelling of tidal elastic bending, *J. Glaciol.*, 60, 526–536, <https://doi.org/10.3189/2014JoG13J033>, <http://www.ingentaconnect.com/content/igsoc/jog/2014/00000060/00000221/art00011>, (doi: 10.3189/2014JoG13J033), 2014.
- 35 Massom, R. and Lubin, D.: Polar remote sensing, vol. 2, Springer, 2006.

- Minchew, B., Simons, M., Riel, B., and Milillo, P.: Tidally induced variations in vertical and horizontal motion on Rutford Ice Stream, West Antarctica, inferred from remotely sensed observations, *Journal of Geophysical Research: Earth Surface*, 122, 167–190, <https://doi.org/10.1002/2016JF003971>, <https://agupubs.onlinelibrary.wiley.com/doi/abs/10.1002/2016JF003971>, 2017.
- Mouginot, J., Rignot, E., and Scheuchl, B.: Sustained increase in ice discharge from the Amundsen Sea Embayment, West Antarctica, from 1973 to 2013, *Geophys. Res. Lett.*, 41, 1576–1584, <https://doi.org/10.1002/2013GL059069>, <http://dx.doi.org/10.1002/2013GL059069>, (doi: 10.1002/2013GL059069), 2014.
- Nicholls, K., Corr, H., Stewart, C., Lok, L., Brennan, P., and Vaughan, D.: A ground-based radar for measuring vertical strain rates and time-varying basal melt rates in ice sheets and shelves, *J. Glaciol.*, 61, 1079–1087, <https://doi.org/https://doi.org/10.3189/2015JoG15J073>, <http://www.ingentaconnect.com/content/igsoc/jog/2015/00000061/00000230/art00005>, (doi: <https://doi.org/10.3189/2015JoG15J073>), 2015.
- 10 Padman, L., Fricker, H., Coleman, R., Howard, S., and Erofeeva, L.: A new tide model for the Antarctic ice shelves and seas, *Ann. Glaciol.*, 34, 247–254, <https://doi.org/10.3189/172756402781817752>, (doi: 10.3189/172756402781817752), 2002.
- Padman, L., Erofeeva, S., and Joughin, I.: Tides of the Ross Sea and Ross Ice Shelf cavity, *Antarct. Sci.*, 15, 31–40, <https://doi.org/10.1017/S0954102003001032>, <https://www.cambridge.org/core/article/div-class-title-tides-of-the-ross-sea-and-ross-ice-shelf-cavity-div/61113D5BABF09C073849CE24CB158030>, (doi: 10.1017/S0954102003001032), 2003.
- 15 Padman, L., Erofeeva, S., and Fricker, H.: Improving Antarctic tide models by assimilation of ICESat laser altimetry over ice shelves, *Geophys. Res. Lett.*, 35, <https://doi.org/10.1029/2008GL035592>, <http://dx.doi.org/10.1029/2008GL035592>, 122504, (doi: 10.1029/2008GL035592), 2008.
- Padman, L., Siegfried, M., and Fricker, H.: Ocean Tide Influences on the Antarctic and Greenland Ice Sheets, *Reviews of Geophysics*, 56, 142–184, <https://doi.org/10.1002/2016RG000546>, <https://agupubs.onlinelibrary.wiley.com/doi/abs/10.1002/2016RG000546>, 2018.
- 20 Pawlowicz, R., Beardsley, B., and Lentz, S.: Classical tidal-harmonic analysis including error estimates in MATLAB using T_TIDE, *Comput. Geosci.*, 28, 929–937, [https://doi.org/10.1016/S0098-3004\(02\)00013-4](https://doi.org/10.1016/S0098-3004(02)00013-4), <http://www.sciencedirect.com/science/article/pii/S0098300402000134>, (doi: 10.1016/S0098-3004(02)00013-4), 2002.
- Perol, T. and Rice, J. R.: Shear heating and weakening of the margins of West Antarctic ice streams, *Geophysical Research Letters*, 42, 3406–3413, 2015.
- 25 Rack, W., King, M., Marsh, O., Wild, C., and Floricioiu, D.: Analysis of ice shelf flexure and its InSAR representation in the grounding zone of the Southern McMurdo Ice Shelf, *The Cryosphere*, 11, 2481–2490, <https://doi.org/10.5194/tc-11-2481-2017>, <https://www.the-cryosphere.net/11/2481/2017/>, 2017.
- Rignot, E., Padman, L., MacAyeal, D., and Schmeltz, M.: Observation of ocean tides below the Filchner and Ronne Ice Shelves, Antarctica, using synthetic aperture radar interferometry: Comparison with tide model predictions, *J. Geophys. Res.-Oceans*, 105, 19 615–19 630, <https://doi.org/10.1029/1999JC000011>, <http://dx.doi.org/10.1029/1999JC000011>, (doi: 10.1029/1999JC000011), 2000.
- 30 Rignot, E., Mouginot, J., and Scheuchl, B.: Antarctic grounding line mapping from differential satellite radar interferometry, *Geophys. Res. Lett.*, 38, <https://doi.org/10.1029/2011GL047109>, <http://dx.doi.org/10.1029/2011GL047109>, 110504, (doi: 10.1029/2011GL047109), 2011.
- 35 Rignot, E., Jacobs, S., Mouginot, J., and Scheuchl, B.: Ice-Shelf Melting Around Antarctica, *Science*, 341, 266–270, <https://doi.org/10.1126/science.1235798>, <http://science.sciencemag.org/content/341/6143/266>, 2013.
- Rosier, S. H. and Gudmundsson, G. H.: Tidal bending of ice shelves as a mechanism for large-scale temporal variations in ice flow, *The Cryosphere*, 12, 1699–1713, 2018.

- Schmeltz, M., Rignot, E., and MacAyeal, D.: Tidal flexure along ice-sheet margins: comparison of InSAR with an elastic-plate model, *Ann. Glaciol.*, 34, 202–208, <https://doi.org/10.3189/172756402781818049>, <http://www.ingentaconnect.com/content/igsoc/agl/2002/00000034/00000001/art00031>, (doi: 10.3189/172756402781818049), 2002.
- 5 Stammer, D., Ray, R., Andersen, O., Arbic, B., Bosch, W., Carrère, L., Cheng, Y., Chinn, D., Dushaw, B., Egbert, G., Erofeeva, S., Fok, H., Green, J., Griffiths, S., King, M., Lapin, V., Lemoine, F., Luthcke, S., Lyard, F., Morison, J., Müller, M., Padman, L., Richman, J., Shriver, J., Shum, C., Taguchi, E., and Yi, Y.: Accuracy assessment of global barotropic ocean tide models, *Reviews of Geophysics*, 52, 243–282, <https://doi.org/10.1002/2014RG000450>, <https://agupubs.onlinelibrary.wiley.com/doi/abs/10.1002/2014RG000450>, 2014.
- 10 Tong, X., Liu, S., Li, R., Xie, H., Liu, S., Qiao, G., Feng, T., Tian, Y., and Ye, Z.: Multi-track extraction of two-dimensional surface velocity by the combined use of differential and multiple-aperture InSAR in the Amery Ice Shelf, East Antarctica, *Remote Sensing of Environment*, 204, 122 – 137, <https://doi.org/https://doi.org/10.1016/j.rse.2017.10.036>, <http://www.sciencedirect.com/science/article/pii/S0034425717304996>, 2018.
- Vaughan, D.: Tidal flexure at ice-shelf margins, *J. Geophys. Res.-Sol. Ea.*, 100, 6213–6224, <https://doi.org/10.1029/94JB02467>, <http://dx.doi.org/10.1029/94JB02467>, (doi: 10.1029/94JB02467), 1995.
- 15 Walker, R., Parizek, B., Alley, R., Anandakrishnan, S., Riverman, K., and Christianson, K.: Ice-shelf tidal flexure and subglacial pressure variations, *Earth Planet. Sc. Lett.*, 361, 422–428, <https://doi.org/10.1016/j.epsl.2012.11.008>, <http://www.sciencedirect.com/science/article/pii/S0012821X12006164>, (doi: 10.1016/j.epsl.2012.11.008), 2013.
- Werner, C., Wegmüller, U., Strozzi, T., and Wiesmann, A.: Gamma SAR and interferometric processing software, in: *Proceedings of the ers-envisat symposium, Gothenburg, Sweden, vol. 1620, p. 1620*, <https://pdfs.semanticscholar.org/d427/15a606091b1ae537f70a33cfdffd6e99af4d.pdf>, 2000.
- 20 Wild, C., Marsh, O., and Rack, W.: Viscosity and elasticity: a model intercomparison of ice-shelf bending in an Antarctic grounding zone, *J. Glaciol.*, pp. 1–8, <https://doi.org/10.1017/jog.2017.15>, <https://www.cambridge.org/core/journals/journal-of-glaciology/article/viscosity-and-elasticity-a-model-intercomparison-of-iceshelf-bending-in-an-antarctic-grounding-zone/EC11694D45B8DA9C03574BF797BA74CF>, (doi: 10.1017/jog.2017.15), 2017.
- 25 Wild, C., Marsh, O., and Rack, W.: Unraveling InSAR Observed Antarctic Ice-Shelf Flexure Using 2-D Elastic and Viscoelastic Modeling, *Frontiers in Earth Science*, 6, 28, <https://doi.org/10.3389/feart.2018.00028>, <https://www.frontiersin.org/article/10.3389/feart.2018.00028>, 2018.

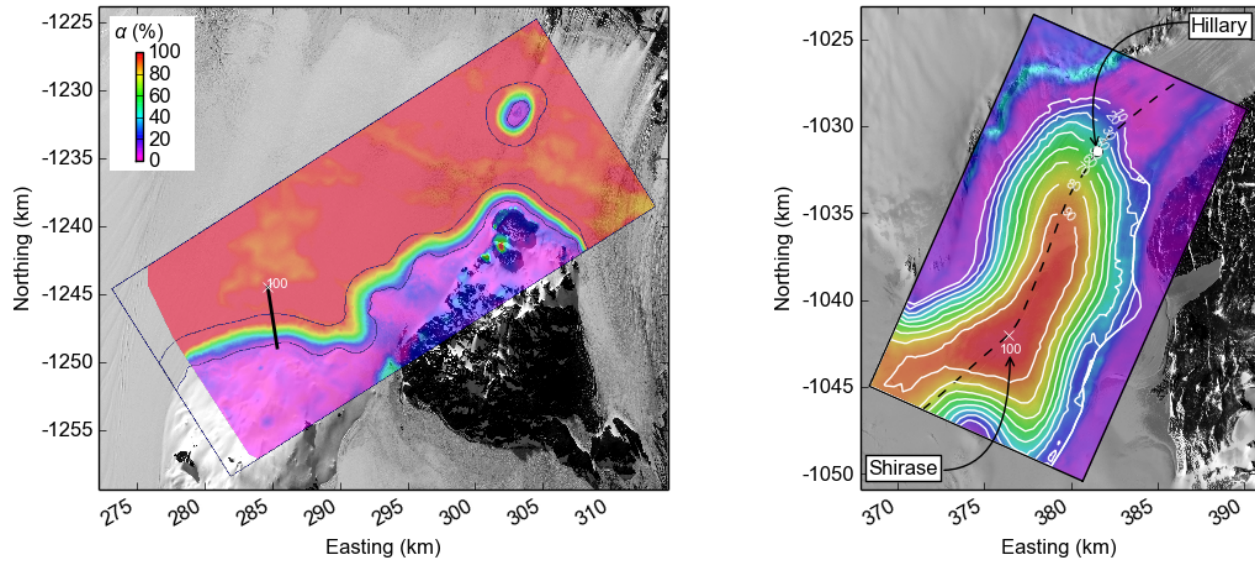


Figure 1. α -maps of percentage vertical displacement due to ocean tides. Red colors highlight areas that can be assumed to be ^{c1}freely floating. The white crosses show the tide-model locations that also serve as a common reference point across the images. The solid black line is the location of the profiles shown in Figures 2 and 3 on the Southern McMurdo IceShelf (left). The dashed black line shows the location of the profiles along the Darwin Glacier’s centerline shown in Fig. 7 (right). The GPS station ‘Shirase’ and ‘Hillary’ in the tidal-flexure zone. White contours delineate areas of constant vertical displacement. The map background is contrast-stretched Landsat 8 panchromatic imagery. The geographic projection is Antarctic Polar Stereographic with easting and northing coordinates shown in kilometers.

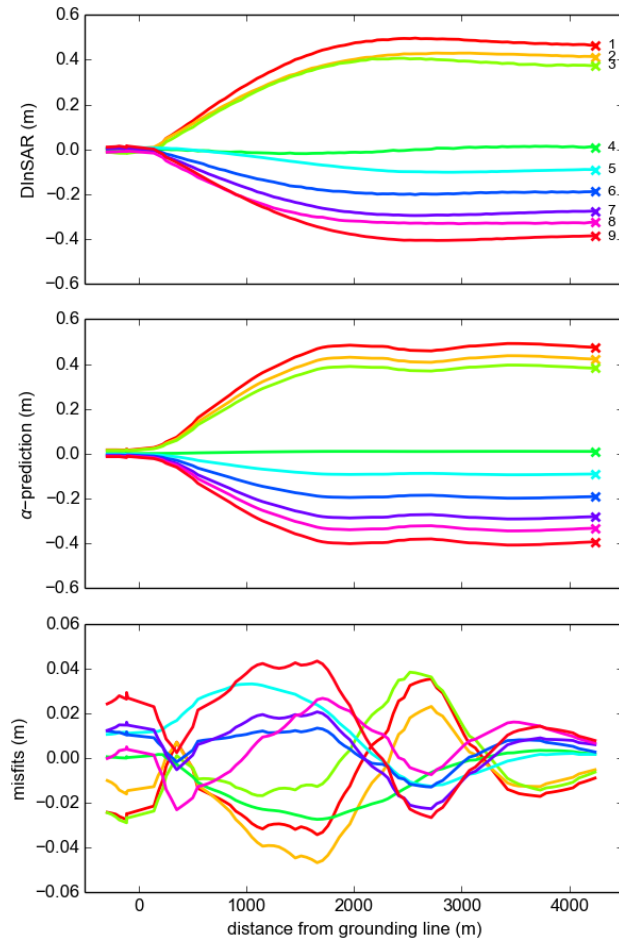


Figure 2. Vertical displacements along a profile through the grounding zone of the Southern McMurdo Ice Shelf, as (top) measured with 9 DInSAR interferograms, (center) predicted from an empirical displacement model (α -map) and (bottom) their difference.

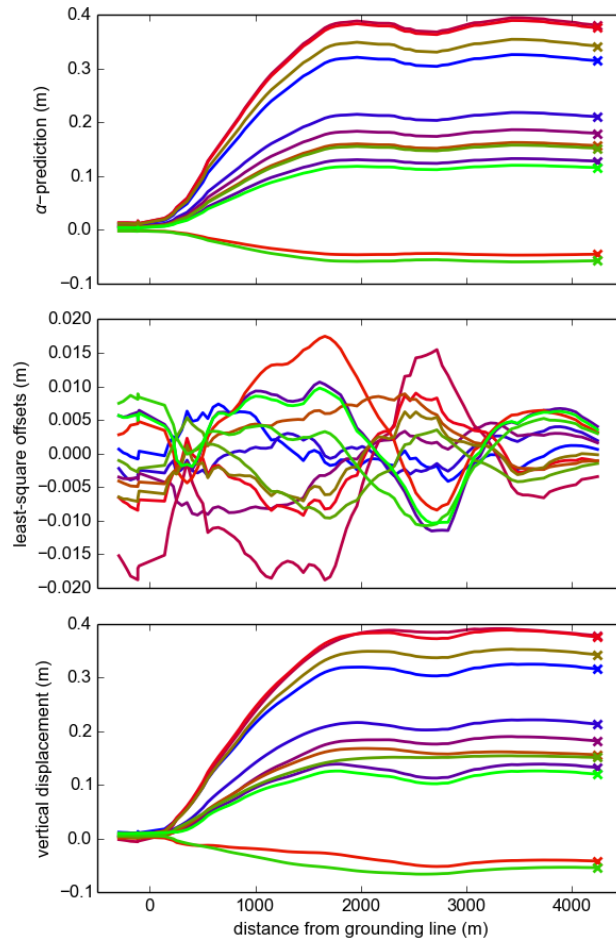


Figure 3. Reconstruction of vertical displacement along the profile during the 12 times of satellite overpasses on the Southern McMurdo Ice Shelf. (Top) a combination of an empirical displacement model with adjusted CATS tide-model output, (center) their least-square adjustment and (bottom) the final vertical displacement profiles during the times of SAR data acquisition.

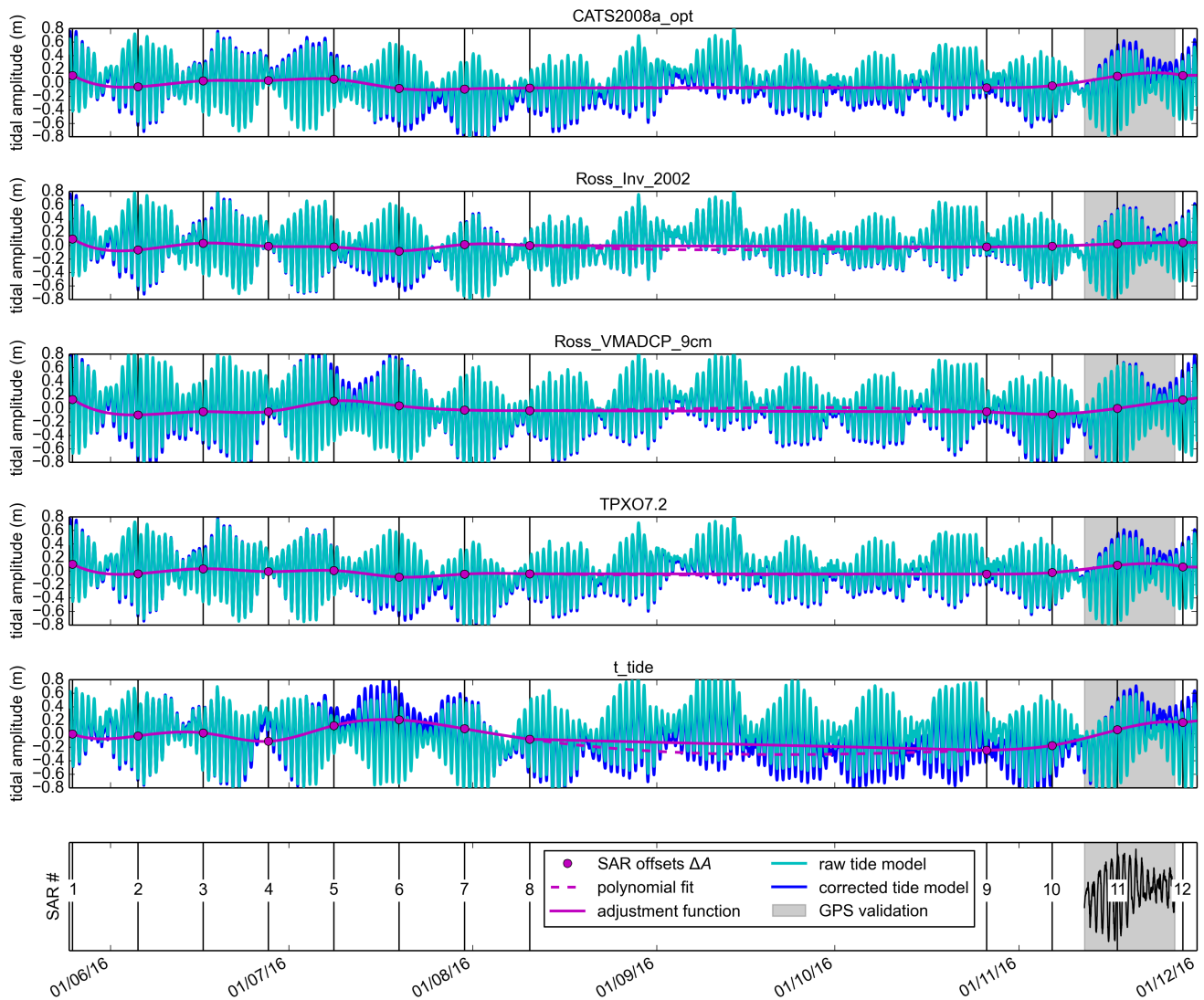


Figure 4. The tidal oscillation at the Darwin Glacier as predicted by four tide models and a harmonic analysis of GPS data from the freely-floating area. The tide-model outputs are adjusted to match DInSAR observations using a least-squares fitting technique published in Wild et al. (2018). Black vertical lines coincide with times of SAR data acquisitions. Values for the prevailing tidal amplitudes and their adjustment at these times are given in Table 1. Gray shaded areas delineate the duration of the TIDEx campaign, when GPS data was acquired for validation (Figs. 8 and A1).

Table 1. SAR imagery used for the Darwin Glacier, least-squares adjustment (${}^{cl}\Delta A$ in m) for 5 tide models, tidal amplitude (A in m) as predicted with the TPXO7.2 tide model and rate of tidal change (\dot{A} in m h^{-1}) as predicted with the Ross_Inv_2002 tide model.

SAR:	Date 13:57 (UTC)	ΔA_{CATS}	$\Delta A_{RossInv}$	$\Delta A_{Ross9cm}$	$\Delta A_{TPXO7.2}$	$\Delta A_{T_{tide}}$	$A_{TPXO7.2}$	$\dot{A}_{RossInv}$
1	25/05/16	0.109	0.098	0.133	0.101	-0.004	-0.341	-0.059
2	05/06/16	-0.061	-0.066	-0.097	-0.039	-0.030	-0.666	-0.057
3	16/06/16	0.029	0.035	-0.050	0.034	0.013	-0.409	-0.007
4	27/06/16	0.032	-0.012	-0.049	-0.009	-0.111	0.002	-0.022
5	08/07/16	0.054	-0.022	0.107	0.008	0.122	-0.271	-0.037
6	19/07/16	-0.086	-0.082	0.035	-0.088	0.206	-0.661	-0.005
7	30/07/16	-0.091	0.015	-0.026	-0.045	0.074	-0.687	0.080
8	10/08/16	-0.078	0.001	-0.035	-0.040	-0.080	-0.276	0.072
9	26/10/16	-0.073	-0.023	-0.053	-0.046	-0.244	-0.132	0.011
10	06/11/16	-0.044	-0.009	-0.088	-0.023	-0.172	0.087	0.096
11	17/11/16	0.099	0.025	-0.002	0.084	0.059	0.522	0.052
12	28/11/16	0.109	0.041	0.124	0.062	0.168	0.398	-0.029
mean absolute ΔA		0.072	0.036	0.067	0.048	0.107	-	-

Table 2. DInSAR images of the Darwin Glacier. The SAR combination from 12 available SAR images, the tidal amplitude (A in m) as measured at the Shirase location as well as predicted with the TPXO7.2 tide model.

ID	SAR combination	$A_{\text{TerraSAR-X}}$	$A_{\text{TPXO7.2}}$	Δ	ID	SAR combination	$A_{\text{TerraSAR-X}}$	$A_{\text{TPXO7.2}}$	Δ			
1	(1-2)-(2-3)	0.581	0.582	-0.001	⋮	⋮	⋮	⋮	⋮			
2	(1-2)-(3-4)	0.740	0.735	0.004	24	(3-4)-(11-12)	-0.536	-0.534	-0.002			
3	(1-2)-(4-5)	0.057	0.052	0.005	25	(4-5)-(5-6)	-0.112	-0.117	0.005			
4	(1-2)-(5-6)	-0.061	-0.065	0.004	26	(4-5)-(6-7)	0.246	0.247	-0.001			
5	(1-2)-(6-7)	0.298	0.299	-0.001	27	(4-5)-(7-8)	0.679	0.684	-0.005			
6	(1-2)-(7-8)	0.734	0.736	-0.002	28	(4-5)-(9-10)	0.496	0.492	0.004			
7	(1-2)-(9-10)	0.552	0.544	0.008	29	(4-5)-(10-11)	0.690	0.708	-0.018			
8	(1-2)-(10-11)	0.736	0.760	-0.024	30	(4-5)-(11-12)	0.155	0.149	0.006			
9	(1-2)-(11-12)	0.207	0.201	0.006	31	(5-6)-(6-7)	0.363	0.364	-0.001			
10	(2-3)-(3-4)	0.154	0.154	0.001	32	(5-6)-(7-8)	0.811	0.801	0.010			
11	(2-3)-(4-5)	-0.529	-0.530	0.001	33	(5-6)-(9-10)	0.620	0.609	0.011			
12	(2-3)-(5-6)	-0.646	-0.647	0.001	34	(5-6)-(10-11)	0.803	0.825	-0.023			
13	(2-3)-(6-7)	-0.288	-0.283	-0.005	35	(5-6)-(11-12)	0.274	0.266	0.008			
14	(2-3)-(7-8)	0.137	0.154	-0.017	36	(6-7)-(7-8)	0.430	0.437	-0.007			
15	(2-3)-(9-10)	-0.034	-0.038	0.004	37	(6-7)-(9-10)	0.237	0.244	-0.007			
16	(2-3)-(10-11)	0.190	0.178	0.012	38	(6-7)-(10-11)	0.466	0.461	0.005			
17	(2-3)-(10-11)	-0.376	-0.381	0.004	39	(6-7)-(11-12)	-0.107	-0.098	-0.009			
18	(3-4)-(4-5)	-0.688	-0.683	-0.004	40	(7-8)-(9-10)	-0.202	-0.192	-0.009			
19	(3-4)-(5-6)	-0.805	-0.801	-0.005	41	(7-8)-(10-11)	0.025	0.024	0.000			
20	(3-4)-(6-7)	-0.446	-0.436	-0.009	42	(7-8)-(11-12)	-0.541	-0.535	-0.006			
21	(3-4)-(7-8)	-0.014	0.001	-0.015	43	(9-10)-(10-11)	0.228	0.217	0.011			
22	(3-4)-(9-10)	-0.192	-0.192	-0.000	44	(9-10)-(11-12)	-0.343	-0.342	-0.001			
23	(3-4)-(10-11)	0.055	0.025	0.030	45	(10-11)-(11-12)	-0.565	-0.559	-0.006			
⋮	⋮	⋮	⋮	⋮	mean absolute error							
									0.007			

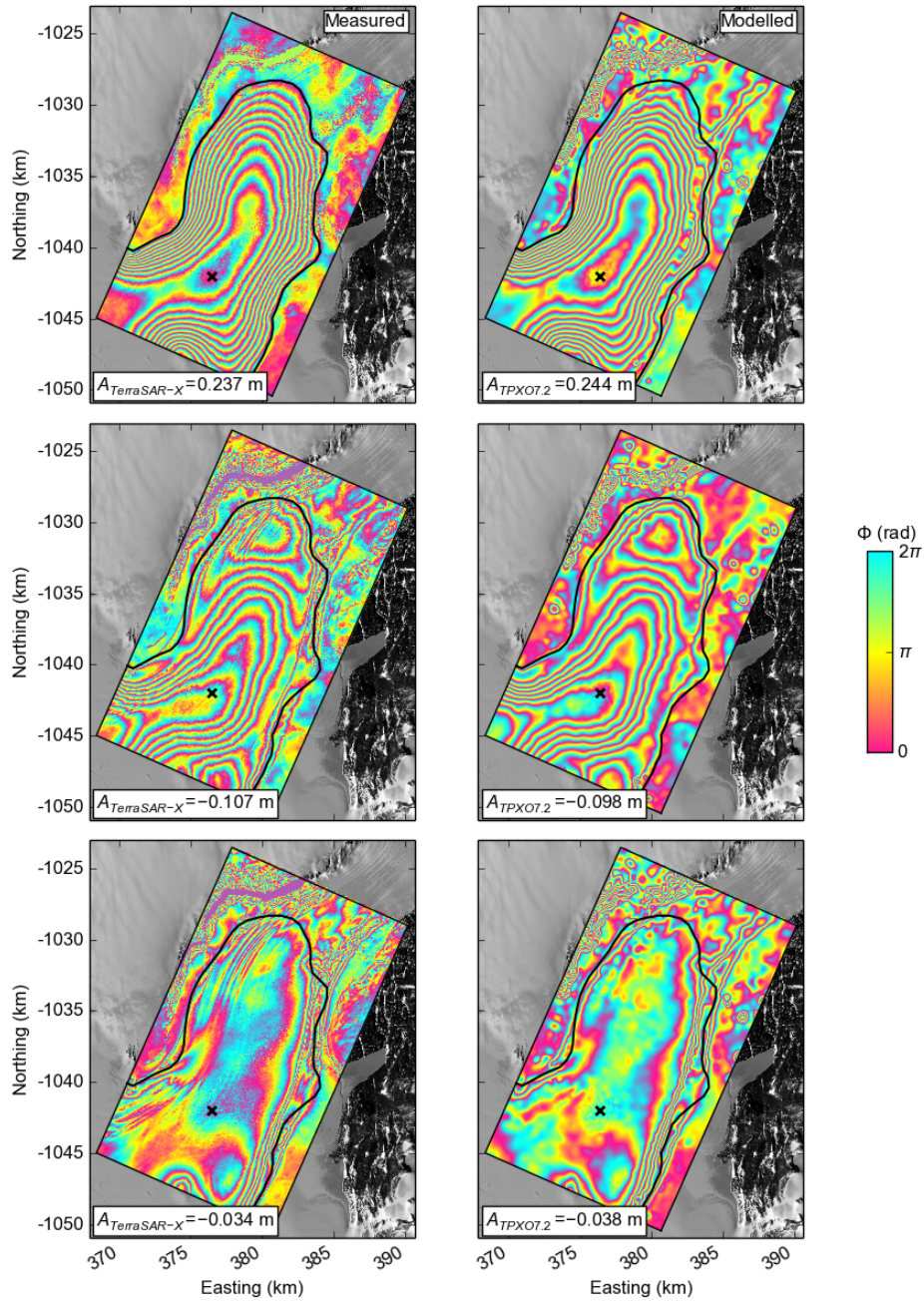


Figure 5. Selection of three measured and modelled images from 45 available DInSAR combinations. The top panels show conditions at a relatively large double-differential tidal amplitude (ID 37), the center panels display a pronounced viscoelastic signal in the Darwin ^{c1}Glaciers grounding zone (ID 39) and the bottom panels show a complex flexural pattern (ID 15).

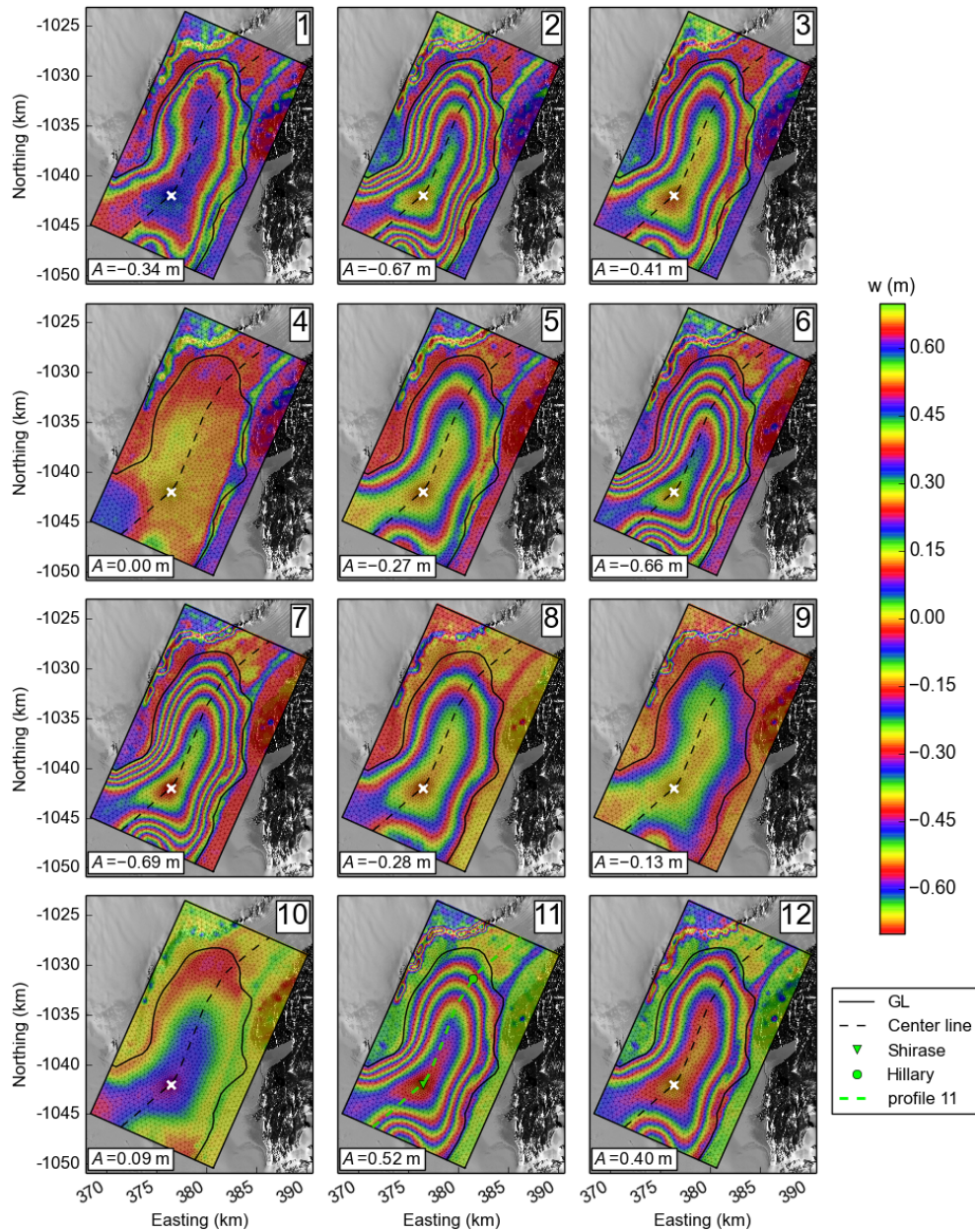


Figure 6. Reconstructed vertical displacement maps in the ^{c1}grounding zone of the Darwin Glacier. The images show surface displacement due to ocean tides at the 12 times of SAR data acquisition. Dashed black lines along the glacier's centerline correspond to the profiles shown in Fig. 7. The white cross marks the tide-model location. The green triangle and dot in the lower center panel mark the locations of the two GPS stations 'Shirase' (^{c2}freely floating) and 'Hillary' (within the tidal flexure zone). Finite-element mesh in gray, mean course of the grounding line as determined from 45 DInSAR images in black. Note the ice rise in the bottom left corner. The map background is contrast-stretched Landsat 8 panchromatic imagery.

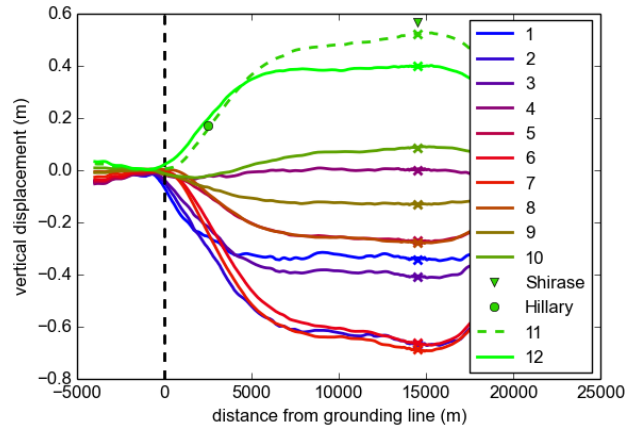


Figure 7. Profiles through the reconstructed maps of vertical displacement along the Darwin Glacier’s centerline. The crosses mark the location where the adjusted tide-model output is applied to the α -map. The green triangle and dot mark the locations of the two GPS stations ‘Shirase’ and ‘Hillary’ and are only used to validate the dashed green profile 11.

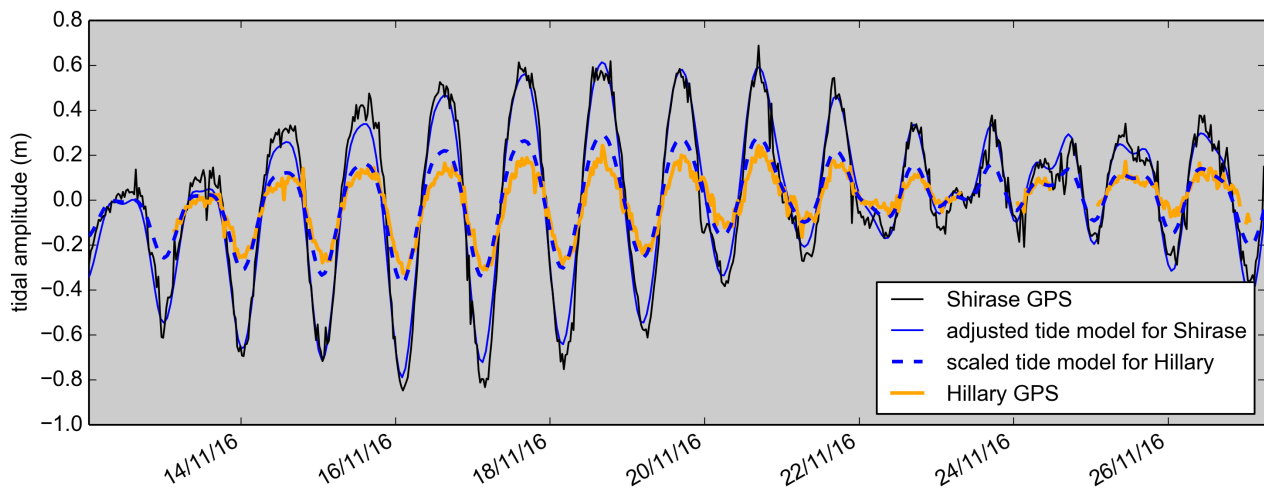


Figure 8. ^{c1}[Time series](#) of vertical tidal displacement on the freely-floating part of the Darwin Glacier ('Shirase') and within the flexure zone close to the grounding line ('Hillary'). The (solid blue) corrected tide-model output for the 'Shirase' location is at first compared to (black) its corresponding GPS record. The (dashed blue) extended tide model is scaled and shows an empirical prediction for (orange) the GPS record at the flexure-zone station 'Hillary'. The length of the record corresponds to the gray-shaded area in Fig. 4.

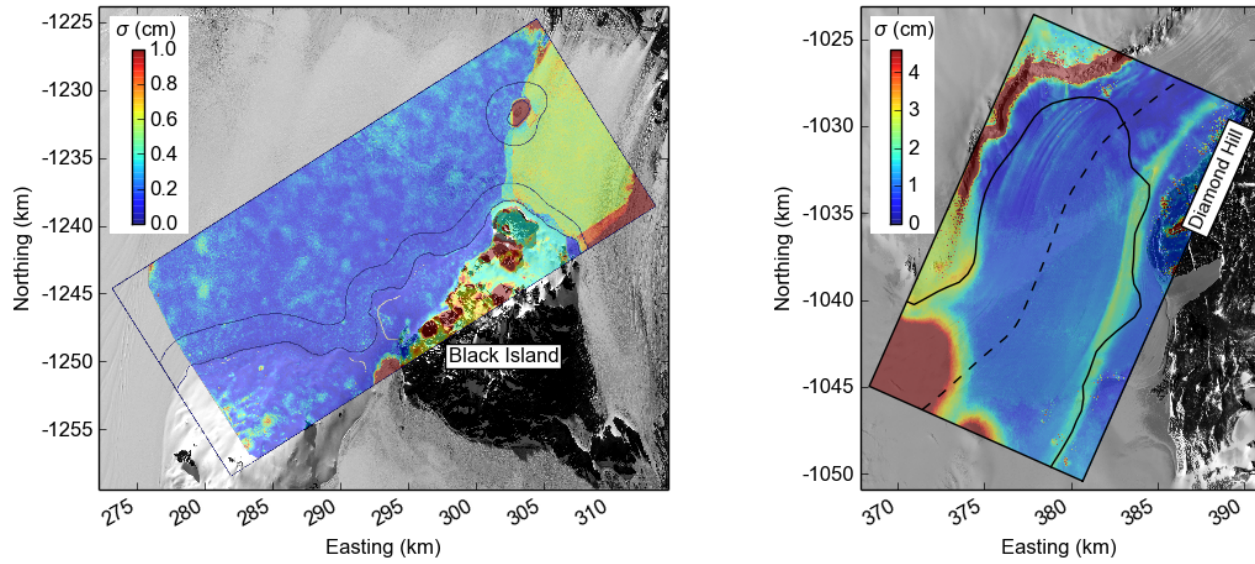


Figure 9. Standard deviations of misfits between modelled and observed DInSAR interferograms. Mean course of the grounding line as determined from DInSAR images in black. (Left) Note the ice rise in the upper right corner and two jumps in standard deviations between this ice rise and the dry land for the Southern McMurdo Ice Shelf. (Right) Note the band of higher standard deviations from the Darwin Glacier's shear margin from Diamond Hill towards the ice rise in the bottom left corner and the high standard deviations. The map background is contrast-stretched Landsat 8 panchromatic imagery.

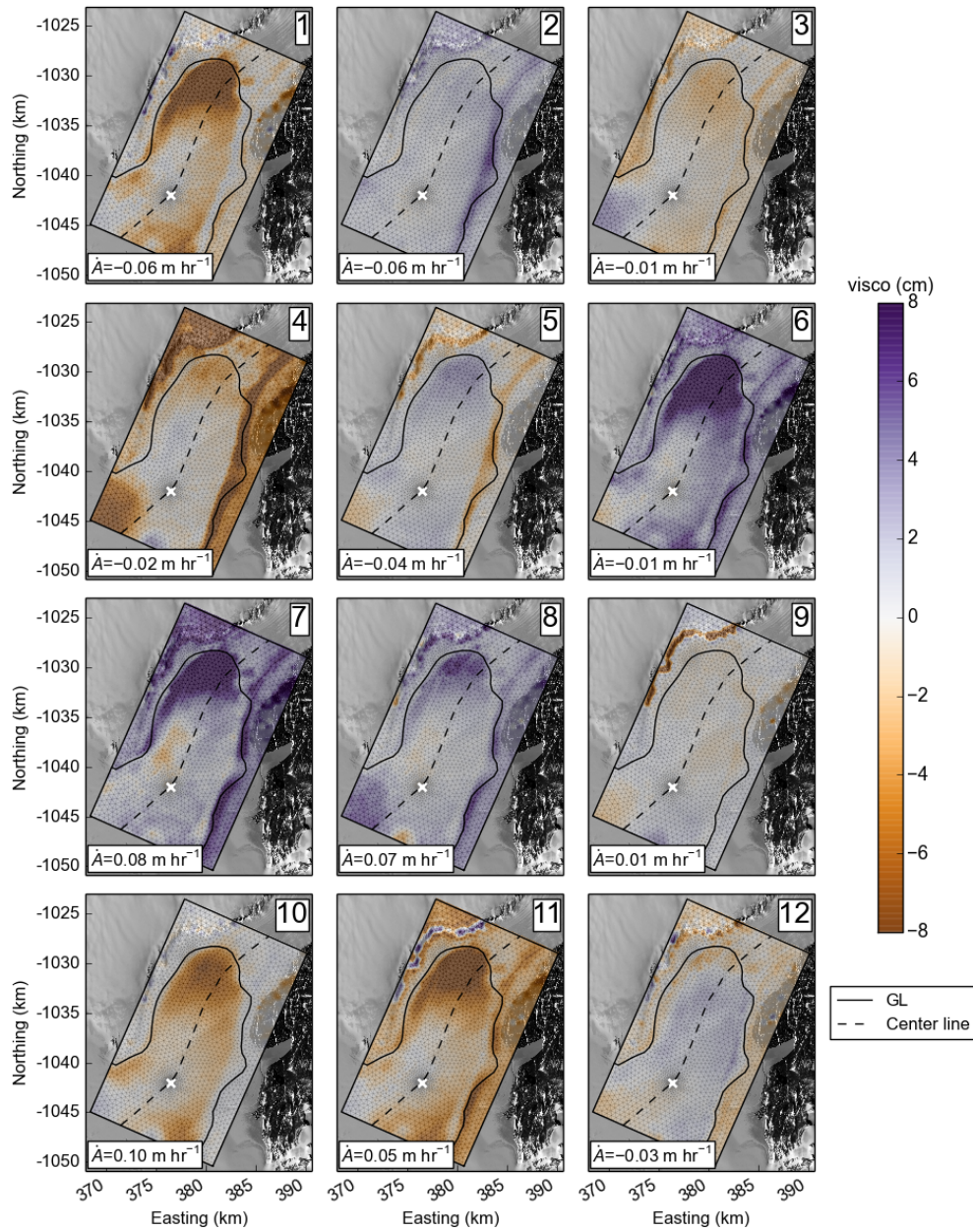


Figure 10. Spatial distribution of 12 least-square offsets that minimize the sum of misfits between 45 maps of α -predictions and their corresponding DInSAR measurements. These offsets can be interpreted as the viscoelastic contribution to the reconstructed vertical tidal displacement at the times of SAR data acquisition. Dashed black line corresponds to the glacier’s centerline, the solid black line shows the Darwin Glacier’s mean grounding line as determined with DInSAR.

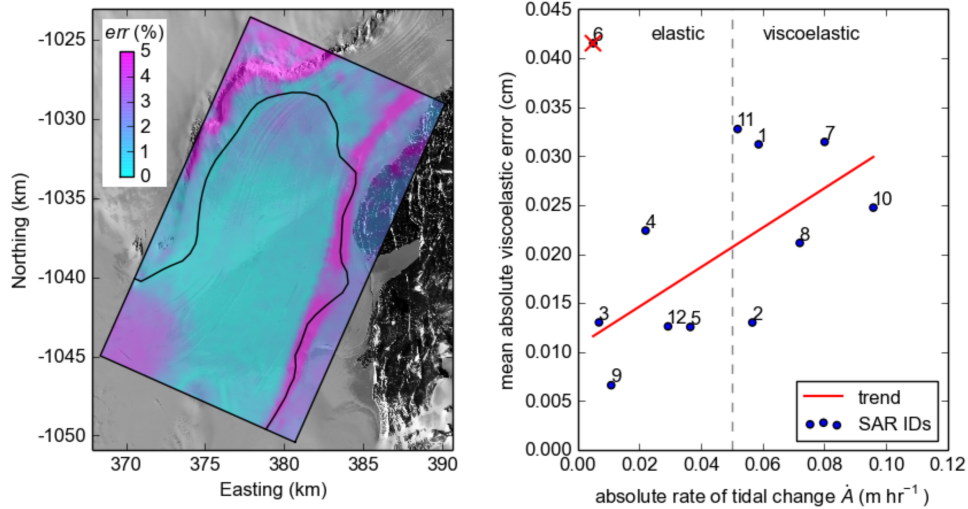


Figure 11. Map of average error due to viscoelasticity in percent of tidal amplitude (left panel) and average error on the floating part of the Darwin Glacier versus rate of tidal change as predicted with the adjusted Ross_Inv_2002 tide model (right panel). Image 6 is considered an outlier and was excluded from the calculation of the linear trend.

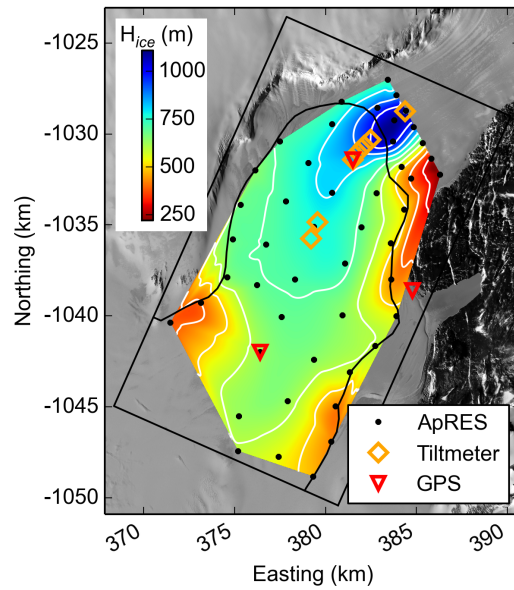


Figure 12. Measured ice-thickness map in the ^{c1}[grounding zone](#) of the Darwin Glacier. Black dots show locations of high-precision ApRES measurements. Orange rectangles mark seven tiltmeter sensors that are orientated along the glacier's centerline. Red triangles show locations of GPS stations on the moving ice (Shirase and Hillary) and the location of the GPS base station on stagnant ice which is used for differential correction of the measurements. White contours correspond to a 100 m change in interpolated ice thickness. The map background is contrast-stretched Landsat 8 panchromatic imagery.

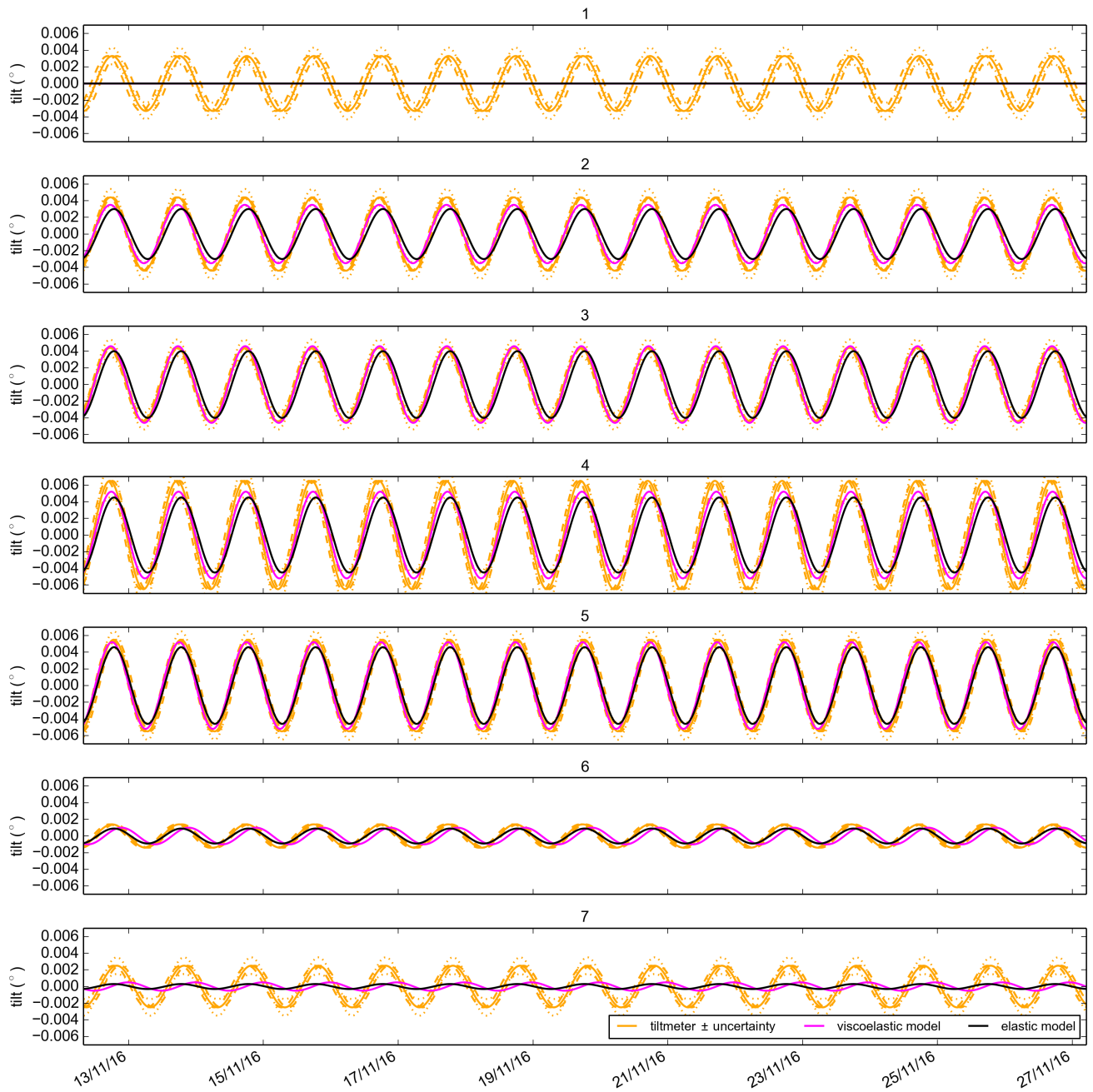


Figure 13. Surface flexure of the K1 tidal constituent along the Darwin Glacier’s centerline as (orange) measured with an array of seven tiltmeters, (magenta) modelled using a viscoelastic rheology and (black) modelled with the elastic approximation. The orange dashed lines correspond to the uncertainty range of the K1 phases as determined from harmonic analysis of the individual tiltmeter records.

Table 3. Amplitude and phase of the K1 tidal constituents from harmonic analysis of tiltmeter measurements and values of the rheological parameters to minimize the average RMSE. Amplitudes are given in degrees, phases are the phase lag of the K1 constituent with respect to the equilibrium tide on Greenwich longitude.

		K1 amplitude \pm error ($^{\circ}$)			K1 phase \pm error ($^{\circ}$)		
	tiltmeter 1	-0.001	0.0033	+0.001	-24.34	206.22	+24.34
	tiltmeter 2	-0.001	0.0044	+0.001	-8.02	215.35	+8.02
	tiltmeter 3	-0.001	0.0044	+0.001	-7.46	218.64	+7.46
	tiltmeter 4	-0.002	0.0065	+0.002	-13.63	219.34	+13.63
	tiltmeter 5	-0.001	0.0055	+0.001	-12.36	198.09	+12.36
	tiltmeter 6	-0.001	0.0014	+0.001	-14.95	207.34	+14.95
	tiltmeter 7	-0.001	0.0025	+0.001	-18.06	181.97	+18.06
elastic	best E (GPa)	1.5	1.0	0.5	0.5	1.0	2.0
	average RMSE ($^{\circ}$)	0.00098	0.00147	0.00198	0.00127	0.00147	0.00182
viscoelastic	best E (GPa)	1.5	1.0	1.0	0.5	1.0	2.0
	best ν (TPa s)	19.9	10.0	10.0	12.6	10.0	7.9
	average RMSE ($^{\circ}$)	0.00077	0.00119	0.00170	0.00122	0.00119	0.00128

Table A1. Root-mean-square-errors in m between tide-model output and GPS data from 'Shirase' before and after the adjustment to match DInSAR.

Tide-model:	RMSE before:	RMSE after:
CATS2008a_opt	0.117	0.087
Ross_Inv_2002	0.112	0.091
Ross_VMADCP_9cm	0.135	0.127
TPXO7.2	0.108	0.067
mean	0.118	0.093
t_tide	0.127	0.141

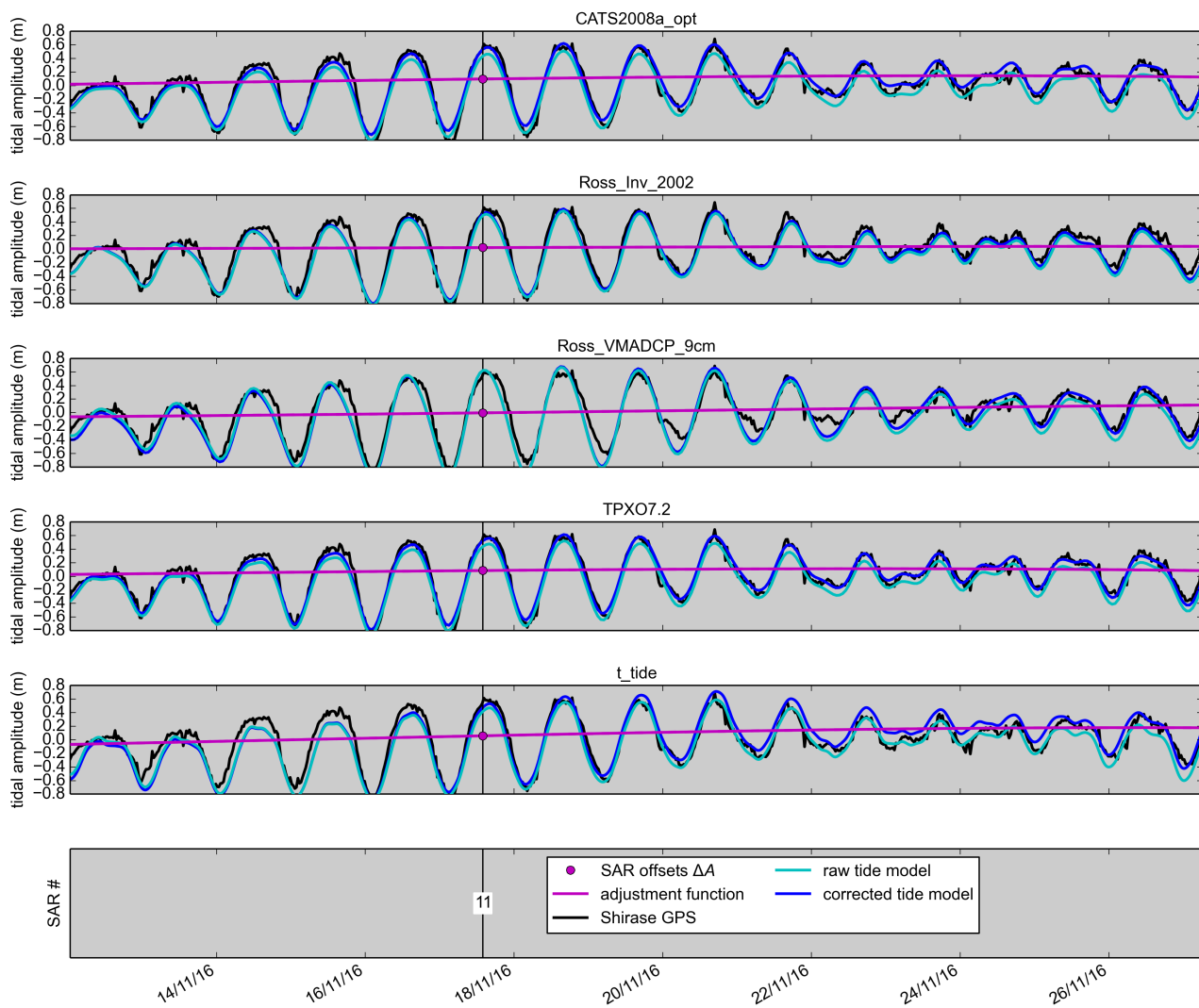


Figure A1. Validation of the tidal predictions of 5 tide models with a GPS record from the freely-floating 'Shirase' station. The tide-model outputs are adjusted to match DInSAR observations using a least-squares fitting technique published in Wild et al. (2018). Root-mean-square-errors before and after this adjustment are presented in Tab. A1. The length of the records corresponds to the gray-shaded area in Fig. 4.