

Interactive comment on “Warming of SE Greenland shelf waters in 2016 primes large glacier for runaway retreat” by Suzanne L. Bevan

Suzanne L. Bevan

s.l.bevan@swansea.ac.uk

Received and published: 19 July 2019

Dear Ginny,

thank you for finding time to reread the manuscript and please accept my apologies.
You are correct, Fig. 3 was missing details of melange.

Please find attached a new fig. 3.

If you need me to incorporate it into a new manuscript pdf please let me know.

best wishes,

Suzanne Bevan

Printer-friendly version

Discussion paper



[Printer-friendly version](#)

[Discussion paper](#)



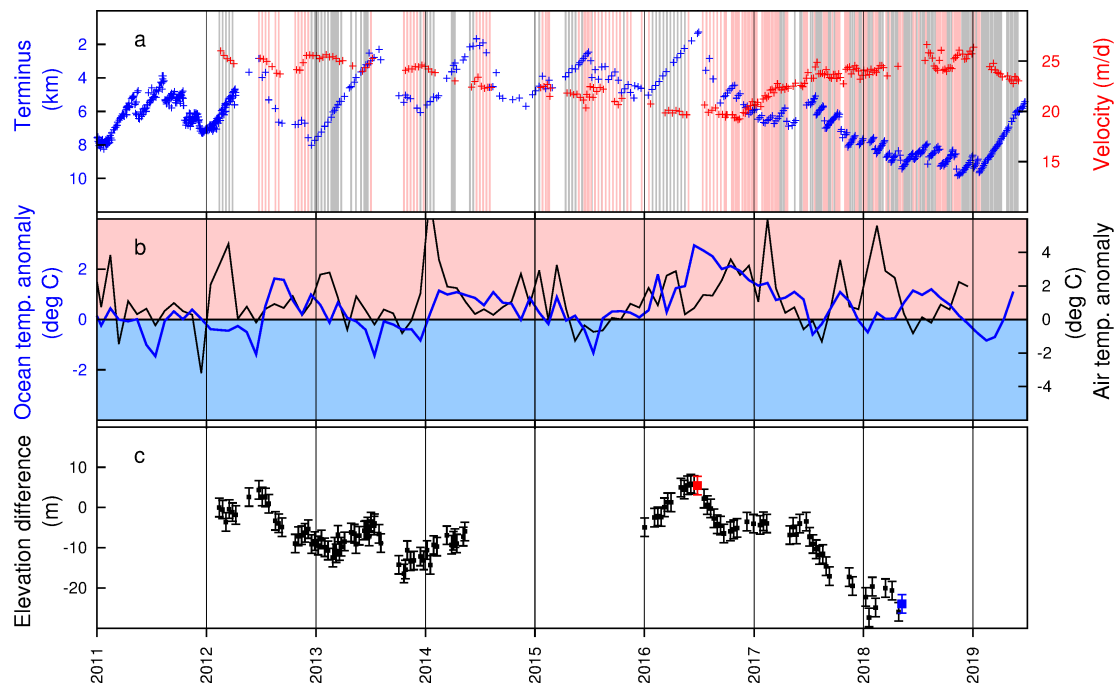


Fig. 1.

[Printer-friendly version](#)[Discussion paper](#)