

Dear reviewer,

Thank you so much for providing a thorough review and very helpful comments and corrections. We agree with all your suggested changes. Please see detailed responses to all your suggestions below. Thanks again!

With best regards,  
Dyre Dammann

Interactive comment on “Instantaneous sea ice drift speed from TanDEM-X interferometry” by Dyre Oliver Dammann et al.  
Anonymous Referee #1  
Received and published: 29 December 2018

#### General comments

The paper presents nice experiments showing sea ice drift from InSAR using TanDEM-X data:

1. a comparison and validation using a ground based radar in Utqiagvik, Alaska
2. an investigation of fracture dynamics near Holm Land, Greenland
3. drift zones in Vilkitsky Strait, Russia

Though the method is not new, the authors provide a good discussion on interpretation, calibration and errors. They provide realistic arguments for the practical use of the method along with its limitations. The authors conclude that InSAR allows resolving meter scale, line-of-sight ice motion which is not resolvable using conventional methods. It is argued that even the relative speed provides insight into transient convergence and divergence of ice, and that this is relevant for ice management and tactical navigation.

Overall, I find the paper to be well structured, well written and of high quality. References are relevant and support the authors' claims. The paper seems like a good fit for this journal and I have only a few comments.

#### Specific comments

- Title:

As noted by the editor, the drift is in the line-of-sight only which is not (explicitly) reflected in the title. The HF-radar is also not mentioned in the title, even though it is a significant part of the paper. I still like the title as it is and leave it to you if you want to take the above aspects into account.

Thank you for providing these points. We might lean towards the option of keeping it as is to keep it short and concise although we agree it could be changed to make it more specific.

- Page 2, line 22: "The technique further requires incorporation and manual interpretation of land areas in each scene"

Why manual? I would assume that this could be automatically estimated over land.

Good point. Taken out.

If the absolute antenna behavior is known it should also be possible to correct the measurements even without land. There was a nice paper at EUSAR this year which mentions this: "... This will then allow proper correction also for scenes with insufficient land coverage." Reference: Hansen et al., EUSAR 2018 "A new look at Envisat ASAR range Doppler shift retrieval with the aim of reprocessing ten years of level-0 data".

Thank you for providing this reference. This has now been included (P2,L22): "The technique has in the past required incorporation and interpretation of land areas in each scene where biases can be corrected (Kræmer et al., 2015), but may not be necessary in the future (Hansen et al., 2018)."

- Page 3, line 18-19: "to our knowledge has not been used to measure sea ice drift"  
I was a little bit surprised by this as your paper already mentions Scheiber2011, who showed some results of TDX InSAR sea ice drift. I think it would be nice to include a reference here and comment on similarities/differences to what they did. As far as I remember they only showed the relative drift without any further calibration/validation, whereas you provide examples of absolute speeds and a more in-depth discussion.

This has now been better clarified by some small changes to the text (P3,L13): "The fringes resulting from 1-dimensional phase information can be interpreted into 2-dimensional motion using inverse modeling and provide important information pertaining to internal deformation of the ice (Dammann et al., 2016). However, the fringes can at the same time hide a constant phase value pertaining to the general drift speed, which was the case for Scheiber et al. (2011). In contrast, we here apply bistatic acquisitions with substantially shorter (~ 10 ms) temporal lag for the evaluation of instantaneous sea ice drift speed."

- Page 4, line 1: "... a combination of existing and newly developed methods".  
It would be nice to have the essence of the methods provided in the text also. Dense Lucas-Kanade optical flow or something more? Please add a sentence or two to make it more explicit.

This has been included. Changed to (P4,L2): "These include dense and feature-based optical flow approaches to compute motion fields from the images, active contours for delineation of stable landfast ice, and Hidden Markov Models for machine learning based event detection (Rohith et al., 2013; Jones et al., 2016). The filtering approach results in motion products averaged over 1.5 hours. For the three cases evaluated here the motion tracking algorithm only produced consistent motion vectors suitable for validation in one case (Nov 21)."

Minor corrections / suggestions

- Page 3, line 1: "in look direction" -> "in the look direction"

Please correct all occurrences (I might have missed some): Page 5 line 1, Page 5 line 2, Page 8 line 11, Page 8 line 20, Page 9 line 8.

Done

- Page 3, line 29: "...archived every 5 m and ..." -> "5 min." or "5 minutes".

Done

- Page 4, line 21: "... sea ice grown in-situ ..."

The "grown in-situ" part sounds a bit strange to me and could be removed, but perhaps am just not familiar with the use of this phrase. What is it being contrasted with? Grown remotely?

Taken out in-situ as we explain the potential for thicker ice advected from other places.

- Page 5, line 3: "...which can be expressed" -> "...which can be expressed as"

Done

- Page 5, line 5: "where theta is the incidence angle" -> "incident angle" or "angle of incidence"

Just a suggestion. Some people are picky about this.

Done

- Page 9, line 20: "formation of ice arches"

The term "ice arch" could perhaps be more precisely specified in the text (I had not heard the term before). I guess it's clear from the context and the fact that your pointing to pont J in the image, but still.

Good point. Included (P9,L26): "Ice arches form when ice passing through a narrow passage experiences flow stoppage as a result of confining pressure and behaves like landfast ice (Hibler et al., 2006)."

- Page 11, line 11: "features larger multiyear floes" -> "features large multiyear floes"  
Larger compared to what?

Done

- Page 16, Figure 1:

It would be nice to have the range in km of the ground-based radar in the caption for easy reference.

Included

- Page 17, Figure 2:

The line of zero velocity is quite weak in the figure which made it disappear completely on my printout. Please try to make it more easily visible, perhaps by making the line thicker or more densely dashed. Was the line drawn manually, or automatically (e.g., from thresholding the velocity map (or similar)?

Done. This was drawn automatically as the zero contour

- Page 18, Figure 3:

I see the right circle in (a) and (b) mentioned in the caption for (d), but what about the left circle? Is it the same type?

Yes, now changed to: “circled areas”

I could not find the reported  $R=0.85$  value in (d) discussed in the text. Please include a short comment in the text.

Included (P7,L29): “The  $v_{gr}$  confirms largely homogenous drift speed of the floes in the southwest direction corresponding to  $v_{\phi}$  (Figure 3d) with an R-value of 0.85.”

It would also be nice to have the regression line in the plot along with the existing one-to-one line.

Done

- Page 19, Figure 4:

Please specify in the captions what the white areas in the InSAR speed plot are. I didn't immediately see this commented in the text, sorry if I missed it.

Now included: “White areas signify values larger than the range of the color scale due to topography (either icebergs or land topography near the coast due to a poor match with the landmask).”

- Page 20, Figure 5:

Consider changing theta to another variable as theta is also used for the angle of incidence, but this is not very important (I guess it's clear enough from context).

Good catch. Changed to  $\phi$

- Page 21, Figure 6:

Please include a brief explanation of the regions marked by letters instead of referring to the text. It doesn't have to be long. For example: Different zones are indicated by letters (A-B) no drift in the look direction, (C-D) intermediate speeds, (F-H) channel of high speeds. As a reader I find it annoying to jump back and forth alot between the text and the figure.



Good idea. Done

- Page 22, Table 1:

There is a lot of white space in the table. Perhaps it could be made a bit neater (e.g., consistent spacing around "/", expand Str. into Strait, add [deg] after theta), but this is a very minor issue. Is date/orbit/cycle enough to uniquely identify the frames you used for the experiment or would a timestamp or frame identifier be needed?

We have cleaned this up. We have now included the acquisition start time and ID.

# Instantaneous sea ice drift speed from TanDEM-X interferometry

Dyre Oliver Dammann<sup>1</sup>, Leif E. B. Eriksson<sup>1</sup>, Joshua M. Jones<sup>2</sup>, Andrew R. Mahoney<sup>2,3</sup>, Roland Romeiser<sup>4</sup>, Franz J. Meyer<sup>2</sup>, Hajo Eicken<sup>3,5</sup>, Yasushi Fukamachi<sup>3,6,7</sup>

<sup>1</sup>Department of Space, Earth, and Environment, Chalmers University of Technology, Gothenburg, Sweden

5 <sup>2</sup>Geophysical Institute, University of Alaska Fairbanks, Fairbanks, AK, USA

<sup>3</sup>Global Station for Arctic Research, Hokkaido University, Sapporo, Japan

<sup>4</sup>Rosenstiel School of Marine and Atmospheric Science, University of Miami, Miami, FL, USA

<sup>5</sup>International Arctic Research Center, University of Alaska Fairbanks, Fairbanks AK, USA

<sup>6</sup>Arctic Research Center, Hokkaido University, Sapporo, Japan

10 <sup>7</sup>Institute of Low Temperature Science, Hokkaido University, Sapporo, Japan

*Correspondence to:* Dyre Oliver Dammann (dyre.dammann@chalmers.se)

**Abstract.** The drift of sea ice is an important geophysical process with widespread implications for the ocean energy budget, ecosystems, and marine operations. Drifting sea ice can threaten navigation routes and present a hazard for ocean vessels and maritime installations. Here, we evaluate single-pass synthetic aperture radar (SAR) interferometry (InSAR) as a tool to assess ice drift for different uses. Initial validation shows that TanDEM-X phase-derived drift speed corresponds well with drift products from a ground-based radar at Utqiagvik, Alaska. Joint analysis of TanDEM-X and Sentinel-1 data covering the Fram Strait demonstrates that InSAR can help quantify the opening/closing rate of leads. In contrast to standard SAR-based drift algorithms deriving averaged drift velocities, single-pass InSAR enables an instantaneous assessment with advantages in the context of ice management and transportation. By evaluating sea ice drift through the Vilkitsky Strait, Russia, we identified short-lived transient convergence patterns. We conclude that InSAR enables the identification of potentially important short-lived dynamic processes otherwise difficult to observe with possible implication for engineering and sea ice modeling.

## 1 Introduction

Arctic sea ice is predominately in a state of drift as a result of a near continual wind and ocean drag, which leads to redistribution and deformation. Drift processes play a large part in the sea ice thickness distribution. Differential ice motion results in the opening and closing of leads and polynyas and the formation of pressure ridges, while large-scale drift patterns control sea ice loss through export from the Arctic Ocean. Sea ice drift has therefore major implications for the mass, heat, and momentum balance of the Arctic Ocean's ice cover. Over the past several decades, Arctic sea ice has declined at a rapid rate (Stroeve et al., 2012;Comiso and Hall, 2014;Meier et al., 2014) and in confined regions resulted in more dynamic ice (Spren et al., 2011;Kwok et al., 2013) increasing strain and fracturing (Rampal et al., 2009a). Recent and predicted changes in sea ice drift (Zhang et al., 2012) are impacting marine biota (Thomas, 2017) and coastal populations (Krupnik et al., 2010). Sea ice drift is also a major concern for maritime activities (Eicken et al., 2009), and associated sea ice hazards play a prominent role in offshore resource development and associated coastal infrastructure (Eicken and Mahoney, 2015).

The wide relevance across scientific disciplines and end users has resulted in numerous approaches for measuring ice drift. GPS buoys are an important tool to determine ice drift on pan-Arctic scales (Meier and Maslanik, 2003; Zhang et al., 2003; Rampal et al., 2009b) with unmatched temporal sampling, but are often hundreds of kilometers apart and cannot provide detailed km-scale information unless specifically deployed for validation purposes. Ground-based remote sensing systems on the other hand, such as X-band marine radars are capable of providing consistent m-scale resolution ice drift measurements and deformation information (Druckenmiller et al., 2009; Shirasawa et al., 2013; Jones et al., 2016; Karvonen, 2016; Oikkonen et al., 2016). The coverage of ground based systems is typically limited to coastal waters, hence satellite remote sensing is also an important tool to measure ice drift (Muckenhuber and Sandven, 2017). Here, microwave systems are superior due to the ability to provide information regardless of light or atmospheric conditions. Passive systems such as the Special Sensor Microwave Imager (SSM/I) are capable of providing information on the pan-Arctic scale (Kwok et al., 1998; Spreen et al., 2011) with relevance for determining sea ice age and the Arctic mass and energy budget, but with a resolution of tens of km.

Active sensors and in particular synthetic aperture radar (SAR) are capable of providing much higher resolution ice drift products at the km-scale by deriving displacement vectors between two consecutive scenes commonly through feature tracking and/or pattern matching (Berg and Eriksson, 2014; Karvonen, 2016; Muckenhuber and Sandven, 2017). These methods depend on at least two consecutive SAR scenes frequently acquired days apart, such that the often-complex drift patterns of sea ice frequently lead to underestimation of ice drift speeds by 10-20% (Haller et al., 2014), but can likely be much higher (Hutchings et al., 2011). The use of a single SAR scene for estimation of instantaneous ice drift using the Doppler centroid anomaly (DCA) was therefore proposed by Kræmer et al. (2015). This technique is capable of providing one-dimensional drift products in the satellite's look direction with resolution on the km-scale. However, the technique is sensitive to biases and aliasing related to the ice surface, accuracy of the satellites orbit state vectors, antenna and ~~incidence angle~~ incident angle. The technique ~~further requires~~ has in the past required incorporation and ~~manual~~ interpretation of land areas in each scene where biases can be corrected (Kræmer et al., 2015), but may not be necessary in the future (Hansen et al., 2018).

All of the techniques mentioned provide valuable ice drift assessments across different spatial and temporal scales, but do not provide a consistent approach with optimal m-scale resolution beneficial to support Arctic stakeholders, such as local ice use, shipping, and resource exploration (Eicken et al., 2009; Dammann et al., 2018a). Monitoring of environmental hazards and effective emergency response in sea ice environments require high-resolution data of ice hazard distributions (e.g., multiyear ice, landfast ice breakout, and ice push events), ice movement and deformation, as well as ice characteristics and dynamics relevant to emergency response (Eicken et al., 2011).

In this work, we explore SAR interferometry (InSAR) as a tool to provide instantaneous m-scale resolution ice drift products. InSAR is a signal processing technique which extracts the phase difference between SAR images acquired from

similar viewing geometries. This interferometric phase can either signify sea ice topography if acquisitions are separated in space (i.e. non-zero perpendicular baseline) or motion in the look direction if separated in time (non-zero temporal lag). InSAR has mainly been used to study deformation (Li et al., 1996;Dammert et al., 1998;Morris et al., 1999;Vincent et al., 2004;Meyer et al., 2011;Berg et al., 2015;Marbouti et al., 2017;Dammann et al., 2018b;Dammann et al., 2018d;Dammann et al., In review) and topography (Dammann et al., 2017;Dierking et al., 2017) of landfast sea ice since the drifting ice generally moves too much between most satellite acquisitions to retain coherence over days to weeks. However, during the pursuit operation mode of TanDEM-X in 2010 and 2015, InSAR analysis of drifting ice was possible with temporal lags on the order of seconds (Scheiber et al., 2011;Mahoney et al., 2016;Dammann et al., 2018c).

The interferometric phase is represented between  $-\pi$  and  $\pi$ . Under conditions where ice floes drift linearly at slightly different velocities without rotating, each floe will feature different homogenous phase values. However, with baselines on the order of seconds, floes generally rotate or slightly deform leading to non-homogenous phase values where the phase can fall outside the  $[-\pi; \pi]$  range and will “wrap around” to the opposite side of the phase cycle causing phase ambiguities. An interferogram is a visual representation of the phase and typically consist of multiple fringes (stripes) of equal phase in case of a baseline on the order of seconds or days for drifting and landfast ice, respectively. The fringes resulting from 1-dimensional phase information can be interpreted into 2-dimensional motion using inverse modeling and provide important information pertaining to internal deformation of the ice (Dammann et al., 2016). However, the fringes, but can at the same time hide a constant phase value pertaining to the general drift speed, which was the case for Scheiber et al. (2011). In contrast, weH here, we apply bistatic acquisitions with substantially shorter ( $\sim 10$  ms) temporal lag for the evaluation of instantaneous sea ice drift speed. This technique has been used for assessment of surface current velocity (Romeiser and Thompson, 2000;Romeiser and Runge, 2007;Romeiser et al., 2010), but to our knowledge has not been used to measure sea ice drift.

## 2 Data and methods

### 2.1 Study area and validation data

We focus validation efforts over Utqiagvik (formerly known as Barrow), situated in the eastern Chukchi Sea near Point Barrow, Alaska (Figure 1). We chose this region because of its diverse ice dynamics, the authors' direct experience with the region over the past two decades, and the ground-based radar stationed in Utqiagvik continuously tracking sea ice drift. Prevailing winds from the northeast in combination with opposing currents and the orientation of the land results in ice drift predominantly towards the southwest, persistent patches of open water, and ridged ice (Norton and Gaylord, 2004;Jones et al., 2016).

The near-shore ice out to a range of 11 km is continuously monitored using a Furuno FAR-2127 25 kW, X-band (3 cm, 10 GHz) marine radar from an altitude of 22.5 m (Figure 1). Radar images are archived every 5 minutes and used for

monitoring landfast ice, providing information on dynamics of offshore ice (Druckenmiller et al., 2009). Due to occlusions and non-rigid body deformation, traditional feature tracking methods are not always effective in tracking sea ice from marine radar imagery. To reduce the noise of calculated motion vectors, we apply a combination of existing and newly developed methods. These include dense and feature-based optical flow approaches to compute motion fields from the images, active contours for delineation of stable landfast ice, and Hidden Markov Models for machine learning based event detection (Rohith et al., 2013; Jones et al., 2016). The filtering approach leading to results in filtered motion products averaged over 1.5 hours. Even so, For the three cases evaluated here the motion tracking algorithm only produced consistent motion vectors suitable for validation in one ~~out of three cases~~ (Nov 21).

- 5
- 10 To assess the ocean currents in the vicinity of our study area, we analyzed data from two moorings, M1 and M2, deployed near Utqiagvik at 71.204N, 157.680W and 71.813N, 156.675W at a water depth of 53 m and 70 m respectively (Figure 1). The moorings contained a Teledyne RDI Workhorse Sentinel acoustic Doppler current profiler (ADCP), whose data we use to evaluate surface current velocity (Mahoney et al., 2015). Velocities are derived from the Doppler shifts of return signals from particles within the water column.
- 15 In addition to Utqiagvik, we explore the potential of InSAR-derived ice drift in the Fram and Vilkitsky Straits. Situated by the east coast of Greenland, the Fram Strait is an important location due to the dynamic conditions and large fluxes of both first- and multiyear sea ice. The Vilkitsky Strait is situated by the Taymyr Peninsula and is a strategic location on the Northern Sea Route (Council, 2009).

## 2.2 TanDEM-X data

- 20 The twin constellation TanDEM-X has operated since 2010, with a repeat-pass cycle of 11 days featuring two X-band ( $\lambda = 3.1$  cm) SAR sensors. We obtained single-look complex image pairs from the German Aerospace Center (DLR). Images were acquired in stripmap bistatic mode with short along-track baselines of less than 100 m. Image information for the images used in this work can be found in Table 1. We considered the entire data set acquired by TanDEM-X over Utqiagvik and chose to focus on three consecutive acquisitions during 30 Oct. – 21 Nov, 2015. This time span was chosen based on (1)
- 25 the ground-based radar being operational, (2) less than a kilometer wide landfast ice maximizing the ground-based radar footprint occupied by drifting ice, and (3) dynamic ice conditions. Due to increasingly later fall freeze-up of landfast ice near Utqiagvik (Mahoney et al., 2014), sea ice ~~grown in situ~~ is likely only a few centimeters thick during Oct. – Nov., but with potential advection of thicker ice from the eastern Beaufort Sea. The scenes were processed using a standard InSAR workflow (Bamler and Hartl, 1998; Ferretti et al., 2007; Dammann et al., 2016) including interferogram formation, adaptive
- 30 phase filtering (Goldstein and Werner, 1998), and geocoding using the GAMMA software (Werner et al., 2000). The ice drift was derived from the interferometric phase further described in the following section. Of the three acquisitions obtained near Utqiagvik, only the image pair from 21 Nov. was acquired when the ground-based radar was operational and could

provide a coherent motion product and was thus used for validation of the derived drift.

### 2.3 InSAR-derived drift speed

In an interferogram, only displacement in look-direction ( $\Delta r_{LOS}$ ) results in a phase change  $\Delta\Phi_{disp}$  according to  $\Delta\Phi_{disp} = 4\pi \Delta r_{LOS}/\lambda$ . For TanDEM-X, the sensor wavelength  $\lambda$  is 3.1 cm, such that ice displacement has to exceed  $\Delta r_{LOS} \approx 1.5cm$  for the  $\Delta\Phi_{disp}$  phase values to “wrap around”. This rarely occurs with the short interferometric time lag of roughly 10 ms used in this work.  $\Delta\Phi_{disp}$  can be converted to drift speed ~~in look direction~~in the look direction using the speed of ambiguity, which is the motion resulting in one phase cycle. We first calculate the ground range displacement ~~in look direction~~in the look direction resulting in one full phase cycle (displacement of ambiguity,  $d$ ), which can be expressed as:

$$d = \frac{\lambda}{2 \sin \theta} \quad (1)$$

where  $\theta$  is the ~~incidence angle~~incident angle. Furthermore, the speed of ambiguity can be expressed as  $v_a = d/B_t$ , where the temporal baseline  $B_t = B_{\parallel}/v_s$ ,  $v_s$  is the orbit speed of the satellite ( $7.6 \text{ km s}^{-1}$ ), and  $B_{\parallel}$  is the along-track baseline. The phase-derived speed ~~in look direction~~in the look direction is calculated as:

$$v_{\phi} = \frac{\Delta\Phi_{disp}}{2\pi} v_a \quad (2)$$

The absolute phase and motion values are initially unknown; thus, we calibrate  $v_{\phi}$  by subtracting the derived speed of landfast ice so it is ensured to be zero. Although the direction of motion cannot be determined using the phase information alone, it is possible to determine the binary direction (i.e. whether scatterers increase or decrease their distance to the satellite) by evaluating spatially continuous phase gradients. Here, an increasing phase is indicative of increased motion towards the satellite (if the image acquired by the leading satellite is used as a master image). We further define the positive direction such that a positive  $v_{\phi}$  is indicative of speed towards the satellite.

### 2.4 Drift speed ambiguities

It is necessary to evaluate topography as a potential contributor to phase change. The height of ambiguity,  $h_a$ , (i.e. the elevation that would result in one phase cycle) can be expressed:

$$h_a = \frac{\lambda R \sin \theta}{m B_{\perp}} \quad (3)$$

where  $B_{\perp}$  is the perpendicular baseline,  $R$  is the slant range, and  $m = 1$  or  $2$  for monostatic and bistatic acquisitions, respectively. The potential resulting speed error,  $v_e$ , caused by assuming the entire phase response to be motion driven, when in reality topographic features of height  $h_0$  are present, can be determined:

$$v_e = h_o \frac{v_a}{h_a} \quad (4)$$

For the scenes considered here,  $h_a$ -values are roughly 40 meters hence cm-scale height offsets will result in  $v_e$  on the order of  $\text{mm s}^{-1}$ . Therefore, the height offset between floes would have to approach one meter to make a significant contribution. This height offset would have to be prominent across an entire floe, which would reflect a difference in ice thickness and hence would mostly be relevant for ice bergs or thick multiyear ice. Ice ridges can often feature offsets larger than a meter, but can easily be identified as a topographic response since they would otherwise indicate a non-homogenous motion across a floe, which is implausible at the timescales considered here.

In addition to topography, it is necessary to consider phase contributions from ocean waves in areas of young ice. The phase values of rigid ice floes will not be significantly impacted by waves, but fragmented ice is capable of following the vertical motion of dm-scale wind-driven waves. The backscatter contribution from waves will often be dominated by the motion of the wave surface facing the radar. Hence, waves propagating toward the radar will result in a positive contribution to the interferometric phase due to the upward motion of the wave face seen by the radar. Conversely, waves travelling away from the radar will result in a negative phase contribution (Thompson and Jensen, 1993; Romeiser and Thompson, 2000). The speed contribution from dm-scale waves is inversely proportional to the sine of the incidence angleincident angle. Hence the contribution from waves can be substantial in cases of small incidence angleincident angles and can be larger than any physical motion of the wave itself. Smaller cm-scale capillary waves can also result in a contribution to the derived speed (Valenzuela, 1978; Thompson and Jensen, 1993; Romeiser and Thompson, 2000).

### 3 Results

#### 3.1 Drift speed validation near Utqiagvik, Alaska

Three images acquired near Utqiagvik were processed for interferometric phase and speed ~~in look direction~~in the look direction and displayed in Figure 2. During the time spanned by the three acquisitions, the wind direction ranged between NNE and E predominately resulting in SW ice drift along the coast. Note that we use standard atmospheric convention for winds (by referring to the direction from which the wind is coming) and the oceanographic convention for surface currents and ice drift (by referring to the direction in which the ice or current is moving).

The image acquired on Oct. 30 features dispersed floes and open water and is displayed in Figure 2a. Areas of open water appear dark in the backscatter image due to low wind speed ( $\sim 4 \text{ m s}^{-1}$ ) and hence low surface roughness in the form of capillary waves (see circled area in Figure 2a). The look-directional speed based on the interferometric phase is displayed in Figure 2b. Here, the exact speed has been calibrated to the known stationary ice on Elson Lagoon. Positive speed is defined

as the direction opposite to look-direction (roughly towards WSW). The velocity field exhibits negative (ENE) surface velocity near the coast (see “A” in Figure 2b). This can be explained by the relatively low NNE wind speed and hence the opposing Alaska Coastal Current (Ahl $\ddot{a}$ s and Garrison, 1984; Winsor and Chapman, 2004; Jones et al., 2016) becomes the dominant force of ice drift, which at the time of the acquisition was NE at  $0.4 \text{ m s}^{-1}$  as observed with mooring M1. Further  
5 off shore the speed changes orientation towards WSW, likely due to wind becoming the dominant forcing resulting in convergence around the dashed line (zero velocity) at the time of the acquisition (Figure 2b). Where positive velocity, areas of open water appears to be moving faster toward the WSW (positive direction) than the surrounding ice (top circle in Figure 2b) likely due to a wind-induced wave contribution to the phase. Here, the speed of the waves will be added to the effect of the currents resulting in apparent higher speed. Further off shore (see “B” in Figure 2b), the negative drift speed is likely due  
10 to reduced wind speed or altered wind direction since the current slowed down significantly further off shore as measured by M2 (not shown).

On Nov. 10, the wind was stronger than during the other acquisitions ( $10 \text{ m s}^{-1}$ ) and areas of open water exhibit higher backscatter than the ice floes that were present due to wind-roughening of the surface (see circled area in in Figure 2c). The strong wind results in a consistently positive drift speed ~~in look direction~~ in the look direction, which decreases with distance  
15 to shore (Figure 2d). This gradient was likely due to variable wind and ice forcing as the current velocity was comparable between M1 and M2. In between floes, the ocean surface exhibits velocities roughly  $1 \text{ m s}^{-1}$  larger than that of the adjacent ice. This difference in speed can be explained by wind-driven waves, which are attenuated beneath the larger floes, but will have an impact over open water and looser fragmented ice. The apparent speed increase with distance from shore within the bottom circled area in Figure 2d is consistent with dm-scale wind-driven waves in which amplitudes increase with fetch.

20 At the time of acquisition on Nov. 21, the sea ice in the radar footprint consisted of a mix of large floes surrounded by young ice and open water (see circled areas in Figure 2e). It is apparent that the floes are largely drifting with homogenous speed in the southwest direction (positive speed defined as the direct opposite of look direction) (Figure 2f). The derived speed also exhibits a higher surface velocity in the areas of open water and thin ice between the floes ( $\sim 1 \text{ m s}^{-1}$  vs.  $\sim 0.6 \text{ m s}^{-1}$ ) (circled area in Figure 2f), but less pronounced than on Nov. 10. This is likely due to reduced wind speed ( $7 \text{ m s}^{-1}$ ) and the presence  
25 of young ice in between floes (circled area in Figure 2e) damping the waves. We further compare the TanDEM-X scene on Nov. 21 with backscatter derived from a ground-based radar system in Utqiagvik (Figure 3a and b). Due to the high ~~incidence angle~~ incident angle of the ground-based radar, the backscatter contrast between the ice floes and the surrounding young ice and open water is significantly greater than in the SAR imagery (see circled areas in Figure 3b).

We spatially compared the phase-derived drift speed,  $v_{\phi}$  (figure 3c), with the drift speed derived from the ground-based  
30 radar,  $v_{gr}$  (arrows in Figure 3c). We further compared the two with  $v_{gr}$  projected into the look direction – the reference frame of  $v_{\phi}$  (Figure 3d). The  $v_{gr}$  confirms largely homogenous drift speed of the floes in the southwest direction corresponding to  $v_{\phi}$  (Figure 3d) with an R-value of 0.85. The general lower  $v_{gr}$  speed can be explained by the 2.5 h



averaging window as  $v_{gr}$  is averaged over a time period when winds fluctuated between roughly 5.5 and 7 m s<sup>-1</sup> while  $v_{\phi}$  was derived when winds were in the upper range near 6.5 m s<sup>-1</sup> recorded in Utqiagvik.  $v_{gr}$  calculated in areas occupied by young ice is derived from the drift of floes occupying the respective pixels either before or after the SAR acquisition since young ice does not sustain a constant signal necessary for the feature tracking algorithm used. Therefore, the match between the derived velocities  $v_{\phi}$  and  $v_{gr}$  is poor in areas between floes (highlighted area in Figure 3d).

To rule out a height offset between the landfast ice and the drifting ice as a possible cause for a phase offset, we calculated the drift speed error (Equation 4) to be roughly 1 mm s<sup>-1</sup> per cm height difference. Assuming first-year ice, a difference in freeboard between smooth sections of landfast and drifting ice greater than 5 cm is unlikely, since this would correspond to a difference in ice thickness of ~0.5 m and ice is unlikely to be thicker at this time of year. Based on local field analysis in 10 years with particularly rough landfast ice (e.g. spring 2015), large areas of rubble ice can potentially raise the mean InSAR-derived height by 20 cm (Dammann et al., 2017). A roughness-induced height offset can often be identified through non-homogenous phase values across the rough area due to the m-scale resolution of TanDEM-X. Even so, a maximum expected offset would therefore be roughly 25 cm and lead to a 2.5 cm s<sup>-1</sup> height-induced bias, ruling out elevation differences as a substantial contributor to biases in the drift speed estimates.

### 15 3.2 Evaluating fracture dynamics near Holm Land, Greenland

From the previous section, it is clear that the interferometric phase can be accurately used to derive ice drift speed ~~in look direction~~ in the look direction. However, due to the calibration offsets, the absolute speed cannot be resolved without stationary landfast ice or land in the image, which can serve as a calibration point for zero drift speed. Even so, relative speed can still be resolved and is potentially of great value. One example is to determine the rate at which a lead opens or closes, which is dependent on the relative speed difference between the two sides of the lead. We applied InSAR to two 20 acquisitions from the Fram Strait (Figure 4a) consisting of near continuous first- and multiyear (marked “A”) sea ice and features a fracture running northwest towards Holm Land, Greenland. The main objective with this case study is to demonstrate the application to determine the opening/closing rates of fractures. In this case, it is possible to obtain absolute speed, since one of the images contains land, but this is not necessary as relative speed would be equally useful in 25 determining opening/closing rates.

We calculated  $v_{\phi}$  (Figure 4b) relative to the stationary ice closest to shore and define positive direction opposite to look direction. The strictly positive velocity indicates a SW velocity component. The higher speed upstream of the lead (to the NE) implies that the lead was closing at the time of the acquisition. The ice motion is not directly in response to the wind, which came from the SW at roughly 3 m s<sup>-1</sup>, according to data from the European Center for Medium-Range Weather 30 Forecasts’ ERA5 reanalysis. To further investigate whether the fracture was in fact closing at the time of the TanDEM-X acquisition, we compared the location of the fracture edges with a Sentinel-1 image acquired 32 minutes later (Figure 5a). We delineated a section of the fracture with easily detectible boundaries in both the Sentinel-1 and TanDEM-X scenes

(Figure 5b and c respectively). This comparison enabled us to estimate the closing direction (solid lines in Figure 5c) and the angle,  $\theta \approx 9.2^\circ$ , relative to the TanDEM-X look direction (dashed line in Figure 5c). Comparing the fracture width in three locations (three solid lines in Figure 5c) indicated that the fracture closed by roughly 200m (176-244 m) during the 32 minutes between acquisitions. This corresponds to a closing velocity of  $10.9 \pm 1.8 \text{ cm s}^{-1}$ . From Figure 4b, the difference in  $v_\phi$  across this lead (along the three solid lines) is approximately  $10.0 \pm 1.0 \text{ cm s}^{-1}$ , which corresponds to an instantaneous speed difference of  $10.1 \pm 1.1 \text{ cm s}^{-1}$  in the direction of lead closure. This is within  $\sim 10\%$  of the closure rate estimated from the comparison of TanDEM-X and Sentinel-1 imagery and within the window of uncertainty. The difference could be due to variation in the closure rate over time. At these closure speeds, the 1 km wide fracture would have closed completely within approximately 3 hours. A Sentinel image acquired 15 hours later (not shown) confirms that the lead closed.

### 10 3.3 Assessing drift zones in Vilkitsky Strait, Russia

We further examined an additional case study in the Vilkitsky Strait, an area with relevance in the context of maritime navigation, to demonstrate the use of InSAR in a dynamically complex scenario (not homogenous floe speeds as in previous sections). The Strait near Taimyr Peninsula features either landfast ice or temporarily stationary pack ice (as absence of landfast ice is apparent in ice charts by the Arctic and Antarctic Research Institute – [www.aari.ru](http://www.aari.ru)). Stationary pack ice is also present south of Bolshevik Island in Severnaya Zemlya visible with lower backscatter and zero ice drift ~~in look direction~~ in the look direction in Figure 6a and b respectively (see “A” and “B” in Figure 6b). Between these areas of stationary ice are two distinct intermediate zones of ice moving at roughly  $0.3 \text{ m s}^{-1}$  (“C” and “D”) bordering a channel with higher velocities ranging between roughly  $0.35$  and  $0.45 \text{ m s}^{-1}$  (“E-H”). The drift is approximately eastward in response to a WSW wind of roughly  $6 \text{ m s}^{-1}$  obtained from ERA5 reanalysis. The westerly wind leads to open water on the east side adjacent to the peninsula (see “I” in Figure 6a), allowing otherwise confined ice to move more freely leading to larger velocities (“E”). The central channel (“F”-“H”) exhibits higher drift speed than the ice immediately to each side (“C” and “D”) and variable speed in the form of a ramping speed (“F” and “G”), towards a prominent sinuous speed discontinuity extending northward from the peninsula (“H”). This discontinuity indicates convergence of roughly  $10 \text{ cm s}^{-1}$ , which is expected to lead to large-scale scale rafting and ridge building. However, there is no evidence of any ridges or ice rubble in the backscatter in Figure 6a. This suggests the event had only just commenced and / or was short-lived. The absence of any ridge features in the backscatter amplitude imagery suggests the process may be transient, impacting different sections of ice as it passes by the point of convergence.

The Vilkitsky Strait is known for the formation of ice arches in the springtime through the consolidation of ice with m-scale thickness. Ice arches form when ice passing through a narrow passage experiences flow stoppage as a result of confining pressure and behaves like landfast ice (Hibler et al., 2006). The scenario presented here may be the precursor to the formation of an ice arch where the drifting ice increasingly gets confined leading to temporarily stationary ice. Although, during December, the ice does not possess the thickness and strength to withstand the building pressure. The result is the buildup of stagnant ice under transient stress conditions as the pressure cyclically builds up and is released through ice

failure. The general direction of the ice drift in the Vilkitsky Strait can be determined strictly based on the backscatter image (Figure 6a) by evaluating among other the lead at the southern margin of the strait (“I”) and the apex of the partial ice arches, which points upstream (“J”). However, this example illustrates additional important utilities of this approach, namely not only to evaluate general drift direction and speed, but also to distinguish between very different dynamic regimes which cannot be evaluated strictly from the amplitude image. We have also demonstrated the ability to capture short-lived transient dynamics, which would otherwise be invisible if using InSAR with longer ( $> 1s$ ) time lags.

#### 4 Discussion – operational potential and limitations

We have demonstrated the potential use of InSAR for derivation of instantaneous sea ice drift. The phase-derived speed has shown to conform well with ground-radar validation dataset with high accuracy similar to prior InSAR validation over landfast ice using longer interferometric time lags on the scale of days to weeks (Dammann et al., 2018b). This validation was limited to rigid ice floes as the young, fragmented ice did not result in a consistent backscatter signature that could be tracked with the ground-based radar. Also, the contributions to the Doppler velocity can be large and difficult to correct in areas of young ice where the ice motion is impacted by dm-scale waves. We argue that InSAR can potentially provide important drift information on the m-scale in support of operations in or near sea ice. We show here that InSAR is capable of determining the opening/closing rate of leads which can serve as important transportation corridors and may help forecast travel conditions for ocean navigation. We also demonstrate the ability to identify detailed transient sea ice dynamic conditions related to convergence and deformation. Such information can possibly improve ice charting by helping to discriminate between landfast ice and temporally stationary pack ice. InSAR can also likely be utilized to evaluate interactions between sea ice and structures by quantifying strain and associated stress in a similar approach to Dammann et al. (2018b). The InSAR processing steps are well documented and can potentially be incorporated into operational analysis frameworks and workflows with standard processing tools (Dammann et al., In review) such as ESA’s SNAP software. Even so, important limitations exist related to the use of InSAR to detect sea ice drift.

The interferometric product only resolves one dimension (look direction) of the 2-dimensional drift; hence the actual drift speed cannot be resolved directly from the interferogram without additional interpretation steps. For surfaces experiencing consistent displacement over time periods of several hours, (e.g. glaciers) 2-D motion vectors can be estimated by data from both ascending and descending passes (Lang, 2003). This is generally not the case for sea ice, but Dammann et al. (2016) demonstrated that by evaluating the coastline, persistent drift patterns, and additional coarser resolution datasets, it is possible to narrow down likely directions of ice motion. In the case of fixed installations near the coast, information related to the general drift pattern may be sufficient to determine the true velocity field. An example is Utqiagvik, where the near-coastal sea ice predominately drifts in the orientation of the coastline. This leaves two possible directions of motion, northeast and southwest, which can be discriminated from the sign of the phase values.

For operations far from shore (e.g. shipping), drift directions can be estimated based on large-scale wind data resulting in a window of possible drift directions. However, in a dense pack, ice forcing may play a larger role impacting drift direction. Here, large-scale sea ice drift products from SAR or SSM/I may be used to determine the general direction of drift. In the absence of land or fixed structures in the scene, only relative speed can be obtained since the exact speed cannot be calibrated in relation to land. Even so, relative speeds are of relevance in the context of evaluating floe interaction and the opening of leads. In the case of the Fram Strait, we extracted the closing direction by comparing with Sentinel-1 imagery (Figure 5). However, even in the absence of other data, a range of likely directions can be estimated based on edge morphology. For instance, shear motion is unlikely along non-linear lead systems.

In the case of ice management (i.e. the protection of installations and drilling rigs from moving ice), the relative drift speed between a vessel and sea ice is of most relevance and can be calculated. However, this is only the case if speed of ambiguity is on the order of meters ruling out the possibility of phase ambiguities. A known vessel speed at the time of acquisition can also potentially be used to derive absolute sea ice drift speed. For the example of a closing lead in the Fram Strait, the interferometric phase could be tracked continuously near the southeastern part of the image. However, in a case where a fracture caused a phase discontinuity extending all the way through the image,  $\Delta v_\phi$  could theoretically not be determined since multiples of  $2\pi$  could not have been discriminated. Even so, considering  $v_a$ -values reaching upwards of 1 m, would result in implausible  $\Delta v_s$ -values if the phase discontinuity represented a phase change of more than  $2\pi$ .

The large effective baseline and  $h_a = 65$  m results only in a minor phase change from elevation. For instance, if the ice on each side of the fracture would feature a 1 cm freeboard difference, it would only result in a  $0.5 \text{ mm s}^{-1}$  drift speed error,  $v_e$  (Equation 4). However, this image features large multiyear floes (see “A” in Figure 4a and b) causing a phase change of around 0.03 radians from surrounding ice. This implies an elevation change of roughly 30 cm and hence a difference in ice thickness of about 3 m, which is a reasonable difference between multiyear and first-year ice in this region. Ice bergs can feature even larger elevation changes than multiyear ice in which cases the sail height can end up dominating the phase signal as is the case here leading to values falling outside of the color range and saturating the image (see white areas in “B” in Figure 4b). The drift speed error from multiyear ice and icebergs can thus be substantial, but such features can be easily recognized and excluded from the drift analysis.

With this work, we demonstrate that it is possible to derive instantaneous drift speed using InSAR, which can be more accurate than SAR-based approaches utilizing acquisitions separated by days, which can lead to underestimation of ice drift speeds (Hutchings et al., 2011; Haller et al., 2014). However, the approach presented here merely provides a snapshot in time, hence the derived drift should be evaluated with caution and preferably used to compliment other SAR-based drift products. For instance, there may be cases where the interferograms capture ice which is being pushed in one direction creating build-up of ice forces leading to short-term rebound effects where ice motion is significantly slowed down or reversed. Although such cases will be rare, it is necessary to consider such possibilities to make sure the derived instantaneous drift is representative of the general ice drift.

## 5 Conclusion

Sea ice is a significant component of Arctic ecosystems and its dynamic nature is of critical relevance to human near-coastal or offshore activities. Multiple techniques exist to evaluate sea ice drift across large spatial scales using remote sensing, but often with limited accuracy due to the temporal lag between satellite overpasses. We here investigate the potential of single-pass TanDEM-X interferometry for deriving more accurate instantaneous drift speeds with a m-scale resolution capable of supporting stakeholders. The approach resulted in values roughly within 10 % of validation data in the form of 2.5 h drift speed averages derived from a ground-based radar system in Utqiagvik, Alaska. The approach was further used to determine the closing speed of a fracture in the Fram Strait. The ability of estimating the separation/closing rate of leads is an application with relevance for transportation since opening of fractures limits over-ice travel, but serves as pathways for ocean navigation.

Lastly, the approach was demonstrated in the Vilkitsky Strait, an important strategic location for trans-Arctic shipping as part of the northern sea route. Here, InSAR showed capable of discriminating different dynamic regimes and identify zones of shear and convergence not easily identified in the amplitude image. The case study in the Vilkitsky Strait not only demonstrates the application for InSAR-derived drift speeds, but also the ability to resolve important sea ice processes at a scale and accuracy which have been difficult to assess in the past. As an example, we were able to resolve short-lived transient convergence processes otherwise invisible to SAR approaches. Such detailed information pertaining to drift speed could potentially be used to accurately determine convergence and divergence in a similar approach as applied to landfast ice. With the m-scale resolution of stripmap X-band SAR, this approach would likely be able to provide estimates of ice forcing and drift around structures relevant for engineering.

TanDEM-X is presently the only system that can produce consecutive SAR images with ms-scale temporal lag necessary to derive interferometric estimates of instantaneous sea ice drift speed. The limited data availability somewhat reduces the potential for this technique in monitoring and strategic decision making, but we argue it can still be valuable in supplementing coarser-resolution datasets with higher temporal sampling where data are available. Also, with potential newer systems such as the proposed TanDEM-L mission, higher temporal resolution of drift estimates may be obtained by utilizing interferograms from multiple sensors. It is clear that single-pass InSAR is not only relevant as a tactical support tool for Arctic stakeholders, but provides an important tool to assess short-term km-scale sea ice processes. Such information can help make strategic decisions by evaluating seasonal dynamics of different ice regimes as well as aid in the development and improvement of sea ice models and predictions.

## Acknowledgements

This work was supported by the Swedish National Space Agency (Dnr 192/15). TanDEM-X data were provided free of charge by the German Aerospace Center (DLR) through a science proposal (XTI\_GLAC6921). Sentinel-1 data are provided

free of charge by the European Union Copernicus program and were accessed through the Alaska Satellite Facility (ASF). The mooring observations by Utqiagvik was supported by Arctic Research for Sustainability (ArCS) Project and Grant in Aid for Scientific Research 15H03721 from the Japanese Ministry of Education, Culture, Sports, Science, and Technology. We thank Bill Hauer at ASF, Thomas Busche at DLR, and David Duncan and Anis Elyouncha at Chalmers University of Technology for valuable support and guidance.

## Competing interests

The authors declare that they have no conflict of interest.

## References

- Ahlnäs, K., and Garrison, G.: Satellite and oceanographic observations of the warm coastal current in the Chukchi Sea, Arctic, 244-254, 1984.
- Bamler, R., and Hartl, P.: Synthetic aperture radar interferometry, Inverse problems, 14, R1, 1998.
- Berg, A., and Eriksson, L. E. B.: Investigation of a hybrid algorithm for sea ice drift measurements using synthetic aperture radar images, IEEE Transactions on Geoscience and Remote Sensing, 52, 5023-5033, 2014.
- Berg, A., Dammert, P., and Eriksson, L. E. B.: X-Band Interferometric SAR Observations of Baltic Fast Ice, IEEE Transactions on Geoscience and Remote Sensing, 53, 1248-1256, 10.1109/TGRS.2014.2336752, 2015.
- Comiso, J. C., and Hall, D. K.: Climate trends in the Arctic as observed from space, Wiley Interdisciplinary Reviews: Climate Change, 5, 389-409, 10.1002/wcc.277, 2014.
- Council, A.: Arctic marine shipping assessment, Protection of the Arctic Marine Environment Working Group (PAME), Akureyri, Island, 190, 2009.
- Dammann, D. O., Eicken, H., Meyer, F., and Mahoney, A.: Assessing small-scale deformation and stability of landfast sea ice on seasonal timescales through L-band SAR interferometry and inverse modeling, Remote Sens Environ, 187, 492-504, 10.1016/j.rse.2016.10.032, 2016.
- Dammann, D. O., Eicken, H., Saitet, E., Mahoney, A., Meyer, F., and George, J. C.: Traversing sea ice - linking surface roughness and ice trafficability through SAR polarimetry and interferometry IEEE Journal of Selected Topics in Applied Earth Observations and Remote Sensing, 11, 416-433, 10.1109/JSTARS.2017.2764961, 2017.
- Dammann, D. O., Eicken, H., Mahoney, A., Meyer, F., and Betcher, S.: Assessing sea ice trafficability in a changing Arctic, Arctic, 71, 59-75, 10.14430/arctic4701, 2018a.
- Dammann, D. O., Eicken, H., Mahoney, A., Meyer, F., Freymueller, J., and Kaufman, A. M.: Evaluating landfast sea ice stress and fracture in support of operations on sea ice using SAR interferometry, Cold Reg Sci Technol, 10.1016/j.coldregions.2018.02.001, 2018b.
- Dammann, D. O., Eicken, H., Mahoney, A., Meyer, F. J., Eriksson, L. E. B., Saitet, E., Freymueller, J., and Jones, J.: New Possibilities Using TS-X and TD-X in Support of Sea Ice Use, EUSAR 2018; 12th European Conference on Synthetic Aperture Radar, 2018c, 1-6
- Dammann, D. O., Eriksson, L. E. B., Mahoney, A., Stevens, C. W., Van der Sanden, J., Eicken, H., Meyer, F., and Tweedie, C.: Mapping Arctic bottomfast sea ice using SAR interferometry, Remote Sensing, 10(5), 720, 10.3390/rs10050720, 2018d.
- Dammann, D. O., Eriksson, L. E. B., Mahoney, A. R., and Eicken, H.: Landfast sea ice stability – mapping pan-Arctic ice regimes with implications for ice use, subsea permafrost and marine habitats, The Cryosphere, 10.5194/tc-2018-129, In review.
- Dammert, P. B. G., Lepparanta, M., and Askne, J.: SAR interferometry over Baltic Sea ice, Int J Remote Sens, 19, 3019-3037, 10.1080/014311698214163, 1998.
- Dierking, W., Lang, O., and Busche, T.: Sea ice local surface topography from single-pass satellite InSAR measurements: a feasibility study, The Cryosphere, 11, 1967, 10.5194/tc-11-1967-2017, 2017.
- Druckenmiller, M. L., Eicken, H., Johnson, M. A., Pringle, D. J., and Williams, C. C.: Toward an integrated coastal sea-ice observatory: System components and a case study at Barrow, Alaska, Cold Reg Sci Technol, 56, 61-72, 10.1016/J.Coldregions.2008.12.003, 2009.
- Eicken, H., Lovcraft, A. L., and Druckenmiller, M. L.: Sea-Ice System Services: A Framework to Help Identify and Meet Information Needs Relevant for Arctic Observing Networks, Arctic, 62, 119-136, 10.14430/arctic126, 2009.

- Eicken, H., Jones, J., Meyer, F., Mahoney, A., Druckenmiller, M. L., Rohith, M., and Kambhamettu, C.: Environmental security in Arctic ice-covered seas: from strategy to tactics of hazard identification and emergency response, *Mar Technol Soc J*, 45, 37-48, doi.org/10.4031/MTSJ.45.3.1, 2011.
- 5 Eicken, H., and Mahoney, A. R.: Sea Ice: Hazards, Risks, and Implications for Disasters, in: *Coastal and Marine Hazards, Risks, and Disasters*, edited by: Ellis, J. T., Sherman, D. J., and Shroder, J. F., Elsevier Inc., Amsterdam, Netherlands, 381-399, 2015.
- Ferretti, A., Monti-Guarnieri, A., Prati, C., Rocca, F., and Massonet, D.: *InSAR Principles-Guidelines for SAR Interferometry Processing and Interpretation*, ESA Publications, TM-19, 2007.
- Goldstein, R. M., and Werner, C. L.: Radar interferogram filtering for geophysical applications, *Geophys Res Lett*, 25, 4035-4038, 10.1029/1998GL900033, 1998.
- 10 Haller, M., Brümmer, B., and Müller, G.: Atmosphere-ice forcing in the transpolar drift stream: results from the DAMOCLES ice-buoy campaigns 2007-2009, *The Cryosphere*, 8, 275, 2014.
- Hansen, M. W., Johnsen, H., Park, J.-W., and Engen, G.: A new look at Envisat ASAR range Doppler shift retrieval with the aim of reprocessing ten years of level-0 data, *EUSAR 2018; 12th European Conference on Synthetic Aperture Radar*, 2018, 1-6
- Hutchings, J. K., Roberts, A., Geiger, C. A., and Richter-Menge, J.: Spatial and temporal characterization of sea-ice deformation, *Annals of Glaciology*, 52, 360-368, 2011.
- 15 Jones, J. M., Eicken, H., Mahoney, A. R., Rohith, M. V., Kambhamettu, C., Fukamachi, Y., Ohshima, K. I., and George, J. C.: Landfast sea ice breakouts: Stabilizing ice features, oceanic and atmospheric forcing at Barrow, Alaska, *Continental Shelf Research*, 126, 10.1016/j.csr.2016.07.015, 2016.
- Karvonen, J.: Virtual radar ice buoys—a method for measuring fine-scale sea ice drift, *The Cryosphere*, 10, 29-42, 2016.
- 20 Krämer, T., Johnsen, H., and Brekke, C.: Emulating Sentinel-1 Doppler radial ice drift measurements using Envisat ASAR data, *IEEE Transactions on Geoscience and Remote Sensing*, 53, 6407-6418, 2015.
- Krupnik, I., Aporta, C., Gearheard, S., Laidler, G. J., and Holm, L. K.: *SIKU: knowing our ice*, Springer, New York, 2010.
- Kwok, R., Schweiger, A., Rothrock, D., Pang, S., and Kottmeier, C.: Sea ice motion from satellite passive microwave imagery assessed with ERS SAR and buoy motions, *Journal of Geophysical Research: Oceans*, 103, 8191-8214, 1998.
- 25 Kwok, R., Spreen, G., and Pang, S.: Arctic sea ice circulation and drift speed: Decadal trends and ocean currents, *Journal of Geophysical Research: Oceans*, 118, 2408-2425, 2013.
- Lang, O.: *Radar Remote Sensing in Western Antarctica with Special Emphasis on Differential Interferometry*, Deutsches Zentrum für Luft-und Raumfahrt, 2003.
- Li, S., Shapiro, L., McNutt, L., and Feffers, A.: Application of Satellite Radar Interferometry to the Detection of Sea Ice Deformation, *Journal of the Remote Sensing Society of Japan*, 16, 67-77, 10.11440/rssj1981.16.153, 1996.
- 30 Mahoney, A., Eicken, H., Gaylord, A. G., and Gens, R.: Landfast sea ice extent in the Chukchi and Beaufort Seas: The annual cycle and decadal variability, *Cold Reg Sci Technol*, 103, 41-56, 10.1016/J.Coldregions.2014.03.003, 2014.
- Mahoney, A., Eicken, H., Fukamachi, Y., Ohshima, K. I., Simizu, D., Kambhamettu, C., Rohith, M., Hendricks, S., and Jones, J.: Taking a look at both sides of the ice: comparison of ice thickness and drift speed as observed from moored, airborne and shore-based instruments near Barrow, Alaska, *Annals of Glaciology*, 56, 363-372, 2015.
- 35 Mahoney, A., Dammann, D. O., Johnson, M. A., Eicken, H., and Meyer, F. J.: Measurement and imaging of infragravity waves in sea ice using InSAR, *Geophys Res Lett*, 43, 6383–6392, 10.1002/2016GL069583 2016.
- Marbouti, M., Praks, J., Antropov, O., Rinne, E., and Leppäranta, M.: A Study of Landfast Ice with Sentinel-1 Repeat-Pass Interferometry over the Baltic Sea, *Remote Sensing*, 9, 833, 10.3390/rs9080833, 2017.
- 40 Meier, W. N., and Maslanik, J. A.: Effect of environmental conditions on observed, modeled, and assimilated sea ice motion errors, *Journal of Geophysical Research: Oceans*, 108, 2003.
- Meier, W. N., Hovelsrud, G. K., Oort, B. E., Key, J. R., Kovacs, K. M., Michel, C., Haas, C., Granskog, M. A., Gerland, S., and Perovich, D. K.: Arctic sea ice in transformation: A review of recent observed changes and impacts on biology and human activity, *Reviews of Geophysics*, 52, 185-217, 10.1002/2013RG000431, 2014.
- 45 Meyer, F. J., Mahoney, A. R., Eicken, H., Denny, C. L., Druckenmiller, H. C., and Hendricks, S.: Mapping arctic landfast ice extent using L-band synthetic aperture radar interferometry, *Remote Sens Environ*, 115, 3029-3043, 10.1016/J.Rse.2011.06.006, 2011.
- Morris, K., Li, S., and Jeffries, M.: Meso-and microscale sea-ice motion in the East Siberian Sea as determined from ERS-I SAR data, *Journal of Glaciology*, 45, 370-383, 10.3189/S0022143000001878, 1999.
- Muckenhuber, S., and Sandven, S.: Open-source sea ice drift algorithm for Sentinel-1 SAR imagery using a combination of feature tracking and pattern matching, *The Cryosphere*, 11, 1835, 10.5194/tc-11-1835-2017, 2017.
- 50 Norton, D. W., and Gaylord, A. G.: Drift velocities of ice floes in Alaska's northern Chukchi Sea flaw zone: Determinants of success by spring subsistence whalers in 2000 and 2001, *Arctic*, 347-362, 2004.
- Oikkonen, A., Haapala, J., Lensu, M., and Karvonen, J.: Sea ice drift and deformation in the coastal boundary zone, *Geophys Res Lett*, 43, 2016.
- 55 Rampal, P., Weiss, J., and Marsan, D.: Positive trend in the mean speed and deformation rate of Arctic sea ice, 1979–2007, *Journal of Geophysical Research: Oceans*, 114, 10.1029/2008JC005066, 2009a.

- Rampal, P., Weiss, J., Marsan, D., and Bourgoïn, M.: Arctic sea ice velocity field: General circulation and turbulent-like fluctuations, *Journal of Geophysical Research: Oceans*, 114, 2009b.
- Rohith, M., Jones, J., Eicken, H., and Kambhamettu, C.: Extracting quantitative information on coastal ice dynamics and ice hazard events from marine radar digital imagery, *IEEE Transactions on Geoscience and Remote Sensing*, 51, 2556-2570, 2013.
- 5 Romeiser, R., and Thompson, D. R.: Numerical study on the along-track interferometric radar imaging mechanism of oceanic surface currents, *IEEE transactions on geoscience and remote sensing*, 38, 446-458, 2000.
- Romeiser, R., and Runge, H.: Theoretical evaluation of several possible along-track InSAR modes of TerraSAR-X for ocean current measurements, *IEEE Transactions on Geoscience and Remote Sensing*, 45, 21-35, 2007.
- Romeiser, R., Suchandt, S., Runge, H., Steinbrecher, U., and Grunler, S.: First analysis of TerraSAR-X along-track InSAR-derived current  
10 fields, *IEEE Transactions on Geoscience and Remote Sensing*, 48, 820-829, 2010.
- Scheiber, R., De Zan, F., Prats, P., Araújo, L. S. A., Künemund, M., and Marotti, L.: Interferometric sea ice mapping with TanDEM-X: First experiments, *Geoscience and Remote Sensing Symposium (IGARSS), 2011 IEEE International*, 2011, 3594-3597
- Shirasawa, K., Ebuchi, N., Leppäranta, M., and Takatsuka, T.: Ice-edge detection from Japanese C-band radar and high-frequency radar coastal stations, *Annals of Glaciology*, 54, 59-64, 10.3189/2013AoG62A007, 2013.
- 15 Spreen, G., Kwok, R., and Menemenlis, D.: Trends in Arctic sea ice drift and role of wind forcing: 1992–2009, *Geophys Res Lett*, 38, 2011.
- Stroeve, J. C., Serreze, M. C., Holland, M. M., Kay, J. E., Malanik, J., and Barrett, A. P.: The Arctic's rapidly shrinking sea ice cover: a research synthesis, *Climatic Change*, 110, 1005-1027, 10.1007/S10584-011-0101-1, 2012.
- Thomas, D. N.: *Sea ice*, John Wiley & Sons, Chichester, United Kingdom, 2017.
- 20 Thompson, D. R., and Jensen, J.: Synthetic aperture radar interferometry applied to ship-generated internal waves in the 1989 Loch Linnhe experiment, *Journal of Geophysical Research: Oceans*, 98, 10259-10269, 1993.
- Valenzuela, G. R.: Theories for the interaction of electromagnetic and oceanic waves—A review, *Boundary-Layer Meteorology*, 13, 61-85, 1978.
- Vincent, F., Raucoules, D., Degroeve, T., Edwards, G., and Abolfazl Mostafavi, M.: Detection of river/sea ice deformation using satellite  
25 interferometry: limits and potential, *Int J Remote Sens*, 25, 3555-3571, 10.1080/01431160410001688303, 2004.
- Werner, C., Wegmüller, U., Strozzi, T., and Wiesmann, A.: Gamma SAR and interferometric processing software, *Proceedings of the ERS-ENVISAT symposium*, Gothenburg, Sweden, 2000, 1620
- Winsor, P., and Chapman, D. C.: Pathways of Pacific water across the Chukchi Sea: A numerical model study, *Journal of Geophysical Research: Oceans*, 109, 2004.
- 30 Zhang, J., Thomas, D., Rothrock, D., Lindsay, R., Yu, Y., and Kwok, R.: Assimilation of ice motion observations and comparisons with submarine ice thickness data, *Journal of Geophysical Research: Oceans*, 108, 2003.
- Zhang, J., Lindsay, R., Schweiger, A., and Rigor, I.: Recent changes in the dynamic properties of declining Arctic sea ice: A model study, *Geophys Res Lett*, 39, 10.1029/2012GL053545, 2012.



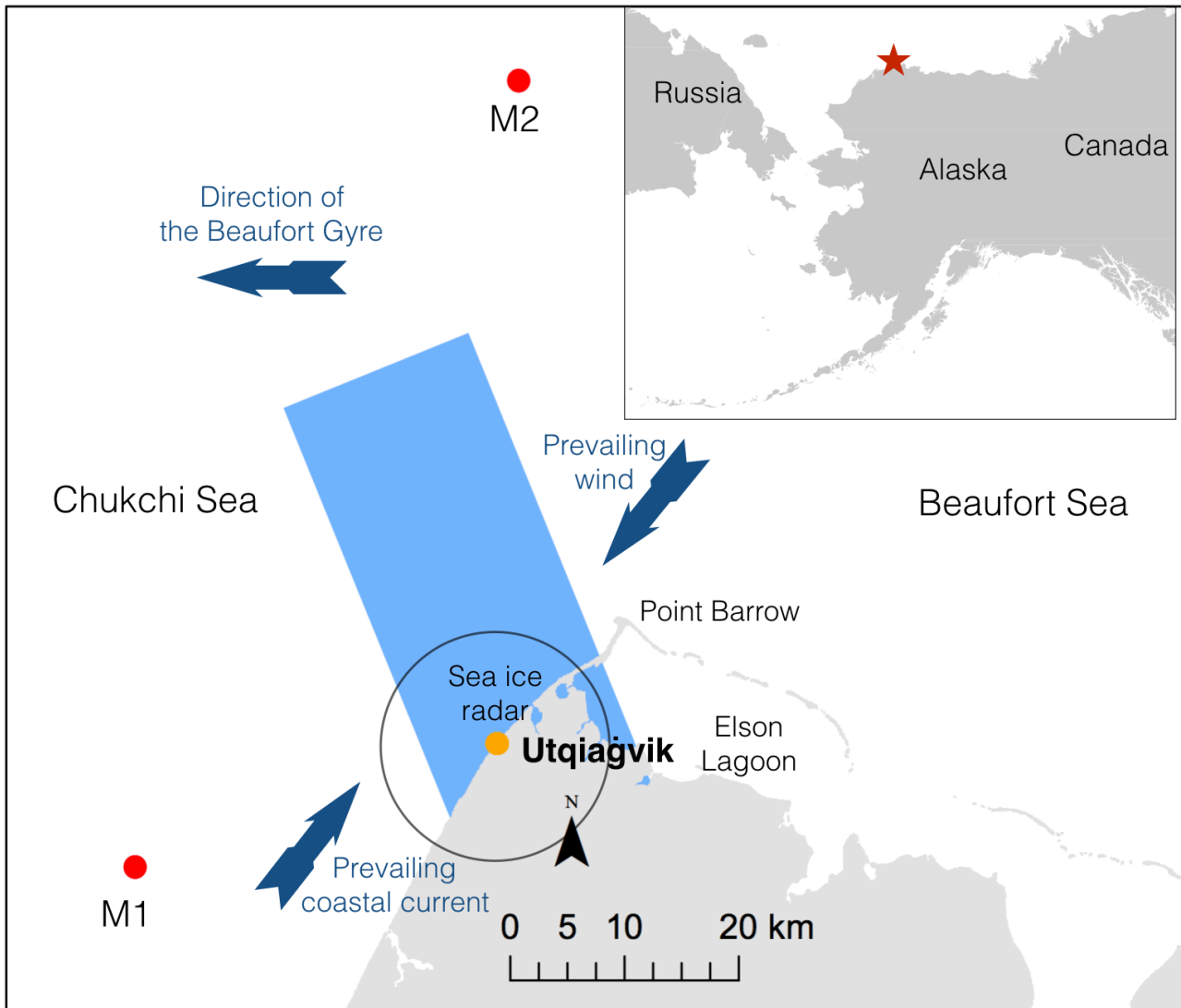
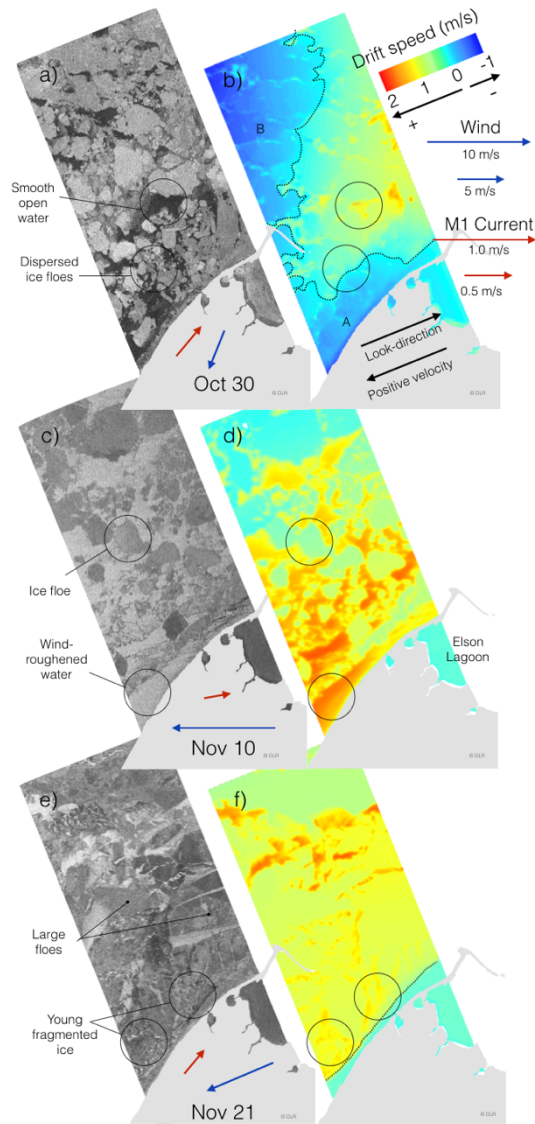


Figure 1: Overview of study region near Utqiagvik, Alaska. The blue rectangle signifies the footprint of the SAR acquisitions and the circle marks the range of the ground-based radar (yellow dot roughly 11 km). Red dots signify location of deployed moorings for assessing ocean surface current.

5

10



5 Figure 2: Three TanDEM-X backscatter images individually stretched to emphasize different ice types and features (left column) and phase-derived speed ~~in look direction~~ in the look direction (right column) by Utqiagvik during fall 2015 at 03:19 UTC. Positive velocity is defined opposite of look direction. Line of zero velocity is marked with a ~~dashed~~ dashed-dotted line. Velocity of wind (recorded in Utqiagvik) and currents (at M1) at the time of acquisition are indicated with blue and red arrows respectively. Land is masked out in light gray. A and B indicate areas of negative velocity in (a) further discussed in the text.

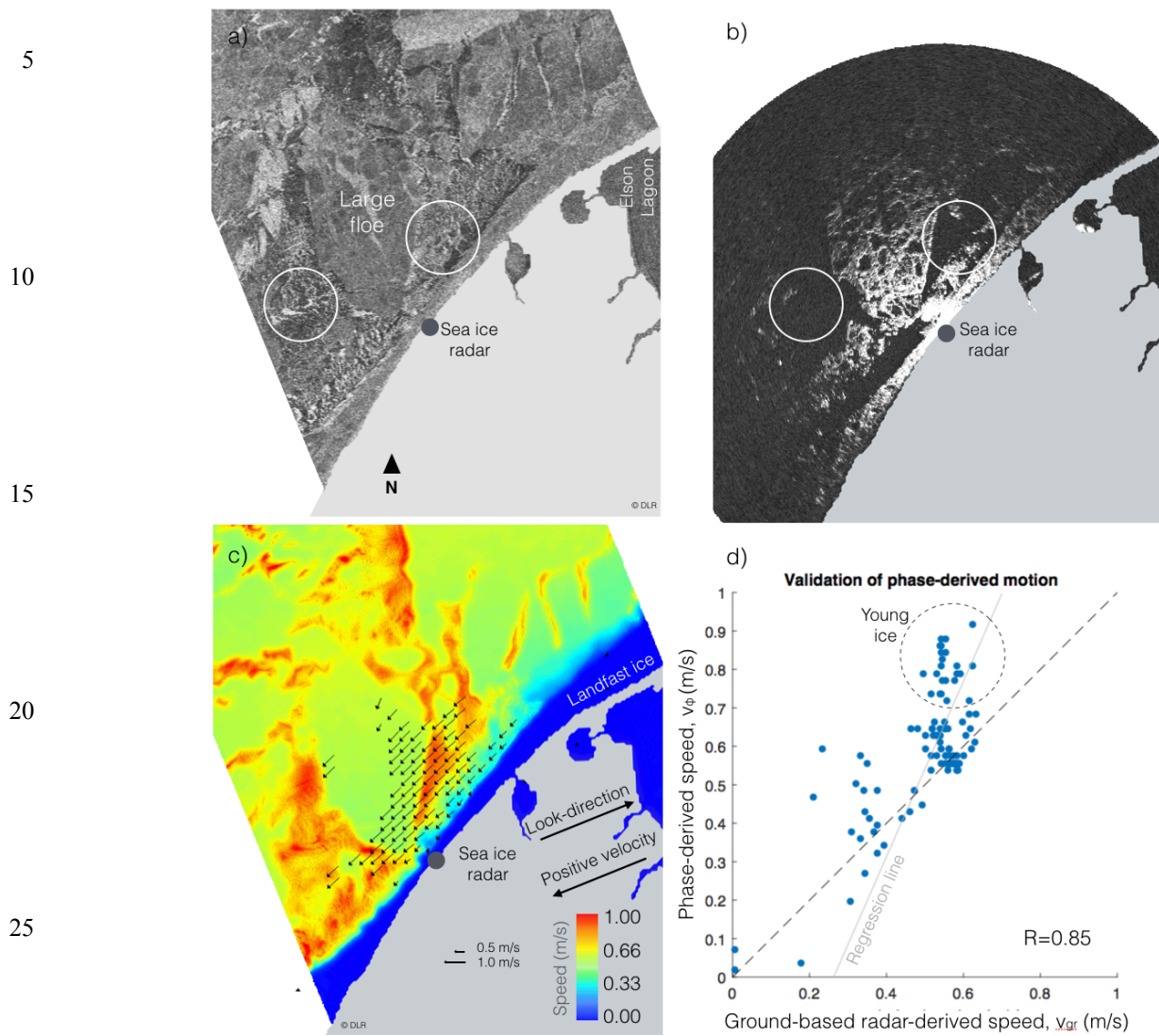


Figure 3: (a) TanDEM-X backscatter scene over Utqiagvik, Alaska on 21 Nov 2015 3:19 UTC. (b) ground-based radar backscatter scene 21 Nov 2015 3:18 UTC. Circles indicate areas of young ice hence reduced backscatter in (b). (c) interferometric phase-derived look-directional speed at 3:19 UTC. Arrows represent speed derived from ground-based radar data averaged between 1:52 – 4:28 UTC. Land is masked out in light gray. (d) Comparison between look-directional speed as evaluated using InSAR- and ground-based radar-derived speed. Circle in (d) indicates poor match between motion products in areas with young sea ice and reduced backscatter from the ground-based radar predominately within the right circled areas in (a) and (b).

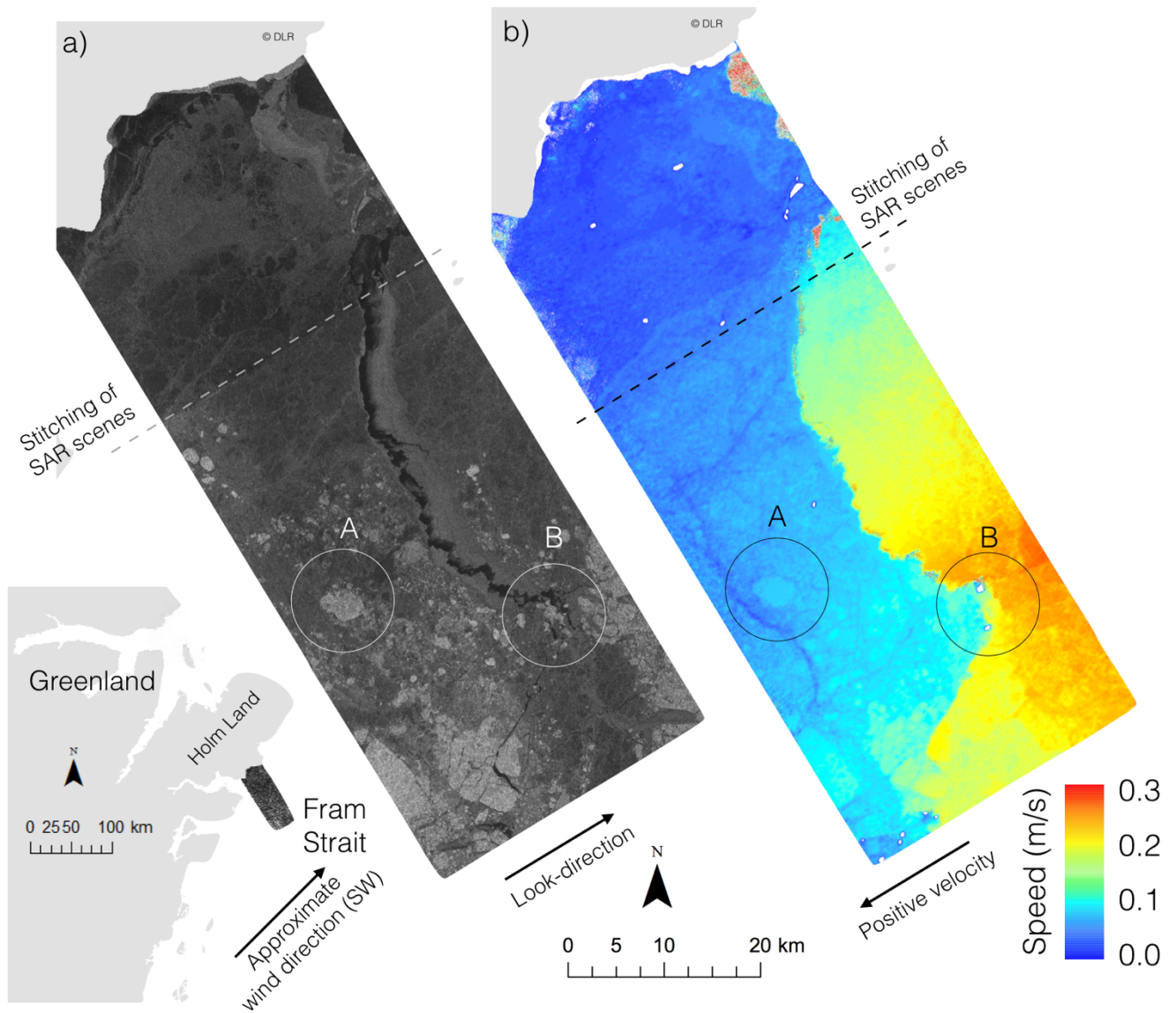


Figure 4: (a) TandEM-X backscatter scene over Fram Strait 23 Nov 2015 at 17:00 UTC. (b) Look-directional component of InSAR-derived speed. Letters signify multiyear ice “A” and area of ice bergs “B”. Land is masked out in light gray. White areas signify values larger than the range of the color scale due to topography (either icebergs or land topography near the coast due to a poor match with the landmask). Wind at the time of the acquisition was roughly southwesterly at 3 m/s.

5



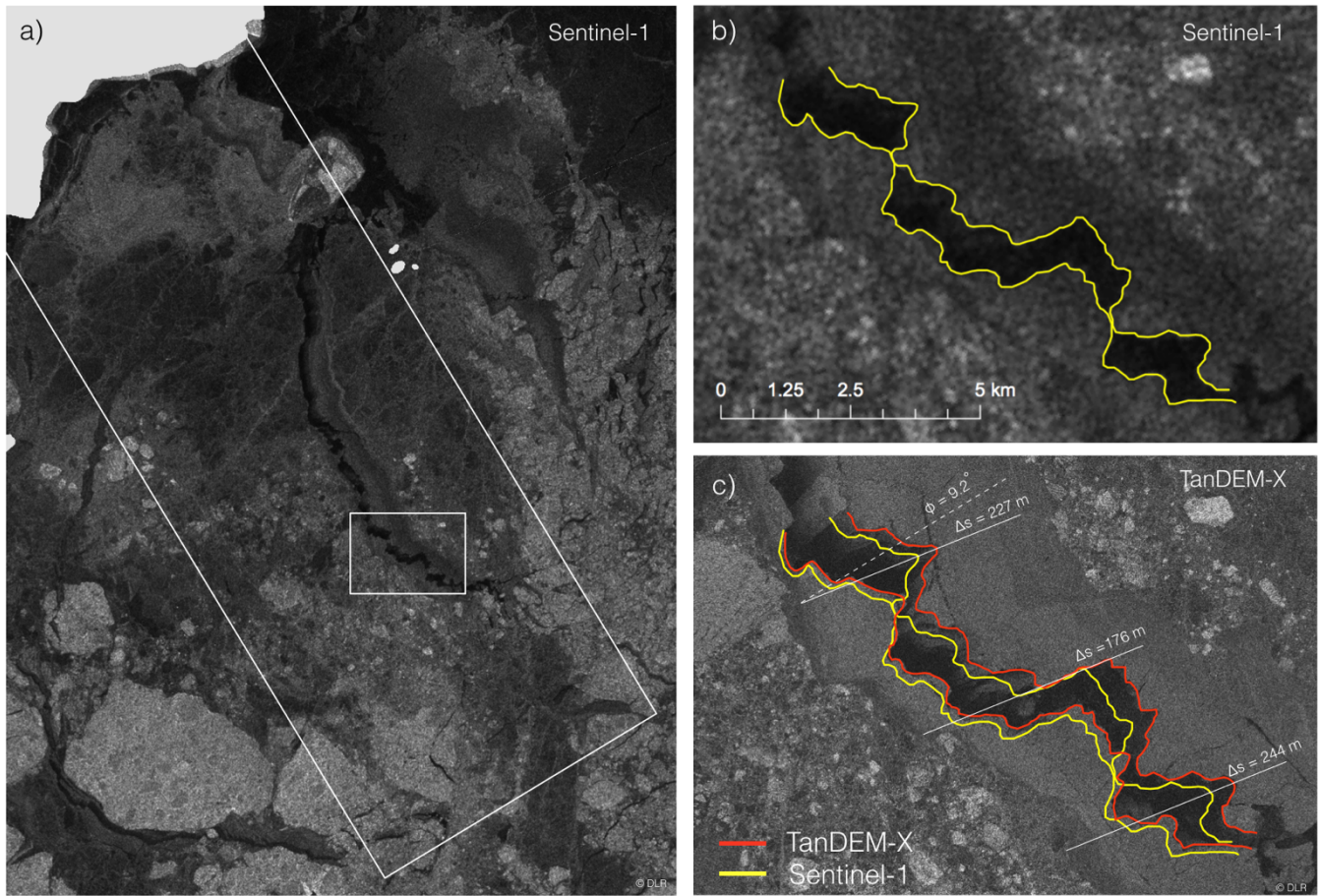


Figure 5: (a) Sentinel-1 backscatter image acquired 23 Nov 2015 at 17:32 UTC. The large white box represents the areal extent of the TanDEM-X image. (b) outlined part of the fracture (yellow line) as observed with Sentinel-1 within the small rectangle in (a). (c) outlined part of the fracture (red line) as observed with TanDEM-X. Width of the fracture ( $\Delta s$ ) is compared along the solid lines and  $\phi$  represents angle between opening direction (solid lines) and the TanDEM-X look direction (dashed line). Land is masked out in light gray.

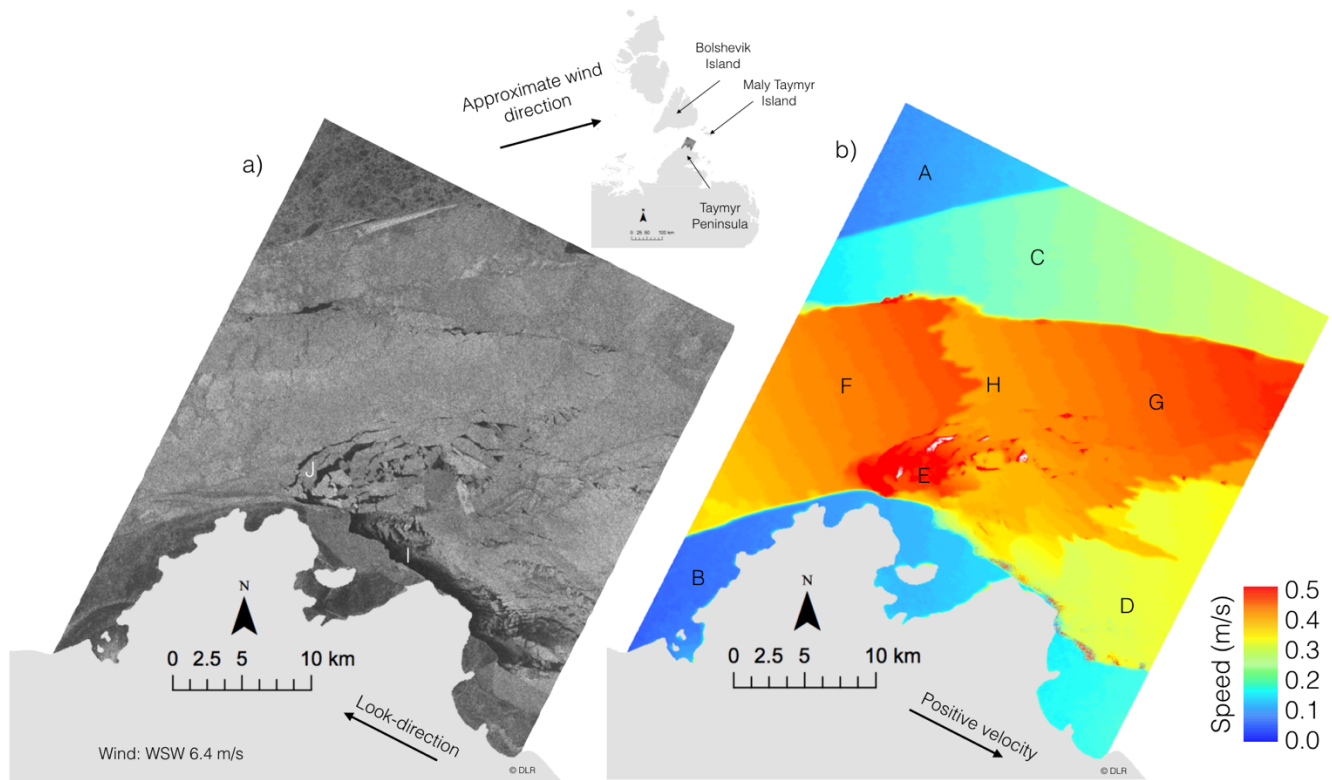


Figure 6: (a) TanDEM-X backscatter scene over Vilkitsky Strait 17 Dec 2013. (b) Look-directional component of InSAR-derived speed. Land is masked out in light gray. Wind at the time of the acquisition was roughly WSW at 6 m/s. Different zones are indicated by letters (A-B) no drift in the look direction, (C-D) intermediate speeds, and (F-H) channel of high speeds. Letters signify different dynamic regions described in the text.

|

**Table 1: List of TanDEM-X datasets analyzed**

<i>Region</i>	<i>Acquisition ID</i>	<i>Orbit</i> <del>/eyele</del>	<i>Date</i>	<i>Time</i>	<i>Dir.</i>	$B_{  }$ (m)	$\theta$ (deg)	$v_a$ (m s <sup>-1</sup> )
Utqiagvik	<a href="#">1321593</a>	46609 <del>7</del> <del>279</del>	30 Oct 2015	<a href="#">03:19:06.563</a>	A	89.2	20.9	3.70
Utqiagvik	<a href="#">1321410</a>	46776 <del>7</del> <del>280</del>	10 Nov 2015	<a href="#">03:19:06.374</a>	A	42.6	20.9	7.76
Utqiagvik	<a href="#">1321233</a>	46943 <del>7</del> <del>281</del>	21 Nov 2015	<a href="#">03:19:06.411</a>	A	73.3	20.9	4.51
Fram Strait-	<a href="#">1323154</a>	46982 <del>7</del> <del>281</del>	23 Nov 2015	<a href="#">17:00:48.513</a>	A	69.5	32.5	3.16
Fram Strait-	<a href="#">1323154</a>	46982 <del>7</del> <del>281</del>	23 Nov 2015	<a href="#">17:00:41.513</a>	A	69.5	32.5	3.16
Vilkitsky Strait-	<a href="#">1169973</a>	36253 <del>7</del> <del>217</del>	17 Dec 2013	<a href="#">00:17:00.693</a>	D	152.2	38.5	1.24

5 *Dir.* = orbit direction either ascending (A) or descending (D), *Time* = acquisition start time in UTC,  $B_{||}$  = along-track baseline,  $\theta$  = incidence angle/incident angle, and  $v_a$  = speed of ambiguity



Review of „Instantaneous sea ice drift speed from TanDEM-X interferometry”  
by D. O. Dammann and 7 co-authors (original manuscript)

General assessment:

From a technological point of view, the paper is very interesting. The shown case studies represent different scenarios for which the results of single-pass along-track interferometry (S-ATI) can potentially contribute to extend our understanding of sea ice dynamics for specific conditions. However, I disagree strongly with the author's assessment concerning the benefit of instantaneous drift fields for different applications. The technique provides useful results only if the ice drift component (anti)parallel to the line-of-sight between radar and resolution cell is considerably larger than the drift component perpendicular to it. If the line-of-sight drift component is zero, along-track InSAR is blind to sea ice movements. Besides this limitation of information on direction it is not clear how representative a single snapshot of millisecond ice movement is for the temporal variations of an ice drift field over several minutes to hours.

Since I regard the topic of the paper and the scientific analysis (section 3) as important contribution to the use of InSAR for sea ice research, I recommend a major revision of the paper to sharpen its message and to provide the reader with a clear list of pros and cons of the technology and still existing gaps of knowledge.

Dear Professor Dierking,

Thank you so much for providing a thorough review and valuable suggestions for this manuscript. We fully agree with your assessment and have made changes according to your suggestions. The changes have resulted in omitting claims that S-ATI is valuable for tactical decision making, while at the same time introducing other potential uses. We have also made it clearer that this is a proof-of-concept with better application with future new systems. The changes have resulted in substantial changes to the discussion and conclusion sections and overall a new and improved manuscript.

Thank you again!

Best regards,  
Dyre Dammann

Details

Abstract:

In the abstract, not a single word is related to the inherent limitations of the method. Why is the knowledge of the millisecond ice drift line-of-sight (LOS) velocity component of advantage for ice management and transportation if compared to standard SAR-based drift algorithms? I doubt this since (1) the field of instantaneous drift components for a given location can be obtained only with time gaps of hours to days between single data takes, (2) the standard SAR-based drift algorithms have the potential to retrieve 2D displacement information with higher temporal resolution if the time gaps between (non-tandem) SAR data acquisitions get shorter. This will be the case e.g. in satellite constellations, or by using images of different SAR systems - a combination of C- and Lband was already successfully tested. I could imagine that for engineering, instantaneous drift can be a valuable information to get statistics of extreme values, but sea ice modellers prefer to get magnitude and direction of drift vectors, and time steps used in simulations of sea ice dynamics are not on the order of milliseconds.

Introduction

Thank you for providing these comments. We very much agree. We have now changed the abstract and addressed all your concerns.

p. 2, 15-23: It is of course true that complex drift patterns often cannot be resolved into sufficiently small time steps by traditional ice drift retrievals. However, using the Doppler-approach described by Kræmer et al. (2015, 2018) or S-ATI as described here is NOT the solution to this problem, since, as described above, one obtains milliseconds snapshots of ice movement only with large time gaps between single shots. One motivation for Kræmer et al. was to make use of a single SAR image for obtaining information on ice drift – with the same limitations as for S-ATI plus a relatively coarse spatial resolution.

Agree. This value of InSAR or DCA as stand-alone product is toned down and we now state (P2,L19): “Other SAR-based approaches, such as Doppler centroid anomaly (DCA) can provide instantaneous ice drift speed, but with other inherent limitations (Kræmer et al., 2015). Instantaneous drift estimates can possibly be used to supplement traditional SAR-based ice drift algorithms for improved accuracy.”

In lines 20-22 the authors list factors that influence the accuracy of the Doppler method, but in the following sections I did not find a similar list for the SATI method (see below). The Doppler method requires the identification of land areas, but so does S-ATI (which the authors describe on p. 5, 9-10 – here they use landfast ice as reference).

Good point. Instead of elaborating on DCA, we have removed the list of specific limitations. Instead, we mention S-ATI as a similar approach and further elaborate its limitation in the discussion.

p. 2, 24-29: why is the method described here “consistent” but the other methods are not? Please explain what you mean by “consistent”.

Taken out

Which requirements do Arctic stakeholders have with regards to spatial resolution of drift fields? Any reference? On regional scales of a few hundred kilometres, a spatial resolution of drift vector fields around 100 m (which is possible to achieve with traditional methods) is certainly sufficient for many applications. The only ice services, which started to consider results of automated drift retrievals in ice chart production, is to my knowledge CIS. Why and for what specific purpose do shipping and resource exploration need drift fields with a meter-resolution? How is drifting pack ice “locally used”? (For traffic on landfast ice, information on differential motion with resolutions of meters is of course beneficial).

Good point. We agree that m-scale resolution is not critical for most applications. We have taken the mention of this out and focus now largely on the possibility of assessing short-lived processes. As an example, we have mentioned the assessment of ice response to interaction with structures, relevant for engineering design.

Is S-ATI really the full answer when it comes to gather “high-resolution” data of ice hazard distributions, ice movement etc.? It must be taken into account that it often fails to deliver useful data, see above.

No, we agree we overstated this. This is now significantly toned down and limitations are discussed in greater detail in the discussion.

The last paragraph of the introduction should be moved to section 2.3, since it specifically addresses issues of InSAR processing.

Good point. This has now been merged with Section 2.3.

p. 3 11-13 If the temporal baseline is too large (the limit dependent on ice speed and environmental conditions changing scattering properties), the interferometric coherence over sea ice is lost. Dependent on drift speed and SAR resolution, this can be minutes.

Included (P4,L26): “With temporal baselines on the order of 10 s (i.e. TanDEM-X pursuit mode), floes can rotate or slightly deform leading to non-homogenous phase values and possibly loss of coherence.”

p.3 13-15 Inverse modelling to provide 2D motion from the line-of-sight drift can be used for landfast ice but not for drifting sea ice.

Good point. We agree. Taken out.

## Section 2

p. 3 29: Radar images are archived every 5 m...??

Changed to “minutes”

What are the uncertainties in velocity as determined from coastal radar and ADCP data?

We have now included (P3,L19): “For features trackable over much of the radar image, errors in the dislocation vectors are on average well below 10% (Rohith et al., 2013) where an average 5 % error is attributed to uncertainties related to spatial scale and time intervals (Mahoney et al., 2015b).”

And (P3,L31):

“The moorings contained a Teledyne RDI Workhorse Sentinel acoustic Doppler current profiler (ADCP), whose data we use to evaluate surface current velocity (Mahoney et al., 2015a) with an accuracy of less than 0.01 m s<sup>-1</sup> (Fukamachi et al., 2006).”

p. 4, 1-3: Regarding the coastal radar - the motion product represents an average field over a time interval of 1.5 hours. How large is the noise contribution?

It is a few percent. Rohith et al., 2013 states: “In summary, for features trackable across much of the image, the corresponding error in the dislocation vector is on average well below 10% of the tracked length. Since these are zero-mean errors, velocity fields obtained for daily or longer intervals are much smaller and associated with errors of a few percent at most.”

Would it be possible to calculate motion for much smaller time intervals to judge short(er)-term variations of the drift field that could help to estimate a time interval for which millisecond ice movements derived from S-ATI can be representative?

We attempted a shorter window. We have now mentioned (P3,L28): “We also attempted validation using a 15-minute interval, which is the shortest possible interval using three images, but this resulted in a noisy result.”

However, even if steps could be taken to further filter the noisy result, the shortest possible interval is still 15 minutes, which is possibly not much more representative for the millisecond ice movement since we

identified quite consistent flow over the entire day. The good match with the 2.5 h correlation also shows this.

Table 1: it would be useful to add the perpendicular baselines (for use in equation 3) and to mention the spatial resolution of the filtered interferogram used for calculating the LOS drift speed in the text.

Done

p. 4: at the end of the sentence following equation 1, another hint to Table 1 (va) would be useful.

Done

p. 4, after line 14: The expected magnitudes of phase noise and the resulting relative error of the retrieved values of  $v\phi$  should be discussed. See also “p. 8, 11” below.

A discussion about the phase noise and resulting velocity error has been included.

p. 4, equation 4: Values of  $h_0$  should also be listed in Table 1.

Included

p. 4, 25-26 and p. 5, 1-2: important point! Here, the information on the spatial resolution of the derived drift field would again be useful. For a single resolution cell, we cannot distinguish the influence of height variations from the influence of motion. The inclusion of the amplitude images and the judgement of the neighbourhood of each pixel in the analysis of the drift field is required as the authors demonstrate in their case studies. This should be made clear, e. g. in the discussion.

Grid spacing of ground radar has now been included in Section 2.1. We have also expanded upon the discussion as you suggest (P11,L29): “The drift speed error from multiyear ice and icebergs can be substantial. For a single resolution cell, we cannot distinguish the influence of height variations from the influence of motion. The inclusion of the amplitude images and the judgement of the neighborhood of each pixel in the analysis of the drift field is necessary to exclude topographic results from the analysis.”

p. 5: last paragraph of 2.4: good point! What about rotational motion of single ice floes that might have occurred in mixtures of smaller ice floes in open water that appear in your examples?

This has now been described in the beginning of Section 2.4 (P6,L2): “So far, we have strictly considered phase values attributed to linear drift leading to homogenous phase values for individual floes. Additional rotational motion may need to be considered in certain cases. This will result in an along-track phase gradient across rotating floes. If this is observed, the average phase value of the floe can be used to describe the linear motion.”

Section 3:

Here one should note that (naturally) optimal conditions were selected as examples: Except for Oct 30 it can be expected that the respective dominant ice speed component is the one parallel to the LOS.

This has been included (P7,L4): “These acquisitions were selected based on optimal conditions, incorporating multiple drifting ice floes and narrow landfast ice extent.”

p. 7 12-13 "...is consistent with..." I assume that the authors did not directly observe the amplitude increase of dm-scale wind waves with distance from the shore but merely speculate that this could be the case. Do you have a reference concerning observations of the increase of amplitudes with distance from the coast? Is it also possible that streaks of frazil and grease ice were present? With the given wind direction in Fig. 2c, it would have accumulated at the shore, thus reducing the retrieved LOS drift velocity.

This has now been included (P7,L29): "The apparent speed increase with distance from shore within the bottom circled area in Figure 2d, which would be consistent with plausible dm-scale wind-driven waves in which amplitudes increase with fetch (Walsh et al., 1989). Another potential contribution to higher speed off shore is a possibly larger concentration of frazil near shore reducing wave height."

p.7 19: Here one should start a new paragraph: " We further compare..."

Done

p. 7 23-24: It is misleading that in the first sentence  $v_{gr}$  is used for the drift vector derived from the coastal radar, and in the second sentence for the LOS-component " $v_{gr}$ " derived from  $v_{gr}$ .

Now separated and used new terms ( $v_g$  and  $v_{vp}$ )

p. 7 26: Here the averaging time for the coastal radar is given as 2.5 hours, in section 2.1, 1.5 hours were mentioned.

Good point. This is due to the fact that data is not always archived every 5 minutes. This is now explained better in Section 2.1 (P3,L17):

"Radar images are archived roughly every 5-10 minutes"

And (P3,L23):

"The filtering approach uses 18 consecutive images resulting in motion products averaged over 1.5-3 hours with a grid spacing of 430 m. For features trackable over much of the radar image, errors in the dislocation vectors are on average well below 10% (Rohith et al., 2013) where an average 5 % error is attributed to uncertainties related to spatial scale and time intervals (Mahoney et al., 2015b)."

p.8, 1-2: the drift speed error mentioned here is only related to the motion-height ambiguity. But phase noise also contributes to the drift speed error.

Drift speed error as a result of phase noise has now been discussed in Section 2.3 (P5,L16).

p. 8, 2-4: Why is a difference between landfast and adjacent drifting ice of 5 cm not possible? I interpret the SAR amplitude image in Fig. 3 such that there is a mixture of smaller dark appearing (hence thinner) ice floes in open water (bright) - in the middle interrupted by more consolidated thin ice - next to the landfast ice. However, since the image is relatively small in the manuscript, it is difficult to interpret it.

Sea ice is in general not thicker than 0.5 m in Barrow during November. Hence a difference in freeboard is unlikely to be larger than 5 cm of any ice type.

p. 8, 11: the phase cannot be solved accurately, it includes an uncertainty due to phase noise

(which depends on decorrelation effects) and the achievable accuracies in determination of baselines, incidence angles, co-registration in processing etc. These factors are not mentioned in section 2 or in the discussion.

This has now been included in Section 2.3.

p. 8, 15-17: “...sea ice and features a...” Isn’t it “which features”?

Changed

p. 9, 16-19: This interpretation again raises the question about how representative milliseconds snapshots are on time-scales of minutes to hours. Convergence should be given in velocity per length unit. The identification of ridges and rubble fields is relatively difficult at higher frequencies such as X-band, unless the spatial resolution is high (another reason to mention it in the paper).

This has been included (P10,L7): “roughly  $10 \text{ cm s}^{-1}$  over a distance of less than 100 m...” Resolution has been included in response to previous comment.

p. 9, 29-30: Since only one temporally isolated snapshot of milliseconds LOS velocity is available, short-lived (or transient) dynamics cannot directly be deduced from the data alone. This requires a careful additional analysis of the environmental context over a longer time period. Without such an analysis one does not know whether an event lasts for seconds, minutes or hours.

We have now included this in the conclusions (P13,L3): “Even with the potential application of S-ATI for evaluating short-lived processes, it will inevitably require a careful analysis of the environmental forcing over a longer time period. Only then it is possible to know whether the phase-derived drift can be representative on scales from minutes to hours. In this context, it would also be beneficial to design experiments to study ice motion on temporal scales from sub-seconds (i.e. S-ATI) to minutes (e.g. coastal radar, buoys) to several hours (e.g. buoys, SAR) to better understand differences between observations at different scales and relate standard SAR approaches (e.g. maximum cross correlation) to S-ATI. Furthermore, an important question is what temporal resolution is required to investigate “short-lived” events such as transient convergence or strain response upon ice impact with structures. This may also be detectable on scales of several seconds, but questionable on longer timescales of minutes. It is presently largely an open question what short-lived processes occur at different timescales and what temporal baselines would be best suited to capture them.”

It also needs to be clarified what “short-lived” means in terms of time units. Certainly not milliseconds.

This has been clarified (P10,L8): “This suggests the event had only just commenced and / or only occurred on a timescale of a few seconds.”

Section 4

p. 10, 1-2: “high accuracy” – the plot Fig. 3 d does not support this statement, since 2.5 hours average velocities are compared with milliseconds ice movements. It looks like a “reasonable” agreement between both velocities, but with maximum deviations up to 0.3-0.4 m/s even when excluding the young ice values. It would be helpful to get examples of the relative error for different velocity ranges.

We have now separated the analysis in Section 3.1 into three clusters in Figure 3d. It is clear that the accuracy is only good (roughly within  $0.1 \text{ m s}^{-1}$  for floes in free drift. We have commented on that further

and included now in the discussion (P10,L25): “We have demonstrated the potential use of S-ATI for derivation of instantaneous sea ice drift. The phase-derived speed has shown to conform well with ground-radar validation dataset with accuracy within roughly 0.1 m s<sup>-1</sup> for ice floes in free drift.”

p. 10, first paragraph: the limitations of S-ATI have to be accounted for in this discussion!

- Examples: Opening and closing rates for leads can only be provided for certain orientations between lead and LOS, and information on those rates is only available for the past – for navigation such information may be useful - but as forecast.

The discussion section has now been completely rewritten. We took out references to forecasts and have further discussed limitations. The orientation aspect is included in the conclusions where we now introduce possibilities with future systems.

- Is a millisecond snapshot well suited to separate landfast and temporally stationary ice – and would this really improve ice charting? The duration to classify stationary ice as landfast is often fixed at 20 days. What is then “temporally stationary”? How can a practical approach to distinguish landfast and temporally stationary ice by means of S-ATI look like?

Good point. We have taken out the discussion around ice charting and included other possible applications in the discussion.

p. 10, second paragraph: a reconstruction of the 2D instantaneous drift field from the 1D-LOS component will not be very reliable but the consideration of wind, current and general ice drift information will help to decide when conditions for the application of S-ATI are close to optimal.

We have included a discussion about this point (P11,L10): “However, considering wind, currents and general drift information will help decide when conditions for application of S-ATI are close to optimal.”

p. 11, first paragraph: I regard this example of deriving absolute speed from a moving vessel and relative speed between vessel and surrounding ice as an interesting scientific exercise but not useful for ice navigation. The example of protecting offshore installations should be elaborated but I presume that it is more a question of collecting statistics of maximum pressure loads on planned installations instead of giving sporadic information to already existing installations.

We agree. We have now changed this according to your suggestion and moved it to the conclusions (P12,L28): “With the m-scale resolution of stripmap X-band SAR, this approach would likely be able to provide statistics of maximum pressure loads on structures relevant for engineering design and planning of offshore installations.”

p.11, third paragraph: No, the S-ATI approach cannot be more accurate than the traditional approaches because of the reasons mentioned above. They are two very different, complementary approaches. It would be worth to design experiments to study ice motion on temporal scales from sub-seconds (S-ATI) to minutes (coastal radar, buoys) to several hours (buoys, SAR constellations) to better relate both approaches to one another.

This claim has been removed and we have included your suggestion in the conclusions (P13,L5): “In this context, it would also be beneficial to design experiments to study ice motion on temporal scales from sub-seconds (i.e. S-ATI) to minutes (e.g. coastal radar, buoys) to several hours (e.g. buoys, SAR) to better understand differences between observations at different scales and relate both standard SAR approaches to S-ATI.”



Conclusions:

Comments given above should be considered.

We have followed all your recommendations

p. 12, 19-20: Given (1) the (yet) missing link between millisecond and hours timescales, (2) the difficult interpretation related to the missing information on drift direction, and (3) the lack of tandem-missions useful for operational ice charting it is NOT clear that S-ATI is relevant as a tactical tool for Arctic stakeholders.

The claim that this could be used for tactical decision making has been removed.

Recommendations:

It is not up to the reviewer to demand changes of the paper contents. Nevertheless, I would like to recommend some items for consideration in the discussion:

- It would be useful to compare the approach of Kræmer et al. and the S-ATI technique in some detail since they have similar limitations concerning certain aspects but are also different in other aspects. Move lines 19-23 on p. 2 into the discussion.

We have here taken an alternative approach to your recommendation, namely to not go into too much detail regarding the Kræmer study. In that way it no longer appears that we claim that ATI is superior. We rather focus on the application and limitations of the ATI approach.

- In the Dierking et al. paper the goal was to retrieve sea ice topography, and the influence of ice motion on the interferometric phase was a disturbing factor that needs to be minimized in this type of application. Here, it is vice versa: motion as wanted information and topography as disturbing factor. Which along- and across-track baselines would you recommend, considering the typical ranges of ice drift speed and height elevations?

We have now included more discussion around this (P11,L31): “Small effective baselines will be beneficial due to reduced sensitivity to topography. By combining Equation 3 and 6 by setting  $\sigma_v = v_e$  it is possible to determine the maximum  $B_{\perp}$  that will ensure that a given height,  $h_0$ , will result in a velocity error comparable to that of phase noise. Assuming  $\theta = 30^\circ$ , and  $\sigma_\phi$  similar to what is used in our work based on  $\gamma = 0.8$ , we determine maximum  $B_{\perp} \sim 2$  km for a large  $h_0 = 0.3$  m. A small  $v_a$  is also beneficial by reducing sensitivity to noise and  $v_e$ . As  $v_a$  is inversely proportional to the along-track baseline, a possible tenfold increase in  $B_{\parallel}$  leading to  $B_t \sim 1$  s would likely be more optimal. A further increase would likely result in increase in rotation of floes and possible deformation, further complicating the results.”

- What is the highest temporal resolution that is required for investigating “short-lived” events? Examples of such events? I am sure that we can extrapolate the milliseconds measurements into the range of seconds, but what are the highest possible frequencies of motion changes, and to which events are they linked? This item is very tricky to answer, and it may be sufficient at this time just to raise these questions to make the reader aware of still existing problems.

This has been included in the conclusions (P13,L8): “Furthermore, an important question is what temporal resolution is required to investigate “short-lived” events such as transient convergence or strain response upon ice impact with structures. This may be also be detectable on scales of several seconds, but questionable on longer timescales of minutes. It is presently largely an open question what short-lived processes occur at different timescales and what temporal baselines would be best suited to capture them.”



- Since the interpretation of drift fields derived from S-ATI is not straightforward, it may be useful for the reader to get a “recipe” of important factors to be considered (e.g. uncertainty of the measurement which depends on phase noise and along-track baseline, LOS – where to get information of the main drift direction, millisecond snapshot – what has to be expected for the next minutes/hours etc).

We are open to this. However, by including all your suggestions, we think the manuscript and the application of this approach is now much clearer, hence such a “recipe” may not be needed. We are slightly hesitant to include a “recipe”, since it may include guesswork and added explanations and discussion, which could make the manuscript more difficult to follow.

# Instantaneous sea ice drift speed from TanDEM-X interferometry

Dyre Oliver Dammann<sup>1</sup>, Leif E. B. Eriksson<sup>1</sup>, Joshua M. Jones<sup>2</sup>, Andrew R. Mahoney<sup>2,3</sup>, Roland Romeiser<sup>4</sup>, Franz J. Meyer<sup>2</sup>, Hajo Eicken<sup>3,5</sup>, Yasushi Fukamachi<sup>3,6,7</sup>

<sup>1</sup>Department of Space, Earth, and Environment, Chalmers University of Technology, Gothenburg, Sweden

5 <sup>2</sup>Geophysical Institute, University of Alaska Fairbanks, Fairbanks, AK, USA

<sup>3</sup>Global Station for Arctic Research, Hokkaido University, Sapporo, Japan

<sup>4</sup>Rosenstiel School of Marine and Atmospheric Science, University of Miami, Miami, FL, USA

<sup>5</sup>International Arctic Research Center, University of Alaska Fairbanks, Fairbanks AK, USA

<sup>6</sup>Arctic Research Center, Hokkaido University, Sapporo, Japan

10 <sup>7</sup>Institute of Low Temperature Science, Hokkaido University, Sapporo, Japan

Correspondence to: Dyre Oliver Dammann (dyre.dammann@chalmers.se)

**Abstract.** The drift of sea ice is an important geophysical process with widespread implications for the ocean energy budget and ecosystems. Drifting sea ice can also threaten marine operations and present a hazard for ocean vessels and installations. Here, we evaluate single-pass along-track synthetic aperture radar (SAR) interferometry (S-ATI) as a tool to assess ice drift inherent limitations, and possible applications. Initial validation shows that TanDEM-X phase-derived drift speed corresponds well with drift products from a ground-based radar at Utqiagvik, Alaska. Joint analysis of TanDEM-X and Sentinel-1 data covering the Fram Strait demonstrates that S-ATI can help quantify the opening/closing rate of leads with possible applications for navigation. S-ATI enables an instantaneous assessment of ice drift and dynamic processes that are otherwise difficult to observe. For instance, by evaluating sea ice drift through the Vilkitsky Strait, Russia, we identified short-lived transient convergence patterns. We conclude that S-ATI enables the identification and analysis of potentially important dynamic processes (e.g. drift, rafting, and ridging). However, current limitations of S-ATI are significant (e.g. data availability and presently only provide the cross-track vector component of the ice drift field), but may be significantly reduced with future SAR systems.

## 1 Introduction

25 Arctic sea ice is predominately in a state of drift as a result of a near continual wind and ocean drag, which leads to redistribution and deformation. Drift processes play a large part in the sea ice thickness distribution. Differential ice motion results in the opening and closing of leads and polynyas and the formation of pressure ridges, while large-scale drift patterns control sea ice loss through export from the Arctic Ocean. Sea ice drift has therefore major implications for the mass, heat, and momentum balance of the Arctic Ocean's ice cover. Over the past several decades, Arctic sea ice has declined at a rapid  
30 rate (Stroeve et al., 2012; Comiso and Hall, 2014; Meier et al., 2014) and in confined regions resulted in more dynamic ice (Spreen et al., 2011; Kwok et al., 2013) increasing strain and fracturing (Rampal et al., 2009a). Recent and predicted changes in sea ice drift (Zhang et al., 2012) are impacting marine biota (Thomas, 2017) and coastal populations (Krupnik et al., 2010).

- Deleted:** ,
- Deleted:** , and marine operations.
- Deleted:** navigation routes
- Deleted:** maritime
- Deleted:** InSAR
- Deleted:** for different uses
- Deleted:** InSAR
- Deleted:** . In contrast to standard SAR-based drift algorithms deriving averaged drift velocities, single-pass InSAR
- Deleted:** with advantages in the context
- Deleted:** management
- Deleted:** transportation. By
- Deleted:** InSAR
- Deleted:** short-lived
- Deleted:** otherwise difficult to observe
- Deleted:** possible implication for engineering and sea ice modeling.

Sea ice drift is also a major concern for maritime activities (Eicken et al., 2009), and associated sea ice hazards play a prominent role in offshore resource development and associated coastal infrastructure (Eicken et al., 2011; Eicken and Mahoney, 2015).

**Deleted:** (Eicken and Mahoney, 2015)

The wide relevance across scientific disciplines and end users has resulted in numerous approaches for measuring ice drift. GPS buoys are an important tool to determine ice drift on pan-Arctic scales (Meier and Maslanik, 2003; Zhang et al., 2003; Rampal et al., 2009b) with unmatched temporal sampling, but are often hundreds of kilometers apart and cannot provide detailed km-scale information unless specifically deployed for validation purposes. Ground-based remote sensing systems on the other hand, such as X-band marine radars are capable of providing m-scale resolution ice drift measurements and deformation information (Druckenmiller et al., 2009; Shirasawa et al., 2013; Jones et al., 2016; Karvonen, 2016; Oikkonen et al., 2016). The coverage of ground based systems is typically limited to coastal waters, hence satellite remote sensing is also an important tool to measure ice drift (Muckenhuber and Sandven, 2017). Here, microwave systems are superior due to the ability to provide information regardless of light or atmospheric conditions. Passive systems such as the Special Sensor Microwave Imager (SSM/I) are capable of providing information on the pan-Arctic scale (Kwok et al., 1998; Spreen et al., 2011) with relevance for determining sea ice age and the Arctic mass and energy budget, but with a resolution of tens of km.

**Deleted:** consistent

**Deleted:** (Muckenhuber and Sandven, 2017).

Active sensors and in particular synthetic aperture radar (SAR) are capable of providing much higher resolution ice drift products at the km-scale by deriving displacement vectors between two consecutive scenes commonly through feature tracking and/or pattern matching (Berg and Eriksson, 2014; Karvonen, 2016; Muckenhuber and Sandven, 2017). These methods depend on at least two consecutive SAR scenes frequently acquired days apart. The often-complex drift patterns of sea ice thus frequently lead to underestimation of ice drift speeds by 10-20% (Haller et al., 2014), but can likely be much higher (Hutchings et al., 2011). Other SAR-based approaches, such as Doppler centroid anomaly (DCA) can provide instantaneous ice drift speed, but with other inherent limitations. Kræmer et al. (2015). Instantaneous drift estimates can possibly be used to supplement traditional SAR-based ice drift algorithms for improved accuracy. Another major advantage of instantaneous ice drift is the ability to evaluate dynamics on shorter timescales. One potential application is the assessment of the ice response when impacting structures, information relevant for offshore engineering design. We here explore single-pass along-track SAR interferometry (S-ATI), which similar to DCA provides instantaneous one-dimensional drift vectors in the satellite's look direction.

**Deleted:** , such that the

**Deleted:** The use of a single

**Deleted:** scene for estimation of instantaneous ice drift using the

**Deleted:**

**Deleted:** was therefore proposed by

**Deleted:** This technique is capable of providing one-dimensional drift products in the satellite's look direction with resolution on the km-scale. However, the technique is sensitive to biases and aliasing related to the ice surface, accuracy of the satellites orbit state vectors, antenna and incidence angle. The technique further requires incorporation and manual interpretation of land areas in each scene where biases can be corrected (Kræmer et al., 2015).

InSAR is a signal processing technique which extracts the phase difference between SAR images acquired from similar viewing geometries. This interferometric phase can either signify sea ice topography if acquisitions are separated in space (i.e. non-zero perpendicular baseline) or motion in the look direction if separated in time (non-zero temporal lag). InSAR has mainly been used to study deformation (Li et al., 1996; Dammert et al., 1998; Morris et al., 1999; Vincent et al., 2004; Meyer et al., 2011; Berg et al., 2015; Marbouti et al., 2017; Dammann et al., 2018a; Dammann et al., 2018c; Dammann et al., In review) and topography (Dammann et al., 2017; Dierking et al., 2017) of landfast sea ice since the drifting ice generally moves too much between most satellite acquisitions to retain coherence over days to weeks. However, during the pursuit operation mode

**Deleted:** All of the techniques mentioned provide valuable ice drift assessments across different spatial and temporal scales, but do not provide a consistent approach with optimal m-scale resolution beneficial to support Arctic stakeholders, such as local ice use, shipping, and resource exploration (Eicken et al., 2009; Dammann et al., 2018a). Monitoring of environmental hazards and effective emergency response in sea ice environments require high-resolution data of ice hazard distributions (e.g., multiyear ice, landfast ice breakout, and ice push events), ice movement and deformation, as well as ice characteristics and dynamics relevant to emergency response (Eicken et al., 2011).<sup>†</sup> In this work, we explore SAR interferometry (InSAR) as a tool to provide instantaneous m-scale resolution ice drift products.

**Deleted:** 2018b

**Deleted:** 2018d

of TanDEM-X in 2010 and 2015, S-ATI analysis of drifting ice was possible with temporal lags on the order of 10 seconds (Scheiber et al., 2011; Mahoney et al., 2016; Dammann et al., 2018b). However, this lag introduces phase ambiguities that can be difficult to convert to drift speed. In contrast, we here apply bistatic acquisitions with substantially shorter (~ 10 ms) temporal lag for the evaluation of instantaneous sea ice drift speed. This technique has been used for assessment of surface current velocity (Romeiser and Thompson, 2000; Romeiser and Runge, 2007; Romeiser et al., 2010), but to our knowledge has not been used to measure sea ice drift. In this work, we validate S-ATI measurements of sea ice drift, explore possible applications, and evaluate the limitations in particular related to data availability and the one-dimensional nature of the drift estimates.

## 2 Data and methods

### 2.1 Study area and validation data

We focus validation efforts over Utqiagvik (formerly known as Barrow), situated in the eastern Chukchi Sea near Point Barrow, Alaska (Figure 1). We chose this region because of its diverse ice dynamics, the authors' direct experience with the region over the past two decades, and the ground-based radar stationed in Utqiagvik continuously tracking sea ice drift. Prevailing winds from the northeast in combination with opposing currents and the orientation of the land results in ice drift predominantly towards the southwest, persistent patches of open water, and ridged ice (Norton and Gaylord, 2004; Jones et al., 2016).

The near-shore ice out to a range of 11 km is continuously monitored using a Furuno FAR-2127 25 kW, X-band (3 cm, 10 GHz) marine radar from an altitude of 22.5 m (Figure 1) (Mahoney et al., 2015b). Radar images are archived roughly every 5-10 minutes and used for monitoring landfast ice, providing information on dynamics of offshore ice (Druckemiller et al., 2009). Due to occlusions and non-rigid body deformation, traditional feature tracking methods are not always effective in tracking sea ice from marine radar imagery. To reduce the noise of calculated motion vectors, we apply a combination of existing and newly developed methods. These include dense and feature-based optical flow approaches to compute motion fields from the images, active contours for delineation of stable landfast ice, and Hidden Markov Models for machine learning based event detection (Rohith et al., 2013; Jones et al., 2016). The filtering approach uses 18 consecutive images resulting in motion products averaged over 1.5-3 hours with a grid spacing of 430 m. For features trackable over much of the radar image, errors in the dislocation vectors are on average well below 10% (Rohith et al., 2013) where an average 5% error is attributed to uncertainties related to spatial scale and time intervals (Mahoney et al., 2015b). For the three cases evaluated here, the motion tracking algorithm only produced consistent motion vectors suitable for validation in one case (Nov 21). We also attempted validation using a 15-minute interval, which is the shortest possible interval using three images, but this resulted in a noisy result.

To assess the ocean currents in the vicinity of our study area, we analyzed data from two moorings, M1 and M2, deployed near Utqiagvik at 71.204N, 157.680W and 71.813N, 156.675W at a water depth of 53 m and 70 m respectively (Figure 1). The

**Deleted:** InSAR

**Deleted:**

**Deleted:** ¶

**Moved down [1]:** The interferometric phase is represented between  $-\pi$  and  $\pi$ .

**Deleted:** 2018c

**Deleted:** Under conditions where ice floes drift linearly at slightly different velocities without rotating, each floe will feature different homogenous phase values.

**Deleted:** with baselines on the order of seconds, floes generally rotate or slightly deform leading to non-homogenous phase values where the phase can fall outside the  $[-\pi, \pi]$  range and will "wrap around" to the opposite side of the phase cycle causing

**Deleted:** An interferogram is a visual representation of the phase and typically consist of multiple fringes (stripes) of equal phase in case of a baseline on the order of seconds or days for drifting and landfast ice, respectively. The fringes resulting from 1-dimensional phase information

**Deleted:** interpreted into 2-dimensional motion using inverse modeling and provide important information pertaining to internal deformation of the ice (Dammann et al., 2016), but can at the same time hide a constant phase value pertaining to the general

**Deleted:** Here

**Deleted:** (Norton and Gaylord, 2004; Jones et al., 2016)

**Deleted:** ). Radar images are archived every 5 m

**Deleted:** (Rohith et al., 2013; Jones et al., 2016), leading to filtered motion products averaged over 1.5 hours. Even so

**Deleted:** out of three cases (Nov 21).

moorings contained a Teledyne RDI Workhorse Sentinel acoustic Doppler current profiler (ADCP), whose data we use to evaluate surface current velocity (Mahoney et al., 2015a) with an accuracy of less than  $0.01 \text{ m s}^{-1}$  (Fukamachi et al., 2006). Velocities are derived from the Doppler shifts of return signals from particles within the water column.

Deleted: (Mahoney et al., 2015).

In addition to Utqiagvik, we explore the potential of InSAR-derived ice drift in the Fram and Vilkitsky Straits. Situated by the east coast of Greenland, the Fram Strait is an important location due to the dynamic conditions and large fluxes of both first- and multiyear sea ice. The Vilkitsky Strait is situated by the Taymyr Peninsula and is a strategic location on the Northern Sea Route (Arctic Council, 2009).

Deleted: Arctic

## 2.2 TanDEM-X data

The twin constellation TanDEM-X has operated since 2010, with a repeat-pass cycle of 11 days featuring two X-band ( $\lambda = 3.1 \text{ cm}$ ) SAR sensors. We obtained single-look complex image pairs from the German Aerospace Center (DLR). Images were acquired in stripmap bistatic mode with short along-track baselines of less than 100 m. Image information for the images used in this work can be found in Table 1. We considered the entire data set acquired by TanDEM-X over Utqiagvik and chose to focus on three consecutive acquisitions during 30 Oct. – 21 Nov, 2015. This time span was chosen based on (1) the ground-based radar being operational, (2) less than a kilometer wide landfast ice maximizing the ground-based radar footprint occupied by drifting ice, and (3) dynamic ice conditions. Due to increasingly later fall freeze-up of landfast ice near Utqiagvik (Mahoney et al., 2014), sea ice is likely only a few centimeters thick during Oct. – Nov., but with potential advection of thicker ice from the eastern Beaufort Sea. The scenes were first multilooked with a resulting pixel spacing of 2.7 m and 4.7 m in range and azimuth respectively. We further followed a standard InSAR workflow (Bamler and Hartl, 1998; Ferretti et al., 2007; Dammann et al., 2016) including interferogram formation, adaptive phase filtering (Goldstein and Werner, 1998), and geocoding using the GAMMA software (Werner et al., 2000). The ice drift was derived from the interferometric phase further described in the following section. Of the three acquisitions obtained near Utqiagvik, only the image pair from 21 Nov. was acquired when the ground-based radar was operational and could provide a coherent motion product and was thus used for validation of the derived drift.

Deleted: grown in-situ

Deleted: processed using

Deleted: (Goldstein and Werner, 1998)

## 2.3 InSAR-derived drift speed

The interferometric phase is represented between  $-\pi$  and  $\pi$ . Here, only displacement in look-direction ( $\Delta r_{LOS}$ ) results in a phase change  $\Delta\Phi_{disp}$  according to  $\Delta\Phi_{disp} = 4\pi \Delta r_{LOS}/\lambda$ . With temporal baselines on the order of 10 s (i.e. TanDEM-X pursuit mode), floes can rotate or slightly deform leading to non-homogenous phase values and possibly loss of coherence. Also, for TanDEM-X, the sensor wavelength  $\lambda$  is 3.1 cm, such that ice displacement exceeding  $\Delta r_{LOS} \approx 1.5 \text{ cm}$  results in  $\Delta\Phi_{disp}$  phase values to “wrap around” to the opposite side of the phase cycle causing phase ambiguities (Dammann et al., 2018b). These ambiguities known as fringes can hide a constant phase value pertaining to the general drift speed, which was the case for Scheiber et al. (2011). In contrast, with temporal baselines on the order of 10 ms (i.e. TanDEM-X bistatic mode), each floe

Moved (insertion) [1]

Deleted: In an interferogram

Deleted: For

Deleted: has to exceed

Deleted: for the

Deleted: ". This rarely occurs with

Deleted: short interferometric time lag of

will feature largely homogenous phase values and typically don't wrap around since ice velocities would have to exceed roughly  $1.5 \text{ m s}^{-1}$ .  $\Delta\Phi_{disp}$  can be converted to drift speed in the look direction using the speed of ambiguity, which is the motion resulting in one phase cycle. We first calculate the ground range displacement in the look direction resulting in one full phase cycle (displacement of ambiguity,  $d$ ), which can be expressed as:

$$5 \quad d = \frac{\lambda}{2 \sin \theta} \quad (1)$$

where  $\theta$  is the incident angle. Furthermore, the speed of ambiguity can be expressed as  $v_a = d/B_t$ , where the temporal baseline  $B_t = B_{||}/v_s$ ,  $v_s$  is the orbit speed of the satellite ( $7.6 \text{ km s}^{-1}$ ), and  $B_{||}$  is the along-track baseline (Table 1). The phase-derived speed in the look direction is calculated as:

$$v_\phi = \frac{\Delta\Phi_{disp}}{2\pi} v_a \quad (2)$$

- 10 The absolute phase and motion values are initially unknown; thus, we calibrate  $v_\phi$  by subtracting the derived speed of landfast ice so it is ensured to be zero. Although the direction of motion cannot be determined using the phase information alone, it is possible to determine the binary direction (i.e. whether scatterers increase or decrease their distance to the satellite) by evaluating spatially continuous phase gradients. Here, an increasing phase is indicative of increased motion towards the satellite (if the image acquired by the leading satellite is used as a master image). We further define the positive direction such
- 15 that a positive  $v_\phi$  is indicative of speed towards the satellite.

~~$v_\phi$  is inevitably impacted by phase noise, which is introduced upon signal decorrelation. Velocity accuracy can be described:~~

$$\sigma_v = \frac{v_a \sigma_\phi}{2\pi} \quad (3)$$

Here,  $\sigma_\phi$  is the standard deviation of the InSAR phase estimate, which is expressed as:

$$\sigma_\phi^2 \approx \frac{1}{2N_L} \frac{1-\gamma^2}{\gamma^2} \quad (4)$$

- 20 where  $N_L$  is the independent number of looks and  $\gamma$  is the interferometric coherence (Rosen et al., 2000; Dierking et al., 2017). For the data used here, the coherence is generally exceeding 0.8 leading to a velocity accuracy of  $\sigma_v \sim 0.2 \text{ m s}^{-1}$  for unfiltered interferograms. As opposed to ice topography, motion is not expected to vary greatly for ridged floes or sections of open water or young ice. Therefore, we heavily filtered the interferometric phase with an FFT window of 128 pixels. This reduces the phase noise substantially for improved accuracy likely below a few  $\text{cm s}^{-1}$ .

Deleted: 10 ms used in this work.

Deleted: incidence

Moved (insertion) [2]

## 2.4 Drift speed ambiguities

So far, we have strictly considered phase values attributed to linear drift leading to homogenous phase values for individual floes. Additional rotational motion may need to be considered in certain cases. This will result in an along-track phase gradient across rotating floes. If this is observed, the average phase value of the floe can be used to describe the linear motion.

- 5 It is also necessary to evaluate topography as a potential contributor to phase change. The height of ambiguity,  $h_a$ , (i.e. the elevation that would result in one phase cycle) can be expressed:

$$h_a = \frac{\lambda R \sin \theta}{m B_{\perp}} \quad (5)$$

where  $B_{\perp}$  is the perpendicular baseline,  $R$  is the slant range, and  $m = 1$  or  $2$  for monostatic and bistatic acquisitions, respectively. The potential resulting speed error,  $v_e$ , caused by assuming the entire phase response to be motion driven, when in reality topographic features of height  $h_0$  are present, can be determined:

10

$$v_e = h_0 \frac{v_a}{h_a} \quad (6)$$

For the scenes considered here,  $h_a$ -values are roughly 40 meters hence cm-scale height offsets will result in  $v_e$  on the order of  $\text{mm s}^{-1}$ . Therefore, the height offset between floes would have to approach one meter to make a significant contribution. This height offset would have to be prominent across an entire floe, which would reflect a difference in ice thickness and hence would mostly be relevant for ice bergs or thick multiyear ice. Ice ridges can often feature offsets larger than a meter, but can easily be identified as a topographic response since they would otherwise indicate a non-homogenous motion across a floe, which is implausible at the timescales considered here.

15

In addition to topography, it is necessary to consider phase contributions from ocean waves in areas of young ice. The phase values of rigid ice floes will not be significantly impacted by waves, but fragmented ice is capable of following the vertical motion of dm-scale wind-driven waves. The backscatter contribution from waves will often be dominated by the motion of the wave surface facing the radar. Hence, waves propagating toward the radar will result in a positive contribution to the interferometric phase due to the upward motion of the wave face seen by the radar. Conversely, waves travelling away from the radar will result in a negative phase contribution (Thompson and Jensen, 1993; Romeiser and Thompson, 2000). The speed contribution from dm-scale waves is inversely proportional to the sine of the incident angle. Hence the contribution from waves can be substantial in cases of small incident angles and can be larger than any physical motion of the wave itself. Smaller cm-scale capillary waves can also result in a contribution to the derived speed (Valenzuela, 1978; Thompson and Jensen, 1993; Romeiser and Thompson, 2000).

25

Deleted: 3

Deleted: 4

Deleted: 5

Deleted: incidence

Deleted: incidence

### 3 Results

#### 3.1 Drift speed validation near Utqiagvik, Alaska

Three images acquired near Utqiagvik were processed for interferometric phase and speed in the look direction and displayed in Figure 2. These acquisitions were selected based on optimal conditions, incorporating multiple drifting ice floes and narrow landfast ice extent. During the time spanned by the three acquisitions, the wind direction ranged between NNE and E predominately resulting in SW ice drift along the coast. Note that we use standard atmospheric convention for winds (by referring to the direction from which the wind is coming) and the oceanographic convention for surface currents and ice drift (by referring to the direction in which the ice or current is moving).

The image acquired on Oct. 30 features dispersed floes and open water and is displayed in Figure 2a. Areas of open water appear dark in the backscatter image due to low wind speed ( $\sim 4 \text{ m s}^{-1}$ ) and hence low surface roughness in the form of capillary waves (see circled area in Figure 2a). The look-directional speed based on the interferometric phase is displayed in Figure 2b. Here, the exact speed has been calibrated to the known stationary ice on Elson Lagoon. Positive speed is defined as the direction opposite to look-direction (roughly towards WSW). The velocity field exhibits negative (ENE) surface velocity near the coast (see “A” in Figure 2b). This can be explained by the relatively low NNE wind speed and hence the opposing Alaska Coastal Current (Ahl nas and Garrison, 1984; Winsor and Chapman, 2004; Jones et al., 2016) becomes the dominant force of ice drift, which at the time of the acquisition was NE at  $0.4 \text{ m s}^{-1}$  as observed with mooring M1. Further off shore the speed changes orientation towards WSW, likely due to wind becoming the dominant forcing resulting in convergence around the dashed line (zero velocity) at the time of the acquisition (Figure 2b). Where positive velocity, areas of open water appears to be moving faster toward the WSW (positive direction) than the surrounding ice (top circle in Figure 2b) likely due to a wind-induced wave contribution to the phase. Here, the speed of the waves will be added to the effect of the currents resulting in apparent higher speed. Further off shore (see “B” in Figure 2b), the negative drift speed is likely due to reduced wind speed or altered wind direction since the current slowed down significantly further off shore as measured by M2 (not shown).

On Nov. 10, the wind was stronger than during the other acquisitions ( $10 \text{ m s}^{-1}$ ) and areas of open water exhibit higher backscatter than the ice floes that were present due to wind-roughening of the surface (see circled area in in Figure 2c). The strong wind results in a consistently positive drift speed in the look direction, which decreases with distance to shore (Figure 2d). This gradient was likely due to variable wind and ice forcing as the current velocity was comparable between M1 and M2. In between floes, the ocean surface exhibits velocities roughly  $1 \text{ m s}^{-1}$  larger than that of the adjacent ice. This difference in speed can be explained by wind-driven waves, which are attenuated beneath the larger floes, but will have an impact over open water and looser fragmented ice. The apparent speed increase with distance from shore within the bottom circled area in Figure 2d, which would be consistent with plausible dm-scale wind-driven waves in which amplitudes increase with fetch (Walsh et al., 1989). Another potential contribution to higher speed off shore is a possibly larger concentration of frazil near shore reducing wave height.

**Deleted:** is consistent with dm-scale wind-driven waves in which amplitudes increase with fetch.



At the time of acquisition on Nov. 21, the sea ice in the radar footprint consisted of a mix of large floes surrounded by young ice and open water (see circled areas in Figure 2e). It is apparent that the floes are largely drifting with homogenous speed in the southwest direction (positive speed defined as the direct opposite of look direction) (Figure 2f). The derived speed also exhibits a higher surface velocity in the areas of open water and thin ice between the floes ( $\sim 1 \text{ m s}^{-1}$  vs.  $\sim 0.6 \text{ m s}^{-1}$ ) (circled area in Figure 2f), but less pronounced than on Nov. 10. This is likely due to reduced wind speed ( $7 \text{ m s}^{-1}$ ) and the presence of young ice in between floes (circled area in Figure 2e) damping the waves.

We further compare the TanDEM-X scene on Nov. 21 with backscatter derived from a ground-based radar system in Utqiagvik (Figure 3a and b). Due to the high incident angle of the ground-based radar, the backscatter contrast between the ice floes and the surrounding young ice and open water is significantly greater than in the SAR imagery (see circled areas in Figure 3b).

10 We spatially compared the phase-derived drift speed,  $v_\phi$  (figure 3c), with the drift speed derived from the ground-based radar,  $v_{gr}$  (arrows in Figure 3c). We further compared the two with  $v_{gp}$  projected into the look direction ( $v_{gp}$ ) – the reference frame of  $v_\phi$  (Figure 3d). The combined correlation has an R-value 0.86 and feature multiple outliers. The reason for this is that  $v_{gp}$  is acquired over 2.5 hours and  $v_\phi$  over 10 ms. This scatterplot indicates three different clusters including young ice and floes either in free drift or interacting with the landfast ice. For floes in free drift, the two datasets match within roughly  $0.1 \text{ m s}^{-1}$  as a result of consistent drift speed (confirmed with the ground-based radar). However,  $v_{gp}$  is generally lower than  $v_\phi$ , which can be explained by the 2.5 h averaging window,  $v_{gp}$  is averaged over a time period when winds fluctuated between roughly 5.5 and  $7 \text{ m s}^{-1}$  while  $v_\phi$  was derived when winds were in the upper range near  $6.5 \text{ m s}^{-1}$  recorded in Utqiagvik.

The correlation between  $v_{gp}$  and  $v_\phi$  is generally lower in areas of young ice due to the large 2.5 hour averaging window.  $v_{gp}$  in areas occupied by young ice is derived from the drift of floes occupying the respective pixels either before or after the SAR acquisition since young ice does not sustain a constant signal necessary for the feature tracking algorithm used. Therefore, the match between the derived velocities  $v_\phi$  and  $v_{gp}$  is poor in areas between floes (highlighted area in Figure 3d). Where floes interact with the landfast ice, drift speed is expected to be variable, which would explain outliers in Figure 3d.

To rule out a height offset between the landfast ice and the drifting ice as a possible cause for a phase offset, we calculated the drift speed error (Equation 6) to be roughly  $1 \text{ mm s}^{-1}$  per cm height difference. Assuming first-year ice, a difference in freeboard between smooth sections of landfast and drifting ice greater than 5 cm is unlikely, since this would correspond to a difference in ice thickness of  $\sim 0.5 \text{ m}$  and ice is unlikely to be thicker at this time of year. Based on local field analysis in years with particularly rough landfast ice (e.g. spring 2015), large areas of rubble ice can potentially raise the mean InSAR-derived height by 20 cm (Dammann et al., 2017). A roughness-induced height offset can often be identified through non-homogenous phase values across the rough area due to the m-scale resolution of TanDEM-X. Even so, a maximum expected offset would therefore be roughly 25 cm and lead to a  $2.5 \text{ cm s}^{-1}$  height-induced bias, ruling out elevation differences as a substantial contributor to biases in the drift speed estimates.

Deleted: incidence

Deleted:  $v_{gr}$

Deleted:  $v_{gr}$

Deleted:  $v_{gr}$  confirms largely homogenous

Deleted: of the floes in the southwest direction corresponding to

Moved up [2]:  $v_\phi$

Deleted: (Figure 3d). The general

Deleted:  $v_{gr}$  speed

Deleted: as  $v_{gr}$

Deleted:  $v_{gr}$  calculated

Deleted:  $v_{gr}$

Deleted: 4

### 3.2 Evaluating fracture dynamics near Holm Land, Greenland

From the previous section, it is clear that the interferometric phase can be accurately used to derive ice drift speed in the look direction. However, due to the calibration offsets, the absolute speed cannot be resolved without stationary landfast ice or land in the image, which can serve as a calibration point for zero drift speed. Even so, relative speed can still be resolved and is potentially of great value. One example is to determine the rate at which a lead opens or closes, which is dependent on the relative speed difference between the two sides of the lead. We applied S-ATI to two acquisitions from the Fram Strait (Figure 4a) consisting of near continuous first- and multiyear (marked “A”) sea ice, which features a fracture running northwest towards Holm Land, Greenland. The main objective with this case study is to demonstrate the application to determine the opening/closing rates of fractures. In this case, it is possible to obtain absolute speed, since one of the images contains land, but this is not necessary as relative speed would be equally useful in determining opening/closing rates.

We calculated  $v_\phi$  (Figure 4b) relative to the stationary ice closest to shore and define positive direction opposite to look direction. The strictly positive velocity indicates a SW velocity component. The higher speed upstream of the lead (to the NE) implies that the lead was closing at the time of the acquisition. The ice motion is not directly in response to the wind, which came from the SW at roughly  $3 \text{ m s}^{-1}$ , according to data from the European Center for Medium-Range Weather Forecasts’ ERA5 reanalysis. To further investigate whether the fracture was in fact closing at the time of the TanDEM-X acquisition, we compared the location of the fracture edges with a Sentinel-1 image acquired 32 minutes later (Figure 5a). We delineated a section of the fracture with easily detectible boundaries in both the Sentinel-1 and TanDEM-X scenes (Figure 5b and c respectively). This comparison enabled us to estimate the closing direction (solid lines in Figure 5c) and the angle,  $\theta \approx 9.2^\circ$ , relative to the TanDEM-X look direction (dashed line in Figure 5c). Comparing the fracture width in three locations (three solid lines in Figure 5c) indicated that the fracture closed by roughly 200m (176-244 m) during the 32 minutes between acquisitions. This corresponds to a closing velocity of  $10.9 \pm 1.8 \text{ cm s}^{-1}$ . From Figure 4b, the difference in  $v_\phi$  across this lead (along the three solid lines) is approximately  $10.0 \pm 1.0 \text{ cm s}^{-1}$ , which corresponds to an instantaneous speed difference of  $10.1 \pm 1.1 \text{ cm s}^{-1}$  in the direction of lead closure. This is within ~10% of the closure rate estimated from the comparison of TanDEM-X and Sentinel-1 imagery and within the window of uncertainty. The difference could be due to variation in the closure rate over time. At these closure speeds, the 1 km wide fracture would have closed completely within approximately 3 hours. A Sentinel image acquired 15 hours later (not shown) confirms that the lead closed.

### 3.3 Assessing drift zones in Vilkitsky Strait, Russia

We further examined an additional case study in the Vilkitsky Strait, an area with relevance in the context of maritime navigation, to demonstrate the use of S-ATI in a dynamically complex scenario (not homogenous floe speeds as in previous sections). The Strait near Taimyr Peninsula features either landfast ice or temporarily stationary pack ice (as absence of landfast ice is apparent in ice charts by the Arctic and Antarctic Research Institute – www.aari.ru). Stationary pack ice is also present south of Bolshevik Island in Severnaya Zemlya visible with lower backscatter and zero ice drift in the look direction in Figure 6a and b respectively (see “A” and “B” in Figure 6b). Between these areas of stationary ice are two distinct intermediate zones

Deleted: InSAR

Deleted: and

Deleted: InSAR

of ice moving at roughly  $0.3 \text{ m s}^{-1}$  (“C” and “D”) bordering a channel with higher velocities ranging between roughly  $0.35$  and  $0.45 \text{ m s}^{-1}$  (“E-H”). The drift is approximately eastward in response to a WSW wind of roughly  $6 \text{ m s}^{-1}$  obtained from ERA5 reanalysis. The westerly wind leads to open water on the east side adjacent to the peninsula (see “I” in Figure 6a), allowing otherwise confined ice to move more freely leading to larger velocities (“E”). The central channel (“F”-“H”) exhibits higher drift speed than the ice immediately to each side (“C” and “D”) and variable speed in the form of a ramping speed (“F” and “G”), towards a prominent sinuous speed discontinuity extending northward from the peninsula (“H”). This discontinuity indicates convergence of roughly  $10 \text{ cm s}^{-1}$  over a distance of less than 100 m, which is expected to lead to large-scale scale rafting and ridge building. However, there is no evidence of any ridges or ice rubble in the backscatter in Figure 6a. This suggests the event had only just commenced and / or only occurred on a timescale of a few seconds. The absence of any ridge features in the backscatter amplitude imagery suggests the process may be transient, impacting different sections of ice as it passes by the point of convergence.

The Vilkitsky Strait is known for the formation of ice arches in the springtime through the consolidation of ice with m-scale thickness. Ice arches form when ice passing through a narrow passage experiences flow stoppage as a result of confining pressure and behaves like landfast ice (Hibler et al., 2006). The scenario presented here may be the precursor to the formation of an ice arch where the drifting ice increasingly gets confined leading to temporarily stationary ice. Although, during December, the ice does not possess the thickness and strength to withstand the building pressure. The result is the buildup of stagnant ice under transient stress conditions as the pressure cyclically builds up and is released through ice failure. The general direction of the ice drift in the Vilkitsky Strait can be determined strictly based on the backscatter image (Figure 6a) by evaluating among other the lead at the southern margin of the strait (“I”) and the apex of the partial ice arches, which points upstream (“J”). However, this example illustrates additional important utilities of this approach, namely not only to evaluate general drift direction and speed, but also to distinguish between very different dynamic regimes which cannot be evaluated strictly from the amplitude image. We have also demonstrated the ability to capture short-lived transient dynamics, which would otherwise be invisible if using InSAR with longer ( $> 1\text{s}$ ) time lags.

#### 4 Discussion

We have demonstrated the potential use of S-ATI for derivation of instantaneous sea ice drift. The phase-derived speed has shown to conform well with a ground-radar validation dataset with accuracy within roughly  $0.1 \text{ m s}^{-1}$  for ice floes in free drift. This validation was limited to rigid ice floes as the young, fragmented ice did not result in a consistent backscatter signature that could be tracked with the ground-radar. Also, the contributions to the Doppler velocity can be large and difficult to correct in areas of young ice where the ice motion is impacted by dm-scale waves. A high accuracy of InSAR-derived motion is expected based on prior InSAR validation over landfast ice using longer interferometric time lags on the scale of days to weeks (Dammann et al., 2018a). However, even if S-ATI is an accurate tool to assess ice drift, it has significant limitations for possible applications.

**Deleted:** <sup>1</sup>

**Deleted:** was short-lived.

**Deleted:** – operational potential and limitations

**Deleted:** We have demonstrated the potential use of InSAR for derivation of instantaneous sea ice drift. The phase-derived speed has shown to conform well with ground-radar validation dataset with high accuracy similar to prior InSAR validation over landfast ice using longer interferometric time lags on the scale of days to weeks (Dammann et al., 2018b). This validation was limited to rigid ice floes as the young, fragmented ice did not result in a consistent backscatter signature that could be tracked with the ground-based radar. Also, the contributions to the Doppler velocity can be large and difficult to correct in areas of young ice where the ice motion is impacted by dm-scale waves. We argue that InSAR can potentially provide important drift information on the m-scale in support of operations in or near sea ice. We show here that InSAR is capable of determining the opening/closing rate of leads which can serve as important transportation corridors and may help forecast travel conditions for ocean navigation. We also demonstrate the ability to identify detailed transient sea ice dynamic conditions related to convergence and deformation. Such information can possibly improve ice charting by helping to discriminate between landfast ice and temporally stationary pack ice. InSAR can also likely be utilized to evaluate interactions between sea ice and structures by quantifying strain and associated stress in a similar approach to Dammann et al. (2018b). The InSAR processing steps are well documented and can potentially be incorporated into operational analysis frameworks and workflows with standard processing tools (Dammann et al., In review) such as ESA’s SNAP software. Even so, important limitations exist related to the use of InSAR to detect sea ice drift. <sup>1</sup>

The interferometric product

Interferometric products only resolve one dimension (look direction) of the 2-dimensional drift; hence the actual drift speed cannot be resolved directly from the interferogram without additional interpretation steps. For surfaces experiencing consistent displacement over time periods of several hours, (e.g. glaciers) 2-dimensional motion vectors can be estimated by data from both ascending and descending passes (Lang, 2003). This is generally not the case for sea ice, but Dammann et al. (2016) demonstrated that by evaluating the coastline, persistent drift patterns, and additional coarser resolution datasets, it is possible to narrow down likely directions of ice motion. In the case of fixed installations near the coast, information related to the general drift pattern may be sufficient to determine the true velocity field. An example is Utqiagvik, where the near-coastal sea ice predominately drifts in the orientation of the coastline. This leaves two possible directions of motion, northeast and southwest, which can be discriminated from the sign of the phase values. Such reconstruction of 2-dimensional motion will not always be reliable. However, considering wind, currents and general drift information will help decide when conditions for application of S-ATI are close to optimal. In the case of the fracture in the Fram Strait, we extracted the closing direction by comparing with Sentinel-1 imagery (Figure 5). However, even in the absence of other data, a range of likely directions can be estimated based on edge morphology. For instance, shear motion is unlikely along non-linear lead systems.

S-ATI merely provides a snapshot in time, hence the derived drift should be evaluated with caution and preferably used to compliment other SAR-based drift products. For instance, there may be cases where the interferograms capture ice which is being pushed in one direction creating build-up of ice forces leading to short-term rebound effects where ice motion is significantly slowed down or reversed. This may be particularly relevant in areas of high ice concentration where the build-up of internal ice pressure can be substantial. Although such cases will be rare, it is necessary to consider such possibilities to make sure the derived instantaneous drift is representative of the general ice drift. Also, since only one isolated snapshot on the millisecond-scale can be analyzed, short-lived or transient dynamics cannot directly be deducted from S-ATI alone.

It is necessary to consider the impact of topographic contribution to the interferometric phase. In our analysis in the Fram Strait,  $h_a = 65$  m resulting only in a minor phase change from elevation. For instance, if the ice on each side of the fracture would feature a 1 cm freeboard difference, it would only result in a  $0.5 \text{ mm s}^{-1}$  drift speed error,  $v_e$  (Equation 6). However, this image features large, multiyear floes (see "A" in Figure 4a and b) causing a phase change of around 0.03 radians from surrounding ice. This implies an elevation change of roughly 30 cm and hence a difference in ice thickness of about 3 m, which is a reasonable difference between multiyear and first-year ice in this region. Icebergs can feature even larger elevation changes than multiyear ice in which cases the sail height can end up dominating the phase signal as is the case here leading to values falling outside of the color range and saturating the image (see white areas in "B" in Figure 4b).

The drift speed error from multiyear ice and icebergs can be substantial. For a single resolution cell, we cannot distinguish the influence of height variations from the influence of motion. The inclusion of the amplitude images and the judgement of the neighborhood of each pixel in the analysis of the drift field is necessary to exclude topographic results from the analysis. Small effective baselines will be beneficial due to reduced sensitivity to topography. By combining Equation 3 and 6 by setting  $\sigma_v = v_e$ , it is possible to determine the maximum  $B_{\perp}$  that will ensure that a given height,  $h_a$ , will result in a velocity error comparable

**Deleted:** resolves

**Deleted:** D

**Deleted:** ¶

For operations far from shore (e.g. shipping), drift directions can be estimated based on large-scale wind data resulting in a window of possible drift directions. However, in a dense pack, ice forcing may play a larger role impacting drift direction. Here, large-scale sea ice drift products from SAR or SSM/I may be used to determine the general direction of drift. In the absence of land or fixed structures in the scene, only relative speed can be obtained since the exact speed cannot be calibrated in relation to land. Even so, relative speeds are of relevance in the context of evaluating floe interaction and the opening of leads. In the case of

**Deleted:** In the case of ice management (i.e. the protection of installations and drilling rigs from moving ice), the relative drift speed between a vessel and sea ice is of most relevance and can be calculated. However, this is only the case if speed of ambiguity is on the order of meters ruling out the possibility of phase ambiguities. A known vessel speed at the time of acquisition can also potentially be used to derive absolute sea ice drift speed.

**Moved down [3]:** For the example of a closing lead in the Fram Strait, the interferometric phase could be tracked continuously near the southeastern part of the image. However, in a case where a fracture caused a phase discontinuity extending all the way through the image,  $\Delta v_{\phi}$  could theoretically not be determined since multiples of  $2\pi$  could not have been discriminated. Even so, considering  $v_a$ -values reaching upwards of 1 m, would result in implausible  $\Delta v_{\phi}$ -values if the phase discontinuity represented a phase change of more than  $2\pi$ . ¶

**Deleted:** The large effective baseline and  $h_a = 65$  m results only in a minor phase change from elevation.

**Moved down [4]:** For instance, if the ice on each side of the fracture would feature a 1 cm freeboard difference, it would only result in a  $0.5 \text{ mm s}^{-1}$  drift speed error,  $v_e$  (Equation

**Deleted:** 4). However, this image features larger

**Moved down [5]:** multiyear floes (see "A" in Figure 4a and b) causing a phase change of around 0.03 radians from surrounding ice. This implies an elevation change of roughly 30 cm and hence a difference in ice thickness of about 3 m, which is a reasonable difference between multiyear and first-year ice in this region.

**Deleted:** Ice bergs can feature even larger elevation changes than multiyear ice in which cases the sail height can end up dominating the phase signal as is the case here leading to values falling outside of the color range and saturating the image (see white areas in "B" in Figure 4b). The drift speed error from multiyear ice and icebergs can thus be substantial, but such features can be easily recognized and excluded from the drift analysis. ¶

With this work, we demonstrate that it is possible to derive instantaneous drift speed using InSAR, which can be more accurate than SAR-based approaches utilizing acquisitions separated by days, which can lead to underestimation of ice drift speeds (Hutchings et al., 2011; Haller et al., 2014). However, the approach presented here

**Moved (insertion) [4]**

**Moved (insertion) [5]**

to that of phase noise. Assuming  $\theta = 30^\circ$ , and  $\sigma_\phi$  similar to what is used in our work based on  $\gamma = 0.8$ , we determine maximum  $B_l \sim 2$  km for a large  $h_0=0.3$  m. A small  $v_a$  is also beneficial by reducing sensitivity to noise and  $v_e$ . As  $v_a$  is inversely proportional to the along-track baseline, a possible tenfold increase in  $B_l$  leading to  $B_l \sim 1$  s would likely be more optimal. A further increase in  $B_l$  would likely result in increased rotation of floes and possible deformation, further complicating the results.

Even without significant rotation, it may be necessary to consider phase ambiguities in discontinuities. For the example of a closing lead in the Fram Strait, the interferometric phase could be tracked continuously near the southeastern part of the image. However, in a case where a fracture caused a phase discontinuity extending all the way through the image,  $\Delta v_\phi$  could theoretically not be determined since multiples of  $2\pi$  could not have been discriminated. Even so, considering  $v_a$  values reaching upwards of 1 m, would result in implausible  $\Delta v_\phi$  values if the phase discontinuity represented a phase change of more than  $2\pi$ .

Moved (insertion) [3]

## 5 Conclusion

Sea ice is a significant component of Arctic ecosystems and its dynamic nature is of critical relevance to human near-coastal or offshore activities. Multiple techniques exist to evaluate sea ice drift across large spatial scales using remote sensing, but often with limited accuracy due to the temporal lag between satellite overpasses. We here investigate the potential of single-pass TanDEM-X interferometry (S-ATI) for deriving more accurate instantaneous drift speeds with a m-scale resolution capable of supporting stakeholders. The approach resulted in values roughly within 10 % of validation data in the form of 2.5 h drift speed averages derived from a ground-based radar system in Utqiagvik, Alaska. The approach was further used to determine the closing speed of a fracture in the Fram Strait. The ability of estimating the separation/closing rate of leads is an application with relevance for transportation since opening of fractures limits over-ice travel, but serves as pathways for ocean navigation.

Lastly, the approach was demonstrated in the Vilkitsky Strait, an important strategic location for trans-Arctic shipping as part of the northern sea route. Here, S-ATI showed capable of discriminating different dynamic regimes and identify zones of shear and convergence not easily identified in the amplitude image. The case study in the Vilkitsky Strait not only demonstrates the application for InSAR-derived drift speeds, but also the ability to resolve important sea ice processes at a scale and accuracy which have been difficult to assess in the past. As an example, we were able to resolve short-lived transient convergence processes otherwise invisible to SAR approaches. Such detailed information pertaining to drift speed could potentially be used to accurately determine convergence and divergence in a similar approach as applied to landfast ice. With the m-scale resolution of stripmap X-band SAR, this approach would likely be able to provide statistics of maximum pressure loads on structures relevant for engineering design and planning of offshore installations. Furthermore, instantaneous velocity

Deleted: InSAR

Deleted: estimates of ice forcing and drift around structures relevant for engineering.

5 measurements may provide new insight into how drifting sea ice respond to the surface current and wind fields and how the motion of ice floes differ at a moment in time.

10 Even with the potential application of S-ATI for evaluating short-lived processes, it will inevitably require a careful analysis of the environmental forcing over a longer time period. Only then it is possible to know whether the phase-derived drift can be representative on scales from minutes to hours. In this context, it would also be beneficial to design experiments to study ice motion on temporal scales from sub-seconds (i.e. S-ATI) to minutes (e.g. coastal radar, buoys) to several hours (e.g. buoys, SAR) to better understand observations at different scales and relate both standard SAR approaches (e.g. maximum cross correlation) to S-ATI. Furthermore, an important question is what temporal resolution is required to investigate “short-lived” events such as transient convergence or strain response upon ice impact with structures. This may also be detectable on scales of several seconds, but questionable on longer timescales of minutes. It is presently largely an open question what short-lived processes occur at different timescales and what temporal baselines would be best suited to capture them.

15 The largest limitations of S-ATI are likely related to data availability and the fact that only the cross-track component of drift speed is captured. The latter results in absolute drift speed being difficult to interpret and potentially invisible if motion is directly in the along-track direction. However, existing spaceborne along-track InSAR systems such as TanDEM-X are predominately used for proof of concept, while future dedicated systems for ocean applications would largely reduce these limitations. For instance, the new satellite concept SEASTAR will be able to provide the 2-dimensional motion vector field.  
20 TanDEM-X is presently the only system that can produce consecutive SAR images with ms-scale temporal lag necessary to derive interferometric estimates of instantaneous sea ice drift speed. ~~However,~~ with potential newer systems such as the proposed TanDEM-L mission, higher temporal resolution of drift estimates may be obtained by utilizing interferograms from multiple sensors.

**Deleted:** The limited data availability somewhat reduces the potential for this technique in monitoring and strategic decision making, but we argue it can still be valuable in supplementing coarser-resolution datasets with higher temporal sampling where data are available. Also

**Deleted:** It is clear that single-pass InSAR is not only relevant as a tactical support tool for Arctic stakeholders, but provides an important tool to assess short-term km-scale sea ice processes. Such information can help make strategic decisions by evaluating seasonal dynamics of different ice regimes as well as aid in the development and improvement of sea ice models and predictions.

## Acknowledgements

25 This work was supported by the Swedish National Space Agency (Dnr 192/15). TanDEM-X data were provided free of charge by the German Aerospace Center (DLR) through a science proposal (XTI\_GLAC6921). Sentinel-1 data are provided free of charge by the European Union Copernicus program and were accessed through the Alaska Satellite Facility (ASF). The mooring observations by Utqiagvik was supported by Arctic Research for Sustainability (ArCS) Project and Grant in Aid for Scientific Research 15H03721 from the Japanese Ministry of Education, Culture, Sports, Science, and Technology. We thank Bill Hauer at ASF, Thomas Busche at DLR, and David Duncan and Anis Elyouncha at Chalmers University of Technology for valuable support and guidance. We thank two reviewers, including Wolfgang Dierking, for substantially improving the manuscript.

## Competing interests

The authors declare that they have no conflict of interest.

## References

- 5 Ahlnäs, K., and Garrison, G.: Satellite and oceanographic observations of the warm coastal current in the Chukchi Sea, Arctic, 244-254, 1984.
- [Arctic Council: Arctic marine shipping assessment, Protection of the Arctic Marine Environment Working Group \(PAME\), Akureyri, Island, 190, 2009.](#)
- Bamler, R., and Hartl, P.: Synthetic aperture radar interferometry, Inverse problems, 14, R1, 1998.
- 10 Berg, A., and Eriksson, L. E. B.: Investigation of a hybrid algorithm for sea ice drift measurements using synthetic aperture radar images, IEEE Transactions on Geoscience and Remote Sensing, 52, 5023-5033, 2014.
- Berg, A., Dammert, P., and Eriksson, L. E. B.: X-Band Interferometric SAR Observations of Baltic Fast Ice, IEEE Transactions on Geoscience and Remote Sensing, 53, 1248-1256, 10.1109/TGRS.2014.2336752, 2015.
- Comiso, J. C., and Hall, D. K.: Climate trends in the Arctic as observed from space, Wiley Interdisciplinary Reviews: Climate Change, 5, 389-409, 10.1002/wcc.277, 2014.
- 15 [Dammann, D. O., Eicken, H., Meyer, F., and Mahoney, A.: Assessing small-scale deformation and stability of landfast sea ice on seasonal timescales through L-band SAR interferometry and inverse modeling, Remote Sens Environ, 187, 492-504, 10.1016/j.rse.2016.10.032, 2016.](#)
- Dammann, D. O., Eicken, H., Saiet, E., Mahoney, A., Meyer, F., and George, J. C.: Traversing sea ice - linking surface roughness and ice trafficability through SAR polarimetry and interferometry IEEE Journal of Selected Topics in Applied Earth
- 20 Observations and Remote Sensing, 11, 416-433, 10.1109/JSTARS.2017.2764961, 2017.
- Dammann, D. O., Eicken, H., Mahoney, A., Meyer, F., Freymueller, J., and Kaufman, A. M.: Evaluating landfast sea ice stress and fracture in support of operations on sea ice using SAR interferometry, Cold Reg Sci Technol, 10.1016/j.coldregions.2018.02.001, [2018a](#).
- Dammann, D. O., Eicken, H., Mahoney, A., Meyer, F. J., Eriksson, L. E. B., Saiet, E., Freymueller, J., and Jones, J.: New
- 25 Possibilities Using TS-X and TD-X in Support of Sea Ice Use, EUSAR 2018; 12th European Conference on Synthetic Aperture Radar, [2018b](#), 1-6
- Dammann, D. O., Eriksson, L. E. B., Mahoney, A., Stevens, C. W., Van der Sanden, J., Eicken, H., Meyer, F., and Tweedie, C.: Mapping Arctic bottomfast sea ice using SAR interferometry, Remote Sensing, 10(5), 720, 10.3390/rs10050720, [2018c](#).
- 30 Dammann, D. O., Eriksson, L. E. B., Mahoney, A. R., and Eicken, H.: Landfast sea ice stability – mapping pan-Arctic ice regimes with implications for ice use, subsea permafrost and marine habitats, The Cryosphere, 10.5194/tc-2018-129, In review.
- Dammert, P. B. G., Lepparanta, M., and Askne, J.: SAR interferometry over Baltic Sea ice, Int J Remote Sens, 19, 3019-3037, 10.1080/014311698214163, 1998.
- Dierking, W., Lang, O., and Busche, T.: Sea ice local surface topography from single-pass satellite InSAR measurements: a feasibility study, The Cryosphere, 11, 1967, 10.5194/tc-11-1967-2017, 2017.
- 35 Druckenmiller, M. L., Eicken, H., Johnson, M. A., Pringle, D. J., and Williams, C. C.: Toward an integrated coastal sea-ice observatory: System components and a case study at Barrow, Alaska, Cold Reg Sci Technol, 56, 61-72, 10.1016/J.Coldregions.2008.12.003, 2009.
- Eicken, H., Lovecraft, A. L., and Druckenmiller, M. L.: Sea-Ice System Services: A Framework to Help Identify and Meet Information Needs Relevant for Arctic Observing Networks, Arctic, 62, 119-136, 10.14430/arctic126, 2009.
- 40 Eicken, H., Jones, J., Meyer, F., Mahoney, A., Druckenmiller, M. L., Rohith, M., and Kambhamettu, C.: Environmental security in Arctic ice-covered seas: from strategy to tactics of hazard identification and emergency response, Mar Technol Soc J, 45, 37-48, doi.org/10.4031/MTSJ.45.3.1, 2011.
- Eicken, H., and Mahoney, A. R.: Sea Ice: Hazards, Risks, and Implications for Disasters, in: Coastal and Marine Hazards, Risks, and Disasters, edited by: Ellis, J. T., Sherman, D. J., and Shroder, J. F., Elsevier Inc., Amsterdam, Netherlands, 381-
- 45 399, 2015.

**Deleted:** Arctic Council: Arctic marine shipping assessment, Protection of the Arctic Marine Environment Working Group (PAME), Akureyri, Island, 190, 2009.

**Deleted:** and Betcher, S.: Assessing sea ice trafficability in a changing Arctic, Arctic, 71, 59-75, 10.14430/arctic4701, 2018a.

**Deleted:** 2018b

**Deleted:** 2018c

**Deleted:** 2018d

- Ferretti, A., Monti-Guarnieri, A., Prati, C., Rocca, F., and Massonet, D.: InSAR Principles-Guidelines for SAR Interferometry Processing and Interpretation, ESA Publications, TM-19, 2007.
- [Fukamachi, Y., Mizuta, G., Ohshima, K. I., Toyota, T., Kimura, N., and Wakatsuchi, M.: Sea ice thickness in the southwestern Sea of Okhotsk revealed by a moored ice-profiling sonar, Journal of Geophysical Research: Oceans, 111, 2006.](#)
- 5 Goldstein, R. M., and Werner, C. L.: Radar interferogram filtering for geophysical applications, Geophys Res Lett, 25, 4035-4038, [10.1029/1998GL900033](#), 1998.
- Haller, M., Brümmer, B., and Müller, G.: Atmosphere-ice forcing in the transpolar drift stream: results from the DAMOCLES ice-buoy campaigns 2007-2009, The Cryosphere, 8, 275, 2014.
- [Hibler, W., Hutchings, J., and Ip, C.: Sea-ice arching and multiple flow states of Arctic pack ice, Annals of Glaciology, 44, 339-344, 10.3189/172756406781811448, 2006.](#)
- 10 Hutchings, J. K., Roberts, A., Geiger, C. A., and Richter-Menge, J.: Spatial and temporal characterization of sea-ice deformation, Annals of Glaciology, 52, 360-368, 2011.
- Jones, J. M., Eicken, H., Mahoney, A. R., Rohith, M. V., [Kambhamettu, C., Fukamachi, Y., Ohshima, K. I., and George, J. C.:](#) Landfast sea ice breakouts: Stabilizing ice features, oceanic and atmospheric forcing at Barrow, Alaska, Continental Shelf Research, 126, 10.1016/j.csr.2016.07.015, 2016.
- 15 Karvonen, J.: Virtual radar ice buoys—a method for measuring fine-scale sea ice drift, The Cryosphere, 10, 29-42, 2016.
- Krämer, T., Johnsen, H., and Brekke, C.: Emulating Sentinel-1 Doppler radial ice drift measurements using Envisat ASAR data, IEEE Transactions on Geoscience and Remote Sensing, 53, 6407-6418, 2015.
- Krupnik, I., Aporta, C., Gearheard, S., Laidler, G. J., and Holm, L. K.: SIKU: knowing our ice, Springer, New York, 2010.
- 20 Kwok, R., Schweiger, A., Rothrock, D., Pang, S., and Kottmeier, C.: Sea ice motion from satellite passive microwave imagery assessed with ERS SAR and buoy motions, Journal of Geophysical Research: Oceans, 103, 8191-8214, 1998.
- Kwok, R., Spreen, G., and Pang, S.: Arctic sea ice circulation and drift speed: Decadal trends and ocean currents, Journal of Geophysical Research: Oceans, 118, 2408-2425, 2013.
- Lang, O.: Radar Remote Sensing in Western Antarctica with Special Emphasis on Differential Interferometry, Deutsches Zentrum für Luft-und Raumfahrt, 2003.
- 25 Li, S., Shapiro, L., McNutt, L., and Feffers, A.: Application of Satellite Radar Interferometry to the Detection of Sea Ice Deformation, Journal of the Remote Sensing Society of Japan, 16, 67-77, [10.11440/rssj1981.16.153](#), 1996.
- Mahoney, A., Eicken, H., Gaylord, A. G., and Gens, R.: Landfast sea ice extent in the Chukchi and Beaufort Seas: The annual cycle and decadal variability, Cold Reg Sci Technol, 103, 41-56, [10.1016/J.Coldregions.2014.03.003](#), 2014.
- 30 Mahoney, A., Eicken, H., Fukamachi, Y., Ohshima, K. I., Simizu, D., Kambhamettu, C., Rohith, M., Hendricks, S., and Jones, J.: Taking a look at both sides of the ice: comparison of ice thickness and drift speed as observed from moored, airborne and shore-based instruments near Barrow, Alaska, Annals of Glaciology, 56, 363-372, [2015a](#).
- Mahoney, A., Dammann, D. O., Johnson, M. A., Eicken, H., and Meyer, F. J.: Measurement and imaging of infragravity waves in sea ice using InSAR, Geophys Res Lett, 43, 6383-6392, [10.1002/2016GL069583](#) 2016.
- 35 [Mahoney, A. R., Eicken, H., Fukamachi, Y., Ohshima, K. I., Simizu, D., Kambhamettu, C., Rohith, M., Hendricks, S., and Jones, J.: Taking a look at both sides of the ice: comparison of ice thickness and drift speed as observed from moored, airborne and shore-based instruments near Barrow, Alaska, Annals of Glaciology, 56, 363-372, 2015b.](#)
- Marbouti, M., Praks, J., Antropov, O., Rinne, E., and Leppäranta, M.: A Study of Landfast Ice with Sentinel-1 Repeat-Pass Interferometry over the Baltic Sea, Remote Sensing, 9, 833, [10.3390/rs9080833](#), 2017.
- 40 Meier, W. N., and Maslanik, J. A.: Effect of environmental conditions on observed, modeled, and assimilated sea ice motion errors, Journal of Geophysical Research: Oceans, 108, 2003.
- Meier, W. N., Hovelsrud, G. K., Oort, B. E., Key, J. R., Kovacs, K. M., Michel, C., Haas, C., Granskog, M. A., Gerland, S., and Perovich, D. K.: Arctic sea ice in transformation: A review of recent observed changes and impacts on biology and human activity, Reviews of Geophysics, 52, 185-217, [10.1002/2013RG000431](#), 2014.
- 45 Meyer, F. J., Mahoney, A. R., Eicken, H., Denny, C. L., Druckenmiller, H. C., and Hendricks, S.: Mapping arctic landfast ice extent using L-band synthetic aperture radar interferometry, Remote Sens Environ, 115, 3029-3043, [10.1016/J.Rse.2011.06.006](#), 2011.
- Morris, K., Li, S., and Jeffries, M.: Meso-and microscale sea-ice motion in the East Siberian Sea as determined from ERS-I SAR data, Journal of Glaciology, 45, 370-383, [10.3189/S0022143000001878](#), 1999.

Deleted: K.,

Deleted: F.,

Deleted: ., O. K

Deleted: 2015



- Muckenhuber, S., and Sandven, S.: Open-source sea ice drift algorithm for Sentinel-1 SAR imagery using a combination of feature tracking and pattern matching, *The Cryosphere*, 11, 1835, [10.5194/tc-11-1835-2017](https://doi.org/10.5194/tc-11-1835-2017), 2017.
- Norton, D. W., and Gaylord, A. G.: Drift velocities of ice floes in Alaska's northern Chukchi Sea flaw zone: Determinants of success by spring subsistence whalers in 2000 and 2001, *Arctic*, 347-362, 2004.
- 5 Oikkonen, A., Haapala, J., Lensu, M., and Karvonen, J.: Sea ice drift and deformation in the coastal boundary zone, *Geophys Res Lett*, 43, 2016.
- Rampal, P., Weiss, J., and Marsan, D.: Positive trend in the mean speed and deformation rate of Arctic sea ice, 1979–2007, *Journal of Geophysical Research: Oceans*, 114, 10.1029/2008JC005066, 2009a.
- Rampal, P., Weiss, J., Marsan, D., and Bourgoin, M.: Arctic sea ice velocity field: General circulation and turbulent-like fluctuations, *Journal of Geophysical Research: Oceans*, 114, 2009b.
- 10 Rohith, M., Jones, J., Eicken, H., and Kambhamettu, C.: Extracting quantitative information on coastal ice dynamics and ice hazard events from marine radar digital imagery, *IEEE Transactions on Geoscience and Remote Sensing*, 51, 2556-2570, 2013.
- Romeiser, R., and Thompson, D. R.: Numerical study on the along-track interferometric radar imaging mechanism of oceanic surface currents, *IEEE transactions on geoscience and remote sensing*, 38, 446-458, 2000.
- 15 Romeiser, R., and Runge, H.: Theoretical evaluation of several possible along-track InSAR modes of TerraSAR-X for ocean current measurements, *IEEE Transactions on Geoscience and Remote Sensing*, 45, 21-35, 2007.
- Romeiser, R., Suchandt, S., Runge, H., Steinbrecher, U., and Grunler, S.: First analysis of TerraSAR-X along-track InSAR-derived current fields, *IEEE Transactions on Geoscience and Remote Sensing*, 48, 820-829, 2010.
- [Rosen, P. A., Hensley, S., Joughin, I. R., Li, F. K., Madsen, S. N., Rodriguez, E., and Goldstein, R. M.: Synthetic aperture radar interferometry, \*Proceedings of the IEEE\*, 88, 333-382, 2000.](#)
- 20 Scheiber, R., De Zan, F., Prats, P., Aratújo, L. S. A., Künemund, M., and Marotti, L.: Interferometric sea ice mapping with TanDEM-X: First experiments, *Geoscience and Remote Sensing Symposium (IGARSS)*, 2011 IEEE International, 2011, 3594-3597
- Shirasawa, K., Ebuchi, N., Leppäranta, M., and Takatsuka, T.: Ice-edge detection from Japanese C-band radar and high-frequency radar coastal stations, *Annals of Glaciology*, 54, 59-64, 10.3189/2013AoG62A007, 2013.
- 25 Spreen, G., Kwok, R., and Menemenlis, D.: Trends in Arctic sea ice drift and role of wind forcing: 1992–2009, *Geophys Res Lett*, 38, 2011.
- Stroeve, J. C., Serreze, M. C., Holland, M. M., Kay, J. E., Malanik, J., and Barrett, A. P.: The Arctic's rapidly shrinking sea ice cover: a research synthesis, *Climatic Change*, 110, 1005-1027, 10.1007/S10584-011-0101-1, 2012.
- 30 Thomas, D. N.: *Sea ice*, John Wiley & Sons, Chichester, United Kingdom, 2017.
- Thompson, D. R., and Jensen, J.: Synthetic aperture radar interferometry applied to ship-generated internal waves in the 1989 Loch Linnhe experiment, *Journal of Geophysical Research: Oceans*, 98, 10259-10269, 1993.
- Valenzuela, G. R.: Theories for the interaction of electromagnetic and oceanic waves—A review, *Boundary-Layer Meteorology*, 13, 61-85, 1978.
- 35 Vincent, F., Raucoules, D., Degroeve, T., Edwards, G., and Abolfazl Mostafavi, M.: Detection of river/sea ice deformation using satellite interferometry: limits and potential, *Int J Remote Sens*, 25, 3555-3571, [10.1080/01431160410001688303](https://doi.org/10.1080/01431160410001688303), 2004.
- [Walsh, E. J., Hancock III, D. W., Hines, D. E., Swift, R. N., and Scott, J. F.: An observation of the directional wave spectrum evolution from shoreline to fully developed, \*Journal of physical oceanography\*, 19, 670-690, 1989.](#)
- 40 Werner, C., Wegmüller, U., Strozzi, T., and Wiesmann, A.: Gamma SAR and interferometric processing software, *Proceedings of the ERS-ENVISAT symposium*, Gothenburg, Sweden, 2000, 1620
- Winsor, P., and Chapman, D. C.: Pathways of Pacific water across the Chukchi Sea: A numerical model study, *Journal of Geophysical Research: Oceans*, 109, 2004.
- Zhang, J., Thomas, D., Rothrock, D., Lindsay, R., Yu, Y., and Kwok, R.: Assimilation of ice motion observations and comparisons with submarine ice thickness data, *Journal of Geophysical Research: Oceans*, 108, 2003.
- 45 Zhang, J., Lindsay, R., Schweiger, A., and Rigor, I.: Recent changes in the dynamic properties of declining Arctic sea ice: A model study, *Geophys Res Lett*, 39, 10.1029/2012GL053545, 2012.

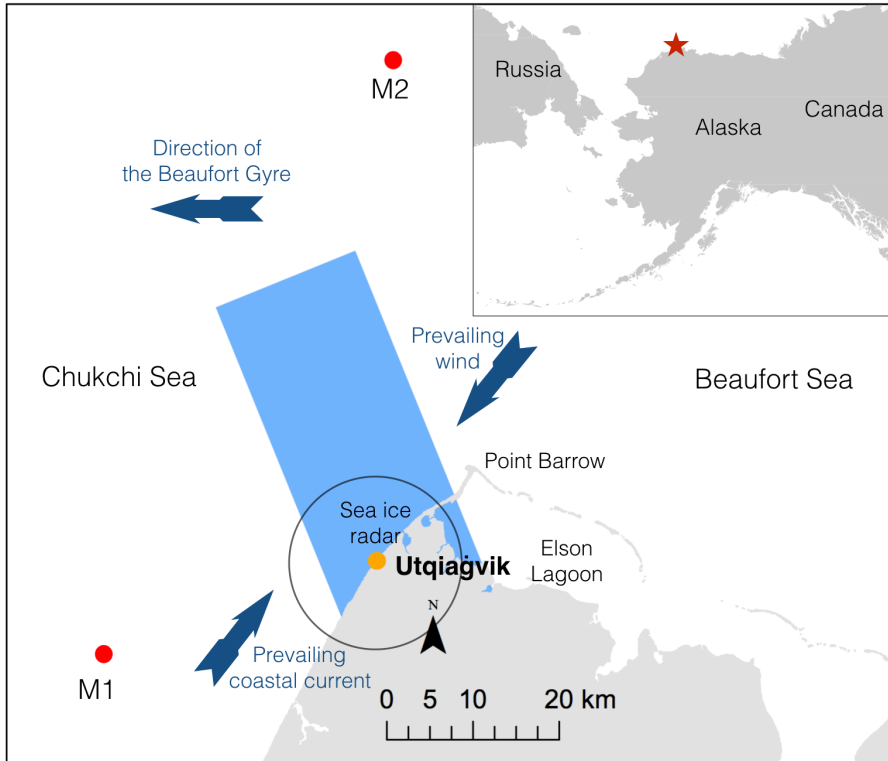


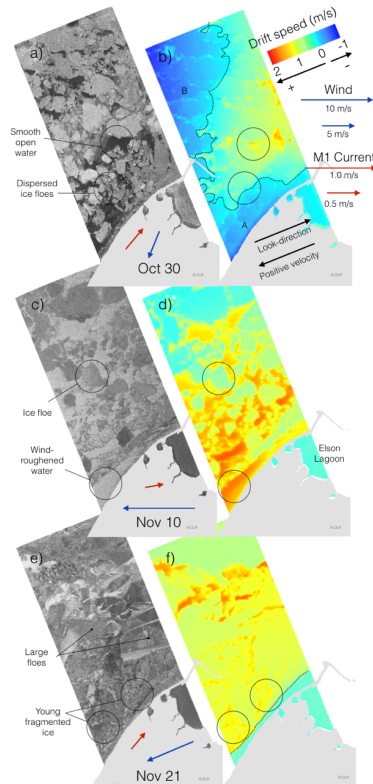
Figure 1: Overview of study region near Utqiagvik, Alaska. The blue rectangle signifies the footprint of the SAR acquisitions and the circle marks the range of the ground-based radar (roughly 11 km). Red dots signify location of deployed moorings for assessing ocean surface current.

Deleted: 1

Deleted: yellow dot

5

10



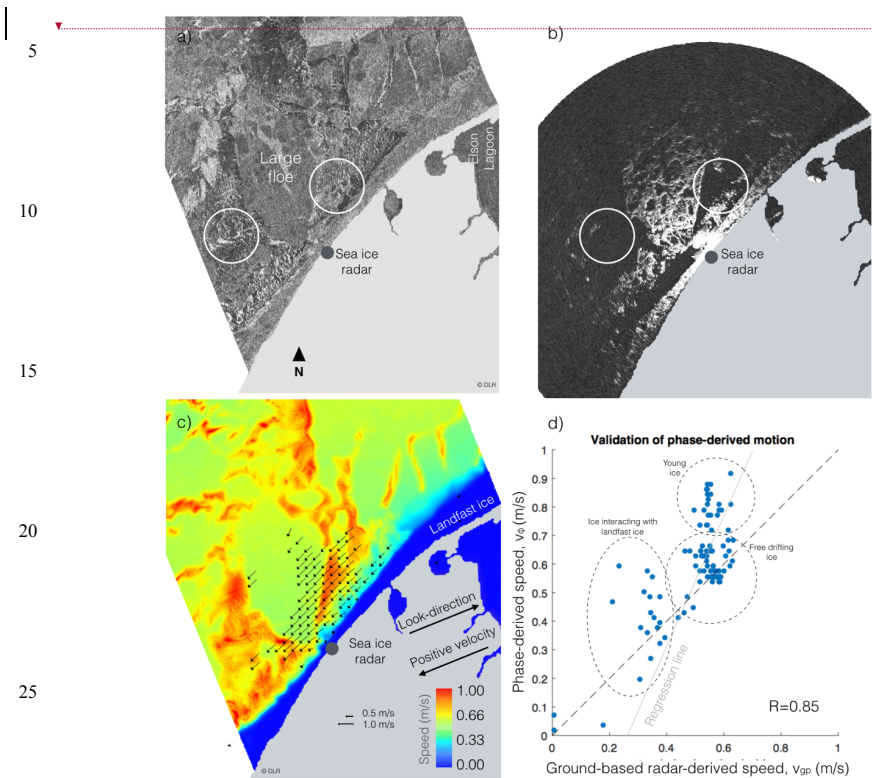
5 **Figure 2:** Three TanDEM-X backscatter images individually stretched to emphasize different ice types and features (left column) and phase-derived speed in the look direction (right column) by Utqiagvik during fall 2015 at 03:19 UTC. Positive velocity is defined opposite of look direction. Line of zero velocity is marked with a dotted line. Velocity of wind (recorded in Utqiagvik) and currents (at M1) at the time of acquisition are indicated with blue and red arrows respectively. Land is masked out in light gray. A and B indicate areas of negative velocity in (a) further discussed in the text.

10

Deleted:

Deleted: 2

Deleted: dashed

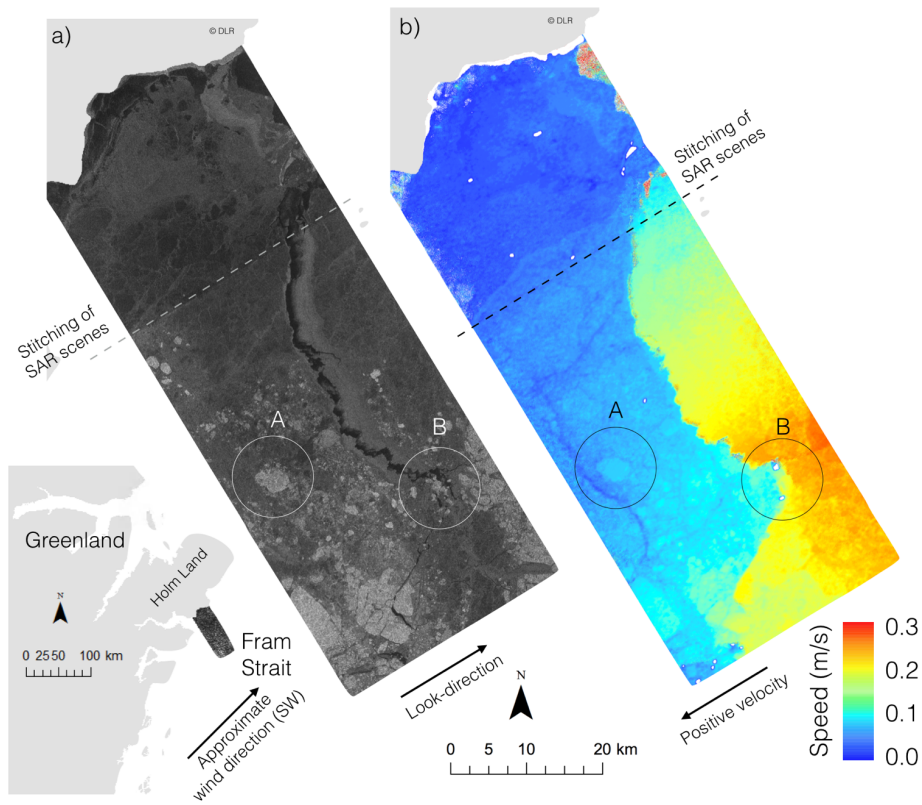


Deleted: <object>

30 Figure 3: (a) Tandem-X backscatter scene over Utqiagvik, Alaska on 21 Nov 2015 3:19 UTC. (b) ground-based radar backscatter  
 scene 21 Nov 2015 3:18 UTC. Circles indicate areas of young ice hence reduced backscatter in (b). (c) interferometric phase-derived  
 look-directional speed at 3:19 UTC. Arrows represent speed derived from ground-based radar data averaged between 1:52 – 4:28  
 35 UTC. Land is masked out in light gray. (d) Comparison between look-directional speed as evaluated using InSAR- and ground-  
 based radar-derived speed. Circles in (d) indicate three types of drifting ice including floes interacting with landfast ice, free drifting  
 floes, and young ice.

Deleted: 3

Deleted: Circle in (d) indicates poor match between motion products in areas with young sea ice and reduced backscatter from the ground-based radar predominately within the right circled area in (a) and (b).



**Figure 4:** (a) Tandem-X backscatter scene over Fram Strait 23 Nov 2015 at 17:00 UTC. (b) Look-directional component of InSAR-derived speed. Letters signify multiyear ice “A” and area of ice bergs “B”. Land is masked out in light gray. White areas signify values larger than the range of the color scale due to topography (either icebergs or land topography near the coast due to a poor match with the landmask). Wind at the time of the acquisition was roughly southwesterly at 3 m/s.

Deleted: 4

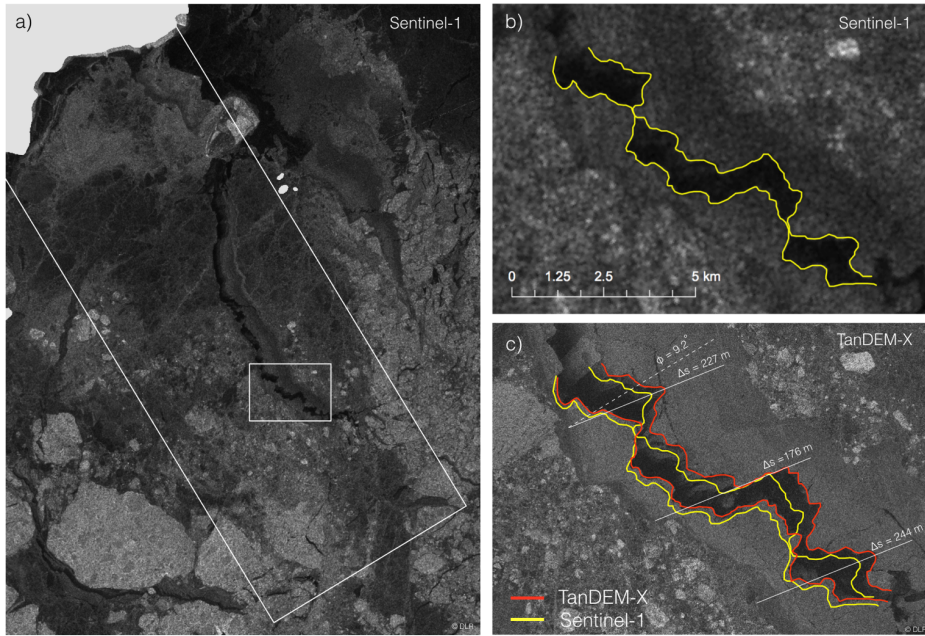
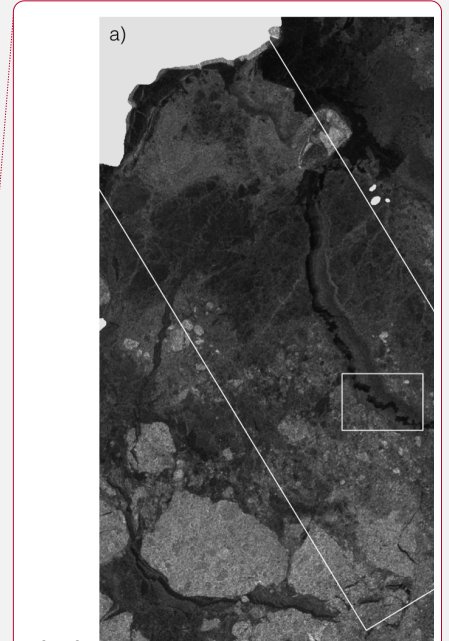


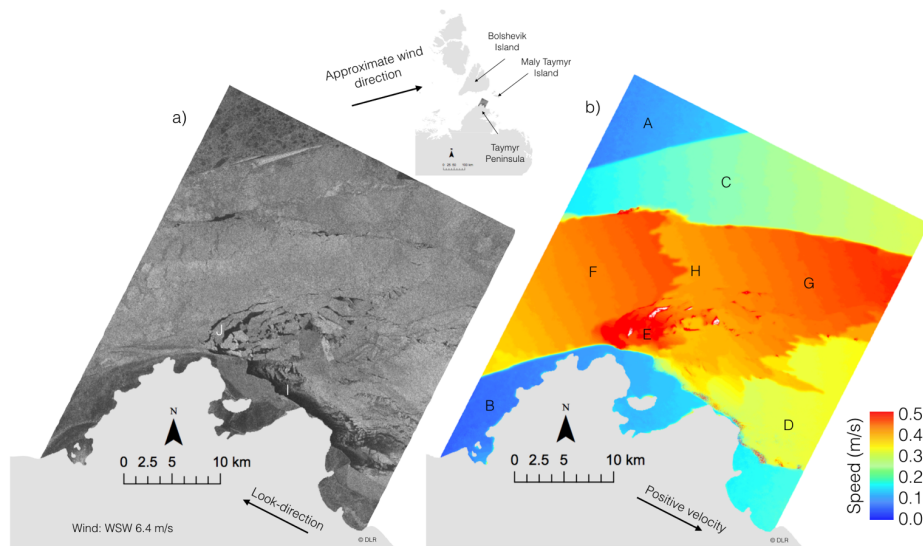
Figure 5: (a) Sentinel-1 backscatter image acquired 23 Nov 2015 at 17:32 UTC. The large white box represents the areal extent of the TanDEM-X image. (b) outlined part of the fracture (yellow line) as observed with Sentinel-1 within the small rectangle in (a). (c) outlined part of the fracture (red line) as observed with TanDEM-X. Width of the fracture ( $\Delta s$ ) is compared along the solid lines and  $\phi$  represents angle between opening direction (solid lines) and the TanDEM-X look direction (dashed line). Land is masked out in light gray.



Deleted:

Deleted: 5

Deleted: 0



**Figure 4** (a) TanDEM-X backscatter scene over Vilkitsky Strait 17 Dec 2013. (b) Look-directional component of InSAR-derived speed. Land is masked out in light gray. Wind at the time of the acquisition was roughly WSW at 6 m/s. **Different zones are indicated by letters (A-B) no drift in the look direction, (C-D) intermediate speeds, and (F-H) channel of high speeds.**

**Deleted:** 6

**Deleted:** Letters signify different dynamic regions described in the text.

**Deleted:** ~~~~~Section Break (Next Page)~~~~~

5



Table 1: List of TANDEM-X datasets analyzed

Region	Acquisition ID	Orbit	Date	Time	Dir.	$B_{  }$ (m)	$B_{\perp}$ (m)	$\theta$ (deg)	$v_a$ (m s <sup>-1</sup> )	$h_a$ (m)
Utqiagvik	1321593	46609	30 Oct 2015	03:19:06.563	A	89.2	73.8	20.9	3.70	41.6
Utqiagvik	1321410	46776	10 Nov 2015	03:19:06.374	A	42.6	76.4	20.9	7.76	40.2
Utqiagvik	1321233	46943	21 Nov 2015	03:19:06.411	A	73.3	77.4	20.9	4.51	39.7
Fram Strait	1323154	46982	23 Nov 2015	17:00:48.513	A	69.5	77.6	32.5	3.16	65.6
Fram Strait	1323154	46982	23 Nov 2015	17:00:41.513	A	69.5	78.4	32.5	3.16	64.9
Vilkitsky Strait	1169973	36253	17 Dec 2013	00:17:00.693	D	152.2	81.2	38.5	1.24	78.1

*Dir.* = orbit direction either ascending (A) or descending (D), **Time** = acquisition start time in UTC,  $B_{||}$  = along-track baseline,  $B_{\perp}$  = perpendicular baseline,  $\theta$  = incident angle, and  $v_a$  = speed of ambiguity

- Deleted: /cycle
- Inserted Cells
- Inserted Cells
- Inserted Cells
- Inserted Cells
- Deleted: / 279
- Deleted: / 280
- Deleted: / 281
- Deleted: Str.
- Deleted: / 281
- Deleted: Str.
- Deleted: / 281
- Deleted: Str.
- Deleted: / 217
- Deleted: incidence