

Response to Reviewers of ‘A multi-season investigation of glacier surface roughness lengths through *in situ* and remote observation.’

Firstly, we wish to sincerely thank the reviewers for providing detailed and thorough reviews of our manuscript. Your comments were extremely useful in refining the paper, and we have endeavoured to respond adequately to each of your comments below. In terms of the main changes to the manuscript, a more comprehensive account of the uncertainties surrounding turbulence measurements and calculations on glaciers has been added to the introduction, methods and discussion, while the information and findings on the potential affects of katabatic wind maximums and non-stationary turbulence have been expanded. Additional expansion and clarification of the methods employed in this study has also been performed throughout the text. Please find below our responses to the individual comments of the reviewers.

Response to Reviewer 1

1) Other Studies Estimating Roughness on Mountain Glaciers:

The introduction is clear and concise, presenting a clear rationale for the study while acknowledging previous work. In general, this paper adequately cites and gives ample credit to other studies. However, I can identify a few specific papers that contain findings of some relevance to the study here. In the majority, they add greater weight to the arguments and findings presented. While I agree with the comment (P3, L6) that “Similar studies on mountain glaciers are very rare”, there are a few examples for Himalayan (debris-covered) glaciers that might be worth considering (Quincey et al., 2017; Miles et al., 2017).

The suggested studies have now been referenced in the manuscript, with an outline of their findings presented in the introduction.

2) Block Estimation Method:

Equation (7) would benefit from some clarification. It took me a while to understand that, but I was simply confused by the definition of ‘lines’ and ‘rows’. Aside from that, it makes sense – Figure 2 is extremely helpful. How does this work when the blocks have a larger cell dimension? Do you assume sheltering across the whole 11 m?

We have added additional text here, referencing Fig. 2, to help clarify the values going into Eq. 7. The same process is applied for all ranges of block sizes, and as a result, the extent of the assumed sheltering will increase with increasing block size. Therefore, by varying the size of the block, we were also testing different assumed sheltering ranges. We have added a line to the methods in Section 2.6.1 to clarify this, and it is discussed in Section 4.2.

How were edge effects of using a moving window dealt with? Was it extrapolated or padded with zeros?

The main step taken to avoid edge effects influencing the calculated roughness values was to use large subareas of the DEMs (2000 x 2000 m) around the stations. Considering that the vast majority of the turbulent footprint (and associated weighting) was contained within 200 m of the station, the values of the grid cells on the edges of the subareas will essentially have no influence on the calculated roughness length values. For populating the values of the edge grid cells, the border around the grid cell of interest (i.e. the block size) was reduced to fit the available grid cells. For example, when using the 3 x 3 m block size, a 2 x 3 m or 3 x 2 m block size was used for the edge grid cells.

Is the result of equation 8 not really a localised z_0 ? Why is it given different notation and called a drag value?

We wished to use different notation for the values produced from Eq.8 as we recognise the momentum roughness length to be a function of the airflow interacting with the surface of the upwind footprint. As the value calculated at Eq.8 is very localised and does not account for the net effect of the turbulent footprint (that comes in the next step), we felt naming it as a momentum roughness length would not be correct. We therefore hold off referring to momentum roughness lengths until we have weighted the values from Eq.8 over the turbulent footprint (Eq.9).

What are these “assumed footprint areas” (P9L18)? It sounds interesting, but I’d like to see more details (mentioned again P18, L7). Actually, the finding on P12L30 that equally weighted cells gave similar results is very interesting and helpful for studies going forwards. Is the assumed footprint related to this?

Yes, this finding is referring to the assumed footprint. A series of assumed footprint areas were tested, ranging from 51 x 51 m to 251 x 251 m in size, and located directly upwind of the station grid cell. The drag values for each cell within these areas were weighted equally when calculating the momentum roughness length value. This gave a roughness length value for an assumed footprint area without the use of EC-derived footprint data, and as you have stated, this was done to see if future studies without EC data could apply this assumption. Implementing a 101 x 101 m with equally weighted cells returned values in line with the EC-derived values. We have added additional text to the methods and discussion section to clarify this.

3) Profile Estimation Method:

I found this method to be very interesting. In fact, it differs markedly from the conventional ‘profile’ approach (e.g. Munro, 1989) in that wind parallel profiles are taken, rather than perpendicular profiles. This works well when dealing with topographic data at the scale available here (1 x 1 m). I find myself agreeing with the authors’ approach here, but I think the difference between this and previous work could be flagged.

Additional text has been added to Section 2.6.2 to highlight the similarities and differences in this method with previous techniques. Fundamentally, this method is based on the theory of Lettau (1969), as is the case with the technique used by Munro (1989). As noted, however, it differs in its application of this theory by examining wind-parallel rather than wind-perpendicular profiles.

The cut-off wavelength of 35 m seems to be important, but looking at Figure 3c, I cannot quite see why this was decided upon.

We assumed that it would be the smaller wavelength features on the surface (e.g. melt channels, crevasses, boulders) that would disturb air flow and influence the roughness length values, while air flow would likely follow the larger wavelength features (e.g. surface undulations due to bed topography). Therefore, we wanted to separate the smaller scale features from the larger scale features at the test sites. Without defined criteria to make this selection, we determined a cut-off wavelength by analysing the power spectrum of the detrended profiles at each location. We looked for a band of wavelengths, with spectrum at zero, that was located between the energy from small and large wavelengths i.e. we looked for a separation of scales based on the power spectrum. At each site, a similar wavelength of approx. 35 m was identified, and we chose this value as the maximum wavelength influencing roughness length, and filtered out larger wavelength features from the roughness calculations. We hypothesise that 35 m appears to perform well as the cut-off wavelength for these calculations as it is likely similar to the height of the stable boundary layer over the glacier surface, and indicates the max wavelength of the features that this shallow air flow would be impeded by rather than follow. Text has been added to Section 2.6.2 and 4.2 to clarify this.

Equation 10 shows that the absolute value of the elevation difference between cells is used in the estimate of s . Is this correct? Is it not more appropriate to consider the differences facing the wind (i.e. only considering positive differences, rather than turning negative differences into positive values)?

The layout of this section has been edited and additional text and equations (Eq. 10 and 11 in the revised manuscript) have been added to clarify the steps taken here, and to facilitate reproducibility. Only the positive differences in surface height are considered. Division by 2 in the calculation of s (Eq. 12 in revised manuscript) is employed so that only the absolute height deviations above the mean height are accounted for in the roughness calculation. The distribution of the height values h around the mean was close to symmetrical, i.e. the mean was equal to the median, and therefore the division by 2 is appropriate.

As with the block method, how were edge effects dealt with?

The detrending and filtering in the profile method was applied over profiles 600 m in length (300 m upstream and downstream of the grid cell of interest), while the calculation of roughness lengths was applied on a fetch up to 70 m upstream of the grid cell of interest. Therefore, the edge effects of detrending and filtering did not impact the domain used in the roughness length calculations.

4) DEM Scale Sensitivity:

I find the creation of the synthetic DEM at a finer scale than the LiDAR data to be the least convincing aspect of the paper. In my opinion, it detracts from the key messages of the paper and is better off being removed entirely. It would make a useful discussion point for further work, but I am not convinced that the data support this analysis.

Ideally, the DEM-based roughness methods would be tested on a range of DEM resolutions, and this recommendation has been further emphasised in the conclusions. In the absence of these data sources, however, we believe it is important to provide some form of sensitivity analysis in the paper to highlight the uncertainties in these methods before they may be employed in another study. Therefore, we suggest that retaining this sensitivity test strengthens the analysis presented in this paper, as a whole.

Technical corrections:

P4L22: data was -> data were

Corrected

Table 2 – are z and zu defined in the text anywhere?

Text added to Table 2 caption to clarify, and pre-exists in Section 2.5.

P10L30 – should the second instance of ‘parallel’ read ‘perpendicular’?

Yes, corrected.

P10L33 –re-word ‘demeaned’!

Corrected

Section 3.2.3 – to confirm, is this the 1 x 1 m data?

Yes. Text added to confirm this

P16L32 – note typo in citation

Corrected

Response to Reviewer 2

This paper should really be published, since the work is highly relevant for future investigation.

Though, a few important key issues, pointing towards the basis of the above mentioned methods, are only briefly mentioned, thought they might play a fundamental role in the divergences observed in the results from the different methods. I don't think any key calculations would have to be remade, but at least a stronger discussion of these issues should be included, and an assessment of the impact that may have on the observed results, in order for readers and the community not to blindly follow these.

To strengthen the discussion and to highlight potential sources and impacts of uncertainty and error in the methods and calculations in this study, a number of additions have been made to the manuscript. Further consideration has been given to the uncertainties surrounding turbulence measurements and calculations on glaciers in the introduction, methods and discussion. The presence and height of a katabatic wind maximum at the study sites and the potential impact on roughness calculation has been discussed. In addition, details on the test for non-stationary turbulence have been expanded, and a determination of the random error in the eddy covariance measurements has been added. Further details are provided below.

The eddy covariance derived surface roughness and the assumptions of the similarity theory. All along the paper, it is assumed that the 30 min-averaged values of u^ , T^* and q^* , are collected during flow conditions which are representative of the assumptions of the similarity theory, a necessary condition for the applicability of the bulk-formulation. This is guaranteed through the careful filtering and selection of the high frequency data, for various criteria (i.e. minimum wind speed, specific flow direction, near-neutral stability conditions, etc., section 2.4, lines 20 to 28). This ensures the scaling of the bulk formulation is valid only if the state of the turbulent flow is driven only by its interaction with the surface, in other words if turbulence is generated only by the interaction of the flow with the surface, and depends only on the stability of the surface layer. One key filter that ensures this conditions to be fulfilled is the one for stationarity of the flow and fully developed turbulence. Thought, even in these cases it is possible that additional turbulence is transported through by large eddies originating from outside*

layers – related processes, or being transported away, so that the actual measured u^ , T^* , q^* do not scale with the mean flow surface properties (Hogstrom, 2002, Thomas and Foken 2005, Barthlott et al 2007, Litt et al., 2015), even under neutral stability conditions. In such cases it is most likely that the roughness provided by the High Frequency fluxes will not be representative of the surface characteristics, and so that the roughness inferred out from the actual surface state (DEM block, profile methods) do not reproduce the actual fluxes when using the bulk formulation. If the filtering retains only specific meteorological conditions for which the turbulent flow develops in a certain way, we could observe a persistent bias. I think this should be addressed in the discussion, and mentioned somewhere in the introduction. An assessment could be done. For example, is there an actual relationship between the value of the stationarity criteria, and the actual EC roughness values? Also, the presence of turbulent transport can be assessed through a spectral analysis or the analysis of the integral turbulence values.*

A new section has been added to the Introduction to highlight the uncertainties in calculating EC-derived roughness length values through the bulk method. This includes the uncertainty in the applied stability functions, the prevalence of katabatic low-level wind maximums over sloped glaciers and the associated assumptions of the bulk method that may not be valid in such conditions (e.g. constant flux/momentum layer, stationary turbulence, negligible advection etc.). As noted, a substantial series of filters have been applied to the EC data in an effort to obtain roughness values representative of surface interactions. The details on the applied stationarity filter have been expanded in Section 2.5. In addition, a sensitivity test to the selection of the stationarity criteria has been added.

A katabatic wind maximum is often present near the surface above glaciers, and this is mentioned in the text and discussion, but only briefly. Actually the formulation of the bulk method is not adapted to the presence of a katabatic maximum, since it induces turbulent transport (Smeets and al., 1998,2000). Though no real assessment is made upon that.

The development of katabatic wind maximums and the associated uncertainties has been further discussed in the introduction (as mentioned in the response above). In addition, a discussion has been added to Section 4.1.1 which indicates that the development of low-level wind maximums near measurement height was likely frequent at the glacier sites (based on observations from a companion study). The majority of such periods, however, would have been identified as being stable and filtered out of the roughness calculations.

Errors on measurements on the EC derived roughness are not assessed. Though, these might be large. Also, the stability corrections, which are used to assess the neutrality of the turbulent flow, and to finally calculate the surface roughness, are dependent upon the surface temperature measurements which, I suppose (not stated clearly in the manuscript) are derived from the Infrared radiometer readings (either an Apogee SI-111 or maybe the Kipp & Zonen CNR4 when the previous is not available). These measurements are directly linked to the value of the surface emissivity of the snow or ice. Which value is assumed for that is not clearly mentioned. How are you taking the uncertainty related to that into account?

Text has been added to Section 2.2 to clarify the source of the surface temperature data (observed in 2015 and 2016 by infrared sensor, and estimated from outgoing longwave in 2014) and to complement the existing information in Table 2. The method used to determine surface temperature from outgoing longwave and the choice of emissivity for the 2014 dataset is detailed in the referenced paper (Fitzpatrick et al., 2017). An emissivity value of 0.98 was used for the surface. Varying the emissivity value between 0.95 and 1 (range based on previous snow/ice studies) had negligible impact on the calculated values. The random error values on the EC-observed fluxes have been calculated and added to Section 2.4.1. Furthermore, the standard deviation of the 30-minute roughness lengths from which the seasonal values are calculated are presented in Table 4 to indicate the large range in the EC-observed roughness values, despite extensive filtering. This substantial variability and scattering is noted and discussed in Sections 3.1 and 4.1.1.

Specific:

1) Introduction. For roughness assessment you could also use detailed wind temperature profiles (Sicart et al, 2014)

Text added to introduction

2.4) Data treatment, eddy covariance data: Could you provide the chosen threshold for stationarity and indicate the percentage of remaining data blocks after filtering?

Details on the stationarity filter have been added to Section 2.4, and the outcome of this filtering added to Section 3.1.

2.5) mention somewhere how you derive surface temperature out of the SI-112 apogee instruments or the CNR4, more specifically what do you choose for the surface emissivity?

As outlined above, text has been added to clarify this.

3.1) Line 23: provide the actual range explicitly.

Text added

4.1) Line 25: do you have any estimate of the actual height of the Katabatic wind maximum?

The text here in Section 4.1.1 has been expanded, as mentioned above in a previous response, including an indication of wind maximum height.

List of substantive changes made to manuscript

Introduction

- Two further studies discussed (Quincey *et al.*, 2017; Miles *et al.*, 2017) which examined momentum roughness length estimation over debris-covered glaciers.
- Section added discussing the uncertainties in using the bulk aerodynamic method over sloped glaciers, due to the applied stability functions and the potential development of a katabatic low-level wind maximum.
- Description of a turbulent footprint removed from this section

Data and Methods

Section 2.2

- Text and reference added to clarify source of glacier surface temperature values used in calculations.
- Description of a turbulent footprint moved to this section

Section 2.4.1

- Estimation of the random error in the eddy covariance flux measurements added to text.

Section 2.5

- Expansion of the description of the test for non-stationary turbulence and addition of sensitivity analysis on the parameters of the test.

Section 2.6.1

- Text added to clarify the block method steps described in Eq. 7 and Fig. 2., and to clarify how the choice of block size affects the assumptions of the shadowing effect of a roughness element.
- Text added to clarify the application of an assumed footprint area in the block method.

Section 2.6.2

- Text added to highlight similarities and differences in the profile method with existing methods i.e. Lettau (1969) and Munro (1989).
- Editing of the text to clarify the method and reasoning for the selection of the cut-off wavelength in the profile method (discussed further in Section 4.2).
- To clarify the method for the calculation of z_{0v_prof} , two equations (Eq. 10 and 11) have been added, along with editing of the text and Eq. 12 (Eq.10 in previous draft).

Results

Section 3.1

- Results of non-stationary turbulence test added.

Discussion

Section 4.1.1

- Added to the discussion on katabatic conditions, including findings from a companion study at the glacier sites on the height of the wind maximum and its potential influence on roughness estimates.

Section 4.2

- Modified the discussion on the cut-off wavelength for the profile method.
- Text added on the reason for the sensitivity in the profile method to DEM resolution.

Conclusions

- Recommendation added to potentially use both the block and profile method together to determine likely range of roughness values.
- Recommendation added to continue the evaluation of the proposed remote roughness methods over a range of data sources and resolutions.

Figures

- Removed erroneous text from caption of Fig. 10.

Tables

- Modified the caption for Table 2 to clarify the height values presented in the table.

A multi-season investigation of glacier surface roughness lengths through in situ and remote observation

Noel Fitzpatrick¹, Valentina Radić¹, Brian Menounos²

¹ Department of Earth, Ocean, and Atmospheric Sciences, University of British Columbia, Vancouver, V6T 1Z4, Canada,

5 ² Natural Resources and Environmental Studies Institute and Geography Program, University of Northern British Columbia, Prince George, V2N 4Z9, Canada

Correspondence to: Noel Fitzpatrick (nfitzpat@eoas.ubc.ca)

Abstract. The roughness length values for momentum, temperature, and water vapour are key inputs to the bulk
10 aerodynamic method for estimating turbulent heat flux. Measurements of site-specific roughness length are rare for glacier
surfaces, and substantial uncertainty remains in the values and ratios commonly assumed when parameterising turbulence.
Over three melt seasons, eddy covariance observations were implemented to derive the momentum and scalar roughness
lengths at several locations on two mid-latitude mountain glaciers. In addition, two techniques were developed in this study
15 for the remote estimation of momentum roughness length, utilising LiDAR-derived digital elevation models with a 1 x 1 m
resolution. Seasonal mean momentum roughness length values derived from eddy covariance observations at each location
ranged from 0.7–4.5 mm for ice surfaces, and 0.5–2.4 mm for snow surfaces. From one season to the next, mean momentum
roughness length values over ice remained relatively consistent at a given location (0–1 mm difference between seasonal
mean values), while within a season, temporal variability in momentum roughness length over melting snow was found to be
substantial (> an order of magnitude). The two remote techniques were able to differentiate between ice and snow cover, and
20 return momentum roughness lengths that were within 1–2 mm (<< an order of magnitude) of the *in situ* eddy covariance
values. Changes in wind direction affected the magnitude of the momentum roughness length due to the anisotropic nature of
features on a melting glacier surface. Persistence in downslope wind direction on the glacier surfaces, however, reduced the
influence of this variability. Scalar roughness length values showed considerable variation (up to two and a half orders of
magnitude) between locations and seasons, and no evidence of a constant ratio with momentum roughness length or each
25 other. Of the tested estimation methods, the Andreas (1987) surface renewal model returned scalar roughness lengths closest
to those derived from eddy covariance observations. Combining this scalar method with the remote techniques developed
here for estimating momentum roughness length may facilitate the distributed parameterisation of turbulent heat flux over
glacier surfaces without *in situ* measurements.

1 Introduction

The turbulent fluxes of sensible and latent heat (Q_H and Q_L) can form a major component of the surface energy balance (SEB) of a glacier, and substantially influence its rate of surface melt (Hock and Holmgren, 1996; Anderson *et al.*, 2010; Fitzpatrick *et al.*, 2017). With a lack of direct measurement on glaciers, the bulk aerodynamic method is commonly used to parameterise the turbulent fluxes, requiring input of roughness length values for momentum (z_{0v}), temperature (z_{0t}), and water vapour (z_{0q}). Observations of roughness length are rare on glacier surfaces, however. The majority of SEB studies use values and ratios from previous research on similar surface types (e.g. Gillet and Cullen, 2011; Giesen *et al.*, 2014), or treat roughness lengths as model tuning parameters (e.g. Braun and Hock, 2004; Sicart *et al.*, 2005), rather than obtaining site-specific measurements. This approach introduces uncertainty into turbulent flux estimation, as the transferability of roughness lengths between locations and seasons is unknown. Furthermore, parameterisation of the turbulent heat fluxes has been shown in previous studies to be highly sensitive to the implemented roughness lengths (up to a doubling of the calculated flux for one order of magnitude increase in z_{0v}), and to dominate over stability corrections as a source of uncertainty (Munro, 1989; Braithwaite, 1995; Brock *et al.*, 2000; Fitzpatrick *et al.*, 2017). The importance of accurate roughness length selection, as identified in these studies, highlights the need for further research on the spatial and temporal variability of their values on glacier surfaces, and on the methods used in their estimation.

The roughness length values are defined as the lower limits of integration in the bulk-gradient or 'K' theory parameterisation of the turbulent fluxes (Stull, 1988). z_{0v} can be thought of as the height above the surface at which wind speed, extrapolated downwards along an assumed logarithmic profile, will reach its surface value. Similarly, z_{0t} and z_{0q} can be considered to be the heights at which temperature and specific humidity reach their surface values, respectively. z_{0v} accounts for the effects of form drag on the near-surface wind profile due to the interaction of airflow with features on the surface. In many glacier studies and climate models (e.g. Van As, 2011; Fausto *et al.*, 2016), z_{0v} values of 1 mm and 0.1 mm are used for ice and snow surfaces, respectively, and are often assumed constant with time. Where measurements have been obtained on glacier surfaces, however, a large range of z_{0v} values have been recorded, with several orders of magnitude of variation between different glaciers and seasons (e.g. Van den Broeke *et al.*, 2005; Brock *et al.*, 2010). In addition, existing values for z_{0v} on glaciers (observed through mast-based vertical wind and temperature profile measurements, or estimated from eddy covariance (EC) observations or microtopography surveys) only provided values for an individual location or turbulent footprint. Implementing these single values in a glacier-wide distributed model or in a point model at another location on the glacier may not account for the potential variability in surface roughness that may exist across a glacier surface (e.g. Smith *et al.*, 2016). ~~The turbulent footprint referred to above is the source region for the turbulent fluxes received at a given location. It represents the upwind area that influences and contributes to the observed fluxes, and hence, the surface properties that modulate turbulence generation. Broadly speaking, the turbulent footprint for fluxes measured at a given height will extend upwind by a distance of roughly 100 times the measurement height (Burba, 2013).~~

Efforts have been made in previous boundary-layer studies over different land surfaces to determine momentum roughness length values for large areas, including over forestry, scrubland, and outwash plains (e.g. Nield *et al.*, 2013; Li *et al.*, 2017). A range of remote sensing techniques have been implemented in such studies, including the use of light detection and ranging (LiDAR) systems. Paul-Limoges *et al.* (2013) used digital elevation models (DEMs), obtained from airborne
5 LiDAR, to estimate z_{0v} values over a harvested forest surface ($z_{0v} = 0.13$ m), and found good agreement with corresponding EC-derived values ($z_{0v} = 0.12$ m). Similar studies on mountain glaciers are extremely rare. Smith *et al.* (2016) used terrestrial-based structure-from-motion (SfM) photogrammetry and laser surveying to generate a distributed map of z_{0v} estimates for a glacier. Meteorological-based evaluation of the returned z_{0v} estimates was not carried out, however. Over debris-covered glaciers, Quincey *et al.* (2017) and Miles *et al.* (2017) used both SfM microtopography methods and vertical
10 wind profile measurements to estimate z_{0v} at test sites in the Himalayas. Substantial variability in the magnitude of the roughness estimates was noted between the different microtopography methods employed, with agreement with aerodynamically-derived values in some cases.

The scalar roughness lengths (z_{0t} and z_{0q}) are commonly estimated in SEB studies using a fixed ratio with z_{0v} , and are generally assumed to be equal to or one to two orders of magnitude smaller than the momentum roughness length (e.g. Hock
15 and Holmgren, 2005; Sicart *et al.*, 2005; Hoffman *et al.*, 2008). Molecular diffusion controls the rate of scalar transfer with a surface, and having a smaller spatial scale than the form drag processes driving momentum transfer, it is likely that the scalar roughness lengths would be smaller (Beljaars and Holtslag, 1991). The persistence of this ratio with time is uncertain, however. Surface renewal methods have been implemented in some studies (e.g. Andreas, 1987; Smeets and van den Broeke, 2008), where variation in this ratio is described as a function of the roughness Reynolds number R_* . Changes in
20 mean air temperature and relative humidity have also been proposed as drivers of scalar roughness length variation (e.g. Calanca, 2001; Park *et al.*, 2010).

Where EC data are available at the surface of interest, the bulk aerodynamic method is generally implemented to calculate *in situ* roughness length values (e.g. Conway and Cullen, 2013). Caution is required when applying this technique, however. The bulk method assumes logarithmic profiles of wind, temperature, and water vapour in the boundary layer, an assumption
25 valid only during neutral atmospheric stability conditions (Stull, 1988). During the melt season, the boundary layer over a glacier is often stable, requiring the application of a stability function to the bulk method. These stability functions were developed for use over flat terrain, however (e.g. Monin and Obukhov, 1954; Dyer, 1974; Beljaars and Holtslag, 1991), and uncertainty remains regarding their validity over sloped glacier surfaces. Furthermore, previous studies have suggested that some assumptions of the bulk method, namely, constant momentum and heat flux values with height, may not be valid
30 during katabatic conditions with shallow wind maximums which can develop frequently in the stable boundary layer over glacier slopes (e.g. Denby and Smeets, 2000). Such conditions may add uncertainty to the calculated roughness values due to potential decoupling of turbulence at measurement height from the surface, intermittent and non-stationary turbulence, and the increased importance of advection of turbulent kinetic energy (Denby, 1999).

The initial goal of this study is to obtain *in situ* values of the momentum and scalar roughness lengths from multiple locations over several seasons. EC-observed data will be implemented into the bulk aerodynamic method to derive these values. The temporal variability of roughness lengths on a glacier will be examined, and the transferability of values between location and years will be assessed. Commonly assumed values and ratios from the literature will be compared with the obtained data, and predictive relationships for the scalar roughness lengths will be tested. The second goal of this study is to develop remote methods for estimating momentum roughness lengths for a glacier surface, which would facilitate SEB modelling for glaciers without *in situ* observations, and distributed modelling for glaciers with point measurements only. Digital elevation models will be obtained for each study location and will be used to provide surface height data for the two roughness methods developed in the study. Turbulence footprint modelling will be employed in one of these methods to identify the region of the glacier surface influencing the EC-derived roughness length values. The estimates from both remote methods will then be compared with those from corresponding *in situ* observations.

2 Data and Methods

2.1 Field Campaign

Observations were carried out over three melt seasons (2014–2016) on two glaciers in the [Selkirk and Purcell Mountains](#) of British Columbia, Canada (Fig. 1). Nordic Glacier (51°26' N, 117°42'W) is a small (~5 km²), north-facing glacier, ranging in elevation from 2,000 m to 2,900 m above sea level (a.s.l.), approximately. An automatic weather station (AWS) was installed in the ablation zone of the glacier through July and August 2014 (NG14). Conrad Glacier (50°49' N, 116°55'W) is located 87 km to the southeast of Nordic, with an area of ~15 km², and an elevation range of 1,800 m to 3,200 m a.s.l., approximately. A total of four AWS deployments were executed on Conrad during 2015 and 2016; two stations in the ablation zone from July to September 2015 (CG15-1 and CG15-2), and one in both the ablation (CG16-1) and accumulation (CG16-2) zones from June to August 2016 (Table 1). An exposed ice surface was present during observations at NG14, CG15-1, CG15-2, and for most of the observation period at CG16-1, while a snow surface was present throughout at CG16-2, and for the first 10 days at CG16-1. A transitional snow surface was present for the first four days at NG14, with partial snow cover diminishing to a fully bare ice surface.

2.2 AWS

The AWS developed for this project (see Fitzpatrick *et al.*, 2017) was equipped with an array of meteorological and glaciological sensors to observe the complete SEB, with additional sensors added to the stations each year (Table 2). Open and closed path eddy covariance (OPEC and CPEC) systems were used in this project to observe the turbulent heat fluxes, with both forms installed on the same station, in some cases (CG15-1 and CG16-1). Both systems were comprised of a 3D sonic anemometer, and an infrared gas analyser; the OPEC analyser has a sample space that is open to passive air flow, while the CPEC analyser has a closed sample space into which air is drawn using a pump. Implementing these methods

together helped minimise gaps in the turbulence dataset (OPEC analysers are susceptible to errors during precipitation), and enabled a comparison of their values and performance in a glacial environment. The EC data ~~was~~ recorded in raw 20Hz format, with observations from the remaining sensors stored in one-minute averages. Glacier surface temperature (T_s) was observed from the infrared surface temperature sensors in 2015 and 2016, and estimated from the outgoing longwave radiation observations in 2014 using the Stefan-Boltzmann law (see Fitzpatrick *et al.*, 2017).

The meteorological sensors were housed on a four-legged quadpod, which provided a stable platform (verified by an inclinometer sensor) that lowered as the ice melted, and maintained a constant height of the sensors above the surface. EC measurements were carried out at a constant height (~2 m at each station) to avoid substantially varying the ~~turbulenceturbulent~~ footprint area and to reduce the risk of elevating the sensor above the turbulence coupled with the surface (Burba, 2013; Aubinet, 2008). The turbulent footprint is the source region for the turbulent fluxes received at a given location. It represents the upwind area that influences and contributes to the observed fluxes, and hence, the surface properties that modulate turbulence generation. Broadly speaking, the turbulent footprint for fluxes measured at a given height will extend upwind by a distance of roughly 100 times the measurement height (Burba, 2013).

The installation site for each station was selected based on the criteria of a relatively uniform upwind footprint and slope angle, so as to minimise the corrections required in the EC (and radiation) data processing. The EC systems were installed on the upslope side of each station, so as to be the first point of contact with the prevailing wind (downslope), and to help minimise flow distortion. Time lapse cameras at each location were used to observe the surface and atmospheric conditions over a season, and to monitor station behaviour. Over the three melt seasons, the stations performed well, operating continuously over each study period. The solar power systems for the stations had been designed to have sufficient battery storage for approximately a week of operation without sufficient recharge (due to persistent overcast conditions or covering of the solar panels by snow/ice.). If battery voltages dropped below a critical level, the system was designed to restrict power supply to the higher consuming sensors (e.g. CPEC system) to ensure continued operation of the bulk of the instruments, and to allow the batteries to recharge. This occurred at only one station, CG16-2 in the accumulation zone, after consecutive periods of snowfall and persistent low cloud, resulting in four intermittent gaps in the CPEC dataset (28% of total observation time).

2.3 LiDAR

Airborne LiDAR was employed to obtain high resolution topographic data over each of the study locations, using a Riegl 580 laser scanner and dedicated Applanix PosAV 910 Inertial Measurement Unit. In general, flights were performed over Nordic and Conrad glaciers twice per year (Table 3), close to the end of the winter and summer seasons (April and September), as part of an ongoing mass balance survey of the study glaciers (B. Pelto, unpublished data). By analysing the altimetry data from these times of the year, it was hoped that the variation in surface roughness due to the transition from a snow-covered to bare ice surface could be captured. In addition, the repeat mapping of each location from one year to the next would help identify the persistence in surface roughness. In 2014, April flights were not performed over the glaciers (a

July flight was performed over Nordic), while in 2015, the September flight over Conrad captured usable data for the accumulation zone, only.

2.4 Data Treatment

2.4.1 Eddy Covariance Data

- 5 Prior to calculating observed values for the turbulent heat fluxes and roughness lengths, the raw (20 Hz) EC data were passed through a series of preprocessing steps using the EddyPro data package (LI-COR, 2016). These steps are described in detail in Fitzpatrick *et al.* (2017), but a summary of the main techniques is provided below. A planar fit coordinate rotation method (Wilczak *et al.*, 2001) was applied to all of the sonic anemometer data to account for misalignment of the z axis of the sensor with the w component of the mean air flow. For the OPEC water vapour measurements, the Webb-Pearman-
 10 Leuning correction (Webb *et al.*, 1980) was used to correct for the density effects of air temperature fluctuations, while readings from periods affected by precipitation on the analyser windows were removed. These corrections were not required for the CPEC water vapour data. The turbulence data were averaged over 30-minute blocks, and the calculated fluxes were filtered using quality tests for steady state and developed turbulent conditions, following Mauder and Foken (2004). Random error in the turbulent fluxes due to sampling errors was estimated following the methods of Finkelstein and Sims (2001).
 15 Mean random error over all periods was $\pm 4.5 \text{ Wm}^{-2}$ (9%) for Q_H , and $\pm 4.7 \text{ Wm}^{-2}$ (15%) for Q_L .

2.4.2 LiDAR Data

- The trajectories of each LiDAR flight had been previously post processed using a network of permanent GPS base stations in British Columbia. The positional uncertainties of the flight trajectories were typically better than 5 cm, with the total uncertainty in the processed LiDAR point clouds better than ± 10 cm, while the average point density for the LiDAR surveys
 20 over the ice-covered terrain was 1–2 laser shots per m^2 (B. Pelto, unpublished data). LAStools (Isenburg, 2006) was utilised to classify the LiDAR data into ground and non-ground laser returns. The ground returns were subsequently gridded into DEMs with a 1 m^2 grid cell, the grid lines aligned with true north and east.

2.5. In Situ Roughness Length Values

- Roughness length values were calculated by implementing EC data into the bulk method, with separate values calculated for
 25 OPEC and CPEC systems when both sensors were used at the same station:

$$z_{0v_ec} = \exp \left[-\kappa \frac{u_{ec}}{u_{*ec}} - \psi_m \left(\frac{z}{L_{ec}} \right) \right] z, \quad (1)$$

$$z_{0t_ec} = \exp \left[-\kappa \frac{T_{ec} - T_s}{\theta_{*ec}} - \psi_h \left(\frac{z}{L_{ec}} \right) \right] z, \quad (2)$$

$$z_{0q_ec} = \exp \left[-\kappa \frac{q_{ec} - q_s}{q_{*ec}} - \psi_h \left(\frac{z}{L_{ec}} \right) \right] z, \quad (3)$$

where κ is the von Kármán constant (0.4), z is the sensor height, and u_{ec} , T_{ec} , q_{ec} , u_{*ec} , θ_{*ec} , and q_{*ec} are the 30 minute EC-observed values for mean wind speed, air temperature, specific humidity, friction velocity, and the surface layer scales for temperature and specific humidity, respectively (Conway and Cullen, 2013). $\psi_m\left(\frac{z}{L_{ec}}\right)$ and $\psi_h\left(\frac{z}{L_{ec}}\right)$ are the vertically integrated stability functions for momentum and heat (Beljaars and Holtslag, 1991; Dyer, 1974), where L_{ec} is the Monin-Obukhov length. Glacier surface specific humidity q_s is calculated from atmospheric pressure p , and the surface vapour pressure (e_s) which is assumed to be at saturation at the glacier surface temperature T_s ($q_s = 0.622 e_s/p$). To minimise potential errors and to obtain roughness lengths representative of the conditions at each site, an extensive series of filters were applied to the 30-minute values (see Fitzpatrick *et al.*, 2017, for full details). These filters included a 90° wind direction window centred on the main axis of the EC sensor (to minimise the influence of flow distortion due to the station structure), minimum values for wind speed ($> 3 \text{ m s}^{-1}$) and u_{*ec} ($> 0.1 \text{ m s}^{-1}$), minimum differences between measurement and surface height values of air temperature ($> 1^\circ\text{C}$) and vapour pressure ($> 66 \text{ Pa}$) (Calanca, 2001; Conway and Cullen, 2013), a minimum scalar roughness length value of $1 \times 10^{-7} \text{ m}$ based on the mean free path length of molecules (Li *et al.*, 2016), ~~a precipitation filter, and a test for stationarity of the turbulence (Foken, 2008).~~ Only a precipitation filter. A test for stationarity of the turbulence, following Foken (2008), was also applied. This involved comparing each 30-minute flux value with the average of the six 5-minute flux values calculated within the same period. Turbulence for periods where the difference in these two values was greater than 30% was deemed to be non-stationary, and these periods were excluded from the roughness length calculations. The cut-off percentage was varied between 10 and 50% to test the sensitivity to this selection. Finally, only roughness length values calculated during near-neutral stability conditions ($-0.1 < \frac{z}{L_{ec}} < 0.2$) were retained, to minimise the uncertainty associated with the stability functions applied in Eq. (1–3) during non-neutral conditions (Smeets and van den Broeke, 2008; Conway and Cullen, 2013).

2.5.1 Scalar Roughness Length Modelling

The scalar roughness lengths from Eq. (2) and (3) were compared with values from the surface renewal models of Andreas (1987) and Smeets and van den Broeke (2008), where the ratio of the scalar (z_{0s}) and momentum roughness lengths are expressed as a function of the roughness Reynolds number R_* :

$$R_* = \frac{u_* z_{0v}}{\nu}, \quad (4)$$

$$\ln\left(\frac{z_{0s}}{z_{0v}}\right) = b_0 + b_1 \ln(R_*) + b_2 \ln(R_*)^2. \quad (5)$$

ν is the kinematic viscosity of air ($1.5 \times 10^{-5} \text{ m}^2 \text{ s}^{-1}$), and the EC-derived roughness lengths (Eq. 1–3) were used to populate z_{0v} and z_{0s} . The values of the empirical coefficients (b_0 , b_1 , and b_2) change for smooth ($R_* \leq 0.135$), transitional ($0.135 < R_* < 2.5$), and rough ($R_* \geq 2.5$) flow regimes, and between models.

2.6 Remote Momentum Roughness Length Estimation

The set of 1 x 1 m grid cell DEMs obtained for the study glaciers from the LiDAR data were utilised to remotely estimate momentum roughness length values. Estimates were determined at the location of each station using the DEMs from the same year the station was in place, and compared with the EC-derived $z_{0v,ec}$ values. September DEMs were used to estimate roughness length values for bare ice surfaces, and April DEMs for snow-covered surfaces (both the April and September DEMs at CG16-2 in the accumulation zone represent a snow-covered surface). The DEM for Nordic Glacier in July 2014 was used to estimate roughness lengths for the transitional snow-ice surface at NG14. The estimation of z_{0v} was also repeated on DEMs from periods without a station present at that location to allow for an examination of the temporal variation of roughness properties at each site over the three years. Two methods were developed in this study, referred to as the (i) block and (ii) profile methods. Both methods assume that a DEM with a 1 x 1 m grid cell can adequately resolve the scale of the surface features that have the primary influence on roughness length. Where airflow encounters a dense distribution of roughness elements (as can be present on an ablating glacier surface), the flow is likely to experience wake-interference or skimming (Wieringa, 1993), reducing the relative influence of smaller scale roughness features on z_{0v} (Smeets *et al.*, 1999), and increasing the influence of elements that are potentially resolvable at the DEM scale. Both methods draw on the empirical theory of Lettau (1969) for the estimation of z_{0v} from microtopography measurements:

$$z_{0v} = 0.5h^* \frac{s}{S}, \quad (6)$$

where h^* is the average effective height of the roughness elements above the surface, s is the average crosswind silhouette or face area of the roughness elements encountered by oncoming air flow, S is the lot area, equal to the total area of the site divided by the number of roughness elements on its surface, and the value 0.5 represents an average drag coefficient. The original application of the above theory assumes that the surface is composed of regularly spaced roughness elements of similar size and shape, an assumption that may not always hold for a glacier surface.

2.6.1 Block Estimation

The first method developed in this study to estimate z_{0v} aimed to account for the variation in shape and distribution of roughness elements on a glacier surface. First, the form drag generated by the features on an individual portion or block of the surface was estimated, before combining the influence of each portion over a footprint to determine the momentum roughness length value for a given downwind location. Similar methods were proposed and evaluated by Kondo and Yamazawa (1986) for estimating z_{0v} over irregular surfaces. To account for the often dense distribution of roughness elements on a melting glacier surface, and the effects of this distribution on airflow, the block method developed here also considers the relative height differences and potential sheltering influence of neighbouring features on the surface. As the method would be evaluated using roughness measurements derived from the EC systems, it was applied to subareas of each DEM that contained the potential turbulent footprint for a given station. Each subarea was 2,000 x 2,000 m in dimension, and centred on the grid cell containing the station site. For each grid cell in the subarea, a one-cell-thick border

was selected around the cell of interest, creating a 3 x 3 m block of cells (Fig. 2), representing a roughness element and its surrounding area of influence. A localised drag value (F_{D_local}) was estimated for each block, by utilising Eq. (6), and building on the methods of Smith *et al.* (2016). The heights of the cells in the block were detrended for the mean slope of the glacier in the region of the station, as it was assumed that mean airflow was parallel to this plane. The height values within the block were normalised, and the mean height of all the cells above the zero plane was assigned to h_b^* . A value for s_b was calculated for each cardinal wind direction, as follows. The heights of the first line of cells in the block perpendicular to the oncoming wind (h_{i1}) e.g. heights of cells (3,1) (2,1) and (1,1) for the red wind direction in Fig. 2) set the base levels for the silhouette area in each row, and the maximum heights of the cells in each row (e.g. heights of cells (3,3), (2,2), and (1,2)) set the upper levels for the silhouette area. The sum of the silhouette areas of each row was then assigned to the s_b value for that block and wind direction:

$$s_b = \sum_{i=1}^n \max(h_{ij}) - h_{i1}, \quad (7)$$

where n is the number of rows. The area of the block was assigned to the value for S_b . F_{D_local} values were then calculated for each of the four cardinal wind directions for each grid cell; the block in Fig. 2 shifting by one cell each step:

$$F_{D_local} = 0.5h_b^* \frac{s_b}{S_b}. \quad (8)$$

A range of border thicknesses around each grid cell, from one to five cells (3 x 3 m to 11 x 11 m block area), was also implemented to test the performance sensitivity to this choice. Specifically, changing the border thickness represented a change in the assumed size of the dominant roughness elements influencing z_{0v} on the glacier surface, and the assumed range of a feature's shadowing effect.

To estimate a momentum roughness length value at the location of a station, the effective influence of the F_{D_local} values over the entire footprint must be determined. The flux footprint of the turbulence observed at each station was estimated using the model of Kljun *et al.* (2015). This model involves a two-dimensional parameterisation of a more complex, backward Lagrangian particle dispersion model (the LPDM-B model in Kljun *et al.*, 2002). In the above study, the parameterisation was developed and evaluated for a wide range of boundary layer conditions and surface types, and was shown to agree with the footprint estimates of the more complex model. To estimate the footprints for the glacier stations in this study, EC-observed values for mean wind speed and direction, z_{0v_ec} , L_{ec} , u_{*ec} , and the standard deviation of lateral wind velocity were implemented into the parameterisation. Flux footprint maps were generated from the model, with a 1 x 1 m grid cell and total area of 2,000 x 2,000 m, centred on the station location, to match the selected DEM subareas. Each grid cell was assigned a flux footprint value (f_c), representing its normalised contribution to the turbulent flux observed at the station. Maps were generated for every 30-minute period in the EC data, from which an average seasonal footprint for the station was determined. For stations with two EC systems, separate footprint maps were generated for each to investigate sensitivity to the observation method.

The seasonal flux footprint map for a given station (or EC system) was overlaid over the corresponding F_{D_local} values for the wind direction of interest. The F_{D_local} value for each grid cell was then weighted by its flux footprint contribution, and summed over the subarea to obtain z_{0v_bloc} :

$$z_{0v_bloc} = \sum_{i=1}^n F_{D_local_i} f_{c_i}, \quad (9)$$

5 where n is the number of grid cells in the subarea. This process was then repeated for the DEMs available from each season. Standard error propagation methods were used to calculate the uncertainty in z_{0v_bloc} by considering the uncertainties in the LiDAR height data ($< \pm 0.1$ m) and the normalised mean square error in the f_c values from the footprint model (0.48; Kljun *et al.*, 2015).

The primary application of a remote technique to estimate momentum roughness lengths would be to obtain values for where
10 *in situ* observations are not available, and therefore, where the turbulent flux footprint for a given site is unknown. z_{0v_bloc} values were first calculated with EC-derived footprints, as above, to evaluate the effectiveness of the local form drag estimation (Eq. 8). To test the performance of the block method in situations when EC data is not available, the observed turbulent footprints were then replaced with a series of assumed footprint areas at each site and applied to the corresponding F_{D_local} values to calculate z_{0v_bloc} . The area of the assumed footprints ranged between 51 x 51 m and 251 x 251 m in size, and were located directly upwind of the station grid cell. The F_{D_local} values for each cell within these areas were given an equal weighting and used to calculate a momentum roughness length value.
15

2.6.2 Profile Estimation

The second method developed in this study takes a profile-based approach to estimating momentum roughness lengths, and aims to identify the length scales relevant to form drag over that surface profile, rather than using the element by element
20 approach of the previous technique. Again, this method is based on the theory of Lettau (1969), which is similar to roughness estimation techniques used in previous studies (e.g. Munro, 1989). Where it differs, is in its application of this theory to wind-parallel profiles of the surface rather than wind-perpendicular profiles. As with the block method, the first step was to detrend the surface height values for the mean slope of the glacier. Beginning with roughness estimation for the downslope (southerly) wind direction, a profile of grid cells was selected from a given DEM along the glacier slope; 600 m
25 in length, one grid cell wide, and centred on the location of a station. A linear trend was fitted to this profile to identify the slope, and the trend was then removed from the original height data (Fig. 3a-b). This step was repeated for 50 parallel profiles on either side of the central 'station' profile (101 profiles, in total). The next step was to determine the scale of the features relevant to form drag, that is, the features that act as obstacles to air flow, and to remove large scale surface features or waves which air flow may follow rather than be impeded by. The power spectrum was calculated for the detrended
30 profile, and a cut-off wavelength was visually identified analysed to detect a separation of scales between large and small scalewavelength features. In Fig. 3c, an example of the mean power spectrum over 101 detrended profiles is shown in log-log for CG16-1 in September 2016. In this case, a cut-off wavelengthseparation of $\lambda_0 = 35$ m scales was visually identified

from a wavelength of approx. 35 m where the power spectrum was at zero. This value was then used as differentiating a cut-off wavelength ($\lambda_0 = 35$ m) to differentiate between wavelengths with large and small power or amplitude scale surface features. With the cut-off wavelength λ_0 identified, a fast Fourier transform (FFT) high pass filter was applied to the detrended profile to remove the large wavelengths (Fig. 3b), and to obtain a filtered profile. The filtering was performed in the wavenumber (k) domain with the following steps: (i) FFT was applied to the detrended profile $h(y)$ in Fig. 3b to get $H(k)$; (ii) $H(k)$ was modified by setting its values to zero for $k < 2\pi/\lambda_0$; (iii) an inverse FFT was applied to the modified $H(k)$ to get the filtered profile $h(y)$ in Fig. 3d. Finally, Lettau's method (Eq. 6) was applied to the filtered profile to estimate a value for momentum roughness length—for the filtered profile (z_{0v_prof}) was estimated through an application of the theory of Lettau (1969):

$$10 \quad z_{0v_prof} = \frac{\sigma_h s}{S} \quad (10)$$

S was calculated as the width of the profile ($w = 1$ m) multiplied by the length of the fetch (L_F) upwind of the station. A range of values for L_F were applied from λ_0 to $2\lambda_0$ in 1 m increments. The height of the grid cells along a given fetch was assigned to an array from h_0 to h_N , where N is the number of grid cells in the fetch, and the standard deviation of the height array along L_F was assigned to h^* . A value for s was obtained from the sum of the height differences between adjoining grid cells:

$$15 \quad \sigma_h = \sqrt{\frac{\sum_{j=0}^N (h_j - \bar{h})^2}{L_F}} \quad (11)$$

A value for $s = w \sum_{j=1}^N |h_j - h_{j-1}|$ was obtained from the sum of the height differences between adjoining grid cells:

$$s = \frac{w}{2} \sum_{j=1}^N |h_j - h_{j-1}| \quad (12)$$

20 and substituted into Eq. (6), with S and h^* , division by 2 to estimate a momentum roughness length value for a given fetch (z_{0v_fetch}): account for absolute height differences above the mean height, only. The mean of the z_{0v_fetch} calculated roughness values from $L_F = \lambda_0$ to $2\lambda_0$ was then assigned to the momentum roughness length for the station grid cell (z_{0v_prof}).

To examine roughness length variability in the vicinity of the station grid cell, and to determine the uncertainty in the presented results, the above process was repeated for all grid cells in the 101 x 101 m area upwind of the station (i.e. 50 m either side of the station profile). The profile method was also applied over a range of angles in addition to the prevailing downslope, southerly direction, to examine the effects of changing wind direction on momentum roughness length (Fig. 4). To do so, the x-y grid matrix of a patch of grid cells (101 m wide and 351 m long, containing the station site) was multiplied by a rotation matrix (in 5° increments between 90° and 270°). The height values from the DEM grid cells were then bi-
30 linearly interpolated to the rotated grid to derive new rotated height values. A value for z_{0v_prof} was then calculated as above for profiles in line with the long axis of the patch, for each 5° increment in direction.

The sensitivity of the profile method to the use of a DEM with a finer (1 x 0.1 m) or coarser resolution (3 x 3 m) than the original 1 x 1 m DEM was tested. As a 1 x 0.1 m DEM could not be derived from the LiDAR data, a synthetic test surface was created using data from microtopography profile measurements obtained at CG16-1 at the end of the melt season. Four surface height profiles, 2 m in length and with 0.1 m resolution, were obtained at distances of 10 m, 50 m, 100 m, and 150 m upwind of the station (Fig. 5a). The profiles were taken perpendicular to the prevailing wind direction (downslope), and measured using a 2 m snow probe, horizontally laid on the surface and allowed to partially melt in place. The long axis of the probe was set as the zero plane, and the height of the surface was measured relative to this level at 0.1 m spacings. Height variability parallel to the downslope direction was expected to be smaller than in the ~~parallel~~perpendicular direction which crosscuts supraglacial channels on the surface. Therefore, in the absence of microtopography measurements in this direction, the profile from the cross-slope direction with the smallest variance i.e. the 10 m upwind profile (Fig. 5b), was used to represent the slope-parallel variance. ~~This~~The mean was removed from this 2 m profile ~~was demeaned~~ at a 1 m interval and lined up in a repeated sequence to obtain an extended (600 m long) synthetic microtopography profile. The final test profile was constructed by adding this extended synthetic profile to the detrended profile in the downslope wind direction from the 1 x 1 m DEM. The same synthetic profile was added to the detrended profiles from each side of the station, at 1 m distance apart, yielding the synthetic 1 x 0.1 m DEM. The 3 x 3 m DEM was created by applying a 2-D smoothing of the original 1 x 1 m DEM, using a 3-point running mean in both x (Easting) and y (Northing) directions. The profile method was then applied to both the 1 x 0.1 m and 3 x 3 m DEMs for the 600 x 101 m area upwind (slope-parallel) of the station, using the same steps as outlined previously. The same threshold wavelength, $\lambda_0 = 35$ m, was used to filter the profiles. Figure 5c displays examples of filtered profiles, $h(y)$, as derived from the three DEM resolutions.

20 3 Results

3.1 EC-Derived Roughness Lengths

The geometric means of the roughness length values calculated from each EC dataset are presented in Table 4, with separate $z_{0v,ec}$ values for periods with snow and ice surfaces. Each of the observed 30-minute roughness length datasets were found not to have a normal distribution (using one-sample Kolmogorov-Smirnov tests), but one that was approximately log-normal. For presenting mean EC-derived values in the remainder of this study, geometric means are used to avoid excessively weighting the larger roughness values (Andreas *et al.*, 2010). Stable atmospheric conditions persisted over the glaciers for much of each season, limiting the number of suitable 30-minute periods for roughness calculation after application of the filters discussed in Sect. 2.5 (number of available measurements presented in Table 4). Turbulence was found to be non-stationary for 21% of the time, on average. Varying the cut-off percentage in the stationarity test (originally 30%) between 10 and 50% led to a $\pm 15\%$ difference in the calculated roughness length values, on average.

Across all test sites, z_{0v_ec} had a mean of 2.3 mm and 1 mm for ice and snow, respectively, while the scalar roughness lengths had mean values of 0.05 mm for z_{0t_ec} and 0.11 mm for z_{0q_ec} . Where OPEC and CPEC systems were used on the same station, the OPEC system returned slightly larger mean z_{0v_ec} values (2.8 mm and 1.4 mm, respectively). Mann-Whitney U tests applied to the 30-minute roughness values from CG15-1 rejected the null hypothesis that the z_{0v_ec} values from the OPEC and CPEC systems had the same distribution ($p < 0.01$), but the hypothesis could not be rejected for the scalar values ($p > 0.5$).

The ice z_{0v_ec} values were within the expected range for moderately rough glacier ice (1-4.5 mm; e.g. Brock *et al.*, 2006). Where measurements were repeated in the same area a year apart (CPEC observations on CG15-2 and CG16-1), persistence in the mean ice roughness length values was noted (0.86 ± 7.4 mm, and 0.74 ± 6.4 mm, respectively), with a failure to reject the hypothesis of equal distributions ($p = 0.16$). Within a season, substantial variability was noted in the 30-minute z_{0v_ec} values for each ice surface (Fig. 6a), but with no evident trend in z_{0v_ec} due to changes in surface roughness over time. Mean momentum roughness lengths for snow were also within previously observed values on glacier surfaces, with a particularly large mean value observed at CG16-2 in the accumulation zone (2.4 ± 16 mm). Extensive variability was also present in the 30-minute z_{0v_ec} values for CG16-2 (Fig. 6b), with a general increasing trend in roughness over the season. Across all stations and seasons, substantial variability was noted in the mean scalar roughness lengths, with z_{0q_ec} , in particular, showing a range of two and a half orders of magnitude. z_{0t_ec} exhibited less variability (~one order of magnitude), with similar mean values observed for CG15-2 and CG16-1 (0.03 ± 0.28 mm and 0.05 ± 0.29 mm), and a failure to reject the null hypothesis of equal distributions ($p = 0.11$).

The ratios of the 30-minute EC-determined scalar roughness lengths to z_{0v_ec} were expressed as a function of R_* using the data from all stations and seasons (Fig. 7). These values were compared with the surface renewal models of Andreas (1987) and Smeets and van den Broeke (2008). The seasonal mean ratios and R_* were also compared with these models. In general, the roughness ratios were shown to decrease with increasing R_* , with substantial scatter in the 30-minute values. The seasonal mean $\frac{z_{0t}}{z_{0v}}$ ratios were in line with the output of the Andreas (1987) model ($r = 0.81$; $p < 0.05$), with greater scatter in the $\frac{z_{0q}}{z_{0v}}$ values ($r = 0.2$), while both sets of ratios were underestimated by the Smeets and van den Broeke (2008) model.

25 3.2 Momentum Roughness Length from LiDAR

3.2.1 Block Method

F_{D_local} maps were generated from LiDAR-derived DEMs using the block estimation method (Fig. 8a-b) for all available years and seasons, and for each of the four cardinal wind directions. Substantial variation in F_{D_local} was observed across each glacier surface, ranging from 10^{-4} m for snow-covered grid cells to $10^{-0.5}$ m for large crevasses. Figure 9 displays the seasonal turbulent flux footprint maps generated using the model of Kljun *et al.* (2015) for each EC sensor deployment. In general, the fluxes were sourced from regions to the south of each station, in line with the prevailing downslope winds at

each site. Over 80% of flux contribution came from an area within 200 m upwind of each station, with concentrated peak source regions 15–20 m upwind, on average. The flux footprints of each EC dataset were merged with the corresponding F_{D_local} maps (Fig. 8c), producing a series of z_{0v_bloc} values for each site. As stated, wind direction was predominately from the south during each station deployment, so the roughness estimates for this wind direction (Table 5) are used for comparison with the EC-derived values. The influence of wind direction on the roughness length estimates is discussed in Sect. 3.3 and 4.1.3.

The mean uncertainty in the z_{0v_bloc} values, estimated from propagation of the errors in the LiDAR and flux footprint values, was ± 0.53 mm. Where OPEC and CPEC systems were used simultaneously on the same station (CG15-1 and CG16-1), virtually identical z_{0v_bloc} values were returned when their flux footprints were applied. Therefore, only one set of values is presented for each station in Table 5. Mean z_{0v_bloc} values for ice and snow surfaces, over all sites and seasons, were 3.1 mm and 0.6 mm, respectively, with strong persistence in site roughness values from one year to the next. A range of assumed footprint areas were also applied to the F_{D_local} maps to determine the effectiveness of the method in the absence of observed footprint data. Applying equal weighting to F_{D_local} values in a 101 x 101 m area directly upwind of a site (f_{c_100}) was found to return roughness values close to the z_{0v_bloc} and z_{0v_ec} values, in most cases (Table 5).

As previously stated, the sensitivity of roughness length estimation to the selected block size was tested by varying the border thickness around the grid cell of interest. Overall, increasing the block area was found to lead to an increase in estimated roughness length for a given footprint, with a border thickness of 1 cell (3 x 3 m block area) returning roughness lengths closest to the EC-derived values at all stations (e.g. CG16-1 ice $z_{0v_bloc} = 1.6, 1.9, 2.0, 2.2,$ and 2.4 mm for an increasing border thickness range of 1-5 cells).

3.2.2 Profile Method

The detrending and filtering of the surface height data, as shown in Fig. 3, was performed for downslope profiles at each station site using the DEMs for all available years and seasons. The same approximate value for the cut-off wavelength ($\lambda_0 \approx 35$ m) was identified at each station site. z_{0v_prof} values were then estimated for each station location, and for each grid cell in a 101 x 101 m upwind area (Fig. 10a), from all corresponding DEMs. Table 5 presents the z_{0v_prof} values for each station and LiDAR flight. Mean z_{0v_prof} values for ice and snow surfaces, over all sites and seasons, were 4.3 mm and 1.1 mm, respectively. Where repeated over the same location, the z_{0v_prof} values displayed substantial differences from one year to the next over ice surfaces (up to 5 mm), in contrast to the noted z_{0v_bloc} persistence.

Fig. 10b displays the z_{0v_prof} values derived for the downslope profiles from the original DEM (1 x 1 m), and from the higher (1 x 0.1 m) and lower (3 x 3 m) resolution DEMs constructed for sensitivity testing. Roughness values are presented for the station location at CG16-1 and for the grid cells 50 m to the east and west of the station. The same pattern of spatial variability in z_{0v_prof} across the grid cells was captured with each DEM, but with substantial differences in magnitude. On average, the 3 x 3 m DEM yielded z_{0v_prof} values one order of magnitude smaller than the original 1 x 1 m DEM. This result

is expected since the original surface has been smoothed, and the relevant scales of the roughness elements may not be adequately resolved in the 3 x 3 m DEM. Applied to the 1 x 0.1 m DEM, the profile method yielded roughness values, on average, a half order of magnitude larger than those for the 1 x 1 m DEM. The primary reason for differences in z_{0v_prof} values with changing DEM resolution was the difference in s values (Eq. 4012). While $k^* \sigma_h$ values remained almost unaltered for different resolutions, the s values changed by > 50%, resulting in large changes in z_{0v_prof} .

The first-order estimate of surface variability from the microtopography survey may overestimate the variability in the downslope wind direction in the 1 x 0.1 m DEM. To test for this, the amplitude of the synthetic microtopography profiles was reduced by a factor 10 (from dm to cm scale) and z_{0v_prof} recalculated. The resulting roughness length values were reduced and matched more closely the original z_{0v_prof} from the 1 x 1 m DEM, however, still yielding up to 10% larger values than original (Fig. 10b).

3.2.3 In Situ vs Remote Methods

The estimates from both DEM-based roughness methods (applied to a 1 x 1 m DEM) were compared with the EC-derived values (Fig. 11 and Table 6). In cases where LiDAR data were not available from the same year a station was in place, the averages of the roughness estimates from the two other years were utilised for the comparison. Overall, estimates from both DEM-based roughness methods provided values for ice and snow surfaces in line with previous observations on glacier surfaces (Brock *et al.*, 2010), and were generally within 2 mm and 0.2mm (< half order of magnitude) of the corresponding z_{0v_ec} observations over ice and snow, respectively. Over ice surfaces, the z_{0v_bloc} values were slightly smaller than the corresponding z_{0v_prof} values (mean values of 3.1 mm and 4.3 mm, respectively), and tended to align more closely with the z_{0v_ec} estimates (mean of 2.3 mm). For the snow surface at CG16-2 in the accumulation zone, the mean roughness lengths from both DEM methods (0.4 mm) substantially underestimated the z_{0v_ec} value (2.4 mm). Potential causes for this deviation will be discussed in Sect. 4.1.2. For the transitional snow/ice surface present at NG14 during the first four days of observations, the z_{0v_bloc} and z_{0v_prof} values from the July 2014 flight (4.5 mm and 6.8 mm) aligned more closely with the mean z_{0v_ec} value for ice over the season (4.5 ± 28.8 mm) than with the z_{0v_ec} value obtained during the four day period (0.5 ± 3.0 mm). The mean z_{0v_ec} value for this period, however, was based on a very limited number of EC observations after filtering (n=16) with substantial scatter.

3.3 Wind Direction and Momentum Roughness Length

The 30-minute EC data and the rotated z_{0v_prof} values were used to examine the influence of wind direction on the effective roughness length at each location. It should be restated at this point that the z_{0v_ec} values had been filtered to remove values when wind direction was beyond $\pm 45^\circ$ of the main axis of the EC sensor to minimise the influence of flow distortion due to the station structure. Therefore, only a limited direction window is available in the z_{0v_ec} data over which to examine this dependence. For the ice surface of CG16-1, z_{0v_ec} values were observed to increase and become more scattered as the wind

direction veered towards the southwest, a pattern that was also detected in the z_{0v_prof} (Fig. 12a). Similar behaviour was noted at the same location in 2015 (CG15-2), with greater variation in z_{0v_ec} with wind direction (Fig. 12b).

The rotated z_{0v_prof} values were also used to examine a wider angle of wind direction than was possible with the z_{0v_ec} data.

Fig. 13 displays the z_{0v_prof} values in 5° increments in wind direction between 180° and 270° for an April (snow) and

5 September (ice) surface at each station. The magnitude of roughness length variation with direction was greatest over ice surfaces. For the three stations in Conrad's ablation zone, z_{0v_prof} was observed to increase as wind direction approached a cross-glacier orientation (east or west), while at NG14, a pronounced increase in roughness was noted over the ice surface at 240° . The snow surfaces at CG16-2 in April and September presented very similar roughness profiles with wind direction, with slightly larger z_{0v_prof} in the autumn. The apparent peaking in z_{0v_prof} over CG16-2 at 90° , 180° , and 270° is likely the

10 result of an artificial reduction in roughness at all other angles due to the smoothing of the DEM when the height values were bi-linearly interpolated to the rotated grid. The roughness values at 90° , 180° , and 270° are calculated from the original DEM, without the need for interpolation, and the effect of this appears to be most visible in the smaller magnitude z_{0v_prof} values over the snow surface.

4 Discussion

15 4.1 Spatial and Temporal Variance of z_{0v}

4.1.1 Ice Surfaces

Variation in both the z_{0v_ec} and DEM-based roughness length values was noted across test sites with a melting glacier ice surface (e.g. 4.5 mm and 0.7 mm for mean z_{0v_ec} at NG14 and CG16-1, respectively). An assumed z_{0v} value for ice (e.g.

1mm), applied uniformly to all locations in this study, would have substantially misrepresented the surface roughness

20 characteristics, and the resulting turbulent flux parameterisations. In the case of NG14, implementing the commonly assumed z_{0v} value for ice of 1 mm in the bulk parameterisation of turbulent heat fluxes, rather than the mean observed value of 4.5 mm, would result in a ~20% reduction in the mean estimated fluxes. Furthermore, stations throughout the study were

installed in secure regions of the glaciers with relatively smooth and uniform surfaces, and away from crevasse fields and glacier margins where the surface drag on airflow would be higher (Fig. 8). Therefore, the true range of roughness length

25 values over the entire surface of the study glaciers would be greater than that represented by the values estimated for the station locations. Smith *et al.* (2016) detected a z_{0v} range of over three orders of magnitude across a small (~1 km²) mountain glacier (Kårsaglaciären in Sweden).

Over the study period, the mean momentum roughness length estimates for ice at each site showed little temporal variance from one year to the next. This persistence in seasonal ice roughness values may allow for the use of z_{0v} estimates from pre-

30 existing EC or DEM campaigns at a site of interest. The period of validity of these estimates may vary, however, depending on the surfaces processes of each glacier. Within a single melt season, there was substantial scatter observed in the 30-

minute z_{0v_ec} values (Fig. 6a). Changes in momentum roughness length due to the evolution of the ice surface through the season were not evident in the z_{0v_ec} values, however. Previous glacier roughness studies (e.g. Sicart *et al.*, 2014) have also noted persistence in z_{0v} despite extensive ice melt. Smith *et al.* (2016) noted that this persistence was most evident over ice surfaces with defined melt features, such as supraglacial channels, similar to the ice surfaces of this study. While estimated using EC-observed data, the z_{0v_ec} calculations are still derived from the bulk aerodynamic method (Eq. 1). Extensive filtering was applied to z_{0v_ec} values, in particular, to avoid uncertainty in the bulk method due to non-neutral stability conditions. However, using a filter that allows values from near-neutral conditions ($-0.1 < \frac{z}{L_{ec}} < 0.2$) rather than strictly neutral, only ($\frac{z}{L_{ec}} = 0$), may introduce some uncertainty and variability to the z_{0v_ec} estimates. ~~Furthermore, previous studies have suggested that some assumptions of the bulk method, namely, constant momentum and heat flux values with height, may not be valid during katabatic conditions with shallow wind maximums, which can develop frequently over sloped glaciers (e.g. As previously discussed, additional uncertainties may arise in the bulk method during katabatic conditions, when a low-level wind maximum may develop near measurement height and invalidate such assumptions as a constant flux layer. Estimates for the wind maximum height at the station sites from vertically-offset wind measurements (Fitzpatrick, 2018) indicate that a wind maximum was frequently close to the EC measurement height (2 m). In most cases, these periods coincided with those identified by $\frac{z}{L_{ec}}$ as being stable and would have been filtered out of the calculations in this study, helping to reduce the effect of this uncertainty on the roughness estimates. (Denby and Smeets, 2000).~~

4.1.2 Snow Surfaces

Large differences in z_{0v} between sites were also noted in this study for snow-covered surfaces. The annual persistence in roughness values observed over ice was also present in the snow surface values, with similar z_{0v_bloc} values returned for the same time each year when repeated at the same location. Where both *in situ* and remote values over snow surfaces were available, agreement between z_{0v_ec} and the DEM-obtained roughness values varied substantially. In the case of CG16-2, which had a snow-covered surface throughout, the relatively large mean z_{0v_ec} value (2.4 ± 16 mm) was substantially greater than z_{0v_bloc} and z_{0v_prof} (both 0.4 mm). This difference may be due to the temporal variance in roughness of a snow surface within a melt season (as observed in Fig. 6b), and the difference in observation time between the EC and LiDAR data. Images from the time lapse camera installed at CG16-2 (Fig. 14a-b) illustrate the variety in roughness conditions of the snow surface at that site. Two periods were selected with visually apparent roughness differences and an adequate number of 30-minute z_{0v_ec} observations; a moderately smooth, melting snow surface (June 30th – July 3rd; 78 observations), and a rough, sun-cupped surface (Aug. 19th – 21st; 38 observations). Examining the z_{0v_ec} values, an order of magnitude difference was noted between the mean values for the moderately smooth (1.0 ± 4.2 mm) and rough (9.6 ± 21.7 mm) snow surfaces. In view of this short-term variability in snow roughness, the z_{0v_bloc} and z_{0v_prof} values, derived from LiDAR flights in April and September, cannot be considered comparable to the z_{0v_ec} values from the summer. Imagery taken in the same location

as the station site a few days after the April LiDAR flight (Fig. 14c) show a very smooth snow surface. With fresh snowfall in late August and September, a similar surface was likely present during the second flight, resulting in the small DEM-based values returned. Relatively large $z_{0v,bloc}$ and $z_{0v,prof}$ values were obtained for NG14 during the April LiDAR flights, possibly in response to a rough snow surface. Comparable *in situ* imagery of the site was not available for these periods, however. The effect of the size of the roughness elements on a melting snow surface is discussed further in Sect. 4.2.

4.1.3 Wind Direction

Evidence of roughness length dependence on wind direction was observed in the 30-minute EC data at some locations, and in the rotated $z_{0v,prof}$ values, also. The strongest dependence on wind direction in the $z_{0v,ec}$ values was noted for the ablation zone of Conrad Glacier, at the location of CG15-2 and CG16-1. Elongated roughness features, including meltwater channels, were present on the surface during these observations, with the orientation of their long axes pointing in a southeast to northwest direction (Fig. 12c). As the wind veered to the southwest, airflow became perpendicular to the faces of these features, likely resulting in increased form drag, which produced the larger roughness lengths observed. The rotated $z_{0v,prof}$ values for the three stations in Conrad's ablation zone revealed an increase as wind direction approached a cross-glacier orientation. At NG14, the pronounced increase in roughness over the ice surface at 240° was likely due to a crevasse field to the west of the station. This feature was not evident in the April values, suggesting snow cover had smoothed the surface in that region. Dependence of momentum roughness length on wind direction has been observed in several other glacier studies (e.g. Munro, 1989; Brock *et al.*, 2006; Smith, [200142014](#)). Over all seasons and locations in this study, wind direction was found to be within 45° of the mean slope angle for approximately 93% of the time. This persistent, katabatic downslope wind is a common feature in glacial boundary layers, and as a result, will substantially reduce the influence of surface roughness anisotropy on the variation in the effective roughness lengths and mean generated turbulence.

4.2 Performance of DEM-based z_{0v} Estimation

The methods developed here for remotely estimating z_{0v} were found to returning roughness length values within 1–2 mm (\ll an order of magnitude) of those determined from *in situ* EC measurements, and were shown to respond to changes in surface cover from snow to ice. Using a DEM with a 1 x 1 m grid cell appears to resolve the length scales influencing z_{0v} on the ice surfaces of this study. With a dense distribution of roughness elements (Fig. 12c), the previously mentioned effects of wake-interference and skimming of the airflow over the ablating ice may have reduced the influence of the smaller roughness elements on z_{0v} , as noted in previous studies (e.g. Wieringa, 1993; Smeets *et al.*, 1999). During the April flights over Conrad Glacier, the DEM methods returned roughness values in line with previous observations over smooth, fresh or compacted snow surfaces (e.g. Brock *et al.*, 2006). Over rough, undulating snow surfaces, larger-scale features will have the dominant influence on roughness length (Fassnacht *et al.*, 2009), and are potentially resolvable in the utilised DEM, as may have been the case with the April values for NG14. Over smoother surfaces, however, it is likely that the roughness elements

influencing z_{0v} are not resolvable with a 1 x 1 m DEM, making the usefulness of these methods over a melting snow surface uncertain (in addition to the temporal variation discussed in Sect. 4.1.2).

The profile method developed here has been shown to return values in line with *in situ* estimates of the momentum roughness lengths without the need for the assumptions employed by the block method. The estimation value of a similar the selected cut-off wavelength at each station ($\lambda_0 = 35$ m) indicates a common length likely similar to the height of the stable boundary layer over the glacier sites, and may indicate the upper scale, above which, of the surface features are no longer an influence on roughness length that this shallow flow is impeded by. The z_{0v_prof} values did show a tendency towards overestimation, relative to the z_{0v_ec} values. In addition, the persistence between seasons in roughness length, noted in the z_{0v_ec} and z_{0v_block} values, was less evident in the z_{0v_prof} values, suggesting that the profile method is sensitive to changes in small scale features which may not have a substantial influence on the observed (z_{0v_ec}) roughness values. The profile method also displayed sensitivity to the choice of DEM resolution, arising from substantial differences in the estimate of s (Eq. 4012) for different resolutions (>50% difference between 1 x 1 m and 1 x 0.1 m resolutions). This sensitivity is to be expected for methods dependent on estimates of the surface derivative (s is effectively an integral of the surface derivative). While profiles taken in two different resolutions may have similar absolute values and variance, the derivatives of these profiles (dh/dy) can be substantially different.

The block estimation method returned roughness length values that were smaller than those from the profile method, and more in line with mean z_{0v_ec} , in general. The technique used in the z_{0v_bloc} method to calculate s across overlapping block areas (as shown in Fig. 2 and Eq. 7) was developed in an effort to account for the shadowing of elements from airflow by upwind features. Rather than assuming that each feature above the mean surface has an additive influence on roughness length, as done in the z_{0v_prof} method (below the cut-off wavelength) and other profile-based methods (e.g. Munro, 1989; Arnold and Rees, 2003), the relative height differences and potential sheltering influence of neighbouring features in the block are considered. On glacier surfaces, where elongated roughness features such as melt channels are common, the block approach may also help account for the channelisation of air flow and the shadowing of the roughness element by the upwind continuation of the feature, which in turn, may reduce the effective roughness length. The response of the block method to this effect can be seen when the F_{D_local} estimates for the southerly (downslope) wind direction are compared with those for the westerly (cross-slope) wind direction (Fig. 15). Drag values estimated for the meltwater channels on the surface are lower when air flow is close to parallel to these features, and higher when air flow is perpendicular to the channels. This effect may have led to the smaller z_{0v_bloc} values, relative to the z_{0v_prof} values. When implemented with an assumed turbulent footprint; (101 x 101 m upwind area with equal weighting of F_{D_local} values), the block method returned roughness length values in line with those calculated using a footprint model or from EC data (Table 5), indicating the potential for its use where turbulence observations are unavailable.

To apply the block approach, a number of additional assumptions were required, however. The choice of block size corresponds to an assumption on the size of the dominant roughness elements influencing z_{0v} on the glacier surface, and an

assumption on the range of a feature's shadowing effect. The downwind shadowing generated by a feature will likely vary with wind speed, and this variation is not accounted for here. The optimal block size may vary between locations and wind regimes, and require tuning for application to other surfaces. Over the range of surfaces in this study, however, a 3 x 3 m block (applied to a 1 x 1 m DEM) was shown to be optimal, and to respond to changes in surface roughness due to snow and ice cover. As a test of robustness, z_{0v_bloc} values were also estimated for a region of forest captured in the LiDAR data. This forest was located on a valley floor to the east of Conrad Glacier, and consisted of tall (~20 m), coniferous trees. The z_{0v_bloc} value for a 200 x 200 m subarea within this forest was 1.28 m. This value is in line with existing z_{0v} measurements over coniferous forest (Wieringa, 1993). While the z_{0v_bloc} method (including the LiDAR data utilised) is not configured nor intended for use over forestry, this test indicates that its configuration (including selected block size) is responsive to a wide range of roughness element sizes, beyond the scale of those encountered on the glacial surfaces of this study.

4.3 Scalar Roughness Relationships

Whilst displaying similar mean values over the entire dataset (0.05 mm for z_{0t_ec} and 0.11 mm for z_{0q_ec}), the scalar roughness lengths differed substantially from each other when examined on a site-by-site basis. There was no evidence of a consistent ratio between z_{0t_ec} and z_{0q_ec} , with their seasonal means ranging above and below each other by up to an order of magnitude. Between the momentum and scalar roughness lengths, seasonal z_{0t_ec} displayed a more consistent relationship with z_{0v_ec} , being approximately one and a half orders of magnitude smaller than z_{0v_ec} in most cases. This relation did not hold for NG14 and CG16-2, however, and between z_{0v_ec} and z_{0q_ec} , there was no persistent ratio. Calanca (2001) observed z_{0t} to be a function of the temperature gradient between the air and a melting ice surface, while Park *et al.* (2010) found a relation between relative humidity at 2 m height and z_{0q} . In this study, variation in the scalar roughness lengths was compared with fluctuations in air temperature gradient and relative humidity, but no dependent relationship was evident. The surface renewal model of Andreas (1987), where the ratio of momentum to scalar roughness was expressed as a function of R_* , showed relatively good performance, particularly for seasonal values of z_{0t} . If momentum roughness length values have been obtained for a given surface (through remote or *in situ* methods), this model appears to be the best available method for estimating the scalar values.

5 Conclusions

Over three melt seasons, *in situ* and remote methods were implemented to determine the momentum and scalar roughness lengths on the surface of two glaciers in the Purcell Mountains of British Columbia, Canada. EC sensors were employed to obtain continuous *in situ* measurements throughout each melt season, while LiDAR-derived DEMs were utilised in the development of two remote estimation techniques. Seasonal mean momentum roughness length values, estimated from eddy covariance observations at each location, ranged from 0.7–4.5 mm for ice surfaces, and 0.5–2.4 mm for snow surfaces. For

representative turbulent flux modelling, this study suggests that site-specific z_{0v} values are necessary, particularly in the case of distributed glacier models. From year-to-year, z_{0v} values were noted to remain relatively consistent at a given location (<0.2 mm difference between seasonal mean values). Within a melt season, continuous EC observations and camera imagery noted greater temporal variation in roughness for snow surfaces than for ice. These findings indicate that site-specific z_{0v} values on an ice surface may be valid to implement over multiple melt seasons, while over snow surfaces, the utilised roughness values require intraseasonal updating. Wind direction was also noted to affect z_{0v} variability where elongated features such as melt channels dominated the surface topography. Persistence in wind direction on sloped glacier surfaces, however, reduces the influence of this variability.

Observations of the scalar roughness lengths differed substantially from the corresponding momentum values, showing considerable variation between location and season, and little agreement with fixed ratios commonly assumed with z_{0v} . In general, the Andreas (1987) surface renewal method showed agreement with the observed ratios between EC-derived scalar and momentum roughness lengths, and would seem to be the appropriate method to implement where continuous EC observations are not available, but site-specific z_{0v} values have been established.

The DEM-based methods described in this study were shown to perform well over most surfaces, differentiating between ice and snow cover, and returning momentum roughness values that were within 1–2 mm (<< an order of magnitude) of EC-derived values for the corresponding footprints. Both the block and profile methods could be employed together in future studies to constrain a likely range for z_{0v} . Over ice surfaces, the employed assumption that the features dominating glacier surface roughness, particularly over ice, were found to be of a scale that was resolvable using a 1 x 1 m DEM, and persistent enough for a DEM based roughness estimate grid cell appears to be usable over an extend period of time, valid. This may allow for the potential upscaling of these methods with high resolution satellite imagery, greatly expanding the number of glaciers for which roughness length estimates could be obtained. Furthermore, the observed persistence in seasonal mean z_{0v} values for a given ice surface may allow for DEM-based estimates to be assumed valid over more than one season. z_{0v} estimates were found to be sensitive to DEM resolution, and evaluation of the proposed remote methods over a wider range of resolutions and surface height data sources (e.g. photogrammetry, microtopography) is recommended. Over melting snow surfaces, the validity time of a retrieved DEM is reduced due to the discussed temporal variability in roughness, and as a result, the estimated roughness lengths may quickly become unrepresentative. In addition, the roughness features observed to develop on melting snow in this study may not be resolvable using a 1 x 1 m DEM, and further testing over snow, with simultaneous *in situ* and remote observations, would be useful.

Author contributions. N. Fitzpatrick prepared and executed the on-glacier field campaign, conducted the data analysis, and proposed the roughness estimation methods presented in the chapter, as well as writing the text. V. Radić helped develop these methods and the associated sensitivity testing, supervised the analysis, and provided financial and field support. B. Menounos instigated the LiDAR imaging flights, and provided the resulting digital elevation models to the study, in addition to logistical and minor financial support to the field campaign.

Competing interests. The authors declare that they have no conflict of interest.

Acknowledgements. Funding support for this study was provided through the Natural Sciences and Engineering Research Council (NSERC) of Canada (Discovery grants to V. Radic and B. Menounos). The eddy covariance system and meteorological equipment were supported by NSERC Research Tools and Instruments grant and Canada Foundation for Innovation grant (to V. Radic). The authors wish to thank Ben Pelto for his assistance in the field and with the provision of the DEMs, Steve Conger and Tannis Dakin for logistical support, Zoran Nestic for assistance with station design and sensor calibration, and Jörn Unger for his work on the quadpod construction.

10 References

- Anderson, B., Mackintosh, A., Stumm, D., and Fitzsimons, S.J.: Climate sensitivity of a high-precipitation glacier in New Zealand, *J. Glaciol.*, 56, 114 – 128, <https://doi.org/10.3189/002214310791190929>, 2010.
- Andreas, E.L.: A Theory for the Scalar Roughness and the Scalar Transfer Coefficients over Snow and Sea Ice, *Boundary-Layer Meteorol.*, 38, 159 – 184, <https://doi.org/10.1007/BF00121562>, 1987.
- 15 Andreas, E.L.: Parameterizing Scalar Transfer over Snow and Ice: A Review, *J. Hydrometeorol.*, 3, 417 – 432, [https://doi.org/10.1175/1525-7541\(2002\)003<0417:PSTOSA>2.0.CO;2](https://doi.org/10.1175/1525-7541(2002)003<0417:PSTOSA>2.0.CO;2), 2002.
- Andreas, E.L., Persson, P.O.G., Jordan, R.E., Horst, T.W., Guest, P.S., Grachev, A.A., and Fairall, C.W.: Parameterizing Turbulent Exchange over Sea Ice in Winter, *J. Hydrometeorol.*, 11, 87 – 104, <https://doi.org/10.1175/2009JHM1102.1>, 2010.
- 20 Arnold, N.S., and Rees, G.: Self-similarity in glacier surface characteristics, *J. Glaciol.*, 49, 547 – 554, <https://doi.org/10.3189/172756503781830368>, 2003.
- Aubinet, M.: Eddy covariance CO₂ flux measurements in nocturnal conditions: an analysis of the problem, *Ecological Applications*, 18, 1368 – 1378, <https://doi.org/10.1890/06-1336.1>, 2008.
- Beljaars, A.C.M., Holtslag, A.A.M.: Flux Parameterization over Land Surfaces for Atmospheric Models, *J. Applied Meteorol.*, 30, 327 – 341, [https://doi.org/10.1175/1520-0450\(1991\)030<0327:FPOLSF>2.0.CO;2](https://doi.org/10.1175/1520-0450(1991)030<0327:FPOLSF>2.0.CO;2), 1991.
- 25 Braithwaite, R.: Aerodynamic stability and turbulent sensible-heat flux over a melting ice surface, the Greenland ice sheet, *J. Glaciol.*, 41, 562 – 571, <https://doi.org/10.3189/S0022143000034882>, 1995.
- Braun, M., and Hock, R.: Spatially distributed surface energy balance and ablation modelling on the ice cap of King George Island (Antarctica), *Global and Planetary Change*, 42, 45 – 58, <https://doi.org/10.1016/j.gloplacha.2003.11.010>, 2004.

- Brock, B., Willis, I., Sharp, M., and Arnold, N.: Modelling seasonal and spatial variations in the surface energy balance of Haut Glacier d'Arolla, Switzerland, *Annals of Glaciol.*, 31, 53 – 62, <https://doi.org/10.3189/172756400781820183>, 2000.
- Brock, B.W., Willis, I.C., and Sharp, M.J.: Measurement and parameterization of aerodynamic roughness length variations at Haut Glacier d'Arolla, Switzerland, *J. Glaciol.*, 52, 281 – 297, <https://doi.org/10.3189/172756506781828746>, 2006.
- 5 Brock, B.W., Mihalcea, C., Kirkbride, M.P., Diolaiuti, G., Cutler, M.E.J., and Smiraglia, C.: Meteorology and surface energy balance fluxes in the 2005 – 2007 ablation seasons at the Miage debris-covered glacier, Mont Blanc Massif, Italian Alps, *J. Geophys. Res.*, 115, D09106, <https://doi.org/10.1029/2009JD013224>, 2010.
- Burba, G.: *Eddy Covariance Method for Scientific, Industrial, Agricultural, and Regulatory Applications*, LI-COR Biosciences, Nebraska, USA, 2013.
- 10 Calanca, P.: A note on the roughness length for temperature over melting snow and ice, *Q. J. R. Meteorol. Soc.*, 127, 255 – 260, <https://doi.org/10.1002/qj.49712757114>, 2001.
- Conway, J.P., and Cullen, N.J.: Constraining turbulent heat flux parameterization over a temperate maritime glacier in New Zealand, *Annal. Glaciol.*, 54, 41 – 51, <https://doi.org/10.3189/2013AoG63A604>, 2013.
- 15 Dyer, A.J.: A review of flux-profile relationships, *Boundary-Layer Meteorol.*, 7, 363 – 372, <https://doi.org/10.1007/BF00240838>, 1974.
- Denby, B.: [Second-Order Modelling of Turbulence in Katabatic Flows, *Boundary-Layer Meteorol.*, 92, 67 – 100, <https://doi.org/10.1023/A:1001796906927>, 1999.](https://doi.org/10.1023/A:1001796906927)
- 20 [Denby, B., and Smeets, C.: Derivation of Turbulent Flux Profiles and Roughness Lengths from Katabatic Flow Dynamics, *J. Appl. Meteor.*, 39, 1601 – 1612, \[https://doi.org/10.1175/1520-0450\\(2000\\)039<1601:DOTFPA>2.0.CO;2\]\(https://doi.org/10.1175/1520-0450\(2000\)039<1601:DOTFPA>2.0.CO;2\), 2000.](https://doi.org/10.1175/1520-0450(2000)039<1601:DOTFPA>2.0.CO;2)
- Fassnacht, S.R., Williams, M.W., and Corrao, M.V.: Changes in the surface roughness of snow from millimetre to metre scales, *Ecological Complexity*, 6, 221 – 229, <https://doi.org/10.1016/j.ecocom.2009.05.003>, 2009.
- 25 Fausto, R.S., van As, D., Box, J.E., Colgan, W., Langen, P.L., and Mottram, R.H.: The implication of nonradiative energy fluxes dominating Greenland ice sheet exceptional ablation area surface melt in 2012, *Geophys. Res. Lett.*, 43, 2649 – 2658, <https://doi.org/10.1002/2016GL067720>, 2016.
- 30 [Finkelstein, P.L., and Sims, P.F.: Sampling error in eddy correlation flux measurements, *J. Geophys. Res.* 106, 3503–3509, <https://doi.org/10.1029/2000JD900731>, 2001.](https://doi.org/10.1029/2000JD900731)
- [Fitzpatrick, N.: An investigation of surface energy balance and turbulent heat flux on mountain glaciers, Ph.D. thesis, University of British Columbia, Canada, 127 pp., 2018.](https://doi.org/10.3389/feart.2017.00067)
- 35 [Fitzpatrick, N., Radić, V., and Menounos, B.: Surface energy balance closure and turbulent flux parameterization on a mid-latitude mountain glacier, Purcell Mountains, Canada, *Front. Earth Sci.*, 5:67, <https://doi.org/10.3389/feart.2017.00067>, 2017.](https://doi.org/10.3389/feart.2017.00067)

- Foken, T.: Micro-meteorology, Springer, Berlin, Germany, 118 – 119, 2008.
- Giesen, R.H., Andreassen, L.M., Oerlemans, J., and Van Den Broeke, M.R.: Surface energy balance in the ablation zone of Langfjordjøkelen, an arctic, maritime glacier in northern Norway, *J. Glaciol.*, 60, 57 – 70, <https://doi.org/10.3189/2014JoG13J063>, 2014.
- 5 Gillet, S., and Cullen, N.J.: Atmospheric controls on summer ablation over Brewster Glacier, New Zealand, *International J. Climatol.*, 31, 2033 – 2048, <https://doi.org/10.1002/joc.2216>, 2011.
- Hock, R., and Holmgren, B.: Some aspects of energy balance and ablation of Storglaciären, northern Sweden, *Geogr. Ann.* 78, 121 – 131, <https://doi.org/10.2307/520974>, 1996.
- 10 Hock, R., and Holmgren, B.: A distributed surface energy-balance model for complex topography and its application to Storglaciären, Sweden, *J. Glaciol.*, 51, 25 – 36, <https://doi.org/10.3189/172756505781829566>, 2005.
- Hoffman, M.J., Fountain, A.G., and Liston, G.E.: Surface energy balance and melt thresholds over 11 years at Taylor Glacier, Antarctica, *J. Geophys. Res.*, 113, F04014, <https://doi.org/10.1029/2008JF001029>, 2008.
- 15 Isenburg, M., Liu, Y., Shewchuk, J., Snoeyink, J., and Thirion, T.: Generating Raster DEM from Mass Points via TIN Streaming, *GIScience'06 Conference Proceedings*, 186 – 198, 2006.
- Kljun, N., Rotach, M.W., and Schmid, H. P.: A 3D Backward Lagrangian Footprint Model for a Wide Range of Boundary Layer Stratifications, *Boundary-Layer Meteorol.*, 103, 205 – 226, <https://doi.org/10.1023/A:1014556300021>, 2002.
- Kljun, N., Calanca, P., Rotach, M.W., and Schmid, H.P.: A simple two-dimensional parameterization for Flux Footprint Prediction (FFP), *Geosci. Model Dev.*, 8, 3695 – 3713, <https://doi.org/10.5194/gmd-8-3695-2015>, 2015.
- 20 Kondo, J. and Yamazawa, H.: Aerodynamic roughness over an inhomogeneous ground surface, *Boundary-Layer Meteorol.*, 35, 331 – 348, <https://doi.org/10.1007/BF00118563>, 1986.
- Lettau, H.: Note on Aerodynamic Roughness-Parameter Estimation on the Basis of Roughness-Element Description, *J. Appl. Meteorol.*, 8, 828 – 832, [https://doi.org/10.1175/1520-0450\(1969\)008<0828:NOARPE>2.0.CO;2](https://doi.org/10.1175/1520-0450(1969)008<0828:NOARPE>2.0.CO;2), 1969.
- 25 LI-COR, Inc.: EddyPro® Software (Version 6.2) [Computer software], Nebraska, USA, Infrastructure for Measurements of the European Carbon Cycle consortium, 2016.
- Li, A., Zhao, W., Mitchell, J.J., Glenn, N.F., Germino, M.J., Sankey, J.B., and Allen, R.G.: Aerodynamic Roughness Length Estimation with Lidar and Imaging Spectroscopy in a Shrub-Dominated Dryland, *Photogram. Eng. Remote Sens.*, 83, 415 – 427, <https://doi.org/10.14358/PERS.83.6.415>, 2017.

- Li, Z., Lyu, S., Zhao, L., Wen, L., Ao, Y., and Wang, S.: Turbulent transfer coefficient and roughness length in a high-altitude lake, Tibetan Plateau, *Theor. Appl. Climatol.*, 124, 723 – 735, <https://doi.org/10.1007/s00704-015-1440-z>, 2016.
- Mauder, M., and Foken, T.: Documentation and instruction manual of the eddy covariance software package TK2, Universität Bayreuth, Abt. Mikrometeorologie, Arbeitsergebnisse 26, 2004.
- 5 [Monin, A. S., and Obukhov, A. M.: Basic laws of turbulent mixing in the surface layer of the atmosphere, Tr. Akad. Nauk SSSR Geophys. Inst., 24, 163 – 187, 1954.](#)
- Munro, D.S.: Surface Roughness and Bulk Heat Transfer on a Glacier: Comparison with Eddy Correlation, *J. Glaciol.*, 35, 343 – 348, <https://doi.org/10.1017/S0022143000009266>, 1989.
- Nield, J.M., King, J., Wiggs, G.F.S., Leyland, J., Bryant, R.G., Chiverrell, R.C., Darby, S.E., Eckardt, F.D., Thomas, D.S.G.,
10 Vircavs, L.H., and Washington, R.: Estimating aerodynamic roughness over complex surface terrain, *J. Geophys. Res. Atmos.*, 118, 12,948 – 12,961, <https://doi.org/10.1002/2013JD020632>, 2014.
- Park, S.J., Park, S.U., and Ho, C.H.: Roughness Length of Water Vapor over Land Surfaces and Its Influence on Latent Heat Flux, *Terr. Atmos. Ocean. Sci.*, 21, 855 – 867, [https://doi.org/10.3319/TAO.2009.11.13.01\(Hy\)](https://doi.org/10.3319/TAO.2009.11.13.01(Hy)), 2010.
- Paul-Limoges, E., Christen, A., Coops, N.C., Black, T.A., and Trofymow, J.A.: Estimation of aerodynamic roughness of a
15 harvested Douglas-fir forest using airborne LiDAR, *Remote Sens. Environ.*, 136, 225 – 233, <https://doi.org/10.1016/j.rse.2013.05.007>, 2013.
- Sicart, J.E., Wagon, P., and Ribstein, P.: Atmospheric controls of the heat balance of Zongo Glacier (16°S, Bolivia), *J. Geophys. Res.*, 110, D12106, <https://doi.org/10.1029/2004JD005732>, 2005.
- Sicart, J.E., Litt, M., Helgason, W., Tahar, V.B., and Chaperon, T.: A study of the atmospheric surface layer and roughness
20 lengths on the high-altitude tropical Zongo glacier, Bolivia, *J. Geophys. Res. Atmos.*, 119, 3793 – 3808, <https://doi.org/10.1002/2013JD020615>, 2014.
- Smeets, C.J.P.P., and van den Broeke, M.R.: The Parameterisation of Scalar Transfer over Rough Ice, *Boundary-Layer Meteorol.*, 128, 339 – 355, <https://doi.org/10.1007/s10546-008-9292-z>, 2008.
- Smeets, C.J.P.P., Duynkerke, P.G., and Vugts, H.F.: Observed Wind Profiles and Turbulence Fluxes over an Ice Surface
25 with Changing Surface Roughness, *Boundary-Layer Meteorol.*, 92, 99 – 121, <https://doi.org/10.1023/A:1001899015849>, 1999.
- Smith, M.W.: Roughness in the Earth Sciences, *Earth-Sci. Reviews*, 136, 202 – 225, <https://doi.org/10.1016/j.earscirev.2014.05.016>, 2014.

Smith, M.W., Quincey, D.J., Dixon, T., Bingham, R.G., Carrivick, J.L., Irvine-Fynn, T.D.L., and Rippin, D.M.: Aerodynamic roughness of glacial ice surfaces derived from high-resolution topographic data, *J. Geophys. Res. Earth Surf.*, 121, <https://doi.org/10.1002/2015JF003759>, 2016.

5 Stull, R.B.: *An Introduction to Boundary Layer Meteorology*, Kluwer Academic Publishers, Dordrecht, The Netherlands, 1988.

Van As, D.: Warming, glacier melt and surface energy budget from weather station observations in the Melville Bay region of northwest Greenland, *J. Glaciol.*, 57, 208 – 220, <https://doi.org/10.3189/002214311796405898>, 2011.

10 Van den Broeke, M., Reijmer, C., van As, D., van de Wal, R., and Oerlemans, J.: Seasonal cycles of Antarctic surface energy balance from automatic weather stations., *Annals Glaciol.*, 41, 131 – 139, <https://doi.org/10.3189/172756405781813168>, 2005.

Webb, E.K., Pearman, G.I., and Leuning R.: Correction of flux measurements for density effects due to heat and water vapour transfer, *Q. J. R. Meteorol. Soc.*, 106, 85 – 100, <https://doi.org/10.1002/qj.49710644707>, 1980.

Wilczak, J.M., Oncley, S.P., and Stage, S.A.: Sonic Anemometer Tilt Correction Algorithms, *Boundary-Layer Meteorol.*, 99, 127 – 150, <https://doi.org/10.1023/A:1018966204465>, 2001.

15 Wieringa, J.: Representative roughness parameters for homogeneous terrain, *Boundary-Layer Meteorol.*, 63, 323 – 363, <https://doi.org/10.1007/BF00705357>, 1993.

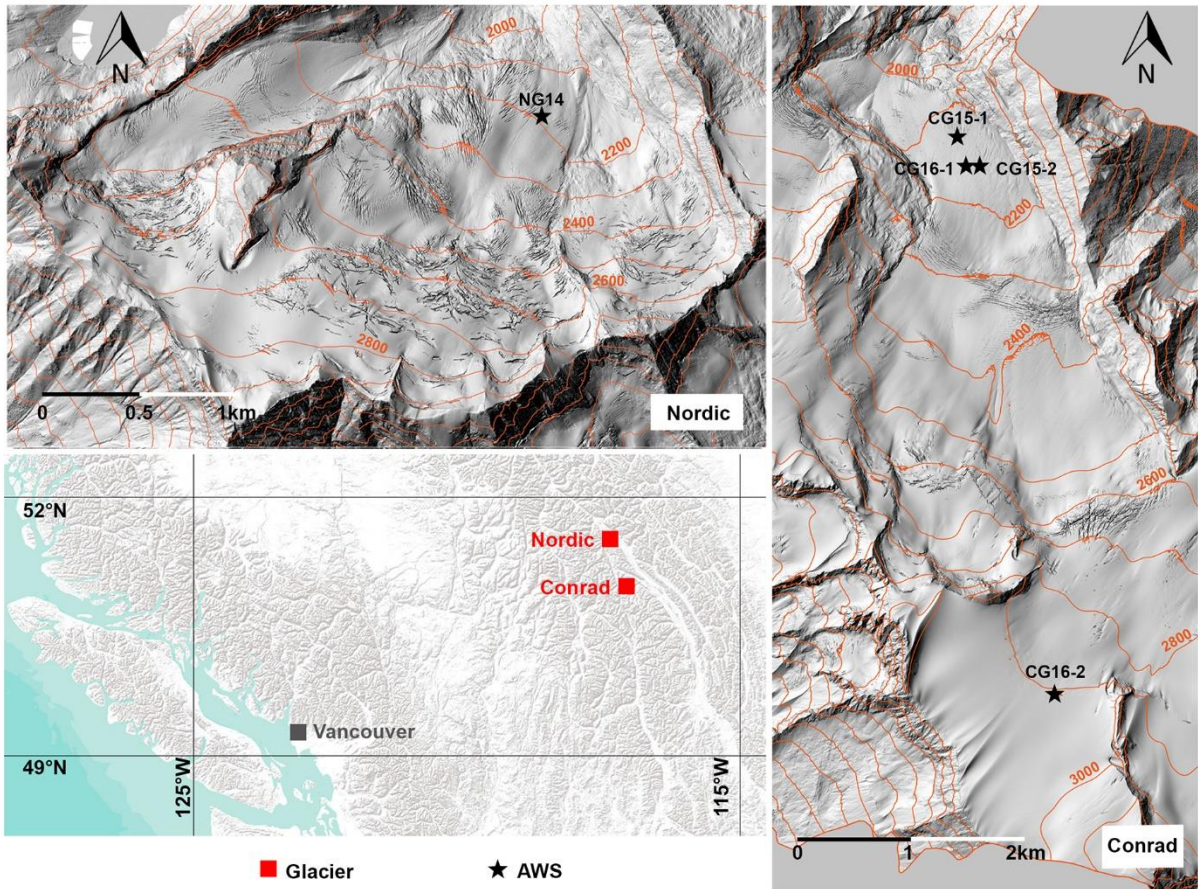
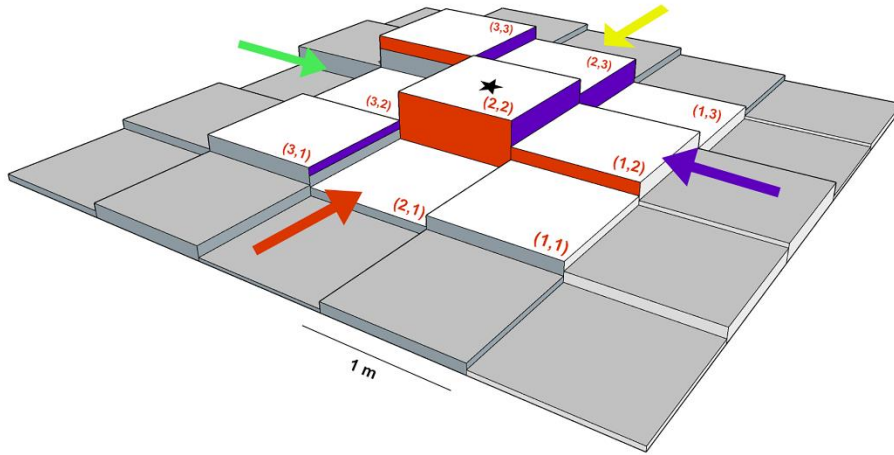


Figure 1. Location of the study glaciers and the stations installed during the 2014–2016 melt seasons.



5 **Figure 2. DEM-based block method for estimating the local drag generated by roughness elements on the surface. The total surface area that is perpendicular and ‘visible’ to the direction of air flow (matching-coloured face area and arrows) is assigned to s_D (Eq. 7). The displayed grid cell indices are for airflow in the direction of the red arrow. A $F_{D,local}$ value is estimated for the four cardinal wind directions, with the values assigned to the central grid cell of the block (starred). The block is then moved by one grid cell at a time, and the process repeated over the DEM.**

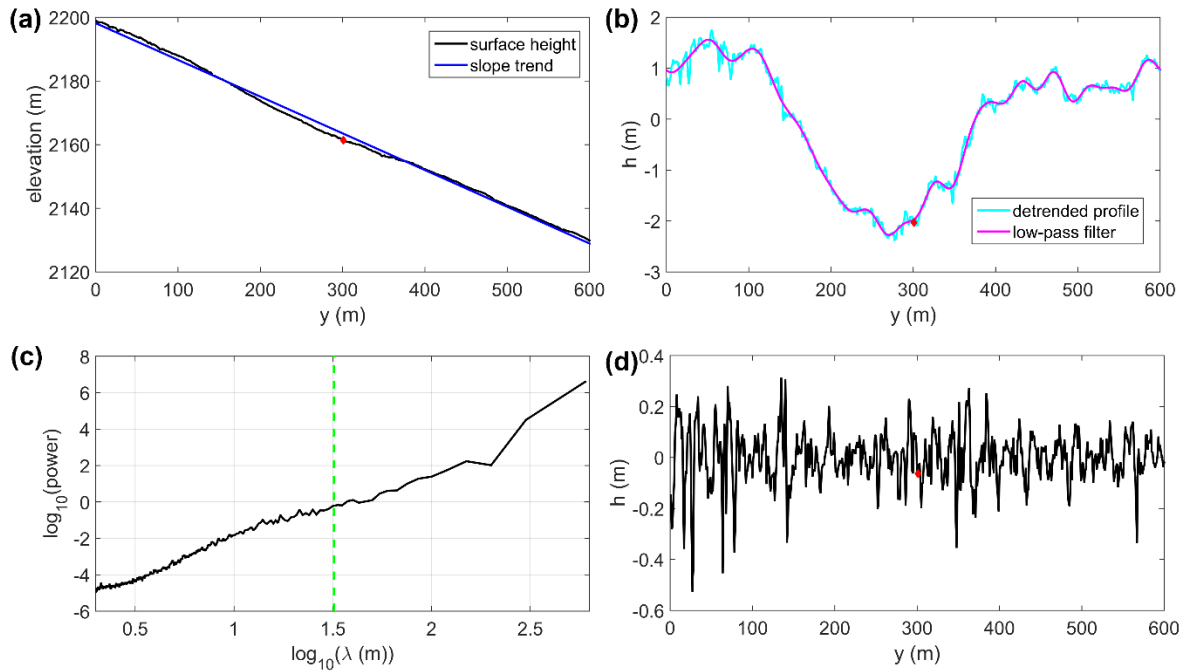


Figure 3. (a) Surface height profile from the September 2016 DEM centred on CG16-1 (red diamond) and a fitted linear trend; (b) detrended profile and low-pass filter according to cut-off wavelength of λ_0 ; (c) log-log power spectrum of the mean detrended profile, with large scale wavelengths greater than λ_0 (green dashed line) used in the low-pass filtering; (d) filtered profile used in the calculation of momentum roughness length.

5

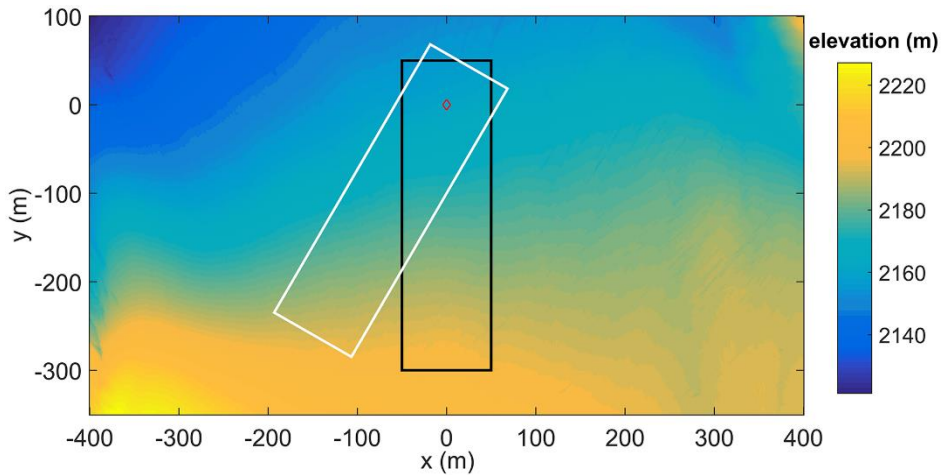


Figure 4. Example of the rotation applied to a DEM patch selected around a station location (red diamond), with the original orientation outlined in black, and a rotated patch, turned 30° clockwise, outlined in white.

10

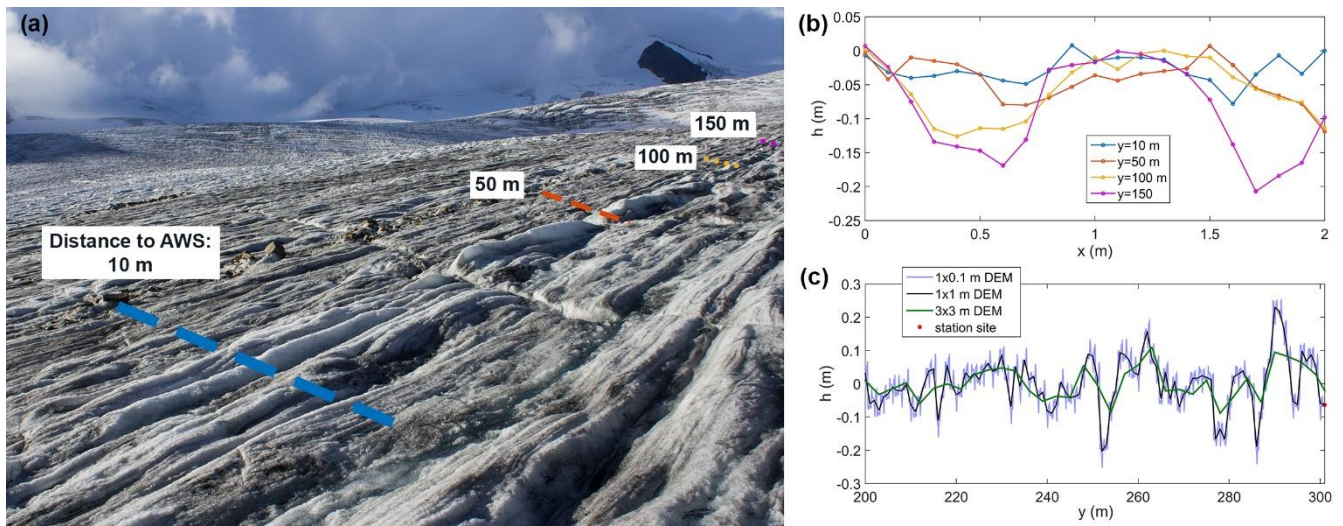


Figure 5. (a & b) Microtopography profiles taken upwind of CG16-1 at the end of the 2016 melt season. Profiles were 2 m in width and taken perpendicular to the downslope direction. The locations of the profiles marked in (a) are representative rather than exact. (c) Examples of the filtered height profiles, as derived from the three DEM resolutions used in the z_{0v_prof} sensitivity test.

5

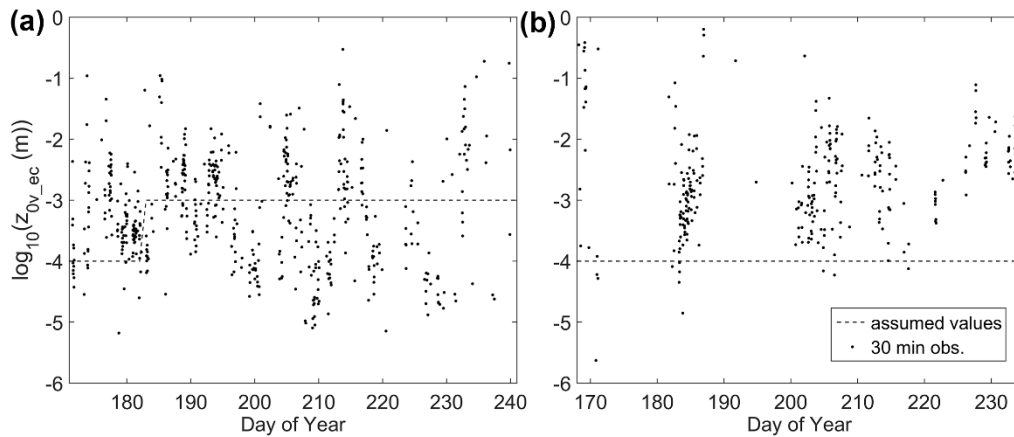


Figure 6. 30-minute z_{0v_ec} values as observed at (a) CG16-1 and (b) CG16-2. The dash line represents the commonly assumed z_{0v} values of 1 mm and 0.1 mm for ice and snow, respectively. At CG16-1, the surface transitioned to bare ice on day of year (DOY)

183.

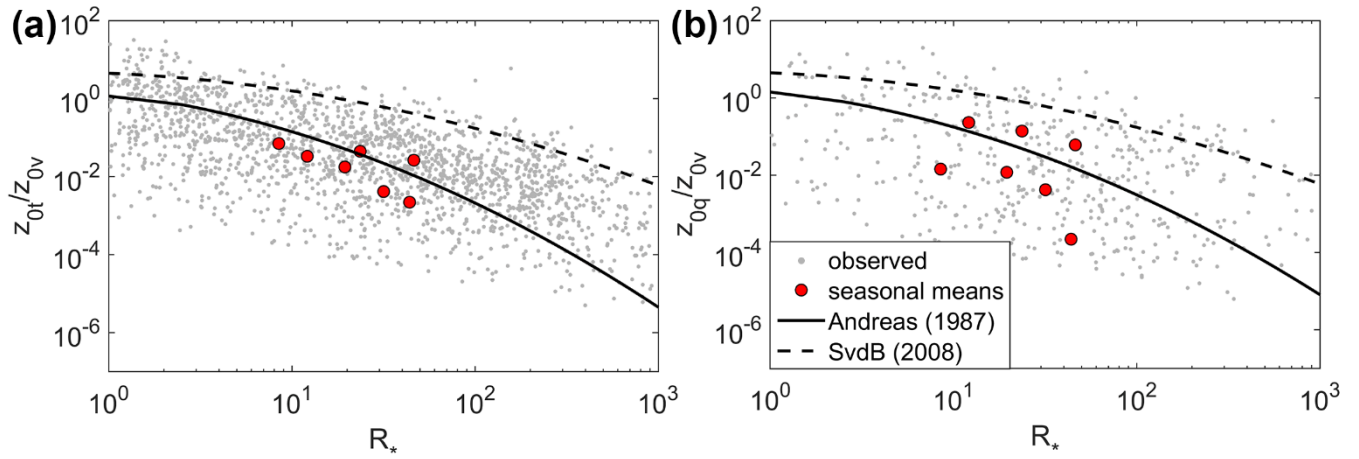
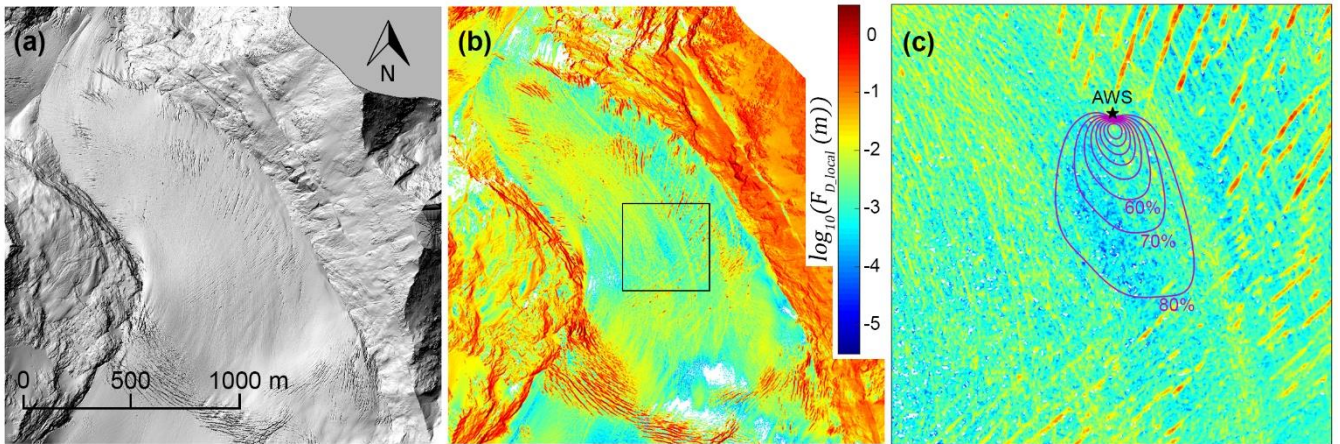


Figure 7. Performance of the surface renewal models of Andreas (1987) and Smeets and van den Broeke (2008) for estimating the ratio of (a) z_{0t} and (b) z_{0q} to z_{0v} . The filtered 30-minute (grey) and seasonal mean (red) ratios of the EC-derived roughness lengths and R_* values are shown for all seasons and EC sensors.

5



10 Figure 8. Example from CG16-1 of the steps taken to estimate z_{0v_bloc} from LiDAR data: (a) 2,000 x 2,000 m subarea extracted from the 1 x 1 m DEM, centred on an AWS; (b) localised drag values (F_{D_local}) calculated for each grid cell; (c) the flux footprint for the corresponding EC data, shown as percentage of crosswind integrated flux contribution (purple contours), overlaid over the F_{D_local} map (400 x 400 m square area expanded from (B) for display purposes).

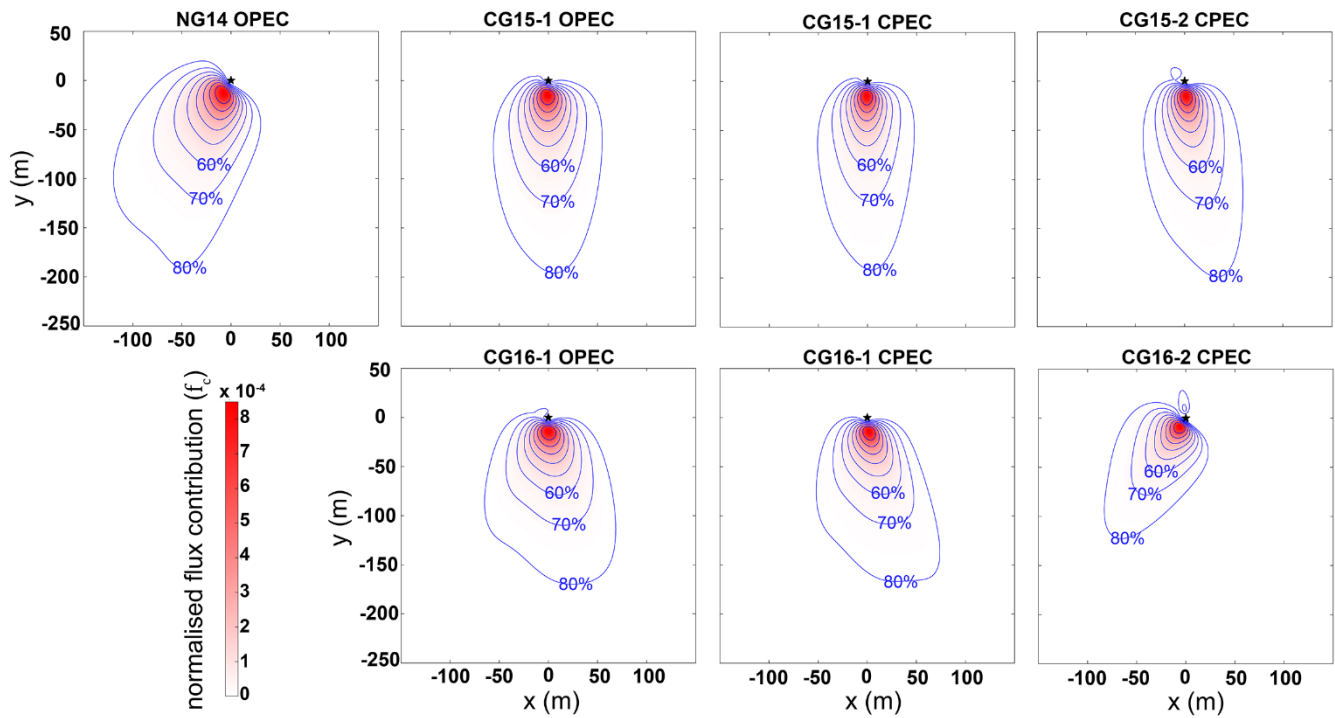


Figure 9. Flux footprint maps for each EC system deployed during the study, including percentage of crosswind integrated flux contribution (purple contours). Distances are in metres east (x) and north (y) of the AWS (black star). Maps were produced following the methods of Kljun *et al.* (2015).

5

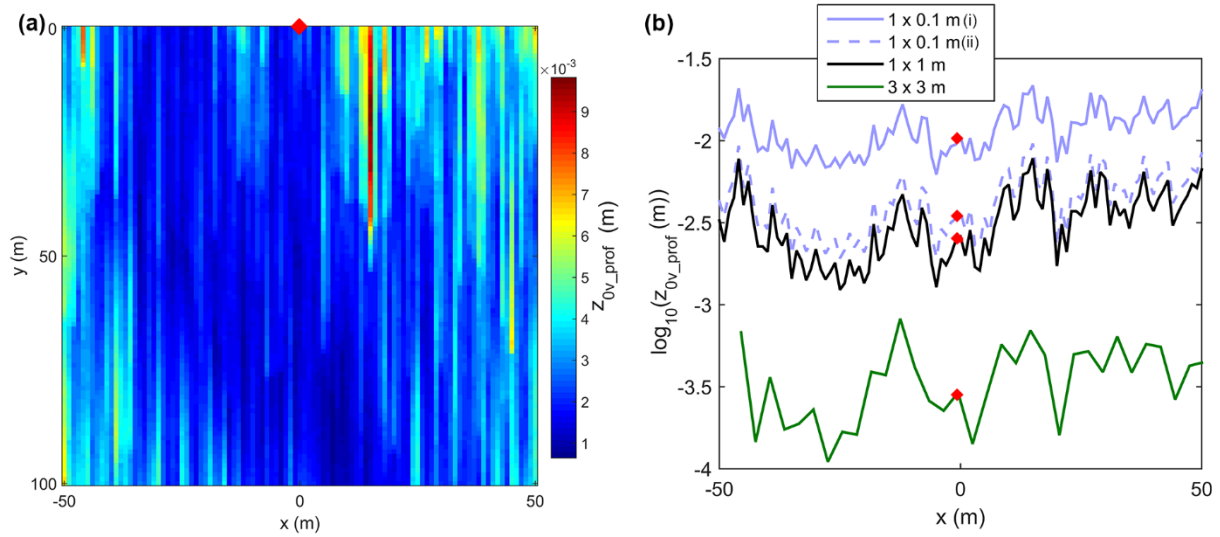


Figure 10. (a) z_{0v_prof} values estimated for each grid cell in a 101 x 101 m area upwind from CG16-1 (red diamond) from the September 2016 DEM of Conrad Glacier. (b) z_{0v_prof} values derived for the downslope profiles at CG16-1 ($x = 0$) and for the grid cells 50 m to the east and west of the station from the original DEM (1 x 1 m), and from the higher (1 x 0.1 m) and lower (3 x 3 m) resolution DEMs constructed for sensitivity testing. The 1 x 0.1 m (i) values are from the initial high resolution DEM used in the sensitivity test, while the DEM used for 1 x 0.1 m (ii) had the amplitude of the synthetic microtopography profiles reduced by a factor of 10. **Table 1. Locations and dates of operation of the automatic weather stations used in this study.**

10

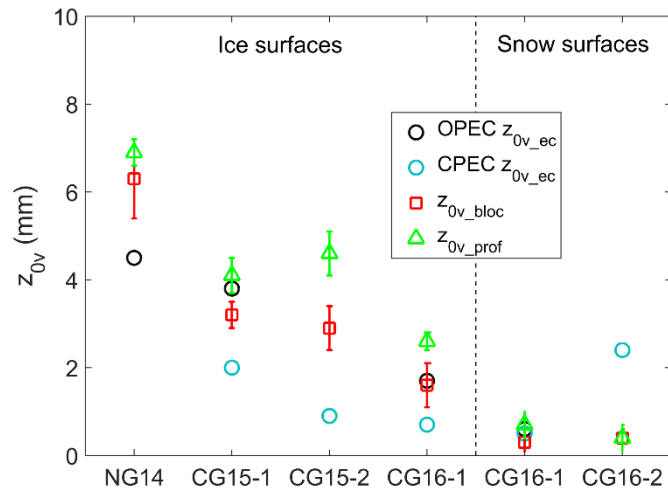


Figure 11. Comparison of geometric mean OPEC and CPEC momentum roughness length observations with z_{0v_bloc} and z_{0v_prof} estimates from the remote methods. Values are separated into ice and snow surface types. Error bars represent the calculated uncertainty in the z_{0v_bloc} method, and σ of the z_{0v_prof} values for ~~the~~ 101 x 101 m upwind patch. The standard deviation on each of the mean z_{0v_ec} values (see Table 4) extends beyond the y-axis range.

15

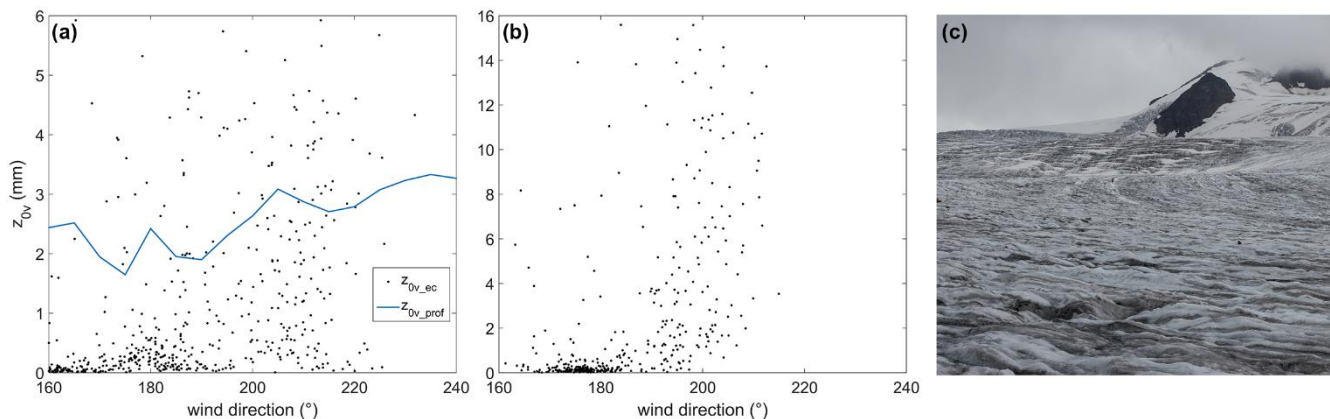


Figure 12. The dependence of momentum roughness length values on wind direction for (a) z_{0v_ec} (filtered 30-minute values) and z_{0v_prof} at CG16-1, and (b) z_{0v_ec} at CG15-2 (LiDAR data was not available for CG15-2 during this period). (c) Elongated roughness features on Conrad glacier, looking south from CG15-1 in July 2015. The meltwater channels had approximate dimensions of 0.5–1 m in width and 0.1–0.2 m in depth, with substantial variability.

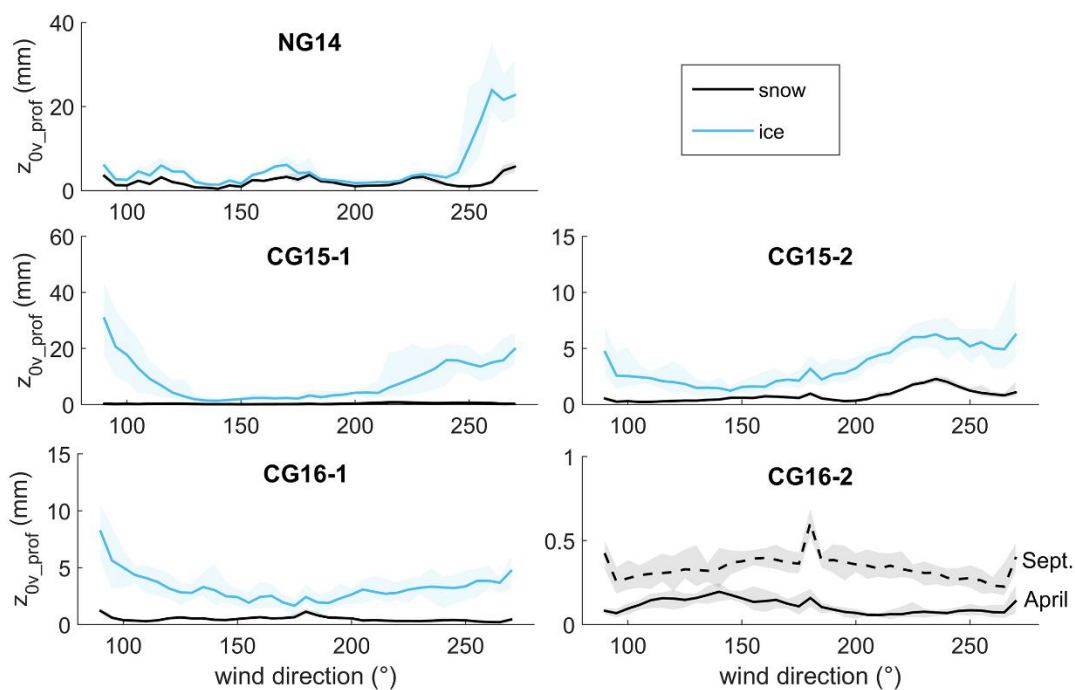


Figure 13. Roughness values from the rotated z_{0v_prof} method for 5° increments in wind direction between 90° and 270° for an April (snow) and September (ice) surface at each station (snow surface present at CG16-2 for both periods). Shaded area represents the range of roughness lengths estimated for the five profiles either side of the station profile (11 profiles).

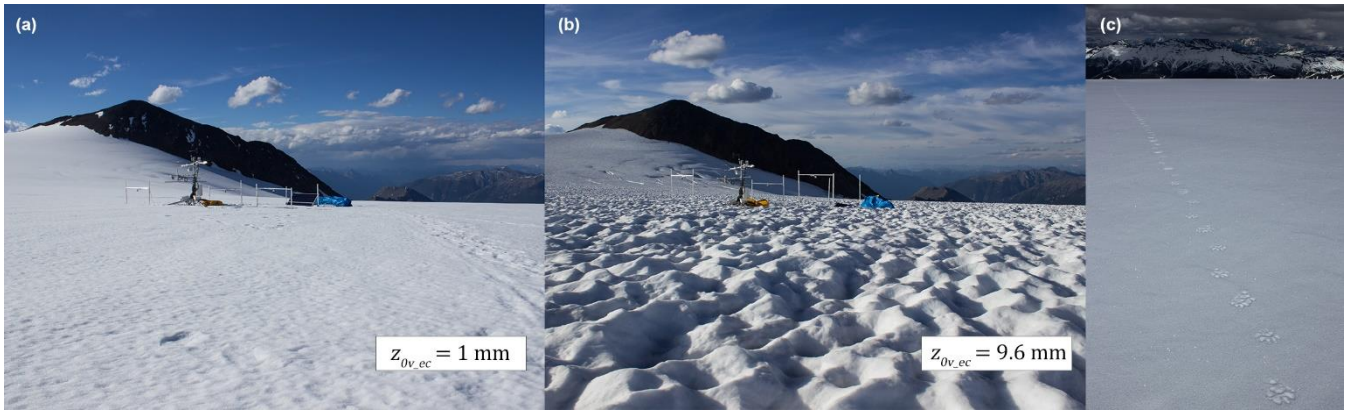
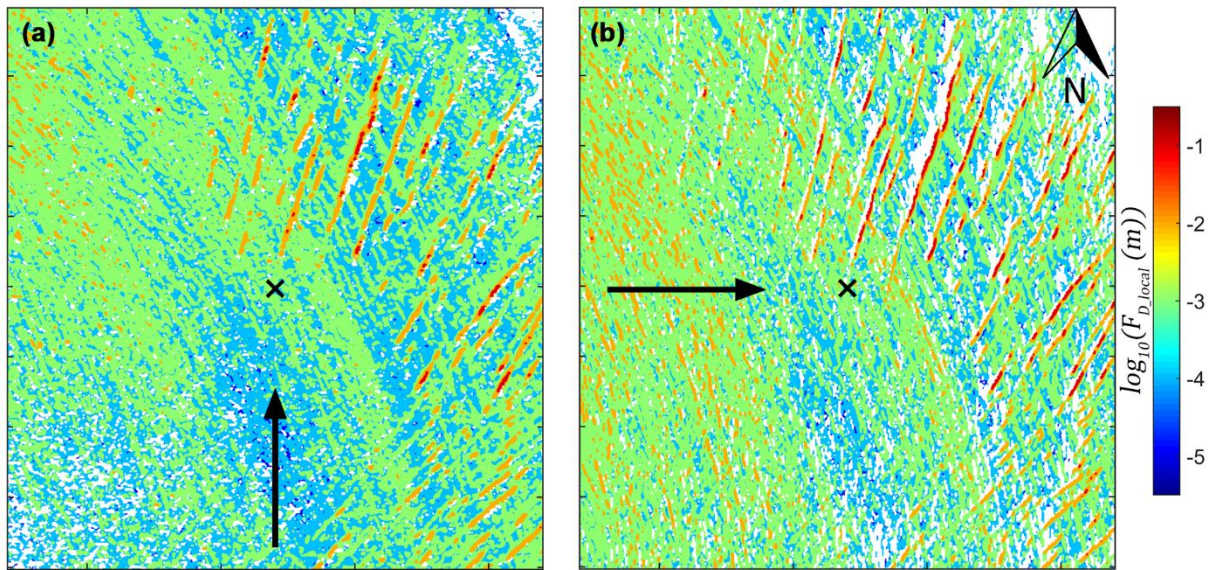


Figure 14. Observed snow surface roughness variations at CG16-2 from camera imagery for (a) June 30th – July 3rd ($z_{0v,ec} = 1.0 \pm 4.2$ mm), and (b) Aug. 19th – 21st ($z_{0v,ec} = 9.6 \pm 21.7$ mm). For scale, the upper crossarm of the AWS is at a height of 1.9 m. (c) Smooth snow surface observed at the location of CG16-2 on April 26th, 2016 (wolverine tracks for scale).

5



10 Figure 15. Comparison of the $F_{D,local}$ values from the block method for (A) southerly (downslope) and (B) westerly (cross-slope) wind direction at CG16-1 in September 2016. Air flow (black arrow), and AWS location (black cross) are also identified.

Table 1. Locations and dates of operation of the automatic weather stations used in this study.

Station	NG14	CG15-1	CG15-2	CG16-1	CG16-2
Glacier	Nordic	Conrad	Conrad	Conrad	Conrad
Location	51.43434°N 117.69973°W	50.82486°N 116.92247°W	50.82306°N 116.92128°W	50.82303°N 116.91992°W	50.78219°N 116.91197°W
Zone	ablation	ablation	ablation	ablation	accum.
Elevation	2208 m	2138 m	2163 m	2164 m	2909 m
Deployed	12/07/2014	15/07/2015	16/07/2015	19/06/2016	16/06/2016
Removed	28/08/2014	05/09/2015	07/09/2015	28/08/2016	22/08/2016

Table 2. Instrument list for each deployed station, including sensor accuracy and ~~height~~ heights of installation, of the EC and temperature sensors (z), and the wind monitor (z_u).

Variable	Sensor	Accuracy	NG14	CG15-1	CG15-2	CG16-1	CG16-2
Wind speed/direction	Young 05103ap Wind Monitor	$\pm 0.3 \text{ m s}^{-1}$	●	●	●	●	●
Air temperature/humidity	Rotronic HC2 Probe	$\pm 0.1^\circ\text{C} / 0.8\%$	●	●	●	●	●
Air temperature/humidity	Aspirated Rotronic HC2 Probe	$\pm 0.1^\circ\text{C} / 0.8\%$	-	-	-	●	●
Atmospheric Pressure	Vaisala PTB110	$\pm 0.3 \text{ hPa}$	●	●	●	●	●
Precipitation	Texas Elec. Tipping Bucket Gauge	$\pm 1\%$ (up to 10 mm hr^{-1})	●	●	●	●	●
Radiation fluxes	Kipp & Zonen CNR4	10–20 W m^{-2} (pyranometer) 5–15 W m^{-2} (pyrgeometer)	●	●	●	●	●
Turbulent fluxes: water vapour 3D wind (u,v,w) sonic temp	OPEC System CSI IRGASON CSI IRGASON CSI IRGASON	$3.5 \times 10^{-3} \text{ g m}^{-3}$ 1 mm s^{-1} $\pm 0.025^\circ\text{C}$	●	●	-	●	-
Turbulent fluxes: water vapour 3D wind 3D wind (u,v,w) sonic temp	CPEC System LI-7200 Gill R3-50 Gill R3-50	$\pm 2\%$ <1% RMS $\pm 0.1^\circ\text{C}$	-	●	●	●	●
Ground heat flux	Thermistor Array (self)	$\pm 0.1^\circ\text{C}$	●	●	●	●	●
Surface height	CSI SR50A Sonic Ranger	$\pm 0.01 \text{ m}$	1	3	3	3	3
Surface temp	Apogee SI-111	$\pm 0.2^\circ\text{C}$	-	1	1	2	2
Station tilt	Turck Inclinometer	$\pm 0.5^\circ$	●	●	●	●	●
Data storage	CSI CR3000 Logger	-	●	●	●	●	●
Site/Surface Conditions	Time Lapse Camera (self)	-	●	●	●	●	●
z (m)	-	-	2.0	2.0	2.0	1.9	1.9
z_u (m)	-	-	2.6	2.5	2.6	2.6	2.4

Table 3. Dates of LiDAR flights over the two study glaciers from 2014 to 2016. *For the September 12th 2015 flight over Conrad Glacier, only the accumulation zone was adequately captured.

	Nordic Glacier		Conrad Glacier	
	Spring	Autumn	Spring	Autumn
2014	July 10 th	Sept 11 th	-	Sept 11 th
2015	April 19 th	Sept 11 th	April 20 th	Sept 12 th *
2016	April 17 th	Sept 12 th	April 17 th	Sept 12 th

Table 4. Seasonal geometric means of the EC-derived roughness length values ($\pm\sigma$) from the open and closed path systems for each station site. $z_{0v_{ec}}$ values for periods with a snow-covered surface are underlined. The number of 30-minute periods available for roughness estimation (after filtering) is presented in square brackets.

(mm)	NG14 OPEC	CG15_1 OPEC	CG15_1 CPEC	CG15_2 CPEC	CG16_1 OPEC	CG16_1 CPEC	CG16_2 CPEC
z_{0v}	4.5±28.8 [93] <u>0.46±3</u> [16]	3.8±31.7 [206]	2.0±19.2 [281]	0.9±7.4 [417]	1.7±11.7 [308] <u>0.62±5.1</u> [114]	0.7±6.4 [429] <u>0.51±2.3</u> [138]	<u>2.4±16</u> [312]
z_{0t}	0.01±0.1 [77]	0.01±0.88 [181]	0.09±0.81 [270]	0.03±0.28 [390]	0.03±0.23 [396]	0.05±0.29 [546]	0.01±0.07 [247]
z_{0q}	0.001±0.008 [16]	0.23±1.5 [43]	0.28±1.9 [17]	0.21±3.1 [74]	0.02±0.28 [194]	0.01±0.19 [186]	0.01±0.1 [38]

5 **Table 5. Momentum roughness length values (in mm) for each station estimated using remote methods (z_{0v_bloc} and z_{0v_prof}) from the LiDAR-derived DEMs. The roughness values for the prevailing downslope southerly wind direction are shown here. f_{c_100} represents values for an assumed 101 x 101 m upwind footprint where F_{D_local} values are given equal weighting. The uncertainty values from error propagation are shown for z_{0v_bloc} , while for z_{0v_prof} , $\pm\sigma$ of the roughness values for the 101 x 101 m upwind patch is presented.**

	NG14		CG15-1		CG15-2		CG16-1		CG16-2	
z_{0v_bloc}	April	Sept	April	Sept	April	Sept	April	Sept	April	Sept
2014	-	6.3±0.9	-	2.5±0.1	-	2.5±0.5	-	1.6±0.4	-	0.5±0.2
2015	2.0±0.2	5.0±0.1	0.3±0.2	-	0.5±0.2	-	0.3±0.2	-	0.3±0.1	0.4±0.2
2016	2.5±0.1	4.0±0.4	0.6±0.3	4.0±0.4	0.8±0.2	3.2±0.5	0.3±0.1	1.6±0.5	0.4±0.1	0.4±0.1
f_{c_100}	2.0±0.2	3.2±0.4	0.5±0.2	4.2±0.2	0.6±0.2	2.1±0.5	0.2±0.1	0.9±0.4	0.2±0.1	0.2±0.1
z_{0v_prof}										
2014	-	6.9±0.3	-	2.6±0.2	-	2.0±0.3	-	2.1±0.2	-	0.4±0.02
2015	4.6±0.4	4.2±0.4	0.2±0.04	-	0.5±0.02	-	0.9±0.03	-	0.1±0.01	0.2±0.04
2016	3.6±0.2	5.6±0.1	0.6±0.1	5.6±0.5	1.7±0.1	7.1±0.6	0.7±0.03	2.6±0.2	0.1±0.02	0.6±0.04

Table 6. Comparison of momentum roughness length values (in mm) for each station, as observed from the EC systems (z_{0v_ec}), and as estimated using the DEM-based methods (z_{0v_bloc} and z_{0v_prof}). *For years where LiDAR data was not available from the same year a station was in place, the averages of the roughness estimates from the two other years were utilised for evaluation.

	NG14 OPEC	CG15-1 OPEC	CG15-1 CPEC	CG15-2 CPEC	CG16-1 OPEC		CG16-1 CPEC		CG16-2 CPEC
	ice	ice	ice	ice	snow	ice	snow	ice	snow
z_{0v_ec}	4.5	3.8	2	0.9	0.6	1.7	0.5	0.7	2.4
z_{0v_bloc}	6.3	3.2*	3.2*	2.9*	0.3	1.6	0.3	1.6	0.4
z_{0v_prof}	6.9	4.1*	4.1*	4.6*	0.7	2.6	0.7	2.6	0.4