

Interactive comment on “Resolving the influence of temperature forcing through heat conduction on rockglacier dynamics: a numerical modelling approach” by Alessandro Cicoira et al.

Hoelzle (Referee)

martin.hoelzle@unifr.ch

Received and published: 2 December 2018

This manuscript models and discuss rockglacier flow and related seasonal and interannual variabilities by using a 1-D numerical flow model including thermal heat conduction. The model is forced by given temperature data below the active layer. Temperature data gaps were linearly interpolated. The main result shows that the overall flow velocities on an annual resolution is well simulated. However, seasonal and interannual variations are strongly underestimated. The authors conclude then that the heat conduction alone is not able to explain the variations and therefore non-conductive processes such as the presence of water must strongly influence the flow behavior.

General comments: This study is elaborated very carefully using a simple flow model and driving the model with available input data from the existing PERMOS network. I appreciated very much the very careful and critical discussion of their results. In general, the paper is written very concise and clear. I have only some minor points, where I suggest some small changes and additions in the paper. I would particularly enjoy when the authors would include some additional past literature and discuss them in relation to their obtained results being aware that the modelled time domain does not overlap with some past studies. However, for the discussion part this would may help to improve some interpretations.

General response:

We thank the referee for his very positive comments and critical points on which we comment in detail below. In brief we addressed the following main points:

- We added and discussed some further and indeed relevant literature in order to improve the interpretations and the discussion of the results.
- We further clarified our choice and of a linear gap filling (and related uncertainties) for the temperature input data and made clearer that this choice does not affect the conclusions of our results.

Specific comments:

Page 1, Line 15: Please add here relevant reference: Barsch and Hell (1975). This paper is in my opinion more important than other papers mentioned here as it is directly related to one of the investigated sites of the authors.

Answer: [reference added.](#)

Page 2, Line 18-19: Some earlier studies already investigated these effects, particularly on rockglacier Murtèl. (e.g. Hanson and Hoelzle 2004, Schneider et al. 2012, Scherler et al. 2014). Particularly, the paper of Schneider et al. shows clearly also that the thermal response within the active layer is very fast and is decoupled from pure heat conduction. This is especially true for the cooling process.

Answer: [references added here in the Introduction.](#)

Page 3. Figure 1c: The borehole is according to my knowledge not at the correct place on this image. Please correct. see also paper by Hoelzle et al. 1998 describing the measurements in the boreholes at Schafberg.

Answer: [the location of the borehole has been set according to the PERMOS report No. 12-15. The location is also in accordance with the mentioned paper \(Hoelzle et al. 1998\), where the borehole is labeled as “borehole 2”. As far as we know no correction is needed. Additionally, the reference has been added throughout the text as a first publication for the borehole.](#)

Page 4, Table 1: Please explain in more detail what ‘bottom temperature’ mean. For example at Murtèl the total borehole thickness is about 58 m and you probably mean the temperature at 27 m depth exactly at the shear horizon. It would be nice, if the values in this table are referenced exactly with the corresponding literature.

Answer: for more clarity the text in the caption has been corrected: “rockglacier bottom temperature, measured at the lower end of the shear horizon”. In section 3 Data and Methods, this points is further explained (Page 7, line 7).

We added references in the caption of the table for the ice content (Hoelzle et al. 1998, Arenson and Springman 2002) and for the temperature and deformation data (Permos).

Page 4: Line 10: Please add information also from the following reference: Herz et al. (2003).

Answer: in the text we discuss the development of a Talik at depth. The suggested publication discuss heat advection only in the blocky active layer of Ritigraben rockglacier.

Page 4, line 14: here also the first model approaches by Wagner (1992) could be mentioned.

Answer: We would like here to cite the more relevant publications: Loewenherz et al, 1989, and Kääh et Weber, 2004.

Page 5, line 1: Here many further and older relevant studies should be noted such as Kääh et al. (1998), Kääh (2002), Kääh et al. (2003).

Answer: Kääh et al. (1998) has been added. The text has been corrected adding “amongst others” before the citations.

Page 5, line 3: better to cite here the relevant papers in this context such as Arenson et al. (2010), Hilbich et al. (2009).

Answer: references added: Arenson et al. (2010).

Page 5, line 8: The analysis of the mentioned time period was done by Arenson et al. 2002 and not in Haeberli et al. 1998.

Answer: as far as we know, the data are presented already in Haeberli et al. 1998. The reference (Arenson et al. 2002) has been added.

Page 5: line 14: please have a look also at some older studies, which give some details about the old deformation measurements at the Schafberg site in relation to photogrammetric analysis (Hoelzle et al. 1998).

Answer: reference added (Hoelzle et al. 1998). The text has been added: “Hoelzle et al. (1998) investigated internal deformation profiles from borehole measurements in relation to photogrammetric analysis”.

Page 5, line 23: Please add: Vonder Mühl and Schmid (1993).

Answer: reference added. The text has been corrected: “Older geophysical and photogrammetrical measurements have been presented in Vonder Mühl (1993)”.

Page 6, line 7: this is only partly true as in some papers is shown that also this rockglacier is highly inhomogeneous such as reported in Arenson et al. (2010) and ground water is influencing the thermal regime in a depth of about 58 m: Vonder Mühl (1992)

Answer: I think the comment refers to line 5. Here, to account for this comment, we corrected the text to: “[...]of the creeping rockglacier. All the parameters are assumed to be homogeneous in time and space in first approximation. Note that geophysical investigations (Arenson 2002, Arenson et al. 2010 amongst others) showed that rockglaciers can be highly heterogeneous”.

Page 6, line 27: here maybe some more sophisticated gap filling could be used such as proposed by Staub et al. 2017.

Answer: We agree that more sophisticated gap filling would deliver more accurate filling of the gaps. However, we believe that for the purpose of the study this more sophisticated gap filling is not needed and would not change any of the conclusions made here. First of all, the gaps are scarce, and our focus are seasonal as well as multi-annual variations, which, as we state already in the text (p. 6 line 25-27 in original version) we interpret purposely the whole times series outside the periods of the gaps. We tried to further clarify this point and changed the text to: "This approach is considered satisfactory due to the combination of the scarcity of data gaps in the surface temperature time series and the length of the considered seasonal to multi-annual time scales. Note that more sophisticated methods (e.g. Staub et al. 2016) could be used for interpolating the time series".

Page 7, Figure 2b: why are at the beginning of this time period no differences plotted. data seems to be available?

Answer: data are plotted but not visible. The problem lies in the graphical interpolation for plotting as a contour-plot in the used software (Matlab). The measurements for the first years were manually done, i.e. only very little profiles are available until 1994 and they are not visible in the last graph.

Page 8, line 17: how you know the slope of ice surface without using the existing geophysical measurements?

Answer: the ice surface is assumed to be parallel to the surface slope. The text has been corrected: ", which is assumed to be parallel to the surface slope".

Page 8, line 23: this is maybe not true at all sites e.g. at the borehole at Schafberg. We were never sure if the borehole was really fixed in the lower part.

Answer: the text has been corrected: "This hypothesis is confirmed by the low deformation rates at the bottom of the borehole inclinometer profiles for all the studied rockglaciers."

Page 8, line 23: use spatial instead of special

Answer: typo corrected.

Page 9, Figure 3 and line 5: please give full references instead of just mentioning 'proposed by literature'

Answer: reference added (Vonder Mühll, 1993; Arenson et al., 2002; Lugon and Stoffel, 2010).

Page 16, line 2: text is missing? You mean results are discussed?

Answer: error corrected. We indeed meant "discussed". The text has been deleted after the second referee's comment.

Page 16, line 3: Temperature modelling -> delete s

Answer: typo corrected.

Page 16, line 5: you could use approaches of gap filling according to Staub et 2017

Answer: see comment for page 6 line 27 above.

Page 16, line 18 and page 17 line 1: I am not convinced if this explanation is reasonable. When we know that rockglacier Murtèl is probably the coldest of all rockglaciers, I would first assume that water may play a less important role at Murtèl than at the other rockglacier which are warmer.

Answer: our hypothesis is confirmed by Arenson et al. 2010, being one of the main conclusions. The reference has been added and the text has been corrected: "flow" instead of "content".

Page 20, line 36: However, at Schafberg all this information (deformation, geophysics) was already published. Please refer to this literature mentioned already above.

Answer: the text has been corrected, deleting the example of Schafberg.

- References: ARENSON, L., HAUCK, C., HILBICH, C., SEWARD, L., YAMAMOTO, Y. & SPRINGMAN, S. (2010). Sub-surface heterogeneities in the Murtèl-Corvatsch rock glacier, Switzerland. 6th Canadian Permafrost Conference. (pp. 1494-1500). Calgary, Canada: CNC-IPA/NRC.
- ARENSON, L., HAUCK, C., HILBICH, C., SEWARD, L., YAMAMOTO, Y. & SPRINGMAN, S. (2010). Sub-surface heterogeneities in the Murtèl-Corvatsch rock glacier, Switzerland. 6th Canadian Permafrost Conference. (pp. 1494-1500). Calgary, Canada: CNC-IPA/NRC.
- BARSCHE, D., HELL, G. (1975). Photogrammetrische Bewegungsmessungen am Blockgletscher Murtèl I, Oberengadin, Schweizer Alpen. *Zeitschrift für Gletscherkunde und Glazialgeologie* 11(2):111-142
- HANSON, S., HOELZLE, M. (2004). The thermal regime of the active layer at the Murtèl rock glacier based on data from 2002. *Permafrost and Periglacial Processes*, 15, 273-282.
- HERZ, T., KING, L., GUBLER, H. (2003) Microclimate within coarse debris of talus slopes in the alpine periglacial belt and its effect on permafrost. In: Phillips M, Springman S, Arenson L (eds) 8th International Conference on Permafrost, Proceedings. Swets & Zeitlinger, Lisse, Zürich, pp 383-387
- HILBICH, C., MARESCOT, L., HAUCK, C., LOKE, M. H. & MÄUSBACHER, R. (2009). Applicability of Electrical Resistivity Tomography Monitoring to Coarse Blocky and Ice-rich Permafrost Landforms. *Permafrost and Periglacial Processes*, 20, 269-284.
- HOELZLE, M., WAGNER, S., KÄÄB, A. & VONDER MÜHLL, D. (1998). Surface movement and internal deformation of ice-rock mixtures within rock glaciers at Pontresina-Schafberg, Upper Engadin, Switzerland. In A. G. A. A. LEWKOWICZ, M. (Ed. 7th International Conference on Permafrost. Proceedings. (pp. 465-471). Yellowknife, Canada: Centre d'Etudes Nordiques, Université Laval.
- KÄÄB, A. (2002). Monitoring high-mountain terrain deformation from repeated air- and spaceborne optical data: examples using digital aerial imagery and ASTER data. *ISPRS Journal of Photogrammetry & Remote Sensing*, 57, 39-52.
- KÄÄB, A., GUDMUNDSSON, G. H. & HOELZLE, M. (1998). Surface deformation of creeping mountain permafrost. Photogrammetric investigations on Murtèl rock glacier, Swiss Alps. In A. G. LEWKOWICZ & M. ALLARD (Eds.) Seventh International Permafrost Conference. (pp. 531-537). Yellowknife, Canada: Centre d'Etudes Nordiques, Université Laval.
- KÄÄB, A., KAUFMANN, V., LADSTÄDTER, R. & EIKEN, T. (2003). Rock glacier dynamics: implications from high-resolution measurements of surface velocity fields. In M. PHILLIPS, S. SPRINGMAN & L. ARENSON (Eds.) 8th International Conference on Permafrost, Proceedings. (pp. 501-506). Zürich: Swets & Zeitlinger, Lisse. DOI: 10.1002/ppp.506
- SCHERLER, M., SCHNEIDER, S., HOELZLE, M. & HAUCK, C. (2014). A two sided approach to estimate heat transfer processes within the active layer of rock glacier Murtèl-Corvatsch. *Earth Surface Dynamics*, 2, 141-154.
- SCHNEIDER, S., HOELZLE, M. & HAUCK, C. (2012). Influence of surface heterogeneity on observed borehole temperatures at a mountain permafrost site in the Upper Engadine, Switzerland. *The Cryosphere*, 6, 517-531.
- STAUB, B., HASLER, A., NOETZLI, J. & DELALOYE, R. (2017). Gap-filling algorithm for ground surface temperature data measured in permafrost and periglacial environments. *Permafrost and Periglacial Processes*, 28, 275-285.
- VONDER MÜHLL, D. (1992). Evidence of intrapermafrost groundwater flow beneath an active rock glacier in the Swiss Alps. *Permafrost and Periglacial Processes*, 3, 169-173.
- VONDER MÜHLL, D. & SCHMID, W. (1993). Geophysical and photogrammetrical investigations of rock glacier Muragl I, Engadin, Swiss Alps. In C. GUODONG (Ed. 6th International Conference on Permafrost. Proceedings. (pp. 654-659). Beijing, China: South China University Technology Press.
- WAGNER, S. (1992). Creep of Alpine permafrost, investigated on the Murtèl-rock glacier. *Permafrost and Periglacial Processes*, 3, 157-162.

Interactive comment on “Resolving the influence of temperature forcing through heat conduction on rockglacier dynamics: a numerical modelling approach” by Alessandro Cicoira et al.

Arenson (Referee)

larenson@bgcengineering.ca

Received and published: 14 January 2019

First I'd like to apologize for the delay in submitting my comments. Unforeseeable circumstances did not allow me to review the paper earlier.

Cicoira et al. present a well written manuscript on a numerical study of rock glacier creep with the objective of understanding seasonal changes in surface deformation. Overall the manuscript reads well and follows a logical flow. Assumptions and limitations of the model are reasonably explained. I also do, in general, agree with the author's conclusion. One aspect I'd like to see included is a presentation of the depths of the zero annual amplitude, and a discussion that relates those depths with the limited C1 TCD Interactive comment Printer-friendly version Discussion paper success of explaining seasonal changes in deformation via conduction. With temperatures being the driver for the creep, no seasonal change in the velocity would be expected if the temperatures remain constant.

The manuscript could also benefit from some editorial improvements and I made several suggestions in the annotated version attached to this comment.

Please also note the supplement to this comment:

<https://www.the-cryosphere-discuss.net/tc-2018-176/tc-2018-176-RC2-supplement.pdf>

General response:

We thank the referee for his constructive and thorough feedback and critical points on which we comment in detail below. In brief we addressed the following main points:

- We addressed the comment about the depths of zero annual temperature amplitude (see details below).
- We implemented the editorial improvements suggested by the referee (see details below).
- We addressed all the more specific comments in the list below (some little corrections are omitted).

Specific comments:

Page 1, line 6:

Answer: “flow velocity” is now used consistently throughout the whole paper. Hereon, this correction will be omitted from the author review response.

Page 2, line 2:

Answer: the following sentence has been added: “The single-word term rockglacier is used here instead of “rock glacier” consistently to Barsch, 1996.”.

Page 2, line 7:

Answer: the term “identify” has been changed to “suggested”.

Page 2, line 9:

Answer: the text has been corrected: “Possible positive feedback processes between rising temperature and increased deformation have also been suggested (Ikeda et al., 2008; Buchli et al., 2018)”.

Page 2, line 30-31:

Answer: Reference and weblinks have been added.

Page 3, line 6:

Answer: the rockglaciers. The text has been corrected accordingly.

Page 3, line 15:

Answer: reference (Arenson et al., 2004) has been added.

Page 4, line 5:

Answer: the text has been corrected adding: "relative to other rockglaciers."

Page 4, line 7:

Answer: the text has been corrected throughout the whole paper adding: "volumetric" to ice content.

Page 6, line 1:

Answer: the text has been corrected: "...using the software MATLAB (2016)."

Page 7, Figure 2:

Answer: the units have been added to the figure, the caption has been corrected. Also the scales in the lower subpanels have been changed to better show the relative difference in temperature.

Page 7, eqn 1:

Answer: reference has been added (Williams and Smith, 1989).

Page 13, line 19:

Answer: the value has been corrected, it was indeed 18%.

Page 13, line 33:

Answer: the information about the depth of the zero annual amplitude for conduction has been added to the section Results in the paragraph about temperature modelling (page 16, line 20 in the manuscript). "The depth of the zero annual temperature amplitude for the studied rockglaciers is according to the PERMOS (2016) report usually between 10 and 20 m depth. This depth is slightly overestimated by our model (see Fig.2), with the seasonal temperature signal influencing reaching slightly deeper in comparison to the borehole measurements (PERMOS, 2016)."

The authors find a direct comparison between this depth and the depth of the shear surface to be misleading. Instead of doing so, the text of the discussion has been modified at page 18 line 17 in the manuscript.

"In consequence, comparing rockglacier thermal regime and rockglacier surface flow velocities is non-trivial and interpretation potentially misleading".

Page 13, line 20:

Answer: the text has been corrected adding the comparison. "more sensitive than to the previous parameters".

Page 16, line 28:

Answer: the text has been corrected: "For Murtèl, the mean surface velocities (averaged over the whole time series) match the observations.".

Page 17, line 28:

Answer: the text has been corrected. The new sentence is "The influence of interstitial water on creep is partially implicitly taken into account in the adopted empirical creep relation through the dependency on

temperature; but note, the impact on the stress regime due to pore pressure is in the adopted rheology not taken into account.”.

Page 19, Line 5:

Answer: a reference to the PERMOS report 2016 has been added along the value of the temperature variations observed in the studied boreholes. The text has been implemented: “too small, being close to one tenth of a degree (PERMOS, 2016).”.

Page 19, Line 25:

Answer: The text has been clarified here: “The model used shows a dependency of the surface velocities on the volumetric ice content value.

Page 21, Line 10:

Answer: The text has been deleted, because it was a repetition of what already included in the conclusion.

Page 21, Line 29:

Answer: The text has been implemented: “short- to mid-term”.

Interactive comment on “Resolving the influence of temperature forcing through heat conduction on rockglacier dynamics: a numerical modelling approach” by Alessandro Cicoira et al.

Cicoira (Author)

a.cicoira@geo.uzh.ch

General comment:

We thank the referees and the editor for the constructive review. On top of the answers to the referees we want to edit some minor details in the manuscript. The specific changes are commented below.

Specific comments:

Page 3, line 1: The section title “Case Study Sites” has been changed in “Study Sites”.

Page 22, line 7: The acknowledgements section has been slightly changed to include the D-GPS pilot project of BAFU, the editor and the referees.

Resolving the influence of temperature forcing through heat conduction on rockglacier dynamics: a numerical modelling approach

Alessandro Cicoira¹, Jan Beutel², Jérôme Faillettaz¹, Isabelle Gärtner-Roer¹, and Andreas Vieli¹

¹Department of Geography, University of Zurich, Zurich, Switzerland

²Computer Engineering and Networks Laboratory, ETH, Zurich, Switzerland

Correspondence to: Alessandro Cicoira (alessandro.cicoira@geo.uzh.ch)

Abstract. In recent years, observations have highlighted seasonal and inter-annual variability in rockglacier flow. Temperature forcing, through heat conduction, has been proposed as one of the key processes to explain these variations in kinematics. However, this mechanism has not yet been quantitatively assessed against real-world data.

We present a 1-D numerical modelling approach that couples heat conduction to an empirically derived creep model for ice-rich frozen soils. We use this model to investigate the effect of thermal heat conduction on seasonal and inter-annual variability in rockglacier flow [velocity](#). We compare the model results with borehole temperature data and surface velocity measurements from the PERMOS and PermaSense monitoring network [in available for](#) the Swiss Alps. We further conduct a model sensitivity analysis in order to resolve the importance of the different model parameters. Using the prescribed empirically derived rheology and observed near-surface temperatures, we are able to model the [right correct](#) order of magnitude of creep [flow](#). However, both inter-annual and seasonal variability are underestimated by an order of magnitude, implying that heat conduction alone can not explain the observed variations. Therefore, [we conclude that](#) non-conductive processes, likely linked to water availability, [must](#) dominate the short-term velocity signal.

1 Introduction

For several rockglaciers [worldwide](#), and especially in Switzerland, surface displacements have been calculated over long time periods ([Chaix, 1923; Wahrhaftig and Cox, 1959; Francou and Reynaud, 1992; Berthling et al., 1998](#)) ([Chaix, 1923; Wahrhaftig and Cox, 1959; Barsch and Hell, 1975; Francou and Reynaud, 1992; Berthling et al., 1998](#)) by using position time series of landmark features (boulders). Since these early investigations, velocity variability has been detected on a multi-yearly scale. In the past decades, starting with some measurements on Gruben rockglacier (Haeberli, 1985), seasonal velocity variability has been observed on such creeping periglacial landforms. Even though differences exist between individual rockglaciers, velocity peak maxima are in general observed between summer and early winter and minima between spring and early summer (Delaloye et al., 2010). In the past years, advances in monitoring techniques and the introduction of continuously measuring D-GPS loggers (Buchli et al., 2012) have confirmed the previous observations on several rockglaciers and have further highlighted velocity peaks on

a daily to a weekly scale predominantly present during the melt season (Wirz et al., 2016a; Kenner et al., 2017; Buchli et al., 2018).

In order to explain the above introduced observations, classical concepts from related disciplines - geotechnical engineering and glaciology - have been applied to rockglacier research. [The single-word term rockglacier is used here instead of "rock glacier" consistently to Barsch \(1992\)](#). Inter-annual velocities have been compared against climatic variables and external temperature forcing has been proposed as one of the key factors controlling the observed long term flow variations (Roer et al., 2005; Krainer and He, 2006; PERMOS, 2016). Similarly, temperature forcing has also been suggested as one of the most important factors controlling rockglacier flow velocity variability on a seasonal scale (Arenson et al., 2002; Käab et al., 2007; Delaloye et al., 2010; Wirz et al., 2016b). Wirz et al. (2016b) has [identified suggested](#) liquid precipitation, snow melt, air and ground temperature as the main factors controlling rockglacier flow on inter-annual, seasonal, and shorter time scales. Previous studies (Johnson (1978); Barsch (1992); Krainer and He (2006) amongst others) highlighted the influence of water on rockglacier and their dynamics, [possibly through positive feedback mechanisms along with rising temperatures and decreasing effective stresses](#) . [Possible positive feedback processes between rising temperature and increased deformation have also been suggested](#) (Ikeda et al., 2008; Buchli et al., 2018).

Even though great improvements have been achieved in this field, our understanding of the processes governing rockglacier dynamics and their relation with external forcings and controlling factors remains at a qualitative level, and many questions remain unanswered. However, it is clear that in order to understand rockglacier dynamics, the complex thermo-hydro-mechanical behaviour of the ice-rich frozen soil and its coupling with the climate have to be considered. In particular, when aiming at understanding the influence of temperature forcing on permafrost creep and its relative importance on rockglacier dynamics, we have to consider two aspects. On one hand, the thermal regime of a rockglacier is mainly controlled by heat conduction, driven by external temperature forcing (Vonder Mühl et al., 2003; Haeberli et al., 2006). Nevertheless, in some cases other processes have been observed, like air and water advection through the permafrost matrix ([Zenklusen Mutter and Phillips, 2012; Luethi et al., 2017; Pruessner et al., 2018](#))([Hanson and Hoelzle, 2004; Zenklusen Mutter and Phillips, 2012; Scherler et al., 2014; Luethi et al., 2017; Pruessner et al., 2018](#)). On the other hand, from glaciological studies it is well known that the rate of deformation of ice is described by a power law (Nye, 1952; Glen, 1955) and depends on ice viscosity, which in turn depends on ice temperature (Mellor and Testa, 1969; Duval et al., 1983). Therefore, heat conduction forced by external surface temperature variations is expected to influence rockglacier creep. However, investigations that quantitatively couple temperature evolution and rockglacier rheology are rare and remain very limited (Käab et al., 2007; Müller et al., 2016). The numerical modelling study by Käab et al. (2007) investigated this process, but has two main limitations: it used a rockglacier rheology that has been derived for pure ice and more importantly, it applied this rheology to a purely synthetic set up and could not directly compare the results to real-world observations.

In this study, we quantify the relative importance of the conductive thermal influence on flow and extend previous research (Käab et al., 2007) by applying the most up-to date rheological relation available for rockglacier material (Arenson and Springman, 2005a) to four real world rockglaciers and constrain the modelling with observations from borehole measurements,

kinematics surveys and D-GPS observations available from the Swiss Permafrost Monitoring Network PERMOS (here on named PERMOS) and PermaSense monitoring networks (<http://dx.doi.org/10.13093/permos-2016-01>).

2 Case Study Sites

For constraining the numerical modelling investigations, we use observational data from four rockglaciers in the Swiss Alps, namely from the rockglaciers Ritigraben located in the Valais, and Murtèl-Corvatsch (for hereon named Murtèl), Schafberg, and Muragl all located in the Engadine (Fig. 1). These rockglaciers have been selected based on the availability of several years of data on highly time resolved surface displacements and subsurface temperatures from boreholes. Further, several borehole deformation profiles are available for different time steps for all rockglaciers. Such type of data is rather unique and made available through the PERMOS monitoring network.

These four rockglaciers cover a wide range of geometric settings and dynamic states: thickness, slope and flow speed velocity from decimetres to several metres per year: for an overview see Table 1. They The rockglaciers are located at elevations between 2500 to 2900 m a.s.l. and their aspect is north to north-west. Their lithology mainly consists of crystalline formations, with prevailing granodiorite and schist for Murtèl and gneiss for Muragl, Schafberg and Ritigraben. The internal structure and deformation profiles are known for all four rockglaciers from boreholes. Their motion is dominated by a few meter thick shear horizon at 18 to 30 m depth (Haeberli et al., 1998; Arenson et al., 2002; Lugon and Stoffel, 2010). Laboratory shear experiments have been undertaken on cores from boreholes for the two rockglaciers Murtèl and Muragl and were used by Arenson and Springman (2005a) to derive an empirical creep-rheology (Arenson and Springman, 2005b)(Arenson et al., 2004; Arenson and Springman, 2005b), which is also used in the flow-modelling investigations of this study (for details see Sect. 3.3).

2.1 Ritigraben

The Ritigraben rockglacier is located above the village of Grächen (VS) and originates from the northern slope of the Gabelhorn (3135 m a.s.l.). It develops a simple linear flow lobe of about 500 m length on a steep slope (27° in the proximity of the borehole, Fig. 1 and Table 1) and terminates at the upper end of the Ritigraben gully. The surface is disturbed affected by the ski slope facilities that have been built on the rockglacier. Accounting for the steep slope and the geometrical setting, the flow unit is only 20 meters thick and the flow velocities are rather high relative to other rockglaciers. Continuous D-GPS measurements provide velocity data since 2012, showing a mean value of 1.4 m a⁻¹ and strong seasonal and inter-annual variations of more than 45% and 25% respectively, see Table 1. Even though no ice cores have been analysed, volumetric ice content has been estimated in previous studies at 30%-70% (Lugon and Stoffel, 2010; Luethi et al., 2017). Borehole measurements since 2002 show warm permafrost temperatures close to the melting point and the progressive development of a Talik at a depth between 10 and 12 meters (Zenklusen Mutter and Phillips, 2012), which has been related to the influence of water infiltration and air circulation (Luethi et al., 2017).

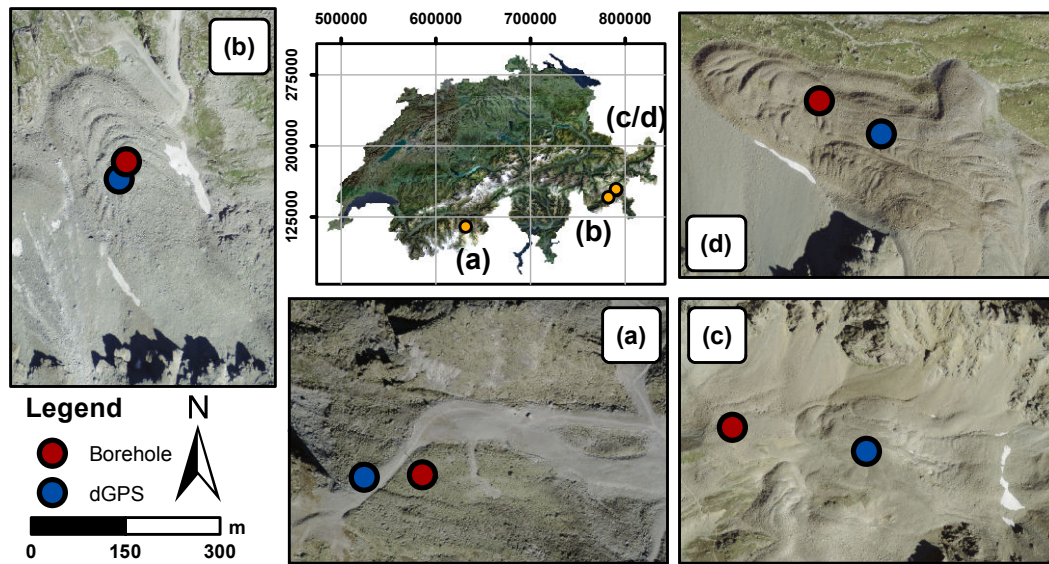


Figure 1. Overview of the four case study sites. Overview site map (middle) and aerial view of the four studied rockglaciers (a-d) with locations of boreholes (blue dots) and D-GPS (red dots) according to PERMOS (2016): (a) Ritigraben, (b) Murtèl, (c) Schafberg and (d) Muragl.

2.2 Murtèl-Corvatsch

The Murtèl rockglacier originates from the north-wall of Piz Murtèl (3432 m a.s.l.) and is characterized by a single lobe of 27 m thickness with well developed surface morphology of lobate furrows and ridges (Fig. 1a) that can be attributed to compressive flow, and buckle and folding (Fig. 1a, Frehner et al. (2015)). (Loewenherz et al., 1989; Kääh and Weber, 2004; Frehner et al., 2015).

5 Consistent with a low surface slope of 12° , this rockglacier is with 0.14 m a^{-1} rather slowly flowing (amongst others Kääh et al. (1998), Müller et al. (2014); see Table 1). Murtèl is probably the best studied rockglacier in the world with continuous temperature monitoring data from boreholes available since 1987 (Haerberli et al., 1988, 1998). The drillings from 1987, 2000 and 2015 (Haerberli et al., 1988; Vonder Mühl et al., 2003) and geophysical investigations (Haerberli et al., 1998; Arenson et al., 2002)

10 (Haerberli et al., 1998; Arenson et al., 2002, 2010) revealed relatively ice-rich material in the main rockglacier body with an estimated volumetric ice content close to 100%. The temperatures within the main body of the rockglacier are between -4° and -1° Celsius and therefore relatively cold compared to other instrumented rockglaciers in Switzerland (Vonder Mühl et al., 2003; PERMOS, 2016). Annual velocities are measured since 2009 by geodetic survey of 11 surface markers around the borehole (PERMOS, 2016). Further, several years of borehole deformation data (at time intervals of several months) are available from 1987 to 1994 (Haerberli et al., 1998)(Haerberli et al., 1998; Arenson et al., 2002). The time averaged yearly velocities

15 show an increasing trend, coherent with observations for other rockglaciers throughout the Swiss Alps, as showed in the PERMOS Glaciological Report No. 12-15 (PERMOS, 2016).

Table 1. Summary of field sites. The borehole locations are given in the CH1903+ coordinate system. The values of the geometrical and physical properties of the rockglaciers are given (thickness, slope, volumetric ice content and thermal diffusivity) as discussed in Sect. 2 Case Study Sites. For the ice content an acceptable range of values is proposed according to the literature (Hoelzle et al., 1998; Arenson et al., 2002). The mean observed rockglacier bottom temperature, measured at the lower end of the shear horizon (from summer 2006 to summer 2015) and surface velocity (from summer 2009) are reported, as well as the inter-annual and seasonal velocity variations relative to the mean velocity (from summer 2012 to summer 2016) (PERMOS, 2016).

Rock glacier	Borehole location	Thickness [m]	Surface slope	w_i	κ [m^2d^{-1}]	Bottom temp. [°C]	Mean velocity [ma^{-1}]	Inter-annual variation	Seasonal variation
Ritigraben	N: 1113751 E: 2631738	18	27°	30 – 70%	0.18	–0.5	1.5	25%	45%
Murtèl	N: 1144718 E: 2783160	27	12°	70 – 100%	0.15	–1.2	0.12	41%	–
Schafberg	N: 1152598 E: 2790943	25	18°	30 – 100%	0.15	–0.1	0.3	33%	39%
Muragl	N: 1153722 E: 2791102	20	20°	30 – 70%	0.18	–0.1	1.4	25%	14%

2.3 Schafberg

The Schafberg rockglacier originates in a cirque south of the Piz Muragl ridge, has an extent of less than 300 meters and an average surface slope of 18° (Table 1, Fig. 1c). In the lower part, the rockglacier splits into two separate tongues as a result of a bedrock outcrop. This study focuses on the north-western lobe where in 1997 a borehole has been drilled and temperatures are monitored thereafter in the framework of within PERMOS. This lobe has a thickness of approximately 26 m and an flow speed velocity of 0.3 m a^{-1} . Investigations by Vonder Mühll (1993) show a volumetric ice content ranging between from 35% to 100%. Hoelzle et al. (1998) investigated internal deformation profiles from borehole measurements in relation to photogrammetric analysis. Continuous daily velocities are measured by D-GPS within the PermaSense framework since 2012 approximately 200 m upstream of the borehole location and show clear seasonal variations with an amplitude of up to 39% relative to the mean velocity and a rising inter-annual trend (33% increase in the observed period).

2.4 Muragl

The Muragl rockglacier is located on the west side of the ridge of Piz Muragl (3156 m a.s.l.) and consists of several generations of overlapping flow units of variable flow speeds velocity (Fig. 1d). The main lobe, where the borehole is located, moves at 1.5 m a^{-1} , is approximately 25 m thick and has a surface slope of 20° (Table 1). The annual surface motion is available from terrestrial survey since 2009 whereas continuous daily velocities from D-GPS-measurements at the lower end of the lobe

are measured since 2012 and indicate clear inter annual (25%) and seasonal variations (14%) (PERMOS, 2016). Ice Older geophysical and photogrammetrical measurements have been presented in Vonder Mühll and Schmid (1993). Volumetric ice content has been estimated from boreholes investigations at 40 – 70% and is found to be very heterogeneous (Arenson et al., 2002). The temperatures within the rockglacier, measured since the drilling in 1999, range from -3° to 0° Celsius and a relatively close to the melting point (Vonder Mühll et al., 2003). As for the Murtèl rockglacier and consistent with other observations in the Alps, there is a rising trend of multi-annual velocities (PERMOS, 2016).

3 Data and Methods

We designed a suite of 1-dimensional numerical models, based on finite-differences, to simulate the response of viscous and plastic flow to external near-surface temperature forcing using the software MATLAB (2016). The modelling framework couples heat conduction, forced by external temperature, to a power-law creep relation for ice-rich frozen soils proposed by Arenson and Springman (2005a). The model inputs are the surface slope, the thickness and other physical properties (density, volumetric ice content and thermal diffusivity) of the creeping rockglacier, which are all . All the parameters are assumed to be homogeneous in time and space . in first approximation. Note that geophysical investigations (amongst others Arenson et al. (2002, 2010); Buchli et al. (2018)) showed that rockglaciers can be highly heterogeneous. The model is forced by permafrost temperature time-series below the active layer as measured in boreholes. At the lower boundary of the rockglacier a constant temperature value representative of the observed bottom temperature is prescribed. The model is applied to the four real-world study cases described in Sect. 2 and the results are compared to observed borehole temperatures and surface flow velocities.

3.1 Data overview

Here, we provide a detailed description of the data used for model input and for comparison with the model results.

The surface slope values are calculated on the basis of the swisstopo digital cartography (Federal Office of Topography swisstopo) over a 200 meter long profile along a flow line centred at the D-GPS location and are representative of the average slope of the landform close to the D-GPS positions. For all four study cases vertical profiles of borehole deformation are available at several time steps over few years (Arenson et al., 2002; Kenner et al., 2017). The rockglacier thickness is defined based on these profiles as the vertical distance from the surface to the lower end of the shear horizon. Ice Volumetric ice content values between 30% and 100% have been noted in the literature and are mostly based on borehole drillings (Vonder Mühll, 1993; Arenson et al., 2002; Lugon and Stoffel, 2010). The densities of the rockglaciers are calculated as a weighted average between the density values of pure ice ρ_{ice} and solid rock ρ_{rock} from the volumetric ice content w_i . The thermal diffusivity κ is calculated similarly based on the thermal diffusivity values of pure ice ($0.1 \text{ m}^2 \text{ day}^{-1}$) and quartz ($0.35 \text{ m}^2 \text{ day}^{-1}$) as proposed by Williams and Smith (1989). Borehole temperature time series are available from the PERMOS database for the four study cases from Spring 2002 to Autumn 2015 with a time resolution of six hours (the time series of Muragl terminates in Autumn 2014). For our modelling, we re-sample these data to a daily average. For all four study cases, some data gaps occur

due to sensor failure, in particular at depth. For temperatures at depth just below the active layer, which are used as forcing input for the model, the data gaps are below a few months apart from the case of Muragl, for which temperature data in the period comprised between August 2008 and April 2009 are missing. Missing temperature data are linearly interpolated. Note that this linear interpolation does not aim to reconstruct exact real temperatures, but rather bridges the gaps in order to create a continuous temperature time series that can be used as model input. This means approach is considered satisfactory due to the combination of the scarcity of data gaps in the surface temperature time series and the length of the considered seasonal to multi-annual time scales. Note that more sophisticated methods (e.g. Staub et al. (2016)) could be used for interpolating the temperature time series. This means, the modelled short-term velocity variations should not be analysed be analysed carefully near these gap filled periods. Figure 2 shows the measured temperatures for all case study sites.

Several type of velocities types of velocity data are available. For Murtèl and Muragl rockglacier mean annual surface velocities are available between 2009 to and 2015 from terrestrial surveys with total station from the PERMOS network. For all study cases but Murtèl, daily velocities from continuous single frequency D-GPS measurements are available since 2012 from the PermaSense network. For a summary of the study case sites see Table 1.

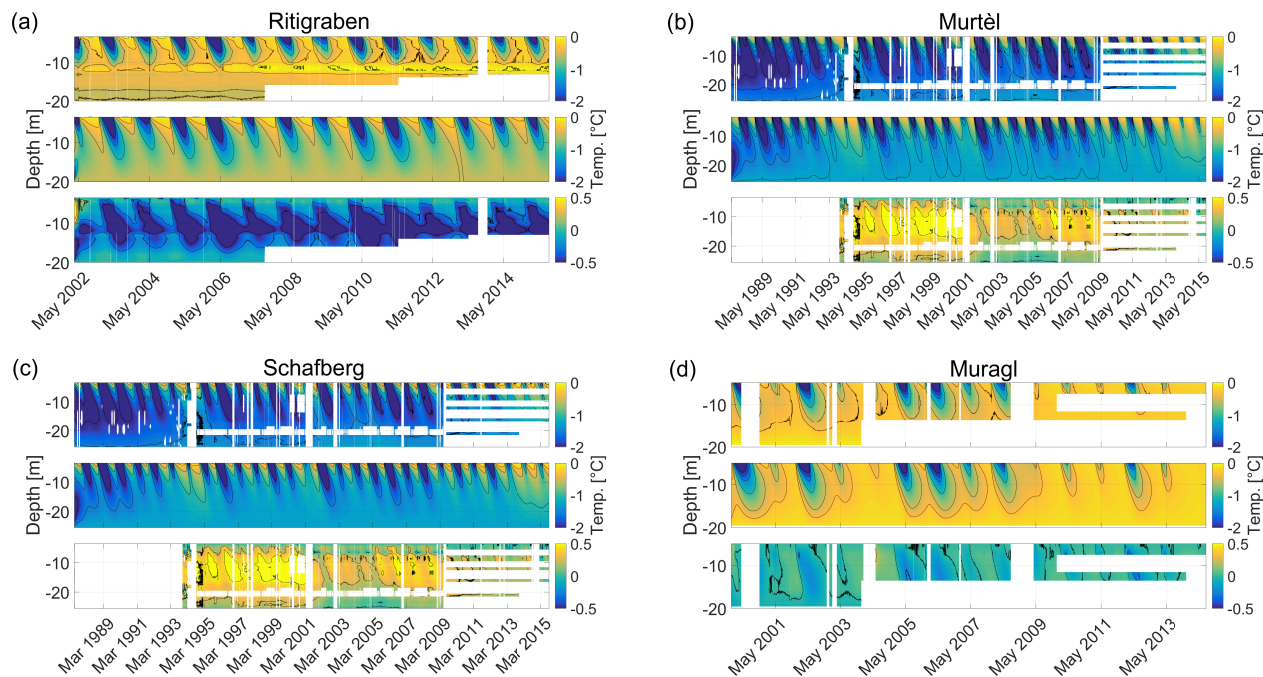


Figure 2. Contour plots of ground temperatures time series (color coded) for rockglacier (a) Ritigraben, (b) Murtèl, (c) Schafberg and (d) Muragl rockglacier. Each panel shows, from top to bottom, measured temperatures, modelled temperatures and differences between the measured and the modelled temperatures. Note the different temperature scales of the lower sub panels with the temperature differences.

3.2 Heat conduction model

We model vertical heat conduction throughout the rockglacier unit by solving the diffusion equation for temperature evolution with depth : (Williams and Smith, 1989)

$$\frac{\partial T}{\partial t} = \kappa \frac{\partial^2 T}{\partial z^2}, \quad (1)$$

- 5 where T is the permafrost temperature, z the vertical coordinate, t the time and κ the thermal diffusivity of the rockglacier material. At the upper boundary the observed temperature history just below the active layer depth is prescribed. At the bottom of the rockglacier (below the shear horizon) a constant temperature value corresponding to the time average of the observations is prescribed. The initial condition is prescribed from the measured vertical temperature profile at the first time step of the simulation. The temporal resolution of the model is 1 day, its vertical resolution is 0.1 meters. Convective and advective heat
- 10 fluxes and any influence from basal heating due to frictional processes, heat dissipation from deformation and geothermal heat flux are not considered in this model.

3.3 Ice-creep model

- For modelling ice creep we use the empirically derived creep-relation proposed by Arenson and Springman (2005a). The samples used to derive this relation have been cored from Murtèl and Muragl rockglacier, also investigated in this study, and
- 15 are described in detail in Arenson and Springman (2005b). The creep relation is a modified Glen's flow law, that relates strain rate $\dot{\epsilon}$ to a stress invariant σ_e as proposed by Von Mises (1913), taking into account the volumetric ice content w_i and the temperature T of rockglacier material:

$$\dot{\epsilon} = A(T, w_i) \sigma_e^n. \quad (2)$$

The flow law exponent n linearly depends on volumetric ice content only:

$$20 \quad n = 3w_i \quad (3)$$

and the creep parameter A depends on temperature and volumetric ice content by:

$$\log A = \frac{2}{1+T} + b(w_i), \quad (4)$$

where $b(w_i)$ is a function of the volumetric ice content:

$$b = \log(5 \times 10^{-11} e^{-10.2w_i}). \quad (5)$$

- 25 Assuming an infinitely wide surface parallel slab, the shear stress σ_e at a depth z is given by

$$\sigma_e = \frac{1}{\sqrt{3}} \rho_r g z \frac{\partial s}{\partial x}, \quad (6)$$

where ρ_r to the density of the rockglacier material, g the constant of gravity and $\frac{\partial s}{\partial x}$ the slope of the ice surface, which is assumed to be parallel to the rockglacier surface slope. Note that the density ρ_r also depends on the ice density by:

$$\rho_r = \rho_s(1 - w_i) + \rho_i w_i, \quad (7)$$

where ρ_i and ρ_s are the densities of ice and sediment particles respectively. As in our case the ice thickness of the rockglacier landform is fixed, any variation in volumetric ice content w_i will change the density and as consequence the shear stress σ_e (see Eq. (6)).

Given the temperature field and assuming an inclined infinite parallel slab, the velocities are solved from Eq. (2) through vertical integration under the assumption of zero displacement at the lower boundary. This hypothesis is confirmed by the low deformation rates at the bottom of the borehole inclinometer profiles for all the studied rockglaciers. The physical properties of the material are considered constant in time and homogeneous in space. The temporal and the spacial model resolution are the same as for the heat-conduction model. Despite its limitations, the proposed constitutive relation is one of the most up-to date on rockglacier material and has the great advantage of being based on laboratory experiments.

3.3.1 Calibration of the model

The model is calibrated to best fit the average observed surface velocities by varying the volumetric ice content parameter within the range of literature values. Because of the mathematical formulation of the applied rheology, calibrating the model by varying the volumetric ice content gives a concave curve for the mean velocities, with a maximum corresponding to around 60% volumetric ice content (see Fig. 3). On the one hand, an increasing volumetric ice content causes the creep relation exponent to grow resulting in higher surface velocities. On the other hand, a higher volumetric ice content implies a lower density, and thus lower shear stress and deformation. This mathematical artefact is because the thickness of the rockglacier in the modelling is fixed. In reality, for varying volumetric ice content values, the rockglacier thickness and velocity would adjust until the shear stress at the base of the rockglacier reaches a critical value.

Within the range of possible volumetric ice content values proposed in the literature literature (Vonder Mühll, 1993; Arenson et al., 2002; Lugon and Stoffel, 2010), we further refine the range for which the maximum and the minimum velocities are obtained (black circles in Fig. 3). Here on, we set the We set the volumetric ice content parameter to the mean of this range and further assess the effect of the uncertainty range on the velocity results.

We consider further uncertainties in input parameters: slope $\pm 2^\circ$, ice content (corresponding to the maximum and minimum velocity value) and thermal diffusivity $\pm 0.02 \text{ m}^2 \text{ day}^{-1}$.

The creep model strongly depends on the temperature input. In order to assess uncertainties related to the heat conduction model and to take into account all possible heat transfer process, we perform additional numerical experiments forcing the ice-creep relation directly with the observed temperature fields with depth.

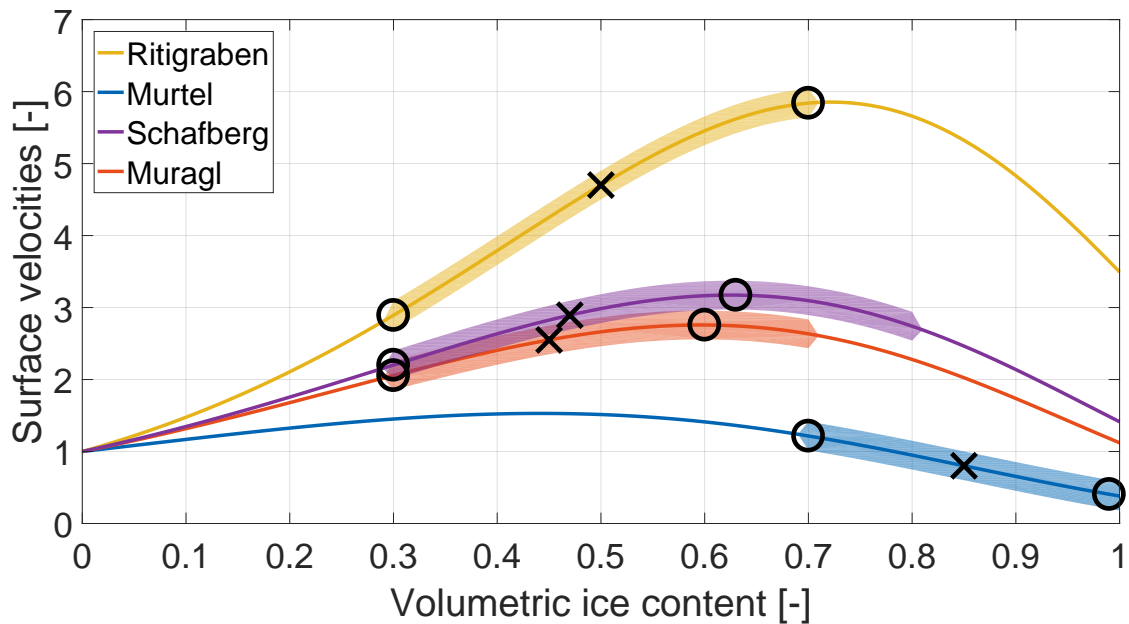


Figure 3. Normalized surface velocities for the four case studies with volumetric ice content values. For each rockglacier the velocities are normalized with the velocity value corresponding to 0% ice content. The coloured buffer around the curve shows the range proposed by the literature (Vonder Mühl, 1993; Arenson et al., 2002; Lugon and Stoffel, 2010). The black circles show for each curve the maximum and the minimum possible velocity values within this range, also representing the uncertainty range for the modelling. The black cross shows the chosen volumetric ice content value for the modelling, i.e. the mid value of the latter range.

3.3.2 Consideration of shear horizon

The above described approach for creep does not consider enhanced deformation in the shear horizon, where most of the displacement takes place. In order to investigate the sensitivity of the model to such phenomenon, we perform additional numerical experiments. We approximate the behaviour of the shear horizon with a pseudo-plastic creep relation, by increasing the flow law exponent of Eq. (2) by a factor 4 ($n_{plastic} = 12 * w_i$), similarly to Frehner et al. (2015). The creep parameter A has been reduced by a factor f_A to match the time averaged surface velocities modelled before:

$$\dot{\epsilon}_{plastic} = f_A(\dot{\epsilon})A(T, w_i)\sigma_e^{n_{plastic}(w_i)} \quad (8)$$

In this way, we approximate the plastic behaviour of the lower layer to better represent the whole deformation profile of the studied rockglaciers.

3.4 Sensitivity experiments

We perform additional synthetic sensitivity experiments in order to explore the influence of the different input parameters on our model results. For these experiments we simulate seasonal temperature forcing by prescribing the temperature below the active layer as sinusoidal function with a mean of 0 °C, that truncates positive temperatures in order to take into account the zero curtain effect. The initial vertical temperature profile is set to 0 °C. The model runs for 28 full annual cycles after which it converged to a quasi steady-state periodic solution. We then analyse the results of the last two successive cycles. We study the sensitivity to different varying seasonal temperature amplitude (corresponding to the minimum winter temperature), temperature at the lower boundary, rockglacier thickness, volumetric ice content and thermal diffusivity. We set up a reference scenario with typical values for rockglaciers taken as *Scn1.0* in Table 3. Starting from the reference scenario, we perform 9 numerical experiments for each parameter, in which we vary the value of the considered parameter by a factor from of 0.2 up to 1.8, with the other parameters being fixed kept constant. The numbers in the experiment name in Tab 3 refer to the multiplication factor of the parameters relative to the reference scenario. Only for the experiments on the volumetric ice content parameter the multiplications factors are different, as shown in Table 3.

Additionally, the thickness sensitivity experiments have been repeated using the pseudo-plastic rheology (Eq. (8)) in order to investigate the effect of the presence of the shear horizon in our experiment. In the case of both sets of varying thickness experiments (with and without shear horizon), the bottom temperature for the scenarios with thicknesses less than the one of the reference are always prescribed at 20 meters depth. For these shallow depths, prescribing a constant temperature would unrealistically constrain the temperature field. For all the values and the results of this analysis we refer to Table 3.

4 Results

4.1 Modelled temperatures

The modelled and measured temperatures are shown in Fig. 2. For Schafberg and Muragl rockglaciers (Fig. 2c and Fig. 2d respectively) the modelled temperatures agree very well with the measurements (temperature differences are below 0.2°C). For the case of Murtèl rockglacier, given the prescribed temperatures below the active layer the modelled temperature evolution with depth agrees well with regard to seasonal amplitude and phase with depth. However, between a depth of 5 and 20 meters, temperatures are in particular during cold seasonal phases slightly underestimated, but the differences stay below 0.5°C. For Ritigraben rockglacier, as shown in Fig. 2a, in a depth between 8 and 12 meters and in particular in early summer, observed temperatures are substantially higher (up to 1°C), which is related to the Talik observed and discussed in Luethi et al. (2017). The depth of the zero annual temperature amplitude is according to the PERMOS (2016) report usually between 10 and 20 m depth. This depth is slightly overestimated by our model (see Fig.2), with the seasonal temperature signal reaching slightly deeper in comparison to the borehole measurements (PERMOS, 2016).

Table 2. Summary of modelling inputs and results. Values of geometrical and physical input parameters for the modelling are listed (thickness, slope, volumetric ice content and thermal diffusivity). The mean modelled surface velocity and its relative inter-annual and seasonal variations are reported in the last three columns.

Rock glacier	Thickness [m]	Temp. input depth [m]	Slope	w_i	κ [$m^2 d^{-1}$]	Mean surface velocity [ma^{-1}]	Inter-annual variation	Seasonal variation
Ritigraben	18	3.5	$27^\circ \pm 2^\circ$	$50 \pm 20\%$	0.18 ± 0.02	0.59	2%	8%
Murtèl	27	3.5	$12^\circ \pm 2^\circ$	$85 \pm 15\%$	0.15 ± 0.02	0.12	5%	2%
Schafberg	25	5.2	$16^\circ \pm 2^\circ$	$48 \pm 18\%$	0.15 ± 0.02	0.69	4%	5%
Muragl	20	4.5	$20^\circ \pm 2^\circ$	$45 \pm 15\%$	0.18 ± 0.02	0.46	6%	5%

4.2 Modelled velocities

The observed and modelled surface flow velocities with time are shown in Fig. 4 for using the modelled temperatures (solid blue line), for using the observed temperature fields (red solid line), and for using the pseudo-plastic rheology (yellow solid line) with modelled temperatures. The resulting maximum and minimum velocities accounting for uncertainties in the input parameter of volumetric ice content, slope and thermal diffusivity are shown with two black dashed lines.

For the chosen volumetric ice content values within the proposed range, we obtain the right correct order of magnitude of the observed surface velocities for all four case study rockglaciers. For Ritigraben and Muragl rockglaciers the modelled velocities are smaller (by a factor 2), for Murtèl the average velocity match and for Schafberg the modelled velocities are overestimated (by a factor 3) in comparison to the observed ones.

The modelled amplitudes in seasonal and multi-annual velocity variations (values in Table 2, solid blue, yellow, and red line in Fig.4) are in general rather low: below 10% relative to the mean speedvelocity. In comparison, the observed variations in flow (solid green and purple lines in Fig. 4, values in Table 1) are one order of magnitude higher. This result does not change when considering uncertainties in the input parameters (dashed black lines in the same figure).

For the three rockglaciers with continuous *D-GPS* measurements, we are also able to compare the phase of the seasonal variations. The modelled velocity maxima occur in late winter and are substantially delayed in comparison to the observed velocity peaks in autumn. The above findings (amplitude underestimation and phase shift), do not change when the observed temperature fields are used as input for the creep model. The exception is the case of Ritigraben, where, as discussed above, substantial discrepancies between velocities obtained using modelled (blue solid line) and observed (red solid line) temperatures occur. When using the observed temperature field, the modelled and the observed seasonal velocity variations are phase synchronous (see red and green line in Fig. 4).

For all rockglaciers the The discrepancies found between observed and modelled velocity variations do not improve when using the pseudo-plastic creep model for all rockglaciers. In the contrary, the seasonal velocity amplitude further reduces and the phase shift increases further (see yellow line in Fig. 4).

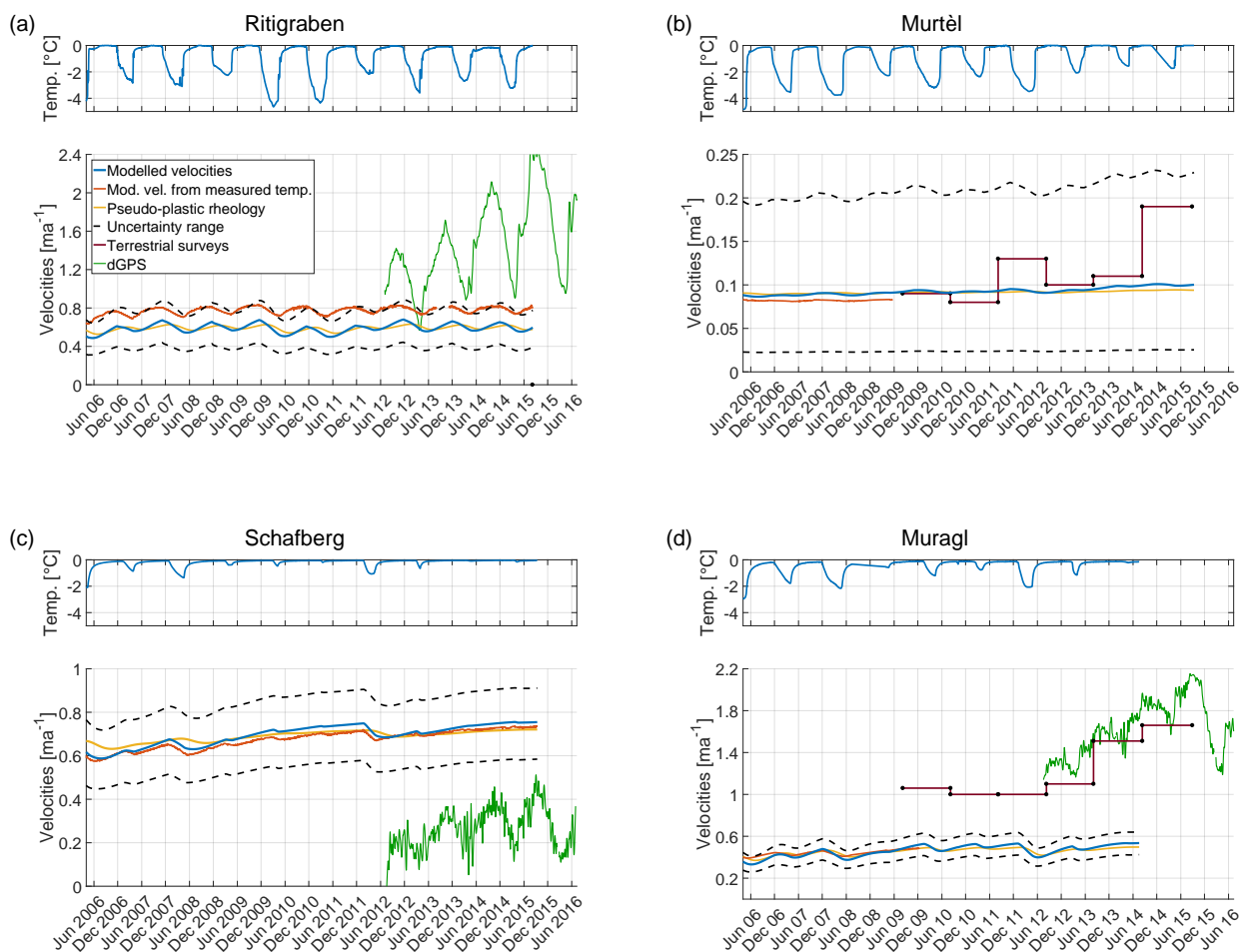


Figure 4. Observed and modelled surface flow velocities for (a) Ritigraben, (b) Murtèl, (c) Schafberg and (d) Muragl rockglaciers. The upper sub-figure shows the observed subsurface temperature used as model input. The lower sub-figure shows the modelled and observed velocities. The modelled velocities are shown for using the modelled temperatures (solid blue line), the observed temperature fields (red solid line), and the pseudo-plastic rheology (yellow solid line). The uncertainty range resulting from variations in slope ($\pm 2^\circ$), volumetric ice content (within the proposed range, see Fig. 3 and Table 2) and thermal diffusivity ($\pm 0.02 \text{ m}^2 \text{ day}^{-1}$) is plotted with a black dashed line. The modelled velocities are compared with the observed velocities from terrestrial surveys (dark solid red line with black dots) and with D-GPS measurements (green solid line).

4.3 Sensitivity experiments

The results of the sensitivity experiments are plotted in Fig. 5 and Fig. 6 and are summarized in Table 3.

In Fig. 5, the time averaged velocity values for the different experiments and scenarios are shown normalized to the mean values of the reference scenario. The left panel shows the results of the experiments investigating the thermal regime of the rockglacier for varying sub-surface temperature forcing amplitude, bottom and initial temperature, and thermal diffusivity. The initial condition experiment shows no differences (purple line constant at 1) and demonstrates that the model converged to a quasi steady-state solution after the 28 annual cycles. A reduction in bottom temperature to -0.2 °C leads to an increase in the mean velocity of 50% and a decrease in seasonal amplitude by a factor 0.2 leads to an increase in the mean velocity of 20% (Fig. 5). Increasing the thermal diffusivity leads to only very slightly increased mean velocity values (less than 1%). The modelled flow is more sensitive to the varying geometrical and physical parameters (thickness, slope and volumetric ice content; right panel in Fig. 5) than to the previous parameters. The velocities strongly vary with thickness and slope, in accordance with the governing equations (Eq. (2) and (6)), following a power law with variations of almost 400% and 600% respectively. For varying volumetric ice content the mean velocities show variations of up to 70% for the used parameter range (see Sect. 3.3).

In Fig. 6, the velocities of the different sensitivity experiments normalized with their mean are presented and a summary is given in Table 3. The velocity seasonal seasonal velocity response to different amplitudes in surface winter temperature forcing is small and stays below 7% even for an 80% increase in the temperature amplitude. The sensitivity of the velocity variations to varying bottom temperature are slightly higher, but remain below 9% in the given range. For the thickness experiment, a velocity variation of up to 80% is obtained when considering a 4 m thick rockglacier, representing an extreme and unrealistic scenario. For a more realistic lower bound of rockglacier thickness of 16 m the seasonal velocity variations stay below 10%. For thickness variations with the pseudo-plastic creep relation the sensitivity is even smaller. Variations in volumetric ice content and thermal diffusivity lead to slightly increased seasonal velocity variability of 12% and 16%, respectively. Thus in general, within a reasonable range of input parameters, the modelled seasonal variations in surface velocity remain more than one order of magnitude below the observed seasonal variations.

5 Discussion

In this study, we developed a simple numerical model approach to investigate the dynamical behaviour of rockglaciers with the aim of resolving the influence of external temperature forcing through heat conduction on rockglacier surface velocities. When choosing volumetric ice contents within a physical range of values proposed in the literature (see Sect. 2 and Sect. 3.3), for all the case studies the right correct order of magnitude of measured mean surface velocities is obtained. However, inter-annual and seasonal variations are for all four cases strongly underestimated, being at least one order of magnitude smaller than the observed ones. In the following sections the results are d

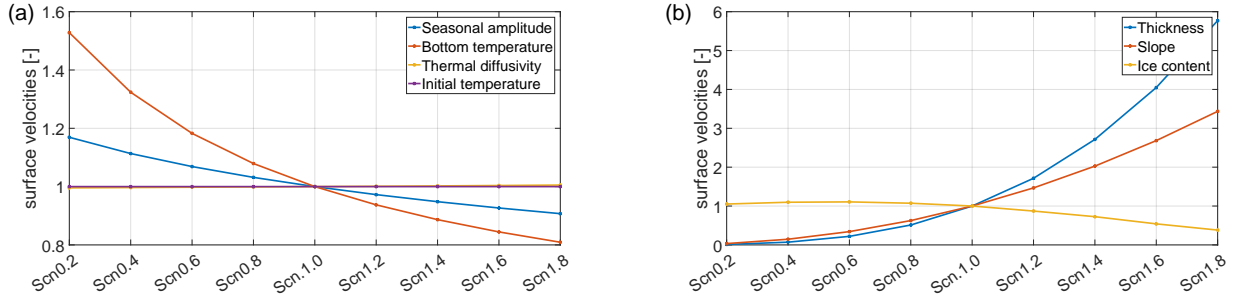


Figure 5. Plots of the time averaged values of surface velocities for the sensitivity experiments with the different parameter scenarios. The mean velocities are normalized with the mean values of the reference scenario *Scn1.0*. Panel (a) shows the results for varying surface temperature forcing amplitudes (blue line), bottom temperature values (red line), thermal diffusivity parameters (yellow line) and initial condition temperature values (purple line). The yellow line is hidden behind the purple line. Panel (b) shows the results for varying thickness values thicknesses (blue line), slope angles (red line), and volumetric ice content values (yellow line).

Table 3. Parameters and results of the sensitivity experiments. The first column indicates the scenario with a label in the form of *Scn α* , where α refers to the value of the multiplication factor for the investigated parameter relative to the reference values. Each column represents a set of experiments for one variable parameter, with the first number in each column referring to the input parameter value. The numbers in the bracket of each column refer to seasonal variations as a percentage of the mean value on the left side and the phase shift relative to the reference scenario on the right side (with a cycle of 2π referring to one year).

	Seasonal amplitude [°C]	Bottom temperature [°C]	Thickness [m]	Shear horizon depth [m]	Ice content Volumetric ice content [%]	κ [$m^2 d^{-1}$]
Scn0.2	-0.8 [3.1% - $\frac{\pi}{14}$]	-0.2 [8.4% + $\frac{\pi}{5}$]	4 [80.4% - $\frac{\pi}{8}$]	4 [68.8% - $\frac{2\pi}{3}$]	40 [11.6% - $\frac{\pi}{8}$]	0.03 [0.8% - $\frac{\pi}{8}$]
Scn0.4	-1.6 [4.5% - $\frac{\pi}{17}$]	-0.4 [7.6% + $\frac{\pi}{7}$]	8 [43.6% - $\frac{\pi}{11}$]	8 [30.8% - $\frac{\pi}{2}$]	48 [9.5% - $\frac{\pi}{8}$]	0.06 [1.4% - $\frac{\pi}{8}$]
Scn0.6	-2.4 [5.3% - $\frac{\pi}{23}$]	-0.6 [6.9% + $\frac{\pi}{11}$]	12 [21.0% - $\frac{\pi}{25}$]	12 [13.2% - $\frac{\pi}{4}$]	55 [8.0% - $\frac{\pi}{8}$]	0.09 [2.2% - $\frac{\pi}{12}$]
Scn0.8	-3.6 [5.7% - $\frac{\pi}{37}$]	-0.8 [6.4% + $\frac{\pi}{23}$]	16 [9.8% + $\frac{\pi}{20}$]	16 [5.8% - $\frac{\pi}{15}$]	63 [6.7% - $\frac{\pi}{9}$]	0.12 [3.9% - $\frac{\pi}{90}$]
Scn1.0	-4.0 [6.1% + 0]	-1.0 [6.1% + 0]	20 [6.1% + 0]	20 [2.0% + 0]	70 [6.1% + 0]	0.15 [6.1% + 0]
Scn1.2	-4.8 [6.3% + $\frac{\pi}{37}$]	-1.2 [5.8% - $\frac{\pi}{26}$]	24 [2.8% + 0]	24 [0.9% + $\frac{\pi}{4}$]	78 [5.6% + $\frac{\pi}{9}$]	0.18 [8.5% - $\frac{\pi}{60}$]
Scn1.4	-5.6 [6.5% + $\frac{\pi}{17}$]	-1.4 [5.5% - $\frac{\pi}{14}$]	28 [1.6% - $\frac{\pi}{13}$]	28 [0.4% + $\frac{\pi}{2}$]	85 [5.3% + $\frac{\pi}{5}$]	0.21 [11.0% - $\frac{\pi}{30}$]
Scn1.6	-6.4 [6.6% + $\frac{\pi}{11}$]	-1.6 [5.4% - $\frac{\pi}{11}$]	32 [1.2% - $\frac{\pi}{9}$]	32 [0.2% + $\frac{3\pi}{4}$]	93 [5.0% + $\frac{\pi}{4}$]	0.24 [13.5% - $\frac{\pi}{20}$]
Scn1.8	-7.2 [6.8% + $\frac{\pi}{9}$]	-1.8 [5.2% - $\frac{\pi}{10}$]	36 [0.9% - $\frac{\pi}{9}$]	36 [0.1% + π]	100 [4.8% + $\frac{\pi}{3}$]	0.27 [15.9% - $\frac{\pi}{15}$]

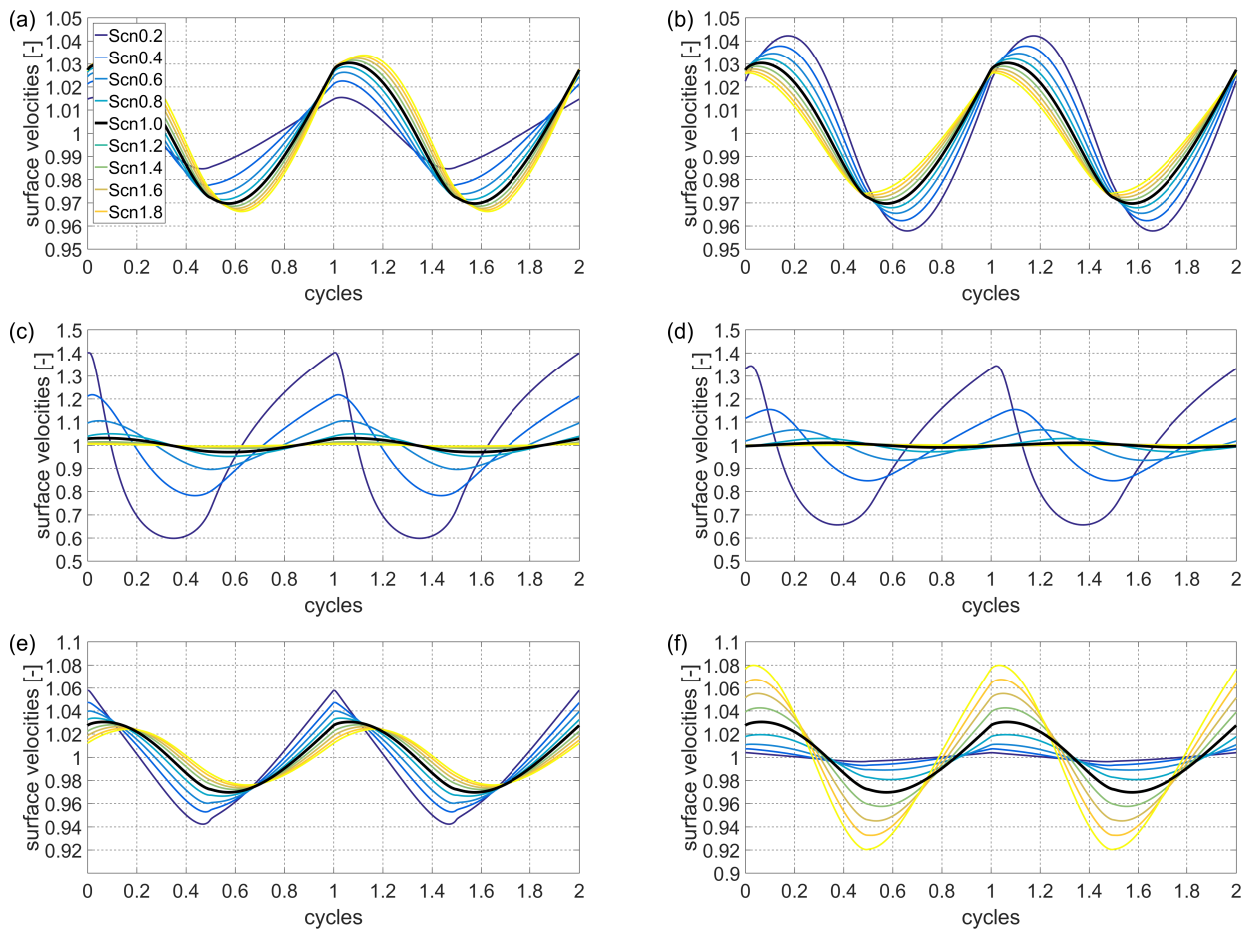


Figure 6. Results of the modelling sensitivity experiments of the model to (a) seasonal amplitude (winter minimum temperature), (b) bottom temperature, (c) thickness, (d) thickness (with shear horizon), (e) volumetric ice content and (f) thermal diffusivity. The surface velocities normalized with their mean are plotted for each experiment with time, given here as the number of cycles (after the 28th cycle). One cycle corresponds to one year. For all experiments the different scenarios are color coded as illustrated in the legend of panel (a); the reference scenario is plotted with a thicker solid black line.

5.1 **Temperatures** Temperature modelling

We model rockglacier temperature evolution based on near surface temperatures as measured below the active layer (see sect. 3.2). In some cases, data gaps are present and linear interpolation of the data is used. The data gaps are short (below a few months) and **don't are expected to not** affect the overall modelling, but interpretation of the modelled velocities for these

5 periods has to consider this **issue** limitation.

The assumption of constant bottom temperature agrees well with the observed borehole temperatures. This is further supported by the good agreement between the modelled velocities from prescribed observed and modelled temperatures. We assume the physical properties of the rockglacier (density, ice content and thermal diffusivity) to be constant in time and homogeneous in space, which seems justified at the considered short (seasonal to multi-annual) time scales and supported by the good performance of the temperature evolution model.

For Schafberg (Fig. 2c) and Muragl (Fig. 2d) rockglaciers, we can very well reproduce the observed temperature fields. For Ritigraben and Murtèl (Fig. 2b and Fig. 2d) our results show some disagreement with seasonal pattern, in particular at 12–15 m depth. At Ritigraben, this disagreement can be explained by the influence of a Talik caused by air and water advection (Luethi et al., 2017), which refers to processes that are not included in our modelling. For Murtèl, the cause of the discrepancy between modelled and observed temperatures is currently not clear. A possible explanation of this effect could be related to advective water fluxes or varying thermal conductivity within the rockglacier body, likely linked to the variable water content unfrozen water content at temperatures close to zero degree (Arenson et al., 2010). However, the results of our modelling for the four study cases, in combination with the available borehole temperature observations, allow us to confidently model and analyse rockglacier velocities.

5.2 Ice-creep modelling

Using the modelled and observed temperature fields respectively, we force the empirical creep relation for rockglacier material. Additionally, we run a separate experiment with the pseudo-plastic rheology to investigate the impact on the model from including enhanced deformation within the shear horizon.

5.2.1 Absolute velocities

When applying the creep-rheology of Arenson and Springman (2005a) and using acceptable and uniform values of the model input parameters, we obtain the correct order of magnitude of the average observed surface velocities for all case studies.

For Murtèl the modelled, the mean surface velocities (averaged over the whole time series) match the observations. For Ritigraben and Muragl the modelled mean average velocities are between 30% and 40% of the observed ones. This result is consistent with the observed borehole deformation contribution from above the shear horizon, accounting for 10% to 30% of the total deformation (Arenson et al., 2002). This finding suggests that the rheology proposed by Arenson and Springman (2005a) may not be applicable to describe the rheology of the shear horizon of a rockglacier. On the contrary, for Schafberg the modelled velocities overestimate the observations. This mismatch can likely be explained by using a too high input thickness resulting from the distance between D-GPS and borehole location. The rockglacier thickness at the location of the observed velocities by D-GPS is not known and the used thickness has been taken from the borehole on the lobe further down which is less steep. The observed flow magnitude can be matched almost perfectly when using a thickness of 17 m, which has been observed in a nearby borehole at the same field site (Arenson et al., 2002), and which can be expected for a steeper surface.

5.2.2 Seasonal and multi-annual variations

For all rockglaciers, we find that both seasonal and in particular inter-annual variations are strongly underestimated. This result is coherent also when considering relative velocity variations (see Fig. 4). Especially the results for Murtèl and Schafberg rockglacier show with 3% to 4% very small seasonal variations. This result is not due to an underestimation in the seasonal temperature variations, as confirmed by the comparison between modelled and measured temperatures and further corroborated by the results of our modelling constrained with the observed temperatures. In fact, the latter forcing indirectly takes into account all non-conductive processes governing the temperature field. The lower sensitivity of rockglacier Murtèl and Schafberg compared to the other two can be explained by their higher thickness. For thicker rockglaciers, temperature variations at the surface reach in relative terms shallower depth and hence do not affect the near bottom layers where most of the deformation occurs. For the thinner Muragl and Ritigraben, the modelled seasonal variations are with 5% and 8% substantially higher, but still a factor 3 to 5 below the observations.

In general, our modelled seasonal variations for the four rockglaciers as well as for the sensitivity experiments are consistent with the obtained 3% to 11% by the earlier idealised modelling study of Käab et al. (2007). The higher variations for Ritigraben and Muragl are likely a result of the higher temperature-sensitivity of the rheology by Arenson and Springman (2005a) compared to the rheology based on Glen used in Käab et al. (2007) for the case of warm permafrost (Müller et al., 2016).

Consistent with the results for similar thicknesses of Käab et al. (2007), we also find that including a shear horizon in the modelling (by using the pseudo-plastic rheology) decreases the sensitivity of the seasonal variations in flow to temperature forcing. This result further corroborates the underestimation of seasonal and inter-annual variations in our modelling compared to the observations. It is unlikely that this underestimation is a result of an insufficient sensitivity of the used rheology of Arenson and Springman (2005a) to temperature. In fact, this rheology is based on laboratory deformation-experiments on core-material from real rockglaciers. Unfrozen water is known to have a significant influence on frozen soils creep (Arenson et al., 2006; Moore, 2014), but the influence of interstitial water on creep is already partially implicitly taken into account in the adopted empirical creep relation through the dependency on temperature; however, the impact on the stress regime due to pore pressure is in the adopted rheology not taken into account. Further, the discrepancy in the phase shift between modelled and observed velocity variations would not improve for a more temperature sensitive rheology.

5.2.3 Phase shift

A phase lag of about 2-3 months between seasonal summer peak in the observed ground surface temperatures and measured surface velocity has been detected on several rockglaciers including Ritigraben, Schafberg and Muragl (see Fig. 7) and has partly been attributed to the time it takes for the seasonal temperature signal to propagate into the rockglacier (Käab et al., 2007; Delaloye et al., 2010; Wirz et al., 2016b). In our modelling this delay is however almost doubled, with the seasonal peak in speed velocity obtained in early January rather than early October. For the pseudo-plastic rheology this delay is further extended by several months.

In contrast, the seasonal winter minima in measured temperatures below the active layer (used as model-input forcing) have only a lag of 2 month on the surface temperatures and seem in phase with the observed velocity minima (Fig. 7). Due to the zero curtain effect there is no clear summer peak in the observed and prescribed near surface temperatures (Fig. 7) and the quantification of the summer peak phase shift therefore ambiguous.

5 Despite the highly asymmetric seasonal temperature pattern, the resulting modelled surface flow variations are almost symmetric (Fig. 4), which is further supported by the sensitivity experiments using a capped sinusoidal forcing function pattern (Fig. 6). This transformation of the seasonal pattern is on the one hand a result of the diffusion of the temperature signal and on the other hand a result of an integrated contribution of deformation over the entire depth. The seasonal pattern in surface **speed**
velocity variation is therefore neither a direct reflection of the temperature signal at a single depth nor of the depth averaged
10 temperature signal. As a consequence, estimating the phase lag between seasonal variations in surface temperature and surface flow from heat conduction is non-trivial and interpreting phase lags potentially misleading.

The clear overestimation of the time lag in the modelled surface variations is a further sign that the process of heat conduction alone can not explain the observed variations **in deformation**. Infiltration of surface melt water into the permafrost in the summer season could reduce this time lag and through advection of water affect the flow in two ways. Firstly, the infiltrating
15 water can effectively advect heat and warm up the rockglacier body at depth as observed in the case of Ritigraben, which in our modelling removed the phase lag when using the observed temperature field that includes the talik formation in summer. For the other three rockglacier, water infiltration may also occur but it does not **seem to** significantly warm the temperatures at depth, as confirmed by the good agreement between observed and modelled temperatures **with depth**, and we can therefore exclude this heat advection process. Secondly, with increasing water infiltration the water content and pore water pressure within the
20 rockglacier material is expected to increase which in turn may reduce the shear strength and thereby enhance deformation and flow. This process has been suggested in other studies (Ikeda et al., 2008; Wirz et al., 2016b; Kenner et al., 2017; Buchli et al., 2018) and has also been proposed to explain the short-term velocity peaks with times scales of days that are related to a sudden input of water at the surface for example during the snow-melt period (Wirz et al., 2016b; Kenner et al., 2017). To what depth such water infiltration occurs is poorly known, but this process would be most effective within the shear horizon,
25 as deformation is highest. Further, in several boreholes pressurised water was observed when drilling into the shear horizon (Arenson et al. (2002) and personal communication Alex Blast (November 2015) for Murtel rockglacier, and Buchli et al. (2018) for the Furggwanghorn rockglacier).

Regarding the multi-annual variations, that are well documented and synchronous for many rockglaciers in Switzerland (PERMOS, 2016), our modelling suggests that the responsible process between the observed acceleration in flow (e.g. from
30 2011 to 2015) and the observed surface warming can not be explained by heat conduction into the ground alone. It is likely an indirect effect of enhanced melt water penetrating into the rockglacier body and thereby affecting its rheology. Phases of slowdown related to conductive cooling in cold or long winters (e.g. 2007 and 2011) are more distinct in our modelled velocities and thus winter cooling may contribute more substantially to the longer-term slow down of rockglacier flow (Fig. 4). The enhanced sensitivity to winter temperatures is (in contrast to summer temperatures) not surprising given that the zero-

curtain effect basically caps the summer temperature peak at zero degrees and inhibits the propagation of the summer heat into the ground, which is well reflected in the observed temperatures below the active layer (Fig. 4).

Including a shear horizon with a pseudo-plastic rheology (with the same temperature dependency as for the main rockglacier body and enforcing the same mean flow **speed velocity**) does not improve our results. **In On** the contrary, inter-annual and seasonal variations are even more underestimated, because at the shear horizon depth, where the main deformation occurs, the signal of seasonal temperature variations from the surface is too small, **being close to one tenth of a degree** (PERMOS, 2016).

In summary, both the strong underestimation in amplitude **of in** seasonal and multi-annual variations as well as the over-estimation in time-lag of seasonal peaks in our modelling suggest that heat conductive processes **alone** can not explain the observed variation in flow **speed velocity**, suggesting the need for other processes such as the interaction of rockglacier rheology with surface water advecting into the rockglacier body.

5.3 Sensitivity experiments

The sensitivity experiments were used Sensitivity experiments were carried out to explore the influence of different input geometries and parameters on the simulated surface velocity in a systematic way. The experiments are in their setup and results an extension of the earlier modelling study by Kääh et al. (2007) but here we use a more realistic model set up and rheology, and explore a more extensive parameter space.

Absolute mean velocities are strongly affected by variations in geometry, due to a changing **driving stress stress conditions** (Eq. (6)). However, over the time scales considered in this study (seasonal to multi-annual), the geometry of a rockglacier is not expected to change substantially. For the other parameters, mean velocities are most sensitive to the bottom temperature of the rockglacier, which is somewhat representative for the thermal state of the entire rockglacier body. Again, the general thermal state of a rockglacier should not change over the considered timescales. Nevertheless, a considerable warming of a rockglacier would lead to faster flow, as also reflected in the observational datasets presented in Kääh et al. (2007). The insensitivity of the mean velocity to thermal diffusivity reflects the fact that the average thermal state of the rockglacier is not affected by uncertainties in this parameter. For high thermal conductivity values, that would require high water content and hence degrading permafrost conditions, relative seasonal variation of 16% are modelled, but this remains an order of magnitude below observed seasonal velocity variations.

The model used shows **some dependency a dependency of the surface velocities** on the volumetric ice content value (Fig. 5 and Fig. 6). The relative seasonal variations stay below 12%, even for a reduction to 40% of the **volumetric** ice content value. For high values of ice content, the velocity peak considerably shifts in time, with a delay of 2 months ($\pi/3$ of one year cycle) in comparison to the reference scenario. Note, that the ice content of the rockglacier material is rather static and not expected to change even over time-scales of several decades.

Decreasing **thickness values thicknesses** lead to very different absolute mean velocities, but more interestingly, they also lead to stronger seasonal variations. Considering realistic **thickness's values thicknesses** of 12, 20, and 28 m, we obtain seasonal velocity variations of 21.2%, 2% and 1.6% respectively. We explain this sensitivity by the variable fraction of the rockglacier thickness that is affected by temperature variations. It implies that thin rockglaciers are more sensitive to the effect of heat conduction

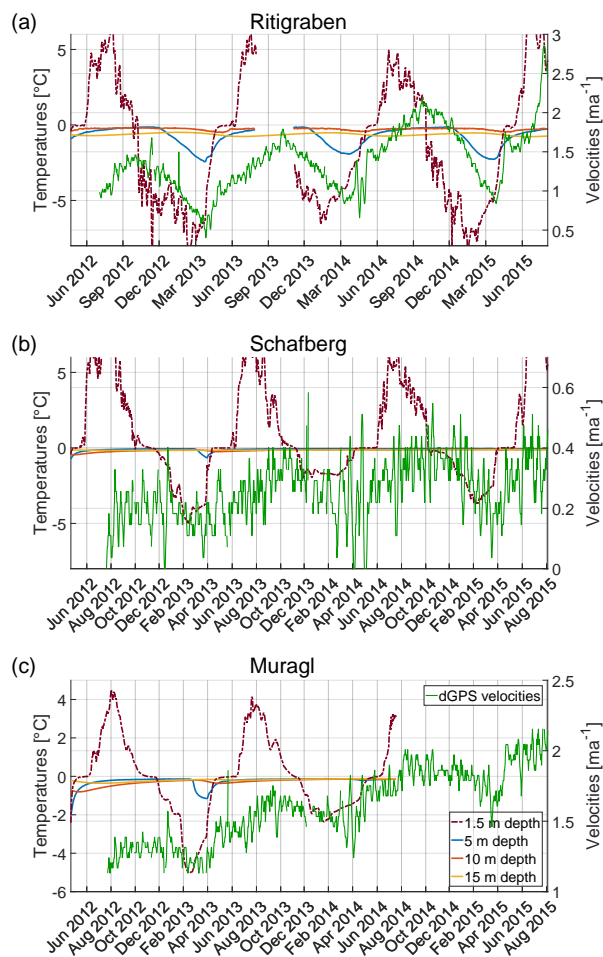


Figure 7. Temperature and velocity time series in the (a) Ritigraben, (b) Schafberg and (c) Muragl rockglacier. The left y-axis shows the temperatures (borehole measurements if available, model results otherwise) at 1.5 m (within the active layer), 5 m, 10 m and 15 m depth. The right y-axis with the green line shows the surface velocities from *D-GPS* measurements.

both for seasonal as well as for long-term temperature changes. This means that for thin rockglaciers (which are usually fast moving) heat conduction should be considered in the interpretation of short-term variations. Note further, that without any borehole deformation data or detailed geophysical investigations, uncertainties in rockglacier thickness (see example of Schafberg) may significantly affect modelled velocities (absolute and seasonal variations).

- 5 For all other remaining parameters, except the rockglacier thickness, the modelled seasonal velocity variations do not change much and stay again below 8 to 12% of their mean flow and phase shifts vary below 2 month, even for extreme and relatively unrealistic end-member parameter values.

By considering the pseudo-plastic relation, the seasonal variations are coherently decreasing for all the scenarios (even for shallow rockglaciers) and the velocity peaks are considerably shifted in **timingtime**, with a delay **of** up to 6 months (see Table 3). Thus in summary, we conclude from our sensitivity study that our modelling results for the four rockglaciers above are, apart from thickness, insensitive to uncertainties in our input parameters, and the modelled magnitudes of seasonal variations and
5 related conclusions are robust.

6 Conclusions

We quantitatively investigated the contribution of heat conduction to seasonal and multi-annual variations in rockglacier flow velocity on the basis of numerical modelling and a multi-year time series of observed surface velocities and borehole temperatures from four different **real-world** rockglaciers. The numerical model couples heat conduction to an empirically derived
10 rheology of rockglacier creep that accounts for temperature and ice-content. We find that using standard parameters from the literature, our modelling reproduces the **right correct** order of magnitude of mean surface velocities for all chosen rockglaciers. **In contrastHowever**, the magnitudes of seasonal and multi annual variations are strongly underestimated by our modelling, and the phase-lags of the seasonal peaks too long. This suggests that the effect of heat conduction on the observed variations in surface flow is very limited and can not explain more than about 25% of the observed variations. The exception are extremely
15 thin rockglaciers, as shown **in during** the sensitivity study (see Sect. 4.3), where short-term temperature variations can force heat conduction to affect the whole deforming thickness of the rockglacier, thus leading to more substantial velocity variations.

Additional sensitivity experiments underpin the robustness of these conclusions within expected parameter uncertainties, also when including a shear horizon at the bottom of the rockglacier. Our idealised sensitivity experiments further indicate that when the temperature changes over the full depth of the rockglacier (changing bottom temperature), the mean **movement**
20 **deformation** maybe affected substantially, but this requires changes in climate over periods of several decades or centuries.

From our quantitative process modelling approach we can therefore exclude heat conduction as the governing process for seasonal to multi-annual variations in rockglacier flow. Considering the phase-lag information of the summer peak (e.g. the case of case of Ritigraben) and indications from earlier qualitative and statistical analysis of rockglacier velocities (Wirz et al., 2016b), we conclude that advection of surface water into the rockglacier and its interaction over **porewater pore water** pressure
25 with the creep rheology is required to explain **short-term short- to mid-term** velocity variations of rockglacier flow. However, further investigations are required for a better understanding of the advection of water within the rockglacier material as well as of the role of water and water pressure on creep rheology.

Data availability. Data on rockglacier kinematics and temperature are available from the PERMOS office upon request. The reference web link is <http://www.permos.ch/data.html>.

Competing interests. The authors declare that they have no conflict of interest.

Acknowledgements. The authors want to thank all colleagues for their constructive feedback and discussions to this research. In particular we want to acknowledge the work of work presented in this paper is part of the project X-Sense 2 funded by Nano-Tera.ch (ref. no. 530659). This work could not have been possible without the pioneering results obtained from the D-GPS pilot project funded by the Swiss Federal Office for the Environment BAFU. We thank Johann Müller for the coherent fieldwork in Engadine, and Vanessa Wirz for her preliminary study on this topic. This work would not have been possible without the support of the PERMOS network and the PermaSense project. This study was possible due to the financing of the X-sense 2 project funded by Nano-Tera. ch (ref. 530659) and the University of Zurich. We further acknowledge the editor C. Hauck and the referees M. Hoelzle and L. Arenson for their constructive and thorough comments, which helped improving the manuscript.

References

- Arenson, L. and Springman, S.: Mathematical descriptions for the behaviour of ice-rich frozen soils at temperatures close to 0 °C, *Canadian Geotechnical Journal*, 42, 431–442, <https://doi.org/10.1139/t04-109>, 2005a.
- Arenson, L., Hoelzle, M., and Springman, S.: Borehole deformation measurements and internal structure of some rock glaciers in Switzerland, *Permafrost and Periglacial Processes*, 13, 117–135, <https://doi.org/10.1002/ppp.414>, 2002.
- Arenson, L., M. Springman, S., and Sego, D.: The rheology of frozen soils, *Appl. Rheol*, 17, 12 147–1, 2006.
- Arenson, L. U. and Springman, S. M.: Triaxial constant stress and constant strain rate tests on ice-rich permafrost samples, *Canadian Geotechnical Journal*, 42, 412–430, <https://doi.org/10.1139/t04-111>, 2005b.
- Arenson, L. U., Johansen, M. M., and Springman, S. M.: Effects of volumetric ice content and strain rate on shear strength under triaxial conditions for frozen soil samples, *Permafrost and Periglacial Processes*, 15, <https://doi.org/https://doi.org/10.1002/ppp.498>, 2004.
- Arenson, L. U., Hauck, C., Hilbich, C., Seward, L., Yamamoto, Y., and Springman, S. M.: Sub-surface Heterogeneities in the Murtèl. Corvatsch Rock Glacier, Switzerland, in: *Proceedings of the joint 63rd Canadian Geotechnical Conference and the 6th Canadian Permafrost Conference*, pp. 1494 – 1500, Canadian Geotechnical Society, the 6th Canadian Permafrost Conference; Conference Location: Calgary, Canada; Conference Date: September 12-16, 2010; ., 2010.
- Barsch, D.: Permafrost creep and rockglaciers, *Permafrost and Periglacial Processes*, 3, 175–188, <https://doi.org/10.1002/ppp.3430030303>, 1992.
- Barsch, D. and Hell, G.: Photogrammetrische Bewegungsmessungen am Blockgletscher Murtel I, Oberengadin, Schweizer Alpen., *Zeitschrift für Gletscherkunde und Glazialgeologie*, 11/2, 111–142, 1975.
- Berthling, I., Etzelmüller, B., Eiken, T., and Sollid, J. L.: Rock glaciers on Prins Karls Forland, Svalbard. I: internal structure, flow velocity and morphology, *Permafrost and Periglacial Processes*, 9, 135–145, [https://doi.org/10.1002/\(SICI\)1099-1530\(199804/06\)9:2<135::AID-PPP284>3.0.CO;2-R](https://doi.org/10.1002/(SICI)1099-1530(199804/06)9:2<135::AID-PPP284>3.0.CO;2-R), 1998.
- Buchli, B., Sutton, F., and Beutel, J.: GPS-Equipped Wireless Sensor Network Node for High-Accuracy Positioning Applications., *Wireless Sensor Network*, pp. 179–195, 2012.
- Buchli, T., Kos, A., Limpach, P., Merz, K., Zhou, X., and Springman, S. M.: Kinematic investigations on the Furggwanghorn Rock Glacier, Switzerland, *Permafrost and Periglacial Processes*, 29, 3–20, 2018.
- Chaix, A.: Les coulées de blocs du Park National Suisse d’Engadine, *Le Globe*, 62, 1 – 35, 1923.
- Delaloye, R., Lambiel, C., and Gärtner-Roer, I.: Overview of rock glacier kinematics research in the Swiss Alps, *Geographica Helvetica*, 65, 135–145, <https://doi.org/10.5194/gh-65-135-2010>, 2010.
- Duval, P., Ashby, M. F., and Anderman, I.: Rate-controlling processes in the creep of polycrystalline ice, *The Journal of Physical Chemistry*, 87, 1983.
- Federal Office of Topography swisstopo: <https://map.geo.admin.ch/>.
- Franco, B. and Reynaud, L.: 10 year surficial velocities on a rock glacier (Laurichard, French Alps), *Permafrost and Periglacial Processes*, 3, 209–213, 1992.
- Frehner, M., Ling, A. H. M., and Gärtner-Roer, I.: Furrow-and-Ridge Morphology on Rockglaciers Explained by Gravity-Driven Buckle Folding: A Case Study From the Murtèl Rockglacier (Switzerland), *Permafrost and Periglacial Processes*, 26, 57–66, <https://doi.org/10.1002/ppp.1831>, pPP-14-0032.R2, 2015.

- Glen, J.: The creep of polycrystalline ice, *Proceedings of the Royal Society of London A: Mathematical, Physical and Engineering Sciences*, 228, 519–538, <https://doi.org/10.1098/rspa.1955.0066>, 1955.
- Haerberli, W.: Creep of mountain permafrost, *Mitteilungen der Versuchsanstalt für Wasserbau. Hydrologie und Glaziologie der ETH Zürich*, vol. 77, 1985.
- 5 Haerberli, W., Hunder, J., Keusen, H.-R., Pika, J., and Röthlisberger, H.: Core drilling through rock-glacier permafrost, *Fifth International Conference on Permafrost, Trondheim*, 2, 937 – 942, 1988.
- Haerberli, W., Hoelzle, M., Kääh, A., Keller, F., Vonder Mühlh, D., and Wagner, S.: Ten years after drilling through the permafrost of the active rock glacier Murtél, *Seventh International Conference on Permafrost, Yellowknife*, pp. 403 – 410, 1998.
- Haerberli, W., Hallet, B., Arenson, L., Elconin, R., Humlum, O., Kääh, A., Kaufmann, V., Ladanyi, B., Matsuoka, N., Springman, S., and
 10 Vonder Mühlh, D.: Permafrost Creep and Rock Glacier Dynamics, *Permafrost and Periglacial Processes*, 17, 189 – 214, 2006.
- Hanson, S. and Hoelzle, M.: The thermal regime of the active layer at the Murtél rock glacier based on data from 2002, *Permafrost and Periglacial Processes*, 15, 273–282, 2004.
- Hoelzle, M., Wagner, S., Kääh, A., and Vonder Mühlh, D.: Surface movement and internal deformation of ice-rock mixtures within rock glaciers in the Upper Engadin, Switzerland, *Proceedings of the 7th International Conference on Permafrost*, pp. 465–471, 1998.
- 15 Ikeda, A., Matsuoka, N., and Kääh, A.: Fast deformation of perennially frozen debris in a warm rock glacier in the Swiss Alps: An effect of liquid water, *Journal of Geophysical Research: Earth Surface*, 113, n/a–n/a, <https://doi.org/10.1029/2007JF000859>, f01021, 2008.
- Johnson, P. G.: Rock glacier types and their drainage systems, Grizzly Creek, Yukon Territory, *Canadian Journal of Earth Sciences*, 15, 1496–1507, <https://doi.org/10.1139/e78-155>, 1978.
- Kääh, A. and Weber, M.: Development of transverse ridges on rock glaciers: Field measurements and laboratory experiments, *Permafrost and Periglacial Processes*, 15, 379 – 391, <https://doi.org/10.1002/ppp.506>, 2004.
- 20 Kääh, A., Gudmundsson, G., and Hoelzle, M.: Surface deformation of creeping mountain permafrost. Photogrammetric investigations on rock glacier Murtél, Swiss Alps, *Proceedings of the 7th International Conference on Permafrost*, 57, 531–537, 1998.
- Kääh, A., Frauenfelder, R., and Roer, I.: On the response of rockglacier creep to surface temperature increase, *Global and Planetary Change*, 56, 172 – 187, <https://doi.org/https://doi.org/10.1016/j.gloplacha.2006.07.005>, 2007.
- 25 Kenner, R., Phillips, M., Beutel, J., Hiller, M., Limpach, P., Pointner, E., and Volken, M.: Factors Controlling Velocity Variations at Short-Term, Seasonal and Multiyear Time Scales, Riti-graben Rock Glacier, Western Swiss Alps, *Permafrost and Periglacial Processes*, 28, 675–684, <https://doi.org/10.1002/ppp.1953>, pPP-16-0044.R2, 2017.
- Krainer, K. and He, X.: Flow velocities of active rock glaciers in the Austrian Alps, *Geografiska Annaler: Series A, Physical Geography*, 88, 267–280, <https://doi.org/10.1111/j.0435-3676.2006.00300.x>, 2006.
- 30 Loewenherz, S. D., J. Lawrence, C., and L. Weaver, R.: On the Development of Transverse Ridges on Rock Glaciers, *Journal of Glaciology - J GLACIOLOGY*, 35, 383–391, <https://doi.org/10.1017/S002214300000931X>, 1989.
- Luethi, R., Phillips, m., and Lehning, M.: Estimating Non-Conductive Heat Flow Leading to Intra-Permafrost Talik Formation at the Riti-graben Rock Glacier (Western Swiss Alps), *Permafrost and Periglacial Processes*, 28, 183 – 194, <https://doi.org/10.1002/ppp.1911>, 2017.
- Lugon, R. and Stoffel, M.: Rock-glacier dynamics and magnitude–frequency relations of debris flows in a high-elevation watershed: Riti-graben, Swiss Alps, *Global and Planetary Change*, 73, 202 – 210, <https://doi.org/https://doi.org/10.1016/j.gloplacha.2010.06.004>, 2010.
- 35 MATLAB: version 9.1.0 (R2016b), The MathWorks Inc., Natick, Massachusetts, 2016.
- Mellor, M. and Testa, R.: Effect of Temperature on the Creep of Ice, *Journal of Glaciology*, 8, 131–145, <https://doi.org/10.3189/S0022143000020803>, 1969.

- Müller, J., Gärtner-Roer, I., Kenner, R., Thee, P., and Morche, D.: Sediment storage and transfer on a periglacial mountain slope (Corvatsch, Switzerland), *Geomorphology*, 218, 35 – 44, <https://doi.org/https://doi.org/10.1016/j.geomorph.2013.12.002>, *SEDIMENT FLUX AND SEDIMENT BUDGET STUDIES IN COLD ENVIRONMENTS: NEW APPROACHES AND TECHNIQUES*, 2014.
- Müller, J., Vieli, A., and Gärtner-Roer, I.: Rock glaciers on the run – understanding rock glacier landform evolution and recent changes from numerical flow modeling, *The Cryosphere*, 10, 2865–2886, <https://doi.org/10.5194/tc-10-2865-2016>, 2016.
- Moore, P. L.: Deformation of debris-ice mixtures, *Reviews of Geophysics*, 52, 435–467, <https://doi.org/10.1002/2014RG000453>, 2014.
- Nye, J. F.: The Mechanics of Glacier Flow, *Journal of Glaciology*, 2, 82–93, <https://doi.org/10.3189/S0022143000033967>, 1952.
- PERMOS: Permafrost in Switzerland 2010/2011 to 2013/2014., Tech. rep., the Cryospheric commission of the Swiss Academy of Sciences, 85pp, 2016.
- 10 Pruessner, L., Phillips, M., Farinotti, D., Hoelzle, M., and Lehning, M.: Near-surface ventilation as a key for modeling the thermal regime of coarse blocky rock glaciers, *Permafrost and Periglacial Processes*, 29, 152–163, <https://doi.org/10.1002/ppp.1978>, 2018.
- Roer, I., Kääh, A., and Dikau, R.: Rockglacier acceleration in the Turtmann valley (Swiss Alps): Probable controls, *Norsk Geografisk Tidsskrift - Norwegian Journal of Geography*, 59, 157–163, <https://doi.org/10.1080/00291950510020655>, 2005.
- Scherler, M., Schneider, S., Hoelzle, M., and Hauck, C.: A two-sided approach to estimate heat transfer processes within the active layer of the Murt-Ä-Corvatsch rock glacier, *Earth Surface Dynamics*, 2, 141–154, <https://doi.org/10.5194/esurf-2-141-2014>, 2014.
- 15 Staub, B., Hasler, A., Noetzi, J., and Delaloye, R.: Gap-Filling Algorithm for Ground Surface Temperature Data Measured in Permafrost and Periglacial Environments, *Permafrost and Periglacial Processes*, 28, <https://doi.org/10.1002/ppp.1913>, 2016.
- Von Mises, R.: Mechanics of solid bodies in the plastically-deformable state, *Nachrichten von der Gesellschaft der Wissenschaften zu Göttingen, Mathematisch-Physikalische Klasse*, 1913.
- 20 Vonder Mühl, D.: Geophysikalische Untersuchungen im Permafrost des Oberengadins, *Mitteilungen der Versuchsanstalt für Wasserbau, Hydrologie und Glaziologie an der Eidgenössischen Technischen Hochschule Zürich, Versuchsanstalt für Wasserbau Hydrologie und Glaziologie der Eidgenössischen Technischen Hochschule Zürich*, 1993.
- Vonder Mühl, D. and Schmid, W.: Geophysical and photogrammetrical investigations of rock glacier Muragl I, Engadin, Swiss Alps, in: Ed. 6th International Conference on Permafrost Proceedings, pp. 654–659, South China University Technology Press, ed. 6th International
- 25 Conference on Permafrost, 1993.
- Vonder Mühl, D., Arenson, L., and Springman, S.: Temperature conditions in two Alpine rock glaciers, *Eight International Conference on Permafrost*, pp. 1195 – 1200, 2003.
- Wahrhaftig, C. and Cox, A.: Rock Glaciers in the Alaska Range, *GSA Bulletin*, 70, 383, [https://doi.org/10.1130/0016-7606\(1959\)70\[383:RGITAR\]2.0.CO;2](https://doi.org/10.1130/0016-7606(1959)70[383:RGITAR]2.0.CO;2), 1959.
- 30 Williams, P. J. and Smith, M. W.: *The Frozen Earth: Fundamentals of Geocryology*, Studies in Polar Research, Cambridge University Press, <https://doi.org/10.1017/CBO9780511564437>, 1989.
- Wirz, V., Geertsema, M., Gruber, S., and Purves, R. S.: Temporal variability of diverse mountain permafrost slope movements derived from multi-year daily GPS data, Mattertal, Switzerland, *Landslides*, 13, 67–83, <https://doi.org/10.1007/s10346-014-0544-3>, 2016a.
- Wirz, V., Gruber, S., Purves, R. S., Beutel, J., Gärtner-Roer, I., Gubler, S., and Vieli, A.: Short-term velocity variations at three rock glaciers and their relationship with meteorological conditions, *Earth Surface Dynamics*, 4, 103–123, <https://doi.org/10.5194/esurf-4-103-2016>, 2016b.
- 35 Zenklusen Mutter, E. and Phillips, M.: Thermal Evidence of Recent Talik Formation in Ritigraben Rock Glacier: Swiss Alps, pp. 479–483, 2012.