

Response to minor corrections from the Editor

Title: Velocity response of Petermann Glacier, northwest Greenland to past and future calving events.

Authors: Emily A. Hill, G. Hilmar Gudmundsson, J. Rachel Carr, and Chris R. Stokes

MS number: tc-2018-162

Dear Emily & coauthors,

thank you for providing your revision and rebuttal to the comments of the two reviewers. Overall, you did address them adequately so that I can accept your manuscript for publication in TC. However, I would like to emphasize that some parts of your manuscript require some clarifications of the technical kind resp. copyediting, see list below. Please consider and incorporate them in the final revised version of your manuscript.

Regards, Olaf

Dear Olaf,

We are grateful for the acceptance of our manuscript subject to technical corrections. We also thank you for the handling of our manuscript, and again thank the reviewers for their helpful comments. Below we respond to each of the minor revisions, and include a tracked changes manuscript and supplement that highlight changes made.

Best wishes,

Emily & co-authors

Fig. 3 caption:

- you write $u_{modeled}$ and $u_{observed}$. Please use same nomenclature as elsewhere in the MS, i.e. u_{mod} and u_{obs} .

We have changed this to u_{mod} and u_{obs} .

- change "b)" to "(b)"

Done.

- add comma after vectors

Done.

p9l18: ambiguous use of "3.8 - 7.2 x ..." and "1.47 - 2.18 x". Mathematically different from what you want to express (range), please use brackets before "x" operator for the range terms.

Brackets added around the range terms in both cases.

p12l2: "...relatively small, and the results, hence ..." - unclear what you want to say, rephrase.

Now rephrased to "We found that the differences in modeled velocity changes due to calving, using different sets of boundary conditions, were relatively small. Hence, our results are insensitive to the type of boundary condition applied."

p13l29: I suggest to add the percentage of flux increase in change after the "increasing 0.35 Gt/a" to which this value corresponds on relation to the total flux.

We have added the percentage increase from the initial flux.

p15l8: "line was double +24 m/a the acceleration". Unclear. Is 24 already the double value, or would that be 48? Clarify.

We have clarified and changed it to "Acceleration 10 km inland of the grounding line more than doubled to 24 m a⁻¹ compared to acceleration after the 2012 calving event (10 m a⁻¹)."

Fig 7 caption: add a statement about the letters A-H at the top of the graph, i.e. what their location on the x-axis stands for.

We hope to have clarified this by now saying "Letters A to H represent the points along the glacier centerline at which sections of the terminus were removed for each experiment."

p16: use use experiments (E-G) and Experiments G etc. Please unify. I suggest to use only experiments without capital E.

Changed to be lower case E in all instances.

Supplement

Fig 1: explain xpsn yspn.

Added.

Fig 2: unresolved reference to other figure: Fig ??. – > resolve

Removed.

Fig 3: "value of m" – > m in math mode

Done.

Velocity response of Petermann Glacier, northwest Greenland to past and future calving events

Emily A. Hill¹, G. Hilmar Gudmundsson², J. Rachel Carr¹, and Chris R. Stokes³

¹School of Geography, Politics, and Sociology, Newcastle University, Newcastle-upon-Tyne, NE1 7RU, UK

²Department of Geography and Environmental Sciences, Northumbria University, Newcastle-upon-Tyne, NE1 8ST, UK

³Department of Geography, Durham University, Durham, DH1 3LE, UK

Correspondence: E.A.Hill (e.hill3@newcastle.ac.uk)

Abstract.

Dynamic ice discharge from outlet glaciers across the Greenland ice sheet has increased since the beginning of the 21st century. Calving from floating ice tongues that buttress these outlets can accelerate ice flow and discharge of grounded ice. However, little is known about the dynamic impact of ice tongue loss in Greenland compared to ice shelf collapse in Antarctica.

5 The rapidly flowing ($\sim 1000 \text{ m a}^{-1}$) Petermann Glacier in north-west Greenland has one of the ice sheet's last remaining ice tongues, but it lost $\sim 50\text{-}60\%$ ($\sim 40 \text{ km}$ in length) of this tongue via two large calving events in 2010 and 2012. The glacier showed a limited velocity response to these calving events, but it is unclear how sensitive it is to future ice tongue loss. Here, we use an ice flow model (Úa) to assess the instantaneous velocity response of Petermann Glacier to past and future calving events. Our results confirm that the glacier was dynamically insensitive to large calving events in 2010 and 2012 ($<10\%$ annual

10 acceleration). We then simulate the future loss of similar sized sections to the 2012 calving event ($\sim 8 \text{ km}$ long) of the ice tongue back to the grounding line. We conclude that thin, soft sections of the ice tongue $>12 \text{ km}$ away from the grounding line, provide little frontal buttressing, and removing them is unlikely to significantly increase ice velocity or discharge. However, once calving removes ice within 12 km of the grounding line, loss of these thicker and stiffer sections of ice tongue could perturb stresses at the grounding line enough to substantially increase inland flow speeds ($\sim 900 \text{ m a}^{-1}$), grounded ice discharge, and

15 Petermann Glacier's contribution to global sea level rise.

1 Introduction

Dynamic ice discharge from marine-terminating outlet glaciers is an important component of recent mass loss from the Greenland Ice Sheet (GrIS) (van den Broeke et al., 2016; Enderlin et al., 2014). Since the 1990s, tidewater outlet glaciers in Greenland have been thinning (Pritchard et al., 2009; Krabill et al., 2000), retreating (e.g. Carr et al., 2017; Jensen et al., 2016; Moon

20 and Joughin, 2008), and accelerating (Joughin et al., 2010; Moon et al., 2012), in response to climate-ocean forcing. Marine-terminating glaciers are influenced by ocean warming (e.g. Holland et al., 2008; Mouginot et al., 2015; Straneo and Heimbach, 2013), increased surface air temperatures (Moon and Joughin, 2008), and reduced sea ice concentration in the fjords (Amundson et al., 2010; Shroyer et al., 2017; Reeh et al., 2001). However, glacier response to ocean-climate forcing is highly variable between regions and between individual glaciers, due to differences in glacier topography and fjord geometry (e.g. Bunce

et al., 2018; Carr et al., 2013; Porter et al., 2014). Moreover, changes at the terminus of these glaciers (i.e. calving or thinning), can reduce basal and lateral resistance which alters the force balance at the terminus, and causes inland ice flow to accelerate. Indeed, 21st century retreat at two large outlet glaciers in south-east Greenland (Heilheim and Kangerlussuaq) was followed by acceleration and ice surface thinning (Howat et al., 2005, 2007; Nick et al., 2009).

5 Floating ice shelves or tongues that extend out from outlet glacier grounding lines can also control a glacier's response to calving events (Schoof et al., 2017). Floating ice adjacent to the glacier grounding line can buttress inland ice, depending on the amount of shear and lateral resistance provided along the ice shelf margins (Pegler, 2016; Pegler et al., 2013; Haseloff and Sergienko, 2018). Consequently, thinning and retreat of ice shelves can reduce backstress, which can perturb the stresses at the grounding line and propagate increases in driving stress inland causing accelerated ice flow. Understanding how glaciers may
10 respond to ice shelf loss is therefore important for estimating future flow speeds and, ultimately, their increased contributions to grounded ice discharge and global sea level rise. Considerable work has focused on the role of buttressing ice shelves on grounded ice dynamics in Antarctica (e.g. Schoof, 2007; Gudmundsson et al., 2012; Goldberg et al., 2009; Reese et al., 2018b), but less work has been done on floating ice tongues in Greenland, where large calving events have recently taken place (Hill et al., 2017; Box and Decker, 2011; Rignot et al., 2001).

15 One of the last remaining ice tongues in Greenland is at Petermann Glacier, northwest Greenland. Petermann Glacier is fast flowing ($\sim 1000 \text{ m a}^{-1}$; Figure 1), and drains approximately 4% of the Greenland Ice Sheet by area (Rignot and Kanagaratnam, 2006; Hill et al., 2017). Mass loss is predominantly via high melt rates ($10\text{-}50 \text{ m a}^{-1}$) beneath the ice tongue (Rignot and Steffen, 2008; Wilson et al., 2017), and also occurs via large episodic calving events (Johannessen et al., 2013). Formerly the glacier terminated in a 70 km floating ice tongue, but two well-documented large calving events in 2010 and 2012 removed
20 $\sim 40 \text{ km}$ of the tongue (Johannessen et al., 2013; Nick et al., 2012; Falkner et al., 2011; Münchow et al., 2014). Contrary to the behavior of glaciers terminating in floating ice elsewhere, large calving events at Petermann Glacier were noted to be followed by minimal glacier acceleration ($< 100 \text{ m a}^{-1}$) (Nick et al., 2012; Münchow et al., 2014, 2016; Ahlstrøm et al., 2013), suggesting that calving from the seaward parts of the ice tongue appear to have limited impact on flow upstream of the grounding line.

Several ice tongues have been lost from neighboring glaciers in northern Greenland since the early 2000s (C. H. Ostfeld, Zacharaie Isstrøm, Hagen Bræ: Rignot et al. 2001; Hill et al. 2017; Mouginot et al. 2015), and with Arctic air and ocean
25 temperatures predicted to increase in a warming climate (Gregory et al., 2004), the question remains: at what point will Petermann Glacier lose its ice tongue and how might its complete removal impact on ice dynamics? Petermann's tongue has been retreating from the end of the fjord ($\sim 90 \text{ km}$ from the present grounding line) since the beginning of the Holocene (Jakobsson et al., 2018) and currently resides at its most retreated position in recent history (Jakobsson et al., 2018; Falkner et al., 2011; Hill et al., 2018). More recently (2016), another large rift formed across the ice tongue (Münchow et al., 2016),
30 suggesting another large calving event is imminent. As Petermann Glacier is fast flowing and drains a large area of the GrIS ($\sim 4\%$), it has the potential to contribute to increased ice discharge and ultimately sea level rise, once it becomes grounded. Here, we attempt to answer the question: at what point do large calving events from the Petermann ice tongue cause substantial acceleration (i.e. $> 100 \text{ m a}^{-1}$ that propagates inland of the grounding line) and increased ice discharge? To do this we use the
35 community finite-element ice flow model Úa (Gudmundsson et al., 2012) to:

- i). Infer the stress conditions beneath the glacier catchment and along the ice tongue walls
- ii). Test whether the recent small changes in velocity following calving events in 2010 and 2012 can be replicated
- iii). Assess the future response (acceleration and ice discharge) of Petermann Glacier to further calving events, and eventual entire loss of the remainder of the ice tongue (Figure 1)

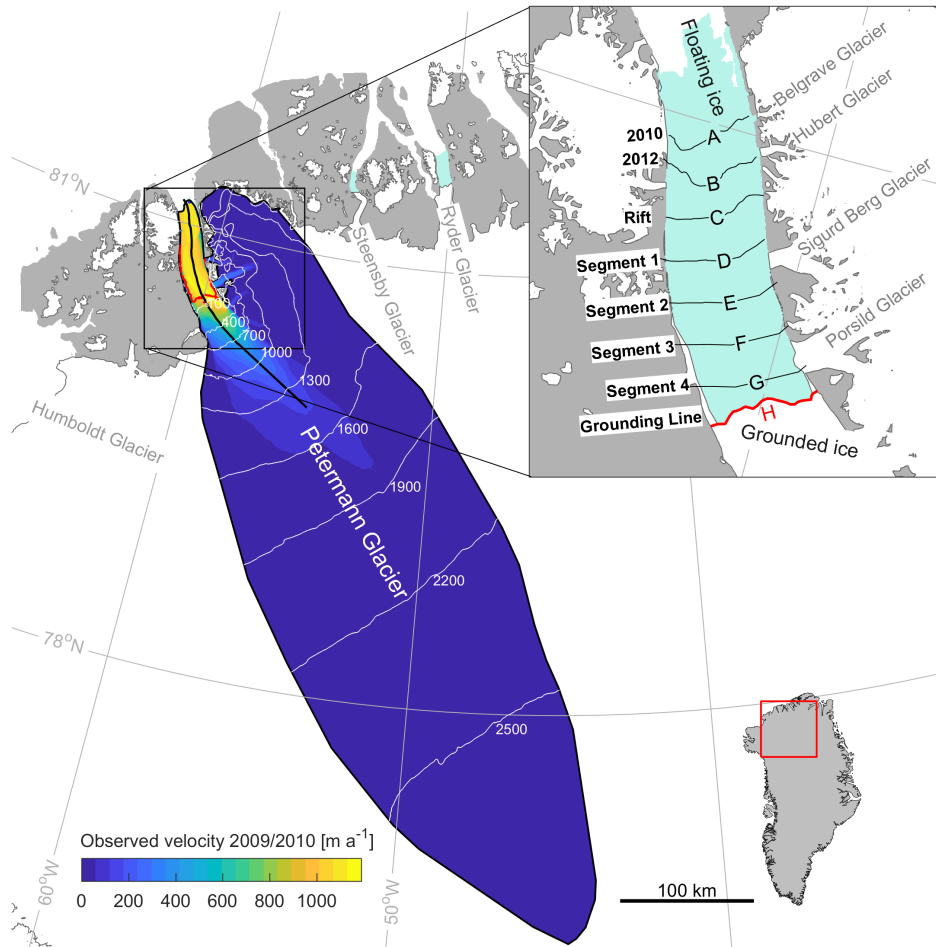


Figure 1. Study location, Petermann Glacier, northwest Greenland. Observed ice speeds from the MEaSUREs program (winter 2009/10: Joughin et al. 2010) across the Petermann Glacier catchment, which corresponds with our model domain. White lines show 300 m ice surface contours across the catchment. The thick black line is the glacier centerline and the thick red line is the glacier grounding line. Inset shows the location of newly prescribed terminus positions for each diagnostic perturbation experiment (A-H). Light green shows floating ice, and white is grounded ice.

First, we initialize the model using observational datasets of surface and basal topography. We then invert observed ice velocities prior to the 2010 calving event to determine the initial basal conditions (slipperiness and rheology of the ice). Finally, we perform a series of diagnostic perturbation experiments where we remove sections of the Petermann Glacier ice tongue and assess the instantaneous glacier acceleration and increase in grounding line ice flux.

5 2 Methodology

2.1 Data Input

To initialize our model, we used several observational datasets of glacier geometry and ice velocity. Ice surface topography of Petermann Glacier was taken from the Greenland Ice Sheet Mapping Project (GIMP) Digital Elevation Model (DEM) (Howat et al., 2014). We also used this to calculate the surface drainage catchment, using flow routing hydrological analysis in the
 10 MATLAB TopoToolbox (Schwanghart and Kuhn, 2010). The defined catchment is $\sim 85,000 \text{ km}^2$, extends approximately 550 km inland of the grounding line, and encompasses the tributary glaciers flowing into the east side of the Petermann Glacier ice tongue (Figure 1). Ice thickness and basal topography were taken from the Operation IceBridge BedMachine v3 dataset (Morlighem et al., 2017). These data were generated from radar ice thicknesses, ice motion, and the mass conservation method, to resolve the basal topography and ice thickness of the Greenland Ice Sheet (Morlighem et al., 2017). This version also includes
 15 high resolution bathymetry of Petermann Glacier fjord seaward of the ice tongue (Jakobsson et al., 2018; Morlighem et al., 2017). All three topographic datasets have a resolution of 150 m, and a nominal date of 2007, which precedes the large calving event in 2010.

Firstly, to initialize our model via inversion (see Section 2.3), we required annual ice velocities prior our first experiment, which is the calving event in 2010 (Table 1). These were taken from winter 2009/10 from the Greenland MEaSUREs dataset
 20 (Table 1: Joughin et al. 2010). This dataset has a resolution of 500 m, and an average error of 8 m a^{-1} across the entire Petermann catchment, which increases to 18 m a^{-1} along the floating ice tongue (Table 1). To validate our modeled velocity changes in response to calving events in both 2010 and 2012, we required observed velocities from the years preceding and succeeding these events. Velocities from winter 2009/10 (used for inversion), also acted as our baseline velocities that we compared with observed velocities after each calving event. However, Greenland wide velocities for the winter following the 2010 calving
 25 event (2010/11) were not readily available. Instead a series of datasets exist that cover select regions of the ice sheet, derived from feature- or intensity-tracking of optical Landsat imagery (Howat, 2017; Rosenau et al., 2015), or synthetic aperture radar (SAR) imagery (Joughin et al., 2010). We do not use optical Landsat 7 ETM+ derived velocities, because their coverage is restricted to mid-summer, which may reflect seasonal speedups rather than the inter-annual impact of large calving events on ice velocity. Additionally, Landsat derived velocities may have errors associated with cloud cover and or the scanning line
 30 correction image banding from May 2003 onwards. Instead, we used a combination of SAR derived velocities (TSX and PALSAR) which are not limited to the summer months, and benefit from higher resolution, and more frequent repeat pass imagery (Table 1). High resolution TSX imagery (100 m) was acquired from the MEaSUREs program (Joughin et al., 2010), but is limited to 11-45 km inland of the grounding line at Petermann Glacier. To supplement this we also used PALSAR derived

Table 1. Velocity data sources for Petermann Glacier

Dataset	Year	Sensor(s)	Resolution (m)	Catchment Error (m)	Use
MEaSURES Greenland wide winter velocity	2009/10	ALOS	500	8 m a ⁻¹	Model inversion
NSIDC (Joughin et al., 2010)		TerraSAR-X			Baseline initial velocities
MEaSURES Greenland Ice Velocity: Selected	2010/11	TerraSAR-X	100	4 m a ⁻¹	Validate modeled change post-2010 calving
Selected Glacier Site Velocity Maps from NSIDC (Joughin et al., 2010)					
ESA Greenland Ice Sheet CCI project IV Greenland margin winter velocities (Nagler et al., 2016)	2010/11	PALSAR	500	16 m a ⁻¹	Validate modeled change post-2010 calving
MEaSURES Greenland wide winter velocity	2012/13	RADARSAT-1	500	3 m a ⁻¹	Validate modeled change post-2012 calving
NSIDC (Joughin et al., 2010)		TerraSAR-X			
		TanDEM-X			

velocities (Table 1: Nagler et al. 2016), which provided additional coverage along the western half of the floating ice tongue. Average errors across the catchment are 4 m a⁻¹ and 16 m a⁻¹ for TSX and PALSAR respectively (Table 1). Greenland wide, winter 2012/13 (post-2012 calving event) velocities were also acquired from the MEAsURES program (Table 1: Joughin et al. 2010).

- 5 To determine observed velocity change, we differenced velocity fields after each calving event (2010/11 and 2012/13) from initial baseline velocities (2009/10) (Figure S1). For 2009/10 to 2010/11 speedup along the ice tongue averaged 29 m a⁻¹, but further inland of the grounding line, noisy and unphysical velocity differences (Figure S1) indicate that there was no coherent velocity change, and it is unlikely velocity changes propagated far inland. For clarity we present centerline velocity profiles in Figure 2, which show that increases in speed were limited to the lower portions of the ice tongue. Observed velocity estimates
- 10 presented here after the calving event in 2010, are within the range of previous studies, which showed a 30-125 m a⁻¹ speed increase along the ice tongue (Johannessen et al., 2013; Nick et al., 2012; Münchow et al., 2016), and limited change further inland (Nick et al., 2012). After the calving event in 2012, velocity increases averaged 79 m a⁻¹ along the ice tongue, and propagated further towards the grounding line (Figure 2 and Figure S2).

2.2 Model Initialization

- 15 To model the response of Petermann Glacier to ice tongue loss we used the finite-element model *Úa* (Gudmundsson et al., 2012). *Úa* solves equations of ice dynamics using the shallow ice-stream approximation (SSA) (Macayeal, 1989; Morland, 1987), a Weertman-sliding law, and Glen’s flow law. The momentum equation of the vertically integrated SSA can be written in the form

$$\nabla_{xy} \cdot (h\mathbf{T}) - \tau_{bh} = \rho_i g h \nabla_{xy} s + \frac{1}{2} g h^2 \nabla_{xy} \rho_i, \quad (1)$$

where

$$\nabla_{xy} = (\partial_x, \partial_y)^T, \quad (2)$$

and \mathbf{T} is the resistive stress tensor defined as

$$\mathbf{T} = \begin{pmatrix} 2\tau_{xx} + \tau_{yy} & \tau_{xy} \\ \tau_{xy} & \tau_{xx} + 2\tau_{yy} \end{pmatrix}. \quad (3)$$

5

In the above equation s is the surface topography, h is the ice thickness, p_i is vertically averaged ice density, g is the gravitational acceleration, and τ_{bh} is the horizontal part of the bed-tangential basal traction τ_b .

10 \dot{U}_a has been previously used to understand glacier behavior following ice shelf loss in Antarctica (De Rydt et al., 2015), and ice tongue collapse at the Northeast Greenland Ice Stream (Rathmann et al., 2017). It has also been used to assess the impact of buttressing ice shelves around Antarctica (Reese et al., 2018a). Previous modeling studies at Petermann Glacier have been conducted using a one-dimensional flowline approach (Nick et al., 2012). Here we aim to expand on earlier work at Petermann to assess if \dot{U}_a , a two horizontal dimensional, vertically integrated approach, can also replicate the observed velocity response

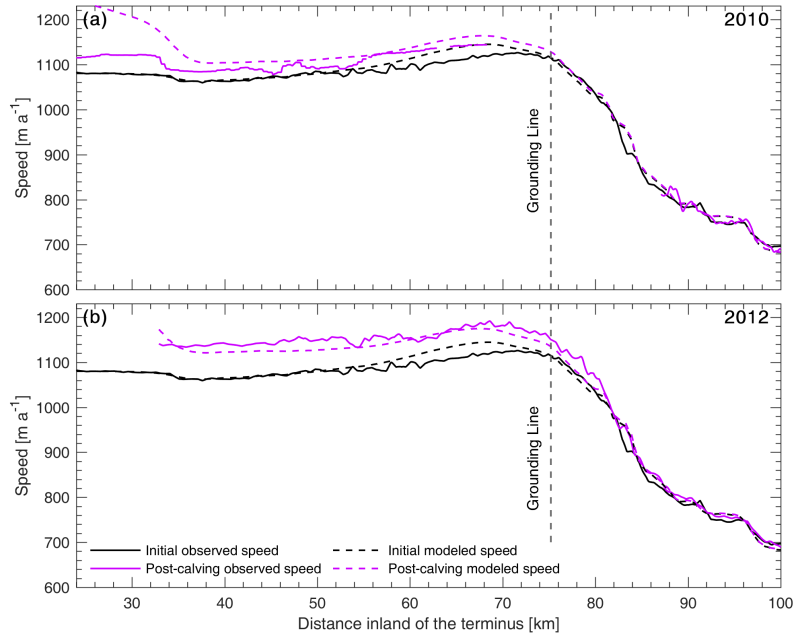


Figure 2. Observed and modeled velocities along the Petermann Glacier centerline before and after calving events in 2010 **a)** and 2012 **b)**. Observed initial speed (MEaSURES InSAR winter 2009/10) is shown with a solid black line. Observed post-calving speeds after the 2010 calving event (PALSAR and TerraSAR-X winter 2010/11) and the 2012 calving event (MEaSURES InSAR winter 2012/13) are shown with solid purple lines. Modeled initial speeds are shown in dashed black, and speeds after each respective modeled calving event are shown in dashed purple. Note the small change in both observed and modeled velocities, particularly inland of the grounding line.

to calving events in 2010 and 2012, and then be used to estimate the impact of future calving events on ice flow and discharge. This model is advantageous over a flowline approach, as it allows us to account for stresses in both horizontal dimensions, which can better assess the impact of ice shelf changes on the force balance at the glacier grounding line (Gudmundsson, 2013).

5 To set-up the model, we used the surface velocity catchment (Figure 1) as the outer computational boundary, and imposed Dirichlet (essential) boundary conditions by fixing velocities to zero inland of the ice divide. Nunataks and rock outcrops along the east side of the ice tongue were digitized using Landsat 8 imagery and treated as holes within the mesh. Ice velocities along the nunataks' boundaries were set to zero, i.e. no-slip boundary condition. Initially, it was less clear what type of boundary condition to impose along the margins of the ice-shelf where it is in contact with the side walls. We began by imposing a
10 free-slip boundary condition along the ice tongue margins, but conducted further runs with no-slip boundary conditions along the side walls to determine which boundary conditions were most appropriate (see Section 2.4).

The initial calving front boundary was the location of the terminus in 2009, digitized from Landsat 7 ETM+ imagery, and in all cases a Neumann (natural) boundary condition was imposed along the terminus. Using this computational domain, and the finite element mesh generator *Gmsh* (Geuzaine and Remacle, 2009), we generated a high resolution mesh, with 58,000 linear
15 (3-node) elements, and $\sim 30,000$ nodes (Figure S3). The unstructured mesh capabilities of *Úa* allowed us to refine the mesh based on the observed velocity field. Where ice speeds are fastest ($> 500 \text{ m a}^{-1}$), primarily along the ice tongue, element sizes are 0.75 km, whereas element sizes inland have a maximum size of 2.7 km. Overall the mean element size is 1.52 km, with a median of 1.4 km. We also increased the mesh resolution of the slower flowing ($< 500 \text{ m a}^{-1}$) tributary glaciers to the east of the Petermann Glacier ice tongue to 0.75 km. Topographic datasets (surface, bed, and ice thickness), and pre-calving observed
20 ice velocities (winter 2009/10) were mapped onto this mesh using linear interpolation.

2.3 Model Inversion

Before modeling changes in the flow speed of Petermann Glacier due to perturbations in the calving front position, we must first estimate the prior stress conditions. We used *Úa* to invert the known velocity field (winter 2009/10) before the calving event to estimate the basal slipperiness (C) and ice rate factor (A) across the catchment. We simultaneously invert for parameters
25 of C and A . To estimate these parameters, *Úa* uses a standard methodology whereby a cost function involving a misfit term and a regularization term is minimized. The gradients of the cost function with respect to A and C are determined in a computationally efficient way using the adjoint method. Here we used Tikhonov regularization involving both amplitude and spatial gradients of A and C . Values of regularization parameters were varied by orders of magnitude between 1 and 10,000, and then within range. We also experimented with different sliding law exponent values of m (1,2,3,4,5,7,9) and found the
30 results of our diagnostic experiments to be insensitive to the value of m (Figure S3). We set the stress exponent in Glen's Flow law to $n = 3$.

To begin with, we inverted the model using a fixed zero velocity condition along the outer catchment boundary only, and we allowed the Petermann Glacier ice tongue to have free-slip boundary conditions (Section 2.2). In the following section we discuss two additional inversion experiments where we varied the boundary conditions along the ice tongue. The model was

inverted until the misfit converged which was after 120 iterations. Resultant model velocities (U_{mod}) are in good agreement with observations (U_{obs}) as shown in Figure 3. The mean percentage difference between observed and modeled velocities is 26%, which equates to an absolute difference of 11 m a^{-1} (Table 2). Absolute mean velocity difference increases to 28 m a^{-1} in areas flowing faster than 300 m a^{-1} and to 66 m a^{-1} along the floating ice tongue, which is only 7% of the average ice tongue speed (967 m a^{-1}). Flow velocities are not well resolved along the far north-eastern tributary glacier which is due to thin ice thicknesses and poorly resolved bed topography from interpolation (errors of $\sim 150 \text{ m}$).

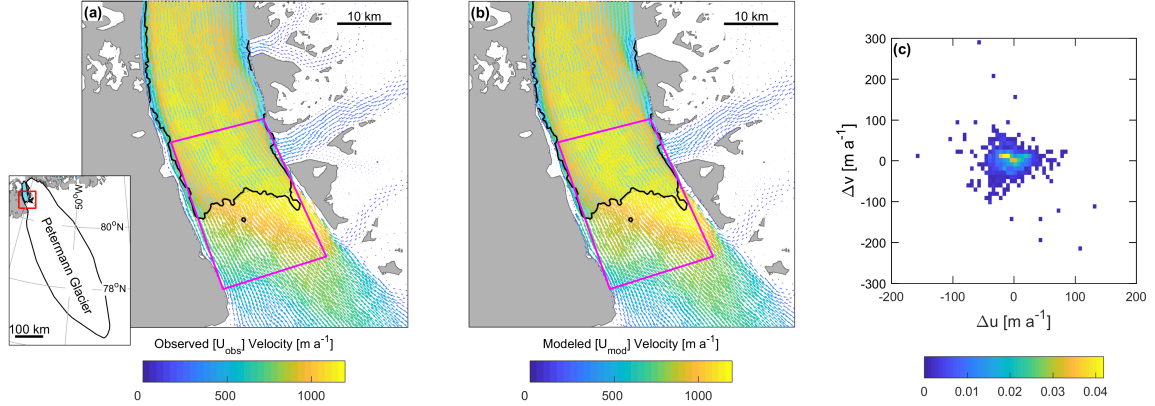


Figure 3. Observed (U_{obs}) winter velocities 2009/10 (a) in the proximity of the grounding line, (b) Modeled (U_{mod}) velocities. (c) shows a normalized bivariate histogram of the velocity residuals which are the difference between modeled and observed velocities in the vicinity of the grounding line (magenta). $\Delta u = u_{\text{modeled}} - u_{\text{observed}}$ and $\Delta v = v_{\text{modeled}} - v_{\text{observed}}$. u and v are x and y components of the velocity vectors, respectively.

By inverting the known velocity field (winter 2009/10), we can infer the basal conditions beneath Petermann Glacier. To our knowledge, a catchment scale assessment of the basal slipperiness and ice stiffness has not been previously documented for this region. Some studies have examined the basal thermal state (MacGregor et al., 2016; Chu et al., 2018), or provided Greenland wide slipperiness estimates (Lee et al., 2015). However aside from these, little is known on the stress conditions of Petermann Glacier. Here, we provide a new record of the basal conditions beneath Petermann Glacier, which are important for understanding dynamic glacier behavior. For our initial inversion, the distribution of basal slipperiness (C), ice rate factor (A), and the misfit between observed and modeled velocities are shown in the first line of Figure 4. Basal slipperiness was on average two orders of magnitude greater within 10 km of the grounding line ($C \approx 7.2 \times 10^{-2} \text{ m a}^{-1} \text{ kPa}^{-3}$) than the rest of the grounded glacier catchment (mean $C \approx 1.47 \times 10^{-4} \text{ m a}^{-1} \text{ kPa}^{-3}$; Figure 4). Grounded ice across the Petermann catchment is on average stiffer ($A \approx 1.2 \times 10^{-8} \text{ a}^{-1} \text{ kPa}^{-3}$) than along the ice tongue ($A \approx 7.4 \times 10^{-8} \text{ a}^{-1} \text{ kPa}^{-3}$). However, the misfit between observed and modeled velocities is highest along the ice tongue (Figure 4g), which suggests that ice rheology parameter (A) may not reflect the true stress conditions along the ice tongue. The distribution of basal slipperiness and ice rheology parameter (A) for our initial inversion are discussed in more detail in the following section.

Table 2. Misfit between observed and modeled velocity for each boundary condition scenario

Boundary Condition Scenario	Mean percentage difference (%)	Mean velocity difference (m a ⁻¹)	Mean velocity difference (>300 m a ⁻¹)	Mean velocity difference ice tongue (m a ⁻¹)
1. Natural ice tongue boundary	26	11	28	66
2. Fixed west ice tongue margin to zero	24	12	34	77
3. Fixed both ice tongue margins to zero	20	9.4	25	51

2.4 Boundary Conditions

In an attempt to improve the misfit between observed and modeled velocities, and accurately replicate the lateral resistive stresses along the ice tongue margins, we conducted runs with both no-slip and free-slip boundary conditions along the side walls. We then tested which produced the best fit to observed velocities. Alongside our additional inversion (Scenario 1), where no velocity condition was imposed along the ice tongue margins, we inverted the model using two further sets of boundary conditions. These are: Scenario 2) fixed velocities along the western margin of the ice tongue to zero (no-slip) and leave the east margin as free-slip, Scenario 3) fixed velocities to zero (no-slip) along both margins of the floating ice tongue. We then based our assessment of these boundary condition scenarios on three criteria: i) the misfit between observed and modeled velocities, ii) observations of the confinement and attachment of the ice tongue to the fjord walls in satellite imagery (i.e. heavy rifting or not), iii) the ability of each set of boundary conditions to replicate the observed velocity response following the 2010 calving event. The former two criteria are discussed in this section, and the third criterion is discussed alongside our model experiments in the following section (Section 2.5). As before, we perform each inversion for 120 iterations until the misfit has converged, and use the same values of: m , n , and regularization parameters for each scenario. The slipperiness (C), ice rate factor (A) and misfit distributions ($|U_{\text{obs}}| - |U_{\text{mod}}|$) are shown for each boundary condition scenario in Figure 4. Mean misfits between observed and modeled velocities for each scenario are in Table 2.

Slipperiness values showed a similar spatial distribution across all boundary condition scenarios, i.e. increasing towards the grounding line and decreasing further inland (Figure 4 a-c), and do not vary substantially within 10 km of the grounding line (range: $3.8 - 7.2 \times 10^{-2} \text{ m a}^{-1} \text{ kPa}^{-3}$ ($3.8 - 7.2 \times 10^{-2} \text{ m a}^{-1} \text{ kPa}^{-3}$)) or across the entire grounded catchment (range: $1.47 - 2.18 \times 10^{-4} \text{ m a}^{-1} \text{ kPa}^{-3}$ ($1.47 - 2.18 \times 10^{-4} \text{ m a}^{-1} \text{ kPa}^{-3}$)). In contrast, spatial variations in ice stiffness (A) were more obvious between each scenario, which corresponds to differences in the misfit distributions (Figure 4). Average A values along the ice tongue varied by three orders of magnitude between scenarios 1 ($A \approx 7.4 \times 10^{-8} \text{ a}^{-1} \text{ kPa}^{-3}$) and 3 ($A \approx 1.4 \times 10^{-5} \text{ a}^{-1} \text{ kPa}^{-3}$). Scenarios 1 and 2 show stiff ice across the entire ice tongue, which does not reflect the stiff ice tongue center and weaker margins we would expect from lateral reductions in longitudinal strain rates and ice velocity associated with

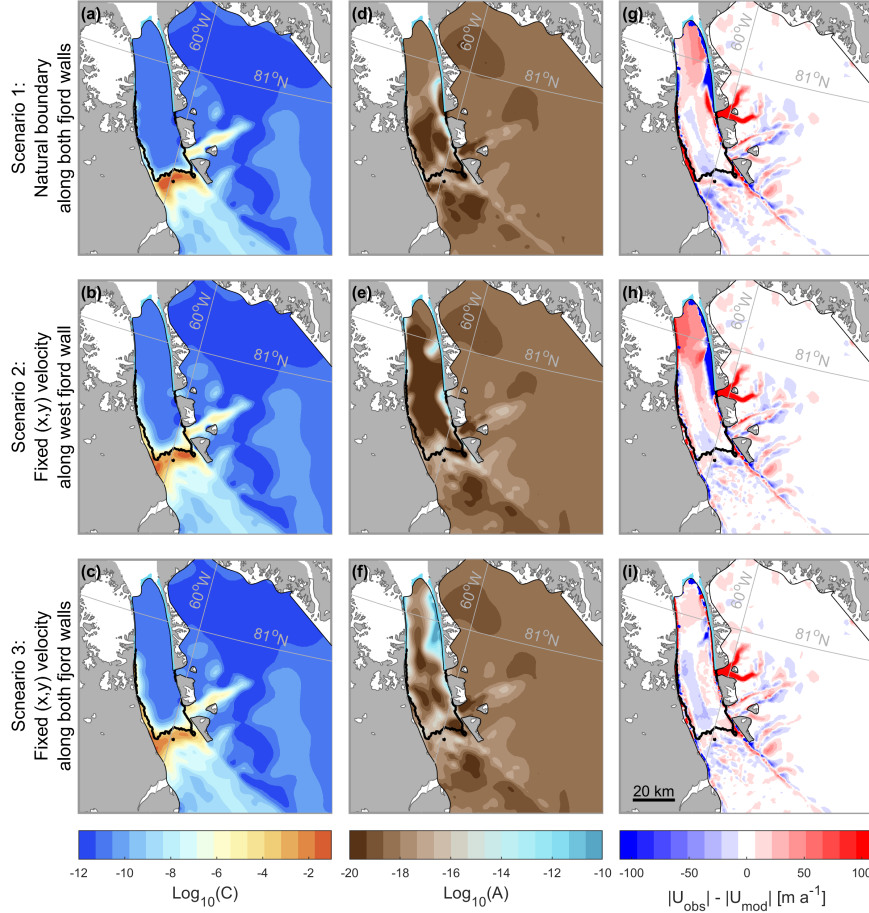


Figure 4. Inversion experiments using three sets of boundary conditions along the floating ice tongue. **a-c** show logarithmic calculated basal slipperiness (C) for boundary condition Scenarios 1 to 3 respectively, where orange represents highly slippery areas. Glen's flow law rate factor A (**d-f**), where light blue represents soft ice, and brown is stiff ice. The final column (**g-i**) is the absolute difference between observed (U_{obs}) and modeled velocities (U_{mod}) after inversion using each set of boundary conditions.

shearing along the fjord walls (Raymond, 1996). In both cases, velocities do not well reproduce observations along the lateral margins and lower portion of the ice tongue (criterion i: Figure 4 g-h).

In contrast, areas of softer ice ($A \approx 4.6 \times 10^{-5} \text{ a}^{-1} \text{ kPa}^{-3}$) exist along the lateral margins of the lower portion of the ice tongue (Figure 4f) when we used a no-slip boundary condition along both ice tongue margins during inversion (Scenario 3). In accordance with previous studies (Nick et al., 2012) and our own observations of satellite imagery, this replicates the apparent weak attachment of floating ice to the fjord walls in the lower/eastern parts of the tongue prior to the 2010 calving event (criterion ii). In Scenario 3, overall mean percentage difference between U_{obs} and U_{mod} was also improved by 6% and absolute difference reduced by 15 m a^{-1} along the ice tongue (Table 2). We find that by imposing a no-slip boundary condition

along both side-walls of the ice tongue (Scenario 3) allowed the inversion procedure to automatically resolve the weak margins of the tongue. Based on criteria i and ii, this Scenario (3) therefore provides the most realistic distribution of ice softness along the ice tongue (criterion ii) and the best model fit to observed velocities (criterion i). These experiments have shown the importance of considering boundary conditions, particularly along floating ice margins in this study, for accurately determining lateral resistive stresses and replicating the observed velocity field.

2.5 Model Experiments

Following model initialization and inversion, we performed a series of diagnostic experiments (Figure 1) that perturb the calving front position to replicate previous large calving events and potential future loss from the Petermann Glacier ice tongue. We then examine the instantaneous velocity change with respect to our initial modeled velocities. As the focus of this paper is the impact of large calving events on glacier velocity, we do not incorporate ice loss via surface and/or basal melting. For each perturbation experiment, we removed all elements from the mesh downstream of the new calving front position, and mapped all topographic datasets onto the new mesh. We then performed a forward-diagnostic model run, which solves the shallow ice-stream equations (see Eq. 1) independent of time. In each case, the model is restarted from the previous experiment set up. During all experiments, grounding line position, boundary conditions, and ice thickness remained fixed. We also use our initially inverted parameters of basal slipperiness and ice rheology as inputs to all experiments. We acknowledge that in reality there is likely to be a period of relaxation and geometric adjustment after each individual calving event. Thus, by performing these sequential calving experiments in a diagnostic time-independent mode, we are modeling the immediate velocity change in response to a perturbation in buttressing at the terminus. We therefore do not allow any relaxation/adjustment or deviation from our initial stress conditions (slipperiness or rheology) in between subsequent events. It is therefore possible that these estimates of ice flow and discharge may be higher than the transient glacier response over longer timescales.

We started by removing sections of the ice tongue that calved in 2010 and 2012 (Figure 1), for which the new terminus positions were digitized from Landsat ETM+ imagery from 31st August and 21st July respectively. We then assumed that the next iceberg to calve from the tongue will follow the path of the rift that formed in 2016. Then, we estimated the glacier response to future calving events, following two assumptions: i) Petermann Glacier will continue to calve episodically, via rift propagation, back to the grounding line, ii) that future icebergs will be similar sized to previous calving events (~ 8 km long: Figure 1). Each segment along the ice tongue acted as the new prescribed terminus position, which has a natural boundary condition. In reality, the size and nature of future calving events may vary (e.g. may be a series of small icebergs), but we conduct these experiments to assess the impact of future events similar in magnitude to previous calving. After each diagnostic experiment we calculated the vertically and horizontally integrated flux across the grounding line in Gt a^{-1} with respect to pre-calving flux. We then convert to sea level equivalent (mm) by dividing by the volume of ice needed to raise global sea levels by 1 mm (361.8 Gt).

For the first diagnostic experiment, we used all three sets of boundary conditions (Scenarios 1-3) proposed in Section 2.4 to fulfill our third criterion (iii) of which scenario best replicates the small increase in velocity observed after the 2010 calving event (Figure 5). Basal slipperiness (C), ice rate factor (A), and boundary conditions for each scenario were input into this

first experiment (2010 calving) and the instantaneous increase in speed presented in Figure 5. We found that the differences in modeled velocity changes due to calving, using different sets of boundary conditions, were relatively small, ~~and the results,~~ hence, Hence, our results are insensitive to the type of boundary condition applied (see also Section 2.4). This insensitivity to the type of side-wall boundary conditions can be understood to be related to our inverse methodology (see Section 2.3), where

5 A is inferred from measured velocities. In all cases the inversion was able to converge and provide a good fit to observations. Despite this, applying no resistance along the ice tongue margins (Scenario 1: free slip), produces no change in velocity along the tongue, which does not reflect observations (Figure 2 and Figure S1). However when applying no-slip side-wall boundary conditions, modeled speed increases along the ice tongue (Scenarios 2 and 3) produced a better fit to observed changes i.e. acceleration at the terminus that did not propagate far inland, and average 45 and 37 m a^{-1} respectively. While both Scenarios 2

10 and 3 appear to adequately reproduce the observed velocity response after the 2010 calving event, we discount Scenario 2 due to the high misfit between modeled and observed velocities (Table 2), and unrealistic ice stiffness along the tongue (Figure 4). Thus, boundary conditions and parameters of basal slipperiness (C) and ice rate factor (A) calculated in Scenario 3 are input into our subsequent diagnostic experiments post-2010.

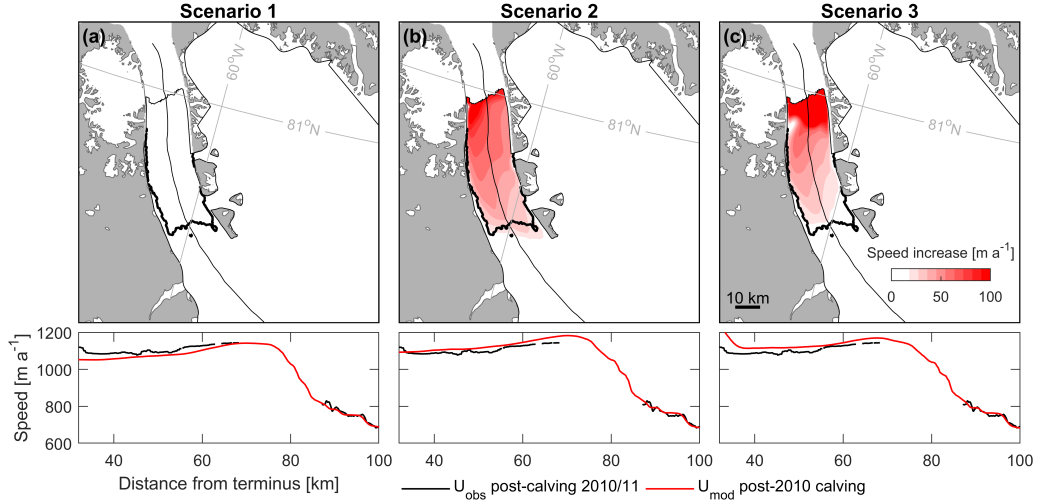


Figure 5. Diagnostic perturbation experiments for the 2010 calving event, using three scenarios of boundary conditions applied along the floating ice tongue (a-c). Graduated white to red shows speed increase between initial modeled velocities (U_{initial}) and modeled velocities post-2010 calving (U_{calving}). Bottom plots show observed velocities (U_{obs}) post-calving (winter 2010/11), and modeled velocities (U_{mod}) post-2010 calving along the glacier centerline.

3 Results

3.1 Response to 2010 and 2012 calving

We have shown that the 2-HD model \dot{U}_a can reproduce the flow of Petermann Glacier before the large calving event in 2010. Following this we removed sections of the ice tongue, to replicate large calving events in 2010 and 2012, and compare the

5 model results with observed changes in flow speeds (Figure 6a and b).

The iceberg that calved away from Petermann Glacier in 2010 was $\sim 214 \text{ km}^2$ and on average 83 m thick (Figure 6). Inverted ice rate factor A reveals that this section of the tongue is softer ($A \approx 2.1 \times 10^{-5} \text{ a}^{-1} \text{ kPa}^{-3}$) by three orders of magnitude than the rest of the ice tongue (Figure 7b) or grounded glacier catchment ($A \approx 1.2 \times 10^{-8} \text{ a}^{-1} \text{ kPa}^{-3}$). Model results show that removing this section of the tongue was followed by a slight instantaneous increase in speed, ranging from $\sim 65 \text{ m a}^{-1}$ (6% increase of tongue speed) at the terminus, to $< 20 \text{ m a}^{-1}$ between 60 and 80 km along the centerline (Figure 6a). These modeled velocity changes are in very good agreement with observed velocities presented here (Figure 2), and documented in previous studies (Nick et al., 2012; Münchow et al., 2016). After the 2010 calving event increases in speed across the entire ice tongue averaged 29 m a^{-1} and 37 m a^{-1} in observed and modeled velocities respectively (Figure 2). Modeled perturbations in flow speeds did not propagate far inland and averaged only $+6 \text{ m a}^{-1}$ inland of the grounding line, which is below the average misfit between observed and modeled velocities (9.4 m a^{-1} : Table 2) and therefore indistinguishable from errors. Prior to the calving event, our modeled grounding line flux of 10.12 Gt a^{-1} was within the range of previous estimates by Rignot and Steffen (2008) ($12 \pm 1 \text{ Gt a}^{-1}$) and Wilson et al. (2017) ($10.8 \pm 0.52 \text{ Gt a}^{-1}$). Limited changes in speed following the 2010 calving event were accompanied by little change in modeled grounding line flux ($+0.14 \text{ Gt a}^{-1}$) and a negligible increase in sea level rise contribution (Figure 7b).

20 In the next experiment, we removed a 96 km^2 section of the ice tongue to replicate a subsequent large calving event in July 2012. Importantly this calving event removed a thicker section of the ice tongue that averaged 111 m (Figure 7a). Similar to the modeled dynamic response after 2010, ice flow speeds increased along the ice tongue after the 2012 calving event, and did not propagate far inland of the grounding line (Figure 6b). These modeled velocity changes are consistent with observed velocities in 2012/13 (Figures 2 and S2). Both modeled and observed speeds increased within the range of 3-5% at the terminus, and showed limited change inland of the grounding line (Figure 2). The 2012 calving event was $< 50\%$ of the 2010 iceberg area, and almost four times softer ($A \approx 9.7 \times 10^{-5} \text{ a}^{-1} \text{ kPa}^{-3}$), suggesting it should provide less resistive stress. However, speed increases were 46% greater along the ice tongue than in 2010 (averaging 59 m a^{-1}) and propagated further towards the grounding line. Despite some acceleration, the 2012 calving event had a limited impact on grounding line flux, increasing it by only 0.35 Gt a^{-1} (3.4%) compared to initial ice flux, and increased sea level rise contribution to 0.029 mm a^{-1} (Figure 7b).

30 3.2 Response to future calving events

Calving events in 2010 and 2012 had a limited dynamic impact on the ice flow of Petermann Glacier and were followed by $< 10\%$ acceleration along the ice tongue, and $< 2\%$ at the grounding line (Figure 2). These modeled findings are consistent with observed velocity change (Figure 2) and previous modeling of the 2010 calving event (Nick et al., 2012). After accurately

replicating the observed velocity response to large calving events in 2010 and 2012, we were confident in the model's ability to estimate the instantaneous velocity response of Petermann Glacier to a change in stress conditions at the grounding line associated with removing large sections of the ice tongue.

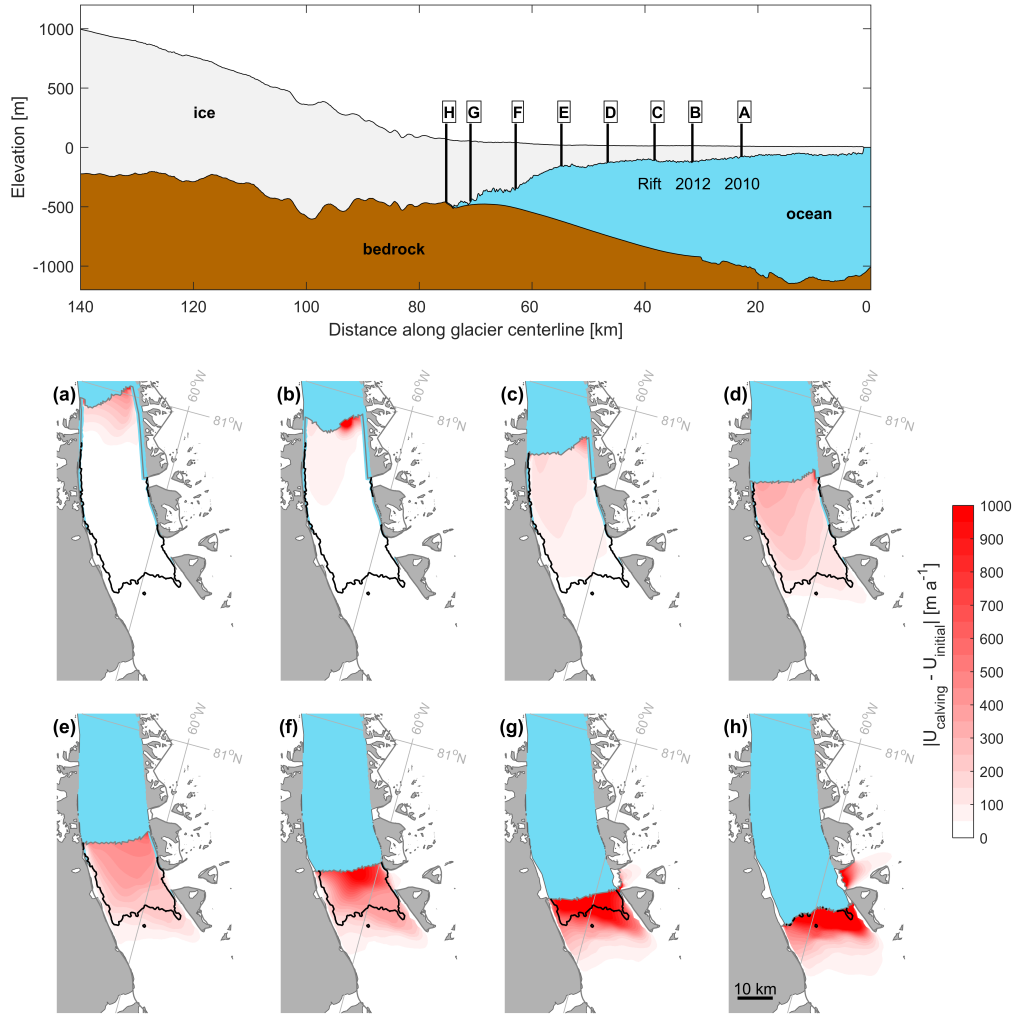


Figure 6. Diagnostic perturbation experiments at Petermann Glacier. Top panel shows a cross-sectional centerline profile of Petermann Glacier from the BedMachine v3 dataset (Morlighem et al., 2017). Letters A to H represent [the points along the glacier centerline at which](#) sections of the terminus [were](#) removed for each experiment. A is the 2010 calving event, B is the 2012 calving event, and C is the location of a large rift that formed in 2016. D to G are successive 8 km splices and H is the current grounding line location. Bottom panels (a-h) show the modeled instantaneous increase in speed after each experiment with respect to initial pre-calving (before 2010) speeds.

We conducted six further experiments to analyze the glacier dynamic response (instantaneous change in flow speeds) and grounding line flux, to large calving events. Each of the new calving front positions were approximately 8 km apart along the tongue, and ice loss area averages 125 km (Figure 7a). First, we assume that the next calving event from Petermann Glacier will fracture along the path of a large rift that formed in 2016, removing a $\sim 154 \text{ km}^2$ section of the ice tongue (Experiment C: Figure 6). This segment is also on average 35 m thicker and sturdier ($A \approx 8.3 \times 10^{-6} \text{ a}^{-1} \text{ kPa}^{-3}$) than the downstream section of the tongue that collapsed in 2010 and 2012 (Figure 7b). In this case, average increases in speed along the ice tongue were greater (94 m a^{-1}) and propagated further ($\sim 30 \text{ km}$ from the terminus) towards the grounding line than after previous calving events (Figure 6). Acceleration 10 km inland of the grounding line ~~was double +~~ more than doubled to 24 m a^{-1} ~~the compared to~~ acceleration after the 2012 calving event (10 m a^{-1}). Despite this, acceleration inland of the grounding line remained 75% smaller than increases along the ice tongue (Figure 7c), and did not propagate far into the glacier catchment (Figure 6c). After

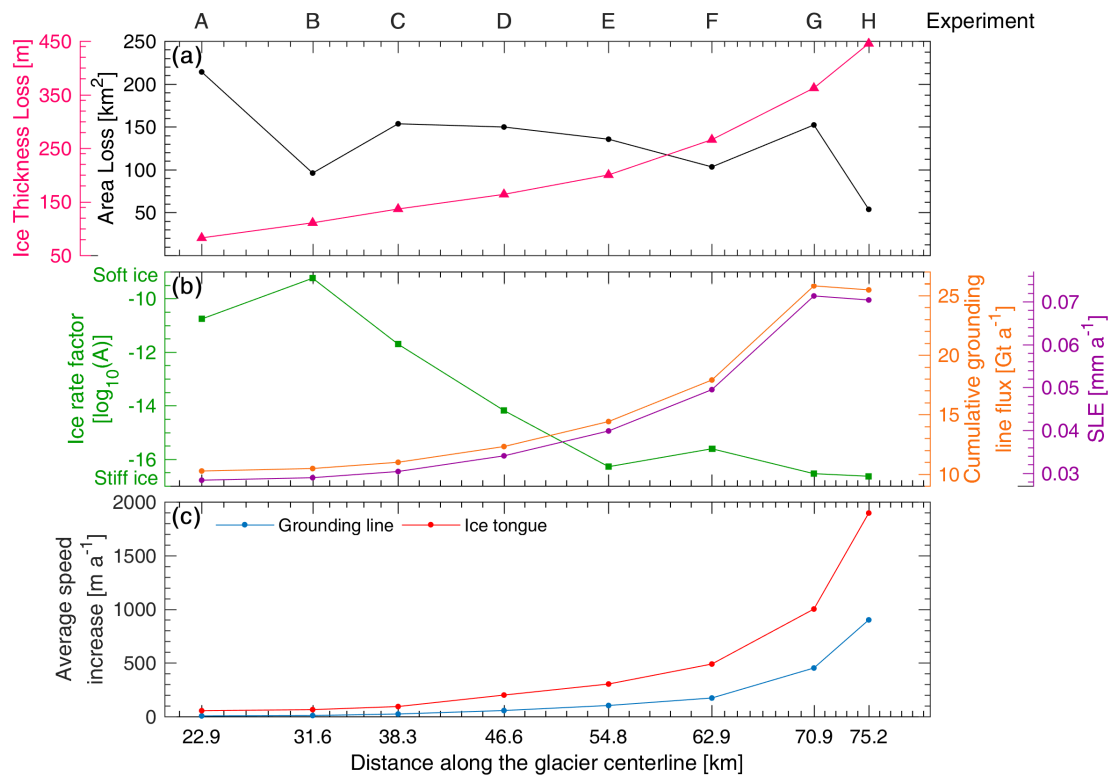


Figure 7. Modeled experiment parameters for Petermann Glacier, for each diagnostic experiment (A-H), also shown in Figure 6. **(a)** Black line shows iceberg area lost between each experiment [km^2] and magenta is the average ice thickness [m] of each section of ice removed. **(b)** green is the average ice rate factor [$\log_{10} A$] across the section of ice removed in each diagnostic experiment. Orange and purple lines represent the cumulative grounding line flux with respect to an initial ice flux of 10.12 Gt a^{-1} and sea level equivalent contribution after the removal of each section of ice. **(c)** Average increases in ice speed across the entire ice tongue (red) and average ice speed within 10 km inland of the grounding line (blue) after each diagnostic experiment.

this experiment grounding line flux increased to 11 Gt a^{-1} ($+0.87 \text{ Gt a}^{-1}$) and sea level equivalent rose to 0.03 mm a^{-1} (Figure 7b).

Over the subsequent diagnostic calving experiments (D-H), there was a linear increase in average speed change across the ice tongue, as well as a near doubling of average speed increases immediately inland of the grounding line (within 10 km) between each experiment (Figure 7). After removing the 164 m thick section D from the tongue, average ice tongue speeds increased by 21% compared to initial velocities ($\sim 954 \text{ m a}^{-1}$), but increases inland of the grounding line (within 10 km) remained small in comparison ($\sim +57 \text{ m a}^{-1}$). During the following three experiments (E-G), instantaneous average velocity increases across the tongue were more substantial than after previous calving events ranging from 304 m a^{-1} after removing segment E, to increasing by $+1000 \text{ m a}^{-1}$ ($> 100\%$ of initial flow speeds) across the small remaining section of the ice tongue after Experiment G. Throughout these experiments, higher magnitude increases in speed propagated further into the catchment ($\sim 10\text{-}15 \text{ km}$ inland of the grounding line) than after previous calving events (Figure 6). Simultaneous to increases along the ice tongue, average speed increases inland of the grounding line (10 km) went from 103 m a^{-1} (Experiment E) to 453 m a^{-1} (Experiment G: Figure 7). Once the last remaining section of the ice tongue was removed (54 km^2 : H), speed increases were double that of Experiment G, reaching $+900 \text{ m a}^{-1}$ immediately inland of the grounding line (10 km). Removing the entire ice tongue, and consequently detaching it from any tributary glaciers also led to a $\sim 530 \text{ m a}^{-1}$ speed up at the terminus of Porsild Glacier (Figure 6h).

Alongside linear increases in speed after large calving events, we also note positive trends in the thickness of each calved iceberg, grounding line discharge, and sea level equivalent (Figure 7). Ice thickness along the Petermann Glacier tongue increases from $\sim 50 \text{ m}$ towards the terminus to $\sim 500 \text{ m}$ at the grounding line (Figure 6: Münchow et al. 2014). In our experiments, the ice thickness of each segment increased by an average of 221 m (Figure 7a). At the same time, grounding line discharge increased by an average of $+2.17 \text{ Gt a}^{-1}$ after each experiment and once the entire ice tongue was removed, cumulative grounding line flux reached 25 Gt a^{-1} and the glacier contribution to sea level rise increased to approximately 0.07 mm per year (Figure 7b). As well as increases in ice thickness along the ice tongue, there is also a general increase in the stiffness of the ice back towards the grounding line. The ice is generally soft in the lower $\sim 40 \text{ km}$ of the tongue (Figure 4f) before ice rate factor (A) values decrease by 1-2 orders of magnitude during the last five experiments (E-H: Figure 7b). Importantly grounded ice immediately inland of the grounding line (within 10 km) is stiffer than the entire ice tongue.

4 Discussion and Conclusions

Here, we expand on previous work and provide new insight into the velocity response of Petermann Glacier to past and future large calving events, and eventual ice tongue collapse. In contrast to the removal of buttressing ice shelves elsewhere in Greenland (e.g. Jakobshavn Isbræ: Joughin et al. 2008; Zacharaie Isstrøm: Mouginot et al. 2015) and from the Antarctic Peninsula (e.g. Larsen B: De Rydt et al. 2015; Scambos et al. 2004), we show that Petermann Glacier was dynamically insensitive to the removal of $\sim 310 \text{ km}^2$ of the ice tongue via calving events in 2010 and 2012 (Figure 6). After both calving events there was a limited increase in speed ($< 10\%$ of initial flow speeds: Figure 2), that remained below the $\sim 22\text{-}25\%$ seasonal

variability in flow speeds observed between 2006 and 2017 (Nick et al., 2012; Lemos et al., 2018). This insensitivity of ice velocities to large calving events can be explained by weak resistance provided by the lower portion of the ice tongue along its lateral margins (Figure 4f: Nick et al., 2012). From this, we can conclude that the section of the ice tongue that calved away in 2010 and 2012 provided little frontal buttressing on grounded ice.

5 Given that several floating ice tongues have been lost from neighboring glaciers in northern Greenland (Hill et al., 2018), and the rapid nature of Petermann Glacier's Holocene retreat from the fjord mouth (Jakobsson et al., 2018), it is possible that the ice tongue will continue to calve episodically, and in the not too distant future collapse entirely. We set out to determine at what point future calving events at Petermann Glacier (similar in magnitude to past calving) will cause substantial acceleration and increased ice discharge. The key conclusion of this work is that future calving events (C-E) from the lower portions of the
10 ice tongue (> 12 km from the grounding line) appear to be passive. We attribute the small modeled velocity response (< 100 m a^{-1} increase at the grounding line) to calving events from this lower portion of the tongue to be due to thinner (< 200 m) and an order of magnitude softer ice, which provides limited buttressing on grounded ice. Indeed, if the next calving event takes the path of the 2016 rift formation, it is unlikely to substantially accelerate ice flow (Figure 6c), or increase the glacier contribution to grounded ice discharge and sea level rise (Figure 7). However, we find that removing sections of the ice tongue within 12 km
15 of the grounding line (F-H) has a larger impact on ice flow speeds, increasing them by an average of 900 m a^{-1} (96%) after the entire ice tongue is removed (Figure 6h). Alongside this, cumulative ice flux across the grounding line increases from 11 Gt a^{-1} (Experiment C) to 25 Gt a^{-1} (H: Figure 7b) and cumulative sea level rise could reach 0.07 mm a^{-1} (for event H). Importantly, within 12 km of the grounding line, the thickness and stiffness of the ice tongue increase dramatically (Figure 7). As such, this part of the ice tongue provides greater lateral resistance along the fjord walls and is therefore more effective at buttressing
20 grounded ice. Removing these sections of ice is thus likely to alter the resistive stresses at the grounding line enough to cause a greater increase in flow speeds that propagate further inland.

Overall, our findings show that Petermann Glacier has not responded dynamically to previous calving events in 2010 and 2012, and is unlikely to accelerate substantially after imminent future calving events (Figure 6c). However, future large episodic calving events closer to the grounding line have the potential to perturb the stresses acting on grounded ice, and substantially
25 increase flow speeds and ice discharge (Figure 7). Despite substantial increases in speed forecast after the ice tongue is removed, the question remains as to whether acceleration will be short-lived, and the glacier will re-stabilize at the current grounding line position or retreat inland. Similar to when the glacier was buttressed by an ice shelf at the end of the fjord (Jakobsson et al., 2018), it may be that the current ice tongue has allowed grounding line stability, and its collapse will similarly lead to unstable grounding line retreat. Indeed, the eastern portion of the current grounding line lies within a deep bedrock canyon
30 (Bamber et al., 2013; Morlighem et al., 2017), which may allow for marine ice sheet instability. However, we cannot discount the possibility that an ice tongue may regrow in the future (Nick et al., 2012). Here, we have estimated the instantaneous response of Petermann Glacier's ice flow to the immediate removal of sections of the ice tongue. Importantly, future work incorporating the transient evolution of the glacier geometry and grounding line position in between these large calving events is needed to assess the long-term response of Petermann Glacier to future ice tongue loss.

Author contributions. This work was carried out by E. Hill with input from all authors. E. Hill led the manuscript writing, and all authors contributed towards editing the manuscript.

Competing interests. The authors declare that they have no conflict of interest.

Acknowledgements. We acknowledge several freely available datasets used in this work. These are: the IceBridge BedMachine v3 (Morlighem et al., 2017) and MEaSURES InSAR ice velocities (Joughin et al., 2010) both from the National Snow and Ice Data Center (NSIDC), and PALSAR derived velocities from the ESA Greenland Ice Sheet Climate Change Initiative (Nagler et al., 2015). This work was supported by a Doctoral Studentship award to E. Hill at Newcastle University, UK from the IAPETUS Natural Environment Research Council Doctoral Training Partnership (grant number: NE/L002590/1). E. Hill was also additionally supported by a CASE partnership from the British Antarctic Survey. [We thank Ellyn Enderlin and one anonymous reviewer for their helpful comments on the manuscript.](#)

References

- Ahlstrøm, A. P., Andersen, S. B., Andersen, M. L., Machguth, H., Nick, F. M., Joughin, I., Reijmer, C. H., Van De Wal, R. S., Merryman Boncori, J. P., Box, J. E., Citterio, M., Van As, D., Fausto, R. S., and Hubbard, A.: Seasonal velocities of eight major marine-terminating outlet glaciers of the Greenland ice sheet from continuous in situ GPS instruments, *Earth System Science Data*, 5, 277–287, <https://doi.org/10.5194/essd-5-277-2013>, 2013.
- Amundson, J. M., Fahnestock, M., Truffer, M., Brown, J., Lüthi, M. P., and Motyka, R. J.: Ice mélange dynamics and implications for terminus stability, Jakobshavn Isbrse, Greenland, *Journal of Geophysical Research: Earth Surface*, 115, 1–12, <https://doi.org/10.1029/2009JF001405>, 2010.
- Bamber, J. L., Griggs, J. A., Hurkmans, R. T. W. L., Dowdeswell, J. A., Gogineni, S. P., Howat, I., Mouginot, J., Paden, J., Palmer, S., Rignot, E., and Steinhage, D.: A new bed elevation dataset for Greenland, *Cryosphere*, 7, 499–510, <https://doi.org/10.5194/tc-7-499-2013>, 2013.
- Box, J. E. and Decker, D. T.: Greenland marine-terminating glacier area changes: 2000–2010, *Annals of Glaciology*, 52, 91–98, <https://doi.org/10.3189/172756411799096312>, 2011.
- Bunce, C., Carr, J. R., Nienow, P. W., Ross, N., and Killick, R.: Ice front change of marine-terminating outlet glaciers in northwest and southeast Greenland during the 21st century, *Journal of Glaciology*, pp. 1–13, <https://doi.org/10.1017/jog.2018.44>, 2018.
- Carr, J. R., Vieli, A., and Stokes, C.: Influence of sea ice decline, atmospheric warming, and glacier width on marine-terminating outlet glacier behavior in northwest Greenland at seasonal to interannual timescales, *Journal of Geophysical Research: Earth Surface*, 118, 1210–1226, <https://doi.org/10.1002/jgrf.20088>, 2013.
- Carr, J. R., Stokes, C. R., and Vieli, A.: Threefold increase in marine-terminating outlet glacier retreat rates across the Atlantic Arctic: 1992–2010, *Annals of Glaciology*, 58, 72–91, <https://doi.org/10.1017/aog.2017.3>, 2017.
- Chu, W., Schroeder, D. M., Seroussi, H., Creyts, T. T., and Bell, R. E.: Complex Basal Thermal Transition Near the Onset of Petermann Glacier, Greenland, *Journal of Geophysical Research: Earth Surface*, pp. 985–995, <https://doi.org/10.1029/2017JF004561>, 2018.
- De Rydt, J., Gudmundsson, G. H., Rott, H., and Bamber, J. L.: Modeling the instantaneous response of glaciers after the collapse of the Larsen B Ice Shelf, *Geophysical Research Letters*, 42, 5355–5363, <https://doi.org/10.1002/2015GL064355>, 2015.
- Enderlin, E. M., Howat, I. M., Jeong, S., Noh, M. J., Van Angelen, J. H., and Van Den Broeke, M. R.: An improved mass budget for the Greenland ice sheet, *Geophysical Research Letters*, 41, 866–872, <https://doi.org/10.1002/2013GL059010>, 2014.
- Falkner, K. K., Melling, H., Mnchow, A. M., Box, J. E., Wohlleben, T., Johnson, H. L., Gudmandsen, P., Samelson, R., Copland, L., Steffen, K., Rignot, E., and Higgins, A. K.: Context for the recent massive petermann glacier calving event, *Eos*, 92, 117–118, <https://doi.org/10.1029/2011EO140001>, 2011.
- Geuzaine, C. and Remacle, J. F.: Gmsh: A 3-D finite element mesh generator with built-in pre- and post-processing facilities, *International Journal for Numerical Methods in Engineering*, 79, 1309–1331, <https://doi.org/10.1002/nme.2579>, 2009.
- Goldberg, D., Holland, D. M., and Schoof, C.: Grounding line movement and ice shelf buttressing in marine ice sheets, *Journal of Geophysical Research: Earth Surface*, 114, <https://doi.org/10.1029/2008JF001227>, 2009.
- Gregory, J. M., Huybrechts, P., and Raper, S. C. B.: Threatened loss of the Greenland ice-sheet, *Nature*, 428, 2513–2513, <https://doi.org/10.1038/nature02512>, 2004.
- Gudmundsson, G. H.: Ice-shelf buttressing and the stability of marine ice sheets, *Cryosphere*, 7, 647–655, <https://doi.org/10.5194/tc-7-647-2013>, 2013.

- Gudmundsson, G. H., Krug, J., Durand, G., Favier, L., and Gagliardini, O.: The stability of grounding lines on retrograde slopes, *Cryosphere*, 6, 1497–1505, <https://doi.org/10.5194/tc-6-1497-2012>, 2012.
- Haseloff, M. and Sergienko, O. V.: The effect of buttressing on grounding line dynamics, *Journal of Glaciology*, 64, 1–15, <https://doi.org/10.1017/jog.2018.30>, 2018.
- 5 Hill, E. A., Carr, J. R., and Stokes, C. R.: A Review of Recent Changes in Major Marine-Terminating Outlet Glaciers in Northern Greenland, *Frontiers in Earth Science*, 4, 1–23, <https://doi.org/10.3389/feart.2016.00111>, 2017.
- Hill, E. A., Carr, J. R., Stokes, C. R., and Gudmundsson, G. H.: Dynamic changes in outlet glaciers in northern Greenland from 1948 to 2015, *The Cryosphere*, 12, 3243–3263, <https://doi.org/10.5194/tc-12-3243-2018>, 2018.
- Holland, D. M., Thomas, R. H., de Young, B., Ribergaard, M. H., and Lyberth, B.: Acceleration of Jakobshavn Isbræ triggered by warm subsurface ocean waters, *Nature Geoscience*, 1, 659–664, <https://doi.org/10.1038/ngeo316>, 2008.
- 10 Howat, I. M.: MeaSURES Greenland Ice Velocity: Selected Glacier Site Velocity Maps from Optical Images, Version 2, National Snow and Ice Data Center Distributed Active Archive Center, <https://doi.org/10.5067/VM5DZ20MYF5C>, 2017.
- Howat, I. M., Joughin, I., Tulaczyk, S., and Gogineni, S.: Rapid retreat and acceleration of Helheim Glacier, east Greenland, *Geophysical Research Letters*, 32, 1–4, <https://doi.org/10.1029/2005GL024737>, 2005.
- 15 Howat, I. M., Joughin, I., and Scambos, T. A.: Rapid changes in ice discharge from Greenland outlet glaciers., *Science (New York, N.Y.)*, 315, 1559–61, <https://doi.org/10.1126/science.1138478>, <http://www.sciencemag.org/content/315/5818/1559.abstract>, 2007.
- Howat, I. M., Negrete, A., and Smith, B. E.: The Greenland Ice Mapping Project (GIMP) land classification and surface elevation data sets, *Cryosphere*, 8, 1509–1518, <https://doi.org/10.5194/tc-8-1509-2014>, 2014.
- Jakobsson, M., Hogan, K. A., Mayer, L. A., Mix, A., Jennings, A., Stoner, J., Eriksson, B., Jerram, K., Mohammad, R., Pearce, C., Reilly, B., and Stranne, C.: The Holocene retreat dynamics and stability of Petermann Glacier in northwest Greenland, *Nature Communications*, 9, <https://doi.org/10.1038/s41467-018-04573-2>, 2018.
- 20 Jensen, T. S., Box, J. E., and Hvidberg, C. S.: A sensitivity study of annual area change for Greenland ice sheet marine terminating outlet glaciers : 1999 – 2013, *Journal of Glaciology*, 62, 72–81, <https://doi.org/10.1017/jog.2016.12>, 2016.
- Johannessen, O. M., Babiker, M., and Miles, M. W.: Unprecedented retreat in a 50-year observational record for Petermann Glacier, North Greenland, *Atmospheric and Oceanic Science Letters*, 6, 259–265, <https://doi.org/10.3878/j.issn.1674-2834.13.0021>, 2013.
- 25 Joughin, I., Howat, I. M., Fahnestock, M., Smith, B., Krabill, W., Alley, R. B., Stern, H., and Truffer, M.: Continued evolution of Jakobshavn Isbrae following its rapid speedup, *Journal of Geophysical Research: Earth Surface*, 113, 1–14, <https://doi.org/10.1029/2008JF001023>, 2008.
- Joughin, I., Smith, B. E., Howat, I. M., Scambos, T., and Moon, T.: Greenland flow variability from ice-sheet-wide velocity mapping, *Journal of Glaciology*, 56, 415–430, <https://doi.org/10.3189/002214310792447734>, 2010.
- 30 Krabill, W., Abdalati, W., Frederick, E., Manizade, S., Martin, C., Sonntag, J., Swift, R., Thomas, R., Wright, W., and Yungel, J.: Greenland Ice Sheet: High-elevation balance and peripheral thinning, *Science*, 289, 428–430, <https://doi.org/10.1126/science.289.5478.428>, 2000.
- Lee, V., Cornford, S. L., and Payne, A. J.: Initialization of an ice-sheet model for present-day Greenland, *Annals of Glaciology*, 56, 129–140, <https://doi.org/10.3189/2015AoG70A121>, 2015.
- 35 Lemos, A., Shepherd, A., McMillan, M., Hogg, A. E., Hatton, E., and Joughin, I.: Ice velocity of Jakobshavn Isbræ, Petermann Glacier, Nioghalvfjærdsfjorden, and Zachariæ Isstrøm, 2015–2017, from Sentinel 1-a/b SAR imagery, *Cryosphere*, 12, 2087–2097, <https://doi.org/10.5194/tc-12-2087-2018>, 2018.
- Macayeal, D. R.: $\dot{H} \{ Ozs / ax \}$ ice stream • $H (Ozs / \bullet y)$ ice stream, 94, 4071–4087, 1989.

- MacGregor, J. A., Fahnestock, M. A., Catania, G. A., Aschwanden, A., Clow, G. D., Colgan, W. T., Gogineni, S. P., Morlighem, M., Nowicki, S. M., Paden, J. D., Price, S. F., and Seroussi, H.: A synthesis of the basal thermal state of the Greenland Ice Sheet, *Journal of Geophysical Research: Earth Surface*, 121, 1328–1350, <https://doi.org/10.1002/2015JF003803>, 2016.
- Moon, T. and Joughin, I.: Changes in ice front position on Greenland’s outlet glaciers from 1992 to 2007, *Journal of Geophysical Research: Earth Surface*, 113, 1–10, <https://doi.org/10.1029/2007JF000927>, 2008.
- Moon, T., Joughin, I., Smith, B., and Howat, I.: 21st-Century Evolution of Greenland Outlet Glacier Velocities, *Science*, 336, 576–578, <https://doi.org/10.1126/science.1219985>, 2012.
- Morland, L. W.: Unconfined Ice-Shelf Flow, in: *Dynamics of the West Antarctic Ice Sheet*, edited by der Veen, C. J. and Oerlemans, J., pp. 99–116, Springer Netherlands, Dordrecht, https://doi.org/10.1007/978-94-009-3745-1_6, 1987.
- 10 Morlighem, M., Williams, C. N., Rignot, E., An, L., Arndt, J. E., Bamber, J. L., Catania, G., Chauché, N., Dowdeswell, J. A., Dorschel, B., Fenty, I., Hogan, K., Howat, I., Hubbard, A., Jakobsson, M., Jordan, T. M., Kjeldsen, K. K., Millan, R., Mayer, L., Mouginot, J., Noël, B. P., O’Cofaigh, C., Palmer, S., Rysgaard, S., Seroussi, H., Siegert, M. J., Slabon, P., Straneo, F., van den Broeke, M. R., Weinrebe, W., Wood, M., and Zinglensen, K. B.: BedMachine v3: Complete Bed Topography and Ocean Bathymetry Mapping of Greenland From Multibeam Echo Sounding Combined With Mass Conservation, *Geophysical Research Letters*, 44, 051–11, <https://doi.org/10.1002/2017GL074954>, 15 2017.
- Mouginot, J., Rignot, E., Scheuchl, B., Fenty, I., Khazendar, A., Morlighem, M., Buzzi, A., and Paden, J.: Fast retreat of Zachariæ Isstrøm, northeast Greenland, *Science*, 350, 1357–1361, <https://doi.org/10.1126/science.aac7111>, 2015.
- Münchow, A., Padman, L., and Fricker, H. A.: Interannual changes of the floating ice shelf of Petermann Gletscher, North Greenland, from 2000 to 2012, *Journal of Glaciology*, 60, 489–499, <https://doi.org/10.3189/2014JoG13J135>, 2014.
- 20 Münchow, A., Padman, L., Washam, P., and Nicholls, K.: The Ice Shelf of Petermann Gletscher, North Greenland, and Its Connection to the Arctic and Atlantic Oceans, *Oceanography*, 29, 84–95, <https://doi.org/10.5670/oceanog.2016.101>, <https://tos.org/oceanography/article/the-ice-shelf-of-petermann-gletscher-north-greenland-and-its-connection-to>, 2016.
- Nagler, T., Rott, H., Hetzenecker, M., Wuite, J., and Potin, P.: The Sentinel-1 Mission: New Opportunities for Ice Sheet Observations, *Remote Sensing*, 7, 9371–9389, <https://doi.org/10.3390/rs70709371>, 2015.
- 25 Nagler, T., Hauglund, K., Forsberg, R., and Engdahl, M.: Product User Guide (PUG), vol. version 2., <http://www.esa-icesheets-cci.org/%0Ahttp://maps.elie.ucl.ac.be/CCI/viewer/download/ESACCI-LC-PUG-v2.5.pdf>, 2016.
- Nick, F. M., Vieli, A., Howat, I. M., and Joughin, I.: Large-scale changes in Greenland outlet glacier dynamics triggered at the terminus., *Nature Geoscience*, 2, 110–114, <https://doi.org/10.1038/ngeo394>, 2009.
- Nick, F. M., Luckman, A., Vieli, A., Van Der Veen, C. J., Van As, D., Van De Wal, R. S. W., Pattyn, F., Hubbard, A. L., and Floricioiu, D.: 30 The response of Petermann Glacier, Greenland, to large calving events, and its future stability in the context of atmospheric and oceanic warming, *Journal of Glaciology*, 58, 229–239, <https://doi.org/10.3189/2012JoG11J242>, 2012.
- Pegler, S. S.: The dynamics of confined extensional flows, *Journal of Fluid Mechanics*, 804, 24–57, <https://doi.org/10.1017/jfm.2016.516>, 2016.
- Pegler, S. S., Kowal, K. N., Hasenclever, L. Q., and Grae Worster, M.: Lateral controls on grounding-line dynamics, *Journal of Fluid Mechanics*, 722, 1–12, <https://doi.org/10.1017/jfm.2013.140>, 2013.
- 35 Porter, D. F., Tinto, K. J., Boghosian, A., Cochran, J. R., Bell, R. E., Manizade, S. S., and Sonntag, J. G.: Bathymetric control of tidewater glacier mass loss in northwest Greenland, *Earth and Planetary Science Letters*, 401, 40–46, <https://doi.org/10.1016/j.epsl.2014.05.058>, 2014.

- Pritchard, H. D., Arthern, R. J., Vaughan, D. G., and Edwards, L. A.: Extensive dynamic thinning on the margins of the Greenland and Antarctic ice sheets, *Nature*, 461, 971–975, <https://doi.org/10.1038/nature08471>, 2009.
- Rathmann, N. M., Hvidberg, C. S., Solgaard, A. M., Grinsted, A., Gudmundsson, G. H., Langen, P. L., Nielsen, K. P., and Kusk, A.: Highly temporally resolved response to seasonal surface melt of the Zachariae and 79N outlet glaciers in northeast Greenland, *Geophysical Research Letters*, 44, 9805–9814, <https://doi.org/10.1002/2017GL074368>, 2017.
- Raymond, C.: Shear margins in glaciers and ice sheets, *Journal of Glaciology*, 42, 90–102, <https://doi.org/10.3189/S0022143000030550>, 1996.
- Reeh, N., Thomsen, H. H., Higgins, A. K., and Weidick, A.: Sea ice and the stability of north and northeast Greenland floating glaciers, *Annals of Glaciology*, 33, 474–480, <https://doi.org/10.3189/172756401781818554>, 2001.
- 10 Reese, R., Gudmundsson, G. H., Levermann, A., and Winkelmann, R.: The far reach of ice-shelf thinning in Antarctica, *Nature Climate Change*, 8, <https://doi.org/10.1038/s41558-017-0020-x>, 2018a.
- Reese, R., Winkelmann, R., and Gudmundsson, G. H.: Grounding-line flux formula applied as a flux condition in numerical simulations fails for buttressed Antarctic ice streams, *The Cryosphere*, 12, 3229–3242, <https://doi.org/10.5194/tc-12-3229-2018>, 2018b.
- Rignot, E. and Kanagaratnam, P.: Changes in the velocity structure of the Greenland Ice Sheet, *Science*, 311, 986–990, <https://doi.org/10.1126/science.1121381>, 2006.
- 15 Rignot, E. and Steffen, K.: Channelized bottom melting and stability of floating ice shelves, *Geophysical Research Letters*, 35, 2–6, <https://doi.org/10.1029/2007GL031765>, 2008.
- Rignot, E., Gogineni, S., Joughin, I., and Krabill, W.: Contribution to the glaciology of northern Greenland from satellite radar interferometry, *Journal of Geophysical Research: Atmospheres*, 106, 007–34, <https://doi.org/10.1029/2001JD900071>, 2001.
- 20 Rosenau, R., Scheinert, M., and Dietrich, R.: A processing system to monitor Greenland outlet glacier velocity variations at decadal and seasonal time scales utilizing the Landsat imagery, *Remote Sensing of Environment*, 169, 1–19, <https://doi.org/10.1016/j.rse.2015.07.012>, <http://dx.doi.org/10.1016/j.rse.2015.07.012>, 2015.
- Scambos, T. A., Bohlander, J. A., Shuman, C. A., and Skvarca, P.: Glacier acceleration and thinning after ice shelf collapse in the Larsen B embayment, Antarctica, *Geophysical Research Letters*, 31, 2001–2004, <https://doi.org/10.1029/2004GL020670>, 2004.
- 25 Schoof, C.: Ice sheet grounding line dynamics : Steady states , stability , and hysteresis, 112, 1–19, <https://doi.org/10.1029/2006JF000664>, 2007.
- Schoof, C., Davis, A. D., and Popa, T. V.: Boundary layer models for calving marine outlet glaciers, *Cryosphere*, 11, 2283–2303, <https://doi.org/10.5194/tc-11-2283-2017>, 2017.
- Schwanghart, W. and Kuhn, N. J.: TopoToolbox: A set of Matlab functions for topographic analysis, *Environmental Modelling and Software*, 30, 770–781, <https://doi.org/10.1016/j.envsoft.2009.12.002>, 2010.
- Shroyer, E. L., Padman, L., Samelson, R. M., Münchow, A., and Stearns, L. A.: Seasonal control of Petermann Gletscher ice-shelf melt by the ocean’s response to sea-ice cover in Nares Strait, *Journal of Glaciology*, 63, 324–330, <https://doi.org/10.1017/jog.2016.140>, 2017.
- Straneo, F. and Heimbach, P.: North Atlantic warming and the retreat of Greenland’s outlet glaciers., *Nature*, 504, 36–43, <https://doi.org/10.1038/nature12854>, <http://www.ncbi.nlm.nih.gov/pubmed/24305146>, 2013.
- 35 van den Broeke, M. R., Enderlin, E. M., Howat, I. M., Kuipers Munneke, P., Noël, B. P. Y., Jan Van De Berg, W., Van Meijgaard, E., and Wouters, B.: On the recent contribution of the Greenland ice sheet to sea level change, *Cryosphere*, 10, 1933–1946, <https://doi.org/10.5194/tc-10-1933-2016>, 2016.

Wilson, N., Straneo, F., and Heimbach, P.: Satellite-derived submarine melt rates and mass balance (2011-2015) for Greenland's largest remaining ice tongues, *Cryosphere*, 11, 2773–2782, <https://doi.org/10.5194/tc-11-2773-2017>, 2017.

Supplementary Information for "Velocity response of Petermann Glacier, northwest Greenland to past and future calving events"

Emily A. Hill¹, G. Hilmar Gudmundsson², J. Rachel Carr¹, and Chris R. Stokes³

¹School of Geography, Politics, and Sociology, Newcastle University, Newcastle-upon-Tyne, NE1 7RU, UK

²Department of Geography and Environmental Sciences, Northumbria University, Newcastle-upon-Tyne, NE1 8ST, UK

³Department of Geography, Durham University, Durham, DH1 3LE, UK

Correspondence: E.A.Hill (e.hill3@newcastle.ac.uk)

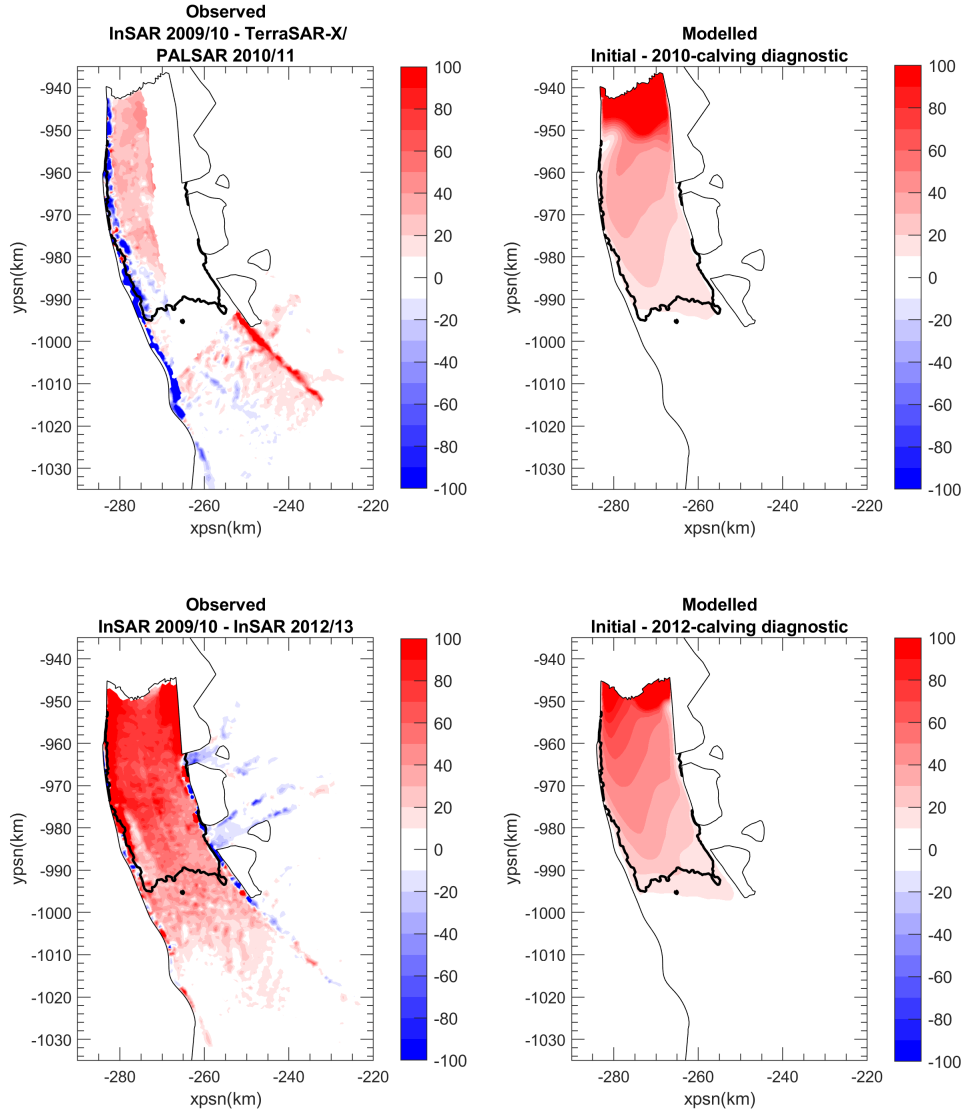


Figure S1. Spatial distribution of observed and modeled changes in flow speeds across the Petermann Glacier ice tongue after calving events in 2010 and 2012. Left two plots show the observed changes in speed between initial pre-calving observed speed (winter 2009/10, MEaSURES Joughin et al. (2010) and observed speeds after the 2010 calving event (top) and 2012 calving event (bottom). Right hand plots show the corresponding modeled change in speed between initial modeled flow speeds and speeds after removing sections of the ice tongue in 2010 (top) and 2012 (bottom). [xpsn and ypsn are x and y kms in polar stereographic north projection, respectively.](#)

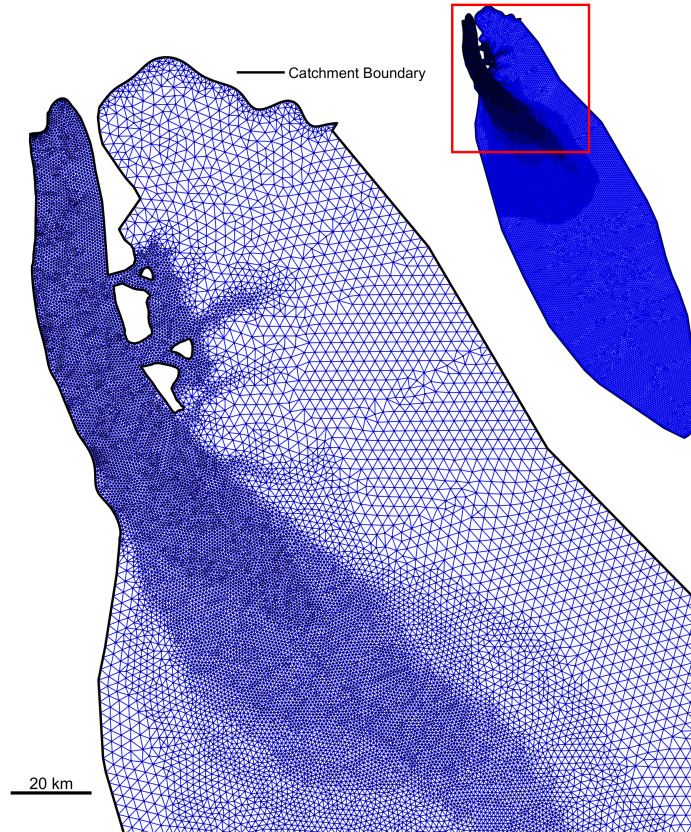


Figure S2. Finite element mesh for Petermann Glacier. The inset shows the mesh across the entire Petermann catchment and the red square highlights the areas shown in the main figure. Element sizes are smallest in the areas of fastest flow(see Figure ??), and larger towards the slower flowing inland regions of the glacier catchment. The thick black line is the model domain.

S1. Diagnostic experiments varying the slipperiness exponent m

Úa inverts for the basal slipperiness parameter C by employing a Weertman sliding law which takes the form

$$\tau_b = C^{-1/m} |\nu_b|^{1/m-1} \nu_b \quad (1)$$

where C is the basal slipperiness, τ_b is the tangential basal traction, ν_b is the basal velocity, and m is the stress exponent.

- 5 The flow of fast flowing glaciers and ice streams are primarily controlled by basal motion i.e. deformation. However observational estimates of basal slipperiness (C) and the stress exponent (m) are limited, and we rely on indirect estimates, often derived from numerically inverting surface velocity measurements. In particular there is ambiguity on the most appropriate value of m . For this reason, we assessed the impact of varying the value of m on the velocity response of Petermann Glacier to two perturbations of its calving front: 1) removing the iceberg that calved in 2010, 2) removing the entire ice tongue. First, we
- 10 invert pre-calving observed velocities (winter 2009/10) for basal slipperiness where we varied the stress exponent (m) between 1 and 9 ($m = 1, 2, 3, 5, 7, 9$). We then input each estimate of basal slipperiness into a diagnostic forward experiment. To assess the impact of different slipperiness distributions on inland ice flow speeds, we look at the normalized change in speed across a centerline profile from the grounding line to 40 km inland for each value of m and for both 2010 calving and entire ice tongue loss (left and middle panels of Figure S3). In both cases, velocity increases are greatest at the grounding line and decrease with
- 15 distance inland. The final panel shows the percentage change in speeds at the grounding line relative to initial flow speeds for both experiments. Importantly the impact of removing the entire ice tongue is distinctly different to removing the 2010 iceberg. Therefor we can conclude that varying the value of m does not impact the results of our diagnostic experiments.

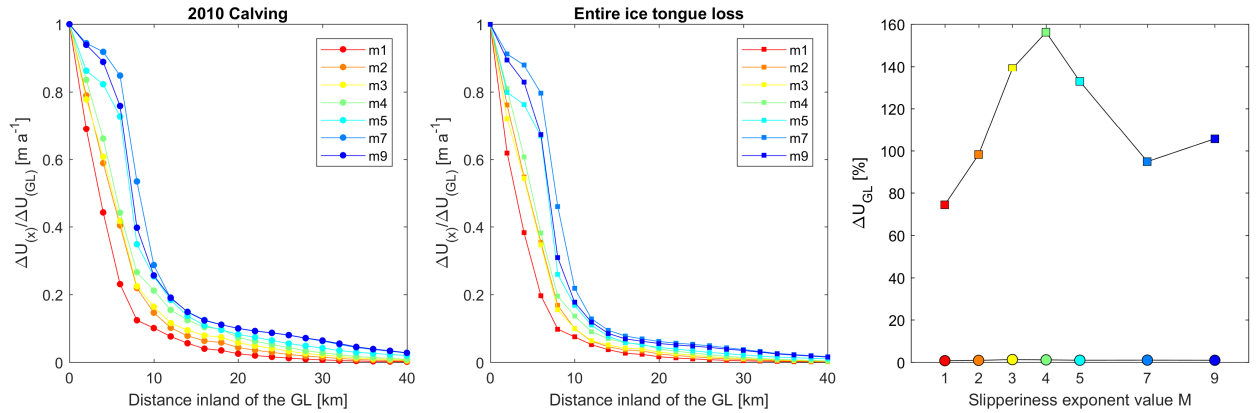


Figure S3. Left two panels show normalized increase in speed along the Petermann Glacier centerline from the grounding line to 40 km inland where $\Delta U_{(x)}$ is the change in velocity at each point along the transect and $\Delta U_{(GL)}$ is the change in speed at the grounding line. Each colored line is a different value of m . The final panel shows the percentage change in speed at the grounding line $\Delta U_{(GL)}$ for each slipperiness exponent value of m . Circles show percentage change after the 2010 calving event and squares after removing the entire ice tongue

References

Joughin, I., Smith, B. E., Howat, I. M., Scambos, T., and Moon, T.: Greenland flow variability from ice-sheet-wide velocity mapping, *Journal of Glaciology*, 56, 415–430, <https://doi.org/10.3189/002214310792447734>, 2010.