

# Warming temperatures are impacting the hydrometeorological regime of Russian rivers in the zone of continuous permafrost

Olga Makarieva<sup>1,2</sup>, Nataliia Nesterova<sup>2,3</sup>, David A. Post<sup>4</sup>, Artem Sherstyukov<sup>5</sup>, Lyudmila Lebedeva<sup>1</sup>

5 <sup>1</sup>Melnikov Permafrost Institute, Merzlotnaya St., 36, Yakutsk, Russia 677010

<sup>2</sup>Saint Petersburg State University, Institute of Earth Sciences, 7/9 Universitetskaya nab, St. Petersburg, Russia 199034

<sup>3</sup>State Hydrological Institute, Department of Experimental Hydrology and Mathematical Modelling of Hydrological Processes, 23 2-ya liniya VO, St. Petersburg, Russia 199053

10 <sup>4</sup>CSIRO, GPO Box 1700, Canberra, Australia

<sup>5</sup>All-Russian Research Institute of Hydrometeorological Information-World Data Center Obninsk, Kaluga oblast, Russia

*Correspondence to:* Olga Makarieva (omakarieva@gmail.com)

15 **Abstract.** Analysis of streamflow data was conducted for 22 hydrological gauges in the Yana and Indigirka River basins with a period of observation ranging from 35 to 79 years up to 2015. These river basins are located completely in the zone of continuous permafrost. The main result is the presence of statistically significant ( $p < 0.05$ ) positive trends in monthly streamflow in the autumn-winter period for most of the gauges. Streamflow increases via break points (post 1981) for 17 of the 22 gauges in September (average trend value for the period of record is 58%,  
20 or 9.8 mm), and 15 of 22 in October (61%, or 2.0 mm). In November and December, increases are seen in 9 out of 19 rivers which do not freeze in November (54%, 0.4 mm) and 6 out of 17 rivers non-freezing in December (95%, 0.15 mm), respectively. Average annual air temperature increases at all 13 meteorological stations of the region by 1.1-3.1 °C over the course of the period 1966-2015. Despite this, the active layer thickness trends are contradictory: it shows an increase of 45 cm, decrease of 77 cm, and no significant trend at the three stations with available soil  
25 temperature data. Precipitation decreases in late winter by up to 15 mm over the period of record. Additionally, about 10 mm of precipitation which used to fall as snow at the beginning of winter now falls as rain. Despite the decrease in winter precipitation, no decrease of streamflow is observed during the spring freshet in May and June in the last 50 years (from 1966); moreover, 5 gauges show an increase of 86% or 12.2 mm in spring flood via an abrupt change in 1987-1993. Changes in spring freshet start date were identified for 10 gauges. The trend value varies from  
30 4 to 10 days earlier in May over the period of record. We conclude that warmer temperatures due to climate change are impacting the hydrological regime of these rivers via changes in precipitation type (rain replacing snow). Other factors such as melting of permafrost, glaciers and, aufeis, or changes in groundwater conditions are likely to contribute to these changes in streamflow, but no direct observation of these changes are available. Overall, these changes are likely to have a significant impact on the ecology of the zone of continuous permafrost. Increasing  
35 freshwater fluxes to the Arctic Ocean could also impact the Arctic thermohaline circulation. Hydrometeorological data used in this study is combined in a single archive and available at <https://doi.pangaea.de/10.1594/PANGAEA.892775>.

**Keywords.** Yana and Indigirka Rivers, climate change, warming trend, autumn-winter streamflow increase, precipitation, permafrost, spring freshet

## 1 Introduction

Numerous studies have shown that river streamflow in Northern Eurasia and North America is increasing (Holland et al., 2007; White et al., 2007; Shiklomanov and Lammers, 2009, 2013; Rawlins et al., 2010). Most of them are focused exclusively on the “Big 6” Arctic rivers – the Ob’, Yenisey, Lena, Mackenzie, Yukon, and Kolyma  
45 (Peterson et al. 2002; Rawlins et al., 2009; Holmes et al., 2013; Rood et al. 2017). Reported streamflow changes are not homogeneous in terms of different runoff characteristics and time scales. While basin-averaged annual and seasonal discharges of the Lena River basin for the period from 1936 to 1995 were increasing (Rawlins et al., 2009), spring peak discharges show no significant changes within the same time frame (Shiklomanov et al., 2007).

Large Arctic river basins are characterized by a great variety of climatic, landscape and permafrost conditions and  
50 the mechanisms of the observed changes could hardly be understood on the large scale of the “Big 6”. Although climate model simulations project increased net precipitation over the pan-Arctic watershed, this is not always supported by ground meteorological data analysis (Rawlins et al., 2010). Runoff change does not necessarily coincide with precipitation and potential evaporation changes (Gao et al., 2016) but usually agrees with increase of air and soil temperature. In some cases there is an opposite change direction in runoff from that in precipitation  
55 (Karlsson et al., 2015). There are also the studies of glacier retreat and their input into increased streamflow of the Arctic Rivers (Dyurgerov and Carter, 2004). Bliss et al. (2014) assessed the global-scale response of glacier runoff to climate change based scenario modelling, and have proposed that the Canadian and Russian Arctic region exhibits steady increases of glacier runoff and consequently hydrological regime.

River runoff change estimates in North-Eastern Siberia are limited and contradictory. Magritsky et al. (2013)  
60 reported an increase in the total runoff of Yana and Indigirka during the period 1976-2006 by 1.5-3% compared to the period before 1976 and noted that the runoff of these rivers increased in summer and autumn by 20-25% and did not change in winter. According to Georgievsky (2016), on the contrary, there is an increase of Yana and Indigirka rivers winter runoff by 40% over the period 1978-2012 compared with the period 1946-1977, and an increase in the spring flood. Majhi and Daqing (2011) concluded that the Yana River monthly flow rises at the Jubileynaya gauge  
65 (224,000 km<sup>2</sup>) for the period of 1972-1999 for June, August, September, October and April, while May, July and March monthly flow have decreased. Bring and Destouni (2014) reported an absence of any significant changes of the Yana and Indigirka streamflow accompanied by a decrease in precipitation of up to 38% for the period 1991–2002 compared to 1961–1991.

Bring et al. (2016) projected long-term streamflow increases over the Yana and Indigirka rivers by 50% during the  
70 21st century by combining information from model runs of multiple scenarios. These estimates agree with other existing projections (Kuzin and Lapteva, 2015; Shkolnik et al., 2017).

Compared to large rivers, the flow of small and medium rivers in cold regions has been studied much less. Tananaev et al. (2016) found that thirty small and medium-sized rivers out of 100 in the Lena River basin showed trends in mean annual flow. Significant changes have been recently reported for small and middle-sized rivers of  
75 northwestern Canada (Spence et al., 2015), Finland (Ashraf et al., 2017), Alaska (Stuefer et al., 2017) and Canadian High Arctic (Lamoureux and Lafrenière, 2017) and attributed to climate change and permafrost disturbances. Further analysis of small river basins could reveal the mechanisms behind ongoing changes as at larger scales, attributing changes can be problematic.

80 Although air temperature rise and associated permafrost degradation have been reported for the whole Arctic and subarctic territories (Nelson, 2003; Frauenfeld et al., 2004), local anomalies could differ due to specific environmental settings. Three periods with different air temperature tendencies were reported for continental regions of North-Eastern Siberia: warming period 1916-1945, cooling period 1946-1975 and modern warming period that started in 1976 (Kirillina, 2013). Analysis of Kirillina (2013) precipitation in the region shows a positive trend with the exception of the Oymyakon meteorological station.

85 Permafrost temperature in Russia has been increasing and the active layer has been deepening for the last 20-30 years (Romanovsky et al., 2010; Sherstyukov and Sherstyukov, 2015) but reported changes are spatially heterogeneous and do not necessarily follow air temperature trends. Permafrost degradation could cause greater connectivity between surface and subsurface water (Walvoord and Kurylyk, 2016), talik development (Yoshikawa and Hinzman, 2003; Smith et al., 2005; Jepsen et al., 2013) and other complex consequences such as land-cover changes that can alter basin runoff production in the permafrost region (Quinton et al., 2011), and changes in the wetland-dominated basins that characterize the southern margin of the permafrost region (Connon et al., 2014).

90 Existing assessments of maximum and minimum flow across the cold regions are contradictory. Minimum flow decrease is reported for the Tibetan Plateau (Gao et al., 2016) and Finland (Ashraf et al., 2017) but an increase is observed at Mackenzie River (Yang et al., 2015), at the Lena river and its tributaries (Tananaev et al., 2016) and in most of the Arctic (Rennermalm and Wood, 2010). Shiklomanov et al. (2007) found no widespread significant change in spring maximum discharge, except for the Lena River, among the 139 gauging stations in the Russian Arctic. Tananaev et al. (2016) reported trends in maximum discharge only in nine time series (negative at three and positive at six gauges) out of the 105 in the Lena River basin. The Ob' and Lena rivers showed uncorrelated changes in spring peak with those aggregated from small natural watersheds located within these larger river basins (Shiklomanov et al., 2007). There are significant negative trends ( $p < 0.1$ ) over 1950-2001 from aggregated maximum discharge for Kolyma river basin (Shiklomanov et al., 2007). According to recent projections, the annual maximum river discharge could almost double by the mid-21st century in the outlets of major Siberian rivers (Shkolnik et al., 2017).

100 (Shiklomanov et al., 2007). There are significant negative trends ( $p < 0.1$ ) over 1950-2001 from aggregated maximum discharge for Kolyma river basin (Shiklomanov et al., 2007). According to recent projections, the annual maximum river discharge could almost double by the mid-21st century in the outlets of major Siberian rivers (Shkolnik et al., 2017).

105 While some studies have examined flows at the outlet of the Yana and Indigirka river basins, estimation of streamflow changes of small and medium-sized rivers in the Yana and Indigirka river basins do not exist. The objective of this research is therefore a quantitative assessment of current changes of hydrometeorological regime within two large arctic river basins, with both basins completely located within the continuous permafrost zone, and which have long-term runoff observations along the main rivers and their tributaries at smaller scales.

110 In section 2 of this paper, we will describe the study area. In section 3, we will describe the data to be examined and the methods that we will use. Results of the analysis will be presented in section 4, while these results will be put into context and potential causal factors influencing the results described in section 5. Finally, some conclusions will be drawn in section 6.

## 2 Study area

### 115 2.1 General description, relief

The Yana and Indigirka rivers are two of the few large Arctic rivers whose basins are completely located in the zone

of continuous permafrost (Figure 1). The terrain is mainly mountainous. There is a high elevation of the Verkhoyansk (Orulgan, 2 389 m), Cherskiy (Pobeda, 3 003 m) and Suntar-Khayata (Mus-Khaya, 2 959 m) ranges, as well as wide river valleys. The average altitude of the research basins ranges from 320 to 1410 m and the values of the outlet gauges from -1.55 to 833 m respectively. The lower parts of the Yana and Indigirka basin area are presented by the Yano-Indigirskaya Lowland. The average height is above 30-80 m. Some places of the lowland are raised up to more than 500 m.

## 2.2 Climate

The study territory is the region where the Northern Hemisphere's 'pole of cold' is located. The absolute minimum there has reached record levels for the Northern Hemisphere: down as far as -71°C in Oymyakon and -68°C in Verkhoyansk (Ivanova, 2006). The research region's climate is distinctly continental. Long-time average annual air temperature ranges from -16.1°C (Oymyakon, 726 m, 1930-2012) to -13.1°C (Vostochnaya, 1288 m, 1942-2012). Minimum mean monthly temperatures are typically observed in January and can fall as low as -47.1°C (Oymyakon) and -33.8°C (Vostochnaya). Maximum average monthly temperatures are observed in July, averaging 15.7°C and 11.8°C for stations Yurty (590 m, 1957-2012) and Vostochnaya, respectively.

Steady cold weather begins in the first week of October; spring starts in the second part of May or at the beginning of June, when seasonal snow cover starts to melt. Snow accumulation is relatively small and accounts for 25-30 cm depth.

Annual average precipitation at Verkhoyansk meteorological station (137 m, 1966-2012) is about 180 mm, while at Vostochnaya station (1966-2012) it is 280 mm. Most precipitation (over 60%) occurs in summer, with a peak in July of up to 70 mm per month (Vostochnaya, 1966-2012).

## 2.3 Soil, vegetation and landscapes

The research basins are situated in the transitional zone between forest-tundra and coniferous taiga (Figure 2). For high altitude mountain areas above 1900 m a.s.l., goltsy (bald mountain) and small glaciers with minimum and maximum area defined as 0.024 and 5.76 km<sup>2</sup> (GLIMS and NSIDC, 2005, updated 2017) are typical. Vegetation in this landscape is absent. Broken stone is present in the form of glacial frost-split boulders as well as diluvia soil of the valley slopes with admixed loam material.

Below is the tundra, which is characterized by distribution of a tight and depressed layer of grass and moss with bushes under which there is rock formation with some ice with admixtures. Most of the research areas are covered larch woodland with moss-lichen cover. In river valleys, grass-moss larch forest and swampy sparse growth forest are typical. Soil types at these landscapes are clayey podzol with partially decayed organic material underlain by frozen soil and bedrock (Makarieva et al., 2019) The updated map of permafrost landscapes (Fedorov et al., 2018) can be used for more detailed description of the studied basins.

## 2.4 Permafrost

Permafrost distribution controls the hydrological regime, especially baseflow formation and ratio of maximum to minimum discharge (Niu et al., 2016). In the studied river basins, permafrost thickness can reach over 450 m at watershed divides and up to 180 m in river valleys and depressions. There are highly dynamic cryogenic features

such as retrogressive thaw slumps found in the Yana river basin that indicate on-going permafrost degradation processes (Günther et al., 2015). Permafrost temperature at a depth of zero annual amplitude in the studied region typically vary from -3 to -11 °C, the active layer depth – from 0.3 to 2 m (Explanatory note ..., 1991).

## 160 **2.5 Hydrological regime and water balance**

The hydrological regime is characterized by spring freshet, high summer-autumn rainfall floods and low winter flow. In winter, small and medium-sized rivers freeze thoroughly. Spring freshet starts in May-June (on average the 20<sup>th</sup> of May) and lasts approximately for a month and a half. In summer, glacier runoff as well as melting aufeis and snowfields contribute to streamflow (Hydrological Yearbooks, 1936-1980; State Water Cadastre, 1981-2007).

165 The amount of precipitation at meteorological stations varies from 176 mm/year (ID 24261) to 279 mm/year (ID 24679). At the high altitude area, annual precipitation can reach up to 600 mm or more per year. Average annual precipitation at Suntar-Khayata station (2068 m) in 1957-1964 reached the value of 690 mm with the corrections for wind and wetting losses (Grave, 1964). Annual precipitation amount at the mountain peaks is estimated to be as high  
170 as 800 mm (Vasiliev, Torgovkin, 2002).

The average annual flow at studied rivers varies from 58 mm (ID 3433, 18.3 km<sup>2</sup>) to 362 mm (ID 3516, 16.6 km<sup>2</sup>). The difference by six times at two watersheds of similar area shows the impact of local conditions on runoff formation. Annual values of flow at the outlet gauges of the Indigirka (ID 3871, 305000 km<sup>2</sup>) and Yana (ID 3861, 224000 km<sup>2</sup>) Rivers are 166 and 156 mm respectively.

175 According to observational data (Makarieva et al., 2018a) annual evapotranspiration depends on the type of underlying surface and the distribution of landscapes over the catchment area. On average, it ranges from 90 mm at the goltsy landscape to 140 mm at the sparse growth of larch trees (Lebedeva et al., 2017).

## **2.6 Groundwater and taliks**

180 Since the whole Yana and Indigirka river basins are located in continuous permafrost, groundwater can be found in a seasonally developed active layer, underneath permafrost (supra-permafrost water) and in taliks (Shepelev, 2011). Depending on texture, infiltration and other soil properties, the active layer stores and transmits water to rivers in summer and early autumn. Water in the active layer could sustain recession river flow in autumn only before the freezing front reaches the permafrost table. Taliks with thicknesses of several meters typically exist under small and  
185 middle-sized rivers even if the rivers may freeze in winter (Mikhailov, 2013). Through-taliks are typically found along the river channels with water depth exceeding 3-5 m. Rivers in continuous permafrost often lose water to channel taliks during summer and gain in winter (Arzhakova, 2001). Through-taliks are also associated with fractured deposits with depth exceeding the permafrost thickness (Glotov, 2015). Rivers with lengths >800 km and basin area >75 000 km<sup>2</sup> typically do not freeze up and flow over the winter. Year-round groundwater springs and  
190 winter flow of large rivers suggest suprapermafrost water contribution.

## **2.7 Aufeis and glaciers**

Aufeis (naleds), which form at mountain foothills, as well as in sub-mountain and intermountain depressions, are another distinguishing feature of the region. According to Simakov and Shilnikovskaya (1958) the research area had  
195 1,281 aufeis covering an area of about 2,082 km<sup>2</sup>. Recent assessment of aufeis area conducted for the Yana and

Indigirka River basins based on recent Landsat imagery analysis has shown that the number of aufeis increased up to 1,796 but the total area decreased to 1,713 km<sup>2</sup> (Makarieva et al., 2018c). The aufeis area share for the studied watersheds in the Indigirka River basin ranges from 0.26 to 1.15% (Makarieva et al., 2018c), though previous estimations are higher: relative aufeis area averages from 0.4 to 1.3%, reaching 4% in the basins of some rivers (Tolstikhin, 1974). For example, the aufeis area at the Suntar river (ID 3499) reaches 58 km<sup>2</sup>, 0.8% of the basin (Makarieva et al., 2018c) while in the Charky river basin (ID 3478) it is 113 km<sup>2</sup>, 1.4% (Tolstikhin, 1974).

In winter, the aufeis reduce river stream and underground flow, and in the warm season, melted aufeis waters form an additional source of river runoff. Most significant flow from melting aufeis is observed in May-June. In most cases, the share of the aufeis component does not exceed 3-7% of annual river runoff (Reedyk et al., 1995; Sokolov, 1975), but in May its proportion may exceed 50% of the total runoff (Sokolov, 1975).

Few glaciers are found in the research area (GLIMS and NSIDC, 2005, updated 2017). The total area of glaciers is about 2.2 km<sup>2</sup> at the Yana river and 436 km<sup>2</sup> (0.14% of the area) of the Indigirka river basin.

At some studied basins, glaciers reach up to 0.38% of the basin area (3488, Indigirka river – Yurty). The glacier runoff may exceed 3.8% of the overall annual runoff and reach 6.1% of runoff in July and August, as, for example, at the basin of the Agayakan river (the Indigirka basin), where glaciers cover over 1.35% of the catchment (USSR surface waters..., 1972).

On the slopes of the Suntar-Khayata and Cherskiy Ranges, perennial snow fields and rock glaciers are widespread (Lytkin, Galanin, 2016). They, along with the ice of the active layer and summer atmosphere precipitation, may represent a significant source of the local rivers, however in this respect they are poorly studied (Zhizhin et al., 2012; Lytkin, Galanin, 2016).

### **3 Data and methodology**

#### **3.1 Data**

Daily discharge series for 22 hydrological gauge stations of Russian Hydrometeorological network in the Yana and Indigirka river basins were analyzed. Most of the stations have hydrological data until 2014-2015, but two of them ceased operation in 2007 and one (Indigirka river at Vorontsovo) in 1996. The median length of observations series is 62 years with minimum and maximum values reaching 36 and 80 years respectively (Table 1, Fig. 1).

Ten out of 22 examined catchments have areas less than 10 000 km<sup>2</sup>, with five of them being less than 100 km<sup>2</sup>. Maximum catchment area is 305 000 km<sup>2</sup> (riv. Indigirka – Vorontsovo). Average elevation above sea level of the examined catchments varies from 320 m (Khoptolooch stream – Verkhoyansk) to 1 410 m (riv. Suntar – riv. Sakhariniya mouth). Thus, the study covers not only large, but also small and medium-sized rivers over a broad range of elevations and landscapes typical for the studied mountain region.

We used daily discharge data for the entire observation period from 1936 up to and including 2014-2015, published in Hydrological Yearbooks (Hydrological Yearbooks, 1936-1980; State Water Cadastre, 1981-2007) and available for the period 2008-2015 on the website of the Automated information data system for state monitoring of water bodies (AIS SMWB) (URL: <https://gmvo.skniivh.ru>, reference date: 01.03.2018).

Monthly and annual flow (mm) and spring freshet start dates (counting days from the beginning of the year) were analyzed here. There are different ways to determine a freshet start date. For example, Lesack et al. (2013) defined

235 the initiation of freshet discharge based on a threshold value of 3% increase in discharge per day. In this study where non-freezing and freezing rivers were investigated, a different approach was considered to be more appropriate. A day was defined as a freshet flood start date if its discharge reached or exceeded 20% of the average discharge value in the studied year. All the streamflow series were visually checked for the adequacy of this assumption.

In some cases when daily discharge data was not available, monthly values of flow were adopted from State Water Cadastre (1979, 1987).

240 In general the uncertainties associated with discharge determination significantly change from year to year and strongly depend on the computational methods used and frequency of discharge measurements (Shiklomanov et. al, 2006). Possible errors in flow values shown in the database as reliable are as follows for all gauges: average annual flow errors do not exceed 10%, monthly flows errors are 10-15% for the open channel period and 20-25% for winter months. The errors of “approximate” flow, placed in the database in parentheses, can exceed the values indicated above by 2-3 times (State water cadastre, 1979). The errors for streamflow in large rivers may be slightly lower: 245 monthly flow errors are 4-12 % for the open channel period and 17 % for winter months in the Lena River basin (Shiklomanov et al., 2006).

Daily air temperatures and precipitation data series, observed at thirteen weather stations (the elevation range varies from 20 to 1288 m) located in the studied basins, over different periods from 1935 (but not later than 1966) to 2015 (some stations to 2012) were reduced to average monthly values series (Table 2).

250 Monthly soil temperatures under natural cover at different depths down to 320 cm from three weather stations over a period of 1966-2015 were also analysed. Detailed description of soil temperature data sets and their quality control methods may be found in Sherstyukov (2012a; 2012b). Active layer thickness (ALT), used for the analysis, was estimated with polynomial interpolation of soil temperatures at depth (Sherstyukov, 2009; Streletskiy and Sherstyukov, 2015).

255 The source of the meteorological and soil temperature data is All-Russian Research Institute of Hydrometeorological Information – World Data Centre (<http://meteo.ru/data>). Combined monthly hydrometeorological data used in this study is available in Makarieva et al. (2018b).

## 260 **3.2 Methods**

In this study, we applied the combination of widely used statistical methods for trend detection and assessment of their values in hydrometeorological data. General guidance with detailed description of different types of tests and their adequate application can be found in Kundzewicz and Robson (2004). Time series of runoff characteristics (monthly flow, estimated flood starting dates and maximum daily flows) and meteorological elements (monthly and annual values of air temperature and precipitation; soil temperature and ALT) were evaluated for stationarity, in relation to presence of monotonic trends, with Mann-Kendall and Spearman rank-correlation tests, at the significance level of  $p < 0.05$  (Mann, 1945; Kendall, 1975; Lehmann, 1975). If both tests suggested a trend at the significance level  $p < 0.05$ , a serial correlation coefficient was tested at unity lag  $r(1)$ . With the serial correlation coefficient  $r < 0.20$ , the trend was considered reliable. In the case of  $r \geq 0.20$ , to eliminate serial correlation in the input series «trend-free pre-whitening» procedure (TFPW), described by Yue et al. (2002), was carried out. «Whitened» time-series were repeatedly tested with Mann-Kendall non-parametric test at the significance level  $p < 0.05$ . The Pettitt’s test (Pettitt, 1979) was applied to look for the presence of a change point in time series at  $p \leq$

275 0.05, the Buishand range test (Buishand, 1982) was used to search for numerous discontinuities at the same significance level.

Trend values were estimated with Theil-Sen estimator (Sen, 1968) and are given in the relevant data units along with the percentage change since the beginning of observations. Note that the trends are presented for the entire period of observations, and not for the period after the change point was identified, as there can be multiple trends within the period of observations. In some (specified) cases, the significance level was relaxed to the value  $p >$   
280 0.05.

#### 4 Results

The results of the trend analysis are presented in Tables 3-8. The Tables have the same structure and designations. The cells filled with grey color correspond to statistically significant trends with  $p < 0.10$ . If any value is bold, it has significance  $p < 0.05$ ; if a value is in italics, it has significance  $0.05 < p < 0.10$ . In Tables 4 (precipitation) and 7-9  
285 (streamflow) each cell with significant trend contains three numbers: 1) the value of total change for the whole period of observations in the characteristic unit (for example, mm) 2) percentage of total change (%); 3) where available – the year of change point or letter “m” for monotonical trend. If there is neither year, nor “m”, the Pettitt’s test was not carried out due to too many gaps in the data. Statistically significant trend values are divided into 4 groups and marked with different colors accordingly: change points around 1966 – magenta, 1970-1985 – green,  
290 1986-1995 – violet, 1996 and later – yellow. Monotonous trends and where change points were not available due many gaps are in black. For streamflow, the year of change point marked with \* indicates that the gauge has a long-term series of more than 70 years with change point in about 1966 and no significant trend after that period (last 50 years). In some cases, a second year of change point is given in brackets, it was estimated with Buishand range test. We used the same colors as in Tables 3-8 in Figure 3 showing the percentage change of monthly and annual  
295 streamflow and Figure 4, S12-S17 which presents the spatial patterns of change periods.

#### 4.1 Air temperature

Annual air temperature increase is statistically significant at all 13 studied stations (Table 3, Fig. S1) with an  
300 average cumulative value of about +2.1°C (from +0.16 to +0.46 and average +0.35°C per 10 years) for the historical period of observations (minimum, maximum and mean number of years correspond to 47, 80 and 63).

During the period from April to July, there is a significant air temperature trend at most of the weather stations of the region; average trend values in these months account for +3.0°C, 3.1°C, 1.9°C and 2.3°C correspondingly (Table 3). Positive air trend is observed in March in the mountainous part of the Indigirka River (5 stations with elevation >  
305 500 m). In August, air temperature has increased at three Yana basin stations and two lowland stations in the Indigirka basin accounting on average for 3.4 and 2.4°C increase respectively. In September, air temperature has increased at two stations of the lower part of the Indigirka river basin by 2.3°C on average.

There are no significant trends in October at the Yana basin weather stations but the mean positive trend at 5 stations of the Indigirka basin accounting for 3.7°C in the same month. In November, at 7 stations of 13 in both basins  
310 positive trends are statistically significant and reach on average 4.7 °C with a maximum value of 6.3°C at Delyankir station (ID 24691).

Positive winter air temperature trends are significant at 4 weather stations in December, 6 – in January and at 1



station – in February. In March, the positive trend value is 3.6 °C on average for 7 meteorological stations of the mountainous part of the Indigirka River basin.

315 Change point analysis was conducted for 9 stations out of 13 with full data series. Almost all changes occur through abrupt shifts rather than monotonic trends. Most change points are attributed to two periods: 1975-1985 and 1986-1996. The shifts in winter air temperature occurred at the beginning of the millennium (1999-2004).

#### 4.2 Precipitation

320 Monthly precipitation analysis for 13 meteorological stations in the region, located at elevations from 20 to 1 288 m, 1966 – 2015 (some stations until 2012), has shown no evidence of a systematic positive trend (Table 4, Fig. S2).

On the contrary, at 6 weather stations out of 9 in the Indigirka basin, a statistically significant precipitation decrease is observed in January and at 3 stations in February. In the Yana basin, 2 stations have shown decrease of precipitation in December. Average statistically significant decrease in winter months ranges from -3.0 to -6.7 mm per month or -44-92 %.

325 In lowland areas which are close to the furthest most downstream gauges of the Yana and Indigirka rivers, reliable negative trends were identified in July (-73%, -23 mm) at Chokurdah station (ID 21946, the Indigirka basin) and in August (-71%, -26 mm) at Kazachie (ID 21931, the Yana basin). It is unlikely that runoff from these areas significantly impacts the flow at the outlets of the Yana and Indigirka Rivers as most of the runoff is formed in upper mountainous parts of the basins.

330 Positive trends in summer months are observed at two stations of the Indigirka basin – + 44% (21 mm) at Vostochnaya station (ID 24679) in June and +49% (22 mm) and +49% (15 mm) in June and September at Deputatsky station (ID 24076) (Table 4).

335 We evaluated cold season precipitation calculated as the sum from October to April. Two stations in the Yana River basin have shown a statistically significant ( $p<0.05$ ) decrease of about 40% or 20 mm. Three stations in the Indigirka River basin experienced negative trends at the level of significance  $0.05<p<0.08$  with reduction of precipitation about -28% or 15 mm per season. The change points for solid precipitation are estimated from 1980 to 1996 with most of them occurring in 1986.

340 A positive trend in warm period precipitation (May – September) is detected at Oymyakon station (ID 24688), the upstreams of the Indigirka river, with values of 35% or 54 mm. Warm season precipitation has decreased by almost half (-48% or -60 mm) at the outlet of Indigirka river (Chokurdah station, ID 21946).

##### 4.2.1 Rain – snow precipitation ratio

345 The state and timing of precipitation in May and September (which are the months when the 0°C air temperature threshold is crossed) were analyzed. The results show that meteorological stations in the higher elevations (which mostly are located in the Indigirka river basin) exhibit a shift towards larger amounts of rain rather than snow in both studied months.

350 In May, three stations show an upward trend for a larger fraction of rain ( $p<0.05$ ). Vostochnaya station (ID 24679, 1288 m) exhibits the strongest changes: mean share for the whole period is 0.43, trend value is 0.45. The stations Oymyakon and Agayakan (ID 24684, 24688) have mean value of rain share equal 0.79 and on average increase by 0.16 (Table 5).

In September, the mean share of rain fluctuates from 0.56 at Vostochnaya station (ID 24679, 1288 m) to 0.79 at Agayakan and Oymyakon stations (ID 24684, 24688, 726 and 776 m). The trend value varies from 0.15 to 0.19 of increase in rain share for the whole period of observation at 5 stations (Table 5). In absolute values, the amount of rain increased on average by 60.7%, or 12.2 mm in total during the same period at 6 stations. Pettitt and Buishand tests for change points indicate an abrupt shift of precipitation regime in September during the 1991-1993 period at 4 stations.

#### 4.3 Soil temperature and ALT

There are three meteorological stations with soil temperature data available for the entire historical period including the beginning of the 21st century for studied territory with total area of 529 000 km<sup>2</sup> – two in the Indigirka and one in the Yana river basin.

We analyzed soil temperature at a depth of 80 cm and estimated maximum active layer thickness (Table 6). The analysis of changes in the number of days with positive soil temperature at the depth of 80 cm for 2001-2015 in comparison with the long-term mean value for 1971-2000 was also carried out. Positive soil temperatures at the depth of 80 cm at the described weather stations are observed from July to October.

**Verhoyansk, ID 24266, 137 a.s.l., Yana River basin** Significant positive soil temperature trends at the depth of 80 cm in summer (from May to September), and negative ones in winter (from January to March) have been identified (Table 6, Fig. S3).

On average, soil temperature at studied depth increased by +3.4°C in summer months for the last 50 years. Maximum trend values are observed in July and August and account for +4.1 and 4.4 °C respectively. In winter, the corresponding temperature average dropped by -2.2°C for the same period of observations. Winter trends should be viewed with some caution as there was a significant gap in the observations from 1985 to 1999.

Change point estimated with Pettitt's test was identified around 1996-1999 in June–September and 2003 in May. Accordingly, ALT (mean = 170 cm) increased by 45 cm. It has grown in 10 years (1997 to 2007) and is stable for the last 8 years. The number of «warm» days at the depth of 80 cm has increased, on average, by 18 days over the last 15 years in comparison with the long-term mean value for 1971-2000 from 87 to 105 cm.

**Oymyakon, ID 24688, 726 a.s.l., Indigirka River basin** In the uppermost part of the Indigirka river basin

meaningful negative soil temperature trends at the depth of 80 cm in summer are observed, along with positive trends in winter (Table 6, Fig. S3). In June – September soil temperature at 80 cm depth dropped on average by -2.8°C and increased by +4.8°C in October – April.

The change of soil temperature occurs in an abrupt manner – the shifts in winter temperature are identified in 1977 (October), 1983 (November, April), 1990 (May) and 1994-1995 (December – February). In summer, the shift cannot be estimated due to the data gap from 1990-1999.

Due to the temperature decrease in summer, estimated ALT (mean = 165 cm) dropped by 77 cm in the period of 1966-2015 (-1.5 cm a-1). The number of «warm» days has dropped by 32 days from 103 to 71 in the period 2000-2015 in comparison with the previous 30-years period.

**Ust-Moma, ID 24382, 196 a.s.l., Indigirka River basin** Statistically significant positive trends are identified for the period from May to November, and on average temperature increases by +2.1°C in 39 years (1977-2015) (Table 6, Fig. S3). Maximum values of trends are observed in October and November and account for +3.0°C and +5.9°C

respectively. The change points are estimated as 2001-2002 for August – November and 2006 for May – July. The trend in ALT (mean=127 cm) is insignificant. The number of «warm» days has increased, on average, by 39 days in 1977 to 2015 from 57 to 96.

#### 4.4 Runoff

395

Positive statistically significant trends ( $p < 0.05$ ) in monthly streamflow were identified during two main periods: in autumn-winter and in the first month of a spring flood – in May for most of the river gauges (Fig. 3, Table 7-8). Most of the time series with significant trends are nonstationary, where changes are attributed to break points. Single and double change points are common for studied streamflow records and are described below.

400

##### 4.4.1 Spring flow (May and June)

In May, a statistically significant increase in streamflow is observed at twelve of the twenty-one studied gauges. Those twelve may be divided into two groups.

405

The first group (Fig. S4, Group A) contains 7 gauges with basin areas from 8290 to 89600 km<sup>2</sup> characterized by a longer continuous series of observations beginning from 1937 to 1956. The shifts of streamflow occur in 1964-1966 and follow a similar behaviour. In most cases, a negative tendency changes to an insignificant positive one. Average trend rates are 79% or 8.9 mm for this group. If the assessment of trend is made for the last 50 years after the change point (1966-2015), no significant trend is detected in May for this group of gauges.

410

The second group (Fig. S5, Group B) consists of 5 gauges with no significant trend, followed by breakpoints during the period from 1980 to 1999 and positive trends thereafter varying from 5.5 to 25.7 mm with average value of 12.2 mm (or from 64 to 103%, 86% in average). Minimum basin area for this group is 16.6 km<sup>2</sup>, maximum is 52800 km<sup>2</sup>. No trends were identified in May at the Yana and Indigirka river outlet gauges for the periods 1972-2007 (ID 3861, 224000 km<sup>2</sup>) and 1936-1996 (ID 3871, 305000 km<sup>2</sup>) respectively.

415

In June, a statistically significant ( $p < 0.05$ ) positive trend in streamflow is observed at 4 gauges of the Yana river (Fig. S6). One gauge exhibits a monotonic increase of flow in June for the last 50-60 years and 3 other gauges have break points in 1983-1995. Average positive trend value is 40% or 16.4 mm.

420

The small river in the Indigirka basin (ID 3510 – 644 km<sup>2</sup>,  $p < 0.057$ ) has shown total decreased trend value during the last 70 years with a break point in 1967. The streamflow shifts from high mean with negative tendency to low mean with slightly positive tendency. If the analysis is made for the period 1967-2015, streamflow in June at this gauge does not present any detectable changes. Total negative trend value accounts for -61% or -14.2 mm.

##### 4.4.2 Summer-autumn floods (July – September)

425

In July, no statistically significant changes of streamflow occur in the Indigirka river basin. In the Yana River basin, two nested gauges show opposite tendencies (Table 7). The streamflow at gauge ID 3474 (8290 km<sup>2</sup>) monotonically decreased by 38% (26 mm). At the same time gauge ID 3443 (52800 km<sup>2</sup>) experienced total increase of streamflow by 17 mm or 36% with a breakpoint in 1995.

In August, an increase in streamflow was identified at 7 out of 22 studied gauges with an average increase by 55% or 18 mm. Areas of the catchments, where discharge increases in August, vary from 644 to 89600 km<sup>2</sup>. Two nested gauges (ID 3507 and ID 3489) have a monotonic increasing trend from mid-50s to 2015. The other, including two

430 nested gauges of the Adycha river (ID 3443, ID 3445), exhibit the shift in 1982-1987 (Fig. S6, Fig.2).  
In September, positive trends were identified at 17 out of 22 gauging stations (average value is 58% or 9.8 mm);  
three of those rivers are small ones (catchment areas are less than 100 km<sup>2</sup>), the others are medium and large rivers  
(Table 7-8, Fig. S7, Fig. 2). This assessment includes a positive trend identified at the Indigirka river outlet gauge  
(ID 3871) for the shorter period 1936-1996.

435 Some river gauges of the Yana River basin (ID 3478, 3479, 3483) have shown monotonic increase, other have  
change points mainly in the 1981-1982 period (nested gauges ID 3414 and 3424, 3443 and 3445); one gauge (ID  
3430) exhibited the shift of mean in 1994.

In the Indigirka river basin, 7 gauges have a change point in 1992-1993 from which two of them with the length of  
time series of about 70 years have additional change points in 1965.

440 The Indigirka river gauge (ID 3871) with the data series interrupted in 1996 has a change point in 1965 as well. One  
may assume that this gauge would show positive shift in September around 1993 as the other of its tributaries, if  
longer observation data were available.

#### 4.4.3 Low flow (October – March)

445 In October, streamflow increases at 15 out of 22 gauges (on average by 61% or 2.0 mm) and in November at 11 out  
of 17 non-frozen gauges (on average by 54% or 0.4 mm) (Table 7-8, Fig. S7-S8). Most of the changes are abrupt. In  
October most of the step trends occur in 1987-1993 with several exceptions in 1982 and 2001-2002, in November –  
1981-1999, mainly around 1994.

In December, positive trends are found at 6 out of 15 non-frozen gauges (Table 7-8, Fig. S8, Fig. 2). Average  
450 positive trend magnitude is 95% or 0.15 mm. Change points occur from 1981 to 1994. A negative monotonic trend  
in December is found at gauge 3483 with the magnitude -54% or -0.04 mm.

Decrease of streamflow at the Indigirka river at the Vorontsovo (ID 3871) is identified in December and January for  
the period 1936-1996 and accounts for 32 and 25 % or -0.20 and -0.08 mm respectively with change points in 1964-  
1969 (Fig. S8-S9, Fig. 2).

455 In contrary, at the Yana river at Yubileynaya gauges (ID 3861) streamflow increases by 74% (0.12 mm)  
monotonically in December and by step trend in 1981 in January amounting to 77% (0.03 mm) correspondingly. A  
positive trend is also found at the upstreams of the Yana river (gauge ID 3414) in January with the magnitude by  
161% or 0.04 mm in 80 years (change point in 1977) (Fig. S9, Fig. 2).

In February, no trends are found at the Yana river basin where only 5 gauges stay unfrozen at this month of the year  
460 (Table 7). In March, streamflow trend at the Yana in Yubileynaya is negative with change point around 1989 when  
monthly average value of 0.003 mm declines to zero.

Positive trends are identified at two gauges of the Indigirka river (ID 3488, 3489) and one of its main tributary, the  
Elgi river (ID 3507) with mean magnitude 74% (0.07 mm), 83% (0.02 mm) and 87% (0.08 mm) in February, March  
and April respectively (Table 8, Fig. S9). The change points are 1981-1987 for ID 3489 and ID 3507 gauges and  
465 2002-2004 for 3488 station in those three months.

#### 4.4.4 Annual flow

In the Yana river basin, statistically significant changes of annual streamflow are found at the Adycha river

tributary. Maximum percentage and net flow changes accounting for +51% or +104 mm during 1960-2015 are  
470 observed at the Adycha river in Ust'-Charky (ID 3443) with basin area 51100 km<sup>2</sup> with a step change in 1995. The  
change point at the nested lower gauge ID 3445 (basin area 89600 km<sup>2</sup>) occurred in 1987 with a total increase of  
flow by 42% or 82 mm for the period from 1937 to 2015 (Table 7, Fig. S10).

An increasing annual trend is also found at the gauges (ID 3478, 22.6 km<sup>2</sup> and ID 3479, 7570 km<sup>2</sup>) with an increase  
by 73% or 79 mm with shift in 1988 and monotonic growth by 48 % or 34 mm correspondingly. Monotonic flow  
475 changes are observed at two nested gauges of the Yana River (ID 3414, 45300 km<sup>2</sup> and ID 3861, 224000 km<sup>2</sup>) with  
the magnitudes by 22%, 24 mm and 39%, 60 mm correspondingly (Table 7, Fig. S10).

In the mountainous part of the Indigirka river basin, positive step trends in annual streamflow are found starting  
from 1993 at two gauges in the upstream of the Indigirka river (ID 3488, 3489) and its tributary, the Elgi river (ID  
3507), with average magnitude by 27% or 49 mm. An increase in annual streamflow is also observed at the smallest  
480 basin from the analyzed set (ID 3516, 16.6 km<sup>2</sup>) with a magnitude of 31% or 115 mm. Runoff in August and  
September have contributed most significantly of all months to the annual streamflow rate changes at these gauging  
stations (Table 8, Fig. S10).

#### 4.4.5 Maximum daily streamflow

485 The analysis of maximum daily streamflow was carried out for the warm period from May to September. In general,  
the patterns of changes of maximum daily discharges replicate the change of monthly streamflow (Table S1). Main  
changes in May are observed with breakpoints around 1966 when negative trends reverse into an insignificant  
positive one. The percentage change in May for 8 gauges averages 69% over the whole period of observations. In  
September, the break points in terms of maximum discharge occur around 1993 in the Indigirka and between 1976-  
490 1981 in the Yana River basin. Average increase of maximum discharge in September reaches up to 55% for 15  
gauges.

#### 4.4.6 Freshet onset dates

495 In the rivers with basin area less than 2000 km<sup>2</sup>, freshet starts in the middle of third week of May (May 11-18); for  
the larger rivers this date shifts to the middle of the fourth week (May 25, on average). Freshet starts 4-8 days earlier  
than 50-70 years ago (the trends are statistically significant) in 8 rivers with the identified streamflow changes in  
May, as well as in 3 gauges for which monthly streamflow increase in May is statistically insignificant; two of these  
gauges have catchment areas smaller than 1 000 km<sup>2</sup> (Table 1). In the Indigirka River basin, 3 gauges have change  
500 points of freshet onset dates in 1967 and another 3 have monotonical shift. In the Yana River basin 4 gauges have  
monotonical change to earlier onset, 1 gauge has a change point in 1978 and 2 – in 1995-1997.

## 5 Discussion

### 5.1 Air temperature

505 Global land-surface air temperature has increased over the period 1979-2012 by 0.25-0.27 °C per 10 years (IPCC,  
2014). According to Dzhamalov et al. (2012) the warmest decade in Russia was 1990–2000, while the highest  
temperature anomaly was recorded in 2007 (temperature anomaly of +2.06 °C), followed by 1995 (anomaly of

+2.04 °C) and 2008 (anomaly of +1.88 °C).

510 The Arctic has warmed at more than twice the global rate over the past 50 years. The greatest increase of more than 2 °C since 1960 occurred during the cold season (AMAP, 2017). Data from our study supports these observations. The annual air temperature increase in Yana and Indigirka river basins with average annual value about +2.1 °C (1966–2015) and trends from +0.16 to +0.46 °C per 10 years slightly exceeds other observations. Interpolated MAAT trends between 1956 and 1990 in the studied region are from 0.15 to 0.30 °C per 10 years (Romanovsky et al., 2007). Kirillina (2013) reported air temperature increase at the Verhoyansk, Ust'-Moma and Oymyakon meteorological stations from 1 to 2 °C in warm season and from 1.6 to 1.9 °C in winter season for the period 1941-2010.

520 The different period of analyzed data could partly explain the difference in estimated trends. As noted by Fedorov et al. (2014) and Kirillina (2013), there were several phases with different air temperature tendencies for continental regions of North-Eastern Siberia in the 20th and 21st centuries. The last warming phase started in the 1960s or 1970s and was preceded by three or four decades of cooling. The lowest trends from 0.16 to 0.30 °C per 10 years were identified at the stations with longest MAAT time series that partly included the cooling phase: Ust-Charky 24371 (1942-2015), 21946 Chokurdah (1939-2015), 24679 Vostochnaya (1942-2015) and 24688 Oymyakon (1935-2015). It suggests that the actual MAAT trend for last 40 years is spatially homogenous for the Yana and Indigirka river basins. Trend values exceeding 0.3 °C/year slightly outnumber globally reported ones and agree with other regional estimations of 0.03–0.05 °C/year (Pavlov and Malkova, 2009).

## 5.2 Precipitation

530 Although precipitation is projected to increase over the pan-Arctic basin, this is not always supported by ground meteorological data. Small and insignificant positive trends from 0.63 mm/year to 5.82 mm/year are reported for the 1951–2008 period for the high latitudes of the Northern hemisphere (60°N to 90°N) by IPCC (2014). Pan-Arctic cold season precipitation (October-May) increased by 3.6 mm per decade (1.5% per decade) over the 1936–2009 (AMAP, 2017; Callaghan et al., 2011c).

535 The presented analysis for 1966-2015 (to 2012 at some stations) has shown no evidence of a systematic positive trend in annual precipitation and even displays a negative trend of solid precipitation for several stations including Verhoyansk. Savelieva et al. (2000) reference the decrease of winter precipitation over the territory of Eastern Siberia to the changes in the location and intensity of the Siberian High and Aleutian Low before and after 1970s. At the same time Kononova (2013) reported increase of winter sum for Verhoyansk for 1981-2007.

540 The complex topography of the Arctic region may cause considerable underestimation of precipitation as meteorological stations tend to be located in low elevation areas (Serreze et al., 2003). Analyzed precipitation data did not undergo wind correction which may vary from 10% in summer to 80-120% in winter due to the effect of wind on gauge undercatch of snowfall (Yang et al., 2005). The study confirms high uncertainty of spatial pattern of the precipitation trends in cold regions (Hinzman et al., 2013).

## 5.3 Soil temperature

545 Permafrost temperatures have risen in many areas of the Arctic (AMAP, 2017). Long-term data on permafrost temperature from boreholes for the Yana and Indigirka basins is extremely scarce. Romanovsky et al. (2010)

reported an increase of mean annual ground temperature (MAGT) in the eastern part of Northern Yakutia (including the Yana and Indigirka River basins) up to 1.5°C over the last 20 years at the 15 m depth.

550 Pavlov and Malkova (2009) reported annual ground temperature linear trends of 0.02-0.03 °C/year for North-Eastern Russia.

Air temperature increases in May-July period at Oymyakon station, soil temperature dropped on average by -2.8°C (1966-2015) in summer. Therefore we suggest that the data of Oymyakon station is not reliable as the decrease of soil temperature occurred in an abrupt manner which appears to be related to the replacement of an instrument.

555 Additionally, it is hypothesised that the increase of liquid precipitation should warm permafrost through advective heat transport.

Identified trends of air, soil temperature and precipitation at Verkhoyansk and Ust'-Moma stations agree with each other. At Verkhoyansk soil temperature increase in May-September follows air temperature upward tendency in April-August with one month delay. The soil temperature drop in winter may be caused by decrease of snow depth (Sherstukov, 2008) due to identified statistically significant decrease of precipitation in cold season from October to April (Table 4). At Ust'-Moma soil temperature increase from May to November could be explained by statistically significant air temperature rise for nine months out of twelve.

560 Detected trends from -0.05 to +0.12 °C/year at 80 cm depth in different months for 1966 (1977)-2015 at Verkhoyansk and Ust'-Moma stations show significant scatter compared to reported trends for the whole North-Eastern regions that vary from 0 to 0.03 °C/year.

565 In Eastern Siberia and the Russian Far East, ALT generally increased between 1996 and 2007 but has since been more stable (AMAP, 2017), which is confirmed by the temporal patterns of ALT change at Verkhoyansk station.

#### 5.4 Streamflow

570 Streamflow significantly ( $p < 0.05$ ) increased at least in one month at 19 gauges of the 22 analyzed. Three small rivers (ID 3501 84.4 km<sup>2</sup>, 1120 m, 98 mm; ID 3480 – 1.2 km upstream of the mouth, 98 km<sup>2</sup>, 570 m, 81 mm; ID 3433, 18.3 km<sup>2</sup>, 320 m, 58 mm) do not show any significant changes of any studied streamflow metrics.

575 Analysis of the runoff data for the Yana and Indigirka river basins has shown statistically significant positive discharge trends in May and the autumn-winter period for the last few decades (accompanied by significant warming). Statistically significant increases are seen in 12 out of 22 in May, 17 out of 22 in September, 15 out of 22 in October, 9 out of 19 in November, 6 out of 17 in December, 4 out of 12 in January, 3 out of 8 in February and 3 out of 7 in March. Note that total number of gauges decreases below 22 in the period from November to April because the rivers freeze.

##### 5.4.1 Autumn

580 September shows the most considerable change of hydrological regime. The increase of streamflow happened at basins of all sizes in 17 of the 22 studied gauges. In September, air temperature and precipitation increased only at 2 and 1 meteorological stations out of 13 respectively.

585 In the Indigirka river basin, the increase in streamflow can be attributed to the shift of precipitation type in September. Investigating the correlation between monthly streamflow and precipitation in September for 4 small watersheds (area <100 km<sup>2</sup>) where meteorological stations are located nearby, we found that the correlation

coefficient varies from 0.16 to 0.59 for liquid precipitation and from 0.14 to 0.60 for total precipitation (Table 9, Fig.S11). We could not explain the reasons for low correlation at gauge 3433 (Table 9). It is also worth noting that for gauge 3501, the correlation coefficient increases from 0.27 to 0.46 for total and liquid precipitation respectively.

590 The shift of precipitation from solid to liquid occurs starting from 1993 and manifests in a considerable increase of rain fraction in comparison with snow at meteorological stations located in the mountains. The fact that the changes of streamflow are observed at the gauges regardless of basin size and in general match the breakpoints of streamflow rise and precipitation ratio shift indicate that it is climate rather than other possible factors (permafrost thaw, increased groundwater connectivity, etc.) which drives those changes. Average magnitude of streamflow trend reaches up to 9.8 mm, which is comparable with the mean absolute increase of rain precipitation of 12.2 mm. In the Yana River basin, one would expect a similar linkage between precipitation and streamflow in autumn, but because of the lack of meteorological stations in higher elevations this cannot be confirmed.

600 Spence et al. (2011) have shown that the trend towards more autumn rainfall in the northwestern subarctic Canadian Shield with no sign of significant total precipitation increase has been sufficient to cause late season peaks in discharge and higher winter low flows. Recessional curves of early autumn flood events extend into later autumn and winter season. The streamflow changes in October generally repeat the spatial pattern of changes in September but with lower magnitude.

The hypothesis of Berghuijs et al. (2014) stating that a shift from a snow- towards a rain-dominated regime would likely reduce streamflow is contradicted by the results of this study for the rivers in the continuous permafrost zone.

#### 605 **5.4.2 Winter**

Upward trends of low flow are observed in most of the Arctic (Rennermalm and Wood, 2010). The widely found hypothesis is that increased low flow indicates permafrost degradation, aquifer activation and better connectivity between surface and subsurface water. Increasing active layer thickness, enlarged infiltration and sub-surface water contribution to winter discharge by deeper and longer flow pathways sustain increasing winter streamflow in permafrost environments (Karlsson et al., 2015, Niu et al., 2016; St. Jacques and Sauchyn, 2009; Tananaev et al., 2016).

615 Change points for low flow were detected in 1980s, 1990s and 2000s. Similar change points are observed at the Lena River basin (Tananaev et al., 2016), where the major shifts in all nonstationary time-series occur in the 1990s, but when the data from adjacent decades are combined, the major changes in minimum discharge occur between 1985 and 1995, and in mean annual daily flow between 1995 and 2005.

The changes in November-December tend towards basins larger than 17,000 km<sup>2</sup> although many smaller ones do not freeze up until January. Glotova and Glotov (2015) attributes that to the fact that the fraction of groundwater contribution to middle- sized and large basins is higher than to smaller ones in the continuous permafrost zone.

620 Markov and Gurevich (2008), Gurevich (2009), Dzamalov and Potehina (2010) have substantiated the hypothesis on a regulatory impact of river ice cover in the regions with long-lasting winter on ground water feeding into rivers. It suggests that in colder winters, with a significant thickness of ice, the total water discharge decreases in small river basins. In less severe winters, there is a decrease in the thickness of river ice and the preservation of higher runoff of the underground streamflow in the river by the end of winter.

625 Shiklomanov and Lammers (2014) report significant negative linear trends for the outlet gauges of the Lena,



Yenisey and Yana Rivers where decreases in maximum ice thickness over 1955–2012 reached up to 73, 46 and 33 cm respectively. Average values of maximum ice thickness for the same rivers were about 180, 105 and 153 cm respectively for the period 1955-1992 (Vuglinsky, 2000). 10-days series of river ice depth for the Lena River at Tabaga for the period 1955-2015 were analyzed based on Mann-Kendall test at the significance level of  $p < 0.05$ . Negative statistically significant trends were identified in March and April with Theil-Sen estimator. The depletion of river ice depth intensifies from March to April and reaches the rates from 27 to 49 cm, or 20-35% (Copernicus Climate Change Service, project #C3S\_422\_LOT1\_SMHI). However, Shiklomanov and Lammers (2014) have found that the relationship between annual maximum ice thickness and mean river discharge over November–April has shown no significant correlation: the highest correlation coefficients were found for the Yenisey ( $r = -0.63$ ) and Lena ( $r = -0.54$ ).

### 5.4.3 Freshet

The changes of monthly streamflow in May occur in an abrupt manner. At 7 gauges (area  $\geq 8290 \text{ km}^2$ ) out of 12, the shift of flow happened around 1966, it was accompanied by two consequent years (1967, 1968) with extraordinarily high streamflow in May. Monthly flow in May 1967 and 1968 exceeded the monthly average by 3.8 – 6.5 times. Moreover, at 9 gauges out of 22 it was the highest flow through the whole period of observations. At the other 6 gauges, streamflow was the second highest among the observations with three of them differing by less than 5% from the historical maximum, the other 3 – from 11 to 27%.

No significant trends are detected for the period after the change point (1967-2015) alone. The changes of spring freshet start date were identified at 10 gauges with streamflow changes in May. Trend value varies from 4 to 10 earlier days. This agrees with Savelieva et al. (2000) who stated that the final frost in spring has been 12–15 days earlier than the mean value in Yakutia. Smith (2000) estimated the magnitude of time shift of start date of spring ice-cover events for the outlet of the Indigirka river at Vorontsovo (ID 3871) as 8.1 days for the period of observations 1937-1992.

Another 5 basins have shown the shift of flow in May during the period from 1980 to 1999. In 4 cases of 5 that shift can be attributed to earlier freshet. Yang et al. (2014, 2015) documented increases in May flows for the Mackenzie and Yukon Rivers, respectively related to earlier melting of snow. Earlier start of freshet agrees with identified significant air temperature increase in May at 9 out of 13 meteorological stations in the region. But in contrast to the Lena river basin, where strong warming in spring led to an advance of snowmelt season into late May and resulted in a lower daily maximum discharge in June (Yang et al., 2002; Tan, 2011), at the study gauges streamflow have not reduced in June (except ID 3510).

## 5.5 Water balance

### 5.5.1 Precipitation and streamflow relationship

Positive discharge trends in the Arctic have been established in recent years (McClelland et al., 2006; Peterson et al. 2002, 2006; Shiklomanov and Lammers, 2009). Increasing precipitation has been suggested as the one of the drivers of increasing streamflow (Dyurgerov and Carter, 2004; McClelland et al. 2004).

The findings of this study largely contradict this, with an increase of streamflow reported at most of the gauges

665 despite no substantial change in absolute amount of precipitation. We estimate that 10 mm of snow is lost in  
September as rain draining directly into streamflow. Adding the decrease of precipitation in February-March  
months, the decrease of snow water equivalent during winter may reach up to 15-20 mm in total. Curiously though,  
no evident decrease of streamflow is observed during freshet or summer months.

Inconsistent trends in discharge and precipitation have also been reported for other Arctic rivers. Berezovskaya et al.  
670 (2004) have shown that the patterns in increasing trends of runoff from Siberian Rivers cannot be resolved from the  
apparent lack of consistent positive trends in the considered precipitation datasets.

Milliman et al. (2008) suggest that a fluctuating climate in the Yana River watershed precluded delineating a  
statistically significant change in either precipitation or discharge, but the Indigirka River basin had a statistically  
significant decrease of precipitation and non-significant increase in runoff.

## 675 **5.5.2 Evapotranspiration**

The issue of increasing streamflow in the absence of increasing precipitation may be explained by decreased  
evapotranspiration. By increasing the active layer depth and thus potentially lowering the water table,  
evapotranspiration might decrease, leading to increases in runoff (McClelland et al. 2004). Milliman et al. (2008)  
680 proposed that decreased evapotranspiration due to earlier snowmelt and the changes in water storage within the  
drainage basins could be a potential source of excess streamflow. Based on modelling results Stieglitz et al. (2000)  
showed that as warming occurs mostly during winter months it does not lead to an increase in evapotranspiration.

On the other hand, Rawlins et al. (2010) argue that evapotranspiration is increasing. This is supported by reanalysis  
data for the pan-Arctic domain. According to model simulation, evapotranspiration has a significant trend of 0.11  
685  $\text{mm yr}^{-2}$  (VIC model, 1950 – 1999), annual total evapotranspiration from LSMs model also shows a positive trend  
(0.40  $\text{mm yr}^{-2}$ ) (Rawlins et al., 2010). A longer growing season, observed as a result of climate warming in the 20th  
century, is likely to result in continued upward trends in evapotranspiration (Huntington 2004).

## **5.6 Cryosphere**

### 690 **5.6.1 Thawing permafrost**

Subsurface ice melting along with air temperature increase, widespread over the studied area (Brown et al., 1998;  
Yang et al., 2002), can contribute to the streamflow increase (USSR surface waters resources, 1972; Frey and  
McClelland, 2009). Though McClelland et al. (2004) argue that if water released from thawing permafrost was  
695 making a significant contribution to the observed increase in annual discharge from Eurasian Arctic rivers, one  
might expect that watersheds with the most permafrost cover would show the largest increase in runoff, but no such  
pattern is apparent.

An analysis using satellite based gravimetry at the Lena basin suggest that the storage of water in these areas has  
increased over the past decades (Velicogna et al., 2012; Muskett and Romanovsky; 2009), but the causes of this  
700 phenomenon are not clear (Velicogna et al., 2012). One reason may be the permafrost degradation, because warming  
in the active layer will increase the flow of groundwater and, consequently, the discharge of groundwater into the  
rivers will be increased too (Ge et al., 2011; Walvoord et al., 2012; Michelle et al., 2016; Lamontagne-Hallé, 2018).  
However, this phenomenon only holds if sufficient water is available to replenish the increased discharge.

705 Otherwise, there will be an overall lowering of the water table in the recharge portion of the catchment (Ge et al.,  
2011). Michelle et al. (2016) suggest that permafrost loss is more likely to contribute to baseflow increases in  
discontinuous permafrost than in continuous permafrost, where permafrost tends to be cold and thick. The results of  
this study have shown that baseflow is increasing in the zone of continuous permafrost as well.

710 If the permafrost is degraded, talik zones can be relieved. Most groundwater discharge occurs through areas  
overlying open taliks so they play the important hydrogeological role in accommodating preferential pathways  
acting to either recharge the deeper regional aquifer from the supra-permafrost system or facilitating discharge from  
the deeper aquifer (Bense et al., 2011; Walvoord et al., 2012; Lamontagne-Hallé, 2018). Permafrost thaw can also  
generate rapid landscape changes. An example may be thermokarsting and plateau subsidence (Quinton et al., 2011)  
that in turn influence surface water storage, routing, and runoff (Connon et al., 2014; Michelle et al., 2016).

### 715 **5.6.2 Glaciers, rock glaciers and aufeis**

Another possible contribution to streamflow increase could be the meltwater from glaciers at least in the Indigirka  
river basin where glaciers take up to 0.12% of the total basin area.

720 In current climate the glaciers of the region melt more intensively in July and August so their input to streamflow  
would be intuitively expected during those months. . In the headwaters of the Indigirka river (ID 3488, 51100 km<sup>2</sup>)  
the glaciers share is the highest among studied rivers and amounts up to 0.30% of the basin area, however no  
significant trend of streamflow is observed in July and August. The next downstream gauge of the Indigirka River  
(ID 3489, F = 83500 km<sup>2</sup>) exhibits monotonical increase of streamflow in August from 1944 to 2015 which is  
mainly explained by increasing streamflow of its tributary, the Elgi River (ID 3507) where no glaciers are found.

725 Huss and Hock (2018) estimated hydrological response to current and future glacier mass loss; according to their  
simulations, annual maximum input of glacier runoff to streamflow in the Indigirka River basin have been passed in  
the period of 1980-2010 and expected to decline in the future., It will also be accompanied by the change of timing  
of glacier runoff. In the Indigirka River basin glacier runoff is expected to increase by 20-40% in June and drop by  
20% in average in other months (Huss and Hock, 2018).

730 Liljedahl et al. (2017) have found that in Jarvis Creek (634 km<sup>2</sup>), (a subbasin of the Tanana and Yukon Rivers), the  
excess discharge sourced from mountain glaciers has not only increased headwater streamflow, aquifer recharge,  
and storage but has also increased aquifer capacity – all with the final effect of increasing winter discharge in lower  
gauges. Ananicheva (2014) estimated the losses of glacier ice volumes for the Suntar-Khayata and Chersky Ranges  
as 1.7 and 1.4 km<sup>3</sup> for the period of 1945-2003 and 1970-2003 respectively. 1.7 km<sup>3</sup> in 58 years would give an  
additional inflow of 0.35 mm per year which by order is comparable with the increase of streamflow in the Indigirka  
735 River (ID 3489) in November and December together for the same period. The fact that the change points of the  
increase of streamflow in late autumn – earlier winter occurred about 10-18 years earlier at downstream gauge (ID  
3489) in comparison with headwater gauge (ID 3488) does not contradict this hypothesis. But the same pattern of  
more early change points at downstream gauge is observed at nested gauges of the Adycha river (ID 3443, 3445)  
where glacier impact would be negligible due to their tiny area (about 1.35 km<sup>2</sup> in total).

740 The melt of rock glaciers and aufeis, which are widespread in the study area, may have a similar effect of additional  
water input. According to Lytkin and Galanin (2016), 540 rock glaciers are identified within Suntar-Khayata Range  
with a distribution density of 8.4 objects per 100 km<sup>2</sup>.

The aufeis account for 0.01 – 0.5% of relative basin areas in the studied territory (Shepelev, 2016).

### 5.6.3 Geotectonic conditions

745

A significant positive trend of annual streamflow was identified only for four gauges. Arzhakova (2001) emphasizes that riv. Elgi (ID 3507, the Indigirka river basin) and riv. Adycha (ID 3443, 3445, the Yana river basin) cross tectonic dislocation zones. The studied area is characterized by modern seismotectonic activities (Imaeva et al., 2016). Taliks, which form within faults and excessive jointing zones, supply rivers even in extreme winter conditions (Romanovsky, 1983; Piguzova, 1989). The correlation between streamflow and sub-permafrost waters is also confirmed by Glotov et al. (2011), who assumed that in particular years, the Kolyma river winter runoff losses at cross sections downstream in comparison with cross sections upstream depending on the current extensive extensions and compressions of underflow through talik space during sublittoral seismic activity periods. Savelieva et al. (2000) pointed to redistribution of the water budget between the upper (thaw layer) water and ground water beneath the permafrost. According Savelieva et al. (2000), the increases of temperature and thickness of the permafrost active layer may enhance the water inputs from the seasonal thaw layer into the ground waters beneath the permafrost through tectonic trenches and lake's talik zone.

750

755

### 5.7 Overall impacts to the ecosystem

760

This study has identified increases in runoff in rivers discharging to the Arctic Ocean. Increasing volumes of freshwater flows to the Arctic Ocean could lead to a significant weakening of the thermohaline circulation, changing of sea stratification and sea ice formation (Arnell, 2005; Lique et al., 2016, Weatherly and Walsh, 1996). The total volume of water being discharged from the Yana and Indigirka rivers is around 84 km<sup>3</sup> (about 1.7% of total freshwater discharge to the Arctic). As a result, changes in these two basins are unlikely to impact the Arctic by themselves, noting however that even subtle changes of river streamflow may have large implication on the ocean-climate system (Miller and Russel, 2000). However, if the changes in hydroclimate seen in these basins are being felt across other Arctic basins, impacts on the Arctic Ocean could be significant.

765

Approximately 85% of the total terrestrial runoff to the Arctic Ocean is supplied by rivers draining from the Russian Federation (Aagaard and Carmack, 1989), therefore analysis of this database covering the Yana and Indigirka rivers, is particularly timely. Forman and Johnson (1996) have previously identified the volume, timing, and natural variability of Russian river discharge as being a major priority in Arctic science. In particular, the Indigirka is one of the two largest rivers flowing into the East Siberian Sea (Anderson et al, 2011) and thus changes in flows from the Indigirka have the potential to impact on acidity, nutrients and carbon cycling in this sea (Semiletov et al, 2016).

770

In terms of ecological impacts, increases in discharge, velocity, temperature, and concentration of suspended materials exert important effects on primary production and food-web dynamics in rivers and estuaries (Scrimgeour et al., 1994). Flooding associated with increased discharge is a primary control on the exchange of sediment and organic carbon between rivers and Arctic floodplains (Smith and Alsdorf, 1998).

775

## 6 Conclusions

780

Analysis of data from the Yana and Indigirka river basins has shown increases in annual air temperature for the region of around 2.0 °C over the last 50 years (1966-2015). Much of this increase has occurred in the late autumn

and spring. Precipitation has shown a decrease in the late winter (February-March) and exhibits little change in other seasons. However, the increases in air temperature have led to a shift in the rain-snow ratio, with more rain at the expense of snow in May and September in mountainous areas. In total, snow loss can be estimated at around 20-25 mm, half of which now falls as rain and the other half is the decrease in late winter precipitation. The increase in air temperature is also reflected in soil temperature and the length of the thaw season.

785

Despite the slight decrease in overall precipitation, analysis of daily discharge data for 22 gauging stations in the Yana and Indigirka river basins (1936-2015) has revealed, at most of the stations, statistically significant ( $p < 0.05$ ) positive trends in monthly streamflow during the autumn-winter period (September through December) and in the spring flood (May-June). Changes in spring flow are also seen through the spring freshet occurring 4 to 10 days earlier over the period of record. Total annual flow has increased significantly in the upstream tributaries of the Yana and Indigirka rivers.

790

Most of the increases in streamflow are seen via break points, rather than showing a monotonic increase over the entire period of record. The structure of the timing of these changes is very complex; however, in general, the changes occur in the Yana River basin 10 years before the Indigirka River basin. Changes in winter streamflow are seen in the larger river basins (lower-elevation gauges) before they are seen in the smaller river basins. Analysis of monthly data is required in order to identify these changes, as in many cases, changes in annual flow are not significant. Additionally, analysis of other datasets such as precipitation and temperature is required in order to develop hypotheses regarding the potential causes of these changes in streamflow.

795

Increases of streamflow in the autumn-winter period are likely mainly caused by a shift in precipitation from snow to rain in September, with consequent increases in streamflow in that month, continuing into October and later months. Decreased depth of river ice and better connection of surface and ground water due to deepening of active layer and prolonging of freeze-free period may also be causing higher winter flow.

800

There are no changes seen in spring discharge in the last 50 years (from around 1966) except at several upstream, mountainous gauges in both studied river basins. Curiously, snow losses and the earlier timing of the spring freshet in May do not lead to a decrease of streamflow in June. This additional input of water is likely related to the regional warming trend impacting more intensive melting of the cryosphere elements such as permafrost, glaciers, and aufeis. It is difficult to directly attribute changes in streamflow to definite causes and it is almost certainly a consequence of a complicated interplay between different changing water storages and pathways in warming permafrost. The possibility also exists of additional water input via precipitation higher in the mountains, but this hypothesis cannot be verified with current observational data.

805

810

The observed changes agree with reported positive trends in arctic river discharge albeit with low confidence (IPCC, 2014) and the importance of local factors in streamflow response to climate change over Siberia (AMAP, 2017). Increased streamflow may also cause changes to the Arctic Ocean through an increased freshwater flux and decreased thermohaline circulation.

815

**Acknowledgements** The authors are thankful to two anonymous reviewers whose comments made the paper considerably better. The study was partially funded by RFBR according to the research project № 18-45-140065.

820

## References

- Aagaard, K., and Carmack, E. C.: The role of sea ice and other fresh water in the arctic circulation. *J. Geophys. Res.*, 94, 14485–14498, 1989.
- 825 AMAP. Snow, Water, Ice and Permafrost. Summary for Policy-makers. Arctic Monitoring and Assessment Programme (AMAP), Oslo, Norway. 20 pp., 2017.
- Ananicheva, M.D.: Estimation of the areas, volumes and heights of the boundary of the feeding of glacier systems of the Northeast of Russia from the space images of the beginning of the 21st century. *Ice and Snow*, 1 (125), 35-48, 2014.
- 830 Anderson L.G, Bjork G, Jutterstrom S, Pipko I, Shakhova N, Semiletov I, and Wahlstrom I. East Siberian Sea, an Arctic region of very high biogeochemical activity, *Biogeosciences*, 8, 1745–1754, 2011.
- Arnell, N. W.: Implications of climate change for freshwater inflows to the Arctic Ocean, *J. Geophys. Res. Atmos.*, 110(D7), D07105, available at: <https://doi.org/10.1029/2004JD005348>, 2005.
- Arzhakova, S.K.: The winter flow of the rivers of the permafrost zone of Russia. *Gidrometeoizdat*, St. Petersburg, 2001 (in Russian).
- 835 Ashraf , B., AghaKouchak, A., Alizadeh, A., Mousavi- Baygi, M., Moftakhari, H.R., Mirchi, A., Anjileli, H., and Madani, K.: Quantifying Anthropogenic Stress on Groundwater Resources, *Scientific Reports*, 7, 12910, doi: 10.1038/s41598-017-12877-4, 2017
- Automated information system for state monitoring of water bodies of the Russian Federation (AIS SMWB): <https://gmvo.skniivh.ru>, last access: 01 March 2018 (in Russian).
- 840 Bense, V. F., Kooi, H., Ferguson, G., and Read, T.: Permafrost degradation as a control on hydrogeological regime shifts in a warming climate. *Journal of Geophysical Research*, 117(F03036). doi: 10.1029/2011JF002143, 2011.
- Berezovskaya, S., D. Yang, and Kane, D. L.: Compatibility analysis of precipitation and runoff trends over the large Siberian watersheds, *Geophys. Res. Lett.*, 31, L21502, doi:10.1029/2004GL021277, 2004.
- Berghuijs, W.R., Woods, R.A., and Hrachowitz, M.: A precipitation shift from snow towards rain leads to a decrease in streamflow. *Nat. Clim. Chang.* 4, 583–586, 2014.
- 845 Bliss, A., R. Hock, and V. Radić (2014), Global response of glacier runoff to twenty-first century climate change, *J. Geophys. Res. Earth Surf.*, 119, 717–730, doi:10.1002/2013JF002931.
- Bring, A, and Destouni, G.: Arctic climate and water change: Model and observation relevance for assessment and adaptation, *Surveys in Geophysics*, 35, 853–877, 2014.
- 850 Bring, A., Fedorova, I., Dibike, Y., Hinzman, L., Mård, J., Mernild, S. H., Prowse, T., Semenova, O., Stuefer, S. L., and Woo, M.-K.: Arctic terrestrial hydrology: Asynthesis of processes, regional effects, and research challenges, *J. Geophys. Res. Biogeosci.*, 121, 621–649, doi:10.1002/2015JG003131, 2016.
- Brown J., O.J. Ferrians, Jr., Heginbottom, J.A., and Melnikov, E.S.: Circum-arctic map of permafrost and ground ice conditions. Boulder, CO: National Snow and Ice Data Center. Digitalmedia, 1998.
- 855 Buishand, T. A.: Some methods for testing the homogeneity of rainfall records, *J. Hydrol.*, 58, 11–27, 1982.
- Bulygina, O.N., Veselov, V.M., Razuvaev, V.N., and Aleksandrova, T.M.: Description of an array of urgent data on the main meteorological parameters at Russian stations. Certificate of state registration of the database No. 2014620549: <http://meteo.ru/data/163-basic-parameters#description> of the data array, last access: 01.03.2018 (in Russian).

- 860 Callaghan, T. V., Johansson, M., Prowse, T. D., Olsen, M. S., and Reiersen, L.-O.: Arctic Cryosphere: Changes and Impacts. *Ambio*, 40 (Suppl 1), 3–5. Available at: <http://doi.org/10.1007/s13280-011-0210-0>, 2011.
- Christiansen, L. B., Hurwitz, S., Saar, M. O., Ingebritsen, S. E., and Hsieh, P.: Seasonal seismicity at western United States volcanic centers, *Earth Planet. Sci. Lett.*, 240, 307-321, 2005.
- Connon, R. F., Quinton, W. L., Craig, J. R., and Hayashi, M.: Changing hydrologic connectivity due to permafrost thaw in the lower Liard River valley, NWT, Canada, *Hydrol. Processes*, 28(14), 4163–4178, doi:10.1002/hyp.10206, 2014.
- 865 Copernicus Climate Change Service, project #C3S\_422\_LOT1\_SMHI
- Dyurgerov, M. B., and Carter, C. L.: Observational evidence of increases in freshwater inflow to the Arctic Ocean, *Arct. Antarct. Alp. Res.*, 36(1), 117–122, doi:10.1657/1523-0430(2004)036, 2004.
- 870 Dzhmalov, R.G., Potekhina, E.V.: Natural-climatic and anthropogenic causes of changes in the underground flow of the Lena basin. *Electronic scientific journal "GEO cut"*, 25, 2010 (in Russian).
- Explanatory note to the geocryological map of the USSR, scale 1: 2 500 000, 125 pp., 1991 (in Russian).
- Fedorov, A.N., Ivanova, R.N., Perk, H., Hiyama, T., Iijima, Y.: Recent air temperature changes in the permafrost landscapes of northeastern Eurasia, *Polar Science*, available at: <http://dx.doi.org/10.1016/j.polar.2014.02.001>, 2014.
- 875 Fedorov, A.N.; Vasilyev, N.F.; Torgovkin, Y.I.; Shestakova, A.A.; Varlamov, S.P.; Zheleznyak, M.N.; Shepelev, V.V.; Konstantinov, P.Y.; Kalinicheva, S.S.; Basharin, N.I.; Makarov, V.S.; Ugarov, I.S.; Efremov, P.V.; Argunov, R.N.; Egorova, L.S.; Samsonova, V.V.; Shepelev, A.G.; Vasiliev, A.I.; Ivanova, R.N.; Galanin, A.A.; Lytkin, V.M.; Kuzmin, G.P.; Kunitsky, V.V. Permafrost-Landscape Map of the Republic of Sakha (Yakutia) on a Scale 1:1,500,000. *Geosciences*, 8, 465. 2018.
- 880 Forman, S. L., and Johnson, J. L.: Reports of National Science Foundation Arctic System Science sponsored workshops to define research priorities for Eurasian Arctic land-shelf systems: Columbus, Ohio State University, Byrd Polar Research Center Miscellaneous Publication, M-397, 51 pp, 1996.
- Frauenfeld, O. W., Zhang, T., Barry, R. G., and Gilichinsky, D.: Interdecadal changes in seasonal freeze and thaw depths in Russia, *J. Geophys. Res.-Atmos.*, 109, D05101, doi:10.1029/2003JD004245, 2004.
- 885 Frey, K. E., and McClelland, J. W.: Impacts of permafrost degradation on arctic river biogeochemistry, *Hydrol. Processes*, 23(1), 169–182, 2009.
- Gao, J., Holden, J., and Kirkby, M.: The impact of land-cover change on flood peaks in peatland basins. *Water Resources Research*, 52 (5), 3477-3492, ISSN 0043-1397, 2016.
- Ge, S., McKenzie, J., Voss, C., and Wu, Q.: Exchange of groundwater and surface-water mediated by permafrost response to seasonal and long term air temperature variation, *Geophys. Res. Lett.*, 38, L14402, doi:10.1029/2011GL047911, 2011.
- 890 Ge, X., Li, T., and Peng, M.: Effects of vertical shears and midlevel dry air on tropical cyclone developments, *J. Atmos. Sci.*, 70, 3859–3875, 2013.
- Georgievsky, M.: Water resources of the Russian rivers and their changes, *Proc. IAHS*, 374, 75-77, <https://doi.org/10.5194/piahs-374-75-2016>, 2016.
- 895 GLIMS and NSIDC: Global Land Ice Measurements from Space glacier database. Compiled and made available by the international GLIMS community and the National Snow and Ice Data Center, Boulder CO, U.S.A., doi:10.7265/N5V98602, 2005, updated 2017.

- 900 Glotov, V.E., Glotova, L.P., Ushakov, M.V.: Abnormal changes in the regime of the water flow of the Kolyma River in the winter low water. *Cryosphere of the Earth*. XV,1, 52-60, 2011.
- Glotov, V.E.: The connection of terranean tectonics with hydrogeological features of the zone of free water exchange in the mountain regions of cryolithozone, in: *Fundamental and Applied Problems of Hydrogeology. Materials of the All-Russian Meeting on Groundwaters in the Russian East, XXI Meeting on Groundwaters in Siberia and the Far East with International Participation, Yakutsk, June 28, ISBN 978-5-93254-161-6, 2015* (in Russian).
- 905 Glotova, L.P., and Glotov, V.E.: General regularities of underground feeding of rivers in the North-East Russia. *News of Samara Scientific Center of the Russian Academy of Sciences*, 17, 6, 63-69, 2015 (in Russian).
- Günther, F., Overduin, P. P., Yakshina, I. A., Opel, T., Baranskaya, A. V., and Grigoriev, M. N.: Observing Muostakh disappear: Permafrost thaw subsidence and erosion of a ground-ice- rich island in response to arctic summer warming and sea ice reduction, *Cryosphere*, 9, 151–178, doi:10.5194/tc-9-151-2015, 2015.
- 910 Grave N., Gavrilova M., Gravis G., Katasonov E., Klyukin N., Koreysha G., Kornilov B., Chistotinov L. The freezing of the earth's surface and glaciation on the ridge Suntar-Hayata (Eastern Yakutia). *Nauka, Moscow*. 1964 (in Russian)
- Gurevich, E. V.: Influence of air temperature on the river runoff in winter (the Aldan river catchment case study), *Russian Meteorology and Hydrology*, 34, 628–633, 2009. (in Russian)
- 915 Hinzman, L. D., Deal, C. J., McGuire, A. D., Mernild, S. H., Polyakov, I. V., and Walsh, J. E.: Trajectory of the Arctic as an integrated system, *Ecol. Appl.*, 23(8), 1837–1868, doi:10.1890/11-1498.1, 2013.
- Holland, M. M., Finnis, J., Barrett, A. P., and Serreze, M. C.: Projected changes in Arctic Ocean freshwater budgets, *J. Geophys. Res.*, 112, G04S55, doi:10.1029/2006JG000354, 2007.
- 920 Holmes, R.M., Coe, M.T., Fiske, G.J., Gurtovaya, T., McClelland, J.W., Shiklomanov, A.I., Spencer, R.G.M., Tank, S.E., and Zhulidov, A.V.: Climate change impacts on the hydrology and biogeochemistry of Arctic rivers. In: Goldman, C.R., Kumagai, M., and Robarts, R.D., eds. *Global impacts of climate change on inland waters: Impacts and mitigation for ecosystems and societies*. Hoboken, New Jersey: WileyBlackwell. 3–26, 2013.
- Huntington, T. G.: Climate change, growing season length, and transpiration: Plant response could alter hydrologic regime. *Plant Biol.*, 6, 651–653, 2004.
- 925 *Hydrological Yearbook: Volume 8. Issue. 0-7. The basin of the Laptev and East-Siberian seas to the Kolyma river, Yakutsk Department of Hydrometeorology, Yakutsk, 1936-1980.*
- Imaeva, L. P., Gusev, G. S., Imaev, V. S., Ashurkov, S. V., Melnikova, V. I., and Sereckina, A. I.: Geodynamic activity of advanced structures and tectonic stress fields of northeast Asia, *Geodynamics and Tectonophysics* (electronic journal), 8., 4, 2017 (in Russian).
- 930 IPCC: *Climate Change 2014: Synthesis Report. Contribution of Working Groups I, II and III to the Fifth Assessment Report of the Intergovernmental Panel on Climate Change*, IPCC, Geneva, Switzerland, 151 pp., 2014.
- Ivanova, R.N.: Extremely low air temperatures in Eurasia, *Vestnik YSU*, 3, 1, 2006 (in Russian).
- 935 Jepsen, S. M., Voss, C. I., Walvoord, M. A., Minsley, B. J., and Rover, J.: Linkages between lake shrinkage/expansion and sublacustrine permafrost distribution determined from remote sensing of interior Alaska, USA, *Geophys. Res. Lett.*, 40, 882–887, doi:10.1002/grl.50187, 2013.



- Karlsson, J. M., Jaramillo, F., and Destouni, G.: Hydro-climatic and lake change patterns in Arctic permafrost and non-permafrost areas, *J. Hydrol.*, 529 (Part 1), 134–145, doi:10.1016/j.jhydrol.2015.07.005, 2015.
- Kendall, M.G.: Rank Correlation Methods. Griffin, London, UK, 1975.
- 940 Kirillina, K.S.: Current trends of climate change of the republic of Sakha (Yakutia), Scientific memories of the Russian State Hydrometeorological University, Publisher: Russian State Hydrometeorological University (St. Petersburg), ISSN: 2074-2762, 2013 (in Russian).
- Kononova, N. K.: The Dynamic circulation of the atmosphere in the 20th century and the start of the 21st century, available at: <http://www.atmospheric-circulation.ru>, 2013 (in Russian).
- 945 Kundzewicz and Robson, 2004. Change detection in hydrological records—a review of the methodology. *Hydrological Sciences Journal des Sciences Hydrologiques* 49: 7–19
- Kuzin, V. I., and Lapteva, N. A.: Calculations of the Siberian rivers runoff in the XXI century, Interexpo Geo-Sibir, 1, available at: <https://cyberleninka.ru/article/n/raschety-stoka-rek-sibiri-v-xxi-veke>, 2015 (in Russian).
- Lamontagne-Hallé, P., McKenzie, J. M., Kurylyk, B.L. and Zipper, S. C.: Changing groundwater discharge dynamics in permafrost regions. *IOP Publishing Ltd*, 20, 2018.
- 950 Lamoureux, S.F., Lafrenière, M.J.: More than just snowmelt: integrated watershed science for changing climate and permafrost at the Cape Bounty Arctic Watershed Observatory. *Wiley Interdisciplinary Reviews (WIREs) Water*, 2017.
- Lebedeva, L.S., Makarieva, O.M., and Vinogradova, T.A.: Spatial variability of the water balance elements in mountain catchments in the North-East Russia (case study of the Kolyma Water Balance Station). *Meteorology and Hydrology J.*, 4, 90-101, 2017 (in Russian).
- 955 Lehmann, E. L.: Nonparametrics, Statistical methods based on ranks. Holden–Day, Inc., California, USA, 1975.
- Liljedahl, A.K., Gädeke, A., O’Neel, S., Gatesman, T.A., and Douglas, T.A.: Glacierized headwater streams as aquifer recharge corridors, subarctic Alaska, *Geophys. Res. Lett.*, 44(13), 6876-6885, doi:10.1002/2017GL073834, 2017.
- 960 Lesack, L. F. W., P. Marsh, F. E. Hicks, and D. L. Forbes (2013), Timing, duration, and magnitude of peak annual water-levels during ice breakup in the Mackenzie Delta and the role of river discharge, *Water Resour. Res.*, 49, 8234–8249, doi:10.1002/2012WR013198.
- Lique, C., Holland, M. M., Dibike, Y. B., Lawrence, D. M., and Screen, J. A.: Modeling the Arctic freshwater system and its integration in the global system: Lessons learned and future challenges, *J. Geophys. Res. Biogeosci.*, 121, 540–566, doi:10.1002/2015JG003120, 2016.
- 965 Lytkin, V.M., and Galanin, A.A.: Rock glaciers in the Suntar-Khayata Range, *Ice and Snow*, 56(4): 511-524, available at: <https://doi.org/10.15356/2076-6734-2016-4-511-524>, 2016 (in Russian)
- Magritsky, D.V., Mikhailov, V.N., Korotaev, V.N. and Babich, D.B.: Changes in hydrological regime and morphology of river deltas in the Russian Arctic. *Proc. of HP1, IAHS-IAPSOIASPEI Assembly 358 (Deltas: Landforms, Ecosystems and Human Activities)*, 67–79, 2013.
- 970 Majhi I., and Yang, D.: Cold Region Hydrology in a Changing Climate, *IAHS Publ.* 346, 39-43, 2011.
- Makarieva, O., Nesterova, N., Lebedeva, L., and Sushansky, S.: Water balance and hydrology research in a mountainous permafrost watershed in upland streams of the Kolyma River, Russia: a database from the Kolyma

- 975 Water-Balance Station, 1948–1997, *Earth Syst. Sci. Data*, 10, 689–710, <https://doi.org/10.5194/essd-10-689-2018>, 2018a.
- Makarieva, Olga; Nesterova, Nataliia; Sherstyukov, Artem: Monthly hydro-climate database for the Yana and Indigirka Rivers basins, Northern Eurasia (2018b) PANGAEA, <https://doi.org/10.1594/PANGAEA.892775>
- 980 Makarieva, O., Shikhov, A., Nesterova, N., and Ostashov, A.: Aueis of the Indigirka river basin (Russia): the database from historical data and recent Landsat images, *Earth Syst. Sci. Data Discuss.*, <https://doi.org/10.5194/essd-2018-99>, in review, 2018c.
- Makarieva O., Nesterova N., Lebedeva L., Vinogradova T. Modeling runoff formation processes in the high-mountain permafrost zone of Eastern Siberia (a case study of the Suntar-Hayata Range) // *Geography and natural resources*, 1, 178–186, 2019 (in Russian)
- 985 Mann, H. B.: Nonparametric tests against trend, *Econometrica*, 13, 245–259, 1945.
- Markov, M.L., and Gurevich, E.V.: The effect of ice cover on river runoff, *Collection on Hydrology*, 28, 158–163, 2011 (in Russian)
- McClelland, J. W., Déry, S. J., Peterson, B. J., Holmes, R. M., and Wood, E. F.: A pan-arctic evaluation of changes in river discharge during the latter half of the 20th century, *Geophys. Res. Lett.*, 33, L06715, <https://doi.org/10.1029/2006gl025753>, 2006
- 990 McClelland, J. W., Holmes, R. M., Peterson, B. J., and Stieglitz, M.: Increasing river discharge in the Eurasian Arctic: Consideration of dams, permafrost thaw, and fires as potential agents of change, *J. Geophys. Res.*, 109, D18102, [doi:10.1029/2004JD004583](https://doi.org/10.1029/2004JD004583), 2004.
- Mikhailov, V. M.: Floodplain taliks of North-East of Russia. *Novosibirsk. Geo.* 2013, 244 pp. (in Russian)
- 995 Miller, J. R., and Russell, G. L.: Projected impact of climate change on the freshwater and salt budgets of the Arctic Ocean by a global climate model, *Geophys. Res. Lett.*, 27, 1183–1186, [doi:10.1029/1999GL007001](https://doi.org/10.1029/1999GL007001), 2000.
- Milliman, J. D., Farnsworth, K. L., Jones, P. D., Xu, K. H., and Smith, L. C.: Climatic and anthropogenic factors affecting river discharge to the global ocean, 1951–2000. *Global Planet. Change*, 62, 187–194, [doi:10.1016/j.gloplacha.2008.03.001](https://doi.org/10.1016/j.gloplacha.2008.03.001), 2008.
- 1000 Muskett, R. R., and Romanovsky, V. E.: Groundwater storage changes in arctic permafrost watersheds from GRACE and in situ measurements, *Environ. Res. Lett.*, 4, 045009 (8 pp), [doi: 10.1088/1748-9326/4/4/045009](https://doi.org/10.1088/1748-9326/4/4/045009), 2009.
- Nelson, F. E.: (Un)frozen in time, *Science*, 299, 1673–1675, 2003.
- Niu, F., Cheng, G., Niu, Y., Zhang, M., Luo, J., and Lin, Z.: A naturally occurring ‘cold earth’ spot in Northern China. *Scientific Reports* 6, 34184, 2016.
- 1005 Pavlov, A. V. and Malkova, G. V.: Small-scale mapping of trends of the contemporary ground temperature changes in the Russian North, *Earth’s Cryosphere*, 13, 32–39, 2009.
- Peterson, B. J., Holmes, R. M., McClelland, J. W., Vörösmarty, C. J., Lammers, R. B., Shiklomanov, A. I., Shiklomanov, I. A., and Rahmstorf C.: Increasing river discharge to the Arctic Ocean, *Science*, 298, 2171–2173, [doi: 10.1126/science.1077445](https://doi.org/10.1126/science.1077445), 2002.
- 1010 Peterson, B. J., McClelland J., Curry, R., Holmes, R. M., Walsh, J. E., and Aagaard, K.: Trajectory shifts in the Arctic and Subarctic freshwater cycle, *Science*, 313, 1061–1066, 2006
- Pettitt, A. N.: A non-parametric approach to the change-point problem, *J. R. Stat. Soc., Ser. C*, 28, 126–135, 1979.

- 1015 Piguzova, V.M., and Tolstikhin, O.N.: Conditions for the formation of underground feeding of mountain rivers of permafrost zone, Proc. of the 5th All Union Hydrological Congress, 6, 365-370, 1989.
- Pomortsev, O.A, Kashkarov E.P., and Popov V.F.: Naledi: global warming and the processes of ice formation, Bulletin of the Yakut University, 7(2), 2010 (in Russian).
- Quinton, W. L., Hayashi, M., and Chasmer, L. E.: Permafrost-thaw-induced land-cover change in the Canadian subarctic: Implications for water resources, Hydrol. Processes, 25(1), 152–158, 2011.
- 1020 Rawlins, M. A., Serreze, M. C., Schroeder, R., Zhang, X., and McDonald, K. C.: Diagnosis of the record discharge of Arctic-draining Eurasian rivers in 2007, Environ. Res. Lett., 4(4), 045011, doi:10.1088/1748-9326/4/4/045011, 2009.
- Rawlins, M.A., Steele, M., Holland, M.M., Adam, J.C., Cherry, J.E., Francis, J.A., Groisman, P.Y., et al.: Analysis of the Arctic system for freshwater cycle intensification: Observations and expectations, Journal of Climate 23(21): 5715 – 5737, 2010.
- 1025 Rawlins, M.A., Steele, M., Holland, M.M., Adam, J.C., Cherry, J.E., Francis, J.A., Groisman, P.Y., Hinzman, L.D., Huntington, T.G., Kane, D.L., Kimball, J.S., Kwok, R., Lammers, R.B., Lee, C.M., Lettenmaier, D.P., McDonald, K.C., Podest, E., Pundsack, J.W., Rudels, B., Serreze, M.C., Shiklomanov, A., Skagseth, Ø., Troy, T.J., Vörösmarty, C.J., Wensnahan, M., Wood, E.F., Woodgate, R., Yang, D., Zhang, K., and Zhang, T.: Analysis of the Arctic System for Freshwater Cycle Intensification: Observations and Expectations. J. Climate, 23, 5715–5737, available at: <https://doi.org/10.1175/2010JCLI3421.1>, 2010.
- 1030 Reedyk, S., Woo, M.K., and Prowse, T.D.: Contribution of icing ablation to flowflow in a discontinuous permafrost area. Canadian Journal of Earth Science, 32: 13-20, 1995.
- Rennermalm, A. K., Wood, E. F., and Troy, T. J.: Observed changes in pan-arctic cold-season minimum monthly river discharge, Clim. Dyn., 35(6), 923–939, 2010.
- 1035 Romanovsky, N.N.: Underground waters of cryolithozone, Moscow, 1983 (in Russian).
- Romanovsky, V. E., Sazonova, T. S., Balobaev, V. T., Shender, N. I., and Sergueev, D. O.: Past and recent changes in air and permafrost temperatures in eastern Siberia, Global Planet. Change, 56, 399–413, doi:10.1016/j.gloplacha.2006.07.022, 2007.
- 1040 Romanovsky, V. E., Smith, S. L., and Christiansen, H. H.: Permafrost thermal state in the polar Northern Hemisphere during the International Polar Year 2007–2009: A synthesis, Permafrost Periglac. Process., 21, 106–116, doi: 10.1002/ppp.689, 2010.
- Rood, S. B., Kaluthota, S., Philipsen, L. J., Rood, N. J. and Zanewich, K. P.: Increasing discharge from the Mackenzie River system to the Arctic Ocean, Hydrol. Process., 31(1), 150–160, doi:10.1002/hyp.10986, 2017.
- 1045 Saar, M.O., Manga, M.: Seismicity induced by seasonal groundwater recharge at Mt. Hood, Oregon, Earth and Planetary Science Letters, 214, 605–618, 2003.
- Savelieva, N.I, Semiletov, I.P., Vasilevskaya, L.N., and Pugach, S.P.: A climate shift in seasonal values of meteorological and hydrological parameters for Northeastern Asia, Progress in Oceanography 47, 279-297, 2000.
- Scrimgeour, G.J., Prowse, T.D., Culp, J.M., and Chambers, P.A.: Ecological effects of river ice break-up: a review and perspective, Freshwater Biology 32, 261–275, 1994.
- 1050

- Semiletov I., Pipko I, Gustafsson O, Anderson LG, Sergienko V, Pugach S, Dudarev O, Charkin A, Gukov A, Bröder L, Andersson A, Spivak E and Shakhova N. Acidification of East Siberian Arctic Shelf waters through addition of freshwater and terrestrial carbon, *Nature Geoscience* 9, pp 361–365, 2016.
- 1055 Sen, P. K.: Estimates of the regression coefficient based on Kendall's tau, *J. Am. Statist. Assoc.*, 63, 1379–1389, 1968.
- Serreze, M. C., Bromwich, D. H., Clark, M. P., Etringer, A. J., Zhang, T., and Lammers, R.: The large-scale hydroclimatology of the terrestrial Arctic drainage, *J. Geophys. Res.*, 108(D2), 8160, doi:10.1029/2001JD000919, 2003.
- 1060 Shepelev, V.V.: Suprapermafrost waters in the cryolithozone. *Novosibirsk. Geo.* 2011, 169 pp (in Russian)
- Shepelev, V.V.: Advantages of the basin approach for investigations of aufeis (naleds). *Ice and Snow*, 56 (3): 381-386. doi: 10.15356 / 2076-6734-2016-3-381-386, 2016. Sherstyukov, A. B. and Sherstyukov, B. G.: Spatial features and new trends in thermal conditions of soil and depth of its seasonal thawing in the permafrost zone, *Russ. Meteorol. Hydrol.*, 40, 73–78, doi:10.3103/S1068373915020016, 2015.
- 1065 Sherstyukov, A.B.: Climate change and its consequences in the Russian permafrost zone, *All-Russian Scientific Research Institute of Hydrometeorological Information - World Data Center, Obninsk*, 2009, (in Russian).
- Sherstyukov, A.B.: Dataset of Daily Soil Temperature at the Depth to 320 cm from Weather Stations of the Russian Federation, *All-Russian Scientific Research Institute of Hydrometeorological Information - World Data Center*, 176, 233-256, 2012, (in Russian).
- 1070 Sherstyukov, A.B.: Statistical Control of Daily Soil Temperature Datasets, *All-Russian Scientific Research Institute of Hydrometeorological Information - World Data Center*, 176, 224-232, 2012 (in Russian).
- Sherstyukov, B.G.: Regional and seasonal patterns of changes in the modern climate, *All-Russian Scientific Research Institute of Hydrometeorological Information - World Data Center Obninsk*, 246 pp., 2008 (in Russian).
- 1075 Shiklomanov, A. I., and Lammers R. B.: Record Russian river discharge in 2007 and the limits of analysis, *Environ. Res. Lett.*, 4(4), 045015, doi:10.1088/1748-9326/4/4/045015, 2009.
- Shiklomanov, A. I., and Lammers, R. B.: Changing Discharge Patterns of High-Latitude Rivers. In *Climate Vulnerability: Understanding and Addressing Threats to Essential Resources*, 5, 161–175, available at: <http://doi.org/10.1016/B978-0-12-384703-4.00526-8>, 2013.
- 1080 Shiklomanov, A. I., and Lammers, R.B.: River ice responses to a warming Arctic – recent evidence from Russian rivers, *Environ. Res. Lett.*, 9, 035008, doi: 10.1088/1748-9326/9/3/035008, 2014.
- Shiklomanov, A. I., Lammers, R. B., Rawlins, M. A., Smith, L. C., and Pavelsky, T. M.: Temporal and spatial variations in maximum river discharge from a new Russian dataset, *J. Geophys. Res.*, 112, G04S53, doi: 10.1029/2006JG000352, 2007.
- 1085 Shkolnik, I., Pavlova, T., Efimov, S., and Zhuravlev, S.: Future changes in peak river flows across northern Eurasia as inferred from an ensemble of regional climate projections under the IPCC RCP8.5 scenario. *Clim Dyn*, available at: <https://doi.org/10.1007/s00382-017-3600-6>, 2017.
- Smith, L. C., and Alsdorf, D. E.: Control on sediment and organic carbon delivery to the Arctic Ocean revealed with space-borne synthetic aperture radar: Ob' River, Siberia, *Geology*, 26, 395–398, 1998.
- Smith, L. C., Sheng, Y., MacDonald, G. M., and Hinzman, L. D.: Disappearing Arctic lakes, *Science*, 308(5727), 1429, doi:10.1126/science.1108142, 2005.

- 1090 Smith, L.C.: Trends in Russian arctic river-ice formation and breakup, 1917 to 1994, *Physical Geography*, 21:1, 46-56, 2000.
- Sokolov, B.L.: Aufeis (naleds) and river runoff, Leningrad, Gidrometeoizdat, 1975 (in Russian).
- Spence, C., Kokelj, S. V., and Ehsanzadeh, E.: Precipitation trends contribute to streamflow regime shifts in northern Canada, *Cold Region Hydrology in a Changing Climate*. Edited by D. Yang, P. Marsh, and A. Gelfan, IAHS publication 346, International Association of Hydrological Sciences, Wallingford, U.K., 3–8, 2011.
- 1095 St Jacques, J.M., and Sauchyn, D.J.: Increasing winter baseflow and mean annual streamflow from possible permafrost thawing in the northwest territories, Canada. *Geophys. Res. Lett.*, 36, 329–342, 2009.
- State water cadast: Inter-annual data on the regime and resources of surface terrestrial waters. Volume 1. Issue 16. The Lena River basin (middle and lower course), Khatanga, Anabara, Olenka, Yana, Indigirka, Yakutsk Department of Hydrometeorology, Leningrad, Hydrometeoizdat, 1987
- 1100 State water cadastre: Annual data on the regime and resources of surface terrestrial waters. Volume 1. Issue 16. The Lena River basin (middle and lower course), Khatanga, Anabara, Olenka, Yana, Indigirka, Yakutsk Department of Hydrometeorology, Yakutsk, 1981-2007.
- State water cadastre: Main hydrological characteristics (for 1971-1975 and the whole period of observation). Volume 17. Leno-Indigirsky district. Leningrad, Gidrometeoizdat, 1979.
- 1105 Stieglitz, M., S. J. De'ry, V. E. Romanovsky, and T. E. Osterkamp, The role of snow cover in the warming of arctic permafrost, *Geophys. Res. Lett.*, 30(13), 1721, doi:10.1029/2003GL017337, 2003.
- Streletsky, D. A., Sherstiukov, A. B., Frauenfeld, O. W., and Nelson, F. E.: Changes in the 1963–2013 shallow ground thermal regime in Russian permafrost regions, *Environ. Res. Lett.*, 10, 125005, doi: 10.1088/1748–9326/10/12/125005, 2015.
- 1110 Stuefer, S. L., Arp, C. D., Kane, D. L., and Liljedahl, A. K.: Recent Extreme Runoff Observations From Coastal Arctic Watersheds in Alaska, *Water Resources Research*, 53, 9145-9163, 10.1002/2017WR020567, 30, 2017.
- Tan, A., Adam, J. C., and Lettenmaier, D. P.: Change in spring snowmelt timing in eurasian arctic rivers, *Journal of Geophysical Research: Atmospheres* (1984–2012), 116 (D3), doi:10.1029/2010JD014337, 2001.
- 1115 Tananaev, N. I., Makarieva, O. M., and Lebedeva, L. S.: Trends in annual and extreme flows in the Lena River basin, Northern Eurasia. doi: 10.1002/2016GL070796, 2016.
- Tolstikhin, O.N.: Aufeis (naleds) and underground waters in the Northeast USSR, Novosibirsk, Science, 1974 (in Russian)
- USSR surface waters resources: Vol. 17. The Lena-Indigirka Region, Leningrad, Gidrometeoizdat, 1972 (in Russian)
- 1120 Vasiliev, I.S., and Torgovkin, I.I.: Spatial distribution of precipitation in Yakutia. *Meteorology and Hydrology*, 6, 2002.
- Velicogna, I., Tong, J., Zhang, T., and Kimball, J. S.: Increasing Subsurface Water Storage in Discontinuous Permafrost Areas of the Lena River Basin, Eurasia, Detected From GRACE. *Geophysical Research Letters* 39 (9): L09403. doi:10.1029/2012GL051623, 2012.
- 1125 Walvoord, M. A., and Kurylyk, B. L.: Hydrologic Impacts of Thawing Permafrost—A Review. *Vadose Zone Journal* ; 15(6), available at: <https://doi.org/10.2136/vzj2016.01.001>, 2016.

- Walvoord, M. A., Voss, C. I., and Wellman, T. P.: Influence of permafrost distribution on groundwater flow in the context of climate-driven permafrost thaw: Example from Yukon Flats Basin, Alaska, United States, *Water Resour. Res.*, 48, W07524, doi:10.1029/2011WR011595, 2012.
- Walvoord, M. A., and Kurylyk, B.L.: Hydrologic impacts of thawing permafrost – A review, *Vadose Zone J.*, 15(6), doi: 10.2136/vzj2016.01.0010, 2016.
- Weatherly, J. W., and Walsh, J. E.: The effects of precipitation and river runoff in a coupled ice-ocean model of the Arctic. *Climate Dyn.*, 12, 785–798, 1996
- White, D. M., Craig Gerlach, S., Loring, P., Tidwell, A. C., and Chambers, M. C.: Food and water security in a changing arctic climate, *Environ. Res. Lett.*, 2(4), 045018, doi:10.1088/1748-9326/2/4/045018, 2007.
- Yang, D., Kane, D. L., Hinzman, L.D., Zhang, X., Zhang, T., and Hengchun Ye.: Siberian Lena River hydrologic regime and recent change. *Journal of Geophysical Research*, 107, D23, 4694, 2002.
- Yang, D., Kane, D., Zhang, Z., Legates, D., and Goodison, B.: Bias corrections of long-term (1973–2004) daily precipitation data over the northern regions, *Geophys. Res. Lett.*, 32, L19501, doi:10.1029/2005GL024057, 2005
- Yang, D., Shi, X., and Marsh, P.: Variability and extreme of Mackenzie River daily discharge during 1973–2011, *Quat. Int.*, 380–381, 159–168, doi:10.1016/j.quaint.2014.09.023, 2014.
- Yang, D., Shi, X., and Marsh, P.: Variability and extreme of Mackenzie River daily discharge during 1973–2011, *Quatern. Int.*, 380–381, 159–168, doi:10.1016/j.quaint.2014.09.023, 2015
- Yoshikawa, K., and Hinzman, L.D.: Shrinking thermokarst ponds and groundwater dynamics in discontinuous permafrost near council, Alaska. *Permafrost Periglac Process*, 14(2):151–160, 2003.
- Yue, S., Pilon, P., and Cavadias, G.: Power of the Mann–Kendall and Spearman’s rho tests for detecting monotonic trends in hydrological series, *Journal of Hydrology*, 259, 254–271, 2002
- Zhizhin, V.I., Zheleznyak, M.N., and Pulyaev, N.A.: Cryogenic processes in the morphology formation of the mountain relief at the Suntar-Khayata Range. *Bulletin of the Ammosova North-Eastern Federal University*, 9(3), 73–79, 2012 (in Russian).

**Table 1 Characteristics of runoff gauge stations**

Index	River – gauge	Period	Basin area (km <sup>2</sup> )	Outlet catchment elevation (m)	Average catchment elevation (m)	Average annual flow (mm)	The average date of the beginning of the runoff (the number in May)
<b>Yana River basin</b>							
3414	Yana – Verkhoyansk	1936-2015	45300	125	740	112	21
3424	Sartang – Bala	1957-2015	16700	136	700	94	19
3430	Dulgalaakh – Tomtor	1956-2015	23900	145	930	143	20
3433	Khoptolookh – Verkhoyansk	1968-2014 (gap in 1987)	18.3	133	320	58	11
3443	Adycha – Ust'-Charky	1960-2015	52800	259	960	203	19
3445	Adycha – Yurdyuk-Kumakh	1937-2015	89600	108	880	192	21
3474	Char'ky - 3.5 km upstream of the mouth	1949-2007 (gap in 1990)	8290	274	1030	242	19
3478	No name (Gnus) - 0.2 km upstream of the mouth	1953-2007	22.6	279	520	115	15
3479	Borulakh – Tomtor	1956-2014	7570	175	540	71	18
3480	Turagas – 1.2 km upstream of the mouth	1969-2014 (gap in 2004, 2012)	98	187	570	81	13
3483	Bytantay – Asar	1945-2015	40000	80	750	123	24
3861	Yana - Yubileynaya (Kazachye)	1972-2007	224000	-1.55	728	156	27

Indigirka River basin

3488	Indigirka – Yurty	1956-2015	51100	578	1330	155	19
3489	Indigirka – Indigirskiy	1944-2015	83500	482	1250	168	21
3499	Suntar river – riv. Sakharinya mouth	1956-2015	7680	828	1410	189	22
3501	Sakharinya –stream mouth	1957-2014	84.4	833	1120	98	31
3507	Elgi – 5.0 km upstream of the river Artyk-Yuryakh mouth	1946-2015	17600	594	1140	210	23
3510	Artyk-Yuryakh – 3.5 km upstream of the mouth	1946-2014	644	591	900	89	18
3516	Dunai (Ambar-Yuryuete) – Rempunkt	1964-2014	16.6	494	1060	362	11
3518	Nera – Ala-Chubuk	1945-2015	22300	568	1150	174	21
3527	Blizhniy – 0.3 km upstream of the mouth	1945-2014	23	578	900	108	18
3871	Indigirka - Vorontsovo	1936-1996	305000	3.41	760	166	29

1155 **Table 2 Characteristics of meteorological stations**

Index	Meteorological station	Latitude	Longitude	Elevation, m
Yana River basin				
21931	Kazachye	70.75	136.22	20
24261	Batagay-Alyta	67.80	130.38	494
24266	Verkhoyansk	67.55	133.38	137
24371	Ust-Charky	66.80	136.68	273
Indigirka River basin				
24382	Ust-Moma	66.45	143.23	196
24585	Nera	64.55	143.12	523
24588	Yurty	64.05	141.88	590
24679	Vostochnaya	63.22	139.60	1288
24684	Agayakan	63.33	141.73	776
24688	Oymyakon	63.27	143.15	726
24691	Delyankir	63.83	145.60	802
24076	Deputatskiy	69.33	139.67	275
21946	Chokurdah	70.62	147.90	53



**Table 3 Changes of monthly and annual air temperature (value, year of change point)**

Index	Period	1	2	3	4	5	6	7	8	9	10	11	12	Avg	*CPY
<b>Yana River basin</b>															
21931*	1961-2015	2.8	0.7	2.9	<b>4.1</b>	<b>3.1</b>	2.0	1.4	<b>3.0</b>	1.7	1.8	3.0	2.1	<b>2.2</b>	<b>0.40</b>
24261	1966-2012	<i>3.1</i> m	-3.3	-0.1	1.7	<b>3.1</b> m	2.3	2.2	2.4	-0.2	0.5	<b>3.6</b> 2000	-0.1	<b>1.4</b> m	<b>0.30</b>
24266*	1969-2015	<b>5.6</b>	2.1	0.0	<b>2.3</b>	<b>3.8</b>	<b>1.7</b>	<b>3.2</b>	<b>2.1</b>	0.5	0.6	1.9	<b>4.5</b>	<b>2.1</b>	<b>0.45</b>
24371	1942-2015	<b>3.5</b> 1990	0.7	1.0	<b>3.4</b> 1967	<b>3.3</b> 1970	0.8	<i>1.5</i> m	0.3	-0.4	0.7	<b>4.1</b> 1982	1.9	<b>1.8</b> 1982	<b>0.24</b>
<b>Indigirka River basin</b>															
21946	1939-2015	1.4	0.4	1.4	2.8	1.1	0.4	<i>1.5</i> 1986	<i>2.1</i> 2001	<b>2.9</b> 1979	<b>4.4</b> 1993	<b>4.7</b> 1993	2.5	<b>2.3</b> 1987	<b>0.30</b>
24076	1960-2015	<b>4.6</b> 1992	1.8	2.5	<i>3.7</i> 2002	<i>3.1</i> 2004	0.9	1.8	<b>2.0</b> 1994	<b>1.6</b> m	1.7	3.2	3.1	<b>2.5</b> 1987	<b>0.45</b>
24382	1938-2015	<b>5.1</b> 1975	<b>3.0</b> 1978	<b>4.1</b> 1983	<b>4.5</b> 1980	<b>3.5</b> 1987	1.1	<b>2.2</b> 1986	1.4	1.3	<b>4.5</b> 1987	<b>6.3</b> 1983	<b>5.2</b> 1978	<b>3.6</b> 1987	<b>0.46</b>
24585*	1966-2012	-1.6	0.1	<b>4.0</b>	1.4	1.8	<b>2.2</b>	1.7	0.7	0.3	1.5	<b>4.7</b>	<b>2.9</b>	<b>1.7</b>	<b>0.36</b>
24588	1957-2015	2.4	0.1	<i>3.3</i> 2000	1.0	1.2	1.4	<i>1.6</i> m	1.0	0	2.1	<b>3.8</b> m	2.4	<b>1.8</b> 1979	<b>0.31</b>
24679*	1942-2015	1.7	-0.9	<b>2.5</b>	<b>1.9</b>	<b>2.8</b>	<b>1.9</b>	1.0	-0.6	-0.7	0.5	2.3	1.2	<b>1.2</b>	<b>0.16</b>
24684	1957-2015	1.3	-0.3	<i>3.0</i> 1999	1.1	1.9	<b>2.0</b> 1988	<b>2.1</b> 1990	1.2	0.6	1.1	<b>5.7</b> 1983	3.2	<b>2.1</b> 1979	<b>0.36</b>
24688	1935-2015	<b>3.7</b> 1973	0.8	<b>4.1</b> 1988	<b>2.8</b> 1969	<b>2.7</b> 1970	<b>2.1</b> 1985	<b>1.6</b> 1993	0.7	0.5	1.4	1.4	1.8	<b>2.0</b> 1979	<b>0.25</b>
24691	1966-2015	1.6	-0.5	<i>4.0</i> 1999	1.3	1.9	1.4	<b>2.2</b> 1987	1.0	0.3	<b>3.1</b> 1993	<b>6.2</b> 1983	<b>5.0</b> 1994	<b>2.3</b> 1993	<b>0.46</b>

The cells filled with grey color and bold fonts correspond to statistically significant trends with  $p < 0.10$ . If any value is bold it has significance  $p < 0.05$ ; if the values is in italics it has significance  $0.05 < p < 0.10$ . First figure means trend value ( $^{\circ}\text{C}$ ), second (if available) means the year of change point. Letter “m” is for monotonical trends. Some stations marked with \* had many gaps and it was not possible to assess the change point. CPY ( $^{\circ}\text{C} (10\text{y})^{-1}$ ) is for average change of temperature per 10 years. Statistically significant trends values are divided into 4 groups and marked with different colors accordingly: change points 1985 and before – green, 1985-1995 – violet, 1996 and later – yellow. Monotonous trends and where change points were not available due many gaps are in black.

1160

1165

**Table 4 Changes of monthly, seasonal and annual precipitation (mm, %, change point year), 1966-2015**

Index	Period	1	2	3	4	5	6	7	8	9	10	11	12	Year	Cold (10-4)	Warm
<b>Yana River basin</b>																
21931	1966-2015	2.5	-1.4	3.0	0.0	-0.7	-10.0	-12.9	<b>-26.0</b> <b>-71</b>	-6.3	-1.5	4.5	1.1	-36.2		
24261	1966-2012	-1.7	-1.8	-1.2	-4.5	5.3	8.1	17.9	6.5	2.0	-4.2	-0.3	<b>-3.5</b> <b>-67</b>	32.6		
24266	1966-2015	-2.9	-2.9	-1.3	-3.1	2.2	5.8	3.0	5.1	7.3	-3.9	-1.9	-5.0	9.0	<b>-19.3</b> <b>-36</b> <b>1979</b>	
24371	1966-2015	-1.3	-1.7	-0.7	-4.6	1.8	13.9	5.7	8.5	5.5	-4.8	-2.5	<b>-4.2</b> <b>-63</b> <b>1985</b>	10.8	<b>-23.6</b> <b>-46</b> <b>1996</b>	
<b>Indigirka River basin</b>																
24382	1966-2015	<b>-6.7</b> <b>-92</b> <b>1986</b>	<b>-4.8</b> <b>-71</b> <b>m</b>	-2.9	-1.0	4.3	5.2	3.3	7.1	4.1	0.0	0.8	-4.3	11.8	<b>-16.0</b> <b>-29</b> <b>m</b>	
24585	1966-2015	<b>-4.2</b> <b>-58</b>	-2.6	1.2	-0.8	-0.2	5.5	-8.9	5.5	14.6	2.7	2.9	-3.0	15.5		
24588	1966-2015	<b>-4.3</b> <b>-68</b>	-1.5	0.0	-2.8	1.7	-12.1	-8.8	2.8	-0.2	-1.7	-1.7	-1.9	-26.6	<b>-14.9</b> <b>-26</b>	
24679	1966-2015	<b>-4.0</b> <b>-90</b>	<b>-3.3</b> <b>-121</b>	-2.1	0.4	1.3	<b>20.7</b> <b>44</b>	-28.3	-3.2	13.8	-1.7	0.1	-1.0	41.6	<b>-13.0</b> <b>-30</b>	
24684	1966-2015	-2.4	-0.6	1.8	0.3	-1.6	2.1	-9.0	-4.5	3.9	0.5	2.7	-1.1	13.7		
24688	1966-2015	<b>-4.4</b> <b>-60</b> <b>1980</b>	<b>-3.0</b> <b>-44</b> <b>1994</b>	-1.3	-0.6	0.5	7.5	0.1	9.7	8.5	-1.0	3.0	-4.5	40.9		<b>53</b> <b>34</b> <b>m</b>
24691	1966-2015	<b>-5.5</b> <b>-62</b> <b>1987</b>	-3.6	1.1	1.7	-3.5	9.2	-2.8	12.3	5.8	3.0	3.5	-3.8	15.9		
24076	1966-2012	-2.0	-2.6	1.6	-3.8	3.1	<b>21.8</b> <b>49</b>	9.4	23.7	<b>15.3</b> <b>49</b>	5.0	4.0	-1.9	58.5		
21946	1966-2012	-5.3	-4.8	2.8	0.0	2.1	-14.4	<b>-22.9</b> <b>-73</b>	-11.5	-1.7	5.6	5.0	3.3	-42.9		<b>-48</b> <b>-60</b>

The cells filled with grey color correspond to statistically significant trends with  $p < 0.10$ . If any value is bold, it has significance  $p < 0.05$ ; if a value is in italics, it has significance  $0.05 < p < 0.10$ .

1170

First and second figures mean trend value (mm and %), third (if available) is for the year of change point. Letter “m” is for monotonical trends. If there is neither year, nor “m”, the Pettitt’s test was not carried out due to many gaps in the data. Statistically significant trends values are divided into 4 groups and marked with different colors accordingly: change points 1985 and before – green, 1985-1995 – violet, 1996 and later – yellow. Monotonous trends and where change points were not available due many gaps are in black.

1175

**Table 5 Characteristics of rain and snow share in precipitation regime in May and September, 1966-2012 (the table contains only the data of stations with the changes)**

	24679	24684	24688	24076	24585	24679	24684	24688	24691
	May			September					
Significance $p$	<0.01	0.01	0.01	0.15		0.18	0.05	0.03	0.09
Mean share of rain (dimensionless)	0.43	0.78	0.79	0.63		0.56	0.79	0.79	0.74
Trend value (dimensionless)	<b>0.45</b>	<b>0.15</b>	<b>0.17</b>	0.19		0.18	<b>0.15</b>	<b>0.15</b>	<i>0.18</i>
Significance $p$	0.004	0.17	0.07	0.03	0.09	0.06	0.02	0.01	0.32
Mean amount of rain (mm)	8.7	12.0	10.3	19.3	25.5	53.6	19.4	18.3	20.5
Trend value (%)	79.0	39.9	62.8	68.1	61.0	57.6	60.3	77.7	39.3
Trend value (mm)	<b>6.9</b>	4.8	<i>6.5</i>	<b>13.1</b>	<i>15.5</i>	<i>10.4</i>	<b>11.7</b>	<b>14.2</b>	<b>8.1</b>
Pettitt's test significance $p$	0.03	0.06	0.23			0.32	0.14	0.12	
Pettitt's test change year	1973	1971	<b>1987</b>			1979	<b>1992</b>	<b>1993</b>	
Buishand test change year	<b>1986</b>	1971	2006			<b>1991</b>	<b>1992</b>	<b>1993</b>	<b>1993</b>

**Table 6 Changes of soil temperature at 80 cm depth and maximum active layer thickness (ALT)**

	1	2	3	4	5	6	7	8	9	10	11	12	ALT	D
24266 Verkhoyansk, Yana River basin, 1966-2015														
N	31	31	33	33	48	50	49	49	50	49	49	34		
M	-16.8	-18.9	-18.6	-14.3	-6.6	-1.4	2.1	2.9	1.3	-0.5	-5.8	-12.4		
T	<i>-1.8</i>	<b>-2.3</b>	<b>-2.4</b>	1.2	<b>3.3</b>	<b>2.5</b>	<b>3.8</b>	<b>3.7</b>	<b>1.7</b>	0.2	0.6	-1.2	<b>45</b>	18
Y					2003	1999	1996	1996	1998					
24688 Oymyakon, Indigirka River basin, 1966-2015														
N	47	45	44	46	35	38	40	41	43	48	46	47		
M	-16.1	-17.5	-17.4	-13.8	-5.3	-1.0	2.3	3.1	1.5	-0.2	-4.9	-11.7		
T	<b>7.6</b>	<b>6.3</b>	<b>5.0</b>	<b>2.5</b>	-1.8	<b>-2.3</b>	<b>-4.2</b>	<b>-3.5</b>	<i>-1.0</i>	<b>0.7</b>	<b>4.5</b>	<b>7.3</b>	<b>-77</b>	-32
Y	1995	1995	1990	1983						1977	1983	1994		
24382 Ust'-Moma, Indigirka River basin, 1977-2015														
N					34	38	38	38	38	39	38			
M					-7.3	-2.5	0.3	1.0	0.3	-1.5	-6.7			
T					<b>1.7</b>	<i>1.1</i>	<b>1.1</b>	<b>1.0</b>	<b>1.0</b>	<b>3.0</b>	<b>5.9</b>		6	40
Y					2006	2006	2006	2001	2001	2001	2002			

1180 \*N – the number of values in analyzed series; M, °C – mean temperature; T, °C<sup>1</sup> – temperature trend Sen’s estimate;  
 1185 Y – change point (year); ALT (cm) – change of maximum active layer thickness; D – change in the number of days  
 with positive soil temperature at the depth of 80 cm, 2001-2015, comparing to the long-term mean value for 1971-  
 2000. The numbers of row T in **bold** font and filled with grey color are significant values of trends at p<0.05 level.  
 Values in italic font marked by have the level of significance 0.05<p<0.10. The numbers in decreased font are not  
 significant trends. Empty cells refer to the series with significant number of gaps where the assessment of change  
 points were not possible.  
 Statistically significant trends values are divided into 4 groups and marked with different colors accordingly: change  
 points 1985 and before – green, 1985-1995 – violet, 1996 and later – yellow. Monotonous trends and where change  
 points were not available due many gaps are in black.

1190

**Table 7 Changes of monthly and annual streamflow (mm, %, change point year) and freshet onset dates. The Yana River basin**

ID	Period	Area, km <sup>2</sup>	Jan	Feb	Mar	Apr	May	Jun	Jul	Aug	Sep	Oct	Nov	Dec	Year	Freshet onset dates
3478	1953-2007	22.6	NA	NA	NA	NA	6.9	14.0	12.9	<b>13.0</b> 50 1981	7.1 54 m	<b>0.12</b> 31 1987	0.00	0.00	<b>79</b> 69 1988	5.8
3479	1956-2014	7570	NA	NA	NA	NA	5.6	<b>12.8</b> 64 m	4.6	<b>8.3</b> 54 1987	<b>5.5</b> 67 m	0.1	0.0	NA	38	
3474	1949-2007	8290	NA	NA	NA	NA	<b>7.5</b> 54 1964*	-6.7	-26 -38 m	8.7	8.4	<b>4.5</b> 78 1991	0.3	0.0	-7	<b>10</b>
3424	1957-2015	16700	0.0	NA	NA	NA	2.9	7.3	-5.5	0.4	<b>5.7</b> 53 1982	<b>0.8</b> 54 1987	0.1	0.0	9	<b>4.5</b> m
3430	1956-2015	23900	0.0	NA	NA	NA	<b>5.5</b> 64 1999	12.6	-2.2	0.4	<b>7.6</b> 50 1994	<b>2.0</b> 72 1982	<b>0.4</b> 77 1981	<b>0.1</b> 149 1981	20	<b>7.1</b> 1997
3483	1945-2015 (1956)	40000	0.0	0.0	NA	NA	<b>3.6</b> 71 1966*	3.4	1.8	9.0	5.7 46 m	<b>1.3</b> 74 2001	<b>0.31</b> 74 1998	<b>-0.04</b> -54 m	24	
3414	1936-2015 (1941)	45300	<b>0.04</b> 161 1977	0.0	0.0	0.0	<b>4.3</b> 60 1965*	7.6	3.2	5.5	<b>5.8</b> 46 1982	<b>1.0</b> 51 1993	<b>0.3</b> 77 1994	<b>0.1</b> 126 1994	24 22 m	<b>6.5</b> 1978
3443	1960-2015	52800	0.0	NA	NA	0.0	15.5 79 1987 (1999)	18.6 28 1995	17.4 36 1995	27.0 62 1986	19.0 83 1981	3.3 96 1992	0.2 44 1994	0.0	104 51 1995	6.8 1995
3445	1937-2015 (1953)	89600	0.0	0.0	0.0	0.0	<b>12.4</b> 83 1966*	17.9 28 1988	7.4	<b>24.7</b> 63 1982	<b>15.7</b> 69 1981	2.1 54 1992	0.5 54 1987	0.1 75 1987	82 42 1987	<b>4.3</b> m
3861	1972-2007	224000	<b>0.03</b> 79 1981	0.0	<b>-0.004</b> -153 1989	0.0	-0.8	<b>16.2</b> 40 1983	9.4	9.2	7.8	<b>4.4</b> 118 1993	<b>0.4</b> 118 m	<b>0.12</b> 75 1982	60 40 1983	

The cells filled with grey color correspond to statistically significant trends with  $p < 0.10$ . If any value is bold it has significance  $p < 0.05$ ; if the values is in italics it has significance  $0.05 < p < 0.10$ .

1195

First and second figures mean trend value (mm and %), third (if available) is for the year of change point. Letter “m” is for monotonical trends. Statistically significant trends values are divided into 4 groups and marked with different colors accordingly: change points around 1966 – red, 1970-1985 – green, 1986-1995 – violet, 1996 and later – yellow. Year of change point marked with \* indicates that the gauge has long-term series more of than 70 years with change point in about 1966 and no significant trend after that period (last 50 years). In some cases second year of change point is given in brackets, it was estimated with Buishand range test.

1200

**Table 8 Changes of monthly and annual streamflow (mm, %, change point year) and freshet onset dates. The Indigirka River basin**

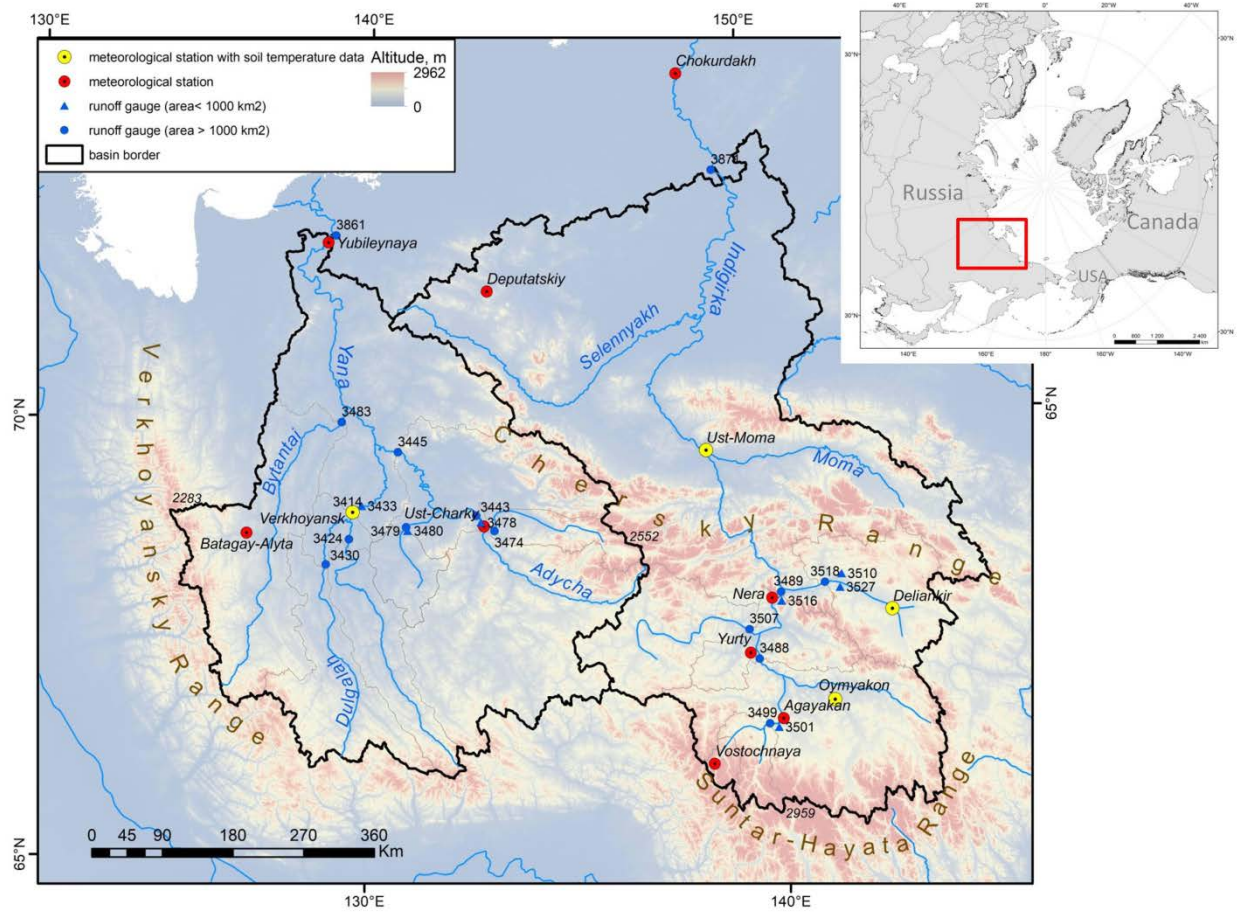
ID	Period	Area, km <sup>2</sup>	Jan	Feb	Mar	Apr	May	Jun	Jul	Aug	Sep	Oct	Nov	Dec	Year	Freshet onset dates	
3516	1964-2014	16.6	NA	NA	NA	0.0	25.7 78 1989	12.4	-9.1	18.3	36.8 111 1992	1.6 107 1992	0.0	0.0	115 32 1993		
3527	1945-2014	23	NA	NA	NA	NA	3.9	-11.1	10.9	6.4	8.8 87 1965 (1993)	0.0	NA	NA	21	4.2 m	
3510	1946-2014	644	NA	NA	NA	NA	5.2	-14.2 -61 1967*	5.3	14.0 65 1982	6.3 61 1993	0.1	0.0	NA	21		
3499	1956-2015	7680	NA	NA	NA	NA	6.8 103 1996	11.6	-	17.6	-2.6	9.9 49 1993	3.3 70 1993	0.43 52 1994	0.0	26	5.4 m
3507	1946-2015	17600	0.03 59 1985	0.02 91 1985	0.02 86 1985	0.01 57 1985	15.3 106 1964*	4.0	2.9	23.4 53 m	16.5 76 1993	2.1 61 1990	0.6 88 1988	0.1 80 1987	81 39 1995	7.6 1967	
3518	1945-2015	22300	0.0	NA	NA	NA	11.8 90 1966*	-12.3	-3.2	3.9	9.1 51 1965 (1993)	0.9 34 1966*	0.2 47 1994	0.0	14	3.9 1967	
3488	1956-2015	51100	0.1	0.10 54 2003	0.11 67 2004	0.10 56 2002	7.6 97 1980	9.9	-4.4	7.6	12.5 59 1993	2.3 45 2002	0.4 25 1999	0.0	43	5.1 m	
3489	1944-2015	83500	0.14 64 2006	0.10 86 1977	0.10 120 1983	0.14 159 1981	7.4 92 1966*	-0.6	-6.0	13.2 34 m	11.4 55 1993	1.4 34 1993	0.4 28 1982	0.3 63 1983	33 19 1995	4.6 1967	
3871	1936-1996	30500 0	-0.08 -25 1964*	-0.01	0.01	0.01	0.2	0.3	-6.3	4.3	11 49 1965	0.7	-0.1	-0.2 -32 1969	8.1		

All designations are the same as in Table 6.

1205

**Table 9 Correlation coefficient of monthly streamflow and precipitation in September at small watersheds**

Meteorological station, index	Elevation, m	Gauge index	Average basin elevation, m	Basin area, km <sup>2</sup>	Period	Correlation coefficient with precipitation	
						total	liquid
<b>Indigirka River basin</b>							
Nera, 24585	523	3516	1060	16.6	1966-2012	0.53	0.51
Agayakan, 24684	776	3501	1120	84.4	1966-2015	0.27	0.46
<b>Yana River basin</b>							
Ust-Charky, 24371	273	3478	520	22.6	1966-2007	0.60	0.59
Verkhoyansk, 24266	137	3433	320	18.3	1967-2015	0.14	0.16



1210 **Figure 1: Meteorological stations and hydrological gauges within the study basins**



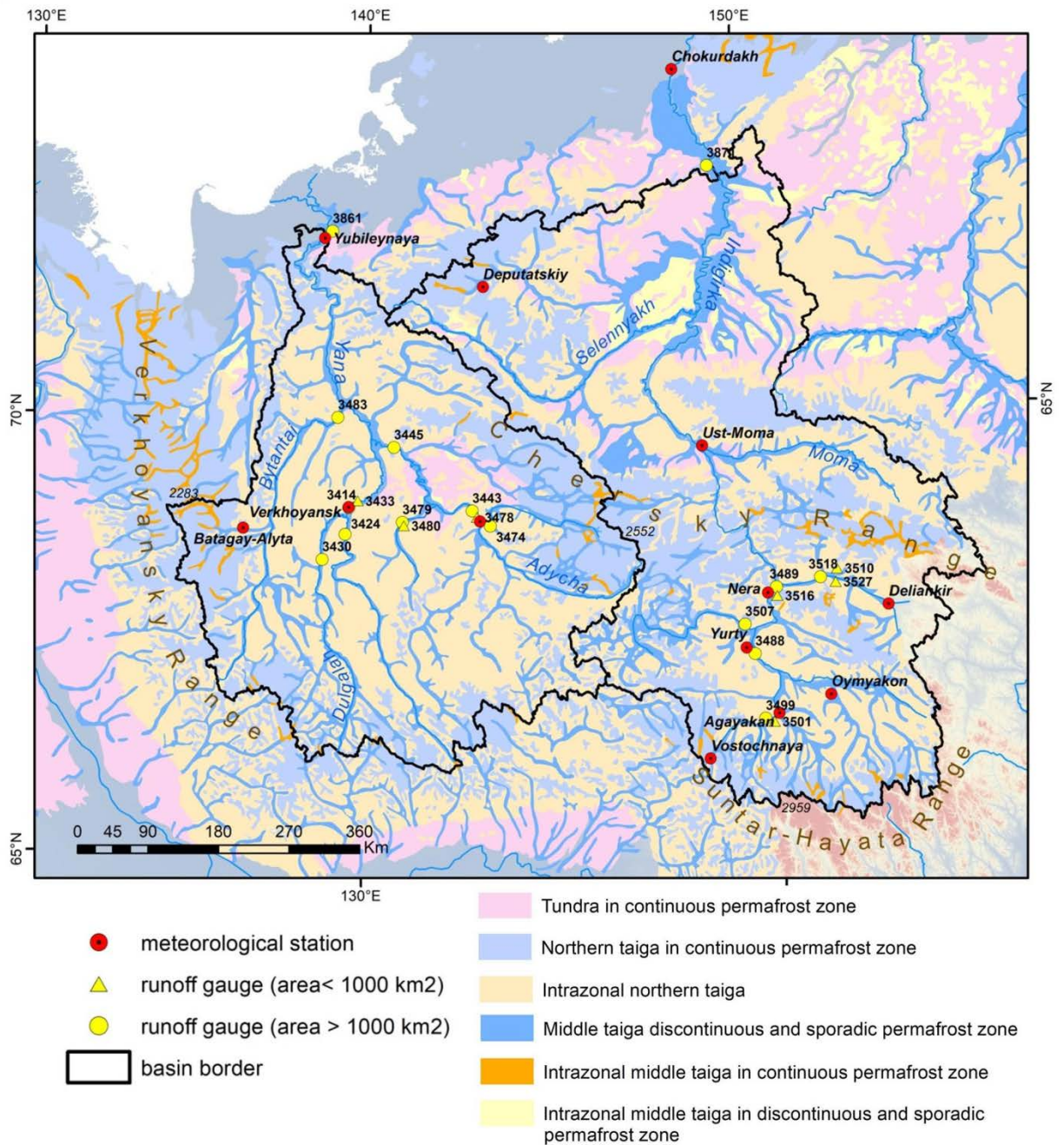
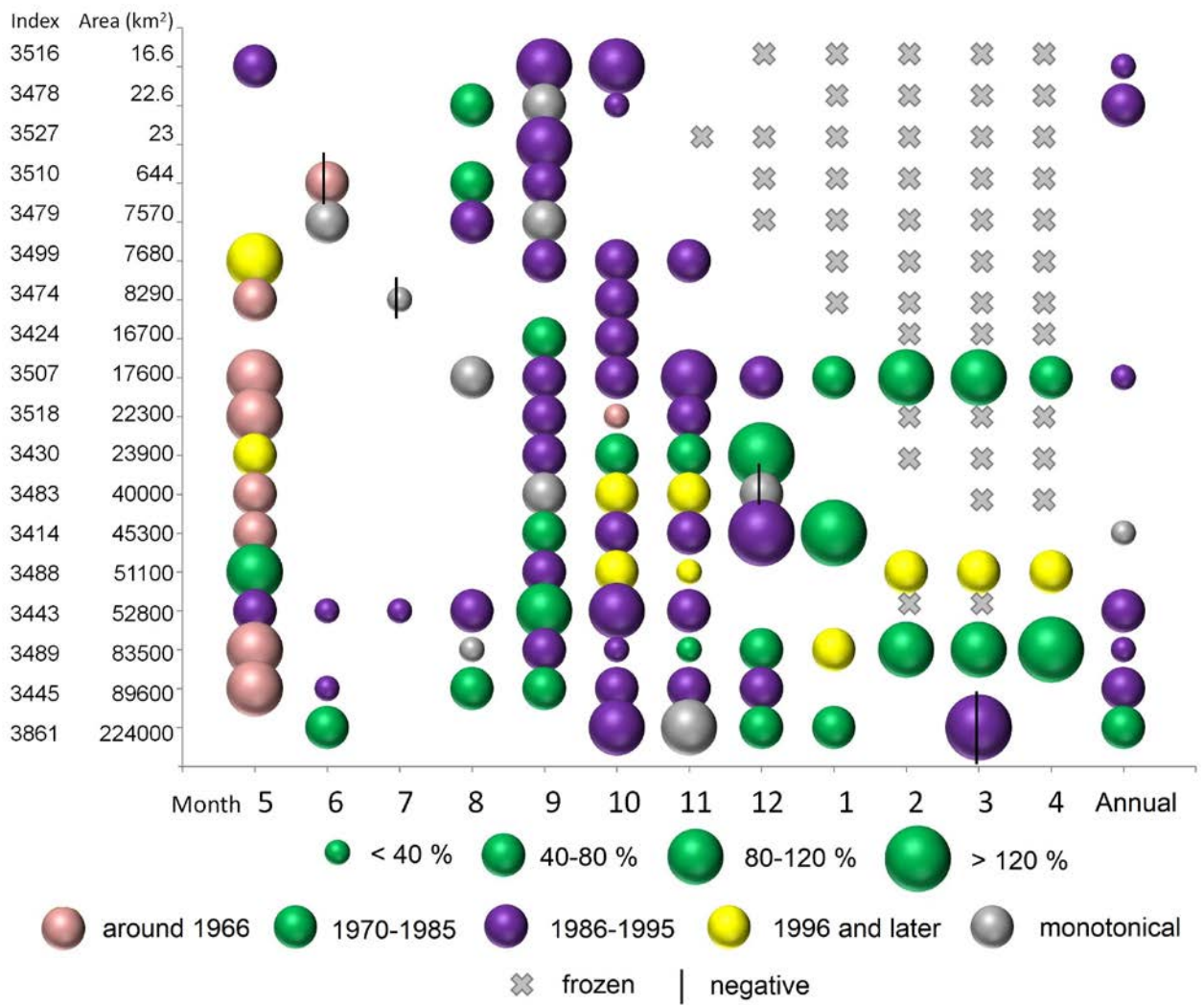


Figure 2: Landscape distribution within the study basins according to Permafrost-Landscape Map of the Republic of Sakha (Yakutia) on a Scale 1:1,500,000 (Fedorov et al., 2018)





1215

**Figure 3: Change in monthly streamflow represented as a %, along with the period in which that change occurred. Data are for both Yana and Indigirka river basins and are sorted in order of basin area.**

1220

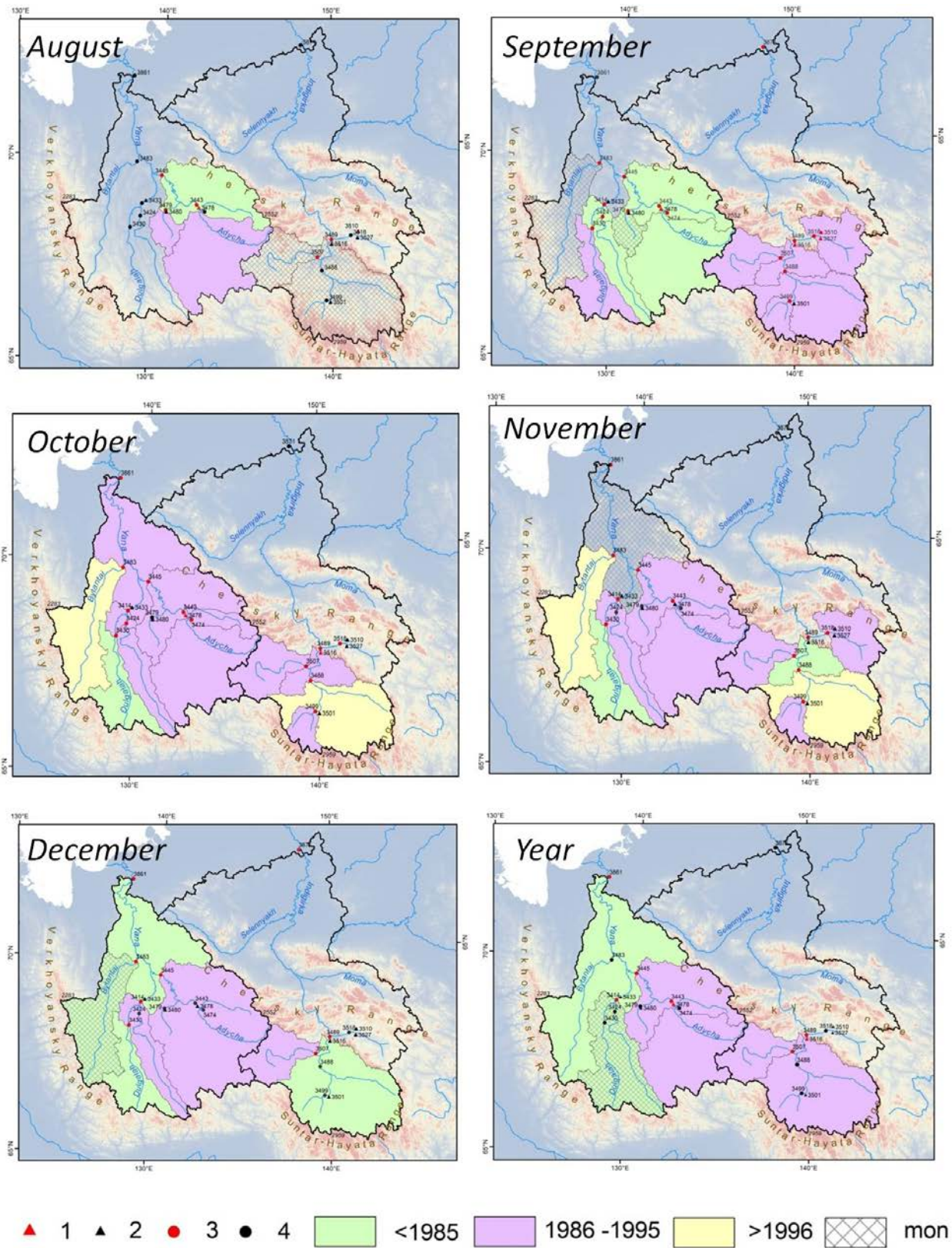


Figure 4: The periods of changes of streamflow in August, September, October, November, December and annually. Red and black colours indicate the presence and absence of the trends, respectively. The triangles and circles indicate the basin area of less and more 1000 km<sup>2</sup>, respectively.