

Author's Response

Dear Editor,

Below, you will find our answer to the first reviewer's comment. It was in reaction to Figure 7 which has since been revised. We included both versions of the figure for reference. The point remains relevant nonetheless :

- 5 **There is one issue by reviewer 1 that I feel you did not address in your response and revised manuscript, but which could be quite important for the overall conclusions.**

This is about your interpretation of results in section 4, page 6 starting with line 22 in manuscript version 4. The reviewer wrote: "My interpretation of fig 7 is that it shows outward moisture flux at low levels with inward flux above. The low-level outward flux is smaller at the radiosonde stations than on average and is mostly due to moisture transport by the mean wind. By contrast, the inward flux at higher levels at the sonde stations is similar to that averaged along the boundary and, for both observations and reanalyses, is dominated by transient eddy fluxes - presumably a result of cyclones in the coastal region."

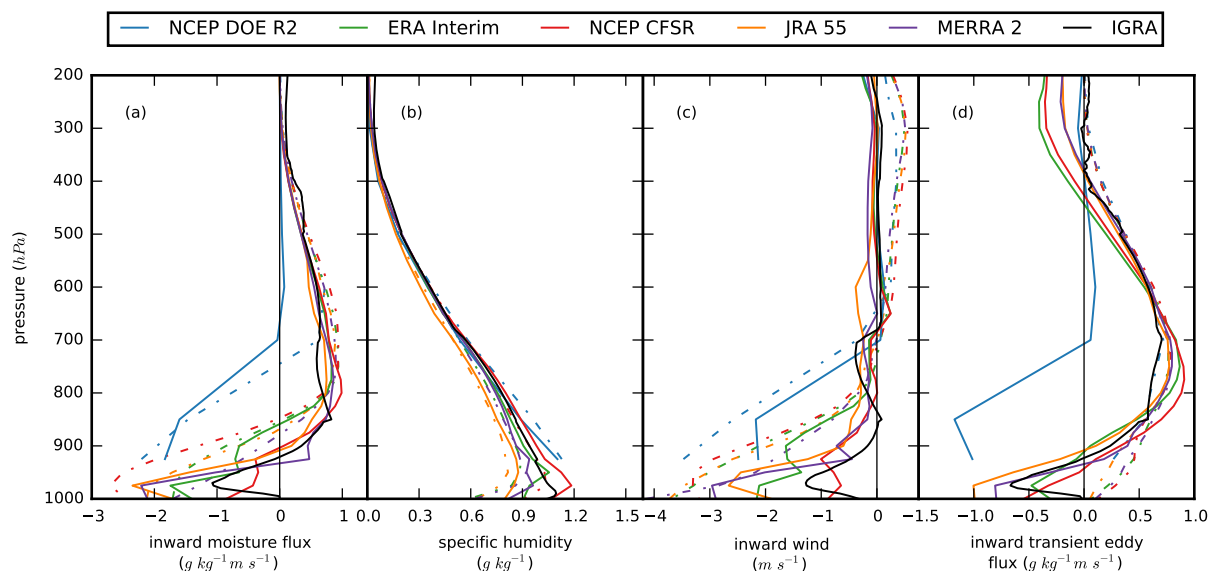


Figure 0. NEW Fig. 7 Mean vertical profiles : over radiosonde sites, simultaneously with observations (solid lines) ; along the coast of the East Antarctic ice sheet for the whole 1980-2016 period (dashed lines). The variables displayed in the panels are : moisture flux (a), specific humidity (b), mean wind (c) and transient eddy fluxes (d).

In the previous version of the manuscript, we had strengthened the distinction between outward low-level versus inward high level transport. However, we did not detail the sign of the contribution of katabatic winds to transient eddy fluxes and we did not discuss the differences between stations and the rest of the continent. This line of inquiry led us to a probable assimilation bias in the reanalyses, which we expose in the paragraph starting at line 30, page 6 of the new manuscript.

Due to the correlation between wind and humidity, the mean moisture flux ($\overline{q\vec{v}}$) is more than the product of the mean wind (\vec{v}) and the mean humidity (\bar{q}). The residual is the transient eddy term of the Reynolds decomposition : $\overline{q\vec{v}} = \overline{q\vec{v}} - \bar{q}\vec{v}$. In the

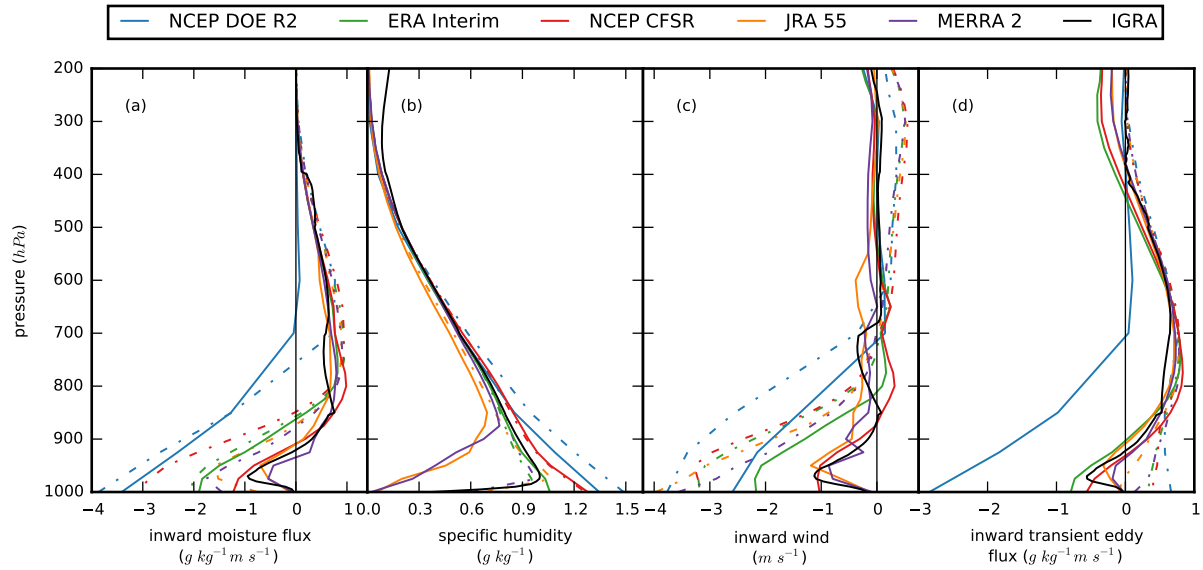


Figure 0. OLD Fig. 7 Mean vertical profiles : over radiosonde sites, simultaneously with observations (solid lines) ; along the coast of the East Antarctic ice sheet for the whole 1980-2016 period (dashed lines). The variables displayed in the panels are : moisture flux (a), specific humidity (b), mean wind (c) and transient eddy fluxes (d).

presence of an extratropical cyclone, the warm sector advects exceptionally moist air inland and vice-versa in its cold sector. This corresponds to the inward fluxes above 900 hPa in panel (d) of Figure 7. They peak at 750 hPa and then decrease with altitude. Below 900 hPa, the fluxes averaged along the boundary remain positive but they change sign at the sonde locations. Intermittent katabatic conditions imply unusually strong downslope winds : they will lead to positive transient eddy fluxes if they advect the unusually dry air from the plateau. However, they will count as negative if that air is moistened by the sublimation of blowing snow (Barral et al., 2014) or of precipitation (Grazioli et al., 2017). The former process at least is not modelled in the reanalyses. Its effect on the humidity profile will only be felt where radiosoundings are assimilated. Returning to panel (a), we now interpret the outward low-level fluxes as the effect of katabatic winds but we suspect that this effect is underestimated for different reasons depending on the location. At the stations, the prevailing katabatic wind is weaker than average. Away from the observations, the reanalyses are too dry during katabatic events. The inward high level fluxes are a consequence of transient eddies, presumably extratropical cyclones, with good agreement between sites and datasets.

These new results are included in the conclusions at the paragraph starting at line 10, page 9 :

The seasonal resolution of stake farms and ice cores is not enough to study short and intense accumulation events such as described in Gorodetskaya et al. (2014) but radiosondes are launched on a daily basis. The distribution of moisture transport highlights both positive and negative extreme events. Regarding exports, the conflation of net precipitation with accumulation ignores wind erosion in particular. The reanalyses only represent its signature on the humidity profile near radiosonde sites. Conversely, the observations are made in sheltered locations that experience a weaker transport by the mean wind.

We hope our corrections solve the issue raised by the reviewer. We thank you again for your consideration.

Ambroise Dufour, on behalf of the co-authors

Moisture transport in observations and reanalyses as a proxy for snow accumulation in East Antarctica

Ambroise Dufour^{IGE}, Claudine Charrondière^{IGE}, and Olga Zolina^{IGE, IORAS}

^{IGE}Institut des Géosciences de l'Environnement, CNRS/UGA, Grenoble, France

^{IORAS}P. P. Shirshov Institute of Oceanology, Russian Academy of Science, Moscow, Russia

Correspondence to: Ambroise DUFOUR (ambroise.dufour@univ-grenoble-alpes.fr)

Abstract.

Atmospheric moisture convergence on ice-sheets provides an estimate of snow accumulation which is critical to quantify sea level changes. In the case of East Antarctica, we computed moisture transport from 1980 to 2016 in five reanalyses and in radiosonde observations. Moisture convergence in reanalyses is more consistent than net precipitation but still ranges from 72 to 96 mm per year in the four most recent reanalyses, ERA Interim, NCEP CFSR, JRA 55 and MERRA 2. The representation of long term variability in reanalyses is also inconsistent which justified the resort to observations.

Moisture fluxes are measured on a daily basis via radiosondes launched from a network of stations surrounding East Antarctica. Observations agree with reanalyses on the major role of extreme advection events and transient eddy fluxes. Although assimilated, the observations reveal processes ~~some~~ reanalyses cannot model, some due to a lack of horizontal and vertical resolution especially the oldest, NCEP DOE R2. Additionally, the observational time series are not affected by new satellite data unlike reanalyses. We formed pan-continental estimates of convergence by aggregating anomalies from all available stations. We found statistically significant trends neither in moisture convergence nor in precipitable water.

1 Introduction

East Antarctica stores the equivalent of 53.3 m of sea level rise out of the 58.3 for the whole continent (Fretwell et al., 2013). The mass of the ice-sheet decreases when icebergs are calved off the coast and increases when snow accumulates inland. The surface mass balance is expected to become more positive as precipitation increases due to higher humidity (Bengtsson et al., 2011; Palerme et al., 2017) though not as fast as the loss of ice increases, thus leading to net sea-level rise (Collins et al., 2013). However, as we shall see, the additional accumulation has yet to be observed.

The in situ methods that are used to determine snow accumulation are reviewed in Eisen et al. (2008). The most reliable consist in measuring the emergence of stakes on a yearly basis or annual snow layers in firn cores (Favier et al., 2013). To make up for their limited spatial coverage, the ground-based observations can be combined with remote sensing data as in Arthern et al. (2006) or with regional climate models (Monaghan et al., 2006; Agosta et al., 2012). Lately, both satellites and models have been used without the need for surface data : the snowfall measurements from CloudSat (Palerme et al., 2014) and the high resolution calibration-free model of Lenaerts et al. (2012).

Not all the aforementioned methods yield accumulation time series. Among those that do, none present statistically significant trends in accumulation on a continental scale e.g. Lenaerts et al. (2012) or Monaghan et al. (2006) for East Antarctica in particular. The situation is more contrasted on a local scale (Fyke et al., 2017) with recent increases in Dronning Maud Land (Boening et al., 2012; Medley et al., 2018) and Law Dome (Van Ommen and Morgan, 2010), mixed trends on the traverse to Dome A (Ding et al., 2015) and none in Adélie Land (Agosta et al., 2012). The 1000-year ice core synthesis of Thomas et al. (2017) confirms the high spatial variability, both regional and small-scale due to post deposition processes. In East Antarctica and for the 20th century, the authors report a decrease in accumulation in Victoria Land and contradictory trends in Dronning Maud Land and over the plateau.

The accumulation can also be inferred from the convergence of moisture blown from the oceans onto the continent. To compute Antarctica's atmospheric moisture budget, one needs vertical wind and moisture fields along the coast including locations with few research stations, like West Antarctica. Reanalyses synthesize historical observations and short term weather forecasts and provide gridded atmospheric fields constrained by observations even in such remote regions (Gentson and Krinner, 1998; Bromwich et al., 2011; Tsukernik and Lynch, 2013). The analyses will shift to accommodate for new observations sources making the interpretation of time series equivocal. This issue was raised in the case of Antarctica by Nicolas and Bromwich (2011) under a telling title : "Precipitation changes in high southern latitudes from global reanalyses: A cautionary tale."

To reduce the ambiguity, we cross-examined the reanalysis moisture transport with the only in situ measurements of humidity and wind - radiosondes - in the footsteps of Connolley and King (1993) and Bromwich et al. (1995). Rather than compute the climatological moisture budget, our contribution will be to investigate the temporal variability of the transport. Radiosoundings cannot provide an independent validation of reanalyses but they will yield more homogeneous time series. Besides, in Antarctica, humidity soundings are sometimes rejected during the assimilation process even by state of the art analyses (Barral et al., 2014). Like our predecessors, we restrict ourselves to East Antarctica because of the lack of long-term upper-air measurements in West Antarctica and in the Peninsula.

2 Data and methods

We build upon a similar study in the Arctic (Dufour et al., 2016) and the reanalyses presented herewith. The first NCEP NCAR reanalysis was not included due to a well known moisture diffusion problem over Antarctica (Cullather et al., 1998) as well as unrealistic evaporation (Hines et al., 1999). Its successor, NCEP DOE R2 solved the main errors from the first attempt (Kanamitsu et al., 2002). At 2.5°, it has the lowest horizontal resolution of our ensemble (Table 1) as well as the fewest vertical levels. We left out JRA 25 and MERRA 1 because they were not extended up to 2016. CFSR has the highest resolution (T382 or approximately 35 km) and includes ocean and sea-ice physics in its forecast model. Our period of study starts in 1980 to adjust to the new reanalysis from NASA, MERRA 2. Among other things, the data assimilation system from MERRA 1 was improved to take into account satellites launched after NOAA-18 (2005) for instance the hyperspectral infrared radiances of EOS Aqua (Gelaro et al., 2017). ERA Interim and JRA 55 implement 4D-Var assimilation whereas CFSR and MERRA 2 run

improved versions of 3D-Var. ERA Interim has been commended as especially reliable over Antarctica (Bromwich et al., 2011; Wang et al., 2016).

The domain of study is constrained by the location of stations running long term radiosonde programs which restricts us to East Antarctica (Fig. 1). SANAE (east of Neumayer) and Molodeznaja (east of Syowa) had practically no humidity soundings available inside our time window. Inland, the radiosonde program at Vostok Station stopped in 1992 ; it began at Dome C in 2006 only. The boundary between East and West Antarctica is the transect between the Ross and Filchner-Ronne ice shelves. We excluded ice shelves because they do not contribute to sea level rise. We smoothed the shape of the domain (red line in Figure 1) to avoid making the direction normal to the boundary too dependant on the local shape of the coastline (black line). The largest gaps between stations are at the boundaries between the Ross and Filchner-Ronne ice shelves and around Dumont d'Urville.

Radiosondes can measure moisture advection directly as it is the product of humidity with the horizontal wind vector. The Integrated Global Radiosonde Archive version 2 provided the sounding data (Durre et al., 2006). IGRA stores quality-controlled soundings from more than 2 700 stations worldwide dating as far back as 1905. We applied additional climatological checks to the wind and specific humidity variables similar to Dufour et al. (2016). Based on monthly distributions, they exclude values further than three times the interquartile range from the median. Due to the persistence of unrealistic values, we removed the data from Syowa above 400 hPa.

The hygrometers on board radiosondes suffer from known biases some of which can be compensated retrospectively (Milochevich et al., 2004). For instance, at low temperatures, the hygrometer can no longer adjust to sharp variations of humidity, leading to the so-called time-lag bias. Moreover, the default calibration model of the sensor is inaccurate below -20°C (“temperature-dependence error”). Unfortunately, the suggested corrections apply only to specific radiosonde models and require metadata and high resolution vertical data absent from IGRA. However, as we shall see, in Antarctica most of the transport of humidity occurs near the surface, often in warm storm conditions. Finally, solar heating of the sensor also can generate errors which were documented in the case of Antarctica in Rowe et al. (2008) with the help of an Atmospheric Radiance Emitted Interferometer.

The temporal availability of the soundings after filtering is shown in Figure 2. The temporal sampling is biased against the early eighties and winters. To build time series and compute trends, we only kept the monthly data of a station if it involved at least ten valid soundings per month for at least ten years. The same criterion was used to exclude reanalysis data at given locations and pressure levels that are too often masked due to the topography and variations in surface pressure. When we needed to compare the datasets at specific locations, we co-located the gridded reanalysis data with the stations using bi-linear interpolation. In such cases, the year-round six-hourly reanalysis values were masked to match the irregular availability of observations.

The study of snow accumulation via upstream atmospheric processes relies on the conservation of water vapour. Over long time scales, the rate of change of precipitable water can be ignored (Peixóto and Oort, 1992) so that the moisture budget

equation is reduced to :

$$\oint_{\partial EAa} \int_0^{p_s} q v_n \, dl \frac{dp}{g} = \iint_{EAa} \int_0^{p_s} (c - e) \, ds \frac{dp}{g} \quad (1)$$

where “EAa” refers to the East Antarctic ice sheet and ∂ to its boundary. p_s is the surface pressure, q is the specific humidity and v_n is the wind component normal to the boundary. c and e are the condensation and evaporation rates per unit mass. One must then assume that the vertical integral of condensation and evaporation is equal to net precipitation i.e. that the transport of water only occurs in the gas phase. As it happens, the convergence of cloud frozen and liquid water is in the order of 10 % of the vapour convergence in Antarctica according to the few reanalyses that provide these variables (Dufour, 2016). The final step is to equate net precipitation with snow accumulation. Liquid runoff is indeed negligible given the low temperatures (King and Turner, 2007). Sublimation and hoarfrost will appear under evaporation. However, our method cannot account for snow blown out of the domain by the wind.

We use the trapezoidal rule to approximate the path integrals along the domain boundary e.g. to compute the left-hand side of Equation 1. In the case of a variable f available at M stations surrounding the domain this translates to :

$$\oint f \, dl \approx \sum_{m=0}^M \frac{1}{2} [f_{m+1} + f_m] (l_{m+1} - l_m) \quad (2)$$

The l_m are the location of the stations after the domain boundary is parameterised by the arc length l . Likewise, the vertical integral of a function f defined on N pressure levels p_n is given by :

$$\int_0^{p_s} f(p) \, dp \approx \sum_{n=n_0}^{N-1} \frac{1}{2} [f(p_{n+1}) + f(p_n)] (p_n - p_{n+1}) + f(p_{n_0}) (p_s - p_{n_0}) \quad (3)$$

n_0 refers to the last pressure level above the surface.

Our aim was to investigate trends rather than absolute amounts so we worked with anomalies with respect to each station’s monthly climatology as in Jones (1994). We could thus consider the whole 1980-2016 period and not be as affected by the biased temporal and spatial sampling. Trends and correlations were considered statistically significant for p-values higher than 95 % on a two-tail Student t-test.

3 Assessment of reanalyses

The map of mean moisture convergence in ERA Interim (Fig. 3.a) is broadly similar to the accumulation map of Arthern et al. (2006). The convergence is highest over the Peninsula where the westerlies intersect the orography. The lower altitude of West Antarctica allows moisture advection further inland than in the eastern half. The area stretching from Dome Fuji to Dome C receives less than 20 mm of moisture a year.

Along the coast of East Antarctica and in the Transantarctic Mountains, there are zones of net moisture divergence neighbouring local maxima in excess of 1000 mm per year. In comparison, the accumulation from Arthern et al. (2006) is always

positive and peaks at 500 mm equivalent water per year. The important wind contrasts in mountain ranges and outlet glaciers is a likely source of numerical artefacts. Theoretically at least, strong winds erode and sublimate snow which is a genuine cause of moisture divergence but these processes are not represented in most climate models (Amory et al., 2015).

Generally speaking, the ensemble standard deviation is proportional to the mean convergence, being highest in the Peninsula and along the coast (Fig. 3.b). The inter-dataset spread is disproportionately high in the Transantarctic Mountains and the East Antarctic Plateau. The 100 km scale inhomogeneities on the plateau are due to JRA 55. Neither the precipitation nor the evaporation exhibit these features (not shown). Unlike the other datasets, in JRA 55, evaporation is on average negative (net deposition) above 2000 m.

Given the dispersion between datasets on a local scale, we cannot expect them to converge to a common estimate of convergence on the scale of East Antarctica (Fig. 4.a, magenta bars). This is all the more true for evaporation and precipitation, which are forecasted variables and thus even less constrained by observations (light and dark blue bars, respectively). One issue with reanalyses is the non-closure of their moisture budget, witnessed by the gap between upper and lower bars in Figure 4 (a). The small mismatch in NCEP DOE R2 is illusory, a consequence of its excessively high sublimation (Bromwich et al., 2011). The 4D-Var reanalyses exhibit the smallest residual. The cloud water fluxes were not included : they could improve the balance for CFSR, JRA 55 and MERRA 2 but will worsen it for NCEP DOE R2 and ERA Interim. For comparison, we also give the breakdown of the moisture budget in the case of the whole continent (still excluding ice-shelves) in Table 2 along with the figures of Arthern et al. (2006). West Antarctica and the Peninsula are more exposed to moisture fluxes and indeed the convergence is higher for the whole continent. The ranking between reanalyses remains the same.

The interannual variability in reanalyses is doubtful due to the discontinuities introduced by changes in the observation system (Bengtsson et al., 2004). This is especially the case in Antarctica where analyses rely heavily on satellite data as opposed to conventional observations (Nicolas and Bromwich, 2011). The changes in the components of the moisture budget over time are summarized as linear trends in Figure 4 (b). Generally speaking, the trends are weak and inconsistent. Precipitable water has not changed significantly in the modern reanalyses yet it is the purported mechanism for the future increase in moisture fluxes.

25 4 Comparison with observations

The coastal profile in the upper panel of Figure 5 was built by interpolating the mean moisture flux field on the smoothed boundary of the East Antarctic ice sheet (lower panel). Overall, the moisture transports are positive over East Antarctica with occasional negative values in valleys where the katabatic winds are channelled e.g. on the Amery ice shelf (70°E). Because of its low resolution, NCEP DOE R2 is oblivious to these local effects and is frequently outside of the ensemble envelope. On the other hand, NCEP CFSR, whose spectral resolution is the highest (T382), shows stronger offshore fluxes at these locations than ERA Interim, MERRA 2 and JRA 55.

Above the launch sites, the reanalysis profiles can be compared with the radiosoundings (black stars in Figure 5). The observations are within the plus or minus one standard deviation envelope. In several cases (Syowa, Mawson, Casey), the

presence of the radiosounding coincides with an extremum in the reanalysis profile, perhaps a deviation to accomodate for the observation.

The reanalysis climatology is built on six hourly data whereas there are two radiosoundings a day at the very best with extensive gaps in the data. To correct the sampling bias, we now only consider the reanalysis timesteps that coincide with a radiosounding. The resulting time averages are shown as dots in Figure 5. As expected, there is a gap between profiles and the dots, a measure of the sampling bias. This is particularly true for Mirniy as well as for Novolazarevskaja in the case of NCEP CFSR. The values for South Pole Station are shown at the abscissa of the closest point on the domain boundary ; the direction of fluxes normal to the boundary is also defined at this point. At the South Pole, the difference between profiles and dots is also a consequence of the distance to the boundary. Otherwise, the subsampled reanalyses are quite representative of the year-round values including the summer-only data at Mario Zuchelli Station surprisingly.

This is likely a coincidence : the annual cycle of moisture convergence experiences a twofold increase during the austral winter (Fig. 6.a). In the Southern Hemisphere, the lower winter humidity is more than compensated by the stronger storm activity (Oshima and Yamazaki, 2006). NCEP DOE R2 has a much weaker convergence cycle perhaps due to the unrealistic evaporation in summer. When the reanalyses are interpolated on the stations and masked in time to match the radiosonde launches, the annual cycle is quite different (Fig. 6.b). The transition from summer to winter is no longer as sharp in most datasets and it is altogether absent from NCEP DOE R2 and IGRA.

In the vertical, the moisture flux profiles demonstrate two different regimes (Fig. 7, a). In most datasets including observations, the transport changes sign around 900 hPa : into the continent above and away from it below. The level of the transition is higher in ERA Interim (850 hPa) and higher still in NCEP DOE R2 (750-700 hPa). The 1000 hPa level in NCEP DOE R2 was too often below the ground to be shown. The surface fluxes are weaker above stations (solid lines) than in the continental average (dashed lines).

The interdataset spread also increases near the surface in the case of humidity (Fig. 7, b). The IGRA observations exhibit a shallow inversion also present in the modern reanalyses but deeper and stronger. There is practically no mean wind at altitude but below 800 hPa the prevailing winds blow out from the ice-sheet. This is the signature of katabatic flows. There is some difference between the original reanalyses and when they are both sampled in time and interpolated in space. We suggest that the stations are not representative of their surroundings because they were generally built in places sheltered from the winds. Only the high resolution datasets can represent both the katabatic outflow and the relative haven of the station. What's more, the radiosonde launch is more likely to be cancelled or the balloon lost during a strong katabatic event which biases the observations against these conditions.

Due to the correlation between wind and humidity, the mean moisture flux ($\overline{q\mathbf{v}}$) is more than the product of the mean wind ($\overline{\mathbf{v}}$) and the mean humidity (\overline{q}). The residual is the transient eddy term of the Reynolds decomposition : $\overline{q\mathbf{v}} = \overline{q}\mathbf{\overline{v}} + \overline{q'\mathbf{v}'}$. ~~Two mechanisms should show up under this term : the previously mentioned katabatic conditions and extratropical cyclones. The former involves exceptionally strong downslope wind along with exceptionally dry air from the plateau. In the latter case, the cyclone's~~ In the presence of an extratropical cyclone, the warm sector advects exceptionally moist air inland and vice-versa in its cold sector. ~~The sum of these two phenomena fits with~~ This corresponds to the inward fluxes above 900 hPa

in panel (d) of Figure 7. They peak at 750 hPa and then decrease with altitude. Below 900 hPa, the fluxes averaged along the boundary remain positive but they change sign at the sonde locations. Intermittent katabatic conditions imply unusually strong downslope winds : they will lead to positive transient eddy fluxes if they advect the unusually dry air from the plateau. However, they will count as negative if that air is moistened by the sublimation of blowing snow (Barral et al., 2014) or of precipitation (Grazioli et al., 2017). The former process at least is not modelled in the reanalyses. Its effect on the humidity profile will only be felt where radiosoundings are assimilated. Returning to panel (a), we now interpret the outward low-level fluxes as the effect of katabatic winds ~~-, both the mean and exceptional types, but we suspect that this effect is underestimated~~ for different reasons depending on the location. At the stations, the prevailing katabatic wind is weaker than average. Away from the observations, the reanalyses are too dry during katabatic events. The inward high level fluxes are a consequence of ~~extratropical cyclones~~ transient eddies, presumably extratropical cyclones, with good agreement between sites and datasets.

We finish the intercomparison with the statistical distributions of vertically integrated moisture transport, both in the non-sampled and subsampled cases (Fig. 8, a and b). The positive (inward) transport dominates, particularly the last decile but the negative (outgoing) fluxes are nonetheless important : more than a third of the absolute transport. The inter-dataset variability is as strong for the positive and the negative transport, highlighting once more the role of katabatic winds. In the subsampled case, the observations fall within the reanalysis envelope but the inter-dataset variability is also greater.

To sum up, radiosondes and reanalyses diverge in narrow valleys and near the ground especially for low resolutions models. Otherwise, since radiosondes are usually assimilated into reanalyses, the difference between the two is predictably small. The added value of radiosondes is the study of time series.

5 Interannual variability

Time series from reanalyses reflect modifications to the observation system in addition to changes in the climate. The radiosonde record also has its homogeneity issues e.g. when instruments are upgraded. These events are recorded in the IGRA metadata and we found no association with discontinuities in the times series. We will therefore interpret sudden divergences between observations and reanalyses as artefacts of the data assimilation. From Figure 9, the most conspicuous ones are in NCEP DOE R2 followed by JRA 55 but they do not take the form of the shifts we would expect with, say, the introduction of a new satellite. Rather, anomalies are amplified intermittently compared to observations or one reanalysis departs for several years from the ensemble. At Amundsen Scott Station (South Pole), observations exhibit variations of higher amplitude than the reanalyses. The extreme climate in our only inland station must have been a test to both measurements and reanalyses.

We now examine the long term evolution of moisture transport in terms of linear trends, this time analysed along the horizontal dimension (Fig. 10). Most longitudes show no statistically significant change in the advection. Among those that do, even fewer display an agreement between datasets. Mirny station and its surroundings to the east has seen less moisture travelling inland according to observations, NCEP CFSR and MERRA 2. The other reanalyses agree in sign but not in significance. There has been a similar decrease over the Amery ice shelf in between Davis and Mawson stations. The radiosondes and the interpolated reanalyses at Mawson station present an opposite trend which is greater in magnitude than the un-interpolated

reanalyses indicating a sampling bias. This increase evokes the accumulation measurements of Ding et al. (2015) on the eastern side of the nearby Lambert Glacier but it is unrelated : the timing of the rise is off by a decade. Radiosondes at Syowa station report an increase of the onshore moisture flux stronger than the reanalyses. Syowa station is located at the edge of the domain surrounding Kohnen station identified in Boening et al. (2012) and where ice cores have revealed a similar increase in accumulation. In Adélie Land, trends are incoherent in sign. The positive trend in radiosondes is not significantly different from zero, in line with the findings of Agosta et al. (2012). Van Ommen and Morgan (2010) recorded anomalous precipitation at Law Dome that peaked in the mid-1970s before returning to normal by the turn of the century but there is no trace of this trend in the observed transport at the nearby station of Casey. The decreasing accumulation in Victoria Land from Thomas et al. (2017) is not apparent in the time series of McMurdo and Mario Zuchelli stations, presumably because the ice core sites were located further north.

At the scale of the ice-sheet, we know from Figure 4 that the transport series from reanalyses will be offset by up to 30 mm year⁻¹ and that they will present contradictory trends. In Figure 11 (a), ERA Interim, JRA 55 and MERRA 2 are grouped together especially after 2000. NCEP DOE R2 is once again the outlier. It is the only dataset not to peak in 1980. Surprisingly, NCEP CFSR diverges from the other modern reanalyses in the 1980s.

When we restrict the reanalyses to the locations and times of radiosonde launches, they display a more consistent behaviour (Fig. 11, b) : a downward trend in the 1980s and an upward trend in the two following decades. Observations follow the same pattern with comparatively higher fluxes in the 1980s and 2000s. During the same period, precipitable water above the launch sites has remained constant both in observations and analyses (not shown). The interdecadal pattern in transport is therefore a consequence of variable winds rather than thermodynamics.

We deduce from Figure 11 (b) a straightforward assimilation of radiosoundings by reanalyses when available. The reanalysis time series at the stations would be less consistent if the assimilation relied more on the model first guess or on remote sensing data. While the time series at the stations may be accurate, they would be irrelevant if they were not representative of East Antarctica as a whole. If that were the case, the two panels of Figure 11 would have little in common. As we saw, this is true of decadal variability. However once trends are removed, the continental and the station detrended time series are significantly correlated on a year to year basis for all reanalyses except NCEP DOE R2. The significant correlation coefficients lie between 0.48 (JRA 55) and 0.61 (MERRA 2). This gives credibility to the claim that the network of stations is representative of the entire boundary of the ice sheet.

6 Conclusions

We have compared moisture transport to Antarctica in five reanalyses and over the 1980-2016 period. For East Antarctica, estimates of moisture convergence range from 65 to 96 mm per year and net precipitation from 60 to 123 mm per year (respectively 72-96 and 91-123 mm per year when excluding NCEP DOE R2). The sign of the linear trend for moisture convergence is not consistent. In any case, changes are not driven by precipitable water increases.

The scarce situ observations and the unreliable satellite observations (Bouchard et al., 2010) make Antarctica a fitting object of study for reanalyses. The differences we found between the datasets remind us of their familiar limitations : model dependence in the absence of observations and unreliable time series (Bromwich et al., 2011; Nicolas and Bromwich, 2011). Additionally, the non-closure of their atmospheric hydrological budget is an issue for estimating accumulation over the ice-sheet. Fortunately, the gap between moisture convergence and net precipitation is reduced by 4D-Var assimilation.

Although radiosondes are assimilated by reanalyses, lower resolution models have difficulties to take into account observations near the surface and on irregular terrain. This is relevant to represent the humidity inversion and how valleys funnel moisture offshore during katabatic events. Most of the onshore moisture transport occurs above 950 hPa as transient eddy fluxes and in winter. This consistently represented in all but the oldest reanalysis.

Changes in the observing system confounds the interpretation of temporal variability in reanalyses. At the cost of spatial coverage, the original observations provide homogeneous time series that can be used as a proxy for accumulation. After a sharp decline in the 1980s, the moisture transport recovered gradually in the 1990s and early 2000s and has since slightly decreased. This time series can now serve as a reference to identify spurious trends in the reanalyses.

The seasonal resolution of stake farms and ice cores is not enough to study short and intense accumulation events such as described in Gorodetskaya et al. (2014) but radiosondes are launched on a daily basis. The distribution of moisture transport highlights both positive and negative extreme events. Regarding exports, the conflation of net precipitation with accumulation ignores wind erosion in particular. The reanalyses only represent its signature on the humidity profile near radiosonde sites. Conversely, the observations are made in sheltered locations that experience a weaker transport by the mean wind. Since blowing snow leaves a signature on the humidity profile (Barral et al., 2014), radiosoundings could in fact lend themselves to the study of snow fluxes too.

On the long term and averaged over all the selected East Antarctic stations, there has been no statistically significant increase, either in incoming moisture or in precipitable water. In contrast, surface temperature trends are much stronger in West Antarctica and the Peninsula (Steig et al., 2009) with probable consequences on the moisture budget. It remains to be seen whether the limited radiosonde data in these regions can provide the corresponding evidence.

Acknowledgements. The reanalysis datasets were available by courtesy of ECMWF, NASA, NCEP and JMA. The IGRA sounding data were made available by the NOAA National Centers for Environmental Information (NCEI). This work was supported by the project “Mechanisms of moisture advection in high latitudes in the present and future climate” funded by CNRS, IGE and UGA and partly through the BELMONT Forum Fund ARCTIC-ERA project funded by ANR. OZ also benefited from the project 14.613.21.0083 (ID RFMEFI61317X0083) funded by the Ministry of Education and Science of Russia. Finally, we thank the logistics crew at Cap Prudhomme, Vincent Favier and the TA64 Météo France team particularly Didier Lacoste for investigating the station’s present weather archives on our behalf.

References

- Agosta, C., Favier, V., Genthon, C., Gallée, H., Krinner, G., Lenaerts, J. T., and van den Broeke, M. R.: A 40-year accumulation dataset for Adelie Land, Antarctica and its application for model validation, *Climate dynamics*, 38, 75–86, 2012.
- Amory, C., Trouvilliez, A., Gallée, H., Favier, V., Naaïm-Bouvet, F., Genthon, C., Agosta, C., Piard, L., and Bellot, H.: Comparison between
5 observed and simulated aeolian snow mass fluxes in Adélie Land, East Antarctica, *The Cryosphere Discussions*, pp. 1373–1383, 2015.
- Arthern, R. J., Winebrenner, D. P., and Vaughan, D. G.: Antarctic snow accumulation mapped using polarization of 4.3-cm wavelength microwave emission, *Journal of Geophysical Research: Atmospheres*, 111, 2006.
- Barral, H., Genthon, C., Trouvilliez, A., Brun, C., and Amory, C.: Blowing snow in coastal Adélie Land, Antarctica: three atmospheric-moisture issues, *The Cryosphere*, 8, 1905–1919, 2014.
- 10 Bengtsson, L., Hagemann, S., and Hodges, K. I.: Can climate trends be calculated from reanalysis data?, *Journal of Geophysical Research: Atmospheres* (1984–2012), 109, 2004.
- Bengtsson, L., Hodges, K. I., Koumoutsaris, S., Zahn, M., and Keenlyside, N.: The changing atmospheric water cycle in polar regions in a warmer climate, *Tellus A*, 63, 907–920, 2011.
- Boening, C., Lebsack, M., Landerer, F., and Stephens, G.: Snowfall-driven mass change on the East Antarctic Ice Sheet, *Geophysical
15 Research Letters*, 39, 2012.
- Bouchard, A., Rabier, F., Guidard, V., and Karbou, F.: Enhancements of satellite data assimilation over Antarctica, *Monthly Weather Review*, 138, 2149–2173, 2010.
- Bromwich, D. H., Robasky, F. M., Cullather, R. I., and Van Woert, M. L.: The atmospheric hydrologic cycle over the Southern Ocean and Antarctica from operational numerical analyses, *Monthly Weather Review*, 123, 3518–3538, 1995.
- 20 Bromwich, D. H., Nicolas, J. P., and Monaghan, A. J.: An Assessment of Precipitation Changes over Antarctica and the Southern Ocean since 1989 in Contemporary Global Reanalyses*, *Journal of Climate*, 24, 4189–4209, 2011.
- Collins, M., Knutti, R., Arblaster, J., Dufresne, J.-L., Fichet, T., Friedlingstein, P., Gao, X., Gutowski, W., Johns, T., Krinner, G., Shongwe, M., Tebaldi, C., Weaver, A., and Wehner, M.: Long-term Climate Change: Projections, Commitments and Irreversibility, book section 12, p. 1029–1136, Cambridge University Press, Cambridge, United Kingdom and New York, NY, USA, 2013.
- 25 Connolley, W. and King, J.: Atmospheric water-vapour transport to Antarctica inferred from radiosonde data, *Quarterly Journal of the Royal Meteorological Society*, 119, 325–342, 1993.
- Cullather, R. I., Bromwich, D. H., and Van Woert, M. L.: Spatial and Temporal Variability of Antarctic Precipitation from Atmospheric Methods, *Journal of Climate*, 11, 334–367, 1998.
- Dee, D., Uppala, S., Simmons, A., Berrisford, P., Poli, P., Kobayashi, S., Andrae, U., Balmaseda, M., Balsamo, G., Bauer, P., et al.: The
30 ERA-Interim reanalysis: configuration and performance of the data assimilation system, *Quarterly Journal of the Royal Meteorological Society*, 137, 553–597, 2011.
- Ding, M., Xiao, C., Li, C., Qin, D., Jin, B., Shi, G., Xie, A., and Cui, X.: Surface mass balance and its climate significance from the coast to Dome A, East Antarctica, *Science China Earth Sciences*, 58, 1787–1797, 2015.
- Dufour, A.: Transport de vapeur d’eau vers les hautes latitudes : Mécanismes et variabilité d’après réanalyses et radiosondages, Ph.D. thesis, Grenoble Alpes, 2016.
- 35 Dufour, A., Zolina, O., and Gulev, S. K.: Atmospheric Moisture Transport to the Arctic: Assessment of Reanalyses and Analysis of Transport Components, *Journal of Climate*, 29, 5061–5081, 2016.

- Durre, I., Vose, R. S., and Wuertz, D. B.: Overview of the Integrated Global Radiosonde Archive, *Journal of Climate*, 19, 53–68, 2006.
- Ebita, A., Kobayashi, S., Ota, Y., Moriya, M., Kumabe, R., Onogi, K., Harada, Y., Yasui, S., Miyaoka, K., Takahashi, K., et al.: The Japanese 55-year reanalysis “JRA-55”: an interim report, *Sola*, 7, 149–152, 2011.
- Eisen, O., Frezzotti, M., Genthon, C., Isaksson, E., Magand, O., van den Broeke, M. R., Dixon, D. A., Ekaykin, A., Holmlund, P., Kameda, T.,
5 et al.: Ground-based measurements of spatial and temporal variability of snow accumulation in East Antarctica, *Reviews of Geophysics*, 46, 2008.
- Favier, V., Agosta, C., Parouty, S., Durand, G., Delaygue, G., Gallée, H., Drouet, A.-S., Trouvilliez, A., and Krinner, G.: An updated and quality controlled surface mass balance dataset for Antarctica, *Cryosphere*, 7, p=583, 2013.
- Fretwell, P., Pritchard, H. D., Vaughan, D. G., Bamber, J., Barrand, N., Bell, R., Bianchi, C., Bingham, R., Blankenship, D., Casassa, G.,
10 et al.: Bedmap2: improved ice bed, surface and thickness datasets for Antarctica, *The Cryosphere*, 7, 2013.
- Fyke, J., Lenaerts, J. T., and Wang, H.: Basin-scale heterogeneity in Antarctic precipitation and its impact on surface mass variability, *The Cryosphere*, 11, 2595, 2017.
- Gelaro, R., McCarty, W., Suárez, M. J., Todling, R., Molod, A., Takacs, L., Randles, C., Darmenov, A., Bosilovich, M. G., Reichle, R., et al.: The Modern-Era Retrospective Analysis for Research and Applications, Version 2 (MERRA-2), *Journal of Climate*, 2017.
- 15 Genthon, C. and Krinner, G.: Convergence and disposal of energy and moisture on the Antarctic polar cap from ECMWF reanalyses and forecasts, *Journal of climate*, 11, 1703–1716, 1998.
- Gorodetskaya, I. V., Tsukernik, M., Claes, K., Ralph, M. F., Neff, W. D., and Van Lipzig, N. P.: The role of atmospheric rivers in anomalous snow accumulation in East Antarctica, *Geophysical Research Letters*, 41, 6199–6206, 2014.
- Grazioli, J., Madeleine, J.-B., Gallée, H., Forbes, R. M., Genthon, C., Krinner, G., and Berne, A.: Katabatic winds diminish precipitation
20 contribution to the Antarctic ice mass balance, *Proceedings of the National Academy of Sciences*, doi:10.1073/pnas.1707633114, <https://www.pnas.org/content/early/2017/09/19/1707633114>, 2017.
- Hines, K. M., Grumbine, R. W., Bromwich, D. H., and Cullather, R. I.: Surface Energy Balance of the NCEP MRF and NCEP-NCAR Reanalysis in Antarctic Latitudes during FROST, *Weather and forecasting*, 14, 851–866, 1999.
- Jones, P. D.: Hemispheric surface air temperature variations: a reanalysis and an update to 1993, *Journal of Climate*, 7, 1794–1802, 1994.
- 25 Kanamitsu, M., Ebisuzaki, W., Woollen, J., Yang, S.-K., Hnilo, J., Fiorino, M., and Potter, G.: NCEP-DOE AMIP-II Reanalysis (R-2), *Bulletin of the American Meteorological Society*, 83, 1631–1643, 2002.
- King, J. C. and Turner, J.: *Antarctic meteorology and climatology*, Cambridge University Press, 2007.
- Kobayashi, S., Ota, Y., Harada, Y., Ebita, A., Moriya, M., Onoda, H., Onogi, K., Kamahori, H., Kobayashi, C., Endo, H., et al.: The JRA-55 reanalysis: general specifications and basic characteristics, *Journal of the Meteorological Society of Japan. Ser. II.*, 93, 5–48, 2015.
- 30 Lenaerts, J., Den Broeke, M., Berg, W., Meijgaard, E. v., and Kuipers Munneke, P.: A new, high-resolution surface mass balance map of Antarctica (1979–2010) based on regional atmospheric climate modeling, *Geophysical Research Letters*, 39, 2012.
- Medley, B., McConnell, J., Neumann, T., Reijmer, C., Chellman, N., Sigl, M., and Kipfstuhl, S.: Temperature and snowfall in western Queen Maud Land increasing faster than climate model projections, *Geophysical Research Letters*, 45, 1472–1480, 2018.
- Miloshevich, L. M., Paukkunen, A., Vömel, H., and Oltmans, S. J.: Development and validation of a time-lag correction for Vaisala radiosonde humidity measurements, *Journal of Atmospheric and Oceanic Technology*, 21, 1305–1327, 2004.
- 35 Monaghan, A. J., Bromwich, D. H., Fogt, R. L., Wang, S.-H., Mayewski, P. A., Dixon, D. A., Ekaykin, A., Frezzotti, M., Goodwin, I., Isaksson, E., et al.: Insignificant change in Antarctic snowfall since the International Geophysical Year, *Science*, 313, 827–831, 2006.

- Nicolas, J. P. and Bromwich, D. H.: Precipitation changes in high southern latitudes from global reanalyses: A cautionary tale, *Surveys in geophysics*, 32, 475–494, 2011.
- Oshima, K. and Yamazaki, K.: Difference in seasonal variation of net precipitation between the Arctic and Antarctic regions, *Geophysical research letters*, 33, 2006.
- 5 Palerme, C., Kay, J., Genthon, C., L'Ecuyer, T., Wood, N., and Claud, C.: How much snow falls on the Antarctic ice sheet?, *The Cryosphere*, 8, 1577–1587, 2014.
- Palerme, C., Genthon, C., Claud, C., Kay, J. E., Wood, N. B., and L'Ecuyer, T.: Evaluation of current and projected Antarctic precipitation in CMIP5 models, *Climate Dynamics*, 48, 225–239, 2017.
- Peixóto, J. and Oort, A. H.: *Physics of climate*, American institute of physics, New York, 1992.
- 10 Rowe, P. M., Miloshevich, L. M., Turner, D. D., and Walden, V. P.: Dry bias in Vaisala RS90 radiosonde humidity profiles over Antarctica, *Journal of Atmospheric and Oceanic Technology*, 25, 1529–1541, 2008.
- Saha, S., Moorthi, S., Pan, H.-L., Wu, X., Wang, J., Nadiga, S., Tripp, P., Kistler, R., Woollen, J., Behringer, D., et al.: The NCEP Climate Forecast System Reanalysis, *Bulletin of the American Meteorological Society*, 91, 1015–1057, 2010.
- Steig, E. J., Schneider, D. P., Rutherford, S. D., Mann, M. E., Comiso, J. C., and Shindell, D. T.: Warming of the Antarctic ice-sheet surface since the 1957 International Geophysical Year, *Nature*, 457, 459–462, 2009.
- 15 Thomas, E. R., van Wessem, J. M., Roberts, J., Isaksson, E., Schlosser, E., Fudge, T. J., Vallelonga, P., Medley, B., Lenaerts, J., Bertler, N., van den Broeke, M. R., Dixon, D. A., Frezzotti, M., Stenni, B., Curran, M., and Ekaykin, A. A.: Regional Antarctic snow accumulation over the past 1000 years, *Climate of the Past*, 13, 1491–1513, doi:10.5194/cp-13-1491-2017, <https://www.clim-past.net/13/1491/2017/>, 2017.
- 20 Tsukernik, M. and Lynch, A. H.: Atmospheric meridional moisture flux over the Southern Ocean: A story of the Amundsen Sea, *Journal of Climate*, 26, 8055–8064, 2013.
- Van Ommen, T. D. and Morgan, V.: Snowfall increase in coastal East Antarctica linked with Southwest Western Australian drought, *Nature Geoscience*, 3, 267–272, 2010.
- Wang, Y., Ding, M., van Wessem, J. M., Schlosser, E., Altnau, S., van den Broeke, M. R., Lenaerts, J. T. M., Thomas, E. R., Isaksson, E., Wang, J., and Sun, W.: A Comparison of Antarctic Ice Sheet Surface Mass Balance from Atmospheric Climate Models and In Situ Observations, *Journal of Climate*, 29, 5317–5337, doi:10.1175/JCLI-D-15-0642.1, <https://doi.org/10.1175/JCLI-D-15-0642.1>, 2016.
- 25

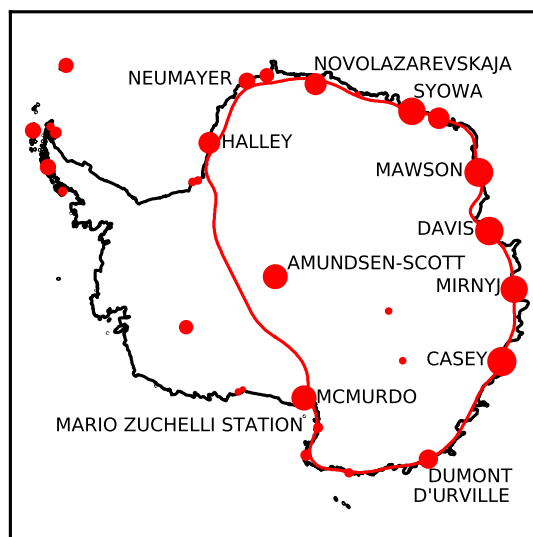


Figure 1. Location of the radiosonde launch sites and boundary of the East Antarctic ice-sheet. The diameter of the dots is proportional to the number of archived soundings (maximum is Casey with 39 000 soundings between 1957 and 2016). Only the sites selected for the study are labelled.

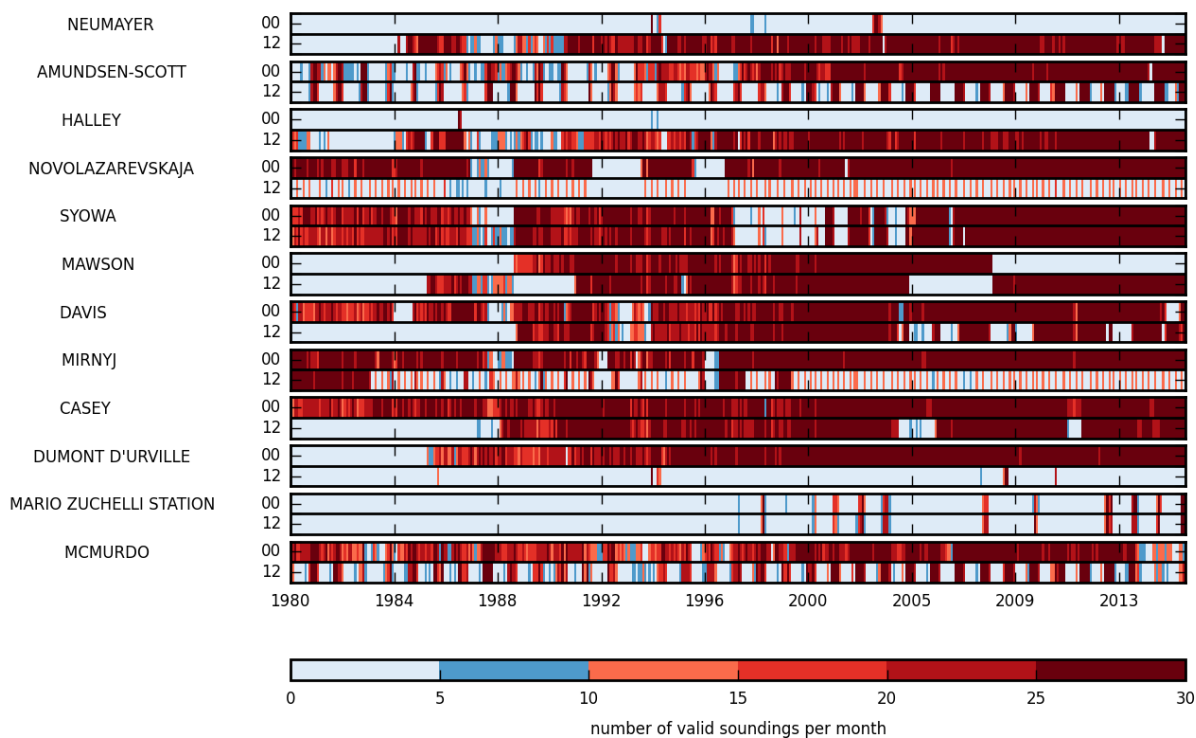


Figure 2. Monthly density of valid humidity and wind soundings per station and per synoptic time (midnight and noon GMT).

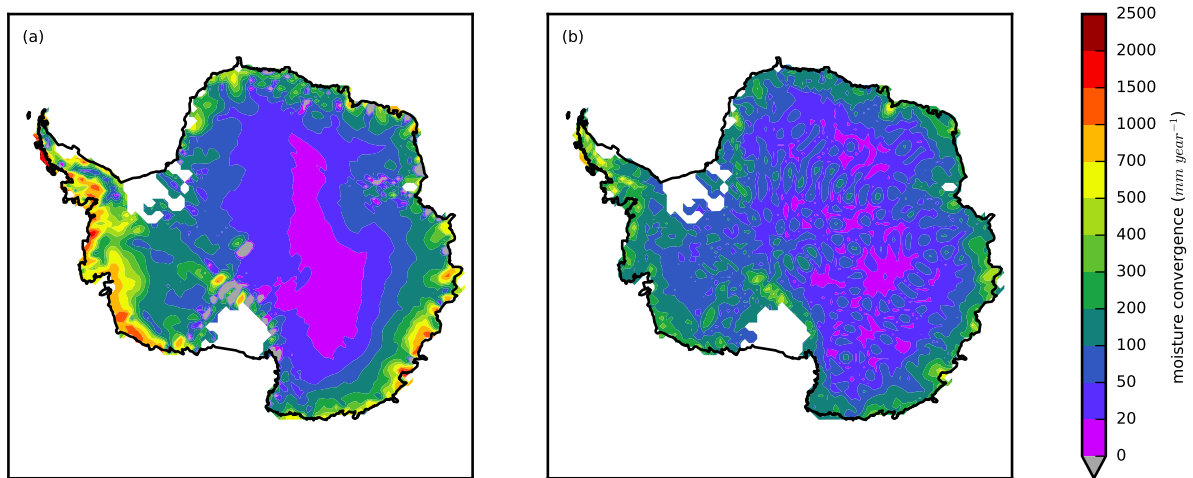


Figure 3. Mean vertically integrated moisture flux convergence over Antarctica in ERA Interim (a) and the standard deviation of that variable for all the studied reanalyses (b).

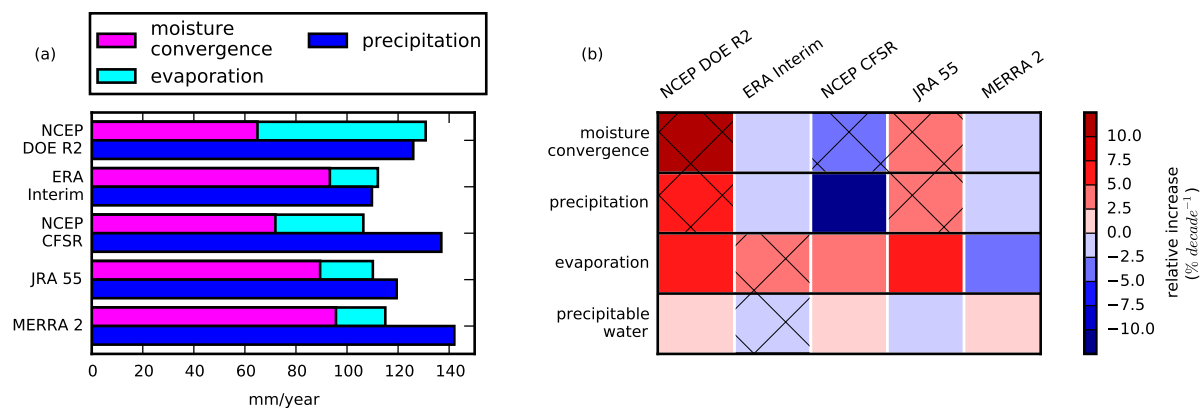


Figure 4. Magnitude of the long-term averaged (1979-2016) atmospheric moisture budget terms of the East Antarctic ice sheet (a). Linear trends of the moisture budget terms (b) : colour indicates rate of change and hatches statistical significance.

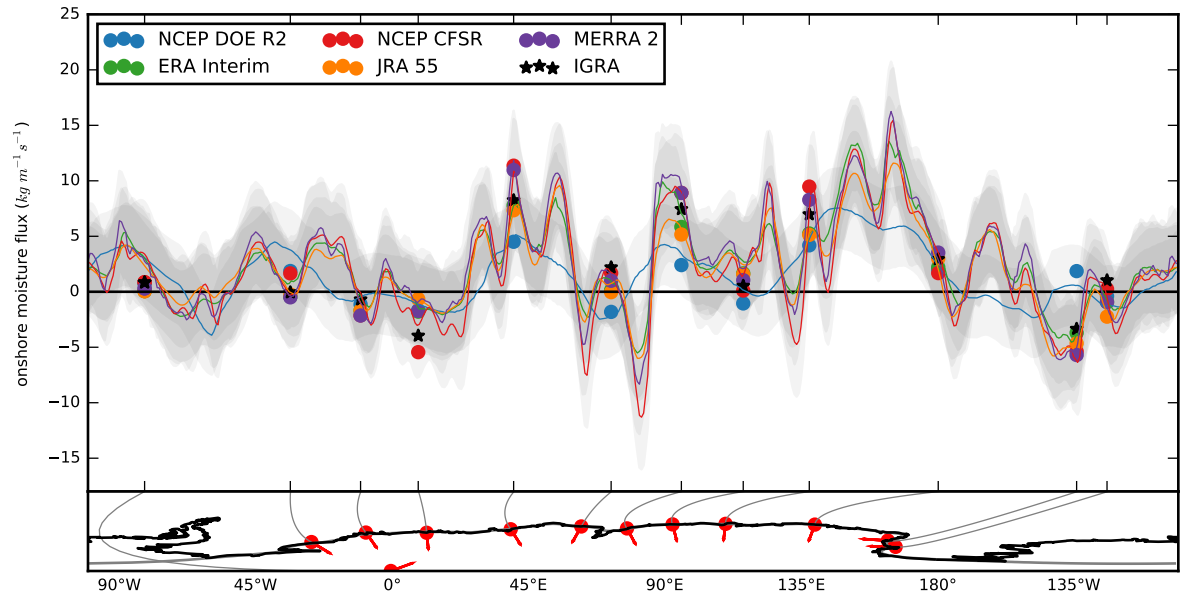


Figure 5. Distribution of the mean incoming vertically integrated moisture flux on the boundary of the Antarctic ice sheet in different reanalyses. The grey shaded bands indicate the ranges corresponding to plus or minus one interannual standard deviation from the mean. Stars represent the radiosonde and dots the reanalyses interpolated over the launch sites and with the same temporal sampling as the observations. The red dots in the lower panel indicate the location of the sites and the arrows the direction normal to the boundary.

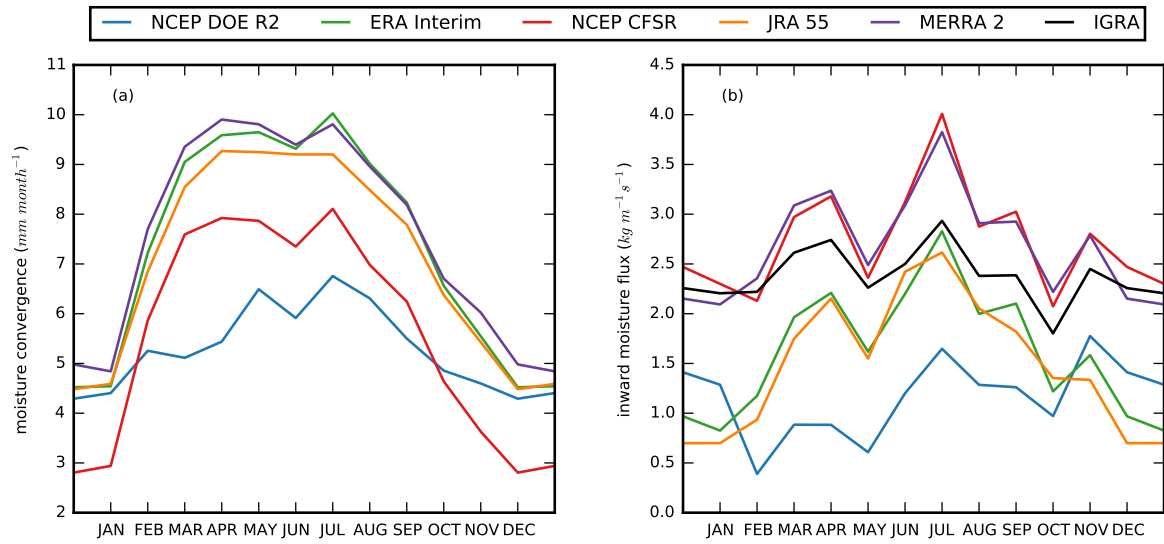


Figure 6. Annual cycle of moisture transport into East Antarctica : (a) computed from reanalyses averaged over East Antarctica (b) observations and reanalyses (with the same spatial and temporal sampling) averaged over all stations

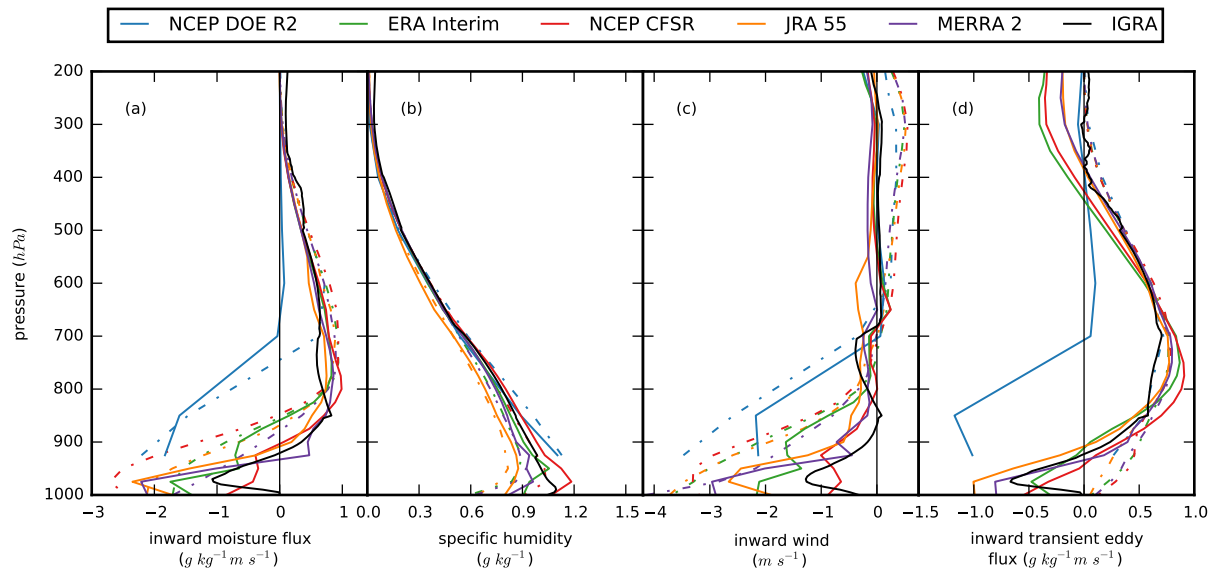


Figure 7. Mean vertical profiles : over radiosonde sites, simultaneously with observations (solid lines) ; along the coast of the East Antarctic ice sheet for the whole 1980-2016 period (dashed lines). The variables displayed in the panels are : moisture flux (a), specific humidity (b), mean wind (c) and transient eddy fluxes (d).

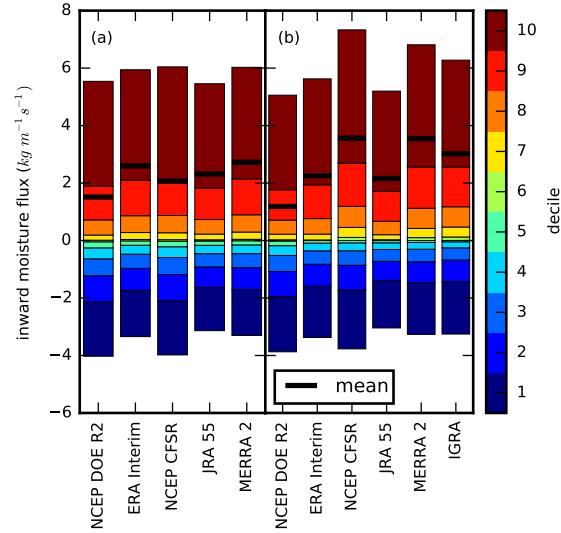


Figure 8. Breakdown of the climatological vertically integrated moisture flux into the contribution of its different deciles. When a decile is represented below the origin, its contribution is negative. The top of the bar indicates the mean transport when negative values are set to zero. The difference between the top and bottom is the mean transport, symbolised by the bold black line. In panel (a), the flux deciles are averaged over the East Antarctic boundary whereas in panel (b) the deciles are computed by aggregating the data over stations only with the same temporal sampling as IGRA.

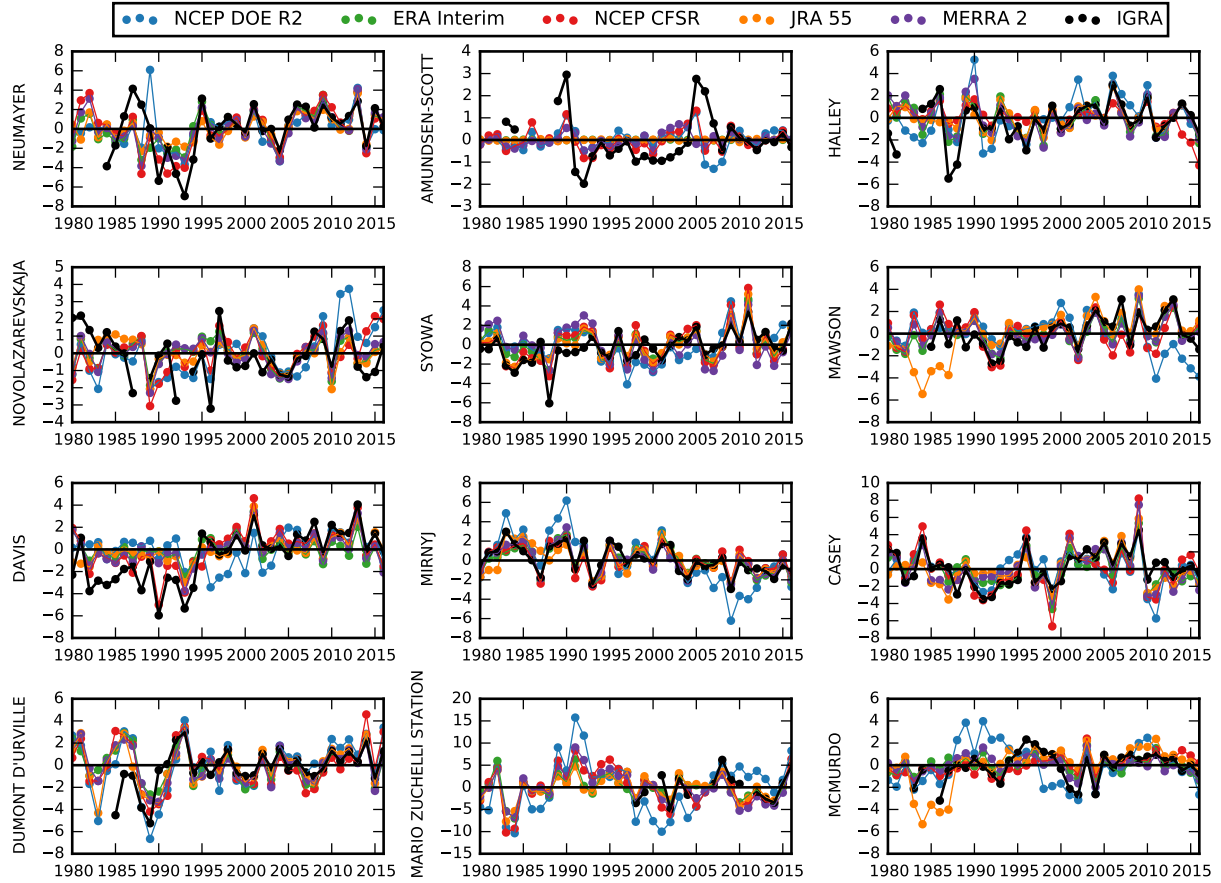


Figure 9. Time series of vertically integrated moisture transport anomalies into East Antarctica (in $\text{kg m}^{-1}\text{s}^{-1}$) at the location of the selected stations in observations and reanalyses.

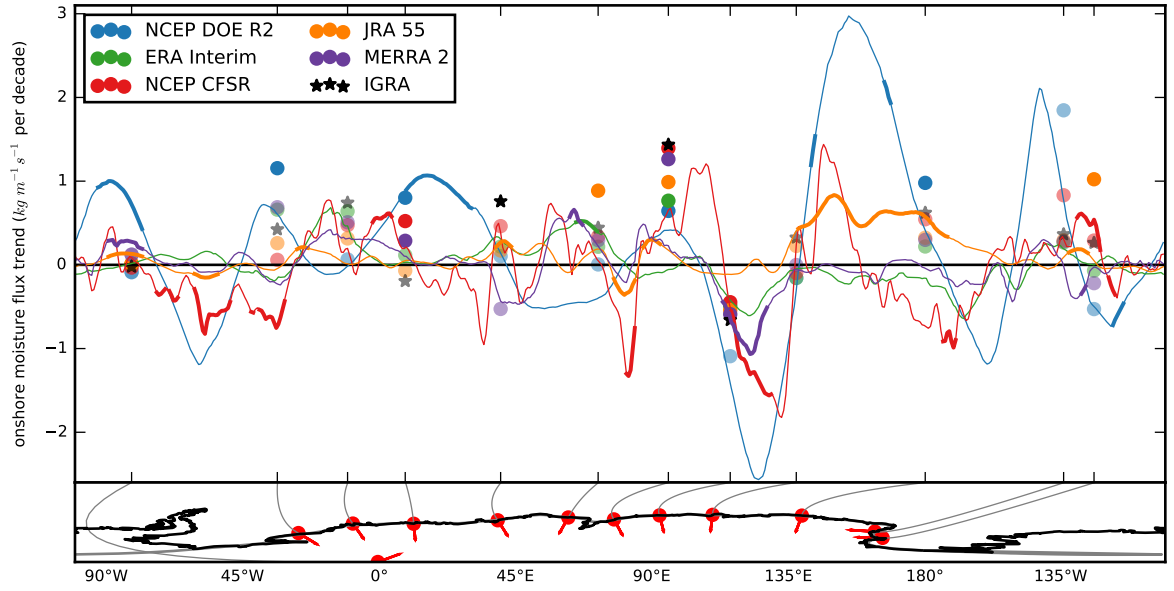


Figure 10. Linear trends of vertically integrated moisture transport into East Antarctica. The profiles are built from reanalyses over the 1980-2016 period interpolated along the domain boundary whereas the dots are computed from reanalyses with the same temporal sampling as the observations. The stars correspond to trends computed from observations. The bold sections of the profiles and the solid dots and stars indicate statistically significant changes.

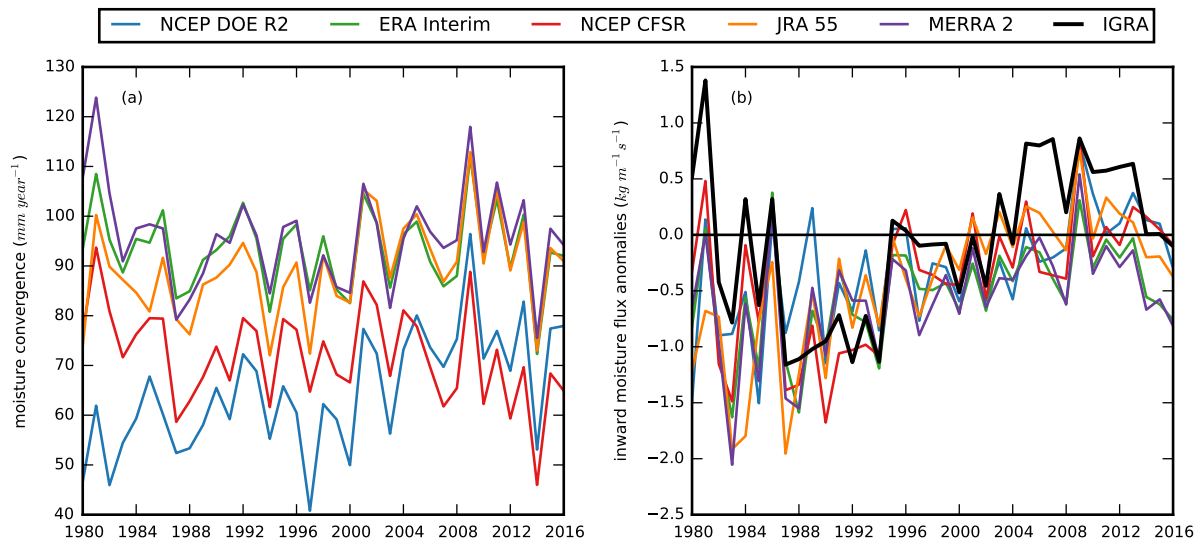


Figure 11. Time series of transport into East Antarctica : (a) absolute amounts computed from reanalyses averaged over the domain boundary (b) anomalies of observations and reanalyses (with the same spatial and temporal sampling) averaged over all stations

Reanalysis	reference	model vintage	model resolution	available resolution	data assimilation
NCEP DOE R2	Kanamitsu et al. (2002)	2001	T62	2.5°	3D-Var
ERA			L28	L10	
Interim	Dee et al. (2011)	2006	T255	0.75°	4D-Var
NCEP			L60	L23	
CSFR	Saha et al. (2010)	2009	T382	0.5°	3D-Var
JRA 55			L64	L23	+ FOTO
MERRA 2	Ebita et al. (2011)	2009	T319	0.5°	4D-Var
			L60	L23	
	Kobayashi et al. (2015)		~ 50 * 50 km	0.5° * 0.625°	3D-Var
			L72	L23	+ IAU
	Gelaro et al. (2017)	2012			

Table 1. Major characteristics of reanalyses compared during the study.

Dataset	East Antarctica					Antarctica				
	P	E	P-E	C	P-E-C	P	E	P-E	C	P-E-C
NCEP DOE R2	126	66	60	65	-5	172	64	108	115	-7
ERA Interim	110	19	91	93	-2	159	19	140	138	3
NCEP CFSR	137	34	102	72	31	196	38	158	120	39
JRA 55	119	21	99	89	9	175	21	154	140	15
MERRA 2	142	19	123	96	27	204	20	184	143	42
Arthern et al. (2006)			112					143		

Table 2. Magnitude of the long-term averaged (1979-2016) atmospheric moisture budget terms in mm per year for the East Antarctic ice sheet and the whole Antarctic continent (ice-shelves excluded). The columns stand for : precipitation (P), evaporation (E), convergence (C), net precipitation (P-E) and residual (P-E-C). Strictly speaking, the values of Arthern et al. (2006) represent accumulation rather than net precipitation. The figure for East Antarctica is a weighted average of the accumulation in the sectors from 45W to 180E.