

Response to Reviewer #1

Dear Anonymous Referee #1,

Thank you very much for your detailed and supportive review. We particularly appreciate your major suggestion to review other sources of satellite imagery and having done this, now feel that our interpretations have much greater support. Here, we respond (in black plain text) to your comments (in blue italics) one by one. We also attach a marked-up version of revised manuscript and supplement.

Best regards,

Guang Liu, Mingyang Lv and Co-authors

1. *P2, L10: it would also be useful to mention the nearby Karakoram here (which is already described in several of the papers you reference). An added reference to this paper would also be useful:*

Gardelle et al. 2012. Slight mass gain of Karakoram glaciers in the early twenty-first century. Nature Geoscience, 5, 322-325

Thanks for this suggestion. Certainly, given that we include the Karakoram in the discussion of our results it would be sensible to also include it here. We have amended the text accordingly and added the Gardelle et al., 2012 reference too.

2. *P2, L13: clarify the period that the reference to positive mass balance of the eastern Pamir refers to*

Yes, this was an omission on our part. We now add 'in the early twenty-first century' right after 'with the eastern Pamir experiencing a slight positive mass balance'.

3. *P4, L14: the distance from Taxkogan meteorological station to the Kingata Mountains is >100 km, so this should be noted.*

We agree, and have added some text to clarify: 'Taxkogan meteorological station (37°46'N, 75°14'E; 3090.9 m asl) is located near to the Muztag Ata mountains, approximately 150 km away from KM.' We have also made some necessary adjustment to the following sentence.

4. *P4, L16: clarify where a 'mean temperature as high as 15°C' is referring to: e.g., over glaciers? At which altitude?*

Thank you for pointing this out. According to Shangguan et al (2006), 15 °C is referring to the temperature at the same altitude of the meteorological station. We have added 'as high as 15 °C (at an elevation of ~3000 m asl)' to the text.

5. *P5, L4: I think that 'high accuracy' is optimistic given the resolution of your imagery; 'good accuracy' would seem to be a better descriptor*

We agree that 'good accuracy' is a better descriptor here and have changed the text accordingly.

6. P6, L4: state what the 'common reference dataset' was

We meant to refer here to the common projection, and so have changed 'dataset' to 'system' and added 'specifically to the Universal Transverse Mercator (UTM) grid'.

5 7. P6, L10: state which band(s) and resolution were used for the determination of glacial motion; in part, this is needed to understand the pixel size being referred to here

We have added a sentence here to address this: 'All imagery used for surface displacement detection had a spatial resolution of 15 m (i.e. panchromatic bands of Landsats 7 (ETM+) and 8 (OLI), and ASTER band 3N).

8. P7, L6: state the averaging distance used for the velocity smoothing, and how blunders were identified in the data

10 We have added 'with a kernel size of 3×3 (45 m \times 45 m in horizontal distance)' to describe the Gaussian Low Pass filtering method we use. Also, we give a clear identification to blunders adding a sentence 'We took values that differed by > 20 m/yr, compared to those in surrounding areas, as blunders'.

9. P7, L7: how do you know that the accuracy of manual measurements is within 30 m, and therefore which area changes can be considered significant? There are some useful papers that address this issue directly, such as:

15 [Hall, D. K., Baa, K. J., Schöner, W., Bindshadler, R. A., and Chien, J. Y. L., 2003: Consideration of the errors inherent in mapping historical glacier positions in Austria from the ground and space \(1893–2001\). Remote Sensing of Environment, 86: 566–577.](#)

[Paul, F., and 19 others, 2013: On the accuracy of glacier outlines derived from remote-sensing data. Annals of Glaciology, 54\(63\): 171–182.](#)

20 Thanks for highlighting this. We have revisited our error analysis and applied the methods in the suggested papers. Specifically, we selected five differently sized glaciers in our study area and manually digitized their termini outlines both in 1999 and in 2016 for five times independently, and then measured the changes for each glacier along their centreline. We take the average standard deviation of the five glaciers as our manual measurement accuracy. We have revised the text in our manuscript to read 'Manually digitizing glacier outlines
25 may give inconsistent and unreproducible results (Hall et al., 2003). We therefore used the method recommended by Paul et al, (2013) to measure the associated error. This entailed repeatedly digitizing the termini position of five differently sized glaciers in our study area and calculating the standard deviation of changes along their centrelines. The final accuracy of our manual measurement was calculated as 15.7 m. A
30 combination of Landsat multipsectral, Landsat panchromatic and high-resolution images in Google Earth helped us to determine the sign of terminal changes'. We add the two papers you mentioned to the references.

10. P7, L18: be more explicit as to what 'discrete changes in glacial motion' refers to

We have added 'such as a clear acceleration or deceleration in some part or along the entire glacier within adjacent years' to the original sentence.

11. P8, L9: state what the total glacier area was in 1999 so that the 1.33 km² change can be put in perspective

Thanks for the suggestion. We have changed the original sentence to now read ‘The total glacier area in 2016 was 357.19 km², an increase of more than 1.33 km² since 1999’.

5 12. P8, L13: can you be more specific about the duration of the individual surges? A range of ‘a few months to several years’ is pretty broad

See response to point 13 immediately below.

13. P8, L14: please better describe what the ‘clear sign of surge behaviour’ was – e.g., how far did the glacier advance over which period? Fig. S1 is too small and too low resolution to make out much meaningful detail (also see specific comments below). Please improve!

10 We discussed this at some length and decided the clearest way to do this would be to add a table describing each event and the evidence we have for interpreting it as a surge (see Table 2 below). We also amended the specific text referred to above from ‘it showed clear sign of surge behaviour’ to ‘there was a clear terminus advance between...’.

15 **Table 2: Detailed information of each surge-type glacier in this study including evidence of each surge event, their initiating and terminating year, and their duration**

No.	Evidences of surge events	Surge initiating year	Surge terminating year	Surge duration
E1	Surface features show clear movement; Looped moraines; A clear surge front in velocity profiles.	1999	2003	4 years
		2013	2016	3 years
E7	Surface features show clear movement; Looped moraines; A clear surge front in velocity profiles.	2013	After 2016	> 3 years
E9	Destruction of original surface feature; Changes in ice crevasses; Looped moraines; A clear acceleration near terminus region.	2007	After 2016	> 9 years
E10	Terminus advanced 588 m; A clear acceleration and deceleration along glacier tongue during study period.	2007	Before 2010	< 3 years
E11	Clear surge fronts in satellite images; Changes in crevassing; Looped moraines; Broken surface feature; Disappearance of glacial ponds.	1999	2002	3 year
		2013	2016	3 years
E12	Clear surge front in satellite images; Changes in ice crevasses; Looped moraines; Disappearance of glacial ponds; A clear surge front in velocity profiles.	2007	After 2016	> 9 years
E13	Clear surge front in satellite images; Changes in ice crevasses; Looped moraines; Disappearance of	After 2005	2007	< 2 years

	glacial ponds; A clear deceleration along glacier tongue.			
W6	Clear increase and decrease of bare ice area; A clear acceleration near its accumulation zone.	After 1977	Before 1989	< 12 years
W8	Terminus advanced 1431 m; A clear deceleration along glacier tongue.	1993	2002	9 years
W9	Terminus advanced 810 m; Changes in ice crevasses.	2007	2008	1 year
W12	Terminus advanced more 1435 m; Changes in ice crevasses; Looped moraines; Abnormal change in velocity profiles.	2001	2007	6 years
W13	East branch advanced ~450 m and squeezed main branch; Changes in ice crevasses; Velocity increased near terminus region of trunk glacier.	2008	2010	2 years
W5	No obvious sign of surge except an advance of 161 m between 1972 and 1977; Distorted moraines in lower terminus region; Terminus retreated while surface velocity increased from 1999 to 2016.	Before 1972		

14. P8, L18: please specify the end period for the movement of '100 m/yr since 2007'. Also specify the period that 'termini of advancing glaciers... changed less than 300 m' refers to: my initial assumption was 1999-2016, but in the next sentence you say that remained stable until 2007

5 Yes, re-reading this we can see it is somewhat confusing. We have amended the text to read 'the east branch surged into the main branch at a rate of approximately 100 m/yr from 2007 to 2016' and added 'from 1999 to 2016' to specify the period we are referring to for the advancing glaciers.

15. P9, L6: I don't understand what 'displacement following the entire glacier' means. It would also be useful to state what the change in glacier length was, in addition to area

10 We have clarified both of these points by amending the text to read 'but they all advanced (W2: 245 m, W3: 212 m, W10: 154 m, W11: 224 m) leading to a total increase in area of 0.38 km²'.

16. P9, L13: change 'truck glacier' to 'trunk glacier'!

Thanks for picking this up! We've changed it accordingly.

15 17. P9, L15: to me, W5 looks like a surge-type glacier due to the distorted moraines in lower terminus region in 2000 (in particular it looks as if the tributary to the SE might have recently surged; see Google Earth for high resolution imagery). It would be worthwhile looking through old Landsat imagery to see if this surge was captured, which would prove this definitively. I would therefore argue that the unusual recession of this glacier is primarily due to the quiescent phase of the surge cycle, which would make sense when no other glacier in the KM retreated over the study period.

We have discussed this glacier at some length following your comment, and concluded that given its surface morphology and measured surface velocities, it is indeed most likely to be a surge-type glacier in quiescence. As suggested, we have reviewed all available Landsat images back to 1972. The only indication of a possible previous surge is between 1972 and 1977, during which time its terminus advanced 161 m. From 1977 to 2016, we do not find other obvious sign of surge events. We have also checked high resolution images in Google Earth and can confirm that the tributary to southeast did not surge recently. Nevertheless, given the distorted moraines in the lower terminus region and the terminus and surface dynamics measured between 1999 and 2016, all of which indicate a surge-type glacier in its quiescent phase, we take W5 as a surge-type glacier. We have changed all related parts in manuscript including figures to reflect this adjustment in interpretation.

10 *18. P10, L2: you mean that these glaciers showed no detectable change beyond error limits? This is why the errors need to be better defined in the methods – see comment above for P7, L7*

Yes, we do mean within the error limits, and have amended the text to read ‘Eleven glaciers in our study area are classified as being stable over the study period having shown no detectable change in terminus position or surface features beyond error limits’.

15 *19. P10, L6: it would be useful to include a figure that shows Landsat images of these stable glaciers to prove that they haven’t changed, and so that the velocity profiles in Fig. 7 can be understood in relation to conditions on the ground. This could be a supplementary figure if there isn’t space in the main text.*

We agree, and have made a new figure (S1) showing the stable glaciers in KM from 1999 to 2016.

20. P10, L18: remember to include reference to Figure S1 in this section (e.g., for E10, W8).

20 Thanks – added.

21. P11, L3: I have to admit that I was pretty unconvinced that some of these glaciers were surge-type based on the low resolution images provided in Fig. 8. So I went to Google Earth and used the ‘historical imagery’ time slider to find a large number of excellent, high resolution images that cover your glaciers of interest. Using these, it is much easier to prove that surges occurred – for example, see screen captures on the next page for glacier E12, which show a dramatic change in surface crevassing between 2007 and 2011. Similarly, the changes for glaciers E13 and W13 in Google Earth are much clearer than shown in Fig. 8. The Google Earth images also help to correct what appear to be some misinterpretations in your figures, such as the label for the ‘Stable glacier terminus’ for glacier E7 in Fig. 8, which appears to be ~2 km north of the actual terminus (I’m also unconvinced whether E7 is actually a surge-type glacier based on Google Earth).

30 *So I believe that you need to go back through the analyses for all 28 glaciers in your study and using the high resolution Google Earth imagery (perhaps also Bing Aerial: <https://www.bing.com/maps>) to supplement the Landsat and ASTER data you already use. This would make your interpretations for some glaciers much stronger, while potentially correcting misinterpretations on others. This would also enable a better description of the features indicative of surges, such as changes in crevassing, terminus advance, looped moraines, potholes, etc.*
35 *(could list these in a table for each glacier).*

This is a great suggestion, and we have done exactly as suggested. As a point of interest, the use of Google Earth is banned in China, so we have carried out this extra analysis while the lead author was a visiting researcher in the UK. More details on our revisions are included in the response to point 22 immediately below.

22. P12, L1: *I expect that some of these interpretations might need to be updated after analysis of the Google Earth imagery*

We have now replaced some Landsat images in our original figures with those from Google Earth. We have also included a new supplementary file (S3) containing 16 GIFs that show the changes of some advancing and surge-type glaciers between 1999 and 2016. Based on high spatial resolution images in Google Earth, we improve some parts with a better description of surface feature changes and surge evidence in Session 4 Results. We add a sentence ‘High spatial resolution images from Google Earth (data provided by DigitalGlobe, NASA, and Landsat/Copernicus) were also used for detailed visual interpretations of surface change.’ to the Session 3 Data and Methods.

For E7, we checked the images in Google Earth carefully and still hold the opinion that its terminus region remained stable during our study period. The yellow line and red line give the changes of visible surface features of E7 before and after the surge in Figure 7, not pointing its terminus position. We admit it is hard to tell the exact terminus position for E7. However, we take E7 as a surge-type glacier mainly based on its velocity profiles (Fig. 8c). It shows a clear surge front from 2013 to 2016.

23. P12, L20: *please provide an indication of how many (and exactly which) of these glaciers have not previously been identified as surge-type in other databases*

We checked the geodatabase of 2317 surge-type glaciers described in Sevestre and Benn (2015). Dr. Sevestre sent us the geodatabase in 2016. We also carried out a comprehensive literature search, but we cannot find any records of surges in KM. Very few publications have ever focused on glaciers in KM. We add one sentence ‘None of the glaciers detailed here have been identified as surge-type glaciers in previous publications’ to clarify this.

24. P13, L10: *change ‘velocity initiated’ to ‘velocity event initiated’*

Done

25. P13, L16: *reference to Hewitt’s discussion of thermal vs. hydrological causes (and potential role of trunk-tributary interactions) of the surges of nearby Karakoram glaciers would be useful to include here:*

Hewitt, K., 2007: Tributary glacier surges: an exceptional concentration at Panmah Glacier, Karakoram Himalaya. Journal of Glaciology, 53: 181–188.

Thanks, this is a good suggestion. We have amended the text to read ‘They are interpreted to be a result of both hydrological and thermal changes (Kamb et al., 1985; Fowler et al., 2001; Hewitt, 2007)’.

26. P14, L6: *when you look at the high resolution Google Earth imagery I don’t believe that all the termini were unaffected by the surges*

We agree, and have changed 'The surges of E1 and E7 showed minor surface feature advances' to 'The surges of E1 and E7 showed new crevasses with yearly detectable surface feature advances'.

27. P14, L12: what does 'and so on' refer to exactly?

We have amended the text to read 'and their configurations in relation to neighbouring glaciers, for example'.

5 *28. P15, L1: reference to Copland et al. (2011) would seem to be useful here, as they talk about Karakoram surge periodicity in detail:*

Copland, L., Sylvestre, T., Bishop, M.P., Shroder, J.F., Seong, Y.B. Owen, L.A., Bush, A. and Kamp, U. 2011. Expanded and recently increased glacier surging in the Karakoram. Arctic, Antarctic, and Alpine Research, 43(4), 503-516.

10 We agree to refer to this paper here.

29. P15, L21: I think that it would be more realistic to say 'surge events likely remain undiscovered'

We agree and have amended the text.

30. P16, L5: based on my earlier comment, I'm not convinced that you did see any receding glaciers; I think that your only retreating glacier (W5) is the result of a quiescent phase after a surge.

15 As described above we have reviewed the imagery and agree that this glacier is most likely to be in quiescence.

31. P17, L9: the statement that 'KM glaciers on the northeastern slopes are also in a period of rapid recession' seems to directly contradict what you just said and what you show in Fig. 2: i.e., that every glacier on the northeastern slopes is either stable or surge-type. With no evidence to back up your statement I think that you should therefore delete it.

20 This was a hangover from a previous version and we will delete it. Thank you for pointing it out.

32. P29, Fig. 4: I find the use of the white lines a bit confusing as the same terminus outline from a particular date is solid in the first part of each image, but dashed in the second part. It would be easier to follow if you used a consistent colour over time; e.g., blue for all early outlines, white for all recent outlines. Same comment applies to Figs. 6 & 8.

25 We have changed the original dashed lines to yellow solid lines and given related indication in the captions.

33. P32, Fig. 8: indicate what the white and red lines indicate in the caption

Done.

34. P34, Fig. 10: what do the letters a to g indicate?

30 We add 'Profile-a to Profile-g indicate different stages during the active and quiescent phases of a surge-type glacier' to the caption.

35. *P36, Table 1: state the year that the values refer to for 'area' and 'debris cover', and the period that the column 'area changed' refers to. And why are area and debris cover values not provided for 3 of the glaciers listed in the table?*

5 We add 'Areas of glaciers and debris cover are measured based on images in 2016. Values relating to areal changes were measured from 1999 to 2016.' to the caption. E10, E15 and W13 are composite glaciers as recorded in the Second Glacier Inventory Dataset of China (Version 1.0). So we give a total area for these three glaciers. We also change some alignments of Table 1 to make it clearer to readers.

10 *36. Figure S1: this image quality is pretty low – perhaps it has suffered from compression in conversion to a PDF (size of the entire PDF file is only 147 kb). Can you therefore produce this figure at much higher resolution? There is also no need to make the figure so small; the luxury of having a supplementary section is that you have lots of available space, so I would prefer to see the images for each glacier made much larger (e.g., use the full page width for W8, E9, etc.). Also please indicate what the dotted and dashed lines indicate.*

15 We have made a new supplementary figure (S2) comprising bigger, and clearer Landsat images and Google Earth images giving the same information of the original Figure S1. We changed the dotted and dashed lines into yellow lines and added the caption with a sentence 'The yellow lines show the outlines of glacier termini in the earlier images and the white lines show the outlines of glacier termini in recent images'.

Response to Reviewer #2

Dear Anonymous Referee #2,

20 Thank you very much for your comments on our work. While we find them interesting, in most cases it was not clear how we might modify the manuscript so the revised version will remain largely unchanged. Nevertheless, here we respond (in black plain text) to your comments (in blue italics) one by one.

Best regards,

Guang Liu, Mingyang Lv and Co-authors

25 *1. The authors analyzed only optical images with limited period and area, which did not lead to significant scientific novelties. The analyzed location is certainly unique, but the presence of surge-type glaciers in High Mountain Asia is no longer surprising. There exist more glaciers with longer length to the southeast of the studied area in this study. Why did the authors limit the analysis area?*

There are several points here that we would like to address.

30 The first point relates to the time period of analysis. We chose to study the period over which the Landsat archive holds imagery with sufficient resolution to be able to extract robust measurements of glacier surface velocity as well as terminus fluctuations. This is a period of 17 years (1999 to 2016), and our analysis extends back to the 1970s for some glaciers where their status as a surge- or non-surge type is unclear. Having now

included an analysis of Google Earth imagery, as helpfully suggested by Reviewer #1, we estimate we have reviewed several hundred images in total, and therefore consider this to be comprehensive.

The second point relates to the area of study. The eastern Pamir comprises several discrete mountain ranges, of which the Kingata Mountains are one. There are two other major ranges here, the Kongur Mountains and Muztag Ata. The choice to focus on the Kingata glaciers alone was made partly to keep our analysis manageable in terms of glacier numbers, and partly because the other two ranges host glaciers with different hypsometric, aspect, slope and geomorphological characteristics. By limiting our analysis to a single discrete range we were then able to make clear interpretations about the controls of recession and advance as per the manuscript discussion. This would not have been possible otherwise.

The third point relates to the novelty of our study. Given that, as you recognise, the location is ‘certainly unique’, there is clear novelty in simply describing the dynamics of this glacier over recent decades. To additionally identify the number of surging glaciers here, their recent activity, their event evolution, and ultimately make some interpretation on their controls, is a major addition to the literature on this poorly studied area, we would suggest.

2. In addition, the velocity profiles with nearly one-year temporal resolution will prevent us from examining the seasonal changes, and the authors’ conclusion regarding the surge mechanisms cannot be supported from the present data.

It is true that there is no analysis of seasonal changes (and nowhere did we suggest that this was an aim of our work). We made our interpretations on surge mechanisms based on the length and style of surge evolution, in comparison to other areas of the world that have a greater abundance of both field and remotely sensed observations.

3. The classification map in Figure 2 and terminus changes in Figure 3 are quite similar to Figures 3 and 4 in Yasuda and Furuya (2015), but they employed both optical and radar images with much longer period since 1970s. The criteria of the authors’ Figure 2 are not clearly mentioned and uncertain, either.

Figure 2 summarises the findings of our work – these advancing, surge-type and stable glaciers are described and analysed as such within this manuscript. The only similarity with Figure 3 in Yasuda and Furuya (2015) is that we chose to colour the glaciers as per our interpretation. We agree that our Figure 3 and Figure 4 of Yasuda and Furuya (2015) are presented in a similar way; their style of data presentation here is very clear and this is what we wished to emulate. We will seek advice from the journal’s editorial team as to whether they see this being a problem for the revised manuscript.

4. Figure 10 is overly qualitative and speculative.

We agree that this is a qualitative interpretation of surge evolution – this is exactly the nature of conceptual models. We do not agree that the figure is speculative, since it is based on the observations we present in the manuscript. Such conceptual models are useful as a summary for future research to test and either support or

refute. We hope that other researchers will do exactly this, so that we can progress our understanding of this important glacierised region.

Characterising the behaviour of surge and non-surge type glaciers in the Kingata Mountains, Eastern Pamir, from 1999 to 2016

LV Mingyang^{1,2,4} GUO Huadong^{1,2} LU Xiancai¹ LIU Guang^{2*} YAN Shiyong³ RUAN Zhixing² DING Yixing² Duncan J. Quincey⁴

5 ¹School of Earth Sciences and Engineering, Nanjing University, Nanjing, 210023, China

²Key Laboratory of Digital Earth Science, Institute of Remote Sensing and Digital Earth, Chinese Academy of Sciences, Beijing, 100094, China

³Jiangsu Key Laboratory of Resources and Environmental Engineering, School of Environment Science and Spatial Informatics, China University of Mining and Technology, Xuzhou, 221116, China

10 ⁴School of Geography, University of Leeds, Leeds, LS2 9JT, UK

Correspondence to: LIU Guang (liug@ceode.ac.cn)

Abstract. Glaciers in the Pamir Mountains are generally acknowledged to be in a stable state and show the least glacial retreat in High Mountain Asia; however, they are also some of the most dynamic glaciers in the region and their behaviour has been spatially variable in recent decades. Few data exist for these glaciers, in particular relating to how they are responding to recent climatic changes. Here, we utilize Landsat 7: [\(ETM+\)](#), Landsat 8: [\(OLI\)](#), and ASTER optical images acquired between 1999 and 2016 to characterise the dynamics of the glaciers in the Kingata Mountains, located in the eastern Pamir. We quantify the velocity, areal, and frontal changes of these glaciers, which provide us with valuable data on their recent dynamic evolution and an indication of how they may evolve in future years. We highlight 28 glaciers among which 17 have changed markedly over the study period. We identify 4 advancing glaciers, ~~1 receding glacier~~, and ~~12~~13 surge-type glaciers. The dynamic evolution of the glacier surges shows some similarity with those of the nearby Karakoram, suggesting that both hydrological and thermal controls are important for surge initiation and recession. Topography seems to be a dominant control on non-surge glacier behaviour in the KM, with the north-side of the divide characterised by steep, avalanche-fed basins and glacier tongues now approaching recession in contrast to those on the south-side of the divide that capture the majority of precipitation and have much broader plateau-like accumulation zones. This study is the first synthesis of glacial motion across this region and provides a baseline with which to compare future changes.

1 Introduction

Changes in mountain glaciers represent a key indicator of climate variability, as well as contributing to sea-level-rise and at times being the source of flood hazards (Oerlemans, 1994; Meier et al., 2007; Gardner et al., 2013; Burgess et al., 2013). High Mountain Asia (HMA), extending from the Hindu Kush and Tien Shan in the west to the glaciers and snowfields of Yunnan,

China, in the east, contains the greatest mass of ice outside the Earth's polar regions. Since the 1990s, the glaciers in HMA have broadly been in recession, and the glacier mass balance has been negative (Yao et al., 2004; Tian et al., 2006). Rates of recession generally decrease towards the western part of the region (Yao et al., 2012). Indeed, in the far west, the eastern Pamir is characterized by relatively stable glaciers and, although there remains debate within the literature regarding the details (Khromova et al., 2006; Bolch et al., 2012; Kääb et al., 2012; Farinotti et al., 2015), recent research has revealed that Pamir, along with the nearby Karakoram, is the region of transition from positive to negative mass balance, with the eastern Pamir experiencing a slight positive mass balance in the early twenty-first century (Gardner et al., 2013; Gardelle et al., 2012; Gardelle et al., 2013; Osmonov et al., 2013; Holzer et al., 2015; Kääb et al., 2015; Brun et al., 2017).

Within the eastern Pamir lies the Kingata Mountains (KM) (Fig. 1). Due to their remoteness and harsh environment, few ground-based glaciological studies have been carried out (Thompson et al., 1995; Ono et al., 1997; Shangguan et al., 2016). Remote-sensing studies have provided most of the available data for this region, using both optical and radar imagery to evaluate the temporal changes in glacier extent and flow (Kääb, 2002; Luckman et al., 2007; Yang et al., 2013; Yasuda and Furuya, 2015). Three approaches have generally been employed to derive displacements of the glacier surface: offset tracking based on intensity using both optical and synthetic aperture radar (SAR) imagery (Copland et al., 2009; Quincey et al., 2011; Burgess et al., 2013; Quincey et al., 2015), interferometric SAR (InSAR) (Gourmelen et al., 2011; Kenyi and Kaufmann, 2003; Goldstein et al., 1993), and a combination of these two methods (Yan et al., 2016). Images acquired by optical sensors are often limited by cloud- and snow-cover as well as coarse spatial resolutions, but the existing global archive offers many possibilities to match features across image pairs over annual to multi-annual timescales. Cross-correlation provides a quick and efficient way of measuring glacier surface displacement and is routinely applied to images acquired by the Advanced Spaceborne Thermal Emission and Reflection Radiometer (ASTER) and Landsat sensors (Luckman et al., 2007; Scherler et al., 2008; Quincey et al., 2015).

Glacier surges represent an endmember of glacier flow, and remain relatively poorly understood despite an increase in related studies in recent years (Gladstone et al., 2014; Quincey et al., 2015; Sevestre and Benn, 2015; Yasuda and Furuya, 2015). Most surges occur in regular cycles consisting of active phases and quiescent phases (Meier and Post, 1969). During the active phase of a surge, glacier velocities can increase by one or two orders of magnitude within a few months, often accompanied by an advance of the glacier tongue as large volumes of ice are discharged from high-to-low elevations (Harrison and Post, 2003; Clarke, 1987; Raymond, 1987). During quiescent phases, these glaciers recharge their ice reservoirs at high elevation and recede across their ablation area. Since glacier surges are closely related to glacial hazards such as glacial lake outburst floods (GLOFs) and debris flows, research on their controls and evolution has become a particular focus within the literature (Kargel et al., 2005; Gladstone et al., 2014; Dunse et al., 2015). Glacier surges are reported all over the world and HMA,

particularly the Pamirs, Karakoram, and Tien Shan, is regarded as one of the most active surge zones (Sevestre and Benn, 2015). An inventory of glacier surges for Pamir Plateau in Tajikistan based on remote sensing revealed that 51 out of 215 glaciers had signs of dynamic instability and were considered as surge type (Kotlyakov et al., 2008). However, this inventory did not include the surges in the Pamir in China or investigate any changes in glacier dynamics that have occurred over recent 5 years.

The objective of this paper is, therefore, to characterize the dynamics of glaciers within the KM. In doing this, we will also be able to identify the distribution and characteristics of surge-type glaciers in this region and describe their evolution for the first time and make comparisons with studies from neighbouring regions. Supported by analyses of glacier terminus position and areal change, we aim to quantify the behaviour of glaciers within this region over a seventeen-year period. ~~In doing so, this~~ This study will therefore provide valuable baseline data for future studies focussing on the glaciers of this region, and will help stakeholders such as regional water resource managers to better understand the likely evolution of these important water sources in coming decades.

2 Study Area

The KM, located on the eastern Pamir Plateau (38°N–39°N, 73°E–75°E), together with the neighbouring Kongur Mountains and Muztag Ata, ~~form~~ forms the main mountain range in the eastern Pamir. The mountain range is oriented approximately southeast–northwest, extending for a length of 120 km and width of 40 km (Fig. 1). The highest summit of the KM is Chakragil, 6760 m above sea level (asl). Two other major peaks exist in the middle and northern parts of the range, Buduk Seltau (6110 m asl) and Aksay Bax (6102 m asl). In the southwest, the Muji River flows along the southern slopes of KM towards the southeast. In the north of the south-eastern end of the mountain range lies the Oytag Glacier Park.

Since the study area is one of the coldest and driest glacierized areas in middle latitude regions, the glaciers are considered to be continental in type (Zhang, 1980; Su et al., 1989; Li et al., 2004; Jiang et al., 2014). They provide a critical natural water reservoir for people living downstream (Yao et al., 2004) and changes in glacier extent or behaviour can impact directly on their ability to be able to irrigate their land and daily water use. ~~Based on data from~~ Taxkogan meteorological station (37°46'N, 75°14'E; 3090.9 m asl) is located near to the Muztag Ata mountains, approximately 150 km away from KM. Based on data from this station, annual precipitation is less than 70 mm. Peak ablation generally occurs between June and August, when the mean temperature is as high as 15 °C (at an elevation of ~3000 m asl) and the monthly mean air temperature over the glacier termini can be higher than 0 °C (Shangguan et al., 2006). The climate is largely controlled by high-altitude westerly circulation with precipitation sourced at middle latitudes from the Mediterranean, Black Sea, and Caspian Sea (Su et al., 1989; Seong et al., 2009; Jiang et al., 2014).

According to the Second Glacier Inventory Dataset of China, there are more than 216 glaciers in the KM, with a total area of 551.16 km² (Guo et al., 2014). Their terminus elevations vary from 3100 to 5200 m asl, and their mean slopes range from 20° to 40°. Glaciers on the southern side of the mountain range are generally smaller than those on the northern side, and most glaciers on the northern side are heavily debris-covered, which is likely to impact their dynamic evolution as well as long-term ablation rates (Scherler et al., 2011; Huang et al., 2018). Many glaciers in this region are small in size (area of less than 2 km²); here we focus on 28 glaciers with area greater than 5 km² as they provide the greatest contribution to downstream river discharge and remote sensing observations can be made with highgood accuracy.

3 Data and Methods

3.1 Satellite Imagery and DEM

We obtained 13 Landsat 7 Enhanced Thematic Mapper Plus (ETM+) images from 1999 to 2013, 17 Landsat 8 Operational Land Imager (OLI) images from 2013 to 2017, and 12 ASTER L1T images from 2003 to 2013, with minimal cloud and snow cover. Imagery from late summer and autumn (~July to October) was preferentially selected to minimize snow cover (Table S1). Several Landsat 2 and Landsat 5 images were also obtained for the identification of surge-type glaciers and surge cycle periods. These images were acquired from the United States Geological Survey (USGS) Earth Resources Observation and Science Center (EROS) (<http://glovis.usgs.gov/>). High spatial resolution images from Google Earth (data provided by DigitalGlobe, NASA, and Landsat/Copernicus) were also used for detailed visual interpretations of surface change. Feature tracking was mainly conducted using the Landsat 7 and Landsat 8 images. However, due to the Landsat 7 ETM+ scan line corrector failure in May 2003, several ASTER images were used for feature tracking from 2003 to 2013. All Landsat 7, Landsat 8, and ASTER data were used for glacial boundary identification. Landsat 7 and Landsat 8 images were preprocessed using the USGS Level-1 Product Generation System, which includes radiometric and geometric correction and transformation to UTM projection. Due to the limited number of cloud-free images available for velocity detection and in order to minimise the effect of seasonal velocity variations on our data, we selected image pairs separated by approximately 365 days for the analysis. All the imagery used in this study is listed in Table S1. The ASTER Global Digital Elevation Model (GDEM Version 2) of this area (N38°-N39°; E074°-E075°) was acquired from NASA's Earth Observing System Data and Information System (EOSDIS) and was used for interrogating glacier surface elevation profiles in support of the velocity analyses.

3.2 Determination of glacial motion

Glacier surface displacement was quantified by performing co-registration and correlation of the optical imagery using the software package COSI-Corr (Co-registration of Optically Sensed Images and Correlation), described in detail by Leprince et al. (2007) and Scherler et al. (2008). Images were first co-registered ~~to~~in a common reference ~~dataset~~system, specifically the
5 Universal Transverse Mercator (UTM) grid, such that misalignment was less than a single pixel for any pair. The correlation step then uses a sliding window to measure horizontal displacements along the East/West and North/South directions separately. This technique has been validated on several case examples of horizontal ground displacements (Ayoub et al., 2009; Herman et al., 2011; Avouac et al., 2006) and proved to be an effective tool for deriving glacier surface displacement from optical satellite imagery (Heid and Käab, 2011). Horizontal displacements were measured with the frequential sub-pixel correlator
10 using a multi-scale approach where the correlation window size changed from 32×32 to 8×8 , sliding every pixel. ~~Using a UTM projection, the~~All imagery used for surface displacement detection had a spatial resolution of 15 m (i.e. panchromatic bands of Landsat 7 (ETM+) and Landsat 8 (OLI), and ASTER band 3N). The measured column and row displacements were combined to obtain the magnitude and direction of glacier surface displacement. The glacier velocity (GV) was acquired using Eq. (1):

$$15 \quad GV = \frac{D \times A_y}{A_i} \quad (1)$$

where D is the displacement measured between each image pair; A_i is the interval between the image pair in days; and A_y is the number of days in the year. The unit of GV is m/yr.

We selected 28 glaciers with areas (including the debris-covered part) of more than 5 km². These 28 glaciers are all recorded in the Second Glacier Inventory Dataset. Several of them are composite glaciers with multiple tributaries feeding a main glacier
20 trunk. The annual velocity fields of these glaciers were derived from 1999 to 2003 utilizing Landsat 7 images, from 2003 to 2011 utilizing ASTER images, and from 2013 to 2016 utilizing Landsat 8 images. For most glaciers, we derived the annual velocity fields in two periods, 1999–2003 and 2013–2016, to highlight any evolution of the glacial motion patterns. In order to complete the time series and investigate motion variability in greater detail, we incorporated ASTER images from 2003 to 2011 to derive the displacements of several surge-type glaciers during the course of their surge events.

25 Errors in the derived data are reflected by the residual value in the motionless (stable terrain) area. We statistically analysed the residual error in the non-glacier region without rugged topography. The mean uncertainty was 1.6 m/yr with a corresponding standard deviation of 1.3 m/yr. Velocity profiles for different years were extracted along the centreline of each glacier to consider the interannual variability. Due to the heavy debris cover, different snow-cover and cloud-cover conditions, and relatively small size for some parts of the glaciers, decorrelation of the image pair is an unavoidable problem for monitoring

glacial motion in this region. In order to reduce the impact of decorrelation, we smoothed the velocity map using Gaussian Low Path filtering method with a kernel size of 3×3 (45 m \times 45 m in horizontal distance). We took values that differed by > 20 m/yr, compared to those in surrounding areas, as blunders and manually removed ~~clear blunders them~~ from the resulting data. This quantitative measurement provides sufficient precision to characterize the glacial motion patterns in the study area.

5 3.3 Glacier Delineation and Identification of Surge-type Glaciers

Glaciers in the KM are heavily covered by debris making the delineation of their boundaries a challenging task. Considering the paucity of glacial research in the study area, we utilized the Second Glacier Inventory Dataset of China (Version 1.0) to identify the glacierised area (Guo et al., 2014). Some glaciers converge together at lower elevations, in which case we treat them as a single ice mass. In order to understand and quantify the evolution of these glaciers, as most of them are debris covered on their termini, we manually measured the changes in glacier termini for each time period using ArcMap 10.3.1. ~~The~~ Manually digitizing glacier outlines may give inconsistent and unreproducible results (Hall et al., 2003). We therefore used the method recommended by Paul et al, (2013) to measure the associated error. This entailed repeatedly digitizing the termini position of five differently sized glaciers in our study area and calculating the standard deviation of changes along their centrelines. The final accuracy of our manual measurement ~~is within 30~~ was calculated as 15.7 m, or 2 pixels for the . A combination of Landsat multispectral, Landsat panchromatic data of 15 m and high-resolution images in Google Earth helped us to determine the sign of terminal changes.

When a glacier experienced some special surface features, such as moraine looping or folding in the middle of the glacier, ice foliation, glacier surface crevassing, or sudden advance of its tongue, we identify the glacier as surge-type (Meier and Post, 1969; Barrand and Murray, 2006). In some cases, discrete changes in glacial motion during a certain time ~~can be, such as a~~ clear acceleration or deceleration in some part or along the entire glacier within adjacent years, were also taken as the evidence of a surge event.

4 Results

Through visual inspection of the satellite imagery we identified 17 ~~glaciers~~ out of 28 studied glaciers that had clearly changed either in terminus positions or in surface features between 1999 and 2016 (Fig. 2). By directly comparing the differences between successive images and velocity profiles in different years, we classified these glaciers into ~~4~~ 2 13 surge-type glaciers and ~~4~~ 6 15 non-surge glaciers, including 4 advancing glaciers, ~~1 receding glacier,~~ and 11 other stable glaciers which did not show obvious changes in termini or surface features. Their characteristics, including areal changes, are listed in Table 1. E10, E15 and W13 are composite glaciers as recorded in the Second Glacier Inventory Dataset of China (Version 1.0). In general,

our data show that glaciers on northeast-facing slopes are lower and more heavily debris covered than those on southwest-facing slopes (Table 1). The total glacier area ~~has increased in 2016 was 357.19 km², an increase of~~ more than 1.33 km² since 1999.

Of the 17 glaciers that showed change over the study period, we measured the changes in terminus positions for 4 advancing glaciers, ~~1 receding glacier,~~ and ~~4~~ 5 surge-type glaciers, with the remaining 8 showing no clear terminus fluctuations (Fig. 3). As surge-type glaciers, the termini of W9, W12, and E10 moved more than 500 m over relatively short time periods. The durations of these surges ranged from ~~a few months one year~~ to several years. ~~(Table 2).~~ Even though W8 has not shown significant glacier terminus movements since 1999, ~~it showed there was a clear sign of surge behaviour in the images acquired by Landsat 5~~ terminus advance between 1993 and 1999 (Fig. ~~S1S2~~) and its terminus position change also shows a similar trend to the records of W12 and E10 after their rapid advances. For W13, we measured the change of the south branch glacier terminus. The main (west) branch terminus of W13 remained stable over the observation period; however, the east branch surged into the main branch at a rate of approximately 100 m/yr ~~since from~~ 2007 to 2016. The termini of advancing glaciers (W2, W3, W10, and W11) changed less than 300 m and did not change abruptly. ~~from 1999 to 2016~~. They remained relatively stable until 2007 and moved down-valley with a speed less than 30 m/yr thereafter. ~~The only receding glacier (W5) in our study area~~ diminished in size year-on-year between 1999 and 2016.

~~The comparison of interannual velocity fields allows us to understand the change of glacial motion patterns from 1999 to 2016 for non-surge glaciers and the motion change of surge type glaciers before, during, and after surge events. Central velocity profiles show the magnitude and timing of each glacier velocity field. It should be noted that our data focus on the glacier ablation zones as the largely featureless accumulation areas contain few useful matches.~~

4.1 Non-surge Glaciers: Advancing Glaciers

Four advancing glaciers (W2, W3, W10, and W11) are located on the southwestern slopes of the KM with relatively less debris cover than the glaciers on the northeastern slopes. Their surface features did not undergo significant change, ~~except for a slight displacement following the entire glacier with a total increase in area of 0.38 km² (Fig. 4) but they all advanced (W2: 245 m, W3: 212 m, W10: 154 m, W11: 224 m) leading to a total increase in area of 0.38 km² (Fig. 4). The appearance of ice crevasses and rearrangement of surface debris cover was evident on W2, W10, and W11, and surface hydrology was also modified with the disappearance of a glacial pond at the margin of W11 and change of glacial ponds distribution on W10 (Fig. S3).~~

The velocity profiles of these advancing glaciers show different motion patterns along their centrelines, but all with an obvious acceleration during 2013–2016 compared ~~with to~~ 1999–2002. For W2, W3, and W10 (Fig. 5a, b, and c), the values are ~10

m/yr higher in the upper parts increasing to ~30 m/yr higher near the termini. For W11 (Fig. 5d), although the profiles in the upper parts (km3 - km6) did not show a clear change, the profiles in the lower parts (km0 - km3) increased by ~30–50 m/yr.

4.2 Non-surge ~~Glaciers: Receding Glacier~~

~~There is only one glacier (W5) that was detected to have receded over the study period, with its terminus position moving ~300 m up valley, reducing its area by 0.31 km². W5 has two branches converging into the truck glacier from both north and south slopes of the valley. A watercourse connected to the glacier terminus is clearly seen in the images acquired in July 2016 in an area previously occupied by glacier ice in September 2000 (Fig. 6). The images also show that the distribution of surface debris cover also changed due to the variable flow of the three branches. The centreline velocity of W5 undulated between 20 m/yr and 40 m/yr prior to 2007, whereas from 2013 to 2016 the glacier was flowing consistently at 40 m/yr. The velocity of the main glacier tongue showed an accelerating trend in the 2010s, despite the terminus position receding as described.~~

4.3 ~~Non-surge~~ glaciers: Stable Glaciers

Eleven glaciers in our study area are classified as being stable over the study period having shown no detectable change in terminus position or surface features beyond error limits. Most of these glaciers are located on the northeastern side of KM and are covered by heavy debris. From 1999 to 2016, only the area and distribution of glacial ponds on some stable glaciers has changed (Fig. S1). Velocity profiles of some glaciers (W1, E2, E3, E4) are absent in Fig. 76 because they exhibited no detectable motion and/or decorrelation between available image pairs.

Stable glaciers in our study area show a range of glacial motion patterns. For E5, E6, and W7 (Fig. 7a6a, b, and g), the velocity profiles in 2013-2016, compared to those in 1999-2003, show a decelerating trend (20 m/yr – 40 m/yr less). For E8, E14, and E15 (Fig. 7e6c, d, and e), the velocities in 2013-2016 remain unchanged when compared to 1999-2003. W4 is the slowest glacier among the stable glaciers with peak velocity less than 30 m/yr (Fig. 7f6f), although its velocity at km0 - km3 increased ~20 m/yr in 2013-2016. Even though the glacier termini and surface features remained stable, their motion change is diverse.

4.4.3 Surge-type Glaciers

We ~~identify 12~~identified 13 surge-type glaciers and 14 discrete surge events from the studied glaciers- (Table 2). These surge events generally have two styles of behaviour based on whether the surge impacts the terminus or not. 5 glaciers have surged resulting in a terminus advance- (E10, W8, W9, W12, and W13). From 1999 to 2016, these glacier termini advanced only once. According to glacier termini evolution in Fig. 3 and satellite images in Figure 7 and Fig. S2, E10,

W9, and W12 advanced more than 500 m with the surge duration varying from ~~a couple of months~~ nearly one year (W9) to several years (W12). ~~For W12 is unique in that it does not have an apparent,~~ there was clear lowering around the terminus that can be interpreted from satellite images. We take its latest change and changes in debris downstream as its terminus position. ~~surface crevasse patterns between 2007 and 2011~~ (Fig. S3). The south branch of W13 advanced ~450 m to the north and compressed the trunk glacier by ~150 m (Fig. 87). Subsequently, the trunk branch of W13 advanced ~100 m every year since 2008 (Fig. 3). The surge of W8 was in its recession stage in 1999 ~~with the beginning of terminus advance in 1993,~~ having begun in 1993 (Fig. S2) and no further changes were detected from 2007 to 2012 (Fig. S3).

There are 7 glaciers that surged without affecting their termini: (E1, E7, E9, E11, E12, E13, and W6). These glaciers showed obvious and dramatic changes in surface features within relatively short time periods (several months) from 1999 to 2016. ~~Figure 8 shows the comparison before and after the surge events of E7, E11, E12, and E13, E1, E9, and W6 are given in Fig. S1. These glaciers are~~ (Table 2). These glaciers are all heavily debris-covered and most develop what appear to be composite masses of rock and ice at their termini. In most cases the surges destroy the original surface structures and reshape the glaciers and debris during the surges. The satellite images of E11, E12, and E13 clearly show that new surge fronts propagated down-glacier ~~and transported~~ breaking down original surface features and transporting mixtures of ice and debris creating new alluvial fans, ice crevasses, and looped moraines, which in addition changed the original glacial outflow. ~~But for~~ (Fig. 7; Fig. S2; Fig. S3). ~~For~~ E1 and E7, the surges did not entirely destroy the original surface features and the general appearance remained after the surge events. But new crevasses in the terminus region of E1 can be detected on Google Earth images (Fig. S2). Although these surges did not result in terminus advances, they modified the inner surface structures of glaciers, bringing about the rapid expansion of original supraglacial lakes and the growth of new debris-dammed supraglacial ponds: (cf. E7 and E13 in Fig. 7).

Centreline profiles of annual velocities provide quantitative information about the glacial motion before, during, and after the surges. For E1, E7, and E12 we could only extract the profiles during the active phases showing a clear surge front in each case (Fig. 98). Due to the limitation of available satellite images, it is not possible to provide complete velocity profiles throughout the other glacier surge events. Instead, we present the comparison before and after the surges to identify the impact of surges on glacial motion. Profiles of E1 reveal two surge events: the first peaked between 1999 and 2000, and the second peaked between 2013 and 2014. The interval of the surge events is ~14 years which can be taken as an indication of the surge cycle period of E1. Two different surge fronts were also detected on the surface of E11 with a 14-year surge cycle from 1999 to 2013 (Fig. 87). Since the width of E11 (most parts) is less than 300 m it is difficult to detect the displacement fields directly from satellite images with low spatial resolution. The two surges of E1 are not identical in their nature. According to Fig. 9a8a and b, the surge in 1999 affected a larger area (km² – km⁷) with higher peak velocity (~100 m/yr) than the surge in 2013 (affected area: km¹ – km⁵, peak velocity: ~70 m/yr). E7 (Fig. 9e8c) has a much higher peak velocity, nearly ten times greater

during surge active phases (~150 m/yr) than in its quiescent phase (~15 m/yr). The profiles of E12 show a moving surge front propagating downstream, although our observations are limited to the initiation and decay of the surge (Fig. 9f8f). In the cases of E1, E7, and E11, the surge lasted for between 3 and 4 years. For E12, the surge front is still detectable near its terminus, lasting 8 years after initiation. Judging from the terminus changes shown in the imagery, the surges of W8 and W12 appeared to last 6–7 years and surges of W9 and E10 lasted 1–2 years. 9 years after initiation (Table 2).

Changes in the surface features of E9 and W9 are also indicative of surge behaviour in 2007. The surface velocity of E9 (2013 to 2016) appeared to be the same as prior to the surge in 1999–2003, except in the lower reaches, where the glacier showed faster flow in the earlier image pairs (Fig. 9d8d). The velocity profiles of W9 (Fig. 9j8j) in 2013–2016 show a similar trend to those in 1999–2002, except for a higher peak velocity zone at 3–4 km from terminus (~90 m/yr) shown in 2013–2016. We suggest that until 2013, E9 and W9 had recovered from the surges in 2007 judging from the similar motion patterns in 1999–2003 and 2013–2016. Profiles of E10, E13, W8, and W12 vary markedly in both amplitude and shape. Most parts of these glaciers flowed much slower between 2013 and 2016 than they did between 1999 and 2003. W12 increased its velocities in velocity year-on-year in 2013–2016 indicating it is currently recovering from the last surge event (Fig. 9k8k). E10, E13, and W8 may follow this pattern in the near future as well. For W13 (Fig. 9l8l), the south branch surged into the trunk glacier at 15 km² from the terminus in 2008. The trunk glacier was compressed by the south branch after the surge, which resulted in a motion change of the trunk glacier, characterized by acceleration in the lower parts (km⁰ – km²).

Velocities of W6, which surged before 1989 (Fig. 9s8s), were 20–60 m/yr higher in 2013–2016 than those in 1999–2002 and the profiles show a clear downstream-propagating trend (Fig. 9h8h). The retreat in the ablation zone recent years and the fast-moving mass in the accumulation zone indicate that W6 is preparing for the next surge and its surge cycle period is more than 20 27 years (1989–2016).

W5 has two branches converging into the trunk glacier from both north and south slopes of the valley. Its terminus position moved ~300 m up-valley reducing its area by 0.31 km². The proglacial stream is clearly seen in the images acquired in July 2016 in an area previously occupied by glacier ice in September 2000 (Fig. 9). The distorted moraines in the lower terminus region in 2000 gives a hint of previous surge event but there are no obvious signs in the historic imagery other than a gradual advance of ~160 m between 1972 and 1977. The centreline velocity of W5 fluctuated between 20 m/yr and 40 m/yr prior to 2007, whereas from 2013 to 2016 the glacier was flowing consistently at 40 m/yr. The velocity of the main glacier tongue showed an accelerating trend in the 2010s, despite the terminus position receding as described. Based on this, we suggest that W5 is a surge-type glacier in its quiescent phase during our study period.

5 Discussion

5.1 Motion Pattern of Surge-type Glaciers

The existence of at least ~~twelve~~thirteen surge-type glaciers out of 28 in the KM provides strong evidence that the Pamir region is one of the world's most active surge zones, as indicated by the geodatabase of surge-type glaciers (Sevestre and Benn, 2015).

~~None of the glaciers detailed here have been identified as surge-type glaciers in previous publications.~~ By analysing the velocity profiles of these glaciers in the study area, we define ~~42~~13 glaciers (E1, E7, E9, E10, E11, E12, E13, W5, W6, W8, W9, W12, and W13) as surge-type glaciers. 14 surge events were identified with E1 and E11 surging twice each until 2016. Despite these glaciers being of different sizes and shapes, we find that they tend to show broadly similar motion patterns during their active and quiescent phases (Fig. 10). Prior to the onset of the surge, the glacier occupies a relatively stable stage (Profile-a). In the active phase (Profile-b to Profile-d), the glaciers in our study area show peak velocities in the first year (E1 and E7) when surges occur, followed by gradually decreasing velocities in the following few years as the surge front propagates downstream. After the active phase, the glacier surface velocities drop to their minimum level (Profile-e to Profile-g). In many cases, the glacier tongue will then remain largely stagnant flowing 0–10 m/yr in most parts for several years as ice is recharged in the accumulation zone (cf. Fig. ~~9i~~8j). After an uncertain period (varying from 11 years to 14 years) of accumulation, the glacier again begins to transport ice downstream in a gradually recovered velocity event initiated from the accumulation zone to ablation zone until it reaches its stable stage before the next surge (cf. Figs. ~~9d~~8d and j). We interpret the relatively motionless (Profile-e to Profile-g) and stable (Profile-a) stages to define the glacial quiescent phase. We note that the exact periods corresponding to the active and quiescent phases differ with glacier geometry and amount of debris-cover.

Previous studies have reported traveling waves during glacier surges, such as observations of Gasherbrum Glacier (Mayer et al., 2011) and Kunyang Glacier (Quincey et al., 2011). They are interpreted to be a result of both hydrological (~~Kamb et al., 1985~~) and thermal changes (Kamb et al., 1985; Fowler et al., 2001; Hewitt, 2007). Hydrologically controlled surges are suggested to accelerate during winter condition when the downglacier basal hydrology is inefficient and decelerate during summer conditions when the water pressure is reduced by melting-water channelization (Raymond, 1987). The hydrologically controlled surge front represents the boundary between an efficient tunnel drainage system in upglacier and an inefficient cavitized system in downglacier. Thermally controlled surges rely on a change in conditions at the bed and the surge fronts in this case represent the transition between warm ice (upglacier) and cold ice (downglacier) (Clarke, 1976). Another explanation to the fronts of surges in the Karakoram can relate to the individual glacier configurations (cf. Quincey et al., 2015). ~~Slow-moving ice in downglacier, which could be~~In these cases immobile cold ice or a remnant of a previous glacier surge depending on different glaciers, exists~~may exist~~ as an obstacle to fast-moving ice ~~in~~from upglacier.

Although many other surge events likely remain undiscovered, we identified seven glaciers (that surged nine times) in the KM (E1, E7, E9, E11, E12, E13, and W6) that occurred without affecting their termini. Due to their heavy debris cover and long glacier tongues these events were inhibited by immobile and likely cold ice, and consequently these glacier termini remained stable during and after the surge events. The surges of E1 and E7 showed ~~minor~~ new crevasses with yearly detectable surface feature advances and the other five surges (E9, E11, E12, E13, and W6) caused the rearrangement of surface features in the middle parts of the glacier tongue, as well as overriding the remnant left by a possible previous glacier surge, similar to the surges of Braldu and Unnamed1 Glaciers in the Karakoram (Quincey et al., 2015). This type of glacier surge is common in eastern Pamir (Lv et al., 2016; Shangguan et al., 2016) although their evolutions differ both spatially and temporally. We suggest these flow instabilities can be ~~contributed~~ attributed to the geomorphological characteristics of different glaciers, such as the slope of the ~~entire~~ glacier, the size of accumulation area, the width of the outlet, and ~~so on~~ their configurations in relation to neighbouring glaciers, for example.

Even though the poor temporal resolution of our data cannot provide any seasonal signal of the surge evolution, it is clear that most of the surges reached their peak velocities in the first year of initiation and their termination phase lasted for years, contrasting with the hydrologically controlled surges in Alaska where the termination phase has been shown as much more abrupt than the initiation phase, lasting as little as several days (Burgess et al., 2013).

We attribute the relatively shorter surge cycle period of E1 and E11 compared to other glaciers to their large accumulation areas and abundant ice supply. E1 has one trunk glacier and three tributaries and E11 has a narrow outlet, which make them much quicker to accumulate and transport new-formed ice downstream. On the other hand, W6, which appears to have a cycle period of more than 27 years, has a winding and broad outlet and only one reservoir in its accumulation area. The ~~fast moving~~ mass surface velocity (70 m/yr) of W6 in recent years indicates that ~~W6~~ it is approaching its next surge. Our data suggest that return periods vary widely from glacier to glacier but in general the larger the accumulation area and the narrower the outlet, the shorter return period the glacier has. The return period of glacier surges in Kingata ~~appear~~ appears to range between one decade and several decades, which is coincident with Karakoram glacier surges ~~are~~, reported to be of the order of several decades (Copland et al., 2011; Quincey and Luckman, 2014; Quincey et al., 2015). This is quite different from other thermally controlled surges elsewhere with a return cycle up to several centuries (Dowdeswell et al. 1991).

The duration of Kingata glacier surges is usually less than ~10 years ~~which is taken as the duration of surges in Svalbard, ranging from 1 year to 8 years. Indeed, most Kingata surges last, and more commonly~~ 3-4 years, similar to those in the Karakoram. The extreme short-lived surges, and the large-scale velocity variations of W9 and E10 (1-2 years), are similar to surge events reported on Shakesiga Glacier in the Karakoram (Quincey et al., 2015) and Kelayayilake Glacier on Mont Tobe Feng (Lv et al., 2016). The surge of Kelayayilake Glacier, located near the south of KM, initiated in winter months and

terminated in summer months [in 2015](#). The significantly-reduced water discharge before and during the surge reported by Gez hydrological station implicate this type of glacier surge is partially dominated by a hydrological control. Unfortunately, there are no hydrological data for the KM to help resolve the dominant processes operating here in a similar way.

Glacier surges in eastern Pamir share many, although not all, common features with Karakoram glacier surges and they both do not completely resemble either thermal or hydrologically controlled surges reported in Svalbard and Alaska. We suggest that surges in eastern Pamir, as with surges in Karakoram, have variable controlling processes depending on the thermal and hydrological conditions as well as the geomorphological characteristics of different individuals.

Although such surge-type glaciers represent a small percentage of the world's glacier population, they are of great importance in the investigation of glacier processes, flow instabilities, and fast glacier flow (Clarke, 1987). Before and after the surges, the interannual velocity profiles of surge-type glaciers show significant variations in their shape and amplitude, which reflect the internal structure change. ~~The vigorous motion processes of such a large number of surge-type glaciers give~~ Their rapid acceleration and deceleration gives us a different insight into the acknowledged stable glacial situation in the Pamir region in the context of glacial shrinkage in HMA; in addition, more surge events likely remain undiscovered because of insufficient available high spatial resolution satellite data and decorrelation between image pairs that precludes the derivation of velocity data by feature tracking.

5.2 Glacial Motion Pattern Change

Glaciers in northwestern China are of continental type, formed under dry and cold climate conditions. These glaciers were previously regarded as stable, low-ablation glaciers with short glacier tongues and low motion rates. In particular, glaciers in the Pamir region experienced the least glacial retreat in HMA over recent decades (Yao et al., 2012). In our study, with the exception of surge-type glaciers, advancing and stable glaciers both ~~advanced and receded, showingshowed~~ diverse motion pattern changes during the study period.

The patterns we describe in this study show some similarity with glacial motion patterns in the Bhutan Himalaya; Kääh (2005) ascertained that large differences in dynamics were present between fast-moving north-facing glaciers and slow-moving south-facing glaciers and concluded that different erosion and sediment evacuation processes should act on the two sides of Bhutan Himalayan main ridge. There, glaciers on the northern slope are debris-free and glaciers on the south slope have heavy debris cover with thermokarst features. In the KM, glaciers on the northeastern slopes flowing into the Tarim Basin range in peak velocity from 30 m/yr to 60 m/yr whereas fast-moving glaciers on the southwestern slopes flowing into the Pamir Plateau range from 40 m/yr to 120 m/yr. The topography and surface features are very different either side of the divide, which we suggest might lead to the motion variation we have detected here.

Elevation profiles (Fig. 11a) indicate that glaciers to the southwest have plateau-type accumulation areas and gentle surface slopes, which might exert a positive influence on the formation and preservation of new ice in the upglacier zones. The westerly winds deliver most of the total annual precipitation to eastern Pamir (Su et al., 1989; Seong et al., 2009; Jiang et al., 2014). As the wind-facing slopes, glaciers on the southwest have the potential to capture most of the precipitation. Little precipitation makes its way over the divide to nourish the high-elevation areas on the northeast, even though snow may be blown further into the accumulation area by winds from the southwest. Most glaciers on the northeastern slopes have steep-ice accumulation zones, indicating that they are predominantly fed by avalanches. No reliable measurements of precipitation exist in this region with which we can verify these trends. However, the southwestern glaciers have bigger total glacierised areas than the northeastern ones judging from the mean hypsometry profiles of glaciers on both slopes (Fig. 11 b and c). Meanwhile, the southwestern glaciers have most ice at high elevation, which is opposite for the northeastern ones. The ~~abundant~~broad, high-elevation accumulation zones on the southwest give a reasonable explanation for their faster moving behaviour compared to the other slopes.

Glaciers on the northeastern-facing slopes also flow down to much lower elevations, usually about 1000 m lower than those on ~~the~~ southwest (Fig 11a). Some of these glaciers flow at a much slower rate and tend to remain stable with well-developed supraglacial melt ponds (cf. E3), features which are also prevalent for many other long debris-covered glacier tongues in HMA, including the Everest region (Luckman et al., 2007; Scherler et al., 2008; Quincey et al., 2009; Watson et al., 2016). These glaciers in different catchments around the Everest region ~~are experiencing~~have experienced substantial mass loss over the last few decades as revealed by DEM differencing (King et al., 2017). ~~Although we have no ice mass balance data to support our interpretation, based on visual evidence we would suggest that KM glaciers on the northeastern slopes are also in a period of rapid recession.~~

~~By comparing the interannual glacier velocity profiles, we can determine how the glacial motion patterns changed. Fast moving glaciers on southwestern slope are most likely to dynamically adjust to climate variations. The high velocities reflect an efficient ice mass turnover within glaciers, and acceleration is coincident with the positive mass balance reported in the Pamir region (Gardner et al., 2013; Gardelle et al., 2013; Osmonov et al., 2013; Holzer et al., 2015; Käab et al., 2015; Brun et al., 2017). For the receding glacier (W5 in Fig. 7), the glacial motion in the 2010s shows an increasing or, at least, stable trend. We suggest that its retreat is the consequence of the interaction between the trunk glacier and its two branches.~~

Changes in glacial motion can also be attributed to changes in precipitation and temperature over recent decades (Raper and Braithwaite, 2009). Most glaciers in the KM are relatively small compared to glaciers in nearby areas, such as Kalayayilake Glacier (Lv et al., 2016; Shangguan et al., 2016) and Muztag Glacier (Yang et al., 2013). No in-situ climate data exist for this region making it difficult to disentangle glacier response to a change in accumulation from other factors. Moreover, there are

no robust data on ablation rates or ice thickness that might be used to make estimations of glacier response times (Jóhannesson et al., 1989). Nevertheless, it may be reasonable to suggest that the acceleration/deceleration we observed is a product of climate changes over the last two decades given their relatively small size and insulating debris cover. This speculation underlines the need for more detailed meteorological records as well as robust and long-term field data if the climate impacts on glaciers in the KM and surrounding regions are to be robustly characterised.

6 Conclusions

Using cross-correlation feature tracking on Landsat and ASTER images, we have studied the temporal and spatial evolution of glacial motion in the KM for the first time. When combined with the record of terminus positions and surface features indicative of surging, these data demonstrate that: (1) By analysing and quantifying glacial motion in the KM from 1999 to 2016, we can define [4213](#) surge-type glaciers and summarize a surge-type glacial motion pattern for the characterization of different surge states. (2) The controlling process of each surge varied on different individuals depending on their thermal and hydrological conditions and geomorphological characteristics. These surges resemble those in Karakoram and do not fit into classic thermal and hydrological classification. (3) Glaciers on southwestern [slopeslopes](#) have relatively higher speeds than glaciers on northeastern [slopeslopes](#). (4) Glaciers in KM experienced a significant and diverse change in their motion patterns which may indicate decadal scale changes in climate, although glaciers in the Pamir region are acknowledged of stable state in mass balance and show the least glacial retreat in HMA. In future research, precipitation and temperature data, associated with estimates of glacier thickness and its change, will greatly aid the study of climate impacts on glaciers in the Pamir region.

7 Data availability

The Landsat-7, Landsat-8, and ASTER images can be freely downloaded from <http://glovis.usgs.gov>. ASTER GDEM can be found from NASA's Earth Observing System Data and Information System (EOSDIS). The Second Glacier Inventory Dataset of China is available from <http://westdc.westgis.ac.cn/data/f92a4346-a33f-497d-9470-2b357ccb4246>. These data are publicly accessible.

Author contributions

LV Mingyang, LIU Guang, GUO Huadong and LU Xiancai designed this study. LV Mingyang carried out the data processing. LV Mingyang, Duncan J. Quincey, and YAN Shiyong wrote the paper. [Duncan J. Quincey](#), RUAN Zhixing, and DING Yixing assisted in data interpretation and edited the paper.

Competing interests

The authors declare that they have no conflict of interest.

Acknowledgments

This research was supported by the Strategic Priority Research Program of the Chinese Academy of Sciences [XDA19070202];
5 the International Cooperation Program of CAS [131211KYSB20150035]; National Natural Science Foundation of China (NSFC) [41120114001, 41001264]; Natural Science Foundation of Jiangsu Province [No.BK20150189]; The Landsat-7, Landsat-8, and ASTER images were freely downloaded from <http://glovis.usgs.gov>. ASTER GDEM can be found from NASA's Earth Observing System Data and Information System (EOSDIS). We acknowledge support from Owen King on the analysis of glacier hypsometry.

10 References

- Avouac, J.-P., Ayoub, F., Leprince, S., Konca, O., and Helmberger, D. V.: The 2005, M-w 7.6 Kashmir earthquake: Sub-pixel correlation of ASTER images and seismic waveforms analysis, *Earth Planet. Sci. Lett.*, 249, 514-528, doi:10.1016/j.epsl.2006.06.025, 2006.
- Ayoub, F., Leprince, S., and Avouac, J.-P.: Co-registration and correlation of aerial photographs for ground deformation
15 measurements, *ISPRS J. Photogrammetry and Remote Sensing*, 64, 551-560, doi:10.1016/j.isprsjprs.2009.03.005, 2009.
- Barrand, N. E., and Murray, T.: Multivariate controls on the incidence of glacier surging in the Karakoram Himalaya, *Arct. Antarc. Apl. Res.*, 38, 489-498, doi:10.1657/1523-0430(2006)38[489:mcotio]2.0.co;2, 2006.
- Bolch, T., Kulkarni, A. V., Kääh, A., Huggel, C., Paul, F., Cogley, J. G., Frey, H., Kargel, J. S., Fujita, K., Scheel, M.,
20 Bajracharya, S., and Stoffel, M.: The state and fate of Himalayan glaciers, *Science*, 336, 310-314, doi:10.1126/science.1215828, 2012.
- Burgess, E. W., Forster, R. R., and Larsen, C. F.: Flow velocities of Alaskan glaciers, *Nature Commun.*, 4, doi:10.1038/ncomms3146, 2013.
- Brun, F., Berthier, E., Wagnon, P., Kääh, A., and Treichler, D.: A spatially resolved estimate of High Mountain Asia glacier mass balances from 2000 to 2016, *Nature Geosci.*, 10, 668-673, doi:10.1038/ngeo2999, 2017.
- 25 Clarke, G. K. C.: Thermal regulation of glacier surging, *J. Glaciol.*, 16, 231-250, doi:10.3189/S0022143000031567, 1976.
- Clarke, G. K. C.: Fast glacier flow: Ice streams, surging, and tidewater glaciers, *J. Geophys. Res.*, 92, 8835-8841, doi:10.1029/JB092iB09p08835, 1987.

- Copland, L., Pope, S., Bishop, M. P., Shroder, J. F., Jr, Clendon, P., Bush, A., Kamp, U., Seong, Y. B., and Owen, L. A.: Glacier velocities across the central Karakoram, *Ann. Glaciol.*, 50, 41-49, doi:10.3189/172756409789624229, 2009.
- 5 [Copland, L., Sylvestre, T., Bishop, M. P., Shroder, J. F., Seong, Y. B., Owen, L. A., Bush, A., and Kamp, U.: Expanded and recently increased glacier surging in the Karakoram, *Arct. Antarct. Alp. Res.*, 43, 503–516, doi: 10.1657/1938-4246-43.4.503, 2011.](#)
- Dowdeswell, J., Hamilton, G., and Hagen, J.: The duration of the active phase on surge-type glaciers: Contrasts between Svalbard and other regions, *J. Glaciol.*, 37, 388-400. doi:10.3189/S0022143000005827, 1991.
- Dunse, T., Schellenberger, T., Hagen, J. O., Kaab, A., Schuler, T. V., and Reijmer, C. H.: Glacier-surge mechanisms promoted by a hydro-thermodynamic feedback to summer melt, *The Cryosphere*, 9, 197-215, doi:10.5194/tc-9-197-2015, 2015.
- 10 Farinotti, D., Longuevergne, L., Moholdt, G., Duethmann, D., Mölg, T., Bolch, T., Vorogushyn, S., and Güntner, A.: Substantial glacier mass loss in the Tien Shan over the past 50 years, *Nature Geosci.*, 8, 716-722, doi:10.1038/ngeo2513, 2015.
- Fowler, A. C., Murray, T., and Ng, F. S. L.: Thermally controlled glacier surging, *J. Glaciol.*, 47, 527-538, doi:10.3189/172756501781831792, 2001.
- 15 [Gardelle, J., Berthier, E., and Arnaud, Y.: Slight mass gain of Karakoram glaciers in the early 21st century, *Nat. Geosci.*, 5, 322–325, doi: 10.1038/NNGEO1450, 2012.](#)
- [Gardelle, J., Berthier, E., Arnaud, Y., and Käab, A.:](#) Region-wide glacier mass balances over the Pamir-Karakoram-Himalaya during 1999-2011, *The Cryosphere*, 7, 1263-1286, doi:10.5194/tc-7-1263-2013, 2013.
- Gardner, A. S., Moholdt, G., Cogley, J. G., Wouters, B., Arendt, A. A., Wahr, J., Berthier, E., Hock, R., Pfeffer, W. T., Kaser, G., Ligtenberg, S. R. M., Bolch, T., Sharp, M. J., Hagen, J. O., van den Broeke, M. R., and Paul, F.: A Reconciled Estimate of Glacier Contributions to Sea Level Rise: 2003 to 2009, *Science*, 340, 852-857, doi:10.1126/science.1234532, 2013.
- 20 Gladstone, R., Schafer, M., Zwinger, T., Gong, Y., Strozzi, T., Mottram, R., Boberg, F., and Moore, J. C.: Importance of basal processes in simulations of a surging Svalbard outlet glacier, *The Cryosphere*, 8, 1393-1405, doi:10.5194/tc-8-1393-2014, 2014.
- 25 Goldstein, R. M., Engelhardt, H., Kamb, B., and Frolich, R. M.: Satellite Radar Interferometry for Monitoring Ice Sheet Motion: Application to an Antarctic Ice Stream, *Science*, 262, 1525-1530, doi:10.1126/science.262.5139.1525, 1993.
- Gourmelen, N., Kim, S. W., Shepherd, A., Park, J. W., Sundal, A. V., Björnsson, H., and Pálsson, F.: Ice velocity determined using conventional and multiple-aperture InSAR, *Earth Planet. Sci. Lett.*, 307, 156-160, doi:10.1016/j.epsl.2011.04.026, 2011.

- Guo, W. Q., Liu, S. Y., Yao, X. J., Xu, J. L., Shangguan, D. H., Wu, L. Z., Zhao, J. D., Liu, Q., Jiang, Z. L., Wei, J. F., Bao, W. J., Yu, P. C., Ding, L. F., Li, G. Q., Li, P., Ge, C. M., and Wang, Y.: The Second Glacier Inventory Dataset of China (Version 1.0). Retrieved from: - <http://dx.doi.org/10.3972/glacier.001.2013.db>, 2014.
- 5 [Hall, D. K., Bahr, K. J., Shoener, W., Bindschadler, R. A., and Chien, J. Y. L.: Consideration of the errors inherent in mapping historical glacier positions in Austria from the ground and space, *Remote Sens. Environ.*, 86, 566–577, doi:10.1016/S0034-4257\(03\)00134-2, 2003.](#)
- Harrison, W. D., and Post, A. S.: How much do we really know about glacier surging?, *Ann. Glaciol.*, 36, 1-6, doi:10.3189/172756403781816185, 2003.
- Heid, T., and Käab, A.: Evaluation of existing image matching methods for deriving glacier surface displacements globally from optical satellite imagery, *Remote Sens. Environ.*, 118, 339–355, doi:10.1016/j.rse.2011.11.024, 2011.
- 10 Herman, F., Anderson, B., and Leprince, S.: Mountain glacier velocity variation during a retreat/advance cycle quantified using sub-pixel analysis of ASTER images, *J. Glaciol.*, 57, 197-207, doi:10.3189/002214311796405942, 2011.
- [Hewitt, K.: Tributary glacier surges: an exceptional concentration at Panmah Glacier, Karakoram Himalaya, *J. Glaciol.*, 53, 181–188, doi:10.3189/172756507782202829, 2007.](#)
- 15 Holzer, N., Vijay, S., Yao, T., Xu, B., Buchroithner, M., and Bolch, T.: Four decades of glacier variations at Muztagh Ata (eastern Pamir): a multi-sensor study including Hexagon KH-9 and Pléiades data, *The Cryosphere*, 9, 2071-2088, doi:10.5194/tc-9-2071-2015, 2015.
- Huang, L., Li, Z., Han, H., Tian, B., and Zhou, J.: Analysis of thickness changes and the associated driving factors on a debris-covered glacier in the Tianshan Mountain, *Remote Sens. Environ.*, 206, 63-71, doi:10.1016/j.rse.2017.12.028, 2018.
- 20 Jiang, Z., Liu, S., Long, S., Lin, J., Wang, X., Li, J., Xu, J., Wei, J., and Bao, W.: Analysis of the glacier dynamics features in Kongur Mountain based on SAR technology and DEMs, *J. Glaciol. Geocryol.*, 36, 286-295, doi:10.7522/j.issn.1000-0240.2014.0035, 2014 (In Chinese).
- Jóhannesson, T., Raymond, C., and Waddington, E.: Time–Scale for Adjustment of Glaciers to Changes in Mass Balance. *J. Glaciol.*, 35, 355-369. doi:10.3189/S002214300000928X, 1989.
- 25 Käab, A.: Monitoring high-mountain terrain deformation from repeated air- and spaceborne optical data: examples using digital aerial imagery and ASTER data, *ISPRS J. Photogrammetry and Remote Sensing*, 57, 39-52, doi:10.1016/s0924-2716(02)00114-4, 2002.
- Käab, A.: Combination of SRTM3 and repeat ASTER data for deriving alpine glacier flow velocities in the Bhutan Himalaya, *Remote Sens. Environ.*, 94, 463-474, doi:10.1016/j.rse.2004.11.003, 2005.

- Kääb, A., Berthier, E., Nuth, C., Gardelle, J., and Arnaud, Y.: Contrasting patterns of early twenty-first-century glacier mass change in the Himalayas, *Nature*, 488, 495-498, doi:10.1038/nature11324, 2012.
- Kääb, A., Treichler, D., Nuth, C., and Berthier, E.: Contending estimates of 2003-2008 glacier mass balance over the Pamir-Karakoram-Himalaya, *The Cryosphere*, 9, 557-564, doi:10.5194/tc-9-557-2015, 2015.
- 5 Kamb, B., Raymond, C. F., Harrison, W. D., Engelhardt, H., Echelmeyer, K. A., Humphrey, N., Brugman, M. M., and Pfeffer, T.: Glacier surge mechanism: 1982-1983 surge of Variegated Glacier, Alaska, *Science*, 227, 469-479, doi:10.1126/science.227.4686.469, 1985.
- Kargel, J. S., Abrams, M. J., Bishop, M. P., Bush, A., Hamilton, G., Jiskoot, H., Kaab, A., Kieffer, H. H., Lee, E. M., Paul, F., Rau, F., Raup, B., Shroder, J. F., Soltesz, D., Stainforth, D., Stearns, L., and Wessels, R.: Multispectral imaging contributions to global land ice measurements from space, *Remote Sens. Environ.*, 99, 187-219, doi:10.1016/j.rse.2005.07.004, 2005.
- 10 Kenyi, L. W., and Kaufmann, V.: Estimation of rock glacier surface deformation using SAR interferometry data, *IEEE Trans. Geosci. Remote Sensing*, 41, 1512-1515, doi:10.1109/tgrs.2003.811996, 2003.
- Khromova, T. E., Osipova, G. B., Tsvetkov, D. G., Dyrurgerov, M. B., and Barry, R. G.: Changes in glacier extent in the eastern Pamir, Central Asia, determined from historical data and ASTER imagery, *Remote Sens. Environ.*, 102, 24-32, doi:10.1016/j.rse.2006.01.019, 2006.
- 15 King, O., Quincey, D. J., Carrivick, J. L. and Rowan, A. V.: Spatial variability in mass loss of glaciers in the Everest region, central Himalayas, between 2000 and 2015, *The Cryosphere*, 11, 407-426, doi:10.5194/tc-11-407-2017, 2017.
- Kotlyakov, V. M., Osipova, G. B., and Tsvetkov, D. G.: Monitoring surge glaciers of the Pamirs, central Asia, from space, *Ann. Glaciol.*, 48, 125-134, doi:10.3189/172756408784700608, 2008.
- 20 Leprince, S., Barbot, S., Ayoub, F., and Avouac, J.-P.: Automatic and precise orthorectification, coregistration, and subpixel correlation of satellite images, application to ground deformation measurements, *IEEE Trans. Geosci. Remote Sensing*, 45, 1529-1558, doi:10.1109/tgrs.2006.888937, 2007.
- Li, Z., Yao, T. D., Tian, L. D., Xu, B. Q., Wu, G. J., and Zhu, G. C.: Borehole Temperature at the Ice-core Drilling Site in the Muztag Ata Glacier, East Pamirs, *J. Glaciol. Geocryol.*, 25, 280-284, doi:10.3969/j.issn.1000-0240.2004.03.007, 2004 (In Chinese).
- 25 Luckman, A., Quincey, D., and Bevan, S.: The potential of satellite radar interferometry and feature tracking for monitoring flow rates of Himalayan glaciers, *Remote Sens. Environ.*, 111, 172-181, doi:10.1016/j.rse.2007.05.019, 2007.
- Lv, M., Lu, X., Guo, H., Liu, G., Ding, Y., Ruan, Z., Ren, Y., and Yan, S.: A rapid glacier surge on Mount Tobe Feng, western China, 2015, *J. Glaciol.*, -1, 1-3, doi:10.1017/jog.2016.42, 2016.

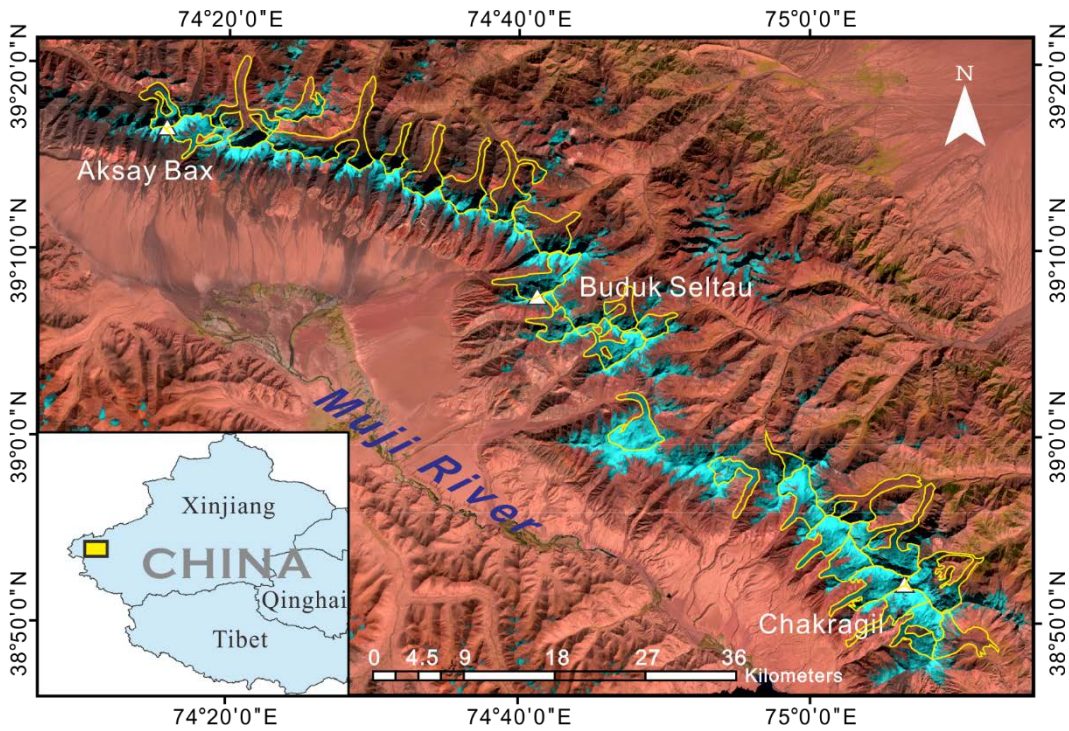
- Mayer, C., Fowler, A. C., Lambrecht, A., and Scharrer, K.: A surge of North Gasherbrum, Karakoram, China, *J. Glaciol.*, 57, 904-916, doi:10.3189/002214311798043834, 2011.
- Meier, M. F., and Post, A.: What are glacier surges?, *Can. J. Earth Sci.*, 6, 807-817, doi:10.1139/e69-081, 1969.
- Meier, M. F., Dyurgerov, M. B., Rick, U. K., O'Neel, S., Pfeffer, W. T., Anderson, R. S., Anderson, S. P., and Glazovsky, A. F.: Glaciers dominate Eustatic sea-level rise in the 21st century, *Science*, 317, 1064-1067, doi:10.1126/science.1143906, 2007.
- Oerlemans, J.: Quantifying global warming from the retreat of glaciers, *Science*, 264, 243-245, doi:10.1126/science.264.5156.243, 1994.
- Ono, Y., Liu, D., and Zhao, Y.: Paleoenvironments of Tibetan Plateau Viewed from Glacial Fluctuations in the Northern Foot of the West Kunlun Mountains, *J. Geogr.*, 106, 184-198, doi:10.5026/jgeography.106.plate7, 1997.
- Osmonov, A., Bolch, T., Xi, C., Kurban, A., and Guo, W.: Glacier characteristics and changes in the Sary-Jaz River Basin (Central Tien Shan, Kyrgyzstan)-1990-2010, *Remote Sens. Lett.*, 4, 725-734, doi:10.1080/2150704X.2013.789146, 2013.
- Paul, F., Barrand, N. E., Baumann, S., Berthier, E., Bolch, T., Casey, K., Frey, H., Joshi, S. P., Konovalov, V., Le Bris, R., Molg, N., Nosenko, G., Nuth, C., Pope, A., Racoviteanu, A., Rastner, P., Raup, B., Scharrer, K., Steffen, S., and Winsvold, S.: On the accuracy of glacier outlines derived from remote-sensing data, *Ann. Glaciol.*, 54, 171-182, doi:10.3189/2013AoG63A296, 2013.
- Quincey, D. J., Luckman, A., and Benn, D.: Quantification of Everest region glacier velocities between 1992 and 2002, using satellite radar interferometry and feature tracking, *J. Glaciol.*, 55, 596-606, doi:10.3189/002214309789470987, 2009.
- Quincey, D. J., Braun, M., Glasser, N. F., Bishop, M. P., Hewitt, K., and Luckman, A.: Karakoram glacier surge dynamics, *Geophys. Res. Lett.*, 38, 113-120, doi:10.1029/2011GL049004, 2011.
- Quincey, D. J., Glasser, N. F., Cook, S. J., and Luckman, A.: Heterogeneity in Karakoram glacier surges, *J. Geophys. Res.*, 120, 1288-1300, doi:10.1002/2015jf003515, 2015.
- Quincey, D. J., and Luckman, A.: Brief communication: On the magnitude and frequency of Khurdopin glacier surge events, *The Cryosphere*, 8, 571-574, doi:10.5194/tc-8-571-2014, 2014.
- Raper, S. C. B., and Braithwaite, R. J.: Glacier volume response time and its links to climate and topography based on a conceptual model of glacier hypsometry, *The Cryosphere*, 3, 183-194, doi:10.5194/tc-3-183-2009, 2009.
- Raymond, C. F.: How do glaciers surge? A review, *J. Geophys. Res.*, 92, 9121-9134, doi:10.1029/JB092iB09p09121, 1987.
- Scherler, D., Leprince, S., and Strecker, M. R.: Glacier-surface velocities in alpine terrain from optical satellite imagery - Accuracy improvement and quality assessment, *Remote Sens. Environ.*, 112, 3806-3819, doi:10.1016/j.rse.2008.05.018, 2008.

- Scherler, D., Bookhagen, B., and Strecker, M. R.: Spatially variable response of Himalayan glaciers to climate change affected by debris cover, *Nature Geosci.*, 4, 156-159, doi:10.1038/ngeo1068, 2011.
- Seong, Y. B., Owen, L. A., Yi, C., Finkel, R. C., and Schoenbohm, L.: Geomorphology of anomalously high glaciated mountains at the northwestern end of Tibet: Muztag Ata and Kongur Shan, *Geomorphology*, 103, 227-250, doi:10.1016/j.geomorph.2008.04.025, 2009.
- Sevestre, H., and Benn, D. I.: Climatic and geometric controls on the global distribution of surge-type glaciers: implications for a unifying model of surging, *J. Glaciol.*, 61, 646-662, doi:10.3189/2015jog14j136, 2015.
- Shangguan, D., Liu, S., Ding, Y., Ding, L., Xiong, L., Cai, D., Li, G., Lu, A., Zhang, S., and Zhang, Y.: Monitoring the glacier changes in the Muztag Ata and Konggur mountains, east Pamirs, based on Chinese Glacier Inventory and recent satellite imagery, *Ann. Glaciol.*, 43, 79-85, doi:10.3189/172756406781812393, 2006.
- Shangguan, D., Liu, S., Ding, Y., Guo, W., Xu, B., Xu, J., Jiang, Z.: Characterizing the May 2015 Karayaylak Glacier surge in the eastern Pamir Plateau using remote sensing, *J. Glaciol.*, 62, 944-953, doi:10.1017/jog.2016.81, 2016.
- Su, Z., Liu, S., and Wang, Z.: Modern glaciers of Mt. Muztagata and Mt. Kongur, *J. Nat. Resour.*, 4, 241-246, doi:10.11849/zrzyxb.1989.03.008, 1989 (In Chinese).
- Thompson, L. G., Mosleythompson, E., Davis, M. E., Lin, P. N., Dai, J., Bolzan, J. F., and Yao, T.: A 1000 year climatic ice-core record from the Guliya ice cap, China: its relationship to global climate variability, *Ann. Glaciol.*, 21, 175-181, doi:10.3189/S0260305500015780, 1995.
- Tian, L., Yao, T., Li, Z., MacClune, K., Wu, G., Xu, B., Li, Y., Lu, A., and Shen, Y.: Recent rapid warming trend revealed from the isotopic record in Muztagata ice core, eastern Pamirs, *J. Geophys. Res.*, 111, no. D13, doi:10.1029/2005JD006249, 2006.
- Watson, C. S., Quincey, D. J., Carrivick, J. L., and Smith, M. W.: The dynamics of supraglacial ponds in the Everest region, central Himalaya, *Global Planet. Change*, 142, 14-27, doi:10.1016/j.gloplacha.2016.04.008, 2016.
- Yan, S., Ruan, Z., Liu, G., Deng, K., Lv, M., and Perski, Z.: Deriving Ice Motion Patterns in Mountainous Regions by Integrating the Intensity-Based Pixel-Tracking and Phase-Based D-InSAR and MAI Approaches: A Case Study of the Chongce Glacier, *Remote Sens.*, 8, 611, doi:10.3390/rs8070611, 2016.
- Yang, H., Yan, S., Liu, G., and Ruan, Z.: Fluctuations and movements of the Kuksai Glacier, western China, derived from Landsat image sequences, *J. Appl. Remote Sens.*, 8, 084599, doi:10.1117/1.jrs.8.084599, 2013.
- Yao, T. D., Liu, S. Y., Pu, J. C., Shen, Y. P., and Lu, A. X.: Recent glacial retreat in High Mountain Asia and its influence on water resource in northwest China, *Sci. China Ser. D Earth Sci.*, 47, 1065-1075, doi: 10.1360/03yd0256, 2004.

Yao, T. D., Thompson, L., Yang, W., Yu, W. S., Gao, Y., Guo, X. J., Yang, X. X., Duan, K. Q., Zhao, H. B., Xu, B. Q., Pu, J. C., Lu, A. X., Xiang, Y., Kattel, D. B., and Joswiak, D.: Different glacier status with atmospheric circulations in Tibetan Plateau and surroundings, *Nature Clim. Change*, 2, 663-667, doi:10.1038/nclimate1580, 2012.

Yasuda, T., and Furuya, M.: Dynamics of surge-type glaciers in West Kunlun Shan, Northwestern Tibet, *J. Geophys. Res.*, 5 120, 2393-2405, doi:10.1002/2015jf003511, 2015.

Zhang, X.: Recent variations in the glacial termini along the Karakorum Highway, *Acta Geogr. Sinica*, 35, 149-160, doi:10.3321/j.issn:0375-5444.1980.02.006, 1980 (In Chinese).



10 **Figure 1: Landsat OLI image (bands 6-5-4) of the Kingata Mountains acquired on October 3rd, 2014. Light blue areas represent bare ice, red-brown areas represent bare soil and rocks, and green areas represent grass or other vegetation. Glaciers with area greater than 5 km² are highlighted by yellow lines.**

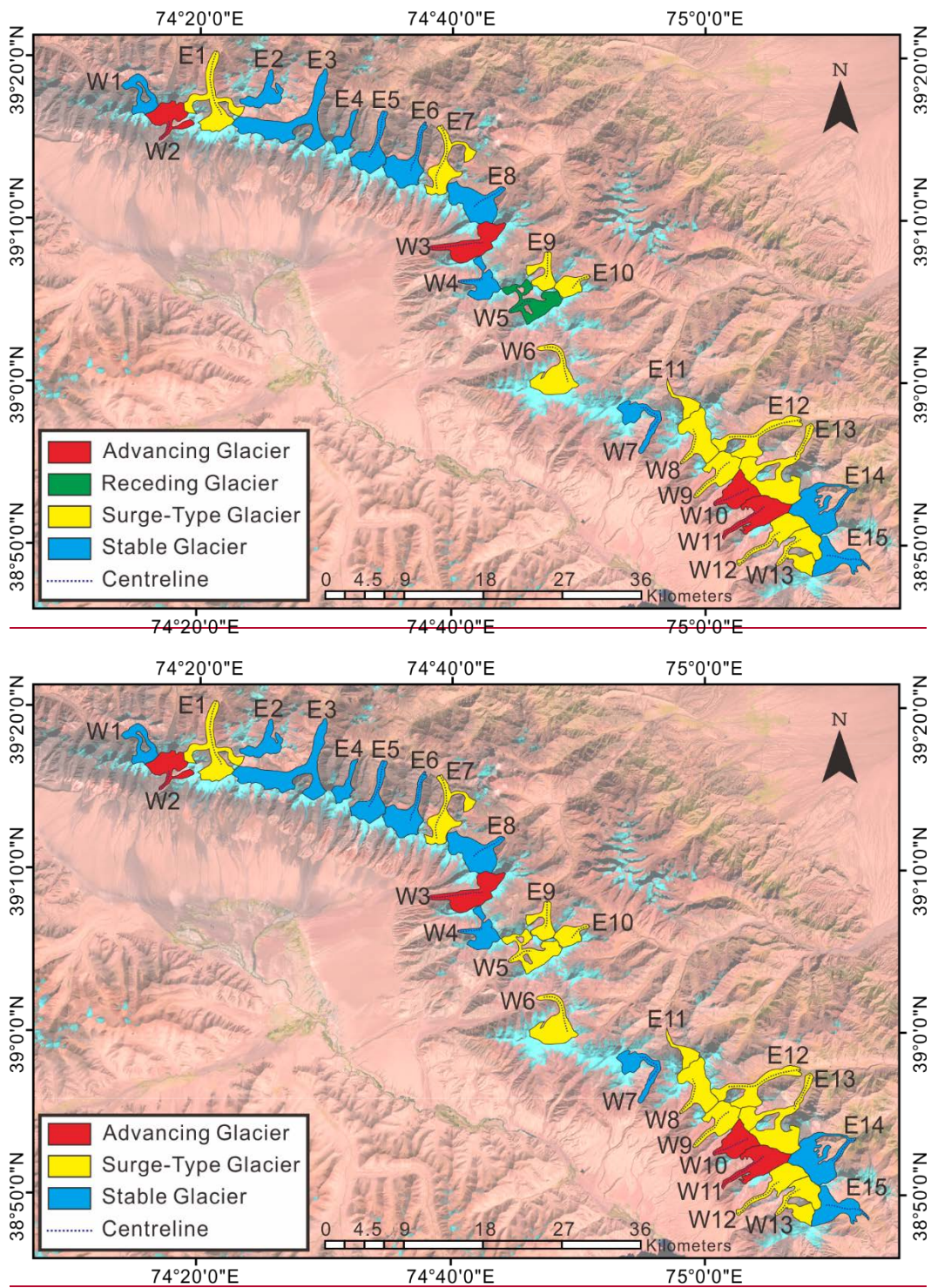


Figure 2: Studied glaciers and their numbers in this study.

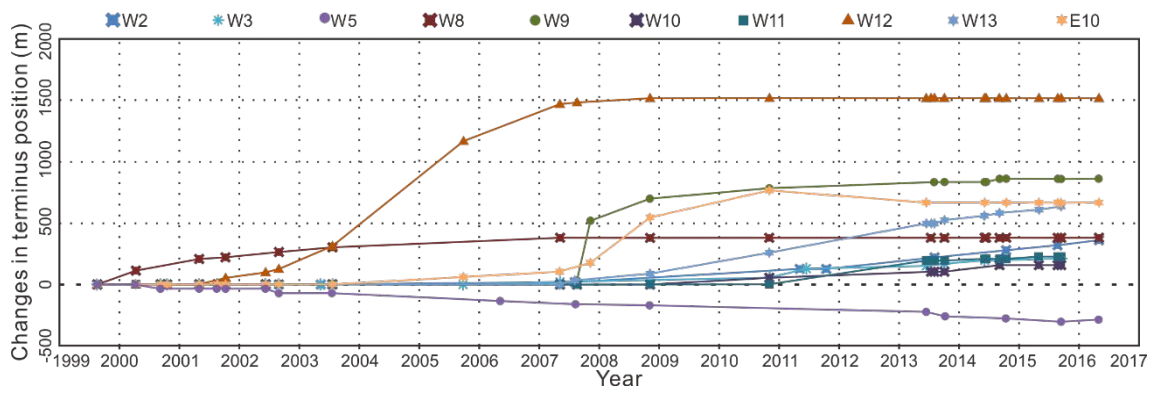
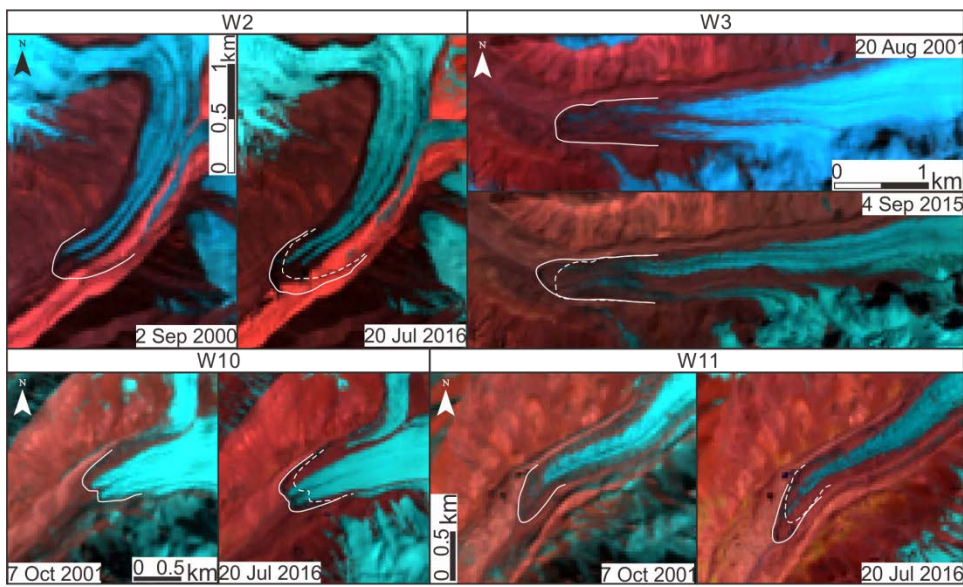


Figure 3: Changes in glacier terminus positions from 1999 to 2016 for 10 glaciers with detectable change.



5

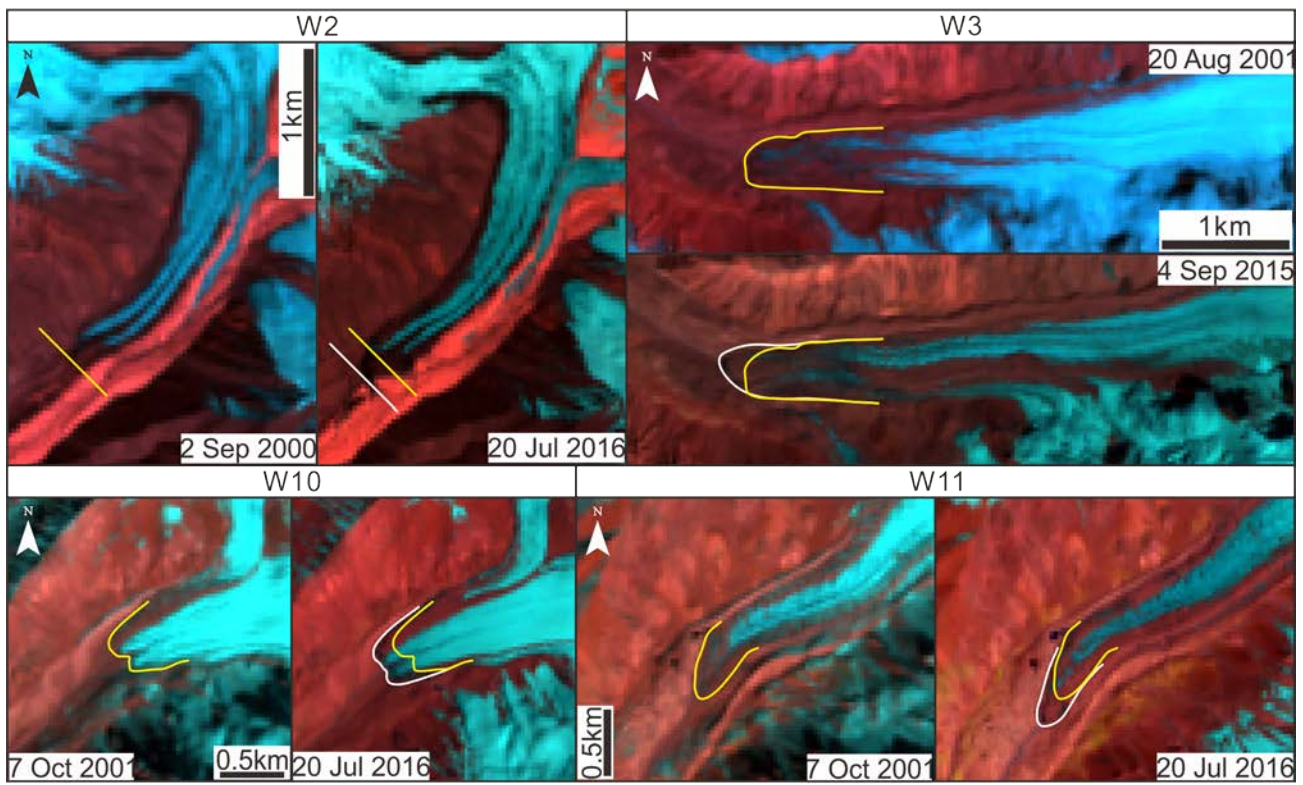


Figure 4: Comparison of the advancing glaciers before and after the advance. The **whiteyellow** lines show the positions of glacier termini in **theearly** images and the **dashedwhite** lines show the **relative** positions of the termini in **the-associated-pre-advance** recent images.

5

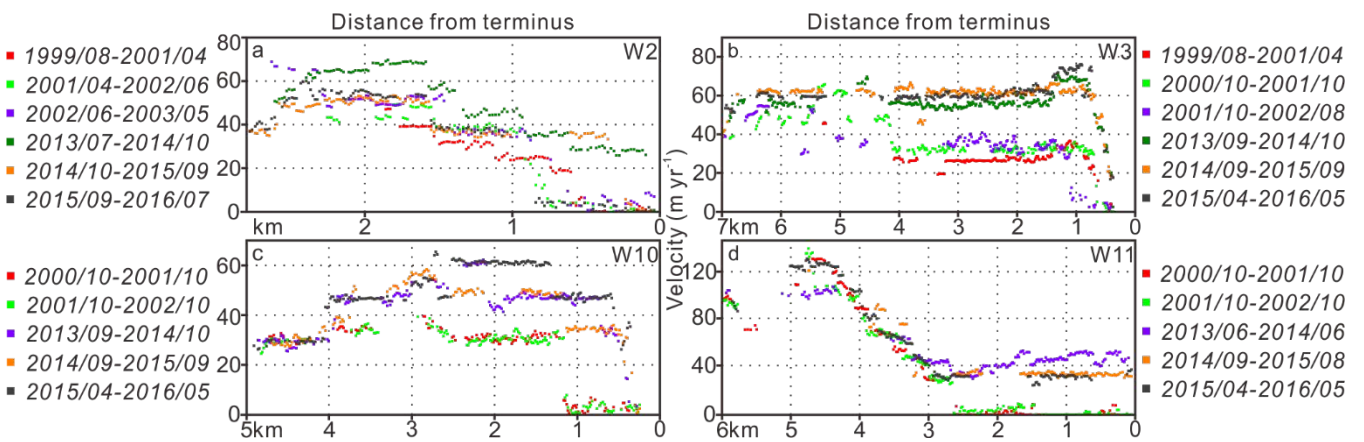


Figure 5: Centreline annual-velocity profiles for advancing glaciers: (a) W2, (b) W3, (c) W10, and (d) W11.

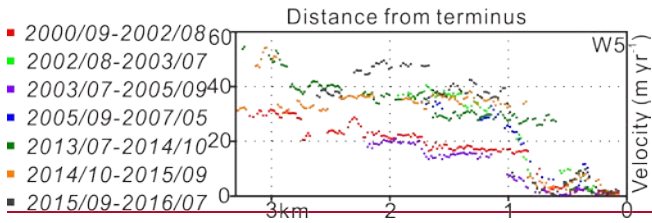
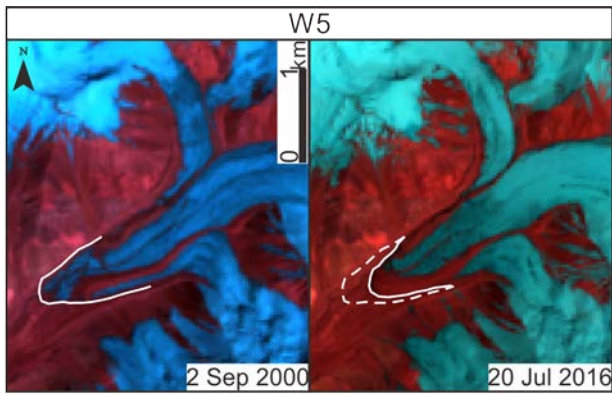
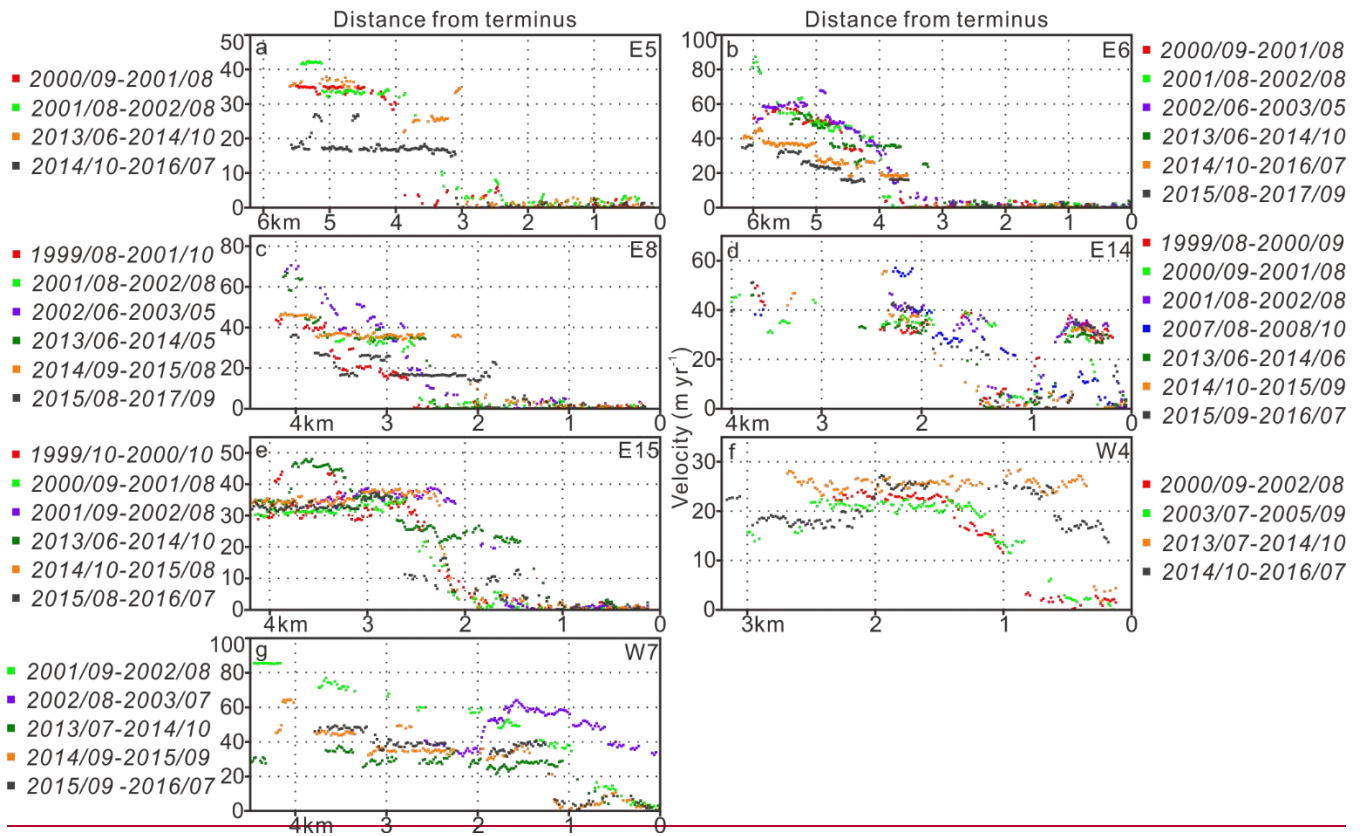


Figure 6: Comparison of the receding glacier W5 before and after the retreat and its centreline annual-velocity profiles.



5 **Figure 7**

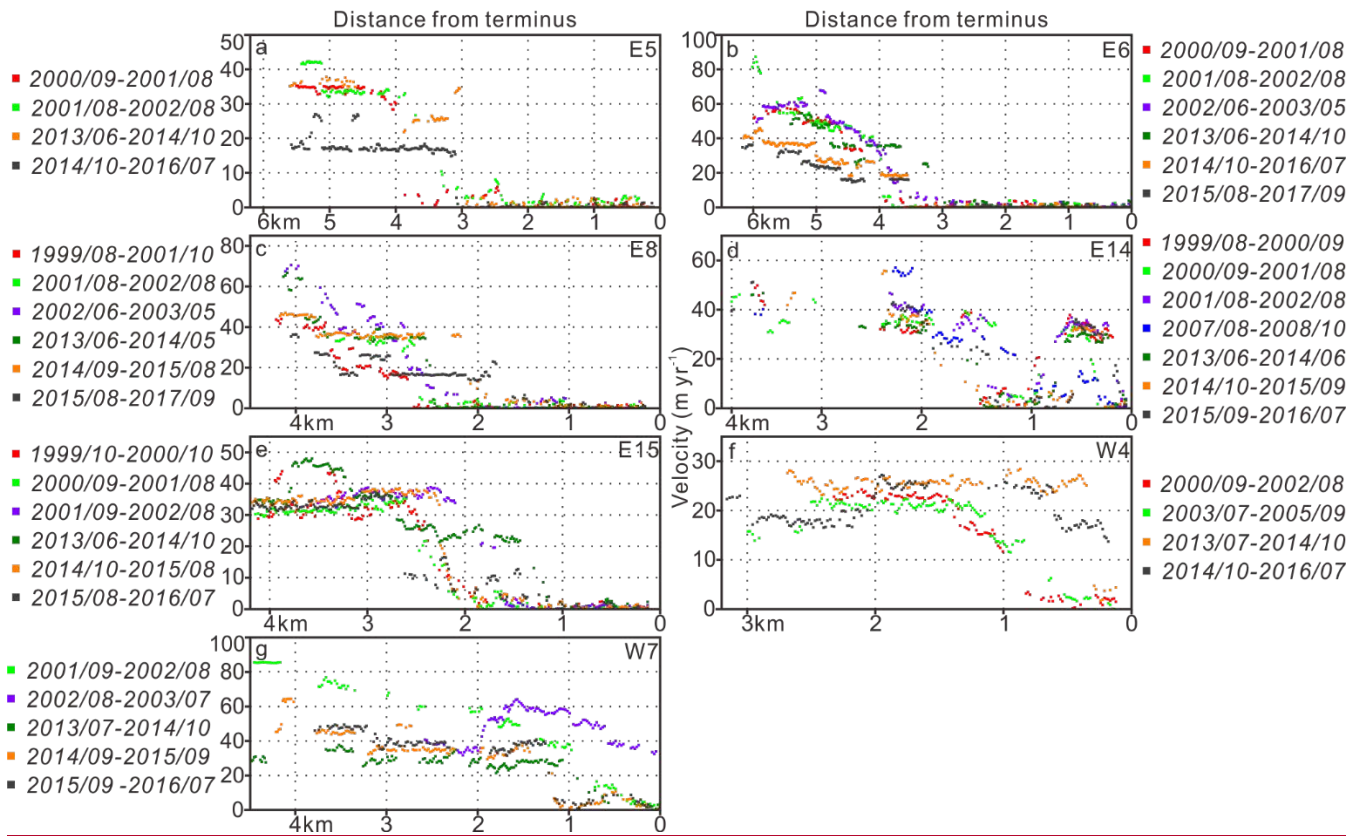
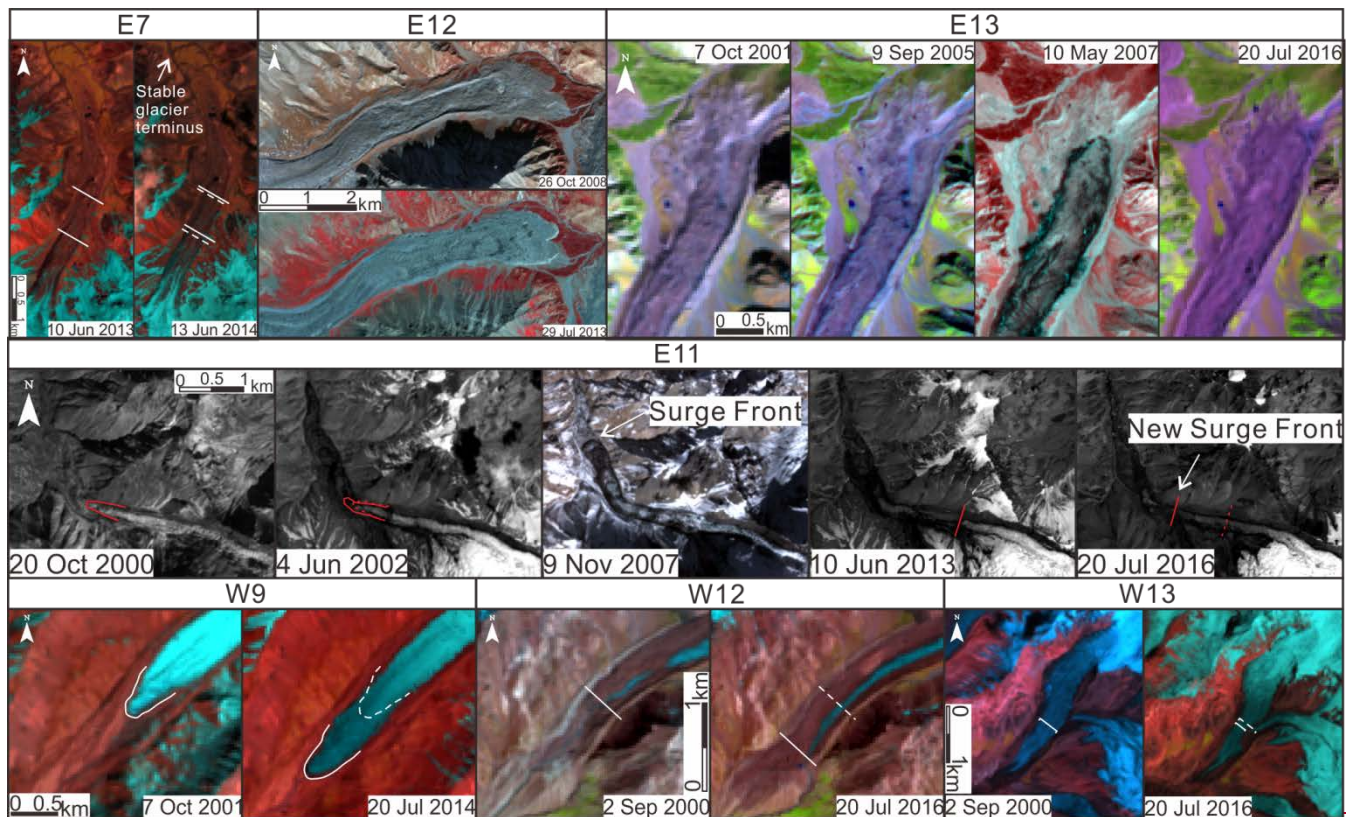


Figure 6: Centreline annual-velocity profiles for stable glaciers: (a) E5, (b) E6, (c) E8, (d) E14, (e) E15, (f) W4, and (g) W7. Note that profiles of W7 start from the clean ice boundary rather than the glacier ~~terminus~~terminus.



5

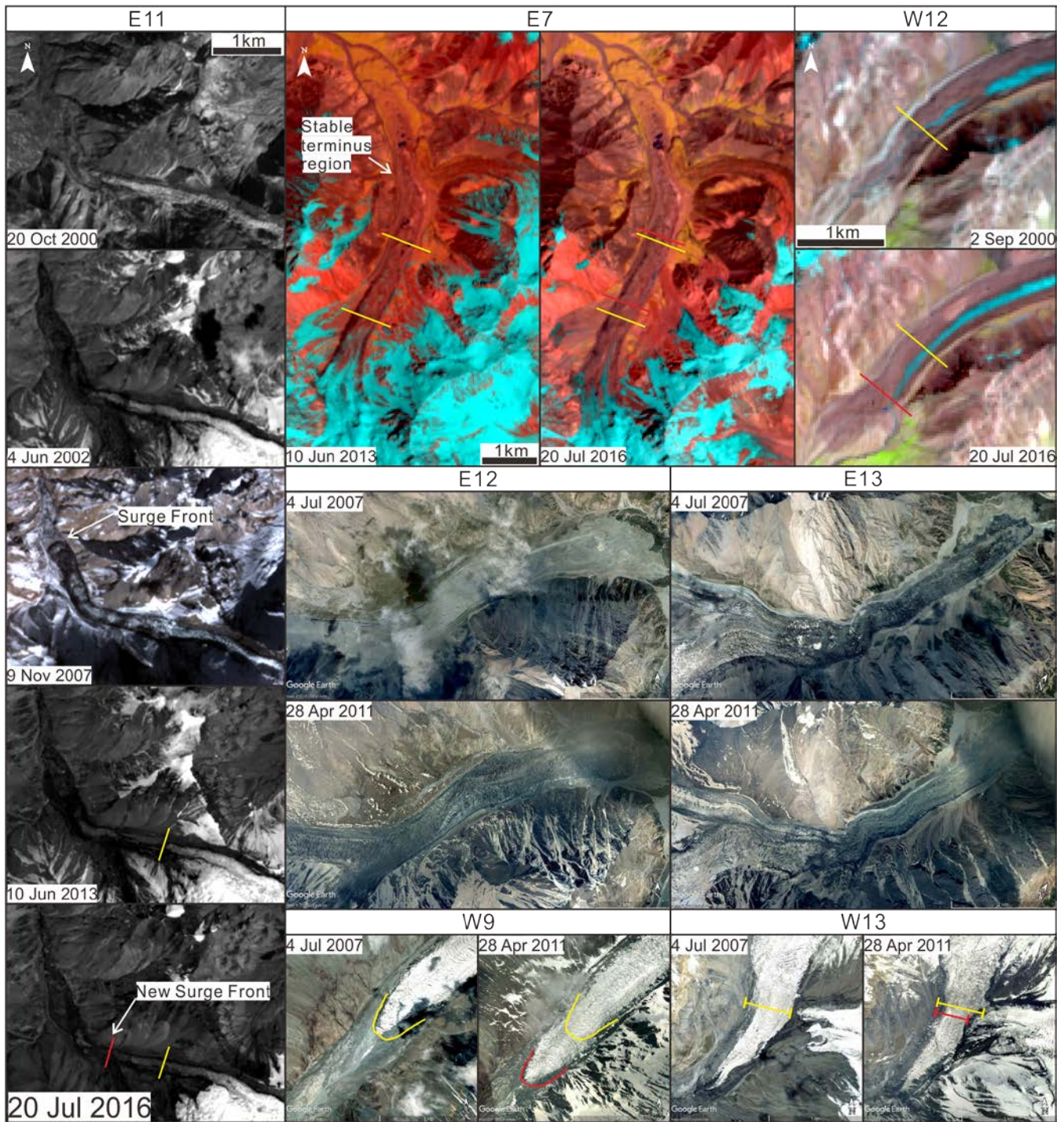


Figure 87: Comparison of the surge-type glaciers before and after surge events. The yellow lines show the positions of visible surface features in the earlier images and the red lines show the positions of the same surface features in recent images. Note that the south branch of W13 surged into the trunk branch and narrowed the trunk branch to nearly two-thirds of its original width. E11 is given the panchromatic band of Landsat, except ASTER true colour combination in 2007.

5

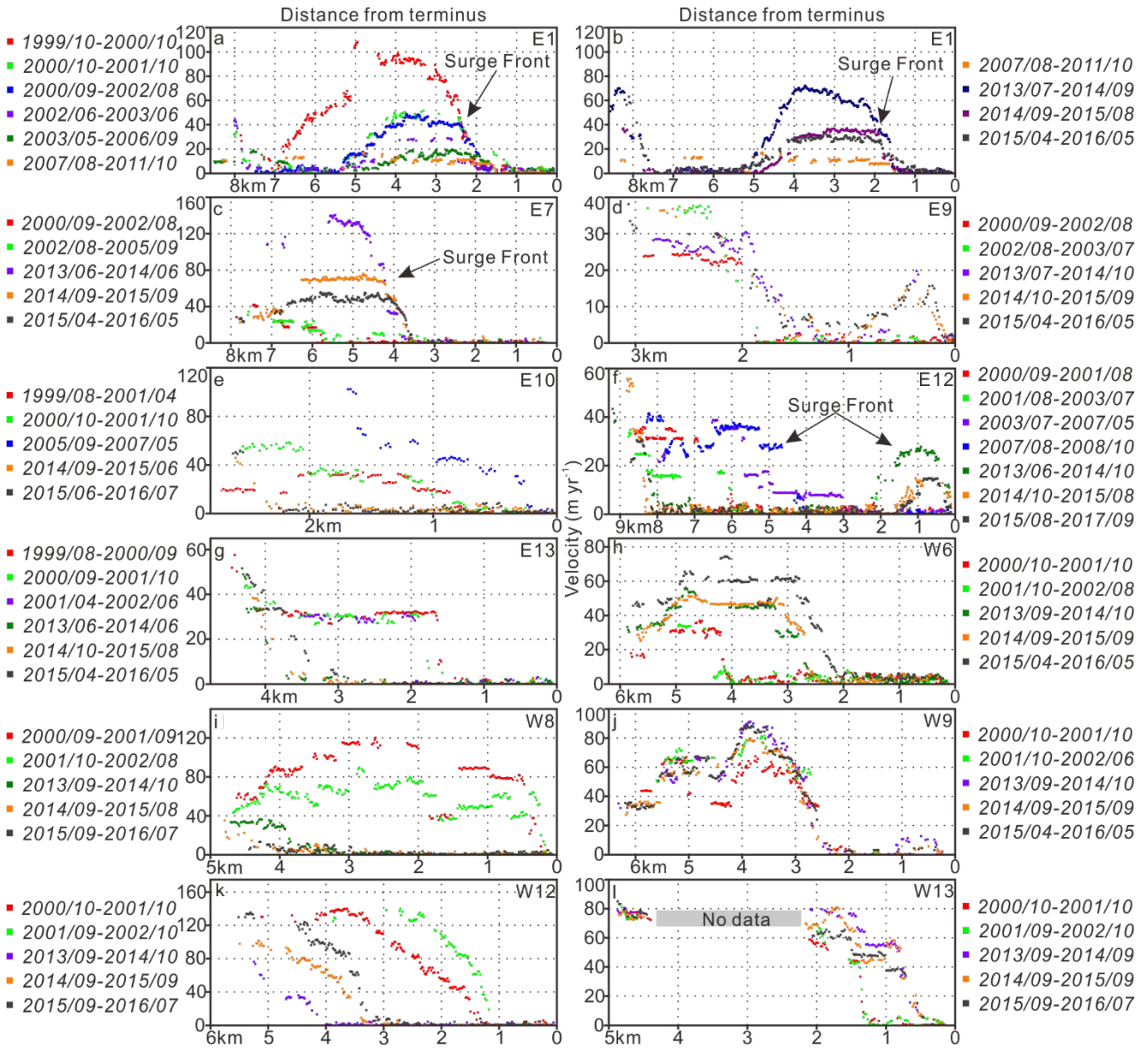


Figure 98: Centreline annual-velocity profiles for surge-type glaciers: (a) E1 (1999-2011), (b) E1 (2007-2016), (c) E7, (d) E9, (e) E10, (f) E12, (g) E13, (h) W6, (i) W8, (j) W9, (k) W12, and (l) W13.

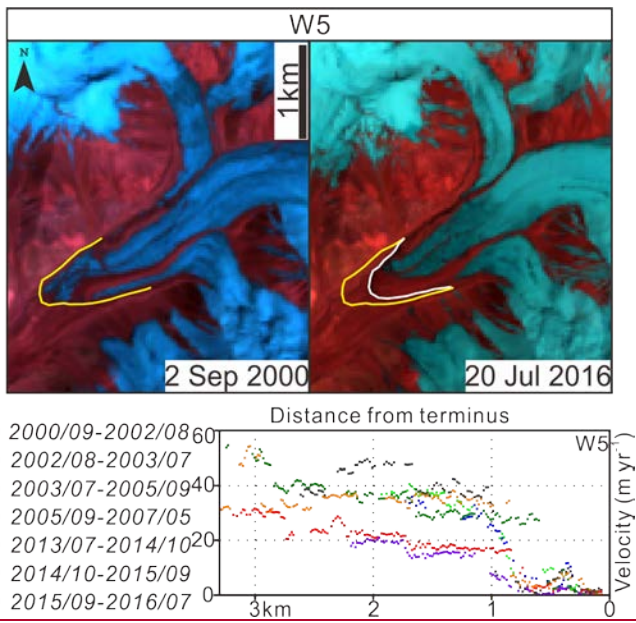
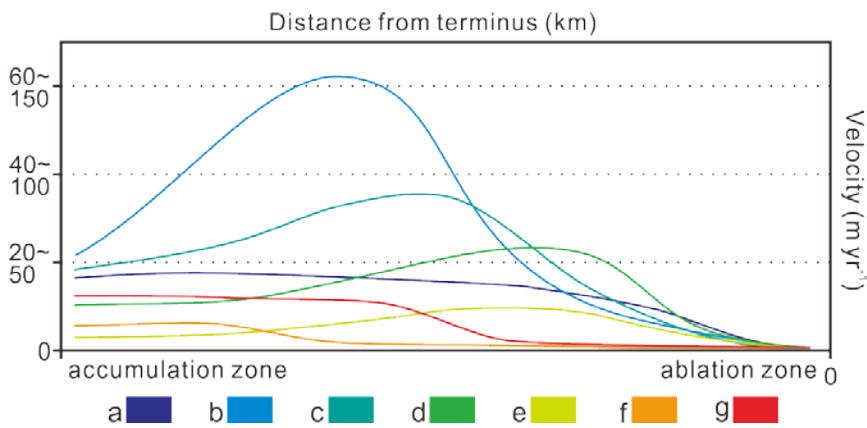


Figure 9: Comparison of W5 between 2000 and 2016 and its centreline annual-velocity profiles. The yellow line indicates its terminus position in 2000 and the white line indicates its terminus in 2016.



5

Figure 10: Conceptual characterisation of the glacial motion pattern of surge-type glaciers in the Kingata Mountains. Profile-a to Profile-g indicate different stages during the active and quiescent phases of a surge-type glacier.

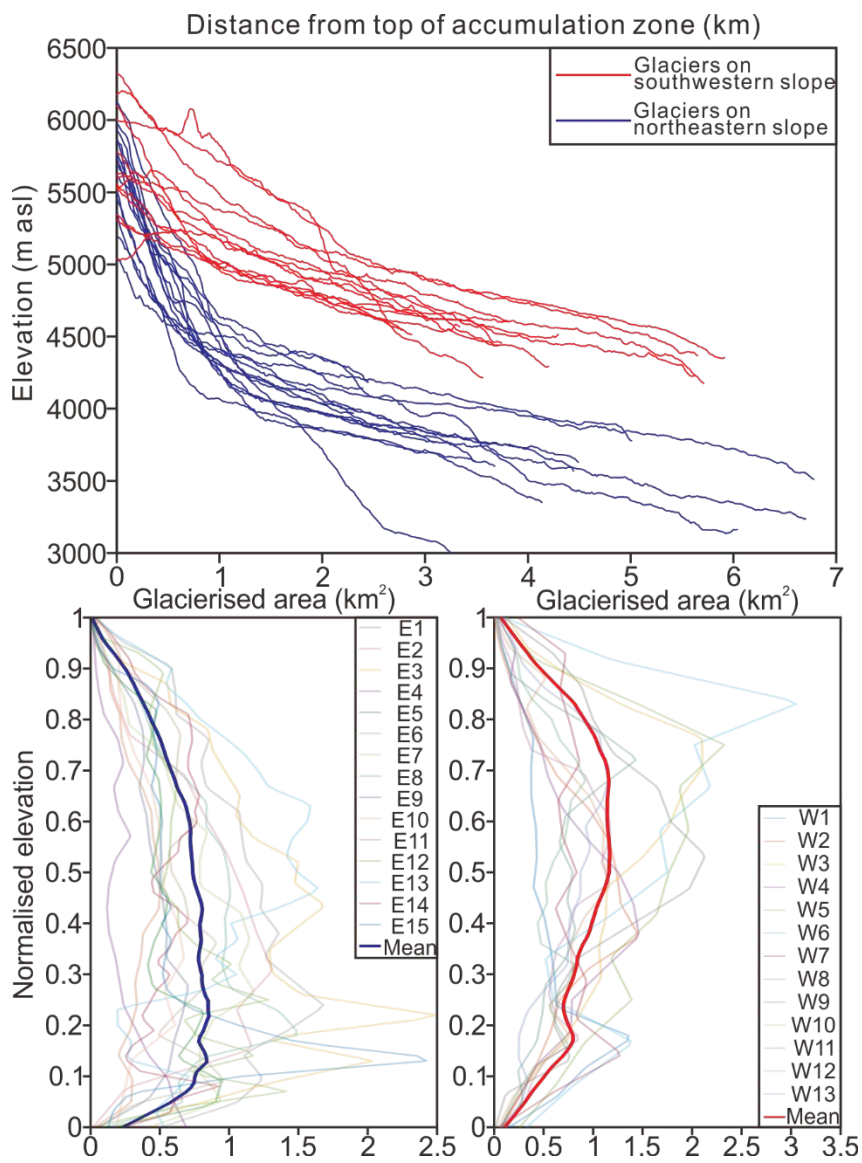


Figure 11: (a) Surface elevation profiles of studied glaciers extracted from ASTER GDEM, (b) hypsometry curves of northeastern glaciers and (c) hypsometry curves of southwestern glaciers.

5 Table 1: Attributes of the glaciers in this study. Areas of glaciers and debris cover are measured based on images in 2016. Values relating to areal changes were measured from 1999 to 2016.

No.	Area (km ²)	Debris cover (%)	GLIMS_ID	Lon.	Lat.	Max/Min elevation (m)	Mean elevation (m)	Mean slope (°)	Mean aspect (°)	Area changed (km ²)
E1	24.11	26.3	G074348E39282N	74.35	39.28	5912.2/3796.4	4760.2	25.4	22.5	
E2	7.37	19.7	G074419E39295N	74.42	39.29	5423.4/4223.1	4707.3	20.5	16.8	
E3	25.52	46.0	G074449E39260N	74.45	39.26	5836/3829.2	4606.2	26.5	42.5	
E4	5.25	38.5	G074525E39252N	74.52	39.25	5913.6/3943.3	4570.4	30.6	40.2	

E5	9.29	42.7	G074560E39231N	74.56	39.23	5692.7/3716.9	4563.7	30.3	25.7	
E6	13.65	29.3	G074606E39223N	74.61	39.22	5774.1/3584.2	4562.8	26.5	42	
E7	10.75	52.1	G074652E39213N	74.65	39.21	5828.2/3744.1	4525	24.2	6.4	
E8	17.17	21.4	G074696E39186N	74.70	39.19	5895.3/3675.5	4655.2	29.9	59.1	
E9	6.43	42.8	G074785E39097N	74.79	39.09	5704.5/4016.4	4780.6	27.6	29.4	
E10	5.53	3.3	G074826E39097N	74.83	39.10	5629.4/4129.4	4884.3	28.8	49.2	0.22
			G074813E39103N	74.81	39.10	5631.6/4497.2	4948	29	54.3	
E11	5.26	8.6	G074981E38974N	74.98	38.97	5788.9/4010.1	4983.2	26.4	2.3	
E12	14.46	60.2	G075050E38938N	75.05	38.94	5900.8/3336.1	4534.2	29.3	54.3	
E13	23.00	11.9	G075083E38897N	75.08	38.90	6095.5/3139.3	4780.4	28.3	51	
E14	21.84	11.8	G075145E38873N	75.15	38.87	6592.4/2843.1	4547.7	34.2	71.4	
E15	12.78	46.9	G075160E38813N	75.16	38.81	6106.5/3730.5	4714.4	32.6	107.6	
			G075150E38828N	75.15	38.83	6394.3/3894.9	5239	42.2	124.3	
W1	9.62	23.2	G074258E39293N	74.26	39.29	6059.7/4421.7	5030.7	25	342.2	
W2	12.27	3.1	G074295E39269N	74.29	39.27	6037.1/4529.6	5254.5	24.6	220.8	0.14
W3	15.05	6.0	G074696E39143N	74.70	39.14	6069.7/4383	5332.8	25.1	313.2	0.08
W4	9.18	5.3	G074707E39103N	74.71	39.10	6015.6/4544.7	5229.6	24.1	308.1	
W5	13.20	2.6	G074774E39084N	74.77	39.08	5811.5/4616.1	5257.8	21.1	299.7	-0.31
W6	14.27	7.0	G074800E39007N	74.80	39.01	5634.7/4487.9	5149.1	12	24.8	
W7	10.19	17.1	G074911E38969N	74.91	38.97	5625/4231.7	4926.2	16.7	103.2	
W8	12.69	1.4	G074990E38942N	74.99	38.94	5906/4456	5236.6	23.9	260.4	0.05
W9	10.61	2.2	G075022E38910N	75.02	38.91	6102/4421	5394.4	21.3	247.3	0.04
W10	9.84	1.3	G075043E38887N	75.04	38.89	6073.5/4581.5	5302.3	23	271.2	0.09
W11	13.38	3.8	G075075E38868N	75.07	38.87	6576.7/4454.9	5460.1	25.7	288.6	0.07
W12	10.51	10.8	G075097E38848N	75.10	38.85	6613.2/4118	5365.3	25.7	237	0.50
W13	13.97	2.4	G075126E38839N	75.13	38.84	6438.5/4270.8	5558.5	24.4	254.6	
			G075128E38819N	75.13	38.82	6155.3/4581.6	5328.1	29.6	296.8	

Table 2: Detailed information of each surge-type glacier in this study including evidence of each surge event, their initiating and terminating year, and their duration

<u>No.</u>	<u>Evidences of surge events</u>	<u>Surge initiating year</u>	<u>Surge terminating year</u>	<u>Surge duration</u>
<u>E1</u>	<u>Surface features show clear movement; Looped moraines; A clear surge front in velocity profiles.</u>	<u>1999</u>	<u>2003</u>	<u>4 years</u>
		<u>2013</u>	<u>2016</u>	<u>3 years</u>
<u>E7</u>	<u>Surface features show clear movement; Looped moraines; A clear surge front in velocity profiles.</u>	<u>2013</u>	<u>After 2016</u>	<u>> 3 years</u>
<u>E9</u>	<u>Destruction of original surface feature; Changes in ice crevasses; Looped moraines; A clear acceleration near terminus region.</u>	<u>2007</u>	<u>After 2016</u>	<u>> 9 years</u>
<u>E10</u>	<u>Terminus advanced 588 m; A clear acceleration and deceleration along glacier tongue during study period.</u>	<u>2007</u>	<u>Before 2010</u>	<u>< 3 years</u>
<u>E11</u>	<u>Clear surge fronts in satellite images; Changes in crevassing; Looped moraines; Broken surface feature; Disappearance of glacial ponds.</u>	<u>1999</u>	<u>2002</u>	<u>3 year</u>
		<u>2013</u>	<u>2016</u>	<u>3 years</u>
<u>E12</u>	<u>Clear surge front in satellite images; Changes in ice crevasses; Looped moraines; Disappearance of glacial ponds; A clear surge front in velocity profiles.</u>	<u>2007</u>	<u>After 2016</u>	<u>> 9 years</u>
<u>E13</u>	<u>Clear surge front in satellite images; Changes in ice crevasses; Looped moraines; Disappearance of glacial ponds; A clear deceleration along glacier tongue.</u>	<u>After 2005</u>	<u>2007</u>	<u>< 2 years</u>
<u>W6</u>	<u>Clear increase and decrease of bare ice area; A clear acceleration near its accumulation zone.</u>	<u>After 1977</u>	<u>Before 1989</u>	<u>< 12 years</u>
<u>W8</u>	<u>Terminus advanced 1431 m; A clear deceleration along glacier tongue.</u>	<u>1993</u>	<u>2002</u>	<u>9 years</u>
<u>W9</u>	<u>Terminus advanced 810 m; Changes in ice crevasses.</u>	<u>2007</u>	<u>2008</u>	<u>1 year</u>
<u>W12</u>	<u>Terminus advanced more 1435 m; Changes in ice crevasses; Looped moraines; Abnormal change in velocity profiles.</u>	<u>2001</u>	<u>2007</u>	<u>6 years</u>
<u>W13</u>	<u>East branch advanced ~450 m and squeezed main branch; Changes in ice crevasses; Velocity increased near terminus region of trunk glacier.</u>	<u>2008</u>	<u>2010</u>	<u>2 years</u>
<u>W5</u>	<u>No obvious sign of surge except an advance of 161 m between 1972 and 1977; Distorted moraines in lower terminus region; Terminus retreated while surface velocity increased from 1999 to 2016.</u>	<u>Before 1972</u>		

Supplement:

Table S1:

Summary of remote sensing imagery used in this study (DD/MM/YYYY, Path-Row, Cloud cover rate ‘%’)

Landsat 7	Landsat 8	ASTER	Landsat 2 & Landsat 5
15/08/1999 150-33 3	10/06/2013 150-33 3.81	06/05/2003 150-33 14	26/09/1977 161-33 9
18/10/1999 150-33 7	28/07/2013 150-33 7.96	23/06/2003 150-33 2	01/12/1989 150-33 2
11/04/2000 150-33 7	30/09/2013 150-33 6.31	18/07/2003 150-33 3	05/07/1993 150-33 7
02/09/2000 150-33 2	20/01/2014 150-33 24.53	09/09/2005 150-33 9	09/11/1995 149-33 3
20/10/2000 150-33 6	26/04/2014 150-33 25.16	26/09/2006 150-33 11	
30/04/2001 150-33 4	28/05/2014 150-33 16.99	15/04/2007 150-33 1	
20/08/2001 150-33 9	13/06/2014 150-33 11.17	10/05/2007 150-33 1	
30/09/2001 149-33 2	01/09/2014 150-33 7.63	05/08/2007 150-33 3	
07/10/2001 150-33 2	17/09/2014 150-33 3.71	21/08/2007 149-33 1	
04/06/2002 150-33 5	03/10/2014 150-33 0.91	09/11/2007 150-33 28	
16/08/2002 149-33 1	29/04/2015 150-33 11.04	26/10/2008 150-33 10	
23/08/2002 150-33 8	16/06/2015 150-33 17.62	03/10/2011 150-33 3	
03/10/2002 149-33 3	19/08/2015 150-33 3.82		
	04/09/2015 150-33 6.28		
	01/05/2016 150-33 2.92		
	20/07/2016 150-33 1.35		
	09/09/2017 150-33 1.22		

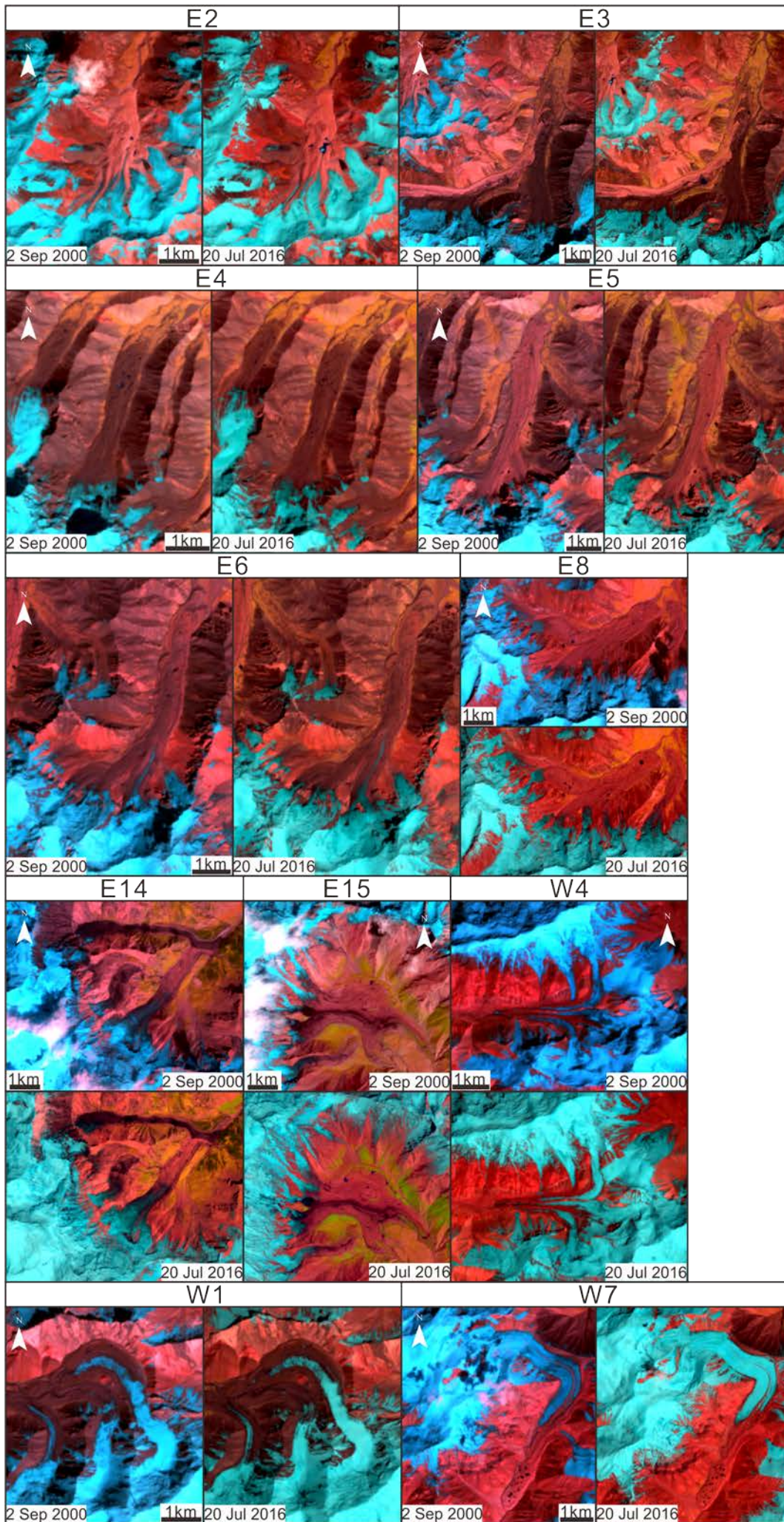


Figure S1: Comparison of stable glaciers in KM during study period.

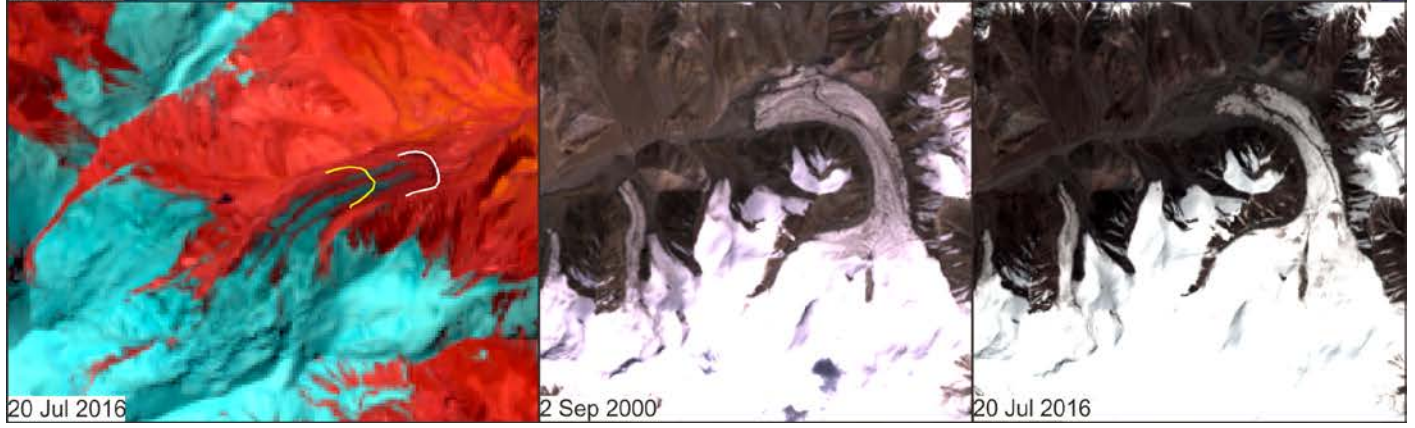
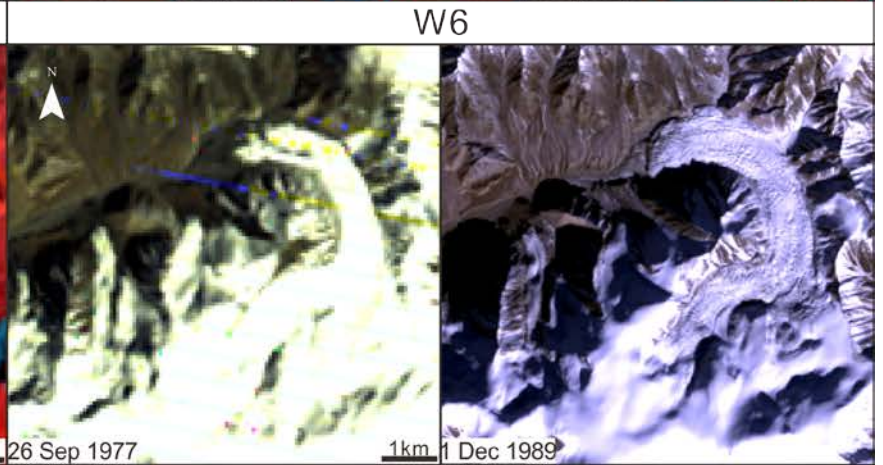
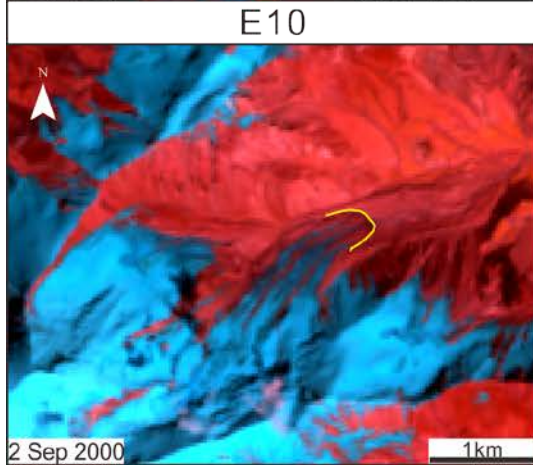
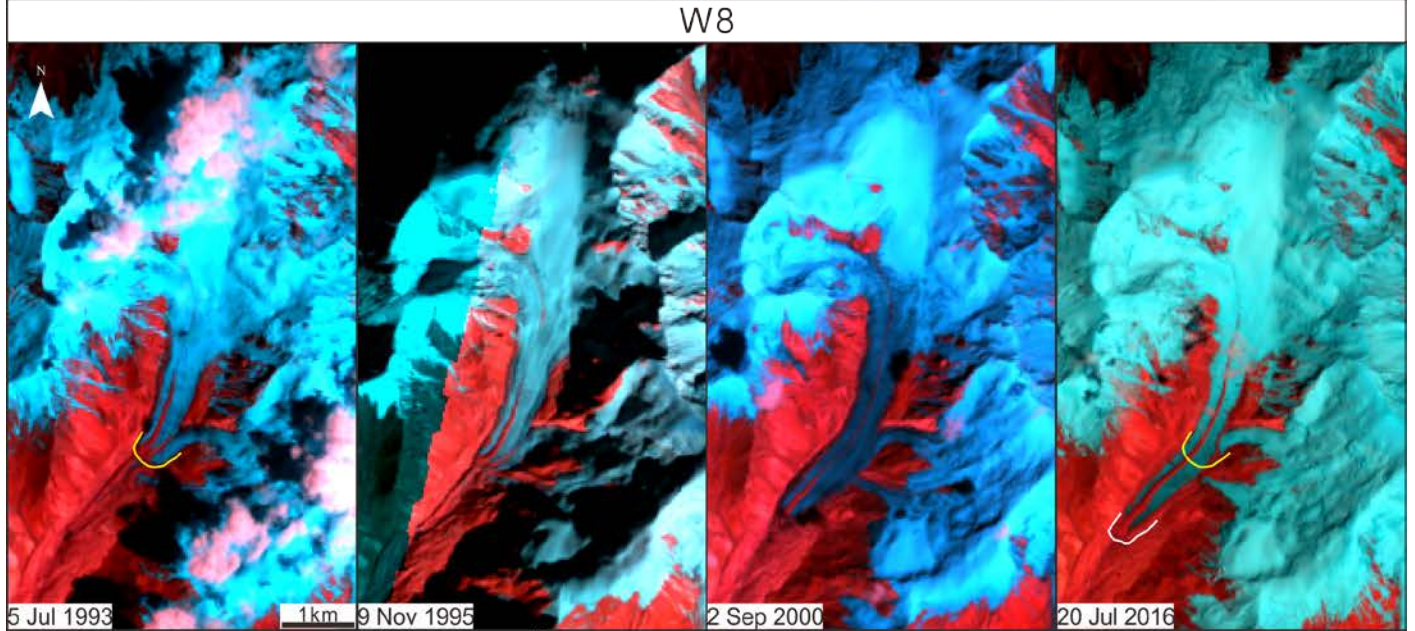
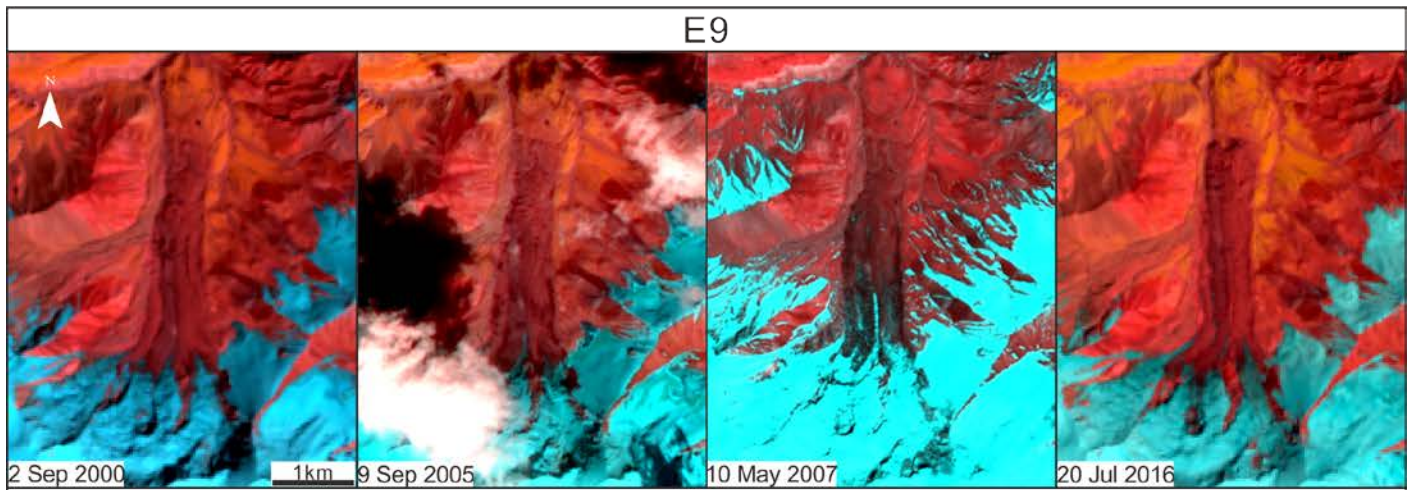




Figure S2: Comparison of the rest surge-type glaciers before and after surge events. The yellow lines show the outlines of glacier termini in the earlier images and the white lines show the outlines of glacier termini in recent images.