

Challenges associated with the climatic interpretation of water stable isotope records from a highly resolved firn core from Adélie Land, coastal Antarctica

5 S.Goursaud^{1,2}, V. Masson-Delmotte¹, V. Favier², S. Preunkert², M. Legrand², B. Minster¹, M. Werner³

¹LSCE (UMR CEA-CNRS-UVSQ 8212-IPSL), Gif-sur-Yvette, France

²Univ. Grenoble Alpes, CNRS, IGE, F-38000 Grenoble, France

10

³Alfred Wegener Institute, Helmholtz Centre for Polar and Marine Research, Bremerhaven, Germany

Correspondence to: Sentia Goursaud (sentia.goursaud@lsce.ipsl.fr)

Abstract.

A new 21.3 m firn core was drilled in 2015 at a coastal Antarctic high accumulation site in Adélie Land (66.78 °S; 139.56 °E, 602 m a.s.l.), named Terre Adélie 192A (TA192A).

The mean isotopic values (-19.3 ± 3.1 ‰ for $\delta^{18}\text{O}$ and 5.4 ± 2.2 ‰ for deuterium excess) are consistent with other coastal Antarctic values. No significant isotope-temperature relationship can be evidenced at any timescale. This rules out a simple interpretation of in terms of local temperature. An observed asymmetry in the $\delta^{18}\text{O}$ seasonal cycle may be explained by the precipitation of air masses coming from the eastern and western sectors in autumn and winter times, recorded in the d-excess signal showing outstanding values in austral spring versus autumn. Significant positive trends are observed in the annual d-excess record and local sea ice extent (135 °E–145 °E) over the period 1998-2014.

However, processes studies focusing on resulting isotopic compositions and particularly the deuterium excess- $\delta^{18}\text{O}$ relationship, evidenced as a potential fingerprint of moisture origins, as well as the collection of more isotopic measurements in Adélie Land are needed for an accurate interpretation of our signals.

1. Introduction

Motivation for new coastal Antarctic firn cores

Polar ice cores are exceptional archives of past climate variations. In Antarctica, many deep ice cores have been drilled and analyzed since the 1950s. For instance, Stenni et al. (2017) compiled water stable isotope data from 112 ice cores spanning at least part of the last 2000 years. Most deep ice cores were drilled in the central Antarctic plateau where low accumulation rates and ice thinning give access to long climate records. In today's context of rapid global climate change, it is of paramount importance to also document recent past climate variability around Antarctica. Many Antarctic regions still remain undocumented due to the lack of accumulation and water stable isotope records from shallow ice cores or pits (Jones et al., 2016; Masson-Delmotte et al., 2008). An accurate knowledge of changes in coastal Antarctic surface mass balance (SMB), an evaluation of the ability of climate models to resolve the key processes affecting its variability, and thus an improved confidence in projections of future changes in coastal Antarctic surface mass balance is important to reduce uncertainties on the ice sheet mass balance and its contribution to sea level change (Church et al., 2013).

Meteorological observations have been conducted since 1957 in manned and automatic stations (Nicolas and Bromwich, 2014), and considerable efforts have been deployed to compile and update the corresponding dataset (Turner et al., 2004). This network is marked by gaps in spatio-temporal coverage (Goursaud et al., 2017a) as well as systematic biases of instruments such as thermistors (Genthon et al., 2011). Satellite remote sensing data have been available since 1979 and provide large-scale information for changes in Antarctic sea-ice and temperature (Comiso et al., 2017), but do not provide sufficient accuracy and homogeneity to resolve trends at local scales (Bouchard et al., 2010). Coastal shallow (20 – 50 m long) firn cores are thus essential to provide continuous climate information spanning the last decades at sub-annual resolution, at local but also regional scales. They complement stake area observations of spatio-temporal variability in surface mass balance (Favier et al., 2013), which also help assessing the representativeness of a single record.

Since the 1990s, efforts have been made to retrieve shallow ice cores in coastal Antarctic areas. Most of these efforts have been focused on the Atlantic sector, in Dronning Maud Land (Altnau et al., 2015; Graf et al., 2002; e.g. Isaksson and Karlén, 1994) and the Weddell Sea Sector (Mulvaney et al., 2002). Fewer

annually resolved water stable isotope records have been obtained from ice cores in other regions, such as the Peninsula (Fernandoy et al., 2018), the Ross sea sector (Bertler et al., 2011), Law Dome (Masson-Delmotte et al., 2003; Delmotte et al., 2000; Morgan et al., 1997), Adélie Land (Yao et al., 1990; Ciais et al., 1995; Goursaud et al., 2017b), and Princess Elizabeth region (Ekaykin et al., 2017). However, the recent 2k temperature and SMB reconstructions for Antarctic (Stenni et al., 2017; Thomas et al., 2017) highlighted the need for more coastal records. In this line, new drilling efforts have recently been initiated in the context of the ASUMA project (improving the Accuracy of SURface Mass balance of Antarctica) from the French Agence Nationale de la Recherche, which aims to assess spatio-temporal variability and change in SMB over the transition zone from coastal Adélie Land to the central East Antarctic Plateau (towards Dome C).

Climatic interpretation of water stable isotope records

Water stable isotope ($\delta^{18}\text{O}$, δD) records from central Antarctic ice cores have classically been used to infer past temperature changes (e.g. Jouzel et al., 1987). The isotope-temperature relationship was nevertheless shown not to be stationary and to vary in space (Jouzel et al., 1997), calling for site-specific calibrations relevant for various timescales (Stenni et al., 2017). In coastal regions, several studies showed no temporal isotope-temperature relationship at all between water stable isotope records in firn cores covering the last decades and near-surface air temperature measured at the closest station. This is for instance the case in Dronning Maud Land, near the Neumayer station (three firn cores, for which the longest covered period is 1958-2012, Vega et al., 2016), in the Ross Sea sector (one snow pit covering the period 1964-2000, Bertler et al., 2011), and in Adélie Land, close to DDU (one firn core covering the period 1946-2006, Goursaud et al., 2017b). While several three-dimensional atmospheric modelling studies have suggested a dominant role of large-scale atmospheric circulation on the variability of coastal Antarctic snow $\delta^{18}\text{O}$ (e.g. Noone, 2008; Noone and Simmonds, 2002), understanding the drivers of coastal Antarctic $\delta^{18}\text{O}$ variability remains challenging (e.g. Fernandoy et al., 2018; Bertler et al., 2018; Schlosser et al., 2004; Dittmann et al., 2016). While distillation processes are expected theoretically to relate condensation temperature with precipitation isotopic composition, a number of deposition processes can distort this relationship: changes in moisture sources (Stenni et al., 2016), intermittency or seasonality of

precipitation (Sime et al., 2008), boundary layer processes affecting the links between condensation and surface air temperature (Krinner et al., 2008), as well as several post-deposition processes, such as the effects of winds (Eisen et al., 2008), snow-air exchanges (Casado et al., 2016; Ritter et al., 2016), and diffusion processes in snow and ice (e.g. Johnsen, 1977). Nevertheless, all these processes remain poorly
5 quantified. As a result, comparisons between firn core records with precipitation records or simulations have to be performed carefully.

Changes in the atmospheric water cycle can also be investigated using a second order parameter, deuterium excess (d-excess). The definition given by Dansgaard (1964) as $d\text{-excess} = \delta D - 8 \times \delta^{18}O$ aims to remove the effect of equilibrium fractionation processes to identify differences in kinetic fractionation
10 between the isotopes of hydrogen and oxygen. In Antarctica, spatial variations of d-excess have been documented through data syntheses, showing an increase from the coast to the plateau (Masson-Delmotte et al., 2008; Touzeau et al., 2016), but temporal variations of d-excess (seasonal cycle, inter-annual variations) remain poorly documented and understood.

Theoretical isotopic modeling studies show that d-excess depends on evaporation conditions, mainly
15 through the impacts of relative humidity (RH), and sea surface temperature (SST) on kinetic fractionation at the moisture source (Merlivat and Jouzel, 1979; Petit et al., 1991; Ciais et al., 1995), and the preservation of the initial vapor signal during transportation towards polar regions (e.g. Jouzel et al., 2013; Bonne et al., 2015). The effect of wind speed on kinetic fractionation is secondary and thus has been neglected in climatic interpretations of d-excess. Some studies usually privileged one variable (RH or SST). For
20 instance, glacial – interglacial d-excess have classically been interpreted to reflect past changes in moisture source SST, neglecting RH effects or assuming co-variations of RH and SST (Vimeux et al., 2001; Vimeux et al., 1999; Stenni et al., 2001). Recent measurements of d-excess in water vapor from ships have evidenced a close relationship between d-excess and oceanic surface conditions, especially RH, at sub-monthly scales (Pfahl and Sodemann, 2014; Uemura et al., 2008; Kurita et al., 2016). Other recent
25 studies have suggested that evaporation at sea ice margins may be associated with a high d-excess value due to low RH effects, a process which may not be well captured in atmospheric general circulation models (e.g. Kurita, GRL, 2011; Steen-Larsen et al., 2017). Several authors have thus identified the potential to identify changes in moisture sources using d-excess (Delmotte et al., 2000; Sodemann and

Stohl, 2009;Ciais et al., 1995). The comparison between multi-year isotopic precipitation datasets with the identification of air mass origins using back-trajectories showed however a complex picture, with no trivial relationship between the latitudinal air mass origin and d-excess (Dittmann et al., 2016;Schlosser et al., 2008). A few studies have also explored sub-annual d-excess variations, and suggested that seasonal
5 d-excess signals cannot be explained without accounting for seasonal changes in moisture transport (e.g. Delmotte et al., 2000). These features have been explored through the identification of back-trajectory clusters and their relationship with $\delta^{18}\text{O}$ -d-excess relationships, including phase lags (Markle et al., 2012;Caiazzo et al., 2016;Schlosser et al., 2017).

Most of these d-excess studies have been performed using firn records and not precipitation samples. We
10 stress that the impact of post-deposition processes on d-excess remain poorly documented and understood. While relationships between moisture origin and d-excess should in principle be conducted on vapour measurements to circumvent the uncertainties associated with deposition and post-deposition processes, the available vapour water stable isotope records from Antarctica only cover one or two summer months (Ritter et al., 2016;Casado et al., 2016) and do not yet allow to explore the relationships between moisture
15 transport and seasonal or inter-annual isotopic variations. Also, state-of-the-art atmospheric general circulation models equipped with water stable isotopes such as ECHAM5-wiso can capture d-excess spatial patterns in Antarctic snow, but they fail to correctly reproduce its seasonal variations (Goursaud et al., 2017a). Finally, the understanding of the climatic signals preserved in d-excess is limited by the available observations. This motivates the importance of retrieval of more highly resolved d-excess
20 records from coastal Antarctic firn cores.

This study

In this study, we focus on the first highly resolved firn core drilled in coastal Adélie Land, at the TA192A site (66.78 ° S, 139.56 ° E; 602 m a.s.l., hereafter named “TA”). Only two ice cores and one snow pit
25 were previously studied for water stable isotopes in this region, without any d-excess record: the S1C1 ice core (14 km from the TA, 279 m a.s.l., Goursaud et al., 2017b), the D47 highly resolved pit (78 km from the TA, 1550 m a.s.l., Ciais et al., 1995) and the Caroline ice core (Yao et al., 1990). The climate of coastal Adélie Land is greatly influenced by katabatic winds (resulting in a very high spatial variability

of accumulation), and by the presence of sea ice (Périard and Pettré, 1993; König-Langlo et al., 1998), including the episodic formation of winter polynya (Adolphs and Wendler, 1995), which lead to nearby open water during winter time. The regional climate is well documented since March 1957 at the meteorological station of Dumont d'Urville, where multi-year atmospheric aerosol monitoring has also
5 been performed (e.g. Jourdain and Legrand, 2001). The spatio-temporal variability of regional SMB has also been monitored at annual time scale since 2004 through stake height and snow density measurement over a 156-km stake-line (91 stakes) (Agosta et al., 2012; Favier et al., 2013). The TA firn core was analysed at sub-annual resolution for water isotopes ($\delta^{18}\text{O}$ and δD) and chemistry (Na, SO_4^{2-} , and MSA). These records were used to establish the age scale for the firn core. Using these records, we explore: (i)
10 the links between the TA isotopic signals, local climate and atmospheric transport, (ii) the possibility to extract a sub-annual signal from such a highly-resolved core, and (iii) how to interpret the d-excess signal of coastal Antarctic ice cores.

In this manuscript, we first present our material and methods (Sect. 2), then describe our results (Sect. 3) and compare them with other Antarctic records and the outputs of the ECHAM5-wiso model in our
15 discussion (Sect. 4), before summarizing our key findings and formulating suggestions for future studies (Sect. 5).

2. Material and method

2.1 Field work and laboratory analyses

We present here the results of one firn core drilled at the TA site (66.78°S , 139.56°S ; 602 m a.s.l.),
20 located at 25 km from Dumont d'Urville station (DDU) and at 14 km from the S1C1 ice core (Goursaud et al., 2017b; Fig. 1). The 21.3 m long firn core was drilled on the 29th of January in 2015, when the daily surface air temperature and wind speed were -8.5°C and $3.9 \text{ m}\cdot\text{s}^{-1}$ respectively, at the D17 station (9 km from the drilling site).

The FELICS (Fast Electrochemical lightweight Ice Coring System) drill system was used (Ginot et al.,
25 2002; Verfaillie et al., 2012). Firn core pieces were then sealed in polyethylene bags, stapled and stored in clean isothermal boxes. At the end of the field campaign, the boxes were transported in a frozen state

to the cold-room facilities of the Institute of Environmental Geoscience (IGE, Grenoble, France). Every core piece was weighted and its length measured in order to produce a density profile. The cores were sampled at 4 cm resolution, leading to a total of 533 samples for oxygen isotopic ratio and ionic concentrations following the method described in Goursaud et al. (2017b). Samples devoted to ionic concentration measurements were stored in the cold room until concentrations of sodium (Na^+), sulfate (SO_4^{2-}), and methane sulfonate (MSA) were analyzed by ion chromatography equipped with a CS12 and an AS11 separator column, for cations and anions respectively. Samples devoted to oxygen isotopic ratio were sent to LSCE (Gif-sur-Yvette, France) and analyzed following two methods. First, $\delta^{18}\text{O}$ was measured by the $\text{CO}_2/\text{H}_2\text{O}$ equilibration method on a Finnigan MAT252, using two standards calibrated to SMOW/SLAP international scales, with an accuracy of 0.05 ‰. Second, $\delta^{18}\text{O}$ and δD were also measured using a laser cavity ring-down spectroscopy (CRDS) Picarro analyzer, using the same standards, leading to an accuracy of 0.2 ‰ and 0.7 ‰ for $\delta^{18}\text{O}$ and δD respectively. The resulting accuracy of d-excess, calculating using a quadratic approach, is 1.7 ‰.

2.2 Datasets

15 *Instrumental data*

To assess potential climate signals archived in our firn core records, we extracted meteorological data to explore regional climate signals, and outputs of atmospheric models to explore synoptic scale climate signals. The regional climate is well documented since 1957 thanks to the continuous meteorological monitoring at DDU station (https://donneespubliques.meteofrance.fr/?fond=produit&id_produit=90&id_rubrique=32), with one gap between March 1959 and January 1960. We extracted near-surface temperature, humidity, surface pressure, wind speed and wind direction data computed monthly and annual averages over the periods 1957–2014 and 1998–2014.

The monthly average sea ice concentration was extracted from the Nimbus-7 Scanning Multichannel Microwave Radiometer (SMMR) and Defense Meteorological Satellite Program Special Sensor Microwave/Imagers - Special Sensor Microwave Image/Sounder (DMSP SSM/I-SSMIS) passive microwave data (<http://nsidc.org/data/nsidc-0051>), over the 50 – 90 °S latitudinal range at a 25 km x 25

km grid resolution (Cavalieri et al., 1996). D’Urville summer sea ice extent was estimated by extracting the number of grid points covering the area (50 – 90 °S, 135 – 145 °E) where the sea ice concentration is higher than 15 %, from December to January (included) for each year from 1998 to 2014.

SMB measurements from stake point data were obtained from the Glacioclim observatory
5 (<https://glacioclim.osug.fr/>). We extracted data from the three stakes closest to the TA drilling site, namely “18.3” (66.77 °S, 139.57 °E; 1.04 km from the TA drill site), “19.2” (66.77 °S, 139.56 °E; 83 m from the drilling TA site), and “20.3” (66.78 °S, 139.55 °E; 1.00 km from the drilling TA site), all spanning the period 2004–2014.

10 *Database of surface snow isotopic composition*

In order to compare the d-excess record from the TA firn core with available Antarctic values, we have updated the database of Masson-Delmotte et al. (2008), by adding 26 new data points from precipitation and firn core measurements provided with d-excess (Table 1). This includes data from five ice cores from the database constituted by the Antarctica2k group (Stenni et al., 2017). Altogether, the updated database
15 includes 777 locations. This includes 64 coastal sites at an elevation lower than 1000 m a.s.l., (with 19 new datasets). These data were extracted from our updated isotope database (Goursaud et al., 2018) archived on the PANGAEA data library (<https://doi.org/10.1594/PANGAEA.891279>).

Atmospheric reanalyses and back-trajectories

20 Unfortunately, because of the katabatic winds around DDU, no instrumental method allows reliable measurements of precipitation (Grazioli et al., 2017a). We use outputs from ERA-interim reanalyses (Dee et al., 2011b), which were shown to be relevant for Antarctic surface mass balance (Bromwich et al., 2011), to provide information on DDU intra-annual precipitation variability. We extracted these outputs from the grid point (0.75 ° x 0.75 °, ~ 80 km x 80 km, point centered at 66.75 °S and 139.5 °E) closest to
25 the TA drilling site over the period 1998–2014, at a 12-hours resolution, and calculated daily, monthly and annual average values. We also extracted 2-meter temperature (2mT), 10-meter u and v wind components (u10 and v10), and the geopotential height at 500 hPa (z500) over the whole southern

hemisphere (50 – 90 °S), in order to investigate potential linear relationships between our records and the large-scale climate variability.

In order to identify the origin of air masses, back-trajectories were computed using the HySPLIT (Hybrid Single-Particle Lagrangian Integrated Trajectory) model. It is an atmospheric transport and dispersion model developed by the National Oceanic and Atmospheric Administration's (NOAA) Air Research Laboratory (Draxler and Hess, 1998), based on a mixing between Lagrangian and Eulerian approaches (Stein et al., 2015). We set the arrival point at the coordinates of the TA drilling site, at an initial height of 1500 m a.s.l., and used the NCEP/NCAR Global Reanalysis ARL archived data for forcing the meteorological conditions, as the ERA-interim reanalyses are not available in the required extension.

Earlier studies (e.g. Markle et al., 2012; Sinclair et al., 2010) highlighted good performances of NCEP outputs when compared with Antarctic station data after 1979. For instance, previous studies showed that the mean sea level pressure simulated at DDU and averaged on a 5 year running window, was well captured in NCEP reanalyses after 1986 (correlation coefficient > 0.8, bias < 4 hPa and RMSE < 5 hPa) (Bromwich and Fogt, 2004; Bromwich et al., 2007). Also, Simmons et al. (2004) showed quasi-equal twelve months running mean of 2-meter temperatures for the Southern Hemisphere between the European Re-Analyses ERA-40, the NCEP/NCAR and the Climatic Research Unit CRUTEM2v products. We thus run daily five days back-trajectories from January 1998 to December 2014. Each back-trajectory was analyzed for the geographical position of the last simulated point (the estimated start of the trajectory, 5 days prior arrival at DDU), and classified into one of the following four regions, represented on Figure 2 and defined by their longitude (lon) and latitude (lat) as follows : (i) the eastern sector: (0 – 66 °S, 0 – 180 °E), (ii) the Plateau: (66 – 90 °S, 0 – 180 °E), (iii) the Ross sea sector: (0 – 75 °S, 180 – 240 °E), and finally (iv) the western sector: (0 – 75 °S, 180 – 240 °E), and (50 – 90 °S, 240 – 360 °E).

Atmospheric general circulation and water stable isotope modeling: ECHAM5-wiso

The potential relationships between large-scale climate variability and regional precipitation isotopic composition was also investigated through outputs of a nudged simulation performed with the atmospheric general circulation model ECHAM5-wiso (Roeckner et al., 2003), equipped with stable-water isotopes (Werner et al., 2011). We chose this model due to demonstrated skills to reproduce spatial

and temporal patterns of water stable isotopes in Antarctica (Masson-Delmotte et al., 2008; Steen-Larsen et al., 2017; Werner et al., 2011; Goursaud et al., 2017a), and in Greenland (Steen-Larsen et al., 2017).

In this study, we use the same simulation as Goursaud et al. (2017a), in which the large-scale circulation (winds) and air temperature were nudged to outputs of the ERA interim reanalyses (Dee et al., 2011a).

5 The skills of the model were assessed over Antarctica for the period 1979–2014. The model was run in a T106 resolution (i.e. $\sim 110 \text{ km} \times 110 \text{ km}$ horizontal grid size). In the following, we used the subscripts “ECH”, “TA”, and “S1C1” to differ ECHAM5-wiso outputs from the TA and S1C1 firm cores records respectively (e.g. $\delta^{18}\text{O}_{\text{TA}}$ and $\delta^{18}\text{O}_{\text{ECH}}$). Note also that linear relationships are considered significant when the p-value < 0.05 .

10

Modes of variability

We tested either the main modes of variability were imprinted in our recorded, especially:

- the Southern Annual Mode (SAM) using the index defined by Marshall (2003), and archived on the National Center for Atmospheric Research website (Marshall, Gareth & National Center for Atmospheric Research Staff (Eds). Last modified 19 Mar 2018. "The Climate Data Guide: Marshall Southern Annular Mode (SAM) Index (Station-based)." Retrieved from <https://climatedataguide.ucar.edu/climate-data/marshall-southern-annular-mode-sam-index-station-based.>)
- 15 - the El Niño Southern Oscillation (ENSO) using el Niño 3.4 index defined by the Climate Prediction Center of NOAA's National Centers for Environmental Prediction, and archived on their website (Trenberth, Kevin & National Center for Atmospheric Research Staff Eds). Last modified 06 Sep 2018. "The Climate Data Guide: Nino SST Indices (Nino 1+2, 3, 3.4, 4; ONI and TNI)." Retrieved from <https://climatedataguide.ucar.edu/climate-data/nino-sst-indices-nino-12-3-34-4-oni-and-tni.>)
- 20 - the Interdecadal Pacific Oscillation (IPO), using the IPO Tripole Index (TPI) defined by Henley et al. (2015) based on filtered HadISST and ERSSTv3b sea surface temperature data and archived on the internet (Accessed on 09 20 2018 at "https://www.esrl.noaa.gov/psd/data/timeseries/IPOTPI").
- 25 - the Amundsen Sea Low pressure center (ASL) archived on the National Center for Atmospheric Research website (Hosking, Scott & National Center for Atmospheric Research Staff Eds). Last modified

19 Mar 2018. "The Climate Data Guide: Amundsen Sea Low indices." Retrieved from [https://climatedataguide.ucar.edu/climate-data/amundsen-sea-low-indices.](https://climatedataguide.ucar.edu/climate-data/amundsen-sea-low-indices))

3. Results

3.1 Firn core chronology

5 *Ice core dating*

The firn core was dated using an annual layer counting method (Fig. 3). As in Goursaud et al. (2017b), we used concentrations in MSA and non-sea-salt (nss) SO_4^{2-} (nss SO_4).

We have explored the validity of an approach using a definition of nss SO_4 based on a sulfate to sodium mass ratio of 0.25 inferred from summer observations only. The multi-year study of size-segregated aerosol composition conducted at the coast of TA (the DDU station) has demonstrated that sea-salt aerosol is depleted in sulfate with respect to sodium in winter, with a sulfate to sodium mass ratio of 0.13 from May to October instead of 0.25 (i.e. the sea-water composition) in summer (Jourdain and Legrand, 2002). Even at the high plateau station of Concordia, Legrand et al. (2017a) showed that sea-salt aerosol is depleted in sulfate in winter (sulfate to sodium ratio of 0.13 from May to October). We resampled the sulfate time series recorded in the TA with 12 points per year and inferred seasonal average values from averages over the corresponding subsets of points, as previously done for isotopic records (Section 3.2). We then calculated nss SO_4 (noted as nss SO_4^*) using a sulfate to sodium ratio of 0.25 for points associated to months from November to February and 0.13 for points associated from months from March to September. Note that when ignoring the change in sulfate to sodium ratio in winter, (i.e. applying a sulfate to sodium ratio of 0.25 for all the points of the year), the mean nss SO_4 value is lower by 18.2 %, decreasing from 36.5 ± 12.3 ppb to 43.1 ± 11.8 ppb for nss SO_4^* (Figure S1 in the Supplementary Material). We thus applied a calculation of nss SO_4 for all points of our firn core, only using the sulfate to sodium ratio obtained from summer observations, as $[\text{nssSO}_4^{2-}] = [\text{SO}_4^{2-}] - 0.25 [\text{Na}^+]$.

For depths lower than 10 m w.e., summer (December-January) peaks were identified (i) from nss SO_4 values higher than 100 ppb, synchronous with MSA peaks (with no threshold), and (ii) for nss SO_4 values higher than 200 ppb (with or without a simultaneous MSA peak). Double nss SO_4 peaks were counted as

one summer (e.g. 2012, 2003, and 2001). For depths higher than 10 m w.e., summer peaks were identified for nssSO_4 values higher than 27 ppb. The outcome of layer counting allowed us to estimate annual layer thickness, which, combined with the density profile, allowed us to estimate annual SMB in the firn core. This estimated SMB was then compared with stake area data. The three stake data closest to the TA firn core (“18.3”, “19.2” and “20.3”, not shown) depict the same inter-annual variability (pairwise coefficient correlations, $r > 0.93$ and p-values, $p < 0.05$), giving confidence in the use of these measurements to characterize the inter-annual variability of local SMB. The comparison with the stake data shows that our initial layer counted chronology results in a mismatch in the measured versus estimated SMB for year 2008 (Fig. 4a). This mismatch can be resolved by identifying one more summer peak in the chemical records (thin green line, Fig. 3). The revised firn core SMB record from this revised chronology shows correlation coefficients between the stake data and the TA firn core varying from 0.64 for the “20.3” to 0.83 for the “19.2” ($p < 0.05$), with coherent inter-annual variability (Fig. 4b).

Peaks in $\delta^{18}\text{O}_{\text{TA}}$ or $\text{d-excess}_{\text{TA}}$ were not used in our layer counting, so that our age scale is independent of a climatic interpretation of water stable isotopes (e.g. assumption of synchronicity between temperature seasonal cycles and water stable isotope records). We note an uncertainty in layer counting of 3 years when comparing the outcome of layer counting using chemical records with $\delta^{18}\text{O}_{\text{TA}}$ peaks, which have nonetheless been excluded from our dating, as they do not improve the correlations, neither between the reconstructed SMB and the stake data, nor between our records and the ECHAM5-wiso simulations (Tables S1 to S3 in the Supplementary Material).

As a result, we consider that the “best guess” chronology results from the annual layer counting based on nssSO_4 and MSA refined with the comparison with stake data, giving a total of 18 summer peaks (green vertical lines, Fig. 3). In the following, we thus use the dated firn core records covering the complete period 1998–2014. We note that our chronology is more robust for the period 2004–2014, for which stake area SMB data are available.

25

Potential post-deposition effects

In order to test whether the available $\text{d-excess}_{\text{TA}}$ records are not affected by post-deposition effects, one may apply calculations of diffusion (e.g. Jones et al., 2017; Johnsen et al., 2000; van der Wel et al., 2015).

However, many records are not available as depth profiles, and annual accumulation rate data are missing, precluding a systematic approach. We thus applied a simple approach to quantify how the seasonal $\delta^{18}\text{O}_{\text{TA}}$ and $\text{d-excess}_{\text{TA}}$ amplitudes vary through time in firn records, as an indicator of potential post-diffusion effects. For this purpose, we calculate the ratio between the mean amplitude of the most recent three complete seasonal cycles (2011–2014 for TA) and the average seasonal amplitude for the whole record (1998–2014 for TA). If seasonal cycles are stable through time, and if there is no significant smoothing due to post-deposition effects, we should obtain a ratio of 1. However, it is expected to be above 1 in the case of large post-deposition smoothing. We obtain a ratio of 0.5 for $\delta^{18}\text{O}_{\text{TA}}$ data, possibly reflecting the inter-annual variability of the $\delta^{18}\text{O}$ seasonal amplitude. We repeated the same exercise with all the 8 other sub-annual $\delta^{18}\text{O}$ records from our database (Table S4 in the Supplementary Material.). Discarding an outlier (NUS 08-7), all ratios are between 1.0 and 2.9. Ratios based on d-excess amplitudes are similar to those found for $\delta^{18}\text{O}$ (Table S5 in the Supplementary Material). For the TA firn core, we again obtain a ratio of 1.1 for $\text{d-excess}_{\text{TA}}$. We also note high ratios for d-excess data in the NUS 08-7. Except for the ratios calculated in the WDC06A, which notably differs for d-excess (1.1) compared to $\delta^{18}\text{O}$ (2.9), other ratios for d-excess data vary between 1.0 and 1.4, with 20 % maximum difference compared to the corresponding ratio for $\delta^{18}\text{O}$ data.

For the TA, we also estimated the diffusion length (Küttel et al., 2012), and found mean diffusion lengths of 1.4 ± 0.3 months for $\delta^{18}\text{O}_{\text{TA}}$ (with a maximum of 1.9 months in 2007), and 1.6 ± 0.5 months for $\text{d-excess}_{\text{TA}}$ (with a maximum of 2.4 months in 2007).

These results suggest that potential post-deposition effects in the TA can be neglected. Notwithstanding, a potential loss of seasonal amplitude in the other average time series compared to the most recent seasonal cycles cannot be discarded, and has to be considered in the comparison of seasonal amplitudes, from one core to the other, in the comparison with the seasonal amplitude of precipitation $\delta^{18}\text{O}$ time series, and with ECHAM5-wiso outputs.

3.2 Mean values

Mean climate from instrumental data

Before reporting the mean values from TA records, we describe the available meteorological data. A time-averaged statistical description of the available meteorological data measured at DDU, the station closest to the drilling site, is given in Table 2 for the whole available measurement period prior to 2015 (1957–2014), and over the period covered by our TA records, 1998–2014. For all the considered parameters (near-surface temperature, wind direction, wind speed, humidity, and surface pressure), the time-averaged values differ by less than 8% (the maximum deviation being for the wind direction) over the period 1998–2014 compared to the whole available period. Standard deviations calculated over these two time periods also differ by less than one respective standard deviation unit, except for wind direction which shows much less variability over the recent period. We conclude that the local climate of the period 1998–2014 is representative of the multi-decadal climate state since 1957. In ERA-interim, the average precipitation is 46.0 ± 26.9 cm w.e. y^{-1} over the period 1998–2014.

Finally, we compare the statistical description of the sea ice concentration for the four aforementioned regions (Section 2.2) over the available period 1979–2014, with the period covered by the TA firn core 1998–2014 (Table 3). We note that the mean difference between the two periods is maximum for the local sea ice concentration (135 – 145 °E), with 8.9 % difference, whereas it remains below 1.5 % for the other sectors. The extrema (minimum and maximum values) varies of 0.5 % on average (all regions included) from one sector to another, with a maximum difference of 2.9 %. As a result, the mean sea ice concentrations of the period 1998–2014 are also representative for the last decades over large sectors from Amundsen to Indian Ocean.

20

Mean values recorded in the TA firn core

Time-averaged values calculated from TA records are reported in Table 4. The average SMB_{TA} is 75.2 ± 15.0 cm w.e. y^{-1} . Stake data points from Glacioclim show that this site of high accumulation is located in an area of large spatial variability. This features is confirmed by the values given by (i) the stake data closest to the TA site (“19.2”, 100 m for the TA site and associated to a 76.6 ± 25.8 cm w.e. y^{-1} mean accumulation rate) compared to further stake data (“18.2”, 1.04 km from the TA site and associated to a 47.7 ± 15.7 cm w.e. y^{-1} mean accumulation rate), (ii) our mean SMB reconstruction from the S1C1 ice core almost four times lower than for the TA (21.8 ± 6.9 cm w.e. y^{-1} (Goursaud et al., 2017b)) (iii) and

meso-scale fingerprints such as the SMB estimated for coastal Adélie Land by Pettré et al. (1986), based on measurements at stakes located from 500 m to 5 km from the coast (Table 2).

The average $\delta^{18}\text{O}_{\text{TA}}$ value is $-19.3 \pm 3.1 \text{ ‰}$, close to the average $\delta^{18}\text{O}_{\text{SIC1}}$ of $-18.9 \pm 1.7 \text{ ‰}$, and the average $\text{d-excess}_{\text{TA}}$ is $5.4 \pm 2.2 \text{ ‰}$. Compared to the 64 points located at an elevation lower than 1000 m a.s.l. from our database, the $\delta^{18}\text{O}_{\text{TA}}$ and $\text{d-excess}_{\text{TA}}$ average values are slightly higher than the average low-elevation records ($-22.7 \pm 8.8 \text{ ‰}$ and $4.8 \pm 2.3 \text{ ‰}$ for $\delta^{18}\text{O}$ and d-excess respectively, Fig. 5). Finally, the average TA concentrations in Na^+ , MSA and nssSO_4 are of $126.0 \pm 276.5 \text{ ppb}$, $4.5 \pm 5.6 \text{ ppb}$ and $36.5 \pm 44.2 \text{ ppb}$ respectively. Note that the Na^+ average concentration value is affected by strong peaks in 2003 and 2004 with annual values of 369.4 and 388.5 ppb. Excluding these two peaks, the average Na^+ concentration is reduced to 93.2 ppb (with a standard deviation of 38.6 ppb). These concentrations will be discussed later in Section 4.4.

To summarize our findings, the TA records encompass a period (1998–2014) representative of multi-decadal mean climatic conditions. The isotopic mean values appear lower than the average of other Antarctic low elevation records (as shown in Fig. 4). The local SMB is remarkably high for East Antarctica, consistent with stake measurements performed close to the TA site.

3.3 Inter-annual variations

In the following, we refer to seasons as follows: summer (December to February), autumn (March to May), winter from (June to September) and spring (October and November). This cutting was defined based on the mean seasonal cycle of temperature, showing the highest values from December to February, and a plateau of low values from May to September (Fig. 8a). In the TA records, resampled with 12 points per year, we identified seasonal average values by calculating averages over the corresponding subsets of points (e.g. for autumn, we select from the 3rd to the 5th points out of the 12 resampled points within the year). We are fully aware that this is a simplistic approach, assuming a regular distribution of precipitation year round, and that our chronology is more accurate for summer than for other seasons, due to the layer counting method. We nevertheless checked that the distribution of precipitation simulated by ERA-interim within each year is rather homogeneous (Table S6 in the Supplementary Material).

Trends in time-series

We report here the analysis of potential trends from 1998 to 2014, and the identification of remarkable years. Figure 6 and 7 display the time series of meteorological variables, d'Urville summer sea-ice extent and TA records over 1998–2014. In Figures 6 and 7, we chose not to display standard deviations for readability, but they are reported in the Supplementary Material (Fig. S2 and S3).

Significant increasing trends are detected in the annual values of d-excess_{TA} (0.11 ‰ y^{-1} , $r=0.61$ and $p<0.05$) as well as of d'Urville summer sea ice extent ($r=0.77$, $p<0.05$)

10 *Pairwise linear regressions between variables*

We performed pairwise linear regressions for all records (meteorological and firn core records), using on one side, annual averages and on the other side, monthly or seasonal values. As previously observed by Comiso et al. (2017), we report a significant anti-correlation between annual regional sea ice concentration (i.e. 100 – 205 °E, but not with other sectors) and DDU near-surface air temperature ($r=-0.56$ and $p<0.05$). This relationship is strongest in autumn ($r = -0.75$ and $p<0.05$), where it holds for sea-ice in all sectors, and disappears in spring or summer. Confirming earlier studies (Minikin et al., 1998), we observe a close correlation between annual concentrations of MSA and nssSO₄ ($r=0.76$, $p<0.05$). Statistically significant linear relationships appear between the isotopic signals ($\delta^{18}\text{O}_{\text{TA}}$ and d-excess_{TA}) and nssSO₄ in spring ($r=0.65$ and $r=0.55$ for $\delta^{18}\text{O}_{\text{TA}}$ and d-excess_{TA} respectively, $p<0.05$), and only between d-excess_{TA} and nssSO₄ in autumn ($r=0.65$ and $p<0.05$). We find no relationship between $\delta^{18}\text{O}_{\text{TA}}$ and the DDU near-surface temperature. Our record depicts a significant anti-correlation between annual values of SMB_{TA} and d-excess_{TA} ($r=-0.59$ and $p<0.05$), as well as a significant correlation between d-excess_{TA} and d'Urville summer sea ice extent ($r=0.65$ and $p<0.05$). Finally, a systematic positive significant correlation is identified between d-excess_{TA} and $\delta^{18}\text{O}_{\text{TA}}$, except in summer. It is the strongest in austral spring, with a correlation coefficient of 0.75 (with a slope of 0.61 ‰ ‰^{-1}).

In order to understand the specificities of the TA record, we explored the temporal correlation between $\delta^{18}\text{O}$ and d-excess from all available Antarctic records (Table 5, cells in bold for significant relationships), using all data points (in order to be able to exploit non-dated depth profiles) as well as inter-annual

variations, when available. When focusing on significant results, we note that most precipitation datasets depict an anti-correlation between d-excess and $\delta^{18}\text{O}$ (3 out of 9 precipitation records). Although we are cautious with the short DDU precipitation time series (with only 19 points, and p-values = 0.08, cell in italics in Table 5), it shows a positive relationship, similar to the one identified in the TA record. We conclude that the positive correlation observed in the TA records is specific to the coastal Adélie Land region, what is unusual in an Antarctic context.

Remarkable years

Using only annual SMB, water stable isotope and chemistry TA records, we finally searched for remarkable years, defined here as deviating from the 1998–2014 mean value by at least 2 standard deviations. We highlight three remarkable years (red-shaded for high values and blue-shaded for low values, Fig. 6 and 7):

→ Year 2007: very low SMB_{TA} .

→ Year 2009: remarkably high $\delta^{18}\text{O}_{\text{TA}}$.

15 → Year 2011: high MSA, d'Urville summer sea ice extent, and wind speed values.

We had previously noted that years 2003 and 2004 are associated with very high Na^+ values and add that year 1999 experienced low nssSO_4 values.

In summary, we identify increasing trends in $\text{d-exces}_{\text{TA}}$ and sea-ice concentration, no significant correlation between $\delta^{18}\text{O}_{\text{TA}}$ and DDU near-surface temperature, and an anti-correlation between $\text{d-exces}_{\text{TA}}$ and SMB_{TA} . We also note 2 remarkable years in SMB_{TA} (“dry” 2007) and $\delta^{18}\text{O}_{\text{TA}}$ (“high” 2009). Finally, no systematic relationships are identified between chemistry and water stable isotope signals (e.g. parallel trends, inter-annual correlation, and remarkable years).

3.4 Intra-annual scale

25 *Mean cycles*

The high resolution of the TA record allows us to describe the mean seasonal cycles (Fig. 8), as well as to explore the inter-annual variability of the seasonal cycle.

Among the meteorological variables, only near-surface temperature, relative humidity and sea level pressure show a clear seasonal cycle. Temperature (Fig. 8a) is minimum in July and maximum in January, while relative humidity and pressure (Fig. 8b and 8c respectively) are minimum in spring (in November and October respectively), and a maximum in winter (in August and June respectively), as reported in earlier studies (Pettré and Périard, 1996). The average seasonal cycles of wind speed and wind direction are flat but marked by large inter-annual variations (Fig. 8d and 8e). Finally, the local sea ice concentration shows a rapid advance from March to June, a plateauing from June to October and a rapid retreat from October to November, with a minimum in February (Fig. 8c), as previously reported by Massom et al. (2013).

10 In the TA firn core, Na, nssSO₄, and MSA show symmetric cycles with minima in winter and maxima in summer (by construction of our time scale) (Fig8 g-i), consistent with previous studies of aerosols and ice core signals (e.g. Preunkert et al., 2008). The $\delta^{18}\text{O}_{\text{TA}}$ seasonal cycle is surprisingly asymmetric (Fig. 8j), with a maximum in December and a minimum in April, thus not in phase with the seasonal cycles of local sea-ice concentration (Fig. 8f) nor DDU temperature (Fig. 8a). The mean d-excess_{TA} seasonal cycle (Fig. 8k) is marked by a maximum in February, two months after the $\delta^{18}\text{O}_{\text{TA}}$ maximum, and a minimum in October, six months after the $\delta^{18}\text{O}_{\text{TA}}$ minimum. We then calculated the mean of the isotopic seasonal amplitudes, preferentially to the amplitude of the mean seasonal cycle, due to the different timing of peaks from one year to another. The mean $\delta^{18}\text{O}_{\text{TA}}$ seasonal amplitude is 8.6 ± 2.1 ‰, more than three times higher than found in the S1C1 ice core, and close to the DSSA mean $\delta^{18}\text{O}$ seasonal cycle of 8.0 ± 2.8 ‰.

15 The mean d-excess_{TA} seasonal amplitude is 6.5 ± 2.8 ‰, close to the DSSA value of 5.3 ± 1.0 ‰. Compared with other precipitation and firn/ice core isotopic data from other regions of Antarctica (Table S7 in the Supplementary Material), the average seasonal amplitude obtained from TA $\delta^{18}\text{O}$ is closest to the one obtained at KM, BI sites in Dronning Maud Land, and Vernadsky or Rothera in Peninsula, but is much larger than identified from NUS 08-7 or WDC06A, and significantly smaller than at Halley (by a factor of almost 2), Neumayer (a factor of 2.3), Dome C or Dome F (a factor of ~4). In addition to DSSA, the average seasonal amplitude obtained from TA d-excess is also comparable to the one obtained in the KM, BI, and the IND25B5 firn cores in Dronning Maud Land, but is systematically higher (by a factor

20

25

higher than 3) than in precipitation datasets. This calls for systematic comparisons of d-excess seasonal amplitudes in precipitation and snow data.

Due to their common symmetric aspect, significant positive linear relationships emerge from the mean seasonal cycles of (i) temperature, nssSO₄ and MSA ($r > 0.93$ and $p < 0.05$), (ii) nssSO₄ and MSA ($r = 0.97$ and $p < 0.05$), (iii) nssSO₄ and Na⁺ ($r = 0.93$ and $p < 0.05$) and finally (iv) $\delta^{18}\text{O}$ with nssSO₄ ($r = 0.75$ and $p < 0.05$). Due to the asymmetry of water stable isotope seasonal cycles, no linear relationship is detected between the seasonal cycles of DDU near-surface temperature, $\delta^{18}\text{O}_{\text{TA}}$, and d-excess_{TA}. Finally, the seasonal cycle of d-excess_{TA} is clearly anti-correlated with all sea-ice concentration indices (local, Indian, Amundsen and regional), with correlation coefficients varying between -0.83 and -0.80.

10

Inter-annual variability of peaks

Over the whole period covered by the TA firn core (1998–2014), the seasonal cycle of $\delta^{18}\text{O}_{\text{TA}}$ shows a large inter-annual variability (Table 6). $\delta^{18}\text{O}_{\text{TA}}$ maximum values occur primarily in summer (41 % of the time) and winter (41 %), and more rarely in spring (12 %) and in autumn (6%). The same feature is 15 observable for d-excess_{TA}, which most of the time has its maximum in summer (38 %) and winter (43 %), and more scarcely in spring (6%) and in autumn (13%).

In summary, the TA water stable isotope seasonal cycles displays an asymmetry, with higher isotopic values in austral spring than in austral autumn. The d-excess_{TA} seasonal cycle is anti-correlated with the 20 reconstructed SMB. Finally, the TA isotopic seasonal cycles show a high inter-annual variability from one seasonal cycle to another one, with no recurrent pattern between those of $\delta^{18}\text{O}_{\text{TA}}$ and d-excess_{TA}.

3.5 Influence of synoptic weather on TA records: insights from ECHAM5-wiso simulation, ERA-interim reanalyses, back-trajectories and modes of variability

In order to explore the influence of the synoptic scale weather on TA records, we explore outputs of 25 ECHAM5-wiso and back-trajectory calculations, driven by atmospheric reanalyses. None of the associated atmospheric simulations does resolve local processes such as katabatic winds or sea breeze. We used the ECHAM5-wiso model outputs to explore the following questions: (i) ECHAM5-wiso outputs show similarities with the corresponding observed variables for their inter-annual variability,

trends and remarkable years? (ii) What are the simulated seasonal cycles for $\delta^{18}\text{O}$ and d-excess? (iii) What are the simulated relationships between local near-surface air temperature and $\delta^{18}\text{O}$, and $\delta^{18}\text{O}$ and d-excess at the seasonal and inter-annual scales? (iv) Are there significant relationships between our isotopic records and the large-scale climatic variability?

5

ECHAM5-wiso similarities with the corresponding observed variables

For inter-annual variations, the annual means of DDU near-surface temperature and the simulated 2-meter temperature (2m-T_{ECH}) are significantly correlated (slope of 0.50 ± 0.14 , $r=0.67$ and $p<0.05$). This relationship is valid for all seasons. It is the strongest in winter (slope of $1.1 \pm 0.1 \text{ }^\circ\text{C }^\circ\text{C}^{-1}$, $r=0.93$ and $p<0.05$), and the weakest in summer (slope of $0.98 \pm 0.3 \text{ }^\circ\text{C }^\circ\text{C}^{-1}$, $r=0.69$ and $p<0.05$). There are no significant correlation between water stable isotope records from the TA and simulated by the ECHAM5-wiso, neither for $\delta^{18}\text{O}$, nor for d-excess. Finally, we found no significant trend in any model output over 1998–2014.

In terms of remarkable years, ECHAM5-wiso shows a low $\delta^{18}\text{O}_{\text{ECH}}$ mean value in 1998 and a high d-excess_{ECH} mean value in 2007 (Fig. S4 in the Supplementary Material). Only year 2007 is remarkable in both the data (low reconstructed SMB) and the model. We thus explored more deeply the model. The highest d-excess value was simulated the 7th of May (Table S8 in the Supplementary Material). When comparing from the 6th to the 8th of May in 2007, with daily averages over the period 1979-2014, the model simulates similar near-surface temperature, but particularly low precipitation, and wind components (zonal and meridional). Despite the small precipitation amount, the daily isotopic anomaly is sufficiently large to drive the annual anomaly (Fig. S5 in the Supplementary Material). D-excess values higher than 30 ‰ (threshold chosen as it corresponds to the maximum d-excess mean + standard deviation simulated by ECHAM5-wiso over Antarctica at the monthly scale, see Fig. S6 in the Supplementary Material) occur only 4 other times over 1998–2014. We nevertheless remain cautious with these values which could be due to a numerical artefact.

Neither $t2\text{m}_{\text{ECH}} - \delta^{18}\text{O}_{\text{ECH}}$, nor $\text{SMB}_{\text{ECH}} - \text{d-excess}_{\text{ECH}}$, nor $\delta^{18}\text{O}_{\text{ECH}} - \text{d-excess}_{\text{ECH}}$ relationships are identified in ECHAM5-wiso seasonal or annual outputs. Likewise, no significant relationship could be identified between $\text{d-excess}_{\text{STA}}$ and SMB simulated by ERA using both annual and seasonal values.

Simulated seasonal cycles for $\delta^{18}\text{O}$ and d-excess

We now explore the seasonal variations in $\delta^{18}\text{O}_{\text{ECH}}$ and $\text{d-excess}_{\text{ECH}}$ over the period of simulation (1998-2014, Table 6). The peaks in $\delta^{18}\text{O}_{\text{ECH}}$ predominantly occur in spring and summer (25 % and 63 % respectively), while it only happens 12 % of the time in winter and never in autumn. The $\text{d-excess}_{\text{ECH}}$ peaks most often in autumn (69 %) and secondarily in winter (31 %), but never during the other seasons. As a result, the model simulates more regular isotopic seasonal cycles with $\delta^{18}\text{O}$ maxima during spring to summer seasons, and d-excess maxima during autumn to winter seasons, than identified in the TA record.

10

Relationships with the large-scale climatic variability

The ERA-interim outputs allow us to investigate whether the large-scale climatic variability influence the isotopic composition of Adélie Land precipitation recorded in the TA firn core. We looked at the simulated linear relationships between the TA isotopic records ($\delta^{18}\text{O}_{\text{TA}}$ and $\text{d-excess}_{\text{TA}}$) with the ERA-interim outputs (2mT, u10, v10 and z500, Section 2.2). We here report only significant relationships with absolute correlation coefficients higher than 0.6. For $\delta^{18}\text{O}_{\text{TA}}$, we found a correlation with 2m-T over the Antarctic plateau (Fig.12a), as well as a correlation with v10 (Fig. 12b) along the westerly wind belt, at \sim (55 °S, 100 °E) and \sim (55 °S, 130 °E) in the Indian Ocean, and at \sim (55 °S, 10-50 °E) in the Atlantic Ocean, and a very little area on coastal Dronning Maud Land at \sim (60 °S, 30-40 °E). For $\text{d-excess}_{\text{TA}}$, we found a correlation with 2m-T (Fig. 12c) toward the Lambert Glacier at \sim (70-80 °S, 30-40 °E), and an anticorrelation in the south of the Peninsula at \sim (55-65 °S, 250-300 °E). Finally, we noted a correlation between $\text{d-excess}_{\text{TA}}$ and u10 (Fig. 12d) at a very narrow area of Dronning Maud Land at \sim (80 °S, 10-20 °E), and an anticorrelation on the westerly wind belt in the Atlantic Ocean at \sim (55 °S, 40-50 °E). No correlation is found with z500, neither with $\delta^{18}\text{O}_{\text{TA}}$ nor $\text{d-excess}_{\text{TA}}$.

25 Note that no significant relationship is obtained between the TA records and any mode of variability.

Origin of air masses

Finally, we used the HYSPLIT back-trajectory model to count the proportion (in percentage) of air mass back-trajectories, based on daily calculations over the period 1998-2014, and averaged at the annual and seasonal scale, from four different regions (Section 2.3): the plateau, the eastern Atlantic Ocean and the Indian Ocean (eastern sector), the Ross Sea sector (RSS), and the West Antarctic Ice Sheet with the Pacific Ocean and the western Atlantic Ocean (western sector), as displayed on Fig. 2. On average, the highest annual proportion of air masses comes from the eastern sector ($54.1 \pm 8.3 \%$) and the East Antarctic plateau (32.5 ± 4.9), while a small proportion of air masses come from the western sector ($9.7 \pm 3.7 \%$), and from the RSS ($3.6 \pm 1.3 \%$). A k-mean clustering over the last points of the whole back-trajectories indicate two main origins, in the Indian Ocean (62.4°S , 131.7°E) and in the coastal West Antarctic Ice Sheet (73.4°S , 227.5°E).

Inter-annual variations in back trajectories (Fig. 9b) reveal a positive trend for the fraction of air masses coming from western sector (slope of $0.41 \pm 0.16 \%$ y^{-1} , $r=0.55$ and $p<0.05$), and remarkable years: 1999, which was identified as a remarkable high $\delta^{18}\text{O}$ value and low nssSO_4 in our TA records, is here associated with a minimum of back-trajectories from the Plateau, and year 2011 which was associated with particular high MSA in our TA record, shows a particular low proportion of air masses coming from the eastern sector while particular high proportion of air masses coming from the Ross and western sectors.

The seasonal cycles of back-trajectories per region is shown on Figures 9c. The percentage of back-trajectories coming from the Plateau display peaks in autumn and spring (March and November), those from the Ross Sea sector in winter and summer (January and June), those from the eastern sector in autumn and winter (May and August), and finally those from the western sector in spring (November). We note a significant linear correlation between the seasonal cycles of the percentage of $\delta^{18}\text{O}$ and back-trajectories coming from the Ross sea sector ($r=0.68$ and $p<0.05$), and from the western sector ($r=0.59$ and $p<0.05$), and between the seasonal cycles of d-excess and the percentage of back-trajectories coming from the western sector ($r=-0.67$ and $p<0.05$).

Finally, we associated each daily back-trajectory to daily precipitation $\delta^{18}\text{O}$ and d-excess values simulated by ECHAM5-wiso in the precipitation, and classified the time series for each variable by back-trajectories sectors. We then computed the corresponding seasonal cycles (Fig. 10). The mean $\delta^{18}\text{O}_{\text{ECH}}$ value is slightly higher for air masses coming from the eastern sector (-20.6% compared to -21.9 ± 0.2 for the

other sectors). The asymmetry in $\delta^{18}\text{O}_{\text{ECH}}$ is particularly well marked for air masses coming from the Ross sea and western sectors, with peaks in August and September respectively (resulting in a winter amplitude more than twice higher compared to the eastern and Plateau sectors), and correspond to higher precipitation amounts during these months during the winter season. The d-excess mean seasonal cycles substantially differ by their amplitude: for air masses coming from the western sector, it is 11.8 ‰, with outstanding values in March and October (minima) and in May (higher than the mean plus two standard deviations), whereas it varies between 3.2 ‰ and 3.6 ‰ for the other sectors.

The back-trajectory of the 7th of May in 2007 (shown to be remarkable of simulated d-excess by ECHAM5-wiso) was identified as coming from the western sector, but those associated with the 4 other remarkable simulated d-excess (i.e. > 30 ‰) indicate air masses coming the three other regions, and sometimes varying with the hour of the day (S6 in the Supplementary Material).

In summary, we found a mismatch between ECHAM5-wiso outputs and the TA data for d-excess variations. There are no similarities for trends, for seasonal cycles, or for inter-annual isotopic variations. Similarly than in the TA firn core, ECHAM5-wiso simulates no $\delta^{18}\text{O}_{\text{ECH}} - t2m_{\text{ECH}}$ correlation, but no d-excess_{ECH} - $\delta^{18}\text{O}_{\text{ECH}}$. Both TA records and ECHAM5-wiso depict an unusual feature in 2007, with dry conditions and high d-excess values. The comparison between TA records and air mass back trajectories suggests that the asymmetry in the $\delta^{18}\text{O}$ seasonal cycle is due to the precipitation of air masses coming from the the western sector, and that an increased occurrence of (rare) air masses coming from the the western sectoris associated with high d-excess values.

20 **4. Discussion**

4.1 SMB

The estimated SMB of East Antarctica does not show a clear trend since 1900 (Favier et al., 2017). Recent studies (Altnau et al., 2015;Ekaykin et al., 2017;Vega et al., 2016) report negative SMB trends in coastal areas contrary to positive trends for the plateau. Especially, Thomas et al. (2017) report an unprecedented negative trend observed in Victoria Land for the last 50 years (1961-2010). For our study period (17 years for the TA record, and the ECHAM5-wiso simulation), we observe no significant trend.

In Adélie Land, a quality controlled SMB dataset has been developed (Favier et al., 2013), but the drivers of SMB spatio-temporal variability remain unexplored (Favier et al., 2017). This is related to the challenges in monitoring 1) precipitation in windy areas 2) sublimation of precipitating snowflakes (Grazioli et al., 2017b) in the katabatic flow, 3) and the amounts of surface erosion or deposition according to surface wind convergence or divergence, of drifting snow fluxes, and of sublimation of the drifting snow particles (Gallée et al., 2013; Amory et al., 2017; Amory et al., 2016). The low correlation (over 1998-2006) between TA192A annual accumulation and from the first shallow ice core (“S1C1” (Goursaud et al., 2017b)), collected 14 km from TA192A site, demonstrates this complexity, even though this mismatch may be explained by age scale uncertainties. The S1C1 reconstructed accumulation was also weakly correlated with stake data and model outputs, reflecting the random snow accumulation amounts due to the presence or absence of sastrugi, and the potential occurrence of annual erosion at S1C1 site (Fig. S7 in the Supplementary Material). Here, the TA accumulation record is highly correlated not only with the closest stake data, but also with the ECHAM5-wiso model output over the period 2004–2014, showing the robustness of our reconstruction for this period. The fact that the TA record, the ECHAM5-wiso output for the corresponding grid point, and the “156 km” stake area data are pairwise correlated ($0.79 \leq r \leq 0.90$ and $p < 0.05$), indicates that the TA firm core captures a 100 km- scale regional signal. The differences between the local and regional SMB signal are (Fig.3b): (i) a higher local SMB average compared to the regional SMB, and (ii) the shift of minimum peak of 2007 in the local signal (i.e. the TA firm core and the “19.2” stake data) to 2008 in the regional signal (see the 2007–2008 plateau in the “156 km” network and the 2008 minimum value simulated by the ECHAM5-wiso model in Fig. 3b). The anticorrelation between the $d\text{-excess}_{TA}$ and SMB_{TA} shows the possibility to use water isotope firm core records from Adélie Land to complete the document of the SMB spatio-temporal variability. Dry air masses from the western sector may be associated with particular high d-excess values. The remaining uncertainty in the dating and the extraction of a pure signal limited our investigation.

As a conclusion, the absence of similarity between the TA and the S1C1 accumulation reflects the uncertainty in the S1C1 dating resulting from the large spatial variability and from more frequent erosion processes occurring at the S1C1 site. More ice core records within a 100 km area will allow reducing

uncertainties in the interpretation of ice core signals, in particular on the link with the atmospheric variability.

4.2 The $\delta^{18}\text{O}$ – temperature relationship in coastal Antarctic regions

Several studies have shown that the annual $\delta^{18}\text{O}$ – temperature relationship is weak in coastal regions.

5 As an example, over Dronning Maud Land, Isaksson and Karlén (1994) found a weaker correlation between $\delta^{18}\text{O}$ records and Halley temperature for coastal ice cores, i.e. for sites below 1000 m a.s.l., with a correlation coefficient of 0.56 compared to a correlation coefficient of 0.91 for site above 1000 a.s.l. More recently, Abram et al. (2013) reported a coefficient correlation of 0.52 for the relationship between $\delta^{18}\text{O}$ recorded in the James Ross Island ice core (at a high of 1524 m a.s.l., with a mean reconstructed
10 SMB of 63 cm w.e. y^{-1}), and the near-surface temperature measured at Esperanza station (n=56 and $p < 0.05$). In coastal West Antarctica, Thomas et al. (2013) also reported a significant but weak correlation between the the $\delta^{18}\text{O}$ recorded in an ice core drilled on the Bryan coast and the near-surface temperature simulated by ERA-interim, over the period 1979-2009. Closer to Adélie Land, in Victoria Land, Bertler et al. (2011) found a correlation coefficient of 0.35 between the $\delta^{18}\text{O}$ recorded in the Victoria Lower
15 Glacier ice core (at a high of 626 m a.s.l.) and the summer near-surface temperature measured in Scott Base station (n=30 and $p < 0.0005$). In this study, we find no relationship between the DDU near-surface temperature and the $\delta^{18}\text{O}_{\text{TA}}$, based on annual averages. Similarly, no relationship had been identified in the S1C1 core (Goursaud et al., 2017b), and was here not simulated by the ECHAM5-wiso model.

Our study shows that changes in air mass trajectories (dynamics) may dominate over thermodynamical
20 controls (condensation temperature) on coastal Adélie Land $\delta^{18}\text{O}$ signal, as shown by the asymmetry of the $\delta^{18}\text{O}$ seasonal cycle recorded in the TA firn core (Section 3.4 and Fig. 8). The coupling of calculations of air masses back-trajectory and ECHAM5-wiso outputs suggests that $\delta^{18}\text{O}$ outstanding high values occurring during winter time would be brought by air masses coming from the western sector (Section 3.5 and Fig. 10).

25 The $\delta^{18}\text{O}$ measured in the ice of coastal Adélie Land may thus not allow to reconstruct surface temperatures of this region. However, correlations between $\delta^{18}\text{O}_{\text{TA}}$ and the 2m-temperature by ERA-interim over each grid point of Antarctica (Fig.12a) show significant relationships over the plateau,

confirmed by a significant correlation between annual $\delta^{18}\text{O}_{\text{TA}}$ and the near-surface temperature measured at Dome C over the period 1998-2014 (slope of $0.70 \pm 0.29 \text{ ‰ } ^\circ\text{C}^{-1}$, $r=0.53$, $p<0.05$). These results support previous studies suggesting warm intrusions offshore Dumont d'Urville towards Dome C (Naithani et al., 2002).

- 5 Finally, the significant linear relationships with the u10 wind component above the westerly wind belt and at some coastal Antarctic area (Fig 12b) stress the influence of other processes than thermodynamic drive the isotopic composition of Adélie Land precipitations.

4.3 Water stable isotope, a fingerprint of changes in air mass origins

10 The mean d-excess_{TA} is $5.4 \pm 1.0 \text{ ‰}$, close to the $4.7 \pm 0.4 \text{ ‰}$ value simulated by the ECHAM5-wiso model for the “coastal Indian” region defined in Goursaud et al. (2017a, different definition than in this study), and the $5.2 \pm 0.6 \text{ ‰}$ value for the grid point corresponding to the TA drilling site. Inter-annual variations of d-excess_{TA} (Fig. 7) are anti-correlated with TA reconstructed SMB, a feature not depicted by ECHAM5-wiso.

15 *Main trajectories imprinted in the TA isotopic records*

We suggest that air masses associated with small/large precipitation amounts are associated with different trajectories and moisture sources: main air mass origins from the Indian Ocean. These maritime air masses, isotopically enriched may transport water vapor, to the plateau, as shown by the significant relationship between $\delta^{18}\text{O}_{\text{TA}}$ and the near-surface temperature of the plateau, especially in winter. Rare
20 dry air masses may also come from the western sector, with a signal preserved in d-excess. Last point is led by the following hints:

- (i) the positive trends both for the TA d-excess and the percentage of air masses coming from the western sector
- (ii) an anti-correlation between the seasonal cycles of the TA d-excess and percentages of air masses coming from the western sector
25
- (iii) the high simulated d-excess amplitude simulated by ECHAM5-wiso for air masses coming from the western sector, reflecting outstanding values occurring in autumn and winter times

(iv) The particular case of the 7th of May in 2007 with very high d-excess values simulated by ECHAM5-wiso, corresponding to an air mass trajectory from the western sector

As discussed earlier, the last item should be considered with caution as the four other remarkable d-excess values (i.e. higher than 30 ‰) simulated by the ECHAM5-wiso are associated to air masses coming from other regions (S6 in the Supplementary Material), and also to the fact that such high values could be due to potential numerical artefacts.

Linear relationships between d-excess_{TA} and ERA-interim outputs strengthen the link between the climate variability of western Antarctic and associated southern oceans, as we note an anticorrelation between d-excess_{TA} and the 2m-T in the south of the Peninsula, the Ellsworth region and the Bellingshausen sea (r>0.6); and an anticorrelation between d-excess_{TA} and the u10 wind component over the coastal Ross sector, consistent with air mass trajectories coming from western Antarctica towards Adélie Land via the Ross sea sector. These dry air masses might origin from the Amundsen Bellingshausen sea (Emanuelsson et al., 2018; Winstrup et al., 2017), but cannot be directly linked to the Amundsen sea cyclonic, as we obtain no significant relationship with the ASL center pressure indices.

15

Potential interaction with sea ice

Noone and Simmonds (2004) have shown, thanks to climate modelling, that water stable isotopes were conditioned by changes in sea ice extent (a contraction in sea ice increases the local latent heat and temperature due to open water), but confirmed that a thorough understanding of main mechanisms controlling the d-excess was still needed. Also, earlier studies have suggested the use of d-excess ice core records to reconstruct past sea ice extent (e.g. Sinclair et al., 2014). Although we find a significant correlation between the d-excess_{TA} and the d'Urville summer sea ice extent (section 3.3), a correlation map between the annual d-excess_{TA} and the summer sea ice concentration (S8 in the Supplementary Material) show significant correlations with further sea ice areas (e.g. an anticorrelation in the Amundsen sea and correlations in the Bellingshausen, Scotia and Lazarev seas). We also noted a coincidence between the sign of the correlation of the relationship between the d-excess_{TA} and the sea ice concentration, and the sea ice extent trend over the period 1998-2014 (S9 in the Supplementary Material), especially positive correlations (negative) associated to positive sea ice concentration trends. These findings call for

25

mechanistic studies to understand the different processes behind d-excess associated to each air mass origins.

As we suggested a particular d-excess signature in the TA firn core, associated with air masses coming from the western sector, we tested the possibility for the d-excess_{TA} to imprint changes in the Ross polynya. We thus estimated it, by counting the annual sea ice concentration over the polygon (60 – 70 °S; 150 – 210 °E), lower than 15 %. But we find no significant correlation between this estimated Ross polynya and the d-excess_{TA} over the period 1998-2014.

The $\delta^{18}\text{O} - \delta\text{D}$ relationship

10 Earlier studies showed empirically that the relationship between d-excess and $\delta^{18}\text{O}$, and mainly the phase lag between signals within the seasonal cycle may indicate variations of the origin of the moisture source. This phase lag was shown to be of ~ 3–4 months over coastal regions such as Law Dome (Masson-Delmotte et al., 2003), Dronning Maud Land (Vega et al., 2016) and in the Ross Sea sector (Sinclair et al., 2014). By contrast, most studies identified an anti-phase over the East Antarctic plateau (e.g. Landais
15 et al., 2012; Ciais et al., 1995), and at D47, situated close to the TA drilling site (Ciais et al., 1995).

We thus focus on the outcome of the running linear regression between d-excess_{TA} and $\delta^{18}\text{O}_{\text{TA}}$ over 10 points all along the core (Fig. 11). We focus on the periods (53.3%) when a significant linear relationship is identified (i.e. $p < 0.05$). The time-averaged correlation coefficient is 0.71 ± 0.45 , which is consistent with the results obtained from the annual averages (varying from 0.51 in autumn to 0.75 in spring, Section
20 3.3). The time-averaged slope is $0.83 \pm 0.83 \text{ ‰ ‰}^{-1}$. These positive values prevail for 91.5 % of the significant linear regressions. However, we observe remarkable deviations from this overall relationship. Particularly, linear regressions within year 2007 show slopes lower than the time-averaged minus two standard deviations (with a minimum value of -1.46 ‰ ‰^{-1}), and others within year 2011 show surprisingly very high slopes up to 6.9 ‰ ‰^{-1} . The years 2007 and 2011 were also previously noticed:
25 the mean d-excess_{ECH} simulated by ECHAM5-wiso for the year 2007 was shown to be driven by the high value occurring the 7th of May, associated to air masses coming from the western sector; and year 2011 is associated with a minimum of annual back-trajectories percentage from the eastern sector and maxima of back-trajectories from the Ross and the western sector. As a result, the $\delta^{18}\text{O}$ -d-excess relationship may

be a fingerprint of changes in air mass origins, and particularly of the occurrence of precipitation of air masses coming from the western sector.

We undertook the same exercise with outputs of the ECHAM5-wiso model (Fig. S10 in the Supplementary Material), where only 19.2 % of the simulated linear regressions are significant (i.e. 5 $p < 0.05$). All significant relationships have negative correlation coefficients and slopes of time-averaged values $-0.72 \pm 0.25 \text{ ‰ ‰}^{-1}$ and $-0.39 \pm 0.23 \text{ ‰ ‰}^{-1}$ respectively (this is consistent with the annual means, Section 3.4). Moreover, these significant relationships do not occur during the remarkable years 2007 and 2011 identified in the TA firn core.

As a result, we propose that remarkable anomalies in d-excess / $\delta^{18}\text{O}$ running linear relationships provide 10 an isotopic fingerprint associated with changes in dominant air mass trajectories. But a more comprehensive mechanistic study would be necessary to quantify the fractionation processes associated with different moisture source and transport characteristics.

4.4 Limits associated with model-data isotopic comparisons

We note a mismatch between ECHAM5-wiso outputs and the data (Section 3.5 and Fig. S4 in the 15 Supplementary Material). This could be related to (i) to post-deposition processes associated with wind scoring or snow metamorphism not resolved in ECHAM5-wiso, (ii) the key role of very local atmospheric circulation effects related to katabatic wind processes, not resolved in large-scale atmospheric reanalyses and simulations, (iii) or the difficulties of ECHAM5-wiso to resolve the processes associated with the ocean boundary vapour d-excess, a mismatch already identified in the Arctic (Steen-Larsen et al., 2017). 20 The first issue is related with the robustness of records from a single coastal firn core. Several studies have evidenced signal to noise limits (e.g. Mulvaney et al., 2002; Graf et al., 2002). Given the high SMB estimated from TA, diffusion effects can be ignored (Frezzotti et al., 2007), and the estimated inter-annual variations in TA SMB are closely correlated not only with stake data closest to the drilling site, but also with the 156 km network stake data and to precipitation from the corresponding grid point of ECHAM5- 25 wiso within a 100 x 100 km area. This finding supports an interpretation of the TA record to be representative of a regional SBM signal (100 km scale). However, we cannot draw any conclusion of the signal to noise aspects of the water stable isotope records, given the lack of coherency between the inter-

annual variability in the TA and S1C1 $\delta^{18}\text{O}$ records for the few years of overlap (Unfortunately, there are no striking features during the records common period, which makes it challenging to match the isotope records), and the lack of any other d-excess record within hundreds of kilometers.

The second source of uncertainty lies in the mismatch between inter-annual variations from coastal Adélie Land meteorological observations and the TA records, with ECHAM5-wiso outputs. For instance, we only see high correlation for the surface air temperature inter-annual variations for winter, and weak correlation for wind speed in spring and summer. These findings suggest limitations in the skills of either atmospheric reanalyses or the ECHAM5-wiso model to correctly capture the processes responsible for local climate variability. We had previously reported the capability of ECHAM5-wiso to correctly simulate observed large-scale features of water stable isotopes and SMB across Antarctica, for spatio-temporal patterns identified from datasets spanning the last decades such as mean values, amplitudes and phases of mean seasonal cycles, amplitude of inter-annual variance, strength of isotope-temperature relationships, d-excess versus $\delta^{18}\text{O}$ relationships) (Goursaud et al., 2017a). We thus highlight here specific challenges related to the Antarctic coastline, where local processes associated with katabatic winds, open water (e.g. polynya), and local boundary layer processes (e.g. snow drift) may affect isotopic records without being resolved at the resolution of reanalyses and ECHAM5-wiso simulation.

Our study therefore depicts limited understanding of the drivers of seasonal and inter-annual variability in coastal Adélie Land hydrological cycle, and thus calls for more isotopic measurements (from ice cores, snow precipitation, and water vapour) in Adélie Land to reduce uncertainties.

20 **4.5 Chemistry**

We compare the chemical concentrations recorded in the TA firn core with S1C1core (Goursaud et al., 2017b), for their common period (1998–2006). The mean concentrations are slightly lower for the TA than the S1C1 firn core from 30 % for Na^+ , to 50 % for MSA (Table S9 in the Supplementary Material). This decrease with the increasing distance from the coast (or elevation above sea level) is consistent with atmospheric studies showing a decrease of levels from the coast to the plateau for sea-salt (Legrand et al., 25 2017b) and sulfur aerosols (Legrand et al., 2017a). No significant linear regression emerges from any

chemical species, highlighting a high spatial variability and/or the uncertainty in the dating of the S1C1 firn core.

Finally, we initially processed chemical measurements in our firn core, to support the isotopic records not only for dating, but also to identify air mass origins, making the hypothesis of three possible cases: (i) Air masses formed near the sea-ice margin may be associated with relatively high d-excess and $\delta^{18}\text{O}$ values, due to respectively a high kinetic fractionation due to evaporation under low humidity levels, and limited distillation effects. Such a configuration should be associated to low sea-salt concentrations due to the presence of the sea ice, as shown by atmospheric studies (Legrand et al., 2016). (ii) In contrast, vapour formed over the ocean in the absence of sea ice may be associated with high $\delta^{18}\text{O}$ values, low d-excess and high sea-salt concentrations. (iii) Finally, air masses from central Antarctica may be associated with depleted $\delta^{18}\text{O}$ values and high d-excess, while air masses from ocean regions may lead to intermediate $\delta^{18}\text{O}$ and d-excess values, due to distillation effects, and evaporation under relatively humid conditions, but with low sea-salt concentrations.

The period from December 2003 to February 2004, associated with Na^+ values higher than the mean plus five standard deviations, probably caused by marine advections, is not distinguishable in the isotopic records. None of the three aforementioned cases was systematically observed.

To make it short, taking into account the definition of summer observations only does not alter our results. The sea-salt and sulfur concentrations measured along the TA records are slightly lower compared to the S1C1 firn core, consistently with the coast-to-plateau depletion previously observed in atmospheric measurement. Unfortunately, we could not use the sea-salt measurements to support our hypotheses regarding the air mass origins associated with isotopic compositions.

5. Conclusions and perspectives

In this study, we report the analysis of the first highly resolved firn core drilled in Adélie Land covering the very recent period 1998–2014, with a sub-annual resolution. The chronology was based on chemical tracers (Na , nssSO_4 and MSA) and adjusted by one year based on stake area information. Three $\delta^{18}\text{O}$ peaks found no counterparts in the chemical records. The high estimated SMB rate of 74.1 ± 14.1 cm w.e. y^{-1} limits the effects of diffusion and ensures that records with sub-annual resolution are preserved (e.g.

Johnsen, 1977). The good consistency of the estimated annual SMB variations with observations on stakes reflects that high accumulation amounts are needed to ensure that small-scale SMB random variability caused by presence of sastrugi, dunes and barchans is negligible when compared to the mean accumulation value. This condition allows avoiding the erosion of seasonal or annual layers, which would lead to
5 removal of the annual cycle of the recorded signal. For this reason, getting long term observations on distributed stake networks around a drilling site, or ground penetrating radar data is crucial to accurately select a drilling site, by retrieving the location of mesoscale accumulation maxima, and by rejecting zones with potential erosion.

Using an updated database of Antarctic surface snow isotopes, we showed that not only $\delta^{18}\text{O}_{\text{TA}}$ but also
10 d-excess_{TA} mean values are in line with the range of coastal values in other locations.

Neither in the TA – DDU dataset, nor in the ECHAM5-wiso output do we see any significant relationship between inter-annual variations in $\delta^{18}\text{O}$ and local surface air temperature. The anti-correlation between annual reconstructed SMB_{TA} and d-excess_{TA} leads us to suggest that changes in large-scale atmospheric transport could lead to an explanation for this feature. Particularly back-trajectory simulations from
15 HYSPLIT and atmospheric outputs from ECHAM5-wiso at the seasonal cycle show the occurrence of air masses coming from the western sector during autumn and winter times, corresponding to high simulated d-excess values. Also, the identification of remarkable years both in back-trajectory percentages and in the relationships between d-excess and $\delta^{18}\text{O}$ also lead us to evidence a potential in the d-excess – $\delta^{18}\text{O}$ to identify remarkable features in moisture transport.

20 We cannot explain at this stage the observed positive trends in the d-excess_{TA}. We suggest that an improved understanding of the drivers of moisture transport towards coastal Adélie Land can benefit from the interpretation of water stable isotope tracers, especially d-excess, through mechanistic studies and the exploration of global atmospheric models. Ways forward include a better documentation of the spatio-temporal variability in SMB and water stable isotopes using a matrix of coastal firn core records spanning
25 longer periods over the last decades (17 points being small to assess linear relationships, and record climate shifts, e.g. the IPO shift occurring in 1998 (Turner et al., 2016)); a better documentation of the relationships between precipitation and ice core records through the monitoring of the isotopic composition of surface vapour, and precipitation snow and firn (Casado et al., 2016; Ritter et al., 2016);

and the implementation of water stable isotopes in regional models resolving the key missing processes linked for instance with katabatic winds, boundary layer processes, wind drift (Gallée et al., 2013).

Data availability

The TA192A isotope and chemical firn core records were archived on the PANGAEA data library at
5 <https://doi.pangaea.de/10.1594/PANGAEA.896623>.

Acknowledgements

This study has been supported by the ASUMA project supported by the ANR (Agence Nationale de la Recherche, Project n°: ANR-14-CE01-0001), which funded the PhD grant of Sentia Goursaud and the publication costs of this manuscript. The authors also acknowledge the support from Institut Paul-Emile
10 Victor (IPEV) for the surface mass balance observatory in Antarctica (GLACIOCLIM-SAMBA). This project also received support from the Investissements d'Avenir project EquipEX 'Equipement d'Excellence' CLIMCOR (ANR-11-EQPX-0009-CLIMCOR).

References

- Abram, N. J., Mulvaney, R., Wolff, E. W., Triest, J., Kipfstuhl, S., Trusel, L. D., Vimeux, F., Fleet, L., and Arrowsmith, C.: Acceleration of snow melt in an Antarctic Peninsula ice core during the twentieth century, *Nature Geoscience*, 6, 404-411, <https://doi.org/10.1038/ngeo1787>, 2013.
- 5 Adolphs, U., and Wendler, G.: A pilot study on the interactions between katabatic winds and polynyas at the Adélie Coast, eastern Antarctica, *Antarctic Science*, 7, 307-314, <https://doi.org/10.1017/S0954102095000423>, 1995.
- Altnau, S., Schlosser, E., Isaksson, E., and Divine, D.: Climatic signals from 76 shallow firn cores in Dronning Maud Land, East Antarctica, *The Cryosphere*, 9, 925-944, <https://doi.org/10.5194/tc-9-925-2015>, 2015.
- Amory, C., Naaïm-Bouvet, F., Gallée, H., and Vignon, E.: Brief communication: Two well-marked cases of aerodynamic adjustment of sastrugi, *The Cryosphere*, 10, 743-750, <https://doi.org/10.5194/tc-10-743-2016>, 2016.
- 10 Amory, C., Gallée, H., Naaïm-Bouvet, F., Favier, V., Vignon, E., Picard, G., Trouvilliez, A., Piard, L., Genthon, C., and Bellot, H.: Seasonal variations in drag coefficient over a sastrugi-covered snowfield in coastal East Antarctica, *Boundary-Layer Meteorology*, 164, 107-133, <https://doi.org/10.1007/s10546-017-0242-5>, 2017.
- Bertler, N., Mayewski, P., and Carter, L.: Cold conditions in Antarctica during the Little Ice Age—Implications for abrupt climate change mechanisms, *Earth and Planetary Science Letters*, 308, 41-51, 2011.
- 15 Bertler, N. A., Conway, H., Dahl-Jensen, D., Emanuelsson, D. B., Winstrup, M., Vallelonga, P. T., Lee, J. E., Brook, E. J., Severinghaus, J. P., and Fudge, T. J.: The Ross Sea Dipole—temperature, snow accumulation and sea ice variability in the Ross Sea region, Antarctica, over the past 2700 years, *Climate of the Past*, 14, 193-214, 2018.
- Bonne, J. L., Steen-Larsen, H. C., Risi, C., Werner, M., Sodemann, H., Lacour, J. L., Fettweis, X., Cesana, G., Delmotte, M., and Cattani, O.: The summer 2012 Greenland heat wave: In situ and remote sensing observations of water vapor isotopic composition during an atmospheric river event, *Journal of Geophysical Research: Atmospheres*, 120, 2970-2989, 2015.
- 20 Bouchard, A., Rabier, F., Guidard, V., and Karbou, F.: Enhancements of satellite data assimilation over Antarctica, *Monthly Weather Review*, 138, 2149-2173, 2010.
- Bromwich, D. H., and Fogt, R. L.: Strong trends in the skill of the ERA-40 and NCEP–NCAR reanalyses in the high and midlatitudes of the Southern Hemisphere, 1958–2001, *Journal of Climate*, 17, 4603-4619, 2004.
- 25 Bromwich, D. H., Fogt, R. L., Hodges, K. I., and Walsh, J. E.: A tropospheric assessment of the ERA-40, NCEP, and JRA-25 global reanalyses in the polar regions, *Journal of Geophysical Research: Atmospheres*, 112, 1-21, 10.1029/2006JD007859, 2007.
- Bromwich, D. H., Nicolas, J. P., and Monaghan, A. J.: An assessment of precipitation changes over Antarctica and the Southern Ocean since 1989 in contemporary global reanalyses, *Journal of Climate*, 24, 4189-4209, 2011.
- 30 Caiazzo, L., Becagli, S., Frosini, D., Giardi, F., Severi, M., Traversi, R., and Udisti, R.: Spatial and temporal variability of snow chemical composition and accumulation rate at Talos Dome site (East Antarctica), *Science of the Total Environment*, 550, 418-430, 2016.
- Casado, M., Landais, A., Masson-Delmotte, V., Genthon, C., Kerstel, E., Kassi, S., Arnaud, L., Picard, G., Prie, F., and Cattani, O.: Continuous measurements of isotopic composition of water vapour on the East Antarctic Plateau, *Atmospheric Chemistry and Physics*, 16, 8521-8538, 2016.
- 35 Church, J. A., Clark, P. U., Cazenave, A., Gregory, J. M., Jevrejeva, S., Levermann, A., Merrifield, M. A., Milne, G. A., Nerem, R. S., and Nunn, P. D.: Sea level change, PM Cambridge University Press, 2013.
- Ciais, P., White, J., Jouzel, J., and Petit, J.: The origin of present-day Antarctic precipitation from surface snow deuterium excess data, *Journal of Geophysical Research: Atmospheres*, 100, 18917-18927, 1995.
- 40 Comiso, J. C., Gersten, R. A., Stock, L. V., Turner, J., Perez, G. J., and Cho, K.: Positive trend in the Antarctic sea ice cover and associated changes in surface temperature, *Journal of Climate*, 30, 2251-2267, 2017.
- Dansgaard, W.: Stable isotopes in precipitation, *Tellus*, 16, 436-468, 10.3402/tellusa.v16i4.8993, 1964.
- 45 Dee, D., Uppala, S., Simmons, A., Berrisford, P., Poli, P., Kobayashi, S., Andrae, U., Balmaseda, M., Balsamo, G., and Bauer, P.: The ERA-Interim reanalysis: Configuration and performance of the data assimilation system, *Quarterly Journal of the Royal Meteorological Society*, 137, 553-597, 2011a.

- Dee, D. P., Uppala, S., Simmons, A., Berrisford, P., Poli, P., Kobayashi, S., Andrae, U., Balmaseda, M., Balsamo, G., and Bauer, P.: The ERA-Interim reanalysis: Configuration and performance of the data assimilation system, *Quarterly Journal of the royal meteorological society*, 137, 553-597, 2011b.
- 5 Delmotte, M., Masson, V., Jouzel, J., and Morgan, V. I.: A seasonal deuterium excess signal at Law Dome, coastal eastern Antarctica: a southern ocean signature, *Journal of Geophysical Research: Atmospheres*, 105, 7187-7197, 2000.
- Dittmann, A., Schlosser, E., Masson-Delmotte, V., Powers, J. G., Manning, K. W., Werner, M., and Fujita, K.: Precipitation regime and stable isotopes at Dome Fuji, East Antarctica, *Atmospheric Chemistry and Physics*, 16, 6883-6900, 2016.
- Draxler, R. R., and Hess, G.: An overview of the HYSPLIT_4 modelling system for trajectories, *Australian meteorological magazine*, 47, 295-308, 1998.
- 10 Eisen, O., Frezzotti, M., Genthon, C., Isaksson, E., Magand, O., van den Broeke, M. R., Dixon, D. A., Ekaykin, A., Holmlund, P., and Kameda, T.: Ground-based measurements of spatial and temporal variability of snow accumulation in East Antarctica, *Reviews of Geophysics*, 46, 1-39, 2008.
- Ekaykin, A. A., Vladimirova, D. O., Lipenkov, V. Y., and Masson-Delmotte, V.: Climatic variability in Princess Elizabeth Land (East Antarctica) over the last 350 years, *Climate of the Past*, 13, 61-71, 2017.
- 15 Emanuelsson, B. D., Bertler, N. A., Neff, P. D., Renwick, J. A., Markle, B. R., Baisden, W. T., and Keller, E. D.: The role of Amundsen–Bellingshausen Sea anticyclonic circulation in forcing marine air intrusions into West Antarctica, *Climate Dynamics*, 1-18, 2018.
- Favier, V., Agosta, C., Parouty, S., Durand, G., Delaygue, G., Gallée, H., Drouet, A.-S., Trouvilliez, A., and Krinner, G.: An updated and quality controlled surface mass balance dataset for Antarctica, *The Cryosphere*, 7, 583-597, 2013.
- 20 Favier, V., Krinner, G., Amory, C., Gallée, H., Beaumet, J., and Agosta, C.: Antarctica-Regional Climate and Surface Mass Budget, *Current Climate Change Reports*, 3, 303-315, 2017.
- Fernandoy, F., Meyer, H., and Tonelli, M.: Stable water isotopes of precipitation and firn cores from the northern Antarctic Peninsula region as a proxy for climate reconstruction, *The Cryosphere*, 6, 313-330, 2012.
- 25 Fernandoy, F., Tetzner, D., Meyer, H., Gacitúa, G., Hoffmann, K., Falk, U., Lambert, F., and MacDonell, S.: New insights into the use of stable water isotopes at the northern Antarctic Peninsula as a tool for regional climate studies, *The Cryosphere*, 12, 1069-1090, 10.5194/tc-12-1069-2018, 2018.
- Frezzotti, M., Urbini, S., Proposito, M., Scarchilli, C., and Gandolfi, S.: Spatial and temporal variability of surface mass balance near Talos Dome, East Antarctica, *Journal of Geophysical Research: Earth Surface*, 112, 1-15, 2007.
- 30 Fujita, K., and Abe, O.: Stable isotopes in daily precipitation at Dome Fuji, East Antarctica, *Geophysical Research Letters*, 33, 1-4, 10.1029/2006GL026936, 2006.
- Gallée, H., Trouvilliez, A., Agosta, C., Genthon, C., Favier, V., and Naaim-Bouvet, F.: Transport of snow by the wind: A comparison between observations in Adélie Land, Antarctica, and simulations made with the regional climate model MAR, *Boundary-layer meteorology*, 146, 133-147, 2013.
- Genthon, C., Six, D., Favier, V., Lazzara, M., and Keller, L.: Atmospheric temperature measurement biases on the Antarctic plateau, *Journal of Atmospheric and Oceanic Technology*, 28, 1598-1605, 2011.
- 35 Ginot, P., Stampfli, F., Stampfli, D., Schwikowski, M., and Gaggeler, H.: FELICS, a new ice core drilling system for high-altitude glaciers, *Memoirs of National Institute of Polar Research. Special issue*, 56, 38-48, 2002.
- Goursaud, S., Masson-Delmotte, V., Favier, V., Orsi, A., and Werner, M.: Water stable isotopes spatio-temporal variability in Antarctica in 1960-2013: observations and simulations from the ECHAM5-wiso atmospheric general circulation model, *Clim. Past Discuss.*, 2017, 1-48, 10.5194/cp-2017-118, 2017a.
- 40 Goursaud, S., Masson-Delmotte, V., Favier, V., Preunkert, S., Fily, M., Gallée, H., Jourdain, B., Legrand, M., Magand, O., and Minster, B.: A 60-year ice-core record of regional climate from Adélie Land, coastal Antarctica, *The Cryosphere*, 11, 343-362, 2017b.
- Goursaud, S., Masson-Delmotte, V., Favier, V., Orsi, A., and Werner, M.: Water stable isotope spatio-temporal variability in Antarctica in 1960–2013: observations and simulations from the ECHAM5-wiso atmospheric general circulation model, *Clim. Past*, 14, 923-946, 10.5194/cp-14-923-2018, 2018.
- Graf, W., Oerter, H., Reinwarth, O., Stichler, W., Wilhelms, F., Miller, H., and Mulvaney, R.: Stable-isotope records from Dronning Maud Land, Antarctica, *Annals of Glaciology*, 35, 195-201, 2002.
- 50 Grazioli, J., Genthon, C., Boudevillain, B., Duran-Alarcon, C., Del Guasta, M., Jean-Baptiste, M., and Berne, A.: Measurements of precipitation in Dumont d'Urville, Adélie Land, East Antarctica, *The Cryosphere*, 11, 1797-1811, 2017a.

- Grazioli, J., Madeleine, J.-B., Gallée, H., Forbes, R. M., Genthon, C., Krinner, G., and Berne, A.: Katabatic winds diminish precipitation contribution to the Antarctic ice mass balance, *Proceedings of the National Academy of Sciences*, 114, 10858-10863, 2017b.
- 5 Henley, B. J., Gergis, J., Karoly, D. J., Power, S., Kennedy, J., and Folland, C. K.: A tripole index for the interdecadal Pacific oscillation, *Climate Dynamics*, 45, 3077-3090, 2015.
- Isaksson, E., and Karlén, W.: Spatial and temporal patterns in snow accumulation, western Dronning Maud Land, Antarctica, *Journal of Glaciology*, 40, 399-409, 1994.
- Johnsen, S.: Stable isotope homogenization of polar firn and ice, *Isotopes and impurities in snow and ice*, 118, 210-219, 1977.
- 10 Johnsen, S. J., Clausen, H. B., Cuffey, K. M., Hoffmann, G., Schwander, J., and Creyts, T.: Diffusion of stable isotopes in polar firn and ice: the isotope effect in firn diffusion, *Physics of ice core records*, 2000, 121-140,
- Jones, J. M., Gille, S. T., Goosse, H., Abram, N. J., Canziani, P. O., Charman, D. J., Clem, K. R., Crosta, X., De Lavergne, C., and Eisenman, I.: Assessing recent trends in high-latitude Southern Hemisphere surface climate, *Nature Climate Change*, 6, 917-926, 2016.
- 15 Jones, T., Cuffey, K., White, J., Steig, E., Buizert, C., Markle, B., McConnell, J., and Sigl, M.: Water isotope diffusion in the WAIS Divide ice core during the Holocene and last glacial, *Journal of Geophysical Research: Earth Surface*, 122, 290-309, 2017.
- Jourdain, B., and Legrand, M.: Seasonal variations of atmospheric dimethylsulfide, dimethylsulfoxide, sulfur dioxide, methanesulfonate, and non-sea-salt sulfate aerosols at Dumont d'Urville (coastal Antarctica)(December 1998 to July 1999), *Journal of Geophysical Research: Atmospheres*, 106, 14391-14408, 2001.
- 20 Jourdain, B., and Legrand, M.: Year-round records of bulk and size-segregated aerosol composition and HCl and HNO₃ levels in the Dumont d'Urville (coastal Antarctica) atmosphere: Implications for sea-salt aerosol fractionation in the winter and summer, *Journal of Geophysical Research: Atmospheres*, 107, 1-13, 2002.
- Jouzel, J., Lorius, C., Petit, J., Genthon, C., Barkov, N., Kotlyakov, V., and Petrov, V.: Vostok ice core: a continuous isotope temperature record over the last climatic cycle (160,000 years), *Nature*, 329, 403-408, 1987.
- 25 Jouzel, J., Alley, R. B., Cuffey, K., Dansgaard, W., Grootes, P., Hoffmann, G., Johnsen, S. J., Koster, R., Peel, D., and Shuman, C.: Validity of the temperature reconstruction from water isotopes in ice cores, *Journal of Geophysical Research: Oceans*, 102, 26471-26487, 1997.
- Jouzel, J., Delaygue, G., Landais, A., Masson-Delmotte, V., Risi, C., and Vimeux, F.: Water isotopes as tools to document oceanic sources of precipitation, *Water Resources Research*, 49, 7469-7486, 2013.
- 30 König-Langlo, G., King, J., and Pettré, P.: Climatology of the three coastal Antarctic stations Dumont d'Urville, Neumayer, and Halley, *Journal of Geophysical Research: Atmospheres*, 103, 10935-10946, 1998.
- Krinner, G., Guicherd, B., Ox, K., Genthon, C., and Magand, O.: Influence of oceanic boundary conditions in simulations of Antarctic climate and surface mass balance change during the coming century, *Journal of Climate*, 21, 938-962, 2008.
- 35 Kurita, N., Hirasawa, N., Koga, S., Matsushita, J., Steen-Larsen, H. C., Masson-Delmotte, V., and Fujiyoshi, Y.: Influence of large-scale atmospheric circulation on marine air intrusion toward the East Antarctic coast, *Geophysical Research Letters*, 43, 9298-9305, 2016.
- Küttel, M., Steig, E. J., Ding, Q., Monaghan, A. J., and Battisti, D. S.: Seasonal climate information preserved in West Antarctic ice core water isotopes: relationships to temperature, large-scale circulation, and sea ice, *Climate Dynamics*, 39, 1841-1857, 2012.
- 40 Landais, A., Ekaykin, A., Barkan, E., Winkler, R., and Luz, B.: Seasonal variations of 17O-excess and d-excess in snow precipitation at Vostok station, East Antarctica, *Journal of Glaciology*, 58, 725-733, 2012.
- Legrand, M., Yang, X., Preunkert, S., and Theys, N.: Year-round records of sea salt, gaseous, and particulate inorganic bromine in the atmospheric boundary layer at coastal (Dumont d'Urville) and central (Concordia) East Antarctic sites, *Journal of geophysical research: atmospheres*, 121, 997-1023, 2016.
- 45 Legrand, M., Preunkert, S., Weller, R., Zipf, L., Elsässer, C., Merchel, S., Rugel, G., and Wagenbach, D.: Year-round record of bulk and size-segregated aerosol composition in central Antarctica (Concordia site)–Part 2: Biogenic sulfur (sulfate and methanesulfonate) aerosol, *Atmospheric Chemistry and Physics*, 17, 14055-14073, 2017a.
- Legrand, M., Preunkert, S., Wolff, E., Weller, R., Jourdain, B., and Wagenbach, D.: Year-round records of bulk and size-segregated aerosol composition in central Antarctica (Concordia site)–Part 1: Fractionation of sea-salt particles, *Atmospheric*
- 50 *Chemistry and Physics*, 17, 14039, 2017b.

- Markle, B., Bertler, N., Sinclair, K., and Sneed, S.: Synoptic variability in the Ross Sea region, Antarctica, as seen from back-trajectory modeling and ice core analysis, *Journal of Geophysical Research: Atmospheres*, 117, 1-17, 2012.
- Marshall, G. J.: Trends in the Southern Annular Mode from observations and reanalyses, *Journal of Climate*, 16, 4134-4143, 2003.
- 5 Massom, R., Reid, P., Stammerjohn, S., Raymond, B., Fraser, A., and Ushio, S.: Change and variability in East Antarctic sea ice seasonality, 1979/80–2009/10, *PLoS one*, 8, e64756, 2013.
- Masson-Delmotte, V., Delmotte, M., Morgan, V., Etheridge, D., Van Ommen, T., Tartarin, S., and Hoffmann, G.: Recent southern Indian Ocean climate variability inferred from a Law Dome ice core: New insights for the interpretation of coastal Antarctic isotopic records, *Climate Dynamics*, 21, 153-166, 2003.
- 10 Masson-Delmotte, V., Hou, S., Ekaykin, A., Jouzel, J., Aristarain, A., Bernardo, R., Bromwich, D., Cattani, O., Delmotte, M., Falourd, S., Frezzotti, M., Gallée, H., Genoni, L., Isaksson, E., Landais, A., Helsen, M., Hoffmann, G., Lopez, J., Morgan, V., Motoyama, H., Noone, D., Oerter, H., Petit, J., Royer, A., Uemera, R., Schmidt, G., Schlosser, E., Simões, J., Steig, E., Stenni, B., Stievenard, M., van den Broeke, M., van de Wal, R., van de Berg, W., Vimeux, F., and White, J.: A review of Antarctic surface snow isotopic composition: Observations, atmospheric circulation, and isotopic modeling, *Journal of Climate*, 21, 3359-3387, 2008.
- 15 Merlivat, L., and Jouzel, J.: Global climatic interpretation of the deuterium-oxygen 18 relationship for precipitation, *Journal of Geophysical Research: Oceans*, 84, 5029-5033, 10.1029/JC084iC08p05029, 1979.
- Minikin, A., Legrand, M., Hall, J., Wagenbach, D., Kleefeld, C., Wolff, E., Pasteur, E. C., and Ducroz, F.: Sulfur-containing species (sulfate and methanesulfonate) in coastal Antarctic aerosol and precipitation, *Journal of Geophysical Research: Atmospheres*, 103, 10975-10990, 1998.
- 20 Morgan, V. I., Wookey, C., Li, J., Van Ommen, T., Skinner, W., and Fitzpatrick, M.: Site information and initial results from deep ice drilling on Law Dome, Antarctica, *Journal of Glaciology*, 43, 3-10, 1997.
- Mulvaney, R., Oerter, H., Peel, D. A., Graf, W., Arrowsmith, C., Pasteur, E. C., Knight, B., Littot, G. C., and Miners, W. D.: 1000 year ice-core records from Berkner Island, Antarctica, *Annals of Glaciology*, 35, 45-51, 2002.
- 25 Naithani, J., Gallée, H., and Schayes, G.: Marine air intrusion into the Adelie Land sector of East Antarctica: A study using the regional climate model (MAR), *Journal of Geophysical Research: Atmospheres*, 107, 2002.
- Nicolas, J. P., and Bromwich, D. H.: New Reconstruction of Antarctic Near-Surface Temperatures: Multidecadal Trends and Reliability of Global Reanalyses, *Journal of Climate*, 27, 8070-8093, 2014.
- Noone, D., and Simmonds, I.: Associations between δ 18O of water and climate parameters in a simulation of atmospheric circulation for 1979–95, *Journal of Climate*, 15, 3150-3169, 2002.
- 30 Noone, D., and Simmonds, I.: Sea ice control of water isotope transport to Antarctica and implications for ice core interpretation, *Journal of Geophysical Research: Atmospheres*, 109, 1-13, 2004.
- Noone, D.: The influence of midlatitude and tropical overturning circulation on the isotopic composition of atmospheric water vapor and Antarctic precipitation, *Journal of Geophysical Research: Atmospheres*, 113, 1-13, 2008.
- 35 Périard, C., and Pettré, P.: Some aspects of the climatology of Dumont D'Irville, Adélie land, Antarctica, *International Journal of Climatology*, 13, 313-328, 1993.
- Petit, J., White, J., Young, N., Jouzel, J., and Korotkevich, Y. S.: Deuterium excess in recent Antarctic snow, *Journal of Geophysical Research: Atmospheres*, 96, 5113-5122, 1991.
- Pettré, P., Pinglot, J., Pourchet, M., and Reynaud, L.: Accumulation distribution in Terre Adélie, Antarctica: effect of meteorological parameters, *Journal of Glaciology*, 32, 486-500, 1986.
- 40 Pettré, P., and Périard, C.: Aspects du climat de Dumont-d'Urville et de l'Antarctique, *Rubrique: Climatologie*, 13, 55-62, 1996.
- Pfahl, S., and Sodemann, H.: What controls deuterium excess in global precipitation?, *Climate of the Past*, 10, 771-781, 2014.
- 45 Preunkert, S., Jourdain, B., Legrand, M., Udisti, R., Becagli, S., and Cerri, O.: Seasonality of sulfur species (dimethyl sulfide, sulfate, and methanesulfonate) in Antarctica: Inland versus coastal regions, *Journal of Geophysical Research: Atmospheres*, 113, 1-10, 2008.
- Rahaman, W., Thamban, M., and Laluraj, C.: Twentieth-century sea ice variability in the Weddell Sea and its effect on moisture transport: Evidence from a coastal East Antarctic ice core record, *The Holocene*, 26, 338-349, 2016.

- Ritter, F., Steen-Larsen, H. C., Werner, M., Masson-Delmotte, V., Orsi, A., Behrens, M., Birnbaum, G., Freitag, J., Risi, C., and Kipfstuhl, S.: Isotopic exchange on the diurnal scale between near-surface snow and lower atmospheric water vapor at Kohlen station, East Antarctica, *The Cryosphere*, 10, 1647-1663, 2016.
- 5 Roeckner, E., Bäuml, G., Bonaventura, L., Brokopf, R., Esch, M., Giorgetta, M., Hagemann, S., Kirchner, I., Kornblueh, L., and Manzini, E.: The atmospheric general circulation model ECHAM 5. PART I: Model description, 2003.
- Rozanski, K., Araguás-Araguás, L., and Gonfiantini, R.: Isotopic patterns in modern global precipitation, *Climate change in continental isotopic records*, 78, 1-36, 1993.
- Schlosser, E., Reijmer, C., Oerter, H., and Graf, W.: The influence of precipitation origin on the $\delta^{18}\text{O}$ -T relationship at Neumayer station, Ekstrmisen, Antarctica, *Annals of Glaciology*, 39, 41-48, 2004.
- 10 Schlosser, E., Oerter, H., Masson-Delmotte, V., and Reijmer, C.: Atmospheric influence on the deuterium excess signal in polar firn: implications for ice-core interpretation, *Journal of glaciology*, 54, 117-124, 2008.
- Schlosser, E., Dittmann, A., Stenni, B., Powers, J. G., Manning, K. W., Masson-Delmotte, V., Valt, M., Cagnati, A., Grigioni, P., and Scarchilli, C.: The influence of the synoptic regime on stable water isotopes in precipitation at Dome C, East Antarctica, *The Cryosphere*, 11, 2345-2361, 2017.
- 15 Sime, L. C., Tindall, J. C., Wolff, E. W., Connolley, W. M., and Valdes, P. J.: Antarctic isotopic thermometer during a CO₂ forced warming event, *Journal of Geophysical Research: Atmospheres*, 113, 1-16, 2008.
- Simmons, A., Jones, P., da Costa Bechtold, V., Beljaars, A., Källberg, P., Saarinen, S., Uppala, S., Viterbo, P., and Wedi, N.: Comparison of trends and low-frequency variability in CRU, ERA-40, and NCEP/NCAR analyses of surface air temperature, *Journal of Geophysical Research: Atmospheres*, 109, 1-18, 2004.
- 20 Sinclair, K., Bertler, N., and Trompeter, W.: Synoptic controls on precipitation pathways and snow delivery to high-accumulation ice core sites in the Ross Sea region, Antarctica, *Journal of Geophysical Research: Atmospheres*, 115, 1-11, 2010.
- Sinclair, K. E., Bertler, N. A., Bowen, M. M., and Arrigo, K. R.: Twentieth century sea-ice trends in the Ross Sea from a high-resolution, coastal ice-core record, *Geophysical Research Letters*, 41, 3510-3516, 2014.
- 25 Sodemann, H., and Stohl, A.: Asymmetries in the moisture origin of Antarctic precipitation, *Geophysical research letters*, 36, 1-5, 2009.
- Steen-Larsen, H., Risi, C., Werner, M., Yoshimura, K., and Masson-Delmotte, V.: Evaluating the skills of isotope-enabled general circulation models against in situ atmospheric water vapor isotope observations, *Journal of Geophysical Research: Atmospheres*, 122, 246-263, 2017.
- 30 Steig, E. J., Ding, Q., White, J. W., Küttel, M., Rupper, S. B., Neumann, T. A., Neff, P. D., Gallant, A. J., Mayewski, P. A., and Taylor, K. C.: Recent climate and ice-sheet changes in West Antarctica compared with the past 2,000 years, *Nature Geoscience*, 6, 372-375, 2013.
- Stein, A., Draxler, R. R., Rolph, G. D., Stunder, B. J., Cohen, M., and Ngan, F.: NOAA's HYSPLIT atmospheric transport and dispersion modeling system, *Bulletin of the American Meteorological Society*, 96, 2059-2077, 2015.
- 35 Stenni, B., Masson-Delmotte, V., Johnsen, S., Jouzel, J., Longinelli, A., Monnin, E., Röthlisberger, R., and Selmo, E.: An oceanic cold reversal during the last deglaciation, *Science*, 293, 2074-2077, 2001.
- Stenni, B., Scarchilli, C., Masson-Delmotte, V., Schlosser, E., Ciardini, V., Dreossi, G., Grigioni, P., Bonazza, M., Cagnati, A., and Karlicek, D.: Three-year monitoring of stable isotopes of precipitation at Concordia Station, East Antarctica, *The Cryosphere*, 10, 2415-2428, 2016.
- 40 Stenni, B., Curran, M. A., Abram, N. J., Orsi, A., Goursaud, S., Masson-Delmotte, V., Neukom, R., Goosse, H., Divine, D., and Van Ommen, T.: Antarctic climate variability on regional and continental scales over the last 2000 years, *Climate of the Past*, 13, 1609-1634, 2017.
- Thomas, E. R., Bracegirdle, T. J., Turner, J., and Wolff, E. W.: A 308 year record of climate variability in West Antarctica, *Geophysical Research Letters*, 40, 5492-5496, 2013.
- 45 Thomas, E. R., van Wesse, J. M., Roberts, J., Isaksson, E., Schlosser, E., Fudge, T. J., Vallelonga, P., Medley, B., Lenaerts, J., and Bertler, N.: Regional Antarctic snow accumulation over the past 1000 years, *Climate of the Past*, 13, 1491-1513, 2017.
- Touzeau, A., Landais, A., Stenni, B., Uemura, R., Fukui, K., Fujita, S., Guilbaud, S., Ekaykin, A., Casado, M., and Barkan, E.: Acquisition of isotopic composition for surface snow in East Antarctica and the links to climatic parameters, *The Cryosphere*, 10, 837-852, 2016.

- Turner, J., Colwell, S. R., Marshall, G. J., Lachlan-Cope, T. A., Carleton, A. M., Jones, P. D., Lagun, V., Reid, P. A., and Iagovkina, S.: The SCAR READER project: toward a high-quality database of mean Antarctic meteorological observations, *Journal of Climate*, 17, 2890-2898, 2004.
- 5 Turner, J., Lu, H., White, I., King, J. C., Phillips, T., Hosking, J. S., Bracegirdle, T. J., Marshall, G. J., Mulvaney, R., and Deb, P.: Absence of 21st century warming on Antarctic Peninsula consistent with natural variability, *Nature*, 535, 411, 2016.
- Uemura, R., Matsui, Y., Yoshimura, K., Motoyama, H., and Yoshida, N.: Evidence of deuterium excess in water vapor as an indicator of ocean surface conditions, *Journal of Geophysical Research: Atmospheres*, 113, 1-10, 2008.
- van der Wel, G., Fischer, H., Oerter, H., Meyer, H., and Meijer, H.: Estimation and calibration of the water isotope differential diffusion length in ice core records, *The Cryosphere*, 9, 1601-1616, 2015.
- 10 Vega, C. P., Schlosser, E., Divine, D. V., Kohler, J., Martma, T., Eichler, A., Schwikowski, M., and Isaksson, E.: Surface mass balance and water stable isotopes derived from firn cores on three ice rises, Fimbul Ice Shelf, Antarctica, *The Cryosphere*, 10, 2763-2777, 2016.
- Verfaillie, D., Fily, M., Le Meur, E., Magand, O., Jourdain, B., Arnaud, L., and Favier, V.: Snow accumulation variability derived from radar and firn core data along a 600 km transect in Adelie Land, East Antarctic plateau, *The Cryosphere*, 6, 1345-1358, 2012.
- 15 Vimeux, F., Masson, V., Jouzel, J., Stievenard, M., and Petit, J.: Glacial-interglacial changes in ocean surface conditions in the Southern Hemisphere, *Nature*, 398, 410-413, 1999.
- Vimeux, F., Masson, V., Delaygue, G., Jouzel, J., Petit, J., and Stievenard, M.: A 420,000 year deuterium excess record from East Antarctica: Information on past changes in the origin of precipitation at Vostok, *Journal of Geophysical Research: Atmospheres*, 106, 31863-31873, 2001.
- 20 Werner, M., Langebroek, P. M., Carlsen, T., Herold, M., and Lohmann, G.: Stable water isotopes in the ECHAM5 general circulation model: Toward high-resolution isotope modeling on a global scale, *Journal of Geophysical Research: Atmospheres*, 116, 2011.
- 25 Yao, T., Petit, J., Jouzel, J., Lorius, C., and Duval, P.: Climatic record from an ice margin area in East Antarctica, *Annals of Glaciology*, 14, 323-327, 1990.

Table 1: Site, latitude (in °), longitude (in °E) and reference of new d-excess data added to Masson-Delmotte et al. (2008). Data in orange correspond to precipitation, blue data correspond to ice cores extracted from the Antarctica2k database (Stenni et al., 2017), purple data are new data compared to our prior database (Goursaud et al., 2017a). Finally, data associated with “*” were not provided with a dating while data in italic have a sub-annual resolution. Note that DE08-2 and D15 ice cores were not dated.

Site	Latitude	Longitude	Reference
Frei (south shetland islands)*	-62.20	301.04	(Fernandoy et al., 2012)
O'Higgins peninsula)*	(north -63.32	302.10	(Fernandoy et al., 2012)
<i>Halley</i>	-75.58	333.50	<i>(Rozanski et al., 1993)</i>
<i>Base tte. Marsh</i>	-62.12	301.44	<i>(Rozanski et al., 1993)</i>
<i>Rothera Point</i>	-67.57	291.87	<i>(Rozanski et al., 1993)</i>
<i>Vernadsky</i>	-65.08	296.02	<i>(Rozanski et al., 1993)</i>
<i>Vostok</i>	-78.5	106.9	<i>(Landais et al., 2012)</i>
<i>DDU</i>	-66.7	140.00	<i>Pers. Comm., Jean Jouzel</i>
<i>Neumayer</i>	-70.7	351.60	<i>(Schlosser et al., 2008)</i>
<i>Dome F</i>	-77.3	39.7	<i>(Fujita and Abe, 2006)</i>
<i>Dome C</i>	-75.1	123.4	<i>(Schlosser et al., 2017)</i>
EDC Dome C	-75.10	123.39	(Stenni et al., 2001)
NUS 08-7	-74.12	1.60	(Steig et al., 2013)
NVFL-1	-77.11	95.07	(Ekaykin et al., 2017)
WDC06A	-79.46	247.91	(Steig et al., 2013)
IND 25B5 Coastal DML	-71.34	11.59	(Rahaman et al., 2016)
OH-4*	-63.36	302.20	(Fernandoy et al., 2012)
OH-5*	-63.38	302.38	(Fernandoy et al., 2012)
OH-6*	-63.45	302.24	(Fernandoy et al., 2012)
OH-9*	-63.45	302.24	(Fernandoy et al., 2012)
OH-10*	-63.45	302.24	(Fernandoy et al., 2012)
KC	-70.52	2.95	(Vega et al., 2016)

<i>KM</i>	-70.13	1.12	<i>(Vega et al., 2016)</i>
<i>BI</i>	-70.40	3.03	<i>(Vega et al., 2016)</i>
<i>GIP</i>	-80.10	159.30	<i>(Markle et al., 2012)</i>
DE08-2	-66.72	112.81	<i>(Delmotte et al., 2000)</i>
<i>DSSA</i>	-66.77	112.81	<i>(Delmotte et al., 2000)</i>
<i>DI5*</i>	-66.86	139.78	<i>Pers. Comm., Jean Jouzel</i>
<i>TA192A</i>	-66.78	139.56	<i>This study</i>

Table 2: Number of points (“n”), time averages (“ μ ”), standard deviation (“ σ ”), minimum (“min”) and maximum (“max”) values of all the monthly meteorological observations at Dumont d’Urville from Météo France over the period 1957-2014 (with a gap between March 1959 and January 1960, included) and over the period 1998-2014 for near-surface temperature (“Ts”, °C), wind speed (“ws”, m s⁻¹), wind direction (“wd”, °E), and relative humidity (“RH”, %), and of annual precipitation and accumulation (precipitation minus evaporation/sublimation) from ERA-interim reanalyses (“Prec. ERA’ mm w.e. y⁻¹”).

5

	1957-2014				1998-2014				
	Ts (°C)	ws (m/s)	wd (°E)	RH (%)	Ts (°C)	ws (m/s)	wd (°E)	RH (%)	Prec. ERA (cm w.e. y ⁻¹)
n	730	719	383	717	202	201	201	199	
μ	-10.9	9.6	145.3	61.4	-11.1	9.1	133.8	60	46.0
σ	6	2.1	22.4	7.6	6.0	1.8	15.8	8.3	26.9
min	-23.5	4.9	90	34	-22.1	4.8	1.5	34.0	1.5
max	1	19.5	220	86	0.9	14.1	172.4	85.5	147.8

5 Table 3: Number of points (“n”), time averages (“ μ ”), standard deviation (“ σ ”), minimum (“min”) and maximum (“max”) values of monthly meteorological sea ice concentration over the periods 1979-2014 and 1998-2014 extracted from the Nimbus-7 Scanning Multichannel Microwave Radiometer (SMMR) and Defense Meteorological Satellite Program Special Sensor Microwave/Imagers - Special Sensor Microwave Image/Sounder (DMSP SSM/I-SSMIS) passive microwave data (<http://nsidc.org/data/nsidc-0051>) (Cavalieri et al., 1996), and for the four regions defined as (i) “local” (135 – 145 °E), (ii) “Indian” (100°E – 145°E), (iii) “Amundsen” (160 – 205 °E) and (iv) “regional” (100 – 205 °E).

	1979-2014				1998-2014			
	Indian	local	Amundsen	Regional	Indian	local	Amundsen	Regional
n	432	432	432	432	204	204	204	204
μ	41.1	47.0	56.6	42.9	41.6	51.2	57.4	43.4
σ	6.8	7.7	11.5	8.7	6.6	8.0	11.6	8.8
min	31.0	38.2	36.3	28.7	31.1	38.4	36.6	28.9
max	55.4	66.0	74.2	58.8	53.8	65.2	73.9	57.7

Table 4: Time averages (“ μ ”) and standard deviation (“ σ ”) of the reconstructed accumulation (cm w.e.) and of the signals recorded in the TA192A ice core obtained from the resampling of the isotopic and chemical variables) for $\delta^{18}\text{O}$ (‰), d-excess (‰), Na, MSA, and nssSO₄ (ppb), over the 17 annual values.

	Accumulation (cm w.e.)	$\delta^{18}\text{O}$ (‰)	d-excess (‰)	Na ⁺ (ppb)	MSA (ppb)	nssSO ₄ (ppb) ⁵
μ	75.2	-19.3	5.4	126.0	4.5	36.5
σ	15.0	3.1	2.2	276.5	5.6	44.2

Table 5: d-excess versus $\delta^{18}\text{O}$ linear relationship of data from our database provided with d-excess over the whole time series (left side of the table) and over annual averages ('inter-annual scale', right side of the table): slope (‰‰^{-1}), correlation coefficient ('r'), p-value ("p-val") and standard error of the slope ('stderr', ‰‰^{-1}). Cells in bold show significant relationship ($p < 0.05$) and the cell in italic is to be taken with caution (see "DDU" line, $p < 0.10$). Inter-annual relationships could not be computed for not dated data (D15 and OH ice cores) as well as for too short time monitored precipitation data, and thus appear as empty cells.

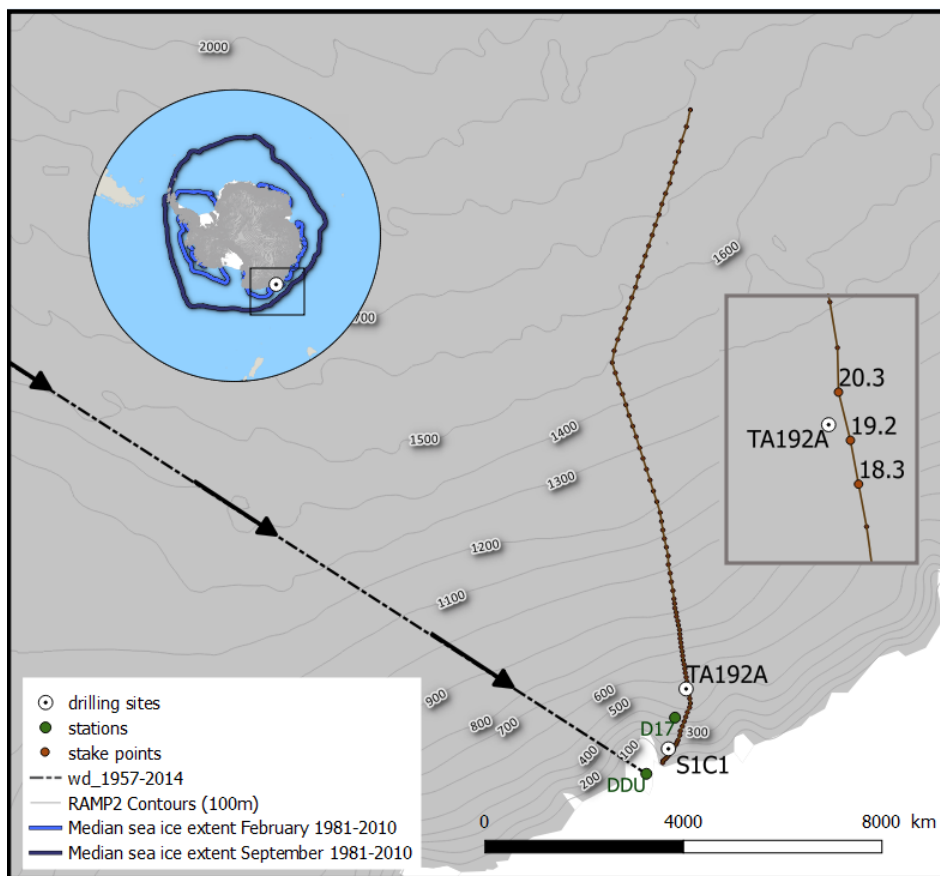
5

	Whole time series					Inter-annual scale				
	Number of points	Slope (‰‰^{-1})	R	p-val	stderr	Number of points	Slope (‰‰^{-1})	r	p-val	stderr
EDC Dome C	140	-0.41	-0.31	0.00	0.11	623	-0.41	-0.31	0.00	0.11
NUS 08-7	2413	-0.36	-0.28	0.00	0.08	626	-0.36	-0.28	0.00	0.08
NUS 07-1	299	0.17	0.25	0.15	0.12	299	0.17	0.25	0.15	0.12
NVFL-1	233	0.47	0.40	0.00	0.02	233	0.47	0.40	0.00	0.02
WDC06A	41120	0.25	0.25	0.00	0.00	2056	0.05	0.06	0.01	0.02
IND 25B5	1297	0.17	0.08	0.45	0.22	140	0.17	0.08	0.45	0.22
BI	404	0.01	0.02	0.70	0.03	17	-0.57	-0.57	0.01	0.20
KC	343	0.22	0.23	0.00	0.05	48	0.05	0.06	0.70	0.12
KM	425	0.04	0.06	0.24	0.04	18	-0.86	-0.57	0.01	0.29
DSSA	161	-0.03	-0.04	0.58	0.05	6	-0.41	-0.74	0.04	0.15
DE08-2	58	-0.11	-0.08	0.57	0.19	58	-0.11	-0.08	0.57	0.19
D15-1	126	-0.03	-0.03	0.72	0.07					
D15-2	191	-0.06	-0.10	0.19	0.04					
OH4	318	-0.11	-0.11	0.13	0.07					
OH5	213	-0.05	-0.04	0.45	0.07					

OH6	124	0.01	0.01	0.86	0.08					
OH9	232	-0.05	-0.04	0.57	0.08					
OH10	190	-0.10	-0.04	0.58	0.17					
<i>DDU</i>	<i>19</i>	<i>0.48</i>	<i>0.41</i>	<i>0.08</i>	<i>0.26</i>					
Dome C	501	-1.48	-0.84	0.00	0.04	4	-2.75	-0.98	0.02	0.42
Dome F	351	-1.60	-0.89	0.00	0.05					
Halley	532	-0.20	-0.18	0.00	0.05	49	-0.23	-0.12	0.41	0.28
Marsh	19	-0.86	-0.51	0.03	0.35					
Neumayer	336	-0.06	-0.07	0.21	0.05	19	0.28	0.31	0.20	0.21
Rothera	194	-1.00	-0.58	0.00	0.10	18	-1.21	-0.86	0.00	0.18
Vernadsky	372	-1.33	-0.57	0.00	0.08	35	-1.89	-0.69	0.00	0.29
Vostok	27	-0.73	-0.63	0.00	0.18					

Table 6: Fraction of annual maxima (in %) of $\delta^{18}\text{O}$ and d-excess identified during each season: austral summer (“DJF”, i.e. from December to February), austral autumn (“MAM”, i.e. from March to May), austral winter (“JJAS”, i.e. from June to September) and austral spring (“ON”, i.e. from October to November) in the data over the period 1998-2014, and in the ECHAM5-wiso simulation (“model”) over the period 1998–2013. The analysis is based on resampled data (ice core) and monthly values (model).

Variable	Source	Period	DJF	MAM	JJAS	ON
$\delta^{18}\text{O}$	data	1998-2014	41	6	41	12
	model	1998-2013	63	0	12	25
d-excess	data	1998-2014	41	12	41	6
	model	1998-2013	0	69	31	0



5 Figure 1: Map showing the location of the drilling sites of the S1C1 and TA192A firm cores (black points), the Dumont d'Urville and D17
 10 stations (green points), and the stake points (in brown. included the three closest stake points from the TA192A. namely the "18.3", the
 "19.2" and the "20.3, and the "156 km" stake line), the mean wind direction over the periods 1957-2014 (in black). Isohypsies (grey lines)
 shown on the main figure are simulations from Digital elevation model, large scale resolution. Radarsat Antarctic Mapping Project Digital
 Elevation Model Version 2 (Liu et al., 2001). The map of Antarctica on the top left displays the mean February and September sea ice extent
 over the period 1981-2010 extracted from the Nimbus-7 Scanning Multichannel Microwave Radiometer (SMMR) and Defense
 Meteorological Satellite Program Special Sensor Microwave/Imagers - Special Sensor Microwave Image/Sounder (DMSP SSM/I-SSMIS)
 passive microwave data (<http://nsidc.org/data/nsidc-0051>) (Cavalieri et al., 1996) (light blue. and dark blue lines respectively), and the
 zoomed area (grey rectangle), while the grey rectangle in the middle right zooms the area around the TA192A drilling site in order to show
 the three closest stake locations.

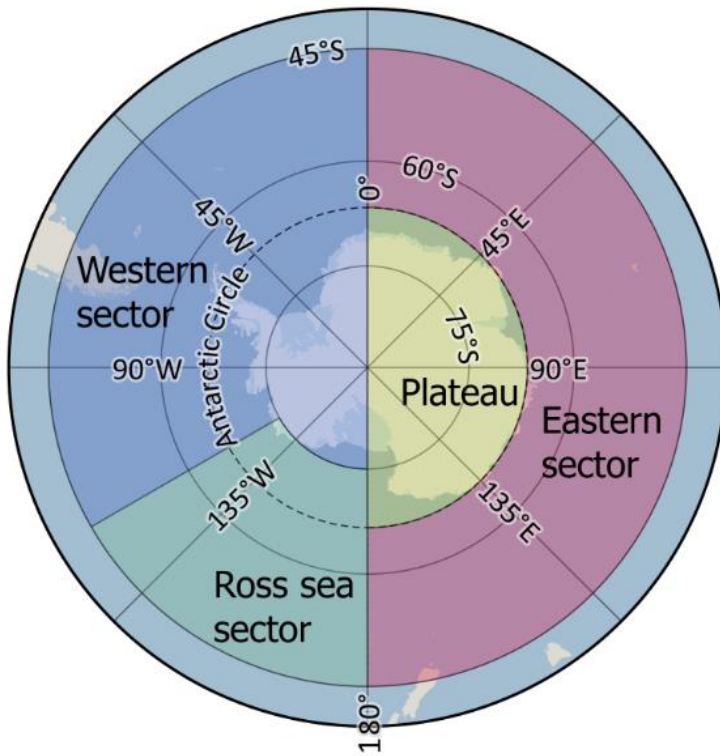


Figure 2: Representation of the sectors used to classify the last point of the simulated back-trajectories by HYSPLIT over the period 1998-2014, defined as follows: (i) the eastern sector: (0 – 66 °S, 0 – 180 °E), (ii) the Plateau: (66 – 90 °S, 0 – 180 °E), (iii) the Ross sea sector: (0 – 75 °S, 180 – 240 °E), and finally (iv) the western sector: (0 – 75 °S, 180 – 240 °E), and (50 – 90 °S, 240 – 360 °E).

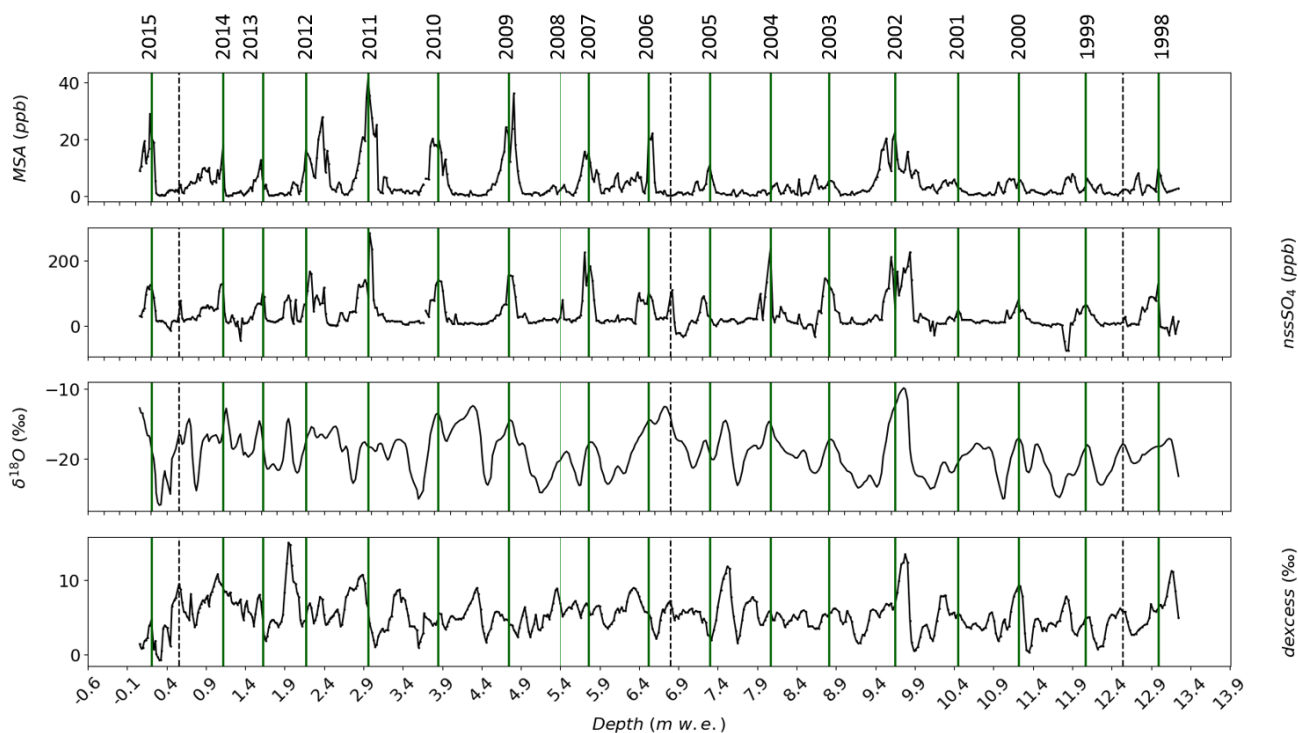
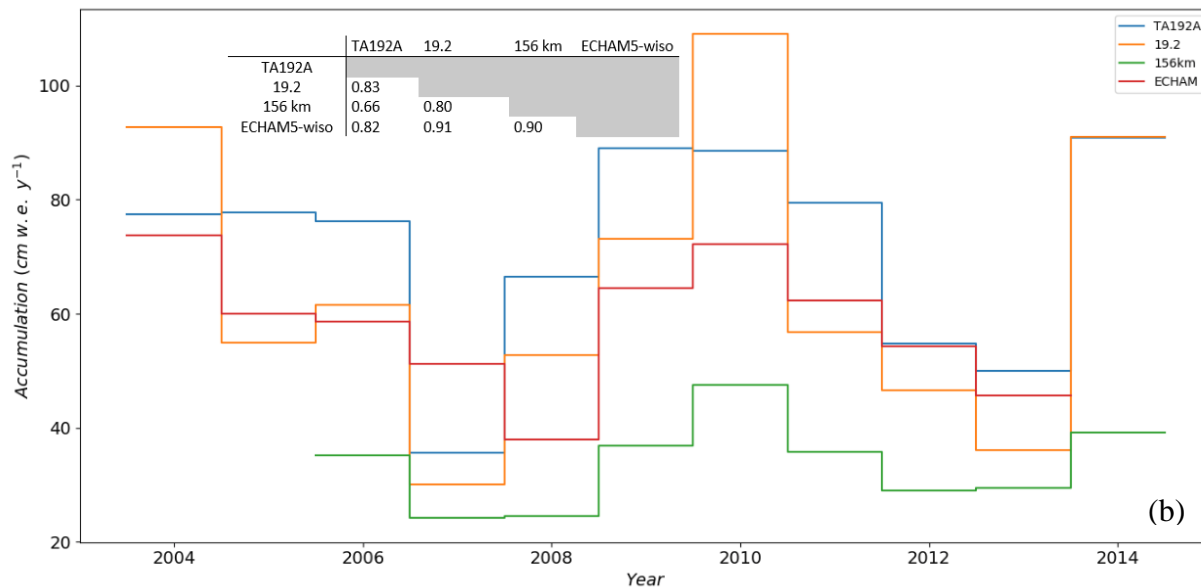
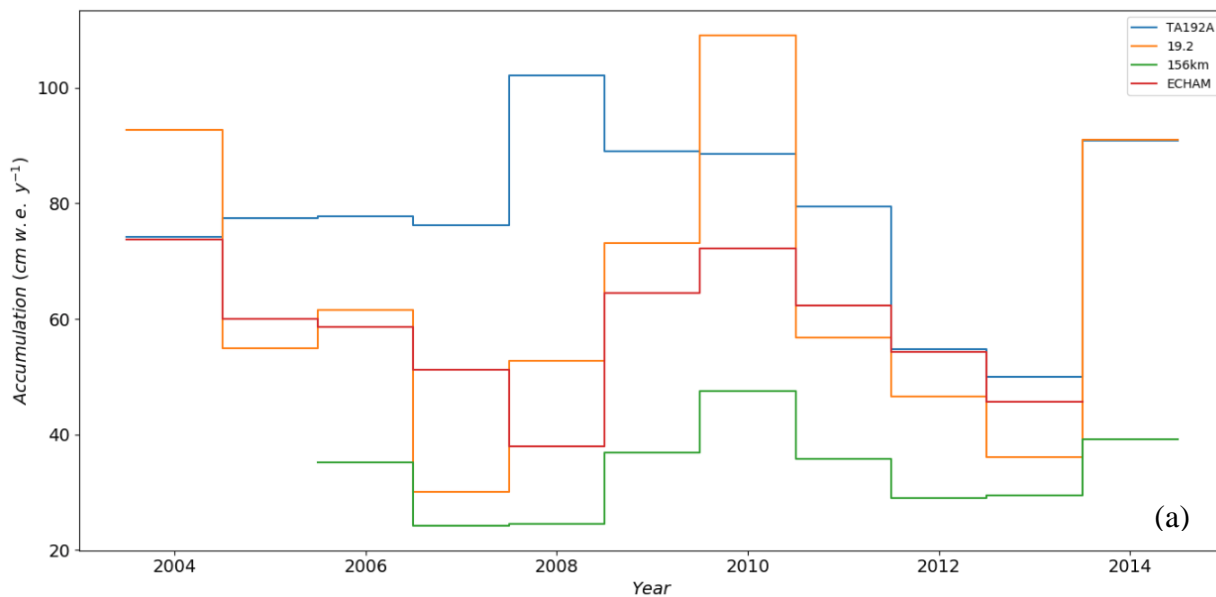


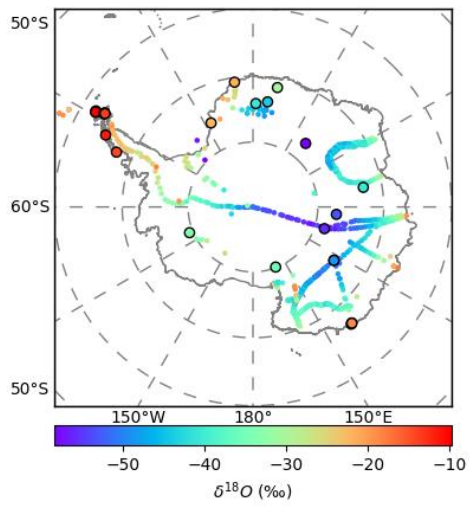
Figure 3: Identification of annual layers in the TA192A ice core based on the dual identification of nssSO₄²⁻ and MSA summer peaks, and comparison of estimated accumulation with annual accumulation measured at the closest stakes (not shown). The thick vertical green lines correspond to summer peaks identified from chemical signals, while the thin vertical green line shows the additional identification of summer 2008 added to the counted summers from the comparison between the estimated accumulation and the accumulation record from the closest stake data (see Fig. 3). Vertical dashed lines highlight equivocal summer peaks with a sometimes small signal in only one of the chemical records. Water stable isotope records were not used to build the time scale. Note that double peaks in both δ¹⁸O and d-excess occur repeatedly within one counted year.

5

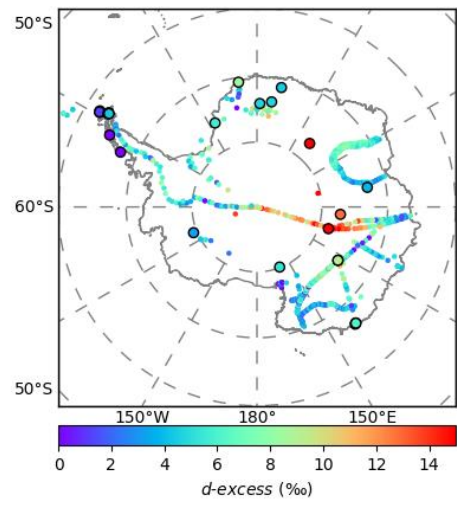
10



5 Figure 4: Annual accumulation (cm w.e. y^{-1}) estimated from the layer counting in the TA192A firn core (blue line), measured at the closest stake point "19.2" (orange line), from the 156 km network stake data (green line) and extracted from the ECHAM5-wiso model (red line), before (a) and after (b) adding the identification of summer 2008 in a time interval of low accumulation rates and skipped in the initial layer counting approach due to the lack of a signal in the MSA record (thin green line in Fig. 2). Correlations between time series (TA192A series inferred from the second dating) are inserted in the lower plot, all linear relationships being significant ($p < 0.05$).

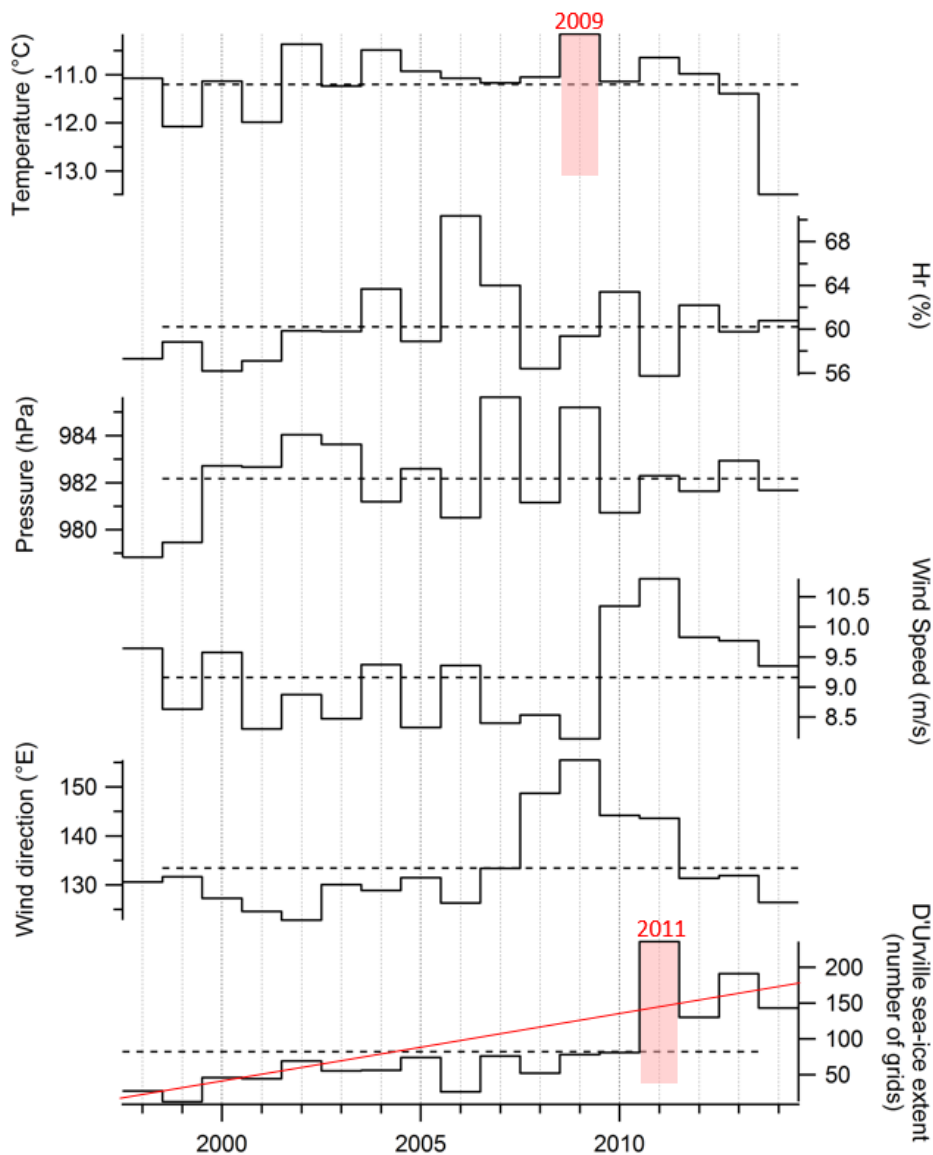


(a)



(b)

Fig. 5: Spatial distribution of $\delta^{18}\text{O}$ (a, ‰) and d-excess (b, ‰) in surface Antarctic snow based on our updated database combining data from precipitation, surface snow, pits and shallow ice cores. Bigger points with a black edge correspond to new data compared to Masson-Delmotte et al. (2008).



5 Figure 6: Meteorological time series over the period 1998-2014 averaged at the inter-annual scale. Near-surface temperature (°C), relative humidity (%), sea level pressure (hPa), wind speed (m s^{-1}) and direction (°E) were provided by Météo France. The local sea ice concentration (%) is extracted in the 135 – 145°E sector (with a latitudinal range of 50 – 90 °S) from the Nimbus-7 Scanning Multichannel Microwave Radiometer (SMMR) and Defense Meteorological Satellite Program Special Sensor Microwave/Imagers - Special Sensor Microwave Image/Sounder (DMSP SSM/I-SSMIS) passive microwave data (Cavalieri et al., 1996). Horizontal dashed lines correspond to the climatological averages over 1998-2014 for each parameter. Remarkable years, i.e. associated with values deviating by at least 2 standard deviations from the climatological mean value are highlighted with a red shading (positive anomalies) or blue shading (negative anomalies). The same figure with standard deviations is available in the Supplementary Material (Fig. S2).

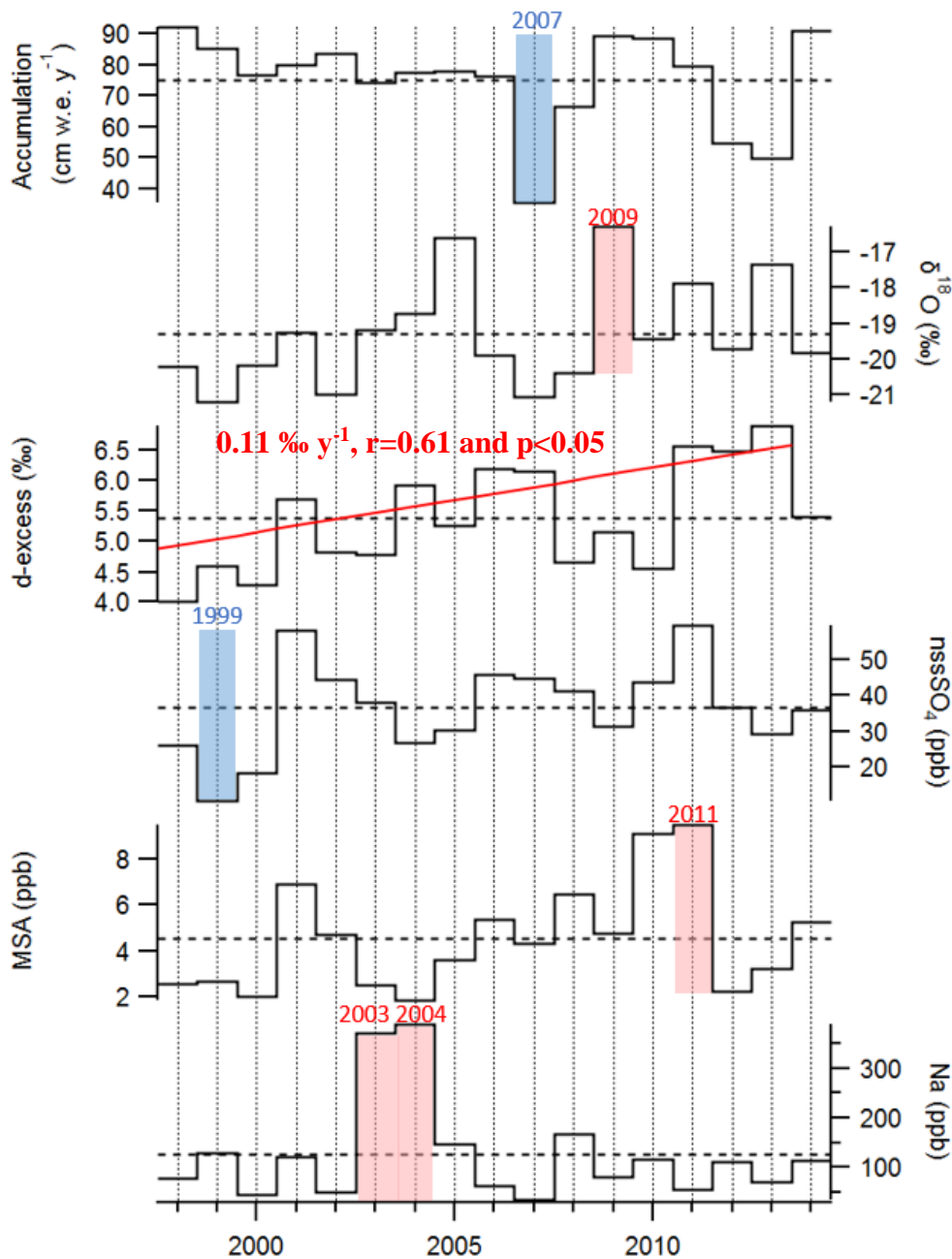


Figure 7: Dated TA192A ice core annually averaged records over the period 1998–2014: accumulation cm w.e. y^{-1}), concentrations of Na^+ (ppb), nssSO_4 (ppb), MSA (ppb), $\delta^{18}\text{O}$ (‰) and d-excess (‰). Horizontal dashed lines correspond to 1998–2014 average values. Remarkable years (i.e. associated with values deviating by at least 2 standard deviations from the climatological mean value) are highlighted with a red shading (positive anomalies) or blue shading (negative anomalies). The same figure with standard deviations is available in the Supplementary Material (Fig. S3).

5

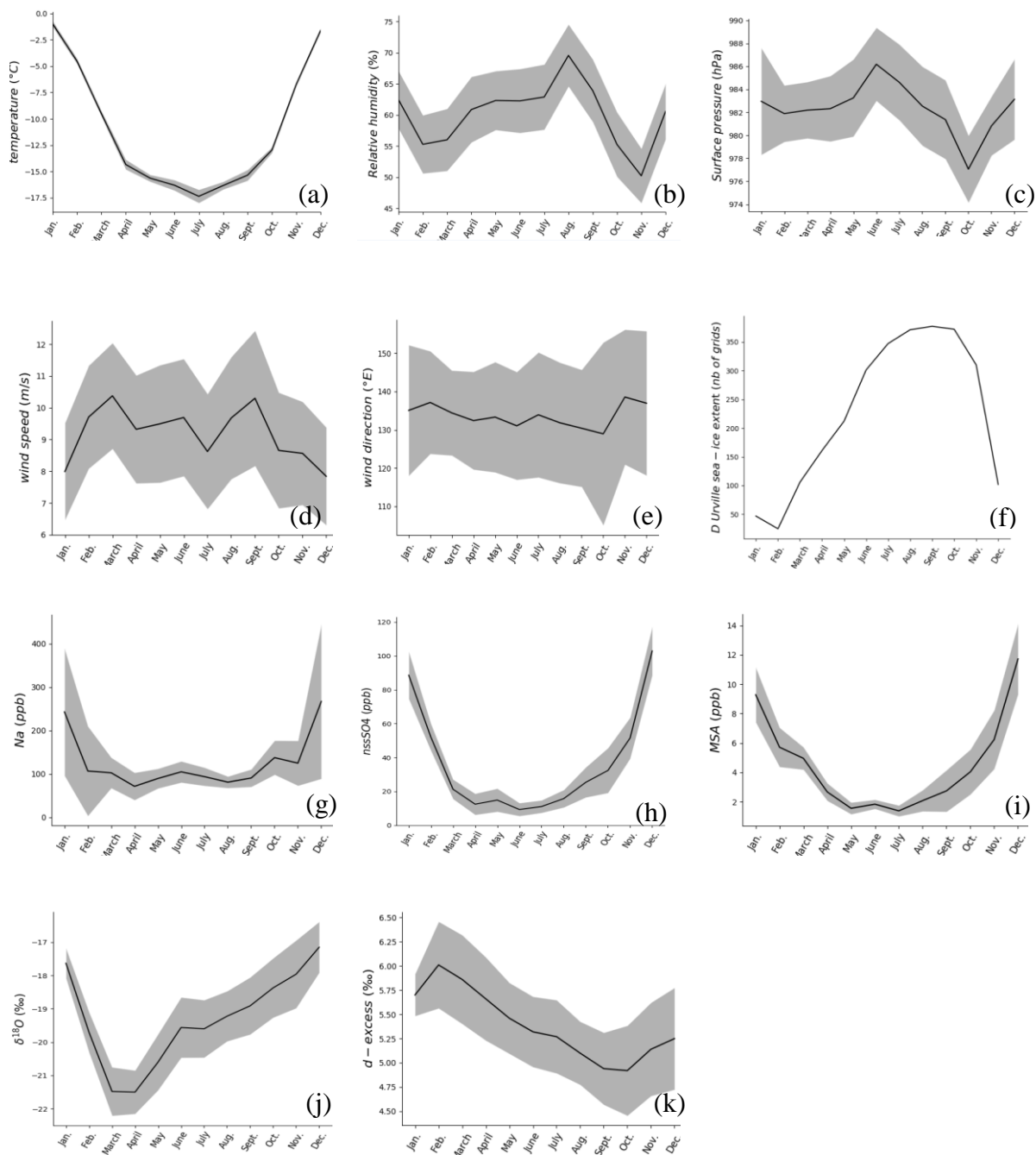
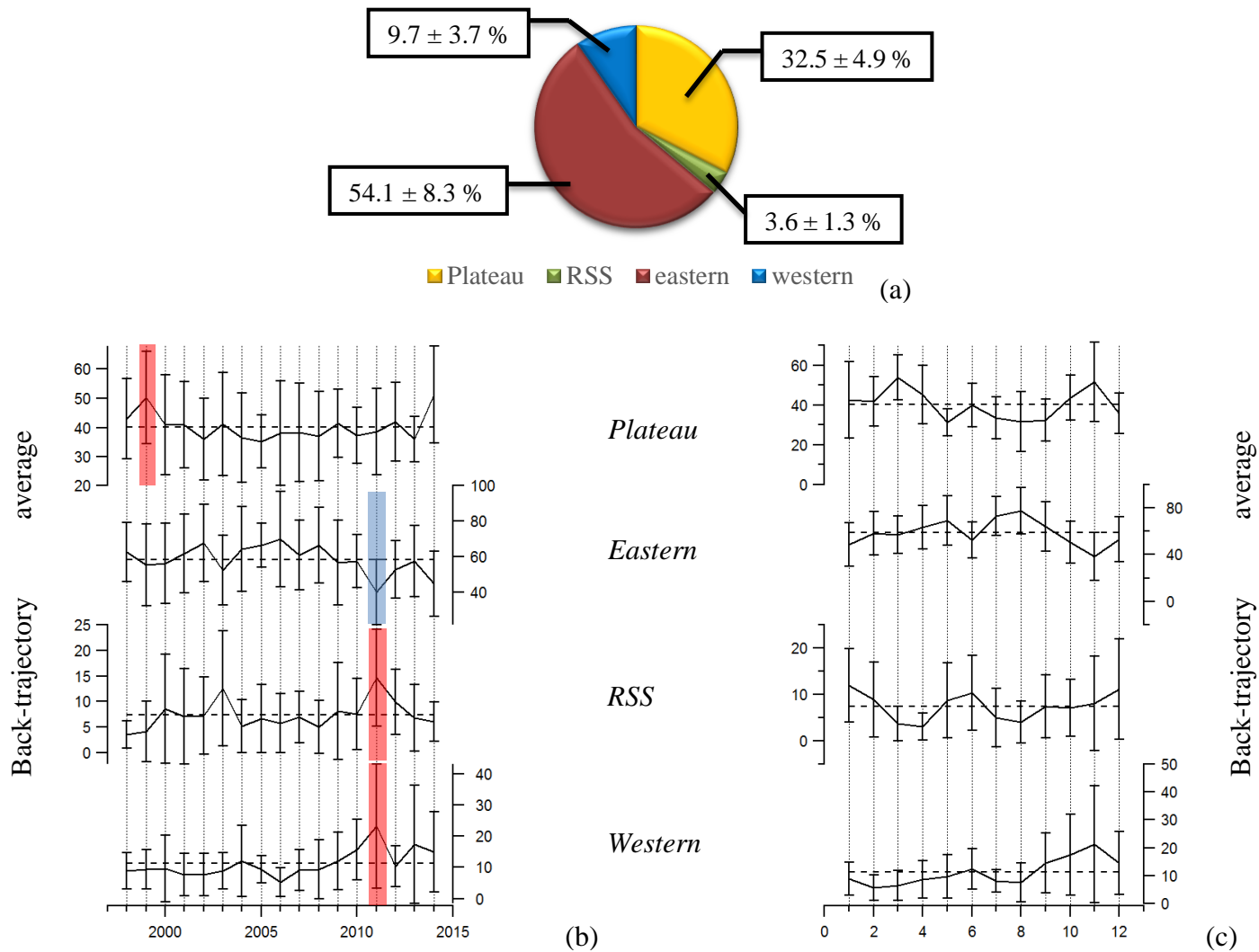


Figure 8: Mean seasonal cycles over the period 1998-2014. Meteorological observations are averaged from daily data, for near-surface temperature (a, °C), relative humidity (b, %), surface pressure (c, hPa), wind speed (d, m/s), wind direction (e, °E), and local sea ice concentration. i.e. averaged over a 135 – 145 °E ridge (f, %). Seasonal cycles from ice core records are averaged from the resampled time series for Na (g, ppb), nssSO₄ (h, ppb), MSA (i, ppb), δ¹⁸O (j, ‰) and d-excess (k, ‰). The inter-annual standard deviation is highlighted with the grey shading.

5



5 Figures 9: Results of daily back-trajectories calculations over the period 1998-2014 with (i) percentage (%) of the sum of back-trajectories passing over each defined region: (i) the eastern sector: (0 – 66 °S, 0 – 180 °E), (ii) the Plateau: (66 – 90 °S, 0 – 180 °E), (iii) the Ross sea sector: (0 – 75 °S, 180 – 240 °E), and finally (iv) the western sector: (0 – 75 °S, 180 – 240 °E), and (50 – 90 °S, 240 – 360 °E)(see Section 2.3); and (ii) averages at the annual scale (a and c) and at the mean seasonal scale (c and d). On the bottom panels. Horizontal dashed lines correspond to the mean value and vertical solid lines to standard deviations. Remarkable years, i.e. associated with values deviating by at least 2 standard deviations from the climatological mean value are highlighted with a red shading (positive anomalies) or blue shading (negative anomalies).

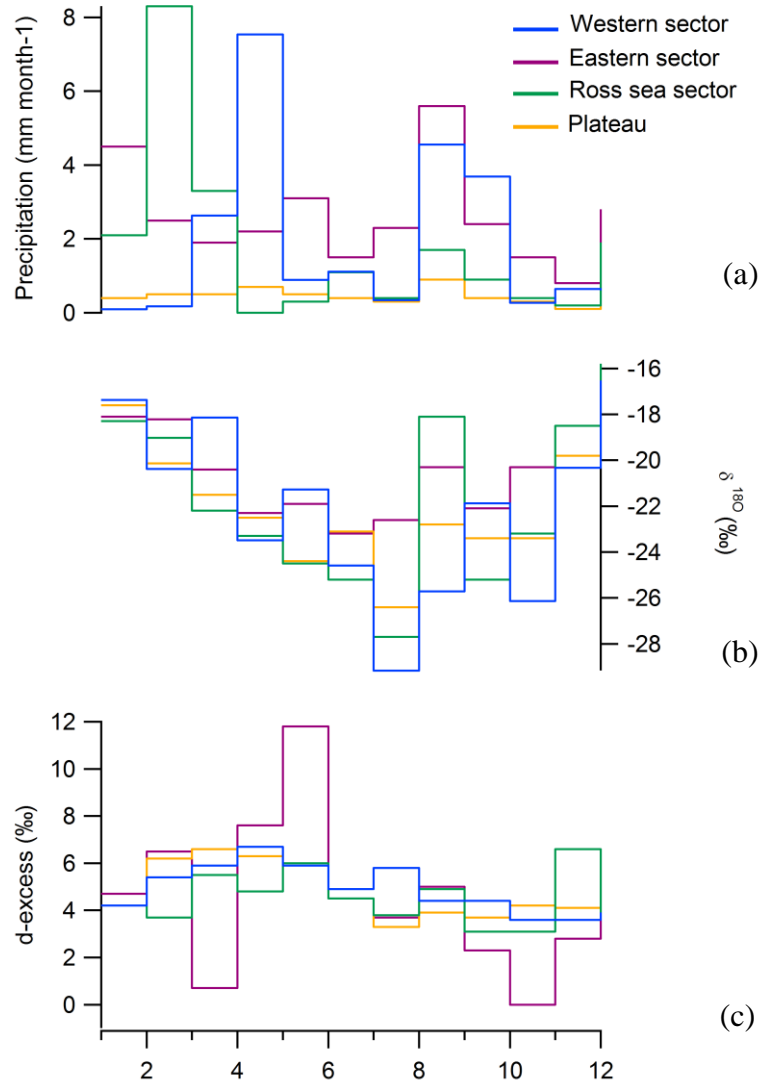
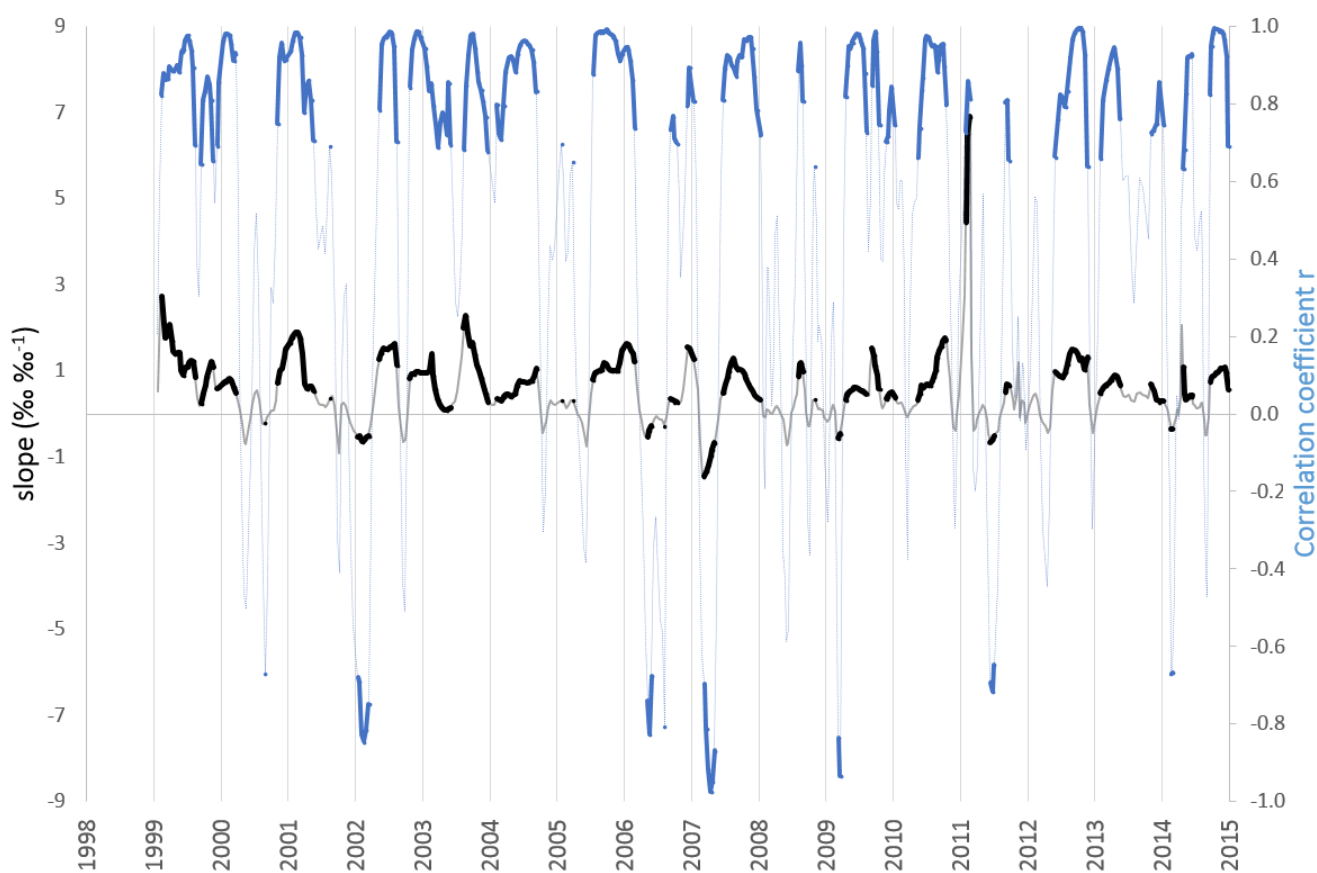


Figure 10: Seasonal cycles of precipitation (mm month⁻¹, a), $\delta^{18}\text{O}$ (‰, b) and d-excess (‰, c) simulated by ECHAM5-wiso by back-trajectories regions: (i) the eastern sector: (0 – 66 °S, 0 – 180 °E), (ii) the Plateau: (66 – 90 °S, 0 – 180 °E), (iii) the Ross sea sector: (0 – 75 °S, 180 – 240 °E), and finally (iv) the western sector: (0 – 75 °S, 180 – 240 °E), and (50 – 90 °S, 240 – 360 °E) (see Section 2.3).



5 Figure 11: Ten-point running slope (‰ ‰^{-1}) and running correlation coefficient calculated between d-excess versus $\delta^{18}\text{O}$ calculated from the raw data of TA192A. Significant results are indicated by thick lines ($p < 0.05$). The date associated with the results correspond to the first point of the regression calculation (applied on 10 points).

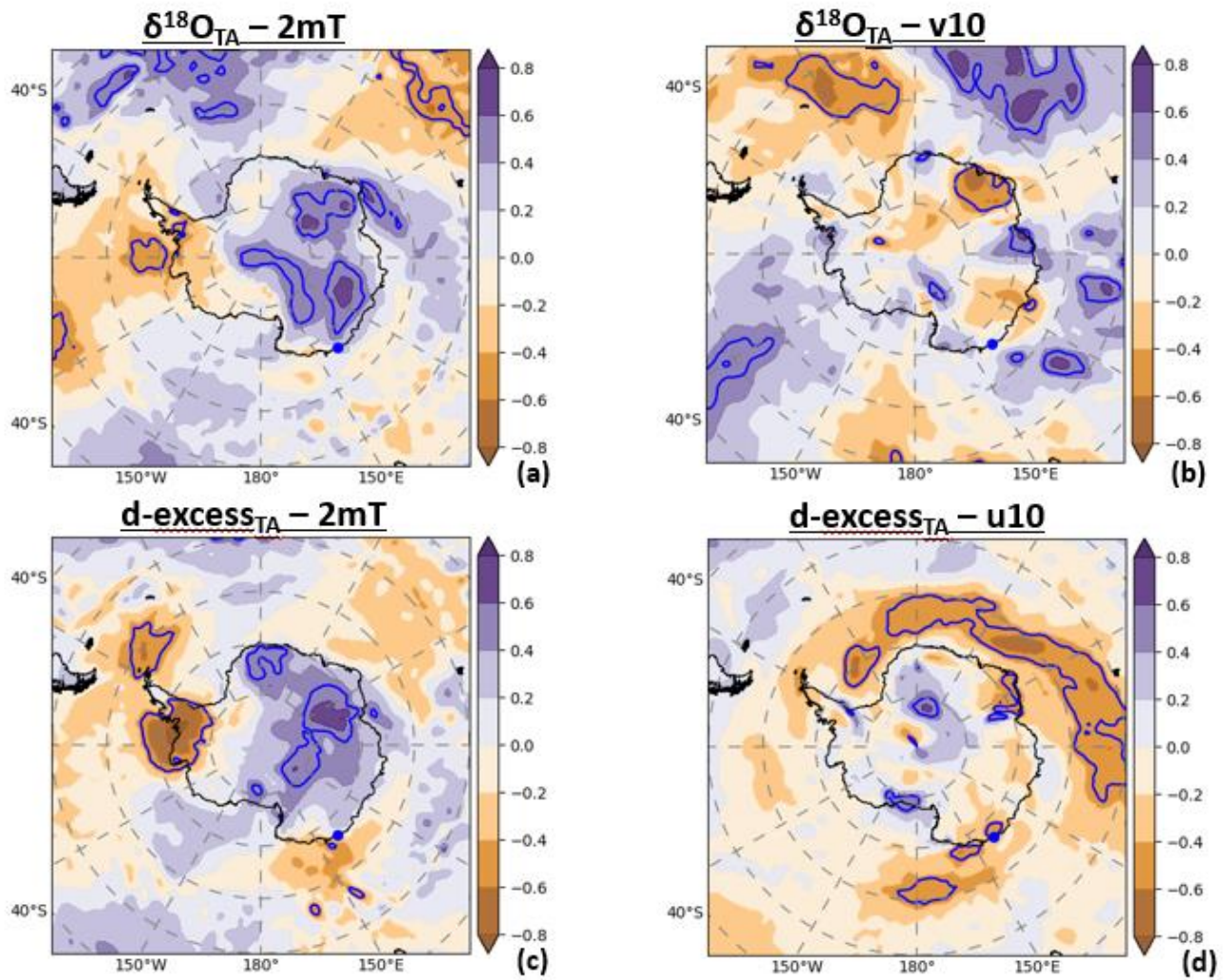


Figure 12: Coefficient correlation between the TA isotopic records and ERA-interim reanalyses, (a) between $\delta^{18}\text{O}_{\text{TA}}$ and the 2-meter temperature, (b) between $\delta^{18}\text{O}_{\text{TA}}$ and the 10-meter v wind component, (c) between $d\text{-excess}_{\text{TA}}$ and the 2-meter temperature, and finally (d) between $d\text{-excess}_{\text{TA}}$ and the 10-meter u wind component. The blue point locates the TA192A drilling site, and the blue lines contour the significant correlations.

5