

Responses to the Editor's comments

Comments by the editor were very enlightening and their suggestions useful; we are grateful for her input. His/her careful reading of the manuscript and his/her good knowledge of the subject-matter allowed providing relevant suggestions and additions to the manuscript. We treat each point raised in detail and with great interest.

Note that the line numbers given in this response refer to the revised version of the manuscript in track changes mode.

Editor

Technical corrections (23 Nov 2018)

Editor: Please check and correct one minor technical detail – please check the numbering of figures, tables thoroughly again. The equations in your appendix need to be labeled with capital letters, for example A1, B1, etc. Appendix C starts with equation (2) instead of C1.

Authors: We have checked the numbering of all figures and we have corrected the labelling of the equations provided in Appendix B and C.

General comments

Comment 1:

Editor: Please clarify and correct your results of the water samples, specifically referring to S+ as “cation”. S does not form a cation in aqueous solutions, but anions (SO₂, SO₃, SO₄).

Authors: We agree and removed it from the results and figure 7 since it does not enhance the discussion.

Comment 2:

Editor: The discussion of the occurrence, formation and processes of buried ice needs to be extended and sharpened to extend beyond the local/regional Bylot Island perspective. Please discuss and distill, especially with available literature available from Russia, Alaska (similarities of occurrence, processes).

Authors: We added this information (*section 5. Discussion*) to further discuss the occurrence, formation and process of buried ice beyond the regional Bylot Island perspective.

- “*Our interpretation is similar to other studies that reported the burial of glacier ice by glaciofluvial sedimentation (Dallimore and Wolfe 1988; Ingólfsson and Lokrantz 2003; Kaplanskaya and Tarnogradskiy 1986, Belova et al., 2008).*”
- “*The formation of these ice-cored landforms follows a typical sequence of events where the ice is first buried under a sufficient amount of sediments exceeding the active layer thickness (Lukas et al. 2005, Benn et Evans, 2010). Beyond the active margins of many glaciers and ice sheets, there are broad areas of glacial deposits, till and outwash underlain by glacier ice. Gravitational and glaciofluvial processes are often identified as the most important processes of sediment deposition and reworking that lead to the burial of englacial ice (Benn and Evans, 2010). In basal zones of glaciers and ice-sheets,*

in situ melting of stagnant debris-rich basal ice produces a supraglacial sediment cover (i.e. melt-out till) that accumulates on the ice, which inhibits its ablation. Both stagnant englacial and basal ice becomes progressively isolated from the upper active flowing ice. These ice-cored landforms adjust to non-glacial conditions and their evolution is strongly linked with climate-driven processes (e.g. active layer deepening due to warmer atmospheric temperature or active layer detachment slides following heavy rains).”

- *“Such ice-cored landforms inherited from the partial melting of buried glacier ice are common in formerly glaciated permafrost regions across Northern Canada and Siberia but their spatial distribution remains poorly known (Belova, 2008; Ingolfsson et Lokrantz, 2003; Kokelj et al., 2017; Dyke and Savelle, 2000; Lakeman and England, 2012).”*

Comment 3 (Format issue):

Editor: Please check and improve font (size and format) of letters in your figures. For examples, “Mittimatalik” is not readable with 100% view. Also, please include sublabels of figures (a, b, c) and refer to these in your figures captions and in your text. Please make sure that the font size of legends and axis labels are large enough (should be readable with 100% view).

Authors: Modification made.

Comment 4:

Editor: Please check and improve the language thoroughly. I have made some few suggestions in the text.

Authors: Suggestions accepted.

Comment 5:

Editor: Why did you choose a supplement instead of appendix for additional method description? Appendices are part of the manuscript whereas supplements are published along with the manuscript. Since you are referring to a method, I suggest to use the appendix format, since it makes it easier to read. Equations, figures and tables in supplements should be numbered as (S1), Fig. S5 or Table S6. Sections are numbered as S3, S3.1, and S3.1.1.

Authors: Modification made.

Specific comments

Comment 1:

Editor: P3L11 - Please add references to sub figures (a,b,c)

Authors: Modification made.

Comment 2:

Editor: P4L6 - Add sublabel of figure.

Authors: Modification made.

Comment 3:

Editor: P4L8-9 – Sentence unclear, please rephrase

Authors: We modified for “*The lower and lateral contacts between the ice body and the surrounding sediments could not be delineated*”.

Comment 4:

Editor: P4L10 – Small letters after enumerations

Authors: Modification made.

Comment 5:

Editor: P4L13 + P5L11 – Which years was the field sampling done and when was the laboratory analysis done?

Authors: We added:

- “*Between 2011 and 2013, ice cores were extracted every 10 cm [...]*”.
- “*In 2013, all samples (n=80) were melted [...]*”.

Comment 6:

Editor: P4L29 – I suggest to move it to appendix, not supplementary.

Authors: We agree and modified for “[...] is presented in Appendix A”.

Comment 7:

Editor P4L13 + P6L23 - This is not a cation; do you mean SO₂, SO₃, SO₄? Same with P. Please clarify.

Authors: See comment #1 (General comments).

Comment 8:

Editor: P5L13 - Were the samples acidified in the field? Were they kept cold?

When was the analysis done? Please add this information in the method section.

Authors: We agree and we added this information in the method section:

- “*All samples were kept frozen, shipped and stored in our laboratory for further analysis.*”
- As for the acidification, all samples were kept frozen prior to shipment to our laboratories. Then, the ice samples were thawed in the laboratory and acidified before processing. We added some details to clarify this part: “*In 2013, all samples (n=80) were melted, filtered (0.45 μm diameter filter) and acidified in the laboratory in sealed polyethylene bottles prior to analyses.*”

Comment 9:

Editor: P5L29 – Classification: Why only pore ice? Could it not be other types of ice? Above you refer to massive ice.

Authors: In this section, we refer to the sediments (units B and C) overlying the massive ice body. These sediments consist mostly of coarse sands and gravels with a structureless cryostructure made of pore ice. Since this information only given in section 4.2 of the “Results”, we modified for “*Additionally, the ground ice in the sediments was analyzed [...]*” to clarify this part.

Comment 10:

Editor: P6L4 - Correct your figure labeling (a or A) throughout text and figures, please.

Authors: Modification made.

Comment 11:

Editor: P6L30 - Please clarify: massive, pore, intrasedimental?

Authors: We modified for “*The D-excess of snow, ice wedge, glacier C-93 and ground ice (unit B) samples averages [...]*”. The type of ground ice (pore ice) is defined later in the results (Section 4.2 - Cryostratigraphy and properties of the overlying sediments).

- P7L8: “[...] *has an ice-poor sediment cryofacies with a structureless cryostructure, essentially made of pore ice.*”

Comment 12:

Editor: P8L5-6 - The table does not include the locations. "Described" in literature should be detailed. Please also add the Russian Literature/locations to give a complete circum-Arctic perspective of occurrence and formation of this ice.

Authors: We agree and added the locations (location, country) in the table.

Comment 13:

Editor: P9L8 - Please extend the discussion to a larger circum-arctic perspective by including other regions, especially the Russian/Siberian locations and potentially also burial/preservation processes.

Authors: See response to comment #2 (General comments)

Comment 14:

Editor: P9L32 - Be consistent, please use the correct and same symbols throughout the paper (Ca²⁺,...)

Authors: Modification made. “*The average concentrations of Ca²⁺, Na⁺ Mg²⁺ and K⁺ in units B and C are [...]*”

Comment 15:

Editor: P12L4-7 - Small letters after enumerations

Authors: Modifications made.

Comment 16:

Editor: P10L21-22 - Please add the citation (with doi) of the data in your reference list as well.

Authors: The citation (with doi) is already in our references (P16L21): Fortier, D., Coulombe, S. and Lacelle, D.: Isotope characterization of ground ice on Bylot Island, v.1.0 (2013-2015). Nordicana D40., 10.5885/45564CE-8A9A55185FBD4283, 2018.

Origin, burial and preservation of late Pleistocene-age glacier ice in Arctic permafrost (Bylot Island, NU, Canada)

Stephanie Coulombe^{1 2 3}, Daniel Fortier^{2 3 5}, Denis Lacelle⁴, Mikhail Kanevskiy⁵, Yuri Shur^{5 6}

¹Polar Knowledge Canada, Cambridge Bay, X0B 0C0, Canada

5 ²Department of Geography, Université de Montréal, Montréal, H2V 2B8, Canada

³Centre for Northern Studies, Université Laval, Quebec City, G1V 0A6, Canada

⁴Department of Geography, Environment and Geomatics, University of Ottawa, Ottawa, K1N 6N5, Canada

⁵Institute of Northern Engineering, University of Alaska Fairbanks, Fairbanks, 99775-5910, USA

⁶Department of Civil and Environmental Engineering, University of Alaska Fairbanks, Fairbanks, 99775-5960, USA

10 Correspondence to: Stephanie Coulombe (stephanie.coulombe@polar.gc.ca)

Over the past decades, observations of buried glacier ice exposed in coastal bluffs and headwalls of retrogressive thaw slumps of the Arctic indicate that considerable amounts of late Pleistocene glacier ice survived the deglaciation and are still preserved in permafrost. In exposures, relict glacier ice and intrasedimental ice often coexist and look alike but their genesis is strikingly different. This paper aims to present a detailed description and infer the origin of a massive ice body preserved in the permafrost of Bylot Island (Nunavut). The massive ice exposure and core samples were described according to the cryostratigraphic approach, combining the analysis of permafrost cryofacies and cryostructures, ice crystallography, stable O-H isotopes and cation contents. The ice was clear to whitish in appearance with large crystals (cm) and small gas inclusions (mm) at crystal intersections, similar to observations of englacial ice facies commonly found on contemporary glaciers and ice sheets. However, the $\delta^{18}\text{O}$ composition ($-34.0 \pm 0.4 \text{ ‰}$) of the massive ice was markedly lower than contemporary glacier ice and was consistent with the late Pleistocene age ice in the Barnes Ice Cap. This ice predates the aggradation of the surrounding permafrost and can be used as an archive to infer paleo-environmental conditions at the study site. As most of the glaciated arctic landscapes are still strongly determined by their glacial legacy, the melting of these large ice bodies could lead to extensive slope failures and settlement of the ground surface, with significant impact on permafrost geosystem landscape dynamics, terrestrial and aquatic ecosystems, and infrastructure.

25 1 Introduction

In the Arctic, extensive areas of ridged and hummocky moraines are underlain by buried glacier ice (Dyke and Savelle, 2000; Kokelj et al., 2017; Solomatin, 1986). Massive-ice bodies within these landscapes are important indicators of past glacial, hydrologic and hydrogeologic conditions and are used to reconstruct regional paleo-environments and paleo-climates (Jorgenson and Shur, 2008; Murton et al., 2005; [Lacelle et al., 2018](#)). Areas with buried glacier ice are also becoming increasingly vulnerable to climate warming (Kokelj et al., 2017). Glacier ice is the most common type of buried ice in permafrost and its occurrence was reported in Russia (Astakhov, 1986; Belova, 2008; Ingólfsson and Lokrantz, 2003;

Kaplanskaya and Tarnogradskiy, 1986; Solomatin, 1986), the Canadian Arctic (Dallimore and Wolfe, 1988; French and Harry, 1990;), Alaska (Jorgenson and Shur, 2008; Kanevskiy et al., 2013), and Antarctica (Sugden et al., 1995; Swanger, 2017). Buried glacier ice has been commonly observed in the proglacial zone of contemporary glaciers and can be preserved in formerly glaciated areas (the paraglacial to periglacial zones) within large moraine belts, hummocky till and glaciofluvial deposits (Everest and Bradwell, 2003; Tonkin et al., 2016). In the Canadian Arctic, buried glacier ice has been mainly reported in the western and central regions, especially in the Mackenzie Delta region (French and Harry, 1990), Tuktoyaktuk Coastlands (Murton et al., 2005), Herschel Island (Fritz et al., 2011), Yukon (Lacelle et al., 2007), Banks Island (Lakeman and England, 2012) and Victoria Island (Dyke and Savelle, 2000; Lorrain and Demeur 1985). While the permafrost of the eastern Canadian Arctic is expected to contain remnants of Pleistocene ice sheets or glaciers, very few have been reported so far.

10

Distinguishing between buried glacier ice and other types of massive ground ice in the permafrost is usually based on cryostratigraphy combined with detailed studies of physical, geochemical and isotopic properties of the ice that may also include analyses of occluded gases (Cardyn et al., 2007; Fritz et al., 2011; Ingólfsson and Lokrantz, 2003). When classifying glacier ice facies, a distinction is made between englacial and basal ice facies (Fortier et al., 2012; Lawson, 1979). The englacial (firm-derived) ice facies is formed by the gradual snow compaction and recrystallization, a process called firmification, and has a low debris content (Benn and Evans, 2010). Basal ice has distinctive physical and chemical characteristics and has a much higher debris content than the overlying englacial ice as a result of subglacial processes operating at the glacier bed: regelation, glaciohydraulic supercooling accretion, net basal adfreezing, incorporation of ice and sediments by overriding ice during glacier advance, glacio-tectonics, ice lens aggradation and downward propagation of cold temperature in the sediment at the glacier bed (congelation) (Alley et al., 1998; Fortier et al., 2012; Hubbard and Sharp, 1995; Knight, 1997; Lawson, 1979; Sharp et al., 1994). Both types of glacier ice may experience burial but basal ice is probably the most common form of buried glacier ice according to reports from various [circumpolar](#) permafrost regions (Belova et al., 2008; Fritz et al., 2011; Murton et al., 2005; St-Onge and McMartin, 1999). The process of burial of glacier ice has been described by Shur (1988), Solomatin (1986), Harris and Murton (2005) and citations therein. Burial of glacier ice may occur as a result of (1) accumulation of fluvial, lacustrine, aeolian, or slope sediments on top of the ice; (2) glaciotectionic processes or (3) formation of insulating blanket of supraglacial melt-out till. With the latter scenario, sediment-rich basal ice has a greater potential to persist in a buried state than englacial ice with little debris. Buried glacier ice remains stable for a long period of time only if the soil temperature is below freezing, and the active layer thickness does not exceed a depth to the massive ice body (Shur, 1988).

30 In this study, we describe the occurrence of massive ice preserved in the permafrost of the Qarlikturvik Valley, southwestern Bylot Island (NU, Arctic Canada). We investigated the physical and geochemical properties of a recently exposed body of massive ice and compared them with those of other ice types in the region (snow, glacier ice, wedge ice, segregated ice) to infer its origin. A cryostratigraphic approach was used to delineate cryostratigraphic units on the basis of their cryostructures,

physical properties, and thaw unconformities (French and Shur, 2010; Gilbert et al., 2016), combined with crystallography and geochemical analyses of the different ground-ice types. The origin of the massive ice is discussed.

2 Regional Setting

5 With ice-capped summits dominating the central highlands and glaciated valleys that extend near the coast, the mountainous central section forms a striking contrast with the relatively flat coastal lowlands. The Byam Martin Mountains range (~1400 m a.s.l.) consists primarily of Archean-Aphebian crystalline igneous rocks and Proterozoic metasedimentary and metamorphic rocks (Jackson and Davidson, 1975). Klassen (1993) suggested that alpine glaciers, larger but similar in size to those present today, occupied Bylot Island during the late Wisconsinan. At the last glacial maximum (LGM), ice streams of the Laurentide Ice Sheet (LIS) flowed in adjacent marine channels (Lancaster Sound, Navy Board Inlet, and Eclipse Sound) and reached 10 Bylot Island (De Angelis and Kleman, 2007). The study area is situated in the Qarlikturvik Valley (73°09' N, 79°57' W, 25 m a.s.l.) on southwest Bylot Island at about 80 km north-west of Mittimatalik (Pond Inlet; Fig. 1b). This valley was eroded through a Cretaceous-Tertiary sequence of poorly consolidated sandstone and shale (Jackson and Davidson, 1975).

The Qarlikturvik Valley is a typical U-shaped glacial valley with surface sediments reflecting the complex history of the valley: 15 presence of unconsolidated glacial, colluvial, alluvial, marine, aeolian and organic deposits dating back to the Late Pleistocene and Holocene (Allard, 1996; Fortier and Allard, 2004). The valley comprises low-lying ice-wedge polygon terraces bordering a proglacial braided river running in a glaciofluvial outwash plain and forming a delta in Navy Board Inlet. During the Holocene glaciers C-93 and C-79 retreated up-valley and today they are located about 14 km from the coast. Following glacial retreat, the valley became partially submerged between 11,335 cal yr BP to 6,020 cal yr BP as a result of a marine transgression 20 (Allard, 1996). Alternating layers of peat and aeolian sands and silts (~2-3 m) cover the glaciofluvial terraces of the valley, where an extensive network of syngenetic ice-wedge polygons have developed after 6000 cal yr BP (Fortier and Allard, 2004). Mounds of reworked till and ice-contact stratified sediments mark a former position of the glacier in the valley.

Bylot Island belongs to the Arctic Cordillera and the Northern Arctic terrestrial ecozones. The MAAT between 1971 and 2000 25 in Pond Inlet (NU, Canada) was -15.1 ± 5.1 °C, increasing slightly to -14.6 ± 4.9 °C between the 1981 and 2010 (Environment Canada, 2015). No significant trends in precipitation have been observed over the last decades, with a mean annual precipitation of 189 mm, much of it falling as snow. Thawing and freezing indices averaged (1981-2010) 473 degree-days above 0°C and 5736.1 degree-days below 0°C, respectively (Environment Canada, 2015). Vegetation in the valley is typical of Arctic tundra environments and is largely determined by soil moisture and slope (Duclos et al., 2006). Wetlands occur in 30 low-lying areas, commonly with low-centered polygons, and are typically dominated by grasses and sedges. Mesic tundra is found in areas characterized by better-drained soils (i.e. ~~plateaus~~ uplands and hillslopes). The climatic and vegetation conditions determine the presence of continuous permafrost in the ice-free areas of Bylot Island. Locally, permafrost thickness

>400 m has been detected from thermal measurements on nearby Somerset and Devon Islands (Smith and Burgess, 2002). Active layer thickness varies from ~ 1 m in drained unvegetated sands and gravels, to ~ 0.3-0.7 m in peaty and silty soils (Allard et al., 2016).

3 Material and Methods

5 A large body of massive ice was found exposed beneath ~ 1.7 m of sediments along the headwall of a thaw slump in the Qarlikturvik Valley, ~10 km from the terminus of C-93 and C-79 glaciers (Fig. 1c). Since a great amount of slump material covered the ice, the exposure was cleaned and enlarged to allow a better description and sampling. The excavated section along the headwall of the slump attained a height exceeding 7 m and extended laterally over 10 m. The lower and lateral contacts ~~between the ice body and the surrounding sediments massive ice have not been reached could not be delineated.~~ The exposure
10 was subdivided into three units, from bottom: ~~aA) m~~Massive ice; ~~bB) s~~Sand and gravel and ~~dC) m~~Muddy sand diamicton overlaid by peat (Fig. 2). The thaw depths were measured with a steel probe at every 10 m along a 150-m transect that started at the upper headwall of the thaw slumps. Samples from the massive ice (unit A) were collected using an axe and a portable core-drill equipped with an 8-cm diamond carbide core barrel. ~~Between 2011 and 2013, i~~Ice cores were extracted every 10 cm or less from depths ranging from one to three meters below the surface (Fig. 2) without reaching the bottom of the ice body.
15 For comparison, modern glacier ice (englacial ice) was sampled from freshly collapsed ice blocks at the margin of glacier C-93 located a few kilometers up the valley (Fig. 1c). ~~-~~Wedge ice, segregated ice and snow, were also sampled for geochemical analysis at the site located nearby (< 1 km) the massive ice exposure. Samples (n=5) from the sediments (units B and C) overlying the massive ice were collected and characterized. ~~All samples were kept frozen, shipped and stored in our laboratory for further analysis. All samples (n=80) were thawed in the laboratory in sealed polyethylene bottles, shipped and stored in~~
20 ~~our laboratory for further analysis.~~

A cryostratigraphic approach was used to describe the massive-ice body and the overlying sediments (Fortier et al., 2012; French and Shur, 2010; Gilbert et al., 2016; Murton and French, 1994). Cryostratigraphic units were delineated based on cryostructures and cryofacies. Cryofacies are bodies of frozen sediment that are visually distinct from adjacent frozen
25 sediments based on their cryostructures, volumetric ice content, ice-crystal size and sediment texture. Cryostructures refer to the shape, amount and distribution of ice within the frozen sediment. Gas inclusions visible within the ice and the deformation structures in the ice and sediments were also described (Hambrey and Lawson, 2000). To further investigate the cryostratigraphic characteristics of the massive ice body, all samples were observed under X-ray computed tomography (CT) scanning (*Siemens SOMATOM Sensation 64*), a technique that allows visualizing and reconstructing the internal structure (2D
30 and 3D) of permafrost samples at < 1 mm resolution (Calmels et al., 2010; Dillon et al., 2008; Fortier et al., 2012). The complete CT scanning procedure used in this study is presented in ~~supplementary material~~Appendix A. Crystallographic analysis of the massive ice and modern glacier ice was conducted to measure their crystal size and shape (surface area, long-

axis and circularity ratio) as these parameters contain information about the conditions under which the ice was formed (French and Shur, 2010). The crystalline structure was investigated through thin sections of ice mounted on a glass slide under cross-polarized light. Thin sections were made by cutting the ice sample vertically and/or horizontally into thin slices (thickness: 0.2 to 0.4 mm). C-axis orientations of the crystals have not been measured since the horizontal orientation of the ice samples was not preserved following the sampling. Fiji image analysis software was used to measure the area, long axis, circularity ratio of each crystal (Schindelin et al., 2012). Differences in the crystal shape (area, long axis, circularity ratio) of horizontal and vertical thin sections were tested with the Mann-Whitney U test using R, which is a programming language software for data analysis and graphics (R Development Core Team, 2016).

The massive ice body, along with glacier C-93 ice, ice wedges, intrasedimental ice and snow, were analyzed for their geochemical and isotopic ($\delta^{18}\text{O}$, δD) composition, an approach that can shed light into the origin of ground ice (Lacelle and Vasil'chuk, 2013). Sampling of the massive ice body was done at 10 cm vertical intervals or less, depending on the unit change; prior to sampling, at least 10 cm of the ice surface was removed with an ice axe. In 2013, all samples (n=80) were melted, and filtered (0.45 μm diameter filter) and acidified in the laboratory in sealed polyethylene bottles prior to analyses. The concentration of major cations in the ice and snow (Al_{tot} , ~~B~~, Ca^{2+} , Fe_{tot} , K^+ , Mg^{2+} , Mn_{tot} , Na^+ , ~~P, S, Si and Sr~~) was determined by inductively coupled plasma optical emission spectrometry (Vista Pro ICP-OES) at the University of Ottawa. Solutes are expressed in milligrams per litre and analytical reproducibility was $\pm 1\%$. The stable isotope ratios of oxygen ($^{18}\text{O}/^{16}\text{O}$) and hydrogen (D/H) were determined using a Los Gatos Research high-precision liquid water analyzer coupled to a CTC LC-PAL autosampler. The results are presented using the δ -notation ($\delta^{18}\text{O}$ and δD), where δ represents the parts per thousand differences for $^{18}\text{O}/^{16}\text{O}$ or D/H in a sample with respect to Vienna Standard Mean Ocean Water (VSMOW). Analytical reproducibility for $\delta^{18}\text{O}$ and δD was $\pm 0.3\text{‰}$ and $\pm 1\text{‰}$, respectively.

The origin of the sediment overlying the massive ice was inferred from particle-size distribution, the clasts and sand-size quartz grain morphoscopy, and the geochemical and isotopic (δD - $\delta^{18}\text{O}$) composition of pore water. Particle-size distributions were determined by dry sieving at $\frac{1}{2} \phi$ intervals (size ranges -12 to 4 ϕ). The hydrometer method was used to determine the distribution of the finer particles smaller than 4 ϕ (ASTM Standard D422, 2007). Descriptive statistics (mean grain size, sorting, skewness) and *Folk & Ward* sediment classes were determined using the RYSGRAN package for R (Gilbert et al., 2014; R Development Core Team, 2016). Fifty *in situ* pebble- to cobble-sized clasts were randomly collected from the uppermost unit (Unit C). These clasts were analyzed for shape, roundness, and lithology using techniques described by Benn (2004). Morphoscopic analyses of small quartz grains (0.5-1.0 mm) were conducted using a binocular microscope (Cailleux and Tricart, 1963). Additionally, the ground pore-ice in the sediments was analyzed for soluble ions (major cations) and δD - $\delta^{18}\text{O}$ composition following the method described above. A fragment of poorly decomposed peat sampled in unit B was radiocarbon dated by accelerator mass spectroscopy (AMS) (ULA-6505, Centre for Northern Studies, Université Laval). Radiocarbon age

was calculated as $-8033\ln(F^{14}\text{C})$ and reported in ^{14}C yr BP (BP=AD 1950) (Stuiver and Polach, 1977) and then corrected to calendar years (cal yr BP) using Calib 7.10 and the IntCal13 calibration curve (Reimer et al., 2013; Stuiver et al., 2017).

4 Results

4.1 Cryostratigraphy and properties of the massive ice body.

5 The exposed massive ice body (unit A) was > 10 m thick and had a clear to milky white appearance due to its high bubble content (Fig. 3a). With a volumetric ice content near 100%, it refers to the “pure ice” cryofacies described by Murton and French (1994). Occasional thin bands of sediments (sands and gravels) with suspended and crustal cryostructures were cutting across the ice (Fig. 3b). These discrete and planar bands were < 2 -cm thick, sub-parallel one to the other and showed a dip direction (21° to 31°) downward the ice body in the southeast direction. Crystallographic analysis of thin sections of the massive
10 ice under cross-polarized light showed that the crystals had mostly bluish colours, suggesting that the ice crystals had similar orientations (Figs. 4 and 5a). Coarse-grained ice crystals characterized the massive ice body: long axis average of 7.97 ± 2.97 mm (3.13-16.58 mm); average surface area of 34.9 ± 25 mm² (5.8 and 153.5 mm²); average circularity ratio of 0.65 ± 0.09 , indicating the crystals were relatively rounded (Fig. 6). No significant differences in the shape properties (surface area, long axis, circularity ratio) were observed between the horizontal and vertical thin sections (Mann-Whitney-Wilcoxon test, $p>0.05$),
15 indicating that the ice crystals were nearly equiaxial. The glacier C-93 ice displayed ice crystals with varying colors (Fig. 4). The ice crystals were larger (average surface area of 125.29 ± 148 mm²) than those of the massive ice body (Figs. 4 and 6). Glacier C-93 ice consists of relatively rounded crystals as their mean circularity ratio averaged 0.65 ± 0.01 . The total volumetric content of gas inclusions varied from 2 to 10 % for both the massive ice and glacier C-93 ice, with bubbles being mostly located along grain boundaries (Fig. 5a). The massive ice body contained three types of gas inclusions: A) spherical bubbles;
20 B) flattened disks and C) clusters of deformed and coalescent bubbles (Figs. 5b, c, d). The tiny gas bubbles had a mean surface area of 0.85 ± 1.04 mm² with circularity ratio averaging 0.89 ± 0.17 . Gas bubbles observed in glacier C-93 were mostly spherical and small, with a few clusters of deformed coalescent bubbles. The gas bubbles had a mean surface area of 0.13 ± 0.41 mm² and an average circularity ratio of 0.89 ± 0.18 .
25 Major cations in the massive ice body (i.e. Ca^{2+} , Na^+ Mg^{2+} and K^+ and S^+) all occurred in low concentrations (mean < 1.76 mg/L; Fig. 7). The cation concentrations of glacier C-93 ice were very similar to those of the massive ice; whereas the ice wedge had slightly higher cation concentrations, with average concentrations ranging from 1.11 ± 0.18 mg/L for Mg^{2+} , to 3.32 ± 0.44 mg/L for Ca^{2+} . The δD - $\delta^{18}\text{O}$ composition of the massive ice, along with those from glacier C-93 and other types of ground ice present in the valley are shown in Fig. 8b. The $\delta^{18}\text{O}$ composition of the massive ice had a narrow range
30 (average $\delta^{18}\text{O}$: $-34.0 \pm 0.4\text{‰}$) with D-excess ($d=\delta\text{D} - 8 \delta^{18}\text{O}$) averaging $6.6 \pm 2.5 \text{‰}$. The $\delta^{18}\text{O}$ composition of the massive ice was much lower than that of the snow (average $\delta^{18}\text{O}$: $-30.4 \pm 1.8 \text{‰}$), ice-wedge ice (average $\delta^{18}\text{O}$: $-25.6 \pm 0.95 \text{‰}$) and

glacier C-93 ice (average $\delta^{18}\text{O}$: -25.0 ± 3.1 ‰). The D-excess of snow, ice wedge, glacier C-93 and ~~intrasedimental-ground~~ ice (unit B) samples averages 8.9 ± 3.4 ‰; 9.3 ± 7.1 ‰, 5.2 ± 5.8 ‰ and -52.4 ± 31.4 ‰ respectively. In a $\delta\text{D}-\delta^{18}\text{O}$ diagram, the samples from the massive ice, glacier C-93, snow and ice wedges were distributed along linear regression slope values of 6.0 ($R^2 = 0.44$), 7.1 ($R^2 = 0.95$), 6.6 ($R^2 = 0.96$), and 5.2 ($R^2 = 0.36$), respectively.

5

4.2 Cryostratigraphy and properties of the overlying sediments

The massive ice body was covered by ~ 1.7 m of sediments. The thaw depths measured in late July (2013) ranges between 19 and 55 cm (mean: 30 ± 9 cm). A sharp, sub-planar and unconformable contact separated the ice from the overlying sediments (units B and C) along the exposed section (Fig 2). Unit B (~ 115 cm thick) directly overlaid the massive ice body and has an ice-poor sediment cryofacies with a structureless cryostructure, essentially made of pore ice. Unit B is subdivided into three sub-units: B₁: Coarse sandy gravel, B₂: Sandy gravel, B₃: Stratified gravelly sand. All sub-units were texturally similar, consisting mostly of sands and gravels, with silt- and clay-sized particles constituting $< 3\%$ of the sediment (Fig. 9). The grain size fraction > 32 mm was not included in profile distribution, but abundant cobbles were ~~randomly~~ observed within the bottom sub-units. Sediments were poorly sorted to very poorly sorted (sorting values ranging between 3 and 5) and were coarser at the base and finer near the top (Fig. 9). Sub-units B₁ and B₂ were both characterized by unstratified sandy gravel that became finer towards the uppermost sub-unit B₃, which consisted of stratified gravelly sand with thin sub-horizontal laminae (< 1 cm). Morphoscopic analysis of sub-unit B₃ showed that quartz grains were mostly angular (70%) to sub-angular (smooth and polished, glazing grains: 25%). Rounded and frosted grains represented $< 5\%$ of the total sand fraction. Plants fragments located at the base of sub-unit B₃ were dated to 885 ± 15 ^{14}C yr BP (1164 cal yr BP; 1σ range: 1058-1204). The sand and gravel sequence of Unit B was sharply overlain by ~ 55 cm of an unstratified (massive) thawed diamicton, with abundant pebble- to cobble-sized clasts (Unit C; Figs. 2 and 9). The matrix (sandy silt) was very poorly sorted and the grain size distribution tended to be fine-skewed. Clasts had a wide range of shapes, with predominance in the sub-angular and sub-rounded classes (76%). Only ~~about~~ 24% of all clasts were rounded or angular. Gneiss was the dominant cobble type with an average of 60 % in the matrix whereas sedimentary and igneous rocks average 36 % and 4 %, respectively. A thin, continuous and irregular layer of dark fibrous peat with roots (sub-unit C2) overlaid the diamicton.

Supernatant water samples (n=5) from the ice-poor sediments in Unit B showed markedly higher $\delta^{18}\text{O}$ and cation values compared to the underlying massive-ice body (Figs. 7 and 8a). In Unit B, the $\delta^{18}\text{O}$ values became progressively higher, from -25.7 to -15.4‰, as we moved upward from the ice-sediment contact towards the surface (Fig. 8a). The cations content in the ice-poor sediment was 1 to 2 orders of magnitude higher than in the massive ice and also shifted ~~s~~ to higher concentrations towards the surface (Fig. 7).

5 Discussion

5.1 Origin of the massive ice

The cryostratigraphic and crystallographic properties of the massive ice along with its isotopic and geochemical composition indicate that the exposed ice consists of relict Pleistocene englacial ice buried and preserved in the permafrost of Bylot Island.

5 Table 1 summarizes the cryostratigraphic and crystallographic properties of different types of tabular massive ice described in the literature: buried glacier ice (basal and englacial), massive segregated-intrusive ice, and buried snowbanks. The appearance and structure of the buried massive ice body are similar to those of englacial ice typically observed at the margin of glaciers, ice caps or ice sheets. The buried massive ice body has a whitish appearance owing to its high concentration of [air bubbles](#) ~~gas inclusions~~[air bubbles](#). Coarse-bubbly ice is the most abundant type (90-95%) of englacial ice found in glaciers (Allen et al., 10 1960). Our results also show that the cross-sectional area of the crystals of the buried massive ice is smaller than that of neighbouring C-93 glacier ice, but there is no significant difference in their circularity ratio (Mann-Whitney-Wilcoxon test, $p=0.89$). However, the difference in ice crystal size is not unforeseen since the ones from glacier ice can show variations on the order of a few millimetres to several centimetres in diameter (Gow, 1963; Thorsteinsson et al., 1997). Patterns of preferred crystal orientation combined with the occurrence of deformation features in the form of debris bands suggest that the ice has 15 been subjected to long-continued shear stress caused by the motion of [a glacier](#) (Benn and Evans, 2010; Lawson, 1979). The debris bands cross-cutting the buried glacier ice are comparable to those observed in [a zone of the terminus](#) [zone](#) of Stagnation Glacier on Bylot Island, where basal sediments were transported to the glacier surface through shear planes (Moorman and Michel, 2000).

20 Cations and stable water isotopes measured in the buried massive ice also support its glacial origin. The low cation content in the buried massive ice is statistically similar to that of the ice of glacier C-93. Although a slope of 6.0 was calculated between δD - $\delta^{18}O$ of the buried ice, lower than the GMWL (slope =8; Craig, 1961), this was due to the small range of the data ($\delta^{18}O$: -34.4 ‰ to -33.4 ‰) which prevented the calculation of a reliable regression slope. The δD - $\delta^{18}O$ values of the buried massive ice are similar to those of Pleistocene-age ice from the Barnes Ice Cap [on adjacent Baffin Island](#) (median $\delta^{18}O$: 25 -33.1 ‰; Zdanowicz et al., 2002). This is supported by the average D-excess of 6.6 ± 2.5 ‰ for the buried massive ice, which is within the range of the values of Barnes Ice Cap (Lacelle et al. 2018) and glacier C-93 (5.2 ± 5.8 ‰) on Bylot Island.

The average $\delta^{18}O$ value of the buried massive ice (-34.0 ± 0.4 ‰) is much lower than that of the other ice types sampled in the study area (Fig. 8b). The $\delta^{18}O$ values of the buried massive ice are also lower than in the ice of Penny Ice Cap from the last 30 glacial period ($\delta^{18}O \sim -31.3 \pm 1.1$ ‰; Fisher et al., 1998), but in the range of the late Pleistocene ice of Barnes Ice Cap (Zdanowicz et al., 2002). The late Pleistocene $\delta^{18}O$ values on Barnes Ice Cap were 6-10‰ lower than the expected $\delta^{18}O$ [modern - last glacial maximum] and interpreted to be the product of two factors: 1) temperature effect: cold climate during the last glacial period that caused a $\delta^{18}O$ shift of 6-7‰ at that latitude (Fisher and Alt, 1985); 2) elevation effect: ice sourced

from higher elevation on Foxe Dome (~ 2200 - 2400 m) that caused an additional depletion in $\delta^{18}\text{O}$ of local precipitation (Hooke and Clausen, 1982; Zdanowicz et al., 2002). Klassen (1993) suggested that the alpine glaciers on Bylot Island were larger but did not change much in elevation during the late Pleistocene; however, the $\delta^{18}\text{O}$ values of our buried ice require ice sourced from elevations in the 2150-2350 m range and as such was likely sourced from the Foxe Dome (Lacelle et al., 2018).

5 Mega-scale glacial lineations and streamlined landforms were mapped on the floor of Navy Board Inlet, Eclipse Sound and Lancaster Sound by De Angelis and Kleman (2007); and interpreted as a product of LIS ice streams. We proposed that the study area was most likely an area of confluence of LIS ice and local alpine glaciers during the LGM as an ice stream moved through Navy Board Inlet and onto south-western Bylot as proposed by Dyke and Hooper (2001).

10 5.2 Burial and preservation of late Pleistocene glacier ice in permafrost

The texture (sand and gravel), stratification, and poorly sorted nature of the sediments (unit B) directly overlying the buried glacier ice suggest a glaciofluvial ice-contact deposit. Similar sediment characteristics were obtained by Fortier and Allard (2004) for glaciofluvial sands (angular grains: 75%) located a few kilometers away from the study site. The abundance of angular grains (70%) in unit B indicates little abrasion, which is consistent with a transport by glaciofluvial water where grains
15 were carried over short distances allowing little wear. Furthermore, the sharp and unconformable contact between the buried glacier ice and the overlying sediment suggests that thermal erosion caused by sediment-laden waterflow affected the top of the ice of unit A. Our interpretation is similar to other studies that reported the burial of glacier ice by glaciofluvial sedimentation (Dallimore and Wolfe 1988; Kaplanskaya and Tarnogradskiy 1986; Ingólfsson and Lokrantz 2003; Belova et al., 2008). The uppermost unit (C) is a diamicton, which has undergone reworking by non-glacial processes such as gravitational
20 mass-wasting (e.g. slumping and solifluction). In ice-contact environments, the sediment cover is subject to several cycles of subsidence and redeposition as the ice undergoes progressive and partial melting (Schomacker, 2008). The shape of the clasts found within this unit provides evidence that it has experienced active glacial transport, which is also supported by the occurrence of erratic clasts (gneiss) derived from distal bedrock located several kilometres from the study site. To summarize, large stagnant ice blocks could have been covered by glacial sediments at or near the ice margins during the advance and
25 stagnation of a glacier within the Qarlikturvik Valley. The burial of the ice occurred as meltwater streams deposited sediments in direct contact with glacier ice followed by the reworking and redeposition of supraglacial sediments, which formed a surficial cover of mud and sand, later affected by cryoturbations as is indicated by the incorporation of organic material dated at 885 ± 15 ^{14}C yr BP (1164 cal yr BP; 1σ range: 1058-1204).

A clear discontinuity in the $\delta^{18}\text{O}$ and cations profiles is observed at the ice-sediment contact and in the overlying units (Figs.
30 7 and 8a). Strong contrasting profiles between buried ice and the overlying sediment are related to different sources of water and formation history. The supernatant water from the ground ice in the overlying sediments (units B and C) has much higher average $\delta^{18}\text{O}$ values of -17.6 ± 5.4 ‰. These values are comparable to $\delta^{18}\text{O}$ values obtained from precipitation at Pond Inlet

between 1990 and 1992 (-23.8‰ ; IAEA/WMO, 2016) and modern segregation ice which generally has $\delta^{18}\text{O}$ values of -18 to -22‰ (Michel, 2011). The average concentrations of Ca^{2+} , Na^+ , Mg^{2+} and K^+ in units B and C are 10-86 times greater than those in the buried glacier ice. The substantial increase observed in the cation content from the sediment layers can be attributed to the great amount of mineral dissolution before the freezing of the water (Lacelle and Vasil'chuk, 2013).

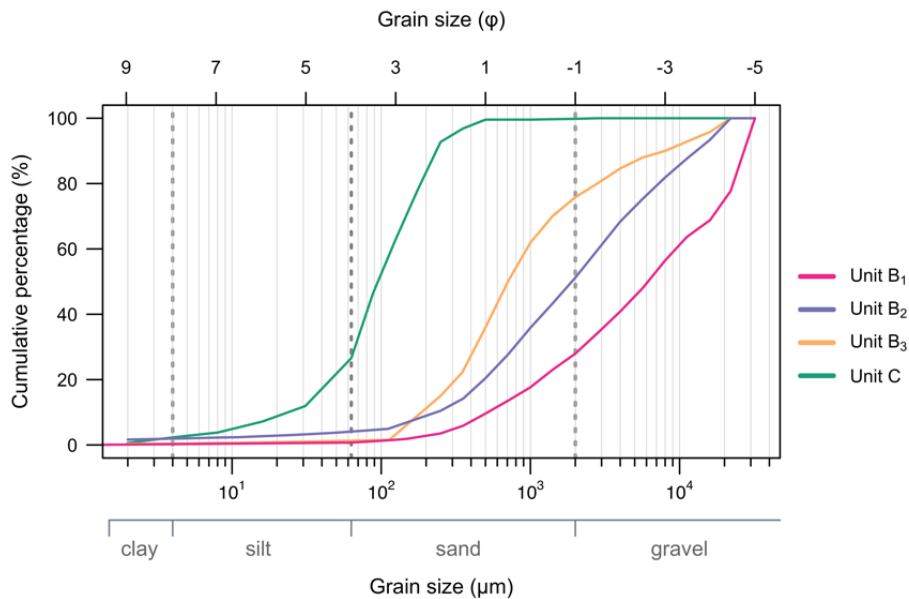
- 5 The formation of these ice-cored landforms follows a typical sequence of events where the ice is first buried under a sufficient amount of sediments exceeding the active layer thickness (Lukas et al. 2005, Benn et Evans, 2010). Beyond the active margins of many glaciers and ice sheets, there are broad areas of glacial deposits, till and outwash underlain by glacier ice. Gravitational and glaciofluvial processes are often identified as the most important processes of sediment deposition and reworking that lead to the burial of englacial ice (Benn and Evans, 2010). In basal zones of glaciers and ice-sheets, in situ melting of stagnant
- 10 debris-rich basal ice produces a supraglacial sediment cover (i.e. melt-out till) that accumulates on the ice, which inhibits its ablation. Both stagnant englacial and basal ice becomes progressively isolated from the upper active flowing ice. These ice-cored landforms adjust to non-glacial conditions and their evolution is strongly linked with climate-driven processes (e.g. active layer deepening due to warmer atmospheric temperature or active layer detachment slides following heavy rains). In the Arctic, large blocks of buried late Pleistocene glacier ice were left undisturbed for several millennia owing to cold and dry
- 15 climatic conditions that favored permafrost aggradation following deglaciation. Such ice-cored landforms inherited from the partial melting of buried glacier ice are common in formerly glaciated permafrost regions across Northern Canada and Siberia but their spatial distribution remains poorly known (Belova, 2008; Ingolfsson et Lokrantz, 2003; Kokelj et al., 2017; Dyke and Savelle, 2000; Lakeman and England, 2012). In this study, the deposition of a cover of coarse and well-drained sediment exceeding the average active layer thickness of the area has probably been the most important factor limiting the melting of
- 20 the ice. Furthermore, plant colonization and the development of a continuous vegetation cover with organic accumulation have changed the thermal properties of the ground which reduced heat flow from the atmosphere to the permafrost during the summer and favored heat loss during winter. This resulted in a thinner active layer (the permafrost table moved upward) and ground ice aggradation. The preservation potential of buried glacier ice on a millennial time-scale following the glacial retreat depends on the complex interactions between climate, geomorphology, and the physical properties of the sediment cover.
- 25 Between 1999 and 2016, ground thermal regime monitoring in an intact low-centered polygon nearby the study site showed maximum active layer depths varying between 0.3 and 0.7 m while the buried ice is located >1 m below the ground surface. While the properties of the sediment cover had positive feedback on the long-term preservation of the buried ice, thaw slumping activity, and not atmospheric temperature per say, was a fundamental drivers of its degradation by exposing the ice and accelerating its melting.

6 Conclusions

This study confirms that the permafrost of Bylot Island contains remnants of Pleistocene glacier ice that survived the last deglaciation. Geomorphic and cryostratigraphic observations along with the crystallographic properties of the massive ice suggest its englacial origin. Evidence that support the englacial origin of the massive ice are: 1) sSharp and unconformable upper contact between the ice and the overlying glaciofluvial sediments; 2) cClear to whitish ice, with large crystals; 3) bBubble-rich ice, with small gas inclusions (~mm) mainly located at crystal junctions; 4) oOccasional debris bands of sand and fine gravel cross-cutting older debris-free ice; 5) gGeochemical similarities with contemporary glacier ice. The geochemical data show a clear discontinuity at the buried ice-sediment contact as well as the very low cation content similar to that of modern glacier ice. An origin of massive ice from a Pleistocene glaciation is suggested based on the isotope data: the buried englacial ice is strongly depleted in heavy isotopes, similarly to regional Pleistocene glacier ice. Glacier-derived permafrost contains ice that predates the aggradation of the permafrost and represents unique environmental archives to reconstruct paleo-environmental conditions at the study site. Although stable isotopes cannot yield information on absolute ages, these data show that the glacier ice body was originated from an ice stream flowing from the Foxe dome of the Laurentide Ice Sheet, which was subsequently buried and preserved in the permafrost of Bylot Island for thousands of years. The sedimentological data and interpretations presented in this study demonstrate that the first phase in the burial of the ice involved glaciofluvial deposition directly on the ice, which was followed by mass wasting and plant colonization. Knowledge regarding the occurrence, origin, and preservation of buried glacier ice is of a great interest due to its potential impacts on the landscape stability upon melting. Since Bylot Island has experienced several periods of native and foreign Pleistocene glaciations and based on our findings, we propose that buried glacier ice should occur elsewhere on the island, and probably on adjacent Baffin Island. In a context of climate change, active layer deepening and increased activity of slope processes, such as active layer detachment slides, thaw slumping and thermo-erosional gullying, will very likely expose buried glacier ice and initiate major landscape changes, with cascade effects on the ecosystems.

Data availability. The isotope data are available for download at the public data repositories of Nordicana D, managed by the Centre for Northern Studies (<http://www.cen.ulaval.ca/nordicanad/dpage.aspx?doi=45564CE-8A9A55185FBD4283>).

Appendix A



5 **Figure A1: Grain size distribution curves of the sedimentary units (two samples per sub-units). The gravel fraction was removed prior to analysis.**

Appendix B

10 To further investigate the cryostratigraphic characteristics of the ice, all samples were observed under X-ray computed tomography (CT) scanning (Siemens SOMATOM Sensation 64). This technique relies on the calculation of the linear attenuation coefficient that measured the density of an object passed through an X-ray beam at different angles. A CT-scan produces cross-sectional images (usually 512 by 512 pixels matrix) of an object where each pixel of the image is assigned an X-ray attenuation value (μ), also called a CT number. CT numbers are then standardized using the Hounsfield scale where the radiodensity of water (μ_{water}) is arbitrarily defined as 0 HU (Hounsfield units) according to Equation 1. Different shades of gray are assigned specific CT numbers to create the displayed image using a specific image processing software (Fiji) dedicated to DICOM (Digital Imaging and Communications in Medicine) images. In permafrost samples, unconsolidated sediments and

15 rock (high density minerals) appear white, as the attenuation of these materials is very high. Gases inclusions and water appear black and other materials, such as ice, can have various shades of grey depending on their density.

$$HU \text{ value} = \frac{\mu - \mu_{\text{water}}}{\mu_{\text{water}}} \times 1000 \quad (B1)$$

This tool helps refine cryostratigraphic characterization of permafrost cores as it can reveal characteristics otherwise difficult or even impossible to observe with the naked eye. It allows visualization and characterization of the internal components of the frozen sample, such as the ice, grain-size variations and gas inclusions. From a quantitative perspective, it has been used to segment images into regions of ice, gas and sediment in order to quantify the volumetric content of the sample scanned
5 (Calmels et al., 2010; Dillon et al., 2008).

Appendix C

The typical method of measuring ice texture and fabric requires that an ice core or block is sliced into 1-cm thick vertical and horizontal sections with a band saw, and then thinning it to the desired thickness (< 0.5 mm) following the standard microtoming procedure. Three photographs were taken of each sample at different angles (0°, 45°, 90°) under cross-polarized
10 light in order to show the crystal boundaries as clearly as possible. The analysis is based mostly on qualitative observations, although statistics on crystal dimensions and geometry were obtained from digital analysis of thin section photographs. It should be noted that the values obtained from these parameters does not represent exact values and gives limited information since a thin section is only a two-dimensional representation of the crystals (“sectioning effect”). A digital image analysis using ImageJ software allowed delineating and measuring three geometrical parameters of each crystal. The area (mm²), the
15 long-axis (mm) and the circularity ratio determine the crystal texture (size and shape). The long-axis is a measurement of the primary axis of the best-fit ellipse to an ice crystal. The circularity ratio (C) is dimensionless parameter used to describe quantitatively the shape or outline form of a crystal. It is a function the perimeter P and the area A:

$$C = \frac{4\pi A}{P^2} \quad (C2)$$

20 As C approaches 1, crystals become more circular, and as it approaches 0, crystals become very narrow relative to their length. Therefore, the circularity ratio is a measure of the deviation of a crystal cross-section shape from a perfect circle.

Author contributions. The study was conceived by SC, DF and DL. The manuscript was written by SC and all authors
25 contributed to editing and revision.

Competing interests. The authors declare that they have no conflict of interest.

Acknowledgements. We are grateful to E. Godin, K. Larrivée, N. Perreault, A. Veillette, J. Lasnier, M. Paquette and S. Veuille,
30 for their help in the field and in the laboratory. We also thank the team of Prof. G. Gauthier (U. Laval) and the staff of the Sirmilik National Park for logistical support and access to Bylot Island. This project was funded by ArcticNet, the Natural

Sciences and Engineering Research Council of Canada (NSERC), Fonds de Recherche du Québec – Nature et technologies (FRQNT), the W. Garfield Weston Foundation and the Polar Continental Shelf Program (PCSP), the Northern Scientific Training Program (NSTP) of the Canadian Polar Commission, the NSERC Discovery Frontiers grant ‘Arctic Development and Adaptation to Permafrost in Transition’ (ADAPT). Finally, this paper has benefited from constructive comments from

5 Michael Fritz and one anonymous reviewer. We would also like to thank the handling editor, Julia Boike.

References

Allard, M.: Geomorphological changes and permafrost dynamics: key factors in changing arctic ecosystems. An example from Bylot Island, Nunavut, Canada, *Geoscience Canada*, 205–212, 1996.

10 Allard, M., Sarrazin, D. and L’Herault, E.: Borehole and near-surface ground temperatures in northeastern Canada, *Nordicana D8.*, 2016.

Allen, C. R., Kamb, W. B., Meier, M. F. and Sharp, R. P.: Structure of the lower Blue glacier, Washington, *The Journal of Geology*, 601–625, doi:10.1086/626700, 1960.

15 Alley, R. B., Lawson, D. E., Evenson, E. B., Strasser, J. C. and Larson, G. J.: Glaciohydraulic supercooling: a freeze-on mechanism to create stratified, debris-rich basal ice: II. Theory, *Journal of Glaciology*, 44(148), 563–568, 1998.

Astakhov, V. I.: Geological conditions for the burial of Pleistocene glacier ice on the Yenisey, *Polar Geography and Geology*, 10(4), 286–295, doi:10.1080/10889378609377298, 1986.

ASTM Standard D422: Standard test method for particle-size analysis of soils, [online] Available from: www.astm.org, 2007.

20 Belova, N. G., Solomatina, V. I. and Romanenko, F. A.: Massive ground ice on the Ural coast of Baydaratskaya Bay, Kara Sea, Russia, in *Proceedings of Ninth International Conference on Permafrost*, vol. 1, pp. 107–112., 2008.

Benn, D. I.: Clast morphology, in *A Practical Guide to the Study of Glacial Sediments*, Evan, D.J.A., Benn, D.I. (Eds.), 2004.

Benn, D. I. and Evans, D. J. A.: *Glaciers and Glaciations*, 2nd ed., Hodder Education, London., 2010.

Cailleux, A. and Tricart, J.: *Initiation à l’étude des sables et des galets*, Centre de documentation universitaire., 1963.

25 Calmels, F., Clavano, W. and Froese, D. G.: Progress on X-ray computed tomography (CT) scanning in permafrost studies, in *Proceedings of the Joint 63rd Canadian Geotechnical Conference & 6th Canadian Permafrost Conference*, pp. 1353–1358, Calgary, Alberta., 2010.

Cardyn, R., Clark, I. D., Lacelle, D., Lauriol, B., Zdanowicz, C. and Calmels, F.: Molar gas ratios of air entrapped in ice: A new tool to determine the origin of relict massive ground ice bodies in permafrost, *Quaternary Research*, 68(2), 239–248, doi:10.1016/j.yqres.2007.05.003, 2007.

30 Craig, H.: Isotopic Variations in Meteoric Waters, *Science*, 133(3465), 1702–1703, doi:10.1126/science.133.3465.1702, 1961.

Dallimore, S. R. and Wolfe, S. A.: Massive ground ice associated with glaciofluvial sediments, Richards Island, N.W.T., Canada, in *Proceedings, Fifth International Permafrost Conference*, Tapir, Trondheim, Norway, vol. 1, pp. 132–137., 1988.

- De Angelis, H. and Kleman, J.: Palaeo-ice streams in the Foxe/Baffin sector of the Laurentide Ice Sheet, *Quaternary Science Reviews*, 26(9–10), 1313–1331, doi:10.1016/j.quascirev.2007.02.010, 2007.
- Dillon, M., Fortier, D., Kanevskiy, M. and Shur, Y.: Tomodensitometric Analysis of Basal Ice, in *Proceedings, Ninth International Conference on Permafrost*, pp. 361–366, Fairbanks, U.S.A., 2008.
- 5 Duclos, I., Lévesque, E., Gratton, D. and Bordeleau, P.-A.: Vegetation mapping of Bylot Island and Sirmilik National Park: Final report, Unpublished report, Parks Canada, Iqaluit., 2006.
- Dyke, A. S. and Hooper, J. M. G.: Deglaciation of Northwest Baffin Island, Nunavut, Geological Survey of Canada. [online] Available from: <https://doi.org/10.4095/212484>, 2001.
- Dyke, A. S. and Savelle, J. M.: Major end moraines of Younger Dryas age on Wollaston Peninsula, Victoria Island, Canadian Arctic: implications for paleoclimate and for formation of hummocky moraine, *Canadian Journal of Earth Sciences*, 37(4), 10 601–619, doi:10.1139/cjes-37-4-601, 2000.
- Environment Canada: Canadian Climate Normals Pond Inlet Station Data, [online] Available from: http://climate.weather.gc.ca/climate_normals/, 2015.
- Everest, J. and Bradwell, T.: Buried glacier ice in southern Iceland and its wider significance, *Geomorphology*, 52(3–4), 347–15 358, doi:10.1016/S0169-555X(02)00277-5, 2003.
- Fisher, D. A. and Alt, B. T.: A global oxygen isotope model - Semi-empirical, zonally averaged, *Annals of Glaciology*, 7, 117–124, doi:<https://doi.org/10.3189/S0260305500006017>, 1985.
- Fisher, D. A., Koerner, R. M., Bourgeois, J. C., Zielinski, G., Wake, C., Hammer, C. U., Clausen, H. B., Gundestrup, N., Johnsen, S., Goto-Azuma, K., Hondoh, T., Blake, E. and Gerasimoff, M.: Penny Ice Cap Cores, Baffin Island, Canada, and 20 the Wisconsinan Foxe Dome Connection: Two States of Hudson Bay Ice Cover, *Science*, 279(5351), 692–695, doi:10.1126/science.279.5351.692, 1998.
- Fortier, D. and Allard, M.: Late Holocene syngenetic ice-wedge polygons development, Bylot Island, Canadian Arctic Archipelago, *Canadian Journal of Earth Sciences*, 41(8), 997–1012, doi:10.1139/e04-031, 2004.
- Fortier, D., Kanevskiy, M., Shur, Y., Stephani, E., Dillon, M. and Jorgenson, M. T.: Cryostructures of Basal Glacier Ice as an 25 Object of Permafrost Study: Observations from the Matanuska Glacier, Alaska, in *Proceedings, 10th International Conference on Permafrost*, vol. 1, pp. 107–112, Salekhard, Russie., 2012.
- Fortier, D., Coulombe, S. and Lacelle, D.: Isotope characterization of ground ice on Bylot Island, v.1.0 (2013-2015). *Nordicana D40.*, 10.5885/45564CE-8A9A55185FBD4283, 2018.
- French, H. and Shur, Y.: The principles of cryostratigraphy, *Earth-Science Reviews*, 101(3–4), 190–206, 30 doi:10.1016/j.earscirev.2010.04.002, 2010.
- French, H. M. and Harry, D. G.: Observations on buried glacier ice and massive segregated ice, western Arctic coast, Canada, *Permafrost and Periglacial Processes*, 1(1), 31–43, doi:10.1002/ppp.3430010105, 1990.

- Fritz, M., Wetterich, S., Meyer, H., Schirmer, L., Lantuit, H. and Pollard, W. H.: Origin and characteristics of massive ground ice on Herschel Island (western Canadian Arctic) as revealed by stable water isotope and Hydrochemical signatures, *Permafrost and Periglacial Processes*, 22(1), 26–38, doi:10.1002/ppp.714, 2011.
- Gell, W. A.: Underground ice in permafrost, Mackenzie Delta-Tuktoyaktuk Peninsula, N.W.T.,
 5 University of British Columbia, Vancouver (B.C.). [online] Available from: <https://open.library.ubc.ca/cIRcle/collections/ubctheses/831/items/1.0094030>, 1976.
- Gilbert, E. R., Camargo, M. G. and Sandrini-Neto, L.: rysgran: Grain size analysis, textural classifications and distribution of unconsolidated sediments., 2014.
- Gilbert, G. L., Kanevskiy, M. and Murton, J. B.: Recent Advances (2008–2015) in the Study of Ground Ice and
 10 Cryostratigraphy, *Permafrost and Periglac. Process.*, 27(4), 377–389, doi:10.1002/ppp.1912, 2016.
- Gow, A. J.: The inner structure of the Ross Ice Shelf at Little America V, Antarctica, as revealed by deep core drilling, *IASH Publ.*, 61, 272–284, 1963.
- Hambrey, M. J. and Lawson, W.: Structural styles and deformation fields in glaciers: a review, Geological Society, London, Special Publications, 176(1), 59–83, doi:10.1144/GSL.SP.2000.176.01.06, 2000.
- 15 Harris, C. and Murton, J. B.: Cryospheric Systems: Glaciers and Permafrost, Special Publications no 242., Geological Society, London., 2005.
- Harry, D. G., French, H. M. and Pollard, W. H.: Massive ground ice and ice-cored terrain near Sabine Point, Yukon Coastal Plain, *Canadian Journal of Earth Sciences*, 25(11), 1846–1856, 1988.
- Hooke, R. L. and Clausen, H. B.: Wisconsin and Holocene $\delta^{18}\text{O}$ variations, Barnes Ice Cap, Canada, *GSA Bulletin*, 93(8),
 20 784–789, doi:10.1130/0016-7606(1982)93<784:WAHOVB>2.0.CO;2, 1982.
- Hubbard, B. and Sharp, M.: Basal Ice Facies and Their Formation in the Western Alps, *Arctic and Alpine Research*, 27(4), 301–310, doi:10.2307/1552023, 1995.
- IAEA/WMO: Global Network of Isotopes in Precipitation, [online] Available from: <http://www.iaea.org/water>, 2016.
- Ingólfsson, Ó. and Lokrantz, H.: Massive ground ice body of glacial origin at Yugorski Peninsula, arctic Russia, *Permafrost and Periglacial Processes*, 14(3), 199–215, doi:10.1002/ppp.455, 2003.
 25
- Jackson, G. D. and Davidson, A.: Bylot Island map-area, District of Franklin., Geological Survey of Canada, Paper 74-29, 1975.
- Jorgenson, M. T. and Shur, Y.: Glaciation of the Coastal Plain of Northern Alaska, in *Eos Transactions*, vol. 89 (53), p. Abstract C11D-0544. [online] Available from: <http://adsabs.harvard.edu/abs/2008AGUFM.C11D0544J> (Accessed 23 May 2018),
 30 2008.
- Kanevskiy, M., Shur, Y., Jorgenson, M. T., Ping, C.-L., Michaelson, G. J., Fortier, D., Stephani, E., Dillon, M. and Tumskey, V.: Ground ice in the upper permafrost of the Beaufort Sea coast of Alaska, *Cold Regions Science and Technology*, 85, 56–70, doi:10.1016/j.coldregions.2012.08.002, 2013.

- Kaplanskaya, F. A. and Tarnogradskiy, V. D.: Remnants of the Pleistocene ice sheets in the permafrost zone as an object for paleoglaciological research, *Polar Geography and Geology*, 10(4), 257–266, doi:10.1080/10889378609377295, 1986.
- Klassen, R. A.: Quaternary geology and glacial history of Bylot Island, Northwest Territories, Geological Survey of Canada, Memoir 429, 1993.
- 5 Knight, P. G.: The basal ice layer of glaciers and ice sheets, *Quaternary Science Reviews*, 16(9), 975–993, 1997.
- Kokelj, S. V., Lantz, T. C., Tunnicliffe, J., Segal, R. and Lacelle, D., Climate-driven thaw of permafrost preserved glacial landscapes, northwestern Canada, *Geology*, G38626.1, doi:10.1130/G38626.1, 2017.
- Krüger, J., Kjær, K. H.: De-icing progression of ice-cored moraines in a humid, subpolar climate, Kötlujökull, Iceland, *The Holocene*, 10(6), 737–747, doi: 10.1191/09596830094980, 2000.
- 10 Lacelle, D. and Vasil'chuk, Y. K.: Recent Progress (2007-2012) in Permafrost Isotope Geochemistry: Recent Progress in Permafrost Isotope Geochemistry, *Permafrost and Periglacial Processes*, 24(2), 138–145, doi:10.1002/ppp.1768, 2013.
- Lacelle, D., Fisher, D.A., Coulombe, S., Fortier, D. and Frappier, R.: Buried remnants of the Laurentide Ice Sheet and connections to its surface elevation, *Scientific Reports*, DOI:101038/s41598-018-31166-2, [2018](https://doi.org/10.1038/s41598-018-31166-2).
- Lacelle, D., Lauriol, B., Clark, I. D., Cardyn, R. and Zdanowicz, C.: Nature and origin of a Pleistocene-age massive ground-
- 15 ice body exposed in the Chapman Lake moraine complex, central Yukon Territory, Canada, *Quaternary Research*, 68(2), 249–260, doi:10.1016/j.yqres.2007.05.002, 2007.
- Lacelle, D., St-Jean, M., Lauriol, B., Clark, I. D., Lewkowicz, A., Froese, D. G., Kuehn, S. C. and Zazula, G.: Burial and preservation of a 30,000 year old perennial snowbank in Red Creek valley, Ogilvie Mountains, central Yukon, Canada, *Quaternary Science Reviews*, 28(27–28), 3401–3413, doi:10.1016/j.quascirev.2009.09.013, 2009.
- 20 Lakeman, T. R. and England, J. H.: Paleoglaciological insights from the age and morphology of the Jesse moraine belt, western Canadian Arctic, *Quaternary Science Reviews*, 47, 82–100, doi:10.1016/j.quascirev.2012.04.018, 2012.
- Lawson, D. E.: Sedimentological analysis of the western terminus of the Matanuska Glacier, Alaska, Cold Regions Research Engineering Laboratory Report., 1979.
- Lorrain, R.D., Demeur, P.: Isotopic evidence for relic Pleistocene glacier ice on Victoria Islandm Canada Arctic Archipelago,
- 25 Canadian Arctic Archipelago, *Arctic and Alpine Research*, 17(1), 89-98, 1985.
- Michel, F. A.: Isotope characterisation of ground ice in northern Canada, *Permafrost and Periglacial Processes*, 22(1), 3–12, doi:10.1002/ppp.721, 2011.
- Moorman, B. J. and Michel, F. A.: The burial of ice in the proglacial environment on Bylot Island, Arctic Canada, *Permafrost and Periglacial Processes*, 11, 161–175, doi:10.1002/1099-1530(200007/09)11:3<161::AID-PPP347>3.0.CO;2-F, 2000.
- 30 Murton, J. B. and French, H. M.: Cryostructures in permafrost, Tuktoyaktuk coastlands, western arctic Canada, *Canadian Journal of Earth Sciences*, 31(4), 737–747, 1994.
- Murton, J. B., Whiteman, C. A., Waller, R. I., Pollard, W. H., Clark, I. D. and Dallimore, S. R.: Basal ice facies and supraglacial melt-out till of the Laurentide Ice Sheet, Tuktoyaktuk Coastlands, western Arctic Canada, *Quaternary Science Reviews*, 24(5–6), 681–708, doi:10.1016/j.quascirev.2004.06.008, 2005.

- Ostrem, G.: Comparative crystallographic studies on ice from ice-cored moraines, snow-banks and glaciers, *Geografiska Annaler*, 45(4), 210-240, doi:10.2307/520113, 1963.
- Pollard, W. H.: The nature and origin of ground ice in the Herschel Island area, Yukon Territory, in *Proceedings of the Fifth Canadian Permafrost Conference*, pp. 23–30, Québec, Canada. [online] Available from: 5 <http://pubs.aina.ucalgary.ca/cpc/CPC5-23.pdf> (Accessed 14 March 2014), 1990.
- Pollard, W. H. and Dallimore, S. R.: Petrographic characteristics of massive ground ice, Yukon Coastal Plain, Canada, in *Proceedings, 5th International Conference, Trondheim, Norway*, pp. 224–229., 1988.
- R Development Core Team: R: A language and environment for statistical computing, R Foundation for Statistical Computing, Vienna, Austria. [online] Available from: <http://www.R-project.org>, 2016.
- 10 Reimer, P. J., Bard, E., Bayliss, A., Beck, J. W., Blackwell, P. G., Ramsey, C. B., Buck, C. E., Cheng, H., Edwards, R. L., Friedrich, M., Grootes, P. M., Guilderson, T. P., Hafliðason, H., Hajdas, I., Hatté, C., Heaton, T. J., Hoffmann, D. L., Hogg, A. G., Hughen, K. A., Kaiser, K. F., Kromer, B., Manning, S. W., Niu, M., Reimer, R. W., Richards, D. A., Scott, E. M., Southon, J. R., Staff, R. A., Turney, C. S. M. and Plicht, J. van der: IntCal13 and Marine13 Radiocarbon Age Calibration Curves 0–50,000 Years cal BP, *Radiocarbon*, 55(4), 1869–1887, 2013.
- 15 Schindelin, J., Arganda-Carreras, I. and Frise, E.: Fiji: an open-source platform for biological-image analysis, *Nature methods*, 9(7), 676–682, doi:10.1038/nmeth.2019, 2012.
- Schomacker, A.: What controls dead-ice melting under different climate conditions? A discussion, *Earth-Science Reviews*, 90(3–4), 103–113, doi:10.1016/j.earscirev.2008.08.003, 2008.
- Sharp, M., Jouzel, J., Hubbard, B. and Lawson, W.: The character, structure and origin of the basal ice layer of a surge-type 20 glacier, *Journal of Glaciology*, 40(135), 327–340, doi:10.3189/S0022143000007413, 1994.
- Shur, Y. L.: Upper horizon of permafrost and thermokarst, Nauka, Novosibirsk., 1988.
- Smith, S. L. and Burgess, M. M.: A digital database of permafrost thickness in Canada, Geological Survey of Canada., 2002.
- Solomatin, V. I.: Petrogenesis of ground ice, Nauka, Novobirsk., 1986.
- St-Onge, D. A. and McMartin, I.: La moraine du Lac Bluenose (Territoires du Nord-Ouest), une moraine à noyau de glace de 25 glacier, *Géographie physique et Quaternaire*, 53(2), 287–295, 1999.
- Stuiver, M. and Polach, H. a: Radiocarbon, *Radiocarbon*, 19(3), 355–363, doi:10.1021/ac100494m, 1977.
- Stuiver, M., Reimer, P. J. and Reimer, R.: CALIB Radiocarbon Calibration., 2017.
- Sugden, D. ., Marchant, D. R., Potter, N. J., Souchez, R. A., Denton, G. H., Swisher III, C. C. and Tison, J.-L.: Preservation of glacier ice in East Antarctica, *Letters to Nature*, 376, 412–414, 1995.
- 30 Swanger, K. M.: Buried ice in Kennar Valley: a late Pleistocene remnant of Taylor Glacier, *Antarctic Science*, 29(03), 239–251, doi:10.1017/S0954102016000687, 2017.
- Thorsteinsson, T., Kipfstuhl, J. and Miller, H.: Textures and fabrics in the GRIP ice core, *Journal of Geophysical Research: Oceans* (1978–2012), 102(C12), 26583–26599, doi:10.1029/97JC00161, 1997.

Tison, J.-L. and Hubbard, B.: Ice crystallographic evolution at a temperate glacier: Glacier de Tsanfleuron, Switzerland, Geological Society, London, Special Publications, 176(1), 23–38, doi:10.1144/GSL.SP.2000.176.01.03, 2000.

5 Tonkin, T. N., Midgley, N. G., Cook, S. J. and Graham, D. J.: Ice-cored moraine degradation mapped and quantified using an unmanned aerial vehicle: A case study from a polythermal glacier in Svalbard, Geomorphology, 258, 1–10, doi:10.1016/j.geomorph.2015.12.019, 2016.

Yoshikawa, K.: Notes on open-system pingo ice, Adventdalen, Spitsbergen, Permafrost and Periglacial Processes, 4(4), 327–334, 1993.

Zdanowicz, C. M., Fisher, D. A., Clark, I. and Lacelle, D.: An ice-marginal $\delta^{18}O$ record from Barnes Ice Cap, Baffin Island, Canada, Annals of Glaciology, 35(1), 145–149, doi:10.3189/172756402781817031, 2002.

10

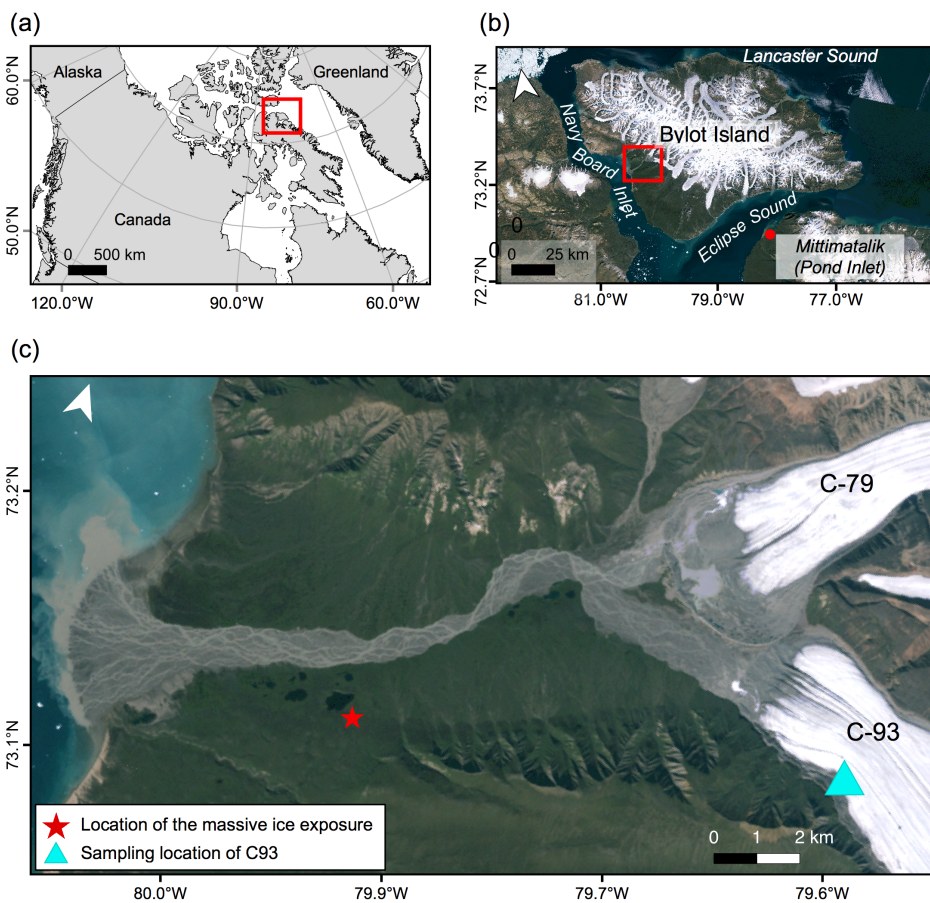


Figure 1: **a) location of Bylot Island; b) location of the Qarlikturvik valley; c) Location of the study area within the Qarlikturvik Valley (valley of glaciers C-79 and C-93), Bylot Island, Nunavut, Canada. Wedge ice, segregated ice and snow were also sampled nearby (< 1 km) the massive ice exposure. The thaw depths were measured with a steel probe at every 10 m along a 150-m transect.**

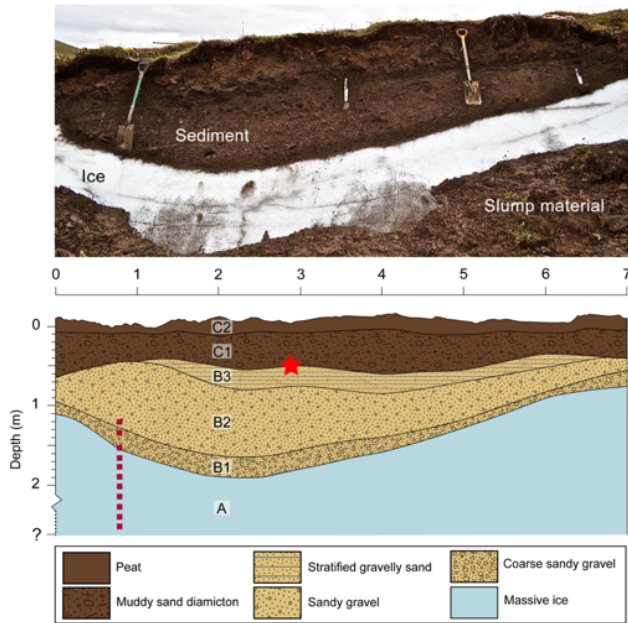


Figure 2: A photograph and a schematic cross section showing generalized stratigraphy of the massive ice exposure and the overlying sediments. The lower and lateral contacts of the massive ice have not been reached. The thaw depths measured in late July (2013) at the headwall reaches 55 cm. The red star indicates the sampling location of the organic material and the red dots show the sampling points for stable O-H isotope and hydrochemistry.

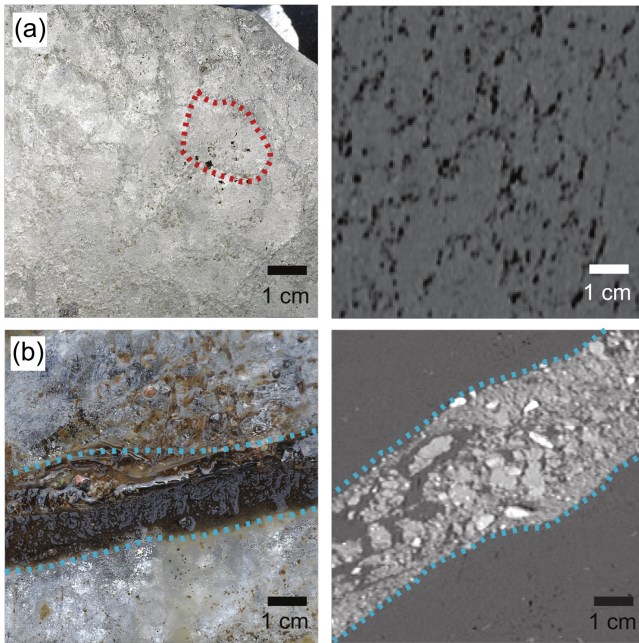


Figure 3: Photographs (left) and CT scans (right) of the massive ice body. **aA** pPure ice facies. The red-dotted line highlights one single crystal; **bB** iIce-poor sediment (sands and gravels) with suspended and crustal cryostructures forming a band in the massive ice.

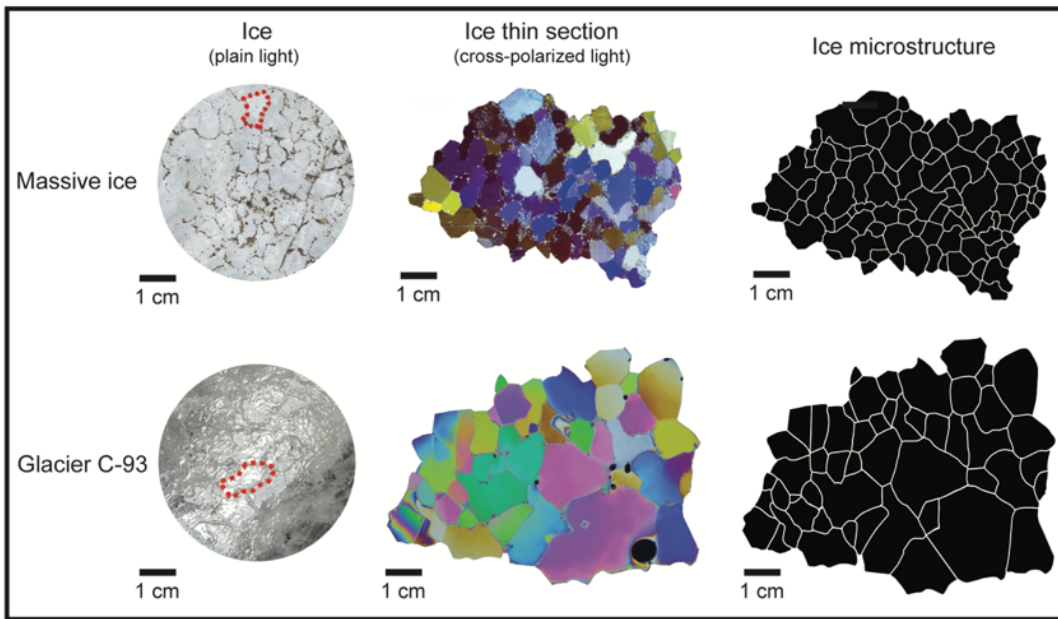
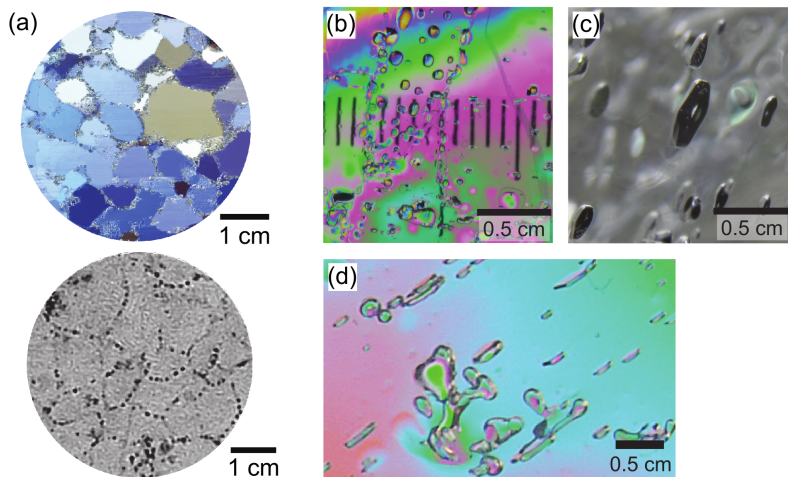
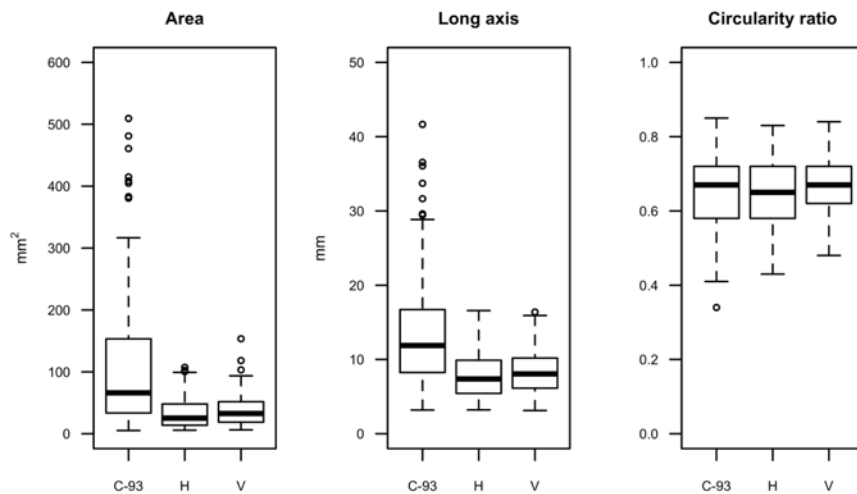


Figure 4: Comparison between the massive ice body and modern glacier ice (glacier C-93, Bylot Island). The first column shows unprocessed photographs of the ice taken under plain light with surficial sediment inclusions highlighting the crystal boundaries. The red-dotted line highlights one crystal. The second column shows thin sections of ice sample viewed under direct cross-polarized light. The third column shows the microstructure (crystal boundaries) extracted from the thin section photograph.

5



5 Figure 5: **aA**) a thin section of the massive ice viewed under cross-polarized light and a transverse cross-section from a scan showing the gas inclusions within the ice. (Air = black; Ice = dark grey). Photos to the right show patterns of gas inclusions; **bB**) small (sub-mm to mm) spherical bubbles (vertical bars are from measuring ruler of microscope stage); **cC**) small disks up to 6 mm in diameter; **dD**) coalescent bubbles and small disks all flattened in the same direction.



10

Figure 6: Boxplots comparing the distribution of ice crystal characteristics (area, long axis, circularity ratio) of horizontal thin-sections (H) and vertical thin-section (V) obtained from massive ice samples. C-93 represents data obtained from a sample of modern glacier ice sampled from glacier C-93.

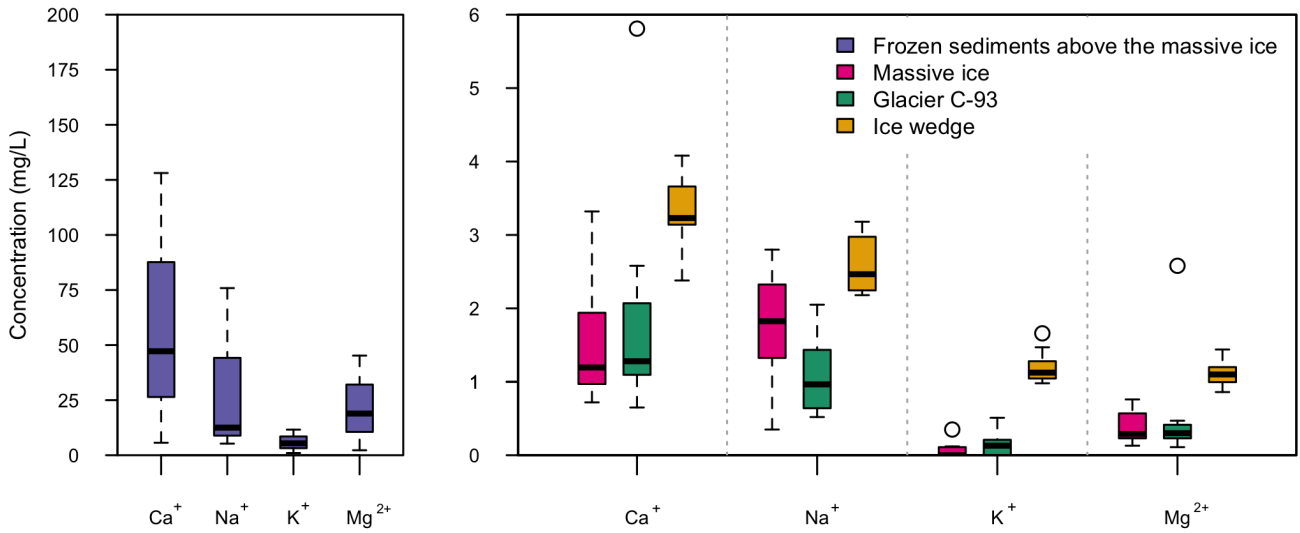


Figure 7: Boxplots showing soluble cation concentration of the massive ice, ice wedge, glacier C-93 and intrasedimental ice sampled within the sediments layers covering the massive ice unit.

5

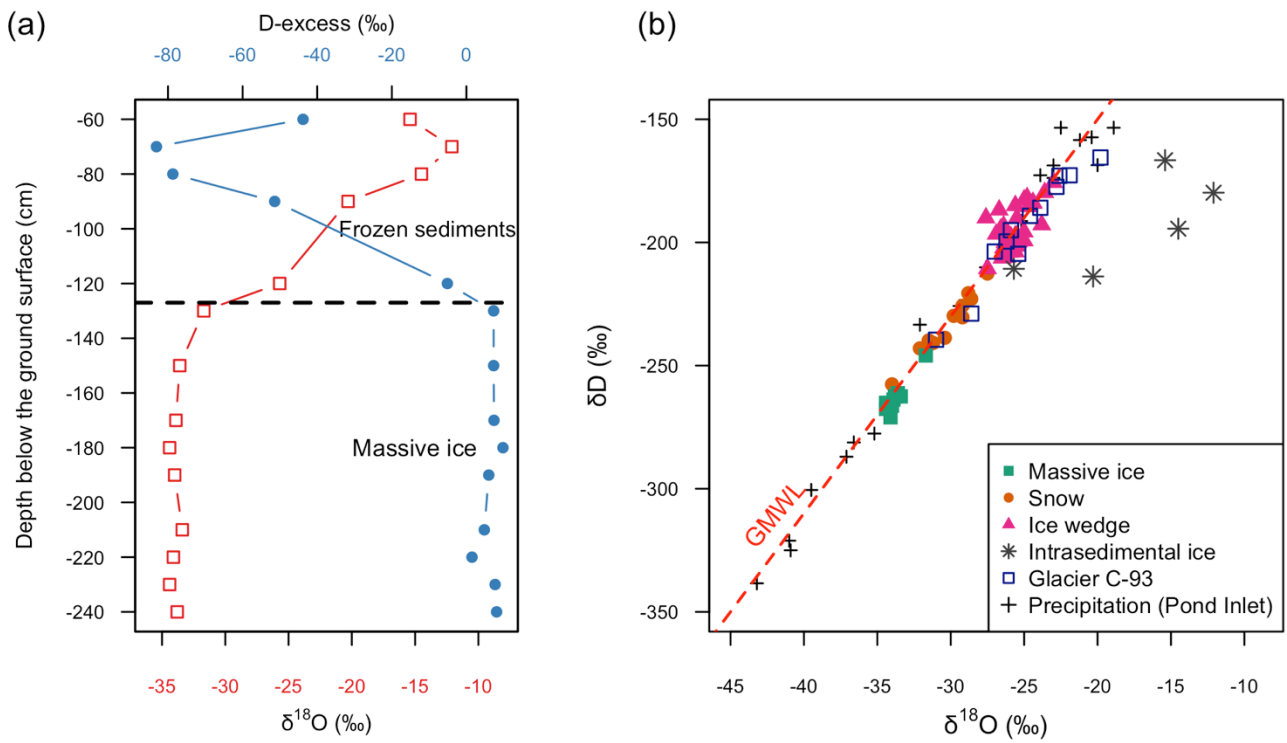
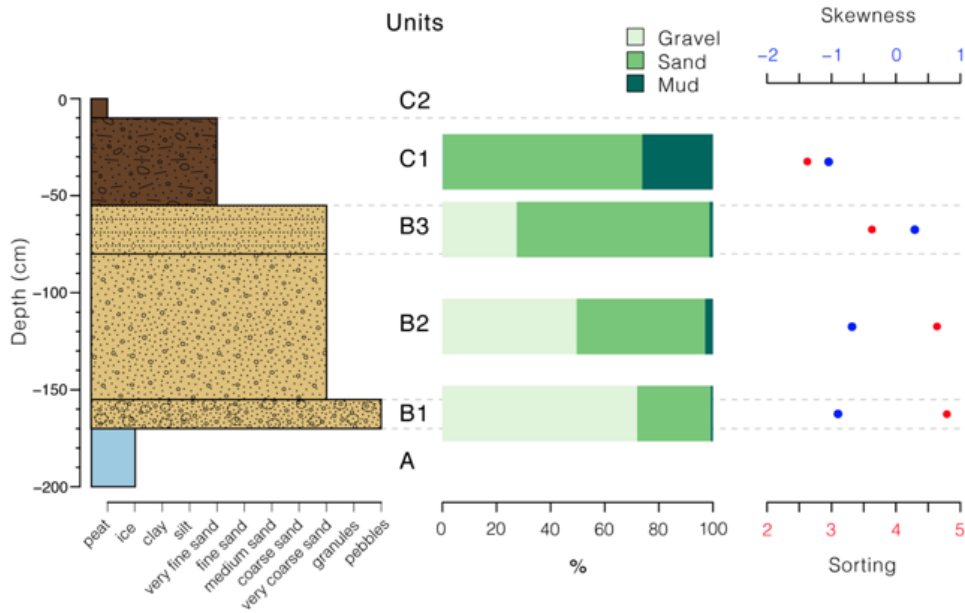


Figure 8: **aA)** δ¹⁸O and D-excess depth profiles including both the massive ice unit and the intrasedimental ice from the sediment

cover; **bB**) $\delta^{18}\text{O}$ - δD diagram of the massive ice and other types of ground ice (ice wedge, intrasedimental ice), snow and modern glacier ice (C-93) sampled on Bylot Island. The solid red line represents the Global Meteoric Water Line (GMWL): $d = \delta\text{D} - 8 \delta^{18}\text{O} + 10$ (Dansgaard, 1964). Also shown are the $\delta^{18}\text{O}$ and δD values of precipitation recorded at Pond Inlet (1990-1992) and Resolute Bay (1989-1993; IAEA/WMO, 2016). LMWL = Local Meteoric Water Line for Resolute Bay, Nunavut ($\delta\text{D} = 7.8 \delta^{18}\text{O} + 5.33$; IAEA/WMO, 2016) and Pond Inlet, Nunavut ($\delta\text{D} = 8.0 \delta^{18}\text{O} + 10.55$; IAEA/WMO, 2016).



10 **Figure 9: Sedimentological data from the stratigraphic section. From left to right: A stratigraphic log showing the mean grain size of each unit, gravel-sand-mud percentages, skewness and sorting.**

	Ice type	General appearance	Texture	Fabric	Gas inclusions	Reference (location, country)
Intrasedimental ice	Massive segregated-intrusive ice	<ul style="list-style-type: none"> • Clear • Sediment-free to sediment-poor 	<ul style="list-style-type: none"> • Variable crystal size, but mostly medium to large grains (cm-scale) • Slightly elongated crystals¹ • Ahnedral to subhedral 	<ul style="list-style-type: none"> • Preferred near-vertical oriented c-axis¹ 	<ul style="list-style-type: none"> • Bubble-poor to bubble-rich • Small (mm- to cm-scale) • Elongated and tubular bubbles¹ • Trains of small spherical bubbles¹ • Inter- and intra-crystalline 	<p>Pollard, 1990 (Hershel Island, Canada) Yoshikawa, 1993 (Spitsbergen, Norway) Harry et al., 1988 (Yukon Coastal Plain, Canada) Gell, 1976 (Mackenzie Delta, Canada) Dallimore and Wolfe, 1998 (Richards Island, Canada)</p>
	Buried glacier ice (englacial)	<ul style="list-style-type: none"> • Clear to milky white • Deformation structures² • Foliations of bubble-poor and bubble-rich ice 	<ul style="list-style-type: none"> • Wide range of crystal sizes (sub-mm to tens of cm) • Mostly large grains (cm-scale) • Equigranular • Interlocked crystal boundaries 	<ul style="list-style-type: none"> • Random or preferred c-axis orientation³ 	<ul style="list-style-type: none"> • Bubble-poor to bubble-rich • Located at crystal junctions • Bubbles truncated at the ice-sediment contact 	<p>Pollard, 1990 (Hershel Island, Canada) Gow, 1963 (Ross Ice Shield, Antarctica) Tison and Hubbard, 2000 (Glacier de Tsanfleuron, Switzerland)</p>
Buried surface ice	Buried glacier ice (basal)	<ul style="list-style-type: none"> • High sediment content • Debris laminations • Deformation structures² • Suspended pebbles and cobbles 	<ul style="list-style-type: none"> • Small grains (mm-scale) • Ahnedral to subhedral 	<ul style="list-style-type: none"> • Weak to strongly oriented c-axis 	<ul style="list-style-type: none"> • Bubble-free to bubble-poor • Small (μm to mm-scale) • Flattened bubbles • Bubbles truncated at the ice-sediment contact • Located at crystal junctions 	<p>Sharp et al., 1994 (Variegated Glacier, U.S.A.) Sugden et al., 1995 (Beacon Valley, Antarctica) Murton et al., 2005 (Tuktoyaktuk Coastlands, Canada) Ingólfsson and Lokrantz, 2003 (Yugorski Peninsula, Russia)</p>
	Buried snowbank	<ul style="list-style-type: none"> • Milky white to light brown • Loosely compacted structure • Bands of nearly horizontal pale brown ice • Organic inclusions (e.g. twigs and leaf fragments) 	<ul style="list-style-type: none"> • Small grains (mm-scale) • Crystal size area usually reaches a few mm^2 • Subhedral to euhedral • Equigranular 	<ul style="list-style-type: none"> • Random c-axis orientation 	<ul style="list-style-type: none"> • Bubble-rich • Layers of bubbles and dispersed in the ice • Small spherical bubbles (μm- to mm-scale) • Elongated and tubular bubbles • Vertically oriented bubbles 	<p>Lacelle et al., 2009 (Central Yukon, Canada) Pollard and Dallimore, 1988 (Yukon Coastal Plain, Canada) Ostrem, 1963 (Barnes Ice Cap, Canada; Kebnekaise, Sweden; Jotunheimen, Norway)</p>

¹ Parallel to the heat flow direction, indicating that freezing is downward.

² Occurrences of debris bands, boudinage and pinch-and-swell structures, folding, thrust-faulting).

³ Depending on the position of the ice within the glacier or ice sheet at the time it becomes buried.

Table 1: Comparisons of the physical properties of different massive tabular ground ice found in the permafrost.