

Interactive comment on “Future interannual variability of Arctic sea ice in coupled climate models” by John R. Mioduszewski et al.

John R. Mioduszewski et al.

jrmioduszewski@gmail.com

Received and published: 26 August 2018

A full response to both reviews has been attached as a pdf to preserve formatting, with our responses in red. Figures with substantive changes have been attached, along with a figure showing analysis of equivalent ice area as requested. The revised introduction and data/methods section has been included as well due to some of the more extensive edits occurring in response to the reviewers' suggestions.

Please also note the supplement to this comment:

<https://www.the-cryosphere-discuss.net/tc-2018-100/tc-2018-100-AC1-supplement.zip>

Interactive comment on The Cryosphere Discuss., <https://doi.org/10.5194/tc-2018-100>, 2018.

Printer-friendly version

Discussion paper



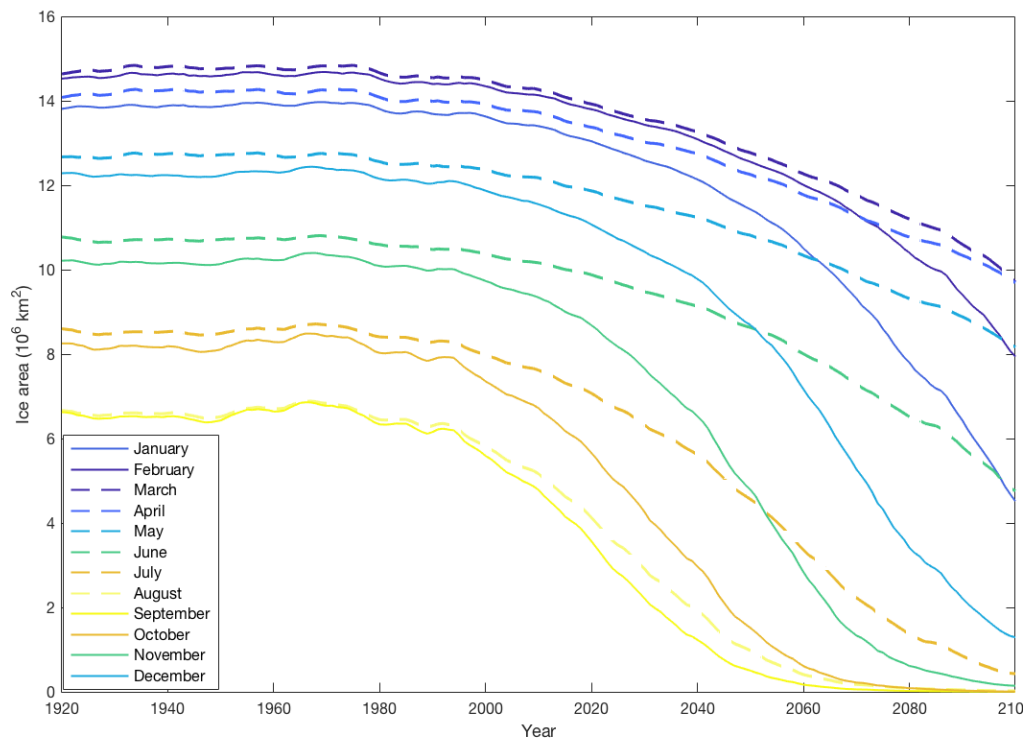


Fig. 1. Figure 1

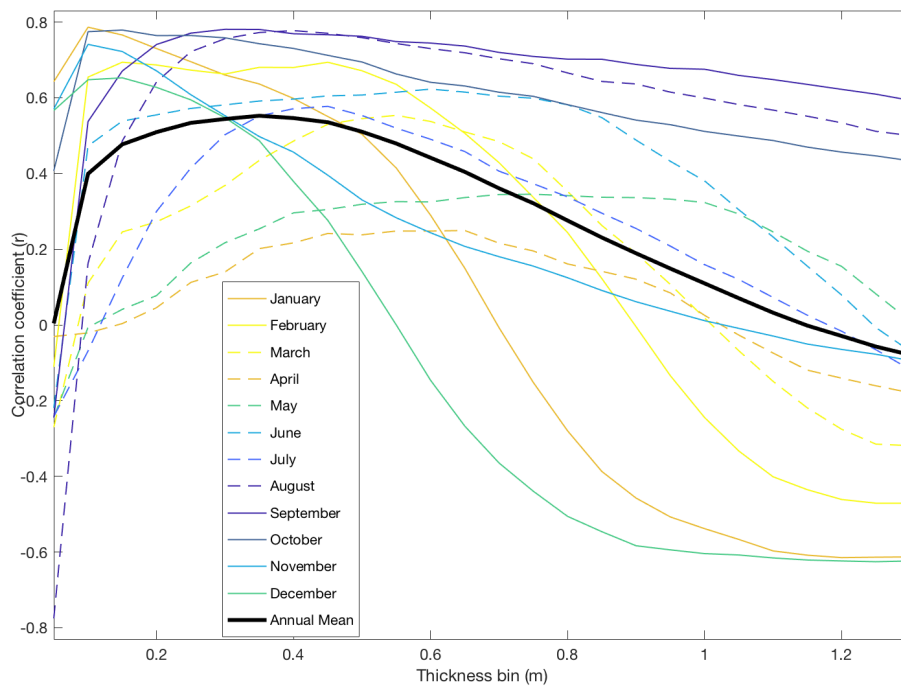


Fig. 2. Figure 3

[Printer-friendly version](#)[Discussion paper](#)

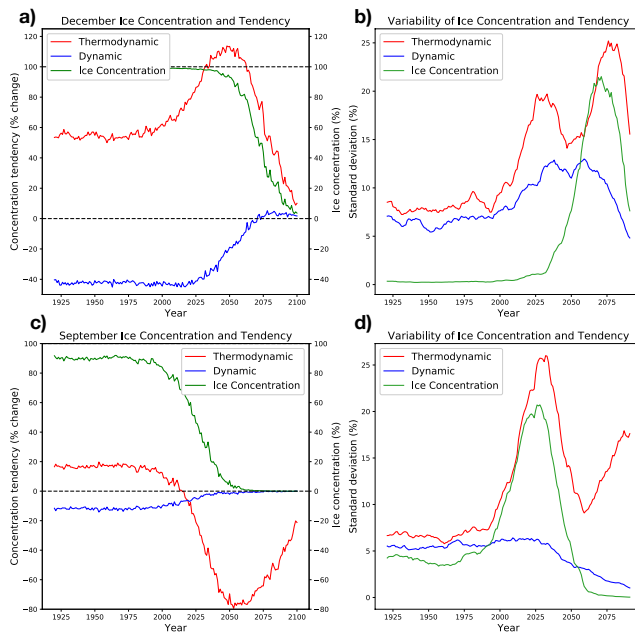


Fig. 3. Figure 6

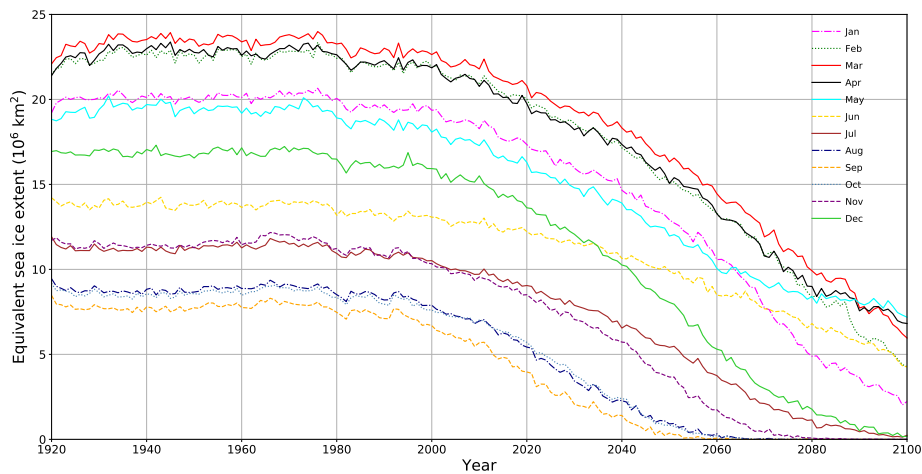


Fig. 4. Equivalent Ice Area

Printer-friendly version

Discussion paper

