

Response to Referee #1 (A. Rempel)

Interactive comment on “Methanesulfonic acid (MSA) migration in polar ice: Data synthesis and theory” by Matthew Osman et al.

A. Rempel (Referee)

rempe@uoregon.edu

Received and published: 10 June 2017

Dear Dr. Rempel,

We thank you for your valuable feedback. We have reviewed all your comments/suggestions, and have attempted to sequentially address each to the best of our ability. For convenience, your comments are reproduced below, our replies to them are in italics, and excerpts from the text are between double quotes.

General Comments

The concentrations of trace constituents measured in polar ice cores record changes in conditions at the time of deposition at the glacier surface. However, there is clear empirical evidence (e.g. from anomalies of volcanic origin that exhibit increasingly gradual onsets with age, changing seasonality of MSA peaks) that some degree of post-depositional redistribution can take place. The current manuscript examines the movement of MSA signals in considerable detail with a combination of empirical data and theoretical analysis applied primarily to a new high-resolution dataset from the DIV2010 core. The results of this effort include important new constraints on the environmental variables that are most important for determining the depth at which significant MSA migration can take place, an informative linearized model that predicts the evolution of MSA concentration in response to the changes in liquid content imparted by seasonal variations in the impurity loading that are gauged by Na concentrations, and a new determination of the effective diffusivity of MSA that is held responsible for the concentration changes observed in the DIV2010 core. This represents substantial progress beyond previous understanding of impurity migration in polar ice, and will help in the interpretation and design of future sampling efforts.

Specific Comments

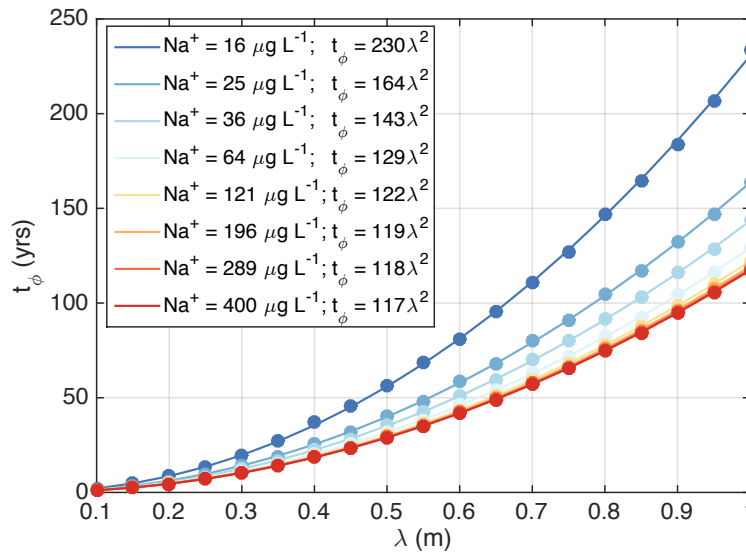
C1) The manuscript is well organized and clearly written. I appreciated the examination of site-specific variables contributing to MSA migration, including regression analyses leading to best-fit relationships (figs. 2-4) with the depth at which migration is evident. If the authors could provide some further intuition for the source of the exponents in these power laws, this would be a useful addition to the synthesis subsection (2.5).

The power law $z_{fo} \propto \dot{b}^E$ with $E = 1.77 > 1$ (Fig. 2) implies that the depth of first occurrence of MSA migration, z_{fo} , is more sensitive to annual mean accumulation rate, \dot{b} , for small \dot{b} than for high \dot{b} . Interestingly, results from the model of Rempel et al. (2002) (section 5.3) leads to a power law between the time scale of MSA migration, t_ϕ , and the layer thickness over which the migration takes place, λ (see our new Figure 15, added to the main text and also appended below). That is, $t_\phi \propto a\lambda^e$, where $e \approx 2$. Thus, to the extent that t_ϕ and λ can be taken as surrogates for, respectively, z_{fo} and \dot{b} , the model results appear to be consistent with the data. The observed variation of the shallowest depth of MSA migration with accumulation rate would thus reflect the mere fact that, similarly to Fickian

diffusion with constant diffusivity, the time scale for anomalous diffusion (t_ϕ) varies about quadratically with the thickness over which the diffusion takes place (λ). These points are now elaborated in the manuscript in Section 5.3 (Pages 31-32, Lines 27 and 1-5):

“The nonlinear relationship found between z_{f0} and \dot{b} (Section 2) is also worth further exploration. Results from the RWW model can be well-approximated by the power law $t_\phi \propto \lambda^2$ (Fig. 15), which is reminiscent of the power law relationship $z_{f0} \propto \lambda^{1.77}$ derived from our data compilation (Fig. 2). The observed variation of the shallowest depth of MSA migration with accumulation rate would thus reflect the mere fact that, similarly to Fickian diffusion with constant diffusivity, the time scale for anomalous diffusion (t_ϕ) varies quadratically with the thickness over which the diffusion takes place (λ).”

(Page 52, Lines 1-6)



“Figure 15: The time required for approximate alignment of [MS] and [Na⁺] maxima (t_ϕ) as a function of annual layer thickness (λ) for different layer averages of [Na⁺] and $D_{MS} = 10^{-11} m^2 s^{-1}$. The various curves are the least-squares power law fit $t_\phi = a\lambda^e$. The exponent e is estimated to about 2 for all values of layer-averaged [Na⁺] (note that the least squares power law fit for $D_{MS} = 10^{-12} m^2 s^{-1}$, not shown, yields a value of a that is a factor of 10 higher than for $D_{MS} = 10^{-11} m^2 s^{-1}$).”

C2) The description of the DIV2010 MSA record and related variables in section 3 is succinct and informative. The mechanistic treatment of MSA migration is particularly clear and represents an important advance over earlier work, particularly by providing constraints on the effective diffusivity of MSA in the DIV2010 core. The value obtained for this key parameter is one or two orders of magnitude smaller than that typically used to describe compositional diffusion in pure water; this might suggest a significant role for motion along two-grain boundaries rather than only in the liquid veins that line triple-junctions and their associated nodes at 4-grain intersections. The authors appear to have made a conscious decision not to speculate on the details of the precise migration pathways, referring only to “grain-boundary” migration rather than specifying whether they expect the vein–node network or the two-grain boundaries to dominate. A brief comment on the distinctions between these possibilities might be of use for some readers.

We have added a clarifying statement along these lines to Sect. 4.4 (Pages 26-27, lines 28-29 and 1):

“...(our derived) D_{MS} does not take into account whether MS migration is dominated by diffusion at

two-grain boundaries, or at the triple junctures and node networks (Wettlaufer and Worster, 2006, Riche et al., 2012)."

The paleoclimatic implications are well summarized in the final substantial section of the paper, prior to the conclusions.

Technical Corrections

C3) I didn't notice many typos or other technical issues requiring the authors' attention. The term "super-cooling" is used throughout, whereas previous authors have taken care to use "under-cooling" instead since super-cooling is most commonly used to refer to liquid in a transient, disequilibrium state.

All prior occurrences of "super-cooling" have now been changed to "under-cooling".

C4) Line 5 of page 27 repeats the word 'in' twice.

The typo has been corrected (pg. 27, line 19).

References

- Riche, F., Bartels-Rausch, T., Schreiber, S., Ammann, M., and Schneebeli, M.: Temporal evolution of surface and grain boundary area in artificial ice beads and implications for snow chemistry, *J. Glaciol.*, 58, 815–817, doi:10.3189/2012JoG12J058, 2012.
- Wettlaufer, J. S., and Worster M. G.: Premelting Dynamics, *Annu. Rev. Fluid Mech.*, 38(1), 427–452, doi:10.1146/annurev.fluid.37.061903.175758, 2006.

Response to Anonymous Referee #2

Interactive comment on “Methanesulfonic acid (MSA) migration in polar ice: Data synthesis and theory” by Matthew Osman et al.

Anonymous Referee #2

Received and published: 27 July 2017

Dear Anonymous Referee #2,

We thank you for your valuable feedback. We have reviewed all your comments/suggestions, and have attempted to address each to the best of our ability below. For convenience, your comments are reproduced below, our replies to them are in italics, and revised excerpts from the manuscript are noted between double quotes.

The manuscript by Osman et al describes a very detailed study on the migration of MSA in ice cores. A crucial finding is correlation between the depth at which migration is observed and the accumulation site, asking for caution when concluding the absence of MSA migration in short cores. Further, the role of a number of physical parameters and processes on MSA migration is discussed in detail, it turns out that accumulation rate is an important one. Last but not least, diffusivity coefficients are suggested based on detailed modelling work on a high resolution ice core. I'm impressed how the study combines expertise in ice core analysis with fundamental physical chemistry. Therefore, it is of paramount interest to a wide scientific audience. The manuscript is very long due to the wealth of information and the careful and precise description of the analysis. It reads very charming, the conclusions are well justified, and assumptions and uncertainties in the analysis are openly mentioned. I refrain from recommending immediate publication, because I need clarification regarding the fundamental aspect in discussing and applying the phase diagrams. These fundamental details are directly linked to the conclusion of the manuscript and one of the questions raised in the introduction “Why should MSA in particular exhibit migrations, while associated soluble impurities and acids do not?”.

My concern comes down to the point, that I can't follow how the impurity transport model by Rempel as presented in the manuscript leads to a transport from summer to winter layers via concentration driven diffusion. I can think of two scenarios:

(C1) At T above -20°C, isolated patches of NaCl (winter) and NaCl/MSA (summer) solution form. If temperature increases, volume of the liquid brine increases. At a specific T the two patches might meet. If they do not mix, MSA will diffuse from summer to winter resulting in a constant concentration. On first approximation NaCl might have the same concentration in both patches, so it does not diffuse. This scenario will not build up a new peak at the winter location in the core, but rather smooth the MSA over the whole year.

As per the model by Rempel et al. (2002) and its linearized form presented in the manuscript, the movement of MSA is not only driven by its own concentration gradient but also by the concentration gradients of other species, such as Na^+ . This is particularly clear in the linearized model, where MSA migration is shown to be the sum of (i) Fickian diffusion along the MS^- concentration gradient and (ii)

an effective advection driven by the vertical variations in Na^+ concentration (eq. 13). As shown by the formal development in Section 4.3 of the manuscript (eq. 13 in particular; Page 23, line 4) and illustrated in figure 11 of the manuscript, any local maxima present in a layer where Na^+ shows a unique maximum will be carried to the level of the $[\text{Na}^+]$ maximum. It is an advective effect, fundamentally different from the smoothing effect expected from Fickian diffusion with constant diffusivity.

If $[\text{Na}^+]$ is uniform over the thickness of an annual layer, then the advective effect on MSA migration will vanish, and MS^- will simply diffuse along its own concentration gradient and not show concentration peaks, as correctly pointed out for the Reviewer. However, $[\text{Na}^+]$ is not observed to be uniform over an annual layer in ice cores (as illustrated in this study as well as in many others), most likely because of the high-frequency (i.e., sub-annual) variability of Na^+ deposition. As such, this scenario is currently untested.

(C2) At T between -75 and -30 °C (MSA is still in solution, but NaCl and NaMS are solid). Thus a liquid patch at summer location holding only MSA will form. If that spreads or moves it might meet NaCl crystals. There, crystallisation of NaMS could occur, which will built up a concentration gradient and lead to diffusion of more and more MSA towards the winter layer. This might indeed lead to a complete shift of the MSA peak from summer to winter. But, is the diffusion of MSA in liquid rate determining, or the spreading/movement of the film, or the solution of NaCl, or the precipitation of NaMS? I attached a graph for illustration. It is very likely that I miss an important point here, but may I ask you to clarify the ultimate process in more detail?

We deeply appreciate your comment, in particular your taking the time to illustrate your point in a graph. As noted in the manuscript (Sect. 2.3), the hypothesis referred to in the comment was indeed initially speculated early on by Mulvaney et al. (1992) in their original study on the migration phenomenon, though these authors lacked empirical constraints on the eutectic temperature of the $\text{CH}_3\text{SO}_3\text{Na}\cdot n\text{H}_2\text{O} - \text{H}_2\text{O}$ system. We again agree with the Reviewer's intuition here, and thank him/her for turning us to this point, and particularly so as the comment cued us to a typo in the original document where we aimed to address (albeit less extensively) such a scenario. The typo was corrected, and a more explicit discussion on the matter was added to Sect. 5.1 of the manuscript (Page 27, lines 6-21 and page 28, lines 10-23):

(Page 27, Lines 6-21)

“In section 2.3, we tested the hypothesis that post-depositional formation of winter $[\text{MS}^-]$ maxima occurs solely as a result of the precipitation of MS^- -salts from their grain boundary solutions in sea-salt rich winter layers (Mulvaney et al., 1992; Wolff et al., 1996; Kreutz et al., 1998, Pasteur and Mulvaney, 2000; Curran et al., 2002). This hypothesis, denoted below as the “Mulvaney model”, suggests that MS^- in under-cooled solutions should migrate along its concentration gradient via Fickian diffusion until reaching Na^+ -rich layers, where crystallization of $\text{CH}_3\text{SO}_3\text{Na}$ removes MS^- from the premelt solution, thereby perpetuating a $[\text{MS}^-]$ gradient between summer and winter layers in the residual premelt. Importantly, it suggests MSA migration would be inhibited at sites where in situ temperatures are greater than the eutectic temperature of $\text{CH}_3\text{SO}_3\text{Na}\cdot n\text{H}_2\text{O} - \text{H}_2\text{O}$ (-29.3 °C), since $\text{CH}_3\text{SO}_3\text{Na}$ would not be precipitated from the premelt liquid. However, such an inhibition is not apparent in our data compilation (Sect. 2.3).

The RWW model (Sect. 4) is fundamentally different than the Mulvaney model. The RWW model does not represent crystallization and metathetic removal of constituents from the liquid phase (Sect.

2). Rather, in the RWW model, MS is implicitly assumed to remain dissolved in the premelt liquid following migration from the summer to winter layers, provided in situ temperatures exceed the eutectic temperature of the binary system $\text{CH}_3\text{SO}_3\text{Na}\cdot n\text{H}_2\text{O} - \text{H}_2\text{O}$.

...

(Page 28, Lines 10-23)

A currently poorly constrained situation arises for sites characterized by in situ temperatures less than $\sim -30^\circ\text{C}$ and greater than -75°C (Table 2). In this temperature regime, MSA remains in solution while Na^+ is presumably immobile, either as solid state NaCl , $\text{CH}_3\text{SO}_3\text{Na}$, or Na_2SO_4 (Table 2). MSA migration as envisioned in the Mulvaney model, but not in the RWW model, may operate under such conditions. On the other hand, the Mulvaney model may not apply should summer concentrations of Na^+ be high enough to sequester a large fraction of the [MS] as $\text{CH}_3\text{SO}_3\text{Na}$ (s) in summer layers. This sequestration process appears supported by the lack of discernable MSA migration in the subannually-resolved portion (i.e., down to ~ 10.5 m) of the [MS] record from South Pole (SP-95), where annual mean SAT is -51°C (Meyerson et al., 2002). While SP-95 is not considered in our data compilation due to the site's low \dot{b} (0.08 m w.eq. yr^{-1}), the lack of clear MSA migration at SP-95 departs from the expected relationship found between \dot{b} and z_{fo} in Antarctica (Sect. 2.1; Fig. 2). This observation leads us to speculate that MS at SP-95 may be immobilized in the summer layers through a metathesis reaction with Na^+ allocated to the grain boundaries."

(C3) As a third option, could MSA also be pushed into the gas phase from solution and be transported by gas-phase diffusion? May I ask you to comment on this aspect. (M. H. Kuo, S. G. Moussa and V. F. McNeill, Atmos. Chem. Phys., 2011, 11, 9971–9982.)

The model presented by Kuo et al. (2011) contrasts loss processes of soluble and volatile impurities by modeling the solubility of the impurities in the solid (ice crystal) water phase and (or) their release to the gas phase during surface melting (i.e., at the grain boundary-vapor interface). We envisage that these processes may be relevant in near-surface (nominally, $<1\text{--}2$ m depth) layers of the polar firn pack, where snow-density is low (effective porosity is high, allowing increased volatile loss through the interconnected pore space of ice grains; Wolff et al., 1996; Domine et al., 2008; Bartels-Rausch et al., 2013) and thermal fluctuations rather extreme (via diurnal, seasonal cycles). These surficial processes thus appear to be useful in predicting the mass conservation of originally-deposited MS at some sites. However, as the mechanism of MSA migration explored here appears to be primarily limited to depths deeper than 2 m (Sect. 2), we assume in the manuscript that this volatile post-depositional redistribution plays a negligible role in MSA migration below 2 m. Indeed, empirical evidence by Weller et al. (2004) suggests that, whereas volatile losses of MS (as well as NO_3^-) can be severe in the upper 1.2–1.4 m of the snow and (or) firn layer at low accumulation sites (<0.10 m w.eq. yr^{-1}), such losses (and gaseous-redistribution) are found to be negligible below this depth. These authors attributed the losses in the upper layers jointly to volatile acid formation in acidic (summer) snow layers that can be partially remitted to the atmosphere, a process akin to that described in depth by Kuo et al. (2011). We have included the following text (Page 5, Lines 10-15) making it explicit that we assume no vertical volatile redistribution of MSA:

"Post-depositional surficial losses of MSA may occur via gaseous diffusion in the top 1–2 meters of the firn at low accumulation sites (Wagon et al., 1999, Delmas et al., 2003, Weller et al., 2004). As a result, we exclude records from sites where annual mean accumulation rate is less than $100 \text{ kg m}^{-2} \text{ yr}^{-1}$,

and assume that vertical redistribution of MSA via gas-phase diffusion (Kuo et al., 2011) is negligible at all considered sites and depths”

(C4) Second, I would like to read more about the grain boundary network along which migration of the MSA takes place. A) What is the crystal size, grain boundary density at the position where MSA migration is observed? B) The diffusivity that is discussed is then an effective diffusivity in a porous medium like water/sand or air/snow. When comparing diffusivity between different ice cores or between single crystals and ice cores the grain boundary density (or its volume fraction) needs to be taken into account. I acknowledge that –taken the missing data- this is not possible, but would encourage a more detailed discussion on this issue (F. Dominé, M. R. Albert, T. Huthwelker, H.-W. Jacobi, A. A. Kokhanovsky, M. Lehning, G. Picard and W. R. Simpson, *Atmos. Chem. Phys.*, 2008, 8, 171–208.)

Question A) To our knowledge, there is little empirical knowledge on the grain boundary density and crystal size at locations where MSA migration takes place. Thus while we acknowledge the importance of both parameters in acquiring an improved understanding of the migration process, we are severely limited in our ability to investigate this process more fully in this present study, and thus do not discuss further. We have now extended the discussion of Sect. 4.4 to make these points more explicit, namely with respect to constraining the MS⁻ diffusivity (Pg. 26, Lines 21-26; see Question B for denoted text).

Question B) We agree with the Reviewer that the MS⁻ diffusivity that is discussed in our manuscript should be regarded as an effective diffusivity. The revised manuscript includes a paragraph where this point is elaborated (Pages 26-27, Lines 17-29 and 1- 3):

“While the D_{MS} range estimated by a comparison to DIV2010 data is instructive, we note it is not necessarily universal, as diffusivities in polar ice are expected to vary in response to multiple glaciological factors. For example, the experimental results of Kim et al. (2008) show that the diffusion coefficients of ions in under-cooled mixtures are a function of both ionic concentration and temperature. Additionally, physical properties of the firn and ice, including porosity, grain-boundary density, and crystal size, may affect the partitioning of chemical impurities between the liquid premelt and the ice lattice (Dominé et al., 2008; Spaulding et al., 2011), thereby affecting the amount of impurities subjected to anomalous diffusion as well as the interconnectivity of the liquid premelt/vein network. While the RWW model can account for this partitioning (Rempel et al., 2002), the proportions of total MS⁻ and Na⁺ that are present in liquid form remain poorly constrained (Sakurai et al., 2010). Even at a given site, seasonal and interannual variations in impurity concentrations may lead to down-core changes in D_{MS} . Finally, D_{MS} does not take into account whether MS⁻ migration is dominated by diffusion at two-grain boundaries, or at triple junctures and node networks (Wettlaufer and Worster, 2006; Riche et al., 2012). As a result of all these complicating factors, D_{MS} , as defined in the RWW model and constrained here, should probably be viewed as an effective diffusivity.”

We thank the reviewer pointing us towards the study of Domine et al. (2008), which is now discussed/cited in the revised manuscript, shown above.

Minor comments

C5) Page 7 line 10 ff: Here I wonder, if the observation of MSA migration at these depths is a matter of time rather than ice density at that depth. Time is mentioned in the intro to this 2.1 but then I miss a discussion or final conclusion on time.

We have removed the mention of “time” in the introduction to Section 2.1 (Pg 6, line 15).

We consider the depth of first migration occurrence (z_{f0}), as opposed to the timing of first migration occurrence (t_{f0}), in Section 2 due to the relatively fewer assumptions and ambiguities associated with z_{f0} as opposed to t_{f0} . For example, t_{f0} could be reasonably defined either as the difference between the surface age and the prescribed age at z_{f0} , or as the difference between the age at the threshold migration onset density (Sect. 2.4) and t_{f0} . While the latter is preferable in that it suggests the “true” timespan required for MSA migration, it also would require a clear understanding of the migration onset density and corresponding depth, which remains poorly constrained (see expanded discussion in Sect. 2.4). Finally, z_{f0} is impervious to age-depth error, whereas t_{f0} is not. As a result of these limitations, the occurrence of MSA migration is defined in terms of depth, not of time, in our analysis.

C6) Page 18 line 4 ff: “The RWW model as applied to the binary system containing MS and Na^+ ”. This confuses me. The binary system is water- NaMS . Or, do we have a ternary system water- NaCl-MSA ?

We thank the reviewer for pointing out this potentially confusing wording. No, we do not have a ternary system water- NaCl-MSA . In Sect. 4.2.2, we arrive at the conclusion that the binary system being modeled is indeed the $\text{CH}_3\text{SO}_3\text{Na}\cdot n\text{H}_2\text{O-H}_2\text{O}$ binary system, though we acknowledge the ambiguity of “binary” prior to this conclusion. We have removed “binary” from the noted sentence (page 18, line 6), and changed all other wordings to explicitly denote the $\text{CH}_3\text{SO}_3\text{Na}\cdot n\text{H}_2\text{O-H}_2\text{O}$ binary system when “binary” is indeed implied (e.g., pg. 21 lines 1-2).

C7) Connected to this: Page 19 line 10: How can an ion have a liquidus curve? The phase diagram is different for each counter ion.

The parameters Γ_{MS} and Γ_{Na} may be taken as shorthand notations for Γ_{MS^} and Γ_{Na^*} , where * represents an unknown cationic – anionic pair, respectively. Indeed, exploration of the likely cationic – anionic pair for MS^- and Na^+ , respectively, forms the remainder of 4.2.2’s discussion. Text has been added to express this “shorthand” notation explicitly (page 19, lines 17-19):*

“Knowledge of Γ requires knowledge of the dominant precursor (bonded) molecular state(s) of the MS^- and Na^+ ions present in the ice (thus, Γ_{MS} and Γ_{Na} should be viewed as shorthand notations for Γ_{MS^} and Γ_{Na^*} , where * represents some unknown cationic – anionic pair).”*

C8) Page 18 line 18: I suggest to add and discuss the work of Domine on diffusion in single crystals (E. Thibert and F. Dominé, J. Phys. Chem. B, 1998, 102, 4432–4439; F. Dominé and E. Thibert, J. Phys. Chem. B, 1997, 101, 3554–3565.) and discuss the role of grain boundaries with respect to diffusion in porous media in more detail (last point hold throughout the text).

We thank the Reviewer for pointing us to these studies. In the revised manuscript, we now cite and briefly summarize these two studies (page 18, lines 19-23):

“Notably, this estimate is 1-3 orders of magnitude larger than that reported for solid-state diffusion of HCl (Thibert and Dominé, 1997), HNO_3 (Thibert and Dominé, 1998), HCHO (Barret et al., 2011), and deuterated water (Lu et al., 2009) determined in single ice crystals, despite the molecular radius of MSA greatly exceeding that of each of these species (Roberts et al., 2009).”

I hope you find these comments helpful and I'm looking forward to your revised manuscript. Please also note the supplement to this comment: <https://www.the-cryosphere-discuss.net/tc-2017-84/tc-2017-84-RC2-supplement.pdf>

References

- Barret, M., Houdier, S., and Domine, F.: Thermodynamics of the formaldehyde – water and formaldehyde – ice systems for atmospheric applications, *J. Phys. Chem. A*, 115, 307–317, doi:10.1021/jp108907u, 2011.
- Bartels-Rausch, T., Wren, S. N., Schreiber, S., Riche, F., Schneebeli, M., and Ammann, M.: Diffusion of volatile organics through porous snow: impact of surface adsorption and grain boundaries, *Atmos. Chem. Phys.*, 13, 6727–6739, <https://doi.org/10.5194/acp-13-6727-2013>, 2013.
- Curran, M. A. J., Palmer, A. S., van Ommen, T. D., Morgan, V., Phillips, K. L., McMorrow, A. J., and Mayewski, P.: Post-depositional methanesulphonic acid movement on Law Dome and the effect of accumulation rate, *Annals of Glaciology*, 35, 333–339, 2002.
- Delmas, R. J., Wagnon, P., Goto-Azuma, K., Kamiyama, K., and Watanabe, O.: Evidence for the loss of snow-deposited MSA to the interstitial gaseous phase in central Antarctic firn, *Tellus, Ser. B Chem. Phys. Meteorol.*, 55(1), 71–79, doi:10.1034/j.1600-0889.2003.00032.x, 2003.
- Domine, F., Albert, M., Huthwelker, T., Jacobi, H.-W., Kokhanovsky, A. A., Lehning, M., Picard, G., and Simpson, W. R.: Snow physics as relevant to snow photochemistry, *Atmos. Chem. Phys.*, 8, 171–208, <https://doi.org/10.5194/acp-8-171-2008>, 2008.
- Kim, J. S., and Yethiraj, A.: A Diffusive Anomaly of Water in Aqueous Sodium Chloride Solution at Low Temperatures, *J. Phys. Chem. B*, 112, 1729–1735, DOI:10.1021/jp076710+, 2008.
- Kreutz, K. J., Mayewski, P. A., Whitlow, S. I., and Twickler, M. S.: Limited migration of soluble ionic species in a Siple Dome, Antarctica, ice core, *Ann. Glaciol.*, 27, 371–377, 1998.
- Kuo, M. H., Moussa, S. G., and McNeill, V. F.: Modeling interfacial liquid layers on environmental ices, *Atmos. Chem. Phys.*, 11, 9971–9982, <https://doi.org/10.5194/acp-11-9971-2011>, 2011.
- Lu, H., McCartney, S. A., and Sadchenko, V.: H/D exchange kinetics in pure and HCl doped polycrystalline ice at temperatures near its melting point: Structure, chemical transport, and phase transitions at grain boundaries, *J. Chem. Phys.*, 130, 054501–054511, doi:10.1063/1.3039077, 2009.
- Meyerson, E. A., Mayewski, P. A., Kreutz, K. J., Meeker, L. D., Whitlow, S. I., and Twickler, M. S.: The polar expression of ENSO and sea-ice variability as recorded in a South Pole ice core, *Ann. Glaciol.*, 35, 430–436, doi:10.3189/172756402781817149, 2002.
- Mulvaney, R., Pasteur, E. C., Peel, D. A., Saltzman, E. S., and Whung, P. Y.: The ratio of MSA to non-sea-salt sulphate in Antarctic Peninsula ice cores, *Tellus B*, 44(4), doi:10.3402/tellusb.v44i4.15457, 1992.
- Pasteur, E. C., and Mulvaney, R.: Migration of methane sulphonate in Antarctic firn and ice, *J. Geophys. Res.*, 105, 11525–11534, doi:10.1029/2000JD900006, 2000.
- Rempel, A. W., Wettlaufer, J. S., and Waddington, E. D.: Anomalous diffusion of multiple impurity species: Predicted implications for the ice core climate records, *J. Geophys. Res.*, 107, 1–12, doi:10.1029/2002JB001857, 2002.
- Riche, F., Bartels-Rausch, T., Schreiber, S., Ammann, M., and Schneebeli, M.: Temporal evolution of surface and grain boundary area in artificial ice beads and implications for snow chemistry, *J. Glaciol.*, 58, 815–817, doi:10.3189/2012JoG12J058, 2012.
- Roberts, J. L., van Ommen, T. D., Curran, M. A. J., and Vance, T. R.: Methanesulphonic acid loss during ice-core storage: Recommendations based on a new diffusion coefficient, *J. Glaciol.*, 55(193), 784–788, doi:10.3189/002214309790152474, 2009.
- Sakurai, T., Ohno, H., Genceli, F. E., Horikawa, S., Iizuka, Y., Uchida, T., and Hondoh, T.: Magnesium methanesulfonate salt found in the Dome Fuji (Antarctica) ice core, *J. Glaciol.*, 56(199), 837–842, doi:10.3189/002214310794457335, 2010.
- Spaulding, N.E., Meese, D.A., and Baker, I.: Advanced microstructural characterization of four East Antarctic firn/ice cores. *J. Glaciol.*, Vol. 57, No. 205, 796–810, 2011.
- Thibert, E., and Dominé, F.: Thermodynamics and Kinetics of the Solid Solution of HCl in Ice, *J. of Phys. Chem. B*, 101 (18), 3554–3565, doi: 10.1021/jp962115o, 1997.
- Thibert, E., and Dominé, F.: Thermodynamics and Kinetics of the Solid Solution of HNO₃ in Ice, *J. of Phys. Chem. B*, 102 (22), 4432–4439, doi: 10.1021/jp980569a, 1998.

- Wagnon, P., Delmas, R. J. and Legrand M.: Loss of volatile acid species from upper firn layers at Vostok, Antarctica, *J. Geophys. Res.*, 104(D3), 3423, doi:10.1029/98JD02855, 1999.
- Weller, R.: Postdepositional losses of methane sulfonate, nitrate, and chloride at the European Project for Ice Coring in Antarctica deep-drilling site in Dronning Maud Land, Antarctica, *J. Geophys. Res.*, 109(D7), 1–9, doi:10.1029/2003JD004189, 2004.
- Wettlaufer, J. S., and Worster M. G.: Premelting Dynamics, *Annu. Rev. Fluid Mech.*, 38(1), 427–452, doi:10.1146/annurev.fluid.37.061903.175758, 2006.
- Wolff, E.W.: Location movement and reactions of impurities in solid ice, in *Chemical Exchange Between the Atmosphere and Polar Snow*, NATO ASI Ser., Ser. 1, Global Environmental Change, vol. 43, pp 541-560, edited by E.W.Wolff and R.C. Bales, Springer-Verlag, New York, 1996.

Response to the Editor (B. Alexander)

Interactive comment on “Methanesulfonic acid (MSA) migration in polar ice: Data synthesis and theory” by Matthew Osman et al.

B. Alexander (Editor)

beckya@u.washington.edu

Received and published: 12 September 2017

Dear Dr. Alexander,

We thank you for your suggested technical corrections, which are addressed below. For convenience, your comments are reproduced below, our replies to them are in italics, and excerpts from the text are between double quotes.

Dear Matthew Osman,

Thank you for submitting your responses and revisions. In addition to the reviewer comments that you have already addressed, I have a few minor suggestions detailed below that I think will improve clarity. Please let me know if you have any questions.

Regards,

Becky Alexander

Page and line numbers below refer to the revised manuscript.

Suggested technical corrections

C1) Page 2 Line 14: Photolysis also results in postdepositional alteration of some chemical species. Perhaps this should be explicitly mentioned in this general statement about possible processes impacting chemical species in ice cores.

We have now included “photolysis” in the opening paragraph of the manuscript (Pg. 2, Line 14):

“Processes acting within the upper firn layer, including wind pumping, diffusion, photolysis, volatility, sublimation, and melt (Wolff et al., 1996), can affect the stability of chemical species... ().”

C2) Page 3 Line 9: “lack of wintertime MSA deposition” implies zero MSA deposition flux during winter. Do we really know that it is zero? MSA has an atmospheric lifetime of several days, and thus can be transported over significant distances before deposition. Perhaps replace “lack of” with “relatively low”?

We agree with this suggestion, and have replaced “lack of” with “relatively low” (Pg. 3, Line 9):

“Conversely, the relatively low wintertime MSA deposition may be jointly attributed to... ()”

C3) Page 3 line 11: “OH-“ should read “OH $\dot{\text{S}}$ ” or “OH radical”.

We have changed “OH” to “OH radical” on Pg., 3, line 12.

C4) Page 6 lines 19 and 24 have confusing wording. “increasingly shallow depths” is confusing. Maybe replace with a description of the relationship between snow accumulation rate and the depth over which MSA migration occurs. “depths lower” is also confusing. Does “lower” mean

above or below a certain depth in this context?

We have removed “increasingly shallow depths” on Pg. 6, line 19, and have reworded the sentence as follows (Pg. 6):

“At low-to-moderate accumulation rate sites ($\dot{b} = 0.1 - 0.45 \text{ m w. eq. yr}^{-1}$), MSA migration seems to universally occur, with the shallowest reported depths of migration showing a positive relationship with accumulation rate (Table 1 and Fig. 2).”

On Pg. 6, Line 24, we have changed “depths lower” to “depths deeper”.

C5) Page 9 line 7: Does this mean that the depth at which movement of MSA stops is deeper, or that MSA moves a larger distance in total?

On Pg. 9, Line 7, we make the observation that the shallowest observed depth of MSA migration (z_{fo}) appears to occur at deeper depths for sites with lower core-averaged Na^+ concentrations ($\overline{\text{Na}^+}$). This observation does not necessarily relate to the distance traveled by MSA from a summer layer to a winter layer. The sentence referred to on Pg. 9, Line 7 has been adjusted to read as follows:

“We find that, as $\overline{\text{Na}^+}$ decreases, MSA migration tends to be observed at greater depths in the firn or ice column (Fig. 3).”

C6) Page 9 line 8: Can “small values” be replaced with “low concentrations”?

We have changed “small values” with “low concentrations” (Pg. 9, Line 8).

C7) Page 20 line 7: The textbook Seinfeld and Pandis [2006] is probably not the appropriate reference for the Cl:Na molar ratio in seawater.

The reference for Seinfeld and Pandis (2006) has been replaced with that of Chesselet et al. (1972; see references below), who similarly adopted a molar ratio of Cl:Na = 1.8 for seawater to study variations in ionic ratios of marine aerosols.

C8) Page 32 line 6: Can you be more quantitative with the statement “high accumulation and low core-averaged $[\text{Na}^+]$ ” by giving some numbers of range of numbers for “high” and “low”?

Our results suggest that the timing/depth of MSA migration is a continuous function of site accumulation rate (\dot{b} ; positive relationship) and core-averaged $[\text{Na}^+]$ ($\overline{\text{Na}^+}$; negative relationship), indicating that migration should inevitably occur provided i) enough time and (or) depth and ii) requisite thermal conditions (Sect. 5.1). As such, a conscientious decision was made in refraining from providing a specific range of \dot{b} and $\overline{\text{Na}^+}$ values for which MSA migration may be deemed “negligible”. We provide two primary reasons in support of this decision:

- 1. Studies using [MSA] for paleoclimatic inferences vary in terms of timescales and temporal resolutions that are explored/achieved (Table 1), indicating that values of \dot{b} and $\overline{\text{Na}^+}$ which are relevant will similarly vary from study to study.*
- 2. Following reason (1), irrespective of the site-specific values of \dot{b} and $\overline{\text{Na}^+}$, the precise timing of MSA migration still remains broadly unconstrained, given in particular the significant uncertainty in the grain-boundary diffusion coefficient of MSA (Sect's. 4.4; see also Fig. 14).*

Thus, providing quantitative constraints on “high accumulation and low core-averaged $[\text{Na}^+]$ ” may be subjective and (or) potentially misleading. Rather, we believe the associated quantitative results are well encapsulated within Figures 14 and 15. As such, no changes were made to Pg. 32, Line 6.

References

Chesselet, R., Morelli, J., and Buat-Menard, P.: Variations in ionic ratios between reference sea water and marine aerosols, J. Geophys. Res., 77(27), 5116–5131, doi:10.1029/JC077i027p05116, 1972.

Methanesulfonic acid (MSA) migration in polar ice: Data synthesis and theory

Matthew Osman¹, Sarah B. Das², Olivier Marchal², Matthew J. Evans³

5 ¹Massachusetts Institute of Technology/Woods Hole Oceanographic Institution Joint Program in Oceanography/Applied Ocean Sciences and Engineering, Woods Hole Oceanographic Institution, Woods Hole, MA, 02543, USA

²Dept. of Geology and Geophysics, Woods Hole Oceanographic Institution, Woods Hole, MA, USA

³Dept. of Chemistry, Wheaton College, Wheaton, MA, USA

10 *Correspondence to:* Matthew Osman (osmanm@mit.edu)

Abstract Methanesulfonic acid (MSA; CH₃SO₃H) in polar ice is a unique proxy of marine primary productivity, synoptic atmospheric transport, and regional sea ice behavior. However, MSA can be mobile within the firn and ice matrix, a post-depositional process that is well known but poorly understood and documented, leading to uncertainties in the integrity of the MSA paleoclimatic signal.

15 Here, we use a compilation of 22 ice core MSA records from Greenland and Antarctica and a model of soluble impurity transport in order to comprehensively investigate the vertical migration of MSA from summer layers, where MSA is originally deposited, to adjacent winter layers in polar ice.

We find that the shallowest depths of MSA migration in our compilation vary over a wide range (~2 m to 400 m), and are positively correlated with snow accumulation rate and negatively correlated

20 with ice concentration of Na⁺ (typically the most abundant cationic sea salt). Although the considered soluble impurity transport model provides a useful mechanistic framework for studying MSA migration, it remains limited by inadequate constraints on key physico-chemical parameters, most notably, the diffusion coefficient of MSA in cold ice (D_{MS}). We derive a simplified version of the model, which includes D_{MS} as the sole parameter, in order to illuminate aspects of the migration process. Using this

25 model, we show that the progressive phase alignment of MSA and Na⁺ concentration peaks observed along a high-resolution West Antarctic core is most consistent with $10^{-12} \text{ m}^2 \text{ s}^{-1} < D_{MS} < 10^{-11} \text{ m}^2 \text{ s}^{-1}$, one order of magnitude greater than D_{MS} values previously estimated from laboratory studies. More

Matthew Osman 9/26/2017 7:00 PM

Deleted:

Matthew Osman 9/26/2017 7:00 PM

Deleted: The

Matthew Osman 9/26/2017 7:00 PM

Deleted: reported

Matthew Osman 9/26/2017 7:00 PM

Deleted: our analysis suggests that these depths

Matthew Osman 9/26/2017 7:00 PM

Deleted: .

generally, our data synthesis and model results suggest that (i) MSA migration may be fairly ubiquitous, particularly at coastal and (or) high accumulation regions across Greenland and Antarctica, and (ii) can significantly change annual and multi-year MSA concentration averages. Thus, in most cases, caution should be exercised when interpreting polar ice core MSA records, although records that have undergone severe migration could still be useful for inferring decadal and lower-frequency climate variability.

1. Introduction

Measurements of soluble impurity species in polar ice cores provide important high-resolution proxies of past climatic phenomena, including past changes in sea-ice extent, marine and terrestrial productivity, volcanism, biomass burning, atmospheric cycling, and anthropogenic pollution (e.g., Legrand and Mayewski, 1997). A foundational premise, however, is that these species undergo negligible post-depositional redistribution in the ice column, an assumption unsupported by numerous ice core records from Greenland and Antarctica. Processes acting within the upper firn layer, including wind pumping, diffusion, [photolysis](#), volatility, sublimation, and melt (Wolff et al., 1996), can affect the stability of chemical species soon after deposition and undermine the climatic interpretation of these records down-core (Wagnon et al. 1999, Weller et al. 2004). Deeper in the ice column, both observation (e.g., Barnes et al., 2003b) and theory (Nye, 1991; Rempel et al. 2001, 2002) indicate the potential for solid and liquid-state chemical migration, impacting the stability of chemical species much later after deposition. In this study, we focus on one species particularly susceptible to vertical migration in polar ice, methanesulfonic acid, or MSA ($\text{CH}_3\text{SO}_3\text{H}$; Pasteur and Mulvaney, 2000).

The processes leading to the production, transport, and deposition of MSA onto an ice sheet are complex (e.g., Abram, 2013). The progenitor compound of MSA, dimethylsulfoniopropionate, or DMSP ($((\text{CH}_3)_2\text{S}^+\text{CH}_2\text{CH}_2\text{COO}^-)$), is produced by certain marine algae as an osmotic regulator (Dickson and Kirst, 1986). Planktonic life cycle processes ultimately release DMSP to the water column, whereupon the ensuing bacterial-mediated cleavage of the compound promotes the formation of dimethylsulfide, or DMS ($((\text{CH}_3)_2\text{S})$), a highly-insoluble gaseous compound (Yoch, 2002). Once freed to the atmosphere, DMS is rapidly photo-oxidized (Saltzman et al., 1983), branching to form either non-

sea salt sulfate (nssSO_4^{2-}), or, to a lesser extent, MSA. Unlike nssSO_4^{2-} , however, DMS production appears to be the exclusive source of MSA (Abram, 2013).

Early studies on DMS and DMSP production in the Southern Ocean (Curran and Jones, 2000) and in Arctic waters (Leck and Persson, 1996) reported the greatest fluxes of DMS near the marginal sea ice zone at the onset of spring – summer decay (Turner et al., 1995; Curran et al., 1998). Since concentrations of atmospheric MSA rapidly decrease with increasing altitude and distance from their marine source (the mean atmospheric lifetime of MSA is estimated to about 7 days; Hezel et al. 2011), deposition of MSA at coastal ice sheet localities near-ubiquitously exhibits well-defined annual peaks during the late-spring to summer months. Conversely, the relatively low wintertime MSA deposition may be jointly attributed to (1) limited marine productivity during polar darkness, (2) increased wintertime sea ice extent and, accordingly, atmospheric transport distances, and (or) (3) diminished atmospheric OH radical concentrations, the primary oxidant of airborne DMS (Jourdain and Legrand, 2001). The strong seasonality and unique marine source of MSA in ice cores have led to its predominant use as a high-resolution proxy for past sea-ice cover (e.g., Welch et al., 1993; Abram et al., 2013).

Mulvaney et al. (1992) appear to be the first authors to report migration of MSA in polar ice using data from Dolleman Plateau, Antarctica Peninsula. In the shallow portions of the Dolleman Plateau core, concentrations of MSA exhibited well-defined summer maxima, as expected. With increasing depth in the ice column, however, a distinctive shift to predominantly winter $[\text{MS}^-]$ maxima was found (hereafter, MSA is denoted as MS^- when referring to its anionic form, CH_3SO_3^- , as measured by ion chromatography). Concluding that a change in the seasonality of peak MSA production and (or) deposition was unlikely, the authors postulated this shift to result from post-depositional vertical migration. Since then, numerous ice core studies from both Antarctica and Greenland have reported the migration phenomenon over a wide range of depths, temperatures, and ionic concentrations in the ice column (Table 1 and references therein).

Despite the importance of $[\text{MS}^-]$ records in paleoclimatic studies, there have been few systematic evaluations of the environmental and (or) chemical conditions promoting MSA migration from summer-to-winter layers in polar ice. Furthermore, aspects of this migration process exhibit behavior distinct from other post-depositional processes, and are important to understand mechanistically. First, the $[\text{MS}^-]$

Matthew Osman 9/26/2017 7:00 PM
Deleted: lack of

Matthew Osman 9/26/2017 7:00 PM
Deleted: .

Matthew Osman 9/26/2017 7:00 PM
Moved up [1]: Mulvaney et al.

Matthew Osman 9/26/2017 7:00 PM
Moved (insertion) [1]

Matthew Osman 9/26/2017 7:00 PM
Deleted: The

Matthew Osman 9/26/2017 7:00 PM
Deleted: are

Matthew Osman 9/26/2017 7:00 PM
Deleted: (1992),

Matthew Osman 9/26/2017 7:00 PM
Formatted: Not Superscript/ Subscript

maxima that are formed in winter are converse to what would be expected from typical (Fickian) diffusion, which would instead weaken the amplitude of summertime [MS⁻] peaks. Second, MSA movement has been reported to occur in the up-core direction (Curran et al., 2002), ruling out gravitational forcing as the sole mechanism for migration. These observations, corroborated by evidence for highly concentrated regions of sulfuric acid at the interface of individual ice crystals (Mulvaney et al. 1988), led to speculation that liquid migration of soluble impurities could occur along the boundaries of individual ice crystals, likely along concentration gradients (Mulvaney et al. 1992). However, critical questions remain. For example, why should MSA in particular exhibit migration, while associated soluble impurities and acids (e.g., nssSO₄²⁻) do not (Pasteur et al., 1999)? How could diffusion result in clearly defined concentration maxima in winter layers? Could the “trapping” of migrating MSA in the adjacent winter layer stem any subsequent “spillover” of MSA into an adjacent annual layer, as assumed in prior studies (e.g., Kreutz et al. 1998; Pasteur and Mulvaney, 2000; Becagli et al. 2009; Thomas and Abram, 2016)? Clearly, investigating the mechanisms(s) responsible for MSA migration in polar ice is necessary if we are to answer these questions and build confidence in the use of [MS⁻] in polar ice as a paleoclimatic indicator.

The overarching goal of this study is to develop a better understanding of the environmental and physico-chemical processes that are conducive to MSA migration in cold, polar ice, in order to improve the interpretation of ice-core [MS⁻] records. This paper is organized as follows. In Section 2, we consider published [MS⁻] and ancillary measurements from a variety of Greenlandic and Antarctic ice cores in an effort to identify site-specific factors that influence MSA migration. In Section 3, we present observations from the high-resolution, precisely dated DIV2010 ice core (West Antarctica) as a case study for MSA migration. In Section 4, we summarize our current understanding of the physico-chemical processes leading to MSA migration, utilizing an existing model describing soluble impurity transport along ice grain boundaries (Rempel et al., 2002). We derive a simplified version of this model to illuminate these processes, and to test the ability of different values of MSA diffusivity to reproduce the down-core change in phase relationship between the concentrations of MSA (deposited primarily in summer) and Na⁺ (deposited primarily in winter) observed along the DIV2010 core. In Section 5, we assess the integrity of the DIV2010 [MS⁻] record, and discuss the broader implications of our results for

Matthew Osman 9/26/2017 7:00 PM

Deleted: important

Matthew Osman 9/26/2017 7:00 PM

Deleted: records to infer past climatic phenomena

Matthew Osman 9/26/2017 7:00 PM

Deleted: any

the interpretation of $[MS^-]$ records across a wide range of polar conditions. Section 6 concludes with an overview of our results and suggestions for future research.

2. MSA migration in ice cores

In this section, we use observations to evaluate the relative importance of site-specific variables on MSA migration in polar ice. We compiled 22 ice core $[MS^-]$ records originating from 20 sites in Greenland and Antarctica (see Supplementary Material), taken from both the literature and unpublished datasets (Table 1). The following criteria are adopted for selection of the records: (1) high temporal resolution and dating accuracy (annually resolved and dating uncertainty < 3 yr); (2) multi-decadal record length (20 yr minimum); and (3) documented changes in seasonality in the $[MS^-]$ record and (or) an explicit mention of MSA migration from summer-to-winter layers. Post-depositional surficial losses of MSA may occur via gaseous diffusion in the top 1-2 meters of the firn at low accumulation sites (Wagon et al., 1999, Delmas et al., 2003, Weller et al., 2004). As a result, we exclude records from sites where annual mean accumulation rate is less than $100 \text{ kg m}^{-2} \text{ yr}^{-1}$ and assume that vertical redistribution of MSA via gas-phase diffusion (Kuo et al., 2011) is negligible at all considered sites and depths. Also excluded are records from sites subject to moderate to severe melt, which, through percolation, can also rapidly redistribute MS^- along the firn (Moore et al., 2005).

Of the 20 sites, thirteen indicate MSA migration, five do not indicate migration, and at two sites migration is deemed unclear at the deepest depths sampled (Fig. 1). The sites and records cover a wide range of climatologic and glaciological conditions, as represented by annual mean surface air temperature, annual mean accumulation rate, distance inland, and impurity concentrations in the ice (Table 1 and Figure 1). Figure 1a illustrates the range of annual mean accumulation rates (\dot{b}) and annual mean surface air temperatures (SAT) of all sites. A strong, nonlinear relationship is apparent between both variables, as expected (Cuffey and Patterson, 2010). Similarly, for the 14 sites where glaciochemical data are available (Table 1), Figures 1b and 1c show, respectively, the depth-averaged concentrations of Na^+ ($\overline{Na^+}$; an ionic species whose relevance we expound upon in Sect. 2.2) and MS^- ($\overline{MS^-}$), taken here as rough measures of winter and summer deposition, respectively, across sites. While impurity deposition largely covaries with distance inland (Fig. 1b and 1c), with higher $\overline{Na^+}$ and $\overline{MS^-}$ at

Matthew Osman 9/26/2017 7:00 PM

Deleted: ,

Matthew Osman 9/26/2017 7:00 PM

Deleted:),

Matthew Osman 9/26/2017 7:00 PM

Deleted: .

sites nearer to the coast, this pattern does not always hold true, likely due to effects associated with seasonal atmospheric transport and (or) local differences in the production of the progenitor aerosols of both ions (Iizuka et al., 2016). There is also a notable geographic difference: Greenland values of \overline{Na}^+ and \overline{MS}^- (observed at the high-elevation, inland Summit2010 and D4 sites) are lower than those reported for all Antarctic ice cores. In the following sub-sections, we explore in detail the effects of snow accumulation, ice impurity concentration, surface air temperature, and ice density on MSA migration.

2.1 Snow accumulation

Previous work has suggested that high snow accumulation acts as the primary deterrent for MSA migration (Pasteur and Mulvaney, 2000), a result of either (i) the longer distance required for an ion to travel from the summer to winter layer, (ii) the corresponding suppression of summer-winter layer ionic concentration gradients at higher accumulation sites, or (iii) both (Curran et al., 2002). General support for this suggestion is illustrated in Figure 1a, showing that sites with $\dot{b} > 0.45$ m w. eq. yr^{-1} (meter of water equivalent per year) appear less likely to exhibit clear signs of MSA migration than sites with lower accumulation rates. This consideration, however, does not take into account the depth required for migration to occur. As such, we consider below whether MSA migration invariably occurs across the full range of accumulation rates, given sufficient depth within the firn column.

At low-to-moderate accumulation rate sites ($\dot{b} = 0.1 - 0.45$ m w. eq. yr^{-1}), MSA migration seems to universally occur, with the shallowest reported depths of migration showing a positive relationship with accumulation rate (Table 1 and Fig. 2). Data from sites characterized by moderately high accumulation rates ($\dot{b} = 0.45 - 0.65$ m w. eq. yr^{-1}) are not as straightforward to interpret. For example, in the Dome Summit South (DSS; Law Dome, Antarctica) and Dyer Plateau ice cores, signs of MSA migration were noted in the original studies. At DSS ($\dot{b} = 0.64$ m w. eq. yr^{-1}), moderate indications of [MS] annual maxima extending into adjacent autumn layers were reported at depths deeper than about 40-50 m (Curran et al., 2002). Similarly, at Dyer Plateau ($\dot{b} = 0.48$ m w. eq. yr^{-1}) [MS] showed suppressed, localized maxima in both winter and summer layers throughout a core section from ~51-54 m depth, indicating, perhaps, initial or transitory stages of migration (Pasteur and Mulvaney, 2002). On

Matthew Osman 9/26/2017 7:00 PM

Deleted: yr^{-1}

Matthew Osman 9/26/2017 7:00 PM

Formatted: Not Superscript/ Subscript

Matthew Osman 9/26/2017 7:00 PM

Deleted: and (or) time

Matthew Osman 9/26/2017 7:00 PM

Deleted: and is observed at increasingly shallow

Matthew Osman 9/26/2017 7:00 PM

Deleted: at progressively lower

Matthew Osman 9/26/2017 7:00 PM

Deleted: sites

Matthew Osman 9/26/2017 7:00 PM

Deleted: lower

the other hand, two [MS⁻] records at sites characterized by annual mean accumulation rates similar to DSS and Dyer, the 2Barrell ($\dot{b} = 0.51$ m w.eq. yr⁻¹) and WHG ice cores ($\dot{b} = 0.61$ m w.eq. yr⁻¹), respectively, showed no signs of migration. However, neither WHG nor the 2Barrell records extend as deep as their counterparts, suggesting WHG and 2Barrell may be of insufficient length and thus may also show migration at similar depths. Finally, of the four sites characterized by high accumulation rates (>0.65 m w. eq. yr⁻¹), three [MS⁻] records, the Gomez ($\dot{b} = 0.88$ m. w.eq. yr⁻¹), Beethoven ($\dot{b} = 1.2$ m. w.eq. yr⁻¹), and DE08 ($\dot{b} = 1.27$ m. w.eq. yr⁻¹) ice cores, did not present signs of migration. The exception is the highest accumulation site, Bruce Plateau ($\dot{b} = 1.98$ m. w.eq. yr⁻¹), where clear evidence of summer-to-winter migration was reported at ~395 m depth (Porter et al., 2016). Notably, Bruce Plateau is also the deepest drilled record among the high accumulation rate sites of our compilation.

We use these observations to determine the relationship between \dot{b} and the depth of first occurrence of MSA migration, z_{fo} , defined as the shallowest reported depth where [MS⁻] consistently shows its annual maximum in winter (see Supplementary Material for details about the estimation of z_{fo} for each site). We first consider just Antarctic sites reporting MSA migration (Fig. 2a). A least squares fit of a power law of z_{fo} against \dot{b} , with the intercept fixed to the origin, yields $r^2 = 0.99$ (Fig. 2a). To ensure that the fit is not dominated by the data pair with the highest \dot{b} value (Bruce Plateau), z_{fo} is regressed against \dot{b} using only those records with accumulation rates < 0.45 m w. eq. yr⁻¹, which yields $r^2 = 0.82$ (Fig. 2b). Remarkably, extension of the latter fit to the Bruce Plateau data point produces a value of z_{fo} that is within ~15 m of the reported value (Fig. 2a). The ability of the power law to describe the data in both scenarios suggests that, at least at Antarctic sites, the annual mean rate of snow accumulation has a strong (non-linear) influence on the shallowest depth of MSA migration in the ice column.

Applying this power law to the five sites where MSA migration was not observed or reported (Fig. 1), we find that three of these sites did not reach the predicted z_{fo} . The exceptions are (i) the WHG core, where little information on MSA migration in the deepest portions of the core is provided in the original study (Sinclair et al., 2014), and (ii) the Law Dome DE08 core, where the largest depth reported by Curran et al. (2002) remains within ~15 m of the predicted z_{fo} . These results suggest that MSA

Matthew Osman 9/26/2017 7:00 PM

Deleted: at

Matthew Osman 9/26/2017 7:00 PM

Deleted: the core

Matthew Osman 9/26/2017 7:00 PM

Deleted: are

migration may be more general than commonly thought and that records for which MSA migration was not reported either may have not reached the requisite depth, or they do not have the necessary resolution, required to observe the phenomenon. The two high elevation records from inland Greenland, which have low overall impurity concentration relative to the coastal Antarctic records, appear anomalous (Fig. 2a). This anomaly may result from the effect of ice impurities – in particular cationic sea salts – on MSA migration, a point we investigate in more detail below.

2.2 Ice Impurities

Earlier studies hypothesized that the presence of well-defined $[MS^-]$ peaks in winter layers reflects interaction with sea salts, which are preferentially deposited during winter months at most coastal locations (Legrand and Mayewski, 1997). The attributed mechanism, first hypothesized by Mulvaney et al. (1992) and echoed by subsequent studies (Wolff et al., 1996; Kreutz et al., 1998, Pasteur and Mulvaney, 2000; Curran et al., 2002), posits that a MSA molecule rejected to and dissolved in the under-cooled liquid veins present at the interface of ice grains (Mulvaney et al., 1988) would be transported by diffusion along a concentration gradient. This mechanism could transport MS^- in either the down or up gradient direction and would not necessarily conform to the concentration gradient measured on bulk ice samples (Sect. 4). Mulvaney et al. (1992) further proposed that upon contact with a cation, the precipitation of a stable cation salt through a metathesis reaction could effectively remove MS^- from solution, thus sequestering the resultant precipitate in the winter layer.

Here we evaluate whether observations support this mechanism, by comparing z_{fo} to the bulk concentrations of winter-deposited cations at sites showing evidence of MSA migration. Our evaluation is premised by the notion that higher ionic concentrations have greater ability to regulate the chemical composition of liquid veins, when *in situ* temperatures exceed the eutectic temperatures of the dominant progenitor salt species of those ions (Nye et al., 1991; Sect. 4). We constrain our analysis to the relationship between MSA and Na^+ for the following reasons. First, at coastal localities, the most abundant winter-maximum cation is typically Na^+ , though the relative abundance of Mg^{2+} , Ca^{2+} , and K^+ may vary from site to site (Legrand and Mayewski, 1997). Second, past studies have noted that MSA concentration peaks tend to coincide with Na^+ concentration peaks down-core (Pasteur and Mulvaney,

Matthew Osman 9/26/2017 7:00 PM
Deleted: (sections 2.2, 2.5).

Matthew Osman 9/26/2017 7:00 PM
Deleted: formulated

Matthew Osman 9/26/2017 7:00 PM
Deleted: super

Matthew Osman 9/26/2017 7:00 PM
Deleted: boundaries

Matthew Osman 9/26/2017 7:00 PM
Deleted: hypothesized

Matthew Osman 9/26/2017 7:00 PM
Deleted: Section

Matthew Osman 9/26/2017 7:00 PM
Deleted: ice core

2000; Kreutz et al., 1998). Finally, Na^+ is considered to be relatively nonreactive within the ice column (Barnes et al., 2003a,b; Legrand and Mayewski, 1997), while less abundant cations, such as Mg^{2+} , appear to be more susceptible to post-depositional effects (Kreutz et al., 1998; Wolff et al., 1996).

In Figure 3, z_{fo} is plotted against the core-averaged concentration of Na^+ ($\overline{\text{Na}^+}$) for [the eleven](#) sites where $[\text{Na}^+]$ data are available. These sites have comparable annual mean accumulation rates, within $0.13 - 0.42 \text{ m w. eq. yr}^{-1}$, so that the effect of $\overline{\text{Na}^+}$ on MSA migration could be isolated with some confidence. We find that as $\overline{\text{Na}^+}$ decreases, MSA migration tends to [be observed at greater depths](#) in the firn or ice column (Fig. 3). The depth z_{fo} appears to be particularly sensitive to $\overline{\text{Na}^+}$ for [low concentrations](#) of $\overline{\text{Na}^+}$, as can be seen most prominently for the two Greenland cores showing migration, D4 and Summit2010. This result conforms to the suggestion that, as the concentration of Na^+ is reduced, the concentration gradient of MS^- existing in the liquid vein network between the winter and summer layers is also reduced, thereby decreasing the rate at which MSA migration occurs. Another possibility is that the reduction of $[\text{Na}^+]$ closes off the liquid vein network within winter layers, inhibiting the vertical transport of ions along grain boundaries, although [data are lacking](#) to explore this further.

2.3 Temperature

Temperature may influence MSA migration in at least two ways. First, the rate of diffusion of MS^- along grain boundaries may depend on temperature, with higher rates occurring at warmer site, as suggested by Pasteur et al. (1999). Such dependence would imply that sites characterized by lower *in situ* temperatures would tend to exhibit larger values of z_{fo} . Second, the precipitation of an MS^- -sea salt from solution may be required to sequester MS^- in the winter layer, as proposed by Mulvaney et al. (1992). If effective, the formation of winter-layer $[\text{MS}^-]$ annual maxima would be inhibited at sites [where *in situ* temperature exceeds the eutectic temperature\(s\) of the dominant precipitated \$\text{MS}^-\$ -sea salt\(s\)](#). We can test both of the foregoing thermal influences with the available observations. However, due to a lack of firn temperature profiles, we substitute the more widely available annual mean surface air temperature (SAT) as a surrogate for *in situ* temperature. This approach appears justified, as vertical thermal gradients in polar ice sheets are typically small below 10 m, and their magnitude dictated

Matthew Osman 9/26/2017 7:00 PM

Deleted: all

Matthew Osman 9/26/2017 7:00 PM

Deleted: (n = 11).

Matthew Osman 9/26/2017 7:00 PM

Deleted: occur deeper

Matthew Osman 9/26/2017 7:00 PM

Deleted: small values

Matthew Osman 9/26/2017 7:00 PM

Deleted: we lack sufficient

Matthew Osman 9/26/2017 7:00 PM

Deleted: whose

primarily by local annual mean SAT (Cuffey and Patterson, 2010). We note that deeper in the ice, thermal gradients could be important (Rempel et al., 2001), particularly near the bedrock due to geothermal fluxes and (or) frictional heat dissipation, but we do not consider those cases here.

As a rough test of a thermal influence on MSA diffusivity, we regress z_{fo} against SAT (not shown). Unlike the relationships between z_{fo} and \dot{b} or $[\text{Na}^+]$, no significant relationship between z_{fo} and SAT is [observed](#). Likewise, no significant relationship is found between the z_{fo} residuals of the relationship between z_{fo} and \dot{b} (arguably, the best predictor for z_{fo}) and SAT ([also not shown](#)). These results suggest that temperature has a negligible influence on MSA migration, at least for the sites considered (Table 1).

Similarly, available observations do not indicate that sites reporting MSA migration can be discriminated on the basis of SAT. Although sites presenting no evidence for MSA migration tend to experience high SAT (-19°C to -12.5°C , Fig. 1a), two sites where MSA migration has been reported are also characterized by equal or higher SAT. We interpret this observation as an artifact of the strong relationship between SAT and accumulation rate in polar regions (Figure 1), whereupon \dot{b} is deemed to be the [most](#) relevant variable in driving z_{fo} (Sect. 2.1). This conclusion, in turn, indicates that either precipitating MS^- -salts may not drive MSA migration (Mulvaney et al., 1992), or the eutectic temperature(s) of the dominant MS^- -sea salt(s) is (are) less than -29.5°C , the lowest SAT reported in Table 1. We return to this discussion in Section 5.1, after incorporating recent estimates of the eutectic temperatures of the dominant MS^- -sea salts.

2.4 Firn or [ice density](#)

The mechanism of MSA migration described above, involving diffusion along liquid grain boundaries, relies on the assumption that the ice grains are sufficiently well compacted to form interconnected premelted veins between the summer and winter layers. This mechanism seems to imply there should be a relationship between the onset of MSA migration and ice density (ρ), yet to our knowledge such possible relationship has not been investigated. Here, we consider the firn or ice densities (ρ_{fo}) observed at the shallowest depth of MSA migration, z_{fo} , again using our compilation of Greenland and Antarctic data.

Matthew Osman 9/26/2017 7:00 PM

Deleted: found

Matthew Osman 9/26/2017 7:00 PM

Deleted: .

Matthew Osman 9/26/2017 7:00 PM

Deleted: more

Matthew Osman 9/26/2017 7:00 PM

Deleted: Ice Density

In Figure 4, z_{fo} is plotted against ρ_{fo} for the seven sites where available data permit (Table 1). A weighted least squares fit to the data, with the weighting provided by the errors in the z_{fo} estimates, shows a positive relationship between z_{fo} and ρ_{fo} ($p < 0.01$), as expected. Data for low accumulation Berkner Island sites, where annual mean $\dot{b} = 0.18 - 0.22$ m w.eq. yr⁻¹, indicate the occurrence of MSA migration at densities exceeding about 515-560 kg m⁻³ (Wagenbach et al., 1994), while higher accumulation sites, including THW2010, Ferrigno, and DIV2010 ($\dot{b} = 0.28 - 0.41$ m w.eq. yr⁻¹) show values of ρ_{fo} values in the range of 610-650 kg m⁻³. The highest values of ρ_{fo} values, in the range 710-760 kg m⁻³, are found for the Greenland cores, D4 and Summit2010.

Interestingly, the firn or ice densities at the shallowest depths of MSA migration (~ 500 to ~800 kg m⁻³, Fig. 4), are all comparable to or higher than the critical value of 550 kg m⁻³ that corresponds to the theoretical closest random packing of spherical ice grains (Benson, 1962). Densities greater than 550 kg m⁻³ can be achieved only by bond formation, or sintering, at the contact of individual grains (Cuffey and Patterson, 2010). Persistent vertical transport of under-cooled liquid at the grain boundaries (Mulvaney et al., 1992) requires reaching or exceeding this effective critical density. The compiled data also indicate that the critical density for MSA migration may vary between sites (Fig. 4), which might be due to variability in grain shape, grain size, and (or) impurity content. For example, firn samples with densities of 350-400 kg m⁻³ can typically be cut into blocks (Cuffey and Patterson, 2010), which suggests that bond formation in the upper firnpack can begin at densities below 550 kg m⁻³. Furthermore, at the lowest accumulation sites, Byrd Station, Siple Dome, and the Filchner-Ronne Ice Shelf, MSA migration was reported in the shallowest ~5 m of the firn ($z_{fo} = 2.6, 2,$ and $3-4$ m, respectively). Although density data are not available for these specific records, this observation suggests that MSA migration may begin at bulk densities substantially lower than 550 kg m⁻³, perhaps through high-density microlayers, such as wind-blown crusts, features commonly found at lower accumulation sites (Cuffey and Patterson, 2010). While more data are needed, available evidence presented here supports the notion that a density of at least 500 kg m⁻³, comparable to the theoretical value of 550 kg m⁻³, is needed for MSA migration.

Matthew Osman 9/26/2017 7:00 PM

Deleted: ,

Matthew Osman 9/26/2017 7:00 PM

Deleted: . We note that

Matthew Osman 9/26/2017 7:00 PM

Deleted: super

Matthew Osman 9/26/2017 7:00 PM

Deleted: or

2.5 Synthesis

Our data analysis suggests that the annual mean rate of snow accumulation appears to have a strong influence on the shallowest depth at which MSA migration is observed. The concentration of Na^+ in the ice or firn appears to also be an important factor, especially at sites characterized by low $\overline{\text{Na}^+}$. Annual mean SAT appears to play a less important role in determining z_{fo} , at least in the SAT range where data are available (-29.5°C to -12.5°C). Lastly, the onset of migration appears to be associated with a critical density near $450\text{--}550\text{ kg m}^{-3}$, though this may not hold true for all low accumulation sites. Overall, our analysis suggests that MSA migration may be more common than usually thought, and that existing [MS] records not exhibiting evidence for migration may not be deep enough, or have the necessary (sub-annual) resolution, to observe the phenomenon.

The shallowest depth of MSA migration (z_{fo}) appears most readily predictable from \dot{b} in coastal Antarctica. This result appears in part attributable to the comparably higher concentrations of Na^+ in the coastal Antarctic cores than in the two Greenland cores showing evidence of migration (Table 1). The joint effect of annual mean accumulation rate and depth-averaged Na^+ concentration on the shallowest depth of MSA migration is illustrated in Figure 5, which shows MSA migration tends to occur deeper in the firn or ice column for larger values of \dot{b} and lower values of $\overline{\text{Na}^+}$. Notably, Antarctic sites with comparably low concentrations of Na^+ tend to occur further inland and at higher elevations, and thus also tend to have lower accumulation rates than considered in this study (i.e., $\dot{b} < 0.1\text{ m. w.eq. yr}^{-1}$). Greenland, in contrast, experiences comparably large accumulation rates even at its highest-altitude, inland locations (e.g., Summit). For a recent overview of Greenland-wide $[\text{Na}^+]$ deposition, see Rhodes et al. (2017).

3. A Case Study: The DIV2010 MSA record

In this section, we use a well-dated multi-century ice core record from DIV2010, an intermediate accumulation rate site in coastal West Antarctica (Table 1), to document in detail the phenomenon of MSA migration. Prior studies have investigated aspects of the DIV2010 core, including variability in accumulation (Medley et al., 2013; Medley et al., 2014) and chemical composition (Criscitiello et al.,

Matthew Osman 9/26/2017 7:00 PM

Deleted: concentrations of Na^+ .

Matthew Osman 9/26/2017 7:00 PM

Deleted: We note that

Matthew Osman 9/26/2017 7:00 PM

Deleted: variability

Matthew Osman 9/26/2017 7:00 PM

Deleted: glaciochemistry

2013; Criscitiello et al., 2014; Pasteris et al., 2014). As this is the first report of the DIV2010 [MS⁻] record below the zone of MSA migration, however, we describe the record in more detail here. Inorganic salt ions (e.g., Na⁺) and MS⁻ were measured on discrete samples at a constant sampling interval $\Delta z = 5$ cm using standard suppressed ion chromatography methods (Curran and Palmer, 2001).

5 The age-depth relationship of the core was established independently by identifying summer maxima in three parameters – [nssS], [H₂O₂], and $\delta^{18}\text{O}$ – measured at ~2 cm resolution (Pasteris et al., 2014). Here, we examine data from the top 60.4 m of DIV2010 (AD 1905-2010) covering the zone of progressive migration of MSA. Dating uncertainty over this depth interval is estimated to be less than 1 yr based on tie points to well known volcanic events (Pasteris et al., 2014), and the sampling frequency (~10-15
10 samples per year) allows for seasonally resolved records throughout this depth interval (Criscitiello et al., 2013; Criscitiello, 2014). At a depth 60.4 m in the core, annual layer thinning estimated using a thinning model assuming frozen basal conditions and a linear vertical strain rate (Nye, 1963) is considerably less than the distance required for a chemical species to migrate from the summer to the winter layer (~30 cm). As a result, no correction for thinning is applied.

15 The migration of MSA from summer to winter layers in the DIV2010 ice core appears to be progressive. To document this progression and contrast the behavior of Na⁺ and MS⁻, the month of the annual maximum of [MS⁻] (m_{MS^-}) and the month of the annual maximum of [Na⁺] (m_{Na^+}) are each plotted versus age (Fig. 6). The month of the annual maximum of [MS⁻] tends to change down-core from summer to predominantly winter, as revealed by the significant linear trend of m_{MS^-} between AD
20 1905-1999 ($r = 0.75$; $p < 0.001$). In contrast, [Na⁺] consistently shows maxima in the winter layers, i.e., m_{Na^+} portrays no significant trend over this period ($r = 0.09$, $p = 0.41$). Similarly, [nssSO₄²⁻] displays its annual maximum consistently in the summer layers during this period (not shown). Note that no significant decrease in annual mean [MS⁻] is found deeper than 10 m, suggesting post-depositional losses are negligible at the DIV2010 core site.

25 3.1 Identification of DIV2010 migration zones

Notwithstanding the progressive nature of MSA migration in the DIV2010 core, we identify three distinct zones in the [MS⁻] record for this core (Fig.7). First, a *shallow* zone is defined as the depth

Matthew Osman 9/26/2017 7:00 PM

Deleted: here

Matthew Osman 9/26/2017 7:00 PM

Deleted: .

Matthew Osman 9/26/2017 7:00 PM

Deleted: concentration

interval where density is less than 550 kg m^{-3} ; at DIV2010, this depth occurs at approximately 9.1 m (Medley et al., 2014). The upper 9.1 m of the core appears to contain the original (unaltered by migration) $[\text{MS}^-]$ variations, to the extent that annual maxima of $[\text{MS}^-]$ are found in the summer layers and are out of phase with winter $[\text{Na}^+]$ maxima. Second, a *transition* zone is defined further down-core, where the $[\text{MS}^-]$ record exhibits no consistent seasonality. Finally, a *deep* zone is defined as the deepest portion of the record considered, where $[\text{MS}^-]$ and $[\text{Na}^+]$ annual maxima appear to be broadly in phase (Fig.7). In order to facilitate our analysis, we linearly interpolated the $[\text{MS}^-]$ record onto a monthly scale, with the three zones defined to entail an equal number of data points ($n = 132$ months, or 11 years).

To better reveal the variable phase relationship between $[\text{MS}^-]$ and $[\text{Na}^+]$ in the shallow, transition, and deep zones, monthly mean values of $[\text{MS}^-]$ and $[\text{Na}^+]$ are calculated and the standard error of the monthly means are computed for each zone (Fig.8). In all three zones, Na^+ shows concentration maxima in winter, albeit with broad variation between April and September. In contrast, MS^- exhibits concentration maxima during summer (January) in the shallow zone, but during winter (broadly, May to August) in the deep zone. In the transition zone, the monthly mean $[\text{MS}^-]$ are not significantly different between summer (DJF) and winter (JJA), though local maxima in both spring (MAM) and fall (SON) are apparent.

3.2 Cross-correlation analysis

Cross-correlation coefficients are calculated to quantify the amount of linear relationship between the monthly mean $[\text{MS}^-]$ and $[\text{Na}^+]$ at different lags in the three zones. Due to the finite length of the records, only the coefficients from lag 1 to lag 24 (2 yr) are calculated (Fig. 9). In the shallow zone, $[\text{MS}^-]$ and $[\text{Na}^+]$ show a negative correlation at lag 0 and a positive correlation at lag 6 (i.e., 6 months); both correlations appear significant at the 5% level compared to two uncorrelated series (Chatfield, 1996). These results reflect MSA and Na^+ being deposited primarily during summer and winter, respectively. In contrast, in the transition zone and more prominently in the deep zone, the $[\text{MS}^-]$ and $[\text{Na}^+]$ records show a positive correlation at lag 0 and a negative correlation at lag 6; in the deep zone the correlations at lags 0 and 6 are both significant at the 5% level. The positive correlation at zero lag in the transition and deep zones indicates that positive deviations in $[\text{MS}^-]$ tend to coincide with

Matthew Osman 9/26/2017 7:00 PM

Deleted: cross-correlation

Matthew Osman 9/26/2017 7:00 PM

Deleted: , of which one is white noise

positive deviations in $[\text{Na}^+]$. The distinct phase relationships between the two species in the shallow and deep zones are consistent with MSA migration.

4. Towards a Mechanistic Understanding of MSA Migration

In this section, we discuss the physico-chemical processes that may be responsible for MSA migration using an existing model of soluble impurity transport. We then derive a linearized version of the model in order to further illuminate the processes that lead to the movement of MSA from summer to winter layers.

4.1 The impurity transport model of Rempel et al. (2002)

The physical mechanisms responsible for the presence of a liquid phase in ice cores, even well below the freezing point of pure water, are well documented (e.g., Nye et al. 1973, Nye 1991) and attributed to two distinct physical processes. The first relates to the fact that the atomic radii of most impurity species (not including [requisitely-small ionic species, e.g.,](#) F^- , Cl^- , and NH_4^+ ; Wolff, 1996) possess a misfit strain energy that inhibits their incorporation into the tightly packed, crystalline ice lattice. During densification, these impurities are thus preferentially expelled to the boundaries of individual grains of ice. This process has been observed using optical measurements (Mulvaney et al., 1988; Bartels-Rauch et al., 2014). [As](#) the concentration of impurities at the grain boundary is increased, the local equilibrium temperature is decreased, depressing the freezing point of the water-impurity mixture. At temperatures greater than a system's eutectic point, premelted aqueous solutions are assumed to exist at equilibrium as interconnected, submicron veins at the grain boundaries. The second process responsible for the presence of a liquid phase in polar ice pertains to the interstitial curvature occurring at the interface of three (i.e., triple junctures) or four (i.e., nodes) ice grains. Known as the Gibbs-Thompson effect, this thermodynamic phenomenon is related to the deviation in chemical potential of a vapor surrounding a curved surface from that of the same vapor at equilibrium with a flat liquid surface. In effect, it allows smaller (more curved) ice grains of a given composition to melt at lower temperatures than larger (less curved) ice grains of the same composition (Wettlaufer and Worster, 2006).

Matthew Osman 9/26/2017 7:00 PM
Deleted: are

Matthew Osman 9/26/2017 7:00 PM
Deleted: When

Importantly, both of the foregoing processes should respond collaterally to a temperature change, although they may not have the same importance in the maintenance of a liquid phase: scaling arguments suggest that the curvature effect required to reach a given volume of premelted liquid is negligible in ice sheets in comparison to the effect of impurity-driven under-cooling (Rempel et al., 2001). Focusing on the first process, Rempel et al. (2002) developed an elegant model describing the movement of soluble impurities along crystal grain boundaries. They considered impurity migration due to (1) temperature gradients (Rempel et al. 2001), which vary gradually downcore (typically <1°C per 100 m in ice sheet interiors; Cuffey and Patterson, 2010), and (2) impurity concentration gradients, which are characterized by length scales typically on the order of centimeters (Rempel et al. 2002). They derived the following impurity migration equation, referred to below as the RWW model:

$$\frac{\partial}{\partial t} c_{B,k} = -\nabla \cdot (v + v_k) c_{B,k} , \quad (1)$$

where,

$$v_k = D_k \frac{\nabla T}{(T_m - T)} + D_k \frac{\sum \Gamma_i \nabla c_{B,i} - \frac{\nabla c_{B,k}}{c_{B,k}} \sum \Gamma_i c_{B,i}}{\sum \Gamma_i c_{B,i}} \quad (2)$$

Here $c_{B,k}$ is the bulk concentration of the k^{th} impurity species, i.e., the mass of the k^{th} impurity species per unit ice volume as measured during standard chemical analyses, t is time, and v_k is an effective velocity of the k^{th} impurity species relative to the surrounding ice. The ice velocity, v , would arise, e.g., from a vertical strain rate and appears to have a small influence on MSA transport on time scales of years to decades (Nye, 1963). As a result, it is systematically neglected in this paper (see also, Rempel et al., 2002).

As indicated by (2), the relative velocity v_k has two distinct contributions. The first is due to the motion of molecules in the liquid along a temperature gradient and leads to solute transport, even in the absence of concentration gradients. It is proportional to the diffusivity of the k^{th} impurity in the liquid, D_k , and inversely proportional to the difference $T_m - T$ between the melting point of pure ice (T_m) and the temperature of the liquid (T). The second contribution to v_k arises from the concentration gradients of

all solutes present in the liquid veins, including the k^{th} impurity. As with the first contribution, it is proportional to the diffusivity of the k^{th} impurity in the liquid, but it would occur in the absence of a temperature gradient. It also depends on the slope of the liquidus curve, Γ_i , of the various solutes that are present in the liquid veins. Scaling arguments suggest that v_k is often well approximated by the second contribution in (2), at least in portions of the ice column where temperature gradients are small (Rempel et al. 2002). The small effect of the first contribution on MSA migration is further supported by observations made in Section 2.3.

A binary mixture provides the simplest context to discuss the mechanisms of MSA migration in the RWW model. In a mixture comprising MS^- and Na^+ , equations (1-2) reduce to (for negligible v),

$$\frac{\partial}{\partial t} c_{\text{MSA}} = -\nabla \cdot (v_{\text{MS}} c_{\text{MS}}) , \quad (3a)$$

$$\frac{\partial}{\partial t} c_{\text{Na}} = -\nabla \cdot (v_{\text{Na}} c_{\text{Na}}) , \quad (3b)$$

where,

$$v_{\text{MSA}} = \frac{D_{\text{MS}} \Gamma_{\text{Na}}}{\Gamma_{\text{MS}} c_{\text{MS}} + \Gamma_{\text{Na}} c_{\text{Na}}} (\nabla c_{\text{Na}} - \frac{c_{\text{Na}}}{c_{\text{MS}}} \nabla c_{\text{MS}}) , \quad (4a)$$

$$v_{\text{Na}} = \frac{D_{\text{Na}} \Gamma_{\text{MS}}}{\Gamma_{\text{MS}} c_{\text{MS}} + \Gamma_{\text{Na}} c_{\text{Na}}} (\nabla c_{\text{MS}} - \frac{c_{\text{MS}}}{c_{\text{Na}}} \nabla c_{\text{Na}}) . \quad (4b)$$

In this case, the model implicitly assumes that an appreciable amount of the MSA and Na^+ -containing impurities are rejected from the crystalline lattice of individual ice grains during firnification. The postulated expulsion would concentrate impurities at the grain boundaries, depressing the freezing point of the inter-granular medium to form sub-micron, under-cooled liquid veins. In general, higher impurity concentrations would lead to higher abundance of premelt liquid. Thus, more premelt liquid is predicted to occur in winter layers, where $[\text{Na}^+]$ is typically maximum, than in summer layers, where the comparatively low (bulk) concentration of MSA shows a maximum. The ensuing network of liquid veins would allow the ionic impurities to diffuse under their own concentration gradients, such that a large proportion of the MS^- from the MS^- -rich summer layer migrates to the MS^- -poor winter layer.

Conversely, a comparatively small proportion of Na^+ migrates to the summer layer, because the Na^+ concentration difference between the summer and winter layers is reduced by the larger amount of premelt liquid in the winter layer than in the summer layer. The net result of the different transport rates of MS^- and Na^+ is that variations in $[\text{MS}^-]$ ultimately become in phase with variations of $[\text{Na}^+]$ (Fig.10).

5 4.2 Physico-chemical parameters of MSA migration

The RWW model as applied to the system containing MS^- and Na^+ (equations 3-4) includes four parameters: the slopes of the liquidus curve for relevant MS^- and Na^+ -containing soluble impurity species (Γ_{MS} and Γ_{Na}), and the grain-boundary diffusivities of MS^- and Na^+ (D_{MS} and D_{Na}). Below, we review the existing literature on each of these quantities.

10 4.2.1 Grain boundary diffusivity of MS^- and Na^+

We first consider the grain boundary diffusion coefficient of MS^- , D_{MS} . [Lacking](#) empirical constraints, [Rempel et al. \(2002\)](#) approximated the diffusivity for ionic constituents in equation (2) as one-third the molecular diffusivity of a bulk liquid (i.e., $D_{\text{MS}} = 5 \cdot 10^{-10} \text{ m}^2 \text{ s}^{-1}$), scaled so as to account for the random orientation of premelted liquid veins in the ice (Lemlich, 1978). Smith et al. (2004) reported
 15 a value of $D_{\text{MS}} = 2 \cdot 10^{-13} \text{ m}^2 \text{ s}^{-1}$ for solid ice, estimated by measuring variations in $[\text{MS}^-]$ across horizontal sections of an ice core from Law Dome, Antarctica following nearly 15 years of freezer storage at -20°C . Using similar ice substrate and experimental set up, Roberts et al. (2009) revised this estimate to $(4.1 \cdot 10^{-13} \pm 2.5 \cdot 10^{-14}) \text{ m}^2 \text{ s}^{-1}$ at -20°C , which was interpreted by the authors to represent
 20 diffusive losses of volatile MSA occurring during extended periods of freezer storage. Notably, this estimate is 1-3 orders of magnitude larger than that reported for solid-state diffusion of HCl ([Thibert and Dominé, 1997](#)), HNO_3 ([Thibert and Dominé, 1998](#)), HCHO ([Barret et al., 2011](#)), and deuterated water ([Lu et al., 2009](#)) determined in single ice crystals, despite the molecular radius of MSA greatly exceeding that of each of these species (Roberts et al., 2009). In fact, subsequent studies have contended that the D_{MS} estimate of Roberts et al. (2009) is unlikely to represent pure solid-state diffusion of MSA
 25 in firn or ice, and suggested that at least some of the storage-based losses of MSA occurred via liquid transport along grain boundaries (McNeil et al., 2012; Bartels-Rausch et al., 2014). We thus consider the

Matthew Osman 9/26/2017 7:00 PM

Deleted: binary

Matthew Osman 9/26/2017 7:00 PM

Deleted: Rempel et al. (2002), lacking

Matthew Osman 9/26/2017 7:00 PM

Deleted: ice core

Matthew Osman 9/26/2017 7:00 PM

Deleted: in ice

Matthew Osman 9/26/2017 7:00 PM

Deleted: ,

Matthew Osman 9/26/2017 7:00 PM

Deleted: ,

Matthew Osman 9/26/2017 7:00 PM

Deleted: ,

two values of D_{MS} as suggested by Rempel et al. (2002) and Roberts et al. (2009) as potential [extrema](#)

Matthew Osman 9/26/2017 7:00 PM

Deleted: D_{MS} endmembers.

Although the grain boundary diffusion coefficient for Na^+ , D_{Na} , is also under-constrained, empirical evidence supports a relative immobility of Na^+ in polar ice. For example, Barnes et al. (2003a) noted no detectable changes in the amplitude of $[\text{Na}^+]$ peaks over the past ~11,000 years (top 350 m) in the low-accumulation Dome C ice core record (East Antarctica), while the amplitudes of both $[\text{Cl}^-]$ and $[\text{SO}_4^{2-}]$ peaks were found to change over the same period. Furthermore, optical measurements at Dome C suggest a predisposition for Na^+ to be situated at grain boundaries and for Cl^- to be located preferentially within the crystalline structure (Barnes et al., 2003b). The importance of these findings is twofold: (i) Na^+ appears to be situated in the requisite location to favor the presence of premelt liquid at the grain boundaries, enabling MS^- migration as envisioned in the RWW model to occur; and (ii) Na^+ shows greatly reduced mobility relatively to MS^- (or similar sulfur-based acidic species).

4.2.2 Liquidus relationships for relevant sea-salt species

The slopes of the liquidus curves, Γ_{MS} and Γ_{Na} , represent linear approximations of the [under-cooling](#) as a function of impurity concentration in the liquid phase present near the grain boundaries, c , i.e., $T_m - T = \Gamma c$, where T is the *in situ* temperature and T_m is the melting point for pure ice (see Supplementary Material, Fig. S2). Knowledge of Γ requires knowledge of the dominant precursor [\(bonded\)](#) molecular state(s) of the MS^- and Na^+ ions present in the ice, [\(thus, \$\Gamma_{MS}\$ and \$\Gamma_{Na}\$ should be viewed as shorthand notations for \$\Gamma_{MS^*}\$ and \$\Gamma_{Na^*}\$, where * represents some unknown cationic – anionic pair\)](#). Unfortunately, such data remain sparse beyond those reported in a few notable studies (e.g., Barnes et al., 2003b, Sakurai et al., 2010, Iizuka et al., 2016).

Matthew Osman 9/26/2017 7:00 PM

Deleted: super

Matthew Osman 9/26/2017 7:00 PM

Deleted: .

It is generally assumed that all measured MS^- present in polar firn or ice samples derives solely from MSA (Sakurai et al., 2010). In the [binary system](#) $\text{MSA-H}_2\text{O}$, MSA reaches its eutectic temperature at -75°C (Stephen and Stephen, 1963). Thus, any MSA molecules expelled to and concentrated at grain boundaries are expected to exist in liquid solution with H_2O . By contrast, Na^+ in polar ice may have a number of precursors. For coastal ice cores, however, it seems reasonable to expect that the majority of Na^+ is deposited either as NaCl derived primarily from sea spray during storm activity (Legrand and Mayewski, 1997), or as sodium-sulfate salts such as mirabilite, $\text{Na}_2\text{SO}_4 \cdot 10\text{H}_2\text{O}$, derived from brine

Matthew Osman 9/26/2017 7:00 PM

Formatted: Not Superscript/ Subscript

Matthew Osman 9/26/2017 7:00 PM

Deleted: $\text{CH}_3\text{SO}_3\text{H}$ (

Matthew Osman 9/26/2017 7:00 PM

Deleted: system

rejection in sea-ice or from atmospheric sea-salt sulfatization (Rankin et al., 2002; Iizuka et al., 2016). While the $\text{NaCl-H}_2\text{O}$ system reaches its eutectic at -21.3°C (Stephen and Stephen, 1963), the eutectic of the $\text{Na}_2\text{SO}_4\text{-H}_2\text{O}$ system is -1.6°C (Hougen et al., 1954), suggesting that Na^+ deposited as Na_2SO_4 should be relatively immobile at most polar ice core sites. Consequentially, the majority of Na^+ relevant to grain boundary migration is likely derived from NaCl . At DIV2010, for example, the molar ratio $\text{Cl}:\text{Na}$ in the top 60.4 m of the core averages 1.806, similar to the mean molar ratio $\text{Cl}:\text{Na} = 1.8$ used for seawater (e.g., Chesselet, et al., 1972). This indicates a primary marine source of NaCl aerosols at DIV2010, as both brine rejection and sea salt sulfatization in the atmosphere would tend to produce an offset in the amount of Cl^- deposited (Iizuka et al., 2016).

Although the annual mean surface air temperature at most sites showing MSA migration is observed to be well below -21.3°C (Sect. 2.3), the upper firm ($<10\text{-}20$ m) undergoes seasonal temperature fluctuations that may exceed this value during summer months (Cuffey and Paterson, 2010), thereby providing a potential mechanism to temporarily free Na^+ from its bonded state with Cl^- . When premelted liquid solutions containing Na^+ and Cl^- refreeze, Cl^- may thus be preferentially allocated within the ice structure (Tokumasu et al., 2015; Barnes et al., 2003b).

With Na^+ and MS^- both situated at the grain boundaries, the resulting binary system is the sodium-salt of MS^- , $\text{CH}_3\text{SO}_3\text{Na}\cdot n\text{H}_2\text{O}$, and water (Mulvaney et al., 1992). Recent experimental data indicate that the eutectic temperature for the $\text{CH}_3\text{SO}_3\text{Na}\cdot n\text{H}_2\text{O} - \text{H}_2\text{O}$ system occurs at approximately -29.3°C (Sakurai et al., 2010). For comparison, the eutectics for the binary systems $\text{Ca}(\text{CH}_3\text{SO}_3)_2\cdot n\text{H}_2\text{O} - \text{H}_2\text{O}$ and $\text{Mg}(\text{CH}_3\text{SO}_3)_2\cdot n\text{H}_2\text{O} - \text{H}_2\text{O}$ amount to -32.6°C and -5.0°C , respectively (Sakurai et al., 2010). Table 2 lists the slopes of the liquidus curves for these MS^- -salts in addition to those for alternative relevant sea salts containing Ca^{2+} and Mg^{2+} , and SO_4^{2-} (see also Supplementary S2). For the system $\text{CH}_3\text{SO}_3\text{Na}\cdot n\text{H}_2\text{O} - \text{H}_2\text{O}$, the slope amounts to 6.5 K M^{-1} .

4.3 A Simplified model of MSA migration

Although the RWW model provides significant insight into the mechanisms of MSA migration, the system of non-linear partial differential equations (1a-b) or (3a-b) does not permit a straightforward analysis (e.g., no closed form solution of these equations with general initial and boundary conditions is

Matthew Osman 9/26/2017 7:00 PM

Deleted: binary system

Matthew Osman 9/26/2017 7:00 PM

Formatted: Not Superscript/ Subscript

Matthew Osman 9/26/2017 7:00 PM

Formatted: Not Superscript/ Subscript

Matthew Osman 9/26/2017 7:00 PM

Deleted: 798

Matthew Osman 9/26/2017 7:00 PM

Deleted: Seinfeld and Pandis, 2006

Matthew Osman 9/26/2017 7:00 PM

Deleted: ice

Matthew Osman 9/26/2017 7:00 PM

Deleted: estimated

Matthew Osman 9/26/2017 7:00 PM

Deleted: -

Matthew Osman 9/26/2017 7:00 PM

Deleted: $\text{NaCH}_3\text{SO}_3 -$

Matthew Osman 9/26/2017 7:00 PM

Deleted: ,

Matthew Osman 9/26/2017 7:00 PM

Deleted: , such that, implicitly, $\Gamma_{\text{MS}} = \Gamma_{\text{Na}}$.

Matthew Osman 9/26/2017 7:00 PM

Deleted: Model

Matthew Osman 9/26/2017 7:00 PM

Deleted: Migration

Matthew Osman 9/26/2017 7:00 PM

Deleted: are

available to our knowledge). In this section, we develop a linearized version of the model for the binary system [comprising \$\text{CH}_3\text{SO}_3\text{Na}\$ and \$\text{H}_2\text{O}\$](#) (eqs. 3-4) in order to further our understanding of MSA migration. Of course, the insight to be gained is only as reliable as the assumptions upon which the linearized model relies.

5 Consider the governing equations (3a-b), making it explicit that concentration gradients are strictly vertical,

$$\frac{\partial c_{MS}}{\partial t} = -\frac{\partial}{\partial z} (w_{MS} c_{MS}), \quad (6a)$$

$$\frac{\partial c_{Na}}{\partial t} = -\frac{\partial}{\partial z} (w_{Na} c_{Na}), \quad (6b)$$

10

where,

$$w_{MS} = D_{MS} \frac{\Gamma_{Na}}{\Gamma_{Na} c_{Na} + \Gamma_{MS} c_{MS}} \left(\frac{\partial c_{Na}}{\partial z} - \frac{c_{Na}}{c_{MS}} \frac{\partial c_{MS}}{\partial z} \right), \quad (7a)$$

$$w_{Na} = D_{Na} \frac{\Gamma_{MS}}{\Gamma_{Na} c_{Na} + \Gamma_{MS} c_{MS}} \left(\frac{\partial c_{MS}}{\partial z} - \frac{c_{MS}}{c_{Na}} \frac{\partial c_{Na}}{\partial z} \right), \quad (7b)$$

15

Here, w_{MS} and w_{Na} are the vertical components of MS^- and Na^+ migration velocity, respectively, and z is depth. Three assumptions are made (see also Rempel et al., 2002). First, the slope of the liquidus curve is taken to be the same for the two ionic species, i.e., $\Gamma_{Na} = \Gamma_{MS}$ ([Sect. 4.2.2](#)). This assumption appears plausible if the MS^- -salt species $\text{CH}_3\text{SO}_3\text{Na} \cdot n\text{H}_2\text{O}$ dominates in the premelt liquid present near the grain boundaries. With this assumption, the slopes of the liquidus curves cancel out in the defining relationships for w_{MS} and w_{Na} (7a-b). Second, the concentration of MS^- is taken to be much smaller than the concentration of Na^+ in the liquid veins, i.e., $c_{MS} \ll c_{Na}$. This assumption is generally supported by $[\text{MS}^-]$ and $[\text{Na}^+]$ measurements on ice core samples originating from most coastal sites ([Sect. 2.3](#); Table 1). Under the two assumptions above, relation (7a) becomes

25

$$w_{MS} = D_{MS} \left(1 + 0 \left[\frac{c_{MS}}{c_{Na}} \right] \right) \left(\frac{1}{c_{Na}} \frac{\partial c_{Na}}{\partial z} - \frac{1}{c_{MS}} \frac{\partial c_{MS}}{\partial z} \right), \quad (8)$$

Matthew Osman 9/26/2017 7:00 PM

Deleted: with MS^-

Matthew Osman 9/26/2017 7:00 PM

Deleted: Na^+

Matthew Osman 9/26/2017 7:00 PM

Deleted: section

Matthew Osman 9/26/2017 7:00 PM

Deleted: section

upon expansion of the denominator in a Taylor series. Thus, to the first order in c_{MS}/c_{Na} , the speed of MS^- migration can be approximated as

$$w_{MS} = D_{MS} \left(\frac{1}{c_{Na}} \frac{\partial c_{Na}}{\partial z} - \frac{1}{c_{MS}} \frac{\partial c_{MS}}{\partial z} \right). \quad (9a)$$

A similar development for w_{Na} leads to

$$w_{Na} = D_{Na} \left(\frac{1}{c_{MS}} \frac{\partial c_{MS}}{\partial z} - \frac{1}{c_{Na}} \frac{\partial c_{Na}}{\partial z} \right) \frac{c_{MS}}{c_{Na}}, \quad (9b)$$

which is also first order in c_{MS}/c_{Na} . The ratio of the migration speeds for the two ionic species is thus

$$\frac{w_{Na}}{w_{MS}} = \left(\frac{D_{Na}}{D_{MS}} \right) \frac{c_{MS}}{c_{Na}}. \quad (10)$$

If D_{MS} is comparable to or higher than D_{Na} , then Na^+ would migrate much more slowly than MS^- . In this case, Na^+ would be quasi immobile and its concentration at a given depth would vary only slowly with time (compared to MS^-). This consideration suggests the following, third assumption. The concentration of Na^+ at a given depth in the ice column and at a given time is decomposed into a mean value, $\bar{c}_{Na}(z)$, and a fluctuation, $c'_{Na}(z, t)$,

$$c_{Na}(z, t) = \bar{c}_{Na}(z) + c'_{Na}(z, t). \quad (11)$$

Assuming that $c'_{Na}(z, t) \ll \bar{c}_{Na}(z)$, as suggested by the relatively small mobility of Na^+ , the vertical speed of MS^- migration along the ice column can be further approximated as

$$w_{MS} = D_{MS} \left(\frac{1}{\bar{c}_{Na}} \frac{\partial \bar{c}_{Na}}{\partial z} - \frac{1}{c_{MS}} \frac{\partial c_{MS}}{\partial z} \right) \quad (12)$$

The insertion of (12) into (6a) yields

$$\frac{\partial c_{MS}}{\partial t} + \frac{\partial}{\partial z} (w_* c_{MS}) = \frac{\partial}{\partial z} \left(D_{MS} \frac{\partial c_{MS}}{\partial z} \right), \quad (13)$$

5

where w_* is an effective velocity of MS^- induced by vertical gradients in $[Na^+]$,

$$w_* = \frac{D_{MS}}{\bar{c}_{Na}} \frac{\partial \bar{c}_{Na}}{\partial z} \quad (14)$$

10 Thus, under the three stated assumptions, MSA migration can be described by a single, linear partial differential equation (eq. 13) with the MS^- diffusivity as a single parameter. In this model (eq. 13), MSA migration arises from two fundamental processes: (1) the convergence or divergence of MS^- driven by Na^+ concentration gradients and (2) the diffusion of MS^- along its own concentration gradient. Albeit physically distinct, both processes depend on the diffusivity of MS^- in the inter-granular liquid.

15 It is instructive to consider the character of the steady state distribution of $[MS^-]$ according to the linearized model. With the tendency term $\partial c_{MS}/\partial t$ set to zero, equation (13) reduces to

$$\frac{\partial}{\partial z} \left(\frac{c_{MS}}{\bar{c}_{Na}} D_{MS} \frac{\partial \bar{c}_{Na}}{\partial z} \right) = \frac{\partial}{\partial z} \left(D_{MS} \frac{\partial c_{MS}}{\partial z} \right), \quad (15)$$

20 given the defining relation for w_* (eq. 14). If D_{MS} is uniform along the ice column ($\partial D_{MS}/\partial z = 0$), and at depths where Na^+ shows an extremum ($\partial \bar{c}_{Na}/\partial z = 0$), equation (15) becomes

$$\frac{c_{MS}}{\bar{c}_{Na}} \frac{\partial^2 \bar{c}_{Na}}{\partial z^2} = \frac{\partial^2 c_{MS}}{\partial z^2}. \quad (16)$$

25 Since concentrations are positive quantities, the concentration ratio on the left-hand side of (16) is always positive, implying that the two second-order derivatives should always have the same sign. Thus,

Matthew Osman 9/26/2017 7:00 PM

Deleted: $\left(\frac{c_{MS}}{\bar{c}_{Na}} D_{MS} \frac{\partial \bar{c}_{Na}}{\partial z} \right)$

Matthew Osman 9/26/2017 7:00 PM

Deleted: 13

minima (maxima) of MS^- concentration will coincide with minima (maxima) of Na^+ concentration. The $[MS^-]$ profile, regardless of its initial (i.e., unaltered) character, will evolve so as to become eventually in phase with the $[Na^+]$ profile. Figure 10 illustrates this evolution of the $[MS^-]$ profile to steady state as simulated by the linearized model and compares it with the evolution simulated with the RWW model (see Supplementary S3 for details about the numerical solutions of these two models).

The following example illuminates the respective roles of the effective velocity, w_* , and of the diffusivity, D_{MS} , in the MSA migration process. Consider a locally Gaussian profile of $[Na^+]$,

$$\bar{c}_{Na} \propto \exp(-[z - z_0]^2 / 2\sigma^2), \quad (17)$$

where z_0 is the depth at which $[Na^+]$ is maximum and σ describes the spread of Na^+ on each side of the maximum (Fig. 11). In this case, the effective velocity $w_* = -D_{MS} - (z - z_0)/\sigma^2$ is positive above z_0 and negative below z_0 , and the migration equation (13) becomes

$$\frac{\partial c_{MS}}{\partial t} - \frac{D_{MS}}{\sigma^2} (z - z_0) \frac{\partial c_{MS}}{\partial z} = D_{MS} \frac{\partial^2 c_{MS}}{\partial z^2} + \frac{D_{MS}}{\sigma^2} c_{MS}, \quad (18)$$

where it has been again assumed that D_{MS} is vertically uniform. Interestingly, the migration equation (18) has the familiar form of an advection-diffusion-reaction equation. The 2nd term on the left-hand side corresponds to downward advection of MS^- above z_0 and to upward advection of MS^- below z_0 , i.e., it tends to accumulate MS^- at z_0 . On the right-hand side, the 1st term represents Fickian diffusion, and the 2nd term is a “reaction” term that stems from the vertical variation of w_* . The second term is always positive, effectively leading to MS^- production throughout the ice column at a rate proportional to the amount of MS^- initially present. As time progresses, all $[MS^-]$ maxima that may be present in the ice section where $[Na^+]$ is distributed according to (17) will be gradually shifted toward $z = z_0$. At steady state, the $[MS^-]$ profile will be maintained by a balance between MS^- advection to the $[MS^-]$ maximum and effective production on the one hand, and the diffusion of MS^- away from the $[MS^-]$ maximum on the other hand (Fig. 11).

Matthew Osman 9/26/2017 7:00 PM

Deleted: initial conditions, boundary conditions,

Matthew Osman 9/26/2017 7:00 PM

Deleted: method

Matthew Osman 9/26/2017 7:00 PM

Deleted: solution, and parameters for

Matthew Osman 9/26/2017 7:00 PM

Deleted: where

Matthew Osman 9/26/2017 7:00 PM

Deleted: The 1st term on

Matthew Osman 9/26/2017 7:00 PM

Deleted: -

Matthew Osman 9/26/2017 7:00 PM

Deleted: describes

Matthew Osman 9/26/2017 7:00 PM

Deleted: . Finally,

Matthew Osman 9/26/2017 7:00 PM

Deleted: on the right-hand side

Matthew Osman 9/26/2017 7:00 PM

Deleted: It

Matthew Osman 9/26/2017 7:00 PM

Deleted: as illustrated in

4.4 Assessment of MS⁻ diffusivity

We next aim to constrain a range of values for MS⁻ diffusivity along ice grain boundaries consistent with observed MS⁻ concentrations in polar ice. To this end, the simplified model of MSA migration (eq. 13), which includes D_{MS} as the sole parameter, is solved for different values of D_{MS} and model results are compared with data from the DIV2010 ice core.

The model is solved numerically using finite differences (Supplementary S3; Figures S5 and S6). The model domain, with an upper boundary is situated at $z = 9.1$ m and a lower boundary at $z = 60.4$ m, is intended to represent the present-day shallow zone at the DIV2010 site. The model grid has a uniform spacing ($\Delta z = 0.05$ m), with grid points coinciding with the sampling depths of the DIV2010 core. The grid cell interfaces coincide with the upper and lower boundaries of the domain. With this configuration of the grid, the boundary conditions of the model consist of a vanishing flux of MS⁻ prescribed at the upper and lower boundaries of the domain:

$$w_* c_{MS} - D_{MS} \frac{\partial c_{MS}}{\partial z} = 0, \quad \text{at } z = 9.1 \text{ m and } 60.4 \text{ m.} \quad (19)$$

The initial conditions of the model consist of an idealized [MS⁻] profile obtained by linearly interpolating, at the model grid points, the (unaltered) monthly mean [MS⁻] values for the shallow zone (Fig. 5). The vertical profile of [Na⁺], which determines the effective velocity of MS⁻ (w_*), is directly derived from the measured profile of [Na⁺] in the shallow zone (since model grid points coincide with sampling depths, no interpolation is necessary).

The model is integrated over a time interval that approximates the time it would take for the shallow zone to be buried by a layer of equal thickness through surface accumulation (see Supplementary S4 for details). This final time, denoted as t_f , is taken as 95 yr, based on the difference between the ages of the sample at $z = 9.1$ m and 60.4 m. At the end of the model integration ($t = t_f$), the cross-correlation between the [MS⁻] and [Na⁺] profiles simulated by the model between $z = 9.1$ and 60.4 m is calculated and compared to the cross-correlation between the measured [Na⁺] and [MS⁻] profiles over the same depth interval. This procedure is repeated for four different values of D_{MS} , 10^{-10} , 10^{-11} , 10^{-12} , and 10^{-13} m²/yr.

Matthew Osman 9/26/2017 7:00 PM

Deleted: Diffusivity

Matthew Osman 9/26/2017 7:00 PM

Deleted: introduced above.

Matthew Osman 9/26/2017 7:00 PM

Deleted: whose

Matthew Osman 9/26/2017 7:00 PM

Deleted: whose

Matthew Osman 9/26/2017 7:00 PM

Deleted: is

Matthew Osman 9/26/2017 7:00 PM

Deleted: prescribed

Matthew Osman 9/26/2017 7:00 PM

Deleted: DIV2010

Matthew Osman 9/26/2017 7:00 PM

Deleted: of DIV2010 core

Matthew Osman 9/26/2017 7:00 PM

Deleted: ~

Matthew Osman 9/26/2017 7:00 PM

Deleted: age

Matthew Osman 9/26/2017 7:00 PM

Deleted:)

Matthew Osman 9/26/2017 7:00 PM

Deleted: the age of the sample at z =

10^{-12} , and $10^{-13} \text{ m}^2 \text{ s}^{-1}$, encompassing the values assumed or suggested in prior studies (e.g., Rempel et al., 2002; Roberts et al., 2009). A “good” value of D_{MS} is expected to lead to a “good” agreement between the simulated and observed cross-correlations, at least at small lags.

Consider first the model solution with $D_{MS} = 10^{-13} \text{ m}^2 \text{ s}^{-1}$. At $t = t_f$, the simulated $[\text{MS}^-]$ profile has not significantly deviated from its initial profile, which is negatively correlated at zero lag with the $[\text{Na}^+]$ profile (Fig.12a). This result suggests that the value of $D_{MS} = 10^{-13} \text{ m}^2 \text{ s}^{-1}$ is too small to account for the down-core change in phase relationship between $[\text{Na}^+]$ and $[\text{MS}^-]$ observed at DIV2010. For $10^{-12} \text{ m}^2 \text{ s}^{-1} < D_{MS} < 10^{-11} \text{ m}^2 \text{ s}^{-1}$, the simulated cross-correlation at zero lag between $[\text{Na}^+]$ and $[\text{MS}^-]$ switches from negative to positive. For values of $D_{MS} \geq 10^{-11} \text{ m}^2 \text{ s}^{-1}$, it is positive but much stronger than observed, suggesting that these values may be too large. Thus, D_{MS} values that best explain DIV2010 data would be in the range from 10^{-12} to $10^{-11} \text{ m}^2 \text{ s}^{-1}$, i.e., greater than the value of $(4.1 \cdot 10^{-13} \pm 2.5 \cdot 10^{-14}) \text{ m}^2 \text{ s}^{-1}$ reported by Roberts et al., (2009) and lower than the value of $5 \cdot 10^{-10} \text{ m}^2 \text{ s}^{-1}$ assumed by Rempel et al. (2002). We stress that this result is immune to potential dating errors in the sense that the cross-correlation coefficients are calculated for different vertical spacings along the core, not for different time lags; calculating cross-correlations at different time lags leads to a similar result (Fig. 12b; see also Supplementary Figures S5 and S6).

While the D_{MS} range estimated by a comparison to DIV2010 data is instructive, we note it is not necessarily universal, as diffusivities in polar ice are expected to vary in response to multiple glaciological factors. For example, the experimental results of Kim et al. (2008) show that the diffusion coefficients of ions in under-cooled mixtures are a function of both ionic concentration and temperature. Additionally, physical properties of the firm and ice, including porosity, grain-boundary density, and crystal size, may affect the partitioning of chemical impurities between the liquid premelt and the ice lattice (Dominé et al., 2008; Spaulding et al., 2011), thereby affecting the amount of impurities subjected to anomalous diffusion as well as the interconnectivity of the liquid premelt/vein network. While the RWW model can account for this partitioning (Rempel et al., 2002), the proportions of total MS^- and Na^+ that are present in liquid form remain poorly constrained (Sakurai et al., 2010). Even at a given site, seasonal and interannual variations in impurity concentrations may lead to down-core changes in D_{MS} . Finally, D_{MS} does not take into account whether MS^- migration is dominated by

Matthew Osman 9/26/2017 7:00 PM
Formatted: Not Superscript/ Subscript

Matthew Osman 9/26/2017 7:00 PM
Formatted: Not Superscript/ Subscript

Matthew Osman 9/26/2017 7:00 PM
Formatted: Not Superscript/ Subscript

Matthew Osman 9/26/2017 7:00 PM
Formatted: Not Superscript/ Subscript

Matthew Osman 9/26/2017 7:00 PM
Deleted: the

Matthew Osman 9/26/2017 7:00 PM
Deleted: value

Matthew Osman 9/26/2017 7:00 PM
Deleted: explains

Matthew Osman 9/26/2017 7:00 PM
Deleted: m's

Matthew Osman 9/26/2017 7:00 PM
Deleted: m's

Matthew Osman 9/26/2017 7:00 PM
Deleted: m's

Matthew Osman 9/26/2017 7:00 PM
Deleted: best fitting the

Matthew Osman 9/26/2017 7:00 PM
Deleted: grain boundary

Matthew Osman 9/26/2017 7:00 PM
Deleted: super

Matthew Osman 9/26/2017 7:00 PM
Deleted: grain

Matthew Osman 9/26/2017 7:00 PM
Deleted: to grain boundaries (

Matthew Osman 9/26/2017 7:00 PM
Deleted: Nonetheless, the approach presented in this section suggests that a range of D_{MS} values can be directly derived from $[\text{MS}^-]$ measurements along a given ice core.

diffusion at two-grain boundaries, or at triple junctures and node networks (Wettlaufer and Worster, 2006, Riche et al., 2012). As a result of all these complicating factors, D_{MS} , as defined in the RWW model and constrained here, should probably be viewed as an effective diffusivity.

5 Paleoclimatic Implications

5.1 Revisiting the effect of temperature on grain boundary migration

In section 2.3, we tested [the hypothesis](#) that post-depositional formation of winter $[MS^-]$ maxima occurs [solely](#) as a result of the precipitation of MS^- -salts from their grain boundary solutions in sea-salt rich winter layers (Mulvaney et al., 1992; Wolff et al., 1996; Kreutz et al., 1998, Pasteur and Mulvaney, 2000; Curran et al., 2002). [This hypothesis, denoted below as the “Mulvaney model”, suggests that \$MS^-\$ in under-cooled solutions should migrate along its concentration gradient via Fickian diffusion until reaching \$Na^+\$ -rich layers, where crystallization of \$CH_3SO_3Na\$ removes \$MS^-\$ from the premelt solution, thereby perpetuating a \$\[MS^-\]\$ gradient between summer and winter layers in the residual premelt. Importantly, it suggests MSA migration would be inhibited at sites where *in situ* temperatures are greater than the eutectic temperature of the binary system \$CH_3SO_3Na \cdot nH_2O - H_2O\$ \(\$-29.3^\circ C\$ \), since \$CH_3SO_3Na\$ would not be precipitated from the premelt liquid. However, such an inhibition is not apparent in our data compilation \(Sect. 2.3\).](#)

[The RWW model \(Sect. 4\) is fundamentally different than the Mulvaney model. The RWW model does not represent crystallization and metathetic removal of constituents from the liquid phase \(Sect. 2\). Rather, in the RWW model, \$MS^-\$ is implicitly assumed to remain dissolved in the premelt liquid following migration from the summer to winter layers, provided *in situ* temperatures exceed the eutectic temperature of the binary system \$CH_3SO_3Na \cdot nH_2O - H_2O\$.](#)

[The foregoing assumption can be evaluated using our data compilation. At 19 of the 20 sites considered \(Table 1\), the ice temperature as estimated from the annual mean SAT exceeds the eutectic temperature of the binary system \$CH_3SO_3Na \cdot nH_2O - H_2O\$, suggesting MSA migration could occur according to the RWW model at these sites.](#) The only site where ice temperature is estimated to be less than $-29.3^\circ C$ is the Summit2010 record from Greenland (Maseli et al., 2017), where MSA migration is also observed but not predicted to occur based on this model. We offer [a few](#) explanations for this sole

Matthew Osman 9/26/2017 7:00 PM

Deleted: prior hypotheses stating

Matthew Osman 9/26/2017 7:00 PM

Deleted: While such

Matthew Osman 9/26/2017 7:00 PM

Deleted: mechanism

Matthew Osman 9/26/2017 7:00 PM

Formatted: English (US)

Matthew Osman 9/26/2017 7:00 PM

Deleted: could occur only

Matthew Osman 9/26/2017 7:00 PM

Deleted: do not exceed

Matthew Osman 9/26/2017 7:00 PM

Deleted: (s) of the relevant MS^- -salt(s),

Matthew Osman 9/26/2017 7:00 PM

Deleted: did not support such a distinction (Fig. 1; section

Matthew Osman 9/26/2017 7:00 PM

Deleted: Here we revisit this conclusion, equipped with the mechanistic framework provided by the RWW model.

Matthew Osman 9/26/2017 7:00 PM

Deleted:

Matthew Osman 9/26/2017 7:00 PM

Formatted: Indent: First line: 0.5"

Matthew Osman 9/26/2017 7:00 PM

Deleted: in in our study

Matthew Osman 9/26/2017 7:00 PM

Deleted: estimated

Matthew Osman 9/26/2017 7:00 PM

Deleted: value ($-29.3^\circ C$) for the sodium salt of MS^- , $CH_3SO_3NaH_2O$. At these 19 sites,

Matthew Osman 9/26/2017 7:00 PM

Deleted: would be expected to occur following the model of Rempel et al. (2002), whereby migrating species are implicitly assumed to remain dissolved in the grain boundary liquid

Matthew Osman 9/26/2017 7:00 PM

Deleted: two

discrepancy. First, ice temperatures may depart significantly from annual mean SAT. The annual mean SAT at Summit is -29.5°C (Giese et al., 2015), just below, but very close to, the eutectic temperature for the system $\text{CH}_3\text{SO}_3\text{Na}\cdot n\text{H}_2\text{O}-\text{H}_2\text{O}$. It is therefore conceivable that ice temperatures may in fact slightly exceed the eutectic temperature of this system, at least along some portions of the ice column and (or) during some time intervals in the past. Another possibility is that the Ca^{2+} salt of MS^- , $\text{Ca}(\text{CH}_3\text{SO}_3)_2$, a component of the system $\text{Ca}(\text{CH}_3\text{SO}_3)_2\cdot n\text{H}_2\text{O}-\text{H}_2\text{O}$ with a lower eutectic of -32.6°C , may be more efficient than the Na^+ salt of MS^- , $\text{CH}_3\text{SO}_3\text{Na}$, in driving MSA migration at Summit2010, given the much higher abundances of Ca^{2+} in inland Greenland ice compared to coastal Antarctica (Iizuka et al., 2008).

A currently poorly constrained situation arises for sites characterized by *in situ* temperatures less than $\sim -30^{\circ}\text{C}$ and greater than -75°C (Table 2). In this temperature regime, MSA remains in solution while Na^+ is presumably immobile, either as solid state NaCl , $\text{CH}_3\text{SO}_3\text{Na}$, or Na_2SO_4 (Table 2). MSA migration as envisioned in the Mulvaney model, but not in the RWW model, may operate under such conditions. On the other hand, the Mulvaney model may not apply should summer concentrations of Na^+ be high enough to sequester a large fraction of the $[\text{MS}^-]$ as $\text{CH}_3\text{SO}_3\text{Na}$ (s) in summer layers. This sequestration process appears supported by the lack of discernable MSA migration in the subannually-resolved portion (i.e., down to ~ 10.5 m) of the $[\text{MS}^-]$ record from South Pole (SP-95), where annual mean SAT is -51°C (Meyerson et al., 2002). While SP-95 is not considered in our data compilation due to the site's low \dot{b} (0.08 m w.eq. yr^{-1}), the lack of clear MSA migration at SP-95 departs from the expected relationship found between \dot{b} and z_{fo} in Antarctica (Sect. 2.1; Fig. 2). This observation leads us to speculate that MS^- at SP-95 may be immobilized in the summer layers through a metathesis reaction with Na^+ allocated to the grain boundaries.

In sum, we propose that MSA migration operates at most sites through anomalous diffusion as described in the RWW model. This migration process would occur if *in situ* temperatures exceed the relevant eutectic temperatures, so that MS^- can be present in solution in the presence of Na^+ and Ca^{2+} situated at the grain boundaries. The relevant eutectic temperatures are inferred here to range from -29.3°C to -32.6°C , depending on the binary system considered (Sakurai et al., 2010). Importantly, most coastal ice core locations, despite their paleoclimatic significance, are susceptible to MSA migration

Matthew Osman 9/26/2017 7:00 PM
Deleted: the reported...ce temperatures ma... [1]

Matthew Osman 9/26/2017 7:00 PM
Deleted: (within 0.2°C), suggesting *in situ* mean annual ice temperatures exceeding -29.3°C below 10 m depth are possible. An alternative... at least... [2]

Matthew Osman 9/26/2017 7:00 PM
Deleted:)... may be more important...ffici... [3]

Matthew Osman 9/26/2017 7:00 PM
Deleted: ...A eutectic effect...urren... [4]

Matthew Osman 9/26/2017 7:00 PM
Deleted: suggests

Matthew Osman 9/26/2017 7:00 PM
Formatted: Superscript

Matthew Osman 9/26/2017 7:00 PM
Deleted: once partitioned...ith Na^+ allocate... [5]

Matthew Osman 9/26/2017 7:00 PM
Deleted: sites will only be subject to potentially-severe ...SA migration operates at most sites... [6]

given their relatively high SAT (Table 1), although high accumulation rates will mitigate this phenomenon to some degree (Sect. 2.1). One coastal region of exception may be northeastern Greenland, where relatively cold conditions (SAT of approximately -30 to 33°C; Weißbach et al., 2016) may keep the ice below the eutectic temperature of the primary MS⁻-salts.

Matthew Osman 9/26/2017 7:00 PM
Deleted: section
Matthew Osman 9/26/2017 7:00 PM
Deleted: SATs (
Matthew Osman 9/26/2017 7:00 PM
Deleted: even in near-coastal environments.

5.2 Vertical extent of MSA migration

A reigning question in the use of [MS⁻] in polar ice as a paleoclimate proxy is the extent of MSA migration along the core. Past studies have circumvented this potential issue by assuming either that (1) MSA migration is confined within an annual layer (Kreutz et al., 1998; Curran et al., 2003; Thomas and Abram, 2016), or (2) multi-year averages of [MS⁻] are largely unaffected by migration (Wolff et al., 1996). While (2) appears a more conservative approach, the requisite averaging period, and thus the maximum resolution that can be achieved in a paleoclimatic reconstruction given MSA migration, remains unknown. In this section, we examine assumptions (1-2) using DIV2010 data and the linearized model of MSA migration.

Matthew Osman 9/26/2017 7:00 PM
Deleted: remain

In an effort to account for a range of initial (i.e., unperturbed) [MS⁻] profiles in the shallow zone of DIV2010 (Sect. 3.1), a large number (10,000) of numerical experiments of MSA migration are conducted. The initial [MS⁻] profile of a given experiment is obtained by adding, to the monthly mean [MS⁻] values observed in the shallow zone, a normal noise with a mean of zero and a variance equal to that of the mean monthly values in the shallow zone. If a negative concentration value arises in the initial profile, the procedure is repeated until all values in the profile are positive. Using this approach, inter-annual variability in the initial [MS⁻] profile is emulated, such that no two years should contain the same mean [MS⁻] in a given experiment, nor should a given year display the same mean [MS⁻] for different experiments. In contrast, all experiments rely on the same [Na⁺] profile measured at DIV2010. Given the uncertainties in MS⁻ diffusivity (Sect. 4.4), two sets of experiments are considered: a first set with $D_{MS} = 10^{-12} \text{ m}^2 \text{ s}^{-1}$ and a second with $D_{MS} = 10^{-11} \text{ m}^2 \text{ s}^{-1}$ (so that $2 \times 10,000 = 20,000$ experiments are actually performed). For all experiments, the model is subjected to a condition of no MS⁻ flux at both the upper and lower boundaries of the domain, and is integrated for $t = t_f = 95 \text{ yr}$ (Sect. 4.4).

Matthew Osman 9/26/2017 7:00 PM
Deleted: the
Matthew Osman 9/26/2017 7:00 PM
Deleted: ice core
Matthew Osman 9/26/2017 7:00 PM
Deleted: of DIV2010
Matthew Osman 9/26/2017 7:00 PM
Deleted: shallow zone

Matthew Osman 9/26/2017 7:00 PM
Deleted: for
Matthew Osman 9/26/2017 7:00 PM
Deleted: section

Matthew Osman 9/26/2017 7:00 PM
Deleted: over a time interval
Matthew Osman 9/26/2017 7:00 PM
Deleted: section

Figure 13a shows (i) the [Na⁺] profile observed at DIV2010 and used to constrain the effective

velocities w_s in the model, and (ii) the annual mean $[\text{MS}^-]$ profiles simulated by the model at $t = t_f$. For $D_{\text{MS}} = 10^{-11} \text{ m}^2 \text{ s}^{-1}$, the changes in annual mean $[\text{MS}^-]$ relative to the initial $[\text{MS}^-]$ profile are much larger than for $D_{\text{MS}} = 10^{-12} \text{ m}^2 \text{ s}^{-1}$ (Fig. 13b), particularly prior to AD 1975 ($t = 25$ yrs). In some sections of the simulated profiles, dramatic positive or negative changes in annual mean $[\text{MS}^-]$ occur, depending on the magnitude of the local $[\text{Na}^+]$ gradients. In some individual years (e.g., AD 1954), relative changes in the annual mean $[\text{MS}^-]$ reach 60 to 100%, clearly negating the [assumption \(1\)](#) above, that MSA migration is confined within an annual layer.

Given this finding, we next explore [assumption \(2\)](#) that multi-year [averages](#) of $[\text{MS}^-]$ data could be used to accurately reflect the original (i.e., unaltered) multi-year mean $[\text{MS}^-]$ [signal](#). To this end, we average the simulated $[\text{MS}^-]$ profiles at $t = t_f$ in different time intervals ranging from 3 to 15 years and compare the final (altered) averages to the initial (unaltered) averages (Fig. 13c). As expected, the difference between the final and initial averages of $[\text{MS}^-]$ decreases as the averaging period increases. [Interestingly, the](#) difference shows only modest reduction as the averaging period increases from 7 to 15 years.

In sum, while our results may pertain only to DIV2010 and rely on a series of modelling assumptions ([Sect. 4.3](#)), two points appear worthy of note. First, for $[\text{MS}^-]$ records showing evidence of MSA migration, the assumption that MSA remained confined within annual layers may not be generally valid, given in particular the high inter-annual variability in the concentrations of Na^+ and other major impurities potentially conducive to MSA migration, which is typical of most ice cores originating from coastal sites (Legrand and Mayewski, 1997). High inter-annual variability in $[\text{Na}^+]$, for example, corresponds to large vertical $[\text{Na}^+]$ gradients along the core, which tend to increase [MSA migration](#). Second, at least for $[\text{MS}^-]$ records exhibiting severe MSA migration such as at DIV2010, averaging the data over a time period of approximately ten years may constitute a reasonable compromise between accuracy and temporal resolution for paleoclimatic reconstruction.

5.3 Revisiting the combined influence of snow accumulation and $[\text{Na}^+]$ on MSA migration

In Section 2, we provided empirical evidence that two local factors appear to influence the shallowest depth of MSA migration in polar ice cores: annual mean accumulation rate ([b](#)) and core-

Matthew Osman 9/26/2017 7:00 PM
Deleted: first

Matthew Osman 9/26/2017 7:00 PM
Deleted: whether and over what range a

Matthew Osman 9/26/2017 7:00 PM
Deleted: average

Matthew Osman 9/26/2017 7:00 PM
Deleted: more

Matthew Osman 9/26/2017 7:00 PM
Deleted: concentration

Matthew Osman 9/26/2017 7:00 PM
Deleted: The

Matthew Osman 9/26/2017 7:00 PM
Deleted: section

Matthew Osman 9/26/2017 7:00 PM
Deleted: the anomalous diffusion of MS^- within the super-cooled liquid present at grain boundaries.

averaged Na^+ concentration. Here, we assess whether the ability to predict z_{f0} from these two factors is also mechanistically grounded. Since the linearized model is not valid for small values of $[\text{Na}^+]/[\text{MS}^-]$, the original model of Rempel et al. (2002) is used in an effort to produce results of more general validity.

We first simulate, for a range of layer thicknesses and layer-averaged $[\text{Na}^+]$ values, the time it takes for a $[\text{MS}^-]$ maximum present in the annual layer and initially out of phase with the $[\text{Na}^+]$ maximum in the layer ($\varphi = 180^\circ$), to align with the $[\text{Na}^+]$ maximum in the layer ($\varphi = 0^\circ$). Given the asymptotic nature of the concentration evolutions simulated by the model, we approximate this time as the time at which the phase difference between the $[\text{MS}^-]$ and $[\text{Na}^+]$ maxima drops to $\varphi < 20^\circ$.

Experiments are conducted for different extents of the model domain, to represent different values of annual layer thicknesses (λ). For each experiment, the initial $[\text{MS}^-]$ and $[\text{Na}^+]$ profiles in the layer are sinusoidal functions of depth, with (i) a period set equal to the layer thickness, (ii) a $[\text{MS}^-]$ maximum present in the middle of the layer, and (iii) two $[\text{Na}^+]$ maxima present at the top and bottom of the layer (see Supplementary S5 for details). The model is subjected to a condition of no flux both at the top and at the bottom of the layer. The model parameters are set to $\Gamma_{\text{MS}} = \Gamma_{\text{Na}} = 6.5 \text{ K mol}^{-1}$ and $D_{\text{MS}} = D_{\text{Na}} = 10^{-11} \text{ m}^2 \text{ s}^{-1}$ or $10^{-12} \text{ m}^2 \text{ s}^{-1}$.

The time required for approximate phase alignment ($\varphi < 20^\circ$) of the simulated $[\text{MS}^-]$ and $[\text{Na}^+]$ profiles is shown for two different values of λ and a range of layer-averaged $[\text{Na}^+]$ values (Fig. 14a); this time is referred to as t_φ below. It is seen that t_φ increases with λ and decreases with layer-averaged $[\text{Na}^+]$. Similar results are displayed in Figure 14b in a form that is reminiscent of Figure 5 (linear scales) and Figure 14c (logarithmic scales), which both show the combined effect of annual mean accumulation and core-averaged $[\text{Na}^+]$ ($\bar{N}a^+$) on the shallowest depths of MSA migration (z_{f0}) in our data compilation. To the extent that λ increases with \dot{b} , the model results appear to be qualitatively consistent with the data, thereby providing a theoretical basis to the notion that \dot{b} and $[\text{Na}^+]$ could be used to predict z_{f0} .

The nonlinear relationship found between z_{f0} and \dot{b} (Sect. 2) is also worth further exploration. Results from the RWW model can be well-approximated by the power law $t_\varphi \propto \lambda^2$ (Fig. 15), which is

- Matthew Osman 9/26/2017 7:00 PM
Deleted: use a model of soluble impurity transport to
- Matthew Osman 9/26/2017 7:00 PM
Deleted: for
- Matthew Osman 9/26/2017 7:00 PM
Deleted:) (Section 4.1
- Matthew Osman 9/26/2017 7:00 PM
Deleted: accumulation rates
- Matthew Osman 9/26/2017 7:00 PM
Deleted: depth
- Matthew Osman 9/26/2017 7:00 PM
Deleted: an
- Matthew Osman 9/26/2017 7:00 PM
Deleted: .
- Matthew Osman 9/26/2017 7:00 PM
Deleted: D_{MS}
- Matthew Osman 9/26/2017 7:00 PM
Deleted: D_{Na}
- Matthew Osman 9/26/2017 7:00 PM
Formatted: Not Superscript/ Subscript
- Matthew Osman 9/26/2017 7:00 PM
Deleted: 'or
- Matthew Osman 9/26/2017 7:00 PM
Deleted: in the layer are
- Matthew Osman 9/26/2017 7:00 PM
Deleted: layer thicknesses
- Matthew Osman 9/26/2017 7:00 PM
Deleted: Two notable conclusions can be drawn. First, it
- Matthew Osman 9/26/2017 7:00 PM
Deleted: layer thickness
- Matthew Osman 9/26/2017 7:00 PM
Deleted: scaled linearly
- Matthew Osman 9/26/2017 7:00 PM
Deleted: scaled logarithmically
- Matthew Osman 9/26/2017 7:00 PM
Deleted: annual layer thickness
- Matthew Osman 9/26/2017 7:00 PM
Deleted: annual mean accumulation rate,
- Matthew Osman 9/26/2017 7:00 PM
Deleted: and provide
- Matthew Osman 9/26/2017 7:00 PM
Formatted: Indent: First line: 0.5"

reminiscent of the power law relationship $z_{fo} \propto \lambda^{1.77}$ derived from our data compilation (Fig. 2). The observed variation of the shallowest depth of MSA migration with accumulation rate would thus reflect the mere fact that, similar to Fickian diffusion with constant diffusivity, the time scale for anomalous diffusion (t_{ϕ}) varies quadratically with the thickness over which the diffusion takes place (λ). Both current observations and the present set of experiments with the RWW model suggest that [MS⁻] records from ice cores characterized by high accumulation and low core-averaged [Na⁺] should undergo relatively small alteration by MSA migration.

6. Conclusions

Polar ice core records of methanesulfonic acid have been used to draw inferences about oceanic and atmospheric processes at polar latitudes on a range of time scales. However, both observation and theory suggest that MSA is mobile in the ice column, leading to uncertainties about its integrity as an indicator of past climatic conditions. Here, we synthesize existing data from a range of polar environments and consider an impurity transport model to study MSA migration in polar ice. Emphasis is placed on (i) the environmental conditions that favor MSA migration and (ii) a better understanding of the physico-chemical processes causing the movement of MSA in polar firn and ice.

Our analysis shows that the shallowest depth at which MSA migration occurs in coastal ice cores varies with annual mean accumulation rate. In Antarctica in particular, a power law characterizes this relationship accurately. It suggests that the absence of MSA migration observed in some ice cores from high accumulation sites stems from the fact that chemical measurements for these cores have been conducted on samples that are not deep enough to have undergone migration. Thus, MSA migration in polar ice may be more general than commonly thought. Annual mean surface air temperature and the concentration of the dominant cation sea salt, Na⁺, appear to be less influential than accumulation rate under most circumstances, at least at most coastal Antarctic sites and in the temperature range from -29.5°C to -12.5°C. A notable exception is for inland Greenland sites, where MSA migration tends to occur deeper in the core than would be predicted from surface accumulation alone, an offset hypothesized to stem from extremely low concentrations of marine-derived impurities relative to most coastal Antarctic sites. Our analysis further suggests that MSA migration generally takes place once firn

Matthew Osman 9/26/2017 7:00 PM

Deleted: primarily

Matthew Osman 9/26/2017 7:00 PM

Deleted: reached depths sufficient

Matthew Osman 9/26/2017 7:00 PM

Deleted: This observation leads us to conclude that

Matthew Osman 9/26/2017 7:00 PM

Deleted: is

Matthew Osman 9/26/2017 7:00 PM

Deleted: by the power law

or ice density reaches a critical value near 550 kg m^{-3} , which corresponds to the tightest packing of spherical ice grains in the firn and enabling the formation of premelted liquid veins at grain boundaries.

However, at some low accumulation sites ($\dot{b} = 0.1 - 0.2 \text{ m w. eq. yr}^{-1}$), MSA migration is observed at depths where bulk density is likely to be less than 550 kg m^{-3} . This result suggests that small-scale variability in ice density is important and (or) that other factors may also determine the onset of MSA along the firn or ice column.

New high-resolution data from the West Antarctic DIV2010 ice core shows annual $[\text{MS}^-]$ maxima gradually shifting down-core from austral summer, when MSA deposition is high, to austral winter, when MSA deposition is low and Na^+ deposition is high. As a result, a down-core change in the phase relationship between $[\text{MS}^-]$ and $[\text{Na}^+]$ is observed, whereby $[\text{MS}^-]$ and $[\text{Na}^+]$ are negatively correlated at zero lag in the upper part of the core and positively correlated at zero lag in the lower part of the core, providing evidence of the progressive nature of MSA migration.

A linearized version of the impurity transport model of Rempel et al. (2002) is derived for the binary system $\text{CH}_3\text{SO}_3\text{Na} \cdot n\text{H}_2\text{O} - \text{H}_2\text{O}$ in order to further understanding of the MSA migration phenomenon in polar ice. In this linearized model, MS^- transport is governed by a single linear partial differential equation with MS^- diffusivity in the under-cooled liquid (D_{MS}) as the sole parameter. In this model, MSA migration arises from two transport processes: (1) the convergence or divergence of MS^- driven by $[\text{Na}^+]$ gradients and (2) the diffusion of MS^- along its own concentration gradient. Analysis of this model shows that $[\text{MS}^-]$ maxima (minima) are bound to coincide with $[\text{Na}^+]$ maxima (minima) along the ice column, regardless of the timing of MSA deposition maxima. The model, therefore, provides a mechanistic explanation for the tendency for MSA, deposited mainly during summer, to present concentration peaks in winter layers in the deepest part of polar ice cores.

Finally, we use the linearized MSA migration model and the DIV2010 data to gain insight into two poorly constrained yet critically important aspects of MSA migration. First, we evaluate different values of MS^- diffusivities in polar ice. We find that D_{MS} values in the range from 10^{-12} to $10^{-11} \text{ m}^2 \text{ s}^{-1}$ lead to the most accurate simulations of the down-core change in the phase relationship between $[\text{MS}^-]$ and $[\text{Na}^+]$ observed at DIV2010. Second, using this range of values, we apply the model to determine the extent to which MSA migration has altered the original $[\text{MS}^-]$ record for DIV2010. We estimate the

Matthew Osman 9/26/2017 7:00 PM

Deleted: seen to occur

Matthew Osman 9/26/2017 7:00 PM

Deleted: a

Matthew Osman 9/26/2017 7:00 PM

Deleted: mixture containing MS^- and Na^+

Matthew Osman 9/26/2017 7:00 PM

Formatted: English (UK), Not Superscript/ Subscript

Matthew Osman 9/26/2017 7:00 PM

Deleted: super

Matthew Osman 9/26/2017 7:00 PM

Deleted: the grain boundary diffusivity of

Matthew Osman 9/26/2017 7:00 PM

Deleted: \cdot , D_{MS} .

Matthew Osman 9/26/2017 7:00 PM

Deleted: investigate

errors incurred by averaging $[MS^-]$ data over annual (and multi-year) intervals, an approach often adopted to reduce the effect of migration on the interpretation of $[MS^-]$ records. We find that MSA migration may have lead to significant changes in the annual and multi-year $[MS^-]$ averages at DIV2010. This result suggests that $[MS^-]$ records severely perturbed by MSA migration may best be used to infer decadal and lower-frequency climate variability, though a range of $[MS^-]$ records and a better constrained model are needed to investigate this further.

The migration of MSA in cold, polar ice is a fascinating but challenging phenomenon. This paper covers many, but not all, of its observational and theoretical aspects. For example, contentions of MSA migrating away from regions of high acidity in the core, as caused by the deposition of compounds of volcanic origin (Curran et al., 2002; Delmas et al., 2003), are not explored here. While the model of Rempel et al. (2002) provides an important mechanistic framework for understanding MSA migration in polar ice and perhaps for ultimately correcting its effects for paleoclimatic reconstruction, its usefulness remains limited by uncertainties about key physico-chemical parameters. These include most notably the diffusivities of the relevant migrating species in under-cooled liquid, the slope of the liquidus curves for relevant, interacting species, and the partitioning of impurities between the ice lattice and the surface of the ice grains. Laboratory studies under a range of controlled conditions would help constrain these parameters, improve our understanding of MSA migration in polar ice, and make full use of the paleoclimatic potential of this compound.

Data Availability

The DIV2010 chemistry data used in the generation of this manuscript is available on request from M. Osman.

Author Contribution

M. Osman, S. B. Das, and O. Marchal designed the study. M. Osman carried out the data synthesis. O. Marchal developed the linearized model and M. Osman coded the RWW model and the linearized model. S. B. Das collected the DIV2010 ice core. M. J. Evans measured the DIV2010 ice core ion data. M. Osman, S. B. Das and O. Marchal interpreted the results. M. Osman wrote the paper. All co-authors

Matthew Osman 9/26/2017 7:00 PM

Deleted: can

Matthew Osman 9/26/2017 7:00 PM

Deleted: further investigation using

Matthew Osman 9/26/2017 7:00 PM

Deleted: is

Matthew Osman 9/26/2017 7:00 PM

Deleted: super

Matthew Osman 9/26/2017 7:00 PM

Deleted: O

commented on the paper.

Competing interests

The authors declare that they have no competing conflicts of interest.

5

Acknowledgements: We thank Elizabeth Thomas for contributing the Ferrigno data, Joseph McConnell for contributing the Summit2010 and D4 data, and Alison Criscitiello and Weifu Guo for early discussions about MSA migration in the DIV2010 record. M. B. Osman acknowledges government support awarded by DoD, Air Force Office of Scientific Research, National Defense Science and Engineering Graduate (NDSEG) Fellowship, 32 CFR 168a. [We thank Dr. Alan Rempel and one anonymous reviewer, whose comments and suggestions greatly improved the content of this manuscript.](#) This work was supported by the US NSF (ANT-0632031 and PLR-1205196 to S. B. Das, and NSF-MRI-1126217 to M. J. Evans. and a Woods Hole Oceanographic Institution Interdisciplinary Research award to S. B. Das. and O. Marchal.

10

15 References

- Abram, N. J., Wolff, E. W., and Curran, M. A. J.: A review of sea ice proxy information from polar ice cores, *Quat. Sci. Rev.*, 79, 168–183, doi:10.1016/j.quascirev.2013.01.011, 2013.
- Barnes, P. R. F., Wolff, E. W., Mader, H. M., Udisti, R., Castellano, E., and Röthlisberger, R.: Evolution of chemical peak shapes in the Dome C, Antarctica, ice core, *J. Geophys. Res.*, 108, 4126, doi:10.1029/2002JD002538, 2003.
- Barnes, P. R. F., Wolff, E. W., Mallard, D. C., Mader, H. M.: SEM Studies of the Morphology and Chemistry of Polar Ice, *Microscopy Research and Technique*, 62, 62-69, 2003.
- [Barret, M., Houdier, S., and Domine, F.: Thermodynamics of the formaldehyde – water and formaldehyde – ice systems for atmospheric applications, *J. Phys. Chem. A*, 115, 307–317, doi:10.1021/jp108907u, 2011.](#)
- 25 Bartels-Rausch, T., Jacobi, H. W., Kahan, T. F., Thomas, J. L., Thomson, E. S., Abbatt, J. P. D., Ammann, M., Blackford, J. R., Bluhm, H., Boxe, C., Domine, F., Frey, M. M., Gladich, I., Guzman,

- M. I., Heger, D., Huthwelker, Th., Klan, P., Kuhs W. F., Maus, S., Moussa, S. G., McNeill, V. F., Newberg, J. T., Pettersson, J. B. C., Roeselova, M., and Sodeau, J. R.: A review of air-ice chemical and physical interactions (AICI): Liquids, quasi-liquids, and solids in snow, *Atmos. Chem. Phys.*, 14(3), 1587–1633, doi:10.5194/acp-14-1587-2014, 2014.
- 5 Becagli, S., Castellano, E., Cerri, O., Curran, M., Frezzotti, M., Marino, F., Morganti, A., Proposito, M., Severi, M., Traversi, R., Udisti, R.: Methanesulphonic acid (MSA) stratigraphy from a Talos Dome ice core as a tool in depicting sea ice changes and southern atmospheric circulation over the previous 140 years, *Atmos. Environ.*, 43(5), 1051–1058, doi:10.1016/j.atmosenv.2008.11.015, 2009.
- Benson, C. S.: Stratigraphic studies in the snow and firn of the Greenland ice sheet. *SIPRE Res. Rep.* 10 70, 76–83, 1962.
- Chatfield, C.: The analysis of time series: an introduction. Texts in statistical science. Chapman and Hall/CRC, Boca Raton, 1996.
- [Chesselet, R., Morelli, J., and Buat-Menard, P.: Variations in ionic ratios between reference sea water and marine aerosols, *J. Geophys. Res.*, 77\(27\), 5116–5131, doi:10.1029/JC077i027p05116, 1972.](#)
- 15 Criscitiello, A. S., Das, S. B., Evans, M. J., Frey, K. E., Conway, H., Joughin, I., Medley, B., and Steig, E. J.: Ice sheet record of recent sea-ice behavior and polynya variability in the Amundsen Sea, West Antarctica, *J. Geophys. Res. Ocean.*, 118(1), 118–130, doi:10.1029/2012JC008077, 2013.
- Criscitiello, A. S., Das, S. B., Karnauskas, K. B., Evans, M. J., Frey, K. E., Joughin, I., Steig, E. J., McConnell, J. R., and Medley, B.: Tropical pacific influence on the source and transport of marine 20 aerosols to West antarctica, *J. Clim.*, 27(3), 1343–1363, doi:10.1175/JCLI-D-13-00148.1, 2014.
- Criscitiello, A. S.: Amundsen Sea sea-ice variability, atmospheric circulation, and spatial variations in snow isotopic composition from new West Antarctic firn cores. Ph.D. Thesis. The Massachusetts Institute of Technology – Woods Hole Oceanographic Institution Joint Program in Oceanography/Applied Science and Engineering, MA, USA, 242 pp., 2014.
- 25 Cuffey, K.M., and Paterson, W. S. B. (3rd Ed.): The Physics of Glaciers, Burlington, MA: Butterworth-Heinemann/Elsevier, 2010.
- Curran, M. A. J., and Jones, G. B.: Dimethylsulfide in the Southern Ocean: Seasonality and flux, *J. Geophys. Res.*, 105(D16), 20451–20459, 2000.

Matthew Osman 9/26/2017 7:00 PM
Formatted: Justified

- Curran, M. A. J., and Palmer, A. S.: Suppressed ion chromatography methods for the routine determination of ultra low level anions and cations in ice cores, *Journal of Chromatography A*, 919(1), 107–1132, 2001.
- Curran, M. A. J., Palmer, A. S., van Ommen, T. D., Morgan, V., Phillips, K. L., McMorrow, A. J., and Mayewski, P.: Post-depositional methanesulphonic acid movement on Law Dome and the effect of accumulation rate, *Annals of Glaciology*, 35, 333–339, 2002.
- Curran, M. A. J., van Ommen, T. D., Morgan, V. I., Phillips, K. L., and Palmer, A. S.: Ice core evidence for Antarctic sea ice decline since the 1950s., *Science*, 302(5648), 1203–1206, doi:10.1126/science.1087888, 2003.
- Delmas, R. J., Wagnon, P., Goto-Azuma, K., Kamiyama, K., and Watanabe, O.: Evidence for the loss of snow-deposited MSA to the interstitial gaseous phase in central Antarctic firn, *Tellus, Ser. B Chem. Phys. Meteorol.*, 55(1), 71–79, doi:10.1034/j.1600-0889.2003.00032.x, 2003.
- Dickson, D. M. and Kirst, G. O.: β -dimethylsulphoniopropionate, [glycine betaine](#) and homarine in the [osmoacclimation](#) of *Platymonas subcordiformis*. *Planta*, 167, 536–543, 1986.
- Domine, F., Albert, M., Huthwelker, T., Jacobi, H.-W., Kokhanovsky, A. A., Lehning, M., Picard, G., and Simpson, W. R.: Snow physics as relevant to snow photochemistry, *Atmos. Chem. Phys.*, 8, 171–208, <https://doi.org/10.5194/acp-8-171-2008>, 2008.
- Giese, A. L., and Hawley, R. L., Reconstructing thermal properties of firn at Summit, Greenland , from a temperature profile time series, *J. of Glaciol.*, 61-227, 503-510, doi:10.3189/2015JG14J204, 2015.
- Goodwin, B. P.: Recent Environmental Changes on the Antarctic Peninsula as Recorded in an Ice Core from the Bruce Plateau, Ph. D. Thesis, The Ohio State University, OH, USA, 247 pp., 2013.
- Herron, M. M., Langway Jr, C. C.: Firn densication: An empirical model. *Journal of Glaciology*, 25, 373–385, 1980.
- Hezel, P., Alexander, J. B., Bitz, C. M., Steig, E. J., Holmes, C. D., Yang, X., and Sciare, J.: Modeled methanesulfonic acid (MSA) deposition in Antarctica and its relationship to sea ice, *J. Geophys. Res. Atmos.*, 116(23), 1–18, doi:10.1029/2011JD016383, 2011.

Matthew Osman 9/26/2017 7:00 PM

Deleted: The role of S

Matthew Osman 9/26/2017 7:00 PM

Deleted: glycinebetaineand

Matthew Osman 9/26/2017 7:00 PM

Deleted: osmoacclimation

- Hornung, E. W., Brackett, T. E., and Giaque, W. F.: The Low Temperature Heat Capacity and Entropy of Sulfuric Acid Hemihexahydrate. Some Observations on Sulfuric Acid “Octahydrate”, *J. Am. Chem. Soc.*, 78 (22), 5747-5751, doi:10.1021/ja01603a009, 1956.
- Hougen, O.A., Watson, K.W., Ragatz, R.A. (2nd Ed.): *Chemical Process Principles. Part 1*, Wiley, New York, NY, 1954.
- Iizuka, Y., Horikawa, S., Sakurai, T., Johnson, S., Dahl-Jensen, D., Steffensen, J.P., and Hondoh, T., A.: relationship between ion balance and the chemical compounds of salt inclusions found in the Greenland Ice Core Project and Dome Fuji ice cores, *J. Geophys. Res.*, 113, 1-11, doi:10.1029/2007JD009018, 2008.
- Iizuka, Y., Ohno, H., Uemura, R., Suzuki, T., Oyabu, I., Hoshina, Y., Fukui, K., Hirabayashi, M.: Spatial distributions of soluble salts in surface snow of East Antarctica, *Tellus B*, 68, 29285, <http://dx.doi.org/10.3402/tellusb.v68.29285>, 2016.
- Jourdain, B., and Legrand, M.: Seasonal variations of dimethyl sulfide, dimethyl sulfoxide, sulfur dioxide, methanesulfonate, and non-sea-salt sulfate aerosols at Dumont d’Urville (December 1998 – July 1999), *J. Geophys. Res.*, 106, 14,391–14,408, doi:10.1029/2000JD900841, 2001.
- Kim, J. S., and Yethiraj, A.: A Diffusive Anomaly of Water in Aqueous Sodium Chloride Solution at Low Temperatures, *J. Phys. Chem. B*, 112, 1729-1735, DOI:10.1021/jp076710+, 2008.
- Kreutz, K. J., Mayewski, P. A., Whitlow, S. I., and Twickler, M. S.: Limited migration of soluble ionic species in a Siple Dome, Antarctica, ice core, *Ann. Glaciol.*, 27, 371–377, 1998.
- Kumar, P.: Breakdown of the Stokes-Einstein relation in supercooled water, *PNAS*, 103(35), 12955-12956, doi: 10.1073/pnas.0605880103, 2006.
- Kuo, M. H., Moussa, S. G., and McNeill, V. F.: Modeling interfacial liquid layers on environmental ices, *Atmos. Chem. Phys.*, 11, 9971-9982, <https://doi.org/10.5194/acp-11-9971-2011>, 2011.
- Langway, C.C., Jr., Osada, K., Clausen, H. B., Hammer, C.U, Shoji, H., and Mitani, A.: New chemical stratigraphy over the last millennium for Byrd Station, Antarctica, *Tellus*, 46B, 40-51, 1994.
- Leck, C. and Persson, C.: Seasonal and short-term variability in dimethyl sulfide, sulfur dioxide and biogenic sulfur and sea salt aerosol particles in the Arctic marine boundary layer during summer and autumn. *Tellus*, 48B(2), 272–299, 1996.

- Legrand, M., and Mayewski, P.: Glaciochemistry of polar ice cores: A review, *Rev. Geophys.*, 35(3), 219–243, doi:10.1029/96RG03527, 1997.
- Lemlich, R.: A theory for the limiting conductivity of polyhedral foam at low density. *J. Colloid Interface Sci.* 64, 107–110, 1978.
- 5 | [Lu, H., McCartney, S. A., and Sadtchenko, V.: H/D exchange kinetics in pure and HCl doped polycrystalline ice at temperatures near its melting point: Structure, chemical transport, and phase transitions at grain boundaries, *J. Chem. Phys.*, 130, 054501–054511, doi:10.1063/1.3039077, 2009.](#)
- Marion, G. M., Farren, R. E.: Mineral solubilities in the Na-K-Mg-Ca-Cl-SO₄-H₂O system: a re-evaluation of the sulfate chemistry in the Spencer-Møller-Weare model, *Geochim. Cosmochim. Acta*, 63 (9), 1305–1318. 1999.
- 10 | Maselli, O. J., Chellman, N. J., Grieman, M., Layman, L., McConnell, J. R., Pasteris, D., Rhodes, R. H., Saltzman, E., and Sigl, M.: Sea ice and pollution-modulated changes in Greenland ice core methanesulfonate and bromine, *Clim. Past.*, 13, 39-59, doi:10.5194/cp-2016-49, 2017.
- McNeill, V. F., Grannas, A. M., Abbatt, J. P. D., Ammann, M., Ariya, P., Bartels-Rausch, T., Domine, F., Donaldson, D. J., Guzman, M. I., Heger, D., Kahan, T. F., Klan, P., Masclin, S., Toubin, C., and Voisin, D.: Organics in environmental ices: Sources, chemistry, and impacts, *Atmos. Chem. Phys.*, 12(20), 9653–9678, doi:10.5194/acp-12-9653-2012, 2012.
- 15 | Medley, B., Joughin, I., Smith, B. E., Das, S. B., Steig, E. J., Conway, H., Gogineni, S., Lewis, C., Criscitiello, A. S., McConnell, J. R., van den Broeke, M. R., Lenaerts, J. T. M., Bromwich, D. H., Nicolas, J. P., and Leuschen, C.: Constraining the recent mass balance of Pine Island and Thwaites glaciers, West Antarctica, with airborne observations of snow accumulation, *The Cryosphere*, 8, 1375-1392, doi:10.5194/tc-8-1375-2014, 2014.
- 20 | Medley, B., Joughin, I., Das, S. B., Steig, E. J., Conway, H., Gogineni, S., Criscitiello, A. S., McConnell, J. R., Smith, B. E., van den Broeke, M. R., Lenaerts, J. T. M., Bromwich, D. H., and Nicolas, J. P.: Airborne-radar and ice-core observations of annual snow accumulation over Thwaites Glacier, West Antarctica confirm the spatiotemporal variability of global and regional atmospheric models, *Geophys. Res. Lett.*, 40, 3649–3654, 2013.
- 25 |

- Meyerson, E. A., Mayewski, P. A., Kreutz, K. J., Meeker, L. D., Whitlow, S. I., and Twickler, M. S.: The polar expression of ENSO and sea-ice variability as recorded in a South Pole ice core, *Ann. Glaciol.*, 35, 430–436, doi:10.3189/172756402781817149, 2002.
- Minikin, A., Wagenbach, D., Graf, W., and Kipfstuhl, J.: Spatial and seasonal variations of the snow chemistry at the Filchner-Ronne Ice Shelf, Antarctica, 20, 283–290, 1994.
- Moore, J. C., Grinsted, A., Kekonen, T., and Pohjola, V.: Separation of melting and environmental signals in an ice core with seasonal melt, *Geophysical Research Letters*, 32, L10501, doi: 10.1029/2005GL023039, 2005.
- Mulvaney, R., Wolff, E. W., and Oates, K.: Sulphuric acid at grain boundaries in Antarctic ice, *Nature*, 331, 247–249, 1988.
- Mulvaney, R., and Peel, D. A.: Anions and cations in ice cores from Dolleman Island and the Palmer Island plateau, Antarctic Peninsula, *Ann. Glaciol.*, 10, 121–125, 1988.
- Mulvaney, R., Pasteur, E. C., Peel, D. A., Saltzman, E. S., and Whung, P. Y.: The ratio of MSA to non-sea-salt sulphate in Antarctic Peninsula ice cores, *Tellus B*, 44(4), doi:10.3402/tellusb.v44i4.15457, 1992.
- Nye, J. F.: Correction factor for accumulation measured by the thickness of the annual layers in an ice sheet. *J. Glaciol.*, 4(36), 785–788, 1963.
- Nye, J. F., and Frank, F. C.: Hydrology of the intergranular veins in a temperate glacier, in *International Association of Scientific Hydrology, Pub. 95 (Symposium at Cambridge 1969: Hydrology of Glaciers)*, pp. 157–161, 1973.
- Nye, J. F.: Thermal behaviour of glacier and laboratory ice. *J. Glaciology*, Vol. 37, No. 127, 401–413, 1991.
- Osterberg, E. C., Hawley, R. L., Wong, G., Kopec, B., Ferris, D., and Howley, J.: Coastal ice-core record of recent northwest Greenland temperature and sea-ice concentration, *J. Glaciol.*, 61(230), 1137–1146, doi:10.3189/2015JoG15J054., 2015.
- Pasteris, D. R., McConnell, J. R., Das, S. B., Criscitiello, A. S., Evans, M. J., Maselli, O. J., Sigl, M., and Layman, L.: Seasonally resolved ice core records from West Antarctic indicate a sea ice source of

- sea-salt aerosol and a biomass burning source of ammonium, *J. Geophys. Res. Atmos.*, 119(3), 9168–9182, doi:10.1002/2013JD020720., 2014.
- Pasteur, E. C., and Mulvaney, R.: Migration of methane sulphonate in Antarctic firn and ice, *J. Geophys. Res.*, 105, 11525–11534, doi:10.1029/2000JD900006, 2000.
- 5 Pasteur, E. C., and Mulvaney, R.: Laboratory study of the migration of methane sulphonate in firn, *J. Glaciol.*, 45(150), 214–218, doi:10.3189/002214399793377202., 1999.
- Porter, S. E., Parkinson, C. L., and Mosley-Thompson, E.: Bellinghausen Sea ice extent recorded in an Antarctic Peninsula ice core, *J. Geophys. Res. Atmos.*, 121, 13886–13900, doi:10.1002/2016JD025626., 2016.
- 10 Rankin, A. M., Wolff, E. W., and Martin, S.: Frost flowers - implications for tropospheric chemistry and ice core interpretation, *J. Geophys. Res.*, 107(D23), 4683, doi:10.1029/2002JD002492, 2002.
- Rempel, A. W., Waddington, E. D., Wettlaufer, J. S., and Worster, M. G.: Possible displacement of the climate signal in ancient ice by premelting and anomalous diffusion., *Nature*, 411(May), 568–571, doi:10.1038/35079043., 2001.
- 15 Rempel, A. W., Wettlaufer, J. S., and Waddington, E. D.: Anomalous diffusion of multiple impurity species: Predicted implications for the ice core climate records, *J. Geophys. Res.*, 107, 1–12, doi:10.1029/2002JB001857. 2002.
- 20 [Riche, F., Bartels-Rausch, T., Schreiber, S., Ammann, M., and Schneebeli, M.: Temporal evolution of surface and grain boundary area in artificial ice beads and implications for snow chemistry, *J. Glaciol.*, 58, 815–817, doi:10.3189/2012JoG12J058, 2012.](#)
- Roberts, J. L., van Ommen, T. D., Curran, M. A. J., and Vance, T. R.: Methanesulphonic acid loss during ice-core storage: Recommendations based on a new diffusion coefficient, *J. Glaciol.*, 55(193), 784–788, doi:10.3189/002214309790152474, 2009.
- Rolnick, L. S.: The stability of gypsum and anhydrite in the geologic environment, Ph.D. Thesis, Massachusetts Institute of Technology, MA, USA, 147 pp., 1954.
- 25 Sakurai, T., Ohno, H., Genceli, F. E., Horikawa, S., Iizuka, Y., Uchida, T., and Hondoh, T.: Magnesium methanesulfonate salt found in the Dome Fuji (Antarctica) ice core, *J. Glaciol.*, 56(199), 837–842, doi:10.3189/002214310794457335, 2010.

- Saltzman, E. S., Savoie, D. L., Zika, R. G., and Prospero, J. M.: Methane sulfonic acid in the marine atmosphere, *or. J. Geophys. Res.*, 88, 10,897-10,902, 1983.
- 5 [Sinclair, K. E., Bertler, N. A. N., and van Ommen, T. D.: Twentieth-century surface temperature trends in the western Ross Sea, Antarctica: Evidence from a high-resolution ice core, *J. Clim.*, 25\(10\), 3629–3636, doi:10.1175/JCLI-D-11-00496.1., 2012.](#)
- Sinclair, K. E., Bertler, N. A. N., Bowen, M.M., and Arrigo, K. R.: Twentieth century sea-ice trends in the Ross Sea from a high-resolution, coastal ice-core record, *Geophys. Res. Lett.*, 41, 3510–3516, doi:10.1002/2014GL059821, 2014.
- 10 Smith, B. T., van Ommen, T. D., and Curran, M. A. J.: Methanesulphonic acid movement in solid ice cores, *Ann. Glaciol.*, 39, 540–544, doi:10.3189/172756404781814645, 2004.
- Spaulding, N.E., Meese, D.A., and Baker, I.: Advanced microstructural characterization of four East Antarctic firn/ice cores. *J. Glaciol.*, Vol. 57, No. 205, 796-810, 2011.
- Stephen, H. and Stephen, T.: *Solubilities of Inorganic and Organic Compounds*. Vol. (1), Oxford, Pergamon Press., 1963.
- 15 [Thibert, E., and Dominé, F.: Thermodynamics and Kinetics of the Solid Solution of HCl in Ice, *J. of Phys. Chem. B*, 101 \(18\), 3554-3565, doi: 10.1021/jp962115o, 1997.](#)
- [Thibert, E., and Dominé, F.: Thermodynamics and Kinetics of the Solid Solution of HNO₃ in Ice, *J. of Phys. Chem. B*, 102 \(22\), 4432-4439, doi: 10.1021/jp980569a, 1998.](#)
- 20 [Thomas, E. R., and Abram, N.: Ice core reconstruction of sea ice change in the Amundsen-Ross Seas since 1702 AD, *Geophys. Res. Lett.*, 43, doi:10.1002/2016GL068130, 2016.](#)
- [Turner, S. M., Nightingale, P. D., Broadgate, W., and Liss, P. S.: The distribution of dimethylsulfide and dimethylsulphoniopropionate in Antarctic waters and ice, *Deep Sea Res., Part II*, 42, 1059–1080, 1995.](#)
- 25 Wagenbach, D., Graf, W., Minikin, A., Trefzer, U., Kipstuhl, J., Oerter, H., and Blindow, N.: Reconnaissance of chemical and isotopic firn properties on top of Berkner Island, Antarctica, *Ann. Glaciol.*, 20, 307-312, 1994.
- Wagon, P., Delmas, R. J. and Legrand M.: Loss of volatile acid species from upper firn layers at Vostok, Antarctica, *J. Geophys. Res.*, 104(D3), 3423, doi:10.1029/98JD02855, 1999.

Matthew Osman 9/26/2017 7:00 PM

Deleted: Seinfeld, J.H. and Pandis, S. N., (2nd ed.): *Atmospheric chemistry and physics: from air pollution to climate change*. New York, John Wiley and Sons. doi:10.1029/2005GL025629., 2006. -

Matthew Osman 9/26/2017 7:00 PM

Deleted: ..

- Weißbach, S., Wegner, A., Opel, T., Oerter, H., Vinther, B. M., and Kipfsuhl, S.: Spatial and temporal oxygen isotope variability in northern Greenland – implications for a new climate record over the past millennium, *Clim. Past*, 12, 171-188, doi:10.5194/cp-12-171-2016, 2016.
- 5 Welch, K. A., Mayewski, P. A., and Whitlow, S. I.: Methanesulfonic acid in coastal Antarctic snow related to sea-ice extent, *Geophys. Res. Lett.*, 20(6), 443-446, doi:10.1029/93GL00499, 1993.
- Weller, R.: Postdepositional losses of methane sulfonate, nitrate, and chloride at the European Project for Ice Coring in Antarctica deep-drilling site in Dronning Maud Land, Antarctica, *J. Geophys. Res.*, 109(D7), 1–9, doi:10.1029/2003JD004189, 2004.
- 10 Wettlaufer, J. S., and Worster M. G.: Premelting Dynamics, *Annu. Rev. Fluid Mech.*, 38(1), 427–452, doi:10.1146/annurev.fluid.37.061903.175758, 2006.
- Wolff, E.W.: Location movement and reactions of impurities in solid ice, in *Chemical Exchange Between the Atmosphere and Polar Snow*, NATO ASI Ser., Ser. 1, Global Environmental Change, vol. 43, pp 541-560, edited by E.W.Wolff and R.C. Bales, Springer-Verlag, New York, 1996.
- 15 Yoch, D. C.: Dimethylsulfoniopropionate : Its Sources, Role in the Marine Food Web, and Biological Degradation to Dimethylsulfide, *Society*, 68 (12), 5804–5815, doi:10.1128/AEM.68.12.5804, 2002.

Figures

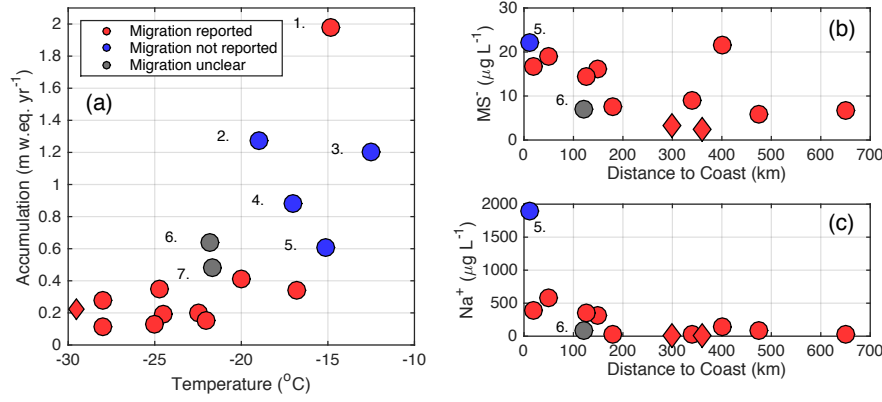


Figure 1: Compilation of data for Antarctic (circles) and Greenland (diamonds) ice cores for which [MS] records meet the criteria of this study. (a) Annual mean accumulation rate versus annual mean surface air temperature. (b) Core-averaged [MS] versus distance to the coast. (c) Core-averaged [Na⁺] versus distance to the coast. The colors indicate whether MSA migration has been reported, deemed as unclear, or not reported in the original publications. The numbers indicate ice core sites with $\bar{b} > 0.45$ m w. eq. yr⁻¹: 1. Bruce Plateau (length of record: 448 m), 2. DS08-Law Dome (196 m, corresponding to a time span of 145 yr), 3. Beethoven Plateau (47 m, 28 yr), 4. Gomez Nunatak (56 m, 42 yr), 5. WHG-Victoria Land (106 m, 130 yr), 6. DSS-Law Dome (124 m, 156 yr), 7. Dyer Plateau (80 m, 103 yr).

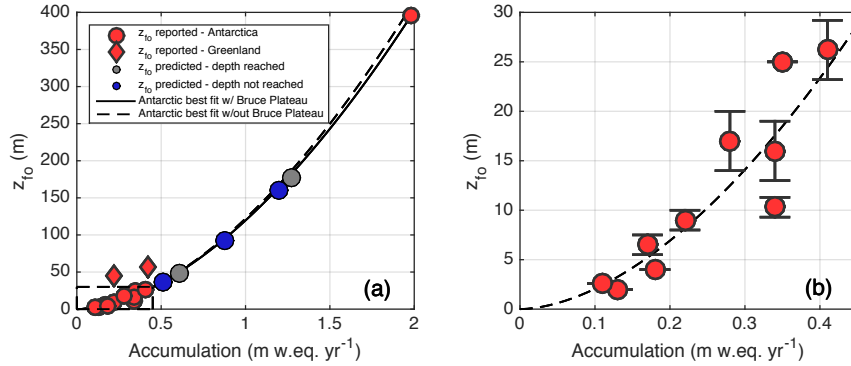


Figure 2: (a) Shallowest depth of MSA migration, z_{fo} , versus annual mean accumulation rate (\bar{b}) for Antarctic (circles) and Greenland sites (diamonds). The dashed line is the least-squares fit $z_{fo} = 125 \cdot \bar{b}^{1.77}$ through the Antarctic data with $\bar{b} < 0.45$ m. w. eq. yr⁻¹ ($n = 10$; $r^2 = 0.82$) and used to predict z_{fo} at sites where MSA migration was not reported (grey and blue). At 2 of these sites (WHG and DE08; grey), maximum sampling depth exceeds the predicted z_{fo} . The solid black line is the fit when including the Bruce Plateau data ($\bar{b} = 1.98$ m. w. eq. yr⁻¹). (b) Expanded view of panel (a) (rectangle bounded with dashed lines). Error estimates

for z_{fo} are generally crude (Supplementary S1). Some are based on unit conversion from m w. eq. to m using a firn densification model (Harron and Langway, 1980) constrained by site diagnostic observations (Table 1) and an assumed surface snow density range of 300–400 kg m⁻³. The dashed line is the same as in panel (a).

5

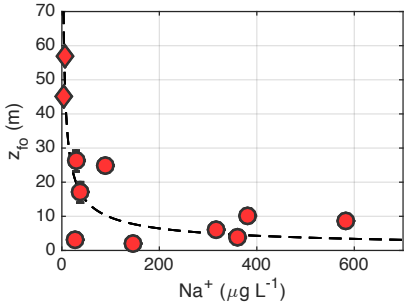


Figure 3. Shallowest depth of MSA migration versus core-averaged $[Na^+]$ for different core sites in Antarctica (circles) and Greenland (diamonds). The dashed line is the least-squares fit $z_{fo} = 142 \cdot [Na^+]^{-0.58}$ through all the data ($n = 11$, $r^2 = 0.85$).

10

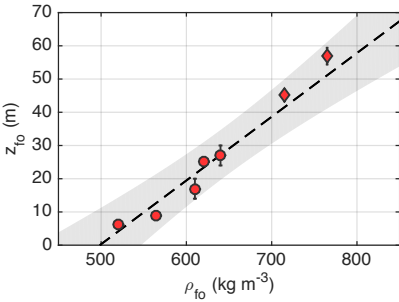


Figure 4. Shallowest depth of MSA migration versus firn or ice density for different core sites in Antarctica (circles) and Greenland (diamonds). The vertical bars are error estimates (Supplementary S1), the dashed line is the weighted least-squares fit $z_{fo} = -95.6 + 0.192\rho$ through the data ($n = 7$; $r^2 = 0.89$), with the weighting provided by the z_{fo} error estimates, and the shaded region is the region of 95% confidence.

15

20

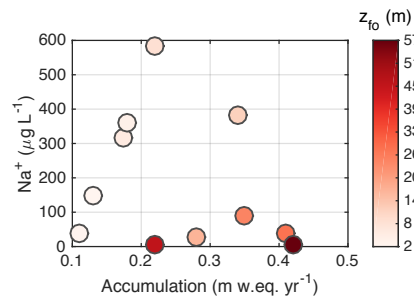


Figure 5: Core-averaged $[\text{Na}^+]$ versus annual mean accumulation rate for different core sites in Antarctica and Greenland. The different colors correspond to different values of the shallowest depth of MSA migration.

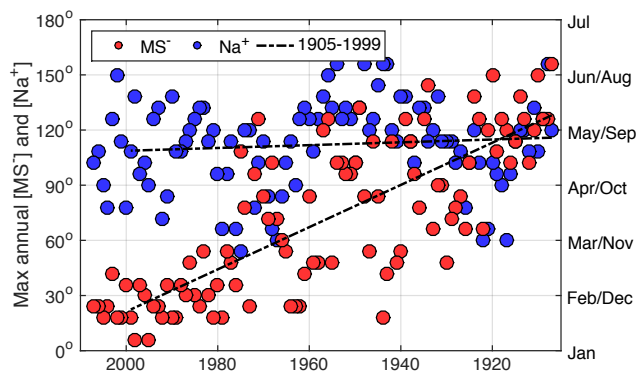


Figure 6: Timing of annual maximum of $[\text{MS}^-]$ (red) and annual maximum of $[\text{Na}^+]$ (blue) versus calendar age (year AD) for the DIV2010 core. No obvious predisposition for migration in the up or down-core direction is observed in DIV2010. As such, the timing of annual maximum $[\text{MS}^-]$ and annual maximum $[\text{Na}^+]$ are defined in terms of the number of degrees out of phase of January 1st (0°), where 180° indicates an annual maximum on July 1st. The two dashed lines are the least-squares fits for $[\text{MS}^-]$ and $[\text{Na}^+]$ over the period AD 1999-1905, corresponding to depths below which $\rho = 550 \text{ kg m}^{-3}$. The fit is highly significant for $[\text{MS}^-]$ ($n = 95$, $r = 0.75$, $p < 0.0001$) and not significant for $[\text{Na}^+]$ ($n = 95$, $r = 0.09$, $p = 0.41$).

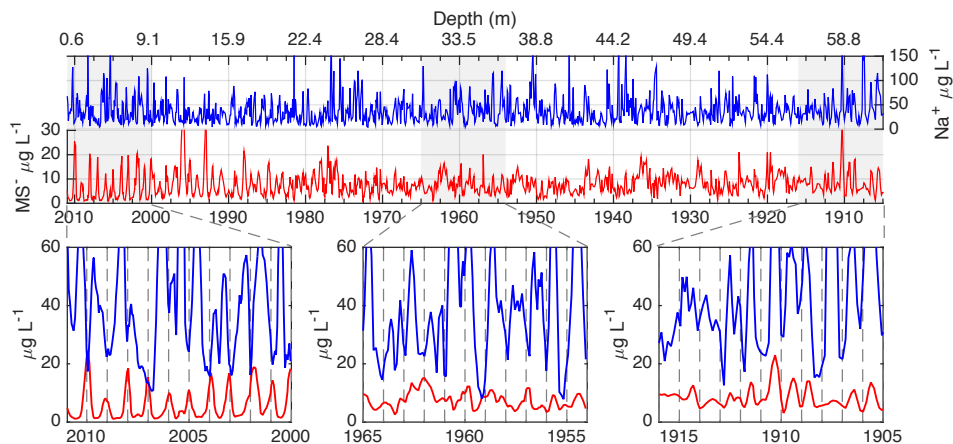


Figure 7: Records of $[MS^-]$ (red) and $[Na^+]$ (blue) from the DIV2010 ice core. Upper panel: the entire record considered in this study, with a depth scale at the top and a time scale (year AD) at the bottom (raw data). Bottom panels: 11-yr long portions of the records within the shallow zone (left), the transition zone (middle), and the deep zone (right). Three-point running averages are displayed for each zone. Dashed vertical lines denote January 1st of each year.

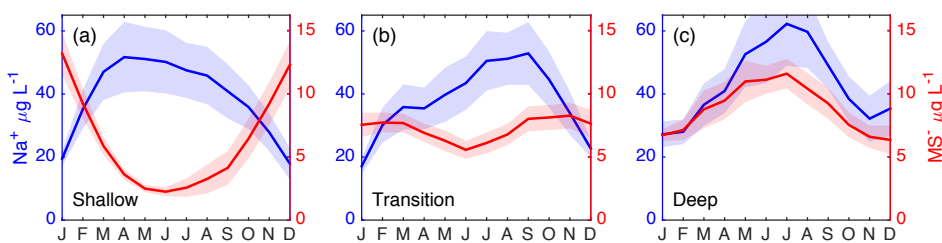


Figure 8: Monthly mean concentration of Na^+ and MS^- in the shallow (a), transition (b), and deep (c) zones of DIV2010. The shaded regions indicate ± 1 standard error of the mean.

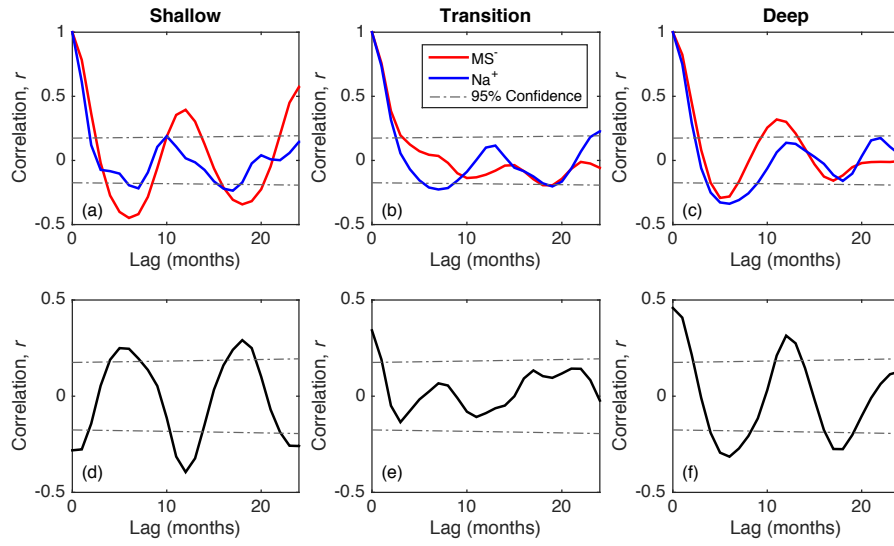


Figure 9: (a-c) Correlograms of $[\text{MS}^-]$ and $[\text{Na}^+]$ in the three zones of the DIV2010 ice core. The horizontal dashed lines show the 95% confidence interval for a time series with no autocorrelation (white sequence). (d-f) Cross-correlation between $[\text{MS}^-]$ and $[\text{Na}^+]$ in the three zones of the DIV2010 ice core. The horizontal dashed lines show the 95% confidence interval for two uncorrelated time series.

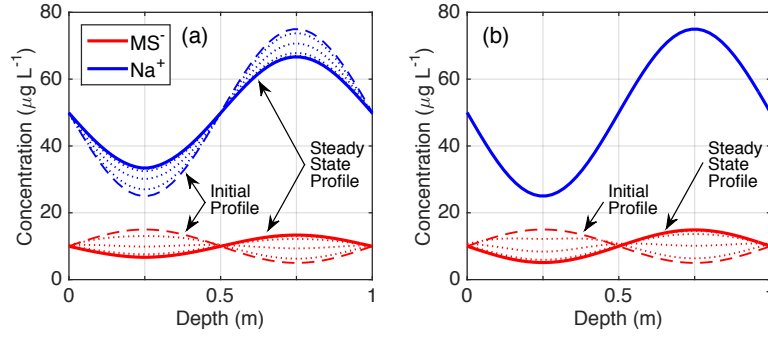


Figure 10: Comparison between the RWW model and the linearized model. (a) Profiles of $[\text{MS}^-]$ and $[\text{Na}^+]$ simulated by the RWW model with $D_{\text{MS}} = D_{\text{Na}} = 10^{-11} \text{ m}^2 \text{ s}^{-1}$ and $\Gamma_{\text{MS}} = \Gamma_{\text{Na}} = 6.5 \text{ K M}^{-1}$. (b) Profiles of $[\text{MS}^-]$ simulated by the linearized model with an effective velocity based on the $[\text{Na}^+]$ profile shown in the panel and with $D_{\text{MS}} = 10^{-11} \text{ m}^2 \text{ s}^{-1}$ (see text and Supplementary for details).

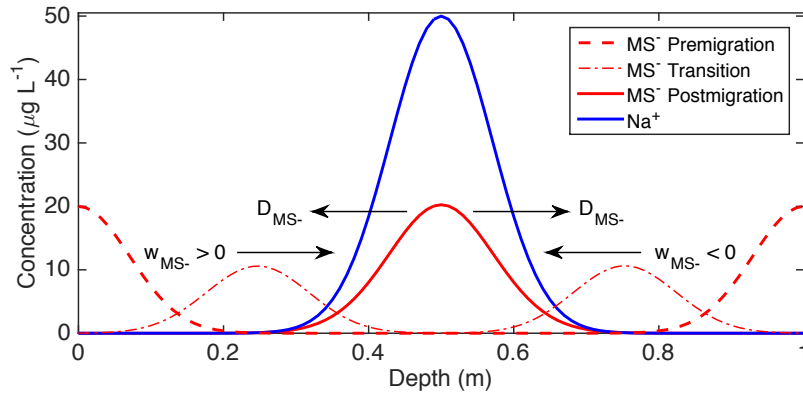


Figure 11: Evolution of [MS] simulated by the linearized model assuming (i) an effective velocity based on a Gaussian profile of [Na⁺] (blue) and (ii) $D_{MS} = 10^{-11} \text{ m}^2 \text{ s}^{-1}$. The dashed, dotted-dashed, and solid red lines show, respectively, the initial, transient, and steady state profiles of [MS]. The different symbols and arrow show the two transport processes affecting the steady-state profile of [MS]: MS⁻ convergence toward the [Na⁺] maximum, and MS⁻ diffusion away from the [Na⁺] maximum (see text and Supplementary Material for details).

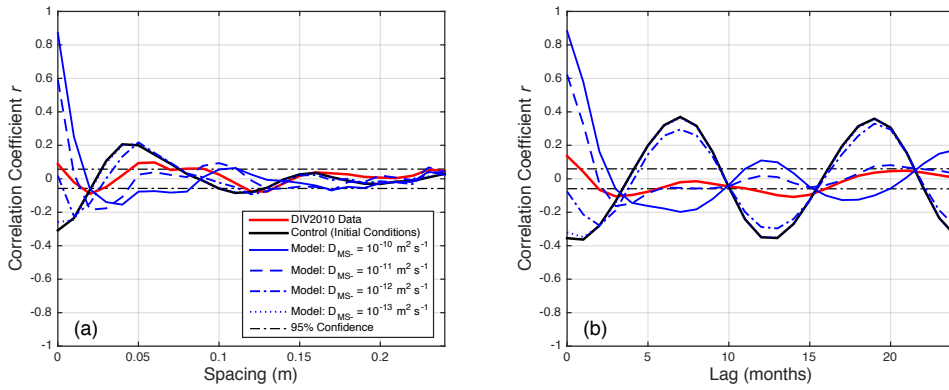


Figure 12: Cross-correlation between [Na⁺] and [MS⁻] at different vertical spacings (a) and different time lags (b). In each panel, the red line shows the cross-correlations calculated from the DIV2010 data below the shallow zone ($z > 9.1 \text{ m}$), the blue lines show the cross-correlations calculated from the linearized model for different values of D_{MS} , the solid black line shows the cross-correlations corresponding to the initial conditions of the model, and the horizontal dashed lines show the 95% confidence interval for two uncorrelated time series (see text and Supplementary for details).

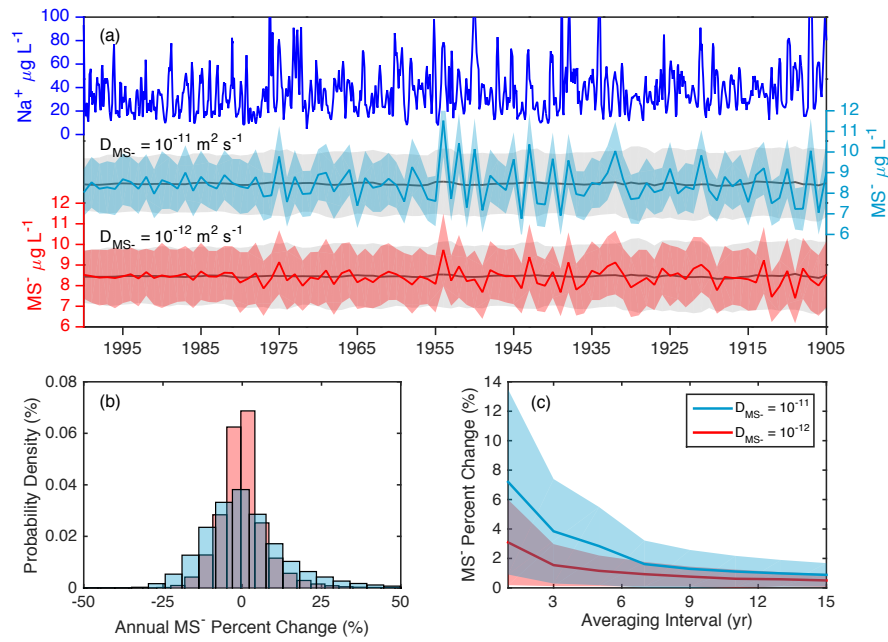


Figure 13: Extent of MSA migration in the DIV2010 ice core as estimated from the linearized model. Panel (a), top: DIV2010 $[\text{Na}^+]$ record (5-point smoothed). Panel (a), middle: (i) Annual means of $[\text{MS}^-]$ (black line) and standard deviations of $[\text{MS}^-]$, σ (gray band, representing $\pm 1\sigma$ about the means) for the initial conditions (ICs) of the model experiments, and (ii) annual means of $[\text{MS}^-]$ (blue line) and standard deviations of $[\text{MS}^-]$ (blue band) for the terminal conditions (TCs, ~ 95 yr) of the model experiments for $D_{\text{MS}^-} = 10^{-11} \text{ m}^2 \text{ s}^{-1}$. Panel (a), bottom: Same as panel (a), middle, but for $D_{\text{MS}^-} = 10^{-12} \text{ m}^2 \text{ s}^{-1}$. Panel (b): Probability density of the absolute difference between the annual mean $[\text{MS}^-]$ for the ICs and TCs, normalized to the annual mean $[\text{MS}^-]$ of the ICs, for all model experiments with $D_{\text{MS}^-} = 10^{-11} \text{ m}^2 \text{ s}^{-1}$ (blue) and $10^{-12} \text{ m}^2 \text{ s}^{-1}$ (red). Panel (c): Absolute difference between the annual mean $[\text{MS}^-]$ for the ICs and TCs, normalized to the annual mean $[\text{MS}^-]$ of the ICs, for all model experiments with $D_{\text{MS}^-} = 10^{-11} \text{ m}^2 \text{ s}^{-1}$ (blue) and $10^{-12} \text{ m}^2 \text{ s}^{-1}$ (red), as a function of the data averaging interval. The shaded regions illustrate the dispersion (± 1 standard deviation) of the normalized absolute differences among the model experiments.

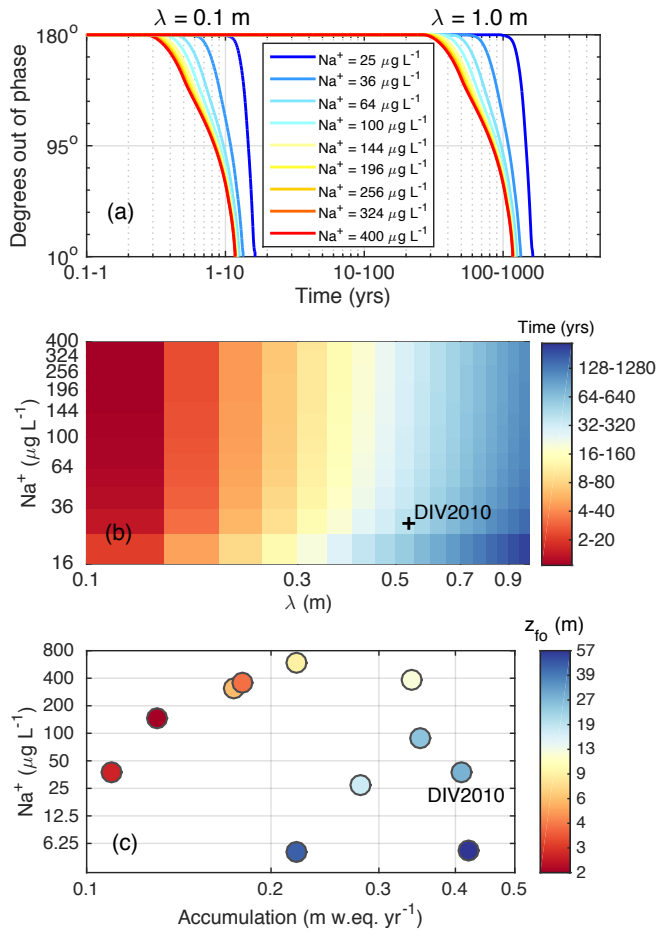


Figure 14: (a) Evolution of the phase difference between [MS] and [Na⁺] maxima for (i) two different extents of the model domain or “annual layer thickness” (0.1 and 1 m) and (ii) different layer averages of [Na⁺] (25 – 400 $\mu\text{g L}^{-1}$), as calculated from the RWW model. Note the two different scales along the horizontal axis: the scale from 0.1 to 100 yr applies to model results with $D_{MS} = 10^{-11} \text{ m}^2 \text{ s}^{-1}$, and the scale from 1 to 1,000 yr applies to model results with $D_{MS} = 10^{-12} \text{ m}^2 \text{ s}^{-1}$. (b) Time required for approximate alignment of [MS] and [Na⁺] maxima for different values of “annual layer thickness” and different layer averages of [Na⁺], as calculated from the RWW model. Conditions for the DIV2010 core site are indicated by the cross. (c) Shallowest depth of MSA migration for different values of annual mean accumulation rate and different core averages of [Na⁺] according to our data compilation, with DIV2010 denoted. Note the logarithmic scales in all panels.

Matthew Osman 9/26/2017 7:00 PM
Deleted: .

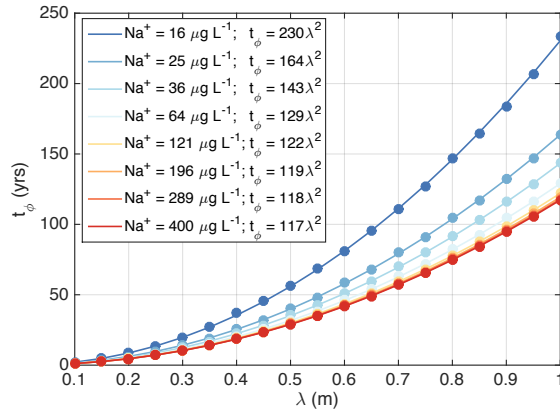


Figure 15: The time required for approximate alignment of [MS] and [Na⁺] maxima (t_ϕ) as a function of annual layer thickness (λ) for different layer averages of [Na⁺] and $D_{MS} = 10^{-11} \text{ m}^2 \text{ s}^{-1}$. The various curves are the least-squares power law fit $t_\phi = a\lambda^e$. The exponent e is estimated to about 2 for all values of layer-averaged [Na⁺] (note that the least squares power law fit for $D_{MS} = 10^{-12} \text{ m}^2 \text{ s}^{-1}$, not shown, yields a value of a that is a factor of 10 higher than for $D_{MS} = 10^{-11} \text{ m}^2 \text{ s}^{-1}$).

Tables

Table 1. Ice core sites where MSA migration (or lack thereof) has been reported (“~” denotes unavailable data and “n/a” denotes a non-applicable field).

| Ice core name | Lat/Lon | Year collected | Depth reached/ reported, m (yrs) | Elevation, m | Distance to coast, km | SAT, °C | \dot{b} , m w. eq. yr ⁻¹ | MSA migration reported? * | z_{fo} , m (yr) *** | ρ_{fo} , kg m ⁻³ | $[\overline{MS}]$, $\mu\text{g L}^{-1}$ | $[\overline{Na}^+]$, $\mu\text{g L}^{-1}$ | Reference |
|----------------------------|------------------|----------------|----------------------------------|--------------|-----------------------|---------|---------------------------------------|---------------------------|-----------------------|----------------------------------|--|--|--|
| West Antarctic MSA records | | | | | | | | | | | | | |
| Dyer Plateau | 70.65°S, 65.02°W | 1988 – 1989 | 56 m w.eq. (103) | 1943 | 190 | -21.7 | 0.48 | U | n/a | ~ | ~ | ~ | Mulvaney et al., 1992; Pasteur and Mulvaney, 2000 |
| Dolleman Island (1) | 70.58°S, 60.93°W | 1985 – 1986 | 96 m w.eq. (297) | 398 | 20 | -16.8 | 0.34 | Y | 10 (10) | ~ | 16.6 | 382 | Mulvaney et al., 1992 |
| Dolleman Island (2) | 70.58°S, 60.93°W | 1992 – 1993 | 18.5 m w.eq. (45) | 398 | 20 | -16.8 | 0.34 | Y | 8.5 m w.eq (19) | ~ | ~ | ~ | Pasteur and Mulvaney, 2000 |
| Gomez Nunatak | 74.02°S, 70.63°W | 1980 – 1981 | 37 m w.eq. (42) | 1130 | 135 | -17 | 0.88 | N | n/a | n/a | ~ | ~ | Mulvaney and Peel 1998; Pasteur and Mulvaney, 2000 |
| Beethoven Peninsula | 71.88°S, 74.57°W | 1992 – 1993 | 30 m w.eq. (28) | 580 | 16 | -12.5 | 1.20 | N | n/a | n/a | ~ | ~ | Pasteur and Mulvaney, 2000 |

| | | | | | | | | | | | | | |
|---|-------------------|-------------|------------------|------|-----|-------|--------|---|-----------------------|---------|------|---------|---|
| Berkner Island North (1) | 78.30°S, 46.28°W | 1989 – 1990 | 11 (21) | 730 | 50 | -22.5 | 0.22 | Y | 9 (16) | 560 | 19.0 | 583*** | Wagenbach et al., 1994 |
| Berkner Island North (2) | 78.30°S, 46.28°W | 1994 – 1995 | 39 m w.eq. (174) | 730 | 50 | -22.5 | 0.20 | Y | ~ | ~ | ~ | ~ | Pasteur and Mulvaney, 2000 |
| Berkner Island South | 79.60°S, 45.62°W | 1989 – 1990 | 11 (28) | 940 | 150 | -24.5 | 0.17 | Y | 6 (16) | 520 | 16.0 | 317*** | Wagenbach et al., 1994 |
| Siple 94-1 | 81.65°S, 148.8°W | 1994 – 1995 | 148 (1150) | 621 | 400 | -25 | 0.13 | Y | 2 (6) | ~ | 21.7 | 147 | Kreutz et al., 1998 |
| DIV2010 | 76.80°S, 101.7°W | 2010 – 2011 | 112 (216) | 1329 | 180 | -24 | 0.41 | Y | 26 (38) | 640 | 7.7 | 37.6 | Criscitiello et al., 2014; Criscitiello, 2014 |
| THW2010 | 77.0°S, 121.2°W | 2010 – 2011 | 62 (145) | 2020 | 340 | -28 | 0.28 | Y | 17 (32) | 610 | 9.0 | 27.5 | Criscitiello et al., 2014; Criscitiello, 2014 |
| Bruce Plateau | 66.03°S, 64.07°W | 2009 – 2010 | 448 (~) | 1976 | 30 | -14.8 | 1.98** | Y | 395 (560) | ~ | ~ | ~ | Goodwin, 2013; Porter et al., 2016 |
| Byrd NBY-2 | 80.02°S, 119.5°W | 1989 – 1990 | 164 (629) | 1530 | 650 | -28 | 0.11 | Y | 2.6 (13) | ~ | 6.7 | 37 | Langway et al., 1994 |
| Filchner-Ronne D235 | 77°S, 64°W | 1987 – 1988 | 4.3 m w.eq. (20) | ~ | 125 | ~ | 0.18 | Y | 1.8 m w.eq. (9) | ~ | 14.4 | 361*** | Minikin et al., 1994 |
| Ferrigno | 74.57°S, 86.90°W | 2010 – 2011 | 136 (309) | 1354 | 475 | -24.7 | 0.35 | Y | 25 (30) | 620 | 5.9 | 88 | Thomas et al., 2016 |
| East Antarctic MSA records | | | | | | | | | | | | | |
| Law Dome: W20k | 66.77°S, 112.35°E | 1997 | 45 (191) | 1370 | 110 | -22 | 0.15 | Y | ~ | ~ | ~ | ~ | Curran et al., 2002 |
| Law Dome: DSS | 66.77°S, 112.42°E | 1997; 2000 | 124 (156) | 1370 | 120 | -21.8 | 0.64 | U | n/a | n/a | 7.0 | 85.5 | Curran et al., 2002; Curran et al., 2003 |
| Law Dome: DE08 | 66.72°S, 113.18°E | 1986 | 196 (145) | ~ | 100 | -19 | 1.27 | N | n/a | n/a | ~ | ~ | Curran et al., 2002 |
| WHG - Victoria Land | 72.90°S, 169.08°E | 2006 | 105 (130) | 400 | 12 | -15 | 0.61 | N | n/a | n/a | 22 | 1901 | Sinclair et al., 2012; Sinclair et al., 2014 |
| Greenland MSA records | | | | | | | | | | | | | |
| Summit2010 | 72.33°N, 38.28°W | 2010 | 87 (268) | 3213 | 360 | -29.5 | 0.22 | Y | 43.7-46.9 (120 - 130) | 710-720 | 3.4 | 5.1**** | Maselli et al., 2017 |
| D4 | 71.4°N, 44.0°W | 2004 | 145 (270) | 2710 | 300 | ~ | 0.42 | Y | 54.3-59.4 (90-100) | 760-770 | 2.5 | 5.3**** | MSA data unpublished |
| 2Barrell | 76.94°N, 63.15°W | 2011 | 21.3 (21) | 1685 | 100 | ~ | 0.51 | N | n/a | n/a | ~ | ~ | Osterberg et al., 2015 |
| * Y = Yes; N = No; U = Unclear ** Bruce Plateau annual mean accumulation rate appears to be highly variable over the core-depth; listed value represents the AD 1750-2010 estimate (Goodwin, 2013). *** See Supplementary S1 and Table S1 for more information on how α_{f0} is defined at each site. **** $[\bar{N}\bar{a}^+]$ estimated using the reported site value for $[\bar{C}\bar{L}^-]$, and converted assuming a site-ratio $[\bar{C}\bar{L}^-]/[\bar{N}\bar{a}^+] = 1.8$, the mean sea-water ratio (e.g., Chesselet et al., 1972). ***** $[\bar{N}\bar{a}^+]$ measurements made using continuous-flow inductively coupled plasma mass spectrometry (ICP-MS), as opposed to $[\bar{N}\bar{a}^+]$ measurements made using ion chromatography (IC). As ICP-MS measures both the soluble and insoluble mass content, $[\bar{N}\bar{a}^+]$ values are likely slightly higher than IC-based estimates of $[\bar{N}\bar{a}^+]$. | | | | | | | | | | | | | |

Matthew Osman 9/26/2017 7:00 PM

Deleted: 798, identical to

Matthew Osman 9/26/2017 7:00 PM

Deleted: Seinfeld and Pandis, 2006).

Table 2. Slopes of the liquidus curves (Γ) estimated for various binary mixtures composed of impurity species of likely relevance and water. All values listed in columns prior to the Γ column are required for calculation of Γ (see Supplementary S2).

| Species | Mol. mass (g mol ⁻¹) | Eutectic temperature (°C; binary with H ₂ O) | Eutectic composition (wt%; binary with H ₂ O) | Density at eutectic (g mL ⁻¹ ; *≈approximated) | Γ (K M ⁻¹) | Reference |
|---|----------------------------------|---|--|---|-------------------------------|---------------------------|
| CH ₃ SO ₃ H | 96.11 | -75.0 | 51.1 | 1.20 | 11.7 | Stephen and Stephen, 1963 |
| Na(CH ₃ SO ₃) | 119.11 | -29.3 | 47 | 1.15* | 6.5 | Sakurai et al., 2010 |
| Mg(CH ₃ SO ₃) ₂ | 214.50 | -5.0 | 14.2 | 1.15* | 6.6 | Sakurai et al., 2010 |
| Ca(CH ₃ SO ₃) ₂ | 230.27 | -32.6 | 47 | 1.20* | 12.9 | Sakurai et al., 2010 |
| NaCl | 58.44 | -21.3 | 23.3 | 1.16 | 4.6 | Stephen and Stephen, 1963 |
| MgCl ₂ | 95.21 | -33.0 | 21.6 | 1.13 | 12.9 | Stephen and Stephen, 1963 |
| CaCl ₂ | 110.98 | -51.0 | 30 | 1.19 | 15.9 | Stephen and Stephen, 1963 |
| H ₂ SO ₄ | 98.08 | -62.0 | 35.6 | 1.19 | 14.3 | Hornung et al., 1956 |
| Na ₂ SO ₄ | 142.04 | -1.6 | 4.0 | 1.12 | 5.5 | Hougen et al., 1954 |
| MgSO ₄ | 120.37 | -3.6 | 17.3 | 1.22 | 2.3 | Marion et al., 1999 |
| CaSO ₄ | 136.14 | -0.7 | 18.0 | 1.23 | 0.4 | Rolnick, 1954 |

5